



Shini Group

Addr: No.23, Minhe St., Shulin Dist.,
New Taipei, Taiwan

Tel: +886 2 2680 9119

Fax: +886 2 2680 9229

Email: shini@shini.com

Factories:

- Taiwan
- Dongguan
- Ningbo
- Pinghu
- Chongqing
- Pune

Profile 公司简介

About Shini

发展

1969年，吴一夫先生在台北成立信一电器行，主要经营电热片、电热管、电机维修及电控箱设计装配。1975年，信一电器行开始生产SHD料斗干燥机，正式跨入塑料辅机行业，1978年更名为“信易电热有限公司”，信易由此正式诞生。

行业协会

中国塑料机械工业协会
副会长单位

中国塑料加工工业协会
注塑制品专业委员会理事单位

目标市场

注塑成型 | 挤出成型

中空成型 | 模压成型

智能成型 | 整厂规划

荣誉

中国塑机优势企业

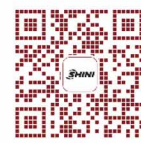
国家级专精特新
“小巨人”企业

中国驰名商标

国家知识产权优势企业

国家高新技术企业

二维码



官网



微信公众号



微信视频号



腾讯视频



抖音号

Development

In 1969, Shini Electrical Work Shop was established in Taipei by the chairman Mr. I-Fun Wu. Its primary products include a band heater, pipe heater, motor service, design, and assembly for the control box. In 1975, Shin I Electrical Work Shop began producing the classic SHD hopper dryer and entered the plastic material handling equipment industry. In 1978, Shin I Electrical Work Shop was renamed "Shini Electric Heaters Co., Ltd." Since then, Shini has been officially established.

Industry Association

China Plastics Machinery Industry Association
Vice President Unit

China Plastics Processing Industry Association
Governing unit of association of Injection Moulding Product

Profession

Plastic Injection
Plastic Extrusion

Blow moulding
Compression moulding

Thermoforming
Turnkey solution

Honor

China's leading enterprise in plastic machinery

National specialized, refinement, differential, and innovation
"Little Giant" Enterprise

China Famous Trademark

National Intellectual Property Advantage Enterprise

National high-tech enterprises

QR code



shini.com



WeChat



Tencent



facebook



WeChat Channel



YouTube

华西信易(重庆厂)
West China (Chongqing) Factory
Started in 2015



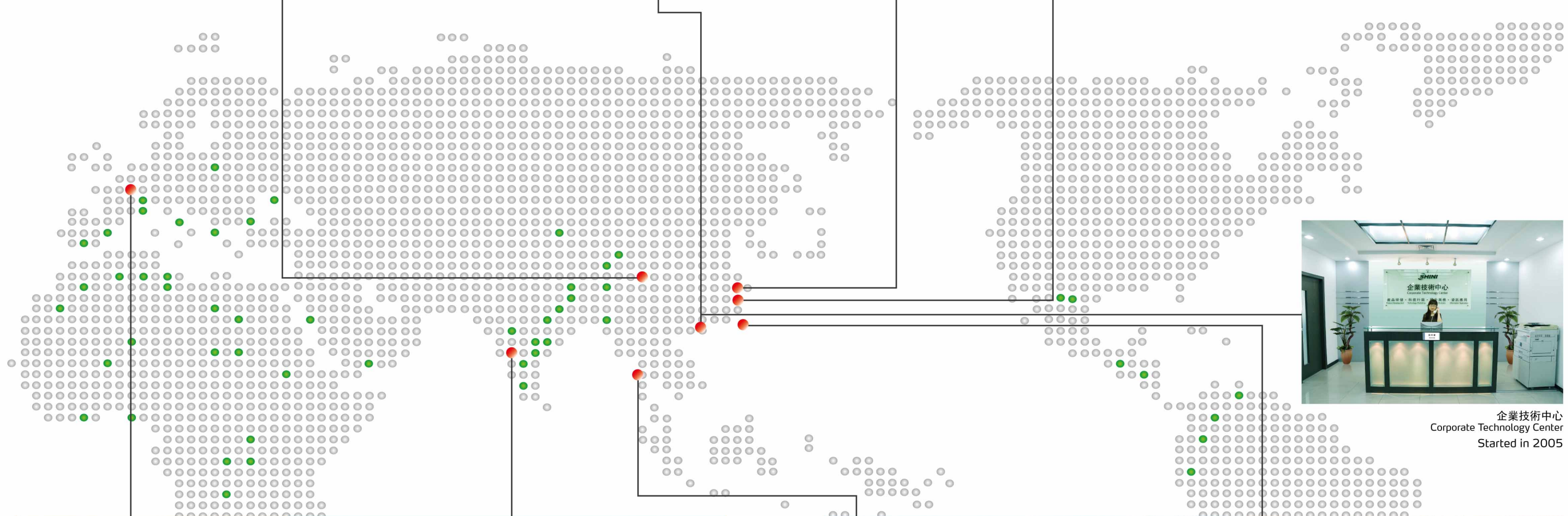
华南信易(东莞厂)
South China (Dongguan) Factory
Started in 1992



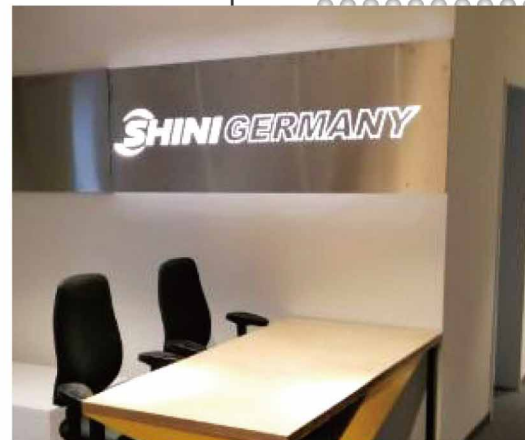
华东信易(宁波厂)
East China (Ningbo) Factory
Started in 2001



华东信易(平湖厂)
East China (Pinghu) Factory
Started in 2010



企業技術中心
Corporate Technology Center
Started in 2005



信易德国分公司
Shini Germany Office
Started in 2013



印度信易
Shini India
Started in 2010



越南信易
CONG TY TNHH VSP Vietnam (Shini Vietnam)
Started in 2022



总公司及新北厂
Headquarters & New Taipei Factory
Started in 2006

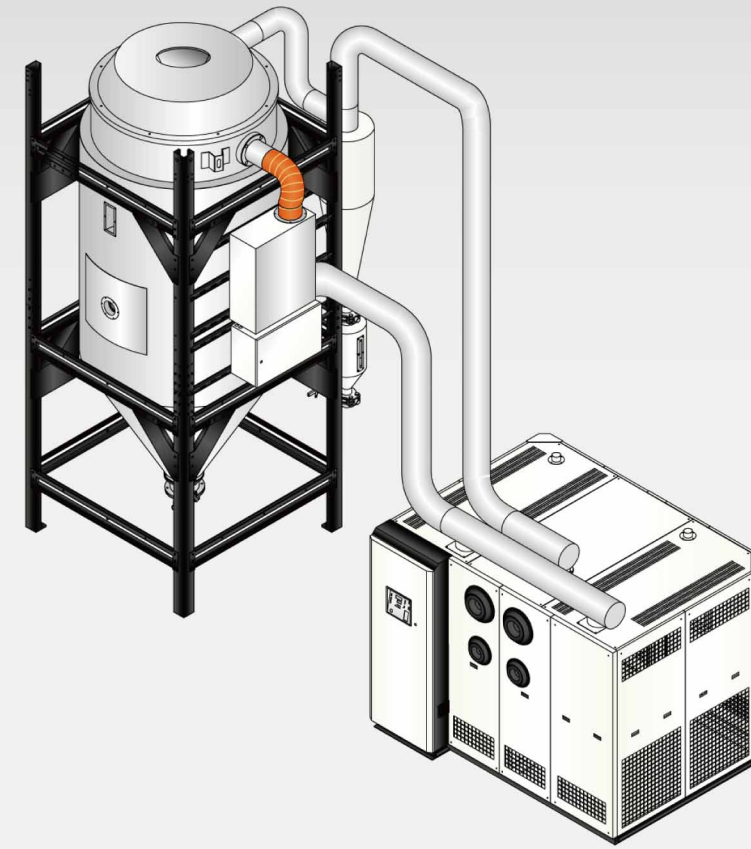
除湿干燥系列 Drying and Dehumidifying



SCD
欧化除湿干燥送料组合
"All-in-One" Compact Dryers

在对吸湿性塑料成型制程中，干燥成为尤为关键的阶段，必须确保原料中的水分被除去并且干燥温度合理。信易的蜂巢转轮除湿技术可提供持续稳定的湿度和温度的空气，保证生产效率和品质。我们也提供热风干燥料斗供您选择，主要用于去除非吸湿性热塑性塑料表面的水

In hygroscopic plastic, material drying becomes one of the essential steps in the process. The moist material must dry at the correct temperature and time. The desiccant wheel dehumidifying dryer can deliver constant low dew-point air and ensure production efficiency and quality. We also provide a classic hopper dryer for the drying process of non-hygroscopic material.



转轮除湿机SD-H-C与干燥料桶DH-U-PH组成大型除湿干燥系统，可分为地面及平台安装型两种。若原料中粉尘过多污染原料，可选用旋风集尘器ACF。

The dehumidifying dryers system consists of Honeycomb Dehumidifier SD-H-C and Hopper Dryer DH-U-PH. It includes the floor stand version or the customized platform version. If too much dust contaminates the material, cyclone dust-collector ACF can be an option.



SD-H 转轮除湿机
Honeycomb Dehumidifiers

转轮除湿机可提供-40℃或更低露点干燥空气，并可实现适时监控各项参数及确保露点恒定，干燥空气流量可高达4,000m³/hr。

采用全分子筛蜂巢除湿，相比硅胶吸附式蜂巢除湿效果更好。

采用P.I.D.温度控制系统，可精确控制温度。可选购PLC控制搭配LCD触控式人机界面，更能方便操作及监控。

可选装多种类型的节能装置，实现节能减排，综合节能值最高可达70%。

A desiccant wheel dehumidifying dryer can provide a constant low dew-point air of -40°C or lower. Also, it can achieve continuous detection of all the crucial parameters and maintain the dew-point. The largest can provide dry air up to 4000m³/hr.

The molecular sieve desiccant wheel offers much more advantages over the silica gel desiccant wheel.

The unit uses a P.I.D. temperature controller for precise control of temperature. The optional PLC control and HMI offer flexibility and the same level of performance.

Various optional energy-saving devices are available to realize energy saving and emission reduction. In a large dehumidified drying system, as much as 60% of energy can be saved.



SHD-U 欧化料斗干燥机
Hopper Dryers

料斗干燥机采用一周定时自动开关机功能，以达到省电目的。可选装控制系统根据当前料位高低，采用变频控制技术来自动调整干燥风量大小，将干燥桶调整至最合理的热能工作状态，以达成理想的烘干效果。干燥风量的降低，即为干燥热能消耗的降低，可节省能源超过20%。提供20L~8000L的料桶容量供选择。

Shini hopper dryer utilizes a programmable weekly timer to maximize energy consumption and efficiency. An optional energy control system using energy management software and inverter control technology. The control system will automatically adjust the airflow according to the temperature profile to optimize the working process of the drying hopper to deliver the optimal drying result and energy consumption. Management of optimal airflow will lead to a power reduction from the drying heater and realize as much energy saving as 20% or more.

Optional hopper capacities of 20L-8000L are available.

Shini smart modular dryer embraces a modular structure. A detachable floor stand is convenient for moving and extension at any time. One dehumidifier and several drying hoppers can centrally dry several materials, precisely controlling the drying air quantity in each drying hopper.



SDD 欧化除湿干燥组合
Dehumidifying Dryers



智能模块化除湿干燥组合
Smart Modular Dryer

智能模块化除湿干燥组合采用模块化的结构，可拆式的脚架方便随时移动与扩充，可同时搭配1对多个干燥料桶进行除湿干燥作业，可精确控制进入到每个干燥桶的干燥风量。



SHD-E 料斗干燥机
Hopper Dryer

SHD-E料斗干燥机可用于对大多数不易吸湿的塑料原料进行干燥，如PS、PP、ABS等，最高干燥温度可达160℃。另有诸多配件供选用，可实现热风回收可利用、过滤原料中铁屑杂质等功能，亦可搭配脚架实现落地式安装。可提供12kg~600kg的料桶供选择。

SHD-E hopper dryers are used to dry non-hygroscopic plastics, such as PS, PP, ABS...etc., which can reach the highest drying temperature of up to 160°C. In addition, the unit has multiple optional accessories to realize different process needs, such as recycling hot air, floor stand, and filtering metal impurities in the materials. Optional hopper capacities of 12kg~600kg are available.



SICR结晶送料组合
Crystallizing System

SICR结晶送料组合包括加热装置、保温料桶、搅拌组件、填料装置、送料装置。当未晶相化的PET原料进入料斗后，对其进行结晶处理，同时进行搅拌，可防止原料结块。结晶后的塑料可以从料斗底部输送到储料桶或直接输送到干燥料桶中干燥后使用。

This system mainly consists of heating elements, an insulated hopper, an agitator assembly, a material loader, and a material conveying loader. A transparent clear color identifies the non-crystallized PET (also known as Amorphous PET) materials fed into the crystallizing hopper. Amorphous PET should be crystallized by heating the material above the glass transition temperature (T_g) of 80°C (180°F) and agitating the material during softening status before further drying the PET at the higher temperatures. The system starts crystallization with an agitator to prevent materials from sticking and forming a large lump. The crystalline PET is discharged to the material storage hopper from the bottom or directly to the drying hopper for further drying.



SND氮气干燥机
Nitrogen Dryer

氮气干燥机主要针对光学级注塑制品干燥，填充氮气可以防止注塑原料在干燥过程中变黄，并且经过制氮膜过滤后得到的氮气露点极低，可保证对塑胶材料有效干燥。干燥温度可达140℃。

SND series is used for drying optical-grade material in plastic injection. It fills the unit with nitrogen to contain the plastic materials from oxidation and yellowing during over-drying. Besides, the nitrogen dew point is very low after being filtered by the nitrogen membrane, and the drying temperature can reach 140°C.



SCR PET结晶机
PET Crystallizers

PET结晶机SCR与SICR结晶送料组合功能类似，但没有集成输送功能，可灵活定制搭配各种输送装置使用，结晶料桶容量为160~2500L不等。

PET crystallizer SCR has similar functions with Shini Crystallizing System SICR, but without integrated conveying function, which can be flexibly collocated with various conveying devices. The crystallizing hopper capacity varies from 160-2500L.



SMD 模具除湿机
Mould Dehumidifier

模具除湿机能有效的解决因模具使用冷冻水来缩短成型周期而使模具外壳和型腔形成冷凝水的问题，保证稳定的成型条件和PET系统的最大生产能力。除湿风量从500~3000m³/hr不等，满足各种制程条件。

Shini mould dehumidifier can effectively keep the injection mould free from condensation. This ensures stable moulding conditions for rapid cycle times and maximizes the PET system's production capability. The units are capable of capacity up to the quantity of 500~3000m³/hr of dry air.



SCAD-U 空压式干燥机
Compressed Air Dryer

SCAD-U 空压式干燥机无需风机，直接使用加热后的压缩空气对小批量塑料，如ABS、PS等塑料进行成型前预处理。最高温度可达160℃。提供1~40L的料桶供选择

SCAD-U, a compressed air dryer for drying small volumes of engineering plastics such as ABS and PS. It is also suitable for pre-heating of material before plastic moulding. The max. drying temperature can reach 160°C, and optional hopper capacities of 1~40L are available.

供料输送系列 Feeding and Conveying



SAL-U
欧化直结式真空填料机
Self-contained Hopper Loaders

直结式和分离式真空填料机，利用风机在料斗内形成真空，使料斗内产生压力差，实现塑胶原料的自动输送，并确保无污染和浪费。整体输送包括适合不同条件下吸料机和料斗，最高输送量可达2,000kg/hr,输送距离可达100米。

Shini "Standard" Self-contained Hopper Loader and "Standard" Separate-vacuum Hopper Loader both use the blower to generate the vacuum and pressure difference inside the hopper, thus achieving auto conveying of plastic materials without contamination and wastes. The conveying system comprises different hopper loaders and hopper receivers with a conveying capacity of up to 2,000kg/hr and a conveying distance of 100m.



SAL-UGP
吸粉式真空填料机
Vacuum Powder Loader

欧化分离式真空吸粉机系列用于塑料颗粒与粉体混合物或者全粉体的输送，标准配备逆洗功能，确保物料顺畅输送。

SAL-UGP separate hopper loaders are suitable to convey the mixture of plastic granules and powder or all powders. It is standard equipped with the reverse purging function to ensure smooth conveying.



SAL 直结式真空填料机
"Standard" Self-contained Hopper Loaders

与原料接触的部分采用不锈钢材质，配备过滤装置，有效确保了塑料原料在输送过程中不被污染。配备布质过滤网及自动清洗装置，在此基础上全系列配备手动控制开关，方便机器安装于高处时进行电源切换。可直接安装在干燥桶上或成型机入料口实现自动输送。

The part in contact with the materials is made of stainless steel and equipped with a filter device. This effectively ensures that the plastic materials are free from contamination. It is equipped with a cloth filter and an automatic purging device. The entire series is equipped with a wired control switch to facilitate the machine installed at a high location. It can be directly mounted at the feed port of the drying hopper or injection moulding machine to realize auto conveying.



SAL-UG 欧化分离式真空填料机
Separate-vacuum Hopper Loaders

欧化分离式真空填料机采用高压风机为动力核心，具有不易损坏，吸力大，使用寿命长等优点。控制方面使用LCD显示屏搭配微电脑控制器，其具有独立的混料与截料输出功能，可直接控制两料比例阀SPV-U和截料阀SBU。标配RS485通讯接口和声光警报装置。

The U series separated hopper loaders feature a high-pressure blower as the vacuum source. The blower has the advantages of a robust structure, strong vacuum, long service life, and much more. The unit is comprised of an LCD and microcomputer controller. The control has independent proportion mixing and line cleaning output, and it can directly control the material



SMM 料斗原料消耗检测器
Material Consumption Monitor for Hopper Receiver

可实时监控原料消耗，操作人员根据原料消耗数据与合格产品量，统计出产品的合格率，监控生产。也可按需供料干燥，减少传统干燥换料时间，提高生产效率。

The material consumption monitor SMM is suitable for a hopper loader and receiver with a line cleaning function to monitor material consumption in real-time. The operator can document the product rate and control the production according to consumed material data. SMM also can supply drying materials on demand to reduce the conventional drying and replacing time and improve the production process.



SHR-U-V(SV)欧化型真空料斗
Vacuum Hopper Receiver

可以通过钢化玻璃观察斗内的原料量和状态，料斗采用不锈钢贴合钢化玻璃制造，确保原料不受污染；标准配备钢丝过滤网、真空分离阀。

The hopper receiver is made of stainless steel and tempered glass to ensure no contamination. The material level and status can be checked via tempered glass. The receiver has a standard steel mesh filter and a vacuum-breaking valve.

混合拌料系列 Dosing and Mixing



SGB
称重式拌料混合机
Gravimetric Blenders

本系列产品包含了各种类型的混合计量设备，可完成各种不同类型的工艺需求，实现了体积式、称重式及失重式等不同主流计量技术的混合应用，满足各种个性化工艺需求。

This series of products includes all kinds of mixing, metering, and dosing equipment, which can meet various process requirements. We realize the application with different metering technologies such as volumetric, gravimetric, and loss-in-weight and fulfill various process needs.



SCM
计量式色母混合机
Volumetric Dosers

体积式色母机SCM可实现对色母原料的精确计量，单机生产范围为0.1-130kg/hr。

The Volumetric Doser SCM can realize precise metering of masterbatches, and a dosing throughput from 0.1-130kg/hr.



SGD 称重式色母混合机
Gravimetric Dosers

称重式拌料混合机SGB的产量范围为40-3000kg/hr, 计量组分从4到8组分不等。

特殊的高温型称重式拌料混合机设计包括称重传感器及料位检测器，可应对高温原料处理。

SGB和SGD控制器配备以太网功能，配合相应软件，可通过此通讯功能读取原料配比数据如最大产量、实际产量、配比精度）以便于产品质量控制。

SGB具有回收料自动补偿功能，可根据回收料下料量的多少自动计算色差补偿。

称重式色母机SGD采用失重计量方式，生产范围为0.04-60kg/hr。

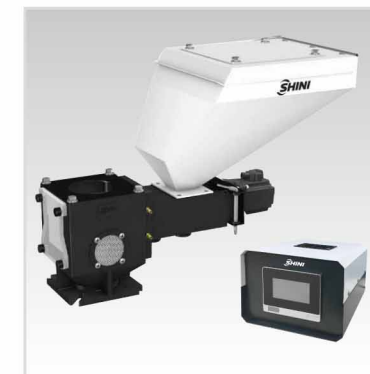
SGB's throughput ranges from 40-3000kg/hr with 4, 6, or 8 components.

The specially customized high-temperature gravimetric blender with a high-temperature load cell and the level sensor is suitable for high-temperature applications.

The PLC controllers of SGB and SGD are equipped with ethernet capability works with the relevant software for data logging, such as actual throughput, max throughput, and dosing ratio of the material, to facilitate product quality control.

SGB has regrinds auto compensation function. It compensates masterbatch automatically based on the ratio of regrind material.

SGD masterbatch doser adopts loss-in-weight technologies with an output of 0.04-60kg/hr.



SCM-H 高温型计量式色母混合机
Volumetric Dosers (High-temp. Series)

高温型色母混合机SCM-H配备内部冷却水循环冷却功能，能防止色母料粒进入主原料流可能出现的熔融，从而保证了精确地计量。

模块式装配结构，具有强制清料功能，更换色母时清理方便。

记录现有运作模式，不受停电影响，复电后即可恢复运作。

可设定若干模周期添加一次色母，以满足微量计量要求。

小型称重式计量喂料机，适用于微小产品生产中的精密计量称重混合。控制精度达到0.01g，输出范围小于40g/分钟。

The high-temperature volumetric masterbatch dosers, SCM-H, have a water cooling mechanism that can prevent masterbatch from melting and choking the dosing screw, such as in the PET preform application, and delivers the exact precision dosing.

A modular structure with masterbatch purge cleaning for easy colour change.

The current control cycle is registered and free from power failure. When power returns, the system is resumed without loss of setting.

The programmable setting of masterbatch dosing with every X amount production cycle. The function is for the demanding micro-dosing needs.

Micro Doser is most suitable for material dosing and mixing of small item production. The control precision can reach 0.01g, and the throughput is less than 40g/min.



SPM 容积式比例混合机
Proportional Mixer



SGD-Micro小型称重式计量喂料机
Micro Doser



STM-WD 双段水式模具控温机
Dual-purpose Water Heaters

信易开发的模温机种类多样，分为水式、油式、高温水式和大流量型系列，能够满足精确的控温要求及成型工艺的需求。

Shini has launched various types of mould temp. controller, including water heater, oil heater, high temp. water heater and large flow water/oil heater series, which can meet precise temperature control and moulding process demands.



STM-W/O 水油两用式模具控温机
Dual-purpose Water/Oil Heater

以水或油为传热媒介，最高温度可达：用水时90℃，用油时160℃。

采用全数字P.I.D 分段式控温系统，控温精度达到±0.5℃。

配备电热功率切换功能，可进行3KW、6KW、9KW切换使用。

Adopt water or oil as the heat transfer medium; the maximum operating temperature for water is 90℃, and for oil is 160℃.

P. I. D multi-stage temperature control system can maintain a mould temperature with an accuracy of ±0.5℃.

Programmable heating capacity in 3kW, 6kW, or 9kW via HMI.



STM 油式模具控温机
Oil Heaters

加热功率从6kW到48Kw, 加热温度从95~350℃, 配备涡轮泵或流量泵或磁力驱动泵。

控制器采用按键式或触控式，显示直观、操作简单友好。

采用P.I.D. 控温系统，在任何操作状态下均可维持稳定的模具温度，控温精度可达到±0.5℃。

能适用于精密模具及小直径模具回路中的控温需求，实现精密控温和高效率热交换。

配备RS485通讯功能，可选装回水温度及流量显示功能，亦有多款不同的选装件和配件可满足各种工艺的控温需求。

The heater power is from 3kW to 48Kw, and heating temp. is from 95~350℃, equipped with the turbo pump or flow pump or magnetic-driven pumps.

The controller adopts press or touch buttons, with an intuitive and user-friendly interface.

The P.I.D. temperature control will maintain stable mould temperature and control precision of ±0.5℃.

The unit will fulfill the requirements of different precision plastics processing needs and maintain high efficiency in heat exchange.

Equipped with RS485 communication function, and optional displaying function of the return water temp. and flow is available. There are also many different options and accessories to meet the temperature control demands of various processes.



STM-SPW 高端高温型水式模温机
High-end high-temp. water heater

STM-SPW系列配备PT100热电阻式与SSR综合控温，控温精度更高更稳定，配置电子流量显示及电子压力显示，方便实时监测管路输送流量及压力，可通过RS485通讯功能实现主机监控，满足更全面的智能监控管理需求。

以水为传热媒介最高加热温度可达200℃。

STM-SPW series is equipped with PT100 thermoelectric resistance and SSR solid state relay for temperature control, which has better stable temperature precision control. It is equipped with a digital flow meter and pressure, and it's easy to monitor the water pressure and flow in real-time; with the aid of an RS485 interface, the system can achieve information intelligent monitoring and management. The maximum heating temperature of the water heater can reach up to 200℃.



STM-W 水式模具控温机
Water Heaters

最高工作温度可达180℃,采用4.3"触控屏显示，人机界面操作更便捷。

采用板式换热器间接冷却，控温更为精确，以水之低粘滞性，快速达到热交换效果采用全数字P.I.D.分段式控温系统，在任何操作状态下均可维持稳定的模具温度，控温精度达到±0.5℃。

有一周定时开关机功能，支持中/英文切换及℃/°F转换。

STM-PW maximum water heating temperature is 180℃Industrial grade 4.3" touch-screen controller with easy-to-use HMI. The unit uses a plate heat exchanger for rapid indirect cooling and precision temperature control. The multi-stage P.I.D controller can maintain stable mould temperature with a precision of +/- 0.5℃. The control software has built a weekly timer with °C/°F unit conversion.



STM-PW 高温水式模具控温机
High-temp. water heater

冷热交换系列 Heating and Cooling



SIC-A-R2 环保冷媒风冷式冷水机
CFC-free Refrigerant Air-cooled
Water Chiller

信易的环保R410A冷媒冷水机，无臭氧层破坏，满足当今世界对环境保护的高标准。

全新开发的新一代高可靠度、超高效率冷水机采用高速低噪音散热风扇，能够在环境温度(0~43℃)，及冷冻水出水温度在7~25℃范围内稳定、安全、可靠的工作。

R410A is a CFC-free refrigerant, a replacement for the R22 refrigerant, and it doesn't cause harm to ozone like the R22.

The new generation of water chiller maintains a higher standard of reliability and efficiency. It is made with a low-noise cooling fan, which can safely, and reliably work under the environment temperature of 0~43℃, and the chilled water set temperature range of 7~25℃.



SICC-W-R3
环保冷媒水冷式中央式冷水主机
CFC-free Refrigerant Water-cooled Central Water Chillers

对于模具、注塑和各类塑料成型设备的精确冷却，信易的冷水机冷却系统可做到精确的控制温度、流量和压力，最大限度的发挥制冷效果，其产品包括风冷和水冷式冷水机、冷却水塔、水泵、水箱。

High-efficient centralized water cooling solution for different applications such as injection moulding, extrusion ...etc. Shini water chillers can achieve precise water temperature, flow, and pressure to maximize their cooling result. The product line consists of an air-cooled chiller, water-cooled water chiller, cooling tower, pump station, and insulated water tank.



SIC-W-R2 环保冷媒水冷式冷水机
CFC-free Refrigerant Water-cooled
Water Chillers

冷水机内部自带大容量圆型自力搅拌水箱，热容量倍增而使温度变化小，更增强了主机运转的稳定性，另外采用防锈水管路，防止生锈；微电脑控制、操作方便、功能多样。

精简合理的系统水管路设计和安装，使得设备运行更为顺畅的同时也降低了客户使用成本。

The water chiller contains a large self-stirring round water tank. The multiplication of the water tank allows a buffer for minor temperature variations, thus strengthening the main machine's reliability. In addition, it adopts a rust-proof water pipeline. The new microcomputer controller with easy, user-friendly, and additional functions.

The new compact footprint reduction design and pipeline optimization have enabled the cooling system to operate smoothly and be highly energy-efficient. As a result, it ultimately lowers the production expenses of the customer.



SIFR 智能流量调节器
Intelligent Flow Regulator

采用电子式流量、温度监控系统，可实时监控各管路流量、温度，能在模具回路堵塞时即刻显示，避免不良品

各回路中设有手动或自动调节阀，可根据不同水路环境进行调节，精确控制各回路流量

实时流量、温度监测报警功能，及时提醒回路异常

配备RS485通讯接口，可与主机通讯实现集中监控。

Digital flow and temperature monitoring systems with real-time display and manual control of each pipe's flow rate and temperature. Which can alarm and display mould loop blockage to avoid the rejects.

The regulating valve in each return loop can control the flow rate by adjusting different water loops.

The display of graphic and numerical data enables a more intuitive adjustment of the return loop.

RS485 communication interfaces make centralized monitoring with the host units unrestricted.



SICC-A-R2 环保冷媒风冷式中央冷水主机
CFC-free Refrigerant Air-cooled
Central Water Chiller

模块化的设计，由单元模块组合而成，根据负荷需要可选择1~15个单元模块。若需增加容量，可以增加模块或再选择适当的模块组成机组，接入已有的系统就可投入运行。

安装方便，模块连接只需在一模块上接进出水管即可完成整个水路的连通，不需每台单独配进出水管；模块之间采用橡胶软管连接，施工方便。

防护等级：IP54。

The modularized design with max a combination of 15 units. Cooling capacity can be enlarged by adding a number of modules to the existing system. The additional modules can easily connect to the inlet/outlet chilled water loop without requiring a new pipeline. An easily assemble rubber anti-vibration joint combines the modular unit.
Ingress Protection Rating IP54

冷热交换系列 Heating and Cooling



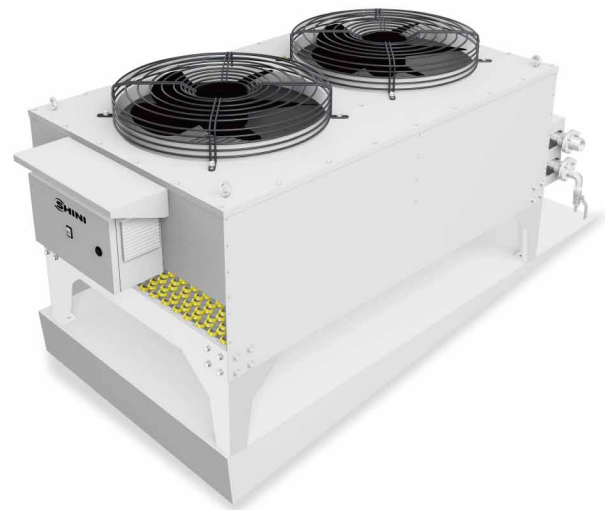
SDC-WS
密闭冷却水塔
Hermetic cooling water tower

经济节能：以环境空气作为冷却介质，无需压缩机，节省成本，整个水路采用密闭循环式，耗水量极少，极大的节约资源。

蒸发式湿帘：夏天可直接喷自来水，提高换热效率，维持流程水温稳定，喷水时间无限制且高效免维护。

Economic energy saving: take ambient air as the cooling medium without the compressor to save the cost. The hermetic circulation water loop with little water consumption greatly holds the water resource.

Evaporative wet curtain: In the summer, it can directly spray water to increase heat exchange efficiency and maintain constant water temperature. The spraying time is unlimited, highly efficient, and maintenance-free.



SDC-A
干式密闭冷却水塔
Dry Hermetic Cooling Tower

因可提供清洁的冷却水，而广泛应用于对冷却水质量要求较高的行业中，如电子，食品，化工，铸造，空调和制冷行业；采用模块化设计，扩容方便，减小故障维修的影响。

安装简捷：模块体积小，运输方便，现场安装只需接通电源，连接好水管即可投入运行。

经济节能：以环境空气作为冷却介质，无需压缩机，节省成本，整个水路采用密闭循环式，耗水量极少，极大的节约资源。

Due to the closed loop system, clean cooling water is available. It's widely used in industries with high demands for cooling water quality, such as the electronic, food, chemical, casting, air conditing, and refrigeration industries. Easy installation: Small footprint, modular design, and convenient to move around. Which only needs to connect the power supply and water pipe to start operation.

Economic energy saving: take ambient air as the cooling medium without the compressor to save the cost. The hermetic circulation water loop with little water consumption greatly holds the water resource.

粉碎回收系列 Granulating and Recycling



SG-24N
齿啃式粉碎机
Screenless Granulators

机边粉碎机包括齿啃式与慢速机边粉碎两大系列，适用于塑料成型机旁与取出机或皮带输送机将水口料或少量不良品的粉碎。

Shini machine side granulator includes screenless granulators and low-speed granulators. It is suitable for grinding sprues and rejects in small quantities. It is placed on the IMM side and sprue picker or collocates with a conveyor belt.



SG-L 齿啃式粉碎机
Screenless Granulators

齿啃式粉碎机采用无筛网设计，齿啃式刀具搭配切断刀具，粗粉碎与细粉碎同时进行，粉碎均匀，粉尘极少，可立即与新料混合使用。（多种机型供选择，其粉碎室尺寸为

240mm×175mm~240mm×460mm）

梯形齿刀，使应力集中产生的可能性有效降低，承受能力提高，从而使刀具使用寿命延长。

微电脑侦测遇阻自动逆转及警报，可于清除堵塞的原料后自动复位正转。

Screenless design granulators, teeth cutters, and large cutting blades are orderly organized and integrated with the cutting chamber. With the unique design of the teeth cutter and low speed, dusting powder is minimal during the recycling process. The regrinds can be immediately mixed and recycled with virgin materials back to the production process. (Multiple models are available, and the cutting chamber size is 240mm×175mm~240mm×460mm).

The new inclined teeth cutter reduces the possibility of stress concentration, enhances strength capacity, and improves the life span of cutter blades.

When the material stops the cutting blade, the unit will alarm and reverse the motor to free itself, and it will resume working automatically after the trouble is clear.

The low-speed granulators adopt new staggered blades and paddle blades. After re-sharpening the blades, the staggered blades keep a settled cutting clearance without needing precise adjustment. The paddle blades with a suitable angle create a good slice result. (Multiple models are available, and the cutting chamber size is 160mm×210mm~200mm×420mm).



SG-16N/20N慢速机边粉碎机
Low-speed Granulators

慢速机边粉碎机包括爪刀与片刀两大类，爪刀采用免调试活动刀片设计，片刀采用渐切式一体化动刀设计。（多种机型供选择，其粉碎室尺寸为

160mm×210mm~200mm×420mm）

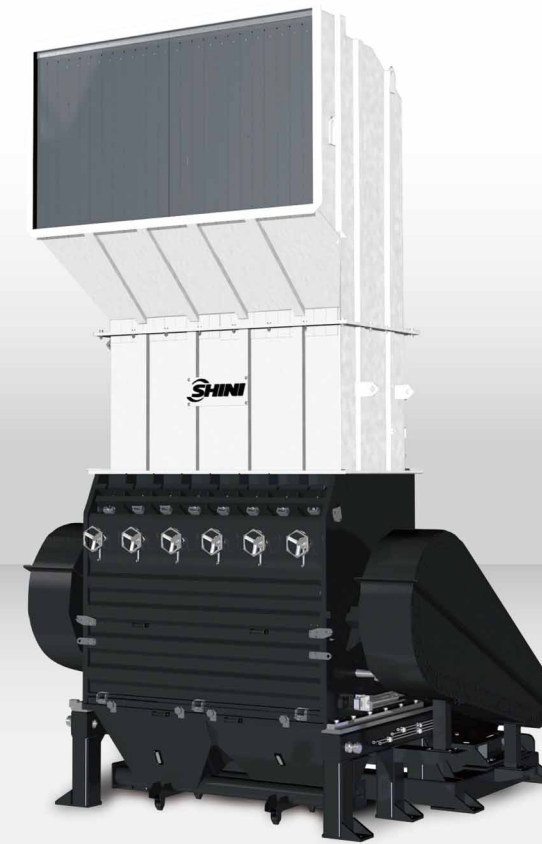
粉碎回收系列 Granulating and Recycling



SG-23/30
静音集中粉碎机
Sound-proof Central Granulators

集中粉碎机适用于各种注塑成型、吹塑成型或废料的集中粉碎回收。粉碎室尺寸从230×240mm到1200×2500mm不等，完全满足各种不同尺寸的粉碎要求。

Granulators are suitable for centralized grinding rejects from plastic production. The range of cutting chamber size is from 230×240mm to 900×2000mm.



SG-120250B
重型集中粉碎机
Central Granulator

集中粉碎机适用于粉碎各种塑料材料，包括注射成型、吹塑成型或挤压成型后产生的废料。

Shini granulators are suitable for granulating various plastic reject from injection moulding, blow moulding, or extrusion moulding.



SG-43 静音集中粉碎机
Sound-proof Central Granulators

免调刀的刀架设计，刀具更换更为简便。

配备电流继电器，马达超载保护及多重安全保护装置。

大型机种转动刀具采用V形切割技术，可将待破碎材料送至转刀中央，可避免材料贴在侧壁上，同时也增加了侧壁的使用寿命。

3x2型刀具(标准型)

两排固定刀的设计使得机壳进口空间很大，加上刀具的起始切割点低，材料可以被迅速的抓住并切碎。这种机壳的设计使其适用于粉碎空心体，如瓶子、滚筒等大体积的材料。

5x3型刀具

五爪式的半封闭式转子，每行叶片之间的空隙不大，被粉碎原料不会掉入转刀中。这种大型、重型转刀尤其适用于粉碎注塑料头料、厚壁物体及厚的板材等。

The blade retainer is designed for quick blade replacement without adjustment.

The unit features a current relay, motor overload protector, and multiple safety devices.

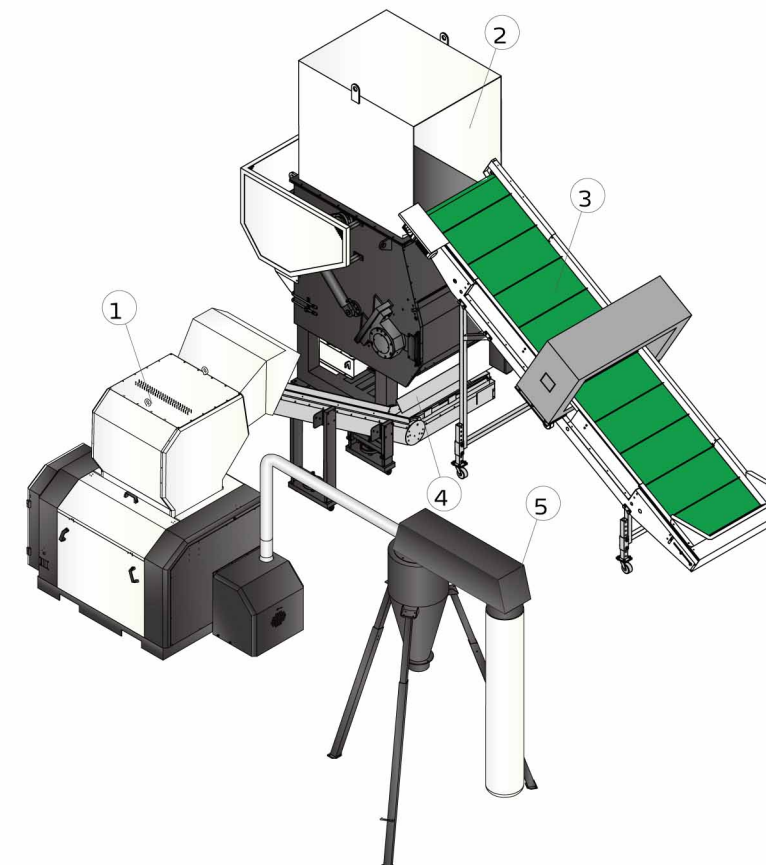
The V-formation rotating blades on the large granulators can force the material to the center of the rotating blades. It will prevent the material from rubbing against the side walls of the cutting chamber, increasing its life span.

Standard 3x2 Type (3 Rows of Rotating Blades and 2 Rows of Fixed Blades)

The models have larger inlet space and a low initial cutting point. Material can be easily grabbed and cut, making this ideal combination for the granulation of hollow objects such as bottles, crates, drums, and large bulky materials.

5x3 Type (5 Rows of Rotating Blades and 3 Rows of Fixed Blades)

The models have smaller pockets between each rotating blade. Enhance these massive, highly robust rotors ideally suited for heavy-duty applications such as plastic lumps, thick-walled articles, etc.



1. 静音集中粉碎机
Sound-proof central granulator

2. 破碎机
Shredder

3. 金属探测输送机
Belt conveyors with metal detector

4. 上行式皮带输送机
Up-feed belt conveyor

5. 旋风器
Dust separator



ST5-I
横走式五轴伺服机械手(驱控一体)
Five Axes Servo Driven Robot (Driven-control integrated)

横走式三/五轴伺服机械手主要应用于注塑成型时成品及水口料的取出。适用于二板模、三板模及热流道模具。能实现各种特殊动作，如排列、堆放、品检和埋入等。适用于锁模力在80~300T的射出成型机。

The ST3/ST5 series is designed for rapid and repeatable removal of injected products from the moulding machines. It applies to 2- or 3-plate moulds or with a hot runner. Capable of arranging, stacking, further quality inspection, and mould insertion. Suitable for injection moulding machine with clamping force 80~300 tons.



ST3-S2 标准横走式三轴伺服机械手
Standard Three-Axes Servo Driven Robot

精密性

三轴均采用伺服马达驱动，配合高精度线性滑轨及进口钢丝皮带传动，速度快、噪音低且定位准确。

安全性

横走、引拔及上下方向各极限位置均装有防撞装置，可有效防止操作失控。

智能性

7寸TFT高清晰触摸屏，友好的人机界面，可通过USB进行手控器及主板升级、程序数据下载，开放式程序教导，8GB存储器，独立的双16位IO扩展板设计，最大可扩展4块IO板。

人性化

系统自带多种语言，方便不同地区客人使用，预留辅助设备接口，便于用户增加辅助设备。

Precision

Heavy-duty servo motors drive all linear movements with precise linear guide rails and high-power V belts for fast, silent, and precise operation.

Safety

The travel limit of the X, Y, and Z-axis are with anti-collision devices. Thus, it can effectively prevent operations out of control.

Intelligence

7.0-inch high-definition TFT touch screen with user-friendly HMI, open program teaching. The USB port is used to upgrade and export the hand control and mainboard data. 8GB memory bank and an independent dual 16-bit IO expansion board can expand to a maximum of 4 IO boards.

User Friendly

The control came with a multi-language selection and reserved auxiliary equipment slots for the user's further expansion.



ST3-LT-S 三轴伺服大型开放式机械手
Large Three Axes Servo Telescopic



SAC 角式皮带输送机
Belt Conveyor SAC

角式皮带输送机，机身由高精度铝合金结构组成，传送皮带采用高质量加布塑料材料，可有效保护产品外观且具极高的耐磨性

传统的丝杆搭配手轮升降模式集成在一体化脚架中，表面烤漆，可依升降尺寸调节高度

隐藏式旋钮式调速器，可自由调整运转速度，操作简单，防触碰。

Shini Belt Conveyor is composed of a high-precision aluminum alloy frame. The conveying belt is made of quality plastics with cloth, effectively protecting the product's appearance and ensuring high wear resistance. It integrates a traditional screw + lifting hand wheel into the floor stand, with a baking finish surface, which can adjust the height according to the lifting range. The hidden knob speed controller can adjust the belt speed flexibly, make simple operations and avoid touches.



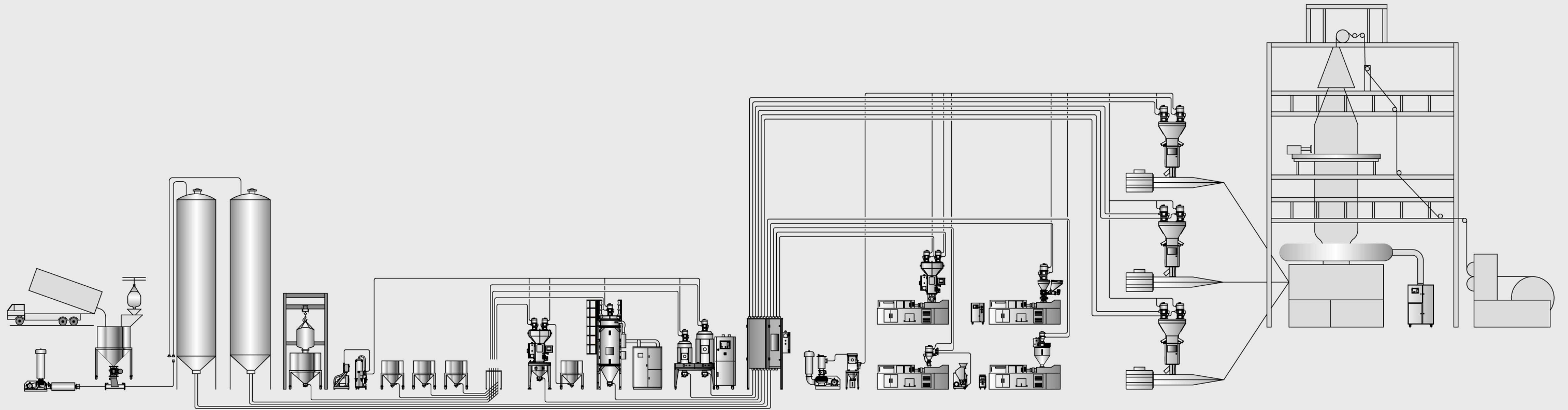
SPC 平面式皮带输送机
Belt Conveyor SPC

平面式皮带输送机主要用于机械手取出产品的输送，能有效提升工作效率，保护产品外形与机械手信号连接，可搭配机械手实现全自动化作业，也可独立作业。

Shini Belt Conveyor is mainly used for conveying the products taken out by the robots. It will dramatically improve the working efficiency and protects product appearance. The signal between the robots and the conveyor belt. Moreover, it can collocate with the robot to achieve automatic operation or work independently.

助您提高效益，提升产品质量，满足市场日益竞争的需求，根据您的需要，信易将为您提供个性化的原料处理方案，以优化产品生产流程。

Shini is always here to help the industry improve product quality and enhance its competitiveness in marketing. Shini can cater to different needs by providing customized plastic material handling solutions and optimizing the product production process.



储存
Storage



输送
Conveying



分配
Distribution



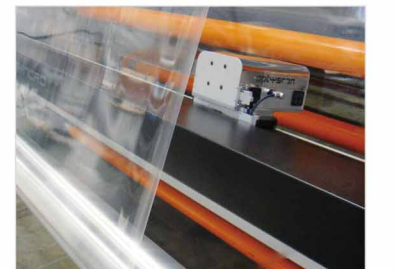
计量混合
Dosing and Mixing



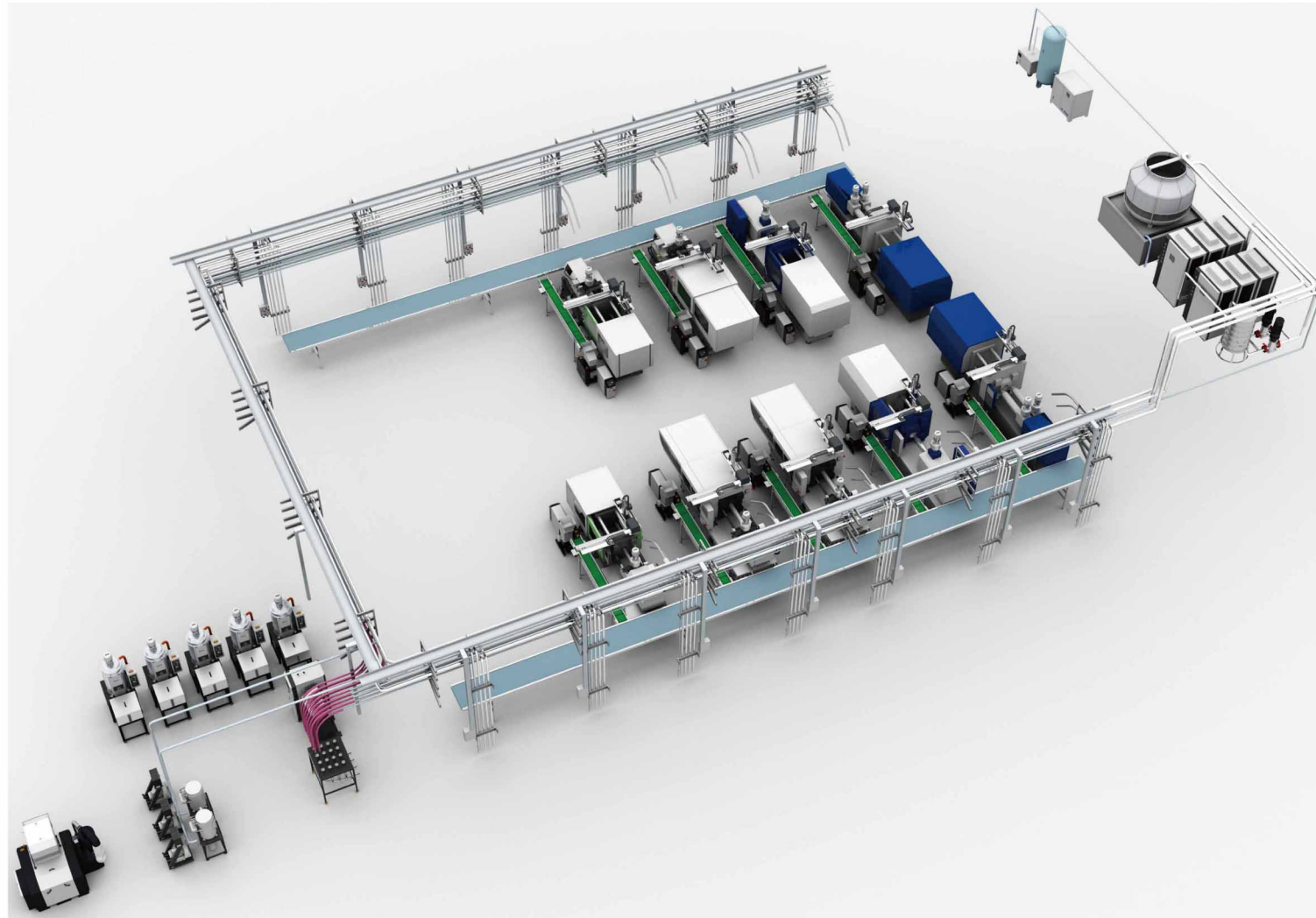
干燥
Drying



挤出控制
Extrusion Control

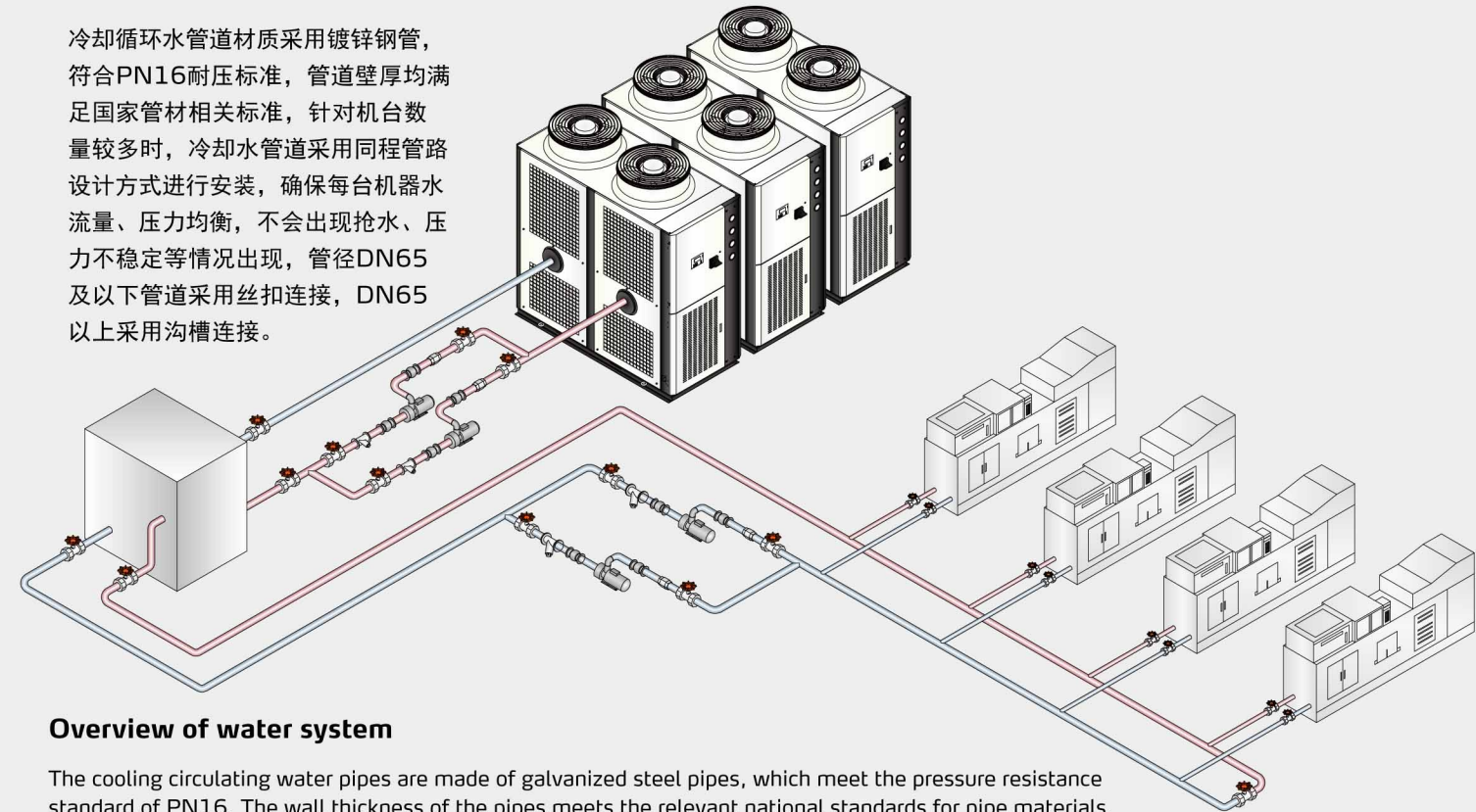


中央水电气整厂规划



水系统概览

冷却循环水管道材质采用镀锌钢管，符合PN16耐压标准，管道壁厚均满足国家管材相关标准，针对机台数量较多时，冷却水管道采用同程管路设计方式进行安装，确保每台机器水流量、压力均衡，不会出现抢水、压力不稳定等情况出现，管径DN65及以下管道采用丝扣连接，DN65以上采用沟槽连接。



Overview of water system

The cooling circulating water pipes are made of galvanized steel pipes, which meet the pressure resistance standard of PN16. The wall thickness of the pipes meets the relevant national standards for pipe materials. When the number of machines is large, the cooling water pipes are installed by the same way of pipeline design to ensure that the water flow and pressure of each machine are balanced, and there will be no water rush, pressure instability and other situations. The pipes with pipe diameter of DN65 and below are connected by screw thread, and the pipes with pipe diameter of DN65 and above are connected by groove.

电系统概览

电力电缆符合GB/T12706、GB12666等国家标准。
电线、电缆的生产厂均有国家级部门颁发的生产许可证。
电线、电缆均有国家认可的质量检测机构出具的检验合格报告和“3C”认证。

Overview of electrical system

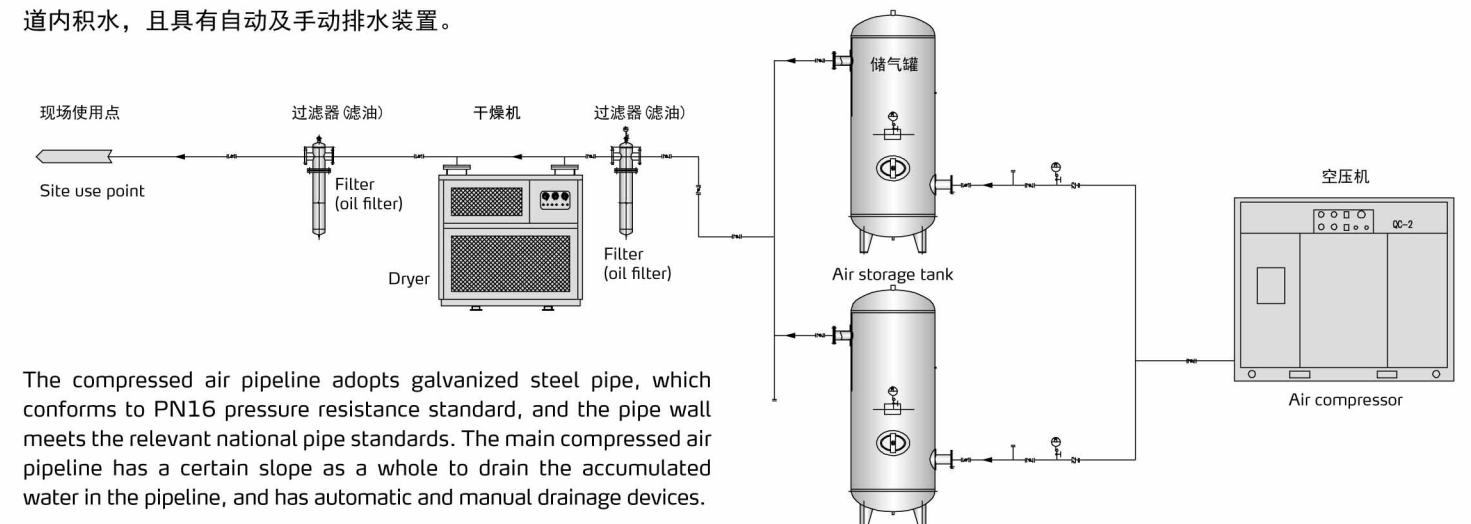
Power cables comply with GB/T12706, GB12666 and other national standards. Wire and cable manufacturers have production licenses issued by national departments. The wires and cables are provided with the inspection report and "3C" certification issued by the nationally recognized quality inspection agency.



动力柜
Distribution Cabinet

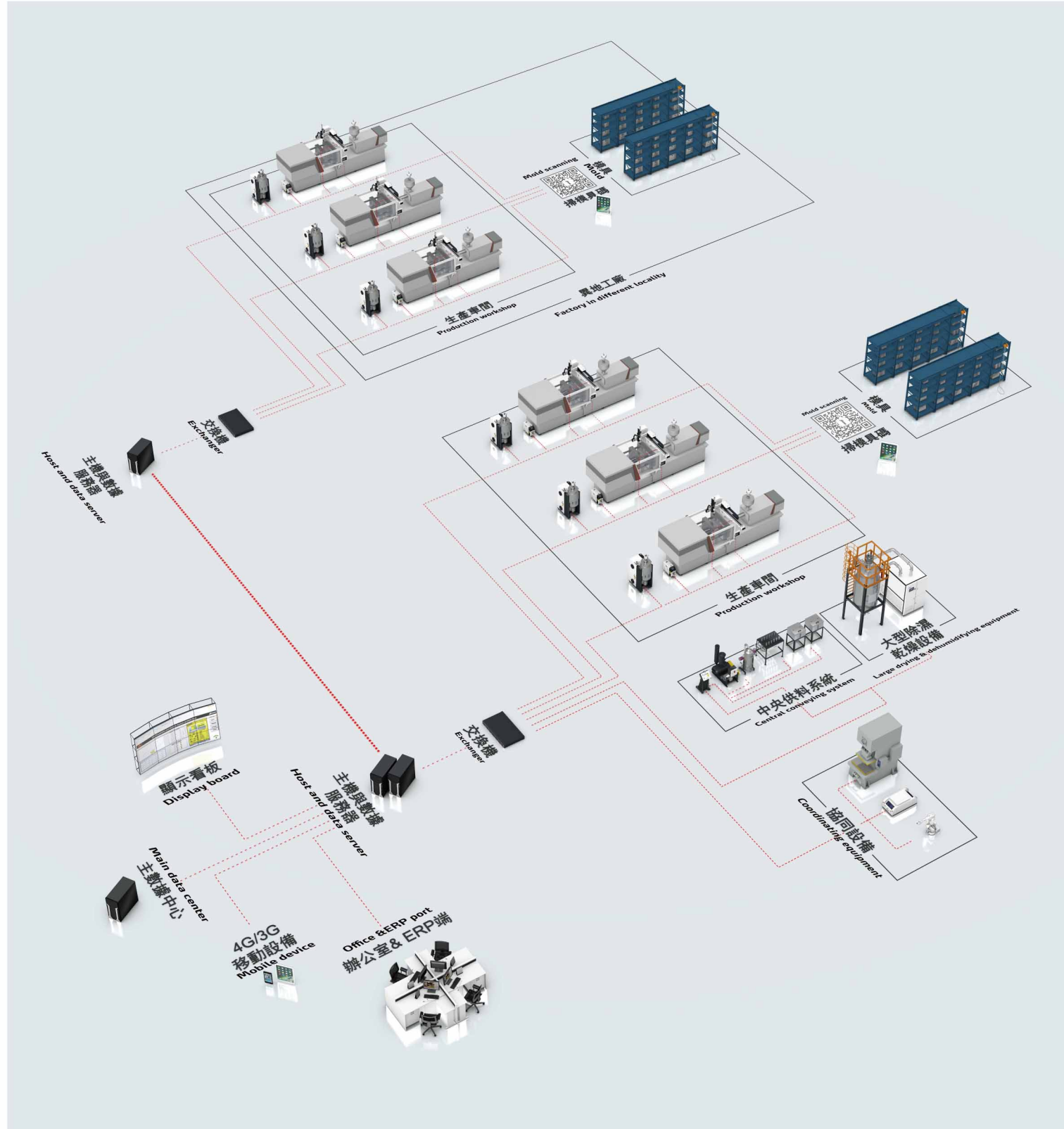
气系统概览 Overview of gas system

压缩空气管道采用镀锌钢管，符合PN16耐压标准，管道壁满足国家管材相关标准。压缩空气主管道整体具有一定的坡度，以便排放管道内积水，且具有自动及手动排水装置。



The compressed air pipeline adopts galvanized steel pipe, which conforms to PN16 pressure resistance standard, and the pipe wall meets the relevant national pipe standards. The main compressed air pipeline has a certain slope as a whole to drain the accumulated water in the pipeline, and has automatic and manual drainage devices.

sLink 基于网络的集成控制技术



sDATA 注塑工厂数据采集监控系统



sDATA数据采集监控系统是对注塑工厂的生产过程数据进行实时采集，存储，并对这些工厂详细制造数据和过程进行报表化和图表化的软硬件解决方案。

sDATA data acquisition and monitoring system is a software and hardware solution that collects and stores the production process data of injection molding plants in real time, and reports and charts the detailed manufacturing data and processes of these plants.

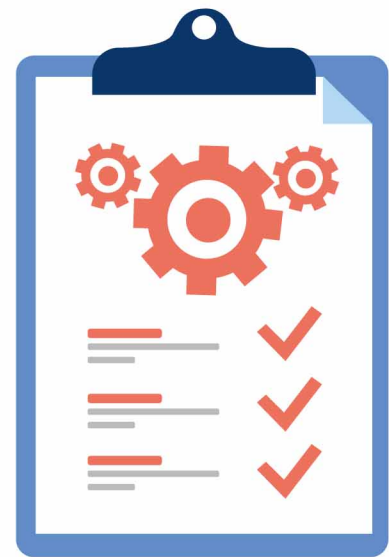
主要功能/Main Function

数据采集/Data acquisition	数据监控/Data monitoring	分布式服务/Distributed services
排程/APS	OPC UA	多终端支持/Multi-terminal support
数据看板/Data board	SPC	自定义界面/Custom interface

智塑云MES系统

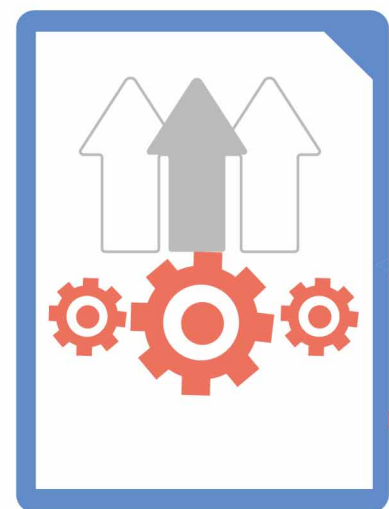
计划员工单任务下发
可以与其他信息系统进行集成，形
成信息流和管理上的闭环

Planned employee single task distribution
It can be integrated with other information
systems to form a closed-loop information
flow and management

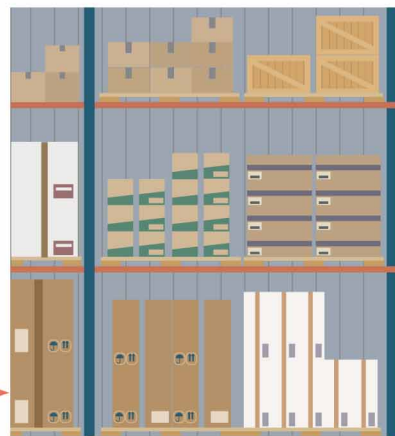


工单任务
Work order task

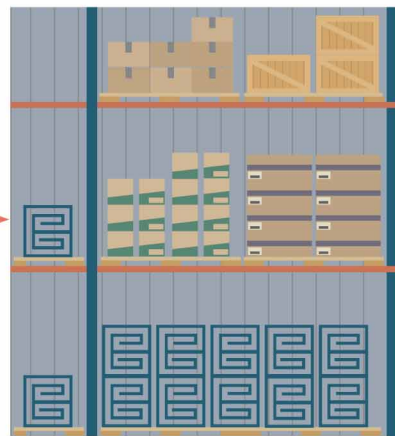
MES系统智能排产
支持手动调整排产
MES system intelligent production
scheduling
Support manual adjustment of
production scheduling



计划排产
Planned production



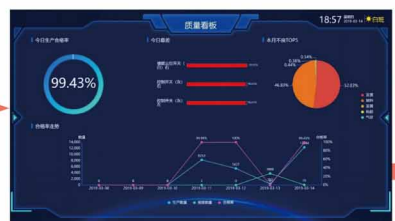
物料仓库
Material warehouse



模具仓库
Mold warehouse



生产任务
Production task



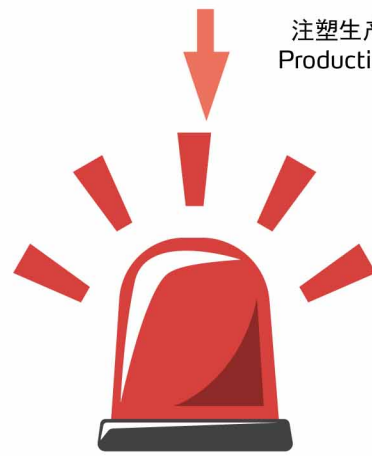
生产数据
Production data



品质管理
Quality



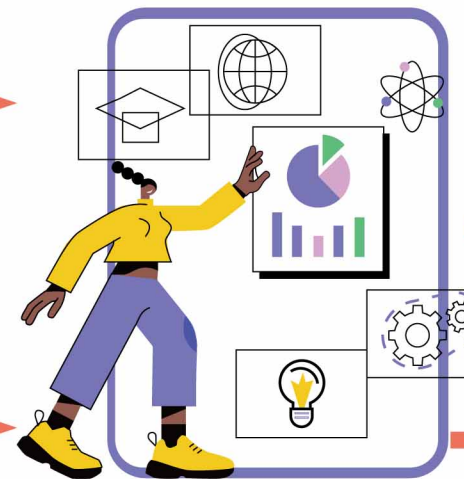
注塑生产
Production



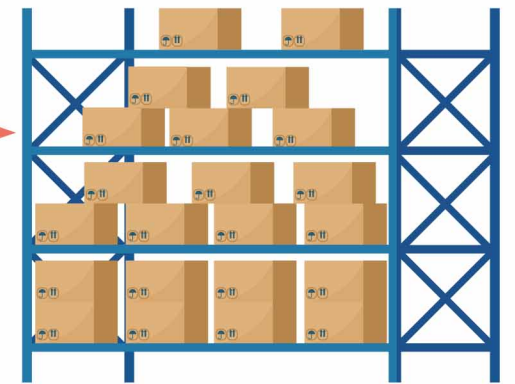
预警管理
Alarm



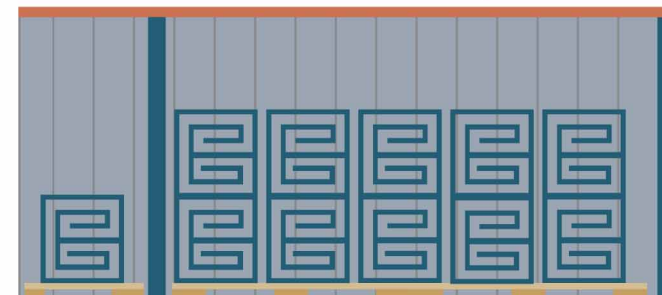
生产统计表
Production statistics



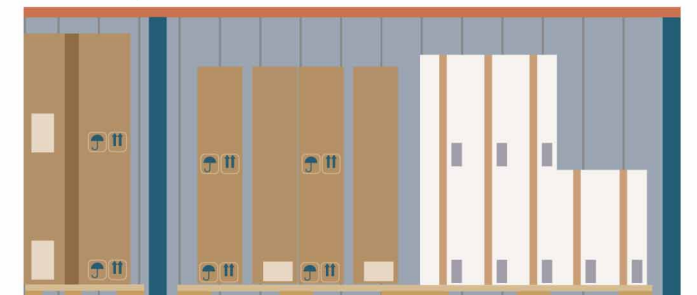
工单报工
Work order reporting



产品入库
Product storage



模具入库
Mold warehousing



剩料回收
Residual material recovery

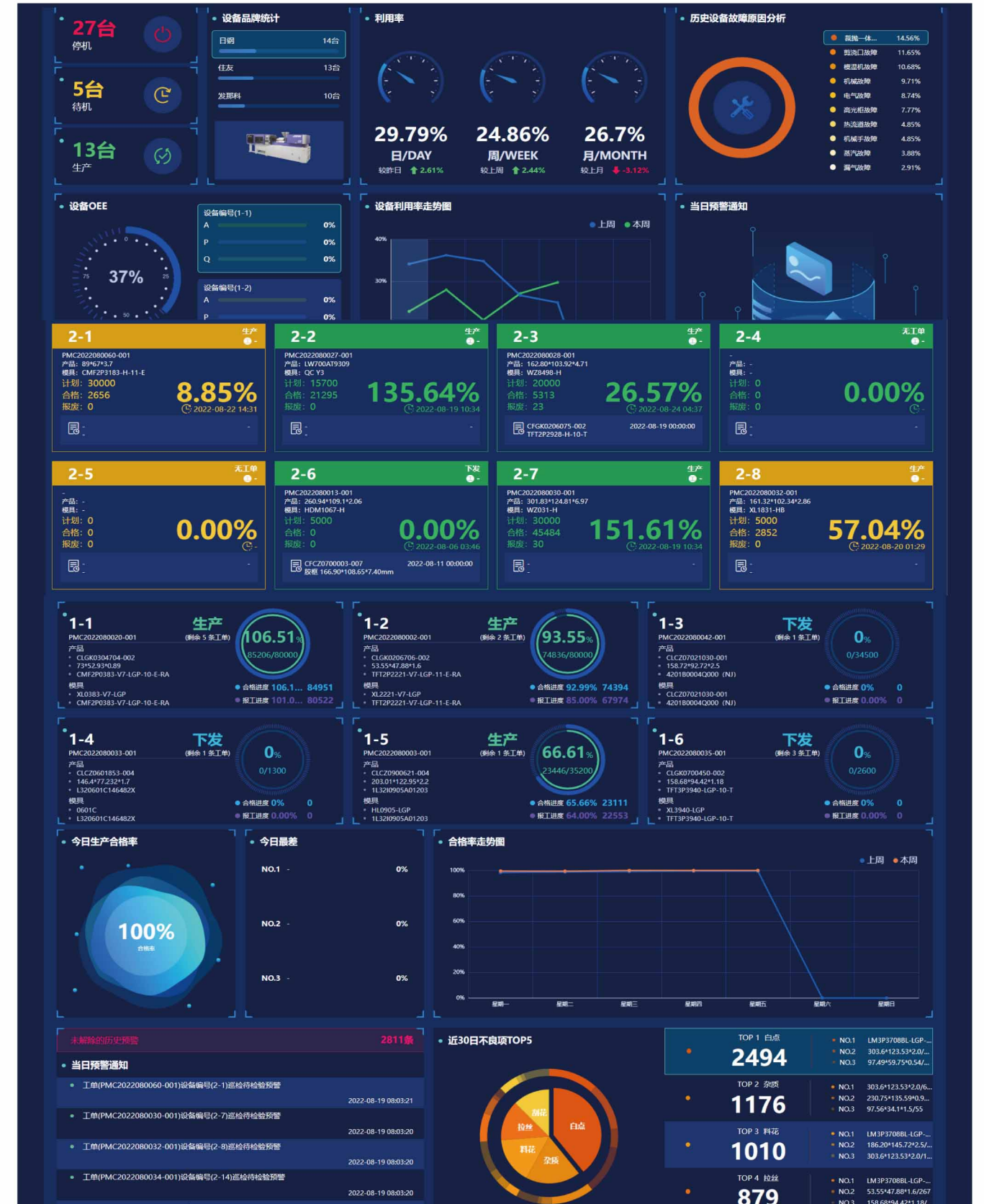
MES数字化工厂核心价值

<p>提高管理效率</p>	<p>提高了生产数据统计分析的及时性、准确性，加强了各生产部门的协同办公能力，达到了精细化管理的目的。</p>	<p>提高生产效率</p>	<p>实时采集设备信息，透明的流程管理，实现车间的全透明化，信息化生产，提高生产执行效率和生产节拍。</p>
<p>降低人力成本</p>	<p>实时采集统计车间生产数据，无需传统的人工数据采集和统计。工厂数字化，信息化生产，并进行生产进度提醒，目前一个工人只能看3-5台机器，未来可能一个人可以看5-7台机器。</p>	<p>降低生产成本</p>	<p>实时监控设备状态和工艺信息，并进行实时预警，避免使用错误工艺进行生产和长时间的设备待机，从而降低物料成本和能源消耗成本。</p>
<p>提高良品率</p>	<p>结合QMS质量体系和实时预警，全程化、实时性检测生产线状况并及时纠错。结合质量统计报表的不良品原因分析进行针对性的整改措施。</p>	<p>质量可追溯</p>	<p>如出现产品质量问题，可排查原料供应商、原料批次、生产者和设备，模具状况等，同时也支持全流程追溯。</p>

MES Core values

<p>Improve management efficiency</p>	<p>It improves the timeliness and accuracy of statistical analysis of production data, strengthens the collaborative office capacity of all production departments, and achieves the goal of refined management.</p>	<p>Improve productivity</p>	<p>Real-time collection of equipment information, transparent process management, full transparency of the workshop, information-based production, and improvement of production execution efficiency and production rhythm.</p>
<p>Reduce labor costs</p>	<p>Real-time collection and statistics of workshop production data, without traditional manual data collection and statistics.</p>	<p>Lower production cost</p>	<p>Real-time monitoring of equipment status and process information, and real-time warning to avoid using wrong process for production and long-term equipment standby. So as to reduce the cost of materials and energy consumption.</p>
<p>Improve yield</p>	<p>In combination with the QMS quality system and real-time warning, the whole process and real-time detection of production line conditions and timely correction. Carry out targeted rectification measures based on the analysis of the causes of defective products in the quality statistical report.</p>	<p>Quality traceability</p>	<p>In case of product quality problems, the raw material supplier, raw material batch, manufacturer and equipment, mold condition, etc. can be checked, and the whole process traceability is also supported.</p>

丰富的数字看板/Bulletin board



智能注塑工厂中央集成系统SYS

智能注塑工厂中央集成系统，以工业4.0智能注塑为主轴，融合中央原料处理系统、中央供水系统、中央供电系统、中央供气系统、智能物流系统、自动化系统、sDATA数据采集监控系统及MES系统等全球领先的软硬件产品，为您提供整套注塑工厂“智造”解决方案，助推企业的信息化与自动化管理，为您全面实现工业4.0夯实基础。

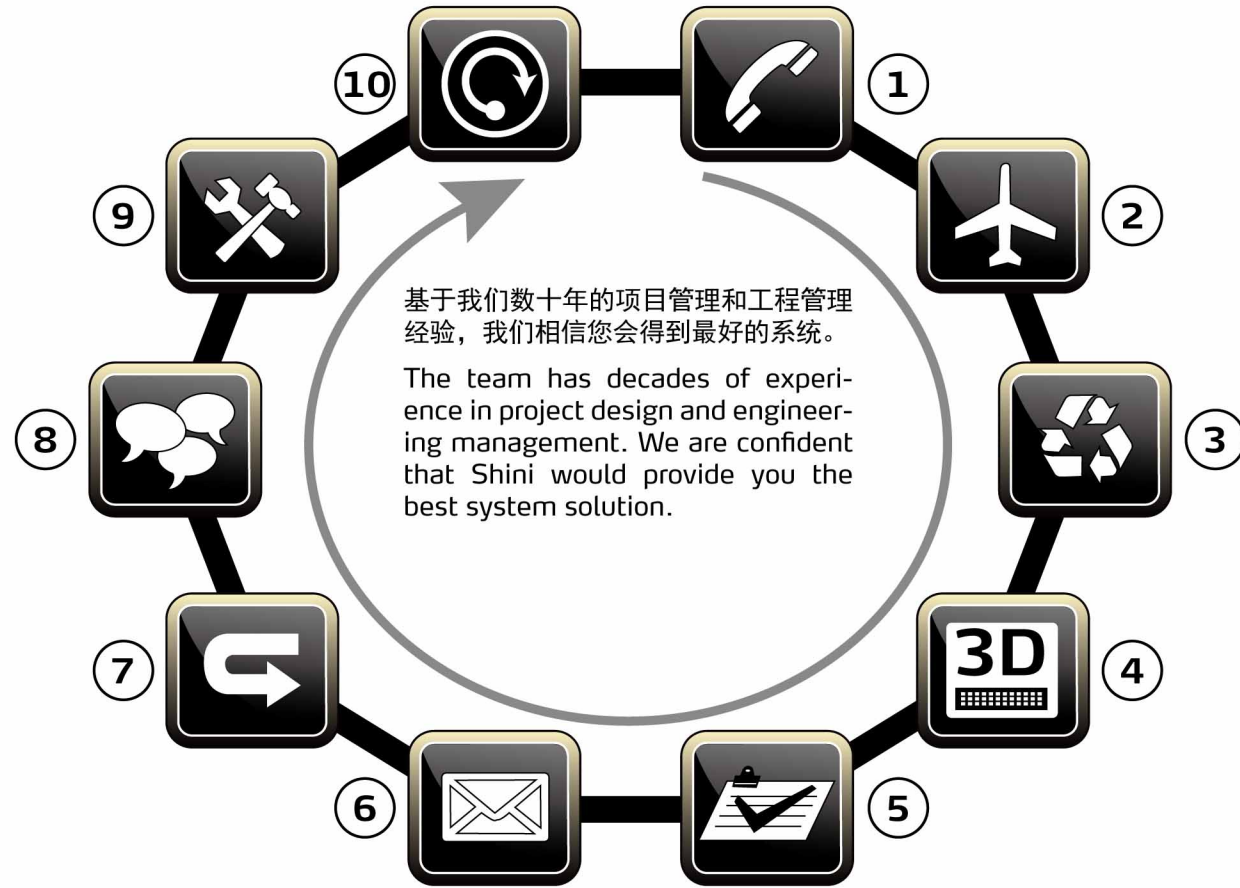
Central Integrated System SYS

The "SYS" is formed on the core foundation of Intelligent Injection Moulding and Industrial 4.0. It comprises world-leading software and hardware such as a centralized plastic material handling system, centralized water system, centralized air system, electrical system, automated system, data monitoring and collection system, and MES systems. It can provide a comprehensive collection of automated solutions for injection moulding factories, promoting production informatization and automation management, laying a solid basis for fully realizing Industrial 4.0.



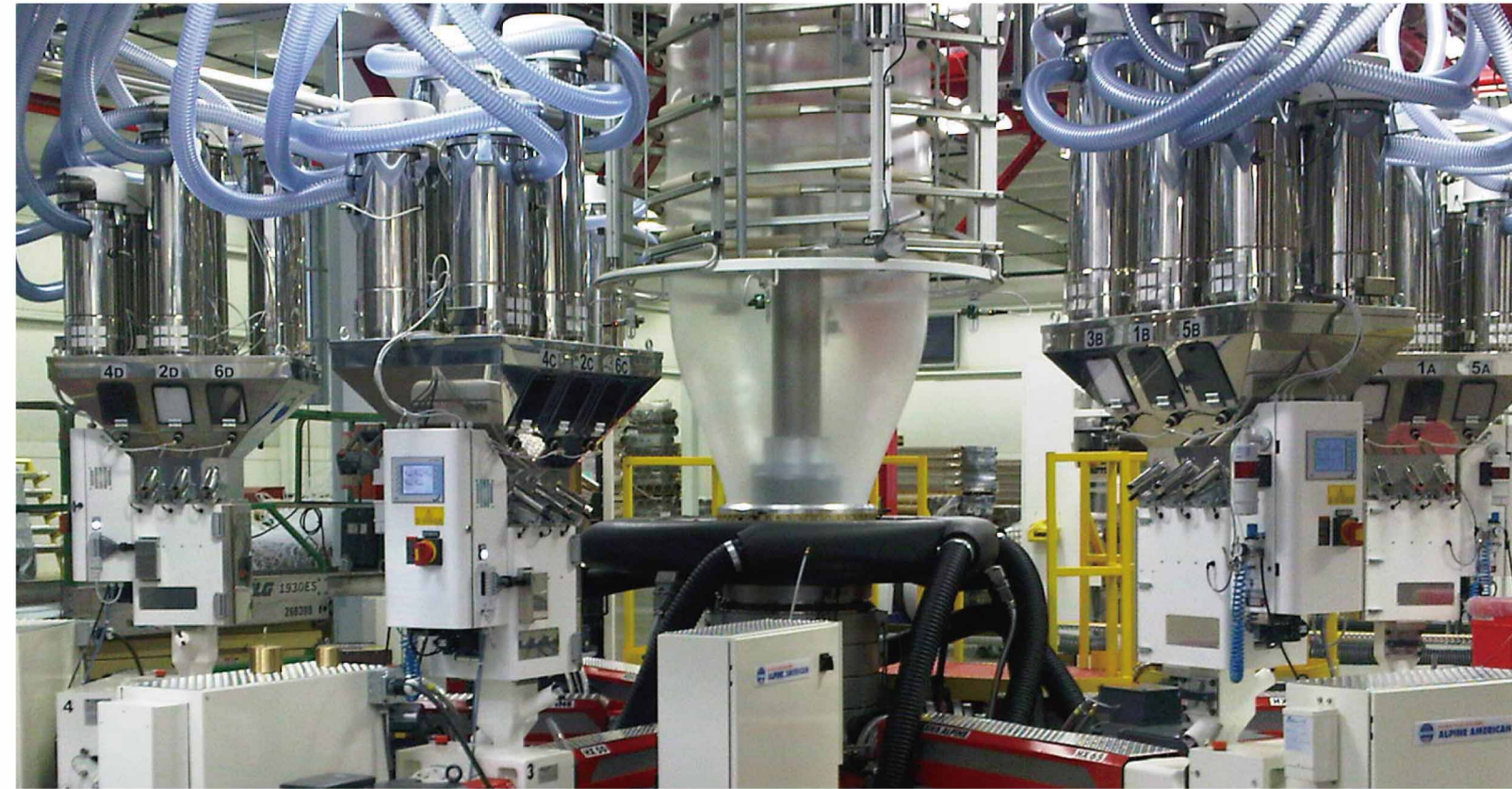
信易集团可以从成型整厂之辅助装备为您规划，包括塑料原料储存、干燥输送到计量混合，从模具的温度控制到成型设备的冷却系统，从自动化机械手到废料的粉碎回收，从薄膜冷却风环到在线测厚等。

Shini design and implement complete plastic material handling equipment and solutions for new or existing production. It includes plastic material storage, material drying, material conveying, material dosing and mixing, mould temperature control and cooling system of moulding machines, injection robots, granulating and recycling plastics, air ring, and online thickness measurement for blow film.



1. 需求调查 2. 现场察看 3. 系统规划 4. 3D布置图 5. 确认规范
6. 采购合同 7. 系统施工图 8. 项目会议 9. 安装、验收 10. 跟踪调查

- 1.Demand Survey 2.Checking on site 3.System Planning 4.Diagram with 3D Layout
5.Confirming Regulations 6.Purchasing Contract 7.System Architectural Drawing
8.Project Conference 9.Installation&Acceptance 10.Follow-up Survey



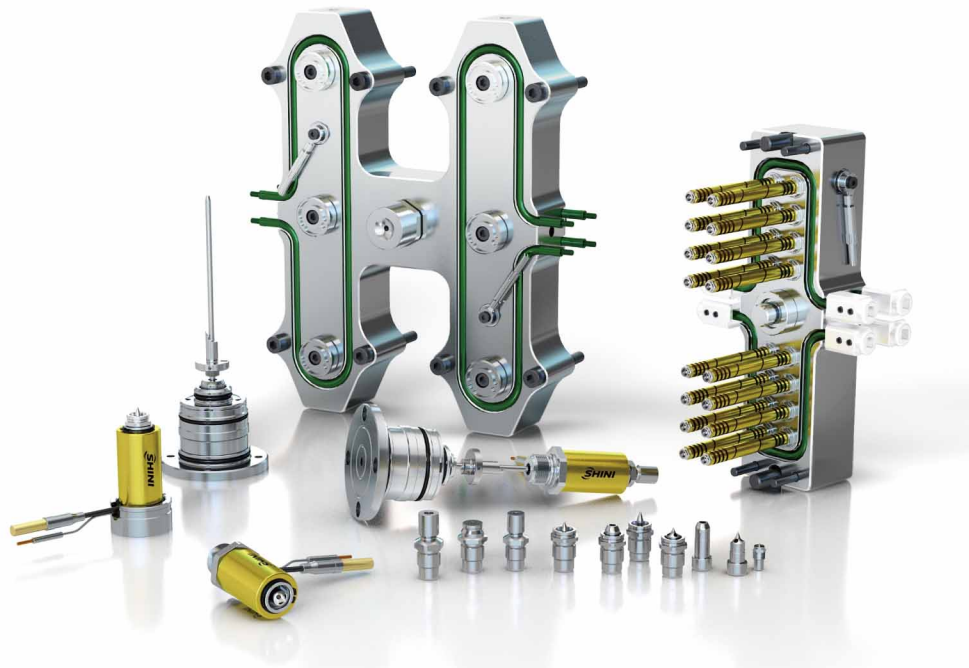
SYdos 连续式失重混合机
Loss-in-weight continuous Dosing System

SYdos是连续式失重计量系统，它用于同时供应多重原料。主料通过两个偏心传感器测重，然后把数据回馈给控制系统，控制系统再通过其他原料上的两个偏心传感器测重并调节螺杆的转速使其与主料达到恒定的配比。SYdos控制软件包括了失重控制、米重/产量控制、原料消耗控制。

SYdos is a continuous loss-in-weight gravimetric dosing system designed to dose and feed multiple components in all processes requiring constant gravimetric feeding. The main material is weighed by two off-center load cells, and the data is transferred to the control system to adjust the screw speed with the data transmitted by each load cell of other materials. The control software of SYdos consists of loss-in-weight control, gram/meter and throughput control, and material consumption control.

- 挤出总量控制 Extrusion gram/metre & yield control 自动轮廓控制 auto profile control 在线测量 Online thickness measurement IBC 膜泡内冷控制 IBC inner cooling control





SHTC-S 温控箱
Temperature Controller



SHTS-V 时序控制器
Timing Controller

温控箱是一种连续不断保持热流道系统所需温度值的设备，由温控卡、断路器、箱体、风扇、接线座和线缆等组成。温控箱通过内装的温控卡，控制热流道产品的温度，与系统温度的精确性，自我保护和容错性取决于温控卡的机能。目前温控箱是热流道模具应用所必须的电气系统。

顺序时间控制器是用于使用阀针式热流道系统时，用以控制模具热阻注塑时间先后的设备。顺序时间控制器能使热流道系统的各个浇口得以控制。

A hot runner temperature controller is used in every mould with a hot runner system. It is a device that continuously controls and maintains the required temperature value of the hot runner system. It comprises temperature control cards, a circuit breaker, a cabinet, a fan, terminal blocks, and cables. The cabinet's temperature control card controls each hot runner's temperature. Therefore, the precision of temperature control systems, self-protection, and tolerance depends on the temperature control card.

The timing controller is used in the pins and valves hot runner system and controls the pins and valves' timing and sequence in the hot runner system.



SGFP薄膜粉碎回收造粒机
Granulating Film Pelletizer



SFP薄膜回收造粒机
Film Pelletizer

SGFP系列造粒机集粉碎造粒于一体，适用于MDPE、LDPE、LLDPE和PP等各种塑料薄膜粉碎回收造粒。既可在线式回收切边造粒，也可离线式集中造粒。

风冷系列最大产能根据机型可达60~90kg/hr。

水冷系列最大产能根据机型可达100~180kg/hr。

SFP系列造粒机适用于MDPE、LDPE、LLDPE和PP等各种塑料薄膜回收。机器配备网孔式进料篮及牵引装置，既可在线式对吹膜切边料回收造粒，也可离线式对废膜卷引入造粒，粉碎后的片材状废料(需搭配片材喂料机)进行投料，实现废料回收造粒。

风冷系列最大产能根据机型可达50~90kg/hr。

水冷系列最大产能根据机型可达130~150kg/hr。

SGFP series of pelletizer integrates crushing and pelletizing into one unit. It is suitable for recycling and pelletizing various plastic films such as MDPE, LDPE, LLDPE, and PP. It can recycle and pelletize online with edge trimming or centrally offline.

The maximum air-cooled series capacity ranges from 60 to 90kg/hr.

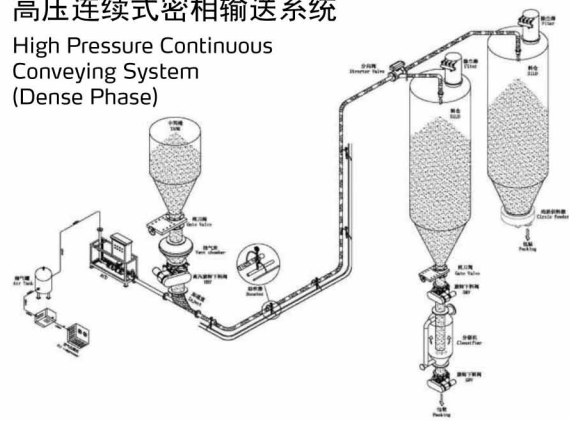
The maximum water-cooled series capacity ranges from 100 to 180kg/hr.

SFP series of pelletizer is suitable for pelletizing plastic films such as MDPE, LDPE, LLDPE, and PP. The machine has a screen feed basket and traction device, which can recycle and pelletize edge films online, roll up films offline with the traction device, or recycle flakes (with a feeder).

The maximum air-cooled series capacity ranges from 50~90kg/hr.

The maximum water-cooled series capacity ranges from 130~150kg/hr.

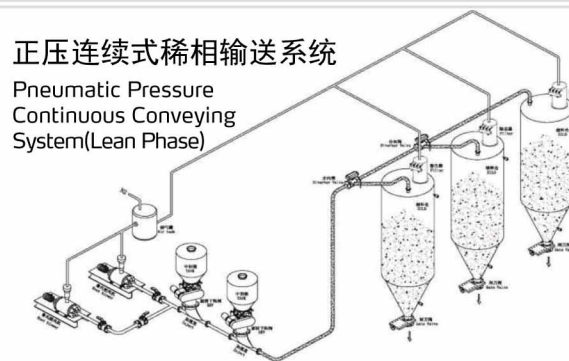
高压连续式密相输送系统
High Pressure Continuous
Conveying System
(Dense Phase)



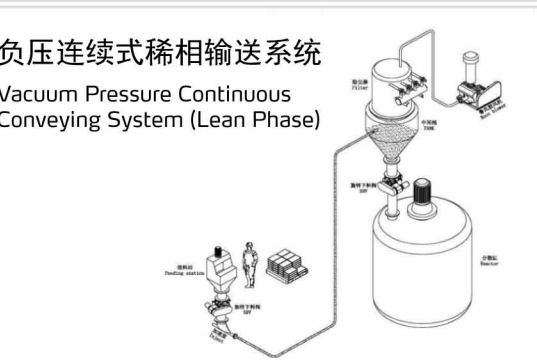
高压BATCH式密相输送系统
High Pressure Intermittent
Conveying System (Dense Phase)



正压连续式稀相输送系统
Pneumatic Pressure
Continuous Conveying
System (Lean Phase)



负压连续式稀相输送系统
Vacuum Pressure Continuous
Conveying System (Lean Phase)



SRV 旋转下料阀
Rotary Valve

旋转下料阀是以供给粉粒体为目的，设计精良的定量供给机械。在空气输送装置等有压力差的场所使用，可以发挥优良的性能。

The rotary valve is designed to precisely and effectively convey powder and pellet materials over a distance. The precise mechanism and material pockets provide air locking results from the material hopper and minimal pressure losses for the most demanding pneumatic conveying system.



HRV 高压旋转下料阀
High Pressure Rotary Valve

高压旋转下料阀是以供给粉粒体为目的而设计的最精良定量供给机器。用于在高压连续输送方式的气力输送上。

The high-pressure rotary valve is designed for precise material feeding and batch pneumatic conveying via high pressure. A high-pressure pneumatic conveying system can effectively convey powder and pellet materials over a great distance without damage via low velocity.



LRV 立式旋转下料阀
Vertical Rotary Valve

从集装箱接收物料通过空气输送到储料桶。使用立式旋转下料阀可以不用挖地下坑。因为是可移动式，故在任何地方都可以接收物料，不需使用时可以移动，所以不需要固定作业场地。因从储料桶和排出口配管位置到地面间的距离短，故是一般旋转下料阀不可替代的设备。

The vertical rotary valve system offers an efficient solution to unloading bulk packing from material truck to material hopper without an onboard pumping system. In addition, the mobile design allows flexible unloading locations without the need for pit and lengthy piping, which in return saves time and energy.

信易直属企业 Subordinate Companies

总公司及台北厂：
信易电热机械股份有限公司
台湾新北市树林区民和街23号
Headquarters & Taipei Factory:
Shini Plastics Technologies, Inc.
23, Minhe St., Shulin Dist., New Taipei
City 23852, Taiwan
t 886 2 2680 9119
f 886 2 2680 9229

企业技术中心
广东省东莞市大朗镇石厦村工业区
信易路9号
Corporate Technologies Center
9 Shini Rd, Shixia, Dalang, Dongguan
City, Guangdong Province, China 523792
t 0769 8111 6600
f 0769 8111 6611

东莞信易电热机械有限公司
广东省东莞市大朗镇石厦村工业区
信易路9号
Shini Plastics Technologies
(Dongguan), Inc.
9 Shini Rd, Shixia, Dalang,
Dongguan City, Guangdong Province,
China 523792
t 0769 8331 3588
f 0769 8331 3589

宁波大榭信易电热有限公司
浙江省宁波大榭开发区
榭西工业园区雪窦山路11号
Shini Plastics Technologies
(Ningbo), Inc.
11 Xuedoushan Rd, Xiexi Industrial
Park, Daxie Dvpt. Dist., Ningbo city,
Zhejiang Province, China 315812
t 0574 8671 9088
f 0574 8676 5988

信易电热机械有限公司
浙江省平湖经济开发区平湖大道西侧
信易路2500号
Shini Plastics Technologies
(China), Inc.
2500 Xinkai Rd, West Pinghu St.,
Economic Dvpt. Zone, Pinghu City,
Zhejiang Province, China 314200
t 0573 8522 5288
f 0573 8522 5299

重庆信鼎精密机械有限公司
重庆市璧山区璧泉街道铜山路80号
Shinden Precision Machinery
(Chongqing), Inc.
80 Tongshan Rd, Biqian Str.,
Bishan Dist., Chongqing
t 023 6431 0898
f 023 6431 0899

Shini Plastics Technologies
India Pvt. Ltd.
Plot No. A-46, Chakan Indl Area,
Phase-II, Chakan MIDC, Village Vasuli,
Tal Khed, Pune, Maharashtra,
India 410 501
t 91 2135 660600
f 91 2135 660629

SHINI Germany GmbH
信易德国分公司
Großhainer Straße 163,
01129 Dresden
t 49 351 21 71 8778
E office@shinigermany.com

信易越南分公司
Công Ty TNHH VSP Việt Nam VSP
lô 660 KCN Quang Minh-TT. Chi Đông Huyện
Mê Linh-TP. Hà Nội
t +84(0) 24 3201 1753
f +84(0) 24 3200 7005

信易大陆分公司及办事处

顺德
广东省佛山市顺德区大良街道国际商业城
B区4座首层113-114号
t 13924562120
f 0757 2261 0609

江门
江门市五邑碧桂园漫绿十一竺6幢302
t 139 2456 4172
f 0757 2261 0609

汕头
广东省汕头市泰山路龙腾熙园
12栋309单元
t 138 2698 1026
f 0754 8999 0780

惠州
惠州市惠城区龙丰街道办岭南南路
45号(南山公馆)二期2号楼12楼1201房
t 13826981010
f 0752-2476581

深圳
深圳市龙岗区中心城和谐路爱地花园
二期4栋C单元1601号
t 13826981012
f 0755-89230514

南宁
广西省南宁市星光大道68号天筑丽城
26栋803房
t 0771 4309 652
f 0771 4309 652

成都
四川省成都市建设北路3段185#东辰瑞景
1-1-12-8
t 028 8324 4753
f 028 8327 9326

重庆
重庆市九龙坡石坪桥正街65号志龙
石坪苑B1-22-6
t 023 8637 8237
f 023 6882 2015

昆明
昆明市盘龙区北京路凤凰新村雅俊园
11幢509室
t 0871 6570 9667
f 0871 6826 0662

长沙
湖南省长沙市岳麓区金星大道郡原广场
3栋2124
t 0731 8880 8602
f 0731 8890 6839

贵阳
贵州省贵阳市南明区四方河路1号山水
黔城九组团三栋二单元2702
t 18785139623
f 0731 8890 6839

武汉(大武昌、汉阳区)
武汉市蔡甸区常福人民电器汽配城一期
6栋6119号
t 027 8763 7036
f 027 8665 1289

武汉(除大武昌、汉阳区以外)
湖北省武汉市蔡甸区人民汽车城
一期C区2栋2307
t 027 8377 1868
f 027 8377 1868

襄阳
湖北省襄阳市谷城光彩大市场1108号
t 0710 7315 098
f 0710 7315 098

南昌
江西省南昌市西湖区云锦路国贸阳光小
区1栋604室
t 0791 8598 7528
f 0791 8598 6399

赣州
江西省赣州市章贡区西津路23-18号
t 0797 8175 991
189 7012 9302
f 0797 8290 753

宜春
江西省宜春市袁州区秀江中路万和公馆
t 158 7002 8721
f 0791 8598 6399

赣东
上饶市广信区武夷山大道锦绣年华
11栋103
t 0791 8598 7528
f 0791 8598 6399

郑州
河南省开封市一大街森林半岛南苑
64号楼2单元1001号
t 0371-2296 4220
f 0371-2296 4220

西安
陕西省西安市朱雀大街南段南方星座
A-17-03号
t 029 8194 7712
f 029-8527 2912

上海
上海市松江区泗泾高新技术开发区
高技路386-3号
t 021 5762 8669
f 021 5762 8667

昆山
江苏省昆山市前进路东方华庭
2A 302室
t 0512 5770 1068
f 0512 5770 8200

苏州
苏州市三香路1298号万通大厦11楼A座
t 0512 6829 8690
f 0512 6829 3859

南京
南京市江宁区竹山路618号雍景园
16号楼
t 0519-8511 1313
f 0519-8511 5533

无锡
江苏省无锡市新吴区行创四路89号星洲
商务园8栋101室
t 13601482363
f 0510 8525 9596

南通
南通经济开发区上海路新苑47栋102室
t 021 5762 8669
138 6194 4916
f 021 5762 8667

张家港/常熟
上海市松江区泗泾高新技术开发区高技路
386-3号
t 15850313929
f 021-5762 8667

常州
江苏省常州市新北区河海街道荣盛锦绣
华府19栋15号
t 0519 8511 1313
f 0519 8511 5533

余姚
浙江省余姚市舜江东路北96弄6号
t 0574 6263 8482
f 0574 6263 8480

温州
温州市瓯海区茶山街道霞岙村霞北路90-92
号
t 188 7583 0656
f 0577 8855 0376

杭州
浙江省杭州市大江东产业集聚区河庄
街道河景路131号
t 0571 8259 3751
f 0571 8259 3951

宁波
宁波市江东区江南路国际汽车城
明珠商务大厦702室
t 0574 6263 8482
f 0574 6263 8480

台州
台州黄岩区印山路方山下村三区二号
t 0574-62638482
f 0574-62638480

湖州
湖州市安吉天目中路9-11号
t 0573-8522 5288
f 0573-8522 5289

金华
金华市婺城区浙中模具城仙源路1077号
t 159 2421 9966

青岛
山东省青岛市李沧区金水路1068-54
t 0532 8769 0696
f 0532 8769 0686

行销区域 Worldwide

合肥 合肥市经济开发区百乐门尚泽大都会A座1708 t 0551 6380 0285 t 139 1313 0088 f 0551 6380 0595	福州 福建省闽侯县青口镇农光路壶山安置房4号楼1602单元 t 0591 8399 2208	沈阳 瀋陽市經濟開發區沈遼西路18-7-2-1-2 t 024 3122 0897 f 024 3122 0897	北京 北京市大兴区滨河街27号水晶之星1705 t 010 8128 3897 / 6127 2012 f 010 8128 2758 / 6021 5610
滁州 滁州市琅琊区菱溪路555号金城豪庭8号楼2单元1603室 t 0551 6380 0285 t 139 1313 0088 f 0551 6380 0595	泉州 福建省泉州市南环路江南商务公寓722室 t 138 0606 5907	哈尔滨 黑龙江哈尔滨市哈平路副85-2号盛世闲庭412室 t 0451-8796 7682 f 0451-8796 7682	山西 山西省太原市小店区真武路通达街口阳光芳汀A座2013 t 19935352363 f 0351 5252 363
芜湖 芜湖市弋江北路伟星城3-4-1102 t 0553 5868 340 f 0553 5868 340	宁德 福建省宁德市东桥经济开发区九龙路3号亿利城A区2幢302室 t 18875830656 0593-235 2958	长春 长春市经开七区高层世纪新居2单元1205号 t 024 3122 0897 f 024-3122 0897	石家庄 河北省石家庄市卓达太阳城阳光美墅5-4-901 t 139 1165 2177
厦门 厦门市翔安火炬高新区翔岳路69号2楼 t 0592 5634 111 f 0592 5639 532	大連 大连开发区滨海路2号海湾城10号楼2单元2504室 t 158 4091 9152	天津 天津市东丽区津滨大道凯东大厦1-529号 t 022 8425 5281/138 2038 7027 f 022 8425 5436	宁海 宁波市宁海县桥头胡街道东吕村15号 t 136 0584 0597 f 0574 6263 8480

信易台湾营业所

台南营业所 台湾台南市新市区中山路工业巷2号 t 886 6 501 4625 f 886 6 501 4623	台中营业所 台湾台中市西屯区工业40路34号 t 886 4 2358 1899 f 886 4 2358 1799
--	--

Overseas Branches and Distributors

Asia			
Korea Skatec Co., Ltd. 54 Bongusunhwan-ro, 3 Beon-gil Shiheung-City, Kyungki-Do 15047 South Korea t 82 31 497 8072/82 10 5496 9635 82 31 432 6490	Indonesia PT. Benua Kencana Makmur JL. Bandengan Selatan NO. 84/A/1, Jakarta Utara, 14450 Indonesia t 62 21 661 3453 f 62 21 666 00907	Malaysia WY machinery trading (kl) sdn. bhd. No.43, Jalan Meranti Jaya 8,Meranti jaya Industrial Park,47100 Puchong, Selangor D.E., Malaysia t 603 8060 8143 f 603 8062 4099	Thailand Shini Plastics Technologies (Thailand) Co., Ltd. 78/6 Kingkaew Rd., Rachatewa Bangplee Samutprakarn 10540 Thailand t 66(0) 2738 4503 4 66(0) 910090580
Vietnam 43 TAN DA, 10 WARD, 5 DISTRICT, HO CHI MINH CITY, VIETNAM t +(848)38593686	Uzbekistan,Kyrgyzstan, Turkmenistan, Tajikistan, Kazakhstan Xinjiang Huangjin Mid-Asia Engineering Technology Co., Ltd. Gaomi residential area 4-1-103, No.580 Heping South Road, Tianshan Dist., Urumchi City, Xinjiang P.R.C, China t 86 991-8568088 f 86 991-8566771	PHILIPPINES NEW IVEK PLASTICS INDUSTRIES NO.134 KAINGIN ROAD BALINTAWAK, QUEZON CITY,METRO MANILA, PHILIPPINES 1106 t (02) 412-3009 / (02)463-0575 f (02) 411-0949	Pakistan KUNJJI ENGINEERING WORKS OFFICE#301, AMBER ESTATE EXTENSION, SHAHRA-E-FAISAL, KARACHI, PAKISTAN t 66(0) 816163120 66(0) 81 684 0565
Sri Lanka CMC Engineering Export GmbH No 8, Rodrigo Mawatha,Nawala Road, Rajagiriya.Sri Lanka t 94 11 2806 776 f 94 11 2806 780	USA Shini USA 2002 Joseph Lloyd Parkway, Willoughby, Ohio 44094 , USA t +1 440 918 0505 ext 807 +1 440-918-0606/440-918-0707	Mexico Dycomet S.A DE C.V. Av de Las Granjas 758-B, Col. Sta. Catarina CP 02250, Mexico, D.F t + 55 9172 0200 f + 55 9172 0211	Ecuador VILLAGOMEZ HOLGUIN GALO GUILLERMO Ventura mall, local 34-2 PA (planta alta)Av. Interoceánica Km 14.5, TUMBACO - ECUADOR t +022-379168 099- 9905915

America			
Canada Hamilton plastic systems ltd. Unit # 2 - 230 Brunel Road, Mississauga, Ontario,Canada L4Z 1T5 t 905 890 0055-102 f 905 890 1513	Chile Servicios Técnicos Industriales SpA. Coyancura 2270 of. 801 Cod. Postal 7510124 Providencia Santiago - Chile t 56 (9) 9309 8825	Venezuela Imocom de Venezuela, C.A. C.E. Este Oeste Local 25 Calle Este Oeste 2 Con Av Norte Sur3 Zona Industrial Norte, Valencia, Edo,Carabobo, Venezuela t 58 241 8325 794 f 58 241 8385 319	Sri Lanka KUNJJI ENGINEERING WORKS OFFICE#301, AMBER ESTATE EXTENSION, SHAHRA-E-FAISAL, KARACHI, PAKISTAN t 66(0) 816163120 66(0) 81 684 0565
Colombia Imocom S.A. Calle 17 NR. 50 24 Bogota, Colombia t 57 1 413 7755 f 57 1 261 6019	Argentina Eldan Electronica Sacifa Bahia Blanca 2159 C1417asa. Cdad. buenos Aires, Argentina t 54 11 4566 5020 f 54 11 4566 2079	Brazil SHINI DO BRASIL/IPLAS Rua Curupá 631, Vl. Formosa, São Paulo, SP, 03355-010, Brasil t 55 11 2225 1721 f 55 11 2225 1724	Peru Noblecorp Los Milanos 135 Of. 302 San Isidro - Lima - PERU t 51 1 615 1400 f 51 1 615 1415

Australia Telford Smith Engineering Pty Ltd 250 Hammond Road, Dandenong, Victoria 3175 Australia t +61 3 8792 9777 +61 0417 169 672	India New Delhi 202, Connaught Place, New Delhi 110087 India t +91 11 2610 2222 +91 11 2610 2223	China Beijing 2500, Zhongguo Road, Beijing 100025 China t +86 10 6040 1111 +86 10 6040 1112	South Africa Cape Town 100, Main Road, Cape Town 8001 South Africa t +27 21 422 2222 +27 21 422 2223
---	---	--	---

Africa			
S. Africa Cabletech Marketing (Pty)Ltd. 20 Amelia Lane, Lanseria Corporate Estate, Lanseria, South Africa t +27 11 704 0824 f +27 11 462 2108	Egypt Makinat Abouseif (Engineering and International Trading Co.) Abu Rawash-KM 28 Cairo-Alex Road t 33 (0) 4 37 25 60 00 f 33 (0) 4 37 25 60 01	Tunisia Tunis and Algeria EPSI Sarl 9 rue des Frères Lumière 69720 Saint Bonnet de Mure France t 33 (0) 4 37 25 60 00 f 33 (0) 4 37 25 60 01	Egypt Makinat Abouseif (Engineering and International Trading Co.) Abu Rawash-KM 28 Cairo-Alex Road t +2 02 35 39 27 28 f +2 02 35 39 27 30

Middle East			
Iran Aras Machinery Company No. 26-28, 4th Floor., Seray – E –Omid, 15th Khordad Ave, Tehran 11169, Iran t 98 21 7332 013 f 98 21 7343 985	Israel ASAF INDUSTRIES LTD. 29 HABANAI ST. HOLON, ISRAEL, 5885707 t +972-3-5581290 f +972-3-5581293	Turkey HASTEK PLASTIK TEKNOLOJISI VE OTOMASYON SIST. PAZARLAMA SAN. VE TIC. LTD. STI. AKÇABURGAZ MH. 3108 SK. NO: 6 34522 KIRAC-ESENYURT ISTANBUL/TURKEY t +90 212 671 60 50 f +90 212 671 60 51	Saudi Arabia AL BALAD AL BAID.est Al Kharj Old Road, Second Industrial City, Al Zamel Center 2nd Floor Office #38, Riyadh, Saudi Arabia t 00966-126012500 f 00966-126012500
Jordan TROYS COMPANY Khilda-Amman Jordan t 0096 2 6488 9011 f 0096 2 6488 5500	Turkey HASTEK PLASTIK TEKNOLOJISI VE OTOMASYON SIST. PAZARLAMA SAN. VE TIC. LTD. STI. AKÇABURGAZ MH. 3108 SK. NO: 6 34522 KIRAC-ESENYURT ISTANBUL/TURKEY t +90 212 671 60 50 f +90 212 671 60 51	Israel ASAF INDUSTRIES LTD. 29 HABANAI ST. HOLON, ISRAEL, 5885707 t +972-3-5581290 f +972-3-5581293	Saudi Arabia AL BALAD AL BAID.est Al Kharj Old Road, Second Industrial City, Al Zamel Center 2nd Floor Office #38, Riyadh, Saudi Arabia t 00966-126012500 f 00966-126012500

Europe			
Poland ASTEN GROUP SP. Z.O.O. Ul. Bor 77/81 42-202 Czestochowa Poland t +48 34 363 48 78 f +48 34 360 88 66	Hungary Extremplast BT. 8000 Székesfehérvár, Osztráku.2, Sóstó Ipari Park, Hungary t +36 70 927 0746 Star-Plus M-anyagipari Kft. 3527.Miskolc, Sajószigeti út 2 Hungary t + 36 (46) 584 060 t + 36 (46) 584 070	Russia IMM-TRADE LLC Tverskaya Street 26A, Dubna town, Moscow region, Russia, 141983 t +7(49621)9-87-87 f +7(49621)2-4632	Czech Republic A.M. Spol. S.r.o. Sladovnicka 167, 46311 Liberec Czech Republic t +420 48 2750 037 f +420 48 5163 999
Sweden Bts Nordic Shini Sweden Tostaredsvägen 1097, SE-439 75 Fjärås t +46300 542970 f +46 300 542980	Portugal Deltaplas, Lda. Zona Industrial Da Barosa, Petigais, 2400-013, Leiria, Portugal t 00351 244 823 198 f 00351 244 823 218	Ukraine Shini Ukraine 70/1, 3-Nova Str., Khmelnytskyi 29025,Ukraine t +38 (097) 976-19-29/+38 (050)376-47-25 f +38 (0382) 78-81-85	Denmark APM Denmark ApS Egebjergvej 408 DK - 4571 Grevinge t +45 2399 0414 f +45 2459 4060
Italy CMT Srl Piazza Campo Marzio,15 36071 Arzignao(vi) Italy. t +39 04441572817 f +39 04441572815	UK + Ireland Shini Uk (trace Pt Limited) 404 Milton Keynes Business Centre, Foxhunter Drive Milton Keynes , Buckinghamshire, MK14 6GD,Uk t + 03334 561156 f + 03334 561157	GlobalMash, Ltd (ASTRON-C-GROUP, LLC) No25, Timiryazeva Street, Chita, Russia t +7 49 5923 8988	Group of companies AvangardPLAST Distributor and Service Center Russia, Nizhny Novgorod city, 199 Vaneeva Street, office 43 t +7(831) 435-48-49 Nizhny Novgorod city +7(383) 354-22-45 Russia, Novosibirsk +7 (843) 206-07-13 Russia, Kazan +7 (812) 309-50-18 Saint Petersburg +7 (495) 108-43-19 Russia, Moscow

France Mat-Plast 60, Avenue d'Oyonnax B.P 39 01100 Bellignat, France t 33 04 7477 5296 f 33 04 7473 9106	Spain Cypet Technologies Ltd., 45, Lefkosias Street, Dhali Industrial Zone,2540, Dhali, Nicosia, Cyprus t +00357 22 610 700 f +00357 22 610 800	Cyprus Cypet Technologies Ltd., 45, Lefkosias Street, Dhali Industrial Zone,2540, Dhali, Nicosia, Cyprus t +00357 22 610 700 f +00357 22 610 800	Finland Polyplast Keskuskatu 24 81100 Kontiolahti Finland t +358 41 4556 445 f + 358 13 733 230
--	---	--	---

Slovak A.M. SK. SPOL. S. R. O. Kocankova 2, 851 01 Bratislava, Slovak, Republic t +421 905 349 777 f +421 2 4463 8827	Slovak A.M. SK. SPOL. S. R. O. Kocankova 2, 851 01 Bratislava, Slovak, Republic t +421 905 349 777 f +421 2 4463 8827	Benelux OBINION B.V. TEMPELHOF 4, 3045 PV ROTTERDAM, THE NETHERLANDS t 31 (0)85 7842833 f 31 (0)84 8365499	Benelux OBINION B.V. TEMPELHOF 4, 3045 PV ROTTERDAM, THE NETHERLANDS t 31 (0)85 7842833 f 31 (0)84 8365499
---	---	--	--