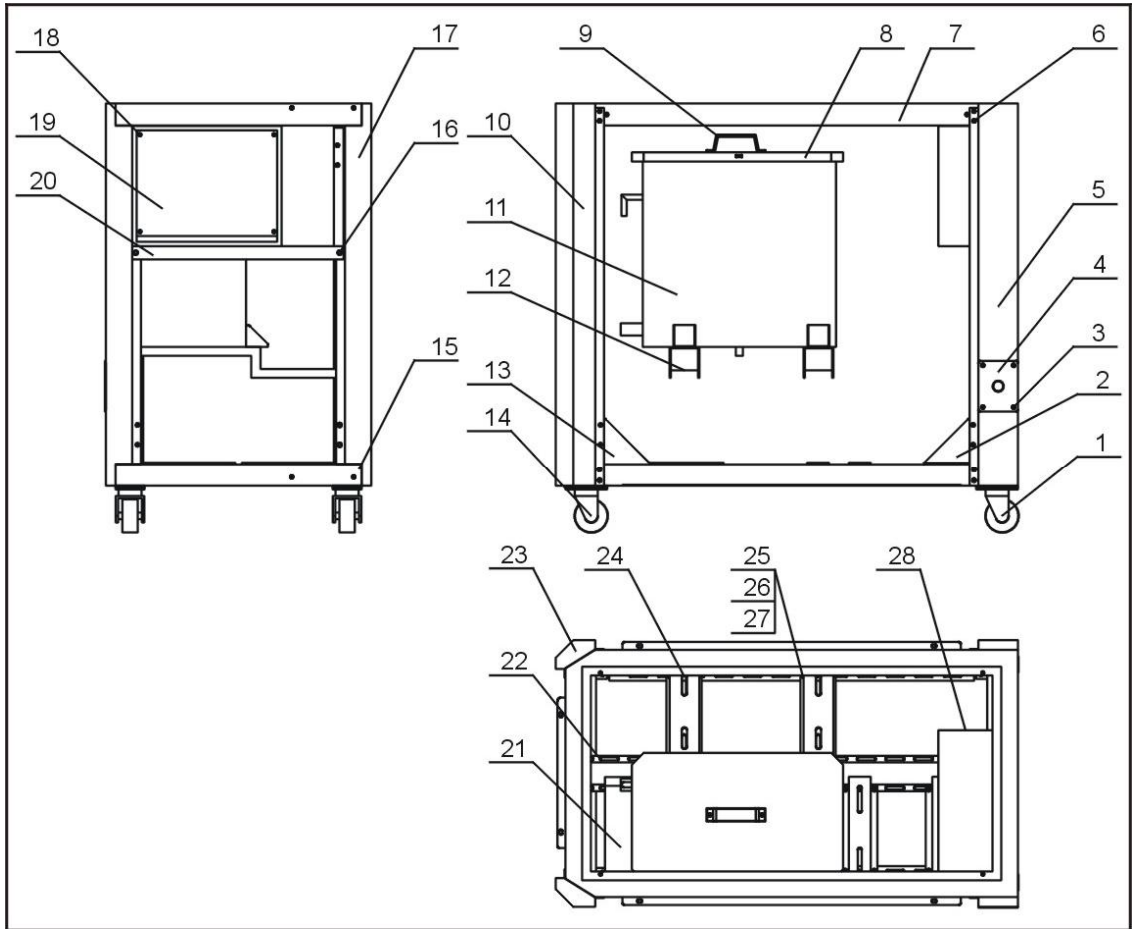


2.2 Parts Drawing

2.2.1 Structure Chart (SIC-9W-R2~14W-R2)



Note: For details of the numbers in the parts drawing, please refer to the part list in 2.2.2

Picture 2-2: Structure Chart (SIC-9W-R2~14W-R2)

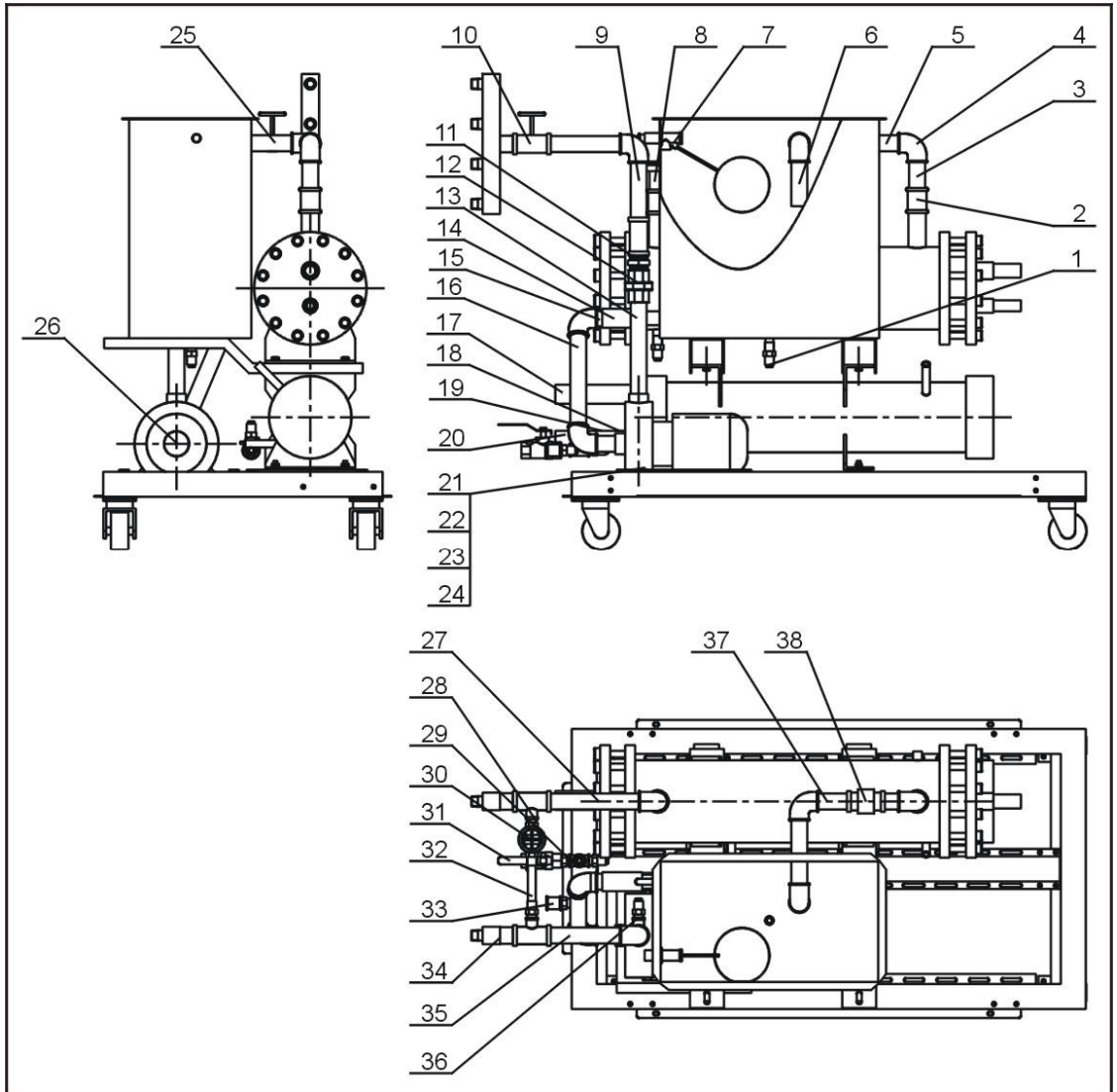
2.2.2 Structure Chart Parts List (SIC-9W-R2~14W-R2)

Table 2-1: Structure Chart Parts List (SIC-9W-R2~14W-R2)

No.	Name	Stock No.	No.	Name	Stock No.
1	Braking black castor 3"	YW03000300000	15	Base frame	-
2	Triangle support (left)	-	16	Screw M8×20	YW60082000300
3	Screw M6×10	YW62061000000	17	Right front stand column	-
4	Line jig fixing plate	-	18	Screw M5×20	YW62052000000
5	Left front stand column	-	19	Electric moubting plate	-
6	Hexbolt M6×20	YW60062000100	20	Electric contrl cabinet supporting	-
7	Upper-frame	-	21	Pump supporting	-
8	Tank cover	-	22	Lower middle beam	-
9	Square handle	BW20012000040	23	Right back stand column	-
10	Left back stand column	-	24	Lower beam	-
11	Tank body	-	25	Hexnut M6	YW64000600300
12	Tank supporting	-	26	Spring washer 6	YW65006000100
13	Triangle support (right)	-	27	Flat washer 6	YW66061300000
14	Movable black caster 3"PP	YW03000300200	28	Electric control cabinet	-

* means possible broken parts. ** means easy broken parts. Spare backup is suggested. Please confirm the version number of the manual before you order to ensure the stock number and the parts are consistent.

2.2.3 Water System Diagram (SIC-9W-R2~14W-R2)



Note: For details of the numbers in the parts drawing, please refer to the part list in 2.2.4

Picture 2-3: Water System Diagram (SIC-9W-R2~14W-R2)

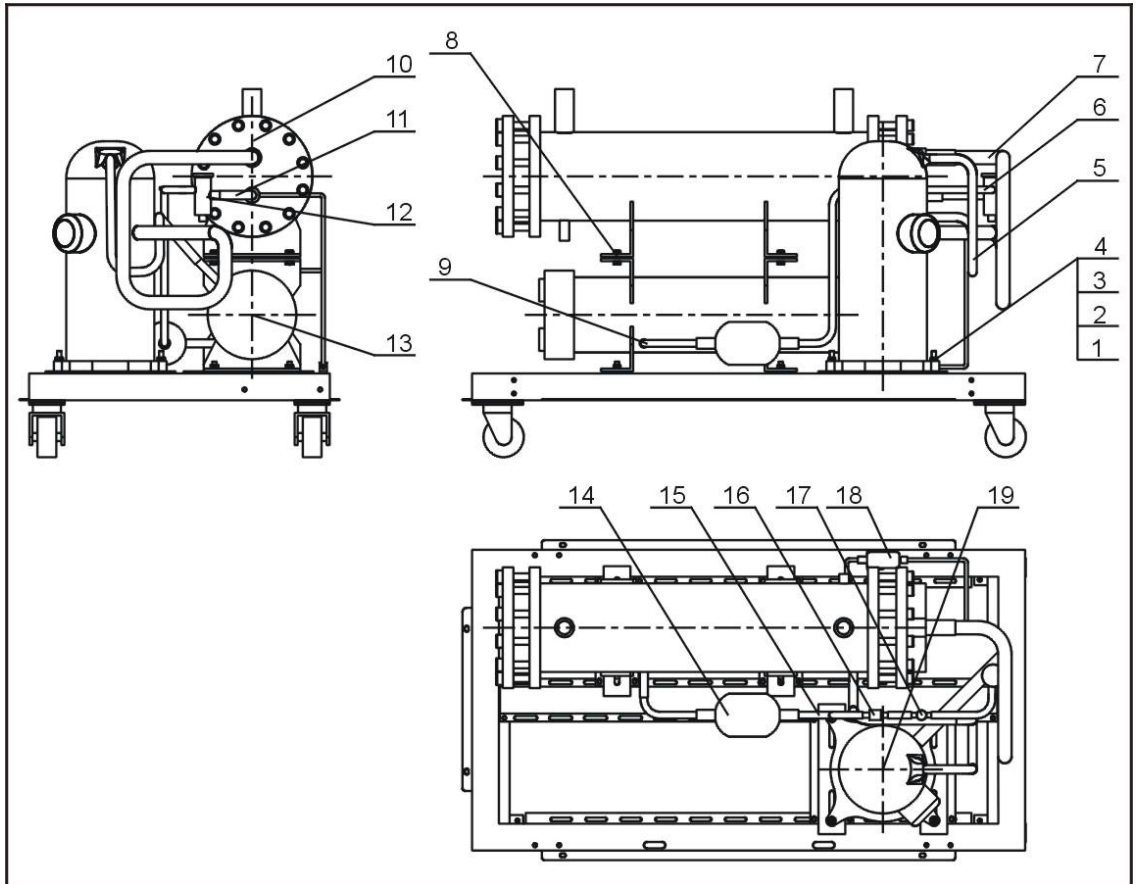
2.2.4 Water System Parts List (SIC-9W-R2~14W-R2)

Table 2-2: Water System Parts List (SIC-9W-R2~14W-R2)

No.	Name	Stock No.	No.	Name	Stock No.
1	Copper inserted core 1/2"	BH12161200010	20	Galvanized steel pipe 13	-
2	Direct connection1"	YW51000100000	21	Hexnut M8	YW64080600000
3	Galvanized steel pipe 1	-	22	Spring washer	YW65008000100
4	Pipe elbow 1"	YW53100000000	23	Flat washer 8	YW66082200100
5	Galvanized steel pipe 2	-	24	Hexnut M8×20	YW60082000300
6	Galvanized steel pipe 3	-	25	Galvanized steel pipe 11	-
7	Floating ball valve 1/2"	YW59010200000	26	Pump	-
8	Galvanized steel pipe 4	-	27	Galvanized steel pipe 12	-
9	Galvanized steel pipe 5	-	28	Copper pipe coupler 1/2"	BH12010200010
10	T connection1" ×1/2"	YW52101200100	29	T connection1/2"	YW52100200000
11	Inner joint 1"	YW50000100000	30	Sluice valve1/2"	YW50010200000
12	Loose joint1"	YW54000100000	31	Copper cored ball valve 1/2"	YW50010200100
13	Galvanized steel pipe 7	-	32	Steel wire rubber hose 1/2"	YR60051000000
14	Black rubber hose	YR60320500000	33	Direct connection1/2"	YW51001200000
15	Galvanized steel pipe 8	-	34	Water manifold	-
16	Galvanized steel pipe 9	-	35	Galvanized steel pipe 6	-
17	Galvanized steel pipe 10	-	36	Copper pipe coupler 1/2"	BH12010400610
18	Inner joint 1-1/2"	YW50001500100	37	Galvanized steel pipe 7	-
19	T connection 1-1/2"×1/2"	YW52151200100	38	Flow switch 1"	YW85005000000

* means possible broken parts. ** means easy broken parts. Spare backup is suggested. Please confirm the version number of the manual before you order to ensure the stock number and the parts are consistent.

2.2.5 Refrigerant System Diagram (SIC-9W-R2~14W-R2)



Note: For details of the numbers in the parts drawing, please refer to the part list in 2.2.6

Picture 2-4: Refrigerant System Diagram (SIC-9W-R2~14W-R2)

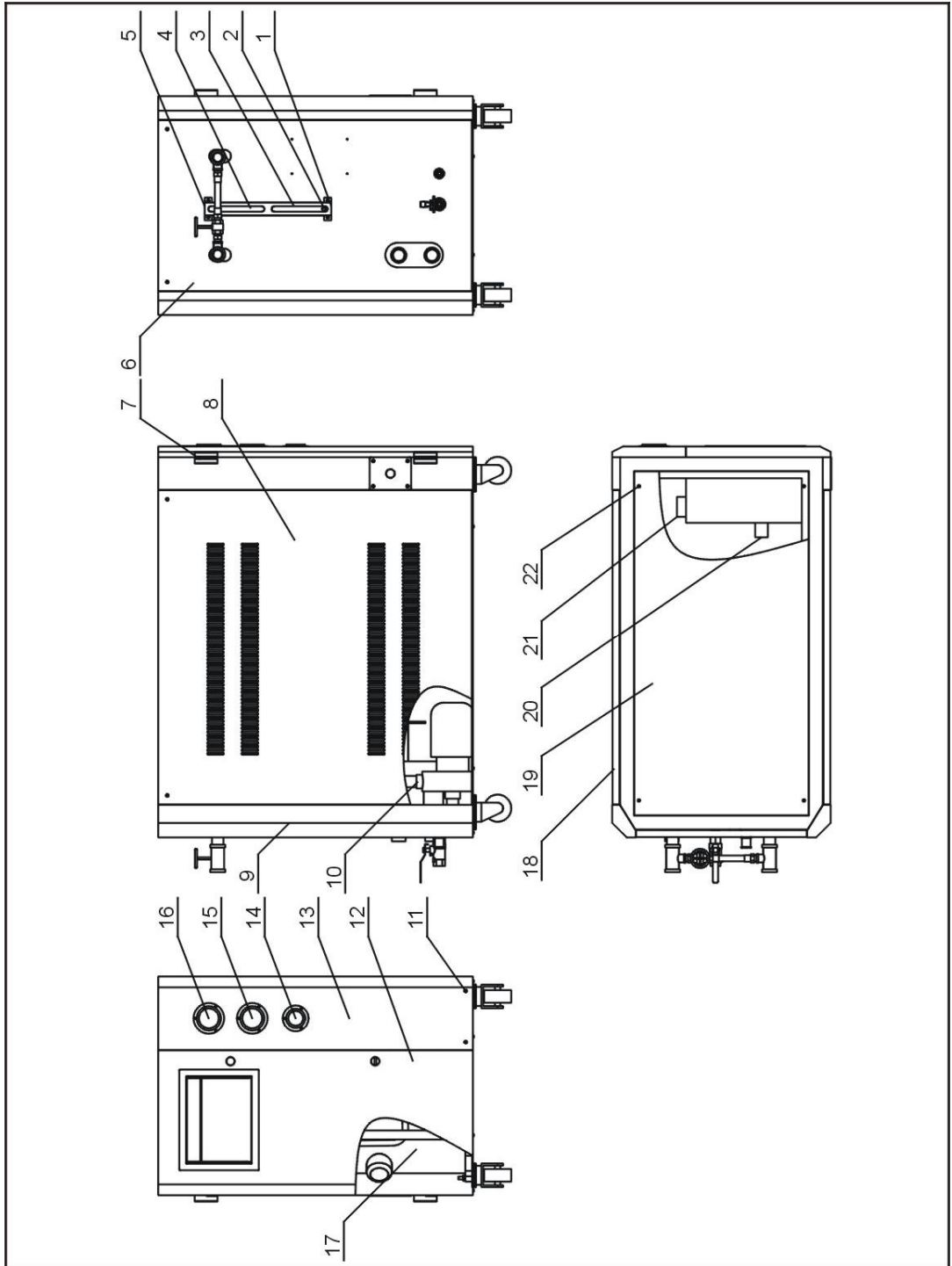
2.2.6 Refrigerant System Parts List (SIC-9W-R2~14W-R2)

Table 2-3: Refrigerant System Parts List (SIC-9W-R2~14W-R2)

No.	Name	Stock No.	No.	Name	Stock No.
1	Hexbolt M8×50	YW60085000000	11	Liquid valve 4	-
2	Flat washer 8	YW66082200100	12	Thermostate expansion valve	-
3	Spring washer 8	YW65008000100	13	Condenser	-
4	Hexnut M8	YW64080600000	14	Drying filter	YW85016530100
5	Air suction pipe	-	15	Liquid pipe 2	-
6	Liquid pipe 3	-	16	Liquid pipe solenoid valve	-
7	Exhaust pipe	-	17	Refrigerant indicator	YW85001300100
8	Hexbolt M8×30	YW60083000300	18	Bypass solenoid valve	YE32008300000
9	Liquid pipe 4	-	19	Compressor	-
10	Evaporator	-			

* means possible broken parts. ** means easy broken parts. Spare backup is suggested. Please confirm the version number of the manual before you order to ensure the stock number and the parts are consistent.

2.2.7 General Assembly Diagram (SIC-9W-R2~14W-R2)



Note: For details of the numbers in the parts drawing, please refer to the part list in 2.2.8

Picture 2-5: General Assembly Diagram (SIC-9W-R2~14W-R2)

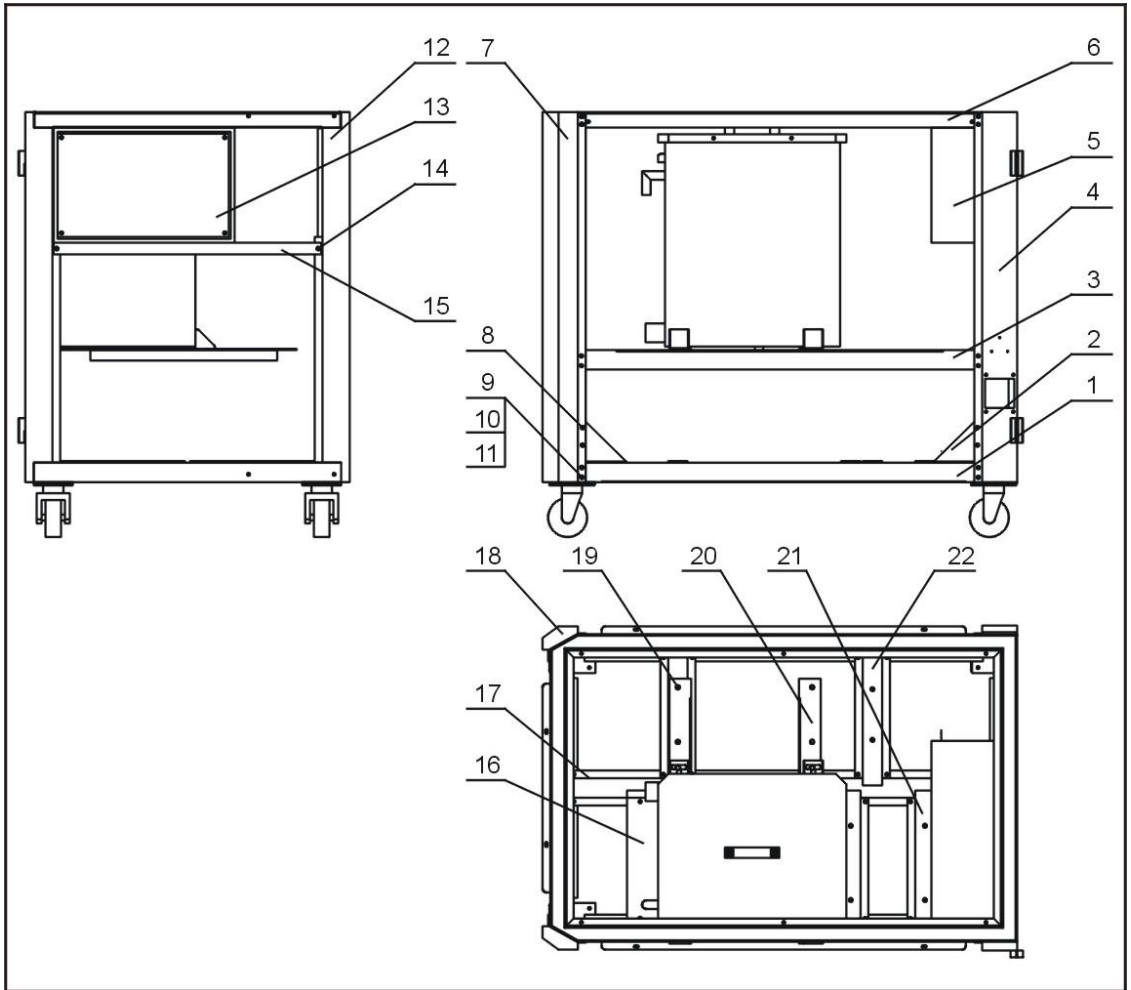
2.2.8 General Assembly Diagram Parts List (SIC-9W-R2~14W-R2)

Table 2-4: General Assembly Diagram Parts List (SIC-9W-R2~14W-R2)

No.	Name	Stock No.	No.	Name	Stock No.
1	Level indicator base	YW20000000400	12	Front door plate	-
2	Level indicator screw	BH12060700110	13	Gauge plate	-
3	Liquid level indicator	BH12030000010	14	Water pressure gauge	YW85001000100
4	Glass tube	YW70963000000	15	Low pressure gauge	YW85601800000
5	Liquid level indicator cover	BL90006800020	16	High pressure gauge	YW85603800000
6	Rear plate	-	17	Refrigerant system	-
7	Hinge	YW06203100400	18	Side plate (right)	-
8	Side plate (left)	-	19	Top plate	-
9	Rack	-	20	Anti-freeze switch	YW85071100000
10	Water system	-	21	Pressure controller	YE90124500000
11	Screw M6×45	YW63064500000	22	Screw M6×30	YW63063000000

* means possible broken parts. ** means easy broken parts. Spare backup is suggested. Please confirm the version number of the manual before you order to ensure the stock number and the parts are consistent.

2.2.9 Racking Diagram (SIC-21W-R2~28W-R2)



Note: For details of the numbers in the parts drawing, please refer to the part list in 2.2.10

Picture 2-6: Rack Diagram (SIC-21W-R2~28W-R2)

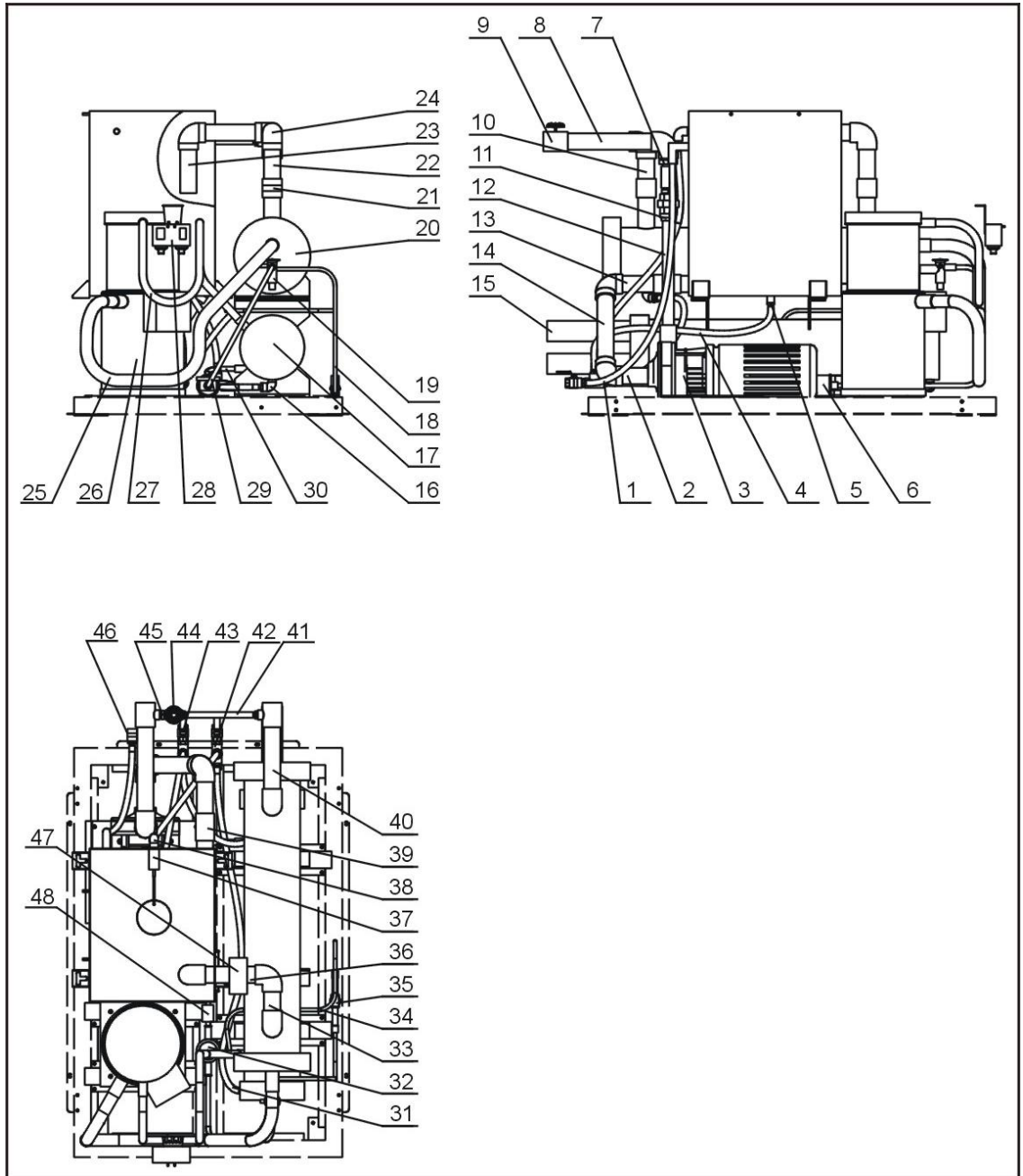
2.2.10 Rack Parts List (SIC-21W-R2~28W-R2)

Table 2-5: Rack Parts List (SIC-21W-R2~28W-R2)

No.	Name	Stock No.	No.	Name	Stock No.
1	Base frame	-	12	Front stand column (right)	-
2	Trangle support (right)	-	13	Electric mounting plate	-
3	Water tank beam	-	14	Outside hexbolt M8×30	YW60083000200
4	Front stand column (left)	-	15	Electric cabinet supporting	-
5	Electric control cabinet	-	16	Pump beam	-
6	Top frame	-	17	Middle beam	-
7	Back stand column (left)	-	18	Back stand column (left)	-
8	Screw M6×10	YW62061000000	19	Water tank supporting (left)	-
9	Outside hexbolt M6×20	YW60062000100	20	Water tank supporting (right)	-
10	Spring bolt M6×20	YW66061300000	21	Compressor beam	-
11	Flat washer 6	YW65006000100	22	Evaporator beam	-

* means possible broken parts. ** means easy broken parts. Spare backup is suggested. Please confirm the version number of the manual before you order to ensure the stock number and the parts are consistent.

2.2.11 Water System + Refrigerant System Diagram (SIC-21W-R2~28W-R2)



Note: For details of the numbers in the parts drawing, please refer to the part list in 2.2.12

Picture 2-7: Water System + Refrigerant System Diagram
(SIC-21W-R2~28W-R2)

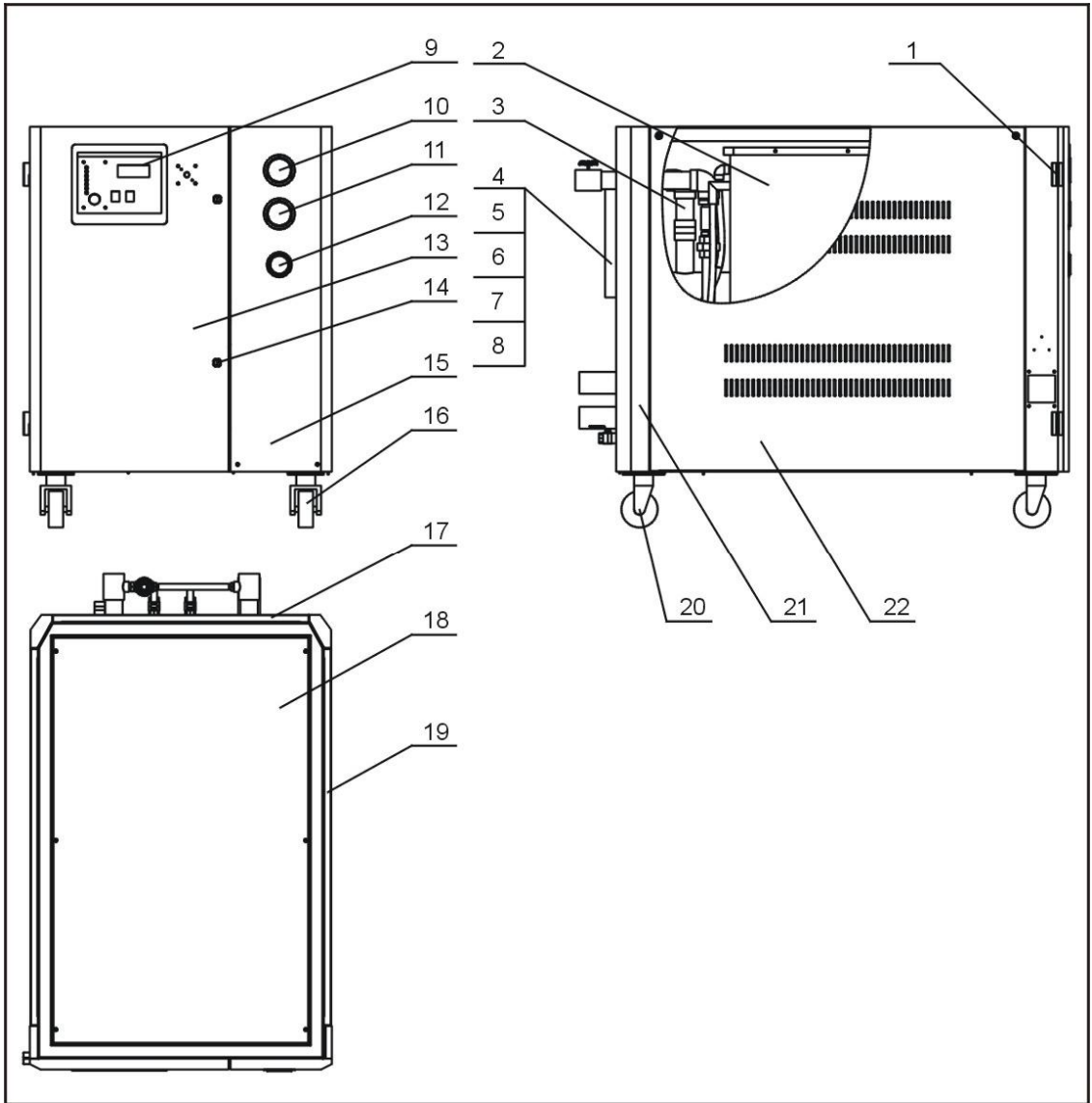
2.2.12 Water System + Refrigerant System Parts List (SIC-21W-R2~28W-R2)

Table 2-6: Water System + Refrigerant System Parts List (SIC-21W-R2~28W-R2)

No.	Name	Stock No.	No.	Name	Stock No.
1	Steel wire rubber hose 1/2"	YR60051000000	25	Return air pipe	-
2	Pipe 9	-	26	Compressor	-
3	Pump	YM21401600100	27	Exhaust pipe	-
4	Steel wire rubber hose 1/2"	YR60051000000	28	High/low pressure switch	YE90124500000
5	Copper inserted core	BH12161200010	29	Liquid pipe 2	-
6	Filter	-	30	Liquid pipe 1	-
7	Inner joint of galvanized pipe 1.5"	YW50001500100	31	Steel wire rubber hose 1/2"	YR60051000000
8	Pipe 7	-	32	Level indicator	-
9	T connection of galvanized pipe 1.5"x1/2"	YW52151200100	33	Pipe 2	-
10	Inner joint of galvanized pipe 1.5"	YW50001500100	34	Bypass 1	-
11	Galvanized stretch connector 1.5"x1"	YW57150100000	35	Hot air bypass valve	YE32008300000
12	Pipe 6	-	36	Pipe 3	-
13	Pipe 10	-	37	Floating ball valve	YW59010200000
14	Pipe 8	-	38	Elbow 1/2"	YW53100200100
15	Pipe 11	-	39	Black rubber valve	YR60480500000
16	Street elbow 1/2"	YW53121200000	40	Pipe 5	-
17	Condenser	-	41	Steel wire rubber hose 1/2"	YR60051000000
18	Bypass 2	-	42	T-connection 1/2"	YW52100200000
19	Expansion valve	-	43	Ball valve 1/2"	YW50010200100
20	Evaporator	-	44	Sluice valve 1/2"	YW50010200000
21	Direct connection 1.5"	YW53011200000	45	Inner join 1/2"	YW50000400000
22	Pipe 1	-	46	Direct connection 1/2"	YW51001200000
23	Pipe 4	-	47	Flow switch 1"	YW85005000000
24	Elbow 1.5"	YW53011200000	48	Liquid pipe solenoid valve	YW85005000000

* means possible broken parts. ** means easy broken parts. Spare backup is suggested. Please confirm the version number of the manual before you order to ensure the stock number and the parts are consistent.

2.2.13 Genmeral Assembly Diagram (SIC-21W-R2~28W-R2)



Note: For details of the numbers in the parts drawing, please refer to the part list in 2.2.14

Picture 2-8: Genmeral Assembly Diagram (SIC-21W-R2~28W-R2)

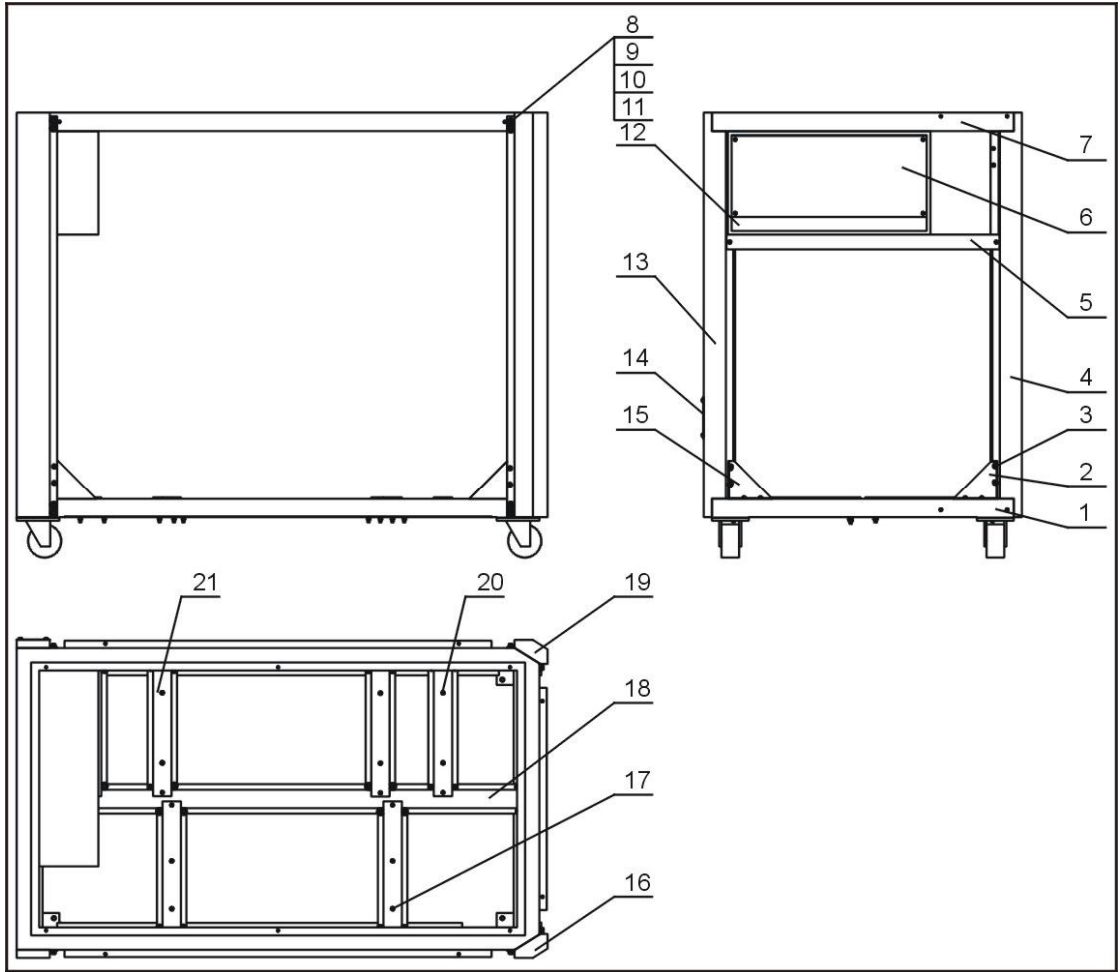
2.2.14 Genmeral Assembly Parts List (SIC-21W-R2~28W-R2)

Table 2-7: Genmeral Assembly Parts List (SIC-21W-R2~28W-R2)

No.	Name	Stock No.	No.	Name	Stock No.
1	Hinge (left)	-	12	Water pressure gauge	YW85001000100
2	Water tank	-	13	Front door plate	-
3	System assembly	-	14	Gate lock	YW00000000100
4	Level indicatorcover	BL90006800020	15	Gauge plate	-
5	Galss tube	YW70963000000	16	Braking black caster 4"	YW03000400000
6	Liquid level sensor	BH12030000010	17	Rear plate	-
7	Level indicatorscrew	BH12060700110	18	Top plate	-
8	Level indicatorbase	YW20000000400	19	Side plate (right)	-
9	Panel	-	20	Movable black caster 4"	YW03000400200
10	High pressure gauge	YW85005500000	21	Rack	-
11	Low pressure gauge	YW85003500000	22	Side plate (left)	-

* means possible broken parts. ** means easy broken parts. Spare backup is suggested. Please confirm the version number of the manual before you order to ensure the stock number and the parts are consistent.

2.2.15 Rack Diagram (SIC-33W-R2~42W-R2)



Note: For details of the numbers in the parts drawing, please refer to the part list in 2.2.16

Picture 2-9: Rack Diagram (SIC-33W-R2~42W-R2)

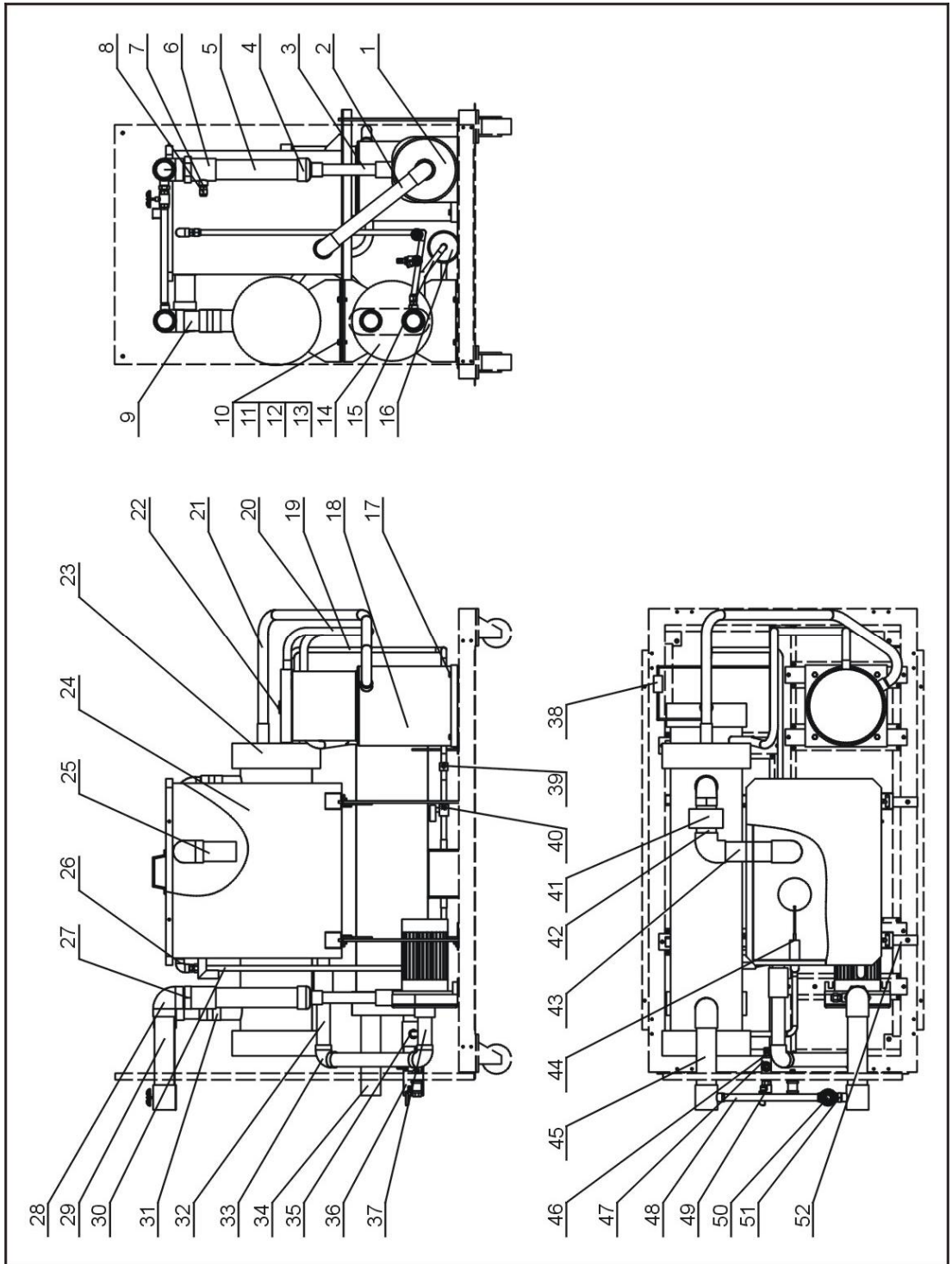
2.2.16 Rack Parts List (SIC-33W-R2~42W-R2)

Table 2-8: Rack Parts List (SIC-33W-R2~42W-R2)

No.	Name	Stock No.	No.	Name	Stock No.
1	Base frame	-	12	Electric control cabinet	-
2	Triangle supporting (left)	-	13	Left front stand column	-
3	Flat head screw M6×20	YW62062000000	14	Line jig fixing plate	-
4	Right front stand column	-	15	Triangle supporting (right)	-
5	Front middle beam	-	16	Left back stand column	-
6	Electric base plate	-	17	Condenser fixing beam	-
7	Top frame	-	18	Base frame middle beam	-
8	Outside hexbolt M6×25	YW60062500000	19	Right back stand column	-
9	Spring washer 6MM	YW65006000100	20	Pump fixing beam	-
10	Flat washer 6×13×10	YW66061300000	21	Compressor fixing beam	-
11	Hexnut M6	YW64000600300			

* means possible broken parts. ** means easy broken parts. Spare backup is suggested. Please confirm the version number of the manual before you order to ensure the stock number and the parts are consistent.

2.2.17 Water System + Refrigerant System Diagram (SIC-33W-R2~42W-R2)



Note: For details of the numbers in the parts drawing, please refer to the part list in 2.2.18

Picture 2-10: Water System + Refrigerant System Diagram (SIC-33W-R2~42W-R2)

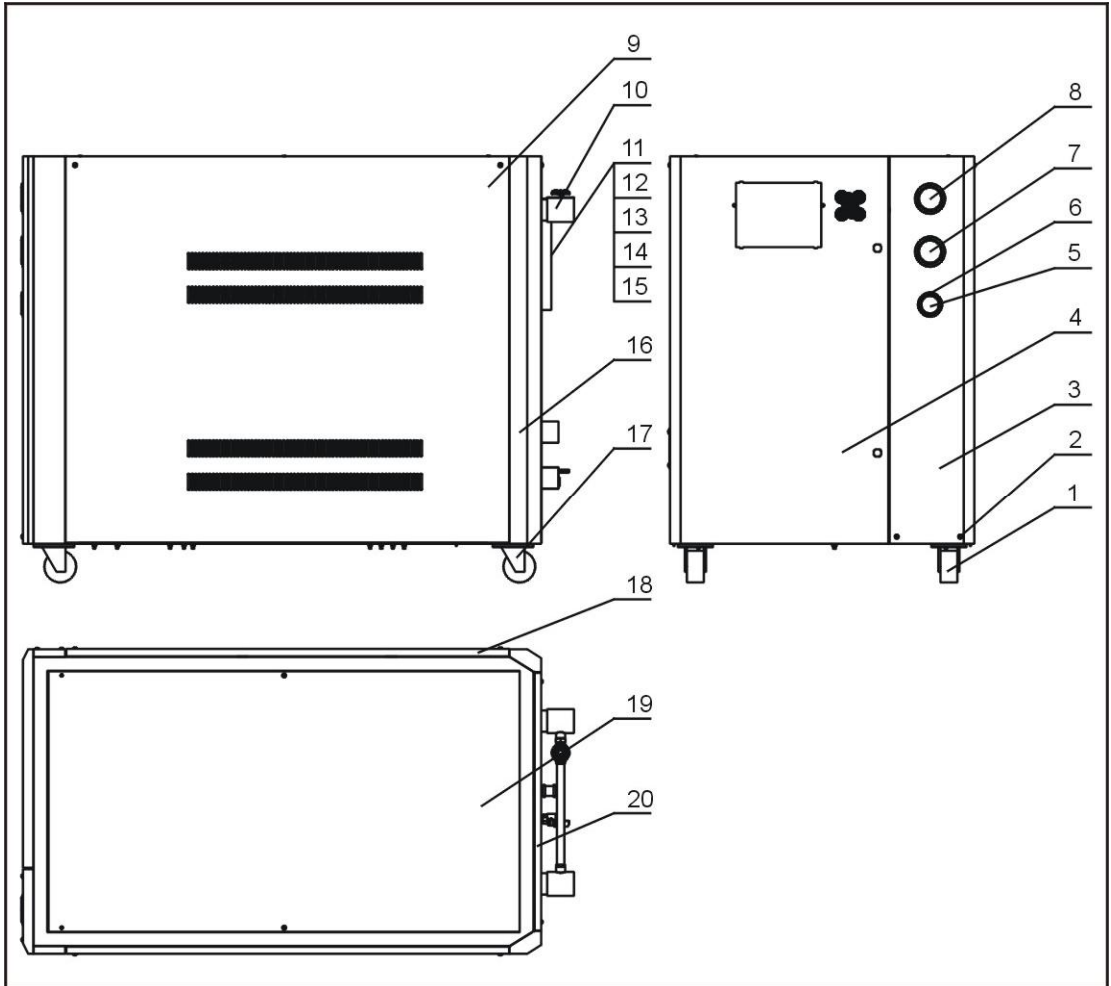
2.2.18 Water System + Refrigerant System Parts List (SIC-33W-R2~42W-R2)

Tabel 2-9: Water System + Refrigerant System Parts List (SIC-33W-R2~42W-R2)

No.	Name	Stock No.	No.	Name	Stock No.
1	Pump	-	25	Water pipe 3	-
2	Pipe 10	-	26	Street elbow 1/2"×1/2"	YW53121200000
3	Pipe 8	-	27	Inner joint of galvanized pipe 2"	YW50000200000
4	Concentric reducer 2"×1"	YW56020100000	28	Galvanized pipe elbow 2"	YW53000200100
5	Pipe 7	-	29	Water pipe 6	-
6	T-connection of the galvanized pipe 2"×1/2"	YW52201200100	30	Water replenishing copper pipe	-
7	Teflon pipe connection 1/4H×1/2PT	BH12010400610	31	Direct connection 2"	YW51000200000
8	Copper horn screw 1/4"	BH12010401010	32	Water pipe 11	-
9	Pipe 4	-	33	Galvanized pipe elbow 1-1/4"	YW53012500100
10	Outside hexscrew M8×30	YW60083000100	34	Cooling water pipe 1	-
11	Spring washer 8	YW65008000100	35	Copper horn screw 1/2"	BH12000401010
12	Flat washer 8	YW66081900000	36	Cooling water pipe 2	-
13	Hexnut M8	YW64080600000	37	Water pipe 9	-
14	Condenser	-	38	Hot air bypass valve	YE32008300000
15	Liquid pipe 1	-	39	Liquid level sensor	YW85001500100
16	Drying filter	YW85030700000	40	Liquid pipe solenoid valve	-
17	Outside hexbolt M8×50	YW60085000000	41	Flow switch 1"	YW85005000000
18	Evaporator 15HP	-	42	Water pipe 1	-
19	Liquid pipe 2	-	43	Water pipe 2	-
20	Exhaust pipe	-	44	Floating ball switch 1/2"	YW59010200000
21	Return air pipe	-	45	Water pipe 5	-
22	Expansion valve	-	46	Copper inserted core M16×1/2"	BH12161200010
23	Evaporator 15HP	-	47	T-connection of galvanized pipe 1/2"	YW52100200000
24	Water tank components	-	48	Steel wire rubber hose 1/2"	YR60051000000

* means possible broken parts. ** means easy broken parts. Spare backup is suggested. Please confirm the version number of the manual before you order to ensure the stock number and the parts are consistent.

2.2.19 Genmeral Assembly Diagram (SIC-33W-R2~42W-R2)



Note: For details of the numbers in the parts drawing, please refer to the part list in 2.2.20

Picture 2-11: General Assembly Diagram (SIC-33W-R2~42W-R2)

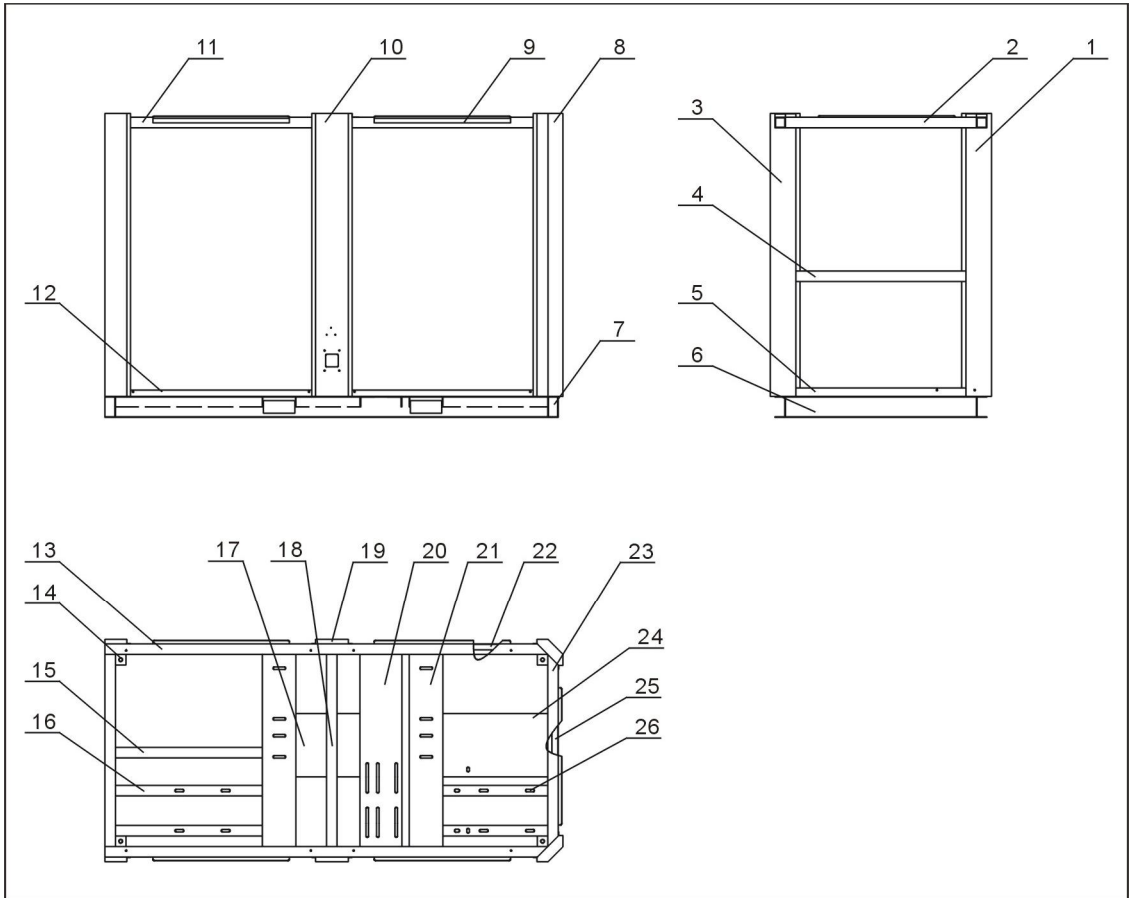
2.2.20 Genmeral Assembly Parts List (SIC-33W-R2~42W-R2)

Table 2-10: Genmeral Assembly Parts List (SIC-33W-R2~42W-R2)

No.	Name	Stock No.	No.	Name	Stock No.
1	Movable black caster 4"	YW03000430100	11	Level indicator cover	BL90006800020
2	Screw M6×35	YW63063500000	12	Glass tube	YW70963000000
3	Gauge plate	-	13	Level indicator	BH12030000010
4	Door plate	-	14	Level indicator screw	BH12060700110
5	Water pressure gauge 0~10kg	YW85001000100	15	Level indicator base	YW20000000400
6	Screw M4×10	YW62041000000	16	Rack	-
7	Low pressure gauge	YW85003500000	17	Braking black caster 4"	YW03000430200
8	High pressure gauge	YW85005500000	18	Side plate (left)	-
9	Side plate (right)	-	19	Top plate	-
10	Refrigeration system	-	20	Rear plate	-

* means possible broken parts. ** means easy broken parts. Spare backup is suggested. Please confirm the version number of the manual before you order to ensure the stock number and the parts are consistent.

2.2.21 Rack Diagram (SIC-56W-R2~84W-R2)



Note: For details of the numbers in the parts drawing, please refer to the part list in 2.2.22.

Picture 2-12: Rack Diagram (SIC-56W-R2~84W-R2)

2.2.22 Rack Parts List (SIC-56W-R2~84W-R2)

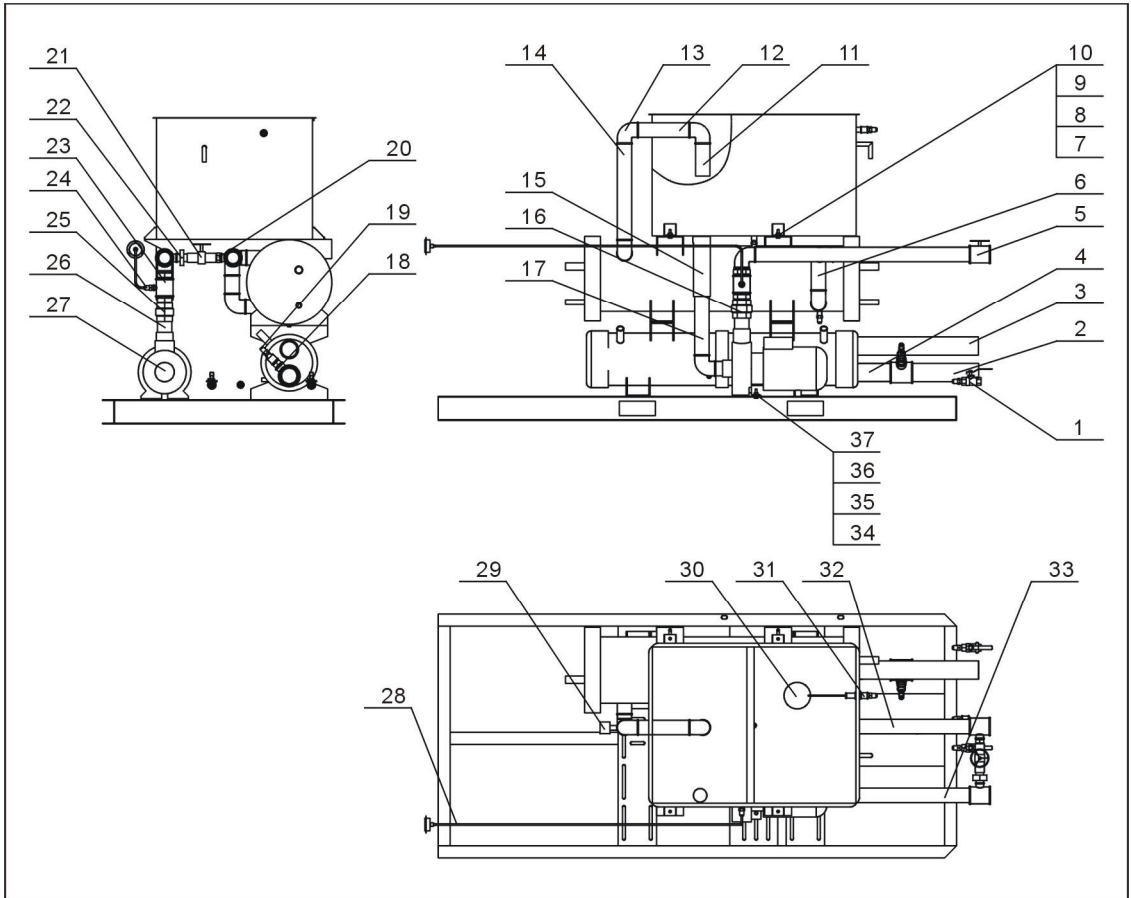
Table 2-11: Rack Parts List (SIC-56W-R2~84W-R2)

No.	Name	Stock No.	No.	Name	Stock No.
1	Workpiece 1	-	14	Workpiece 14	-
2	Workpiece 2	-	15	Workpiece 15	-
3	Workpiece 3	-	16	Workpiece 16	-
4	Workpiece 4	-	17	Workpiece 17	-
5	Workpiece 5	-	18	Workpiece 18	-
6	Workpiece 6	-	19	Workpiece 19	-
7	Workpiece 7	-	20	Workpiece 20	-
8	Workpiece 8	-	21	Workpiece 21	-
9	Workpiece 9	-	22	Workpiece 22	-
10	Workpiece 10	-	23	Workpiece 23	-
11	Workpiece 11	-	24	Workpiece 24	-
12	Workpiece 12	-	25	Workpiece 25	-
13	Workpiece 13	-	26	Workpiece 26	-

* means possible broken parts. ** means easy broken parts. Spare backup is suggested.

Please confirm the version number of the manual before you order to ensure the stock number and the parts are consistent.

2.2.23 Water System Diagram (SIC-56W-R2~84W-R2)



Note: For details of the numbers in the parts drawing, please refer to the part list in 2.2.24.

Picture 2-13: Water System Diagram (SIC-56W-R2~84W-R2)

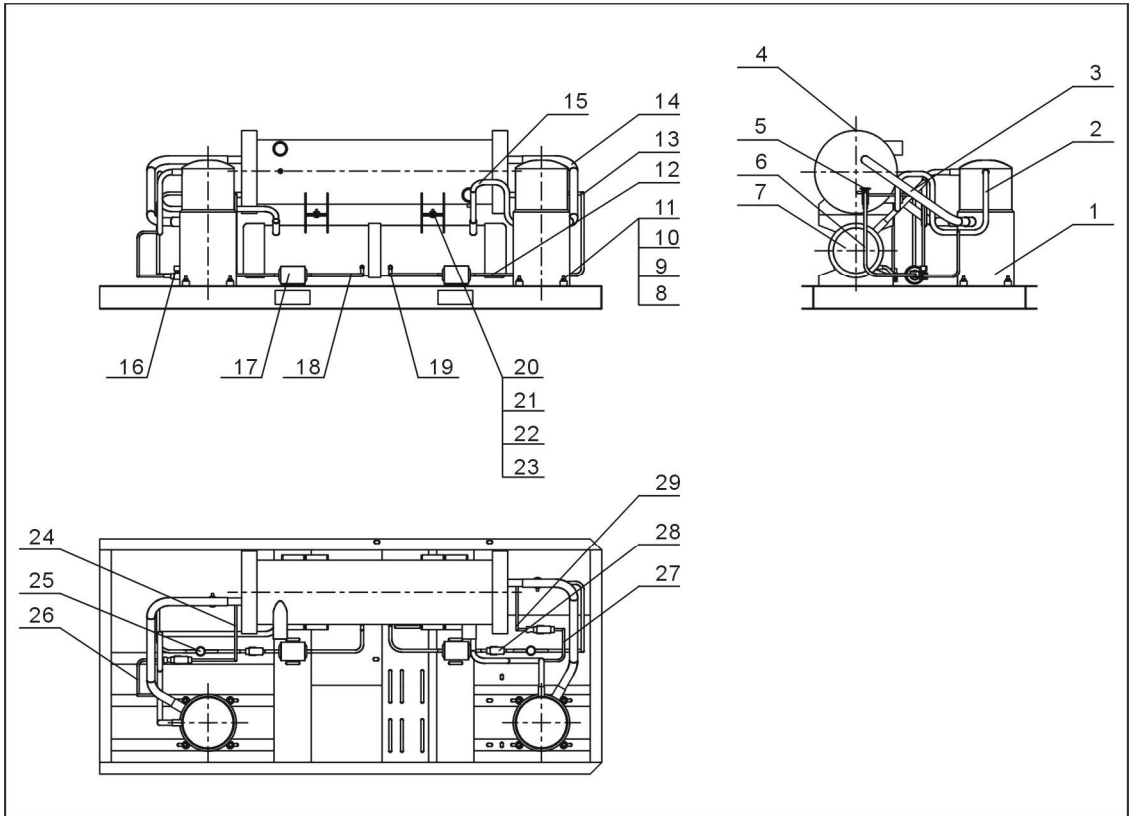
2.2.24 Water System Parts List (SIC-56W-R2~84W-R2)

Table 2-12: Water System Parts List (SIC-56W-R2~84W-R2)

No.	Name	Stock No.	No.	Name	Stock No.
1	Copper cored ball valve 1/2"	YW50010200100	20	Inner joint 1"	YW50000100000
2	Galvanized steel pipe 1	-	21	Sluice valve 1"	YW50000101000
3	Galvanized steel pipe 2	-	22	Loose joint 1"	YW54000100000
4	Galvanized steel pipe 3	-	23	T connection 2" × 1/2"	YW52201200100
5	T connection 2"×1"	YW52020100000	24	Teflon pipe connector 1/4" × 1/2"	BH12010400610
6	Galvanized steel pipe 11	-	25	Loose joint 2"	YW54000200000
7	Hexbolt M8×30	YW60083000200	26	Galvanized steel pipe 9	-
8	Flat washer 8	YW66081600000	27	Pump	-
9	Spring washer 8	YW65008000100	28	Copper pipe 1	-
10	Nut M8	YW61000800200	29	Flow switch 1"	YW85005000000
11	Galvanized steel pipe 5	-	30	Floating ball valve 1/2"	YW59010200000
12	Galvanized steel pipe 6	-	31	Direct connection 1/2"	YW51001200000
13	Pipe elbow 2"	YW53000200100	32	Galvanized steel pipe 10	-
14	Galvanized steel pipe 7	-	33	Galvanized steel pipe 4	-
15	Black rubber pipe	YR60600300000	34	Hexbolt M10×30	YW60103000100
16	Inner joint 2"	YW50000200000	35	Flat washer 10	YW66103200000
17	Galvanized steel pipe 8	-	36	Spring washer 10	YW65010000000
18	T connection 2-1/2" × 1/2"	YW52251200000	37	Nut M10	YW64001000100
19	Copper inserted core 1/2"	BH12161200010			

* means possible broken parts. ** means easy broken parts. Spare backup is suggested. Please confirm the version number of the manual before you order to ensure the stock number and the parts are consistent.

2.2.25 Refrigerant System Diagram (SIC-56W-R2~84W-R2)



Note: For details of the numbers in the parts drawing, please refer to the part list in 2.2.26.

Picture 2-14: Refrigerant System Diagram (SIC-56W-R2~84W-R2)

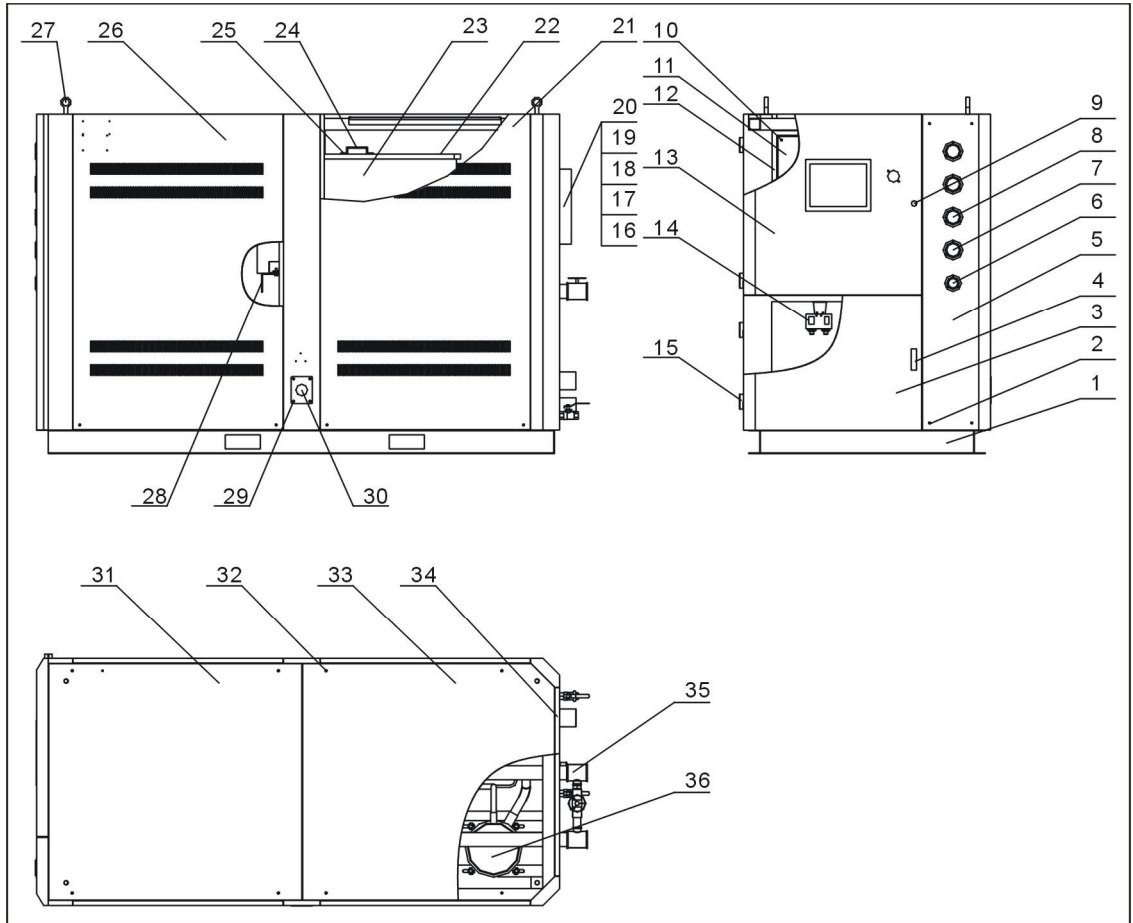
2.2.26 Refrigerant Sytem Parts List (SIC-56W-R2~84W-R2)

Table 2-13: Refrigerant System Parts List (SIC-56W-R2~84W-R2)

No.	Name	Stock No.	No.	Name	Stock No.
1	Compressor	-	16	Bypass solenoid valve	-
2	Compressor 1 exhaust pipe	-	17	Drying filter	YW85016400100
3	Compressor 1 return-air pipe	-	18	Compressor 1 liquid pipe 2	-
4	Evaporator	-	19	Compressor 2 liquid pipe 3	-
5	Thermostate expansion valve	-	20	Hexbolt M10×30	YW60103000100
6	Compressor 1 liquid pipe 1	-	21	Flat washer 10	YW66103200000
7	Condensor	-	22	Spring washer 10	YW65010000000
8	Hexbolt M8×50	YW60085000000	23	Nut M10	YW64001000300
9	Flat washer 8	YW66082200100	24	Compressor 1 copper pipe 2	-
10	Spring washer 8	YW65008000100	25	Refrigerant indicator	-
11	Nut M8	YW64080600000	26	Compressor 1 copper pipe 1	-
12	Compressor 2 liquid pipe 2	-	27	Compressor 2 copper pipe 1	-
13	Compressor 2 liquid pipe 1	-	28	Liquid soleoid valve	-
14	Compressor 2 return-air pipr	-	29	Compressor 2 copper pipe 2	-
15	Compressor 2 exhuaat pipe	-			

* means possible broken parts. ** means easy broken parts. Spare backup is suggested. Please confirm the version number of the manual before you order to ensure the stock number and the parts are consistent.

2.2.27 General Assembly Diagram (SIC-56W-R2~84W-R2)



Note: For details of the numbers in the parts drawing, please refer to the part list in 2.2.28.

Picture 2-15: General Assembly Diagram (SIC-56W-R2~84W-R2)

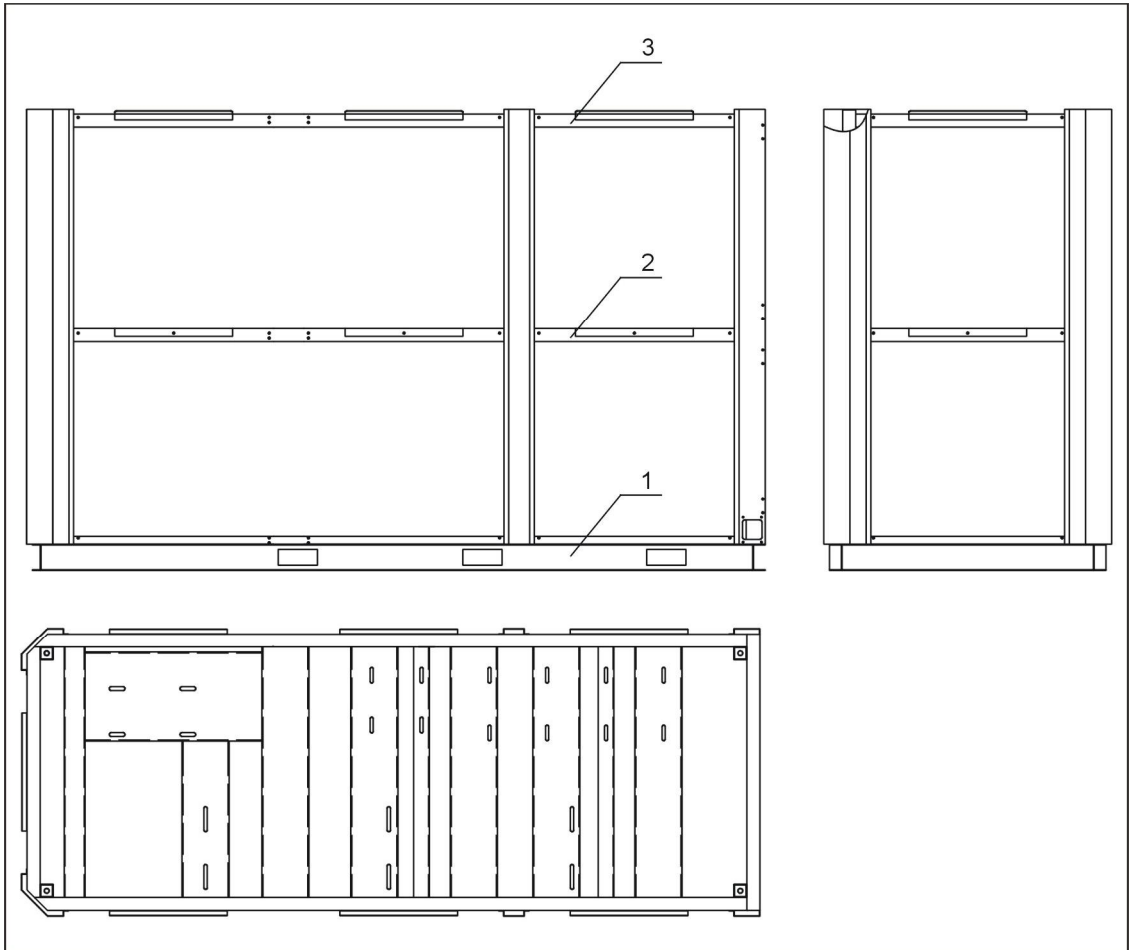
2.2.28 General Assembly Diagram Parts List (SIC-56W-R2~84W-R2)

Table 2-14: General Assemble Diagram Parts List (SIC-56W-R2~84W-R2)

No.	Name	Stock No.	No.	Name	Stock No.
1	Rack	-	19	Glass pipe	YW70963000000
2	Hex screw M6×60	YW61066000000	20	Liquid level glass cover	BL90006800020
3	Front plate 2	-	21	Side plate 2	-
4	Cabinet lock	YW00717100000	22	Tank cover	-
5	Gauge plate	-	23	Tank body	-
6	Water pressure gauge	YW85001000100	24	Handle	BW20012000040
7	Low pressure gauge	YW85003500000	25	Screw M6×10	YW62061000000
8	High pressure gauge	YW85005500000	26	Side plate 1	-
9	Door lock	YW00000000100	27	Stationary ring M16	YW09001600000
10	Screw M6×15	YW62061500000	28	Water tank supporting	-
11	Electrical cabinet base plate	-	29	Screw M5×00	YW62051000100
12	Electric control cabinet	-	30	Cable fixed plate	-
13	Front door plate 1	-	31	Cover plate 1	-
14	Pressure controller	YE90124500000	32	Screw M6×30	YW62063000000
15	Hinge	YE06022500000	33	Cover plate 2	-
16	Indicator base	YE20000000400	34	Rear plate	-
17	Indicator nut	BH12060700110	35	Water system	-
18	Refrigerant indicator STM-310	BH12030000010	36	Refrigerant system	-

** means possible broken parts. ** means easy broken parts. Spare backup is suggested. Please confirm the version number of the manual before you order to ensure the stock number and the parts are consistent.

2.2.29 Rack Diagram (SIC-112W-R2)



Note: For details of the numbers in the parts drawing, please refer to the part list in 2.2.30.

Picture 2-16: Rack Diagram (SIC-112W-R2)

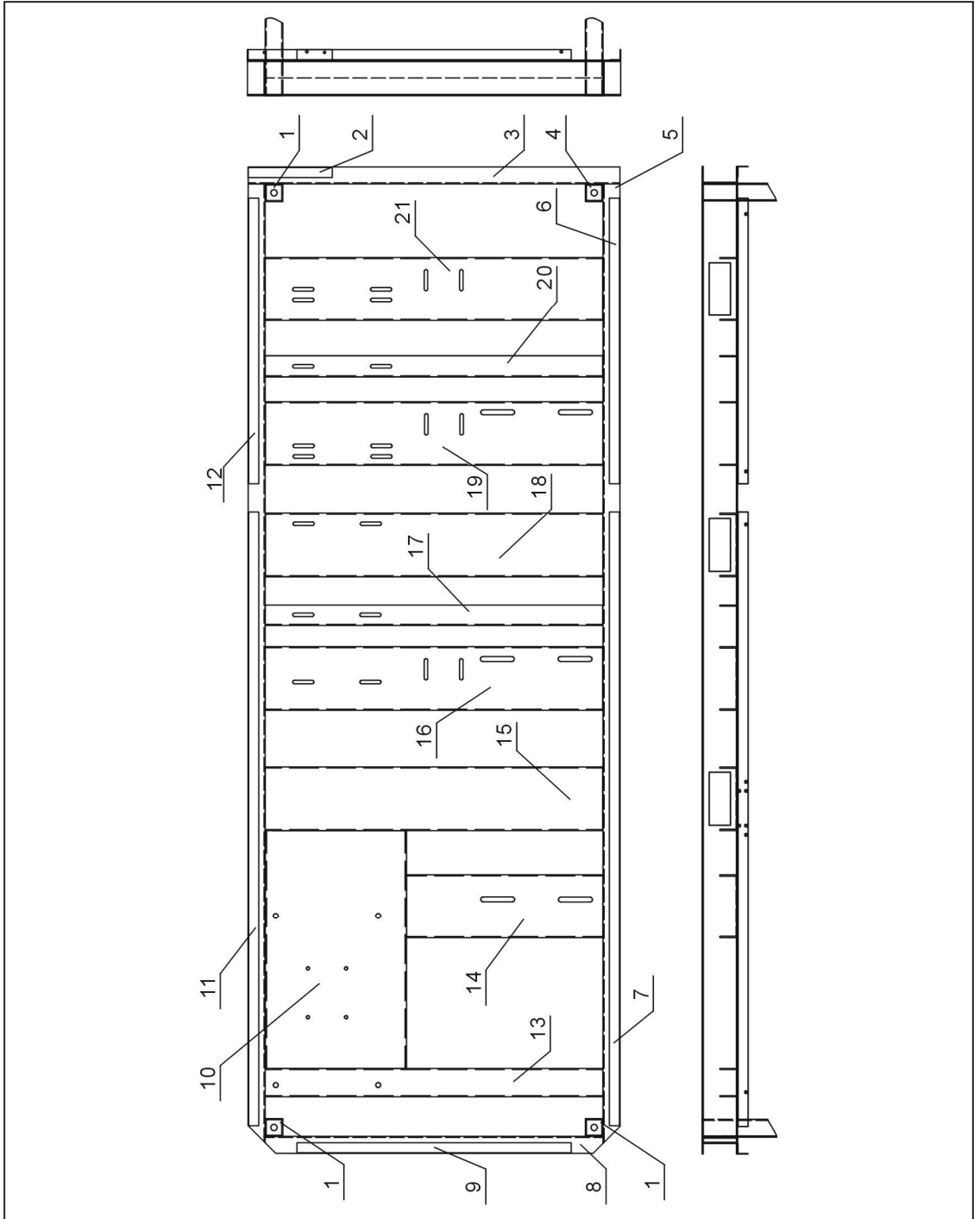
2.2.30 Rack Parts List (SIC-112W-R2)

Table 2-15: Rack Parts List (SIC-112W-R2)

No.	Name	Stock No.	No.	Name	Stock No.
1	Rack first layer	-	3	Rack third layer	-
2	Rack second layer	-			-

* means possible broken parts. ** means easy broken parts. Spare backup is suggested. Please confirm the version number of the manual before you order to ensure the stock number and the parts are consistent.

2.2.31 Rack Diagram 1 (SIC-112W-R2)



Note: For details of the numbers in the parts drawing, please refer to the part list in 2.2.32.

Picture 2-17: Rack Diagram 1 (SIC-112W-R2)

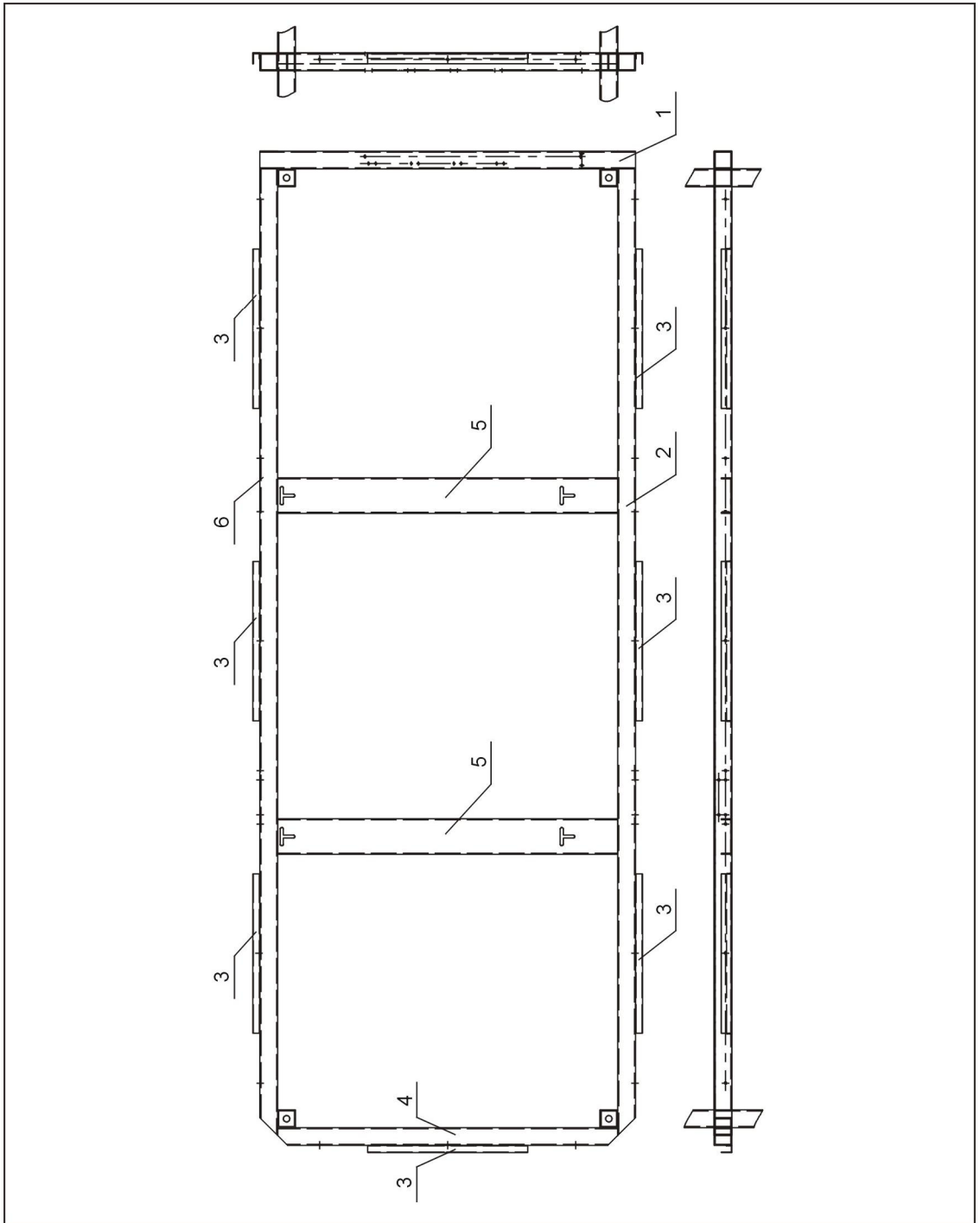
2.2.32 Rack 1 Parts List (SIC-112W-R2)

Table 2-16: Rack 1 Parts List (SIC-112W-R2)

No.	Name	Stock No.	No.	Name	Stock No.
1	Brace 2	-	12	Baffle 2	-
2	Baffle 6	-	13	Base beam 1	-
3	Base U-steel 3	-	14	Base beam 2	-
4	Brace 1	-	15	Base beam 3	-
5	Base U-stell 1	-	16	Base beam 4	-
6	Baffle 1	-	17	Base steel angle 1	-
7	Baffle 3	-	18	Base beam 5	-
8	Base U-steel 2	-	19	Base beam 6	-
9	Baffle 5	-	20	Base steel angle 2	-
10	Base beam 8	-	21	Base beam 7	-
11	Baffle 4	-			-

* means possible broken parts. ** means easy broken parts. Spare backup is suggested. Please confirm the version number of the manual before you order to ensure the stock number and the parts are consistent.

2.2.33 Rack Diagram 2 (SIC-112W-R2)



Note: For details of the numbers in the parts drawing, please refer to the part list in 2.2.34.

Picture 2-18: Rack Diagram 2 (SIC-112W-R2)

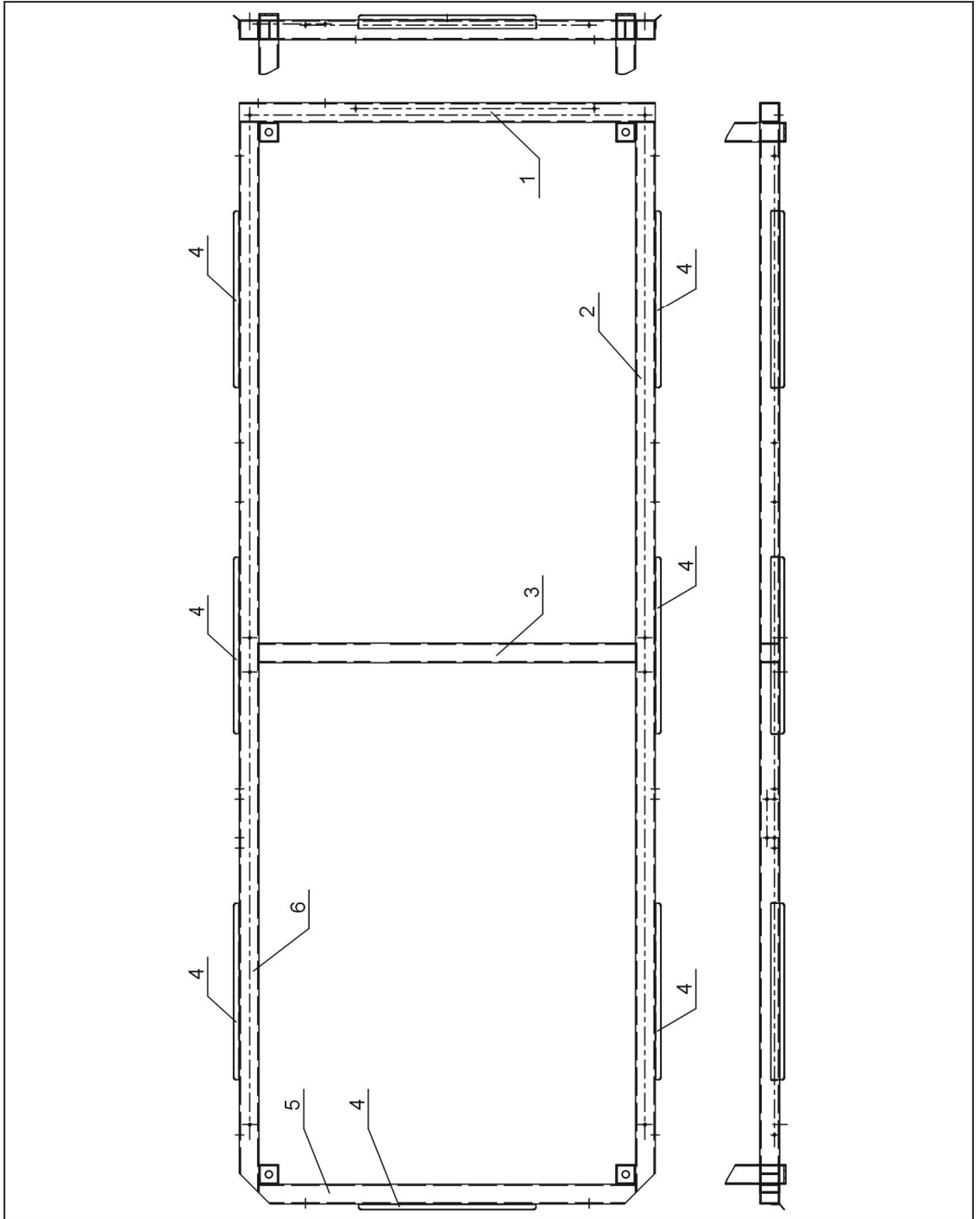
2.2.34 Rack 2 Parts List (SIC-112W-R2)

Table 2-17: Rack 2 Parts List (SIC-112W-R2)

No.	Name	Stock No.	No.	Name	Stock No.
1	Middle beam 1	-	4	Fixed block	-
2	Middle beam 2	-	5	Middle beam 3	-
3	Fixed block	-	6	Middle beam 4	-

* means possible broken parts. ** means easy broken parts. Spare backup is suggested. Please confirm the version number of the manual before you order to ensure the stock number and the parts are consistent.

2.2.35 Rack Diagram 3 (SIC-112W-R2)



Note: For details of the numbers in the parts drawing, please refer to the part list in 2.2.36.

Picture 2-19: Rack Diagram 3 (SIC-112W-R2)

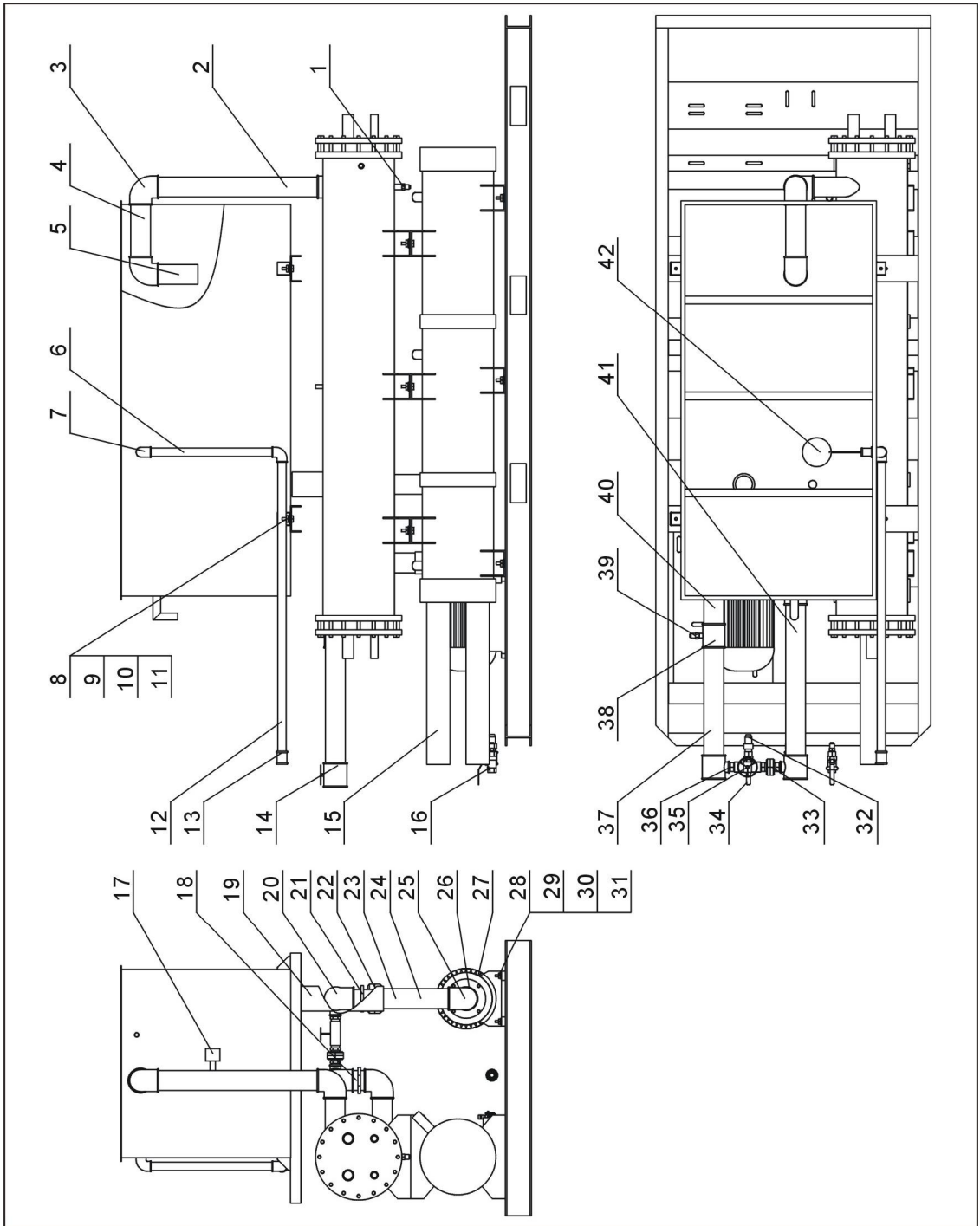
2.2.36 Rack 3 Parts List (SIC112W-R2)

Table 2-18: Rack 3 Parts List (SIC-112W-R2)

No.	Name	Stock No.	No.	Name	Stock No.
1	Top beam 1	-	4	Hanging strip	-
2	Top beam 2	-	5	Top beam 4	-
3	Top beam 3	-	6	Top beam 5	-

* means possible broken parts. ** means easy broken parts. Spare backup is suggested. Please confirm the version number of the manual before you order to ensure the stock number and the parts are consistent.

2.2.37 Water System Diagram (SIC-112W-R2)



Note: For details of the numbers in the parts drawing, please refer to the part list in 2.2.38.

Picture 2-20: Water System Diagram (SIC-112W-R2)

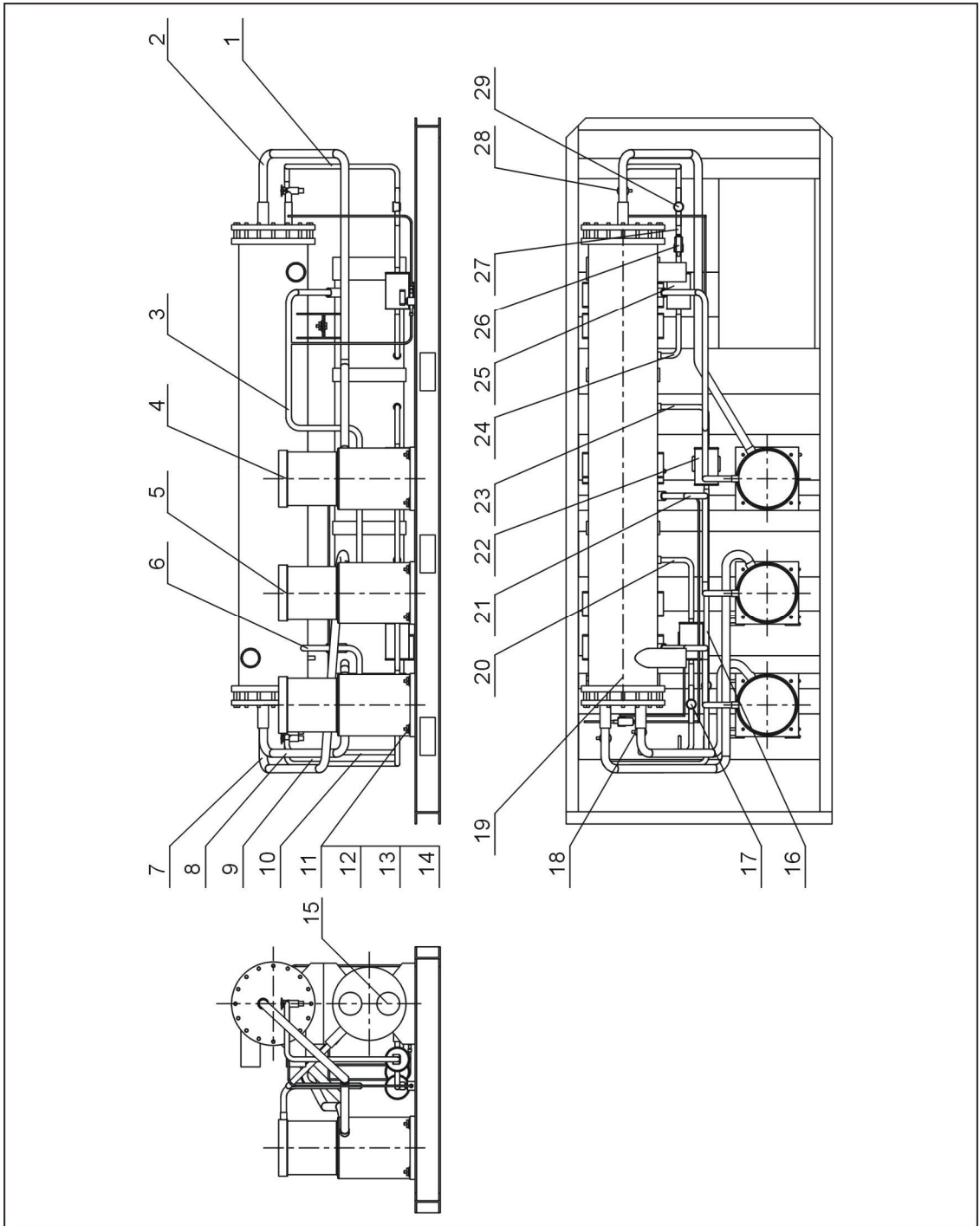
2.2.38 Water System Parts List (SIC-112W-R2)

Table 2-19: Water System Parts List (SIC-112W-R2)

No.	Name	Stock No.	No.	Name	Stock No.
1	Copper inserted core 1/2"	BH12121200210	22	Pipe loose joint 2"	YW54000200000
2	Galvanized steel pipe 1	-	23	Galvanized steel pipe 7	-
3	Pipe elbow 2-1/2"	YW53002500000	24	Galvanized steel pipe 8	-
4	Galvanized steel pipe 2	-	25	Pipe elbow 2"	YW53000200100
5	Galvanized steel pipe 3	-	26	Galvanized steel pipe 9	-
6	Galvanized steel pipe 4	-	27	Pump	-
7	Pipe elbow 1"	YW53100000000	28	Hexbolt M10×40	YW60104000100
8	Hexbolt M8×30	YW60083000200	29	Nut M10	YW64001000100
9	Nut M8	YW64080600000	30	Spring washer 10	YW65010000000
10	Spring washer 8	YW65008000100	31	Flat washer 10	YW66103200000
11	Flat washer 8	YW66082200100	32	Copper inserted core 1"	BH12012500010
12	Galvanized steel pipe 5	-	33	Pipe loose joint 1"	YW54000100000
13	Pipe direct connection 1"	YW51000100000	34	Copper globe valve 1"	YW50010000000
14	Pipe T-joint 2-1/2" ×1"	YW52250100000	35	Sluice valve 1"	YW50000101000
15	Galvanized steel pipe 6	-	36	Pipe inner joint 1"	YW50000100000
16	Copper globe valve 1/2"	YW50010200100	37	Galvanized steel pipe 10	-
17	Flow switch 1"	YW85005000000	38	Pipe T-joint 2-1/2" ×1/2"	YW52251200000
18	Pipe inner joint 2-1/2"	YW50002500100	39	Copper inserted core 1/2"PT×1/4"H	BH12141200010
19	Black rubber pipe 2"	YR60600300000	40	Galvanized steel pipe 11	-
20	Pipe elbow 2" ×2-1/2"	YW53250200000	41	Galvanized steel pipe 12	-
21	Pipe inner joint"	YW50000200000	42	Floating ball valve 1"	YW59010000000

* means possible broken parts. ** means easy broken parts. Spare backup is suggested. Please confirm the version number of the manual before you order to ensure the stock number and the parts are consistent.

2.2.39 Refrigerant System Diagram (SIC-112W-R2)



Note: For details of the numbers in the parts drawing, please refer to the part list in 2.2.40.

Picture 2-21: Refrigerant System Diagram (SIC-112W-R2)

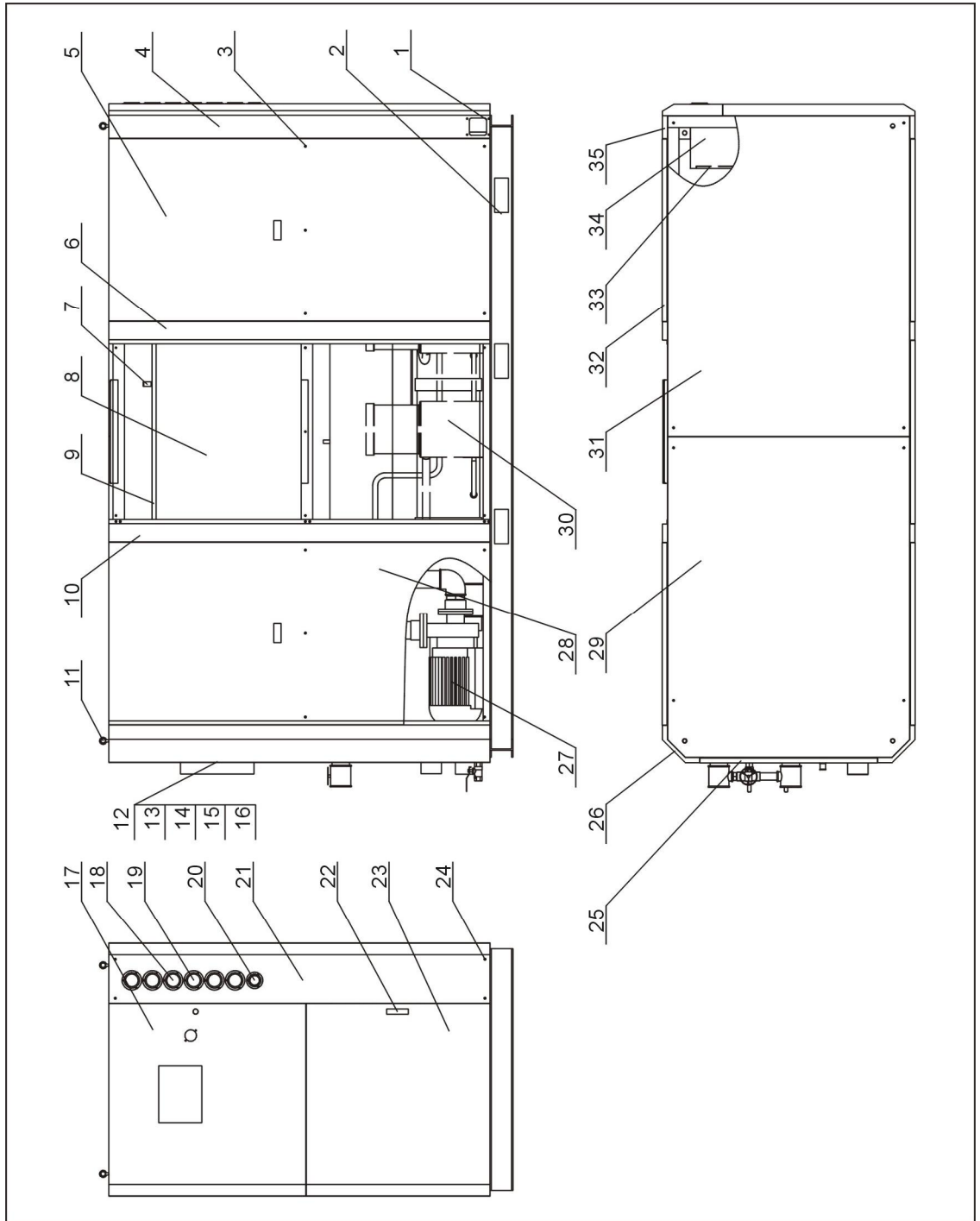
2.2.40 Refrigerant System Parts List (SIC-112W-R2)

Table 2-20: Refrigerant System Parts List (SIC-112W-R2)

No.	Name	Stock No.	No.	Name	Stock No.
1	Liquid pipe 3 of compressor 3	-	16	Liquid pipe 2 of compressor 2	-
2	Air-return pipe of compressor 3	-	17	Refrigerant indicator HMI-1TT5	YW85001500100
3	Exhaust pipe of compressor 3	-	18	Thermal expansion valve	YW85001300000
4	Compressor 10HP	-	19	Evaporator	-
5	Compressor 15HP	-	20	Liquid pipe 1 of compressor 1	-
6	Exhaust pipe of compressor 1	-	21	Exhaust pipe of compressor 2	-
7	Air-return pipe of compressor 2	-	22	Dryer filter EK-307S	YW85030700000
8	Air-return pipe of compressor 1	-	23	Liquid pipe 1 of compressor 2	-
9	Liquid pipe 3 of compressor 2	-	24	Liquid pipe 1 of compressor 3	-
10	Liquid pipe 2 of compressor 1	-	25	Dryer filter EK-164S	YW85016400100
11	Hexbolt M10×40	YW60104000100	26	Solenoid valve of liquid valve	-
12	Screw M10	YW64001000100	27	Liquid pipe 2 of compressor 3	-
13	Spring washer 10	YW65010000000	28	Thermal expansion valve	YW85712700000
14	Flat washer 10	YW66103200000	29	Refrigerant indicator HMI-1TT4	YW85001400000
15	Condenser	-			

* means possible broken parts. ** means easy broken parts. Spare backup is suggested. Please confirm the version number of the manual before you order to ensure the stock number and the parts are consistent.

2.2.41 General Assembly Diagram (SIC-112W-R2)



Note: For details of the numbers in the parts drawing, please refer to the part list in 2.2.42.

Picture 2-22: General Assembly Diagram (SIC-112W-R2)

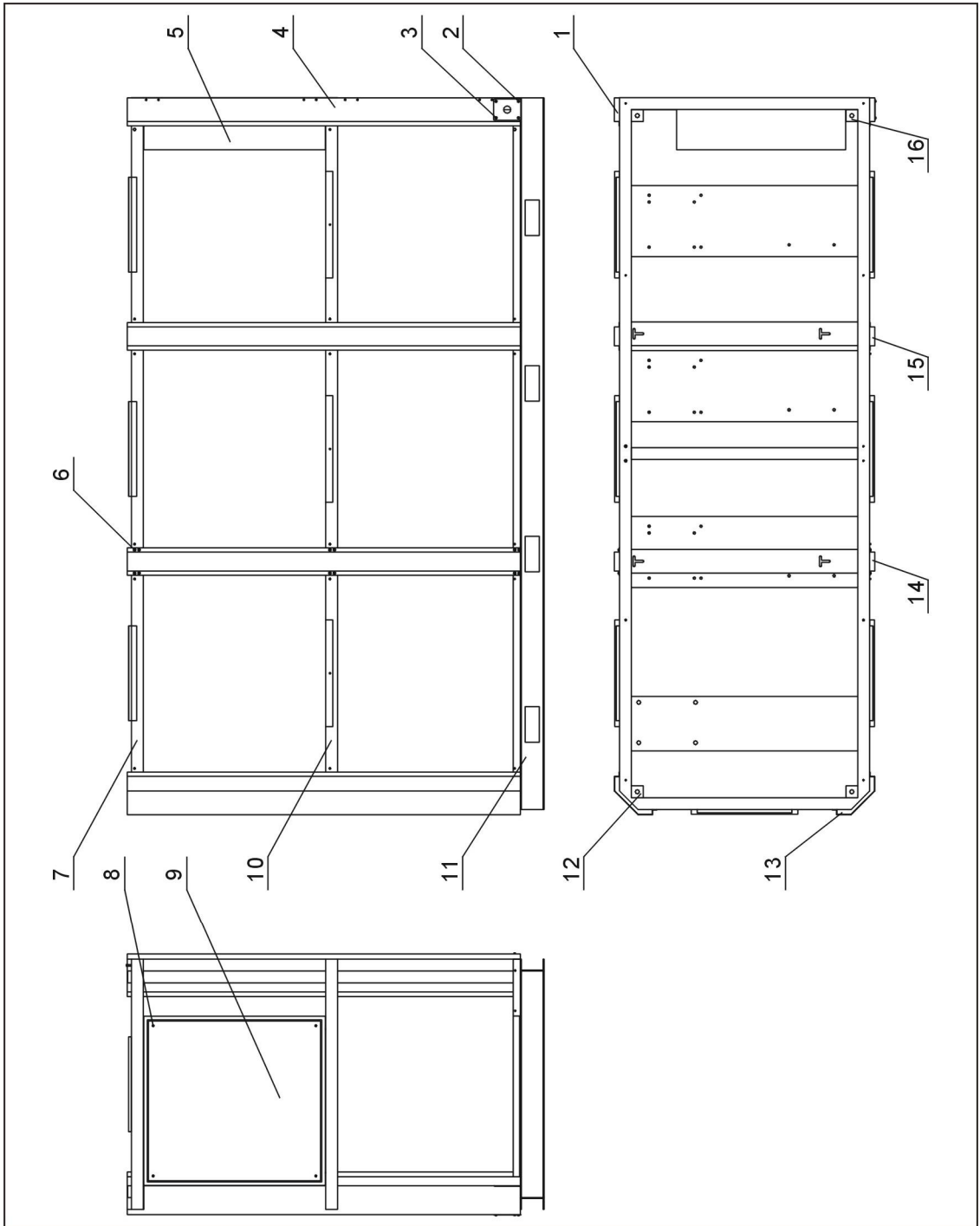
2.2.42 General Assembly Diagram Parts List (SIC-112W-R2)

Table 2-21: General Assemble Diagram Parts List (SIC-112W-R2)

No.	Name	Stock No.	No.	Name	Stock No.
1	Line jig fixed plate	-	19	Low pressure gauge	YW85003500000
2	Rack	-	20	Water pressure gauge	YW85001000100
3	Screw M6×30	YW63063000000	21	Gauge plate	-
4	Left front stand column	-	22	Door lock of electrical cabinet	YW00717100000
5	Side plate 3	-	23	Lower plate	-
6	Middle stand column	-	24	Socket head cap screw M6×60	YW61066000000
7	Aluminum square handle	BW20012000040	25	Rear plate	-
8	Water tank body	-	26	Back stand column	-
9	Water tank cover	-	27	Side plate 2	-
10	Movable stand column	-	28	Water system	-
11	Ringbolt M16	YW09001600000	29	Rear top plate	-
12	Liquid level indicator base	YW20000000400	30	Refrigerant system	-
13	Liquid level indicator screw	BH12060700110	31	Front top plate	-
14	Liquid level indicator STM-310	BH12030000010	32	Side plate 1	-
15	Glass tube	YW70963000000	33	Base plate of electrical cabinet	-
16	Liquid level indicator shelter	BL90006800020	34	Control cabinet	-
17	Upper plate	-	35	Right front stand column	-
18	High pressure gauge	YW85005500000			

** means possible broken parts. ** means easy broken parts. Spare backup is suggested. Please confirm the version number of the manual before you order to ensure the stock number and the parts are consistent.

2.2.43 Rack Diagram (SIC-126W-R2)



Note: For details of the numbers in the parts drawing, please refer to the part list in 2.2.44.

Picture 2-23: Rack Diagram (SIC-126W-R2)

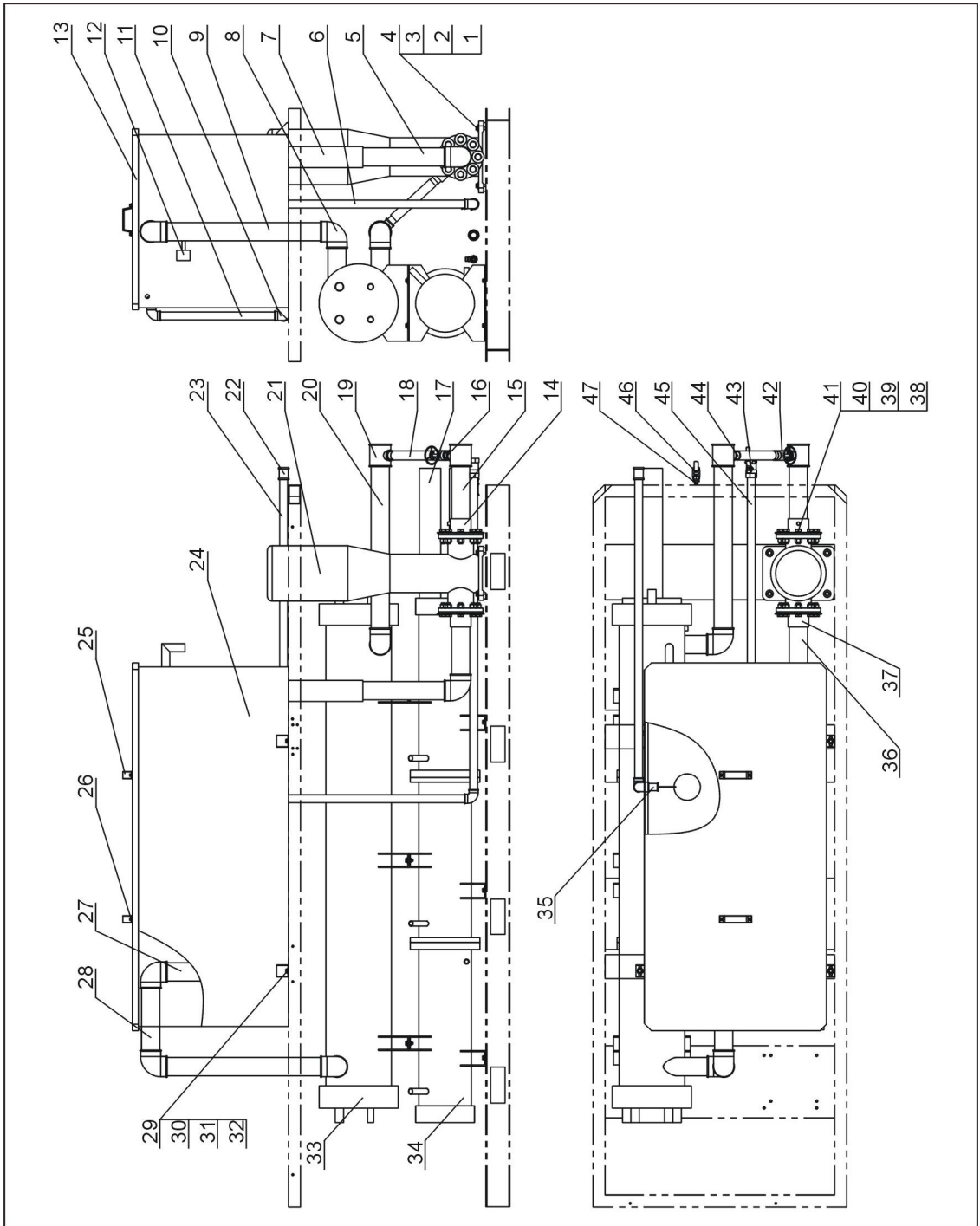
2.2.44 Rack Parts List (SIC-126W-R2)

Table 2-22: Rack Parts List (SIC-126W-R2)

No.	Name	Stock No.	No.	Name	Stock No.
1	Right front stand column	-	9	Electrical cabinet base	-
2	Line jig fixed board	-	10	Rack second layer	-
3	Cross-recessed oval head screw M5×10	YW62051000000	11	Rack first layer	-
4	Left front stand column	-	12	Stand column 1	-
5	Electrical cabinet	-	13	Back stand column	-
6	Cross-recessed oval head screw M6×10	YW62061000000	14	Movable stand column	-
7	Rack third layer	-	15	Middle stand column	-
8	Cross-recessed oval head screw M6×10	YW62061500000	16	Stand column 2	-

* means possible broken parts. ** means easy broken parts. Spare backup is suggested. Please confirm the version number of the manual before you order to ensure the stock number and the parts are consistent.

2.2.45 Water System Diagram (SIC-126W-R2)



Note: For details of the numbers in the parts drawing, please refer to the part list in 2.2.46.

Picture 2-24: Water System Diagram (SIC-126W-R2)

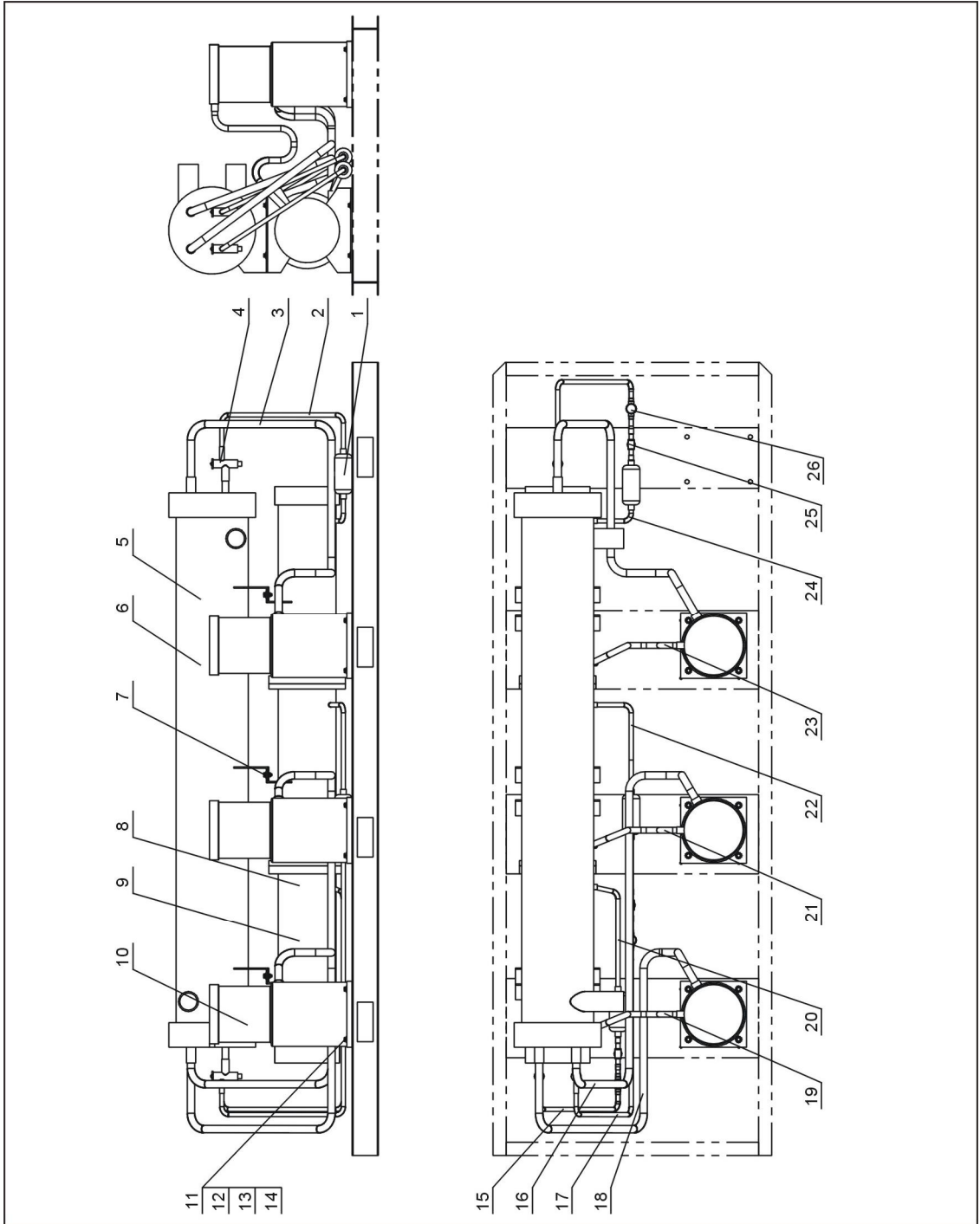
2.2.46 Water System Parts List (SIC-126W-R2)

Table 2-23: Water System Parts List (SIC-126W-R2)

No.	Name	Stock No.	No.	Name	Stock No.
1	Hexbolt M10×50	YW60105000000	25	Square handle	BW20012000040
2	Spring washer 10	YW65010000000	26	Socket head cap screw M6×20	YW61062000000
3	Flat washer 10	YW66102000100	27	Water pipe 5	-
4	Hexnut M10	YW64001000100	28	Water pipe 4	-
5	Water pipe 6	-	29	Hexbolt M25×20	YW60082500200
6	Water pipe 8	-	30	Spring washer 8	YW65008000100
7	Black rubber inner diameter 89	YR60390300000	31	Flat washer 8	YW66082200100
8	Galvanized pipe elbow 2.5"	YW53002500000	32	Hexnut M8	YW64080600000
9	Water pipe 3	-	33	Evaporator	-
10	Galvanized pipe elbow 1"	YW53100000000	34	Condenser	-
11	Water pipe 11	-	35	Floating ball switch 1"	YW59010000000
12	Flow switch	YW85005000000	36	Water pipe 7	-
13	Water tank cover	-	37	Water inlet flange	-
14	Water outlet flange	-	38	Hexbolt M16×45	YW60040050000
15	Water pipe 1	-	39	Spring washer 16	YW65016000000
16	Galvanized pipe inner joint 1"	YW50000100000	40	Flat washer 16	YW66163000000
17	Water pipe 13	-	41	Hexnut M16	YW64001600000
18	Black rubber pipe inner diameter 32	YR60320500000	42	Sluice valve 1"	YW50000101000
19	Galvanized pipe T-joint 2.5" ×1"	YW52250100000	43	Copper globe valve 1"	YW50010000000
20	Water pipe 2	-	44	Water pipe 12	-
21	Pump	-	45	Water pipe 9	-
22	Galvanized pipe direct connection 1"	YW51000100000	46	Copper globe valve 1/2"	YW50010200100
23	Water pipe 10	-	47	Copper inserted core M16×1/2PT	BH12161200010
24	Water tank body	-			

* means possible broken parts. ** means easy broken parts. Spare backup is suggested. Please confirm the version number of the manual before you order to ensure the stock number and the parts are consistent.

2.2.47 Refrigerant System Diagram (SIC-126W-R2)



Note: For details of the numbers in the parts drawing, please refer to the part list in 2.2.48.

Picture 2-25: Refrigerant System Diagram (SIC-126W-R2)

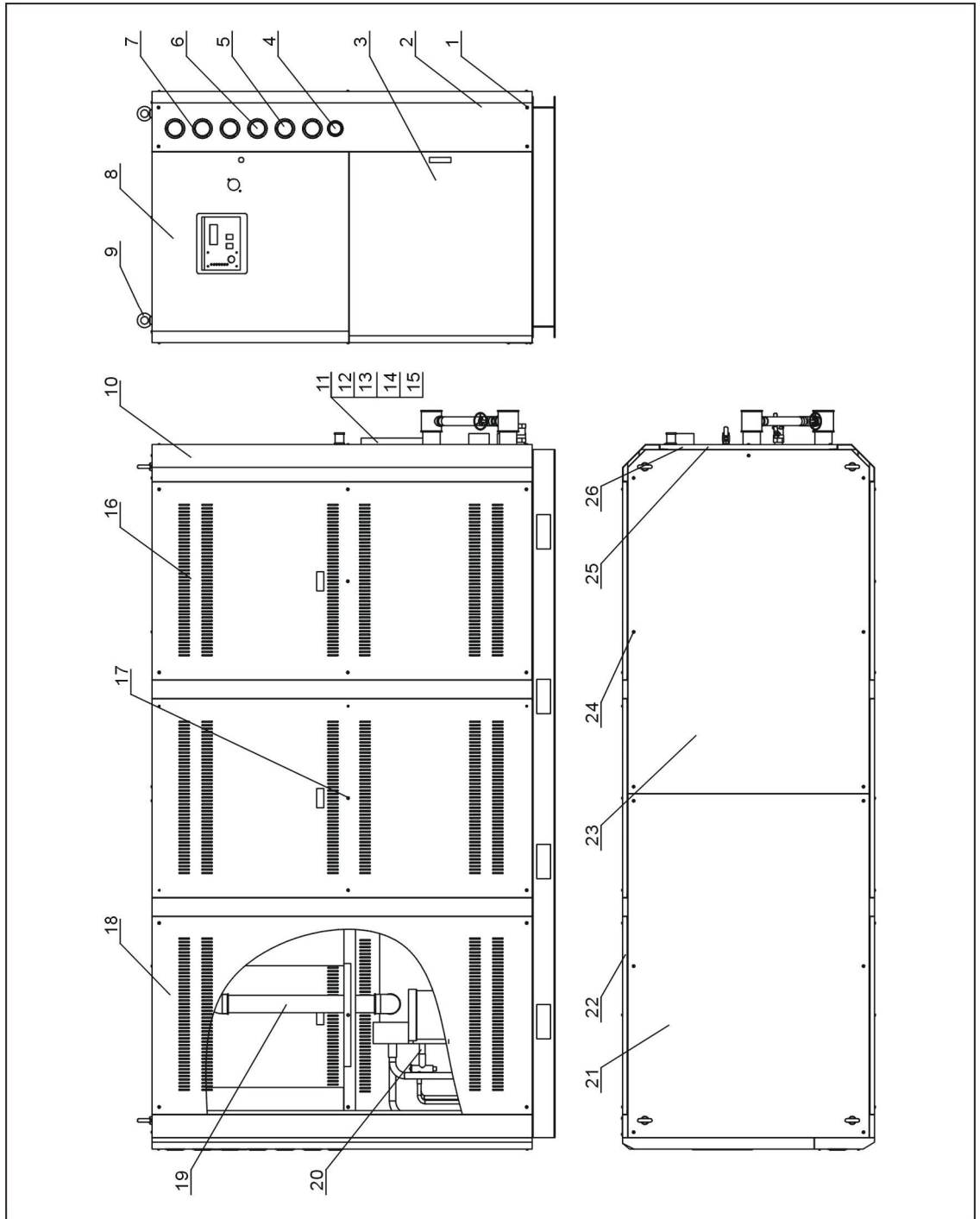
2.2.48 Refrigerant Sytem Parts List (SIC-126W-R2)

Table 2-24: Refrigerant System Parts List (SIC-126W-R2)

No.	Name	Stock No.	No.	Name	Stock No.
1	Dryer filter	YW85030700000	14	Hexnut M8	YW64080600000
2	Liquid pipe 2	-	15	Liquid pipe 6	-
3	Air-return pipe 1	-	16	Air-return pipe 2	-
4	Expansion valve	-	17	Liquid pipe 4	-
5	Evaporator	-	18	Air-return pipe 3	-
6	Evaporator 60Hz	-	19	Exhaust piep 1	-
7	Hexbolt M8×25	YW60082500200	20	Liquid pipe 5	-
8	Condenser	-	21	Air-return pipe 2	-
9	Condenser 60Hz	-	22	Liquid pipe 3	-
10	Compressor	-	23	Air-return pipe 1	-
11	Hexbolt M8×50	YW60085000000	24	Liquid pipe 1	-
12	Spring washer 8	YW65008000100	25	Solenoid valve of liquid pipe	-
13	Flat washer 8	YW66081600000	26	Refrigerant indicator	YW85001500100

* means possible broken parts. ** means easy broken parts. Spare backup is suggested. Please confirm the version number of the manual before you order to ensure the stock number and the parts are consistent.

2.2.49 General Assembly Diagram (SIC-126W-R2)



Note: For details of the numbers in the parts drawing, please refer to the part list in 2.2.50.

Picture 2-26: General Assembly Diagram (SIC-126W-R2)

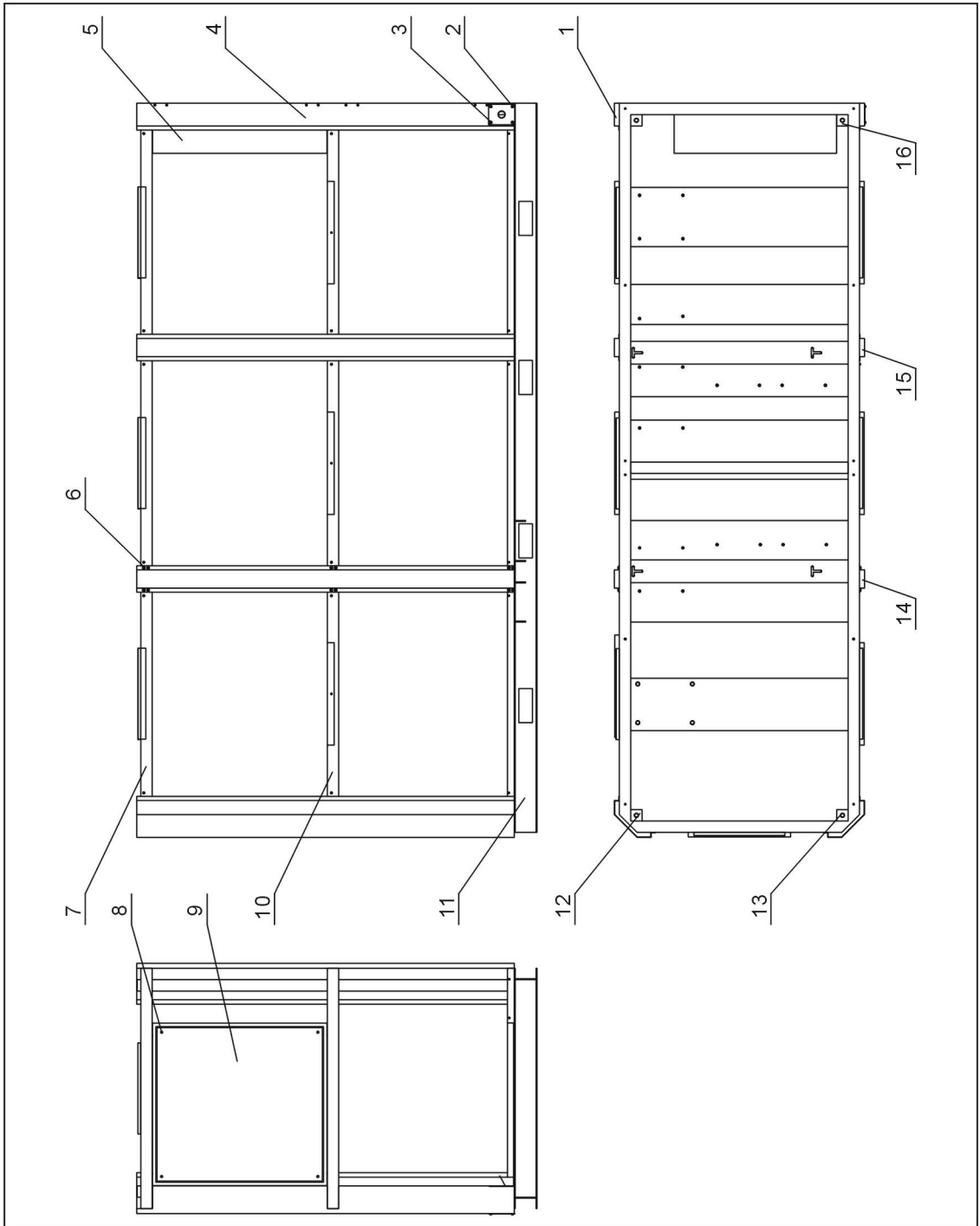
2.2.50 General Assembly Diagram Parts List (SIC-126W-R2)

Table 2-25: General Assemble Diagram Parts List (SIC-126W-R2)

No.	Name	Stock No.	No.	Name	Stock No.
1	Socket head cap screw M6×60	YW61066000000	14	Glass tube	YW70963000000
2	Gauge plate	-	15	Liquid level indicator shelter	BL90006800020
3	Lower plate	-	16	Cross-recessed oval head screw M6×10	YW62061000000
4	Pressure gauge 0~10kg	YW85001000100	17	Side plate 1	-
5	Low pressure gauge 0~35kg	YW85003500000	18	Side plate 2	-
6	Low pressure gauge 0~50kg	YW85005500000	19	Chilled water system	-
7	Corss-recessed oval head screw M4×5	YW62040500000	20	Refrigerant system	-
8	Upper plate	-	21	Front top plate	-
9	Ringbolt M16	YW09001600000	22	Side plate 3	-
10	Rack	-	23	Back top plate	-
11	Liquid level indicator base	YW20000000400	24	Cross-recessed oval head screw M6×30	YW62063000000
12	Liquid level indicator screw	BH12060700110	25	Rear plate	-
13	Liquid level indicator STM-310	BH12030000010	26	Rear plate 2	-

** means possible broken parts. ** means easy broken parts. Spare backup is suggested. Please confirm the version number of the manual before you order to ensure the stock number and the parts are consistent.

2.2.51 Rack Diagram (SIC-132W-R2)



Note: For details of the numbers in the parts drawing, please refer to the part list in 2.2.52.

Picture 2-27: Rack Diagram (SIC-132W-R2)

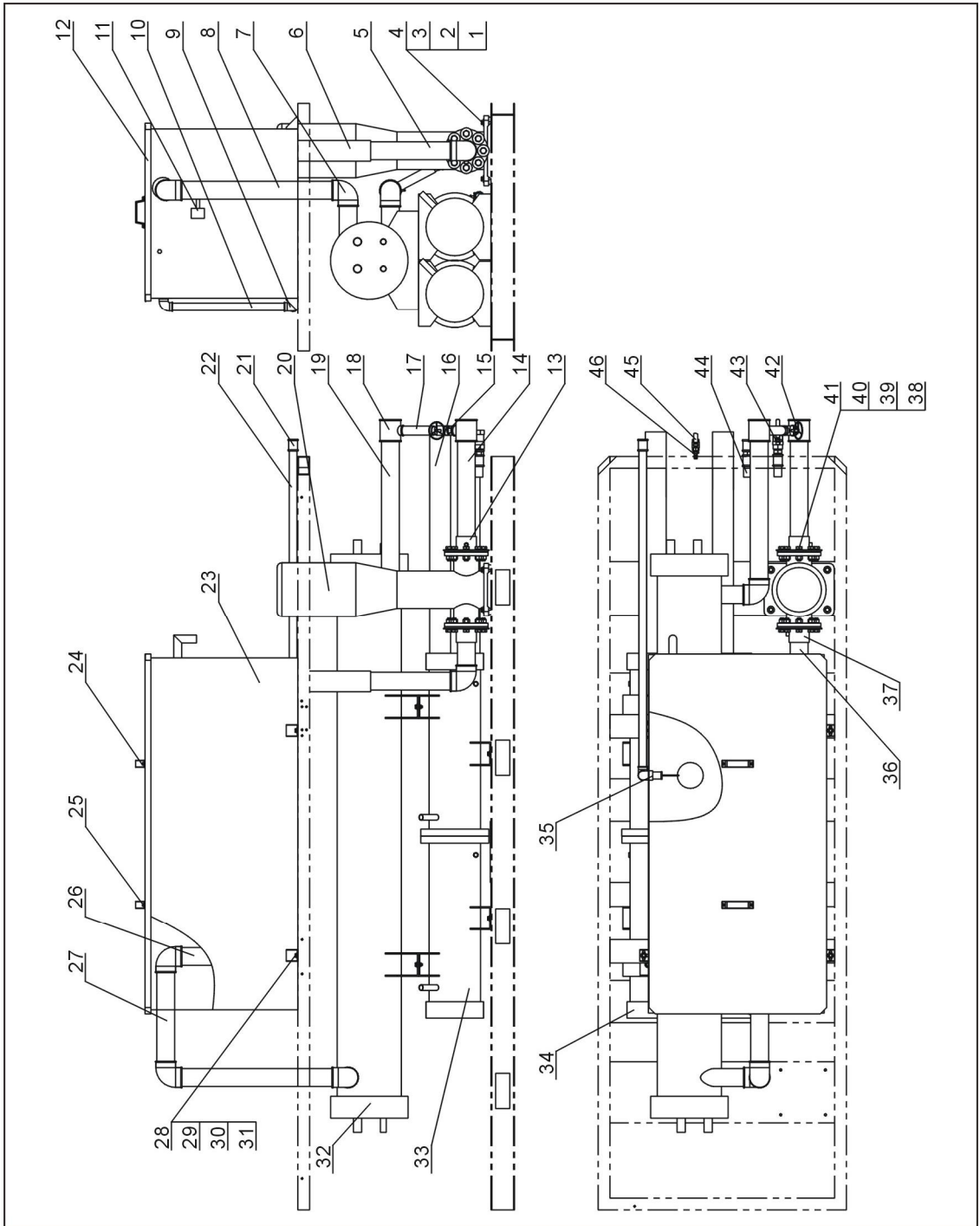
2.2.52 Rack Parts List (SIC-132W-R2)

Table 2-26: Rack Parts List (SIC-132W-R2)

No.	Name	Stock No.	No.	Name	Stock No.
1	Right front stand column	-	9	Base plate of electric cabinet	-
2	Line jig fixed board	-	10	Rack second layer	-
3	Cross-recessed oval head screw M5×10	YW62051000000	11	Rack first layer	-
4	Left front stand column	-	12	Stand column 1	-
5	Electrical cabinet	-	13	Back stand column	-
6	Cross-recessed oval head screw M6×10	YW62061000000	14	Movable stand column	-
7	Rack third layer	-	15	Middle stand column	-
8	Cross-recessed oval head screw M6×15	YW62061500000	16	Stand column 2	-

* means possible broken parts. ** means easy broken parts. Spare backup is suggested. Please confirm the version number of the manual before you order to ensure the stock number and the parts are consistent.

2.2.53 Water System Diagram (SIC-132W-R2)



Note: For details of the numbers in the parts drawing, please refer to the part list in 2.2.54.

Picture 2-28: Water System Diagram (SIC-132W-R2)

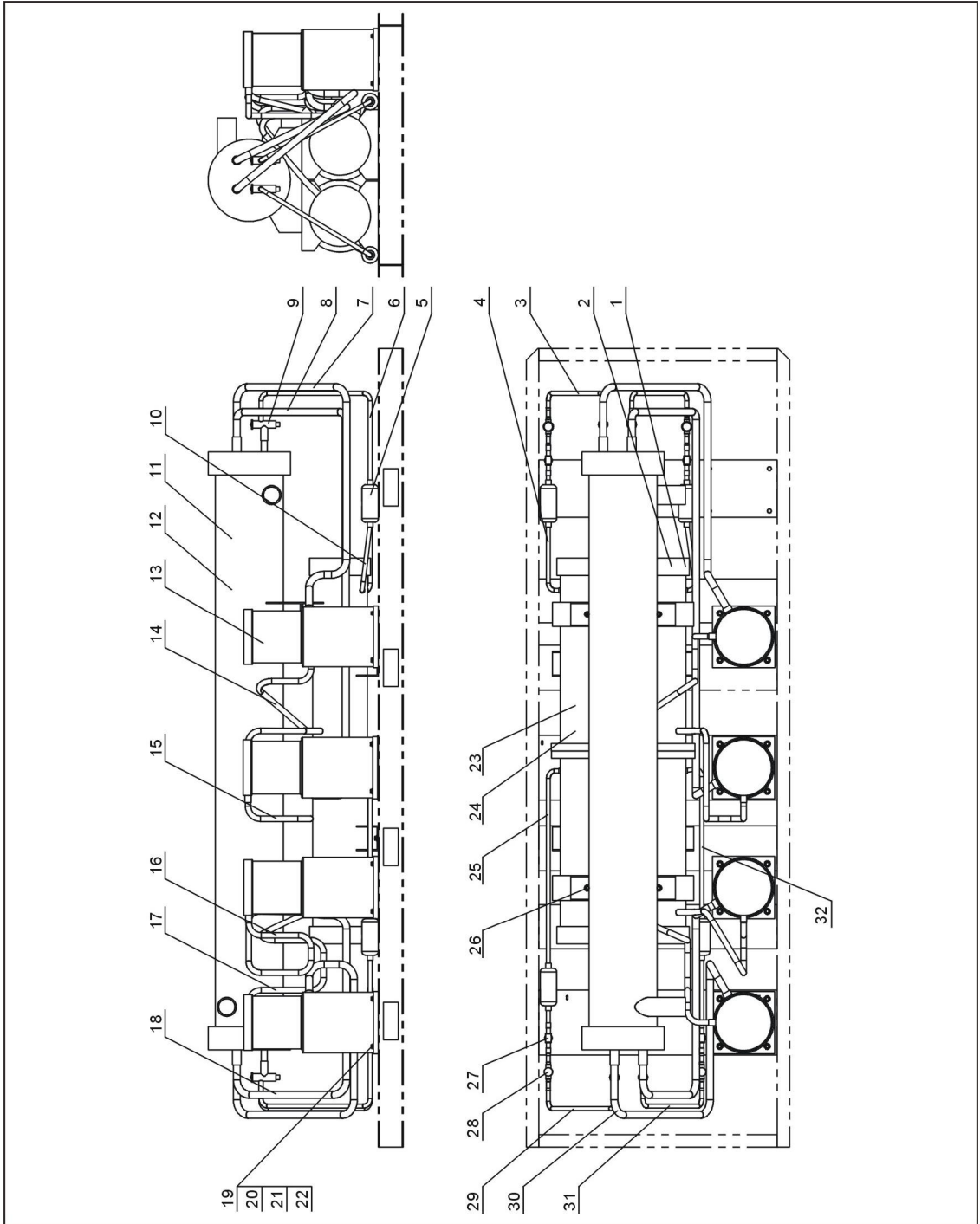
2.2.54 Water System Parts List (SIC-132W-R2)

Table 2-27: Water System Parts List (SIC-132W-R2)

No.	Name	Stock No.	No.	Name	Stock No.
1	Hexbolt M10×50	YW60105000000	24	Square handle	BW20012000040
2	Spring washer 10	YW65010000000	25	Socket head cap screw M6×20	YW61062000000
3	Flat washer 10	YW66102000100	26	Water pipe 5	-
4	Hexnut M10	YW64001000100	27	Water pipe 4	-
5	Water pipe 6	-	28	Hexbolt M25×20	YW60082500200
6	Inner diameter of black rubber pipe 89	YR60390300000	29	Spring washer 8	YW65008000100
7	Galvanized pipe elbow 2.5"	YW53002500000	30	Flat washer 8	YW66082200100
8	Water pipe 3	-	31	Hexnut M8	YW64080600000
9	Galvanized pipe elbow 1"	YW53100000000	32	Evaporator	-
10	Water pipe 9	-	33	Condenser 1	-
11	Water tank cover	-	34	Condenser 2	-
12	Flow switch	YW85005000000	35	Floating ball switch 1"	YW59010000000
13	Water outlet flange	-	36	Water pipe 7	-
14	Water pipe 1	-	37	Water inlet flange	-
15	Galvanized pipe inner joint 1"	YW50000100000	38	Hexbolt M16×45	YW60040050000
16	Water pipe 11	-	39	Spring washer 16	YW65016000000
17	Inner diameter of black rubber pipe 32	YR60320500000	40	Flat washer 16	YW66163000000
18	Galvanized pipe T-joint 2.5" ×1"	YW52250100000	41	Hexnut M16	YW64001600000
19	Water pipe 2	-	42	Sluice valve 1"	YW50000101000
20	Pump	-	43	Copper globe valve 1"	YW50010000000
21	Direct connection of galvanized pipe 1"	YW51000100000	44	Water pipe 10	-
22	Water pipe 8	-	45	Copper globe valve 1/2"	YW50010200100
23	Water tank body	-	46	Copper inserted core M16×1/2PT	BH12161200010

* means possible broken parts. ** means easy broken parts. Spare backup is suggested. Please confirm the version number of the manual before you order to ensure the stock number and the parts are consistent.

2.2.55 Refrigerant System Diagram (SIC-132W-R2)



Note: For details of the numbers in the parts drawing, please refer to the part list in 2.2.56.

Picture 2-29: Refrigerant System Diagram (SIC-132W-R2)

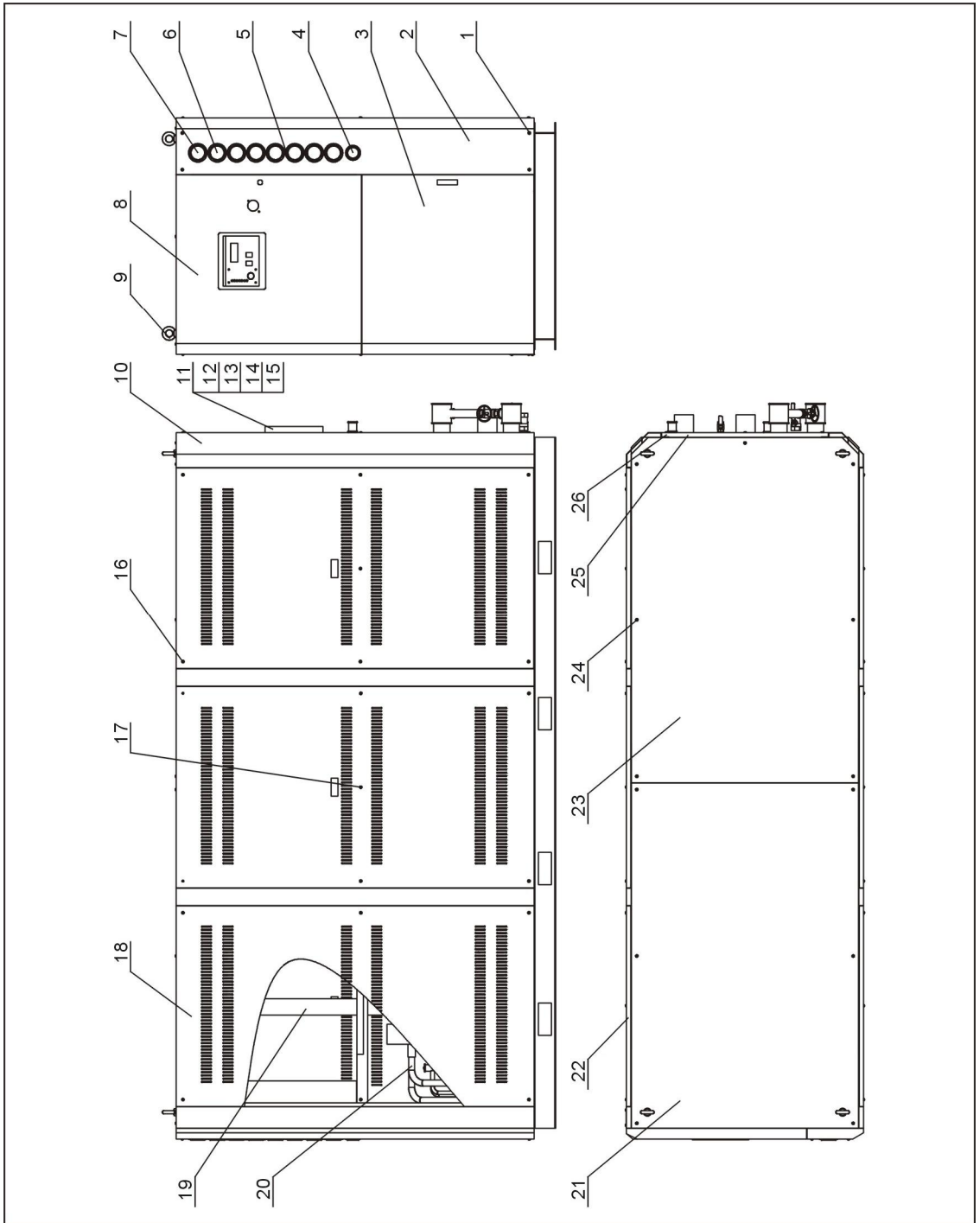
2.2.56 Refrigerant System Parts List (SIC-132W-R2)

Table 2-28: Refrigerant System Parts List (SIC-132W-R2)

No.	Name	Stock No.	No.	Name	Stock No.
1	Condenser 2	-	17	Exhaust pipe 4	-
2	Condenser 2 60Hz	-	18	Air-return pipe 3	-
3	Liquid pipe 2	-	19	Hexbolt M8×50	YW60085000000
4	Liquid pipe 1	-	20	Spring washer 8	YW65008000100
5	Dryer filter	YW85016500100	21	Flat washer 8	YW66081600000
6	Liquid pipe 4	-	22	Hexbolt M8	YW64080600000
7	Air-return pipe 1	-	23	Condenser 1	-
8	Air-return pipe 2	-	24	Condenser 1 60Hz	-
9	Expansion valve	-	25	Liquid pipe 7	-
10	Liquid pipe 3	-	26	Hexbolt M8×25	YW60082500200
11	Evaporator	-	27	Liquid pipe solenoid valve	-
12	Evaporator 60Hz	-	28	Refrigerant indicator	YW85001500100
13	Compressor	-	29	Liquid pipe 8	-
14	Exhaust pipe1	-	30	Air-return pipe 4	-
15	Exhaust pipe 2	-	31	Liquid pipe 6	-
16	Exhaust pipe 3	-	32	Liquid pipe 5	-

* means possible broken parts. ** means easy broken parts. Spare backup is suggested. Please confirm the version number of the manual before you order to ensure the stock number and the parts are consistent.

2.2.57 General Assembly Diagram (SIC-132W-R2)



Note: For details of the numbers in the parts drawing, please refer to the part list in 2.2.58.

Picture 2-30: General Assembly Diagram (SIC-132W-R2)

2.2.58 General Assembly Diagram Parts List (SIC-132W-R2)

Table 2-29: General Assemble Diagram Parts List (SIC-132W-R2)

No.	Name	Stock No.	No.	Name	Stock No.
1	Socket head cap screw M6×60	YW61066000000	14	Glass tube	YW70963000000
2	Gauge plate	-	15	Liquid level indicator shelter	BL90006800020
3	Lower plate	-	16	Cross-recessed oval head screw M6×10	YW62061000000
4	Pressure gauge 0~10kg	YW85001000100	17	Side plate 1	-
5	Cross-recessed oval head screw M4×5	YW62040500000	18	Side plate 2	-
6	Low pressure gauge 0~35kg	YW85003500000	19	Chilled water system	-
7	Low pressure gauge 0~50kg	YW85005500000	20	Refrigerant system	-
8	Upper plate	-	21	Front top plate	-
9	Ringbolt M16	YW09001600000	22	Side plate 3	-
10	Rack	-	23	Back top plate	-
11	Liquid level indicator base	YW20000000400	24	Cross-recessed oval head screw M6×30	YW62063000000
12	Liquid level indicator screw	BH12060700110	25	Rear plate	-
13	Liquid level indicator STM-310	BH12030000010	26	Rear plate 2	-

** means possible broken parts. ** means easy broken parts. Spare backup is suggested. Please confirm the version number of the manual before you order to ensure the stock number and the parts are consistent.