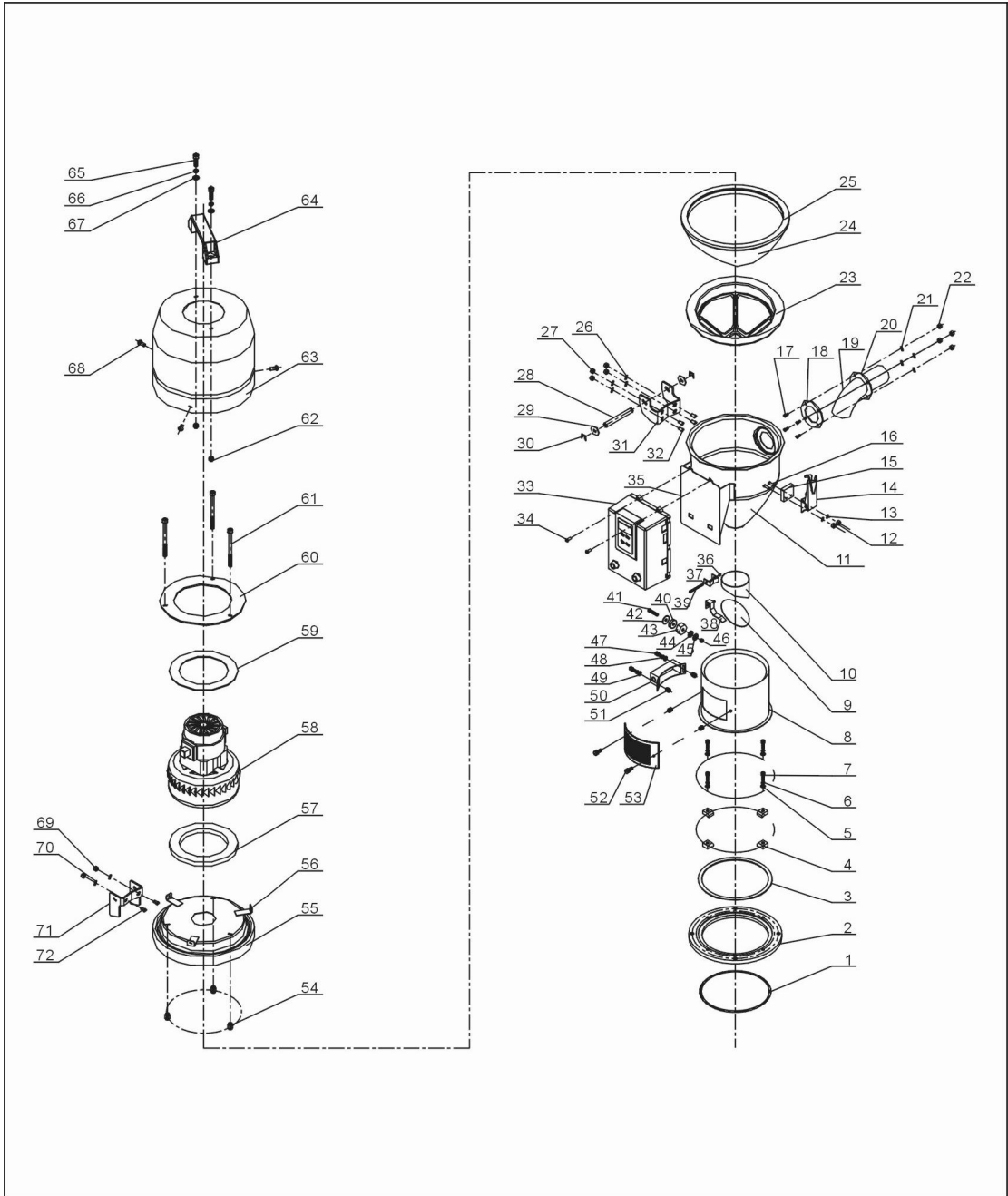


## 2.2 Assembly Drawing

### 2.2.1 Assembly Drawing (SAL-1U)



Remarks: Please refer to material list 2.2.2 for specific explanation of the numbers in assembly drawing.

Picture 2-4: Assembly Drawing (SAL-1U)

## 2.2.2 Parts List (SAL-1U)

Table 2-1: Parts List (SAL-1U)

No.	Name	Part No.	No.	Name	Part No.
1	O-Type seal ring	YR20205500000	30	Split washer of filter cloth **	-
2	Base	YW20001500200	31	Hop-pocket**	BP82000100040
3	Base ring	-	32	Hopper ring*	YR10104000000
4	Pressure block	YW20000600500	33	Flat washer 5	YW66051000100
5	Flat washer $\Phi 6 \times 13$	YW66061300000	34	Locknut M5	YW64000500000
6	Spring washer M6	YW65006000000	35	Hinge pin	BH10006003110
7	Inner hexagon screw M6 $\times$ 15	YW61061600300	36	Flat washer 8 $\times$ 22	YW66082200100
8	Cross socket head cap screw	YW63032500000	37	E-rings 6	YW63051000000
9	Flat washer 3 $\times$ 10	YW66031000000	38	Down hinge	BL32000600140
10	Flat washer 3 $\times$ 12	YW66031200000	39	Screw M5 $\times$ 10	YW69051000000
11	Permanent magnet	YW90213700000	40	Control box base	-
12	Magnet shield	BH12115000010	41	Control box	YR40030600000
13	Locknut M3	YW64000300000	42	Cross socket head cap screw M4 $\times$ 6	YW63040600000
14	Shut-off plate*	BL21001501920	43	Sensor shell	-
15	Connection block for shut-off plate	-	44	Inner hexagon screw	YW61061000100
16	Lentil head screw	YW09250500000	45	Shut-off plate fixing base	-
17	Star knob M6 $\times$ 15	YR40061500000	46	Locknut M3	YW64000300000
18	Discharge port	-	47	Shut-off plate fixing base	-
19	Ventilation window	YR40000600500	48	Cross socket head cap screw M3 $\times$ 40	YW63034000000
20	Snap hook	YW02003000400	49	Mini-countersunk rivet screw M6	YW64060200000
21	Block	YR40000600300	50	Hopper cover	-
22	Screw M4 $\times$ 15	YW69041500100	51	Blower fixing base	BH10063200040
23	Screw M4 $\times$ 10	YW69041000000	52	Reverse clean pipe	-
24	Material inlet pipe fastener	YR10150300000	53	Air pipe quick connector	YW80083800200
25	Material inlet pipe	BL32333600020	54	Blower ring	-
26	Fixing plate for material inlet pipe	-	55	Carbon brush motor *	YM30122250000
27	Flat washer 4	YW66040800000	56	Fixed board 2	-
28	Locknut M4 $\times$ 0.7	YW64040700100	57	Fixed board 1	-
29	Material storage tank	-	58	Fixed board 3	-

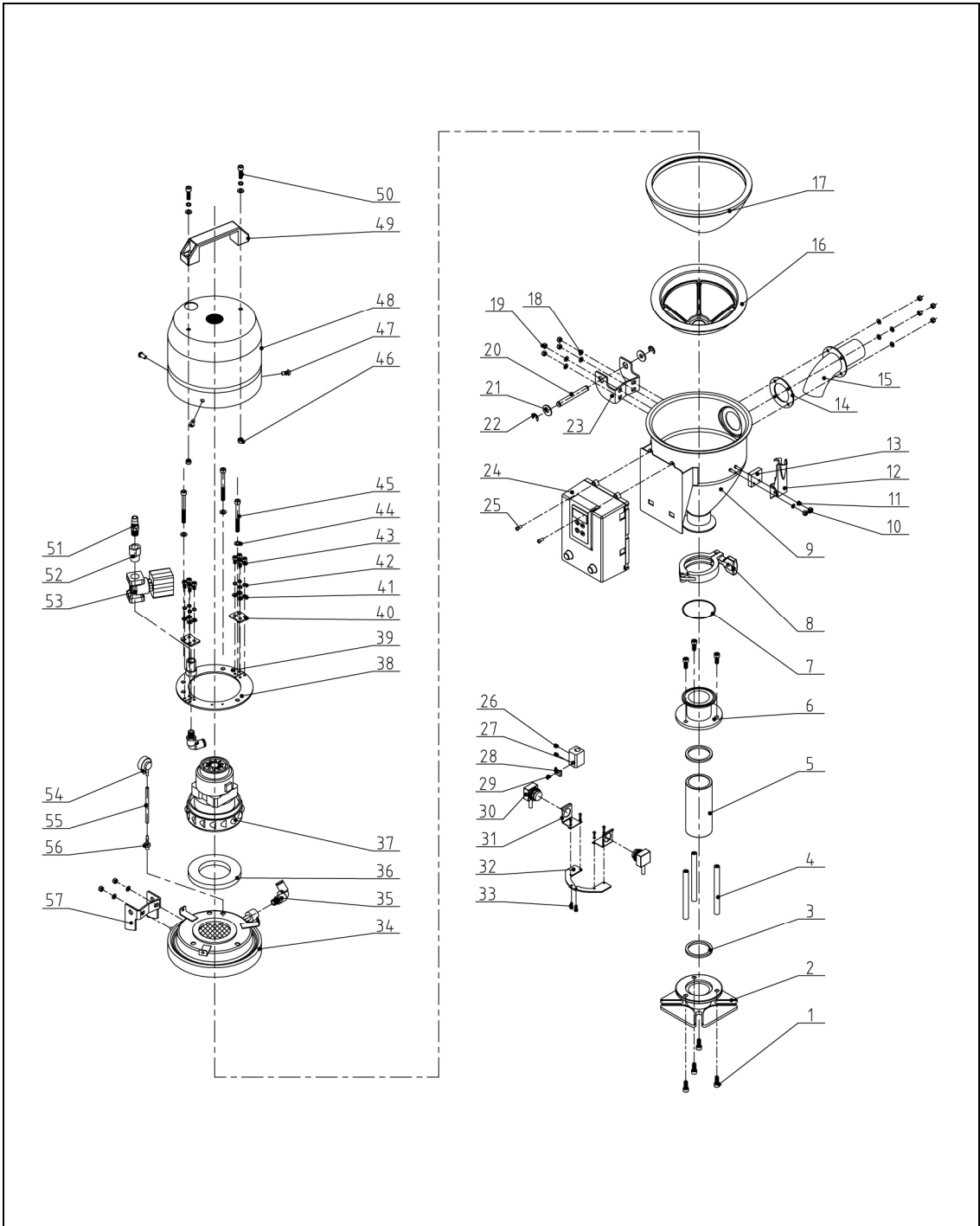
No.	Name	Part No.	No.	Name	Part No.
59	Flat washer 5	YW66051000100	68	Inner hexagon screw	YW61062000300
60	Spring washer 5	YW65050000000	69	Quick connector	YW80031400000
61	Inner hexagon screw	YW61051200100	70	Connector 3	-
62	Flat washer 6	YW66061300000	71	Solenoid valve *	YE32213100000
63	Inner hexagon screw	YW61065000100	72	Pressure switch	YE16028000000
64	Locknut	YW64000600200	73	Blue air pipe	YR60060400000
65	Cross socket head cap screw	YW62051500000	74	Pressure switch connector	BH11103000010
66	Blower cover	-	75	upper hinge	BL32000600240
67	Square aluminum handle	BW20012000040			

\* means possible broken parts.

\*\* means easy broken parts. A spare backup is suggested.

Please confirm the version of manual is compatible with equipment before placing the purchase order to guarantee that the item number of the spare part is in accordance with the real object.

### 2.2.3 Assembly Drawing (SAL-1U-E)



Remarks: Please refer to material list 2.2.4 for specific explanation of the numbers in parts drawing.

Picture 2-5: Assembly Drawing (SAL-1U-E)

## 2.2.4 Parts List (SAL-1U-E)

Table 2-2: Parts List (SAL-1U-E)

No.	Name	Part No.	No.	Name	Part No.
1	Inner hexagon screw M6×15	YW61061600300	30	Photosensor	YE15143900000
2	Glass pipe down flange	YW32000300000	31	Photosensor mounting block	-
3	Glass pipe ring	YW61061600300	32	Photosensor fixing plate	BL90001000120
4	Flange connection shaft	BH10101100010	33	Cross socket head cap screw M4×10	YW63041000000
5	Glass pipe**	YW70504000000	34	Mini-countersunk rivet screw M6	YW64060200000
6	Glass pipe upper flange	BW32000300210	35	Hopper cover	BL22001500821
7	Base ring	YR10000300200	36	Blower cover fixing base	-
8	Stainless steel pipe clamp	YW07002500600	37	Reverse clean pipe	YM30122250000
9	Material storage tank	BL21001502320	38	Fixing plate 2	-
10	Locknut M4×0.7	YW64040700100	39	Fixing plate 1	-
11	Flat washer 4	YW66040800000	40	Fixing plate 3	-
12	Snap hook **	YW02003000400	41	Flat washer 5	YW66051000100
13	Block	YR40000600300	42	Spring washer 5	YW65050000000
14	Material inlet pipe ring	YR10150300000	43	Inner hexagon cylinder head screw	YW61051200100
15	Material inlet pipe	BL32333600020	44	Flat washer 6	YW66061300000
16	Filter cloth split washer**	YR40001500100	45	Inner hexagon screw M6×50	YW61065000100
17	Hop-pocket**	BP82001500044	46	Locknut M6	YW64000600200
18	Flat washer 5	YW66051000100	47	Cross socket head cap screw M5×15	YW62051500000
19	Locknut M5	YW64000500000	48	Blower cover	-
20	Hinge pin	BH10006003110	49	Square aluminum handle L120	BW20012000040
21	Flat washer Φ8×22	YW66082200100	50	Inner hexagon screw M6×20	YW61062000300
22	E rings 6	YW63051000000	51	Quick connector 3" ×1/4PT	YW80031400000
23	Down hinge	BL32000600120	52	Connector 3	BH13031100010
24	Control box	YR40030600000	53	Solenoid valve	YE32213100000
25	Cross socket head cap screw M4×6	YW63040600000	54	Pressure switch	YE16028000000
26	Set screw M4×5	YW63040600000	55	Blue air pipe	YR60060400000
27	Photosensor fixing base	BL21001502420	56	Pressure switch connector	BH11103000010

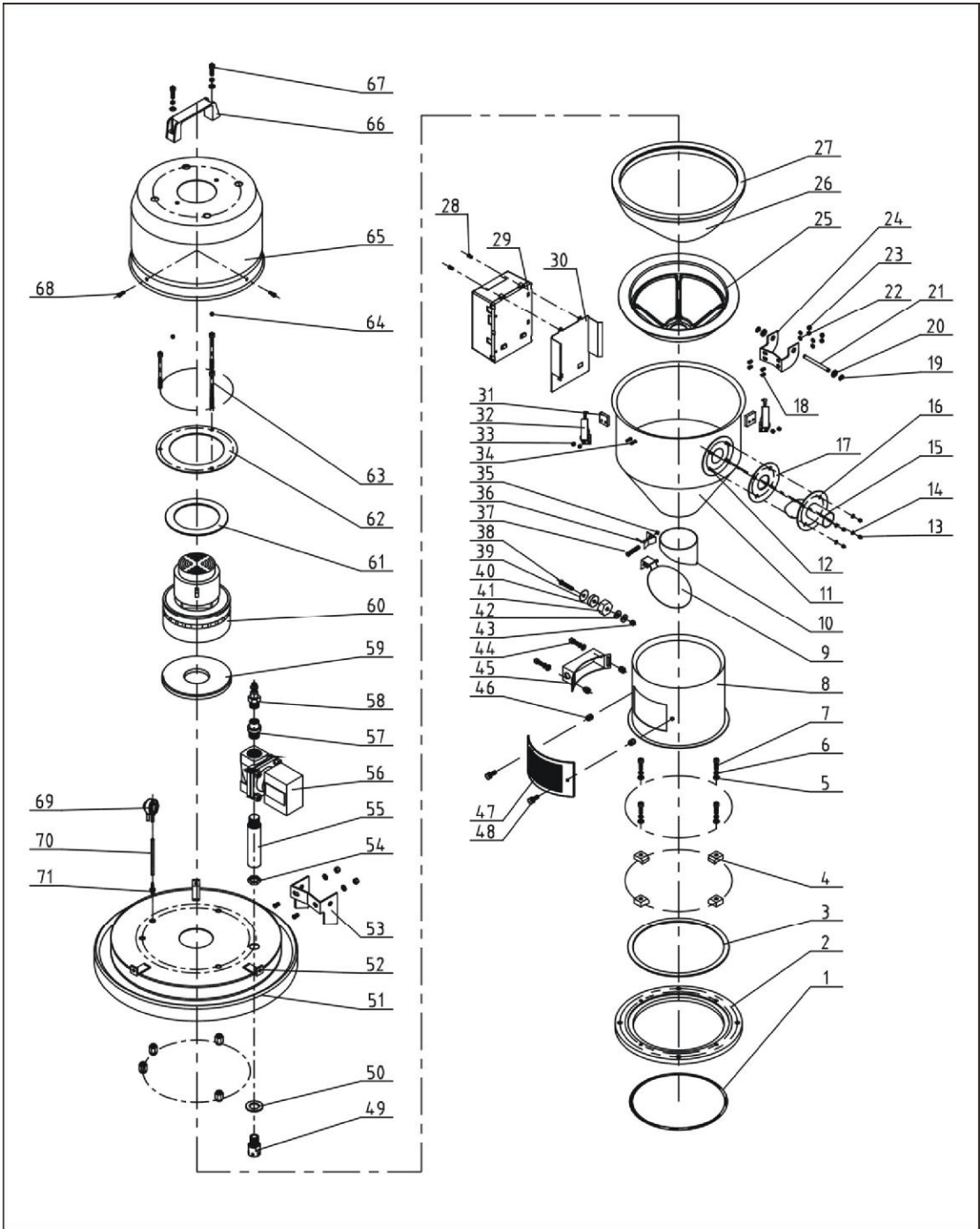
No.	Name	Part No.	No.	Name	Part No.
28	Pressure block of photosensor	BL21061600020	57	Upper hinge	BL32000600240
29	Cross socket head cap screw M4×10	YW63041000000			

\* means possible broken parts.

\*\* means easy broken parts. A spare backup is suggested.

Please confirm the version of manual is compatible with equipment before placing the purchase order to guarantee that the item number of the spare part is in accordance with the real object.

### 2.2.5 Assembly Drawing (SAL-3U)



Remarks: Please refer to material list 2.2.6 for specific explanation of the numbers in parts drawing.

Picture 2-6: Assembly Drawing (SAL-3U)

## 2.2.6 Parts List (SAL-3U)

Table 2-3: Parts List (SAL-3U)

No.	Name	Part No.	No.	Name	Part No.
1	O-Type seal ring	YR20205500000	32	Snap hook	YR40000600300
2	Base	YW20006000000	33	Locknut M4×0.7	YW69040700100
3	Base ring	-	34	Screw M4×15	YW64041500100
4	Pressure block	YW20000600500	35	Locknut M3	YW64000300000
5	Spring washer M6	YW65006000000	36	Fixing base of baffle plate	BL20000601220
6	Flat washer Φ6	YW66061300000	37	Cross socket head cap screw M3×40	YW63034000000
7	Inner hexagon screw M6×20	YW61062000300	38	Cross socket head cap screw M6×20	YW63062000000
8	Hopper fixing base	BL21063200020	39	Magnet cover	BL21000600120
9	Baffle plate*	BL21000302320	40	Permanent magnet	YW90257700000
10	Discharging port	BL21000600720	41	Magnet sleeve	BH12000600010
11	Material storage tank	-	42	Flat washerΦ8×22	YW66082200100
12	Screw M4×10	YW69041000000	43	Screw M6	YW64000600200
13	Locknut M4×0.7	YW64040700100	44	Inner hexagon screw M6×10	YW63061000000
14	Flat washerΦ4	YW66040800000	45	Sensor shell	YR40000600100
15	Material inlet pipe	BL32333600020	46	Mini-countersunk rivet screw M6	YW64060200000
16	Material inlet pipe fixing plate	-	47	Ventilation window	YR40000600500
17	Material inlet pipe ring	YR10150300000	48	Star spanner	YR40061500000
18	Screw M5×10	YW64040700100	49	Reverse clean pipe nozzle	BH13033000810
19	E rings 6	YW66000500000	50	Washer	BP62352100050
20	Flat washer Φ8×22	YW66082200100	51	Hopper cover	-
21	Hinge pin	BH10006003110	52	Blower fixing base	-
22	Flat washer Φ5	YW66051000100	53	Upper hinge	BL32000600240
23	Locknut M5	YW64000500000	54	Connection nut	-
24	Down hinge	BL32000600140	55	Connector 2	BH13030300010
25	Filter cloth split washer**	YR40003000100	56	Solenoid valve	YE32213100000
26	Hop-pocket **	BP82003000044	57	Connector 3	BH13031100010
27	Hopper ring*	YR10000300100	58	Quick connector	YW80031400000
28	Cross socket head cap screw M4×6	YW63040600000	59	Blower ring (down)	YR10070000000
29	Control box	YR40030600000	60	Carbon brush motor*	YM30965600000
30	Control box base	-	61	Blower ring (upper)	YP62141200000
31	Block	YW02003000400	62	Blower fixing plate	-



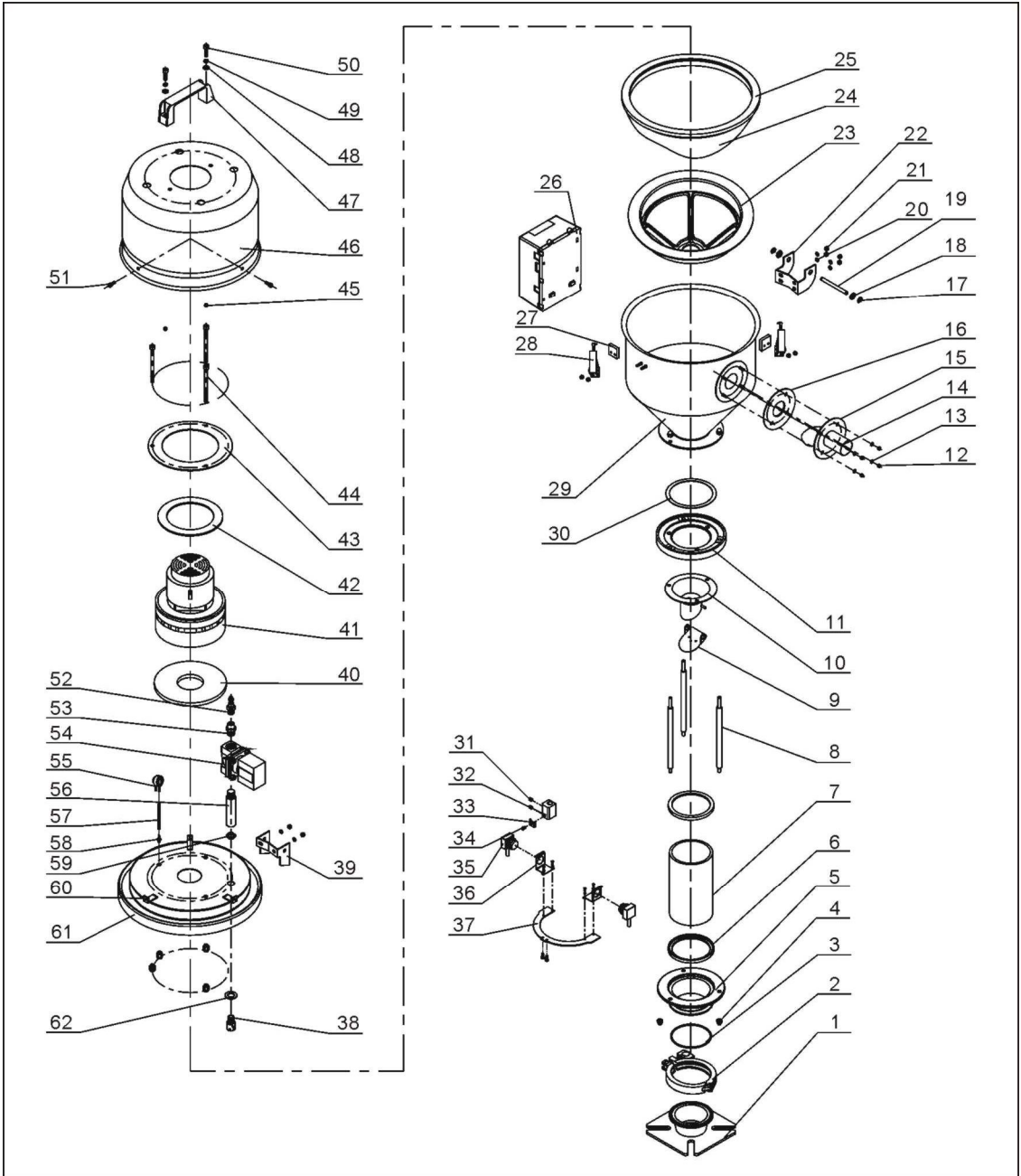
No.	Name	Part No.	No.	Name	Part No.
63	Inner hexagon screw M6×90	YW61069000100	68	Cross socket head cap screw M5×15	YW62051500000
64	Locknut M6	YW64000600200	69	Pressure switch	YE15002000100
65	Blower shell	YR40033000000	70	Blue air pipe	YR60060400000
66	L120 square aluminum handle	BW20012000040	71	Pressure switch connector	BH11103000010
67	Inner hexagon screw M6×20	YW61062000300			

\* means possible broken parts.

\*\* means easy broken parts. A spare backup is suggested.

Please confirm the version of manual is compatible with equipment before placing the purchase order to guarantee that the item number of the spare part is in accordance with the real object.

## 2.2.7 Assembly Drawing (SAL-3U-E)



Remarks: Please refer to material list 2.2.8 for specific explanation of the numbers in parts drawing.

Picture 2-7: Assembly Drawing (SAL-3U-E)

## 2.2.8 Parts List (SAL-3U-E)

Table 2-4: Parts List (SAL-3U-E)

No.	Name	Part No.	No.	Name	Part No.
1	Mounting flange	BL21060200820	27	Snap hook block	YR40000600800
2	3" stainless steel pipe clamp	YW07000300000	28	Snap hook	YW02003000400
3	Cap nut M6	YR20802600000	29	Material storage tank	-
4	Cap nut M6	YW64006000100	30	Hopper base plate ring	-
5	Glass pipe down flange	BW32610900010	31	Set screw M4×5	YW68004500000
6	Glass pipe ring	YR10060200000	32	Photosensor fixing base	BL90001000120
7	Glass pipe*	YW70317000600	33	Pressure block of photosensor	YW31616200000
8	Flange connection shaft	BH10000600640	34	Cross socket head cap screw M4×10	YW63041000000
9	Non-return flap	-	35	Photosensor	YE15143900000
10	Discharging port	-	36	Photosensor mounting block (come with photosensor)	-
11	Glass pipe upper flange	BW32610800010	37	Photosensor fixing plate	BL21061200020
12	Locknut M4×0.7	YW64040700100	38	Reverse clean pipe nozzle	BH13033000810
13	Flat washer 4	YW66040800000	39	Upper hinge	BL32000600240
14	Material inlet pipe	BL32333600020	40	Blower ring (down)	YR10070000000
15	Material inlet pipe fixing plate	BL20036000320	41	Carbon brush motor 1.15kW	YM30965600000
16	Material inlet pipe ring	YR10150300000	42	Blower ring (upper)	YP62141200000
17	E-rings 6	YW63051000000	43	Blower fixing board	BL21000300420
18	Flat washer M8×22	YW66082200100	44	Inner hexagon cylindrical screw M6×90	YW61069000100
19	Hinge pin	BH10006003110	45	Locknut M6	YW64000600200
20	Flat washer 5	YW66051000100	46	Blower shell	YR40000300100
21	Locknut M5	YW64000500000	47	Square aluminum handle L120	BW20012000040
22	Down hinge	BL32000600140	48	Flat washer 6	YW66061300000
23	Filter cloth split washer**	YR40003000100	49	Spring washer 6	YW65006000000
24	Hop-pocket **	BP82003000044	50	Inner hexagon cylindrical screw M6×20	YW61062000300
25	Hopper ring*	YR10000300100	51	Cross socket head cap screw M5×15	YW62051500000
26	Control box	YR40030600000	52	Quick connector 3" ×1/4PT	YW80031400000

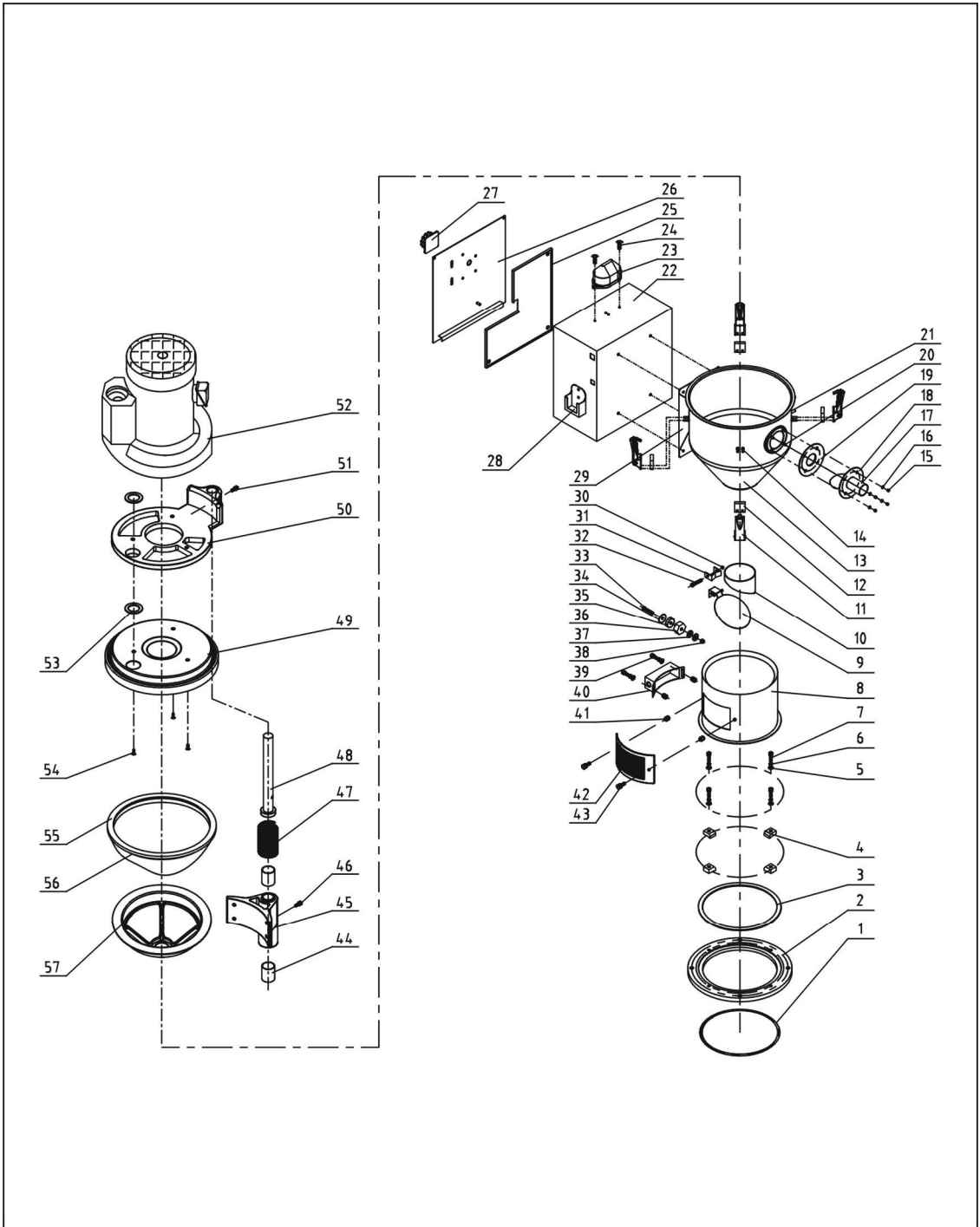
No.	Name	Part No.	No.	Name	Part No.
53	Connector 3	BH13031100010	58	Pressure switch connector	BH11103000010
54	Solenoid valve*	YE32213100000	59	Connection nut 1	BH12030400410
55	Pressure switch	YE15002000100	60	Blower cover fixing base	-
56	Connector 2	BH13030300010	61	Hopper cover	-
57	Blue air pipe $\Phi 6 \times \Phi 4$	YR60060400000	62	Washer $\Phi 30 \times \Phi 17 \times 2$	BP62352100050

\* means possible broken parts.

\*\* means easy broken parts. A spare backup is suggested.

Please confirm the version of manual is compatible with equipment before placing the purchase order to guarantee that the item number of the spare part is in accordance with the real object.

## 2.2.9 Assembly Drawing (SAL-3U-3)



Remarks: Please refer to material list 2.2.10 for specific explanation of the numbers in parts drawing.

Picture 2-8: Assembly Drawing (SAL-3U-3)

## 2.2.10 Parts List (SAL-3U-3)

Table 2-5: Parts List (SAL-3U-3)

No.	Name	Part No.	No.	Name	Part No.
1	O-Type seal ring	YR20205500000	30	Locknut M3	YW64000300000
2	Base	YW20006000000	31	Fixing base of baffle plate	BL20000601220
3	Base ring	-	32	Cross socket head cap screw M3×40	YW63034000000
4	Pressure block	YW20000600500	33	Cross socket head cap screw M6×20	YW63062000000
5	Spring washer	YW65006000000	34	Magnet cover	BL21000600120
6	Flat washer Φ6×13	YW66061300000	35	Permanent magnet	YW60257700000
7	Inner hexagon screw M6×20	YW61062000300	36	Magnet sleeve	BH12000600010
8	Hopper fixing base	BL21000600020	37	Flat washer 8×22	YW66082200100
9	Baffle plate*	BL21000302320	38	Locknut M6	YW64000600200
10	Discharging port	BL21000600720	39	Inner hexagon cylindrical screw M6×10	YW63061000000
11	Snap hook **	YW02003000400	40	Sensor shell	YR40000600100
12	Block	YR40000600300	41	Mini-countersunk rivet screw M6	YW64060200000
13	Material storage tank	-	42	Ventilation window	YR40000600500
14	Screw M4×15	YW69041500100	43	Star spanner	YR40061500000
15	Screw	YW64040700100	44	Shaft sleeve	YW11253000000
16	Flat washer Φ4	YW66040800000	45	Mounting base	BW21030300010
17	Material inlet pipe	BL32333600020	46	Guide pin	BH11000300000
18	Material inlet pipe fixing plate	-	47	Spring	YW01380300000
19	Material inlet pipe ring	YP10150300000	48	Shaft	BH10060300040
20	Screw M4×10	YW69041000000	49	Hopper cover	-
21	Screw M6×20	-	50	Adapter flange	BW21030300100
22	Control box	-	51	Set screw M5×15	YM30965600000
23	Alarm light	YE83305100200	52	High pressure blower 0.5HP	YM30032900000
24	Cross socket head cap screw M4×6	YW63040600000	53	Blower suction mouth ring	YR10001000000
25	Control box base plate	-	54	Cross socket head cap screw M5×25	YW62052500000

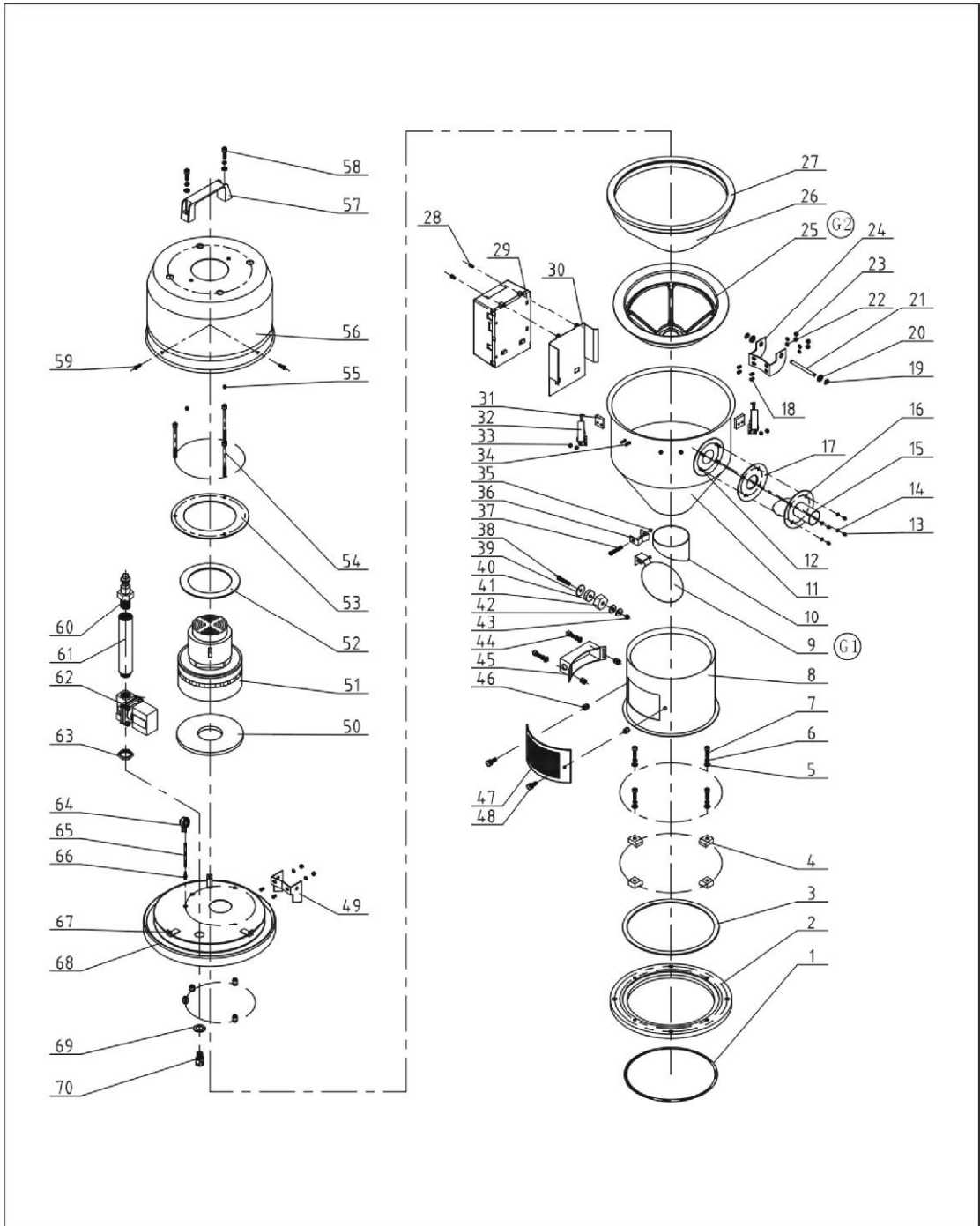
No.	Name	Part No.	No.	Name	Part No.
26	Control box cover	-	55	Hopper ring**	YR10000300100
27	Main power switch	YE10210300000	56	Hop-pocket **	BP82003000044
28	Handle box	-	57	Filter cloth split washer**	YR45003000100
29	Control box base	-			

\* means possible broken parts.

\*\* means easy broken parts. A spare backup is suggested.

Please confirm the version of manual is compatible with equipment before placing the purchase order to guarantee that the item number of the spare part is in accordance with the real object.

### 2.2.11 Assembly Drawing (SAL-6U)



Remarks: Please refer to material list 2.2.12 for specific explanation of the numbers in parts drawing.

Picture 2-9: Assembly Drawing (SAL-6U)



## 2.2.12 Parts List (SAL-6U)

Table 2-6: Parts List (SAL-6U)

No.	Name	Part No.	No.	Name	Part No.
1	O-Type seal ring	YR20205500000	29	Control box	YR40030600000
2	Base	YW20006000000	30	Control box base	-
3	Base ring	-	31	Block	YR40000600300
4	Pressure block	YW20000600500	32	Snap hook	YW02003000400
5	Spring washer M6	YW65006000100	33	Locknut M4×0.7	YW64040700100
6	Flat washerΦ6	YW66061300000	34	Screw M4×15	YW69041500100
7	Inner hexagon screw M6×20	YW61062000300	35	Locknut M3	YW64000300000
8	Hopper fixing base	BL21000600020	36	Fixing base of baffle plate	BL20000601220
9	Baffle plate	BL21000302320	37	Cross socket head cap screw M3×40	YW63034000000
10	Discharging port	BL21000600720	38	Cross socket head cap screw M6×20	YW63062000000
11	Material storage tank	-	39	Magnet cover	BL21000600120
12	Screw M4×10	YW69041000000	40	Permanent magnet	YW90257700000
13	Locknut M4×0.7	YW64040700100	41	Magnet sleeve	BH12000600010
14	Flat washer Φ4	YW66040800000	42	Flat washer Φ8×22	YW66082200100
15	Material inlet pipe	-	43	Locknut M6	YW64000600200
16	Material inlet pipe fixing plate	-	44	Inner hexagon cylindrical screw M6×10	YW63061000000
17	Material inlet pipe ring	-	45	Sensor shell	YR40000600100
18	Screw M5×10	YW64040700100	46	Mini-countersunk rivet screw M6	YW64060200000
19	E rings	YW66000500000	47	Ventilation window	YR40000600500
20	Flat washer Φ8×22	YW66082200100	48	Star spanner	YR40061500000
21	Hinge pin	BH10006003110	49	Upper hinge	BL32000600240
22	Flat washer Φ5	YW66051000100	50	Blower ring (down)	YR10070000000
23	Locknut M5	YW64000500000	51	Carbon brush motor*	YM30965600000
24	Down hinge	BL32000600140	52	Blower ring (upper)	YP62141200000
25	Filter cloth split washer**	YR40006000000	53	Blower fixing board	-
26	Hop-pocket **	BP82006000044	54	Inner hexagon cylindrical screw M6×90	YW61069000100
27	Hopper ring*	YR10000600200	55	Locknut M6	YW64000600200
28	Cross socket head cap screw M4×6	YW63040600000	56	Blower shell	YR40036000000

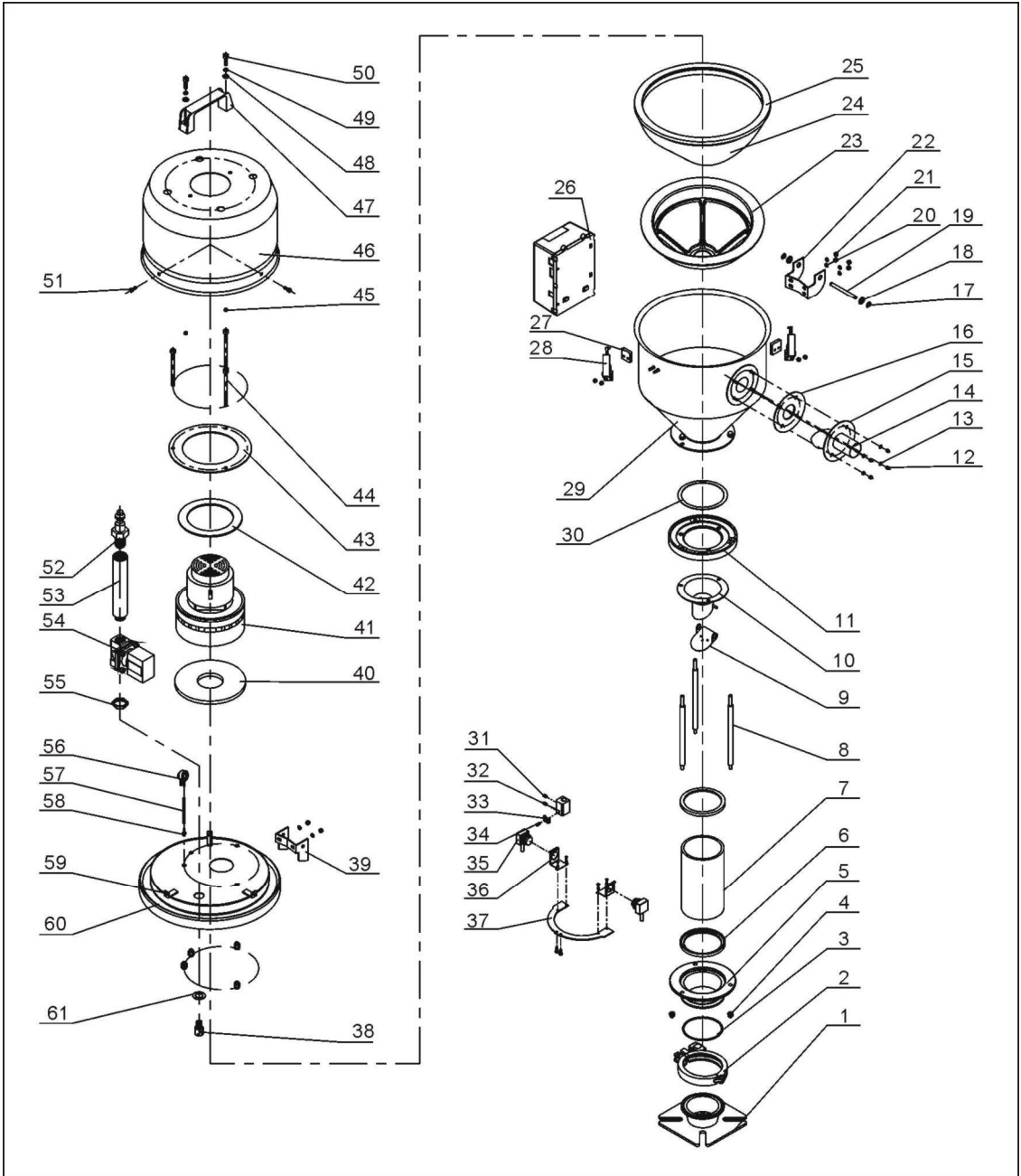
No.	Name	Part No.	No.	Name	Part No.
57	L120 Square aluminum handle	BW20012000040	64	Pressure switch	YE15002000100
58	Inner hexagon cylindrical screw M6×20	YW61062000300	65	Blue air pipe	YR60060400000
59	Cross socket head cap screw M5×15	YW62051500000	66	Pressure switch connector	BH11103000010
60	Quick connector	YW80031400000	67	Blower shell fixing base	-
61	Connector 2	BH13030300010	68	Hopper cover	-
62	Solenoid valve*	YE32213100000	69	Washer	BP62352100050
63	Connection nut	BH12030400410	70	Reverse clean pipe nozzle	BH13033000810

\* means possible broken parts.

\*\* means easy broken parts. A spare backup is suggested.

Please confirm the version of manual is compatible with equipment before placing the purchase order to guarantee that the item number of the spare part is in accordance with the real object.

### 2.2.13 Assembly Drawing (SAL-6U-E)



Remarks: Please refer to material list 2.2.14 for specific explanation of the numbers in parts drawing.

Picture 2-10: Assembly Drawing (SAL-6U-E)

## 2.2.14 Parts List (SAL-6U-E)

Table 2-7: Parts List (SAL-6U-E)

No.	Name	Part No.	No.	Name	Part No.
1	Mounting flange	BL21060200820	27	Snap hook block	YR40000600300
2	3" stainless steel pipe clamp	YW07000300000	28	Snap hook	YW02003000400
3	Cap nut M6	YR20802600000	29	Material storage tank	-
4	Cap nut M6	YW64006000100	30	Hopper base plate ring	-
5	Glass pipe down flange	BW32610900010	31	Set screw M4×5	YW68004500000
6	Glass pipe ring	YR10060200000	32	Photosensor fixing base	BL90001000120
7	Glass pipe*	YW70317000600	33	Photosensor pressure block	YW31616200000
8	Flange connection shaft	BH10000600640	34	Cross socket head cap screw M4×10	YW63041000000
9	Non-return flap	-	35	photosensor	YE15143900000
10	Discharging port	-	36	Photosensor mounting block (come with photosensor)	-
11	Glass pipe upper flange	BW32610800010	37	Photosensor fixing plate	BL21061200020
12	Locknut M4×0.7	YW64040700100	38	Reverse clean pipe nozzle	BH13033000810
13	Flat washer 4	YW66040800000	39	Upper hinge	BL32000600240
14	Material inlet pipe	-	40	Blower ring (down)	YR10070000000
15	Material inlet pipe fixing plate	BL20036000320	41	Carbon brush motor 1.15kW	YM30965600000
16	Material inlet pipe ring	YR10061200000	42	Blower ring (upper)	YP62141200000
17	E-rings 6	YW63051000000	43	Blower fixing board	BL21000300420
18	Flat washer M8×22	YW66082200100	44	Inner hexagon cylindrical screw M6×90	YW61069000100
19	Hinge pin	BH10006003110	45	Locknut M6	YW64000600200
20	Flat washer 5	YW66051000100	46	Blower shell	BL22001200220
21	Locknut M5	YW64000500000	47	Square aluminum handle L120	BW20012000040
22	Down hinge	BL32000600140	48	Flat washer 6	YW66061300000
23	Filter cloth split washer**	YR40006000000	49	Spring washer 6	YW65006000000
24	Hop-pocket **	BP82003000044	50	Inner hexagon cylindrical screw M6×20	YW61062000300
25	Hopper ring*	YR10000300100	51	Cross socket head cap screw M5×15	YW62051500000
26	Control box	YR40030600000	52	Quick connector 3" ×1/4PT	YW80031400000

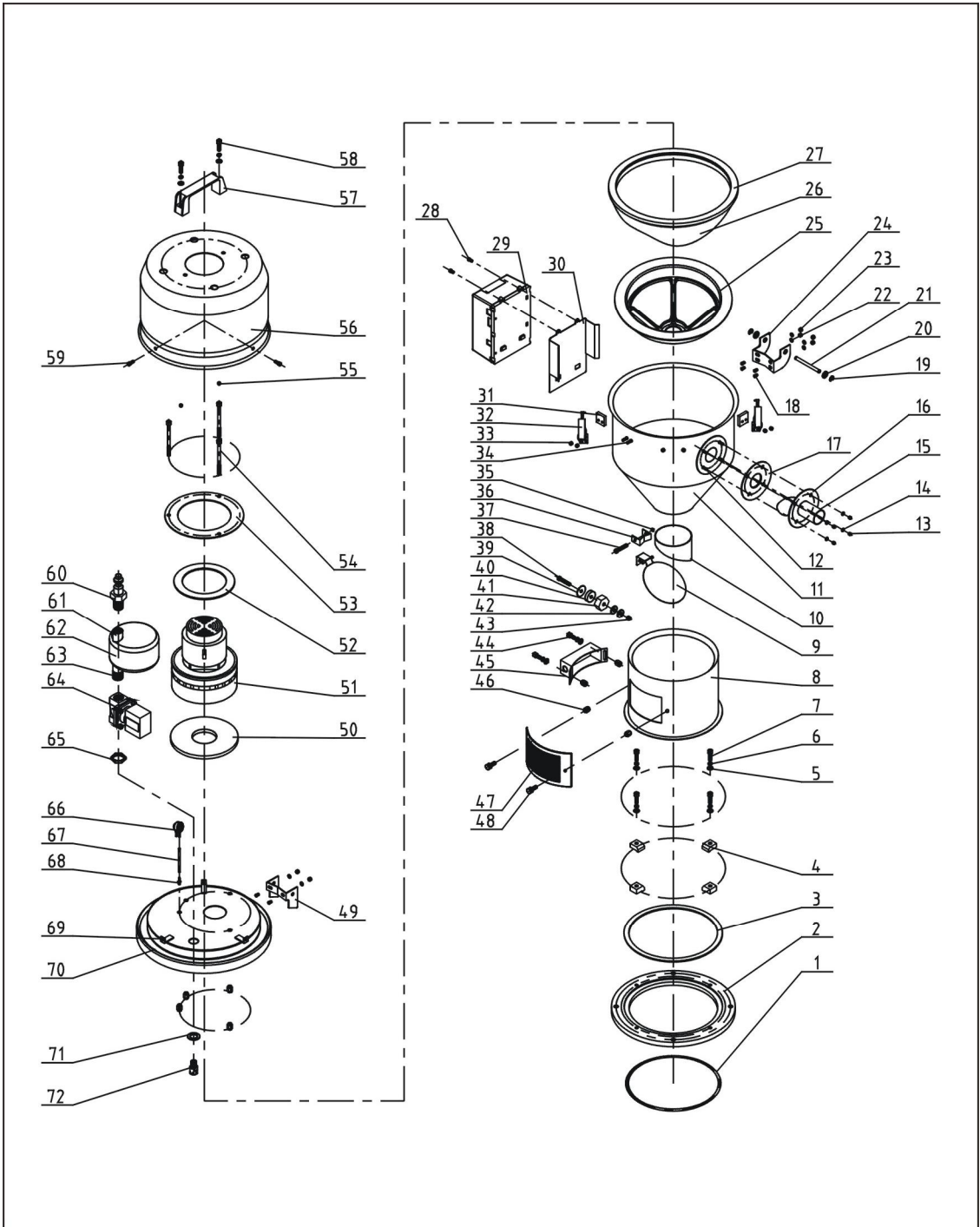
No.	Name	Part No.	No.	Name	Part No.
53	Connector 2	BH13030300010	58	Pressure switch connector	BH11103000010
54	Solenoid valve*	YE32213100000	59	Blower cover fixing base	-
55	Connection nut 1	BH12030400410	60	Hopper cover	-
56	Pressure switch	YE15002000100	61	Washer $\Phi 30 \times \Phi 17 \times 2$	BP62352100050
57	Blue air pipe $\Phi 6 \times \Phi 4$	YR60060400000			-

\* means possible broken parts.

\*\* means easy broken parts. A spare backup is suggested.

Please confirm the version of manual is compatible with equipment before placing the purchase order to guarantee that the item number of the spare part is in accordance with the real object.

## 2.2.15 Assembly Drawing (SAL-6U-A)



Remarks: Please refer to material list 2.2.16 for specific explanation of the numbers in parts drawing.

Picture 2-11: Assembly Drawing (SAL-6U-A)

## 2.2.16 Parts List (SAL-6U-A)

Table 2-8: Parts List (SAL-6U-A)

No.	Name	Part No.	No.	Name	Part No.
1	O-Type seal ring	YR20205500000	27	Hopper ring*	YR10000600200
2	Base	YW20006000000	28	Cross socket head cap screw M4×6	YW63040600000
3	Base ring	-	29	Control box	YR40030600000
4	Pressure block	YW20000600500	30	Control box base	-
5	Spring washer M6	YW65006000100	31	Block	YR40000600300
6	Flat washer Φ6	YW66061300000	32	Snap hook	YW02003000400
7	Inner hexagon screw M6 × 20	YW61062000300	33	Locknut M4 × 0.7	YW64040700100
8	Hopper fixing base	BL21000600020	34	Screw M4 × 15	YW69041500100
9	Baffle plate*	BL21000302320	35	Locknut M3	YW64000300000
10	Discharging port	BL21000600720	36	Fixing base of baffle plate	BL20000601220
11	Material storage tank	-	37	Cross socket head cap screw M3×40	YW63034000000
12	Screw M4×10	YW69041000000	38	Cross socket head cap screw M6×20	YW63062000000
13	Locknut M4×0.7	YW64040700100	39	Magnet cover	BL21000600120
14	Flat washer Φ4	YW66040800000	40	Permanent magnet	YW90257700000
15	Material inlet pipe	-	41	Magnet sleeve	BH12000600010
16	Material inlet pipe fixing piece	-	42	Flat washer Φ8×22	YW66082200100
17	Material inlet pipe ring	-	43	Locknut M6	YW64000600200
18	Screw M5×10	YW64040700100	44	Inner hexagon cylindrical screw M6×10	YW63061000000
19	E rings	YW66000500000	45	Sensor shell	YR40000600100
20	Flat washerΦ8 × 22	YW66082200100	46	Mini-countersunk rivet screw M6	YW64060200000
21	Hinge pin	BH10006003110	47	Ventilation window	YR40000600500
22	Flat washer Φ5	YW66051000100	48	Star spanner	YR40061500000
23	Locknut M5	YW64000500000	49	Upper hinge	BL32000600240
24	Down hinge	BL32000600140	50	Blower ring (down)	YR10070000000
25	Filter cloth split washer**	YR40006000000	51	Carbon brush motor*	YM30965600000
26	Hop-pocket **	BP82006000044	52	Blower ring (upper)	YP62141200000

No.	Name	Part No.	No.	Name	Part No.
53	Blower fixing board	-	63	Connection nut 2	-
54	Inner hexagon cylindrical screw M6×90	YW61069000100	64	Solenoid valve*	YE32213100000
55	Locknut M6	YW64000600200	65	Connection nut	BH12030400410
56	Blower shell	YR40036000000	66	Pressure switch	YE15002000100
57	L120 Square aluminum handle	BW20012000040	67	Blue air pipe	YR60060400000
58	Inner hexagon cylindrical screw M6×20	YW61062000300	68	Pressure switch connector	BH11103000010
59	Cross socket head cap screw M5×15	YW62051500000	69	Blower cover fixing base	-
60	Quick connector	YW80031400000	70	Hopper cover	-
61	Connection nut 1	-	71	Washer	BP62352100050
62	Air accumulator	-	72	Reverse clean pipe nozzle	BH13033000810

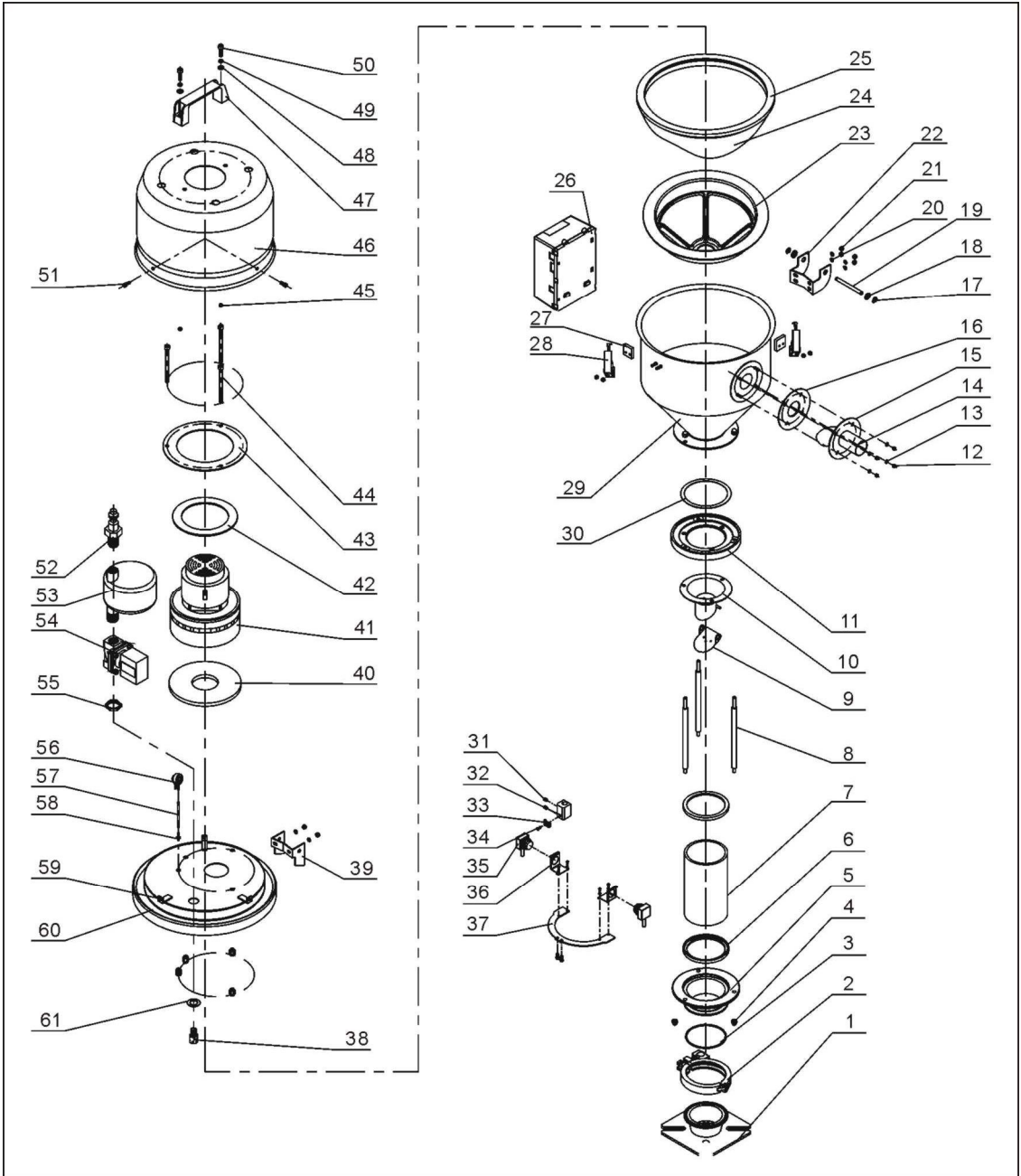
\* means possible broken parts.

\*\* means easy broken parts. A spare backup is suggested.

Please confirm the version of manual is compatible with equipment before placing the purchase order to guarantee that the item number of the spare part is in accordance with the real object.



## 2.2.17 Assembly Drawing (SAL-6U-EA)



Remarks: Please refer to material list 2.2.18 for specific explanation of the numbers in parts drawing.

Picture 2-12: Assembly Drawing (SAL-6U-EA)

## 2.2.18 Parts List (SAL-6U-EA)

Table 2-9: Parts List (SAL-6U-EA)

No.	Name	Part No.	No.	Name	Part No.
1	Mounting flange	BL21060200820	27	Snap hook block	YR40000600300
2	3" stainless steel pipe clamp	YW07000300000	28	Snap hook	YW02003000400
3	Cap nut M6	YR20802600000	29	Material storage tank	-
4	Cap nut M6	YW64006000100	30	Hopper base plate ring	-
5	Glass pipe down flange	BW32610900010	31	Set screw M4×5	YW68004500000
6	Glass pipe ring	YR10060200000	32	Photosensor fixing base	BL90001000120
7	Glass pipe*	YW70317000600	33	Photosensor pressure block	YW31616200000
8	Flange connection shaft	BH10000600640	34	Cross socket head cap screw M4×10	YW63041000000
9	Non-return flap	-	35	Photosensor	YE15143900000
10	Discharging port	-	36	Photosensor mounting block (come with photosensor)	-
11	Glass pipe upper flange	BW32610800010	37	Photosensor fixing plate	BL21061200020
12	Locknut M4×0.7	YW64040700100	38	Reverse clean pipe nozzle	BH13033000810
13	Flat washer 4	YW66040800000	39	Upper hinge	BL32000600240
14	Material inlet pipe	BL32000600020	40	Blower ring (down)	YR10070000000
15	Material inlet pipe fixing plate	BL20036000320	41	Carbon brush motor 1.15kW	YM30965600000
16	Material inlet pipe ring	YR10061200000	42	Blower ring (upper)	YP62141200000
17	E-rings 6	YW63051000000	43	Blower fixing board	BL21000300420
18	Flat washer M8×22	YW66082200100	44	Inner hexagon cylindrical screw M6×90	YW61069000100
19	Hinge pin	BH10006003110	45	Locknut M6	YW64000600200
20	Flat washer 5	YW66051000100	46	Blower shell	BL22001200220
21	Locknut M5	YW64000500000	47	Square aluminum handle L120	BW20012000040
22	Down hinge	BL32000600140	48	Flat washer 6	YW66061300000
23	Filter cloth split washer**	YR40006000000	49	Spring washer 6	YW65006000000
24	Hop-pocket **	BP82003000044	50	Inner hexagon cylindrical screw M6×20	YW61062000300
25	Hopper ring *	YR10000300100	51	Cross socket head cap screw M5×15	YW62051500000
26	Control box	YR40030600000	52	Quick connector 3" ×1/4PT	YW80031400000

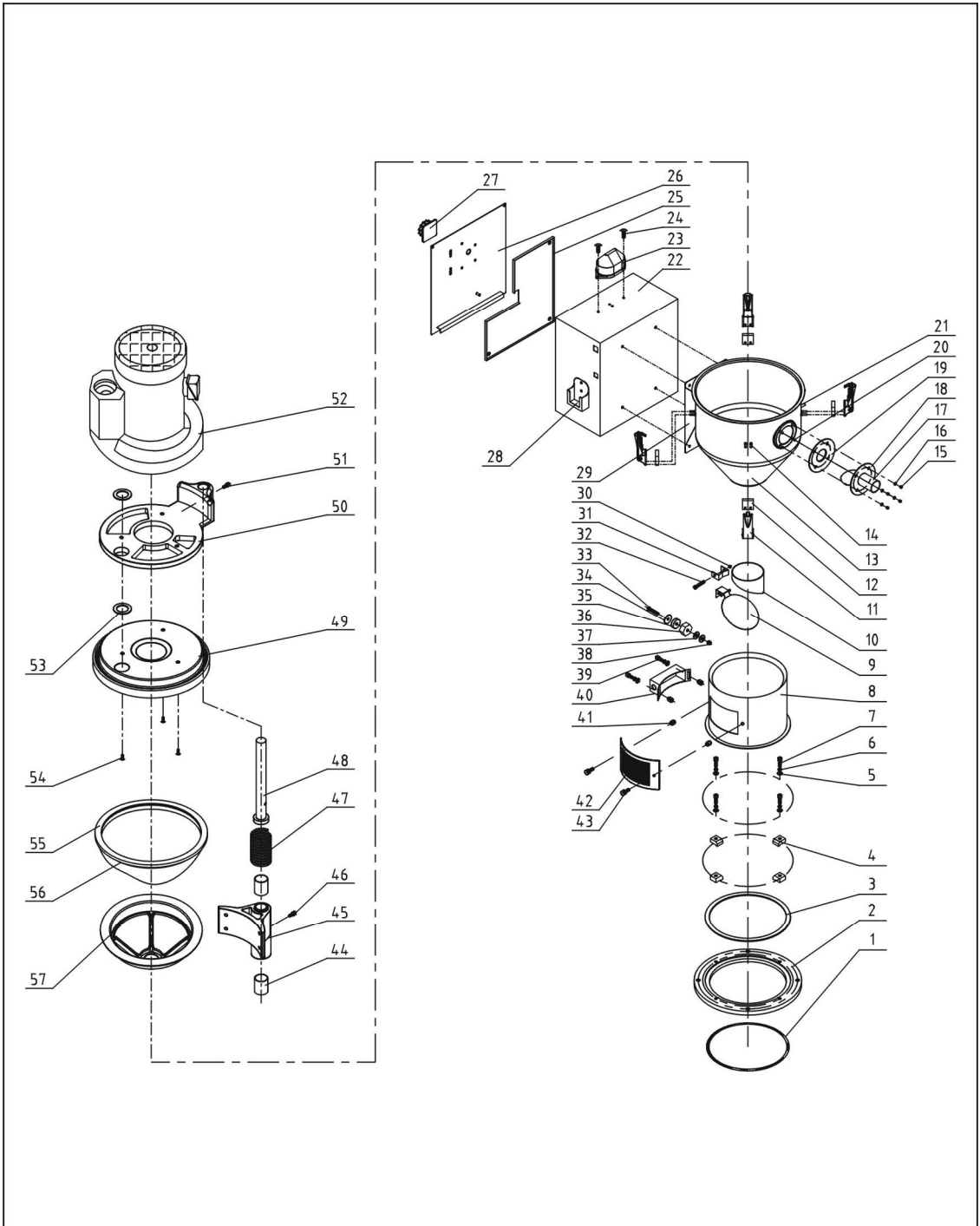
No.	Name	Part No.	No.	Name	Part No.
53	Air accumulator	-	58	Pressure switch connector	BH11103000010
54	Solenoid valve*	YE32213100000	59	Blower cover fixing base	-
55	Connection nut 1	BH12030400410	60	Hopper cover	-
56	Pressure switch	YE15002000100	61	Washer $\Phi 30 \times \Phi 17 \times 2$	BP62352100050
57	Blue air pipe $\Phi 6 \times \Phi 4$	YR60060400000			-

\* means possible broken parts.

\*\* means easy broken parts. A spare backup is suggested.

Please confirm the version of manual is compatible with equipment before placing the purchase order to guarantee that the item number of the spare part is in accordance with the real object.

## 2.2.19 Assembly Drawing (SAL-6U-3)



Remarks: Please refer to material list 2.2.20 for specific explanation of the numbers in parts drawing.

Picture 2-13: Assembly Drawing (SAL-6U-3)

## 2.2.20 Parts List (SAL-6U-3)

Table 2-10: Parts List (SAL-6U-3)

No.	Name	Part No.	No.	Name	Part No.
1	O-Type seal ring	YR20205500000	30	Locknut M3	YW64000300000
2	Base	YW20006000000	31	Fixing base of baffle plate	BL20000601220
3	Base ring	-	32	Cross socket head cap screw M3×40	YW63034000000
4	Pressure block	YW20000600500	33	Cross socket head cap screw M6×20	YW63062000000
5	Spring washer	YW65006000000	34	Magnet cover	BL21000600120
6	Flat washer Φ6×13	YW66061300000	35	Permanent magnet	YW60257700000
7	Inner hexagon screw M6×20	YW61062000300	36	Magnet sleeve	BH12000600010
8	Hopper fixing base	BL21000600020	37	Flat washer 8×22	YW66082200100
9	Baffle plate*	BL21000302320	38	Locknut M6	YW64000600200
10	Discharging port	BL21000600720	39	Inner hexagon cylindrical screw M6×10	YW63061000000
11	Snap hook **	YW02003000400	40	Sensor shell	YR40000600100
12	Block	YR40000600300	41	Mini-countersunk rivet screw M6	YW64060200000
13	Material storage tank	-	42	Ventilation window	YR40000600500
14	Screw M4×15	YW69041500100	43	Star spanner	YR40061500000
15	Locknut	YW64040700100	44	Shaft sleeve	YW11253000000
16	Flat washer Φ4	YW66040800000	45	Mounting base	BW21030300010
17	Material inlet pipe	BL32000600020	46	Guide pin	BH11000300000
18	Material inlet pipe fixing plate	-	47	Spring	YW01380300000
19	Material inlet pipe ring	YP10061200000	48	Shaft	BH10060300040
20	Screw M4×10	YW69041000000	49	Hopper cover	BL21060300020
21	Screw M6×20	-	50	Adapter flange	BW21030300100
22	Control box	-	51	Set screw M5×15	YM30965600000
23	Alarm light	YE83305100200	52	High pressure blower 1HP	BM30031000450
24	Cross socket head cap screw M4×6	YW63040600000	53	Blower suction mouth ring	YR10001000000
25	Control box base plate	-	54	Cross socket head cap screw M5×25	YW62052500000

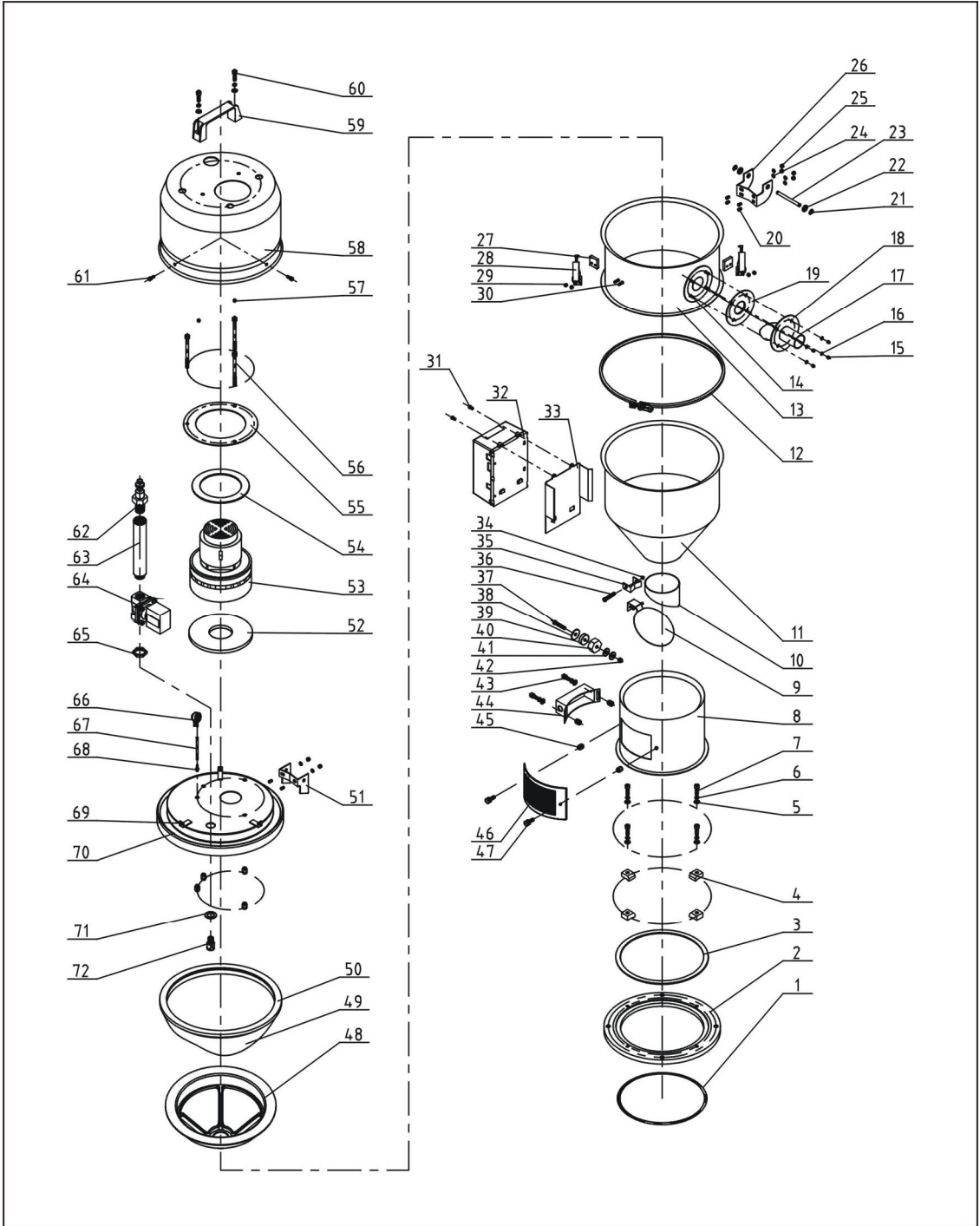
No.	Name	Part No.	No.	Name	Part No.
26	Control box cover	-	55	Hopper ring *	YR10000300100
27	Main power switch	YE10210300000	56	Hop-pocket **	BP82006000044
28	Handle box	-	57	Filter cloth split washer**	YR45003000100
29	Control box base	-			

\* means possible broken parts.

\*\* means easy broken parts. A spare backup is suggested.

Please confirm the version of manual is compatible with equipment before placing the purchase order to guarantee that the item number of the spare part is in accordance with the real object.

## 2.2.21 Assembly Drawing (SAL-12U)



Remarks: Please refer to material list 2.2.22 for specific explanation of the numbers in parts drawing.

Picture 2-14: Assembly Drawing (SAL-12U)

## 2.2.22 Parts List (SAL-12U)

Table 2-11: Parts List (SAL-12U)

No.	Name	Part No.	No.	Name	Part No.
1	O-Type seal ring	YR20205500000	30	Screw M4×15	YW69041500100
2	Base	YW20006000000	31	Cross socket head cap screw M4×6	YW63040600000
3	Base ring	-	32	Control box	YR40030600000
4	Pressure block	YW20000600500	33	Control box base	-
5	Spring washer M6	YW65006000100	34	Locknut M3	YW64000300000
6	Flat washer Φ6	YW66061300000	35	Fixing base of baffle plate	BL20000601220
7	Inner hexagon screw M6×20	YW61062000300	36	Cross socket head cap screw M3×40	YW63034000000
8	Hopper fixing base	BL21000600020	37	Cross socket head cap screw M6×20	YW63062000000
9	Baffle plate *	BL21000302320	38	Magnet cover	BL21000600120
10	Discharging port	BL21000600720	39	Permanent magnet	YW90257700000
11	Material storage tank	-	40	Magnet sleeve	BH12000600010
12	Pipe clamp	BH11120400010	41	Flat washer Φ8×22	YW66082200100
13	Extra large material tank	-	42	Locknut M6	YW64000600200
14	Screw M4×10	YW69041000000	43	Inner hexagon cylindrical screw M6×10	YW63061000000
15	Locknut M4×0.7	YW64040700100	44	Sensor shell	YR40000600100
16	Flat washer Φ4	YW66040800000	45	Mini-countersunk rivet screw M6	YW64060200000
17	Material inlet pipe	-	46	Ventilation window	YR40000600500
18	Material inlet pipe fixing plate	-	47	Star spanner	YR40061500000
19	Material inlet pipe ring	-	48	Filter cloth split washer**	YR40006000000
20	Screw M5×10	YW64040700100	49	Hop-pocket **	BP82006000044
21	E rings	YW66000500000	50	Hopper ring *	YR10000600200
22	Flat washerΦ8×22	YW66082200100	51	Upper hinge	BL32000600240
23	Hinge pin	BH10006003110	52	Blower ring (down)	YR10070000000
24	Flat washer Φ5	YW66051000100	53	Carbon brush motor*	YM30965600000
25	Locknut M5	YW64000500000	54	Blower ring (upper)	YP62141200000
26	Down hinge	BL32000600140	55	Blower fixing board	-
27	Block	YR40000600300	56	Inner hexagon cylindrical screw M6×90	YW61069000100
28	Snap hook	YW02003000400	57	Locknut M6	YW64000600200
29	Lockup nut M4×0.7	YW64040700100	58	Blower shell	YR40036000000



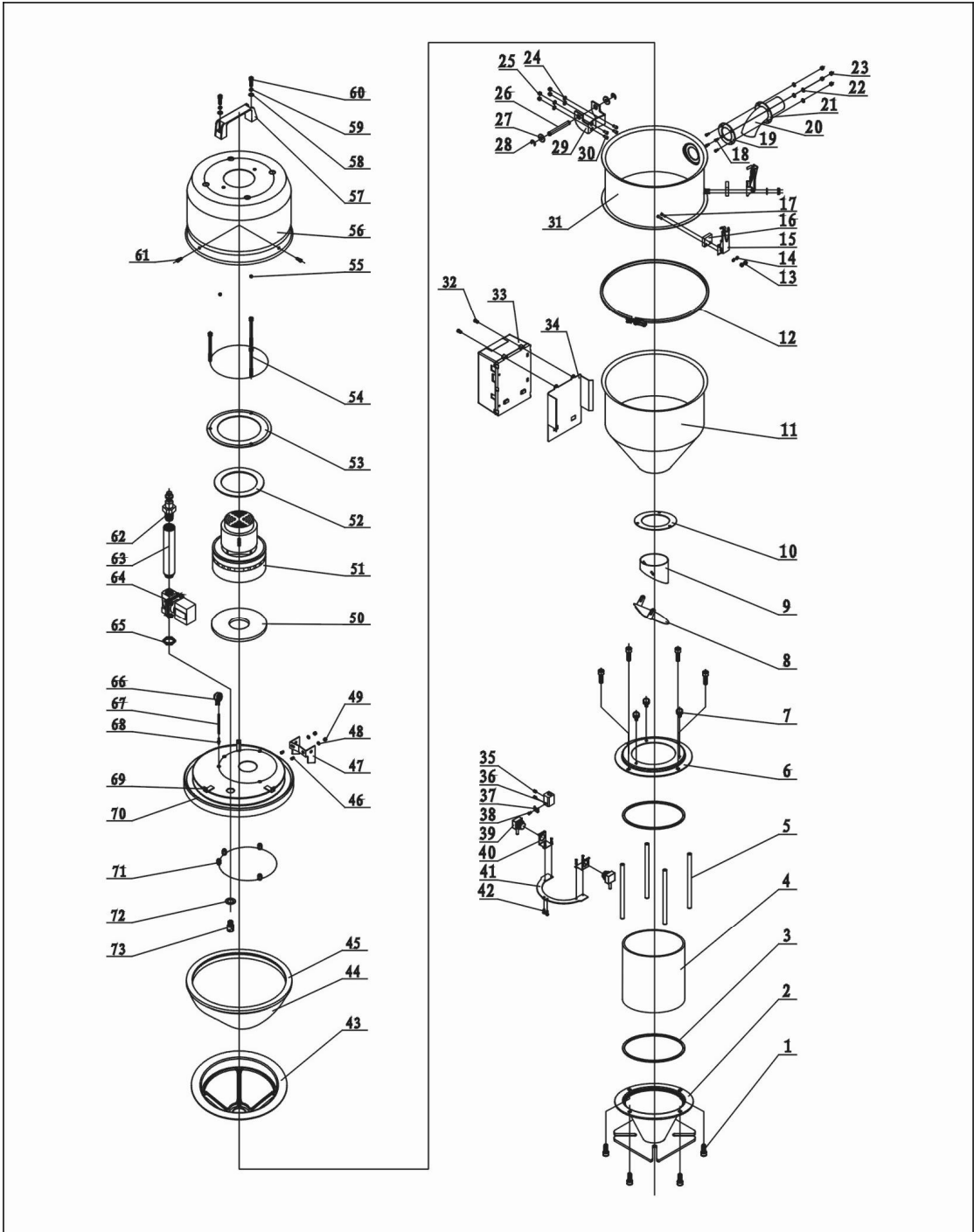
No.	Name	Part No.	No.	Name	Part No.
59	L120 Square aluminum handle	BW20012000040	66	Pressure switch	YE15002000100
60	Inner hexagon cylindrical screw M6×20	YW61062000300	67	Blue air pipe	YR60060400000
61	Cross socket head cap screw M5×15	YW62051500000	68	Pressure switch connector	BH11103000010
62	Quick connector	YW80031400000	69	Blower cover fixing base	-
63	Connector 2	BH13030300010	70	Hopper cover	-
64	Solenoid valve*	YE32213100000	71	Washer	BP62352100050
65	Connection nut	BH12030400410	72	Reverse clean pipe nozzle	BH13033000810

\* means possible broken parts.

\*\* means easy broken parts. A spare backup is suggested.

Please confirm the version of manual is compatible with equipment before placing the purchase order to guarantee that the item number of the spare part is in accordance with the real object.

### 2.2.23 Assembly Drawing (SAL-12U-E)



Remarks: Please refer to material list 2.2.24 for specific explanation of the numbers in parts drawing.

Picture 2-15: Assembly Drawing (SAL-12U-E)

## 2.2.24 Parts List (SAL-12U-E)

Table 2-12: Parts List (SAL-12U-E)

No.	Name	Part No.	No.	Name	Part No.
1	Inner hexagon screw M6×15	YW61061600300	31	Extra large material tank	BL21001200621
2	Glass pipe down flange	YW32000600000	32	Cross socket head cap screw	YW63040600000
3	Glass pipe ring	YR10060200000	33	Control box	YR40030600000
4	Glass pipe *	YW70908000000	34	Control box base	BL21000602020
5	Flange connection shaft	BH10101100010	35	Set screw	YW68004500000
6	Glass pipe upper flange	YW32000600200	36	Photosensor fixing base	YW20061500000
7	Plastic handle screw M6×15	YW69621600000	37	Photosensor pressure block	BL21001210020
8	Non-return flap	BL21001200520	38	Cross socket head cap screw M4×10	YW63041000000
9	Discharging port	BL27001200720	39	Photosensor	YE15143900000
10	Hopper flange	YW32000600100	40	Photosensor mounting block	-
11	Material storage tank	BL21001200820	41	Photosensor fixing plate	BL21001200120
12	Pipe clamp	BH11120400010	42	Cross socket head cap screw M4×10	YW63041000000
13	Locknut M4×0.7	YW64040700100	43	Filter cloth split washer**	YR40006000000
14	Flat washer 4	YW66040800000	44	Hop-pocket **	BP82006000044
15	Snap hook	YW02003000400	45	Hopper ring *	YR10000600200
16	Block	YR40000600300	46	Screw M5×10	YW64040700100
17	Screw M4×15	YW69041500100	47	Upper hinge	BL32000600220
18	Screw M4×10	YW69041000000	48	Flat washer 5	YW66040800000
19	Material inlet pipe ring	YR10061200000	49	Locknut	YW64000500000
20	Material inlet pipe	BL32001500020	50	Blower ring (down)	YR10070000000
21	Material inlet pipe fixing plate	BL20036000320	51	Carbon brush motor	YM30965600000
22	Flat washer 4	YW66040800000	52	Blower ring (upper)	YP62141200000
23	Locknut M4×0.7	YW64040700100	53	Blower fixing board	BL21000300420
24	Flat washer 5	YW66051000100	54	Inner hexagon cylindrical screw	YW61069000100
25	Locknut M5	YW64000500000	55	Locknut M6	YW64000600200
26	Hinge pin	BH10006003110	56	Blower shell	YR40036000000
27	Flat washer 8×22	YW66082200100	57	Square aluminum handle	BW20012000040
28	E-rings 6	YW63051000000	58	Inner hexagon cylindrical screw	YW61062000300
29	Down hinge	BL32000600120	59	Spring washer	YW65006000000
30	Screw M5×10	YW64040700100	60	Flat washer 6	YW66061300000

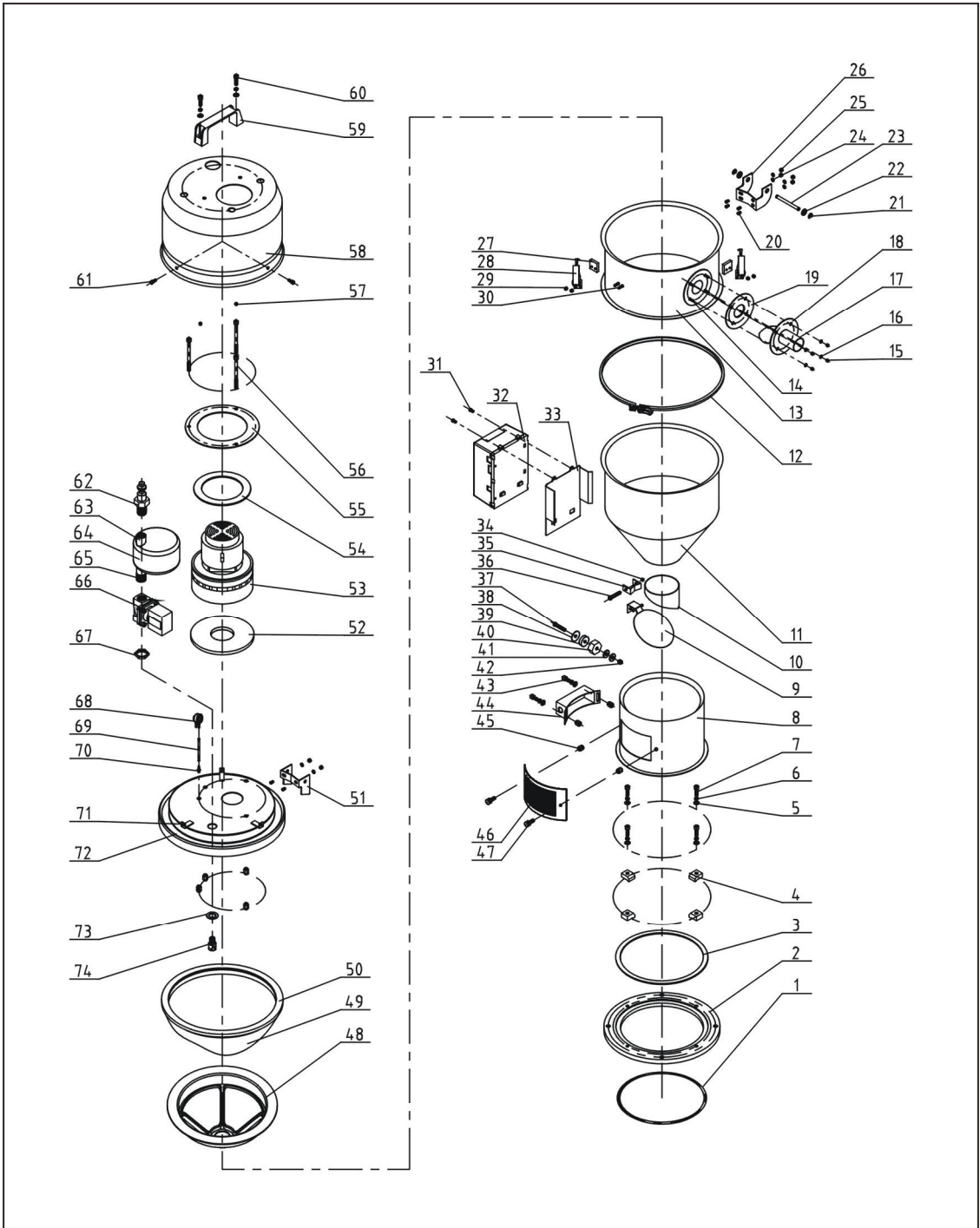
No.	Name	Part No.	No.	Name	Part No.
61	Cross socket head cap screw M5×15	YW62051500000	68	Pressure switch connector	BH11103000010
62	Quick connector	YW80031400000	69	Blower cover fixing base	BH10063200040
63	Connector 2	BH13030300010	70	Hopper cover	BL22001200721
64	Solenoid valve	YE32213000100	71	Mini-countersunk rivet screw M6	YW64060200000
65	Connection nut	BH12030400410	72	Washer	BP62352100050
66	Pressure switch	YE15002000100	73	Reverse clean pipe nozzle	BH13033000810
67	Blue air pipe	YR60060400000			

\* means possible broken parts.

\*\* means easy broken parts. A spare backup is suggested.

Please confirm the version of manual is compatible with equipment before placing the purchase order to guarantee that the item number of the spare part is in accordance with the real object.

### 2.2.25 Assembly Drawing (SAL-12U-A)



Remarks: Please refer to material list 2.2.26 for specific explanation of the Arabic numbers in parts drawing.

Picture 2-16: Assembly Drawing (SAL-12U-A)

## 2.2.26 Parts List (SAL-12U-A)

Table 2-13: Parts List (SAL-12U-A)

No.	Name	Part No.	No.	Name	Part No.
1	O-Type seal ring	YR20205500000	31	Cross socket head cap screw M4×6	YW63040600000
2	Base	YW20006000000	32	Control box	YR40030600000
3	Base ring	-	33	Control box base	-
4	Pressure block	YW20000600500	34	Locknut M3	YW64000300000
5	Spring washer M6	YW65006000100	35	Fixing base of baffle plate	BL20000601220
6	Flat washerΦ6	YW66061300000	36	Cross socket head cap screw M3×40	YW63034000000
7	Inner hexagon screw M6×20	YW61062000300	37	Cross socket head cap screw M6×20	YW63062000000
8	Hopper fixing base	BL21000600020	38	Magnet cover	BL21000600120
9	Baffle plate*	BL21000302320	39	Permanent magnet	YW90257700000
10	Discharging port	BL21000600720	40	Magnet sleeve	BH12000600010
11	Material storage tank	-	41	Flat washer Φ8×22	YW66082200100
12	Pipe clamp	BH11120400010	42	Locknut M6	YW64000600200
13	Extra large material tank	-	43	Inner hexagon cylindrical screw M6×10	YW63061000000
14	Screw M4×10	YW69041000000	44	Sensor shell	YR40000600100
15	Locknut M4×0.7	YW64040700100	45	Mini-countersunk rivet screw M6	YW64060200000
16	Flat washer Φ4	YW66040800000	46	Ventilation window	YR40000600500
17	Material inlet pipe	BL32000600020	47	Star spanner	YR40061500000
18	Material inlet pipe fixing plate	-	48	Filter cloth split washer**	YR40006000000
19	Material inlet pipe ring	YR10061200000	49	Hop-pocket **	BP82006000044
20	Screw M5×10	YW64040700100	50	Hopper ring *	YR10000600200
21	E rings	YW66000500000	51	Upper hinge	BL32000600240
22	Flat washerΦ8×22	YW66082200100	52	Blower ring (down)	YR10070000000
23	Hinge pin	BH10006003110	53	Carbon brush motor*	YM30965600000
24	Flat washer Φ5	YW66051000100	54	Blower ring (upper)	YP62141200000
25	Locknut M5	YW64000500000	55	Blower fixing board	-
26	Down hinge	BL32000600140	56	Inner hexagon cylindrical screw M6×90	YW61069000100
27	Block	YR40000600300	57	Locknut M6	YW64000600200
28	Snap hook	YW02003000400	58	Blower shell	YR40036000000
29	Locknut M4×0.7	YW64040700100	59	L120 Square aluminum handle	BW20012000040
30	Screw M4×15	YW69041500100	60	Inner hexagon cylindrical screw M6×20	YW61062000300

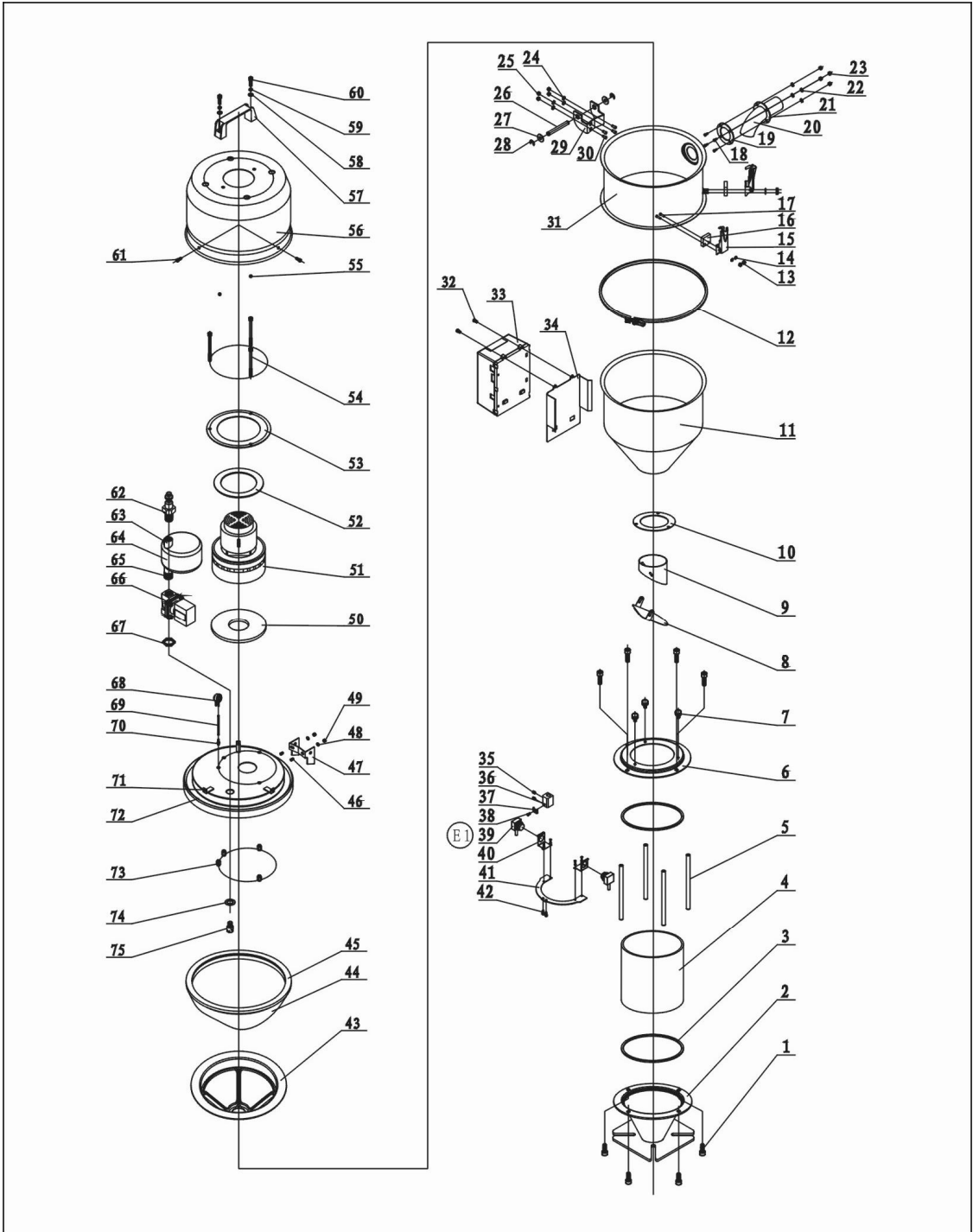
No.	Name	Part No.	No.	Name	Part No.
61	Cross socket head cap screw M5×15	YW62051500000	68	Pressure switch	YE15002000100
62	Quick connector	YW80031400000	69	Blue air pipe	YR60060400000
63	Connection nut 1	-	70	Pressure switch connector	-
64	Air accumulator	-	71	Blower cover fixing base	-
65	Connection nut 2	-	72	Hopper cover	-
66	Solenoid valve*	YE32213100000	73	Washer	BP62352100050
67	Connection nut	-	74	Reverse clean pipe nozzle	-

\* means possible broken parts.

\*\* means easy broken parts. A spare backup is suggested.

Please confirm the version of manual is compatible with equipment before placing the purchase order to guarantee that the item number of the spare part is in accordance with the real object.

### 2.2.27 Assembly Drawing (SAL-12U-EA)



Remarks: Please refer to material list 2.2.26 for specific explanation of the Arabic numbers in parts drawing.

Picture 2-17: Assembly Drawing (SAL-12U-EA)



## 2.2.28 Parts List (SAL-12U-EA)

Table 2-14: Parts List (SAL-12U-EA)

No.	Name	Part No.	No.	Name	Part No.
1	Inner hexagon screw M6×15	YW61061600300	31	Extra large material tank	BL21001200621
2	Glass pipe down flange	YW32000600000	32	Cross socket head cap screw	YW63040600000
3	Glass pipe ring	YR10060200000	33	Control box	YR40030600000
4	Glass pipe *	YW70908000000	34	Control box base	BL21000602020
5	Flange connection shaft	BH10101100010	35	Set screw	YW68004500000
6	Glass pipe upper flange	YW32000600200	36	Photosensor fixing base	YW20061500000
7	Plastic handle screw M6×15	YW69621600000	37	Photosensor pressure block	BL21001210020
8	Non-return flap	BL21001200520	38	Cross socket head cap screw M4×10	YW63041000000
9	Discharging port	BL27001200720	39	Photosensor	YE15143900000
10	Hopper flange	YW32000600100	40	Photosensor mounting block	-
11	Material storage tank	BL21001200820	41	Photosensor fixing plate	BL21001200120
12	Pipe clamp	BH11120400010	42	Cross socket head cap screw M4×10	YW63041000000
13	Locknut M4×0.7	YW64040700100	43	Filter cloth split washer**	YR40006000000
14	Flat washer 4	YW66040800000	44	Hop-pocket **	BP82006000044
15	Snap hook	YW02003000400	45	Hopper ring *	YR10000600200
16	Block	YR40000600300	46	Screw M5×10	YW64040700100
17	Screw M4×15	YW69041500100	47	Upper hinge	BL32000600220
18	Screw M4×10	YW69041000000	48	Flat washer 5	YW66040800000
19	Material inlet pipe ring	YR10061200000	49	Locknut	YW64000500000
20	Material inlet pipe	BL32001500020	50	Blower ring (down)	YR10070000000
21	Material inlet pipe fixing plate	BL20036000320	51	Carbon brush motor	YM30965600000
22	Flat washer 4	YW66040800000	52	Blower ring (upper)	YP62141200000
23	Locknut M4×0.7	YW64040700100	53	Blower fixing board	BL21000300420
24	Flat washer 5	YW66051000100	54	Inner hexagon cylindrical screw M6×90	YW61069000100
25	Locknut M5	YW64000500000	55	Locknut M6	YW64000600200
26	Hinge pin	BH10006003110	56	Blower shell	YR40036000000
27	Flat washer 8×22	YW66082200100	57	Square aluminum handle	BW20012000040
28	E-rings 6	YW63051000000	58	Inner hexagon cylindrical screw M6×20	YW61062000300
29	Down hinge	BL32000600120	59	Spring washer	YW65006000000
30	Screw M5×10	YW64040700100	60	Flat washer 6	YW66061300000

No.	Name	Part No.	No.	Name	Part No.
61	Cross socket head cap screw M5×15	YW62051500000	69	Blue air pipe	YR60060400000
62	Quick connector	YW80031400000	70	Pressure switch connector	BH11103000010
63	Connection nut 2	BH13030300010	71	Blower cover fixing base	BH10063200040
64	Air accumulator	BL21000601420	72	Hopper cover	BL22001200721
65	Connection nut 1	BH12030400410	73	Mini-countersunk rivet screw M6	YW64060200000
66	Solenoid valve	YE32213000100	74	Washer	BP62352100050
67	Connection nut	-	75	Reverse clean pipe nozzle	BH13033000810
68	Pressure switch	YE15002000100			

\* means possible broken parts.

\*\* means easy broken parts. A spare backup is suggested.

Please confirm the version of manual is compatible with equipment before placing the purchase order to guarantee that the item number of the spare part is in accordance with the real object.