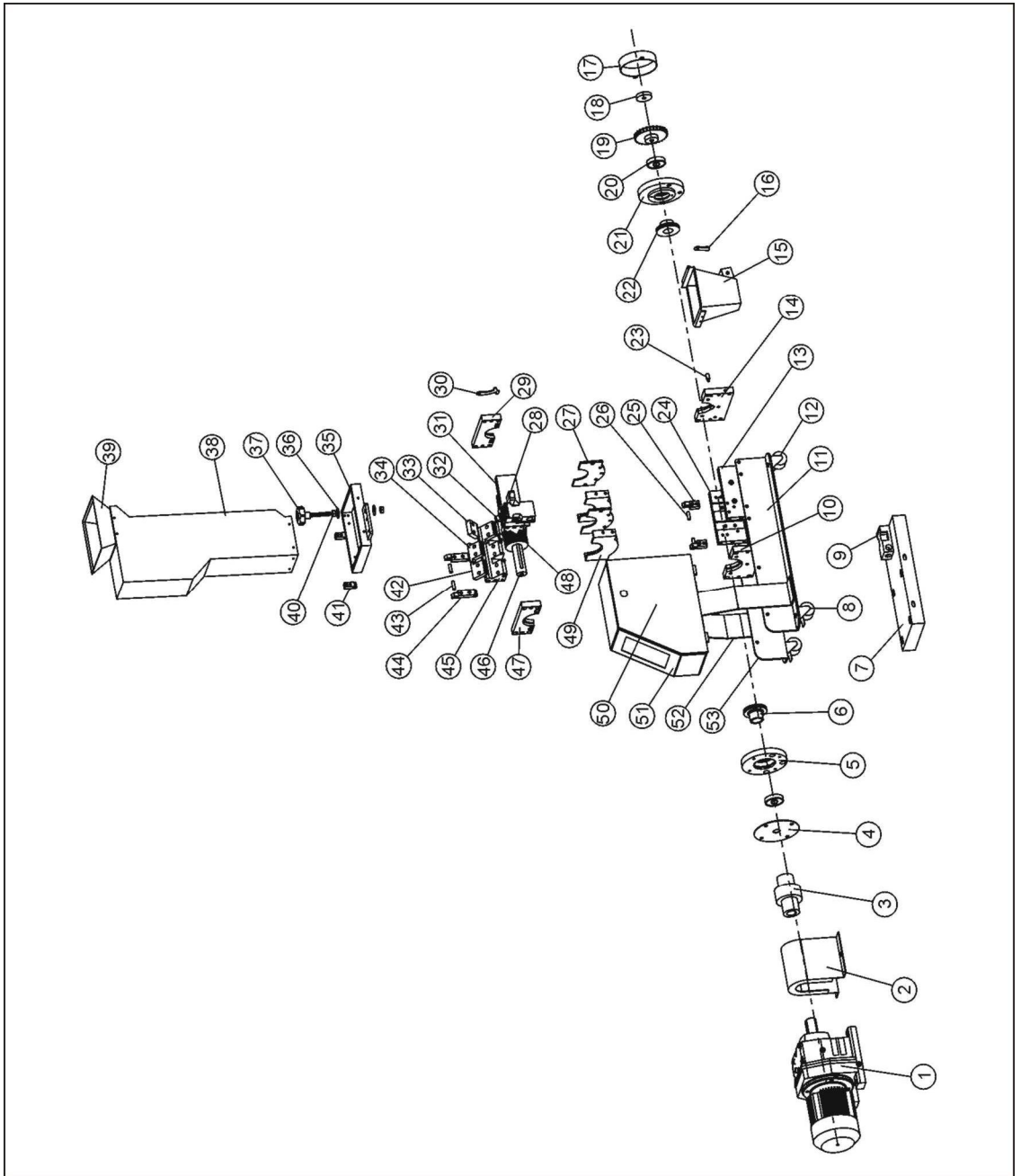


2.2 Assembly Drawing

2.2.1 Assembly Drawing



Note: Please refer to 2.2.2 material list about the parts code.

Picture 2-5: Assembly Drawing

2.2.2 Parts list

Table 2-1: Parts List

No.	Name	Part No.	
		SG-1411	SG-1417
1	Gear motor	YM10572100000	YM10572100000
2	Coupling cover	-	-
3	Coupling	YW11305500000	YW11305500000
4	Bearing cover on left side	-	-
5	Left bearing block	BW30001400010	BW30001400010
6	Left bearing sleeve	BW30014000010	BW30014000010
7	Fixing plate for gear motor	-	-
8	Movable castor	YW03002500100	YW03002500100
9	Safety switch**	YE16147600100	YE16147600100
10	Left bearing holder at bottom	BH10140000110	BH10140000110
11	Left side fixing plate for castor	-	-
12	Castor with brake	YW03002500200	YW03002500200
13	Front case block at bottom	BH10141100210	BH10141700110
14	Right bearing holder at bottom	BH10140000010	BH10140000010
15	Storage box	-	-
16	Check plate for storage box	-	-
17	Wheel sensor cover	-	-
18	Special washer	-	-
19	Wheel sensor	BH10141101710	BH10141101710
20	Bearing	YW11600800000	YW11600800000
21	Right bearing block	BW30001420010	BW30001420010
22	Right bearing sleeve	BW30001400110	BW30001400110
23	Pothead	BH10141100110	BH10141100110
24	Back case block at bottom	BH10141100010	BH10141700210
25	Locating block 2	BH10214450010	BH10214450010
26	Dowel (Φ8x32)	BH10083200010	BH10083200010
27	Layer	BH10001400510	BH10001400510
28	Fixing plate for safety switch	-	-
29	Right bearing holder at top	BH10140000210	BH10140000210
30	Pothead	-	-

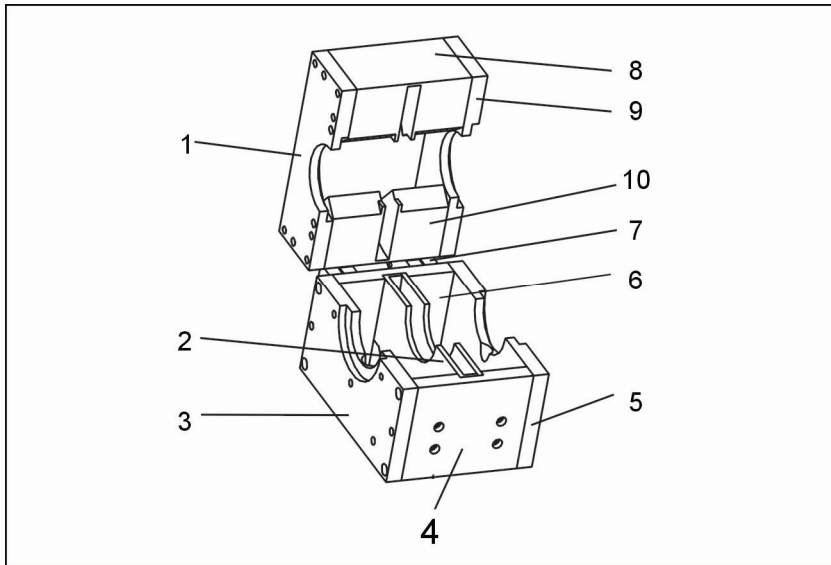
No.	Name	Part No.	
		SG-1411	SG-1417
31	Front case block at top	BW30141100110	BW30141700110
32	Staggered blade *	BW40141410010	BW40141410010
33	Fixed blade 2*	BW40141630010	BW40141630010
34	Fixed blade 3*	-	BW40314170010
35	Feed box base	-	-
36	Flat gasket 10	YW66102500000	YW66102500000
37	Star knob	YW09001000000	YW09001000000
38	Feed box	BR90141100110	BR90141700010
39	Feed port	-	-
40	Screw nut M10	YW64001000300	YW64001000300
41	Locating block 3	BH10314460010	BH10314460010
42	Fixed blade 1*	BW40114150010	BW40114150010
43	Dowel (Φ8x27)	BH10082700010	BH10082700010
44	Locating block 1	BH10140900910	BH10140900910
45	Back case block at top	BW30141100010	BW30141700010
46	Main shaft	BH10141101110	BH10141701110
47	Left bearing holder at top	BH10140000310	BH10140000310
48	Teeth cutter*	BW40140180010	BW40140180010
49	Layer	BH10001400610	BH10001400610
50	Top side plate of control box	-	-
51	Housing of electrical control box	-	-
52	Sustain plate for electrical control box	-	-
53	Right side fixing plate for castor	-	-

* means possible broken parts.

** means easy broken part. and spare backup is suggested.

Please confirm the version of manual before placing the purchase order to guarantee that the item number of the spare part is in accordance with the real object.

2.2.3 Cutting Chamber



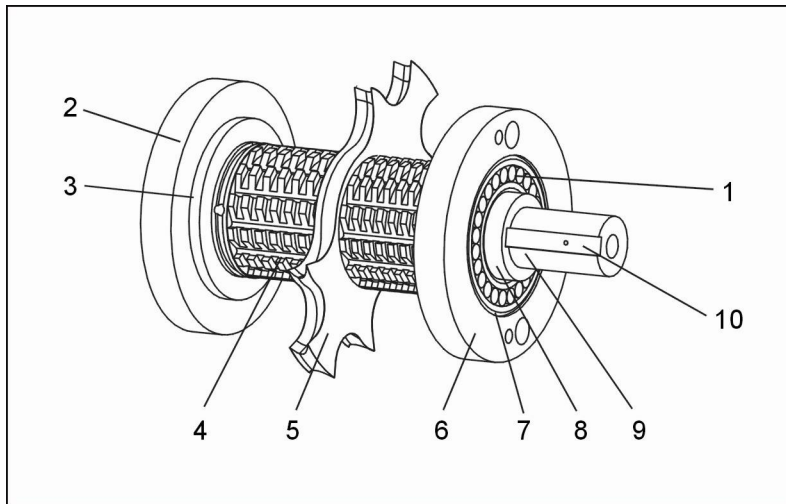
Picture 2-6: Cutting Chamber

2.2.4 Cutting Chamber Parts List

Table 2-2: Parts List

No.	Name	Part No.
1	Left bearing holder at top	1
2	Layer	1-2
3	Left bearing holder at bottom	1
4	Front case block at bottom	1
5	Right bearing holder at bottom	1
6	Back case block at bottom	1
7	Locating block	2
8	Front case block at top	1
9	Right bearing holder at top	1
10	Back case block at top	1

2.2.5 Blade Rest



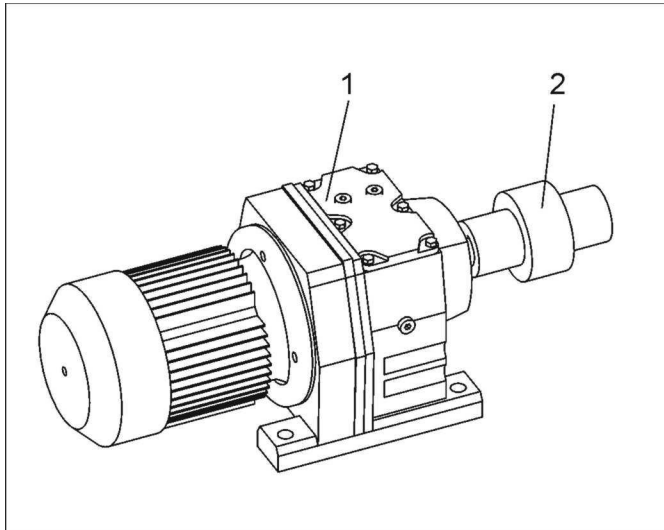
Picture 2-7: Blade Rest

2.2.6 Blade Rest Parts List

Table 2-3: Blade Rest Parts List

No.	Name	Part No.
1	Bearing	2
2	Right bearing block	1
3	Right bearing sleeve	1
4	Teeth cutter	2-3
5	Staggered blade	1-2
6	Left bearing block	1
7	Spring clip	2
8	Left bearing block	1
9	Main shaft	1
10	Key	1

2.2.7 Transmission Parts



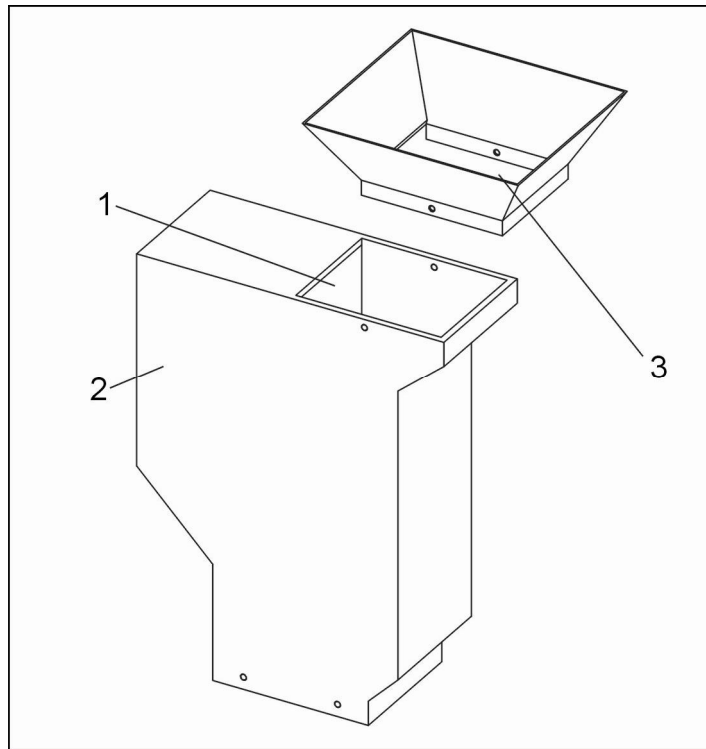
Picture 2-8: Transmission Parts

2.2.8 Transmission Parts List

Table 2-4: Transmission Parts List

No.	Name	Part No.
1	Gear motor	1
2	Coupling	1

2.2.9 Feed Box, Feed Port and Material Stopper



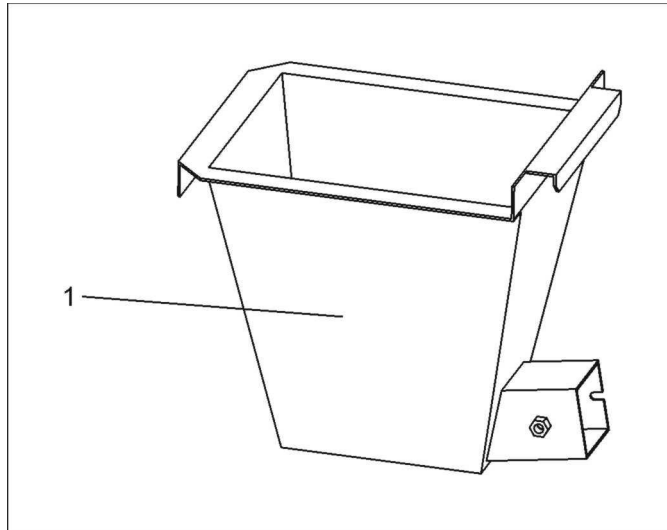
Picture 2-9: Feed Box, Feed Port and Material Stopper

2.2.10 Feed Box, Feed Port and Material Stopper Parts List

Table 2-5: Feed Box, Feed Port and Material Stopper Parts List

No.	Name	Part No.
1	Material stopper	1
2	Feed box	1
3	Feed port	1

2.2.11 Storage Box



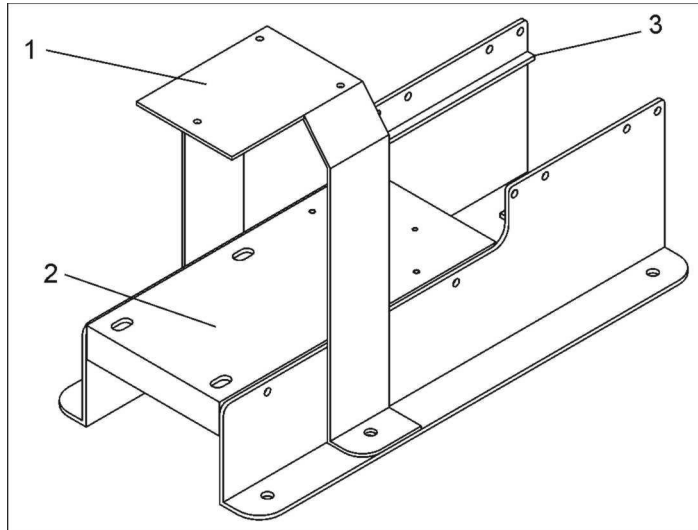
Picture 2-10: Storage Box

2.2.12 Storage Box Parts List

Table 2-6: Storage Box Parts List

No.	Name	Part No.
1	Storage box	1

2.2.13 Main Body



Picture 2-11: Main Body

2.2.14 Main Body Parts List

Table 2-7: Main Body Parts List

No.	Name	Part No.
1	Installation plate for control box	1
2	Installation plate for gear motor	1
3	Fixing plate for storage box	2