

## 2. 结构特征与工作原理

### 2.1 机器零件图

#### 2.1.1 机身零件图(SC)

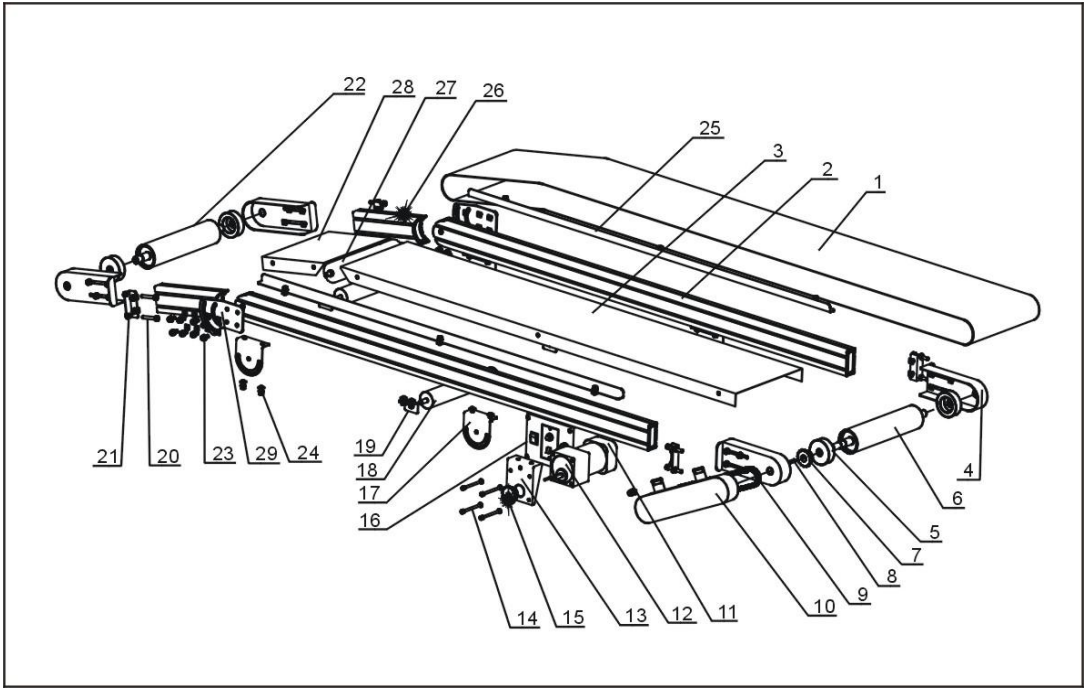


图 2-3: 机身零件图(SC)

## 2.1.2 零件材料明细表(SC)

表 2-1: 零件材料明细表(SC-200W~400W)

序号	名称	物料编号		
		SC-200W	SC-300W	SC-400W
1	皮带 2000L	YR00410260000	YR02412030000	YR00412000000
	皮带 3000L	YR00620200000	YR00613200000	YR00612400000
	皮带 4000L	YR00812000000	YR02812030000	YR00812400000
	皮带 5000L	YR00122000000	YR00101300000	YR00102420000
	皮带 6000L	YR00126000000	YR00121300000	YR00102460000
2	顶横梁 1 2000L	BH76130020010	BH76130020010	BH76130020010
	顶横梁 1 3000L	BH76133100010	BH76133100010	BH76133100010
	顶横梁 1 4000L	BH76134000010	BH76134000010	BH76134000010
	顶横梁 1 5000L	BH76135000010	BH76135000010	BH76135000010
	顶横梁 1 6000L	BH76136100010	BH76136100010	BH76136100010
3	电解板 1 2000L	BL69202000020	BL69132300020	BL69004300020
	电解板 1 3000L	BL69231000020	BL69003300020	BL69030300020
	电解板 1 4000L	BL69241000020	BL69003200020	BL69040400020
	电解板 1 5000L	BL69125100020	BL69005200020	BL69014500020
	电解板 1 6000L	BL69126100020	BL69006300020	BL69010600020
4	皮带调整板	BL68000200020	BL68000200020	BL68000200020
5	轴承	-	-	-
6	输送轮 2	YW08272730000	YW08722042000	YW08272460000
7	链轮 1	YW08521820000	YW08521820000	YW08521820000
8	平键	YX70060625000	YX70060625000	YX70060625000
9	链条	YW08080006000	YW08080006000	YW08080006000
10	皮带罩	BL68321100020	BL68321100020	BL68321100020
11	调速马达	YM10565200000	YM10565200000	YM10565200000
12	减速机滚珠轴承	-	-	-
13	马达固定板	BL69327000020	BL69327000020	BL69327000020
14	M6×80 螺	-	-	-
15	链轮 2	YW08521220000	YW08521220000	YW08521220000
16	控制箱	BH90000000050	BH90000000050	BH90000000050

序号	名称	物料编号		
		SC-200W	SC-300W	SC-400W
17	顶横梁固定板	YW09321800000	YW09321800000	YW09321800000
18	无动力输送轮	YW08512500000	YW08501235000	YW08512460000
19	无动力输送轮固定板	YW09321200000	YW09321200000	YW09321200000
20	M8×40 螺丝	-	-	-
21	皮带调节板	YW09321300000	YW09321300000	YW09321300000
22	输送轮 1	YW08729000000	YW08722039000	YW08724900000
23	M8×12 螺丝	-	-	-
24	M8×16 螺丝	-	-	-
25	L 型压条 1 2000L	YX50302700020	YX50302700020	YX50302700020
	L 型压条 1 3000L	YX50350000020	YX50350000020	YX50350000020
	L 型压条 1 4000L	YX50343000020	YX50343000020	YX50343000020
	L 型压条 1 5000L	YX50353000020	YX50353000020	YX50353000020
	L 型压条 1 6000L	YX50336000020	YX50336000020	YX50336000020
26	顶横梁 2 2000L	BH76230020010	BH76230020010	BH76230020010
	顶横梁 2 3000L	BH76232200010	BH76232200010	BH76232200010
	顶横梁 2 4000L	BH76232200010	BH76232200010	BH76232200010
	顶横梁 2 5000L	BH76232200010	BH76232200010	BH76232200010
	顶横梁 2 6000L	BH76236200010	BH76236200010	BH76236200010
27	无动力滚轮 2	YW08245200000	YW08235200000	YW08242300000
28	电解板 2 2000L	BL69022000020	BL69132400020	BL69002400020
	电解板 2 3000L	BL69023000020	BL69023300020	BL69040300020
	电解板 2 4000L	BL69023000020	BL69023300020	BL69040300020
	电解板 2 5000L	BL69023000020	BL69023300020	BL69040300020
	电解板 2 6000L	BL69226100020	BL69026300020	BL69024600020
29	角度调节板	YW09300206000	YW09300206000	YW09300206000

\*表示可能损坏的项目；\*\*表示较可能损坏的项目，建议备份。

请在下单采购零配件之前，先确认说明书版本号，以确保零配件物料号与实物一致。

表 2-2: 零件材料明细表(SC-500W/600W)

序号	名称	物料编号	
		SC-500W	SC-600W
1	皮带 2000L	YR00412500000	YR00412600000
	皮带 3000L	YR00612500000	YR00612600000
	皮带 4000L	YR00802500000	YR00812600000
	皮带 5000L	YR00101500000	YR00106200000
	皮带 6000L	YR00121500000	YR00126200000
2	顶横梁 1 2000L	BH76130020010	BH76130020010
	顶横梁 1 3000L	BH76133100010	BH76133100010
	顶横梁 1 4000L	BH76134000010	BH76134000010
	顶横梁 1 5000L	BH76135000010	BH76135000010
	顶横梁 1 6000L	BH76136100010	BH76136100010
3	电解板 1 2000L	BL69015200020	BL69006200020
	电解板 1 3000L	BL69013500020	BL69016000020
	电解板 1 4000L	BL69045000020	BL69064100020
	电解板 1 5000L	BL69055100020	BL69065000020
	电解板 1 6000L	BL69006500020	BL69010060020
4	皮带调整板	BL68000200020	BL68000200020
5	轴承	-	-
6	输送轮 2	YW08720058000	YW08272720000
7	链轮 1	YW08521820000	YW08521820000
8	平键	YX70060625000	YX70060625000
9	链条	YW08080006000	YW08080006000
10	皮带罩	BL68321100020	BL68321100020
11	调速马达	YM10565200000	YM10565200000
12	减速机滚珠轴承	-	-
13	马达固定板	BL69327000020	BL69327000020
14	M6×80 螺	-	-
15	链轮 2	YW08521220000	YW08521220000
16	控制箱	BH90000000050	BH90000000050
17	顶横梁固定板	YW09321800000	YW09321800000

序号	名称	物料编号	
		SC-500W	SC-600W
18	无动力输送轮	YW08501546000	YW08512660000
19	无动力输送轮固定板	YW09321200000	YW09321200000
20	M8×40 螺丝	-	-
21	皮带调节板	YW09321300000	YW09321300000
22	输送轮 1	YW08722059000	YW08726900000
23	M8×12 螺丝	-	-
24	M8×16 螺丝	-	-
25	L 型压条 1 2000L	YX50302700020	YX50302700020
	L 型压条 1 3000L	YX50350000020	YX50350000020
	L 型压条 1 4000L	YX50343000020	YX50343000020
	L 型压条 1 5000L	YX50353000020	YX50353000020
	L 型压条 1 6000L	YX50336000020	YX50336000020
26	顶横梁 2 2000L	BH76230020010	BH76230020010
	顶横梁 2 3000L	BH76232200010	BH76232200010
	顶横梁 2 4000L	BH76232200010	BH76232200010
	顶横梁 2 5000L	BH76232200010	BH76232200010
	顶横梁 2 6000L	BH76236200010	BH76236200010
27	无动力滚轮 2	YW08252300000	YW08245600000
28	电解板 2 2000L	BL69052200020	BL69026000020
	电解板 2 3000L	BL69025000020	BL69036000020
	电解板 2 4000L	BL69025000020	BL69036000020
	电解板 2 5000L	BL69025000020	BL69036000020
	电解板 2 6000L	BL69123100020	BL69026600020
29	角度调节板	YW09300206000	YW09300206000

\*表示可能损坏的项目；\*\*表示较可能损坏的项目，建议备份。

请在下单采购零配件之前，先确认说明书版本号，以确保零配件物料号与实物一致。

### 2.1.3 机身零件图(SCI)

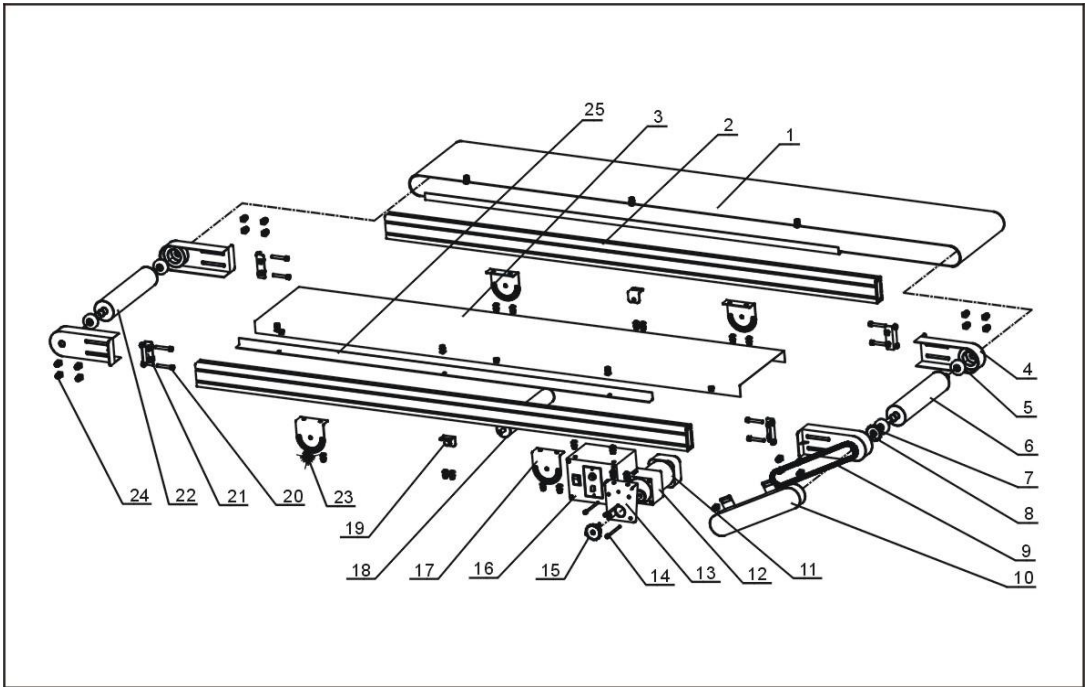


图 2-3: 机身零件图(SCI)

## 2.1.4 零件材料明细表(SCI)

表 2-3: 零件材料明细表(SCI-200W~400W)

序号	名称	物料编号		
		SCI-200W	SCI-300W	SCI-400W
1	皮带 1500L	-	YR00312320000	YR00314200000
	皮带 2000L	YR00410260000	YR02412030000	YR00412000000
	皮带 2500L	YR00520200000	YR00512320000	YR00520400000
	皮带 3000L	YR00620200000	YR00613200000	YR00612400000
	皮带 3500L	-	YR00712300000	YR00403500000
	皮带 4000L	YR00812000000	YR02812030000	YR00812400000
	皮带 4500L	-	YR00912000000	YR00912420000
	皮带 5000L	YR00122000000	YR00101300000	YR00102420000
	皮带 6000L	YR00126000000	YR00121300000	YR00102460000
2	顶横梁 1500L	-	BL68315400020	BL68315400020
	顶横梁 2000L	BH76804017840	BH76804017840	BH76804017840
	顶横梁 2500L	BH76803002040	BH76803002040	BH76803002040
	顶横梁 3000L	BX08040340040	BX08040340040	BX08040340040
	顶横梁 3500L	-	BH76335000440	BH76335000440
	顶横梁 4000L	BH76804037840	BH76804037840	BH76804037840
	顶横梁 4500L	-	BH76345000440	BH76345000440
	顶横梁 5000L	BH76364000040	BH76354000040	BH76354000040
	顶横梁 6000L	BH76354000040	BH76354000040	BH76354000040
3	电解板 1500L	-	BL68315300020	BL68315200020
	电解板 2000L	BL68220500020	BL69003400020	BL68422000020
	电解板 2500L	BL68225200020	BL68325000020	BL69004800020
	电解板 3000L	BL68322000020	BL68333000020	BL68435000020
	电解板 3500L	-	BL68343000020	BL68435200020
	电解板 4000L	BL68242000020	BL68303000020	BL68442000020
	电解板 4500L	-	BL68345000020	BL68445200020
	电解板 5000L	BL68252000020	BL68360000020	BL68452000020
	电解板 6000L	BL69232000020	BL68360000020	BL68602200020
4	皮带调整板	BL68000200020	BL68000200020	BL68000200020

5	轴承	-	-	-
6	输送轮 2	YW08272730000	YW08722042000	YW08272460000
7	链轮 1	YW08521820000	YW08521820000	YW08521820000
8	平键	YX70060625000	YX70060625000	YX70060625000
9	链条	YW08080006000	YW08080006000	YW08080006000
10	皮带罩	BL68321100020	BL68321100020	BL68321100020
11	调速马达	YM10565200000	YM10565200000	YM10565200000
12	减速机滚珠轴承	YE80520000200	YE80520000200	YE80520000200
13	马达固定板	BL69327000020	BL69327000020	BL69327000020
14	M6×80 螺	-	-	-
15	链轮 2	YW08521220000	YW08521220000	YW08521220000
16	控制箱	BH90000000050	BH90000000050	BH90000000050
17	顶横梁固定板	YW09321800000	YW09321800000	YW09321800000
18	无动力输送轮	YW08512500000	YW08501235000	YW08512460000
19	无动力输送轮固定板	YW09321200000	YW09321200000	YW09321200000
20	M8×40 螺丝	-	-	-
21	皮带调节板	YW09321300000	YW09321300000	YW09321300000
22	输送轮 1	YW08729000000	YW08722039000	YW08724900000
23	M8×12 螺丝	-	-	-
24	M8×16 螺丝	-	-	-
25	L 型压条 1500L	-	YX50303020000	YX50303020000
	L 型压条 2000L	YX50320900020	YX50320900020	YX50320900020
	L 型压条 2500L	BL68300250020	BL68300250020	BL68300250020
	L 型压条 3000L	YX50300050020	YX50300050020	YX50300050020
	L 型压条 3500L	-	YX50300450020	YX50300350020
	L 型压条 4000L	YX50300450020	YX50300350020	YX50300450020
	L 型压条 4500L	-	BL68304050020	BL68304050020
	L 型压条 5000L	YX50300550020	YX50306500020	YX50300550020
	L 型压条 6000L	YX50306500020	YX50306500020	YX50306500020

\*表示可能损坏的项目；\*\*表示较可能损坏的项目，建议备份。

请在下单采购零配件之前，先确认说明书版本号，以确保零配件物料号与实物一致。



表 2-4: 零件材料明细表(SCI-500W/600W)

序号	名称	物料编号	
		SCI-500W	SCI-600W
1	皮带 1500L	-	-
	皮带 2000L	YR00412500000	YR00412600000
	皮带 2500L	YR00512500000	-
	皮带 3000L	YR00612500000	YR00612600000
	皮带 3500L	YR00403500000	-
	皮带 4000L	YR00812400000	YR00812600000
	皮带 4500L	YR00912050000	-
	皮带 5000L	YR00101500000	YR00106200000
	皮带 6000L	YR00121500000	YR00126200000
2	顶横梁 1500L	-	-
	顶横梁 2000L	BH76804017840	BH76804017840
	顶横梁 2500L	BH76803002040	-
	顶横梁 3000L	BX08040340040	BX08040340040
	顶横梁 3500L	BH76335000440	-
	顶横梁 4000L	BH76804037840	BH76804037840
	顶横梁 4500L	BH76345000440	-
	顶横梁 5000L	BH76354000040	BH76354000040
	顶横梁 6000L	BH76354000040	BH76354000040
3	电解板 1500L	-	-
	电解板 2000L	BL68522000020	BL68600200020
	电解板 2500L	BL68325000020	-
	电解板 3000L	BL68532000020	BL68602200020
	电解板 3500L	BL68435200020	-
	电解板 4000L	BL68442000020	BL68642200020
	电解板 4500L	BL68504500020	-
	电解板 5000L	BL68502000020	BL68652000020
	电解板 6000L	BL68062000020	BL68620000020
4	皮带调整板	BL68000200020	BL68000200020
5	轴承	-	-

6	输送轮 2	YW08720058000	YW08272720000
7	链轮 1	YW08521820000	YW08521820000
8	平键	YX70060625000	YX70060625000
9	链条	YW08080006000	YW08080006000
10	皮带罩	BL68321100020	BL68321100020
11	调速马达	YM10565200000	YM10565200000
12	减速机滚珠轴承	YE80520000200	YE80520000200
13	马达固定板	BL69327000020	BL69327000020
14	M6×80 螺	-	-
15	链轮 2	YW08521220000	YW08521220000
16	控制箱	BH90000000050	BH90000000050
17	顶横梁固定板	YW09321800000	YW09321800000
18	无动力输送轮	YW08501546000	YW08512660000
19	无动力输送轮固定板	YW09321200000	YW09321200000
20	M8×40 螺丝	-	-
21	皮带调节板	YW09321300000	YW09321300000
22	输送轮 1	YW08722059000	YW08726900000
23	M8×12 螺丝	-	-
24	M8×16 螺丝	-	-
25	L 型压条 1500L	-	-
	L 型压条 2000L	YX50320900020	YX50320900020
	L 型压条 2500L	BL68300250020	-
	L 型压条 3000L	YX50300050020	YX50300050020
	L 型压条 3500L	YX50300350020	-
	L 型压条 4000L	YX50300450020	YX50300450020
	L 型压条 4500L	YX50300450020	-
	L 型压条 5000L	YX50300550020	YX50300550020
	L 型压条 6000L	YX50306500020	YX50306500020

\*表示可能损坏的项目；\*\*表示较可能损坏的项目，建议备份。

请在下单采购零配件之前，先确认说明书版本号，以确保零配件物料号与实物一致。

### 2.1.5 支撑架零件图

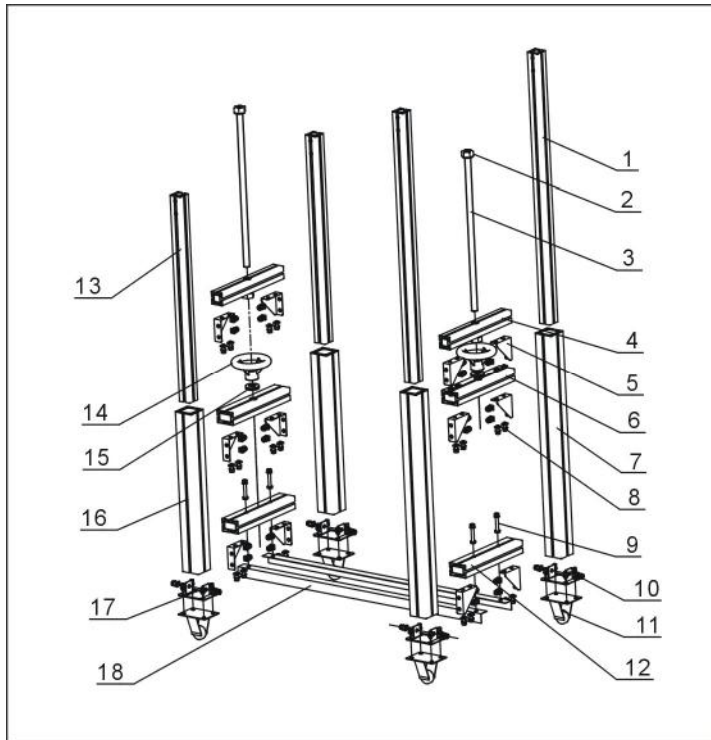


图 2-3: 支撑架零件图

## 2.1.6 零件材料明细表(SC/SCI)

表 2-5: 零件材料明细表(SC-200W~400W)

序号	名称	物料编号		
		SC-200W	SC-300W	SC-400W
1	立柱后(上)	BH76404085010	BH76404085010	BH76404085010
2	M18 外六角螺母	YW61051500000	YW61051500000	YW61051500000
3	螺杆 M18×500	YW69018500000	YW69018500000	YW69018500000
	螺杆 M18×600	YW69018600000	YW69018600000	YW69018600000
4	横梁(上)	BH76022000010	BH76404031010	BH76043000010
5	三角板	YW09321600000	YW09321600000	YW09321600000
6	横梁(中)	BH76020200010	BH76604028010	BH76043200010
7	立柱后(下)	BH76626270040	BH76626270040	BH76626270040
8	M8×12 螺丝	YW61081200000	YW61081200000	YW61081200000
9	M8×55 螺丝	YW61085500000	YW61085500000	YW61085500000
10	脚轮固定板	YW09321400000	YW09321400000	YW09321400000
11	脚轮(活动)	YW03000300000	YW03000300000	YW03000300000
	脚轮(刹车)	YW03000300200	YW03000300200	YW03000300200
12	横梁(下)	BH76022300010	BH76604029010	BH76043300010
13	立柱前(上)	BH76404065010	BH76404065010	BH76404065010
14	手轮	YW12801200000	YW12801200000	YW12801200000
15	推力球轴承	YW11512040000	YW11512040000	YW11512040000
16	立柱前(下)	BH76626250010	BH76626250010	BH76626250010
17	M6×12 螺丝	YW61061600200	YW61061600200	YW61061600200
18	底杆 1500L	-	BL68315100020	BL68315100020
	底杆 2000L	BH76303091610	BH76303091610	BH76303091610
	底杆 2500L	BH73250000010	BH73250000010	BH73250000010
	底杆 3000L	BH73230000010	BH73230000010	BH73230000010
	底杆 3500L	BH76335000010	BH76335000010	BH76335000010
	底杆 4000L	BH76303000010	BH76303000010	BH76303000010
	底杆 4500L	BH76345000010	BH76345000010	BH76345000010
	底杆 5000L	BH76350000010	BH76350000010	BH76350000010
	底杆 6000L	BH76336000010	BH76336000010	BH76336000010

\*表示可能损坏的项目；\*\*表示较可能损坏的项目，建议备份。

请在下单采购零配件之前，先确认说明书版本号，以确保零配件物料号与实物一致。

表 2-6: 零件材料明细表(SC-500W/600W)

序号	名称	物料编号	
		SC-500W	SC600W
1	立柱后(上)	BH76404085010	BH76404085010
2	M18 外六角螺母	YW61051500000	YW61051500000
3	螺杆 M18×500	YW69018500000	YW69018500000
	螺杆 M18×600	YW69018600000	YW69018600000
4	横梁(上)	BH76504000010	BH76063000010
5	三角板	YW09321600000	YW09321600000
6	横梁(中)	BX50542000000	BH76063200010
7	立柱后(下)	BH76626270040	BH76626270040
8	M8×12 螺丝	YW61081200000	YW61081200000
9	M8×55 螺丝	YW61085500000	YW61085500000
10	脚轮固定板	YW09321400000	YW09321400000
11	脚轮(活动)	YW03000300000	YW03000300000
	脚轮(刹车)	YW03000300200	YW03000300200
12	横梁(下)	BX50450200010	BH76063300010
13	立柱前(上)	BH76404065010	BH76404065010
14	手轮	YW12801200000	YW12801200000
15	推力球轴承	YW11512040000	YW11512040000
16	立柱前(下)	BH76626250010	BH76626250010
17	M6×12 螺丝	YW61061600200	YW61061600200
18	底杆 1500L	-	-
	底杆 2000L	BH76303091610	BH76303091610
	底杆 2500L	BH73250000010	BH73250000010
	底杆 3000L	BH73230000010	BH73230000010
	底杆 3500L	BH76335000010	BH76335000010
	底杆 4000L	BH76303000010	BH76303000010
	底杆 4500L	BH76345000010	BH76345000010
	底杆 5000L	BH76350000010	BH76350000010
	底杆 6000L	BH76336000010	BH76336000010

\*表示可能损坏的项目；\*\*表示较可能损坏的项目，建议备份。

请在下单采购零配件之前，先确认说明书版本号，以确保零配件物料号与实物一致。

表 2-7: 零件材料明细表(SCI-200W~400W)

序号	名称	物料编号		
		SCI-200W	SCI-300W	SCI-400W
1	立柱后(上)	BH76404085010	BH76404085010	BH76404085010
2	M18 外六角螺母	YW61051500000	YW61051500000	YW61051500000
3	螺杆 M18×500	YW69018500000	YW69018500000	YW69018500000
	螺杆 M18×600	YW69018600000	YW69018600000	YW69018600000
4	横梁(上)	BH76022000010	BH76404031010	BH76043000010
5	三角板	YW09321600000	YW09321600000	YW09321600000
6	横梁(中)	BH76020200010	BH76604028010	BH76043200010
7	立柱后(下)	BH76626270040	BH76626270040	BH76626270040
8	M8×12 螺丝	YW61081200000	YW61081200000	YW61081200000
9	M8×55 螺丝	YW61085500000	YW61085500000	YW61085500000
10	脚轮固定板	YW09321400000	YW09321400000	YW09321400000
11	脚轮(活动)	YW03000300000	YW03000300000	YW03000300000
	脚轮(刹车)	YW03000300200	YW03000300200	YW03000300200
12	横梁(下)	BH76022300010	BH76604029010	BH76043300010
13	立柱前(上)	BH76404065010	BH76404065010	BH76404065010
14	手轮	YW12801200000	YW12801200000	YW12801200000
15	推力球轴承	YW11512040000	YW11512040000	YW11512040000
16	立柱前(下)	BH76626250010	BH76626250010	BH76626250010
17	M6×12 螺丝	YW61061600200	YW61061600200	YW61061600200
18	底杆 1500L	-	BL68315100020	BL68315100020
	底杆 2000L	BH76303091610	BH76303091610	BH76303091610
	底杆 2500L	BH73250000010	BH73250000010	BH73250000010
	底杆 3000L	BH73230000010	BH73230000010	BH73230000010
	底杆 3500L	BH76335000010	BH76335000010	BH76335000010
	底杆 4000L	BH76303000010	BH76303000010	BH76303000010
	底杆 4500L	BH76345000010	BH76345000010	BH76345000010
	底杆 5000L	BH76350000010	BH76350000010	BH76350000010
	底杆 6000L	BH76336000010	BH76336000010	BH76336000010

\*表示可能损坏的项目; \*\*表示较可能损坏的项目, 建议备份。

请在下单采购零配件之前, 先确认说明书版本号, 以确保零配件物料号与实物一致。

表 2-8: 零件材料明细表(SCI-500W/600W)

序号	名称	物料编号	
		SCI-500W	SCI-600W
1	立柱后(上)	BH76404085010	BH76404085010
2	M18 外六角螺母	YW61051500000	YW61051500000
3	螺杆 M18×500	YW69018500000	YW69018500000
	螺杆 M18×600	YW69018600000	YW69018600000
4	横梁(上)	BH76504000010	BH76063000010
5	三角板	YW09321600000	YW09321600000
6	横梁(中)	BX50542000000	BH76063200010
7	立柱后(下)	BH76626270040	BH76626270040
8	M8×12 螺丝	YW61081200000	YW61081200000
9	M8×55 螺丝	YW61085500000	YW61085500000
10	脚轮固定板	YW09321400000	YW09321400000
11	脚轮(活动)	YW03000300000	YW03000300000
	脚轮(刹车)	YW03000300200	YW03000300200
12	横梁(下)	BX50450200010	BH76063300010
13	立柱前(上)	BH76404065010	BH76404065010
14	手轮	YW12801200000	YW12801200000
15	推力球轴承	YW11512040000	YW11512040000
16	立柱前(下)	BH76626250010	BH76626250010
17	M6×12 螺丝	YW61061600200	YW61061600200
18	底杆 1500L	-	-
	底杆 2000L	BH76303091610	BH76303091610
	底杆 2500L	BH73250000010	BH73250000010
	底杆 3000L	BH73230000010	BH73230000010
	底杆 3500L	BH76335000010	BH76335000010
	底杆 4000L	BH76303000010	BH76303000010
	底杆 4500L	BH76345000010	BH76345000010
	底杆 5000L	BH76350000010	BH76350000010
	底杆 6000L	BH76336000010	BH76336000010

\*表示可能损坏的项目；\*\*表示较可能损坏的项目，建议备份。

请在下单采购零配件之前，先确认说明书版本号，以确保零配件物料号与实物一致。

### 2.1.7 控制箱零件图

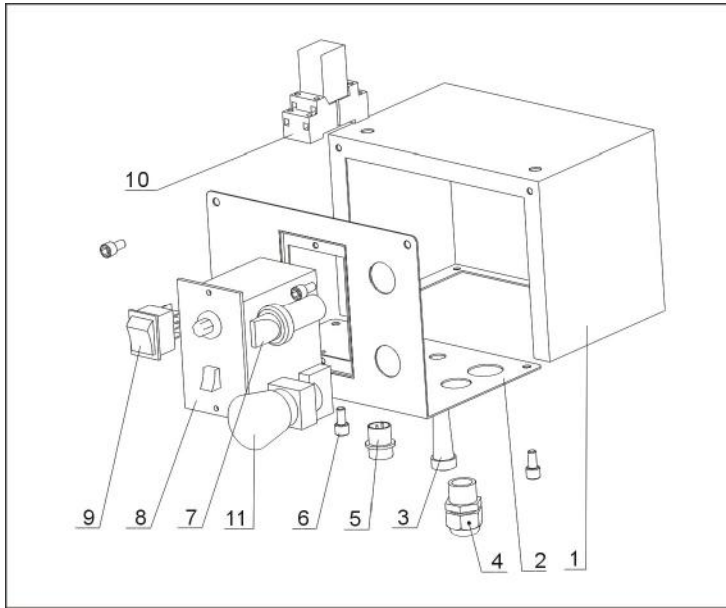


图 2-3: 控制箱零件图



## 2.1.8 零件材料明细表(SC/SCI)

表 2-9: 零件材料明细表(SC-200W~400W)

序号	名称	物料编号		
		SC-200W	SC-300W	SC-400W
1	控制箱体	BL68200800020	BL68200800020	BL68200800020
2	控制箱盖	BL68200700020	BL68200700020	BL68200700020
3	熔断保险座	YE46052000100	YE46052000100	YE46052000100
4	电缆锁头	YE67013500000	YE67013500000	YE67013500000
5	防水接头(公)	YE64160200100	YE64160200100	YE64160200100
	防水接头(母)	YE64160200000	YE64160200000	YE64160200000
6	M5×10 螺丝	-	-	-
7	旋钮开关	YE12210100000	YE12210100000	YE12210100000
8	组合型调速器	YE80520000200	YE80520000200	YE80520000200
9	切替开关	YE10220600000	YE10220600000	YE10220600000
10	中间继电器	YE03272400000	YE03272400000	YE03272400000
11	紧急停止按钮	YE11411000000	YE11411000000	YE11411000000

\*表示可能损坏的项目；\*\*表示较可能损坏的项目，建议备份。

请在下单采购零配件之前，先确认说明书版本号，以确保零配件物料号与实物一致。

表 2-10: 零件材料明细表(SC-500W/600W)

序号	名称	物料编号	
		SC-500W	SC-600W
1	控制箱体	BL68200800020	BL68200800020
2	控制箱盖	BL68200700020	BL68200700020
3	熔断保险座	YE46052000100	YE46052000100
4	电缆锁头	YE67013500000	YE67013500000
5	防水接头(公)	YE64160200100	YE64160200100
	防水接头(母)	YE64160200000	YE64160200000
6	M5×10 螺丝	-	-
7	旋钮开关	YE12210100000	YE12210100000
8	组合型调速器	YE80520000200	YE80520000200
9	切替开关	YE10220600000	YE10220600000
10	中间继电器	YE03272400000	YE03272400000
11	紧急停止按钮	YE11411000000	YE11411000000

\*表示可能损坏的项目；\*\*表示较可能损坏的项目，建议备份。

请在下单采购零配件之前，先确认说明书版本号，以确保零配件物料号与实物一致。

表 2-11: 零件材料明细表(SCI-200W~400W)

序号	名称	物料编号		
		SCI-200W	SCI-300W	SCI-400W
1	控制箱体	BL68200800020	BL68200800020	BL68200800020
2	控制箱盖	BL68200700020	BL68200700020	BL68200700020
3	熔断保险座	YE46052000100	YE46052000100	YE46052000100
4	电缆锁头	YE67013500000	YE67013500000	YE67013500000
5	防水接头(公)	YE64160200100	YE64160200100	YE64160200100
	防水接头(母)	YE64160200000	YE64160200000	YE64160200000
6	M5×10 螺丝	-	-	-
7	旋钮开关	YE12210100000	YE12210100000	YE12210100000
8	组合型调速器	YE80520000200	YE80520000200	YE80520000200
9	切替开关	YE10220600000	YE10220600000	YE10220600000
10	中间继电器	YE03272400000	YE03272400000	YE03272400000
11	紧急停止按钮	YE11411000000	YE11411000000	YE11411000000

\*表示可能损坏的项目；\*\*表示较可能损坏的项目，建议备份。

请在下单采购零配件之前，先确认说明书版本号，以确保零配件物料号与实物一致。

表 2-12: 零件材料明细表(SCI-500W/600W)

序号	名称	物料编号	
		SCI-500W	SCI-600W
1	控制箱体	BL68200800020	BL68200800020
2	控制箱盖	BL68200700020	BL68200700020
3	熔断保险座	YE46052000100	YE46052000100
4	电缆锁头	YE67013500000	YE67013500000
5	防水接头(公)	YE64160200100	YE64160200100
	防水接头(母)	YE64160200000	YE64160200000
6	M5×10 螺丝	-	-
7	旋钮开关	YE12210100000	YE12210100000
8	组合型调速器	YE80520000200	YE80520000200
9	切替开关	YE10220600000	YE10220600000
10	中间继电器	YE03272400000	YE03272400000
11	紧急停止按钮	YE11411000000	YE11411000000

\*表示可能损坏的项目；\*\*表示较可能损坏的项目，建议备份。

请在下单采购零配件之前，先确认说明书版本号，以确保零配件物料号与实物一致。