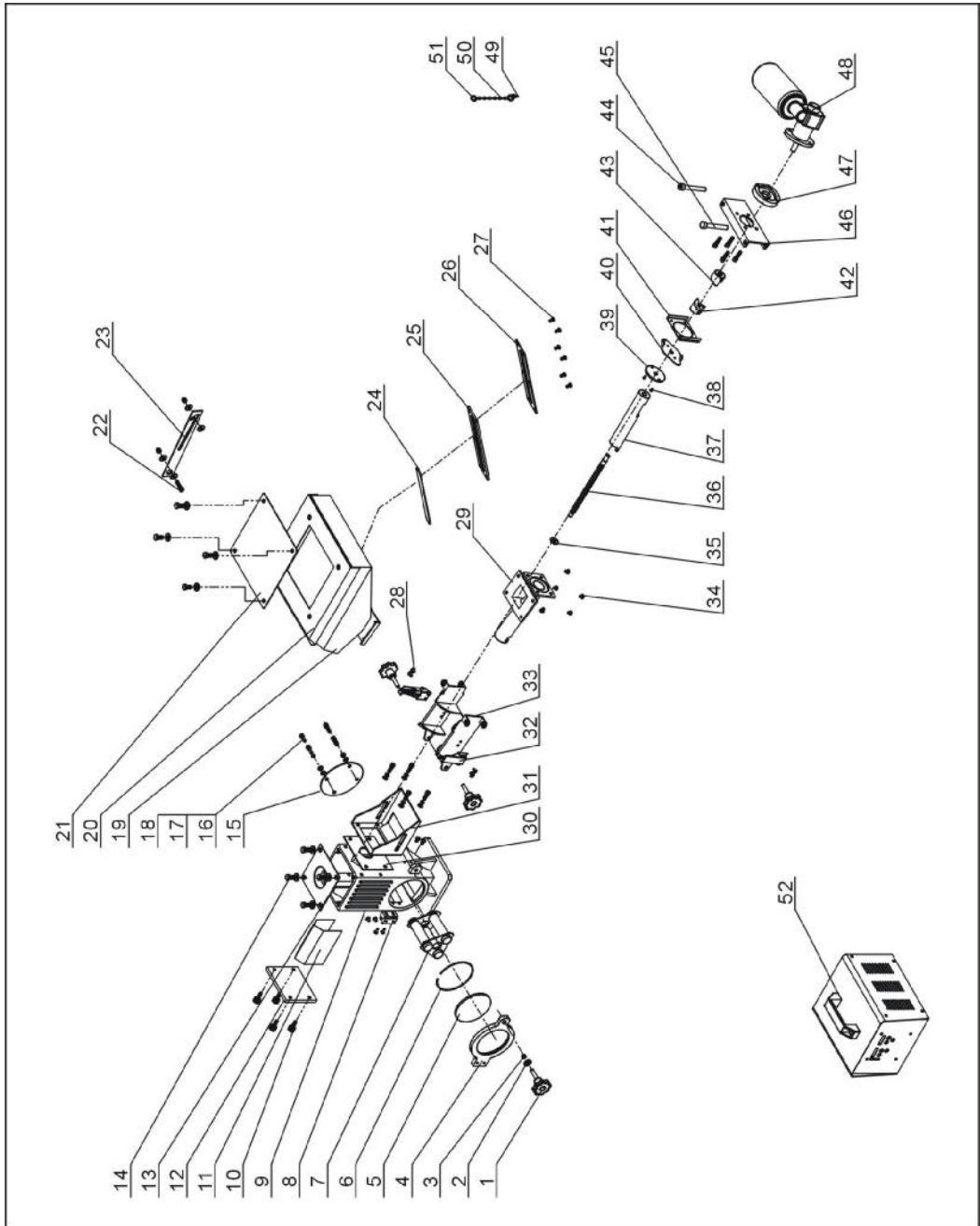


2.3 Assembly Drawing and Parts List

2.3.1 Assembly Drawing of Single-color Doser



Remarks: Please refer to material List 2.3.2 for specific explanation of the Arabic numbers in parts drawing.

Picture 2-3: Assembly Drawing of Single-color Doser

2.3.2 Parts List of Single-color Doser

Table 2-1: Parts List of Single-color Doser (SCM-E-38-16/14/12)

No.	Name	Part number		
		SCM-E-38-16	SCM-E-38-14	SCM-E-38-12
1	Knob B type M8×35	YR40083500000	YR40083500000	YR40083500000
2	Flat gasket 8	YW66081900000	YW66081900000	YW66081900000
3	Nut M8	YW64000800100	YW64000800100	YW64000800100
4	Base door	-	-	-
5	Tempered glass	YW70125000000	YW70125000000	YW70125000000
6	Spring of magnetic base	YW01005000100	YW01005000100	YW01005000100
7	Three-tube magnetic frame	BY10500010050	BY10500010050	BY10500010050
8	Hinge of magnetic base	BL01005020020	BL01005020020	BL01005020020
9	Base	-	-	-
10	Manual tighten up screw M6×6×16	YW69616100000	YW69616100000	YW69616100000
11	Striker plate	-	-	-
12	End plate	-	-	-
13	Base cover	-	-	-
14	Hex screw M8×16	YW60081600100	YW60081600100	YW60081600100
15	Rear cover	-	-	-
16	Hex socket screw M6×20	YW61062000200	YW61062000200	YW61062000200
17	Flat gasket 8	YW66061200000	YW66061200000	YW66061200000
18	Spring gasket 6	YW65006000100	YW65006000100	YW65006000100
19	Storage hopper	-	-	-
20	Storage hopper lid plate	-	-	-
21	Storage hopper lid	BW09202000000	BW09202000000	BW09202000000
22	Hex screw M6×25	YW61062500000	YW61062500000	YW61062500000
23	Hopper connection plate	-	-	-
24	Six-way acryl	YR40001200000	YR40001200000	YR40001200000
25	Six-way acryl stringency	YR40000600000	YR40000600000	YR40000600000
26	Six-way acryl iron sheet	YW09000600000	YW09000600000	YW09000600000
27	Cross socket head cap screw M5×10	YW62051000100	YW62051000100	YW62051000100
28	Cross socket head cap screw M4×10	YW62041000100	YW62041000100	YW62041000100
29	Convey pipeline	-	-	-
30	Material shutter	-	-	-

No.	Name	Part number		
		SCM-E-38-16	SCM-E-38-14	SCM-E-38-12
31	Side fixed housing	-	-	-
32	New snap hook adjustable	YW02003000400	YW02003000400	YW02003000400
33	Body fixed bracket 1	-	-	-
34	Hex socket screw M5×10	YW61051000100	YW61051000100	YW61051000100
35	Screw shaft option 2	-	-	-
36	Screw shaft Φ12	-	-	-
37	Screw shaft Φ12 sleeve	-	-	-
38	Cruciform screw M3×6	YW61030600100	YW61030600100	YW61030600100
39	Screw shaft option 3	-	-	-
40	Screw shaft connection of	-	-	-
41	Conveying connection board	-	-	-
42	Shaft coupler 1	-	-	-
43	Shaft coupler 2	-	-	-
44	Motor fixed rotation pin 2	-	-	-
45	Motor fixed rotation pin 1	-	-	-
46	Body fixed bracket 2	-	-	-
47	Feeding motor flange	-	-	-
48	Gearmotor	-	-	-
49	Screw M3×10	-	-	-
50	1.2 hinge	YW90120000000	YW90120000000	YW90120000000
51	A key ring1.5×13	-	-	-
52	Electrical control box	-	-	-

* means possible broken parts.

** means easy broken part. and spare backup is suggested.

Please confirm the version of manual before placing the purchase order to guarantee that the item number of the spare part is in accordance with the real object.

Table 2-2: Parts List of Single-color Doser (SCM-E-75-16/14/12)

No.	Name	Part number		
		SCM-E-75-16	SCM-E-75-14	SCM-E-75-12
1	Knob B typem8×35	YR40083500000	YR40083500000	YR40083500000
2	Flat gasket 8	YW66081900000	YW66081900000	YW66081900000
3	Nut M8	YW64000800100	YW64000800100	YW64000800100
4	Base door	-	-	-
5	Tempered glass	YW70125000000	YW70125000000	YW70125000000
6	Spring of magnetic base	YW01005000100	YW01005000100	YW01005000100
7	Three-tube magnetic frame	BY10500010050	BY10500010050	BY10500010050
8	Hinge of magnetic base	BL01005020020	BL01005020020	BL01005020020
9	Base	-	-	-
10	Manual tighten up screw M6×6×16	YW69616100000	YW69616100000	YW69616100000
11	Striker plate	-	-	-
12	End plate	-	-	-
13	Base cover	-	-	-
14	Hex screw M8×16	YW60081600100	YW60081600100	YW60081600100
15	Rear cover	-	-	-
16	Hex socket screw M6×20	YW61062000200	YW61062000200	YW61062000200
17	Flat gasket 8	YW66061200000	YW66061200000	YW66061200000
18	Spring gasket 6	YW65006000100	YW65006000100	YW65006000100
19	Storage hopper	-	-	-
20	Storage hopper lid plate	-	-	-
21	Storage hopper lid	BW09202000000	BW09202000000	BW09202000000
22	Hex screw M6×25	YW61062500000	YW61062500000	YW61062500000
23	Hopper connection plate	-	-	-
24	Six-way acryl	YR40001200000	YR40001200000	YR40001200000
25	Six-way acryl stringency	YR40000600000	YR40000600000	YR40000600000
26	Six-way acryl iron sheet	YW09000600000	YW09000600000	YW09000600000
27	Cross socket head cap screw M5×10	YW62051000100	YW62051000100	YW62051000100
28	Cross socket head cap screw M4×10	YW62041000100	YW62041000100	YW62041000100
29	Convey pipeline	-	-	-
30	Material shutter	-	-	-

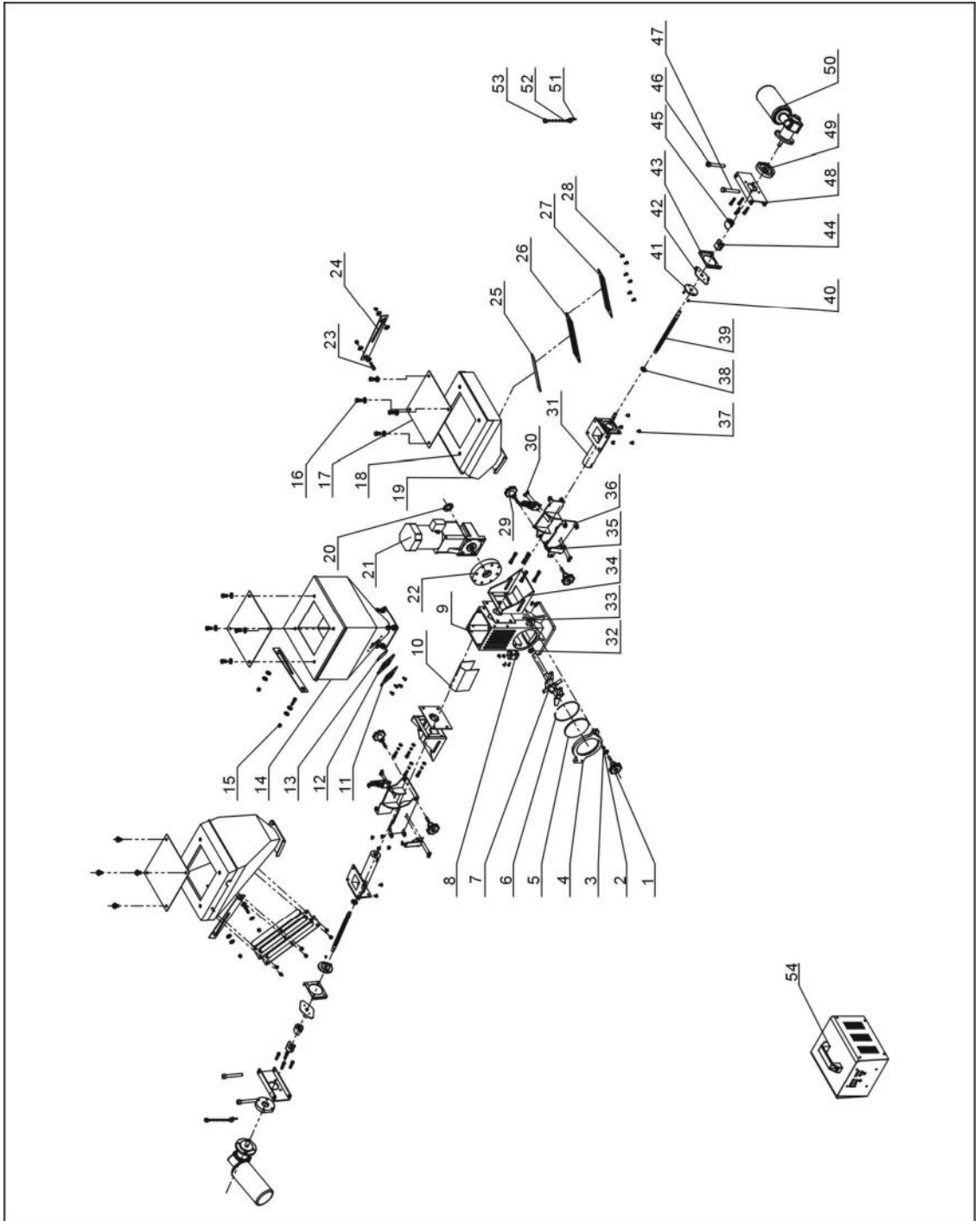
No.	Name	Part number		
		SCM-E-75-16	SCM-E-75-14	SCM-E-75-12
31	Side fixed housing	-	-	-
32	New snap hook adjustable	YW02003000400	YW02003000400	YW02003000400
33	Body fixed bracket 1	-	-	-
34	Hex socket screw m5×10	YW61051000100	YW61051000100	YW61051000100
35	Screw shaft option 2	-	-	-
36	Screw shaft φ12	-	-	-
37	Screw shaft φ12 sleeve	-	-	-
38	Cruciform screw m3×6	YW61030600100	YW61030600100	YW61030600100
39	Screw shaft option 3	-	-	-
40	Screw shaft connection of	-	-	-
41	Conveying connection board	-	-	-
42	Shaft coupler 1	-	-	-
43	Shaft coupler 2	-	-	-
44	Motor fixed rotation pin 2	-	-	-
45	Motor fixed rotation pin 1	-	-	-
46	Body fixed bracket 2	-	-	-
47	Feeding motor flange	-	-	-
48	Gearmotor	-	-	-
49	Screw M3×10	-	-	-
50	1.2 hinge	YW90120000000	YW90120000000	YW90120000000
51	A key ring1.5×13	-	-	-
52	Electrical control box	-	-	-

* means possible broken parts.

** means easy broken part. and spare backup is suggested.

Please confirm the version of manual before placing the purchase order to guarantee that the item number of the spare part is in accordance with the real object.

2.3.3 Assembly Drawing of Two-color Doser



Remarks: Please refer to material List 2.3.4 for specific explanation of the Arabic numbers in parts drawing.

Picture 2-3: Assembly Drawing of Two-color Doser

2.3.4 Parts List of Two-color Doser

Table 2-3: Parts List of Two-color Doser (SCM-E-D-38-16/14/12)

No.	Name	Part number		
		SCM-E-D-38/38	SCM-E -D-38/75	SCM-E -D-75/75
1	Knob B type m8×45	-	-	-
2	Flat gasket 8	YW66081900000	YW66081900000	YW66081900000
3	Nut M8	YW64000800100	YW64000800100	YW64000800100
4	Base door	-	-	-
5	Tempered glass**	YW70125000000	YW70125000000	YW70125000000
6	Spring of magnetic base	YW01005000100	YW01005000100	YW01005000100
7	Mixer welding figure	-	-	-
8	Hinge of magnetic base	BL01005020020	BL01005020020	BL01005020020
9	Base	BW20000000010	BW20000000010	BW20000000010
10	Striker plate	-	-	-
11	Four -way acryl iron sheet	YW09000400000	YW09000400000	YW09000400000
12	Four -way acryl stringency	YR40000400000	YR40000400000	YR40000400000
13	Four-way acryl	YR40001200100	YR40001200100	YR40001200100
14	Main hopper welding figure	-	-	-
15	Acorn nut M6	YW64006000100	YW64006000100	YW64006000100
16	Hex screw M8×16	YW60081600100	YW60081600100	YW60081600100
17	Storage hopper lid	BW09202000000	BW09202000000	BW09202000000
18	Storage hopper lid plate	-	-	-
19	Storage hopper	-	-	-
20	Blending motor cover washer	-	-	-
21	Blending motor	YM50992200000	YM50992200000	YM50992200000
22	Fixed flange for mixing	-	-	-
23	Hex socket screw M6×25	YW61062500000	YW61062500000	YW61062500000
24	Hopper connection plate	-	-	-
25	Six-way acryl	YR40001200000	YR40001200000	YR40001200000
26	Six-way acryl stringency	YR40000600000	YR40000600000	YR40000600000
27	Six-way acryl iron sheet	YW09000600000	YW09000600000	YW09000600000
28	Cross socket head cap screw M5×10	YW62051000100	YW62051000100	YW62051000100
29	Knob B type m8×35	YR40083500000	YR40083500000	YR40083500000
30	Cross socket head cap screw M4×10	YW62041000100	YW62041000100	YW62041000100

No.	Name	Part number		
		SCM-E-D-38/38	SCM-E -D-38/75	SCM-E -D-75/75
31	Convey pipeline	-	-	-
32	Nsk bearing 6003	YW11600300000	YW11600300000	YW11600300000
33	Material shutter	-	-	-
34	Side fixed housing	-	-	-
35	New snap hook adjustable	YW02003000400	YW02003000400	YW02003000400
36	Body fixed bracket 1	-	-	-
37	Cruciform screw m5×10	YW61051000100	YW61051000100	YW61051000100
38	Screw shaft option 2	-	-	-
39	Screw shaft ϕ 16	-	-	-
40	Cruciform screw m3×6	YW61030600100	YW61030600100	YW61030600100
41	Screw shaft option 3	-	-	-
42	Screw shaft connection of	-	-	-
43	Conveying connection board	-	-	-
44	Shaft coupler 1	-	-	-
45	Shaft coupler 2	-	-	-
46	Motor fixed rotation pin 2	-	-	-
47	Motor fixed rotation pin 1	-	-	-
48	Body fixed bracket 2	-	-	-
49	Feeding motor flange	-	-	-
50	Gearmotor	-	-	-
51	Screw m3×10	-	-	-
52	Dia. 1.2 hinge	YW90120000000	YW90120000000	YW90120000000
53	A key ring1.2×16	-	-	-
54	Electrical control box	-	-	-

* means possible broken parts.

** means easy broken part. and spare backup is suggested.

Please confirm the version of manual before placing the purchase order to guarantee that the item number of the spare part is in accordance with the real object.