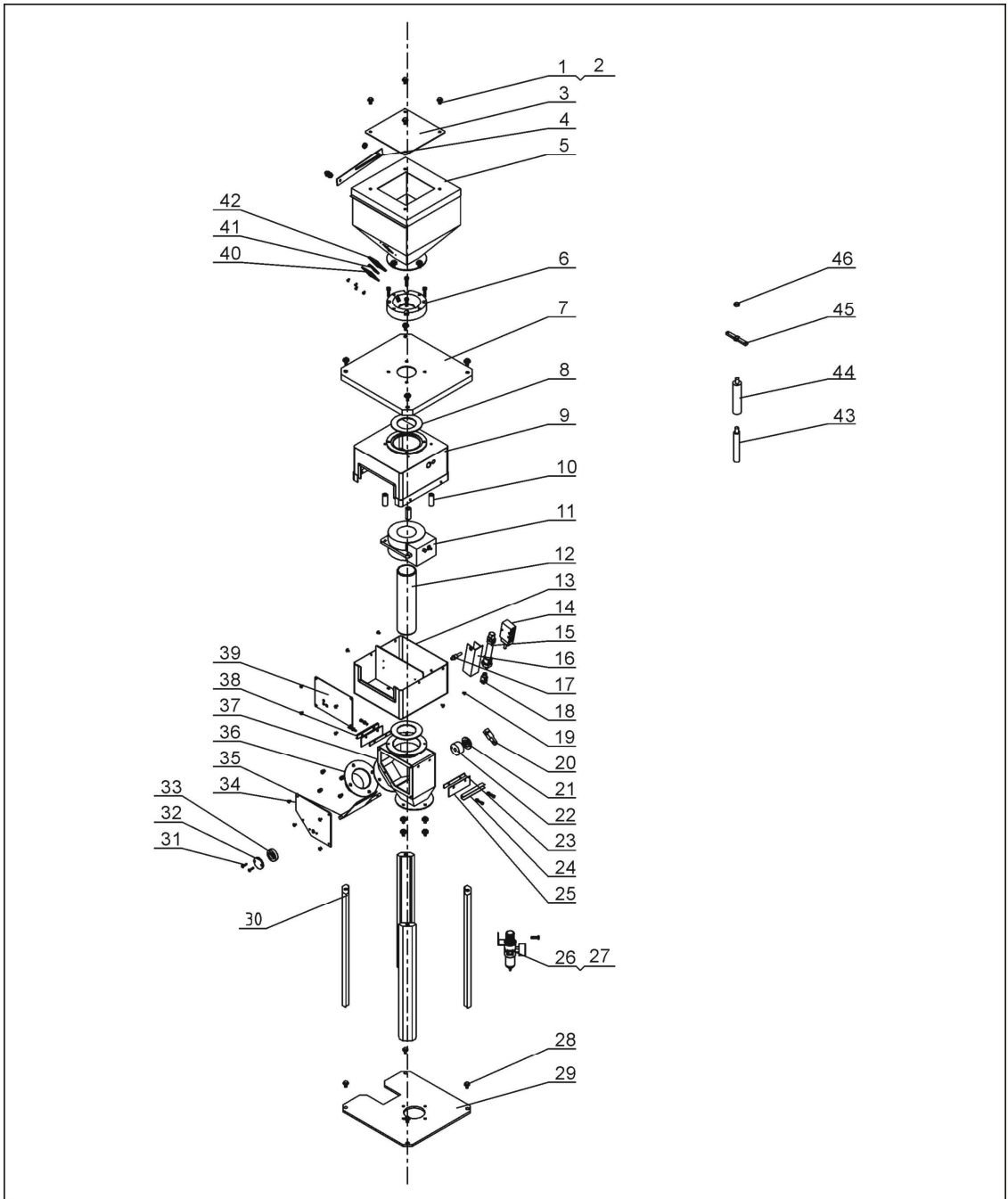


2.2 Drawing and Parts List

2.2.1 Assembly Drawing



Remarks: Please refer to material list 2.2.2 for specific explanation of the Arabic numbers in parts drawing.

Picture 2-3: Assembly Drawing

2.2.2 Parts List

Table 2-1: Parts List

No.	Name	Part No.	No.	Name	Part No.
1	Hex screw M8×16	YW60081600100	23	Block solid piece of skin 2	-
2	Flat gasket 8	YW66081900000	24	Block solid piece of skin 3	-
3	Hopper lid plate cover	BW09202000000	25	Material keeping leather	-
4	Hopper connection plate	-	26	Filter & pressure regulating valve	YE30421400000
5	Store hopper welding figure	-	27	Honeycomb mounting bracket	YE30004200000
6	Feed opening flange	BH13007000010	28	Hex screwm8×10	YW60081000100
7	Top plate	-	29	Base	-
8	Material outlet tube lid	BH14007500110	30	Standing post	-
9	Cover body welding figure	-	31	Flat head screw M5×20	YW62052000000
10	Detector fitment	BH10184500010	32	Bearing block cover B	BH13005000310
11	Metal survey meter	YE15007000000	33	Bearing block B	BH13005000110
12	Material outlet pipe	BR90700300010	34	Under body components 4	-
13	Cover the body welding figure	-	35	Block material components	-
14	Solenoid valve	YE32051800300	36	Material outlet	-
15	Festocylinder	YE31205000000	37	Nakedness welding figure	-
16	Cylinder installation board	-	38	Block solid piece of skin 1	-
17	Cylinder location pin	BH10165200010	39	Panel	-
18	FESTO Y type pin rod	YE31000800000	40	Stringency four holes of material Observation window	YW09000400000
19	Flat head screw M5×10	YW62051000100	41	Acryl four holes	YR40001200100
20	Cylinder components	BH11257500010	42	Stringency four holes of material Observation window	YR40000400000
21	Bearing block cover A	BH13005000210	43	Φ21 Keep-off rods	BR90500100010
22	Bearing block A	BH13005000610	44	Φ31 Keep-off rods	BR90350100010

No.	Name	Part No.	No.	Name	Part No.
45	Fixing board for keep-off rods	BL90500020020	46	Locknut M12	YW64001200000

* means possible broken parts.

** means easy broken part. and spare backup is suggested.

Please confirm the version of manual before placing the purchase order to guarantee that the item number of the spare part is in accordance with the real object.