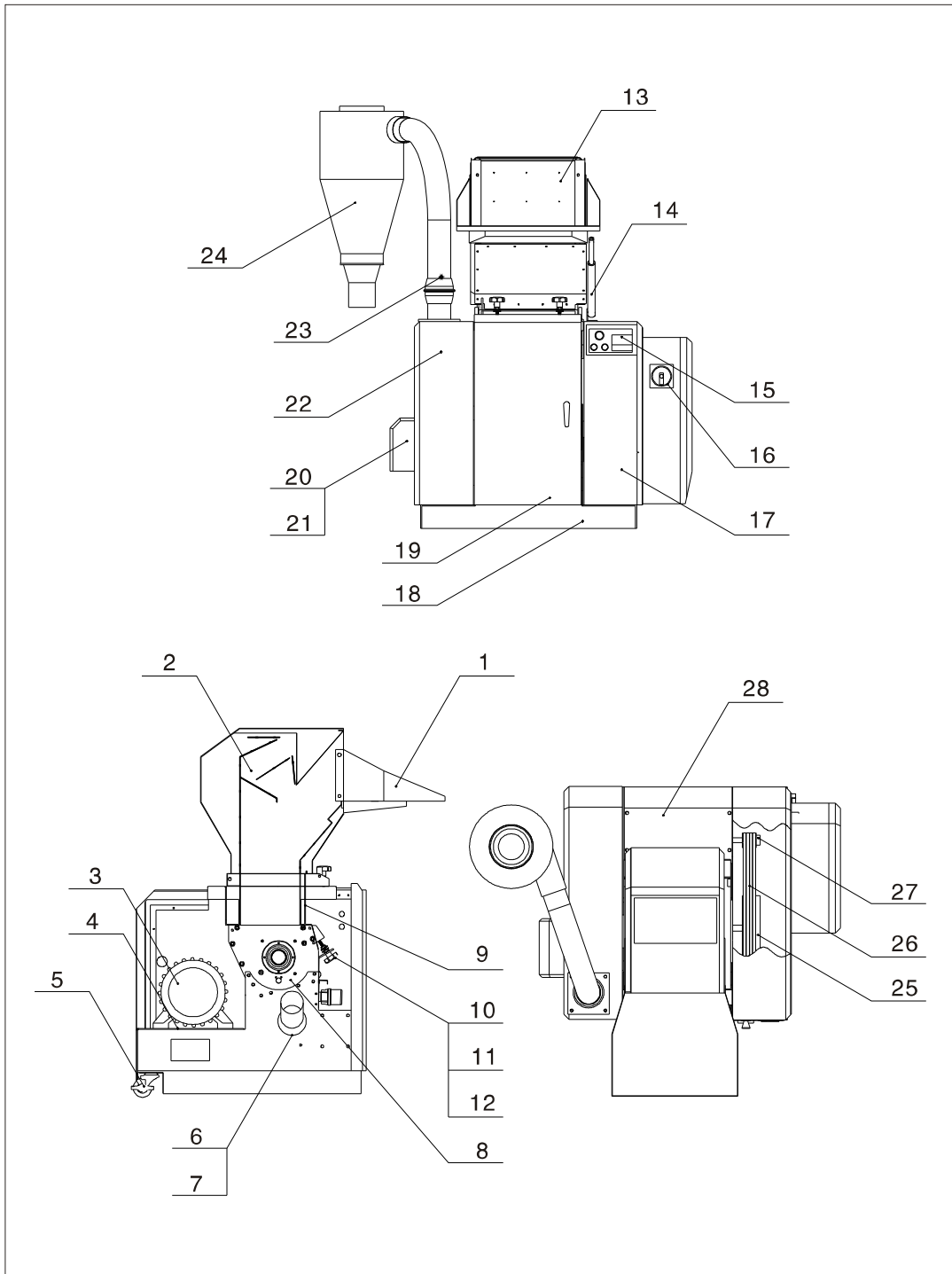


### 2.3 SG-23 Assembly Drawing

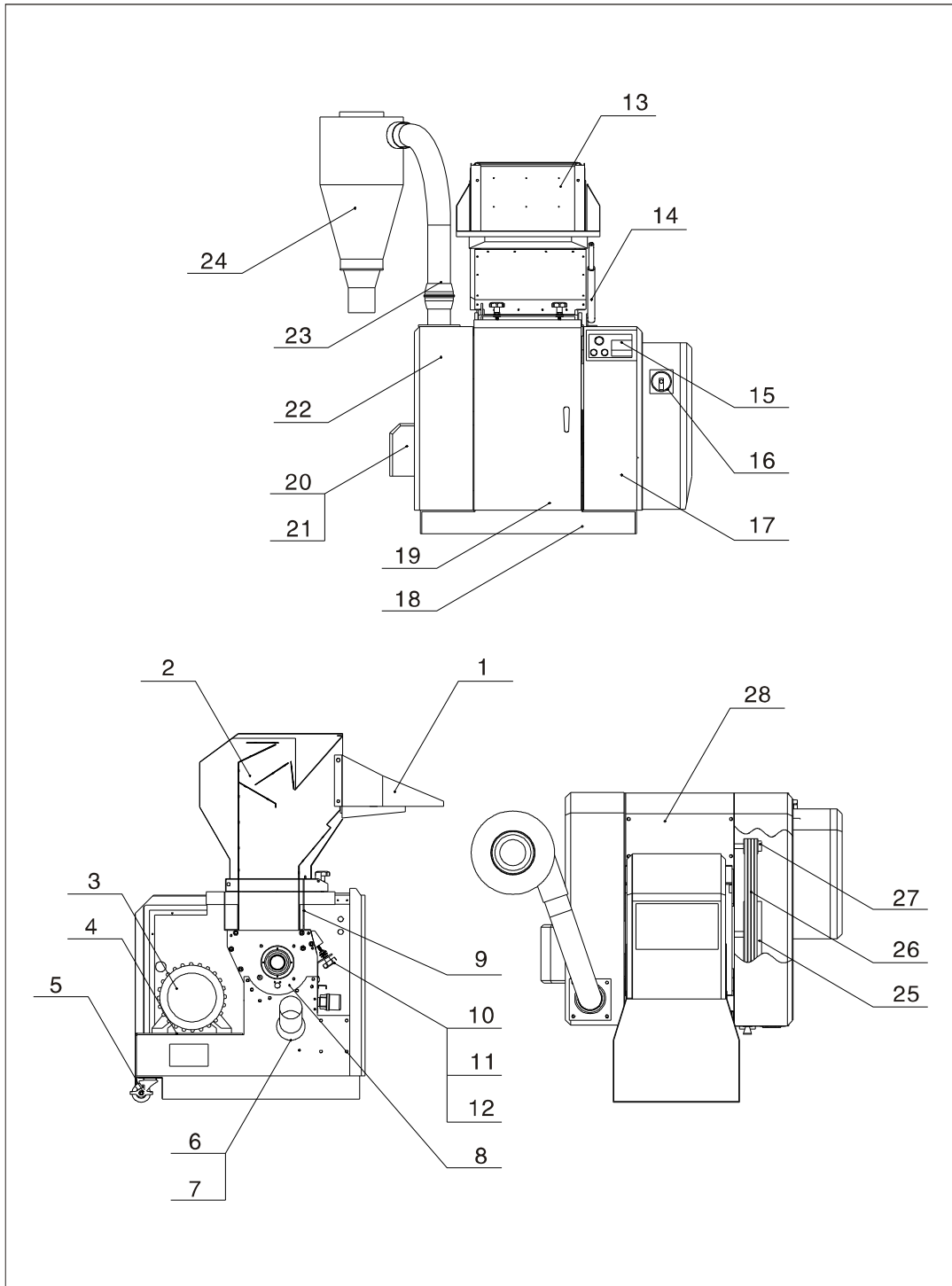


## 2.4 SG-23 Parts List

No.	Name	Parts Number		
		SG-2324 (S)	SG-2336 (S)	SG-2348 (S)
1	Feeding inlet	BL58232400020	BL58233600020	BL58234800020
2	Feed box	BL54232400020	BL54233600020	BL54234800020
3	Motor	YM10713000200 YM10711300200	YM10713300200 YM10713000200	YM10716300200 YM10713300200
4	Motor pedestal	-	-	-
5	Truckle	YW03000300500 YW03000300600	YW03000300500 YW03000300600	YW03000300500 YW03000300600
6	Air suction pipe	-	-	-
7	Fixing plate of air suction pipe	-	-	-
8	Cutting chamber	BH85232400010	BH85233600010	BH85234800010
9	Cutting box	-	-	-
10	Screen bracket	BL54232400220	BL54233600220	BL54234800220
11	Screen **	BL54042500020	BL54233600820	BL54234800820
12	Storage box	BL54232410020	BL54233610020	BL54234810020
13	Feeding inlet material baffle	BR90232400020	BR90233600020	BR90234800020
14	Pneumatic spring	YW01090000000	YW01090000000	YW01090000000
15	Control panel	BR01023000020	BR01023000020	BR01023000020
16	Switch of main power *	YE10220300000	YE10220300000	YE10220300000
17	Right shell	BL90900800020	BL90900800020	BL90900800020
18	Pedestal	BL54234800320	-	-
19	Door	BH10232400110	-	-
20	Blower *	BM30055000250	BM30055000250	BM30055000250
21	Left shell	-	-	-
22	Blower cover	BL90900800120	BL90900800120	BL90900800120
23	Feeding pipe	-	-	-
24	Cyclone dust collector	BY50002300150	BY50002300150	BY50002300150
25	Larger belt pulley	YW30002300100	YW30002300100	YW30002300100
26	V-belt *	YR00160000100	YR00160000100	YR00160000100
27	Smaller belt pulley	YW30230000000	YW30230000000	YW30230000000
28	Rear cover plate	-	-	-

\* means possible broken parts. \*\* means easy broken part. and spare backup is suggested.

### 2.5 SG-30 Assembly Drawing



2.6 SG-30 Parts List

No.	Name	Parts Number	
		SG-3048	SG-3060
1	Feeding inlet	BL58304800020	BL58306000020
2	Feed box	BL54304800020	BL54306000020
3	Motor	YM10716300200 YM10716600100	YM10716600100 YM10185400000
4	Motor pedestal	-	-
5	Truckle	YW03000300500 YW03000300600	YW03000300500 YW03000300600
6	Air suction pipe	-	-
7	Fixing plate of air suction pipe	-	-
8	Cutting chamber	BH85304800010	BH85306000010
9	Cutting box	-	-
10	Screen bracket	BL54304800220	BL54306000220
11	Screen **	BL54304800820	BL54304800820
12	Storage box	BL54304801120	BL54306001120
13	Material baffle	YW45300000000	YW45300000000
14	Pneumatic spring	YW01090000000	YW01090000000
15	Control panel	BR01023000020	BR01023000020
16	Switch of main power *	YE10250400000	YE10250400000
17	Right shell	-	-
18	Pedestal	-	-
19	Door	BH10304801310	BH10306001310
20	Blower *	YM30055000000	YM30055000000
21	Left shell	-	-
22	Blower cover	-	-
23	Feeding pipe	-	-
24	Cyclone dust collector	-	-
25	Larger belt pulley	YW30002300100	YW30002300100
26	V-belt *	YR00170000000	YR00170000000
27	Smaller belt pulley	BW30300000010	BW30300000010
28	Rear cover plate	-	-

\* means possible broken parts. \*\* means easy broken part. and spare backup is suggested.