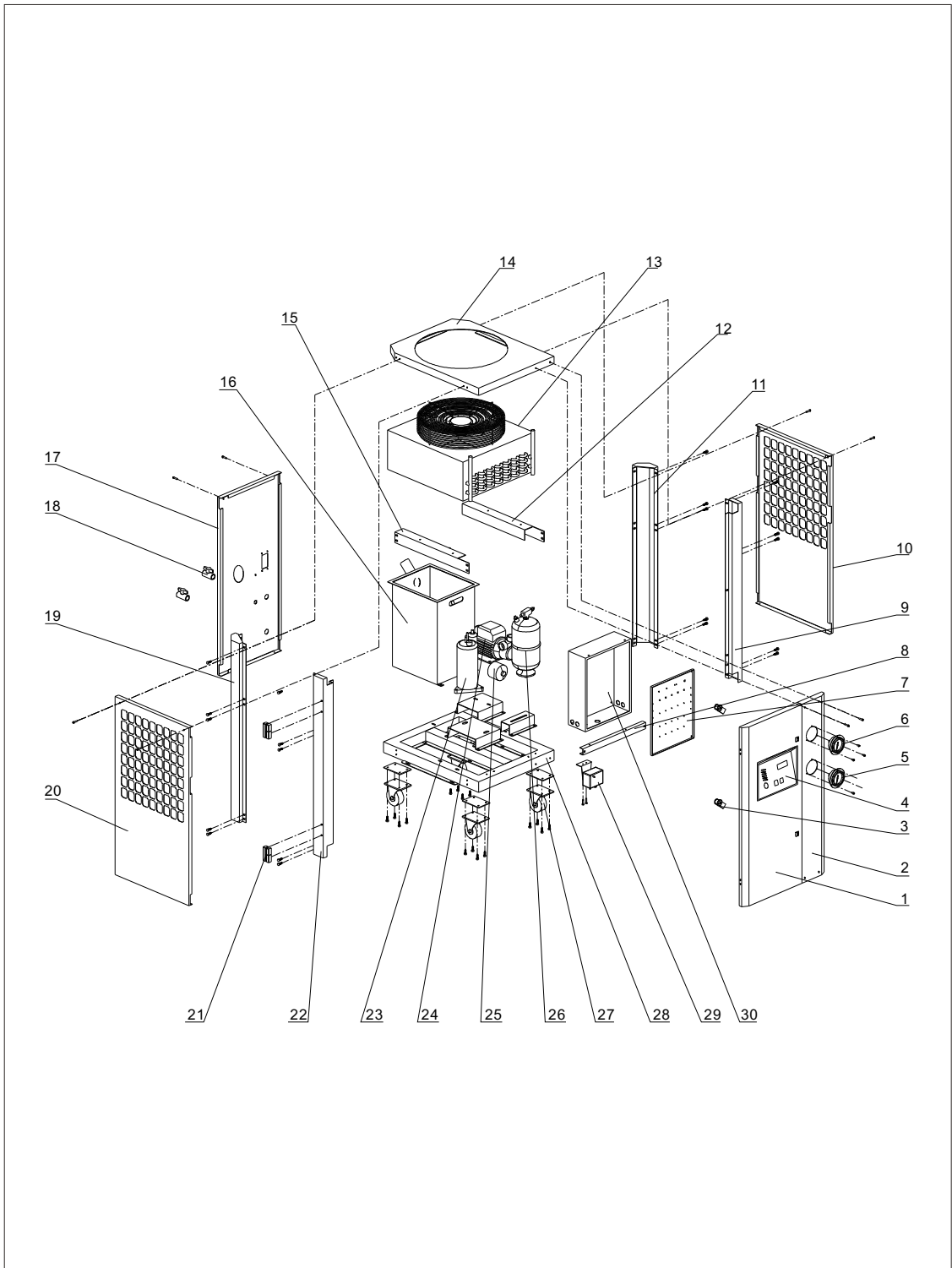


2.3 SIC-1A Assembly Drawing

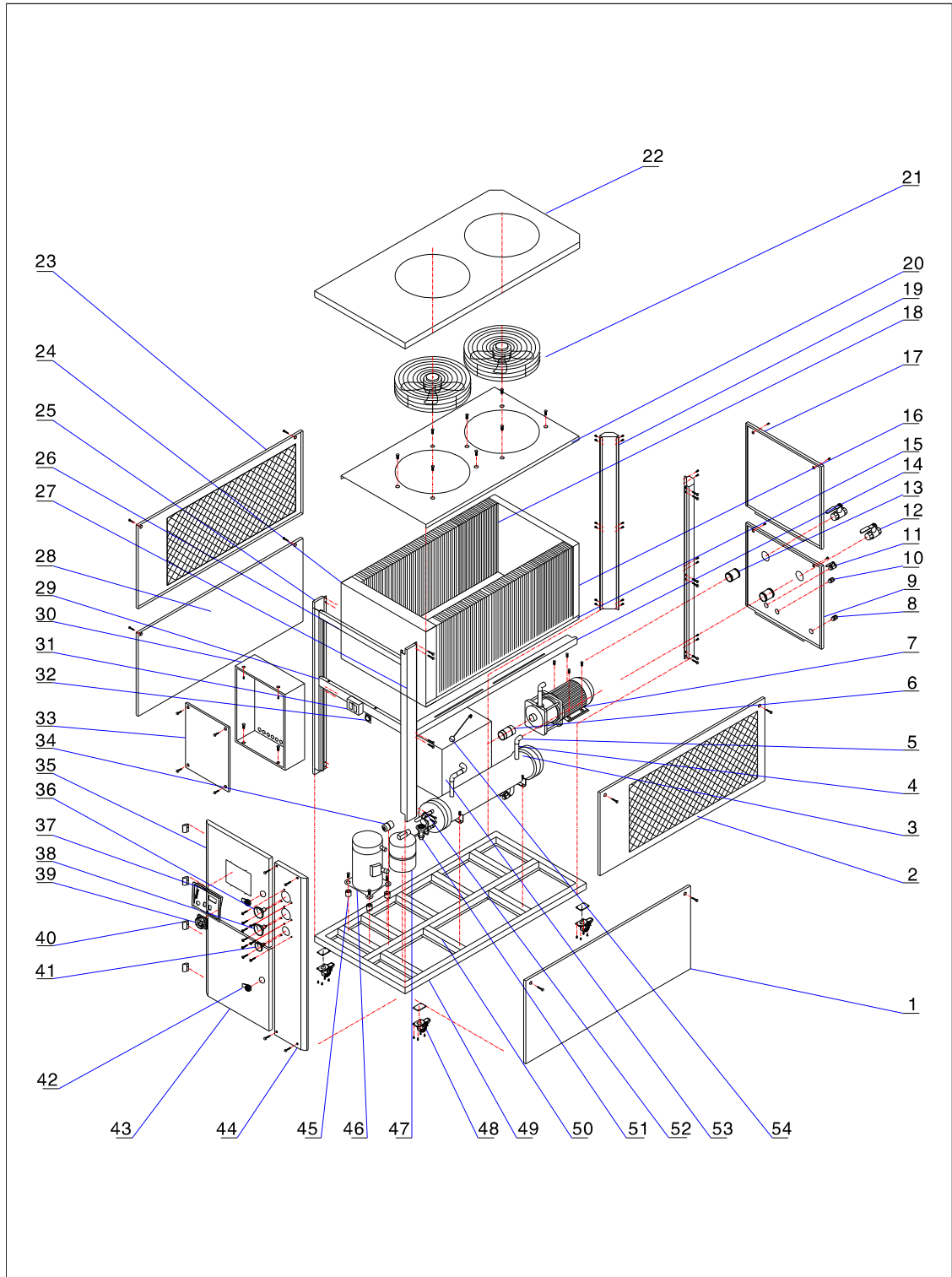


2.4 SIC-1A Parts List

N0.	Name	No. of the materiel
1	Door plank	PSIC00000001XXA0004
2	Meter board	PSIC00000001XXA0001
3	Control box door lock	YW00040600200
4	Control panel	YR40000400200
5	Low pressure gauge	YE90151500000
6	High pressure gauge	YE90253500000
7	Electric bottom plate	PSIC00000001XXA4003
8	Electrical control box support beam	PSIC00000001XXA9001
9	Right front standing pole	PSIC00000001XXA1008
10	Side plate (right)	PSIC00000001XXA0002
11	Back standing column (right)	PSIC00000001XXA1005
12	Condenser support beam right	PSIC00000001XXA1009
13	Condenser	-
14	Top plate	PSIC00000001XXA0005
15	Back standing column (left)	PSIC00000001XXA1009
16	Water tank	PSIC00000001XXA7001
17	Rear plate	PSIC00000001XXA0003
18	Ball valve	YW50010200100
19	Back standing column (left)	PSIC00000001XXA0005
20	Side plate (left)	PSIC00000001XXA0002
21	Small	YW06203100400
22	Front standing pole (left)	PSIC00000001XXA1008
23	Compressor	-
24	Water pump	-
25	Dry filter	-
26	Fluid reservoir	BL32060000020
27	Castor	YW03000300100
28	Base	PSIC00000001XXA1001
29	Pressure controller	YE90083000100
30	Electrical control box	PSIC00000001XXA4002

* means possible broken parts. ** means easy broken part. and spare backup is suggested.

2.5 SIC-3A~15A Assembly Drawing



2.6 SIC-3A~15A Parts List

NO.	Name	No. of the materiel		
		SIC-3A-P	SIC-5A-P	SIC-8A-P
1	Right below board	-	-	-
2	Right up board	-	-	-
3	The evaporator	YW87003000000	YW87005000000	YW87008000000
4	Galvanization water pipe	YS50130600000	YS50130600000	YS50153600000
5	Elbow of the water pipe	YW53100000000	YW53100000000	YW53011200000
6	The rubber pipe*	YR60320500000	YR60320500000	YR60420300000
7	The pump*	YM21015800100	YM21015800100	YM21401600100
8	The compensate stretch	YW57341200000	YW57341200000	YW57341200000
9	Back below board	-	-	-
10	The direct connection	YW51001200000	YW51001200000	YW51001200000
11	Ball valve*	YW50010200100	YW50010200100	YW50010200100
12	Ball valve*	YW50010200100	YW50010200100	YW50010200100
13	Water pipe direct connection	YW51000100000	YW51000100000	YW51001200000
14	Middle side beam	-	-	-
15	Fan cover base board	-	-	-
16	Fan cover back board	-	-	-
17	Back top board	-	-	-
18	The condenser	YW86003500000	YW86003500000	YW86008100000
19	Back standing column	-	-	-
20	Fan cover board	-	-	-
21	Outer rotor fan	YM60445000100	YM60445000100	YM60440000100
22	Cover	-	-	-
23	Left top board	-	-	-
24	Fan cover front board	-	-	-
25	Left standing column	-	-	-
26	Control box top beam	-	-	-
27	Right front standing column	-	-	-

NO.	Name	No. of the materiel		
		SIC-3A-P	SIC-5A-P	SIC-8A-P
28	Left below board	-	-	-
29	Control box below beam	-	-	-
30	Control box	BH52000300650	BH52000500950	BH52000800750
31	High and low pressure switch	YE90083000000	YE90083000000	YE90083000100
32	Adjustable anti-freeze switch	YW85071100000	YW85071100000	YW85071100000
33	Control base board	-	-	-
34	Drying filter	YW85008300000	YW85016400000	YW85016400000
35	Top door board	-	-	-
36	High pressure meter	YW85603500000	YW85603500000	YW85603500000
37	Control panel	YR01004400000	YR01004400000	YR01004400000
38	Low pressure meter	YW85601500000	YW85601500000	YW85601500000
39	Main power switch	YE10200300000	YE10200300000	YE10220300000
40	Hinge	YW06203100400	YW06203100400	YW06203100400
41	Water pressure meter	YW85001000100	YW85001000100	YW85001000100
42	Door lock	YW00000000100	YW00000000100	YW00000000100
43	Left below door board	-	-	-
44	Meter board fixing board	-	-	-
45	Anti-vibrate leg for the compressor	-	-	-
46	Compressor *	YM70338000000	YM70534600000	YM70083800000
47	Storage bin	-	YW85080500000	YW85100800000
48	Castor	YW03000300000	YW03000300000	YW03000300000
49	Bottom frame	-	-	-
50	Below beam	-	-	-
51	Heat expansion valve	YW85033810100	-	YW85000500100
52	liquid filling thimble valve	YW85010400100	YW85010400100	YW85010400100
53	Stainless water tank	-	-	-
54	Floating ball valve*	YW59010200000	YW59010200000	YW59010200000

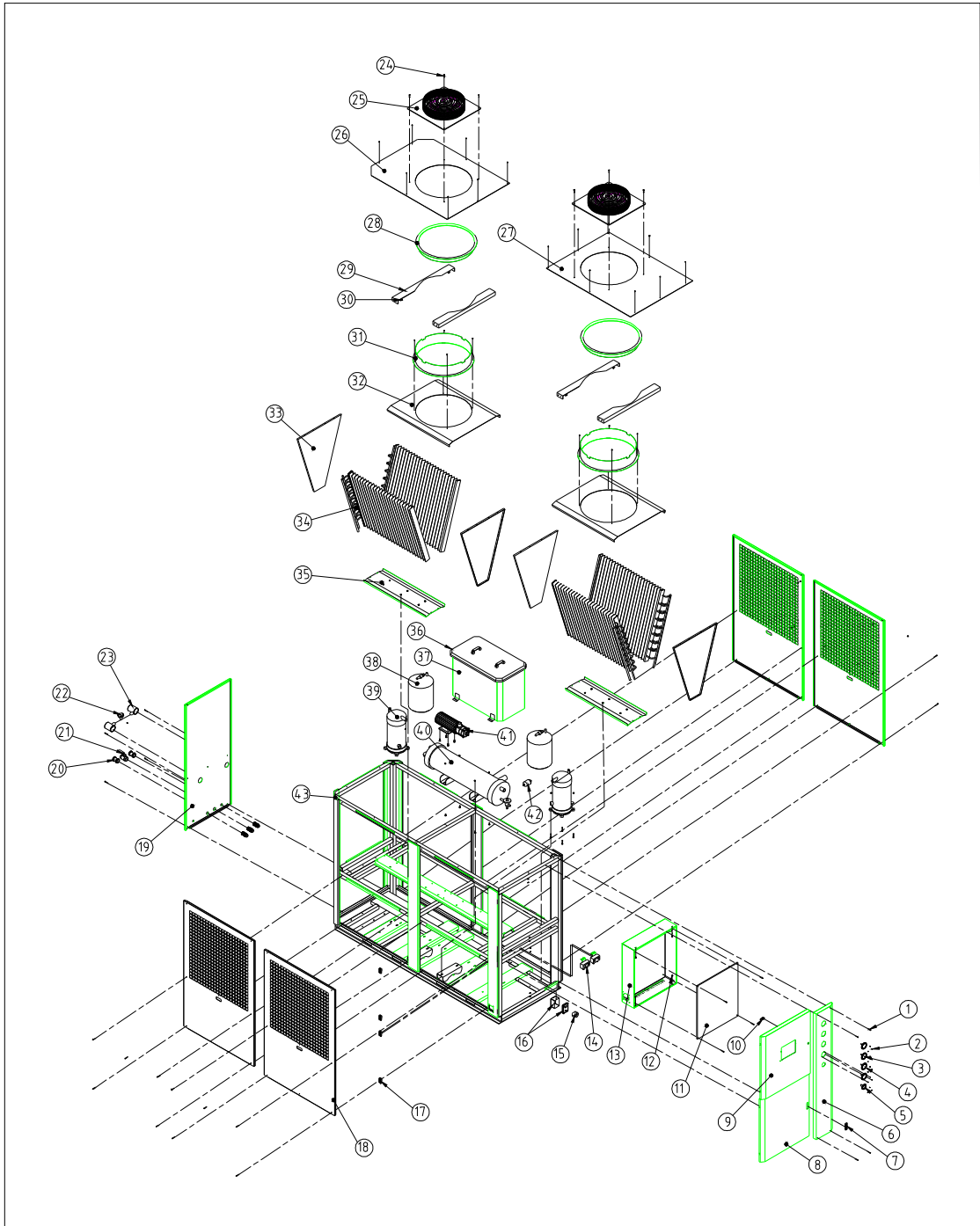
* means possible broken parts. ** means easy broken part. and spare backup is suggested.

NO.	Name	No. of the materiel		
		SIC-10A-P	SIC-12.5A-P	SIC-15A-P
1	Right below board	-	-	-
2	Right up board	-	-	-
3	The evaporator	YW87010000000	YW87012500000	YW87015000000
4	Galvanization water pipe	YS50153600000	YS50153600000	YS50153600000
5	Elbow of the water pipe	YW53011200000	YW53100200100	YW53100200100
6	The rubber pipe*	YR60420300000	YR60420300000	YR60420300000
7	The pump*	YM21401600100	YM21017000100	YM21017000100
8	The compensate stretch	YW57150100000	YW53100000000	YW57150100000
9	Back below board	-	-	-
10	The direct connection	-	YW51001200000	YW51001200000
11	Ball valve*	YW50010200100	YW50010200100	YW50010200100
12	Ball valve*	YW50010200100	YW50010200100	YW50010200100
13	Water pipe direct connection	YW51001200000	YW51001200000	YW51001200000
14	Middle side beam	-	-	-
15	Fan cover base board	-	-	-
16	Fan cover back board	-	-	-
17	Back top board	-	-	-
18	The condenser	YW86008100000	YW86012500000	YW86015000100
19	Back standing column	-	-	-
20	Fan cover board	-	-	-
21	Outer rotor fan	YM60440000100	YM60445000100	YM60445000100
22	Cover	-	-	-
23	Left top board	-	-	-
24	Fan cover front board	-	-	-
25	Left standing column	-	-	-
26	Control box top beam	-	-	-
27	Right front standing column	-	-	-

NO.	Name	No. of the materiel		
		SIC-10A-P	SIC-12.5A-P	SIC-15A-P
28	Left below board	-	-	-
29	Control box below beam	-	-	-
30	Control box	BH52001000650	BH52120500350	BH52001500550
31	High and low pressure switch	YE90083000100	YE90083000100	-
32	Adjustable anti-freeze switch	YW85071100000	YW85071100000	YW85071100000
33	Control base board	-	-	-
34	Drying filter	YW85016400000	YW85030700000	YW85030700000
35	Top door board	-	-	-
36	High pressure meter	YW85603500000	YW85603500000	YW85603500000
37	Control panel	YR01004400000	YR01004400000	YR01004400000
38	Low pressure meter	YW85601500000	YW85601500000	YW85601500000
39	Main power switch	-	YE10220300000	YE10250400000
40	Hinge	YW06203100400	YW06203100400	YW06203100400
41	Water pressure meter	YW85001000100	YW85001000100	YW85001000100
42	Door lock	YW00000000100	YW00000000100	YW00000000100
43	Left below door board	-	-	-
44	Meter board fixing board	-	-	-
45	Anti-vibrate leg for the compressor	-	-	-
46	Compressor*	YM70103800000	-	YM70153600000
47	Storage bin	YW85121000100	BL90008000020	YW85141200000
48	Castor	YW03000300000	YW03000400000	YW03000400000
49	Bottom frame	-	-	-
50	Below beam	-	-	-
51	Heat expansion valve	-	-	YW85001000200
52	Liquid filling thimble valve	YW85010400100	YW85010400100	YW85010400100
53	Stainless water tank	-	-	-
54	Floating ball valve*	YW59010200000	YW59010200000	YW59010200000

* means possible broken parts. ** means easy broken part. and spare backup is suggested.

2.7 SIC-20A~30A Assembly Drawing



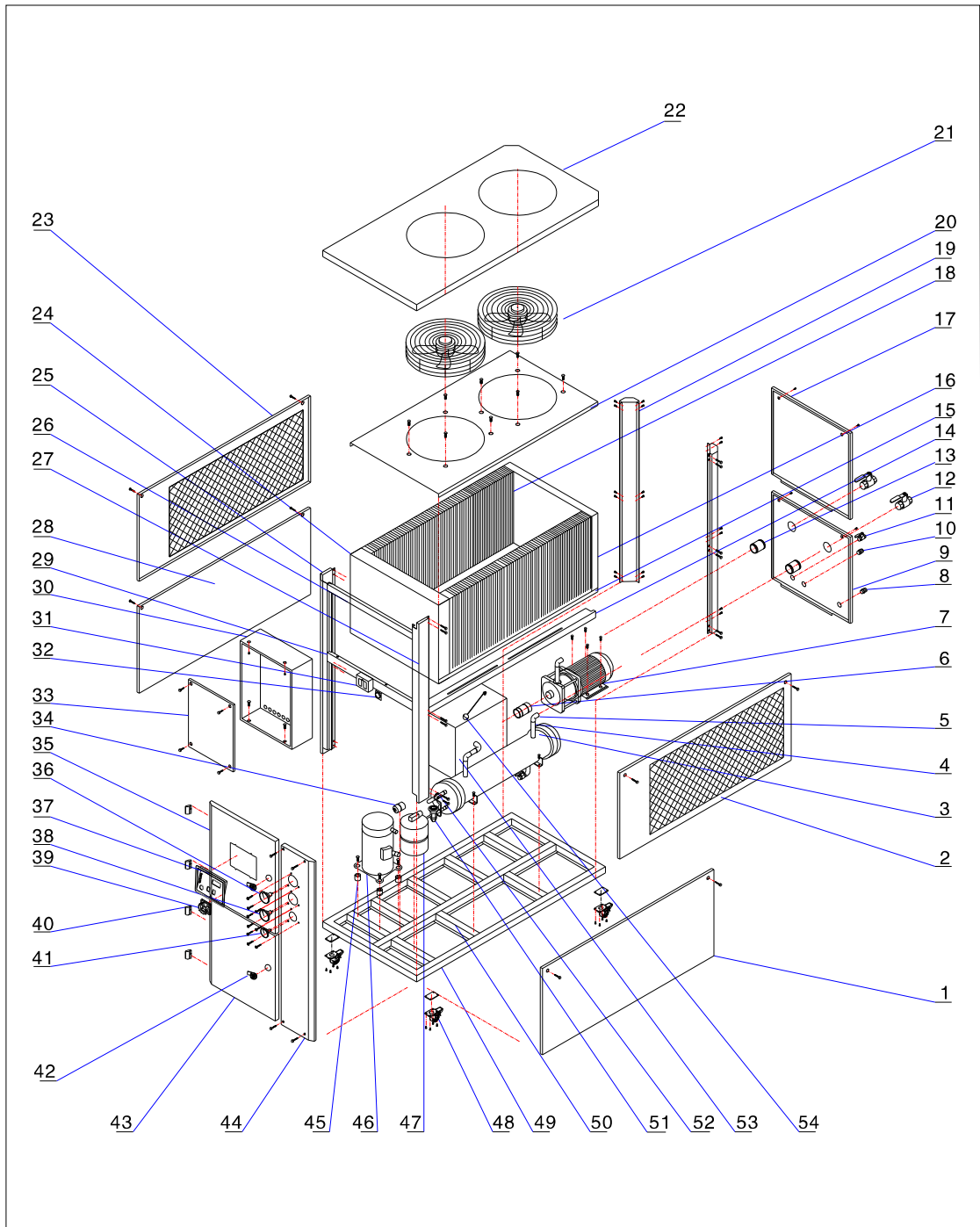
2.8 SIC-20A~30A Parts List

NO.	Name	No. of the materiel		
		SIC-20A-P	SIC-25A-P	SIC-30A-P
1	Thick head screw M6×45	YW63064500000	YW63064500000	YW63064500000
2	Screw M4×5	YW62040500000	YW62040500000	YW62040500000
3	Pressure gauge (Oil) MF-15	YW85601800000	YW85601800000	YW85601800000
4	Pressure gauge (Oil) MF-35	YW85603800000	YW85603800000	YW85603800000
5	Pressure gauge 0-10kg	YW85001000100	YW85001000100	YW85001000100
6	Surface board	-	-	-
7	Contorl box dowel	YW00717100000	YW00717100000	YW00717100000
8	Lower panel	-	-	-
9	Upper panel	-	-	-
10	Long pin lock	YW00000000100	YW00000000100	YW00000000100
11	Control base board	-	-	-
12	Flat head screw M6×10	YW62061000000	YW62061000000	YW62061000000
13	Control box	-	-	-
14	Pressure controller	YE90083000100	YE90083000100	YE90083000100
15	Anti-freeze switch	YW85071100000	YW85071100000	YW85071100000
16	Plastic protective cover	YR40000400300	YR40000400300	YR40000400300
17	Hinge	YW06203100400	YW06203100400	YW06203100400
18	Side plate	-	-	-
19	Rear plate	-	-	-
20	Galvanized three-way water tube 1/2"	YW51001200000	YW51001200000	YW51001200000
21	Copper ball valve 4"	YW50010200100	YW50010200100	YW50010200100
22	Flat gate Valve 1"	YW50000101000	YW50000101000	YW50000101000
23	Galvanized three-way water tubes 2"×1"	YW52020100000	YW52020100000	YW52250100000
24	Inner hexagon socket cap screw M10×40	YW61104000000	YW61104000000	YW61104000000
25	Fan	-	-	-
26	Back pressing plate	-	-	-
27	Front pressing plate	-	-	-

NO.	Name	No. of the materiel		
		SIC-20A-P	SIC-25A-P	SIC-30A-P
28	Fan cover 1	-	-	-
29	Support beam 1	-	-	-
30	Out hexagonal screw M8×20	YW60082000300	YW60082000300	YW60082000300
31	Fan cover 2	-	-	-
32	Top plate on condenser	-	-	-
33	Side plate on condenser	-	-	-
34	Condenser	YW86020000100	YW86025000100	YW86030000000
35	Side plate on condenser	-	-	-
36	Water tank cover	-	-	-
37	Water tank	-	-	-
38	Liquid reservoir	YW85080500000	YW85100800000	YW85121000100
39	Compressor	YM70134400000	YM70124000000	YM70154400000
40	Evaporator	YW87020000000	YW87020000000	YW87030000000
41	Water pump	-	-	-
42	Expansion valve	-	YW85000800000	YW85001000200
43	Housing	-	-	-

*Indicates latent wearing parts; **Indicates latent wearing parts and it's suggested to back them up.

2.9 SIC-40A~50A Assembly Drawing



2.10 SIC-40A~50A Parts List

NO.	Name	No. of the materiel		
		SIC-40A-P	SIC-45A-P	SIC-50A-P
1	Right below board	-	-	-
2	Right up board	-	-	-
3	The evaporator	-	-	-
4	Galvanization water pipe	YS50230600000	YS50330600000	YS50330600000
5	Elbow of the water pipe	YW53000300100	YW53000300100	YW53000300100
6	The rubber pipe*	YR60600300000	YR60600300000	YR60600300000
7	The pump*	YM21040000000	YM21040000000	YM21040000000
8	The compensate stretch	YW57300200000	YW57300200000	YW57300200000
9	Back below board	-	-	-
10	The direct connection	YW51002500000	YW51000300000	YW51000300000
11	Ball valve*	YW50030800100	YW50030800100	YW50010000000
12	Ball valve*	YW50015000000	YW50015000000	YW50030000000
13	Water pipe direct connection	YW51002500000	BH10030300010	BH10030300010
14	Middle side beam	-	-	-
15	Fan cover baseboard	-	-	-
16	Fan cover back board	-	-	-
17	Back top board	-	-	-
18	The condenser	YW86040000100	YW86045000000	-
19	Back standing column	-	-	-
20	Fan cover board	-	-	-
21	Outer rotor fan	YM60750600000	YM60750600000	YM60750600000
22	Cover	-	-	-
23	Left top board	-	-	-
24	Fan cover front board	-	-	-
25	Left standing column	-	-	-
26	Control box top beam	-	-	-
27	Right front standing column	-	-	-

NO.	Name	No. of the materiel		
		SIC-40A-P	SIC-45A-P	SIC-50A-P
28	Left below board	-	-	-
29	Control box below beam	-	-	-
30	Control box	BH52004000250	BH52006000050	BH52000300150
31	High and low pressure controller	YE90083000100	YE90083000100	YE90083000100
32	Adjustable anti-freeze switch	YW85071100000	YW85071100000	YW85071100000
33	Control base board	-	-	-
34	Drying filter	YW85030700000 YW85016500000	YW85030700000	YW85030700000
35	Top door board	-	-	-
36	High pressure meter	YW85603500000	YW85603500000	YW85603500000
37	Control panel	YR01004400000	YR01004400000	YR01004400000
38	Low pressure meter	BH12151500110	BH12151500110	BH12151500110
39	Main power switch	YE41161200000	YE41161200000	YE41161200000
40	Hinge	YW06203100400	YW06203100400	YW06203100400
41	Water pressure meter	YW85001000100	YW85001000100	YW85001000100
42	Door lock	-	-	-
43	Left below door board	-	-	-
44	Meter board fixing board	-	-	-
45	Anti-vibrate leg for the compressor	-	-	-
46	Compressor*	YM70154400000 YM70134400000	YM70154400000	YM70124000000
47	Storage bin	YW85141200000 YW85121000100	YW85121000100	YW85121000100
48	Castor	-	-	-
49	Bottom frame	-	-	-
50	Below beam	-	-	-
51	Heat expansion valve	YW85001000200	YW85001000200	YW85000800000
52	liquid filling thimble valve	YW85010400100	YW85010400100	YW85010400100
53	Stainless water tank	-	-	-
54	Floating ball valve*	YW59010000000	YW59010000000	YW59010000000

*Indicates latent wearing parts; **Indicates latent wearing parts and it's suggested to back them up.