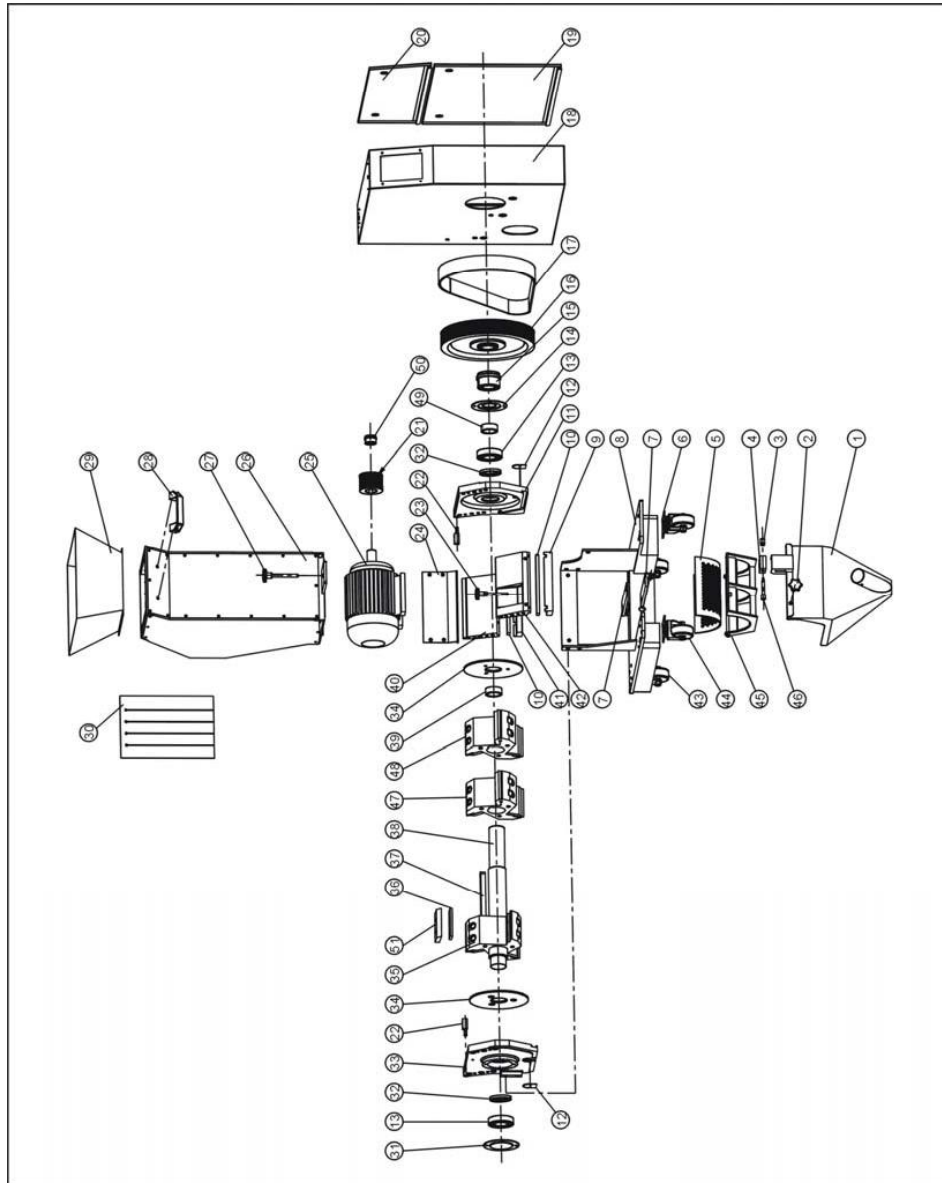


2.3 Assembly Drawing

2.3.1 Assembly Drawing (SG-1621N)



Note: Please refer to 2.3.2 material list about the parts code.

Picture 2-5: Assembly Drawing (SG-1621N)

2.3.2 Parts List (SG-1621N)

Table 2-1: Parts List (SG-1621N)

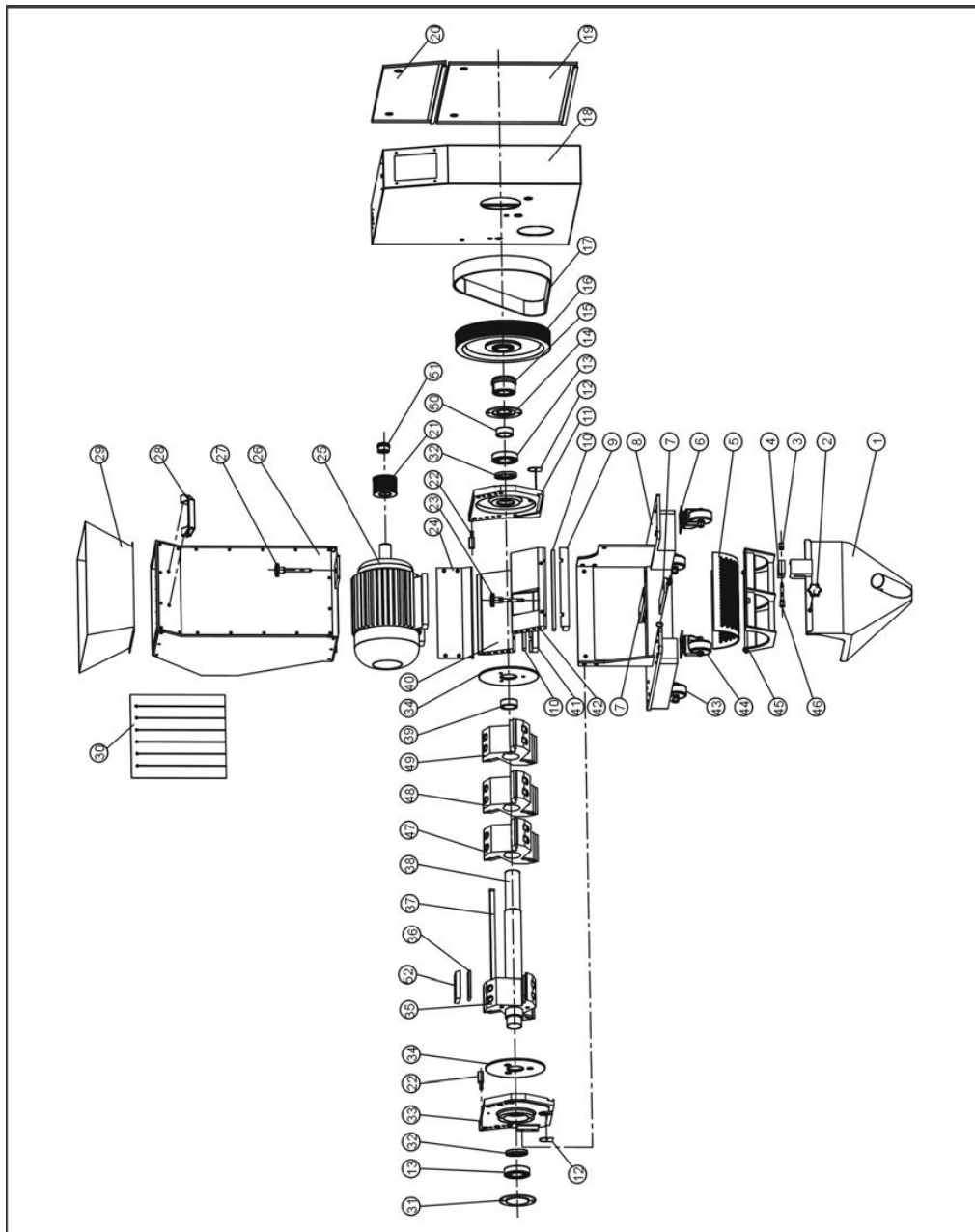
No.	Name	Part No.	No.	Name	Part No.
1	Storage box	-	24	Check plate for storage box	-
2	Knob	YR40083500000	25	Motor (1.5kW)	YM10710600300
3	Safety switch knob	BH10024200010	26	Feeding box	-
4	Safety switch installation board	BH10424500010	27	Star assembly of feeding box	BH55162800010
5	Screen (Φ4)**	BL50162111620	28	Handle*	BW20012000140
	Screen (Φ5)**	BL50162150020	29	Feeding mouth	-
	Screen (Φ6)**	BL50162111720	30	Material fender	-
	Screen (Φ7)**	BL50162103820	31	Left bearing cover plate	-
	Screen (Φ10)**	BL50162131920	32	Oil seal	YR80554200000
	Screen (Φ12)**	BL50162131020	33	Left bearing plate	BH10162010010
6	Castor	YW03000300000	34	Material fender(65Mn)	YW45162850000
7	Motor adjusting plate	-	35	Blade rest(1)	BH11162850010
8	Base	-	36	Rotating blade**	YW42162840000
9	Front pressure block	BH10162150010	37	Flat key 10X199	BH10162110010
10	Sustain brace**	YW42162100000	38	Shaft	BH55162100010
11	Right end plate	BH10161600010	39	Sleeve	BH10161500010
12	Bearing cover	-	40	Back block	BH10162600010
13	Bearing 6207DD*	YW11620700000	41	Pressure block of back block	BH10162500010
14	Right bearing cover plate	-	42	Front block	BH10162130010
15	Taper sleeve 3020-35	YW30203500000	43	Fixed castor 3"	YW03000300300
16	Large belt wheel	YW30231900000	44	Movable castor 3"	YW03000300200
17	Poly V-belt 20PJ50 *	YW30205000000	45	Screen rest	-
18	Outer shell	-	46	Safety switch installation shaft	BH10204300010
19	Outer cover board of shell	-	47	Blade rest 1	BH10116100010
20	Upper cover board of shell	-	48	Blade rest (2)	BH11162110010
21	Small belt pulley	YW30207800000	49	Sleeve 1	BH10162823010
22	Rotating shaft	BH10204100010	50	Taper sleeve 1210-28	YW30121002800
23	Star assembly of screen	BH55162820010	51	Press block for rotating blade	BH11162700010

* means possible broken parts.

** means easy broken part. and spare backup is suggested.

Please confirm the version of manual before placing the purchase order to guarantee that the item number of the spare part is in accordance with the real object.

2.3.3 Assembly Drawing (SG-1628N)



Note: Please refer to 2.3.4 material list about the parts code.

Picture 2-6: Assembly Drawing (SG-1628N)

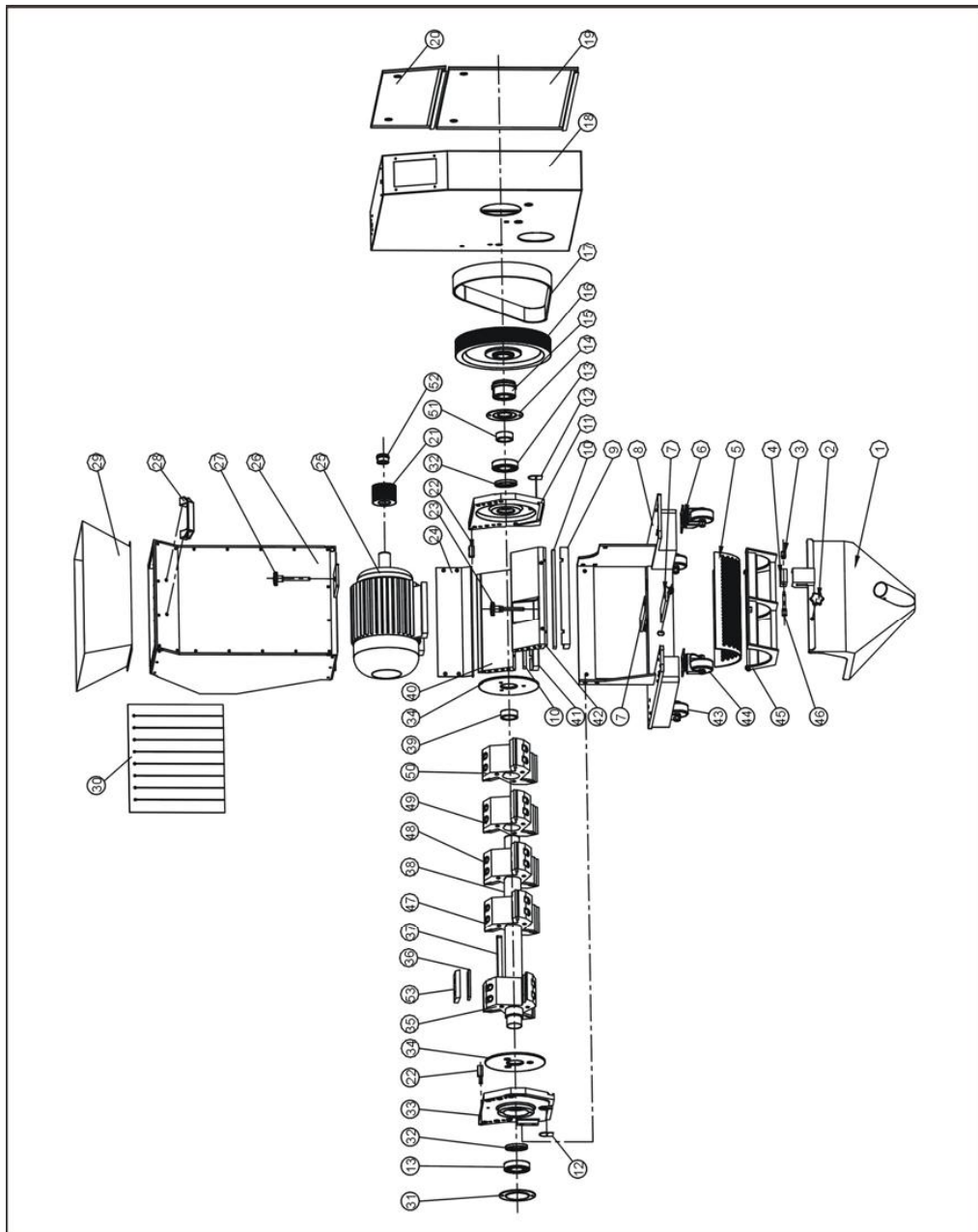
2.3.4 Parts List (SG-1628N)

Table 2-2: Parts List (SG-1628N)

No.	Name	Part No.	No.	Name	Part No.
1	Storage box	-	25	Motor (2.2kW)	YM10692900000
2	Knob	YR40083500000	26	Feeding box	-
3	Safety switch knob	BH10024200010	27	Star assembly of feeding box	BH55162800010
4	Safety switch installation board	BH10424500010	28	Handle*	BW20012000140
5	Screen (Φ4)**	BL50162821820	29	Feeding mouth	-
	Screen (Φ5)**	BL50162860020	30	Material fender	-
	Screen (Φ6)**	BL50162821920	31	Left bearing cover plate	-
	Screen (Φ8)**	BL50162821020	32	Oil seal	YR80554200000
	Screen (Φ10)**	BL50162821120	33	Left bearing plate	BH10162010010
	Screen (Φ12)**	BL50162821220	34	Material fender (65Mn)	YW45162850000
6	Castor	YW03000300000	35	Blade rest (1)	BH11162850010
7	Motor adjusting plate	-	36	Rotating balde**	YW42162840000
8	Base	-	37	Flat key 10X268	BH10162810010
9	Front pressure block	BH10160800010	38	Shaft	BH55162600010
10	Sustain brace**	YW41162820000	39	Sleeve	BH10161500010
11	Right end plate	BH10161600010	40	Back block	BH10162900010
12	Bearing cover	-	41	Pressure block of back block	BH10160280010
13	Bearing 6207DD*	YW11620700000	42	Front block	BW30162083010
14	Right bearing cover plate	-	43	Fixed castor 3"	YW03000300300
15	Taper sleeve 3020-35	YW30203500000	44	Movable castor 3"	YW03000300200
16	Large belt wheel	YW30231900000	45	Screen rest	-
17	Poly V-belt 20PJ50 *	YW30205000000	46	Safety switch installation shaft	BH10204300010
18	Outer shell	-	47	Blade rest 1	BH10116100010
19	Outer cover board of shell	-	48	Blade rest 2	BH10216200010
20	Upper cover board of shell	-	49	Blade rest (2)	BH11162810010
21	Small belt pulley	YW30207800000	50	Sleeve 1	BH10162823010
22	Ratating shaft	BH10204100010	51	Taper sleeve 1210-28	YW30121002800
23	Star assembly of screen	BH55162820010	52	Press block for rotating blade	BH11162700010
24	Check plate for storage box	-			

* means possible broken parts. ** means easy broken part. and spare backup is suggested. Please confirm the version of manual before placing the purchase order to guarantee that the item number of the spare part is in accordance with the real object.

2.3.5 Assembly Drawing (SG-1635N(H))



Note: Please refer to 2.3.6 material list about the parts code.

Picture 2-7: Assembly Drawing (SG-1635N(H))

2.3.6 Parts List (SG-1635N(H))

Table 2-3: Parts List (SG-1635N)

No.	Name	Part No.	No.	Name	Part No.
1	Storage box	-	25	Motor (2.2kW)	YM10692900000
2	Knob	YR40083500000	26	Feeding box	-
3	Safety switch knob	BH10024200010	27	Star assembly of feeding box	BH55162800010
4	Safety switch installation board	BH10424500010	28	Handle*	BW20012000140
5	Screen (Φ4)**	BL50163521620	29	Feeding mouth	-
	Screen (Φ5)**	BL50162050020	30	Material fender	-
	Screen (Φ6)**	BL50163521720	31	Left bearing cover plate	-
	Screen (Φ8)**	BL50163521820	32	Oil seal	YR80554200000
	Screen (Φ10)**	BL50163521920	33	Left bearing plate	BH10162010010
	Screen (Φ12)**	BL50163521020	34	Material fender (65Mn)	YW45162850000
6	Castor	YW03000300000	35	Blade rest (1)	BH11162850010
7	Motor adjusting plate	-	36	Rotating balde**	YW42162840000
8	Base	-	37	Flat key 10X337	BH10163510010
9	Front pressure block	BH10163010010	38	Shaft	BH55163500010
10	Sustain brace**	YW41163520000	39	Sleeve	BH10161500010
11	Right end plate	BH10161600010	40	Back block	BH10163560010
12	Bearing cover	-	41	Pressure block of back block	BH10163550010
13	Bearing 6207DD*	YW11620700000	42	Front block	BW30163030010
14	Right bearing cover plate	-	43	Fixed castor 3"	YW03000300300
15	Taper sleeve 3020-35	YW30203500000	44	Movable castor 3"	YW03000300200
16	Large belt wheel	YW30231900000	45	Screen rest	-
17	Poly V-belt 20PJ50 *	YW30205000000	46	Safety switch installation shaft	BH10204300010
18	Outer shell	-	47	Blade rest 1	BH10116100010
19	Outer cover board of shell	-	48	Blade rest 2	BH10216200010
20	Upper cover board of shell	-	49	Blade rest 3	BH10316300010
21	Small belt pulley	YW30207800000	50	Blade rest (2)	BH11162050010
22	Ratating shaft	BH10204100010	51	Sleeve 1	BH10162823010
23	Star assembly of screen	BH55162820010	52	Taper sleeve 1210-28	YW30121002800
24	Check plate for storage box	-	53	Press block for rotating blade	BH11162700010

* means possible broken parts.

** means easy broken part. and spare backup is suggested.

Please confirm the version of manual before placing the purchase order to guarantee that the item number of the spare part is in accordance with the real object.

Table 2-4: Parts List (SG-1635NH)

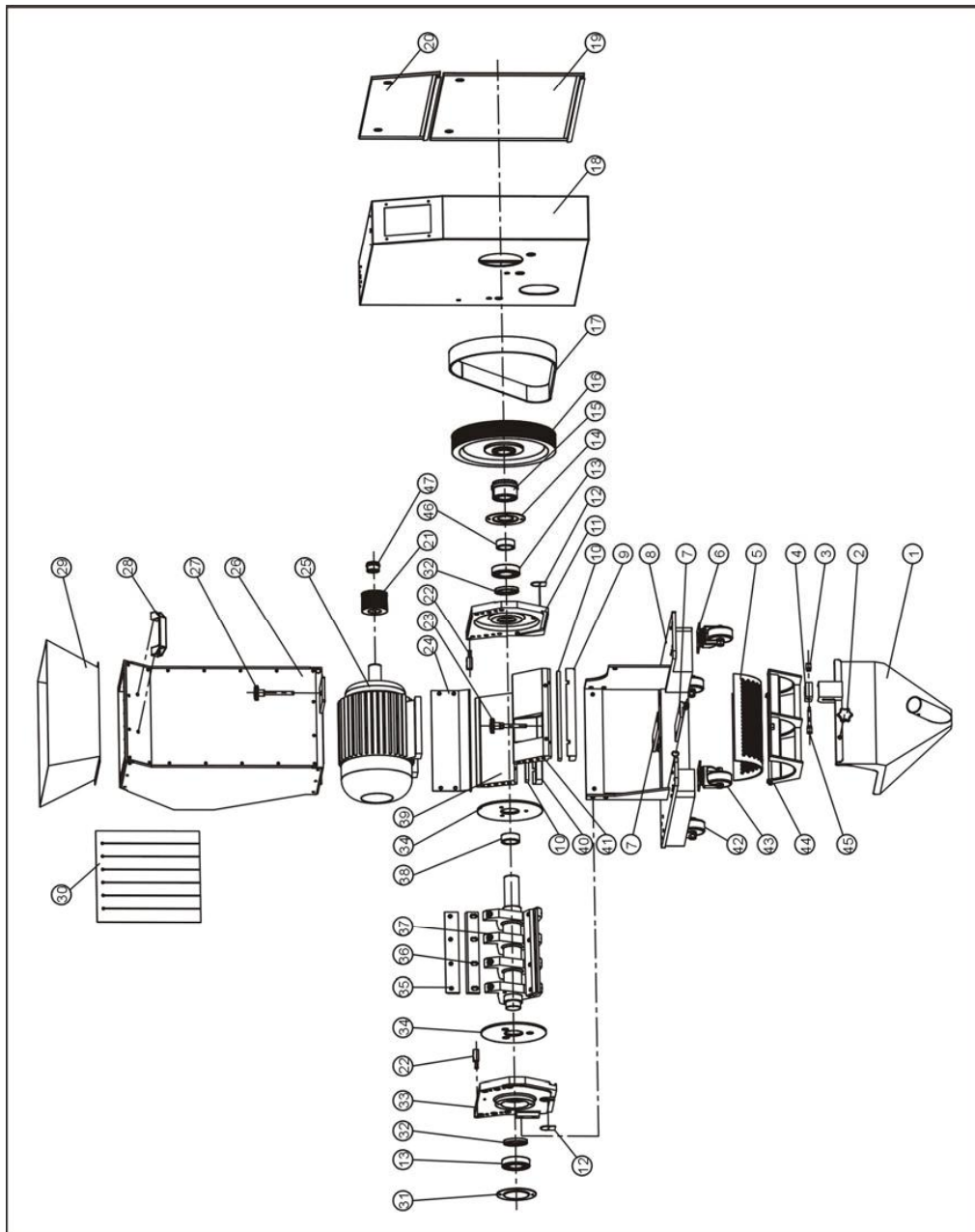
No.	Name	Part No.	No.	Name	Part No.
1	Storage box	-	25	Motor (3.0kW)	YM10361900000
2	Knob	YR40083500000	26	Feeding box	-
3	Safety switch knob	BH10024200010	27	Star assembly of feeding box	BH55162800010
4	Safety switch installation board	BH10424500010	28	Handle*	BW20012000140
5	Screen (Φ4)**	BL50163521620	29	Feeding mouth	-
	Screen (Φ5)**	BL50162050020	30	Material fender	-
	Screen (Φ6)**	BL50163521720	31	Left bearing cover plate	-
	Screen (Φ8)**	BL50163521820	32	Oil seal	YR80554200000
	Screen (Φ10)**	BL50163521920	33	Left bearing plate	BH10162010010
	Screen (Φ12)**	BL50163521020	34	Material fender (65Mn)	YW45162850000
6	Castor	YW03000300000	35	Blade rest (1)	BH11162850010
7	Motor adjusting plate	-	36	Rotating blade**	YW42162840000
8	Base	-	37	Flat key 10X337	BH10163510010
9	Front pressure block	BH10163010010	38	Shaft	BH55163500010
10	Sustain brace**	YW41163520000	39	Sleeve	BH10161500010
11	Right end plate	BH10161600010	40	Back block	BH10163560010
12	Bearing cover	-	41	Pressure block of back block	BH10163550010
13	Bearing 6207DD*	YW11620700000	42	Front block	BW30163030010
14	Right bearing cover plate	-	43	Fixed castor 3"	YW03000300300
15	Taper sleeve 3020-35	YW30203500000	44	Movable castor 3"	YW03000300200
16	Large belt wheel	YW30231900000	45	Screen rest	-
17	Poly V-belt 20PJ50 *	YW30205000000	46	Safety switch installation shaft	BH10204300010
18	Outer shell	-	47	Blade rest 1	BH10116100010
19	Outer cover board of shell	-	48	Blade rest 2	BH10216200010
20	Upper cover board of shell	-	49	Blade rest 3	BH10316300010
21	Small belt pulley	YW30207800000	50	Blade rest (2)	BH11162050010
22	Rotating shaft	BH10204100010	51	Sleeve 1	BH10162823010
23	Star assembly of screen	BH55162820010	52	Taper sleeve 1210-28	YW30121002800
24	Check plate for storage box	-	53	Press block for rotating blade	BH11162700010

* means possible broken parts.

** means easy broken part. and spare backup is suggested.

Please confirm the version of manual before placing the purchase order to guarantee that the item number of the spare part is in accordance with the real object.

2.3.7 Assembly Drawing (SG-2028N(H))



Note: Please refer to 2.3.8 material list about the parts code.

Picture 2-8: Assembly Drawing (SG-2028N(H))

2.3.8 Parts List (SG-2028N(H))

Table 2-5: Parts List (SG-2028N)

No.	Name	Part No.	No.	Name	Part No.
1	Material collection case	-	22	Rotating shaft	BH10204100010
2	Handle	YR40083500000	23	Star assembly of screen	BH10204220010
3	Safety switch handle	BH10024200010	24	Check plate for storage box	-
4	Safety switch installation board	BH10424500010	25	Motor (2.2kW)	YM10692900000
5	Screen (Φ4)**	BL50202810620	26	Feeding box	-
	Screen (Φ5)**	BL50202810720	27	Star assembly of feeding box	BH85204120010
	Screen (Φ6)**	BL55202850020	28	Handle *	BW20012000140
	Screen (Φ7)**	BL50202810820	29	Feeding mouth	-
	Screen (Φ8)**	BL50202810920	30	Material fender	-
	Screen (Φ10)**	BL50202811020	31	Cover board of left bearing plate	-
	Screen (Φ12)**	BL50202811120	32	Oil seal	YR80557200000
6	Castor with brake 3"	YW03000300000	33	Left bearing plate	BH10204210010
7	Adjusting board for motor	-	34	Material fender (65Mn)	BH11020020010
8	Motor base	-	35	Pressure block of balde	BH11202850010
9	Pressure block of front block	BH10202810010	36	Rotating blade**	YW43202800000
10	Fixed balde**	YW41202800000	37	Blade rest	BH11002028010
11	Right bearing holder	BH10204600010	38	Sleeve	BH10204500010
12	Cover board	-	39	Pressure block	BH10020208010
13	Bearing 6209DD*	YW11620900000	40	Pressure block of back block	BH10020270010
14	Right bearing cover plate	-	41	Front block	BH10202830010
15	Taper sleeve 3020-45	YW30302450000	42	Fixed castor 3"	YW03000300300
16	Large belt wheel	YW30231900000	43	Movable castor 3"	YW03000300200
17	Poly V-belt 20PJ53 *	YR00532000000	44	Screen rest	-
18	Out housing	-	45	Safety switch installation shaft	BH10204300010
19	Lower cover board of shell	-	46	Sleeve 1	BH10369002110
20	Upper cpver board of shell	-	47	Taper sleeve 1610-28	YW30121002800
21	Small belt pulley	YW30207800000			

* means possible broken parts.

** means easy broken part. and spare backup is suggested.

Please confirm the version of manual before placing the purchase order to guarantee that the item number of the spare part is in accordance with the real object.

Table 2-6: Parts List (SG-2028NH)

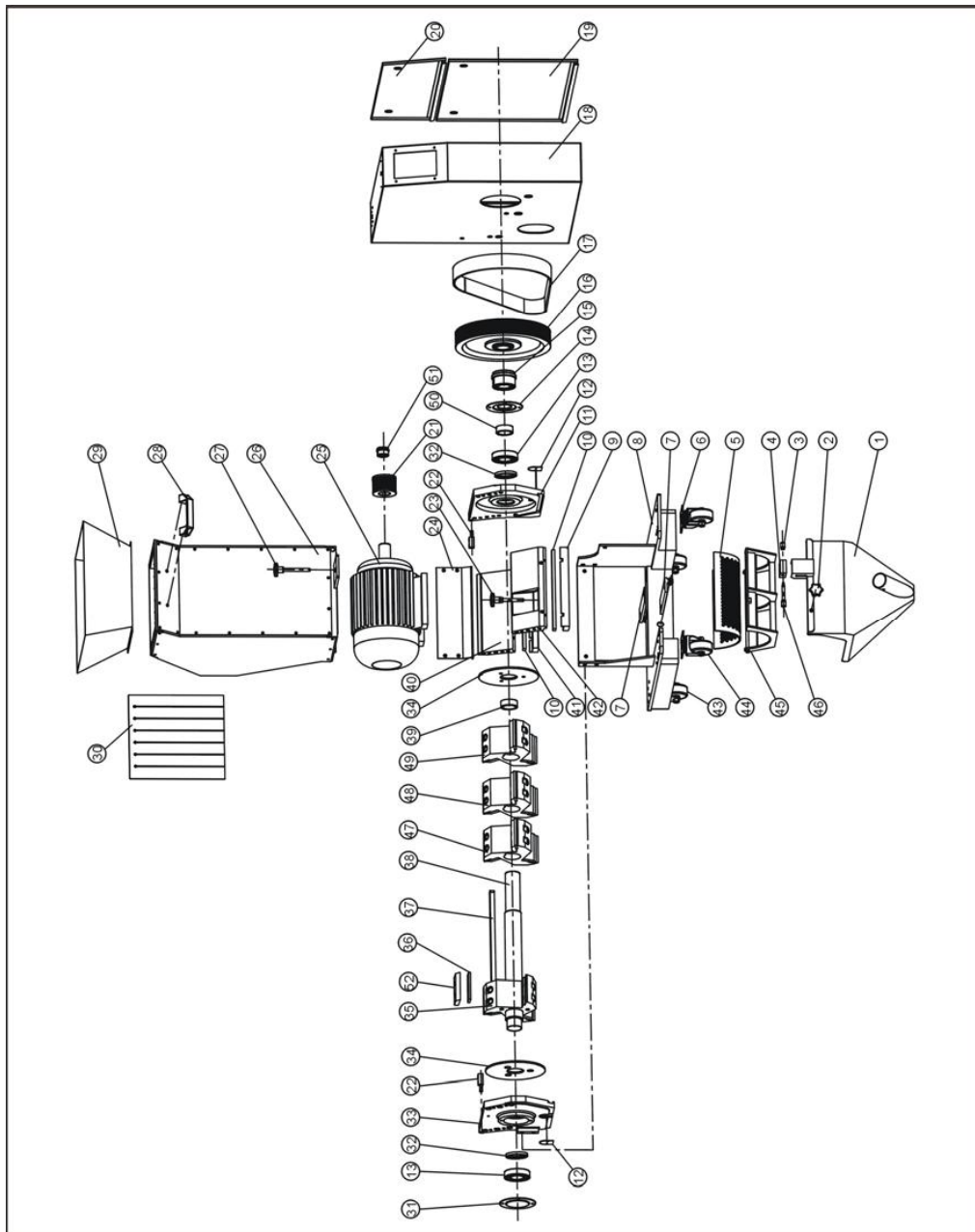
No.	Name	Part No.	No.	Name	Part No.
1	Material collection case	-	22	Rotating shaft	BH10204100010
2	Handle	YR40083500000	23	Star assembly of screen	BH10204220010
3	Safety switch handle	BH10024200010	24	Check plate for storage box	-
4	Safety switch installation board	BH10424500010	25	Motor (3.0kW)	YM10361900000
5	Screen (Φ4)**	BL50202810620	26	Feeding box	-
	Screen (Φ5)**	BL50202810720	27	Star assembly of feeding box	BH85204120010
	Screen (Φ6)**	BL55202850020	28	Handle *	BW20012000140
	Screen (Φ7)**	BL50202810820	29	Feeding mouth	-
	Screen (Φ8)**	BL50202810920	30	Material fender	-
	Screen (Φ10)**	BL50202811020	31	Cover board of left bearing plate	-
	Screen (Φ12)**	BL50202811120	32	Oil seal	YR80557200000
6	Castor with brake 3"	YW03000300000	33	Left bearing plate	BH10204210010
7	Adjusting board for motor	-	34	Material fender (65Mn)	BH11020020010
8	Motor base	-	35	Pressure block of balde	BH11202850010
9	Pressure block of front block	BH10202810010	36	Rotating blade**	YW43202800000
10	Fixed balde**	YW41202800000	37	Blade rest	BH11002028010
11	Right bearing holder	BH10204600010	38	Sleeve	BH10204500010
12	Cover board	-	39	Pressure block	BH10020208010
13	Bearing 6209DD*	YW11620900000	40	Pressure block of back block	BH10020270010
14	Right bearing cover plate	-	41	Front block	BH10202830010
15	Taper sleeve 3020-45	YW30302450000	42	Fixed castor 3"	YW03000300300
16	Large belt wheel	YW30231900000	43	Movable castor 3"	YW03000300200
17	Poly V-belt 20PJ53 *	YR00532000000	44	Screen rest	-
18	Out housing	-	45	Safety switch installation shaft	BH10204300010
19	Lower cover board of shell	-	46	Sleeve 1	BH10369002110
20	Upper cpver board of shell	-	47	Taper sleeve 1610-28	YW30121002800
21	Small belt pulley	YW30207800000			

* means possible broken parts.

** means easy broken part. and spare backup is suggested.

Please confirm the version of manual before placing the purchase order to guarantee that the item number of the spare part is in accordance with the real object.

2.3.9 Assembly Drawing (SG-2028NC(H))



Note: Please refer to 2.3.10 material list about the parts code.

Picture 2-9: Assembly Drawing (SG-2028NC(H))

2.3.10 Parts List (SG-2028NC(H))

Table 2-7: Parts List (SG-2028NC)

No.	Name	Part No.	No.	Name	Part No.
1	Material collection case	-	24	Check plate for storage box	-
2	Handle	YR40083500000	25	Motor (2.2kW)	YM10692900000
3	Safety switch handle	BH10024200010	26	Feeding box	-
4	Safety switch installation board	BH10424500010	27	Star assembly of feeding box	BH85204120010
5	Screen (Φ4)**	BL50202810620	28	Handle *	BW20012000140
	Screen (Φ5)**	BL50202810720	29	Feeding mouth	-
	Screen (Φ6)**	BL55202850020	30	Material fender	-
	Screen (Φ7)**	BL50202810820	31	Cover board of left bearing plate	-
	Screen (Φ8)**	BL50202810920	32	Oil seal	YR80557200000
	Screen (Φ10)**	BL50202811020	33	Left bearing plate	BH10204210010
	Screen (Φ12)**	BL50202811120	34	Material fender (65Mn)	BH11020020010
6	Castor with brake 3"	YW03000300000	35	Blade rest 1	BW30200320010
7	Adjusting board for motor	-	36	Rotating blade**	BW41200100010
8	Motor base	-	37	Flat key 14X267	BH11202800310
9	Pressure block of front block	BH10202810010	38	Shaft	BH11202810010
10	Fixed balde**	YW41202800000	39	Sleeve	BH10204500010
11	Right bearing holder	BH10204600010	40	Pressure block	BH10020208010
12	Cover board	-	41	Pressure block of back block	BH10020270010
13	Bearing 6209DD*	YW11620900000	42	Front block	BH10202830010
14	Right bearing cover plate	-	43	Fixed castor 3"	YW03000300300
15	Taper sleeve 3020-45	YW30302450000	44	Movable castor 3"	YW03000300200
16	Large belt wheel	YW30231900000	45	Screen rest	-
17	Poly V-belt 20PJ53 *	YR00532000000	46	Safety switch installation shaft	BH10204300010
18	Out housing	-	47	Blade rest 2	BW30202420010
19	Lower cover board of shell	-	48	Blade rest 3	BW30200520010
20	Upper cpver board of shell	-	49	Blade rest 4	BW30202800210
21	Small belt pulley	YW30209800000	50	Sleeve 1	BH10369002110
22	Rotating shaft	BH10204100010	51	Taper sleeve 1610-28	YW30162800200
23	Star assembly of screen	BH10204220010	52	Press block for rotating blade	BH10235200010

* means possible broken parts.

** means easy broken part. and spare backup is suggested.

Please confirm the version of manual before placing the purchase order to guarantee that the item number of the spare part is in accordance with the real object.

Table 2-8: Parts List (SG-2028NCH)

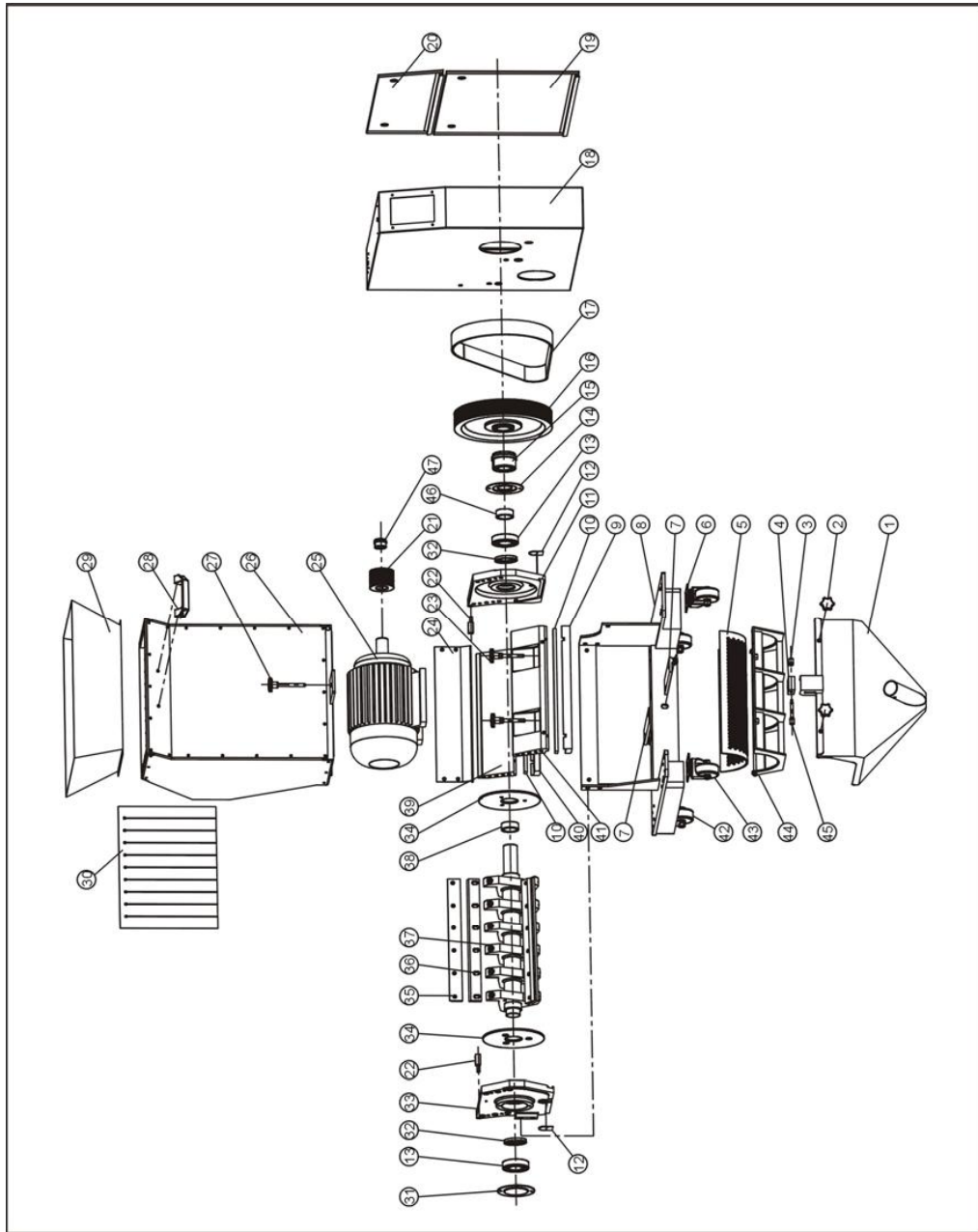
No.	Name	Part No.	No.	Name	Part No.
1	Material collection case	-	24	Check plate for storage box	-
2	Handle	YR40083500000	25	Motor (3.0kW)	YM10361900000
3	Safety switch handle	BH10024200010	26	Feeding box	-
4	Safety switch installation board	BH10424500010	27	Star assembly of feeding box	BH85204120010
5	Screen (Φ4)**	BL50202810620	28	Handle *	BW20012000140
	Screen (Φ5)**	BL50202810720	29	Feeding mouth	-
	Screen (Φ6)**	BL55202850020	30	Material fender	-
	Screen (Φ7)**	BL50202810820	31	Cover board of left bearing plate	-
	Screen (Φ8)**	BL50202810920	32	Oil seal	YR80557200000
	Screen (Φ10)**	BL50202811020	33	Left bearing plate	BH10204210010
	Screen (Φ12)**	BL50202811120	34	Material fender (65Mn)	BH11020020010
6	Castor with brake 3"	YW03000300000	35	Blade rest 1	BW30200320010
7	Adjusting board for motor	-	36	Rotating blade**	BW41200100010
8	Motor base	-	37	Flat key 14X267	BH11202800310
9	Pressure block of front block	BH10202810010	38	Shaft	BH11202810010
10	Fixed balde**	YW41202800000	39	Sleeve	BH10204500010
11	Right bearing holder	BH10204600010	40	Pressure block	BH10020208010
12	Cover board	-	41	Pressure block of back block	BH10020270010
13	Bearing 6209DD*	YW11620900000	42	Front block	BH10202830010
14	Right bearing cover plate	-	43	Fixed castor 3"	YW03000300300
15	Taper sleeve 3020-45	YW30302450000	44	Movable castor 3"	YW03000300200
16	Large belt wheel	YW30231900000	45	Screen rest	-
17	Poly V-belt 20PJ53 *	YR00532000000	46	Safety switch installation shaft	BH10204300010
18	Out housing	-	47	Blade rest 2	BW30202420010
19	Lower cover board of shell	-	48	Blade rest 3	BW30200520010
20	Upper cpver board of shell	-	49	Blade rest 4	BW30202800210
21	Small belt pulley	YW30209800000	50	Sleeve 1	BH10369002110
22	Rotating shaft	BH10204100010	51	Taper sleeve 1610-28	YW30162800200
23	Star assembly of screen	BH10204220010	52	Press block for rotating blade	BH10235200010

* means possible broken parts.

** means easy broken part. and spare backup is suggested.

Please confirm the version of manual before placing the purchase order to guarantee that the item number of the spare part is in accordance with the real object.

2.3.11 Assembly Drawing (SG-2042N(H))



Note: Please refer to 2.3.12 material list about the parts code.

Picture 2-10: Assembly Drawing (SG-2042N(H))

2.3.12 Parts List (SG-2042N(H))

Table 2-9: Parts List (SG-2042N)

No.	Name	Part No.	No.	Name	Part No.
1	Material collection case	-	22	Rotating shaft	BH10204100010
2	Handle	YR40083500000	23	Star assembly of screen	BH10204220010
3	Safety switch handle	BH10024200010	24	Check plate for storage box	-
4	Safety switch installation board	BH10424500010	25	Motor (3.0kW)	YM10361900000
5	Screen (Φ4)**	BL50202811620	26	Feeding box	-
	Screen (Φ5)**	BL50202811720	27	Star assembly of feeding box	BH85204120010
	Screen (Φ6)**	BL55204260020	28	Handle *	BW20012000140
	Screen (Φ7)**	BL50202811820	29	Feeding mouth	-
	Screen (Φ8)**	BL50202811920	30	Material fender	-
	Screen (Φ10)**	BL50202812020	31	Cover board of left bearing plate	-
	Screen (Φ12)**	BL50202812120	32	Oil seal	YR80557200000
6	Castor with brake 3"	YW03000300000	33	Left bearing plate	BH10204210010
7	Adjusting board for motor	-	34	Material fender (65Mn)	BH11020020010
8	Motor base	-	35	Pressure block of balde	BH11204250010
9	Pressure block of front block	BH10235000010	36	Rotating blade**	YW43204200000
10	Fixed balde**	YW41041900000	37	Blade rest	BH11204260010
11	Right bearing holder	BH10204600010	38	Sleeve	BH10204500010
12	Cover board	-	39	Pressure block	BH10204290010
13	Bearing 6209DD*	YW11620900000	40	Pressure block of back block	BH10024280010
14	Right bearing cover plate	-	41	Front block	BH10204230010
15	Taper sleeve 3020-45	YW30302450000	42	Fixed castor 3"	YW03000300300
16	Large belt wheel	YW30231900000	43	Movable castor 3"	YW03000300200
17	Poly V-belt 20PJ53 *	YW30253300000	44	Screen rest	-
18	Out housing	-	45	Safety switch installation shaft	BH10204300010
19	Lower cover board of shell	-	46	Sleeve 1	BH10369002110
20	Upper cpver board of shell	-	47	Taper sleeve 1610-38	YW30163800000
21	Small belt pulley	YW30209800000			

* means possible broken parts.

** means easy broken part. and spare backup is suggested.

Please confirm the version of manual before placing the purchase order to guarantee that the item number of the spare part is in accordance with the real object.

Table 2-10: Parts List (SG-2042NH)

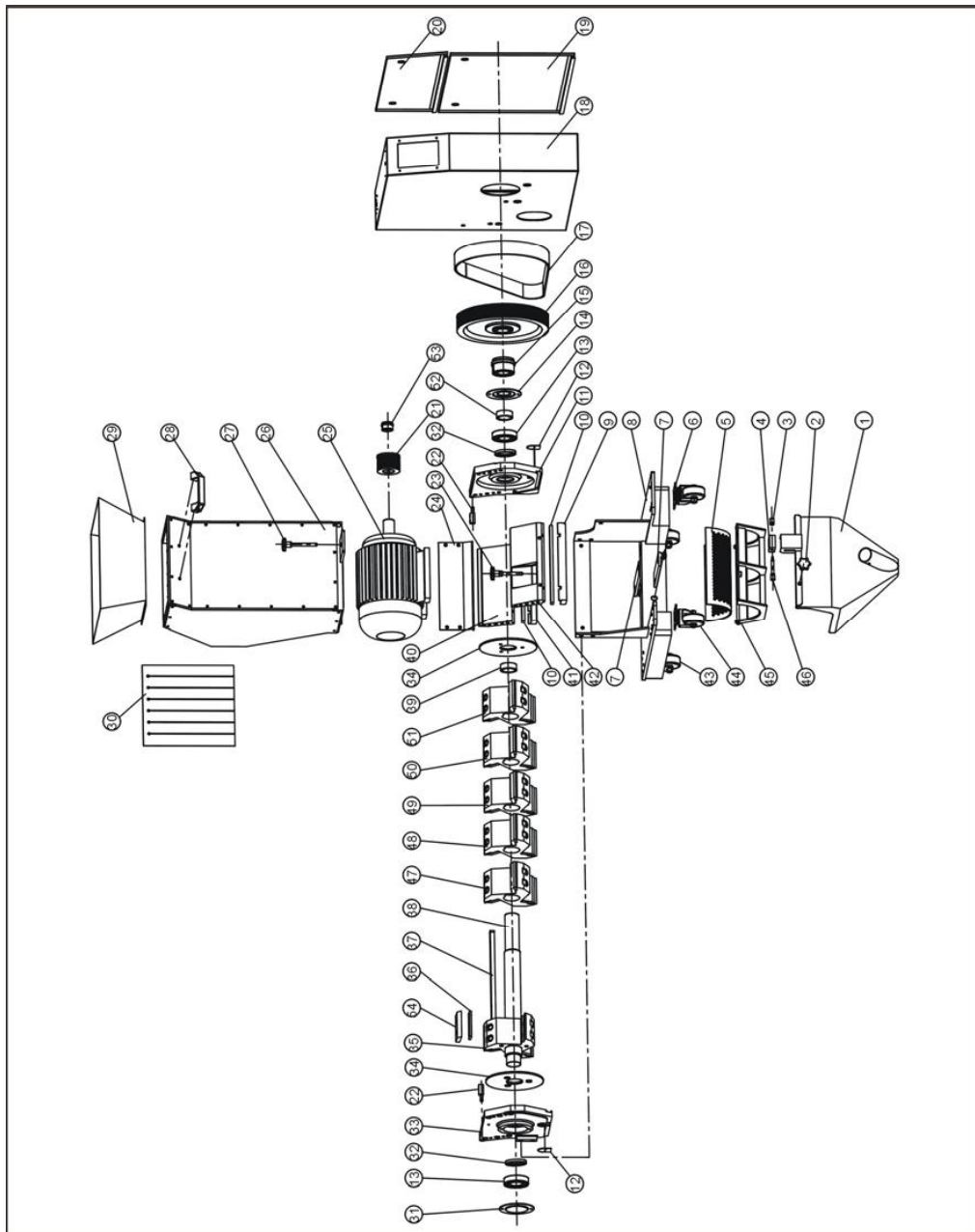
No.	Name	Part No.	No.	Name	Part No.
1	Material collection case	-	22	Rotating shaft	BH10204100010
2	Handle	YR40083500000	23	Star assembly of screen	BH10204220010
3	Safety switch handle	BH10024200010	24	Check plate for storage box	-
4	Safety switch installation board	BH10424500010	25	Motor (4.0kW)	YM10113300000
5	Screen (Φ4)**	BL50202811620	26	Feeding box	-
	Screen (Φ5)**	BL50202811720	27	Star assembly of feeding box	BH85204120010
	Screen (Φ6)**	BL55204260020	28	Handle *	BW20012000140
	Screen (Φ7)**	BL50202811820	29	Feeding mouth	-
	Screen (Φ8)**	BL50202811920	30	Material fender	-
	Screen (Φ10)**	BL50202812020	31	Cover board of left bearing plate	-
	Screen (Φ12)**	BL50202812120	32	Oil seal	YR80557200000
6	Castor with brake 3"	YW03000300000	33	Left bearing plate	BH10204210010
7	Adjusting board for motor	-	34	Material fender (65Mn)	BH11020020010
8	Motor base	-	35	Pressure block of balde	BH11204250010
9	Pressure block of front block	BH10235000010	36	Rotating blade**	YW43204200000
10	Fixed balde**	YW41041900000	37	Blade rest	BH11204260010
11	Right bearing holder	BH10204600010	38	Sleeve	BH10204500010
12	Cover board	-	39	Pressure block	BH10204290010
13	Bearing 6209DD*	YW11620900000	40	Pressure block of back block	BH10024280010
14	Right bearing cover plate	-	41	Front block	BH10204230010
15	Taper sleeve 3020-45	YW30302450000	42	Fixed castor 3"	YW03000300300
16	Large belt wheel	YW30231900000	43	Movable castor 3"	YW03000300200
17	Poly V-belt 20PJ53 *	YW30253300000	44	Screen rest	-
18	Out housing	-	45	Safety switch installation shaft	BH10204300010
19	Lower cover board of shell	-	46	Sleeve 1	BH10369002110
20	Upper cpver board of shell	-	47	Taper sleeve 1610-38	YW30163800000
21	Small belt pulley	YW30209800000			

* means possible broken parts.

** means easy broken part. and spare backup is suggested.

Please confirm the version of manual before placing the purchase order to guarantee that the item number of the spare part is in accordance with the real object.

2.3.13 Assembly Drawing (SG-2042NC(H))



Note: Please refer to 2.3.14 material list about the parts code.

Picture 2-11: Assembly Drawing (SG-2042NC(H))

2.3.14 Parts List (SG-2042NC(H))

Table 2-11: Parts List (SG-2042NC)

No.	Name	Part No.	No.	Name	Part No.
1	Material collection case	-	25	Motor (3.0kW)	YM10713000800
2	Handle	YR40083500000	26	Feeding box	-
3	Safety switch handle	BH10024200010	27	Star assembly of feeding box	BH85204120010
4	Safety switch installation board	BH10424500010	28	Handle *	BW20012000140
5	Screen (Φ4)**	BL50202811620	29	Feeding mouth	-
	Screen (Φ5)**	BL50202811720	30	Material fender	-
	Screen (Φ6)**	BL55204260020	31	Cover board of left bearing plate	-
	Screen (Φ7)**	BL50202811820	32	Oil seal	YR80557200000
	Screen (Φ8)**	BL50202811920	33	Left bearing plate	BH10204210010
	Screen (Φ10)**	BL50202812020	34	Material fender (65Mn)	BH11020020010
	Screen (Φ12)**	BL50202812120	35	Blade rest 1	BW30200320010
6	Castor with brake 3"	YW03000300000	36	Rotating blade**	BW41200100010
7	Adjusting board for motor	-	37	Flat key 14X267	BH11204200510
8	Motor base	-	38	Shaft	BH11204210110
9	Pressure block of front block	BH10235000010	39	Sleeve	BH10204500010
10	Fixed balde**	YW41041900000	40	Pressure block	BH10204290010
11	Right bearing holder	BH10204600010	41	Pressure block of back block	BH10024280010
12	Cover board	-	42	Front block	BH10204230010
13	Bearing 6209DD*	YW11620900000	43	Fixed castor 3"	YW03000300300
14	Right bearing cover plate	-	44	Movable castor 3"	YW03000300200
15	Taper sleeve 3020-45	YW30302450000	45	Screen rest	-
16	Large belt wheel	YW30231900000	46	Safety switch installation shaft	BH10204300010
17	Poly V-belt 20PJ53 *	YW30253300000	47	Blade rest 2	BW30202420010
18	Out housing	-	48	Blade rest 3	BW30200520010
19	Lower cover board of shell	-	49	Blade rest 4	BW30204220210
20	Upper cpver board of shell	-	50	Blade rest 5	BW30204220310
21	Small belt pulley	YW30209800000	51	Blade rest 6	BW30204220410
22	Rotating shaft	BH10204100010	52	Sleeve 1	BH10369002110
23	Star assembly of screen	BH10204220010	53	Taper sleeve 1610-38	YW30163800000
24	Check plate for storage box	-	54	Press block for rotating blade	BH10235200010

* means possible broken parts. ** means easy broken part. and spare backup is suggested.

Please confirm the version of manual before placing the purchase order to guarantee that the item number of the spare part is in accordance with the real object.

Table 2-12: Parts List (SG-2042NCH)

No.	Name	Part No.	No.	Name	Part No.
1	Material collection case	-	25	Motor (4.0kW)	YM10713300600
2	Handle	YR40083500000	26	Feeding box	-
3	Safety switch handle	BH10024200010	27	Star assembly of feeding box	BH85204120010
4	Safety switch installation board	BH10424500010	28	Handle *	BW20012000140
5	Screen (Φ4)**	BL50202811620	29	Feeding mouth	-
	Screen (Φ5)**	BL50202811720	30	Material fender	-
	Screen (Φ6)**	BL55204260020	31	Cover board of left bearing plate	-
	Screen (Φ7)**	BL50202811820	32	Oil seal	YR80557200000
	Screen (Φ8)**	BL50202811920	33	Left bearing plate	BH10204210010
	Screen (Φ10)**	BL50202812020	34	Material fender (65Mn)	BH11020020010
	Screen (Φ12)**	BL50202812120	35	Blade rest 1	BW30200320010
6	Castor with brake 3"	YW03000300000	36	Rotating blade**	BW41200100010
7	Adjusting board for motor	-	37	Flat key 14X267	BH11204200510
8	Motor base	-	38	Shaft	BH11204210110
9	Pressure block of front block	BH10235000010	39	Sleeve	BH10204500010
10	Fixed blade**	YW41041900000	40	Pressure block	BH10204290010
11	Right bearing holder	BH10204600010	41	Pressure block of back block	BH10024280010
12	Cover board	-	42	Front block	BH10204230010
13	Bearing 6209DD*	YW11620900000	43	Fixed castor 3"	YW03000300300
14	Right bearing cover plate	-	44	Movable castor 3"	YW03000300200
15	Taper sleeve 3020-45	YW30302450000	45	Screen rest	-
16	Large belt wheel	YW30231900000	46	Safety switch installation shaft	BH10204300010
17	Poly V-belt 20PJ53 *	YW30253300000	47	Blade rest 2	BW30202420010
18	Out housing	-	48	Blade rest 3	BW30200520010
19	Lower cover board of shell	-	49	Blade rest 4	BW30204220210
20	Upper cover board of shell	-	50	Blade rest 5	BW30204220310
21	Small belt pulley	YW30209800000	51	Blade rest 6	BW30204220410
22	Rotating shaft	BH10204100010	52	Sleeve 1	BH10369002110
23	Star assembly of screen	BH10204220010	53	Taper sleeve 1610-38	YW30163800000
24	Check plate for storage box	-	54	Press block for rotating blade	BH10235200010

* means possible broken parts.

** means easy broken part. and spare backup is suggested.

Please confirm the version of manual before placing the purchase order to guarantee that the item number of the spare part is in accordance with the real object.