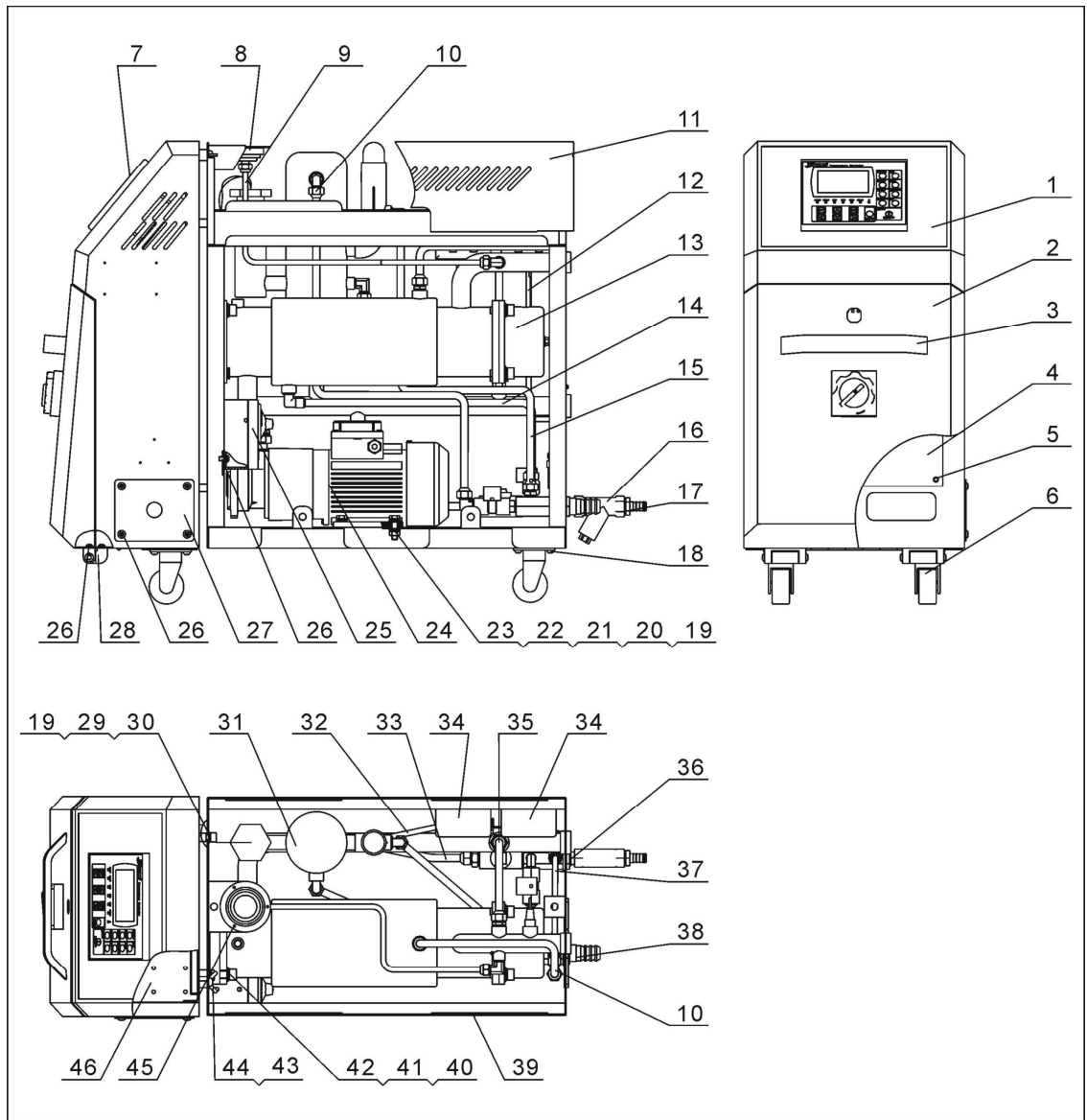


2.2 Assembly Drawing

2.2.1 Assembly Drawing (STM-607-PW)



Remarks: Please refer to material list 2.2.2 for specific explanation of the Arabic numbers in parts drawing.

Picture 2-2: Assembly Drawing (STM-607-PW)

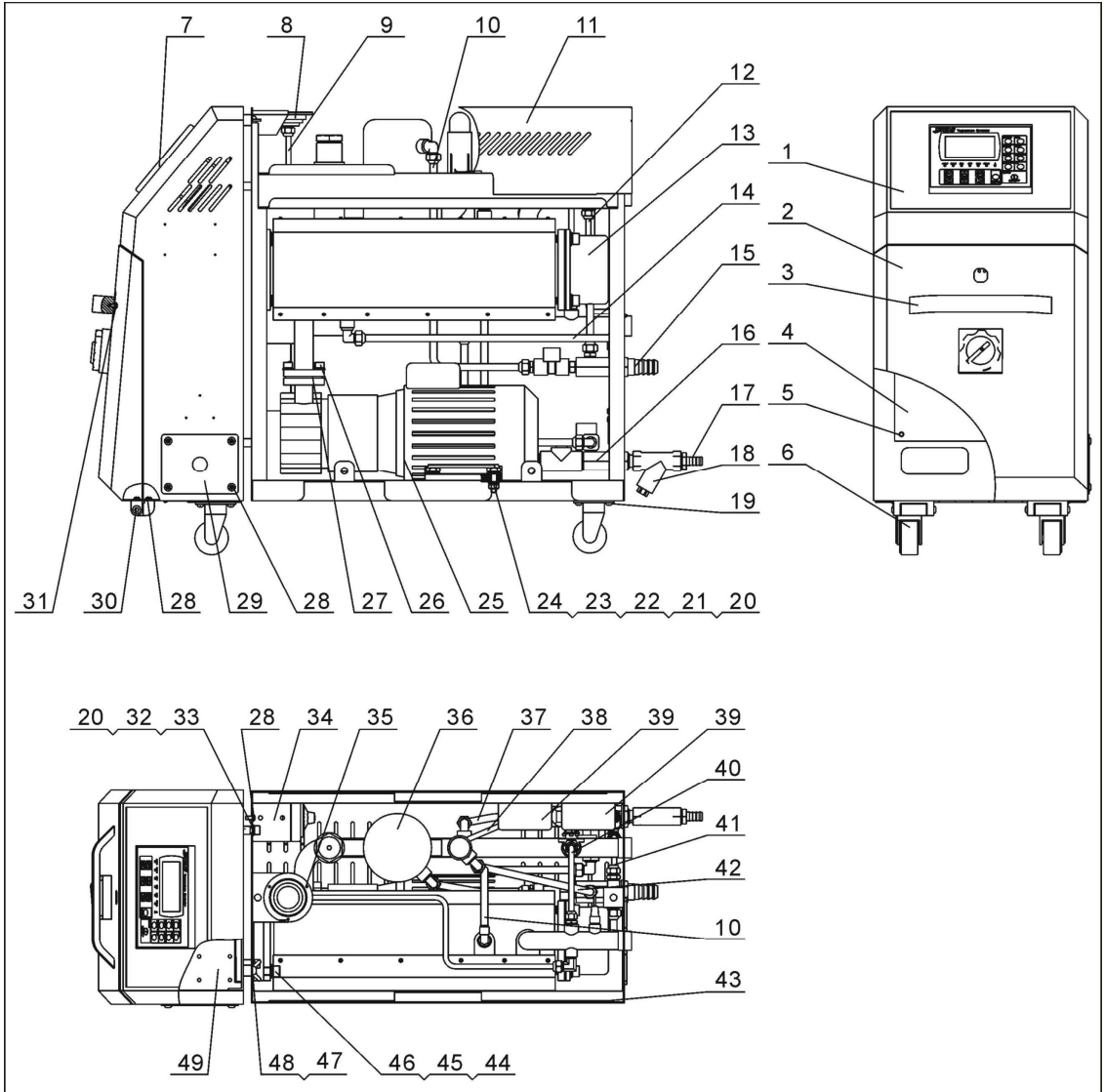
2.2.2 Parts List (STM-607-PW)

Table 2-1: Parts List (STM-607-PW)

No.	Name	Part No.	No.	Name	Part No.
1	Control box	-	24	Pump MP-55	YW64080600000
2	Door plate	-	25	EGO assembly	BH90115000050
3	Door plate aluminum handle 6609	YW20660900100	26	Lentil-headed screw M5×10	YW62051000100
4	Base plate of control box	-	27	Line clamp fixing plate	-
5	Thick head screw M6×20	YW63062000000	28	Big hinge CL219-1	YW06219100000
6	Caster 2"	YW03000200000	29	Inner hexagon screw M8×20	YW61082000200
7	HAN YOUNG controller MT100-01	YE81100010000	30	Spring gasket 8mm	YW65008000100
8	Pressure gauge 0-15kg	YW85015000000	31	Return pipe parts	-
9	Pressure gauge pipe	-	32	High pressure pipe	-
10	Teflon pipe with connector 3/8"×60cm	YW59386000000	33	Filling water pipe	-
11	Cover plate	-	34	Low pressure on-off controller 0-0.8MPa	YE90000800000
12	Low pressure pipe	-	35	Hot water by-pass pipe	-
13	Heating tank parts	-	36	Filling pipe connector parts	-
14	Cooling water inlet pipe	-	37	Cooling water by-pass pipe	-
15	Water drainage pipe	-	38	Water drainage pipe parts	-
16	Y type filtering water valve 1/2"	YW57010200000	39	Side plate	-
17	Copper core M13×1/2PT	BH12131200010	40	Inner hexagon screw M10×30	YW61103000100
18	Lentil-headed screw M6×10	YW62061000000	41	Spring gasket 10	YW65010000000
19	Flat gasket 8×22×1.5mm	YW66082200000	42	Flat gasket 10.5×20×2mm	YW66102000100
20	Spring gasket 6	YW65006000100	43	Butterfly screw M8×15	YW69081500000
21	Flat gasket 6×18×1.0	YW66061800000	44	Spring gasket 8×16×1.5mm	YW66081600000

* means possible broken parts. ** means easy broken part. and spare backup is suggested. Please confirm the version of manual before placing the purchase order to guarantee that the item number of the spare part is in accordance with the real object.

2.2.3 Assembly Drawing (STM-1220-PW)



Remarks: Please refer to material list 2.2.4 for specific explanation of the Arabic numbers in parts drawing.

Picture 2-3: Assembly Drawing (STM-1220-PW)

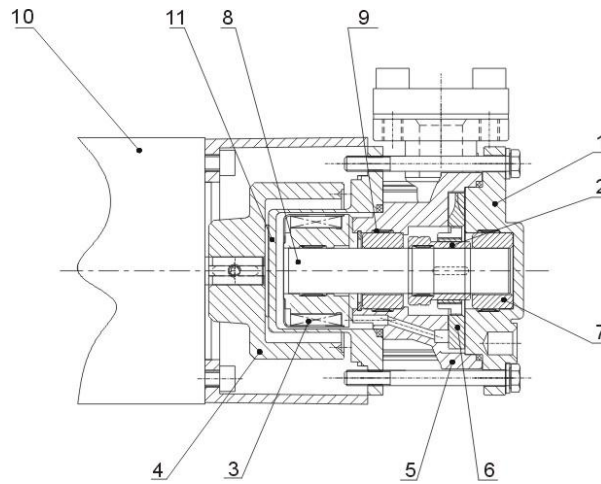
2.2.4 Parts List (STM-1220-PW)

Table 2-2: Parts List (STM-1220-PW)

No.	Name	Part No.	No.	Name	Part No.
1	Control box	-	26	Inner hexagon screw M10×25	YW61102500000
2	Door plate	-	27	Flange gasket	-
3	Door plate aluminum handle 6609	YW20660900100	28	Lentil-headed screw M5×10	YW62051000100
4	Base plate of control box	-	29	Line clamp fixing plate	-
5	Thick head screw M6×20	YW63062000000	30	Big hinge CL219-1	YW06219100000
6	Caster 2"	YW03000200000	31	Thick head screw M4×6	YW63040600000
7	HAN YOUNG controller MT100-01	YE81100010000	32	Inner hexagon screw M8×20	YW61082000200
8	Pressure gauge 0-15kg	YW85015000000	33	Spring gasket 8mm	YW65008000100
9	Pressure gauge pipe	-	34	EGO assembly	BH90115000050
10	Teflon pipe with connector 3/8"×50cm	YW59385000000	35	Thick head screw M3×6	YW63030600000
11	Cover plate	-	36	Return pipe parts	-
12	Low pressure pipe	-	37	Filling water pipe	-
13	Heating tank parts	-	38	High pressure pipe	-
14	Cooling water inlet pipe	-	39	Low pressure on-off controller 0-0.8MPa	YE90000800000
15	Water drainage connector parts	-	40	Hot water by-pass pipe	-
16	Filling pipe connector parts	-	41	Cooling water by-pass pipe	-
17	Copper core M13×1/2PT	BH12131200010	42	Water drainage pipe	-
18	Y type filtering water valve 1/2"	YW57010200000	43	Side plate	-
19	Lentil-headed screw M6×10	YW62061000000	44	Spring gasket 10	YW65010000000
20	Flat gasket 8×22×1.5mm	YW66082200000	45	Inner hexagon screw M10×30	YW61103000100
21	Spring gasket 6	YW65006000100	46	Flat gasket 10.5×20×2mm	YW66102000100
22	Flat gasket 6×18×1.0	YW66061800000	47	Butterfly screw M8×15	YW69081500000
23	Hexagon screw M6×25	YW60062500000	48	Spring gasket 8×16×1.5mm	YW66081600000
24	Screw M6	YW64080600000	49	Rear plate of control box	-
25	Pump MP-100	BM20123400000			

* means possible broken parts. ** means easy broken part. and spare backup is suggested. Please confirm the version of manual before placing the purchase order to guarantee that the item number of the spare part is in accordance with the real object.

2.2.5 Pump



Names of Parts:

- | | | |
|-------------------------------|------------------|---------------------------|
| 1. Pump cover | 2. Shaft sleeve | 3. Inner magnetic coupler |
| 4. Out magnetic coupler | 5. Pump body | 6. Paddle wheel |
| 7. Carbonated silicon bearing | 8. Ceramic stick | |
| 9. Lockup parts | 10. Motor | 11. Magnetic cover |

Picture 2-4: Pump