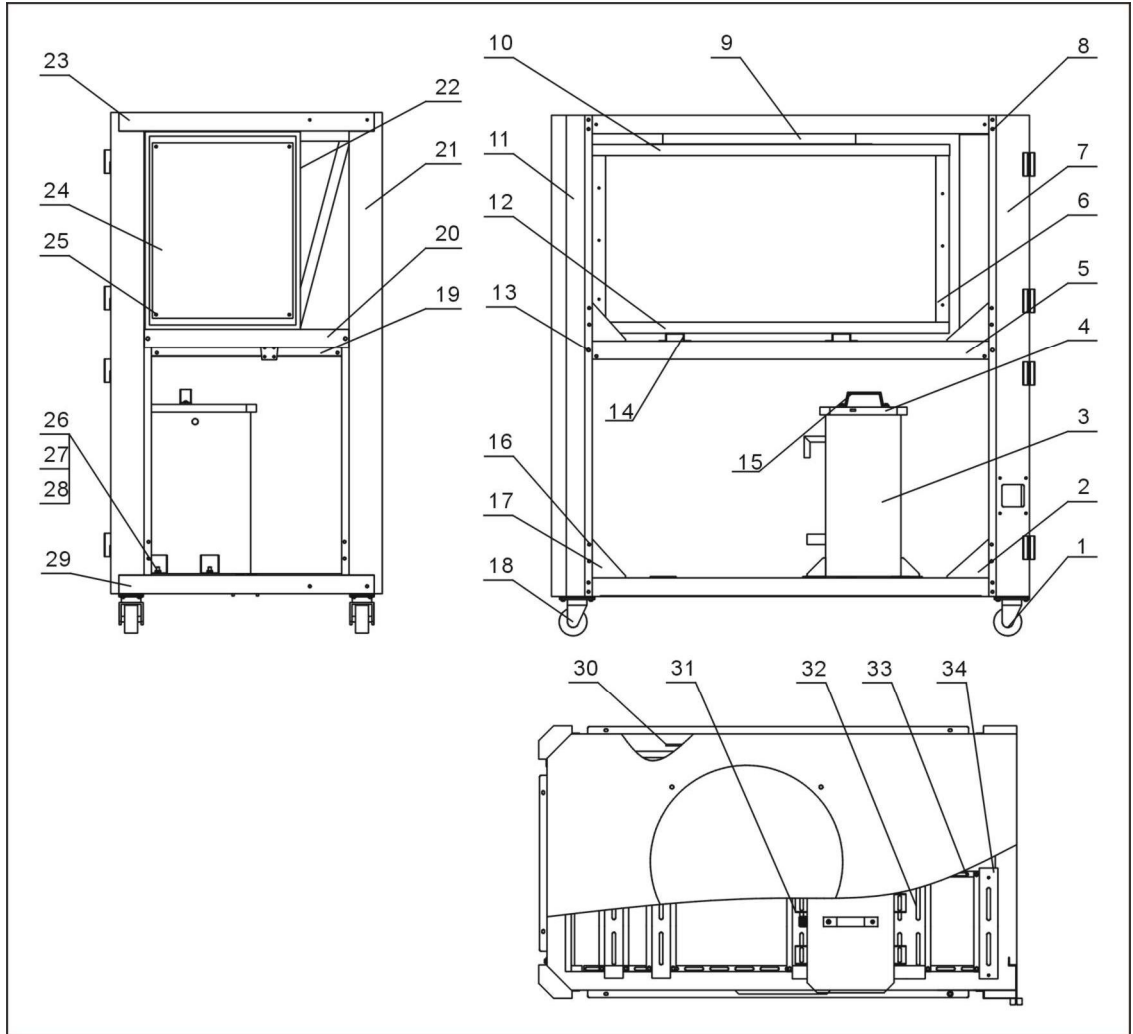


## 2.2 Parts Drawing

### 2.2.1 Structure Chart (SIC-7.5A-R2)



Note: For details of the numbers in the parts drawing, please refer to the part list in 2.2.2

Picture 2-2: Structure Chart (SIC-7.5A-R2)

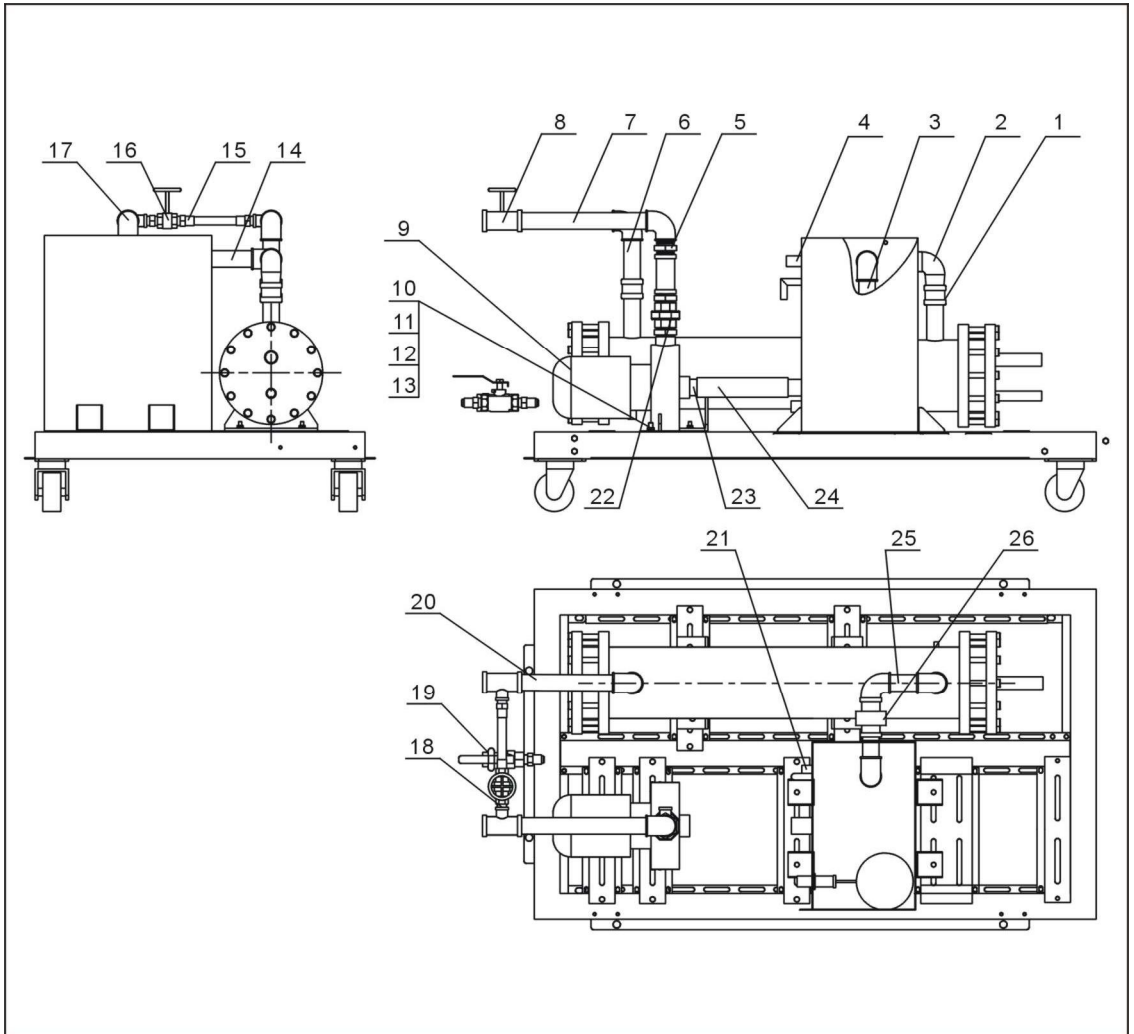
## 2.2.2 Structure Chart Parts List (SIC-7.5A-R2)

Table 2-1: Structure Chart Parts List (SIC-7.5A-R2)

No.	Name	Parts No.	No.	Name	Parts No.
1	Braking black castor 3"	YW03000300000	18	Movable black castor 3"PP	YW03000300200
2	Triangle support (left)	-	19	Middle back beam	-
3	Water tank	-	20	Electric control cabinet support	-
4	Water tank Cover	-	21	Right front stand stand column	-
5	Left part of middle beam	-	22	Electric control cabinet	-
6	Fan cover 1	-	23	Top plate	-
7	Left front stand stand column	-	24	Base plate of electric control cabinet	-
8	Hexbolt M6×20	YW60062000100	25	Screw M6×20	YW62062000000
9	Fan guide	-	26	Hexnut M8	YW64080600000
10	Fan cover 3	-	27	Spring washer 8	YW65008000100
11	Back stand stand column	-	28	Flat washer 8	YW66082200100
12	Fan cover 2	-	29	Base frame	-
13	Hexbolt M8×20	YW60082000300	30	Right part of middle beam	-
14	Condensor support	-	31	Lower beam 1	-
15	Square handle	BW20012000040	32	Lower beam 2	-
16	Screw M6×10	YW62061000000	33	Middle lower beam	-
17	Triangle support (right)	-	34	Lower beam 3	-

\* means possible broken parts. \*\* means easy broken parts. Spare backup is suggested. Please confirm the version number of the manual before you order to ensure the stock number and the parts are consistent.

### 2.2.3 Water System Diagram (SIC-7.5A-R2)



Note: For details of the numbers in the parts drawing, please refer to the part list in 2.2.4

Picture 2-3: Water System Diagram (SIC-7.5A-R2)

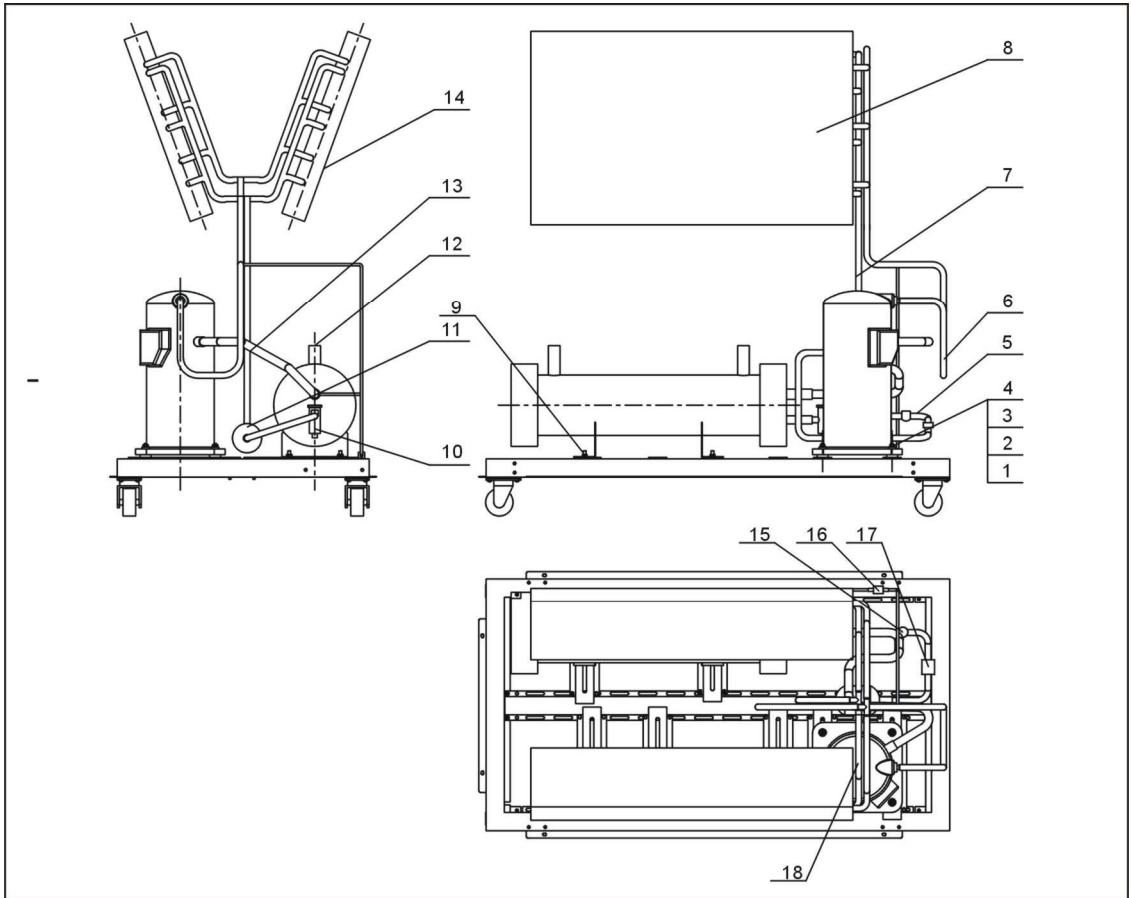
## 2.2.4 Water System Parts List (SIC-7.5A-R2)

Table 2-2: Water System Parts List (SIC-7.5A-R2)

No.	Name	Parts No.	No.	Name	Parts No.
1	Direct connection1"	YW51000100000	14	Galvanized steel pipe 4	-
2	Street elbow 1"	YW53100100000	15	Copper inserted core 1/2"	BH12161200010
3	Galvanized steel pipe 1	-	16	Sluice valve1/2"	YW50010200000
4	Floating ball valve 1/2"	YW59010200000	17	Pipe elbow 1"	YW53100000000
5	Inner joint 1"	YW50000100000	18	Copper pipe coupler 1/2" ×1/2"	BH12010200010
6	Galvanized steel pipe 2	-	19	Copper cored ball valve 1/2"	YW50010200100
7	Galvanized steel pipe 3	-	20	Galvanized steel pipe5	-
8	T connection1" ×1/2"	YW52101200100	21	T connection1/2"	YW52100200000
9	Water pump	-	22	Loosen joint 1"	YW54000100000
10	Hexnut M8	YW64080600000	23	Galvanized steel pipe 6	-
11	Spring washer 8	YW65008000100	24	Black rubber hose	YR60320500000
12	Flat washer 8	YW66082200100	25	Galvanized steel pipe 7	-
13	Hexnut M8×20	YW60082000300	26	Flow switch 1"	YW85005000000

\* means possible broken parts. \*\* means easy broken parts. Spare backup is suggested. Please confirm the version number of the manual before you order to ensure the stock number and the parts are consistent.

## 2.2.5 Refrigerant System Diagram (SIC-7.5A-R2)



Note: For details of the numbers in the parts drawing, please refer to the part list in 2.2.6

Picture 2-4: Refrigerant System Diagram (SIC-7.5A-R2)

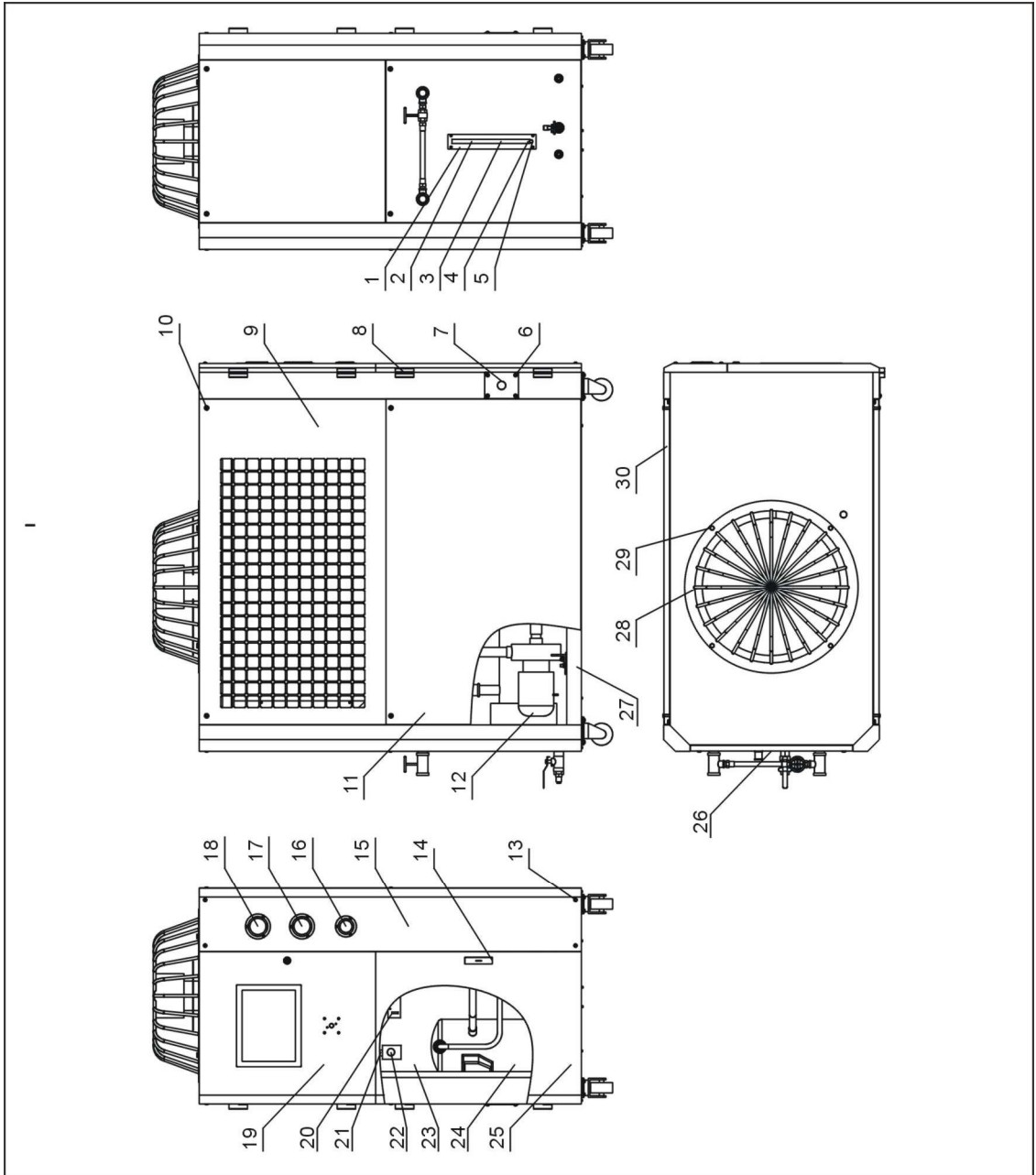
## 2.2.6 Refrigerant System Parts List (SIC-7.5A-R2)

Table 2-3: Refrigerant System Parts List (SIC-7.5A-R2)

No.	Name	Parts No.	No.	Name	Parts No.
1	Hexbolt M8×50	YW60085000000	10	thermostatic expansion valve	-
2	Flat washer 8	YW66082200100	11	Drying filter EK-053S	YW85016530100
3	Spring washer8	YW65008000100	12	Evaporator	-
4	Hexnut M8	YW64080600000	13	Air suction pipe	-
5	Liquid pipe 2	-	14	Right condenser	-
6	Exhaust pipe	-	15	Refrigrant indicator HMI-1TT3	YW85001300100
7	Liquid pipe 1	-	16	By-pass valve	YE32008300000
8	Left condensor	-	17	Solenoid valve	-
9	Hexbolt M8×20	YW60082000300	18	compressor	-

\* means possible broken parts. \*\* means easy broken parts. Spare backup is suggested. Please confirm the version number of the manual before you order to ensure the stock number and the parts are consistent.

## 2.2.7 General Assembly Diagram (SIC-7.5A-R2)



Note: For details of the numbers in the parts drawing, please refer to the part list in 2.2.8

Picture 2-5: General Assembly Diagram (SIC-7.5A-R2)

## 2.2.8 General Assembly Parts List (SIC-7.5A-R2)

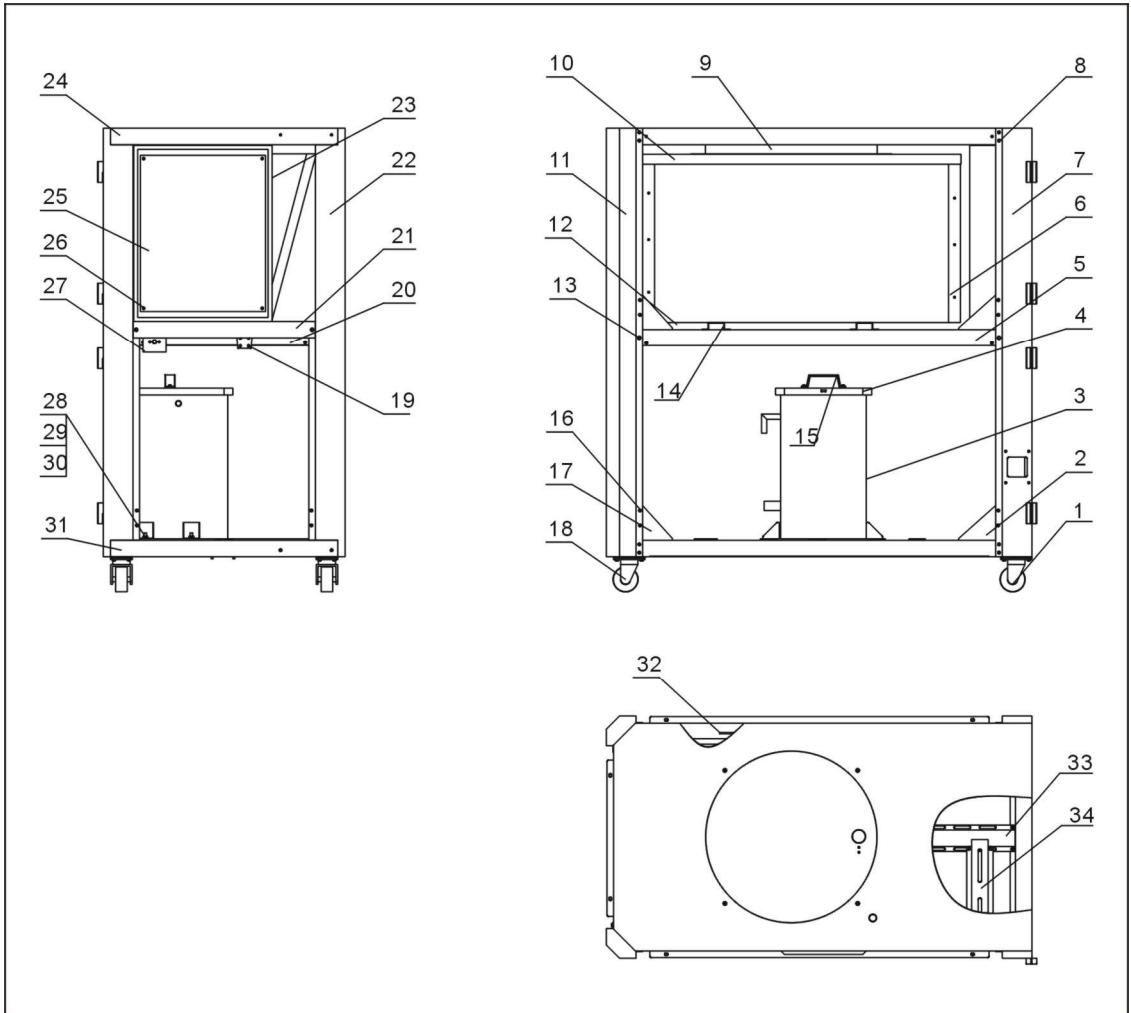
Table 2-4: General Assembly Parts List (SIC-7.5A-R2)

No.	Name	Parts No.	No.	Name	Parts No.
1	Liquid level indicator cover	BL90006800020	16	Water pressure guage	YW85001000100
2	Glass tube	YW70963000000	17	Low pressure guage	YW85003500000
3	Liquid level indicator STM-310	BH12030000010	18	High pressure guage	YW85005500000
4	Level indicator screw	BH12060700110	19	Upper door	-
5	Level indicator base	YW20000000400	20	Pressure controller	YE90124500000
6	Screw M6×10	YW62061000000	21	Fixing block of anti-freezing switch	-
7	Line jig fixed plate	-	22	Adjustable anti-freezing switch	YW85071100000
8	Hinge	YW06203100400	23	Rear plate 1	-
9	Side plate 2 (left)	-	24	Refrigerant system	-
10	Screw M6×30	YW62063000000	25	Lower door	-
11	Side plate 1	-	26	Rear plate 2	-
12	Water system	-	27	Rack	-
13	Screw M6×45	YW63064500000	28	Fan	-
14	Door lock	YW00717100000	29	Hexbolt M8×20	YW60082000300
15	Gauge plate	-	30	Side plate 2 (right)	-

\* means possible broken parts. \*\* means easy broken parts. Spare backup is suggested. Please confirm the version number of the manual before you order to ensure the stock number and the parts are consistent.



### 2.2.9 Racking Diagram (SIC-12A-R2)



Note: For details of the numbers in the parts drawing, please refer to the part list in 2.2.10

Picture 2-6: Rack Diagram (SIC-12A-R2)

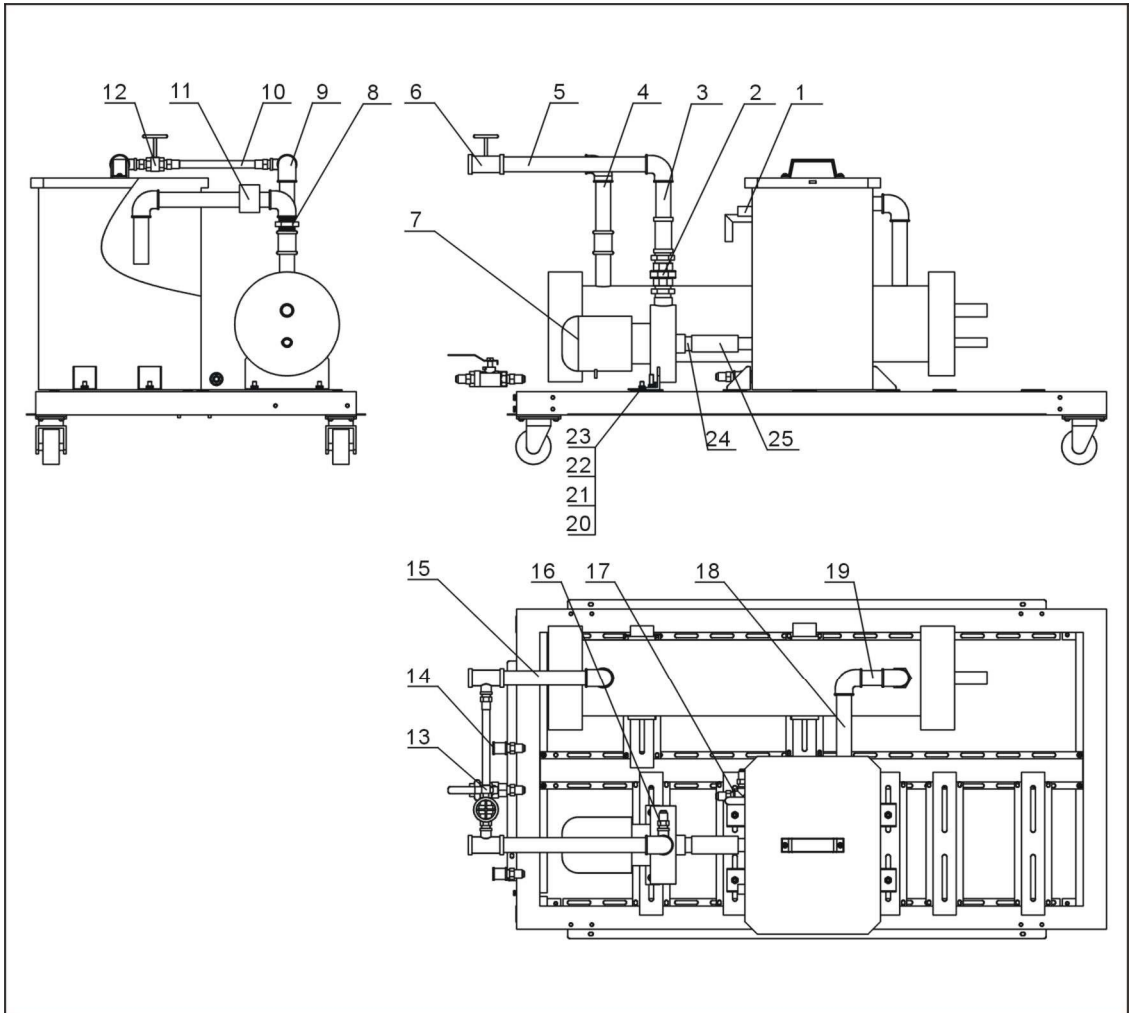
## 2.2.10 Rack Parts List (SIC-12A-R2)

Table 2-5: Rack Parts List (SIC-12A-R2)

No.	Name	Parts No.	No.	Name	Parts No.
1	Braking black castor 3"	YW03000300000	18	Movable black castor 3"	YW03000300200
2	Triangle support	-	19	Fixed block of pressure switch	BL21000603020
3	Water tank	-	20	Middle back beam	-
4	Water tank cover	-	21	Electric control cabinet support	-
5	Left part of middle beam	-	22	Right front stand stand column	-
6	Fan cover 3	-	23	Electric control cabinet	-
7	Left front stand stand column	-	24	Top plate	-
8	Hexbolt M6×20	YW60062000100	25	Base of electric control cabinet	-
9	Fan guide	-	26	Screw M6×20	YW62062000000
10	Fan cover 1	-	27	Fixed plate of anti-freezing switch	-
11	Back stand stand column	-	28	Hexnut M8	YW64080600000
12	Fan cover 2	-	29	Spring washer 8	YW65008000100
13	Hexbolt M8×20	YW60082000300	30	Flat washer 8	YW66082200100
14	Condensor support	-	31	Base frame	-
15	Square handle	BW20012000040	32	Right part of middle beam	-
16	Screw M6×10	YW62061000000	33	Middle lower beam	-
17	Triangle support 2	-	34	Lower beam	-

\* means possible broken parts. \*\* means easy broken parts. Spare backup is suggested. Please confirm the version number of the manual before you order to ensure the stock number and the parts are consistent.

## 2.2.11 Water System Diagram (SIC-12A-R2)



Note: For details of the numbers in the parts drawing, please refer to the part list in 2.2.12

Picture 2-7: Water System Diagram (SIC-12A-R2)

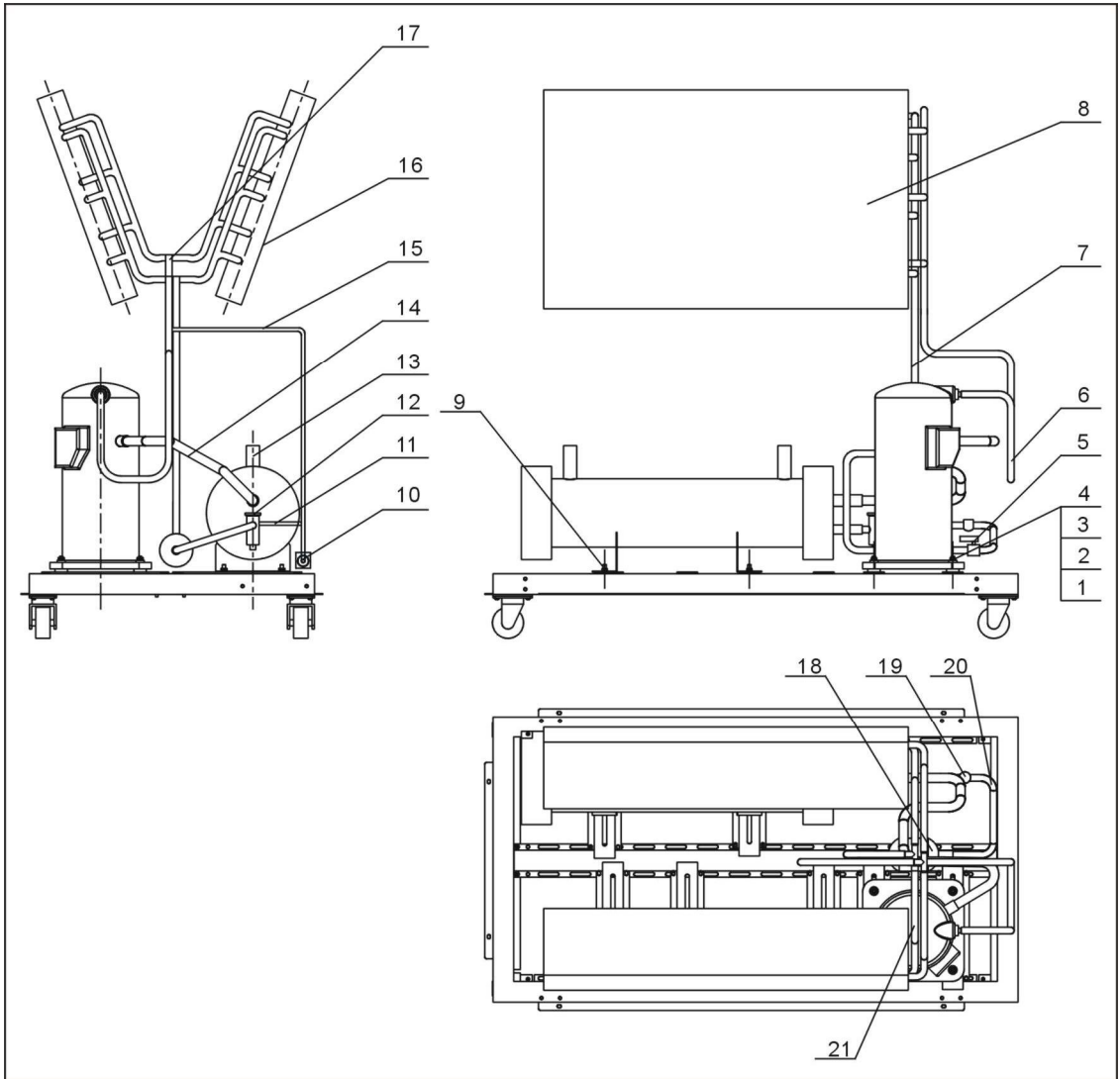
## 2.2.12 Water System Parts List (SIC-12A-R2)

Table 2-6: Water System Parts List (SIC-12A-R2)

No.	Name	Parts No.	No.	Name	Parts No.
1	Floating ball valve 1/2"	YW59010200000	14	Direct connection 1/2"	YW51001200000
2	Loosen joint 1"	YW54000100000	15	Galvanized steel pipe 4	-
3	Galvanized steel pipe 6	-	16	Copper ferrule 1/2"	BH12161200010
4	Galvanized steel pipe 3	-	17	T-connection 1/2"	YW52100200000
5	Galvanized steel pipe 5	-	18	Galvanized steel pipe 1	-
6	T-connection 1" x 1/2"	YW52101200100	19	Galvanized steel pipe 7	-
7	Water pump	-	20	Hexnut M8x20	YW60082000300
8	Inner joint 1"	YW50000100000	21	Flat washer 8	YW66082200100
9	Bent 1"	YW53100000000	22	Spring washer 8	YW65008000100
10	Copper pipe 1	-	23	Hexnut M8	YW64080600000
11	Flow switch 1"	YW85005000000	24	Galvanized steel pipe 2	-
12	Sluice valve 1/2"	YW50010200000	25	Blace rubber hose	YR60320500000
13	Ball valve 1/2"	YW50010200100			

\* means possible broken parts. \*\* means easy broken parts. Spare backup is suggested. Please confirm the version number of the manual before you order to ensure the stock number and the parts are consistent.

### 2.2.13 Refrigerant System Diagram (SIC-12A-R2)



Note: For details of the numbers in the parts drawing, please refer to the part list in 2.2.14

Picture 2-8: Refrigerant System Diagram (SIC-12A-R2)

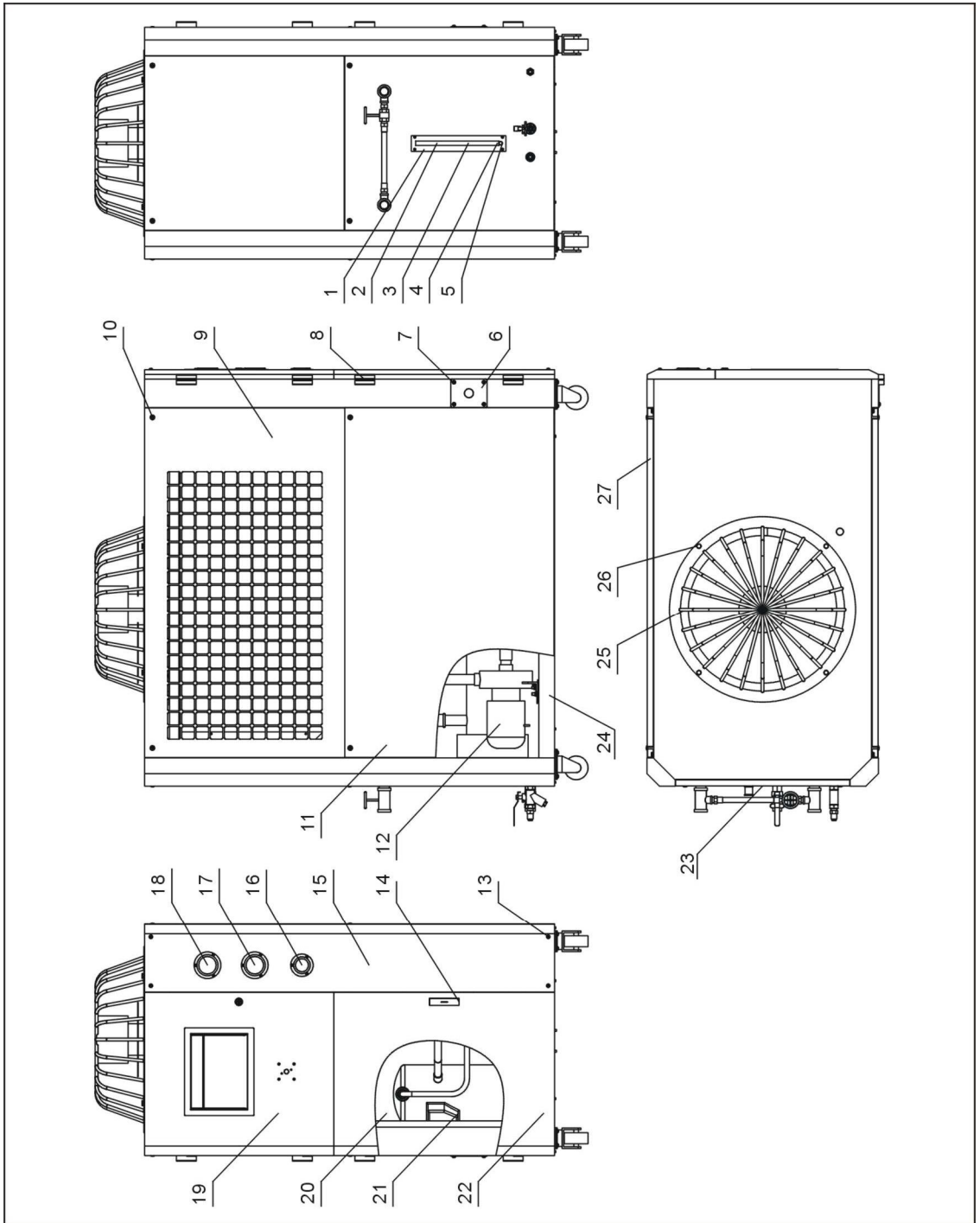
## 2.2.14 Refrigerant System Parts List (SIC-12A-R2)

Table 2-7: Refrigerant System Parts List (SIC-12A-R2)

No.	Name	Parts No.	No.	Name	Parts No.
1	Hexbolt M8×50	YW60085000000	12	Thermostate expansion valve	-
2	Flat washer 8	YW66082200100	13	Evaporator	-
3	Spring washer 8	YW65008000100	14	Air suction pipe	-
4	Hexnut M8	YW64080600000	15	Copper pipe 2	-
5	Solenoid valve	-	16	Right condenser	-
6	Exhaust pipe 1	-	17	Exhaust pipe 2	-
7	Liquid pipe 1	-	18	Drying filter EK-053S	YW85016530100
8	Left condenser	-	19	Refrigerant indicator HMI-1TT3	YW85001300100
9	Hexbolt M8×20	YW60082000300	20	Liquid pipe 2	-
10	By-pass valve	YE32008300000	21	Compressor	-
11	Copper pipe 3	-			

\* means possible broken parts. \*\* means easy broken parts. Spare backup is suggested. Please confirm the version number of the manual before you order to ensure the stock number and the parts are consistent.

## 2.2.15 Rack Diagram (SIC-12A-R2)



Note: For details of the numbers in the parts drawing, please refer to the part list in 2.2.16

Picture 2-9: Rack Diagram (SIC-12A-R2)

## 2.2.16 Rack Parts List (SIC-12A-R2)

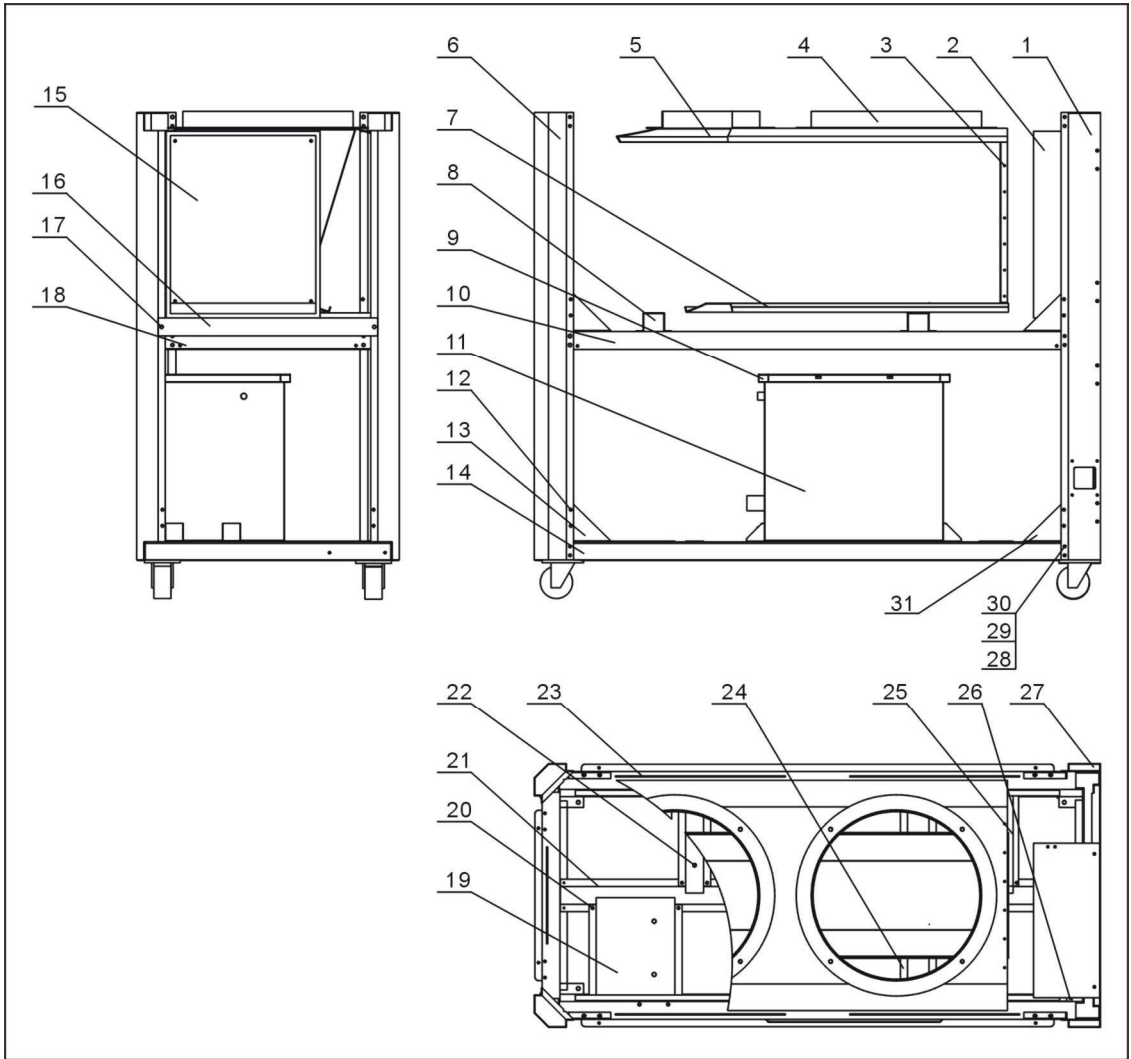
Table 2-8: Rack Parts List (SIC-12A-R2)

No.	Name	Parts No.	No.	Name	Parts No.
1	Refrigerant indicator cover	BL90006800020	16	Water pressure gauge	YW85001000100
2	Galss tube	YW70963000000	17	Low pressure gauge	YW85601800000
3	Refrigerant indicator STM-310	BH12030000010	18	High pressure gauge	YW85603800000
4	Indicator screw	BH12060700110	19	Upper door	-
5	Indicator base	YW20000000400	20	Rear plate 1	-
6	Screw M6×10	YW62061000000	21	Refrigerant system	-
7	Line jig fixed plate	-	22	Lower door	-
8	Hinge	YW06203100400	23	Rear palte 2	-
9	Side plate 1	-	24	Rack	-
10	Screw M6×30	YW62063000000	25	Fan	-
11	Side plate 3	-	26	Hexbolt M8×20	YW60082000300
12	Water system	-	27	Side plate 2	-
13	Screw M6×45	YW63064500000	28		
14	Door lock	YW00717100000	29		
15	Gauge plate	-	30		

\* means possible broken parts. \*\* means easy broken parts. Spare backup is suggested. Please confirm the version number of the manual before you order to ensure the stock number and the parts are consistent.



## 2.2.17 Rack Diagram (SIC-18A-R2~24A-R2)



Note: For details of the numbers in the parts drawing, please refer to the part list in 2.2.18

Picture 2-10: Rack Diagram (SIC-18A-R2~24A-R2)

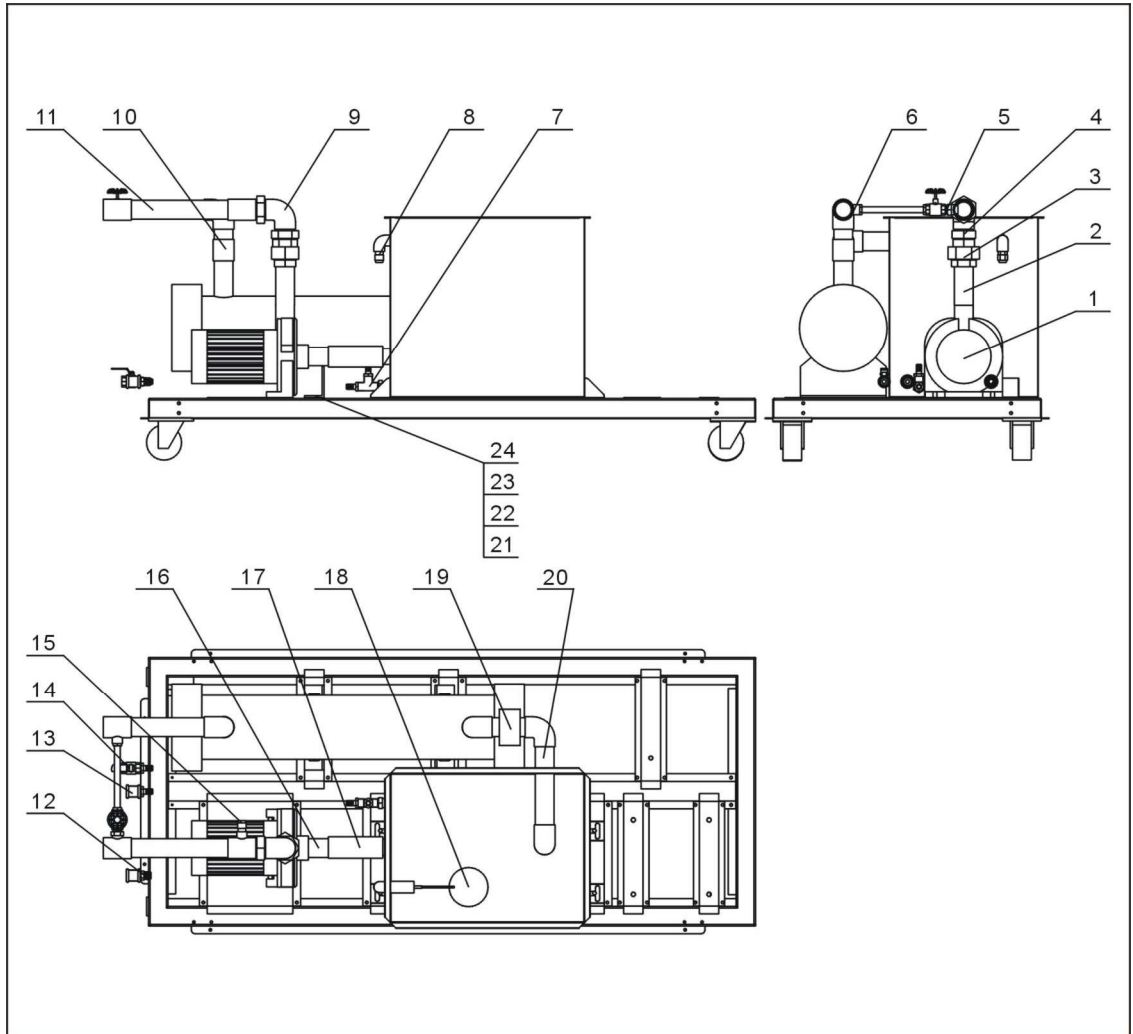
## 2.2.18 Rack Parts List (SIC-18A-R2~24A-R2)

Table 2-9: Rack Parts List (SIC-18A-R2~24A-R2)

No.	Name	Parts No.	No.	Name	Parts No.
1	Left front stand stand column	-	17	Hexbolt M8×20	YW60082000500
2	Electric control cabinet	-	18	Back beam	-
3	Baffle palte of condensor	-	19	Pump angle iron	-
4	Fan guide	-	20	Screw M6	-
5	Condenser cover	-	21	Lower middle beam	-
6	Back stand stand column	-	22	Condensor angle iron	-
7	Condenser base	-	23	Right beam	-
8	Condensor supporting	-	24	Water tank angle iron	-
9	Water tank cover	-	25	Solenoid valve angel iron	-
10	Left beam	-	26	Compressor angle iron	-
11	Water tank	-	27	Right front stand stand column	-
12	Triangle supporting (right)	-	28	Hexbolt M6×20	YW60062000100
13	Screw M6×20	YW63062000000	29	Spring washer 6	YW65006000100
14	Base frame	-	30	Falt washer 6	YW66061300000
15	Rear plate of electric control cabinet	-	31	Triangle supporting (left)	-
16	Middle beam	-			-

\* means possible broken parts. \*\* means easy broken parts. Spare backup is suggested.  
Please confirm the version number of the manual before you order to ensure the stock  
number and the parts are consistent.

## 2.2.19 Water System Diagram (SIC-18A-R2~24A-R2)



Note: For details of the numbers in the parts drawing, please refer to the part list in 2.2.20

Picture 2-11: Water System Diagram (SIC-18A-R2~24A-R2)

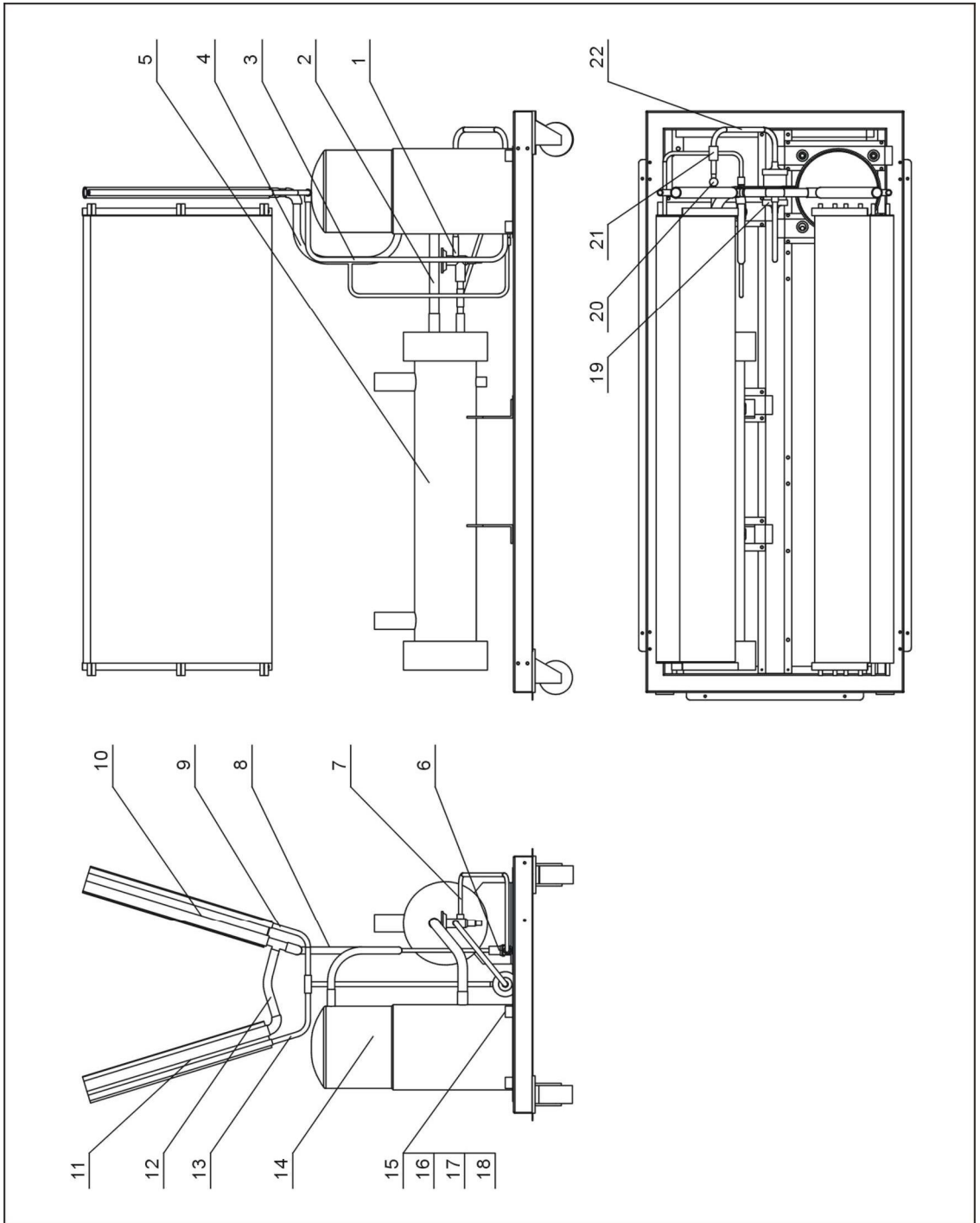
## 2.2.20 Water System Parts List (SIC-18A-R2~24A-R2)

Table 2-10: Water System Parts List (SIC-18A-R2~24A-R2)

No.	Name	Parts No.	No.	Name	Parts No.
1	Water pump	-	13	Direct connection 1/2"	YW51001200000
2	Galvanized steel pipe 1	-	14	Copper cored valve 1/2"	YW50010200100
3	Loosen joint 1-1/2"	YW54001500000	15	Copper joint 1/2"PT x1/4"H	BH12010400610
4	Loosen joint 1-1/2"	YW50001500100	16	Galvanized steel pipe 4	-
5	Copper pipe coupler 1/2"	BH12010200010	17	Blake rubber hose	YR60480500000
6	T-connection 1-1/2" x1/2"	YW52151200100	18	Floating ball valve 1/2"	YW59010200000
7	T-connection 1/2"	YW52100200000	19	Flow switch 1"	YW85005000000
8	Teflon joint 1/2"	BH12010200210	20	Galvanized steel pipe 3	-
9	Bent 1-1/2"	YW53011200000	21	Hexnut M8x20	YW60062000100
10	Direction connection 1-1/2"	YW51001500000	22	Spring washer 6	YW65006000100
11	Galvanized steel pipe 2	-	23	Flat washer 6	YW66061300000
12	Copper ferrule 1/2"	BH12121200210	24	Screw M6	YW64000600300

\* means possible broken parts. \*\* means easy broken parts. Spare backup is suggested. Please confirm the version number of the manual before you order to ensure the stock number and the parts are consistent.

### 2.2.21 Refrigerant System Diagram (SIC-18A-R2~24A-R2)



Note: For details of the numbers in the parts drawing, please refer to the part list in 2.2.22

Picture 2-12: Refrigerant System Diagram (SIC-18A-R2~24A-R2)

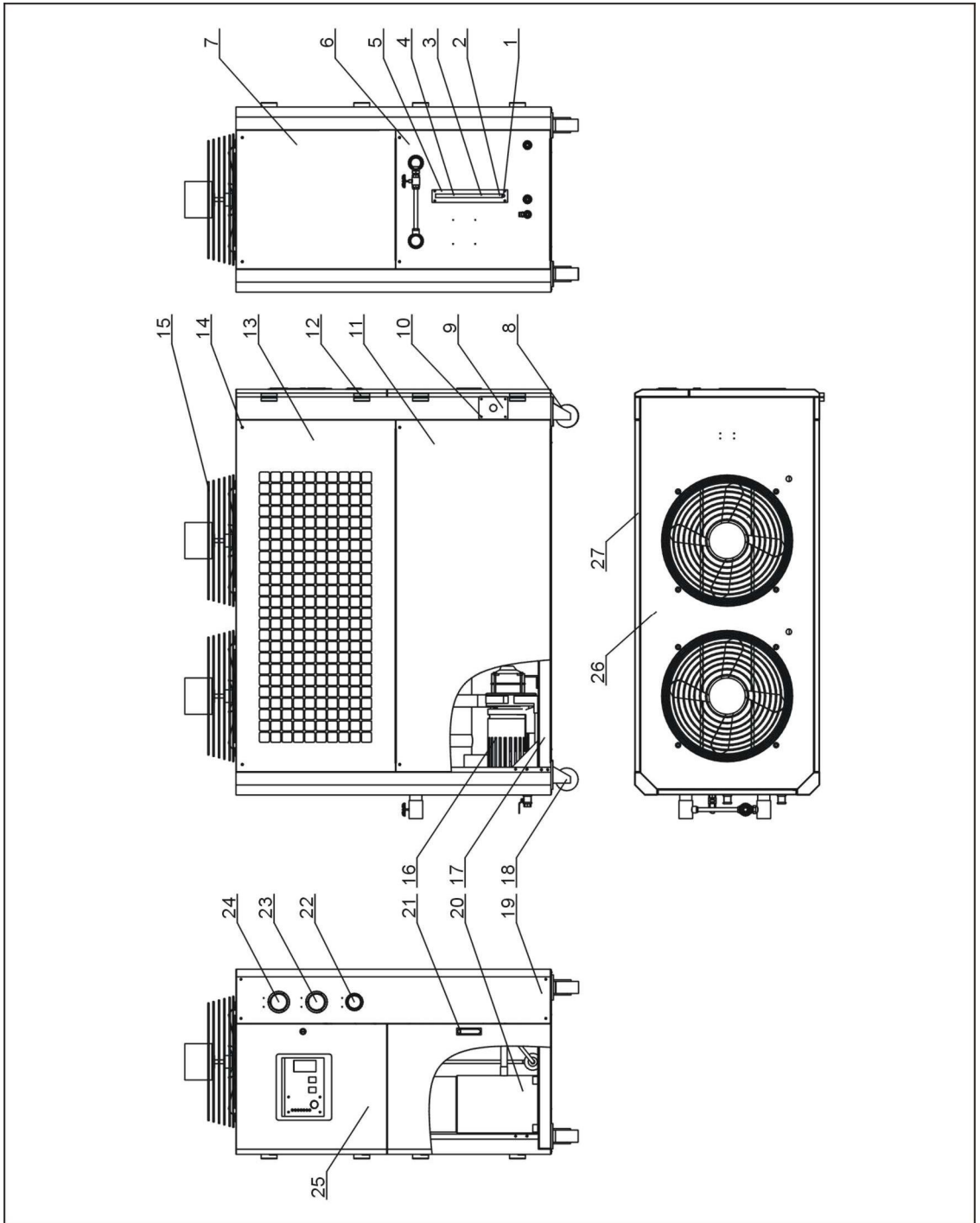
## 2.2.22 Refrigerant System Parts List (SIC-18A-R2~24A-R2)

Tabel 2-11: Refrigerant System Parts List (SIC-18A-R2~24A-R2)

No.	Name	Parts No.	No.	Name	Parts No.
1	Thermostate expansion valve	-	12	Exhaust pipe 2	-
2	Air suction pipe	-	13	Liquid pipe 3	-
3	Liquid pipe1	-	14	Compressor	-
4	Exhaust pipe 1	-	15	Screw M8	YW64080600000
5	Evaporator	-	16	Spring washer 8	YW65008000100
6	Thermostate expansion valve	YE32008300000	17	Flat washer 8	YW66082200100
7	Copper pipe 2	-	18	Hexbolt M8×50	YW60085000000
8	Copper pipe 1	-	19	Dtying filter EK-084S	-
9	Liquid pipe 2	-	20	Refrigerant indicator HMI-1TT4	-
10	Right condenser	-	21	Solenoid valve	-
11	Left condensor	-		Liquid pipe 4	-

\* means possible broken parts. \*\* means easy broken parts. Spare backup is suggested. Please confirm the version number of the manual before you order to ensure the stock number and the parts are consistent.

### 2.2.23 Genmeral Assembly Diagram (SIC-18A-R2~24A-R2)



Note: For details of the numbers in the parts drawing, please refer to the part list in 2.2.24

Picture 2-13: Genmeral Assembly Diagram (SIC-18A-R2~24A-R2)

## 2.2.24 Genmeral Assembly Parts List (SIC-18A-R2~24A-R2)

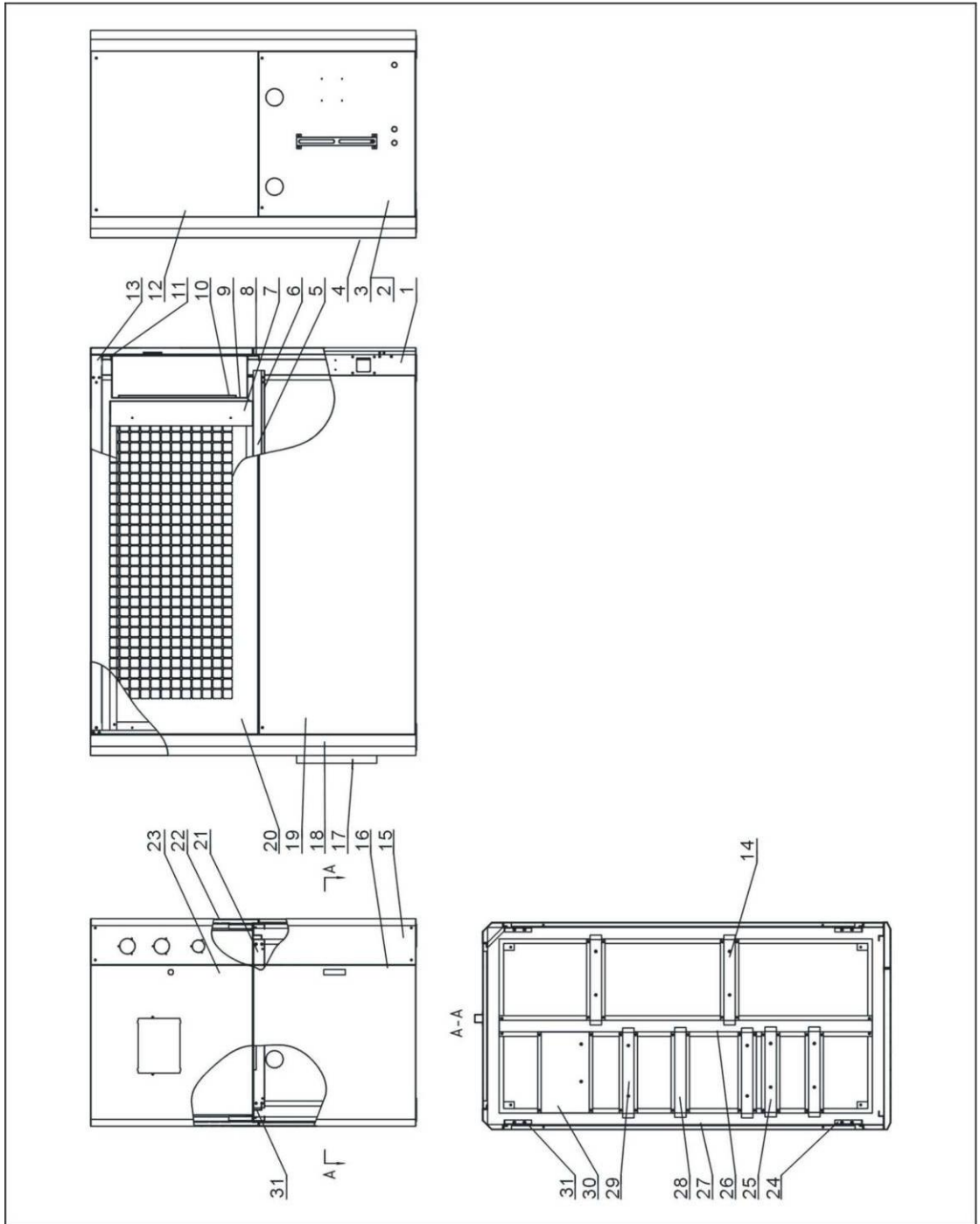
Table 2-12: Genmeral Assembly Parts List (SIC-18A-R2~24A-R2)

No.	Name	Parts No.	No.	Name	Parts No.
1	Refrigerant indicator base	YW20000000400	15	Fan	-
2	Indicator screw	BH12060700110	16	Water system	-
3	Refrigerant indicator STM-310	BH12030000010	17	Rack	-
4	Glass tube	YW70963000000	18	Movable black castors 3"PP	YW03000300200
5	Indicator cover	BL90006800020	19	Gauge plate	-
6	Lower rear plate	-	20	Refrigerant system	-
7	Upper rear palte	-	21	Door lock	YW00717100000
8	Braking black castors 3"PP	YW03000300000	22	Water pressure gauge	YW85001000100
9	Line jig fixed plate	-	23	Low pressure gauge	YW85003500000
10	Screw M5×10	YW63051000000	24	High pressure gauge	YW85005500000
11	Side plate 1	-	25	Left front door	-
12	Left hinge	YW06203100400	26	Top plate	-
13	Side plate on the left 2	-	27	Side plate on the right 2	-
14	Screw M6×45	YW63064500000			

\* means possible broken parts. \*\* means easy broken parts. Spare backup is suggested. Please confirm the version number of the manual before you order to ensure the stock number and the parts are consistent.



## 2.2.25 Rack Diagram (SIC-28A-R2~38A-R2)



Note: For details of the numbers in the parts drawing, please refer to the part list in 2.2.26

Picture 2-14: Rack Diagram (SIC-28A-R2~38A-R2)

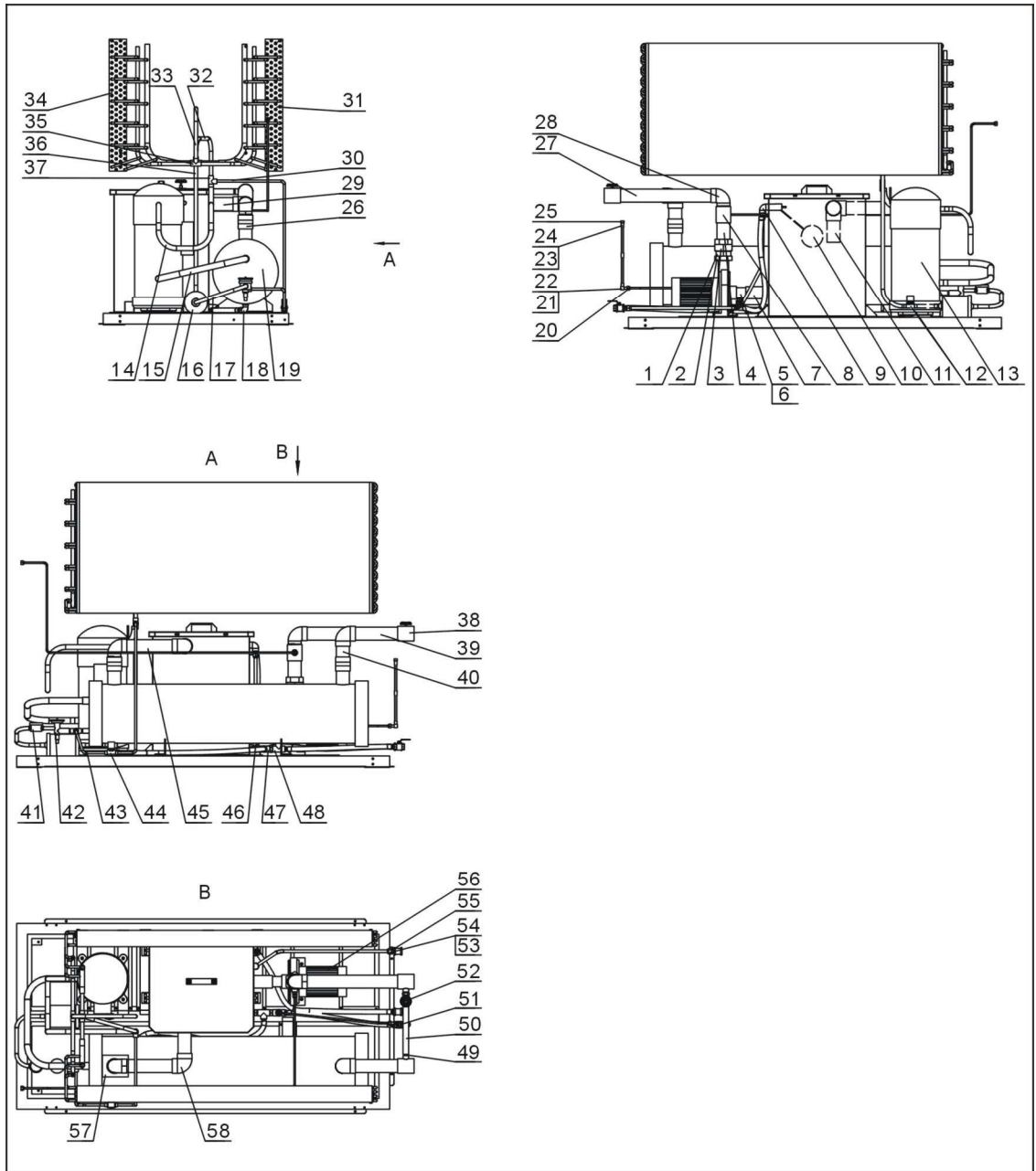
## 2.2.26 Rack Parts List (SIC-28A-R2~38A-R2)

Table 2-13: Rack Parts List (SIC-28A-R2~38A-R2)

No.	Name	Parts No.	No.	Name	Parts No.
1	Left front stand stand column	-	17	Refrigerant indicator cover	-
2	Rear plate	-	18	Left back stand stand column	-
3	Rear plate3	-	19	Lower side plate	-
4	Right back stand stand column	-	20	Upper side palte on the left	-
5	Lower fan cover	-	21	Back middle beam	-
6	Right middle beam	-	22	Upper side palte on the right	-
7	Front fan cover	-	23	Left front door	-
8	Middle beam 3	-	24	Left triangle supporting	-
9	Electric control cabinet	-	25	Compressor beam	-
10	Base plate of the electric control cabinet	-	26	Middle frame	-
11	Middle beam 2	-	27	Base frame	-
12	Rear plate 2	-	28	Water tank beam	-
13	Top plate	-	29	Water tank fixing beam	-
14	Evaporator beam	-	30	Pump supporting	-
15	Gauge plate	-	31	Right triangle supporting	-
16	Lower left door	-	32	Left middle beam	-

\* means possible broken parts. \*\* means easy broken parts. Spare backup is suggested. Please confirm the version number of the manual before you order to ensure the stock number and the parts are consistent.

## 2.2.27 Water System & Refrigerant system Diagram (SIC-28A-R2~38A-R2)



Note: For details of the numbers in the parts drawing, please refer to the part list in 2.2.26

Picture 2-15: Water System & Refrigerant system Diagram  
(SIC-28A-R2~38A-R2)

## 2.2.28 Water System & Refrigerant system Parts List (SIC-28A-R2~38A-R2)

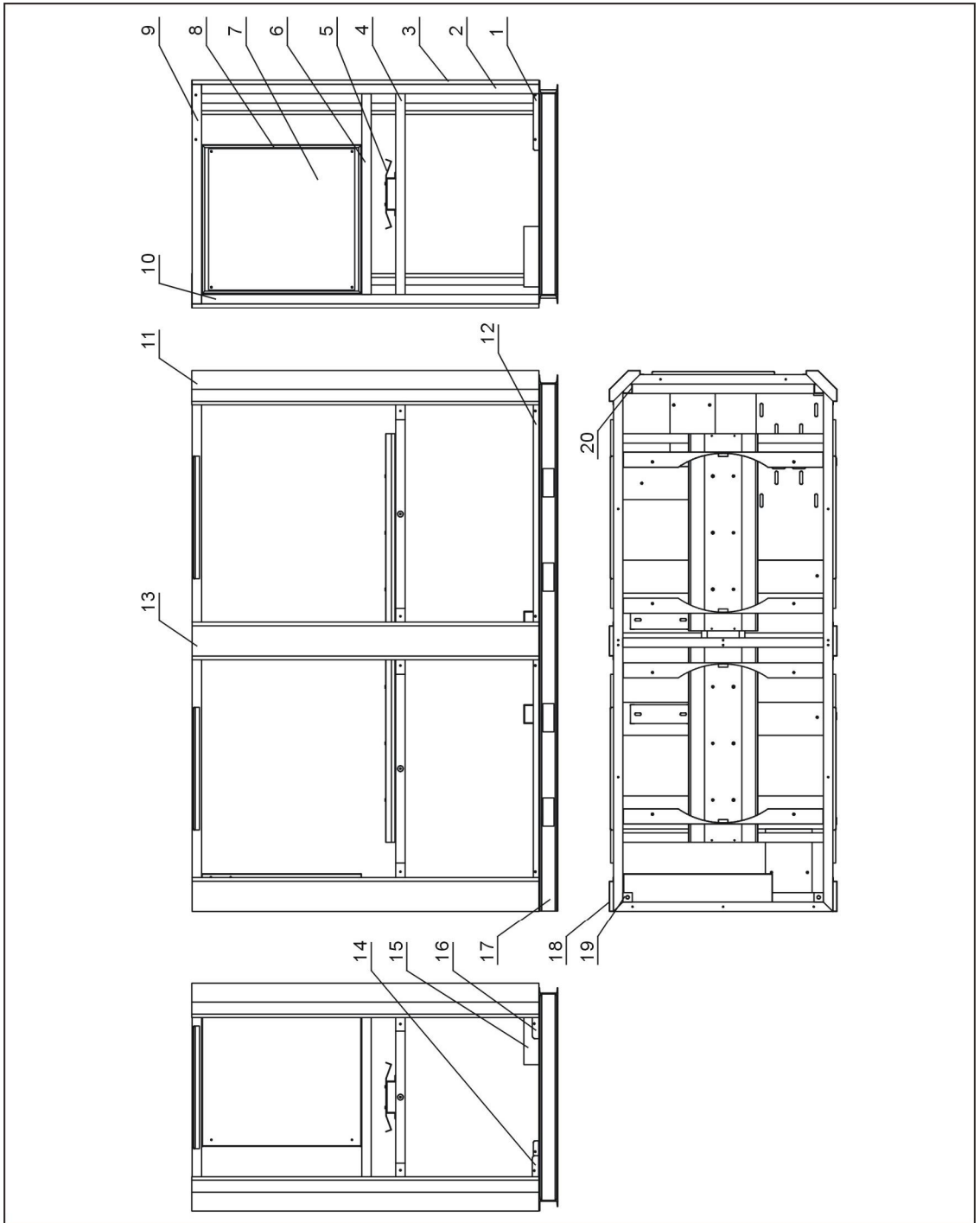
Table 2-14: Water System & Refrigerant system Parts List (SIC-28A-R2~38A-R2)

No.	Name	Stock No.	No.	Name	Stock No.
1	Outer joint 1" × 2"	YW57120100000	30	Copper pipe 8	-
2	Galvanized loosen joint 1"	YW50000100000	31	Right condenser	-
3	Galvanized loosen joint 2"	YW54000200000	32	Copper pipe 2	-
4	Pipe 1	-	33	Copper pipe 1	-
5	Pipe 8	-	34	Left condenser	-
6	Pipe 9	-	35	Copper T-connection 5/8"	YW05000500200
7	Black rubber pipe caliber 42 Wall thickness 3	YR60420300000	36	Copper pipe 3	-
8	Galvanized T-connection 2" × 1/2"	YW52201200100	37	Copper T-connection 7/8"	YW05000700100
9	Galvanized bend 1/2"	YW53100200100	38	Galvanized T-connection 2" × 1/2"	YW52201200100
10	Floating ball valve 1/2"	YW59010200000	39	Pipe 3	-
11	Pipe 6	-	40	Pipe 2	-
12	Solenoid valve	-	41	Refrigerant indicator	-
13	Compressor	-	42	Expansion valve	-
14	Copper pipe 4	-	43	Copper pipe 5	-
15	Copper pipe 6	-	44	Solenoid valve	-
16	Filter EK305S	-	45	Pipe 5	-
17	Copper pipe 7	-	46	Galvanized inner joint 1/2"	YW50000400000
18	Street elbow 1/2"	YW53121200000	47	Galvanized T-connection 1/2"	YW52100200000
19	Evaporator	-	48	Galvanized T-connection 1/2"	YW52100200000
20	1/4" copper screw	BH12010401010	49	Copper ferrule	BH12161200010
21	Refrigerant indicator base	BW33003100010	50	Steel wire rubber pipe 0.5"	YR60051000000
22	Red single-hole rubber stopper 2/8"	YR30000200100	51	Copper cored valve 1/2"	YW50010200100
23	Refrigerant indicator parts	BH12030000010	52	Sluice valve 1/2"	YW50010200000
24	Glass tube	YW70963000000	53	Copper connector	BH12010200210
25	Indicator nut	BW33003010010	54	Copper nut 4/8"	BH12000401010
26	Pipe 4	-	55	Galvanized direct connection 1/2"	YW51001200000
27	Galvanized street elbow 2"	YW53202000000	56	Pump	-
28	Galvanized direct connection 2"	YW51000200000	57	Flow switch	YW85005000000
29	Pipe 7	-	58	Galvanized bend 2"	YW53000200100

\* means possible broken parts. \*\* means easy broken parts. Spare backup is suggested.

Please confirm the version number of the manual before you order to ensure the stock number and the parts are consistent.

### 2.2.29 Rack Diagram (SIC-48A-R2~75A-R2)



Note: For details of the numbers in the parts drawing, please refer to the part list in 2.2.30.

Picture 2-16: Rack Diagram (SIC-48A-R2~75A-R2)

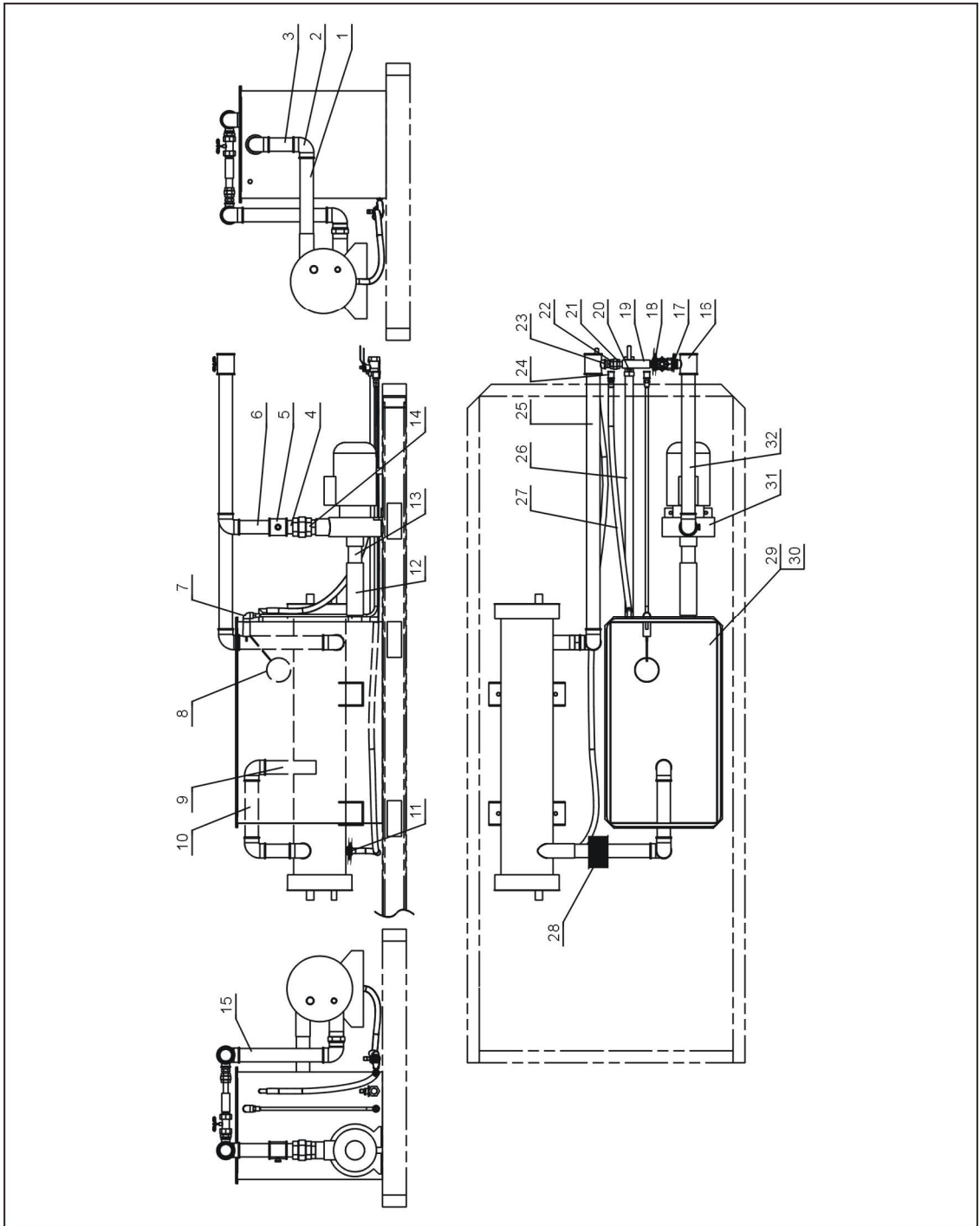
## 2.2.30 Rack Parts List (SIC-48A~75A -R2)

Table 2-15: Rack Parts List (SIC-48A~75A -R2)

No.	Name	Stock No.	No.	Name	Stock No.
1	Baffle 1	-	11	Back stand column	-
2	Right main stand column	-	12	Fixed welding piece of side plate	-
3	Right front stand column	-	13	Middle stand column	-
4	Rack middle layer	-	14	Baffle 3	-
5	Base plate of condenser	-	15	Fixed plate of evaporator	-
6	Brace of electrical cabinet	-	16	Baffle 3	-
7	Base plate of electrical cabinet	-	17	Rack base layer	-
8	Electrical cabinet	-	18	Left front stand column	-
9	Rack layer	-	19	Davit	-
10	Left main stand column	-	20	Back main stand column	-

\* means possible broken parts. \*\* means easy broken parts. Spare backup is suggested. Please confirm the version number of the manual before you order to ensure the stock number and the parts are consistent.

### 2.2.31 Water System Diagram (SIC-48A-R2~75A-R2)



Note: For details of the numbers in the parts drawing, please refer to the part list in 2.232.

Picture 2-17: Water System Diagram (SIC-48A-R2~75A-R2)

## 2.2.32 Water System Parts List (SIC-48A-R2~75A-R2)

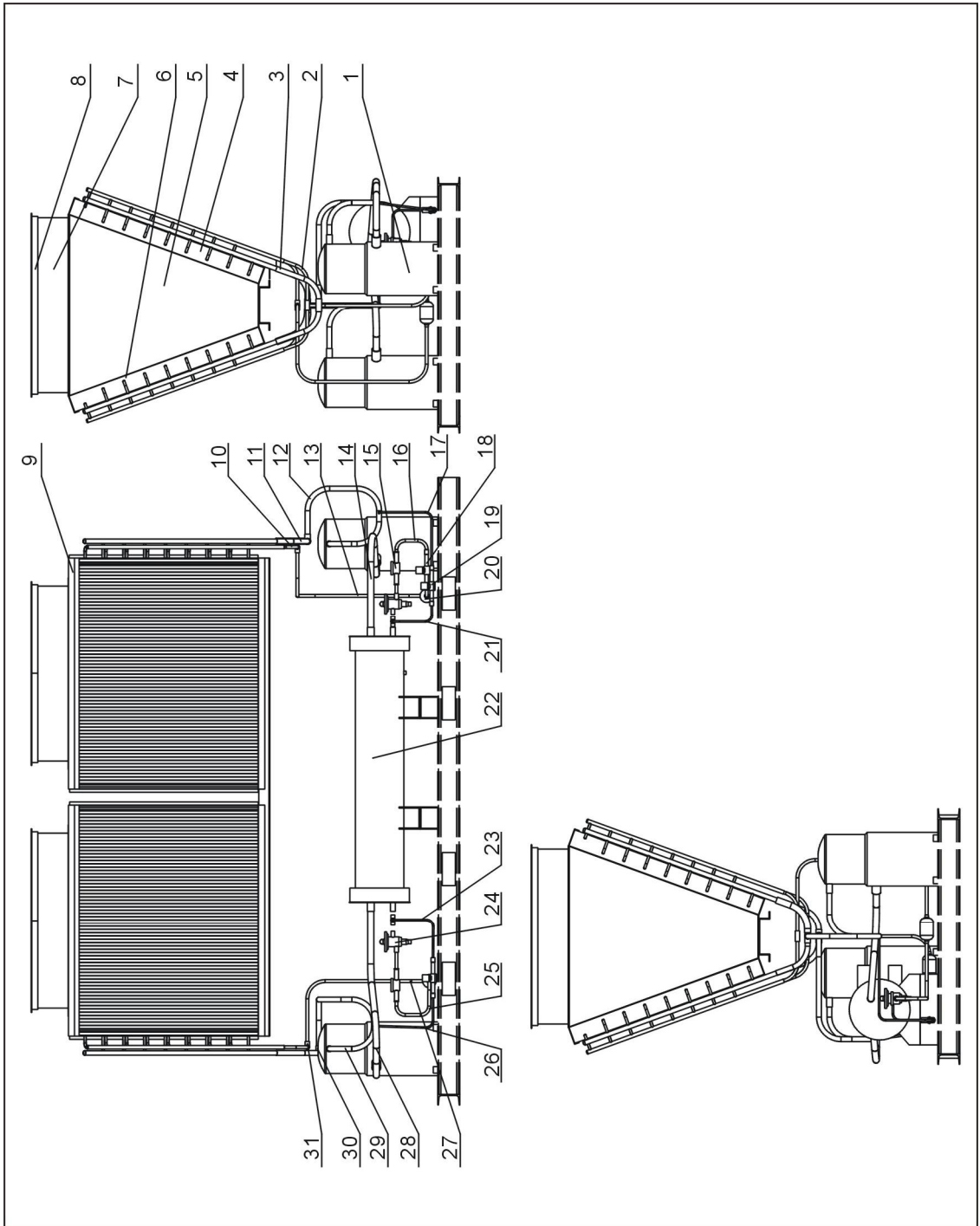
Table 2-16: Water System Parts List (SIC-48A-R2~75A-R2)

No.	Name	Stock No.	No.	Name	Stock No.
1	Evaporator outlet 1	-	17	Galvanized pipe inner joint 1"	YW50000100000
2	Galvanized pipe elbow 2"	YW53000200100	18	Sluice valve 1"	YW50000101000
3	Evaporator outlet 2	-	19	Balck rubber pipe inner diameter 32	YR60320500000
4	Galvanized pipe inner joint 2"	YW50000200000	20	Copper globe valve 1"	YW50010000000
5	Galvanized pipe T-joint 2"×1/2"	YW52201200100	21	By-pass pipe	-
6	Pump outlet 1	-	22	Galvanized pipe loose joint 1"	YW54000100000
7	Galvanized pipe elbow 1/2"	YW53100200100	23	Galvanized pipe inner joint 1"	YW50000200000
8	Floating ball switch 1/2"	YW59010200000	24	Galvanized pipe direct connection 1/2"	YW51001200000
9	Evaporator outlet 4	-	25	Return water pipe 1	-
10	Evaporator outlet 3	-	26	Water outlet pipe	-
11	Copper inserted core M16×1/2PT	BH12161200010	27	Wire rubber hose 0.5"	YW85010400100
12	Balck rubber pipe inner diameter 60× thickness 3	YR60600300000	28	Flow switch	YW85005000000
13	Pump inlet	-	29	Water tank	-
14	Galvanized pipe loose joint 2"	YW54000200000	30	Water tank cover	-
15	Return water 2	-	31	Pump	-
16	Galvanized pipe T-joint 2" ×1"	YW52020100000			

\* means possible broken parts. \*\* means easy broken parts. Spare backup is suggested. Please confirm the version number of the manual before you order to ensure the stock number and the parts are consistent.



### 2.2.33 Refrigerant System Diagram (SIC-48A-R2~75A-R2)



Note: For details of the numbers in the parts drawing, please refer to the part list in 2.2.34.

Picture 2-18: Refrigerant System Diagram (SIC-48A-R2~75A-R2)

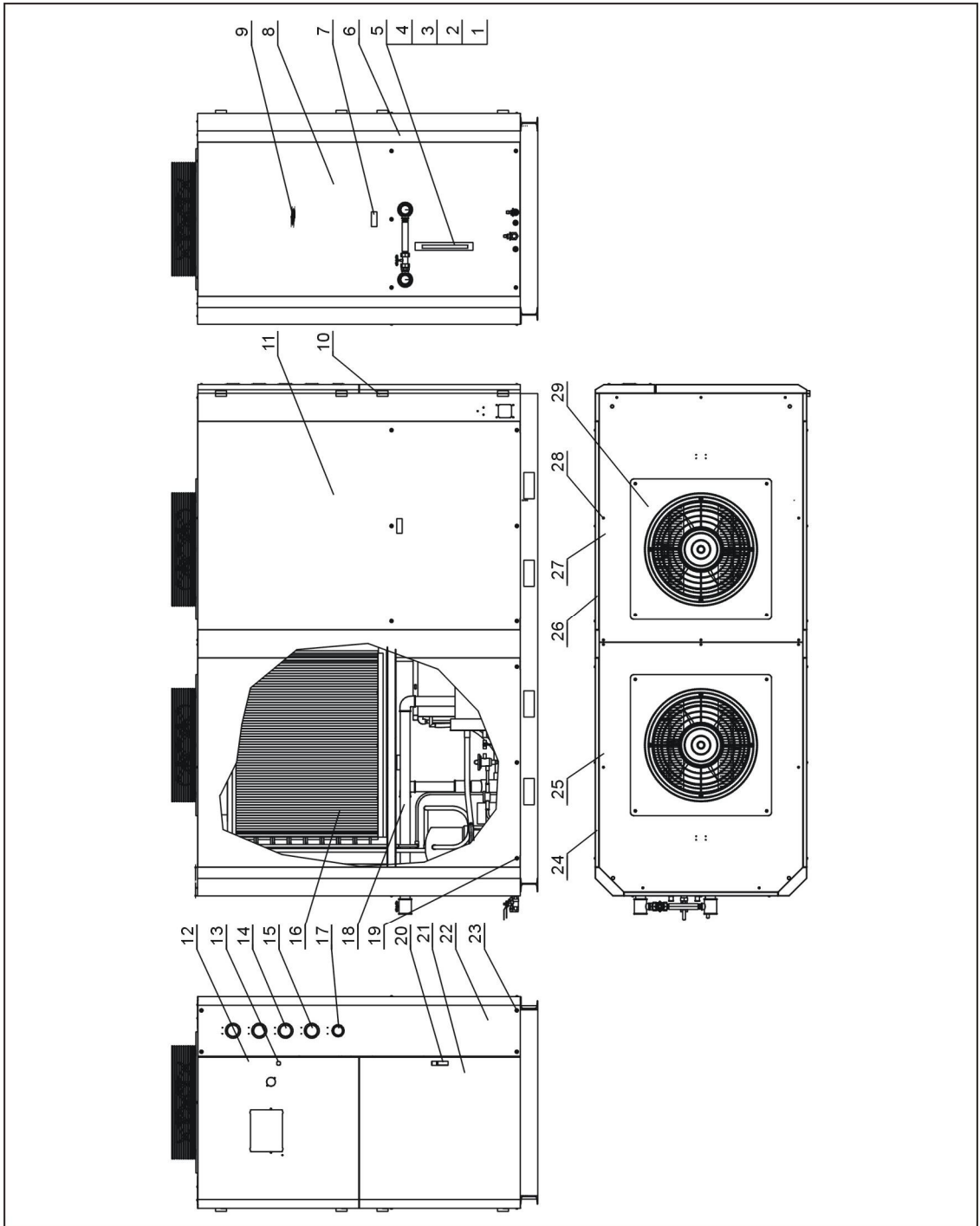
## 2.2.34 Refrigerant Sytem Parts List (SIC-48A-R2~75A-R2)

Table 2-17: Refrigerant Sytem Parts List (SIC-48A-R2~75A-R2)

No.	Name	Stock No.	No.	Name	Stock No.
1	Compressor	-	17	Front chiller by-pass 1	-
2	Back chiller liquid pipe 1	-	18	Solenoid valve	-
3	Back chiller air exhaust pipe 2	-	19	Heat by-pass valve	-
4	Right condenser	-	20	Dryer filter	YW85016400100
5	Base plate of condenser	-	21	Front chiller by-pass 1	-
6	Left condenser	-	22	Evaporator	-
7	Air guide	-	23	Back chiller by-pass 1	-
8	Fan cover	-	24	Expansion valve	-
9	Cover plate of condenser	-	25	Back chiller liquid pipe 2	-
10	Front chiller liquid pipe 1	-	26	Back chiller by-pass 1	-
11	Front chiller air exhaust pipe 2	-	27	Back chiller liquid pipe 3	-
12	Front chiller air exhaust pipe 1	-	28	Back chiller return air pipe	-
13	Front chiller liquid pipe 2	-	29	Back chiller air exhaust pipe 1	-
14	Front return air pipe	-	30	Copper T-joint 7/8"	YW05000700100
15	Refrigerant indicator HMI-1TT4	YW85001400000	31	Copper T-joint 1/2"	YW05000400300
16	Front chiller liquid pipe 3	-			

\* means possible broken parts. \*\* means easy broken parts. Spare backup is suggested. Please confirm the version number of the manual before you order to ensure the stock number and the parts are consistent.

### 2.2.35 General Assembly Diagram (SIC-48A-R2~75A-R2)



Note: For details of the numbers in the parts drawing, please refer to the part list in 2.2.36.

Picture 2-19: General Assembly Diagram (SIC-48A-R2~75A-R2)

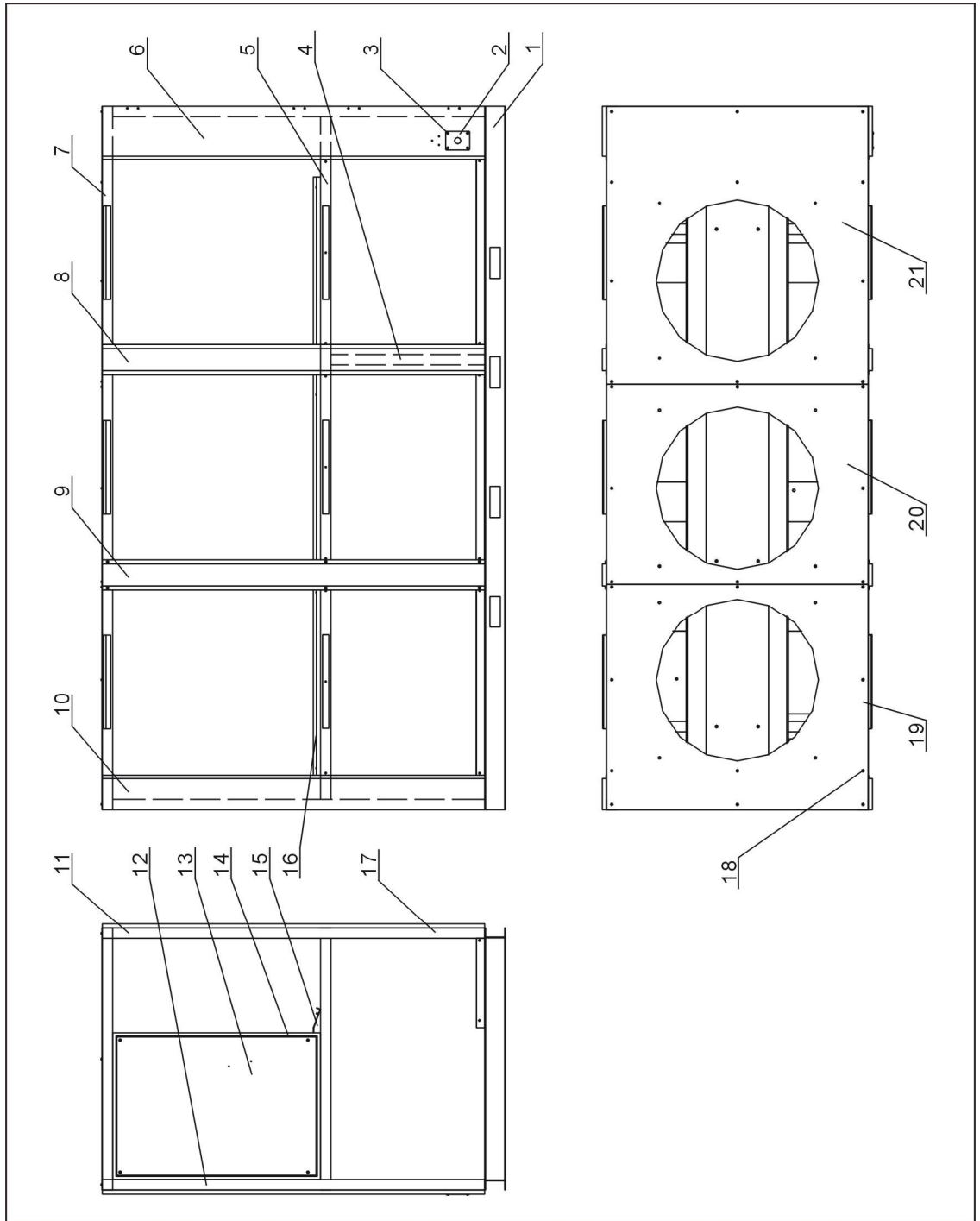
## 2.2.36 General Assemble Diagram Parts List (SIC-48A-R2~75A-R2)

Table 2-18: General Assemble Diagram Parts List (SIC-48A-R2~75A-R2)

No.	Name	Stock No.	No.	Name	Stock No.
1	Refrigerant indicator base	YW20000000400	16	Refrigerating system	-
2	Refrigerant indicator nut	BH12060700110	17	Pressure gauge 0~10kg	YW85001000100
3	Refrigerant indicator	BH12030000010	18	Chilled water system	-
4	Glass tube	YW70963000000	19	Cross recessed oval head screw M6×30	YW63063000000
5	Refrigerant indicator guard	BL90006800020	20	Door lock	YW00717100000
6	Rack	-	21	Lower plate	-
7	Plastic handle	YR40914040000	22	Gauge plate	-
8	Back plate	-	23	Cross recessed oval head screw M6×60	YW63066200000
9	Back plate 2	-	24	Side plate 2	-
10	Hinge	YW06203100400	25	Back cover plate	-
11	Side plate 3	-	26	Side plate 1	-
12	Upper plate	-	27	Front cover plate	-
13	Door lock	YW00816100000	28	Cross recessed oval head screw M6×10	YW63066200000
14	High pressure guage 0~55kg	YW85005500000	29	Fan	-
15	Low pressure guage 0~35kg	YW85003500000			

\*\* means possible broken parts. \*\* means easy broken parts. Spare backup is suggested. Please confirm the version number of the manual before you order to ensure the stock number and the parts are consistent.

### 2.2.37 Rack Diagram (SIC-100A-R2)



Note: For details of the numbers in the parts drawing, please refer to the part list in 2.2.38.

Picture 2-20: Rack Diagram (SIC-100A-R2)

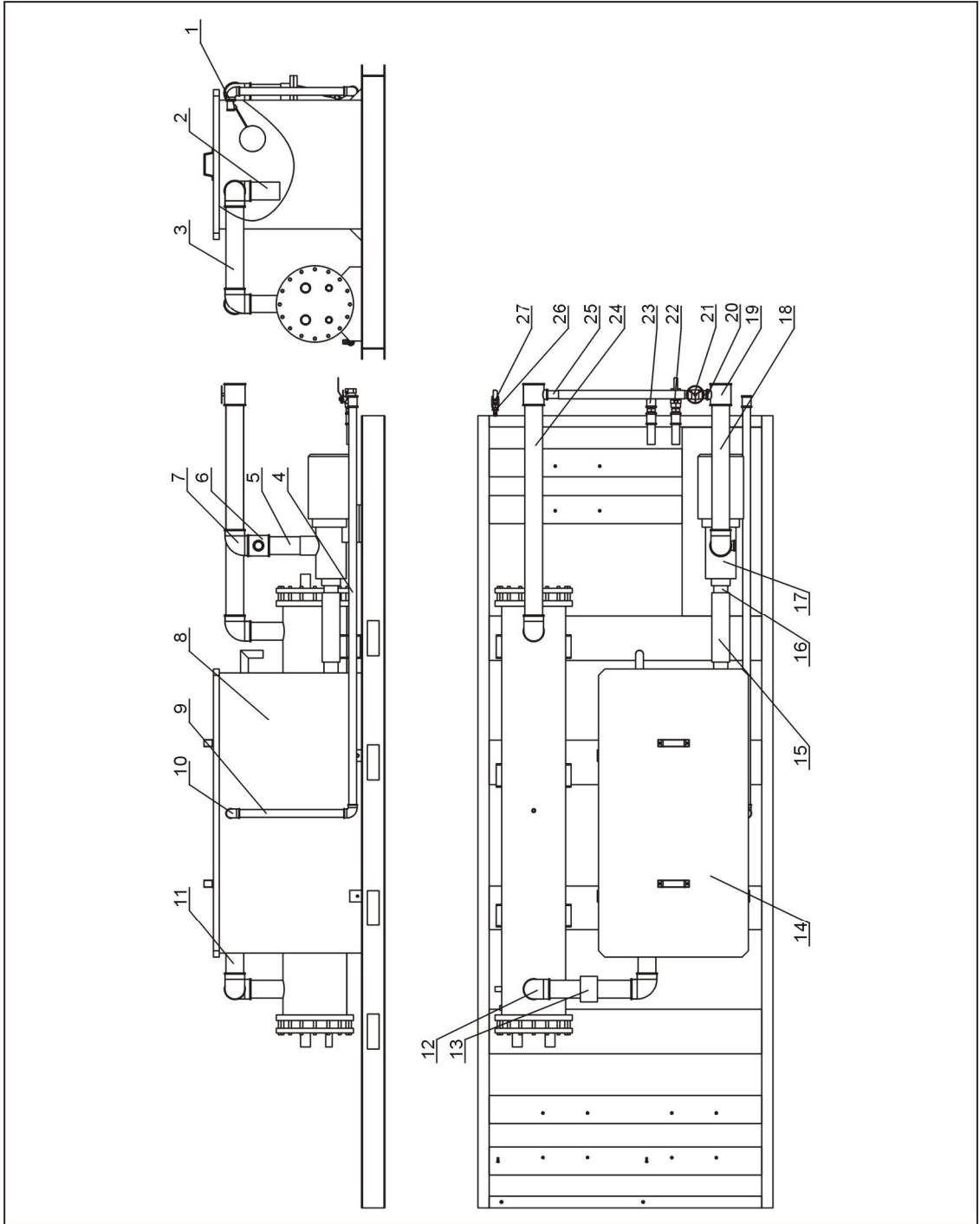
## 2.2.38 Rack Parts List (SIC-100A-R2)

Table 2-19: Rack Parts List (SIC-100A-R2)

No.	Name	Stock No.	No.	Name	Stock No.
1	Rack base layer	-	12	Left front brace	-
2	Line jig fixed board	-	13	Base plate of electrical cabinet	-
3	Cross recessed oval head screw M5×15	YW62051500000	14	Electrical cabinet	-
4	Brace 1	-	15	Middle water pond assembly 2	-
5	Rack middle layer	-	16	Middle water pond assembly	-
6	Left front stand column	-	17	Right front stand column	-
7	Rack top layer	-	18	Cross recessed oval head screw M6×15	YW62061500000
8	Middle stand column	-	19	Top plate 1	-
9	Movable stand column	-	20	Top plate 2	-
10	Back stand column	-	21	Top plate 3	-
11	Brace 2	-			

\* means possible broken parts. \*\* means easy broken parts. Spare backup is suggested. Please confirm the version number of the manual before you order to ensure the stock number and the parts are consistent.

### 2.2.39 Water System Diagram (SIC-100A-R2)



Note: For details of the numbers in the parts drawing, please refer to the part list in 2.2.40.

Picture 2-21: Water System Diagram (SIC-100A-R2)

## 2.2.40 Water System Parts List (SIC-100A-R2)

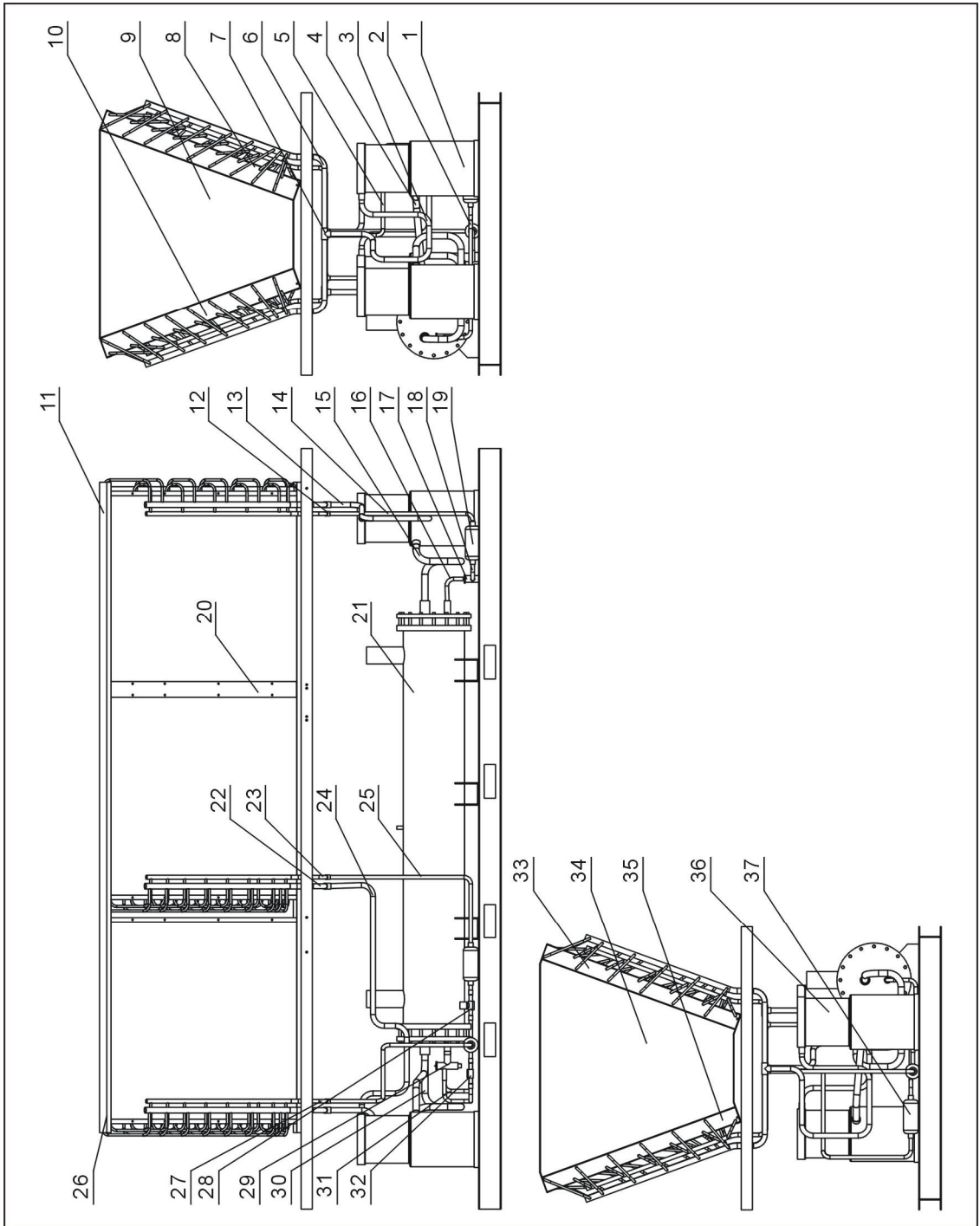
Table 2-20: Water System Parts List (SIC-100A-R2)

No.	Name	Stock No.	No.	Name	Stock No.
1	Floating ball switch 1"	YW59010000000	15	Balck rubber pipe 3"	YR60390300000
2	Water pipe 6	-	16	Water pipe 10	-
3	Water pipe 4	-	17	Pump	-
4	Water pipe 9	-	18	Water pipe 2	-
5	Water pipe 1	-	19	Galvanizewd pipe T-joint 2.5" x1"	YR52250100000
6	Galvanized pipe T-joint 2"x1/2"	YW52201200100	20	Galvanized pipe inner joint 1"	YW50000100000
7	Galvanized pipe street elbow 2" x1/2"	YW53252500000	21	Sluice valve 1"	YW50000101000
8	Water tank body	-	22	Copper globe valve 1"	YW50010000000
9	Water pipe 8	-	23	Galvanized pipe direct connection 1"	YW51000100000
10	Galvanized pipe elbow 1"	YW53100000000	24	Water pipe 3	-
11	Pipe water 5	-	25	Water pipe 7	-
12	Galvanized pipe elbow 2.5"	YW53002500000	26	Copper inserted core M16x1/2PT	BH12161200010
13	Flow switch	YW85005000000	27	Copper globe valve 1/2"	YW50010200100
14	Water tank cover	-			

\* means possible broken parts. \*\* means easy broken parts. Spare backup is suggested. Please confirm the version number of the manual before you order to ensure the stock number and the parts are consistent.



## 2.2.41 Refrigerant System Diagram (SIC-100A-R2)



Note: For details of the numbers in the parts drawing, please refer to the part list in 2.2.42.

Picture 2-21: Refrigerant System Diagram (SIC-100A-R2)

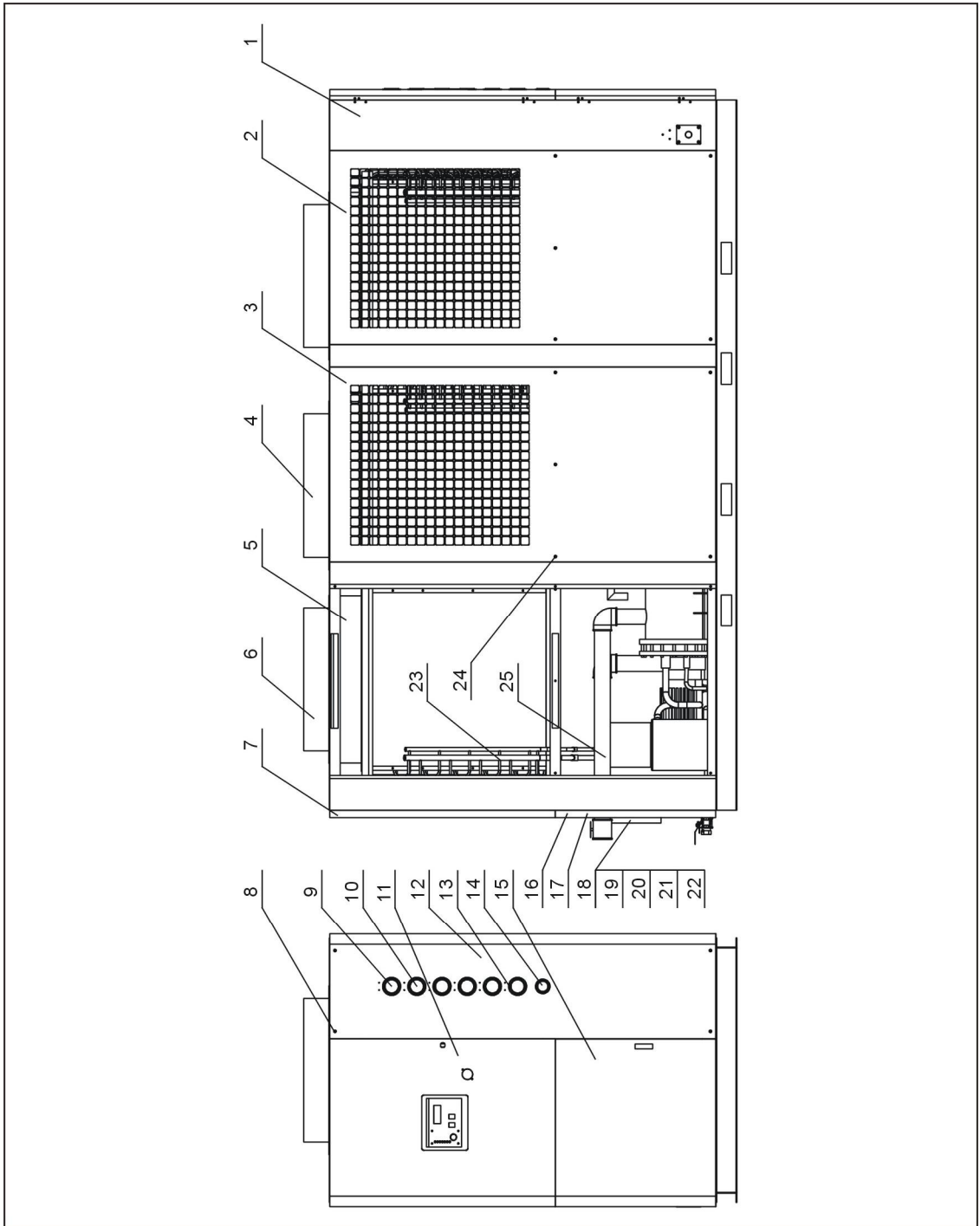
## 2.2.42 Refrigerant Sytem Parts List (SIC-100A-R2)

Table 2-21: Refrigerant Sytem Parts List (SIC-100A-R2)

No.	Name	Stock No.	No.	Name	Stock No.
1	Compressor	-	20	Condenser baffle 3	-
2	Liquid pipe 3	-	21	Evaporator	-
3	Air exhaust pipe 1	-	22	Air exhaust piep 5	-
4	Return air pipe 1	-	23	Liquid pipe 4	-
5	Liquid pipe 2	-	24	Air exhaust pipe 2	-
6	Air exhaust pipe 4	-	25	Liquid pipe 5	-
7	Copper T-joint 7/8"	YW05000700100	26	Condenser cover 2	-
8	Right condenser 1	-	27	Liquid valve 1	-
9	Condenser baffle 1	-	28	Solenoid valve	-
10	Left condenser 1	-	29	Expansion valve	-
11	Condenser cover plate	-	30	Return air pipe 2	-
12	Copper T-joint 5/8"	YW05000500200	31	Liquid pipe 6	-
13	Air exhaust pipe 3	-	32	Refrigerant indicator	-
14	Liquid pipe 7	-	33	Right condenser 2	-
15	Return air pipe 3	-	34	Condenser baffle 2	-
16	Liquid pipe 9	-	35	Left condenser 2	-
17	Expansion valve	-	36	Compressor	-
18	Liquid pipe 8	-	37	Dryer filter	YW85016500100
19	Dryer filter	YW85016400100			

\* means possible broken parts. \*\* means easy broken parts. Spare backup is suggested. Please confirm the version number of the manual before you order to ensure the stock number and the parts are consistent.

### 2.2.43 General Assembly Diagram (SIC-100A-R2)



Note: For details of the numbers in the parts drawing, please refer to the part list in 2.2.44.

Picture 2-22: General Assembly Diagram (SIC-100A-R2)

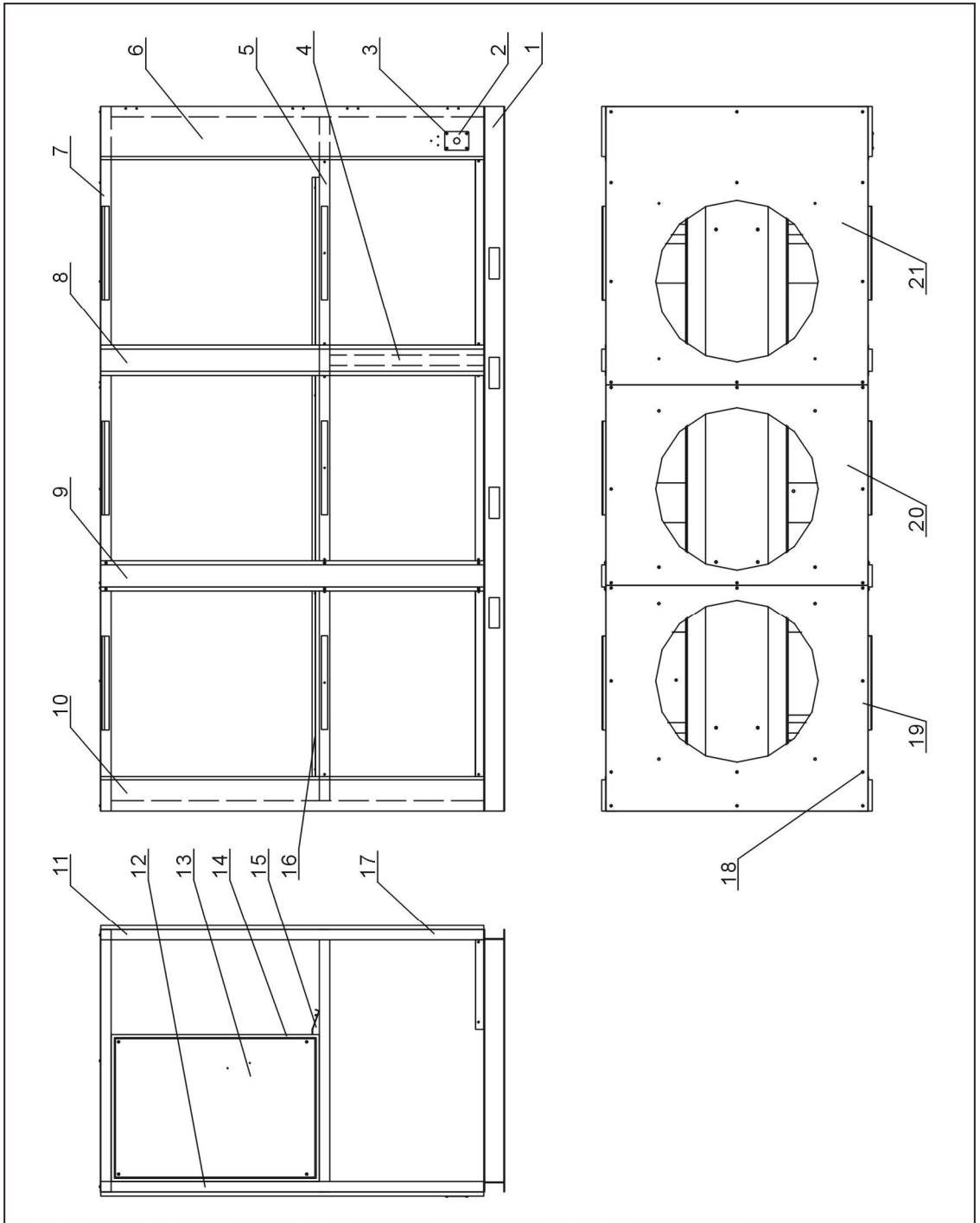
## 2.2.44 General Assembly Diagram Parts List (SIC-100A-R2)

Table 2-22: General Assemble Diagram Parts List (SIC-100A-R2)

No.	Name	Stock No.	No.	Name	Stock No.
1	Rack	-	14	Water pressure gauge	YW85001000100
2	Side plate 2	-	15	Lower plate	-
3	Side plate 1	-	16	Back plate 2	-
4	Fan	-	17	Back plate 3	-
5	Air guide	-	18	Refrigerant indicator base	YW20000000400
6	Fan	-	19	Refrigerant indicator screw	BH12060700110
7	Back plate 1	-	20	Refrigerant indicator STM-310	BH12030000010
8	Socket head cap screw M6×65	YW61066500100	21	Glass tube	YW70963000000
9	High pressure gauge	YW85005500000	22	Refrigerant indicator guard	BL90006800020
10	Low pressure gauge	YW85003500000	23	Refrigerating system assembly	-
11	Upper door plate	-	24	Cross recessed oval head screw M6×30	YW62063000000
12	Gauge plate	-	25	Chilled water system	-
13	Cross recessed oval head screw M4×10	YW62041000000			

\* means possible broken parts. \*\* means easy broken parts. Spare backup is suggested. Please confirm the version number of the manual before you order to ensure the stock number and the parts are consistent.

### 2.2.45 Rack Diagram (SIC-114A-R2)



Note: For details of the numbers in the parts drawing, please refer to the part list in 2.2.46.

Picture 2-23: Rack Diagram (SIC-114A-R2)

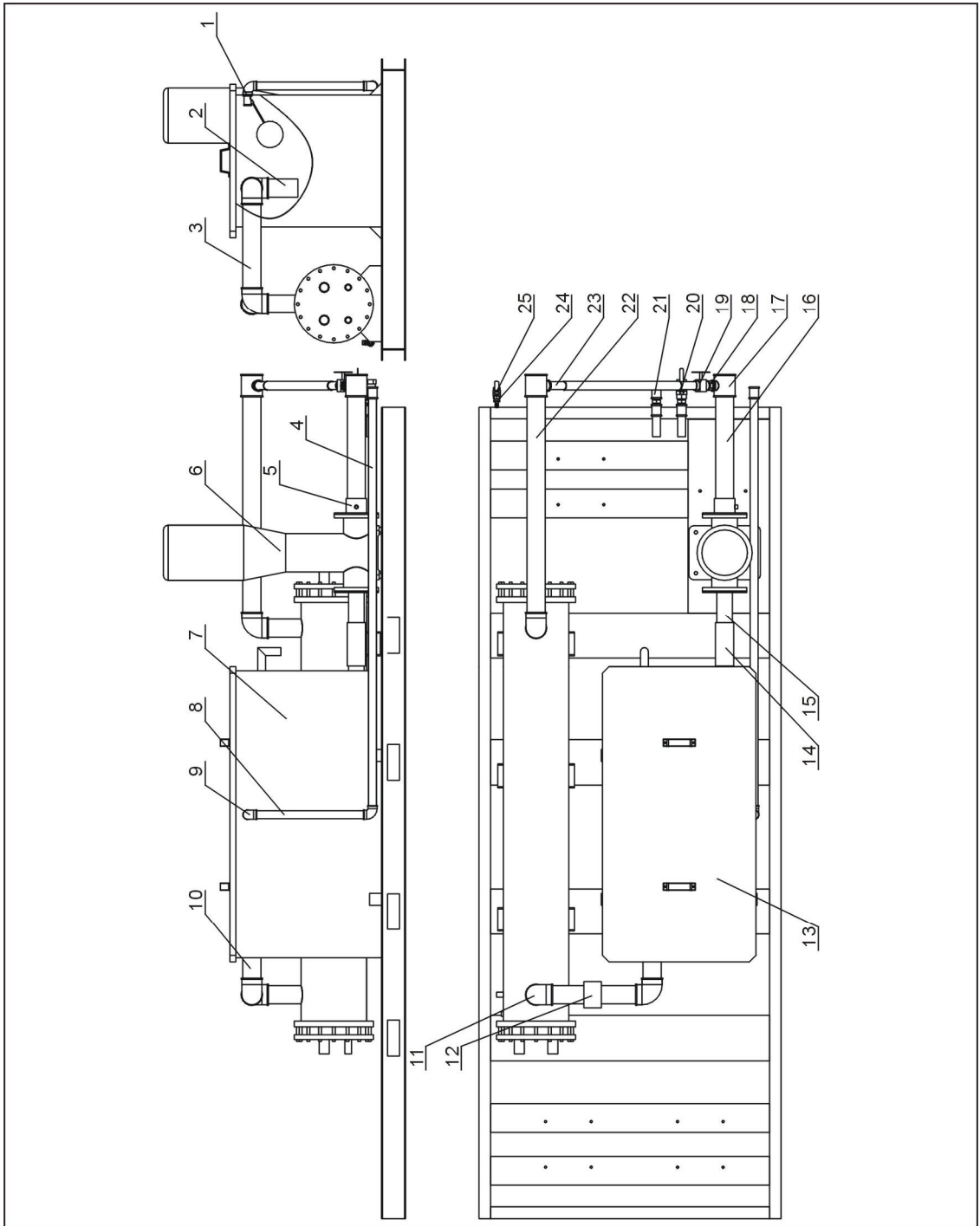
## 2.2.46 Rack Parts List (SIC-114A-R2)

Table 2-23: Rack Parts List (SIC-114A-R2)

No.	Name	Stock No.	No.	Name	Stock No.
1	Rack base layer	-	12	Brace 2	-
2	Line jig fixed board	-	13	Left front stand column	-
3	Cros-recessed oval head screw M5×15	YW62051500000	14	Base plate of electrical cabinet	-
4	Brace 1	-	15	Electrical cabinet	-
5	Rack middle layer	-	16	Middle water pond assembly 2	-
6	Middle water pond assembly	-	17	Right front stand column	-
7	Left front stand column	-	18	Cros-recessed oval head screw M6×15	YW62061500000
8	Rack top layer	-	19	Top plate 1	-
9	Middle stand column	-	20	Top plate 2	-
10	Movable stand column	-	21	Top plate 3	-
11	Back stand column	-			

\* means possible broken parts. \*\* means easy broken parts. Spare backup is suggested. Please confirm the version number of the manual before you order to ensure the stock number and the parts are consistent.

### 2.2.47 Water System Diagram (SIC-114A-R2)



Note: For details of the numbers in the parts drawing, please refer to the part list in 2.2.48.

Picture 2-24: Water System Diagram (SIC-114A-R2)

## 2.2.48 Water System Parts List (SIC-114A-R2)

Table 2-24: Water System Parts List (SIC-114A-R2)

No.	Name	Stock No.	No.	Name	Stock No.
1	Floating ball valve 1"	YW59010000000	14	Black rubber pipe 3"	YR60390300000
2	Water pipe 6	-	15	Water inlet flange	-
3	Water pipe 4	-	16	Water pipe 1	-
4	Water pipe 9	-	17	Galvanized pipe T-joint 2.5" x 1"	YR52250100000
5	Water outlet flange	-	18	Galvanized pipe inner joint 1"	YW50000100000
6	Pump	-	19	Sluice valve 1"	YW50000101000
7	Water tank body	-	20	Copper globe valve 1"	YW50010000000
8	Water pipe 8	-	21	Galvanized pipe direct connection 1"	YW51000100000
9	Galvanized pipe elbow 1"	YW53100000000	22	Water pipe 3	-
10	Water pipe 5	-	23	Water pipe 7	-
11	Galvanized pipe elbow 2.5"	YW53002500000	24	Copper inserted core M16x1/2PT	BH12161200010
12	Flow switch	YW85005000000	25	Copper globe valve 1/2"	YW50010200100
13	Water tank cover	-			

\* means possible broken parts. \*\* means easy broken parts. Spare backup is suggested.

Please confirm the version number of the manual before you order to ensure the stock number and the parts are consistent.





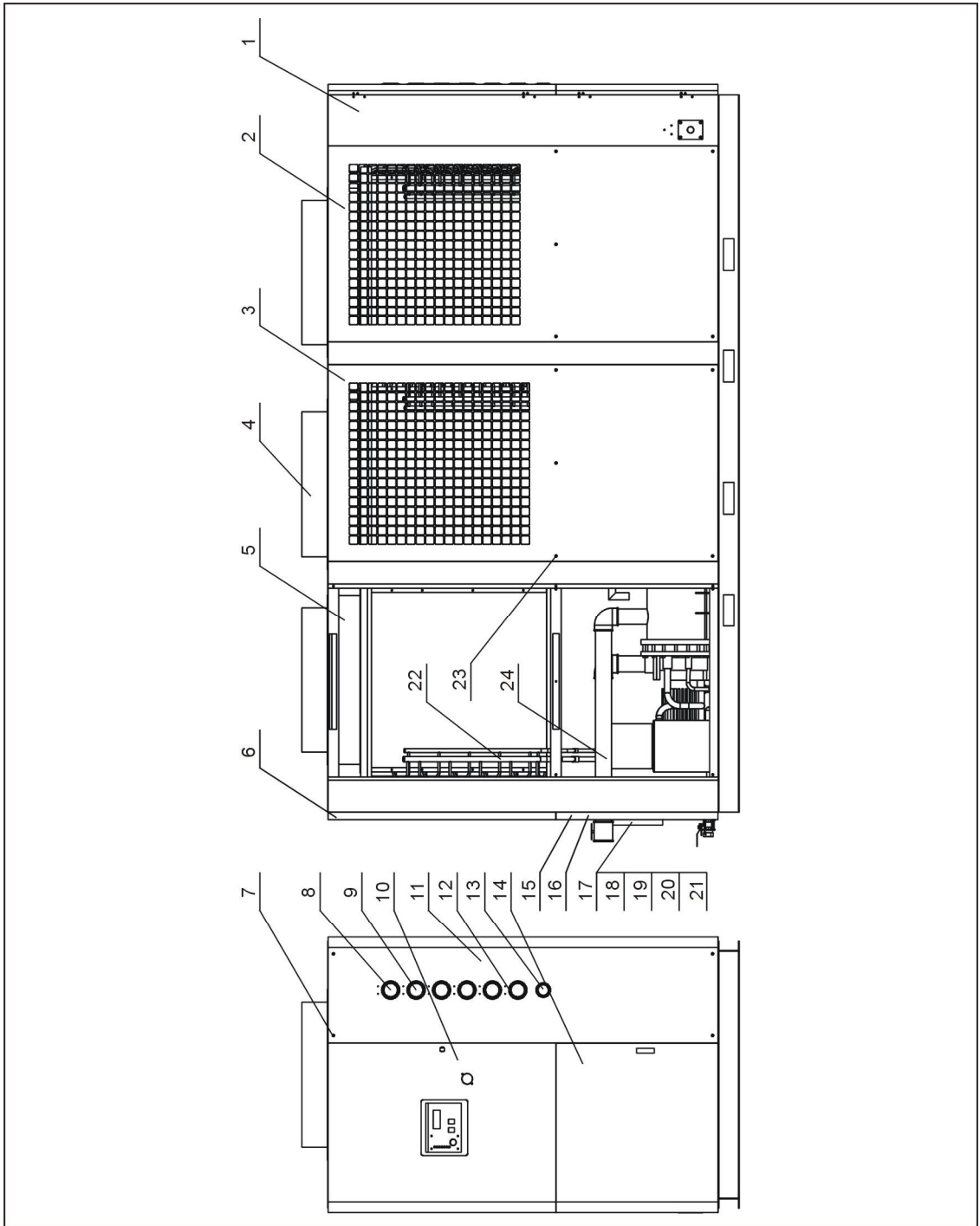
## 2.2.50 Refrigerant System Parts List (SIC-114A-R2)

Table 2-25: Refrigerant System Parts List (SIC-114A-R2)

No.	Name	Stock No.	No.	Name	Stock No.
1	Compressor	-	17	Condenser baffle 3	-
2	Liquid pipe 3	-	18	Evaporator	-
3	Air exhaust pipe 1	-	19	Air exhaust pipe 5	-
4	Return air pipe 1	-	20	Liquid pipe 4	-
5	Liquid pipe 2	-	21	Air exhaust pipe 2	-
6	Air exhaust pipe 4	-	22	Liquid pipe 5	-
7	Copper T-joint 7/8"	YW05000700100	23	Dryer filter	YW85016500100
8	Right condenser 1	-	24	Condenser cover plate	-
9	Condenser baffle 1	-	25	Condenser cover 2	-
10	Left condenser 1	-	26	Liquid valve 1	-
11	Copper T-joint 5/8"	YW05000500200	27	Solenod valve	-
12	Air exhaust pipe 3	-	28	Expansion valve	-
13	Liquid pipe 7	-	29	Return air pipe 2	-
14	Return air pipe 3	-	30	Liquid pipe 6	-
15	Liquid pipe 9	-	31	Refrigerant indicator	-
16	Liquid pipe 8	-			

\* means possible broken parts. \*\* means easy broken parts. Spare backup is suggested. Please confirm the version number of the manual before you order to ensure the stock number and the parts are consistent.

## 2.2.51 General Assembly Diagram (SIC-114A-R2)



Note: For details of the numbers in the parts drawing, please refer to the part list in 2.2.52.

Picture 2-26: General Assembly Diagram (SIC-114A-R2)

## 2.2.52 General Assembly Diagram Parts List (SIC-114A-R2)

Table 2-26: General Assembly Diagram Parts List (SIC-114A-R2)

No.	Name	Stock No.	No.	Name	Stock No.
1	Rack	-	13	Water pressure gauge	YW85001000100
2	Side plate 2	-	14	Lower door plate	-
3	Side plate 1	-	15	Back plate 2	-
4	Fan	YM60650650000	16	Back plate 3	-
5	Air guide	-	17	Refrigerant indicator base	YW20000000400
6	Back plate 1	-	18	Refrigerant indicator screw	BH12060700110
7	Socket head cap screw M6×65	YW61066500100	19	Refrigerant indicator STM-310	BH12030000010
8	High pressure gauge	YW85005500000	20	Glass tube	YW70963000000
9	Low pressure gauge	YW85003500000	21	Refrigeration indicator	BL90006800020
10	Upper door plate	-	22	Refrigerating system assembly	-
11	Gauge plate	-	23	Cross recessed oval head screw M6×30	YW62063000000
12	Cross recessed oval head screw M4×10	YW62041000000	24	Cooling water system	-

\*\* means possible broken parts. \*\* means easy broken parts. Spare backup is suggested. Please confirm the version number of the manual before you order to ensure the stock number and the parts are consistent.