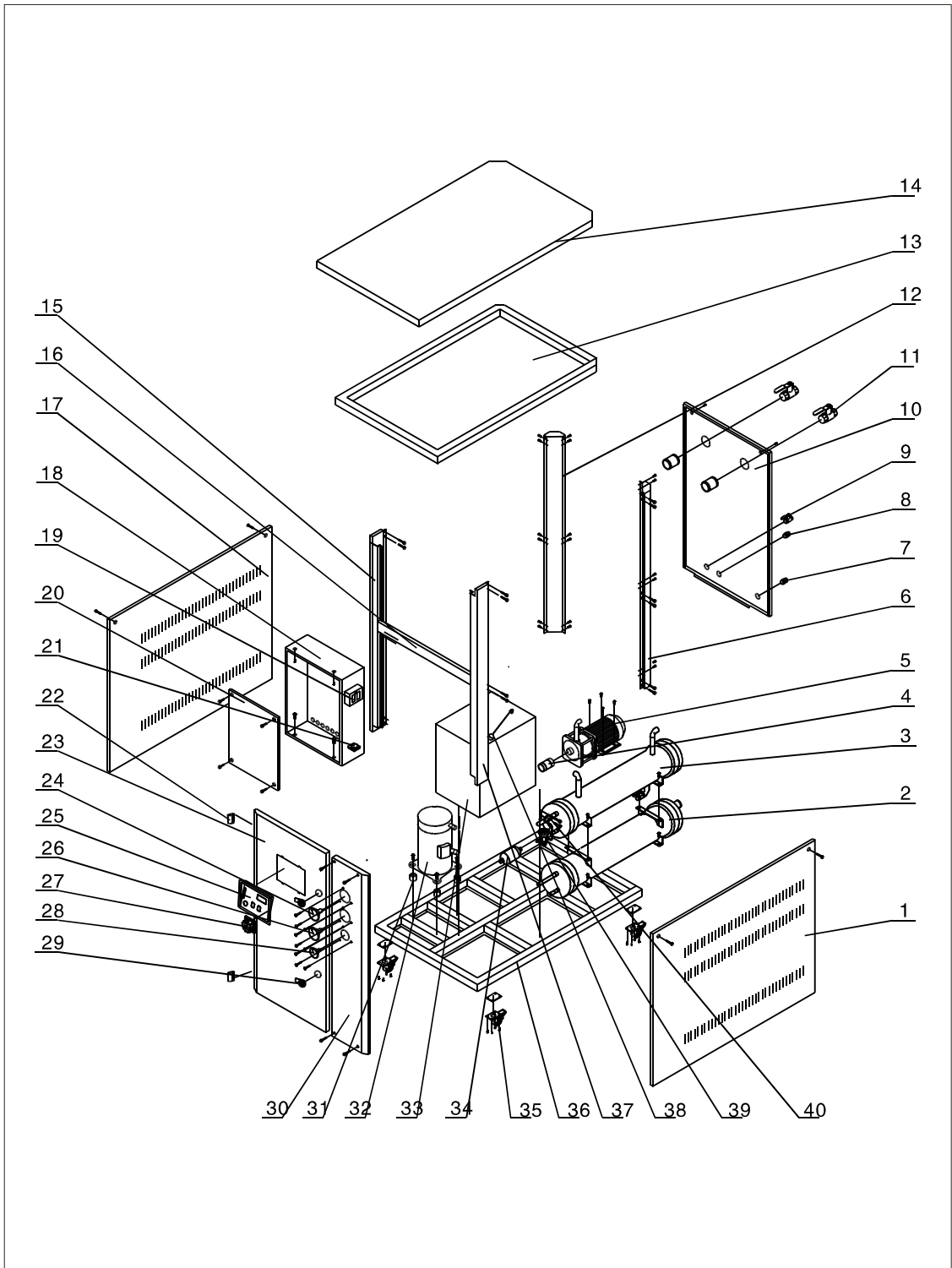


2.3 SIC-W Assembly Drawing



2.4 SIC-W Parts List

No .	Name	No. of the material		
		SIC-3W-P	SIC-5W-P	SIC-8W-P
1	The right board	-	-	-
2	The condenser	YW86003000000	YW86005000000	YW86008000000
3	The evaporator	YW87003000000	YW87005000000	YW87008000000
4	The rubber pipe	YR60320500000	YR60320500000	YR60420300000
5	The pump*	YM21015800100	YM21015800100	YM21401600100
6	The back right upright column	-	-	-
7	The water supply	-	-	-
8	The direct connection	YW51001200000	YW51001200000	YW51001200000
9	The 1/2" ball valve	YW50010200100	YW50010200100	YW50010200100
10	The back board	-	-	-
11	1" ball valve	YW50010200100	YW50010200100	YW50015000000
12	The back left upright column	-	-	-
13	The upper frame	-	-	-
14	The cover plate	-	-	-
15	The front left upright column	-	-	-
16	The cross spreader of the electric control box	-	-	-
17	The left board	-	-	-
18	The electric control box	BH51000300350	BH51000500650	BH51000800550
19	The high and low pressure controller	YE90083000100	YE90083000100	YE90083000100
20	The bottom plate of the controller	-	-	-

No .	Name	No. of the material		
		SIC-3W-P	SIC-5W-P	SIC-8W-P
21	The freeze protection switch	YW85071100000	YW85071100000	YW85071100000
22	The hinge	YW06203100400	YW06203100400	YW06203100200
23	The door sheet	-	-	-
24	The high pressure gauge	YW85603500000	-	YW85603500000
25	The control panel	YR01004400000	YR01004400000	YR01004400000
26	The low pressure gauge	YW85601500000	YW85601500000	YW85601500000
27	The main power supply switch	YE10200300000	YE10200300000	YE10210300000
28	The pump pressure gauge	YW85001000100	YW85001000100	YW85001000100
29	The door lock	YW00000000100	YW00000000100	YW00000000100
30	The dash board fixed plate	-	-	-
31	The compressor anti hunting pillar	-	-	-
32	The compressor	YM70338000000	YM70534600000	YM70083800000
33	The water tank	-	-	-
34	The dry filter	YW85005300000	YW85016400000	YW85016500000
35	The castor	YW03000300200 YW03000300000	YW03000300200 YW03000300000	YW03000300200 YW03000300000
36	The bottom frame	-	-	-
37	The front right upright column	-	-	-
38	The ball float	YW59010200000	YW59010200000	YW59010200000
39	The heat expansion valve	YW85025380100	-	-
40	The liquid filling thimble valve	YW85010400100	YW85010400100	YW85010400100

* means possible broken parts. ** means easy broken part. and spare backup is suggested.

No .	Name	No. of the material		
		SIC-10W-P	SIC-12.5W-P	SIC-15W-P
1	The right board	-	-	-
2	The condenser	YW86010000100	YW86012500100	YW86015000200
3	The evaporator	YW87010000000	YW87012500000	YW87015000000
4	The rubber pipe	YR60420300000	YR60420300000	YR60420300000
5	The pump*	YM21401600100	YM21017000100	YM21017000100
6	The back right upright column	-	-	-
7	The water supply	-	-	-
8	The direct connection	YW51001200000	YW51001200000	YW51001200000
9	The 1/2" ball valve	YW50010200100	YW50010200100	YW50010200100
10	The back board	-	-	-
11	The 1" ball valve	YW50010200100	YW50010200100	YW50010200100
12	The back left upright column	-	-	-
13	The upper frame	-	-	-
14	The cover plate	-	-	-
15	The front left upright column	-	-	-
16	The cross spreader of the electric control box	-	-	-
17	The left board	-	-	-
18	The electric control box	BH51001000450	BH51120500250	BH51001500350
19	The high and low pressure controller	YE90083000100	YE90083000100	YE90083000100
20	The bottom plate of the controller	-	-	-

No	Name	No. of the material		
		SIC-10W-P	SIC-12.5W-P	SIC-15W-P
21	The freeze protection switch	YW85071100000	YW85071100000	YW85071100000
22	The hinge	YW06203100400	YW06203100400	YW06203100400
23	The door sheet	-	-	-
24	The high pressure gauge	YW85603500000	YW85603500000	-
25	The control panel	YR01004400000	YR01004400000	YR01004400000
26	The low pressure gauge	YW85601500000	YW85601500000	YW85601500000
27	The main power supply switch	YE10220300000	YE10220300000	YE10200300000
28	The pump pressure gauge	YW85001000100	YW85001000100	YW85001000100
29	The door lock	YW00000000100	YW00000000100	YW00000000100
30	The dash board fixed plate	-	-	-
31	The compressor anti hunting pillar	-	-	-
32	The compressor	YM70103800000	YM70125300000	YM70154400000
33	The water tank	-	-	-
34	The dry filter	YW85016500000	YW85030500000	YW85030700000
35	The castor	YW03000300200 YW03000300000	YW03000400000 YW03000400200	YW03000400000 YW03000400200
36	The bottom frame	-	-	-
37	The front right upright column	-	-	-
38	The ball float	YW59010200000	YW59010200000	YW59010200000
39	The heat expansion valve	YW85000800000	YW85001000200	YW85001200000
40	The liquid filling thimble valve	YW85010400100	YW85010400100	YW85010400100

* means possible broken parts. ** means easy broken part. and spare backup is suggested.

No	Name	No. of the material		
		SIC-20W-P	SIC-25W-P	SIC-30W-P
1	The right board	-	-	-
2	The condenser	YW8602000000	YW8602500000	YW86030000100
3	The evaporator	YW8702000000	YW8702500000	YW8703000000
4	The rubber pipe	YR6048050000	YR6048050000	YR6048050000
5	The pump*	YM21080000100	YM21080000100	YM2104000000
6	The back right upright column	-	-	-
7	The water supply	YW5721220000	YW5721220000	YW5721220000
8	The direct connection	-	-	-
9	The 1/2" ball valve	YW50010200100	YW50010200100	YW50010200100
10	The back board	-	-	-
11	The 1" ball valve	YW50010200100	YW5002000000	YW5002000000
12	The back left upright column	-	-	-
13	The upper frame	-	-	-
14	The cover plate	-	-	-
15	The front left upright column	-	-	-
16	The cross spreader of the electric control box	-	-	-
17	The left board	-	-	-
18	The electric control box	BH51002000250	BH51002500250	BH51003000250
19	The high and low pressure controller	YE90083000100	YE90083000100	YE90083000100
20	The bottom plate of the controller	BH51003000250	BH51003000250	BH51003000250

No	Name	No. of the material		
		SIC-20W-P	SIC-25W-P	SIC-30W-P
21	The freeze protection switch	YW85071100000	YW85071100000	YW85071100000
22	The hinge	YW06203100400	YW06203100400	YW06203100400
23	The door sheet	-	-	-
24	The high pressure gauge	YW85603500000	YW85603500000	YW85603500000
25	The control panel	YR01004400000	YR01004400000	YR01004400000
26	The low pressure gauge	YW85601500000	YW85601500000	YW85601500000
27	The main power supply switch	YE41106000000	YE41106000000	YE41109000000
28	The pump pressure gauge	YW85015000000	YW85015000000	YW85015000000
29	The door lock	YW00000000100	YW00000000100	YW00000000100
30	The dash board fixed plate	-	-	-
31	The compressor anti hunting pillar	-	-	-
32	The compressor	YM70103800000	YM70125300000	YM70154400000
33	The water tank	-	-	-
34	The dry filter	YW85016500000	YW85030700000	YW85030700000
35	The castor	-	-	-
36	The bottom frame	-	-	-
37	The front right upright column	-	-	-
38	The ball float	YW59010200000	YW59010200000	YW59010200000
39	The heat expansion valve	Yw85000800000	YW85001000200	YW85001200000
40	The liquid filling thimble valve	YW85010400100	YW85010400100	YW85010400100

* means possible broken parts. ** means easy broken part. and spare backup is suggested.

No	Name	No. of the material		
		SIC-40W-P	SIC-45W-P	SIC-50W-P
1	The right board	-	-	-
2	The condenser	YW8604000000	YW8604500000	-
3	The evaporator	YW8704000000	YW8704500000	YW8705000000
4	The rubber pipe	YR60600300000	YR60600300000	YR60600300000
5	The pump	YM2104000000	YM2104000000	YM2132200000
6	The back right upright column	-	-	-
7	The water supply	YW5310000000	YW57150100000	YW57150100000
8	The direct connection	YW51000300000	YW51000300000	YW51000300000
9	The 1/2" ball valve	YW50030800100	YW50030800100	YW50010000000
10	The back board	-	-	-
11	The 1" ball valve	YW50025000000	YW50025000000	YW50030000000
12	The back left upright column	-	-	-
13	The upper frame	-	-	-
14	The cover plate	-	-	-
15	The front left upright column	-	-	-
16	The cross spreader of the electric control box	-	-	-
17	The left board	-	-	-
18	The electric control box	BH51004000250	BH51004500150	BH51005000150
19	The high and low pressure controller	YE90083000100	YE90083000100	YE90083000100
20	The bottom plate of the controller	-	-	-

No	Name	No. of the material		
		SIC-40W-P	SIC-45W-P	SIC-50W-P
21	The freeze protection switch	YW85071100000	YW85071100000	YW85071100000
22	The hinge	YW06203100400	YW06203100400	YW06203100400
23	The door sheet	-	-	-
24	The high pressure gauge	YW85603500000	YW85603500000	YW85603500000
25	The control panel	YR01004400000	YR01004400000	YR01004400000
26	The low pressure gauge	YW85601500000	YW85601500000	YW85601500000
27	The main power supply switch	YE41110000000	YE41161200000	YE41161200000
28	The pump pressure gauge	YW85001000100	YW85001000100	YW85001000100
29	The door lock	YW00000000100	YW00000000100	YW00000000100
30	The dash board fixed plate	-	-	-
31	The compressor anti hunting pillar	-	-	-
32	The compressor	YM70134400000 YM70154400000	YM70154400000	YM70124000000
33	The water tank	-	-	-
34	The dry filter	YW85030700000	YW85030700000	YW85030700000
35	The castor	-	-	-
36	The bottom frame	-	-	-
37	The front right upright column	-	-	-
38	The ball float	YW59010000000	YW59010000000	YW59010000000
39	The heat expansion valve	YW85001200000 YW85000800000	YW85001200000	YW85001000200
40	The liquid filling thimble valve	Yw85010400100	YW85010400100	YW85010400100

*Indicates latent wearing parts; **Indicates latent wearing parts and it's suggested to back them up.