

Mark	Before modification	After modification	Modified by	Modify date	Checked by	Date	20170711
					Proofread by	Approved by	
					Designer	Version	C
					Drawer		

Title
STM-607WF
Control Circuit Diagram

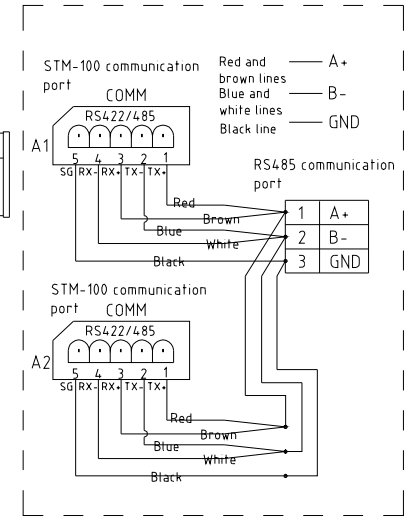
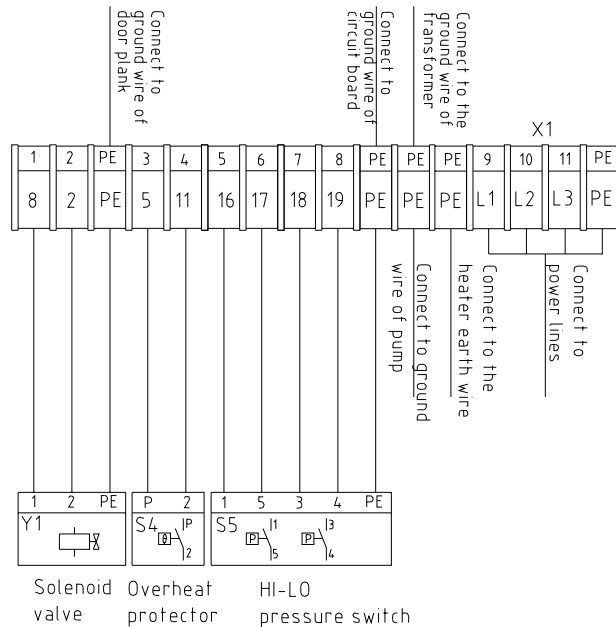
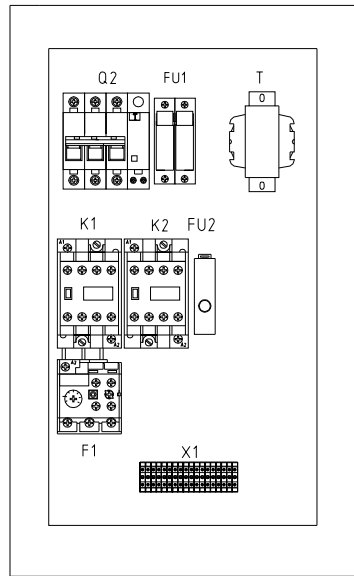
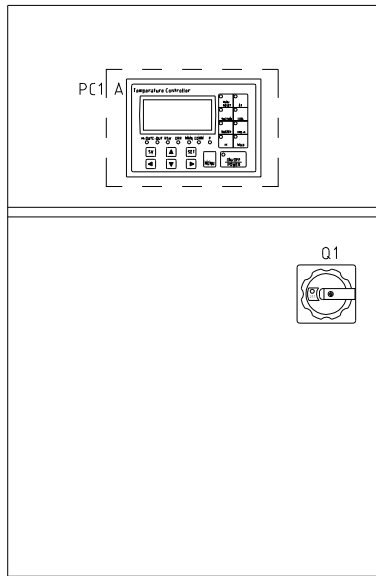
Drawing NO
STM-607WF-CE-230V-C-2

SHINI 信易電熱機械股份有限公司
Shini Plastics Technologies, Inc.

Scale		Page	2
Standard	CE	Totally	4 Pages
Voltage	230V		
Frequency	50Hz		

Technical requirements:

- (1) Directly connect the plus and minus poles of the thermocouple to the input end of thermocouple on the circuit board. No need to connect them to the terminal board.
- (2) Directly connect the pump and heater to the output end of the contactor and thermal overload relay.




RS485 Communications wiring diagram

				Drawer		Version		D		Title		Drawing NO		Scale		Page	
				Designer		Approved by				STM-607WF		STM-607WF-CE-230V-D-3		CE		3	
				Proofread by		Date		20170711		Electrical Components Layout				Voltage		230V	
Mark		Before modification		After modification		Modified by		Modify date		Checked by				Frequency		50Hz	



	1	2	3	4	5	6	7	8	
序号/NO	符号/Symbol	名称/Name	制造商/Manufacturer	型号/Type	规格/Specification	数量/Number	物料编号/Material number	备注/Remark	
A	1	Q1	主电源开关/Main Power Switch	MOELLER	P1-25/EA/SVB/25A	25A	1	YE10125250000	
	2	Q2	断路器/Circuit Breakers	TECO	BM-63C/3025S	25A	1	YE40302503000	
	3		励磁脱扣器/Excitation release	TECO	MX	24VAC	1	YE40024000000	
	4	K1	接触器/Contactors	SIEMENS	3RT6015-1AB01	24VAC	1	YE00601502500	
	5	K2	接触器/Contactors	SIEMENS	3RT6025-1AC20	24VAC	1	YE00602502600	
	6	F1	热过载继电器/Overload Relays	SIEMENS	3RU6116-1CB0	18-2.5A	1	YE01160180000	
	7	FU1	熔断器座/Fuse base	CHNT	RT28-32	32A 2P	1	YE41032200000	
B	8		熔芯/Fuse core	MRO	10×38 500V	2A	2	YE46002000100	
	9	FU2	熔断器/Fuse	YINDA	FS-10	----	1	YE41001000000	
	10		保险管/Fuse	----	6×30	5A	1	YE46630500100	
	11	T	互感变压器/Transformer	BAIYUN	IN=230V OUT=24VAC	120VA	1	YE70023005500	
	12	S1	热电偶/Thermocouple	SHINI	----	K	1	----	(1)
	13	S2 S3	热电偶/Thermocouple	SHINI	----	K	2	----	(1)(3)
C	14	S4	超温保护器/Overheat Protector	----	----	----	1	----	(1)
	15	S5	高低压开关/Hi-Lo pressure switch	FENSHEN	P830HLM	H:5-30bar L:-0.7-6bar	1	----	(1)
	16	PC1 A	线路板/Circuit Board	HANYOUNGUNIX	STM100-21(含通讯)	180-430V 50/60Hz	1	YE81184300200	
	17	H1	蜂鸣器/Buzzer	----	PK-35A	24VAC/DC	1	YE84003500600	
	18	Y1	电磁阀/Solenoid Valve	----	----	24VAC	1	----	(1)
	19	X1	端子排/Terminal Board	----	2.5mm ²	----	8	YE60002503200	
	20			----	2.5mm ² PE	----	3	YE60002503200	
	21			----	4.0mm ²	----	3	YE60000403200	
	22			----	4.0mm ² PE	----	2	YE60000403500	
	23	M1	马达/Motor	SHINI	----	230V 50Hz 0.55kW	1	----	(1)
24	EH	电热/Heater	SHINI	6kW	230V 50Hz	1	----	(1)	

Notes: (1)Means it's not the material inside the control box. (3)Means equipped with function of displaying water outlet and return water temperature

D	Mark	Before modification	After modification	Modified by	Modify date	Checked by	Date	20170711	 信易電熱機械股份有限公司 Shini Plastics Technologies, Inc.	Voltage 230V Frequency 50Hz
						Drawer	Version	C	Title	Scale
						Designer	Approved by		STM-607WF	Page 4
						Proofread by			Electrical Components List 1	Totally 4 Pages
									STM-607WF-CE-230V-C-4	Standard CE

1

2

3

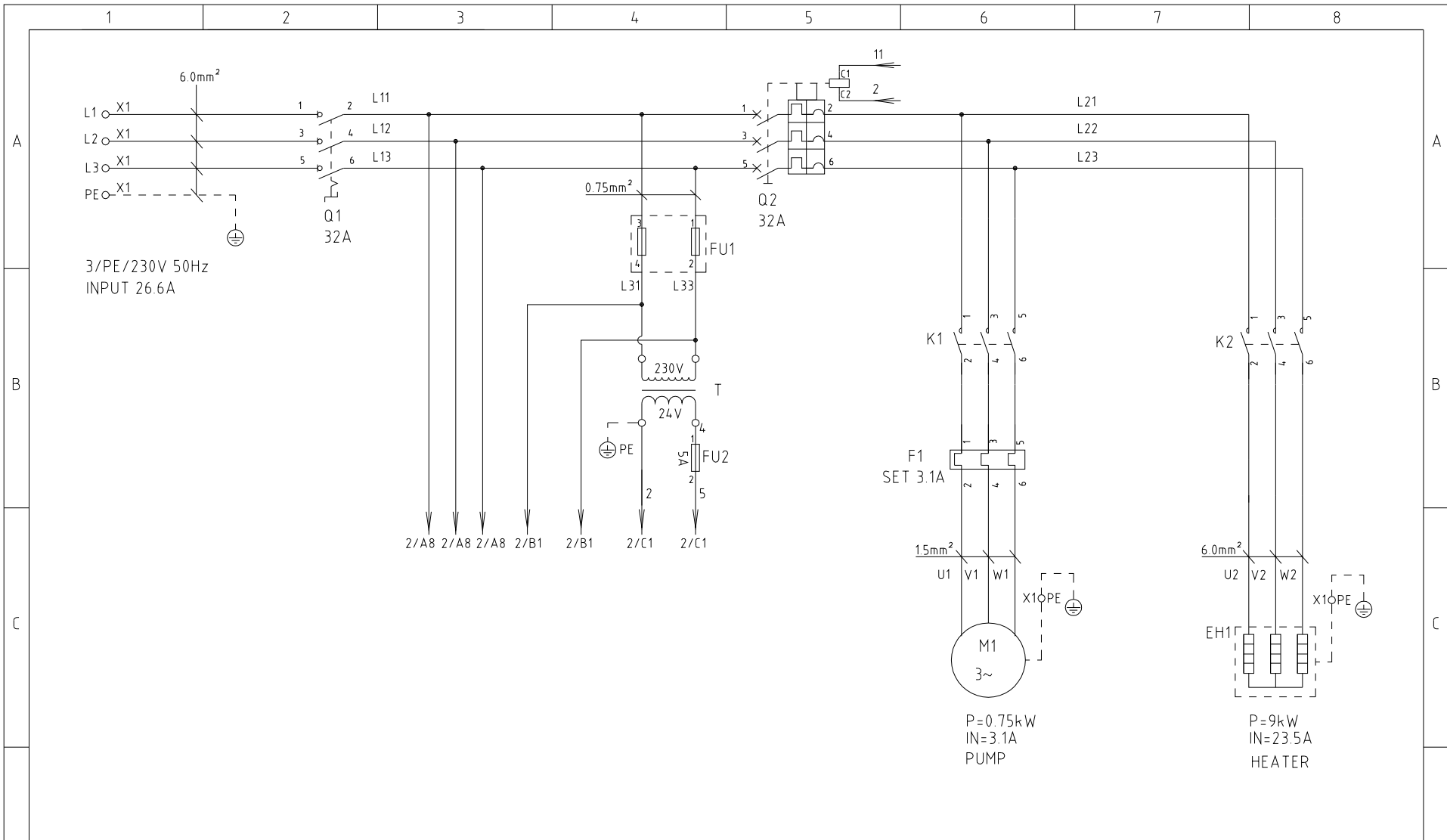
4


5

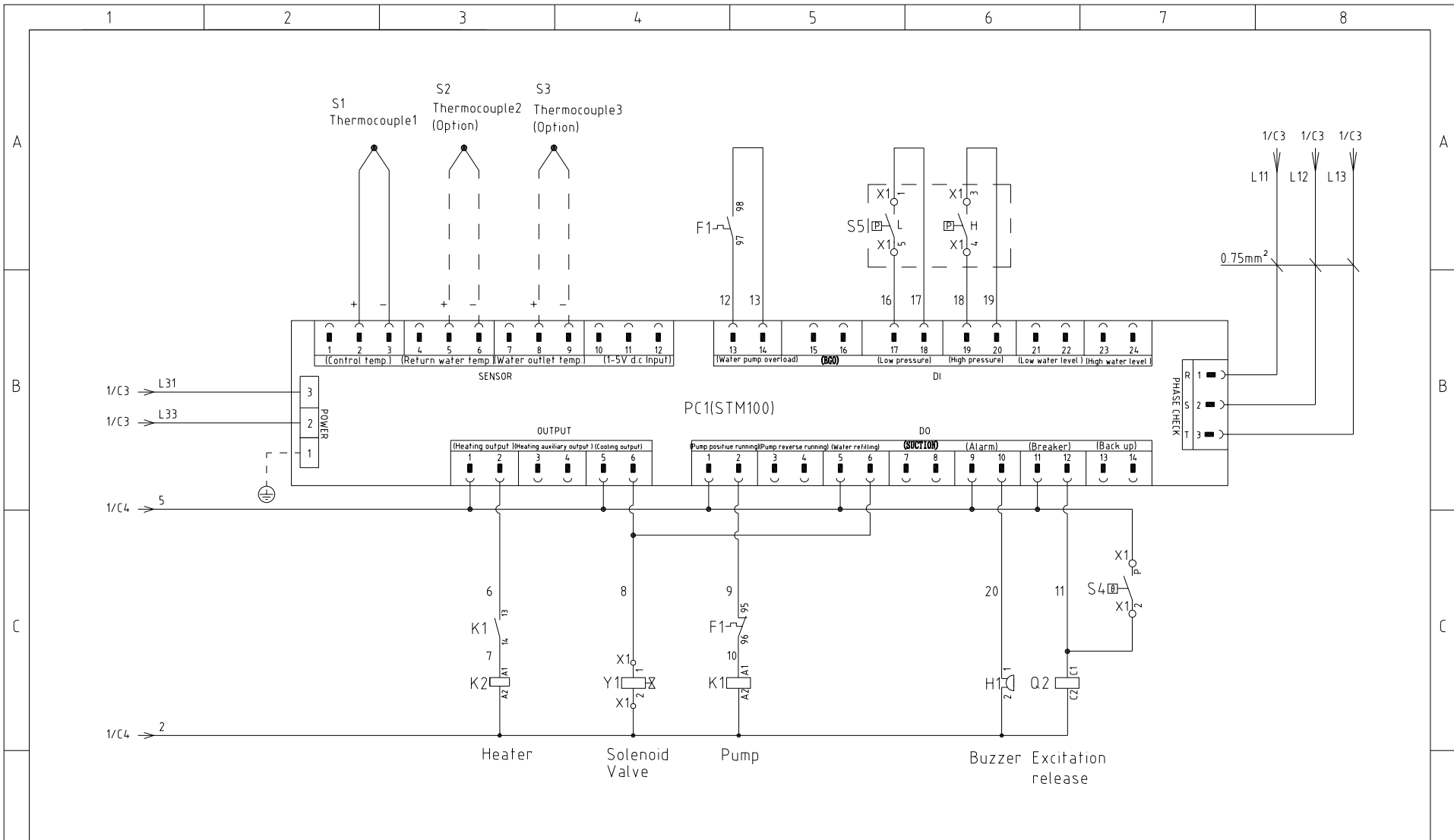
6

7

8



				Drawer	Version		B	Title	STM-910WF	Drawing NO	STM-910WF-CE-230V-B-1	Scale	Page	1	
				Designer	Approved by			Main Circuit Diagram				Standard	CE	Totally	4 Pages
				Proofread by	Date		20161129	 信易電熱機械股份有限公司 Shini Plastics Technologies, Inc.	Voltage		230V				
Mark	Before modification	After modification	Modified by	Modify date	Checked by				Frequency		50Hz				
1	2	3	4	5	6	7	8								



					Drawer	Version	C
					Designer	Approved by	
					Proofread by		
Mark	Before modification	After modification	Modified by	Modify date	Checked by	Date	20170711

Title: STM-910WF
Control Circuit Diagram

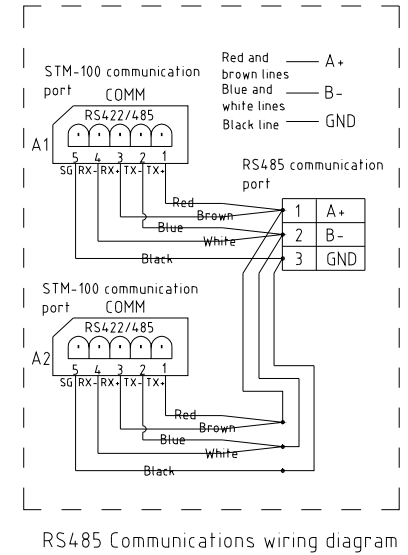
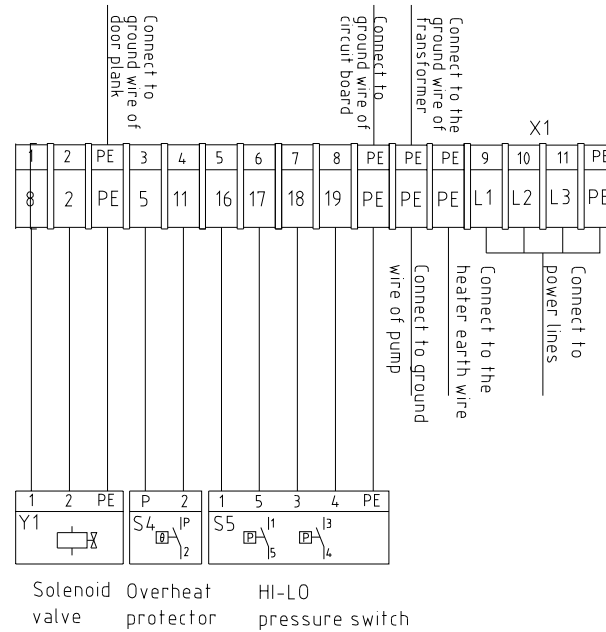
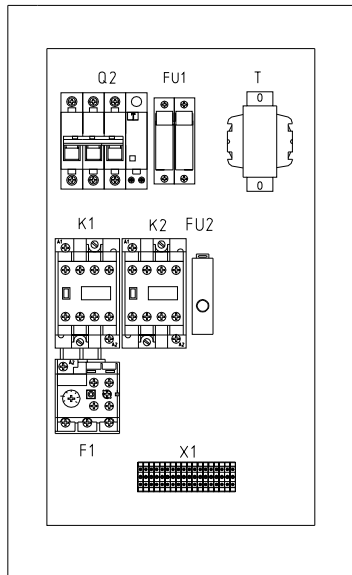
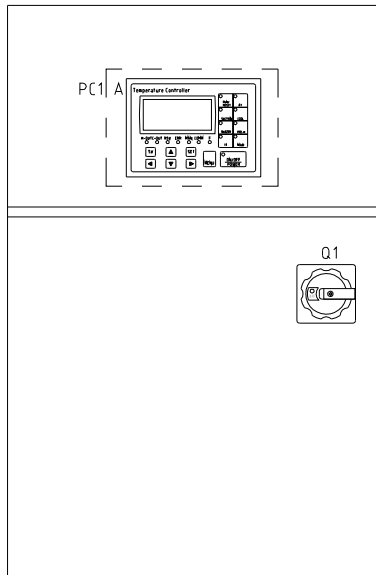
Drawing NO: STM-910WF-CE-230V-C-2

SHINI 信易電熱機械股份有限公司
Shini Plastics Technologies, Inc.

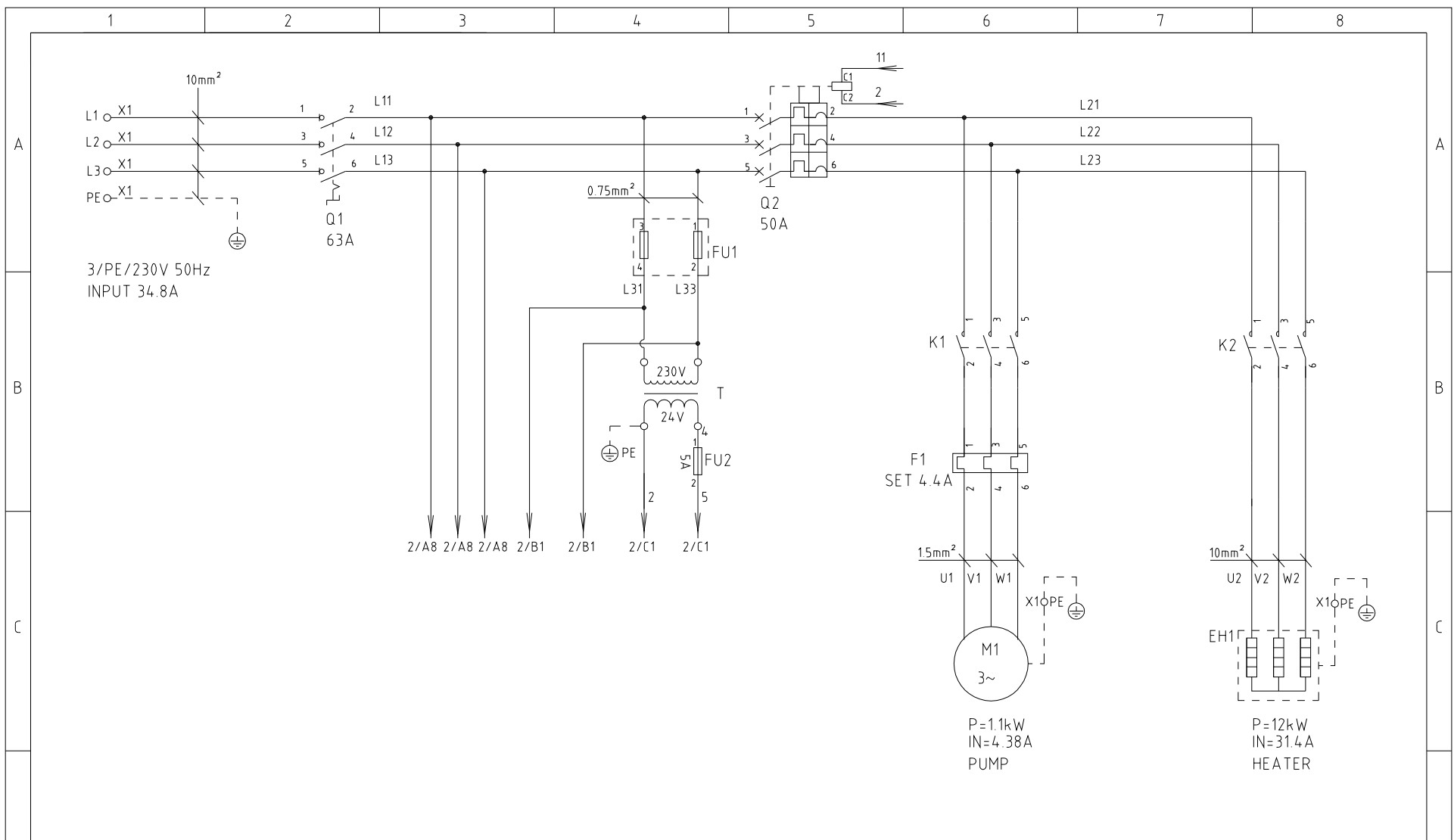
Scale		Page	2
Standard	CE	Totally	4 Pages
Voltage	230V		
Frequency	50Hz		


Technical requirements:

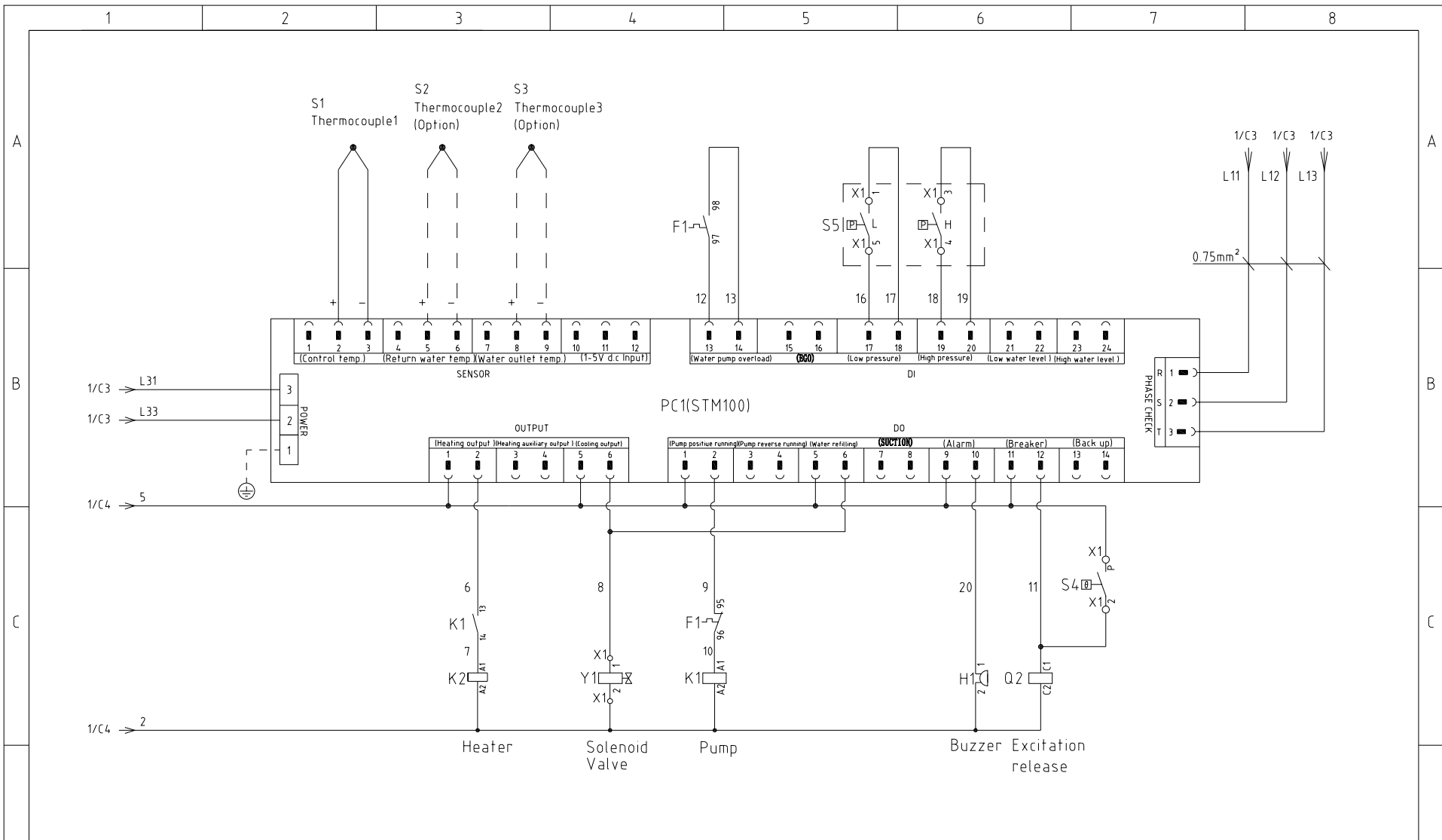
- (1) Directly connect the plus and minus poles of the thermocouple to the input end of thermocouple on the circuit board. No need to connect them to the terminal board.
- (2) Directly connect the pump and heater to the output end of the contactor and thermal overload relay.



				Drawer		Version		D		Title		Drawing NO		Scale		Page 3	
				Designer		Approved by				STM-910WF		STM-910WF-CE-230V-D-3		Standard		CE	
				Proofread by		Date		20170711		信易電熱機械股份有限公司 Shini Plastics Technologies, Inc.		Voltage		230V			
Mark		Before modification		After modification		Modified by		Modify date				Checked by		Frequency		50Hz	
1		2		3		4		5		6		7		8			



				Drawer	Version		B	Title	STM-1220WF	Drawing NO	Scale	Page	1
				Designer	Approved by			Main Circuit Diagram	STM-1220WF-CE-230V-B-1	Standard	CE	Totally	4 Pages
				Proofread by	Date		20161129	 信易電熱機械股份有限公司 Shini Plastics Technologies, Inc.		Voltage	230V		
Mark	Before modification	After modification	Modified by	Modify date	Checked by		Frequency			50Hz			



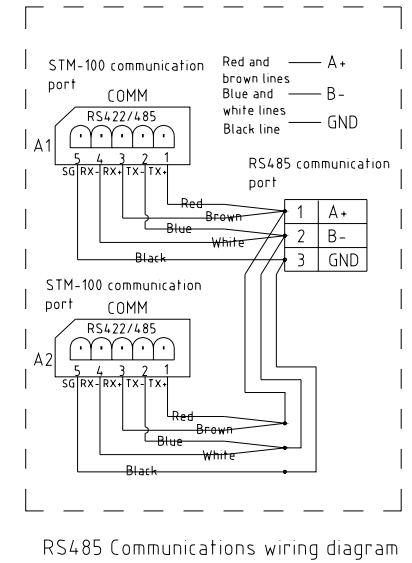
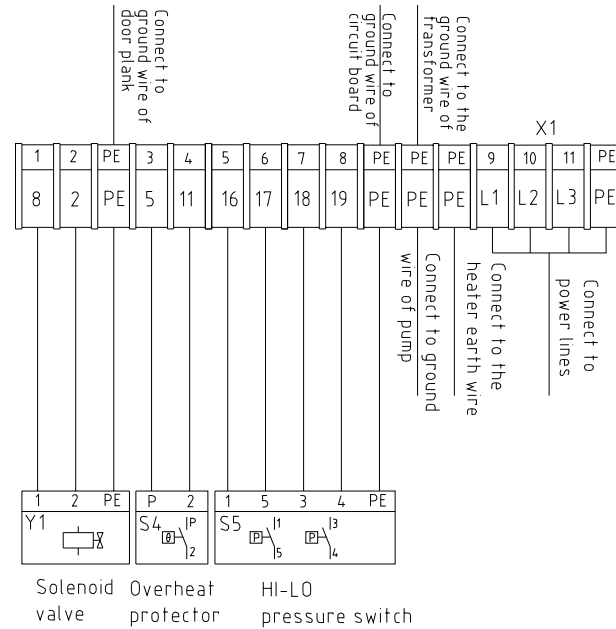
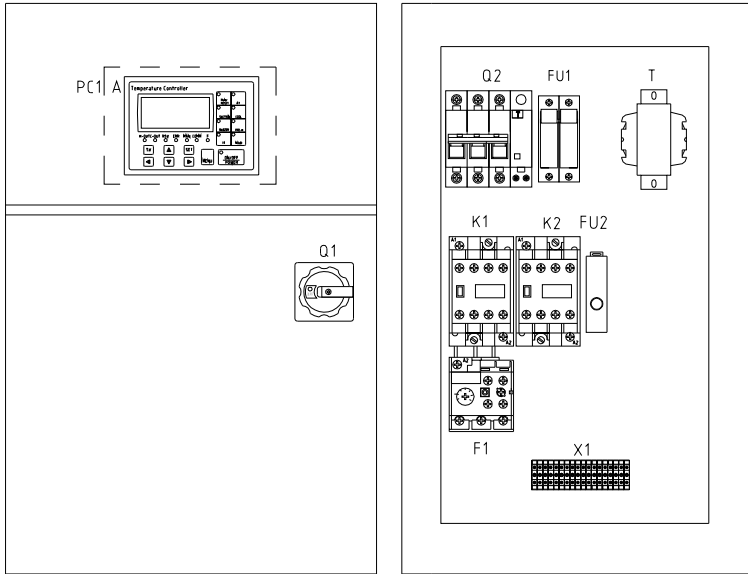
			Drawer	Version	C	Title	STM-1220WF Control Circuit Diagram	Drawing NO	STM-1220WF-CE-230V-C-2	Scale	Page 2	
			Designer	Approved by						Standard	CE	Totally 4 Pages
			Proofread by	Date	20170711					Voltage	230V	
Mark	Before modification	After modification	Modified by	Modify date	Checked by					Frequency	50Hz	



1 2 3 4 5 6 7 8

Technical requirements:

- (1) Directly connect the plus and minus poles of the thermocouple to the input end of thermocouple on the circuit board. No need to connect them to the terminal board.
- (2) Directly connect the pump and heater to the output end of the contactor and thermal overload relay.



B

C


A

B

C

D


D

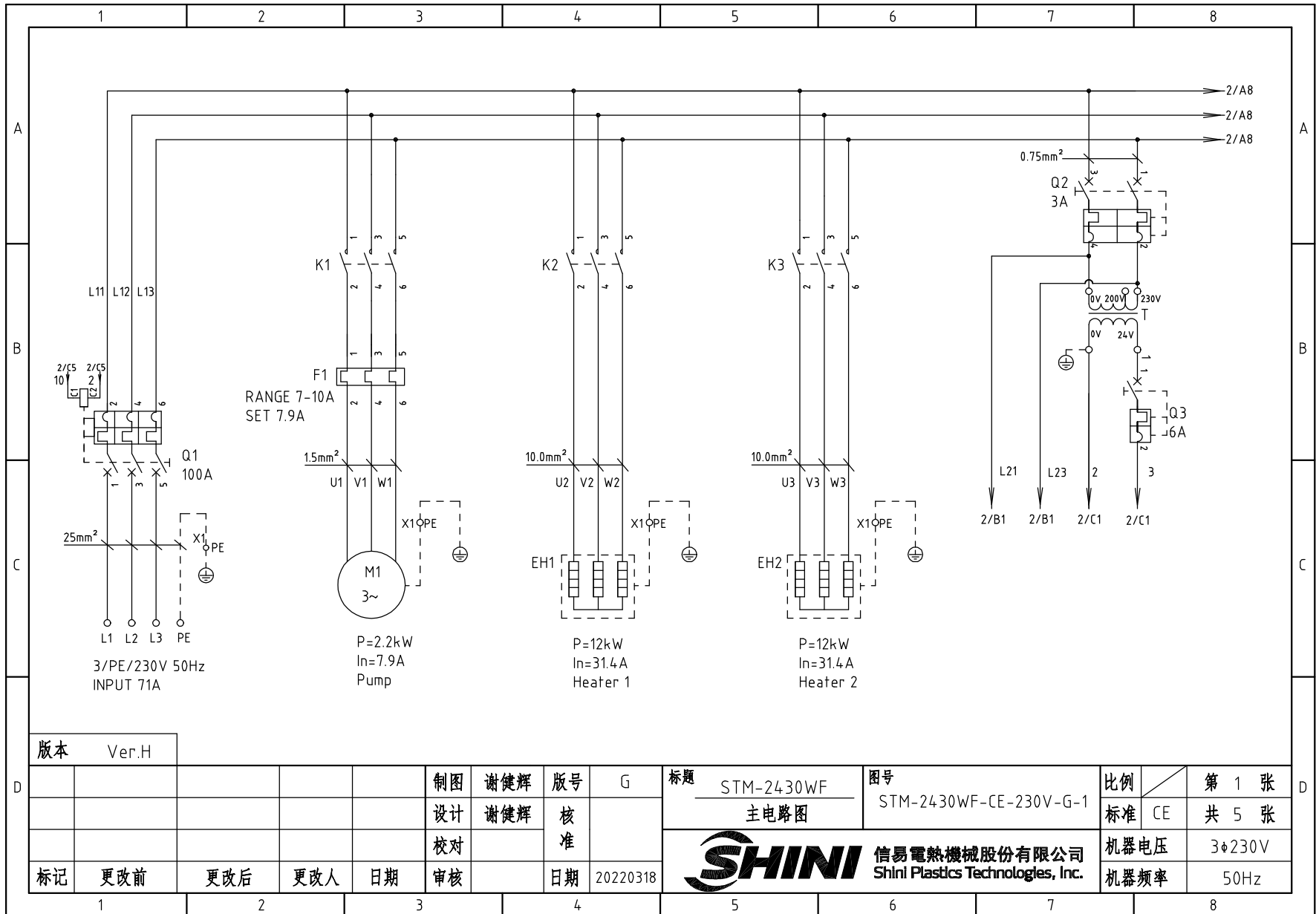
			Drawer	Version	D	Title	STM-1220WF	Drawing NO	STM-1220WF-CE-230V-D-3	Scale	Page	3	
			Designer	Approved by		Electrical Components Layout				Standard	CE	Totally	4 Pages
			Proofread by	Date	20170711	 信易電熱機械股份有限公司 Shini Plastics Technologies, Inc.						Voltage	230V
Mark	Before modification	After modification	Modified by	Modify date	Checked by							Frequency	50Hz

1 2 3 4 5 6 7 8

	1	2	3	4	5	6	7	8	
序号/NO	符号/Symbol	名称/Name	制造商/Manufacturer	型号/Type	规格/Specification	数量/Number	物料编号/Material number	备注/Remark	
A	1	Q1	主电源开关/Main Power Switch	MOELLER	P3-63/EA/SVB	63A	1	YE10636300000	
	2	Q2	断路器/Circuit Breakers	TECO	BM-63C	50A	1	YE40305003000	
	3		励磁脱扣器/Excitation release	TECO	MX	24VAC	1	YE40024000000	
	4	K1	接触器/Contactors	SIEMENS	3RT6015-1AB01	24VAC	1	YE00601502500	
	5	K2	接触器/Contactors	SIEMENS	3RT6028-1AC20	24VAC	1	YE00602802600	
	6	F1	热过载继电器/Overload Relays	SIEMENS	3RU6116-1FB0	3.5-5A	1	YE01160350000	
	7	FU1	熔断器座/Fuse base	CHNT	RT28-32	32A 2P	1	YE41032200000	
B	8		熔芯/Fuse core	MRO	10×38 500V	2A	2	YE46002000100	
	9	FU2	熔断器/Fuse	YINDA	FS-10	----	1	YE41001000000	
	10		保险管/Fuse	----	6×30	5A	1	YE46630500100	
	11	T	互感变压器/Transformer	BAIYUN	IN=230V OUT=24VAC	120VA	1	YE70023005500	
	12	S1	热电偶/Thermocouple	SHINI	----	----	1	----	(1)
	13	S2 S3	热电偶/Thermocouple	SHINI	----	----	2	----	(1)(3)
C	14	S4	超温保护器/Overheat Protector	----	----	----	1	----	(1)
	15	S5	高低压开关/Hi-Lo pressure switch	FENSHEN	P830HLM	H:5-30bar L:-0.7-6bar	1	----	(1)
	16	PC1 A	线路板/Circuit Board	HANYOUNGUNIX	STM100-21(含通讯)	180-430V 50/60Hz	1	YE81184300200	
	17	H1	蜂鸣器/Buzzer	----	PK-35A	24VAC/DC	1	YE84003500600	
	18	Y1	电磁阀/Solenoid Valve	----	----	24VAC	1	----	(1)
	19	X1	端子排/Terminal Board	----	2.5mm ²	----	8	YE60002503200	
	20			----	2.5mm ² PE	----	3	YE60002503400	
	21			----	10mm ²	----	3	YE60001003200	
	22			----	10mm ² PE	----	2	YE60001003500	
	23	M1	马达/Motor	SHINI	----	230V 50Hz 1.1kW	1	----	(1)
24	EH	电热/Heater	SHINI	12kW	230V 50Hz	1	----	(1)	

Notes: (1)Means it's not the material inside the control box. (3)Means equipped with function of displaying water outlet and return water temperature.

D	Mark	Before modification	After modification	Modified by	Modify date	Checked by	Date	20170711	 信易電熱機械股份有限公司 Shini Plastics Technologies, Inc.	Title STM-1220WF Electrical Components List 1	Drawing NO STM-1220WF-CE-230V-C-4	Scale	Page	4	
								Standard				CE	Totally	4	Pages
												Voltage	230V		
												Frequency	50Hz		
	1	2	3	4	5	6	7	8							



版本 Ver.H

制图	谢健辉	版号	G
设计	谢健辉	核准	
校对		核准	
标记	更改前	更改后	更改人
		日期	20220318

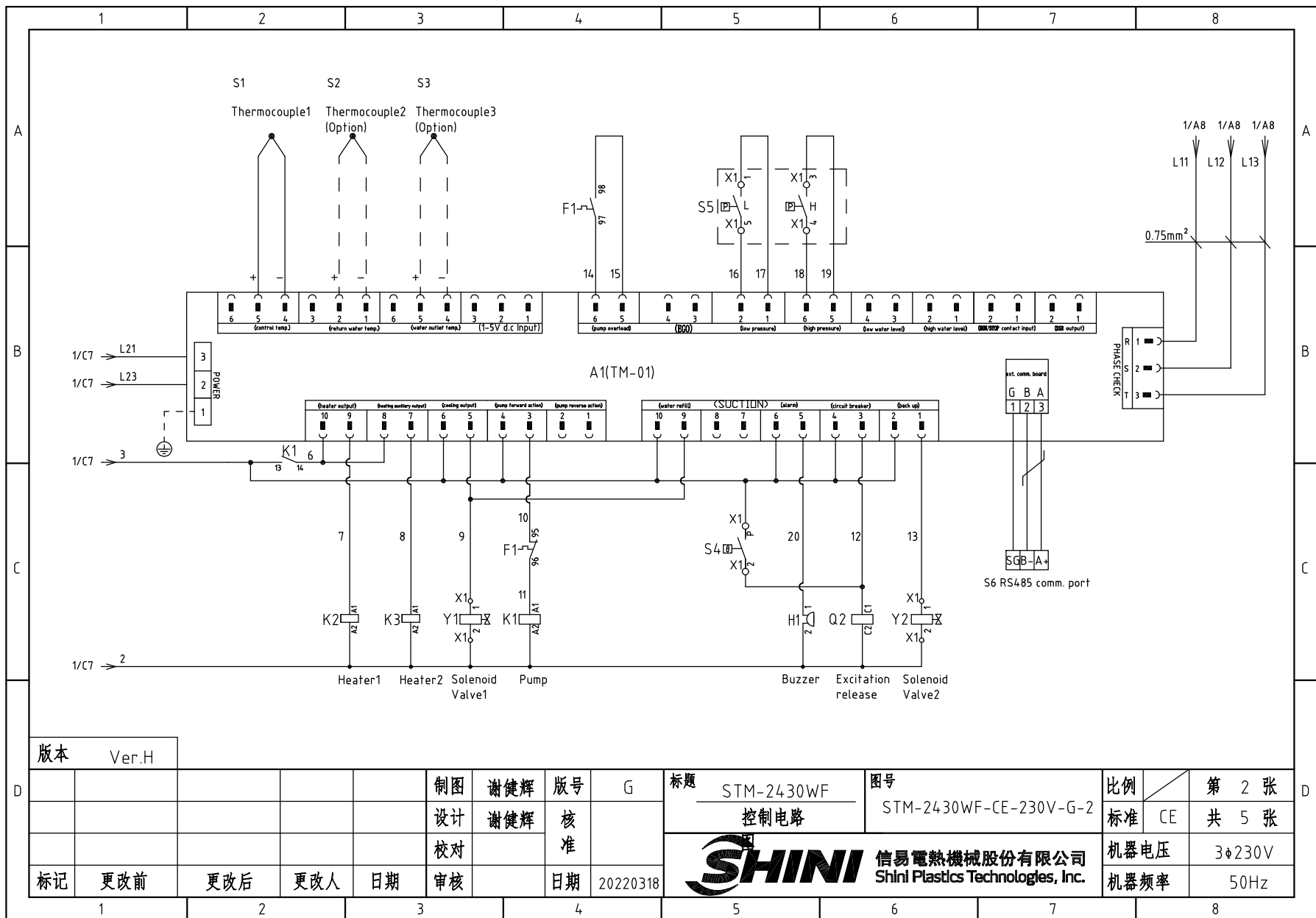
标题 STM-2430WF
主电路图

图号 STM-2430WF-CE-230V-G-1

比例 第 1 张
标准 CE 共 5 张

SHINI 信易電熱機械股份有限公司
Shini Plastics Technologies, Inc.

机器电压 3φ230V
机器频率 50Hz



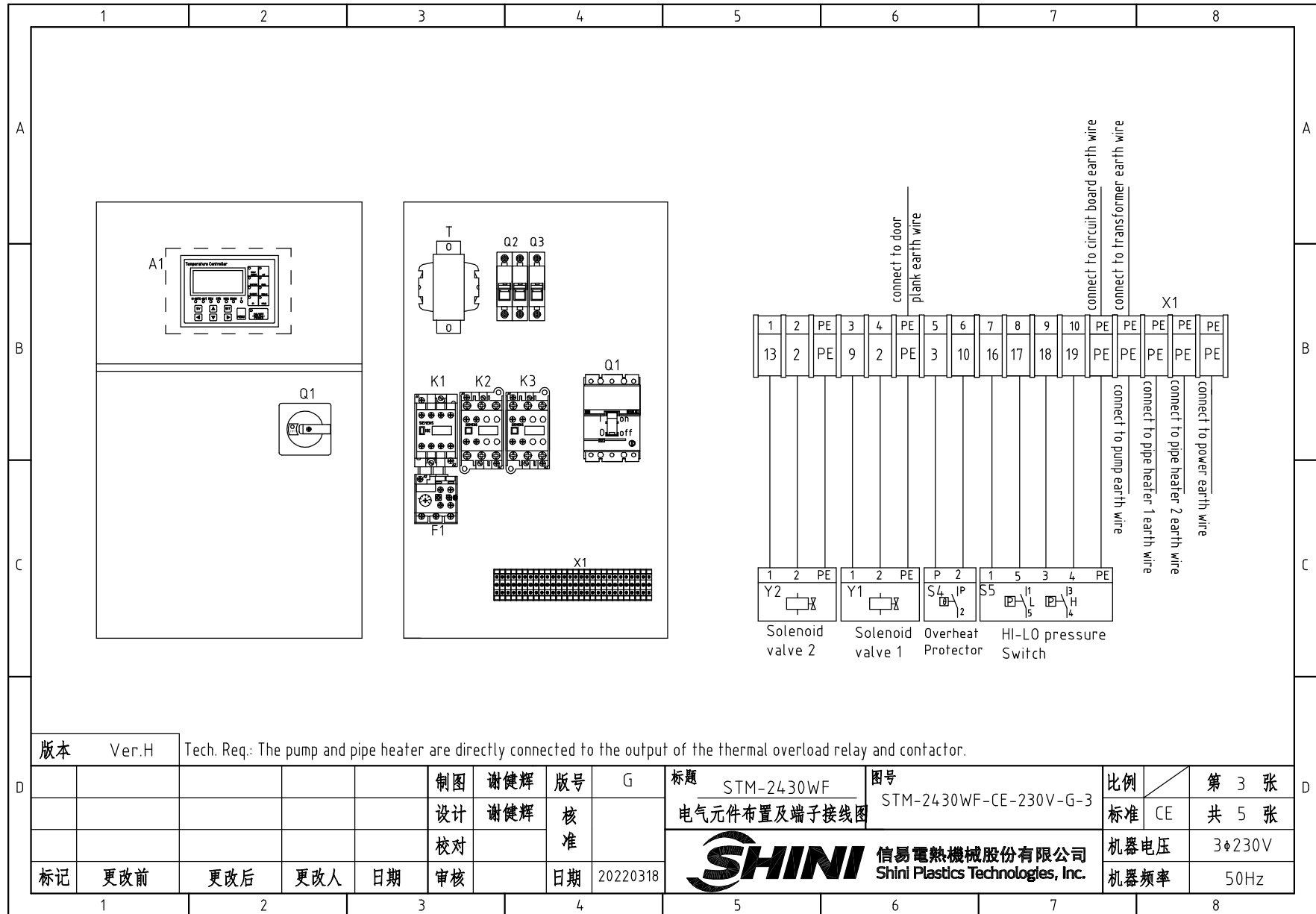
版本 Ver.H

制图	谢健辉	版号	G
设计	谢健辉	核准	
校对		核准	
标记	更改前	更改后	更改人
	日期	日期	20220318

标题 STM-2430WF 控制电路
图号 STM-2430WF-CE-230V-G-2

SHINI 信易電熱機械股份有限公司
Shini Plastics Technologies, Inc.

比例	第 2 张
标准	CE 共 5 张
机器电压	3φ230V
机器频率	50Hz



版本 Ver.H

Tech. Req.: The pump and pipe heater are directly connected to the output of the thermal overload relay and contactor.

制图	谢健辉	版号	G
设计	谢健辉	核准	
校对		核准	
标记	更改前	更改后	更改人
	日期	日期	20220318

标题 STM-2430WF 图号 STM-2430WF-CE-230V-G-3
 电气元件布置及端子接线图

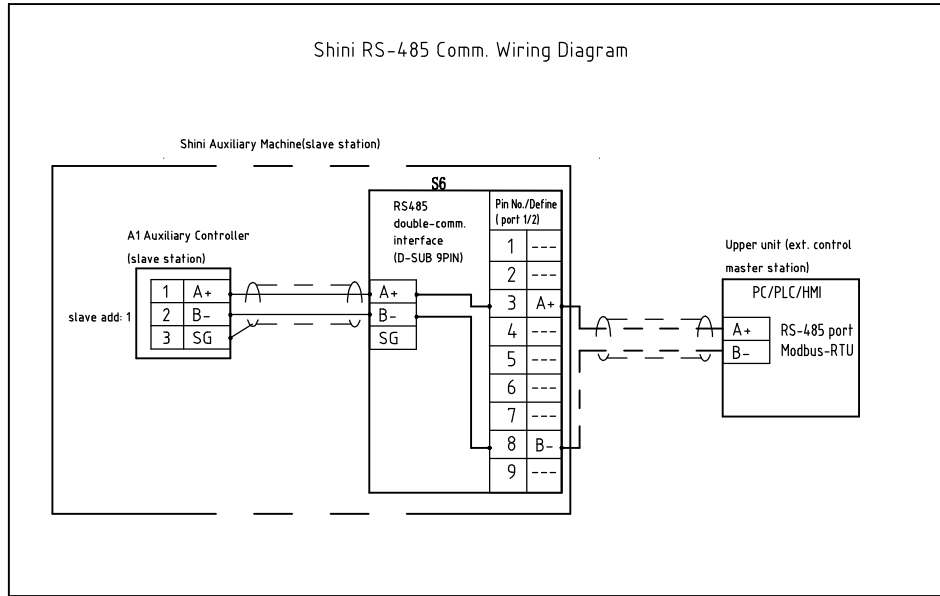
SHINI 信易電熱機械股份有限公司
 Shini Plastics Technologies, Inc.

比例	第 3 张
标准 CE	共 5 张
机器电压	3φ230V
机器频率	50Hz

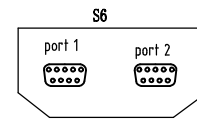
1 2 3 4 5 6 7 8

A A

Shini RS-485 Comm. Wiring Diagram



Shini RS-485 Port Define



D-sub-9 pin interface	Pin No.	Pin Define
	1	-
	2	-
	3	A+ (RS-485 signal)
	4	-
	5	-
	6	-
	7	-
	8	B- (RS-485 signal)
	9	-

Note: 1. Comm. port: RS-485(two wire type)
 2. Comm. protocol: Modbus-RTU
 3. The machine is equipped with d-sub9 female connector. Port 1 and port 2 are connected in parallel, with the same functions, regardless of primary and secondary;

B B

C C

版本 Ver.H

制图	谢健辉	版号	G
设计	谢健辉	核准	
校对		核准	
标记	更改前	更改后	更改人
	日期	审核	日期
			20220318

标题 STM-2430WF
 通讯接线图

图号 STM-2430WF-CE-230V-G-4

比例
 标准 CE

第 4 张
 共 5 张

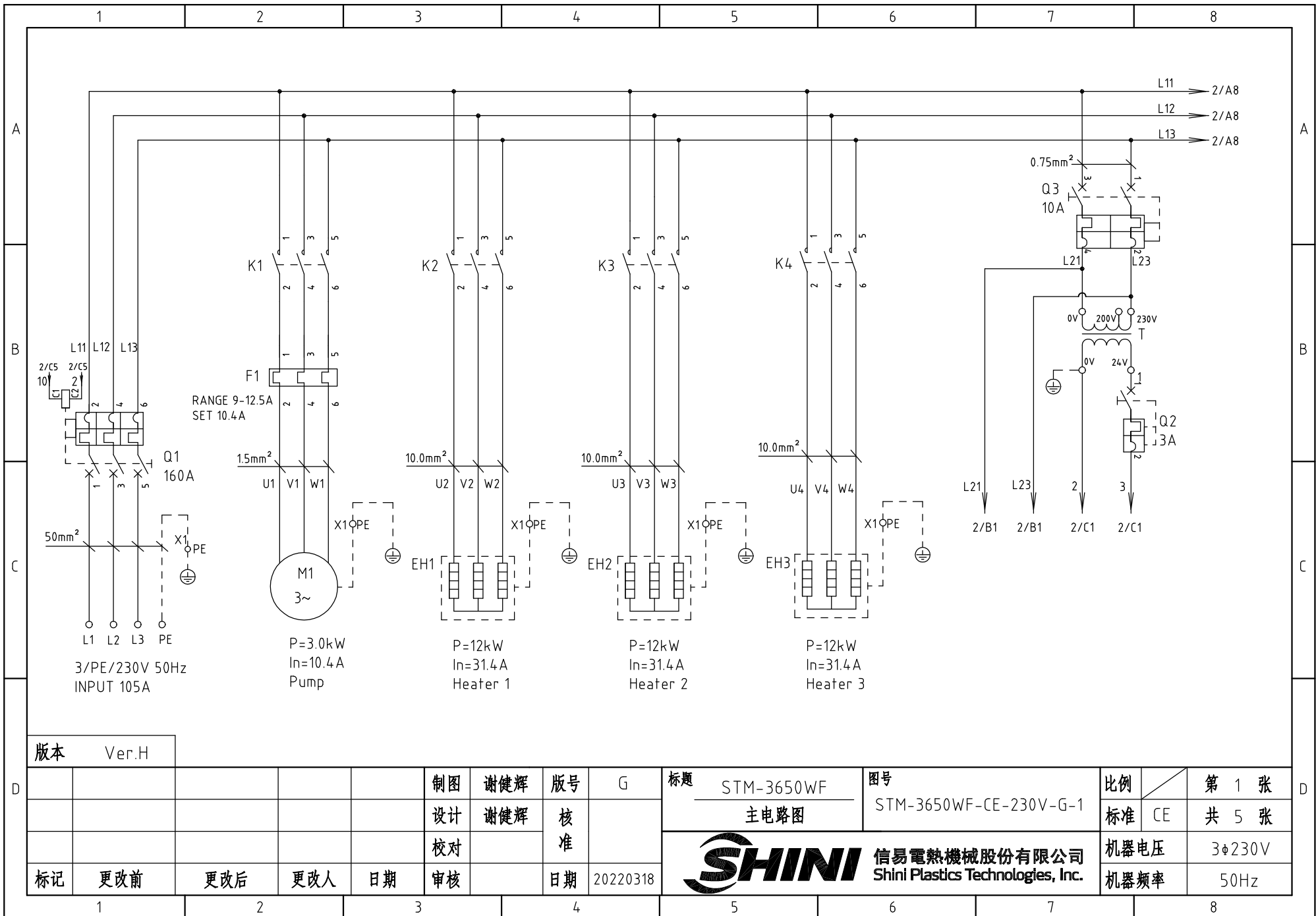
SHINI 信易電熱機械股份有限公司
 Shini Plastics Technologies, Inc.

机器电压 3φ230V
 机器频率 50Hz

1 2 3 4 5 6 7 8

D D

1		2		3		4		5		6		7		8	
NO.	Symbol	Name		Manufacturer		Type		Specification		Number	Material number		Remark		
A	1	Q1	Interlock circuit breaker		ABB		A1A125TMF100/10003PFF		100A		1	YE41110200000			
	2		Release		ABB		SOR-C		24V-30V AC/DC		1	YE40243000900			
	3	Q2	Circuit breaker		TECO		BM-63C/2003S 2P		3A		1	YE40200203000			
	4	Q3	Circuit breaker		TECO		BM-63C/1006S 1P		6A		1	YE40100600100			
	5	K1	Contactor		SIEMENS		3RT6017-1AB01		24VAC		1	YE00601702500			
	6	K2 K3	Contactor		SIEMENS		3RT6028-1AC20		24VAC		2	YE00602802600			
	7	F1	Overload relays		SIEMENS		3RU6116-1JB0		7-10A		1	YE01167100000			
B	8	T	Transformer		JIUXIN		IN=230/200V OUT=24VAC		120VA		1	YE70023004500			
	9	S1	Thermocouple		SHINI		----		----		1	----		(1)	
	10	S2 S3	Thermocouple		SHINI		----		----		2	----		(1)(2)	
	11	S4	Overheat protector		TONCEAO		ZA300		250V 5(4)A		1	----		(1)	
	12	S5	HI-LO pressure switch		FENSHEN		P830HLM		H:5-30bar L:-0.7-6bar		1	----		(1)	
	13	S6	Connect to interface board RS-485(Dsub-9pin connector)		YUYUN		----		----		1	YE90048501200			
	14		Shell RS485(SAL-700G-A-19)0		BINCHENG		----		----		1	YR40048500000			
C	15	A1	Circuit board		YUYUN		TM-01-220VAC(with comm.)		180~430V 50/60Hz		1	YE81012200300			
	16	H1	Buzzer		----		PK-35A		24VAC/DC		1	YE84003500600			
	17	Y1 Y2	Solenoid valve		----		----		24VAC		2	----		(1)	
	18	X1	Terminal board		HONEYWELL		SK2.5		----		8	YE60002503200			
	19		Earth terminal board		HONEYWELL		GK2.5PE		----		4	YE60002503400			
	20		Earth terminal board		HONEYWELL		GK10PE		----		2	YE60001003500			
	21		Earth terminal board		HONEYWELL		GK35PE		----		1	YE60003503500			
D	22		Terminal fittings E/GK series(Honeyware)		HONEYWELL		----		----		6	YE60000003900			
	23	M1	Motor		SHINI		----		230V 50Hz 2.2kW		1	----		(1)	
	24	EH1 EH2	Heater		SHINI		----		230V 50Hz 12kW		2	----		(1)	
版本 Ver.H		Notes: (1)Non materials in the control box;(2)Optional water outlet and return water display function;													
				制图 谢健辉		版本号 G		标题 STM-2430WF		图号 STM-2430WF-CE-230V-G-5		比例		第 5 张	
				设计 谢健辉		核准		电气元件明细表一				标准 CE		共 5 张	
				校对				 信易電熱機械股份有限公司 Shini Plastics Technologies, Inc.		机器电压		3φ230V			
标记 更改前		更改后		更改人		日期 20220318				机器频率		50Hz			
1		2		3		4		5		6		7		8	



版本 Ver.H

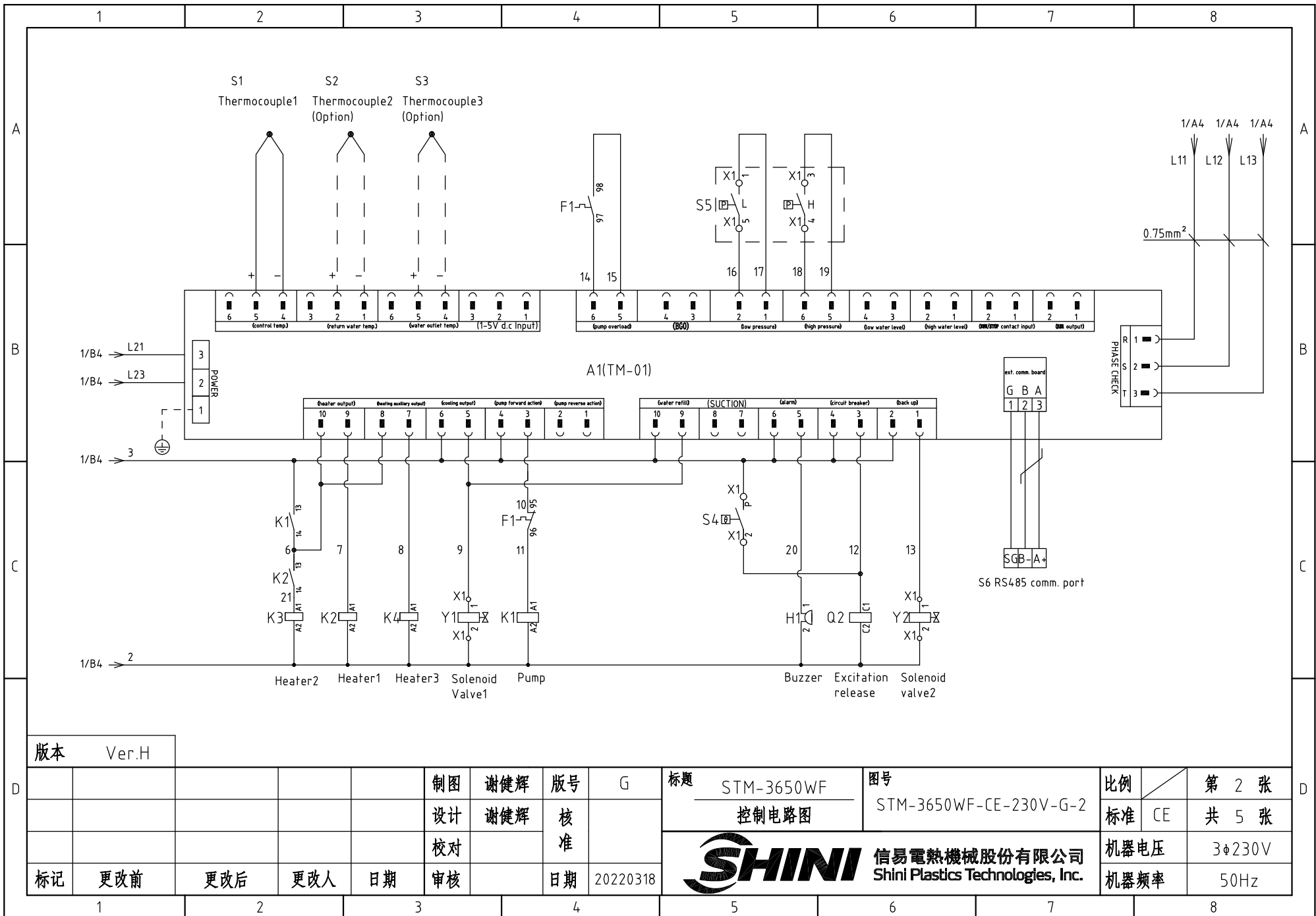
制图	谢健辉	版号	G
设计	谢健辉	核准	
校对		核准	
标记	更改前	更改后	更改人
		日期	20220318

标题 STM-3650WF
主电路图

图号 STM-3650WF-CE-230V-G-1

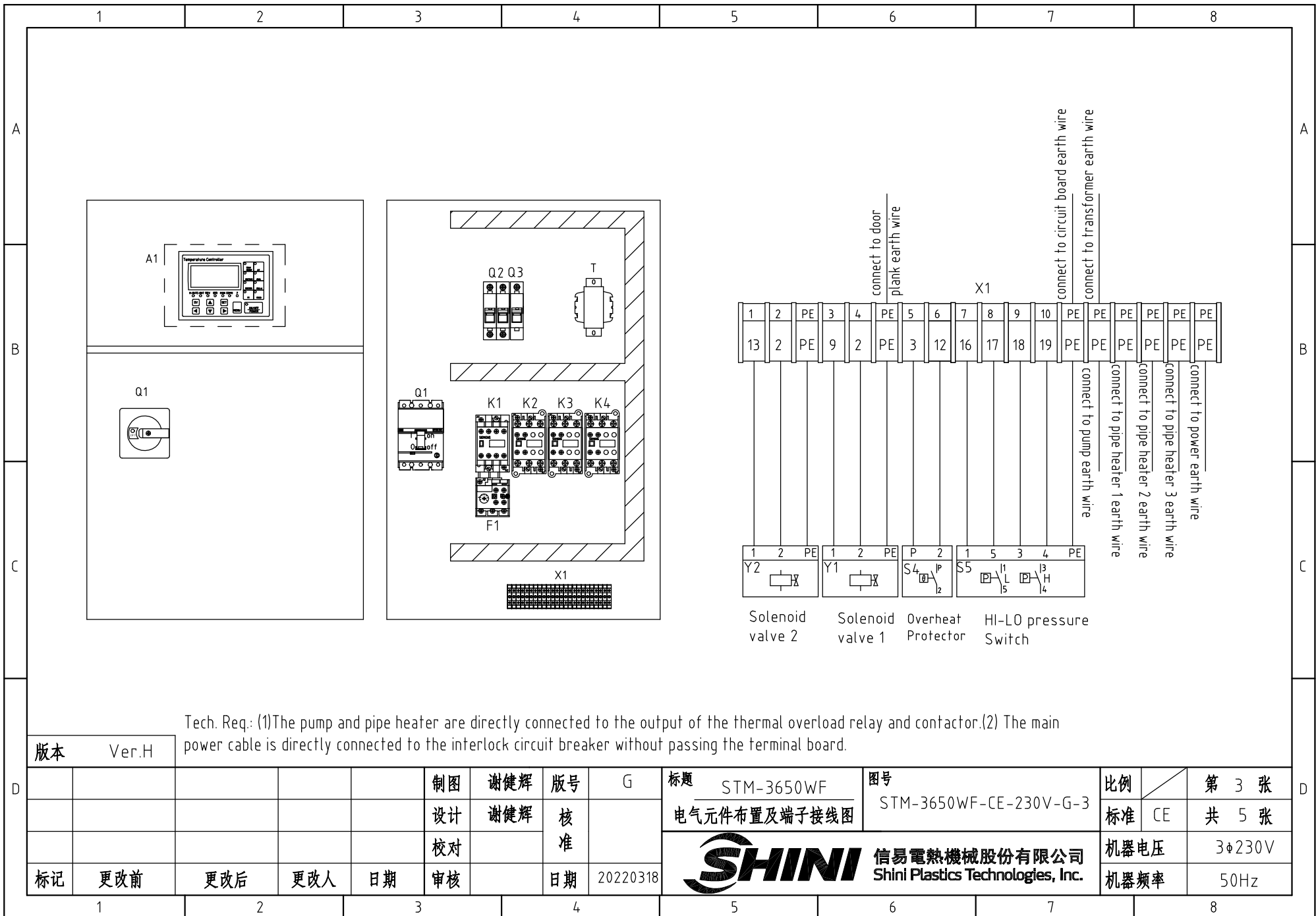
SHINI 信易電熱機械股份有限公司
Shini Plastics Technologies, Inc.

比例	第 1 张
标准 CE	共 5 张
机器电压	3φ230V
机器频率	50Hz



版本 Ver.H

					制图	谢健辉	版号	G	标题	STM-3650WF	图号	STM-3650WF-CE-230V-G-2	比例	第 2 张	
					设计	谢健辉	核			控制电路图			标准	CE	共 5 张
					校对		准						机器电压	3φ230V	
标记	更改前	更改后	更改人	日期	审核		日期	20220318	 信易電熱機械股份有限公司 Shini Plastics Technologies, Inc.			机器频率	50Hz		
1	2	3	4	5	6	7	8								



Tech. Req: (1)The pump and pipe heater are directly connected to the output of the thermal overload relay and contactor.(2) The main power cable is directly connected to the interlock circuit breaker without passing the terminal board.

版本	Ver.H
----	-------

					制图	谢健辉	版号	G
					设计	谢健辉	核	
					校对		准	
标记	更改前	更改后	更改人	日期	审核		日期	20220318

标题	STM-3650WF	图号	STM-3650WF-CE-230V-G-3
电气元件布置及端子接线图			



信易電熱機械股份有限公司
Shini Plastics Technologies, Inc.

比例		第 3 张
标准	CE	共 5 张
机器电压	3φ230V	
机器频率	50Hz	

A

A

B

B

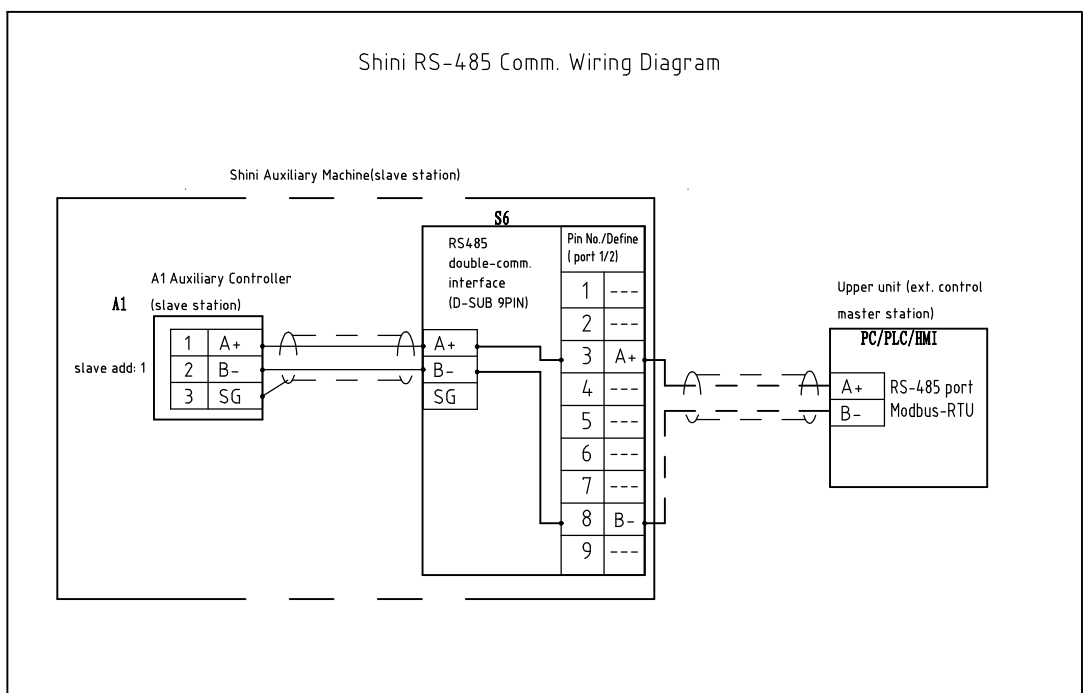
C

C

D

D

Shini RS-485 Comm. Wiring Diagram



Shini RS-485 Port Define

The S6 port define shows two D-sub 9-pin connectors, port 1 and port 2, which are connected in parallel. The pin definitions are as follows:

D-sub-9 pin interface	Pin No.	Pin Define
	1	-
	2	-
	3	A+ (RS-485 signal)
	4	-
	5	-
	6	-
	7	-
	8	B- (RS-485 signal)
	9	-

Note: 1. Comm. port: RS-485(two wire type)
 2. Comm. protocol: Modbus-RTU
 3. The machine is equipped with d-sub9 female connector. Port 1 and port 2 are connected in parallel, with the same functions, regardless of primary and secondary;

版本 Ver.H

制图	谢健辉	版号	G
设计	谢健辉	核准	
校对		核准	
标记	更改前	更改后	更改人
	日期	审核	日期
	20220318		

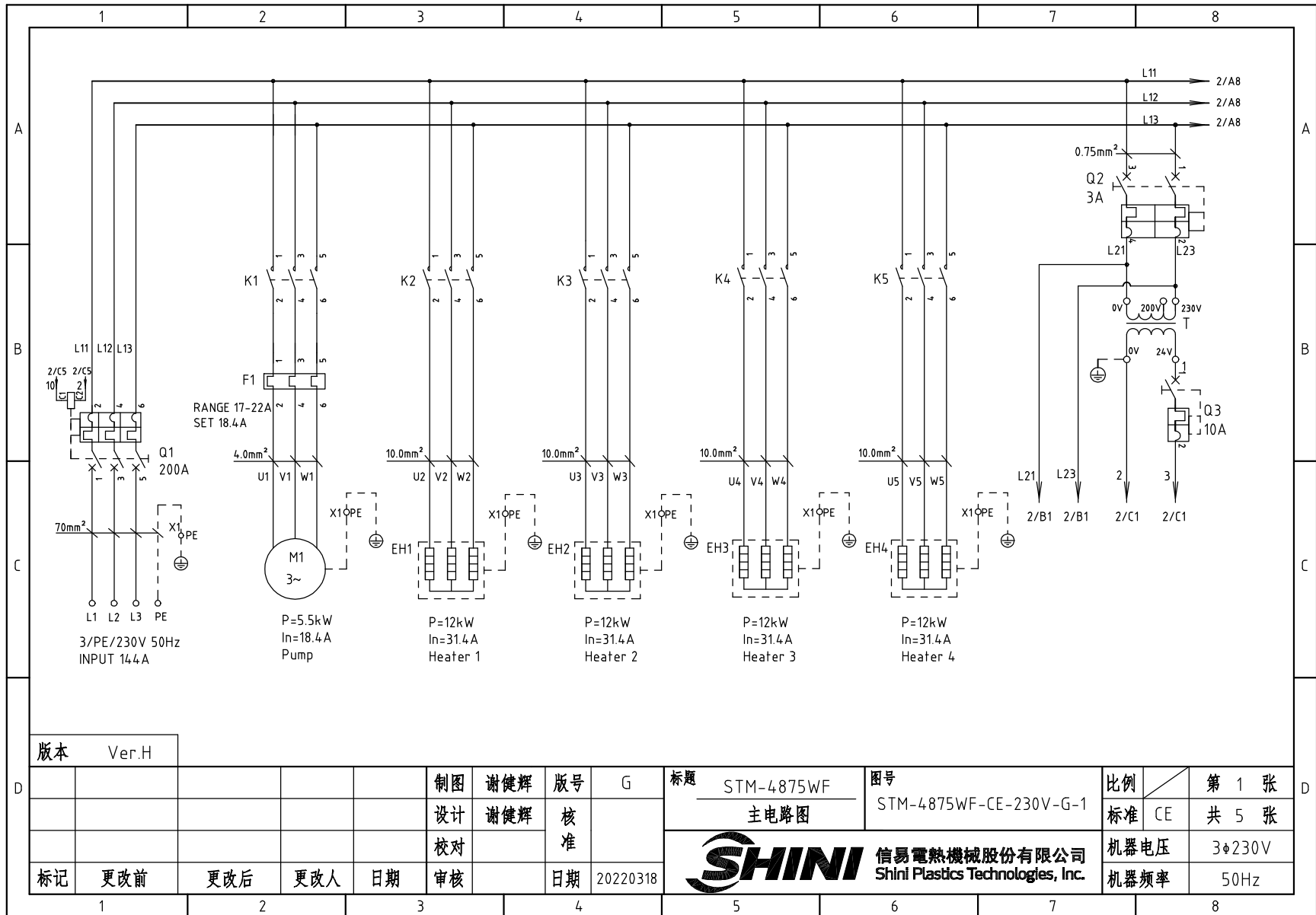
标题 STM-3650WF
 通讯接线图

图号 STM-3650WF-CE-230V-G-4

信易電熱機械股份有限公司
 Shini Plastics Technologies, Inc.

比例	第 4 张
标准 CE	共 5 张
机器电压	3φ230V
机器频率	50Hz

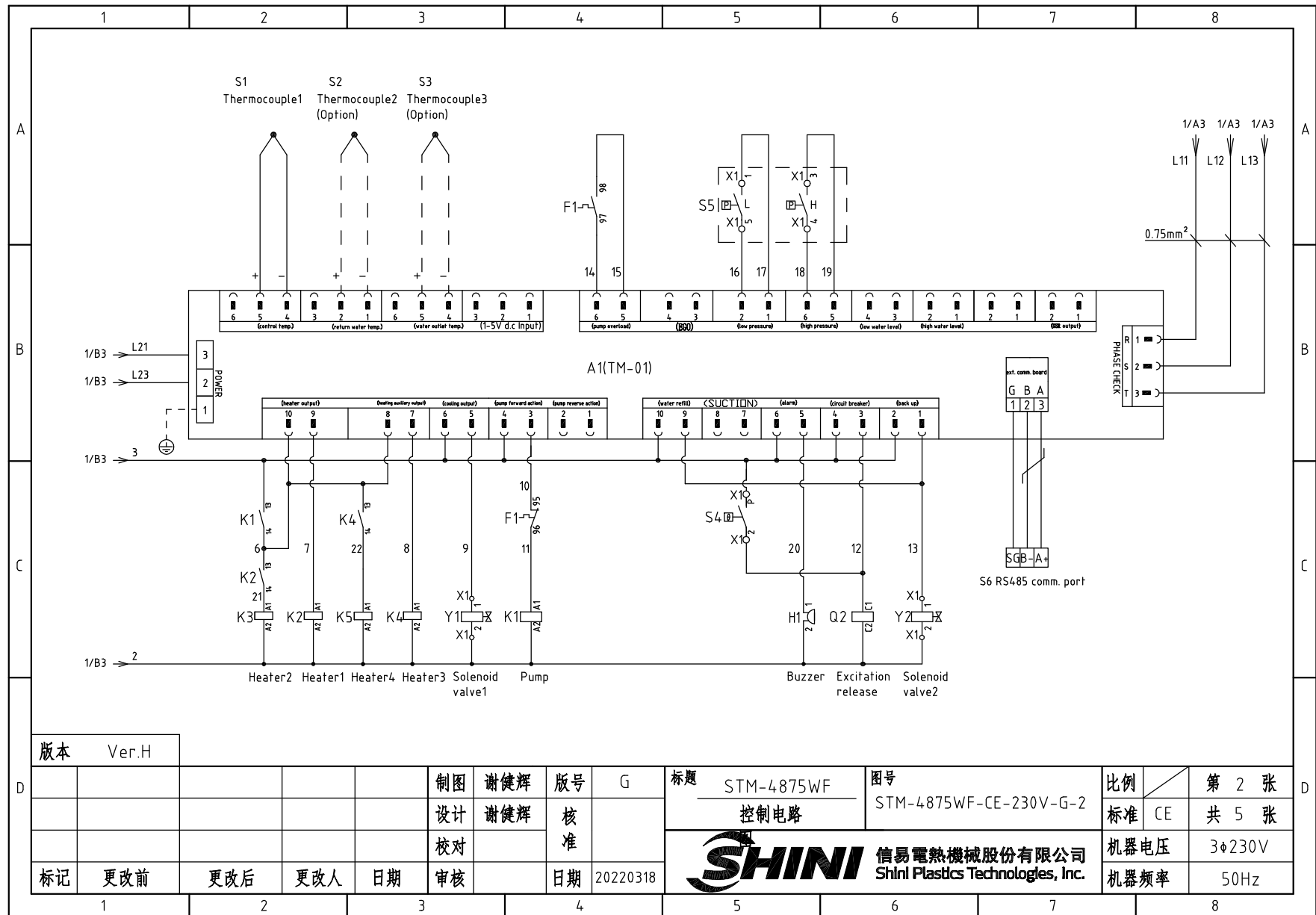
1		2		3		4		5		6		7		8									
N0.	Symbol	Name		Manufacturer		Type		Specification		Number	Material number		Remark										
1	Q1	Interlock circuit breaker		ABB		A2B250TMF160/16003PFF		160A		1	YE41161500000												
2		Release		ABB		SOR-C		24V-30V AC/DC(A1A2)		1	YE40243000900												
3	Q2	Circuit breaker		TECO		BM-63C/2003S 2P		3A		1	YE40200203000												
4	Q3	Circuit breaker		TECO		BM-63C/1010S 1P		10A		1	YE40101000100												
5	K1	Contactor		SIEMENS		3RT6018-1AB01		24VAC		1	YE00601802500												
6	K2 K3 K4	Contactor		SIEMENS		3RT6028-1AC20		24VAC		3	YE00602802600												
7	F1	Overload relays		SIEMENS		3RU6116-1KB0		9-12.5A		1	YE01169125000												
8	T	Transformer		JIUXIN		IN=230V/200V OUT=24VAC		120VA		1	YE70023004500												
9	S1	Thermocouple		SHINI		----		----		1	----		(1)										
10	S2 S3	Thermocouple		SHINI		----		----		2	----		(1)(2)										
11	S4	Overheat protector		TONCEAO		ZA300		250V 5(4)A		1	----		(1)										
12	S5	HI-LO pressure switch		FENSHEN		P830HLM		H:5-30bar L:-0.7-6bar		1	----		(1)										
13	S6	Connect to interface board RS-485(Dsub-9pin connector)		YUYUN		----		----		1	YE90048501200												
14		Shell RS485(SAL-700G-A-19)0		BINCHENG		----		----		1	YR40048500000												
15	A1	Circuit board		YUYUN		TM-01-220VAC(with comm.)		180~430V 50/60Hz		1	YE81012200300												
16	H1	Buzzer		----		PK-35A		24VAC/DC		1	YE84003500600												
17	Y1 Y2	Solenoid valve		----		----		24VAC 50/60Hz		2	----		(1)										
18	X1	Terminal board		HONEYWELL		SK2.5		----		10	YE60002503200												
19		Earth terminal board		HONEYWELL		GK2.5PE		----		4	YE60002503400												
20		Earth terminal board		HONEYWELL		GK10PE		----		3	YE60001003500												
21		Earth terminal board		HONEYWELL		GK35PE		----		1	YE60003503500												
22		Terminal fittings E/GK series(Honeyware)		HONEYWELL		----		----		6	YE60000003900												
23	M1	Motor		----		3.0kW		230V 50Hz		1	----		(1)										
24	EH1 EH2 EH3	Heater		----		12kW		230V 50Hz		3	----		(1)										
版本		Ver.H		Notes: (1)Non materials in the control box;(2)Optional water outlet and return water display function;																			
				制图		谢健辉		版本号		G		标题		STM-3650WF		图号		STM-3650WF-CE-230V-G-5		比例		第 5 张	
				设计		谢健辉		核				电气元件明细表一		标准		CE				共 5 张			
				校对				准				 信易電熱機械股份有限公司 Shini Plastics Technologies, Inc.		机器电压		3φ230V							
标记		更改前		更改后		更改人		日期		20220318				机器频率		50Hz							
1		2		3		4		5		6		7		8									



版本 Ver.H

制图	谢健辉	版号	G
设计	谢健辉	核准	
校对		核准	
标记	更改前	更改后	更改人
	1	2	3
			日期
			日期 20220318

标题	STM-4875WF 主电路图	图号	STM-4875WF-CE-230V-G-1
信易電熱機械股份有限公司 Shini Plastics Technologies, Inc.		比例	第 1 张
		标准	CE 共 5 张
		机器电压	3φ230V
		机器频率	50Hz



版本 Ver.H

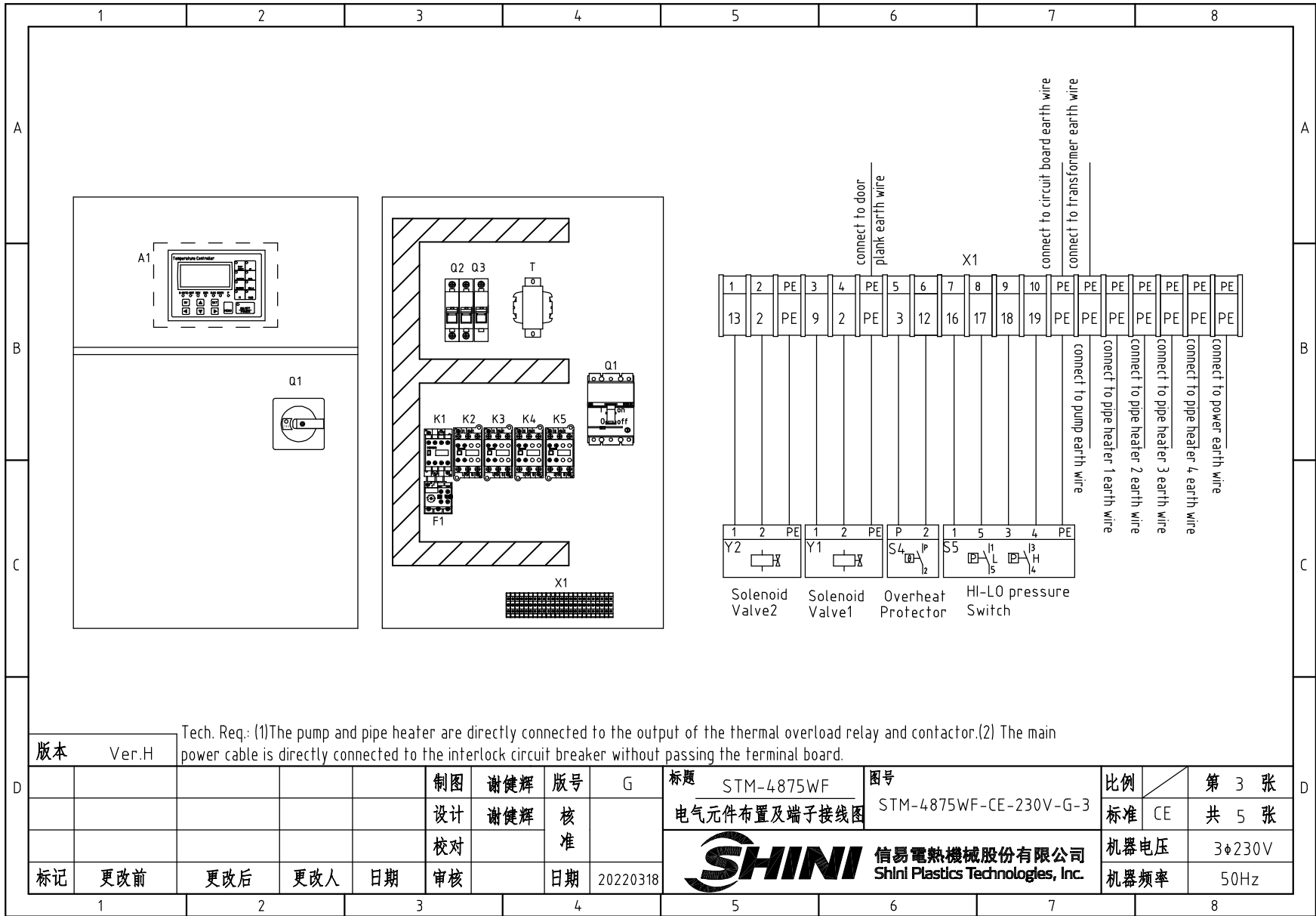
制图	谢健辉	版号	G
设计	谢健辉	核准	
校对		日期	20220318
标记	更改前	更改后	更改人
		日期	

标题 STM-4875WF 控制电路
 图号 STM-4875WF-CE-230V-G-2

比例 第 2 张
 标准 CE 共 5 张

SHINI 信易電熱機械股份有限公司
 Shini Plastics Technologies, Inc.

机器电压 3φ230V
 机器频率 50Hz



Tech. Req.: (1)The pump and pipe heater are directly connected to the output of the thermal overload relay and contactor.(2) The main power cable is directly connected to the interlock circuit breaker without passing the terminal board.

版本	Ver.H			
标记	更改前	更改后	更改人	日期

制图	谢健辉	版号	G
设计	谢健辉	核准	
校对		核准	
审核		日期	20220318

标题	STM-4875WF	图号	STM-4875WF-CE-230V-G-3
电气元件布置及端子接线图		信易電熱機械股份有限公司 Shini Plastics Technologies, Inc.	

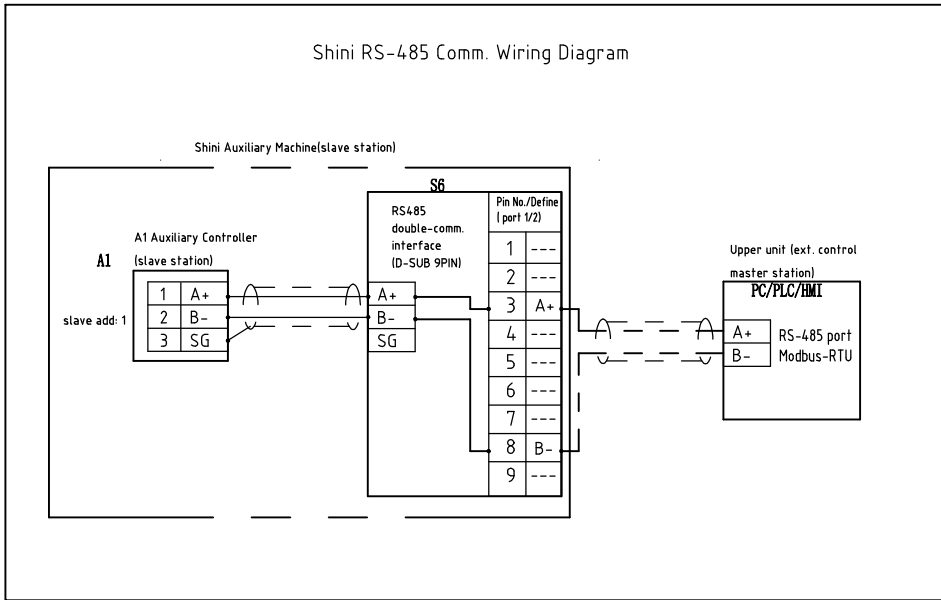
比例	第 3 张	
标准	CE	共 5 张
机器电压	3φ230V	
机器频率	50Hz	

1 2 3 4 5 6 7 8

A A

B B

C C



Shini RS-485 Port Define

S6

D-sub-9 pin interface	Pin No.	Pin Define
	1	-
	2	-
	3	A+ (RS-485 signal)
	4	-
	5	-
	6	-
	7	-
	8	B- (RS-485 signal)
	9	-

Note: 1. Comm. port: RS-485 (two wire type)
 2. Comm. protocol: Modbus-RTU
 3. The machine is equipped with d-sub9 female connector. Port 1 and port 2 are connected in parallel, with the same functions, regardless of primary and secondary;

版本 Ver.H

制图	谢健辉	版号	G
设计	谢健辉	核准	
校对		日期	20220318
标记	更改前	更改后	更改人
	1	2	3

标题 **STM-4875WF 通讯接线图**

图号 **STM-4875WF-CE-230V-G-4**

SHINI 信易电热机械股份有限公司
 Shini Plastics Technologies, Inc.

比例	第 4 张
标准	共 5 张
机器电压	3φ230V
机器频率	50Hz

1 2 3 4 5 6 7 8

D D

1		2		3		4		5		6		7		8									
NO.	Symbol	Name		Manufacturer		Type		Specification		Number	Material number		Remark										
A	1	Q1	Interlock circuit breaker		ABB		A2B250TMF200/20003PFF		200A		1	YE41252200000											
	2		Release		ABB		SOR-C		24V-30V AC/DC(A1A2)		1	YE40243000900											
	3	Q2	Circuit breaker		TECO		BM-63C/2003S 2P		3A		1	YE40200203000											
	4	Q3	Circuit breaker		TECO		BM-63C/1010S 1P		10A		1	YE40101000100											
	5	K1	Contactors		SIEMENS		3RT6027-1AC20		24VAC		1	YE00602702600											
	6	K2 K3 K4 K5	Contactors		SIEMENS		3RT6028-1AC20		24VAC		4	YE00602802600											
	7	F1	Overload relays		SIEMENS		3RU6126-4CB0		17-22A		1	YE01260170000											
B	8	T	Transformer		JIUXIN		IN=230V/200V OUT=24VAC		180VA		1	YE70023005400											
	9	S1	Thermocouple		SHINI		----		----		1	----		(1)									
	10	S2 S3	Thermocouple		SHINI		----		----		2	----		(1)(2)									
	11	S4	Overheat protector		TONCEAO		ZA300		250V 5(4)A		1	----		(1)									
	12	S5	HI-LO pressure switch		FENSHEN		P830HLM		H:5-30bar L:-0.7-6bar		1	----		(1)									
	13	S6	Connect to interface board RS-485(Dsub-9pin connector)		YUYUN		----		----		1	YE90048501200											
	14		Shell RS485(SAL-700G-A-19)0		BINCHENG		----		----		1	YR40048500000											
C	15	A1	Circuit board		YUYUN		TM-01-220VAC(with comm.)		180~430V 50/60Hz		1	YE81012200300											
	16	H1	Buzzer		----		PK-35A		24VAC/DC		1	YE84003500600											
	17	Y1 Y2	Solenoid valve		----		----		24VAC 50/60Hz		2	----		(1)									
	18	X1	Terminal Board		HONEYWELL		SK2.5		----		10	YE60002503200											
	19		Earth terminal board		HONEYWELL		GK2.5PE		----		3	YE60002503400											
	20		Earth terminal board		HONEYWELL		GK5PE		----		1	YE60000403500											
	21		Earth terminal board		HONEYWELL		GK10PE		----		4	YE60001003500											
D	22		Earth terminal board		HONEYWELL		GK35PE		----		1	YE60003503500											
	23		Terminal fittings E/GK series(Honeyware)		HONEYWELL		E/GK		----		6	YE60000003900											
	24	M1	Motor		----		5.5kW		230V 50Hz		1	----		(1)									
	25	EH1 EH2 EH3 EH4	Heater		----		12kW		230V 50Hz		4	----		(1)									
版本		Ver.H		Notes: (1)Non materials in the control box;(2)Optional water outlet and return water display function;																			
				制图		谢健辉		版号		G		标题		STM-4875WF		图号		STM-4875WF-CE-230V-G-5		比例		第 5 张	
				设计		谢健辉		核						标准		CE				共 5 张			
				校对				准												机器电压		3φ230V	
标记		更改前		更改后		更改人		日期		20220318		SHINI		信易電熱機械股份有限公司		Shini Plastics Technologies, Inc.				机器频率		50Hz	
1		2		3		4		5		6		7		8									