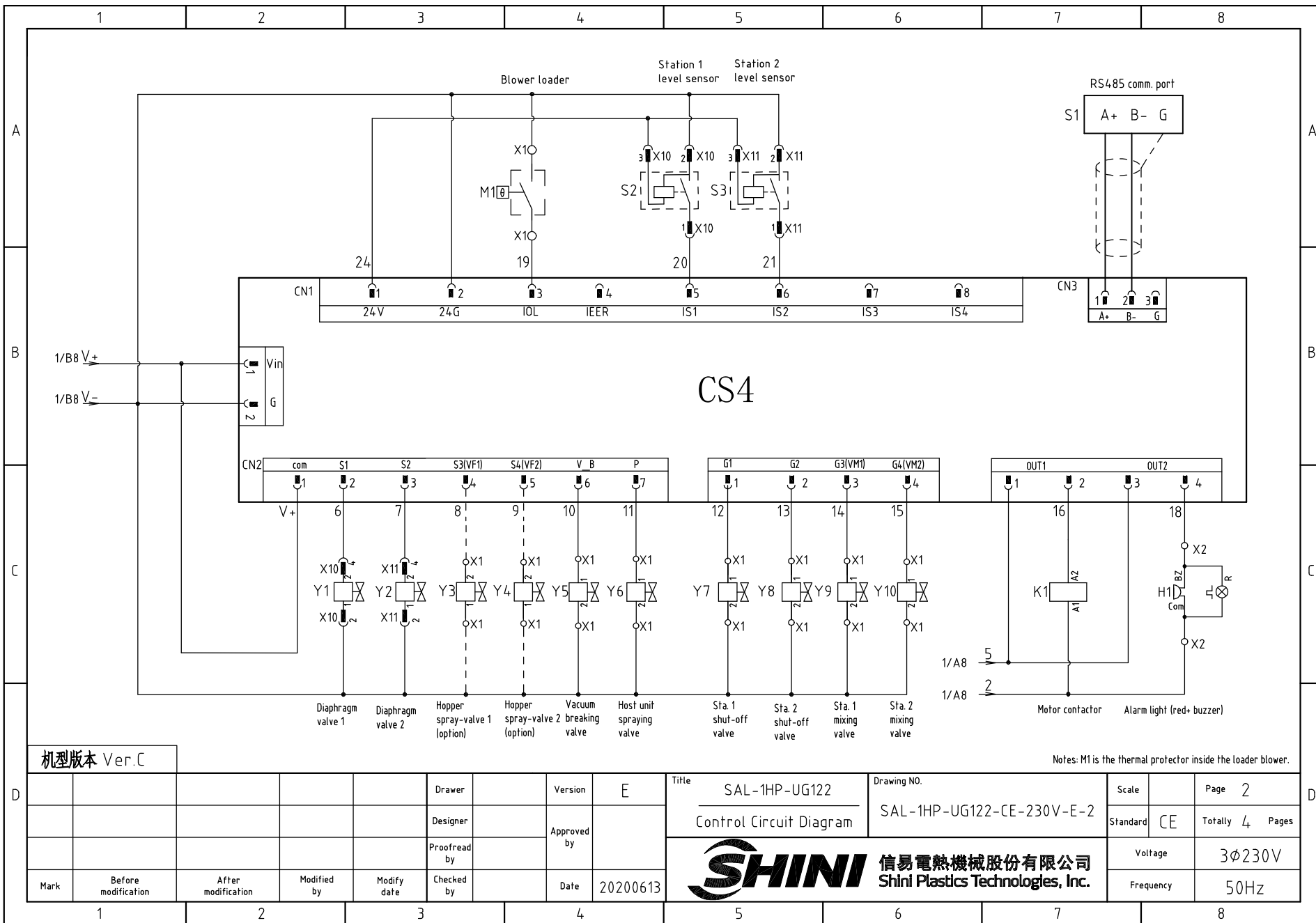


机型版本 Ver.C

Mark	Before modification	After modification	Modified by	Modify date	Checked by	Date	20200613	Version	E	Title	SAL-1HP-UG122	Drawing NO.	SAL-1HP-UG122-CE-230V-E-1	Scale	Page 1
	Designer	Proofread by	Approved by						Main Circuit Diagram		Standard		CE	Totally 4 Pages	
										Voltage	3φ230V				
											Frequency	50Hz			

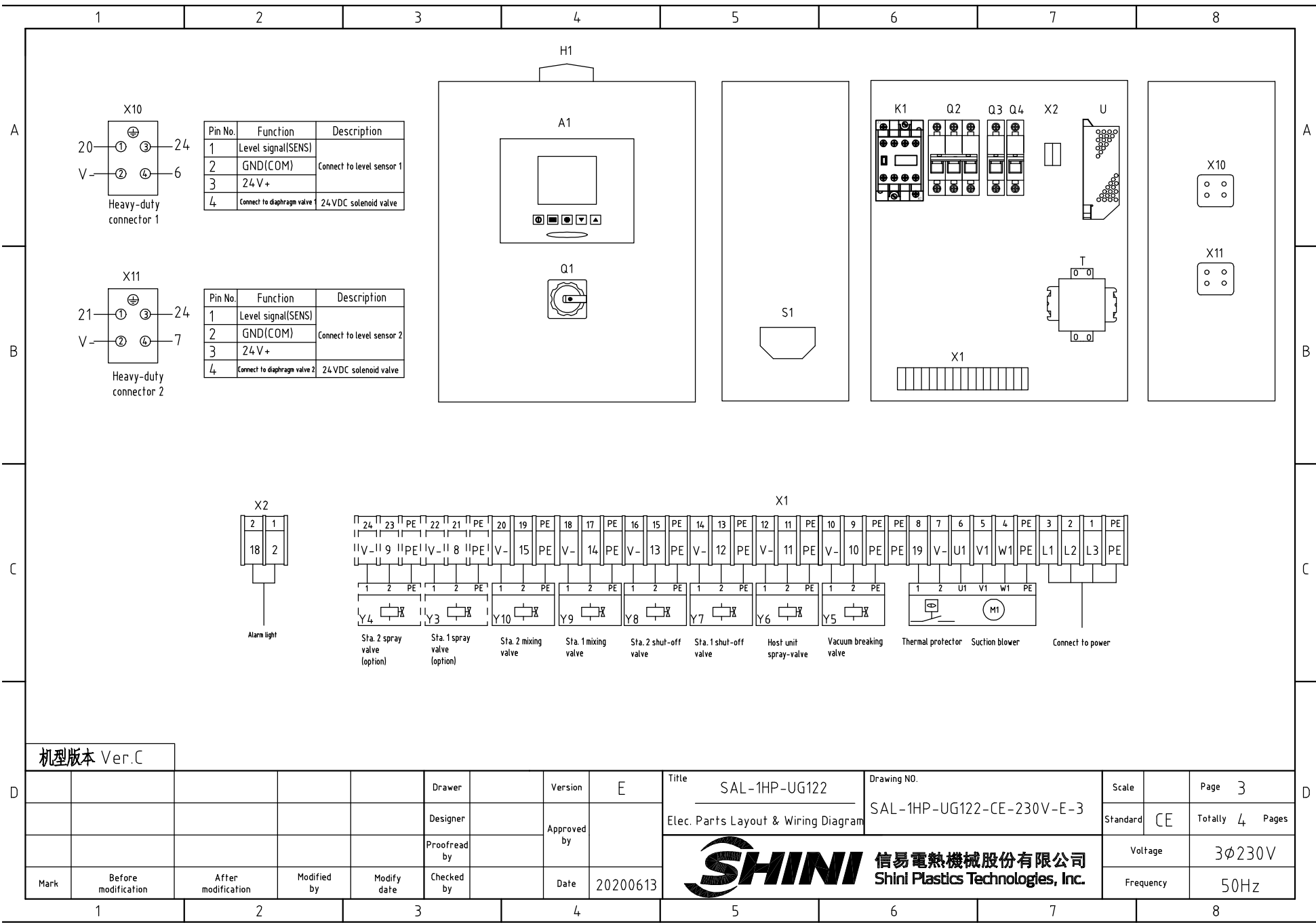




机型版本 Ver.C

Mark	Before modification	After modification	Modified by	Modify date	Checked by	Date	20200613
Drawer					Version	E	
Designer					Approved by		
Proofread by							

Title	SAL-1HP-UG122		Drawing NO.	SAL-1HP-UG122-CE-230V-E-2		Scale	Page	2
	Control Circuit Diagram					Standard	CE	Totally 4 Pages
信易電熱機械股份有限公司 Shini Plastics Technologies, Inc.						Voltage	3φ230V	
						Frequency	50Hz	



机型版本 Ver.C


Mark	Before modification	After modification	Modified by	Modify date	Checked by	Date
						20200613

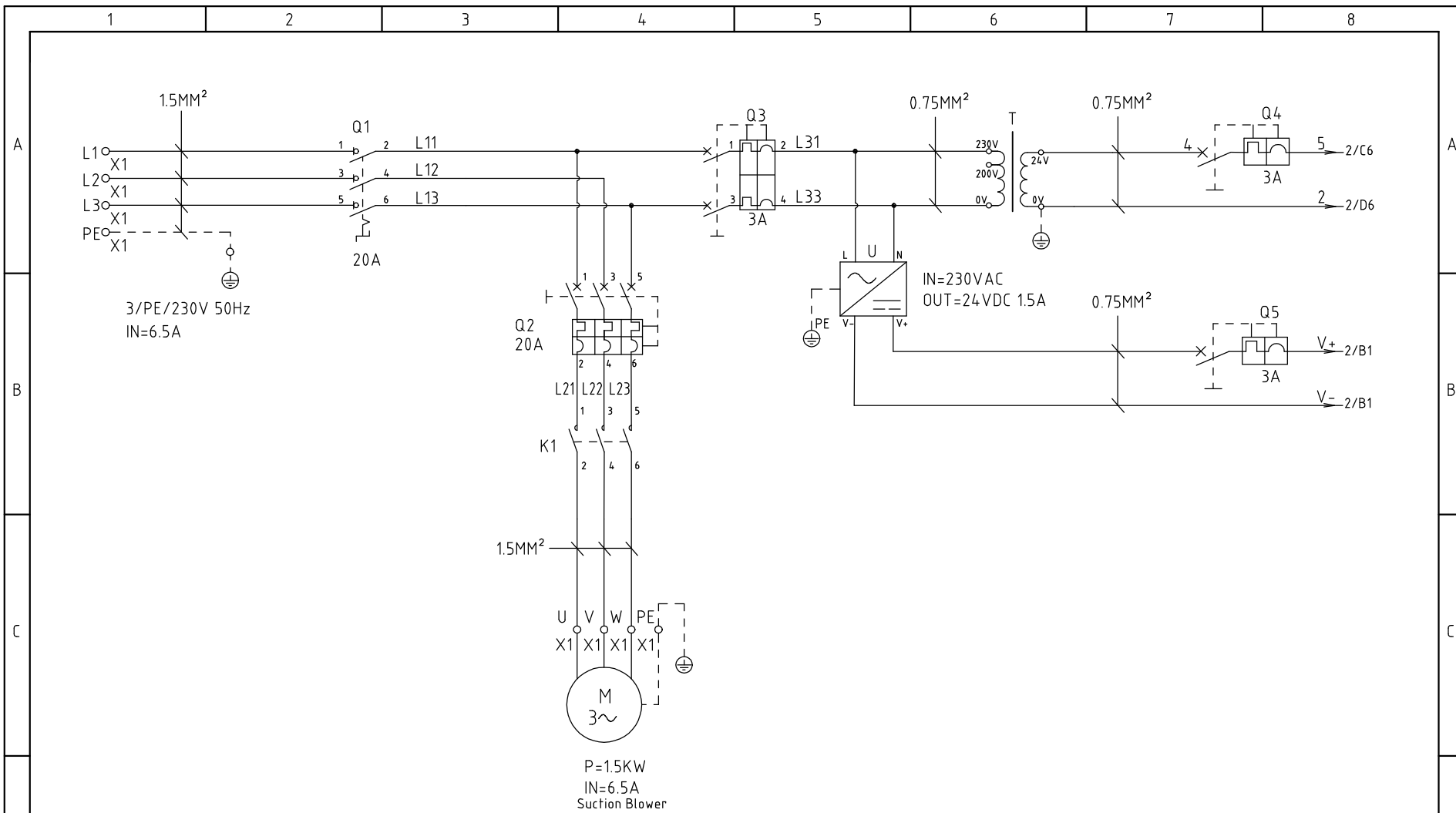
Title	Drawing NO.	Scale	Page
SAL-1HP-UG122	SAL-1HP-UG122-CE-230V-E-3	CE	3
Elec. Parts Layout & Wiring Diagram		Standard	Totally 4 Pages
 信易電熱機械股份有限公司 Shini Plastics Technologies, Inc.		Voltage	3φ230V
		Frequency	50Hz

1		2		3		4		5		6		7		8	
NO.	Symbol	Name		Manufacturer		Type		Specification		Number	Material number		Remark		
A	1	Q1	Main power switch		EATON		TO-2-1/EA/SVB		20A		1	YE10021160000			
	2	Q2	Circuit-breakers		TECO		BM-63C/3010S		10A		1	YE40301003000			
	3	Q3 Q4	Circuit-breakers		TECO		BM-63C/1003S		3A 1P		2	YE40100203000			
	4	K1	Contactors		SCHNEIDER		LC1-D09B7C		24 V 50/60Hz		1	YE00972400000			
	5	A1	Controller		YUYUN		CS4		24 VAC/DC		1	YE80042401200			
	6	S1	RS-485 comm. interface plate		YUYUN		---		Dsub-9pin connector		1	YE90048501200			
	7		Shell RS-485(SAL-700G-A-19)ver.0		---		---		---		1	YR40048500000			
B	8		9 pin-series interface connector (male) with shell and screw		---		---		---		1	YE62090000000			
	9	H1	Alarm light		SHINI		SWI-T		24 VAC/DC		1	BL90000011520			
	10	T	Transformer		JIUXIN		200V/230V OUT=24V		50VA		1	YE70023005100			
	11	U	DC power		---		S-35-24		24 VDC 1.5A		1	YE71352400000			
	12	X1 X2	Wiring terminal		HONEYWELL		SK2.5		2.5mm ²		20	YE60002503200			
	13		Wiring terminal		HONEYWELL		GK2.5PE		2.5PE		8	YE60002503400			
	14		Wiring terminal		HONEYWELL		SK2.5		2.5mm ²		4	YE60002503200		(2)	
C	15		Wiring terminal		HONEYWELL		GK2.5PE		2.5PE		2	YE60002503400		(2)	
	16		Terminal fittings E/GK series		HONEYWELL		---		PCS		6	YE60000003900			
	17	X10 X11	Heavy duty connectors		HARTING		Han E-4F(female)		4P		2	YE68000401400			
	18	M	Blower		SHINI		RB-310 (with thermal protector)		1HP 230V 50HZ		1	---		(1)	
	19	Y1-Y10	Solenoid Valve		AIRTAC		---		24 VDC		10	---		(1)	
	20	S2 S3	Photosensor switch		FOTEK		MT-4MNO-30VDC		10...30VDC		2	---		(1) SVH	
	21		Reed switch		SONON		BN12-30BLA		24 VDC		2	---		(1) SMH	

机型版本 Ver.C

Notes: (1) Installation not in the control box; (2) Hopper optional spray valve;

D	Mark	Before modification	After modification	Modified by	Modify date	Checked by	Date	20200613	 信易電熱機械股份有限公司 Shini Plastics Technologies, Inc.	Title SAL-1HP-UG122 Electrical Parts List 1	Drawing NO. SAL-1HP-UG122-CE-230V-E-4	Scale	Page	4		
												Standard	CE	Totally	4	Pages
												Voltage	3φ230V			
												Frequency	50Hz			

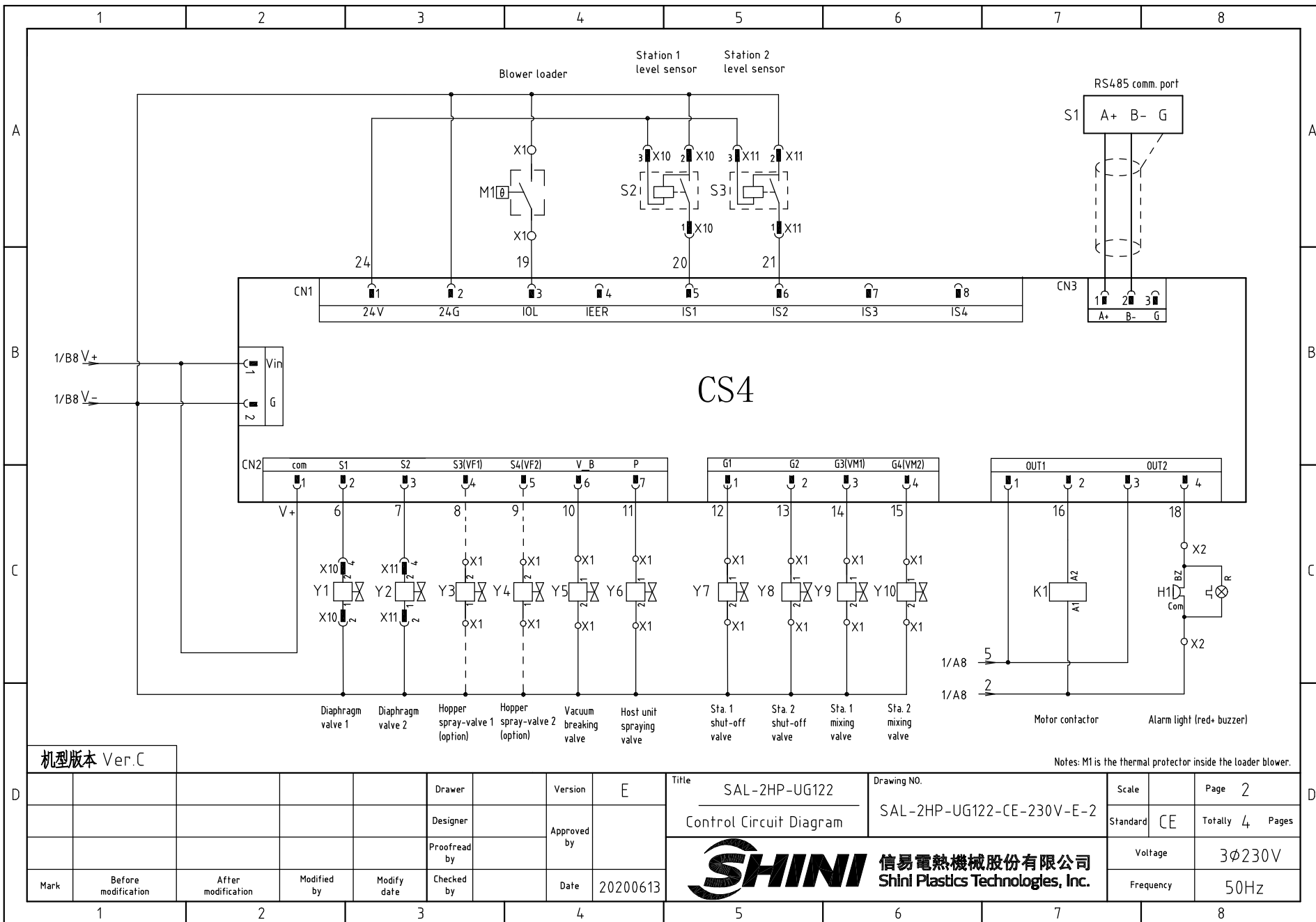


机型版本 Ver.C

Mark	Before modification	After modification	Modified by	Modify date	Checked by	Date	20200613


Title		SAL-2HP-UG122		Drawing NO.		Scale		Page 1	
		Main Circuit Diagram		SAL-2HP-UG122-CE-230V-E-1		Standard		CE	
						Voltage		3φ230V	
						Frequency		50Hz	

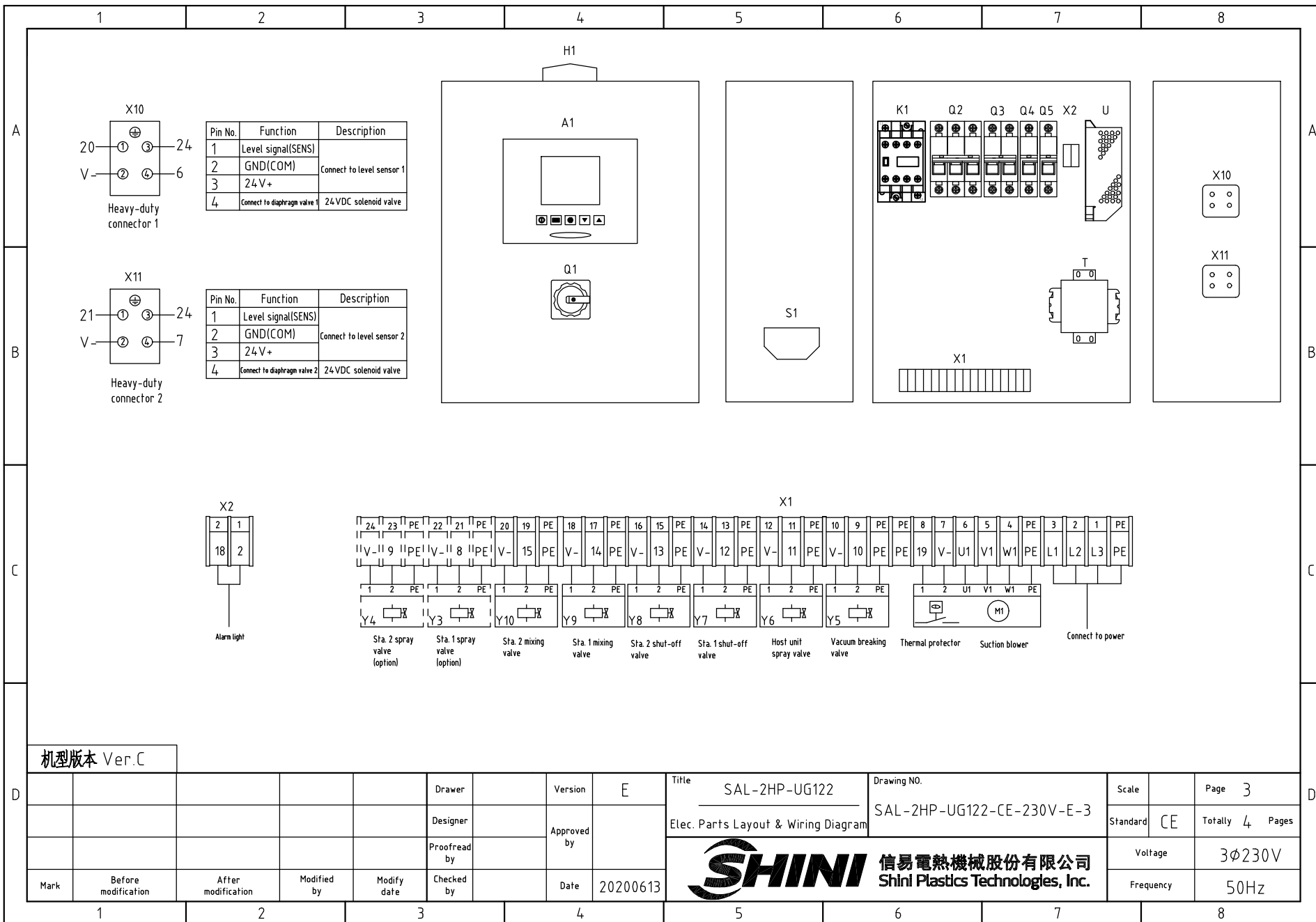




机型版本 Ver.C

Notes: M1 is the thermal protector inside the loader blower.

				Drawer	Version		E	Title	Drawing NO.		Scale	Page
				Designer	Approved by			SAL-2HP-UG122	SAL-2HP-UG122-CE-230V-E-2		Standard	Totally 4 Pages
				Proofread by	Date		20200613	 信易電熱機械股份有限公司 Shini Plastics Technologies, Inc.	Voltage		3φ230V	
Mark	Before modification	After modification	Modified by	Modify date	Checked by				Frequency		50Hz	

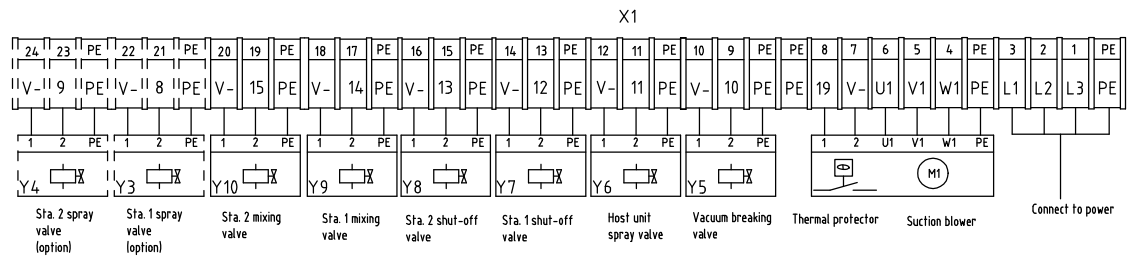


X10

Pin No.	Function	Description
1	Level signal(SENS)	Connect to level sensor 1
2	GND(COM)	
3	24 V+	Connect to diaphragm valve 1
4	24VDC solenoid valve	

X11

Pin No.	Function	Description
1	Level signal(SENS)	Connect to level sensor 2
2	GND(COM)	
3	24 V+	Connect to diaphragm valve 2
4	24VDC solenoid valve	



机型版本 Ver.C


Mark	Before modification	After modification	Modified by	Modify date	Checked by	Date	20200613
					Drawer	Version	E
					Designer	Approved by	
					Proofread by		

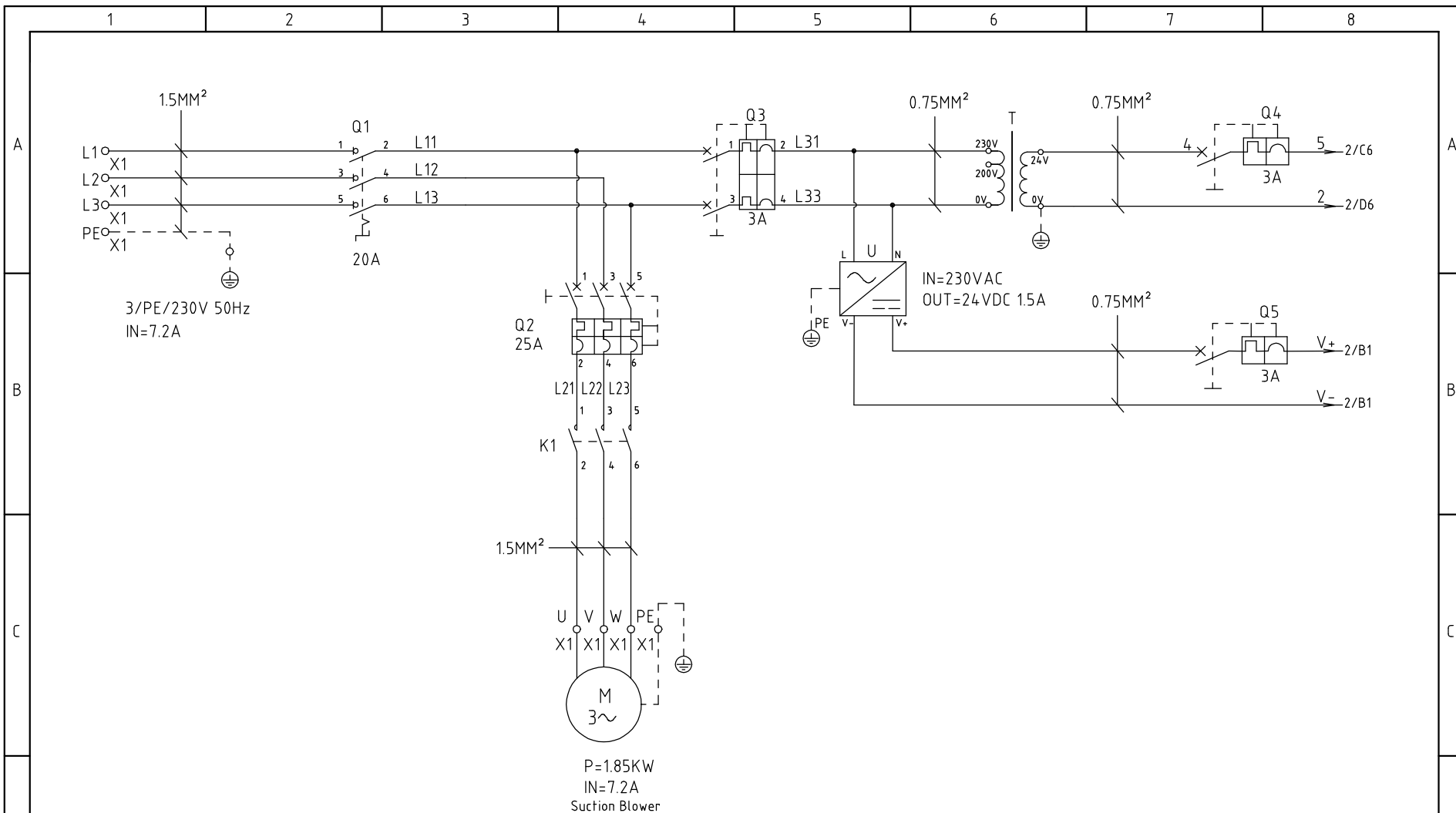
Title	SAL-2HP-UG122	Drawing NO.	SAL-2HP-UG122-CE-230V-E-3	Scale	Page	3
Elec. Parts Layout & Wiring Diagram				Standard	CE	Totally 4 Pages
 信易電熱機械股份有限公司 Shini Plastics Technologies, Inc.		Voltage	3φ230V			
		Frequency	50Hz			

1		2		3		4		5		6		7		8	
NO.	Symbol	Name		Manufacturer		Type		Specification		Number	Material number		Remark		
A	1	Q1	Main power switch		EATON		T0-2-1/EA/SVB		20A		1	YE10021160000			
	2	Q2	Circuit-breakers		TECO		BM-63C/3020S		20A		1	YE40302003000			
	3	Q3	Circuit-breakers		TECO		BM-63C/2003S		3A 2P		1	YE40200203000			
	4	Q4 Q5	Circuit-breakers		TECO		BM-63C/1003S		3A 1P		2	YE40100203000			
	5	K1	Contactors		SCHNEIDER		LC1-D09B7C		24 V 50/60Hz		1	YE00972400000			
	6	A1	Controller		YUYUN		CS4		24 VAC/DC		1	YE80042401200			
	7	S1	RS-485 comm. interface plate		YUYUN		---		Dsub-9pin connector		1	YE90048501200			
B	8		Shell RS-485(SAL-700G-A-19)ver.0		---		---		---		1	YR40048500000			
	9		9 pin-series interface connector (male) with shell and screw		---		---		---		1	YE62090000000			
	10	H1	Alarm light		SHINI		SWI-T		24 VAC/DC		1	BL90000011520			
	11	T	Transformer		JIUXIN		200V/230V OUT=24V		50VA		1	YE70023005100			
	12	U	DC power		---		S-35-24		24 VDC 1.5A		1	YE71352400000			
	13	X1 X2	Wiring terminal		HONEYWELL		SK2.5		2.5mm ²		20	YE60002503200			
	14		Wiring terminal		HONEYWELL		GK2.5PE		2.5PE		8	YE60002503400			
C	15		Wiring terminal		HONEYWELL		SK2.5		2.5mm ²		4	YE60002503200		(2)	
	16		Wiring terminal		HONEYWELL		GK2.5PE		2.5PE		2	YE60002503400		(2)	
	17		Terminal fittings E/GK series		HONEYWELL		---		PCS		6	YE60000003900			
	18	X10 X11	Heavy duty connectors		HARTING		Han E-4F(female)		4P		2	YE68000401400			
	19	M	Blower		SHINI		RB-420 (with thermal protector)		2HP 230V 50HZ		1	---		(1)	
	20	Y1~Y10	Solenoid Vavle		AIRTAC		---		24 VDC		10	---		(1)	
	21	S2 S3	Photosensor switch		FOTEK		MT-4MNO-30VDC		10...30VDC		2	---		(1) SVH	
	22		Reed switch		SONON		BN12-30BLA		24 VDC		2	---		(1) SMH	

机型版本 Ver.C

Notes: (1)Installation not in the control box; (2) Hopper optional spray valve;

D	Mark	Before modification	After modification	Modified by	Modify date	Checked by	Date	20200613	Drawer	Version	E	Title	SAL-2HP-UG122	Drawing NO.	SAL-2HP-UG122-CE-230V-E-4	Scale	Page	4
						Designer	Approved by					Electrical Parts List 1		Standard	CE	Totally	4	Pages
						Proofread by						 信易電熱機械股份有限公司 Shini Plastics Technologies, Inc.	Voltage	3φ230V				
											Frequency		50Hz					



机型版本 Ver.B

				Drawer	Version			Title		Drawing NO.		Scale	Page
				Designer	A			SAL-3HP-UG122		SAL-3HP-UG122-CE-230V-A-1		CE	1
				Proofread by	Approved by			Main Circuit Diagram		Standard		Totally	Pages
				Checked by	Date			SHINI 信易電熱機械股份有限公司 Shini Plastics Technologies, Inc.		Voltage		3φ230V	
Mark	Before modification	After modification	Modified by	Modify date	Checked by	Date	20200613			Frequency		50Hz	

1

2

3

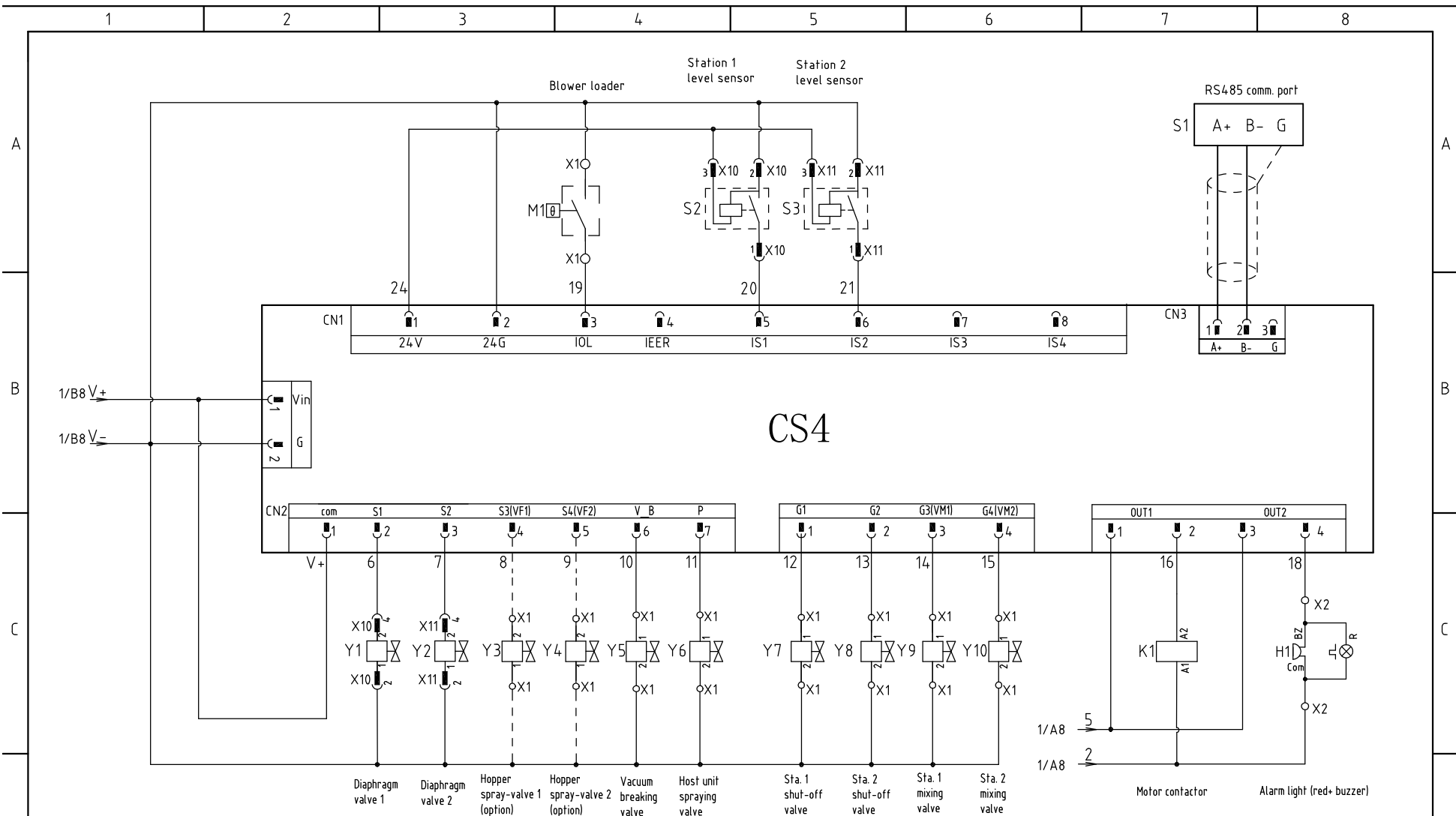
4

5

6

7

8



机型版本 Ver.B

Notes: M1 is the thermal protector inside the loader blower.

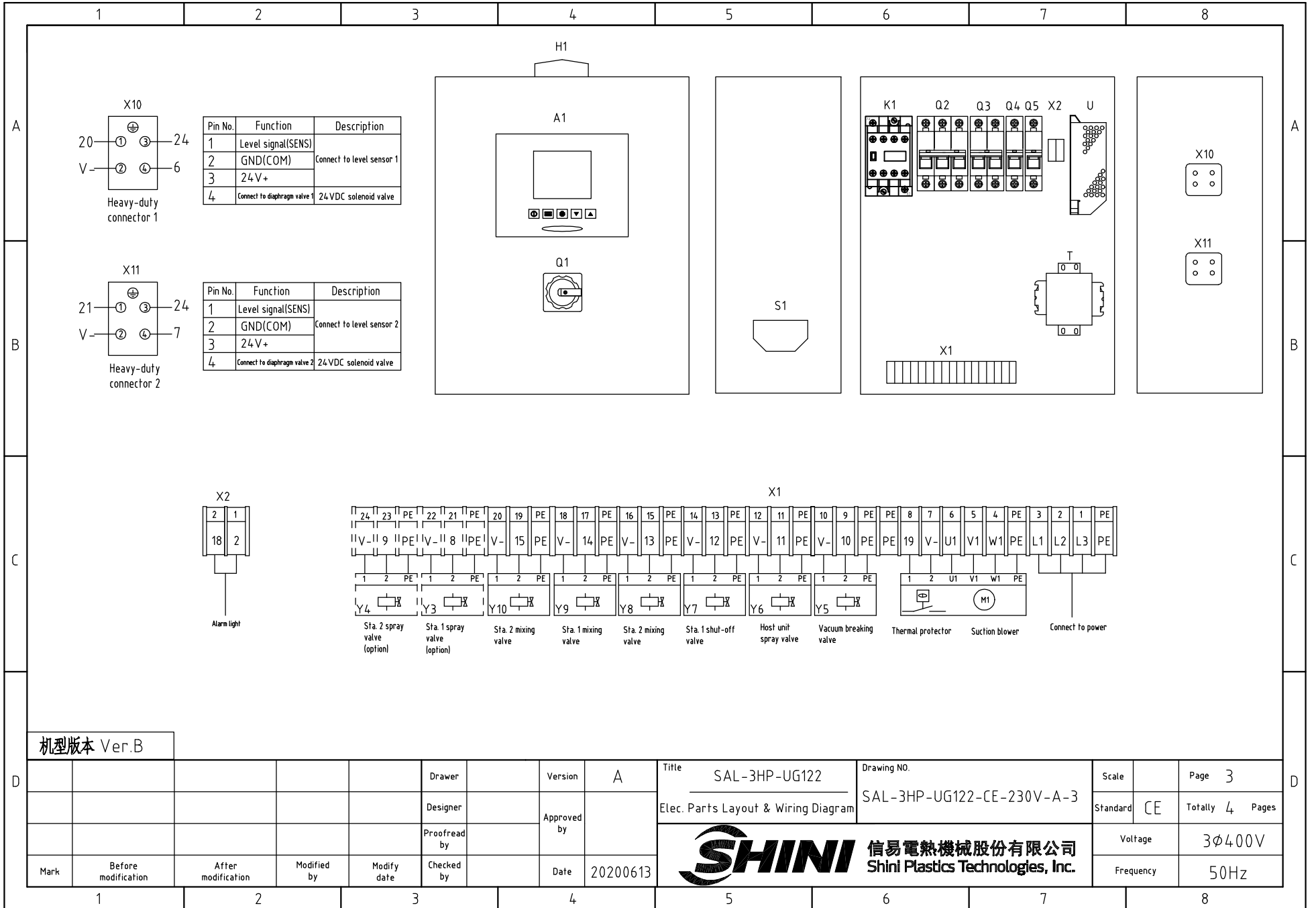
Mark	Before modification	After modification	Modified by	Modify date	Checked by	Date	20200613
					Drawer	Version	A
					Designer	Approved by	
					Proofread by		

Title SAL-3HP-UG122
Control Circuit Diagram

Drawing NO. SAL-3HP-UG122-CE-230V-A-2



Scale	Page
Standard	Totally
Voltage	3ø400V
Frequency	50Hz



机型版本 Ver.B

Mark	Before modification	After modification	Modified by	Modify date	Checked by	Date	20200613
					Proofread by		
					Designer		
					Drawer	Version	A

Title SAL-3HP-UG122
Elec. Parts Layout & Wiring Diagram

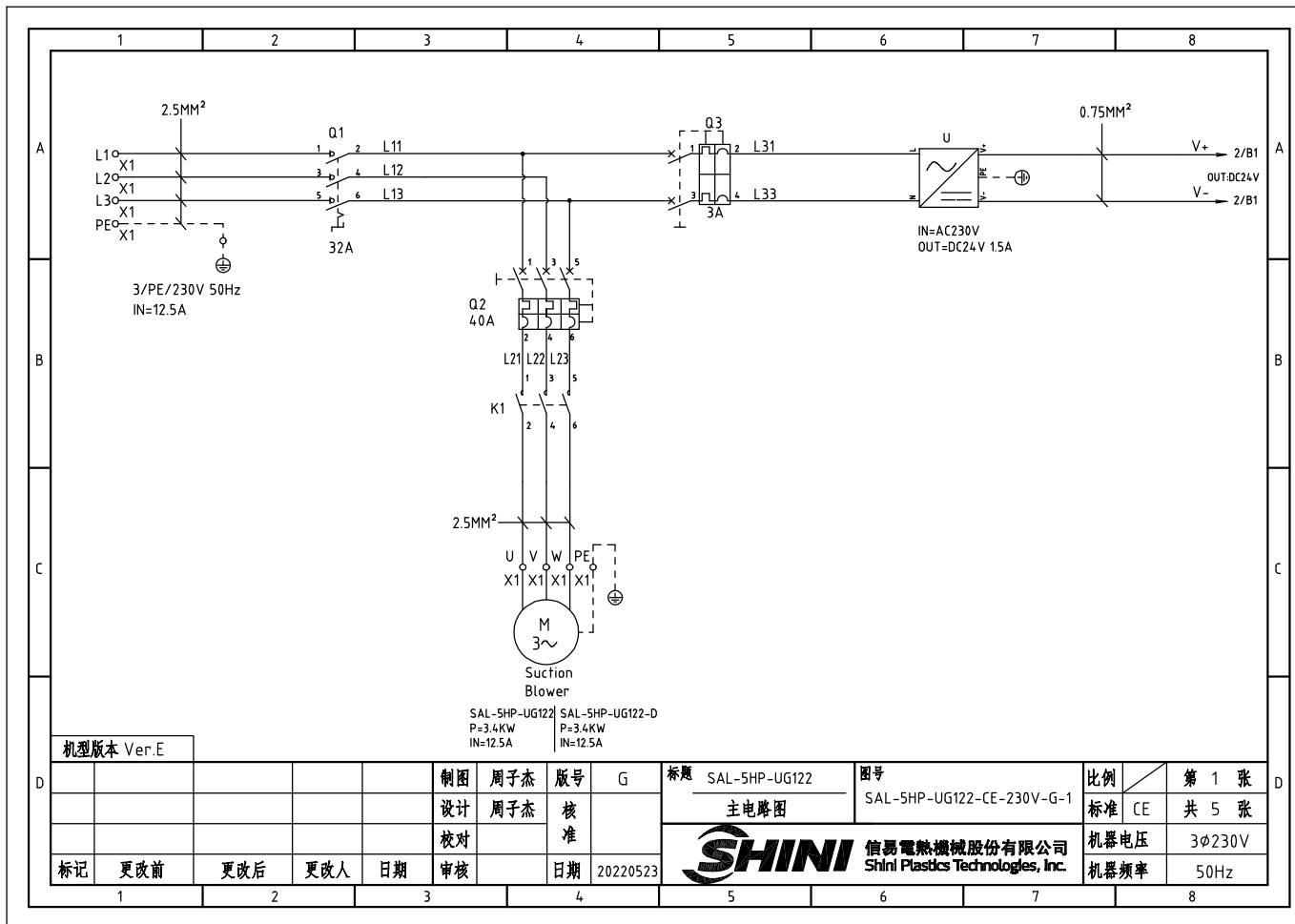
Drawing NO. SAL-3HP-UG122-CE-230V-A-3

Scale
Page 3
Standard CE
Totally 4 Pages



Voltage 3φ400V
Frequency 50Hz

1		2		3		4		5		6		7		8		
NO.	Symbol	Name		Manufacturer		Type		Specification		Number	Material number		Remark			
A	1	Q1	Main switch		EATON		TO-2-1/EA/SVB		20A		1	YE10021160000				
	2	Q2	Circuit-breakers		TECO		BM-63C/3025S		25A		1	YE40302503000				
	3	Q3	Circuit-breakers		TECO		BM-63C/2003S		3A 2P		1	YE40200203000				
	4	Q4 Q5	Circuit-breakers		TECO		BM-63C/1003S		3A 1P		2	YE40100203000				
	5	K1	Contactors		SCHNEIDER		LC1-D09B7C		24V 50/60Hz		1	YE00972400000				
	6	A1	Controllor		YUYUN		CS4		24VAC/DC		1	YE80042401200				
	7	S1	RS-485 comm. interface plate		YUYUN		---		Dsub-9pin connector		1	YE90048501200				
B	8		Shell RS-485(SAL-700G-A-19)ver.0		---		---		---		1	YR40048500000				
	9		9 pin-series interface connector (male) with shell and screw		---		---		---		1	YE62090000000				
	10	H1	Alarm light		SHINI		SWI-T		24VAC/DC		1	BL90000011520				
	11	T	Transformer		JIUXIN		200V/230V OUT=24V		50VA		1	YE70023005100				
	12	U	DC power		---		S-35-24		24VDC 1.5A		1	YE71352400000				
	13	X1 X2	Wiring terminal		HONEYWELL		SK2.5		2.5mm ²		20	YE60002503200				
	14		Wiring terminal		HONEYWELL		GK2.5PE		2.5PE		8	YE60002503400				
C	15		Wiring terminal		HONEYWELL		SK2.5		2.5mm ²		4	YE60002503200		(2)		
	16		Wiring terminal		HONEYWELL		GK2.5PE		2.5PE		2	YE60002503400		(2)		
	17		Terminal fittings E/GK series		HONEYWELL		---		PCS		6	YE60000003900				
	18	X10 X11	Heavy duty connectors		HARTING		Han E-4F(female)		4P		2	YE68000401400				
	19	M	Blower		SHINI		RB-430 (with thermal protector)		3HP 230V 50HZ		1	---		(1)		
	20	Y1~Y10	Solenoid vavle		AIRTAC		---		24VDC		10	---		(1)		
	21	S2 S3	Photosensor switch		FOTEK		MT-4MNO-30VDC		10...30VDC		2	---		(1)SVH		
	22		Reed switch		SONON		BN12-30BLA		24VDC		2	---		(1) SMH		
D	机型版本 Ver.B		Notes: (1)Installation not in the control box; (2) Hopper optional spray valve;													
					Drawer		Version	A	Title	SAL-3HP-UG122		Drawing NO.	Scale		Page	4
					Designer		Approved by		Electrical Parts List 1		SAL-3HP-UG122-CE-230V-A-4		Standard	CE	Totally	4 Pages
	Mark	Before modification	After modification	Modified by	Modify date	Checked by		Date	20200613	 信易電熱機械股份有限公司 Shini Plastics Technologies, Inc.		Voltage	3φ400V		Frequency	50Hz



机型版本 Ver.E

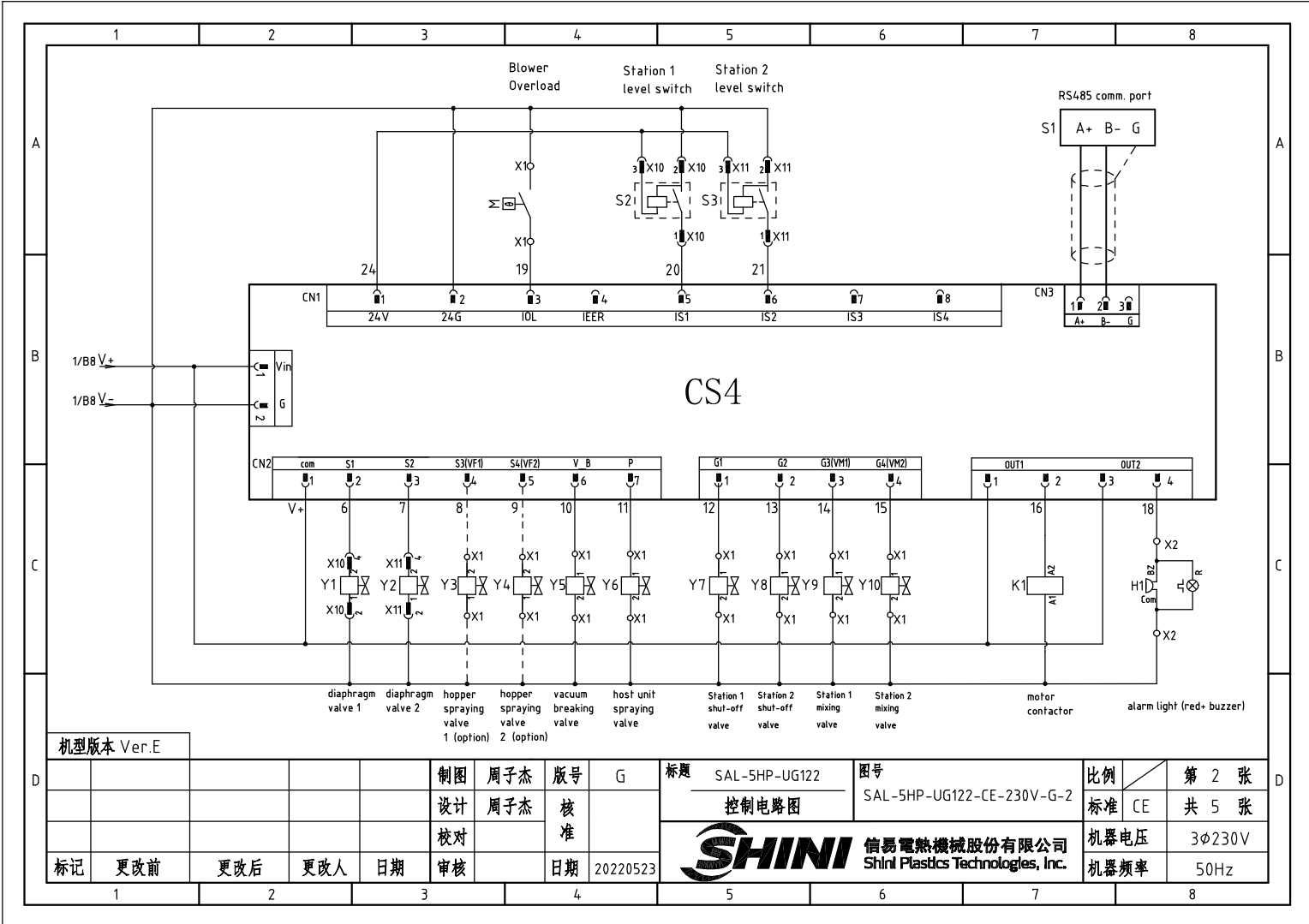
制图	周子杰	版号	G
设计	周子杰	核准	
校对			
标记	更改前	更改后	更改人
	日期	审核	日期
	1	2	3

标题	SAL-5HP-UG122	图号	SAL-5HP-UG122-CE-230V-G-1
主电路图			


比例	第 1 张
标准	CE 共 5 张
机器电压	3φ230V
机器频率	50Hz

SHINI 信易電熱機械股份有限公司
Shini Plastics Technologies, Inc.

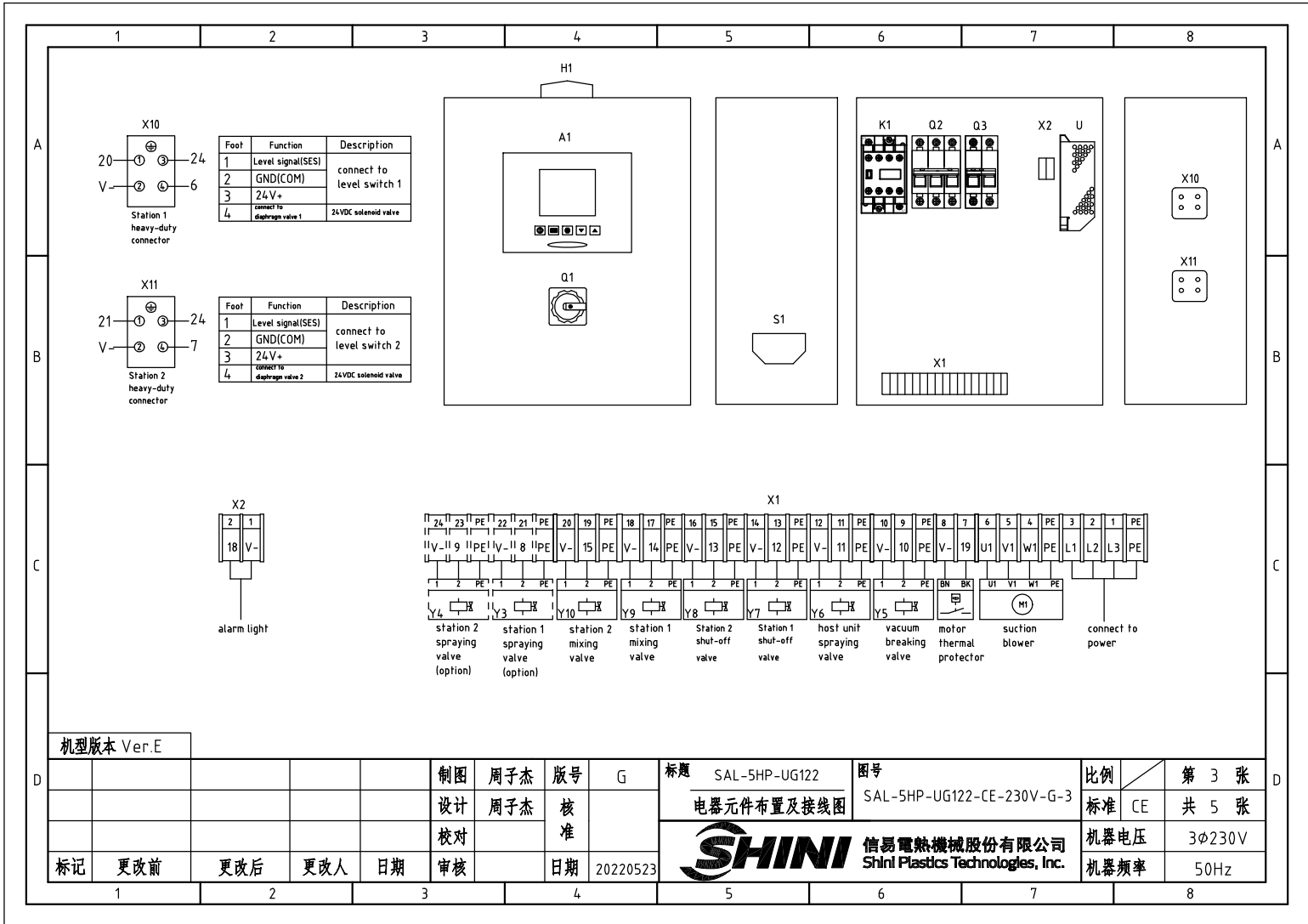
1 2 3 4 5 6 7 8



机型版本 Ver.E

D						制图	周子杰	版号	G	标题	SAL-5HP-UG122	图号	SAL-5HP-UG122-CE-230V-G-2	比例	第 2 张
						设计	周子杰	核准		控制电路图		标准	CE	共 5 张	
						校对		核准		 信易電熱機械股份有限公司 Shini Plastics Technologies, Inc.		机器电压	3φ230V		
						标记	更改前	更改后	更改人			日期	审核	日期	20220523

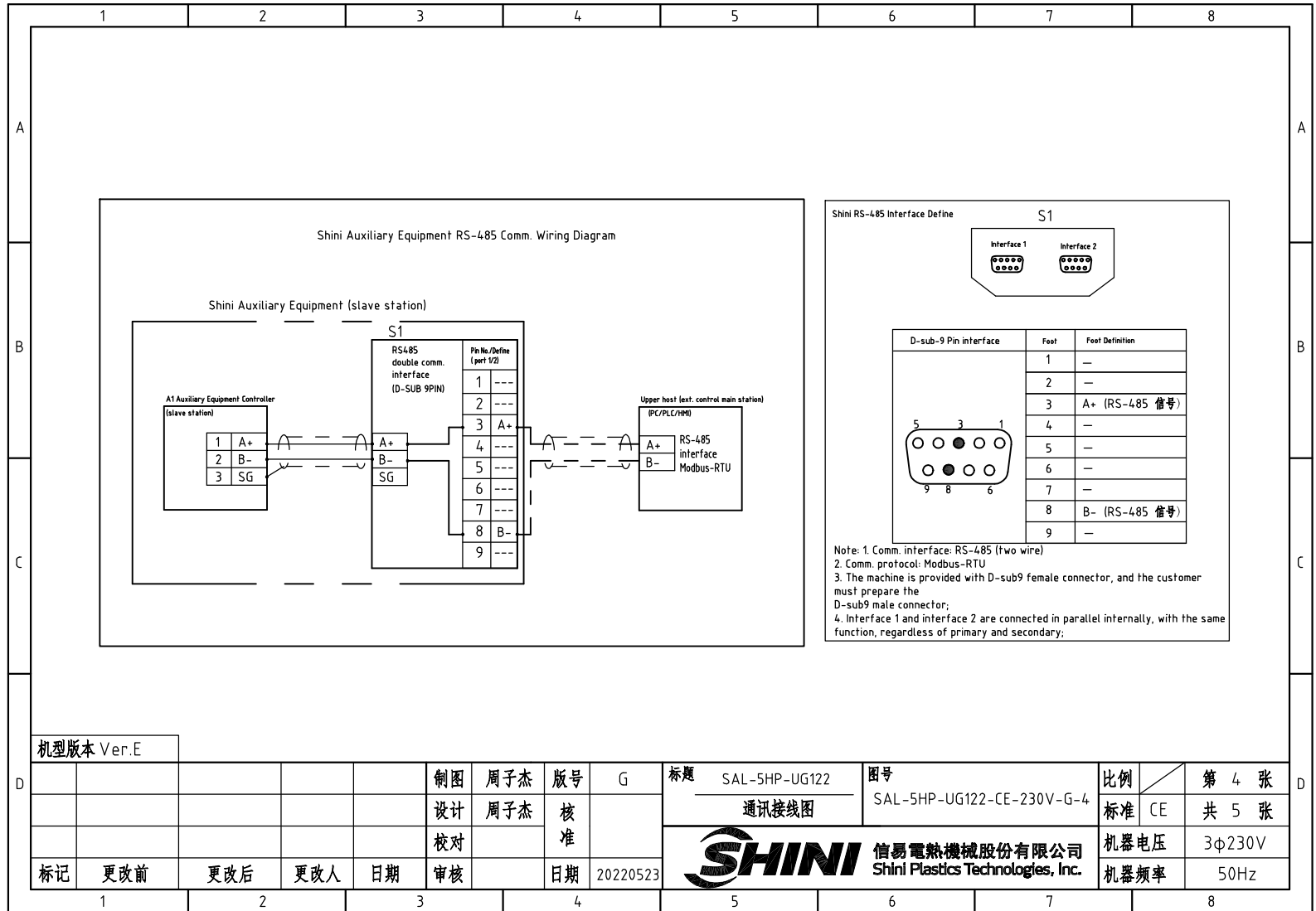
1 2 3 4 5 6 7 8



机型版本 Ver.E

制图	周子杰	版号	G	标题	SAL-5HP-UG122	图号	SAL-5HP-UG122-CE-230V-G-3	比例	第 3 张
设计	周子杰	核准		电	器元件布置及接线图			标准	CE 共 5 张
标记	更改前	更改后	更改人	日期	审核	日期	20220523	机器电压	3φ230V
								机器频率	50Hz

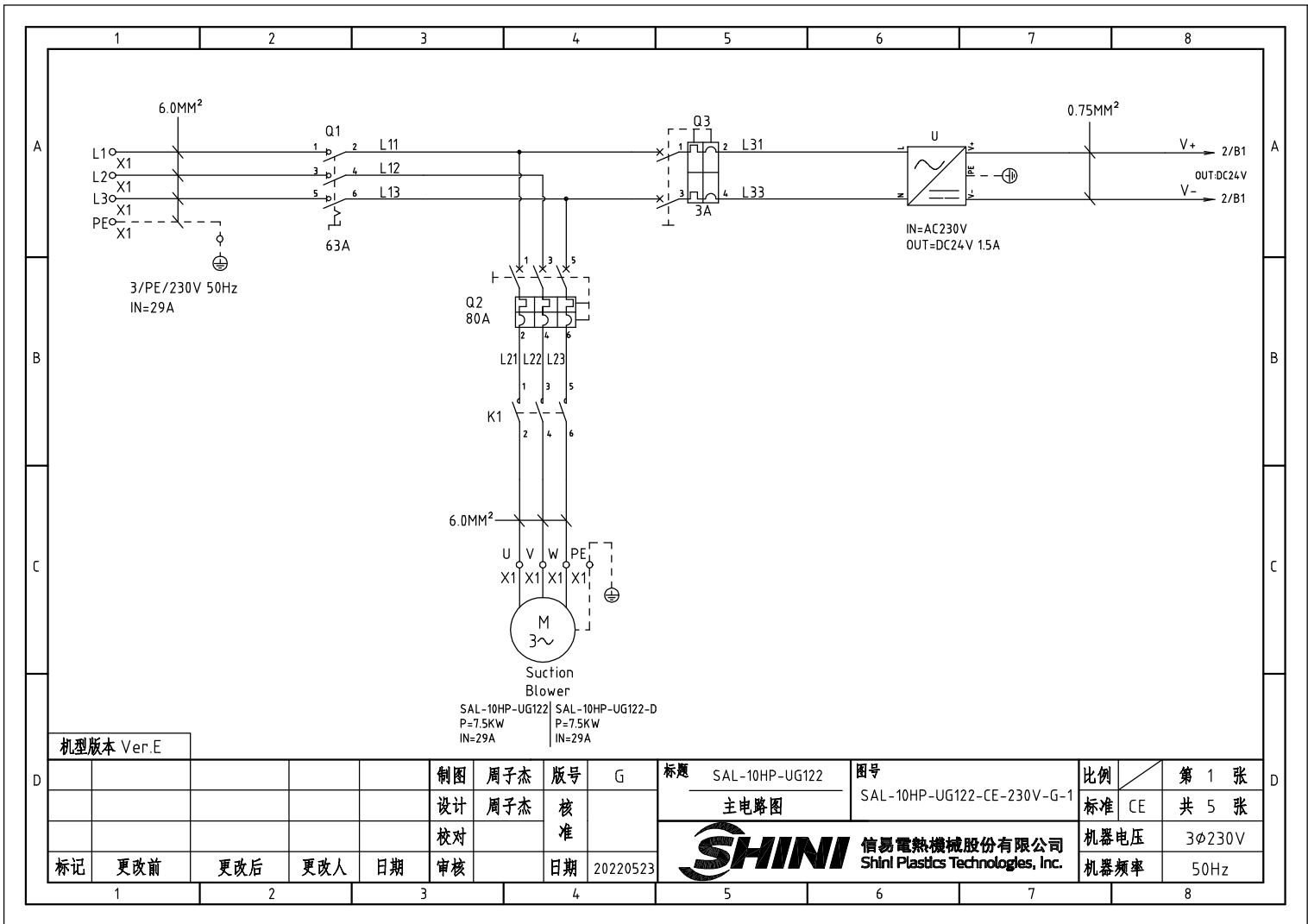




机型版本 Ver.E

信易電熱機械股份有限公司
Shini Plastics Technologies, Inc.

	1	2	3	4	5	6	7	8	
	NO	Symbol	Name	Manufacturer	Type	Specification	Number	Material number	Remark
A	1	Q1	Main power switch	EATON	P1-32/EA/SVB	32A	1	YE10323200000	
	2	Q2	Circuit breakers	TECO	BM-63C/3040S	40A	1	YE40304003000	
	3	Q3	Circuit breakers	TECO	BM-63C/2003S	3A 2P	1	YE40200203000	
	4	K1	Contactors	SIEMENS	3RT6026-1BB40	24VDC	1	YE00602600600	
	5	A1	Controller	YUYUN	CS4	24VAC/DC	1	YE80042401200	
	6	S1	RS-485 comm. interface	YUYUN	---	Dsub-9pin connector	1	YE90048501200	
	7		Shell RS-485 (SAL-700G-A-19) ver.0	---	---	---	1	YR40048500000	
B	8		9-pin serial port connector (male), including housing and screws	---	---	---	1	YE62090000000	
	9	H1	Alarm light	SHINI	SWI-T	24VAC/DC	1	BL90000011520	
	10	U	DC power	---	S-35-24	24VDC 1.5A	1	YE71352400000	
	11	X1 X2	Wiring terminal	HONEYWELL	SK2.5	2.5mm ²	22	YE60002503200	
	12		Wiring terminal	HONEYWELL	GK2.5PE	2.5PE	8	YE60002503400	
	13		Wiring terminal	HONEYWELL	SK2.5	2.5mm ²	4	YE60002503200	(2)
	14		Wiring terminal	HONEYWELL	GK2.5PE	2.5PE	2	YE60002503400	(2)
	15		Terminal fittings E/GK series (honeywell)	HONEYWELL	---	PCS	6	YE60000003900	
C	16	X10 X11	Heavy duty connectors	HARTING	Han E-4F(母)	4P	2	YE68000401400	
	17	M	Blower	SHINI	RB-550	5HP 230V 50HZ	1	---	(1)
	18	Y1~Y10	Solenoid valve	AIRTAC	---	24VDC	10	---	(1)
	19	S2 S3	Photosensor switch	FOTEK	MT-4MNO-30VDC	10...30VDC	2	---	(1) SVH
	20		Reed switch	SONON	BN12-30BLA	24VDC	2	---	(1) SMH
			Reed switch						
机型版本 Ver.E Note: (1) Materials not mounted in the control box; (2) Optional hopper spraying valve;									
D				制图	周子杰	版号	G	标题	SAL-5HP-UG122/SAL-5HP-UG122-D
				设计	周子杰	核		图号	SAL-5HP-UG122-CE-230V-G-5
				校对		准		比例	第 5 张
				审核		日期	20220523	标准	CE 共 5 张
	标记	更改前	更改后	更改人	日期	20220523		机器电压	3φ230V
								机器频率	50Hz



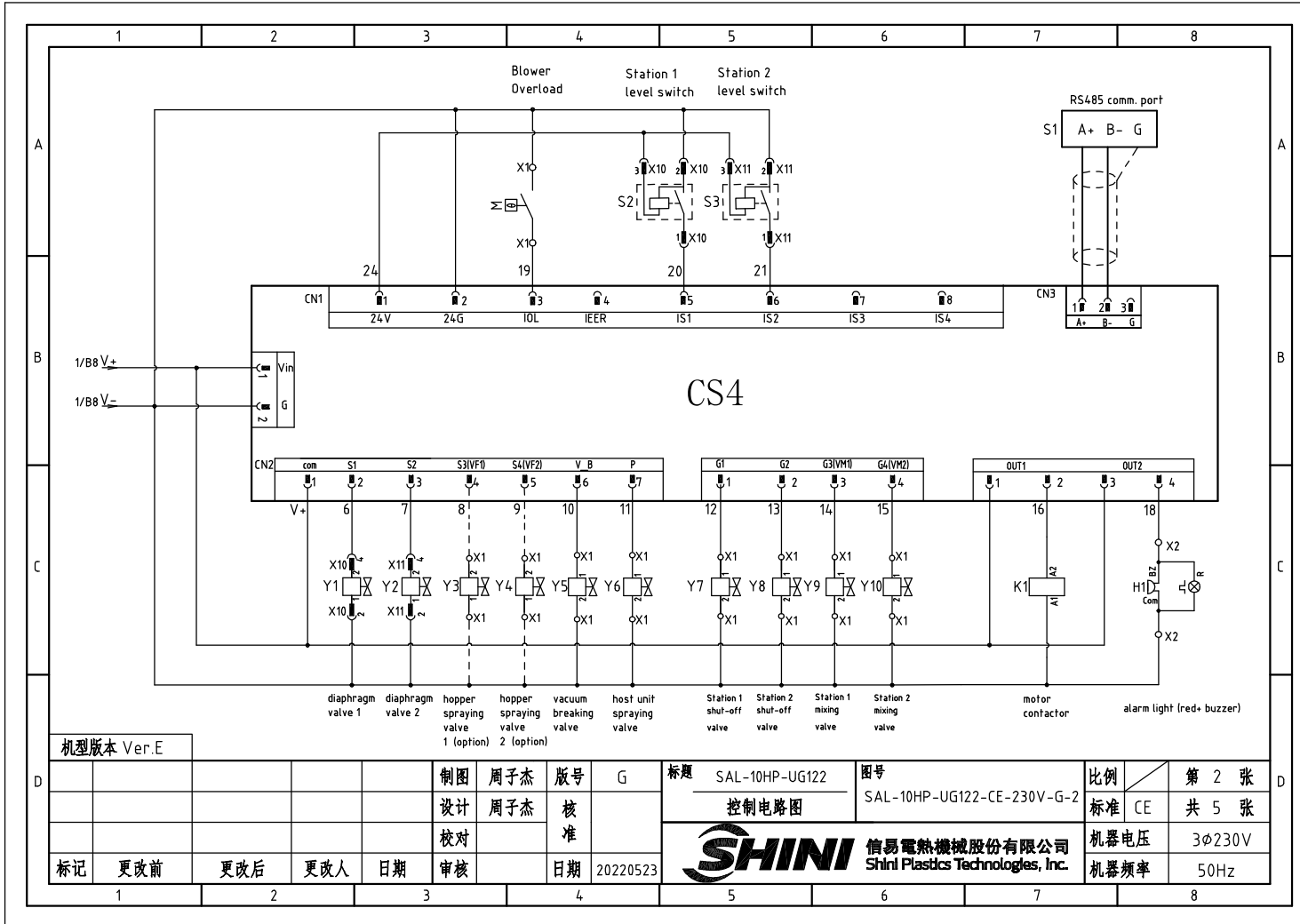
Suction Blower
 SAL-10HP-UG122 | SAL-10HP-UG122-D
 P=7.5KW | P=7.5KW
 IN=29A | IN=29A

机型版本 Ver.E

制图	周子杰	版号	G
设计	周子杰	核准	
校对		核准	
审核		日期	20220523

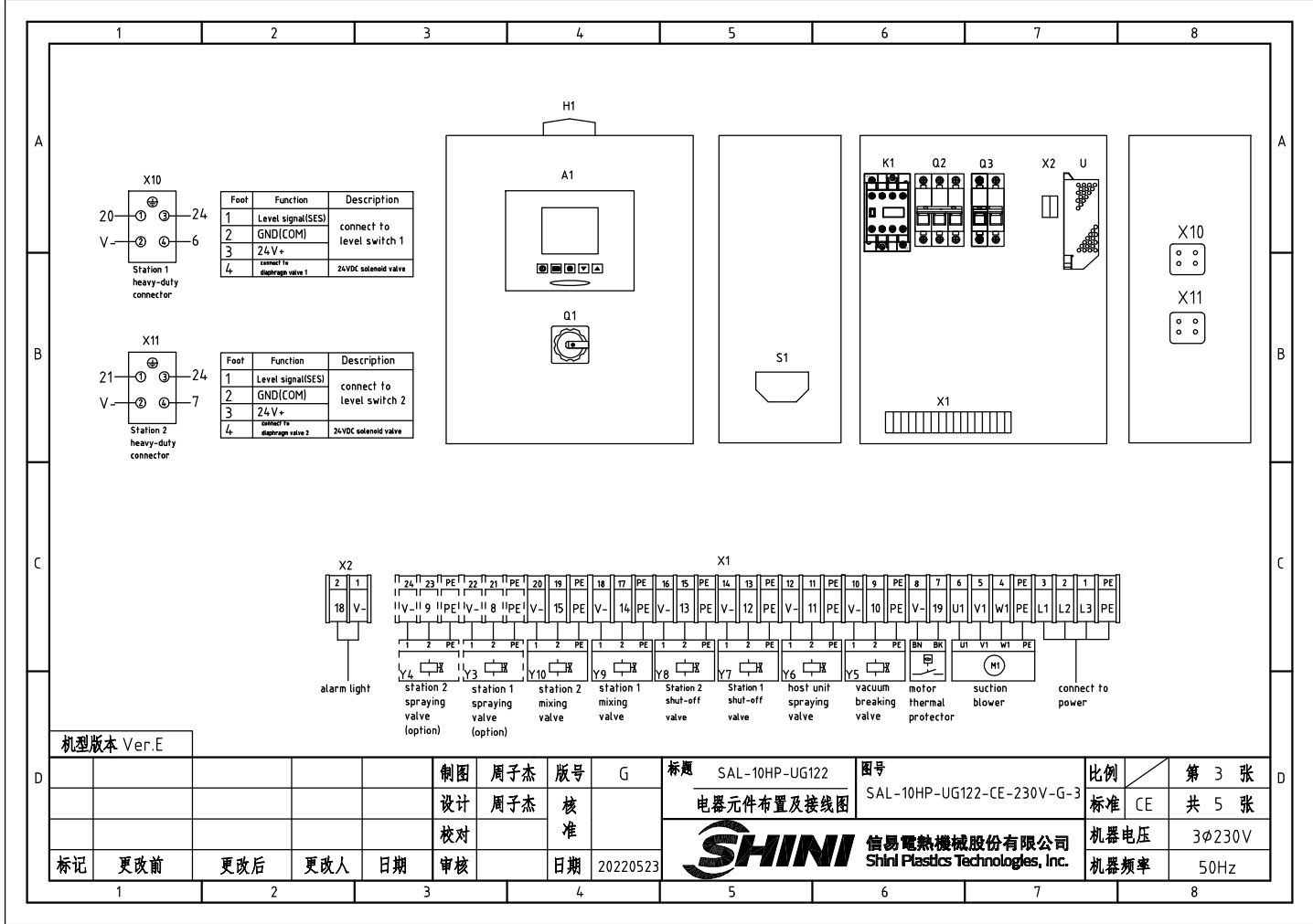
标题	SAL-10HP-UG122	图号	SAL-10HP-UG122-CE-230V-G-1	比例	第 1 张
	主电路图			标准	CE 共 5 张
 信易電熱機械股份有限公司 Shini Plastics Technologies, Inc.				机器电压	3φ230V
				机器频率	50Hz

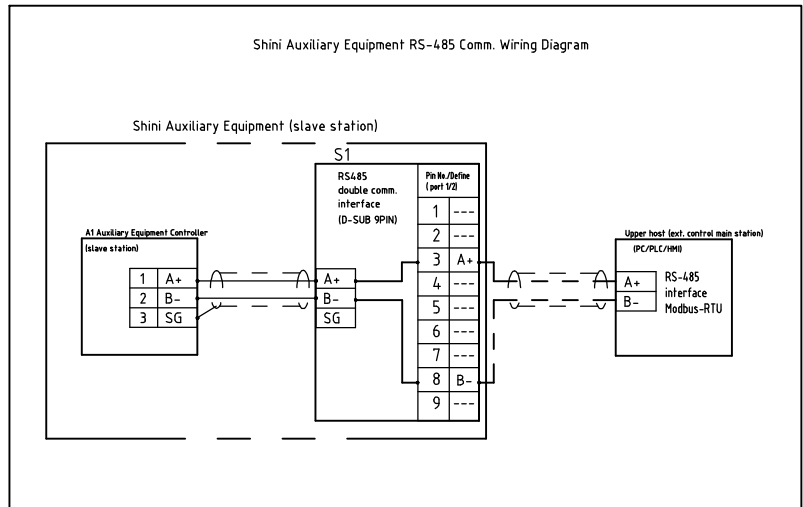
标记	更改前	更改后	更改人	日期
----	-----	-----	-----	----



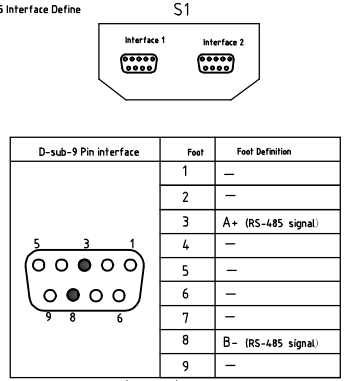
机型版本 Ver.E

制图	周子杰	版号	G	标题	SAL-10HP-UG122	图号	SAL-10HP-UG122-CE-230V-G-2	比例	第 2 张
设计	周子杰	核 准		控制电路图				标准	CE 共 5 张
校对				 信易電熱機械股份有限公司 Shini Plastics Technologies, Inc.				机器电压	3φ230V
标记	更改前	更改后	更改人			日期	20220523		





Shini RS-485 Interface Define

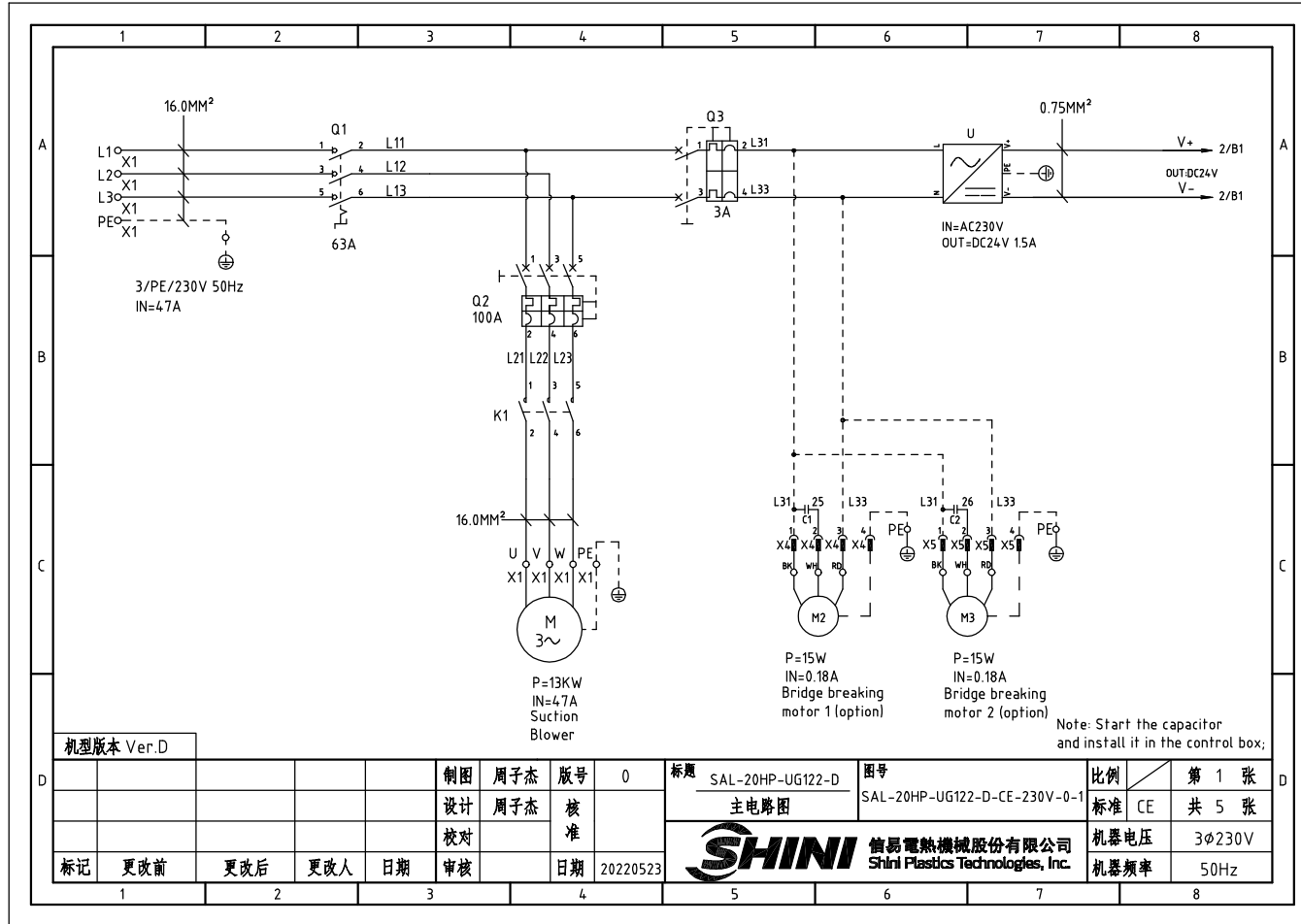


- Note: 1. Comm. interface: RS-485 (two wire)
 2. Comm. protocol: Modbus-RTU
 3. The machine is provided with D-sub9 female connector, and the customer must prepare the D-sub9 male connector;
 4. Interface 1 and interface 2 are connected in parallel internally, with the same function, regardless of primary and secondary;

机型版本 Ver.E

制图		周子杰		版号		G		标题		SAL-10HP-UG122		图号		SAL-10HP-UG122-CE-230V-G-4		比例		第 4 张	
设计		周子杰		核		准		通讯接线图				标准		CE		共 5 张			
标记		更改前		更改后		更改人		日期		审核		日期		20220523		SHINI		信易电热机械股份有限公司	
																Shini Plastics Technologies, Inc.		机器电压	
																		3φ230V	
																		机器频率	
																		50Hz	

1		2		3		4		5		6		7		8		
N0	Symbol	Name		Manufacturer		Type		Specification		Number	Material number		Remark			
A	1	Q1	Main power switch		EATON		P3-63/EA/SVB		63A		1	YE10636300000				
	2	Q2	Circuit breakers		TECO		BM-100D/3080S		80A		1	YE40308003000				
	3	Q3	Circuit breakers		TECO		BM-63C/2003S		3A 2P		1	YE40200203000				
	4	K1	Contactors		SIEMENS		3RT6028-1BB40		24VDC		1	YE00602800600				
	5	A1	Controllor		YUYUN		CS4		24VAC/DC		1	YE80042401200				
	6	S1	RS-485 comm. interface		YUYUN		---		Dsub-9pin connector		1	YE90048501200				
	7		Shell RS-485 (SAL-700G-A-19) ver.0		---		---		---		1	YR40048500000				
B	8		9-pin serial port connector (male), including housing and screws		---		---		---		1	YE62090000000				
	9	H1	Alarm light		SHINI		SWI-T		24VAC/DC		1	BL90000011520				
	10	U	DC power		---		S-35-24		24VDC 1.5A		1	YE71352400000				
	11	X1 X2	Wiring terminal		HONEYWELL		GK6		6.0mm ²		6	YE60000603200				
	12		Wiring terminal		HONEYWELL		GK6PE		6.0PE		2	YE60000603500				
	13		Wiring terminal		HONEYWELL		SK2.5		2.5mm ²		16	YE60002503200				
	14		Wiring terminal		HONEYWELL		GK2.5PE		2.5PE		6	YE60002503400				
C	15		Wiring terminal		HONEYWELL		SK2.5		2.5mm ²		4	YE60002503200		(2)		
	16		Wiring terminal		HONEYWELL		GK2.5PE		2.5PE		2	YE60002503400		(2)		
	17		Terminal fittings E/GK series (honeywell)		HONEYWELL		---		PCS		6	YE60000003900				
	18	X10 X11	Heavy duty connectors		HARTING		Han E-4F(female)		4P		2	YE68000401400				
	19	M	Blower		RuiJing		RB-850		10HP 230V 50HZ		1	---		(1)		
	20	Y1-Y10	Solenoid valve		AIRTAC		---		24VDC		10	---		(1)		
	21	S2 S3	Photosensor switch		FOTEK		MT-4MN0-30VDC		10...30VDC		2	---		(1)SVH		
	22		Reed switch		SONON		BN12-30BLA		24VDC		2	---		SMH		
<p>机型版本 Ver.E Note: (1) Materials not mounted in the control box; (2) Optional hopper spraying valve;</p>																
D	制图		周子杰		版号		G		标题		SAL-10HP-UG122/SAL-10HP-UG122-D		图号		SAL-10HP-UG122-CE-230V-G-5	
	设计		周子杰		核		准		电气元件明细表一		比例		第 5 张			
	校对				核		准				标准		CE		共 5 张	
	标记		更改前		更改后		更改人		日期		审核		日期		20220523	
SHINI		信易電熱機械股份有限公司		Shini Plastics Technologies, Inc.		机器电压		3φ230V		机器频率		50Hz				
1		2		3		4		5		6		7		8		



机型版本 Ver.D

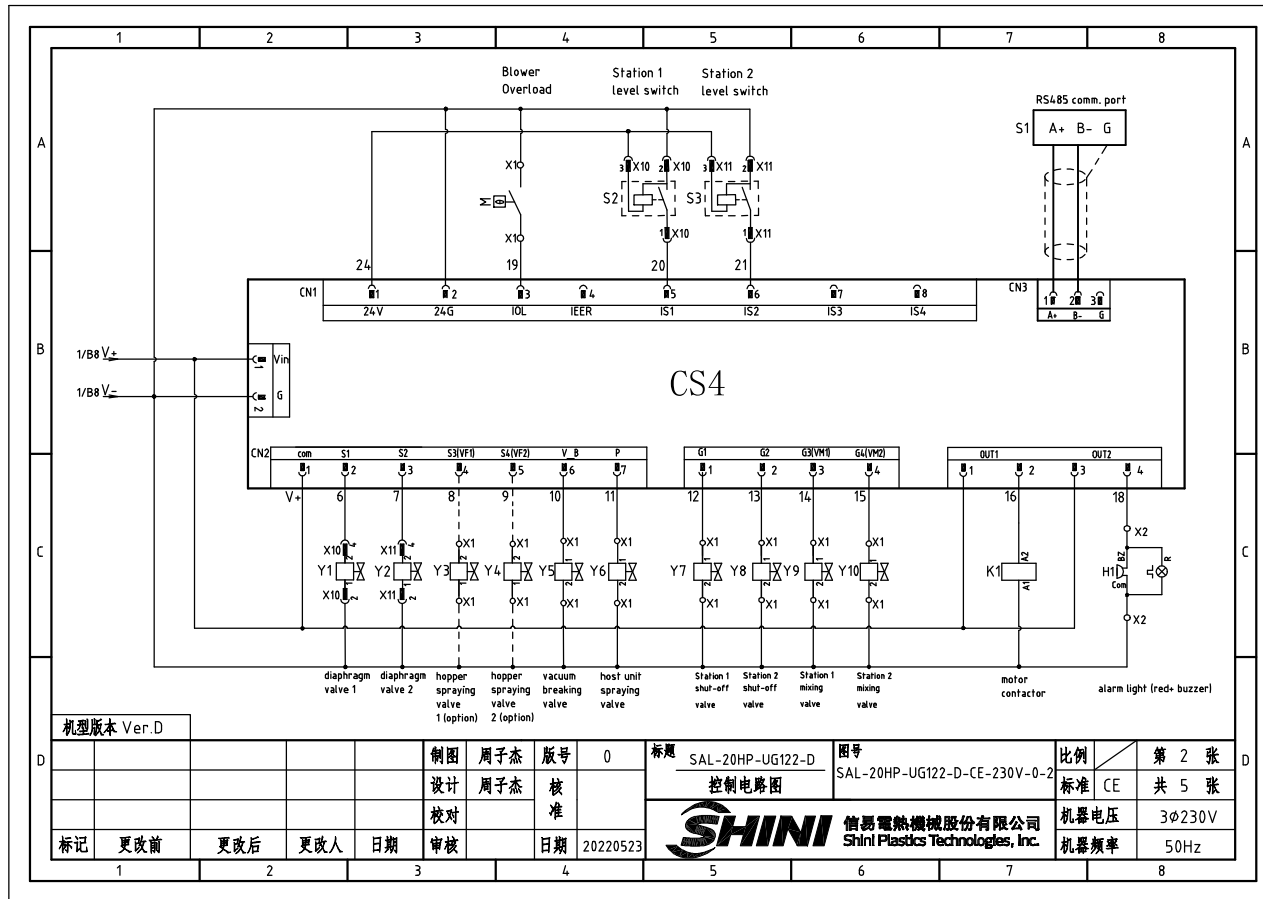
制图	周子杰	版号	0
设计	周子杰	核准	
校对		日期	20220523
标记	更改前	更改后	更改人
	日期	审核	

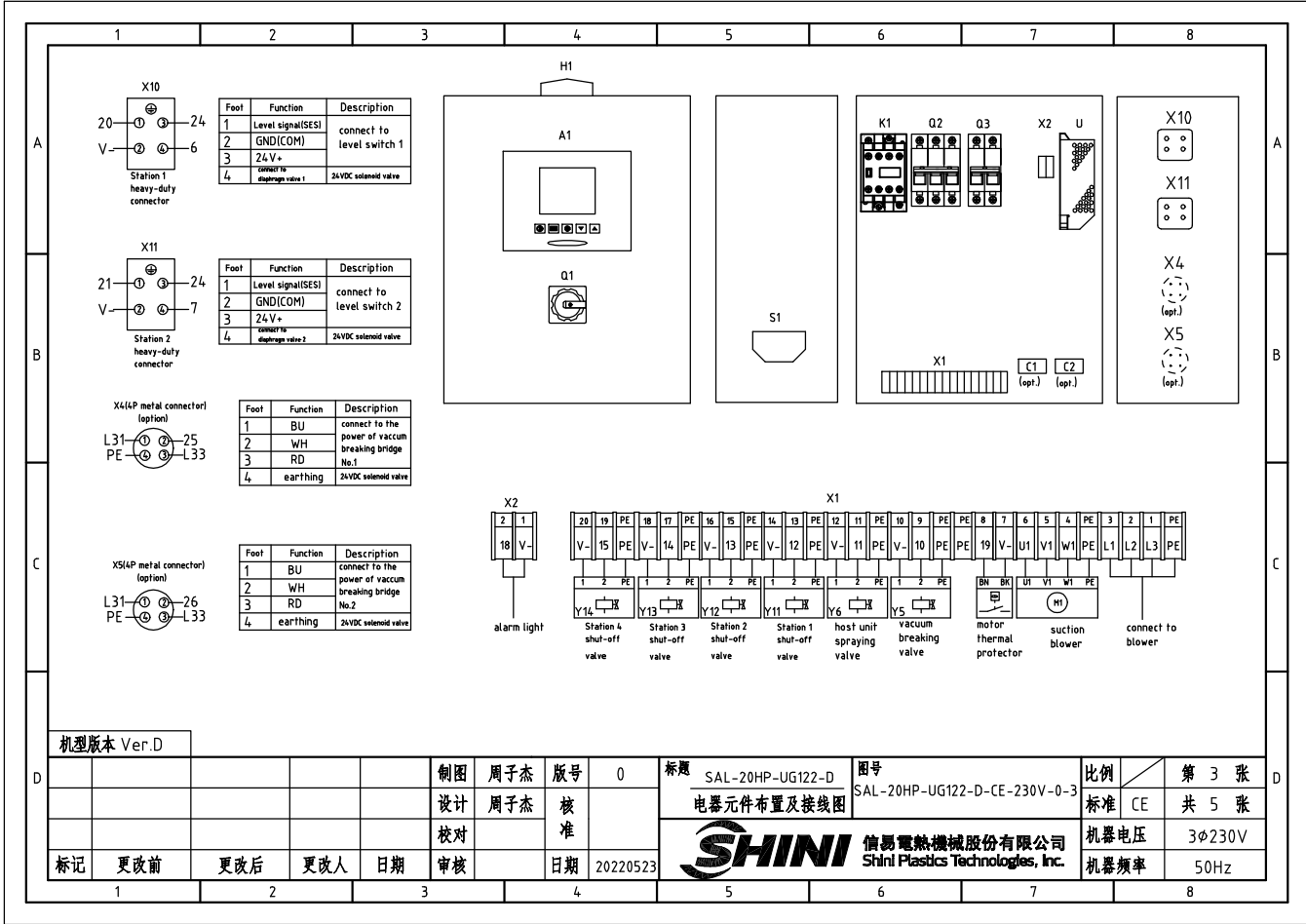
标题 SAL-20HP-UG122-D 图号 SAL-20HP-UG122-D-CE-230V-0-1
主电路图



比例	第 1 张
标准	CE 共 5 张
机器电压	3φ230V
机器频率	50Hz

Note: Start the capacitor and install it in the control box;

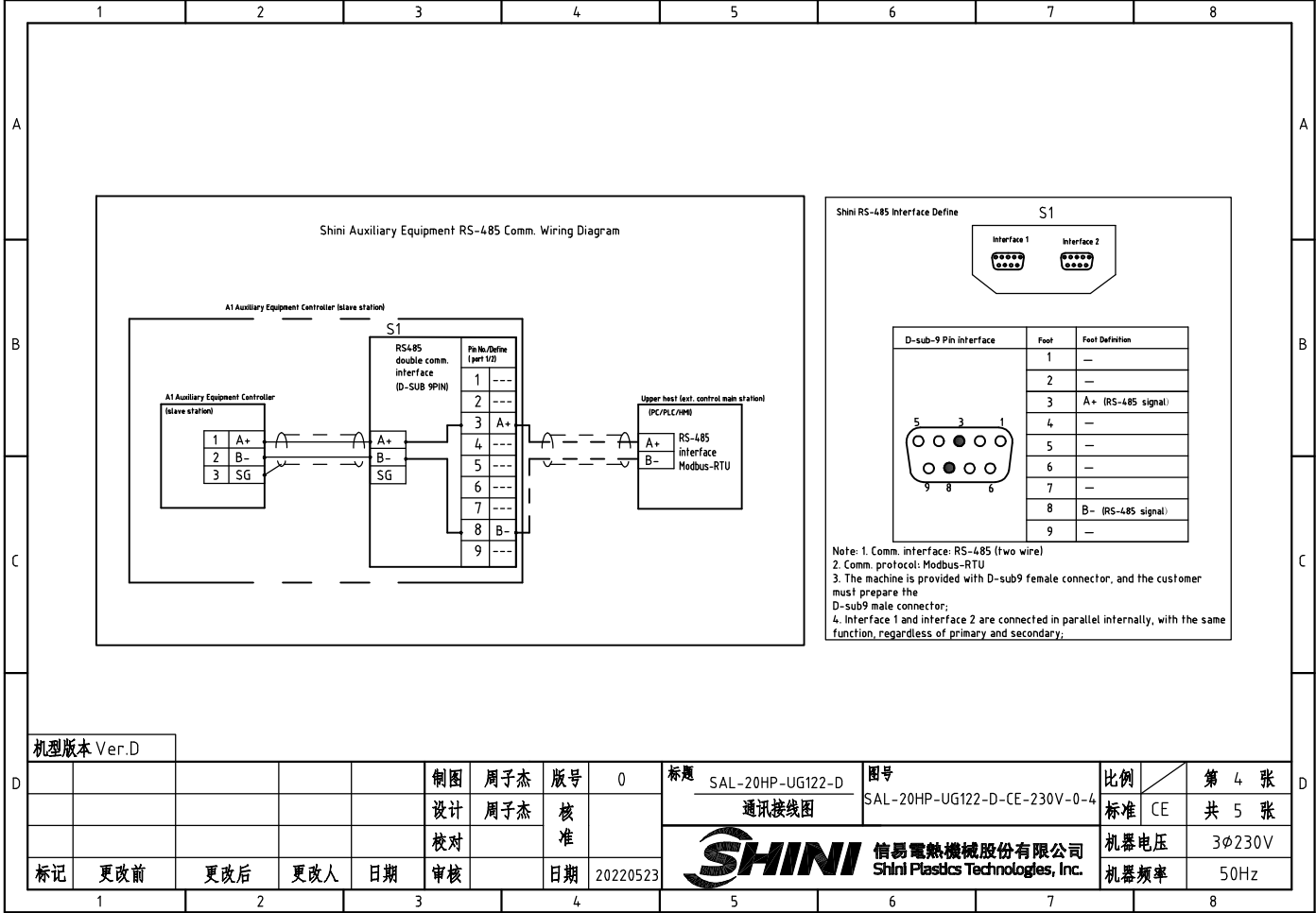





机型版本 Ver.D

制图	周子杰	版号	0
设计	周子杰	核准	
校对		审核	
标记	更改前	更改后	更改人
		日期	20220523

标题	SAL-20HP-UG122-D	图号	SAL-20HP-UG122-D-CE-230V-0-3
电器元件布置及接线图		比例	第 3 张
信易电热机械股份有限公司 Shini Plastics Technologies, Inc.		标准	CE
		共 5 张	
		机器电压	3φ230V
		机器频率	50Hz



机型版本 Ver.D				制图	周子杰	版号	0	标题	SAL-20HP-UG122-D	图号	SAL-20HP-UG122-D-CE-230V-0-4	比例	第 4 张
				设计	周子杰	核		通讯接线图		标准	CE	共 5 张	
				校对		准				机器电压	3φ230V		
标记	更改前	更改后	更改人	日期	审核	日期	20220523	SHINI 信易電熱機械股份有限公司 Shini Plastics Technologies, Inc.		机器频率	50Hz		

1		2		3		4		5		6		7		8	
NO	Symbol	Name		Manufacturer		Type		Specification		Number	Material number		Remark		
1	Q1	Main power switch		EATON		P3-63/EA/SVB		63A		1	YE10636300000				
2	Q2	Circuit breakers		TECO		BM-100D/3100S		100A		1	YE40310003000				
3	Q3	Circuit breakers		TECO		BM-63C/2003S		3A 2P		1	YE40200203000				
4	K1	Contactors		SIEMENS		3RT5044-1BB40		24VDC		1	YE00504400600				
5	A1	Controller		YUYUN		CS4		24VAC/DC		1	YE80042401200				
6	S1	RS-485 comm. interface board		YUYUN		---		Dsub-9pin connector		1	YE90048501200				
7		Shell RS-485 (SAL-700G-A-19) ver.0		---		---		---		1	YR40048500000				
8		9-pin serial port connector (male), including housing and screws		---		---		---		1	YE62090000000				
9	H1	Alarm light		SHINI		SWI-T		24VAC/DC		1	BL90000011520				
10	U	DC power		---		S-35-24		24VDC 1.5A		1	YE71352400000				
11	X1 X2	Wiring terminal		HONEYWELL		GK16		16.0mm ²		6	YE60001603200				
12		Wiring terminal		HONEYWELL		GK16PE		16.0PE		2	YE60001603500				
13		Wiring terminal		HONEYWELL		SK2.5		2.5mm ²		16	YE60002503200				
14		Wiring terminal		HONEYWELL		GK2.5PE		2.5PE		6	YE60002503400				
15		Wiring terminal		HONEYWELL		SK2.5		2.5mm ²		4	YE60002503200		(2)		
16		Wiring terminal		HONEYWELL		GK2.5PE		2.5PE		2	YE60002503400		(2)		
17		Terminal fittings E/GK series (honeywell)		HONEYWELL		---		PCS		6	YE60000003900				
18	X10 X11	Heavy duty connectors		HARTING		Han E-4F(female)		4P		2	YE68000401400				
19	M	Blower		ShengHong		20HP		230V 50HZ		1	---		(1)		
20	Y1-Y10	Solenoid valve		AIRTAC		---		24VDC		10	---		(1)		
21	S2 S3	Photosensor switch		FOTEK		MT-4MNO-30VDC		10...30VDC		2	---		(1) SVH		
22		Reed switch		SONON		BN12-30BLA		24VDC		2	---		(1) SMH		
23	X4 X5	Metal connector		----		PLT-254-RF		4P(male)		2	YE68025400100		(3)		
24	M2 M3	Vacuum breaking motor		----		----		230V 50/60Hz 0.015KW		2	----		(3)		
25	C1 C2	Operating capacitor		----		----		PCS		2	----		(3)		
机型版本 Ver.D		Note: (1) Materials not mounted in the control box; (2) Optional hopper spraying valve; (3) Optional vacuum breaking motor;													
D					制图	周子杰	版号	0	标题	SAL-20HP-UG122-D	图号	SAL-20HP-UG122-D-CE-230V-0-5	比例	CE	第 5 张
					设计	周子杰	核		电气元件明细表一			标准	CE	共 5 张	
					校对		准								
	标记	更改前	更改后	更改人	日期	审核		日期	20220523			信易電熱機械股份有限公司 Shini Plastics Technologies, Inc.		机器电压	3φ230V
1		2		3		4		5		6		7		8	