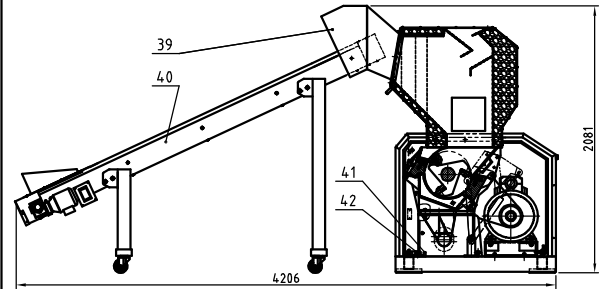
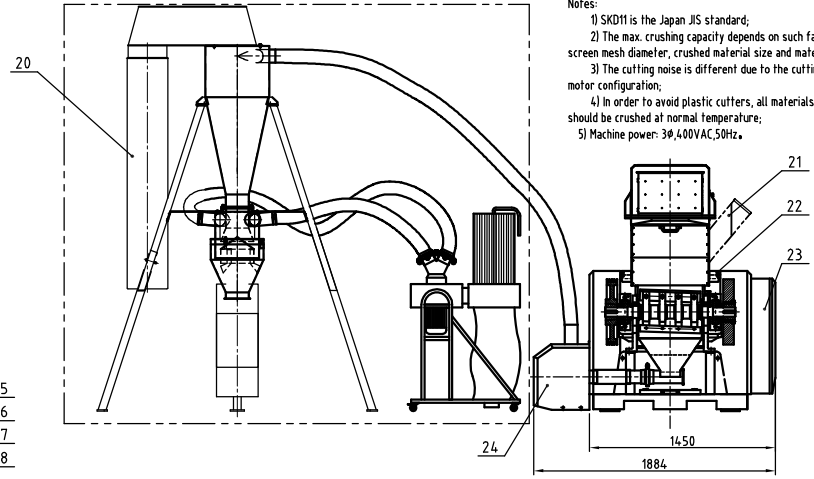
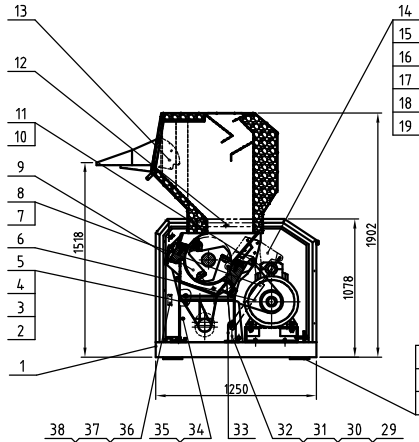


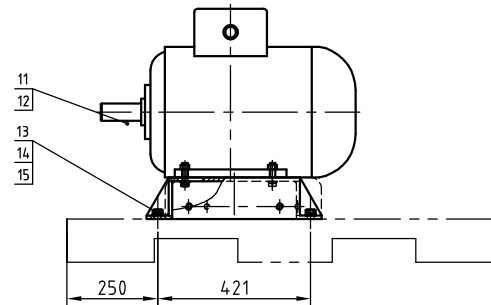
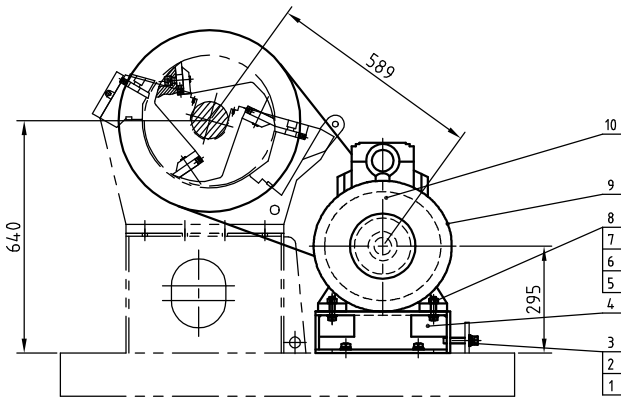
Standard weight(kg)	Noise level (dB(A))	Max. cutting ability (kg/hr)	Cutting Chamber Size (mm)	Rotating Cutter Qty.	Feed Cutter Qty.	Cutter Material	Main Shaft Speed (r.p.m)	Motor Power (kW, Sp/50Hz)	Ver. No.
14.80	100-105	620	360×500	3x2	2	SKD11	54.0	18.5	Ver.E

Notes:
 1) SKD11 is the Japan JIS standard;
 2) The max. crushing capacity depends on such factors as the screen mesh diameter, crushed material size and materials;
 3) The cutting noise is different due to the cutting materials and motor configuration;
 4) In order to avoid plastic cutters, all materials to be crushed should be crushed at normal temperature;
 5) Machine power: 3Φ, 400VAC, 50Hz.



42	YR40083500000	Star handle 8 M8-35	Assembly	2		21	-	Side feed box assembly	Assembly	1	option
41	BH10365000310	Presetting knife jig	Assembly	1		20	-	Dust separating system assembly	Assembly	1	option
40	-	Belt conveyor	Assembly	1	option	19	YW61103000100	Inter hex column head screw M10×30	12.9	4	
39	-	With conveyor feed box assembly	Assembly	1	option	18	-	Air spring fixed base	SPH8.0	1	
38	-	Safety switch mount plate	SPCC1.5	1		17	YW64.001000100	Hex. nut M16 GB/T6170-Longize		4	
37	-	Hex spanner fixed plate	SPCC2.0	1		16	YW61104.0002000	Inter hex column head screw @TR/HRM4		2	
36	YW61051000200	Gross recessed pan head screw M5×10		4		15	YW65010000000	Standard spring washer @TR/Longize		6	
35	YW61089000000	Inter hex column head screw HR40		2		14	YW66102500000	Flat washer 10x25x1.5 Longize		12	
34	BH12360600310	Screen bracket support pipe	H62	2		13	-	Feed box assembly	Assembly	1	standard
33	YW01160000000	Pneumatic spring #12/#28 3600N		1		12	-	Feed box base frame	SPH4.0	1	
32	YW66081900000	Flat washer 8x12x2.8-Longize	14.0HV	2		11	YW0114.0000000	Pneumatic spring #12/#28 1440N		1	
31	YW65008000100	Spring washer 8	65Mn	2		10	BH10361700110	Buffer wheel1	Q235A	1	
30	YW61082501200	Inter hex column head screw M8×25	12.9	2		9	-	Filling rubber assembly	Assembly	1	
29	-	Air spring fixed base	SPH8.0	1		8	BH10361800210	Buffer wheel2	Q235A	1	
28	YW64.001600000	Hex. nut M16	8	4		7	BH10361600010	Buffer of sleeve	Q235A	2	
27	YW03162000000	Foot pad		4		6	-	Mandrel plate	Assembly	1	
26	BH10161800010	Screw for foot pad	45	4		5	YW64.012100000	Hex nut M12	8	8	
25	-	Foot pad sleeve	Q235A	4		4	YW661224.00000	Flat washer 12	14.0HV	16	
24	-	Cover parts	Assembly	1		3	YW65012000000	Spring washer 12	65Mn	8	
23	-	Auto conveying assembly	Assembly	1		2	YW60126000000	Hex bolt M12x60	8.8	8	
22	YR10011000100	Triple compound sealant strip 3000mmx10	Rubber	8M		1	-	Rack assembly	Assembly	1	

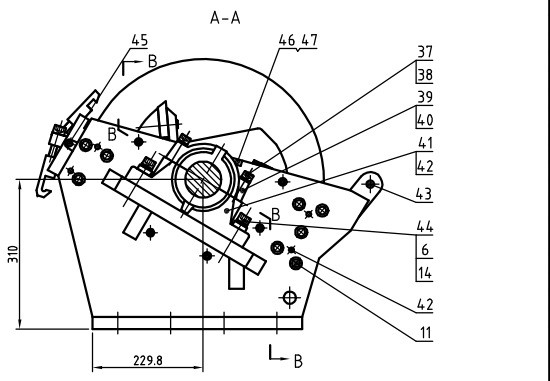
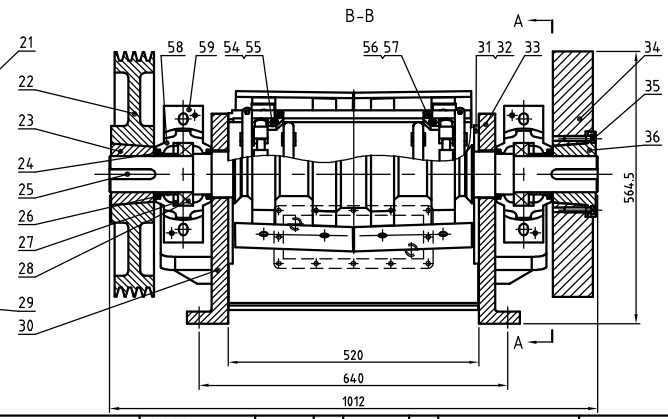
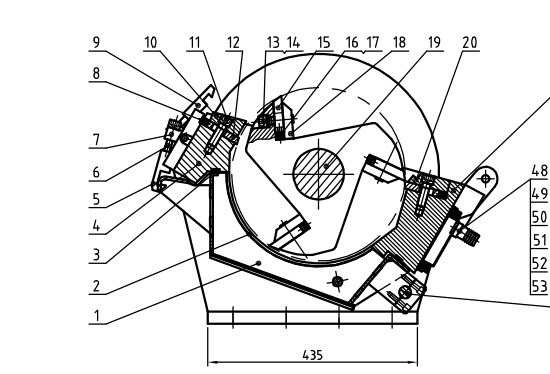
制图	版号	标题	SG-3650	图号	比例	数量
设计	核准	物料号	粉碎机	表面要求	物料号	
校对	日期	SHINI	信昌电热机械股份有限公司	Shini Plastics Technologies, Inc.		
标记	更改前	更改后	更改人	日期	审核	日期



15	YW65016000000	Spring washer 1/6	65Mn	4	
14	YW66164000000	Washer 16x16.5-Lorgine		6	
13	YW61165000000	Inner hex column head screw GB/T70.1M6x50-12.9		4	
12	BW30251701310	Small sleeve SG-36-2517-48 (Black-phosphating)	QT500-7	1	
11	BW30180400710	Small pulley SG-36-SF80-4-2517 (Black-phosphating)	HT250	1	
10	YR00059000000	V-belt (SVX-900)		4	
9	YM10201800400	Motor W20 BSXW08H-4P B31 E3.400/690/140V		1	
8	YW650142000000	Standard spring washer 8/119 N-Lorgine	65Mn	4	
7	YW640014002000	Hex nut GB/16170 M6-Lorgine	8	4	
6	YW661634000000	Flat washer A grade GB/T36 14(15x4x3)	14.0HV	12	
5	YW611470000000	Inner hex column head screw GB/T8.1M6x70-12.9-Lorgine		4	
4	-	Motor mount base	SPH10.0	1	
3	YW640016000000	Hex nut GB/16170 M6-Lorgine	8	2	
2	YW611610000000	Inner hex column head screw GB/T70.1M6x50-12.9-Lorgine		2	
1	YW611660000000	Inner hex column head screw GB/T70.1M6x50-12.9-Lorgine		2	

序号	代号	名称	材质	数量	备注
标题		SG-3650	图号		
设计		主传动装置	比例		
校对			☒ 材质		
审核			表面要求		
标记	更改前	更改后	更改人	日期	物料号

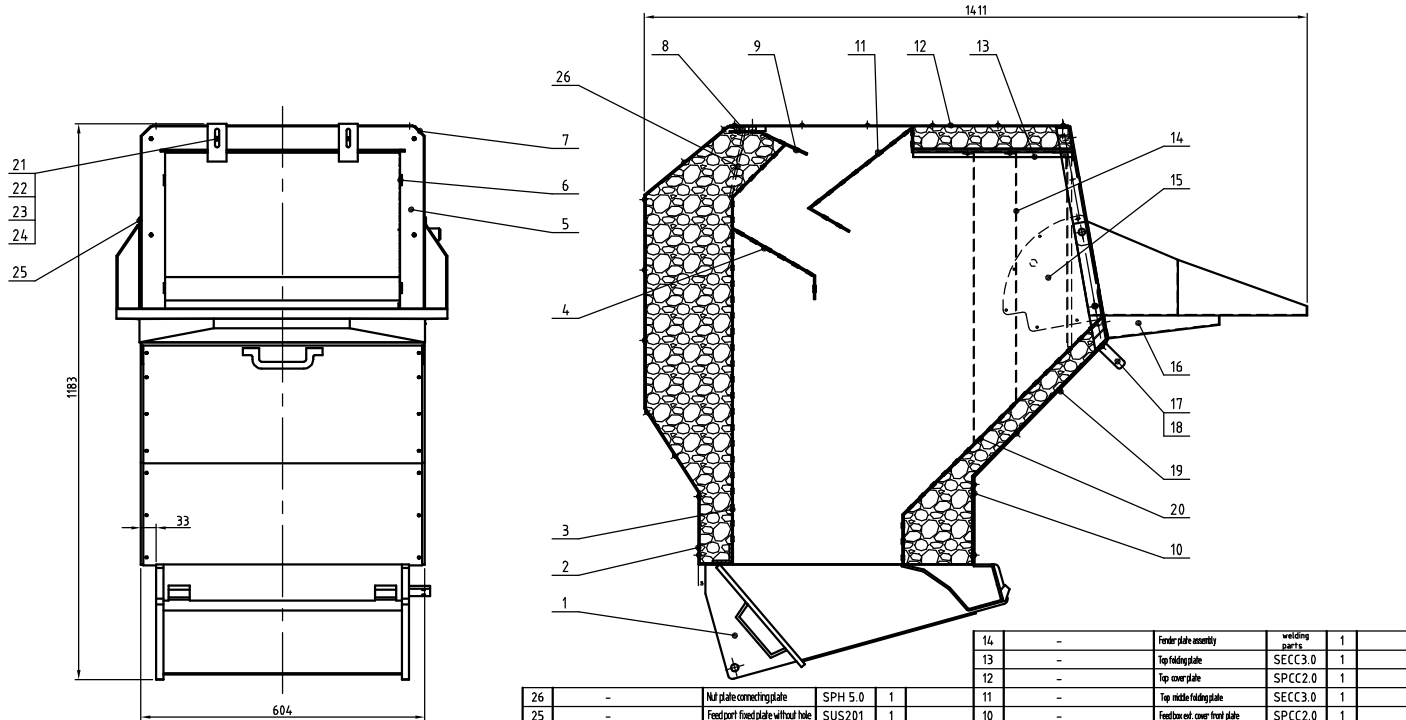
SHINI 信昌电热机械股份有限公司
Shini Plastics Technologies, Inc.



57	YW61063000200	Inner hex column ball screw Ø70/H6-g8-L25	2		28	YW11221500000	Bearing 22215EA4	Assembly	2	
56	BH10367505610	Front blade right connecting block	Q235A	1	27	BH13360100010	Bearing thrust ring	ZL106	2	
55	YW61081600000	Inner hex column ball screw Ø70/H6-g8-L25	4		26	BH10364500210	Sleeve	45	2	
54	BH10367505510	Front blade left connecting block	Q235A	1	25	BH10189500010	Flat washer C 20×12×95	45	2	
53	YW66081900000	Flat washer Øx19x2-Large	12		24	YR80215000000	Oil seal TSN215G		4	
52	YW65080000100	Standard spring washer Ø19 H-Large	65Mn	12	23	BW30003600640	Long hex screw M6×38-3.0mm/HT	QT500-7	1	
51	YW610825501200	Inner hex column ball screw Ø70/H6-g8-L25	12		22	BW30500400710	Supporting shaft Ø16×300-0.3mm/HT	HT250	1	
50	-	Water tank pressing plate	SPH6.0	1	21	BW30365001110	Rear case block	QT500-7	1	
49	-	Water tank washer	rubber	1	20	BH10365000110	Rear case block	Q235A	1	
48	-	Assembly welding		1	19	BH11365000710	Blade reel shaft	Assembly	1	
47	YW61051200100	Inner hex column ball screw Ø70/H6-g8-L25	4		18	BH11365000810	Inhaling blade pressing plate	Q235A	6	
46	BW30364502710	Side plate ring	QT500-7	2	17	YW64080600000	Hex nut GB/T6170 M6-Longline	8	12	
45	BH10369006710	Ball pin	Q235A	2	16	YW60082000200	Hex bolt GB/T5081 M6-L2-Longline	12	12	
44	BL55364504020	Bearing base washer	SPH10.0	4	15	BW40365000710	Inhaling blade	SKD11	6	
43	BH10169200010	Feed box connecting pin	45	2	14	YW65016000000	Standard washer B	65Mn	20	
42	YW09105000000	Column pin M6×50GB/T191 M6-G8 steel	45	12	13	YW61165500000	Inner hex column ball screw Ø70/H6-g8-L25		12	
41	BH11367512710	Right bearing base lower body	QT500-7	1	12	BW40365000610	Fixed blade	SKD11	2	
40	-	Elastic positioning pin 5x16	65Mn	4	11	YW61165000000	Inner hex column ball screw Ø70/H6-g8-L25		24	
39	BH11367512610	Right bearing base upper body	QT500-7	1	10	BH10365000510	Front pressing block	Q235A	1	
38	YW65014200000	Standard spring washer Ø19 H-Large	65Mn	4	9	BH10362500010	Feed box hook	Q235A	2	
37	YW61147000000	Inner hex column ball screw Ø70/H6-g8-L25	4		8	YW60062000100	Hex bolt GB/T5081 M6-Q-L8-Longline		4	
36	BW30036000010	Fly wheel sleeve	QT500-7	1	7	BH10362600010	Square block	Q235A	4	
35	YW61124000000	Inner hex column ball screw Ø70/H6-g8-L25	8		6	YW61167500000	Inner hex column ball screw Ø70/H6-g8-L25		8	
34	BW30003600110	Fly wheel	QT500-7	1	5	BH10364502510	Screen bracket hook	Q235A	2	
33	BW30367502010	Cutting chamber right side plate	QT500-7	1	4	BW30365000410	Front case block	QT500-7	1	
32	YW61104500000	Inner hex column ball screw Ø70/H6-g8-L25	10		3	-	Sealing strip	rubber	2	
31	BL55364501021	Insert	50Mn	2	2	BL55365000220	Screen	45	1	
30	BW300367518010	Cutting chamber left side plate	QT500-7	1	1	-	Screen bracket assembly	Q235A	1	
29	BH11365001210	Screen frame main shaft	Q235A	1						

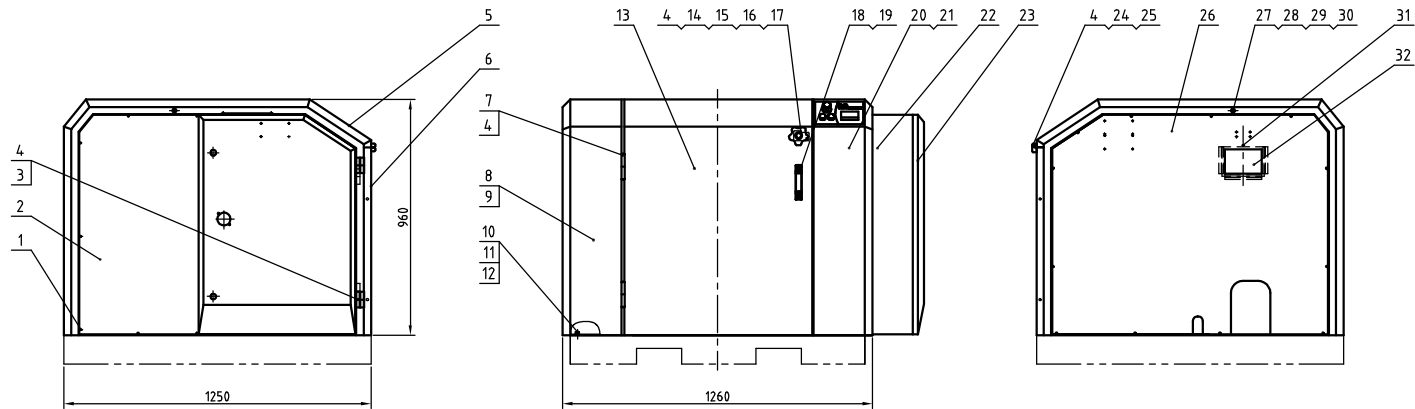
59	BW30003600410	Left bearing base lower body	QT500-7	1	
58	BW30003600210	Left bearing base upper body	QT500-7	1	

制图	版号	标题	SG-3650	图号		比例	数量
设计	核准	粉碎室总成				1:1	材质
校对		SHINI 德昂电热机械股份有限公司				表面要求	
审核	日期	Shini Plastics Technologies, Inc.				物料号	
标记	更改前	更改后	更改人	日期	审核	日期	



26	-	Nut plate connecting plate	SPH 5.0	1		14	-	Feeder plate assembly	welding parts	1	
25	-	Feed port fixed plate without hole	SUS201	1		13	-	Top folding plate	SECC3.0	1	
24	YW66061800000	Large washer A grade 68/179616 L Long size		4		12	-	Top cover plate	SPCC2.0	1	
23	YW65006000100	Standard spring washer 68/193 L long size		2		11	-	Top middle folding plate	SECC3.0	1	
22	YW61062500000	Washer diamond cover 68/179616 L 305G		2		10	-	Feet box end cover front plate	SPCC2.0	1	
21	-	Feeder plate fixed plate	SPCC3.0	2		9	-	Rear upper folding plate	SECC3.0	1	
20	-	Feed port front lower plate	SECC3.0	1		8	-	Nut plate	SPH10.0	1	
19	YW67481900000	Hexagonal pin head alloy plate 5 L 16.9	4.8	54		7	-	Cover plate left & right side plate	SPCC2.0	2	
18	YW61082000000	Rear box column head cover (No.2)	12.9	2		6	-	Feet box left & right side plate	SECC3.0	2	
17	BW20012000140	Handle	aluminum alloy	1		5	-	Hopper part	SPH4.0	1	
16	-	Feed port	SPCC2.0	1		4	-	Rear middle folding plate	SECC3.0	1	
15	-	Feed port fixed plate with hole	SUS201	1		3	-	Feed box rear inner plate	SECC3.0	1	
						2	-	Feet box rear cover rear plate	SPCC2.0	1	
						1	-	Feet box rear base	assembly	1	

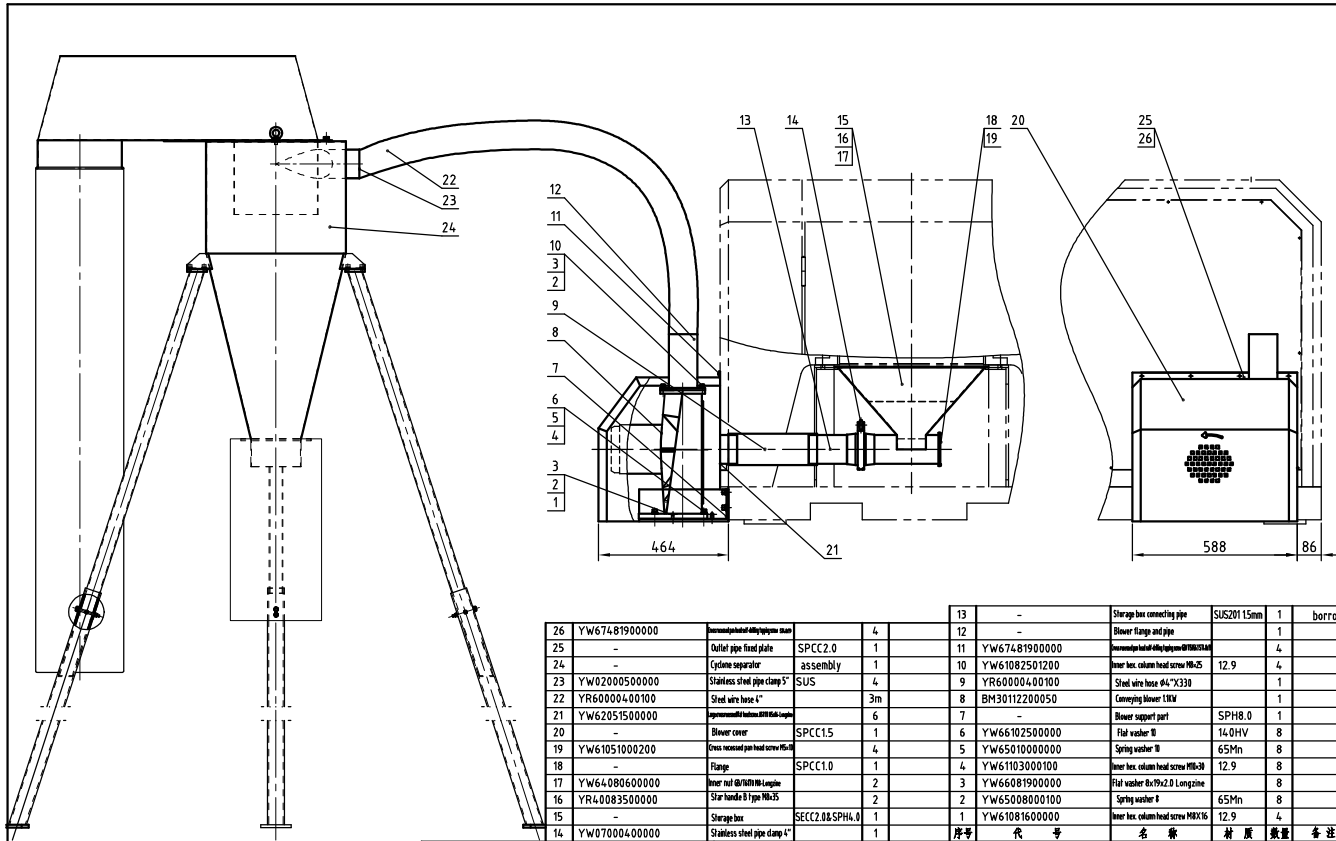
标记	更改前	更改后	更改人	日期	制图	版号	标题	图号	比例	数量	备注
					设计	核	SG-3650		1:1		
					校对	准	进料箱总成				
					审核		SHINI 信昂電能機械股份有限公司		表面要求		
							Shini Plastics Technology, Inc.		物料号		



32	BR90367504310	Sight plate	Acrylic	1	
31	YW67481900000	Door handle	Stainless steel	1	
30	BH10360100010	Oil pipe nut	H62	2	
29	BH10361100010	3/8 copper pipe ext. connector	H62	2	
28	BH12361000010	3/8 copper pipe inner connector	H62	2	
27	-	Oil pipe	3 copper pipe	2	
26	-	Left side plate cover	SPCC2.0	1	
25	YW63050800000	Inner recessed pan head screw	MS-9	4	
24	YW06219100000	Large hinge	CL219-1	2	
23	-	Control box door plank	SPCC2.0	1	
22	-	Electrical fixed plate	SECC1.5	1	
21	-	Right side cover plate	SPCC2.0	1	

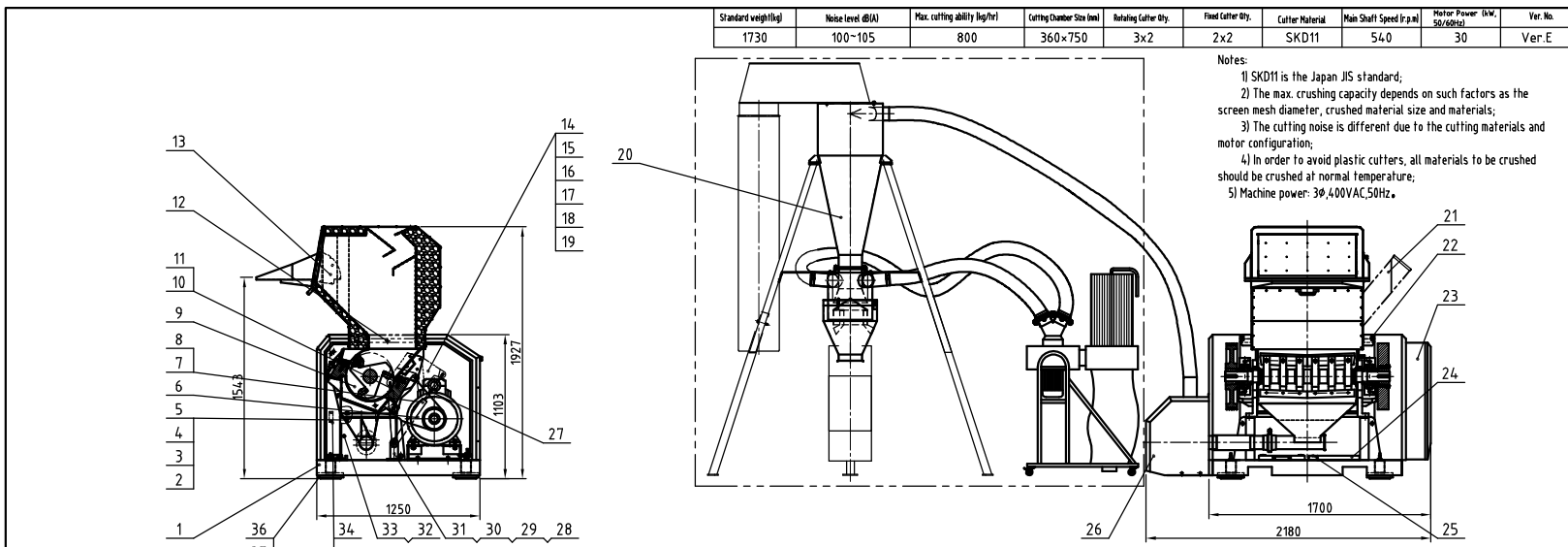
20	-	Right cover screen plate	screen plate 15	1	
19	BW20012000140	Handle	stainless steel	1	
18	YW61081600000	Inner hex. column head screw	M8X11	2	
17	YW68005500000	Inner hex. flat head self screw	Ø17X16 Longline	1	
16	-	Star screw limit plate	SPCC3.0	1	
15	YW09001200500	Star handle (M2)		1	
14	BH10364502710	Star handle screw	45	1	
13	-	Door	SPCC2.0	1	
12	YW66061800000	Large washer	A grade Ø17X16 Longline	140HV	20
11	YW65006000100	Spring washer	6	65Mn	10
10	YW61061600200	Inner hex. column head screw	M6X16	12.9	10
9	-	Left cover screen plate	screen plate 15	1	
8	-	Left cover	SPCC2.0	1	
7	YW06000400000	Stainless steel hinge	4"		2
6	-	Rear lower cover plate	SPCC2.0	1	
5	-	Rear upper cover plate	SPCC2.0	1	
4	YW61051000200	Cross recessed pan head screw	MS-9	10.9	4,2
3	YW06203100200	Large cham L	CL203-1 (right)		4
2	-	Control box bottom plate	SPCC2.0	1	
1	YW62052500000	Large cross recessed flat head screw	MSX25		21

					制图	版号	标题	图号	比例	数量	
					设计	核	护罩部件		1:1		
					校对	准					
					审核						
标记	更改前	更改后	更改人	日期	审核	日期	SHINI 信易电热机械股份有限公司 Shini Plastics Technologies, Inc.		表面要求	物料号	



26	YW67481900000	Inlet pipe fixed plate	SPCC2.0	4	13	-	Storage bin connecting pipe	SUS201 15mm	1	borrow
25	-	Outlet pipe fixed plate	SPCC2.0	1	12	-	Blower flange and pipe		1	
24	-	Cyclone separator assembly		1	11	YW67481900000	Inlet pipe fixed plate		4	
23	YW02000500000	Stainless steel pipe clamp 5"	SUS	4	10	YW61082501200	Inner hex. column head screw M12.9	12.9	4	
22	YR60000400100	Steel wire hose 4"	3m	3m	9	YR60000400100	Steel wire hose 4" X330		1	
21	YW62051500000	Blower support part		6	8	BM30112200050	Conveying blower 110W		1	
20	-	Blower cover	SPCC1.5	1	7	-	Blower support part	SPH8.0	1	
19	YW61051000200	Flange	SPCC1.0	4	6	YW66102500000	Flat washer 10	14.0HV	8	
18	-	Flange	SPCC1.0	1	5	YW65010000000	Spring washer 10	65Mn	8	
17	YW64080600000	Inner nut 6x10x10 Longpin		2	4	YW61103000100	Inner hex. column head screw M12.9	12.9	8	
16	YR40083500000	Star handle 3 type M12.9		2	3	YW66081900000	Flat washer 6x19x2.0 Longzinc		8	
15	-	Storage bin	SEC2.0.SPH.0	1	2	YW65008000100	Spring washer 8	65Mn	8	
14	YW07000400000	Stainless steel pipe clamp 4"		1	1	YW61081600000	Inner hex. column head screw M12.9	12.9	4	

制图	版号	标题	图号	比例	数量
设计	核准	标准	SG-3650	1:1	1
校对	核准	自动送料总成		表面要求	物料号
审核	日期	SHINI 倍易电热机械股份有限公司 Shini Plastics Technologies, Inc.			
标记	更改前	更改后	更改人	日期	审核

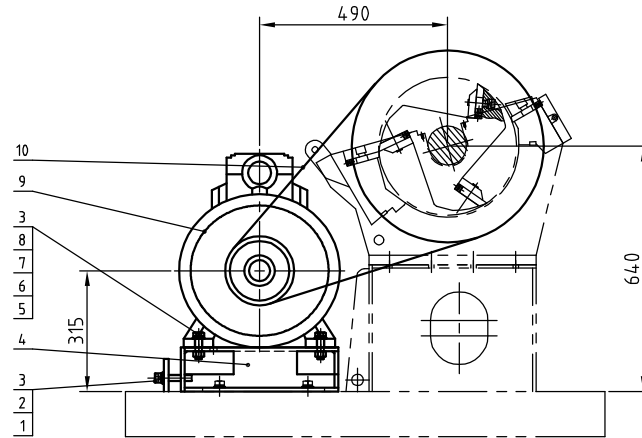
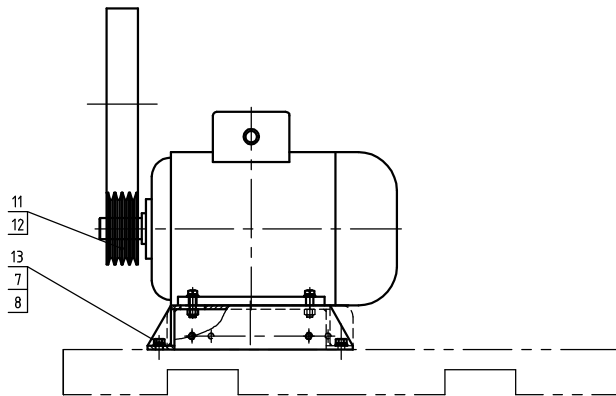


Standard weight(kg)	Noise level (dB(A))	Max. cutting ability (kg/hr)	Cutting Chamber Size (mm)	Rotating Cutter Qty.	Fixed Cutter Qty.	Cutter Material	Main Shaft Speed (r.p.m)	Motor Power (kW, 50/60Hz)	Ver. No.
1730	100-105	800	360x750	3x2	2x2	SKD11	540	30	Ver. E

Notes:
 1) SKD11 is the Japan JIS standard;
 2) The max. crushing capacity depends on such factors as the screen mesh diameter, crushed material size and materials;
 3) The cutting noise is different due to the cutting materials and motor configuration;
 4) In order to avoid plastic cutters, all materials to be crushed should be crushed at normal temperature;
 5) Machine power: 39,400VAC,50Hz.

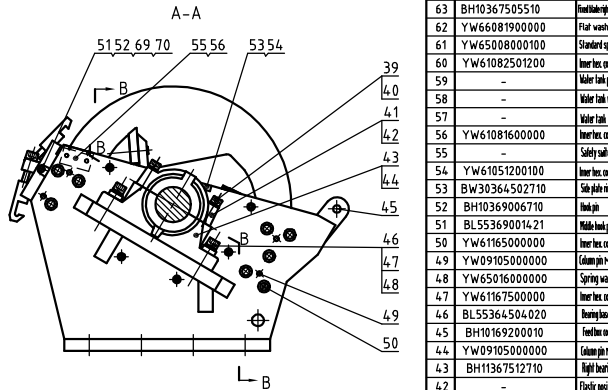
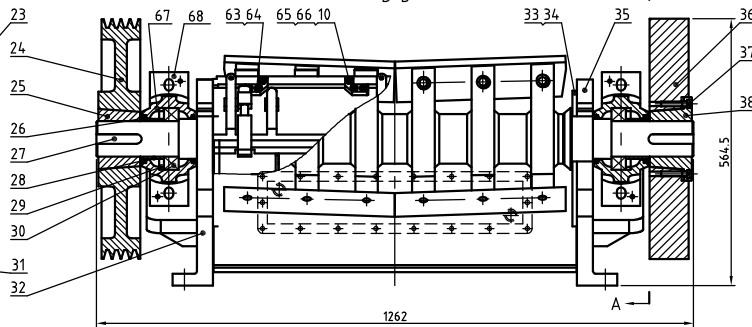
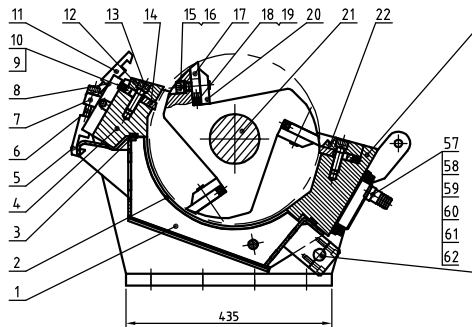
43	YR4.0083500000	Star handle B M8-35	Assembly	2		21	-	Side feed box assembly	Assembly	1	option
42	BH10367503010	Pressing knife jig	Assembly	1		20	-	Dust separating system assembly	Assembly	1	option
41	-	Belt conveyor	Assembly	1		19	YW64.001000100	Hex. nut M16 @10/10 M16-Longline		4	
40	-	With conveyor feed box assembly	Assembly	1		18	YW61104.0002000	Inter hex column head screw @17/17 M16x44		2	
39	YW64.0016000000	Hex. nut M16	8	4	option	17	YW650100000000	Standard spring washer @17/17 M16x44		6	
38	YW031620000000	Foot pad	Assembly	4	option	16	YW661025000000	Flat washer 10x25x15 Longline		12	
37	BH101618000010	Screw for foot pad	4.5	4		15	YW61103000100	Inter hex column head screw M10x30	12.9	4	
36	-	Foot pad sleeve	Q235A	4		14	-	Air spring fixed base	SPH8.0	1	
35	-	Hex spanner fixed plate	SPCC2.0	1		13	-	Feed box base frame	Assembly	1	standard
34	YW610510002000	Cross recessed pan head screw M5x10		4		12	-	Feed box base frame	SPH4.0	1	
33	YW610880000000	Inter hex column head screw M8x80		2		11	YW010200000000	Pneumatic spring #12/#28 2000N	Assembly	1	
32	BH12360600310	Screen bracket support pipe	H62	2		10	BH10361800210	Buffer washer 2	Q235A	1	
31	YW660819000000	Flat washer 8x19x2.0-Longline	14.0HV	2		9	-	Adjustable assembly	Assembly	1	
30	YW650080001000	Spring washer 8	65Mn	2		8	BH10361700110	Buffer washer 1	Q235A	1	
29	YW610825012000	Inter hex column head screw M8x25	12.9	2		7	BH10361600010	Buffer set sleeve	Q235A	2	
28	-	Air spring fixed base	SPH8.0	1		6	-	Main body plate	Assembly	1	
27	YW011800000000	Air spring #12/#28 1800N	Assembly	1		5	YW64.0121000000	Hex nut M12	8	8	
26	-	Cover parts	Assembly	1		4	YW661224.000000	Flat washer 12	14.0HV	16	
25	-	Safety switch cover	SPCC15	1		3	YW650120000000	Spring washer 12	65Mn	8	
24	-	Safety switch wire slot	SPCC15	1		2	YW601260000000	Hex bolt M12x40	8.8	8	
23	-	Auto conveying assembly	Assembly	1		1	-	Rack assembly	Assembly	1	
22	YR10011000100	Triple component sealed strip 1000x1000	Rubber	8M							

制图	版号	标题	SG-3675	图号		比例	数量
设计	核准	总称				材料	
校对		SHINI 信易电热机械股份有限公司 Shini Plastics Technologies, Inc.		表面要求			
审核	日期			物料号			



13	YW6116500000	Inner hex column head screw GB/T7011M6-SP-12.9		4	
12	BW302517014.10	Small sleeve SG-36-2517-48 (Black phosphating)	QT500-7	1	
11	BW301804.00710	Small pulley SG-36-SF88-4-201 (Black phosphating)	HT250	1	
10	YR00059000000	V-belt (5V Xx900)		4	
9	YM102030004.00	Motor W20 3KW-200L-4P B31 E3 400/6N/460		1	
8	YW66164.0000000	Washer 16x40x5-Lorgine		10	
7	YW65016.0000000	Spring washer 16	65Mn	8	
6	YW66163.0000000	Flat washer A grade GB/T96 1415x4x3	14.0HV	4	
5	YW611675.0000000	Inner hex column head screw GB/T7011M6-70-9.9-Lorgine		4	
4	-	Motor mount base	SPH10.0	1	
3	YW64.0016.0000000	Hex nut GB/T6170 M6-Lorgine	8	6	
2	YW61166.0000000	Inner hex column head screw GB/T7011M6-12.9-Lorgine		2	
1	YW611610.0000000	Inner hex column head screw GB/T7011M6-12.9-Lorgine		2	
序号	代号	名称	材质	数量	备注

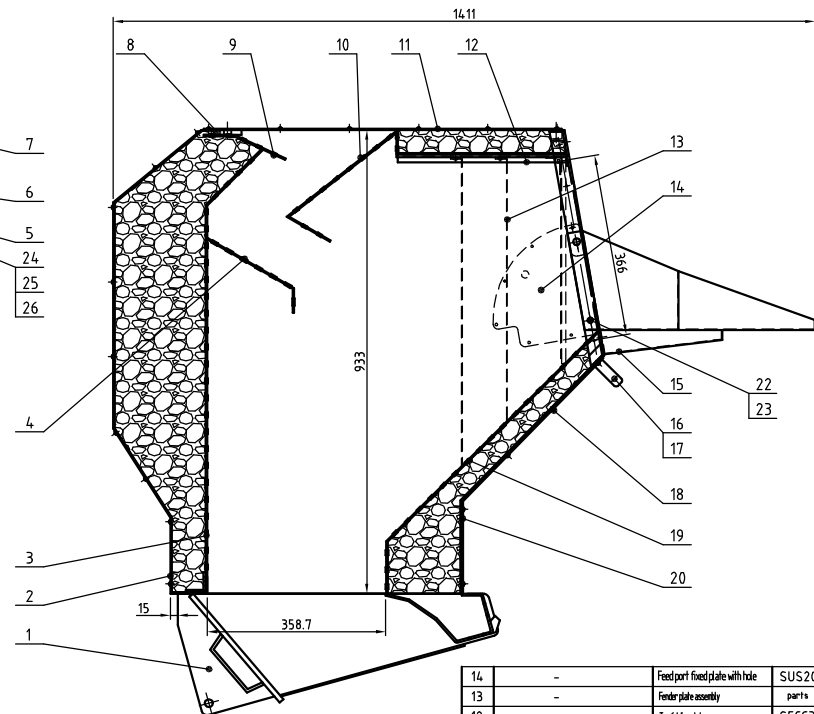
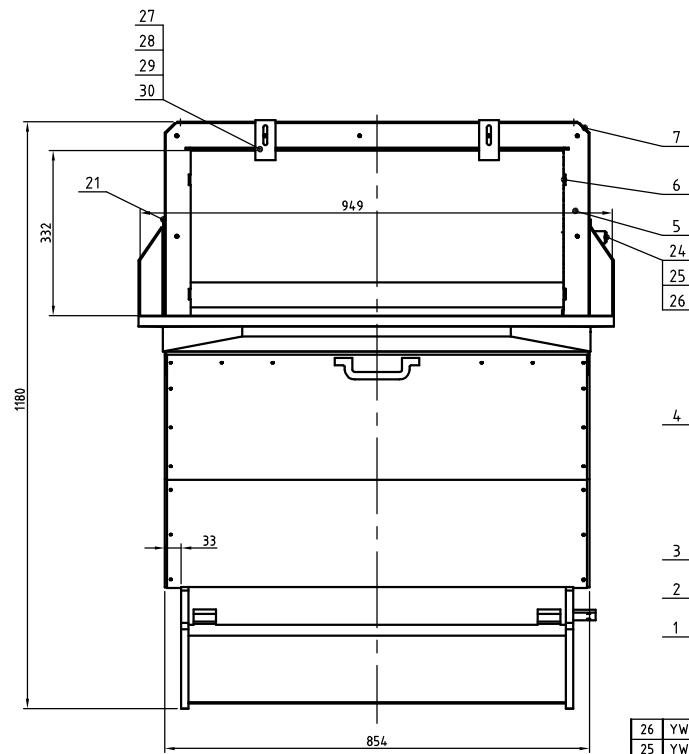
				制图	版号	标题	SG-3675	图号	比例	数量
				设计	核	主传动装置			表面要求	材质
				校对	准					
标记	更改前	更改后	更改人	日期	审核	日期	信易电热机械股份有限公司 Shini Plastics Technologies, Inc.		物料号	



70	YW61061601200	Inner hex column lead screw M16x16	6
69	YW66061800000	Large washer A grade 68/7M14-Longpin	6
68	BW300036004.10	Left bearing base lower body	QT500-7 1
67	BW300036002.10	Left bearing base upper body	QT500-7 1
66	YW61062500000	Inner hex column lead screw M6x25	4
65	BH10367505610	Fixed piece right connecting block	Q235A 2
64	YW61081600000	Inner hex column lead screw M16x16	8

63	BH10367505510	Fixed right connecting block	Q235A	2	31	BH11367517010	Screen bracket shell	Q235A	1
62	YW66081900000	Flat washer 8x19x2-Longpin	14.0HV	18	30	YW11221500000	Bearing 22215EAE4		2
61	YW65008000100	Standard spring washer 68/175 8-Longpin	65Mn	18	29	BH13360100010	Bearing thrust ring	ZL101	2
60	YW61082501200	Inner hex column lead screw M16x25		18	28	BH10364500210	Sleeve	45	2
59	-	Water tank pressing plate	SPH6.0	2	27	BH10189500010	Flat washer C 20-12-95	45	2
58	-	Water tank washer	rubber	1	26	YR80215000000	Oil seal TSN215G		4
57	-	Water tank	assembly welding	1	25	BW300036064.10	Large taper sleeve 36-36-36-36-assembly	QT500-7	1
56	YW61081600000	Inner hex column lead screw M16x16		2	24	BW305004.00710	Large taper sleeve 36-36-36-36-assembly	HT250	1
55	-	Safety shaft fixed plate	SPH6.0	1	23	BW30367514.010	Rear case block	QT500-7	1
54	YW61051200100	Inner hex column lead screw M16x12		4	22	BH10367513010	Rear case block	Q235A	1
53	BW30364502710	Side plate ring	QT500-7	2	21	BH11367512010	Blade reel shaft	Assembly	1
52	BH10369006710	Block pin	Q235A	2	20	BH11367511010	Blending blade pressing plate	Q235A	6
51	BL55369001421	Metal lead pin	Q235A	1	19	YW64080600000	Hex nut GB/T6170 M16-Longpin	8	12
50	YW61165000000	Inner hex column lead screw M16x50		16	18	YW60082000200	Hex nut GB/T6170 M16-Longpin		12
49	YW09105000000	Column pin M16x50GB/T719 16-30-steel		8	17	BW42367510010	Blending blade	SKD11	6
48	YW65016000000	Spring washer II	65Mn	4	16	YW65016000000	Standard washer II	65Mn	24
47	YW61167500000	Inner hex column lead screw M16x75		4	15	YW61165000000	Inner hex column lead screw 68/175 M16x75-Longpin		18
46	BL55364504020	Bearing base washer	SPH10.0	4	14	BW42367509010	Fixed blade	SKD11	4
45	BH10169200010	Fixed base connecting pin	45	2	13	YW61165000000	Inner hex column lead screw 68/175 M16x70		12
44	YW09105000000	Column pin M16x50GB/T719 16-30-steel	45	4	12	BH10367508110	Fixed pressing block	Q235A	1
43	BH11367512710	Right bearing base lower body	QT500-7	1	11	BH10362500010	Feedbox hook	Q235A	2
42	-	Electric positioning pin 5x16	65Mn	4	10	YW64000600300	Hex nut GB/T6170 M6-Longpin	8	8
41	BH11367512610	Right bearing base upper body	QT500-7	1	9	YW60062000100	Hex nut M6-20		8
40	YW65014200000	Standard spring washer 68/175 14-Longpin	65Mn	4	8	YW68082000000	Inner hex full end set screw M16x20		8
39	YW61147000000	Inner hex column lead screw M16x70		4	7	BH10362600010	Square block	Q235A	5
38	BW30036000010	Ty wheel sleeve	QT500-7	1	6	YW61167500000	Inner hex column lead screw M16x75		5
37	YW61260000000	Inner hex column lead screw M12x60		8	5	BH10364502510	Screen bracket assembly	Q235A	3
36	BW30003600110	Ty wheel	QT500-7	1	4	BW30367504.010	Front case block	QT500-7	1
35	BW30367502010	Lifting chamber right side plate	QT500-7	1	3	-	Sealing strip	rubber	2
34	YW61104500000	Inner hex column lead screw M10x45		10	2	BL55367502020	Screen	45	1
33	BL55364501021	Insert	50Mn	2	1	-	Screen bracket assembly	Q235A	1
32	BW30367518010	Lifting chamber left side plate	QT500-7	1					

制图	版号	标题	SG-3675	图号		比例	数量
设计	核准	料号	粉碎室总成			表面要求	材质
校对	核准	SHINI 信昌电热机械股份有限公司 Shini Plastics Technologies, Inc.		物料号			
标记	更改前						

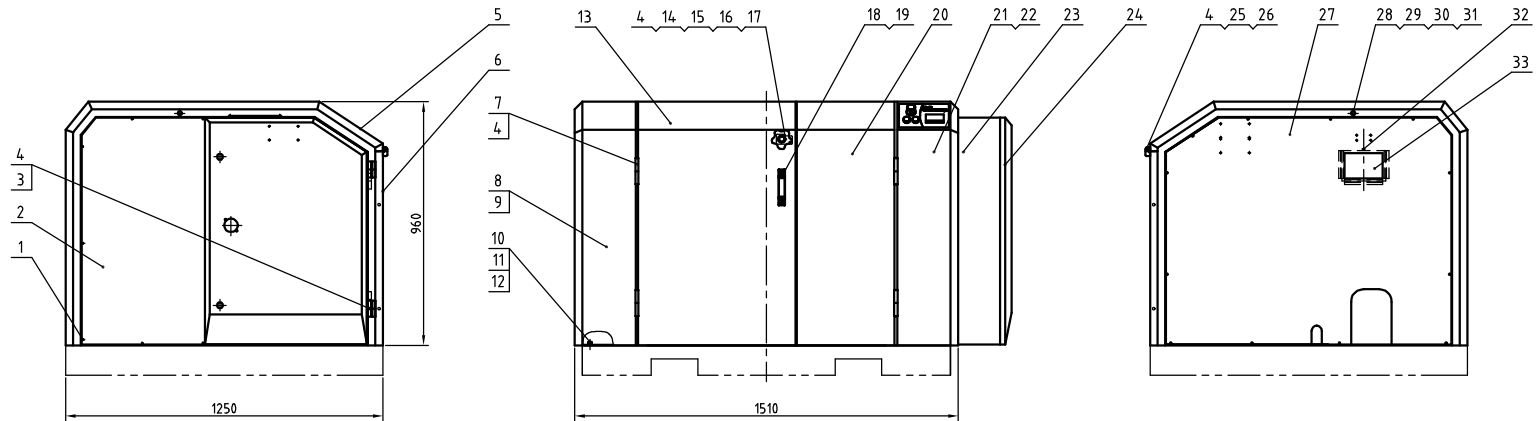


31	-	Nut plate connecting plate	SPH 5.0	1	
30	YW66061800000	Large washer A grade 68/196.14 Longzine		4	
29	YW65006000100	Standard spring washer 68/193.64 Longzine		2	
28	YW61062500000	Hex hex column head screw 17/17.11625-A2-70MS		2	
27	-	Fender plate fixed piece	SPCC3.0	2	

26	YW61084000000	Hex hex column head screw M8x4.0		1	
25	YW01101000000	Standard nut	0.04mm		
24	YW30003600100	Knob handle 56-36		1	
23	YW66081900000	Flat washer 8x19x2.0 Longzine		2	
22	YW61083500000	Hex hex column head screw M8x35		2	
21	-	Feed port fixed plate without hole	SUS201	1	
20	-	Feed port cover front plate	SPCC2.0	1	
19	-	Feed port front inner plate	SECC3.0	1	
18	YW67481900000	Hex hex column head screw 17/17.11625-A2-70MS		54	
17	YW61082501200	Hex hex column head screw M8x25	12.9	2	
16	BW2001200014.0	Handle		1	
15	-	Feed port	SPCC2.0	1	

14	-	Feed port fixed plate with hole	SUS201	1	
13	-	Fender plate assembly parts		1	
12	-	Top folding plate	SECC3.0	1	
11	-	Top cover plate	SPCC2.0	1	
10	-	Top middle folding plate	SECC3.0	1	
9	-	Rear upper folding plate	SECC3.0	1	
8	-	Nut plate	SPH10.0	1	
7	-	Cover plate left & right side plate	SPCC2.0	2	
6	-	Feed box left & right side plate	SECC3.0	2	
5	-	Hopper part	SPH4.0	1	
4	-	Rear middle folding plate	SECC3.0	1	
3	-	Feed box rear inner plate	SECC3.0	1	
2	-	Feed box rear cover rear plate	SPCC2.0	1	
1	-	Feed box rear base	assembly	1	

标记	更改前	更改后	更改人	日期	制图	版号	SG-3675	图号	比例	数量
					设计	核准	进料箱总成		1:1	1
					校对				材质	
					审核				表面要求	
							SHINI 信易电热机械股份有限公司		物料号	
							Shini Plastics Technologies, Inc.			

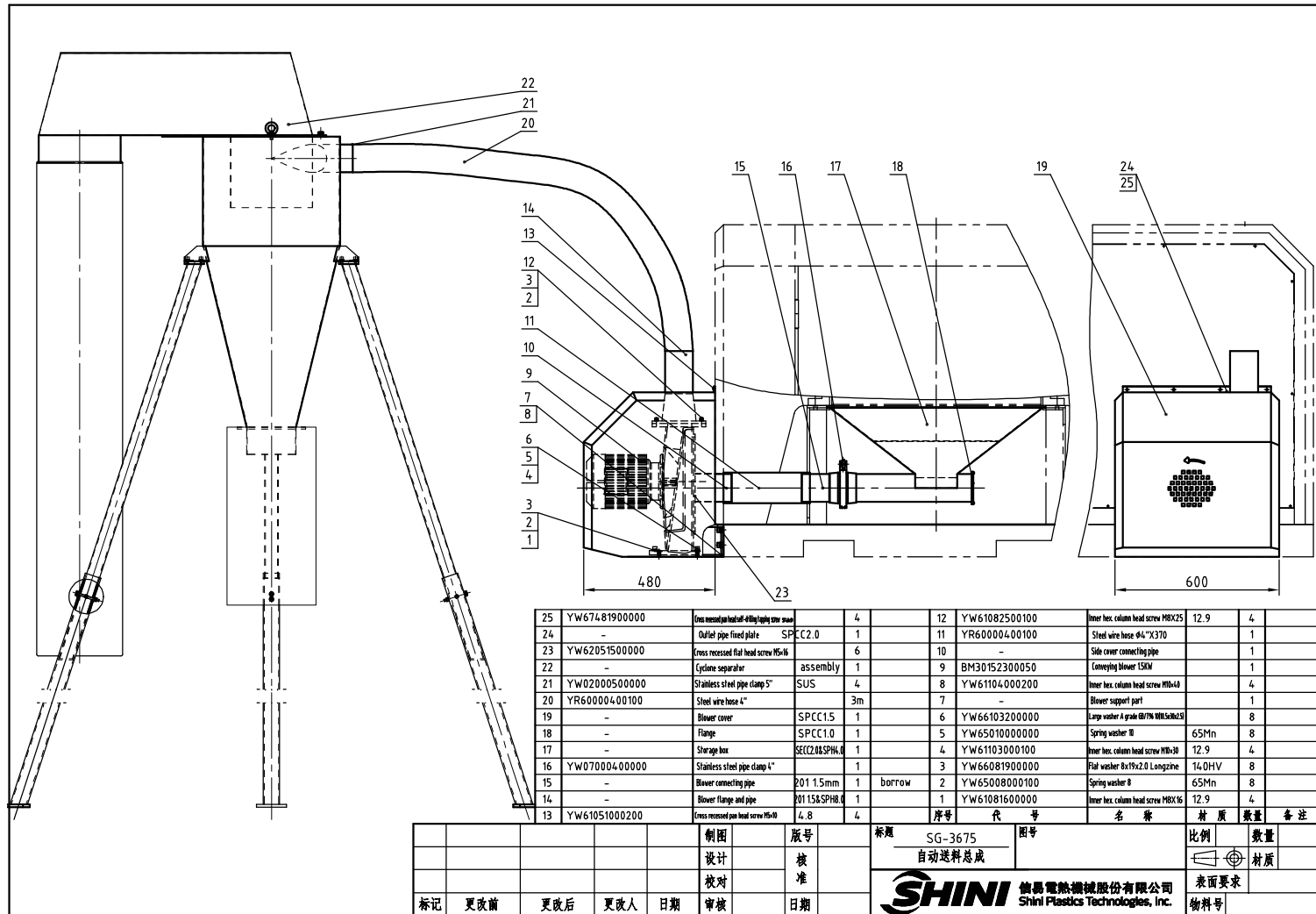


20	-	Right door	SPCC2.0	1	
19	BW20012000140	Handle		1	
18	YW61081600000	Inner hex. column head screw M8X16		2	
17	YW68005500000	Inner hex. flat head set screw Ø177/M6		1	
16	-	Star screw limit plate	SPCC3.0	1	
15	YW09001200500	Star handle (M2)		1	
14	BH12360600310	Star handle screw	45	1	
13	-	Left door	SPCC2.0	1	
12	YW66061800000	Large washer A grade GB/T1614 Longline	14.0HV	20	
11	YW65006000100	Spring washer 6	65Mn	10	
10	YW61061600200	Large cross recessed pan head screw M5X25	12.9	10	
9	-	Left cover screen plate	SPCC2.0	1	
8	-	Left cover	SPCC2.0	1	
7	YW06000400000	Stainless steel hinge 4"		4	
6	-	Rear lower cover plate	SPCC2.0	1	
5	-	Rear upper cover plate	SPCC2.0	1	
4	YW61051000200	Cross recessed pan head screw M5x10		58	
3	YW06203100200	Large chain L CL203-1 (right)		4	
2	-	Control box bottom plate	SPCC2.0	1	
1	YW62052500000			21	

33	BR90367504310	Sight plate	Acrylic	1	
32	YW67481900000	Cross recessed pan head screw M5x10		1	
31	BH10360100010	Oil pipe nut	H62	2	
30	BH12361000010	3/8 copper pipe ext. connector	H62	2	
29	BH12361000010	3/8 copper pipe inner connector	H62	2	
28	BH12360900010	Oil pipe	2 copper pipe	2	
27	-	Left side plate cover	SPCC2.0	1	
26	YW63050800000	Cross recessed pan head screw GB/T 6170 M4x6		4	
25	YW06219100000	Large hinge CL219-1		2	
24	-	Control box door plank	SPCC2.0	1	
23	-	Electrical fixed plate	SECC15	1	
22	-	Right side cover plate	SPCC2.0	1	
21	-	Right cover plate	SPCC2.0	1	

制图	版号	标题	图号	比例	数量	
设计	核准	SG-3675		1:1		
校对	核准	护罩部件		材料		
表面要求						
物料号						
标记	更改前	更改后	更改人	日期	审核	日期

SHINI 信昂电热机械股份有限公司
Shini Plastics Technologies, Inc.



25	YW67481900000	Cross recessed pan head screw M5x10		4		12	YW61082500100	Inner hex. column head screw M8X25	12.9	4	
24	-	Outlet pipe fixed plate	SPCC2.0	1		11	YR60000400100	Steel wire hose Φ4"X370		1	
23	YW62051500000	Cross recessed flat head screw M5x16		6		10	-	Site cover connecting pipe		1	
22	-	Cyclone separator	assembly	1		9	BM30152300050	Connecting blower 15EM		1	
21	YW02000500000	Stainless steel pipe clamp 5"	SUS	4		8	YW61104000200	Inner hex. column head screw M8x40		4	
20	YR60000400100	Steel wire hose 4"		3m		7	-	Blower support part		1	
19	-	Blower cover	SPCC1.5	1		6	YW66103200000	Loop washer A grade 18/19/20/21/22		8	
18	-	Flange	SPCC1.0	1		5	YW65010000000	Spring washer 10	65Mn	8	
17	-	Storage box	SEC248SPHL0	1		4	YW61103000100	Inner hex. column head screw M8x10	12.9	4	
16	YW07000400000	Stainless steel pipe clamp 4"		1		3	YW66081900000	Flat washer 8x19x2.0 Longzhe	14DHV	8	
15	-	Blower connecting pipe	201 1.5mm	1	borrow	2	YW65008000100	Spring washer 8	65Mn	8	
14	-	Blower flange and pipe	201 15&SPH8.0	1		1	YW61081600000	Inner hex. column head screw M8X16	12.9	4	
13	YW61051000200	Cross recessed pan head screw M5x10	4.8	4							

标记	更改前	更改后	更改人	日期	制图	版号	标题	图号	比例	数量	备注
							SG-3675				
							自动送料总成				
							信易电热机械股份有限公司 Shini Plastics Technologies, Inc.				
								表面要求			
											物料号

Blower connecting pipe