

Pump Max. Pressure (bar)	Max. pump Flow(L/min)	Pump Power(kW)	Heater(kW)	Max. Temp	Weight(kg)	Ver.
4.2	25.5	0.55	6	200°C	65	G

Inlet /Outlet Size CE PT female thread (inch)	Cooling Method	Main/Sub Oil Tank(L)	Heating Tank Number
2/2	Indirect Cooling	6/3.2	1

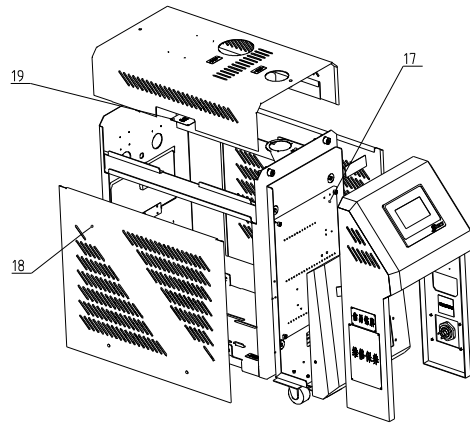
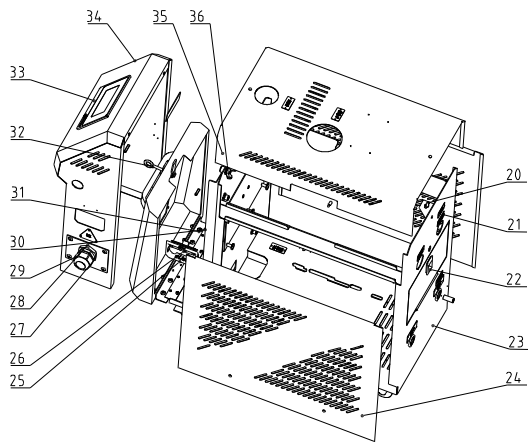
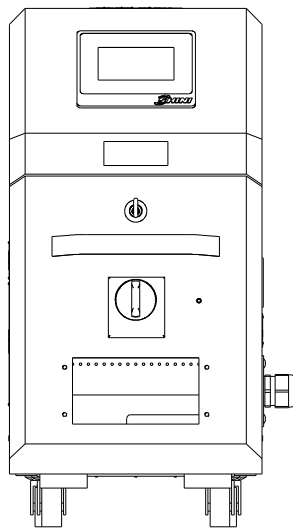
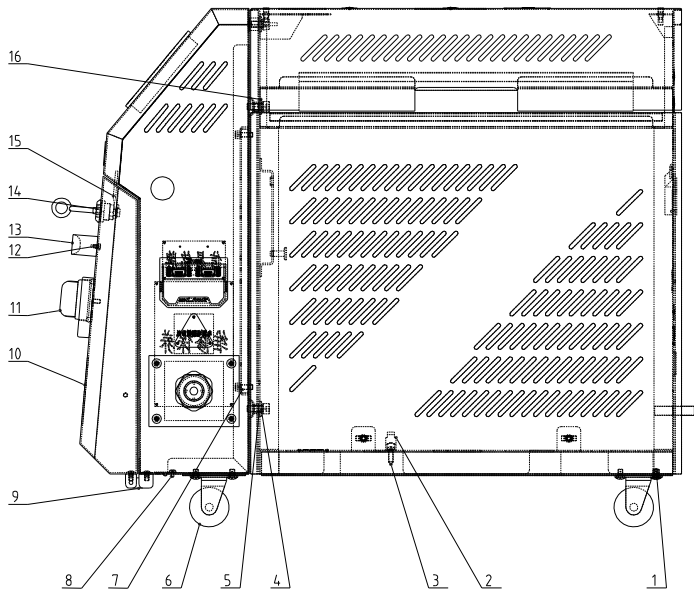
Tech. Req.:

1. Remove burrs, and blunt edges,
2. Unmarked dimensional tolerances shall comply with the standard of GB/T1804-m.

3	YW90002300000	oil cap		1	Assembly
2	STM-607M-B-ALL	Internal structure		1	
1	STM-607M-A-ALL	Shell metal plate		1	
序号	代号	名称	材料	数量	备注

					制图	版号	0	标题	STM-607M	图号	STM-607M-ALL	比例	数量
					设计	核准			油式模温机			⌀	材质
					校对							表面要求	
标记	更改前	更改后	更改人	日期	审核	日期						物料号	





36	YW69081500000	Butterfly bolt M8x15	Q235A	2	GB/T 3098
35	STM-607-A-06	Cover plate		1	Welding parts Borrowed
34	STM-607-A-05	Control box		1	Welding parts Borrowed
33	YE81245100100	STM controller		1	
32	YW00040600200	Long door lock key	SUS201	1	CF-406-DH
31	YW62051000100	Large cross socket flat head screw M5x10	Q235A	12	JIS1111
30	STM-607-A-08	Control box rear plate		1	Welding parts Borrowed
29	SG-S-01	Fixing board of wire clamps	SPCC2 0	1	
28	BE51250400450	Cable		1	2.5*4*4(MITubular terminal)Select based on voltage
27	YE67002900000	Cable clamp	PVC	1	
26	YE90048501200	RS485 Communication interface board		1	
25	YR40048500000	Shell RS485		1	
24	STM-607-A-02	Left side plate		1	Welding parts Borrowed
23	STM-607-A-13	Rack		1	Welding parts Borrowed
22	YR40523040000	Plastic flexible buckle	PVC	1	52*30 has mould
21	YW69020500000	Rivet	2024	33	GB/T 827
20	YW01051000000	Pin spring	65Mn	6	for new STM
19	YP31186006000	Alu label	2024	1	Using Shell Heat Medium Oil S2 For domestic sales
18	STM-607-A-01	Right side plate		1	Welding parts Borrowed
17	STM-607-A-10	Base plate of control box	Electrolysis plank	1	Borrowed
16	YW66081900000	Flat washer 8	Q235A	6	8x19x2 0
15	YW00040600000	Door lock long fender	SUS201	1	MF-406-DH
14	YW00000000100	Long door lock	PVC	1	
13	YW20660900100	Door plank aluminum handle	2024	1	6609(yaxuan)
12	YW63040600000	Cross recessed pan head screw M4x6	Q235A	2	GB/T-823
11	YE10021160000	Main power switch	PVC	1	TO-2-1/EA/SVB/16A Mule
10	STM-607-A-04	Door plank		1	Welding parts Borrowed
9	YW06219100000	Big hinge	2024	2	Shengju CL219-1
8	YW67040600600	Cross socket pan head self-tapping lock screw M4x6	Q235A	5	GB6560
7	YW61061601200	Inner hexagon cylindrical screw M6x16	12 9	4	GB/T70.1
6	YW03000200000	Castor	Rubber	4	2" without brake 35KG
5	YW61082001200	Inner hexagon cylindrical screw M8x20	12 9	4	GB/T70.1
4	YW65008000100	Standard spring washer 8	65Mn	6	GB/T93
3	YW67481900000	Cross socket head tapping screw	Q235A	1	GB/T15856.1
2	YR40018500000	Fixed base	PVC	1	WQSD18.5B
1	YW62061000000	Large cross socket flat head screw M6x10	Q235A	16	JIS1111

Tech. Req:

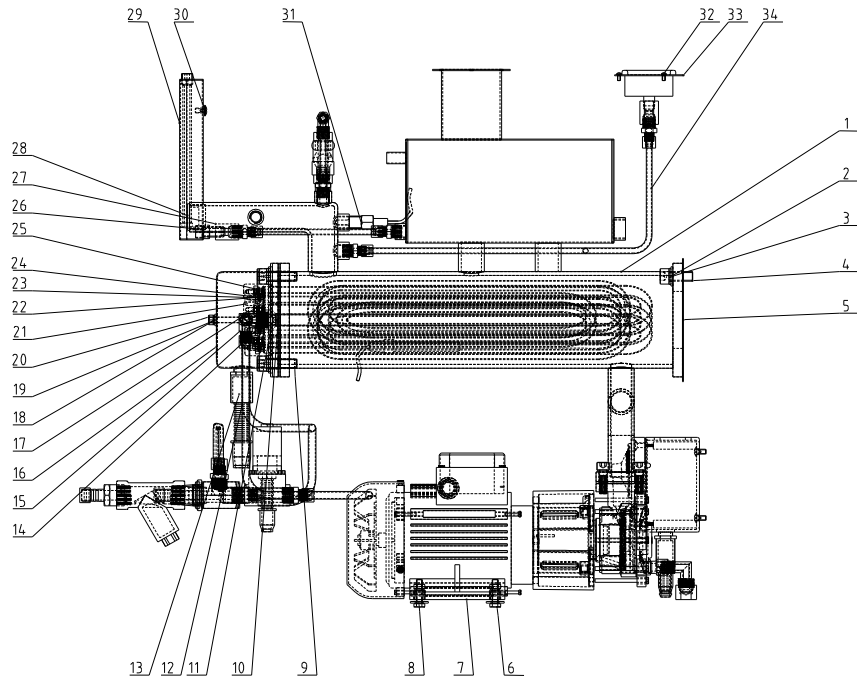
- 1 Remove burrs, and blunt edges.
- 2 Unmarked dimensional tolerances shall comply with the standard of GB/T1804-m.

序号	代号	名称	材料	数量	备注
		STM-607M			
		外壳钣金			STM-607M-A-ALL
					比例
					数量
					材质
					表面要求
					物料号

制图	设计	校对	审核	日期

版号	核准	日期

SHINI 信易電熱機械股份有限公司
Shini Plastics Technologies, Inc.

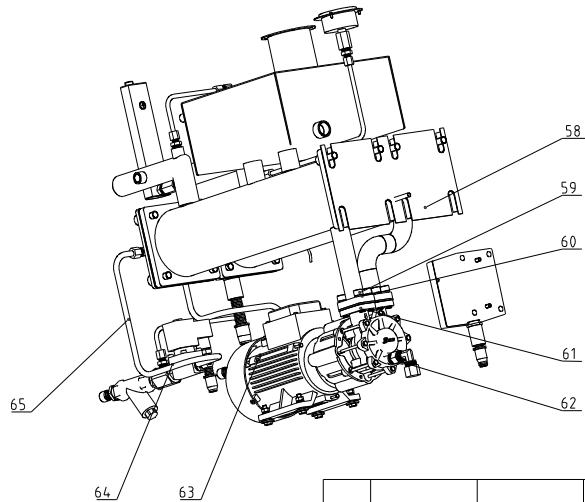
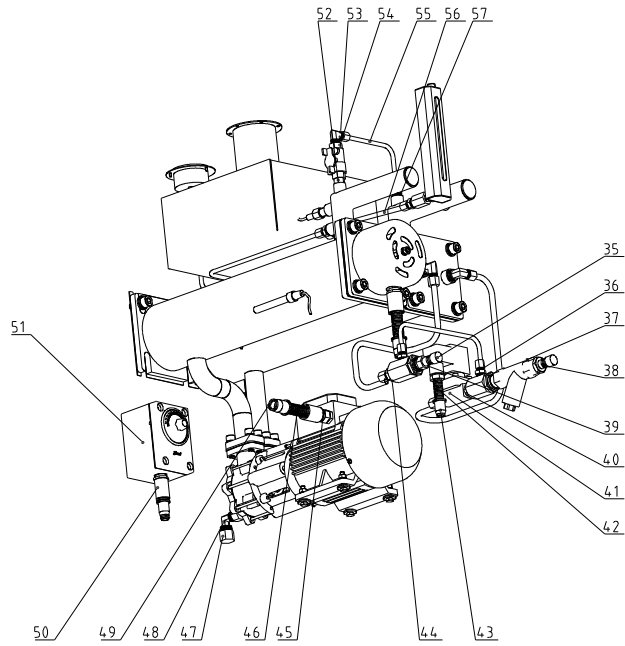


34	STM-607-B-05	Pressure gauge pipe	SUS304	1	
33	YW85001000100	Pressure gauge		1	0~10MPa Range
32	YW63030600000	Cross recessed pan head screw M3x6	Q235A	3	GB/T-B23
31	BE90341500050	Thermocouple	SUS304	1	1.5M
30	YW62051000100	Large cross socket flat head screw M5x10	Q235A	3	JIS1111
29	S-60-ALL	Level detector assembly		1	Assembly
28	YR40251500100	Plastic plug without nut	PVC	2	SM25x15I(Black)
27	S-199	H to PT connector	H58	2	1/4"PT to 1/4"H
26	S-82	Liquid level indicator nut	H62	1	1/4"H
25	YW64000400500	Hex nut M4	A2-70	12	GB/T6170
24	YW66051300000	Flat washer A grade 5	Q235A	16	GB/T97.1 (5.5x10x1)
23	YW65050000000	Standard spring washer 5	65Mn	6	GB/T93
22	YR30000400100	Plastic plug 1/2" single-hole red	PVC	6	
21	YP51031640000	Safety ceramic hat 3/16	ceramics	6	Safety ceramic hat 3/16
20	YW64000600300	Hex nut M6	Q235A	5	GB/T6170
19	YW66061300000	Flat washer A grade 6	Q235A	5	
18	YW65006000100	Standard spring washer 6	65Mn	5	GB/T93
17	YW66523400000	Copper Gasket	Q235A	2	SHD-100KG(5.2x34)
16	S-190	Heating tube cover	SPCC1.0	1	
15	YW05083800100	Sleeve connector		2	8MMX3/8"PT L(H59)
14	STM-607-B-04	Cooling pipe assembly		1	Welding parts Borrowed
13	YE67165800000	Quick connector of hose	PVC	1	WQG1-M16B/AD15.8
12	STM-607-B-12	Cooling pipe water outlet	SUS304	1	
11	STM-607-B-03	Heater pipe assembly		1	Welding parts Borrowed
10	YR20121200000	Flexible graphite gasket	ISO-68	2	120x120x2.0
9	YW61103000100	Inner hexagon cylindrical screw M10x30	12.9	8	GB/T70.1
8	YW66081900000	Flat washer 8	Q235A	4	8x19x2.0
7	MP-55	Magnetic pump	Q235A	1	Shini self-produced
6	YW60062500000	Hexagon bolt M6x25	4.8	4	GB/T5781
5	STM-607-B-09	Mounting plate insulation cotton of heating tank	Aluminium silicate	1	
4	YW61102500000	Inner hexagon cylindrical screw M10x25	12.9	4	GB/T70.1
3	YW66102000100	Flat washer A grade 10	Q235A	12	GB/T97.1 (11x20x2)
2	YW65010000000	Standard spring washer 10	65Mn	12	GB/T93
1	STM-607M-B-01	cooling hopper & Oil tank		1	Welding parts

Tech. Req:

1. Remove burrs, and blunt edges;
2. Unmarked dimensional tolerances shall comply with the standard of GB/T1804-m.

标记	更改前	更改后	更改人	日期	制图	版号	标题	图号	比例	数量
					设计	核准	STM-607M	STM-607M-B-ALL	1:1	1
					校对		内部结构			材质
					审核			信易电热机械股份有限公司 Shini Plastics Technologies, Inc.	表面要求	
					日期				物料号	

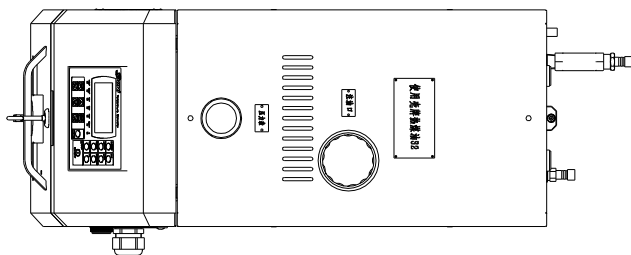
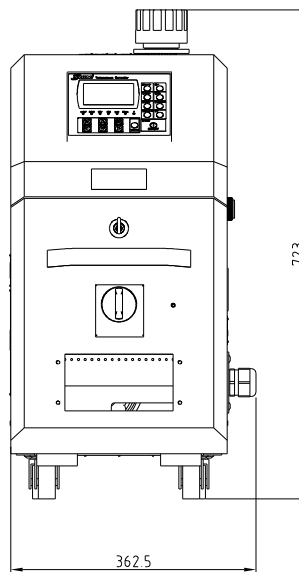
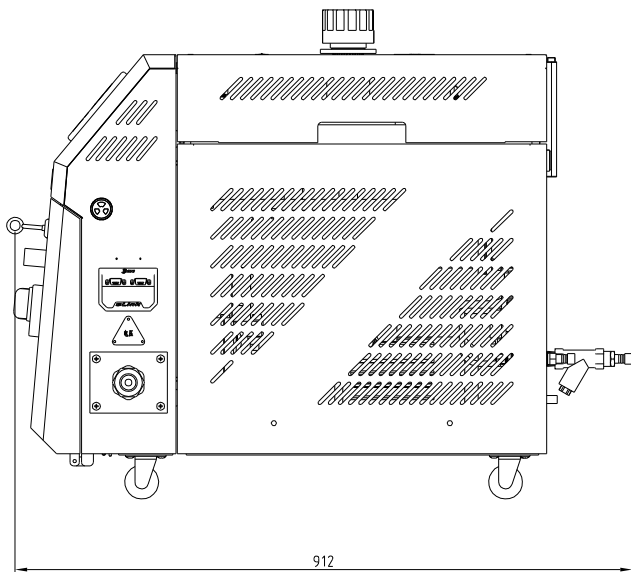


65	STM-607-B-11	Cooling pipe water inlet	SUS304	1	Borrowed
64	S-142	The four-set of the copper connector		1	
63	YW05083800000	Sleeve connector		2	8MMX3/8"PT (H59)
62	STM-907HT-B-17	Lengthened screw of oil discharge	H58	1	Borrowed
61	YR10551500000	Graphite gasket	ISO-68	2	for MP-55
60	YW65008000100	Standard spring washer 8	65Mn	8	GB/T93
59	YW61082500000	inner hexagon cylindrical screw M6x25	Q235A	8	GB/T70.1
58	STM-607M-B-02	Heating tank		1	Welding parts
57	YW05061400000	Sleeve connector		7	6MMX1/4"PT(H59)
56	STM-607-B-07	Level detector pipe	SUS304	1	
55	STM-607-B-06	Oil bypass pipe	SUS304	1	Borrowed
54	YW50220000000	Butterfly ball valve	SUS304	1	1/4" heat-resistant 200t
53	YW05061400100	Sleeve connector		1	6MMX1/4"PT L(H59)
52	S-08	Pipe coupler	H58	1	1/4"PT×1/4"PT
51	BH90115000050	High temp. tester		1	EGO
50	YE67109000000	Quick connector of hose	PVC	1	WQG1-P09B
49	YE67015800100	Quick connector of hose	PVC	2	WQAD15.8B
48	YW04030800400	Tonflon connector	H58	1	1/4"PT×3/8"HL
47	S-171	Teflon plug	H58	1	3/8" H plug
46	YE66015800000	Nylon hose	PA66	2	WY-PA6AD15.8B 13m
45	YE67111000000	Quick connector of hose	PVC	1	WQG1-P11B
44	S-84	Copper three-way pipe thread adapter 3/8"		1	Equipped with universal copper nut
43	YE67001340000	Quick connector of hose	PVC	2	WQAD13.0B
42	YE66001300000	Nylon hose	PA66	2	WY-PA6AD13.0B 15m
41	YE32213100000	Solenoid valve		1	3/8(kailing)220VAC
40	S-07	Copper pipe coupler	H58	1	3/8"PT×3/8"PT
39	S-85	Copper joint	H58	1	3/8"PT×dia.13
38	S-73	Copper joint	H62	1	M13×1/2"PT
37	YW57010200000	Y Type Strainer	H62	1	1/2"PT 30-35 mesh
36	STM-607-B-08	Water bypass	SUS304	1	Borrowed
35	YR30010200000	Copper pipe plug	Rubber	2	1/2"PT
序号	代号	名称	材料	数量	备注

Tech. Req.:

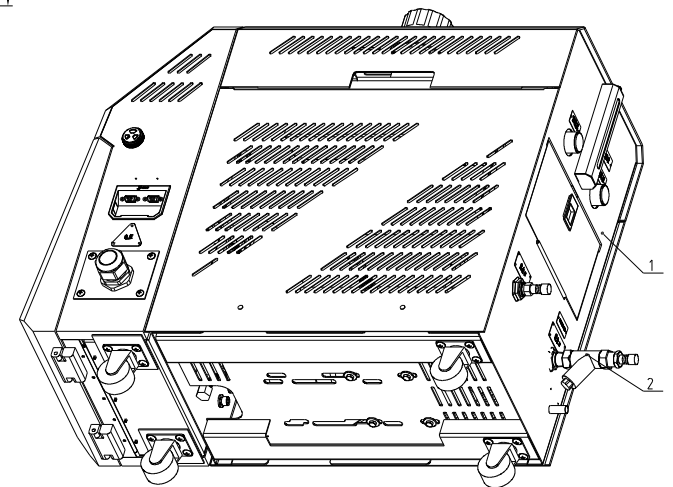
1. Remove burrs, and blunt edges;
2. Unmarked dimensional tolerances shall comply with the standard of GB/T1804-m.

					制图	版号	标题	图号	比例	数量
					设计	核准	内部结构	STM-607M-B-ALL		材质
					校对	日期		信易电热机械股份有限公司 Shini Plastics Technologies, Inc.	表面要求	
标记	更改前	更改后	更改人	日期	审核	日期			物料号	



Pump Max. Pressure (bar)	Max. pump Flow(L/min)	Pump Power(kW)	Heater(kW)	Max. Temp	Weight(kg)	Ver.
5.8	50	1	9	200°C	70	F

Inlet /Outlet Size CE PT female thread (inch)	Cooling Method	Main/Sub Oil Tank(L)	Heating Tank Number
2/2	Indirect Cooling	6/3.2	1



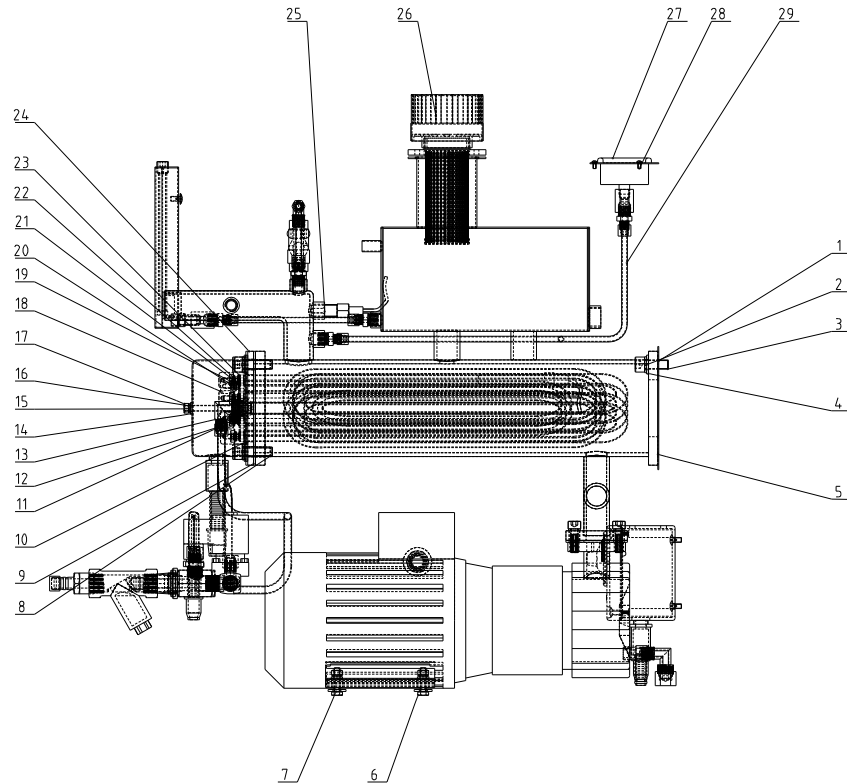
2	STM-910M-A-ALL	Internal structure		1	
1	STM-607M-A-ALL	Shell metal plate		1	
序号	代号	名称	材料	数量	备注

Tech. Req:

1. Remove burrs, and blunt edges;
2. Unmarked dimensional tolerances shall comply with the standard of GB/T1804-m.

					制图	版号
					设计	核准
					校对	
					审核	日期
标记	更改前	更改后	更改人	日期	审核	日期

标题	STM-910M	图号	STM-910M-ALL	比例	数量
	油式模温机				材质
	信易电热机械股份有限公司 Shini Plastics Technologies, Inc.			表面要求	
				物料号	

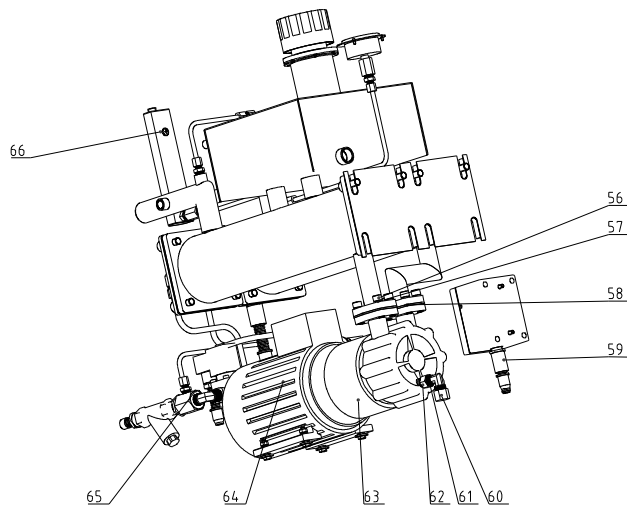
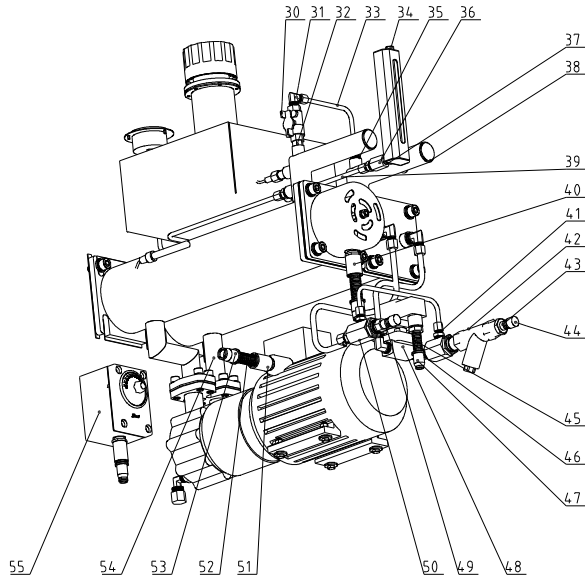


29	STM-607-B-05	Pressure gauge pipe	SUS304	1	
28	YW63030600000	Gross recessed pan head screw M3x6	Q235A	3	GB/T-823
27	YW85001000100	Pressure gauge		1	0-1.0MPa range
26	YW90002300000	Oil cap		1	Assembly
25	BE90341500050	Thermocouple	SUS304	1	15M
24	STM-607-B-04	Cooling pipe assembly		1	Welding parts Borrowed
23	YW66523400000	Copper Gasket	Q235A	2	SHD-100KG(5.2x34)
22	YW64000400500	Hex nut M4	A2-70	12	GB/T6170
21	YR30000400100	Plastic plug 1/2" single-hole red	PVC	6	
20	YW65050000000	Standard spring washer 5	65Mn	6	GB/T93
19	YW66051300000	Flat washer A grade 5	Q235A	16	GB/T97.1 (5.5x10x1)
18	YP51031640000	Safety ceramic hat 3/16	ceramics	6	Safety ceramic hat 3/16
17	YW64000600300	Hex nut M6	Q235A	5	GB/T6170
16	S-190	Heating tube cover	SPCC10	1	
15	YW65006000100	Standard spring washer 6	65Mn	5	GB/T93
14	YW66061300000	Flat washer A grade 6	Q235A	5	
13	YW05083800100	Sleeve connector		3	8MMX3/8"PT L(H59)
12	STM-607-B-12	Cooling pipe water outlet	SUS304	1	
11	STM-910M-A-03	Cooling pipe water outlet	SUS304	1	
10	STM-910-B-08	Heater pipe assembly		1	Welding parts
9	YR20121200000	Flexible graphite gasket	ISO-68	2	120x120x2.0
8	YW61103000100	Inner hexagon cylindrical screw M10x30	12.9	8	GB/T70.1
7	YW66081900000	Flat washer 8	Q235A	4	8x19x2.0
6	YW60062500000	Hexagon bolt M6x25	4.8	4	GB/T5781
5	STM-910M-A-02	Heating tank		1	Welding parts
4	YW66102000100	Flat washer A grade 10	Q235A	12	GB/T97.1 (11x20x2)
3	YW61102500000	Inner hexagon cylindrical screw M10x25	12.9	4	GB/T70.1
2	YW65010000000	Standard spring washer 10	65Mn	12	GB/T93
1	STM-607-B-09	Mounting plate insulation cotton of heating tank	aluminium silicate	1	

Tech. Req:

1. Remove burrs, and blunt edges;
2. Unmarked dimensional tolerances shall comply with the standard of GB/T1804-m.

制图	版号	标题	STM-910M	图号	STM-910M-A-ALL	比例	数量
设计	核准	内部结构					材质
校对			信易电热机械股份有限公司			表面要求	
标记	更改前	更改后	更改人	日期	审核	日期	物料号



66	YW62051000100	Large cross socket flat head screw M5x10	Q235A	3	JIS1111
65	S-142	The four-set of the copper connector		1	
64	YW05083800000	Sleeve connector		1	8MMX3/8"PT (H59)
63	MP-100	magnetic drive pump MP-100	QT400	1	1KW anbo
62	STM-907HT-B-17	Lengthened screw of oil discharge	H58	1	Borrowed
61	YW04030800400	Tonflon connector	H58	1	1/4"PTx3/8"H L
60	S-171	Teflon plug	H58	1	3/8" H plug
59	YE67109000000	Quick connector of hose	PVC	1	WQG1-P09B
58	YR10110000000	MP-100Graphite gasket	ISO-68	2	has mould
57	YW65008000100	Standard spring washer 8	65Mn	8	GB/T193
56	YW61082500000	Inner hexagon cylindrical screw M8x25	Q235A	8	GB/T70.1
55	BH90115000050	High temp. tester		1	EGO
54	STM-910M-A-01	cooling hopper & Oil tank		1	Welding parts
53	YE67015800100	Quick connector of hose	PVC	2	WQEAD15.8B
52	YE66015800000	Nylon hose	PA66	2	WY-PA6AD15.8B 1.3m
51	YE67111000000	Quick connector of hose	PVC	1	WQG1-P11B
50	S-84	copper three-way pipe thread adapter 3/8"		1	Equipped with universal copper nut
49	S-85	Copper joint	H58	1	3/8"PTxdia 13
48	YE32382400000	Solenoid valve 24V		1	3/8PT (kailing)
47	YE67001340000	Quick connector of hose	PVC	2	WQEAD13.0B
46	YW59383800100	Pipe coupler	SUS304	1	3/8"PTx3/8"PT L
45	YE66001300000	Nylon hose	PA66	2	WY-PA6AD13.0B 1.5m
44	YR30010200000	Copper pipe plug	Rubber	2	1/2"PT
43	S-73	Copper joint	H62	1	M13x1/2"PT
42	YW57010200000	Y Type Strainer	H62	1	1/2" PT 30-35 mesh
41	STM-607-B-08	Water bypass	SUS304	1	Borrowed
40	YE67165800000	Quick connector of hose	PVC	1	WQG1-M16B/AD15.8
39	STM-607-B-07	Level detector pipe	SUS304	1	
38	YR40251500100	Plastic plug without nut	PVC	2	SM25x15(Black)
37	S-82	Liquid level indicator nut	H62	1	1/4"H
36	S-199	H to PT connector	H58	2	1/4"PT to 1/4"H
35	YW05061400000	Sleeve connector		7	6MMX1/4"PT(H59)
34	S-60-ALL	Level detector assembly		1	Assembly
33	STM-607-B-06	Oil bypass pipe	SUS304	1	Borrowed
32	S-08	Pipe coupler	H58	1	1/4"PTx1/4"PT
31	YW05061400100	Sleeve connector		1	6MMX1/4"PT L(H59)
30	YW50220000000	Butterfly ball valve	SUS304	1	1/4" heat-resistant 200℃

Tech. Req.:

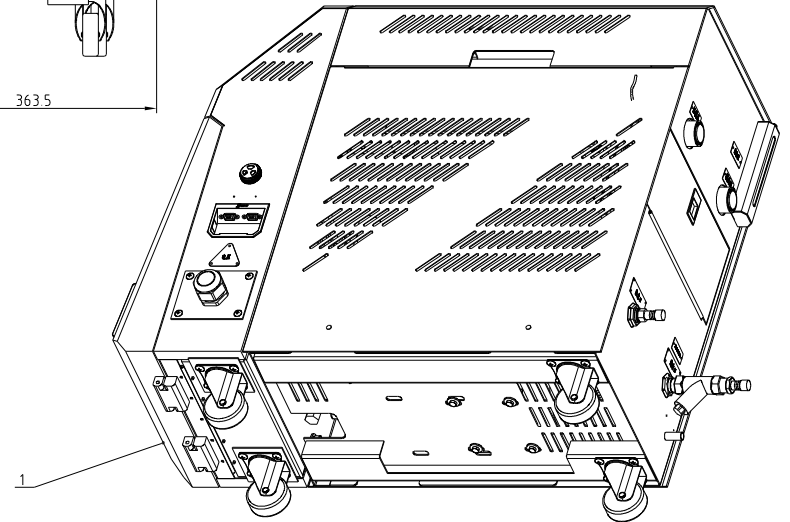
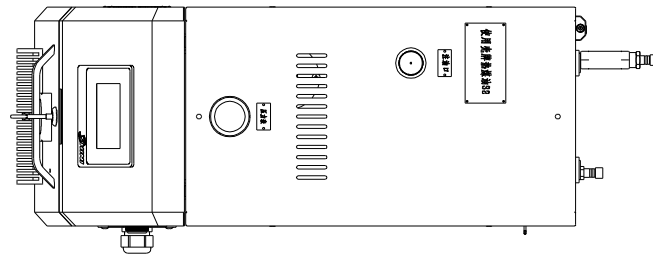
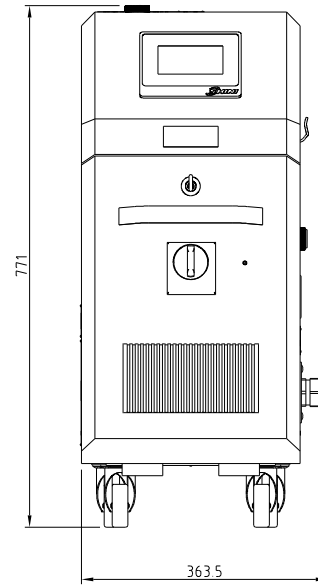
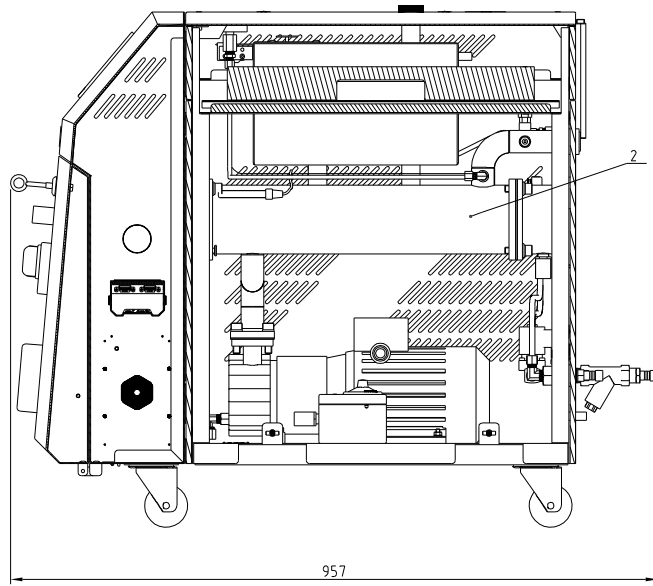
1. Remove burrs, and blunt edges;
2. Unmarked dimensional tolerances shall comply with the standard of GB/T1804-m.

制图	版号	标题	图号	比例	数量
设计	核准	STM-910M	STM-910M-A-ALL	1:1	1
校对	日期	内部结构		表面要求	物料号
标记	更改前	更改后	更改人	日期	审核



Pump Max. Pressure (bar)	Max. pump Flow(L./min)	Pump Power(kW)	Heater(kW)	Max. Temp.	Weight(kg)	Ver.
5.8	50	1	12	200°C	100	F

Inlet /Outlet Size (EE PT Female thread Inch)	Cooling Method	Main/Sub Oil Tank(L)	Heating Tank Number
1/1	Indirect Cooling	6.8/11.8	1

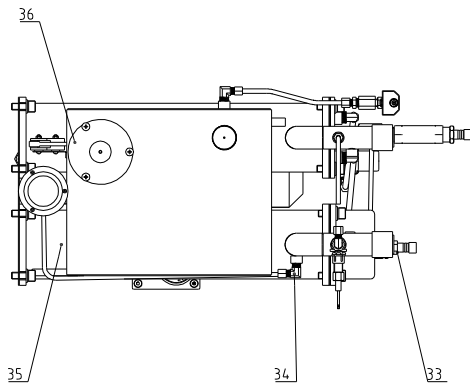
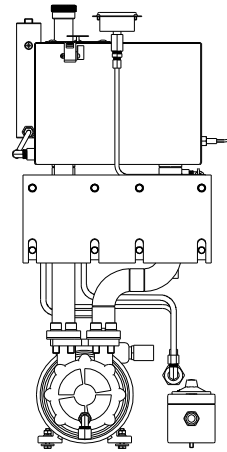
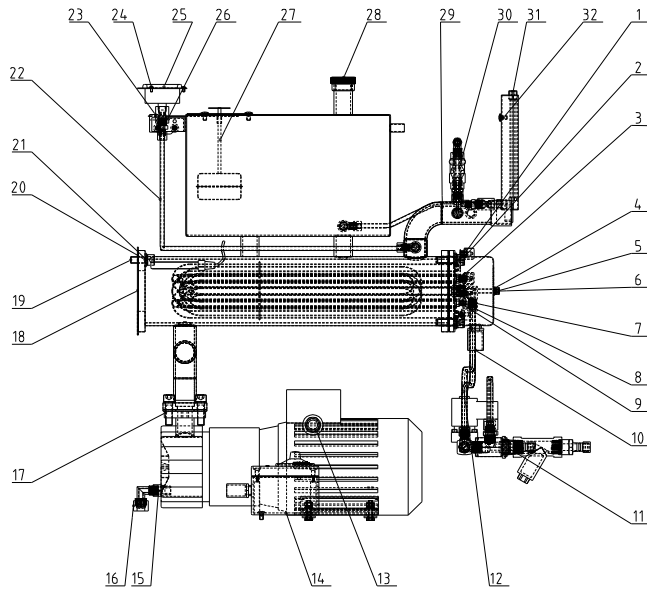


2	STM-1220M-B-ALL	Internal structure		1	
1	STM-1220-A-ALL	Shell metal plate		1	
序号	代号	名称	材料	数量	备注

Tech. Req.:

1. Remove burrs, and blunt edges;
2. Unmarked dimensional tolerances shall comply with the standard of GB/T1804-m.

					制图	版号	标题	STM-1220M	图号	STM-1220M-ALL	比例	数量
					设计	核准	油式模温机				⌀	材质
					校对		信易电热机械股份有限公司 Shini Plastics Technologies, Inc.				表面要求	
标记	更改前	更改后	更改人	日期	审核	日期						物料号



36	YE141524.00000	Micro switch		1	LXW5-1124 rod length: 100mm
35	STM-1220M-B-02	Heating tank		1	Welding parts
34	YW050614.00100	Sleeve connector		3	6MMX1/4"PT L(H59)
33	S-85	Copper joint	H58	1	3/8"PT x dia. 13
32	YW62051000100	Large cross socket flat head screw M5x10	Q235A	6	JIS1111
31	S-60-ALL	Level detector assembly		1	Assembly
30	STM-1220-B-08	Hot Oil bypass	SUS304	1	
29	STM-1220M-B-01	cooling hopper & Oil tank		1	Welding parts
28	S-30	Aluminum oil cap	YL-112	1	3/4"G female thread
27	STM-1220-A-09	Ball		1	Welding parts
26	YW050614.00000	Sleeve connector		5	6MMX1/4"PT(H59)
25	YW85001000100	Pressure gauge		1	0-1.0MPa range
24	YW63030600000	Cross recessed pan head screw M3x6	Q235A	3	GB/T-823
23	BH12060701710	H to PT connector	H58	2	female thread 1/4"PT to 1/4" H
22	STM-1220-B-04	Pressure gauge pipe	SUS304	1	
21	YW65010000000	Standard spring washer 10	65Mn	20	GB/T93
20	YW66102000100	Flat washer A grade 10	Q235A	12	GB/T97.1 (11x20x2)
19	YW61102500000	Inner hexagon cylindrical screw M10x25	12 9	4	GB/T70 1
18	STM-1220-B-10	Mounting plate insulation cotton of heating tank	aluminum silicate	1	
17	YW61103500000	Inner hexagon cylindrical screw M10x35	12 9	8	GB/T70 1
16	S-171	Teflon plug	H58	1	3/8" H plug
15	YW04030800400	Tonflon connector	H58	1	1/4"PT x 3/8" H L
14	BH90115000050	EGO Overheat protector		1	EGO 50-300 °C
13	YE67111000000	Quick connector of hose	PVC	1	WQG1-P11B
12	STM-1220-B-09	Cooling pipe water outlet	SUS304	1	
11	S-84	Copper three-way pipe thread adapter 3/8"		1	Equipped with universal copper nut
10	YE67165800000	Quick connector of hose	PVC	1	WQG1-M16B/AD15 8
9	YW66051300000	Flat washer A grade 5	Q235A	16	GB/T97.1 (5.5x10x1)
8	YW65050000000	Standard spring washer 5	65Mn	6	GB/T93
7	YP5103164.00000	Safety ceramic hat 3/16	ceramics	6	Safety ceramic hat 3/16
6	YW66061300000	Flat washer A grade 6	Q235A	5	
5	YW64.000600300	Hex nut M6	Q235A	5	GB/T6170
4	YW65006000100	Standard spring washer 6	65Mn	5	GB/T93
3	YR300004.00100	Plastic plug 1/2" single-hole red	PVC	6	
2	YW61103000100	Inner hexagon cylindrical screw M10x30	12 9	8	GB/T70 1
1	YW665234.00000	Copper Gasket	Q235A	2	SHD-100KG(5 2x34)

序号	代号	名称	材料	数量	备注
		标题	STM-1220M	图号	STM-1220M-B-ALL
			内部结构		比例
					数量
					材质
					表面要求
					物料号

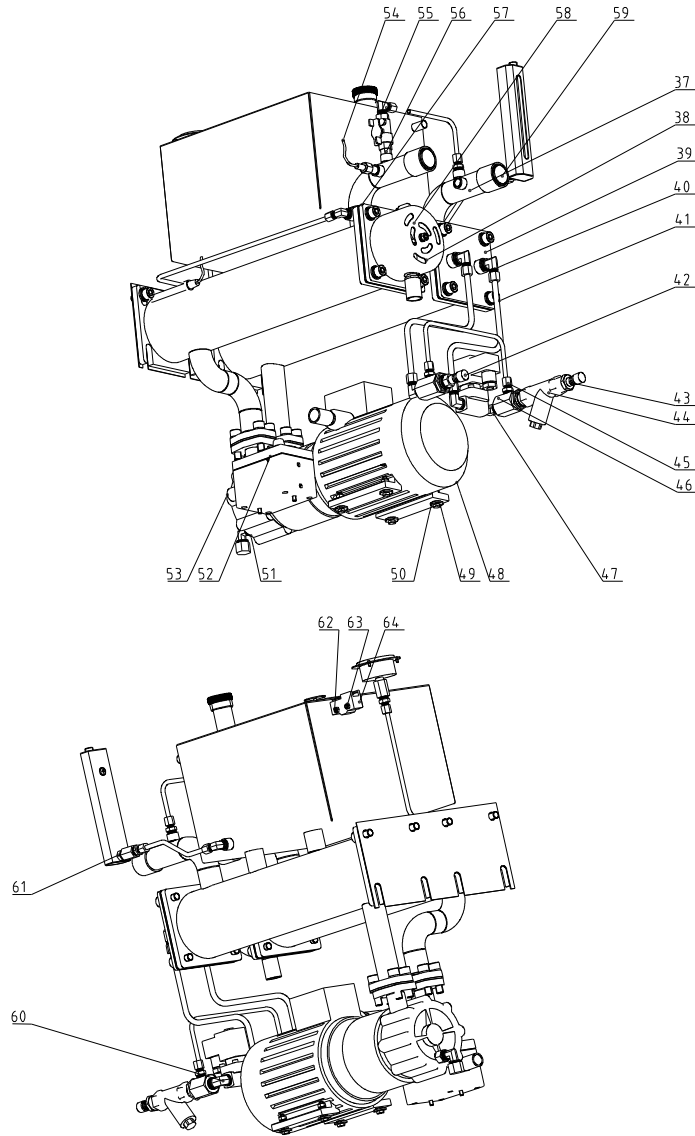
Tech. Req:

1. Remove burrs, and blunt edges;
2. Unmarked dimensional tolerances shall comply with the standard of GB/T1804-m.

制图	设计	校对	审核	制图日期	设计日期	校对日期	审核日期

版号	核准	日期



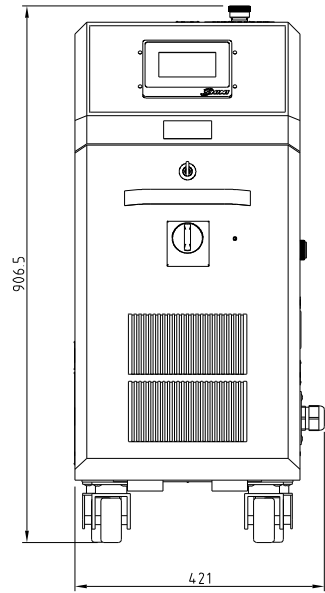
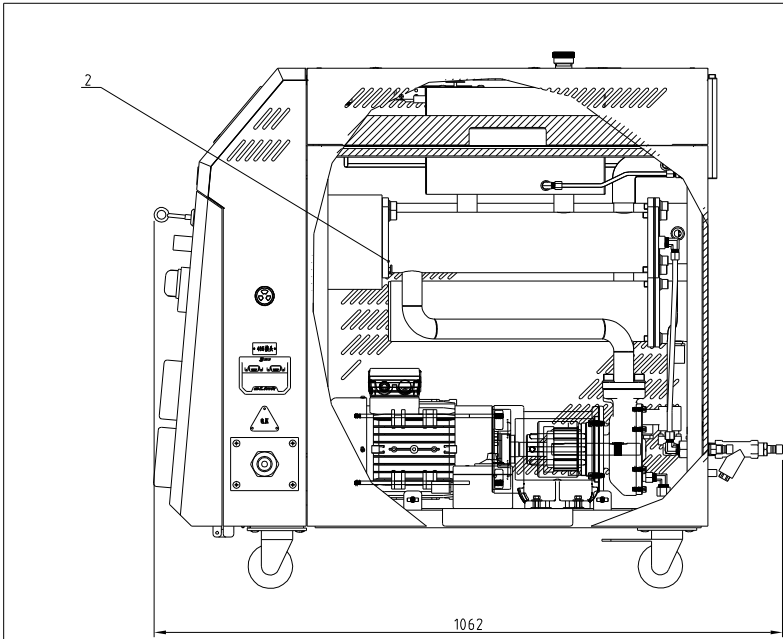


64	S-109	Heat insulation pad of liquid level sensor	3-60	2	Aramid fiber production(has mould)
63	YW64.0004.00500	Hex nut M4	A2-70	14	GB/T6170
62	YW6304.2500000	Cross recessed pan head screw M4x25	Q235A	2	GB/T-823
61	S-82	Liquid level indicator nut	H62	1	1/4"H
60	YE323824.00000	Solenoid valve 24V		1	3/8PT (kailing)
59	YR4.0251500100	Plastic plug without nut	PVC	2	SM25x15(Black)
58	YR20121200000	Flexible graphite gasket	ISO-68	2	120x120x2.0
57	STM-1215HT-B-03	Heater pipe assembly		1	Welding parts Borrowed
56	S-08	Pipe coupler	H58	1	1/4"PTx1/4"PT
55	YW50220000000	Butterfly ball valve	SUS304	1	1/4" heat-resistant 200c
54	BE9034.1500050	Thermocouple	SUS304	1	15M
53	YE67109000000	Quick connector of hose	PVC	1	WQG1-P09B
52	YR10110000000	MP-100Graphite gasket	ISO-68	2	has mould
51	STM-907HT-B-17	Lengthened screw of oil discharge	H58	1	Borrowed
50	YW66081900000	Flat washer 8	Q235A	4	8x19x2.0
49	YW60062500000	Hexagon bolt M6x25	4.8	4	GB/T5781
48	MP-100	magnetic drive pump MP-100	QT4.00	1	1KW anbo
47	YW59383800100	Pipe coupler	SUS304	1	3/8"PTx3/8"PT L
46	S-142	The four-set of the copper connector		1	
45	STM-1220-B-06	Cooling water bypass	SUS304	1	
44	YW57010200000	Y Type Strainer	H62	1	1/2" PT 30-35 mesh
43	S-73	Copper joint	H62	1	M13x1/2"PT
42	YR30010200000	Copper pipe plug	Rubber	2	1/2"PT
41	STM-1220M-B-03	Water inlet of cooling tank's cooling pipe	SUS304	1	
40	YW05083800100	Sleeve connector		4	8MMX3/8"PT L(H59)
39	STM-607-B-04	Cooling pipe assembly		1	Welding parts Borrowed
38	S-190	Heating tube cover	SPCC10	1	
37	STM-1220-B-03	Level detector pipe	SUS304	1	
序号	代号	名称	材料	数量	备注

Tech. Req:

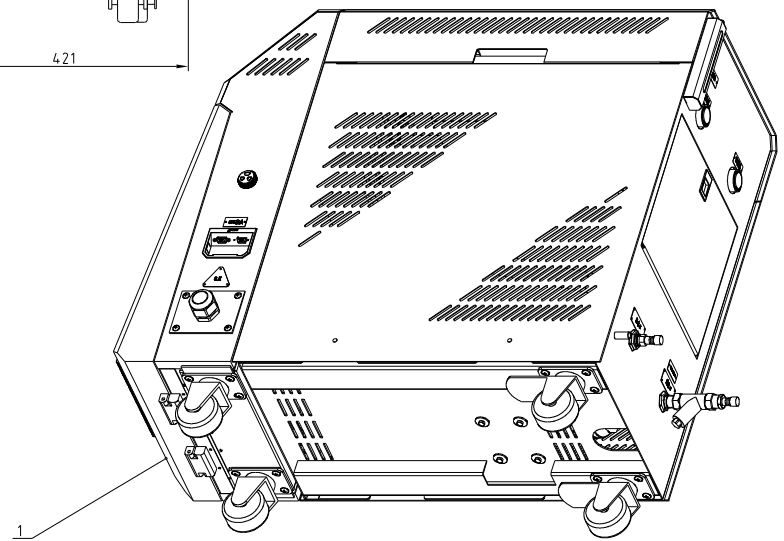
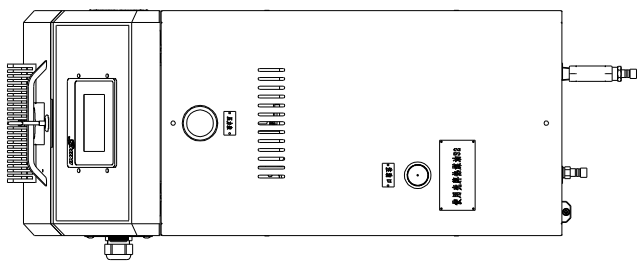
1. Remove burrs, and blunt edges.
2. Unmarked dimensional tolerances shall comply with the standard of GB/T1804-m.

				制图	版号	标题	STM-1220M	图号	STM-1220M-B-ALL	比例	数量
				设计	核准	内部结构					材质
				校对				信易电热机械股份有限公司 Shini Plastics Technologies, Inc.		表面要求	
标记	更改前	更改后	更改人	日期	审核			日期			物料号



Pump Max. Pressure (bar)	Max. pump Flow(L/min)	Pump Power(kW)	Heater(kW)	Max. Temp.	Weight(kg)	Ver.
7.3	62.5	2.8	2.4	200°C	14.5	F

Inlet /Outlet Size (EE PT female thread inch)	Cooling Method	Main/Sub-Dia Tank(L)	Heating Tank Number
1/1	Indirect Cooling	11/16	2



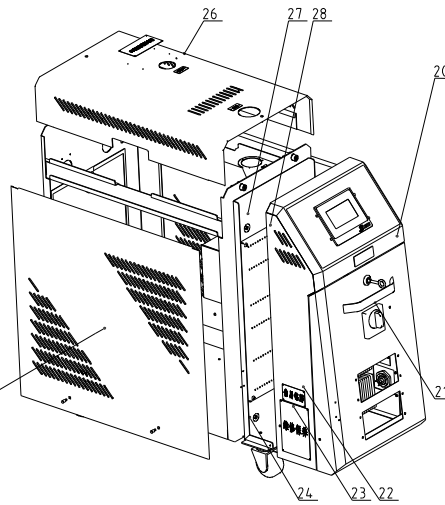
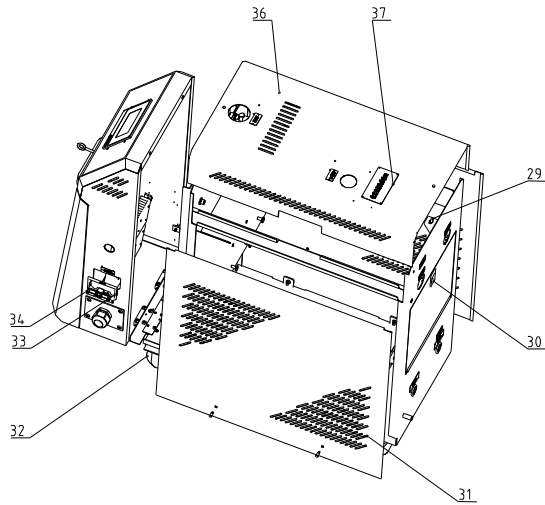
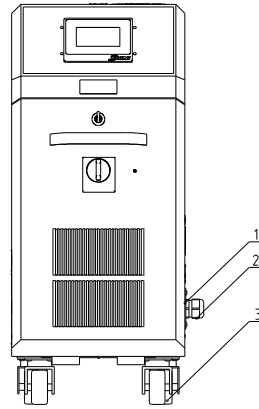
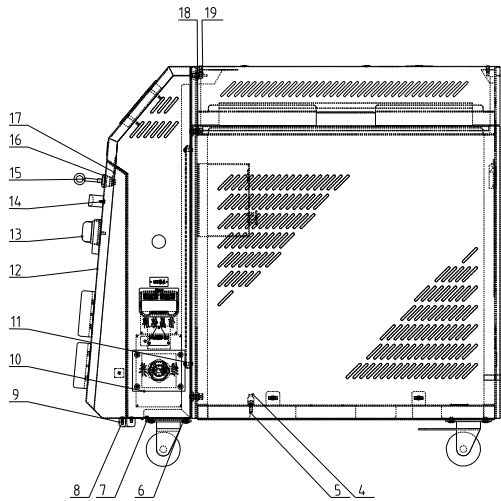
2	STM-2440M-B-ALL	Internal structure		1	
1	STM-2440M-A-ALL	Shell metal plate		1	
序号	代号	名称	材料	数量	备注

Tech. Req.
 1. Remove burrs, and blunt edges.
 2. Unmarked dimensional tolerances shall comply with the standard of GB/T1804 -m.

					制图	版号
					设计	核准
					校对	日期
标记	更改前	更改后	更改人	日期	审核	日期

标题	STM-2440M	图号	STM-2440M-ALL	比例	数量
	油式模温机				材质
				表面要求	
				物料号	



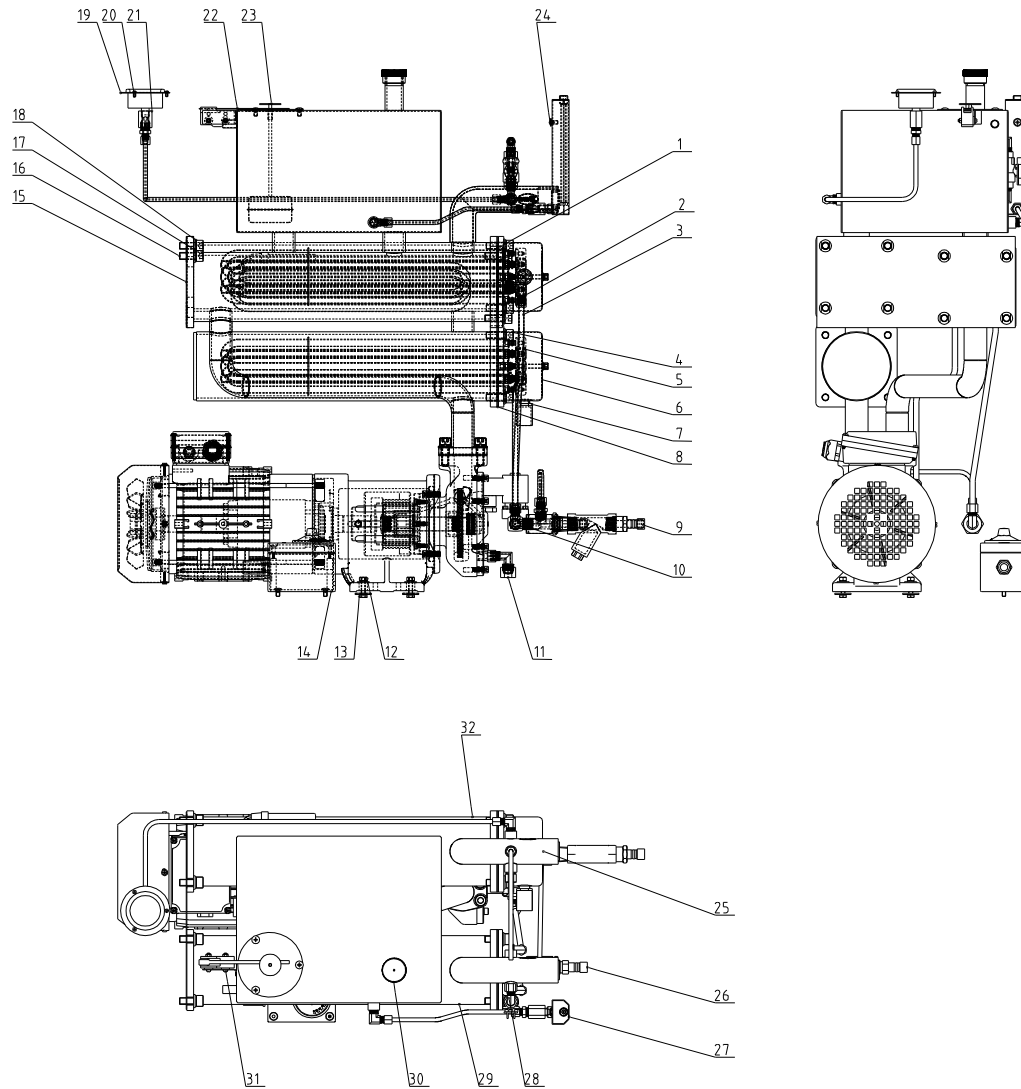


37	YP31118600600	Alu label	2024	1	Use Shell heat medium oil S2 for domestic sales
36	STM-2440M-A-04	Cover plate		1	Welding parts
34	YE90048501200	RS485 Communication interface board		1	
33	YR40048500000	Shell RS485		1	
32	YW03000300200	3" without brake Castor	Q235A	2	
31	STM-2440M-A-02	Right side plate		1	Welding parts
30	YR40523040000	Plastic flexible buckle	PVC	1	52x30 has mould
29	YW01051000000	Pin spring	65Mn	6	for new type STM
28	STM-2440-A-04	Base plate of control box	SECC15	1	
27	STM-2440-A-02	Control box rear plate		1	Welding parts
26	YW69020500000	Rivet	2024	33	GB/T 827
25	STM-2440M-A-03	Left side plate		1	Welding parts
24	YW65008000100	Standard spring washer 8	65Mn	6	GB/T93
23	STM-2440M-A-01	Rack		1	Welding parts
22	YW61082001200	Inner hexagon cylindrical screw M8x20	12 9	4	GB/T170 1
21	YW20660900100	Door plank aluminum handle	2024	1	6609(yaxuan)
20	STM-2440-A-03	Control box		1	Welding parts
19	YW69081500000	Butterfly bolt M8x15	Q235A	2	GB/T 3098
18	YW66081900000	Flat washer 8	Q235A	6	8x19x2 0
17	YW00040600000	Door lock long fender	SUS201	1	MF-406-DH
16	YW00000000100	Long door lock	PVC	1	
15	YW00040600200	Long door lock key	SUS201	1	CF-406-DH
14	YW63040600000	Cross recessed pan head screw M4x6	Q235A	2	GB/T-823
13	YE10021160000	Main power switch	PVC	1	TD-2-1/EA/SVB/16A Mule
12	STM-2440-A-05	Door plank		1	Welding parts
11	YW61061600100	Inner hexagon round head screw M6x16	Q235A	4	GB/T170 2
10	SG-S-01	Fixing board of wire clamps	SPCC2 0	1	
9	YW06219100000	Big hinge	2024	2	Shengju CL219-1
8	YW62051000100	Large cross socket flat head screw M5x10	Q235A	12	JIS1111
7	YW67040600000	Cross socket pan head self-lapping lock screw M4x6	Q235A	5	GB6560
6	YW62061000000	Large cross socket flat head screw M6x10	Q235A	16	JIS1111
5	YW67481900000	Cross socket head tapping screw	Q235A	1	GB/T15856.1
4	YR40018500000	Fixed base	PVC	1	WOSAD18 5B
3	YW03000300000	3" with brake Castor	Q235A	2	
2	YE67002900000	Cable clamp	PVC	1	
1	BE51250400450	Cable		1	2.5x4Cx4MI Tubular terminal>Select based on voltage

序号 代号 名称 材料 数量 备注

Tech. Req:
 1. Remove burrs, and blunt edges.
 2. Unmarked dimensional tolerances shall comply with the standard of GB/T1804 -m.

制图	设计	校对	审核	日期	版号	标题	图号	比例	数量	材质
						STM-2440M	STM-2440M-A-ALL			
						外壳钣金				
						信易电热机械股份有限公司 Shini Plastics Technologies, Inc.		表面要求		
标记	更改前	更改后	更改人	日期	日期			物料号		

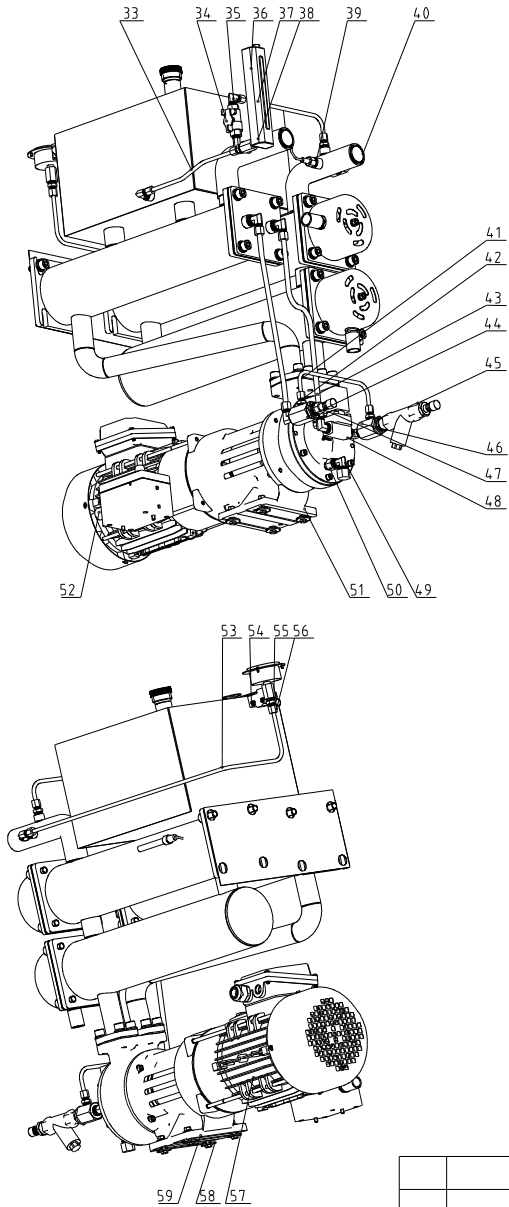


32	STM-24.40M-B-02	Heating tank		1	Welding parts
31	YW6304.2500000	Cross recessed pan head screw M4x25	Q235A	2	GB/T-823
30	S-30	Aluminum oil cap	YL-112	1	3/4"G female thread
29	STM-24.40M-B-01	Cooling hopper		1	Welding parts
28	YW04.14.14.00100	Pipe coupler L	H62	1	1/4"PTx1/4"PT L
27	S-60-ALL	Level detector assembly		1	Assembly
26	YR30010200000	Copper pipe plug	Rubber	2	1/2"PT
25	YW66061300000	Flat washer A grade 6	Q235A	2	
24	YW62051000100	Large cross socket flat head screw M5x10	Q235A	6	JIS1111
23	STM-24.40-A-09	Ball		1	Welding parts
22	YE14.1524.00000	Micro switch		1	LXW5-1124 rod length :100mm
21	BH12060701710	H to PT connector	H58	2	female thread 1/4"PT to 1/4"H
20	YW63030600000	Cross recessed pan head screw M3x6	Q235A	3	GB/T-823
19	YW85001000100	Pressure gauge		1	0-10MPa Range
18	YW65010000000	Standard spring washer 10	65Mn	24	GB/T93
17	YW66102000100	Flat washer A grade 10	Q235A	24	GB/T97.1 (11x20x2)
16	YW61102500000	Inner hexagon cylindrical screw M10x25	12.9	4	GB/T70.1
15	STM-24.40-B-10	Mounting plate insulation cotton of heating tank	aluminium silicate	1	
14	BH90115000050	High temp. fester		1	EGO
13	YW60062500000	Hexagon bolt M6x25	4.8	4	GB/T5781
12	YW64.000600300	Hex nut M6	Q235A	6	GB/T6170
11	S-171	Teflon plug	H58	1	3/8" H plug
10	YE323824.00000	Solenoid valve 24V		1	3/8PT (kailing)
9	S-73	Copper joint	H62	1	M13x1/2"PT
8	YR20121200000	Flexible graphite gasket	ISO-68	3	120x120x2.0
7	YE67165800000	Quick connector of hose	PVC	2	WQG1-M16B/AD15.8
6	S-190	Heating tube cover	SPCC10	2	
5	STM-24.40-B-07	Assembled heating pipe components		2	Assembly
4	YW61103000100	Inner hexagon cylindrical screw M10x30	12.9	21	GB/T70.1
3	STM-24.40-B-09	Water outlet of cooling tank's cooling pipe	SUS304	1	
2	YW05083800100	Sleeve connector		4	8MMX3/8"PT L(H59)
1	STM-607-B-04	Cooling pipe assembly		1	Welding parts Borrowed

Tech. Req:

- 1 Remove burrs, and blunt edges;
2. Unmarked dimensional tolerances shall comply with the standard of GB/T1804-m.

序号	代号	名称	材料	数量	备注	
		标题	STM-24.40M	图号	STM-24.40M-B-ALL	
		内部结构				
		信易电热机械股份有限公司 Shini Plastics Technologies, Inc.			比例	数量
					材质	
标记	更改前	更改后	更改人	日期	审核	
					日期	
					表面要求	
					物料号	



59	YW66061800000	Big gasket A grade	Q235A	4	GB/T96.1(6×18×15)
58	YW66082200100	Big gasket C grade	Q235A	4	GB/T968(8.4×24×2)
57	BM20280000650	magnetic drive pump MP-280		1	2.8KW 100L/min 80M Anbo
56	YW050614.00000	Sleeve connector		5	6MMX1/4"PT(H59)
55	S-109	Heat insulation pad of liquid level sensor	3-60	2	Aramid fiber production(has mould)
54	YW64.0004.00500	Hex nut M4	A2-70	2	GB/T6170
53	STM-24.40M-B-03	Pressure gauge pipe	SUS304	1	
52	YE67109000000	Quick connector of hose	PVC	1	WQG1-P09B
51	YW65006000100	Standard spring washer 6	65Mn	6	GB/T93
50	STM-907HT-B-17	Lengthened screw of oil discharge	H58	1	Borrowed
49	YW04.0308004.00	Tonflon connector	H58	1	1/4"PT×3/8"H L
48	YW59383800100	Pipe coupler	SUS304	1	3/8"PT×3/8"PT L
47	S-85	Copper joint	H58	1	3/8"PT× dia. 13
46	S-142	The four-set of the copper connector		1	
45	YW57010200000	Y Type Strainer	H62	1	1/2"PT 30-35 mesh
44	S-84	Copper three-way pipe thread adapter 3/8"		1	Equipped with universal copper nut
43	STM-24.40-B-05	Water inlet of cooling tank's cooling pipe	SUS304	1	
42	STM-24.40-B-06	Water outlet of Oil tank's cooling pipe	SUS304	1	
41	YR10150000000	Flange gasket	ISO-68	2	TP-150-A-18(has mould)
40	YR4.0251500100	Plastic plug without nut	PVC	2	SM25×1.5(Black)
39	BE9034.2500050	Thermocouple	SUS304	1	2.5M
38	S-82	Liquid level indicator nut	H62	1	1/4"H
37	STM-24.40-B-08	Oil bypass	SUS304	1	
36	YW66051300000	Flat washer A grade 5	Q235A	1	GB/T97.1 (5.5×10×1)
35	YW050614.00100	Sleeve connector		3	6MMX1/4"PT L(H59)
34	YW50220000000	Butterfly ball valve	SUS304	1	1/4" heat-resistant 200°C
33	STM-24.40-B-03	Level detector pipe	SUS304	1	

序号	代号	名称	材料	数量	备注
		标题	STM-24.40M	图号	STM-24.40M-B-ALL
		内部结构			
		比例		数量	
		表面要求		材质	
		物料号			



Tech. Req.
 1. Remove burrs, and blunt edges;
 2. Unmarked dimensional tolerances shall comply with the standard of GB/T1804-m.

制图	设计	校对	审核	日期
标记	更改前	更改后	更改人	日期

版号	核准	日期