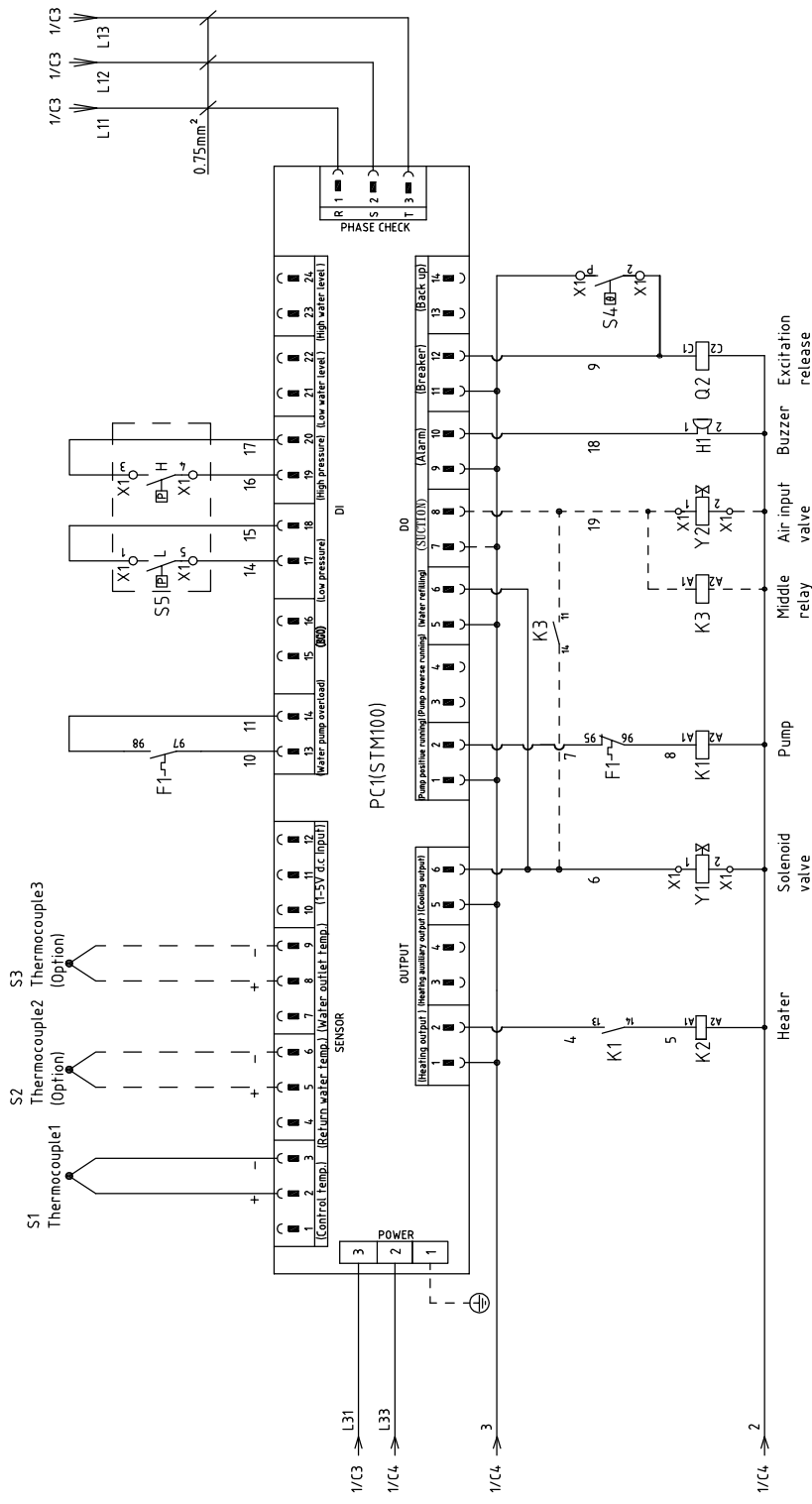



When equipped with magnetic pump: SET 1.7A P=0.55Kw IN=1.7A

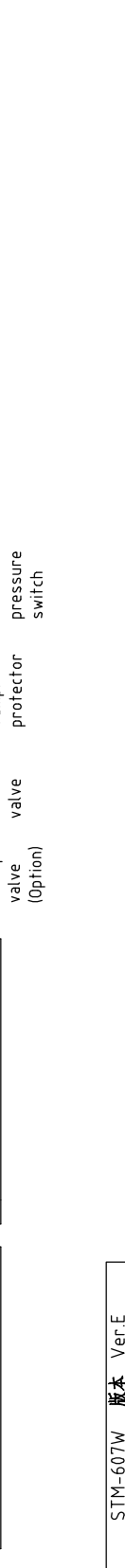
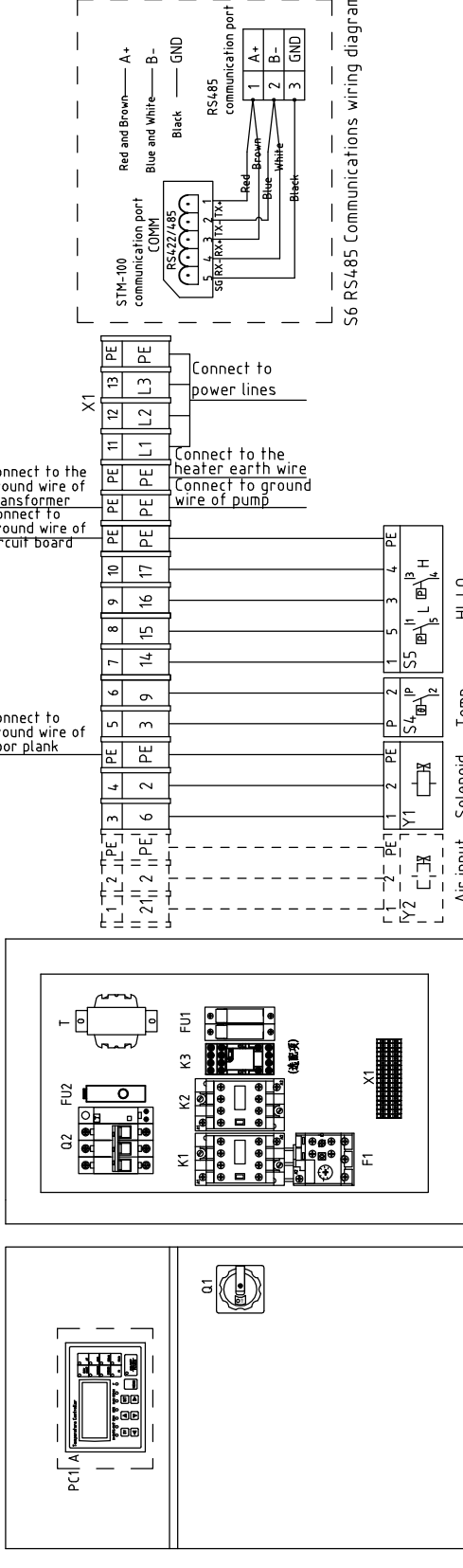
STM-607W	版本	Ver.E
STM-607MW	版本	Ver.D
STM-607WA	版本	Ver.D

Title		Drawing No.	
STM-607W		STM-607W-CE-230V-G-1	
Main Circuit Diagram		Scale	Page 1
Designer	Approved by	Standard	Totally 5 Pages
Proofread by	Date	Voltage	230V
Checked by	20170523	Frequency	50Hz
Modified by		SHINI Shini Plastics Technologies, Inc.	
Before modification		SHINI	
Mark		1 2 3 4 5 6 7 8	



STM-607W 版本 Ver.E	Designer	Version	G	Title	STM-607W	Drawing NO.	Page 2
STM-607MW 版本 Ver.D	Proofread by	Approved by		Control Circuit Diagram	STM-607W-CE-230V-G-2	Standard	Totally 5 Pages
STM-607WA 版本 Ver.D	Checked by	Date	20170523	 <b>信易电热机械股份有限公司</b> <b>Shini Plastics Technologies, Inc.</b>			
Mark	Modified by	Modify date					
Before modification	After modification			Scale	CE	Voltage	230V
				Frequency		50Hz	

A B C D



STM-607W 版本 Ver.E		Title STM-607W		Drawing NO.		Scale		Page 3	
STM-607MW 版本 Ver.D		Electrical Components Layout		STM-607W-CE-230V-G-3		Standard		CE	
STM-607WA 版本 Ver.D		Approved by		Date 20170523		Voltage		230V	
Mark		Modified by		Modify date		Frequency		50Hz	
Before modification		After modification				Voltage		230V	
						Frequency		50Hz	

Technical requirements: Pump and pipe heater should be directly connected to the output terminals of contactor and thermal overload relay.



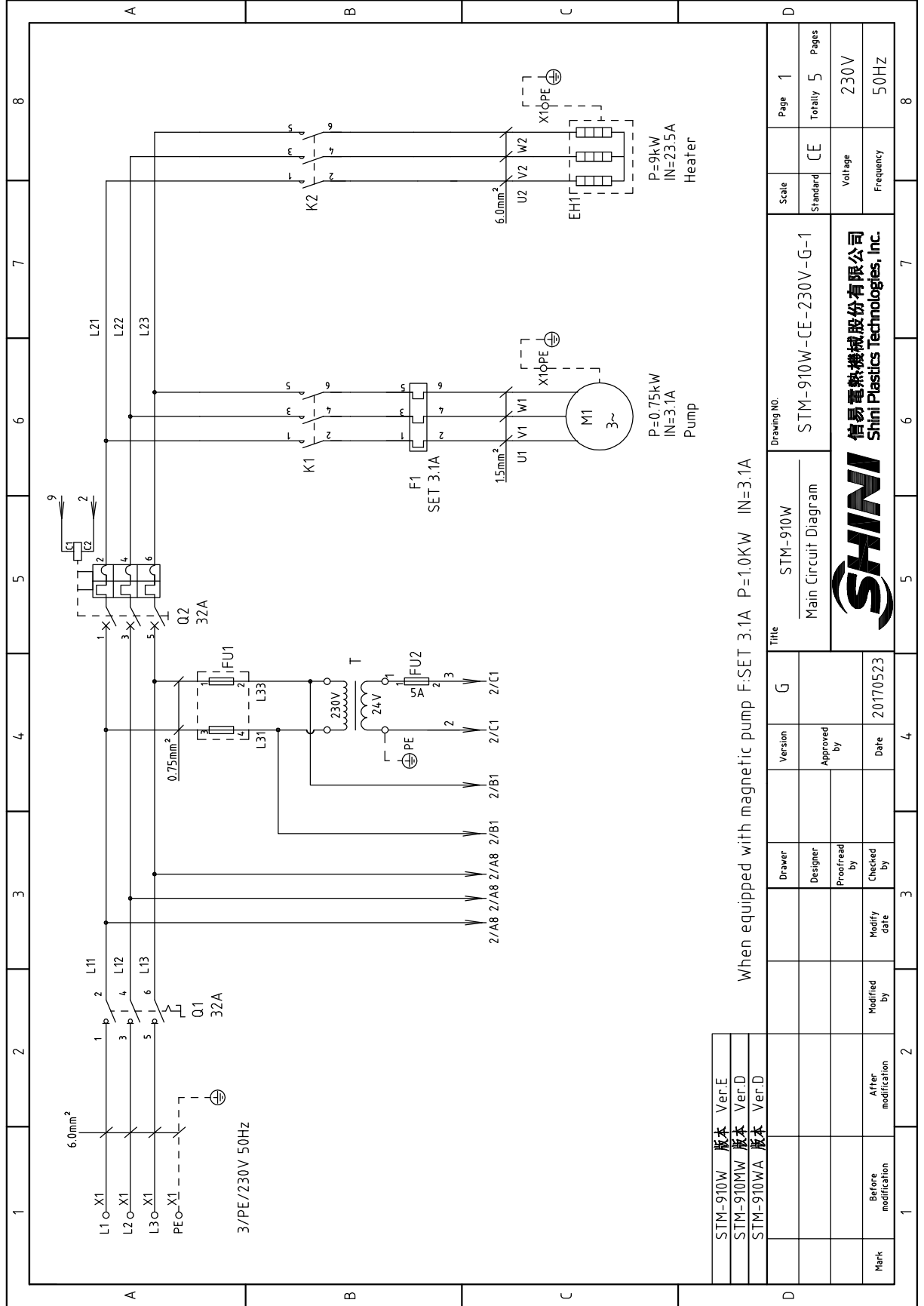
A B C D

1		2		3		4		5		6		7		8	
NO.	Symbol	Name	Manufacturer	Type	Specification	Number	Material number	Remark							
1	Q1	Main Switch	EATON	P1-25/EA/SVB	25A	1	YE10125250000								
2	Q2	Circuit Breakers	TECO	BM-63C/3025S	25A	1	YE40302503000								
3		Excitation Release	TECO	MX	24VAC	1	YE40024000000	A							
4	K1	Contactors	SIEMENS	3RT6015-1AB01	24VAC	1	YE00601502500								
5	K1	Contactors	SIEMENS	3RT6015-1AB01	24VAC	1	YE00601502500	(3)							
6	K2	Contactors	SIEMENS	3RT6025-1AC20	24VAC	1	YE00602502600								
7	K3	Middle Relay	WEIDMULLER	GR-2C-AC24V	24VAC	1	YE03022400300	(4)							
8	F1	Overload Relays	SIEMENS	3RU6116-1BB0	1.4-2A	1	YE01160140000								
9	F1	Overload Relays	SIEMENS	3RU6116-1BB0	1.4-2A	1	YE01160140000	(3)							
10	FU1	Fuse Base	CHNT	RT18-32	32A 2P	1	YE41032200000								
11		Fuse Core	MRO	10x38 500V	2A	2	YE46002000100	B							
12	FU2	Fuse	YINDA	FS-10	----	2	YE41001000000								
13		Fuse	----	6x30/3A	3A	1	YE46630500200								
14	T	Transformer	BAIYUN	IN=230V OUT=24VAC	120VA	1	YE70023005500								
15	S1	Thermocouple	SHINI	----	K	1	----	(1)							
16	S2 S3	Thermocouple	SHINI	----	K	2	----	(1)(2)							
17	S4	Overheat Protector	----	----	----	1	----	(1)							
18	S5	HI-LO pressure switch	----	----	----	1	----	(1)							
19	PC1 A	Circuit Board	HANYOUNG NUX	STM100-21(With the communication)	180-430V 50/60Hz	1	YE81184300200	C							
20	H1	Buzzer	----	PK-35A	24VAC/DC	1	YE84003500600								
21	Y1	Solenoid Valve	----	----	24VAC	1	----	(1)							
22	Y2	Solenoid Valve	----	----	24VAC	1	----	(1)(4)							
23	X1	Terminal Board	PHOENIX	2.5mm <sup>2</sup>	----	8	YE60002503200								
24		Terminal Board	PHOENIX	2.5mm <sup>2</sup> PE	----	3	YE60002503400								
		STM-607W 版本	Notes: (1)Means it's not the material inside the control box.(2)Means equipped with function of displaying water outlet and return water temperature.												
		STM-607MW 版本	(3)Means equipped with magnetic pump. (4)Means optional air-blowing cleaning function.												
		STM-607WA 版本													
			Drawer	Version	G	Title		Drawing NO.		Scale	Page	D			
			Designer	Approved by		STM-607W		STM-607W-CE-230V-G-4		Standard	4	CE			
			Proofread by			Electrical Components List 1				Voltage	Totally	230V			
			Checked by	Date	20170523					Frequency	5	50Hz			
Mark	Before modification	After modification	Modified by	Modify date											
1	2	3	4	5	6	7	8								




1	2		3	4	5	6	7	8
NO.	Symbol	Name	Manufacturer	Type	Specification	Number	Material number	Remark
25		Terminal Board	PHOENIX	4.0mm <sup>2</sup>	----	3	YE60000403200	
26		Terminal Board	PHOENIX	4.0mm <sup>2</sup> PE	----	2	YE60000403500	
27		Terminal Board	PHOENIX	2.5mm <sup>2</sup>	----	2	YE60002503200	(4) A
28		Terminal Board	PHOENIX	2.5mm <sup>2</sup> PE	----	1	YE60002503400	(4)
29	M1	Motor	SHINI	TP-55	230V 50Hz 0.55kW	1	----	(1)
30	M1	Motor	SHINI	MP-55	230V 50Hz 0.55kW	1	----	(1)(3)
31	EH	Heater	SHINI	6kW	230V 50Hz	1	----	(1)
32	S6	Communication interface board RS-485 (double Dsub-9pin connector)			PCS	1.000	YE90048501200	
33		Shell RS485(SAL-700G-A-1910)			PCS	1.000	YR4,0048500000	
B								
C								
D								
STM-607W 版本 Ver.E		Notes: (1)Means it's not the material inside the control box.(2)Means equipped with function of displaying water outlet and return water temperature.						
STM-607MW 版本 Ver.D		(3)Means equipped with magnetic pump. (4)Means optional air-blowing cleaning function.						
STM-607WA 版本 Ver.D								
Mark		Before modification	Modified by	Modify date	Checked by	Date	20170523	
		After modification	Modified by	Modify date	Checked by	Date	20170523	
		Designer	Proofread by	Approved by				
		Drawer	Version	G				
		Title			Drawing NO.		Scale	Page
		STM-607W			STM-607W-CE-230V-G-5		CE	5
		Electrical Components List 2			Standard		Voltage	Pages
					CE		230V	Totally 5
							Frequency	50Hz
								8

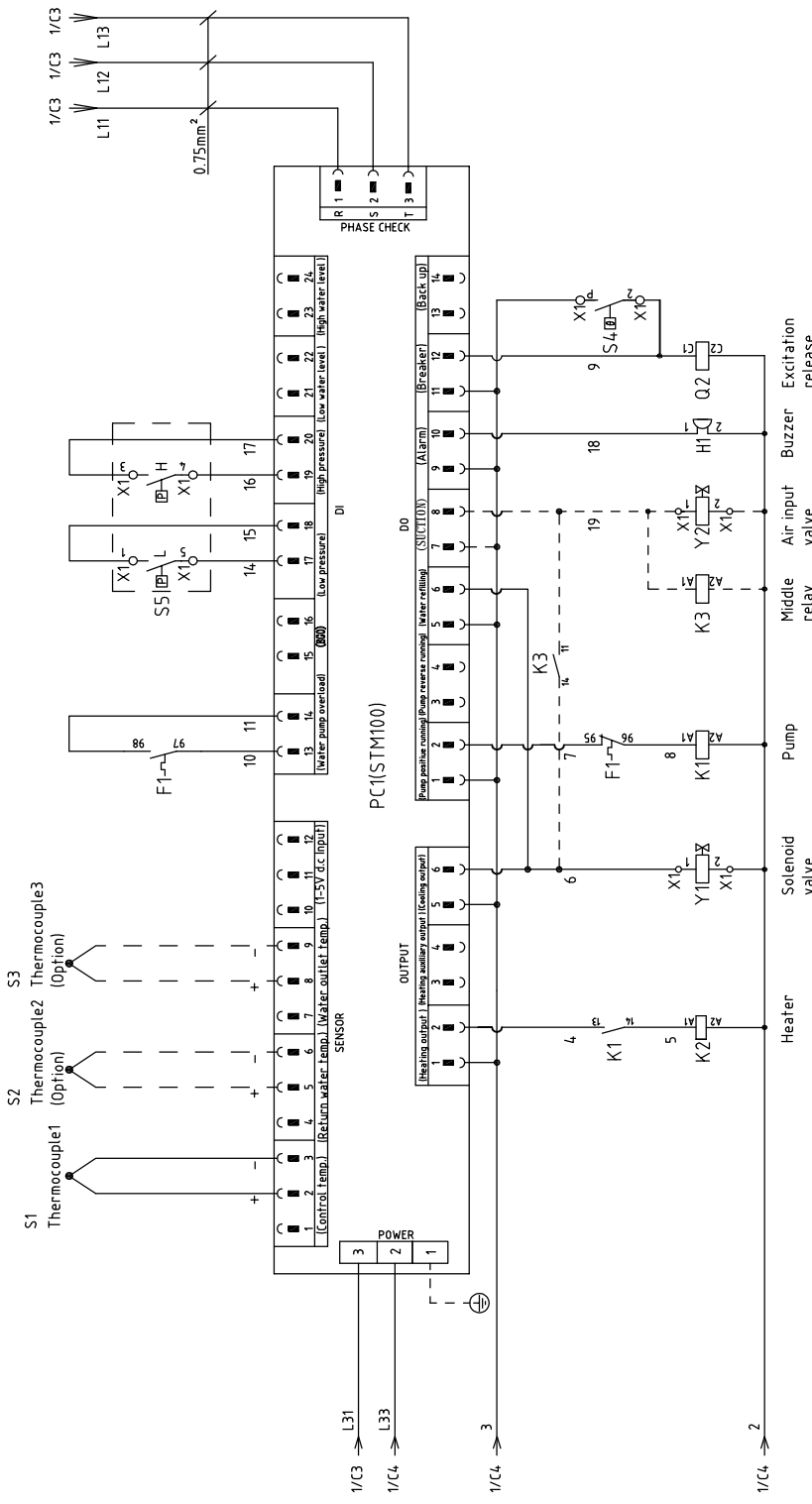




When equipped with magnetic pump F:SET 3.1A P=1.0KW IN=3.1A

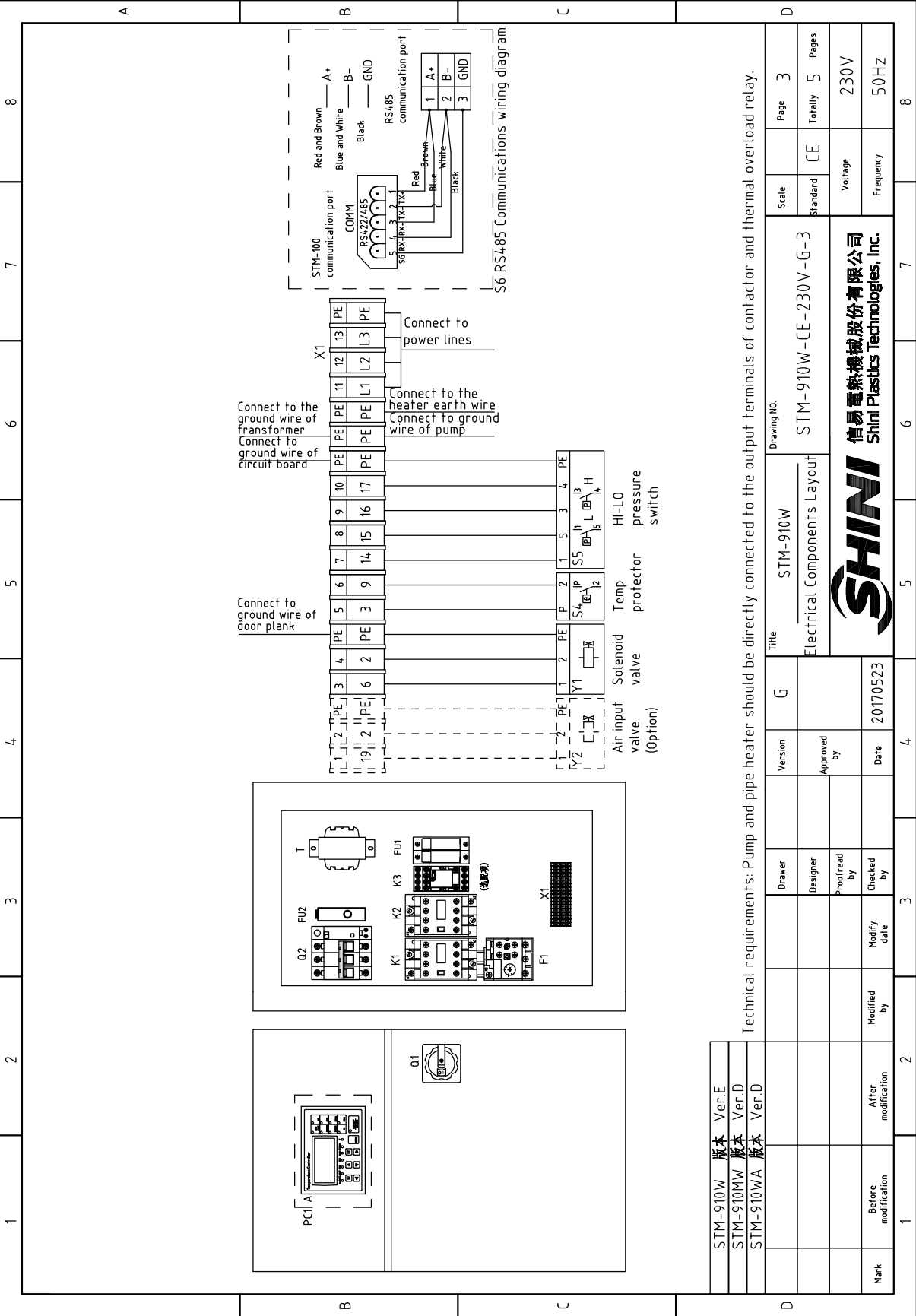
STM-910W	版本	Ver.E
STM-910MW	版本	Ver.D
STM-910WA	版本	Ver.D

Mark	Before modification	After modification	Modify Date	Checked by	Proofread by	Designer	Drawer	Version	G	Title	Drawing No.	Scale	Page
												Standard	Totally
			20170523							Main Circuit Diagram	STM-910W-CE-230V-G-1	CE	1
										 信易电热机械股份有限公司 Shini Plastics Technologies, Inc.		Voltage	230V
												Frequency	50Hz
1	2	3	4	5	6	7	8						



STM-910W 版本 Ver.E		Page 2	
STM-910MW 版本 Ver.D		Standard CE	
STM-910WA 版本 Ver.D		Voltage 230V	
		Frequency 50Hz	
		Totally 5 Pages	
		Drawing NO. STM-910W-CE-230V-G-2	
Title STM-910W Control Circuit Diagram		Voltage 230V	
Version G		Frequency 50Hz	
Designer		Approved by	
Proofread by		Date 20170523	
Modified by		Date	
Before modification		Date	
Mark		Date	





STM-910W	版本	Ver.E
STM-910MW	版本	Ver.D
STM-910WA	版本	Ver.D

Technical requirements: Pump and pipe heater should be directly connected to the output terminals of contactor and thermal overload relay.

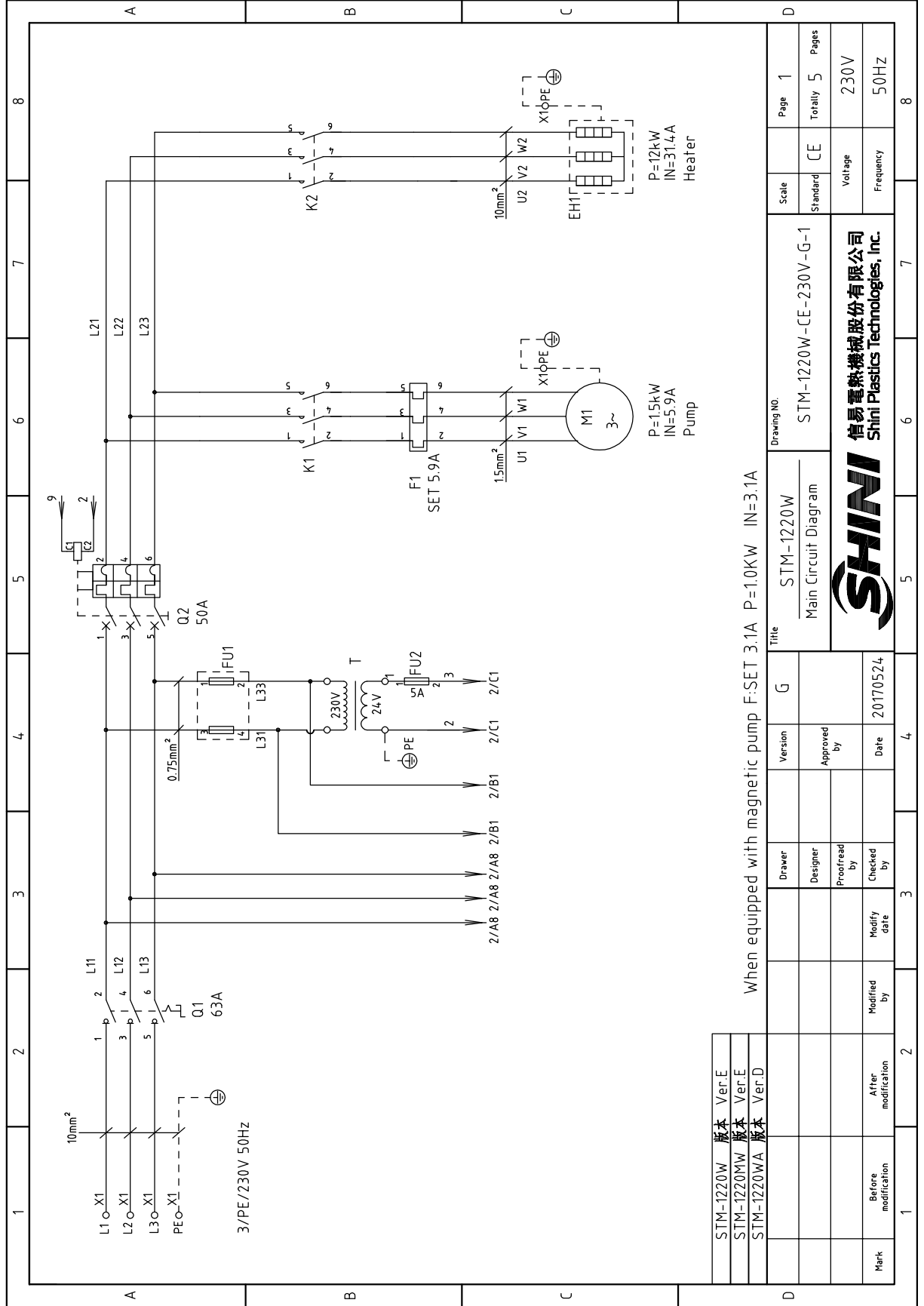
Title		Drawing No.	
STM-910W		STM-910W-CE-230V-G-3	
Electrical Components Layout		Scale	Page 3
Approved by		Standard	Totally 5 Pages
Checked by		Voltage 230V	
Modified by		Frequency 50Hz	
Mark	Before modification	After modification	
	20170523		

**SHINI**  
信易电热机械股份有限公司  
Shini Plastics Technologies, Inc.



1		2		3		4		5		6		7		8	
NO.	Symbol	Name	Manufacturer	Type	Specification	Number	Material number	Remark							
1	Q1	Main Switch	EATON	P1-32/EA/SVB	32A	1	YE10323200000								
2	Q2	Circuit Breakers	TECO	BM-63C/3032S	32A	1	YE40303203000								
3		Excitation Release	TECO	MX	24VAC	1	YE40024000000	A							
4	K1	Contactors	SIEMENS	3RT6015-1AB01	24VAC	1	YE00601502500								
5	K1	Contactors	SIEMENS	3RT6015-1AB01	24VAC	1	YE00601502500	(3)							
6	K2	Contactors	SIEMENS	3RT6027-1AC20	24VAC	1	YE00602702600								
7	K3	Middle Relay	HONEYWELL	GR-2C-AC24V	24VAC	1	YE03022400300	(4)							
8	F1	Overload Relays	SIEMENS	3RU6116-1EB0	2.8-4A	1	YE01160280000								
9	F1	Overload Relays	SIEMENS	3RU6116-1EB0	2.8-4A	1	YE01160280000	(3)							
10	FU1	Fuse Base	CHNT	RT18-32	32A 2P	1	YE41032200000								
11		Fuse Core	MRO	10×38 500V	2A	2	YE46002000100	B							
12	FU2	Fuse	YINDA	FS-10	----	2	YE41001000000								
13		Fuse	----	6×30/5A	5A	1	YE46630500100								
14	T	Transformer	BAIYUN	IN=230V OUT=24VAC	120VA	1	YE70023005500								
15	S1	Thermocouple	SHINI	----	K	1	----	(1)							
16	S2 S3	Thermocouple	SHINI	----	K	2	----	(1)(2)							
17	S4	Overheat Protector	----	----	----	1	----	(1)							
18	S5	HI-LO pressure switch	----	----	----	1	----	(1)							
19	PC1 A	Circuit Board	HANYOUNGUX	STM100-21(with the communication)	180~430V 50/60Hz	1	YE81184300200	C							
20	H1	Buzzer	----	PK-35A	24VAC/DC	1	YE84003500600								
21	Y1	Solenoid Valve	----	----	24VAC	1	----	(1)							
22	Y2	Solenoid Valve	----	----	24VAC	1	----	(1)(4)							
23	X1	Terminal Board	----	2.5mm <sup>2</sup>	----	8	YE60002503200								
24		Terminal Board	----	2.5mm <sup>2</sup>	----	3	YE60002503400								
		STM-910W 版本	Notes: (1)Means it's not the material inside the control box.(2)Means equipped with function of displaying water outlet and return water temperature.												
		STM-910MW 版本	(3)Means equipped with magnetic pump. (4)Means optional air-blowing cleaning function.												
		STM-910WA 版本													
			Drawer	Version	G	Title	Drawing NO.		Scale	Page	D				
			Designer	Approved by		STM-910W	STM-910W-CE-230V-G-4		Standard	4	Electrical Components List 1				
			Proofread by			SHINI		Voltage		230V					
			Checked by	Date	20170523	SHINI		Frequency		50Hz					
		Before modification	Modified by	Modify date		SHINI		Voltage		230V					
		After modification	Modified by	Modify date		SHINI		Frequency		50Hz					
1			3		4	5	6	7	8						

1		2		3		4		5		6		7		8	
No.	Symbol	Name	Manufacturer	Type	Specification	Number	Material number	Remark							
25		Terminal Board	----	6.0mm <sup>2</sup>	----	3	YE60000603200								
26		Terminal Board	----	6.0mm <sup>2</sup>	----	2	YE60000603500								
27		Terminal Board	----	2.5mm <sup>2</sup>	----	2	YE60002503200	(4)							
28		Terminal Board	----	2.5mm <sup>2</sup> PE	----	1	YE60002503400	(4)							
29	M1	Motor	SHINI	TP-75	230V 50Hz 0.75kW	1	----	(1)							
30	M1	Motor	SHINI	MP-100	230V 50Hz 1.0kW	1	----	(1)(3)							
31	EH	Heater	SHINI	9kW	230V 50Hz	1	----	(1)							
32	S6	Communication interface board RS-485 (double Dsub-25pin connector)			PCS	1,000	YE90048501200								
33		Shell RS485(SAL-700G-A-19)0			PCS	1,000	YR4,0048500000								
B															
C															
D															
STM-910W 版本		Notes: (1)Means it's not the material inside the control box.(2)Means equipped with function of displaying water outlet and return water temperature.													
STM-910MW 版本		(3)Means equipped with magnetic pump. (4)Means optional air-blowing cleaning function.													
STM-910WA 版本															
		Version		G		Title		Drawing NO.		Scale		Page		5	
		Designer		Approved by		STM-910W		STM-910W-CE-230V-G-5		Standard		CE		Voltage	
		Proofread by		Date		Electrical Components List 2				Voltage		230V		Pages	
		Checked by		20170523						Frequency		50Hz		Totally 5	
Mark		Before modification		After modification		SHINI		信易塑料机械股份有限公司 Shini Plastics Technologies, Inc.		Frequency		50Hz		8	



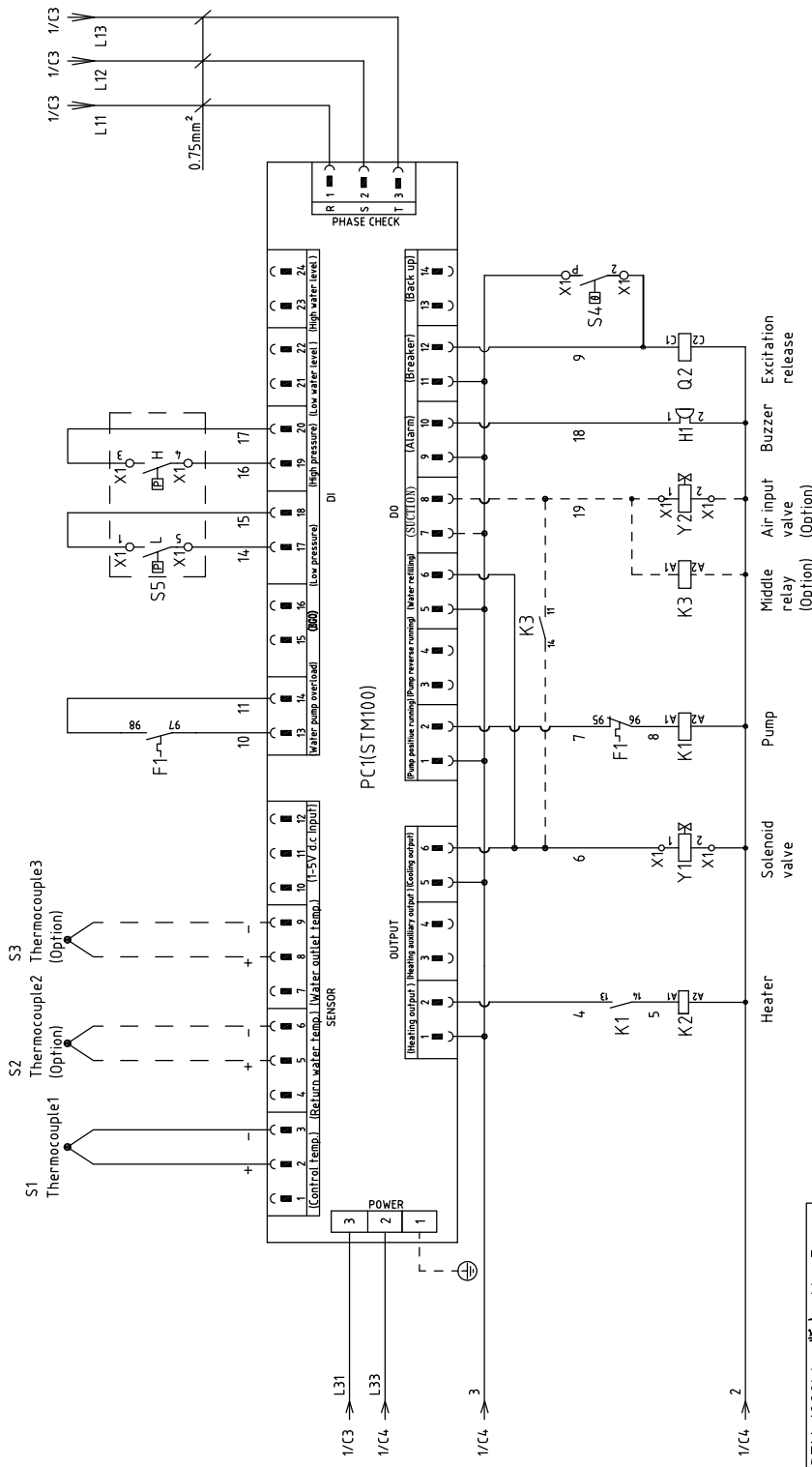
STM-1220W	版本	Ver.E
STM-1220MW	版本	Ver.E
STM-1220WA	版本	Ver.D

When equipped with magnetic pump F:SET 3.1A P=1.0KW IN=3.1A	
Mark	Before modification
Modified by	After modification
Modify Date	
Checked by	
Proofread by	
Designer	
Drawer	
Version	
G	
Title	
STM-1220W	Drawing NO.
Main Circuit Diagram	STM-1220W-CE-230V-G-1
Scale	Page 1
Standard	Totally 5
CE	Pages
Voltage	230V
Frequency	50Hz

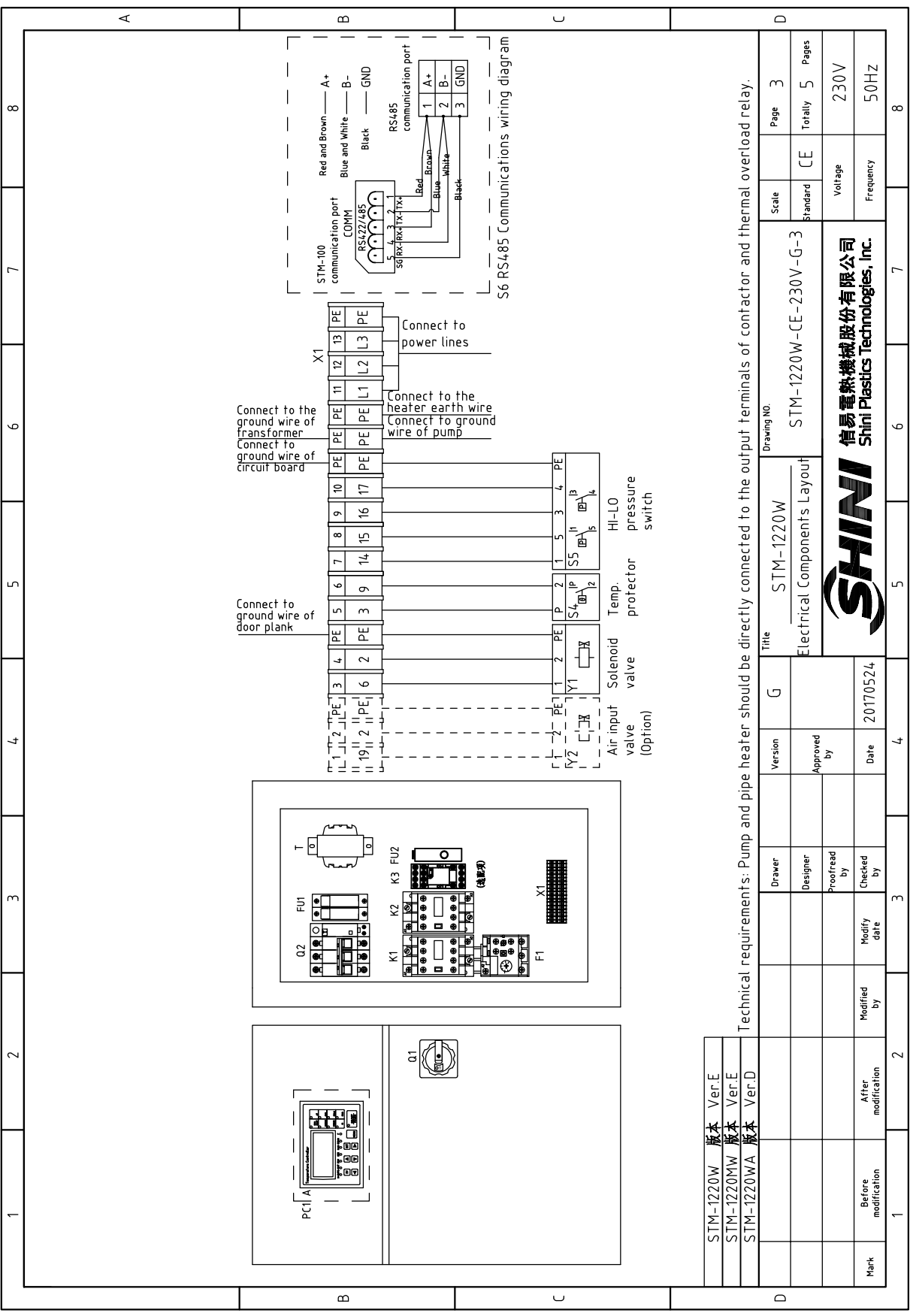
<b>SHINI</b>	
信易电热机械股份有限公司	
Shini Plastics Technologies, Inc.	



STM-1220W	版本	Ver.E
STM-1220MW	版本	Ver.E
STM-1220WA	版本	Ver.D

Mark	Before modification	Modified by	Modify date	Checked by	Date	20170524	Approved by	Version	G	Title	STM-1220W Control Circuit Diagram	Drawing NO.	STM-1220W-CE-230V-G-2	Scale	CE	Page	2
	After modification													Standard	CE	Totally	5
																Voltage	230V
																Frequency	50Hz

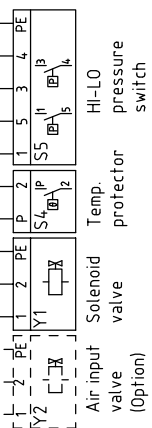
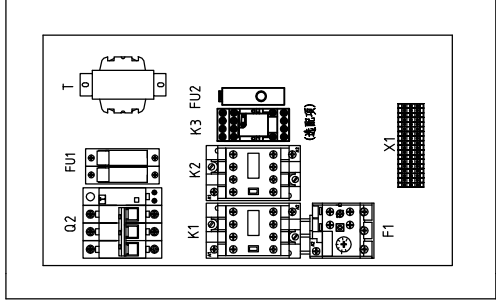
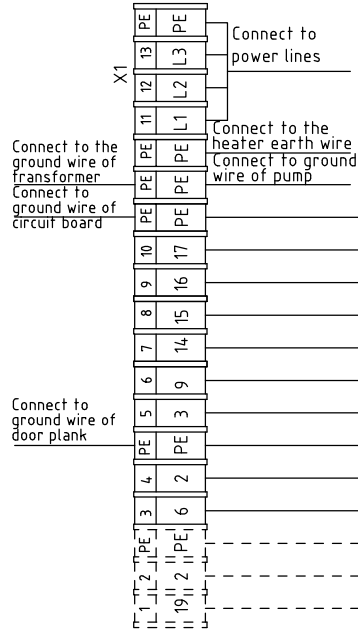
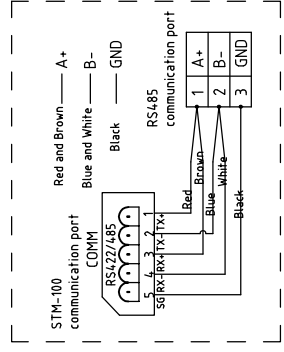





STM-1220W 版本 Ver.E	Scale	Page	3
STM-1220MW 版本 Ver.E	Standard	Totally	5
STM-1220WA 版本 Ver.D		Voltage	230V
		Frequency	50Hz

Technical requirements: Pump and pipe heater should be directly connected to the output terminals of contactor and thermal overload relay.

Title		Drawing No.	
STM-1220W		STM-1220W-CE-230V-G-3	
Electrical Components Layout		Voltage	
		Frequency	
SHINI 信易电热机械股份有限公司 Shini Plastics Technologies, Inc.		230V	
Date		Frequency	
20170524		50Hz	



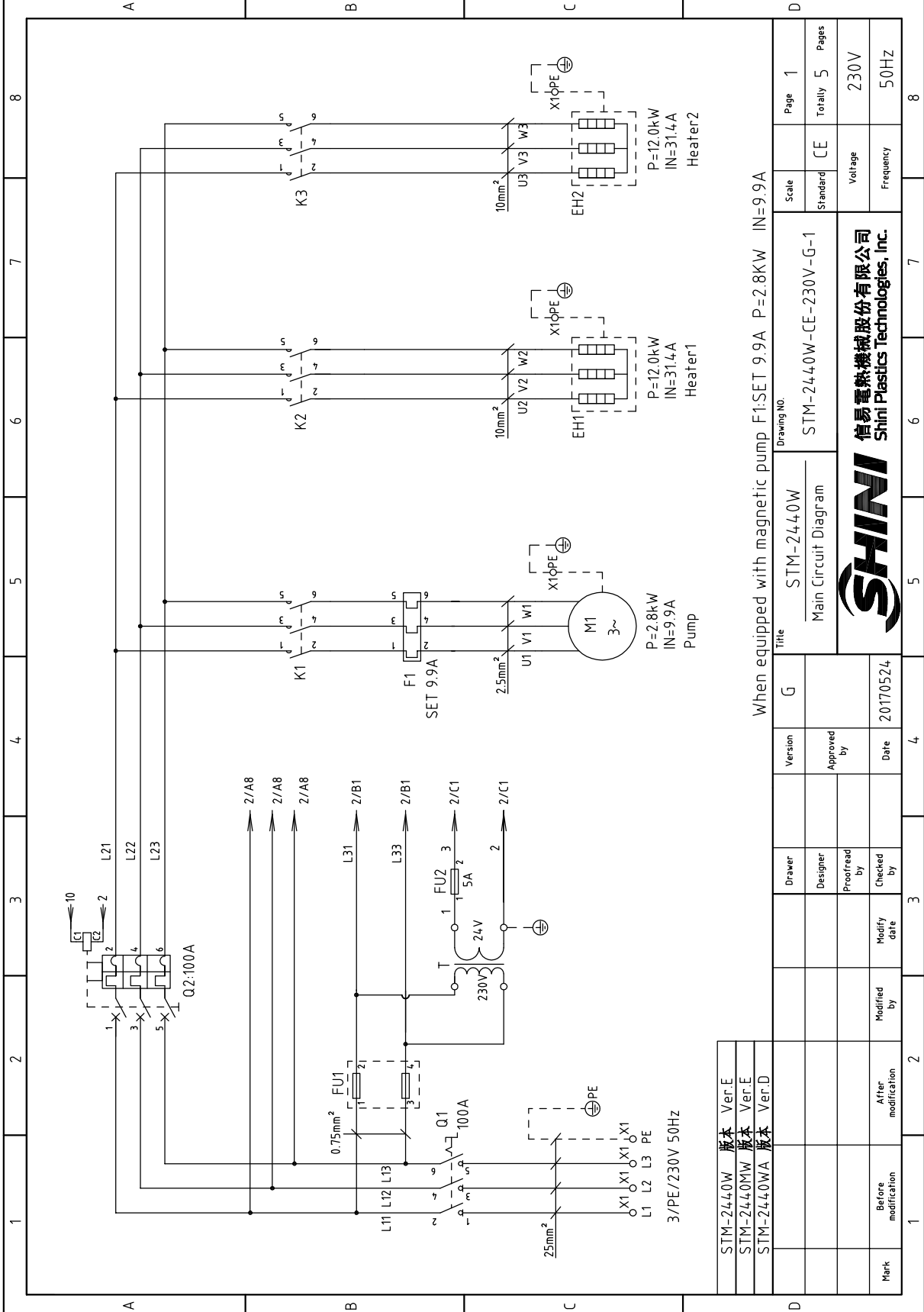
S6 RS485 Communications wiring diagram

1	2		3	4	5	6	7	8	
NO.	Symbol	Name	Manufacturer	Type	Specification	Number	Material number	Remark	
1	Q1	Main Switch	EATON	P3-63/EA/SVB	63A	1	YE10636300000		
2	Q2	Circuit Breakers	TECO	BM-63C	50A	1	YE40305003000		
3	K1	Excitation Release	TECO	MX	24VAC	1	YE40024000000	A	
4	K1	Contactors	SIEMENS	3RT6016-1AB01	24VAC	1	YE00601602500		
5	K1	Contactors	SIEMENS	3RT6015-1AB01	24VAC	1	YE00601502500	(3)	
6	K2	Contactors	SIEMENS	3RT6028-1AC20	24VAC	1	YE00602802600		
7	K3	Middle Relay	WEIDMULLER	GR-2C-AC24V	24VAC	1	YE03022400300	(4)	
8	F1	Overload Relays	SIEMENS	3RU6116-1GB0	4.5-6.32A	1	YE01160450000		
9	F1	Overload Relays	SIEMENS	3RU6116-1EB0	2.8-4A	1	YE01160280000	(3)	
10	FU1	Fuse Base	CHNT	RT18-32	32A 2P	1	YE41032200000		
11	FU2	Fuse Core	MRO	10×38 500V	2A	2	YE46002000100	B	
12	FU2	Fuse	YINDA	FS-10	----	1	YE41001000000		
13	FU2	Fuse	----	6×30/5A	5A	1	YE46630500100		
14	T	Transformer	BAIYUN	IN=230V OUT=24VAC	120VA	1	YE70023005500		
15	S1	Thermocouple	SHINI	----	----	1	----	(1)	
16	S2 S3	Thermocouple	SHINI	----	----	2	----	(1)(2)	
17	S4	Overheat Protector	----	----	----	1	----	(1)	
18	S5	HI-LO pressure switch	----	----	----	1	----	(1)	
19	PC1 A	Circuit Board	HANYOUNG NUX	STM100-21(with the communication)	180~430V 50/60Hz	1	YE81184_300200	C	
20	H1	Buzzer	----	PK-35A	24VAC/DC	1	YE840035000600		
21	Y1	Solenoid Valve	----	----	24VAC	1	----	(1)	
22	Y2	Solenoid Valve	----	----	24VAC	1	----	(1)(4)	
23	X1	Terminal Board	HONEYWELL	2.5mm <sup>2</sup>	----	8	YE60002503200		
24	X1	Terminal Board	HONEYWELL	2.5mm <sup>2</sup>	----	3	YE60002503400		
		STM-1220W 版本	Notes: (1)Means it's not the material inside the control box.(2)Means equipped with function of displaying water outlet and return water temperature.						
		STM-1220MW 版本	(3)Means equipped with magnetic pump. (4)Means optional air-blowing cleaning function.						
		STM-1220WA 版本							
			Drawer	Version	Title	Drawing NO.	Scale	Page	
			Designer	Approved by	STM-1220W	STM-1220W-CE-230V-G-4	Standard	4	
			Proofread by		Electrical Components List 1		CE	Totally 5	
			Checked by	Date			Voltage	Pages	
			Modified by	20170524	信易塑料機械股份有限公司 Shini Plastics Technologies, Inc.		Frequency	230V	
			Before modification					50Hz	
1	2	3	4	5	6	7	8		

1	2		3	4	5	6	7	8
NO.	Symbol	Name	Manufacturer	Type	Specification	Number	Material number	Remark
25		Terminal Board	HONEYWELL	10mm <sup>2</sup>	----	3	YE60001003200	
26		Terminal Board	HONEYWELL	10mm <sup>2</sup>	----	2	YE60001003500	
27		Terminal Board	HONEYWELL	2.5mm <sup>2</sup>	----	2	YE60002503200	(4) A
28		Terminal Board	HONEYWELL	2.5mm <sup>2</sup> PE	----	1	YE60002503400	(4) A
29	M1	Motor	SHINI	TP-150	230V 50Hz 1.5kW	1	----	(1)
30	M1	Motor	SHINI	MP-100	230V 50Hz 1.0kW	1	----	(1)(3)
31	EH	Heater	SHINI	12kW	230V 50Hz	1	----	(1)
32	S6	Communication interface board RS-485 (double Dsub-9pin connector)			PCS	1.000	YE90048501200	
33		Shell RS485(SAL-700G-A-19)0			PCS	1.000	YR4,0048500000	
B								
C								
D								
1	STM-1220W	版本 Ver.E		G	Title	Drawing NO.	Scale	Page
	STM-1220MW	版本 Ver.E	Designer	Version	STM-1220W	STM-1220W-CE-230V-G-5	Standard	5
	STM-1220WA	版本 Ver.D	Proofread by	Approved by	Electrical Components List 2		CE	Totally 5
Mark	Before modification	After modification	Modified by	Checked by	Date	20170524	Voltage	230V
			Modify date				Frequency	50Hz
1								8

Notes: (1)Means it's not the material inside the control box.(2)Means equipped with function of displaying water outlet and return water temperature.  
(3)Means equipped with magnetic pump. (4)Means optional air-blowing cleaning function.





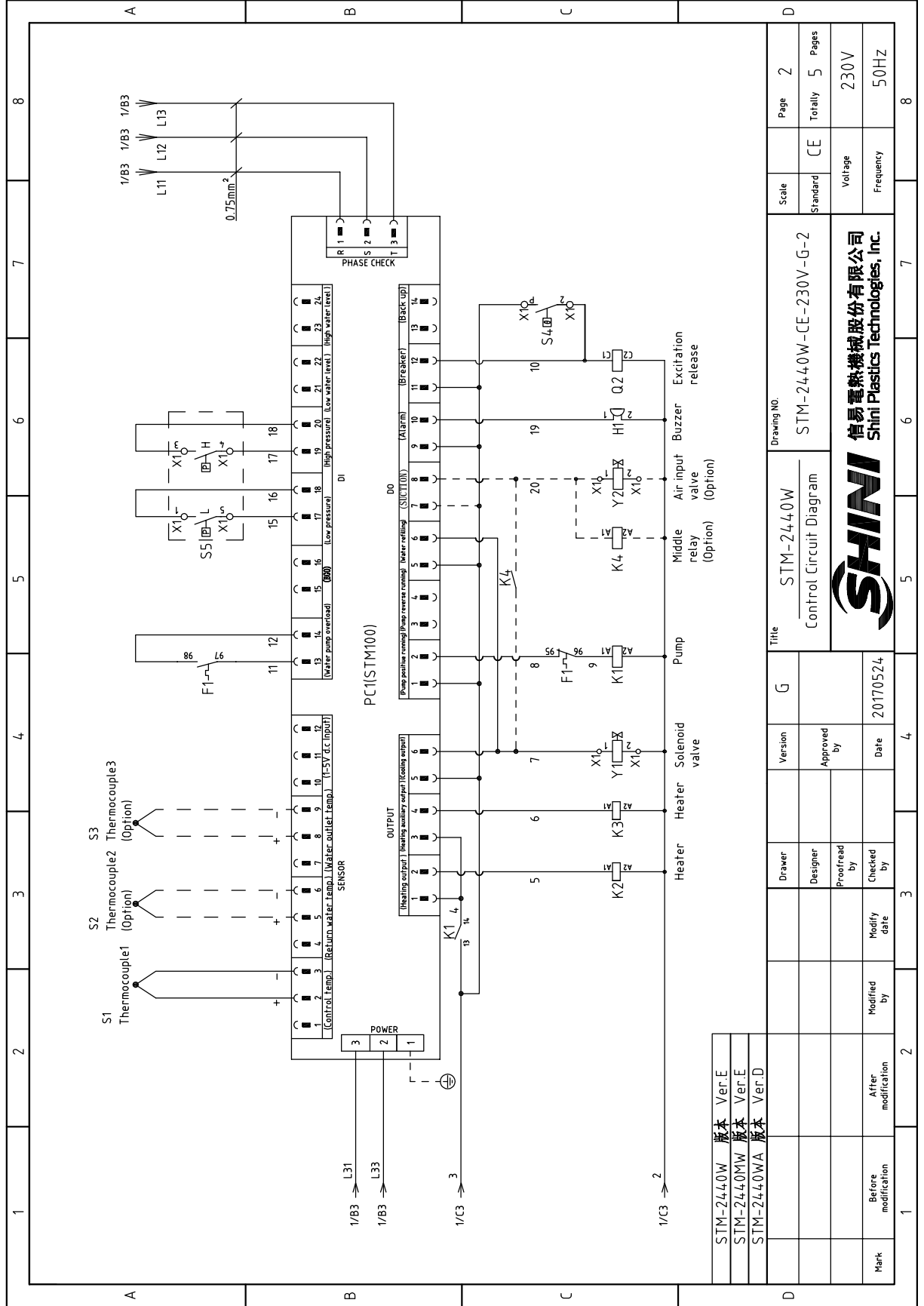
STM-2440W	版本	Ver.E
STM-2440MW	版本	Ver.E
STM-2440WA	版本	Ver.D

When equipped with magnetic pump F1:SET 9.9A P=2.8KW IN=9.9A

Mark	Before modification	After modification	Modify Date	Checked by	Designer	Drawer	Version	G	Title	Scale	Page 1
Drawing NO. STM-2440W Main Circuit Diagram										Standard	CE
										Standard	CE
										Voltage	230V
										Frequency	50Hz
										Totally	5
										Pages	5

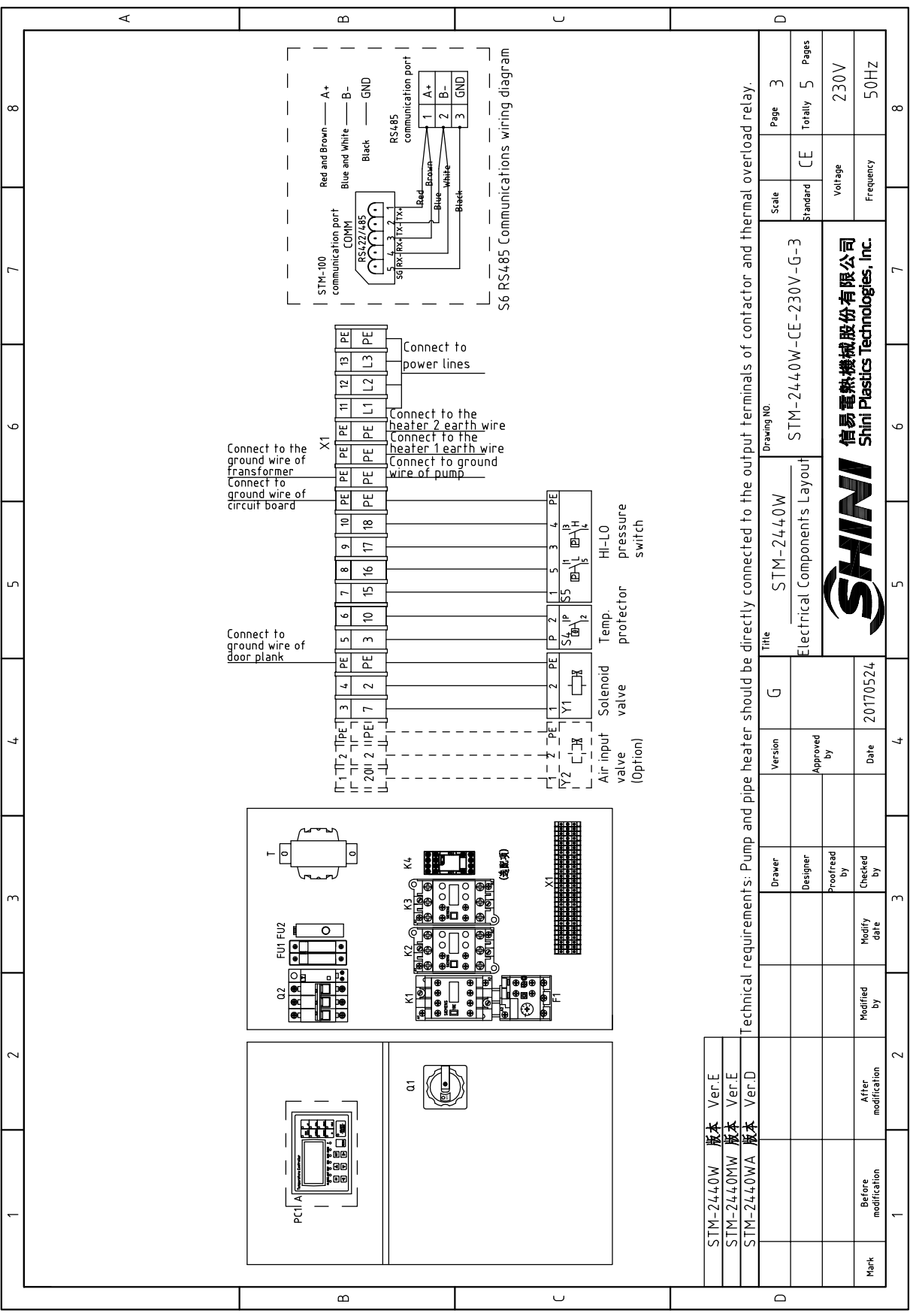







STM-2440W	版本	Ver.E
STM-2440MW	版本	Ver.E
STM-2440WA	版本	Ver.D


Drawer	Version	G	Title	STM-2440W	Drawing NO.	Scale	Page		
Designer	Approved by		Control Circuit Diagram	STM-2440W-CE-230V-G-2	Standard	CE	2		
Proofread by	Date	20170524	 <b>信易电热机械股份有限公司</b> <b>Shini Plastics Technologies, Inc.</b>						
Checked by	Modify date								
Mark	Before modification	2	After modification	3	4	5	6	7	8
Voltage		230V		Frequency		50HZ			
Standard		CE		Totally		5 Pages			



STM-2440W	版本	Ver.E
STM-2440MW	版本	Ver.E
STM-2440WA	版本	Ver.D

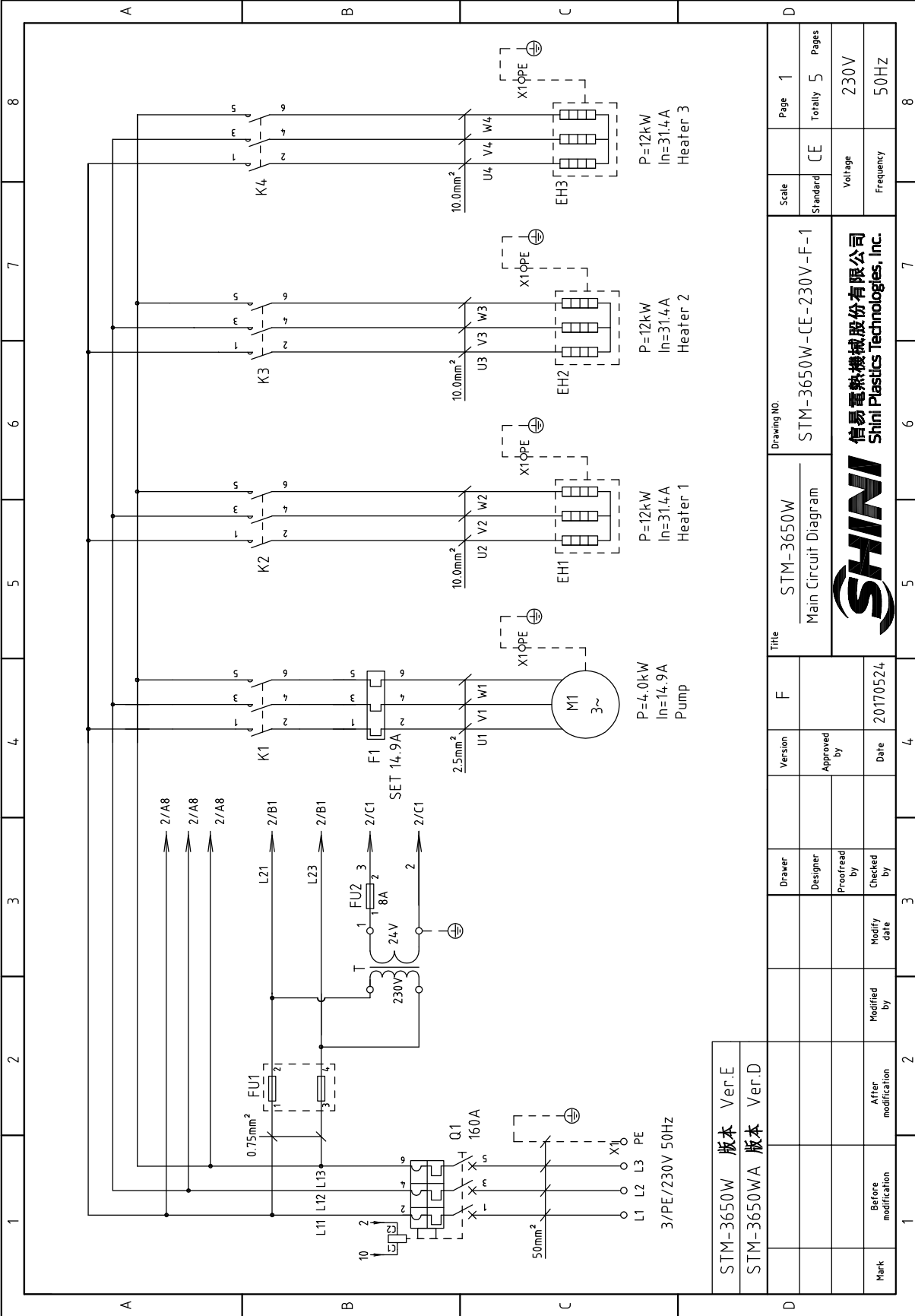
Technical requirements: Pump and pipe heater should be directly connected to the output terminals of contactor and thermal overload relay.

Mark	Before modification	After modification	Voltage 230V	Frequency 50Hz
	Modified by	Modify date		
Title	STM-2440W		Scale	Page 3
	Electrical Components Layout		Standard	Totally 5 Pages
Drawing NO.		STM-2440W-CE-230V-G-3		
 <b>信易电热机械股份有限公司</b> <b>Shini Plastics Technologies, Inc.</b>				
Version	G	Approved by		
Designer		Proofread by		
Date	20170524	Checked by		

1		2		3		4		5		6		7		8	
NO.	Symbol	Name	Manufacturer	Type	Specification	Number	Material number	Remark							
1	Q1	Main Switch	EATON	P3-100/EA/SVB	100A	1	YE10010000000								
2	Q2	Circuit breaker	TECO	BM-100D/3100S	100A	1	YE40310003000								
3		Release	TECO	MX	24VAC	1	YE40024000000								
4	K1	Contactors	SIEMENS	3RT6017-1AB01	24VAC	1	YE00601702500								
5	K1	Contactors	SIEMENS	3RT6017-1AB01	24VAC	1	YE00601702500	(3)							
6	K2 K3	Contactors	SIEMENS	3RT6028-1AC20	24VAC	2	YE00602802600								
7	K4	Middle Relay	WEIDMULLER	GR-2C-AC24V	24VAC	1	YE03022400300	(4)							
8	F1	Overload Relays	SIEMENS	3RU6116-1KB0	9-12.5A	1	YE01169125000								
9	F1	Overload Relays	SIEMENS	3RU6116-1KB0	9-12.5A	1	YE01169125000	(3)							
10	T	Transformer	BAIYUN	IN=230V OUT=24VAC	120VA	1	YE70023005500								
11	FU1	Fuse Base	CHINT	RT18-32	32A 2P	1	YE41032200000								
12		Fuse Core	MRO	10×38 500V	2A	2	YE46002000100								
13	FU2	Fuse	YINDA	FS-10	----	1	YE41001000000								
14		Fuse	----	6×30/5A	5A	1	YE46630500100								
15	S1	Thermocouple	SHINI	----	----	1	----	(1)							
16	S2 S3	Thermocouple	SHINI	----	----	2	----	(1)(2)							
17	S4	Overheat Protector	----	----	----	1	----	(1)							
18	S5	HI-LO pressure switch	----	----	----	1	----	(1)							
19	PC1 A	Circuit Board	HANYOUNGNUX	STM100-21(With the communication)	180~4.30V 50/60Hz	1	YE81184300200								
20	H1	Buzzer	----	PK-35A	24VAC/DC	1	YE84003500600								
21	Y1	Solenoid Valve	----	----	24VAC	1	----	(1)							
22	Y2	Solenoid Valve	----	----	24VAC	1	----	(1)(4)							
23	X1	Terminal Board	HONEYWELL	2.5mm <sup>2</sup>	----	8	YE60002503200								
24		Terminal Board	HONEYWELL	2.5mm <sup>2</sup> PE	----	3	YE60002503400								
STM-2440W 版本 Notes: (1)Means it's not the material inside the control box.(2)Means equipped with function of displaying water outlet and return water temperature. (3)Means equipped with magnetic pump. (4)Means optional air-blowing cleaning function.															
STM-2440MW 版本 STM-2440WA 版本															
<b>D</b>															
Title: STM-2440W Electrical Components List 1 Drawing NO: STM-2440W-CE-230V-G-4 Scale: CE Voltage: 230V Frequency: 50Hz															
															
Page 4 of 5 Totaly 5 Pages															
Mark: Before modification After modification Modified by Modify date Checked by Date 20170524															

1		2		3		4		5		6		7		8	
No.	Symbol	Name	Manufacturer	Type	Specification	Number	Material number	Remark							
25		Terminal Board	HONEYWELL	10mm <sup>2</sup> PE	----	2	YE60001003500								
26		Terminal Board	HONEYWELL	35mm <sup>2</sup>	----	3	YE60003503200								
27		Terminal Board	HONEYWELL	35mm <sup>2</sup> PE	----	1	YE60003503500	A							
28		Terminal Board	HONEYWELL	2.5mm <sup>2</sup>	----	2	YE60002503200	(4)							
29		Terminal Board	HONEYWELL	2.5mm <sup>2</sup> PE	----	1	YE60002503400	(4)							
30	M1	Motor	SHINI	TP-280	230V 50Hz 2.8kW	1	----	(1)							
31	M1	Motor	SHINI	MP-280	230V 50Hz 2.8kW	1	----	(1)(3)							
32	EH1 EH2	Heater	SHINI	----	230V 50Hz 12kW	2	----	(1)							
33	S6	Communication interface board RS-485 (double Dsub-9pin connector)			PCS	1.000	YE90048501200								
34		Shell RS485(SAL-700G-A-19)0			PCS	1.000	YR40048500000								
B															
C															
D															
Notes: (1)Means it's not the material inside the control box.(2)Means equipped with function of displaying water outlet and return water temperature. (3)Means equipped with magnetic pump. (4)Means optional air-blowing cleaning function.															
STM-2440W 版本 Ver.E															
STM-2440MW 版本 Ver.E															
STM-2440WA 版本 Ver.D															
		Title		Version		G		Drawing NO.		Scale		Page		5	
		STM-2440W						STM-2440W-CE-230V-G-5		Standard		CE		Voltage	
		Electrical Components List 2		Approved by						Frequency		230V		50Hz	
		Designer		Proofread by		Checked by		Date		20170524					
		Modified by		Modify date											
Mark		Before modification		After modification											
1		2		3		4		5		6		7		8	



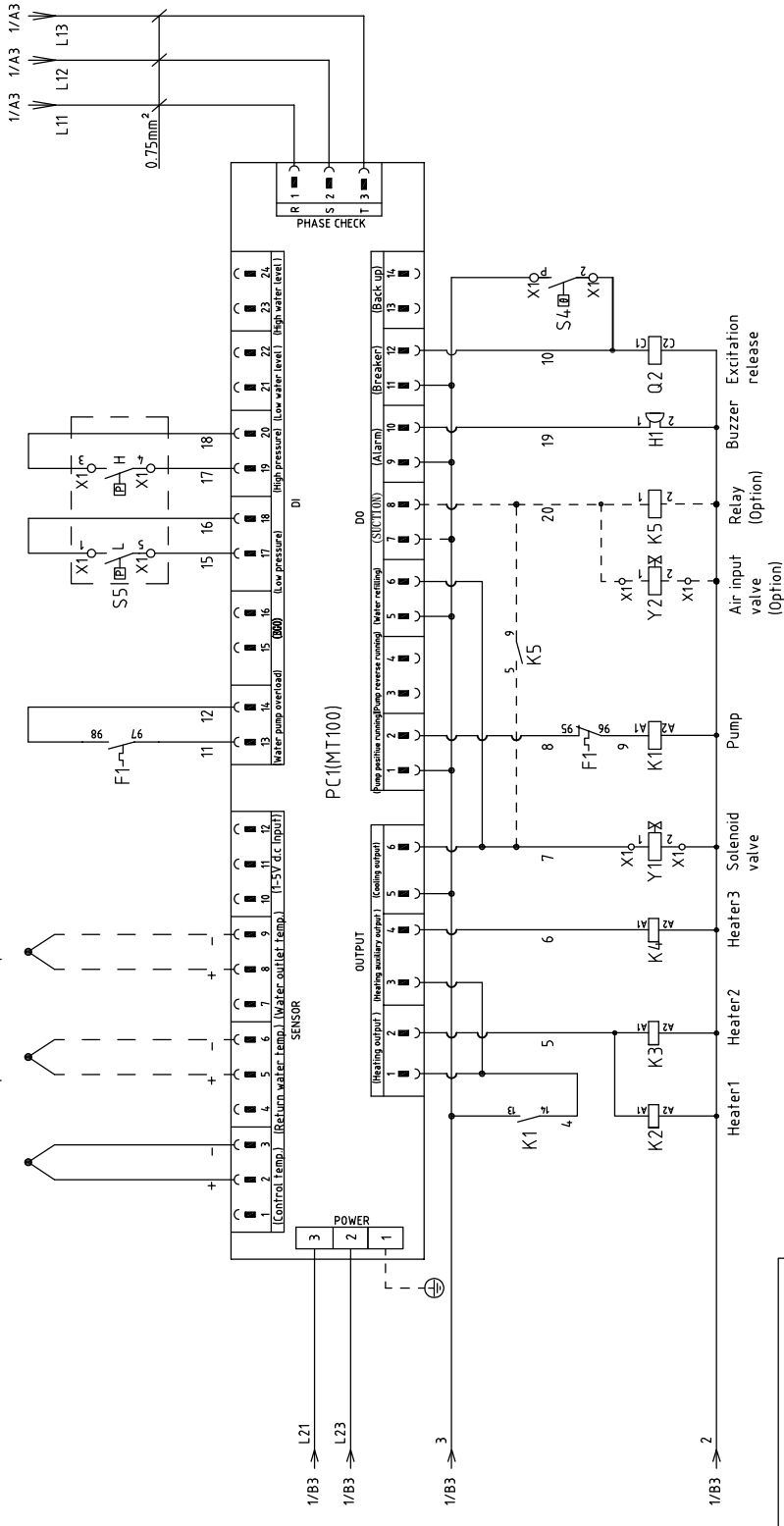


STM-3650W	版本 Ver.E
STM-3650WA	版本 Ver.D

Title		Drawing NO.	
STM-3650W		STM-3650W-CE-230V-F-1	
Main Circuit Diagram		Scale	
		CE	
Version		Page 1	
Approved by		Totally 5	
Proo/read by		Voltage	
Checked by		230V	
Modify Date		Frequency	
20170524		50Hz	
Mark	Before modification	After modification	



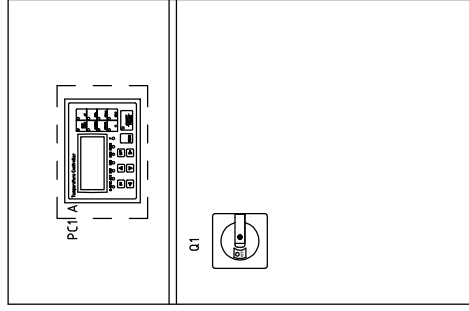
S1 Thermocouple1  
 S2 Thermocouple2  
 S3 Thermocouple3  
 (Option)



STM-3650W 版本 Ver.E  
 STM-3650WA 版本 Ver.D

Mark	Before modification	Modified by	20170524	Date	20170524	Checked by		Approved by		Version	F	Title	STM-3650W Control Circuit Diagram	Drawing No.	STM-3650W-CE-230V-F-2	Scale	CE	Page	2	
Designer		Proofread by																		
Modified by	After modification	Modify date																		
Before modification																				
Standard																				
Voltage																				
Frequency																				
Totally																				
Pages																				
Standard																				

**SHINI**  
 信易电热机械股份有限公司  
 Shini Plastics Technologies, Inc.

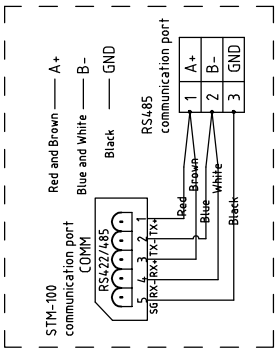


Connect to ground wire of door plank

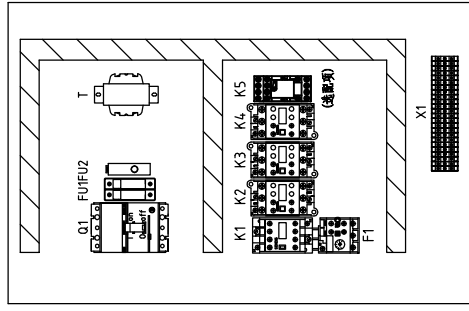
Connect to ground wire of circuit board

Connect to the ground wire of transformer

Connect to the ground wire of power supply  
 Connect to the heater earth wire 3  
 Connect to the heater earth wire 2  
 Connect to the heater earth wire 1  
 Connect to ground wire of pump



S6 RS485 Communications wiring diagram



STM-3650W	版本 Ver.E	Scale	Page 3
STM-3650WA	版本 Ver.D	Standard	Totally 5 Pages
Mark	Before modification	Voltage	230V
	Modified by	Frequency	50Hz
	Modify date		
	Checked by		
	Proofread by		
	Designer		
	Version		

Technical requirements: (1) Pump and pipe heater should be directly connected to the output terminals of contactor and thermal overload relay.  
 (2) Main power inlet directly connects to breaker interlock without passing by terminal board.

Title		Drawing NO.	
STM-3650W		STM-3650W-CE-230V-F-3	
Electrical Components Layout			
信易塑料机械股份有限公司 Shini Plastics Technologies, Inc.			
Mark	Before modification	Checked by	20170524
	Modified by	Designer	
	Modify date	Proofread by	
	Checked by	Version	
	Checked by	Scale	Page 3
	Checked by	Standard	Totally 5 Pages
	Checked by	Voltage	230V
	Checked by	Frequency	50Hz

1		2		3		4		5		6		7		8	
NO.	Symbol	Name	Manufacturer	Type	Specification	Number	Material number	Remark							
1	Q1	Breaker Interlock	ABB	A2B250TMF160/16003PFF	160A	1	YE41161500000								
2		Release	ABB	SOR-C	24V-30V AC/DC	1	YE40243000900								
3	K1	Contactors	SIEMENS	3RT6025-1AC20	24VAC	1	YE00602502600	A							
4	K2 K3 K4	Contactors	SIEMENS	3RT6028-1AC20	24VAC	3	YE00602802600								
5	K5	Middle Relay	WEIDMULLER	GR-2C-AC24V	24VAC	1	YE03022400300	(3)							
6	F1	Overload Relays	SIEMENS	3RU6126-4BB0	14-20A	1	YE01260140000								
7	T	Transformer	BAIYUN	IN=230V OUT=24VAC	180VA	1	YE70023005600								
8	FU1	Fuse Base	CHINT	RT18-32	32A 2P	1	YE41032200000								
9		Fuse Core	MRO	10x38 500V	2A	2	YE46002000100								
10	FU2	Fuse	YINDA	FS-10	----	1	YE41001000000								
11		Fuse	----	6x30/8A	8A	1	YE46863000200	B							
12	S1	Thermocouple	SHINI	----	----	1	----	(1)							
13	S2 S3	Thermocouple	SHINI	----	----	2	----	(1)(2)							
14	S4	Overheat Protector	----	----	----	1	----	(1)							
15	S5	HI-LO pressure switch	----	----	----	1	----	(1)							
16	PC1 A	Circuit Board	HANYOUNGNUX	STM100-21(With the communication)	180-4.30V 50/60Hz	1	YE8184300200								
17	H1	Buzzer	----	PK-35A	24VAC/DC	1	YE84003500600								
18	Y1	Solenoid Valve	----	----	24VAC 50/60Hz	1	----	(1)							
19	Y2	Solenoid Valve	----	----	24VAC	1	----	(1)(3)							
20	X1	Terminal Board	HONEYWELL	2.5mm <sup>2</sup>	----	8	YE60002503200								
21		Terminal Board	HONEYWELL	2.5mm <sup>2</sup> PE	----	3	YE60002503400								
22		Terminal Board	HONEYWELL	10mm <sup>2</sup> PE	----	3	YE60001003500								
23		Terminal Board	HONEYWELL	35mm <sup>2</sup> PE	----	1	YE60003503500								
24		Terminal Board	HONEYWELL	2.5mm <sup>2</sup>	----	2	YE60002503200	(3)							
STM-3650W 版本		Notes: (1)Means it's not the material inside the control box.(2)Means equipped with function of displaying water outlet and return water temperature.													
STM-3650WA 版本		(3)Means optional air-blowing cleaning function.													
		Title		Drawing NO.		Scale		Page		Standard		Voltage		Pages	
		STM-3650W		STM-3650W-CE-230V-F-4		Electrical Components List 1		CE		230V		50Hz			
		SHINI		信易塑料机械股份有限公司		Shini Plastics Technologies, Inc.									
Mark		Before modification		After modification		Modified by		Modify date		Checked by		Date		20170524	
1		2		3		4		5		6		7		8	



1		2		3		4		5		6		7		8	
NO.	Symbol	Name	Manufacturer	Type	Specification	Number	Material number	Remark							
25		Terminal Board	HONEYWELL	2.5mm <sup>2</sup> PE	----	1	YE60002503400	(3)							
26	M1	Motor	----	4.0kW	230V 50Hz	1	----	(1)							
27	EH1 EH2 EH3	Heater	----	12kW	230V 50Hz	3	----	(1)							
28	S6	Communication interface board RS-485 (double Dsub-9pin connector)			PCS	1.000	YE90048501200								
29		Shell RS485(SAL-700G-A-19)0			PCS	1.000	YR4,0048500000								
A															
B															
C															
D															
Notes: (1)Means it's not the material inside the control box.(2)Means equipped with function of displaying water outlet and return water temperature. (3)Means optional air-blowing cleaning function.															
STM-3650W 版本		Ver.E				Title		STM-3650W		Drawing NO.		Scale		Page 5	
STM-3650WA 版本		Ver.D				Version		F		Electrical Components List 2		Standard		CE	
Mark		Before modification		Modified by		Designer		Proofread by		Approved by		Voltage		230V	
		After modification		Modify date		Checked by		Date		20170524		Frequency		50Hz	
1		2		3		4		5		6		7		8	

