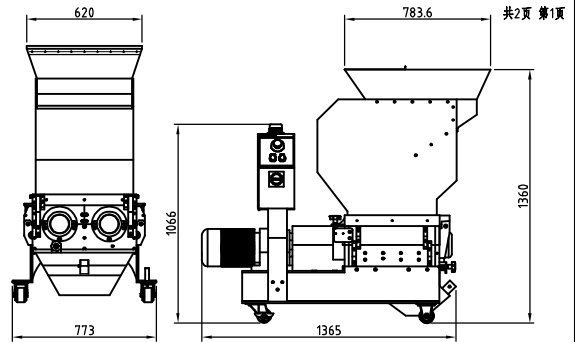
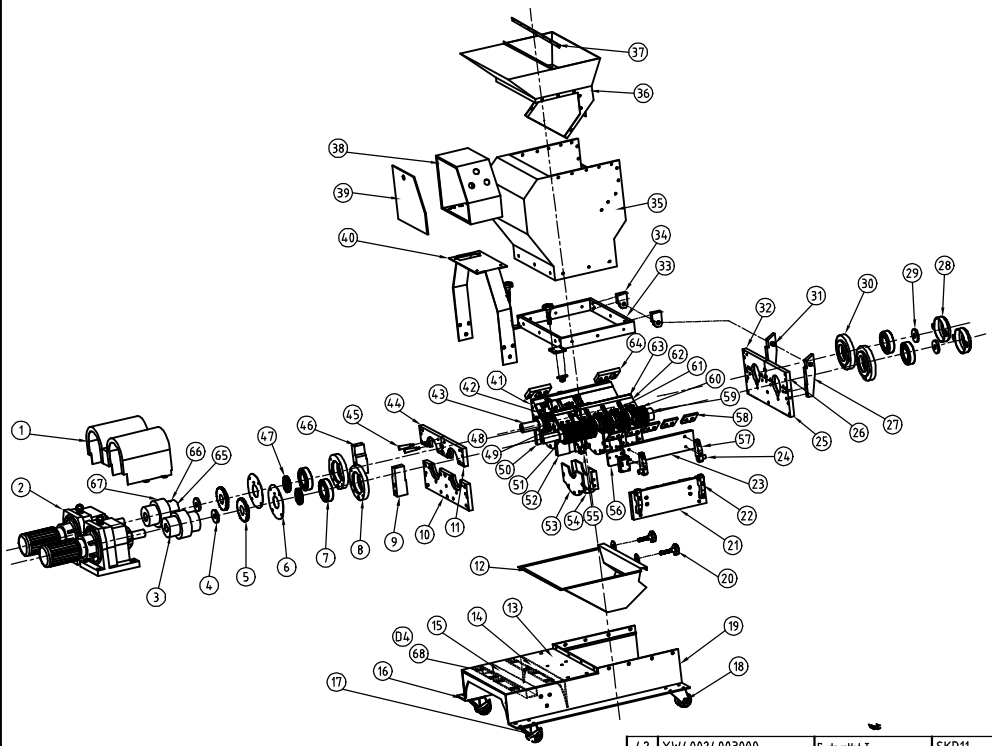


31	BH1024.0300310	Feedbox rotating shaft	Q235A	2
30	BW300024.03610	Front bearing base	QT500-7	2
29	BL51802100020	Washer	Q235A	2
28	BL510024.024.20	Bearing cover	SPCC1.2	2
27	BH100024.02510	Positioning block 5	Q235A	2
26	BH1024.0000510	Upper case front end plate 2	Q235A	1
25	BH100024.024.10	Lower case front end plate	Q235A	1
24	BH1024.1500010	Cutting case rotating shaft	Q235A	4
23	BW3024.3660010	Upper case left case block	QT500-7	1
22	BH1024.14.00010	Feedbox rotating block 2	Q235A	2
21	BH8524.3600150	Lower case left case block	Q235A	1
20	BH11256.00010	Large star assembly M12×5.6	Assembly	4
19	--	Castor left fixed plate	SPH8.0	1
18	YW03000300500	USA flat plate fixed black castor 3"	Assembly	2
17	YW03000300900	USA side movable black castor 3"	Assembly	2
16	--	Castor right fixed plate	SPH8.0	1
15	--	Reinforced trough plate	SPH5.0	1
14	--	Base fixed plate	SPH6.0	2
13	--	Base cover plate	SPH8.0	1
12	BL5124.3601320	Strip in	SECC2.0	1
11	BH1024.0000710	Upper case rear end plate 2	Q235A	1
10	BH1024.2100110	Lower case rear end plate	Q235A	1
9	BL5124.0100220	Positioning block 2(left)	Q235A	1
8	BW30024.003710	Rear bearing base	QT500-7	2
7	YW11621300000	Bearing 6213DDU/VV	Assembly	4
6	--	Rear bearing cover plate	SPCC1.5	2
5	BL5124.0000320	Sensor wheel	45	2
4	BL5124.0003920	Speed washer	45	2
3	BH1024.3802210	1/2" shaft coupler (hole dia: 40mm)	QT500-7	2
2	YM10773100100	Gear 16(2Z)	Assembly	2
1	--	Shaft coupler cover plate	SPCC2.0	1

42	YW40024.003000	Fixed rear flate T	SKD11	2
41	BW3024.3600210	Upper case right case block	QT500-7	1
40	--	Control box support base	SPH5.0	1
39	--	Control box side plate	SPCC2.0	1
38	--	Control box external shell	SPCC2.0	1
37	--	Bulletproof strip fixed plate	SPCC3.0	1
36	--	Feed part	SPCC2.0	1
35	BR9024.3600010	Feed box	PC plate	1
34	BH1024.0100210	Feedbox rotating block 1	Q235A	2
33	BL5124.3600621	Feedbox rotating lower base	Q235A	1
32	BH1024.0000410	Upper case front end plate 1	Q235A	1

序号	代号	名称	材质	数量	备注	序号	代号	名称	材质	数量	备注	
		制图			标题	SG-2436T	图号		比例		数量	
		设计			爆炸示意图						材质	
		校对									表面要求	
		审核									物料号	





31	BH1024.0300310	Feedbox rotating shaft	Q235A	2	
30	BW300024.03610	Front bearing base	QT500-7	2	
29	BL51802100020	Washer	Q235A	2	
28	BL510024.02420	Bearing cover	SPCC1.2	2	
27	BH100024.02510	Positioning block 5	Q235A	2	
26	BH1024.0000510	Upper case front end plate 2	Q235A	1	
25	BH100024.02410	Lower case front end plate	Q235A	1	
24	BH1024.1500010	Cutting case rotating shaft	Q235A	4	
23	BW30244.601210	Upper case left case block	QT500-7	1	
22	BH1024.14.00010	Feedbox rotating block 2	Q235A	2	
21	BH1024.4.602610	Lower case left case block	Q235A	1	
20	BH11125.600010	Large star assembly M12*5.6	Assembly	4	
19	--	Castor left feedplate	SPH8.0	1	
18	YW03000300500	USA flat plate fixed black castor 3	Assembly	2	
17	YW03000300900	USA side movable black castor 3	Assembly	2	
16	--	Castor right feedplate	SPH8.0	1	
15	--	Reinforced trough plate	SPH5.0	1	
14	--	Base feedplate	SPH6.0	2	
13	--	Base cover plate	SPH8.0	1	
12	BL5124.4.601320	Storage box	SECC2.0	1	
11	BH1024.0000710	Upper case rear end plate 2	Q235A	1	
10	BH1024.2100110	Lower case rear end plate	Q235A	1	
9	BL5124.0100220	Positioning block 2 (left)	Q235A	1	
8	BW30024.003710	Rear bearing base	QT500-7	2	
7	YW11621300000	Bearing 6213DDU/VV	Assembly	4	
6	--	Rear bearing cover plate	SPCC1.5	2	
5	BL5124.0000320	Sensor wheel	45	2	
4	BL5124.0003920	Special washer	45	2	
3	BH1024.3802210	M3 shaft coupler Bolt dia: 40mm	QT500-7	2	
2	YM10773100100	Ear nut (20M)	Assembly	2	
1	--	Shaft coupler cover plate	SPCC2.0	1	

42	YW4.0024.003000	Feedbox blade T	SKD11	2	
41	BW3024.3600410	Upper case right case block	QT500-7	1	
40	--	Control box support base	SPH5.0	1	
39	--	Control box side plate	SPCC2.0	1	
38	--	Control box external shell	SPCC2.0	1	
37	--	Blade guard ship feedplate	SPCC3.0	1	
36	--	Feed part	SPCC2.0	1	
35	BR9024.4.601010	Feedbox	PC plate	1	
34	BH1024.0100210	Feedbox rotating block 1	Q235A	2	
33	BH1024.0700010	Feedbox rotating lower base	Q235A	1	
32	BH1024.0000410	Upper case front end plate 1	Q235A	1	

序号	代号	名称	材质	数量	备注	序号	代号	名称	材质	数量	备注	
		制图				标题	SG-2446T	图号		比例	1:21	数量
		设计					爆炸示意图					材质
		校对										表面要求
		审核										物料号



Weight (kg)	Noise When Granulating dB(A)	Max. Cutting Ability (kg/hr)	Cutting Ability Size (mm)	Small Teeth Cutter Qty.	Big Teeth Cutter Qty.	Staggered Cutter Qty.	Teeth Cutter Mat.	Main Shaft Speed (r.p.m)	Motor Power (KW)	Version No.
560	80-85	25	505x460	2	9	9	SKD11	27	2.2x2	VER.C

Note:1)The max.cutting ability depends on the granule's size and property;
 2) The noise during crushing varies according to the granules property and motor;
 3) SKD11 meets the JIS standard No.;
 4) Standard slant teeth cutters, narrow and widened slant teeth cutters are options;
 5) In order to avoid sticking the plastic cutter, all materials to be crushed shall be processed at normal temperature;
 6) Machine Power: 3φ,400VAC,50Hz;

68	--	Motor positioning plate		4	
67	YW68080500000	Inner hex. flax end lock screw Ø7/11MM&Largine		4	
66	BH10243902210	XL9 shaft coupler (hole dia.: 45mm)	QT500-7	2	
65	YW90007500000	XL shaft coupling star washer GR-75		2	
64	YW40024003100	Fixed front blade 1	SKD11	2	
63	BW30244600110	Upper case middle case block 2	QT500-7	1	
62	YW40024000100	Fixed front blade F1	SKD11	2	
61	YW40024000200	Fixed front blade F2	SKD11	5	
60	SG-24N-A-23	Teeth cutter R	SKD11	9	
59	BW30024000210	Left sleeve	QT500-7	2	
58	YW40024000300	Fixed rear blade B	SKD11	9	
57	BW40240500010	Cutting case rotating block 1	Q235A	2	
56	--	Safety switch fixed plate	SPH8.0	1	
55	BW40240500010	Staggered blade	SKD11	9	
54	BH10002400710	Middle plate 1	45	9	
53	BH10002400910	Middle plate 2	45	9	
52	BH10244601510	Lower case middle case block	Q235A	1	
51	BW30002400110	Right bearing sleeve	QT500-7	2	
50	BH10244602110	Lower case right case block	Q235A	1	
49	YW40240003200	Middle teeth cutter T	SKD11	2	
48	BW30243600010	Upper case middle case block 1	QT500-7	1	
47	BH10002401110	Stoping	Q235A	2	
46	BL51240200220	Positioning block 2 (right)	Q235A	1	
45	YW00121400000	Handle M2	Assembly	2	
44	BH10240000610	Upper case rear end plate 1	Q235A	1	
43	BH11244601010	Shaft	40Cr	2	
序号	代 号	名 称	材 质	数 量	备 注

					制图		版号	标题	SG-24.46T	图号		比例		数量	
					设计		核准	爆炸示意图					材质		
标	更改	更改	更改	日期	审核		日期		信易電熱機械股份有限公司 Shini Plastics Technologies, Inc.	表面要求					
记	前	后	人	核			物料号								