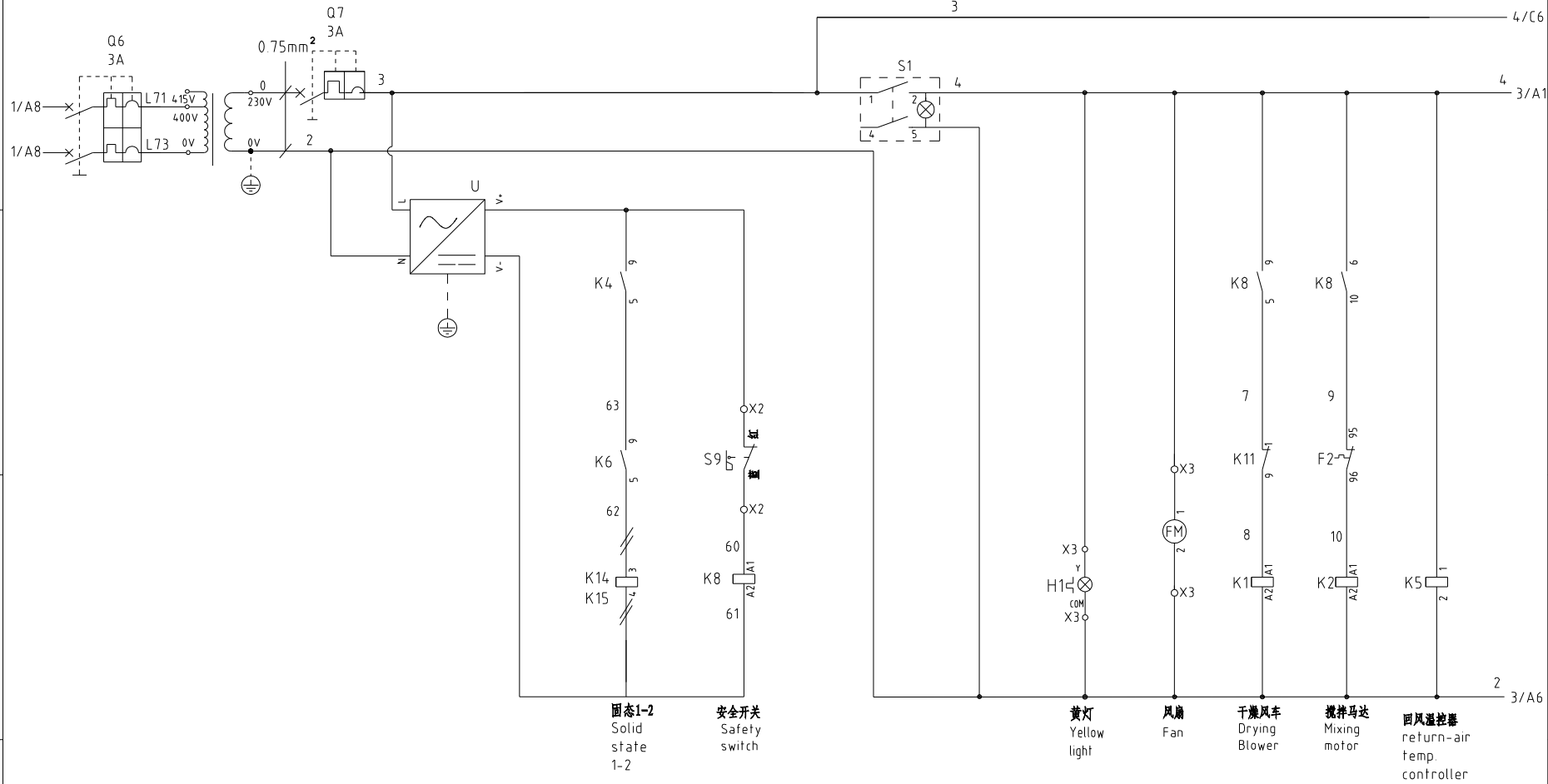



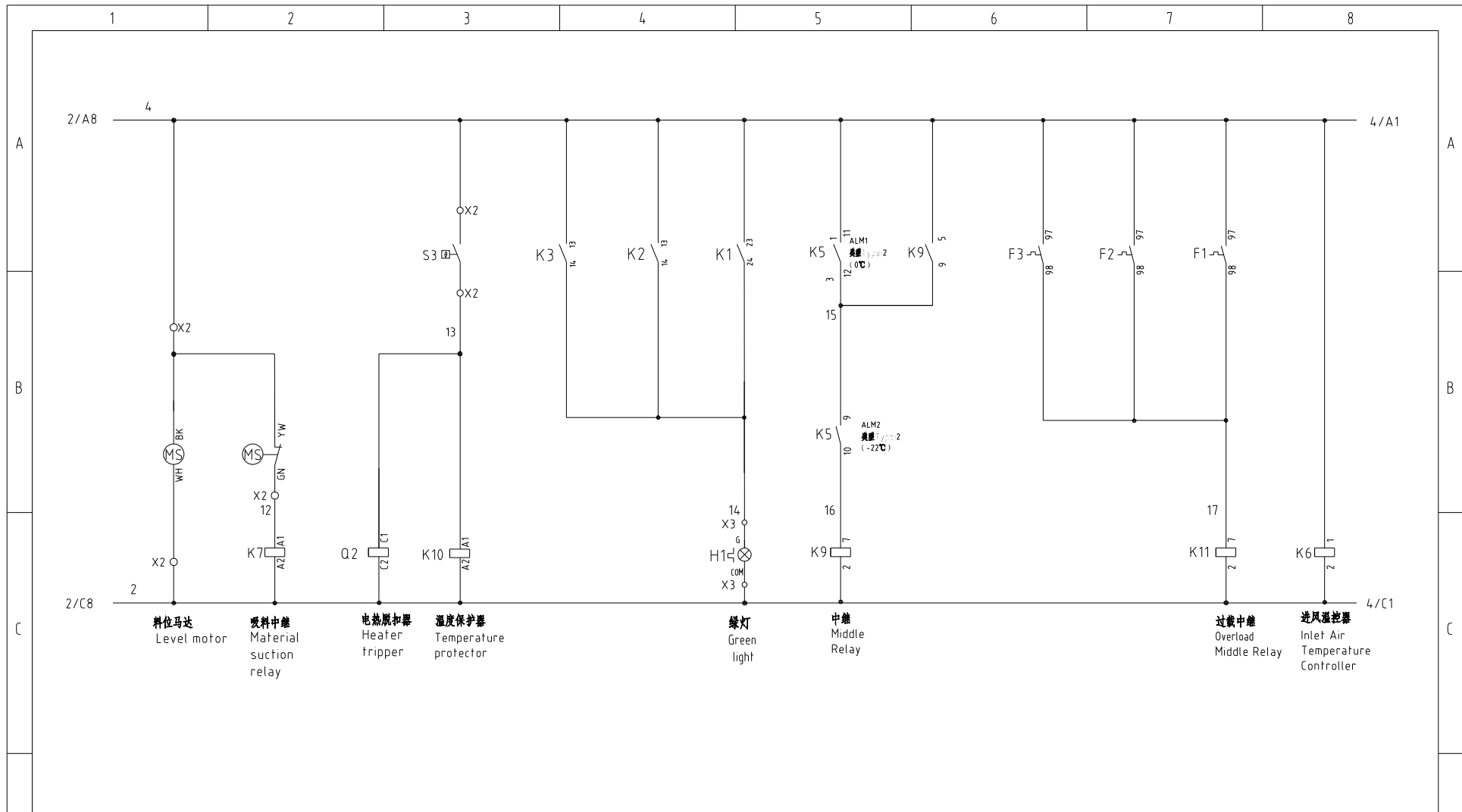
机型版本 Ver.C						制图	版号	E	标题	SCR-160U	图号	SCR-160U-CE-400V-E-1	比例	第 1 张
						设计	核准		主电路图		标准	CE	共 8 张	
						校对	日期	20240227	 信易电热机械股份有限公司 Shini Plastics Technologies, Inc.	机器电压	3φ400V			
标记	更改前	更改后	更改人	日期	审核	日期		机器频率		50Hz				



- 固态1-2
Solid state 1-2
- 安全开关
Safety switch
- 黄灯
Yellow light
- 风扇
Fan
- 干燥风车
Drying Blower
- 搅拌机达
Mixing motor
- 回风温控器
return-air temp. controller

机型版本 Ver.C

					制图	版号	E	标题	SCR-160U	图号	SCR-160U-CE-400V-E-2	比例	第 2 张
					设计	核		控制电路图一		标准	CE	共 8 张	
					校对	准		 信易電熱機械股份有限公司 Shini Plastics Technologies, Inc.		机器电压	3φ400V		
标记	更改前	更改后	更改人	日期	审核	日期	20240227			机器频率	50Hz		



机型版本 Ver.C

制图	版号	E	标题	SCR-160U 控制电路图二	图号	SCR-160U-CE-400V-E-3	比例	第 3 张	
设计	核准						标准	CE 共 8 张	
校对							机器电压	3φ400V	
标记	更改前	更改后	更改人	日期	审核	日期	20240227	机器频率	50Hz



信易電熱機械股份有限公司
Shini Plastics Technologies, Inc.

机器电压 3φ400V
机器频率 50Hz

1

2

3

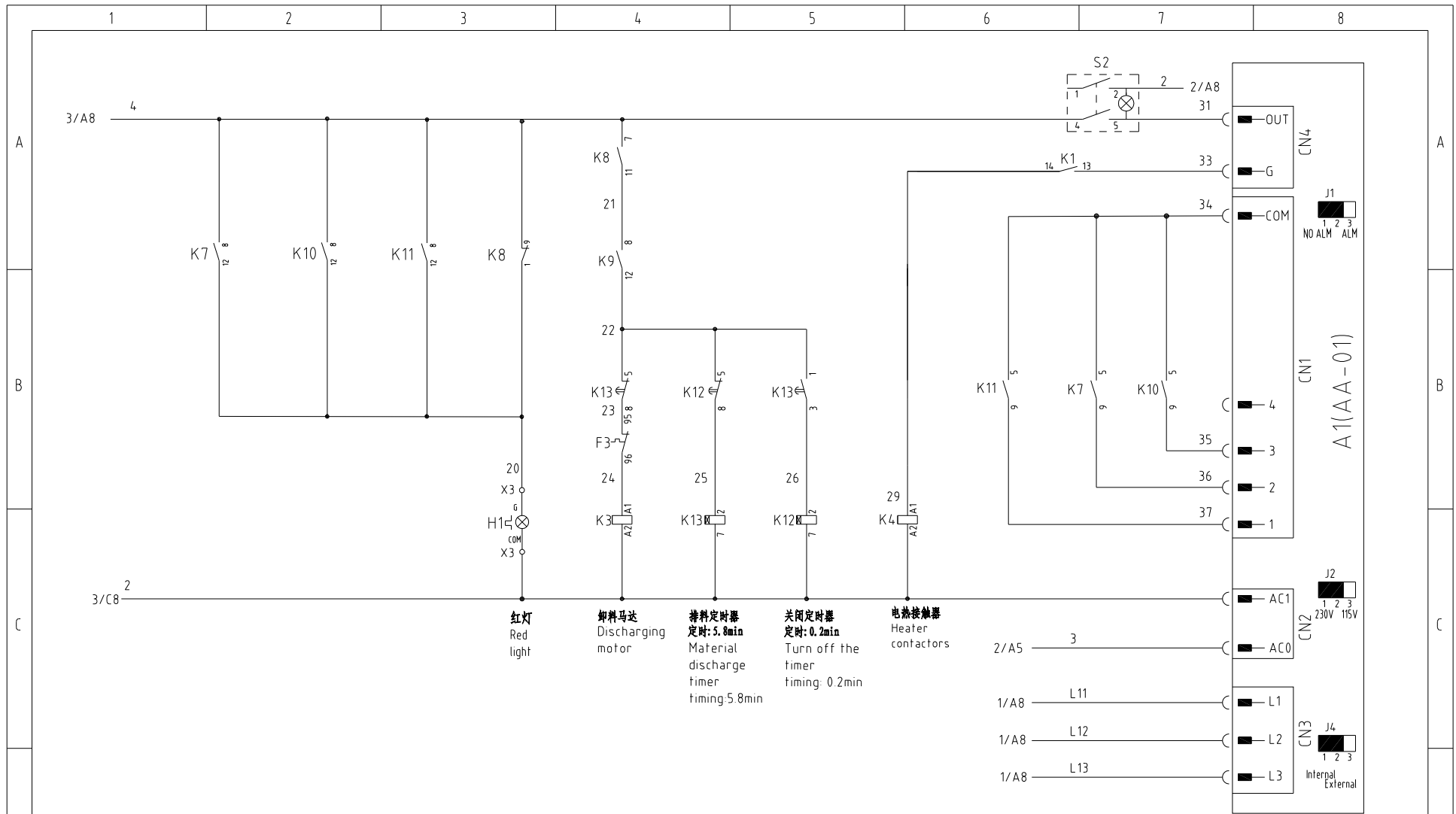
4

5

6

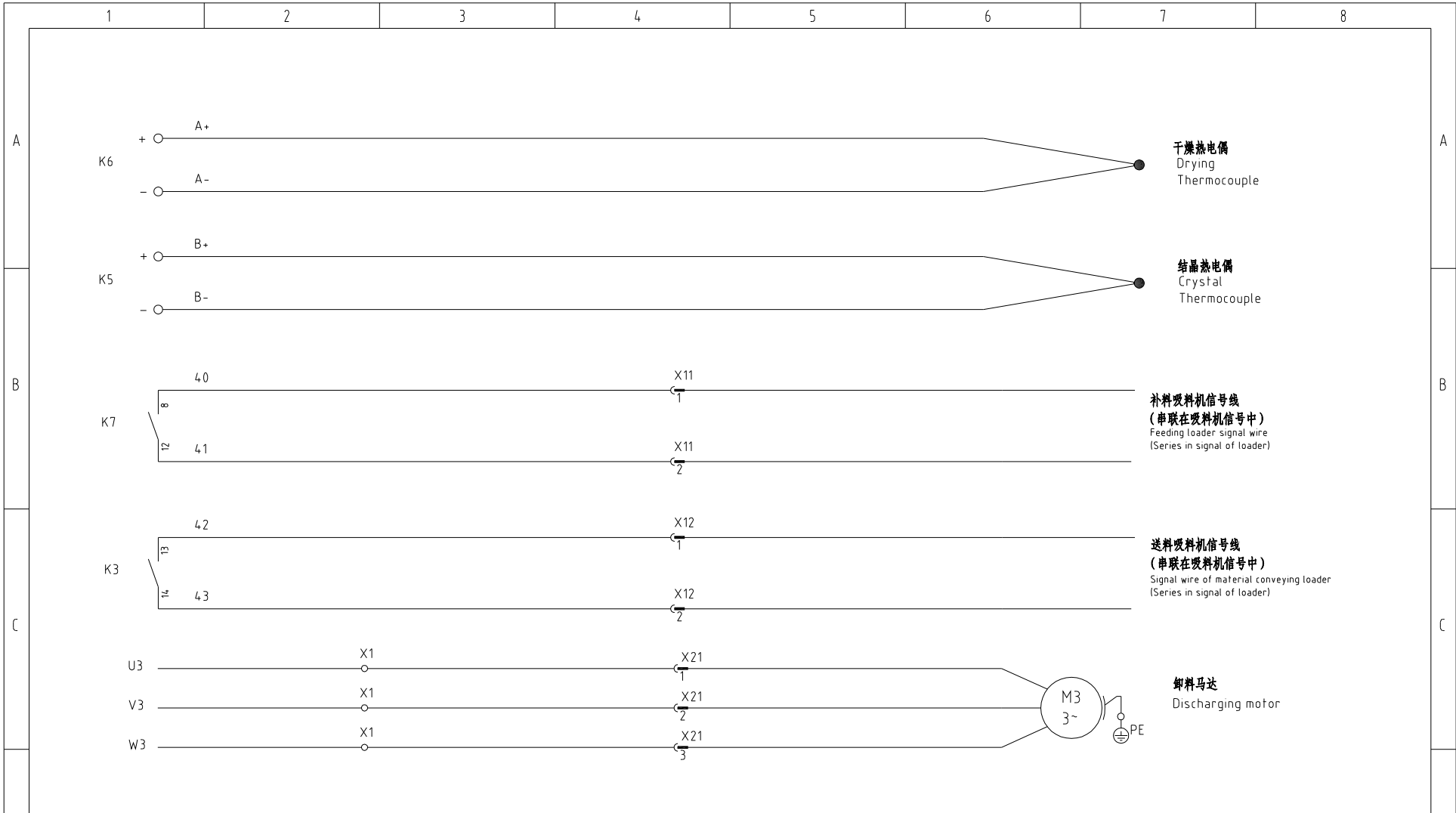
7

8



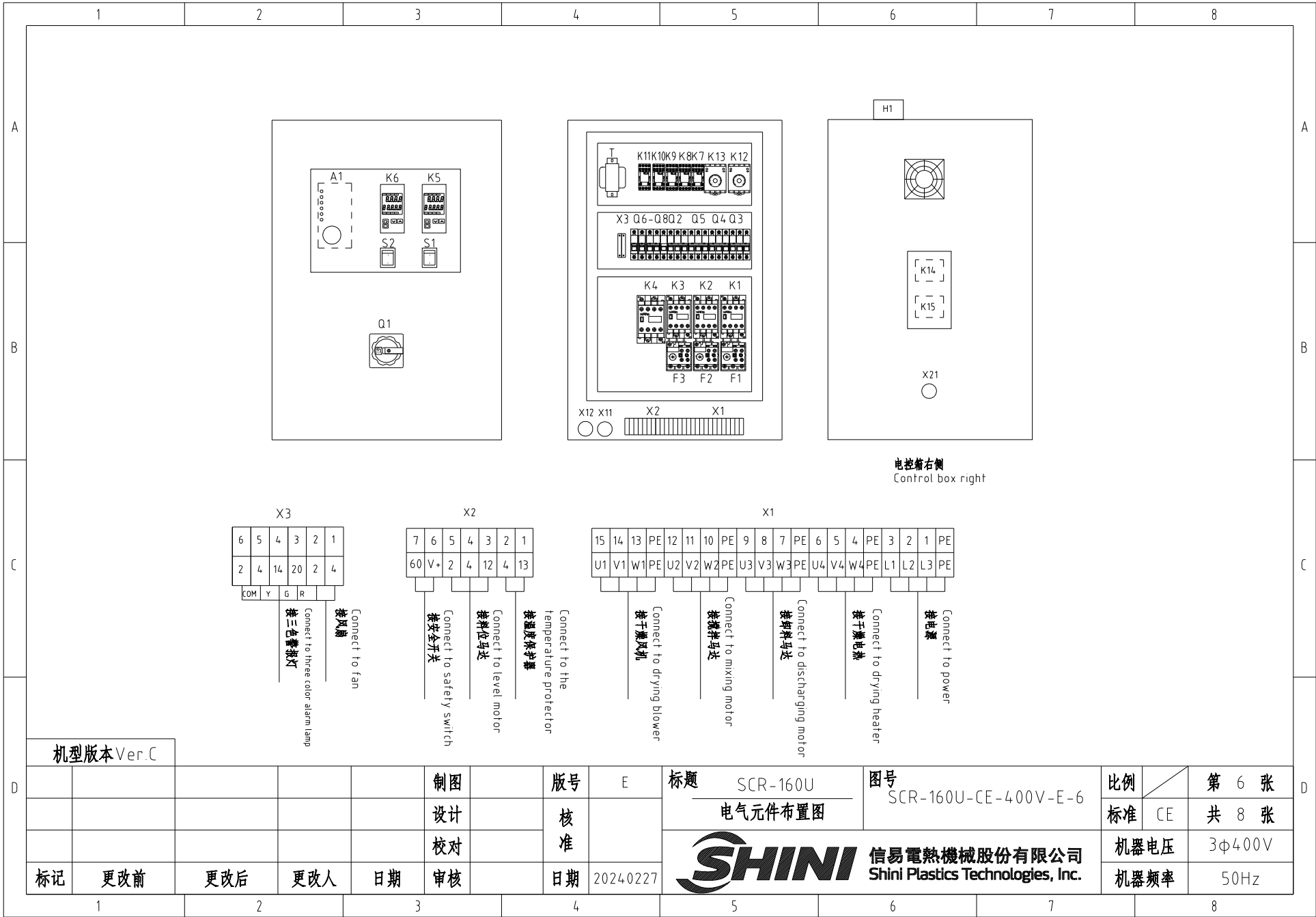
机型版本 Ver.C					制图	版号	E	标题	SCR-160U 控制电路图三	图号	SCR-160U-CE-400V-E-4	比例	第 4 张	
					设计	核准						标准	CE	共 8 张
					校对							机器电压	3φ400V	
标记	更改前	更改后	更改人	日期	审核	日期	20240227	信易電熱機械股份有限公司 Shini Plastics Technologies, Inc.	机器频率	50Hz				

1 2 3 4 5 6 7 8

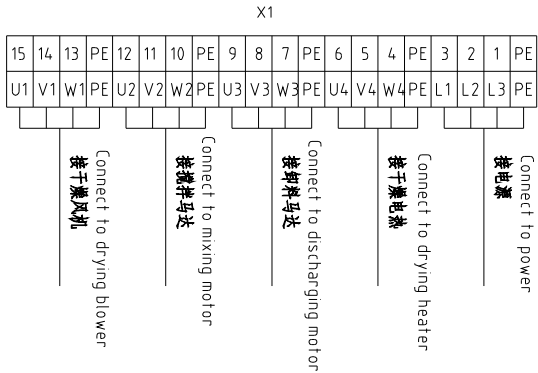
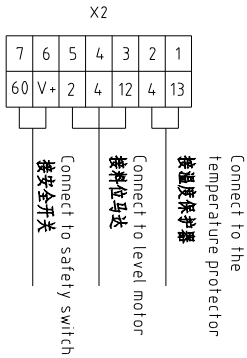
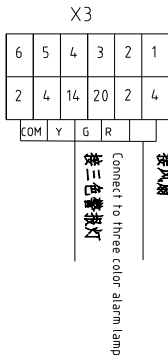


机型版本 Ver.C

					制图	版号	E	标题	SCR-160U	图号	SCR-160U-CE-400V-E-5	比例	第 5 张
					设计	核		热电偶及吸料信号接线图		标准	CE	共 8 张	
					校对	准		 信易電熱機械股份有限公司 Shini Plastics Technologies, Inc.		机器电压	3φ400V		
标记	更改前	更改后	更改人	日期	审核	日期	20240227			机器频率	50Hz		




电控箱右侧
Control box right




机型版本 Ver.C

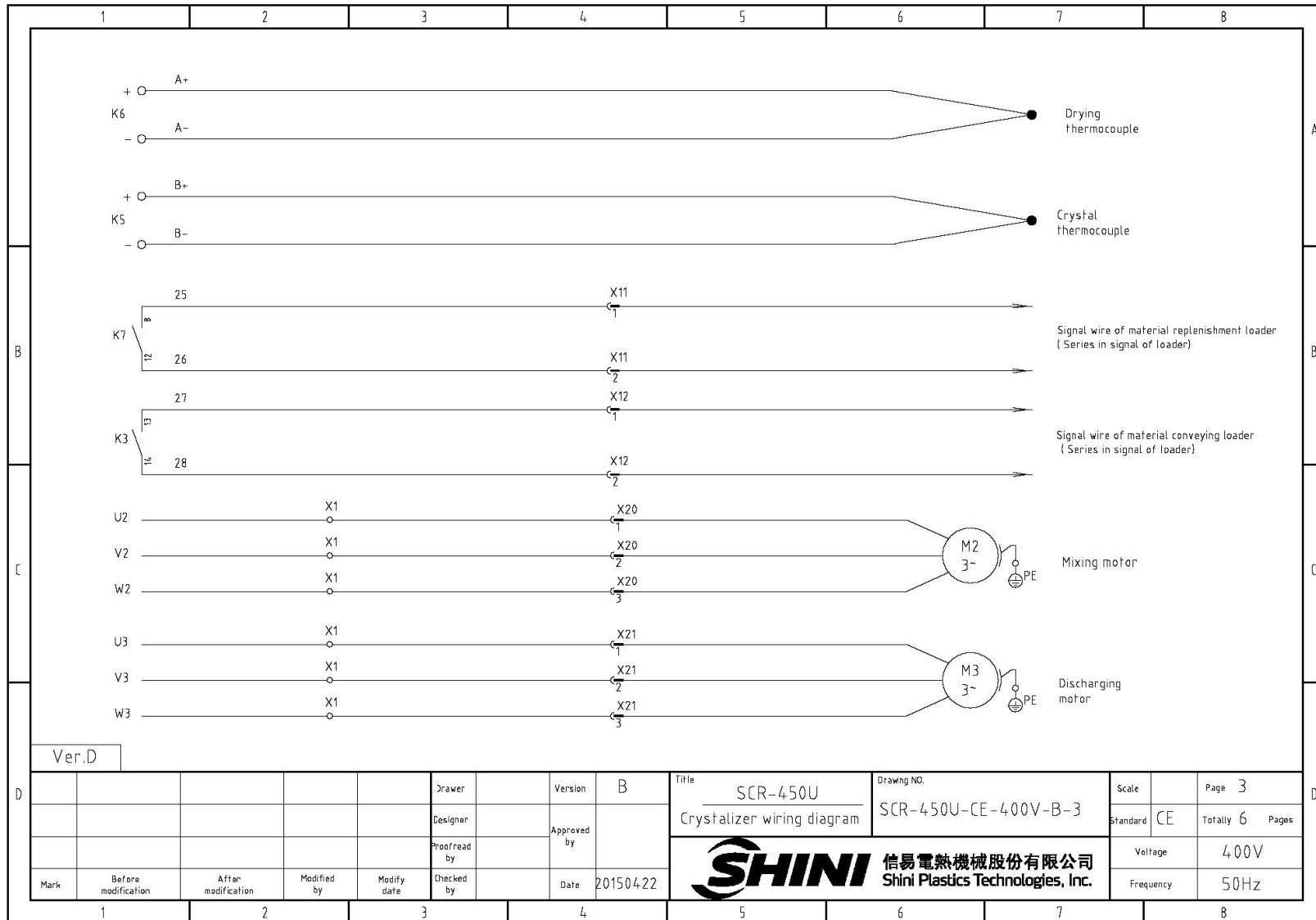
制图	版号	E	标题	SCR-160U	图号	SCR-160U-CE-400V-E-6	比例	第 6 张
设计	核准		电气元件布置图				标准	CE 共 8 张
校对	日期	20240227	 信易电热机械股份有限公司 Shini Plastics Technologies, Inc.	机器电压	3φ400V			
标记	更改前	更改后		更改人	日期	机器频率	50Hz	

1	2	3	4	5	6	7	8
---	---	---	---	---	---	---	---

1		2		3		4		5		6		7		8				
序号/NO	符号/Symbol	名称/Name		制造商/Manufacturer		型号/Type		规格/Specification		单位/unit	数量/Number	物料编号/Material number		备注/Remark				
A	1	Q1	主电源开关 /Main power switch		MOELLER		P1-25/EA/SVB		25A		PCS	1	YE10125250000					
	2	Q2	断路器 /Circuit breakers		TECO		BM-63C		25A		PCS	1	YE40302503000					
	3		励磁脱扣器 /Excitation release		TECO		MX		230VAC		PCS	1	YE40023560000					
	4	Q3 Q4 Q5	断路器 /Circuit breakers		TECO		BM-63C		6A		PCS	3	YE40300603000					
	5	Q6	断路器 /Circuit breakers		TECO		BM-63C		3A		PCS	1	YE40200203000					
	6	Q7	断路器 /Circuit breakers		TECO		BM-63C		3A		PCS	1	YE40100203000					
	7	K1 K2 K3 K4	接触器 /Contactors		SIEMENS		3RT6016-1AN22		220V		PCS	4	YE00601622000					
B	8		辅助触点/Auxiliary contactor		SIEMENS		3RH6911-1AA10		1NO		PCS	4	YE00691110000					
	9	K5 K6	温控器 /Temperature controller		OMRON		E5EZ		100-240V 50/60Hz		PCS	2	YE85005000000					
	10	K7 K11	中间继电器 /Middle relay		WEIDMULLER		DRM570730LT		220V 配座FS4CO		PCS	2	YE03570700000					
	11	K8	中间继电器 /Middle relay		Honeywell		GR-4C-DC24V		配座PGR-4C-E		PCS	1	YE03042400500					
	12	K9 K10	中间继电器 /Middle relay		WEIDMULLER		DRM270730LT		230V 50/60Hz		PCS	2	YE03270700000					
	13	K12 K13	时间继电器 /Timer relay		T&C		TH3M-NAB		3S-60M/AC220V		PCS	2	YE86300300000					
	14	K14 K15	固态继电器/Solid-state relay		FOTEK		KSR-40DA-H		4-32VDC		PCS	2	YE03404003200					
C	15	F1	热过载继电器 /Overload relay		SIEMENS		3RU6116-1BB0		1.4-2A		PCS	1	YE01160140000					
	16	F2	热过载继电器 /Overload relay		SIEMENS		3RU6116-0JB0		0.7-1A		PCS	1	YE01160700000					
	17	F3	热过载继电器 /Overload relay		SIEMENS		3RU6116-1AB0		1.1-1.6A		PCS	1	YE01160110000					
	18	T	变压器/Transformer		JIUXIN		400V/415V OUT=230V		500MA		PCS	1	YE70040005200					
	19	A1	微电脑板 /PCB		YUYUN		AA-01		230VAC 50/60Hz		PCS	1	YE80000100000					
	20	S1 S2	切替开关 /Alternative switch		REAB		T120-55		4P WH		PCS	2	YE10210400000					
	21	MS	料位马达 /Level motor		SIPAI		SR-80-T		250VAC		PCS	1	YE15000200000		(1)			
	22	S4	温度保护器 /Overheat protector		EGO		----		250V 5A		PCS	1	YE21503000000		(1)			
	23	FM1	风扇 /Fan		SUNON		DP200A		230V 50/60Hz		PCS	1	YM60121200400		(1)			
	24	H1	警报灯/Alarm lamp		SHINI		红黄绿优先级		SWI-P-AC230V		PCS	1	BL90023000520		(1)			
	25	X1 X2 X3	端子排/Terminal board		HONEYWELL		GK6		6mm ²		PCS	3	YE60000603200					
机型版本 Ver.C		注: (1) 表示非电控箱安装																
D					制图		版号		E		标题		图号		比例		第 7 张	
					设计		核				SCR-160U		SCR-160U-CE-400V-E-7		标准		CE 共 8 张	
					校对		准				 信易電熱機械股份有限公司 Shini Plastics Technologies, Inc.		机器电压		3φ400V			
	标记		更改前		更改后		更改人		日期				20240227		机器频率		50Hz	
1		2		3		4		5		6		7		8				

1		2		3		4		5		6		7		8	
序号/NO	符号/Symbol	名称/Name		制造商/Manufacturer		型号/Type		规格/Specification		单位/unit	数量/Number	物料编号/Material number		备注/Remark	
26		端子排/Terminal board		HONEYWELL		GK6PE		6mm²E		PCS	1	YE60000603500			
27		端子排/Terminal board		HONEYWELL		SK4		4mm²		PCS	3	YE60000403200			
28		端子排/Terminal board		HONEYWELL		GK5PE		4mm²E		PCS	1	YE60000403500			
29		端子排/Terminal board		HONEYWELL		SK2.5		2.5mm²		PCS	25	YE60002503200			
30		端子排/Terminal board		HONEYWELL		GK2.5PE		2.5mm²E		PCS	6	YE60002503400			
31		终端固定件E/GK系列 Terminal fittings E/GK series		Honeywell		E		GK		PCS	6	YE60000003900			
32	X11 X12	金属接头/Metal connector		----		DF25-3		-----		PCS	2	YE68025300200		(1)	
33	X21	防水接头 / water-proof connector		CEE		RS-314		400V 16A		PCS	1	YE63314100000		(1)	
--	S3	温度保护器 Temp. protector		EGO		ZA300		250V 5A			1	---		(1)	
--	S6 S7	热电偶/Thermocouple		SHINI		----		K			2	---		(1)	
--	S9	安全开关/Safety switch		SCHMERSRC		AZ15-02ZVRK-1476		AZ-15			1	---		(1)	
--	M1	风机/Blower		SHINI		-----		0.55KW 400V 50Hz			1	---		(1)	
--	M2	马达/Motor		SHINI		-----		0.25KW 400V 50Hz			1	---		(1)	
--	M3	马达/Motor		SHINI		-----		0.4KW 400V 50Hz			1	---		(1)	
--	EH1	电热/Heater		SHINI		-----		12KW 400V 50Hz			1	---		(1)	
C															
机型版本 Ver.C		注: (1) 表示非电控箱安装 Note: (1) Means not part of control box.													
				制图		版号 E		标题 SCR-160U		图号 SCR-160U-CE-400V-E-8		比例		第 8 张	
				设计		核 准		电气元件明细表二				标准 CE		共 8 张	
				校对				 信易電熱機械股份有限公司 Shini Plastics Technologies, Inc.				机器电压		3φ400V	
标记		更改前		更改后		更改人				日期		20240227		机器频率	
1		2		3		4		5		6		7		8	

9(33)




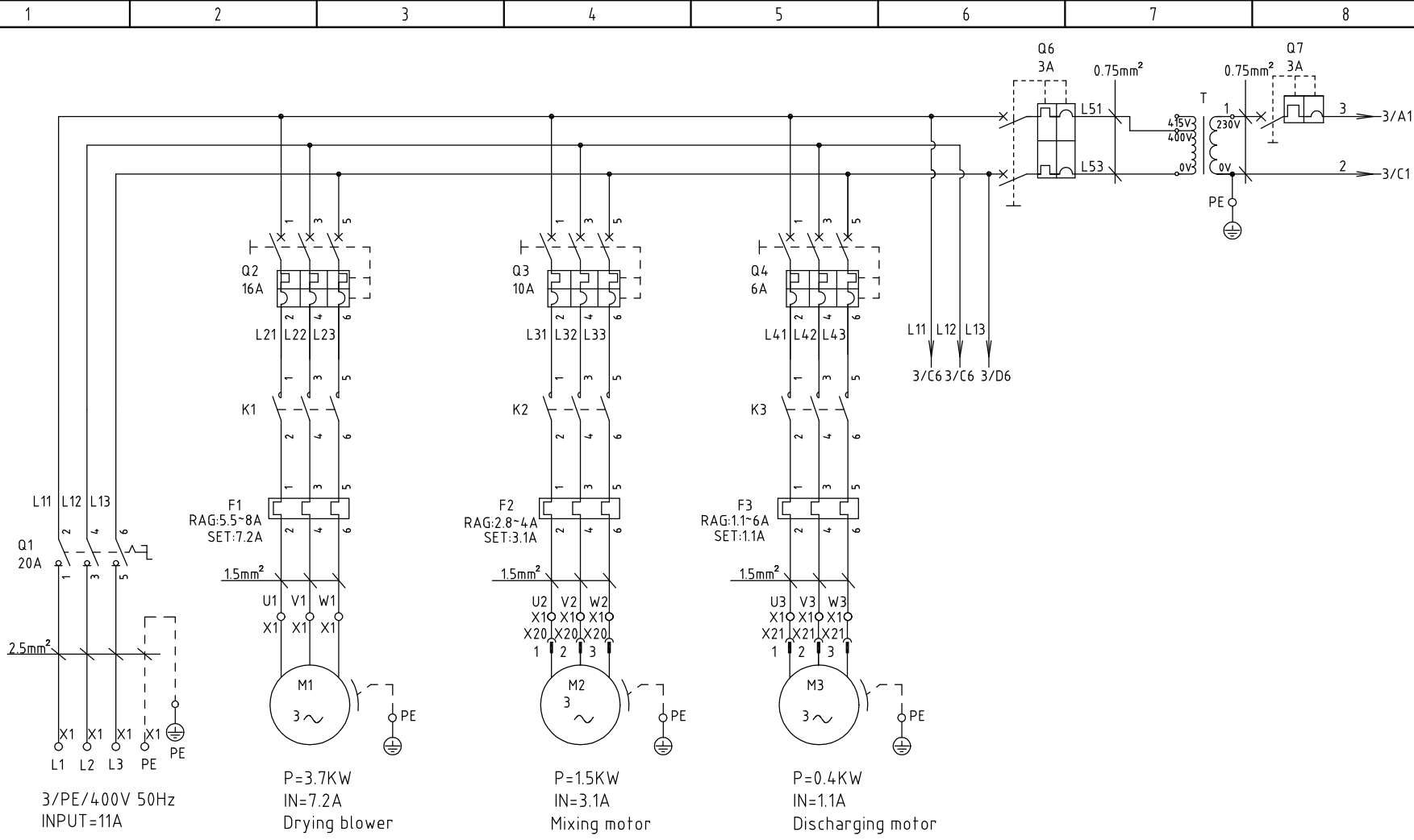
Ver.D

					Drawer	Version	B	Title	SCR-450U Crystalizer wiring diagram	Drawing NO.	SCR-450U-CE-400V-B-3	Scale	Page 3
					Designer	Approved by				Standard	CE	Totally 6	Pages
					Proofread by					Voltage	400V		
Mark	Before modification	After modification	Modified by	Modify date	Checked by	Date	20150422	信易電熱機械股份有限公司 Shini Plastics Technologies, Inc.		Frequency	50Hz		
1	2	3	4	5	6	7	8						


11(33)

1		2		3		4		5		6		7		8					
NO.	Symbol	Name		Manufacturer	Type		Specification		Number	Material number		Remark							
1	Q1	Main power switch		MOELLER	P3-63/EA/SVB		63A		1	YE10636300000									
2	Q2	Circuit breakers		TECO	BM-63C		50A		1	YE40305003000									
3		Excitation release		CHNT	MX		230VAC		1	YE40023560000									
4	Q3	Circuit breakers		TECO	BM-63C		16A		1	YE40301603000									
5	Q4 Q5	Circuit breakers		TECO	BM-63C		6A		2	YE40300603000									
6	K1 K2 K3	Contactors		SIEMENS	3RT6016-1AN21		230V 50/60Hz		3	YE00601621000									
7	K4	Contactors		SIEMENS	3RT5036-1AN20		230V 50/60Hz		1	YE00503600000									
8	K5 K6	Temperature controller		OMRON	E5EZ		100-240V 50/60Hz		2	YE85005000000									
9	K7 K8 K9	Middle relay		WEIDMULLER	DRM270730LT		230V 50/60Hz		3	YE03270700000									
10	K10 K11	Timer relay		OMRON	H3BA-N8H		230VAC 0-300h		2	YE86300800000									
11	F1	Thermo overload relay		SIEMENS	3RU6116-1GB0		4.5-6.3A		1	YE01160450000									
12	F2	Thermo overload relay		SIEMENS	3RU6116-1BB0		1.4-2.0A		1	YE01160140000									
13	F3	Thermo overload relay		SIEMENS	3RU6116-1AB0		1.1-1.6A		1	YE01160110000									
14	FU1	Fuse base		CHNT	RT18-32		2P		1	YE41032200000									
15		Fuse core		CHNT	10x38 500V		2A		2	YE46002000100									
16	FU2	Fuse**		YINDA	FS-10		2A		1	YE41001000000									
17	T	Transformer*		BAIYUN	IN=400V OUT=230V		500mA		1	YE70402300800									
18	PC	PCB		YUYUN	AA-01		230VAC 50/60Hz		1	YE80000100000									
19	S1 S2	Alternative switch		REAB	T120-55		4P WH		2	YE10210400000									
20	MS	Material level motor		SIPAI	SR-80-T		250VAC		1	YE15000200000		(1)							
21	S4	Thermal protector		EGO	----		250V 5A		1	YE21503000000		(1)							
22	S5	Negative pressure switch		----	----		----		1	----		(1)							
23	S6 S7	Thermocouple		SHINI	----		K		2	----		(1)							
24	FM1	Fan		SUNON	DP200A		230V 50/60Hz		1	YM60121200400		(1)							
25	H1	Pulse indicator		----	LED-3051		230VAC 50HZ		1	YE83305100200		(1)							
Ver.D		Note: (1) Means not part of control box. /* means possible broken parts. **means easy broken part. and spare backup is suggested.																	
				Drawer		Version		B		Title		Drawing NO.		Scale		Page		5	
				Designer		Approved by				SCR-450U		SCR-450U-CE-400V-B-5		Standard		CE		Totally 6 Pages	
				Proofread by		Date		20150422		 信易電熱機械股份有限公司 Shini Plastics Technologies, Inc.		Voltage		400V					
Mark		Before modification		After modification		Modified by		Modify date				Checked by		Frequency		50Hz			
1		2		3		4		5		6		7		8					

1		2		3		4		5		6		7		8				
NO.		Symbol		Name		Manufacturer		Type		Specification		Number		Material number		Remark		
A	26	X1	Terminal board			PHOENIX		10mm ²		76A		6		YE61100000000				
	27							10mm ² PE				2		YE61103500000				
	28		Terminal board			PHOENIX		2.5mm ²		41A		6		YE61250040000				
	29							2.5mm ² PE				2		YE61253500000				
	30		Terminal board			PHOENIX		2.5mm ²		32A		3		YE61250040000				
	31							2.5mm ² PE				1		YE61253500000				
B	32	X2	Terminal board			PHOENIX		2.5mm ²		32A		9		YE61250040000				
	33	X3	Terminal board			PHOENIX		2.5mm ²		32A		2		YE61253500000				
	34							2.5mm ² PE				1		YE61253500000				
	35	X10	Heavy duty connector			SIBAS		HDC-HE-04		400V 5A		1		YE68041000000/YE68041000100 (1)				
	36	X11 X12	Metal Tie in			----		DF25-3		-----		2		YE68025300200 (1)				
	37	X20 X21	Waterproof connectors			CEE		RS-314		400V 16A		2		YE63314100000 (1)				
C	38	M1	Blower			SHINI		-----		2.2KW 400V 50Hz		1		----- (1)				
	39	M2	Motor			SHINI		-----		0.55KW 400V 50Hz		1		----- (1)				
	40	M3	Motor			SHINI		-----		0.4KW 400V 50Hz		1		----- (1)				
	41	EH1	Heater**			SHINI		-----		24KW 400V 50Hz		1		----- (1)				
<p>Note: (1) Means not part of control box. /*means possible broken parts. ** means easy broken part. and spare backup is suggested.Please confirm the version of manual before placing the purchase order to guarantee that the item number of the spare part is in accordance with the real object.</p>																		
<p>Ver.D</p>																		
D					Drawer		Version		B		Title		Drawing NO.		Scale		Page 6	
					Designer		Approved by				SCR-450U Electrical Components List 2		SCR-450U-CE-400V-B-6		Standard CE		Totally 6 Pages	
					Proofread by		Date		20150422		 信易電熱機械股份有限公司 Shini Plastics Technologies, Inc.		Voltage		400V			
	Mark		Before modification		After modification		Modified by		Modify date				Checked by		Frequency		50Hz	



Ver.F

					Drawer	Version	D	Title	SCR-900U	Drawing NO.	Scale	Page	1
					Designer	Approved by		Main Circuit Diagram 1	SCR-900U-CE-400V-D-1	Standard	CE	Totally	7 Pages
					Proofread by	Date	20200902	 信易電熱機械股份有限公司 Shini Plastics Technologies, Inc.		Voltage	3φ400V		
Mark	Before modification	After modification	Modified by	Modify date	Checked by					Frequency	50Hz		

1 2 3 4 5 6 7 8

1 2 3 4 5 6 7 8

A

B

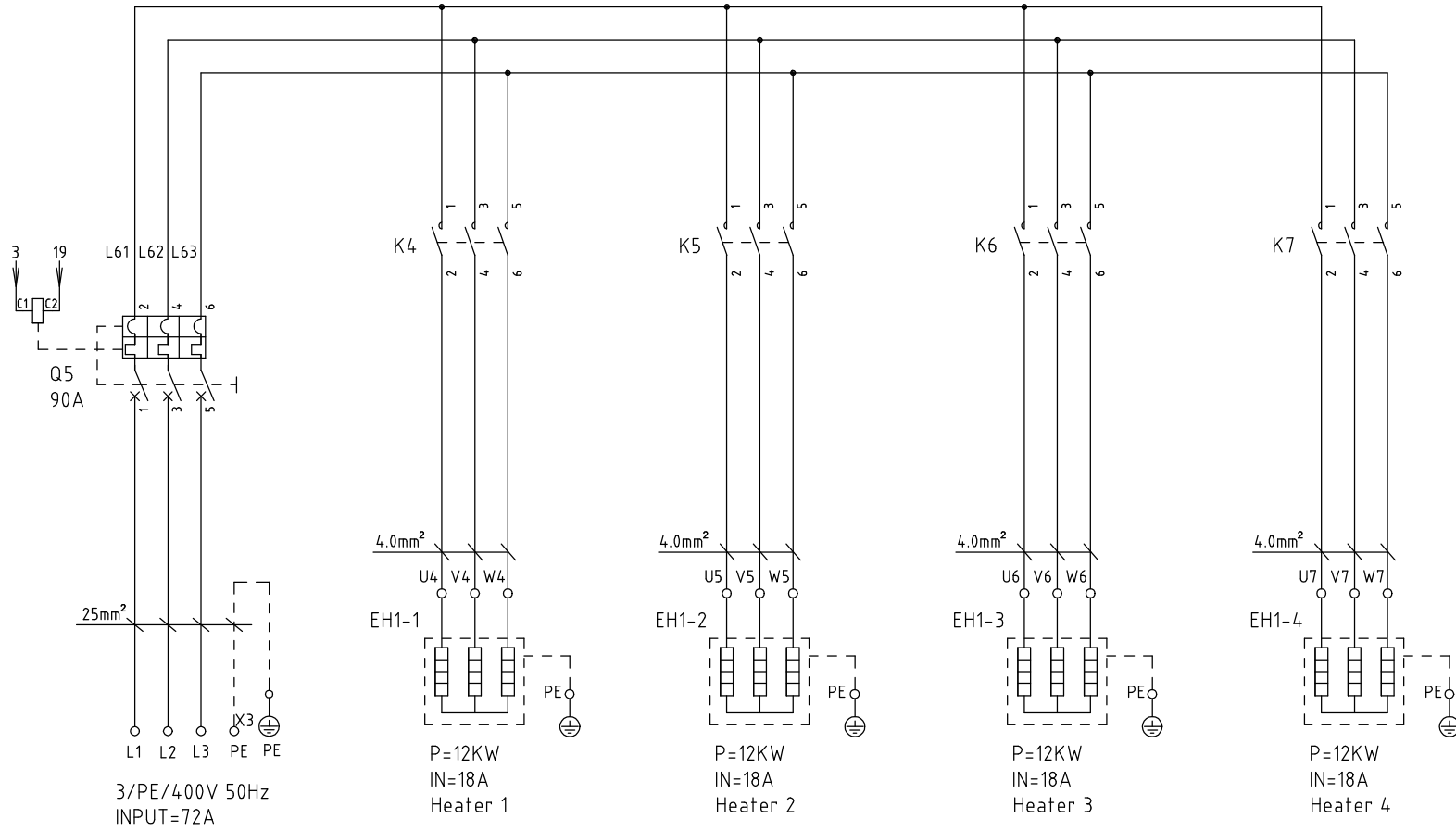
C

A


B

C

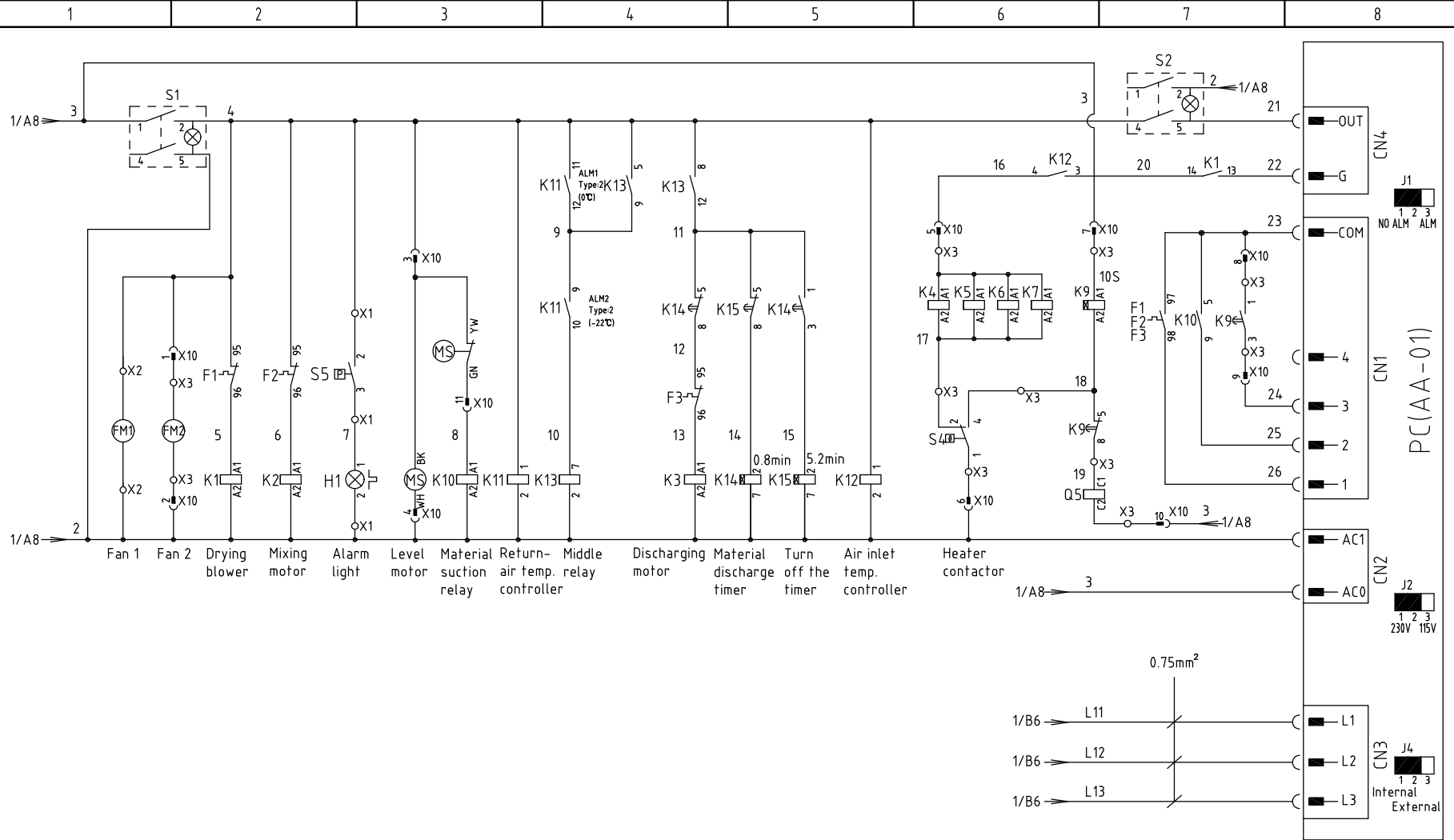
D



Ver.F

					Drawer	Version	D	Title	SCR-900U	Drawing NO.	Scale	Page	2
					Designer	Approved by		Main Circuit Diagram 2	SCR-900U-CE-400V-D-2	Standard	CE	Totally	7 Pages
					Proofread by	Date	20200902	 信易電熱機械股份有限公司 Shini Plastics Technologies, Inc.		Voltage		3Φ400V	
Mark	Before modification	After modification	Modified by	Modify date	Checked by		Date			Frequency		50Hz	

1 2 3 4 5 6 7 8

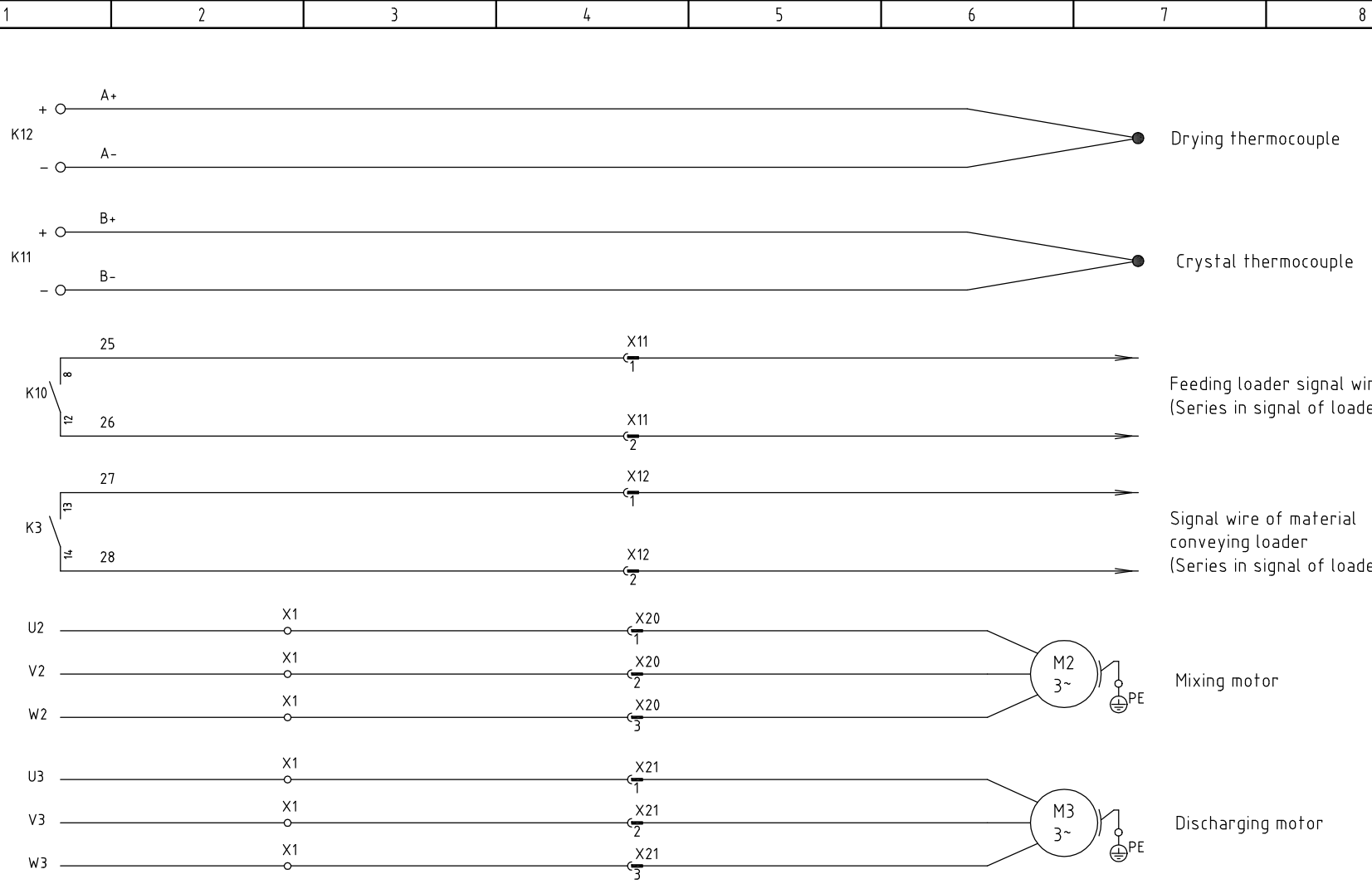


Ver.F


					Drawer	Version	D	Title	Drawing NO.	Scale	Page
					Designer	Approved by		SCR-900U	SCR-900U-CE-400V-D-3	CE	3
					Proofread by	Checked by	Date	Control Circuit Diagram		Standard	Totally 7 Pages
Mark	Before modification	After modification	Modified by	Modify date			20200902	SHINI 信易電熱機械股份有限公司 Shini Plastics Technologies, Inc.		Voltage	3Φ400V
1										Frequency	50Hz



信易電熱機械股份有限公司
Shini Plastics Technologies, Inc.



Ver.F

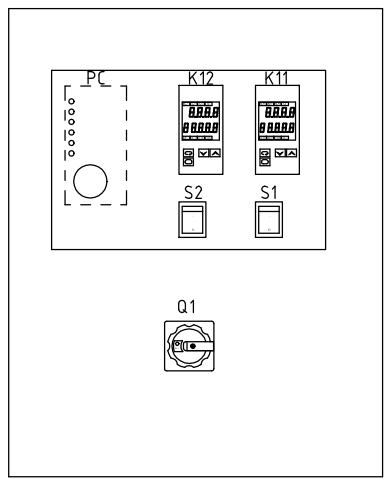
					Drawer	Version	D	Title	Drawing NO.	Scale	Page
					Designer	Approved by		SCR-900U	SCR-900U-CE-400V-D-4	CE	4
					Proofread by			Crystalizer wiring diagram		Totally	7 Pages
Mark	Before modification	After modification	Modified by	Modify date	Checked by	Date	20200902	 信易電熱機械股份有限公司 Shini Plastics Technologies, Inc.		Voltage	3φ400V
										Frequency	50Hz

1 2 3 4 5 6 7 8

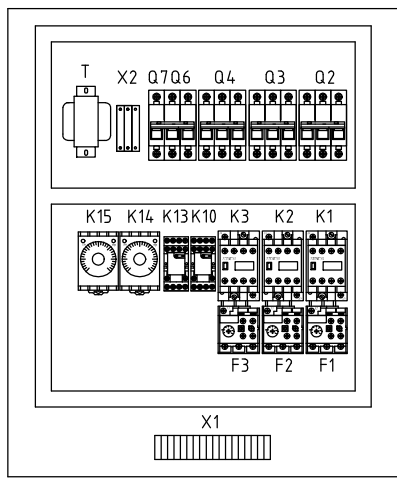
A

X10 16PIN Heavy-duty connector

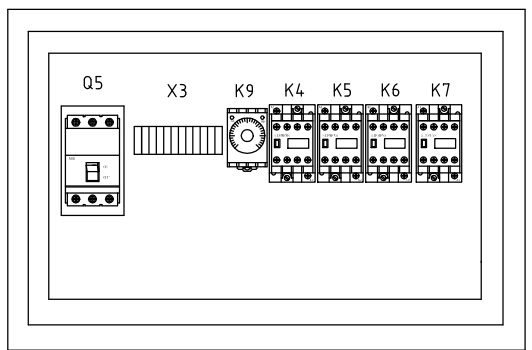
① 4	⑨ 24
② 2	⑩ 3
③ 4	⑪ 8
④ 2	⑫
⑤ 16	⑬
⑥ 2	⑭
⑦ 3	⑮
⑧ 23	⑯



Control box bottom plate

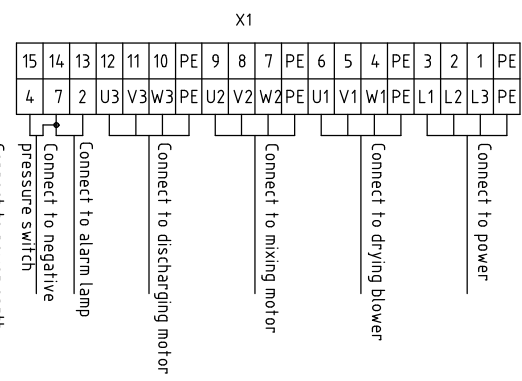
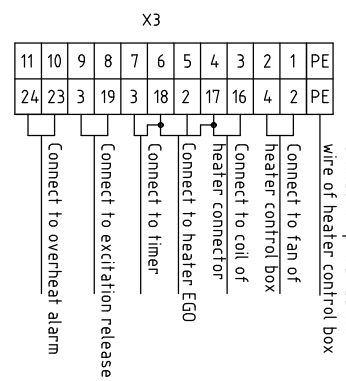
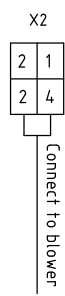


Heater control box



B

Subscript	Function	Description
1	4	Cooling fan power
2	2	
3	4	Level motor power
4	2	
5	16	Heater contactor power
6	2	Power COM end
7	3	Tripping timer power
8	23	Drying heater tripping signal
9	24	Drying tripper power
10	3	Shortage relay power
11	8	
12		
13		
14		
15		
16		



C

Ver.F

D

					Drawer	Version	D	Title	SCR-900U	Drawing NO.	Scale	Page	5
					Designer	Approved by		Electrical Components Layout	SCR-900U-CE-400V-D-5	Standard	CE	Totally	7 Pages
					Proofread by	Date	20200902	信易電熱機械股份有限公司 Shini Plastics Technologies, Inc.		Voltage		3Φ400V	
Mark	Before modification	After modification	Modified by	Modify date	Checked by					Frequency		50Hz	

1 2 3 4 5 6 7 8

A

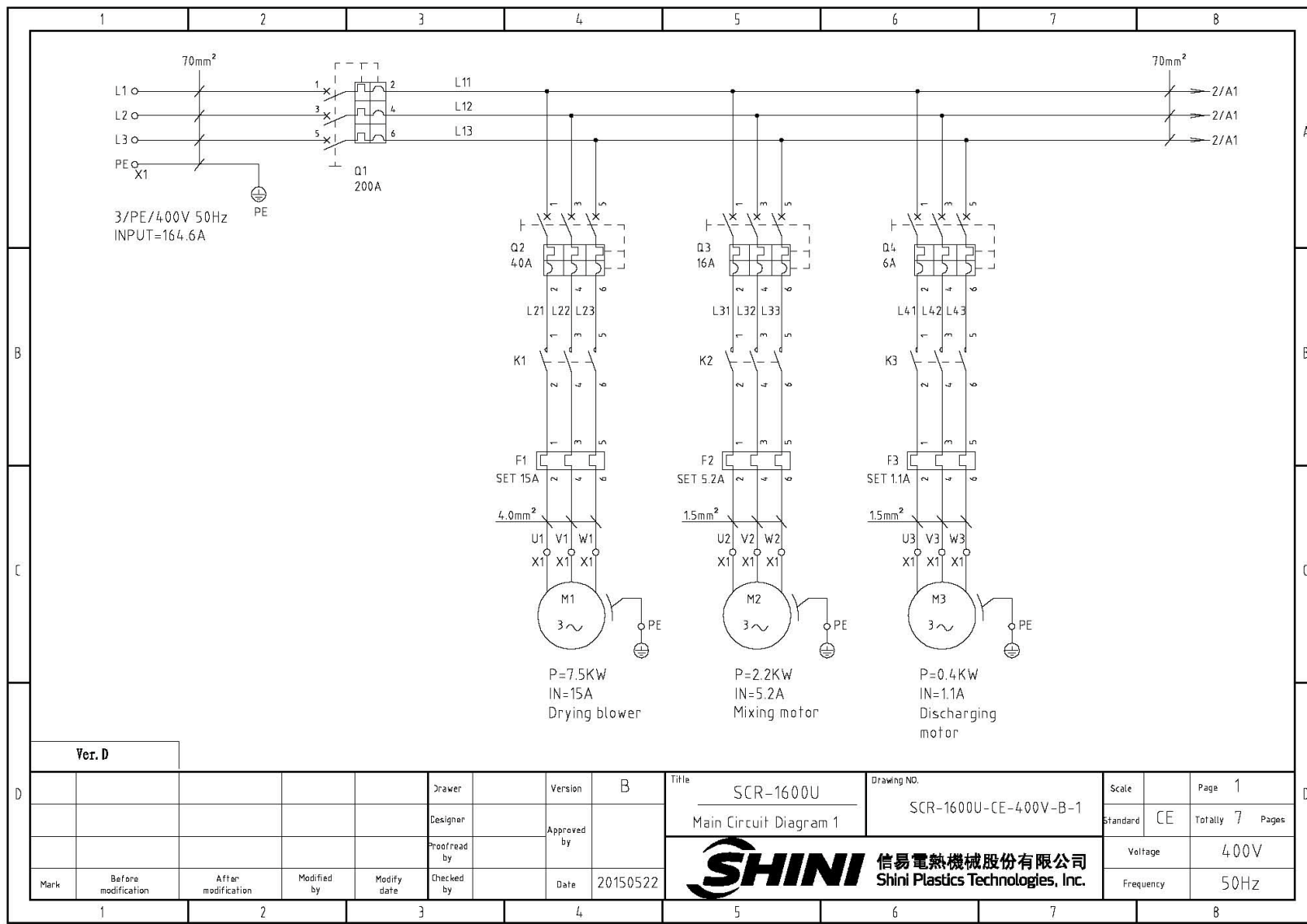
B

C

D

1		2		3		4		5		6		7		8			
NO.	Symbol	Name		Manufacturer		Type		Specification		Number	Material number		Remark				
1	Q1	Main power switch		EATON		T0-2-1/EA/SVB		20A		1	YE10021160000						
2	Q2	Circuit breakers		TECO		BM-63C/3016S		16A		1	YE40301603000						
3	Q3	Circuit breakers		TECO		BM-63C/3010S		10A		1	YE40301003000						
4	Q4	Circuit breakers		TECO		BM-63C/3006S		6A		1	YE40300603000						
5	Q5	Break Interlock		ABB		A1A125TMF90		90A		1	YE41109200000						
6		Excitation release		ABB		SOR-C		230VAC		1	YE40101600000						
7	Q6	Circuit breakers		TECO		BM-63C		3A		1	YE40200203000		New				
8	Q7	Circuit breakers		TECO		BM-63C		3A		1	YE40100203000		New				
9	K1 K2 K3	Contactors		SIEMENS		3RT6016-1AN21		230V 50/60Hz		3	YE00601621000						
10	K4 K5 K6 K7	Contactors		SIEMENS		3RT6027-1AN20		230V 50/60Hz		4	YE00602722000						
11	K9	Timer relay		YUYUN		TH3M-NAB		3S-60M 230VAC		1	YE86300300000						
12	K10 K13	Middle relay		WEIDMULLER		DRM270730LT		230V 50/60Hz		2	YE03270700000						
13	K11 K12	Temperature controller		OMRON		E5EC-RR2ASM-800(Dual stage)		100-240V 50/60Hz		2	YE85005000000						
14	K14 K15	Timer relay		YUYUN		TH3M-NAB		3S-60M 230VAC		2	YE86300300000						
15	F1	Overload relay		SIEMENS		3RU6116-1HB0		5.5-8A		1	YE01160550000						
16	F2	Overload relay		SIEMENS		3RU6116-1EB0		2.8-4A		1	YE01160280000						
17	F3	Overload relay		SIEMENS		3RU6116-1AB0		1.1-1.6A		1	YE01160110000						
18	T	Transformer		jiuxin		IN=400V OUT=230V		1000MA		1	YE70402300000						
19	PC	PCB		YUYUN		AA-01		230V 50/60Hz		1	YE80000100000						
20	S1 S2	Alternative switch		REAB		R210-C5LBW		4P WH		2	YE10210400000						
21	MS	Level motor		SIPAI		SR-80-T		250VAC		1	YE15000200000		(1)				
22	S4	Overheat protector		EGO		----		250V 5A		1	YE21503000000		(1)				
23	S5	Negative pressure switch		----		----		----		1	----		(1)				
24	S6 S7	Thermocouple		SHINI		----		K		2	----		(1)				
25	FM1 FM2	Fan		SUNON		DP200A		230V 50/60Hz		2	----		(1)				
Ver.F		Note: (1) Means not part of control box.															
				Drawer		Version		D		Title		Drawing NO.		Scale		Page 6	
				Designer		Approved by				SCR-900U		SCR-900U-CE-400V-D-6		Standard		CE	
				Proofread by		Checked by		Date		20200902		SHINI 信易電熱機械股份有限公司 Shini Plastics Technologies, Inc.		Voltage		3Φ400V	
Mark		Before modification		After modification		Modified by		Modify date				Frequency		50Hz			
1		2		3		4		5		6		7		8			

20(33)



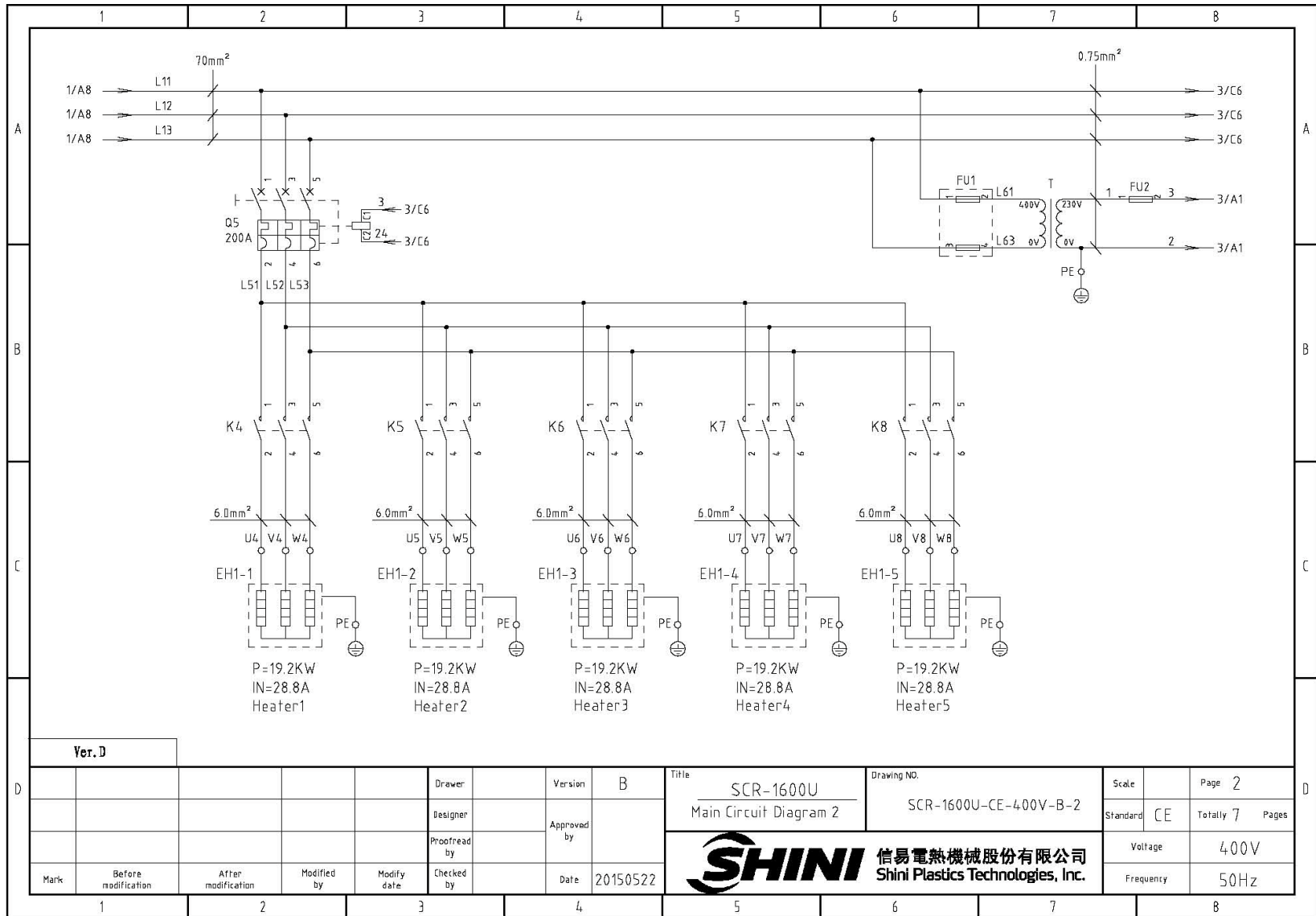
Ver. D

Mark	Before modification	After modification	Modified by	Modify date	Checked by	Date	20150522
Designer					Proofread by	Approved by	
Drawer						Version	B

Title		Drawing NO.		Scale	Page
SCR-1600U		SCR-1600U-CE-400V-B-1			1
Main Circuit Diagram 1				Standard	Totally
				CE	7
				Voltage	400V
				Frequency	50Hz



21(33)



Ver. D

				Drawer	Version	B
				Designer	Approved by	
				Proofread by	Date	20150522
Mark	Before modification	After modification	Modified by	Modify date	Checked by	

Title: SCR-1600U
Main Circuit Diagram 2

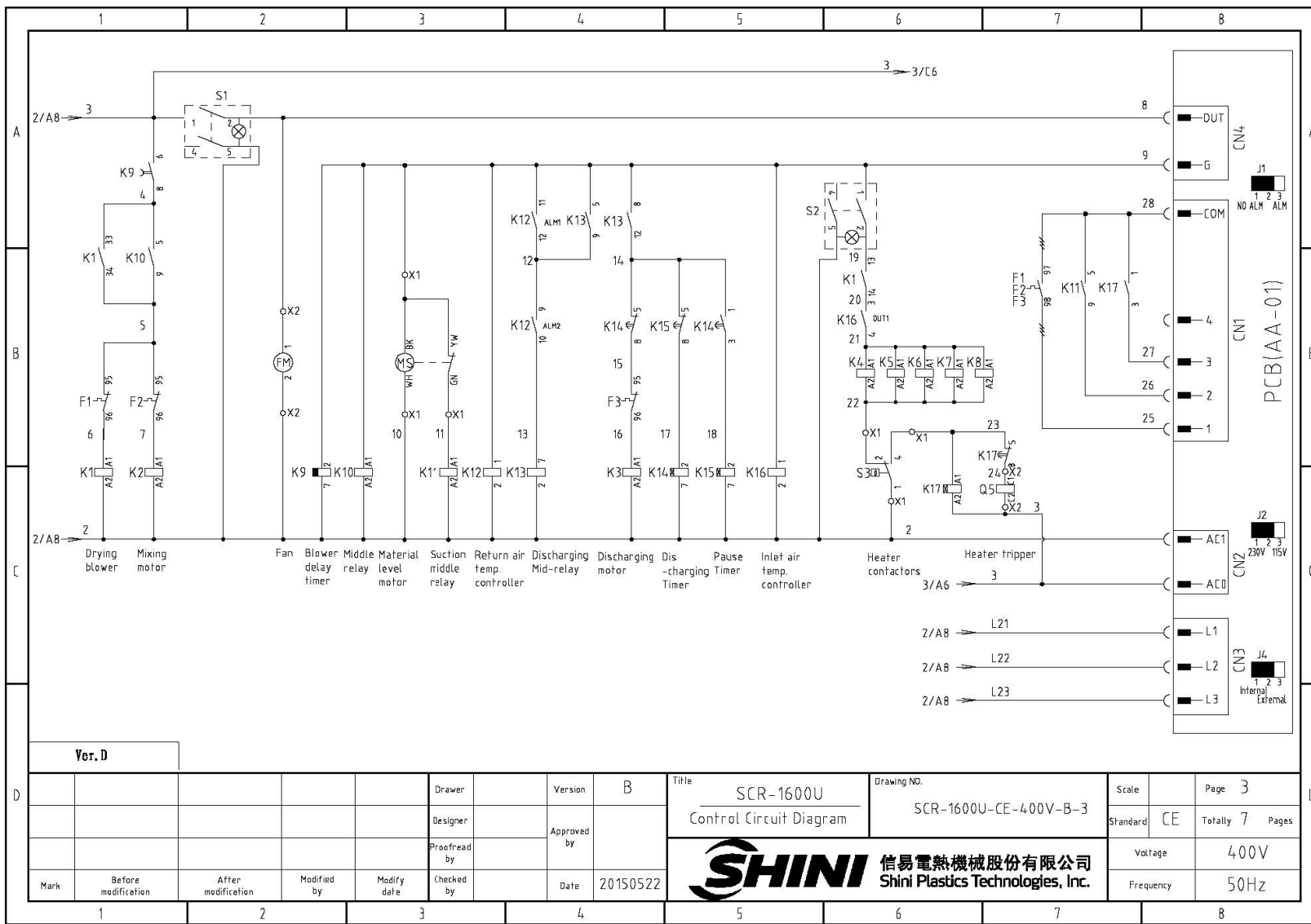
Drawing NO.: SCR-1600U-CE-400V-B-2

Scale	Page 2
Standard	CE Totally 7 Pages
Voltage	400V
Frequency	50Hz



1	2	3	4	5	6	7	8
---	---	---	---	---	---	---	---

22(33)



Ver. D

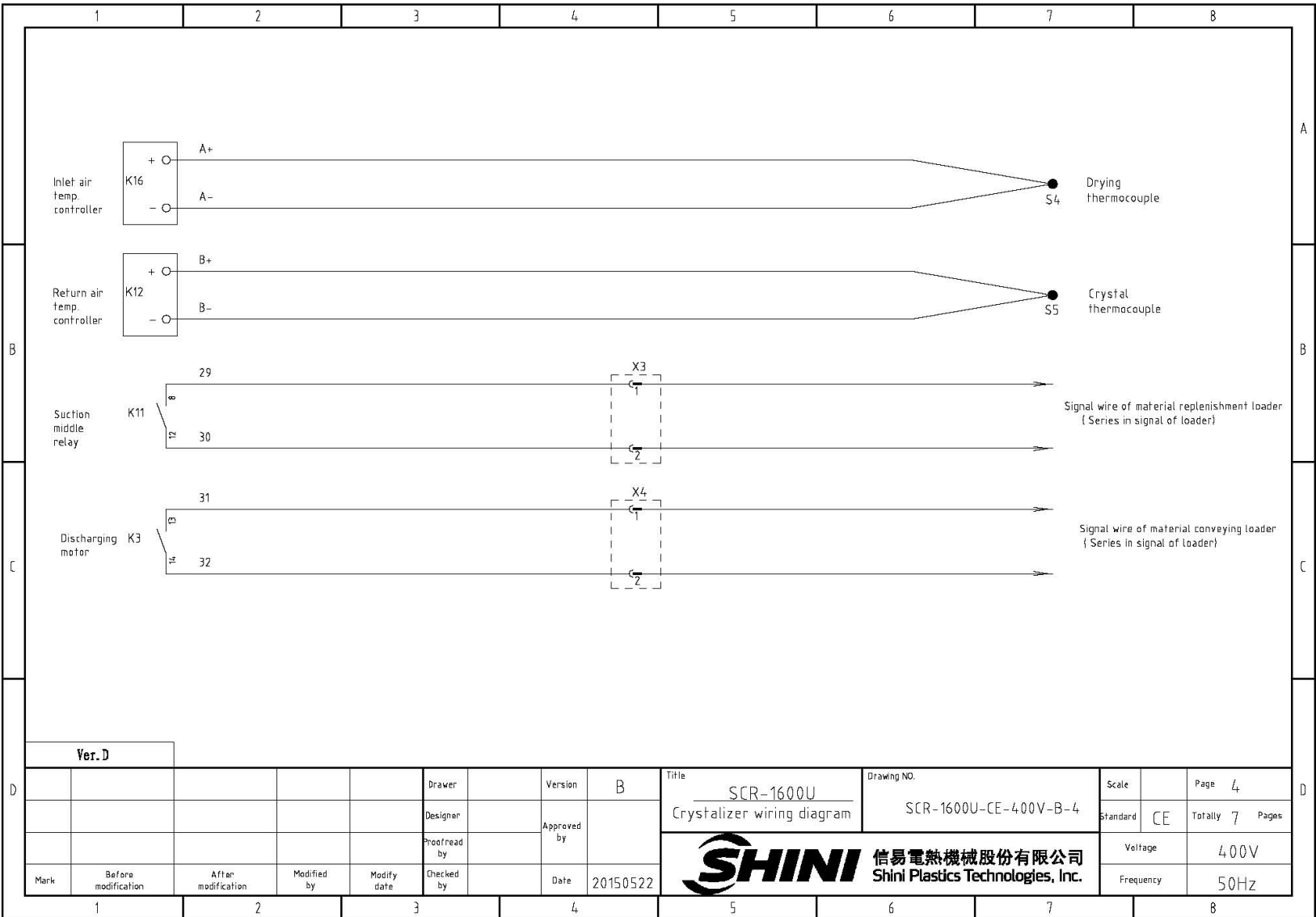
D	Mark	Before modification	After modification	Modified by	Modify date	Checked by	Date	20150522
	Proofread by							
	Designer							
	Drawer							

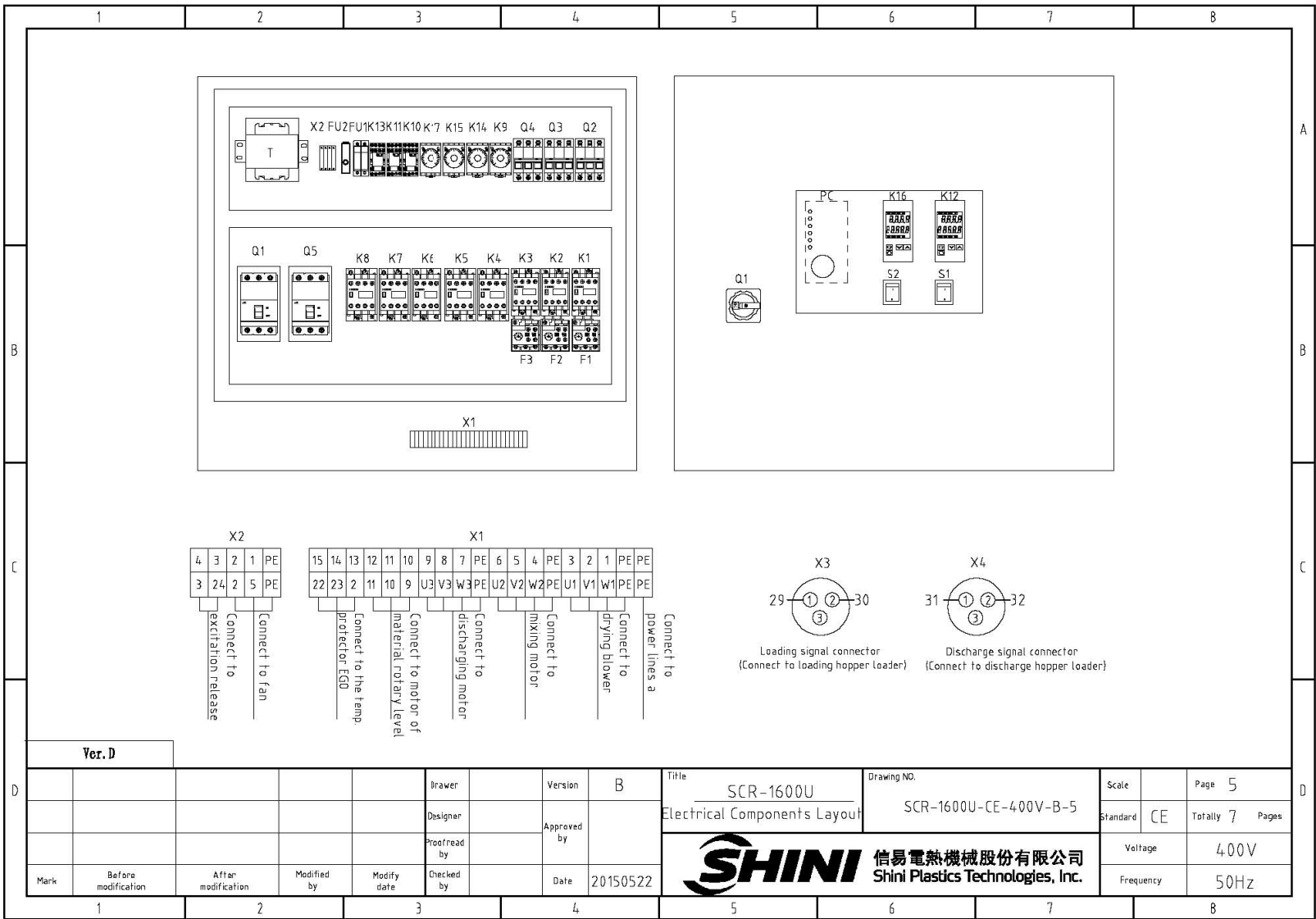
Title: SCR-1600U Control Circuit Diagram
 Drawing NO.: SCR-1600U-CE-400V-B-3

SHINI 信易電熱機械股份有限公司
 Shini Plastics Technologies, Inc.

Scale	Page 3
Standard	CE
Totally	7 Pages
Voltage	400V
Frequency	50Hz

23(33)





A

B

C

D

B

C

D

1

2

3

4

5

6

7

B

A

B

C

D

1

2

3

4

5

6

7

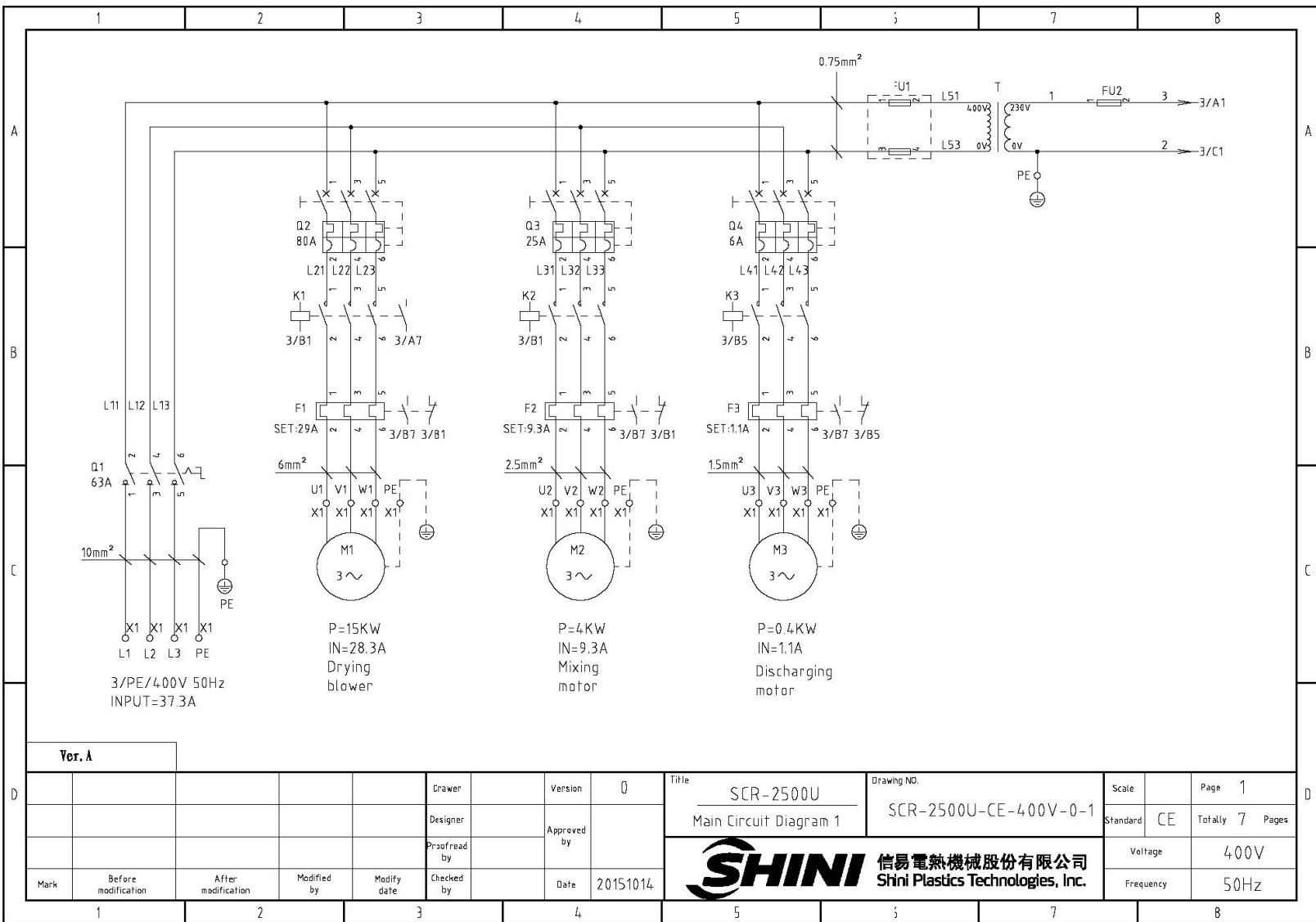
B

25(33)

1		2		3		4		5		6		7		8				
NO.	Symbol	Name		Manufacturer	Type		Specification		Number	Material number		Remark						
A	1	Q1	Breakers interlock		ABB	A2B250TMF200/20003PFF		200A		1	YE41252200000							
	2	Q2	Circuit breakers		TECO	BM-63C/3040S		40A		1	YE40304003000							
	3	Q3	Circuit breakers		TECO	BM-63C/3016S		16A		1	YE40301603000							
	4	Q4	Circuit breakers		TECO	BM-63C/3006S		6A		1	YE40300603000							
	5	Q5	Breakers interlock		ABB	A2B250TMF200/20003PFF		200A		1	YE41252200000							
	6		Excitation release		ABB	SOR-C		230VAC		1	YE40121600000							
	7	K1	Contactors		SIEMENS	3RT6026-1AN20		230V 50/60Hz		1	YE00602622000							
B	8	K2	Contactors		SIEMENS	3RT6016-1AN21		230V 50/60Hz		1	YE00601621000							
	9	K3	Contactors		SIEMENS	3RT6016-1AN21		230V 50/60Hz		1	YE00601621000							
	10	K4 K5 K6 K7 K8	Contactors		SIEMENS	3RT5036-1AN20		230V 50/60Hz		5	YE00503600000							
	11	K9	Timer relay		YUYUN	TRF-N 3M		230VAC		1	YE86322000000							
	12	K10 K11 K13	Middle relay		WEIDMULLER	DRM270730LT		230V 50/60Hz		3	YE03270700000							
	13	K12 K16	Temperature controller		OMRON	ESEC-RR2ASM-800(双数)		100-240V 50/60Hz		2	YE85005000000							
	14	K14 K15 K17	Timer relay		YUYUN	TH3M-NAB		3S-60M 230VAC		3	YE86300300000							
C	15	F1	Thermo overload relay		SIEMENS	3RU6126-4BB0		14-20A		1	YE01260140000							
	16	F2	Thermo overload relay		SIEMENS	3RU6116-1GB0		4.5-6.3A		1	YE01160450000							
	17	F3	Thermo overload relay		SIEMENS	3RU6116-1AB0		1.1-1.6A		1	YE01160110000							
	18	FU1	Fuse**		CHNT	32A/2P		----		1	YE41032200000							
	19		Fuse core		CHNT	10x38 500V		1A		2	YE41001000000							
	20	FU2	Fuse**		YINDA	FS-10		2A		1	YE41001000000							
	21	T	Transformer*		BAIYUN	IN=400V OUT=230V		1000mA		1	YE70402300000							
D	22	PCB	PCB		YUYUN	AA-01		230V 50/60Hz		1	YE80000100000							
	23	S1 S2	Alternative switch		----	T120-55		4P WH		2	YE10210400000							
	24	S3	Overheat protector		TONGBAO	ZA300		250V 5A		1	----		{1}					
	25	S4 S5	Thermocouple		SHINI	----		K		2	----		{1}					
	Ver. D		Note: {1} Means not part of control box. * means possible broken parts. **means easy broken part, and spare backup is suggested.															
						Drawer	Version		B		Title		Drawing NO.		Scale	Page 6		
						Designer	Approved by				SCR-1600U		SCR-1600U-CE-400V-B-6		Standard	CE		
						Proofread by	Date		20150522		Electrical Components List 1				Voltage		400V	
Mark		Before modification		After modification		Modified by		Modify date		Checked by		SHINI 信易電熱機械股份有限公司 Shini Plastics Technologies, Inc.		Frequency		50Hz		
1		2		3		4		5		6		7		8				

1		2		3		4		5		6		7		8			
NO.	Symbol	Name	Manufacturer	Type	Specification	Number	Material number	Remark									
26	FM	Fan	SUNON	DP200A	230V 50/60Hz	1	----	{1}									
27	MS	Material level motor	SIPAI	SR-80-T	250VAC	1	YE15000200000	{1}									
28	X1	Terminal board	----	35mm ² PE	----	1	YE61353500000										
29			----	4mm ²	----	3	YE61040000000										
30			----	4mm ² PE	----	1	YE61043500000										
31			----	2.5mm ²	----	12	YE61250040000										
32			----	2.5mm ² PE	----	2	YE61253500000										
33	X2	Terminal board	----	2.5mm ²	----	4	YE61250040000										
34			----	2.5mm ² PE	----	1	YE61253500000										
35	X3 X4	Waterproof connectors	AQPULO	AQF-16	3P	2	YE62163000100	{1}									
36	M1	Blower	SHINI	-----	7.5KW 400V 50Hz	1	----	{1}									
37	M2	Motor	SHINI	-----	2.2KW 400V 50Hz	1	----	{1}									
38	M3	Motor	SHINI	-----	0.4KW 400V 50Hz	1	----	{1}									
39	EH1-EHS	Heater**	SHINI	-----	19.2KW 400V 50Hz	5	----	{1}									
Ver. D Note: {1} Means not part of control box. * means possible broken parts. **means easy broken part. and spare backup is suggested.																	
				Designer Proofread by checked by		Version Approved by Date		B 20150522		Title SCR-1600U Electrical Components List 2		Drawing NO. SCR-1600U-CE-400V-B-7		Scale Standard CE		Page 7 Totally 7 Pages	
Mark Before modification		After modification		Modified by Modify date		checked by Date		20150522		 信易電熱機械股份有限公司 Shini Plastics Technologies, Inc.		Voltage 400V		Frequency 50Hz			
1		2		3		4		5		6		7		8			

27(33)



Ver. A

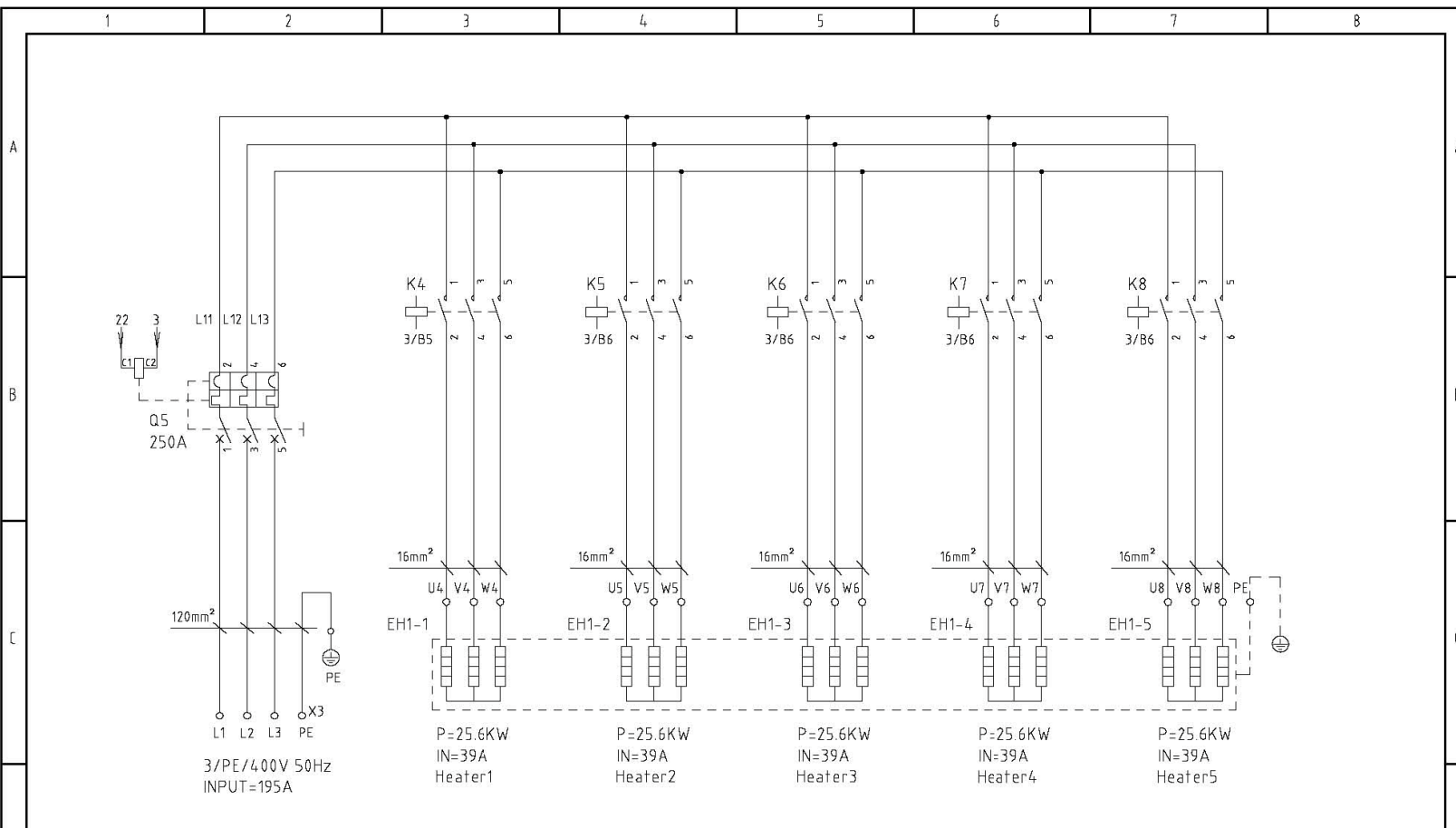
Mark	Before modification	After modification	Modified by	Modify date	Checked by	Date	20151014
Designer							
Proofread by							
Approved by							
Drawer							
Version						0	

Title: SCR-2500U
Main Circuit Diagram 1
Drawing NO.: SCR-2500U-CE-400V-0-1

Scale	Page 1
Standard	Totally 7 Pages
Voltage	400V
Frequency	50Hz

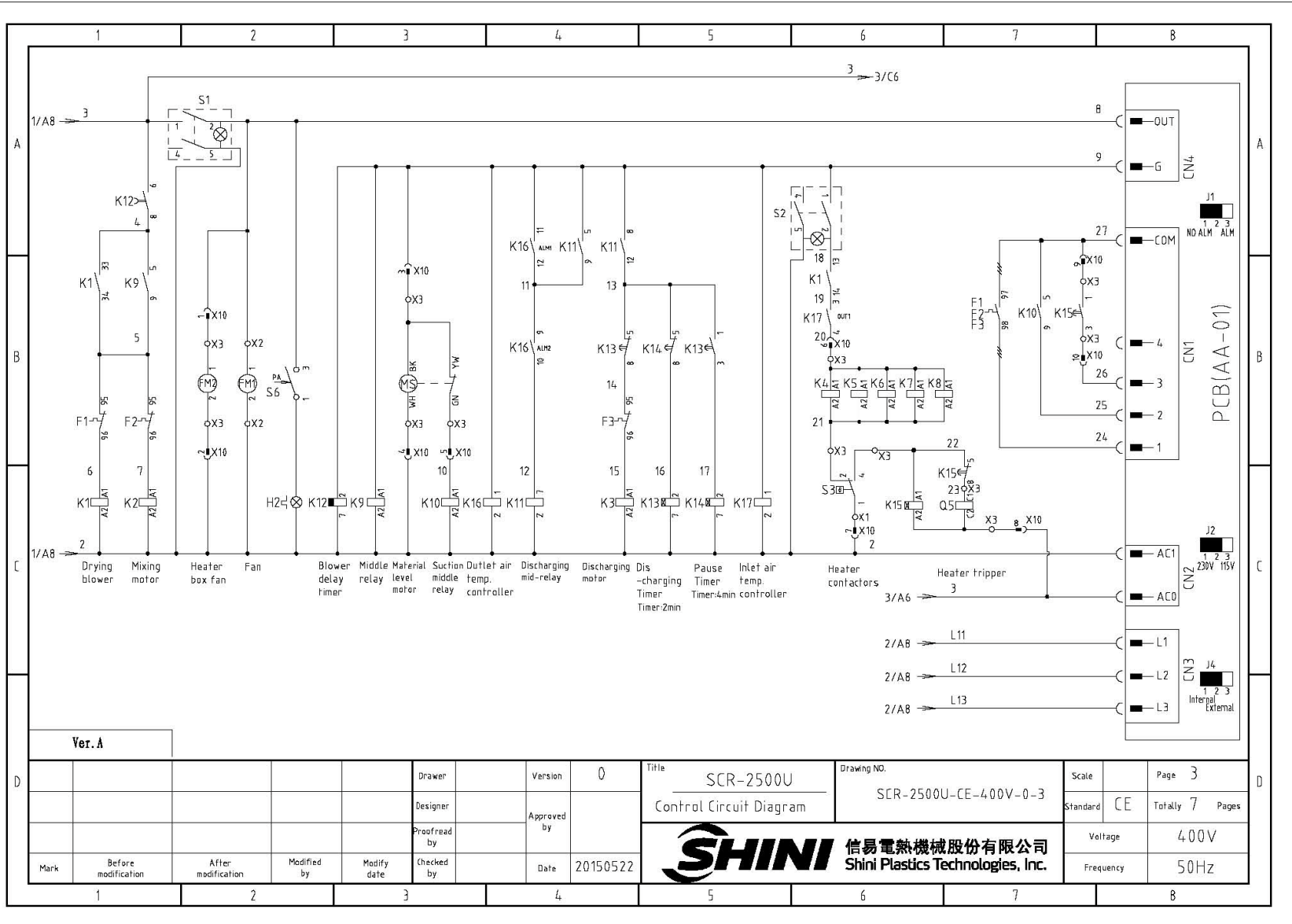
SHINI 信易電熱機械股份有限公司
Shini Plastics Technologies, Inc.

28(33)



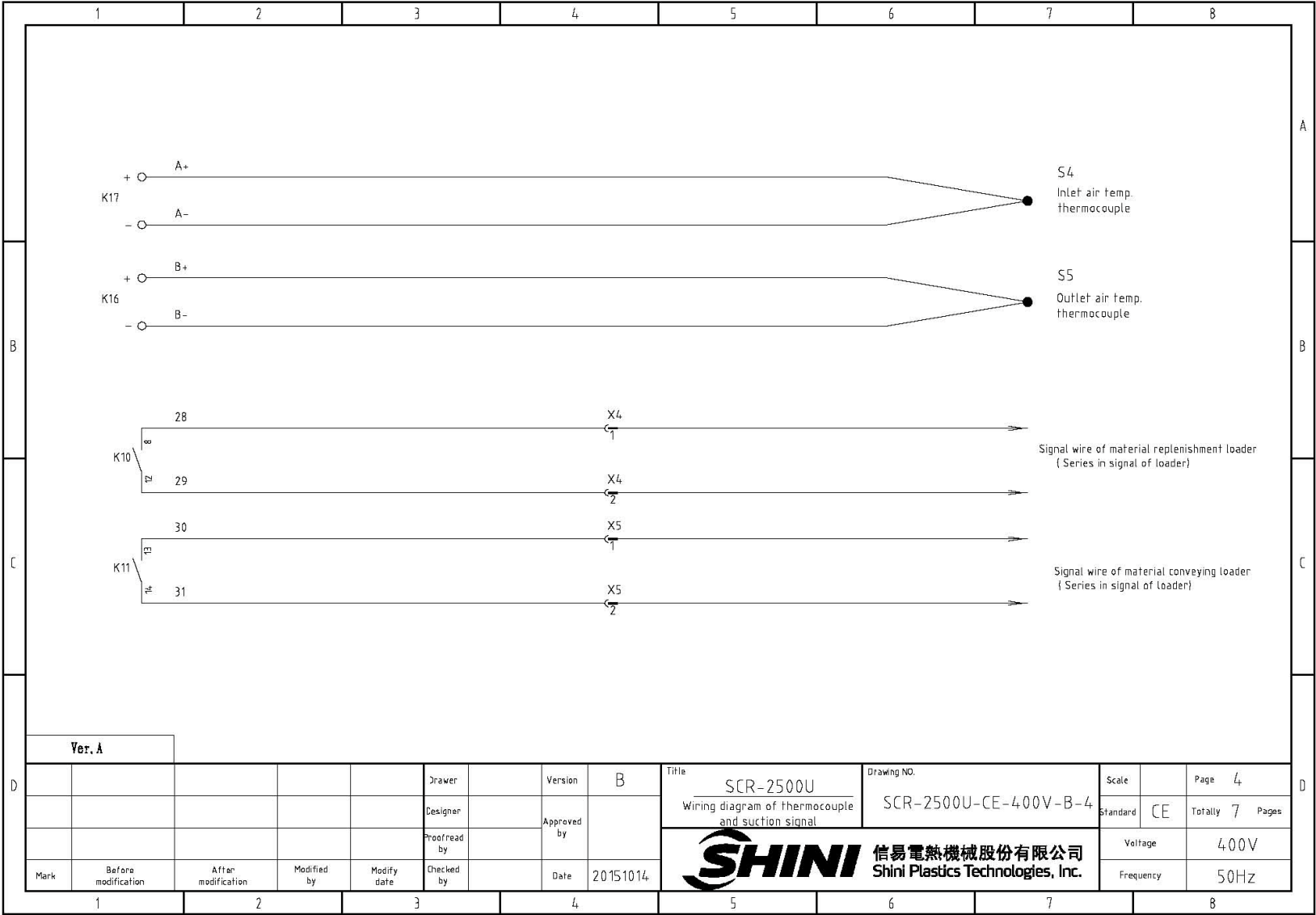
Ver. A				Drawer	Version	B	Title	SCR-2500U Main Circuit Diagram 2	Drawing NO.	SCR-2500U-CE-400V-B-2	Scale	Page	2
Mark	Before modification	After modification	Modified by	Modify date	Checked by	Date	20151014	信易電熱機械股份有限公司 Shini Plastics Technologies, Inc.	Standard	CE	Totally	7	Pages
									Voltage	400V	Frequency	50Hz	

29(33)




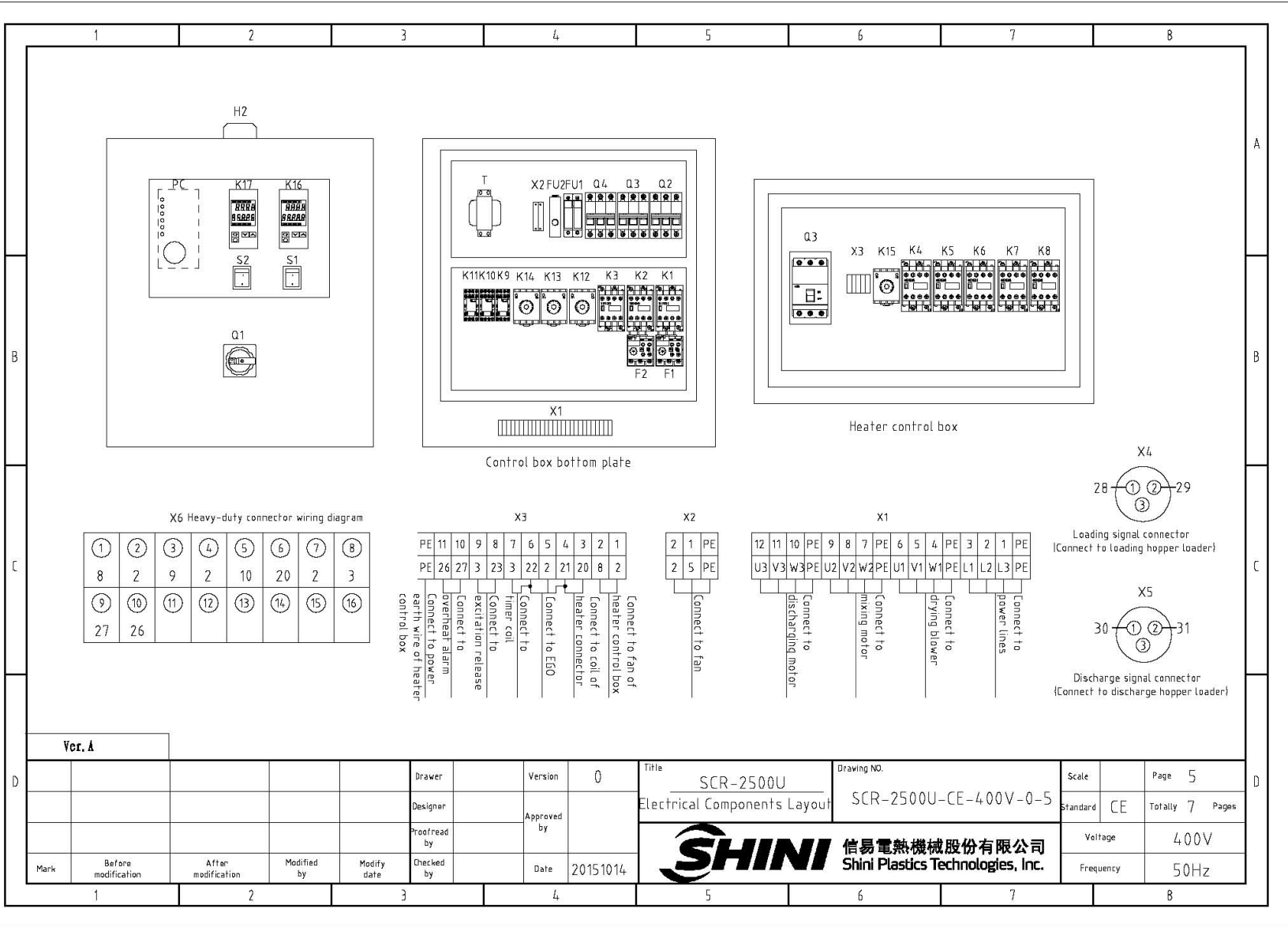
Ver. A				Drawer	Version	0	Title	SCR-2500U	Drawing NO.	SCR-2500U-CE-400V-0-3	Scale	Page	3	
				Designer	Approved by		Control Circuit Diagram				Standard	CE	Totally	7
Mark	Before modification	After modification	Modified by	Modify date	Checked by	Date	20150522	信易電熱機械股份有限公司 Shini Plastics Technologies, Inc.		Voltage	400V			
1	2	3	4	5	6	7	8			Frequency	50Hz			

30(33)




Ver. A

				Drawer		Version	B	Title	SCR-2500U	Drawing NO.	SCR-2500U-CE-400V-B-4	Scale		Page	4
				Designer		Approved by		Wiring diagram of thermocouple and suction signal		Standard	CE	Totally	7	Pages	
				Proofread by		Date	20151014	 信易電熱機械股份有限公司 Shini Plastics Technologies, Inc.		Voltage		400V			
Mark	Before modification	After modification	Modified by	Modify date	Checked by		Frequency			50Hz					



32(33)

1		2		3		4		5		6		7		8							
NO.	Symbol	Name		Manufacturer		Type		Specification		Number	Material number		Remark								
A	1	Q1	Main power switch		SIEMENS		3LD20		63A		1	YE10250400000									
	2	Q2	Circuit breakers		TECO		BM-100D		80A		1	YE40308003000									
	3	Q3	Circuit breakers		TECO		BM-63C		25A		1	YE40302503000		A							
	4	Q4	Circuit breakers		TECO		BM-63C		6A		1	YE40300603000									
	5	Q5	Breakers interlock		ABB		A2B250TMF250		250A		1	YE41252800000									
	6		Excitation release		ABB		SOR-C		230VAC		1	YE40121600000									
	7	K1	Contactors		SIEMENS		3RT6028-1AN20		230V 50/60Hz		1	YE00602822000									
	8	K2	Contactors		SIEMENS		3RT6017-1AN21		230V 50/60Hz		1	YE00601721000									
	9	K3	Contactors		SIEMENS		3RT6016-1AN21		230V 50/60Hz		1	YE00601621000									
	10	K4 K5 K6 K7 K8	Contactors		SIEMENS		3RT5044-1AN20		230V 50/60Hz		5	YE00504400000									
B	11	K9 K10 K11	Middle relay		WEIDMULLER		DRM270730LT		230V 50/60Hz		3	YE03270700000		B							
	12	K12	Timer relay		YUYUN		TRF-N 3M		230VAC		1	YE86322000000									
	13	K13 K14 K15	Timer relay		YUYUN		TH3M-NAB		3S-60M 230VAC		3	YE86300300000									
	14	K16 K17	Temperature controller		OMRON		ESEC		100-240V 50/60Hz		2	YE85005000000									
	15	F1	Thermo overload relay		SIEMENS		3RU6126-4EB0		27-32A		1	YE01612600600									
	16	F2	Thermo overload relay		SIEMENS		3RU6116-1KB0		9-12.5A		1	YE01169125000									
	17	F3	Thermo overload relay		SIEMENS		3RU6116-0KB0		0.9-1.25A		1	YE01160900000									
C	18	FU1	Fuse base		CHNT		RT18-32		2P		1	YE41032200000		C							
	19		Fuse**		CHNT		10x38 500V		2A		1	YE46002000100									
	20	FU2	Fuse**		YINDA		FS-10		2A		1	YE41001000000									
	21	T	Transformer*		BAIYUN		IN=400V OUT=230V		1500mA		1	YE70402300300									
	22	PC	PCB		YUYUN		AA-01		230V 50/60Hz		1	YE80000100000									
	23	S1 S2	Alternative switch		REAB		T120-55		4P WH		2	YE10210400000									
	24	S3	Overheat protector		EGO		ZA300		250V 5A		1	---- (1)									
	25	S4 S5	Thermocouple		SHINI		-----		K TYPE		2	---- (1)									
Ver. A		Note: {1} Means not part of control box. * means possible broken parts. **means easy broken part. and spare backup is suggested.																			
D					Drawer		Version		0		Title		Drawing NO.		Scale		Page		D		
					Designer		Approved by				SCR-2500U Electrical Components List 1		SCR-2500U-CE-400V-0-6		Standard		CE			Totally 7 Pages	
					Proofread by		Date		20151014		 信易電熱機械股份有限公司 Shini Plastics Technologies, Inc.		Voltage		400V						
	Mark		Before modification		After modification		Modified by		Modify date				Checked by		Frequency		50Hz				
1		2		3		4		5		6		7		8							

1	2	3	4	5	6	7	8	
NO.	Symbol	Name	Manufacturer	Type	Specification	Number	Material number	Remark
26	FM1 FM2	Fan	SUNON	DP200A	230V 50/60Hz	2	----	{1}
27	X1	Terminal board	PHOENIX	10mm ²	76A	3	YE6110000000	
28				10mm ² PE		1	YE6110350000	
29		Terminal board	PHOENIX	6mm ²	57A	3	YE6106000000	
30				6mm ² PE		1	YE6106350000	
31		Terminal board	PHOENIX	2.5mm ²	32A	6	YE6125004000	
32				2.5mm ² PE		2	YE6125350000	
33	X2	Terminal board	PHOENIX	2.5mm ²	32A	2	YE6125004000	
34				2.5mm ² PE		1	YE6125350000	
35	X3	Terminal board	PHOENIX	2.5mm ²	32A	11	YE6125004000	
36				50mm ² PE		1	YE61005000200	
37	X4 X5	Waterproof connectors	AOPULO	AQF-16	-----	2	YE621163000100	{1}
38	X6	Heavy duty connector	SIBAS	HDC-HE-16	400V 5A	1	YE68161600000	{1}
39	M1	Blower	SHINI	-----	15KW 400V 50Hz	1	-----	{1}
40	M2	Motor	SHINI	-----	4KW 400V 50Hz	1	-----	{1}
41	M3	Motor	SHINI	-----	0.4KW 400V 50Hz	1	-----	{1}
42	EH1-EH5	Heater*	SHINI	-----	25.6KW 400V 50Hz	5	-----	{1}
43	S6	Negative pressure switch	----	-----	----	1	----	{1}
44	H2	Alarm lamp	SHINI	LED-3051	230V 50/60Hz	1	YE83305100200	
Ver. A		Note: {1} Means not part of control box. * means possible broken parts. **means easy broken part. and spare backup is suggested.						
				Drawer	Version	0	Title	SCR-2500U Electrical Components List 2
				Designer	Approved by		Drawing NO.	SCR-2500U-CE-400V-0-7
				Proofread by	Date	20151014	Scale	Page 7
				Checked by			Standard	CE
Mark	Before modification	After modification	Modified by	Modify date			Voltage	400V
							Frequency	50Hz

D