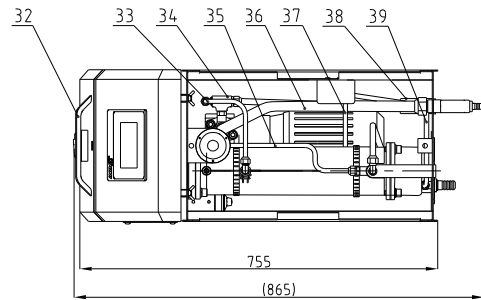
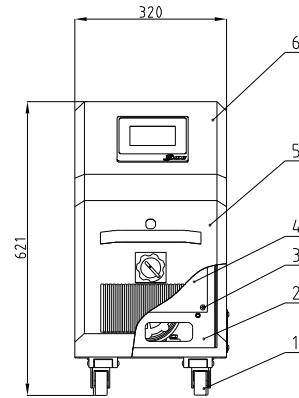
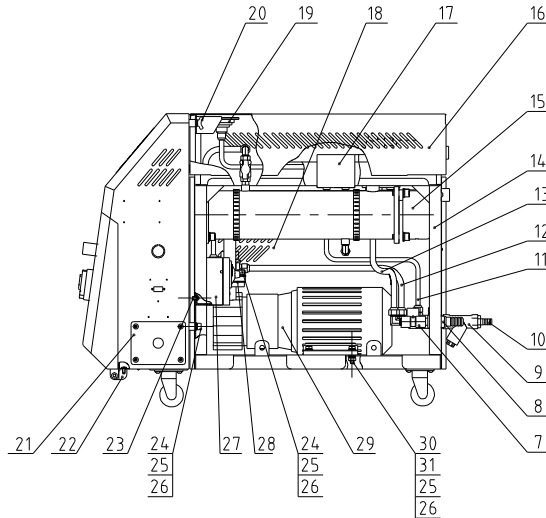


泵最大压力(bar) Pump Max. Pressure (bar)	泵最大流量(L/min) Max. pump Flow(L/min)	泵功率(W) Pump Power(W)	电功率(W) Heater Power(W)	最高温度 Max. Temp	重量(kg) Weight (kg)	版本号 Ver
4.2	25.5	0.55	6	120°C	55	F

进/出口尺寸规格(英寸) Inlet / Outlet Size CE PT inner thread (inch)	冷却方式 Cooling Method	加水容量(L) Sub water tank capacity (L)	加热容量 Heating Tank Qty
2/2	直接冷却 Direct Cooling	3	1



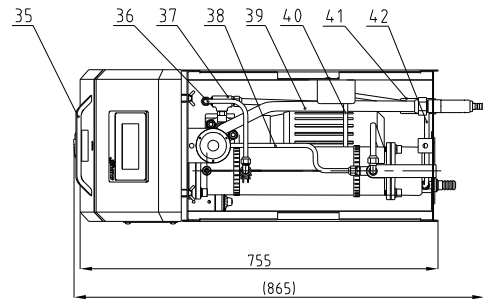
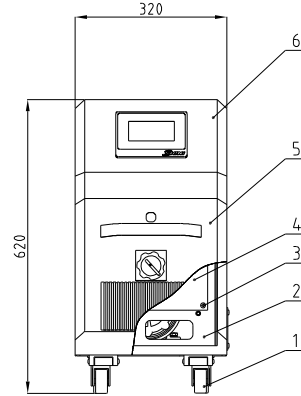
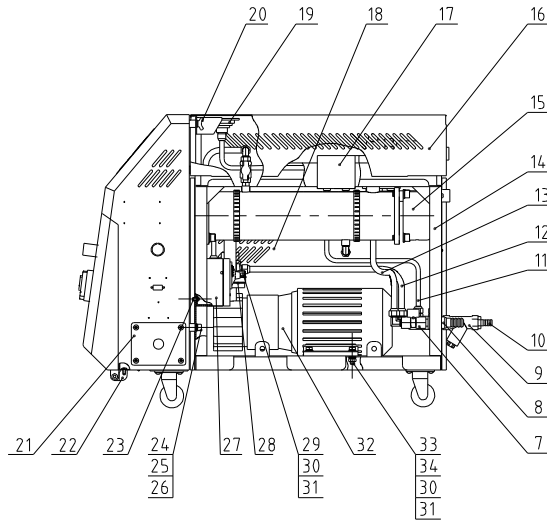
39	STM-910MW-ALL-09	Cold water bypass	Assembly	1	Borrowed
38	STM-910MW-B-ALL	water refilling connector assembly	Assembly	1	Borrowed
37	STM-910MW-ALL-07	high pressure pipe	Assembly	1	Borrowed
36	STM-910MW-ALL-12	Return water pipe	Assembly	1	Borrowed
35	STM-910MW-ALL-06	Pressure gauge pipe	Assembly	1	Borrowed
34	STM-607MW-D-ALL	Pump inlet connector components	Assembly	1	
33	STM-910MW-ALL-10	Hot water bypass	Assembly	1	Borrowed
32	YW20660900100	Door plank aluminum handle 6609(Yaxuan)	Purchased parts	1	
31	YW64080600000	Hexagon nut M8	5.0	4	
30	YW60083000100	Hexagon screw bolt M8*30	8.8	4	
29	BM20005500550	Magnetic pump MP-55	Assembly	1	Anbo
28	YR10551500000	Pump flange gasket	Graphite	2	Pump equipment
27	BH90115000050	EGO assembly	Assembly	1	
26	YW66082200100	Flat washer 8	14.0HV	22	
25	YW65008000100	Spring washer 8	65Mn	20	
24	YW61082000200	Inner hexagon screw M8*20	4.8	12	
23	YW63051000000	Thick head bolt M5*10	4.8	22	
22	YW06219100000	big hinge CL219-1	Assembly	2	
21	SG-S-01	Wire fixture fixed plate	SPCC2.0	1	Borrowed
20	YW69081500000	Butterfly screw M8*15	4.8	2	
19	YW85001000100	Pressure gauge (0-10MPa)	Assembly	1	
18	STM-910MW-ALL-05	side plate	SPCC12	2	Borrowed
17	YE90832500000	high and low pressure switch HLP830HME	Assembly	1	
16	STM-910MW-ALL-13	cover plate	SPCC12	1	Borrowed
15	STM-607MW-C-ALL	Heating barrel parts	Assembly	1	
14	STM-910MW-A-ALL	rack	Structural parts	1	Borrowed
13	YW59385000000	Tonflon pipe <connector 3/8">50CM	Assembly	1	
12	STM-910MW-ALL-11	Water supply pipe	Assembly	1	Borrowed
11	STM-910MW-ALL-08	Low pressure pipe	Assembly	1	Borrowed
10	BH12131200010	Copper joint M13*1/2PT	H58	1	
9	YW57010200000	Y Type Strainer 1/2"	ZCuZn38	1	
8	STM-607W-41	Copper female thread connector 1234	H58	2	Borrowed
7	STM-910MW-E-ALL	Drainage connector assembly	Assembly	1	Borrowed
6	STM-910MW-ALL-01	control box	SPCC15	1	Borrowed
5	STM-910MW-ALL-02	door plank	SPCC12	1	Borrowed
4	STM-910MW-ALL-04	Base plate of control box	SECC15	1	Borrowed
3	YW63061700000	Flat head screw M6*15	4.8	20	
2	STM-910MW-ALL-03	control box rear plate	SPCC2.0	1	
1	YW03000200000	Castor 2"	Assembly	4	

序号	代号	名称	材质	数量	备注
----	----	----	----	----	----

item	Standardized parameters	Nonstandard parameter
Maximum operating temperature(t)	120±0.5	14.0±0.5
Pressure switch settings	Low pressure (MPa)	0.2
	High pressure (MPa)	0.7
EGO set temperature (t)	130	150

				制图	版号	标题	STM-607MW	图号	比例	数量
				设计	核准	磁力泵式模温机			表面要求	物料号
				校对	日期	SHINI 信易电热机械股份有限公司 Shini Plastics Technologies, Inc.				
标记	更改前	更改后	更改人	日期	审核	日期				

最高工作压力(bar) Pump Max. Pressure (bar)	最高最大流量(L/min) Max. pump Flow(L/min)	最高功率(W) Pump Power(kW)	水箱容积(L) Water Tank Capacity(L)	最高温度 Max. Temp	重量(kg) Weight (kg)	版本号 Ver.
5.8	50	1.0	9	120°C	60	F
进出口尺寸规格(PT内螺纹)(inch) Inlet /Outlet Size (CE PT inner thread inch)			冷却方式 Cooling Method	水箱容量(L) Sub water tank capacity (LI)	加热容量 Heating Tank Qty	
2"/2"			直接冷却 Direct Cooling	3	1	

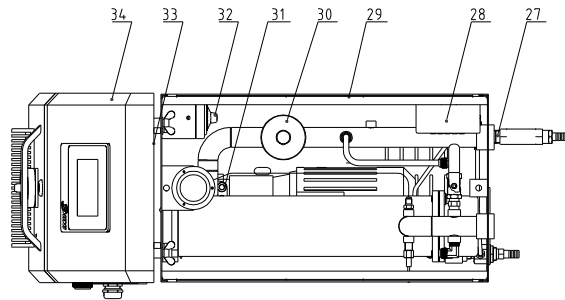
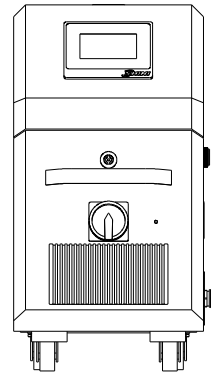
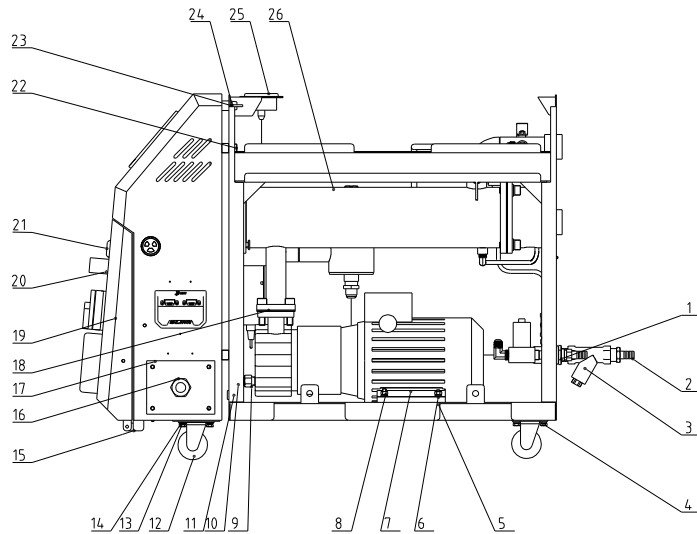


42	STM-910MW-ALL-09	Cold water bypass	Assembly	1	
41	STM-910MW-B-ALL	Water refilling connector assembly	Assembly	1	
40	STM-910MW-ALL-07	high pressure pipe	Assembly	1	
39	STM-910MW-ALL-12	Return water pipe	Assembly	1	
38	STM-910MW-ALL-06	Pressure gauge pipe	Assembly	1	
37	STM-910MW-D-ALL	Pump inlet connector components	Assembly	1	
36	STM-910MW-ALL-10	Hot water bypass	Assembly	1	
35	YW20660900100	Door plank aluminum handle 6609(Yaxuan)	Purchased parts	1	
34	YW64001000100	Hexagon nut M10	5.0	4	
33	YW60103000100	Hex bolt M10×30	8.8	4	
32	BM20010000550	Magnetic pump MP-100	Assembly	1	Anbu
31	YW66102500000	Flat washer 10	140HV	22	
30	YW65010000000	Spring washer 10	65Mn	22	
29	YW61103000100	Inner hexagon screw M10×30	12.9	8	
28	YR10150000000	Pump flange gasket	Graphite	2	Pump equipment
27	BH90115000050	EGO assembly	Assembly	1	
26	YW66082200100	Flat washer 8	140HV	6	
25	YW65008000100	Spring washer 8	65Mn	4	
24	YW61082000200	Inner hexagon screw M8×20	4.8	4	
23	YW63051000000	Thick head bolt M5×10	4.8	22	
22	YW06219100000	big hinge CL219-1	Assembly	2	
21	SG-S-01	Wire fixture fixed plate	SPCC2.0	1	
20	YW69081500000	Butterfly screw M8×15	4.8	2	
19	YW85001000100	Pressure gauge (0~1.0MPa)	Assembly	1	
18	STM-910MW-ALL-05	side plate	SPCC12	2	
17	YE90832500000	high and low pressure switch HLP830HME	Assembly	1	
16	STM-910MW-ALL-13	cover plate	SPCC12	1	
15	STM-910MW-C-ALL	Heating barrel parts	Assembly	1	
14	STM-910MW-A-ALL	rack	Structural parts	1	
13	YW59385000000	Tonifon pipe -connector 3/8"×50CM	Assembly	1	
12	STM-910MW-ALL-11	Water supply pipe	Assembly	1	
11	STM-910MW-ALL-08	Low pressure pipe	Assembly	1	
10	BH12131200010	Copper joint M13×1/2PT	H58	1	
9	YW57010200000	Y Type Strainer 1/2"	ZcuZn38	1	
8	STM-607W-41	Copper female thread connector 1234	H58	2	Borrowed
7	STM-910MW-E-ALL	Drainage connector assembly	Assembly	1	
6	STM-910MW-ALL-01	control box	SPCC15	1	
5	STM-910MW-ALL-02	door plank	SPCC12	1	
4	STM-910MW-ALL-04	Base plate of control box	SECC15	1	
3	YW63061700000	Flat head screw M6×15	4.8	20	
2	STM-910MW-ALL-03	control box rear plate	SPCC2.0	1	
1	YW03000200000	Castor 2"	Assembly	4	

item	Standardized parameters	Nonstandard parameter
Maximum operating temperature(t)	120±0.5	140±0.5
Pressure switch settings	Low pressure (MPa)	0.2
	High pressure (MPa)	0.4
EGO set temperature (t)	130	150

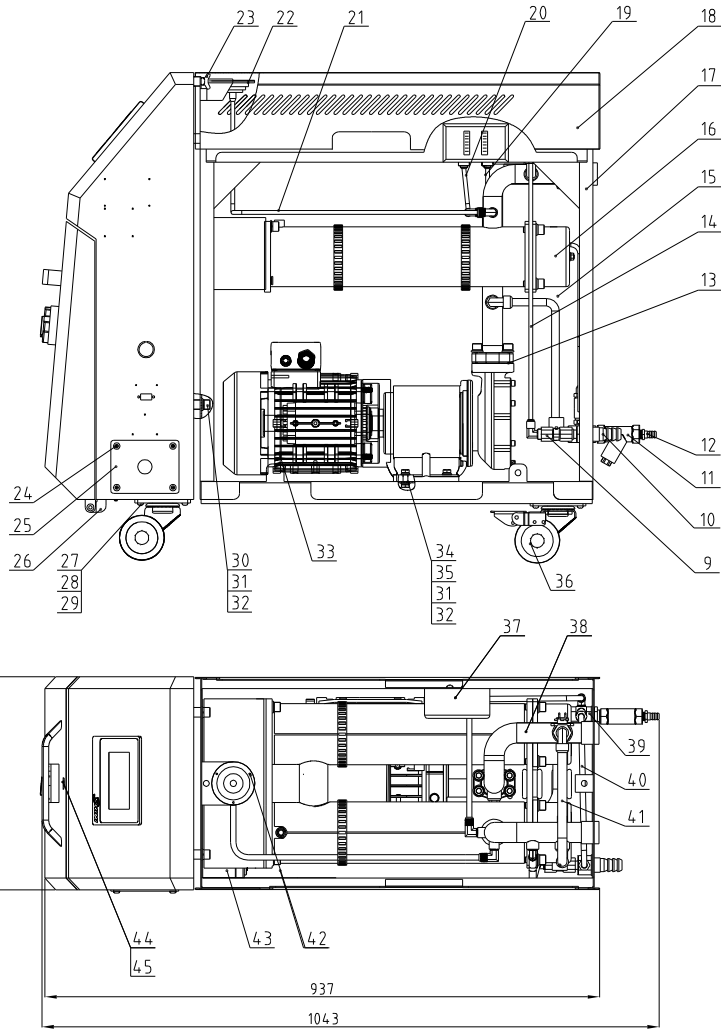
制图	版号	标题	STM-910MW	图号	比例	数量
设计	核准	磁力泵水式模温机			材质	
校对	日期	SHINI 信易电热机械股份有限公司 Shini Plastics Technologies, Inc.			表面要求	
标记	更改前	更改后	更改人	日期	物料号	

最高工作压力(bar) Pump Max. Pressure (bar)	最大流量(L/min) Max. pump flow(L/min)	最大功率(W) Pump Power(W)	加热器功率(W) Heater Power(W)	最高温度 Max. Temp	重量(kg) Weight (kg)	版本号 Ver
5.8	50	1.0	12	120°C	120	G
进/出口尺寸(英寸) Inlet /Outlet Size (E PT inner thread (in))		冷却方式 Cooling Method	加热罐容量(L) Sub water tank capacity (L)		加热罐直径 Heating Tank Dia	
1/1		直接冷却 Direct Cooling	3		1	



34	STM-1220W-ALL-02	Control box		1	Welding parts
33	STM-1220W-ALL-03	Control box rear plate		1	Welding parts
32	BH90115000050	High-temp fester		1	EGO
31	YW61103500000	Hexagon socket head cap screw M10x35	12.9	8	GB/T70.1
30	STM-1220MW-C-ALL	Return water pipe assembly		1	Welding parts
29	STM-1220W-A-ALL	rack		1	Welding parts
28	YE90832500000	high and low pressure switch	2024	1	HLP830HME
27	STM-1220W-B-ALL	Water refilling connector assembly		1	Welding parts
26	STM-1220MW-B-ALL	Heating tank assembly		1	Welding parts
25	YW85001000100	Pressure gauge		1	0-1.0MPa Range
24	YW69081500000	Butterfly bolt M8x15	Q235A	2	GB/T 3098
23	YW65008000100	Standard Spring washer 8	65Mn	6	GB/T93
22	YW61082001200	Inner hexagon cylinder head screw M8x20	12.9	4	GB/T70.1
21	YW00000000100	Long door lock	PVC	1	
20	YW20660900100	door plank aluminum handle	2024	1	6609(Yaxuan)
19	STM-1220W-ALL-01	door plank		1	Welding parts
18	YR10110000000	MP-100 Graphite gasket	ISO-68	2	has mould
17	SG-S-01	Wire fixture fixed plate	SPCC2.0	1	
16	YE67251500100	Copper nickel plated cable connector	H62	1	
15	YW06219100000	big hinge	2024	2	Shengjiu CL219-1
14	YW65006000100	Standard Spring washer 6	65Mn	20	GB/T93
13	YW66061300000	Flat washer A grade 6	Q235A	20	
12	YW03000200000	Castor	Rubber	4	2" without brake 35KG
11	S-171	Teflon plug	H58	1	3/8"H plug
10	YW040308004.00	Tonflon connector	H58	1	1/4"PT×3/8"HL
9	STM-907HT-B-17	lengthened screw of oil discharge	H58	1	Borrowed
8	YW64000600300	Hexagon nut M6	Q235A	4	GB/T6170
7	MP-100	magnetic drive pump MP-100	QT4.00	1	1KW Anbo
6	YW60062500000	Hexagon bolt M6x25	4.8	4	GB/T5781
5	YW66081900000	Flat washer 8	Q235A	10	8x19x2.0
4	YW60061000000	Hexagon bolt M6x10	12.9	16	GB/T5781
3	YW57010200000	Y Type Strainer	H62	1	1/2" PT 30-35 mesh
2	S-73	Copper joint	H62	1	M13x1/2"PT
1	STM-1220W-E-ALL	Discharge connector parts		1	welding parts
序号	代号	名称	材料	数量	备注

制图	设计	校对	审核	版号	D	标题	STM-1220MW	图号	STM-1220MW-ALL	比例	1:8	数量	1
				核准		组装机						材质	/
标记	更改前	更改后	更改人	日期	审核	日期	20190515	SHINI 信易电热机械股份有限公司 Shini Plastics Technologies, Inc.		表面要求	/	物料号	/



规格尺寸及接口尺寸 (mm/inch) Inlet / Outlet Size (CE-PT inner thread inch)	冷却方式 Cooling Method	加热罐容量 (L) Sub water tank capacity (L)	加热罐数量 Heating Tank Qty	最高工作压力 (bar) Pump Max. Pressure (bar)	最高加热流量 (L/min) Max. pump Flow (l/min)	加热器功率 (kW) Pump Power (kW)	加热器功率 (kW) Heater Power (kW)	最高温度 Max. Temp.	重量 (kg) Weight (kg)	备注 Ver
1/1	直接冷却 Direct Cooling	7.4	2	7.3	62.5	2.8	2.4	120°C	14.0	G

45	STM-2440W-ALL-14	Door lock stopper	SUS304	1	Borrowed
44	YW00000000100	Long door lock	Assembly	1	
43	BH90115000050	EGO assembly	Assembly	1	
42	YW63030600000	Thick head bolt M3x6	4.8	3	
41	STM-2440W-ALL-12	Hot water bypass	Assembly	1	Borrowed
40	STM-2440W-ALL-11	Cold water bypass	Assembly	1	Borrowed
39	STM-2440W-E-ALL	Water refilling connector assembly	Assembly	1	Borrowed
38	STM-2440MW-C-ALL	Return water pipe Component	Assembly	1	Borrowed
37	YE90832500000	high and low pressure switch HL2830HSE	Assembly	1	
36	YW03000300000	Brake Castor 3"	Assembly	2	
35	YW64080600000	Hexagon nut M8	5.0	8	
34	YW60083000100	Hexagon screw bolt M8x30	4.8	8	
33	BM20283300050	pump MP-280	Assembly	1	
32	YW66081600000	Flat washer 8x16x15	14.0HV	4	
31	YW65008000100	Spring washer 8	65Mn	4	
30	YW61082000200	Inner hexagon screw M8x20	4.8	4	
29	YW66061800000	Flat gasket 6x18x1mm	14.0HV	4	
28	YW65006000100	Spring washer 6mm	65Mn	4	
27	YW60061600100	External hexagonal bolt M6x16	4.8	4	
26	YW60061000000	big hinge CL219-1	Assembly	2	
25	SG-S-01	Wire fixture fixed plate	SPCC2.0	1	Borrowed
24	YW62051000000	Flat head screw M5x10	4.8	14	
23	YW69081500000	Butterfly screw M8x15	4.8	2	
22	YW85001000100	Pressure gauge (0-10MPa range)	Assembly	1	
21	STM-2440W-ALL-08	Pressure gauge pipe	Assembly	1	Borrowed
20	STM-2440W-ALL-10	Low pressure pipe	Assembly	1	Borrowed
19	STM-2440W-ALL-09	high pressure pipe	Assembly	1	Borrowed
18	STM-2440MW-ALL-02	cover plate	SPCC1.2	1	
17	STM-2440MW-A-ALL	rack	Assembly	1	
16	STM-2440MW-B-ALL	Heating barrel parts	Assembly	1	
15	STM-2440W-ALL-13	Water supply pipe	Assembly	1	Borrowed
14	YW59385000000	Tonfon pipe-connector 3/8"-500MM	Assembly	1	
13	YR10642500000	Pump flange gasket	Graphite	2	Pump equipment
12	BH12131200010	Copper joint M13x1/2PT	H58	1	
11	YW57010200000	Y Type Strainer 1/2"	ZCuZn38	1	
10	S-136	Copper female thread connector 123L	H58	2	Borrowed
9	STM-2440W-D-ALL	Drainage connector assembly	Assembly	1	Borrowed
8	STM-2440W-ALL-03	control box rear plate	SPCC2.0	1	Borrowed
7	YW63062000000	Thick cross screw M6x20	4.8	4	
6	STM-2440W-ALL-04	Electrical base plate	SECC15	1	Borrowed
5	STM-2440MW-ALL-01	side plate	SPCC1.2	2	
4	STM-2440W-ALL-02	control box	SPCC15	1	Borrowed
3	YW20660900100	Door plank aluminum handle 6609(Yaxuan)	AL	1	
2	STM-2440W-ALL-01	door plank	SPCC15	1	Borrowed
1	YW03000300200	Flexible Castor 3"	Assembly	2	

item	Parameter setting value	
Maximum operating temperature(t)	120±0.5	
Pressure switch settings	Low pressure (MPa)	0.2
	High pressure (MPa)	0.7
EGO set temperature (t)	130	

制图	版号	比例	图号
设计	核准	1:1	STM-2440MW
校对	日期	材料	组装图
更改前	日期	表面要求	
更改后	日期	物料号	

标题 STM-2440MW 图号

比例 1:1 数量

材料

表面要求

物料号



信易电热机械股份有限公司  
Shini Plastics Technologies, Inc.