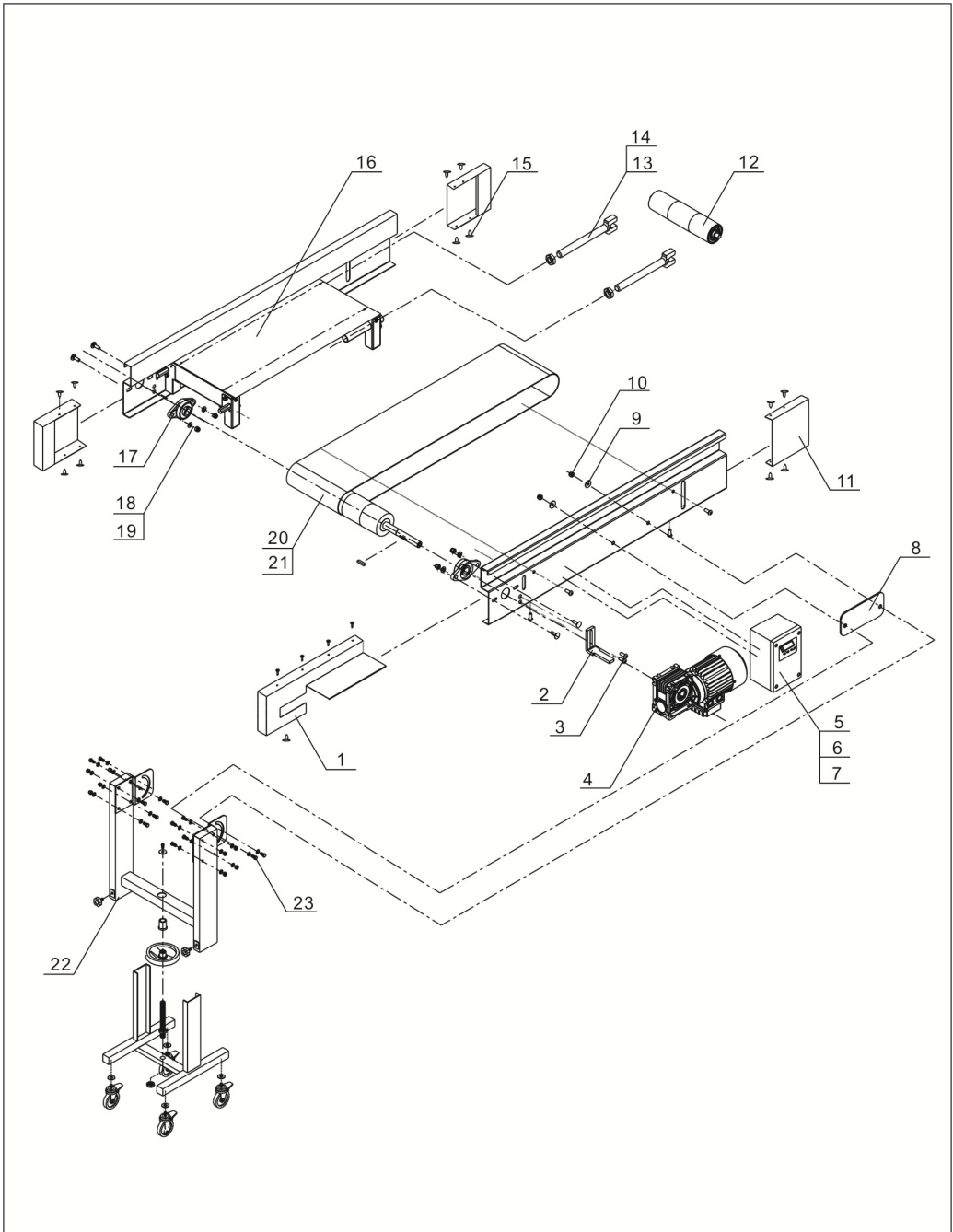


1. Assembly Drawing



Note: Please refer to material list 2 about the parts code.

2. Parts list

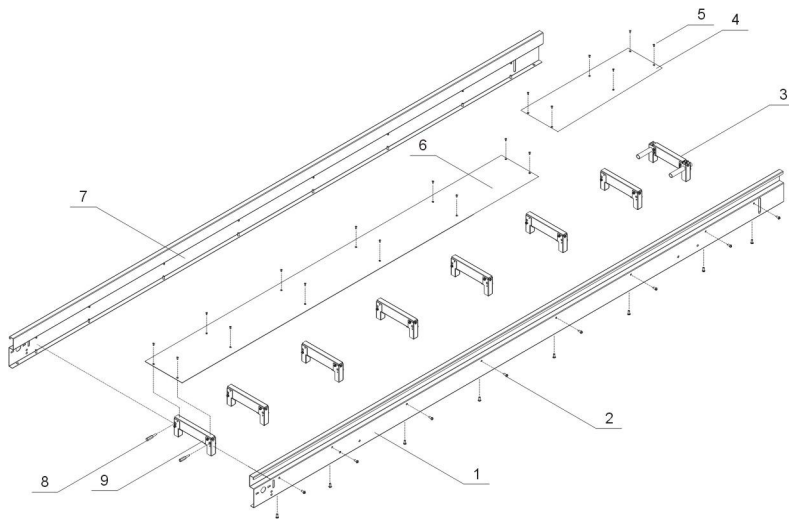
No.	Name	Part No.		
		PNL-1	PNL-2	PNL-3
1	End cover 2	BL56000042020	BL56000042020	BL56000042020
2	Motor holder	BL56000000420	BL56000000420	BL56000000420
3	Hexagon screw bolt	YW60082500300	YW60082500300	YW60082500300
4	Gear motor	YM50406000300	YM50406000300	YM50406000300
5	Frequency converter shell	BL56000240020	BL56000240020	BL56000240020
6	Frequency converter cover	BL56000140020	BL56000140020	BL56000140020
7	Frequency converter	YE75044300600	YE75044300600	YE75044300600
8	Holder pad	BL56004300020	BL56004300020	BL56004300020
9	Gasket	YW66122400000	YW66122400000	YW66122400000
10	Star screw nut	YW64012100000	YW64012100000	YW64012100000
11	End cover 1	BL56000041020	BL56000041020	BL56000041020
12	Iron stick	YW08010600600	YW08020600600	YW08030600600
13	Butterfly screw	BH10401101140	BH10401101140	BH10401101140
14	Hexagon thin nut	YW64200100000	YW64200100000	YW64200100000
15	Hexagon self-tapping screw	YW66061210000	YW66061210000	YW66061210000
16	Conveying belt assembly map	-	-	-
17	Bearing block parts	YW11205100100	YW11205100100	YW11205100100
18	Flat gasket	YW66122400000	YW66122400000	YW66122400000
19	Star screw nut	YW64012100000	YW64012100000	YW64012100000
20	Conveying belt	YR00120000200	YR00220000200	YR00320000200
21	Conveying wheel	YW08010100300	YW08020100300	YW08030100300
22	Exploded view of pedestal	BL56110020021	-	-
23	Hexagon screw bolt	YW60122500100	YW60122500100	YW60122500100
No.	Name	Part No.		
		PNL-4	PNL-5	PNL-6
1	End cover 2	BL56000042020	BL56000042020	BL56000042020
2	Motor holder	BL56000000420	BL56000000420	BL56000000420
3	Hexagon screw bolt	YW60082500300	YW60082500300	YW60082500300
4	Gear motor	YM50406000300	YM50406000300	YM50406000300
5	Frequency converter shell	BL56000240020	BL56000240020	BL56000240020

6	Frequency converter cover	BL56000140020	BL56000140020	BL56000140020
7	Frequency converter	YE80200000100	YE80200000100	YE80200000100
8	Holder pad	BL56004300020	BL56004300020	BL56004300020
9	Gasket	YW66122400000	YW66122400000	YW66122400000
10	Star screw nut	YW64012100000	YW64012100000	YW64012100000
11	End cover 1	BL56000041020	BL56000041020	BL56000041020
12	Iron stick	YW08041801800	YW08050600600	YW09502800000
13	Butterfly screw	BH10401101140	BH10401101140	BH10401101140
14	Hexagon thin nut	YW64200100000	YW64200100000	YW64200100000
15	Hexagon self-tapping screw	YW66061210000	YW66061210000	YW66061210000
16	Conveying belt assembly map	-	-	-
17	Bearing block parts	YW11205100100	YW11205100100	YW11205100100
18	Flat gasket	YW66122400000	YW66122400000	YW66122400000
19	Star screw nut	YW64012100000	YW64012100000	YW64012100000
20	Conveying belt	YR00420000400	YR00520000200	YR00620000200
21	Conveying wheel	YW08040100300	YW08050100300	YW08060100300
22	Exploded view of pedestal	-	-	-
23	Hexagon screw bolt	YW60122500100	YW60122500100	YW60122500100
No.	Name	Part No.		
		PNL-7	PNL-8	
1	End cover 2	BL56000042020	BL56000042020	
2	Motor holder	BL56000000420	BL56000000420	
3	Hexagon screw bolt	YW60082500300	YW60082500300	
4	Gear motor	YM50406000300	YM50406000300	
5	Frequency converter shell	BL56000240020	BL56000240020	
6	Frequency converter cover	BL56000140020	BL56000140020	
7	Frequency converter	YE80200000100	YE80200000100	
8	Holder pad	BL56004300020	BL56004300020	
9	Gasket	YW66122400000	YW66122400000	
10	Star screw nut	YW64012100000	YW64012100000	
11	End cover 1	BL56000041020	BL56000041020	
12	Iron stick	YW08047007800	YW08047008800	
13	Butterfly screw	BH10401101140	BH10401101140	
14	Hexagon thin nut	YW64200100000	YW64200100000	

15	Hexagon self-tapping screw	YW66061210000	YW66061210000	
16	Conveying belt assembly map	-	-	
17	Bearing block parts	YW11205100100	YW11205100100	
18	Flat gasket	YW66122400000	YW66122400000	
19	Star screw nut	YW64012100000	YW64012100000	
20	Conveying belt	YR00420007500	YR00420008500	
21	Conveying wheel	YW08070100300	YW08080100300	
22	Exploded view of pedestal	-	-	
23	Hexagon screw bolt	YW60122500100	YW60122500100	

Please confirm the version of manual before placing the purchase order to guarantee that the item number of the spare part is in accordance with the real object.

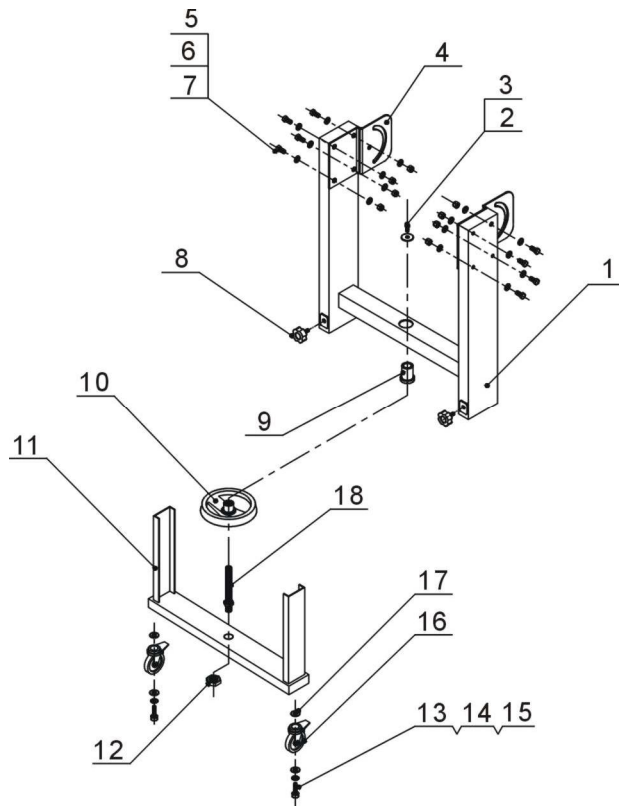
3. Holder Parts



Parts name:

- | | | |
|-----------------|----------------------------|------------------------|
| 1. Side plate | 2. Hexagon screw bolt | 3. Beam 2 assembly map |
| 4. Panel 2 | 5. Cross socket sunk screw | 6. Panel 1 |
| 7. Side plate 2 | 8. Hexagon screw | 9. Beam 1 assembly map |

4. Pedestal Parts



Parts name:

- | | | |
|-------------------------------------|--------------------------|---------------------|
| 1. Lifter assembly map | 2. Adjusting bolt | 3. Flat gasket |
| 4. Adjusting plate | 5. Hexagon screw bolt | 6. Flat gasket |
| 7. Lock nut | 8. Star screw | 9. Adjusting sleeve |
| 10. Driving wheel | 11. Pedestal welding map | 12. Star screw nut |
| 13. Inner hexagon cylindrical screw | 14. Spring gasket | 15. Flat gasket |
| 16. Castor | 17. Flat gasket | 18. Main screw |