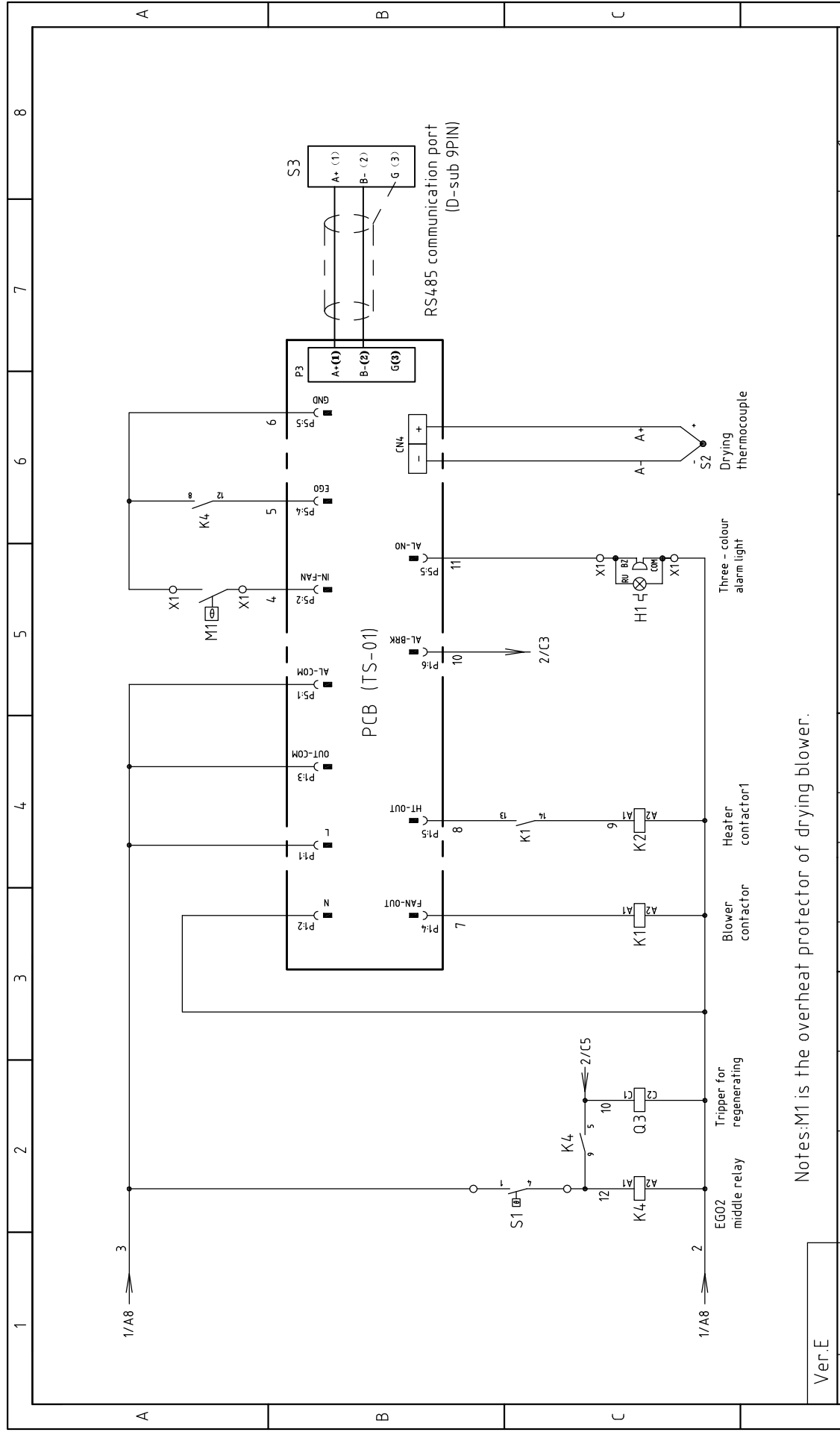


Ver.E	Drawing NO. SHD-40U-HD-CE-230V-A-1				Page 1	
	Title SHD-40U-HD Main Circuit Diagram		Standard CE		Totally 4 Pages	
	Version A		Approved by		Voltage 3Φ230V	
Mark	Before modification	After modification	Modify date	Checked by	Date	Frequency 50HZ
					20190829	
1	2	3	4	5	6	7
						8

SHINI
信易電熱機械股份有限公司
Shini Plastics Technologies, Inc.



Notes: M1 is the overheat protector of drying blower.

Ver.E												
Mark	Before modification	After modification	Modified by	Modify date	Checked by	Proofread by	Designer	Drawer	Version	Title		

SHD-40U-HD-CE-230V-A-2									SHD-40U-HD-CE-230V-A-2		
Control Circuit Diagram									Control Circuit Diagram		
SHINI									SHINI		
信易電熱機械股份有限公司									Shini Plastics Technologies, Inc.		
Drawing NO.									Drawing NO.		
Scale									Scale		
Standard									Standard		
Voltage									Voltage		
Frequency									Frequency		
Page									Page		
Totally									Totally		
Pages									Pages		
3φ230V									3φ230V		
50HZ									50HZ		

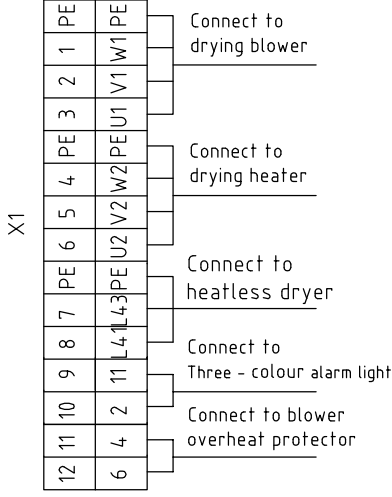
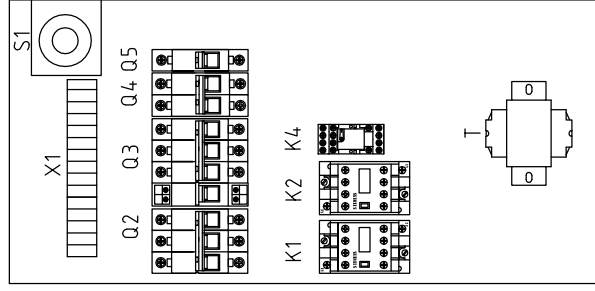
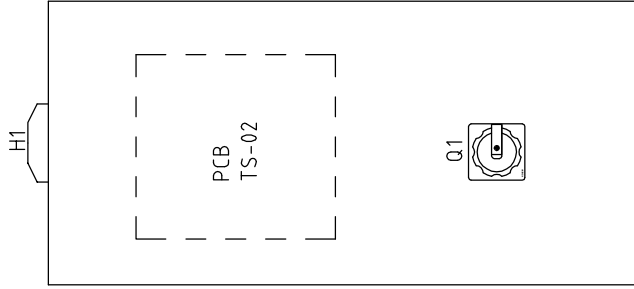
1 2 3 4 5 6 7 8

A


B

C

D



The main power lines directly connect to main power switch disconnect to terminal board.

Ver.E																					
Mark	Before modification	Modified by	Modify date	Checked by	Date	Approved by	Version	Title		Drawing NO.			Scale	Page	Standard		Voltage		Frequency		
					20190829		A	SHD-40U-HD Electrical Components Layout		SHD-40U-HD- CE-230V-A-3			Standard	3	CE		3φ230V		50HZ		
											 信易電熱機械股份有限公司 Shini Plastics Technologies, Inc.										

1

2

3

4

5

6

7

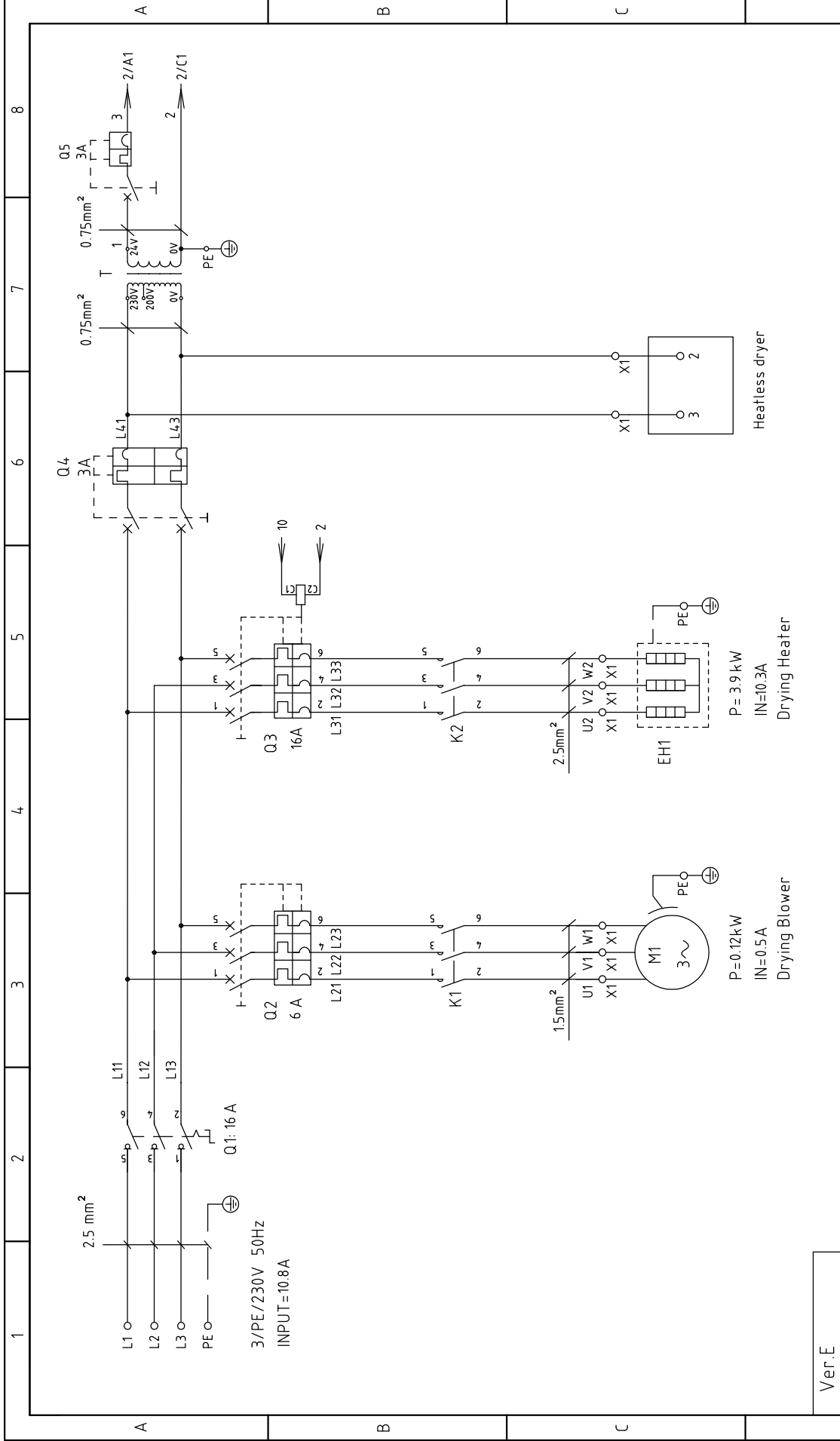
8

1	2		3	4	5	6	7	8
NO.	Symbol	Name	Manufacturer	Type	Specification	Number	Material number	Remark
1	Q1	Main power switch	EATON	TO-2-1/EA/SVB	16A 3P 690V 50/60Hz	1	YE10021160000	
2	Q3	Circuit-breaker	TECO	BM-63C/3010S	10A 3P	1	YE40301003000	
3		Excitation release	YIJIN	MX	24V AC	1	YE40024000000	
4	Q2	Circuit-breaker	TECO	BM-63C/3006S	6A 3P	1	YE40300603000	
5	K1	AC Contactor	SIEMENS	3RT6015-1AB01	7A 3P 1N0 24V AC	1	YE00601502500	
6	K2	AC Contactor	SIEMENS	3RT6017-1AB01	12A 3P 24V AC	1	YE00601702500	
7	K4	Middle relay	HONEYWELL	GR-2C-AC24V配壓PGR-2C-E	24V 50/60Hz	1	YE03022400300	
8	Q4	Circuit-breaker	TECO	BM-63C/2003S	3A 2P	1	YE40200203000	
9	Q5	Circuit-breaker	TECO	BM-63C/1003S	3A 1P	1	YE40100203000	
10	T	Transformer	BAIYUN	IN=230V/200V OUT=24V	120VA	1	YE70023005200	
11	PCB	PCB	YUYUN	TS-02(24VAC/DC)(components)	24V 50/60Hz	1	YE80022401200	
12	S1	Temperature protector	EGO	----	115-320 °C	1	BH901150000150	
13	S2	Thermocouple	SHINI	K TYPE	----	1	----	(1)
14	H1	Three - colour alarm light	SHINI	Red. Yel. Gre + buzzer	24V AC/DC	1	BL900000011520	
15	X1	Terminal	HONEYWELL	SK2.5	2.5mm ²	12	YE60002503200	
16		Grounding terminal	HONEYWELL	GK2.5PE	2.5mm ² PE	3	YE60002503400	
17		Terminal fittings	HONEYWELL	----	----	6	YE600000003900	
18	M1	Blower	SHINI	0.12kW	230V50/60HZ	1	----	(1)
19	EH1	Heater	SHINI	3.0kW	230V50/60HZ	1	----	(1)
20	S3	Communication interface board RS-485 (double Dsub-9pin connector)	YUYUN	----	----	1	YE90048501200	
21		Shell RS485(SAL-700G-A-1910)	BINCHEG	----	----	1	YR400485000000	
Ver.E								
Notes: (1)Means it's not the material inside the control box.								
Title				SHD-40U-HD		SHD-40U-HD-		Page 4
Drawing NO.				Electrical Components List 1		CE-230V-A-4		Totally 4 Pages
SHINI				SHINI		Voltage		3Φ230V
信易電熱機械股份有限公司				SHINI		Frequency		50HZ
Shini Plastics Technologies, Inc.				SHINI		Frequency		50HZ
1	2	3	4	5	6	7	8	

Ver.E

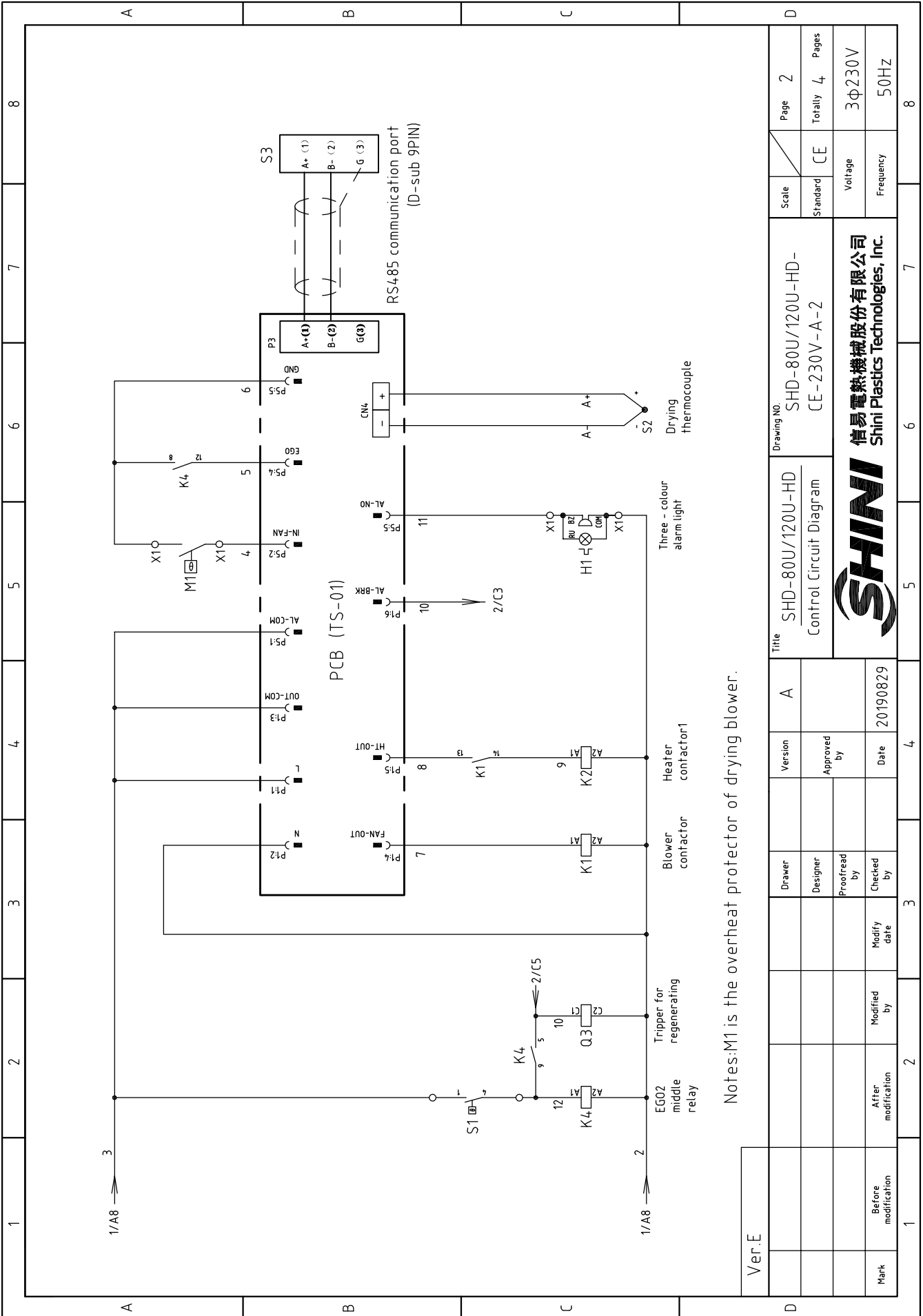
Notes: (1)Means it's not the material inside the control box.

Mark	Before modification	After modification	Modified by	Modify date	Checked by	Date	20190829
Designer		Proofread by		Approved by			
Version	A						
Title				SHD-40U-HD		SHD-40U-HD-	
Drawing NO.				Electrical Components List 1		CE-230V-A-4	
SHINI				SHINI		Voltage	
信易電熱機械股份有限公司				SHINI		Frequency	
Shini Plastics Technologies, Inc.				SHINI		Frequency	
1	2	3	4	5	6	7	8



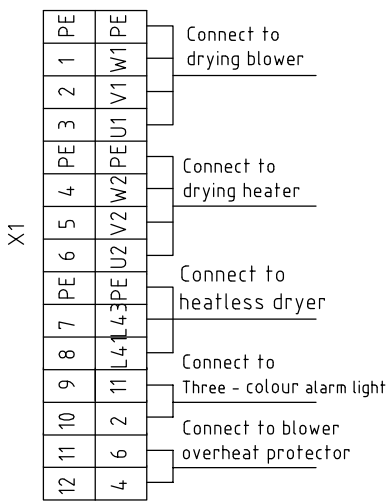
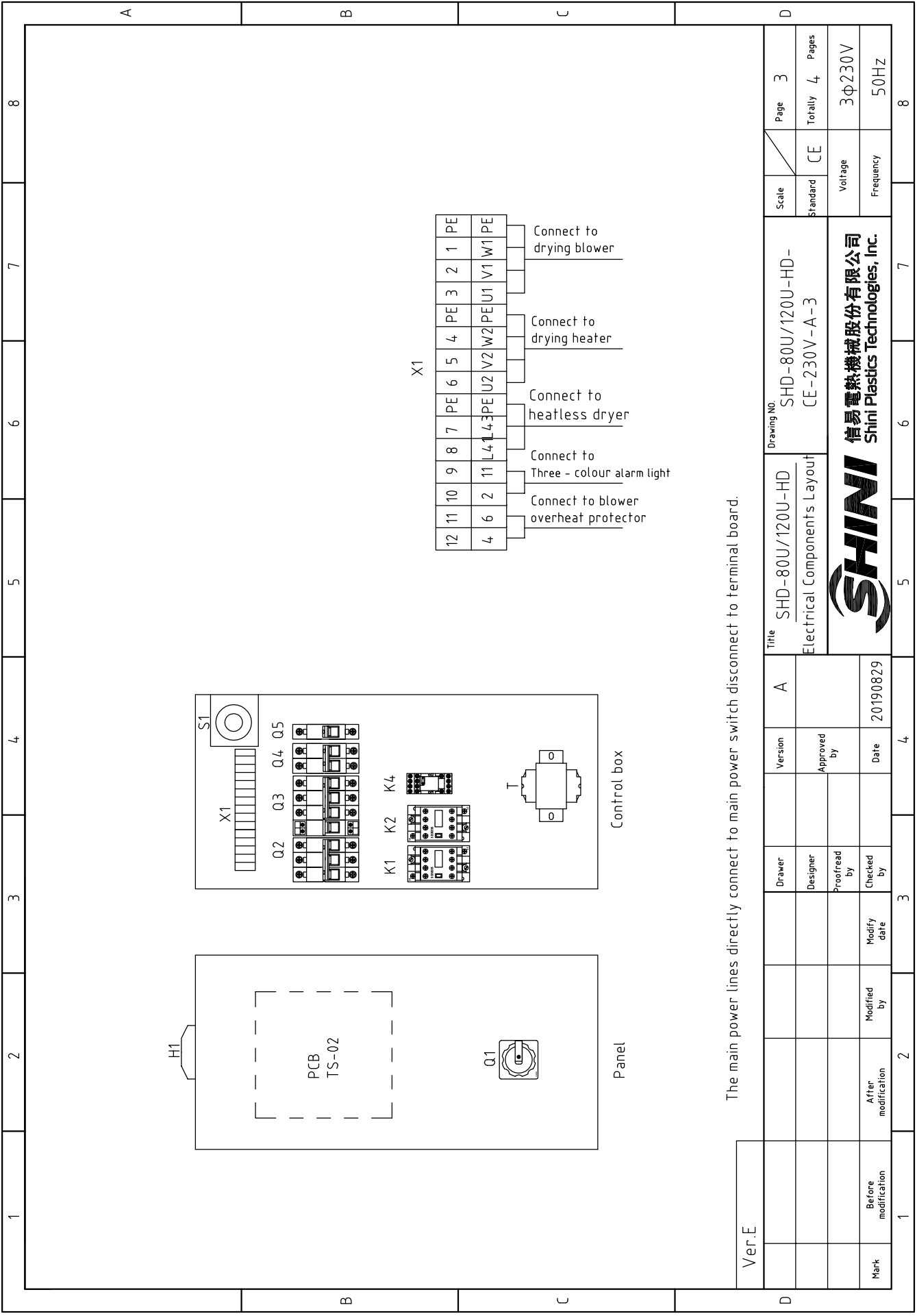
Ver.E					A	Title		SHD-80U/120U-HD Main Circuit Diagram	Drawing NO.	SHD-80U/120U-HD- CE-230V-A-1		Page 1	Totally 4	Pages
						Drawer	Designer			Proofread by	Checked by			
Mark	Before modification	After modification	Modified by	Modify date	20190829							3φ230V	50HZ	8

SHINI
信易電熱機械股份有限公司
Shini Plastics Technologies, Inc.




Ver.E

Scale	Page	2	
	Standard	CE	
Voltage	Totally	4	
	Frequency	50HZ	
Drawing NO: SHD-80U/120U-HD-CE-230V-A-2 SHINI 信易電熱機械股份有限公司 Shini Plastics Technologies, Inc.			
Title	SHD-80U/120U-HD Control Circuit Diagram	Version	A
Designer		Approved by	
Proofread by		Date	20190829
Checked by		Modify date	
Modified by			
After modification			
Before modification			
Mark			



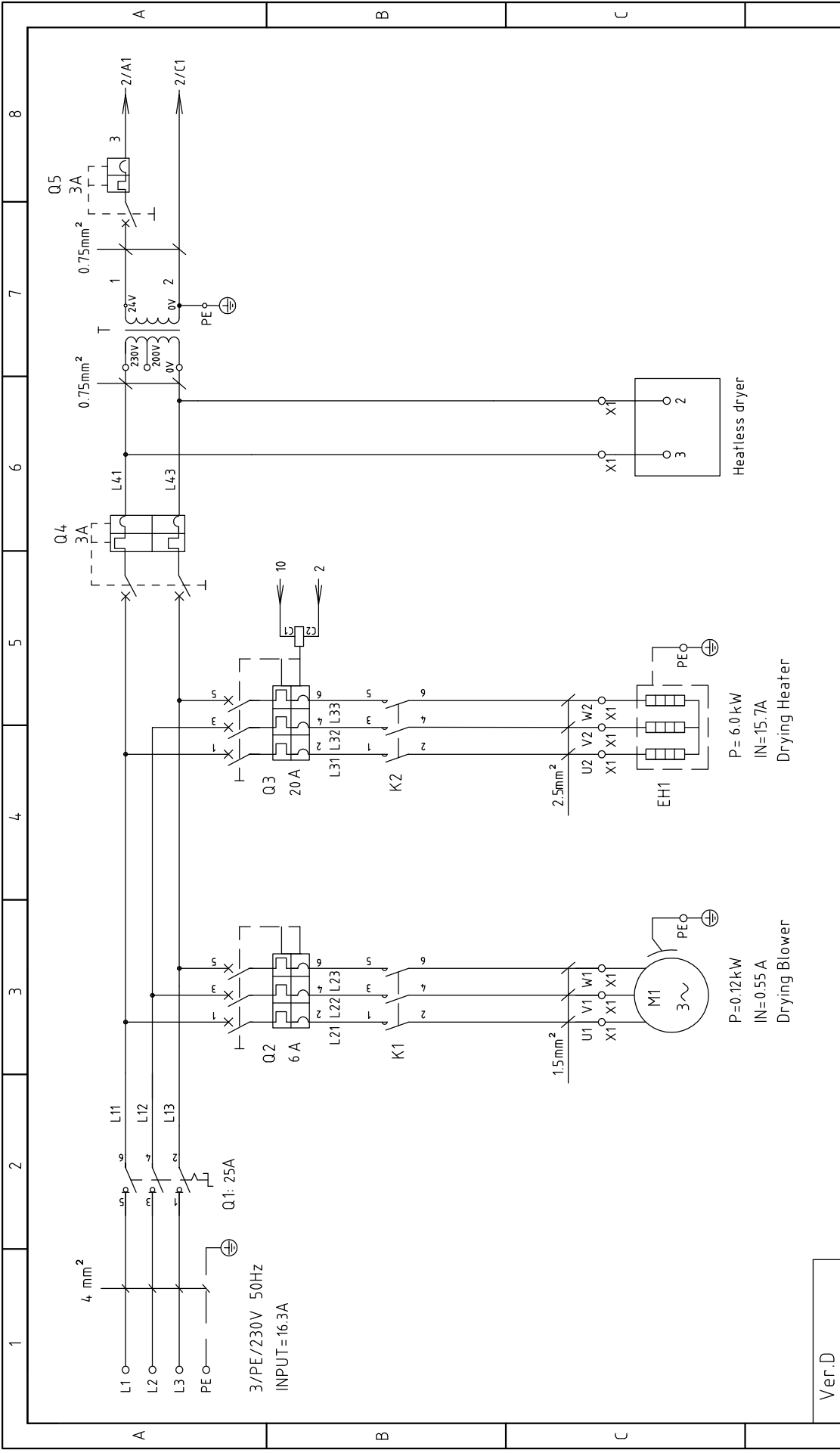
The main power lines directly connect to main power switch disconnect to terminal board.

Ver. E	Mark	Before modification	Modified by	Modify date	Date	Approved by	Version	A	Title	Drawing NO.	Scale	Page
		After modification	Modified by	Modify date							Standard	Totally
					20190829				SHD-80U/120U-HD Electrical Components Layout	SHD-80U/120U-HD- CE-230V-A-3	CE	3
									 信易電熱機械股份有限公司 Shini Plastics Technologies, Inc.		Voltage Frequency	3Φ230V 50HZ
1					4							8

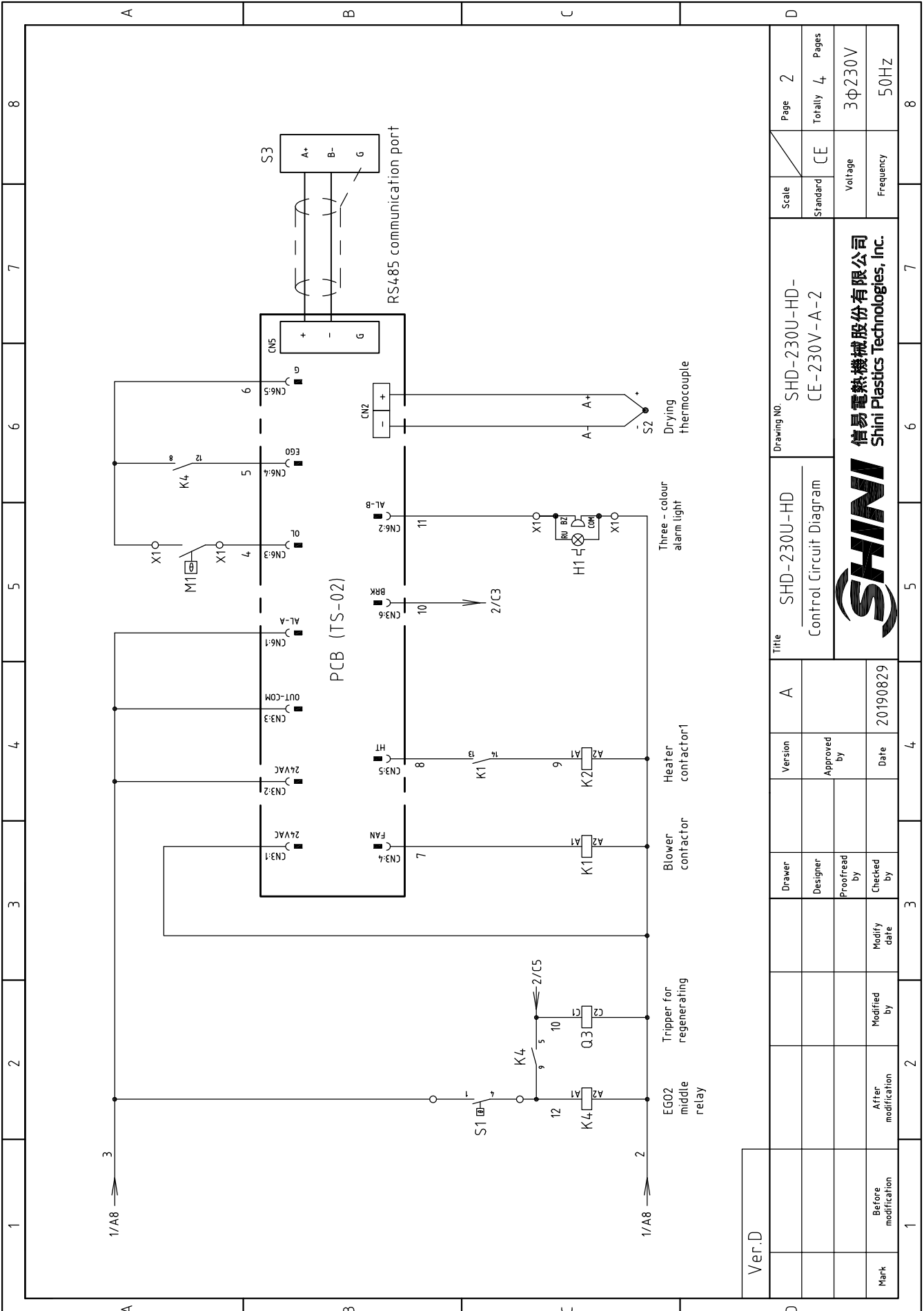
1	2		3	4	5	6	7	8
NO.	Symbol	Name	Manufacturer	Type	Specification	Number	Material number	Remark
1	Q1	Main power switch	EATON	T0-2-1/EA/SVB	16A 3P 690V 50/60Hz	1	YE10021160000	
2	Q3	Circuit-breaker	TECO	BM-63C/3016S	16A	1	YE40301603000	
3		Excitation release	YUJIN	MX	24V AC	1	YE40024000000	
4	Q2	Circuit-breaker	TECO	BM-63C/3006S	6A	1	YE40300603000	
5	K1	AC Contactor	SIEMENS	3RT6015-1AB01	7A 3P 1N0 24V AC	1	YE00601502500	
6	K2	AC Contactor	SIEMENS	3RT6018-1AB01	16A 3P 24V AC	1	YE00601802500	
7	K4	Middle relay	HONEYWELL	GR-2C-AC24V PRG-2C-E	24V 50/60Hz	1	YE03022400300	
8	Q4	Circuit-breaker	TECO	BM-63C/2003S	3A 2P	1	YE40200203000	
9	Q5	Circuit-breaker	TECO	BM-63C/1003S	3A 1P	1	YE40100203000	
10	T	Transformer	BAIYUN	IN-230V/200V OUT=24V	80VA	1	YE70023005200	
11	PCB	PCB	YUYUN	TS-02(24VAC/DC)[components]	24V 50/60Hz	1	YE80022401200	
12	S1	Temperature protector	EGO	----	115-320 °C	1	BH90115000150	
13	S2	Thermocouple	SHINI	K TYPE	----	1	----	(1)
14	H1	Three - colour alarm light	SHINI	Red, Yel, Gre + buzzer	24V AC/DC	1	BL90000011520	
15	X1	Terminal	HONEYWELL	SK2.5	2.5mm ²	12	YE60002503200	
16		Grounding terminal	HONEYWELL	GK2.5PE	2.5mm ² PE	3	YE60002503400	
17		Terminal fittings E/GKseries(honeywell)	HONEYWELL	----	PCS	4	YE60000003900	
18	M1	Blower	SHINI	0.12kW	230V50/60HZ		----	(1)
19	EH1	Heater	SHINI	3.9kW	230V50/60HZ	1	----	(1)
20	S3	Communication interface board RS-485 (double D-sub-9pin connector)	YUYUN	----	----	1	YE90048501200	
21		Shell RS485(SAL-700G-A-19)0	BINCHEG	----	----	1	YR40048500000	
Ver.E								
Notes: (1)Means it's not the material inside the control box.								
				Version	A	Title		D
				Designer		Drawing NO.		Page 4
				Proofread by		SHD-80U/120U-HD - Electrical Components List 1		Totally 4 Pages
				Checked by		Standard		CE
				Modify date		Voltage		3Φ230V
				After modification		Frequency		50HZ
1	2	3	4	5	6	7	8	



信易電熱機械股份有限公司
Shini Plastics Technologies, Inc.



Ver.D	1	2	3	4	5	6	7	8
D	A	Title		SHD-230U-HD		SHD-230U-HD-		Page 1
		Main Circuit Diagram		CE-230V-A-1		Standard	CE	Totally 4 Pages
Mark	Before modification	After modification	Modified by	Modify date	Checked by	Date	Voltage	
							3Φ230V	
							Frequency	
							50Hz	
								8
信易電熱機械股份有限公司 Shini Plastics Technologies, Inc.								7
Drawing NO. SHD-230U-HD-CE-230V-A-1								6
Drawing NO. SHD-230U-HD Main Circuit Diagram								5
P=0.12kW IN=0.55 A Drying Blower								4
P=6.0kW IN=15.7A Drying Heater								3
PE 0.75mm² 230V 200V 0V 24V 0V PE 3A 0.75mm² 0.75mm² 4 mm² 3/PE/230V 50Hz INPUT=16.3A Q1: 25A Q2: 6A Q3: 20A Q4: 3A Q5: 3A L11, L12, L13, L21, L22, L23, L31, L32, L33, K1, K2, EH1, EH2, M1, X1, X2, X3, X4, X5, X6, X7, X8, X9, X10, X11, X12, X13, X14, X15, X16, X17, X18, X19, X20, X21, X22, X23, X24, X25, X26, X27, X28, X29, X30, X31, X32, X33, X34, X35, X36, X37, X38, X39, X40, X41, X42, X43, X44, X45, X46, X47, X48, X49, X50, X51, X52, X53, X54, X55, X56, X57, X58, X59, X60, X61, X62, X63, X64, X65, X66, X67, X68, X69, X70, X71, X72, X73, X74, X75, X76, X77, X78, X79, X80, X81, X82, X83, X84, X85, X86, X87, X88, X89, X90, X91, X92, X93, X94, X95, X96, X97, X98, X99, X100								2



Ver.D

Mark	Before modification	After modification	Modified by	Modify date	Checked by	Proofread by	Designer	Drawer	Version	A	Title	
	SHD-230U-HD Control Circuit Diagram		SHD-230U-HD- CE-230V-A-2						Drawing NO.			
										Scale	Page	2
										Standard	Totally	4
										Voltage		3φ230V
										Frequency		50HZ

SHINI
信易電熱機械股份有限公司
Shini Plastics Technologies, Inc.

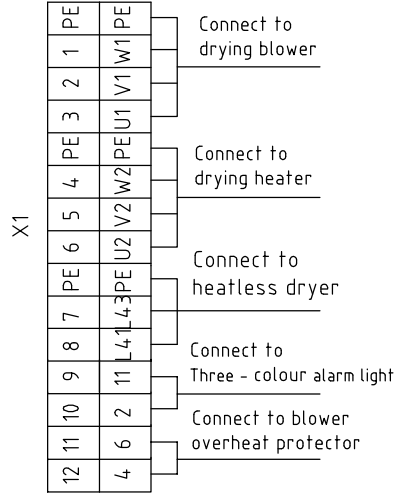
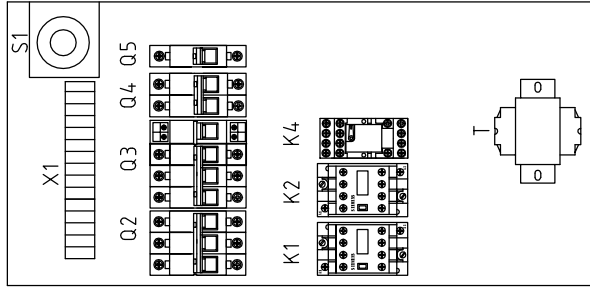
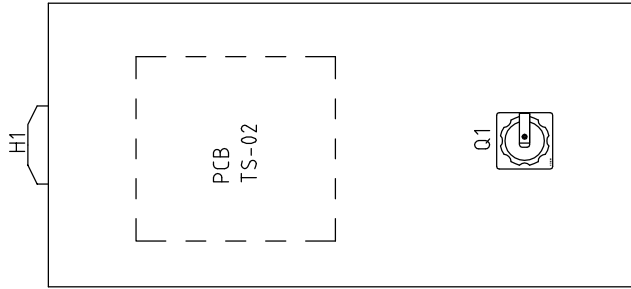
1 2 3 4 5 6 7 8

A

B

C

D



The main power lines directly connect to main power switch disconnect to terminal board.

Ver.D																				
Mark	Before modification	After modification	Modified by	Modify date	Checked by	Proofread by	Designer	Drawer	Version	A										

Title		SHD-230U-HD Electrical Components Layout		Drawing NO.		SHD-230U-HD- CE-230V-A-3		Scale		Standard		Page		3		
Voltage		3Φ230V		Frequency		50HZ		Standard		CE		Totally		4		
<p>信易電熱機械股份有限公司 Shini Plastics Technologies, Inc.</p>																

1

2

3

4

5

6

7

8

1	2		3	4	5	6	7	8
NO.	Symbol	Name	Manufacturer	Type	Specification	Number	Material number	Remark
1	Q1	Main power witch	EATON	P1-25/EA/SVB/25A	25A 3P 4.00V 50/60Hz	1	YE10125250000	
2	Q3	Circuit-breaker	TECO	BM-63C/3020S	20A 3P	1	YE403020030000	
3	Q2	Excitation release	YIJIN	MX	24V 50/60Hz	1	YE400240000000	A
4	Q2	Circuit-breaker	TECO	BM-63C/3006S	6A 3P	1	YE403006030000	
5	K1	AC Contactor	SIEMENS	3RT6015-1AB01	7A 3P 1NO 24V AC	1	YE006015025000	
6	K2	AC Contactor	SIEMENS	3RT6026-1AC20	25A 3P 24V AC	1	YE006026026000	
7	K4	Middle relay	HONEYWELL	GR-2C-AC24V PGR-2C-E	24V 50/60Hz	1	YE030224003000	
8	Q4	Circuit-breaker	TECO	BM-63C/2003S	3A 2P	1	YE402002030000	
9	Q5	Circuit-breaker	TECO	BM-63C/1003S	3A 1P	1	YE401002030000	
10	T	Transformer	JIUXIN	IN=230V/200V OUT=24VAC	80VA	1	YE700230052000	
11	PCB	PCB	YUYUN	TS-02124VAC/DCI(Components)	24V 50/60Hz	1	YE600224012000	B
12	S1	Components EGO	EGO	115-320°C 55.13262.160	----	1	BH901150000150	
13	S2	Thermocouple	SHINI	K TYPE	----	1	----	(1)
14	H1	Three - colour alarm light	SHINI	Red. Yel. Gre + buzzer	24V AC/DC	1	BL900000115200	
15	X1	Terminal	HONEYWELL	SK4	4mm ²	6	YE600000403200	
16		Terminal	HONEYWELL	GK5PE	4mm ² PE	2	YE600000403500	
17		Terminal	HONEYWELL	SK2.5	2.5mm ²	6	YE600025032000	
18		Terminal	HONEYWELL	GK2.5PE	2.5mm ² PE	1	YE600025034000	
19		Terminal fittings E/GKseries(honeywell)	HONEYWELL	----	----	6	YE600000003900	C
20	M1	Blower 4"	SHINI	A02-5622	0.12kW 200-240V 50HZ	1	----	(1)
21	EH1	Heater	SHINI	SHD-230U(6KW)3Φ 230V	6kW	1	----	(1)
22	S3	Communication interface board RS-485 (double Dsub-9pin connector)	YUYUN	----	----	1	YE900048501200	
23		Shell RS485(SAL-700G-A-19)0	BINCHENG	----	----	1	YR400485000000	
Ver.D								
Notes: (1)Means it's not the material inside the control box.								
				Version	A	Drawing NO.		Page 4
				Designer		SHD-230U-HD- CE-230V-A-4		Totally 4
				Proofread by		Electrical Components List 1		Pages 4
				Checked by		SHINI		Voltage 3Φ230V
				Modify date	20190829	Shini Plastics Technologies, Inc.		Frequency 50HZ
1	2	3	4	5	6	7	8	



信易電熱機械股份有限公司
Shini Plastics Technologies, Inc.