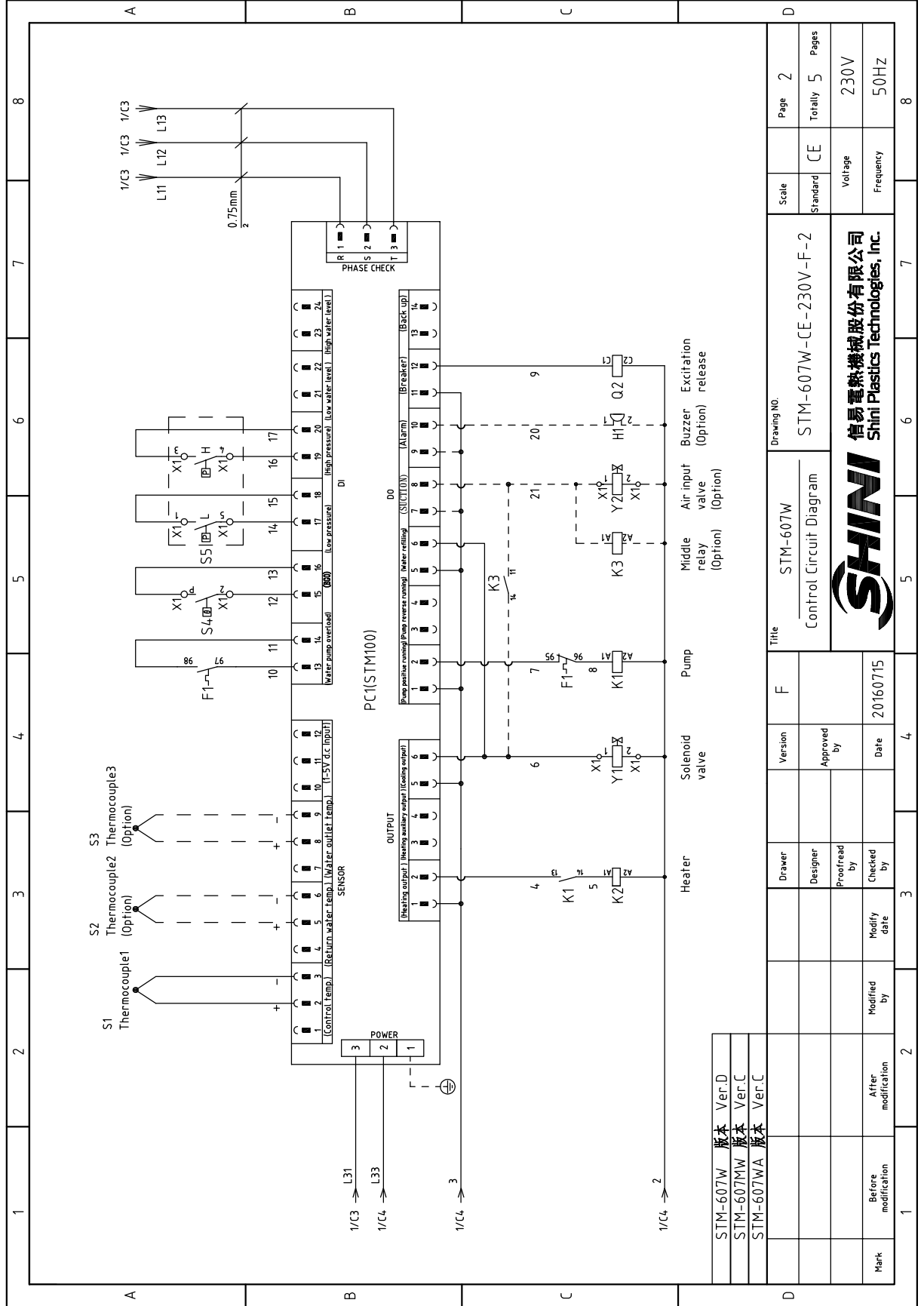


STM-607W	版本	Ver.D
STM-607MW	版本	Ver.C
STM-607WA	版本	Ver.C

When equipped with magnetic pump F:SET 1.7A P=0.55Kw IN=1.7A

Title		Drawing No.		Page	
STM-607W		STM-607W-CE-230V-F-1		1	
Main Circuit Diagram		Standard		CE	
Version		Scale		Voltage	
F		Standard		230V	
Approved by		Frequency		50Hz	
Date		Totally		5	
20160715		Pages		8	
3		5		7	
4		6		8	
1		2		3	
Mark		Before modification		After modification	
		Modified by		Date	





STM-607W	版本	Ver.D
STM-607MW	版本	Ver.C
STM-607WA	版本	Ver.C

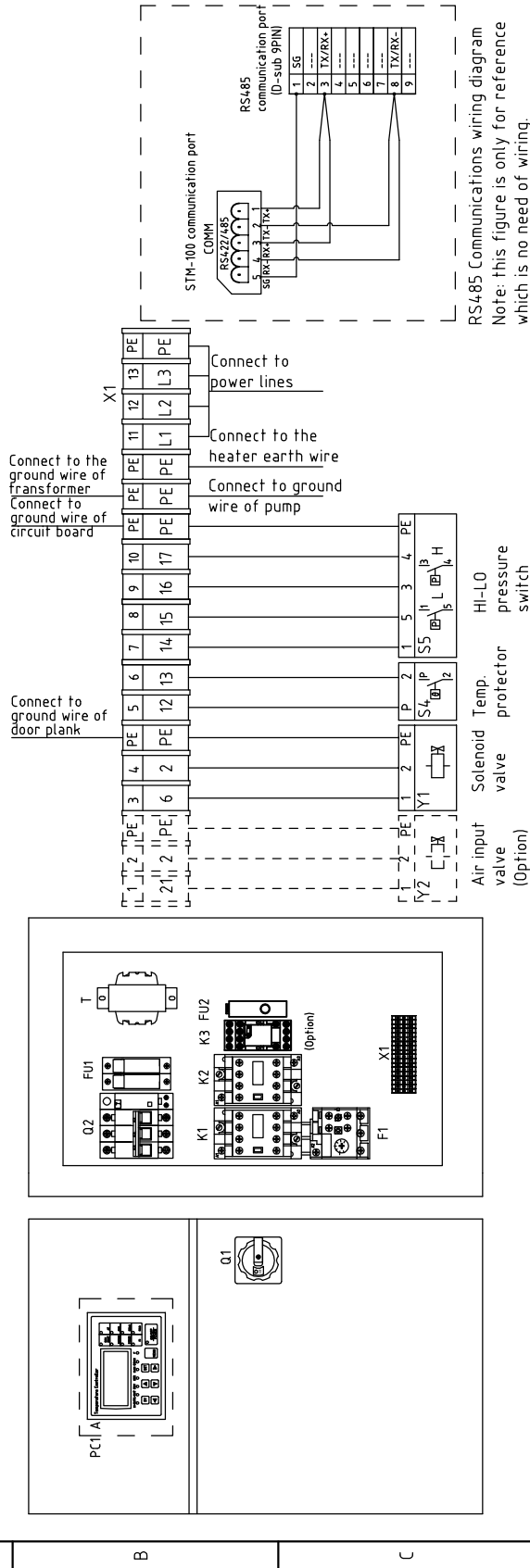
Mark	Before modification	Modified by	20160715	Date
	After modification	Modified by	20160715	Date
		Checked by		
		Proofread by		
		Designer		
		Version		

Title		STM-607W		Drawing NO.
Control Circuit Diagram		STM-607W-CE-230V-F-2		
Scale	Page	Standard	Totally	Pages
CE	2	CE	5	230V
				50Hz

SHINI
信易电热机械股份有限公司
Shini Plastics Technologies, Inc.

Technical requirements:

- (1) Directly connect the plus and minus poles of the thermocouple to the input end of thermocouple on the circuit board. No need to connect them to the terminal board.
- (2) Directly connect the pump and heater to the output end of the contactor and thermal overload relay.



RS485 Communications wiring diagram
Note: this figure is only for reference
which is no need of wiring.

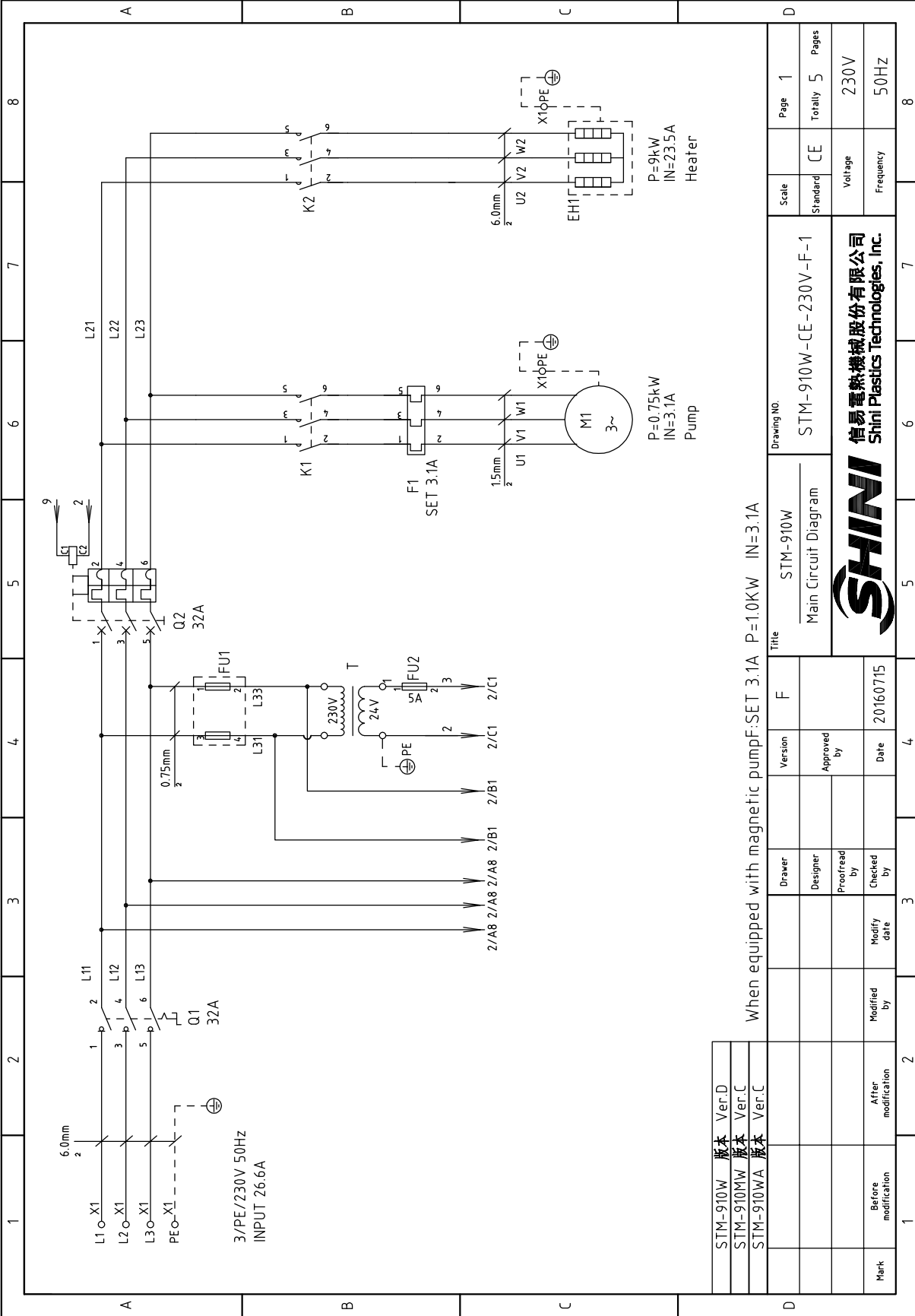
STM-607W	版本	Ver.D
STM-607MW	版本	Ver.C
STM-607WA	版本	Ver.C

Mark	Before modification	After modification	Modified by	Date	Checked by	Proofread by	Designer	Drawer	Version	F	Title	STM-607W	Drawing NO.	STM-607W-CE-230V-F-3	Scale	CE	Page	3
				20160715							Electrical Components Layout						Totally	5
																	Voltage	230V
																	Frequency	50Hz



1		2		3		4		5		6		7		8	
NO.	Symbol	Name	Manufacturer	Type	Specification	Number	Material number	Remark							
1	Q1	Main Switch	EATON	P1-25/EA/SVB	25A	1	YE10125250000								
2	Q2	Circuit Breakers	TECO	BM-63C/3025S	25A	1	YE40302503000								
3		Excitation Release	TECO	MX	24VAC	1	YE40024000000	A							
4	K1	Contactors	SIEMENS	3RT6015-1AB01	24VAC	1	YE00601502500								
5	K1	Contactors	SIEMENS	3RT6015-1AB01	24VAC	1	YE00601502500	(4)							
6	K2	Contactors	SIEMENS	3RT6025-1AC20	24VAC	1	YE00602502600								
7	K3	Middle relay	WEIDMULLER	GR-2C-AC24V	24VAC	1	YE03022400300	(5)							
8	F1	Thermo Overload Relays	SIEMENS	3RU6116-1BB0	1.4-2A	1	YE01160140000								
9	F1	Thermo Overload Relays	SIEMENS	3RU6116-1BB0	1.4-2A	1	YE01160140000	(4)							
10	FU1	Fuse Base	CHNT	RT118-32	32A 2P	1	YE41032200000								
11		Fuse Core	MRO	10x38 500V	2A	2	YE46002000100	B							
12	FU2	Fuse	YINDA	FS-10	----	2	YE41001000000								
13		Fuse Core	----	6x30/5A	5A	1	YE46630500100								
14	T	Transformer	BAIYUN	IN=230V OUT=24VAC	120VA	1	YE70023005500								
15	S1	Thermocouple	SHINI	----	K	1	----	(1)							
16	S2 S3	Thermocouple	SHINI	----	K	2	----	(1)(3)							
17	S4	Overheat Protector	----	----	----	1	----	(1)							
18	S5	HI-LO pressure switch	FENSHEN	P830HLM	HI:5-30bar L:-0.7-6bar	1	----	(1)							
19	PC1 A	Circuit Board	HANYOUNG NUX	STM100-21	180-430V 50/60Hz	1	YE81184300200	C							
20	H1	Buzzer	APT	AD16-30M/W	24VAC	1	YE84163000000	(2)							
21	Y1	Solenoid Valve	----	----	24VAC	1	----	(1)							
22	Y2	Solenoid Valve	----	----	24VAC	1	----	(1)(5)							
23	X1	Terminal Board	HONEYWELL	2.5mm ²	----	8	YE60002503200								
24		Terminal Board	HONEYWELL	2.5mm ² PE	----	3	YE60002503400								
		STM-607W 版本	Notes: (1)Means it's not the material inside the control box.(2)Means it's equipped with buzzer.												
		STM-607MW 版本	(3)Means equipped with function of displaying water outlet and return water temperature.												
		STM-607WA 版本	(4)Means optional air-blowing cleaning function.												
			Drawer	Version	F	Title	Scale	Page	D						
			Designer	Approved by		STM-607W	Standard	4	Electrical Components List 1						
			Proofread by			Electrical Components List 1	CE	Totally	5						
			Checked by	Date	20160715		Voltage	230V							
		Before modification	Modified by	Modify date			Frequency	50Hz							
		After modification						8							



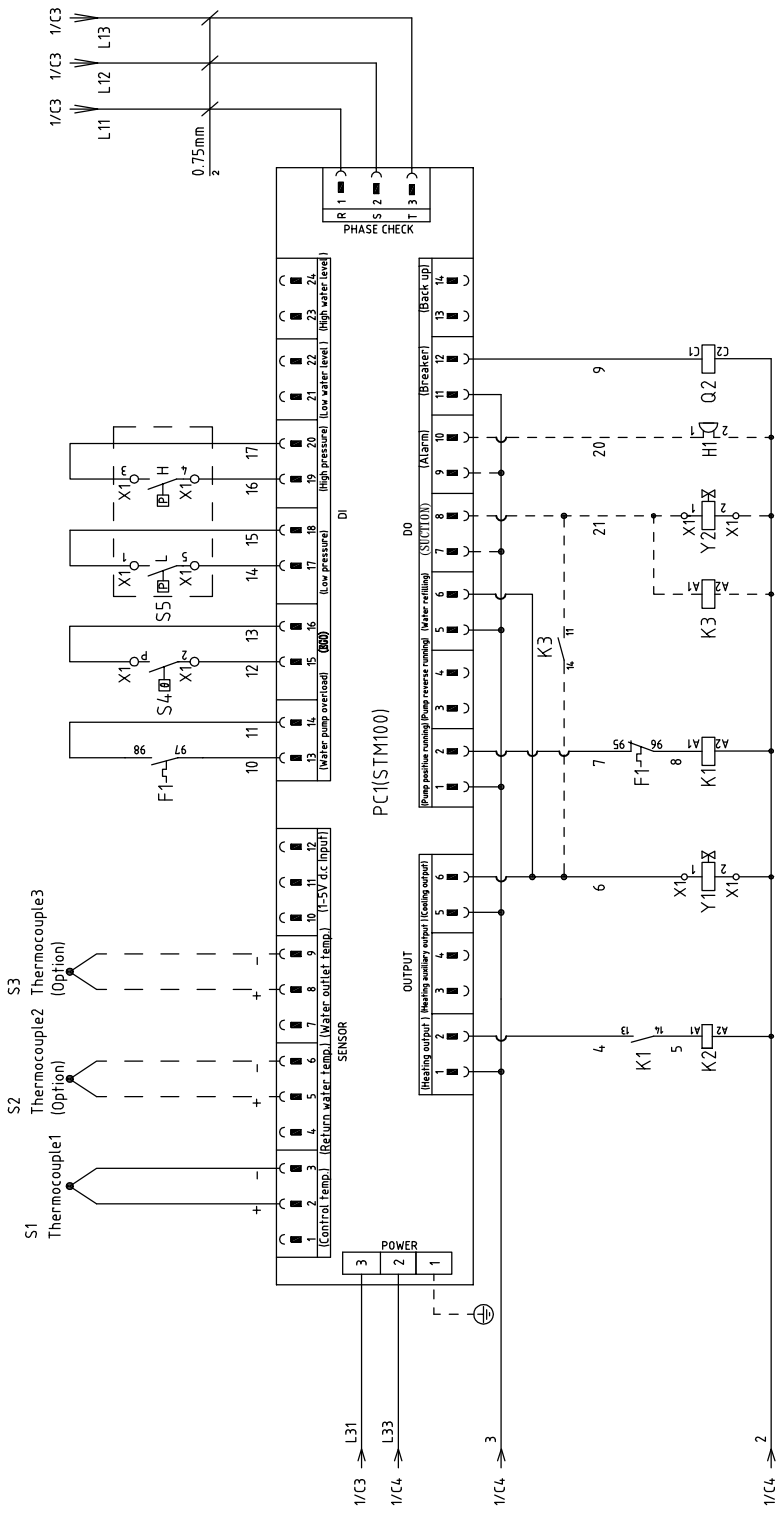


STM-910W	版本	Ver.D
STM-910MW	版本	Ver.C
STM-910WA	版本	Ver.C

When equipped with magnetic pump: SET 3.1A P=1.0KW IN=3.1A

Title		Drawing No.	
STM-910W		STM-910W-CE-230V-F-1	
Version		Scale	
F		CE	
Designer		Standard	
Proofread by		Voltage	
Checked by		Frequency	
Modified by		Page 1	
Modify Date		Totally 5 Pages	
Before modification		230V	
After modification		50Hz	
Mark	1	2	3
	4	5	6
	7	8	

SHINI
信易电热机械股份有限公司
Shini Plastics Technologies, Inc.



STM-910W	版本	Ver.D
STM-910MW	版本	Ver.C
STM-910WA	版本	Ver.C

Mark	Before modification	Modified by	Modify date	Checked by	Date	20160715	Approved by	Version	F	Title	STM-910W Control Circuit Diagram	Drawing NO.	STM-910W-CE-230V-F-2	Scale	CE	Page	2
	After modification													Standard	CE	Totally	5
														Voltage			230V
														Frequency			50Hz



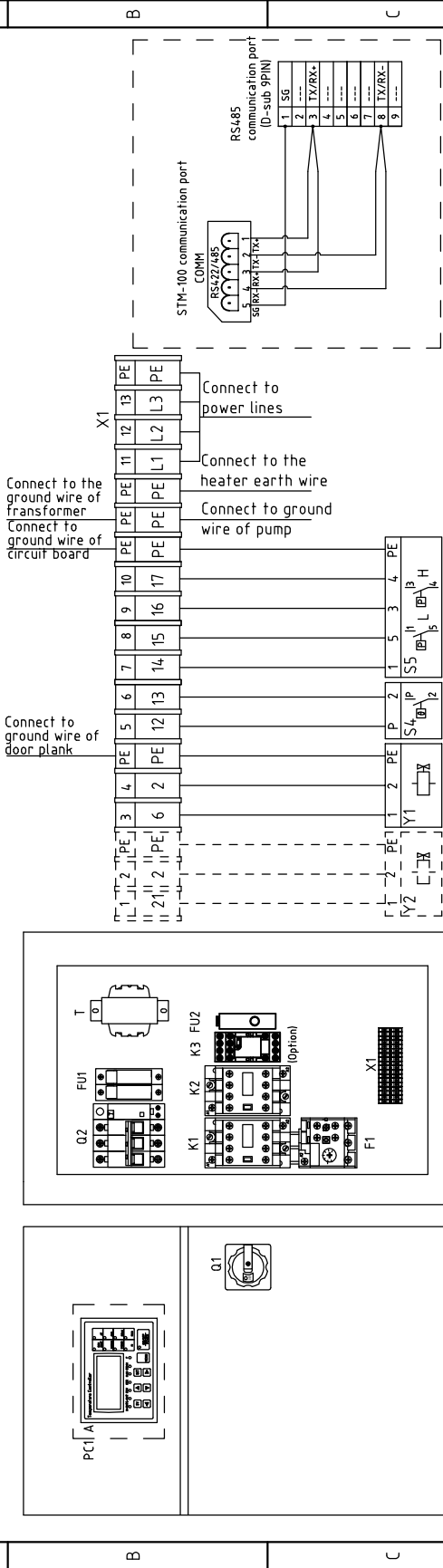
1 2 3 4 5 6 7 8

A B C D

1 2 3 4 5 6 7 8

Technical requirements:

- (1) Directly connect the plus and minus poles of the thermocouple to the input end of thermocouple on the circuit board. No need to connect them to the terminal board.
- (2) Directly connect the pump and heater to the output end of the contactor and thermal overload relay.



RS485 Communications wiring diagram
 Note: this figure is only for reference which is no need of wiring.

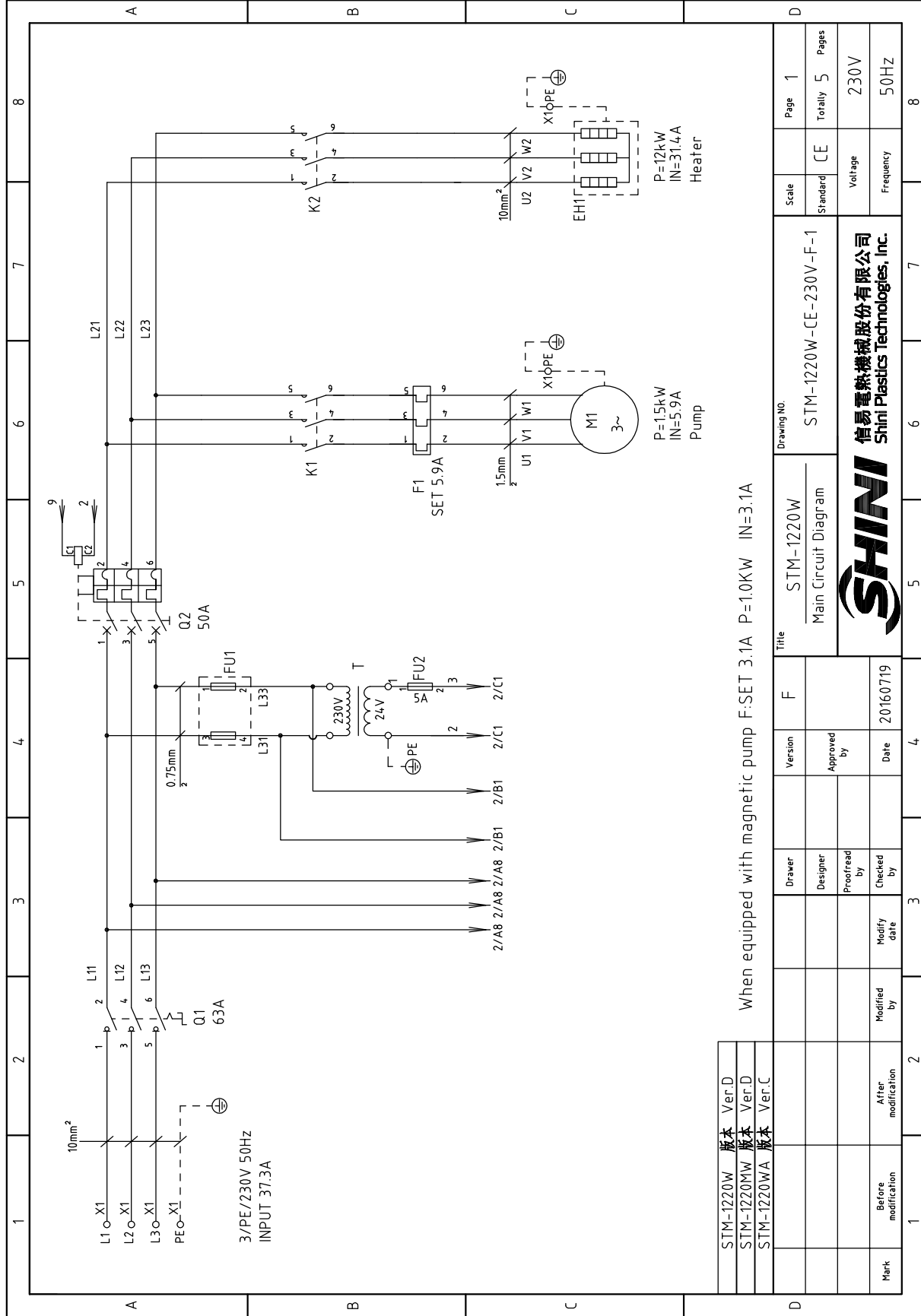
STM-910W	版本	Ver.D
STM-910MW	版本	Ver.C
STM-910WA	版本	Ver.C

Mark	Before modification	Modified by	Modify date	Date	20160715	Checked by	Approved by	Version	F	Title	STM-910W	Drawing NO.	Page	3
	Electrical Components Layout	Scale	CE								Totally		5	
											Standard	CE	Voltage	230V
												Frequency	50Hz	



1	2		3	4	5	6	7	8	
NO.	Symbol	Name	Manufacturer	Type	Specification	Number	Material number	Remark	
1	Q1	Main Switch	EATON	P1-32/EA/SVB	32A	1	YE10323200000		
2	Q2	Circuit Breakers	TECO	BM-63C/3032S	32A	1	YE40303203000		
3		Excitation Release	TECO	MX	24VAC	1	YE40024000000	A	
4	K1	Contactors	SIEMENS	3RT6015-1AB01	24VAC	1	YE00601502500		
5	K1	Contactors	SIEMENS	3RT6015-1AB01	24VAC	1	YE00601502500	(4)	
6	K2	Contactors	SIEMENS	3RT6027-1AC20	24VAC	1	YE00602702600		
7	K3	Middle relay	WEIDMULLER	GR-2C-AC24V	24VAC	1	YE03022400300	(5)	
8	F1	Thermo Overload Relays	SIEMENS	3RU6116-1EB0	2.8-4A	1	YE01160280000		
9	F1	Thermo Overload Relays	SIEMENS	3RU6116-1EB0	2.8-4A	1	YE01160280000	(4)	
10	FU1	Fuse Base	CHNT	RT18-32	32A 2P	1	YE41032200000		
11		Fuse Core	MRO	10x38 500V	2A	2	YE46020000100	B	
12	FU2	Fuse	YINDA	FS-10	----	2	YE41001000000		
13		Fuse Core	----	6x30/5A	5A	1	YE46630500100		
14	T	Transformer	BAIYUN	IN=230V OUT=24VAC	120VA	1	YE70023005500		
15	S1	Thermocouple	SHINI	----	K	1	----	(1)	
16	S2 S3	Thermocouple	SHINI	----	K	2	----	(1)(3)	
17	S4	Overheat Protector	----	----	----	1	----	(1)	
18	S5	HI-LO pressure switch	FENSHEN	P830HLM	Hi:5-30bar L:-0.7-6bar	1	----	(1)	
19	PC1 A	Circuit Board	HANYOUNGNUX	STM100-21	180~430V 50/60Hz	1	YE81184300200	C	
20	H1	Buzzer	APT	AD16-30M/W	24VAC	1	YE84163000000	(2)	
21	Y1	Solenoid Valve	----	----	24VAC	1	----	(1)	
22	Y2	Solenoid Valve	----	----	24VAC	1	----	(1)(5)	
23	X1	Terminal Board	HONEYWELL	2.5mm ²	----	8	YE60002503200		
24		Terminal Board	HONEYWELL	2.5mm ²	----	3	YE60002503400		
		STM-910W 版本	Notes: (1)Means it's not the material inside the control box.(2)Means it's equipped with buzzer.						
		STM-910MW 版本	(3)Means equipped with function of displaying water outlet and return water temperature.						
		STM-910WA 版本	(4)Means equipped with magnetic pump. (5)Means optional air-blowing cleaning function.						
				Title	STM-910W	Drawing NO.			
				Version	F	Electrical Components List 1		Scale	
				Designer		STM-910W-CE-230V-F-4		Standard	
				Proofread by		Voltage		Page 4	
				Checked by		Frequency		Totally 5 Pages	
				Modified by				230V	
				Modify date	20160715			50Hz	
				Before modification					
				After modification					
					SHINI		信易塑料机械股份有限公司		
					SHINI		Shini Plastics Technologies, Inc.		

1		2		3		4		5		6		7		8	
NO.	Symbol	Name	Manufacturer	Type	Specification	Number	Material number	Remark							
25		Terminal Board	HONEYWELL	6.0mm ²	----	3	YE60000603200								
26		Terminal Board	HONEYWELL	6.0mm ²	----	2	YE60000603500								
27		Terminal Board	HONEYWELL	2.5mm ²	----	2	YE60002503200	(5)							
28		Terminal Board	HONEYWELL	2.5mm ² PE	----	1	YE60002503400	(5)							
29	M1	Motor	SHINI	TP-75	230V 50Hz 0.75kW	1	----	(1)							
30	M1	Motor	SHINI	MP-100	230V 50Hz 1.0kW	1	----	(1)(4)							
31	EH	Heater	SHINI	9kW	230V 50Hz	1	----	(1)							
B															
C															
D															
STM-910W 版本		Notes: (1)Means it's not the material inside the control box.(2)Means it's equipped with buzzer.													
STM-910MW 版本		(3)Means equipped with function of displaying water outlet and return water temperature.													
STM-910WA 版本		(4)Means equipped with magnetic pump. (5)Means optional air-blowing cleaning function.													
		Title		Version		F		Drawing NO.		Scale		Page		5	
		Electrical Components List 2		STM-910W		STM-910W-CE-230V-F-5		Standard		CE		Voltage		230V	
		SHINI		Shini Plastics Technologies, Inc.								Frequency		50Hz	
Mark		Before modification		After modification		Modified by		Modify date		20160715		Date		20160715	
1		2		3		4		5		6		7		8	

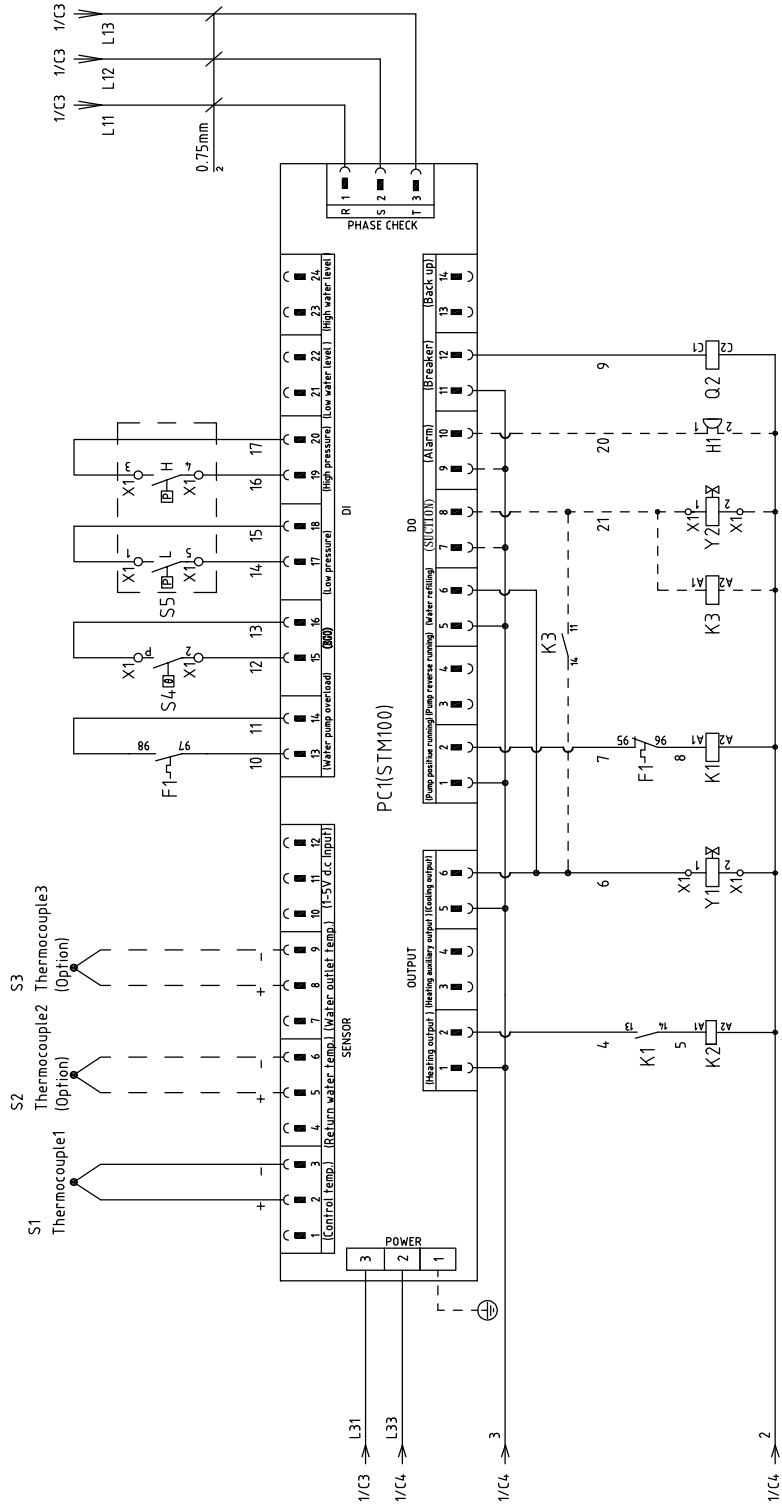


When equipped with magnetic pump F:SET 3.1A P=1.0KW IN=3.1A

STM-1220W	版本	Ver.D
STM-1220MW	版本	Ver.D
STM-1220WA	版本	Ver.C

Title		Drawing No.	
STM-1220W		STM-1220W-CE-230V-F-1	
Main Circuit Diagram		CE	
Scale	Page	Standard	Pages
	1		Totally 5
Voltage		Frequency	
230V		50Hz	
Mark		Before modification	
After modification		Modify Date	
Designer		Approved by	
Proofread by		Date	
Checked by		20160719	
Drawn		Version	
F		Date	
20160719		4	
3		4	
2		4	
1		4	
8		8	





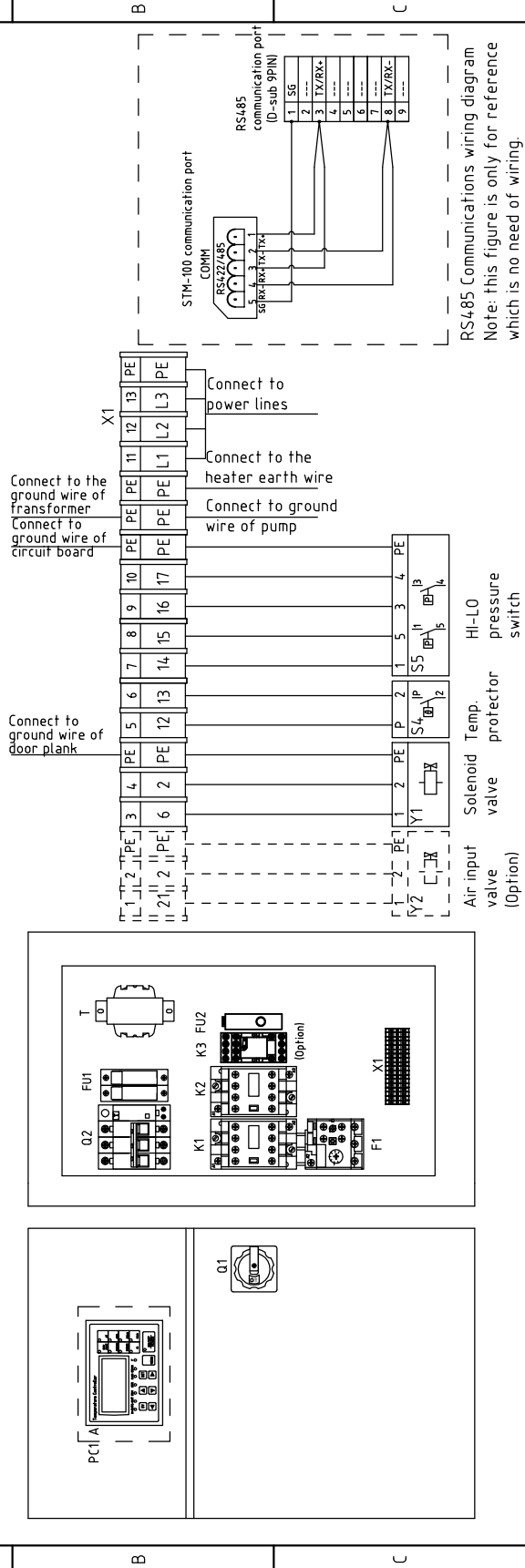
STM-1220W	版本	Ver.D
STM-1220MW	版本	Ver.D
STM-1220WA	版本	Ver.C

Drawer	Version	Title		Drawing NO.	Scale	Page
Designer	Approved by	STM-1220W		STM-1220W-CE-230V-F-2	Standard	2
Proofread by		Control Circuit Diagram			CE	Totally 5
Checked by	Date				Voltage	Pages
Modified by	20160719				230V	5
Before modification					Frequency	
Mark					50Hz	



Technical requirements:

- (1) Directly connect the plus and minus poles of the thermocouple to the input end of thermocouple on the circuit board. No need to connect them to the terminal board.
- (2) Directly connect the pump and heater to the output end of the contactor and thermal overload relay.




RS485 Communications wiring diagram
Note: this figure is only for reference which is no need of wiring.

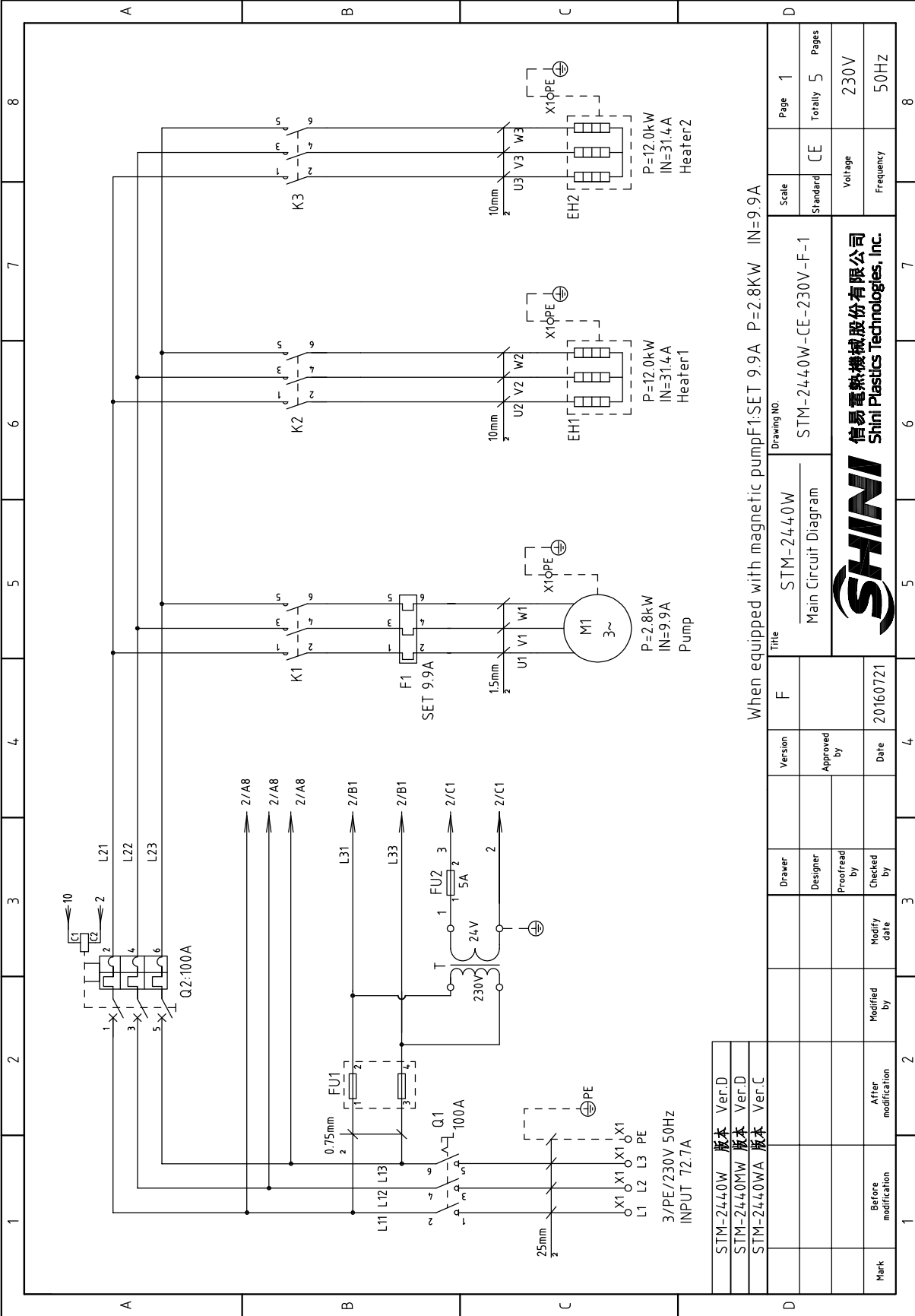
STM-1220W	版本	Ver.D
STM-1220MW	版本	Ver.D
STM-1220WA	版本	Ver.C

Title	STM-1220W		Drawing NO.	STM-1220W-CE-230V-F-3		Scale	Page 3	
	Electrical Components Layout						Standard CE	
Version	F		Approved by			Voltage		230V
Designer			Proofread by			Frequency		50Hz
Checked by	Date		20160719					
Modified by	Modify date							
Mark	Before modification	After modification						



1		2		3		4		5		6		7		8		
NO.	Symbol	Name	Manufacturer	Type	Specification	Number	Material number	Remark								
1	Q1	Main Switch	EATON	P3-63/EA/SVB	63A	1	YE10636300000									
2	Q2	Circuit Breakers	TECO	BM-63C	50A	1	YE40305003000									
3		Excitation Release	TECO	MX	24VAC	1	YE40024000000	A								
4	K1	Contactors	SIEMENS	3RT6016-1AB01	24VAC	1	YE00601602500									
5	K1	Contactors	SIEMENS	3RT6015-1AB01	24VAC	1	YE00601502500	(4)								
6	K2	Contactors	SIEMENS	3RT6028-1AC20	24VAC	1	YE00602802600									
7	K3	Middle relay	WEIDMULLER	GR-2C-AC24V	24VAC	1	YE03022400300	(5)								
8	F1	Thermo Overload Relays	SIEMENS	3RU6116-1GB0	4.5-6.32A	1	YE01160450000									
9	F1	Thermo Overload Relays	SIEMENS	3RU6116-1EB0	2.8-4A	1	YE01160280000	(4)								
10	FU1	Fuse Base	CHNT	RT118-32	32A 2P	1	YE41032200000									
11		Fuse Core	MRO	10x38 500V	2A	2	YE46002000100	B								
12	FU2	Fuse	YINDA	FS-10	----	1	YE41001000000									
13		Fuse Core	----	6x30/5A	5A	1	YE46630500100									
14	T	Transformer	BAIYUN	IN=230V OUT=24VAC	120VA	1	YE70023005500									
15	S1	Thermocouple	SHINI	----	----	1	----	(1)								
16	S2 S3	Thermocouple	SHINI	----	----	2	----	(1)(3)								
17	S4	Overheat Protector	----	----	----	1	----	(1)								
18	S5	HI-LO pressure switch	FENSHEN	P830HLM	HI:5-30bar L:-0.7-6bar	1	----	(1)								
19	PC1 A	Circuit Board	HANYOUNGUX	STM100-21	180-430V 50/60Hz	1	YE81184300200									
20	H1	Buzzer	APT	AD16-30M/W	24VAC	1	YE84163000000	(2)								
21	Y1	Solenoid Valve	----	----	24VAC	1	----	(1)								
22	Y2	Solenoid Valve	----	----	24VAC	1	----	(1)(5)								
23	X1	Terminal Board	HONEYWELL	2.5mm ²	----	8	YE60002503200									
24		Terminal Board	HONEYWELL	2.5mm ²	----	3	YE60002503400									
		STM-1220W 版本	Ver.D	Notes: (1)Means it's not the material inside the control box.(2)Means it's equipped with buzzer.												
		STM-1220MW 版本	Ver.D	(3)Means equipped with function of displaying water outlet and return water temperature.												
		STM-1220WA 版本	Ver.C	(4)Means optional air-blowing cleaning function.												
			Designer	Version	Title	Drawing NO.	Scale	Page								
			Proofread by	F	STM-1220W	STM-1220W-CE-230V-F-4	Standard	4								
			Checked by	Approved by	Electrical Components List 1		CE	Totally								
		Before modification	Modify date	Date			Voltage	5								
		After modification	20160719	20160719			Frequency	230V								
																
					Shini Plastics Technologies, Inc.											
1	2	3	4	5	6	7	8									

1		2		3		4		5		6		7		8	
NO.	Symbol	Name	Manufacturer	Type	Specification	Number	Material number	Remark							
25		Terminal Board	HONEYWELL	10mm ²	----	3	YE60001003200								
26		Terminal Board	HONEYWELL	10mm ²	----	2	YE60001003500								
27		Terminal Board	HONEYWELL	2.5mm ²	----	2	YE60002503200	(5)							
28		Terminal Board	HONEYWELL	2.5mm ² PE	----	1	YE60002503400	(5)							
29	M1	Motor	SHINI	TP-150	230V 50Hz 1.5kW	1	----	(1)							
30	M1	Motor	SHINI	MP-100	230V 50Hz 1.0kW	1	----	(1)(4)							
31	EH	Heater	SHINI	12kW	230V 50Hz	1	----	(1)							
B															
C															
D															
		Notes: (1)Means it's not the material inside the control box.(2)Means it's equipped with buzzer. (3)Means equipped with function of displaying water outlet and return water temperature. (4)Means equipped with magnetic pump. (5)Means optional air-blowing cleaning function.													
		STM-1220W 版本 Ver.D													
		STM-1220MW 版本 Ver.D													
		STM-1220WA 版本 Ver.C													
				Title		Version		F		Drawing NO.		Scale		Page	
				Electrical Components List 2		STM-1220W		STM-1220W-CE-230V-F-5		Standard		CE		Totally 5	
				Designer		Approved by		Date		Voltage		Frequency		230V	
				Proofread by		Checked by		Date		20160719		50Hz			
		Before modification		After modification		Modified by		Modify date							
SHINI 信易电热机械股份有限公司 Shini Plastics Technologies, Inc.															
5 6 7 8															

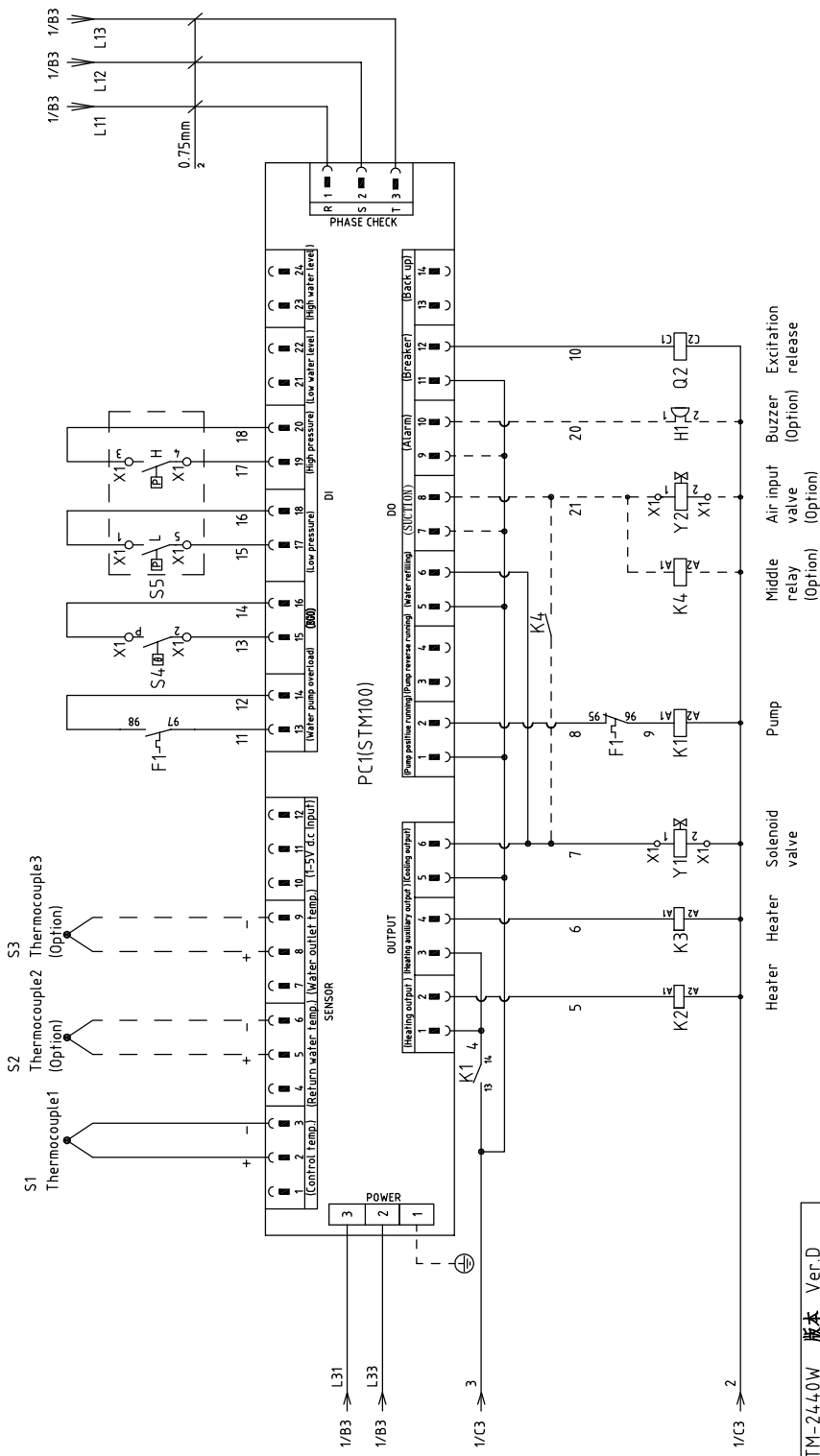


STM-2440W	版本	Ver.D
STM-2440MW	版本	Ver.D
STM-2440WA	版本	Ver.C

When equipped with magnetic pump F1: SET 9.9A P=2.8KW IN=9.9A

Mark	Before modification	After modification	Modify Date	Checked by	Date	Version	F	Title	Scale	Page 1
	Before modification	After modification							Standard	Totally 5
Main Circuit Diagram									CE	Pages
STM-2440W									Voltage	230V
STM-2440W-CE-230V-F-1									Frequency	50Hz





STM-2440W	版本	Ver.D
STM-2440MW	版本	Ver.D
STM-2440WA	版本	Ver.C

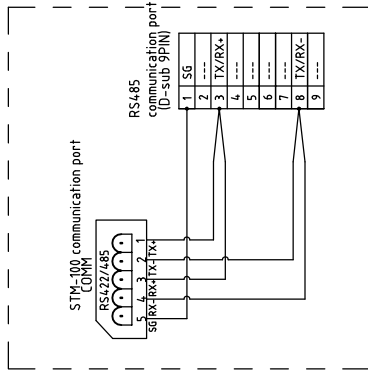
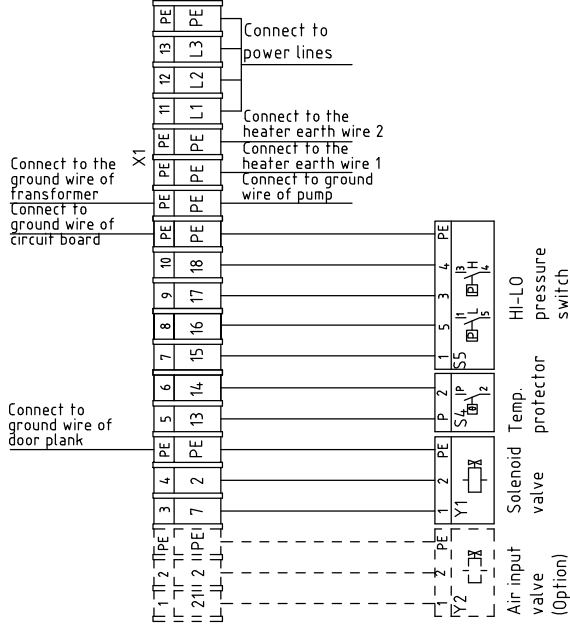
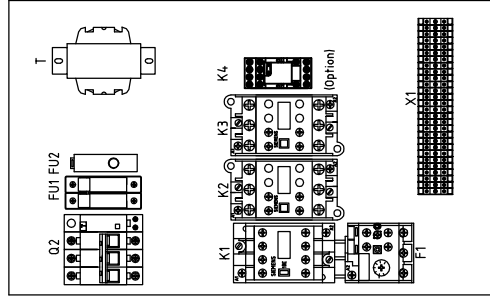
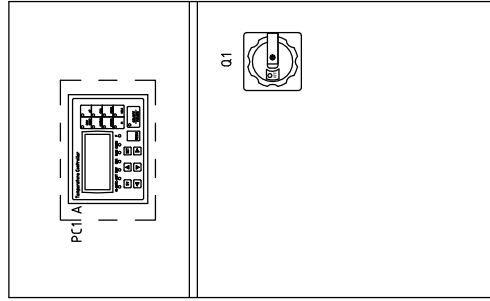
Scale	Page	2
Standard	Totally	5
CE	Pages	5
Voltage	230V	
Frequency	50HZ	

Drawing No.		STM-2440W-CE-230V-F-2
Title		Control Circuit Diagram
Drawer	Version	F
Designer	Approved by	
Proofread by	Date	20160721
Modified by	Modify date	
Checked by		
Mark	Before modification	After modification




Technical requirements:

- (1) Directly connect the plus and minus poles of the thermocouple to the input end of thermocouple on the circuit board. No need to connect them to the terminal board.
- (2) Directly connect the pump and heater to the output end of the contactor and thermal overload relay.



RS485 Communications wiring diagram
 Note: this figure is only for reference which is no need of wiring.

STM-2440W	版本	Ver.D
STM-2440MW	版本	Ver.D
STM-2440WA	版本	Ver.C

Mark	Before modification	After modification	Modified by	Modify date	Checked by	Date	20160721	 信易电热机械股份有限公司 Shini Plastics Technologies, Inc.	Standard	CE	Scale	Page	3	
									Electrical Components Layout	Title	STM-2440W	Drawing NO.	STM-2440W-CE-230V-F-3	Totally
													Voltage	230V
													Frequency	50Hz

1		2		3		4		5		6		7		8	
NO.	Symbol	Name	Manufacturer	Type	Specification	Number	Material number	Remark							
1	Q1	Main Switch	EATON	P3-100/EA/SVB	100A	1	YE10010000000								
2	Q2	Circuit breaker	TECO	BM-100D/3100S	100A	1	YE40310003000								
3	A	Break Away	TECO	MX	24VAC	1	YE40024000000								
4	K1	Contactors	SIEMENS	3RT6017-1AB01	24VAC	1	YE00601702500								
5	K1	Contactors	SIEMENS	3RT6017-1AB01	24VAC	1	YE00601702500	(4)							
6	K2 K3	Contactors	SIEMENS	3RT6028-1AC20	24VAC	2	YE00602802600								
7	K4	Middle relay	WEIDMULLER	GR-2C-AC24V	24VAC	1	YE03022400300	(5)							
8	F1	Thermo Overload Relays	SIEMENS	3RU6116-1KB0	9-12.5A	1	YE01169125000								
9	F1	Thermo Overload Relays	SIEMENS	3RU6116-1KB0	9-12.5A	1	YE01169125000	(4)							
10	T	Transformer	BAIYUN	IN=230V OUT=24VAC	120VA	1	YE70023005500								
11	FU1	Fuse Base	CHINT	RT18-32	32A 2P	1	YE41032200000								
12		Fuse Core	MRO	10×38 500V	2A	2	YE46002000100								
13	FU2	Fuse	YINDA	FS-10	----	1	YE41001000000								
14		Fuse Core	----	6×30/5A	5A	1	YE46630500100								
15	S1	Thermocouple	SHINI	----	----	1	----	(1)							
16	S2 S3	Thermocouple	SHINI	----	----	2	----	(1)(3)							
17	S4	Overheat Protector	TONCEAO	ZA300	250V 5(4)A	1	----	(1)							
18	S5	HI-LO pressure switch	FENSHEN	P830HLM	H:5-30bar L:-0.7-6bar	1	----	(1)							
19	PC1 A	Circuit Board	HANYOUNGNUX	STM100-21	180~4.30V 50/60Hz	1	YE81184300200								
20	H1	Buzzer	APT	AD16-30M/W	24VAC	1	YE84163000000	(2)							
21	Y1	Solenoid Valve	----	----	24VAC	1	----	(1)							
22	Y2	Solenoid Valve	----	----	24VAC	1	----	(1)(5)							
23	X1	Terminal Board	HONEYWELL	2.5mm ²	----	8	YE60002503200								
24		Terminal Board	HONEYWELL	2.5mm ² PE	----	3	YE60002503400								
		STM-2440W 版本	Notes: (1)Means it's not the material inside the control box.(2)Means it's equipped with buzzer.												
		STM-2440MW 版本	(3)Means equipped with function of displaying water outlet and return water temperature.(4)Means equipped with magnetic pump.												
		STM-2440WA 版本	(5)Means optional air-blowing cleaning function.												
			Drawer	Version	F	Title		Drawing NO.		Scale	Page				
			Designer	Approved by		STM-2440W		STM-2440W-CE-230V-F-4		Standard	4				
			Proofread by			Electrical Components List 1				CE	Totally				
			Checked by	Date	20160721					Voltage	5				
		Before modification	Modified by	Modify date						Frequency	Pages				
										230V	5				
										50Hz	8				



1		2		3		4		5		6		7		8	
No.	Symbol	Name	Manufacturer	Type	Specification	Number	Material number	Remark							
25		Terminal Board	HONEYWELL	10mm ² PE	----	2	YE60001003500								
26		Terminal Board	HONEYWELL	35mm ²	----	3	YE60003503200								
27		Terminal Board	HONEYWELL	35mm ² PE	----	1	YE60003503500	A							
28		Terminal Board	HONEYWELL	2.5mm ²	----	2	YE60002503200	(5)							
29		Terminal Board	HONEYWELL	2.5mm ² PE	----	1	YE60002503400	(5)							
30	M1	Motor	SHINI	TP-280	230V 50Hz 2.8kW	1	----	(1)							
31	M1	Motor	SHINI	MP-280	230V 50Hz 2.8kW	1	----	(1)(4)							
32	EH1 EH2	Heater	SHINI	----	230V 50Hz 12kW	2	----	(1)							
B															
C															
D															
Notes: (1)Means it's not the material inside the control box.(2)Means it's equipped with buzzer. (3)Means equipped with function of displaying water outlet and return water temperature.(4)Means equipped with magnetic pump. (5)Means optional air-blowing cleaning function.															
STM-2440W 版本 Ver.D															
STM-2440MW 版本 Ver.D															
STM-2440WA 版本 Ver.C															
		Title		Version		F		Drawing NO.		Scale		Page		5	
		STM-2440W				Electrical Components List 2		STM-2440W-CE-230V-F-5		Standard		CE		Totally 5	
		Designer		Approved by		Date		Voltage		Frequency		230V		50Hz	
		Proofread by		Checked by		Date		20160721							
Mark		Before modification		After modification		Modify date									
1		2		3		4		5		6		7		8	

