

P=3kW  
 IN=4.5A  
 Regeneration  
 heater

P=0.4kW  
 IN=1.2A  
 Regeneration  
 blower

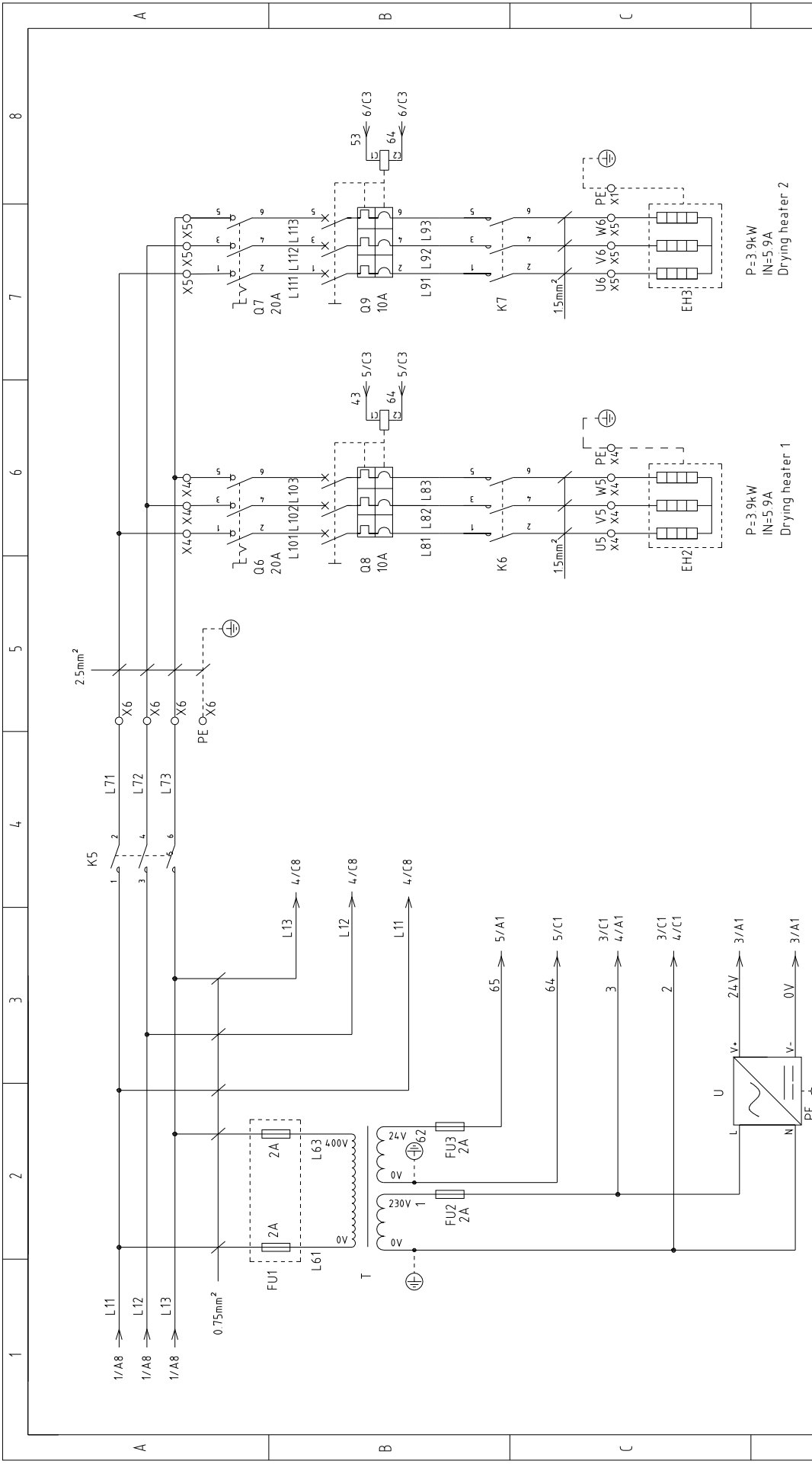
P=0.4kW  
 IN=1.2A  
 Drying  
 blower

P=15kW  
 IN=3.8A  
 Suction  
 blower

版本 Ver.B

Title		SCD-80Ux2-100H		Drawing NO		SCD-80Ux2-100H-PCB-CE-400V-A-1	
Version		A		Approved by		Standard	
Designer		Proofread by		Checked by		Voltage	
Date		20180314		Date		Frequency	
Modified by		Modified date		Date		400V	
Mark		After modification		Date		50HZ	
Page		1		Standard		CE	
Totally		11		Pages		400V	
Pages		8		Frequency		50HZ	





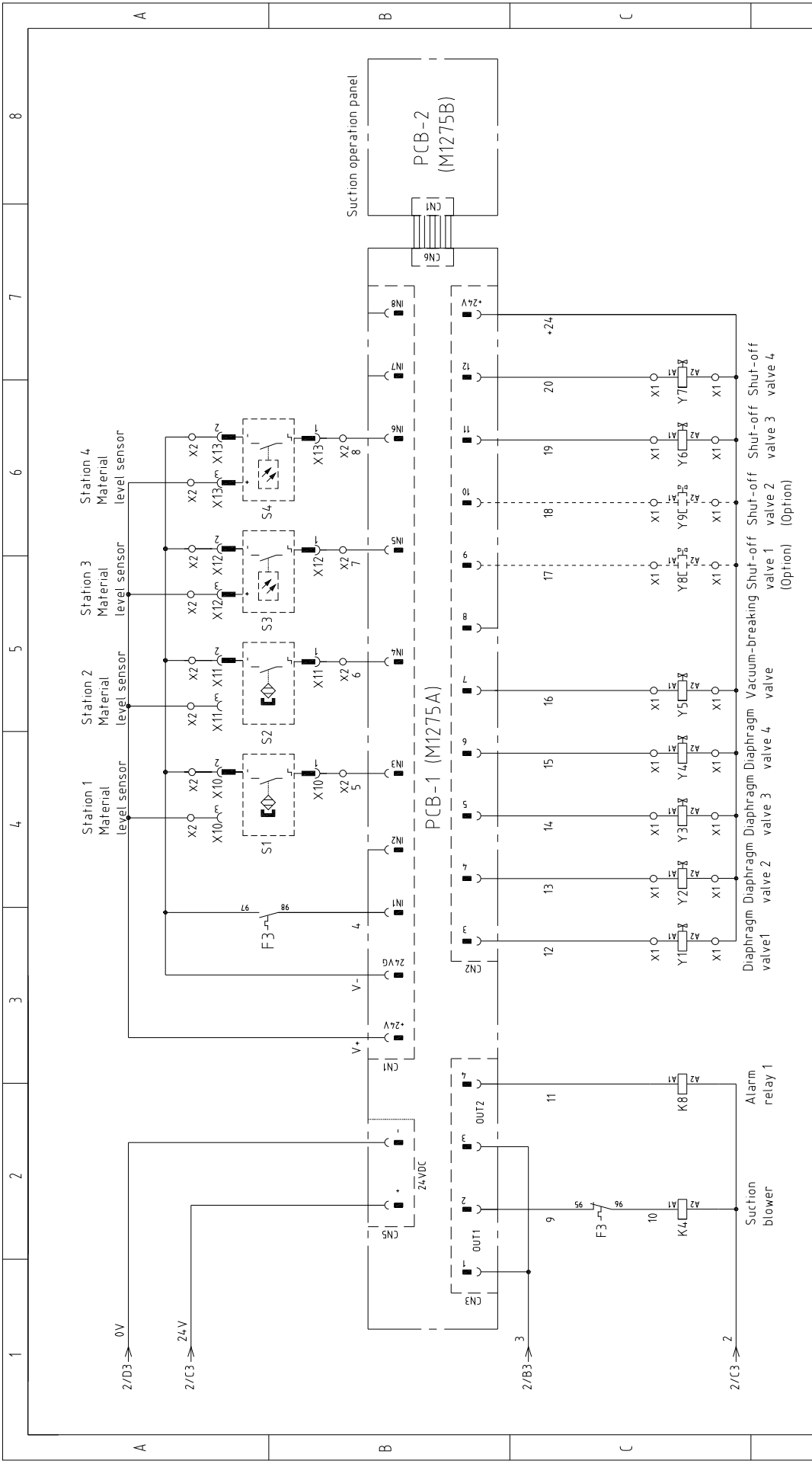
版本 Ver.B

Mark	Before modification	Modified by	Modify date	Checked by	Date	Approved by	Version	A	Title	SCD-80Ux2-100H	Drawing NO	SCD-80Ux2-100H-PCB-CE-400V-A-2
	After modification				20180314				Main Circuit Diagram 2			
									Standard			
									CE			
									Voltage			
									Frequency			
									Page 2			
									Totally 11 Pages			



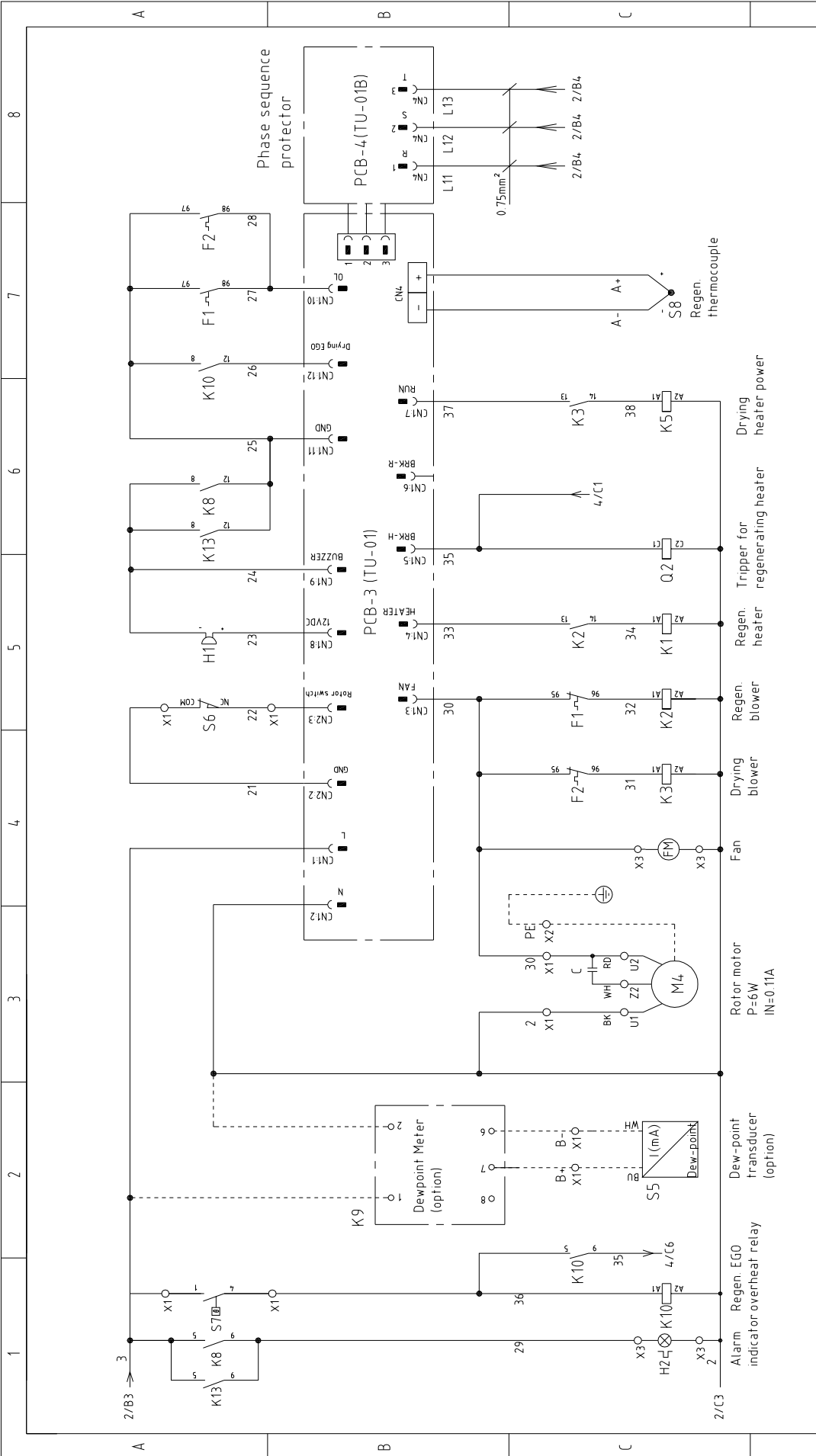
P=3.9kW  
 IN=5.9A  
 Drying heater 2

P=3.9kW  
 IN=5.9A  
 Drying heater 1



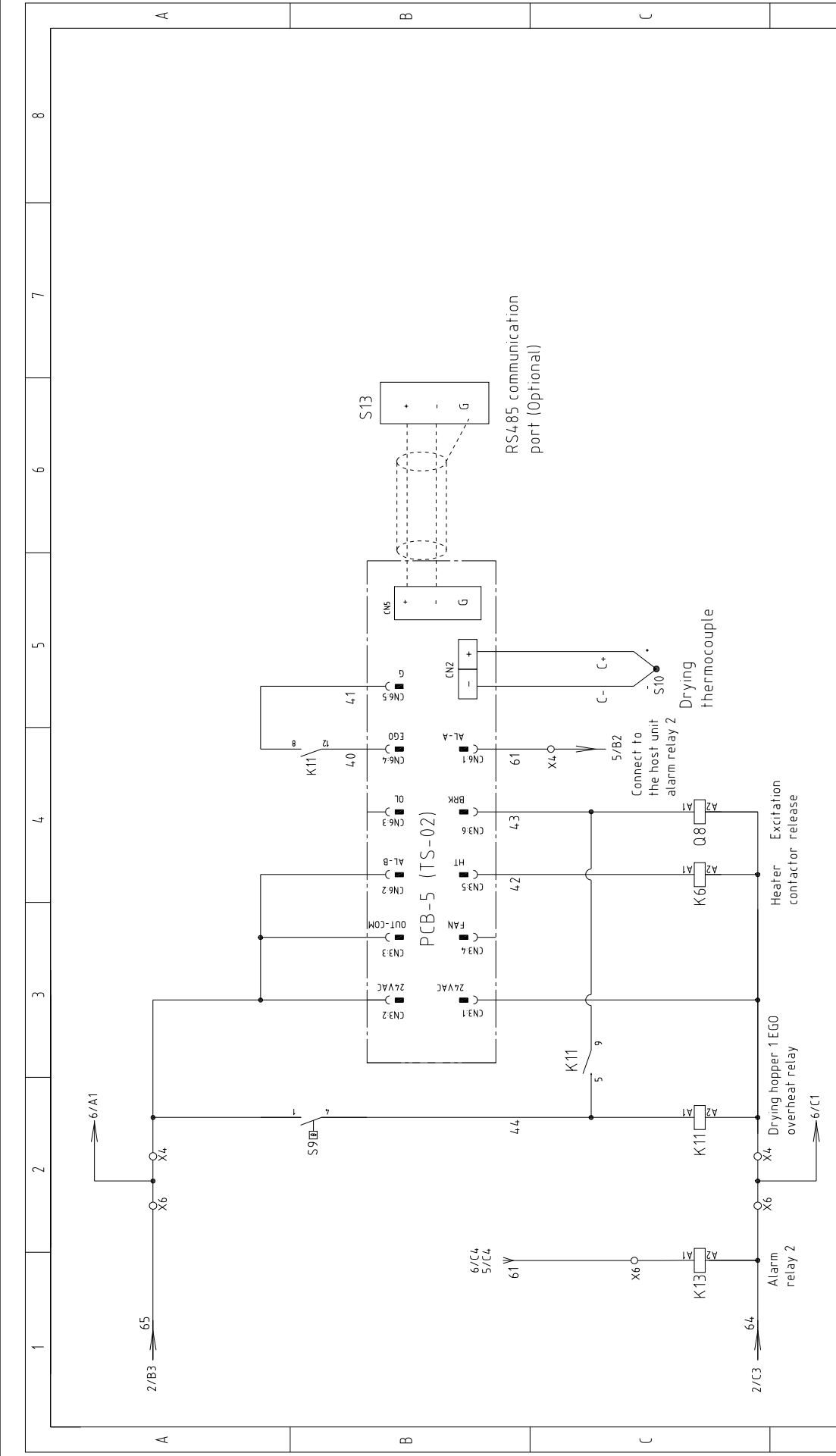
版本 Ver.B		Drawing NO		Page 3	
Title		SCD-80Ux2-100H		Standard	
Control Circuit Diagram 1		SCD-80Ux2-100H-PCB-CE-4,00V-A-3		CE	
Version		A		Voltage	
Approved by				400V	
Designer				Frequency	
Proofread by				50HZ	
Checked by		20180314		Totally 11 Pages	
Modify date				Voltage	
After modification				400V	
Before modification				Frequency	
				50HZ	
Mark				Page 3	
				Totally 11 Pages	
				Voltage	
				400V	
				Frequency	
				50HZ	





版本 Ver.B		Drawing NO		Page	
		SCD-80Ux2-100H		4	4
Control Circuit Diagram 2		SCD-80Ux2-100H-PCB-CE-400V-A-4		Totally 11 Pages	
		Standard CE		Voltage 400V	
				Frequency 50HZ	
Mark		Before modification		1	
Modified by				2	
Modify date				3	
Checked by		20180314		4	
Proofread by				5	
Designer				6	
Drawer				7	
Approved by				8	
Date					
Title		SCD-80Ux2-100H			
Version		A			

**SHINI**  
信易电热机械股份有限公司  
Shini Plastics Technologies, Inc.



版本 Ver.B		Drawing NO SCD-80Ux2-100H		Page 5	
		Title SCD-80Ux2-100H Control Circuit Diagram 3		Standard CE	
Mark Before modification		Designer Proofread by		Scale Standard	
Modified by		Approved by		Voltage 400V	
Modify date		Date 20180314		Frequency 50Hz	
After modification		Date		Frequency	
1		2		3	
2		3		4	
3		4		5	
4		5		6	
5		6		7	
6		7		8	



RS485 communication port (Optional)

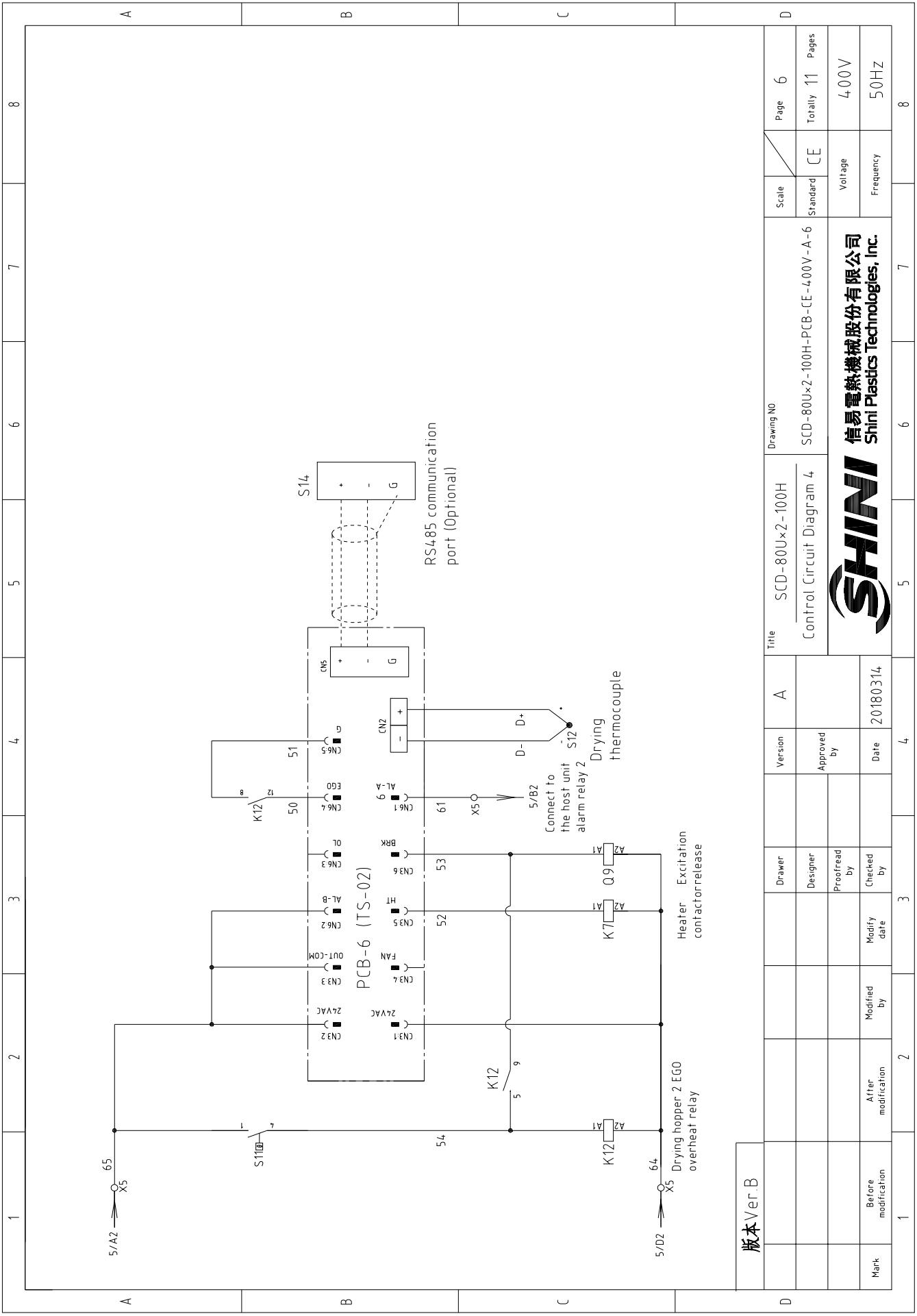
Drying thermocouple

Connect to the host unit alarm relay 2

Heater excitation contactor release

Drying hopper 1 EGO overheat relay

Alarm relay 2



版本 Ver.B

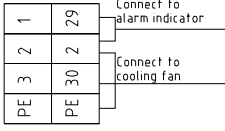
Title		SCD-80Ux2-100H		Drawing NO		Page 6	
Version		A		Standard		CE	
Approved by				Voltage		400V	
Date		20180314		Frequency		50HZ	
Drawn				Scale		Totally 11 Pages	
Designer				Standard		CE	
Proofread by				Voltage		400V	
Checked by				Frequency		50HZ	
Modified by				Scale		Totally 11 Pages	
After modification				Standard		CE	
Mark		Before modification		Voltage		400V	
				Frequency		50HZ	

**SHINI**  
信易電熱機械股份有限公司  
Shini Plastics Technologies, Inc.

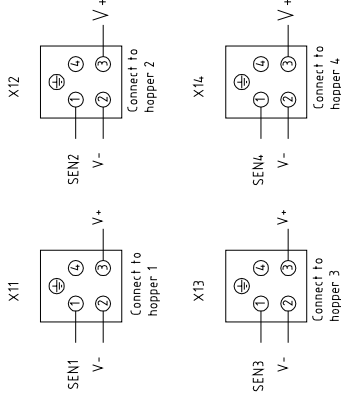
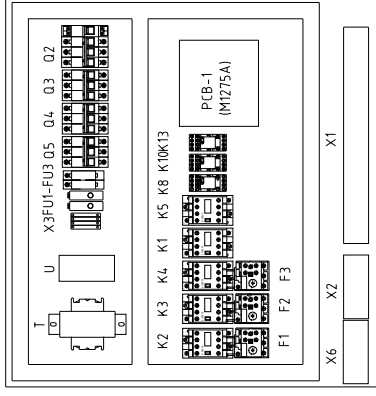
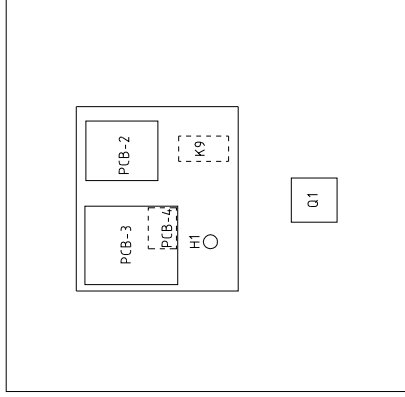
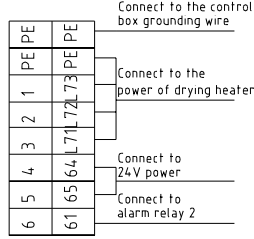
Control Circuit Diagram 4  
SCD-80Ux2-100H-PCB-CE-400V-A-6

1 2 3 4 5 6 7 8

X3



X6

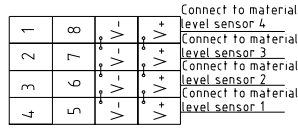


X1

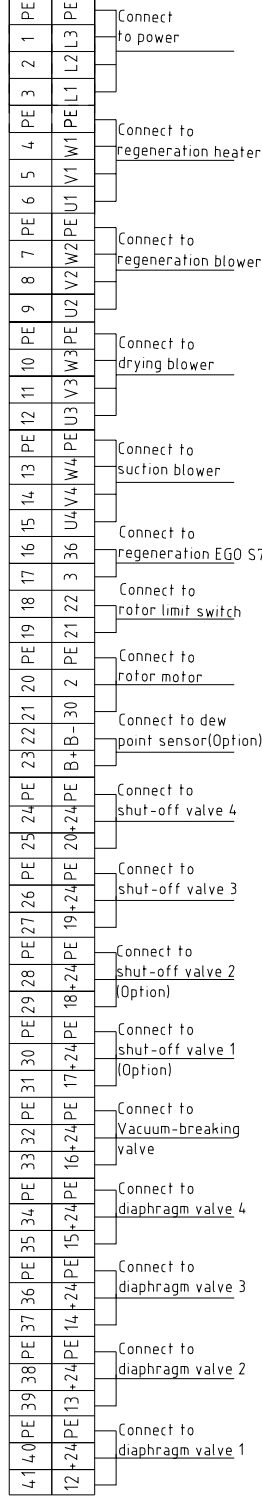
X2

X6

X2



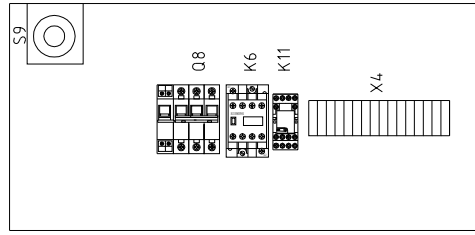
X1



版本 Ver.B

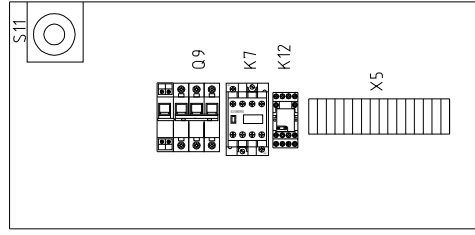
Mark	Before modification	Modified by	Modified date	Checked by	Proofread by	Designer	Drawer	Version	A	Title	SCD-80Ux2-100H Electrical Components Layout 1		Drawing NO	SCD-80Ux2-100H-PCB-CE-400V-A-7		Scale	Standard	CE	Page	7	Totally	11	Pages
After modification	20180314	Date	20180314	Checked by	Proofread by	Designer	Drawer	Approved by	A	信易電熱機械股份有限公司 Shini Plastics Technologies, Inc.		Standard	CE	Standard	Standard	Standard	Standard	Standard	Voltage	400V	Frequency	50HZ	8

Technical requirements: the heater directly connect to contactor output, disconnect to terminal board.



Drying hopper 1 control box

Technical requirements: the heater directly connect to contactor output, disconnect to terminal board.



Drying hopper 2 control box

版本 Ver.B

D	Mark	Before modification	Modified by	Modify date	Checked by	20180314	A	Version	Title	Scale	Page	8		
	Mark	After modification	Modified by	Modify date	Checked by	20180314								
Electrical Components Layout 2										Standard	CE	Totally	11	
SCD-80Ux2-100H										Voltage	400V	Pages		8
SCD-80Ux2-100H-PCB-CE-4.00V-A-8										Frequency	50HZ	Totally		11
 信易電熱機械股份有限公司 Shini Plastics Technologies, Inc.										Drawing NO		SCD-80Ux2-100H-PCB-CE-4.00V-A-8		



1		2		3		4		5		6		7		8	
NO.	Symbol	Name	Manufacturer	Type	Specification	Number	Material number	Remark							
1	Q1	Main switch	EATON	P1-32/EA/SVB 32A	32A	1	YE10323200000								
2	Q2 Q5 Q8 Q9	Circuit breaker	TECO	BM-63C/3010S	10A	4	YE40301003000								
3	A	Release	CHINT	MX	110V ~ 400V/50/60HZ	1	YE40023560000								
4		Release	CHINT	MX	24VAC	2	YE40024000000								
5	Q3 Q4	Circuit breaker	TECO	BM-63C/3006S	6A	2	YE40300603000								
6	Q6 Q7	Main switch	EATON	TO-2-1/EA/SVB/20A	20A	2	YE10021160000								
7	K1-K4	Contactors	SIEMENS	3RT6016-1AN21	9A 1NO 220V 50/60Hz	4	YE00601621000								
8	K6 K7	Contactors	SIEMENS	3RT6016-1AB01	9A 1NO 24V 50/60Hz	2	YE00601602500								
9	K5	Contactors	SIEMENS	3RT6018-1AN21	16A NO 220V 50/60Hz	1	YE00601800000								
10	K8 K10	Middle relay	WEIDMULLER	DRM270730LT	230V 50/60Hz	2	YE03270700000								
11	K11 K12	Middle relay	-----	GR-2C-AC24V+PGR-2C-E	24V 50/60Hz配座	2	YE03022400300								
12	K9	Dew-point meter	SHINI	Dewpoint Meter	220V 50/60Hz	1	YE85122000100	(2)							
13	S5	Dew-point transducer	CS	217-OEM	POWER=24VDC 4-20mA	1	YE90021700100	(1) (2)							
14	F1 F2	Thermo overload relays	SIEMENS	3RU6116-1AB0	1.1-16A	2	YE01160110000								
15	F3	Thermo overload relays	SIEMENS	3RU6116-1EB0	2.8-4A	1	YE01160280000								
16	T	Transformer	-----	IN=400V OUT=230V/24V	1000mA/80VA	1	YE700400008800								
17	U	DC Power	-----	ESA-35-24	OUT=DC24V 15A	1	YE71352400100								
18	FU1	Fuse	CHINT	RT28N-32/2P/32A/500V/10x38		1	YE41032200000								
19	FU2 FU3	Fuse core	MRO	2A/10x38/500V/gG	2A	2	YE46002000100								
20	PCB-1 (PCB-2)	Fuse	YINDA	FS-101/6x30/	2A	2	YE41001000000								
21	PCB-3	PCB	HONGYUN	M1275	一对四	1	YE80127500000								
22	PCB-4	PCB	YUYUN	TU-01A+SA-RCS2	220VAC	1	YE80001100000								
23	PCB-5	PCB	YUYUN	TU-01B	-----	1	YE80001100100								
24	PCB-6	PCB	YUYUN	TS-02(24VDC/AC)	24VAC	2	YE80000101200								
25	H2	Alarm indicator	SHINI	LED-3051/220VAC	220V 50/60Hz	1	YE83305100200	(1)							
<b>版本 Ver.B</b>															
Notes: (1)Means it's not the material inside the control box (2) optional dewpoint, (3)means equipped with communication port (4)Means equipped with shut-off valve.															
D		Title		Version		A		Scale		Page		9		8	
		SCD-80Ux2-100H		Electrical Components list 1		SCD-80Ux2-100H-PCB-CE-400V-A-9		Standard		CE		Voltage		400V	
		Designer		Approved by		Date		Frequency		Totally		11		Pages	
Mark		Before modification		Modified by		Modify date		Checked by		20180314		Frequency		50HZ	
1		2		3		4		5		6		7		8	



1		2		3		4		5		6		7		8	
NO.	Symbol	Name	Manufacturer	Type	Specification	Number	Material number	Remark							
26	S13 S14	Communication interface board RS-485 (double DSub-9pin connector)	--	--	--	2	YE90048501200	(3)							
27		Shell RS485(SAL-700G-A-1910)	--	--	--	2	YR40048500000	(3)							
28	Y1-Y7	Solenoid valve	----	SPDV-38	24VDC	7	----	(1)							
29	Y8 Y9	Solenoid valve	----	----	24VDC	2	----	(1) (4)							
30	X1	Terminal board	----	4mm <sup>2</sup>	----	15	YE60000403200								
31		Terminal board	----	4mm <sup>2</sup> PE	----	5	YE60000403500								
32		Terminal board	----	2.5mm <sup>2</sup>	----	20	YE60002503200								
33		Terminal board	----	2.5mm <sup>2</sup> PE	----	8	YE60002503400								
34		Terminal board	----	2.5mm <sup>2</sup>	----	2	YE60002503200	(2)							
35		Terminal board	----	2.5mm <sup>2</sup>	----	4	YE60002503200	(4)							
36		Terminal board	----	2.5mm <sup>2</sup> PE	----	2	YE60002503400	(4)							
37	X2	Terminal board	----	ZDIK 1.5	10A 250V	4	YE60001500000								
38			----	FBSTB 10-ZDIK RD	10A 250V	4	YE60001000200								
39			----	FBSTB 10-ZDIK BU	10A 250V	4	YE60001000000								
40	X3	Terminal board	----	2.5mm <sup>2</sup>	----	3	YE60002503200								
41			----	2.5mm <sup>2</sup> PE	----	1	YE60002503400								
42	X4	Terminal board	----	2.5mm <sup>2</sup>	----	6	YE60002503200								
43			----	2.5mm <sup>2</sup> PE	----	2	YE60002503400								
44	X5	Terminal board	----	2.5mm <sup>2</sup>	----	6	YE60002503200								
45			----	2.5mm <sup>2</sup> PE	----	1	YE60002503400								
46	X10,X11,X12,X13	Heavy duty plug-in	SIBAS	HDC-HA-004.1	4P 10A	4	----	(1)							
47	S6	Micro switch	----	YBLXW-5/11G2	----	1	----	(1)							
48	S7 S9 S11	EGO	SHINI	(115--320℃ 55.13262.160)	----	3	----	(1)							
49	S8 S10 S12	Thermocouple	SHINI	SD-30H/120H(2.5MIMY07	----	3	----	(1)							
50	H1	Buzzer	HITPOINT	PK-27A/29EPIDC3-24V)	24VDC	1	YE84002700000	(1)							
版本 Ver.B		Notes: (1)Means it's not the material inside the control box (2) optional dewpoint; (3)means equipped with communication port; (4)Means equipped with shut-off valve.													
D		Title		Drawing NO		Scale		Page		10		Page		10	
		SCD-80Ux2-100H		SCD-80Ux2-100H		CE		Standard		Voltage		Frequency		400V	
		Electrical Components List 2												50HZ	
Mark		Before modification		After modification		Modified by		Modify date		Checked by		Date		20180314	
1		2		3		4		5		6		7		8	

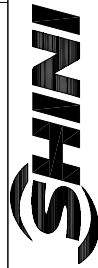


NO.	Symbol	Name	Manufacturer	Type	Specification	Number	Material number	Remark
51	FM	Exhaust fan	----	12×12CM/230V/50/60HZ	配塑胶网	1	----	(1)
52	M1	Drying blower	SHINI	HTB75-032	0.4KW 380V 50Hz	1	----	(1)
53	M2	Regeneration blower	SHINI	RB205	0.4KW 380-415V 50Hz	1	----	(1)
54	M3	Suction blower	SHINI	RB420	1.5KW 380-415V 50Hz	1	----	(1)
55	M4	Gear motor	SHINI	3GN-10XK/3GN-60K/3IK15GN-C-T 220V		1	----	(1)
56	EH1	Pipe heater	SHINI	SD/SDD/SCD-3KW3Φ 230/400V		1	----	(1)
57	EH2 EH3	Pipe heater	SHINI	SHD-80U(3.9KW)3Φ 400V	400V 50Hz 3.9KW	2	----	(1)
58		Terminal block E/GKseries(honeywell)				5	YE60000003900	
59	K13	Middle relay	HONEYWELL	GR-2C-AC24V配座PGR-2C-E	24V 50/60Hz	1	YE030224-00300	
60	X6	Terminal board	----	6mm <sup>2</sup>	----	3	YE600000603200	
61		Terminal board	----	6mm <sup>2</sup> PE	----	1	YE600000603500	
62		Terminal board	----	2.5mm <sup>2</sup>	----	3	YE600002503200	
63		Terminal board	----	2.5mm <sup>2</sup> PE	----	1	YE600002503400	

版本 Ver.B

Notes: (1)Means it's not the material inside the control box (2) optional dewpoint; (3)means equipped with communication port; (4)Means equipped with shut-off valve.

Title		Drawing NO		Scale		Page	
SCD-80U×2-100H Electrical Components List 3		SCD-80U×2-100H-PCB-CE-4.00V-A-11		Standard		CE	
Version		Approved by		Voltage		400V	
A				Frequency		50HZ	
Designer		Date		Totally		11 Pages	
Proofread by		20180314		11		11	
Checked by				11		11	
Modified by				11		11	
Modify date				11		11	
After modification				11		11	
Before modification				11		11	
Mark				11		11	



信易电热机械股份有限公司  
Shini Plastics Technologies, Inc.