

机型版本	Ver. C
Mark	Before modification
After modification	Modified by
Modify date	20190815
Checked by	
Proofread by	
Designer	
Drawer	
Version	F
Approved by	
Date	20190815

Title	SG-14/11/17	
	Main Circuit Diagram	
Drawing NO.	SG-14/11/17-CE-400V-F-1	
	Standard	CE
Scale	Page 1	
	Totally	6 Pages
Voltage	3Φ400V	
	Frequency	50HZ



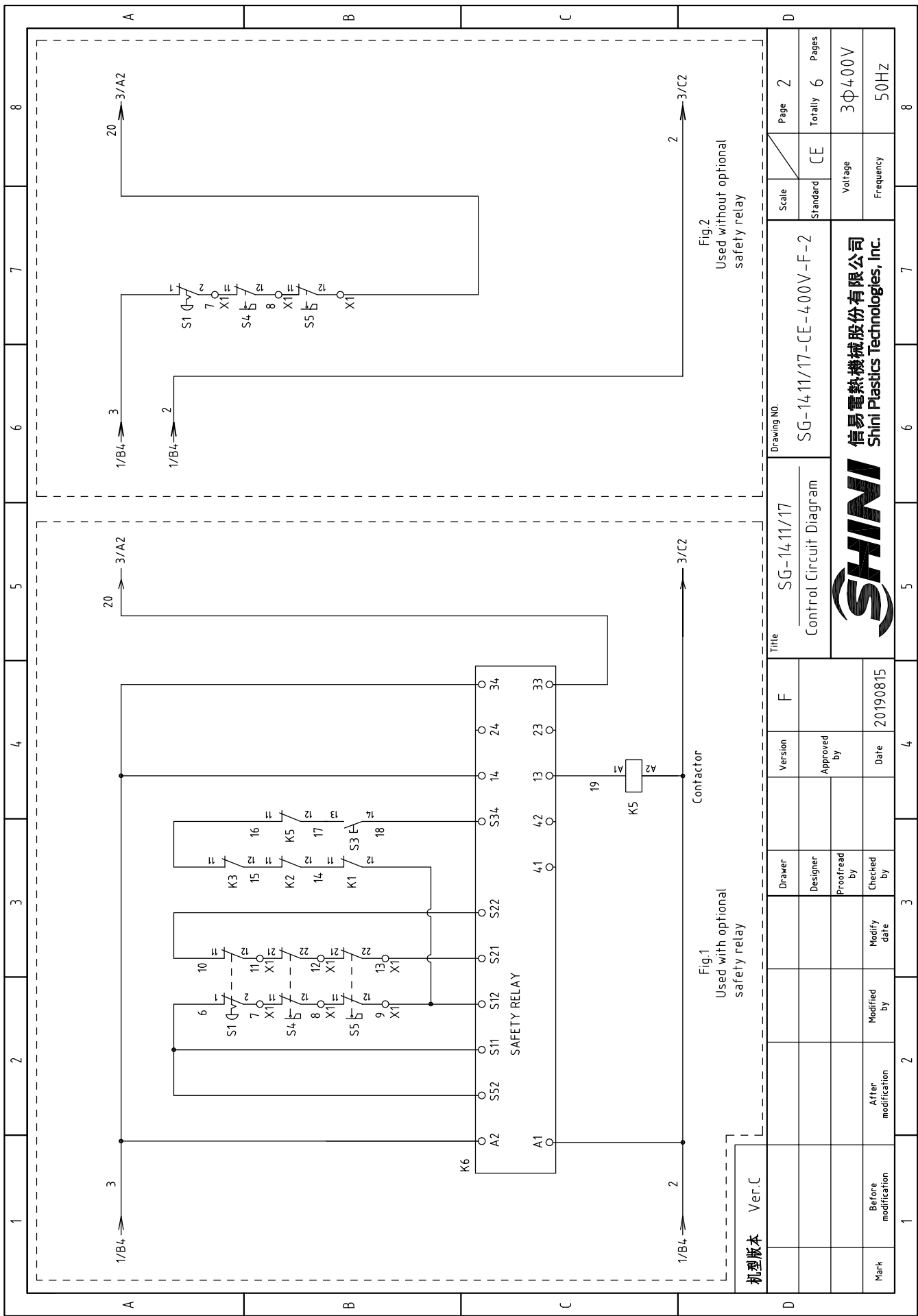


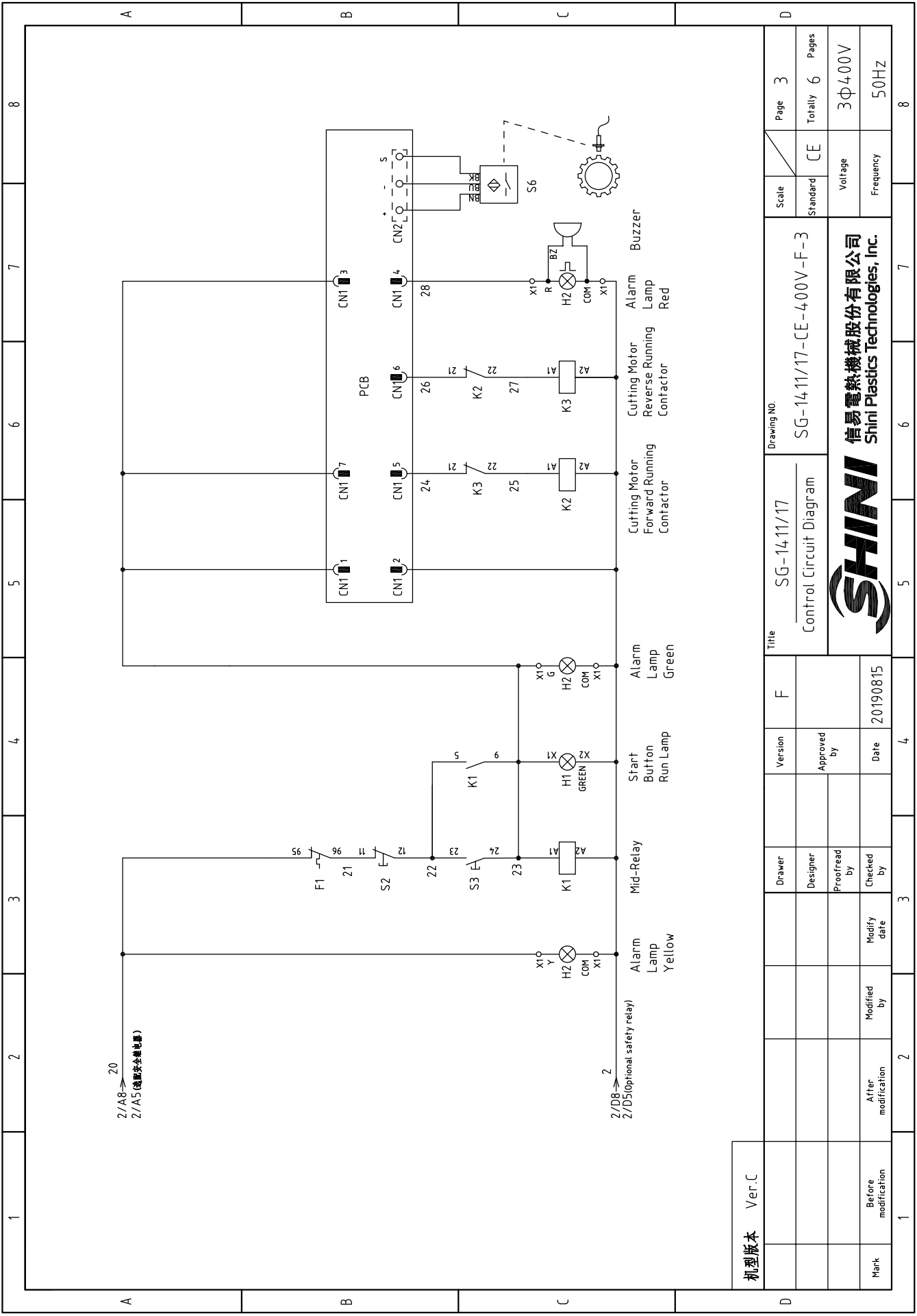
Fig.1  
Used with optional  
safety relay

Fig.2  
Used without optional  
safety relay

机型版本	Ver.C
Mark	Before modification
	Modified by
	Modify date
	Checked by
	Proofread by
	Designer
	Drawer
Version	F
Approved by	
Date	20190815

Title		SG-1411/17	
Control Circuit Diagram		SG-1411/17-CE-4.00V-F-2	
Drawing NO.		SG-1411/17-CE-4.00V-F-2	
Scale	Standard	CE	Page 2
Voltage		3Φ400V	
Frequency		50HZ	
Totally		6	
Pages		8	





机版本	Ver.C
Mark	Before modification
	After modification
	Modified by
	Modify date
	Checked by
	Proofread by
	Designer
	Drawer
	Version
	Approved by
	Date
	20190815

Title		SG-14/11/17	
Control Circuit Diagram		Control Circuit Diagram	
Drawing NO.		SG-14/11/17-CE-4.00V-F-3	
Scale		CE	
Standard		Voltage	
Page		3	
Totally		6	
Pages		Frequency	
3		400V	
50HZ		8	

**SHINI**  
 信易电热机械股份有限公司  
 Shini Plastics Technologies, Inc.

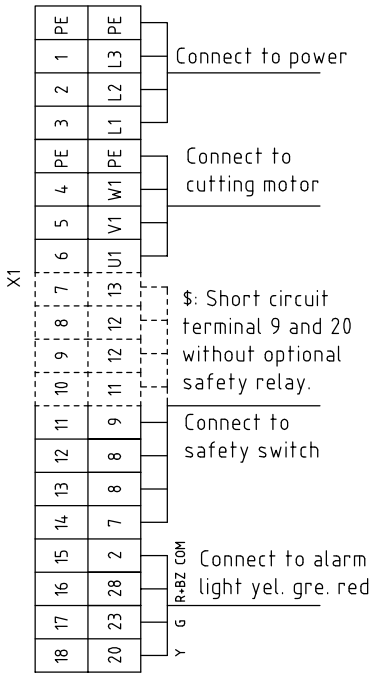
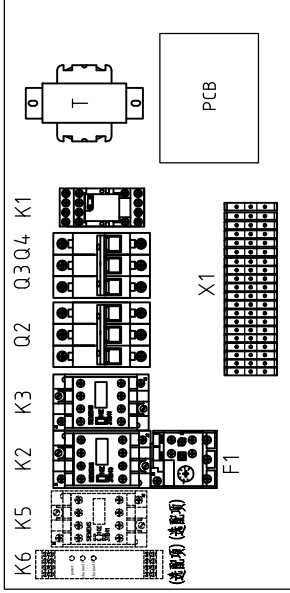
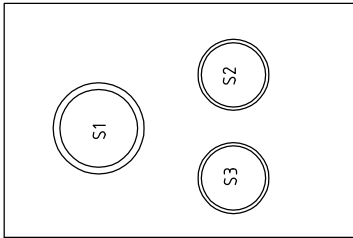
1 2 3 4 5 6 7 8

A

B

C

D



机型版本 Ver.C

Drawer	Designer	Proofread by	Checked by	Modified by	Modify date	Version	F	Title	SG-14/11/17	Drawing NO.	SG-14/11/17-CE-400V-F-4	Scale	Standard	CE	Page	4
Approved by	Date	20190815	SHINI		信易电热机械股份有限公司 Shini Plastics Technologies, Inc.		Electrical Components Layout		Voltage		3Φ400V	Frequency		50HZ	Totally 6 Pages	
Mark	Before modification	After modification	Modified by	Modify date	20190815	SHINI		Electrical Components Layout		Voltage		Frequency		Totally 6 Pages		8

1 2 3 4 5 6 7 8

B

C

D

1	2	3	4	5	6	7	8	
NO.	Symbol	Name	Manufacturer	Type	Specification	Number	Material number	Remark
1	Q1	Main power switch	EATON	T0-2-1/EA/SVB	20A	1	YE10021160000	(1)
2	Q2	Circuit-breaker	TECO	BM-63C/3006S	6A	1	YE40300603000	
3	FU1	Fuse	GHNT	RT28-3Z	2P	1	YE44032200000	Cancel
4		Fuse core	GHNT	10x38-500V ZA	2A	1	YE46002000000	Cancel
5	FU2	Fuse	YINDA	FS-10	----	1	YE44001000000	Cancel
6		Glass-fuse	----	----	5A	1	YE46630500000	Cancel
7	Q3	Circuit-breaker	TECO	BM-63C/2003S 2P	3A	1	YE40200203000	New
8	Q4	Circuit-breaker	TECO	BM-63C/1003S 1P	3A	1	YE40100203000	New
9	K1	Middle relay	Honeywell	GR-2C-AC24V	24VAC 50/60Hz	1	YE03022400300	
10	K2,K3	Contact	SIEMENS	3RT6016-1AB02	24VAC 50/60Hz	2	YE00601602600	
11		Auxiliary contact terminal	SIEMENS	3RH5921-1CA01	1NC	2	YE00592110100	(2)
12	K5	Contact	SIEMENS	3RT6016-1AB02	24V 50/60Hz	1	YE00601602600	(2)
13	K6	Safety relay	PILZ	PN0Zx2.8P	24V AC/DC	1	YE04023000000	(2)
14	F1	Overload relay	SIEMENS	3RU6116-0KB0	0.9-1.25A	1	YE01160900000	
15	T	Sensor transformer	BAIYUN	IIN=400V/4.15V OUT=24V	80VA	1	YE70040006500	
16	H2	Frequency display indicate lamp	SHINI	LED-3051	24VAC 50/60Hz	1	YE83305100900	(1)Cancel
17	H2	3-color alarm lamp	SHINI	Red. gre. yel.+buzzer	24VAC 50/60Hz	1	BL90002401520	(1)New
18	S1	Emergency stop button	SCHNEIDER	XB2BS542C	400VAC	1	YE11254200000	(1)
19		Contact block	SCHNEIDER	ZB2BE102C	1NC	1	YE00210203100	(1)(2)
20	S2	Stop button	SCHNEIDER	XB2BA22C	400VAC	1	YE11222000000	(1)
21	S3,H1	Start button (with light)	SCHNEIDER	XB2BW33B1C	24VAC	1	YE11233100000	(1)
22		Contact block	SCHNEIDER	ZB2BE101C	1NO	1	YE002103100	(1)(2)
23	S4,S5	Safety switch	SCHMERSAL	AZ 152VK-14.76	AC-15	2	YE1614.7600100	(1)
24	S4,S5	Safety switch	SCHMERSAL	AZ16-02ZVRK-14.76	AZ-16	2	YE1614.7600000	(1)(2)
25	PCB	PCB	YUYUN	AC-01	24VAC	1	YE80012400600	
机型版本 Ver.C								
Notes: (1)Means it's not the material inside the control box. (2)Stand for optional safety relay.								
Title			SG-14/11/17		Drawing NO.		Page 5	
Electrical Components list 1			SG-14/11/17-CE-4.00V-F-5		Standard		CE	
Voltage			3Φ400V		Frequency		50HZ	
Mark			Before modification		Modified by		Modify date	
After modification			20190815		Checked by		Date	
Proofread by			Approved by		Version		F	
Designer			F		Manufacturer		SHINI	
SHINI			SHINI		SHINI		SHINI	
信易电热机械股份有限公司			Shini Plastics Technologies, Inc.		6		7	
SHINI			SHINI		5		8	

