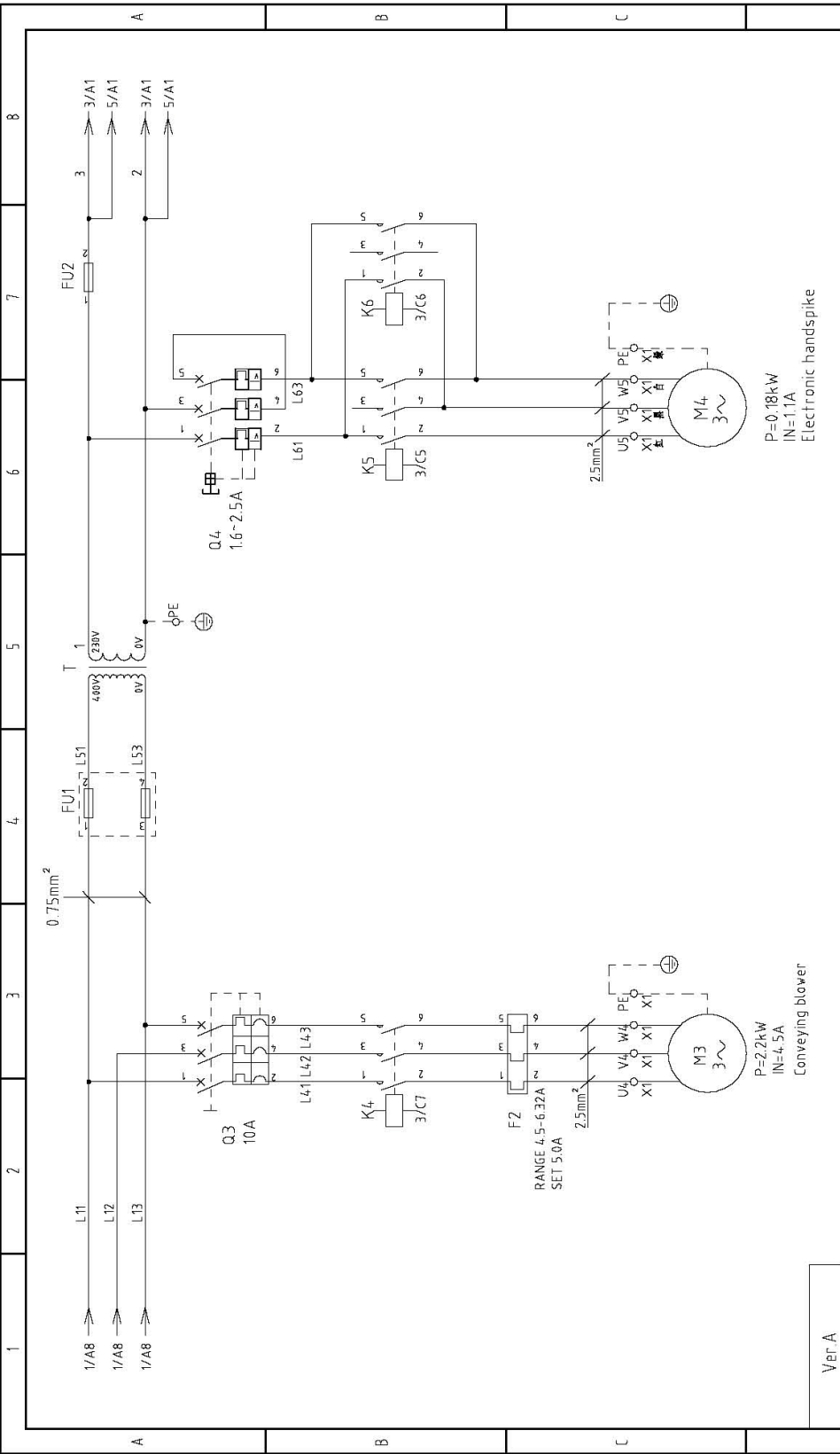


Ver A		Drawing No.		Scale		Page 1	
D		Title		Standard		Totally 8	
D		Designer		GB		Pages	
D		Version		Voltage		400V	
D		Approved by		Frequency		50HZ	
D		Proofread by		Voltage		400V	
D		Checked by		Frequency		50HZ	
D		Date		Voltage		400V	
D		Modify date		Frequency		50HZ	
D		Mark		Voltage		400V	
D		Before modification		Frequency		50HZ	
D		After modification		Voltage		400V	
D		Modified by		Frequency		50HZ	
D		Date		Voltage		400V	
D		20150323		Frequency		50HZ	

SGF-2660  
Main Circuit Diagram 1

**SHINI**  
信昌電熱機械股份有限公司  
Shini Plastics Technologies, Inc.

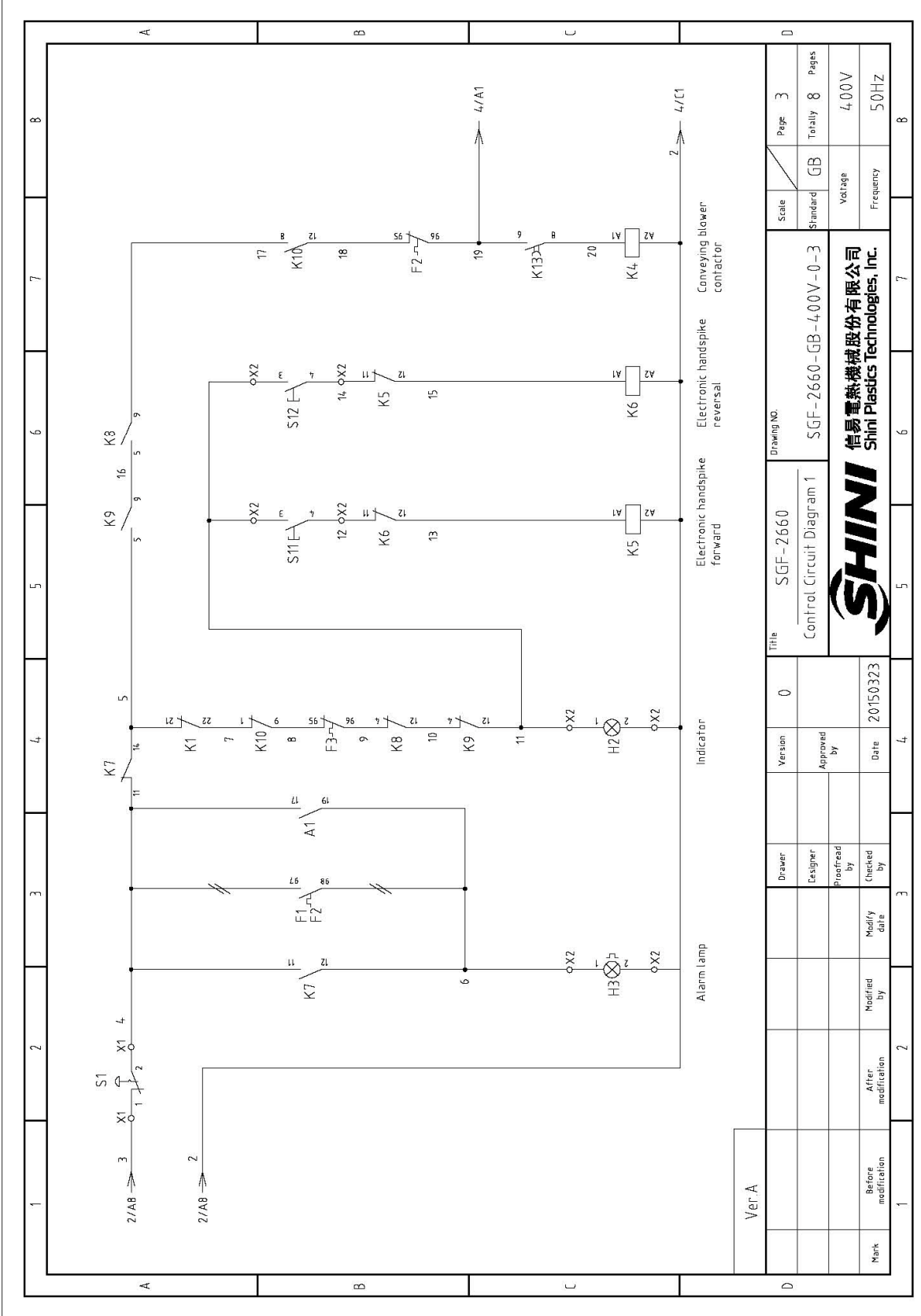


Ver A

1	2	3	4	5	6	7	8
Mark	Before modification	Modified by	Modify date	Checked by	Designer	Version	0
				Approved by	Title		SGF-2660
				Date	Drawing No.		SGF-2660-GB-400V-0-2
			20150323	Main Circuit Diagram 2		Scale	Page 2
					Standard	Totally	8
					GB	Pages	400V
						Voltage	50Hz
						Frequency	8



信易電熱機械股份有限公司  
Shini Plastics Technologies, Inc.



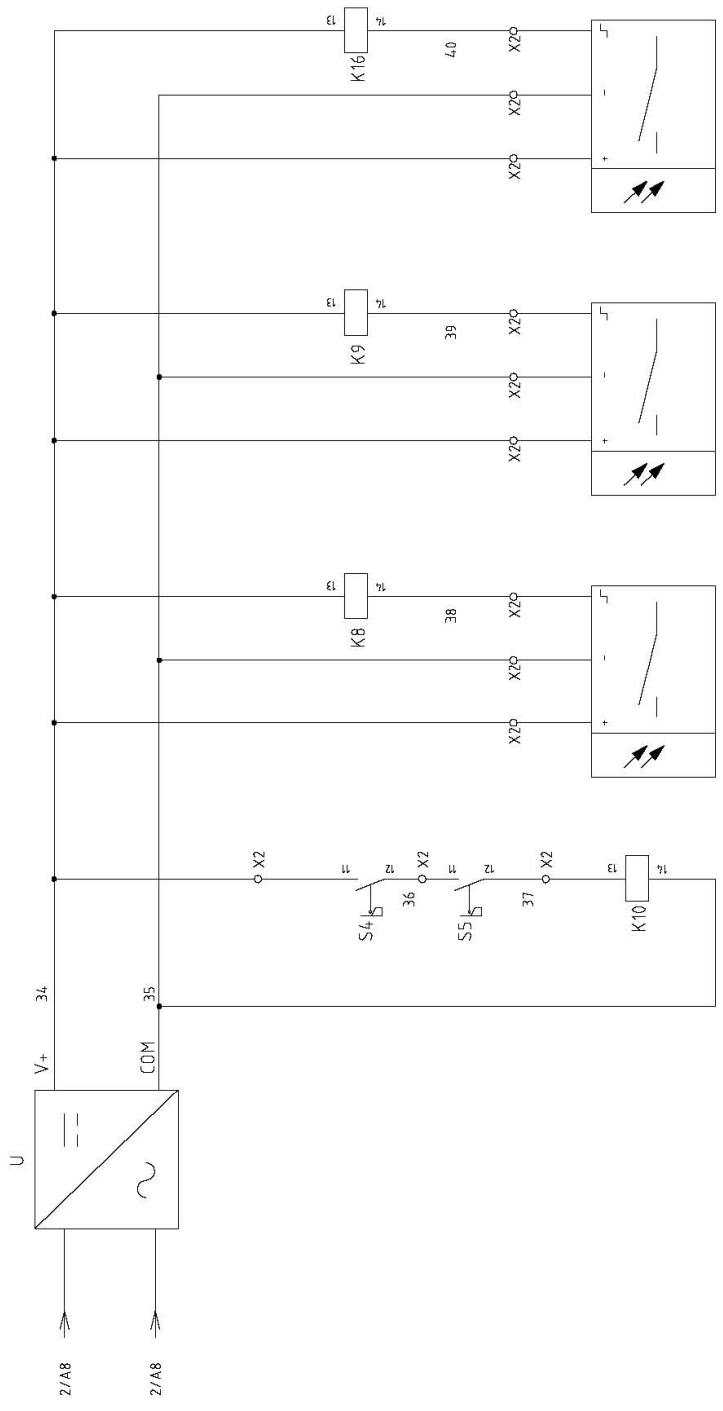
Ver. A

Mark	Before modification	After modification	Modified by	Modify date	Date	20150323	Checked by	Designed by	Drawer	Version	0	Title	SGF-2660	Drawing NO.	SGF-2660-GB-400V-0-3	Standard	GB	Scale	Page	3	Totally	8	Pages
	Before modification	After modification	Modified by	Modify date						Checked by	Designed by		Drawer		Version		0		Title	SGF-2660		Drawing NO.	
												Voltage		4,00V		Frequency		50HZ					





1 2 3 4 5 6 7 8

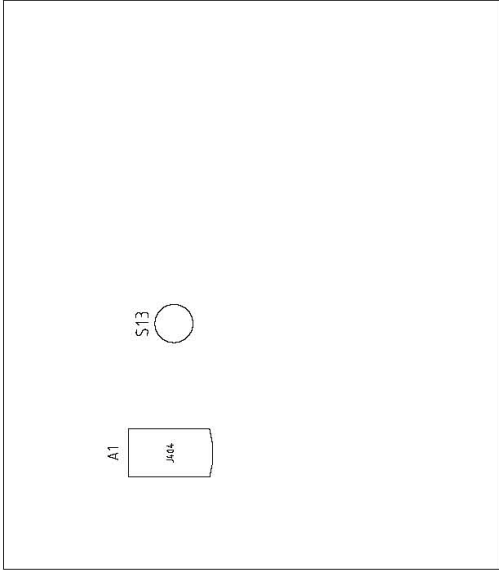


S7 Safety middle relay  
 S8 Feed box safety switch 1  
 S16 Feed box safety switch 2  
 S16 Roll inductive sensor

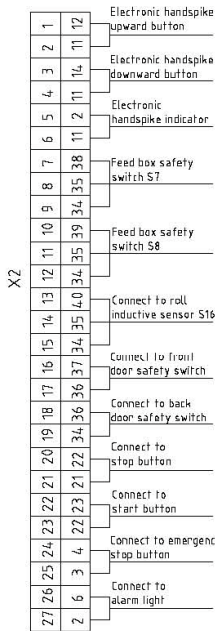
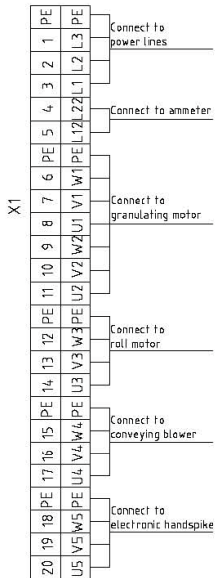
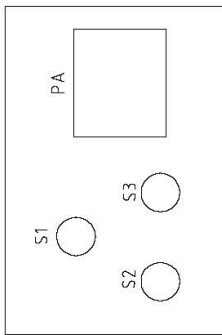
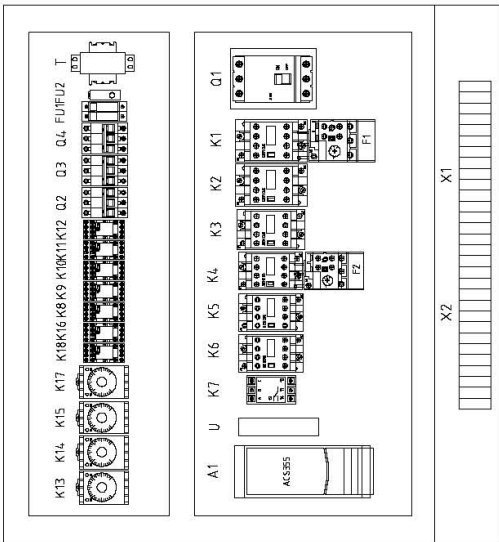
Ver.A		0		SGF-2660		SGF-2660		5		8	
Mark	Before modification	Modified by	Mod/ly data	Designer	Version	Drawing No.		Scale	Page	Totally	Pages
						SGF-2660-GB-400V-0-5		Standard	5	8	8
	After modification	Modified by	Date	Approved by				Voltage	GB		
			20150323					Frequency			
						SHINI 信易電熱機械股份有限公司 Shini Plastics Technologies, Inc.			400V		
									50HZ		



Control box door plate




Base plate of control box



Ver.A

Mark	Before modification	Modified by	Modified date	Checked by	Date	Approved by	Version	Title	Drawing NO.	Scale	Page
	After modification	Modified by	Modified date							Standard	Totally
							0	SGF-2660 Electrical Components Layout	SGF-2660-GB-400V-0-6	Standard	6
										GB	8
										Voltage	400V
										Frequency	50Hz



1	2	3	4	5	6	7	8																				
NO.	Symbol	Name	Manufacturer	Type	Specification	Number	Material number	Remark																			
1	Q1	Breaker interlock	ABB	A1A125TMF60	60A	1	YE41106200080																				
2	Q2	Circuit breakers	TECO	BM-63C	6A	1	YE40300603000																				
3	Q3	Circuit breakers	TECO	BM-63C	10A	1	YE40301003000																				
4	Q4	Circuit-breaker	CHNT	NS2-25	1.6-2.5A	1	YE10162500100																				
5	K1 K2 K3	Contact	SIEMENS	3RT16027-1AN20	230V 50/60Hz	3	YE00602722000																				
6		Auxiliary contact	SIEMENS	3RH6911-1AA10	230V 50/60Hz	1	YE00691110000																				
7	K4	Contact	SIEMENS	3RT16015-1AN21	230V 50/60Hz	1	YE00601521000																				
8	K5 K6	Contact	SIEMENS	3RT16015-1AN22	230V 50/60Hz	2	YE00601522000																				
9	K7	Phase disorder protector	CHAOSHI	ABJ-10W	400V 50/60Hz	1	YE85104600000																				
10	K8 K9 K10	Middle relay	WEIDMULLER	DRM270024LT	24VDC	3	YE03272400000																				
11	K11 K12	Middle relay	WEIDMULLER	DRM270730LT	220VAC	2	YE03270700000																				
12	K13	Time relay	YUYUN	TRF-N3M	230V 50/60Hz	1	YE86322000000																				
13	K14 K15	Time relay	YUYUN	TH3M-NAB	3S~60M 230VAC	2	YE86300300000																				
14	K16	Middle relay	WEIDMULLER	DRM270024LT	24VDC	1	YE03272400000																				
15	K17	Time relay	YUYUN	TH3M-NAB	3S~60M 230VAC	1	YE86300300000																				
16	K18	Middle relay	WEIDMULLER	DRM570730LT	220VAC	1	YE03570700000																				
17	F1	Overload relay	SIEMENS	3RU6126-4AB0	11-16A	1	YE01260110000																				
18	F2	Overload relay	SIEMENS	3RU6116-1FB0	3.5-5A	1	YE01160350000																				
19	FU1	Fuse base	CHNT	RT28-32	2P	1	YE41032200000																				
20		Fuse**	CHNT	10x38 500V	2A	2	YE46002000100																				
21	FU2	Fuse**	YINDA	FS-10	2A	1	YE41001000000																				
22	A1	Frequency converter	ABB	ACS355-03E-02AA-4	400V 0.75kW	1	YE75350300000																				
23		Controller pad	ABB	J4.04	---	1	YE61040400000																				
24	T	Transformer*	BAIYUN	IN=400V OUT=230V	1500mA	1	YE70402300300																				
25	S1	Emergency stop button	SCHNEIDER	XB2BS542C	400VAC	1	YE11254200000	(1)																			
Ver.A Notes: (1)Means it's not the material inside the control box. /*means possible broken parts. **means easy broken part. and spare backup is suggested.																											
Mark			Before modification	After modification	Modified by	Modify date	Checked by	Proofread by	Designer	Drawer	Version	0	Title	SGF-2660	Electrical Components List 1	Drawing No.	SGF-2660-GB-400V-0-7	Scale	Standard	GB	Page	7	Totally	8	Pages	400V	50Hz
 <b>SHINI</b> 信易電熱機械股份有限公司 Shini Plastics Technologies, Inc.																											
1	2	3	4	5	6	7	8																				

1	2	3	4	5	6	7	8	
No.	Symbol	Name	Manufacturer	Type	Specification	Number	Material number	Remark
26	S2	Stop button	SCHNEIDER	XB2BA22C	4.00VAC	1	YE11222000000	{1}
27	S11 S12	Button	ABB	CPI1-10B-01	4.00VAC	2	YE11113100000	{1}
28	S3,H1	Start button(With lamp)	SCHNEIDER	XB2BW33M1C	4.00VAC	1	YE11223100000	{1}
29	S4,S5	Safety switch	SCHMERSRC	AZ16-02ZVRK-14.76	AC-15	2	YE1614.7600000	{1}
30	S7 S8	Inductive sensor	CONTRINEX	DW-AD-621-M12	24VDC NPN N.O	2	YE90621120000	{1}
31	S16	Sensor	DELIN	DL-12	24VDC NPN	1	YE151224.00000	{1}
32	H2	Indicate lamp	ABB	CL-523G	230VAC	1	YE83052300200	{1}
33	H3	Alarm indicate lamp	SHINI	LED-3051	230VAC	1	YE83305100200	
34	S13	Selection switch	ABB	CZSS2-10B-10	UI=300V Ith=5A	1	YE12210100000	
35	U	DC power	WEAN WELL	S 35-24	OUT=24VDC 1.5A	1	YE713524.00000	
36	PA	Ammeter	SFIM	DH-670	50A	1	YE25675000000	{1}
37	X1	Terminal board	PHOENIX	6.0mm <sup>2</sup>	57A	3	YE61060000000	
38		Terminal board	PHOENIX	6.0mm <sup>2</sup> PE	---	1	YE61063500000	
39		Terminal board	PHOENIX	4.0mm <sup>2</sup>	57A	8	YE6104.0000000	
40		Terminal board	PHOENIX	4.0mm <sup>2</sup> PE	---	1	YE6104.3500000	
41		Terminal board	PHOENIX	2.5mm <sup>2</sup>	32A	9	YE6125004.0000	
42		Terminal board	PHOENIX	2.5mm <sup>2</sup> PE	---	1	YE61253500000	
43	X2	Terminal board	PHOENIX	2.5mm <sup>2</sup>	32A	27	YE6125004.0000	
44	M4	Electronic handspike motor(Limited)	---	---	230V 50Hz 0.18kW	1	---	{1}
45	M1	Motor	---	---	4.00V 50Hz 11kW	1	---	{1}
46	M2	Motor	---	---	4.00V 50Hz 0.75kW	1	---	{1}
47	M3	Motor	---	---	4.00V 50Hz 2.2kW	1	---	{1}
Ver.A Notes: (1)Means it's not the material inside the control box. /*means possible broken parts. **means easy broken part. and spare backup is suggested.								

D		Drawing NO.		Scale		Page	
		Title		Standard		Totally	
		SGF-2660		Standard		8	
		Electrical Components List 2		G/B		8	
		SGF-2660-GB-4.00V-0-8		Voltage		4.00V	
		SHINI 信易電熱機械股份有限公司 Shini Plastics Technologies, Inc.		Frequency		5.0Hz	

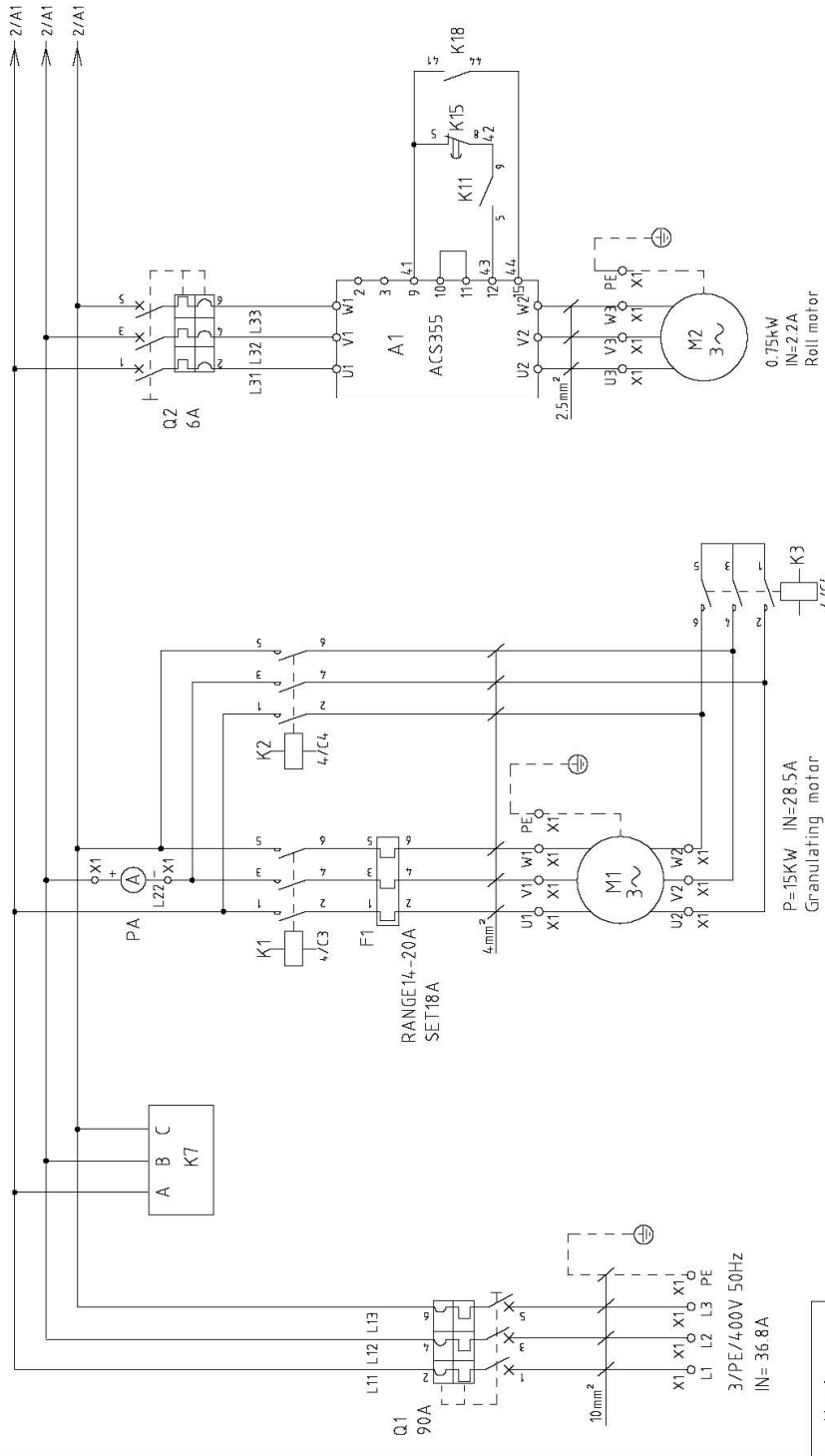


SHINI  
信易電熱機械股份有限公司  
Shini Plastics Technologies, Inc.

Designer	Version	0
Drawn by	Approved by	
Proofread by	Date	20150323
Checked by		

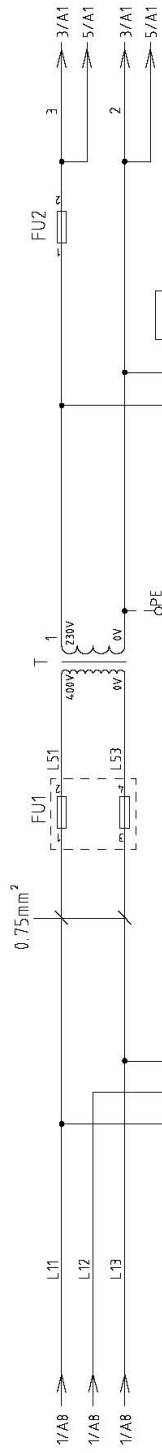


1 2 3 4 5 6 7 8



Ver:A

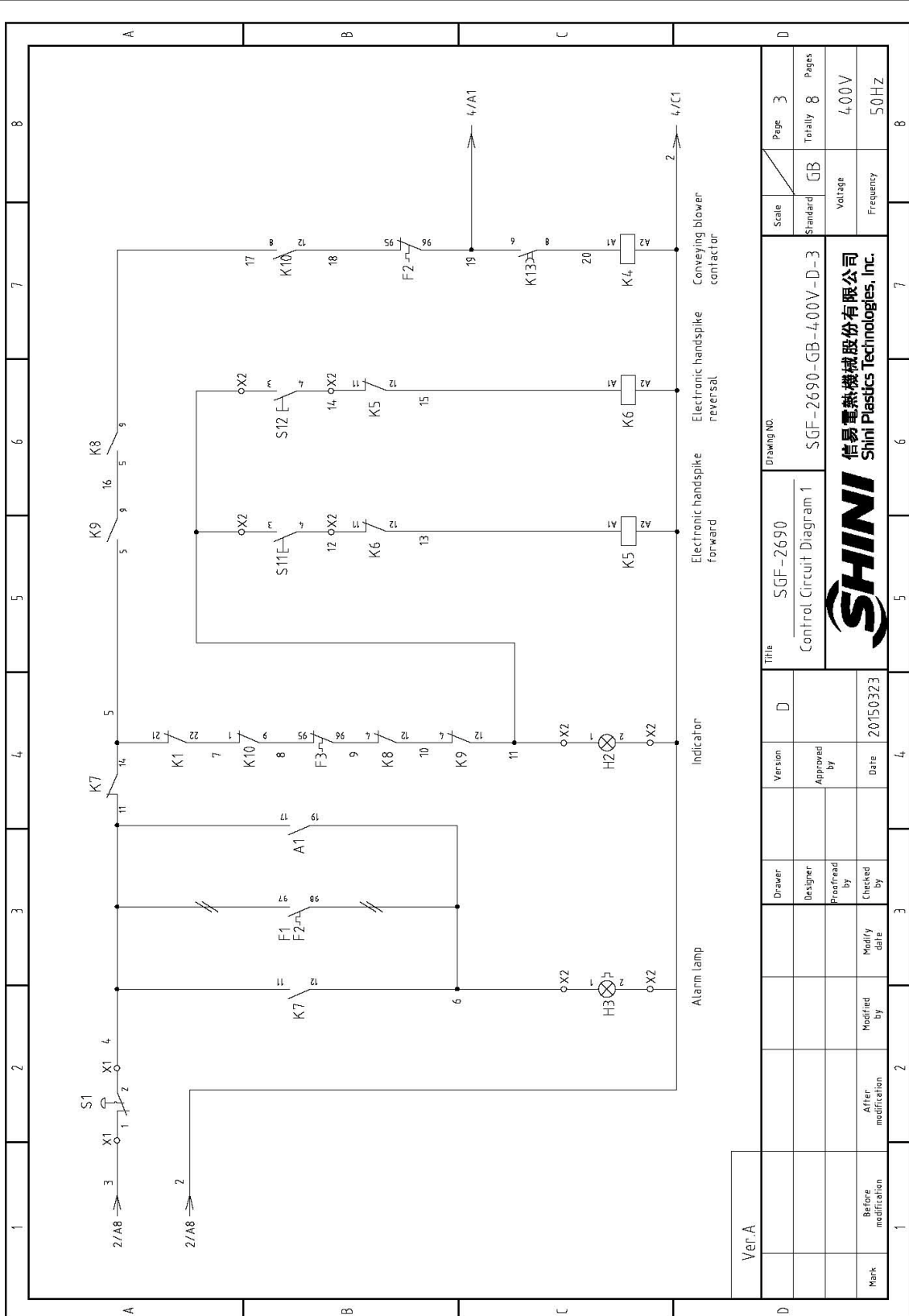
Draw. No.	SGF-2690		Scale	Standard	Page 1
Title	Main Circuit Diagram 1		Standard	GB	Totally 8 Pages
Version	D		Voltage	4.00V	Frequency 50HZ
Designer			Checked by	20150323	
Proofread by			Before modification		
Modified by			After modification		
Approval			Approved by		
Mark			Modify date		
 信譽熱機股份有限公司 Shini Plastics Technologies, Inc.			Drawing No. SGF-2690-GB-4.00V-D-1		
			Title: Main Circuit Diagram 1		




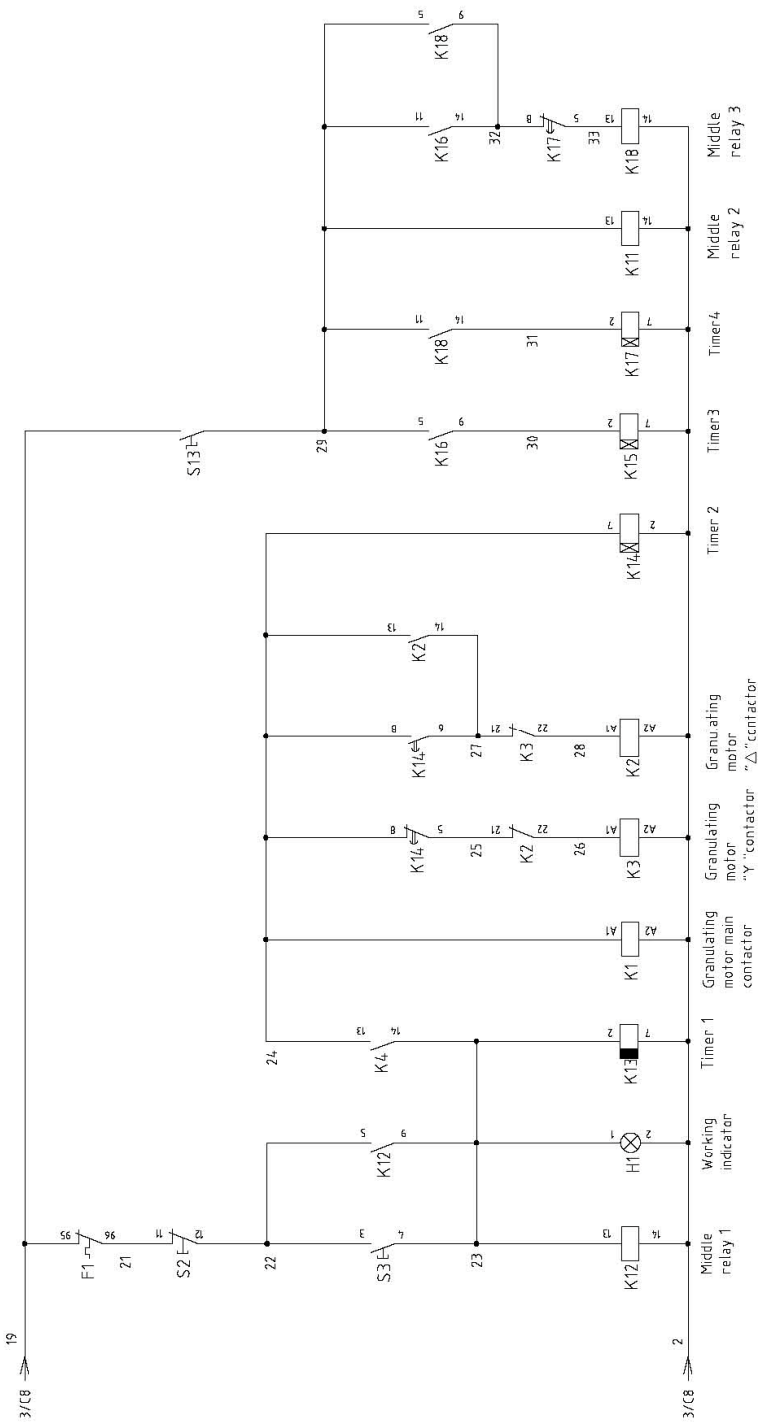
Ver. A

Mark	Before modification	After modification	Modified by	Modify date	Date	20150323	Checked by	Proofread by	Designer	Drawer	Version	D	Title	Drawing No.		Scale	Page
	SGF-2690		Main Circuit Diagram 2											SGF-2690-GB-400V-D-2			
														Voltage		4.00V	
														Frequency		50Hz	

**SHINI**  
 信易電熱機械股份有限公司  
 Shini Plastics Technologies, Inc.

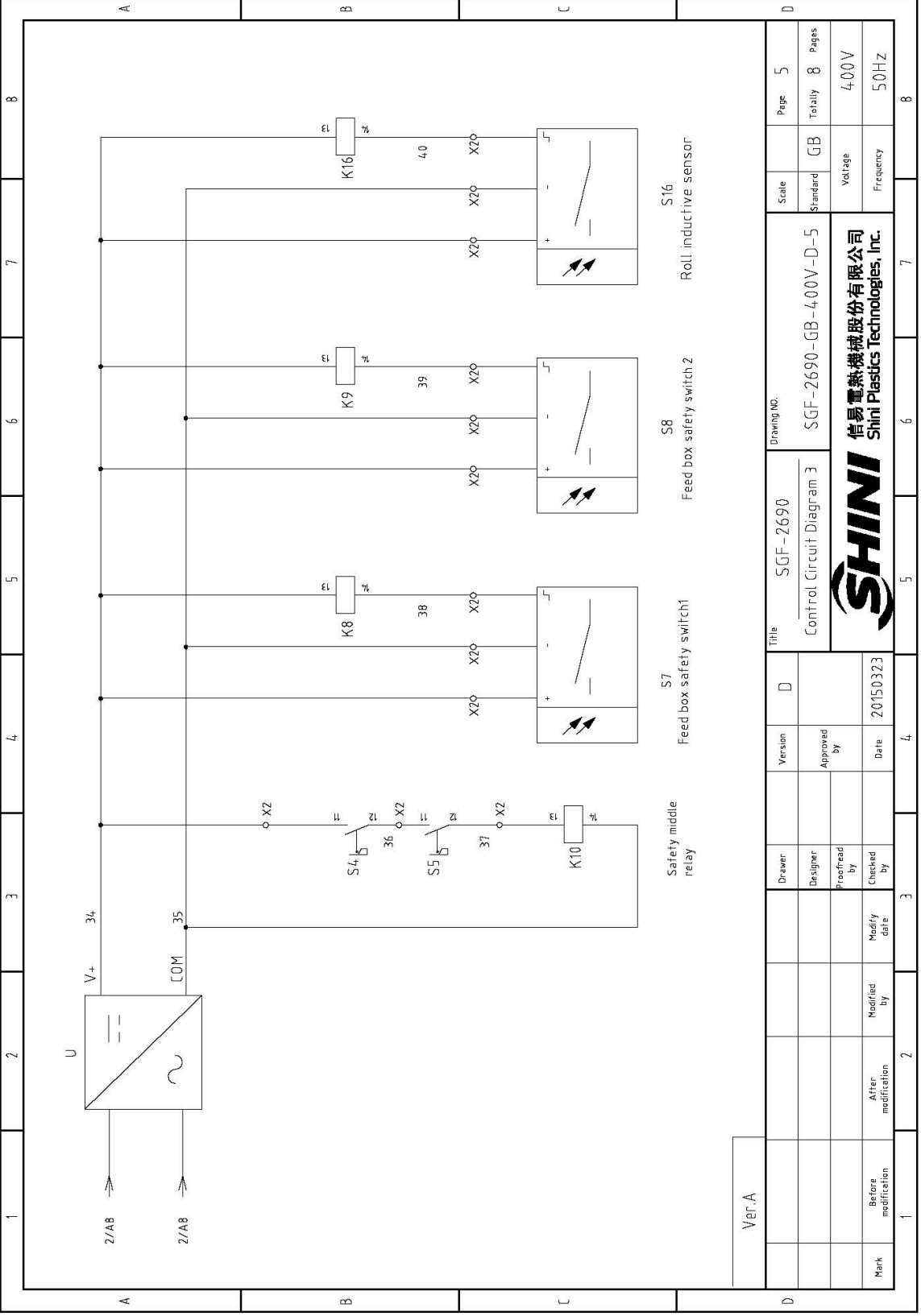


Ver. A																										
Mark	Before modification	After modification	Modified by	Modify date	Checked by	Checked by	Drawer	Version																		
Title											Drawing NO.															
SGF-2690											SGF-2690-GB-400V-D-3															
Control Circuit Diagram 1																										
											信易電熱機械股份有限公司 Shini Plastics Technologies, Inc.															
Scale												Page														
Standard												GB														
Voltage												400V														
Frequency												50HZ														
Totally												8														
Page												3														



Ver.A

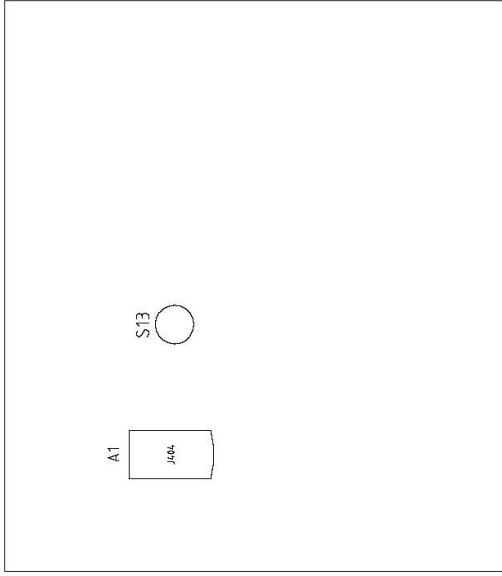
D	Scale	Standard	GB	Page	4
	Title		SGF-2690	Totally	8
	Drawing NO.		SGF-2690-GB-400V-D-4	Voltage	400V
	Control Circuit Diagram 2		Frequency	50HZ	
Version		D	 <b>信易電熱機械股份有限公司</b> <b>Shini Plastics Technologies, Inc.</b>		
Designer					
Approved by					
Date	20150323				
Mark	Before modification	After modification	Medied by	Modify date	



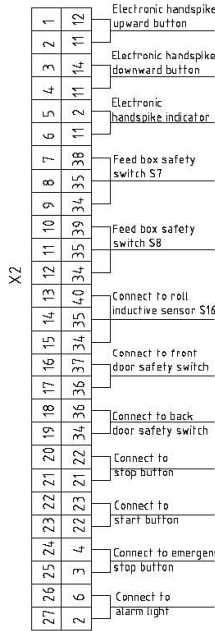
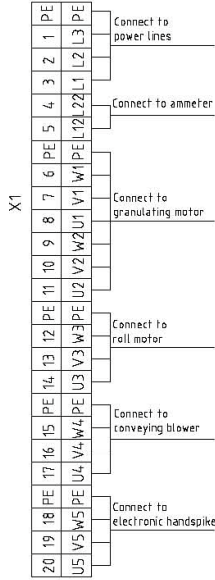
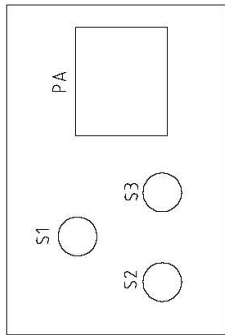
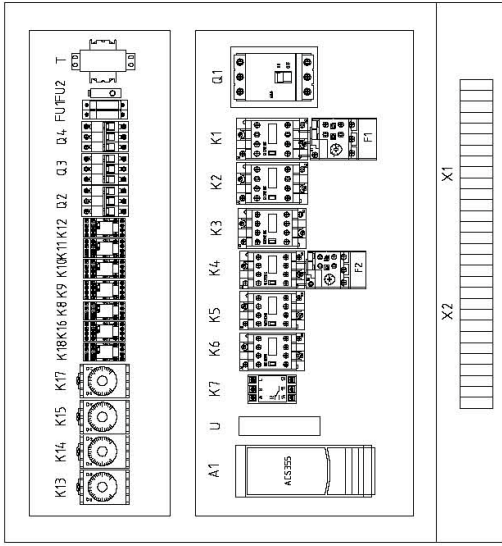
Ver.A

Title		SGF-2690		Drawing No.		Scale		Page 5	
Control Circuit Diagram 3		SGF-2690-GB-400V-D-5		Standard		GB		Totally 8 Pages	
SHINI		信易電熱機械股份有限公司		Voltage		400V		Frequency	
SHINI		Shini Plastics Technologies, Inc.		Frequency		50Hz		8	
Mark		Before modification		After modification		Modified by		Modify date	
20150323		Date		20150323		Date		4	
Version		D		Version		Approved by		4	
Designer		D		Version		Approved by		4	
Proofread by		D		Version		Approved by		4	
Checked by		D		Version		Approved by		4	
1		2		3		4		5	
6		7		8		9		10	

Control box door plate



Base plate of control box



Ver.A


Title		SGF-2690		Drawing NO.		Page 6	
Electrical Components Layout		SGF-2690-GB-400V-D-6		Standard		GB	
Version		Approved by		Voltage		400V	
Date		20150323		Frequency		50HZ	
Before modification		After modification		Modified by		Modified date	
Mark		Before modification		After modification		Modified by	
Total		Totally		Page		8	
8		8		6		8	



信易電熱機械股份有限公司  
Shini Plastics Technologies, Inc.

1	2		3	4	5	6	7	8
NO.	Symbol	Name	Manufacturer	Type	Specification	Number	Material number	Remark
1	Q1	Breaker interlock	ABB	A1A125TMF90	90A	1	YE4.1109200000	
2	Q2	Circuit Breakers	TECO	BM-63C	6A	1	YE4.0300603000	
3	Q3	Circuit Breakers	TECO	BM-63C	10A	1	YE4.0301003000	A
4	Q4	Circuit-breaker	CHNT	NS2-25	1.6-2.5A	1	YE101G2500100	
5	K1 K2	Contactor	SIEMENS	3RT6028-1AN20	230V 50/60Hz	2	YE00602822000	
6	K3	Contactor	SIEMENS	3RT6027-1AN20	230V 50/60Hz	1	YE00602722000	
7	K4	Contactor	SIEMENS	3RT6015-1AN21	230V 50/60Hz	1	YE00601521000	
8	K5 K6	Contactor	SIEMENS	3RT6015-1AN22	230V 50/60Hz	2	YE00601522000	
9	K7	Phase disorder protector	CHAOSHI	ABJ-10W	4.00V 50/60Hz	1	YE03103800000	
10	K8 K9 K10	Middle relay	WEIDMULLER	DRM270024LT	24VDC	3	YE032724.00000	
11	K11 K12	Middle relay	WEIDMULLER	DRM270730LT	220VAC	2	YE03270700000	B
12	K13	Time relay	YUYUN	TRF-N3M	230V 50/60Hz	1	YE86322000000	
13	K14 K15	Time relay	YUYUN	TH3M-NAB	3S-60M 230VAC	2	YE86300300000	
14	K16	Middle relay	WEIDMULLER	DRM270024LT	24VDC	1	YE032724.00000	
15	K17	Time relay	YUYUN	TH3M-NAB	3S-60M 230VAC	1	YE86300300000	
16	K18	Middle relay	WEIDMULLER	DRM570730LT	220VAC	1	YE03570700000	
17	F1	Overload relay	SIEMENS	3RU6126-4BB0	14-2DA	1	YE0126014.0000	
18	F2	Overload relay	SIEMENS	3RU6116-1GB0	4.5-6.32A	1	YE011604.50000	
19	FU1	Fuse base	CHNT	RT28-32	2P	1	YE4.1032200000	C
20	Fuse**	Fuse**	CHNT	10x38 500V	2A	2	YE4.6002000100	
21	FU2	Fuse**	YINDA	FS-10	2A	1	YE4.1001000000	
22	A1	Frequency converter	ABB	ACS355-03E-02A4-4	4.00V 0.75kW	1	YE75350300000	
23	T	Controller pad	ABB	J404	---	1	YE8104.04.00000	
24	T	Transformer**	BAIYUN	IN=4.00V OUT=230V	2500mA	1	YE704.023004.00	
25	S1	Emergency stop button	SCHNEIDER	XB2BS542C	4.00VAC	1	YE11254.200000	{1}
Ver.A Notes: {1}Means it's not the material inside the control box. /* means possible broken parts.** means easy broken part. and spare backup is suggested.								
D			Drawer	Version	Title		Scale	Page
			Designer	D	SGF-2690		Standard	7
			Proofread by	Approved by	Electrical Components List 1		GB	Totally 8
			Checked by	Date	SGF-2690-GB-400V-D-7		Voltage	4.00V
Mark			Before modification	Modified by	Modify date	Frequency		5.0HZ
						Frequency		5.0HZ



1		2		3		4		5		6		7		8	
NO.	Symbol	Name	Manufacturer	Type	Specification	Number	Material number	Remark							
26	S2	Stop button	SCHNEIDER	XB2BA22C	4.00VAC	1	YE1122000000	(1)							
27	S11 S12	Button	ABB	CP1-10B-01	4.00VAC	2	YE11113100000	(1)							
28	S3,H1	Start button(with lamp)	SCHNEIDER	XB2BW33M1C	4.00VAC	1	YE11223100000	(1)							
29	S4,S5	Safety switch	SCHMERSRC	AZ15ZVRK-1476-1+B1	AC-15	2	YE16147600100	(1)							
30	S7 S8	Inductive sensor	CONTRINEX	DW-AD-621-M12	24VDC NPN N.O	2	YE90621120000	(1)							
31	S16	Sensor	DELIN	DL-12	24VDC NPN	1	YE15122400000	(1)							
32	H2	Indicate lamp	ABB	CL-523G	230VAC	1	YE83052300200	(1)							
33	H3	Alarm indicate lamp	SHINI	LED-3501	230VAC	1	YE83305100200								
34	S13	Selection switch	ABB	CZSS2-10B-10	UI=300V Ith=5A	1	YE12210100000								
35	U	DC power	WEAN WELL	S 35-24	OUT=24VDC 1.5A	1	YE71352400000								
36	PA	Ammeter	SFIM	DH-670	50A	1	YE25675000000	(1)							
37	X1	Terminal board	PHOENIX	10mm <sup>2</sup>	---	3	YE61100000000								
38		Terminal board	PHOENIX	10mm <sup>2</sup> PE	---	1	YE61103500000								
39		Terminal board	PHOENIX	6.0mm <sup>2</sup>	57A	2	YE61060000000								
4.0		Terminal board	PHOENIX	4.0mm <sup>2</sup>	32A	8	YE61040000000								
4.1		Terminal board	PHOENIX	4.0mm <sup>2</sup> PE	---	1	YE61043500000								
4.2		Terminal board	PHOENIX	2.5mm <sup>2</sup>	32A	9	YE61250040000								
4.3		Terminal board	PHOENIX	2.5mm <sup>2</sup> PE	32A	3	YE61253500000								
4.4	X2	Terminal board	PHOENIX	2.5mm <sup>2</sup>	32A	27	YE61250040000								
4.5	M1	Motor	---	---	4.00V 50Hz 15kW	1	----	(1)							
4.6	M2	Motor	---	---	4.00V 50Hz 0.75kW	1	----	(1)							
4.7	M3	Motor	---	---	4.00V 50Hz 2.2kW	1	----	(1)							
4.8	M4	Electronic handspike motor(Limited)	---	---	230V 50Hz	1	----	(1)							
Ver.A Notes: (1)Means it's not the material inside the control box. /*Means possible broken parts.**Means easy broken part. and spare backup is suggested.															
D		Title		Drawing No.		Scale		Page		8		8		8	
		SGF-2690		SGF-2690-GB-400V-D-8		GB		4.00V		4.00V		4.00V		4.00V	
		Electrical Components List 2						Voltage		Frequency		4.00V		50Hz	
				SHINI		Shini Plastics Technologies, Inc.									
Mark		Before modification	After modification	Modify date	20150323										
1		2		3		4		5		6		7		8	