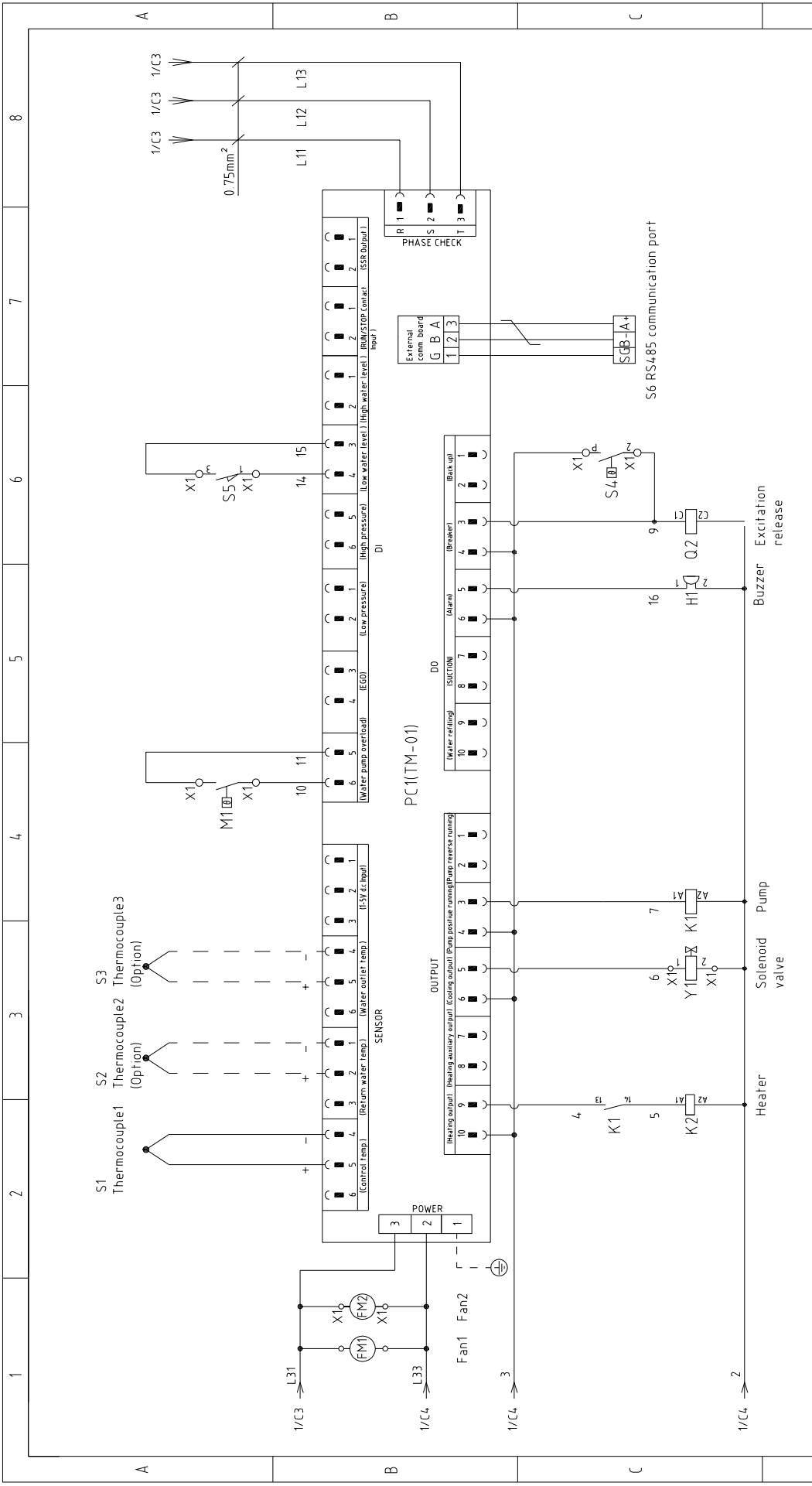


版本	Ver.F
Mark	Before modification
After modification	Modified by
Modify date	20180724
Checked by	
Proofread by	
Designer	
Drawer	
Version	G
Approved by	
Title	STM-907HT Main Circuit Diagram
Drawing NO	STM-907HT-CE-230V-G-1
Scale	Standard CE
Page 1	Totally 4 Pages
Voltage	230V
Frequency	50Hz

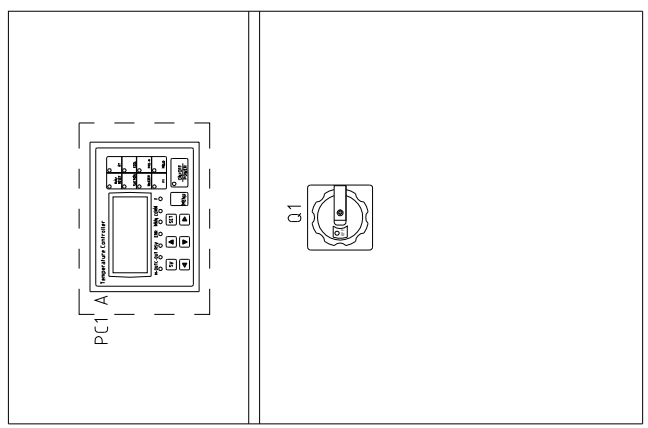
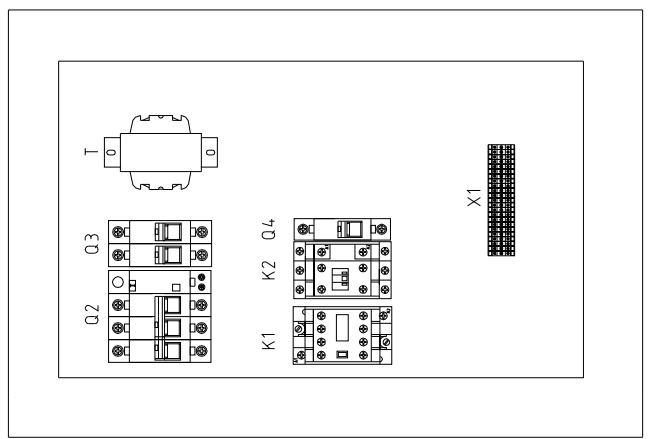
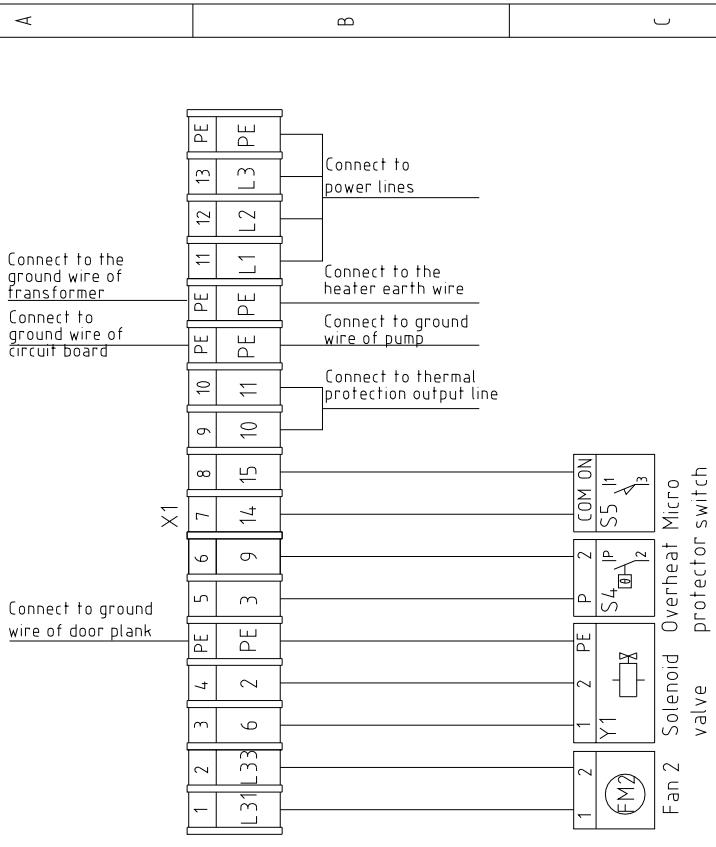




版本	Ver.F	Note: M1 is the overheat protection output contact of water pump.	
Mark	Before modification	Modified by	Modify date
			20180724
Drawer	Designer	Proofread by	Checked by
Version	G	Approved by	Date
			20180724
Title	STM-907HT Control Circuit Diagram		
Drawing NO	STM-907HT-CE-230V-G-2		
Scale	Standard	CE	Page 2
		Voltage	Totally 4 Pages
		Frequency	230V
			50HZ



1 2 3 4 5 6 7 8



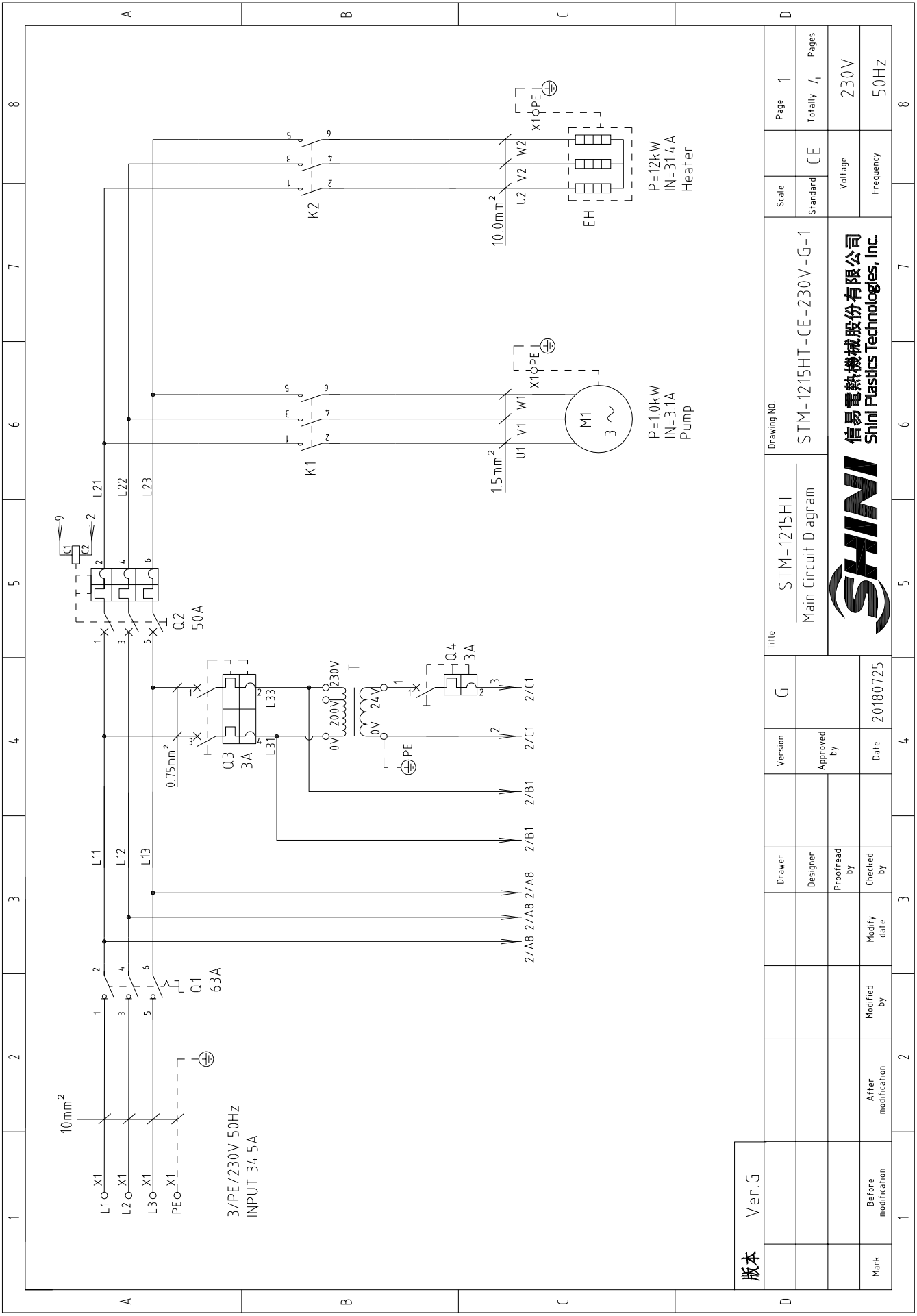
Technical requirements: (1) Pump and pipe heater should be directly connected to the output terminals of contactor and thermal overload relay.

版本	Ver.F
Mark	Before modification
	Modified by
	Modify date
	Checked by
	Proofread by
	Designer
	Drawer
	Version
	G
	Approved by
	Date
	20180724


Title		STM-907HT		Drawing NO		Page		3	
Electrical Components Layout		STM-907HT-CE-230V-G-3		Standard		CE		Totally 4	
Voltage		230V		Frequency		50HZ			
SHINI		信易電熱機械股份有限公司		Shini Plastics Technologies, Inc.					
1		2		3		4		5	
6		7		8		9		10	

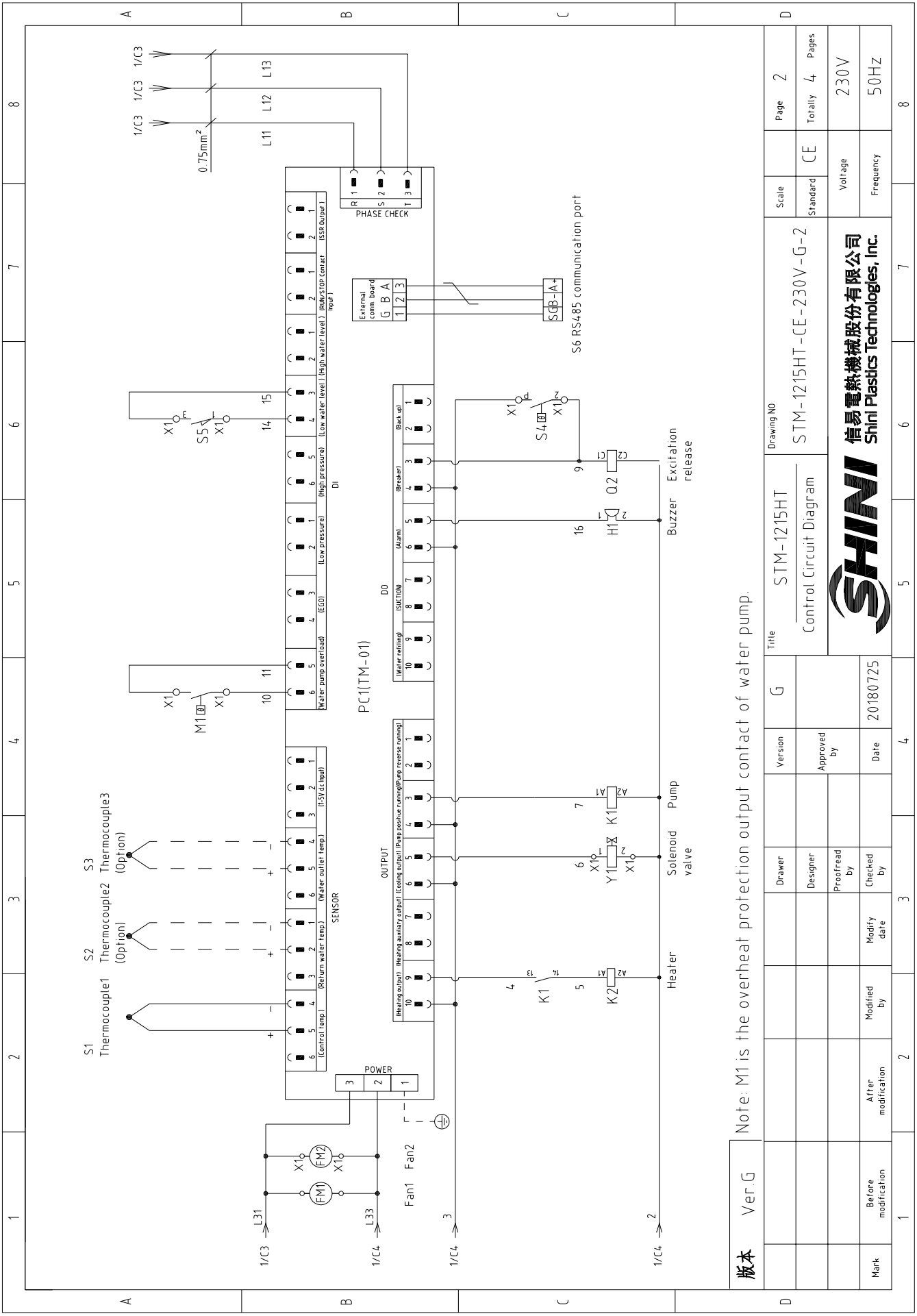
1		2		3		4		5		6		7		8	
NO.	Symbol	Name	Manufacturer	Type	Specification	Number	Material number	Remark							
1	Q1	Main power switch	EATON	P1-32/EA/SVB	32A	1	YE10323200000								
2	Q2	Circuit breakers	TECO	BM-63S	40A	1	YE40304003000								
3		Excitation release	CHINT	MX	24VAC	1	YE40024000000	A							
4	Q3	Circuit breakers	TECO	BM-63C/2003S 2P	3A	1	YE40200203000								
5	Q4	Circuit breakers	TECO	BM-63C/1003S 1P	3A	1	YE40100203000								
6	K1	Contactors	SIEMENS	3RT6015-1AB01	24VAC	1	YE00601502500								
7	K2	Contactors	SIEMENS	3RT6027-1AC20	24VAC	1	YE00602702600								
8	T	Transformer	JIUXIN	IN=230V/200V OUT=24V	80VA	1	YE70023005200								
9	S1	Thermocouple	SHINI	----	K	1	----	(1)							
10	S2 S3	Thermocouple	SHINI	----	K	2	----	(1)(2)							
11	S4	Overheat protector	----	----	----	1	----	(1)							
12	S5	Limit switch	RENEW	----	250V 5(4)	1	----	(1)							
13	S6	Communication interface board RS-485 (double Dsub-9pin connector)	YUYUN	----	PCS	1	YE90048501200								
14		Shell RS485(SAL-700G-A-19)0	BINCHEG	----	PCS	1	YR40048500000								
15	PC1 A	Circuit board	YUYUN	TM-01 (含通讯)	180~430V 50/60Hz	1	YE81012200300								
16	X1	Terminal board	HONEYWELL	SK2 5	----	10	YE60002503200								
17		Terminal board	HONEYWELL	SK2 SPE	----	2	YE60002503400								
18		Terminal board	HONEYWELL	GK6	----	3	YE60000603200								
19		Terminal board	HONEYWELL	GK6PE	----	2	YE60000603500								
20	M1	Motor	SHINI	MP-55	230V 50Hz 0.55kW	1	----	(1)							
21	EH	Heater	SHINI	----	230V 50Hz 9kW	1	----	(1)							
22	FM1 FM2	Fan	----	----	230V 50/60Hz	2	----	(1)							
23	H1	Buzzer	JINGKANG	PK-35A	24VAC	1	YE84003500600								
24	Y1	Solenoid valve	----	----	24VAC	1	----	(1)							
25		Terminal fittings E/GKseries(honeywell)	HONEYWELL	----	PCS	6	YE60000003900								
版本		Ver.F		Notes: (1)Means it's not the material inside the control box.(2)Means equipped with function of displaying water outlet and return water temperature.											
				Title STM-907HT		Drawing NO STM-907HT-CE-230V-G-4		Scale Standard		Page 4		CE		Voltage 230V	
				Electrical Components List						Totally 4		Pages 4			
Mark		Before modification		Modified by		Modify date		Checked by		Date		Frequency		50HZ	
1		2		3		4		5		6		7		8	





版本	Ver G
Mark	Before modification
	After modification
	Modified by
	Modify date
	Checked by
	Proofread by
	Designer
	Drawer
	Version
	G
	Approved by
	Date
	20180725


D	Title		Drawing NO		Page	
	STM-1215HT Main Circuit Diagram		STM-1215HT-CE-230V-G-1		1	
Version		Scale		Totally		Pages
G		CE		4		4
Date		Voltage		Frequency		
20180725		230V		50HZ		
 信易电热机械股份有限公司 Shini Plastics Technologies, Inc.						
1	2	3	4	5	6	7
						8



版本

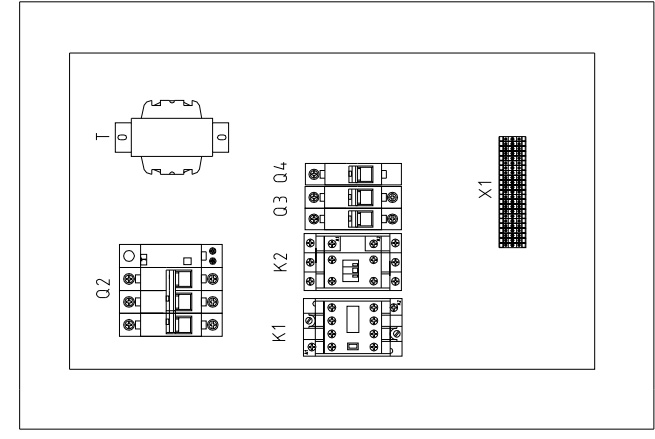
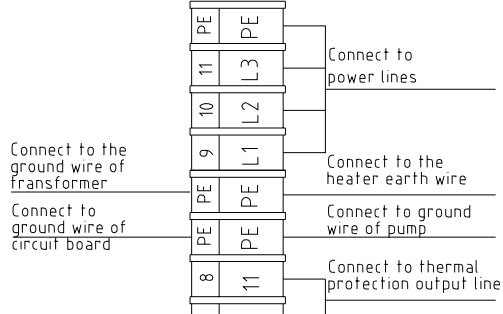
Ver.G

Note: M1 is the overheat protection output contact of water pump.


D	Mark	Before modification	Modified by	20180725	 <p>信易電熱機械股份有限公司 Shini Plastics Technologies, Inc.</p>	Scale	Standard	CE	Page	2	
	Version		Approved by			Standard	CE	Totally	4	Pages	
	Designer		Proofread by			Control Circuit Diagram	Standard	CE	Voltage	230V	
	Drawer		Checked by			STM-1215HT	Standard	CE	Frequency	50Hz	
Title		STM-1215HT Control Circuit Diagram			Drawing NO		STM-1215HT-CE-230V-G-2				
Ver.G		20180725			Date		8				

1 2 3 4 5 6 7 8

A B C



版本 Ver.G Technical requirements.(1)Pump and pipe heater should be directly connected to the output terminals of contactor and thermal overload relay.

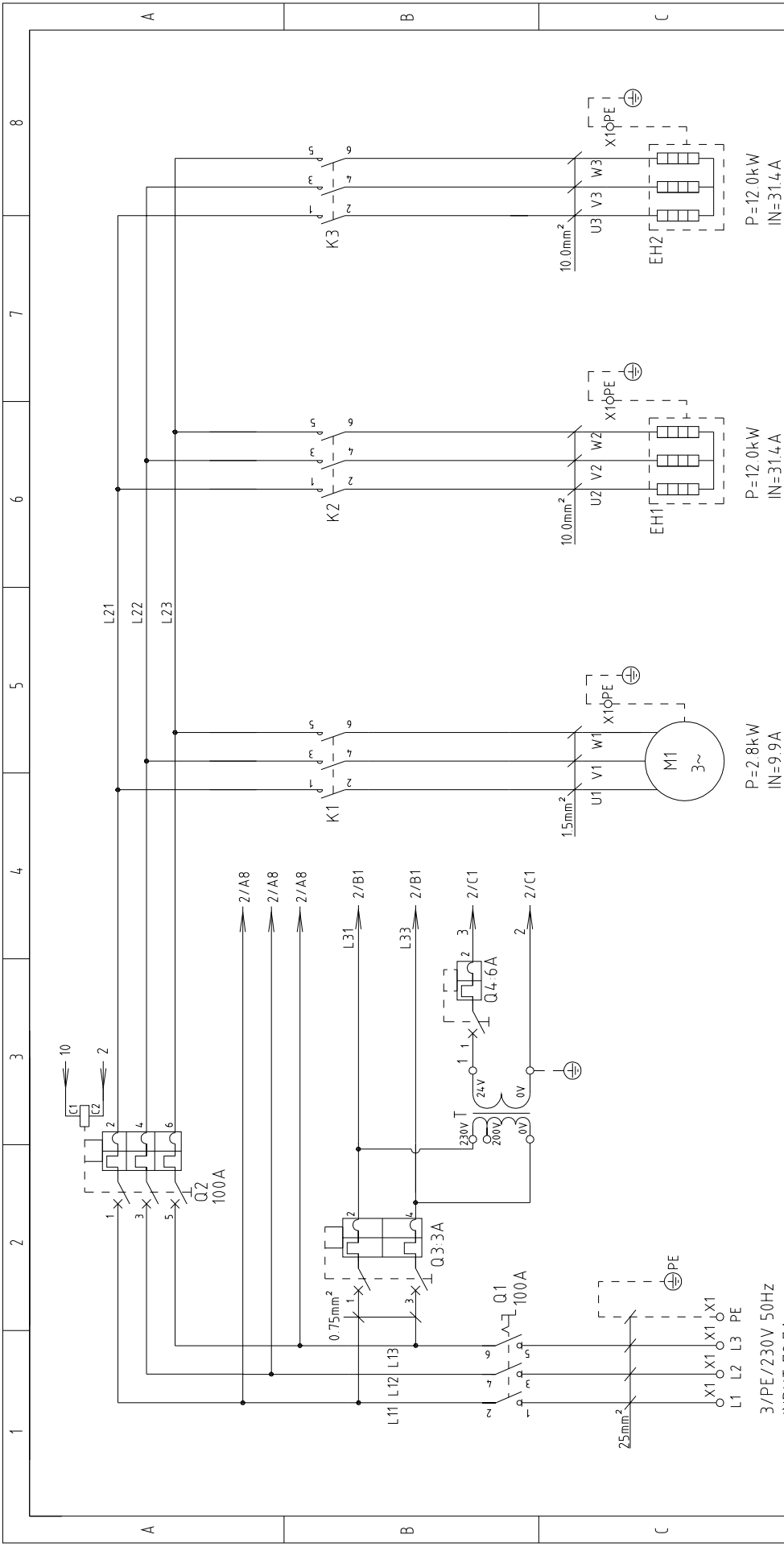
D	Ver.G	Drawer	Version	G	Title	Drawing NO	Scale	Page	3
		Designer	Approved by		Electrical Components Layout	STM-1215HT-CE-230V-G-3	Standard	Totally	4
Mark	Before modification	Modified by	Modify date	20180725	 信易電熱機械股份有限公司 Shini Plastics Technologies, Inc.				
	After modification	Checked by	Date						
				3	4	5	6	7	8

1		2		3		4		5		6		7		8	
NO.	Symbol	Name	Manufacturer	Type	Specification	Number	Material number	Remark							
1	Q1	Main power switch	EATON	P3-63/EA/SVB	63A	1	YE10636300000								
2	Q2	Circuit breakers	TECO	BM-63C/3050S	50A	1	YE40305003000								
3		Excitation release	CHINT	MX	24VAC	1	YE40024000000								
4	Q3	Circuit breakers	TECO	BM-63C/2003S 2P	3A	1	YE40200203000								
5	Q4	Circuit breakers	TECO	BM-63C/1003S 1P	3A	1	YE40100203000								
6	K1	Contactors	SIEMENS	3RT6015-1AB01	24VAC	1	YE00601502500								
7	K2	Contactors	SIEMENS	3RT5035-1AC20	24VAC	1	YE00503502600								
8	T	Transformer	JIUXIN	IN=230V/200V OUT=24V	120VA	1	YE70023004500								
9	S1	Thermocouple	SHINI	----	K	1	----	(1)							
10	S2 S3	Thermocouple	SHINI	----	K	2	----	(1)(2)							
11	S4	Overheat protector	----	----	----	1	----	(1)							
12	S5	Limit switch	RENEW	----	250V 5(4)	1	----	(1)							
13	S6	Communication interface board RS-485 (double Dsub-9pin connector)	YUYUN	----	----	1	YE90048501200	(1)							
14		Shell RS485(SAL-700G-A-19)0	BINGHENG	----	----	1	YR40048500000	(1)							
15	PC1 A	Circuit board	YUYUN	TM-01 (含通讯)	180~430V 50/60Hz	1	YE81012200300								
16	X1	Terminal board	HONEYWELL	SK2 5	----	8	YE60002503200								
17		Terminal board	HONEYWELL	SK2 SPE	----	2	YE60002503400								
18		Terminal board	HONEYWELL	GK10	----	3	YE60000603200								
19		Terminal board	HONEYWELL	GK10PE	----	2	YE60000603500								
20	M1	Motor	SHINI	MP-100	230V 50Hz 1.0kW	1	----	(1)							
21	EH	Heater	SHINI	12kW	230V 50Hz	1	----	(1)							
22	FM1 FM2	Fan	----	----	230V 50/60Hz	2	----	(1)							
23	H1	Buzzer	JINGKANG	PK-35A	24VAC	1	YE84003500600								
24	Y1	Solenoid valve	----	----	24VAC	1	----	(1)							
25		Terminal fittings E/GKseries(honeywell)	HONEYWELL	----	PCS	6	YE60000003900								
版本		Notes: (1)Means it's not the material inside the control box (2)Means equipped with function of displaying water outlet and return water temperature.													
Ver.G		Drawer		Version		Title		Drawing NO		Scale		Page		D	
		Designer		Approved by		STM-1215HT		STM-1215HT-CE-230V-G-4		Standard		CE		Totally 4 Pages	
		Proofread by		Date		Electrical Components List				Voltage		230V			
Mark		Modified by		Modify date		20180725				Frequency		50HZ			
1		2		3		4		5		6		7		8	



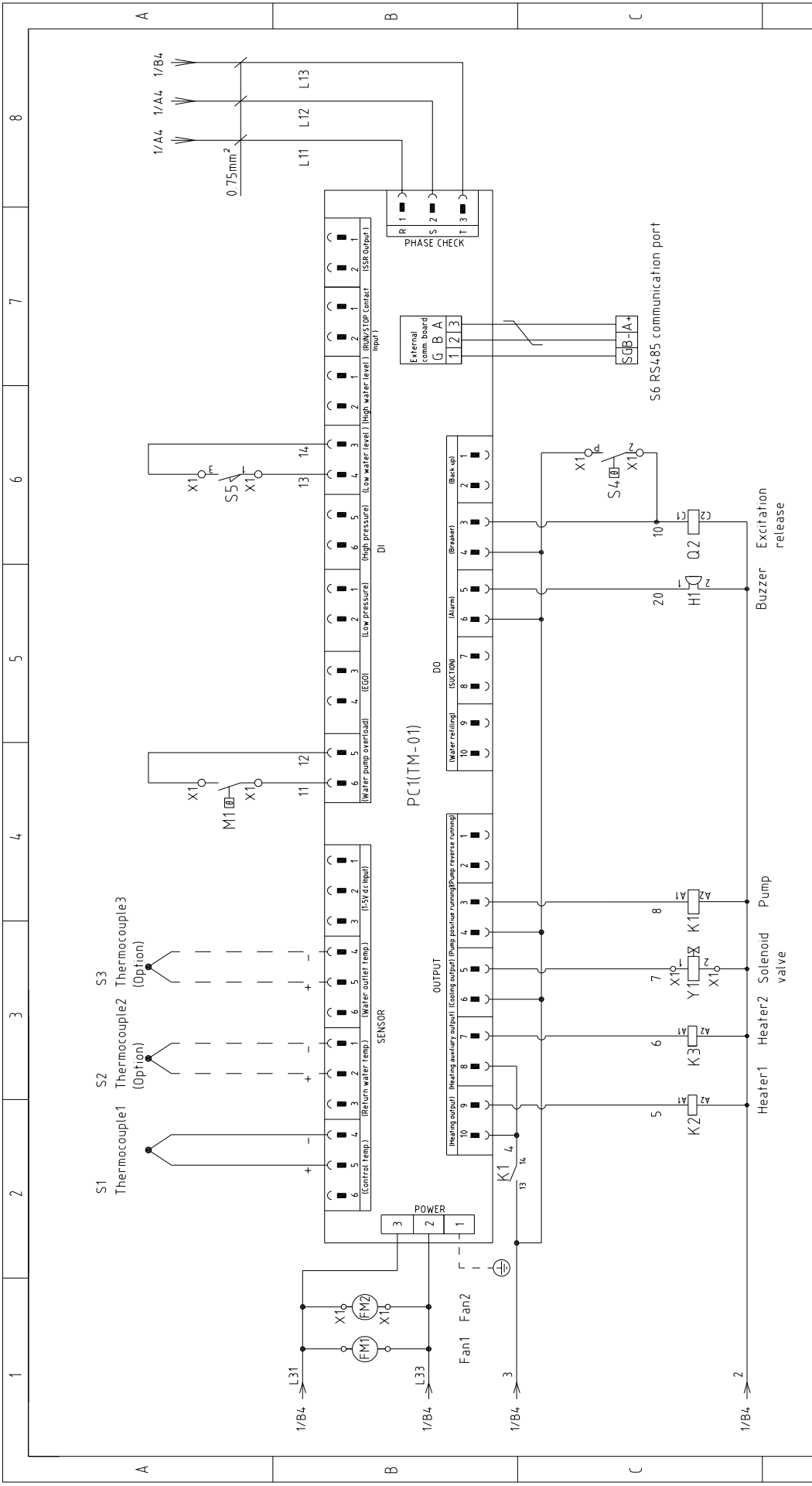
信易电热机械股份有限公司  
Shini Plastics Technologies, Inc.





版本 Ver.F		Title STM-2440HT		Drawing NO STM-2440HT-CE-230V-F-1		Scale		Page 1	
		Main Circuit Diagram				Standard CE		Totally 4 Pages	
		Version F		Approved by		Voltage 230V		Frequency 50Hz	
		Date 20180725		Checked by					
		Modified by		Modify date					
		After modification							
		Before modification							
		Mark							



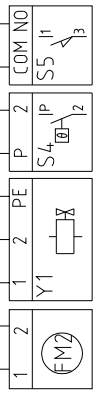
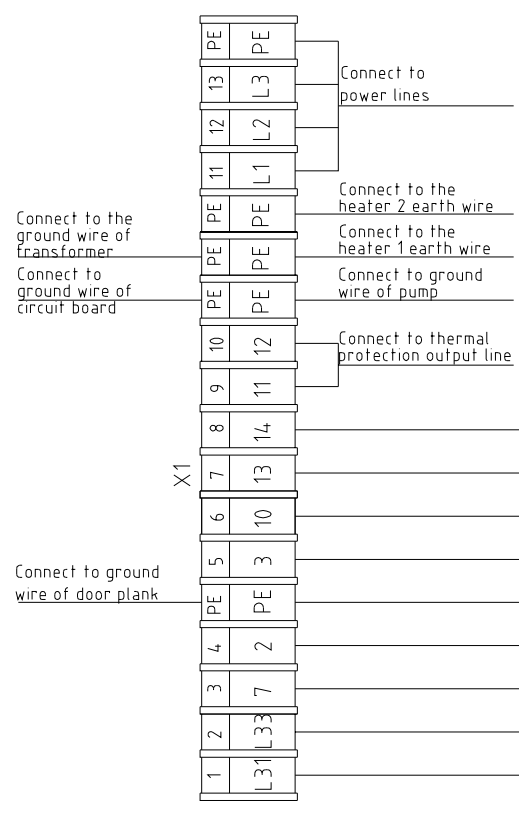
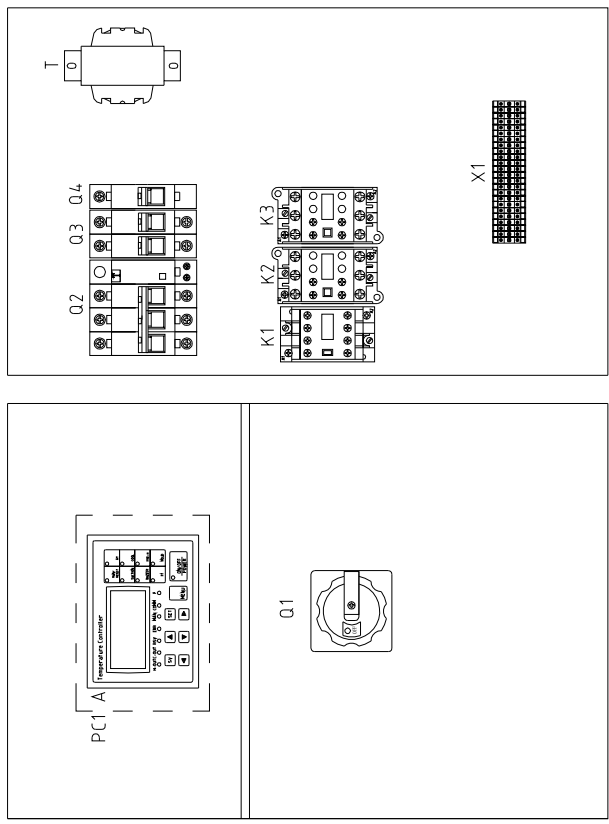


版本	Ver.F	Note: M1 is the overheat protection output contact of water pump.	
Mark	Before modification	Modified by	Modify date
		Checked by	Date
		Proofread by	
		Designer	Approved by
		Version	F
		Title	
		STM-2440HT	Drawing NO
		Control Circuit Diagram	STM-2440HT-CE-230V-F-2
		Standard	CE
		Scale	
		Page	2
		Voltage	
		Frequency	
		Totally	
		Pages	
		230V	
		50HZ	
		8	



1 2 3 4 5 6 7 8

A B C



Fan 2 Solenoid Overheat Micro valve protector switch

版本 Ver.F Technical requirements (1) Pump and pipe heater should be directly connected to the output terminals of contactor and thermal overload relay.

D	Ver.F	Version	F	Title	STM-2440HT	Scale	Standard	Page	3
		Approved by		Electrical Components Layout	STM-2440HT-CE-230V-F-3	Standard	CE	Totally	4
Mark	Before modification	Modified by		Date	20180725	Voltage		230V	
	After modification	Checked by				Frequency		50HZ	
1	2	3	4	5	6	7	8		



1		2		3		4		5		6		7		8	
NO.	Symbol	Name	Manufacturer	Type	Specification	Number	Material number	Remark							
1	Q1	Main power switch	EATON	P3-100/EA/SVB	100A	1	YE100100000000								
2	Q2	Circuit breakers	TECO	BM-100D/3100S	100A	1	YE40310003000								
3		Excitation release	TECO	MX	24VAC	1	YE40024000000								
4	Q3	Circuit breakers	TECO	BM-63C/2003S 2P	3A	1	YE40200203000								
5	Q4	Circuit breakers	TECO	BM-63C/1006S 1P	6A	1	YE40100600100								
6	K1	Contactors	SIEMENS	3RT6017-1AB01	24VAC	1	YE00601702500								
7	K2 K3	Contactors	SIEMENS	3RT5035-1AC20	24VAC	2	YE00503502600								
8	T	Transformer	JIUXIN	IN=230V/200V OUT=24VAC	180VA	1	YE70023005400								
9	S1	Thermocouple	SHINI	----	----	1	----	(1)							
10	S2 S3	Thermocouple	SHINI	----	----	2	----	(1)(2)							
11	S4	Overheat protector	----	----	----	1	----	(1)							
12	S5	Limit switch	RENEW	SMT709-A/SZ-15GHW24-BA	250V 5(4)	1	----	(1)							
13	S6	Communication interface board RS-485 (double Dsub-9pin connector)	YUYUN	----	PCS	1	YE90048501200								
14		Shell RS485(SAL-700G-A-19J0)	BINCHEG	----	PCS	1	YR40048500000								
15	PC1 A	Circuit board	YUYUN	TM-01 (含通讯)	180~430V 50/60Hz	1	YE81012200300								
16	X1	Terminal board	HONEYWELL	SK2 5	----	10	YE60002503200								
17		Terminal board	HONEYWELL	GK2 SPE	----	2	YE60002503400								
18		Terminal board	HONEYWELL	GK10PE	----	2	YE60001003500								
19		Terminal board	HONEYWELL	GK35	----	3	YE60003503200								
20		Terminal board	HONEYWELL	GK35PE	----	1	YE60003503500								
21	M1	Motor	SHINI	TP-280	230V 50Hz 2.8kW	1	----	(1)							
22	EH1 EH2	Heater	SHINI	12kW	230V 50Hz	2	----	(1)							
23	FM1 FM2	Fan	SHINI	----	230V 50/60Hz	2	----	(1)							
24	H1	Buzzer	JINGKANG	PK-35A	24VAC	1	YE84003500600								
25		Terminal fittings E/GKseries(honeywell)	HONEYWELL	----	PCS	6	YE60000003900								
<b>版本</b>															
Notes: (1)Means it's not the material inside the control box (2)Means equipped with function of displaying water outlet and return water temperature.															
Ver.F		Designer		Version		F		Title		Drawing NO		Scale		Page	
								STM-2440HT		STM-2440HT-CE-230V-F-4		Standard		CE	
		Proofread by		Approved by				Electrical Components List				Voltage		4	
		Checked by		Date								Frequency		4	
Mark		Before modification		After modification		Modify date		20180725				230V		50HZ	
1		2		3		4		5		6		7		8	

