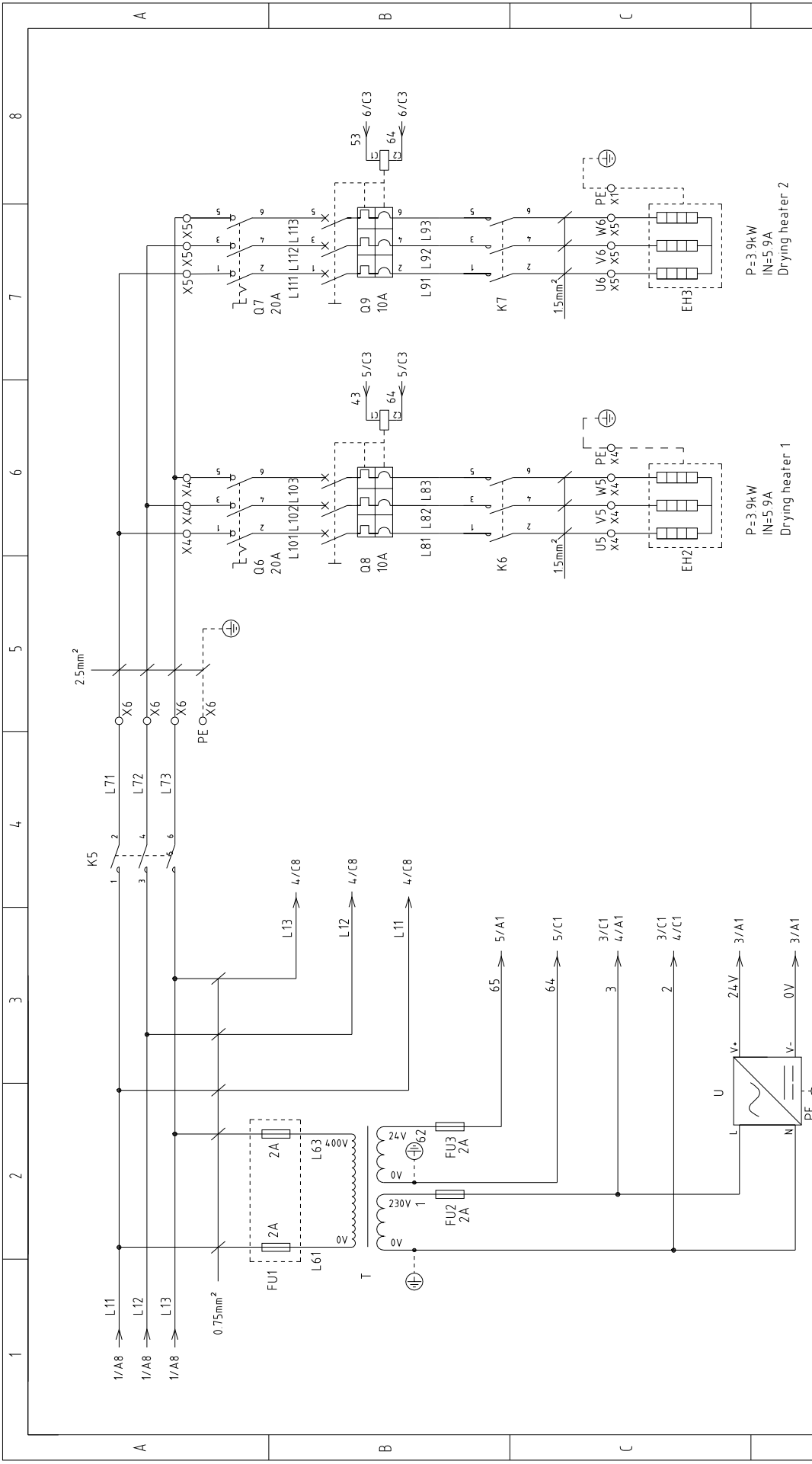


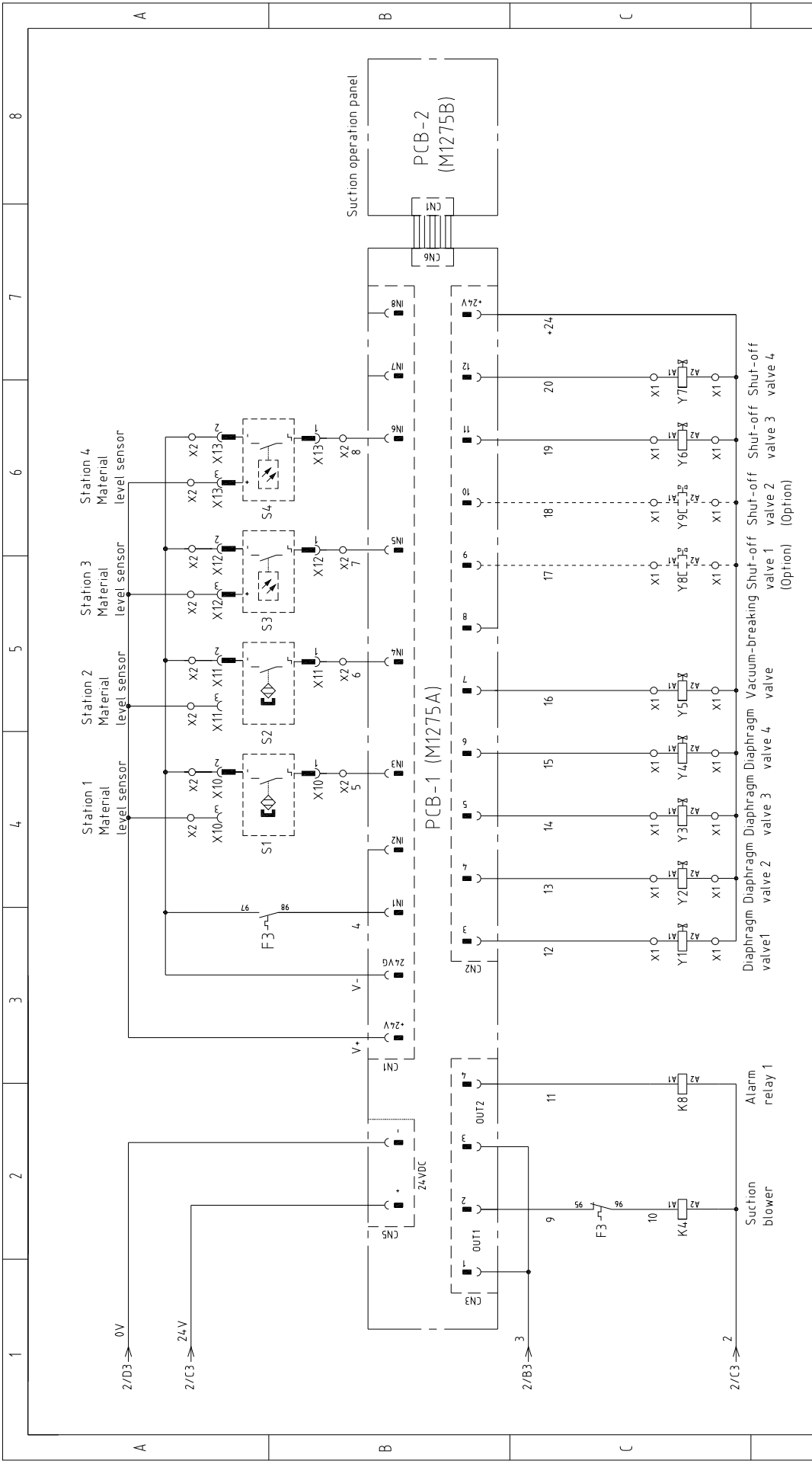
版本 Ver.B

D		Title		Drawing NO		Scale		Page 1	
SCD-80Ux2-100H		SCD-80Ux2-100H-PCB-CE-400V-A-1		Standard		CE		Totally 11 Pages	
Main Circuit Diagram 1		SHINI		Voltage		Frequency		400V	
Version		Approved by		Date		Frequency		50HZ	
A		20180314		Date		Frequency		50HZ	
Designer		Proofread by		Checked by		Voltage		400V	
Modified by		Modify date		Date		Frequency		50HZ	
Before modification		After modification		Date		Voltage		400V	
Mark		Modify date		Date		Frequency		50HZ	
1		2		3		4		5	
6		7		8		9		10	

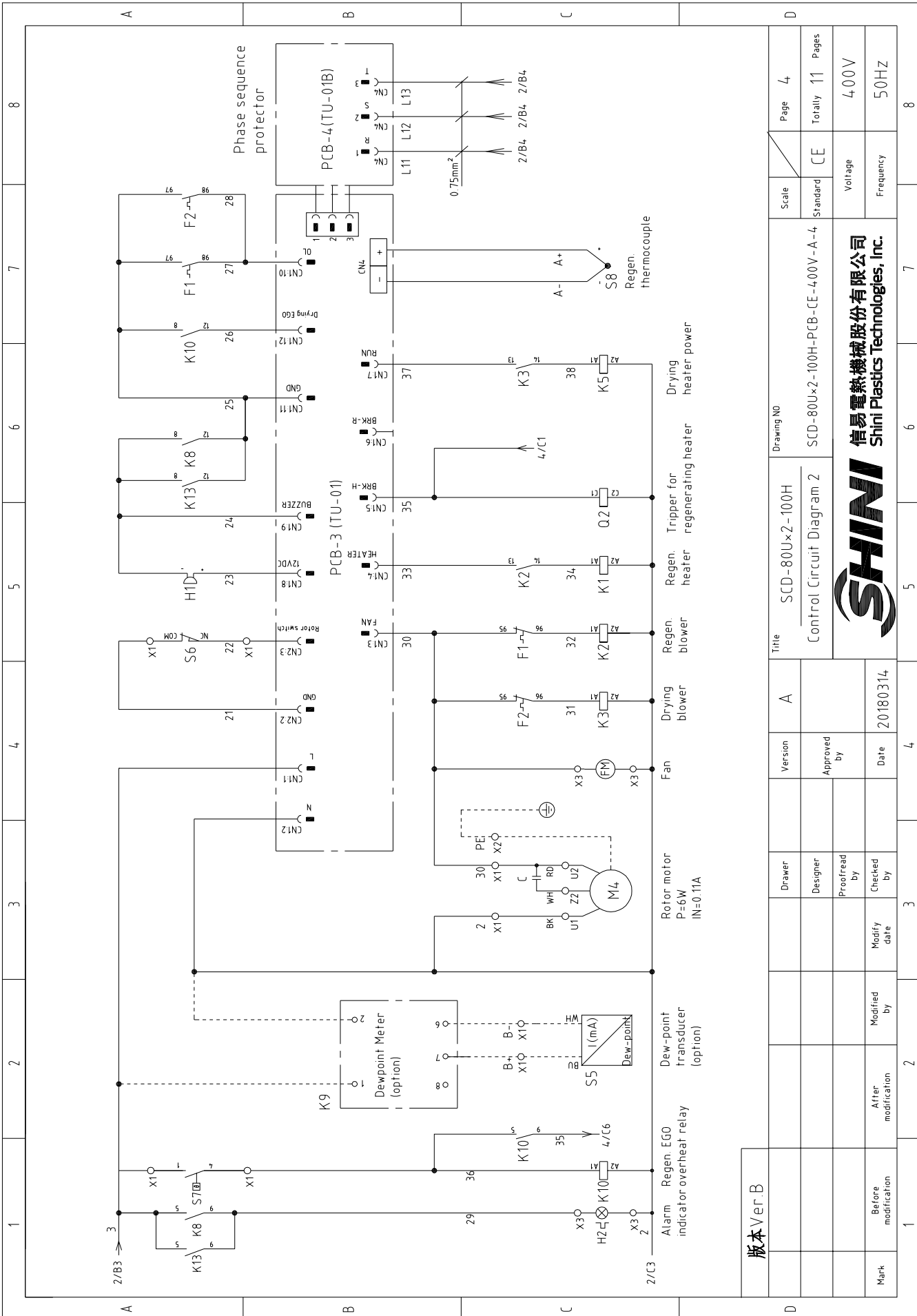




版本 Ver.B		A		Title		Drawing NO		Scale		Page	
		Approved by		SCD-80Ux2-100H		SCD-80Ux2-100H-PCB-CE-400V-A-2		Standard		2	
		Date		Main Circuit Diagram 2		CE		Voltage		Totally	
		20180314		SHINI		Voltage		400V		11	
		Checked by		信易电热机械股份有限公司		Frequency		50HZ		Pages	
		Modified by		Shini Plastics Technologies, Inc.		Frequency		50HZ		8	
Mark		After modification		SHINI		Frequency		50HZ		8	
1		2		3		4		5		6	
7		8		9		10		11		12	



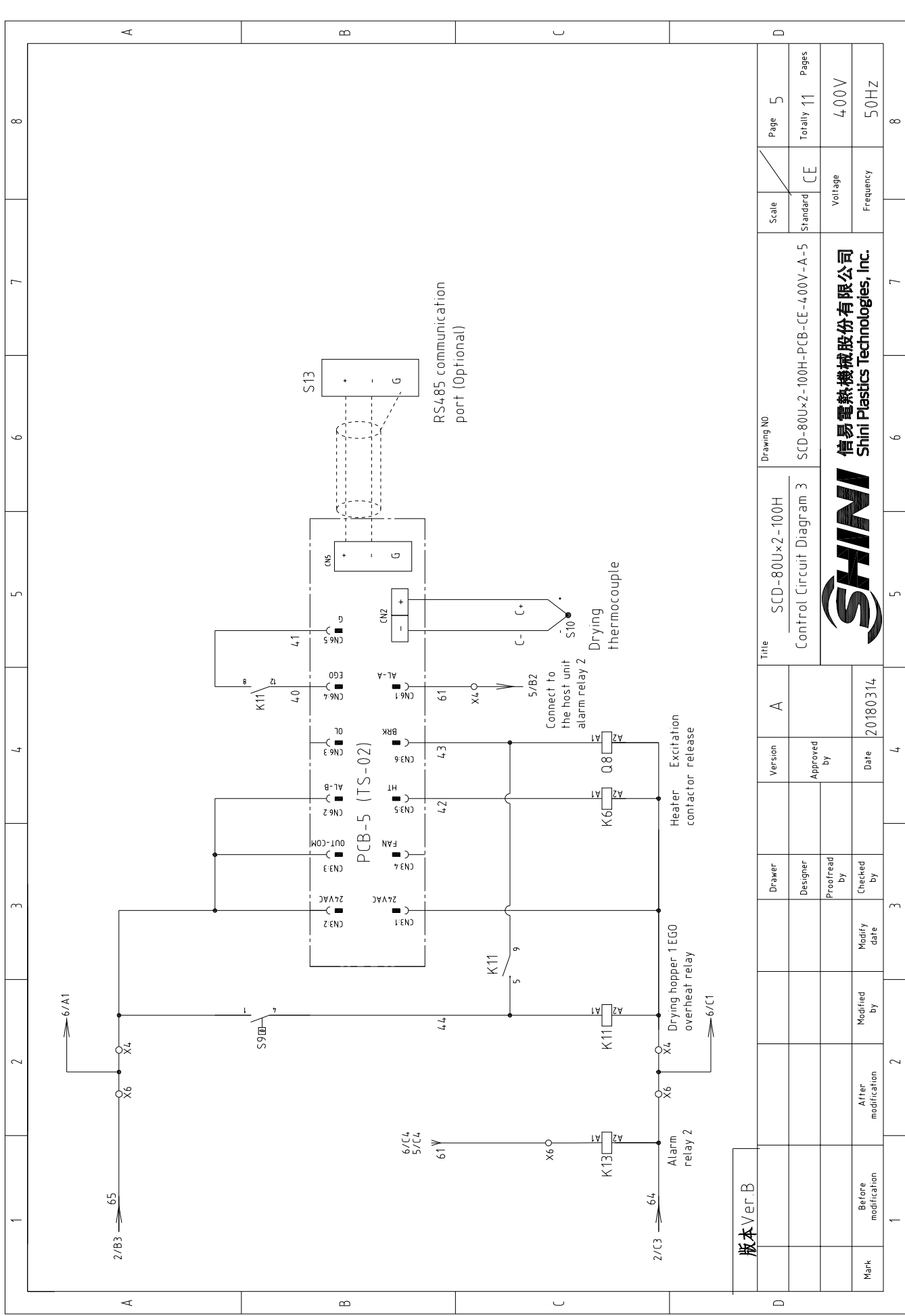
版本 Ver.B		Title		Drawing NO		Scale		Page	
		SCD-80Ux2-100H		SCD-80Ux2-100H-PCB-CE-4,00V-A-3		Standard		CE	
		Control Circuit Diagram 1				Voltage		400V	
		SHINI		信易電熱機械股份有限公司 Shini Plastics Technologies, Inc.		Frequency		50HZ	
Mark		Before modification		Modified by		Modify date		Checked by	
2		3		4		5		6	
1		2		3		4		5	
2		3		4		5		6	
3		4		5		6		7	
4		5		6		7		8	
5		6		7		8		9	
6		7		8		9		10	
7		8		9		10		11	
8		9		10		11		12	
9		10		11		12		13	
10		11		12		13		14	
11		12		13		14		15	
12		13		14		15		16	
13		14		15		16		17	
14		15		16		17		18	
15		16		17		18		19	
16		17		18		19		20	
17		18		19		20		21	
18		19		20		21		22	
19		20		21		22		23	
20		21		22		23		24	
21		22		23		24		25	
22		23		24		25		26	
23		24		25		26		27	
24		25		26		27		28	
25		26		27		28		29	
26		27		28		29		30	
27		28		29		30		31	
28		29		30		31		32	
29		30		31		32		33	
30		31		32		33		34	
31		32		33		34		35	
32		33		34		35		36	
33		34		35		36		37	
34		35		36		37		38	
35		36		37		38		39	
36		37		38		39		40	
37		38		39		40		41	
38		39		40		41		42	
39		40		41		42		43	
40		41		42		43		44	
41		42		43		44		45	
42		43		44		45		46	
43		44		45		46		47	
44		45		46		47		48	
45		46		47		48		49	
46		47		48		49		50	
47		48		49		50		51	
48		49		50		51		52	
49		50		51		52		53	
50		51		52		53		54	
51		52		53		54		55	
52		53		54		55		56	
53		54		55		56		57	
54		55		56		57		58	
55		56		57		58		59	
56		57		58		59		60	
57		58		59		60		61	
58		59		60		61		62	
59		60		61		62		63	
60		61		62		63		64	
61		62		63		64		65	
62		63		64		65		66	
63		64		65		66		67	
64		65		66		67		68	
65		66		67		68		69	
66		67		68		69		70	
67		68		69		70		71	
68		69		70		71		72	
69		70		71		72		73	
70		71		72		73		74	
71		72		73		74		75	
72		73		74		75		76	
73		74		75		76		77	
74		75		76		77		78	
75		76		77		78		79	
76		77		78		79		80	
77		78		79		80		81	
78		79		80		81		82	
79		80		81		82		83	
80		81		82		83		84	
81		82		83		84		85	
82		83		84		85		86	
83		84		85		86		87	
84		85		86		87		88	
85		86		87		88		89	
86		87		88		89		90	
87		88		89		90		91	
88		89		90		91		92	
89		90		91		92		93	
90		91		92		93		94	
91		92		93		94		95	
92		93		94		95		96	
93		94		95		96		97	
94		95		96		97		98	
95		96		97		98		99	
96		97		98		99		100	



Mark	Before modification	After modification	Modified by	Modify date	Date	20180314
	Version	A	Approved by	Title		
				SCD-80Ux2-100H		
Scale			Drawing NO			
			SCD-80Ux2-100H-PCB-CE-4,00V-A-4			
Page		4		Voltage		
Totally		11		Frequency		
		CE		400V		
				50HZ		

信易电热机械股份有限公司
 Shini Plastics Technologies, Inc.

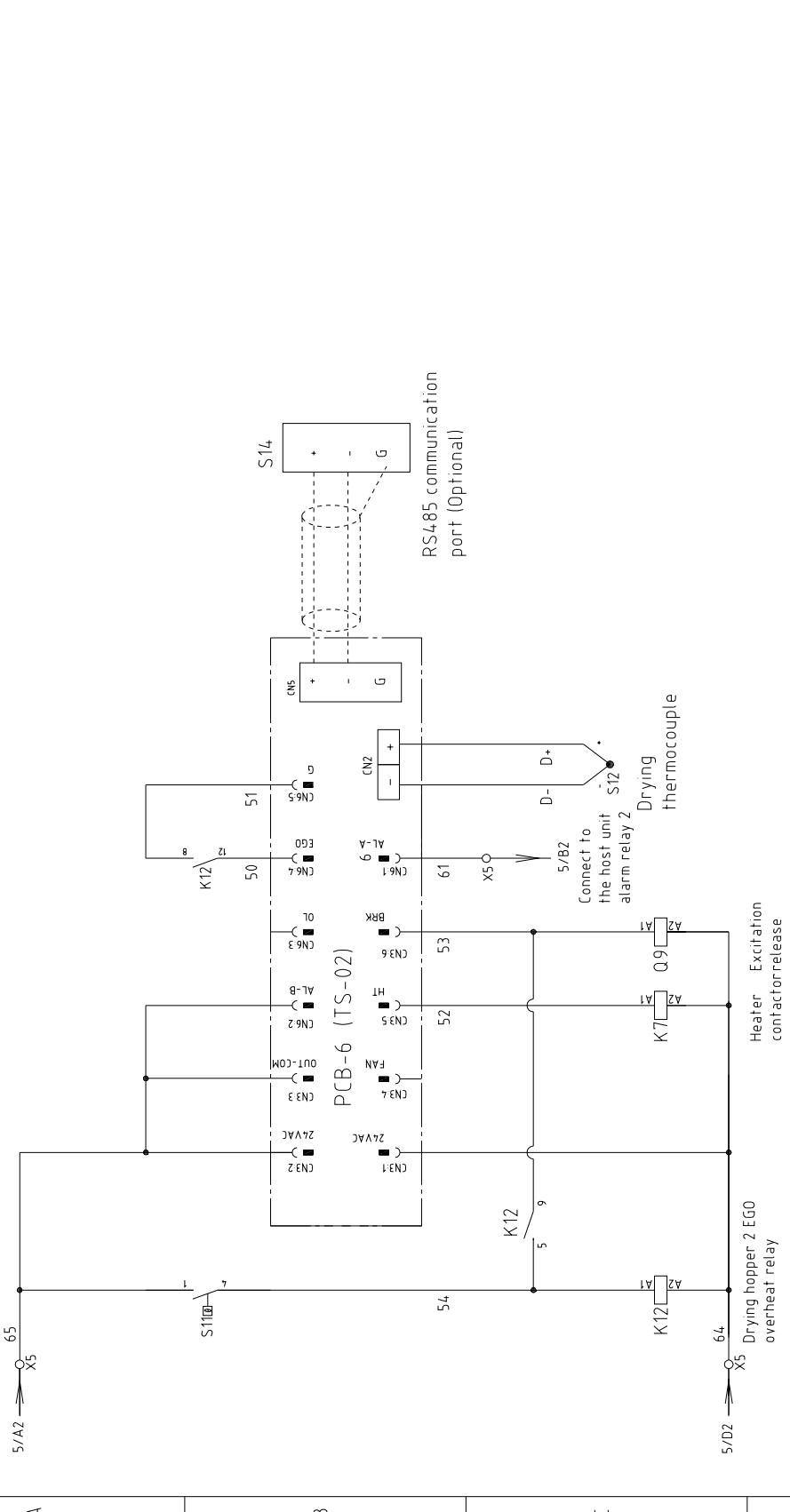
版本 Ver.B



版本 Ver.B

Mark	Before modification	Modified by	3	2	1	8
	Modified date	20180314	4	5	6	7
	Checked by	20180314	4	5	6	7
	Designer		4	5	6	7
	Proofread by		4	5	6	7
Version	Approved by	Title				
		SCD-80Ux2-100H				
A		Drawing NO		Scale		
		SCD-80Ux2-100H-PCB-CE-4.00V-A-5		Standard		
				Voltage		
				Frequency		
				Page		
				Totally		
				Pages		
				4.00V		
				5.0HZ		
				8		

SHINI
信易電熱機械股份有限公司
Shini Plastics Technologies, Inc.

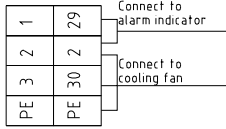


版本 Ver.B

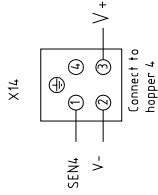
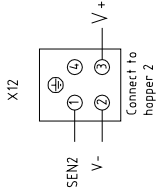
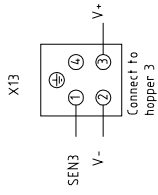
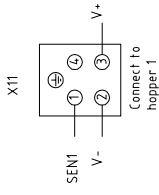
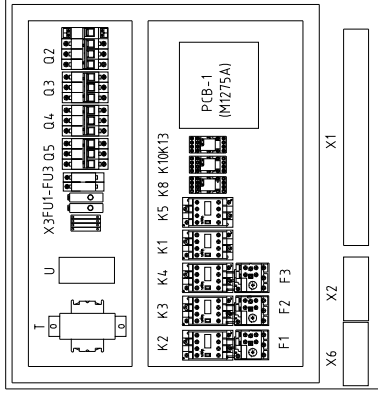
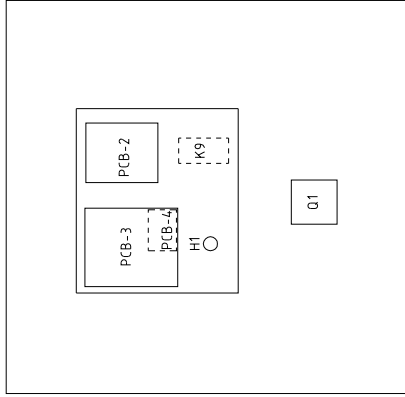
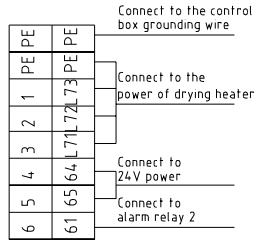
Mark Before modification Modified by Modify date Checked by Proofread by Designer Drawer		Title SCD-80Ux2-100H Control Circuit Diagram 4	Drawing NO SCD-80Ux2-100H-PCB-CE-4.00V-A-6	Scale Standard CE Voltage 400V Frequency 50HZ Page 6 Totally 11 Pages
---	--	--	---	---



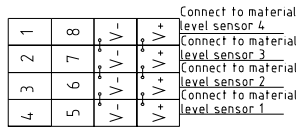
X3



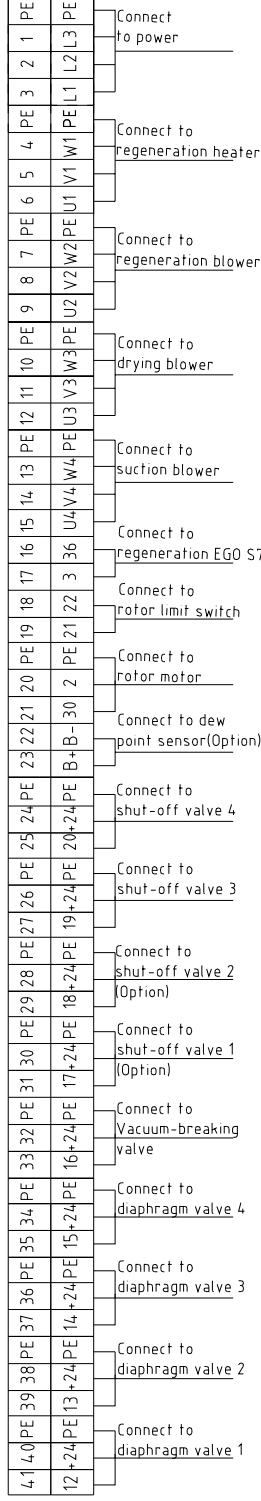
X6



X2



X1

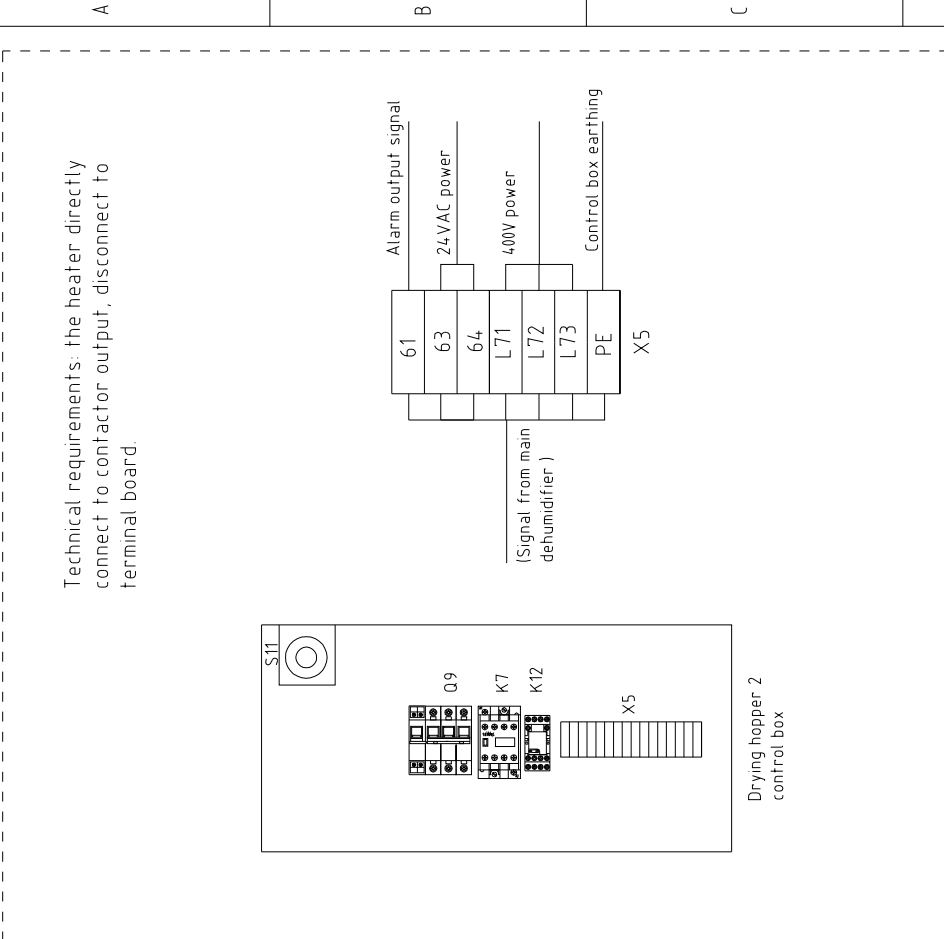
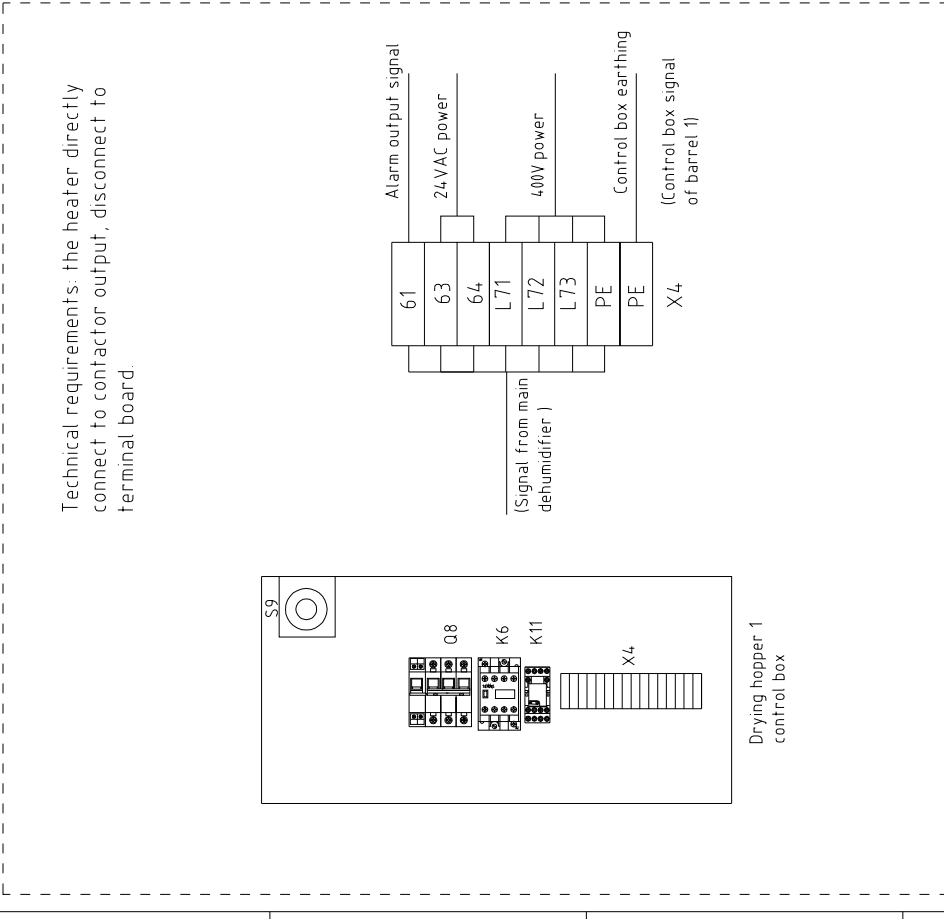


版本 Ver.B

Mark	Before modification	Modified by	20180314	Date	Approved By	Version	A	Title	SCD-80Ux2-100H Electrical Components Layout 1	Drawing NO	SCD-80Ux2-100H-PCB-CE-400V-A-7	Scale	Standard	Page	7
	After modification	Modify date	CE									Totally	11		
Before modification												Voltage	400V	Frequency	50HZ



信易電熱機械股份有限公司
Shini Plastics Technologies, Inc.



版本 Ver.B

D	Mark	Before modification	Modified by	Modify date	Checked by	Proofread by	Designer	Drawer	Version	A	Title		SCD-80Ux2-100H	Drawing NO	Scale	Page	8		
	Electrical Components Layout 2	Approved by		Date	20180314	Electrical Components Layout 2		SCD-80Ux2-100H-PCB-CE-4.00V-A-8		Standard	CE	Totally	11	Pages	Voltage		400V		
	After modification																	Frequency	50HZ



1		2		3		4		5		6		7		8	
NO.	Symbol	Name	Manufacturer	Type	Specification	Number	Material number	Remark							
1	Q1	Main switch	EATON	P1-32/EA/SVB 32A	32A	1	YE10323200000								
2	Q2 Q5 Q8 Q9	Circuit breaker	TECO	BM-63C/3010S	10A	4	YE40301003000								
3	A	Release	CHINT	MX	110V ~ 400V/50/60HZ	1	YE40023560000								
4		Release	CHINT	MX	24VAC	2	YE40024000000								
5	Q3 Q4	Circuit breaker	TECO	BM-63C/3006S	6A	2	YE40300603000								
6	Q6 Q7	Main switch	EATON	TO-2-1/EA/SVB/20A	20A	2	YE10021160000								
7	K1-K4	Contactors	SIEMENS	3RT6016-1AN21	9A 1NO 220V 50/60Hz	4	YE00601621000								
8	K6 K7	Contactors	SIEMENS	3RT6016-1AB01	9A 1NO 24V 50/60Hz	2	YE00601602500								
9	K5	Contactors	SIEMENS	3RT6018-1AN21	16A NO 220V 50/60Hz	1	YE00601800000								
10	K8 K10	Middle relay	WEIDMULLER	DRM270730LT	230V 50/60Hz	2	YE03270700000								
11	K11 K12	Middle relay	-----	GR-2C-AC24V+PGR-2C-E	24V 50/60Hz配座	2	YE03022400300								
12	K9	Dew-point meter	SHINI	Dewpoint Meter	220V 50/60Hz	1	YE85122000100	(2)							
13	S5	Dew-point transducer	CS	217-OEM	POWER=24VDC 4-20mA	1	YE90021700100	(1) (2)							
14	F1 F2	Thermo overload relays	SIEMENS	3RU6116-1AB0	1.1-16A	2	YE01160110000								
15	F3	Thermo overload relays	SIEMENS	3RU6116-1EB0	2.8-4A	1	YE01160280000								
16	T	Transformer	-----	IN=400V OUT=230V/24V	1000mA/80VA	1	YE700400008800								
17	U	DC Power	-----	ESA-35-24	OUT=DC24V 15A	1	YE71352400100								
18	FU1	Fuse	CHINT	RT28N-32/2P/32A/500V/10x38		1	YE41032200000								
19	FU2 FU3	Fuse core	MRO	2A/10x38/500V/gG	2A	2	YE46002000100								
20	PCB-1 (PCB-2)	Fuse	YINDA	FS-101/6x30/	2A	2	YE41001000000								
21	PCB-3	PCB	HONGYUN	M1275	一对四	1	YE80127500000								
22	PCB-4	PCB	YUYUN	TU-01A+SA-RCS2	220VAC	1	YE80001100000								
23	PCB-5	PCB	YUYUN	TU-01B	-----	1	YE80001100100								
24	PCB-6	PCB	YUYUN	TS-02(24VDC/AC)	24VAC	2	YE80000101200								
25	H2	Alarm indicator	SHINI	LED-3051/220VAC	220V 50/60Hz	1	YE83305100200	(1)							
版本 Ver.B															
Notes: (1)Means it's not the material inside the control box (2) optional dewpoint, (3)means equipped with communication port (4)Means equipped with shut-off valve.															
D		Title		Version		A		SCD-80Ux2-100H		Drawing NO		Scale		Page	
		Designer		Approved by				Electrical Components list 1		SCD-80Ux2-100H-PCB-CE-4.00V-A-9		Standard		CE	
		Proofread by										Voltage		400V	
Mark		Before modification		Modified by		Modify date		20180314				Frequency		50HZ	
1		2		3		4		5		6		7		8	



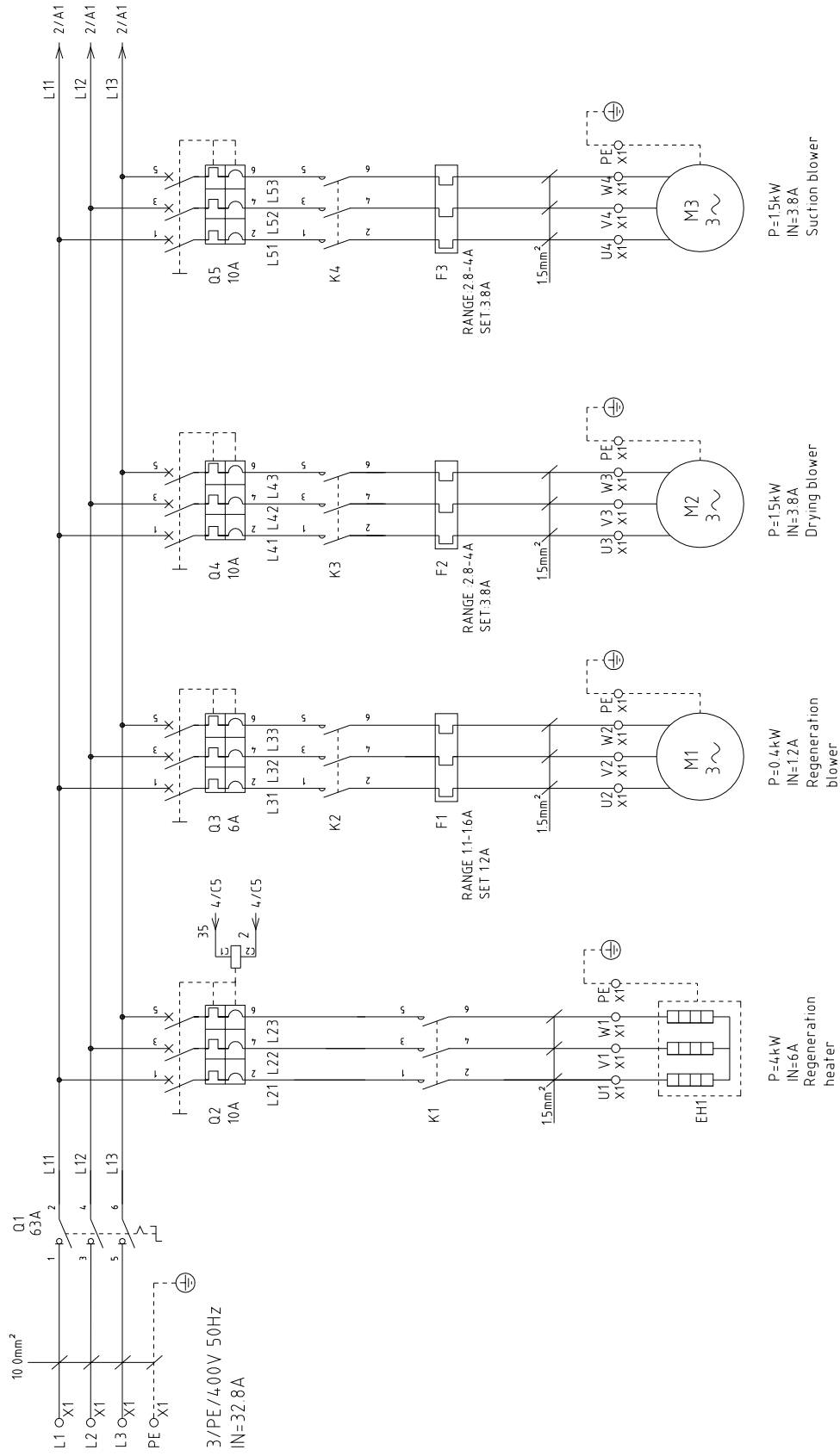
1		2		3		4		5		6		7		8	
NO.	Symbol	Name	Manufacturer	Type	Specification	Number	Material number	Remark							
26	S13 S14	Communication interface board RS-485 (double DSub-9pin connector)	--	--	--	2	YE900048501200	(3)							
27		Shell RS485(SAL-700G-A-1910)	--	--	--	2	YR40048500000	(3)							
28	Y1-Y7	Solenoid valve	----	SPDV-38	24VDC	7	----	(1)							
29	Y8 Y9	Solenoid valve	----	----	24VDC	2	----	(1) (4)							
30	X1	Terminal board	----	4mm ²	----	15	YE60000403200								
31		Terminal board	----	4mm ² PE	----	5	YE60000403500								
32		Terminal board	----	2.5mm ²	----	20	YE60002503200								
33		Terminal board	----	2.5mm ² PE	----	8	YE60002503400								
34		Terminal board	----	2.5mm ²	----	2	YE60002503200	(2)							
35		Terminal board	----	2.5mm ²	----	4	YE60002503200	(4)							
36		Terminal board	----	2.5mm ² PE	----	2	YE60002503400	(4)							
37	X2	Terminal board	----	ZDIK 1.5	10A 250V	4	YE60001500000								
38			----	FBSTB 10-ZDIK RD	10A 250V	4	YE60001000200								
39			----	FBSTB 10-ZDIK BU	10A 250V	4	YE60001000000								
40	X3	Terminal board	----	2.5mm ²	----	3	YE60002503200								
41			----	2.5mm ² PE	----	1	YE60002503400								
42	X4	Terminal board	----	2.5mm ²	----	6	YE60002503200								
43			----	2.5mm ² PE	----	2	YE60002503400								
44	X5	Terminal board	----	2.5mm ²	----	6	YE60002503200								
45			----	2.5mm ² PE	----	1	YE60002503400								
46	X10,X11,X12,X13	Heavy duty plug-in	SIBAS	HDC-HA-004.1	4P 10A	4	----	(1)							
47	S6	Micro switch	----	YBLXW-5/11G2	----	1	----	(1)							
48	S7 S9 S11	EGO	SHINI	(115--320℃ 55.13262.160)	----	3	----	(1)							
49	S8 S10 S12	Thermocouple	SHINI	SD-30H/120H(2.5M)MY07	----	3	----	(1)							
50	H1	Buzzer	HITPOINT	PK-27A/29EPIDC3-24V)	24VDC	1	YE84002700000	(1)							
版本 Ver.B		Notes: (1)Means it's not the material inside the control box (2) optional dewpoint; (3)means equipped with communication port. (4)Means equipped with shut-off valve.													
D		Title		Drawing NO		Scale		Page		10		Page		10	
		SCD-80Ux2-100H		SCD-80Ux2-100H		CE		Standard		CE		Voltage		400V	
		Electrical Components List 2										Frequency		50HZ	
Mark		Before modification		Modified by		Modify date		After modification		Date		20180314			
1		2		3		4		5		6		7		8	



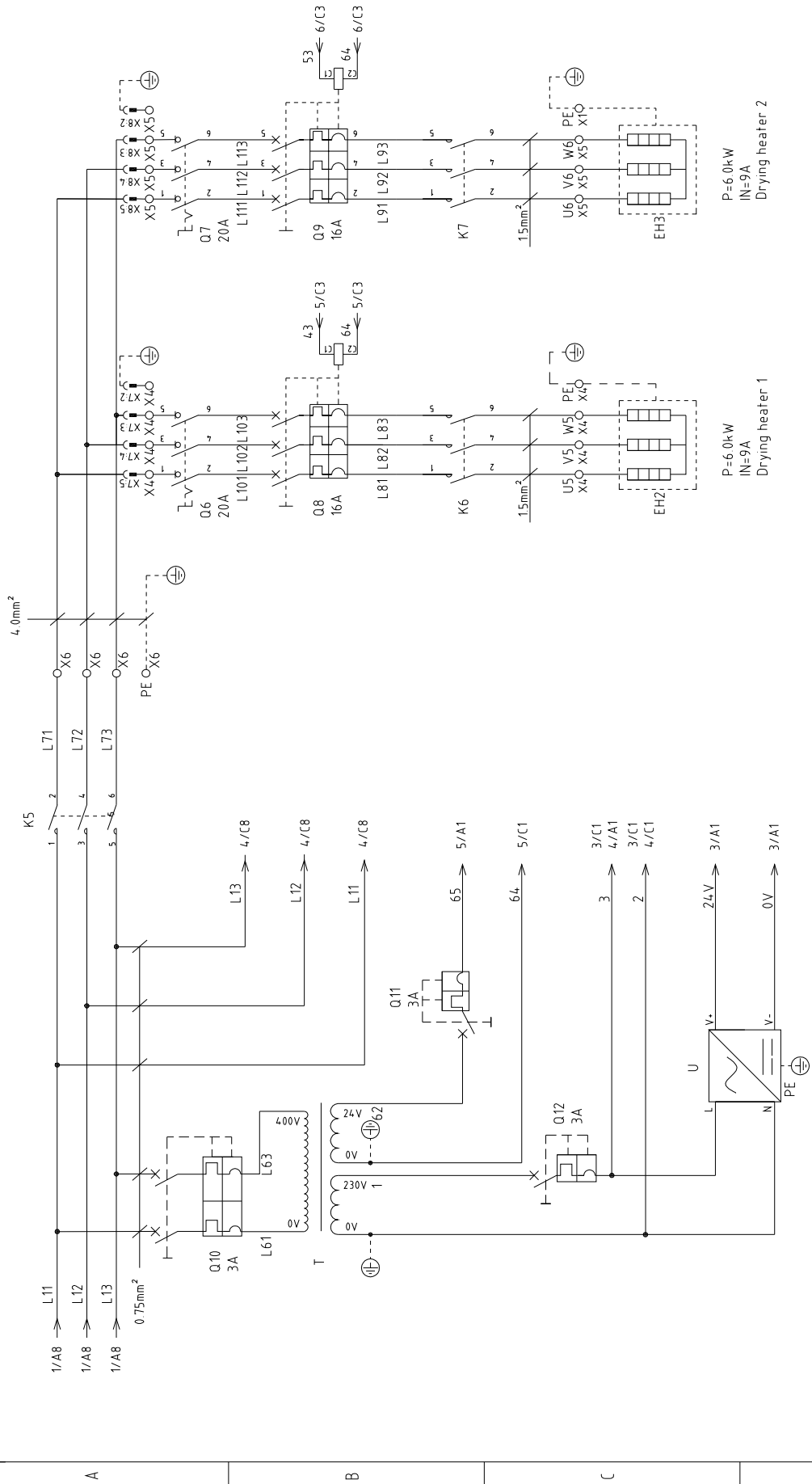
1		2		3		4		5		6		7		8	
NO.	Symbol	Name	Manufacturer	Type	Specification	Number	Material number	Remark							
51	FM	Exhaust fan	----	12×12CM/230V/50/60HZ	配塑胶网	1	----	(1)							
52	M1	Drying blower	SHINI	HTB75-032	0.4KW 380V 50Hz	1	----	(1)							
53	M2	Regeneration blower	SHINI	RB205	0.4KW 380-415V 50Hz	1	----	(1)							
54	M3	Suction blower	SHINI	RB420	1.5KW 380-415V 50Hz	1	----	(1)							
55	M4	Gear motor	SHINI	3GN-10XK/3GN-60K/3IK15GN-C-T 220V		1	----	(1)							
56	EH1	Pipe heater	SHINI	SD/SDD/SCD-3KW3Φ 230/400V		1	----	(1)							
57	EH2 EH3	Pipe heater	SHINI	SHD-80U(3.9KW)3Φ 400V	400V 50Hz 3.9KW	2	----	(1)							
58		Terminal block E/GKseries(honeywell)				5	YE60000003900								
59	K13	Middle relay	HONEYWELL	GR-2C-AC24V配座PGR-2C-E	24V 50/60Hz	1	YE030224-00300								
60	X6	Terminal board	----	6mm ²	----	3	YE60000603200								
61		Terminal board	----	6mm ² PE	----	1	YE60000603500								
62		Terminal board	----	2.5mm ²	----	3	YE600002503200								
63		Terminal board	----	2.5mm ² PE	----	1	YE600002503400								
A															
B															
C															
D															
版本 Ver.B															
				Title		Version		Drawing NO		Scale		Page		11	
				A		Approved by		SCD-80U×2-100H		Standard		CE		Totally 11 Pages	
				Date		20180314		Electrical Components List 3		Standard		Voltage		400V	
				Modify date		20180314		SHINI		Frequency		Frequency		50HZ	
				2		4		5		6		7		8	

Notes: (1)Means it's not the material inside the control box (2) optional dewpoint, (3)means equipped with communication port, (4)Means equipped with shut-off valve.

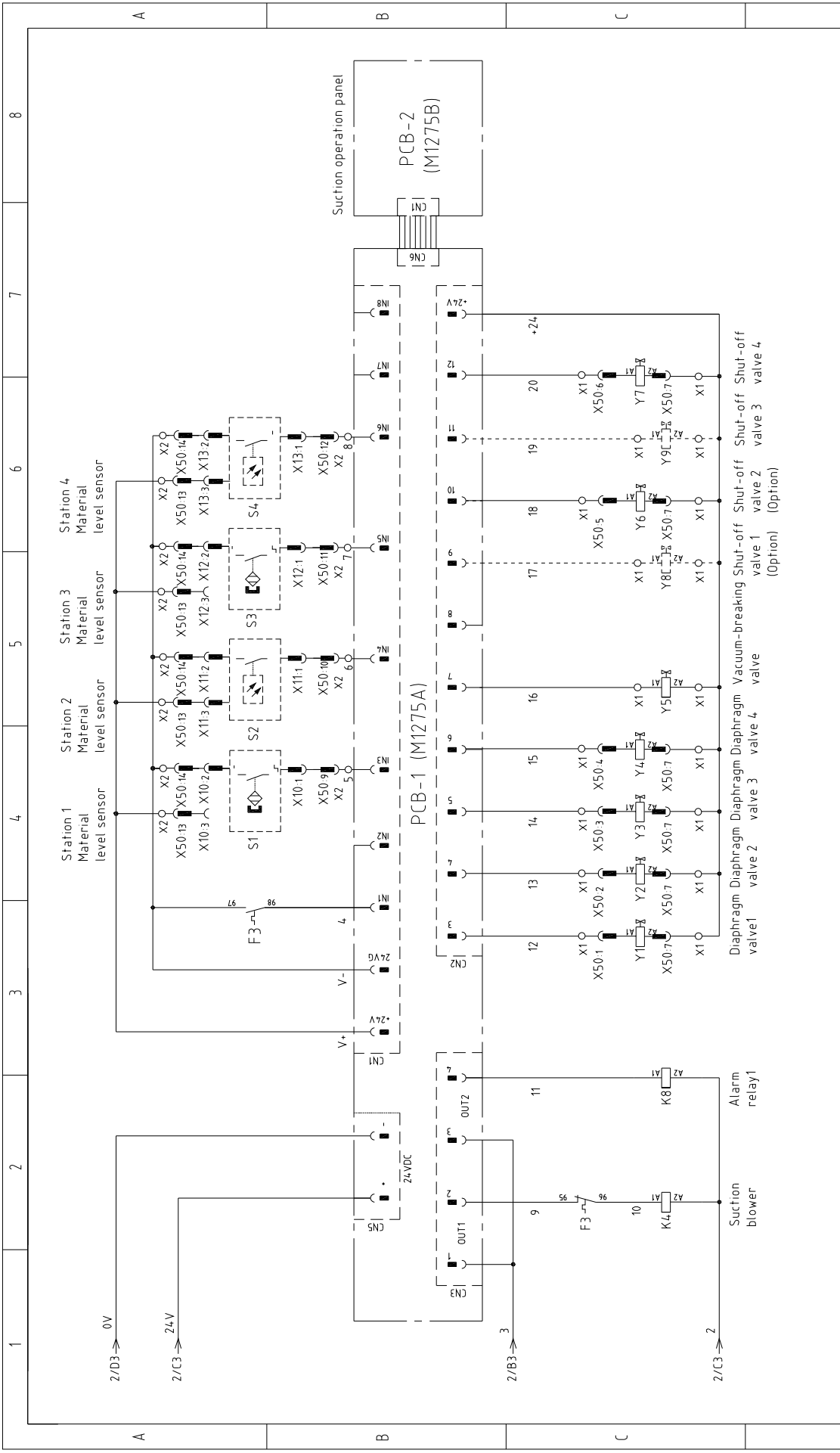




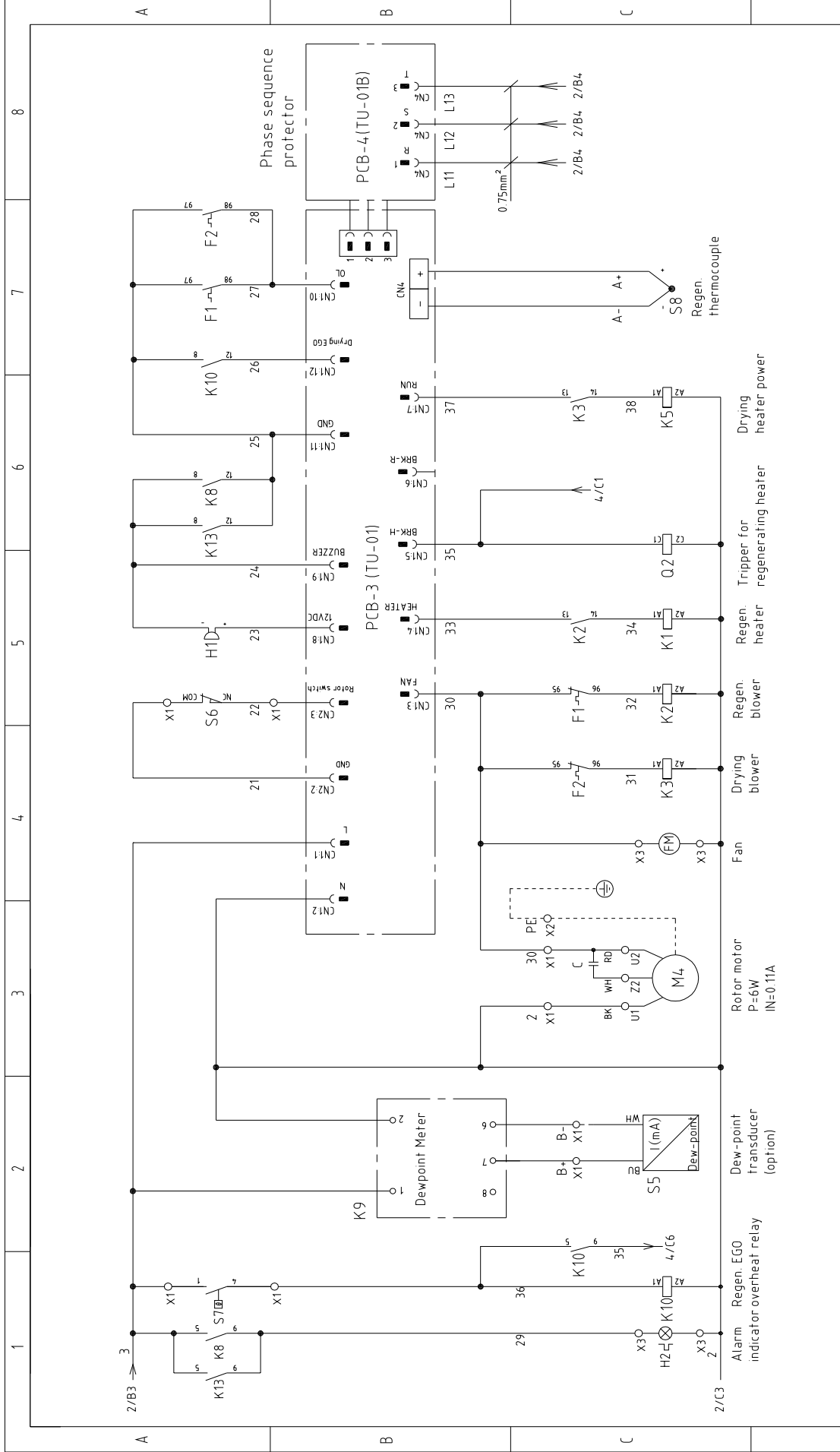
1	2	3	4	5	6	7	8
<p>Scale: Standard CE</p> <p>Voltage: 400V</p> <p>Frequency: 50Hz</p>							
<p>Page 1</p> <p>Totally 11 Pages</p>							
<p>Drawing NO: SCD-160Ux2-200H-D</p> <p>Title: SCD-160Ux2-200H-D</p> <p>Main Circuit Diagram 1</p>							
<p>Version: 0</p> <p>Approved by:</p> <p>Date: 20180803</p>							
<p>Designer:</p> <p>Proofread by:</p> <p>Checked by:</p>							
<p>Modify date:</p> <p>After modification:</p> <p>Before modification:</p>							
<p>Mark</p>							
<p>SHINI 信易電熱機械股份有限公司 Shini Plastics Technologies, Inc.</p>							



Mark		Before modification	Modified by	Modify date	Checked by	Date	Approved by	Version	0	Title	SCD-160Ux2-200H-D Main Circuit Diagram 2		Scale	Standard	CE	Page	2
Mark		After modification	Modified by	Modify date	Checked by	Date	Approved by	Version	0	Title	SCD-160Ux2-200H-D-CE-400V-0-2		Scale	Standard	CE	Page	11
Mark		Before modification	Modified by	Modify date	Checked by	Date	Approved by	Version	0	Title	SHINI 信易电热机械股份有限公司 Shini Plastics Technologies, Inc.		Scale	Standard	CE	Page	8
Mark		After modification	Modified by	Modify date	Checked by	Date	Approved by	Version	0	Title	SHINI 信易电热机械股份有限公司 Shini Plastics Technologies, Inc.		Scale	Standard	CE	Page	8

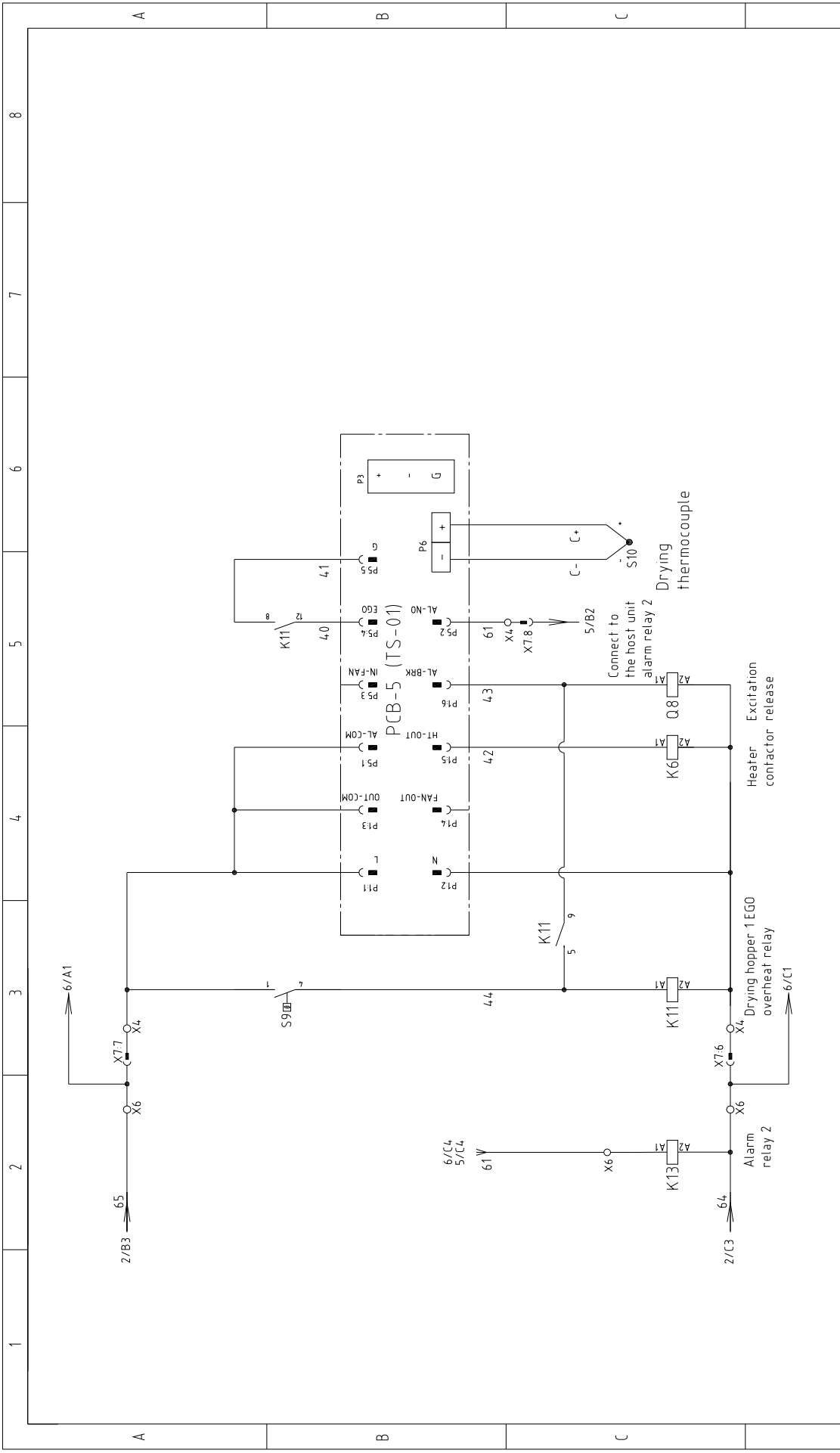


1	2	3	4	5	6	7	8
2/D3 → 0V		2/C3 → 24V		2/B3 → 3		2/C3 → 2	
Station 1 Material level sensor		Station 2 Material level sensor		Station 3 Material level sensor		Station 4 Material level sensor	
Suction blower		Alarm relay1		Diaphragm Diaphragm Diaphragm Diaphragm valve 1 valve 2 valve 3 valve 4		Shut-off Shut-off Shut-off Shut-off valve 1 valve 2 valve 3 valve 4 (Option) (Option)	
Mark		Before modification		After modification		Modified by	
Date		20180803		Date		20180803	
Checked by		Proofread by		Designer		Drawer	
Approved by		Version		0		Title	
Standard		CE		Scale		Page	
Voltage		400V		Drawing NO		3	
Frequency		50HZ		SCD-160Ux2-200H-D		Totally	
Frequency		50HZ		Control Circuit Diagram 1		11	
Voltage		400V		SHINI		Pages	
Frequency		50HZ		信易電熱機械股份有限公司		8	
Frequency		50HZ		Shini Plastics Technologies, Inc.		8	

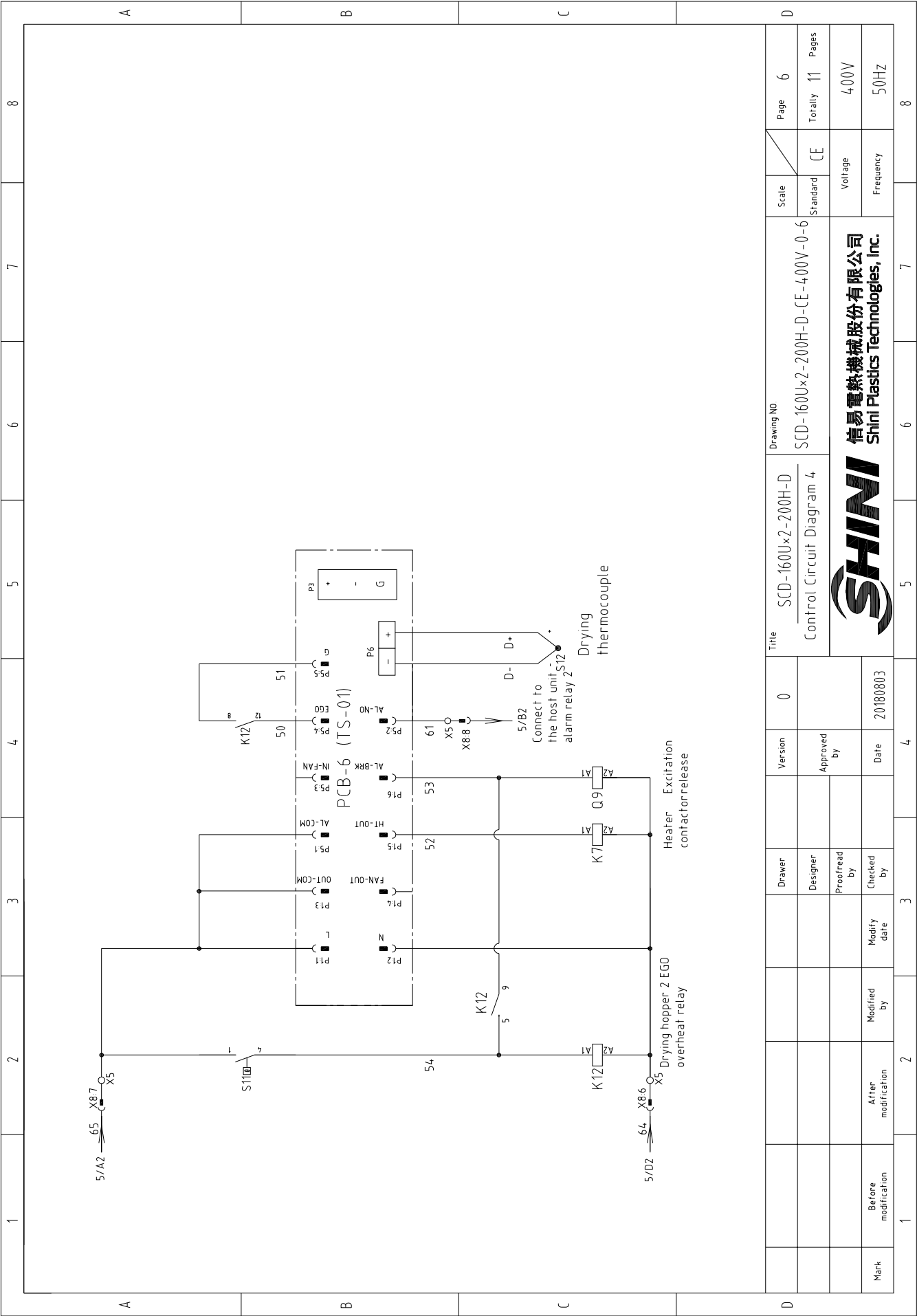


Scale		Page 4	
Standard		Totally 11 Pages	
Voltage		400V	
Frequency		50HZ	
Drawing NO		SCD-160Ux2-200H-D-CE-400V-0-4	
Title		SCD-160Ux2-200H-D Control Circuit Diagram 2	
Version	0	Approved by	
Designer		Proofread by	
Checked by	20180803	Modified by	
Modify date		After modification	
Before modification		Mark	



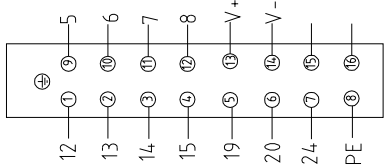
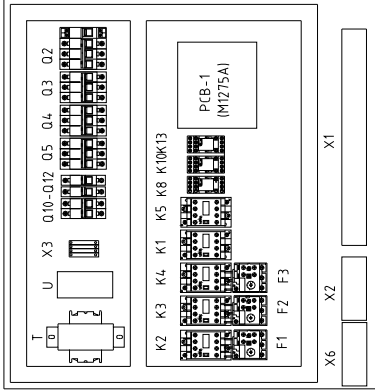
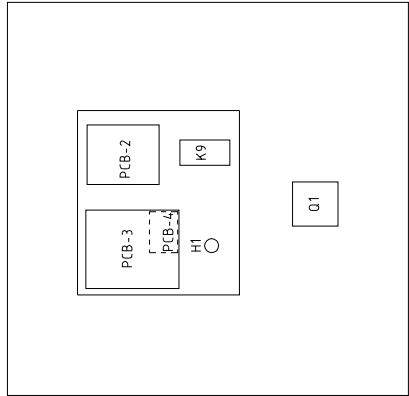
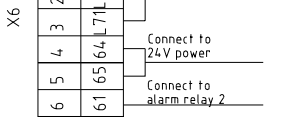
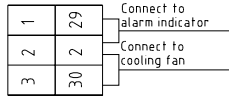


1		2		3		4		5		6		7		8	
A		B		C		D		Scale		Standard		Page		5	
A		B		C		D		Title		Version		Approved by		Totally	
A		B		C		D		SCD-160Ux2-200H-D		0				11	
A		B		C		D		Control Circuit Diagram 3						Pages	
A		B		C		D		Drawing NO						Voltage	
A		B		C		D		SCD-160Ux2-200H-D-CE-400V-0-5						400V	
A		B		C		D		SHINI						Frequency	
A		B		C		D		信易電熱機械股份有限公司						50HZ	
A		B		C		D		Shini Plastics Technologies, Inc.							
A		B		C		D		Mark		Before modification		Modified by		Date	
A		B		C		D								20180803	
A		B		C		D		Drawer		Designer		Proofread by		Checked by	
A		B		C		D									
A		B		C		D		1		2		3		4	



Mark	Before modification	Modified by	Modify date	After modification	2	3	4	5	6	7	8
Mark											
Before modification											
After modification											
Version	0	Approved by									
Title	SCD-160Ux2-200H-D Control Circuit Diagram 4										
Scale	Standard										
Page	6										
Totally	11										
Pages	400V										
Voltage	50HZ										
Frequency											
Standard	CE										
Drawing NO	SCD-160Ux2-200H-D-CE-400V-0-6										
 信易電熱機械股份有限公司 Shini Plastics Technologies, Inc.											

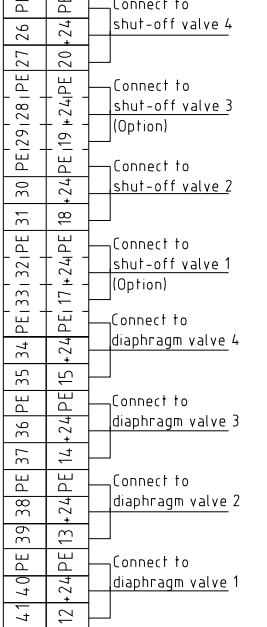
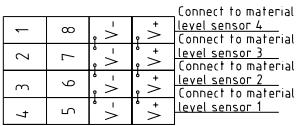
X50 Heavy load joint for connecting heating tank and the main machine



Subscript	Function	Description
1		Diaphragm valve 1 output signal
2		Diaphragm valve 1 output signal
3		Diaphragm valve 1 output signal
4		Diaphragm valve 1 output signal
5		Shut-off valve 1 output signal
6		Shut-off valve 2 output signal
7	+24V	
8	PE	Grounding wire
9		Hopper 1 level sensor input signal
10		Hopper 2 level sensor input signal
11		Hopper 3 level sensor input signal
12		Hopper 4 level sensor input signal
13	V+	Material level signal V+
14	V-	Material level signal V-
15		
16		

Connect to heavy duty connector X7 X8

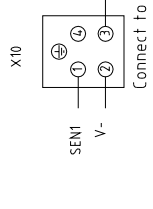
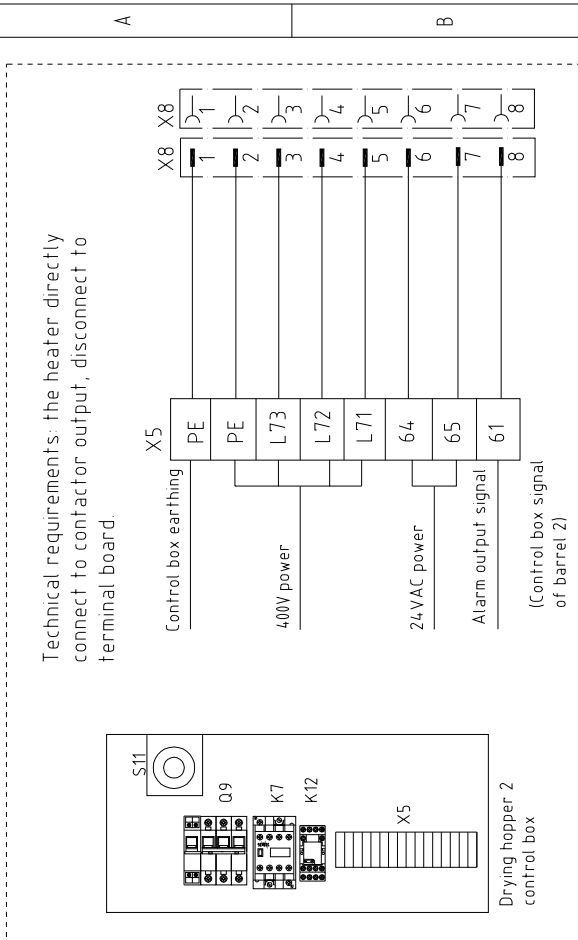
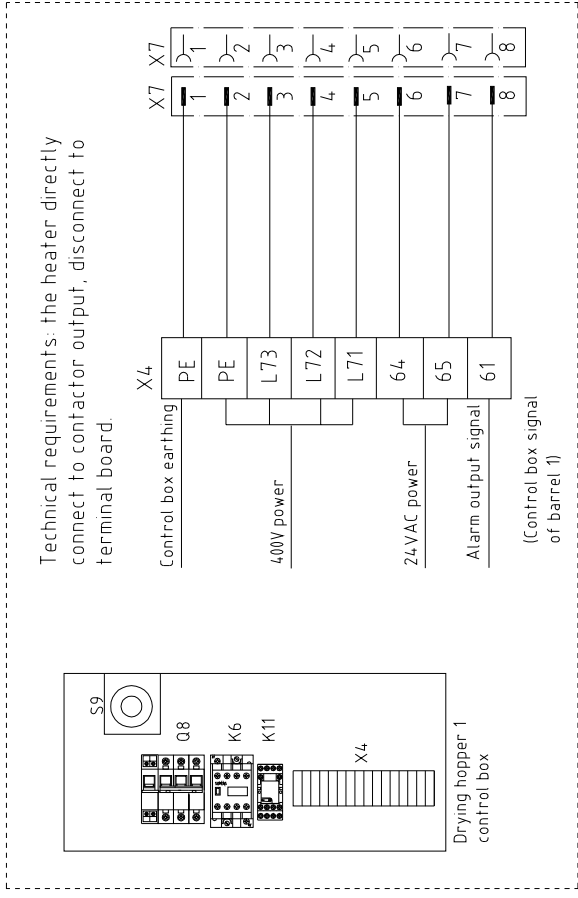
X2



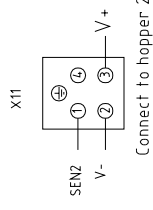
Connect to heavy duty connector X50

Mark	Before modification	After modification	Modified by	Modify date	Checked by	Proofread by	Designer	Drawer	Version	Approved By	Title	Drawing NO	Scale	Page
									0		SCD-160Ux2-200H-D Electrical Components Layout 1	SCD-160Ux2-200H-D-CE-400V-0-7	Standard	7
													CE	Totally 11
														Pages
														400V
														50HZ

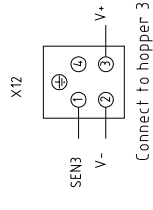




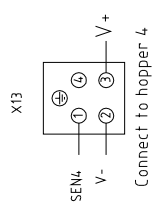
Subscript	Function	Description
1	Material level signal (SENS)	Connect to material sensor 1
2	GND	
3	24V+	
4	----	



Subscript	Function	Description
1	Material level signal (SENS)	Connect to material sensor 2
2	GND	
3	24V+	
4	----	



Subscript	Function	Description
1	Material level signal (SENS)	Connect to material sensor 3
2	GND	
3	24V+	
4	----	



Subscript	Function	Description
1	Material level signal (SENS)	Connect to material sensor 4
2	GND	
3	24V+	
4	----	

Mark	Before modification	After modification	Modified by	Modify date	Checked by	Date	Proofread by	Designer	Drawer	Version	Title	Drawing NO	Scale	Page	Totally	Pages	
						20180803				0	Electrical Components Layout 2	SCD-160Ux2-200H-D	Standard	8	11	400V	50HZ
											SCD-160Ux2-200H-D-CE-400V-0-8		CE				



1	2		3	4	5	6	7	8
NO.	Symbol	Name	Manufacturer	Type	Specification	Number	Material number	Remark
1	Q1	Main power switch	EATON	P3-63/EA/SVB 63A	63A	1	YE10636300000	
2	Q2 Q4 Q5	Circuit breaker	TECO	BM-63C/3010S	10A	3	YE40301003000	
3		Release	CHINT	MX	110V ~ 400V/50/60HZ	1	YE40023560000	A
4	Q8 Q9	Circuit breaker	TECO	BM-63C/3016S	16A	2	YE40301603000	
5		Release	TECO	MX	24VAC	2	YE40024000000	
6	Q3	Circuit breaker	TECO	BM-63C/3006S	6A	1	YE40300603000	
7	Q6 Q7	Main power switch	EATON	TO-2-1/EA/SVB/20A	20A	2	YE10021160000	
8	Q10	Circuit breakers	TECO	BM-63C	3A	1	YE40200203000	
9	Q11 Q12	Circuit breakers	TECO	BM-63C	3A	2	YE40100203000	
10	K1-K4	Contactors	SIEMENS	3RT6016-1AN21	9A 1NO 220V 50/60Hz	4	YE00601621000	
11	K5	Contactors	SIEMENS	3RT6027-1AN20	32A 220V 50/60Hz	1	YE00602722000	B
12	K6 K7	Contactors	SIEMENS	3RT6018-1AB01	16A NO 24V 50/60Hz	2	YE00601802500	
13	K8 K10	Middle relay	WEIDMULLER	DRM270730LT	230V 50/60Hz	2	YE03270700000	
14	K11 K12	Middle relay	-----	GR-2C-AC24V+PGR-2C-E	24V 50/60Hz 继电器	2	YE03022400300	
15	K9	Dew-point meter	SHINI	Dewpoint Meter	220V 50/60Hz	1	YE85122000100	
16	S5	Dew-point transducer	CS	Z17-OEM	POWER=24.VDC 4-20mA	1	YE90021700100	(1)
17	F1	Thermo overload relays	SIEMENS	3RU6116-1AB0	11-16A	1	YE01160110000	
18	F2 F3	Thermo overload relays	SIEMENS	3RU6116-1EB0	2.8-4A	2	YE01160280000	
19	T	Transformer	-----	IN=400V OUT=230V/24V	1000mA/80VA	1	YE70040008800	C
20	U	DC Power	-----	ESA-35-24	OUT=DC24V 15A	1	YE71352400100	
21	PCB-1 (PCB-2)	PCB	HONGYUN	M1275	一对四	1	YE80127500000	
22	PCB-3	PCB	YUYUN	TU-01A+SA-RCS2	220VAC	1	YE80001100000	
23	PCB-4	PCB	YUYUN	TU-01B	-----	1	YE80001100100	
24	PCB-5 PCB-6	PCB	HANYONG NUX	TS-01(24.VDC/AC)	24VAC	2	YE80000101200	
25	H2	Alarm indicator	SHINI	LED-3051/220VAC	220V 50/60Hz	1	YE83305100200	(1)

Notes: (1)Means it's not the material inside the control box.(2) optional dewpoint; (2)Means equipped with shut-off valve.

D	Drawing NO	Scale	Page	9
	SCD-160Ux2-200H-D	Standard	CE	Totally
	Electrical Components list 1			11
	SCD-160Ux2-200H-D-CE-400V-0-9			Pages
				400V
				50HZ



NO.	Symbol	Name	Manufacturer	Type	Specification	Number	Material number	Remark
26	X7 X8	Heavy duty connector	HARTING	10P+PE(公插+母座) Han E-10M/F		2	YE68001001300	
27	X50	Heavy duty connector	HARTING	16P+PE(公插+母座) Han E-16M/F(浩亭)(不含PG21)		1	YE68001601300	
28	Y1~Y7	Solenoid valve	----	SPDV-38	24VDC	7	----	(1)
29	Y8 Y9	Solenoid valve	----	----	24VDC	2	----	(1) (2)
30	X1	Terminal board	Honeywell	10mm ²	----	3	YE60001003200	
31		Terminal board	Honeywell	10mm ² PE	----	1	YE60001003500	
32		Terminal board	Honeywell	4mm ²	----	12	YE60000403200	
33		Terminal board	Honeywell	4mm ² PE	----	4	YE60000403500	
34		Terminal board	Honeywell	2.5mm ²	----	22	YE60002503200	
35		Terminal board	Honeywell	2.5mm ² PE	----	8	YE60002503400	
36		Terminal board	Honeywell	2.5mm ²	----	4	YE60002503200	(2)
37		Terminal board	Honeywell	2.5mm ² PE	----	2	YE60002503400	(2)
38	X2	Terminal board	----	ZDIK 15	10A 250V	4	YE60001500000	
39		Terminal board	----	FBSTB 10-ZDIK RD	10A 250V	4	YE60001000200	
40		Terminal board	----	FBSTB 10-ZDIK BU	10A 250V	4	YE60001000000	
41	X3	Terminal board	Honeywell	2.5mm ²	----	3	YE60002503200	
42		Terminal board	Honeywell	2.5mm ² PE	----	1	YE60002503400	
43	X4	Terminal board	Honeywell	4.0mm ²	----	3	YE60000403200	
44		Terminal board	Honeywell	4.0mm ² PE	----	1	YE60000403500	
45		Terminal board	Honeywell	2.5mm ²	----	3	YE60002503200	
46		Terminal board	Honeywell	2.5mm ² PE	----	1	YE60002503400	
47	X5	Terminal board	Honeywell	4.0mm ²	----	3	YE60000403200	
48		Terminal board	Honeywell	4.0mm ² PE	----	1	YE60000403500	
49		Terminal board	Honeywell	2.5mm ²	----	3	YE60002503200	
50		Terminal board	Honeywell	2.5mm ² PE	----	1	YE60002503400	

Notes: (1)Means it's not the material inside the control box (2) optional dewpoint, (2)Means equipped with shut-off valve.

NO.	Symbol	Name	Manufacturer	Type	Specification	Number	Material number	Remark
26	X7 X8	Heavy duty connector	HARTING	10P+PE(公插+母座) Han E-10M/F		2	YE68001001300	
27	X50	Heavy duty connector	HARTING	16P+PE(公插+母座) Han E-16M/F(浩亭)(不含PG21)		1	YE68001601300	
28	Y1~Y7	Solenoid valve	----	SPDV-38	24VDC	7	----	(1)
29	Y8 Y9	Solenoid valve	----	----	24VDC	2	----	(1) (2)
30	X1	Terminal board	Honeywell	10mm ²	----	3	YE60001003200	
31		Terminal board	Honeywell	10mm ² PE	----	1	YE60001003500	
32		Terminal board	Honeywell	4mm ²	----	12	YE60000403200	
33		Terminal board	Honeywell	4mm ² PE	----	4	YE60000403500	
34		Terminal board	Honeywell	2.5mm ²	----	22	YE60002503200	
35		Terminal board	Honeywell	2.5mm ² PE	----	8	YE60002503400	
36		Terminal board	Honeywell	2.5mm ²	----	4	YE60002503200	(2)
37		Terminal board	Honeywell	2.5mm ² PE	----	2	YE60002503400	(2)
38	X2	Terminal board	----	ZDIK 15	10A 250V	4	YE60001500000	
39		Terminal board	----	FBSTB 10-ZDIK RD	10A 250V	4	YE60001000200	
40		Terminal board	----	FBSTB 10-ZDIK BU	10A 250V	4	YE60001000000	
41	X3	Terminal board	Honeywell	2.5mm ²	----	3	YE60002503200	
42		Terminal board	Honeywell	2.5mm ² PE	----	1	YE60002503400	
43	X4	Terminal board	Honeywell	4.0mm ²	----	3	YE60000403200	
44		Terminal board	Honeywell	4.0mm ² PE	----	1	YE60000403500	
45		Terminal board	Honeywell	2.5mm ²	----	3	YE60002503200	
46		Terminal board	Honeywell	2.5mm ² PE	----	1	YE60002503400	
47	X5	Terminal board	Honeywell	4.0mm ²	----	3	YE60000403200	
48		Terminal board	Honeywell	4.0mm ² PE	----	1	YE60000403500	
49		Terminal board	Honeywell	2.5mm ²	----	3	YE60002503200	
50		Terminal board	Honeywell	2.5mm ² PE	----	1	YE60002503400	

Drawing NO	Scale	Page	Totally
SCD-160Ux2-200H-D	Standard	10	11
Electrical Components List 2	CE		



Mark	Before modification	Modified by	Modify date	Checked by	Date
					20180803

Version	Approved by	Version	Approved by
0			

1		2		3		4		5		6		7		8	
NO.	Symbol	Name	Manufacturer	Type	Specification	Number	Material number	Remark							
51	X10, X11, X12, X13	Heavy duty plug-in	HARTING	HDC-HA-004.1	4P 10A	4	----	(1)							
52	S6	Micro switch	----	YBLXW-5/1fG2	----	1	----	(1)							
53	S7 S9 S11	EGO	SHINI	(115-320℃ 55.13262.160)	----	3	----	(1)							
54	S8 S10 S12	Thermocouple	SHINI	SD-30H/120H(2.5M)MY07	----	3	----	(1)							
55	H1	Buzzer	HITPOINT	PK-27A/29EP(DC3-24V)	24VDC	1	YE84002700000	(1)							
56	FM	Fan	----	12×12CM/230V/50/60HZ	配差线网	1	----	(1)							
57	M1	Regeneration blower	SHINI	RB205	0.4KW 380-415V 50Hz	1	----	(1)							
58	M2	Drying blower	SHINI	RB420	15KW 380-415V 50Hz	1	----	(1)							
59	M3	Suction blower	SHINI	RB420	15KW 380-415V 50Hz	1	----	(1)							
60	M4	Gear motor	SHINI	3GN-10XK/3GN-60K/3IK15GN-A-T	1Φ220V	1	----	(1)							
61	EH1	Heater	SHINI	4KW 3Φ230V/4.00V共用	SD-40H-D-03-04(0版)	1	----	(1)							
62	EH2 EH3	Heater	SHINI	-----	4.00V 50Hz 6KW	2	----	(1)							
63		Terminal block E/GKseries(honeywell)	Honeywell			5	YE60000003900								
64	K13	Middle relay	Honeywell	GR-2C-AC24V	配差PGR-2C-E	1	YE03022400300								
65	X6	Terminal board	Honeywell	10mm ²	----	3	YE60001003200								
66		Terminal board	Honeywell	10mm ² PE	----	1	YE60001003500								
64		Terminal board	Honeywell	2.5mm ²	----	3	YE60002503200								
65		Terminal board	Honeywell	2.5mm ² PE	----	1	YE60002503400								
C															
Notes: (1)Means it's not the material inside the control box.(2) optional dewpoint; (2)Means equipped with shut-off valve.															
D															
				Title		Drawing NO		Scale		Page					
				SCD-160U×2-200H-D		SCD-160U×2-200H-D-CE-4.00V-0-11		Standard		CE		Totally 11		Pages	
				Electrical Components List 3											
				Version		Approved by		Voltage		Frequency					
				0				4.00V		50HZ					
Mark				Before modification		Modified by		Modify date		Date					
								20180803							
1 2 3 4 5 6 7 8															



信易電熱機械股份有限公司
Shini Plastics Technologies, Inc.