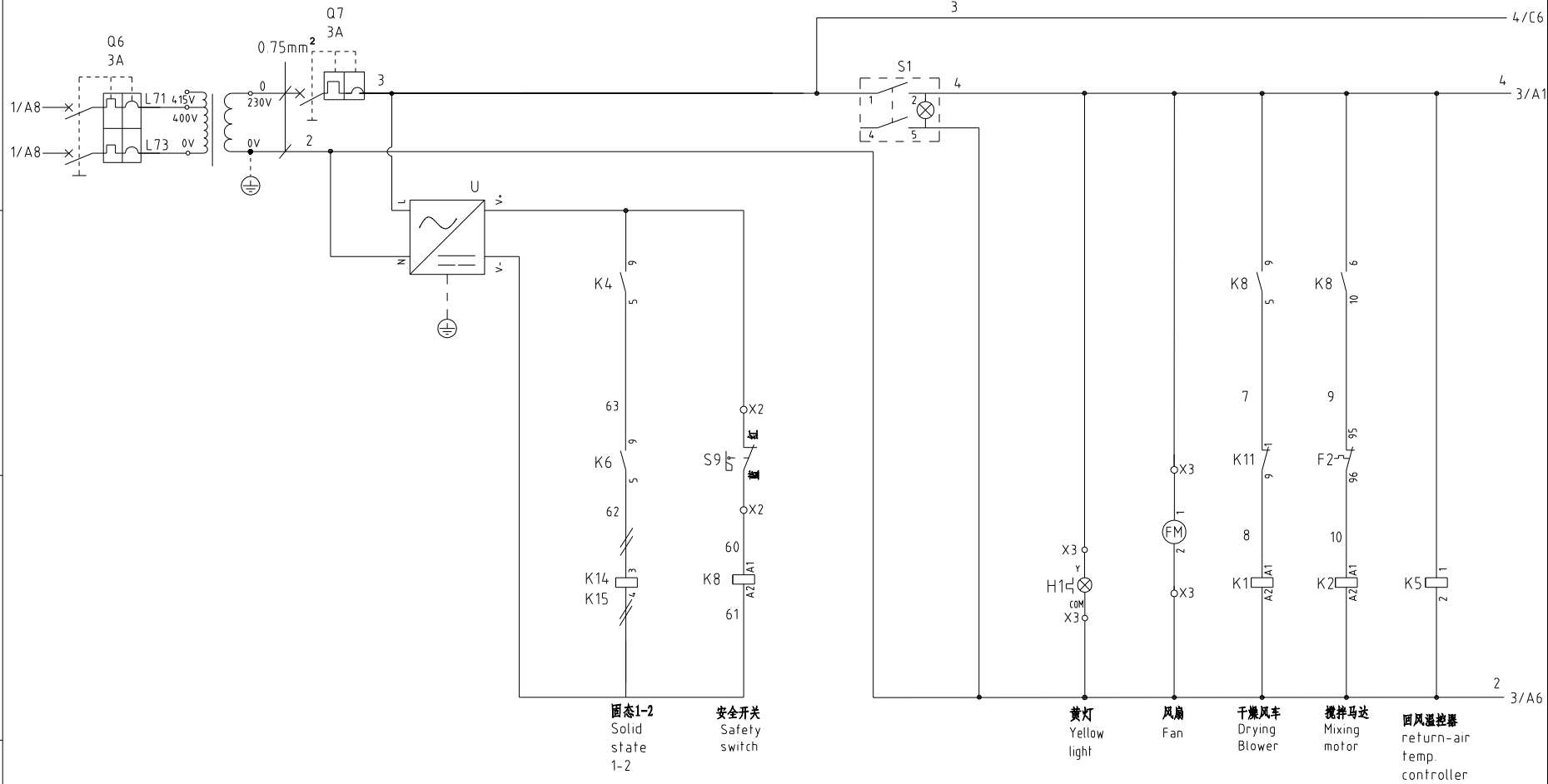


机型版本 Ver.C

					制图	版号	E	标题	SCR-160U	图号	SCR-160U-CE-400V-E-1	比例	第 1 张
					设计	核		主电路图		标准	CE	共 8 张	
					校对	准		 信易電熱機械股份有限公司 Shini Plastics Technologies, Inc.	机器电压	3φ400V			
标记	更改前	更改后	更改人	日期	审核	日期	2024.02.27		机器频率	50Hz			

1 2 3 4 5 6 7 8



固态1-2
Solid state
1-2

安全开关
Safety
switch

黄灯
Yellow
light

风扇
Fan

干燥风车
Drying
Blower

搅拌机达
Mixing
motor

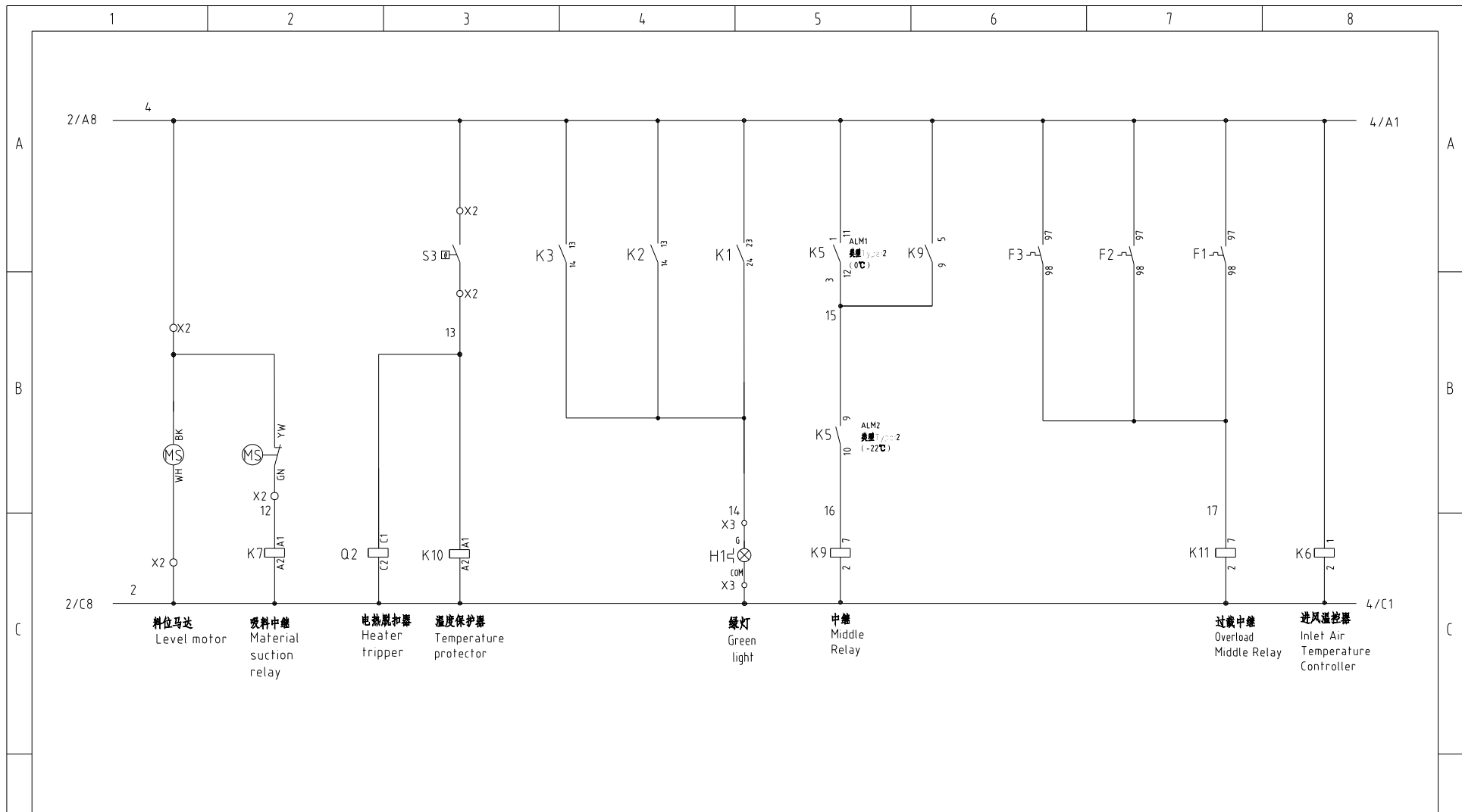
回风温控制器
return-air
temp.
controller

机型版本 Ver.C

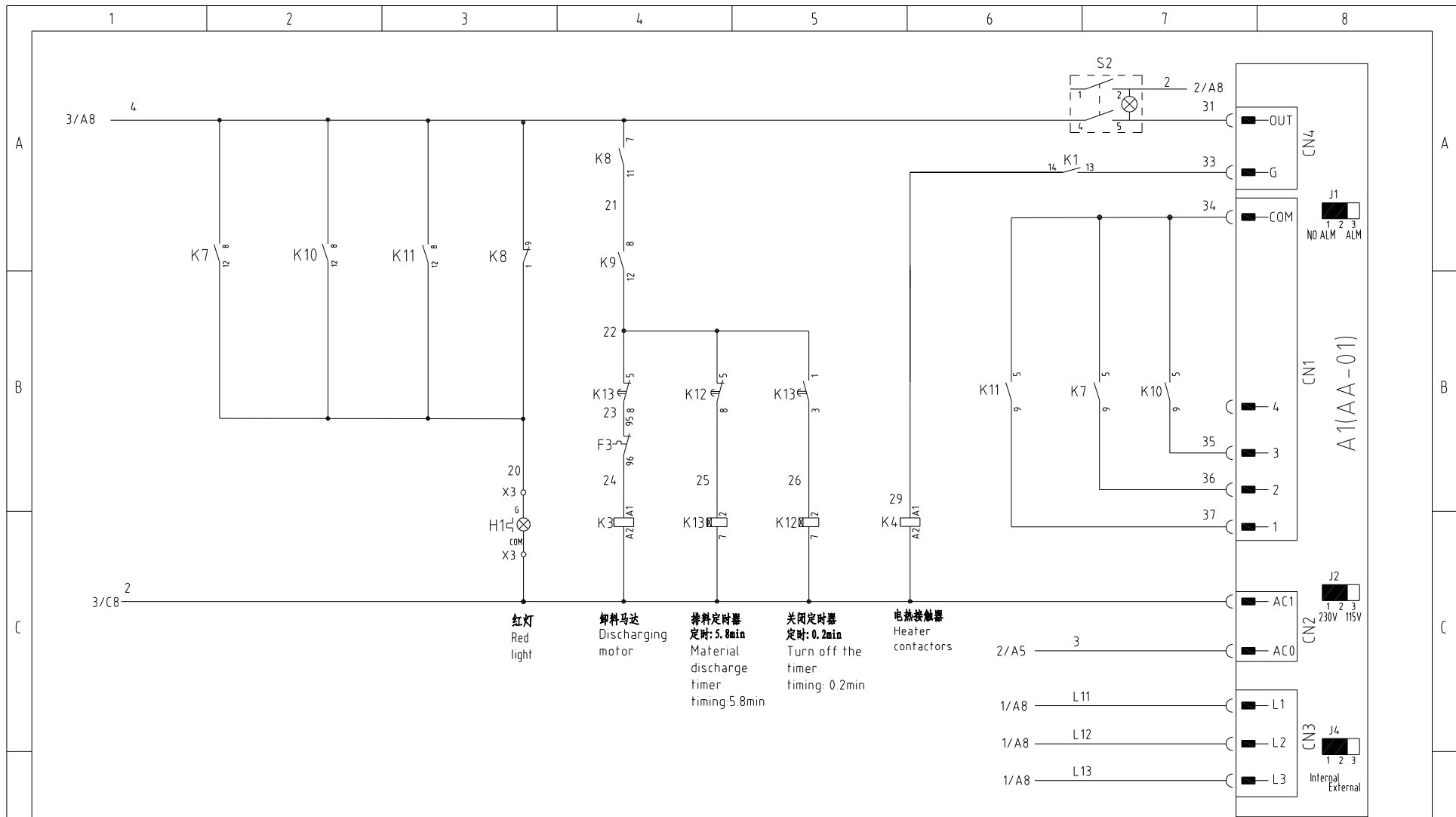
制图	版号	E	标题	SCR-160U
设计	核准		控制电路图一	图号
校对	日期	20240227		SCR-160U-CE-400V-E-2
标记	更改前	更改后	更改人	日期

SHINI 信易電熱機械股份有限公司
Shini Plastics Technologies, Inc.

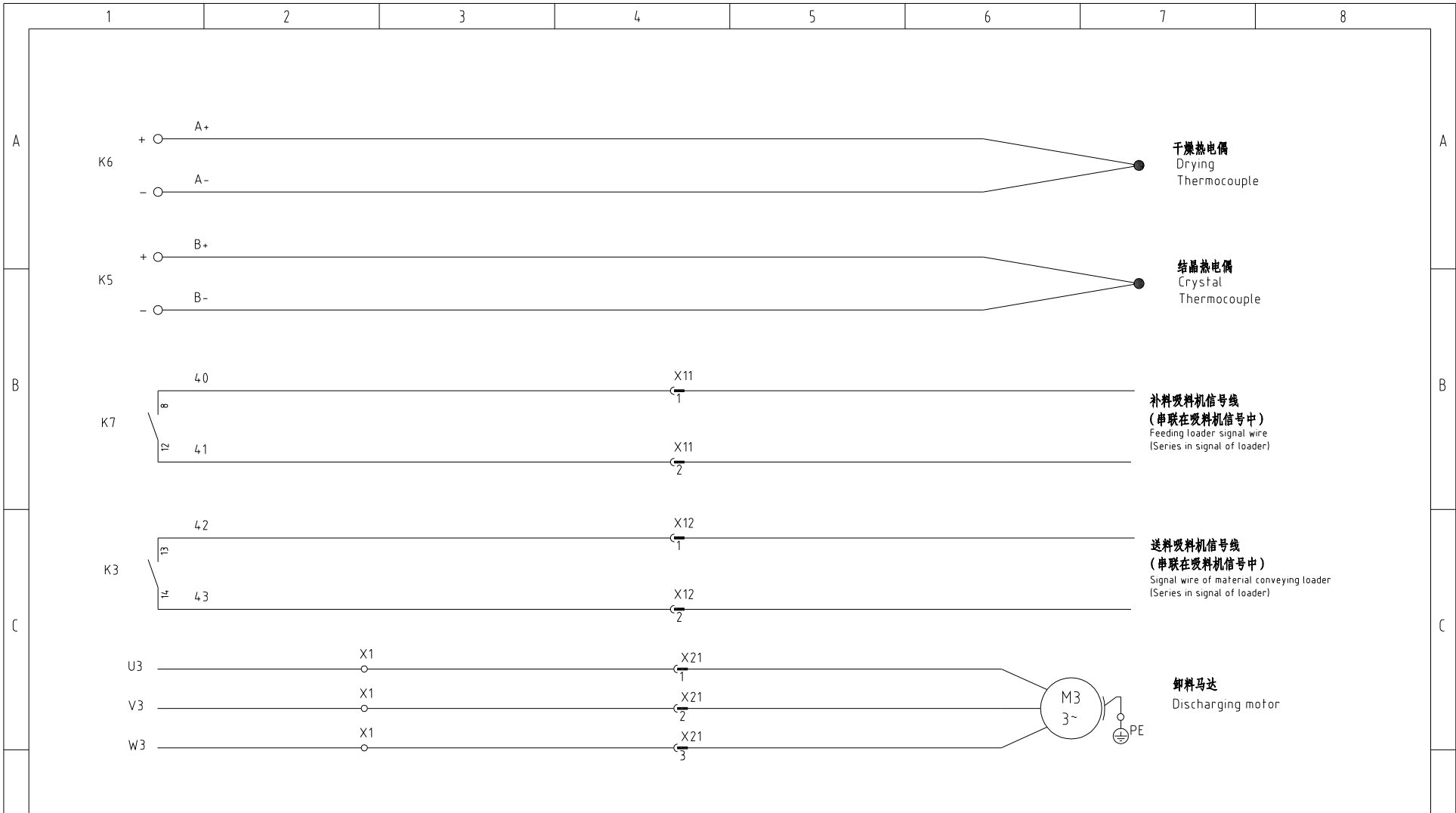
比例	第 2 张
标准	CE 共 8 张
机器电压	3φ400V
机器频率	50Hz



机型版本 Ver.C						制图	版号	E	标题	SCR-160U 控制电路图二	图号	SCR-160U-CE-400V-E-3	比例	第 3 张
						设计	核				标准	CE	共 8 张	
						校对	准				机器电压	3φ400V		
标记	更改前	更改后	更改人	日期	审核	日期	20240227	 信易電熱機械股份有限公司 Shini Plastics Technologies, Inc.		机器频率	50Hz			

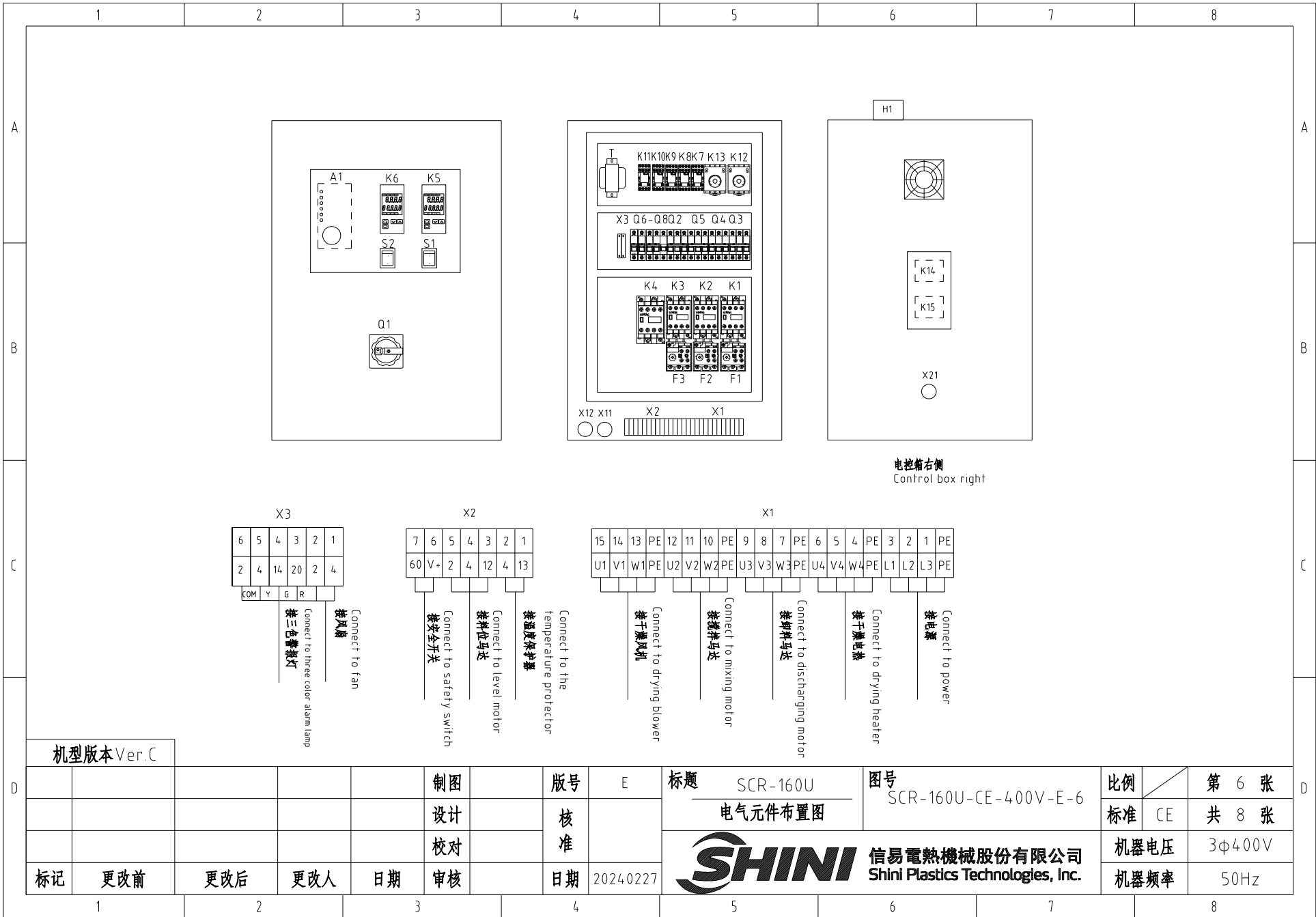


机型版本 Ver.C					制图	版号	E	标题	SCR-160U 控制电路图三	图号	SCR-160U-CE-400V-E-4	比例	第 4 张
					设计	核准				标准	CE	共 8 张	
					校对					机器电压	3φ400V		
标记	更改前	更改后	更改人	日期	审核	日期	20240227	 信易電熱機械股份有限公司 Shini Plastics Technologies, Inc.		机器频率	50Hz		
1	2	3	4	5	6	7	8						

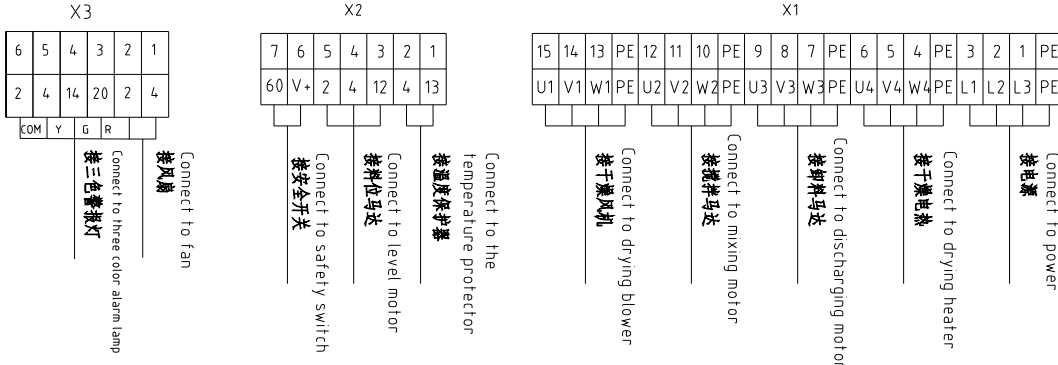


机型版本 Ver.C

					制图	版号	E	标题	SCR-160U	图号	SCR-160U-CE-400V-E-5	比例	第 5 张
					设计	核 准		热电偶及吸料信号接线图		标准	CE	共 8 张	
					校对			SHINI 信易電熱機械股份有限公司 Shini Plastics Technologies, Inc.		机器电压	3φ400V		
标记	更改前	更改后	更改人	日期	审核	日期	20240227			机器频率	50Hz		





电控箱右侧
Control box right



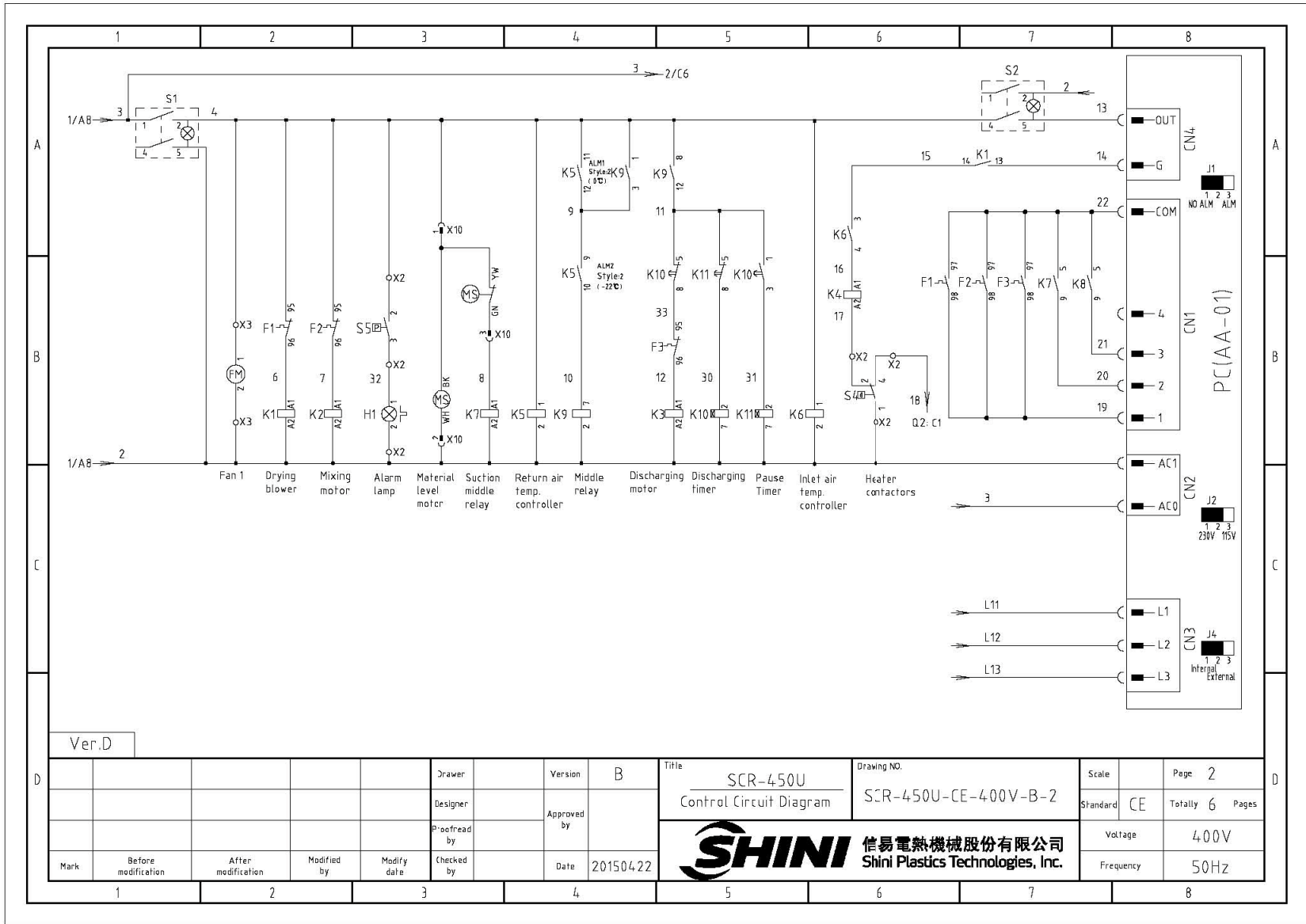
机型版本 Ver.C

					制图	版号	E	标题	SCR-160U	图号	SCR-160U-CE-400V-E-6	比例	第 6 张
					设计	核准		电气元件布置图		标准	CE	共 8 张	
					校对			信易电热机械股份有限公司 Shini Plastics Technologies, Inc.		机器电压	3φ400V		
标记	更改前	更改后	更改人	日期	审核	日期	20240227		机器频率	50Hz			

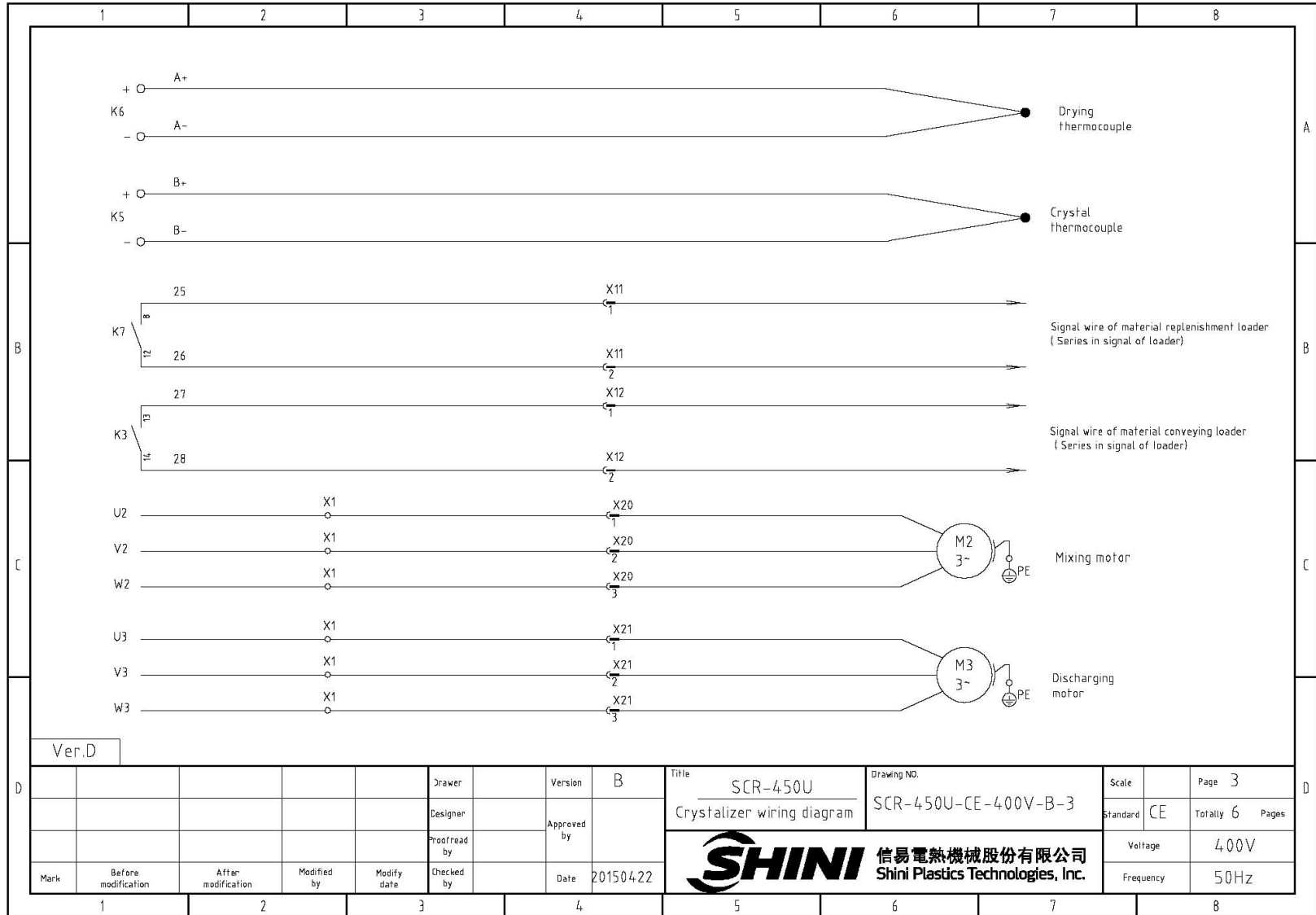
1		2		3		4		5		6		7		8				
序号/NO	符号/Symbol	名称/Name		制造商/Manufacturer		型号/Type		规格/Specification		单位/unit	数量/Number	物料编号/Material number		备注/Remark				
A	1	Q1	主电源开关 /Main power switch		MOELLER		P1-25/EA/SVB		25A		PCS	1	YE10125250000					
	2	Q2	断路器 /Circuit breakers		TECO		BM-63C		25A		PCS	1	YE40302503000					
	3		励磁脱扣器 /Excitation release		TECO		MX		230VAC		PCS	1	YE40023560000					
	4	Q3 Q4 Q5	断路器 /Circuit breakers		TECO		BM-63C		6A		PCS	3	YE40300603000					
	5	Q6	断路器 /Circuit breakers		TECO		BM-63C		3A		PCS	1	YE40200203000					
	6	Q7	断路器 /Circuit breakers		TECO		BM-63C		3A		PCS	1	YE40100203000					
	7	K1 K2 K3 K4	接触器 /Contactors		SIEMENS		3RT6016-1AN22		220V		PCS	4	YE00601622000					
B	8		辅助触点/Auxiliary contactor		SIEMENS		3RH6911-1AA10		1NO		PCS	4	YE00691110000					
	9	K5 K6	温控器 /Temperature controller		OMRON		E5EZ		100-240V 50/60Hz		PCS	2	YE85005000000					
	10	K7 K11	中间继电器 /Middle relay		WEIDMULLER		DRM570730LT		220V配座FS4CO		PCS	2	YE03570700000					
	11	K8	中间继电器 /Middle relay		Honeywell		GR-4C-DC24V		配座PGR-4C-E		PCS	1	YE03042400500					
	12	K9 K10	中间继电器 /Middle relay		WEIDMULLER		DRM270730LT		230V 50/60Hz		PCS	2	YE03270700000					
	13	K12 K13	时间继电器 /Timer relay		T&C		TH3M-NAB		3S-60M/AC220V		PCS	2	YE86300300000					
	14	K14 K15	固态继电器/Solid-state relay		FOTEK		KSR-40DA-H		4-32VDC		PCS	2	YE03404003200					
C	15	F1	热过载继电器 /Overload relay		SIEMENS		3RU6116-1BB0		1.4-2A		PCS	1	YE01160140000					
	16	F2	热过载继电器 /Overload relay		SIEMENS		3RU6116-0JB0		0.7-1A		PCS	1	YE01160700000					
	17	F3	热过载继电器 /Overload relay		SIEMENS		3RU6116-1AB0		1.1-1.6A		PCS	1	YE01160110000					
	18	T	变压器/Transformer		JIUXIN		400V/415V OUT=230V		500MA		PCS	1	YE70040005200					
	19	A1	微电脑板 /PCB		YUYUN		AA-01		230VAC 50/60Hz		PCS	1	YE80000100000					
	20	S1 S2	切替开关 /Alternative switch		REAB		T120-55		4P WH		PCS	2	YE10210400000					
	21	MS	料位马达 /Level motor		SIPAI		SR-80-T		250VAC		PCS	1	YE15000200000		(1)			
	22	S4	温度保护器 /Overheat protector		EGO		----		250V 5A		PCS	1	YE21503000000		(1)			
	23	FM1	风扇 /Fan		SUNON		DP200A		230V 50/60Hz		PCS	1	YM60121200400		(1)			
	24	H1	警报灯/Alarm lamp		SHINI		红黄绿优先级		SWI-P-AC230V		PCS	1	BL90023000520		(1)			
	25	X1 X2 X3	端子排/Terminal board		HONEYWELL		GK6		6mm ²		PCS	3	YE60000603200					
机型版本 Ver.C		注：(1) 表示非电控箱安装																
D					制图		版号		E		标题		图号		比例		第 7 张	
					设计		核				SCR-160U		SCR-160U-CE-400V-E-7		标准		CE	
					校对		准				电气元件明细表一				机器电压		3φ400V	
	标记		更改前		更改后		更改人		日期		20240227		 信易電熱機械股份有限公司 Shini Plastics Technologies, Inc.		机器频率		50Hz	
1		2		3		4		5		6		7		8				

1		2		3		4		5		6		7		8	
序号/NO	符号/Symbol	名称/Name		制造商/Manufacturer		型号/Type		规格/Specification		单位/unit	数量/Number	物料编号/Material number		备注/Remark	
26		端子排/Terminal board		HONEYWELL		GK6PE		6mm²E		PCS	1	YE60000603500			
27		端子排/Terminal board		HONEYWELL		SK4		4mm²		PCS	3	YE60000403200			
28		端子排/Terminal board		HONEYWELL		GK5PE		4mm²E		PCS	1	YE60000403500			
29		端子排/Terminal board		HONEYWELL		SK2.5		2.5mm²		PCS	25	YE60002503200			
30		端子排/Terminal board		HONEYWELL		GK2.5PE		2.5mm²E		PCS	6	YE60002503400			
31		终端固定件E/GK系列 Terminal fittings E/GK series		Honeywell		E		GK		PCS	6	YE60000003900			
32	X11 X12	金属接头/Metal connector		----		DF25-3		-----		PCS	2	YE68025300200		(1)	
33	X21	防水接头 / water-proof connector		CEE		RS-314		400V 16A		PCS	1	YE63314100000		(1)	
--	S3	温度保护器 Temp. protector		EGO		ZA300		250V 5A			1	---		(1)	
--	S6 S7	热电偶 / Thermocouple		SHINI		----		K			2	---		(1)	
--	S9	安全开关 / Safety switch		SCHMERSRC		AZ15-02ZVRK-1476		AZ-15			1	---		(1)	
--	M1	风机 / Blower		SHINI		-----		0.55KW 400V 50Hz			1	---		(1)	
--	M2	马达 / Motor		SHINI		-----		0.25KW 400V 50Hz			1	---		(1)	
--	M3	马达 / Motor		SHINI		-----		0.4KW 400V 50Hz			1	---		(1)	
--	EH1	电热 / Heater		SHINI		-----		12KW 400V 50Hz			1	---		(1)	
C															
机型版本 Ver.C		注: (1) 表示非电控箱安装 Note: (1) Means not part of control box.													
				制图		版号 E		标题 SCR-160U		图号 SCR-160U-CE-400V-E-8		比例		第 8 张	
				设计		核 准		电气元件明细表二				标准 CE		共 8 张	
				校对				 信易電熱機械股份有限公司 Shini Plastics Technologies, Inc.				机器电压		3φ400V	
标记		更改前		更改后		更改人				日期		20240227		机器频率	
1		2		3		4		5		6		7		8	


8(33)

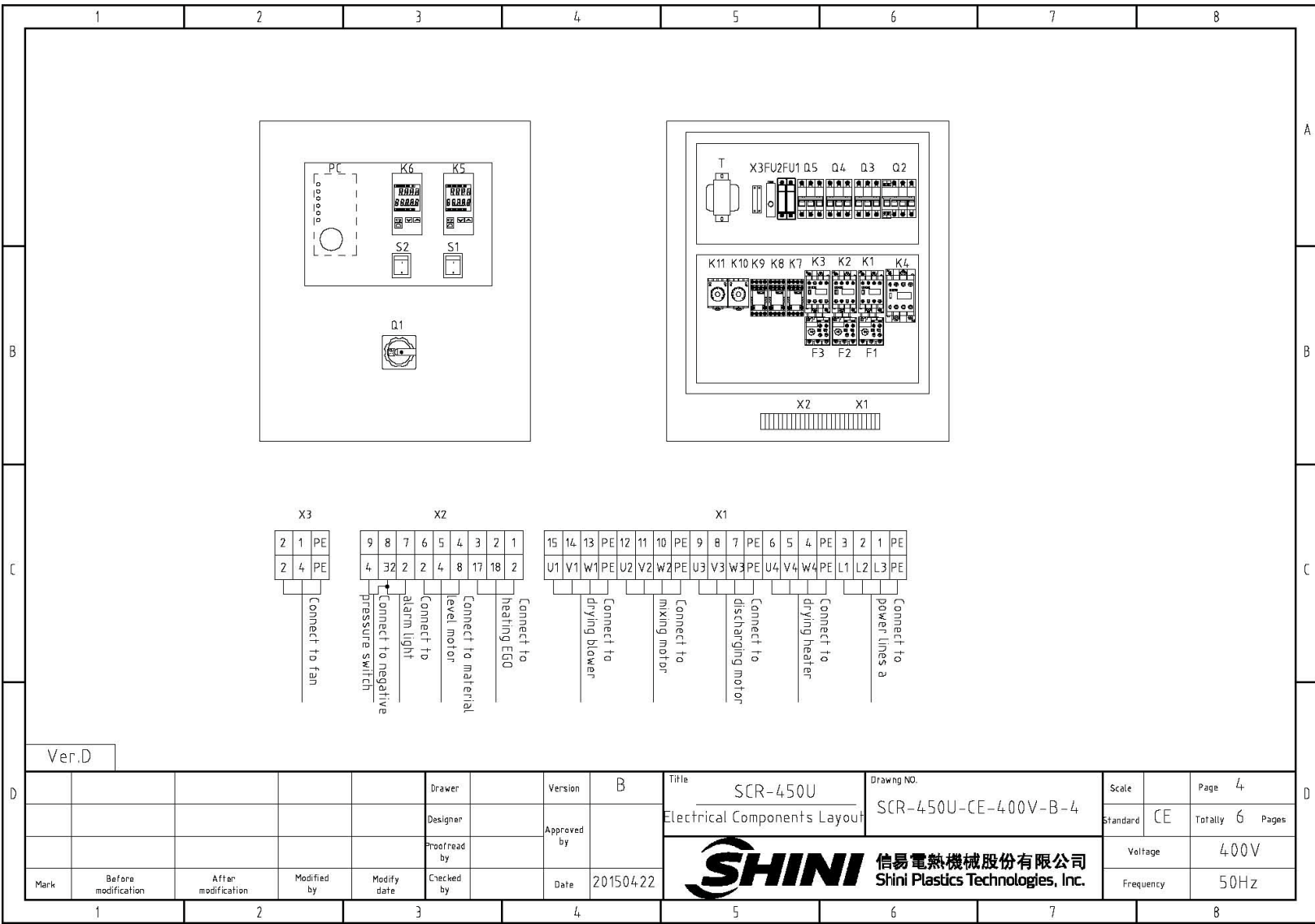


9(33)




Ver.D

					Drawer	Version	B	Title	SCR-450U	Drawing NO.	SCR-450U-CE-400V-B-3	Scale	Page 3
					Designer		Approved by	Crystalizer wiring diagram		Standard	CE	Totally 6	Pages
					Proofread by		Date	20150422	 信易電熱機械股份有限公司 Shini Plastics Technologies, Inc.		Voltage	400V	
Mark	Before modification	After modification	Modified by	Modify date	Checked by			Frequency			50Hz		



Ver.D

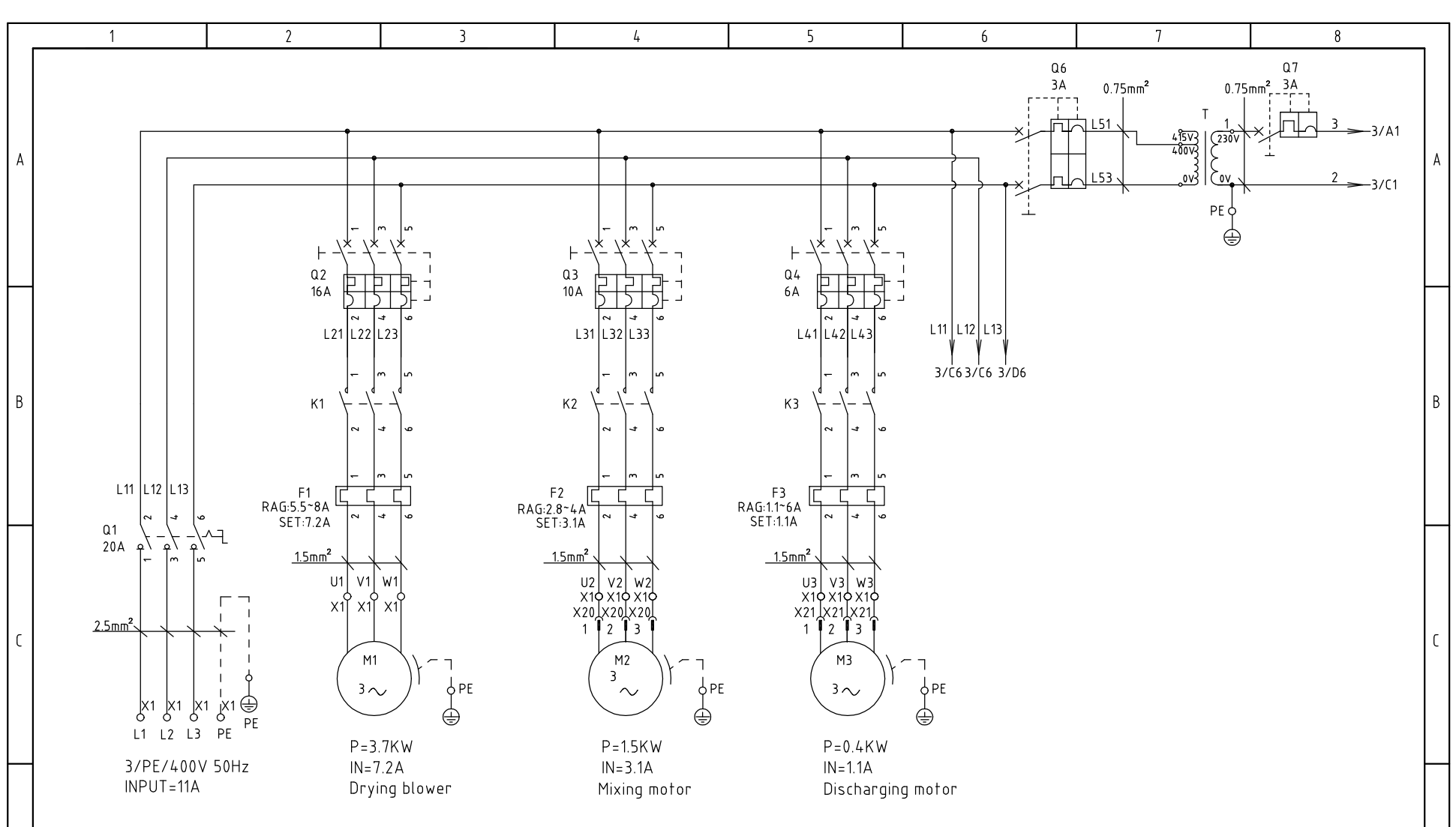
				Drawer	Version	B	Title	SCR-450U	Drawing NO.	SCR-450U-CE-400V-B-4	Scale	Page	4	
				Designer	Approved by		Electrical Components Layout				Standard	CE	Totally	6
				Proofread by	Date	20150422	 信易電熱機械股份有限公司 Shini Plastics Technologies, Inc.				Voltage	400V		
Mark	Before modification	After modification	Modified by	Modify date	Checked by						Frequency	50Hz		

11(33)

1		2		3		4		5		6		7		8			
NO.	Symbol	Name		Manufacturer	Type		Specification		Number	Material number		Remark					
A	1	Q1	Main power switch		MOELLER	P3-63/EA/SVB		63A		1	YE10636300000						
	2	Q2	Circuit breakers		TECO	BM-63C		50A		1	YE40305003000						
	3		Excitation release		CHNT	MX		230VAC		1	YE40023560000						
	4	Q3	Circuit breakers		TECO	BM-63C		16A		1	YE40301603000						
	5	Q4 Q5	Circuit breakers		TECO	BM-63C		6A		2	YE40300603000						
	6	K1 K2 K3	Contactors		SIEMENS	3RT6016-1AN21		230V 50/60Hz		3	YE00601621000						
	7	K4	Contactors		SIEMENS	3RT5036-1AN20		230V 50/60Hz		1	YE00503600000						
B	8	K5 K6	Temperature controller		OMRON	E5EZ		100-240V 50/60Hz		2	YE85005000000						
	9	K7 K8 K9	Middle relay		WEIDMULLER	DRM270730LT		230V 50/60Hz		3	YE03270700000						
	10	K10 K11	Timer relay		OMRON	H3BA-N8H		230VAC 0-300h		2	YE86300800000						
	11	F1	Thermo overload relay		SIEMENS	3RU6116-1GB0		4.5-6.3A		1	YE01160450000						
	12	F2	Thermo overload relay		SIEMENS	3RU6116-1BB0		1.4-2.0A		1	YE01160140000						
	13	F3	Thermo overload relay		SIEMENS	3RU6116-1AB0		1.1-1.6A		1	YE01160110000						
	14	FU1	Fuse base		CHNT	RT18-32		2P		1	YE41032200000						
C	15		Fuse core		CHNT	10x38 500V		2A		2	YE46002000100						
	16	FU2	Fuse**		YINDA	FS-10		2A		1	YE41001000000						
	17	T	Transformer*		BAIYUN	IN=400V OUT=230V		500mA		1	YE70402300800						
	18	PC	PCB		YUYUN	AA-01		230VAC 50/60Hz		1	YE80000100000						
	19	S1 S2	Alternative switch		REAB	T120-55		4P WH		2	YE10210400000						
	20	MS	Material level motor		SIPAI	SR-80-T		250VAC		1	YE15000200000		(1)				
	21	S4	Thermal protector		EGO	----		250V 5A		1	YE21503000000		(1)				
	22	S5	Negative pressure switch		----	----		----		1	----		(1)				
	23	S6 S7	Thermocouple		SHINI	----		K		2	----		(1)				
	24	FM1	Fan		SUNON	DP200A		230V 50/60Hz		1	YM60121200400		(1)				
	25	H1	Pulse indicator		----	LED-3051		230VAC 50HZ		1	YE83305100200		(1)				
Ver.D		Note: (1) Means not part of control box. /* means possible broken parts. **means easy broken part. and spare backup is suggested.															
D					Drawer	Version		B		Title		Drawing NO.		Scale	Page		D
					Designer	Approved by				SCR-450U		SCR-450U-CE-400V-B-5		Standard	CE		
					Proofread by	Date		20150422				信易電熱機械股份有限公司 Shini Plastics Technologies, Inc.		Voltage	400V		
	Mark	Before modification	After modification	Modified by	Modify date	Checked by							Frequency	50Hz			

1	2	3	4	5	6	7	8		
NO.	Symbol	Name	Manufacturer	Type	Specification	Number	Material number	Remark	
A	26	X1	Terminal board	PHOENIX	10mm ²	76A	6	YE6110000000	
	27				10mm ² PE		2	YE6110350000	
	28		Terminal board	PHOENIX	2.5mm ²	41A	6	YE61250040000	
	29				2.5mm ² PE		2	YE6125350000	
	30		Terminal board	PHOENIX	2.5mm ²	32A	3	YE61250040000	
	31					2.5mm ² PE	1	YE6125350000	
B	32	X2	Terminal board	PHOENIX	2.5mm ²	32A	9	YE61250040000	
	33	X3	Terminal board	PHOENIX	2.5mm ²	32A	2	YE6125350000	
	34				2.5mm ² PE		1	YE6125350000	
	35	X10	Heavy duty connector	SIBAS	HDC-HE-04	400V 5A	1	YE68041000000/YE68041000100	{1}
	36	X11 X12	Metal Tie in	----	DF25-3	-----	2	YE68025300200	{1}
	37	X20 X21	Waterproof connectors	CEE	RS-314	400V 16A	2	YE63314100000	{1}
C	38	M1	Blower	SHINI	-----	2.2KW 400V 50Hz	1	----	{1}
	39	M2	Motor	SHINI	-----	0.55KW 400V 50Hz	1	----	{1}
	40	M3	Motor	SHINI	-----	0.4KW 400V 50Hz	1	----	{1}
	41	EH1	Heater**	SHINI	-----	24KW 400V 50Hz	1	----	{1}
Note: {1} Means not part of control box. /*means possible broken parts. ** means easy broken part. and spare backup is suggested.Please confirm the version of manual									
Ver.D before placing the purchase order to guarantee that the item number of the spare part is in accordance with the real object.									
			Drawer	Version	B	Title		SCR-450U Electrical Components List 2	
			Designer	Approved by		Drawing NO.		SCR-450U-CE-400V-B-6	
			Proofread by	Date	20150422	Scale		Page 6	
			Checked by			Standard		CE	
			Mark	Before modification	After modification	Voltage		400V	
			Modified by	Modify date		Frequency		50Hz	
								Totally 6 Pages	





Ver.F

Mark	Before modification	After modification	Modified by	Modify date	Checked by	Date	20200902

Title		SCR-900U		Drawing NO.		Scale		Page 1	
		Main Circuit Diagram 1		SCR-900U-CE-400V-D-1		Standard		CE	
						Voltage		3Φ400V	
						Frequency		50Hz	



1 2 3 4 5 6 7 8

A

A

B

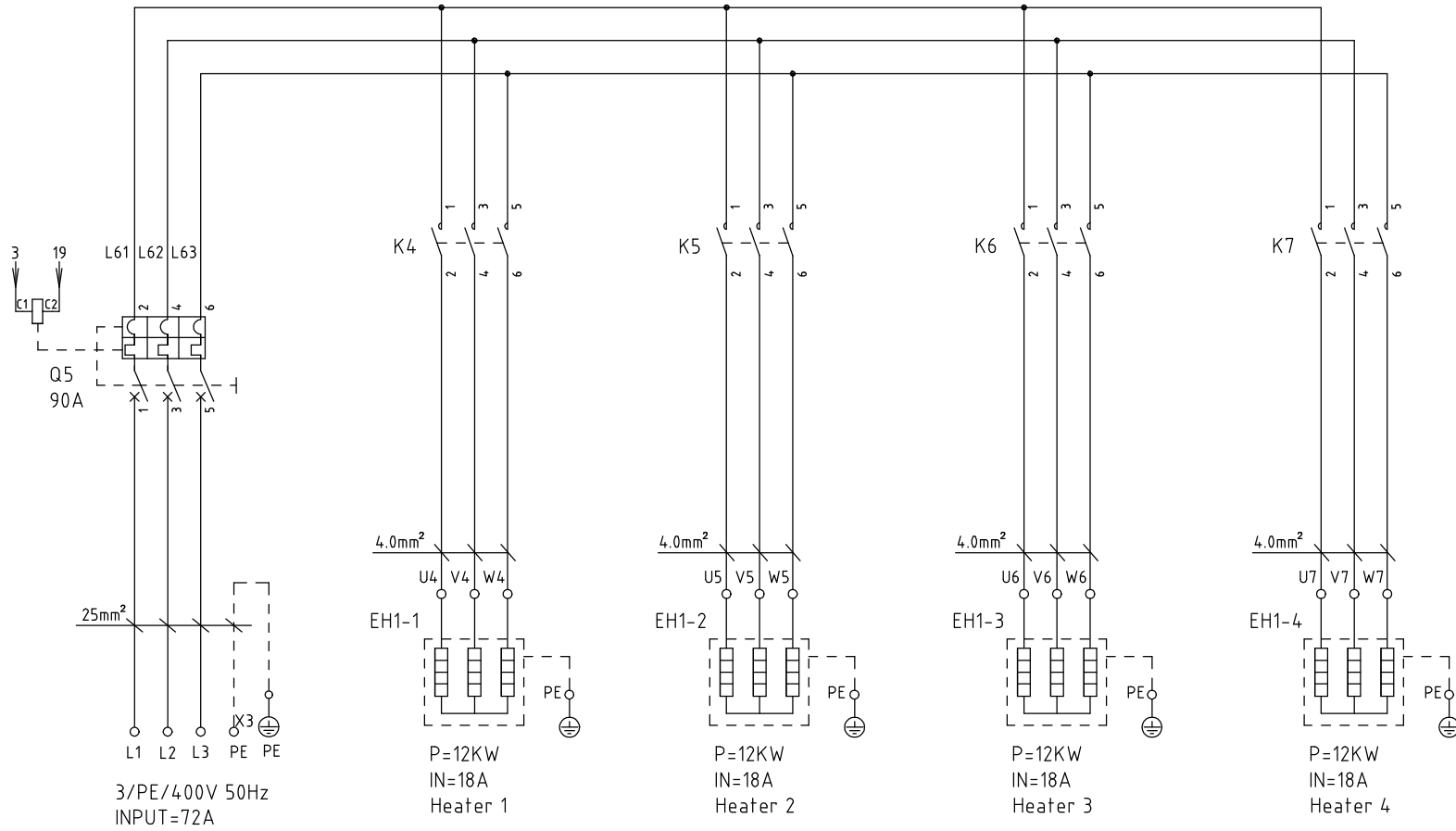
B

C


C

D

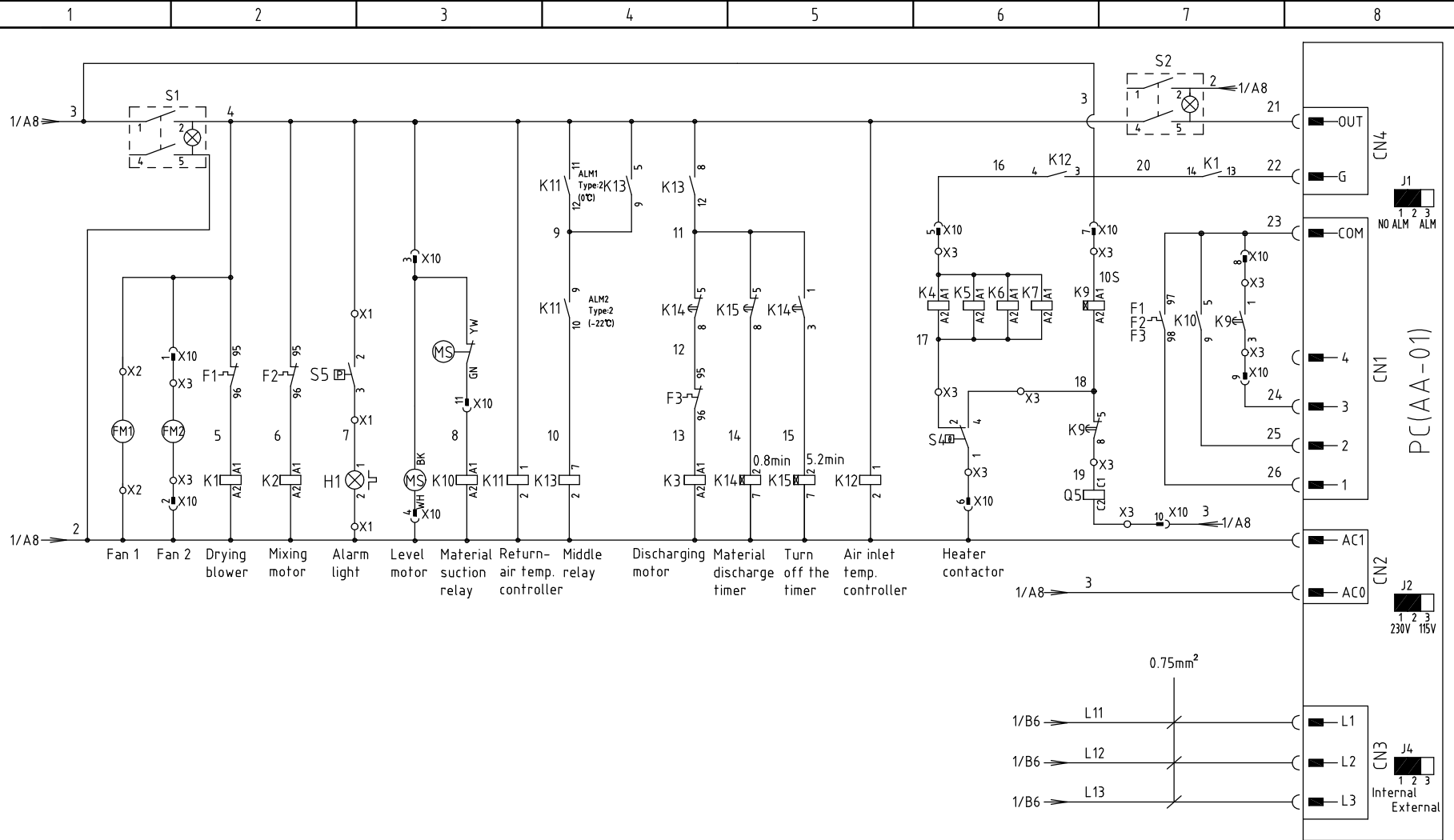
D



Ver.F

				Drawer	Version		D	Title	Drawing NO.		Scale	Page 2	
				Designer	Approved by			Main Circuit Diagram 2	SCR-900U-CE-400V-D-2		Standard	CE Totally 7 Pages	
				Proofread by	Date		20200902	 信易電熱機械股份有限公司 Shini Plastics Technologies, Inc.		Voltage		3Φ400V	
Mark	Before modification	After modification	Modified by	Modify date	Checked by					Frequency		50Hz	

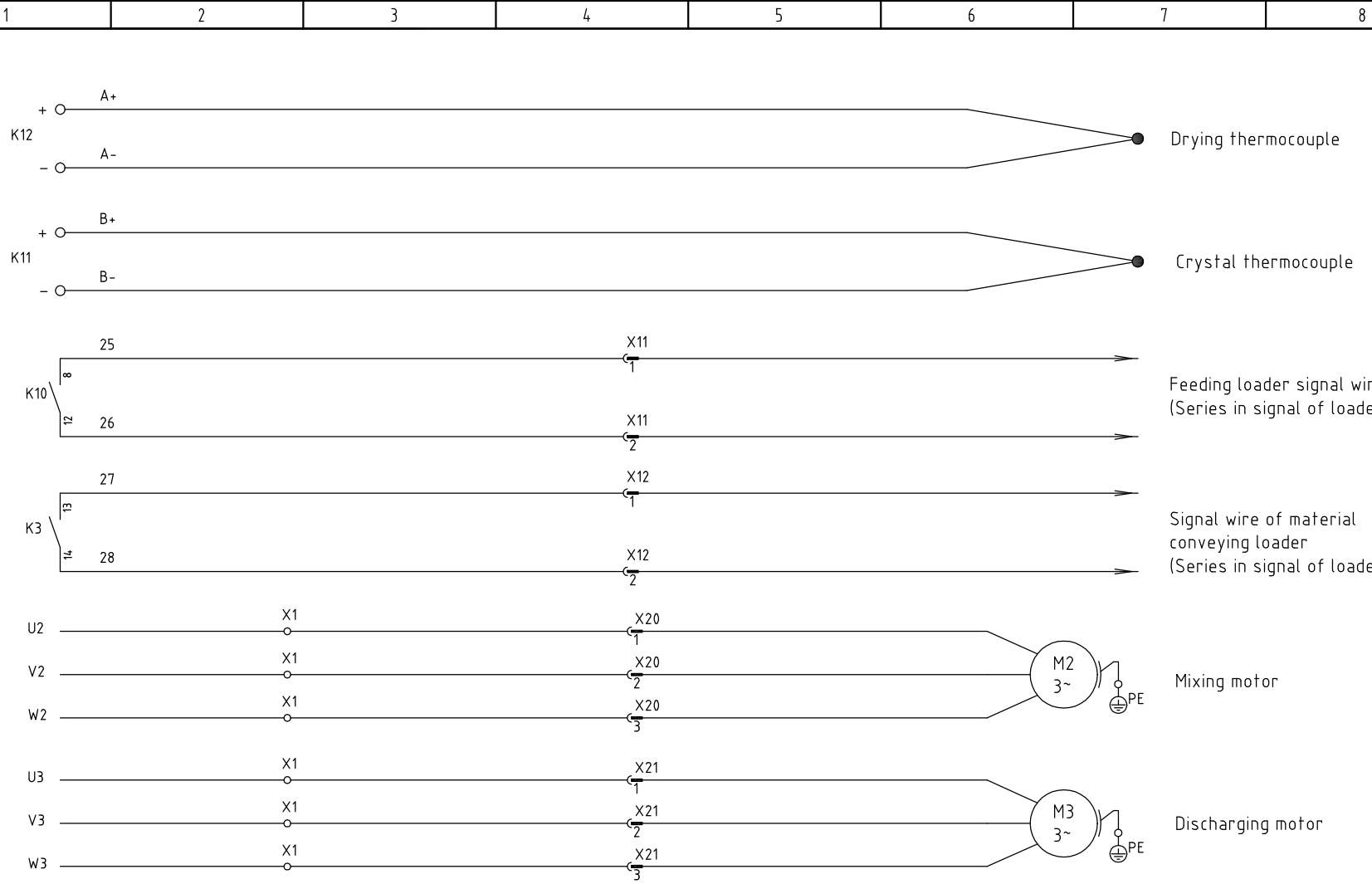
1 2 3 4 5 6 7 8




Ver.F

D					Drawer	Version	D	Title	Drawing NO.	Scale	Page
					Designer	Approved by		SCR-900U	SCR-900U-CE-400V-D-3	CE	3
					Proofread by	Checked by		Control Circuit Diagram		Totally	7 Pages
	Mark	Before modification	After modification	Modified by	Modify date	Date	20200902			Voltage	3Φ400V
	1	2	3	4	5	6	7	8	Frequency	50Hz	





Ver.F

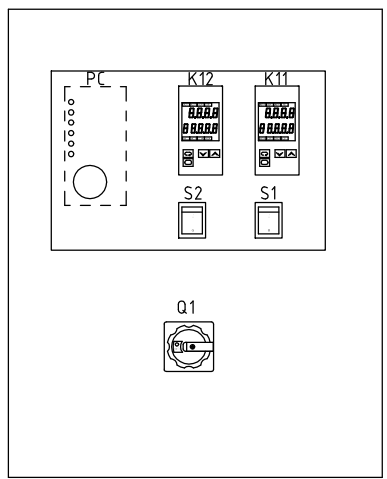
					Drawer	Version	D	Title	SCR-900U	Drawing NO.	Scale	Page	4
					Designer	Approved by		Crystalizer wiring diagram		SCR-900U-CE-400V-D-4	Standard	CE	Totally 7 Pages
					Proofread by							Voltage	3Φ400V
Mark	Before modification	After modification	Modified by	Modify date	Checked by	Date	20200902	 信易電熱機械股份有限公司 Shini Plastics Technologies, Inc.		Frequency		50Hz	

1 2 3 4 5 6 7 8

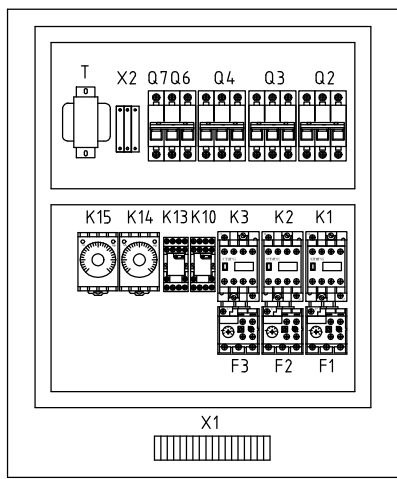
A

X10 16PIN Heavy-duty connector

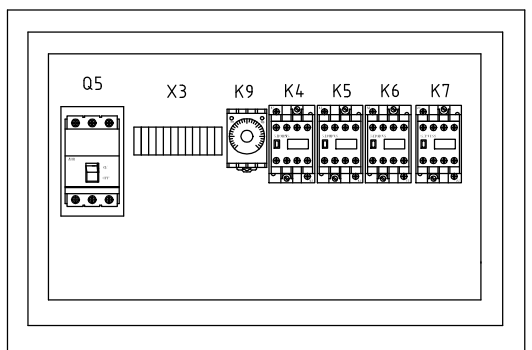
① 4	⑨ 24
② 2	⑩ 3
③ 4	⑪ 8
④ 2	⑫
⑤ 16	⑬
⑥ 2	⑭
⑦ 3	⑮
⑧ 23	⑯



Control box bottom plate



Heater control box

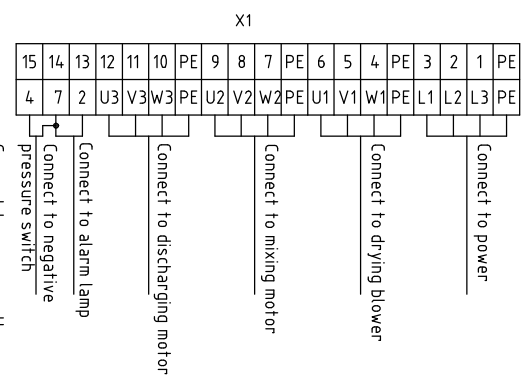
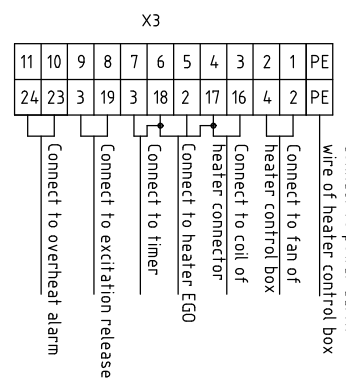
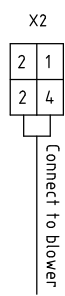


A

B

B

Subscript	Function	Description
1	4	Cooling fan power
2	2	
3	4	Level motor power
4	2	
5	16	Heater contactor power
6	2	Power COM end
7	3	Tripping timer power
8	23	Drying heater tripping signal
9	24	
10	3	Drying tripper power
11	8	Shortage relay power
12		
13		
14		
15		
16		



C

C

Ver.F

D

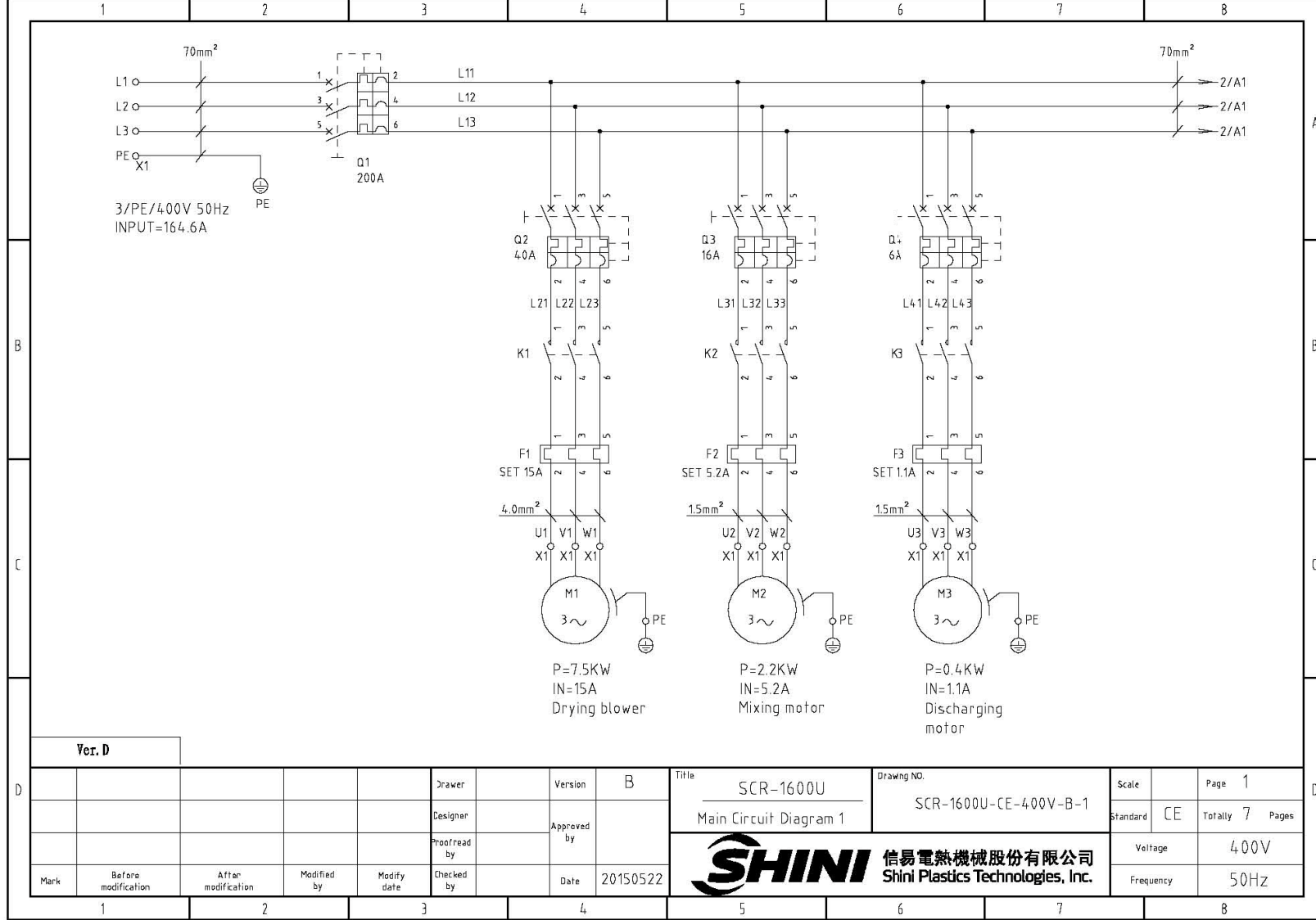
D

				Drawer	Version	D	Title	SCR-900U	Drawing NO.	Scale	Page	5
				Designer	Approved by		Electrical Components Layout	SCR-900U-CE-400V-D-5	Standard	CE	Totally	7 Pages
				Proofread by	Date	20200902	信易電熱機械股份有限公司 Shini Plastics Technologies, Inc.		Voltage	3Φ400V		
Mark	Before modification	After modification	Modified by	Modify date	Checked by				Frequency	50Hz		

1 2 3 4 5 6 7 8

1		2		3		4		5		6		7		8			
NO.	Symbol	Name		Manufacturer		Type		Specification		Number	Material number		Remark				
1	Q1	Main power switch		EATON		T0-2-1/EA/SVB		20A		1	YE10021160000						
2	Q2	Circuit breakers		TECO		BM-63C/3016S		16A		1	YE40301603000						
3	Q3	Circuit breakers		TECO		BM-63C/3010S		10A		1	YE40301003000						
4	Q4	Circuit breakers		TECO		BM-63C/3006S		6A		1	YE40300603000						
5	Q5	Break Interlock		ABB		A1A125TMF90		90A		1	YE41109200000						
6		Excitation release		ABB		SOR-C		230VAC		1	YE40101600000						
7	Q6	Circuit breakers		TECO		BM-63C		3A		1	YE40200203000		New				
8	Q7	Circuit breakers		TECO		BM-63C		3A		1	YE40100203000		New				
9	K1 K2 K3	Contactors		SIEMENS		3RT6016-1AN21		230V 50/60Hz		3	YE00601621000						
10	K4 K5 K6 K7	Contactors		SIEMENS		3RT6027-1AN20		230V 50/60Hz		4	YE00602722000						
11	K9	Timer relay		YUYUN		TH3M-NAB		3S-60M 230VAC		1	YE86300300000						
12	K10 K13	Middle relay		WEIDMULLER		DRM270730LT		230V 50/60Hz		2	YE03270700000						
13	K11 K12	Temperature controller		OMRON		E5EC-RR2ASM-800(Dual stage)		100-240V 50/60Hz		2	YE85005000000						
14	K14 K15	Timer relay		YUYUN		TH3M-NAB		3S-60M 230VAC		2	YE86300300000						
15	F1	Overload relay		SIEMENS		3RU6116-1HB0		5.5-8A		1	YE01160550000						
16	F2	Overload relay		SIEMENS		3RU6116-1EB0		2.8-4A		1	YE01160280000						
17	F3	Overload relay		SIEMENS		3RU6116-1AB0		1.1-1.6A		1	YE01160110000						
18	T	Transformer		jiuxin		IN=400V OUT=230V		1000MA		1	YE70402300000						
19	PC	PCB		YUYUN		AA-01		230V 50/60Hz		1	YE80000100000						
20	S1 S2	Alternative switch		REAB		R210-C5LBW		4P WH		2	YE10210400000						
21	MS	Level motor		SIPAI		SR-80-T		250VAC		1	YE15000200000		(1)				
22	S4	Overheat protector		EGO		----		250V 5A		1	YE21503000000		(1)				
23	S5	Negative pressure switch		----		----		----		1	----		(1)				
24	S6 S7	Thermocouple		SHINI		----		K		2	----		(1)				
25	FM1 FM2	Fan		SUNON		DP200A		230V 50/60Hz		2	----		(1)				
Ver.F		Note: (1) Means not part of control box.															
				Drawer		Version		D		Title		Drawing NO.		Scale		Page 6	
				Designer		Approved by				SCR-900U		SCR-900U-CE-400V-D-6		Standard		CE	
				Proofread by		Checked by		Date		Electrical Components List 1		SHINI		Voltage		3Φ400V	
Mark		Before modification		After modification		Modified by		Modify date		20200902		Shini Plastics Technologies, Inc.		Frequency		50Hz	
1		2		3		4		5		6		7		8			

20(33)



Ver. D

Mark	Before modification	After modification	Modified by	Modify date	Checked by	Date	20150522
Designer					Proofread by	Approved by	
Drawer						Version	B

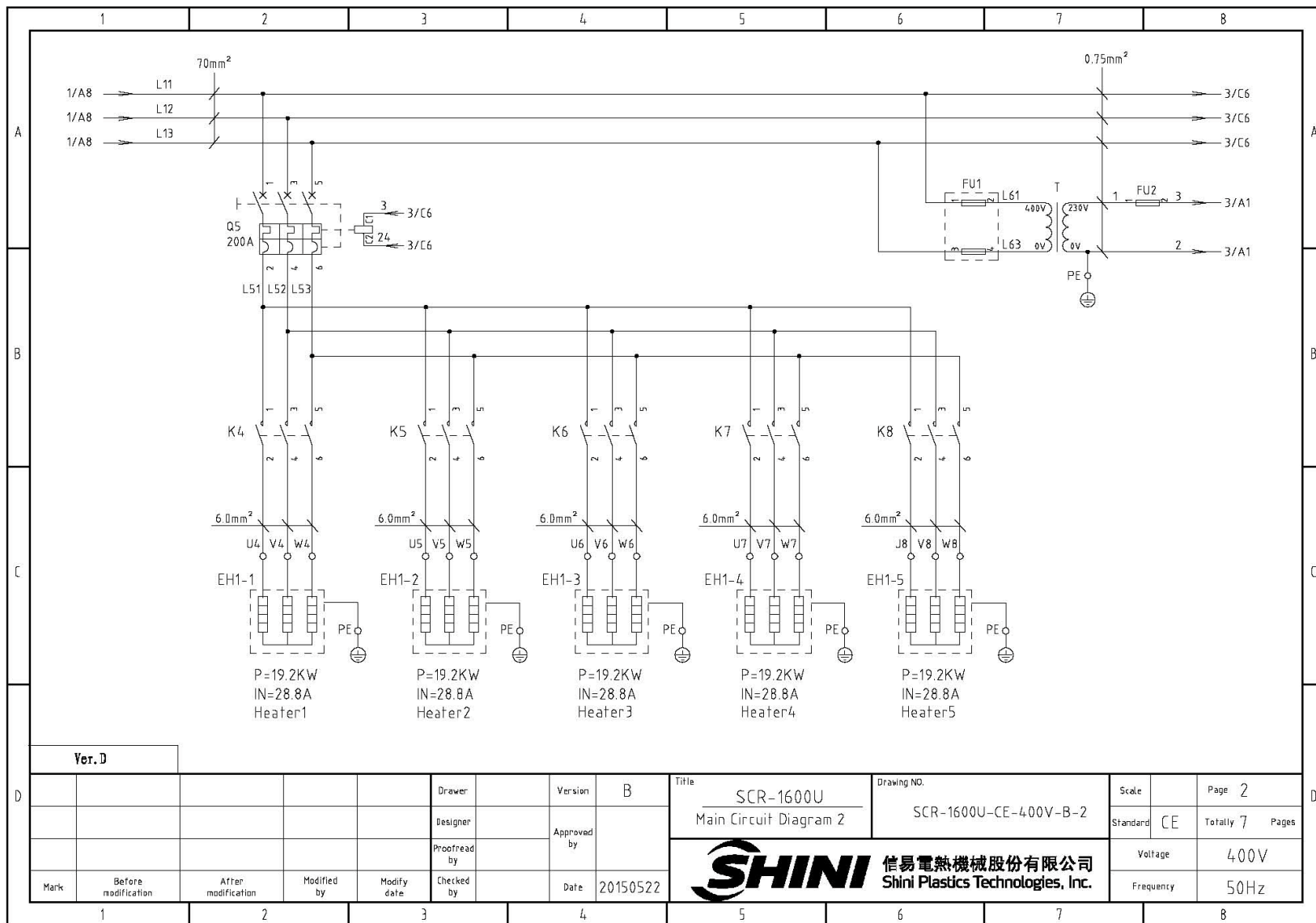
Title SCR-1600U
Main Circuit Diagram 1

Drawing NO. SCR-1600U-CE-400V-B-1

Scale	Page	1
Standard	Totally	7 Pages
Voltage	400V	
Frequency	50Hz	



21(33)



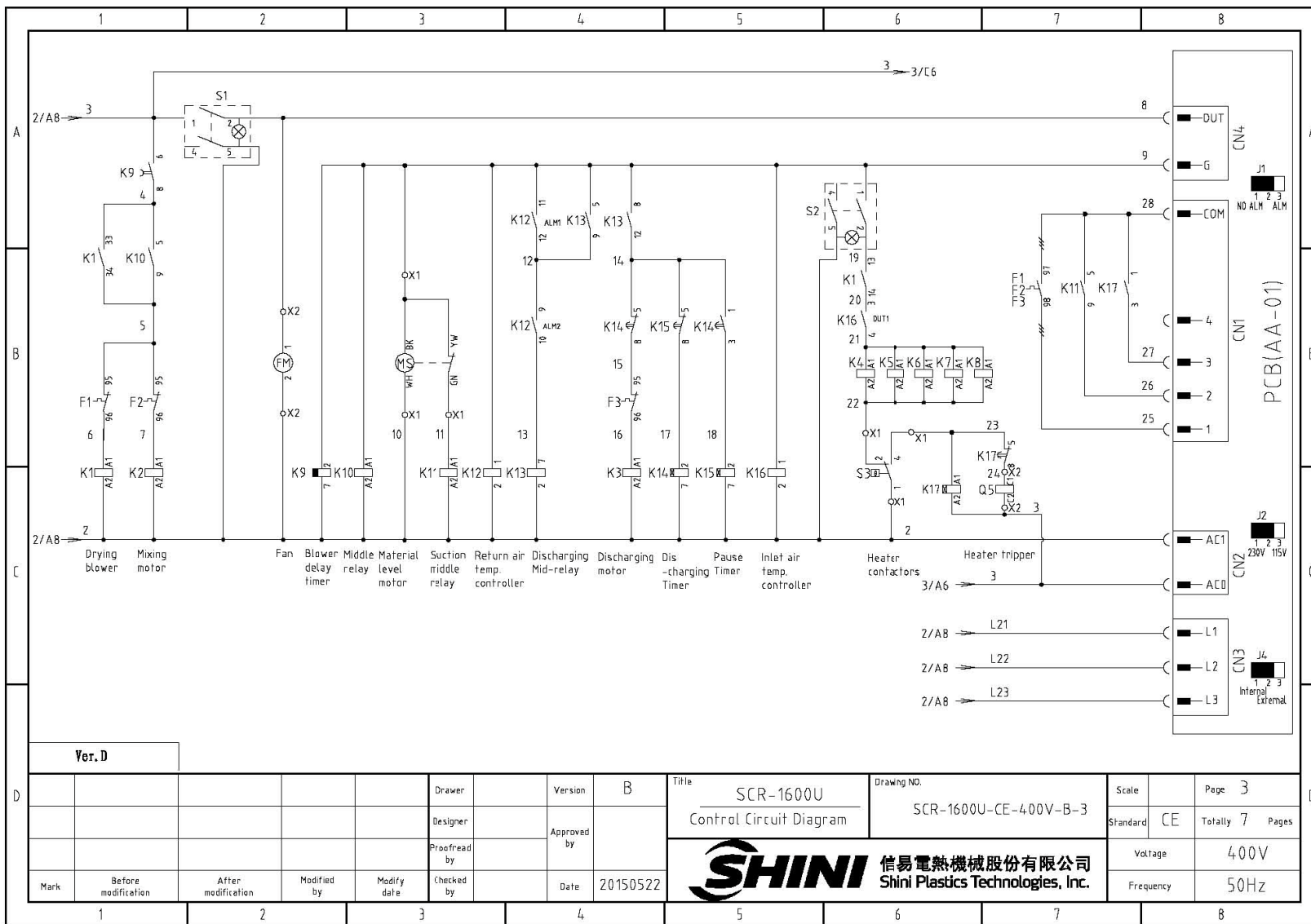
Ver. D

Mark	Before modification	After modification	Modified by	Modify date	Checked by	Date	20150522

Drawer	Version	B	Title	SCR-1600U Main Circuit Diagram 2	Drawing NO.	SCR-1600U-CE-400V-B-2
Designer	Approved by		 信易電熱機械股份有限公司 Shini Plastics Technologies, Inc.			
Proofread by	Date					

Scale	Page	2
Standard	CE	Totally 7 Pages
Voltage	400V	
Frequency	50Hz	

22(33)



Ver. D

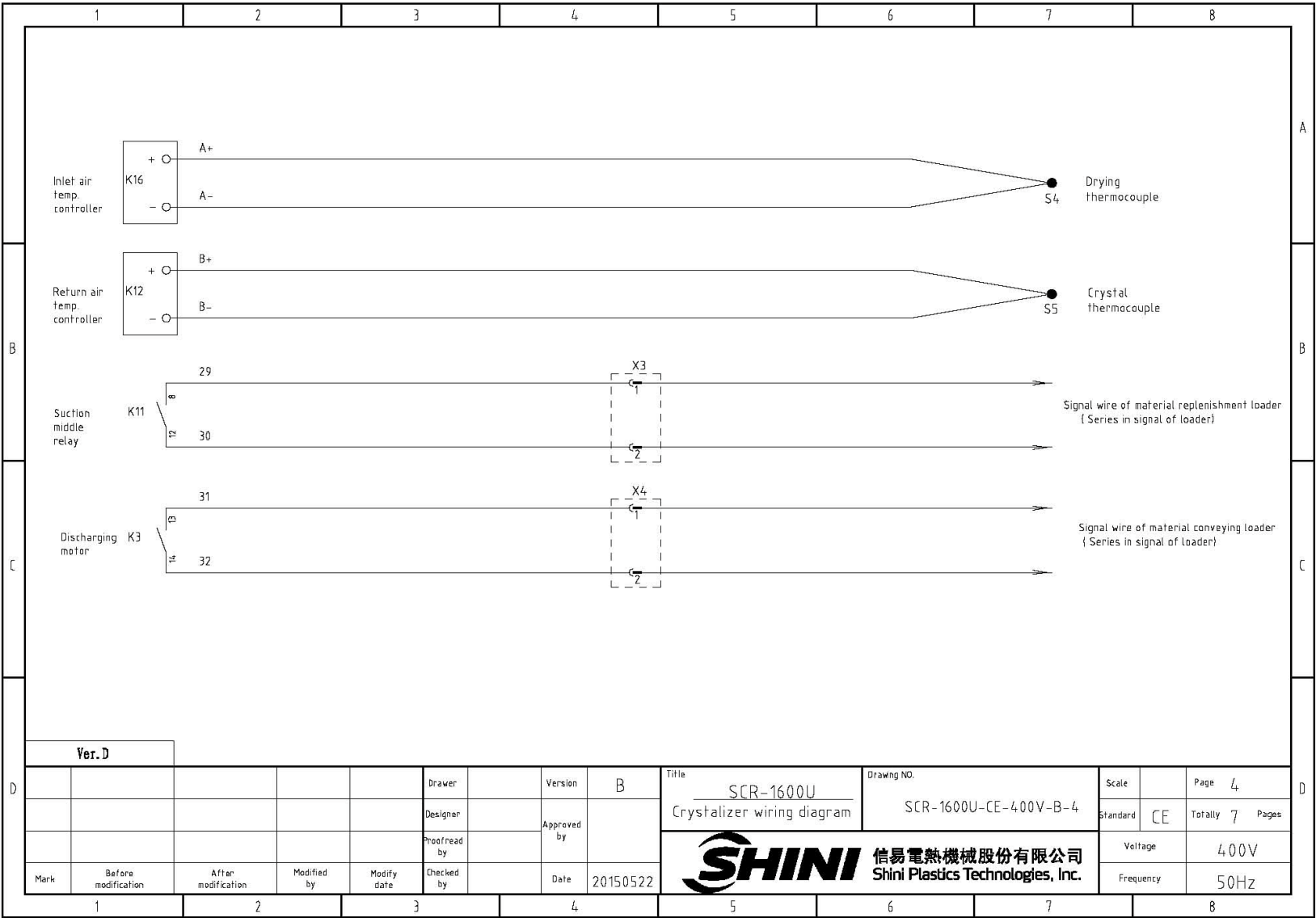
D	Mark	Before modification	After modification	Modified by	Modify date	Checked by	Date	20150522
	Designer					Proofread by	Approved by	
	Version						B	
	Drawer							

Title: SCR-1600U Control Circuit Diagram
 Drawing NO.: SCR-1600U-CE-400V-B-3




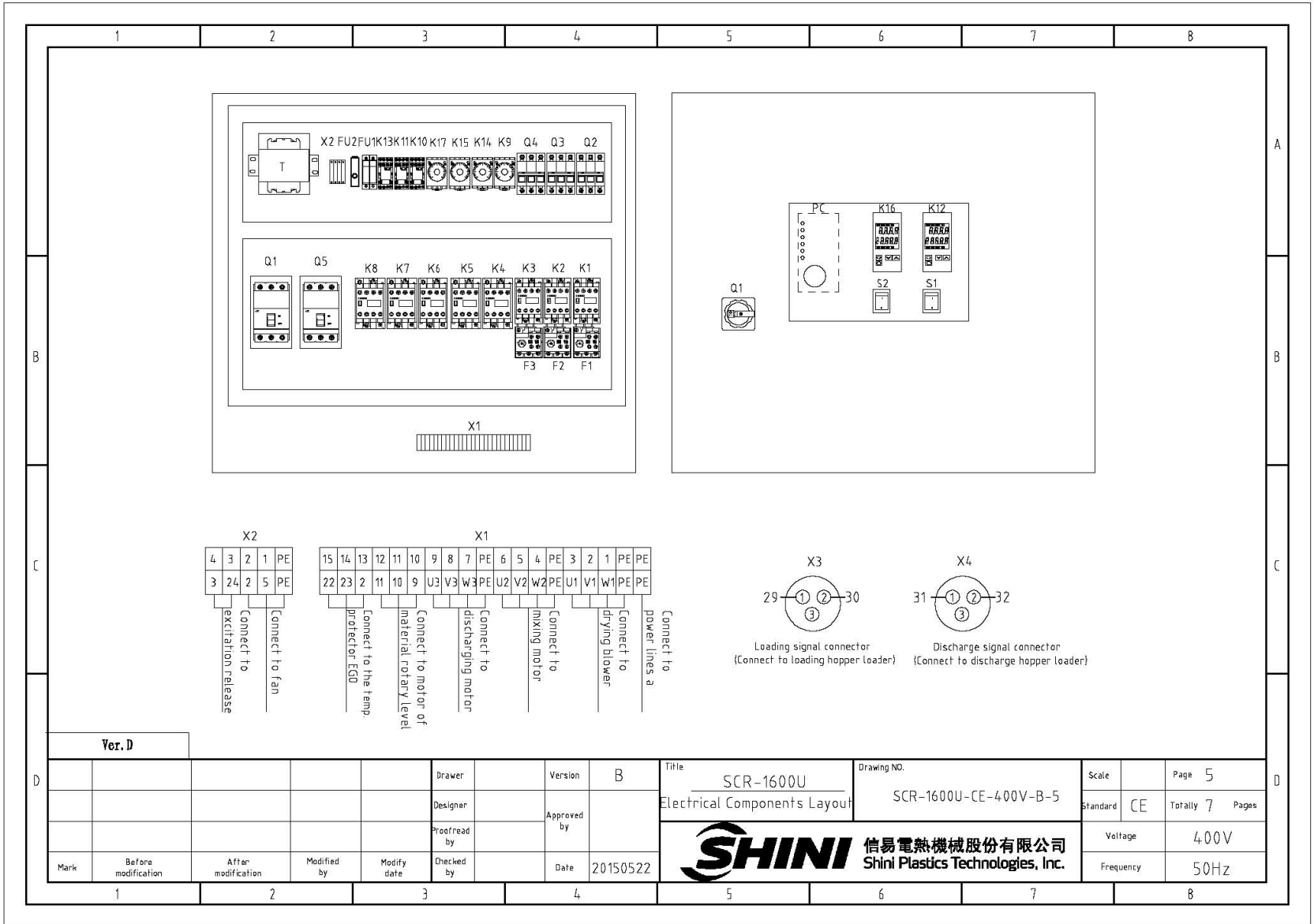
Scale	Page 3
Standard CE	Totally 7 Pages
Voltage	400V
Frequency	50Hz

23(33)



Ver. D

				Drawer		Version	B	Title	SCR-1600U Crystalizer wiring diagram	Drawing NO.	SCR-1600U-CE-400V-B-4	Scale		Page	4
				Designer		Approved by		 信易電熱機械股份有限公司 Shini Plastics Technologies, Inc.		Standard		CE	Totally	7	Pages
				Proofread by		Date	20150522			Voltage		400V		Frequency	
Mark	Before modification	After modification	Modified by	Modify date	Checked by										



Ver. D

Mark	Before modification	After modification	Modified by	Modify date	Checked by	Date	20150522
					Proofread by	Approved by	
					Designer	Version	B
					Drawer		

Title
SCR-1600U
Electrical Components Layout

Drawing NO.
SCR-1600U-CE-400V-B-5

Scale	Page	5
Standard	CE	Totally 7 Pages
Voltage	400V	
Frequency	50Hz	

SHINI 信易電熱機械股份有限公司
Shini Plastics Technologies, Inc.

25(33)

1		2		3		4		5		6		7		8			
NO.	Symbol	Name		Manufacturer	Type		Specification		Number	Material number		Remark					
A	1	Q1	Breakers interlock		ABB	A2B250TMF200/20003PFF		200A		1	YE41252200000						
	2	Q2	Circuit breakers		TECO	BM-63C/3040S		40A		1	YE40304003000						
	3	Q3	Circuit breakers		TECO	BM-63C/3016S		16A		1	YE40301603000						
	4	Q4	Circuit breakers		TECO	BM-63C/3006S		6A		1	YE40300603000						
	5	Q5	Breakers interlock		ABB	A2B250TMF200/20003PFF		200A		1	YE41252200000						
	6		Excitation release		ABB	SOR-C		230VAC		1	YE40121600000						
	7	K1	Contactors		SIEMENS	3RT6026-1AN20		230V 50/60Hz		1	YE00602622000						
B	8	K2	Contactors		SIEMENS	3RT6016-1AN21		230V 50/60Hz		1	YE00601621000						
	9	K3	Contactors		SIEMENS	3RT6016-1AN21		230V 50/60Hz		1	YE00601621000						
	10	K4 K5 K6 K7 K8	Contactors		SIEMENS	3RT5036-1AN20		230V 50/60Hz		5	YE00503600000						
	11	K9	Timer relay		YUYUN	TRF-N 3M		230VAC		1	YE86322000000						
	12	K10 K11 K13	Middle relay		WEIDMULLER	DRM270730LT		230V 50/60Hz		3	YE03270700000						
	13	K12 K16	Temperature controller		OMRON	ESEC-RR2ASM-800(双数)		100-240V 50/60Hz		2	YE85005000000						
	14	K14 K15 K17	Timer relay		YUYUN	TH3M-NAB		3S-60M 230VAC		3	YE86300300000						
C	15	F1	Thermo overload relay		SIEMENS	3RU6126-4BB0		14-20A		1	YE01260140000						
	16	F2	Thermo overload relay		SIEMENS	3RU6116-1GB0		4.5-6.3A		1	YE01160450000						
	17	F3	Thermo overload relay		SIEMENS	3RU6116-1AB0		1.1-1.6A		1	YE01160110000						
	18	FU1	Fuse**		CHNT	32A/2P		----		1	YE41032200000						
	19		Fuse core		CHNT	10x38 500V		1A		2	YE41001000000						
	20	FU2	Fuse**		YINDA	FS-10		2A		1	YE41001000000						
	21	T	Transformer*		BAIYUN	IN=400V OUT=230V		1000mA		1	YE70402300000						
D	22	PCB	PCB		YUYUN	AA-01		230V 50/60Hz		1	YE80000100000						
	23	S1 S2	Alternative switch		----	T120-55		4P WH		2	YE10210400000						
	24	S3	Overheat protector		TONGBAO	ZA300		250V 5A		1	----		{1}				
	25	S4 S5	Thermocouple		SHINI	----		K		2	----		{1}				
Ver. D		Note: {1} Means not part of control box. * means possible broken parts. **means easy broken part, and spare backup is suggested.															
				Drawer		Version		B		Title		Drawing NO.		Scale		Page 6	
				Designer		Approved by				SCR-1600U Electrical Components List 1		SCR-1600U-CE-400V-B-6		Standard CE		Totally 7 Pages	
				Proofread by		Date		20150522		 信易電熱機械股份有限公司 Shini Plastics Technologies, Inc.		Voltage		400V			
Mark		Before modification		After modification		Modified by		Modify date				Checked by		Frequency		50Hz	
1		2		3		4		5		6		7		8			

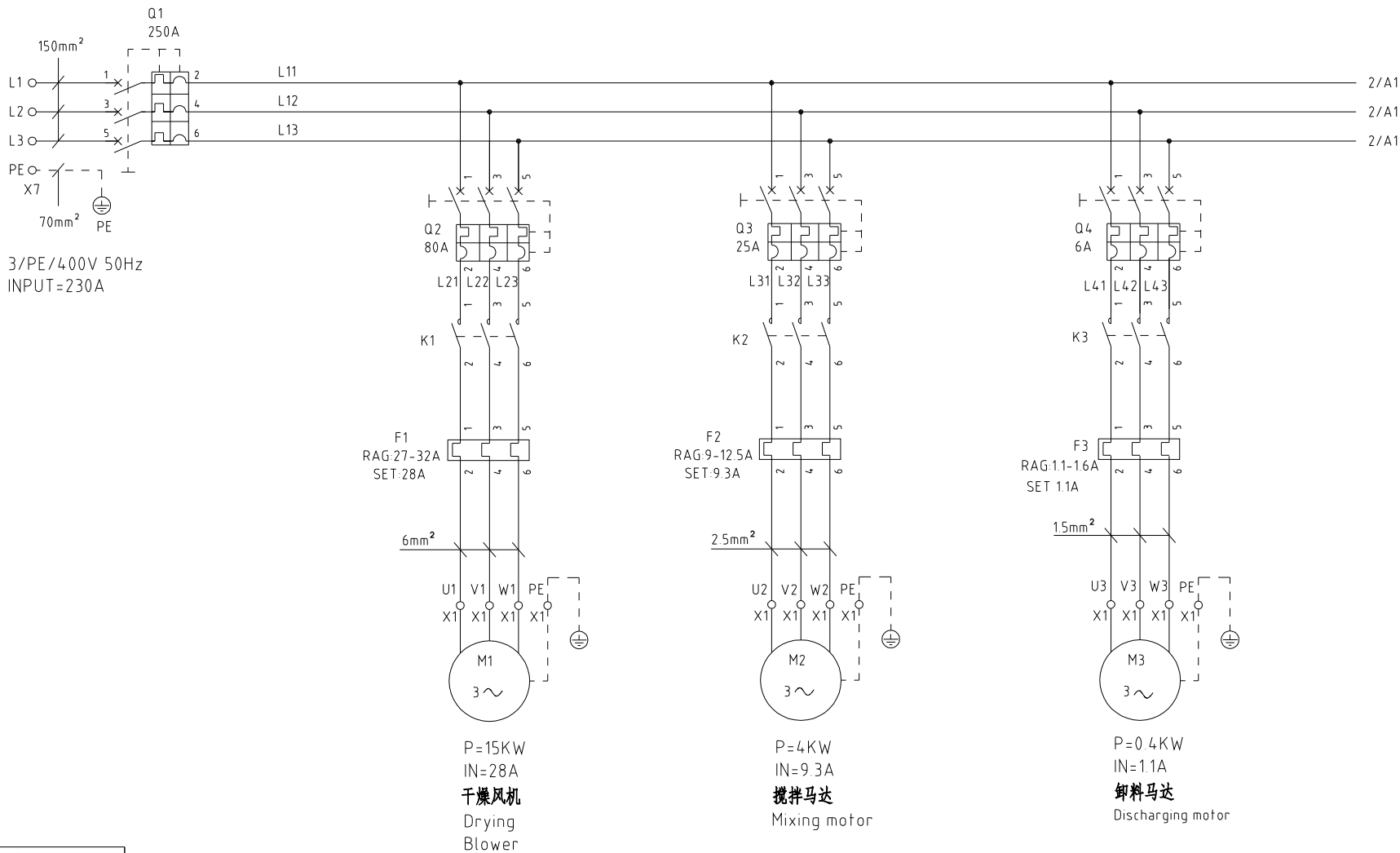
1		2		3		4		5		6		7		8			
NO.	Symbol	Name	Manufacturer	Type	Specification	Number	Material number	Remark									
26	FM	Fan	SUNON	DP200A	230V 50/60Hz	1	----	{1}									
27	MS	Material level motor	SIPAI	SR-80-T	250VAC	1	YE15000200000	{1}									
A	28	X1	Terminal board	----	35mm ² PE	----	YE61353500000										
	29			----	4mm ²	----	YE61040000000										
	30			----	4mm ² PE	----	YE61043500000										
	31			----	2.5mm ²	----	YE61250040000										
	32			----	2.5mm ² PE	----	YE61253500000										
B	33	X2	Terminal board	----	2.5mm ²	----	YE61250040000										
	34			----	2.5mm ² PE	----	YE61253500000										
	35	X3 X4	Waterproof connectors	AQPULO	AQF-16	3P	YE62163000100	{1}									
	36	M1	Blower	SHINI	-----	7.5KW 400V 50Hz	1	----	{1}								
	37	M2	Motor	SHINI	-----	2.2KW 400V 50Hz	1	----	{1}								
	38	M3	Motor	SHINI	-----	0.4KW 400V 50Hz	1	----	{1}								
	39	EH1-EHS	Heater**	SHINI	-----	19.2KW 400V 50Hz	5	----	{1}								
Ver. D Note: {1} Means not part of control box. * means possible broken parts. **means easy broken part. and spare backup is suggested.																	
				Drawer		Version		B		Title		Drawing NO.		Scale		Page 7	
				Designer		Approved by				SCR-1600U Electrical Components List 2		SCR-1600U-CE-400V-B-7		Standard CE		Totally 7 Pages	
				Proofread by		Date		20150522		 信易電熱機械股份有限公司 Shini Plastics Technologies, Inc.		Voltage		400V			
Mark		Before modification		After modification		Modified by		Modify date				Checked by		Frequency		50Hz	
1		2		3		4		5		6		7		8			

A

B

C

D



机型版本 Ver.C

					制图	版号	B	标题	SCR-2500U	图号	SCR-2500U-CE-400V-B-1	比例	第 1 张
					设计	核 准		主电路图一		标准	CE	共 9 张	
					校对				SHINI 信易電熱機械股份有限公司 Shini Plastics Technologies, Inc.		机器电压	3Φ400V	
标记	更改前	更改后	更改人	日期	审核	日期	2024.08.06			机器频率	50Hz		

1

2

3

4

5

6

7

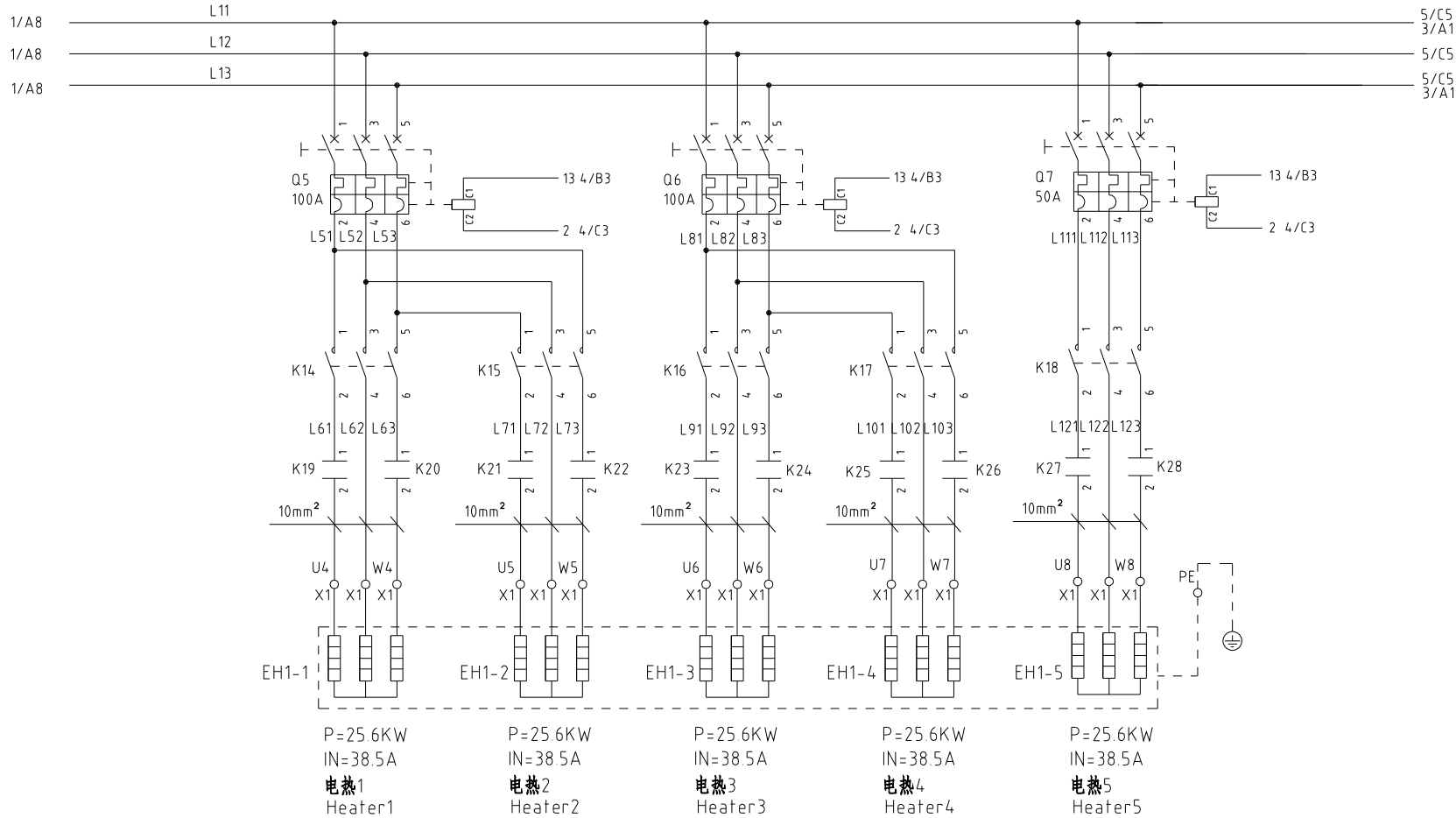
8

1 2 3 4 5 6 7 8

A

B

C



A

B

C

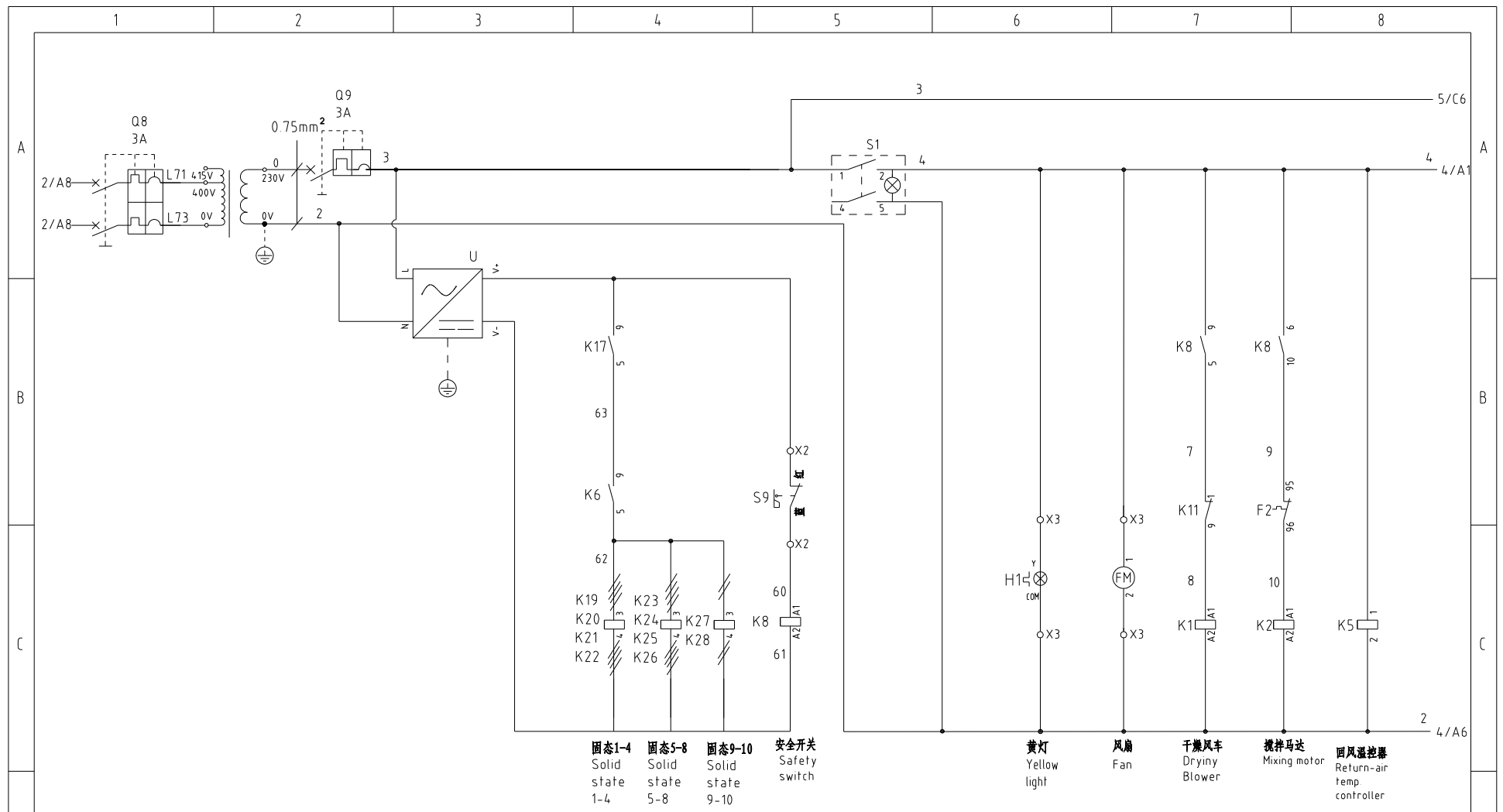
机型版本 Ver.C

D


					制图		版号	B	标题	SCR-2500U	图号	SCR-2500U-CE-400V-B-2	比例	第 2 张
					设计		核			主电路图二			标准	CE
					校对		准						机器电压	3Φ400V
标记	更改前	更改后	更改人	日期	审核		日期	2024.08.06	SHINI	信易电热机械股份有限公司 Shini Plastics Technologies, Inc.			机器频率	50Hz

1 2 3 4 5 6 7 8

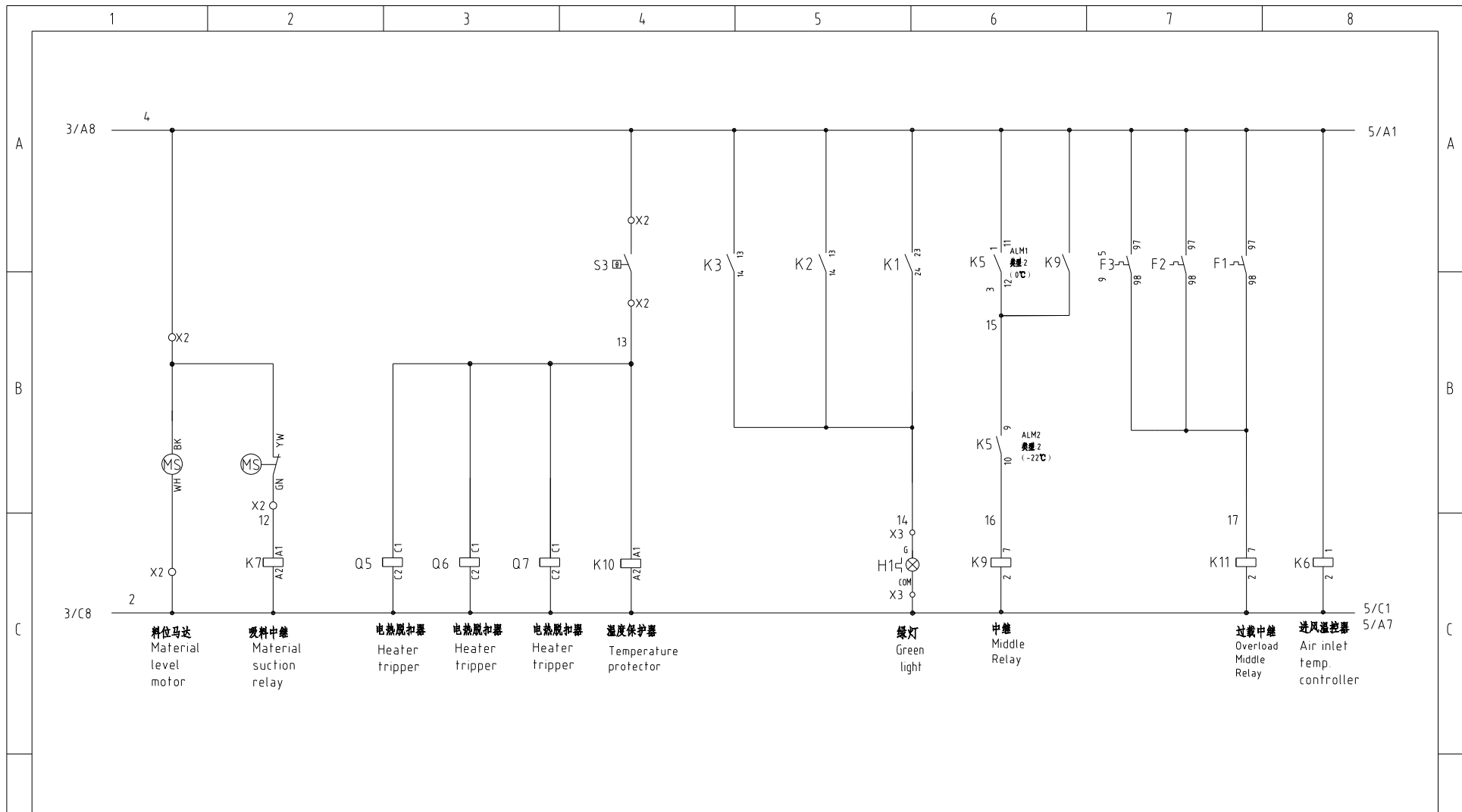
D




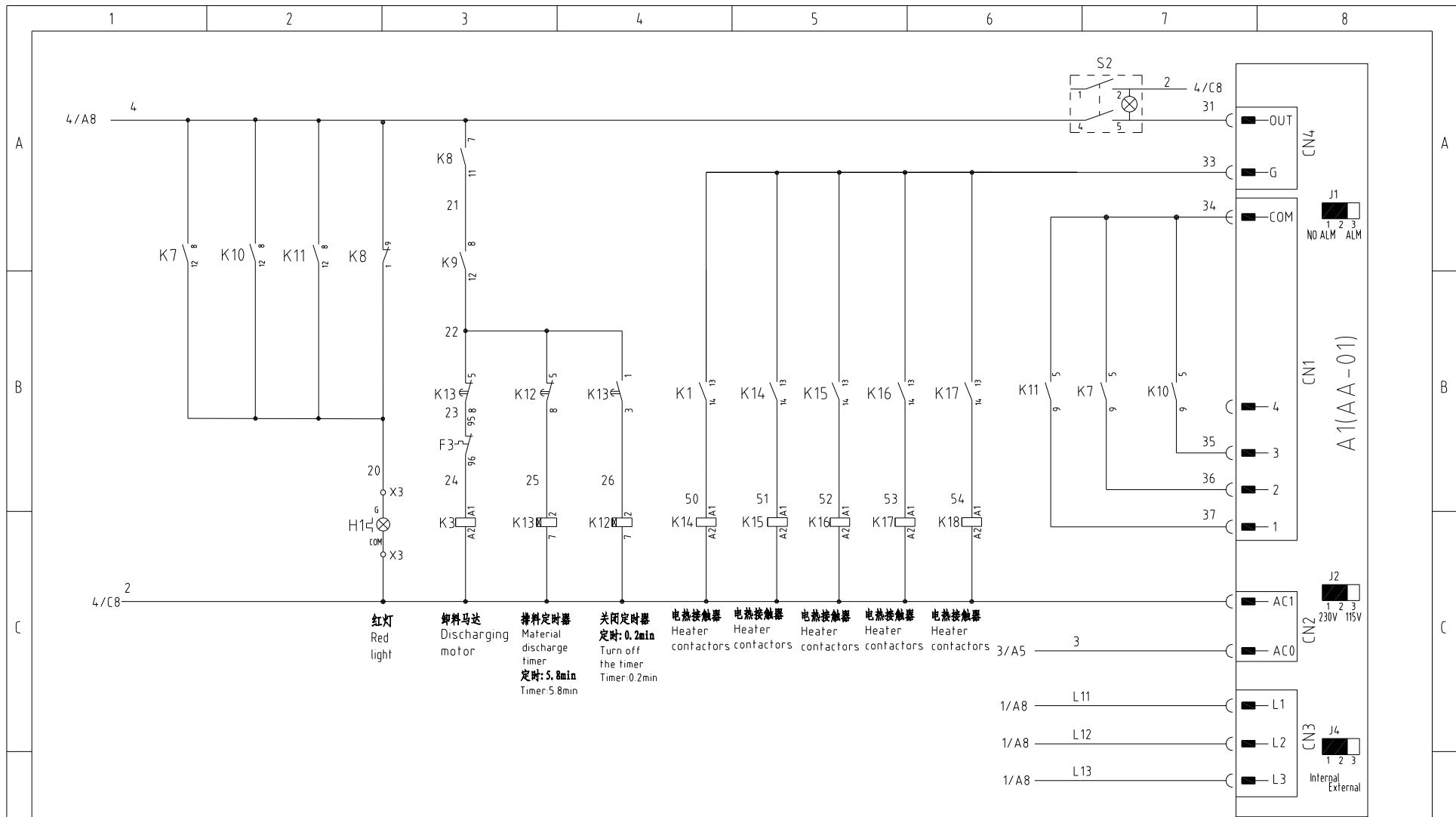
机型版本 Ver.C

					制图	版号	B	标题	SCR-2500U	图号	SCR-2500U-CE-400V-B-3	比例	第 3 张
					设计	核准		控制电路图一		标准	CE	共 9 张	
					校对	日期	20240806	 信易電熱機械股份有限公司 Shini Plastics Technologies, Inc.	机器电压	3Φ400V			
标记	更改前	更改后	更改人	日期	审核				机器频率	50Hz			


1 2 3 4 5 6 7 8



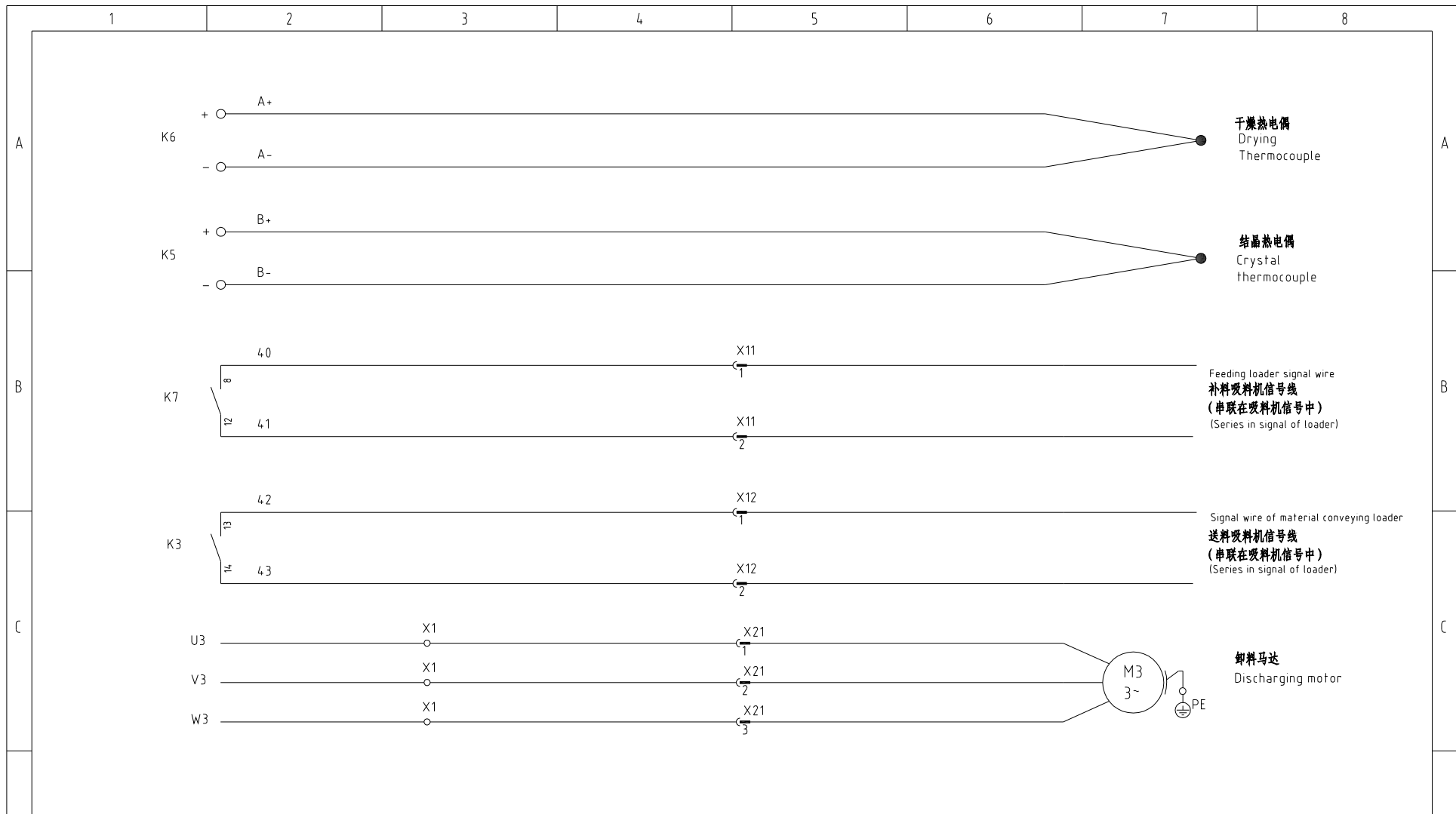
机型版本 Ver.C						制图		版号 B		标题 SCR-2500U 控制电路图二		图号 SCR-2500U-CE-400V-B-4		比例		第 4 张	
						设计		核准				标准 CE		共 9 张			
						校对				 信易電熱機械股份有限公司 Shini Plastics Technologies, Inc.		机器电压		3Φ400V			
标记						更改前		更改后				更改人		日期		审核	
1		2		3		4		5		6		7		8			



机型版本 Ver.C

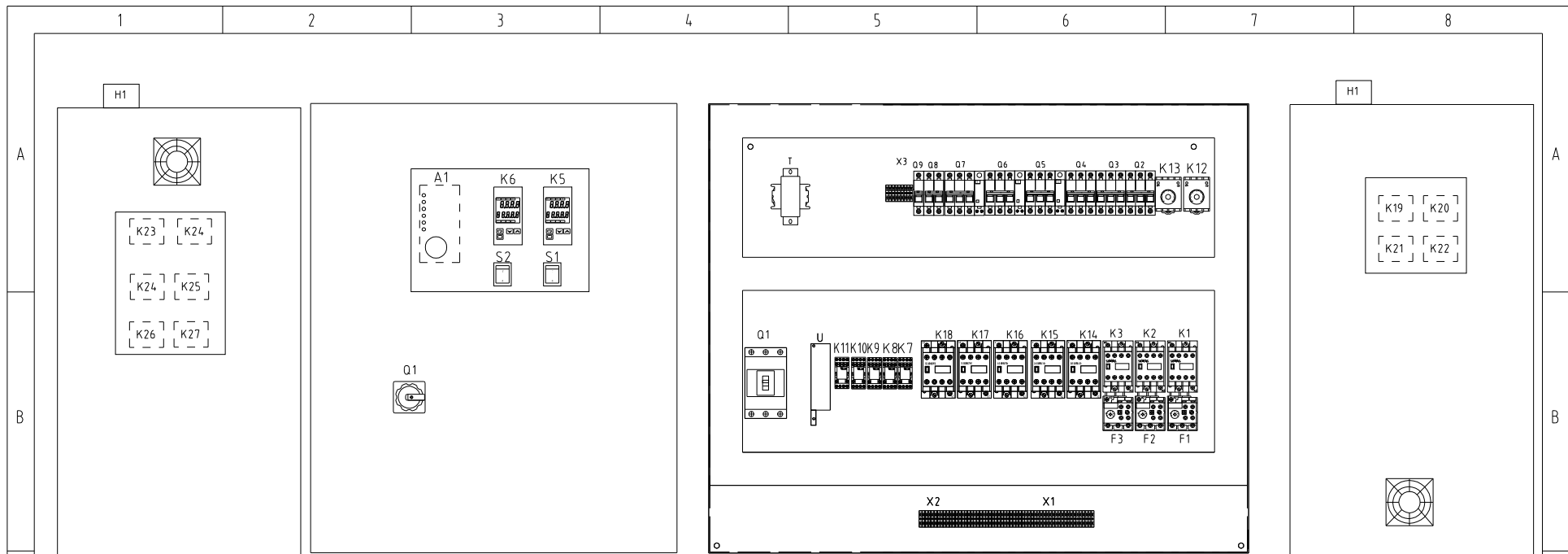
					制图	版号	B	标题	SCR-2500U	图号	SCR-2500U-CE-400V-B-5	比例	第 5 张
					设计	核		控制电路图三		标准	CE	共 9 张	
					校对	准		 信易電熱機械股份有限公司 Shini Plastics Technologies, Inc.	机器电压	3Φ400V			
标记	更改前	更改后	更改人	日期	审核	日期	2024.08.06		机器频率	50Hz			

1 2 3 4 5 6 7 8



机型版本 Ver.C

					制图	版号	B	标题	SCR-2500U	图号	SCR-2500U-CE-400V-B-6	比例	第 6 张
					设计	核 准		热电偶及吸料信号接线图		标准	CE	共 9 张	
					校对			 信易電熱機械股份有限公司 Shini Plastics Technologies, Inc.		机器电压	3Φ400V		
标记	更改前	更改后	更改人	日期	审核	日期	2024.08.06			机器频率	50Hz		

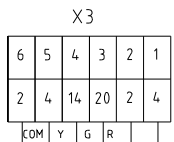


机幕左侧
Machine left side

机幕右侧
Machine right side

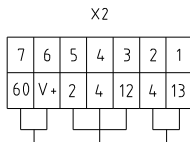


电控箱底部
Control box bottom



COM Y G R
接三色报警灯
Connect to three color alarm lamp

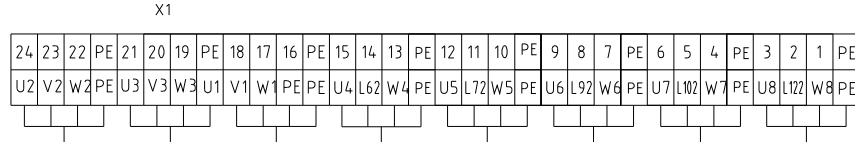
接风扇
Connect to fan



接温度保护器
Connect to the temperature protector

接料位马达
Connect to material level motor

接安全开关
Connect to safety switch



接搅拌马达
Connect to mixing motor

接卸料马达
Connect to discharging motor

接干燥鼓风机
Connect to drying blower

接加热器1
Connect to heater 1

接加热器2
Connect to heater 2

接加热器3
Connect to heater 3

接加热器4
Connect to heater 4

接加热器5
Connect to heater 5

机型版本 Ver.C

				制图	版号	B	标题	SCR-2500U	图号	SCR-2500U-CE-400V-B-7	比例	第 7 张
				设计	核		电气元件布置图	SHINI 信易电热机械股份有限公司 Shini Plastics Technologies, Inc.	标准	CE	共 9 张	
				校对	准						机器电压	3Φ400V
标记	更改前	更改后	更改人	日期	审核	日期	20240806				机器频率	50Hz

1

2

3

4

5

6

7

8

1		2		3		4		5		6		7		8		
序号/NO	符号/Symbol	名称/Name		制造商/Manufacturer		型号/Type		规格/Specification		单位/unit	数量/Number	物料编号/Material number		备注/Remark		
1	Q1	门连锁断路器 /Break Interlock		TECO		TAX-250L3250		250A		PCS	1	?YE40250300600				
2		外部操作把手 /External operating handle		TECO		FB2R-CS1-C-D1		TAX-250		PCS	1	?YE90211200300				
A	3	Q2	断路器 /Circuit breakers		TECO		BM-100D/3080S		80A		PCS	1	YE40308003000		A	
	4	Q3	断路器 /Circuit breakers		TECO		BM-63C/3025S 25A 3P		25A		PCS	1	YE40302503000			
	5	Q4	断路器 /Circuit breakers		TECO		BM-63C/3006S 6A 3P		6A		PCS	1	YE40300603000			
	6	Q5 Q6	断路器 /Circuit breakers		TECO		BM-100D/3100S 100A 3P		100A		PCS	2	YE40310003000			
	7	Q7	断路器 /Circuit breakers		TECO		BM-63C/3050S 50A 3P		50A		PCS	1	YE40305003000			
	8		励磁脱扣器 /Excitation release		TECO		MX		230VAC		PCS	3	YE40023560000			
	9	Q8	断路器 /Circuit breakers		TECO		BM-63C		3A		PCS	1	YE40200203000			
	10	Q9	断路器 /Circuit breakers		TECO		BM-63C		3A		PCS	1	YE40100203000			
B	11	K1	接触器 /Contactors		SIEMENS		3RT6028-1AC20		220V 50/60Hz		PCS	1	YE00602822000		B	
	12		辅助触点/Auxiliary contactor		SIEMENS		3RH6911-1AA10		1NO		PCS	4	YE00691110000			
	13	K2	接触器 /Contactors		SIEMENS		3RT6017-1AN21		220V 50/60Hz		PCS	1	YE00601721000			
	14	K3	接触器 /Contactors		SIEMENS		3RT6016-1AN22		220V		PCS	1	YE00601622000			
	15	K14-K18	接触器 /Contactors		SIEMENS		3RT6027-1AN20		220V 50/60Hz		PCS	5	YE00602722000			
	16	K5 K6	温控器 /Temperature controller		OMRON		E5EZ		100-240V 50/60Hz		PCS	2	YE85005000000			
	17	K7 K11	中间继电器 /Middle relay		WEIDMULLER		DRM570730LT		220V配座FS4CO		PCS	2	YE03570700000			
	18	K8	中间继电器 /Middle relay		Honeywell		GR-4C-DC24V		配座PGR-4C-E		PCS	1	YE03042400500			
C	19	K9 K10	中间继电器 /Middle relay		WEIDMULLER		DRM270730LT		230V 50/60Hz		PCS	2	YE03270700000		C	
	20	K12 K13	时间继电器 /Timer relay		T&C		TH3M-NAB		3S-60M/AC220V		PCS	2	YE86300300000			
	21	K19~ K28	固态继电器/Solid-state relay		FOTEK		KSR-40DA-H		4-32VDC		PCS	2	YE03404003200			
	22	F1	热过载继电器 /Overload relay		SIEMENS		3RU6116-1BB0		27-32A		PCS	1	YE01612600600			
	23	F2	热过载继电器 /Overload relay		SIEMENS		3RU6116-1KB0		9-12.5A		PCS	1	YE01169125000			
	24	F3	热过载继电器 /Overload relay		SIEMENS		3RU6116-1AB0		1.1-1.6A		PCS	1	YE01160110000			
	25	T	变压器/Sensor Transformer		JIUXIN		400V/415V OUT=230V		500MA		PCS	1	YE70040005200			
机型版本 Ver.C		注: (1) 表示非电控箱安装 (2) 表示干燥风机, 搅拌马达用线 Note: (1) Means not part of control box. (2) Means cables for drying blower, mixing motor;														
				制图		版号 B		标题 SCR-2500U		图号 SCR-2500U-CE-400V-B-8		比例		第 8 张		
				设计		核 准		电气元件明细表一		标准 CE		机器电压		3Φ400V		
				校对		日期 20240806		 信易電熱機械股份有限公司 Shini Plastics Technologies, Inc.		机器频率		50Hz				
标记		更改前		更改后		更改人				日期						
1		2		3		4		5		6		7		8		

1	2	3	4	5	6	7	8		
序号/NO	符号/Symbol	名称/Name	制造商/Manufacturer	型号/Type	规格/Specification	单位/unit	数量/Number	物料编号/Material number	备注/Remark
26	U	直流电源/DC power	DETLA	PMT-24V100W2BA 4.5	IN=230V OUT=DC24V	PCS	1	YE71241000100	
27	A1	微电脑板 /PCB	YUYUN	AA-01	230VAC 50/60Hz	PCS	1	YE80000100000	
28	S1 S2	切替开关 /Alternative switch	REAB	T120-55	4P WH	PCS	2	YE10210400000	
29	MS	料位马达 /Material level motor	SIPAI	SR-80-T	250VAC	PCS	1	YE15000200000	(1)
30	FM1	风扇 /Fan	SUNON	DP200A	230V 50/60Hz	PCS	1	YM60121200400	(1)
31	H1	警报灯/Alarm lamp	SHINI	绿黄红(制 Red, yellow, and green (height increasing type))	SWI-P-AC230V	PCS	1	BL90023000620	(1)
32	X1	端子排 /Terminal board	Honeywell	SK10	10mm ²	PCS	15	YE60001003200	
33		端子排 /Terminal board	Honeywell	GK10	10mm ² PE	PCS	5	YE60001003500	
34		端子排 /Terminal board	Honeywell	GK6	6mm ² ?	PCS	3	YE60000603200	
35		端子排 /Terminal board	Honeywell	GK6PE	6mm ² PE	PCS	1	YE60000603500	
36		端子排/Terminal board	HONEYWELL	SK2.5	2.5mm ² ?	PCS	6	YE60002503200	
37		端子排/Terminal board	HONEYWELL	GK2.5PE	2.5mm ² PE	PCS	2	YE60002503400	
38	X2	端子排/Terminal board	HONEYWELL	SK2.5	2.5mm ² ?	PCS	7	YE60002503200	
39	X3	端子排/Terminal board	HONEYWELL	SK2.5	2.5mm ² ?	PCS	6	YE60002503200	
40		终端固定件E/GK系列 Terminal fittings E/GK series	Honeywell	E	GK	PCS	6	YE60000003900	
41	X11 X12	金属接头/Metal connector	1	DF25-3	-----	PCS	2	YE68025300200	(1)
42	X21	防水接头 / Water-proof connector	CEE	RS-314	400V 16A	PCS	1	YE63314100000	(1)
43	S9	安全开关/Safety switch	SCHMERSRC	440N-Z2NRS1A	AZ-15	PCS	1	YE16440200200	(1)
44	S3	温度保护器 Temp. protector	EGO	ZA300	250V 5A		1	-----	(1)
45	S6 S7	热电偶 /Thermocouple	SHINI	----	K		2	----	(1)
46	M1	风机 /Blower	SHINI	----	15KW 400V 50Hz		1	-----	(1)
47	M2	马达 /Motor	SHINI	----	4KW 400V 50Hz		1	-----	(1)
48	EH1~EH5	电热 /Heater	SHINI	----	25.6KW 400V 50Hz		5	-----	(1)

Note: (1) Means not part of control box. (2) Means cables for drying blower, mixing motor.

机型版本 Ver.C

注: (1) 表示非电控箱安装 (2) 表示干燥风机、搅拌马达用线

D		制图		版号		B		标题		SCR-2500U		图号		SCR-2500U-CE-400V-B-9		比例		第 9 张	
		设计		核				电气元件明细表二				标准		CE				共 9 张	
		校对		准				 信易電熱機械股份有限公司 Shini Plastics Technologies, Inc.				机器电压		3Φ400V					
标记		更改前		更改后		更改人				日期		20240806		机器频率		50Hz			
1		2		3		4		5		6		7		8					