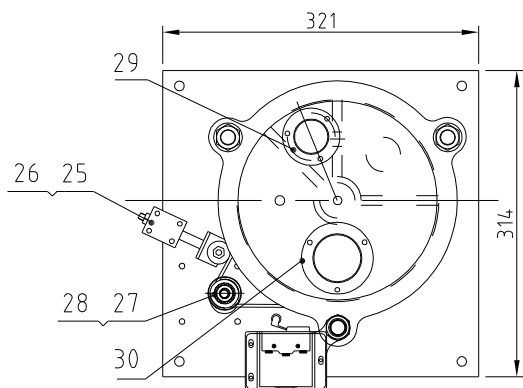
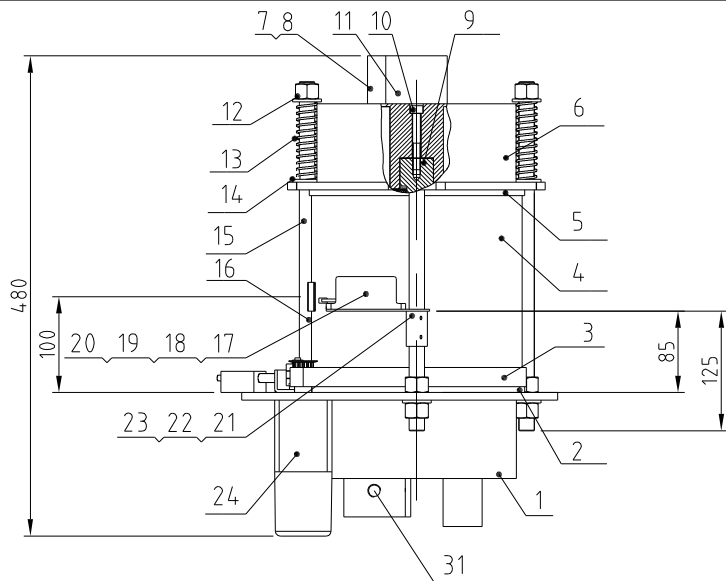


The power of drying electric heating for two material buckets is 3KW, 3KW respectively
 The capacities of the two drying material buckets are 40L and 40L, respectively,
 Regenerative electric heating power 3KW, regenerative fan power 0.2KW,
 Dehumidifier drying windmill power 0.75KW,
 Feeding windmill power 15KW,
 The drying air volume is 80m³/h.

23	SVH-6L-ALL	Photosensor hopper		1	
22	SHR-3U-A-ALL	Euro vacuum hopper receiver		1	
21	YR50128300000	Filter ADC18	Assembly	1	for regen filter tank
20	YW09675100000	Star nut 5/16"	Aluminum alloy	3	
19	YR40120000100	Filter barrel cover SD-120H-ALL-06	PC	2	
18	YR10120400000	Filter barrel cover fastener SD-120H-ALL-06	Silica gel	2	
17	YR50708000100	Filter 700/800G	Assembly	2	
16	YR40400200000	Control box S5MDISHD-40U-C-021	ABS+PC	1	
15	BH90115000050	EGO	Assembly	1	
14	BH70340000150	Pipe heater 3KW/400V flange fixed SD-40H-C-17	Assembly	1	
13	YW69051600000	Butterfly nut 5/16"	Q235A	3	
12	SCD-80Ux2/80H-F-ALL	Honeycomb rotor	Assembly	1	
11	YM60121200400	Exhaust fan 12x120CM	Assembly	1	
10	YR40120300000	Anti-dust screen	Assembly	2	
9	BH70400300350	Heater pipe SHD-40U3KW139400V	Assembly	2	
8	YM40211000100	Ringing blower 210110H0610 2KW1 3 phase 230V/400V	Assembly	1	Regeneration 0.2KW
7	YE85030000100	Temp. sensor	Assembly	1	
6	YW00816100000	Door lock MS816-1	Assembly	2	
5	BY10203812750	Shut-off suction box	Assembly	2	
4	BM30042000050	High pressure blower RB-420	Assembly	1	Conveying 15KW
3	BW88802800100	Cooler	Assembly	2	
2	BM30031000150	Shini Blower RB-310	Assembly	1	Drying 0.75KW
1	BY20003800300	Vacuum breaking separating valve 24V	Assembly	1	

序号 代号 名称 材料 数量 备注

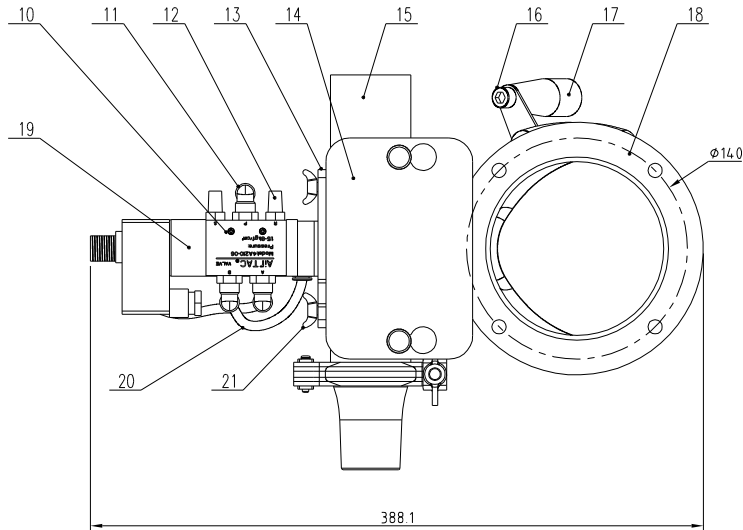
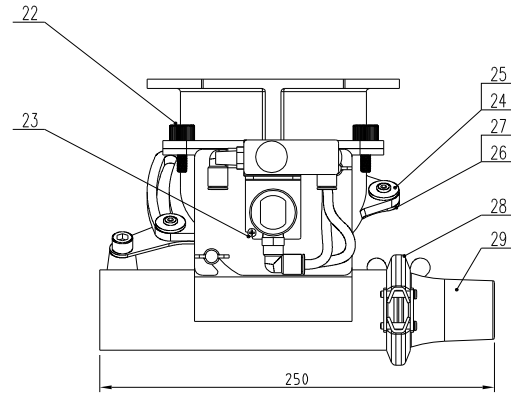
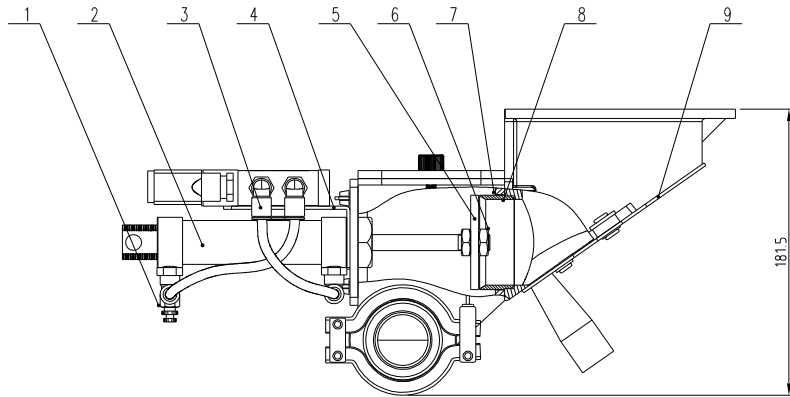
					制图	版号	标题	图号	比例	数量
					设计	核准	SCD-40Ux2/80H	SCD-40Ux2/80H-ALL	1:1	1
					校对		一对二除湿干燥送料组合		材质	
					审核		信易电热机械股份有限公司 Shini Plastics Technologies, Inc.		表面要求	
标记	更改前	更改后	更改人	日期	日期	物料号				



Technical requirements:
 1. Parts 2 and 5 are bonded with red silicone on one side and parts 1 and 6 are bonded with high-temperature resistant white silicone on the other side;
 Number 13 has a compression capacity of 15.

31		2.5" Upper and lower cover flange 1/4"PT		1	
30	YR90002500000	2.5" Flange washer	White silica gel	2	
29	YR90001500200	1.5" Flange washer	White silica gel	3	
28	YW68041000000	Inner hexagon flat-end set screw GB/T77 M4x10-Longzine		1	
27	YW08001000100	Synchronous belt pulley	45	1	
26	YW63043500000	Cross recessed pan head screw GB/T-818 M4x35-Longzine		2	
25		Belt regulator	Assembly	1	Borrowed
24	YM50315300100	Gear motor	Assembly	1	
23	YW64000400500	Hexagon nut M4		4	
22	YW63041600000	Large cross socket flat head screw JIS1111 M4x16-Longzine	4.8	4	
21	BL04402200020	Micro switch fixed piece SD-40H-A-22	SUS201	1	Borrowed
20	YW62041000000	Large cross socket flat head screw JIS1111 M4x10-Longzine		3	
19	YW63032500000	Cross recessed pan head screw GB/T-818 M3x25-Longzine		2	
18	YE14511200000	Position-limit switch YBLXW-5/11G2	Assembly	1	
17	YR40330900000	Microswitch box	ABS	1	
16	YW61030600100	Cross socket counter sunk head screw GB819 M3x6-Longzine		2	
15	BH10533000010	Double-head screw SD-40H-B-07	SUS200	3	Borrowed
14	YW09173000000	Flat washer #17x#30xH3(Longzine)		9	
13	YW01201800000	Spring	70Mn	3	
12	YW64001600000	Hexagon nut GB/T6170 M16-Longzine		9	
11		2.5" Upper and lower cover flange	SUS201	1	
10	YW61086500000	Inner hexagon cylinder head screw GB/T170.1 M8x65-12.9-Longzine		2	
9		Honeycomb mount shaft	45	2	Borrowed
8	YW62051000100	Large cross socket flat head screw JIS1111 M5x10-Longzine		15	
7		1.5" Upper and lower cover flange	SUS201	3	
6	BA40012000110	Honeycomb upper cover	AC4B	1	
5	YR10010000700	Silica gel Teflon upper gasket SCD-80Ux2/80H-F-05	Red silical gel + Teflon	1	
4	YW71022000000	Honeycomb φ220x200L	Full silical gel	1	
3	YR00203000000	Synchronous belt 20x300XL(perimeter:762)	Assembly	1	
2	YR10010000900	Silica gel Teflon lower gasket SCD-80Ux2/80H-F-06	Red silical gel + Teflon	1	
1	BA40012000210	Honeycomb lower cover	AC4B	1	
序号	代号	名称	材料	数量	备注

					制图		版号		标题	图号	比例	1:7	数量	1
					设计		核准		蜂巢转轮	SCD-80Ux2/80H-F-ALL			材质	/
					校对		核准			信易电热机械股份有限公司 Shini Plastics Technologies, Inc.	表面要求		/	
标记	更改前	更改后	更改人	日期	审核	日期		物料号			/			



Technical requirements:

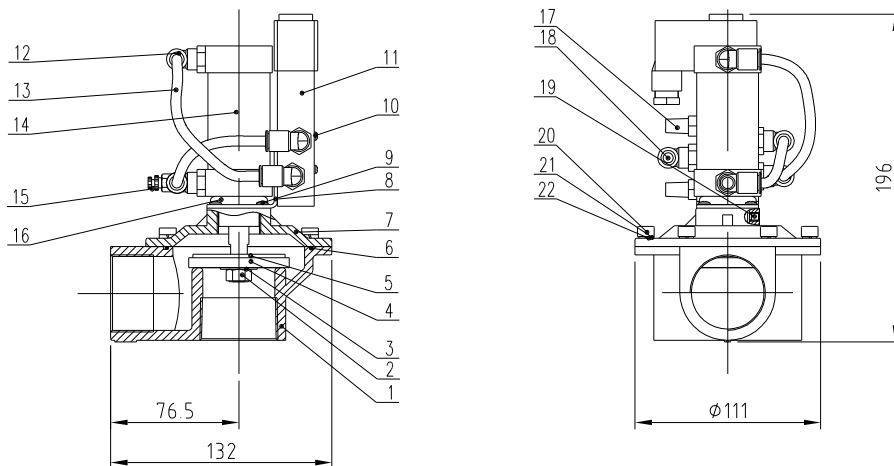
1. Leave a gap of 0.5mm between the cutting port and the membrane.
2. For numbers<24>and<27>, a small amount of screw tightening agent should be applied to prevent them from falling off during use.

29	SBU-20-38S-V-11	1.5" Suction port	ADC12	1	BW20152000120
28	YW07000200300	Stainless steel pinching clamp 2"		1	
27	YW614.02600100	long hex flat head screw D7.4x6.5 Hex		2	
26	YW63041500000	Flat washer 4 grade 48x19mm-Longzine		2	
25	YW66081900000	Flat washer 6x19x2.0 Longzine		2	
24	YW61101300200	Flat head hex head hexagonal nut M6x1.6		2	
23	YW63030600000	Cross recessed pan head screw Q17-422 M6		1	
22	YW69616100000	Hand screw M6*16*16		2	
21	YW69061500000	Butterfly bolt Q17-3098 M6x15		2	
20	YW60620000100	Transparent air pipe 200W/roll	PU pipe	0.4	
19	YE32421000300	Solenoid valve 4V210-06/02W Air/NC	Assembly	1	
18	SBU-20-38S-V-14	Collective barrel	ADC12	1	BW20203807010
17	YW06000100000	Blade rotating rod handle	Plastic	1	
16	YW61081600000	long hexagon cylindrical screw Q17x1.6 M6		1	
15	SBU-20-38S-V-07	shut-off body	ADC12	1	BW20203800220
14	SBU-20-38S-V-09	Sight glass	Acrylic plate	1	BR90203800410
13	SBU-20-38S-V-10	Cylinder fixed piece	SUS201	1	
12	YW80010800000	Copper muffler 1/8"	Copper	2	
11	YW80081800100	L type screw connector 4V2-01 1/8-96	Assembly	1	
10	YW63042500000	Cross recessed pan head screw Q17-411 M6.5		2	
9	SBU-20-38S-V-08	Shut-off plate	SUS201	1	
8	BH32160380010	Shut-off part SBU-160-38S-14-09	SUS201	1	
7	YW61061600000	long hexagon cylindrical head screw M6x1.6 4.0		4	
6	YW64.101250000	Anti-leaking nut 11Mx1.50(Fine tooth)		1	
5	SBU-20-38S-V-13	Diaphragm	SUS201	1	
4	SBU-20-38S-V-12	Solenoid valve fixed block	SUS201	1	
3	YW80061800200	L thread connector 4V2-01 1/8-96	Assembly	3	
2	YE31255000000	Cylinder 48x40-4x-77 (double action)	Assembly	1	
1	YW80061800000	Adjustable air pipe connector 15/8-1/8-96	Assembly	1	

序号	代号	名称	材质	数量	备注
		标题 SBU-20-38S-V	图号 SBU-20-38S-V-ALL	比例	数量
		裁料式吸料盒		①	材质
			表面要求		
			物料号		

SHINI 信易电热机械股份有限公司
Shini Plastics Technologies, Inc.

制图	版号	标题	图号	比例	数量
设计	核准				
校对					
审核					
标记	更改前	更改后	更改人	日期	日期

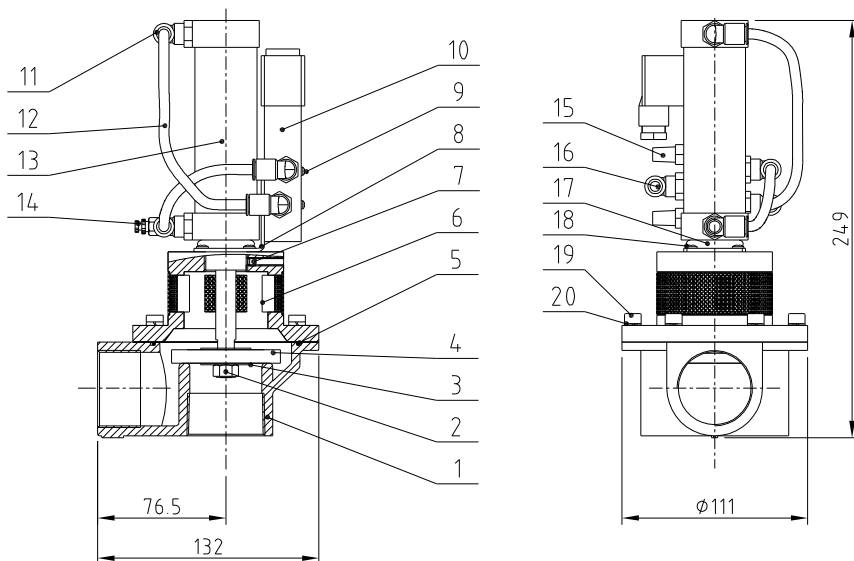


Technical requirements:

1. The pneumatic working pressure of the machine is 0.4-0.8MPa.
2. Serial number (2) needs to be coated with screw fastener when installing.

22	YW66061300000	Flat washer A grade GB/T97.1 6-Longzine	6		
21	YW65006000100	Standard spring washer GB/T93 6-Longzine	6		
20	YW61061601200	Inner hexagon cylindrical screw GB/T71.1 M6x1.6-Longzine	6		
19	YW68005500000	Inner hex. flat end lock screw GB/T71 M6x5-Longzine	1		
18	YW80081800100	L screw connector 1/8-Ø1 1/8-Ø6(AirTAC)10 pcs/bag	1		
17	YW80010800000	Copper silencer 1/8" (has mould)	2		
16	YR20305000000	Rubber O-Ring 30*5	1		
15	YW80061800000	Adjustable air pipe connector K16-1/8(10 pcs/bag)	1		
14	YE31322000100	Non-standard cylinder 10.3220(AirTAC) 10 pcs/bag	1		
13	YR60000600400	PU Air pipe Ø6*Ø4 black 200M/roll	1		
12	YW80061800200	L screw connector 1/8-Ø1 1/8-Ø6(AirTAC)10 pcs/bag	3		
11	YE32421000300	Solenoid valve 4/210-06/DC24V Air TAC	1		
10	YW63042500000	Cone recessed pin head screw Ø7*10 M6xLongzine Ø7*10 M6xLongzine	2		
9	YW63040600000	Cone recessed pin head screw Ø7*10 M6xLongzine Ø7*10 M6xLongzine	2		
8	BL20380500020	Semid metal finish plate 20*38-AL-60% Zn. Ø with 0.02mm semid metal size	1		
7	BW20001500810	Upper cover 20*38-AL-Ø1 white(Processed) (with mold)	1		
6	YR20258900000	Rubber O-ring 2.5*89 (O. D.)	1		
5	BL90558200040	Nonmetal gasket 40x4.54 20*38-AL-Ø1 (with mold) Ø1.65mm	1		
4	BR10608500040	Nonmetal gasket 40x4.54 20*38-AL-Ø1(Silicone) (Covering)	1		
3	YW66082200100	Large washer C grade GB/T908(Ø.4x24x2)-Longzine	1		
2	YW64000800100	Non-metal insert hexagon nut GB/T6899.1	1		
1	BW20001500910	Lower cover 20*38-AL-Ø1 white(Processed) (with mold)	1		
序号	代号	名称	材质	数量	备注

					制图		版号	标题	SPDV-38	图号	SPDV-38-ALL-DC24V	比例	/	数量	/
					设计		核准		真空分离阀					材质	/
					校对									表面要求	/
标记	更改前	更改后	更改人	日期	审核		日期			SHINI	信易电热机械股份有限公司 Shini Plastics Technologies, Inc.	物料号		/	

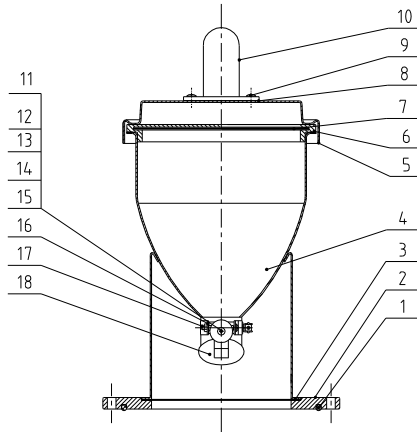
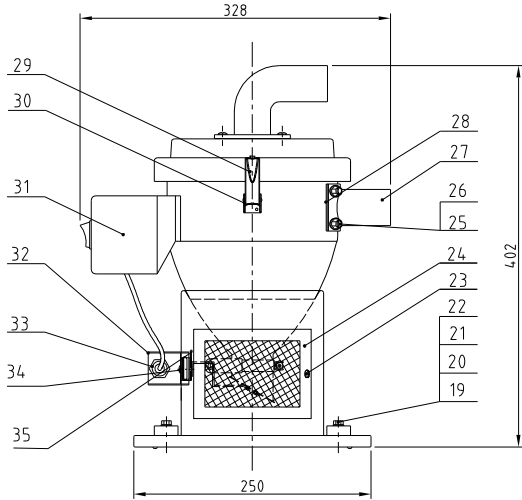


Technical requirements:

1. Machine pneumatic working pressure is 0.4-0.8MPa;.
2. Hexagonal nut M10*1.25 is fixed with fastener.

20	YW65006000100	Standard spring washer GB/T93 6-Longzine		6	
19	YW61062000300	Inner hexagon cylinder screw GB/T70.1 M6x20-12.9-Longzine		6	
18	YW63040600000	Cross recessed pan head screw M4x6		4	
17	YR20305000000	O-type seal ring $\phi 30 \times \phi 5$	Rubber	1	
16	YW80081800100	L screw connector APL8-01 1/8- $\phi 8$	Assembly	1	
15	YW80010800000	Copper muffler 1/8"(has mould)	Assembly	2	
14	YW80061800000	Adjustable air pipe ASL6-1/8	Assembly	1	
13	YE31326000100	Cylinder MBL32x60U(AirTAC)	Assembly	1	
12	YR60000600400	PU air pipe $\phi 6$ black 200m/roll	PU	0.3m	
11	YW80061800200	L thread connector APL6-01 1/8- $\phi 6$	Assembly	3	
10	YE32421000300	Solenoid valve 4 V210-06/DC24V AirTAC	Assembly	1	
9	YW63043500000	Cross recessed pan head screw GB/T-818 M4x35-Longzine		2	
8	BL20380500020	Solenoid valve fixed plate SPDV-38-ALL-05	SPCC2.0	1	
7	YW68005500000	Inner hex flat end lock screw GB/T77 M5x5-Longzine		1	
6	BW20380100010	Upper cover SVBV-38-ALL-01	Assembly	1	
5	YR20258900000	Rubber O-type seal ring 2.5x89(ext. dia.)	Rubber	1	
4	BR10651200040	4-way valve diaphragm 65x12x8mm plastic covered (has mould)	Assembly	1	
3	YW66103200000	Flat washer A grade GB/T96 10(10.5x30x2.5)-Longzine		2	
2		Hex nut M10x1.25		1	气缸自带
1	BW20001500910	Lower cover SPDV-38-ALL-02 white	YL112	1	
序号	代号	名称	材质	数量	备注

					制图		版号	标题	SVBV-38	图号	SVBV-38-ALL	比例	数量
					设计		核准	破真空分离阀				材质	
					校对			信易电热机械股份有限公司 Shini Plastics Technologies, Inc.				表面要求	
标记	更改前	更改后	更改人	日期	审核	日期			物料号				



Technical requirements:

1. Main performance parameters:

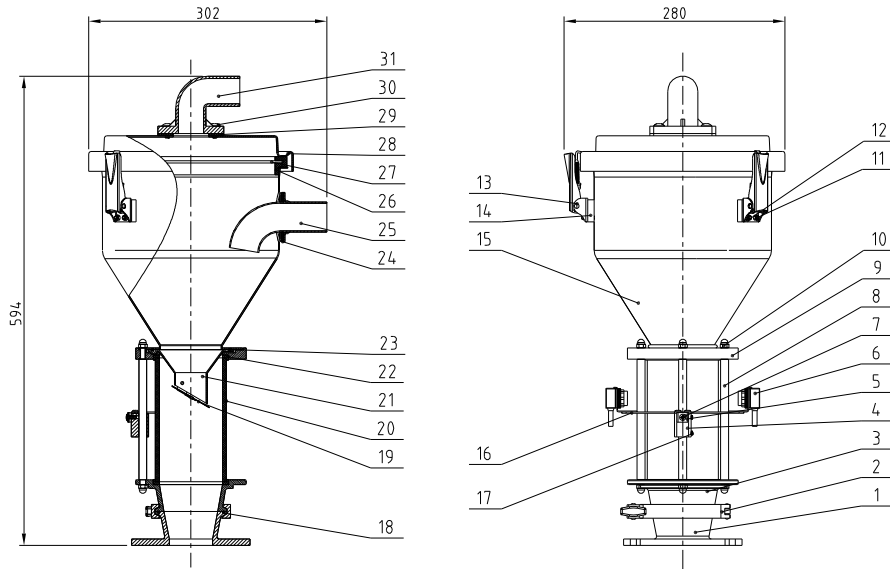
a. The storage hopper has a capacity of 3L.

2. Assembly requirements:

a. During assembly, adjust the opening of the feeding plate and the discharge port by about 8mm.

35		Magnet lid	SUS201	1	Borrowed
34	YW6206100000	Large cross socket flat head screw JIS1111 M6x10-Longzine		2	
33	YE15123000100	Reed switch	Assembly	1	BN12-30BLA
32	YR40000601100	Sensor shell	SUS201	1	Borrowed
31	YR40010000200	Control box	Plastic	1	Borrowed Wearing part
30	YR40000600300	Snap hook pressure block	ABS	3	Borrowed
29	YW02003000400	Snap hook	Assembly	3	Borrowed
28	YR10150300000	Material inlet pipe seal	Rubber	1	Borrowed Wearing part
27	BL32333600020	Material inlet pipe	SUS201	1	Borrowed
26	YW66040800000	Flat washer A grade GB/T 97.1 4-Longzine		4	
25	YW64040700100	Non-metal insert hexagon nut GB/T 889.1 M4		10	
24	YR40000600500	Vent window	Assembly	1	Borrowed
23	YR40061500000	Star handle	Assembly	2	Borrowed
22	YW20000600500	Pressing block	YL112	4	Borrowed
21	YW65006000100	Standard spring washer GB/T93 6-Longzine		6	
20	YW66061300000	Flat washer A grade GB/T 97.1 6-Longzine		6	
19	YW61062000300	Inner hexagon cylinder screw GB/T170.1 M6x20-12.9-Longzine		4	
18		Shut-off plate assembly drawing	Assembly	1	Borrowed
17	YW63034000000	Cross recessed pan head screw GB/T818 M3x6-Longzine		1	
16		Shut-off plate fixed base welding diagram	Assembly	1	Borrowed
15	YW64000300000	Anti-loosening nut M3	04	2	
14	BH12115000010	Magnetic sleeve	HPB59-1	1	Borrowed
13	YW90213700000	Permanent piece $\phi 21 \times \phi 3 \times 7$	Permanent magnet	1	
12	YW66031200000	Flat washer 3x12x0.8mm thickness -Longzine		2	
11	YW63032500000	Cross recessed pan head screw GB/T818 M3x25-Longzine		1	
10	BW20001500010	Air suction pipe	YL112	1	Borrowed
9	YW62051500000	Large cross socket flat head screw JIS1111 M5x16-Longzine		4	
8	YR10000000200	Air suction pipe tighten	Rubber	1	Wearing part
7		Filter screen	Assembly	1	Borrowed
6	YR10001500000	Hopper fastener	Rubber	1	Borrowed Wearing part
5		Hopper cover	SUS304	1	
4		Material storage tank	Assembly	1	
3		Base fastener	EVA2.0	1	
2	BW20001500110	Base	YL112	1	
1	YR20205500000	O type ring inner dia. $\phi 200 \times 5.5$	Rubber	1	Wearing part

序号	序号	代号	名称	材料	数量	备注
			SHR-3U		1:5	1
			欧化真空料斗	SHR-3U-A-ALL		
标记	更改前	更改后	更改人	日期	审核	日期
						2006.11.14
				信易塑料机械股份有限公司 Shini Plastics Technologies, Inc.		表面要求
						本图采用第一角画法

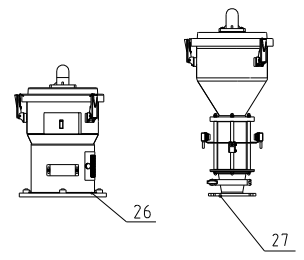
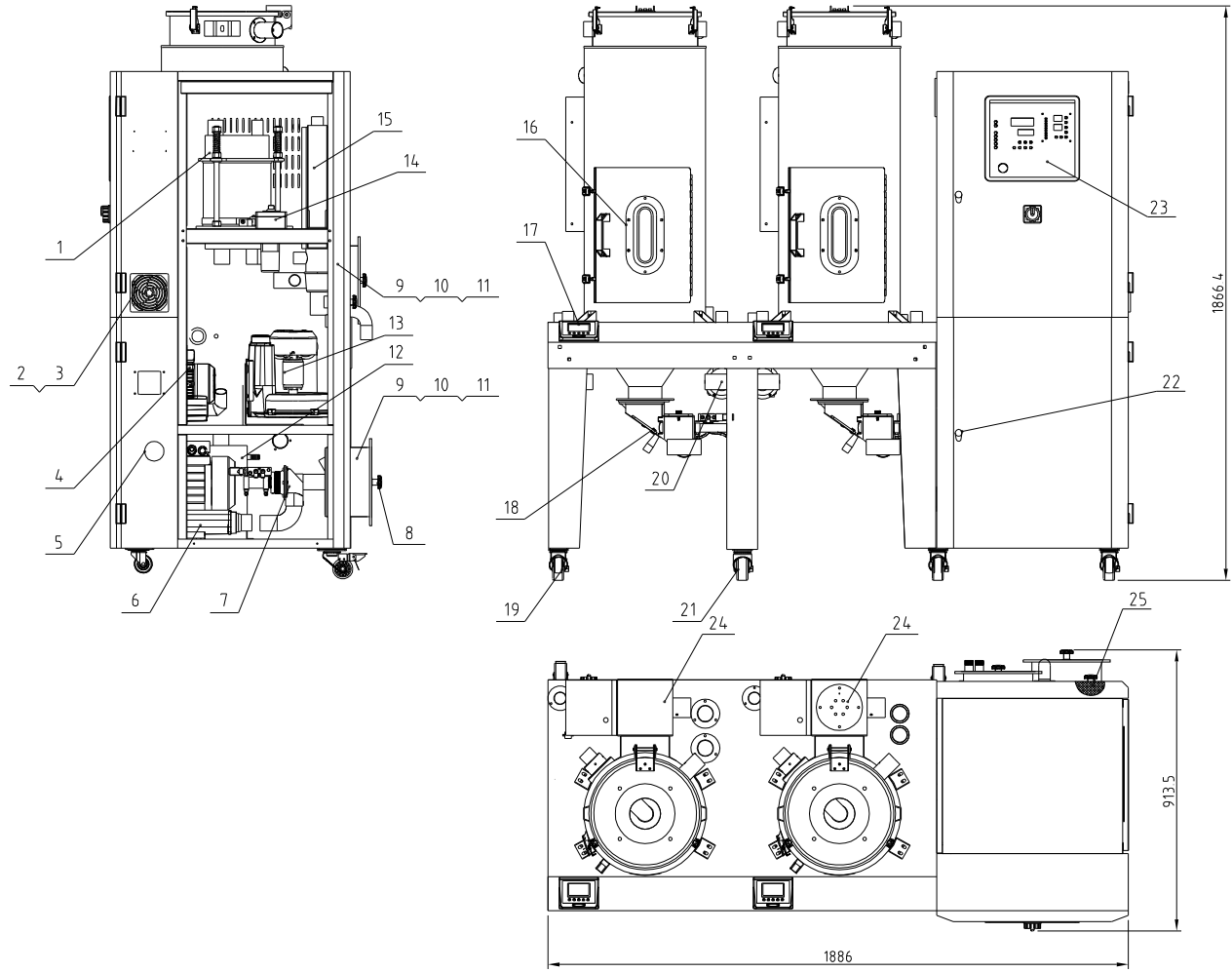


31	BW20001500010	Air suction pipe	YL112	1	
30	YW62051500000	Large cross socket flat head screw JIS1111 Mx16-L-0.014Z0.020		4	
29	YR10000000200	Air suction pipe tighten	Rubber	1	Wearing part
28		Hopper cover	SUS304	1	Borrowed
27		Filter screen	SUS201	1	Borrowed
26	YR10000300100	Hopper fastener	Rubber	1	Wearing part
25		Pipe inlet	SUS201	1	Borrowed
24		Feed pipe tighten	Rubber	1	Borrowed Wearing part
23	YR20259800000	Rubber O-type seal ring 25x98	Rubber	1	Wearing part
22		Glass pipe fastener	Silica gel	2	Wearing part
21		Material discharge port	Assembly	1	
20		Glass tube	Glass	1	
19		Non-return piece	Assembly	1	Wearing part
18	YR20802600000	Rubber O-type seal ring 80 (inner dia) x 2.65	Rubber	1	Wearing part
17	YW68004500000	Inner hex flat end lock screw GB/T77 M4x5-Longzine		2	
16		Photosensor fixed piece	SPCC15	1	
15		Material storage tank	SUS304	1	
14	YR40000600300	Snap hook block	ABS	3	
13	YW02003000400	Snap hook	Assembly	3	
12	YW66041000000	Flat washer A grade GB/T97.1(4.5x9x0.8)-Longzine		8	
11	YW64040700100	Non-metal insert hexagon nut GB/T889.1 M4		8	
10	YW64006000100	Hexagon cap nuts GB/T923 M6-A2-70(SUS)		6	
9		Glass pipe upper flange	YL112	1	
8		Flange connecting rod	Q235A	3	
7	YW63041200100	Cross recessed pan head screw GB/T-818 M4x12-Longzine		3	
6	YE15143900000	Photosensor FOTEK T18-3MN-PE	Assembly	1 pair	
5		Photosensor pressing block	SUS201	1	
4		Photosensor fixed base	YL112	1	
3		Glass pipe lower flange	YL112	1	
2	YW07000300000	3" Stainless steel clamp	SUS202	1	
1		Mounting Flange	YL112	1	
序号	代号	名称	材质	数量	备注

Technical requirements:
1. Main performance parameters:
a. The storage hopper capacity is 6L.

制图	版号	F	标题	SVH-6L	图号	SVH-6L-ALL	比例	1:6	数量	1
设计	核准		电眼料斗				☞ ⊕	材质	组件	
校对							表面要求			
标记	更改前	更改后	更改人	日期	审核	日期	物料号			
						20130112				



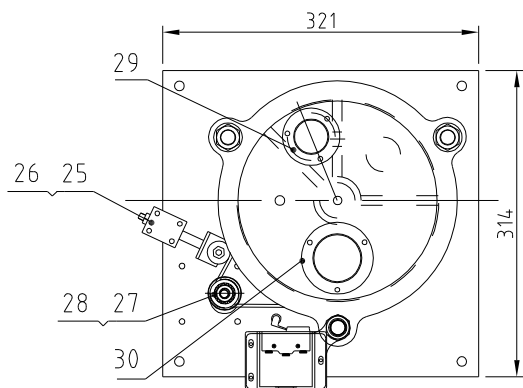
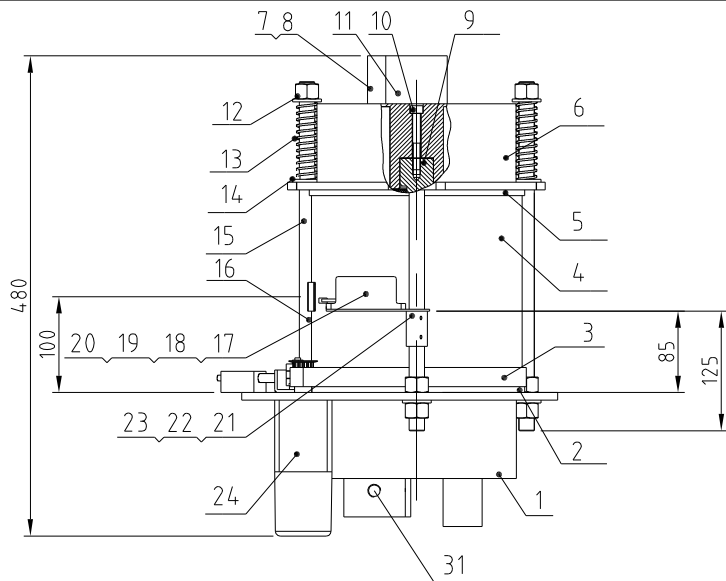


27	SVH-6L-ALL	Photosensor hopper		1	
26	SHR-6U-A-ALL	Euro vacuum hopper receiver		1	
25	YR50128300000	Filter ADC18	Assembly	1	for Regen. filter tank
24	BH70803900250	Heater pipe 3.9kw	Assembly	2	
23	BH10008001710	Plastic panel	ABS	1	
22	YW00816100000	Door lock MS816-1	Assembly	2	
21	YW03000300200	3"Activity rubber wheels	Assembly	4	
20	SPDV-38-ALL	Vacuum breaking separating valve	Assembly	4	
19	YW03000300000	3" Brake rubber wheel	Assembly	4	
18	SBU-20-3BS-V-ALL	Shut-off suction box	Assembly	2	
17	YR40400200000	Control box 55M01SHD-49U-C-021	ABS+PC	1	
16	YW70008000000	Sight glass	Glass	2	
15	BH70340000150	Pipe heater 3KW/00V flange fixed SD-L08-C-13	Assembly	1	
14	BH90115000050	EGO	Assembly	1	
13	BM30031000150	Shini Blower RB-310	Assembly		
12	BW88802800100	Cooler	Assembly	2	
11	YR50708000000	Filter 2UM stainless steel		2	
10		Filter barrel cover SD-120H-ALL-06		2	
9	YR10120400000	Filter barrel cover fastenerSD-120H-ALL-04	Silical gel	2	
8	YW09675100000	Star nut 5/16"	Aluminum alloy	3	
7	SVBV-38-ALL	Vacuum breaking separating valve 24V	Assembly	1	
6	BM30042000050	High pressure blower RB-420	Assembly	1	
5	YE85030000000	Temp gauge	Assembly	1	
4	YM40211000100	Roaring blower 2HB110H0610 2KW/3 230V/50V	Assembly	1	Regeneration 0.2KW
3	YM60121200400	Exhaust fan 12x12CM	Assembly	1	
2	YR40120300000	Anti-dust screen	Assembly	2	
1	SCD-80Ux2/80H-F-ALL	Honeycomb rotor	Assembly	1	借用
序号	代号	名称	材料	数量	备注

The power of the electric heating for drying two material buckets are 3.9KW and 3.9KW, respectively.
 The capacities of the two drying material buckets are 80L and 80L, respectively.
 Regenerative electric heating power: 3KW, regenerative fan power: 0.2KW.
 Dehumidifier drying windmill power: 0.75KW.
 Feeding windmill power: 1.5KW.
 The drying air volume is 80m³/h.

制图	版号	标题	图号	比例	数量
设计	核准	SCD-80U×2/80H	SCD-80U×2/80H-ALL	1:1	1
校对		一对二除湿干燥送料组合		材质	
审核				表面要求	
标记	更改前	更改后	更改人	日期	物料号

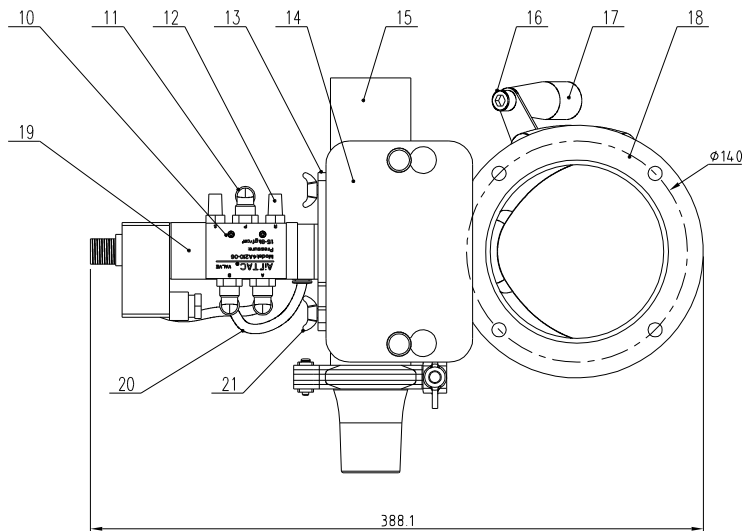
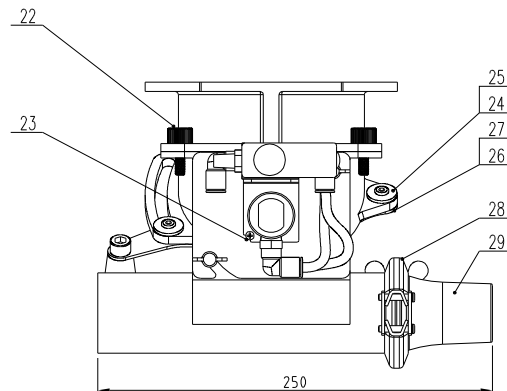
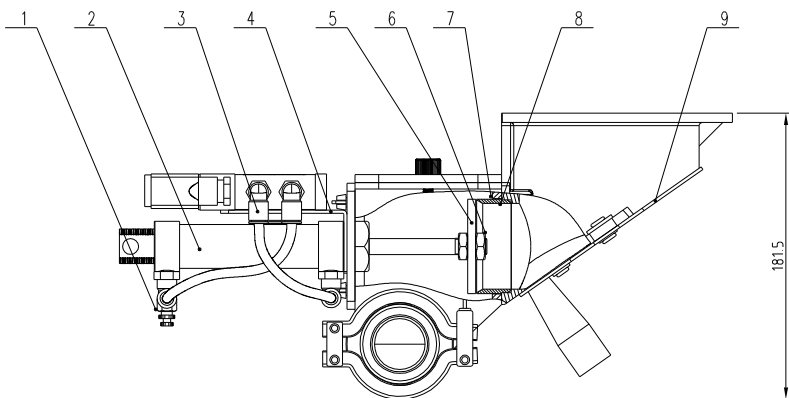




Technical requirements:
 1. Parts 2 and 5 are bonded with red silicone on one side and parts 1 and 6 are bonded with high-temperature resistant white silicone on the other side;
 Number 13 has a compression capacity of 15.

31		2.5" Upper and lower cover flange 1/4"PT		1	
30	YR90002500000	2.5" Flange washer	White silica gel	2	
29	YR90001500200	1.5" Flange washer	White silica gel	3	
28	YW68041000000	Inner hexagon flat-end set screw GB/T77 M4x10-Longzine		1	
27	YW08001000100	Synchronous belt pulley	45	1	
26	YW63043500000	Cross recessed pan head screw GB/T-818 M4x35-Longzine		2	
25		Belt regulator	Assembly	1	Borrowed
24	YM50315300100	Gear motor	Assembly	1	
23	YW64000400500	Hexagon nut M4		4	
22	YW63041600000	Large cross socket flat head screw JIS1111 M4x16-Longzine	4.8	4	
21	BL04402200020	Micro switch fixed piece SD-40H-A-22	SUS201	1	Borrowed
20	YW62041000000	Large cross socket flat head screw JIS1111 M4x10-Longzine		3	
19	YW63032500000	Cross recessed pan head screw GB/T-818 M3x25-Longzine		2	
18	YE14511200000	Position-limit switch YBLXW-5/11G2	Assembly	1	
17	YR40330900000	Microswitch box	ABS	1	
16	YW61030600100	Cross socket counter sunk head screw GB819 M3x6-Longzine		2	
15	BH10533000010	Double-head screw SD-40H-B-07	SUS200	3	Borrowed
14	YW09173000000	Flat washer #17x#30xH3(Longzine)		9	
13	YW01201800000	Spring	70Mn	3	
12	YW64001600000	Hexagon nut GB/T6170 M16-Longzine		9	
11		2.5" Upper and lower cover flange	SUS201	1	
10	YW61086500000	Inner hexagon cylinder head screw GB/T170.1 M8x65-12.9-Longzine		2	
9		Honeycomb mount shaft	45	2	Borrowed
8	YW62051000100	Large cross socket flat head screw JIS1111 M5x10-Longzine		15	
7		1.5" Upper and lower cover flange	SUS201	3	
6	BA40012000110	Honeycomb upper cover	AC4B	1	
5	YR10010000700	Silica gel Teflon upper gasket SCD-80Ux2/80H-F-05	Red silical gel + Teflon	1	
4	YW71022000000	Honeycomb φ220x200L	Full silical gel	1	
3	YR00203000000	Synchronous belt 20x300XL(perimeter:762)	Assembly	1	
2	YR10010000900	Silica gel Teflon lower gasket SCD-80Ux2/80H-F-06	Red silical gel + Teflon	1	
1	BA40012000210	Honeycomb lower cover	AC4B	1	
序号	代号	名称	材料	数量	备注

					制图		版号		标题	图号	比例	1:7	数量	1
					设计		核准		蜂巢转轮	SCD-80Ux2/80H-F-ALL			材质	/
					校对		核准			信易电热机械股份有限公司 Shini Plastics Technologies, Inc.	表面要求		/	
标记	更改前	更改后	更改人	日期	审核	日期		物料号			/			



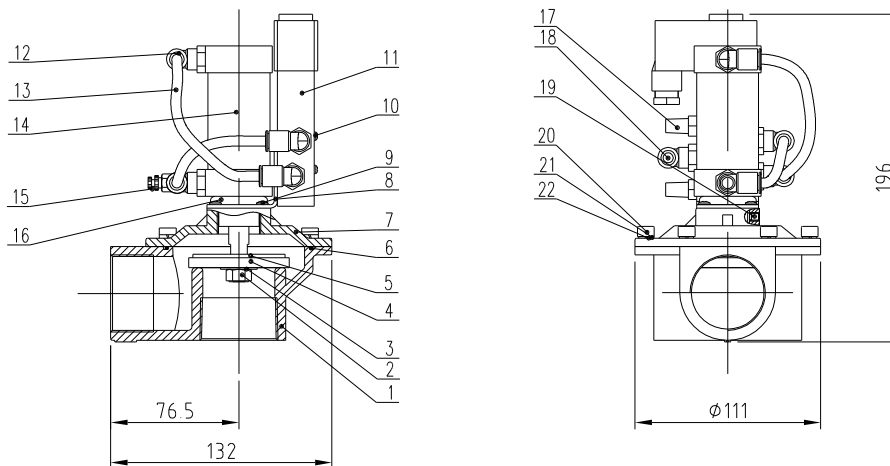
Technical requirements:

1. Leave a gap of 0.5mm between the cutting port and the membrane.
2. For numbers<24>and<27>, a small amount of screw tightening agent should be applied to prevent them from falling off during use.

29	SBU-20-38S-V-11	1.5" Suction port	ADC12	1	BW20152000120
28	YW07000200300	Stainless steel pinching clamp 2"		1	
27	YW614.02600100	long hex flat head screw D7.6x6.5 Hex		2	
26	YW63041500000	Flat washer 4 grade 8x19x2.0 Longzine		2	
25	YW66081900000	Flat washer 6x19x2.0 Longzine		2	
24	YW61101300200	Flat head hex head hexagonal nut M6x1.6		2	
23	YW63030600000	Cross recessed pan head screw Q17-422 M6x6		1	
22	YW69616100000	Hand screw M6*16*16		2	
21	YW69061500000	Butterfly bolt Q17 3098 M6x15		2	
20	YR60620000100	Transparent air pipe 200W/roll	PU pipe	0.4	
19	YE32421000300	Solenoid valve 4V210-06/02W Air/NC	Assembly	1	
18	SBU-20-38S-V-14	Collective barrel	ADC12	1	BW20203807010
17	YW06000100000	Blade rotating rod handle	Plastic	1	
16	YW61081600000	long hexagon cylindrical screw Q17x1.6 M6x6		1	
15	SBU-20-38S-V-07	shut-off body	ADC12	1	BW20203800220
14	SBU-20-38S-V-09	Sight glass	Acrylic plate	1	BR90203800410
13	SBU-20-38S-V-10	Cylinder fixed piece	SUS201	1	
12	YW80010800000	Copper muffler 1/8"	Copper	2	
11	YW80081800100	L type screw connector 4V2-01 1/8-96	Assembly	1	
10	YW63042500000	Cross recessed pan head screw Q17-411 M6x5		2	
9	SBU-20-38S-V-08	Shut-off plate	SUS201	1	
8	BH32160380010	Shut-off part SBU-160-38S-14-09	SUS201	1	
7	YW61061600000	long hexagon cylindrical head screw M6x6.5 4.8		4	
6	YW64.101250000	Anti-leaking nut 11Mx1.50(1.5 fine teeth)		1	
5	SBU-20-38S-V-13	Diaphragm	SUS201	1	
4	SBU-20-38S-V-12	Solenoid valve fixed block	SUS201	1	
3	YW80061800200	L thread connector 4V2-01 1/8-96	Assembly	3	
2	YE31255000000	Cylinder 4V2-01-02-PT (double action)	Assembly	1	
1	YW80061800000	Adjustable air pipe connector 4V2-1/8-96	Assembly	1	

序号	代号	名称	材质	数量	备注
----	----	----	----	----	----

					制图		版号		标题	SBU-20-38S-V	图号	SBU-20-38S-V-ALL	比例		数量	
					设计		核准		裁料式吸料盒							
					校对				 信易电热机械股份有限公司 Shini Plastics Technologies, Inc.		表面要求					
标记	更改前	更改后	更改人	日期	审核	日期					物料号					

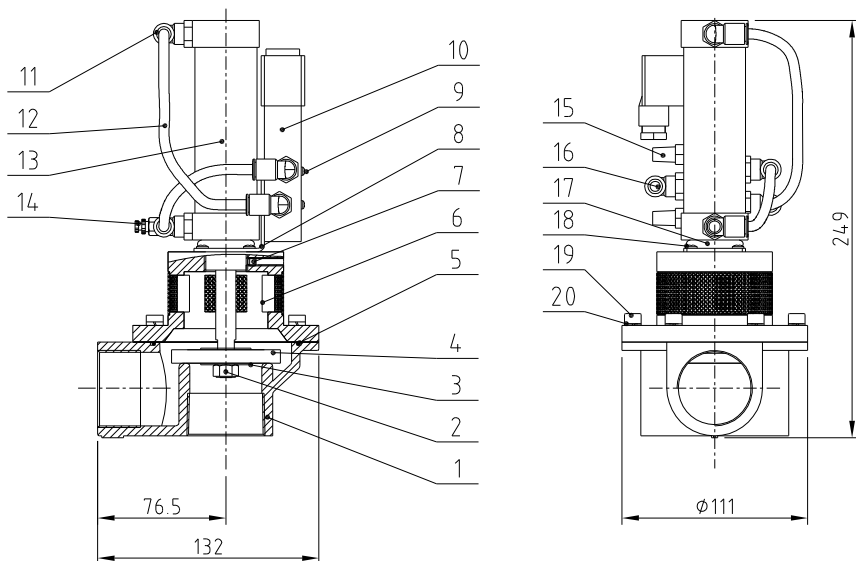


Technical requirements:

1. The pneumatic working pressure of the machine is 0.4-0.8MPa.
2. Serial number (2) needs to be coated with screw fastener when installing.

22	YW66061300000	Flat washer A grade GB/T97.1 6-Longzine	6		
21	YW65006000100	Standard spring washer GB/T93 6-Longzine	6		
20	YW61061601200	Inner hexagon cylindrical screw GB/T71.1 M6x1.6-Longzine	6		
19	YW68005500000	Inner hex. flat end lock screw GB/T71 M6x5-Longzine	1		
18	YW80081800100	L screw connector 1/8-Ø1 1/8-Ø6(AirTAC)10 pcs/bag	1		
17	YW80010800000	Copper silencer 1/8" (has mould)	2		
16	YR20305000000	Rubber O-Ring 30*5	1		
15	YW80061800000	Adjustable air pipe connector K16-1/8(10 pcs/bag)	1		
14	YE31322000100	Non-standard cylinder 10.3220(AirTAC) 10 pcs/bag	1		
13	YR60000600400	PU Air pipe Ø6*Ø4 black 200M/roll	1		
12	YW80061800200	L screw connector 1/8-Ø1 1/8-Ø6(AirTAC)10 pcs/bag	3		
11	YE32421000300	Solenoid valve 4/210-06/DC24V Air TAC	1		
10	YW63042500000	Cone recessed pin head screw Ø7*10 M6xLongzine Ø7*10 M6xLongzine	2		
9	YW63040600000	Cone recessed pin head screw Ø7*10 M6xLongzine Ø7*10 M6xLongzine	2		
8	BL20380500020	Semid metal finish plate 20*38-AL-60% Zn. Ø with 60% zinc	1		
7	BW20001500810	Upper cover 20*38-AL-Ø1 white(Processed) (with mold)	1		
6	YR20258900000	Rubber O-ring 2.5*89 (O. D.)	1		
5	BL90558200040	Non-metal insert hexagon nut 90*55-AL-Ø4 (Silicone) Ø4.5x55	1		
4	BR10608500040	Non-metal insert hexagon nut 106*85-AL-Ø4 (Silicone) (Covering)	1		
3	YW66082200100	Large washer C grade GB/T908(Ø. 4.2x22)-Longzine	1		
2	YW64000800100	Non-metal insert hexagon nut GB/T909.1	1		
1	BW20001500910	Lower cover 20*38-AL-Ø1 white(Processed) (with mold)	1		
序号	代号	名称	材质	数量	备注

					制图		版号	标题	SPDV-38	图号	SPDV-38-ALL-DC24V	比例	/	数量	/	
					设计		核准		真空分离阀					材质	/	
					校对									表面要求	/	
标记	更改前	更改后	更改人	日期	审核		日期							物料号	/	
											信易电热机械股份有限公司 Shini Plastics Technologies, Inc.					

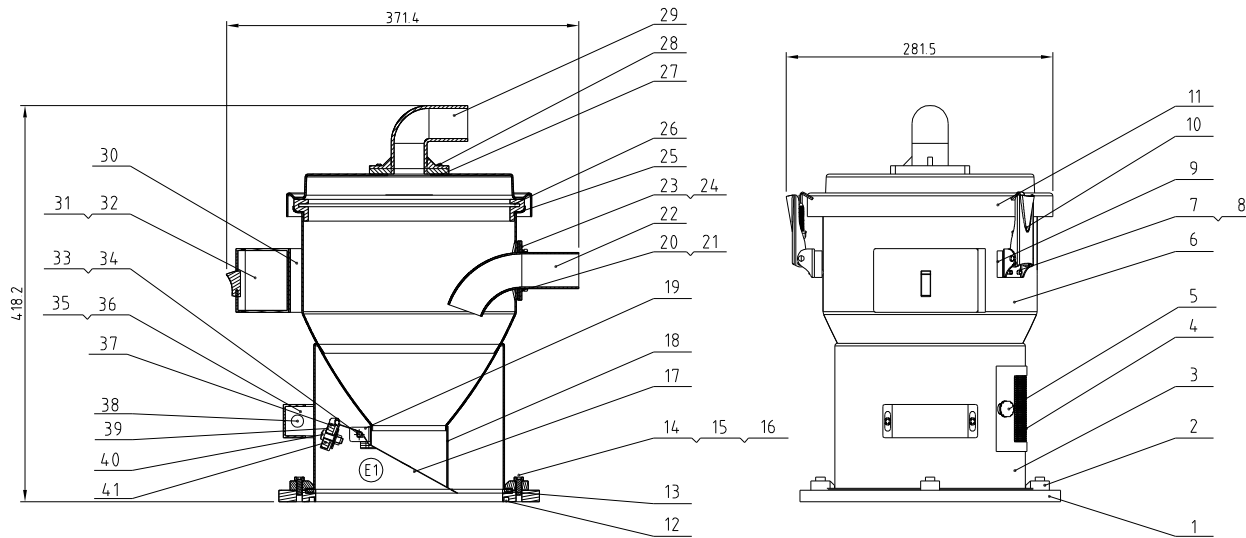


Technical requirements:

1. Machine pneumatic working pressure is 0.4-0.8MPa;.
2. Hexagonal nut M10*1.25 is fixed with fastener.

20	YW65006000100	Standard spring washer GB/T93 6-Longzine		6	
19	YW61062000300	Inner hexagon cylinder screw GB/T70.1 M6x20-12.9-Longzine		6	
18	YW63040600000	Cross recessed pan head screw M4x6		4	
17	YR20305000000	O-type seal ring $\phi 30 \times \phi 5$	Rubber	1	
16	YW80081800100	L screw connector APL8-01 1/8- $\phi 8$	Assembly	1	
15	YW80010800000	Copper muffler 1/8"(has mould)	Assembly	2	
14	YW80061800000	Adjustable air pipe ASL6-1/8	Assembly	1	
13	YE31326000100	Cylinder MBL32x60U(AirTAC)	Assembly	1	
12	YR60000600400	PU air pipe $\phi 6$ black 200m/roll	PU	0.3m	
11	YW80061800200	L thread connector APL6-01 1/8- $\phi 6$	Assembly	3	
10	YE32421000300	Solenoid valve 4 V210-06/DC24V AirTAC	Assembly	1	
9	YW63043500000	Cross recessed pan head screw GB/T-818 M4x35-Longzine		2	
8	BL20380500020	Solenoid valve fixed plate SPDV-38-ALL-05	SPCC2.0	1	
7	YW68005500000	Inner hex flat end lock screw GB/T77 M5x5-Longzine		1	
6	BW20380100010	Upper cover SVBV-38-ALL-01	Assembly	1	
5	YR20258900000	Rubber O-type seal ring 2.5x89(ext. dia.)	Rubber	1	
4	BR10651200040	4-way valve diaphragm 65x12x8mm plastic covered (has mould)	Assembly	1	
3	YW66103200000	Flat washer A grade GB/T96 10(10.5x30x2.5)-Longzine		2	
2		Hex nut M10x1.25		1	气缸自带
1	BW20001500910	Lower cover SPDV-38-ALL-02 white	YL112	1	
序号	代号	名称	材质	数量	备注

					制图		版号	标题	SVBV-38	图号	SVBV-38-ALL	比例	数量
					设计		核准	破真空分离阀				材质	
					校对			信易电热机械股份有限公司 Shini Plastics Technologies, Inc.				表面要求	
标记	更改前	更改后	更改人	日期	审核	日期			物料号				

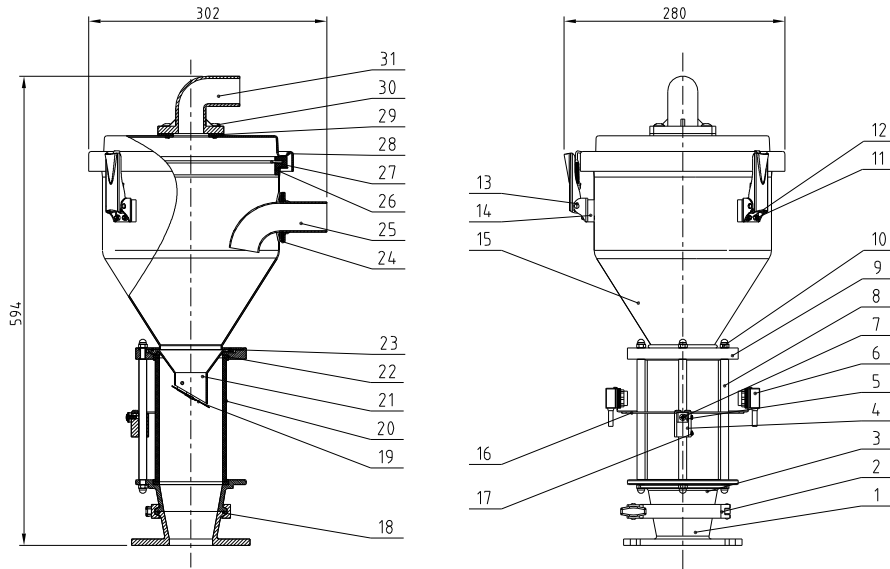


41	BL21000600120	Magnetic cover	SUS201	1	Borrowed
40	YW63062000000	Cross recessed pan head screw GB/T-818 M6x20-Longzine		1	
39	YW90257700000	Permanent magnetφ25-φ7x7	Permanent magnet	1	
38	YE151230004.00	Reed switch BN12-30BLA/Length 80mm/24V without crystal connector		1	
37	BH12000600010	Magnetic sleeve	H58	1	Borrowed
36	YW63061000000	Cross recessed pan head screw GB/T-818 M6x10-Longzine		2	
35	YR4.0000601100	Sensor shell	ABS	1	Borrowed
34	YW63034.0000000	Cross recessed pan head screw GB/T-818 M3x60-Longzine		1	
33	YW64.000300000	Lock nut M3		1	
32	YW6304.0600000	Cross recessed pan head screw M4x6GB/T818 Longzine		2	
31	YR4.0010000200	Control box	ABS	1	Borrowed
30		Control box base	SUS201	1	Borrowed
29	BW20001500010	Air suction pipe	YL12	1	Borrowed
28	YW62051500000	Large cross socket flat head screw JIS111 M5x16 Longzine		4	
27	YR10000000200	Air suction pipe tighten	Rubber	1	Wearing part
26	BL21000600620	Filter screen	SUS201	1	Borrowed
25	YR10000300100	Hopper fastener	Rubber	1	Wearing part
24	YR10061200000	Pipe inlet fastener	Rubber	1	Borrowed Wearing part
23	BL20036000320	1.5" Pipe inlet fixed piece	SUS201	1	Borrowed
22	BL32000600020	Pipe inlet	SUS201	1	Borrowed
21	YW6604.0800000	Flat washer A grade GB/T1971 4/4.5X9X0.81-Longzine		4	
20	YW64.04.0700100	Non-metal insert hexagon nut GB/T889 1M4		4	
19	BL21000601120	Discharging plate fixed base	SUS201	1	Borrowed
18	BL21000600720	Discharge port	SUS201	1	Borrowed
17	BL21000602320	Discharging plate	SUS201	1	Borrowed
16	YW66061300000	Flat washer A grade GB/T1971 6-1.1X12.0-Longzine		8	
15	YW65006000000	Standard spring washer GB/193 6-Longzine		8	
14	YW61062000300	Inner hexagon cylinder screw GB/1776 M6x20-12.9-Longzine		6	
13		Base forced tight	EVA3 0	1	
12	YR20205500000	D-type seal ring inner dia φ200x5.5	Rubber	1	Wearing part
11		Hopper cover	SUS201	1	
10	YW020030004.00	Adjustable snap hook SAL-6U-A-35	Assembly	3	
9	YR4.00006008000	Snap hook block SAL-6U	ABS	3	
8	YW6604.0800000	Flat washer A grade GB/T1971 4/4.5X9X0.81-Longzine		10	
7	YW64.04.0700100	Non-metal insert hexagon nut GB/T889 1M4		10	
6		Material storage tank	SUS304	1	
5	YR4.00615000000	Star knob	Assembly	2	Borrowed
4	YR4.00006010000	Vent window	ABS	1	Borrowed
3	BL27000601320	Hopper fixed base	SUS304	1	Borrowed
2	YW20000600500	Pressing block	YL112	4	Borrowed
1	YW20000600000	Base	YL112	1	Borrowed
序号	代号	名称	材质	数量	备注

					制图		版号	E	标题	SHR-6U	图号
					设计		核准			装配图	SHR-6U-A-ALL
					校对						
					审核		日期	20091129			
标记	更改前	更改后	更改人	日期	审核		日期	20091129			

SHINI 信易电热机械股份有限公司
Shini Plastics Technologies, Inc.

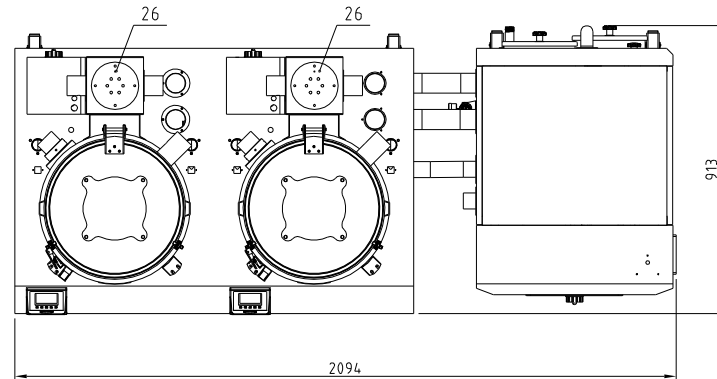
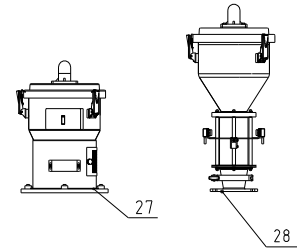
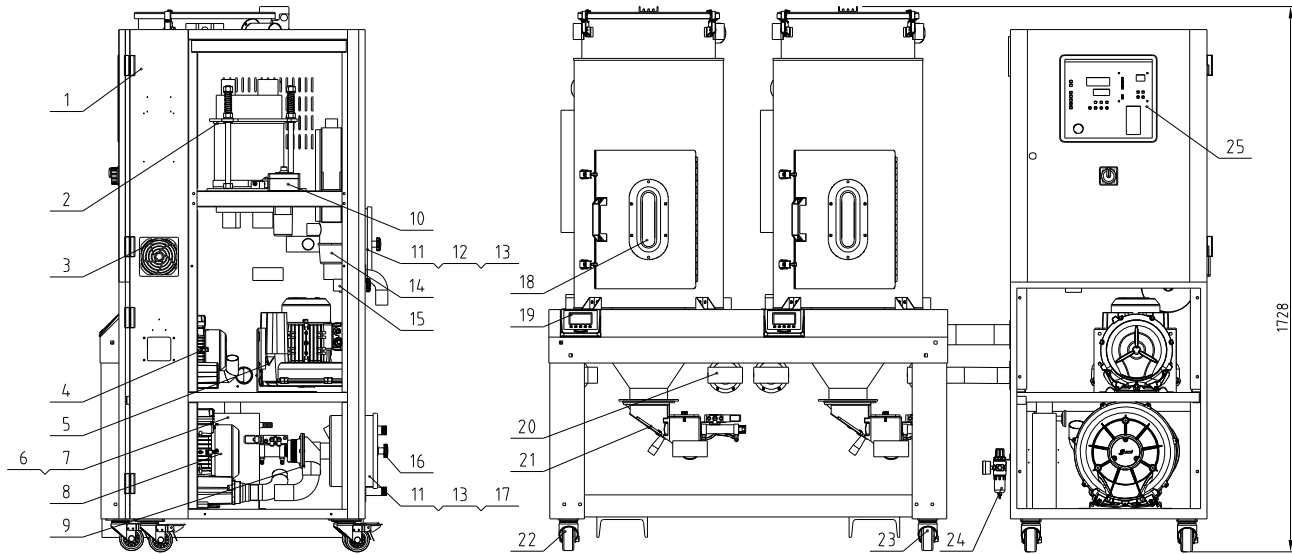
比例	1:5	数量	1
表面要求	⊕		
物料号	材质 组件		



31	BW20001500010	Air suction pipe	YL112	1	
30	YW62051500000	Large cross socket flat head screw JIS1111 Mx16-L-0.014Z0.020		4	
29	YR10000000200	Air suction pipe tighten	Rubber	1	Wearing part
28		Hopper cover	SUS304	1	Borrowed
27		Filter screen	SUS201	1	Borrowed
26	YR10000300100	Hopper fastener	Rubber	1	Wearing part
25		Pipe inlet	SUS201	1	Borrowed
24		Feed pipe tighten	Rubber	1	Borrowed Wearing part
23	YR20259800000	Rubber O-type seal ring 25x98	Rubber	1	Wearing part
22		Glass pipe fastener	Silica gel	2	Wearing part
21		Material discharge port	Assembly	1	
20		Glass tube	Glass	1	
19		Non-return piece	Assembly	1	Wearing part
18	YR20802600000	Rubber O-type seal ring 80 (inner dia) x 2.65	Rubber	1	Wearing part
17	YW68004500000	Inner hex flat end lock screw GB/T77 M4x5-Longzine		2	
16		Photosensor fixed piece	SPCC15	1	
15		Material storage tank	SUS304	1	
14	YR40000600300	Snap hook block	ABS	3	
13	YW02003000400	Snap hook	Assembly	3	
12	YW66041000000	Flat washer A grade GB/T97.1(4.5x9x0.8)-Longzine		8	
11	YW64040700100	Non-metal insert hexagon nut GB/T889.1 M4		8	
10	YW64006000100	Hexagon cap nuts GB/T923 M6-A2-70(SUS)		6	
9		Glass pipe upper flange	YL112	1	
8		Flange connecting rod	Q235A	3	
7	YW63041200100	Cross recessed pan head screw GB/T-818 M4x12-Longzine		3	
6	YE15143900000	Photosensor FOTEK T18-3MN-PE	Assembly	1 pair	
5		Photosensor pressing block	SUS201	1	
4		Photosensor fixed base	YL112	1	
3		Glass pipe lower flange	YL112	1	
2	YW07000300000	3" Stainless steel clamp	SUS202	1	
1		Mounting Flange	YL112	1	
序号	代号	名称	材质	数量	备注

Technical requirements:
1. Main performance parameters:
a. The storage hopper capacity is 6L.

制图	版号	F	标题	SVH-6L	图号	SVH-6L-ALL	比例	1:6	数量	1
设计	核准		电眼料斗				材质 组件			
校对			信易塑料机械股份有限公司 Shini Plastics Technologies, Inc.				表面要求			
标记	更改前	更改后	更改人	日期	审核	日期	20130112	物料号		



The power of the electric heating for drying two material buckets are 3.9KW and 3.9KW, respectively
 Regenerative electric heating power: 3KW,
 regenerative fan power: 0.4KW;
 Dehumidifier drying windmill power: 0.7KW,
 Feeding windmill power: 15KW;

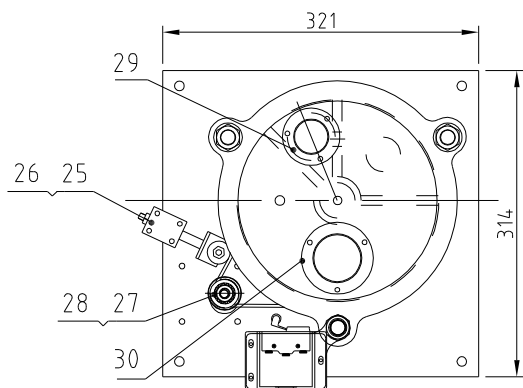
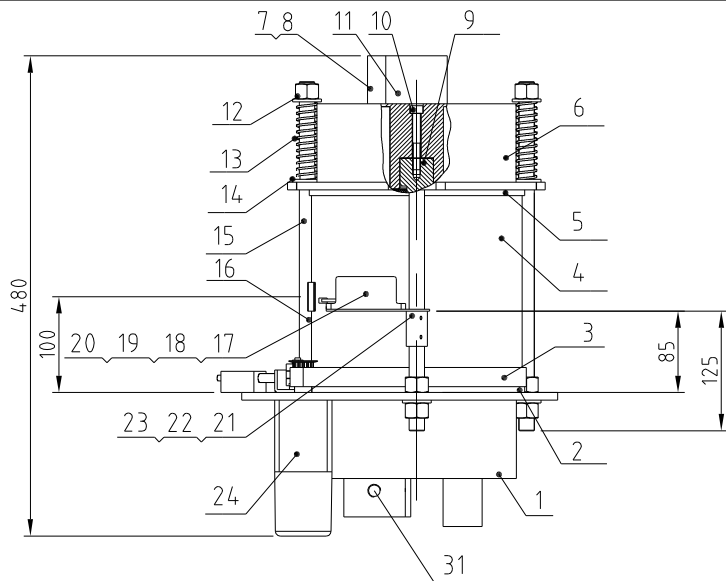
28	SVH-6L-ALL	Photosensor hopper		1	
27	SHR-6U-A-ALL	Euro vacuum hopper receiver		1	
26	BH70803900250	Heater pipe 3.9KW3Ø400V	Assembly	2	
25	BH10008001710	Plastic panel	ABS	1	
24	YE30200020000	Filter pressure regulating valve.AFR-2000	Assembly	2	
23	YW03000300200	3" Activity rubber wheels	Assembly	2	
22	YW03000300000	3" Brake rubber wheel	Assembly	2	
21	SBU-20-38S-V-ALL	Shut-off suction box	Assembly	2	
20	SPDV-38-ALL	Vacuum breaking separating valve	Assembly	4	
19	YR40400200000	Control box S5MDIGHD-40U-C-02I	ABS+PC	1	
18	YW70008000000	Sight glass	Glass	2	
17	YR10080000300	Filter barrel fastener.SAL-810G-A-03	Rubber	1	
16	YW09675100000	Star nut 5/16"	Aluminum alloy	3	
15	YR50128300000	Filter ADC18	Assembly	1	
14	BH70440006150	Heater pipe 4KW400V (flange type) SD-40H-D-1I	Assembly	1	
13	YR40120000100	Filter barrel cover SD-120H-ALL-06	PC	2	
12	YR10708000000	Filter barrel fastener SAL-810G-A-03	Silica gel	1	
11	YR50708000000	Filter 3um700/800G	Assembly	2	
10	BH90115000050	EGO	Assembly	1	
9	SVBV-38-ALL	Vacuum breaking separating valve	Assembly	1	
8	BM30042000050	High pressure blower RB-420	Assembly	1	230V/4.00V
7	YE85030000200	Temp sensor 0-300 Celsius degree	Assembly	1	
6	BW88802800100	Cooler	Assembly	2	
5	BM30031000150	Shini Blower RB-310	Assembly	1	230V/4.00V
4	YM40211000100	Ruijing blower ZHB110H06	Assembly	1	230V/4.00V
3	YR40120300000	Anti-dust screen	Assembly	1	
2	SCD-80Ux2/80H-A-ALL	Honeycomb rotor	Assembly	1	
1	YM60121200400	Exhaust fan 12x12CM/230V	Assembly	1	

序号	代号	名称	材料	数量	备注
----	----	----	----	----	----

标记	更改前	更改后	更改人	日期	制图	版号
					设计	核准
					校对	审核
					日期	日期

标题 SCD-120U×2/120H 一对二除湿干燥送料组合
 图号 SCD-120U×2/120H-ALL
SHINI 信易电热机械股份有限公司
 Shini Plastics Technologies, Inc.

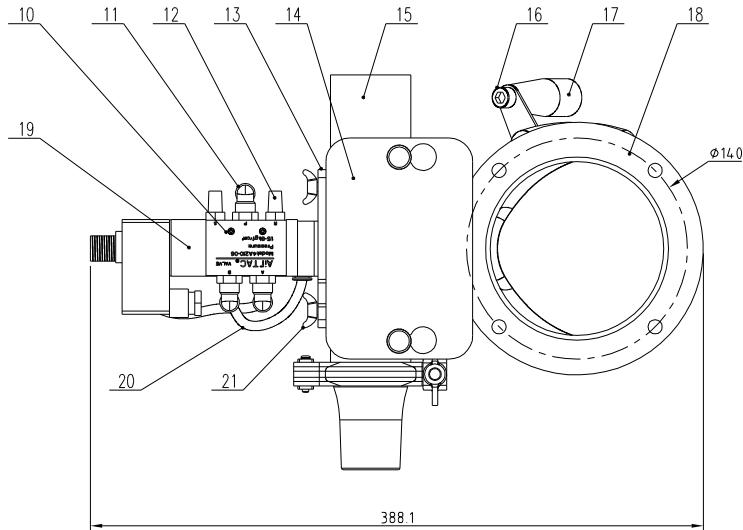
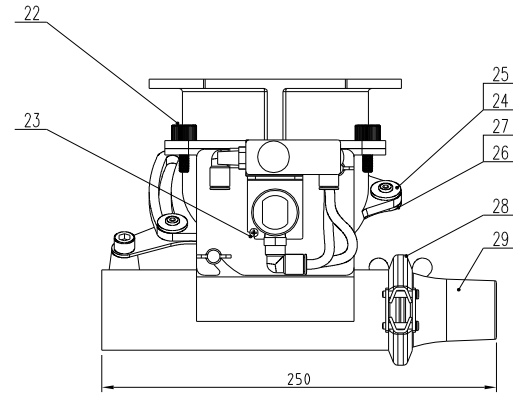
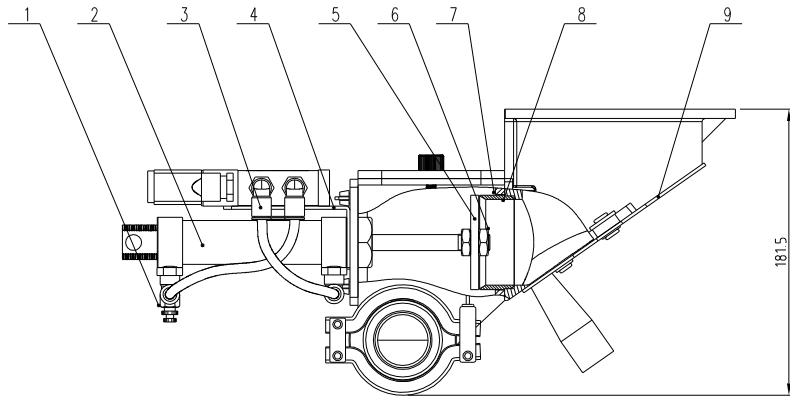
比例	数量	材质
1:1	1	ABS
		表面要求
		物料号



Technical requirements:
 1. Parts 2 and 5 are bonded with red silicone on one side and parts 1 and 6 are bonded with high-temperature resistant white silicone on the other side;
 Number 13 has a compression capacity of 15.

31		2.5" Upper and lower cover flange 1/4"PT		1	
30	YR90002500000	2.5" Flange washer	White silica gel	2	
29	YR90001500200	1.5" Flange washer	White silica gel	3	
28	YW68041000000	Inner hexagon flat-end set screw GB/T77 M4x10-Longzine		1	
27	YW08001000100	Synchronous belt pulley	45	1	
26	YW63043500000	Cross recessed pan head screw GB/T-818 M4x35-Longzine		2	
25		Belt regulator	Assembly	1	Borrowed
24	YM50315300100	Gear motor	Assembly	1	
23	YW64000400500	Hexagon nut M4		4	
22	YW63041600000	Large cross socket flat head screw JIS1111 M4x16-Longzine	4.8	4	
21	BL04402200020	Micro switch fixed piece SD-40H-A-22	SUS201	1	Borrowed
20	YW62041000000	Large cross socket flat head screw JIS1111 M4x10-Longzine		3	
19	YW63032500000	Cross recessed pan head screw GB/T-818 M3x25-Longzine		2	
18	YE14511200000	Position-limit switch YBLXW-5/11G2	Assembly	1	
17	YR40330900000	Microswitch box	ABS	1	
16	YW61030600100	Cross socket counter sunk head screw GB819 M3x6-Longzine		2	
15	BH10533000010	Double-head screw SD-40H-B-07	SUS200	3	Borrowed
14	YW09173000000	Flat washer #17x#30xH3(Longzine)		9	
13	YW01201800000	Spring	70Mn	3	
12	YW64001600000	Hexagon nut GB/T6170 M16-Longzine		9	
11		2.5" Upper and lower cover flange	SUS201	1	
10	YW61086500000	Inner hexagon cylinder head screw GB/T170.1 M8x65-12.9-Longzine		2	
9		Honeycomb mount shaft	45	2	Borrowed
8	YW62051000100	Large cross socket flat head screw JIS1111 M5x10-Longzine		15	
7		1.5" Upper and lower cover flange	SUS201	3	
6	BA40012000110	Honeycomb upper cover	AC4B	1	
5	YR10010000700	Silica gel Teflon upper gasket SCD-80Ux2/80H-F-05	Red silical gel + Teflon	1	
4	YW71022000000	Honeycomb #220x200L	Full silical gel	1	
3	YR00203000000	Synchronous belt 20x300XL(perimeter:762)	Assembly	1	
2	YR10010000900	Silica gel Teflon lower gasket SCD-80Ux2/80H-F-06	Red silical gel + Teflon	1	
1	BA40012000210	Honeycomb lower cover	AC4B	1	
序号	代号	名称	材料	数量	备注

					制图		版号		标题	图号	比例	1:7	数量	1
					设计		核准		蜂巢转轮	SCD-80Ux2/80H-F-ALL			材质	/
					校对		核准			信易电热机械股份有限公司 Shini Plastics Technologies, Inc.	表面要求		/	
标记	更改前	更改后	更改人	日期	审核	日期		物料号			/			

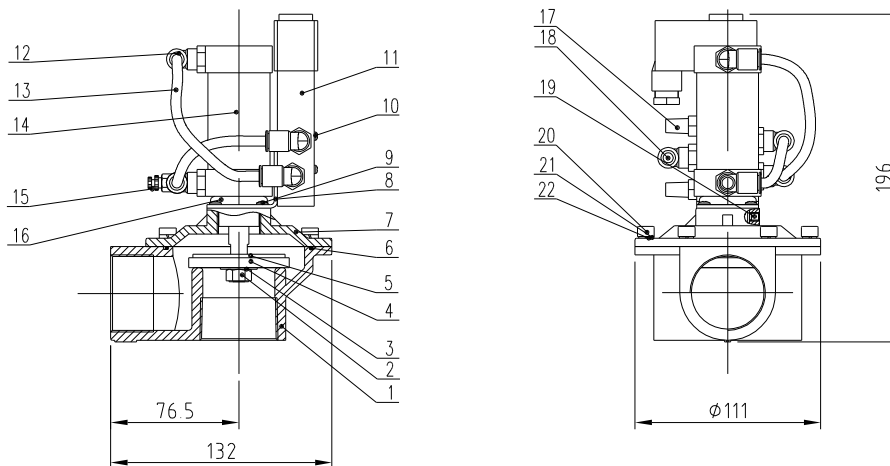


Technical requirements:

1. Leave a gap of 0.5mm between the cutting port and the membrane.
2. For numbers<24>and<27>, a small amount of screw tightening agent should be applied to prevent them from falling off during use.

29	SBU-20-38S-V-11	1.5" Suction port	ADC12	1	BW20152000120
28	YW07000200300	Stainless steel pinching clamp 2"		1	
27	YW614.02600100	long hex flat head screw D7.4x6.5 Hex		2	
26	YW63041500000	Flat washer 4 grade 48x19mm-Longzine		2	
25	YW66081900000	Flat washer 6x19x2.0 Longzine		2	
24	YW61101300200	Flat head hex head long hex screw 10x100 10x1.6		2	
23	YW63030600000	Cross recessed pan head screw Q17-422 10x6		1	
22	YW69616100000	Hand screw M6*16*16		2	
21	YW69061500000	Butterfly bolt Q17-3098 M6x15		2	
20	YW60620000100	Transparent air pipe 200W/roll	PU pipe	0.4	
19	YE32421000300	Solenoid valve 4V210-06/02W Air/NC	Assembly	1	
18	SBU-20-38S-V-14	Collective barrel	ADC12	1	BW20203807010
17	YW06000100000	Blade rotating rod handle	Plastic	1	
16	YW61081600000	long hexagon cylindrical screw Q17x1.6 M6x16		1	
15	SBU-20-38S-V-07	shut-off body	ADC12	1	BW20203800220
14	SBU-20-38S-V-09	Sight glass	Acrylic plate	1	BR90203800410
13	SBU-20-38S-V-10	Cylinder fixed piece	SUS201	1	
12	YW80010800000	Copper muffler 1/8"	Copper	2	
11	YW80081800100	L type screw connector 4V2-01 1/8-9/16	Assembly	1	
10	YW63042500000	Cross recessed pan head screw Q17-411 M6x25		2	
9	SBU-20-38S-V-08	Shut-off plate	SUS201	1	
8	BH32160380010	Shut-off part SBU-160-38S-14-09	SUS201	1	
7	YW61061600000	long hexagon cylindrical head screw 10x16 10x1.6		4	
6	YW64.101250000	Anti-leaking nut 10x1.5/7mm (tear)		1	
5	SBU-20-38S-V-13	Diaphragm	SUS201	1	
4	SBU-20-38S-V-12	Solenoid valve fixed block	SUS201	1	
3	YW80061800200	L thread connector 4V2-01 1/8-9/16	Assembly	3	
2	YE31255000000	Cylinder 48.25-60-12-77 (double action)	Assembly	1	
1	YW80061800000	Adjustable air pipe connector 15/16-9/16	Assembly	1	
序号	代号	名称	材质	数量	备注

制图	版号	标题	SBU-20-38S-V	图号	SBU-20-38S-V-ALL	比例	数量
设计	核准	裁料式吸料盒				⊕	材质
校对		信易电热机械股份有限公司 Shini Plastics Technologies, Inc.				表面要求	
审核	日期		物料号				
标记	更改前	更改后	更改人	日期			

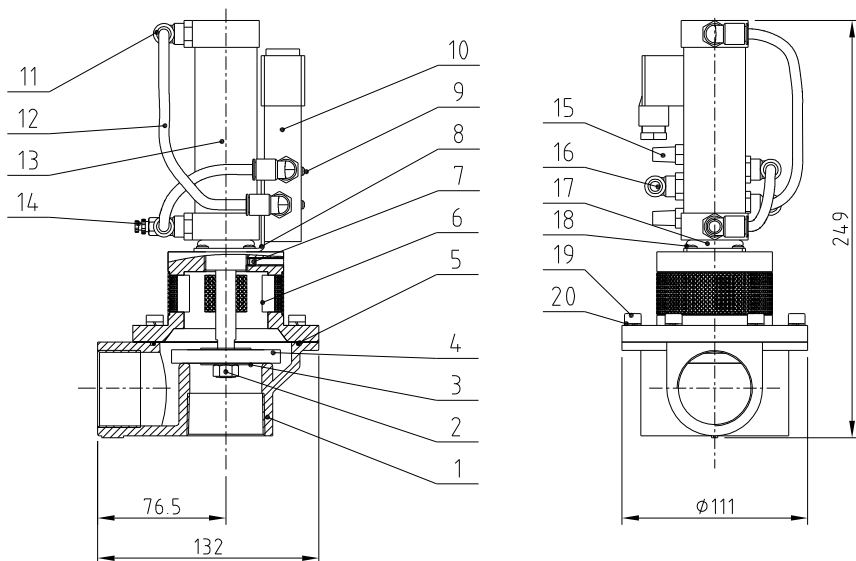


Technical requirements:

1. The pneumatic working pressure of the machine is 0.4-0.8MPa.
2. Serial number (2) needs to be coated with screw fastener when installing.

22	YW66061300000	Flat washer A grade GB/T97.1 6-Longzine	6		
21	YW65006000100	Standard spring washer GB/T93 6-Longzine	6		
20	YW61061601200	Inner hexagon cylindrical screw GB/T71.1 M6x1.6-Longzine	6		
19	YW68005500000	Inner hex. flat end lock screw GB/T71 M6x5-Longzine	1		
18	YW80081800100	L screw connector 1/8-Ø1 1/8-Ø6(AirTAC)10 pcs/bag	1		
17	YW80010800000	Copper silencer 1/8" (has mould)	2		
16	YR20305000000	Rubber O-Ring 30*5	1		
15	YW80061800000	Adjustable air pipe connector K16-1/8(10 pcs/bag)	1		
14	YE31322000100	Non-standard cylinder 10.3220(AirTAC) 10 pcs/bag	1		
13	YR60000600400	PU Air pipe Ø6*Ø4 black 200M/roll	1		
12	YW80061800200	L screw connector 1/8-Ø1 1/8-Ø6(AirTAC)10 pcs/bag	3		
11	YE32421000300	Solenoid valve 4/210-06/DC24V Air TAC	1		
10	YW63042500000	Cone recessed pin head screw Ø7*10 M6xLongzine Ø7*10 M6xLongzine	2		
9	YW63040600000	Cone recessed pin head screw Ø7*10 M6xLongzine Ø7*10 M6xLongzine	2		
8	BL20380500020	Semid metal finish plate 20*38-AL-60% Zn. Ø with 0.02mm semid metal size	1		
7	BW20001500810	Upper cover 20*38-AL-Ø1 white(Processed) (with mold)	1		
6	YR20258900000	Rubber O-ring 2.5*89 (O. D.)	1		
5	BL90558200040	Non-metal insert hexagon nut 90*55-AL-Ø4 (Surface treated) Ø4.65mm	1		
4	BR10608500040	Non-metal insert hexagon nut 106*85-AL-Ø4 (Silicone) (Covering)	1		
3	YW66082200100	Large washer C grade GB/T908(Ø. 4.2x4.2)-Longzine	1		
2	YW64000800100	Non-metal insert hexagon nut GB/T908.1	1		
1	BW20001500910	Lower cover 20*38-AL-Ø1 white(Processed) (with mold)	1		
序号	代号	名称	材质	数量	备注


					制图		版号	标题	SPDV-38	图号	SPDV-38-ALL-DC24V	比例	/	数量	/
					设计		核准		真空分离阀					材质	/
					校对									表面要求	/
标记	更改前	更改后	更改人	日期	审核		日期							物料号	/
									 信易电热机械股份有限公司 Shini Plastics Technologies, Inc.						

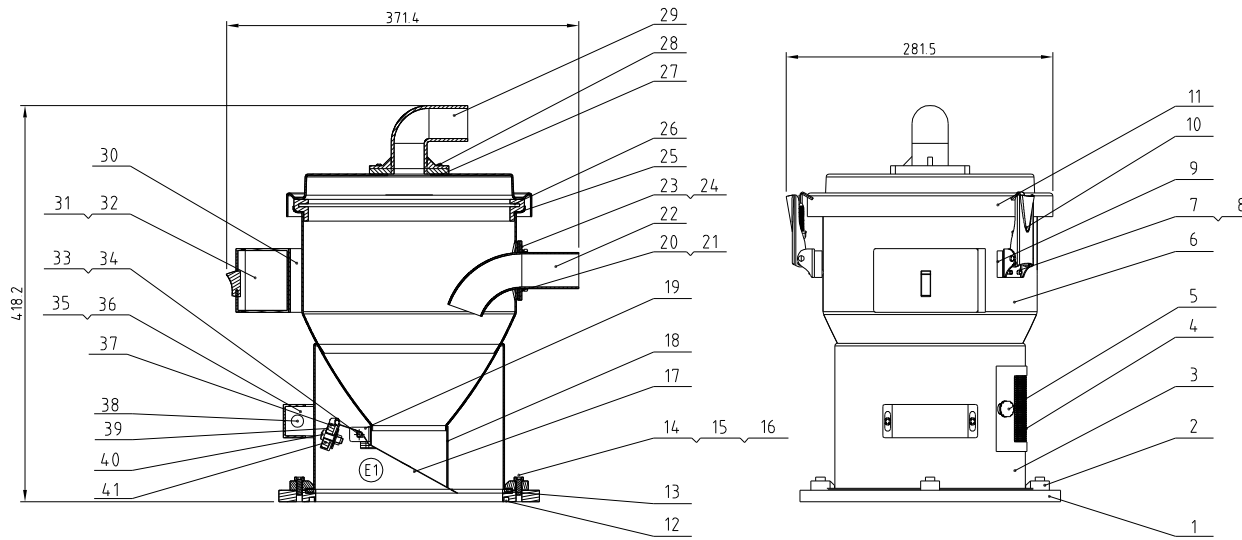


Technical requirements:

1. Machine pneumatic working pressure is 0.4-0.8MPa;.
2. Hexagonal nut M10*1.25 is fixed with fastener.

20	YW65006000100	Standard spring washer GB/T93 6-Longzine		6	
19	YW61062000300	Inner hexagon cylinder screw GB/T70.1 M6x20-12.9-Longzine		6	
18	YW63040600000	Cross recessed pan head screw M4x6		4	
17	YR20305000000	O-type seal ring $\phi 30 \times \phi 5$	Rubber	1	
16	YW80081800100	L screw connector APL8-01 1/8- $\phi 8$	Assembly	1	
15	YW80010800000	Copper muffler 1/8"(has mould)	Assembly	2	
14	YW80061800000	Adjustable air pipe ASL6-1/8	Assembly	1	
13	YE31326000100	Cylinder MBL32x60U(AirTAC)	Assembly	1	
12	YR60000600400	PU air pipe $\phi 6$ black 200m/roll	PU	0.3m	
11	YW80061800200	L thread connector APL6-01 1/8- $\phi 6$	Assembly	3	
10	YE32421000300	Solenoid valve 4 V210-06/DC24V AirTAC	Assembly	1	
9	YW63043500000	Cross recessed pan head screw GB/T-818 M4x35-Longzine		2	
8	BL20380500020	Solenoid valve fixed plate SPDV-38-ALL-05	SPCC2.0	1	
7	YW68005500000	Inner hex flat end lock screw GB/T77 M5x5-Longzine		1	
6	BW20380100010	Upper cover SVBV-38-ALL-01	Assembly	1	
5	YR20258900000	Rubber O-type seal ring 2.5x89(ext. dia.)	Rubber	1	
4	BR10651200040	4-way valve diaphragm 65x12x8mm plastic covered (has mould)	Assembly	1	
3	YW66103200000	Flat washer A grade GB/T96 10(10.5x30x2.5)-Longzine		2	
2		Hex nut M10x1.25		1	气缸自带
1	BW20001500910	Lower cover SPDV-38-ALL-02 white	YL112	1	
序号	代号	名称	材质	数量	备注

					制图		版号	标题	SVBV-38	图号	SVBV-38-ALL	比例	数量
					设计		核准	破真空分离阀				材质	
					校对			 信易电热机械股份有限公司 Shini Plastics Technologies, Inc.			表面要求		
标记	更改前	更改后	更改人	日期	审核	日期			物料号				

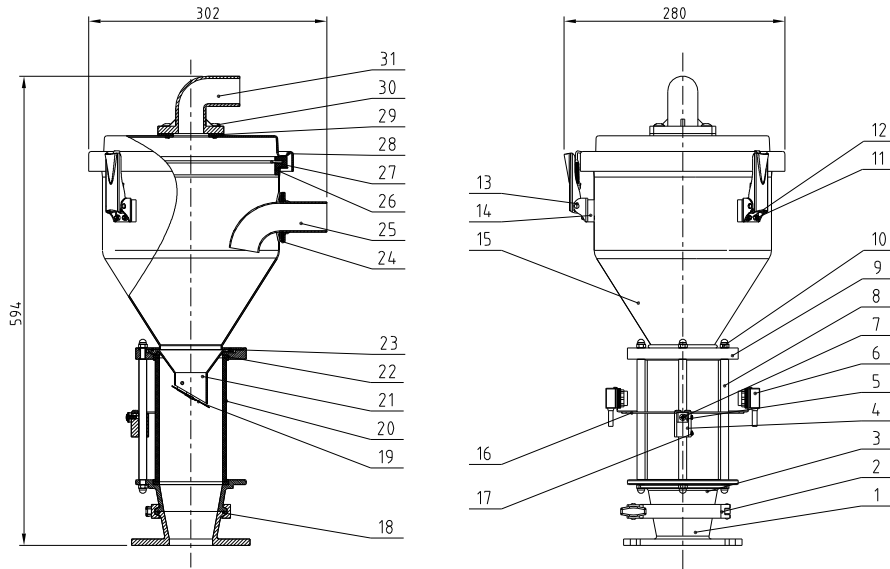


41	BL21000600120	Magnetic cover	SUS201	1	Borrowed
40	YW63062000000	Gross recessed pan head screw GB/T-818 M6x20-Longzine		1	
39	YW90257700000	Permanent magnetφ25-φ7x7	Permanent magnet	1	
38	YE15123000400	Reed switch BN12-30BLA/Length 80mm±2.4' without crystal connector		1	
37	BH12000600010	Magnetic sleeve	H58	1	Borrowed
36	YW63061000000	Gross recessed pan head screw GB/T-818 M6x10-Longzine		2	
35	YR40000601100	Sensor shell	ABS	1	Borrowed
34	YW63034000000	Gross recessed pan head screw GB/T-818 M3x60-Longzine		1	
33	YW64000300000	Lock nut M3		1	
32	YW63040600000	Gross recessed pan head screw M6x6GB/T818 Longzine		2	
31	YR40010000200	Control box	ABS	1	Borrowed
30		Control box base	SUS201	1	Borrowed
29	BW20001500010	Air suction pipe	YL12	1	Borrowed
28	YW62051500000	Large cross socket flat head screw JIS111 M5x16 Longzine		4	
27	YR10000000200	Air suction pipe tighten	Rubber	1	Wearing part
26	BL21000600620	Filter screen	SUS201	1	Borrowed
25	YR10000300100	Hopper fastener	Rubber	1	Wearing part
24	YR10061200000	Pipe inlet fastener	Rubber	1	Borrowed Wearing part
23	BL20036000320	1.5" Pipe inlet fixed piece	SUS201	1	Borrowed
22	BL32000600020	Pipe inlet	SUS201	1	Borrowed
21	YW66040800000	Flat washer A grade GB/T1971 4/4.5X9X0.81-Longzine		4	
20	YW64040700100	Non-metal insert hexagon nut GB/T889 1M4		4	
19	BL21000601120	Discharging plate fixed base	SUS201	1	Borrowed
18	BL21000600720	Discharge port	SUS201	1	Borrowed
17	BL21000602320	Discharging plate	SUS201	1	Borrowed
16	YW66061300000	Flat washer A grade GB/T1971 6-17-1212-16		8	
15	YW65006000000	Standard spring washer GB/193 6-Longzine		8	
14	YW61062000300	Inner hexagon cylinder screw GB/1776 M6x20-12.9-Longzine		6	
13		Base forced tight	EVA3 0	1	
12	YR20205500000	D-type seal ring inner dia φ200x5.5	Rubber	1	Wearing part
11		Hopper cover	SUS201	1	
10	YW02003000400	Adjustable snap hook SAL-6U-A-35	Assembly	3	
9	YR40000600800	Snap hook block SAL-6U	ABS	3	
8	YW66040800000	Flat washer A grade GB/T1971 4/4.5X9X0.81-Longzine		10	
7	YW64040700100	Non-metal insert hexagon nut GB/T889 1M4		10	
6		Material storage tank	SUS304	1	
5	YR40061500000	Star knob	Assembly	2	Borrowed
4	YR40000601000	Vent window	ABS	1	Borrowed
3	BL27000601320	Hopper fixed base	SUS304	1	Borrowed
2	YW20000600500	Pressing block	YL112	4	Borrowed
1	YW20000600000	Base	YL112	1	Borrowed

序号	代号	名称	材质	数量	备注
		标题	SHR-6U	图号	SHR-6U-A-ALL
		装配图		比例	1:5
				数量	1
				材质	组件
		表面要求			
		物料号			

					制图		版号	E	标题	SHR-6U	图号	SHR-6U-A-ALL	比例	1:5	数量	1
					设计		核准		装配图		SHR-6U-A-ALL					
					校对											
					审核											
标记	更改前	更改后	更改人	日期	日期	20091129										





31	BW20001500010	Air suction pipe	YL112	1	
30	YW62051500000	Large cross socket flat head screw JIS1111 Mx16-L-0.014Z0.020		4	
29	YR10000000200	Air suction pipe tighten	Rubber	1	Wearing part
28		Hopper cover	SUS304	1	Borrowed
27		Filter screen	SUS201	1	Borrowed
26	YR10000300100	Hopper fastener	Rubber	1	Wearing part
25		Pipe inlet	SUS201	1	Borrowed
24		Feed pipe tighten	Rubber	1	Borrowed Wearing part
23	YR20259800000	Rubber O-type seal ring 25x98	Rubber	1	Wearing part
22		Glass pipe fastener	Silica gel	2	Wearing part
21		Material discharge port	Assembly	1	
20		Glass tube	Glass	1	
19		Non-return piece	Assembly	1	Wearing part
18	YR20802600000	Rubber O-type seal ring 80 (inner dia.) x 2.65	Rubber	1	Wearing part
17	YW68004500000	Inner hex flat end lock screw GB/T77 M4x5-Longzine		2	
16		Photosensor fixed piece	SPCC15	1	
15		Material storage tank	SUS304	1	
14	YR40000600300	Snap hook block	ABS	3	
13	YW02003000400	Snap hook	Assembly	3	
12	YW66041000000	Flat washer A grade GB/T97.1 (4.5x9x0.8)	Longzine	8	
11	YW64040700100	Non-metal insert hexagon nut GB/T889.1 M4		8	
10	YW64006000100	Hexagon cap nuts GB/T923 M6-A2-70(SUS)		6	
9		Glass pipe upper flange	YL112	1	
8		Flange connecting rod	Q235A	3	
7	YW63041200100	Cross recessed pan head screw GB/T-818 M4x12-Longzine		3	
6	YE15143900000	Photosensor FOTEK T18-3MN-PE	Assembly	1 pair	
5		Photosensor pressing block	SUS201	1	
4		Photosensor fixed base	YL112	1	
3		Glass pipe lower flange	YL112	1	
2	YW07000300000	3" Stainless steel clamp	SUS202	1	
1		Mounting Flange	YL112	1	
序号	代号	名称	材质	数量	备注

Technical requirements:
1. Main performance parameters:
a. The storage hopper capacity is 6L.

制图	版号	F	标题	SVH-6L	图号	SVH-6L-ALL	比例	1:6	数量	1
设计	核准		电眼料斗				☞ ⊕	材质	组件	
校对							表面要求			
标记	更改前	更改后	更改人	日期	审核	日期	20130112	物料号		

