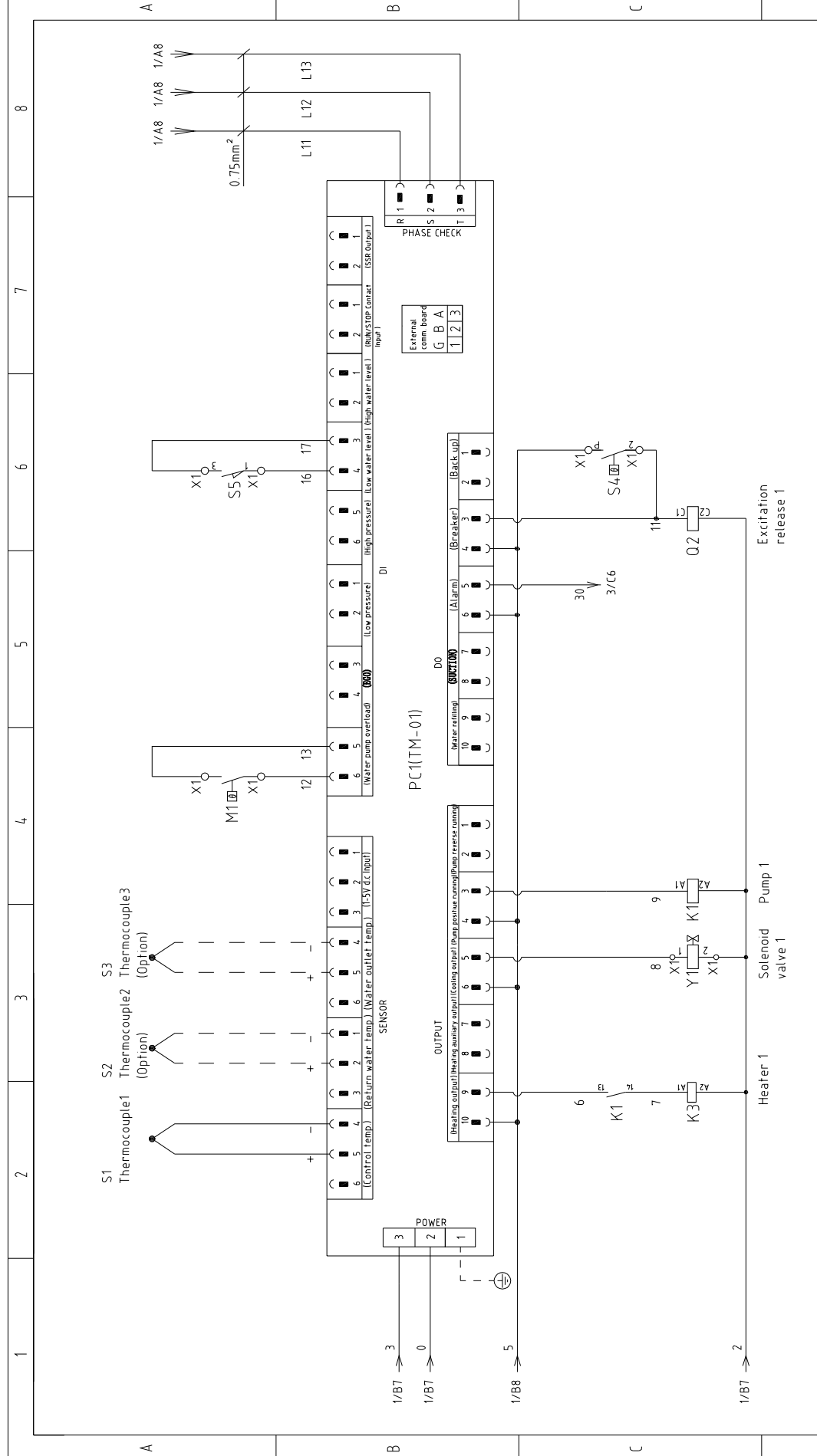


版本 Ver.G		Title STM-607-D		Drawing NO STM-607-D-CE-400V-H-1		Page 1	
		Main Circuit Diagram		Standard CE		Totally 6 Pages	
		Version H		Approved by		Voltage 400V	
		Designer		Date 20180724		Frequency 50Hz	
		Proofread by		Modified by			
		Checked by		Modify date			
Mark		Before modification		After modification			

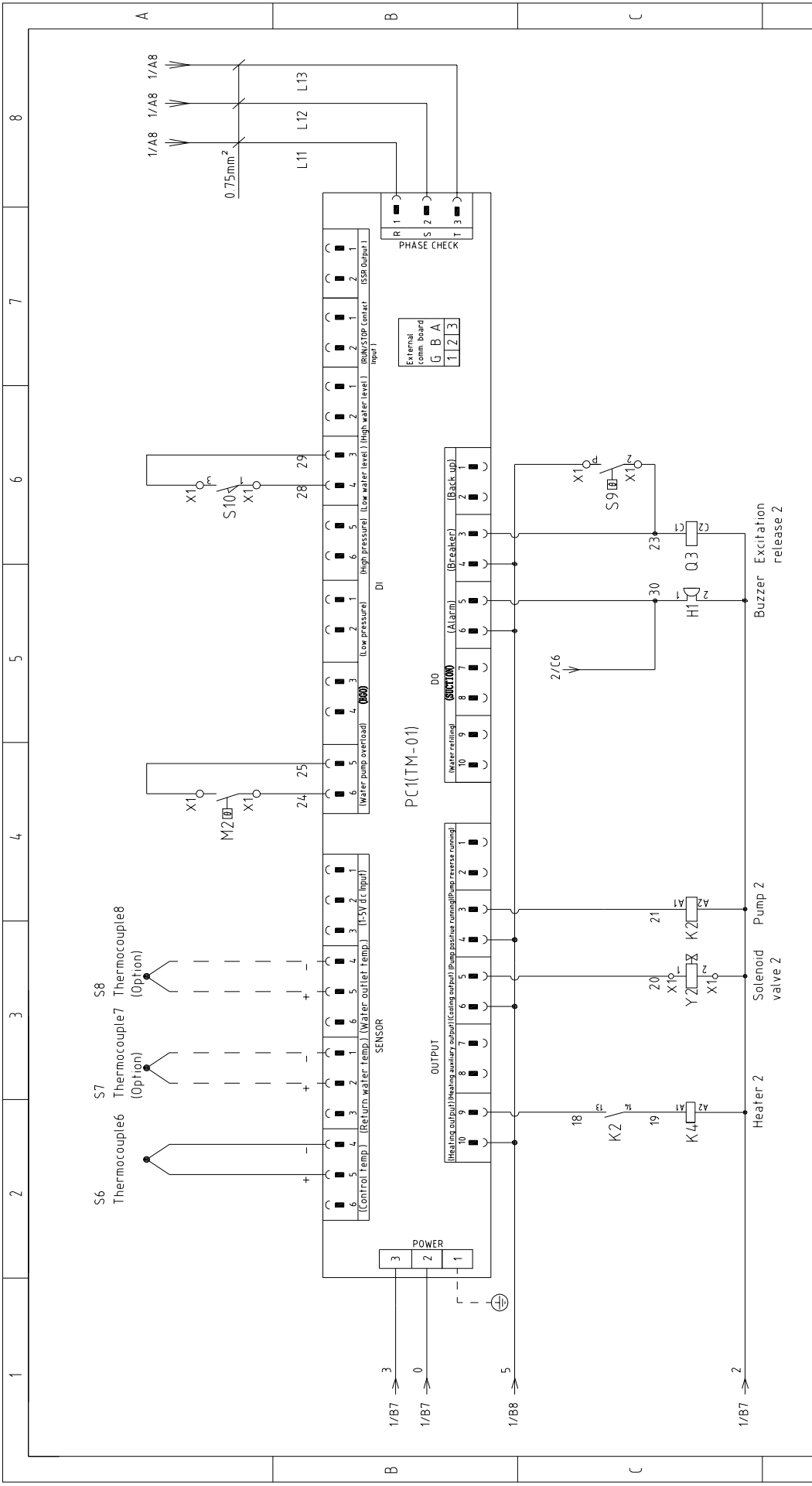




版本	Ver.G	Mark	Before modification	Modified by	20180724	Date	Approved by	Version	H	Title	STM-607-D	Drawing NO	STM-607-D-CE-400V-H-2	Scale	Standard	Page	2	Totally	6	Pages	Voltage	400V	Frequency	50HZ
	After modification		Modify date	20180724	Checked by				20180724		Checked by		20180724		Checked by		20180724		Checked by			20180724		Checked by

Note: M1 is the overheat protection output contact of water pump 1.

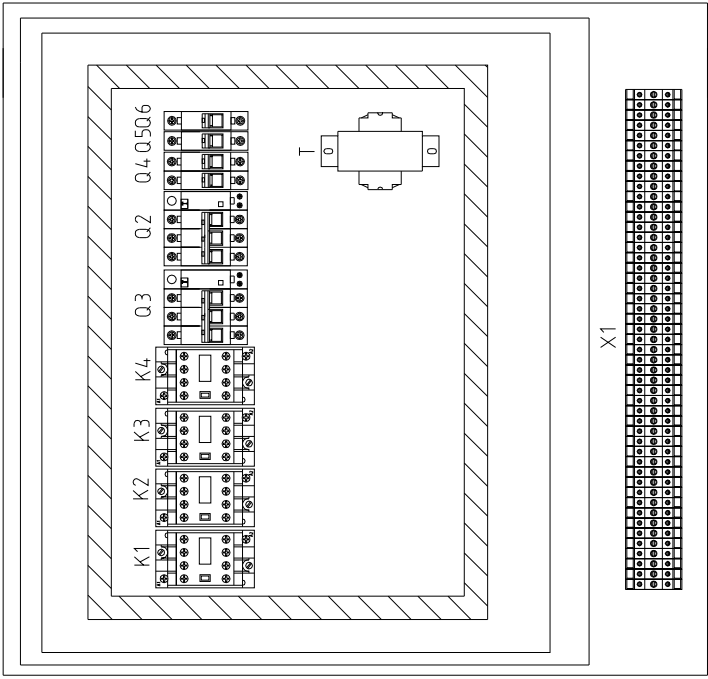
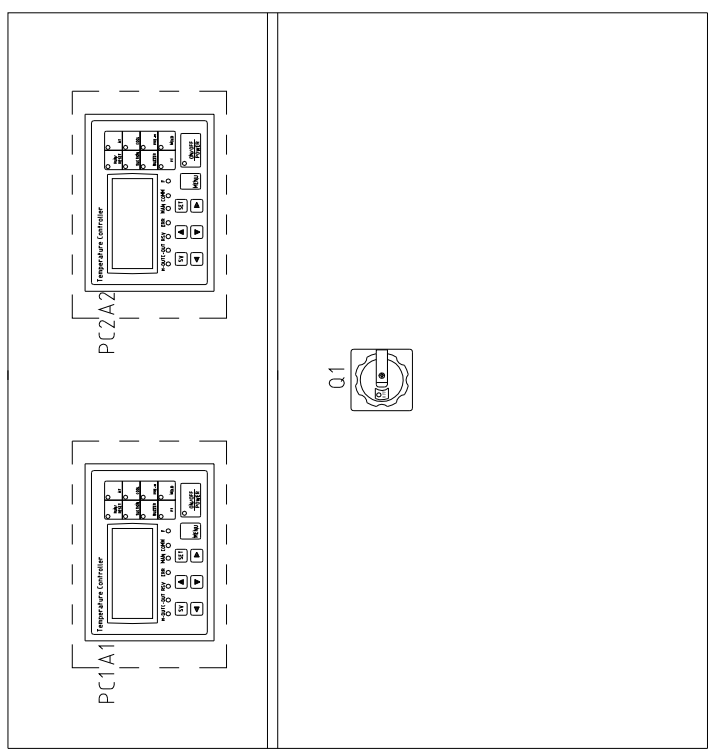




1	2	3	4	5	6	7	8
<p><b>版本</b> Ver.G</p> <p>Note: M2 is the overheat protection output contact of water pump 2.</p>							
Title		Version		Scale		Page	
STM-607-D		H		Standard		3	
Control Circuit Diagram 2				STM-607-D-CE-400V-H-3			
Designer		Approved by		Voltage		Pages	
Proofread by		Checked by		400V		6	
Date		Modify date		Frequency		50HZ	
20180724							
Mark		After modification		SHINI		信易電熱機械股份有限公司 Shini Plastics Technologies, Inc.	
Before modification				SHINI			
1	2	3	4	5	6	7	8

1          2          3          4          5          6          7          8

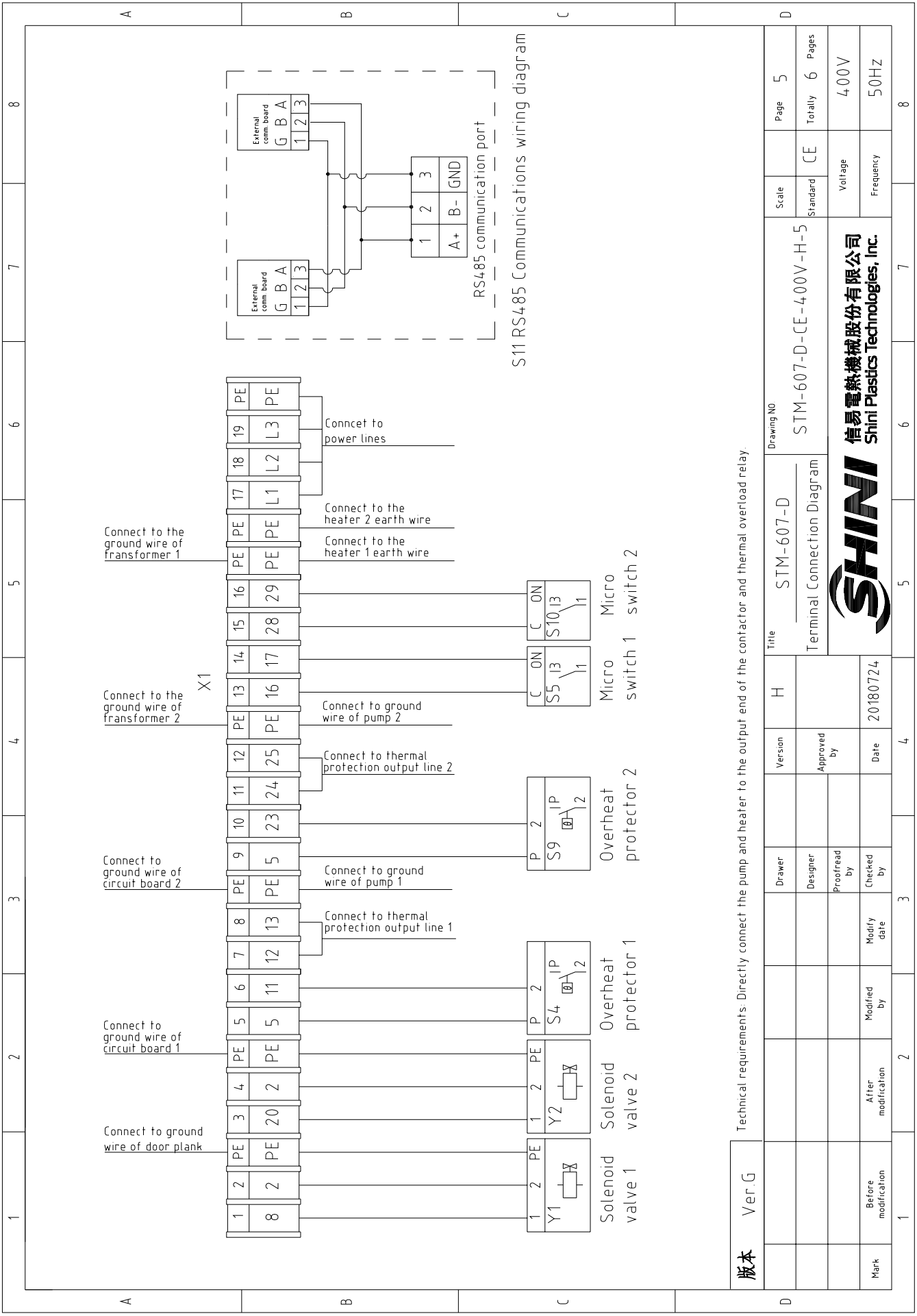
A                                  B                                  C



版本 Ver.G

D	Title STM-607-D Electrical Components Layout			Drawing NO STM-607-D-CE-400V-H-4		Scale Standard CE	Page 4
	Version H		Approved by		Voltage 400V		Totally 6 Pages
Mark	Before modification	Modified by	Modify date	Checked by	Date 20180724	Frequency 50HZ	8





S11 RS485 Communications wiring diagram

版本	Ver.G
Mark	Before modification
	Modified by
	Modify date
	Checked by
	Date
	20180724
	Approved by
	Version
	H
	Title
	STM-607-D
	Terminal Connection Diagram
	Scale
	Standard
	CE
	Page
	5
	Totally
	6
	Pages
	400V
	Voltage
	50HZ
	Frequency

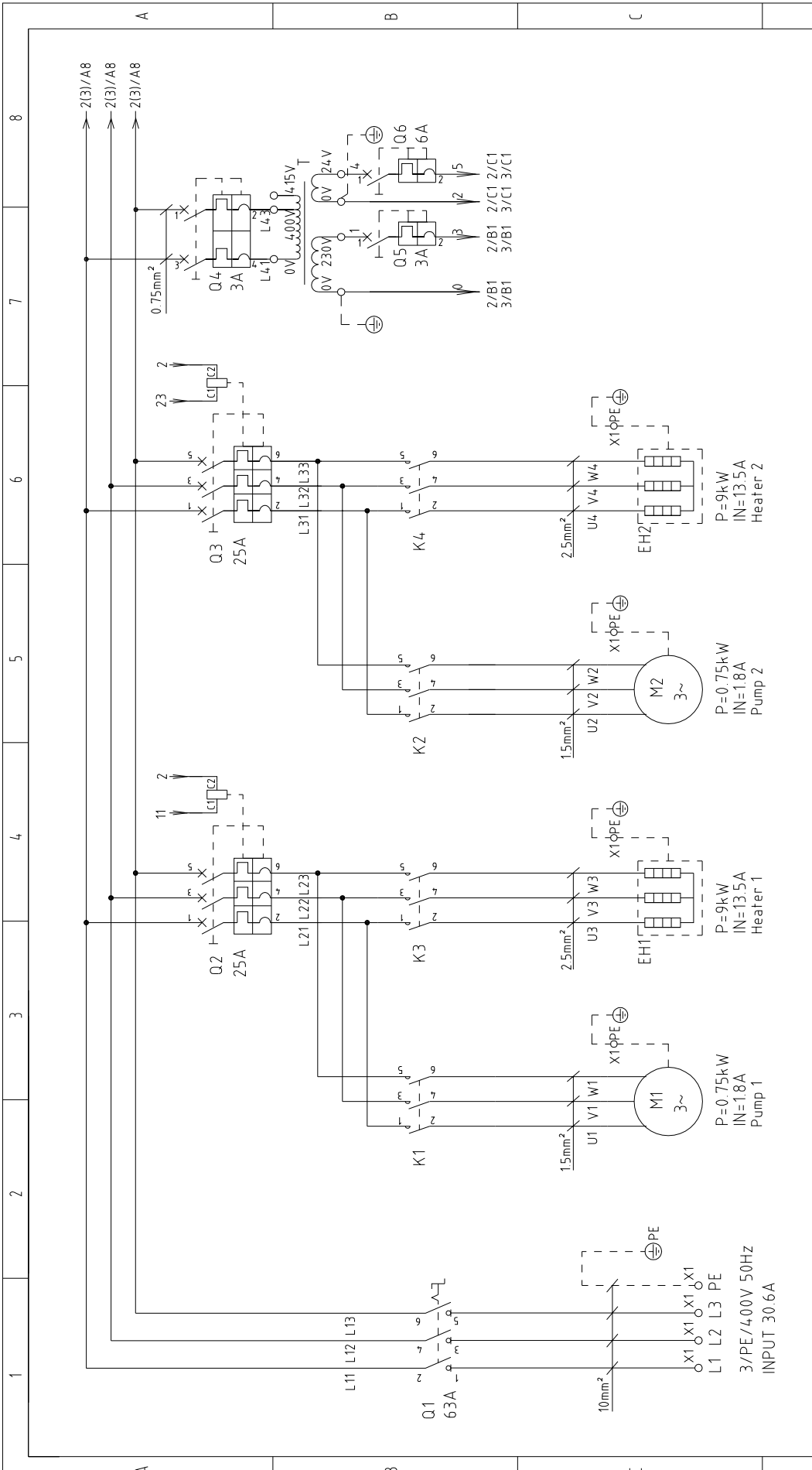
Technical requirements: Directly connect the pump and heater to the output end of the contactor and thermal overload relay.



Drawing NO	STM-607-D-CE-400V-H-5
Scale	Standard
Page	5
Totally	6
Pages	
Voltage	400V
Frequency	50HZ

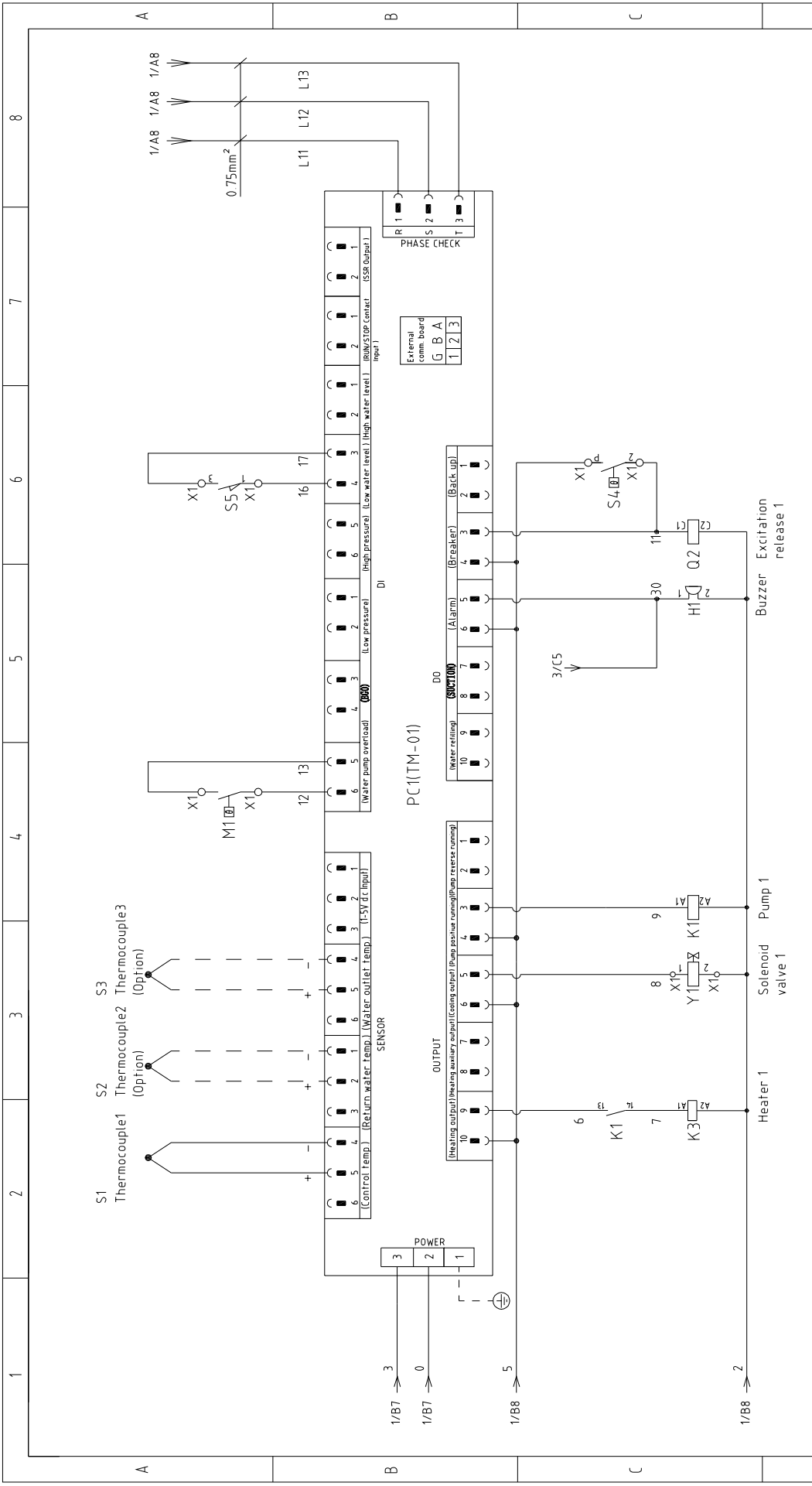
1	2		3	4	5	6		7	8	
NO.	Symbol	Name	Manufacturer	Type	Specification	Number	Material number	Remark		
1	Q1	Main power switch	EATON	P1-32/EA/SVB	32A	1	YE10323200000			
2	Q2 Q3	Circuit breakers	TECO	BM-63C/3016S	16A	2	YE40301603000			
3	A	Excitation release	TECO	MX	24VAC	2	YE40024000000			
4	Q4	Circuit breakers	TECO	BM-63C/2003S 2P	3A	1	YE40200203000			
5	Q5	Circuit breakers	TECO	BM-63C/1003S 1P	3A	1	YE40100203000			
6	Q6	Circuit breakers	TECO	BM-63C/1006S	6A	1	YE40100600100			
7	K1 K2	Contactors	SIEMENS	3RT16015-1AB01	24VAC	2	YE00601502500			
8	K3 K4	Contactors	SIEMENS	3RT16018-1AB01	24VAC	2	YE00601802500			
9	T	Transformer	JIUXIN	IN=400V/415V OUT=24V/230V	80VA/350mA	1	YE70040007200			
10	S1 S6	Thermocouple	SHINI	----	K	2	----	(1)		
11	S2 S3 S7 S8	Thermocouple	SHINI	----	K	4	----	(1)(3)		
12	S4 S9	Overheat protector	----	----	----	2	----	(1)		
13	S5 S10	Micro switch	RENEW	----	----	2	----	(1)		
14	S11	Communication interface board RS-485 (double Dsub-9pin connector)	YUYUN	----	PCS	1	YE90048501200			
15		Shell RS485(SAL-700G-A-1910)	BINGHENG	----	PCS	1	YR40048500000			
16	PC1 PC2 A1 A2	Circuit board	YUYUN	TM-01 (含通讯)	180~430V 50/60Hz	2	YE81012200300			
17	Y1 Y2	Solenoid valve	----	----	24VAC	2	----	(1)		
18	X1	Terminal board	HONEYWELL	SK2.5	----	16	YE60002503200			
19		Terminal board	HONEYWELL	SK2.5PE	----	6	YE60002503400			
20		Terminal board	HONEYWELL	GK6	----	3	YE60000603200			
21		Terminal board	HONEYWELL	GK6PE	----	1	YE60000603500			
22	M1 M2	Motor	SHINI	TP-55	400V 50Hz 0.55kW	2	----	(1)		
23	EH1 EH2	Heater	SHINI	----	400V 50Hz 6kW	2	----	(1)		
24	H1	Buzzer	JINGKANG	PK-35A	24VAC/DC	1	YE84003500600			
25		Terminal fittings E/GKseries(honeywell)	HONEYWELL	----	PCS	6	YE60000003900			
<b>版本</b>										
Ver	G	Notes: (1)Means it's not the material inside the control box.(2)Means it's equipped with buzzer.(3)Means equipped with function of displaying water outlet and return water temperature	Drawing NO	STM-607-D	STM-607-D-CE-400V-H-6	Scale	Standard	CE	Page	6
D			Version	H	Electrical Components List	Standard	CE	Voltage	Totally	6
			Approved by					Frequency	6	Pages
Mark	Before modification	Modified by	Modify date	Date	20180724			400V		50HZ
1	2	3	4	5	6	7	8			





版本 Ver.G		Title STM-910-D		Drawing No STM-910-D-CE-400V-H-1		Page 1	
		Main Circuit Diagram		Standard CE		Totally 6 Pages	
Mark		Before modification		After modification		Voltage 400V	
Date		20180724		Date		Frequency 50HZ	
Modified by				Approved by		Scale	
Modify date				Version H		Standard	
				Designer		Voltage	
				Proofread by		Frequency	
				Checked by		400V	
				Date		50HZ	
				Date		4	
				Date		5	
				Date		6	
				Date		7	
				Date		8	



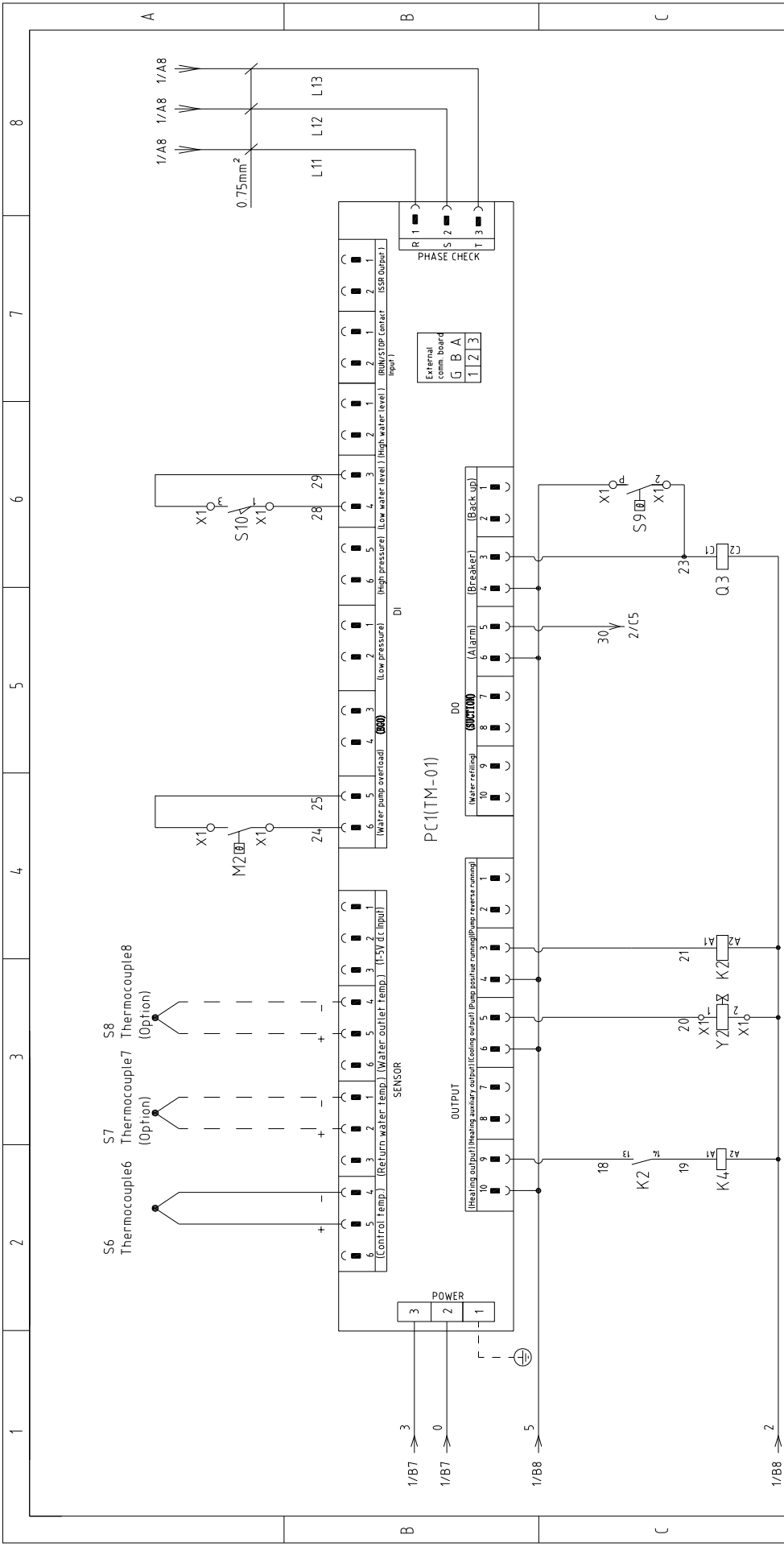


版本 Ver.G		Title STM-910-D		Drawing No STM-910-D-CE-400V-H-2		Page 2	
		Version H		Control Circuit Diagram 1		Standard CE	
		Designer		Approved by		Voltage 400V	
		Proofread by		Date 20180724		Frequency 50HZ	
Mark Before modification		Modified by		Modify date		Totally 6 Pages	
1		2		3		4	
5		6		7		8	

Note: M1 is the overheat protection output contact of water pump 1.

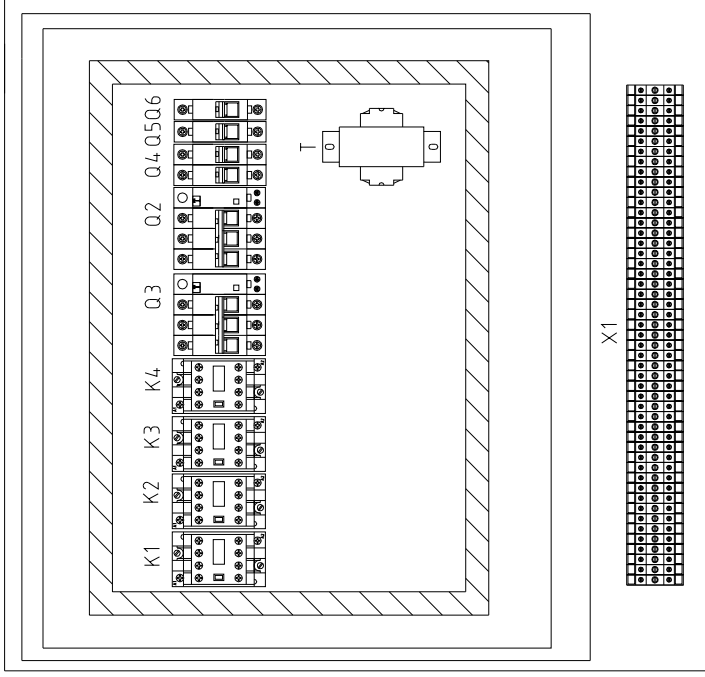
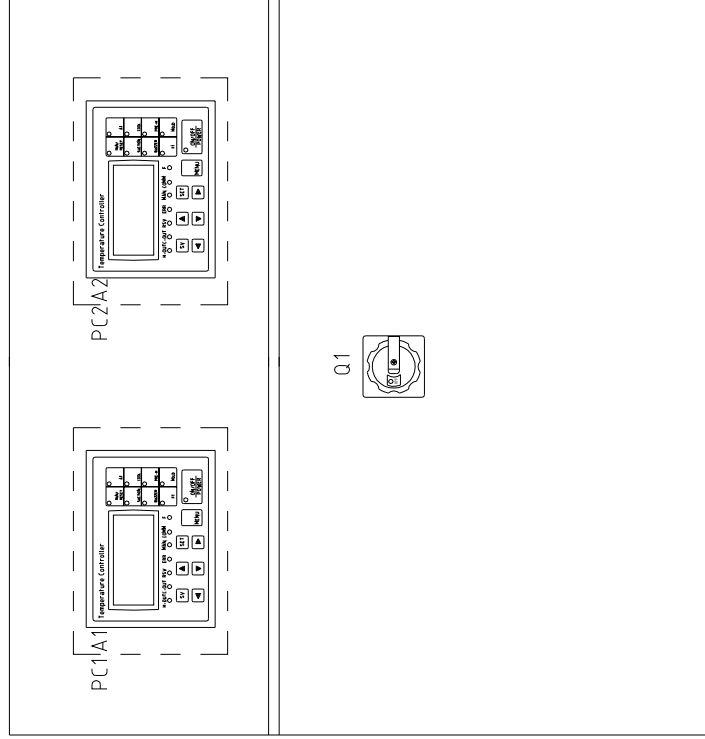






版本	Ver.G	Drawer	Designer	Proofread by	Checked by	Date	20180724	Title	STM-910-D	Drawing NO	STM-910-D-CE-4.00V-H-3	Scale	Standard	Page	3
	Mark								Before modification		Modified by		Modify date		CE
<p>Note: M2 is the overhear protection output contact of water pump 2.</p>												<p>信易电热机械股份有限公司 Shini Plastics Technologies, Inc.</p>		<p>8</p>	

1 2 3 4 5 6 7 8



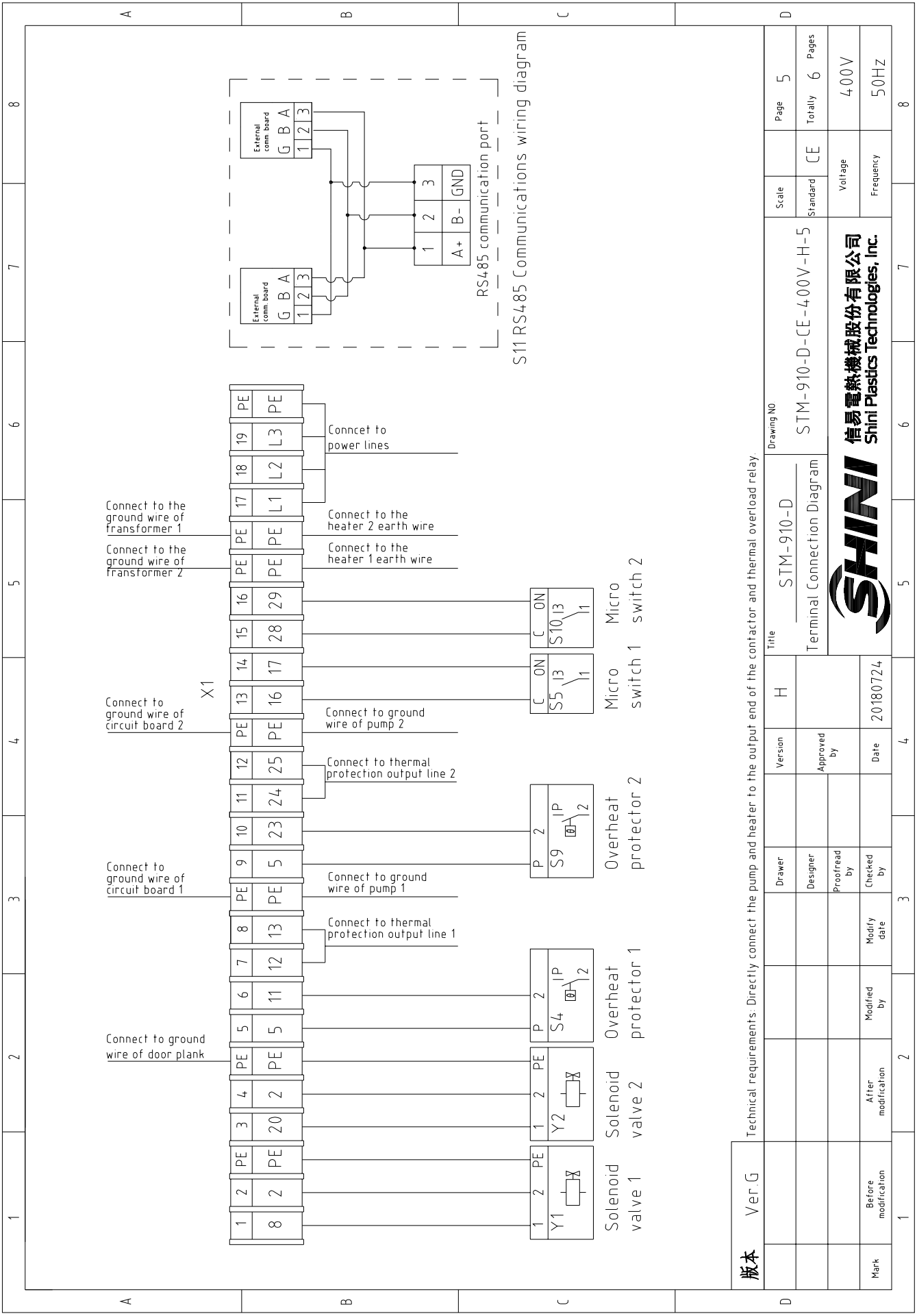
A B C

版本 Ver.G

Mark	Before modification	Modified by	Modify date	Checked by	Date	Proofread by	Designer	Drawer	Version	H	Title	STM-910-D	Drawing NO	STM-910-D-CE-400V-H-4	Scale	Standard	CE	Page	4
	After modification				20180724				Approved by		Electrical Components Layout				Voltage	400V	Totally	6	Pages
															Frequency	50HZ			



1 2 3 4 5 6 7 8

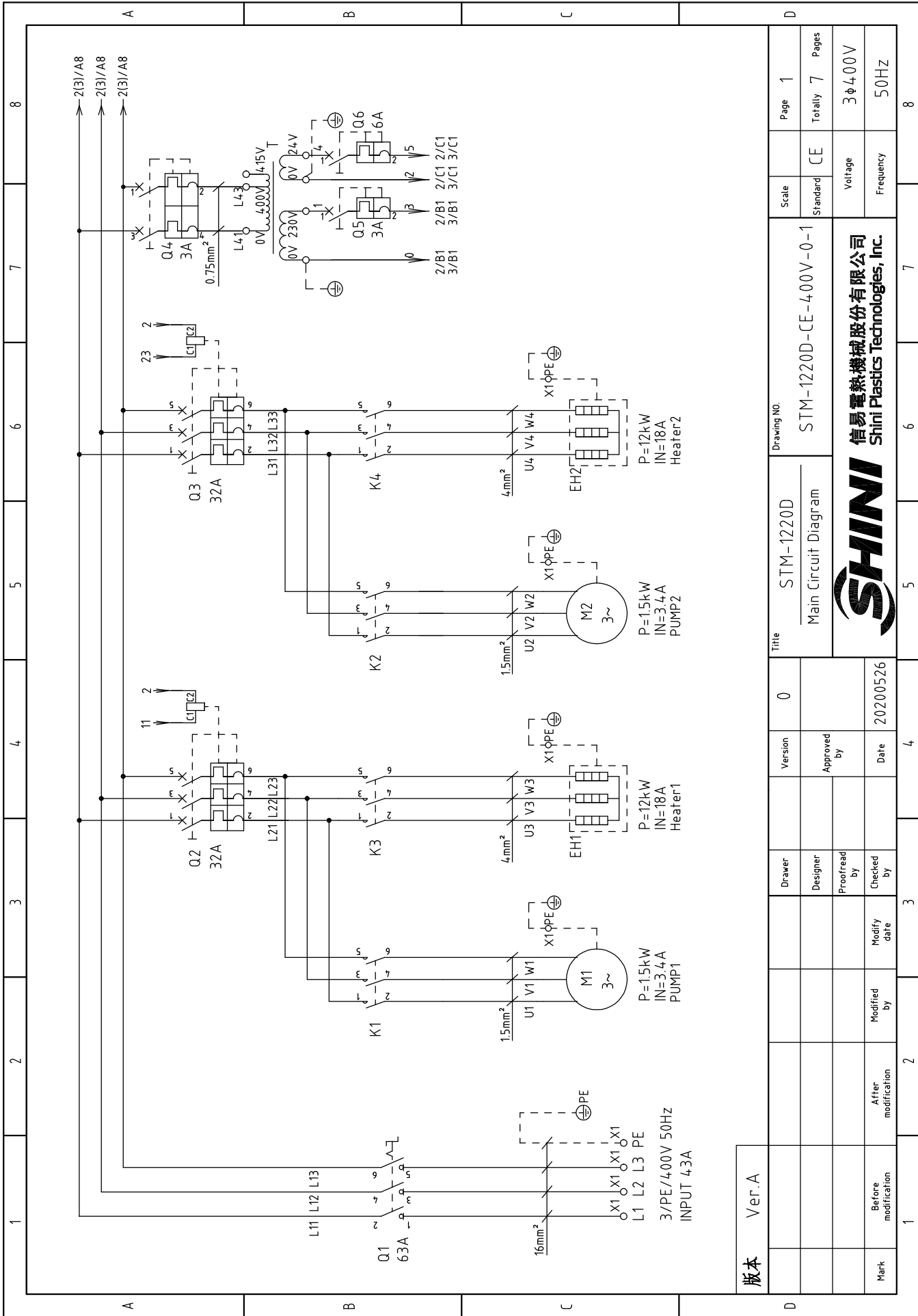


版本 Ver G	Technical requirements: Directly connect the pump and heater to the output end of the contactor and thermal overload relay.			Scale	Page
	Drawing NO	STM-910-D	Terminal Connection Diagram	Standard	Totally
				CE	6
Mark	Before modification	Modified by	Modify date	Voltage	400V
				Frequency	50HZ
1	2	3	4	5	6
					8



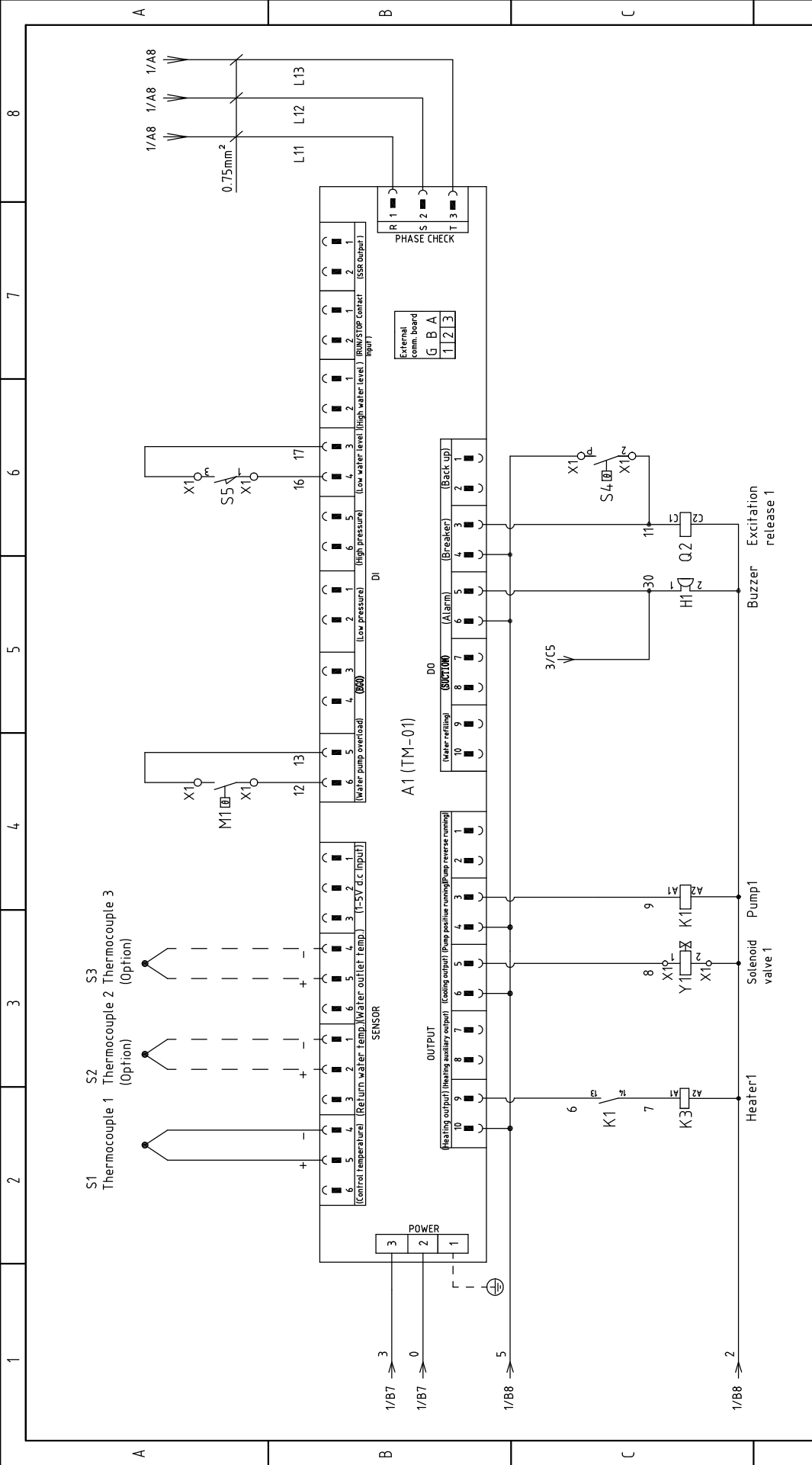
1	2		3	4	5	6	7	8
No.	Symbol	Name	Manufacturer	Type	Specification	Number	Material number	Remark
1	Q1	Main power switch	EATON	P3-63/EA/SVB	63A	1	YE10636300000	
2	Q2 Q3	Circuit breakers	TECO	BM-63C/3025S	25A	2	YE40302503000	
3		Excitation release	TECO	MX	24VAC	2	YE40024000000	A
4	Q4	Circuit breakers	TECO	BM-63C/2003S 2P	3A	1	YE40200203000	
5	Q5	Circuit breakers	TECO	BM-63C/1003S 1P	3A	1	YE40100203000	
6	Q6	Circuit breakers	TECO	BM-63C/1006S 1P	6A	1	YE40100600100	
7	K1 K2	Contactors	SIEMENS	3RT6015-1AB01	24VAC	2	YE00601502500	
8	K3 K4	Contactors	SIEMENS	3RT6025-1AC20	24VAC	2	YE00602502600	
9	T	Transformer	JIUXIN	IN=400V/4.15V OUT=24V/230V	120VA/350mA	1	YE70040007300	
10	S1 S6	Thermocouple	SHINI	----	K	2	----	(1)
11	S2 S3 S7 S8	Thermocouple	SHINI	----	K	4	----	(2)
12	S4 S9	Overheat protector	----	----	250V 5(4)A	2	----	(1)
13	S5 S10	Micro switch	RENEW	----	----	2	----	(1)
14	S11	Communication interface board RS-485 (double Dsub-9pin connector)	YUYUN	----	PCS	1	YE90048501200	
15		Shell RS485(SAL-700G-A-19)0	BINGCHENG	----	PCS	1	YR40048500000	
16	PC1 PC2 A1 A2	Circuit board	YUYUN	TM-01 (含通讯)	180~4.30V 50/60Hz	2	YE81012200300	
17	Y1 Y2	Solenoid valve	----	----	24VAC	2	----	(1)
18	X1	Terminal board	HONEYWELL	SK2.5	----	16	YE60002503200	
19		Terminal board	HONEYWELL	SK2.5PE	----	6	YE60002503400	
20		Terminal board	HONEYWELL	GK10	----	3	YE60001003200	
21		Terminal board	HONEYWELL	GK10PE	----	1	YE60001003500	
22	M1 M2	Motor	SHINI	TP-75	400V 50Hz 0.75kW	2	----	(1)
23	EH1 EH2	Heater	SHINI	----	400V 50Hz 9kW	2	----	(1)
24	H1	Buzzer	JINGKANG	PK-35A	24VAC/DC	1	YE84003500600	
25		Terminal fittings E/GKseries(honeywell)	HONEYWELL	----	PCS	6	YE60000003900	
<b>版本</b>								
Notes: (1)Means it's not the material inside the control box (2)Means equipped with function of displaying water outlet and return water temperature.								
				Drawing NO	Scale	Page	D	
Ver G				Title	Electrical Components List	STM-910-D	STM-910-D-CE-400V-H-6	CE
				Version	H	Approved by	Standard	Voltage
				Drawer	Designer	Proofread by	Frequency	Pages
Mark				Before modification	Modified by	Modify date	Checked by	Totally
1				2	3	4	5	6
				Date	20180724	6	7	8





版本 Ver.A

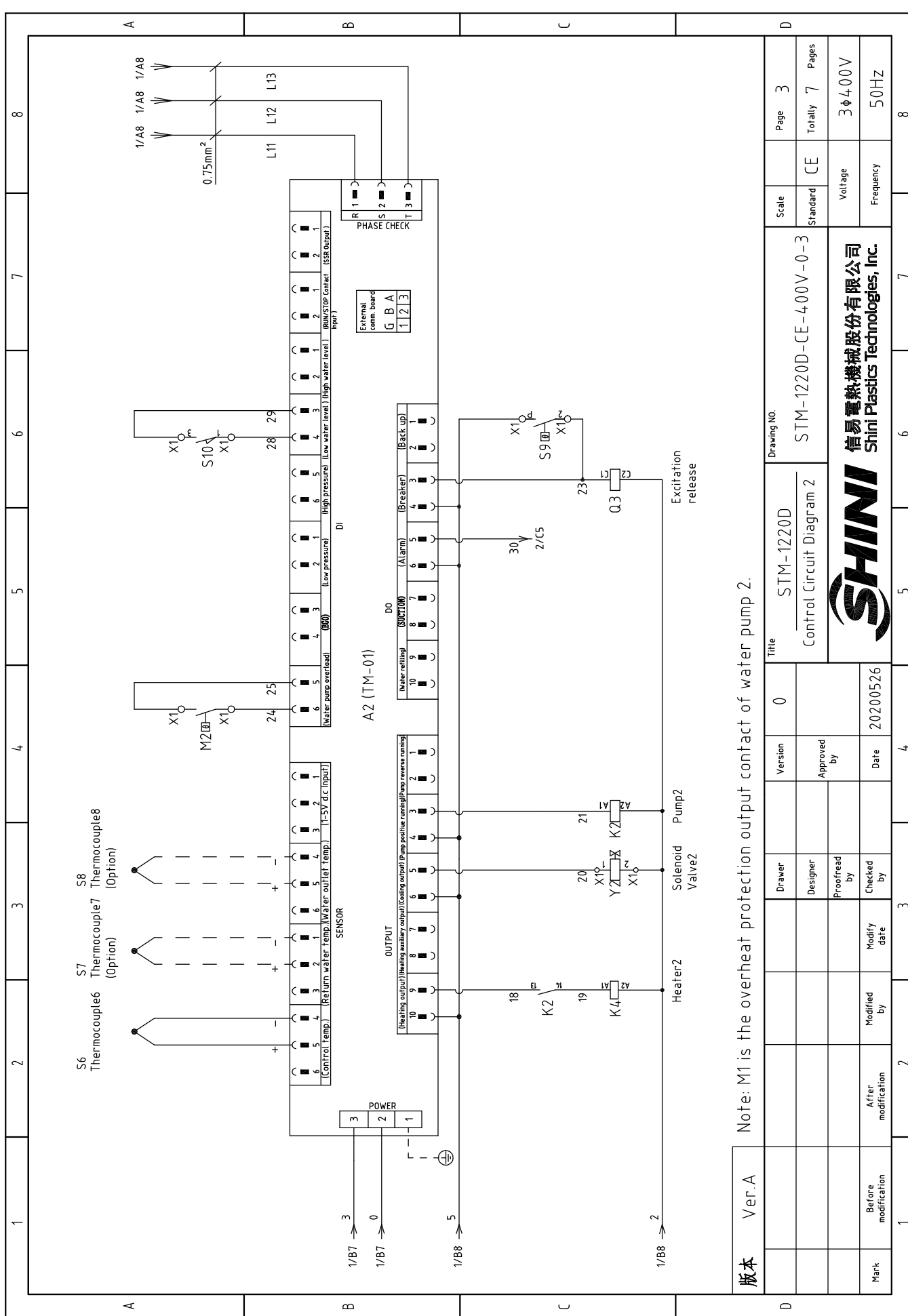
Mark	Before modification	Modified by	Modify date	Checked by	Date	Version	0	Title	Drawing NO.		Scale	Page 1
	After modification	Modified by	Modify date						STM-1220D-CE-400V-0-1			
CE							Voltage		Frequency		3φ400V 50Hz	
<p>信易電熱機械股份有限公司 Shini Plastics Technologies, Inc.</p>												



版本	Ver.A	Title		STM-1220D	Drawing NO.		STM-1220D-CE-400V-0-2	Scale	Page
		Drawer	Version	Control Circuit Diagram 1	Designer	Approved by		Standard	Totally
		Proofread by	Date		Checked by	Modify date		Voltage	Pages
Mark	Before modification	After modification	20200526					3φ400V	7
								Frequency	8

Note: M1 is the overheat protection output contact of water pump 1.



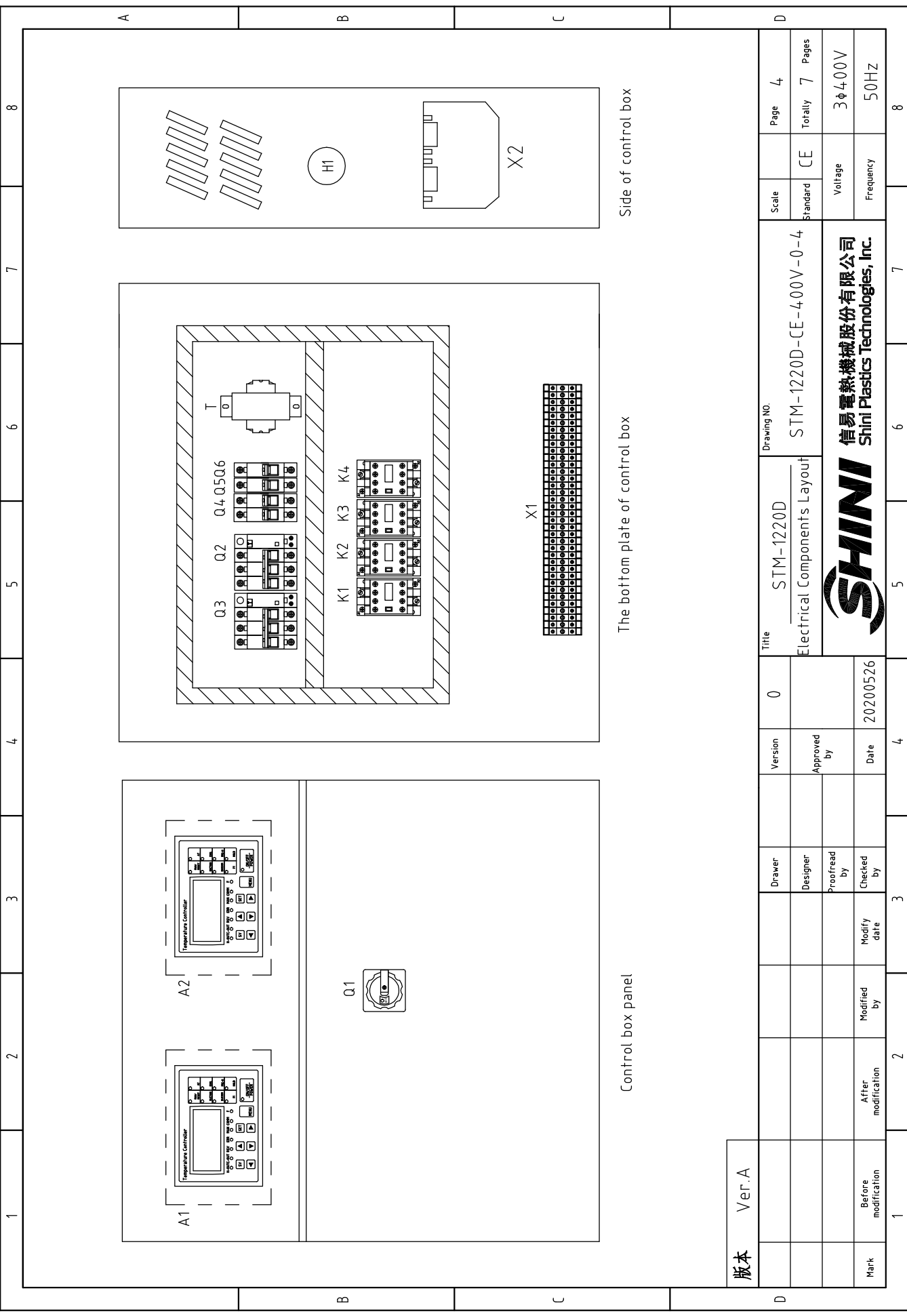


版本 Ver.A

Mark	Before modification	Modified by	Modify date	Checked by	Date	Approved by	Version	0	Title	STM-1220D Control Circuit Diagram 2	Drawing NO.	STM-1220D-CE-400V-0-3	Scale	CE	Page	3
	After modification				20200526										Totally	7
															Voltage	3φ400V
															Frequency	50Hz



Note: M1 is the overheat protection output contact of water pump 2.



Control box panel

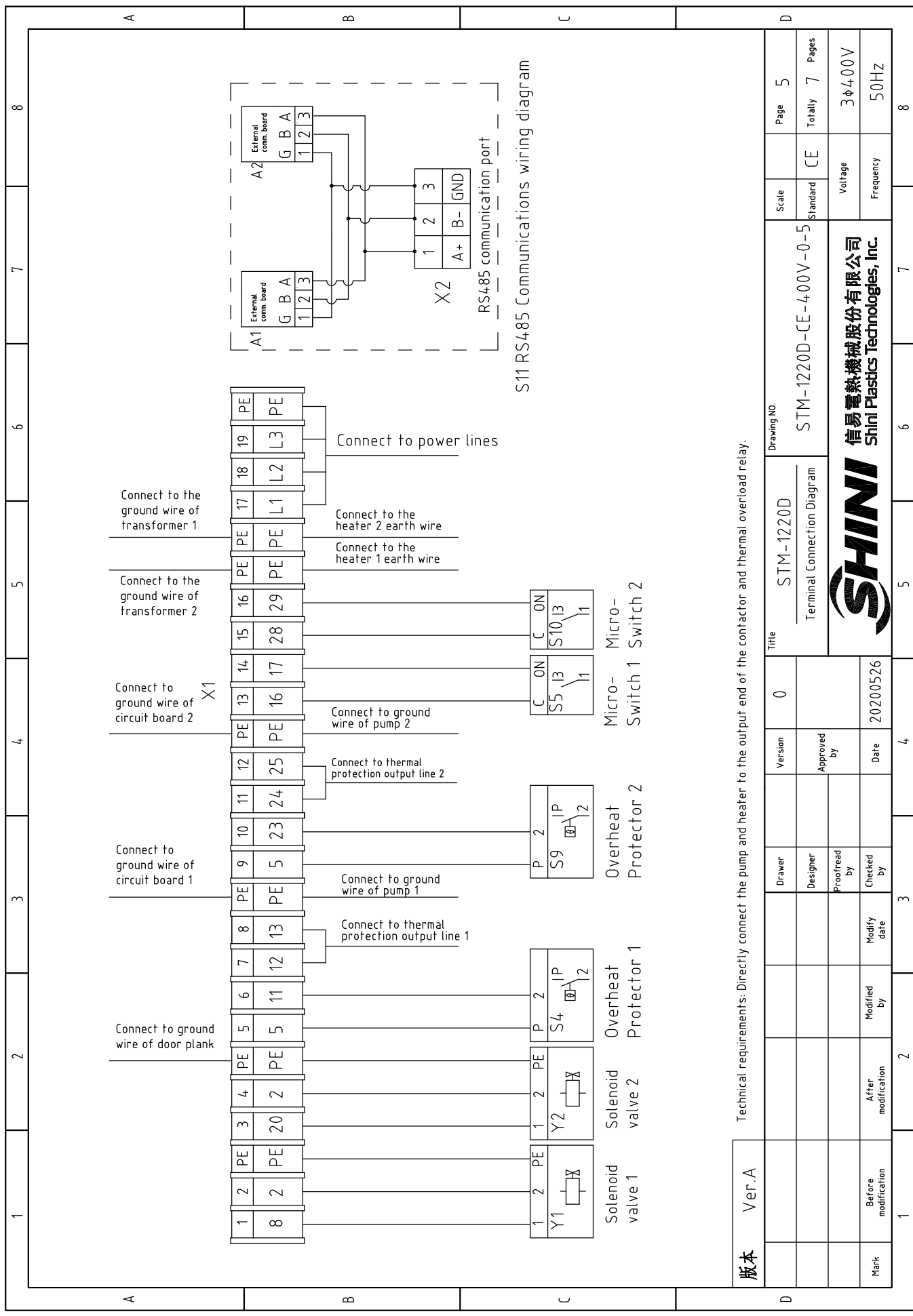
The bottom plate of control box

Side of control box

版本	Ver.A
Mark	Before modification
	After modification
	Modified by
	Modify Date
	Checked by
	Proofread by
	Designer
	Drawer
Version	0
Approved by	
Date	20200526

Title		STM-1220D		Drawing NO.		STM-1220D-CE-400V-0-4	
Electrical Components Layout		Scale	Standard	Page	4	Totally	7 Pages
Voltage		Frequency		3 $\phi$ 400V		50Hz	
SHINI		信易電熱機械股份有限公司 Shini Plastics Technologies, Inc.					





S11 RS485 Communications wiring diagram

Technical requirements: Directly connect the pump and heater to the output end of the contactor and thermal overload relay.

版本	Ver.A	Drawer	Version	Title	Drawing NO.		Page
	STM-1220D				Scale	Page	
Mark	Before modification	Designer	Approved by	Terminal Connection Diagram	Standard	CE	Totally
Mark	After modification	Checked by	Date	20200526	Voltage	Frequency	3φ400V



1		2		3		4		5		6		7		8	
NO.	Symbol	Name	Manufacturer	Type	Specification	Number	Material number	Remark							
1	Q1	Main power switch	EATON	P3-63/EA/SVB	63A	1	YE10636300000								
2	Q2 Q3	Circuit Breakers	TECO	BM-63C/3032S	32A	2	YE40303203000								
3		Excitation release	CHINT	MX	24VAC	2	YE40024000000								
4	Q4	Circuit Breakers	TECO	BM-63C/2003S 2P	3A	1	YE40200203000								
5	Q5	Circuit Breakers	TECO	BM-63C/1003S 1P	3A	1	YE40100203000								
6	Q6	Circuit Breakers	TECO	BM-63C/1006S 1P	6A	1	YE40100600100								
7	K1	Contactors	SIEMENS	3RT16015-1AB01	24VAC	2	YE00601502500								
8	K2	Contactors	SIEMENS	3RT16026-1AC20	24VAC	2	YE00602602600								
9	T	Sensor transformer	JIUXIN	IN=400V/415V OUT=24V/230V	180VA/350mA	1	YE70040007400								
10	S1 S6	Thermocouple	SHINI	----	K	2	----	(1)							
11	S2 S3 S7 S8	Thermocouple	SHINI	----	K	4	----	(1)(2)							
12	S4 S9	Overheat Protector	RONGHUI	----	----	2	----	(1)							
13	S5 S10	Limit Switch	RENEW	----	250V 5(4)	1	----	(1)							
14	X2	Communication interface board RS-485 (double Dsub-9pin connector)	YUYUN	----	PCS	1	YE90048501200								
15		Shell RS485(SAL-700G-A-1910)	BINCHENG	----	PCS	1	YR40048500000								
16	A1 A2	Circuit Board	YUYUN	TM-01 (include communication)	180~430V 50/60Hz	2	YE81012200300								
17	X1	Terminal Board	HONEYWELL	SK2.5	----	16	YE60002503200								
18		Grounding terminal block	HONEYWELL	GK2.5PE	----	3	YE60002503400								
19		Grounding terminal block	HONEYWELL	GK5PE	----	2	YE60000403500								
20		Terminal Board	HONEYWELL	GK16	----	3	YE60001603200								
21		Grounding terminal block	HONEYWELL	GK16PE	----	1	YE60001603500								
22	M1M2	Motor	SHINI	TP-150	400V 50Hz 1.5kW	2	----	(1)							
23	EH1EH2	Heater	SHINI	12kW	400V 50Hz	2	----	(1)							
24	H1	Buzzer	JINGKANG	PK-35A	24VAC/DC	1	YE84003500600								
25	Y1Y2	Solenoid Valve	----	----	24VAC	2	----	(1)							
<b>版本</b> Ver.A Notes: (1)Means it's not the material inside the control box.(2)Means equipped with function of displaying water outlet and return water temperature.															
		Title		Drawing NO.		Scale		Page		6		7		8	
		0		STM-1220D		STM-1220D-CE-400V-0-6		CE		Voltage		3φ400V		Frequency	
		Electrical Components List 1						Totaly		7		Pages		50Hz	
		Approved by		Date		20200526									
		Checked by		Modify date											
		Modified by		After modification											
		Before modification		After modification											
		Mark													



信易電熱機械股份有限公司  
Shini Plastics Technologies, Inc.

