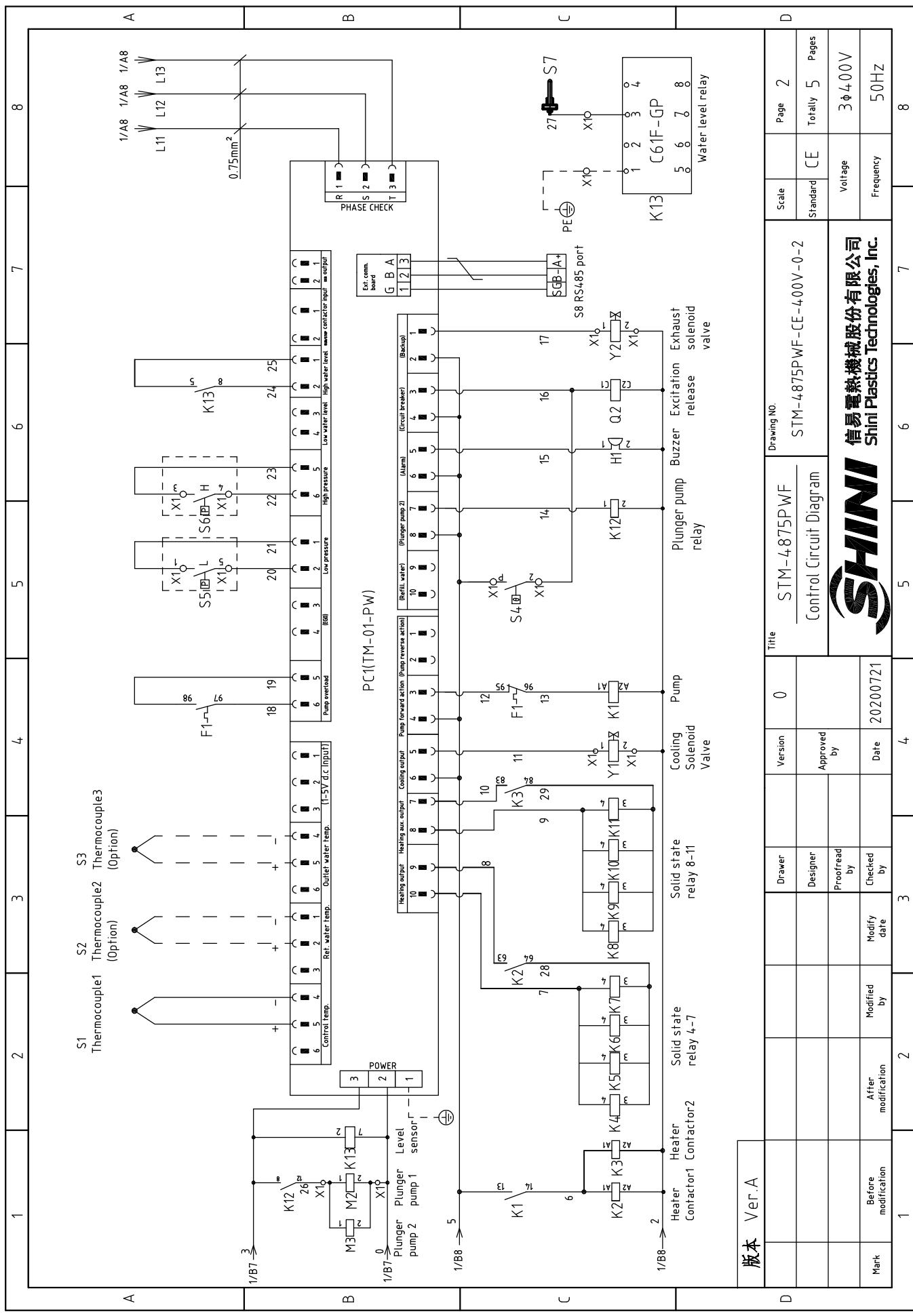


版本 Ver.A


Mark	Before modification	Modified by	Modify date	Checked by	Date
					20200721
Proofread by	Designer	Drawer	Version	0	Title
					STM-4875PWF
					Main Circuit Diagram
					STM-4875PWF-CE-400V-0-1
					Drawing NO

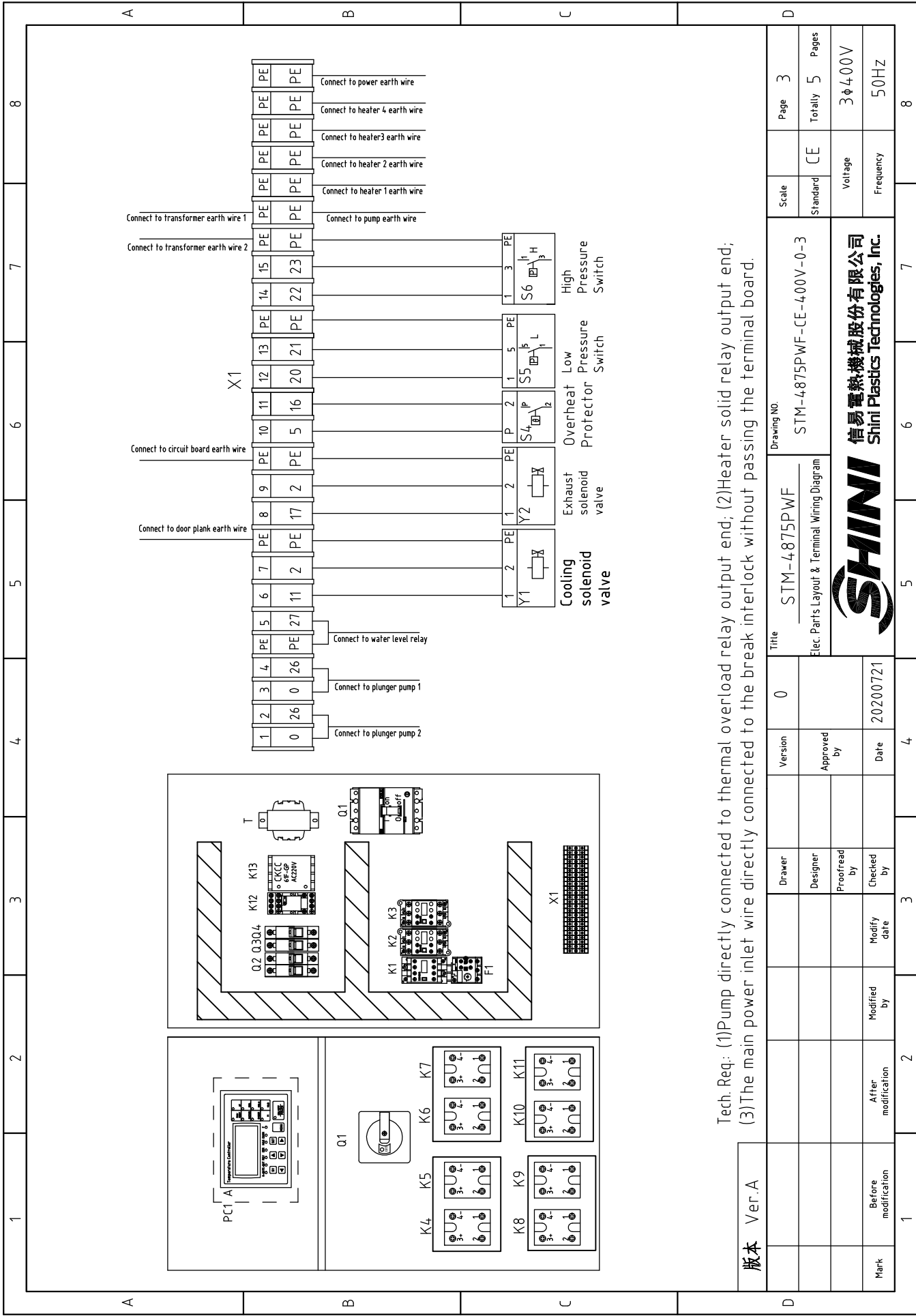
Scale	Page
Standard	1
CE	Totally 5
Voltage	Pages
Frequency	3 φ 400V
	50HZ

SHINI
信易电热机械股份有限公司
Shini Plastics Technologies, Inc.



版本 Ver.A

Mark	Before modification	Modified by	Modify date	20200721	Date	Approved by	Version	0	Title	STM-4875PWF		Drawing NO.	Page	2
	After modification	Modified by	Modify date	20200721						Control Circuit Diagram				
Mark	Before modification	Modified by	Modify date	20200721	Date	Approved by	Version	0	Title	STM-4875PWF		Drawing NO.	Page	2
Mark	After modification	Modified by	Modify date	20200721	Date	Approved by	Version	0	Title	Control Circuit Diagram		Drawing NO.	Page	2
													信易電熱機械股份有限公司 Shini Plastics Technologies, Inc.	
信易電熱機械股份有限公司 Shini Plastics Technologies, Inc.													Voltage 3φ400V	
信易電熱機械股份有限公司 Shini Plastics Technologies, Inc.													Frequency 50Hz	



Tech. Req: (1) Pump directly connected to thermal overload relay output end;
 (2) Heater solid relay output end;
 (3) The main power inlet wire directly connected to the break interlock without passing the terminal board.


Mark	Before modification	After modification	Modified by	Modify date	Checked by	Date	20200721
Version	0	Approved by					
Version	0	Approved by					
Version	0	Approved by					

Scale	Page	3
Standard	Totally	5
	Pages	
Voltage	3φ400V	
Frequency	50HZ	
Title		
STM-4875PWF		
Drawing NO. STM-4875PWF-CE-400V-0-3		
Elec. Parts Layout & Terminal Wiring Diagram		
 信易电热机械股份有限公司 Shini Plastics Technologies, Inc.		

1		2		3		4		5		6		7		8	
No.	Symbol	Name	Manufacturer	Type	Specification	Number	Material number	Remark							
1	Q1	Break interlock	ABB	A1A125TMF125/12503PFF	125A	1	YE41161400000								
2		Release	ABB	S0R-C	24V-30V AC/DC(A1A2)	1	YE40243000900								
3	Q2	Circuit breakers	TECO	BM-63C/2003S 2P	3A	1	YE40200203000								
4	Q3	Circuit breakers	TECO	BM-63C/1003S 1P	3A	1	YE40100203000								
5	Q4	Circuit breakers	TECO	BM-63C/1010S 1P	10A	1	YE40101000100								
6	K1	Contactors	SIEMENS	3RT6018-1AB01	24VAC	1	YE00601802500								
7	K2 K3	Contactors	SIEMENS	3RT5035-1AC20	24VAC	2	YE00503502600								
8		Auxiliary block	SIEMENS	3RH5921-1EA11	1NO/NC	2	YE00592103100								
9	K4-K11	Solid-state relay	FOTEK	KSR-40DA-H	40A/480VAC/4-32VDC	8	YE03404003200								
10	K12	Middle relay	HONEYWELL	GR-2C-AC24V	24VAC 50/60HZ	1	YE03022400300								
11	K13	Water level relay	CIKACHI	C61F-GP	230VAC 50HZ	1	YE02612200000								
12	F1	Overload relays	SIEMENS	3RU6116-1KB0	9-12.5A	1	YE01169125000								
13	T	Transformer	JIUXIN	IN=400/415V OUT=24V/230V	230VA/800mA	1	YE70040004100								
14	S1	Thermocouple	SHINI	----	----	1	----	(1)							
15	S2 S3	Thermocouple	SHINI	----	----	2	----	(1)(2)							
16	S4	Overheat protector	TONCEAO	ZA300	250V 5(4)A	1	----	(1)							
17	S5	HI pressure switch	FENSHEN	----	----	1	----	(1)							
18	S6	LO pressure switch	FENSHEN	----	----	1	----	(1)							
19	S7	Water level probe	SHINI	----	----	1	----	(1)							
20	S8	Connect to comm. interface board RS-485(Dsub-9pin connector)	YUYUN	TODSUB V23	DSUB-9PIN connector	1	YE90048501200								
21	A1	Shell RS485(SAL-700G-A-19)ver.0	BINGHENG	----	----	1	YR40048500000								
22	A1	Circuit Board	YUYUN	TM-01-PW-S 220VAC	180~430V 50/60Hz	1	YE81184300300								
23	H1	Buzzer	JINGKANG	PK-35A	24VAC/DC	1	YE84003500600								
24	Y1 Y2	Solenoid valve	SHINI	----	24VAC 50/60Hz	2	----	(1)							
25	X1	Terminal board	HONEYWELL	SK2.5	----	15	YE60002503200								
版本 Ver.A		Notes: (1)Materials not in the control box; (2)Optional outlet water and return water temp. displayer.													
D		Drawer		Version		Title		Drawing NO.		Scale		Page		4	
				0		STM-4875PW-F		STM-4875PW-F-CE-400V-0-4		CE		Totally		5	
		Designer		Approved by		Elec. Parts List 1				Voltage		3φ		400V	
		Proofread by								Frequency		50		HZ	
Mark		Before modification		Modified by		Modify date		20200721							
1		2		3		4		5		6		7		8	



信易電熱機械股份有限公司
Shini Plastics Technologies, Inc.

1		2		3		4		5		6		7		8	
No.	Symbol	Name	Manufacturer	Type	Specification	Number	Material number	Material number	Remark						
26	X1	Terminal board	HONEYWELL	SK2.5PE	2.5mm ²	5	YE60002503400								
27		Terminal board	HONEYWELL	GK5PE	4mm ² PE	4	YE60000403500								
28		Terminal board	HONEYWELL	GK16PE	16mm ² PE	1	YE60001603500								
29		Terminal fittings E/GK series (HONEYWELL)	HONEYWELL	E/GK	----	6	YE600000003900								
30	M2 M3	Plunger pump	SHINI	----	220~240V 50Hz 53W	2	----		(1)						
31	M1	Motor	SHINI	MPL550	5.5kW 4.00V 50Hz	1	----		(1)						
32	EH1 EH2 EH3 EH4	HEATER	SHINI	12kW	12kW 4.00V 50Hz	4	----		(1)						
33		Aluminium cooler	SHINI	----	----	4	----								
A															
B															
C															
D															
版本 Ver.A Notes: (1)Materials not in the control box. (2)Optional outlet water and return water temp. displayer.															
										Drawing NO.		Scale		Page	
										STM-4875PWF		STM-4875PWF-CE-4.00V-0-5		5	
										Elec. Parts List 2		CE		Totally 5 Pages	
										 信易電熱機械股份有限公司 Shini Plastics Technologies, Inc.		Voltage		3φ4.00V	
												Frequency		50Hz	
Mark Before modification After modification Modified by Modify date Date 20200721															
1 2 3 4 5 6 7 8															