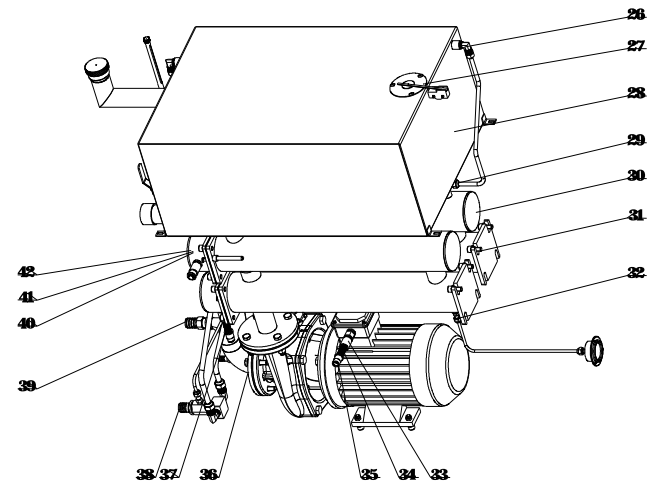
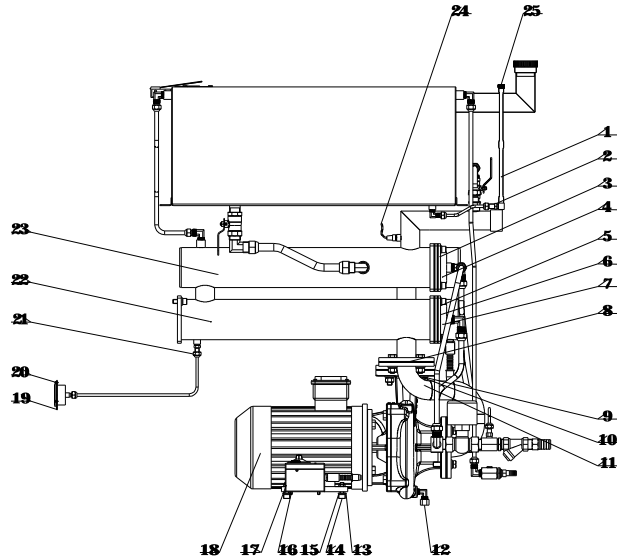


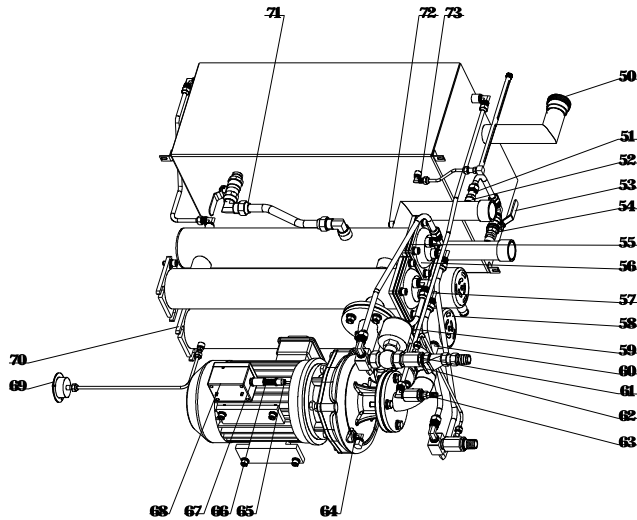
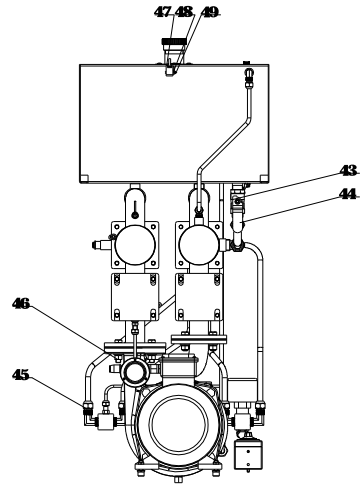
4.4	YW61062501200	Inner hexagon cylinder screw M6x25	12.9	4	GB/T70.1
4.3	STM-3050F-A-07	Right front fixed leg		1	Welding parts
4.2	STM-3050F-A-16	Control box insulation plate	5A02-0.4	1	
4.1	STM-3050F-A-18	Top plate insulation plate	5A02-0.4	1	
4.0	STM-3050F-A-10	Cover plate		1	
3.9	STM-3050F-A-17	Side plate insulation plate	5A02-0.4	2	
3.8	STM-3050F-A-19	Rear plate sealed plate		1	Welding parts
3.7	YW60082000200	Hexagon screw bolt M8x20	Q235A	12	GB/T5783.8.8 Option
3.6	YW63051000000	Cross recessed pan head screw M5x10	Q235A	4	GB/T-818
3.5	STM-3050F-A-04	Rear plate		1	Welding parts
3.4	YR40523040000	Plastic flexible buckle	PVC	1	52x30 has mould
3.3	STM-3050F-A-11	Side plate		2	Welding parts
3.2	STM-3050F-A-06	Crossbeam		2	Welding parts
3.1	STM-3050F-A-02	Pump support plate	SPCC3.0	1	
3.0	STM-3050F-A-05	Left front fixed leg		1	Welding parts
2.9	STM-3050F-A-09	Reforced fixed plate 2	SPCC2.0	2	
2.8	STM-3050F-A-12	Control box		1	Welding parts
2.7	STM-3050F-A-01	Bottom frame		1	Welding parts
2.6	STM-3050F-A-14	Lower door plank of the control box	SPCC1.5	1	
2.5	YW62051000100	Cross socket flat-head screw M5x10	Q235A	8	JIS1111
2.4	STM-3050F-A-13	Upper door plank of the control box		1	Welding parts
2.3	YW90120700000	Aluminum cooler	6061	2	
2.2	YW63063000000	Cross recessed pan head screw M6x30	Q235A	4	GB/T-818
2.1	YW60061500100	Hex. bolt M6x16	12.9	56	GB/T5783
2.0	YW62061000000	Cross socket flat-head screw M6x10	SUS304	4	JIS1111
1.9	STM-3050F-A-15	Base plate of control box	SECC1.5	1	
1.8	YW61061600100	Inner hexagon round head screw M6x16	Q235A	4	GB/T70.2
1.7	YW61064.0000000	Inner hexagon cylinder screw M6x4.0	SUS304	4	GB/T70.1
1.6	STM-3050F-A-03	Heating fan support plate		1	Welding parts
1.5	YW03000300000	3" With castor with brake	Q235A	2	
1.4	YW64.000600300	Hexagon nut M6	Q235A	8	GB/T6170
1.3	YW64.080600000	Hexagon nut M8	Q235A	4	GB/T6170
1.2	YW03000300200	3" Without castor with brake	Q235A	2	
1.1	STM-3050F-A-08	Reforced fixed plate 1	SPCC2.0	2	
1.0	YE84.003500600	Buzzer PK-35A 24V	PVC	1	
9	YM601212004.00	Exhaust fan-plastic net		1	120x120
8	YW06203100100	Hinge		2	CL203-1(Let) Shengjiu
7	YW63041200100	Cross recessed pan head screw M6x12	Q235A	8	GB/T-818
6	SG-S-01	Fixing board of wire clamps	SPCC2.0	1	Choose according to different voltage
5	YE67002900000	Cable head	PVC	1	PG29 4.00V 13.5
4	YR40120300000	Fan guard	PVC	1	Anti-dust plastic net (120x120)
3	YE40100300100	Dongyuan circuit breaker	Q235A	1	
2	YW00816100000	Door lock		1	MS816-1 with key
1		Bump touch screen		1	
NO.	Material number	Name	Mat.	Num.	Remarks

				制图	版号	标题	图号	比例	数量
				设计	核准	外壳钣金	STM-3050F-A-ALL		材质
				校对			信易电热机械股份有限公司 Shini Plastics Technologies, Inc.	表面要求	
标记	更改前	更改后	更改人	日期	审核			日期	物料号



42	YW64000600300	Hexagon nut M6	Q235A	2	GB/T6170
41	YW66061300000	Flat washer A grade 6	Q235A	2	GB/T97.1(6.6x12x1.6)
40	YW65060000000	Standard spring washer 6	65Mn	2	GB/T93
39	S-124	Copper joint 3/4"PTxn25	H62	1	3/4"PT external Teeth 19 through-hole
38	STM-3050F-B-09	Drainage connector assembly		1	Assembly
37	YR20121200000	Flexible graphite pad	ISO-68	4	120x120x2.0
36	STM-3050F-B-05	The pump and the cooling tank connected to the tube		1	Welding parts
35	YE67015800100	Quick connector of hose	PVC	3	WQEA15.8B
34	YE66015800000	Nylon hose	PA66	3	WY-PA6AD15.8B 1.3m
33	YE67111000000	Quick connector of hose	PVC	1	WQG1-P11B
32	S-192	Special connector for pressure gauge	H62	1	1/4"PTx1/4"H
31	YW61102500000	Inner hexagon cylinder screw M10x25	12.9	12	GB/T70.1
30	STM-3050F-B-02	Cooling tank		1	Welding parts
29	S-16	Copper trumpet nut 3/8"	H58	4	
28	STM-3050F-B-03	Oil tank		1	Welding parts
27	STM-3050F-B-04	Float ball		1	Welding parts
26	S-105	Tonfon pipe male thread connector L-type teeth	H58	3	3/8"Hx3/8"PT
25	S-88	Liquid level nut	H62	1	Straight knurled with module m=0.3mm
24	BE9034.1500050	Thermocouple	SUS304	1	15M
23	STM-3050F-B-10	Cooler		2	Welding parts
22	STM-3050F-B-07	Heating tube group		2	Welding parts
21	S-17	Copper trumpet nut 1/4"	H58	7	
20	YW63030600000	Cross recessed pan head screw M4	Q235A	3	GB/T-823
19	YW85001000100	Pressure gauge		1	0~10MPa range
18	YM20503700100	Vortex high temperature circulating pump RGP-50		1	
17	YW64001000100	Hexagonal nut M10	Q235A	4	GB/T6170
16	YW62051000100	Large cross socket flat head screw M5x10	Q235A	5	JIS1111
15	YW65010000000	Standard spring washer 10	65Mn	24	GB/T93
14	YW61103000100	Inner hex column head screw M10x30	12.9	12	GB/T70.1
13	YW66102000100	Flat washer A grade 10	Q235A	24	GB/T97.1 (11x20x2)
12	S-171	Teflon plug	H58	1	3/8"H plug
11	YW60125000100	Hexagon bolt M12x50	4.8	8	GB/T5781
10	YW65012000000	Standard spring washer 12	65Mn	12	GB/T93
9	YW661224.00000	Flat washer A grade 12	12.9	12	GB/T97.1 (13.5x24x2.5)
8	STM-3650WF-ALL-15	Flange gasket	ISO-68	1	
7	YW65050000000	Standard spring washer 5	65Mn	24	GB/T93
6	YW64000400500	Hex. nut M4	A2-70	50	GB/T6170
5	YW665234.00000	Copper gasket	Q235A	12	SHD-100KG(5.2x34)
4	YW66051300000	Flat washer A grade 5	Q235A	48	GB/T97.1 (5.5x10x1)
3	YR300004.00100	Plastic plug 1/2" single-hole red	PVC	25	
2	S-82	Level detector nut	H62	1	1/4"H
1	YW70963000000	Glass pipe φ9×φ6×300mm	Glass	1	
No.	Material number	Name	Mat.	Num.	Remarks

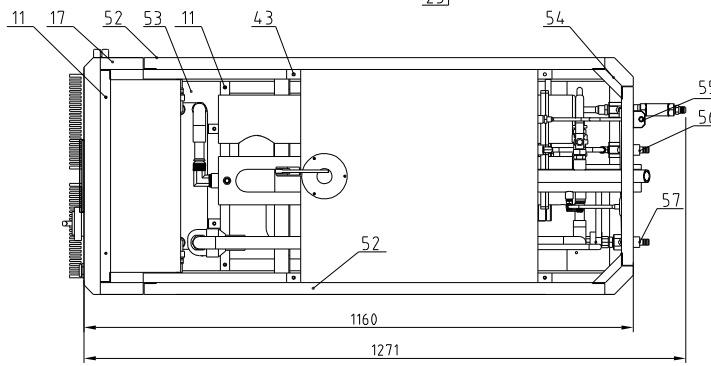
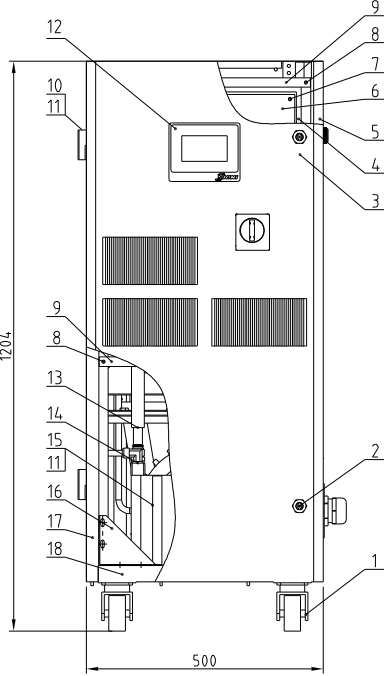
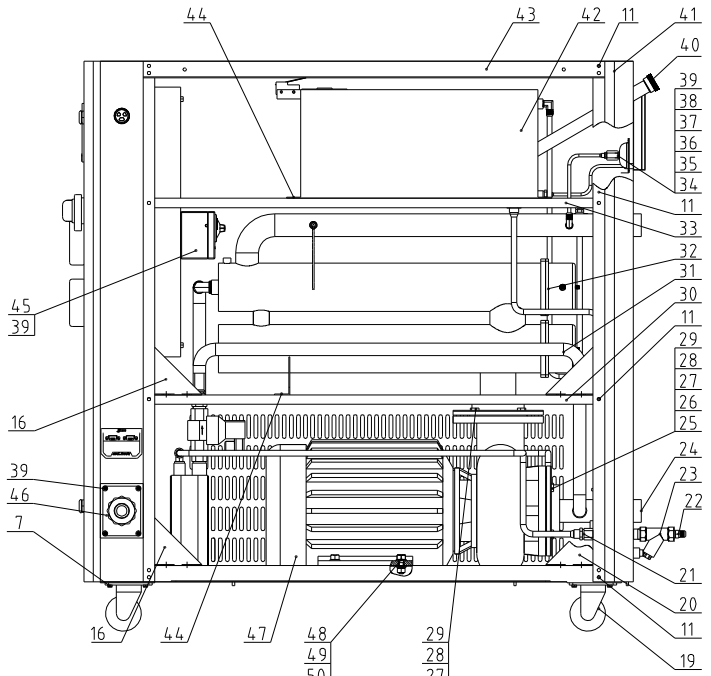
标记	更改前	更改后	更改人	日期	制图	版号	标题	图号	比例	数量	材质
					设计	核准	STM-3050F	STM-3050F-B-ALL	1:1	1	玻璃
					校对		内部结构				
					审核		SHINI 信易电热机械股份有限公司	Shini Plastics Technologies, Inc.	表面要求		
					日期				物料号		



73	YW04010400400	Tonflon pipe male thread elbow	H62	1	1/4"Hx1/4"PT L
72	YW80010200100	1/4"PT plug	H58	1	
71	S-56	3/4" Copper trumpet nut	H58	2	
70	STM-3050F-B-01	Heating barrel parts		1	Welding parts
69	STM-3050F-A-20	Pressure gauge fixed plate	SPCC15	1	
68	BH90115000050	Over temperature protection EGO		1	EGO
67	YE67109000000	Quick connector of hose	PVC	1	WQG1-P09B
66	YE66001300000	Nylon hose	PA66	1	WY-PA6AD13.0B 1.5m
65	YE67001340000	Quick connector of hose	PVC	1	WQEAD13.0B
64	YW04030800400	Tonflon connector	H58	1	1/4"PTx3/8"H L
63	STM-3050F-B-14	Oil overflow connector		1	
62	YW57030400000	Y type waster strainer 3/4"	Cu	1	
61	STM-3050F-B-06	Copper nut	H58	2	
60	YE67165800000	Quick connector of hose	PVC	2	WQG1-M16B/AD15.8
59	STM-3050F-B-08	Inlet water connector		1	Welding parts
58	S-190	Pipe heater cover	SPCC1.0	2	
57	YW59121200000	Teflon pipe connect	H62	5	1/2"PTx1/2"H L-type
56	STM-3050F-B-11	Cooler end cover		2	Welding parts
55	STM-3050F-B-12	Cooler sealing gasket	ISO-68	2	
54	S-122	Pipe coupler	H58	1	1/2"PTx1/2"PT
53	YW50010200500	Ball valve	H58	1	1/2" Ball valve KITZ heat-resistant 180°
52	S-104	1/2" Pipe internal thread	SUS304	1	
51	S-05	Teflon pipe fittings	H58	1	1/2"Hx1/2"PT
50	STM-3050F-B-13	Oil cap	ZL-102	1	
49	YW63042500000	Cross recessed pan head screw M4x25	Q235A	2	GB/T-823
48	S-109	Heat insulation pad of liquid level sensor	3-60	2	Aramid fiber production (has mould)
47	YE14152400000	Micro switch		1	LXW5-1124 rod length 100mm
46	YW64012100000	Hexagonal nut M12	Q235A	8	GB/T6170
45	S-15	Copper trumpet nut 1/2"	H58	10	
44	YW04030400000	3/4PT-3/4H connector L	H58	2	
43	YW50030400500	Ball valve	H58	1	3/4" KITZ heat-resistant 180°
No.	Material number	Name	Mat.	Num.	Remarks

					制图	版号	标题	图号	比例	数量
					设计	核准	STM-3050F	STM-3050F-B-ALL	1:1	1
					校对		内部结构			材质
标记	更改前	更改后	更改人	日期	审核	日期		德易电热机械股份有限公司 Shini Plastics Technologies, Inc.	表面要求	物料号

Max. pump Pressure (bar:50/60Hz)4.0/4.5	Max. pump Flow (L./min) (50/60Hz)320/360	Weight(kg)270	Pump Power(kW)5.5	Heater(kW)45kW	Ver E
--	---	---------------	-------------------	----------------	-------



Tech. Req.
 1. The copper pipe wiring is horizontal and vertical, and the PT pin need to be taped with Teflon.
 2. All fasteners require anti-corrosion treatment.
 3. Max. work temp. 200°C, and control accuracy 0.5%, EGO Protective temp. is set to 215°C.

57	STM-4575F-E-ALL	Drainage connector assembly	Assembly	1		10	YW06203100400	Large chain CL203-11eff	AL	2	
56	STM-4575F-G-ALL	oil discharge connector assembly	Assembly	1		9	STM-4575F-ALL-14	Control box Support beam	SPCC15	2	
55	BH12060700210	Liquid level assembly	Assembly	1		8	YW62062000000	Flat head screw M6-20	4.8	4	
54	STM-4575F-ALL-06	left rear column	SPCC15	1		7	YW63061700000	Flat head screw M6-15	4.8	20	
53	STM-4575F-ALL-07	Plate exchange installation plate	SPCC15	1		6	STM-4575F-ALL-08	Base plate of control box	SECC15	1	
52	STM-4575F-ALL-11	Side plate	SPCC15	2		5	STM-4575F-ALL-03	Right front column	SPCC15	1	
51	YW66102500000	Flat washer 10	140HV	4		4	STM-4575F-ALL-01	Control box	SPCC2.0	1	
50	YW65010000000	Spring washer 10	65Mn	4		3	STM-4575F-ALL-02	Door plank	SPCC15	1	
49	YW64001000300	Hexagon nut M10	5.8	4		2	YW00000000100	Long door lock	Assembly	2	
48	YW60103000100	External hexagonal bolt M10×30	4.8	4		1	YW03000300200	Flexible castor 3"	Assembly	2	

47	YM20755500100	Pump RGP-75	Assembly	1							
46	BH90115000050	EGO assembly	Assembly	1							
45	SG-S-01	Wire fixture fixed plate	SPCC2.0	1	Borrowed						
44	YW60061000000	External hexagonal bolt M6X10	4.8	6							
43	STM-4575F-ALL-10	Cover plate	galvanized mesh plate 15	1							
42	STM-4575F-C-ALL	Oil tank parts	Assembly	1							
41	STM-4575F-ALL-05	Right rear column	SPCC15	1							
40	BH12030403040	Aluminum oil cap 3/4"PT	ZL102	1							
39	YW62051000100	Flat head screw M5×10	4.8	8							
38	YW63030600000	Thick head screw M3×5	4.8	3							
37	STM-4575F-ALL-13	Pressure gauge fixing plate	SPCC15	1							
36	YW85001000100	Pressure gauge 10-10MPa Range	Assembly	1							
35	YW05061400000	Sleeve connector 6mm-1/4"PT	H62	1							
34	STM-607-ALL-07/01	H to PT connector	H58	1	Borrowed						
33	STM-4575F-ALL-12	Oil tank support beam	SPCC15	2							
32	STM-4575F-A-ALL	Heating Tank assembly	Assembly	1							
31	STM-4575F-ALL-15	Plate exchange Oil outlet pipe	Structural parts	1							
30	STM-4575F-ALL-18	Heating tank fixed beam	SPCC2.0	2							
29	STM-4575F-ALL-20	Flange gasket	Graphite	2							
28	YW65016000000	Spring washer 16	65Mn	8							
27	YW66163000000	Flat cushion 16×30	140HV	8							
26	YW60165500000	External hexagonal bolt M16X55	12.9	8							
25	YW64001600000	Hexagon nut M16(Longline)	4	8							
24	STM-4575F-B-ALL	Pump oil return pipe parts	Assembly	1							
23	YW57010200000	Y Type Strainer 1/2"	ZCuZn38	1							
22	BH12131200010	Copper joint M13×1/2PT	H58	1							
21	STM-4575F-F-ALL	Inlet water connector	Assembly	1							
20	STM-4575F-ALL-22	Reinforced plate 2	SPCC2.0	2							
19	YW03000300000	Brake castors 3"	Assembly	2							
18	STM-4575F-ALL-07	Bottom frame	Structural parts	1							
17	STM-4575F-ALL-04	Left front column	SPCC15	1							
16	STM-4575F-ALL-21	Reinforced plate 1	SPCC2.0	8							
15	STM-4575F-ALL-19	Plate exchange fixed plate	SPCC15	2							
14	STM-4575F-D-ALL	Heat exchanger parts	Assembly	1							
13	STM-4575F-ALL-16	Heat exchanger oil Inlet Pipe	Structural parts	1							
12	YE81245100100	Bump controller	Assembly	1							
11	YW62061000000	Flat-head screw M6×10	4.8	4.8							

No.	Material number	Name	Mat.	Num	Remarks	No.	Material number	Name	Mat.	Num	Remarks
		制图		版号	标题	图号				比例	数量
		设计		核准	STM-4575F	STM-4575F-ALL				表面要求	材质
		校对		审核	组装机					物料号	
标记	更改前	更改后	更改人	日期	审核	日期	SHINI 信易电热机械股份有限公司 Shini Plastics Technologies, Inc.				