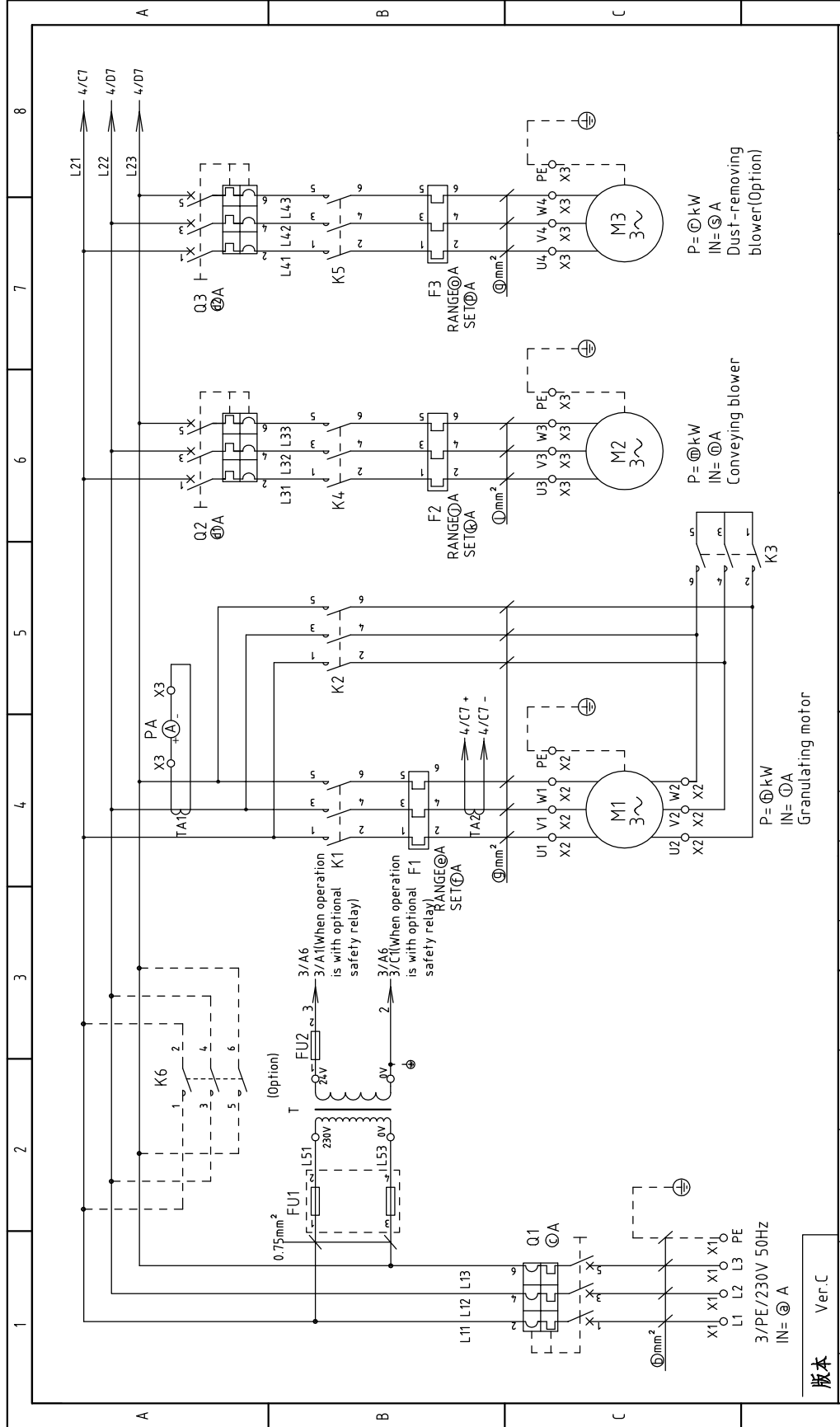


- ㉑ Total current
- ㉒ Dust-removing blower breaker rated current
- ㉓ Main power wire dia.
- ㉔ Main breaker rated current
- ㉕ Conveying blower breaker rated current
- ㉖ Dust-removing blower breaker rated current
- ㉗ Granulating motor power
- ㉘ Granulating motor current
- ㉙ Conveying blower overload relay
- ㉚ Default granulating motor overload relay
- ㉛ Granulating motor wire diameter
- ㉜ Conveying blower wire diameter
- ㉝ Conveying motor power
- ㉞ Granulating motor current
- ㉟ Conveying blower overload relay
- ㊱ Default conveying blower overload relay
- ㊲ Dust-removing blower current
- ㊳ Dust-removing blower current overload relay
- ㊴ Conveying blower wire dia.
- ㊵ Dust-removing blower power
- ㊶ Dust-removing blower power
- ㊷ Dust-removing blower current
- ㊸ Dust-removing blower current overload relay

Mode	Symbol	VER.	㉑	㉒	㉓	㉔	㉕	㉖	㉗	㉘	㉙	㉚	㉛	㉜	㉝	㉞	㉟	㊱	㊲	㊳	㊴	㊵	㊶	㊷	㊸	㊹	
SG-3060		VER.C	60.6	25	125	10	6	28-40	33	10.0	15	57	2.2-3.2	2.5	2.5	2.5	2.5	2.5	2.5	2.5	2.5	2.5	1.1-1.6	1.1	2.5	2.5	1.1
SG-3048		VER.C	46.6	16	100	10	6	23-28	25	6.0	11	43	2.2-3.2	2.5	2.5	2.5	2.5	2.5	2.5	2.5	2.5	2.5	1.1-1.6	1.1	2.5	2.5	1.1
SG-2348		VER.C	46.6	16	100	10	6	23-28	25	6.0	11	43	2.2-3.2	2.5	2.5	2.5	2.5	2.5	2.5	2.5	2.5	2.5	1.1-1.6	1.1	2.5	2.5	1.1
SG-2336		VER.C	32.6	6.0	60	10	6	27-32	29	6.0	7.5	29	2.2-3.2	2.5	2.5	2.5	2.5	2.5	2.5	2.5	2.5	2.5	1.1-1.6	1.1	2.5	2.5	1.1
SG-2324		VER.C	25.6	6.0	50	10	6	20-25	22	6.0	5.5	22	2.2-3.2	2.5	2.5	2.5	2.5	2.5	2.5	2.5	2.5	2.5	1.1-1.6	1.1	2.5	2.5	1.1

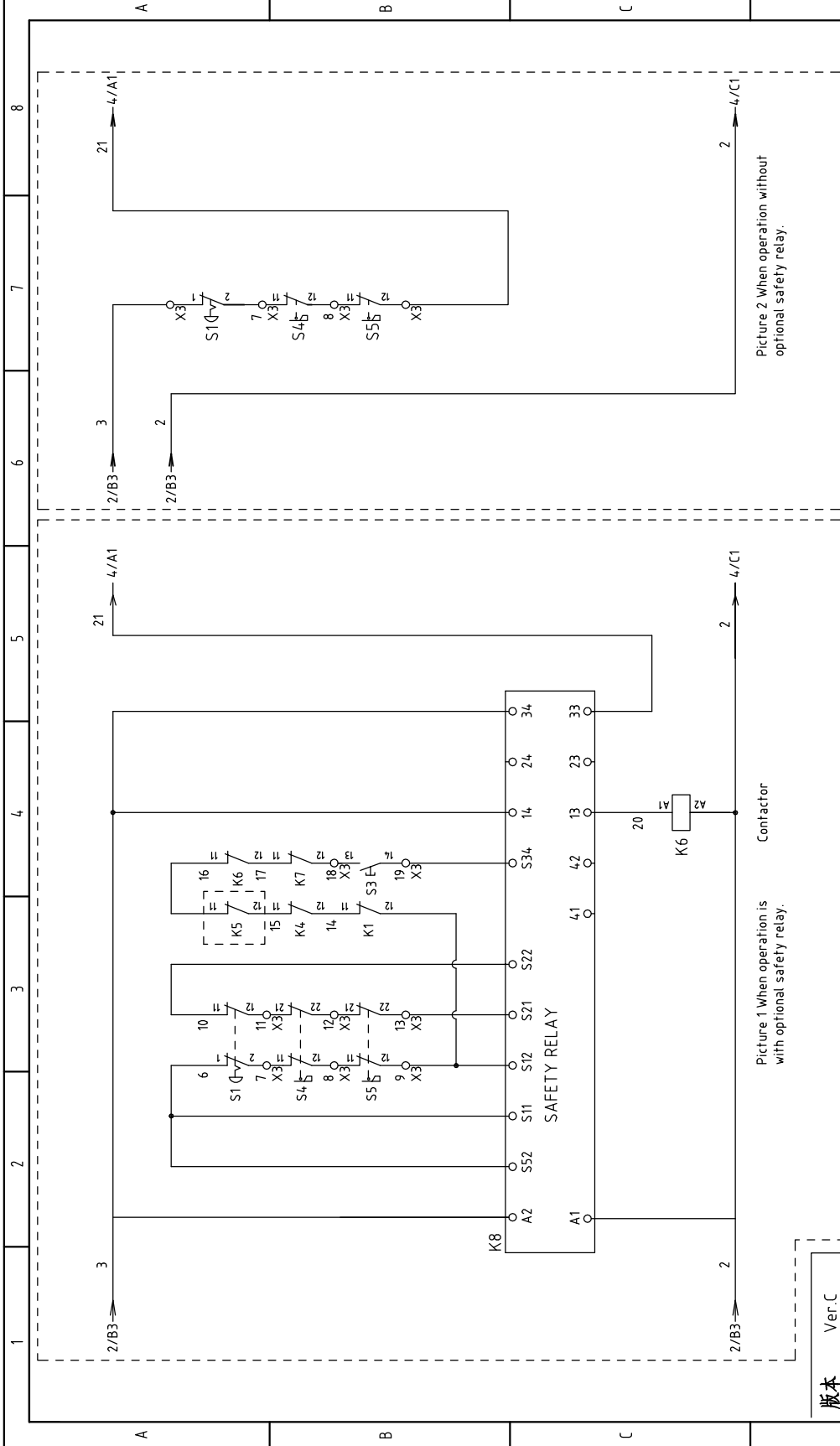
版本 Ver.C

Mark	Before modification	Modified by	Modify date	Checked by	Proffread by	Designer	Drawer	Version	E	Title		Drawing No.		Scale	Page	
	After modification							Approved by		SG-23/30	Power, wire diameter, Ammeter	SG-23/30-CE-230V-E-1	CE	Totally 21		
										SHINI		信易塑料机械股份有限公司 Shini Plastics Technologies, Inc.		Voltage		230V
														Frequency		50Hz
1	2	3	4	5	6	7	8									



版本 Ver.C


Drawing No.		Scale		Page 2	
Title		Standard		Totally 21 Pages	
SG-2348/30		SG-23/30-CE-230V-E-2		Voltage 230V	
Main Circuit Diagram		CE		Frequency 50Hz	
Version	E	SHINI		信易塑料机械股份有限公司 Shini Plastics Technologies, Inc.	
Designer	Approved by	Date		20170424	
Proffread by	Checked by	Modify Date			
Mark	Before modification	After modification			
1		2		3	
4		5		6	
7		8		8	



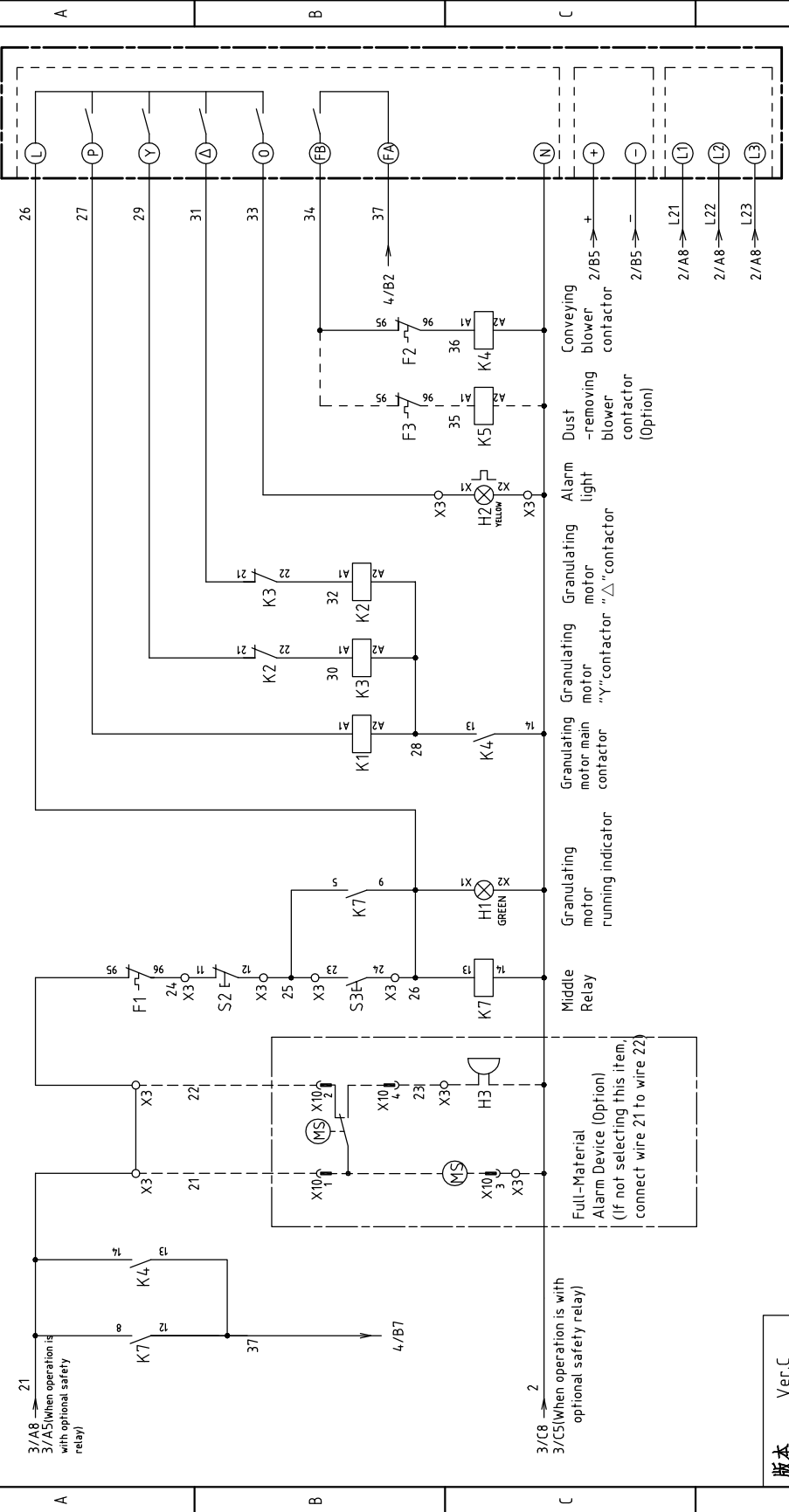
Picture 1 When operation is with optional safety relay.

Picture 2 When operation without optional safety relay.

版本 Ver.C

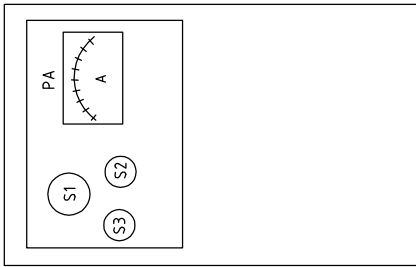
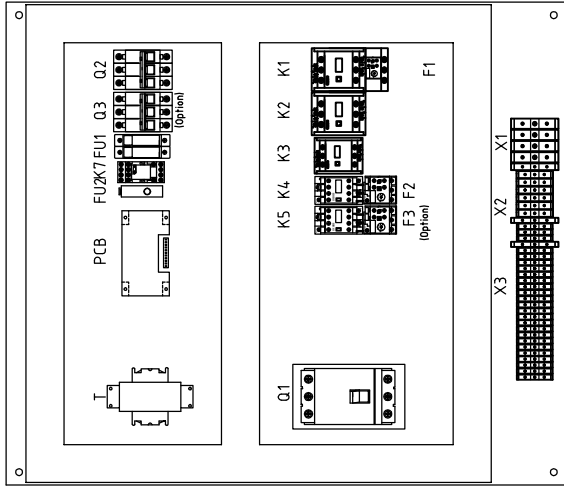
Mark	Before modification	Modified by	Modify date	Checked by	Date	 SHINI 信易塑料机械股份有限公司 Shini Plastics Technologies, Inc.	Drawing NO. SG-23/30-CE-230V-E-3	Scale Standard CE	Page 3
	After modification	Modified by	Modify date	Checked by	Date				
Title SG-2348/30 Control Circuit Diagram 1						Standard CE		Page 3	
Designer Proofread by Approved by						Voltage 230V		Page 3	
Before modification Modified by Modify date Checked by Date						Frequency 50Hz		Page 3	
Mark Before modification Modified by Modify date Checked by Date						Voltage 230V		Page 3	
Title SG-2348/30 Control Circuit Diagram 1						Standard CE		Page 3	
Designer Proofread by Approved by						Voltage 230V		Page 3	
Before modification Modified by Modify date Checked by Date						Frequency 50Hz		Page 3	

PCB(AB-02)

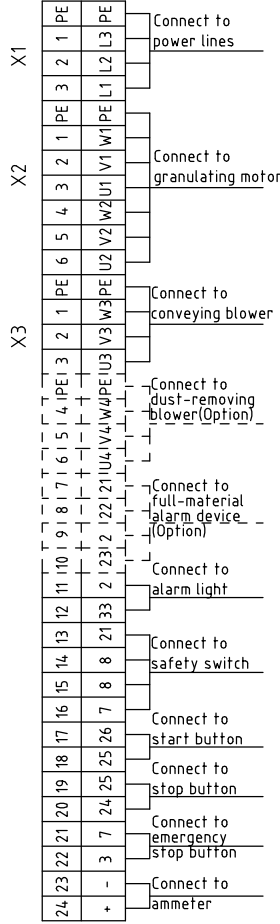
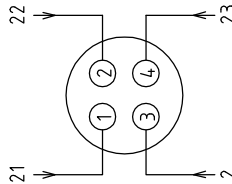


Ver.C

Drawing NO.		Scale		Page 4	
Title		Standard		Totally 21 Pages	
SG-2348/30		CE		Voltage 230V	
Control Circuit Diagram 2		SG-23/30-CE-230V-E-4		Frequency 50Hz	
Version		E		SHINI	
Approved by		20170424		信易電機機械股份有限公司 Shini Plastics Technologies, Inc.	
Date		20170424		SHINI	
Designer		20170424		SHINI	
Proofread by		20170424		SHINI	
Checked by		20170424		SHINI	
Modified by		20170424		SHINI	
Modify date		20170424		SHINI	
After modification		20170424		SHINI	
Before modification		20170424		SHINI	
Mark		20170424		SHINI	



Connection diagram of X10 metal connectors (option)

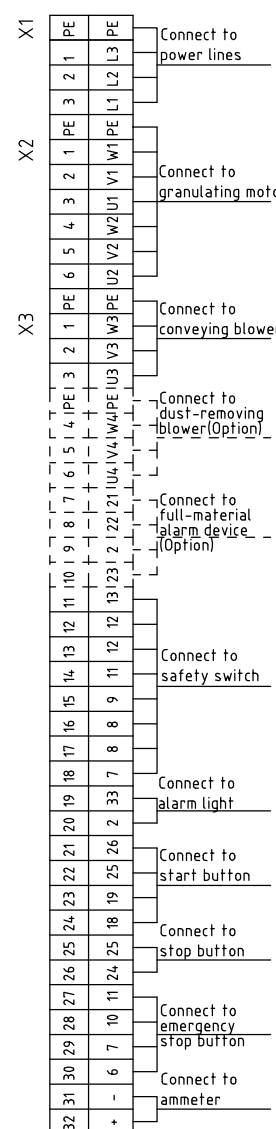
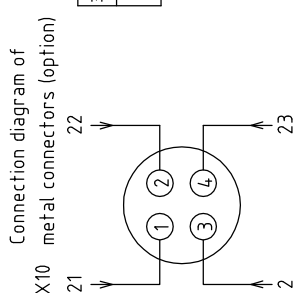
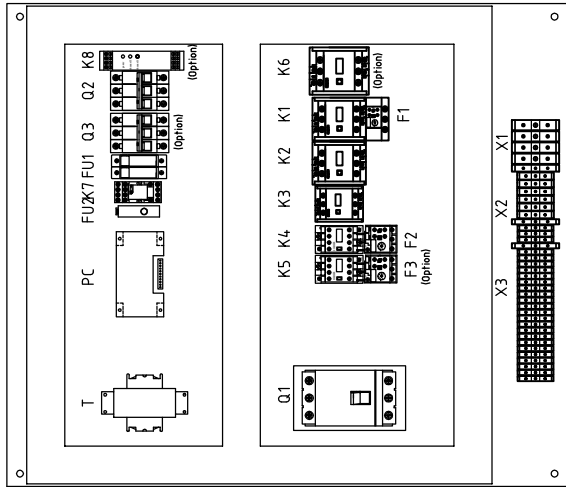
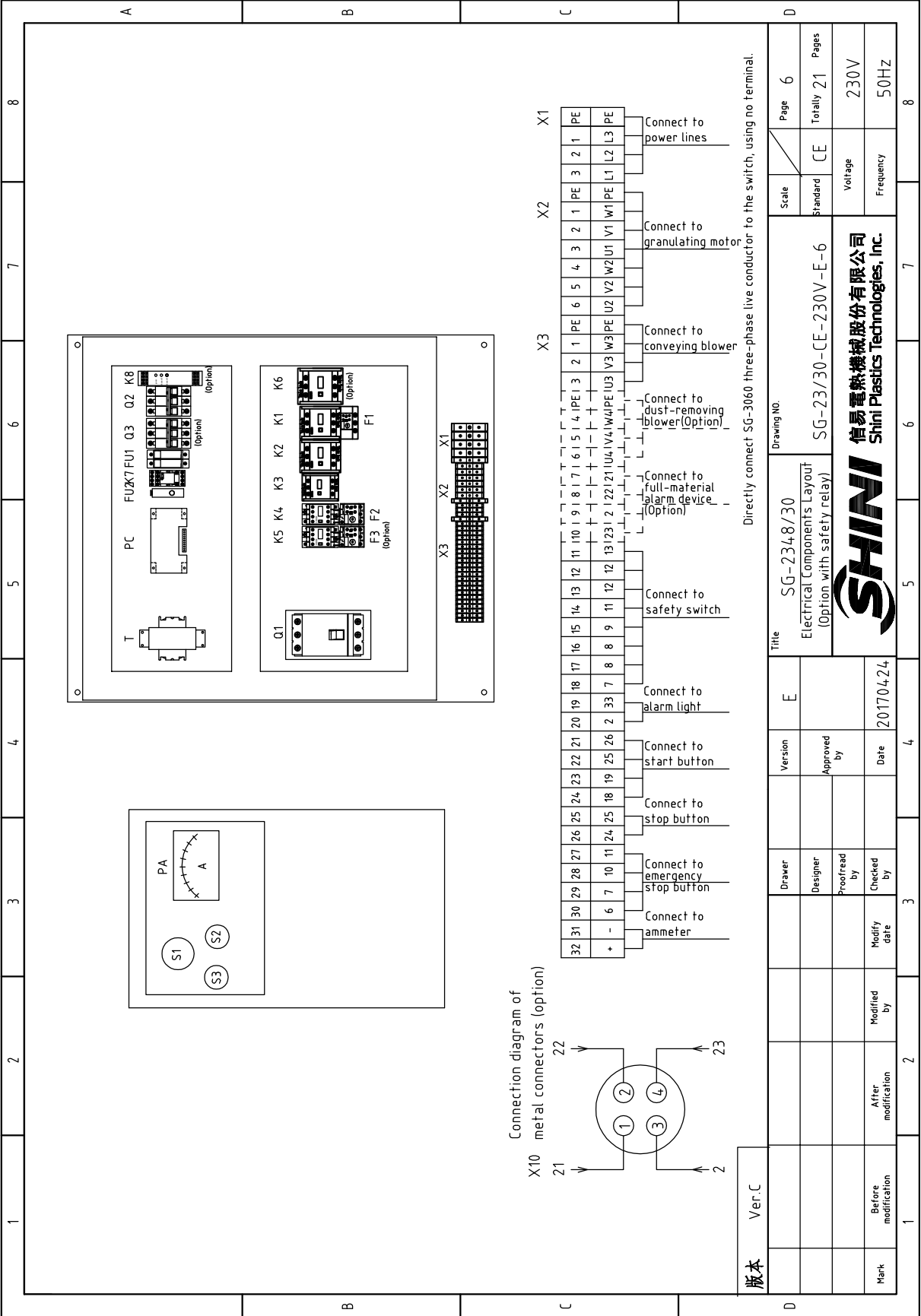


Directly connect SG-3060 three-phase live conductor to the switch, using no terminal.

版本 Ver.C

Mark	Before modification	Modified by	Modify date	20170424	Date	20170424	Date	20170424
Checked by		Checked by			Approved by		Approved by	
Proofread by		Proofread by			Designer		Designer	
Drawer		Version			Title			
					SG-2348/30			
					Drawing NO.			
					Electrical Components Layout			
					(No. option of safety relay)			
					SG-23/30-CE-230V-E-5			
					Standard			
					Scale			
					Page 5			
					Totally 21			
					Pages			
					Voltage			
					230V			
					Frequency			
					50HZ			





Ver. C		E		Title		Drawing No.		Scale		Page	
				SG-2348/30		SG-23/30-CE-230V-E-6		Standard		Page 6	
		Approved by		Electrical Components Layout (Option with safety relay)		CE		Voltage		Totally 21 Pages	
		Date		20170424				Frequency		230V	
Mark		Before modification		Modified by		Modify date		Checked by		50HZ	
1		2		3		4		5		6	
7		8		9		10		11		12	

Directly connect SG-3060 three-phase live conductor to the switch, using no terminal.



1	2		3	4	5	6	7	8
NO.	Symbol	Name	Manufacturer	Type	Specification	Number	Material number	Remark
1	Q1	Breaker interlock	ABB	A1A125TMF125	125A	1	YE41161400000	
2	Q2	Circuit breaker	TECO	BM-63C	10A	1	YE40301003000	
3	Q3	Circuit breaker	TECO	BM-63C	6A	1	YE40300603000	(2)
4	K1	Contactor	SIEMENS	3RT5035-1AC20	24VAC 50/60Hz	1	YE00503502600	
5		Auxiliary contactor	SIEMENS	3RH5921-1CA01	1NC	1	YE00592110100	(4)
6	K2	Contactor	SIEMENS	3RT5035-1AC20	24VAC 50/60Hz	1	YE00503502600	
7		Auxiliary contactor	SIEMENS	3RH5921-1CA01	1NC	1	YE00592110100	
8	K3	Contactor	SIEMENS	3RT5034-1AC20	24VAC 50/60Hz	1	YE00503400700	
9		Auxiliary contactor	SIEMENS	3RH5921-1CA01	1NC	1	YE00592110100	
10	K4	Contactor	SIEMENS	3RT6015-1AB01	24VAC 50/60Hz	1	YE00601502500	
11		Auxiliary contactor	SIEMENS	3RH6911-1HA11	1NC+1NO	1	YE00691100100	
12	K5	Contactor	SIEMENS	3RT6015-1AB02	24VAC 50/60Hz	1	YE00601502600	(2)
13	K6	Contactor	SIEMENS	3RT5044-1AC20	24VAC 50/60Hz	1	YE00504402600	(4)
14		Auxiliary contactor	SIEMENS	3RH5921-1CA01	1NC	1	YE00592110100	(4)
15	K7	Middle relay	Honeywell	GR-2C-AC24V	24VAC	1	YE03022400300	
16	K7	Middle relay	Honeywell	GR-4C-AC24V	24VAC	1	YE03042400300	(4)
17	K8	Safety relay	PILZ	PNOZ*2.8P	24V AC/DC	1	YE04023000000	(4)
18	F1	Overload relay	SIEMENS	3RU5136-4FB0	28-40A	1	YE01513600100	
19	F2	Overload relay	SIEMENS	3RU6116-1DB0	2.2-3.2A	1	YE01160220000	
20	F3	Overload relay	SIEMENS	3RU6116-1AB0	1.1-1.6A	1	YE01160110000	(2)
21	FU1	Fuse	CHINT	RT28-32	2P	1	YE41032200000	
22		Fuse core	CHINT	10x38 500V	2A	2	YE46002000100	
23	FU2	Fuse	YINDA	FS-10	----	1	YE41001000000	
24		Glass tube	----	6x30	5A	1	YE46630500100	
25	T	Transformer	BAIYUN	IN=230V OUT=24V	120VA	1	YE70023005500	

版本 Ver.C

Notes: (1)Means it's not the material inside the control box.(2)Means optional accessories of dedusting blower.(3)Means optional accessories of full-receive alarm device.(4)Stand for optional safety relay.

Title		Drawing NO.		Scale		Page	
SG-3060		SG-23/30-CE-230V-E-7		Standard		CE	
Electrical Components List 1		SG-23/30-CE-230V-E-7		Voltage		230V	
				Frequency		50Hz	
Totality		21		Pages		21	

SHINI 信易塑料机械股份有限公司
Shini Plastics Technologies, Inc.

Before modification: 20170424

Modified by: _____

Modify date: _____

Checked by: _____

Proofread by: _____

Designer: _____

Approved by: _____

Version: E

Date: 20170424

1		2		3		4		5		6		7		8	
NO.	Symbol	Name	Manufacturer	Type	Specification	Number	Material number	Remark							
26	X1	Terminal	HONEYWELL	35mm ² PE	----	1	YE60003503500								
27	X2	Terminal	HONEYWELL	10mm ²	----	6	YE60001003200								
28			HONEYWELL	10mm ² PE	----	1	YE60001003500	A							
29	X3	Terminal	HONEYWELL	2.5mm ²	----	17	YE60002503200								
30			HONEYWELL	2.5mm ² PE	----	1	YE60002503400								
31			HONEYWELL	2.5mm ²	----	3	YE60002503200	(2)							
32			HONEYWELL	2.5mm ² PE	----	1	YE60002503400	(2)							
33			HONEYWELL	2.5mm ²	----	4	YE60002503200	(3)							
34			HONEYWELL	2.5mm ²	----	8	YE60002503200	(4)							
35	S1	Emergency stop button	SCHNEIDER	XB2BS542C	400VAC	1	YE11254200000	(1)							
36		Contact block	SCHNEIDER	ZB2BE102C	1NC	1	YE00210203100	(1)(4)							
37	S2	Stop button	SCHNEIDER	XB2BA22C	400VAC	1	YE11222000000	(1)							
38	S3,H1	Start button	SCHNEIDER	XB2BW33B1C	24VAC	1	YE11233100000	(1)							
39		Contact block	SCHNEIDER	ZB2BE101C	1NO	1	YE00210103100	(1)(4)							
40	S4, S5	Safety switch	SCHMERSRC	AZ15-02ZVRK-1476	AZ-15	2	YE16147600100	(1)							
41	S4, S5	Safety switch	SCHMERSRC	AZ16-02ZVRK-1476	AZ-16	2	YE16147600000	(1)(4)							
42	H2	Alarm light	SHINI	LED-3051	24VAC	1	YE83305100900	(1)							
43	H3	Buzzer	TEND	EA-2	24VAC	1	YE84240200000	(1)(3)							
44	MS	Material level sensor	SIPAI	SR-80	24VAC	1	YE15802400100	(1)(3)							
45	TA1	Current transformer	RATIO	RCT-35	75/5A	1	YE04750500000								
46	TA2	Current transformer	YUYUN	-----	5-100A	1	-----								
47	PA	Ammeter	SFIM	DH-670	75/5A	1	YE25677500000	(1)							
48	X10	Metal joint	SHINI	PLT-254-PM	4P	1	YE68025400000	(1)(3)							
49			-----	PLT-254-RF	4P	1	YE68025400100	(1)(3)							
50	PCB	PCB	YUYUN	AB-02	24VAC	1	YE80022400100								
版本		Ver.C	Notes: (1)Means it's not the material inside the control box.(2)Means optional accessories of dedusting blower.(3)Means optional accessories of full-receive alarm device.(4)Stand for optional safety relay.												
			Drawer	Version	E	Title		Drawing NO.		Scale	Page	8			
			Designer	Approved by	Electrical Components List 2			SG-3060		Standard	CE	Voltage		230V	
			Proofread by	Date	20170424			SG-23/30-CE-230V-E-8		Frequency		50Hz		Totality 21 Pages	
Mark		Before modification	Modified by	Modify date				SHINI 信易塑料機械股份有限公司 Shini Plastics Technologies, Inc.							
1	2	3	4	5	6	7	8								


1	2		3	4	5	6	7	8
NO.	Symbol	Name	Manufacturer	Type	Specification	Number	Material number	Remark
51	M1	Granulating motor	-----	15KW	230V 60HZ	1	-----	(1)
52	M2	Suction blower	-----	0.55KW	230V 60HZ	1	-----	(1)
53	M3	Dust-removing blower	-----	0.25KW	230V 60HZ	1	-----	(1)(2)
A								
B								
C								
D								
版本	Ver. C	Notes: (1)Means it's not the material inside the control box.(2)Means optional accessories of dedusting blower.(3)Means optional accessories of full-receive alarm device.(4)Stand for optional safety relay.	Title	Version	E	Drawing NO.	Scale	Page
			SG-3060	Electrical Components List 3	SG-23/30-CE-230V-E-9	Standard	CE	Page 9
Mark	Before modification	After modification	Modified by	Modified date	Checked by	Date	Voltage	Pages
						20170424	Frequency	Totally 21
							230V	50HZ
1	2	3	4	5	6	7	8	

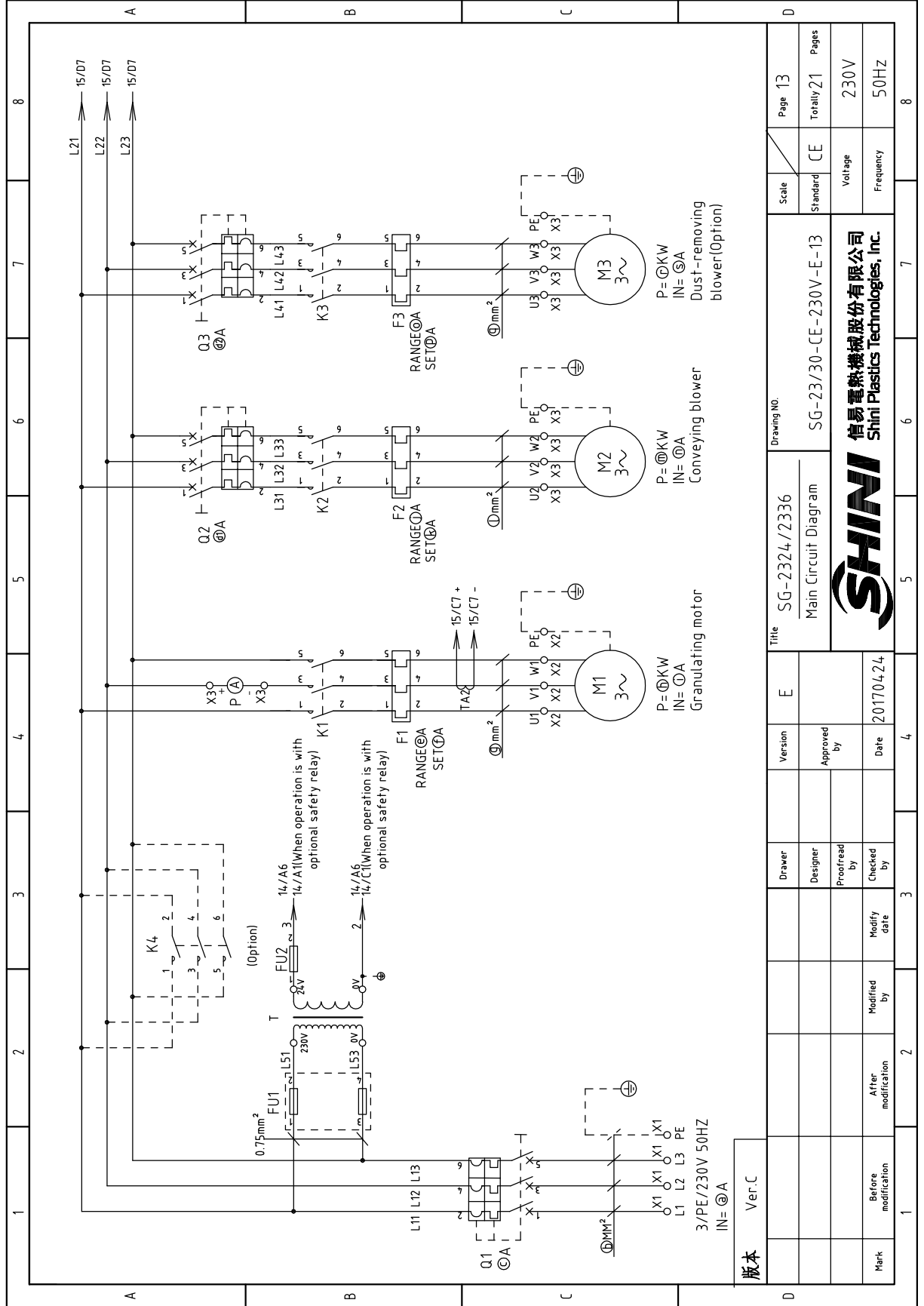


1	2		3	4	5	6	7	8
NO.	Symbol	Name	Manufacturer	Type	Specification	Number	Material number	Remark
1	Q1	Breaker interlock	ABB	A1A125TMF100	100A	1	YE4.110200000	
2	Q2	Circuit breaker	TECO	BM-63C	10A	1	YE4.0301003000	
3	Q3	Circuit breaker	TECO	BM-63C	6A	1	YE4.0300603000	(2)
4	K1	Contactor	SIEMENS	3RT6027-1AC20	24V 50/60Hz	1	YE00602702600	
5	K2	Contactor	SIEMENS	3RT6027-1AC20	24V 50/60Hz	1	YE00602702600	
6	K3	Contactor	SIEMENS	3RT6026-1AC20	24V 50/60Hz	1	YE00602602600	
7	K4	Contactor	SIEMENS	3RT6015-1AB01	24V 50/60Hz	1	YE00601502500	
8		Auxiliary contactor	SIEMENS	3RH6911-1HA11	1NC+1NO	1	YE00691100100	
9	K5	Contactor	SIEMENS	3RT6015-1AB02	24V 50/60Hz	1	YE00601502600	(2)
10	K6	Contactor	SIEMENS	3RT5036-1AC20	24V 50/60Hz	1	YE00503602600	(4)
11		Auxiliary contactor	SIEMENS	3RH5921-1CA01	1NC	1	YE00592110100	(4)
12	K7	Middle relay	Honeywell	GR-2C-AC24V	24VAC	1	YE03022400300	
13	K7	Middle relay	Honeywell	GR-4C-AC24V	24VAC	1	YE03042400300	(4)
14	K8	Safety relay	PILZ	PN0Z×2.8P	24V AC/DC	1	YE04.023000000	(4)
15	F1	Overload relay	SIEMENS	3RU6126-4NB0	23-28A	1	YE01612620000	
16	F2	Overload relay	SIEMENS	3RU6116-1DB0	2.2-3.2A	1	YE01160220000	
17	F3	Overload relay	SIEMENS	3RU6116-1AB0	1.1-1.6A	1	YE01160110000	(2)
18	FU1	Fuse	CHINT	RT28-32	2P	1	YE4.1032200000	
19		Fuse core	CHINT	10×38 500V	2A	2	YE4.6002000100	
20	FU2	Fuse	YINDA	FS-10	----	1	YE4.1001000000	
21		Glass tube	----	6×30	5A	1	YE4.6630500100	
22	T	Transformer	BAIYUN	IN=230V OUT=24V	120VA	1	YE70023005500	
23	X1	Terminal	HONEYWELL	16mm ²	----	3	YE60001603200	
24			HONEYWELL	16mm ² PE	----	1	YE60001603500	
25	X2	Terminal	HONEYWELL	6mm ²	----	6	YE60000603200	
版本		Ver.C	Notes: (1)Means it's not the material inside the control box.(2)Means optional accessories of dedusting blower.(3)Means optional accessories of full-receive alarm device.(4)Stand for optional safety relay.		Title SG-304.8/234.8 Electrical Components List 1		Drawing NO. SG-23/30-CE-230V-E-10	
		Drawer	Designer	Version	E	Scale		Page 10
		Proofread by	Approved by			Standard	CE	Totally 21 Pages
Mark		Before modification	Modified by	Modify date	20170424	Voltage Frequency		230V 50Hz
1	2		3	4	5	6	7	8



1	2		3	4	5	6	7	8
NO.	Symbol	Name	Manufacturer	Type	Specification	Number	Material number	Remark
26			HONEYWELL	6mm ² PE	----	1	YE60000603500	
27	X3	Terminal	HONEYWELL	10mm ²	----	2	YE60001003200	
28			HONEYWELL	2.5mm ²	----	15	YE60002503200	A
29			HONEYWELL	2.5mm ² PE	----	1	YE60002503400	
30			HONEYWELL	2.5mm ²	----	3	YE60002503200	(2)
31			HONEYWELL	2.5mm ² PE	----	1	YE60002503400	(2)
32			HONEYWELL	2.5mm ²	----	4	YE60002503200	(3)
33			HONEYWELL	2.5mm ²	----	8	YE60002503200	(4)
34	S1	Emergency stop button	SCHNEIDER	XB2BS542C	400VAC	1	YE11254200000	(1)
35		Contact block	SCHNEIDER	ZB2BE102C	1NC	1	YE00210203100	(1)(4)
36	S2	Stop button	SCHNEIDER	XB2BA22C	400VAC	1	YE11222000000	(1)
37	S3,H1	Start button	SCHNEIDER	XB2BW33B1C	24VAC	1	YE11233100000	(1)
38		Contact block	SCHNEIDER	ZB2BE101C	1NO	1	YE002103100	(1)(4)
39	S4, S5	Safety switch	SCHMERSRC	AZ15-02ZVRK-1476	AZ-15	2	YE1614-7600100	(1)
40	S4, S5	Safety switch	SCHMERSRC	AZ16-02ZVRK-1476	AZ-16	2	YE1614-7600000	(1)(4)
41	H2	Alarm light	SHINI	LED-3051	24VAC	1	YE83305100900	(1)
42	H3	Buzzer	TEND	EA-2	24VAC	1	YE84240200000	(1)(3)
43	MS	Material level sensor	SIPAI	SR-80	24VAC	1	YE15802400100	(1)(3)
44	TA2	Current transformer	YUYUN	-----	5-100A	1	-----	
45	PA	Ammeter	SFIM	DH-670	50A	1	YE25675000000	(1)
46	X10	Metal joint	SHINI	PLT-254PM	4P	1	YE68025400000	(1)(3)
47			SHINI	PLT-254RF	4P	1	YE68025400100	(1)(3)
48	M1	Granulating motor	-----	11KW	230V 60HZ	1	-----	(1)
49	M2	Suction blower	-----	0.55KW	230V 60HZ	1	-----	(1)
50	M3	Dust-removing blower	-----	0.25KW	230V 60HZ	1	-----	(1)(2)
版本		Ver.C	Notes: (1)Means it's not the material inside the control box.(2)Means optional accessories of dedusting blower.(3)Means optional accessories of full-receive alarm device.(4)Stand for optional safety relay.		Drawing NO.			
			Drawer	Version	E	Title		Scale
			Designer	Approved by		SG-3048/2348		Page 11
			Proofread by			Electrical Components List 2		Standard
			Checked by	Date	20170424	SG-23/30-CE-230V-E-11		Totally 21 Pages
			Modified by			Voltage		230V
			Modify date			Frequency		50HZ
Mark		Before modification	After modification		SHINI		信易塑料机械股份有限公司 Shini Plastics Technologies, Inc.	
1	2	3	4	5	6	7	8	

1		2		3		4		5		6		7		8	
NO.	Symbol	Name	Manufacturer	Type	Specification	Number	Material number	Remark							
51	PCB	PCB	YUYUN	AB-02	24VAC	1	YE80022400100								
A															
B															
C															
D															
版本 Ver.C Notes: (1)Means it's not the material inside the control box.(2)Means optional accessories of dedusting blower.(3)Means optional accessories of full-receive alarm device.(4)Stand for optional safety relay.															
		Title		Version		E		SG-3048/2348		Drawing NO.		Scale		Page 12	
		Electrical Components List 3		Approved by				SG-23/30-CE-230V-E-12		Standard		CE		Totally 21 Pages	
		Proofread by		Date		20170424						Voltage		230V	
Mark		Before modification		Modified by		Modify date		Checked by				Frequency		50Hz	
 信易塑料机械股份有限公司 Shini Plastics Technologies, Inc.															
1 2 3 4 5 6 7 8															



Mark	Before modification	Modified by	Modify date	Checked by	Date
					20170424
Version	Approved by	Checked by	Date		
Version	Approved by	Checked by	Date		
Version	Approved by	Checked by	Date		
Version	Approved by	Checked by	Date		

Scale	Standard	Voltage	230V
Standard	CE	Frequency	50Hz

Page	13
Totally	21
Pages	230V
	50Hz

Drawing No.	SG-2324/2336
Title	Main Circuit Diagram

SG-23/30-CE-230V-E-13

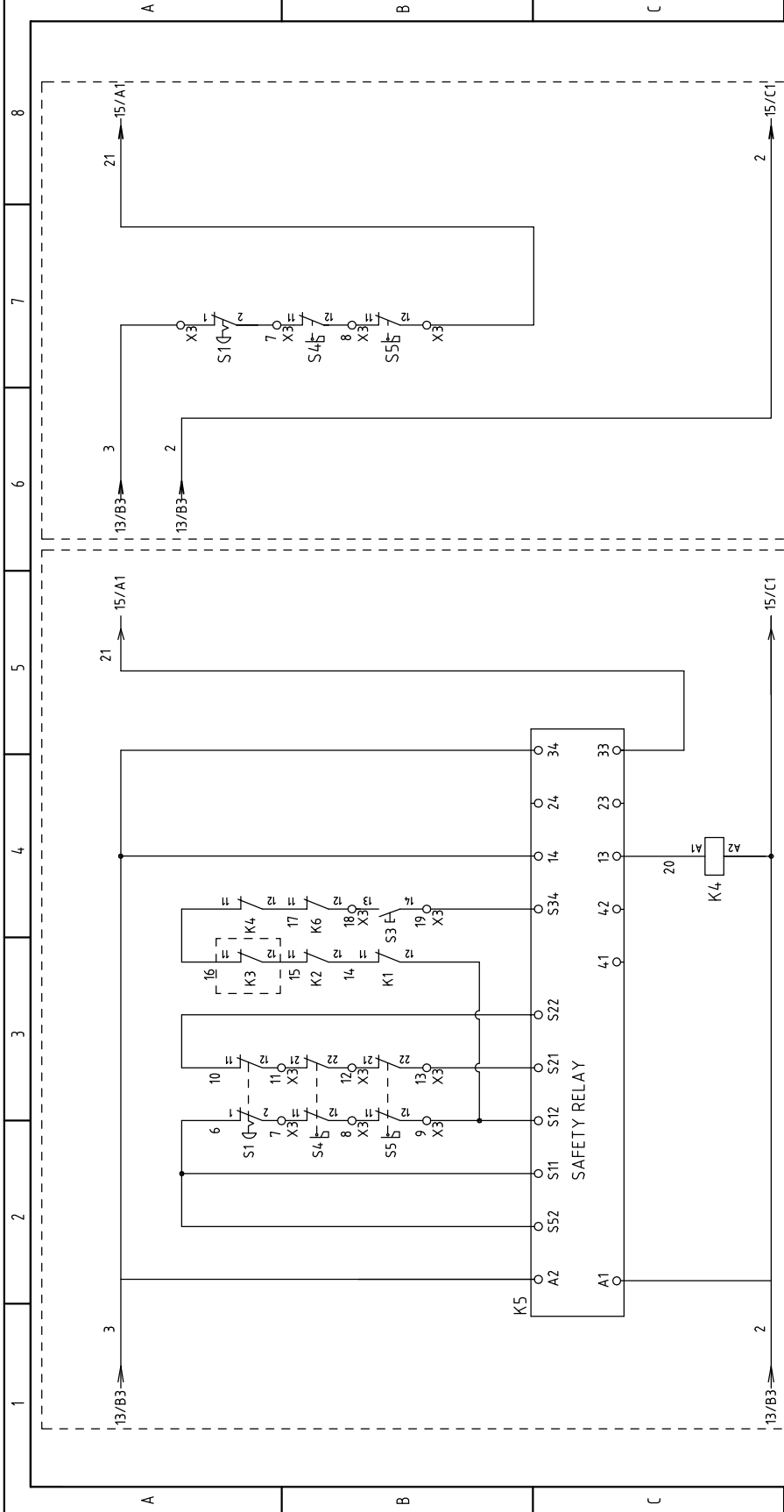


信易塑料机械股份有限公司
Shini Plastics Technologies, Inc.

Ver.C

3/PE/230V 50HZ	IN=⊙A
----------------	-------

3~	P=⊙KW	IN=⊙A
	Dust-removing blower(Optional)	
	Conveying blower	
	Granulating motor	



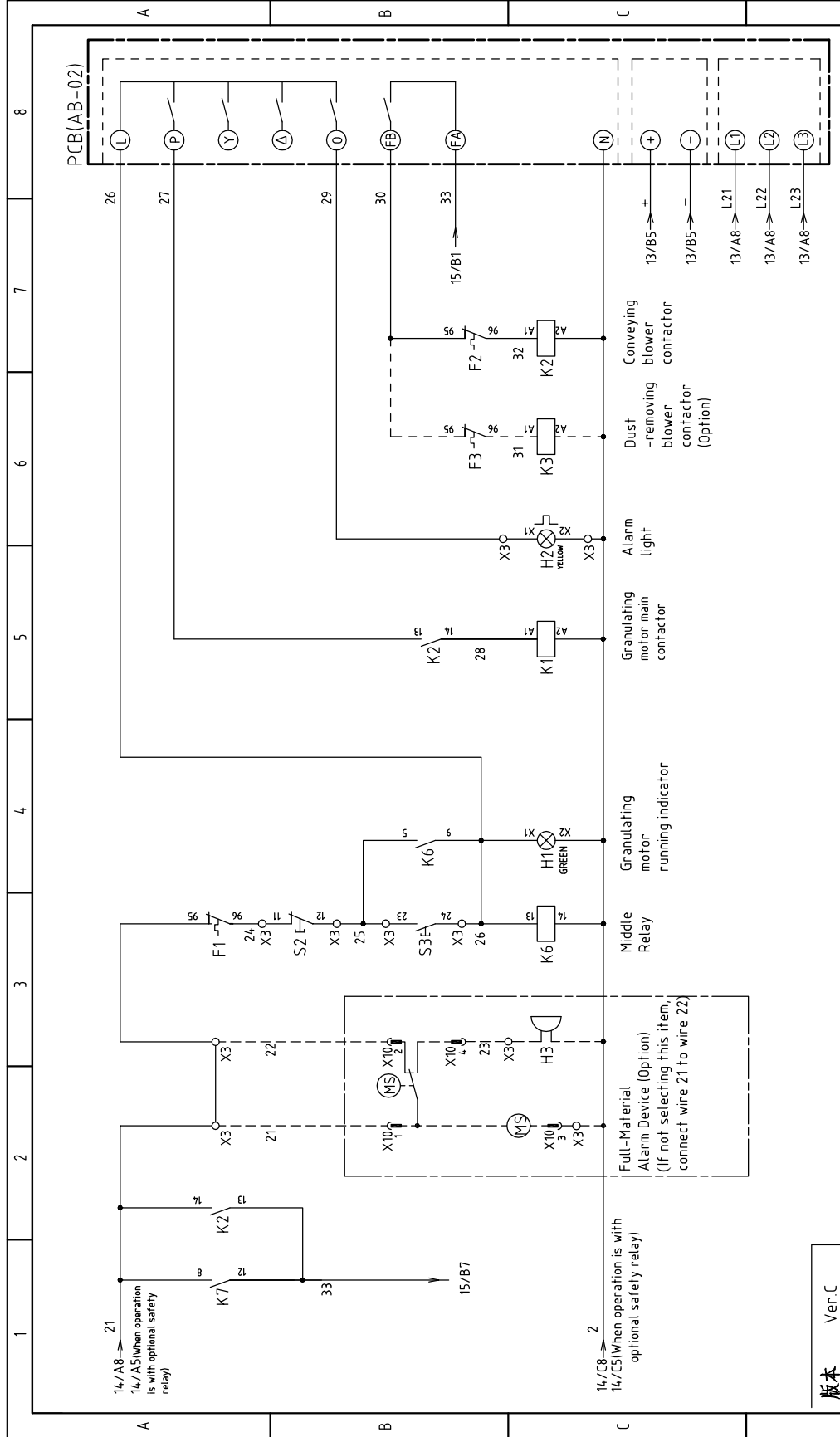
Picture 1 When operation is with optional safety relay.

Picture 2 When operation without optional safety relay.

版本 Ver.C

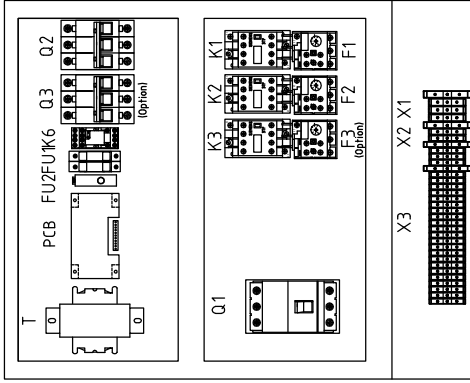
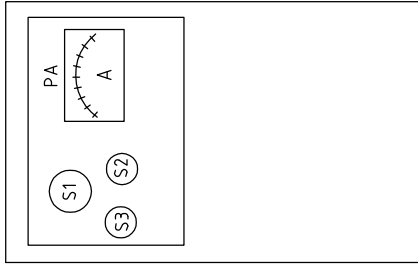
Mark	Before modification	Modified by	Modify date	Date	20170424	Date	20170424	Approved by	Version	E	Title	Drawing NO.		Page	14
	After modification	Modified by	Modify date									SG-2324/2336	SG-23/30-CE-230V-E-14		
												Voltage		230V	
												Frequency		50HZ	
												Totally		21	
												Pages		21	



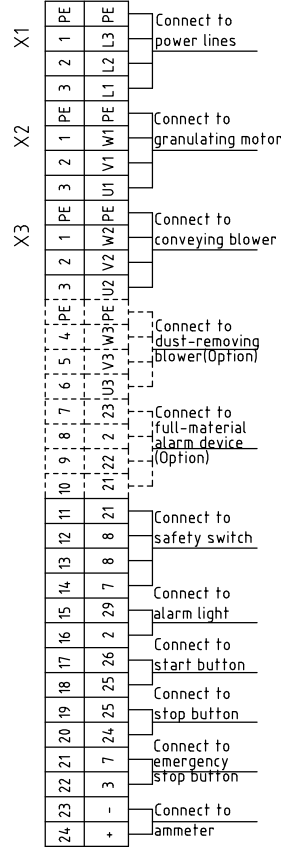
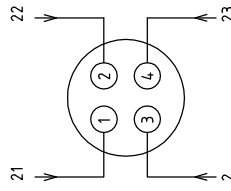


D	Title		Drawing NO.		Scale	Page	
	SG-2324/2336 Control Circuit Diagram 2		SG-23/30-CE-230V-E-15		Standard	CE	
D	Version		E		Standard		
	Approved by		Date		Voltage		
D	Designer		Date		Frequency		
	Proofread by		Date		230V		
D	Checked by		Date		50Hz		
	Modified by		Date		Totaly		
D	Before modification		Date		21		
	After modification		Date		Pages		
Mark		Modified by		Date		8	
Ver.C		Date		20170424		SHINI 信易電機機械股份有限公司 Shini Plastics Technologies, Inc.	

1 2 3 4 5 6 7 8



Connection diagram of X10 metal connectors (option)



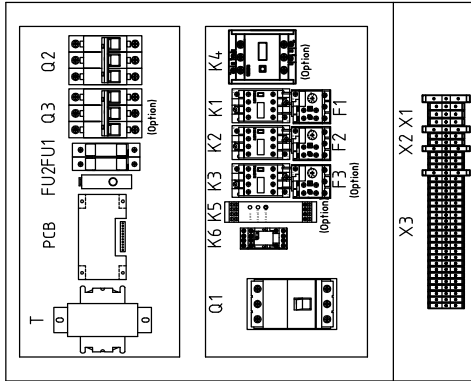
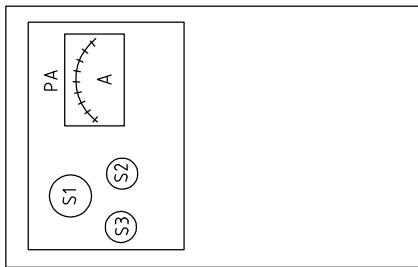
版本 Ver.C

Mark	Before modification	Modified by	Modify date	Checked by	Date	Approved by	Version	E	Title	Drawing No.	Scale	Page
	After modification	Modified by	Modify date								Standard	Totally
									SG-2324/2336	SG-23/30-CE-230V-E-16	CE	16
									(No. option of safety relay)			21
					20170424							230V
												50Hz

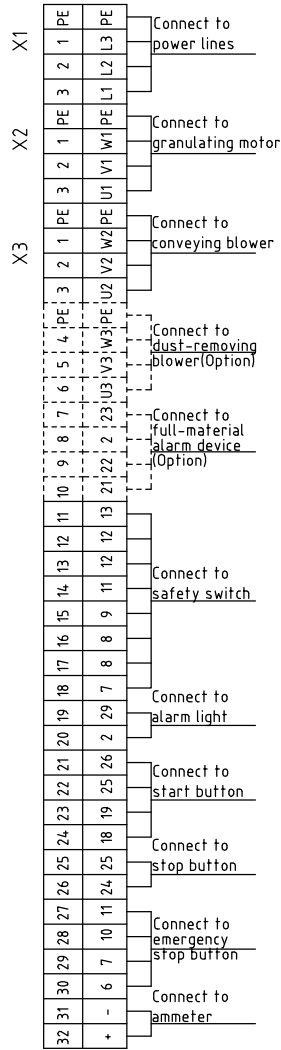
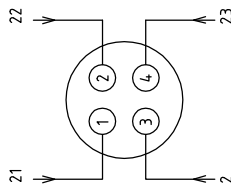


1 2 3 4 5 6 7 8

1 2 3 4 5 6 7 8



Connection diagram of X10 metal connectors (option)




版本 Ver.C

Mark	Before modification	Modified by	Modify date	Date	20170424	Checked by	Proofread by	Designer	Drawer	Version	E	Title	Drawing NO.		Page
	Electrical Components Layout (Option with safety relay)	SG-2324/2336	Scale										Standard	CE	
Voltage	SG-23/30-CE-230V-E-17											230V			
	Frequency	50HZ											50HZ		



1 2 3 4 5 6 7 8

1	2		3	4	5	6	7	8
NO.	Symbol	Name	Manufacturer	Type	Specification	Number	Material number	Remark
1	Q1	Breaker interlock	ABB	A1A125TMF60	60A	1	YE4106200000	
2	Q2	Circuit breaker	TECO	BM-63C	10A	1	YE40301003000	
3	Q3	Circuit breaker	TECO	BM-63C	6A	1	YE40300603000	(2)
4	K1	Contact	SIEMENS	3RT6027-1AC20	24V 50/60Hz	1	YE00602702600	
5	K2	Contact	SIEMENS	3RT6015-1AB01	24V 50/60Hz	1	YE00601502500	
6		Auxiliary contact	SIEMENS	3RH6911-1HA11	1NC-1NO	1	YE00691100100	
7	K3	Contact	SIEMENS	3RT6015-1AB02	24V 50/60Hz	1	YE00601502600	(2)
8	K4	Contact	SIEMENS	3RT6028-1AC20	24V 50/60Hz	1	YE00602802600	(4)
9	K5	Safety relay	PILZ	PNOZx2.8P	24V AC/DC	1	YE04023000000	(4)
10	K6	Middle relay	Honeywell	GR-2C-AC24V	24VAC	1	YE03022400300	
11	K6	Middle relay	Honeywell	GR-4C-AC24V	24VAC	1	YE03042400300	(4)
12	F1	Overload relay	SIEMENS	3RU6126-4EB0	27-32A	1	YE01612600600	
13	F2	Overload relay	SIEMENS	3RU6116-1DB0	2.2-3.2A	1	YE01160220000	
14	F3	Overload relay	SIEMENS	3RU6116-1AB0	1.1-1.6A	1	YE01160110000	(2)
15	FU1	Fuse	CHINT	RT28-32	2P	1	YE41032200000	
16		Fuse core	CHINT	10x38 500V	2A	2	YE46002000100	
17	FU2	Fuse	YINDA	FS-10	----	1	YE41001000000	
18		Glass tube	----	6x30	3A	1	YE46630500200	
19	T	Transformer	BAIYUN	IN=230V OUT=24V	80VA	1	YE70248005900	
20	X1	Terminal	HONEYWELL	6mm ²	----	3	YE60000603200	
21		Terminal	HONEYWELL	6mm ² PE	----	1	YE60000603500	
22	X2	Terminal	HONEYWELL	6mm ²	----	3	YE60000603200	
23		Terminal	HONEYWELL	6mm ² PE	----	1	YE60000603500	
24	X3	Terminal	HONEYWELL	6mm ²	----	2	YE60000603200	
25			HONEYWELL	2.5mm ²	----	15	YE60002503200	
版本		Ver. C	Notes: (1)Means it's not the material inside the control box.(2)Means optional accessories of dedusting blower.(3)Means optional accessories of full-receive alarm device.(4)Stand for optional safety relay.		Title		Scale	
			Drawer	Version	SG-2336	Drawing NO.		Page 18
			Designer	Approved by	Electrical Components List 1		Standard	Totally 21 Pages
			Proofread by	Date	SG-23/30-CE-230V-E-18		CE	Voltage
			Checked by	20170424	SHINI 信易塑料机械股份有限公司		Frequency	230V
			Modified by		SHINI Shini Plastics Technologies, Inc.			50Hz
Mark	Before modification	Modified by	Modify date		5	6	7	8
1	2	3	4	5	6	7	8	

1		2		3		4		5		6		7		8	
NO.	Symbol	Name	Manufacturer	Type	Specification	Number	Material number	Remark							
26			HONEYWELL	2.5mm ² PE	----	1	YE60002503200								
27			HONEYWELL	2.5mm ²	----	3	YE60002503200	(2)							
28			HONEYWELL	2.5mm ² PE	----	1	YE60002503200	(2)							
29			HONEYWELL	2.5mm ²	----	4	YE60002503200	(3)							
30			HONEYWELL	2.5mm ²	----	8	YE60002503200	(4)							
31	S1	Emergency stop button	SCHNEIDER	XB2BS542C	4.00VAC	1	YE11254200000	(1)							
32		Contact block	SCHNEIDER	ZB2BE102C	1NC	1	YE00210203100	(1)(4)							
33	S2	Stop button	SCHNEIDER	XB2BA22C	4.00VAC	1	YE11222000000	(1)							
34	S3,H1	Start button	SCHNEIDER	XB2BW33B1C	24VAC	1	YE11233100000	(1)							
35		Contact block	SCHNEIDER	ZB2BE101C	1NO	1	YE00210103100	(1)(4)							
36	S4, S5	Safety switch	SCHMERSRC	AZ15-02ZVRK-1476	AZ-15	2	YE16147600100	(1)							
37	S4, S5	Safety switch	SCHMERSRC	AZ16-02ZVRK-1476	AZ-16	2	YE16147600000	(1)(4)							
38	H2	Alarm light	SHINI	LED-3051	24VAC	1	YE83305100900	(1)							
39	H3	Buzzer	TEND	EA-2	24VAC	1	YE84240200000	(1)(3)							
40	MS	Material level sensor	SIPAI	SR-80	24VAC	1	YE15802400100	(1)(3)							
41	TA2	Current transformer	YUYUN	-----	5-100A	1	-----								
42	PA	Ammeter	SFIM	DH-670	50A	1	YE25675000000	(1)							
43	X10	Metal joint	SHINI	PLT-254PM	4P	1	YE68025400000	(1)(3)							
44			SHINI	PLT-254RF	4P	1	YE68025400100	(1)(3)							
45	M1	Granulating motor	-----	7.5KW	230V 60HZ	1	-----	(1)							
46	M2	Suction blower	-----	0.55KW	230V 60HZ	1	-----	(1)							
47	M3	Dust-removing blower	-----	0.25KW	230V 60HZ	1	-----	(1)(2)							
48	PCB	PCB	YUYUN	AB-02	24VAC	1	YE80022400100								
版本 Ver.C Notes: (1)Means it's not the material inside the control box.(2)Means optional accessories of dedusting blower.(3)Means optional accessories of full-receive alarm device.(4)Stand for optional safety relay.															
									D		Drawing NO.		Page 19		
									Scale		Standard		CE		
									SG-2336		SG-23/30-CE-230V-E-19		Voltage 230V		
									Electrical Components List 2				Frequency 50HZ		
									 信易塑料机械股份有限公司 Shini Plastics Technologies, Inc.						
											20170424				
									Version E		Approved by		Date		
									Designer		Proofread by		Checked by		
									Drawer		Modify date				
									1		2		3		
									4		5		6		
									7		8		9		

1	2		3	4	5	6	7	8
NO.	Symbol	Name	Manufacturer	Type	Specification	Number	Material number	Remark
1	Q1	Breaker interlock	ABB	A1A125TMF50	50A	1	YE4.1105200000	
2	Q2	Circuit breaker	TECO	BM-63C	10A	1	YE4.0301003000	
3	Q3	Circuit breaker	TECO	BM-63C	6A	1	YE4.0300603000	(2)
4	K1	Contactor	SIEMENS	3RT6026-1AC20	24V 50/60Hz	1	YE00602602600	
5	K2	Contactor	SIEMENS	3RT6015-1AB01	24V 50/60Hz	1	YE00601502500	
6		Auxiliary contactor	SIEMENS	3RH6911-1HA11	1NC-1NO	1	YE00691100100	
7	K3	Contactor	SIEMENS	3RT6015-1AB02	24V 50/60Hz	1	YE00601502600	(2)
8	K4	Contactor	SIEMENS	3RT6027-1AC20	24V 50/60Hz	1	YE00602702600	(4)
9	K5	Safety relay	PILZ	PNOZx2.8P	24V AC/DC	1	YE04.023000000	(4)
10	K6	Middle relay	Honeywell	GR-2C-AC24V	24VAC	1	YE03022400300	
11	K6	Middle relay	Honeywell	GR-4C-AC24V	24VAC	1	YE03042400300	(4)
12	F1	Overload relay	SIEMENS	3RU6126-4DB0	20-25A	1	YE01260200000	
13	F2	Overload relay	SIEMENS	3RU6116-1DB0	2.2-3.2A	1	YE01160220000	
14	F3	Overload relay	SIEMENS	3RU6116-1AB0	1.1-1.6A	1	YE01160110000	(2)
15	FU1	Fuse	CHINT	RT28-32	2P	1	YE4.1032200000	
16		Fuse core	CHINT	10x38 500V	2A	2	YE4.6002000100	
17	FU2	Fuse	YINDA	FS-10	----	1	YE4.1001000000	
18		Glass tube	----	6x30	3A	1	YE4.6630500200	
19	T	Transformer	BAIYUN	IN=230V OUT=24V	80VA	1	YE70248005900	
20	X1	Terminal	HONEYWELL	6mm ²	----	3	YE60000603200	
21		Terminal	HONEYWELL	6mm ² PE	----	1	YE60000603500	
22	X2	Terminal	HONEYWELL	6mm ²	----	3	YE60000603200	
23		Terminal	HONEYWELL	6mm ² PE	----	1	YE60000603500	
24	X3	Terminal	HONEYWELL	6mm ²	----	2	YE60000603200	
25			HONEYWELL	2.5mm ²	----	15	YE60002503200	
版本		Ver.C	Notes: (1)Means it's not the material inside the control box.(2)Means optional accessories of dedusting blower.(3)Means optional accessories of full-receive alarm device.(4)Stand for optional safety relay.		Title		Scale	
			Drawer	Version	SG-2324	Drawing NO.		Page 20
			Designer	Approved by	Electrical Components List 1		Standard	Totally 21 Pages
			Proofread by	Date	SG-23/30-CE-230V-E-20		CE	Voltage 230V
			Checked by	20170424			Frequency	50Hz
Mark		Before modification	Modified by					
1		2	3	4	5	6	7	8



1	2		3	4	5	6	7	8
NO.	Symbol	Name	Manufacturer	Type	Specification	Number	Material number	Remark
26			HONEYWELL	2.5mm ² PE	----	1	YE60002503400	
27			HONEYWELL	2.5mm ²	----	3	YE60002503200	(2)
28			HONEYWELL	2.5mm ² PE	----	1	YE60002503400	(2)
29			HONEYWELL	2.5mm ²	----	4	YE60002503200	(3)
30			HONEYWELL	2.5mm ²	----	8	YE60002503200	(4)
31	S1	Emergency stop button	SCHNEIDER	XB2BS542C	4.00VAC	1	YE11254200000	(1)
32		Contact block	SCHNEIDER	ZB2BE102C	1NC	1	YE00210203100	(1)(4)
33	S2	Stop button	SCHNEIDER	XB2BA22C	4.00VAC	1	YE11222000000	(1)
34	S3,H1	Start button	SCHNEIDER	XB2BW33B1C	24VAC	1	YE11233100000	(1)
35		Contact block	SCHNEIDER	ZB2BE101C	1NO	1	YE00210103100	(1)(4)
36	S4, S5	Safety switch	SCHMERSRC	AZ15-02ZVRK-1476	AZ-15	2	YE16147600100	(1)
37	S4, S5	Safety switch	SCHMERSRC	AZ16-02ZVRK-1476	AZ-16	2	YE16147600000	(1)(4)
38	H2	Alarm light	SHINI	LED-3051	24VAC	1	YE83305100900	(1)
39	H3	Buzzer	TEND	EA-2	24VAC	1	YE84240200000	(1)(3)
40	MS	Material level sensor	SIPAI	SR-80	24VAC	1	YE15802400100	(1)(3)
41	TA2	Current transformer	YUYUN	-----	5-100A	1	-----	
42	PA	Ammeter	SFIM	DH-670	30A	1	YE25673000000	(1)
43	X10	Metal joint	SHINI	PLT-254PM	4P	1	YE68025400000	(1)(3)
44			-----	PLT-254RF	4P	1	YE68025400100	(1)(3)
45	M1	Granulating motor	-----	5.5KW	230V 60HZ	1	-----	(1)
46	M2	Suction blower	-----	0.55KW	230V 60HZ	1	-----	(1)
47	M3	Dust-removing blower	-----	0.25KW	230V 60HZ	1	-----	(1)(2)
48	PCB	PCB	YUYUN	AB-02	24VAC	1	YE80022400100	

1	2		3	4	5	6	7	8
Ver.C	Notes:	(1)Means it's not the material inside the control box.(2)Means optional accessories of dedusting blower.(3)Means optional accessories of full-receive alarm device.(4)Stand for optional safety relay.	Drawer	Version	E	Title	Scale	Page
						SG-2324	Standard	21
			Designer	Approved by	Electrical Components List 2			Totally
			Proofread by		SG-23/30-CE-230V-E-21			21
			Checked by	Date	Voltage			Pages
			Modified by	20170424	Frequency			230V
Mark	Before modification		Modify date		Frequency			50HZ

