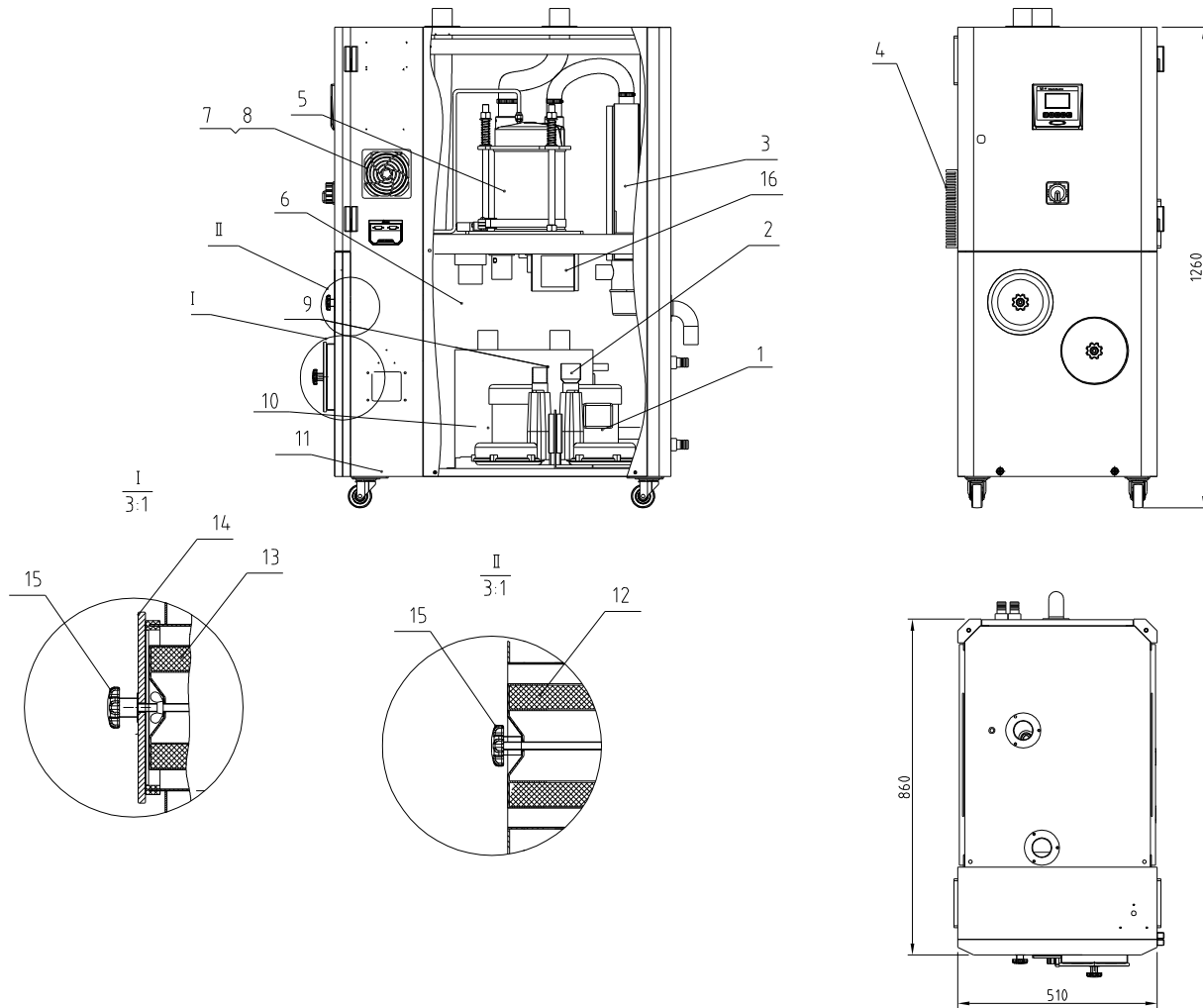
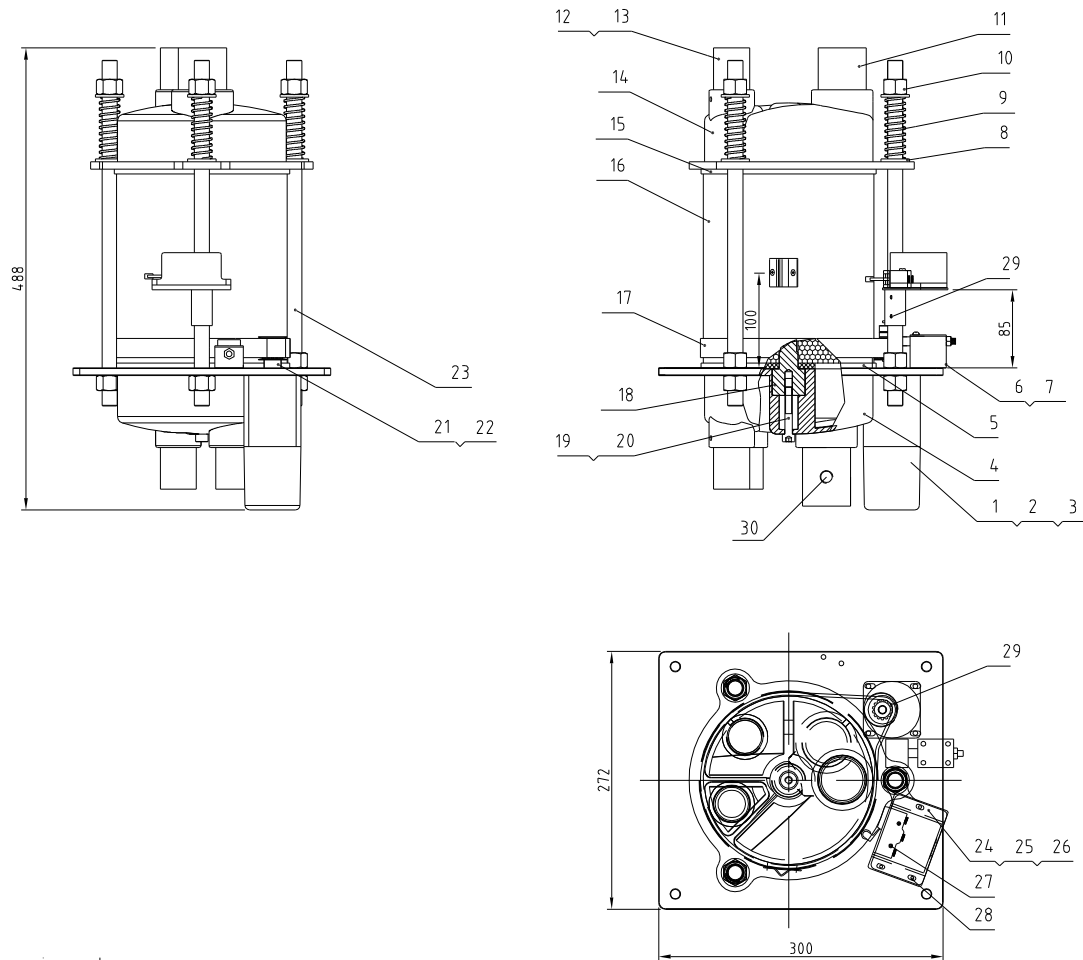


Regen. blower power	Drying blower power	Regen. heater power	Dehumidifying air quantity	Ver.
0.12KW	0.2KW	3KW	40m <sup>3</sup> /hr	Ver.G
Interface size of cooling water inlet and outlet pipe		Cooling water pressure	Cooling water flow	Cooling water temp.
Pagoda connector 3/4-Ø23		3~5Kg	5L/min	Normal temp.



16	YE80153100100	15W Motor speed US315C (Zhongdaide)	Assembly	1	
15	YW09051600000	Star nut 5/16"	Assembly	2	
14	BR90402500010	Filter tank cover SD-40H-ALL-25	Assembly	1	
13	YR50128300100	Filter ADC18	Assembly	1	Wearing part
12	YR50128300000	Filter ADC18	Assembly	1	Wearing part
11	SD-40H-A-ALL	Rack sheet metal	Assembly	1	
10	YM40201000100	Ruijing blower 2HB010H0610 12KW	Assembly	1	
9	BW88008000020	Cooler	Assembly	2	
8	YM60121206400	Exhaust fan 12x12CM/24V/50/60HZ with plastic net	Assembly	1	
7	YR40120300000	Anti-dust screen	Assembly	2	
6	YW72153600000	Heat-resistant air pipe 15"	Assembly	4	
5	SD-40H-B-ALL	Honeycomb assembly	Assembly	1	
4	YW90120700000	Aluminum cooler STM-1207HT-A-17		1	
3	SD-40H-C-ALL	Regenerative heater	Assembly	1	
2	YW72023600000	Heat-resistant air pipe 2"	Assembly	5	
1	YM40211000100	Ruijing blower 2HB110H0610 2KW	Assembly	1	
序号	代号	名称	材料	数量	备注

					制图		版号		标题	SD-40H	图号	比例	1:12	数量	1
					设计		核准		转轮除湿机			 表面要求	 材质		
					校对			SHINI 信易電熱機械股份有限公司			物料号				
标记	更改前	更改后	更改人	日期	审核		日期		Shini Plastics Technologies, Inc.						

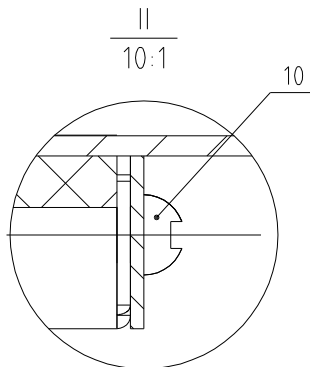
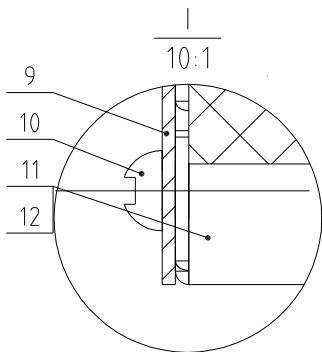
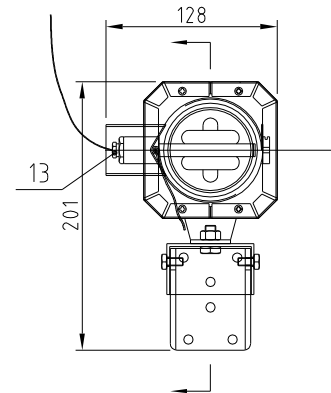
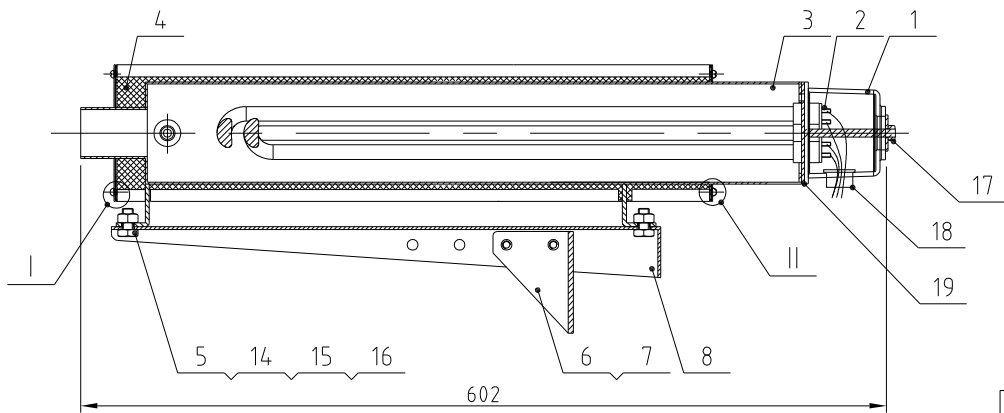


Technical requirements:

1. Use red silicone adhesive on one side of item 5 and high-temperature resistant silicone adhesive on item 4; Number 15 pieces are bonded with red silicone on one side and number 14 pieces are bonded with high-temperature resistant silicone
2. The joints between item 11 and item 12, as well as item 4 and item 14, are bonded with high-temperature resistant silicone adhesive to prevent air leakage;
3. Adjust the position of item 6 on site to keep item 17 in a tensioned state, and drill holes and tap teeth on item 4 to lock item 6;
4. Number 9 has a compression capacity of 15;

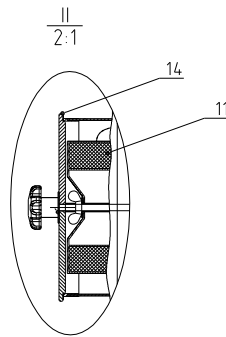
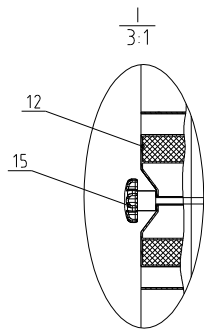
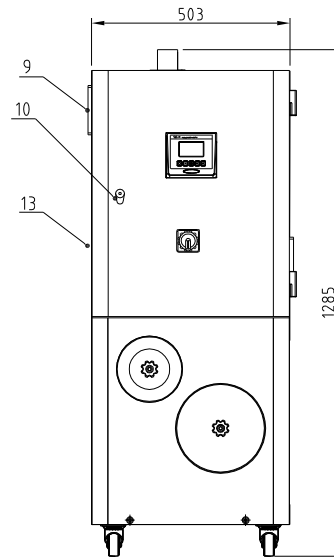
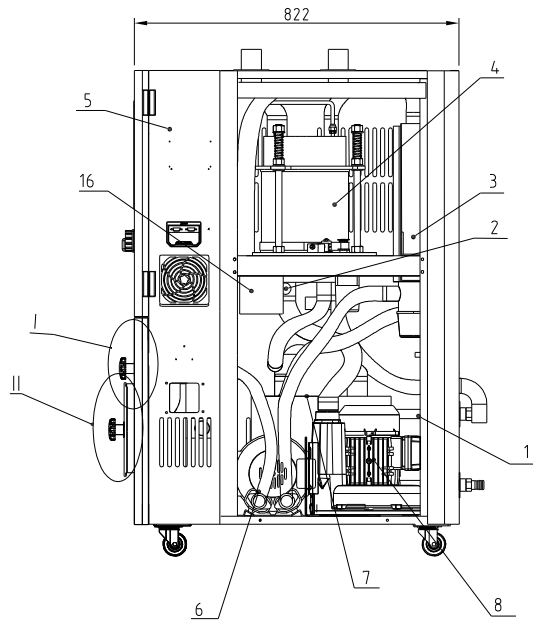
30	SD-40H-B-12	2" Straight pipe 1/4"PT		1	
29	YW68004500000	Inner hexagon flat end set screw GB/T777 M4x5-Longzine		3	
28	YW63040600000	Cross recessed pan head screw GB/T-818 M4x6-Longzine		3	
27	YW63032500000	Cross recessed pan head screw GB/T-818 M3x25-Longzine		2	
26	YR40000600600	Micro switch box	ABS	1	
25	YE14511200000	Position limit switch YBLXW-5/11G2	Assembly	1	
24	BL04402200020	Micro switch fixed piece SD-40H-A-22	SUS201	1	
23	SD-40H-B-07	Double head screw	Q235A	3	
22	YW68041000000	Inner hexagon flat end set screw GB/T777 M4x10-Longzine		1	
21	YW08001000100	Synchronous belt pulley	45	1	
20	YW65008000100	Standard spring washer GB/T93 8-Longzine		2	
19	YW61084500000	Inner hex column head screw GB/T7701 M8x45-12.9(Full tooth)-Longzine		2	
18	SD-40H-B-05	Honeycomb mount shaft	45	2	
17	YR00025400000	Synchronous belt 20x254XL	Assembly	1	
16	YW71018000500	Honeycomb $\phi$ 180x200 (SD-40H-B-1b)	Assembly	1	
15	SD-40H-B-06	Silicone Teflon gasket (upper)	Red sical gel + Teflon	1	
14	SD-40H-B-01	Honeycomb upper cover	YL112	1	
13	YW68051000000	Inner hexagon flat end set screw GB/T777 M5x10-Longzine		5	
12	SD-40H-B-04	1.5-inch straight pipe	SUS201	3	
11	SD-40H-B-03	2-inch straight pipe	SUS201	1	
10	YW64001600000	Hexagonal nut GB/T6170 M16-Longzine		6	
9	YW01201800000	Spring ISD-700H-B-071	70	3	Borrowed
8	YW66163000000	Flat washer A grade GB/T197-1.16(17.5x30x3)-Longzine		6	
7	YW63044500000	Cross recessed pan head screw GB/T-818 M4x45-Longzine		2	
6	SD-400H-A-40	Belt regulator	Assembly	1	Borrowed
5	SD-40H-B-09	Silicone Teflon gasket lower	Red sical gel + Teflon	1	
4	SD-40H-B-02	Honeycomb lower cover	YL112	1	
3	YW64040700000	Hexagonal nut GB/T41 M4x0.7-Longzine		4	
2	YW61059500000	Inner hex. column head screw GB/T770.1 M5x95-12.9-Longzine		4	
1	YM50315300100	Speed motor 3IK15RGN-C/3GN500K2(hongdalide)	Assembly	1	
序号	代号	名称	材料	数量	备注

					制图		版号		标题	SD-40H	图号	SD-40H-B-ALL	比例		数量	
					设计		核准			蜂巢转轮				材质		
					校对								表面要求			
标记	更改前	更改后	更改人	日期	审核		日期			信易电热机械股份有限公司 Shini Plastics Technologies, Inc.		物料号				



19	YR90000200000	Flange washer 2" SD-400H-A-45	Silica gel	1	
18	YE67013500000	Cable head PG13.5		1	
17	YW64000600300	Hex nut GB/T6170 M6		1	
16	YW66081900000	Flat washer 8x19x2.0 Longzine		4	
15	YW64080600000	Hex nut GB/T6170 M8-Longzine		2	
14	YW65008000100	Standard spring washer GB/T93 8-Longzine		2	
13	BH90115000050	EGO Detector	Assembly	1	
12	SD-40H-C-03	Heater cover plate 2	SUS201	1	
11	SD-40H-C-02	Heater cover plate 1	SUS201	1	
10	YW62050500000	Large cross socket flat head screw JS1111 M5x5-Longzine		8	
9	SD-40H-C-04	Heater cover plate	SUS201	1	
8	SD-40H-C-05	Heater fixed frame	SPCC2.0	1	
7	YW60061000000	Hexagon screw bolt GB/T5781 M6x10-4.8-Longzine		4	
6	SD-40H-C-06	Heater fixing angle	SPH4.0	1	
5	YW60081600100	Hexagon screw bolt GB/T5781 M8x16-4.8-Longzine		2	
4	YP62820140000	Fire blanket 250X730mm		1	
3	SD-40H-C-01	Heating Tank	Weldment	1	
2	BH70340000150	Heat pipe 3KW fixed flange 3φ400V	Assembly	1	
1	YR40200000100	Bakelite cover	PF	1	
序号	代号	名称	材质	数量	备注

					制图		版本号	标题	SD-40H	图号	比例	数量
					设计		核准	再生加热器		SD-40H-C-ALL		材质
					校对			<b>信易电热机械股份有限公司</b> <b>Shini Plastics Technologies, Inc.</b>			表面要求	
标记	更改前	更改后	更改人	日期	审核		日期					物料号

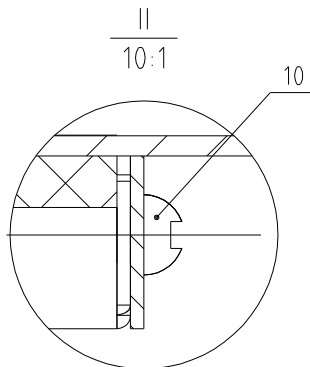
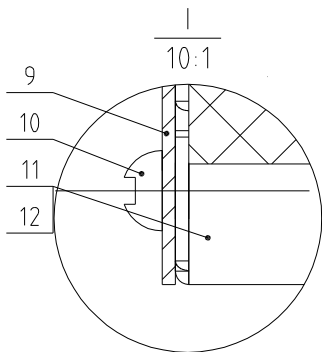
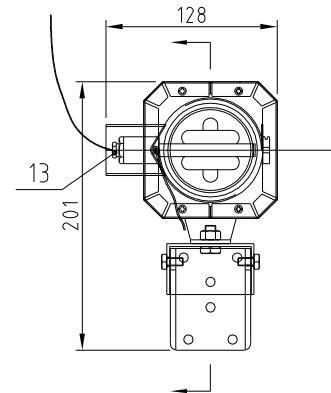
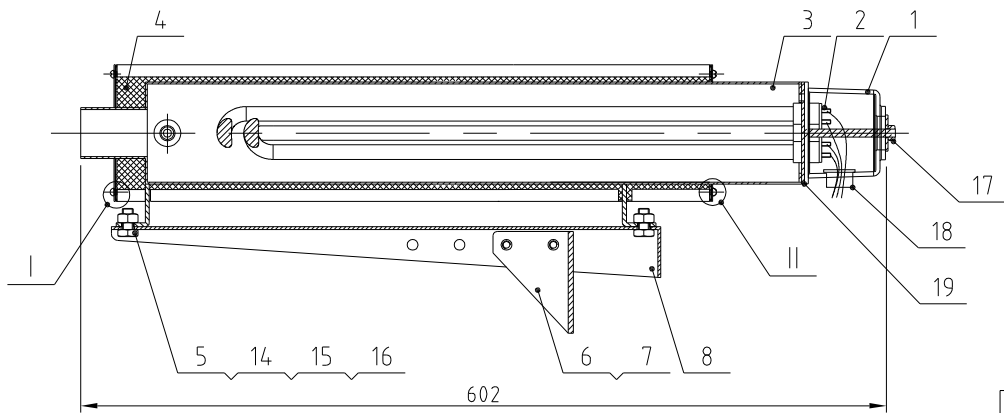


Regen. blower power	Drying blower power	Regen. heater power	Dehumidifying air quantity	Ver.
0.18KW	0.75KW	3KW	80m <sup>3</sup> /hr	Ver.F
Interface size of cooling water inlet and outlet pipe		Cooling water pressure	Cooling water flow	Cooling water temp
Pagoda connector 3/4-Ø23		3~5Kg	10L/min	Normal temp.

16	YE80153100100	15W Motor speed US315C (Zhongdalide)	Assembly	1	
15	YW09051600000	Sfar nut 5/16"	Assembly	2	
14	BR90402500010	Filter tank cover SD-40H-ALL-25	Assembly	1	
13	YW90120700000	Aluminum cooler STM-120HT-A-17		1	
12	YR10708000000	Filter ADC18	Assembly	1	
11	YR50708000100	Filter (700/800G)	Assembly	1	
10	YW00816100000	Door lock MS816-1	Assembly	1	
9	YM60121206400	Exhaust fan 12x12CM/24V/50/60HZ With plastic net	Assembly	1	
8	BM30031000150	Shini blower RB-310	Assembly	1	
7	BW88008000020	Cooler	Assembly	2	
6	YM40211000100	Ruijing blower 2HB110H0610 2KW	Assembly	1	
5	SD-120H-A-ALL	Rack sheet metal	Assembly	1	
4	SD-120H-B-ALL	Honeycomb rotor	Assembly	1	
3	SD-40H-C-ALL	Regenerative heater	Assembly	1	
2	YE85030000100	Temp sensor	Assembly	1	
1	YR60161604000	Pressure resistant water pipe MAX-16 Inner diameter 16mm	Assembly	2	
序号	代号	名称	材料	数量	备注

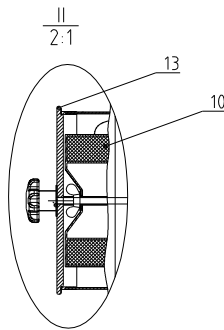
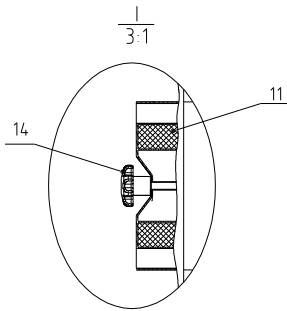
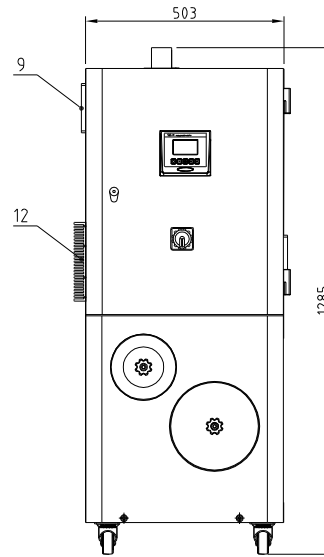
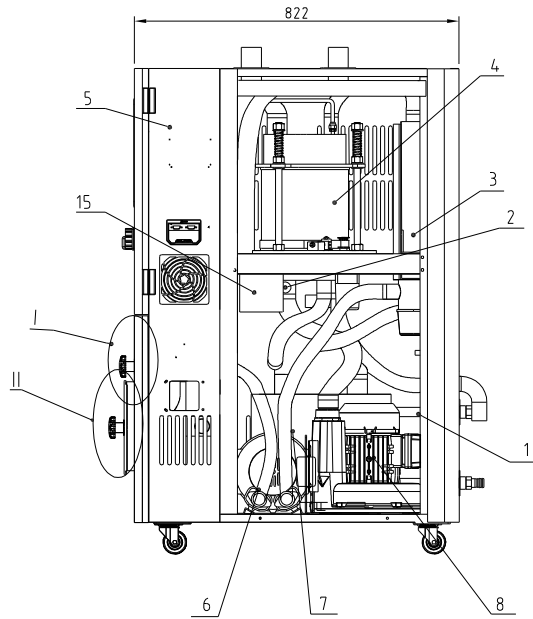
					制图	版号	标题	图号	比例	1:12	数量	1
					设计	核准	SD-80H					
					校对		转轮除湿机					
					审核							
标记	更改前	更改后	更改人	日期	审核	日期	信易电热机械股份有限公司 Shini Plastics Technologies, Inc.		表面要求			
									物料号			





19	YR90000200000	Flange washer 2" SD-400H-A-45	Silica gel	1	
18	YE67013500000	Cable head PG13.5		1	
17	YW64000600300	Hex nut GB/T6170 M6		1	
16	YW66081900000	Flat washer 8x19x2.0 Longzine		4	
15	YW64080600000	Hex nut GB/T6170 M8-Longzine		2	
14	YW65008000100	Standard spring washer GB/T93 8-Longzine		2	
13	BH90115000050	EGO Detector	Assembly	1	
12	SD-40H-C-03	Heater cover plate 2	SUS201	1	
11	SD-40H-C-02	Heater cover plate 1	SUS201	1	
10	YW62050500000	Large cross socket flat head screw JS1111 M5x5-Longzine		8	
9	SD-40H-C-04	Heater cover plate	SUS201	1	
8	SD-40H-C-05	Heater fixed frame	SPCC2.0	1	
7	YW60061000000	Hexagon screw bolt GB/T5781 M6x10-4.8-Longzine		4	
6	SD-40H-C-06	Heater fixing angle	SPH4.0	1	
5	YW60081600100	Hexagon screw bolt GB/T5781 M8x16-4.8-Longzine		2	
4	YP62820140000	Fire blanket 250X730mm		1	
3	SD-40H-C-01	Heating Tank	Weldment	1	
2	BH70340000150	Heat pipe 3KW fixed flange 3φ400V	Assembly	1	
1	YR40200000100	Bakelite cover	PF	1	
序号	代号	名称	材质	数量	备注

					制图		版号	标题	SD-40H	图号	比例	数量
					设计		核准	再生加热器		SD-40H-C-ALL		材质
					校对			<b>信易电热机械股份有限公司</b> <b>Shini Plastics Technologies, Inc.</b>			表面要求	
标记	更改前	更改后	更改人	日期	审核		日期					物料号



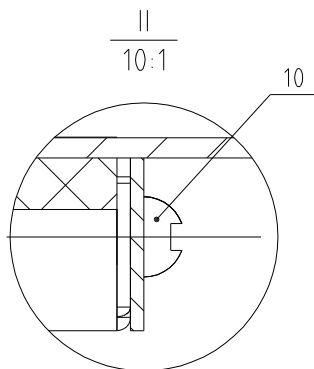
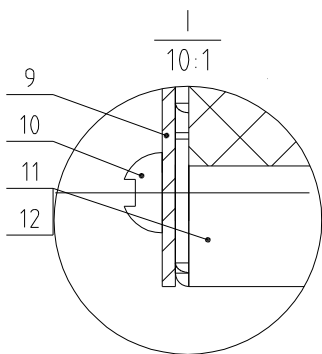
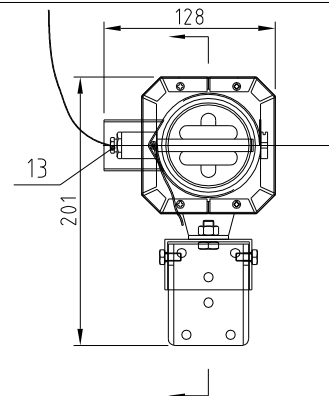
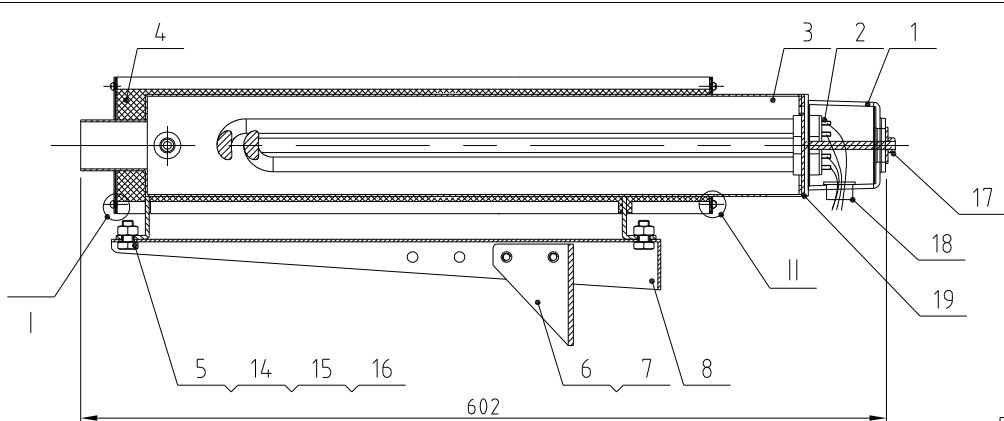
Regen. blower power	Drying blower power	Regen. heater power	Dehumidifying air quantity	Ver.
0.18KW	0.75KW	4KW	120m <sup>3</sup> /hr	Ver.F
Interface size of cooling water inlet and outlet pipe		Cooling water pressure	Cooling water flow	Cooling water temp.
Pagoda connector 3/4-φ23		3~5Kg	15L/min	Normal temp.

15	YE80153100100	ISW Motor speed US315C (Zhongdalide)	Assembly	1	
14	YW09051600000	Star nut 5/16"	Assembly	2	
13	BR904.02500010	Filter tank cover SD-60H-ALL-ZS	Assembly	1	
12	YW90120700000	Aluminum cooler STM-1207HT-A-17		1	
11	YR10708000000	Filter ADC18	Assembly	1	
10	YR50708000100	Filter (700/800G)	Assembly	1	
9	YM60121206400	Exhaust fan 12x12(M/24V/50/60HZ With plastic net)		1	
8	BM30031000150	Shini blower RB-310	Assembly	1	
7	BW88008000020	Cooler	Assembly	2	
6	YM4.0211000100	Ruijing blower 2HB110H06(0.2KW)	Assembly	1	
5	SD-120H-A-ALL	Rack sheet metal	Assembly	1	
4	SD-120H-B-ALL	Honeycomb rotor	Assembly	1	
3	SD-120H-C-ALL	Regenerative heater	Assembly	1	
2	YE85030000100	Temp. sensor	Assembly	1	
1	YR60161604000	Pressure resistant water pipe MAX-16 inner diameter 16mm		2	
序号	代号	名称	材料	数量	备注

					制图	版号	标题	图号	比例	1:12	数量	1
					设计	核准	SD-120H					
					校对		转轮除湿机					
					审核			信易電熱機械股份有限公司 Shini Plastics Technologies, Inc.	表面要求			
标记	更改前	更改后	更改人	日期		日期			物料号			

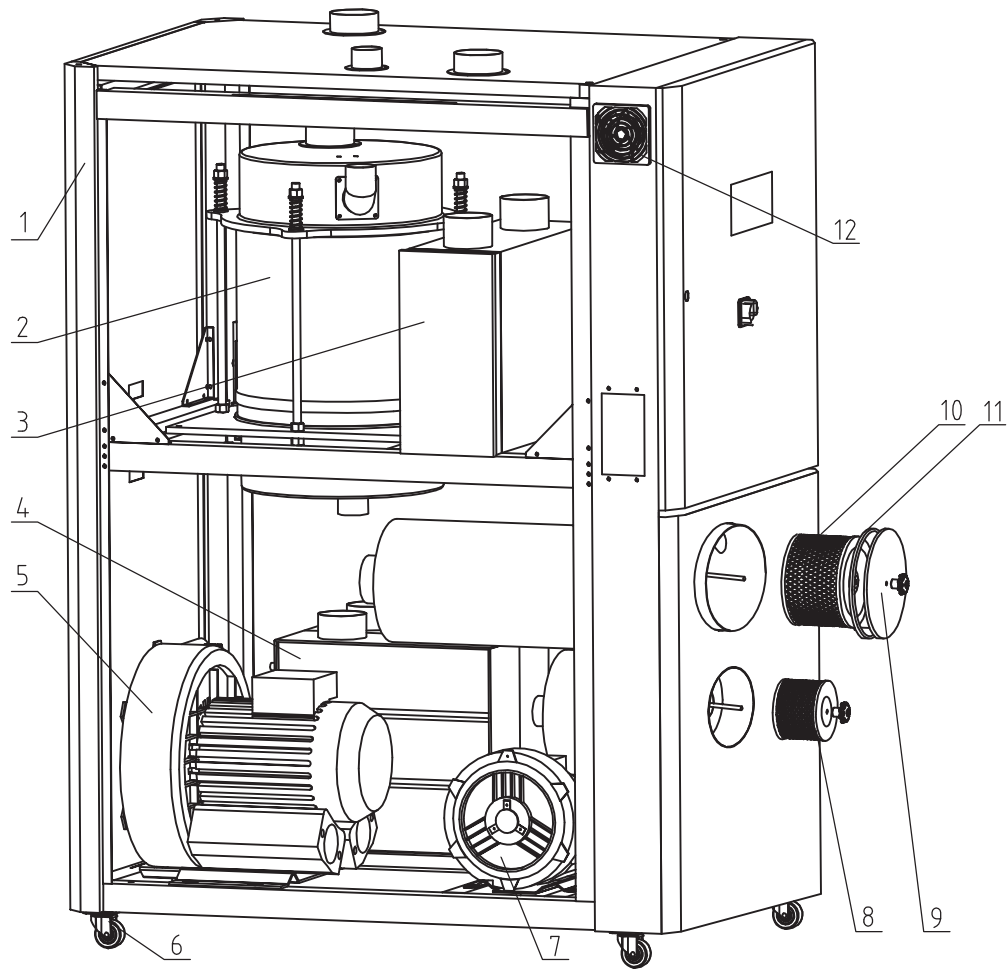






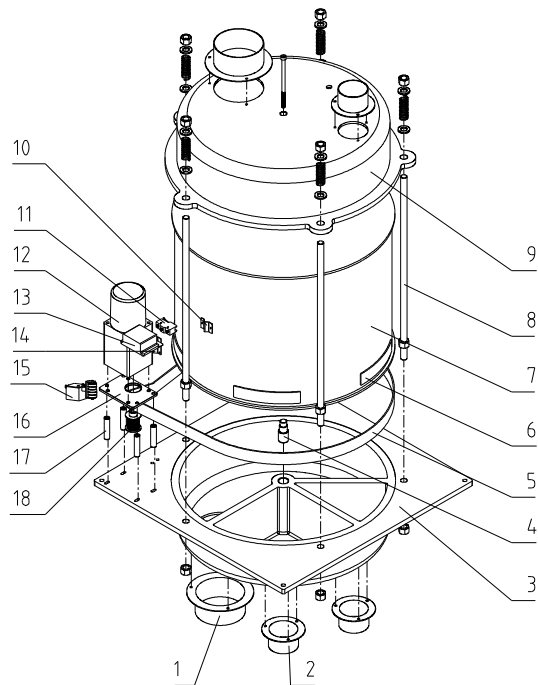
19	YR90000200000	Flange washer 2" SD-400H-A-45	Silicone	1	
18	YE67013500000	Cable head PG13.5		1	
17	YW64000600300	Hex nut GB/T6170 M6		1	
16	YW66081900000	Flat washer 8x19x2.0 Longzine		4	
15	YW64080600000	Hexagonal nut GB/T6170 M8-Longzine		2	
14	YW60081600100	Hexagon screw bolt GB/T5781 M8x16-4.8-Longzine		2	
13	BH90115000050	EGO detector	Assembly	1	
12	SD-40H-C-03	Heater cover plate 2	SUS201	1	
11	SD-40H-C-02	Heater cover plate 1	SUS201	1	
10	YW62050500000	Large cross socket flat head screw JS1111 M5x5-Longzine		8	
9	SD-40H-C-04	Heater cover plate	SUS201	1	
8	SD-40H-C-05	Heater fixed frame	SPCC2.0	1	
7	YW60061000000	Hexagon screw bolt GB/T5781 M6x10-4.8-Longzine		4	
6	SD-40H-C-06	Heater fixing angle	SPH4.0	1	
5	YW60081600100	Hexagon screw bolt GB/T5781 M8x16-4.8-Longzine		2	
4	YP62820140000	Fire blanket 250X730mm		1	
3	SD-40H-C-01	Heating Tank	Weldment	1	
2	BH70440006150	Electric heater 4KW flange fixed 3φ4.00V	Assembly	1	
1	YR40200000100	bakelite cover	PF	1	
序号	代 号	名 称	材 质	数 量	备 注

					制图		版本号	A	标题	SD-120H	图号	比例	1:5	数量	1
					设计		核 准		再生加热器		SD-120H-C-ALL			材 质	/
				20240312	校 对		日 期		<b>信易電熱機械股份有限公司</b> <b>Shini Plastics Technologies, Inc.</b>		表面要求		/		
标记	更改前	更改后	更改人	日期	审 核		日期	20240312		物料号		/			



12	YM60121206400	Exhaust fan**			
11	YR10120400000	Filter fastener			
10	YR50203000100	Filter**			
9	BR90120500010	Filter barrel cover			
8	YR50708000100	Filter**			
7	BM30020500050	Regen. blower*			
6	YW03000300000	Black brake castor			
	YW03000300200	Black movable castor			
5	BM30042000050	Drying blower*			
4	BW88152000020	Cooler(with temp. sensor)			
	BL03154040120	Cooler			
3		Heating case			
2		Honeycomb assembly			
1		Rack metal plate			
No.	Material number	Name	Mat.	Num.	Remarks

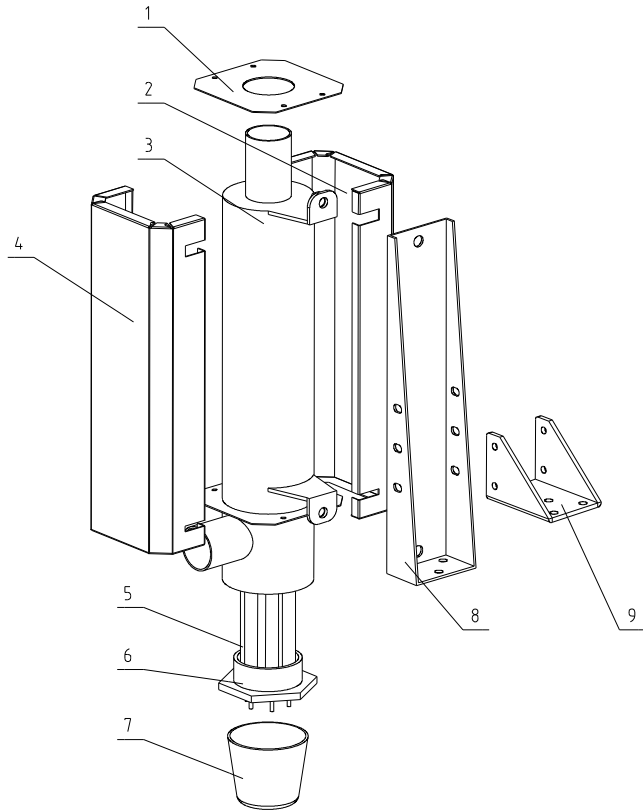
					Dra.	Ver.	B	Title	SD-200H	Drawing No.	Scale	1:15	No.	1
					Desi.	App		Rotor Dehumidifier		SD-200H-ALL			Mat.	
					Check	by					Surface req.			
Mark	Before Mod.	After Mod.	Mod. by	Date	App.		20090224	<b>SHINI</b> 信易電熱機械股份有限公司 Shini Plastics Technologies, Inc.			Mat No.			



SD-200H

18	-----	Synchronous belt
17	-----	Fixing pipe
16	-----	Mounting plate of gear motor
15	-----	Micro switch fixing plate
14	-----	Micro switch fixing plate
13	-----	Microswitch box
12	YM50102600000	Gear motor
11	-----	Microswitch*
10	-----	Honeycomb fixing plate
9	-----	Honeycomb upper cover
8	BH11100000210	Double-head screw
7	YW71254.000200	Honeycomb
6	YR0019054.00000	Synchronous belt
5	YR002034.000000	Synchronous belt**
4	-----	Honeycomb installation shaft
3	-----	Honeycomb lower cover
2	-----	Honeycomb flange
1	-----	Honeycomb flange
No.	Part No.	Name

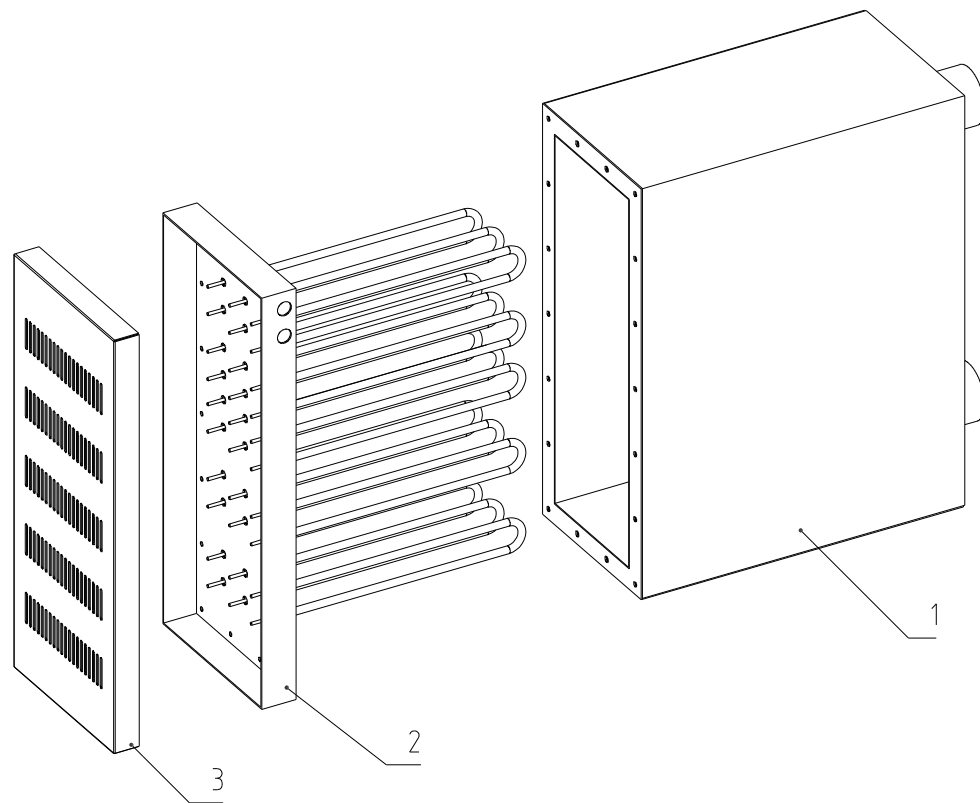
					制图	版号	A	标题	SD-200H	图号	SD-200H-A-01	比例	1:1	数量	1
					设计	核			Honeycomb Assembly			材	质	SPEC15	
					校对	准						表面要求	烤漆		
标记	更改前	更改后	更改人	日期	审核	日期	20121012	 信易電熱機械股份有限公司 Shini Plastics Technologies, Inc.		本图采用第一角画法					



SD-200H

9	-----	Heater fixed corner
8	-----	Heater fixed frame
7	YR40002000100	Bakelite cover
6	BH12200500310	Heater copper head
5	BH70150400050	Pipe heater*
4	-----	Heater plate 2
3	-----	Heating tank
2	-----	Heater plate 1
1	-----	Heater cover plate
No.	Part No.	Name

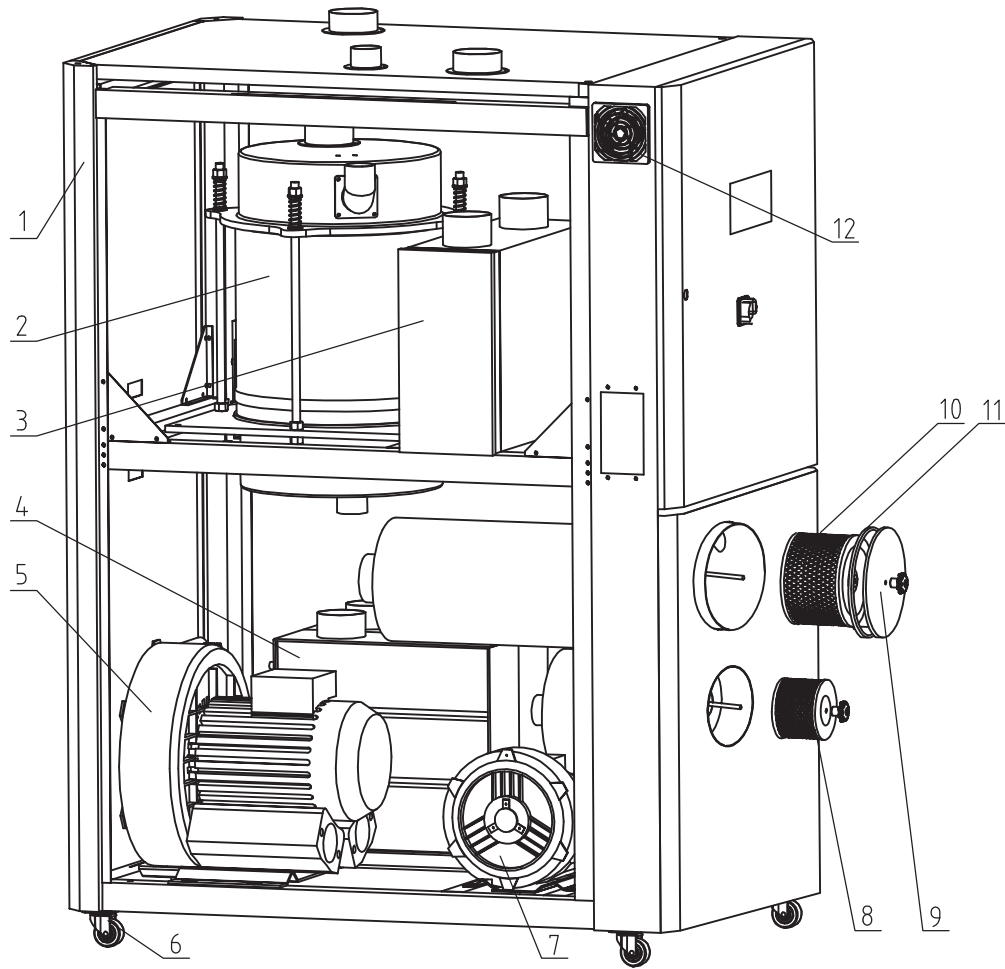
					制图		版号	0	标题	SD-200H	图号		比例	1:1	数量	1
					设计		核准		Heater Assembly				材质			
					校对				 <b>信易電熱機械股份有限公司</b> Shini Plastics Technologies, Inc.				表面要求			
标记	更改前	更改后	更改人	日期	审核		日期	2014.05.29								本图采用第一角画法



SD-200H  
(Option PHC)

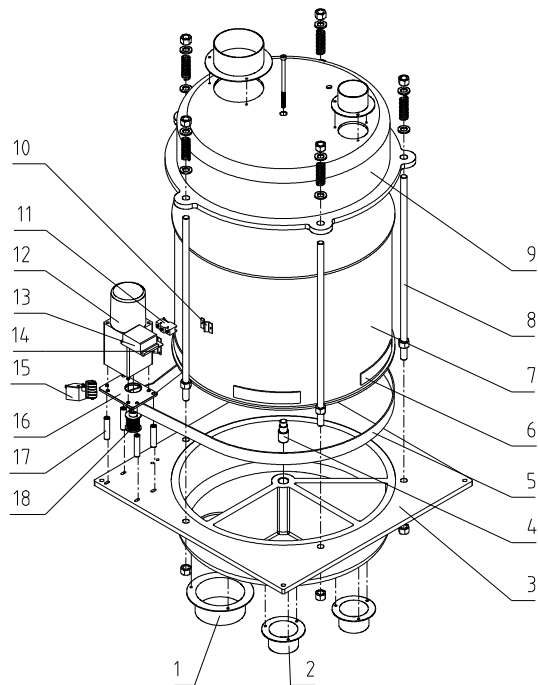
3	-----	Heater cover plate
2	BH70124.000550	Pipe heater*
1	-----	Heater case
No.	Part No.	Name

					制图		版号	0	标题	SD-200H	比例	数量
					设计		核		Heater Case			材质
					校对		准		<b>信易電熱機械股份有限公司</b> <b>Shini Plastics Technologies, Inc.</b>	表面要求		
标记	更改前	更改后	更改人	日期	审核		日期	20091202		物料号		



12	YM60121206400	Exhaust fan**			
11	YR10026000000	Filter fastener			
10	YR50241400000	Filter**			
9	BR90406000010	Filter barrel cover			
8	YR50708000100	Filter**			
7	BM30031000150	Regen. blower*			
6	YW03000400000	Black brake castor			
	YW03000400200	Black movable castor			
5	BM30055000050	Drying blower*			
4	BW88030030020	Cooler(with temp. sensor)			
	BW88030300020	Cooler			
3	_____	Heating case			
2	_____	Honeycomb assembly			
1	_____	Rack metal plate			
No.	Material number	Name	Mat.	Num.	Remarks

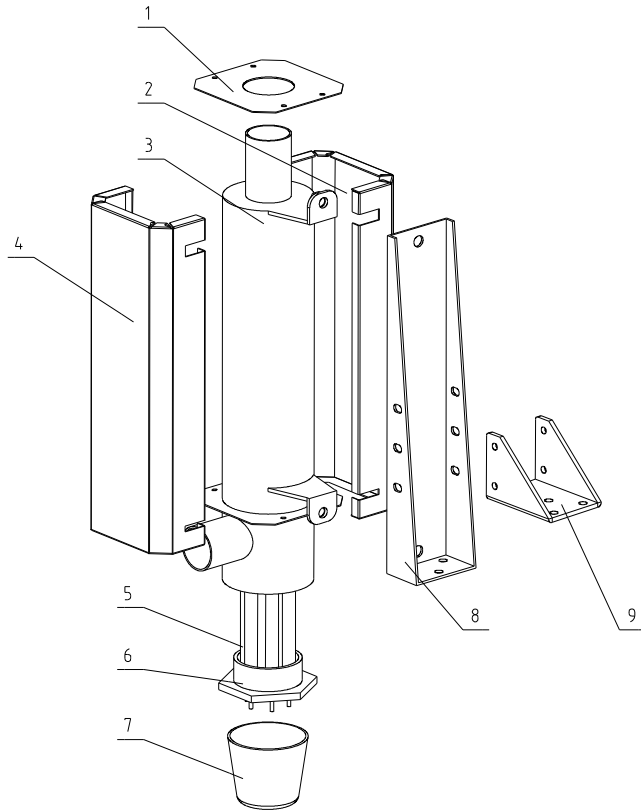
					Dra.	Ver.	B	Title	SD-400H	Drawing No.	Scale	1:15	No.	1
					Desi.	App by			Rotor Dehumidifier	SD-400H-ALL			Mat.	
					Check							Surface req.		
Mark	Before Mod.	After Mod.	Mod. by	Date	App.		20090224	<b>信易電熱機械股份有限公司</b> <b>Shini Plastics Technologies, Inc.</b>						
										Mat No.				



SD-400H

18	-----	Synchronous belt
17	-----	Fixing pipe
16	-----	Mounting plate of gear motor
15	-----	Micro switch fixing plate
14	-----	Micro switch fixing plate
13	-----	Microswitch box
12	YM50512600000	Gear motor
11	-----	Microswitch*
10	-----	Honeycomb fixing plate
9	-----	Honeycomb upper cover
8	BH1100000210	Double-head screw
7	YW71354.000200	Honeycomb
6	YR00003000000	Synchronous belt
5	YR00304.700000	Synchronous belt**
4	-----	Honeycomb installation shaft
3	-----	Honeycomb lower cover
2	-----	Honeycomb flange
1	-----	Honeycomb flange
No.	Part No.	Name

					制图	版号	A	标题	SD-400H	图号	比例	1:1	数量	1
					设计	核		Honeycomb Assembly			材		SPEC15	
					校对	准		 信易電熱機械股份有限公司 Shini Plastics Technologies, Inc.			表面要求	烤漆		
标记	更改前	更改后	更改人	日期	审核	日期	20121012						本图采用第一角画法	

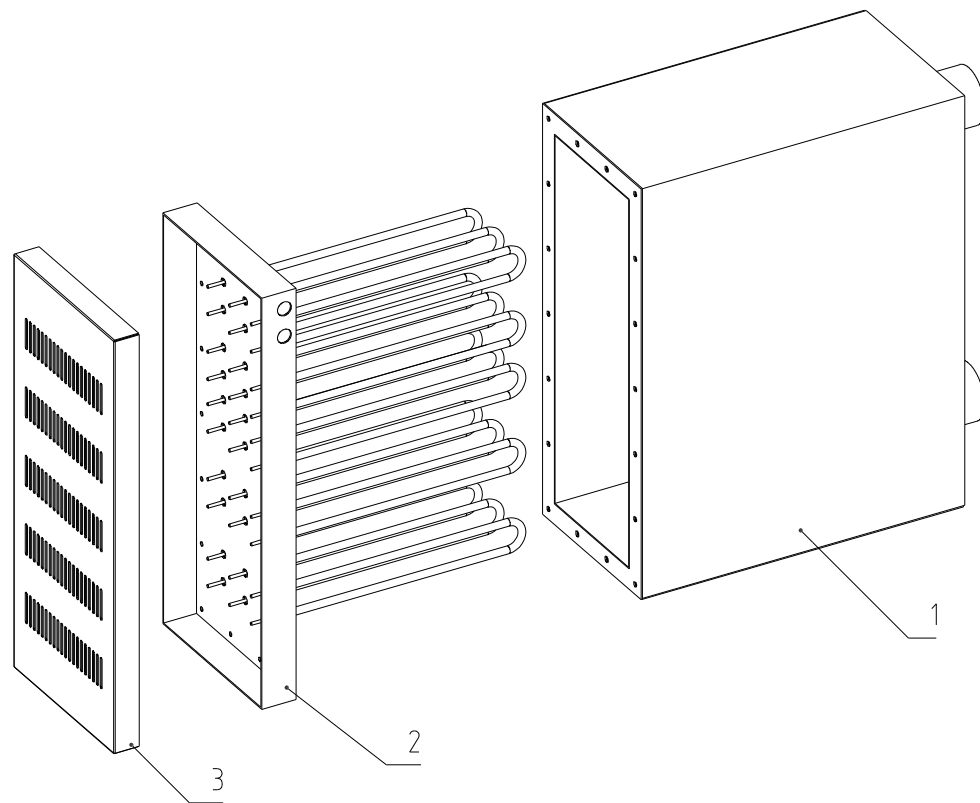


SD-400H

9	-----	Heater fixed corner
8	-----	Heater fixed frame
7	YR40002000100	Bakelite cover
6	BH12200500310	Heater copper head
5	BH70407200050	Pipe heater*
4	-----	Heater plate 2
3	-----	Heating tank
2	-----	Heater plate 1
1	-----	Heater cover plate
No.	Part No.	Name

					制图		版号	0	标题	SD-400H	图号	SD-400H	比例	1:1	数量	1
					设计		核准		Heater Assembly				材质			
					校对				 <b>信易電熱機械股份有限公司</b> <b>Shini Plastics Technologies, Inc.</b>				表面要求			
标记	更改前	更改后	更改人	日期	审核		日期	2014.05.29								



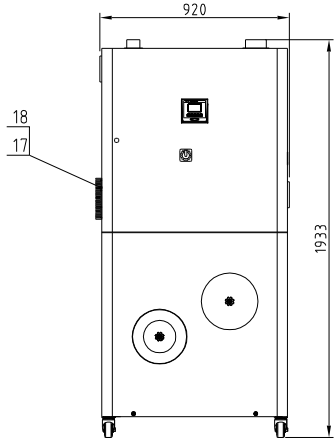
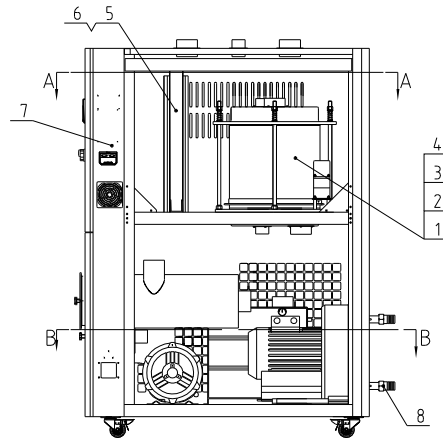


SD-400H  
(Option PHC)

3	-----	Heater cover plate
2	BH70184000550	Pipe heater*
1	-----	Heater case
No.	Part No.	Name

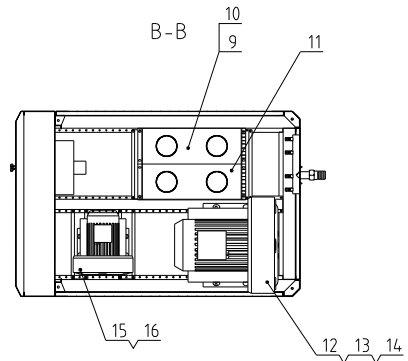
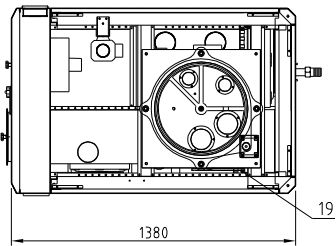
					制图		版号	0	标题	SD-400H	比例	数量
					设计		核		Heater Case		材质	
					校对		准					表面要求
标记	更改前	更改后	更改人	日期	审核		日期	20091202	<b>信易電熱機械股份有限公司</b> <b>Shini Plastics Technologies, Inc.</b>		物料号	

再生风机功率 Regen blower power	干燥风机功率 Drying blower power	再生加热器功率 Regen. heater power	干燥加热器功率 Drying heater power	干燥风量 Drying air flow	冷却水需求 Cooling water demand	机器版本号 Ver.
1.5KW	7.5KW	10KW	24KW	700m <sup>3</sup> /hr	80L/min	Ver.H



A-A

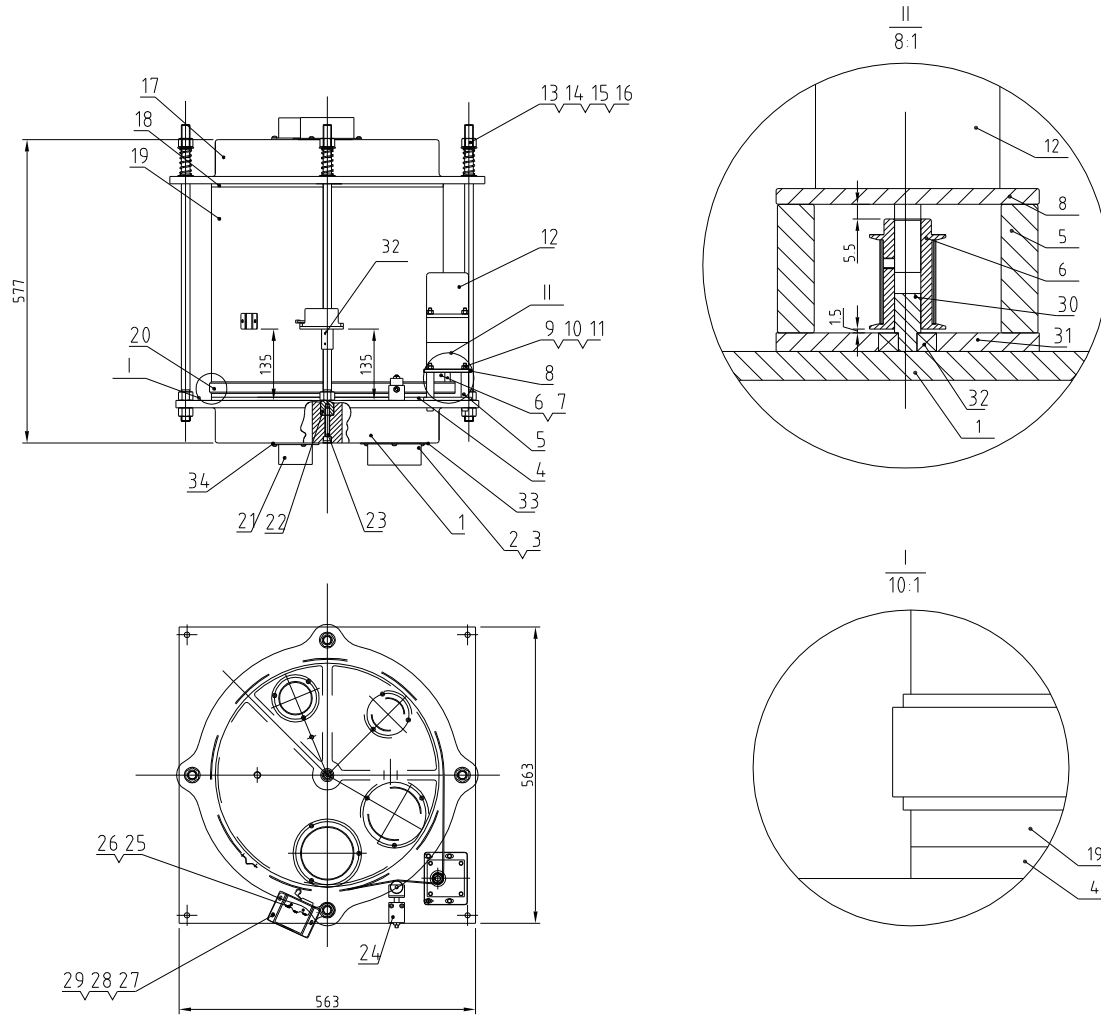
B-B



19	YE80153100100	15W Motor speed US315Z (Zhangshidie)	1
18	YW63040600000	Cover recessed pan head screw Q235 Hex Flange	4
17	YW90120700000	Aluminum cooler SD-40H-ALL-20(Ver.A) (black)	1
16	SD-200H-A-36	2" straight pipe	2
15	BM30042000050	Hex. Bolt Q235 10x20-4.8-Flange	1
14	SD-700H-ALL-01	4" motor flange pipe	2
13	YW60106000000	Hexagon bolt Q235 10x20-4.8-Flange	4
12	YM30283000100	Wipe bar 300x10-20x3mm stainless steel plate	1
11	BL03507045020	Couler SD-700H-C-ALL (has side hole)	1
10	YW64000600300	Hex. nut Q235 10-Longzine	11
9	BW88507000020	Couler 2 SD-700H-C-ALL (has side hole)	1
8	BH12223400010	Copper joint 3/4" PT*423(S-01)	2
7	SD-700H-A-ALL	Rack metal plate	1
6	YW60062000100	Hex. bolt Q235 10x20-4.8-Flange	11
5	SD-700H-D-ALL	Heater	1
4	YW66081600000	Flat rubber gasket Q235 10.5*100.4 Flange	8
3	YW64080600000	Hexagon nut Q235 10-Longzine	4
2	YW60083000200	Hexagon bolt Q235 10x20-4.8-Flange	4
1	SD-700H-B-ALL	Honeycomb rotor	1

制图	版号	标题	SD-700H	图号	SD-700H-ALL	比例	1:23	数量	1
设计	核准	转轮除湿机						材质	/
校对	核准							表面要求	/
标记	更改前	更改后	更改人	日期	审核	日期		物料号	/

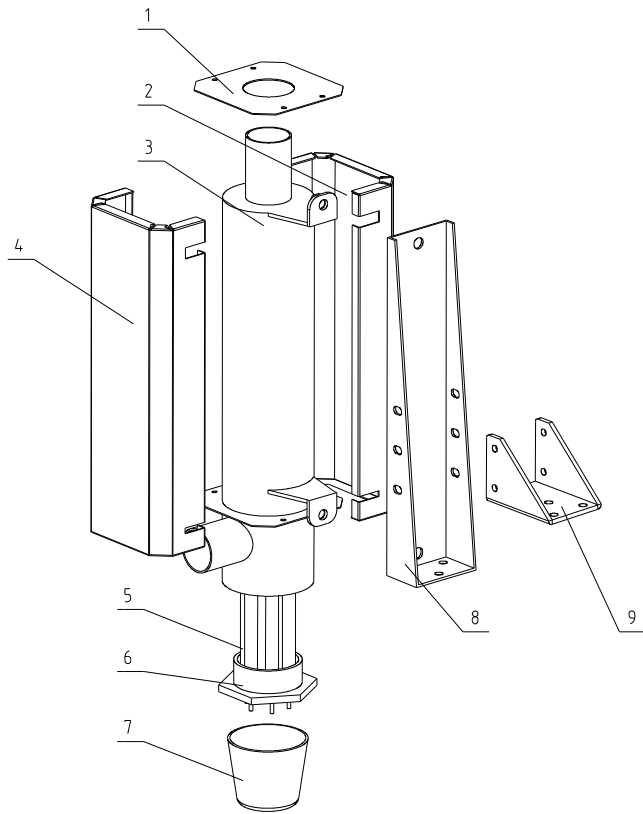




34	YR90002500000	Flap roller 1" Ø 700H-B into silica gel (see note)	white silica gel	3	
33	YR90000400100	Flap roller 1" Ø 700H-B into silica gel (see note)		2	
32	YW11062700000	Bearing 627ZZ1MC3E		1	
31	BH33702200010	Gear motor installation plate 2" Ø 700H-B-22		1	
30	BH33702300010	Fixed shaft SD-700H-B-23		1	
29	YW63040600000	Cone recessed pin head screw Ø17x40 B&S-Longline		3	
28	BL04402200020	Micro switch fixed plate SP-40H-22 (Ver. A)		1	
27	YR40330900000	Microswitch base Ø1.25+0.01 (max) (into note)		1	
26	YW63032500000	Cone recessed pin head screw Ø17x40 B&S-Longline		2	
25	YE14511200000	Position limit switch YRLXP-5/1152		1	
24	BH10004400010	Belt regulator SD-400H-A-40		1	
23	YW61085500000	Low torque cylinder screw Ø17x1.1 B&S-Longline		2	
22	BH11101300010	Honeycomb cover Ø17x1.1 B&S-Longline (Ver. B)		2	
21	SD-200H-A-35	2.5 inch upper and lower cover plate flange		3	
20	YR00305800000	Spacers for Ø16.5 into hole, plate Ø16.5, into note		1	
19	YW71044000700	Flange Ø16.5xØ16.5x1.1 (see note)		1	
18	YR10507000100	Silica gel roller plate Ø17x1.1 (into note)		1	
17	BA40507000110	Honeycomb upper Ø17x1.1 (green) (see note)		1	
16	YW01253000000	Honeycomb roller Ø16.5x1.1 (into note)		4	
15	YW64001600000	Hexagon nut C2/76170 M16-Longline		12	
14	YW66163000000	Flat washer A grade C2/76170 16F-Longline		16	
13	BH11000000210	Double head screw SP-100H-B-11 (SUS304) (Ver. B)		4	
12	YM50315300100	Speed motor X1150H-C/20260H (long-life)		1	
11	YW61069000000	Low torque cylinder screw Ø17x1.1 B&S-Longline		4	
10	YW64000600300	Hexagon nut C2/76170 M6-Longline		8	
9	YW66061300000	Flat washer A grade C2/76170 6F-Longline		12	
8	BH33700800010	Gear motor installation plate Ø17x1.1 (Ver. B)		1	
7	YW68004500000	Low torque flat end screw Ø17x40 B&S-Longline		3	
6	YW08001400000	Spacers for pin Ø16.5 into hole Ø16.5 (see note)		1	
5	BH10070001510	Positioning pipe SD-400H-A-37 (Ver. B)		4	
4	YR10507000000	Silica gel roller plate Ø17x1.1 (into note)		1	
3	YW61051000200	Cone recessed pin head screw 1" Ø 700H-B-3		15	
2	SD-700H-B-13	4" Honeycomb flange		2	
1	BA40507000010	Honeycomb lower cover Ø17x1.1 (green) (see note)		1	

序号	代号	名称	材质	数量	备注	
		标题 SD-700H	图号 SD-700H-B-ALL	比例 1:1	数量 1	
		蜂巢转轮		材质 /		
		SHINI 信易电热机械股份有限公司 Shini Plastics Technologies, Inc.			表面要求 /	
		物料号			/	

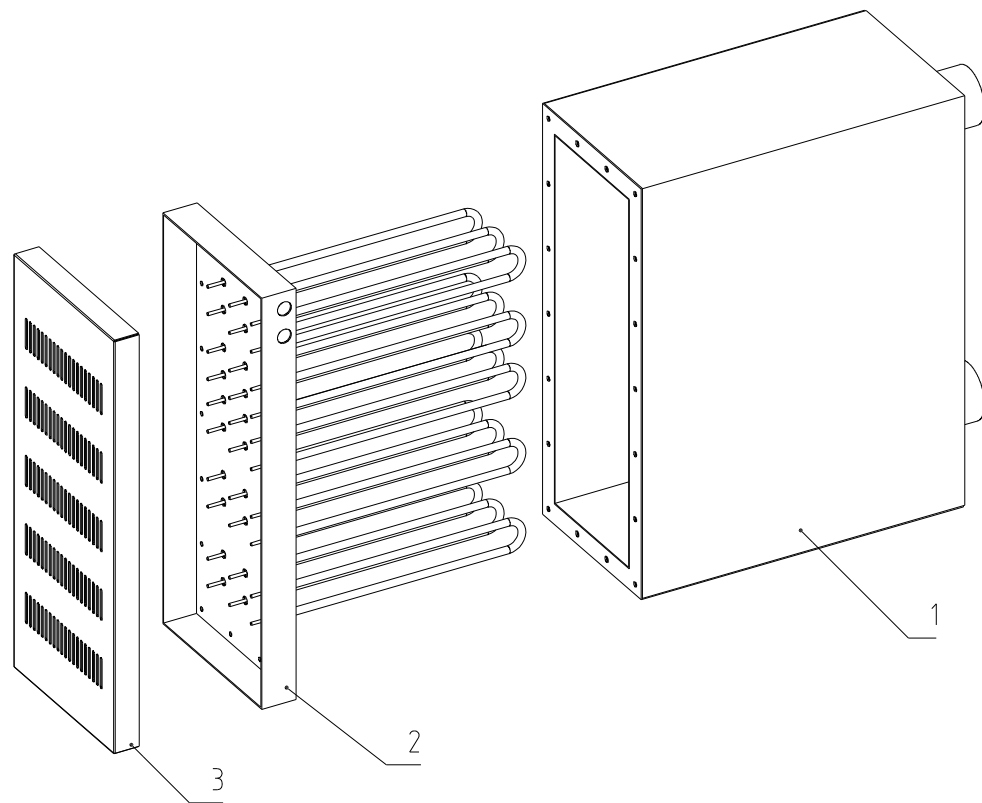
制图	版号	设计	核准	校对	审核	日期	日期
标记	更改前	更改后	更改人	日期	审核	日期	



SD-700H

9	-----	Heater fixed corner
8	-----	Heater fixed frame
7	YR40002000100	Bakelite cover
6	BH12200500310	Heater copper head
5	BH70501000050	Pipe heater*
4	-----	Heater plate 2
3	-----	Heating tank
2	-----	Heater plate 1
1	-----	Heater cover plate
No.	Part No.	Name

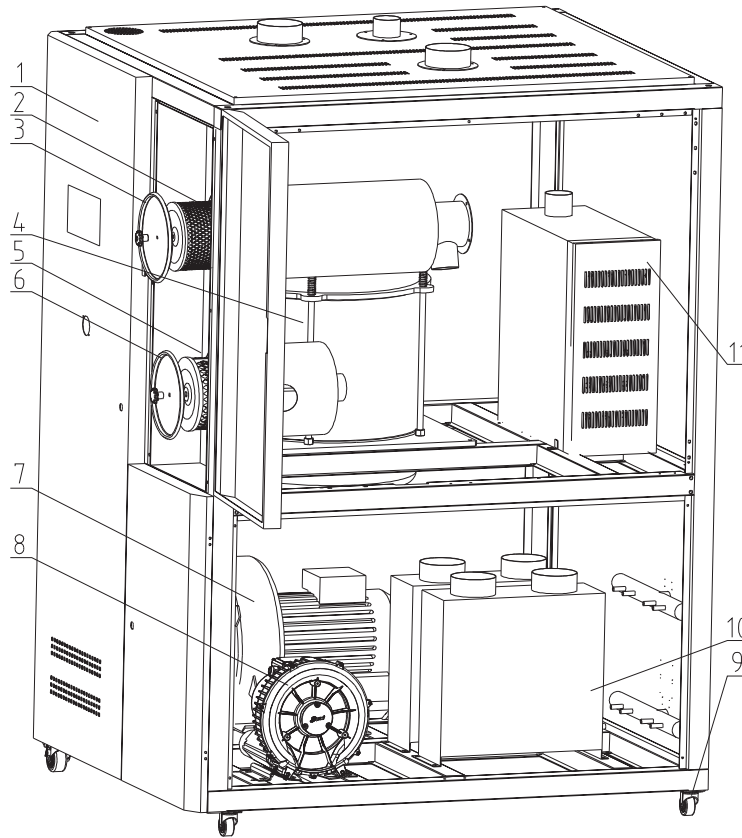
					制图		版号	0	标题	SD-700H	图号		比例	1:1	数量	1
					设计		核准		Heater Assembly				材质			
					校对				 <b>信易電熱機械股份有限公司</b> Shini Plastics Technologies, Inc.			表面要求				
标记	更改前	更改后	更改人	日期	审核		日期	2014.05.29							本图采用第一角画法	



SD-700H  
(Option PHC)

3	-----	Heater cover plate
2	BH70244000850	Pipe heater*
1	-----	Heater case
No.	Part No.	Name

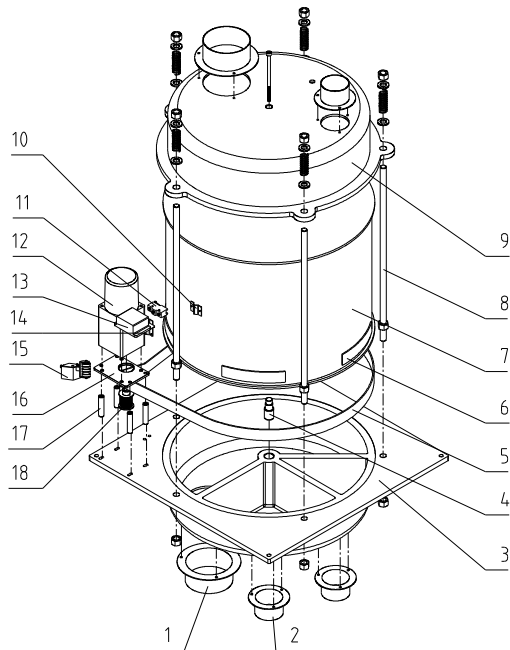
					制图		版号	0	标题	SD-700H	比例	数量
					设计		核		Heater Case			材质
					校对		准		<b>信易電熱機械股份有限公司</b> <b>Shini Plastics Technologies, Inc.</b>	表面要求		
标记	更改前	更改后	更改人	日期	审核		日期	20091202		物料号		



SD-1000H

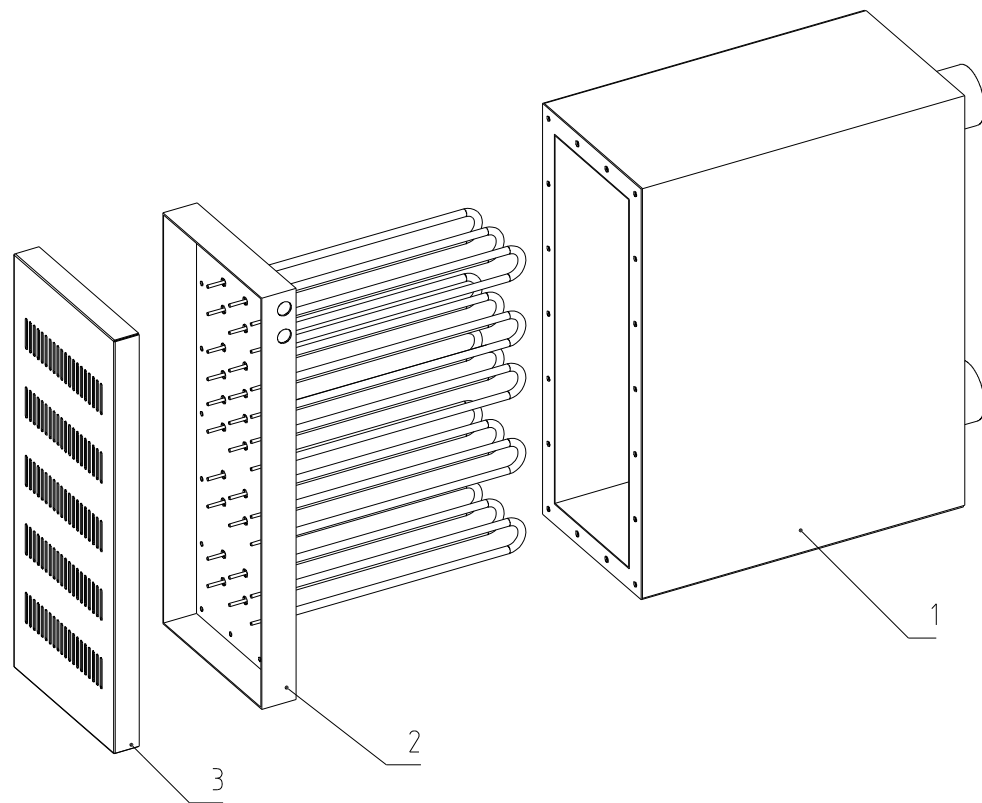
11	-----	Heating case
10	BW88100000020	Cooler(With temperature sensor)
	BL03100049220	Cooler
9	YW03000400000	Brake castor wheel
	YW03000400200	Movable castor wheel
8	BM30053500050	Regen. blower*
7	YM30150300300	Drying blower*
6	YR10026000100	Filter fastener
5	YR50203000000	Filter**
4	-----	Honeycomb assembly
3	YR10026000000	Filter fastener
2	YR50241400100	Filter**
1	-----	Rack metal plate
No.	Part No.	Name

					制图		版号	A	标题	SD-1000H/2000H	图号	比例	1:20	数量	1
					设计		核准		Assembly Drawing		SD-1000H-ALL			材质	
					校对						表面要求				
标记	更改前	更改后	更改人	日期	审核	日期	20090224	信易電熱機械股份有限公司 Shini Plastics Technologies, Inc.			物料号				



18	-----	Synchronous belt
17	-----	Fixing pipe
16	-----	Mounting plate of gear motor
15	-----	Belt tension regulator
14	-----	Micro switch fixing plate
13	-----	Microswitch box
12	YM1094.0000200	Gear motor
11	YE14511200000	Microswitch*
10	-----	Honeycomb fixing plate
9	-----	Honeycomb lower cover
8	BH1100000210	Double-head screw
7	YW71554.0000000	Honeycomb
6	YR00003800000	Synchronous toothed belt
5	YR00357300000	Synchronous belt**
4	-----	Honeycomb installation shaft
3	-----	Honeycomb lower cover
2	-----	Honeycomb flange
1	-----	Honeycomb flange
No.	Part No.	Name

					制图		版号	0	标题	SD-1000H	图号		比例	1:12	数量	1
					设计		核		Honeycomb Assembly				材	质		
					校对		准		 信易電熱機械股份有限公司 Shini Plastics Technologies, Inc.				表	面	要	求
标记	更改前	更改后	更改人	日期	审核		日期	20090224							本图采用第一角画法	

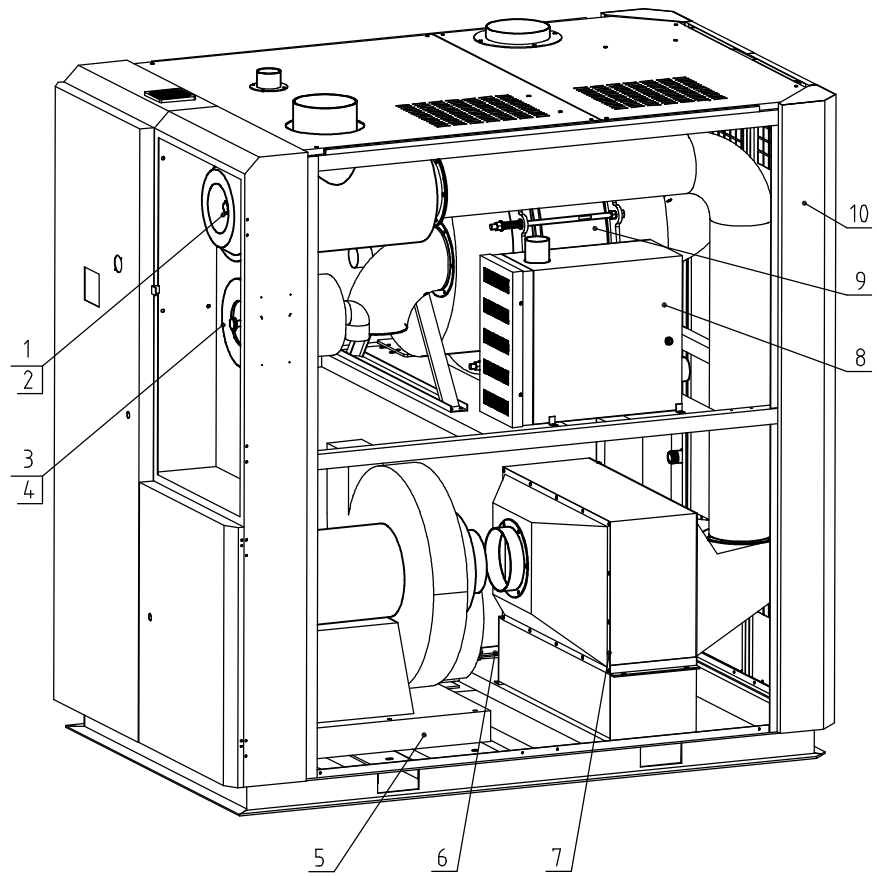


SD-1000H


3	-----	Heater cover plate
2	BH70154000550	Pipe heater*
1	-----	Heater case
No.	Part No.	Name

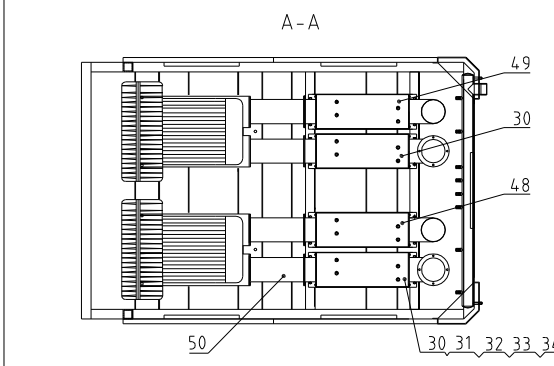
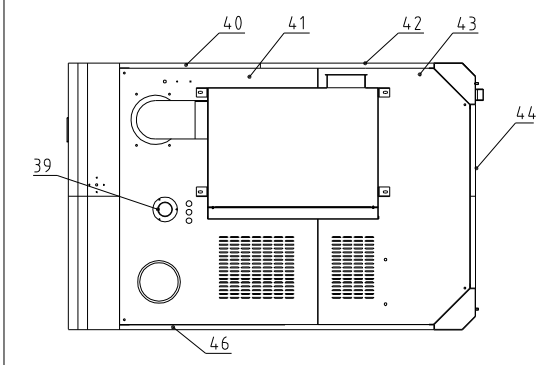
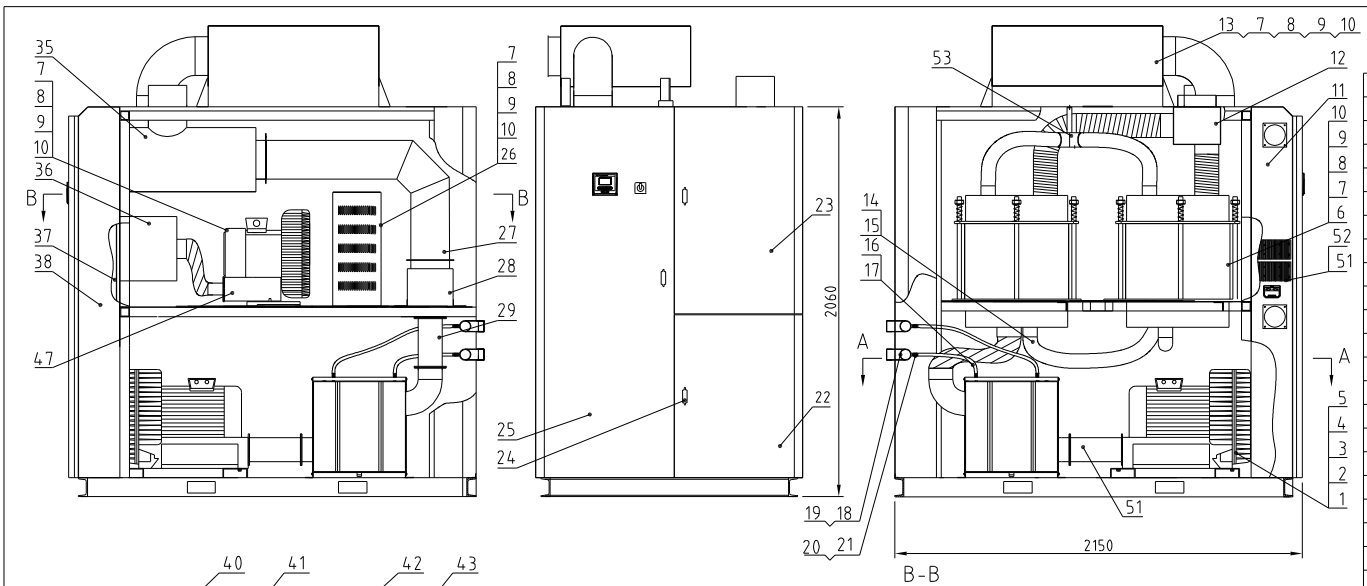
					制图		版号	0	标题	SD-1000H	比例	数量
					设计		核		Heater Case			材质
					校对		准		<b>信易電熱機械股份有限公司</b> <b>Shini Plastics Technologies, Inc.</b>	表面要求		
标记	更改前	更改后	更改人	日期	审核		日期	20091202		物料号		





10		Rack sheet metal			
9	YW71773000200	Honeycomb			
8	BH70150000750	Pipe heater			30KW/230V/400V
7	YW88150001400	Cooler			
6	BM30081000050	Regen. blower			7.5KW
5	YM30001100000	Drying blower			11KW
4	YR50203000000	Regen. filter			
3	YR10026000100	Regen. filter fastener			
2	YR50275700000	Cycler filter			
1	YR10034000000	Cycler filter fastener			
No.	Material number	Name	Mat.	Num.	Remarks

					Dra.		Ver.	0	Title	SD-1500H	Drawing		1:1		1
					Desi.		App. by			Rotor Dehumidifier	SD-1500H-ALL				SPCC1.5
					Check										RAL9010
Mark	Before Mod.	After Mod.	Mod. by	Date	App.		Date	2016	 <b>信易電熱機械股份有限公司</b> <b>Shini Plastics Technologies, Inc.</b>						YW



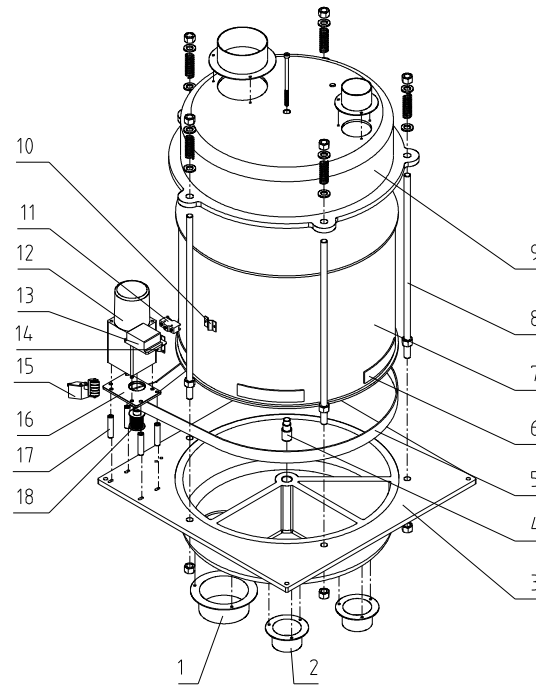
Regen blower power	Drying blower power	Regen heater power	Drying heater power	Drying air flow	Cooling water demand	Ver
7.5KW	13KW*2	28KW	80KW	2000m <sup>3</sup> /hr	240L/min	Ver H

46	SD-2000H-A-51	Right side plate		1	
45	SD-2000H-A-17	Heat exchanger lower flange		1	
44	SD-2000H-A-14	Rear plate		2	
43	SD-2000H-A-24	Cover plate (2)		1	
42	SD-2000H-A-26	side plate		2	
41	SD-2000H-A-23	cover plate (1)		1	
40	SD-2000H-A-50	Left side plate		1	
39	SD-2000H-A-18	Heat exchanger upper flange		1	
38	SD-2000H-A-13	Filter Installation box		1	
37	SD-2000H-A-28	Electrical component installation plate		1	
36	SD-2000H-A-10	Regen filter tank		1	
35	SD-2000H-A-35	Circulating filter tank		1	
34	YW66061300000	Flat washer A grade GB/T97116-longzine		32	
33	YW65006000100	Standard spring washer GB/T93 6		16	
32	YW60062500000	Hexagon screw bolt GB/15781 M6x25-4.8-longzine		16	
31	YW64.000600300	Hexagon nut GB/T6170 M6-longzine		16	
30	BW88300000510	Cooler 1 SD-3000H-E-ALL		2	
29	SD-2000H-A-42	Return air pipe		1	
28	SD-2000H-A-09	Return air three-way		1	
27	SD-2000H-A-19	Return air right-angle elbow		1	
26	SD-2000H-A-08	Heating case		1	
25	SD-2000H-A-41	Left front door		1	
24	YW00000000200	Electric cabinet door lock		3	
23	SD-2000H-A-30	Right upper door		1	
22	SD-2000H-A-29	Right lower door		1	
21	YW02192800000	Blue band pipe clamp ABA19-28mm		32	
20	YR60161604.000	Pressure resistant water pipe MAL-16		10	
19	YW64.001000100	Hexagon nut GB/T6170 M10-longzine		4	
18	SD-2000H-A-34	Water flow regulator		2	
17	YW02501200000	Stainless steel pipe clamp 5.5"		20	
16	YW72053600000	Heat resistant pipe 5"		2	
15	YW02003500000	Steel wire hose 3.5		22	
14	YW72033600100	Heat resistant air pipe 3"		1	
13	SD-2000H-B-ALL	Drying heating box		1	
12	SD-2000H-A-20	Three-way		1	
11	SD-2000H-A-12	Control box		1	
10	YW66081900000	Flat gasket 8x19x2.0longzine		80	
9	YW65008000100	Standard spring washer GB/T93 8-longzine		40	
8	YW64.080600000	Hexagon nut GB/T6170 M8-longzine		40	
7	YW60082500100	Hexagon screw bolt GB/15783 M8x25-12.9-longzine		40	
6	SD-1000H-B-ALL	Honeycomb assembly		2	
5	YW6614.2700000	Flat washer A grade GB/T9711 14/15.5x28x2.5longzine		12	
4	YW65012000000	Standard spring washer GB/T93 12-longzine		6	
3	YW64.012100000	Hexagon nut GB/T6170 M12-longzine		6	
2	YW60125000100	Hexagon screw bolt GB/15781 M12x50-4.8-longzine		6	
1	YM10291000100	Ruijing blower 2HB910H16		2	

53	SD-2000H-A-48	Three way 1		1	
52	YW6304.0600000	Cross recessed pan head screw GB/T818 M4x6-longzine		8	
51	YW90120700000	Aluminum cooler		2	
50	SD-2000H-A-64	blower connector		4	
49	SD-2000H-A-63	Cooler return air pipe		1	
48	SD-2000H-C-ALL	Cooler(has side hole)		2	
47	YM30283000100	Ruijing blower 2HB830H26		1	

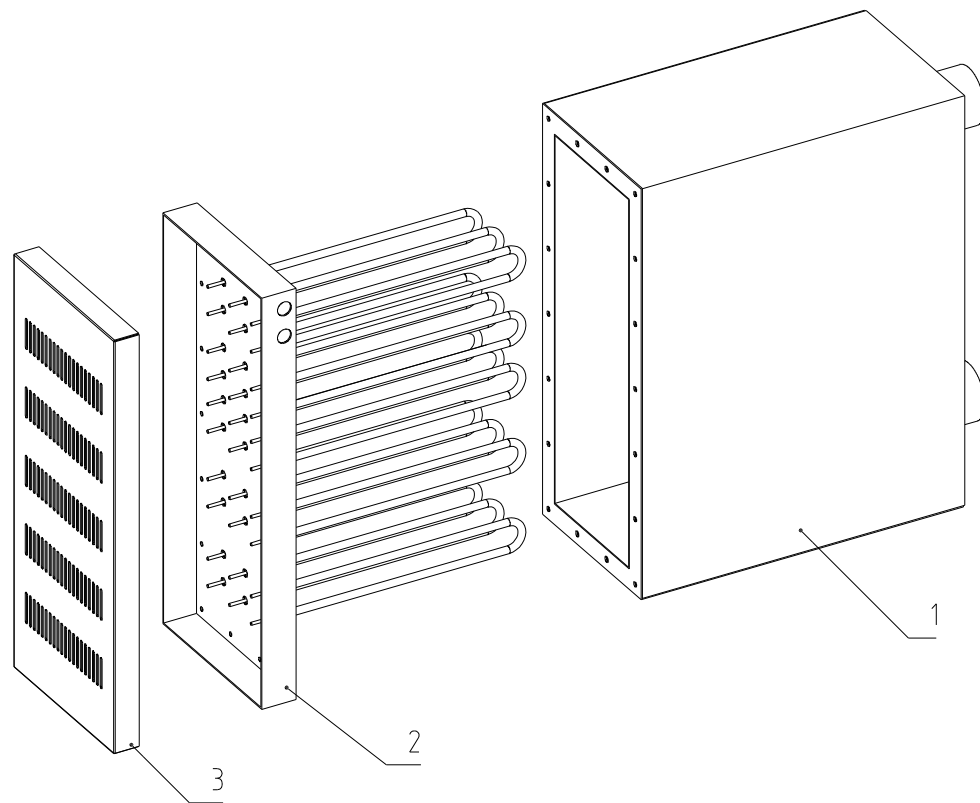
序号	代号	名称	材质	数量	备注	序号	代号	名称	材质	数量	备注
		制图				图号	SD-2000H	比例	1:25	数量	1
		设计					转轮除湿机			材质	/
		校对						表面要求			/
标记	更改前	更改后	更改人	日期	审核	日期		物料号			/

**SHINI** 信易电热机械股份有限公司  
Shini Plastics Technologies, Inc.



18	-----	Synchronous belt
17	-----	Fixing pipe
16	-----	Mounting plate of gear motor
15	-----	Belt tension regulator
14	-----	Micro switch fixing plate
13	-----	Microswitch box
12	YM1094.0000200	Gear motor
11	YE14511200000	Microswitch●
10	-----	Honeycomb fixing plate
9	-----	Honeycomb lower cover
8	BH11100000210	Double-head screw
7	YW71554.0000000	Honeycomb
6	YR0000038000000	Synchronous toothed belt
5	YR00357300000	Synchronous belt●●
4	-----	Honeycomb installation shaft
3	-----	Honeycomb lower cover
2	-----	Honeycomb flange
1	-----	Honeycomb flange
No.	Part No.	Name

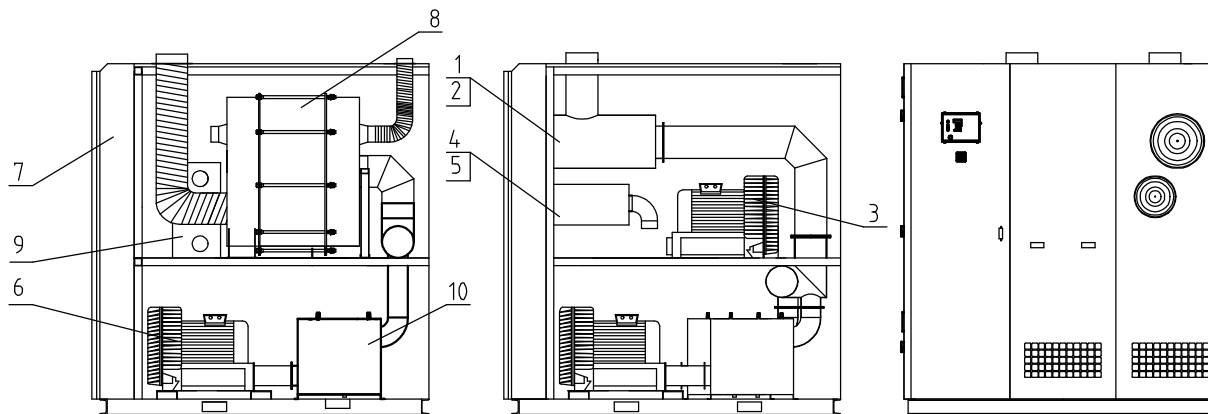
					制图	版号	0	标题	SD-2000H	图号	比例	1:12	数量	1
					设计	核准		Honeycomb Assembly			材质	/		
					校对						表面要求			
标记	更改前	更改后	更改人	日期	审核	日期	20090224	 信易電熱機械股份有限公司 Shini Plastics Technologies, Inc.			本图采用第一角画法			



SD-2000H

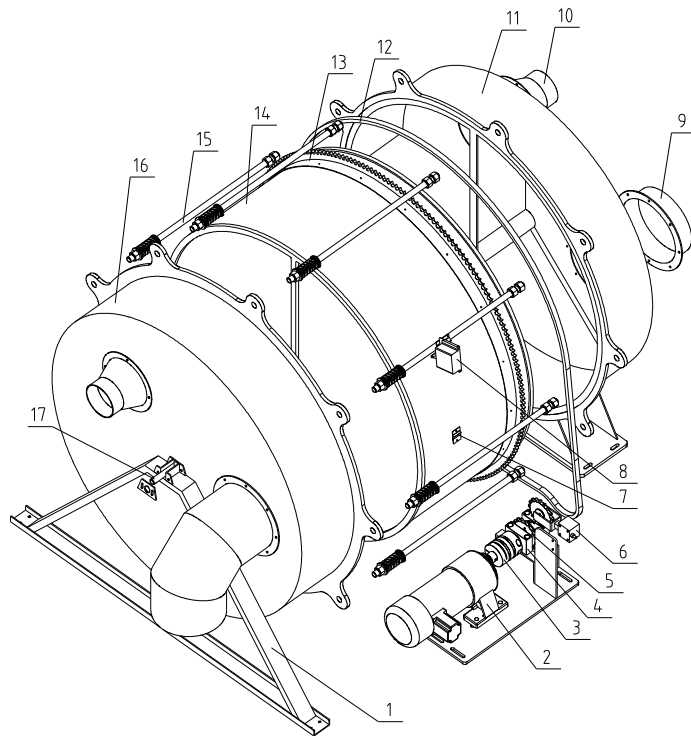
3	-----	Heater cover plate
2	BH70284000650	Pipe heater*
1	-----	Heater case
No.	Part No.	Name

					制图		版号	0	标题	SD-2000H	比例	数量
					设计		核		Heater Case			材质
					校对		准		<b>信易電熱機械股份有限公司</b> <b>Shini Plastics Technologies, Inc.</b>	表面要求		
标记	更改前	更改后	更改人	日期	审核		日期	20091202		物料号		



10		Cooler		6	
9		Heating case		1	
8		Honeycomb assembly		1	
7		Rack sheet metal		1	
6	YM30200300300	Drying blower		3	13x3KW
5	YR50241400100	Filter		1	
4	YR10026000100	Filter fastener		1	
3	YM30150300300	Regen. blower		1	9KW
2	YR50277500000	Filter		1	
1	YR10034000000	Filter fastener		1	
No.	Material number	Name	Mat.	Num.	Remarks

					Dra.		Ver.	0	Title	SD-3000H	Drawing no.	Scale	1:1	Num.	1
					Desi.		App. by			Rotator Dehumidifier	SD-3000H-ALL			Mat.	SPCC1.5
					Check		Date	2016	<b>信易電熱機械股份有限公司</b> <b>Shini Plastics Technologies, Inc.</b>	Surface req.	RAL9010				
Mark	Before Mod.	After Mod.	Mod. by	Date	App.	Date	2016	Mat No.		YW					



SD-3000H

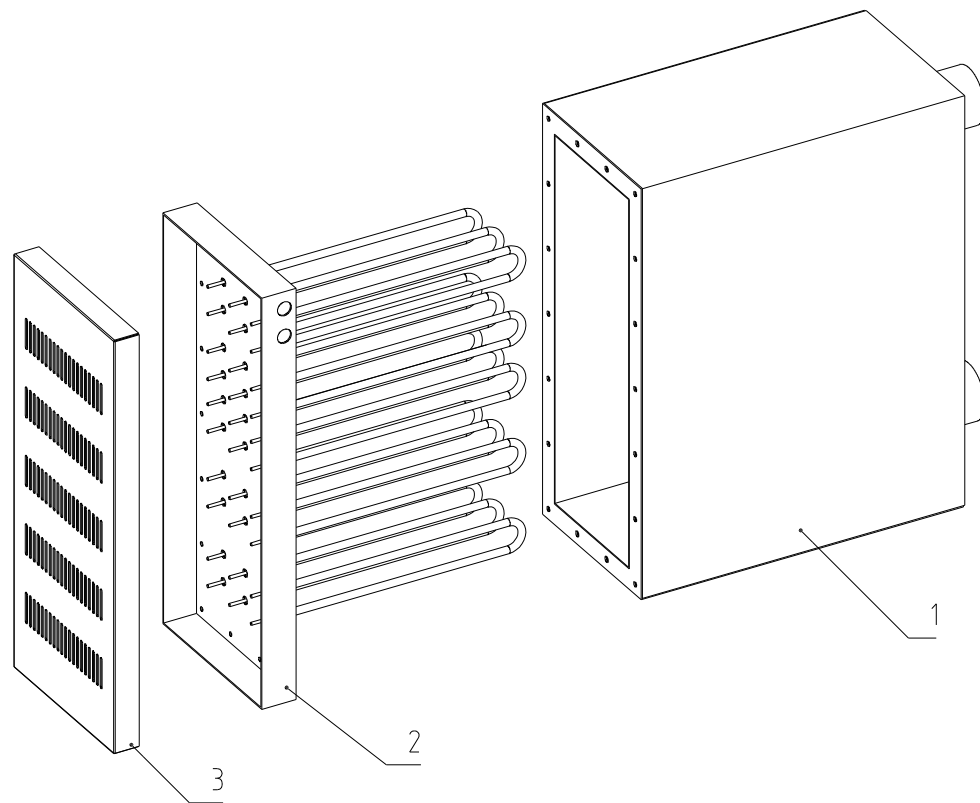
17	-----	Honeycomb installation shaft
16	-----	Left honeycomb cover
15	BH11100000210	Double-head screw
14	YW71965400100	Honeycomb
13	-----	Driven chain wheel
12	YW09121600000	Roller chain
11	-----	Right honeycomb cover
10	-----	Honeycomb flange
9	-----	Honeycomb flange
8	YE14.000100000	Position limit switch
7	-----	Honeycomb fixing plate
6	-----	Chain driven tensioner
5	-----	Driving chain wheel
4	YW11600500000	Bearing
3	YW90263700000	Shaft coupler
2	YM10281500000	Gear motor
1	-----	Honeycomb shaft
No	Part No.	Name

					制图		版号	A	标题	SD-3000H	图号	
					设计		核准		Honeycomb Assembly		SD-3000H-B-ALL	
					校对							
标记	更改前	更改后	更改人	日期	审核		日期	20160123				



信易電熱機械股份有限公司  
Shini Plastics Technologies, Inc.

比例	1:13	数量	1
		表面要求	
物料号	xxxxxxxxxxxx		



SD-3000H

3	-----	Heater cover plate
2	BH70324000550	Pipe heater*
1	-----	Heater case
No.	Part No.	Name

					制图		版号	0	标题	SD-3000H	比例	数量
					设计		核		Heater Case			材质
					校对		准		<b>信易電熱機械股份有限公司</b> <b>Shini Plastics Technologies, Inc.</b>	表面要求		
标记	更改前	更改后	更改人	日期	审核		日期	20091202		物料号		