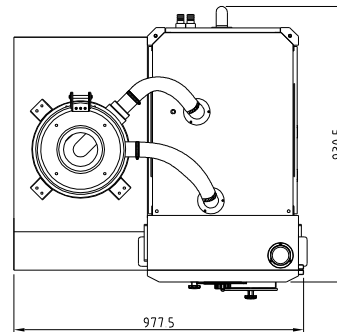
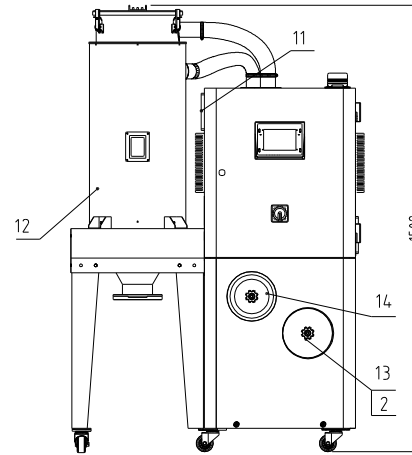
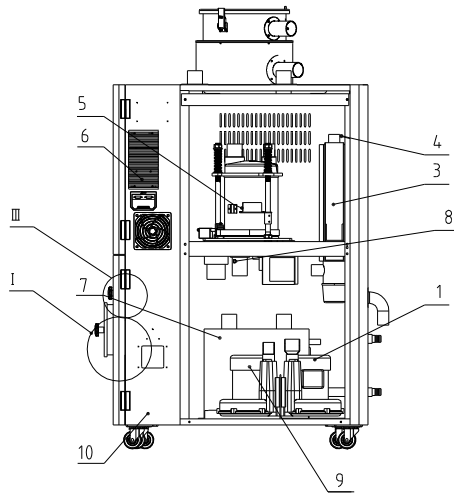
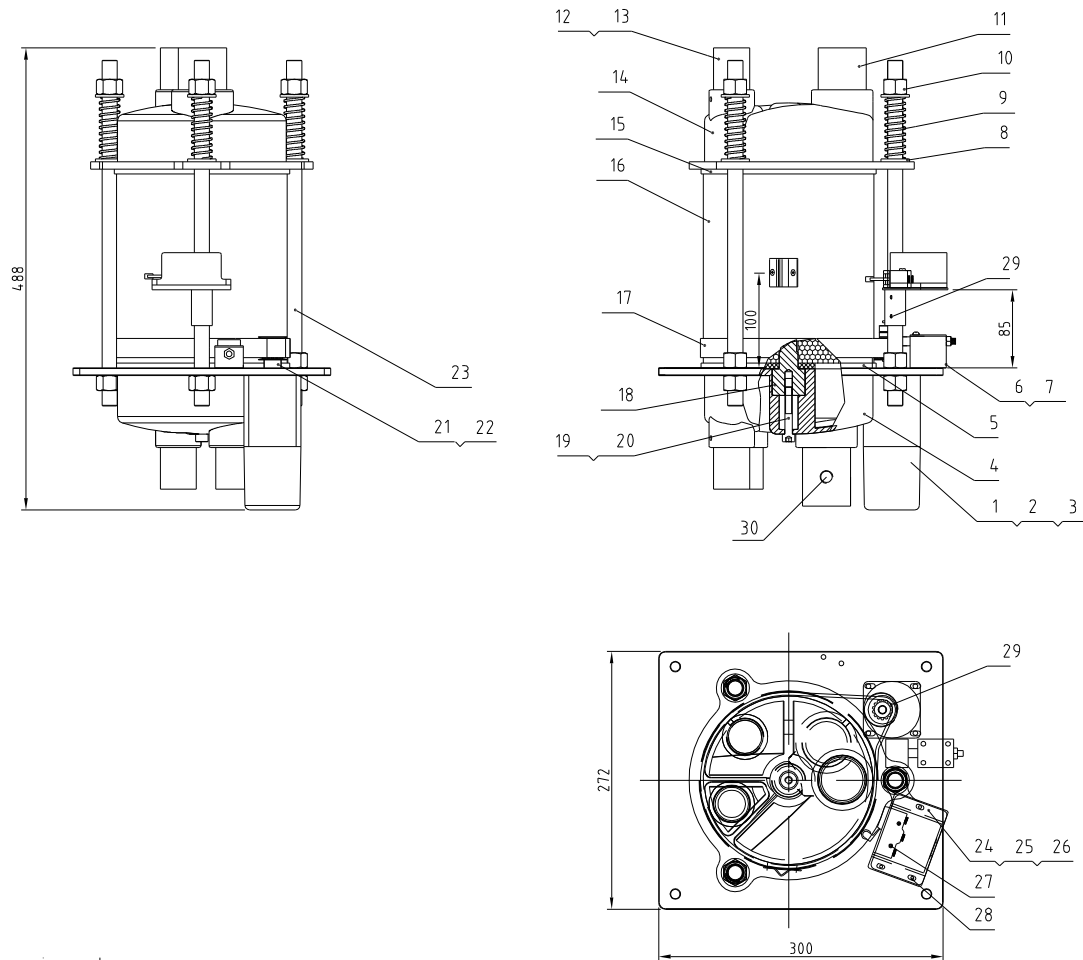


Regen blower power	Drying blower power	Regen heater power	Dehumidifying air quantity	Ver.
0.12KW	0.2KW	3KW	4.0m ³ /hr	Ver.G
Interface size of cooling water inlet and outlet pipe		Cooling water pressure	Cooling water flow	Cooling water temp
Pagoda connector 3/4-φ23		3~5Kg	5L/min	Normal temp



14	YR50128300000	Filter ADC18		1	Wearing part
13	YR50128300100	Filter ADC18 outer 132 × height 83 × inner 72/17 tight material white silicone		1	Wearing part
12	SDD-40U/40H-B-ALL	Storage tank assembly	Assembly	1	
11	YM601212064.00	Exhaust fan 12×12CM/24VAC 50/60HZ With plastic net		1	
10	YE80153100100	15W Motor speed US315C (Zhong@alide)		1	
9	YM4.0201000100	Ruqing blower ZHB010H0610 12KW) 3φ:230V±0.0V/50/60Hz thermal pro		1	
8	BE90342500050	Thermocouple STMProbe length 13 wires, length 2.5 meters/MV13		1	
7	BW88008000020	Cooler		1	
6	YW90120700000	Aluminum cooler		2	
5	SD-40H-B-ALL	Honeycomb assembly	Assembly	1	
4	SD-40H-D-ALL	Drying heater	Assembly	1	
3	SD-40H-C-ALL	Regenerative heater	Assembly	1	
2	BR904.02500010	Filter barrel cover SD-40H-ALL-25	PC	1	
1	YM4.0211000100	Ruqing blower ZHB110H0610 2KW) 3φ:230V±0.0V/50/60Hz thermal pro		1	
序号	代号	名称	材料	数量	备注

					制图		版号		标题	SDD-40U/40H	图号		比例	1:16	数量	1
					设计		核准		欧化除湿干燥组合				⊕	材质		
					校对				SHINI 信易电热机械股份有限公司 Shini Plastics Technologies, Inc.				表面要求			
标记	更改前	更改后	更改人	日期	审核		日期					物料号				



Technical requirements:

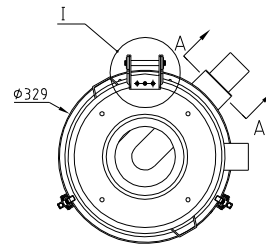
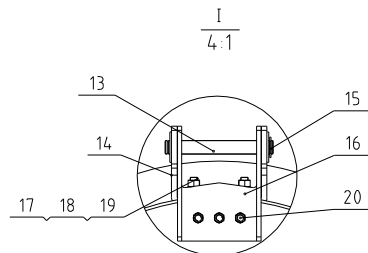
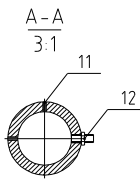
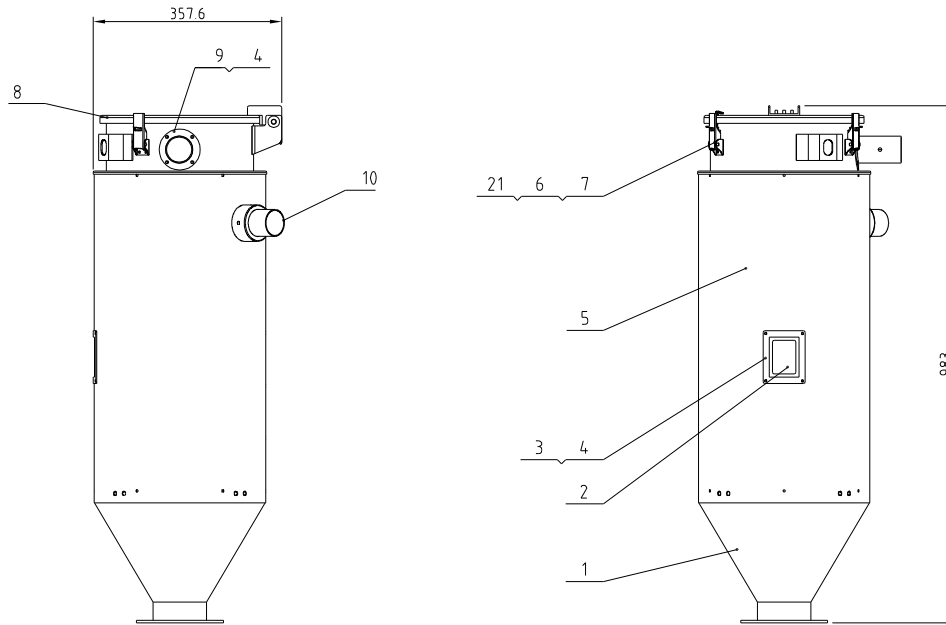
1. Use red silicone adhesive on one side of item 5 and high-temperature resistant silicone adhesive on item 4; Number 15 pieces are bonded with red silicone on one side and number 14 pieces are bonded with high-temperature resistant silicone
2. The joints between item 11 and item 12, as well as item 4 and item 14, are bonded with high-temperature resistant silicone adhesive to prevent air leakage;
3. Adjust the position of item 6 on site to keep item 17 in a tensioned state, and drill holes and tap teeth on item 4 to lock item 6;
4. Number 9 has a compression capacity of 15;

30	SD-40H-B-12	2" Straight pipe 1/4"PT		1	
29	YW68004500000	Inner hexagon flat end set screw GB/T777 M4x5-Longzine		3	
28	YW63040600000	Cross recessed pan head screw GB/T-818 M4x6-Longzine		3	
27	YW63032500000	Cross recessed pan head screw GB/T-818 M3x25-Longzine		2	
26	YR40000600600	Micro switch box	ABS	1	
25	YE14511200000	Position limit switch YBLXW-5/11G2	Assembly	1	
24	BL04402200020	Micro switch fixed piece SD-40H-A-22	SUS201	1	
23	SD-40H-B-07	Double head screw	Q235A	3	
22	YW68041000000	Inner hexagon flat end set screw GB/T777 M4x10-Longzine		1	
21	YW08001000100	Synchronous belt pulley	45	1	
20	YW65008000100	Standard spring washer GB/T93 8-Longzine		2	
19	YW61084500000	Inner hex column head screw GB/T701 M8x45-12.9(Full tooth)-Longzine		2	
18	SD-40H-B-05	Honeycomb mount shaft	45	2	
17	YR00025400000	Synchronous belt 20x254XL	Assembly	1	
16	YW71018000500	Honeycomb ϕ 180x200 (SD-40H-B-1b)	Assembly	1	
15	SD-40H-B-06	Silicone Teflon gasket (upper)	Red sical gel + Teflon	1	
14	SD-40H-B-01	Honeycomb upper cover	YL112	1	
13	YW68051000000	Inner hexagon flat end set screw GB/T777 M5x10-Longzine		5	
12	SD-40H-B-04	1.5-inch straight pipe	SUS201	3	
11	SD-40H-B-03	2-inch straight pipe	SUS201	1	
10	YW64001600000	Hexagonal nut GB/T6170 M16-Longzine		6	
9	YW01201800000	Spring ISD-700H-B-071	70	3	Borrowed
8	YW66163000000	Flat washer A grade GB/T197-1.16(17.5x30x3)-Longzine		6	
7	YW63044500000	Cross recessed pan head screw GB/T-818 M4x45-Longzine		2	
6	SD-40H-B-40	Belt regulator	Assembly	1	Borrowed
5	SD-40H-B-09	Silicone Teflon gasket lower	Red sical gel + Teflon	1	
4	SD-40H-B-02	Honeycomb lower cover	YL112	1	
3	YW64040700000	Hexagonal nut GB/T41 M4x0.7-Longzine		4	
2	YW61059500000	Inner hex column head screw GB/T701 M5x95-12.9-Longzine		4	
1	YM50315300100	Speed motor 3IK15RGN-C/3GN500K2(hongdalide)	Assembly	1	

序号	代号	名称	材料	数量	备注
		标题	SD-40H		
		图号	SD-40H-B-ALL		
		比例			
		数量			
		表面要求			
		物料号			



制图	版号	标题	图号	比例	数量
设计	核准	SD-40H	SD-40H-B-ALL		
校对	核准	蜂巢转轮			
审核	核准				
标记	更改前	更改后	更改人	日期	审核

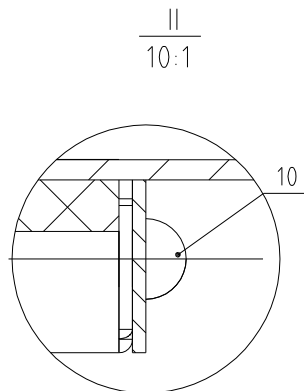
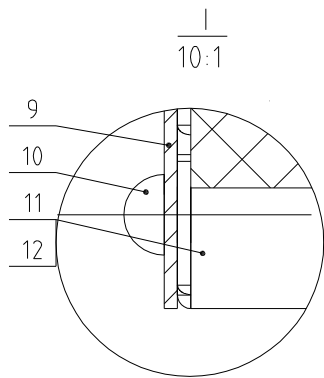
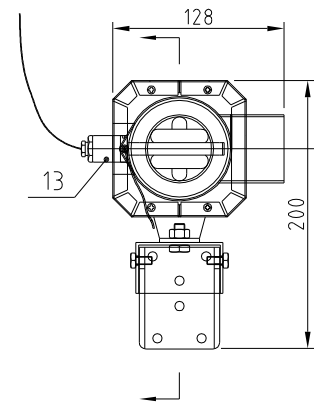
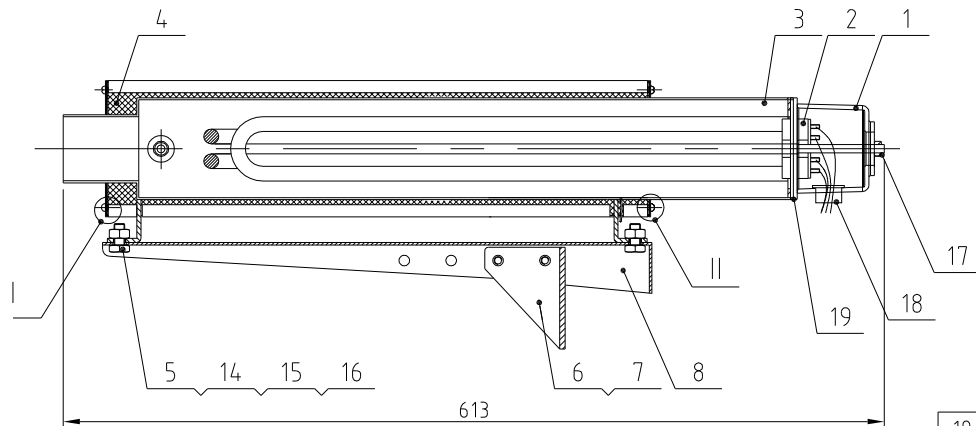


21	YR40000600800	Snap hook plastic block SAL-6U		2	
20	YW61061200000	Inner hexagon cylinder head screw GB/T70.1 M6×12		3	
19	YW66051000000	Flat washer A grade GB/T97.15-Longzine		4	
18	YW60512201000	Inner hex column head screw GB/T70.1 M5×12-A2-70(SUS)		4	
17	YW64000500000	Hexagonal nut M5 anti-loose		5	
16	SCD-40U/40H-B-09	Upper hinge	SUS201(3.0)	1	Revised
15	YW66000500000	E-type washer ES		2	
14	BL02012000720	Lower hinge	SUS201	1	
13	BH10006003110	Hinge pine SAL-6U-31	SUS201	1	
12	YE905308004.00	Thermocouple SCD-230U/120H-ALL-08	Assembly	1	
11	YW68061000000	Inner hex flat end lock screw GB/T77 M6×10-Longzine		2	
10	SCD-40U/40H-B-06	Down-blow pipe assembly	SUS201	1	Revised
9	SCD-40U/40H-B-05	Air exhaust pipe	SUS201	1	Revised
8	BL08040400120	Hopper cover SCD-40U/40H-B-08	Weldment	1	
7	YW64040700100	Non-metal insert hexagon nut GB/T889.1 M4		4	
6	YW020030004.00	Spring buckle adjustable SAL-6U-A-35	SUS304	2	
5	SDD-40U/40H-B-02	Insulation board	SUS430(0.8)	1	
4	YW62051000000	Large cross socket flat head screw JIS1111 M5×10-A2-70(SUS)		8	
3	SCD-40U/40H-B-07	Sight glass component 1	SUS201(1.5)	1	Revised
2	BR90204000010	Sight glass	PC	1	
1	SDD-40U/40H-B-01	Material storage tank	Assembly	1	
序号	代号	名称	材质	数量	备注

Technical requirements:
Number 3 should be fixed with silicone glue during assembly.

标记	更改前	更改后	更改人	日期	制图	版号	标题	图号	比例	数量	材质	表面要求	物料号
					设计	核准	SDD-40U/40H-保温料桶组件	SDD-40U/40H-B-ALL	1:1	1			
					校对								
					审核								

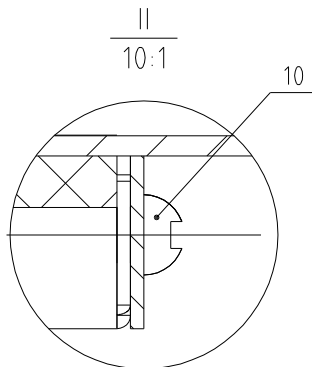
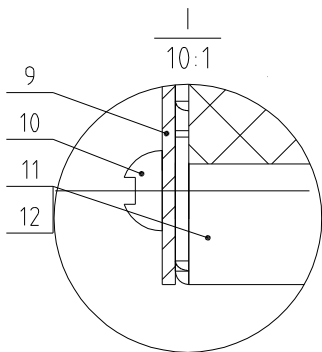
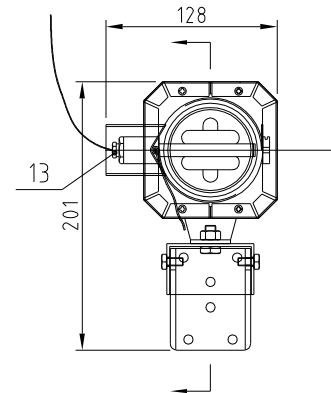
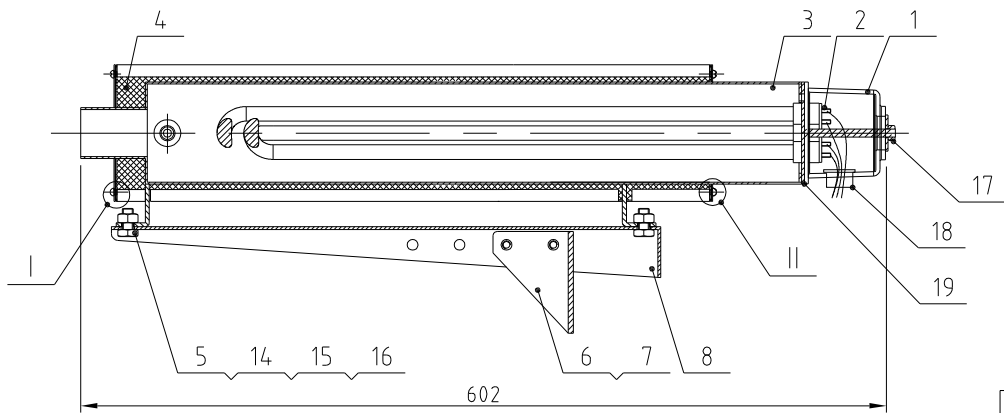
SHINI 信易电热机械股份有限公司
Shini Plastics Technologies, Inc.



19	YR90000200000	Flange washer 2" SD-400H-A-45	Silica gel	1	
18	YE67013500000	Cable head PG13.5		1	
17	YW64000600300	Hex nut GB/T6170 M6		1	
16	YW66081900000	Flat washer 8x19x2.0 Longzine		4	
15	YW64080600000	Hex nut GB/T6170 M8-Longzine		2	
14	YW65008000100	Standard spring washer GB/T93 8-Longzine		2	
13	BH90115000050	EGO detector	Assembly	1	
12	SD-40H-C-03	Heater cover plate 2	SUS201	1	
11	SD-40H-C-02	Heater cover plate 1	SUS201	1	
10	YW69040900000	Open end blind rivets with break pull mandrel and flat round head in aluminium GB/T 12618 4x9		8	
9	SD-40H-D-02	Heater cover plate	SUS201	1	
8	SD-40H-C-05	Heater fixed frame	SPCC2.0	1	
7	YW60061000000	Hexagon screw bolt GB/T5781 M6x10-4.8-Longzine		4	
6	SD-40H-C-06	Heater fixed angle	SPH4.0	1	
5	YW60081600100	Hexagon screw bolt GB/T5781 M8x16-4.8-Longzine		2	
4	YP62820140000	Fire blanket 250x730mm		1	
3	SD-40H-D-01	Heating Tank	Weldment	1	
2	BH70440006150	Heat pipe 4KW flange fixing 3φ4.00V	Assembly	1	
1	YR40200000100	bakelite cover	PF	1	

序号	代号	名称	材质	数量	备注
----	----	----	----	----	----

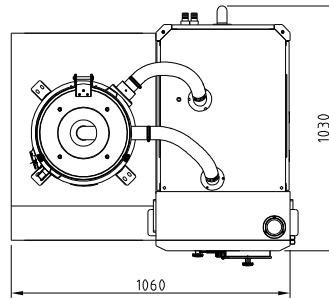
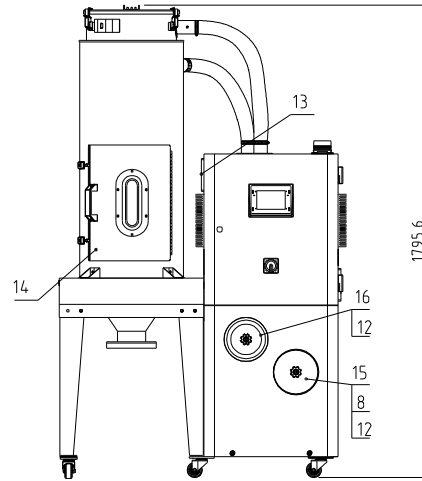
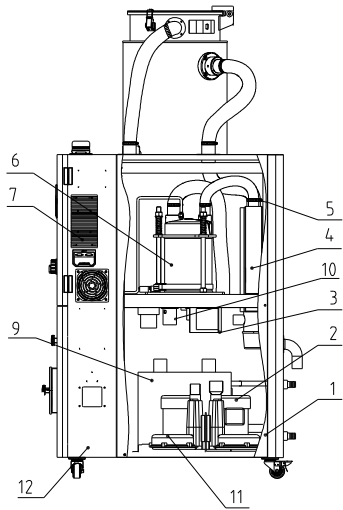
					制图	版号	标题	SD-40H	图号	比例	数量
					设计	核准	干燥加热器		SD-40H-D-ALL		材质
					校对		信易电热机械股份有限公司 Shini Plastics Technologies, Inc.			表面要求	
标记	更改前	更改后	更改人	日期	审核	日期					物料号



19	YR90000200000	Flange washer 2" SD-400H-A-45	Silica gel	1	
18	YE67013500000	Cable head PG13.5		1	
17	YW64000600300	Hex nut GB/T6170 M6		1	
16	YW66081900000	Flat washer 8x19x2.0 Longzine		4	
15	YW64080600000	Hex nut GB/T6170 M8-Longzine		2	
14	YW65008000100	Standard spring washer GB/T93 8-Longzine		2	
13	BH90115000050	EGO Detector	Assembly	1	
12	SD-40H-C-03	Heater cover plate 2	SUS201	1	
11	SD-40H-C-02	Heater cover plate 1	SUS201	1	
10	YW62050500000	Large cross socket flat head screw JS1111 M5x5-Longzine		8	
9	SD-40H-C-04	Heater cover plate	SUS201	1	
8	SD-40H-C-05	Heater fixed frame	SPCC2.0	1	
7	YW60061000000	Hexagon screw bolt GB/T5781 M6x10-4.8-Longzine		4	
6	SD-40H-C-06	Heater fixing angle	SPH4.0	1	
5	YW60081600100	Hexagon screw bolt GB/T5781 M8x16-4.8-Longzine		2	
4	YP62820140000	Fire blanket 250X730mm		1	
3	SD-40H-C-01	Heating Tank	Weldment	1	
2	BH70340000150	Heat pipe 3KW fixed flange 3φ400V	Assembly	1	
1	YR40200000100	Bakelite cover	PF	1	
序号	代号	名称	材质	数量	备注

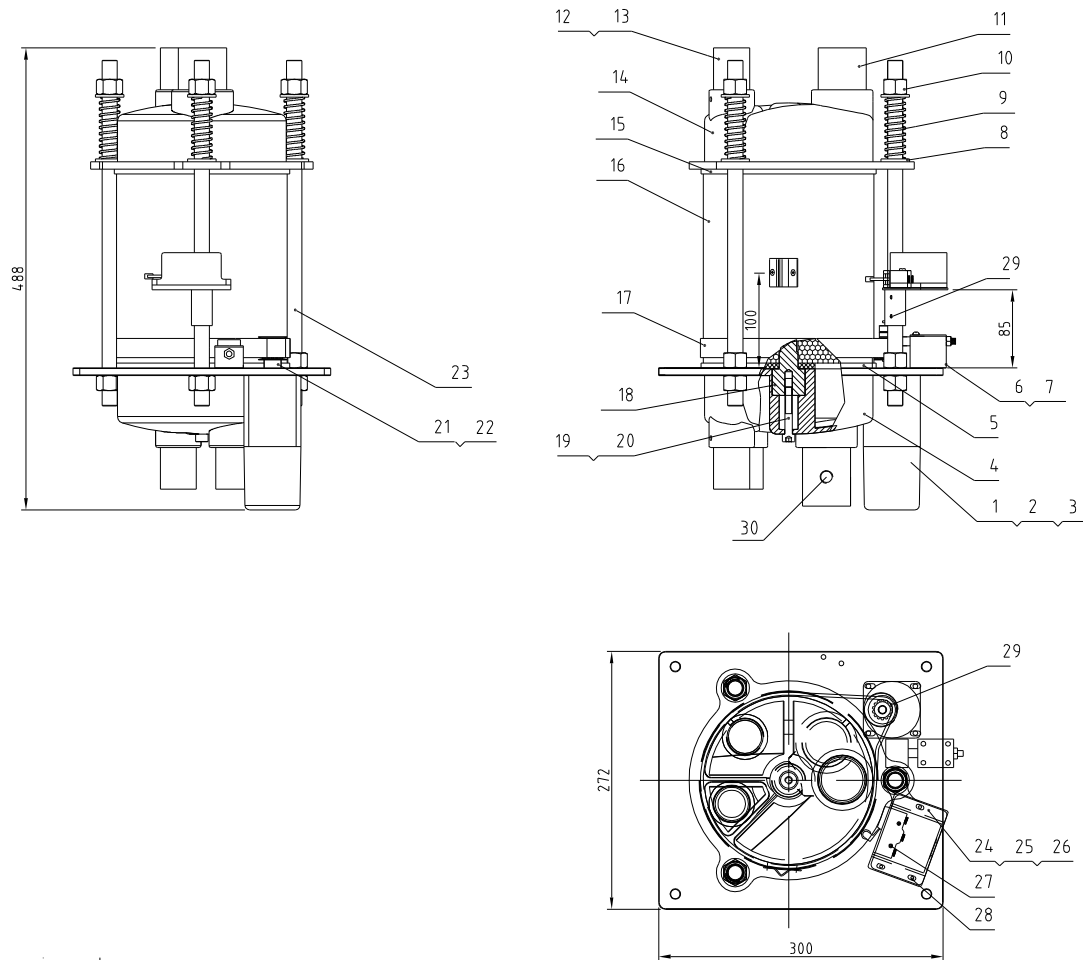
					制图		版本号	标题	SD-40H	图号	比例	数量
					设计		核准	再生加热器		SD-40H-C-ALL		材质
					校对			信易电热机械股份有限公司 Shini Plastics Technologies, Inc.			表面要求	
标记	更改前	更改后	更改人	日期	审核		日期					物料号

Regen blower power	Drying blower power	Regen. heater power	Dehumidifying air quantity	Ver.
0.12KW	0.2KW	3KW	4.0m ³ /hr	Ver.G
Interface size of cooling water inlet and outlet pipe		Cooling water pressure	Cooling water flow	Cooling water temp
Pagoda connector 3/4-#23		3~5Kg	5L/min	Normal temp



16	YR50128300000	Filter ADC18		1	Wearing part
15	YR50128300100	Filter ADC18 Outer 132 * Height 83 * Inner 72/17		1	Wearing part
14	SDD-80U/40H-B-ALL	Storage tank assembly	Assembly	1	
13	YM60121206400	Exhaust fan 12*12CM/24VAC 50/60HZ With plastic net		1	
12	YW09675100000	Star nut 5/16"		2	
11	YM40201000100	Ruujing blower 2#B010#0610 12KW1 3Φ 230V±0.0V/50/60H thermal pro		1	
10	BE90342500050	Thermocouple 51TMProbe length 13 wires, length 25 meters3MR13		1	
9	BW88008000020	Cooler		2	
8	BR90402500010	SD-40H-ALL-25Filter barrel cover		1	
7	YW90120700000	Aluminum cooler		2	
6	SD-40H-B-ALL	Honeycomb assembly	Assembly	1	
5	SD-40H-D-ALL	Drying heater	Assembly	1	
4	SD-40H-C-ALL	Regenerative heater	Assembly	1	
3	YE80153100100	15W Motor speed US315C (Zhengdalide)		1	
2	YM40211000100	Ruujing blower 2#B110#0610 12KW1 3Φ 230V±0.0V/50/60H thermal pro		1	
1	YR60161604000	Pressure resistant water pipe MAX-16 inner diameter 16mm, pressure-resistance 10bar (Korean Samsung brand)	Rubber	2	
序号	代号	名称	材料	数量	备注

					制图		版号		标题	SDD-80U/40H	图号	比例	1:18	数量	1
					设计		核准		欧化除湿干燥组合				材质		
					校对				SHINI 信易电热机械股份有限公司 Shini Plastics Technologies, Inc.		表面要求				
标记	更改前	更改后	更改人	日期	审核		日期					物料号			

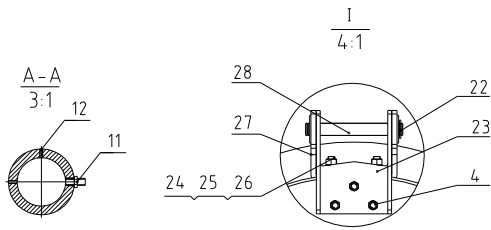
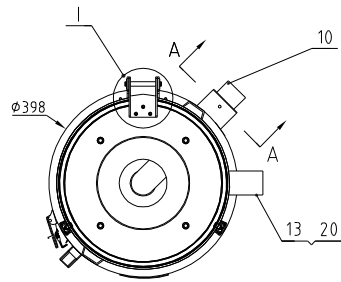
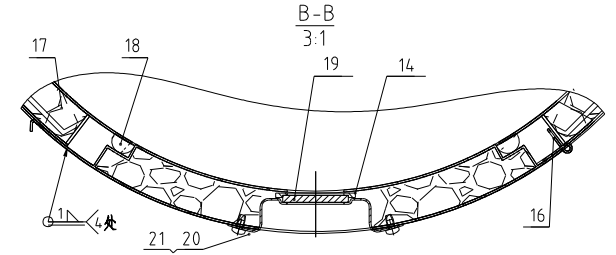
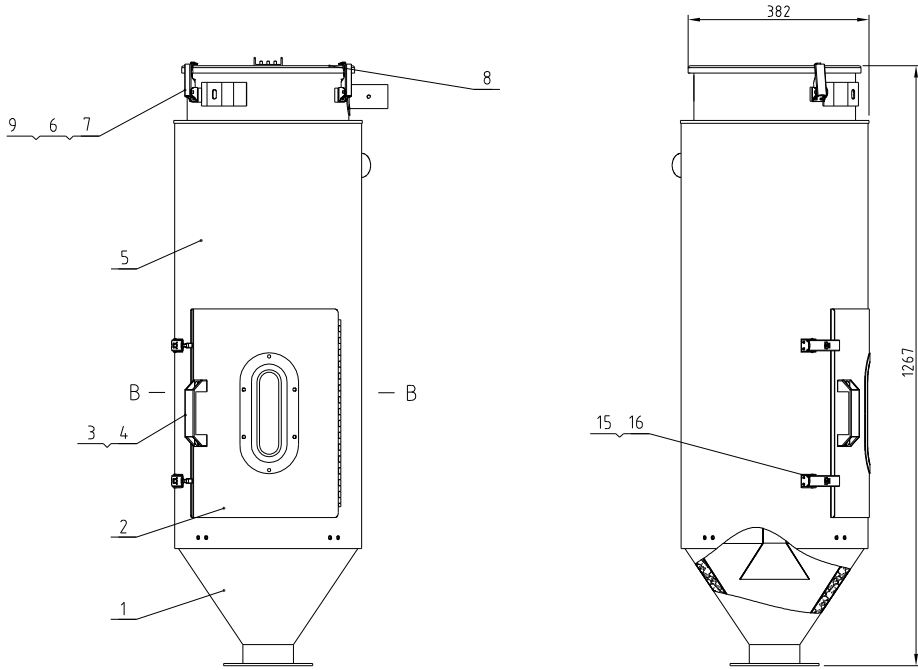


Technical requirements:

1. Use red silicone adhesive on one side of item 5 and high-temperature resistant silicone adhesive on item 4; Number 15 pieces are bonded with red silicone on one side and number 14 pieces are bonded with high-temperature resistant silicone
2. The joints between item 11 and item 12, as well as item 4 and item 14, are bonded with high-temperature resistant silicone adhesive to prevent air leakage;
3. Adjust the position of item 6 on site to keep item 17 in a tensioned state, and drill holes and tap teeth on item 4 to lock item 6;
4. Number 9 has a compression capacity of 15;

30	SD-40H-B-12	2" Straight pipe 1/4"PT		1	
29	YW68004500000	Inner hexagon flat end set screw GB/T777 M4x5-Longzine		3	
28	YW63040600000	Cross recessed pan head screw GB/T-818 M4x6-Longzine		3	
27	YW63032500000	Cross recessed pan head screw GB/T-818 M3x25-Longzine		2	
26	YR40000600600	Micro switch box	ABS	1	
25	YE14511200000	Position limit switch YBLXW-5/11G2	Assembly	1	
24	BL04402200020	Micro switch fixed piece SD-40H-A-22	SUS201	1	
23	SD-40H-B-07	Double head screw	Q235A	3	
22	YW68041000000	Inner hexagon flat end set screw GB/T777 M4x10-Longzine		1	
21	YW08001000100	Synchronous belt pulley	45	1	
20	YW65008000100	Standard spring washer GB/T93 8-Longzine		2	
19	YW61084500000	Inner hex column head screw GB/T701 M8x45-12.9(Full tooth)-Longzine		2	
18	SD-40H-B-05	Honeycomb mount shaft	45	2	
17	YR00025400000	Synchronous belt 20x254XL	Assembly	1	
16	YW71018000500	Honeycomb ϕ 180x200 (SD-40H-B-1b)	Assembly	1	
15	SD-40H-B-06	Silicone Teflon gasket (upper)	Red sical gel + Teflon	1	
14	SD-40H-B-01	Honeycomb upper cover	YL112	1	
13	YW68051000000	Inner hexagon flat end set screw GB/T777 M5x10-Longzine		5	
12	SD-40H-B-04	15-inch straight pipe	SUS201	3	
11	SD-40H-B-03	2-inch straight pipe	SUS201	1	
10	YW64001600000	Hexagonal nut GB/T6170 M16-Longzine		6	
9	YW01201800000	Spring ISD-700H-B-071	70	3	Borrowed
8	YW66163000000	Flat washer A grade GB/T97.1 16(17.5x30x3)-Longzine		6	
7	YW63044500000	Cross recessed pan head screw GB/T-818 M4x45-Longzine		2	
6	SD-40H-B-40	Belt regulator	Assembly	1	Borrowed
5	SD-40H-B-09	Silicone Teflon gasket lower	Red sical gel + Teflon	1	
4	SD-40H-B-02	Honeycomb lower cover	YL112	1	
3	YW64040700000	Hexagonal nut GB/T41 M4x0 7-Longzine		4	
2	YW61059500000	Inner hex. column head screw GB/T701 M5x95-12.9-Longzine		4	
1	YM50315300100	Speed motor 3IK15RGN-C/3GN500K2(hongdalide)	Assembly	1	
序号	代号	名称	材料	数量	备注

					制图		版号		标题	SD-40H	图号		比例		数量	
					设计		核准			蜂巢转轮	SD-40H-B-ALL				材质	
					校对											
					审核											
标记	更改前	更改后	更改人	日期	审核		日期			信易电热机械股份有限公司 Shini Plastics Technologies, Inc.			表面要求			
													物料号			



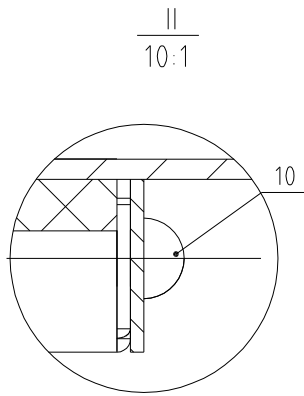
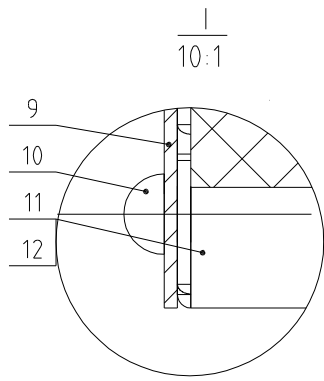
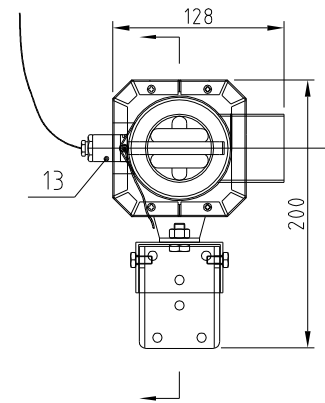
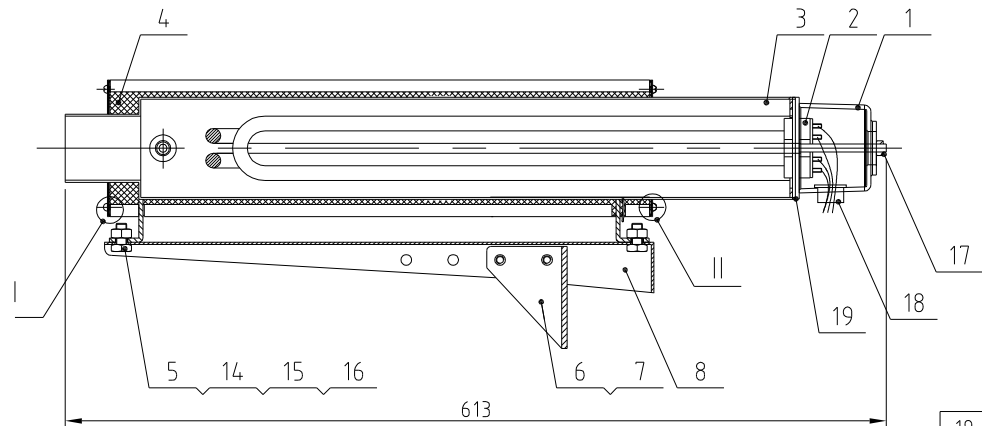
28	BH10006003110	Hinge pine SAL-6U-31	SUS201	1	
27	BL02012000720	Lower hinge	SUS201	1	Borrowed
26	YW66051200000	Flat washer A grade GB/T97.15-A2-70(SUS)		4	
25	YW60512201000	Inner hexagon cylinder screw GB/T70.1 M5x12-A2-70(SUS)		4	
24	YW64000500000	Non-metal insert hexagon nut GB/T889.1 M5		4	
23	SCD-80U/40H-B-09	Upper hinge	SUS201 3.0	1	Borrowed
22	YW66000500000	E-type washer E5		2	
21	BL02080002020	Sight-glass	SUS304	1	Borrowed
20	YW62051000000	Large cross socket flat head screw JIS1111 M5x10-A2-70(SUS)		8	
19	YW70008000000	Sight-glass MHD-80U-A-10(Ver 0)	Tempered glass	1	
18	YR10800800900	Cleaning door fastener MHD-80U-A-08 (D version) Red silicone Hardness 10 Shore	Red sitalcat gel	1	
17	YP60252000000	Epoxy glass laminate wood	Assembly	1	
16	YW62041000000	Large cross socket flat head screw JIS1111 M5x10-Longzine		11	
15	YW09060200100	Adjustable buckle (with safety) model DK602		2	
14	YR10008001300	Sight-glass fastener MHD-80U-A-12 (Ver 0)(has mould)	white silica gel	1	
13	SDD-80U/40H-B-04	Air exhaust pipe	SUS201	1	Borrowed
12	YW68061000000	Inner hexagon flat-end set screw GB/T77 M5x10-Longzine		2	
11	YE90530800400	Thermocouple SCD-230U/120H-ALL-08	Assembly	1	
10	SCD-80U/40H-B-05	Down-blow pipe assembly	SUS201	1	Borrowed
9	YR40000600800	Snap hook plastic block SAL-6U	Plastic	2	
8	SDD-80U/40H-B-03	Hopper cover	SUS201	1	Borrowed
7	YW64040700100	Non-metal insert hexagon nut GB/T889 M4		4	
6	YW02003000400	Adjustable spring buckle SAL-6U-A-35	SUS304	2	
5	SDD-80U/40H-B-02	Insulation board	SUS4.30 0.5	1	
4	YW61061200000	Inner hexagon cylinder screw GB/T70.1 M6x12-12.9-Longzine		5	
3	BW20012000040	Aluminum square handle 120L black 120(L M6)		1	
2	SCD-80U/40H-B-03	External cleaning door	Assembly	1	Borrowed
1	SDD-80U/40H-B-01	Storage tank	Assembly	1	

序号	代号	名称	材质	数量	备注
		标题 SDD-80U/40H	图号		
		料桶组件	SDD-80U/40H-B-ALL		
			比例	数量	
			表面要求	材质	
			物料号		

Technical requirements:
 1 When assembling item 19, it should be fixed with silicone glue.
 2 The insulation board and the cleaning door frame need to be spot welded around, with smooth and beautiful welds

标记	更改前	更改后	更改人	日期	制图	版号	标题	图号	比例	数量	备注
					设计	核准					
					校对						
					审核						

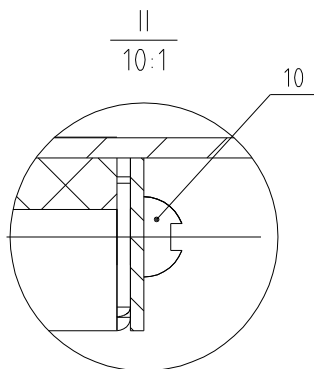
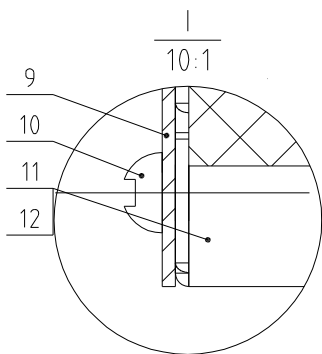
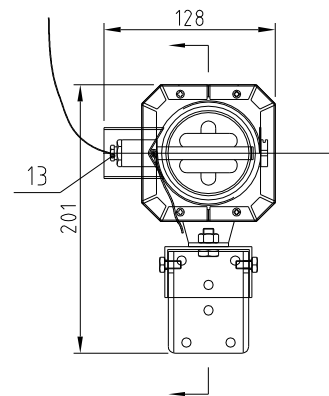
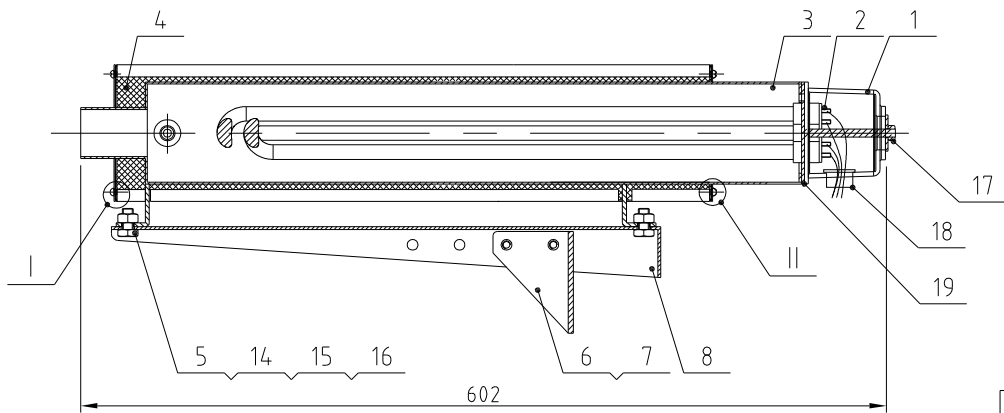




19	YR90000200000	Flange washer 2" SD-400H-A-45	Silica gel	1	
18	YE67013500000	Cable head PG13.5		1	
17	YW64000600300	Hex nut GB/T6170 M6		1	
16	YW66081900000	Flat washer 8x19x2.0 Longzine		4	
15	YW64080600000	Hex nut GB/T6170 M8-Longzine		2	
14	YW65008000100	Standard spring washer GB/T93 8-Longzine		2	
13	BH90115000050	EGO detector	Assembly	1	
12	SD-40H-C-03	Heater cover plate 2	SUS201	1	
11	SD-40H-C-02	Heater cover plate 1	SUS201	1	
10	YW69040900000	Open end blind rivets with break pull mandrel and flat round head in aluminium GB/T 12618 4x9		8	
9	SD-40H-D-02	Heater cover plate	SUS201	1	
8	SD-40H-C-05	Heater fixed frame	SPCC2.0	1	
7	YW60061000000	Hexagon screw bolt GB/T5781 M6x10-4.8-Longzine		4	
6	SD-40H-C-06	Heater fixed angle	SPH4.0	1	
5	YW60081600100	Hexagon screw bolt GB/T5781 M8x16-4.8-Longzine		2	
4	YP62820140000	Fire blanket 250x730mm		1	
3	SD-40H-D-01	Heating Tank	Weldment	1	
2	BH70440006150	Heat pipe 4KW flange fixing 3φ400V	Assembly	1	
1	YR40200000100	bakelite cover	PF	1	
序号	代号	名称	材质	数量	备注

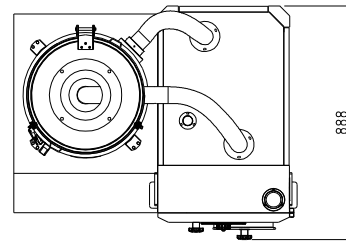
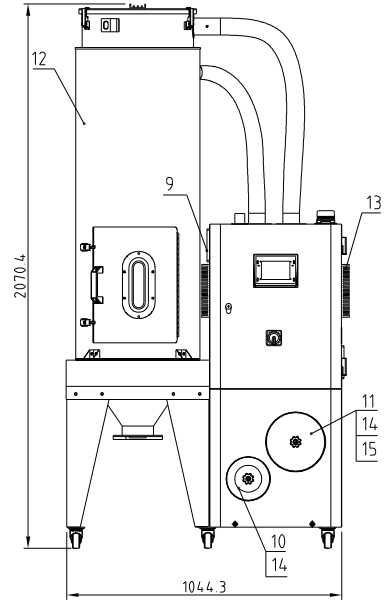
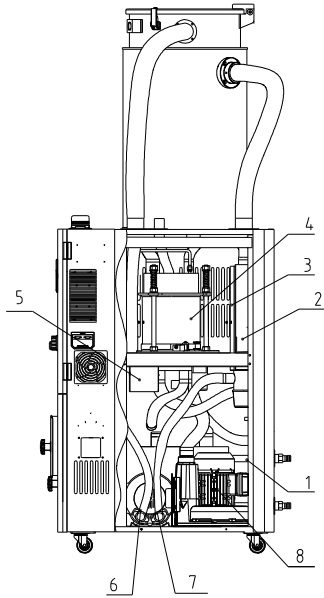
					制图		版号		标题	SD-40H	图号	SD-40H-D-ALL	比例		数量	
					设计		核准			干燥加热器			⊕	⊕	材质	
					校对								表面要求			
标记	更改前	更改后	更改人	日期	审核		日期						物料号			





19	YR90000200000	Flange washer 2" SD-400H-A-45	Silica gel	1	
18	YE67013500000	Cable head PG13.5		1	
17	YW64000600300	Hex nut GB/T6170 M6		1	
16	YW66081900000	Flat washer 8x19x2.0 Longzine		4	
15	YW64080600000	Hex nut GB/T6170 M8-Longzine		2	
14	YW65008000100	Standard spring washer GB/T93 8-Longzine		2	
13	BH90115000050	EGO Detector	Assembly	1	
12	SD-40H-C-03	Heater cover plate 2	SUS201	1	
11	SD-40H-C-02	Heater cover plate 1	SUS201	1	
10	YW62050500000	Large cross socket flat head screw JS1111 M5x5-Longzine		8	
9	SD-40H-C-04	Heater cover plate	SUS201	1	
8	SD-40H-C-05	Heater fixed frame	SPCC2.0	1	
7	YW60061000000	Hexagon screw bolt GB/T5781 M6x10-4.8-Longzine		4	
6	SD-40H-C-06	Heater fixing angle	SPH4.0	1	
5	YW60081600100	Hexagon screw bolt GB/T5781 M8x16-4.8-Longzine		2	
4	YP62820140000	Fire blanket 250X730mm		1	
3	SD-40H-C-01	Heating Tank	Weldment	1	
2	BH70340000150	Heat pipe 3KW fixed flange 3φ400V	Assembly	1	
1	YR40200000100	Bakelite cover	PF	1	
序号	代号	名称	材质	数量	备注

					制图		版本号	标题	SD-40H	图号	比例	数量
					设计		核准	再生加热器		SD-40H-C-ALL		材质
					校对			信易电热机械股份有限公司 Shini Plastics Technologies, Inc.			表面要求	
标记	更改前	更改后	更改人	日期	审核		日期					物料号

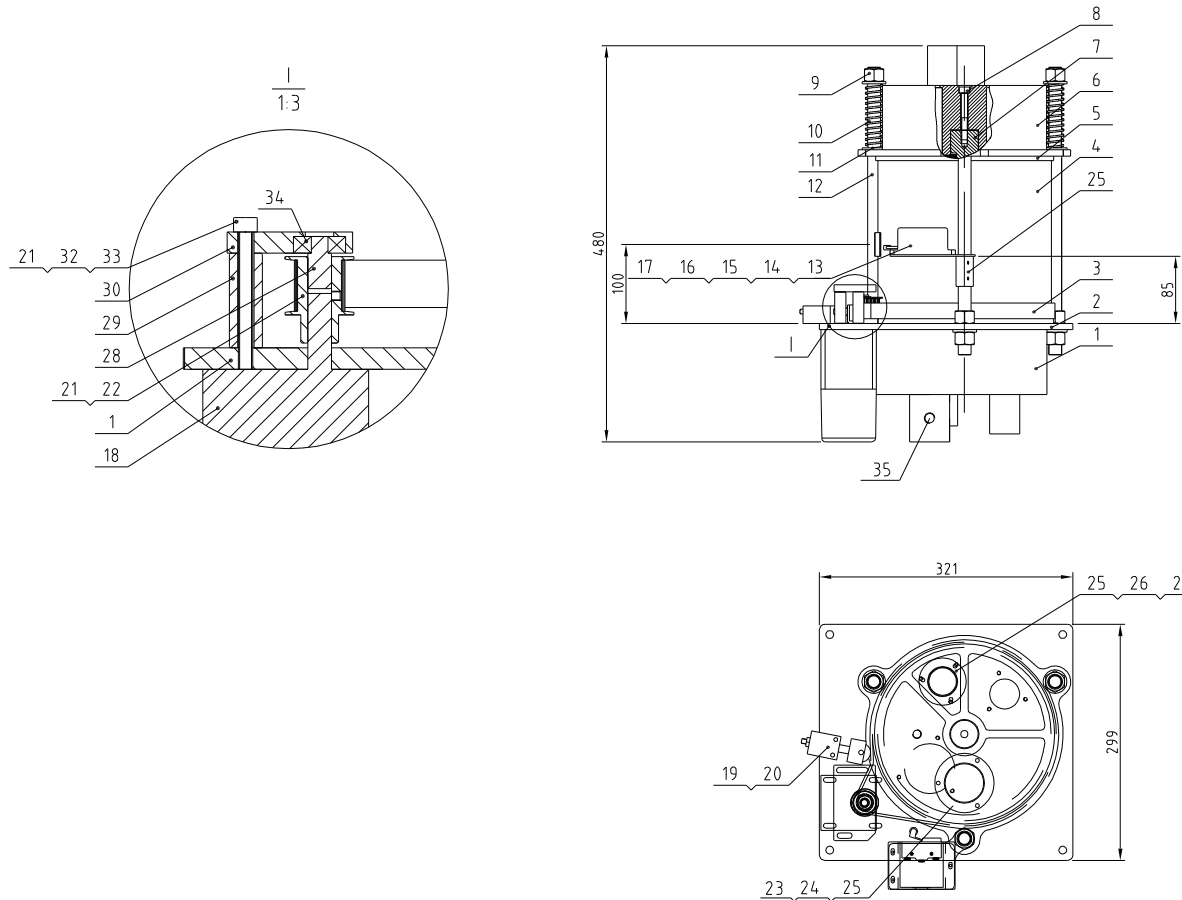


Regen. blower power	Drying blower power	Regen. heater power	Dehumidifying air quantity	Ver.
0.18KW	0.75KW	3KW	120m ³ /hr	Ver.F
Interface size of cooling water inlet and outlet pipe		Cooling water pressure	Cooling water flow	Cooling water temp
		3~5Kg	10L/min	Normal temp

15	YR40120000100	SD-120H-ALL-06 Ver.A Filter barrel cover		1	
14	YW09675100000	Small box nut 5/16 SHD-6-75KG-01-SJ Aluminium alloy		2	
13	YW90120700000	Aluminum cooler STM-1207HT-A-17		1	
12	SDD-160U/120H-B-ALL	Insulation Storage tank assembly	Assembly	1	
11	YR50708000100	Filter (700/800G)		1	Wearing part
10	YR50128300000	Filter ADC18		1	Wearing part
9	YM60121206400	Exhaust fan 12*12CM/24VAC 50/60HZ With plastic net		1	
8	BM30031000150	Shini blower RB-310		1	
7	BW88008000020	Cooler		2	
6	YM40211000100	Ruijing blower 2HB110H06(0.2KW)		1	
5	YE80153100100	15W Motor speed US315C (Zhongdalde)		1	
4	SD-120H-B-ALL	Honeycomb rotor	Assembly	1	
3	SD-40H-D-ALL	Drying heater	Assembly	1	
2	SD-40H-C-ALL	Regeneration heater	Assembly	1	
1	YR60161604000	Pressure resistant water pipe MAX.16inner diameter 16mm, pressure resistance 40bar (Korean Sanshan brand blight)	Assembly	2	

序号	代号	名称	材料	数量	备注
----	----	----	----	----	----

					制图		版号		标题	SDD-160U/80H	图号		比例	1:18	数量	1
					设计		核准		欧化除湿干燥组合							
					校对				信易电热机械股份有限公司 Shini Plastics Technologies, Inc.				表面要求			
标记	更改前	更改后	更改人	日期	审核		日期					物料号				

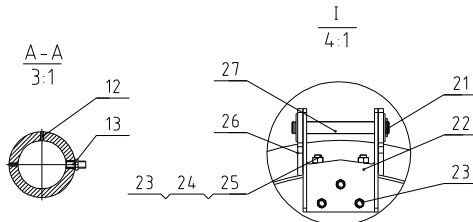
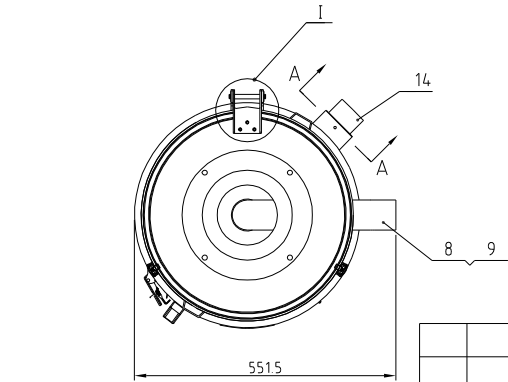
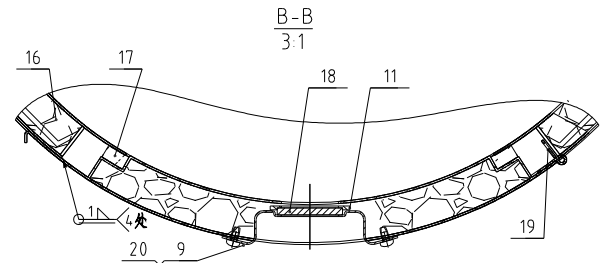
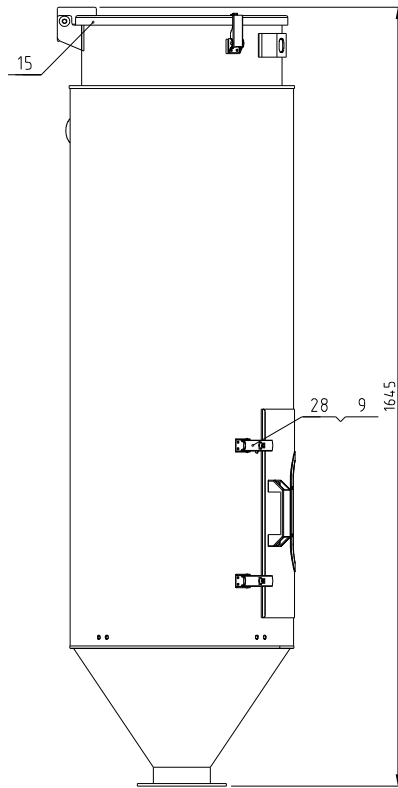
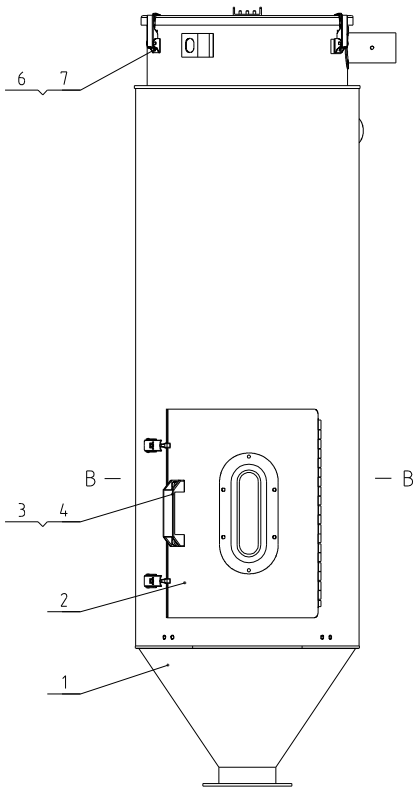


35	SD-120H-B-08	2" Upper and lower cover flange 1/4"PT		1	
34	YW11062700000	Bearing 627	Assembly	1	
33	YW66061300000	Flat washer A grade GB/T97.1 6x12x1.4	Longzine	3	
32	YW65006000100	Standard spring washer GB/T93 6-Longzine		3	
31	YW61066500000	Inner hex column head screw GB/T70.1 M6x5-A2-70 (Full tooth)		3	
30	SD-200H-B-05	Gear motor fixed plate	6061	1	
29	SD-200H-B-04	Positioning pipe 40mm	6061	3	
28	BH33702300010	Fixed shaft SD-700H-B-23	SUS201	1	
27	SD-120H-B-01	1.5" Air pipe flange	SUS201	3	
26	YR90001500200	1.5" Flange washer	White silica gel	3	
25	YW62051000100	Large cross socket flat head screw JIS1117 M5x10-Longzine		15	
24	YR90000200000	2.0" Flange washer	White silica gel	2	
23	SD-120H-B-02	2" air inlet pipe flange	SUS201	1	
22	YW68004500000	Inner hexagon flat end set screw GB/T77 M4x5-Longzine		3	
21	YW08001000100	Synchronous belt pulley SD-120H-B-05	45#	1	
20	YW63044500000	Cross recessed pan head screw GB/T-818 M4x5-Longzine		2	
19	SD-400H-A-40	Belt regulator	Assembly	1	Borrowed
18	YM50315300100	Speed motor BK15RGN-C30N600K(Zhongdaide)	Assembly	1	
17	BL04402200020	Micro switch fixed piece SD-40H-A-22	SUS201	1	
16	YW63040600000	Cross recessed pan head screw GB/T-818 M4x6-Longzine		3	
15	YW63032500000	Cross recessed pan head screw GB/T-818 M3x25-Longzine		2	
14	YE14511200000	Position limit switch YBLXW-5/11G2	Assembly	1	
13	YR40330900000	Microswitch box	ABS	1	
12	BH10533000010	Double head screw SD-40H-B-07		3	
11	YW66163000000	Flat washer A grade GB/T97.1 6-Longzine		12	
10	YW01201800000	Spring SD-700H-B-07	70Mn	3	
9	YW64001600000	Hexagonal nut GB/T6170 M16-Longzine		9	
8	YW61086500000	Inner hex column head screw GB/T70.1 M6x5-19-Longzine		2	
7	BH10005003110	Honeycomb mount shaft	45	2	Borrowed
6	BA40012000110	Honeycomb Upper cover SD-120H-B-03	AC4B	1	
5	YR10010000700	Silica gel Teflon upper gasket	Red silica gel + Teflon	1	
4	SD-120H-B-06	Honeycomb Ø220-200L	Full silica gel	1	
3	YR00203000000	Synchronous belt 20-300XL(perimeter 762)	Assembly	1	
2	YR10010000900	Silica gel Teflon lower gasket	Red silica gel + Teflon	1	
1	BA40012000210	Honeycomb Lower cover SD-120H-B-04	AC4B	1	

Technical requirements:

- Parts 2 and 5 are bonded with red silicone on one side and parts 1 and 6 are bonded with high-temperature resistant white silicone on the other side;
- Number 10 has a compression capacity of 15.

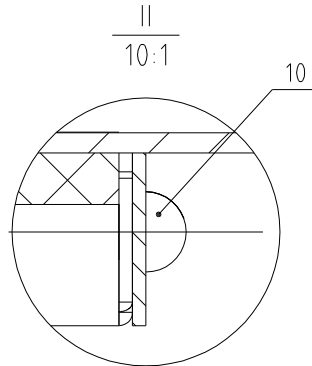
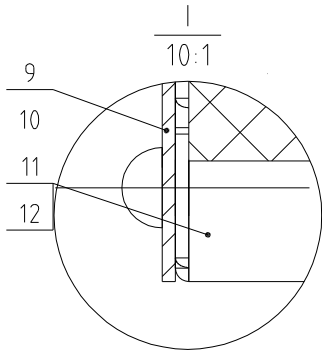
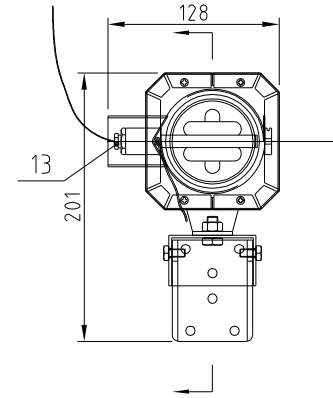
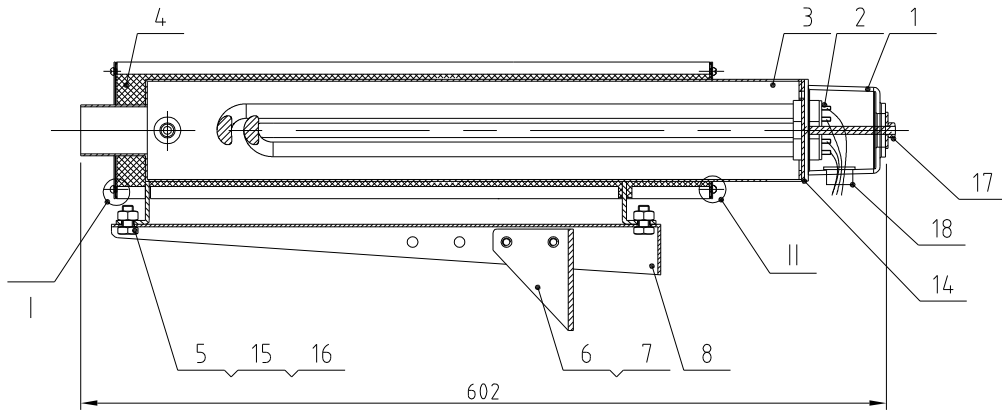
标记	更改前	更改后	更改人	日期	制图	版号	标题	图号	比例	数量	备注
					设计	核准	SD-120H 蜂巢转轮	SD-120H-B-ALL	1:1	1	材质
					校对			信易电热机械股份有限公司 Shini Plastics Technologies, Inc.	表面要求		
					审核				物料号		



28	YW09060200100	Adjustable buckle (with safety) model DK602		2	
27	BH10006003110	Hinge pine SAL-6U-31	SUS201	1	
26	BL02012000720	Lower hinge MHD-120U-A-11(SCD/SDD/SOL/MHD)	SUS201	1	
25	YW66061200000	Flat washer A grade GB/T9716-A2-70(SUS)		4	
24	YW61061001800	Inner hexagon cylinder head screw GB/T7011 M6x10-A2-70(SUS)		4	
23	YW64000600200	Non-metal insert hexagon nut GB/T889	M6	4	
22	SCD-120U/80H-A-07	Upper hinge	SUS201(3.0)	1	Borrowed
21	YW66000500000	E-type washer E5		2	
20	BL02012001020	Sight-glass MHD-120U-A-01(ver. 0) (has mould)	SUS304	1	Borrowed
19	YW62041000000	Large cross socket flat head screw JIS1111 Mx10-Longzine		7	
18	YW70008000000	Sight glass MHD-80U-A-10	Tempered glass	1	
17	YR10012000900	Cleaning door fastener MHD-120U-A-12	Red silical gel	1	
16	YP60252000000	Epoxy glass laminate wood	Assembly	1	
15	SCD-120U/80H-A-09	Hopper cover	SUS304	1	Borrowed
14	SCD-160U/120H-B-04	Down-blow pipe assembly	SUS201	1	Borrowed
13	YE90530800400	Thermocouple SCD-230U/120H-ALL-08	Assembly	1	
12	YW68081000000	Inner hex flat end lock screw GB/T77 M8x10-Longzine		2	
11	YR10008001300	Sight-glass fastener	White silica gel	1	
10	YW09060200100	Adjustable buckle (with safety) model DK602		2	
9	YW62051000000	Large cross socket flat head screw JIS1111 M5x10-A2-70(SUS)		12	
8	SCD-120U/80H-A-06	Air exhaust pipe	SUS201	1	Borrowed
7	YW64040700100	Non-metal insert hexagon nut GB/T889	M4	4	
6	YW02003000400	Spring buckle adjustable		2	
5	SDD-160U/120H-B-02	Insulation board	SUS430(0.5)	1	
4	YW61061200000	Inner hexagon cylinder head screw GB/T7011 M6x12-12.9-Longzine		5	
3	BW20012000040	Aluminum square handle 120(LM6)		1	
2	SCD-120U/80H-A-03	External cleaning door	Assembly	1	
1	SDD-160U/120H-B-01	Material storage tank	Assembly	1	
序号	代号	名称	材质	数量	备注

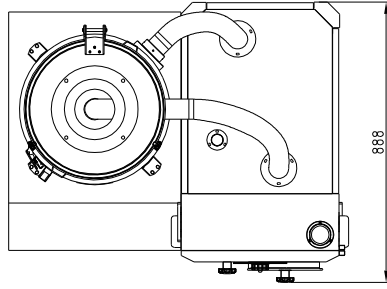
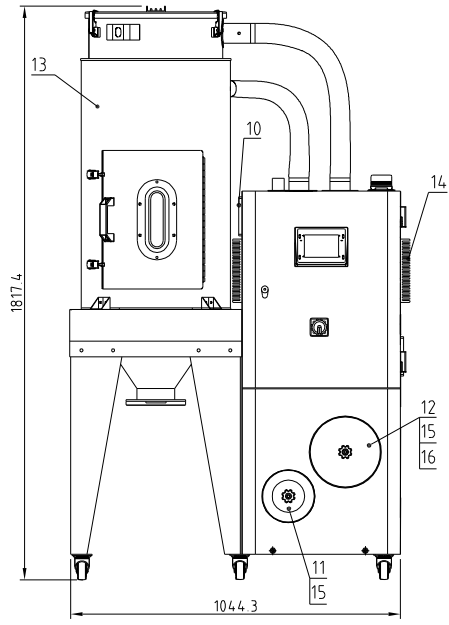
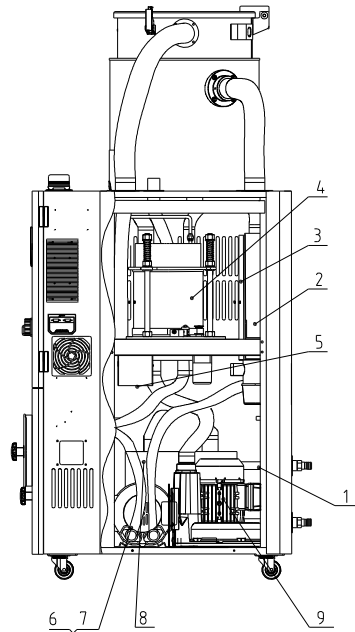
标记	更改前	更改后	更改人	日期	制图	版号
					设计	核
					校对	准
					审核	日期

标题	图号	比例	数量
SDD-160U/120H	SDD-160U/120H-B-ALL	1:1	1
Material storage tank 组件		表面要求	
信易电热机械股份有限公司 Shini Plastics Technologies, Inc.		物料号	



18	YE67013500000	Cable head PG13.5		1	
17	YW64000600300	Hex nut GB/T6170 M6		1	
16	YW66081900000	Flat washer 8x19x2.0 Longzine		4	
15	YW64080600000	Hex nut GB/T6170 M8-Longzine		2	
14	YR90000200000	Flange washer 2" SD-400H-A-45	Silica gel	1	
13	BH90115000050	EGO Detector	Assembly	1	
12	SD-40H-C-03	Heater cover plate 2	SUS201	1	
11	SD-40H-C-02	Heater cover plate 1	SUS201	1	
10	YW69040900000	Open type flat round head aluminum core pulling rivet GB/T 12618 4x9		8	
9	SD-40H-C-04	Heater cover plate	SUS201	1	
8	SD-40H-C-05	Heater fixed frame	SPCC2.0	1	
7	YW60061000000	Hexagon screw bolt GB/T5781 M6x10-4.8-Longzine		4	
6	SD-40H-C-06	Heater fixing angle	SPH4.0	1	
5	YW60081600100	Hexagon screw bolt GB/T5781 M8x16-4.8-Longzine		2	
4	YP62820140000	Fire blanket 250X730mm		1	
3	SD-40H-C-01	Heating Tank	Weldment	1	
2	BH70440006150	Heat pipe 4KW fixed flange 3φ400V	Assembly	1	
1	YR40200000100	Bakelite cover	PF	1	
序号	代号	名称	材质	数量	备注

					制图		版号	标题	SDD-160U/120H	图号	SDD-160U/120H-C-ALL	比例		数量	
					设计		核准	再生加热器					材质		
					校对			信易電熱機械股份有限公司 Shini Plastics Technologies, Inc.				表面要求			
标记	更改前	更改后	更改人	日期	审核		日期						物料号		



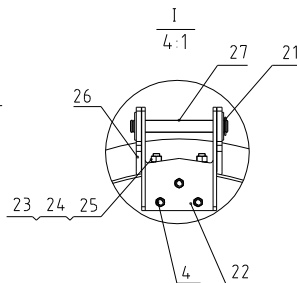
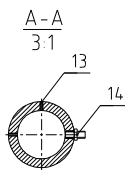
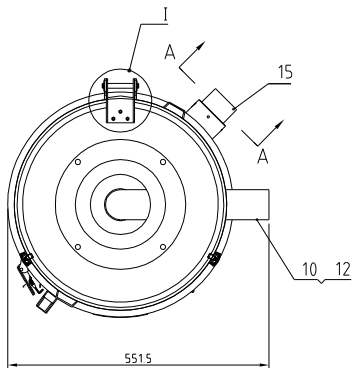
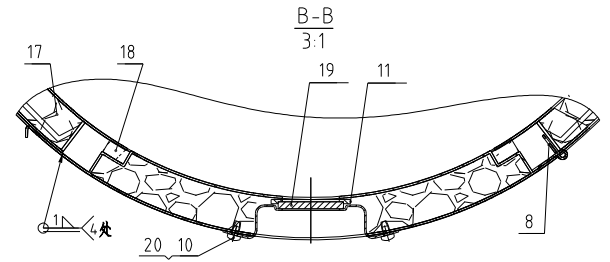
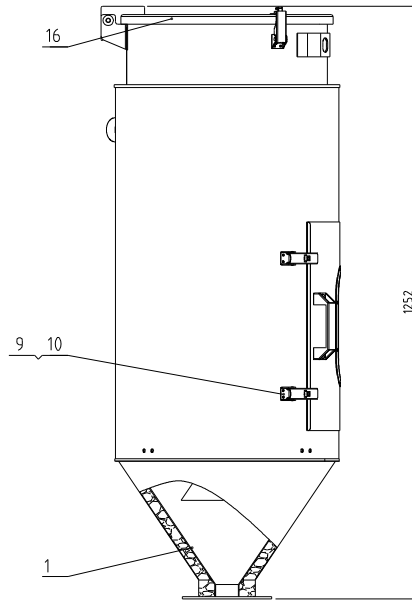
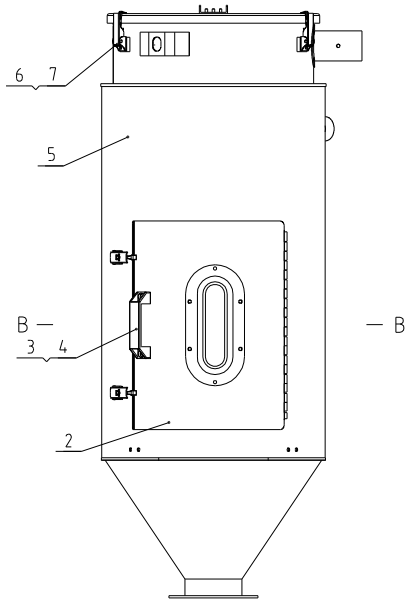
Regen blower power	Drying blower power	Regen heater power	Dehumidifying air quantity	Ver.
0.18KW	0.75KW	3KW	80m ³ /hr	Ver.F
Interface size of cooling water inlet and outlet pipe		Cooling water pressure	Cooling water flow	Cooling water temp
Pagoda connector 3/4-ø23		3~5Kg	10L/min	Normal temp.

16	YR40120000100	SD-120H-ALL-06 Ver A Filter barrel	cover	1	
15	YW09675100000	Small box nut 5/16 SHD-6-75KG-01-	Aluminum alloy	1	
14	YW90120700000	Aluminum cooler STM-1207HT-A-17	Aluminum	1	
13	SDD-120U/80H-B-ALL	Insulation Storage tank assembly	Assembly	1	
12	YR50708000100	Filter (700/800G)	Assembly	1	Wearing part
11	YR50128300000	Filter ADC18	Assembly	1	Wearing part
10	YM60121206400	Exhaust Fan 12x12CM/2L-VAC 50/60HZ With plastic net	Assembly	1	
9	BM30031000150	Shim blower RB-310	Assembly	1	
8	BW88080000020	Cooler	Assembly	2	
7	YR10001000000	Motor suction part tightened 1HP	Rubber	2	
6	YM40211000100	Ruijing blower 2HB110H0610 2KW	Assembly	1	
5	YE80153100100	15W Motor speed US3TSC (Zhongdale)	Assembly	1	
4	SD-120H-B-ALL	Honeycomb rotor	Assembly	1	
3	SD-40H-D-ALL	Drying heater	Assembly	1	
2	SD-40H-C-ALL	Regeneration heater	Assembly	1	
1	YR60161604000	Pressure resistant water pipe MAX-16 inner diameter Item: pressure resistance 40bar (Korea) Sansan brand 0101	Assembly	2	

序号	代号	名称	材料	数量	备注
		标题	SDD-120U/80H 欧化除湿干燥组合		图号
		比例	1:15	数量	1
		表面要求			
		物料号			

制图	版号	标题	图号
设计	核准	SDD-120U/80H 欧化除湿干燥组合	
校对	审核	SHINI 信易电热机械股份有限公司 Shini Plastics Technologies, Inc.	
标记	更改前	更改后	更改人
	日期	日期	日期





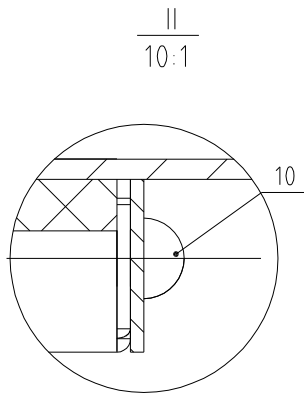
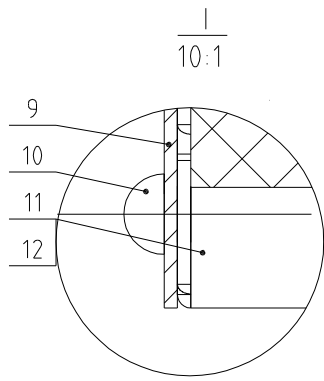
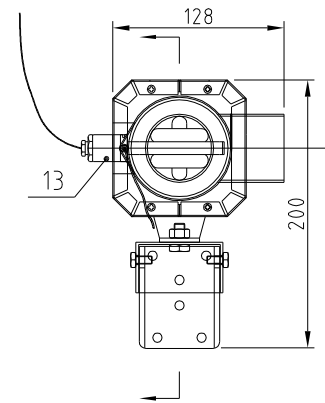
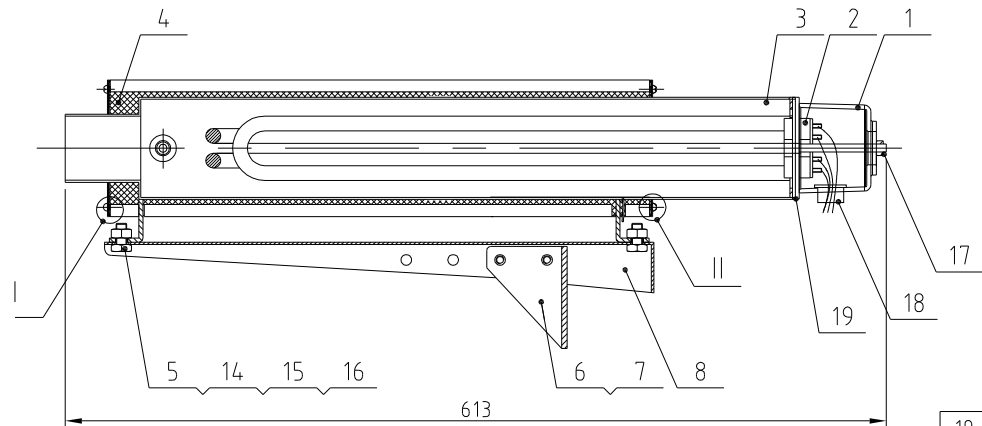
27	BH10006003110	Hinge pine SAL-6U-31	SUS201	1	
26	BL02012000720	Lower hinge MHD-120U-A-11(SCB/SDD/SOL/MHD)	SUS201	1	
25	YW66051000000	Flat washer A grade GB/T97.15		4	
24	YW61051200100	Inner hexagon cylinder head screw GB/T701M5×12		4	
23	YW64000500000	Non-metal insert hexagon nut GB/T889.1M5		4	
22	SCD-120U/80H-A-07	Upper hinge	SUS201(3.0)	1	Borrowed
21	YW66000500000	E-type washer E5		2	
20	BL02012001020	Sight-glass	SUS304	1	Borrowed
19	YW70008000000	Sight glass MHD-80U-A-10	Tempered glass	1	
18	YR10012000900	Cleaning door fastener MHD-120U-A-12	Red silical gel	1	
17	YP60252000000	Epoxy glass laminate wood	Assembly	1	
16	SCD-120U/80H-A-09	Hopper cover	SUS304	1	Borrowed
15	SCD-120U/80H-A-04	Down-blow pipe assembly	SUS201	1	Borrowed
14	YE90530800400	Thermocouple SCD-230U/120H-ALL-08	Assembly	1	
13	YW68006000000	Inner hex flat end lock screw GB/T7716M6×Longzine		2	
12	SCD-120U/80H-A-06	Air exhaust pipe	SUS201	1	Borrowed
11	YR10008001300	Sight-glass fastener	White silica gel	1	
10	YW62051000000	Large cross socket flat head screw JIS1111M5×10-12-10(SUS)		12	
9	YW09060200100	Adjustable buckle (with safety) model DK602		2	
8	YW62041000000	Large cross socket flat head screw JIS1111M6×10-Longzine		4	
7	YW64040700100	Non-metal insert hexagon nut GB/T889.1M4		4	
6	YW02003000400	Spring buckle adjustable		2	
5	SDD-120U/80H-B-02	Insulation board	SUS430(0.8)	1	
4	YW61061200000	Inner hexagon cylinder head screw GB/T7011M6×12.9-Longzine		5	
3	BW20012000040	Aluminum square handle 120L(M6)		1	
2	SCD-120U/80H-A-03	External cleaning door	Assembly	1	Borrowed
1	SDD-120U/80H-B-01	Material storage tank	Assembly	1	
序号	代号	名称	材质	数量	备注

Technical requirements:

- When assembling item 19, it should be fixed with silicone glue;
- The insulation board and the cleaning door frame need to be spot welded around, with smooth and beautiful welds

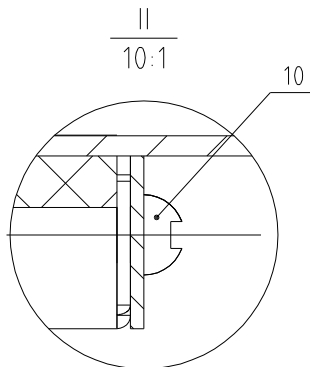
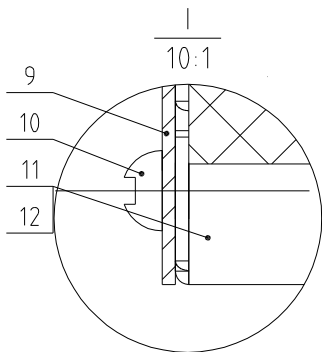
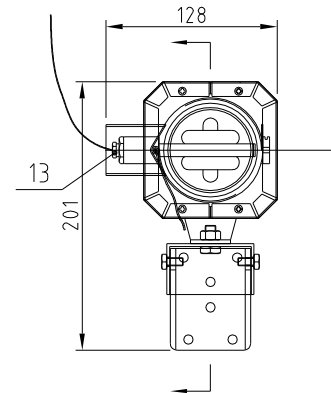
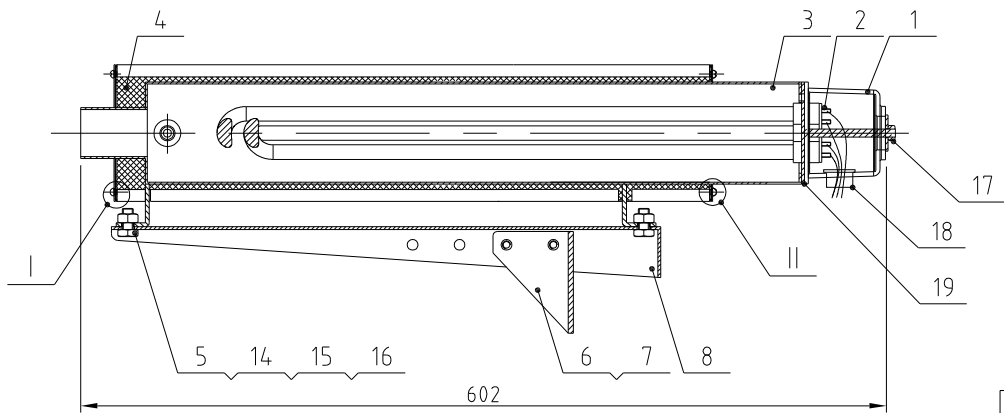
标记	更改前	更改后	更改人	日期	制图	版号	标题	图号	比例	数量
					设计	核准	保温料桶组件	SDD-120U/80H-B-ALL	1:1	1
					校对	审核			表面要求	
					审核	日期			物料号	





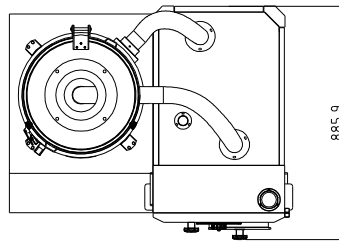
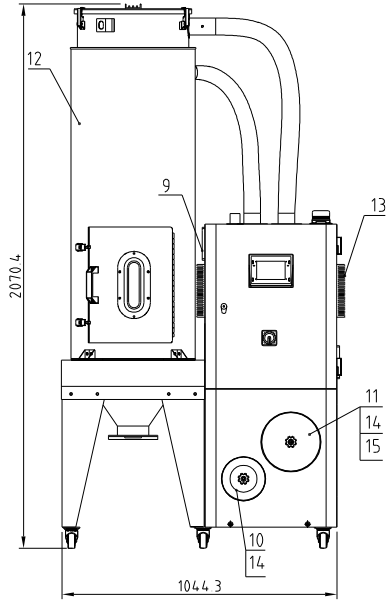
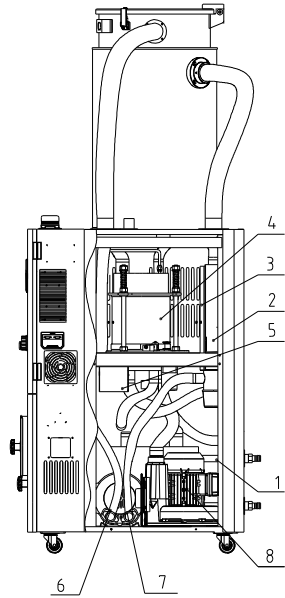
19	YR90000200000	Flange washer 2" SD-400H-A-45	Silica gel	1	
18	YE67013500000	Cable head PG13.5		1	
17	YW64000600300	Hex nut GB/T6170 M6		1	
16	YW66081900000	Flat washer 8x19x2.0 Longzine		4	
15	YW64080600000	Hex nut GB/T6170 M8-Longzine		2	
14	YW65008000100	Standard spring washer GB/T93 8-Longzine		2	
13	BH90115000050	EGO detector	Assembly	1	
12	SD-40H-C-03	Heater cover plate 2	SUS201	1	
11	SD-40H-C-02	Heater cover plate 1	SUS201	1	
10	YW69040900000	Open end blind rivets with break pull mandrel and flat round head in aluminium GB/T 12618 4x9		8	
9	SD-40H-D-02	Heater cover plate	SUS201	1	
8	SD-40H-C-05	Heater fixed frame	SPCC2.0	1	
7	YW60061000000	Hexagon screw bolt GB/T5781 M6x10-4.8-Longzine		4	
6	SD-40H-C-06	Heater fixed angle	SPH4.0	1	
5	YW60081600100	Hexagon screw bolt GB/T5781 M8x16-4.8-Longzine		2	
4	YP62820140000	Fire blanket 250x730mm		1	
3	SD-40H-D-01	Heating Tank	Weldment	1	
2	BH70440006150	Heat pipe 4KW flange fixing 3φ400V	Assembly	1	
1	YR40200000100	bakelite cover	PF	1	
序号	代号	名称	材质	数量	备注

					制图		版号	标题	SD-40H	图号	SD-40H-D-ALL	比例		数量	
					设计		核准	干燥加热器				⊕	材质		
					校对			信易电热机械股份有限公司 Shini Plastics Technologies, Inc.				表面要求			
标记	更改前	更改后	更改人	日期	审核		日期						物料号		



19	YR90000200000	Flange washer 2" SD-400H-A-45	Silica gel	1	
18	YE67013500000	Cable head PG13.5		1	
17	YW64000600300	Hex nut GB/T6170 M6		1	
16	YW66081900000	Flat washer 8x19x2.0 Longzine		4	
15	YW64080600000	Hex nut GB/T6170 M8-Longzine		2	
14	YW65008000100	Standard spring washer GB/T93 8-Longzine		2	
13	BH90115000050	EGO Detector	Assembly	1	
12	SD-40H-C-03	Heater cover plate 2	SUS201	1	
11	SD-40H-C-02	Heater cover plate 1	SUS201	1	
10	YW62050500000	Large cross socket flat head screw JS1111 M5x5-Longzine		8	
9	SD-40H-C-04	Heater cover plate	SUS201	1	
8	SD-40H-C-05	Heater fixed frame	SPCC2.0	1	
7	YW60061000000	Hexagon screw bolt GB/T5781 M6x10-4.8-Longzine		4	
6	SD-40H-C-06	Heater fixing angle	SPH4.0	1	
5	YW60081600100	Hexagon screw bolt GB/T5781 M8x16-4.8-Longzine		2	
4	YP62820140000	Fire blanket 250X730mm		1	
3	SD-40H-C-01	Heating Tank	Weldment	1	
2	BH70340000150	Heat pipe 3KW fixed flange 3φ400V	Assembly	1	
1	YR40200000100	Bakelite cover	PF	1	
序号	代号	名称	材质	数量	备注

					制图		版本号	标题	SD-40H	图号	比例	数量
					设计		核准	再生加热器		SD-40H-C-ALL		材质
					校对			信易电热机械股份有限公司 Shini Plastics Technologies, Inc.			表面要求	
标记	更改前	更改后	更改人	日期	审核		日期					物料号



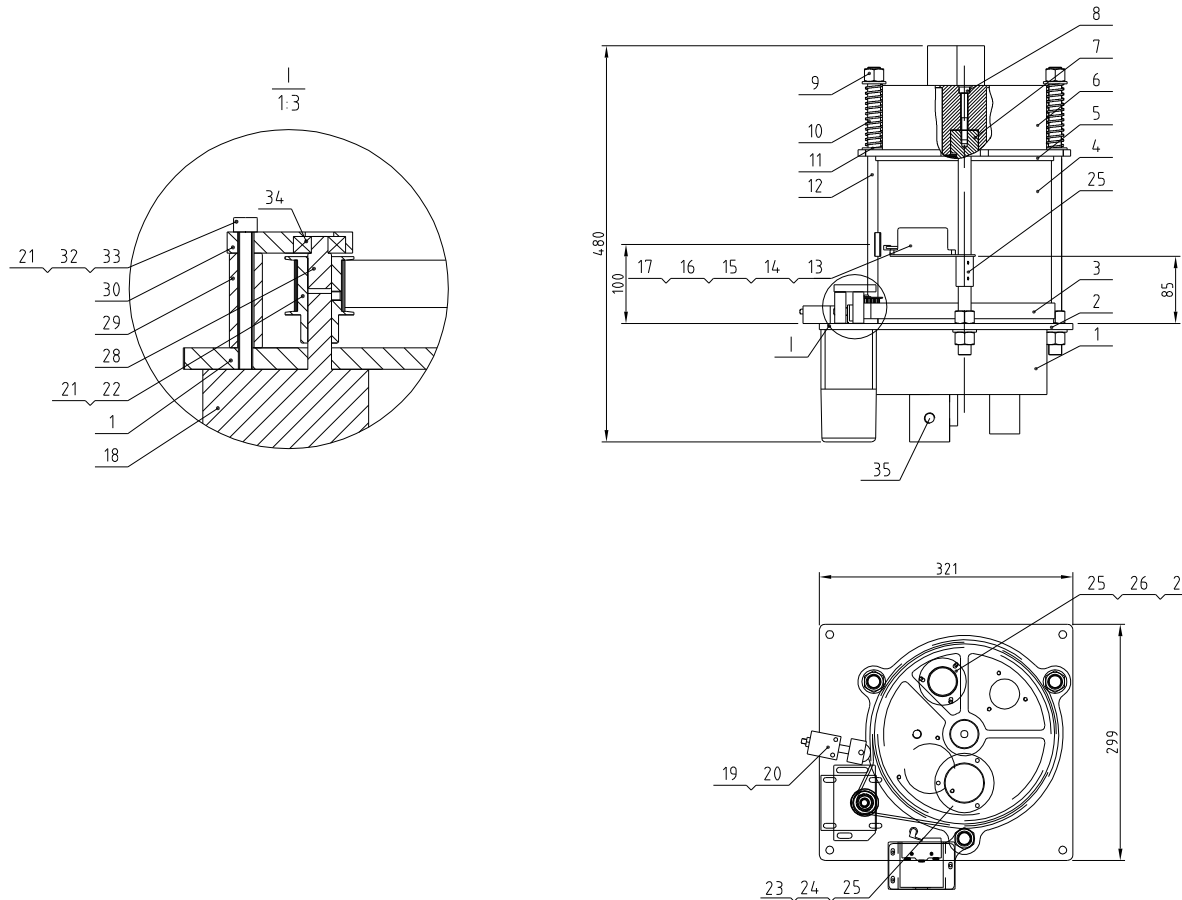
Regen blower power	Drying blower power	Regen heater power	Dehumidifying air quantity	Ver.
0.18KW	0.75KW	4 KW	120m ³ /hr	Ver.F
Interface size of cooling water inlet and outlet pipe		Cooling water pressure	Cooling water flow	Cooling water temp
Pagoda connector 3/4-#23		3~5Kg	15L/min	Normal temp.

15	YR40120000100	SD-120H-ALL-06 Ver.A Filter barrel cover		1	
14	YW09675100000	Small box nut 5/16 SHD-6-75KG-01-SJ Aluminum alloy		2	
13	YW90120700000	Aluminum cooler STM-1207HT-A-17		2	
12	SDD-160U/120H-B-ALL	Insulation Storage Tank assembly		1	
11	YR50708000100	Filter I700/800G		1	
10	YR50128300000	Filter ADC18		1	
9	YM60121206400	Exhaust fan 12*12CM/24VAC 50/60HZ With plastic net		1	
8	BM30031000150	Shini blower RB-310		1	
7	BW88008000020	Cooler		2	
6	YM40211000100	Ruijing blower 2HB110H0610 2KW		1	
5	YE80153100100	15W Motor speed US315C (Zhongdalide)		1	
4	SD-120H-B-ALL	Honeycomb rotor	Assembly	1	
3	SDD-230U/120H-C-ALL	Drying heater	Assembly	1	
2	SDD-160U/120H-C-ALL	Regeneration heater	Assembly	1	
1	YR60161604000	Pressure resistant water pipe MAX-16 inner diameter 16mm, pressure resistance 40bar (Korean Sanshan brand pipe)		2	

序号	代号	名称	材料	数量	备注
----	----	----	----	----	----

					制图		版号	
					设计		核准	
					校对			
					审核			
标记	更改前	更改后	更改人	日期	审核		日期	

标题	SDD-160U/120H 欧化除湿干燥组合		图号		比例	1:18	数量	1
					表面要求		物料号	
SHINI 信易电热机械股份有限公司 Shini Plastics Technologies, Inc.			材质					



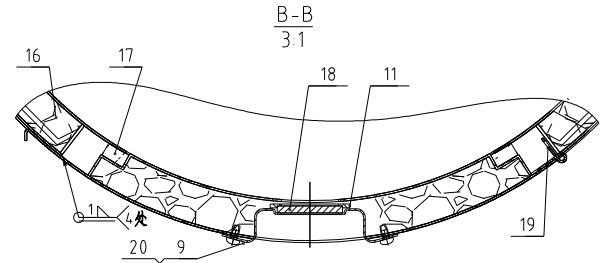
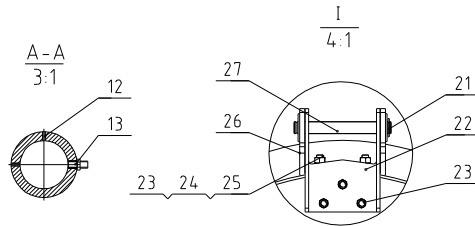
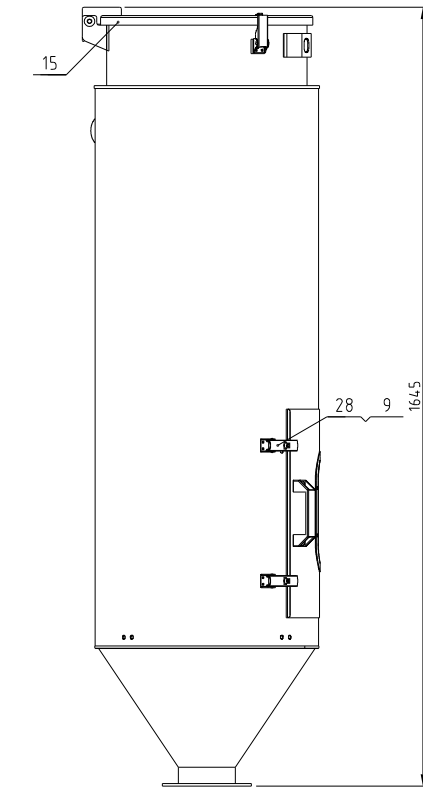
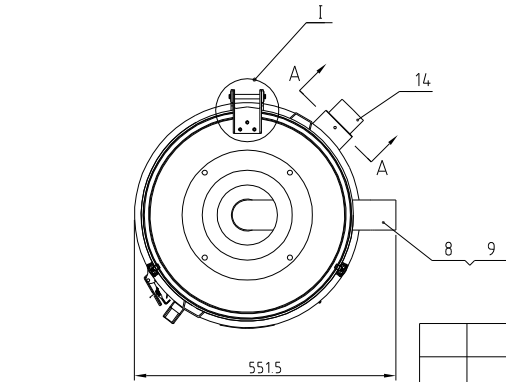
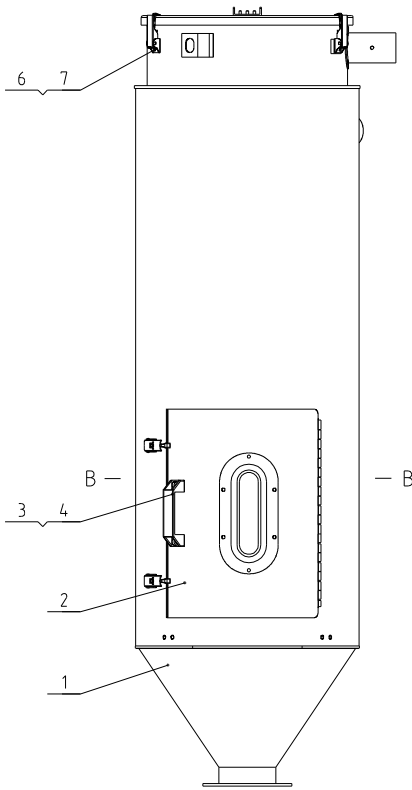
Technical requirements:
 1. Parts 2 and 5 are bonded with red silicone on one side and parts 1 and 6 are bonded with high-temperature resistant white silicone on the other side;
 Number 10 has a compression capacity of 15.

35	SD-120H-B-08	2" Upper and lower cover flange 1/4"PT		1	
34	YW11062700000	Bearing 627	Assembly	1	
33	YW66061300000	Flat washer A grade GB/T97.1 6x12x1.4	-Longzine	3	
32	YW65006000100	Standard spring washer GB/T93 6-Longzine		3	
31	YW61066500000	Inner hex column head screw GB/T70.1 M6x5-A2-70 (Full tooth)		3	
30	SD-200H-B-05	Gear motor fixed plate	6061	1	
29	SD-200H-B-04	Positioning pipe 40mm	6061	3	
28	BH33702300010	Fixed shaft SD-700H-B-23	SUS201	1	
27	SD-120H-B-01	1.5" Air pipe flange	SUS201	3	
26	YR90001500200	1.5" Flange washer	White silica gel	3	
25	YW62051000100	Large cross socket flat head screw JIS1117 M5x10-Longzine		15	
24	YR90000200000	2.0" Flange washer	White silica gel	2	
23	SD-120H-B-02	2" air inlet pipe flange	SUS201	1	
22	YW68004500000	Inner hexagon flat end set screw GB/T77 M4x5-Longzine		3	
21	YW08001000100	Synchronous belt pulley SD-120H-B-05	45#	1	
20	YW63044500000	Cross recessed pan head screw GB/T-818 M4x5-Longzine		2	
19	SD-400H-A-40	Belt regulator	Assembly	1	Borrowed
18	YM50315300100	Speed motor BK15RGN-C10N600K(Zhongdaide)	Assembly	1	
17	BL04402200020	Micro switch fixed piece SD-40H-A-22	SUS201	1	
16	YW63040600000	Cross recessed pan head screw GB/T-818 M4x6-Longzine		3	
15	YW63032500000	Cross recessed pan head screw GB/T-818 M3x25-Longzine		2	
14	YE14511200000	Position limit switch YBLXW-5/11G2	Assembly	1	
13	YR40330900000	Microswitch box	ABS	1	
12	BH10533000010	Double head screw SD-40H-B-07		3	
11	YW66163000000	Flat washer A grade GB/T97.1 6-Longzine		12	
10	YW01201800000	Spring SD-700H-B-07	70Mn	3	
9	YW64001600000	Hexagonal nut GB/T6170 M16-Longzine		9	
8	YW61086500000	Inner hex column head screw GB/T70.1 M6x5-12-Longzine		2	
7	BH10005003110	Honeycomb mount shaft	45	2	Borrowed
6	BA40012000110	Honeycomb Upper cover SD-120H-B-03	AC4B	1	
5	YR10010000700	Silica gel Teflon upper gasket	Red silica gel + Teflon	1	
4	SD-120H-B-06	Honeycomb Ø220-200L	Full silica gel	1	
3	YR00203000000	Synchronous belt 20-300XL(perimeter 762)	Assembly	1	
2	YR10010000900	Silica gel Teflon lower gasket	Red silica gel + Teflon	1	
1	BA40012000210	Honeycomb Lower cover SD-120H-B-04	AC4B	1	

序号	代号	名称	材料	数量	备注
		标题 SD-120H 蜂巢转轮	图号 SD-120H-B-ALL	比例	数量
				表面要求	材质
				物料号	



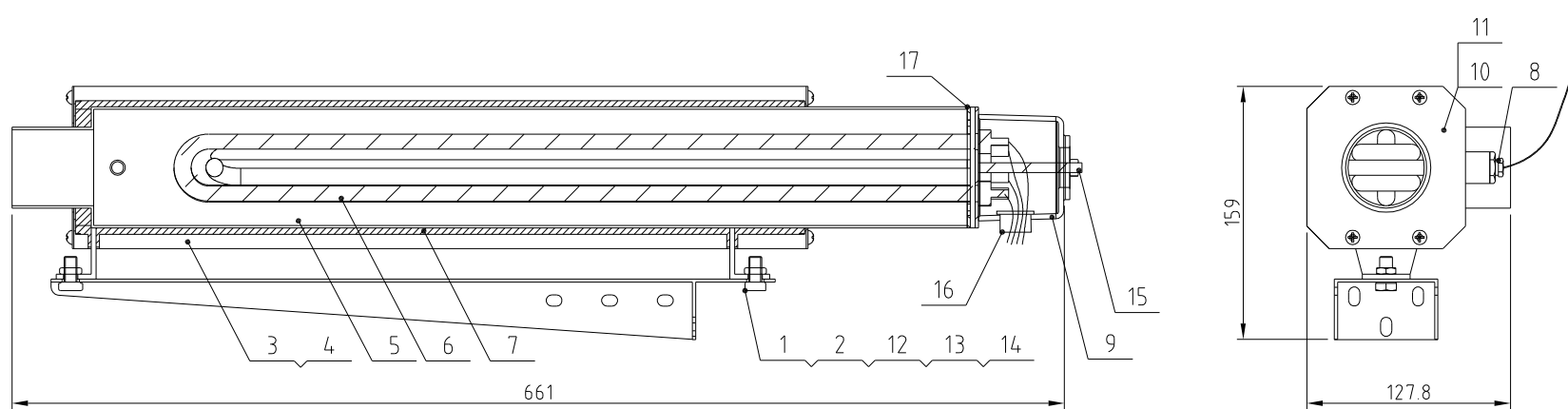
标记	更改前	更改后	更改人	日期	制图	版号	标题	图号	比例	数量
					设计	核准				
					校对					
					审核					
					日期	日期				



28	YW09060200100	Adjustable buckle (with safety) model DK602			2	
27	BH10006003110	Hinge pin SAL-6U-31	SUS201		1	
26	BL02012000720	Lower hinge MHD-120U-A-HHSCD/SDD/SDL/MHD	SUS201		1	
25	YW66061200000	Flat washer A grade GB/T197 16-A2-70(SUS)			4	
24	YW61061001800	Inner hexagon cylinder screw GB/T170.1 M6x10-A2-70(SUS)			4	
23	YW64000600200	Non-metal insert hexagon nut GB/T889 M6			4	
22	SCD-120U/80H-A-07	Upper hinge	SUS201(3.0)		1	Borrowed
21	YW66000500000	E-type washer E5			2	
20	BL02012001020	Sight-glass MHD-120U-A-07 (iver 0) has mould	SUS304		1	Borrowed
19	YW62041000000	Large cross socket flat head screw JIS1111 M6x10-Longzine			7	
18	YW70008000000	Sight-glass MHD-80U-A-10	Tempered glass		1	
17	YR10012000900	Cleaning door fastener MHD-120U-A-12	Red silical gel		1	
16	YP60252000000	Epoxy glass laminate wood	Assembly		1	
15	SCD-120U/80H-A-09	Hopper cover	SUS304		1	Borrowed
14	SCD-160U/120H-B-04	Down-blow pipe assembly	SUS201		1	Borrowed
13	YE90530800400	Thermocouple SCD-230U/120H-ALL-08	Assembly		1	
12	YW68081000000	Inner hexagon flat-end set screw GB/T77 M5x10-Longzine			2	
11	YR10008001300	Sight-glass fastener	white silica gel		1	
10	YW09060200100	Adjustable buckle (with safety) model DK602			2	
9	YW62051000000	Large cross socket flat head screw JIS1111 M5x10-A2-70(SUS)			12	
8	SCD-120U/80H-A-06	Air exhaust pipe	SUS201		1	Borrowed
7	YW64040700100	Non-metal insert hexagon nut GB/T889 M4			4	
6	YW02003000400	Adjustable spring buckle			2	
5	SDD-160U/120H-B-02	Insulation board	SUS430(0.5)		1	
4	YW61061200000	Inner hexagon cylinder screw GB/T170.1 M6x12-12.9-Longzine			5	
3	BW20012000040	Aluminum square handle 120L black 120L(M6)			1	
2	SCD-120U/80H-A-03	External cleaning door	Assembly		1	
1	SDD-160U/120H-B-01	Storage tank	Assembly		1	

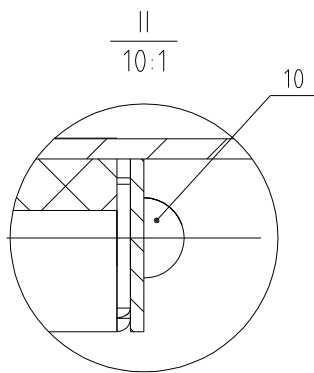
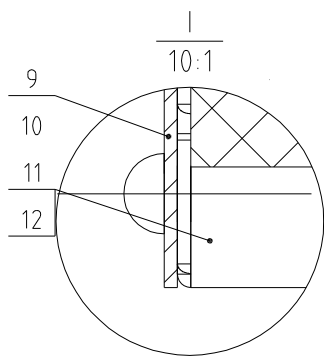
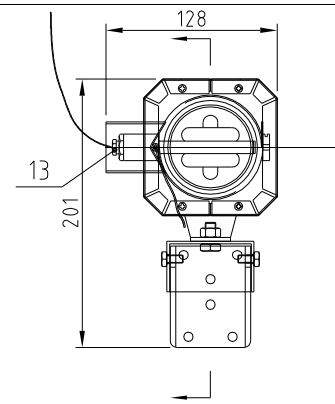
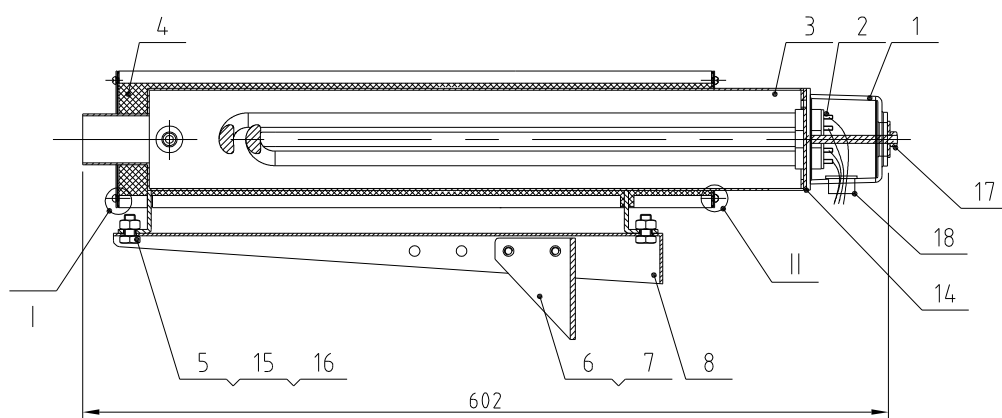
序号	代号	名称	材质	数量	备注
----	----	----	----	----	----

标记	更改前	更改后	更改人	日期	制图	版号	标题	图号	比例	数量	备注
					设计	核准	SDD-160U/120H 储料桶组件	SDD-160U/120H-B-ALL	1:1	1	材质
					校对		SHINI 信易电热机械股份有限公司 Shini Plastics Technologies, Inc.		表面要求		
					审核				物料号		
					日期						



17	YR90000200000	Flange washer 2" SD-400H-A-45		1	
16	YE67013500000	Cable head PG13.5		1	
15	YW64000600300	Hex nut GB/T6170 M6		1	
14	YW65008000100	Standard spring washer GB/T93 8-Longzine		2	
13	YW66081900000	Flat washer 8x19x2.0Longzine		4	
12	YW64080600000	Hex nut GB/T6170 M8-Longzine		2	
11	YW69040900000	Open end blind rivets with break pull mandrel and flat round head in aluminium GB/T 12618 4x9		8	
10	SD-40H-D-02	Heater cover plate	SUS201	1	Borrowed
9	YR40200000100	bakelite cover SD-200H-D-06	PF	1	
8	BH90115000050	EGO detector	Assembly	1	
7	YP62820140000	Fire blanket 250x730mm		1	
6	BH70640000150	pipe heater 6KW 3φ400V	Assembly	1	
5	SDD-230U/120H-C-01	Heating Tank	Weldment	1	
4	SCD-230U/120H-C-03	Heater cover plate 2	SUS201	1	
3	SCD-230U/120H-C-02	Heater cover plate 1	SUS201	1	
2	YW60081600100	Hexagon screw bolt GB/T5781 M8x16-4.8-Longzine		2	
1	SCD-230U/120H-C-04	Heater fixed frame	SPCC2.0	1	
序号	代 号	名 称	材 质	数 量	备 注

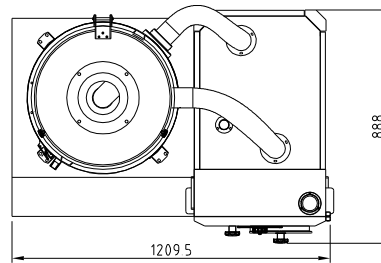
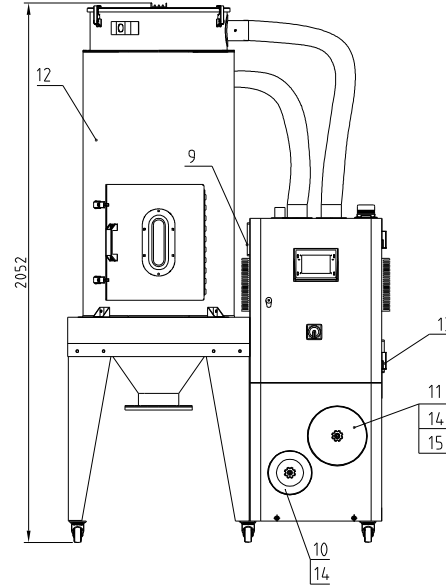
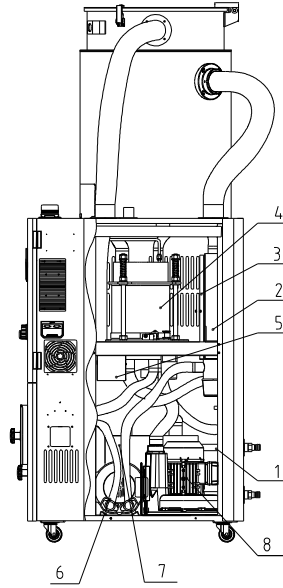
					制图		版号		标题	SDD-230U/120H	图号		比例		数量	
					设计		核		干燥加热器		SDD-230U/120H-C-ALL			材质		
					校对		准		信易電熱機械股份有限公司 Shini Plastics Technologies, Inc.				表面要求			
标记	更改前	更改后	更改人	日期	审核		日期			物料号						



18	YE67013500000	Cable head PG13.5		1	
17	YW64000600300	Hex nut GB/T6170 M6		1	
16	YW66081900000	Flat washer 8x19x2.0 Longzine		4	
15	YW64080600000	Hex nut GB/T6170 M8-Longzine		2	
14	YR90000200000	Flange washer 2" SD-400H-A-45	Silica gel	1	
13	BH90115000050	EGO Detector	Assembly	1	
12	SD-40H-C-03	Heater cover plate 2	SUS201	1	
11	SD-40H-C-02	Heater cover plate 1	SUS201	1	
10	YW69040900000	Open type flat round head aluminum core pulling rivet GB/T 12618 4x9		8	
9	SD-40H-C-04	Heater cover plate	SUS201	1	
8	SD-40H-C-05	Heater fixed frame	SPCC2.0	1	
7	YW60061000000	Hexagon screw bolt GB/T5781 M6x10-4.8-Longzine		4	
6	SD-40H-C-06	Heater fixing angle	SPH4.0	1	
5	YW60081600100	Hexagon screw bolt GB/T5781 M8x16-4.8-Longzine		2	
4	YP62820140000	Fire blanket 250X730mm		1	
3	SD-40H-C-01	Heating Tank	Weldment	1	
2	BH70440006150	Heat pipe 4KW fixed flange 3φ400V	Assembly	1	
1	YR40200000100	Bakelite cover	PF	1	
序号	代号	名称	材质	数量	备注

					制图		版本号	标题	SDD-160U/120H	图号	SDD-160U/120H-C-ALL	比例		数量	
					设计		核准	再生加热器					材质		
					校对			信易電熱機械股份有限公司 Shini Plastics Technologies, Inc.				表面要求			
标记	更改前	更改后	更改人	日期	审核		日期						物料号		

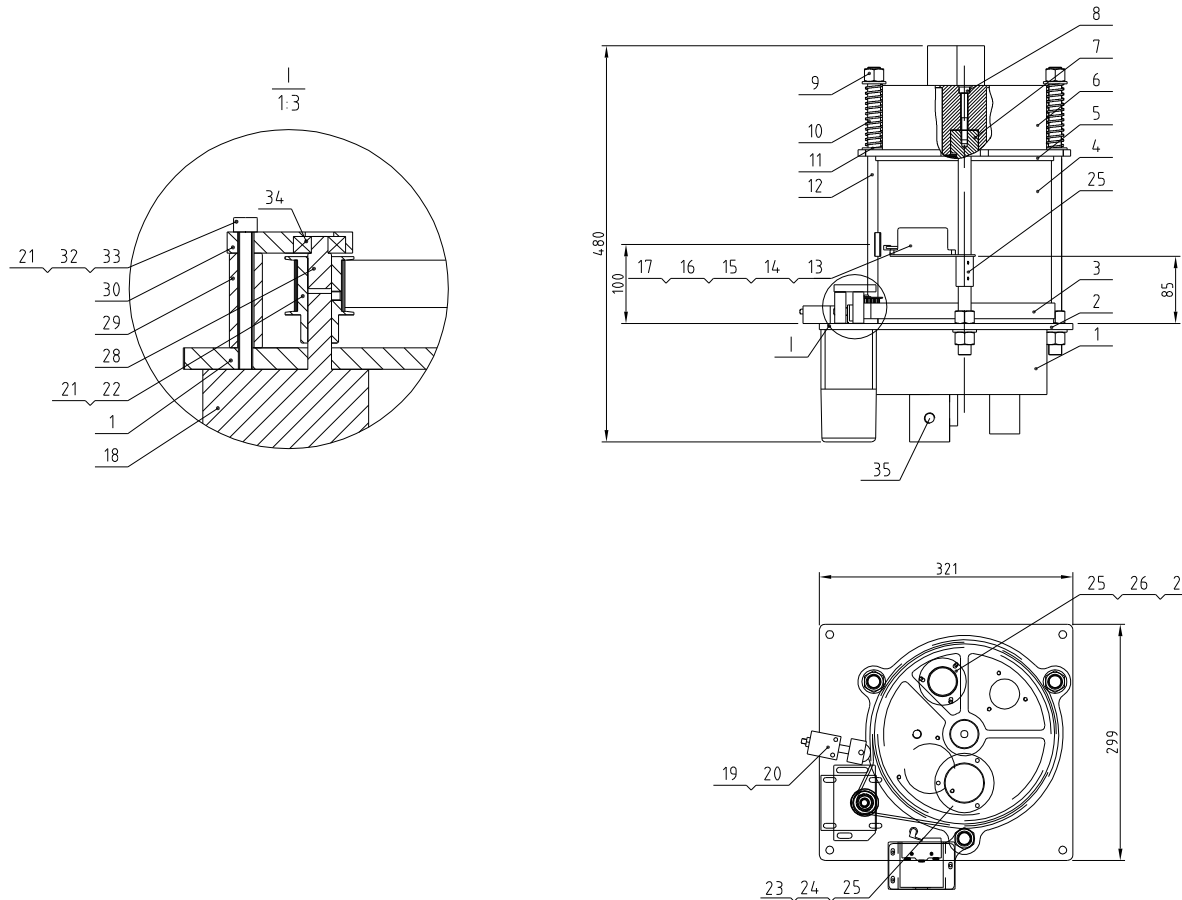
Regen blower power	Drying blower power	Regen heater power	Dehumidifying air quantity	Ver
0.18KW	0.75KW	4KW	120m ³ /hr	Ver F
Interface size of cooling water inlet and outlet pipe	Cooling water pressure	Cooling water flow	Cooling water temp	
	3~5Kg	15L/min	Normal temp	



15	YR40120000100	SD-120H-ALL-06 Ver A Filter barrel cover		1	
14	YW09675100000	Small box nut 5/16 SHD-6-75KG-01-SJ Aluminum alloy		1	
13	YW90120700000	Aluminum cooler STM-1207HT-A-17		2	
12	SDD-230U/120H-B-ALL	Insulation Storage tank	Assembly	1	
11	YR50708000100	Filter (700/800G)		1	
10	YR50128300000	Filter ADC18		1	
9	YM60121206400	Exhaust fan 12x12CM/24VAC 50/60HZ With plastic net		1	
8	BM30031000150	Shini blower RB-310		1	
7	BW88008000020	Cooler		2	
6	YM40211000100	Regen blower 2#B110#0610 2KW 3P 230V400V/50/60Hz thermal pro.		1	
5	YE80153100100	15W Motor speed US315C (Zhongdalde)		1	
4	SD-120H-B-ALL	Honeycomb rotor	Assembly	1	
3	SDD-230U/120H-C-ALL	Drying heater	Assembly	1	
2	SDD-160U/120H-C-ALL	Regeneration heater	Assembly	1	
1	YR60161604000	Pressure resistant water pipe Max. 10 inner diameter 10mm, pressure resistant 4bar (Water Sanction standard)		2	

序号	代号	名称	材料	数量	备注
----	----	----	----	----	----

					制图		版号		标题	SDD-230U/120H	图号	比例	1:18	数量	1
					设计		核准		欧化除湿干燥组合				材质		
					校对				SHINI 信易电热机械股份有限公司 Shini Plastics Technologies, Inc.		表面要求				
标记	更改前	更改后	更改人	日期	审核		日期					物料号			

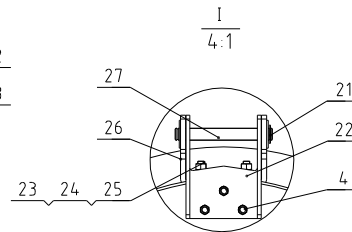
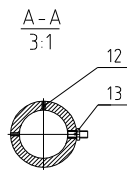
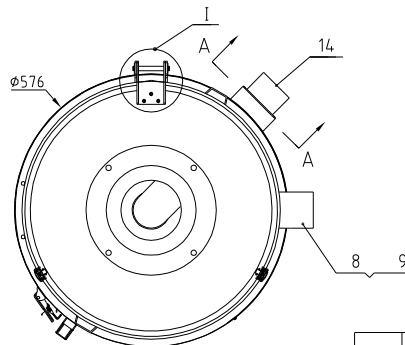
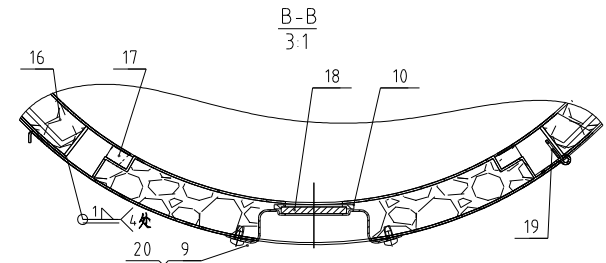
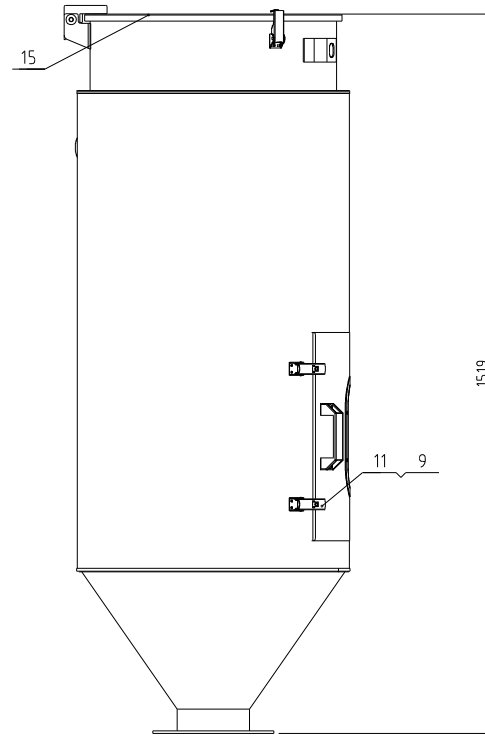
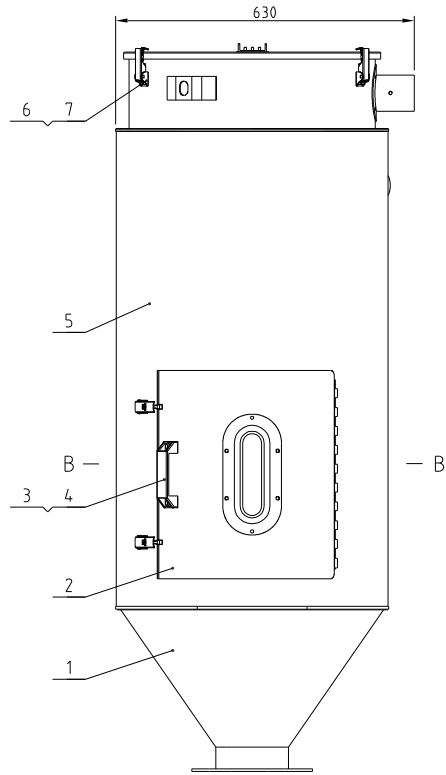


Technical requirements:
 1. Parts 2 and 5 are bonded with red silicone on one side and parts 1 and 6 are bonded with high-temperature resistant white silicone on the other side;
 Number 10 has a compression capacity of 15.

35	SD-120H-B-08	2" Upper and lower cover flange 1/4"PT		1	
34	YW11062700000	Bearing 627	Assembly	1	
33	YW66061300000	Flat washer A grade GB/T97.1 6x12x1.4	-Longzine	3	
32	YW65006000100	Standard spring washer GB/T93 6-Longzine		3	
31	YW61066500000	Inner hex column head screw GB/T70.1 M6x5-A2-70 (Full tooth)		3	
30	SD-200H-B-05	Gear motor fixed plate	6061	1	
29	SD-200H-B-04	Positioning pipe 40mm	6061	3	
28	BH33702300010	Fixed shaft SD-700H-B-23	SUS201	1	
27	SD-120H-B-01	1.5" Air pipe flange	SUS201	3	
26	YR90001500200	1.5" Flange washer	White silica gel	3	
25	YW62051000100	Large cross socket flat head screw JIS1117 M5x10-Longzine		15	
24	YR90000200000	2.0" Flange washer	White silica gel	2	
23	SD-120H-B-02	2" air inlet pipe flange	SUS201	1	
22	YW68004500000	Inner hexagon flat end set screw GB/T77 M4x5-Longzine		3	
21	YW08001000100	Synchronous belt pulley SD-120H-B-05	45#	1	
20	YW63044500000	Cross recessed pan head screw GB/T-818 M4x5-Longzine		2	
19	SD-400H-A-40	Belt regulator	Assembly	1	Borrowed
18	YM50315300100	Speed motor BK15RGN-C30N600K(Zhongdaide)	Assembly	1	
17	BL04402200020	Micro switch fixed piece SD-40H-A-22	SUS201	1	
16	YW63040600000	Cross recessed pan head screw GB/T-818 M4x6-Longzine		3	
15	YW63032500000	Cross recessed pan head screw GB/T-818 M3x25-Longzine		2	
14	YE14511200000	Position limit switch YBLXW-5/11G2	Assembly	1	
13	YR40330900000	Microswitch box	ABS	1	
12	BH10533000010	Double head screw SD-40H-B-07		3	
11	YW66163000000	Flat washer A grade GB/T97.1 6-Longzine		12	
10	YW01201800000	Spring SD-700H-B-07	70Mn	3	
9	YW64001600000	Hexagonal nut GB/T6170 M16-Longzine		9	
8	YW61086500000	Inner hex column head screw GB/T70.1 M6x5-19-Longzine		2	
7	BH10005003110	Honeycomb mount shaft	45	2	Borrowed
6	BA40012000110	Honeycomb Upper cover SD-120H-B-03	AC4B	1	
5	YR10010000700	Silica gel Teflon upper gasket	Red silica gel + Teflon	1	
4	SD-120H-B-06	Honeycomb Ø220-200L	Full silica gel	1	
3	YR00203000000	Synchronous belt 20-300XL(perimeter 762)	Assembly	1	
2	YR10010000900	Silica gel Teflon lower gasket	Red silica gel + Teflon	1	
1	BA40012000210	Honeycomb Lower cover SD-120H-B-04	AC4B	1	

序号	代号	名称	材料	数量	备注
----	----	----	----	----	----

标记	更改前	更改后	更改人	日期	制图	版号	标题	图号	比例	数量
					设计	核准	SD-120H 蜂巢转轮	SD-120H-B-ALL	1:1	1
					校对		信易电热机械股份有限公司 Shini Plastics Technologies, Inc.		表面要求	
					审核				物料号	



27	BH10006003110	Hinge pine SAL-6U-31	SUS201	1	
26	BL02012000720	Lower hinge	SUS201	1	
25	YW660061200000	Flat washer A grade GB/T97.16-A2-70(SUS)		4	
24	YW61061001800	Inner hexagon cylinder head screw GB/T170.1 M6x10-A2-70(SUS)		4	
23	YW64000600200	Non-metal insert hexagon nut GB/T889.1 M6		4	
22	SCD-230U/120H-B-04	Upper hinge	SUS201(3.0)	1	
21	YW66000500000	E-type washer E5		2	
20	BL02080002020	Sight-glass	SUS304	1	
19	YW62041000000	Large cross socket flat head screw JIS1111 Mx10-Longzine		7	
18	YW70008000000	Sight glass	Tempered glass	1	
17	YR10023000900	Cleaning door fastener MHD-230U-A-09	Red silical gel	1	
16	YP60252000000	Epoxy glass laminate wood	Assembly	1	
15	MHD-230U-A-04	Hopper cover	SUS304	1	
14	SCD-230U/120H-B-07	Down-blow pipe assembly	SUS201	1	
13	YE90530800400	Thermocouple SCD-230U/120H-ALL-08	Assembly	1	
12	YW68081000000	Inner hex flat end lock screw GB/T77 M6x10-Longzine		2	
11	YW09060200100	Adjustable buckle (with safety) model DK602		2	
10	YR10008001300	Sight-glass fastener	white silica gel	1	
9	YW62051000000	Large cross socket flat head screw JIS1111 M5x10-A2-70(SUS)		12	
8	SCD-230U/120H-B-09	Air exhaust pipe	SUS201	1	
7	YW64040700100	Non-metal insert hexagon nut GB/T889 M4		4	
6	YW02003000400	Spring buckle adjustable		2	
5	SDD-230U/120H-B-02	Insulation board	SUS430(0.5)	1	
4	YW61061200000	Inner hexagon cylinder head screw GB/T170.1 M6x12.9-Longzine		5	
3	BW20012000040	Aluminum square handle 120L(M6)		1	
2	SCD-230U/120H-B-06	External cleaning door	Assembly	1	
1	SDD-230U/120H-B-01	Material storage tank	Assembly	1	
序号	代号	名称	材质	数量	备注

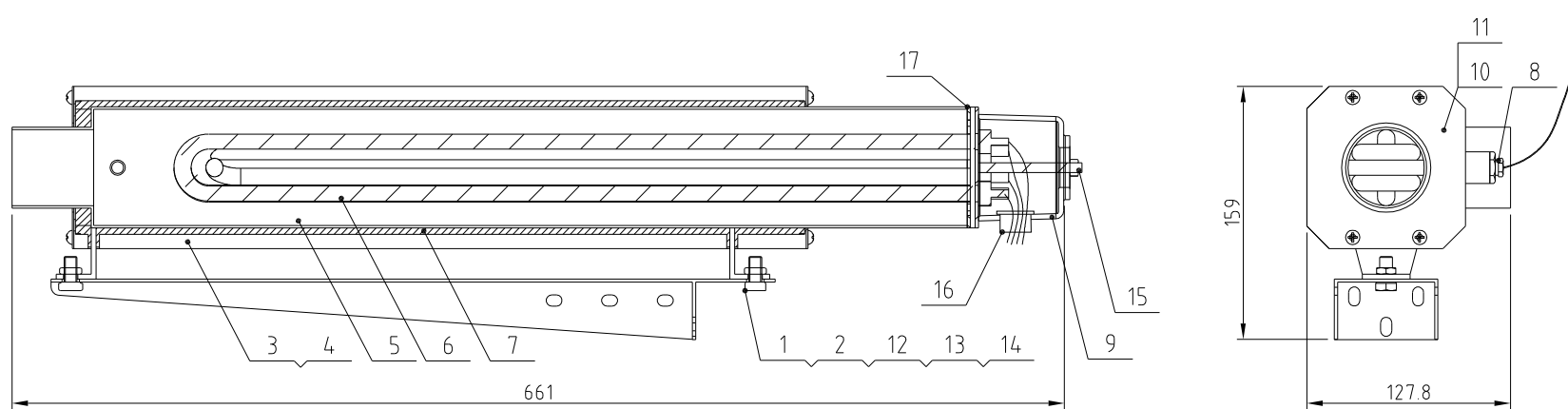
Technical requirements:

- When assembling item 18, it should be fixed with silicone glue;
- The insulation board and the cleaning door frame need to be spot welded around, with smooth and beautiful welds

标记	更改前	更改后	更改人	日期	制图	版号	标题	图号	比例	数量
					设计	核准	SDD-230U/120H	SDD-230U/120H-B-ALL	1:1	1
					校对		保温材料桶组件			
					审核					
					日期	日期				

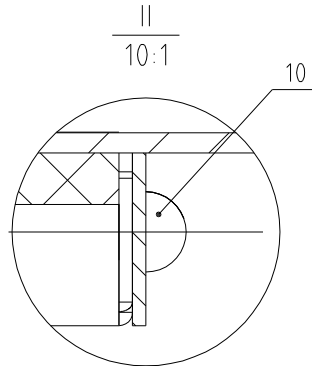
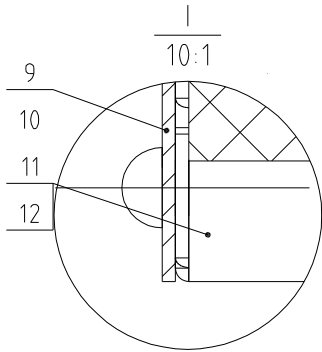
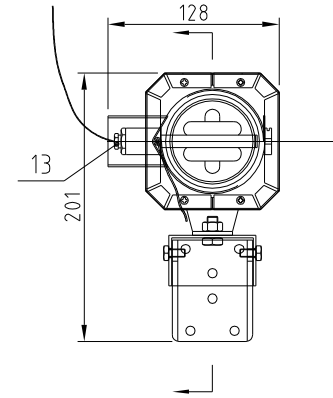
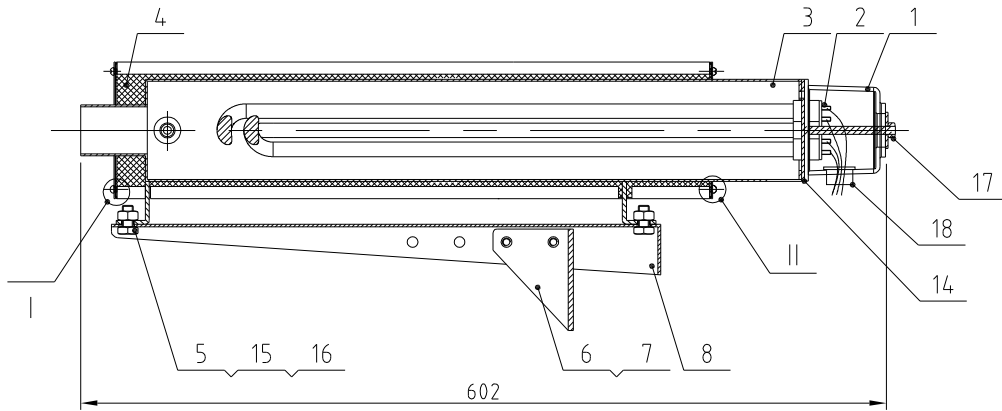
SHINI 信易电热机械股份有限公司
Shini Plastics Technologies, Inc.

表面要求
物料号



17	YR90000200000	Flange washer 2" SD-400H-A-45		1	
16	YE67013500000	Cable head PG13.5		1	
15	YW64000600300	Hex nut GB/T6170 M6		1	
14	YW65008000100	Standard spring washer GB/T93 8-Longzine		2	
13	YW66081900000	Flat washer 8x19x2.0Longzine		4	
12	YW64080600000	Hex nut GB/T6170 M8-Longzine		2	
11	YW69040900000	Open end blind rivets with break pull mandrel and flat round head in aluminium GB/T 12618 4x9		8	
10	SD-40H-D-02	Heater cover plate	SUS201	1	Borrowed
9	YR40200000100	bakelite cover SD-200H-D-06	PF	1	
8	BH90115000050	EGO detector	Assembly	1	
7	YP62820140000	Fire blanket 250x730mm		1	
6	BH70640000150	pipe heater 6KW 3φ400V	Assembly	1	
5	SDD-230U/120H-C-01	Heating Tank	Weldment	1	
4	SCD-230U/120H-C-03	Heater cover plate 2	SUS201	1	
3	SCD-230U/120H-C-02	Heater cover plate 1	SUS201	1	
2	YW60081600100	Hexagon screw bolt GB/T5781 M8x16-4.8-Longzine		2	
1	SCD-230U/120H-C-04	Heater fixed frame	SPCC2.0	1	
序号	代 号	名 称	材 质	数 量	备 注

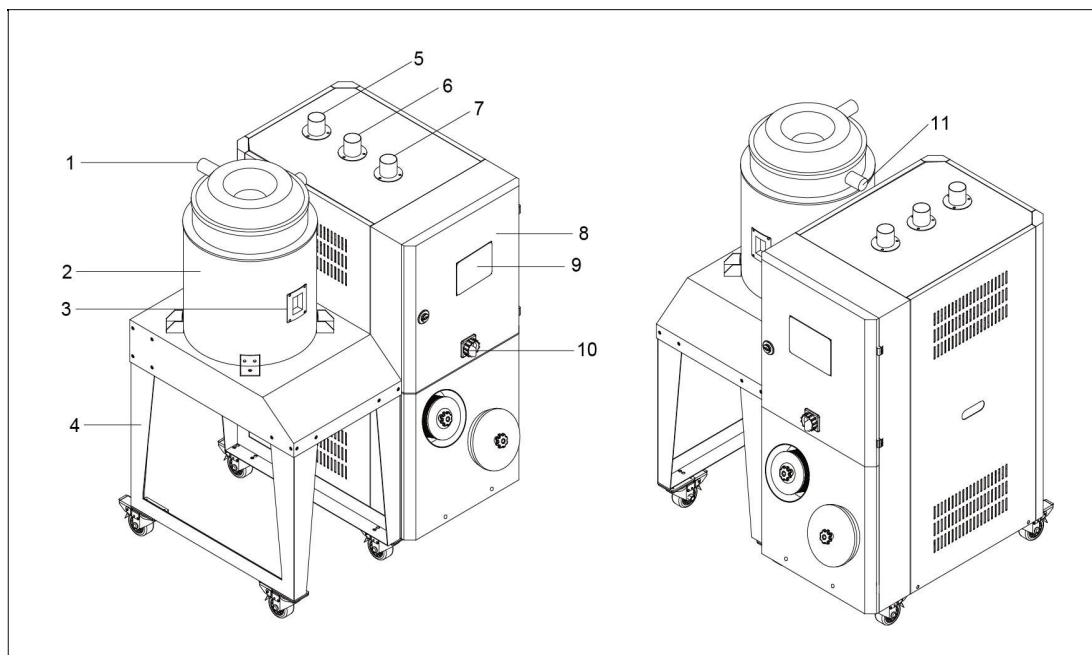
					制图		版号	标题	SDD-230U/120H	图号	SDD-230U/120H-C-ALL	比例		数量	
					设计		核	干燥加热器					材质		
					校对		准					表面要求			
标记	更改前	更改后	更改人	日期	审核		日期		信易電熱機械股份有限公司	Shini Plastics Technologies, Inc.	物料号				



18	YE67013500000	Cable head PG13.5		1	
17	YW64000600300	Hex nut GB/T6170 M6		1	
16	YW66081900000	Flat washer 8x19x2.0 Longzine		4	
15	YW64080600000	Hex nut GB/T6170 M8-Longzine		2	
14	YR90000200000	Flange washer 2" SD-400H-A-45	Silica gel	1	
13	BH90115000050	EGO Detector	Assembly	1	
12	SD-40H-C-03	Heater cover plate 2	SUS201	1	
11	SD-40H-C-02	Heater cover plate 1	SUS201	1	
10	YW69040900000	Open type flat round head aluminum core pulling rivet GB/T 12618 4x9		8	
9	SD-40H-C-04	Heater cover plate	SUS201	1	
8	SD-40H-C-05	Heater fixed frame	SPCC2.0	1	
7	YW60061000000	Hexagon screw bolt GB/T5781 M6x10-4.8-Longzine		4	
6	SD-40H-C-06	Heater fixing angle	SPH4.0	1	
5	YW60081600100	Hexagon screw bolt GB/T5781 M8x16-4.8-Longzine		2	
4	YP62820140000	Fire blanket 250X730mm		1	
3	SD-40H-C-01	Heating Tank	Weldment	1	
2	BH70440006150	Heat pipe 4KW fixed flange 3φ400V	Assembly	1	
1	YR40200000100	Bakelite cover	PF	1	
序号	代号	名称	材质	数量	备注

					制图		版号	标题	SDD-160U/120H	图号		比例		数量	
					设计		核准	再生加热器		SDD-160U/120H-C-ALL			材质		
					校对			信易電熱機械股份有限公司 Shini Plastics Technologies, Inc.				表面要求			
标记	更改前	更改后	更改人	日期	审核		日期						物料号		

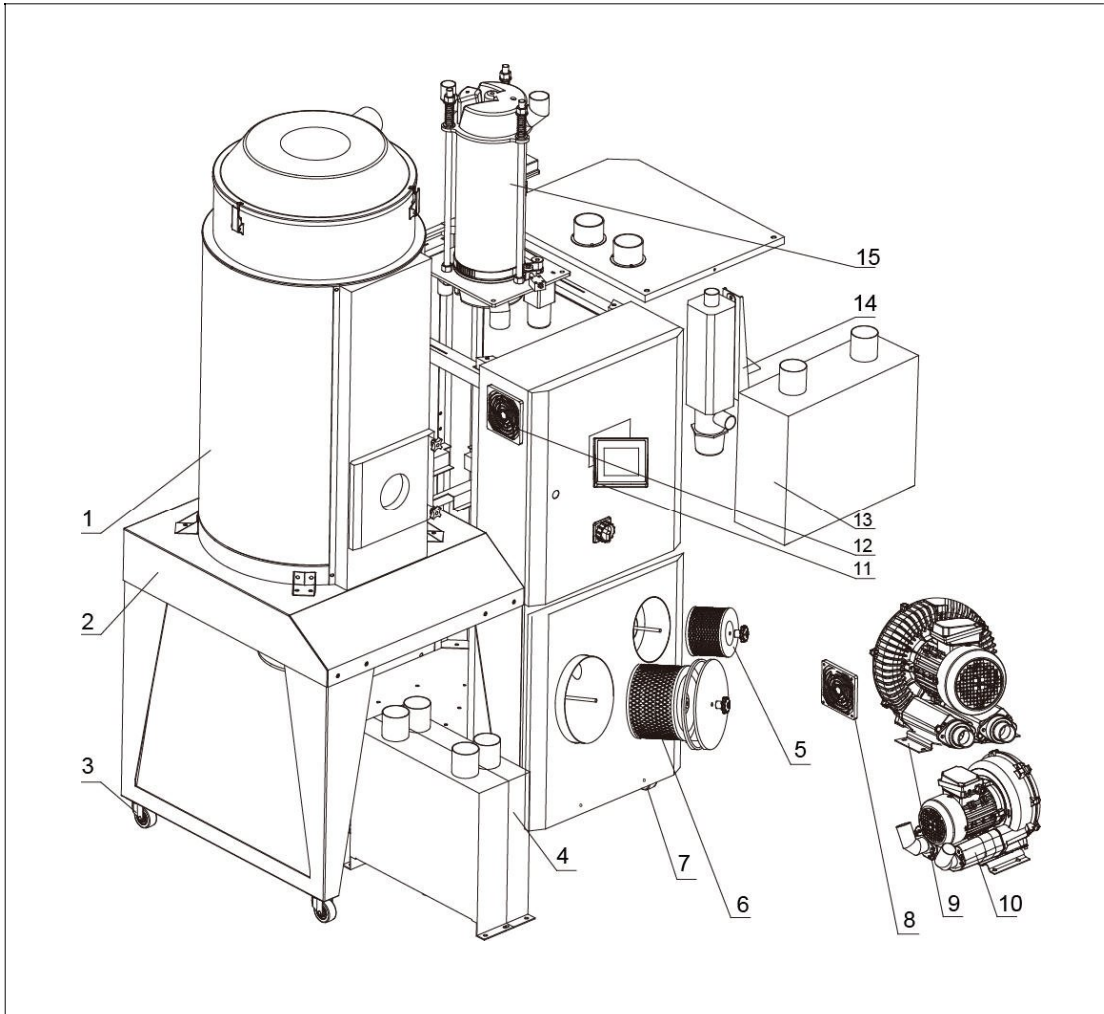
1. Structural Drawing (SDD-300U/200H)



Parts name:

- | | | | |
|---|----------------------------|---------------------|--------------------|
| 1. Return air outlet | 2. Insulated drying hopper | | |
| 3. Sight-glass window (or maintainace door for hopper capacity more than 80U) | | | |
| 4. Floor stand | 5. Dry air outlet | 6. Return air inlet | 7. Moisture outlet |
| 8. Control panel | 9. Main power switch | 10. Dry air inlet | |

2. Assembly Drawing (SDD-300U/200H)



Remarks: Please refer to material list 3 for specific explanation of the Arabic numbers in parts drawing.

3. Parts List (SDD-300U/200H)

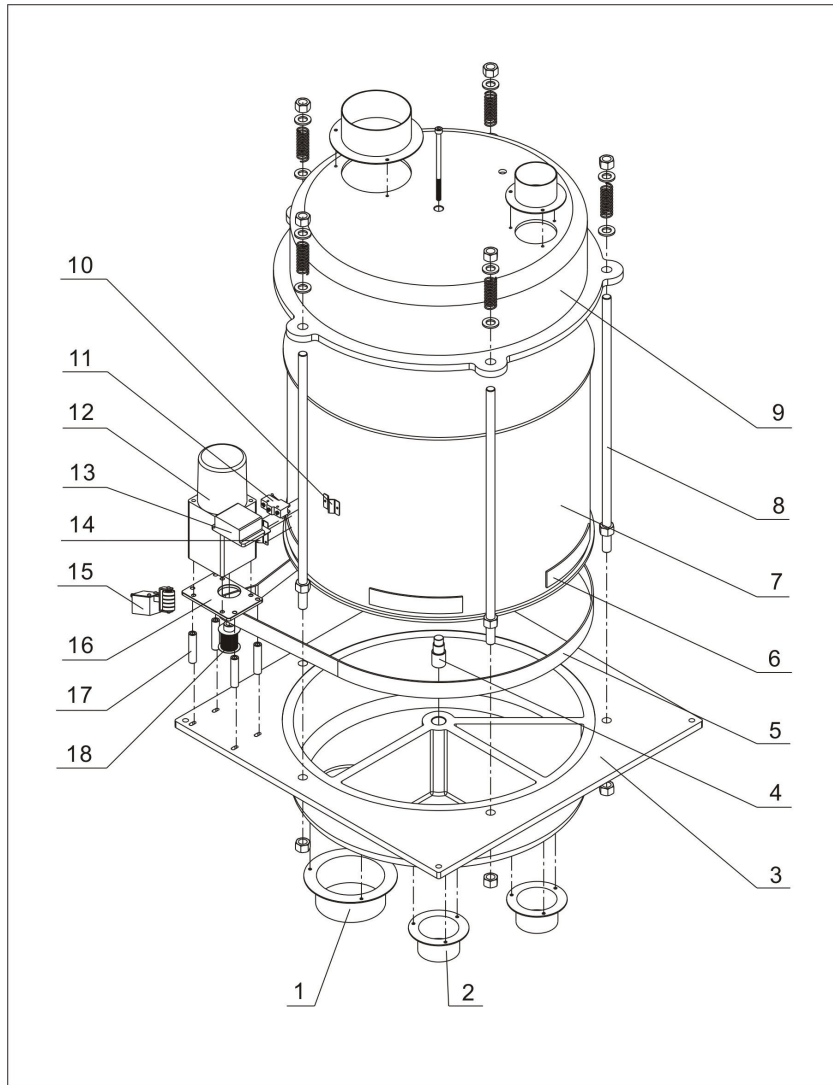
No.	Description	Part No.
1	Drying hopper	BK0430000020
2	Rack metal plate	BK04030000720
3	Brake castor wheel	YW03000300000
4	Cooler	BL03154040120
		BW88152000020
5	Regen. filter **	YR50708000100
6	Drying filter **	YR50203000100
7	Castor wheel	YW03000300200
8	Anti-dust screen	YR40120300000
9	Drying blower *	BM30042000050
10	Regen. blower *	BM30020500050
11	Control panel	YE81878500300
12	Exhaust fan **	YM60121206400
13	Heater case	Refer to list 11
14	Regen. heater	Refer to list 11
15	Honeycomb assembly	Refer to list 9

* means possible broken parts.

** means easy broken part. and spare backup is suggested.

Please confirm the version of manual before placing the purchase order to guarantee that the item number of the spare part is in accordance with the real object.

4. Honeycomb Assembly (SDD-300U/200H)



Remarks: Please refer to material list 5 for specific explanation of the Arabic numbers in parts drawing.

5. Parts List of Honeycomb Assembly (SDD-300U/200H)

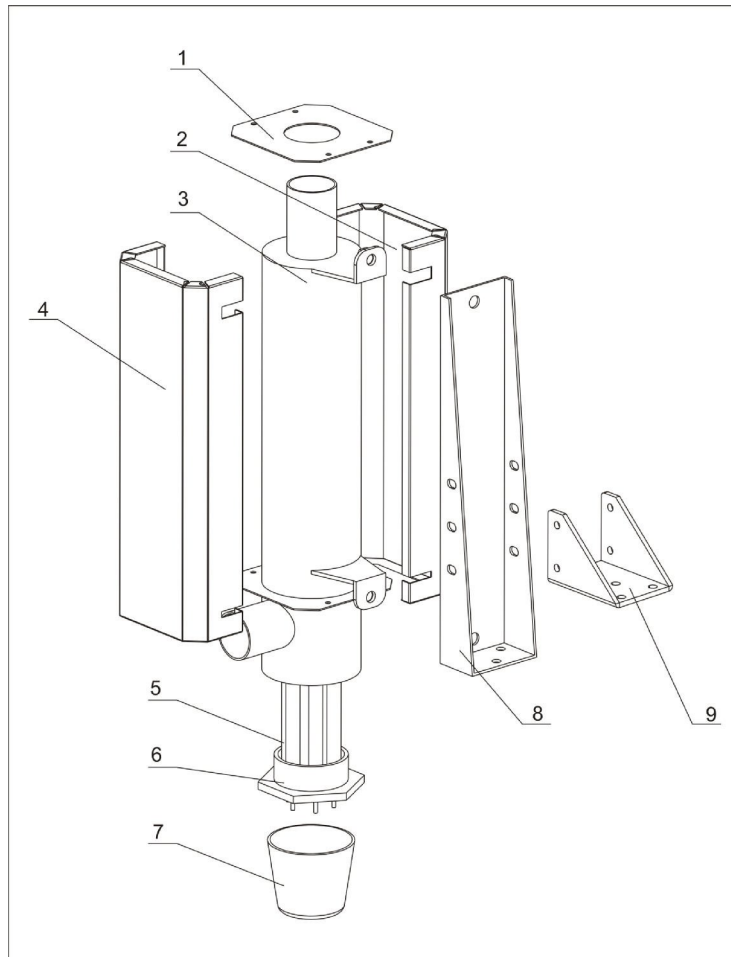
No.	Description	Part No.
1	Honeycomb flange	-
2	Honeycomb flange	-
3	Honeycomb lower cover	-
4	Honeycomb installation shaft	-
5	Synchronous belt **	YR00203400000
6	Synchronous belt	-
7	Honeycomb	YW71025000700
8	Double-head screw	BH11100000210
9	Honeycomb upper cover	-
10	Honeycomb fixing plate	-
11	Position limit switch*	YE14511200000
12	Gear motor	YM50512600000
13	Microswitch box	-
14	Belt tension regulator	-
15	Mounting plate of gear motor	-
16	Fixing pipe	-
17	Synchronous wheel	-

* means possible broken parts.

** means easy broken part, and spare backup is suggested.

Please confirm the version of manual before placing the purchase order to guarantee that the item number of the spare part is in accordance with the real object.

6. Heater Assembly (SDD-300U/200H)



Remarks: Please refer to material list 7 for specific explanation of the Arabic numbers in parts drawing.

7. Part List of Heater Assembly (SDD-300U/200H)

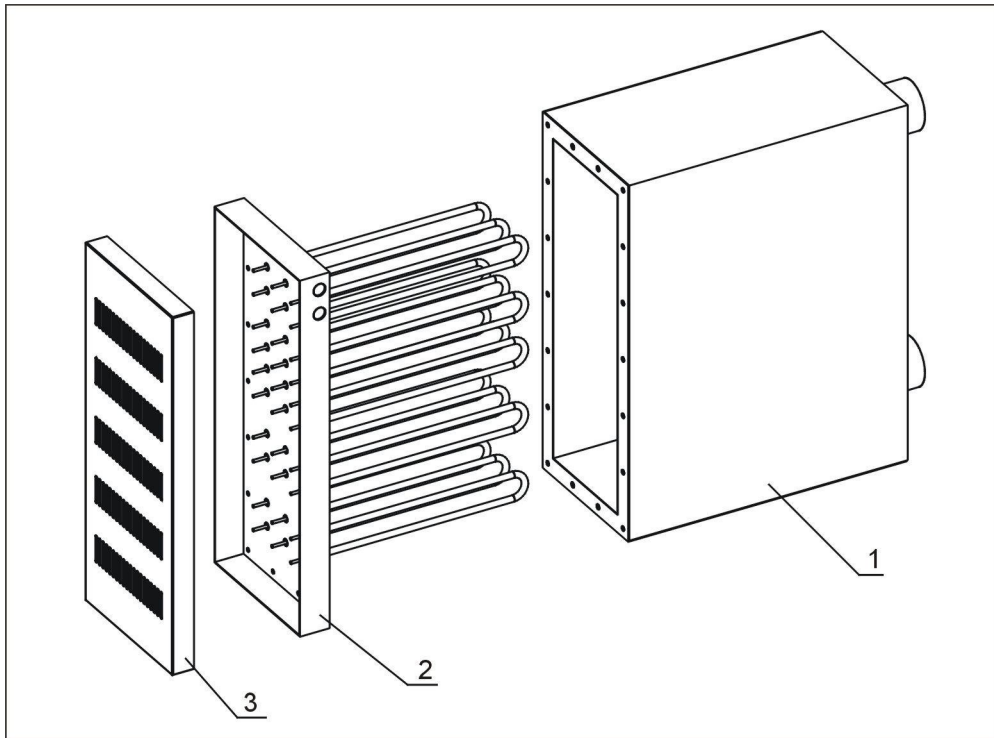
No.	Description	Part No.	No.	Description	Part No.
1	Heater cover plate	-	6	Heater copper head	BH12200500310
2	Heater cover plate 1	-	7	Bakelite cover	YR40002000100
3	Heating tank	-	8	Heater fixed frame	-
4	Heater cover plate 2	-	9	Heater fixed corner	-
5	Pipe heater *(50Hz)	BH70150400050			
	Pipe heater *(60Hz)	BH70120600050			

* means possible broken parts.

** means easy broken part, and spare backup is suggested.

Please confirm the version of manual before placing the purchase order to guarantee that the item number of the spare part is in accordance with the real object.

8. Heater Case Assembly(SDD-300U/200H)



Remarks: Please refer to material list 9 for specific explanation of the Arabic numbers in parts drawing.

9. Part List of Process Heater Case Ass. (SDD-300U/200H)

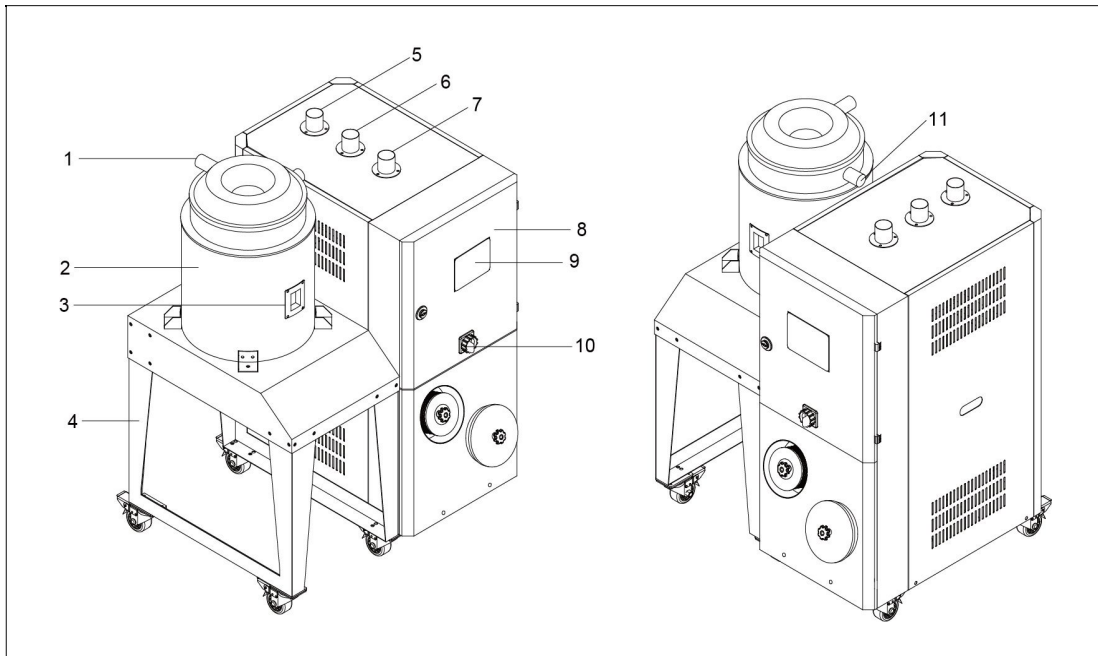
No.	Description	Part No.
1	Heater case	-
2	Pipe heater*	BH70124000550
3	Heater case cover plate	-

* means possible broken parts.

** means easy broken part, and spare backup is suggested.

Please confirm the version of manual before placing the purchase order to guarantee that the item number of the spare part is in accordance with the real object.

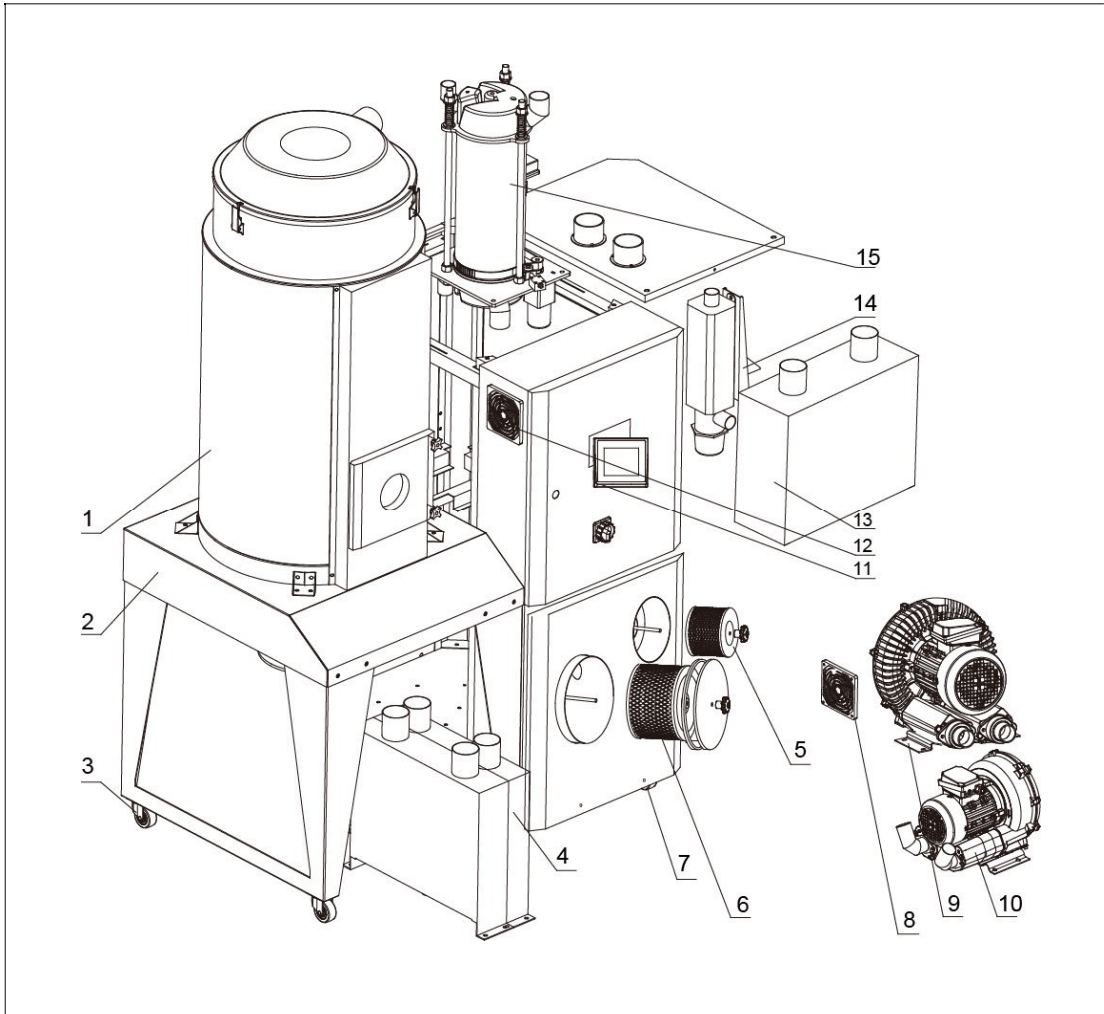
1. Structural Drawing (SDD-450U/200H)



Parts name:

- | | | | |
|---|----------------------------|---------------------|--------------------|
| 1. Return air outlet | 2. Insulated drying hopper | | |
| 3. Sight-glass window (or maintainace door for hopper capacity more than 80U) | | | |
| 4. Floor stand | 5. Dry air outlet | 6. Return air inlet | 7. Moisture outlet |
| 8. Control panel | 9. Main power switch | 10. Dry air inlet | |

2. Assembly Drawing (SDD-450U/200H)



Remarks: Please refer to material list 3 for specific explanation of the Arabic numbers in parts drawing.

3. Parts List (SDD-450U/200H)

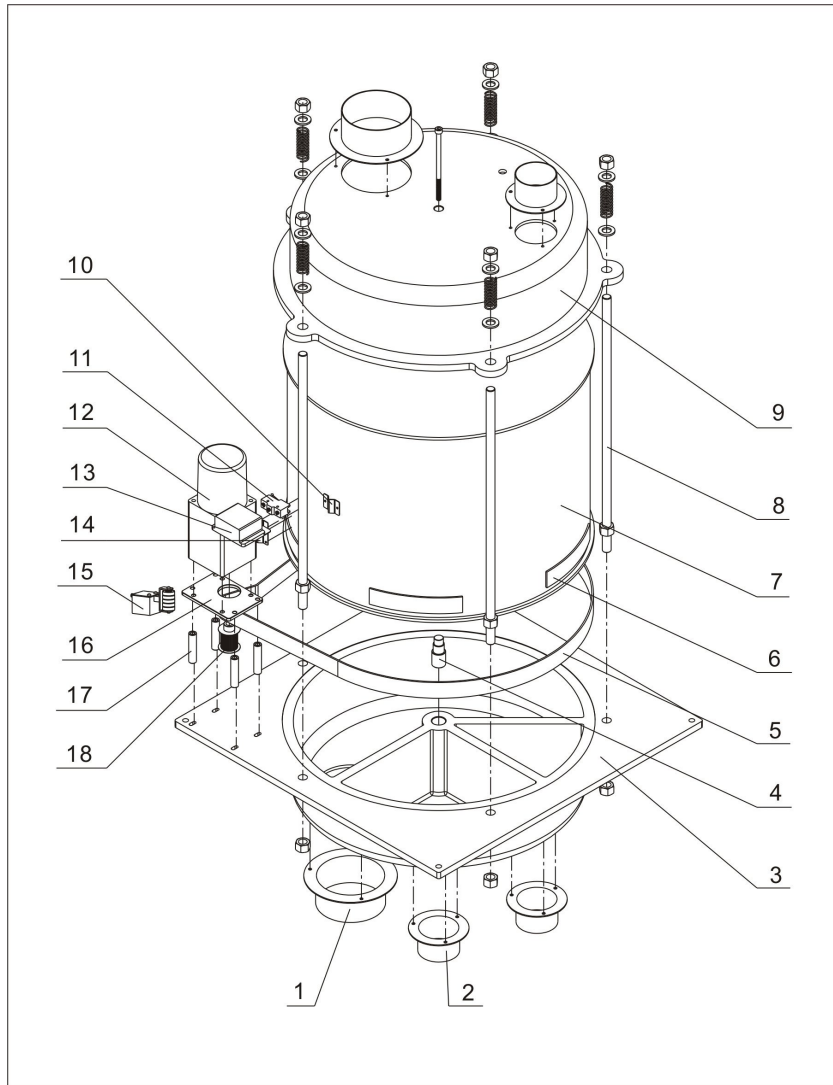
No.	Description	Part No.
1	Drying hopper	BK0445000020
2	Rack metal plate	BK04045000920
3	Brake castor wheel	YW03000300000
4	Cooler	BL03154040120
		BW88152000020
5	Regen. filter **	YR50708000100
6	Drying filter **	YR50203000100
7	Castor wheel	YW03000300200
8	Anti-dust screen	YR40120300000
9	Drying blower *	BM30042000050
10	Regen. blower *	BM30020500050
11	Control panel	YE81878500300
12	Exhaust fan **	YM60121206400
13	Heater case	Refer to list 11
14	Regen. heater	Refer to list 11
15	Honeycomb assembly	Refer to list 9

* means possible broken parts.

** means easy broken part, and spare backup is suggested.

Please confirm the version of manual before placing the purchase order to guarantee that the item number of the spare part is in accordance with the real object.

4. Honeycomb Assembly (SDD-450U/200H)



Remarks: Please refer to material list 5 for specific explanation of the Arabic numbers in parts drawing.

5. Parts List of Honeycomb Assembly (SDD-450U/200H)

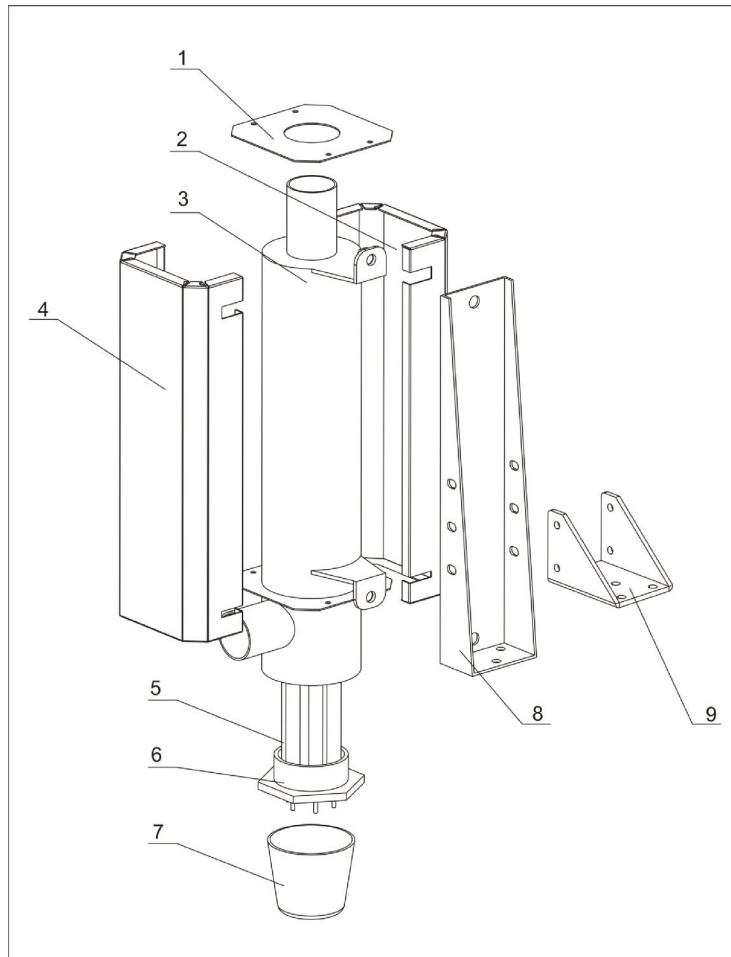
No.	Description	Part No.
1	Honeycomb flange	-
2	Honeycomb flange	-
3	Honeycomb lower cover	-
4	Honeycomb installation shaft	-
5	Synchronous belt **	YR00203400000
6	Synchronous belt	-
7	Honeycomb	YW71025000700
8	Double-head screw	BH11100000210
9	Honeycomb upper cover	-
10	Honeycomb fixing plate	-
11	Position limit switch*	YE14511200000
12	Gear motor	YM50512600000
13	Microswitch box	-
14	Belt tension regulator	-
15	Mounting plate of gear motor	-
16	Fixing pipe	-
17	Synchronous wheel	-

* means possible broken parts.

** means easy broken part. and spare backup is suggested.

Please confirm the version of manual before placing the purchase order to guarantee that the item number of the spare part is in accordance with the real object.

6. Heater Assembly (SDD-450U/200H)



Remarks: Please refer to material list 7 for specific explanation of the Arabic numbers in parts drawing.

7. Part List of Heater Assembly (SDD-450U/200H)

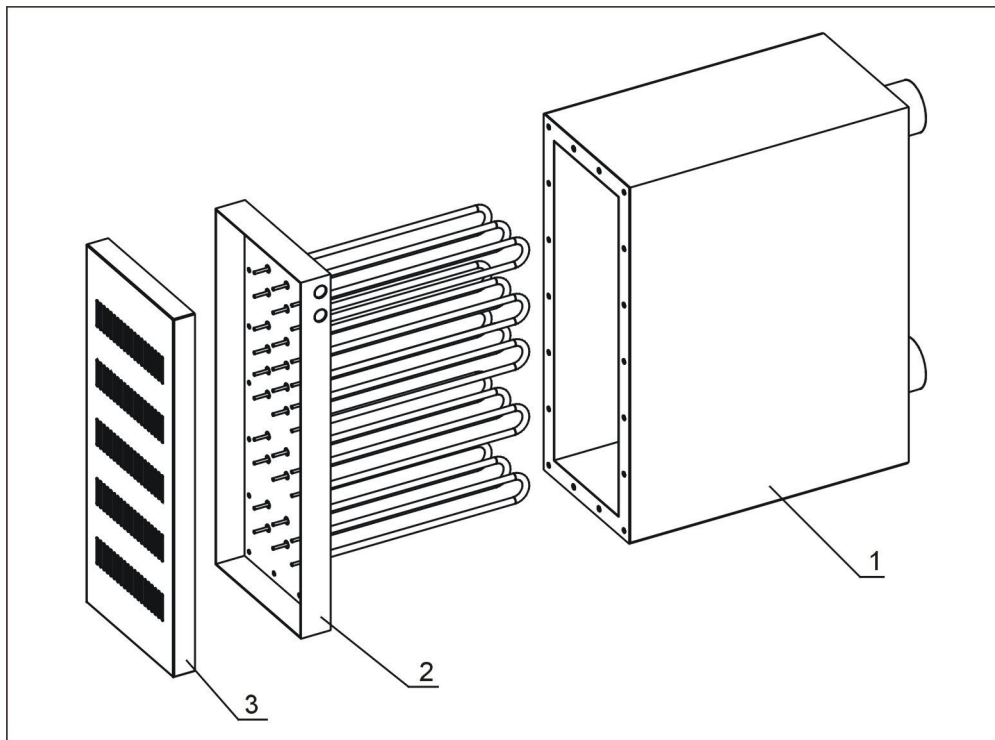
No.	Description	Part No.	No.	Description	Part No.
1	Heater cover plate	-	6	Heater copper head	BH12200500310
2	Heater cover plate 1	-	7	Bakelite cover	YR40002000100
3	Heating tank	-	8	Heater fixed frame	-
4	Heater cover plate 2	-	9	Heater fixed corner	-
5	Pipe heater *(50Hz)	BH70150400050			
	Pipe heater *(60Hz)	BH70120600050			

* means possible broken parts.

** means easy broken part, and spare backup is suggested.

Please confirm the version of manual before placing the purchase order to guarantee that the item number of the spare part is in accordance with the real object.

8. Heater Case Assembly (SDD-450U/200H)



Remarks: Please refer to material list 9 for specific explanation of the Arabic numbers in parts drawing.

9. Part List of Process Heater Case Ass. (SDD-450U/200H)

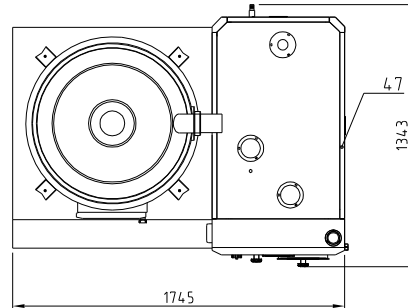
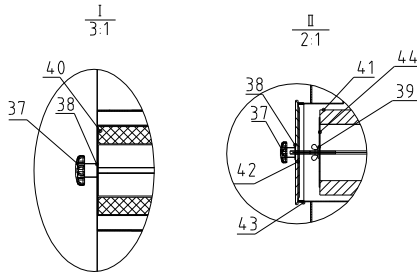
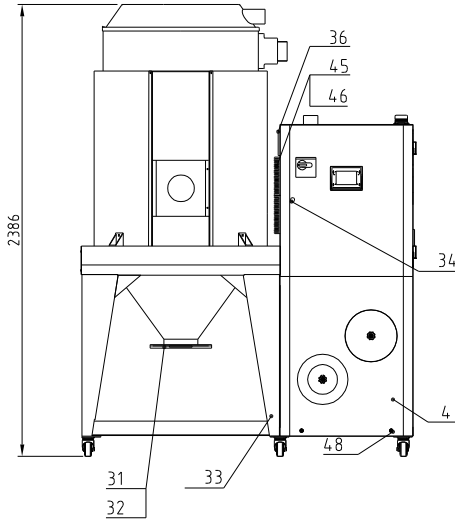
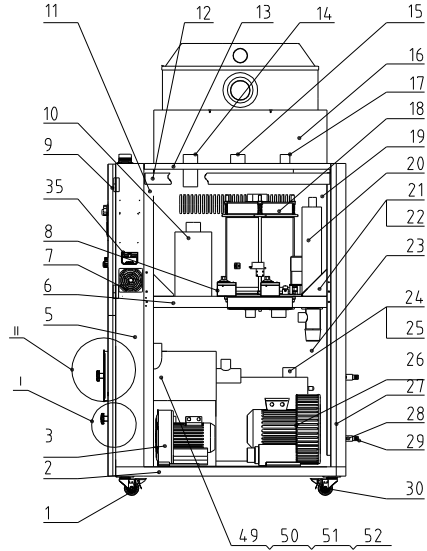
No.	Description	Part No.
1	Heater case	-
2	Pipe heater*	BH70124000550
3	Heater case cover plate	-

* means possible broken parts.

** means easy broken part, and spare backup is suggested.

Please confirm the version of manual before placing the purchase order to guarantee that the item number of the spare part is in accordance with the real object.

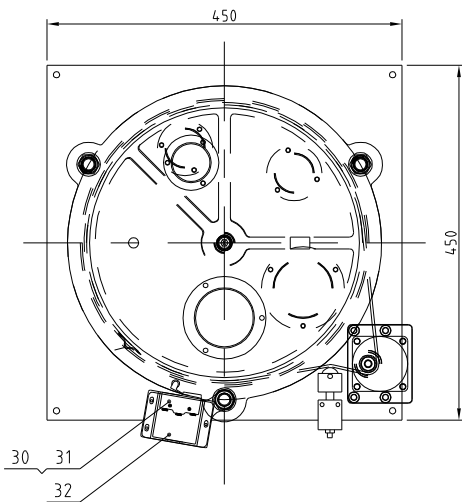
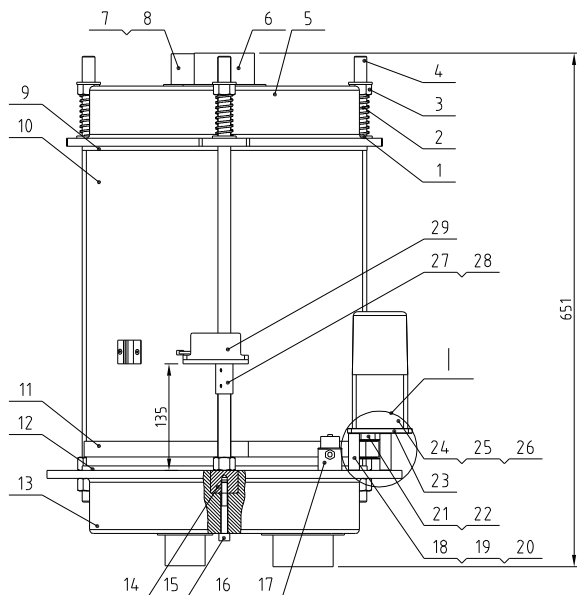
Regen blower power	Drying blower power	Regen heater power	Drying heater power	Dehumidifying air quantity	Insulated hopper capacity	Model version
0.75KW	3.75KW	7.2KW	18KW	400m ³ /hr	600L	Ver E



46	YW6304.0600000	Cross recessed pan head screw GB/T818 M4x6-Longzine		8	
45	YW90120700000	Aluminum cooler SD-40H-ALL-28	Aluminum	2	
44	SD-400H-A-49	Filter cover	SECC	1	For Circulating filtering barrel
4.3	YR10026000000	Filter Hopper fastener	Silica gel	1	For Circulating filtering barrel
4.2	BR904.06000010	SD-400H-A-68 Filter Hopper cover	PC	1	For Circulating filtering barrel
4.1	YR5024.14.00000	Filter ADC3	assembly	1	For Circulating filtering barrel
4.0	YR50708000100	Filter SAL700/800G	assembly	1	For Circulating filtering barrel
3.9	YW69051600000	Wing nuts 5/16"		1	
3.8	YW66081600000	Flat washer A grade GB/T93.118.4=16x16		2	
3.7	YW09675100000	Small box nut 5/16		2	
3.6	YM601212064.00	Exhaust fan	assembly	1	
3.5	YR4.004.8500000	Shell RS485(SAL-700G-A-19H)	ABS+PC	1	
3.4	YW00816100000	Door lock MS816-1	assembly	1	
3.3	SDD-600U/4.00H-B-ALL	Underframe	assembly	1	
3.2	YW0904.0001100	Large shut-off plate	SPH6.0	1	
3.1	BA20060001610	Shut-off plate flange	AC4D	1	
3.0	YW030004.00000	Brake castors 4"	assembly	3	
2.9	BH12234.00010	Copper insert M23x3/4	H58	2	
2.8	BL03030000120	Water flow regulator SD-200H-A-50 Drawing No.C	SUS304	2	
2.7	SCD-600U/4.00H-A-21	Right rear column	SPCC2.0	1	
2.6	YM30062900000	High-pressure blower 5HP	assembly	1	
2.5	BW88030000020	Cooler(Side without hole)	assembly	1	
2.4	BW88030030020	Cooler(has side hole)	assembly	1	
2.3	SD-400H-A-17	Lower side plate	SPCC1.5	2	
2.2	BL08112000020	Set square (Left)	SPCC2.0	3	
2.1	BL08102100020	Set square(Right)	SPCC2.0	3	
2.0	BH704.07200050	Pipe heater7.2KW	assembly	1	Order remark voltage
1.9	SDD-600U/4.00H-A-02	Left upper side plate	SPCC1.5	1	
1.8	SCD-600U/4.00H-D-ALL	Honeycomb rotor	assembly	1	
1.7	SD-400H-A-34	Air exhaust flange	SUS201	1	
1.6	SDD-600U/4.00H-C-ALL	Hopper assembly	assembly	1	
1.5	SCD-600U/4.00H-A-26	Air outlet flange	SUS430	1	
1.4	SD-400H-A-35	Return air flange	SUS201	1	
1.3	SCD-600U/4.00H-A-27	Top plate	SPCC2.0	1	
1.2	SD-400H4-A-09	Side fixed beam	SPCC2.0	2	
1.1	SD-400H4-A-06	Front column	SPCC2.0	2	
1.0	BH70184.000550	Pipe heater 18KW 230V/400V	assembly	1	Order remark voltage
9	SCD-600U/4.00H-A-23	Upper door plank	SPCC1.5	1	
8	BH90115000050	Assembly EGO	assembly	2	
7	YR4.0120300000	Anti-dust screen	ABS	1	
6	SCD-600U/4.00H-A-16	Right center beam	SPCC2.0	1	
5	SDD-600U/4.00H-A-01	Control box	SPCC1.5	1	
4	SDD-600U/4.00H-A-05	Lower door plate	SPCC1.5	1	
3	BM30031000150	Shini blower RB-310	assembly	1	
2	SCD-600U/4.00H-A-28/01	Bottom frame vertical beam(Right)	SPCC2.0	1	
1	YW030004.00200	Flexible castor 4"	assembly	3	

52	SD-400H-A-63/01	Circulating filter head cover		1	
51	YW66061300000	Flat washer A grade GB/T93.16		4	
50	YW65006000100	Standard spring washer GB/T93.6		4	
4.9	YW60061500100	Hexagon bolt GB/T5783 M6x16-12.9		4	
4.8	YW63064500000	Cross recessed pan head screw GB/T-118 M4x5		4	
4.7	SD-400H4-A-16	Left upper side plate	SPCC1.5	1	借用

				制图	版号	标题	图号	比例	1:25	数量	1
				设计	核准	SDD-600U/4.00H- 欧化除湿干燥组合	SDD-600U/4.00H-ALL	表面要求	材质		
				校对	核准	SHINI 信易电热机械股份有限公司 Shini Plastics Technologies, Inc.		表面要求	物料号		
标记	更改前	更改后	更改人	日期	审核					日期	

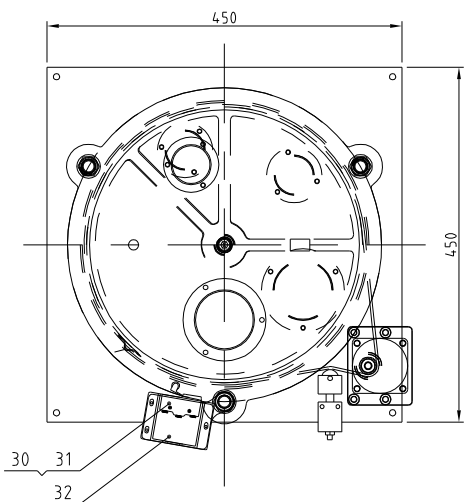
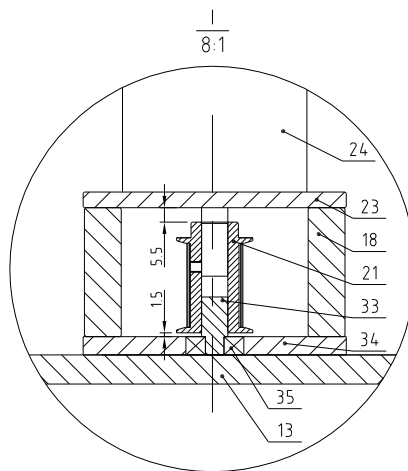
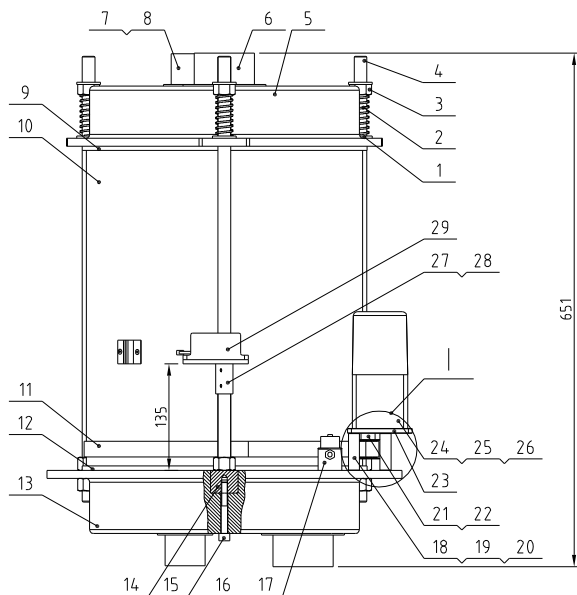


Tech. Req:

1. The red silicone adhesive side of part No.9 is bonded with the part No.5 with the high-temperature resistant silicone adhesive, and the red silicone adhesive side of part No.12 is bonded with the part No.13 with the high-temperature resistant silicone adhesive.
2. The joints of parts 6 and 7 with parts 5 and 13 are bonded with high-temperature resistant silicone adhesive to prevent air leakage.
3. Adjust the position of part 16 on site to make part 11 in a tensioned state.

35	YW11062700000	Bearing 627ZZ1MC3E	assembly	1	
34	SD-700H-B-22	Gear motor fixed plate 2	6061	1	
33	SD-700H-B-23	Fixed shaft	SUS201	1	
32	YW63040600000	Cross recessed pan head screw GB/T-818 M4x6-Longzine		3	
31	YE14511200000	Limit switch YBLXW-5/11G2	assembly	1	
30	YW63032500000	Cross recessed pan head screw GB/T-818 M3x25-Longzine		2	
29	YR40330900000	Microswitch box	ABS	1	
28	YW68004500000	Inner hexagon flat end set screw GB/T777 M4x5-Longzine		3	
27	SD-40H-A-22	Micro switch fixed piece	SUS201	1	Borrow
26	YW64000500000	Hex. nut M5		4	
25	YW61059500000	Inner hexagon cylinder screw GB/T701 M5x95-12.9-Longzine		4	
24	YM50315300100	Spicer motor 3IK15RGN-C/3GN500K	assembly	1	zhong da li de
23	SD-400H-A-38	Gear motor mount plate	AC4D	1	
22	YW68041000000	Inner hexagon flat end set screw GB/T777 M4x10-Longzine		1	
21	YW08001400100	Synchronous belt wheel	45	1	
20	YW64000600300	Hex. nut GB/T6170 M6-Longzine		4	
19	YW63067000000	Thick head screw M6x70(Longzine)		4	
18	BH10070001510	Positioning pipe SD-400H-A-37	AL6061	4	
17	YW63044500000	Cross recessed pan head screw GB/T-818 M4x45-Longzine		2	
16	SD-400H-A-40	Belt regulator	assembly	1	Borrow
15	YW61086500000	Inner hexagon cylinder screw GB/T701 M6x65-12.9-Longzine		2	
14	SD-40H-B-05	Honeycomb mount shaft	45	2	Borrow
13	SD-400H-A-47	Honeycomb lower cover	LY112	1	Borrow
12	YR10304000000	Silica gel Teflon gasket (Lower)	Red silica gel + Teflon	1	
11	YR00304700000	Synchronous belt 30x470XL	assembly	1	
10	YW71035000700	Honeycomb #350x400(SD-400H-B-02 Ver.0)	Full molecular sieve	1	
9	YR10304000100	Silica gel Teflon gasket (Upper)	Red silica gel + Teflon	1	
8	YW62051000100	Large cross socket flat head screw JIS1111 M5x10-Longzine		15	
7	SD-30H-A-05	Z Upper and lower cover flange	SUS201	3	Borrow
6	SD-400H-A-33	Honeycomb upper 3-way	SUS201	2	
5	SD-400H-A-46	Honeycomb upper	ZL101	1	Borrow
4	SD-1000H-B-11	Double-head screw	Q235A	3	Borrow
3	YW64001600000	Hex. nut GB/T6170 M16-Longzine		6	
2	YW01253000000	Spring (SD-1000H-B-12)	70	3	Borrow
1	YW66163000000	Flat washer A grade GB/T931 16-Longzine		6	
序号	代号	名称	材料	数量	备注

				制图	版号	标题	图号	比例	1:6	数量	1
				设计	核准	SCD-600U/400H	SCD-600U/400H-D-ALL			材质	/
				校对		蜂巢转轮				表面要求	/
标记	更改前	更改后	更改人	日期	审核	日期	SHINI 信易电热机械股份有限公司 Shini Plastics Technologies, Inc.	物料号		/	



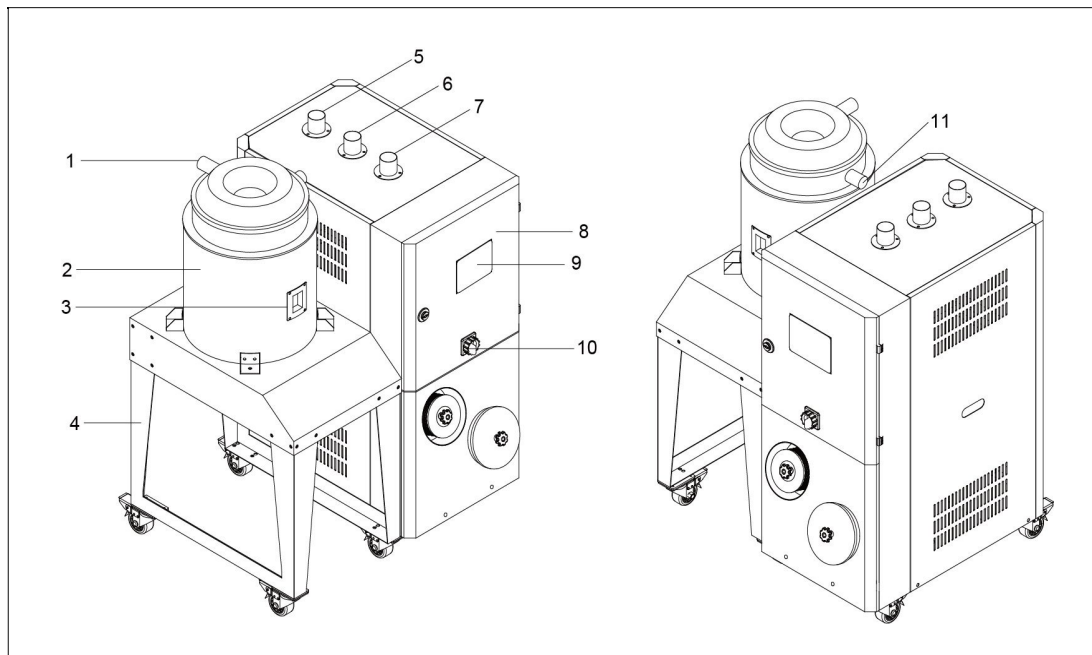
Tech. Req:

1. The red silicone adhesive side of part No.9 is bonded with the part No.5 with the high-temperature resistant silicone adhesive, and the red silicone adhesive side of part No.12 is bonded with the part No.13 with the high-temperature resistant silicone adhesive.
2. The joints of parts 6 and 7 with parts 5 and 13 are bonded with high-temperature resistant silicone adhesive to prevent air leakage.
3. Adjust the position of part 16 on site to make part 11 in a tensioned state.

35	YW11062700000	Bearing 627ZZ1MC3E	assembly	1	
34	SD-700H-B-22	Gear motor fixed plate 2	6061	1	
33	SD-700H-B-23	Fixed shaft	SUS201	1	
32	YW63040600000	Cross recessed pan head screw GB/T-818 M4x6-Longzine		3	
31	YE14511200000	Limit switch YBLXW-5/11G2	assembly	1	
30	YW63032500000	Cross recessed pan head screw GB/T-818 M3x25-Longzine		2	
29	YR40330900000	Microswitch box	ABS	1	
28	YW68004500000	Inner hexagon flat end set screw GB/T777 M4x5-Longzine		3	
27	SD-40H-A-22	Micro switch fixed piece	SUS201	1	Borrow
26	YW64000500000	Hex. nut M5		4	
25	YW61059500000	Inner hexagon cylinder screw GB/T701 M5x95-12.9-Longzine		4	
24	YM50315300100	Spicer motor 3IK15RGN-C/3GN500K	assembly	1	zhong da li de
23	SD-400H-A-38	Gear motor mount plate	AC4D	1	
22	YW68041000000	Inner hexagon flat end set screw GB/T777 M4x10-Longzine		1	
21	YW08001400100	Synchronous belt wheel	45	1	
20	YW64000600300	Hex. nut GB/T6170 M6-Longzine		4	
19	YW63067000000	Thick head screw M6x70(Longzine)		4	
18	BH10070001510	Positioning pipe SD-400H-A-37	AL6061	4	
17	YW63044500000	Cross recessed pan head screw GB/T-818 M4x45-Longzine		2	
16	SD-400H-A-40	Belt regulator	assembly	1	Borrow
15	YW61086500000	Inner hexagon cylinder screw GB/T701 M6x65-12.9-Longzine		2	
14	SD-40H-B-05	Honeycomb mount shaft	45	2	Borrow
13	SD-400H-A-47	Honeycomb lower cover	LY112	1	Borrow
12	YR10304000000	Silica gel Teflon gasket (lower)	Red silica gel + Teflon	1	
11	YR00304700000	Synchronous belt 30x470XL	assembly	1	
10	YW71035000700	Honeycomb #350x400(SD-400H-B-02 Ver.0)	Full molecular sieve	1	
9	YR10304000100	Silica gel Teflon gasket (upper)	Red silica gel + Teflon	1	
8	YW62051000100	Large cross socket flat head screw JIS1111 M5x10-Longzine		15	
7	SD-30H-A-05	Z Upper and lower cover flange	SUS201	3	Borrow
6	SD-400H-A-33	Honeycomb upper 3-way	SUS201	2	
5	SD-400H-A-46	Honeycomb upper	ZL101	1	Borrow
4	SD-1000H-B-11	Double-head screw	Q235A	3	Borrow
3	YW64001600000	Hex. nut GB/T6170 M16-Longzine		6	
2	YW01253000000	Spring (SD-1000H-B-12)	70	3	Borrow
1	YW66163000000	Flat washer A grade GB/T931 16-Longzine		6	
序号	代号	名称	材料	数量	备注

				制图	版号	标题	图号	比例	1:6	数量	1
				设计	核准	SCD-600U/400H	SCD-600U/400H-D-ALL			材质	/
				校对		蜂巢转轮					
				审核						表面要求	/
标记	更改前	更改后	更改人	日期	审核	日期		物料号			/
							SHINI	信易电热机械股份有限公司		Shini Plastics Technologies, Inc.	

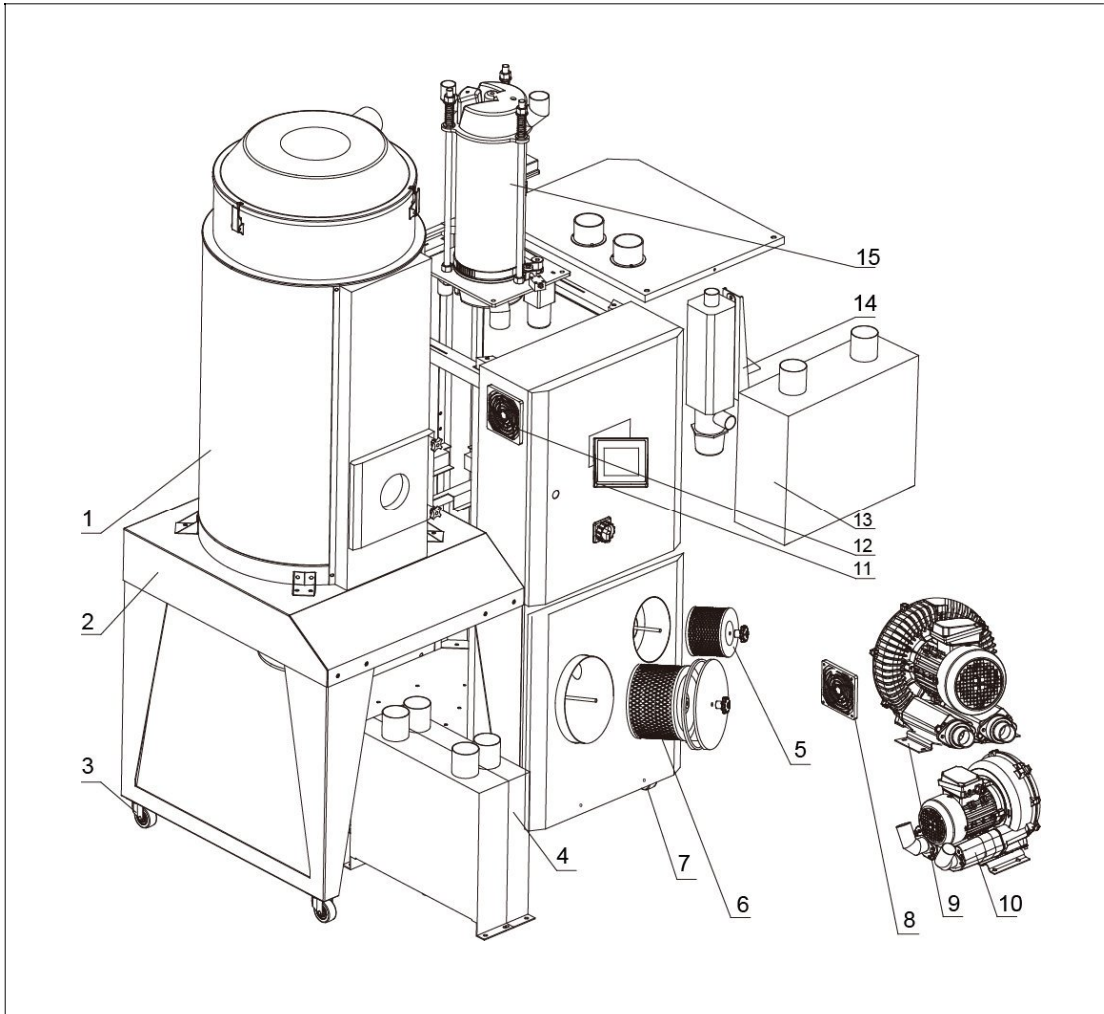
1. Structural Drawing (SDD-900U/700H)



Parts name:

- | | | | |
|---|----------------------------|---------------------|--------------------|
| 1. Return air outlet | 2. Insulated drying hopper | | |
| 3. Sight-glass window (or maintainace door for hopper capacity more than 80U) | | | |
| 4. Floor stand | 5. Dry air outlet | 6. Return air inlet | 7. Moisture outlet |
| 8. Control panel | 9. Main power switch | 10. Dry air inlet | |

2. Assembly Drawing (SDD-900U/700H)



Remarks: Please refer to material list 3 for specific explanation of the Arabic numbers in parts drawing.

3. Parts List (SDD-900U/700H)

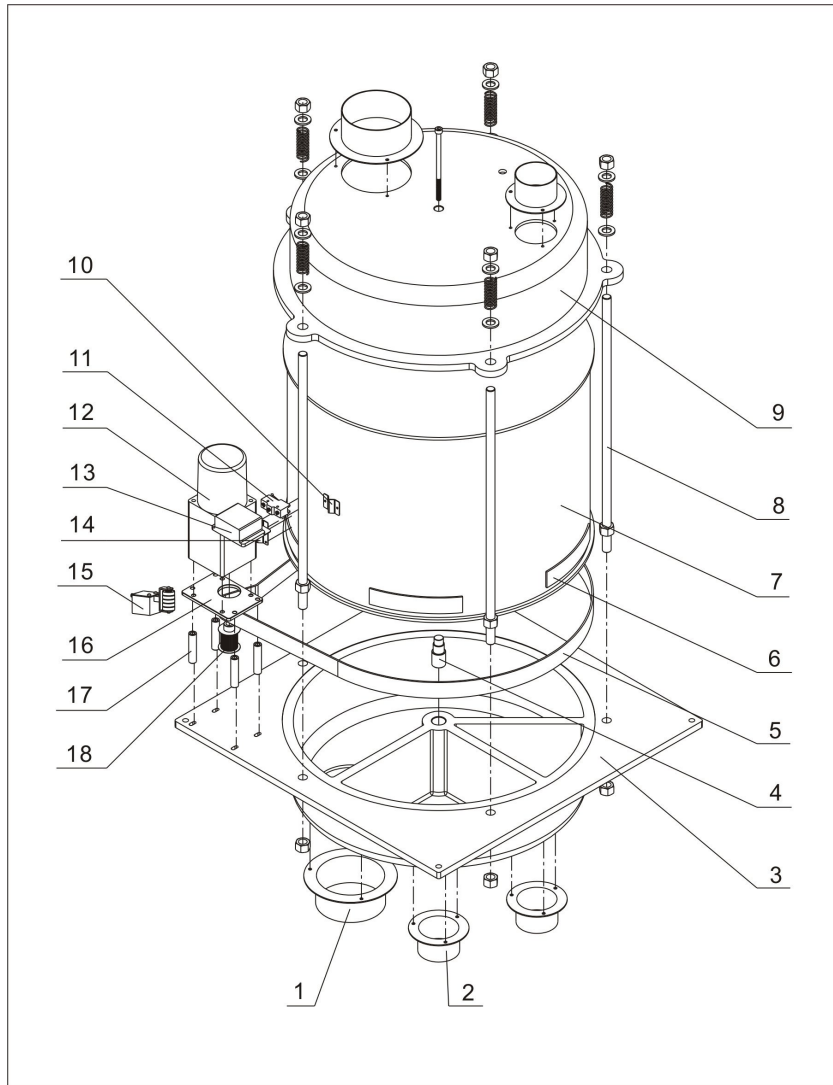
No.	Description	Part No.
1	Drying hopper	BY10090000550
2	Rack metal plate	BK04907000020
3	Brake castor wheel	YW03000300000
4	Cooler	BL03507045020
		BW88507000020
5	Regen. filter **	YR50203000000
6	Drying filter **	YR50241400000
7	Castor wheel	YW03000300200
8	Anti-dust screen	YR40120300000
9	Drying blower *	BM30075000050
10	Regen. blower *	BM30042000050
11	Control panel	YE81878500300
12	Exhaust fan **	YM60121206400
13	Heater case	Refer to list 11
14	Regen. heater	Refer to list 11
15	Honeycomb assembly	Refer to list 9

* means possible broken parts.

** means easy broken part, and spare backup is suggested.

Please confirm the version of manual before placing the purchase order to guarantee that the item number of the spare part is in accordance with the real object.

4. Honeycomb Assembly (SDD-900U/700H)



Remarks: Please refer to material list 5 for specific explanation of the Arabic numbers in parts drawing.

5. Parts List of Honeycomb Assembly (SDD-900U/700H)

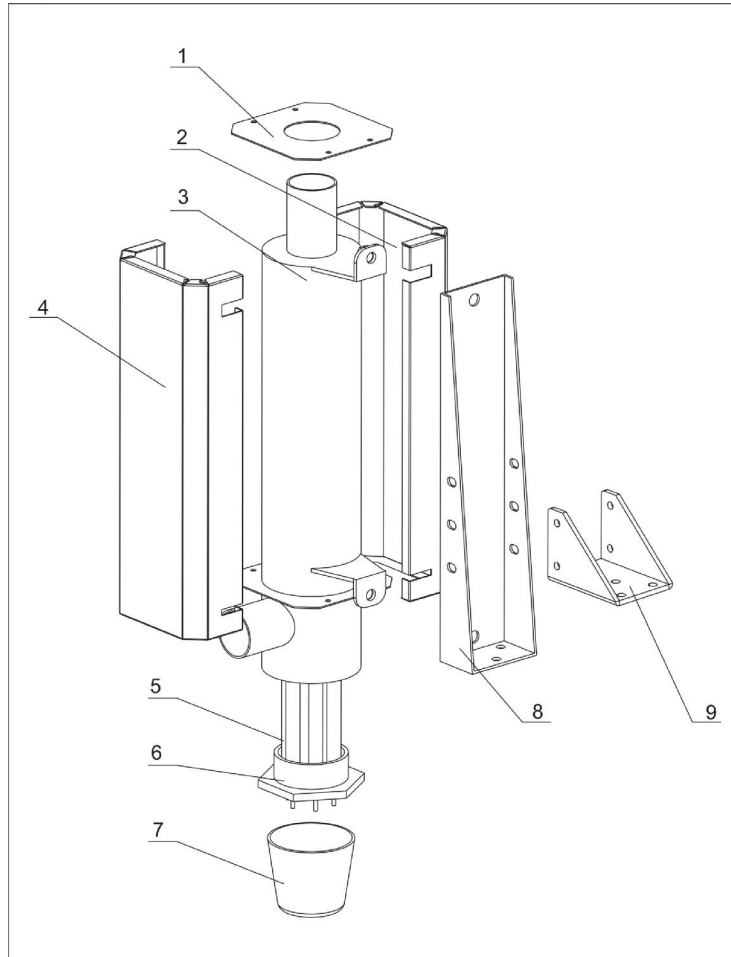
No.	Description	Part No.
1	Honeycomb flange	-
2	Honeycomb flange	-
3	Honeycomb lower cover	-
4	Honeycomb installation shaft	-
5	Synchronous belt **	YR00305800000
6	Synchronous belt	-
7	Honeycomb	YW71044000700
8	Double-head screw	BH11100000210
9	Honeycomb upper cover	-
10	Honeycomb fixing plate	-
11	Position limit switch*	YE14511200000
12	Gear motor	YM50512600000
13	Microswitch box	-
14	Belt tension regulator	-
15	Mounting plate of gear motor	-
16	Fixing pipe	-
17	Synchronous wheel	-

* means possible broken parts.

** means easy broken part. and spare backup is suggested.

Please confirm the version of manual before placing the purchase order to guarantee that the item number of the spare part is in accordance with the real object.

6. Heater Assembly (SDD-900U/700H)



Remarks: Please refer to material list 7 for specific explanation of the Arabic numbers in parts drawing.

7. Part List of Heater Assembly (SDD-900U/700H)

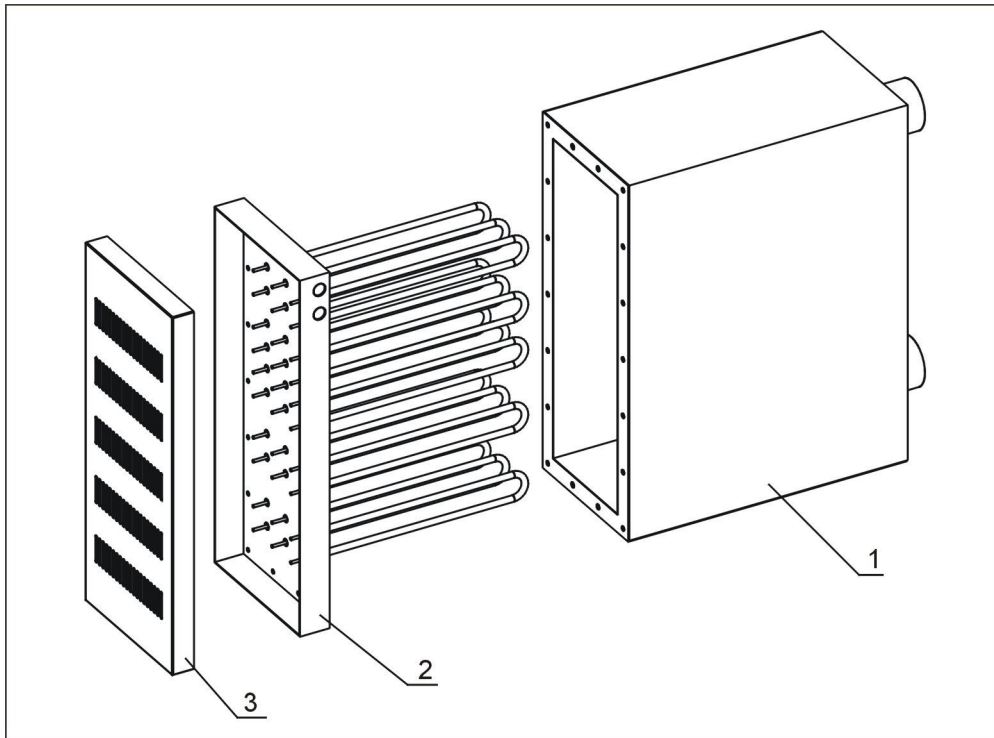
No.	Description	Part No.	No.	Description	Part No.
1	Heater cover plate	-	6	Heater copper head	BH12200500310
2	Heater cover plate 1	-	7	Bakelite cover	YR40002000100
3	Heating tank	-	8	Heater fixed frame	-
4	Heater cover plate 2	-	9	Heater fixed corner	-
5	Pipe heater *	BH70501000050			

* means possible broken parts.

** means easy broken part, and spare backup is suggested.

Please confirm the version of manual before placing the purchase order to guarantee that the item number of the spare part is in accordance with the real object.

8. Heater Case Assembly (SDD-900U/700H)



Remarks: Please refer to material list 9 for specific explanation of the Arabic numbers in parts drawing.

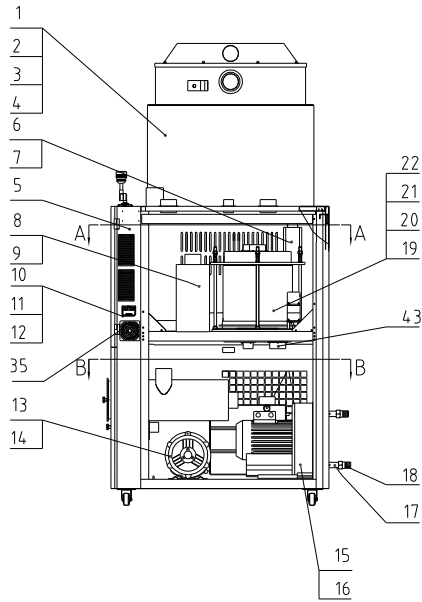
9. Part List of Process Heater Case Ass. (SDD-900U/700H)

No.	Description	Part No.
1	Heater case	-
2	Pipe heater*	BH70244000850
3	Heater case cover plate	-

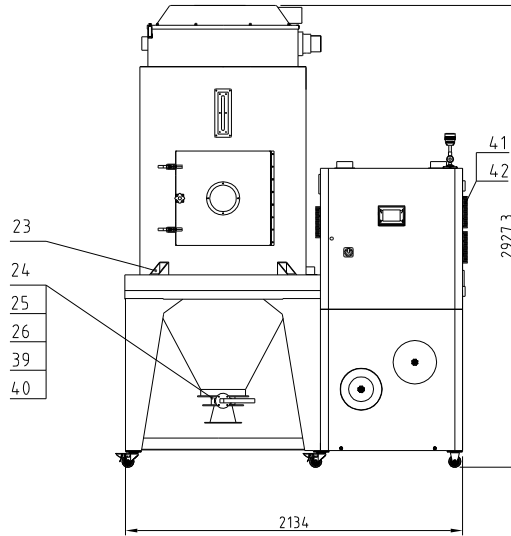
* means possible broken parts.

** means easy broken part, and spare backup is suggested.

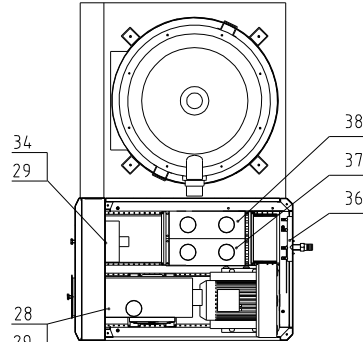
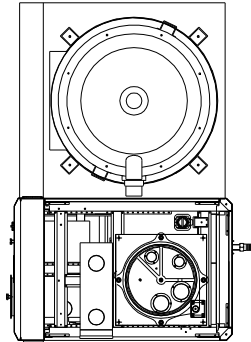
Please confirm the version of manual before placing the purchase order to guarantee that the item number of the spare part is in accordance with the real object.



A-A



B-B



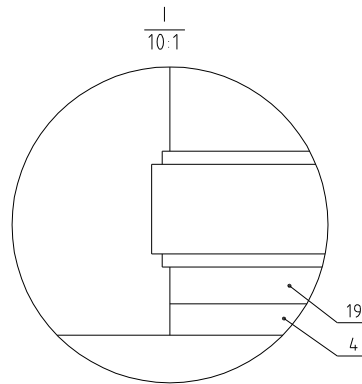
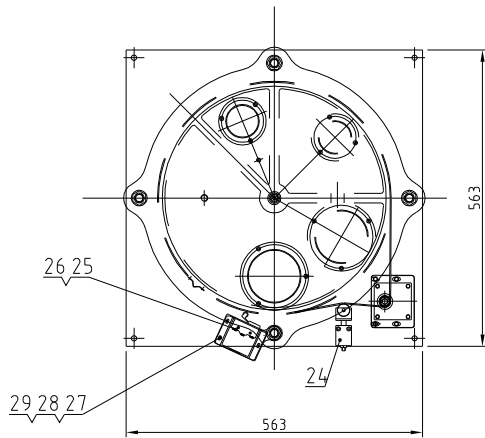
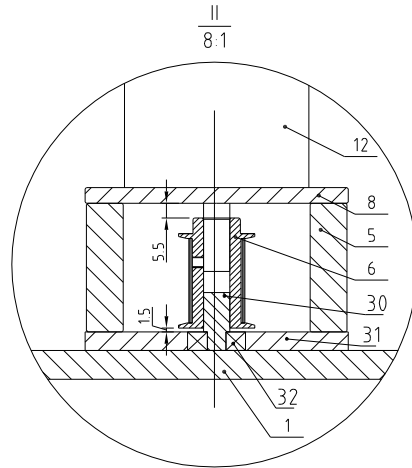
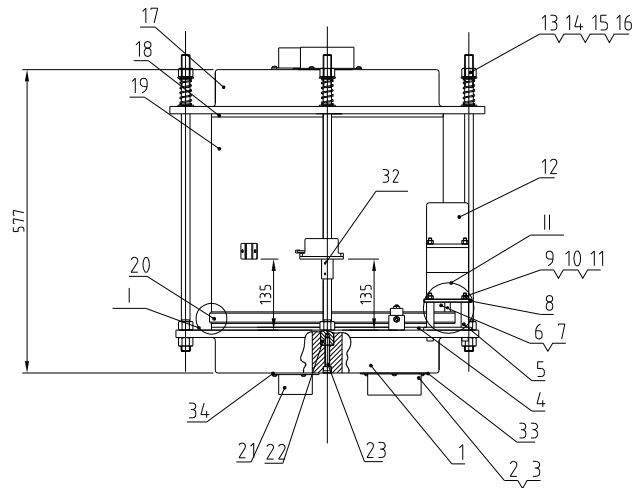
Regen blower power	Drying blower power	Regen heater power	Drying heater power	Dehumidifying air quantity	Heat insulated hopper capacity	Ver.
1.5KW	7.5KW	10KW	24KW	700m ³ /hr	1200L	Ver.H

43	YE80153100100	15W Motor speed US315C(izhongdalide)		1
42	YW63040600000	Cross recessed pan head screw GB/T818 M4x6-Longzine		12
41	YW90120700000	Aluminum cooler STM-1207H1-A-17		3
40	SHD-900U-A-72	Adapter flange		1
39	YW65016200000	Standard spring washer GB/T93 16-Longzine		4
38	SD-700H-C-ALL	Cooler 1		1
37	SD-700H-E-ALL	Cooler 2		1
36	SD-700H-A-29	Water flow regulator		2
35	YR40048500000	Shell RS485(SAL-700G-A-1910		1
34	YR50203000000	Filter SD-200/300(Large)		1
33	YR10026000000	Filter fastener ø260		1
32	SD-400H-A-49	Filter cover		2
31	BR90406000010	SD-400H-A-60-0 filter tank cover		1
30	YR50241400100	Filter ADC3		1
29	YW09675100000	Small box nut 5/16 SHD-6 75KG-01-SJ Aluminium alloy		2
28	YW69051600000	Wing nuts 5/16"		1
27	YM60121206400	Cooling fan		1
26	YW66163000000	Flat washer A grade GB/T97.1 16-Longzine		4
25	YW60168000000	Hexagon screw bolt GB/T5783 M16x80-8 8-Longzine		4
24	YW59418000000	Clip-on manual butterfly valve 4"		1
23	SCD-900U/700H-D-03	External fixing block		4
22	YW66102500000	Flat washer C grade GB/T95 10-Longzine		4
21	YW64080600000	Hexagonal nut GB/T6170 M8-Longzine		4
20	YW60083000200	Hexagon head bolt GB/T5783 M8x30-8 8-Longzine		4
19	SD-700H-B-ALL	Honeycomb assembly		1
18	BH12010101010	Copper joint 1"		2
17	SD-700H-A-24	Water flow regulator		2
16	SD-700H-ALL-01	4" motor flange pipe		2
15	YM30283000100	Ruijing blower 2HB830H2617 5KW thermal pro.		1
14	SD-200H-A-36	2" straight pipe		2
13	BM30042000050	Blower 2HP		1
12	YW64050300000	Hexagon nut GB/T6170 M5-Longzine		4
11	YW62051500000	Large cross socket flat head screw JIS1111 M5x16-Longzine		12
10	YR40120300000	3-in-1 dust-proof plastic screen		1
9	YW64000600300	Hex nut GB/T6170 M6-Longzine		20
8	SCD-900U/700H-B-ALL	Heating case		1
7	YW60061500100	Hexagon screw bolt GB/T5783 M6x16-12 9-Longzine		15
6	SD-700H-D-ALL	Heater		1
5	SDD-1200U/700H-A-ALL	Rack sheet metal		1
4	YW66122400000	Flat washer A grade GB/T97.1 12-Longzine		16
3	YW64001000100	Hexagonal nut GB/T6170 M10-Longzine		12
2	YW60102500000	Hexagon head bolt GB/T5783 M10x25-12 9-Longzine		24
1	SCD-1200U/700H-A-ALL	Insulated hopper assembly		1

序号 代号 名称 材料 数量 备注

				制图	版号	标题 SDD-1200U/700H	图号	比例 1:30	数量 1
				设计	核准	吹化除湿干燥组合	SDD-1200U/700H-ALL		材质 /
				校对				表面要求	/
标记	更改前	更改后	更改人	日期	审核			日期	物料号

SHINI 信易电热机械股份有限公司
Shini Plastics Technologies, Inc.

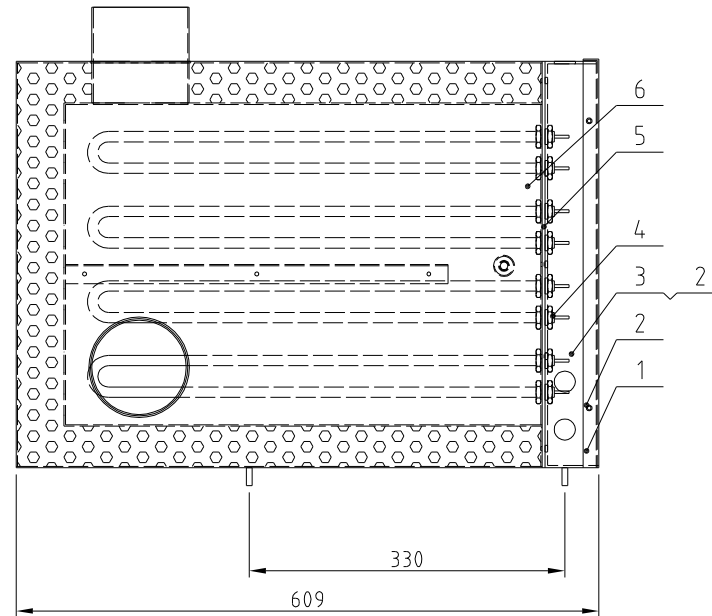
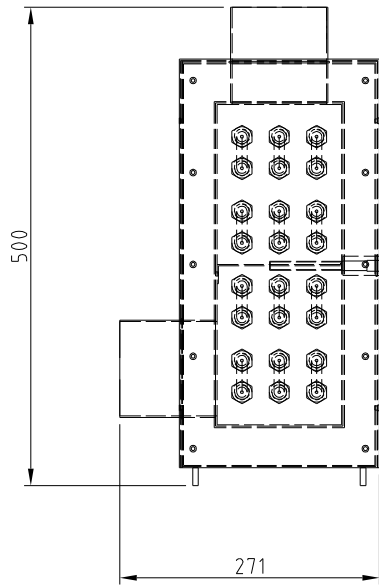


34	YR90002500000	Flap roller 1" Ø 300H+H white silicon gel (see note)	white silicon gel	3	
33	YR90000400100	Flap roller 1" Ø 300H+H white silicon gel (see note)	white silicon gel	2	
32	YW11062700000	Bearing 627ZZ1MC3E	Assembly	1	
31	BH33702200010	Gear motor mount plate 2 Ø 300H+22	6061	1	
30	BH33702300010	Fixed shaft SD-700H-B-23	SUS201	1	
29	YW63040600000	Cone recessed pin head screw Ø17.116x5-Longline		3	
28	BL04402200020	Micro switch fixed piece Ø 40H+22(Ver.0)	SUS201	1	
27	YR40330900000	Resistor (see 38-39+40)(silicon gel)(see note)	ABS	1	
26	YW63032500000	Cone recessed pin head screw Ø17.116x5-Longline		2	
25	YE14511200000	Position limit switch YBL3P-5/11C2	Assembly	1	*
24	BH10004400010	Belt regulator SD-400H-A-40	Assembly	1	
23	YW61085500000	Hexagon necked head screw Ø17.116x5-1.5-Longline		2	
22	BH1101300010	Hexagon necked shaft Ø 300H+13(Ø40)(Ver.0)	45	2	
21	SD-200H-A-35	2.5" Upper and lower cover flange	Weldment	3	
20	YR03058000000	Optical kit (see note)(see 38)(see note)	Assembly	1	*
19	YW71044000700	Hexagon 400HØ 300H+H Ver.0(white silicon gel)	Full silicon gel	1	
18	YR10507000100	Silica gel (see note)(see 38+39)(white silicon gel)	red silicon gel/700H	1	
17	BA40507000110	Hexagon type cover Ø 300H+11(Ø300)(see note)	ZL101	1	
16	YW01253000000	Pin on back Ø 10x10x15(see 38+39)(see note)	70	4	
15	YW64001600000	Hexagonal nut Ø3/76170 11.6-Longline		12	
14	YW66163000000	Flat washer A grade Ø17.116-Longline		16	
13	BH1100000210	Double-head screw Ø 300H+11(Ø300) Ver.0	Q235A	4	
12	YM50315300100	Speed motor 3153E3E-C/2650W(2000rpm)(see note)	Assembly	1	
11	YW61069000000	Hex long hex cylindrical screw Ø17.116x5-1.5(see note)		4	
10	YW64000600300	Hexagonal nut Ø3/76170 11.6-Longline		8	
9	YW66061300000	Flat washer A grade Ø17.116-Longline		12	
8	BH33700800010	Gear motor mount plate Ø 300H+22(Ver.0)	YL102	1	
7	YW68004500000	Hex long hex cylindrical screw Ø17.116x5-1.5(see note)		3	
6	YW08001400000	Synchronous belt pulley Ø 40 Ø 300H+22(Ver.0)	45	1	
5	BH10070001510	Positioning pipe SD-400H+37(Ver.0)	AL6061	4	
4	YR10507000000	Silica gel (see note)(see 38+39)(white silicon gel)	red silicon gel/700H	1	
3	YW61051000200	Cone recessed pin head screw Ø17.116x5-1.5-Longline		15	
2	SD-700H-B-13	4" Honeycomb flange	SUS201 (1.5)	2	
1	BA40507000010	Hexagon base cover Ø 300H+11(Ø300)(see note)	ZL101□	1	

序号	代号	名称	材质	数量	备注
		标题 SD-700H	图号 SD-700H-B-ALL	比例 1:9	数量 1
		蜂巢转轮		材质	/
			表面要求		/
			物料号		/

标记	更改前	更改后	更改人	日期	制图	版号	标题	图号	比例	数量	备注
					设计	核准	SD-700H	SD-700H-B-ALL	1:9	1	
					校对		蜂巢转轮				
					审核						

SHINI 信易电热机械股份有限公司
Shini Plastics Technologies, Inc.

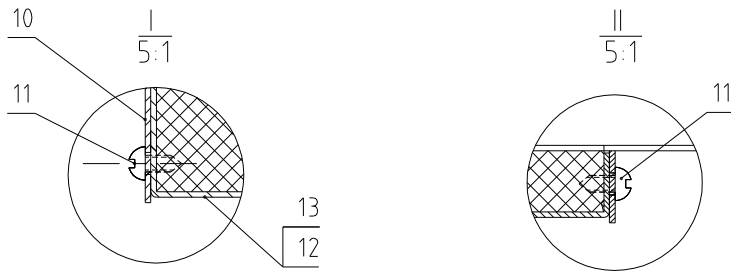
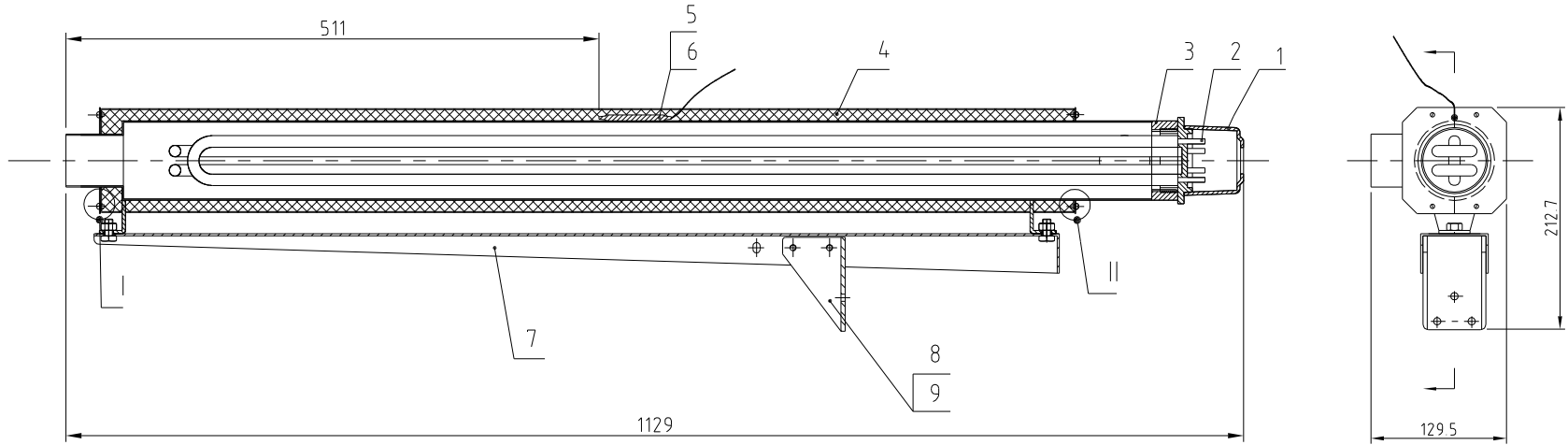


6	SCD-900U/700H-B-02	Heating box body	Assembly	1	
5	YR10350040000	White silicone rubber 3x500mm	Silica gel	1	
4	BH70244000850	Heat pipe 24KWSCD-900U/700H-B-04	Assembly	1	*
3	SCD-900U/700H-B-01	Pipe heat mounting plate	SECC2.5	1	
2	YW62051500000	Large cross socket flat head screw JIS1111 M5x16-L	Longzine	14	
1	SCD-900U/700H-B-03	Heating case cover	Galvanized mesh sheet	1	
序号	代	号	名	称	材 料 数 量 备 注

					制图		版号	标题	SCD-900U/700H	图号	SCD-900U/700H-B-ALL	比例	1:7	数量	1
					设计		核	加热箱				材 质			
					校对		准					表面要求			
标记	更改前	更改后	更改人	日期	审核		日期						本图采用第一角画法		



信易電熱機械股份有限公司
Shini Plastics Technologies, Inc.



13	SD-700H-D-03	10KW Heater panel 2	SUS430	1	
12	SD-700H-D-04	10KW Heater panel 1	SUS430	1	
11	YW62050500000	Cross recessed pan head screw M5X5	4.8	8	
10	SD-700H-D-05	Heater cover plate	SUS430	1	
9	YW61061600300	Hexagon screw bolt M6x15	4.8	6	
8	SD-400H-D-05	Fixed angle of electric heater	SPH4.0	1	
7	SD-700H-D-02	Heater fixed bracket	SPCC2.0	1	
6	YW02003500000	Stainless steel clamp	SUS201	1	
5	BH90115000050	EGO sensor	Assembly	1	
4	YP6282014.0000	Fire blanket 250X930mm		1	
3	SD-700H-D-01	Heating Tank	SUS201	1	
2	BH70501000050	Pipe heater 10KW	Assembly	1	*
1	YR40002000100	2-inch electric wood cover	PF	1	
序号	代号	名称	材料	数量	备注

					制图		版号		标题	SD-700H	图号	SD-700H-D-ALL	比例	1:6	数量	1
					设计		核准		加热器				材质			
					校对								表面要求			
标记	更改前	更改后	更改人	日期	审核		日期	20130713	 信易電熱機械股份有限公司 Shini Plastics Technologies, Inc.			本图采用第一角画法				