


机型版本 Ver.C

				Drawer		Version	G	Title	SAL-1HP-UG122	Drawing NO.	Scale	Page	1
				Designer		Approved by		Main Circuit Diagram	SAL-1HP-UG122-CE-400V-G-1	Standard	CE	Totally	4 Pages
				Proofread by		Date	20200613	 <b>信易電熱機械股份有限公司</b> <b>Shini Plastics Technologies, Inc.</b>		Voltage	3φ400V		
Mark	Before modification	After modification	Modified by	Modify date	Checked by		Frequency			50Hz			

1

2

3

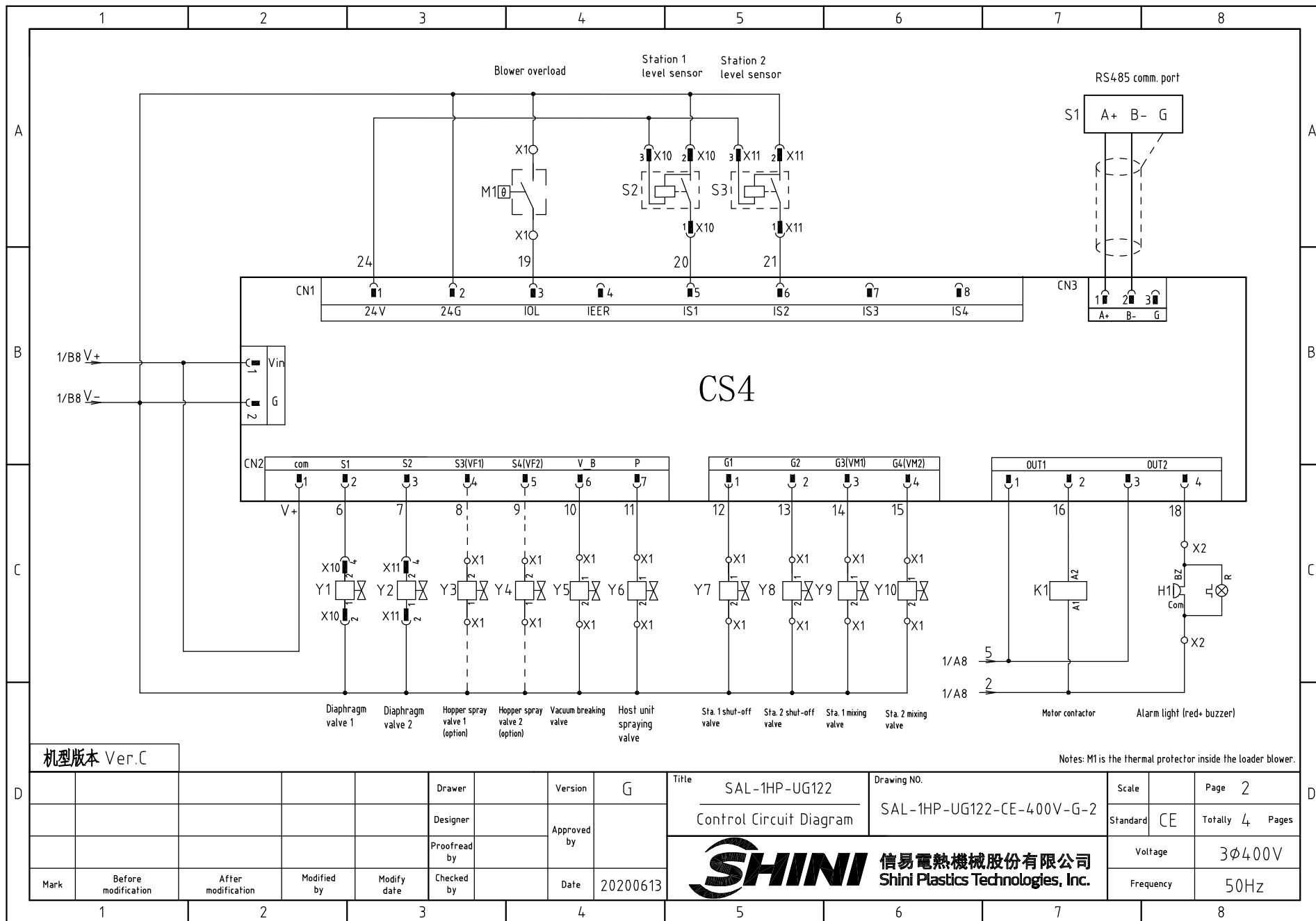
4

5

6

7

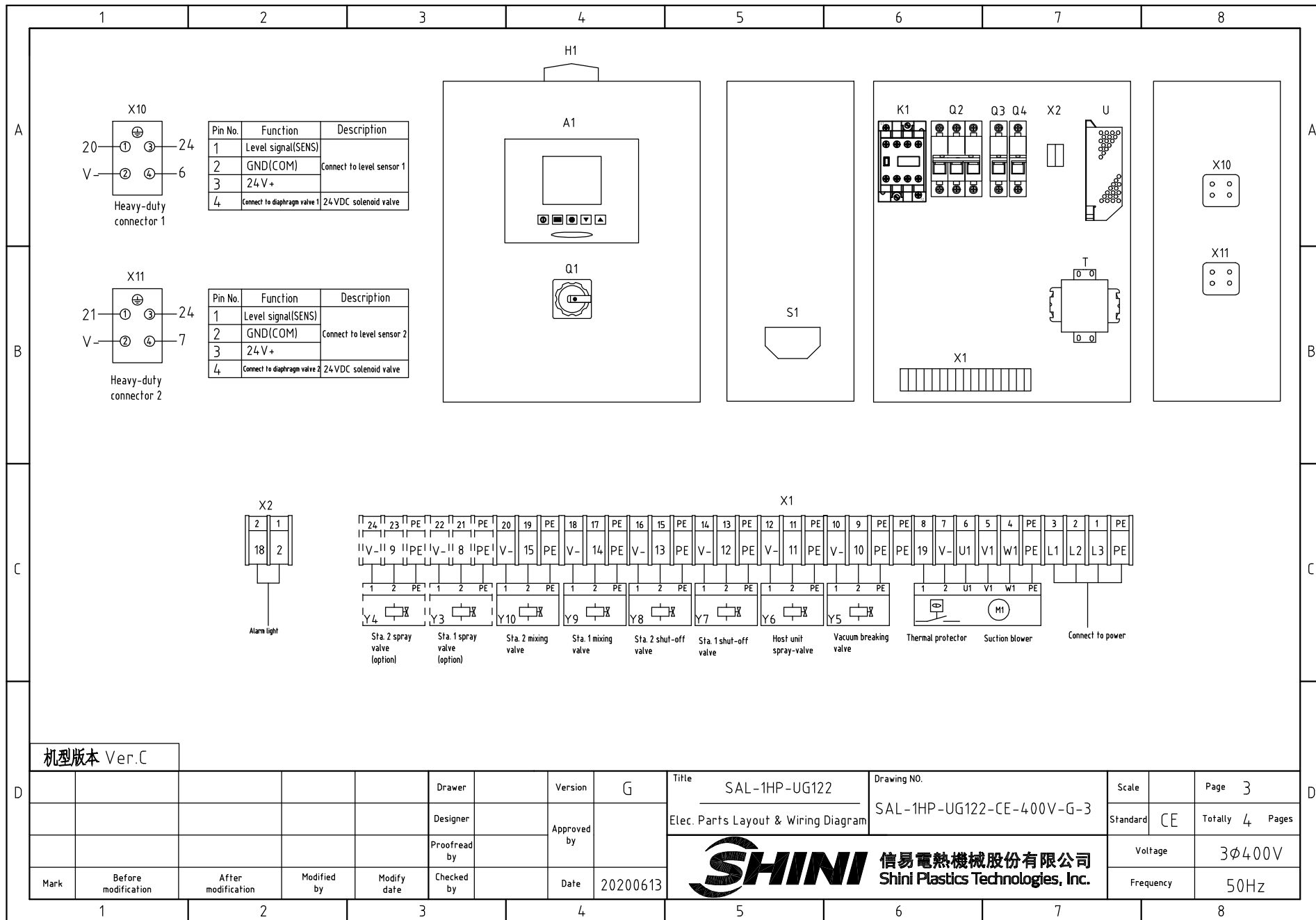
8



机型版本 Ver.C

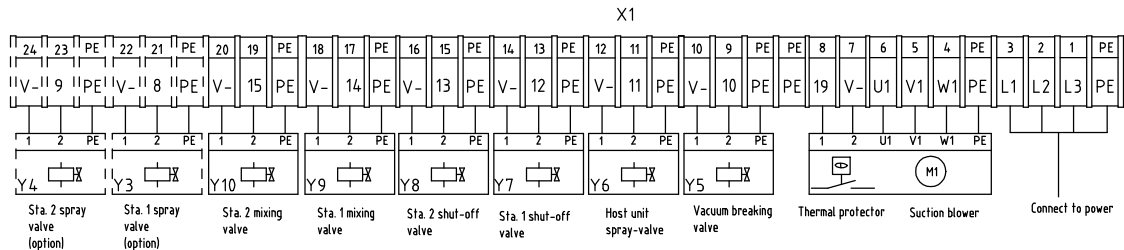
Mark	Before modification	After modification	Modified by	Modify date	Checked by	Date	20200613
			Designer		Approved by		
			Proofread by				
			Drawer		Version	G	

Title	SAL-1HP-UG122	Drawing NO.	SAL-1HP-UG122-CE-400V-G-2	Scale	Page	2
	Control Circuit Diagram			Standard	CE	Totally 4 Pages
 <b>信易電熱機械股份有限公司</b> <b>Shini Plastics Technologies, Inc.</b>			Voltage	3φ400V		
			Frequency	50Hz		



Pin No.	Function	Description
1	Level signal(SENS)	Connect to level sensor 1
2	GND(COM)	
3	24V+	Connect to diaphragm valve 1 24VDC solenoid valve
4	Connect to diaphragm valve 1	

Pin No.	Function	Description
1	Level signal(SENS)	Connect to level sensor 2
2	GND(COM)	
3	24V+	Connect to diaphragm valve 2 24VDC solenoid valve
4	Connect to diaphragm valve 2	




机型版本 Ver.C

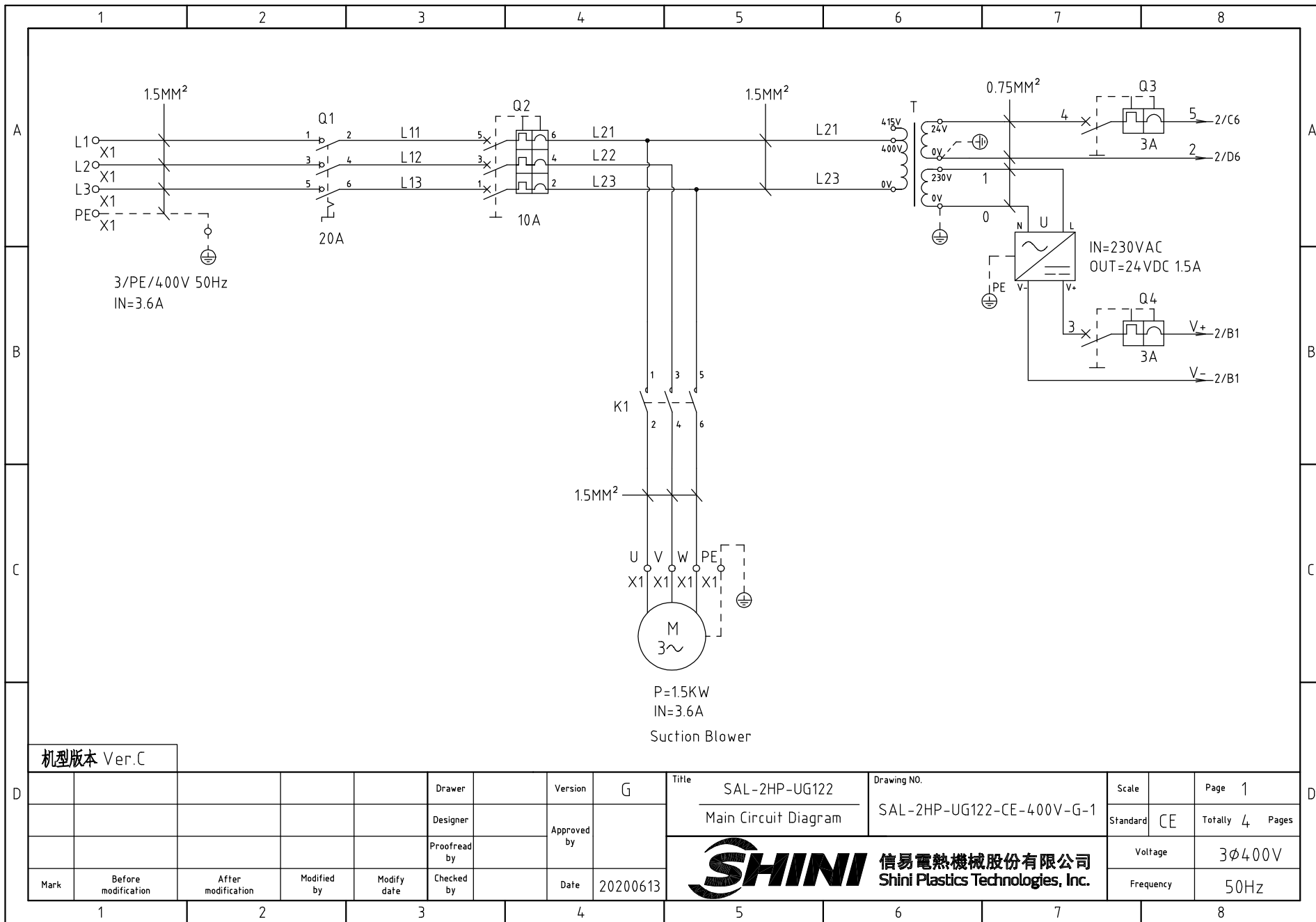
Mark	Before modification	After modification	Modified by	Modify date	Checked by	Date	20200613
					Drawer	Version	G
					Designer	Approved by	
					Proofread by		

Title	SAL-1HP-UG122		Scale	Page
Elec. Parts Layout & Wiring Diagram	SAL-1HP-UG122-CE-400V-G-3		Standard	CE
SHINI 信易電熱機械股份有限公司 Shini Plastics Technologies, Inc.			Voltage	3φ400V
			Frequency	50Hz


1	2		3	4	5	6	7	8	
N0	Symbol	Name	Manufacturer	Type	Specification	Number	Material number	Remark	
	1	Q1	Main switch	EATON	TO-2-1/EA/SVB	20A	1	YE10021160000	
A	2	Q2	Circuit breaker	TECO	BM-63C/3010S	10A	1	YE40301003000	
	3	Q3 Q4	Circuit breaker	TECO	BM-63C/1003S	3A 1P	2	YE40100203000	
	4	K1	Contactors	SCHNEIDER	LC1-D09B7C	24V 50/60Hz	1	YE00972400000	
	5	A1	Controller	YUYUN	CS4	24VAC/DC	1	YE80042401200	
	6	S1	RS-485 comm. interface plate	YUYUN	---	Dsub-9pin connector	1	YE90048501200	
	7		Shell RS-485(SAL-700G-A-19)ver.0	---	---	---	1	YR40048500000	
	8		9 pin-series interface connector (male) with shell and screw	---	---	---	1	YE62090000000	
B	9	H1	Alarm light	SHINI	SWI-T	24VAC/DC	1	BL90000011520	
	10	T	Transformer	JIUXIN	400V/415V OUT=24V /230V	50VA 500MA	1	YE70040007100	
	11	U	DC power	---	S-35-24	24VDC 1.5A	1	YE71352400000	
	12	X1 X2	Wiring terminal	HONEYWELL	SK2.5	2.5mm <sup>2</sup>	20	YE60002503200	
	13		Wiring terminal	HONEYWELL	GK2.5PE	2.5PE	8	YE60002503400	
	14		Wiring terminal	HONEYWELL	SK2.5	2.5mm <sup>2</sup>	4	YE60002503200	(2)
	15		Wiring terminal	HONEYWELL	GK2.5PE	2.5PE	2	YE60002503400	(2)
	16		Terminal fittings E/GK series	HONEYWELL	---	PCS	6	YE60000003900	
C	17	X10 X11	Heavy duty connectors	HARTING	Han E-4F(female)	4P	2	YE68000401400	
	18	M	Blower	SHINI	RB-310 (with thermal protector)	1HP 400V 50HZ	1	---	(1)
	19	Y1-Y10	Solenoid valve	AIRTAC	---	24VDC	10	---	(1)
	20	S2 S3	Photosensor switch	FOTEK	MT-4MNO-30VDC	10...30VDC	2	---	(1) SVH
	21		Reed switch	SONON	BN12-30BLA	24VDC	2	---	(1) SMH

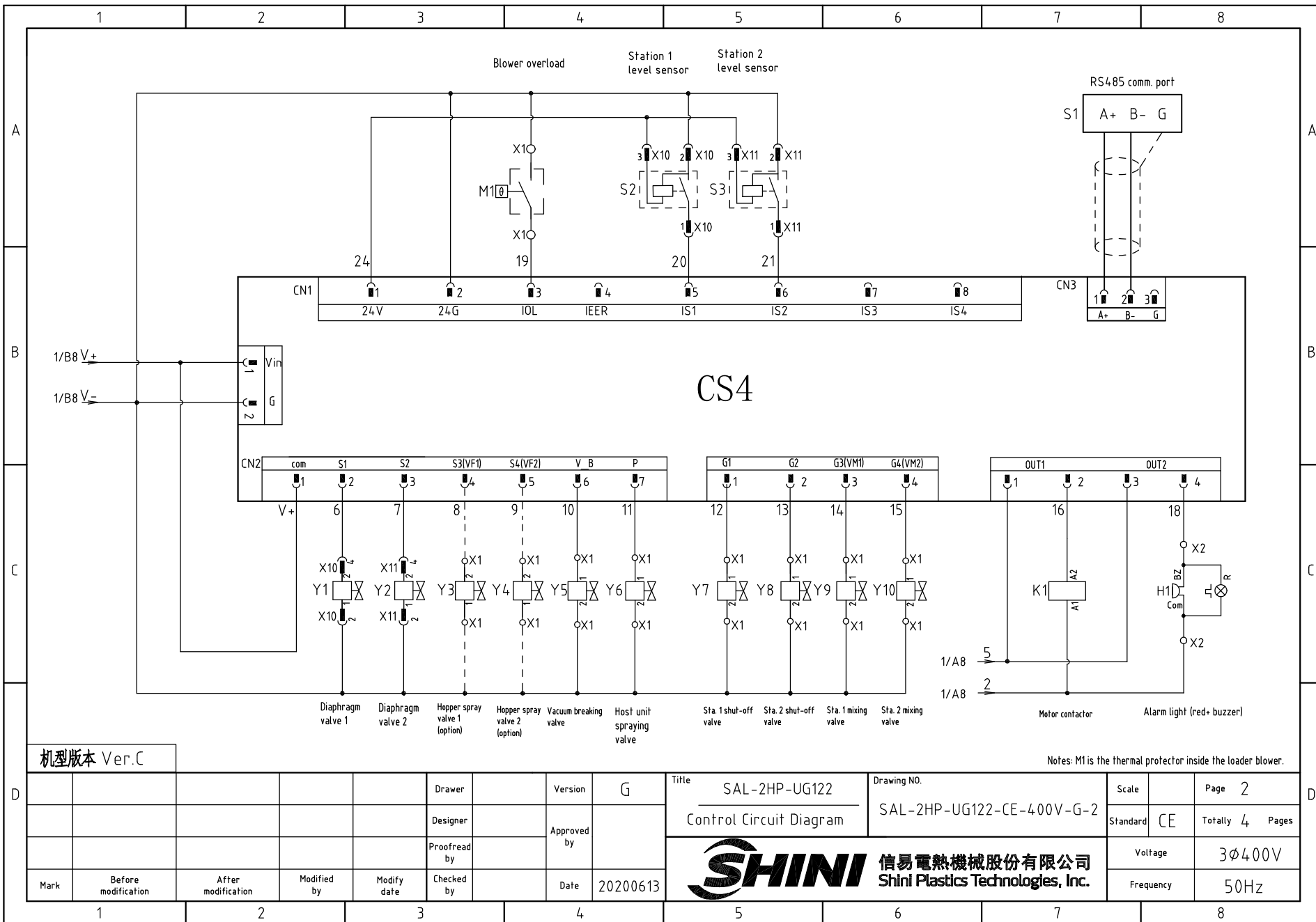
机型版本 Ver.C Notes: (1)Installation not in the control box; (2) Hopper optional spray valve;

D	Mark	Before modification	After modification	Modified by	Modify date	Checked by	Date	20200613	 <b>信易電熱機械股份有限公司</b> <b>Shini Plastics Technologies, Inc.</b>	Title: SAL-1HP-UG122 Drawing NO. SAL-1HP-UG122-CE-400V-G-4 Electrical Parts List 1	Scale	Page	4	
					Designer	Approved by		Standard			CE	Totally	4	Pages
					Proofread by			Voltage			3ø400V			
								Frequency			50Hz			
1	2		3	4	5	6	7	8						



机型版本 Ver.C


				Drawer	Version		G	Title	SAL-2HP-UG122	Drawing NO.	Scale	Page	1
				Designer	Approved by			Main Circuit Diagram	SAL-2HP-UG122-CE-400V-G-1	Standard	CE	Totally	4 Pages
				Proofread by	Date		20200613	 <b>信易電熱機械股份有限公司</b> <b>Shini Plastics Technologies, Inc.</b>		Voltage	3φ400V		
Mark	Before modification	After modification	Modified by	Modify date	Checked by		Frequency			50Hz			

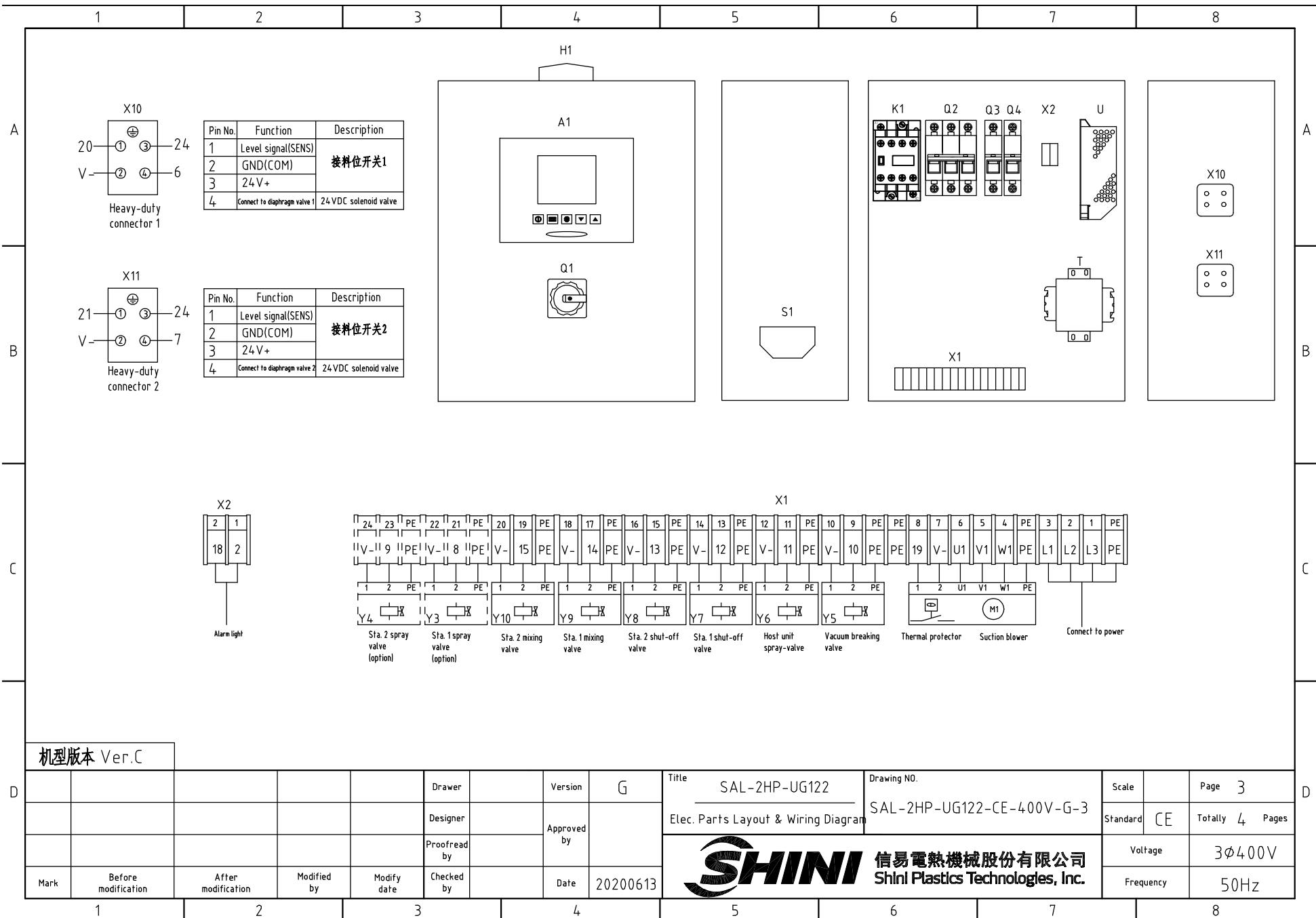


CS4

机型版本 Ver.C

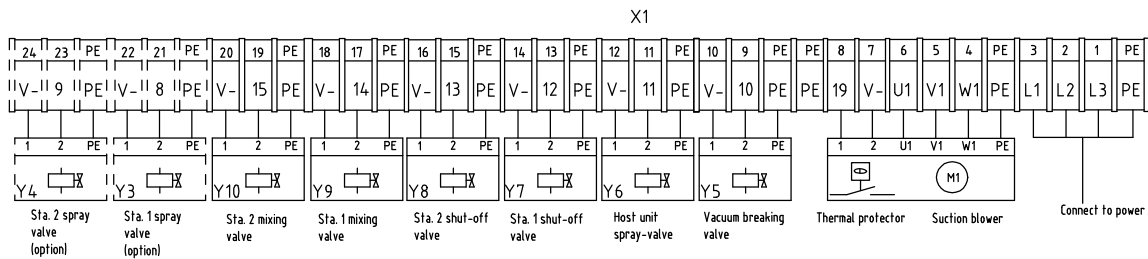
Notes: M1 is the thermal protector inside the loader blower.

				Drawer		Version	G	Title	SAL-2HP-UG122	Drawing NO.	Scale	Page	2
				Designer		Approved by		Control Circuit Diagram	SAL-2HP-UG122-CE-400V-G-2	Standard	CE	Totally	4 Pages
				Proofread by		Date	20200613	 <b>信易電熱機械股份有限公司</b> <b>Shini Plastics Technologies, Inc.</b>		Voltage	3φ400V		
Mark	Before modification	After modification	Modified by	Modify date	Checked by		Frequency			50Hz			



Pin No.	Function	Description
1	Level signal(SENS)	接料位开关1 24VDC solenoid valve
2	GND(COM)	
3	24V+	
4	Connect to diaphragm valve 1	

Pin No.	Function	Description
1	Level signal(SENS)	接料位开关2 24VDC solenoid valve
2	GND(COM)	
3	24V+	
4	Connect to diaphragm valve 2	



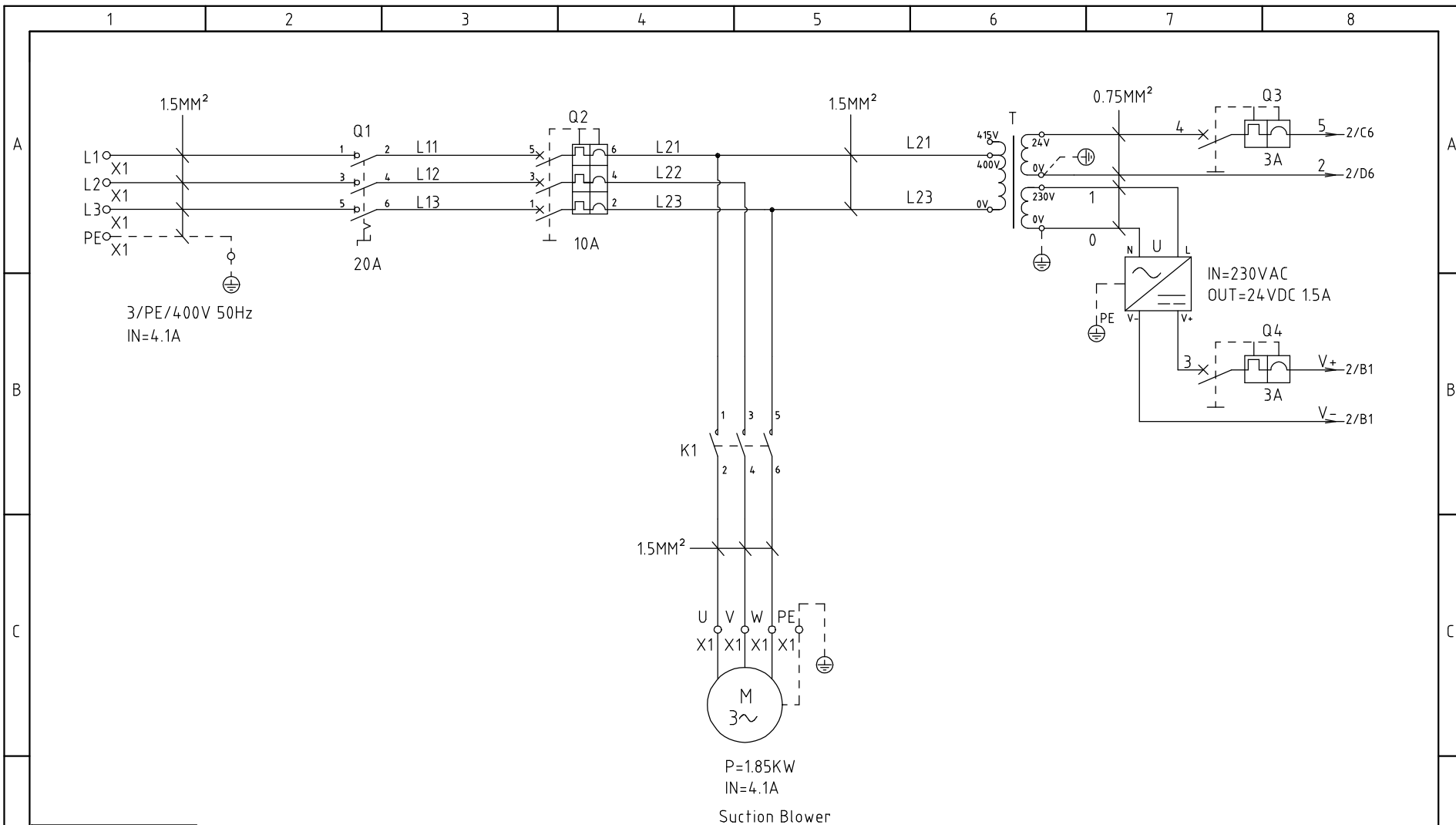
机型版本 Ver.C

Mark	Before modification	After modification	Modified by	Modify date	Checked by	Date
						20200613


Title		Drawing NO.		Scale	Page
SAL-2HP-UG122		SAL-2HP-UG122-CE-400V-G-3			3
Elec. Parts Layout & Wiring Diagram				Standard	Totally 4 Pages
<b>信易电热机械股份有限公司</b> <b>Shini Plastics Technologies, Inc.</b>				Voltage	3φ400V
				Frequency	50Hz

1		2		3		4		5		6		7		8		
NO	Symbol	Name		Manufacturer		Type		Specification		Number	Material number		Remark			
A	1	Q1	Main switch		EATON		TO-2-1/EA/SVB		20A		1	YE10021160000				
	2	Q2	Circuit-breakers		TECO		BM-63C/3010S		10A		1	YE40301003000				
	3	Q3 Q4	Circuit-breakers		TECO		BM-63C/1003S		3A 1P		2	YE40100203000				
	4	K1	Contactor		SCHNEIDER		LC1-D09B7C		24V 50/60Hz		1	YE00972400000				
	5	A1	Controller		YUYUN		CS4		24VAC/DC		1	YE80042401200				
	6	S1	RS-485 comm. interface plate		YUYUN		---		Dsub-9pin connector		1	YE90048501200				
	7		Shell RS-485(SAL-700G-A-19)ver.0		---		---		---		1	YR40048500000				
B	8		9 pin-series interface connector (male) with shell and screw		---		---		---		1	YE62090000000				
	9	H1	Alarm light		SHINI		SWI-T		24VAC/DC		1	BL90000011520				
	10	T	Transformer		JIUXIN		400V/415V OUT=24V /230V		50VA 500MA		1	YE70040007100				
	11	U	DC power		---		S-35-24		24VDC 1.5A		1	YE71352400000				
	12	X1 X2	Wiring terminal		HONEYWELL		SK2.5		2.5mm <sup>2</sup>		20	YE60002503200				
	13		Wiring terminal		HONEYWELL		GK2.5PE		2.5PE		8	YE60002503400				
	14		Wiring terminal		HONEYWELL		SK2.5		2.5mm <sup>2</sup>		4	YE60002503200		(2)		
C	15		Wiring terminal		HONEYWELL		GK2.5PE		2.5PE		2	YE60002503400		(2)		
	16		Terminal fittings E/GK series		HONEYWELL		---		PCS		6	YE60000003900				
	17	X10 X11	Heavy duty connectors		HARTING		Han E-4F(female)		4P		2	YE68000401400				
	18	M	Blower		SHINI		RB-420 (with thermal protector)		2HP 400V 50HZ		1	---		(1)		
	19	Y1~Y10	Solenoid valve		AIRTAC		---		24VDC		10	---		(1)		
	20	S2 S3	Photosensor switch		FOTEK		MT-4MNO-30VDC		10...30VDC		2	---		(1) SVH		
	21		Reed switch		SONON		BN12-30BLA		24VDC		2	---		(1) SMH		
D	机型版本 Ver.C		Notes: (1)Installation not in the control box; (2) Hopper optional spray valve;													
					Drawer		Version	G	Title	SAL-2HP-UG122		Drawing NO.	Scale		Page	4
					Designer		Approved by		Electrical Parts List 1		SAL-2HP-UG122-CE-400V-G-4		Standard	CE	Totally	4
					Proofread by		Date	20200613	 <b>信易電熱機械股份有限公司</b> <b>Shini Plastics Technologies, Inc.</b>		Voltage		3φ400V			
Mark	Before modification	After modification	Modified by	Modify date	Checked by			Frequency			50Hz					





机型版本 Ver.B

				Drawer		Version	A	Title	SAL-3HP-UG122	Drawing NO.	Scale	Page	1
				Designer		Approved by		Main Circuit Diagram	SAL-3HP-UG122-CE-400V-A-1	Standard	CE	Totally	4 Pages
				Proofread by		Date	20200613	 <b>信易電熱機械股份有限公司</b> <b>Shini Plastics Technologies, Inc.</b>		Voltage	3φ400V		
Mark	Before modification	After modification	Modified by	Modify date	Checked by		Frequency			50Hz			

1

2

3

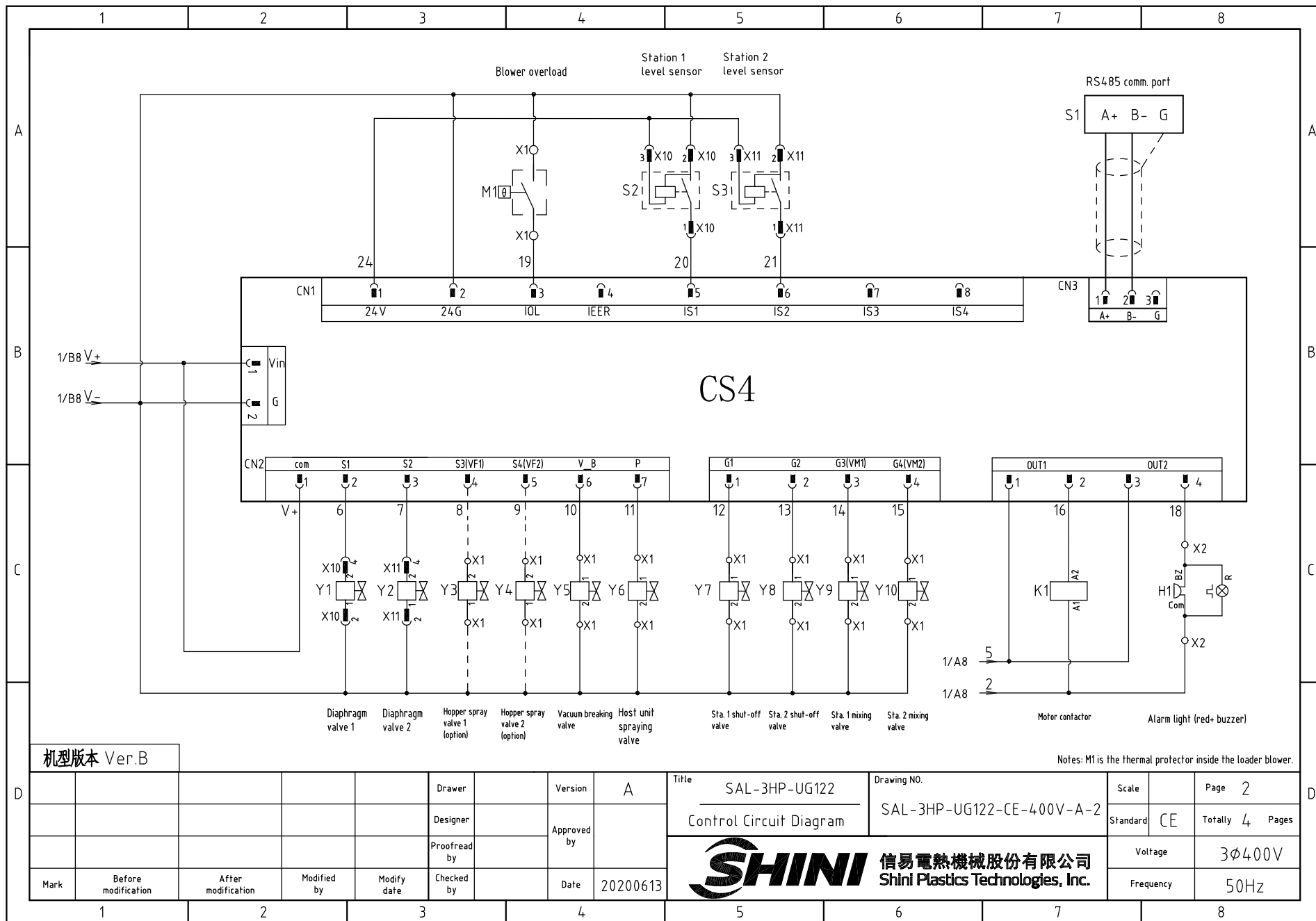
4

5

6

7

8

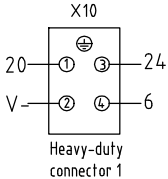
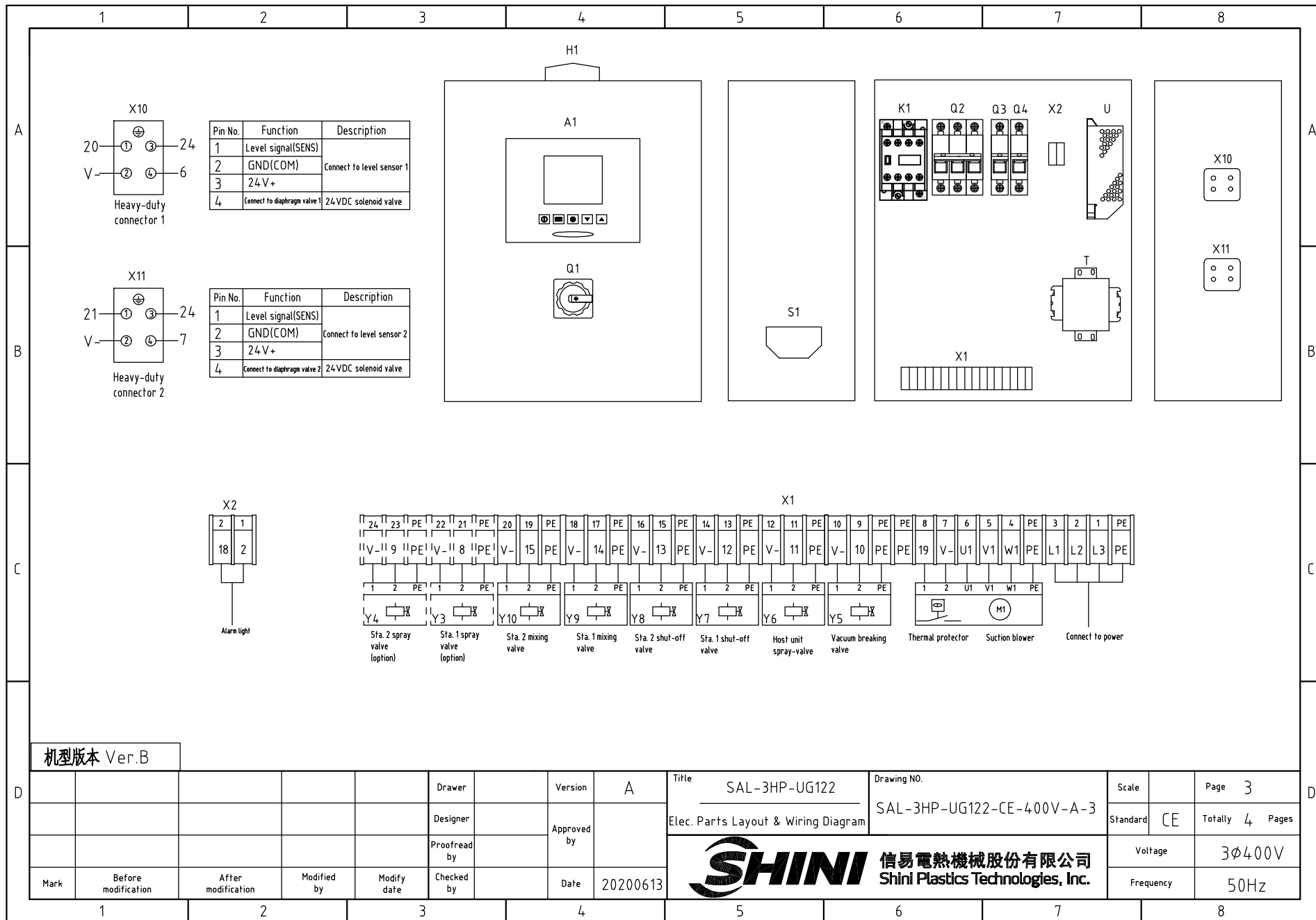


机型版本 Ver.B

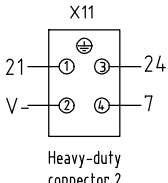
Mark	Before modification	After modification	Modified by	Modify date	Checked by	Date	20200613
Drawer					Version	A	Title
Designer					Approved by		SAL-3HP-UG122
Proofread by							Control Circuit Diagram

Drawing NO.	SAL-3HP-UG122-CE-400V-A-2	Scale	Page	2
Standard	CE	Totally	Pages	4
Voltage	3φ400V	Frequency	50Hz	

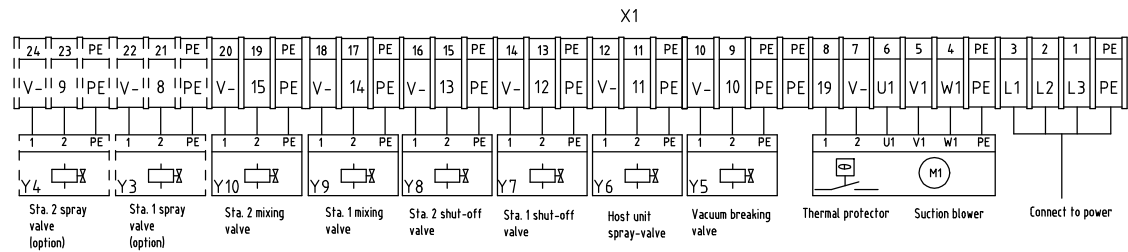
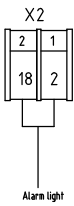




Pin No.	Function	Description
1	Level signal(SENS)	Connect to level sensor 1
2	GND(COM)	
3	24V+	Connect to diaphragm valve 1
4	24VDC solenoid valve	



Pin No.	Function	Description
1	Level signal(SENS)	Connect to level sensor 2
2	GND(COM)	
3	24V+	Connect to diaphragm valve 2
4	24VDC solenoid valve	

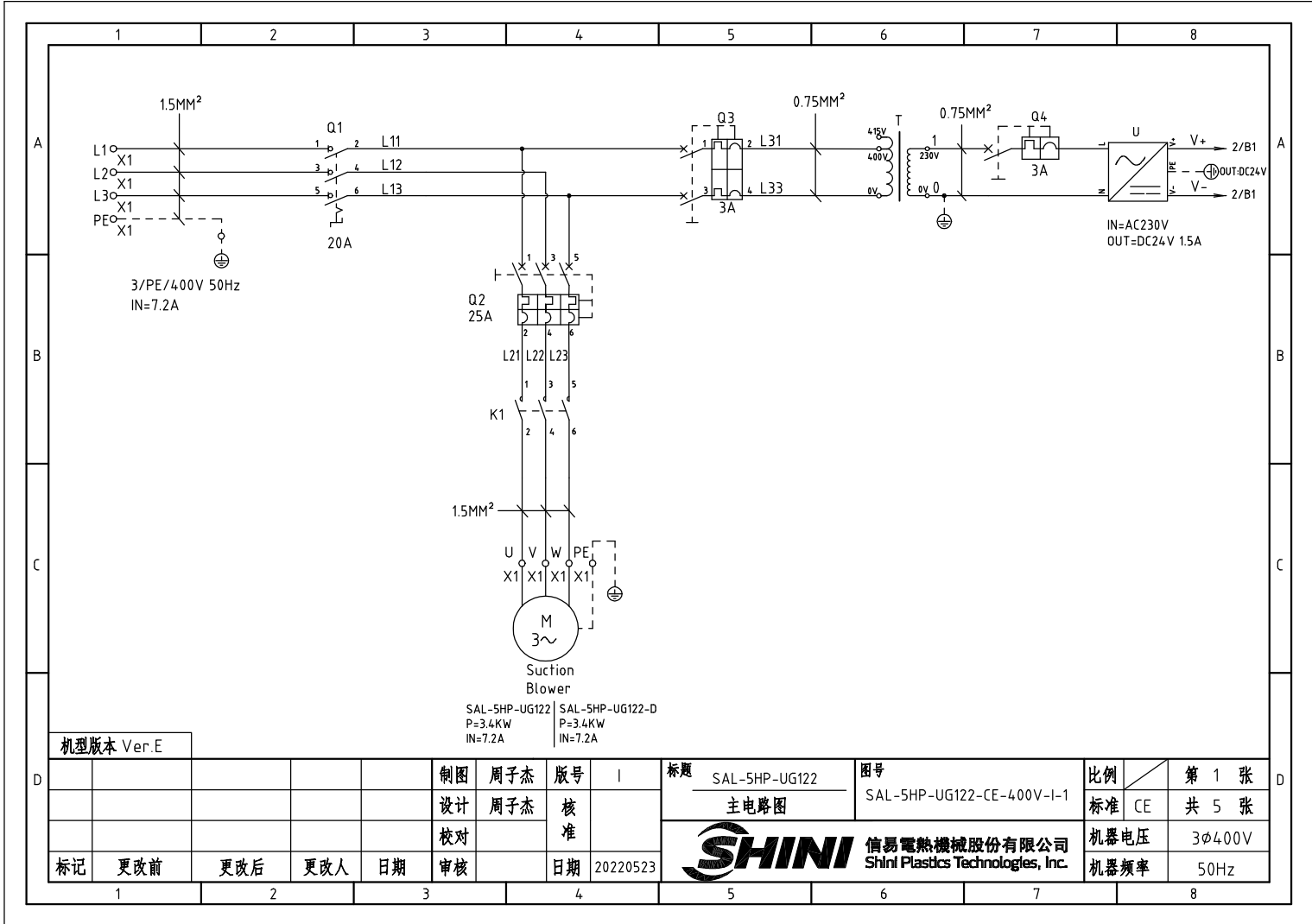


机型版本 Ver.B

Mark	Before modification	After modification	Modified by	Modify date	Checked by	Date	20200613
					Proofread by		
					Designer		
					Drawer		
					Version	A	

Title	SAL-3HP-UG122	Drawing NO.	SAL-3HP-UG122-CE-400V-A-3	Scale	Page	3
Elec. Parts Layout & Wiring Diagram				Standard	CE	Totally 4 Pages
<b>信易電熱機械股份有限公司</b> <b>Shini Plastics Technologies, Inc.</b>			Voltage	3φ400V		
			Frequency	50Hz		

1		2		3		4		5		6		7		8		
NO	Symbol	Name		Manufacturer		Type		Specification		Number	Material number		Remark			
A	1	Q1	Main switch		EATON		T0-2-1/EA/SVB		20A		1	YE10021160000				
	2	Q2	Circuit breakers		TECO		BM-63C/3010S		10A		1	YE40301003000				
	3	Q3 Q4	Circuit breakers		TECO		BM-63C/1003S		3A 1P		2	YE40100203000				
	4	K1	Contactors		SCHNEIDER		LC1-D09B7C		24V 50/60Hz		1	YE00972400000				
	5	A1	Controller		YUYUN		CS4		24VAC/DC		1	YE80042401200				
	6	S1	RS-485 comm. interface plate		YUYUN		---		Dsub-9pin connector		1	YE90048501200				
	7		Shell RS-485(SAL-700G-A-19)ver.0		---		---		---		1	YR40048500000				
B	8		9 pin-series interface connector (male) with shell and screw		---		---		---		1	YE62090000000				
	9	H1	Alarm light		SHINI		SWI-T		24VAC/DC		1	BL90000011520				
	10	T	Transformer		JIUXIN		400V/415V OUT=24V /230V		50VA 500MA		1	YE70040007100				
	11	U	DC power		---		S-35-24		24VDC 1.5A		1	YE71352400000				
	12	X1 X2	Wiring terminal		HONEYWELL		SK2.5		2.5mm <sup>2</sup>		20	YE60002503200				
	13		Wiring terminal		HONEYWELL		GK2.5PE		2.5PE		8	YE60002503400				
	14		Wiring terminal		HONEYWELL		SK2.5		2.5mm <sup>2</sup>		4	YE60002503200		(2)		
C	15		Wiring terminal		HONEYWELL		GK2.5PE		2.5PE		2	YE60002503400		(2)		
	16		Terminal fittings E/GK series		HONEYWELL		---		PCS		6	YE60000003900				
	17	X10 X11	Heavy duty connectors		HARTING		Han E-4F(female)		4P		2	YE68000401400				
	18	M	Blower		SHINI		RB-420 (with thermal protector)		3HP 400V 50HZ		1	---		(1)		
	19	Y1~Y10	Solenoid valve		AIRTAC		---		24VDC		10	---		(1)		
	20	S2 S3	Photosensor switch		FOTEK		MT-4MNO-30VDC		10...30VDC		2	---		(1) SVH		
	21		Reed switch		SONON		BN12-30BLA		24VDC		2	---		(1) SMH		
D	机型版本 Ver.B		Notes: (1)Installation not in the control box; (2) Hopper optional spray valve;													
					Drawer		Version	A	Title	SAL-3HP-UG122		Drawing NO.	Scale		Page	4
					Designer		Approved by		Electrical Parts List 1		SAL-3HP-UG122-CE-400V-A-4		Standard	CE	Totally	4 Pages
	Mark	Before modification	After modification	Modified by	Modify date	Checked by		Date	20200613	 <b>信易電熱機械股份有限公司</b> <b>Shini Plastics Technologies, Inc.</b>			Voltage	3φ400V		
								Frequency	50Hz							



机型版本 Ver.E

SAL-5HP-UG122 | SAL-5HP-UG122-D  
 P=3.4KW | P=3.4KW  
 IN=7.2A | IN=7.2A

制图	周子杰	版号	I
设计	周子杰	核准	
校对		审核	
标记	更改前	更改后	更改人
		日期	20220523

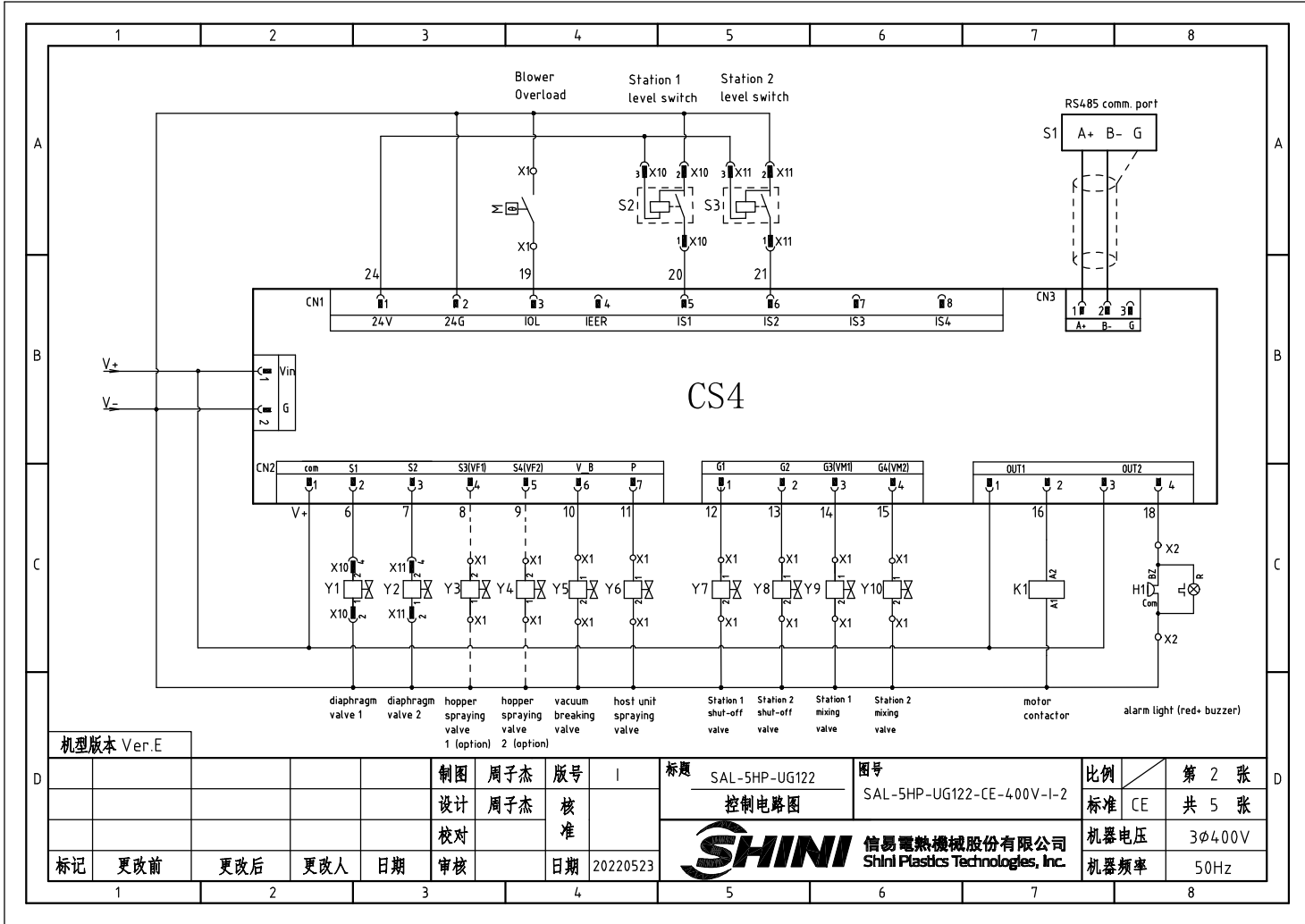
标题 SAL-5HP-UG122  
主电路图

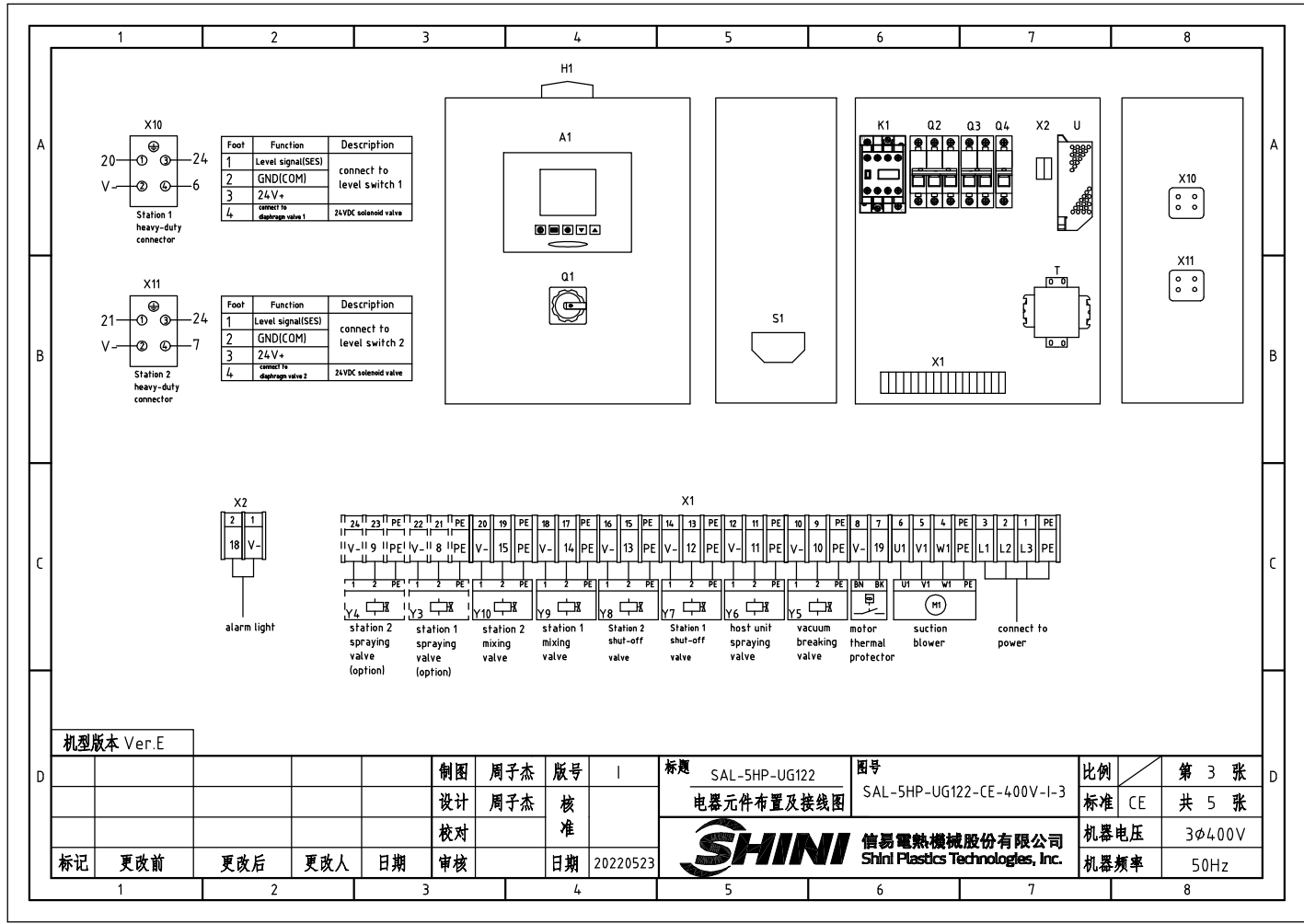
图号 SAL-5HP-UG122-CE-400V-I-1

比例 第 1 张  
标准 CE 共 5 张

**SHINI** 信易電熱機械股份有限公司  
Shini Plastics Technologies, Inc.

机器电压 3φ400V  
机器频率 50Hz



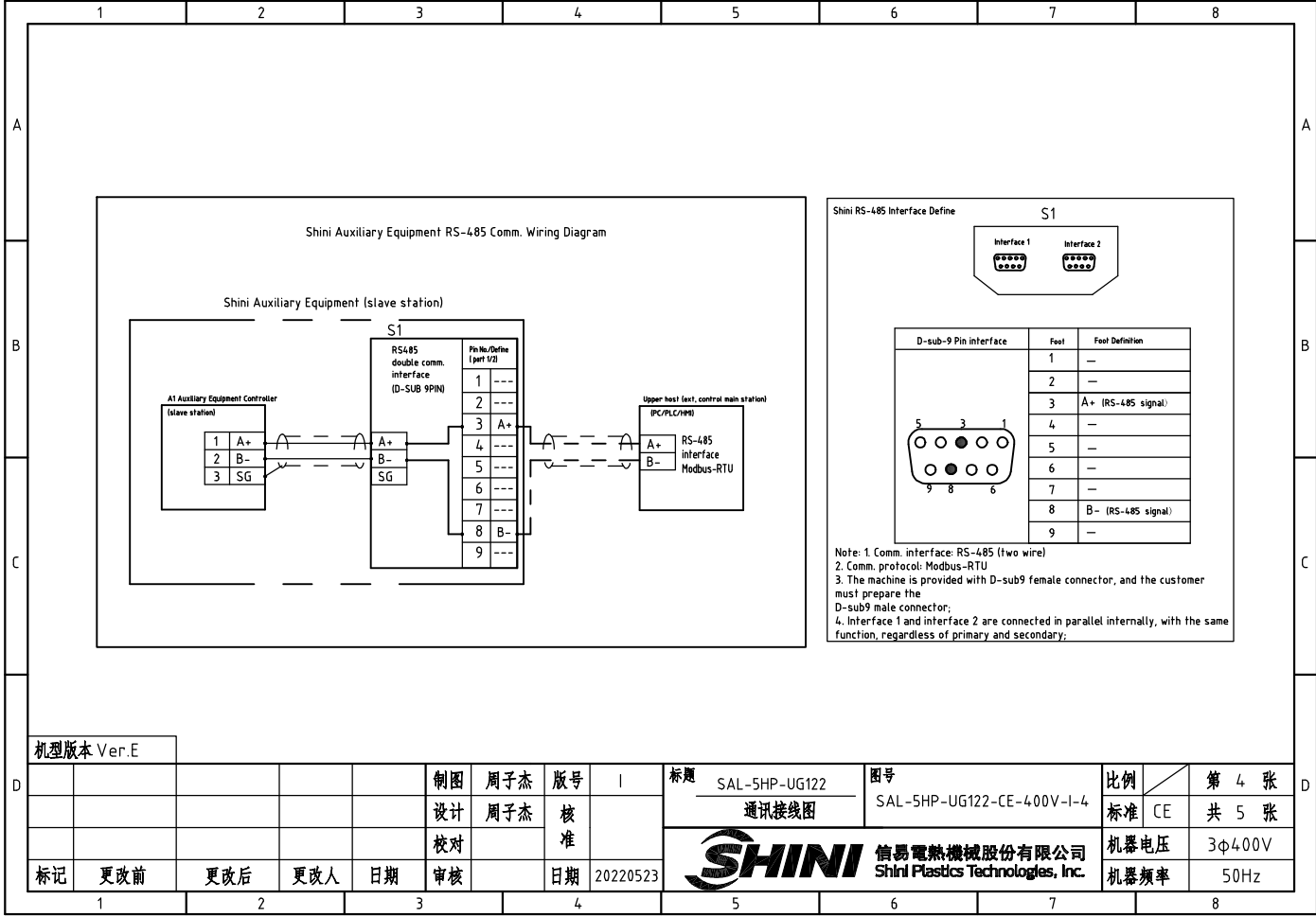


机型版本 Ver.E

制图	周子杰	版号	1	标题	SAL-SHP-UG122	图号	SAL-SHP-UG122-CE-400V-I-3	比例	第 3 张
设计	周子杰	核		电	器元件布置及接线图			标准	共 5 张
校对		准						机	器电压
审核		日期	20220523					器	频率
标记	更改前	更改后	更改人	日期					50Hz



标准 CE  
 机 器电压 3φ4.00V  
 机 器频率 50Hz



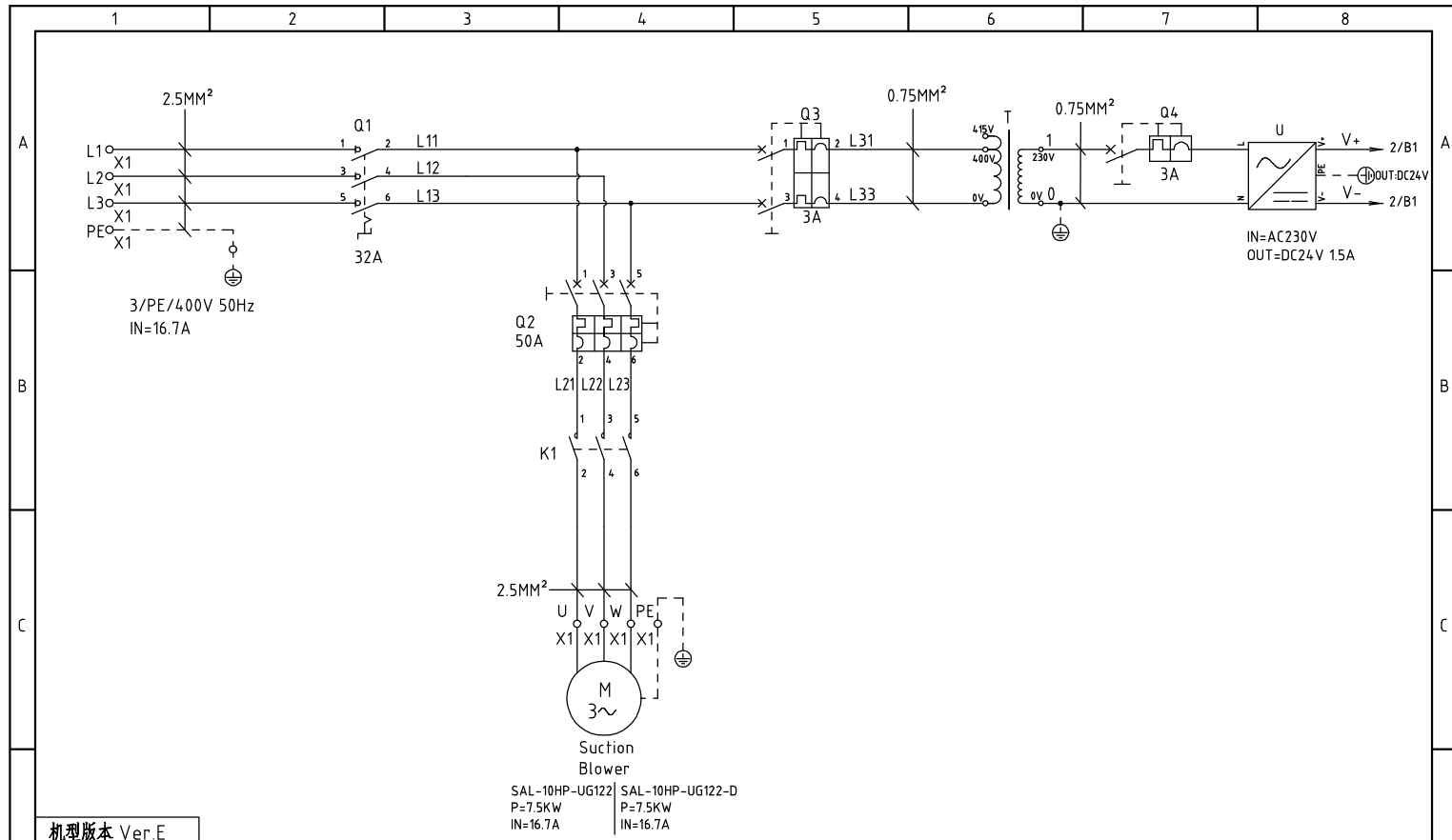
机型版本 Ver.E

制图	周子杰	版号	1
设计	周子杰	核	
校对		准	
审核		日期	20220523

标题	SAL-5HP-UG122	图号	SAL-5HP-UG122-CE-4.00V-I-4
	通讯接线图		
<b>SHINI</b> 信易電熱機械股份有限公司		比例	第 4 张
Shini Plastics Technologies, Inc.		标准	CE 共 5 张
		机器电压	3φ4.00V
		机器频率	50Hz



1		2		3		4		5		6		7		8		
N0	Symbol	Name		Manufacturer		Type		Specification		Number	Material number		Remark			
A	1	Q1	Main power switch		EATON		TO-2-1/EA/SVB		20A		1	YE10021160000				
	2	Q2	Circuit breakers		TECO		BM-63C/3025S		25A		1	YE40302503000				
	3	Q3	Circuit breakers		TECO		BM-63C/2003S		3A 2P		1	YE40200203000				
	4	Q4	Circuit breakers		TECO		BM-63C/1003S		3A 1P		1	YE40100203000				
	5	K1	Contactors		SIEMENS		3RT6017-1BB41		24VDC		1	YE00601700500				
	6	A1	Controller		YUYUN		CS4		24VAC/DC		1	YE80042401200				
	7	S1	RS-485 comm. interface		YUYUN		---		Dsub-9pin connector		1	YE90048501200				
B	8		Shell RS-485 (SAL-700G-A-19) ver.0		---		---		---		1	YR40048500000				
	9		9-pin serial port connector (male), including housing and screws		---		---		---		1	YE62090000000				
	10	H1	Alarm light		SHINI		SWI-T		24VAC/DC		1	BL90000011520				
	11	T	Transformer		JIUXIN		IN=400V/415V OUT=230V		500MA		1	YE70040005200				
	12	U	DC power		---		S-35-24		24VDC 1.5A		1	YE71352400000				
	13	X1 X2	Wiring terminal		HONEYWELL		SK2.5		2.5mm <sup>2</sup>		22	YE60002503200				
	14		Wiring terminal		HONEYWELL		GK2.5PE		2.5PE		8	YE60002503400				
C	15		Wiring terminal		HONEYWELL		SK2.5		2.5mm <sup>2</sup>		4	YE60002503200		(2)		
	16		Wiring terminal		HONEYWELL		GK2.5PE		2.5PE		2	YE60002503400		(2)		
	17		Terminal fittings E/GK series (honeywell)		HONEYWELL		---		PCS		6	YE60000003900				
	18	X10 X11	Heavy duty connectors		HARTING		Han E-4F(female)		4P		2	YE68000401400				
	19	M	Blower		SHINI		RB-550		5HP 400V 50HZ		1	---		(1)		
	20	Y1-Y10	Solenoid valve		AIRTAC		---		24VDC		10	---		(1)		
	21	S2 S3	Photosensor switch		FOTEK		MT-4MNO-30VDC		10...30VDC		2	---		(1) SVH		
22		Reed switch		SONON		BN12-30BLA		24VDC		2	---		(1) SMH			
D	机型版本 Ver.E		Note: (1) Materials not mounted in the control box; (2) Optional hopper spraying valve;													
					制图	周子杰	版号	1	标题	SAL-5HP-UG122/SAL-5HP-UG122-D		图号	SAL-5HP-UG122-CE-400V-I-5		比例	第 5 张
					设计	周子杰	核		电气元件明细表一			标准	CE	共 5 张		
	标记	更改前	更改后	更改人	日期	审核		日期	20220523			信易電熱機械股份有限公司 Shini Plastics Technologies, Inc.		机器电压	3φ400V	
													机器频率	50Hz		

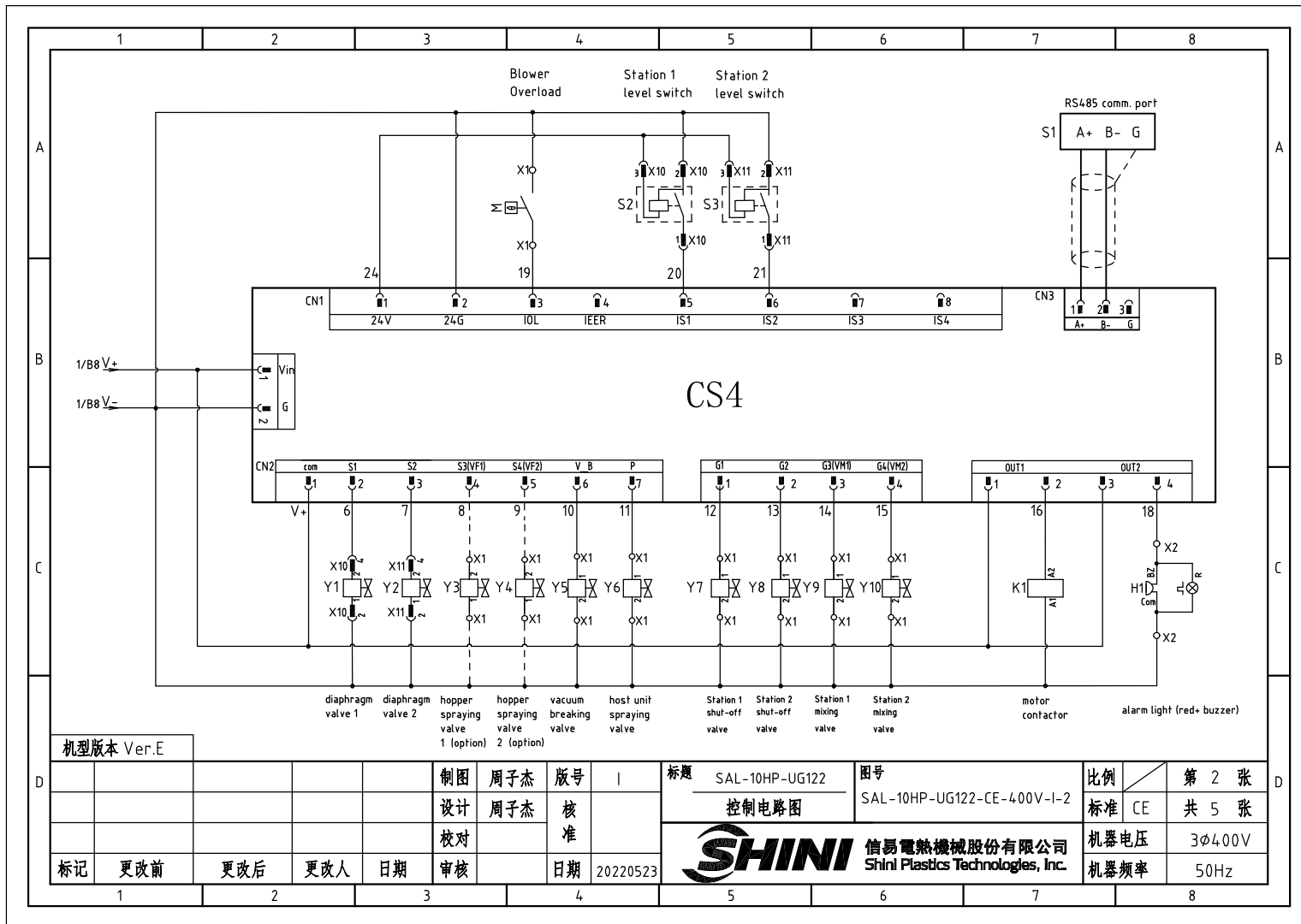


机型版本 Ver.E

制图	周子杰	版号	I
设计	周子杰	核准	
校对		核准	
标记	更改前	更改后	更改人
	日期	日期	20220523

标题	SAL-10HP-UG122 主电路图	图号	SAL-10HP-UG122-CE-400V-I-1	比例	第 1 张
				标准	CE 共 5 张
				机器电压	3φ400V
				机器频率	50Hz





机型版本 Ver.E

制图	周子杰	版号	1
设计	周子杰	核准	
校对		核准	
标记	更改前	更改后	更改人
			日期
			日期

标题 SAL-10HP-UG122  
控制电路图

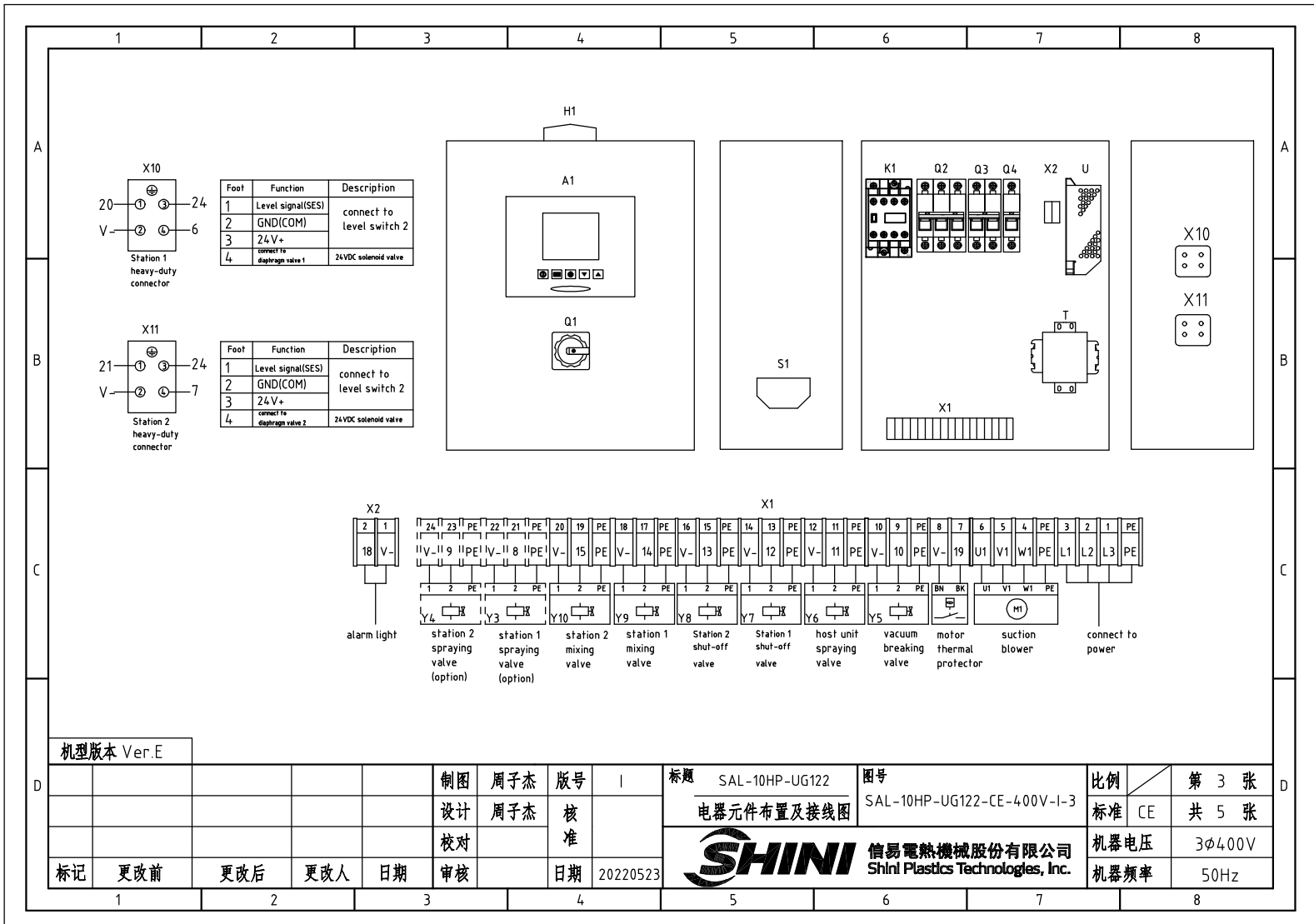
图号 SAL-10HP-UG122-CE-400V-I-2

比例 第 2 张  
标准 CE 共 5 张

**SHINI** 信易電熱機械股份有限公司  
Shini Plastics Technologies, Inc.

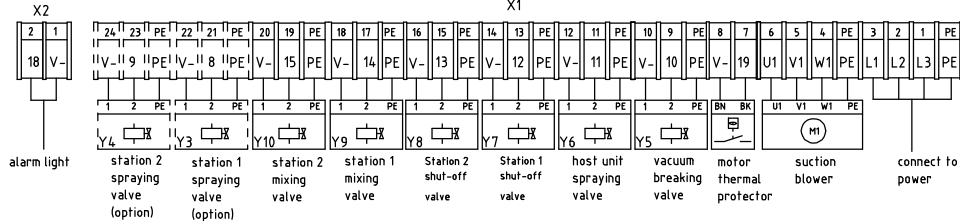
机器电压 3φ400V  
机器频率 50Hz

1 2 3 4 5 6 7 8



Foot	Function	Description
1	Level signal(SES)	connect to level switch 2
2	GND(COM)	
3	24V+	
4	connect to diaphragm valve 1	24VDC solenoid valve

Foot	Function	Description
1	Level signal(SES)	connect to level switch 2
2	GND(COM)	
3	24V+	
4	connect to diaphragm valve 2	24VDC solenoid valve



机型版本 Ver.E

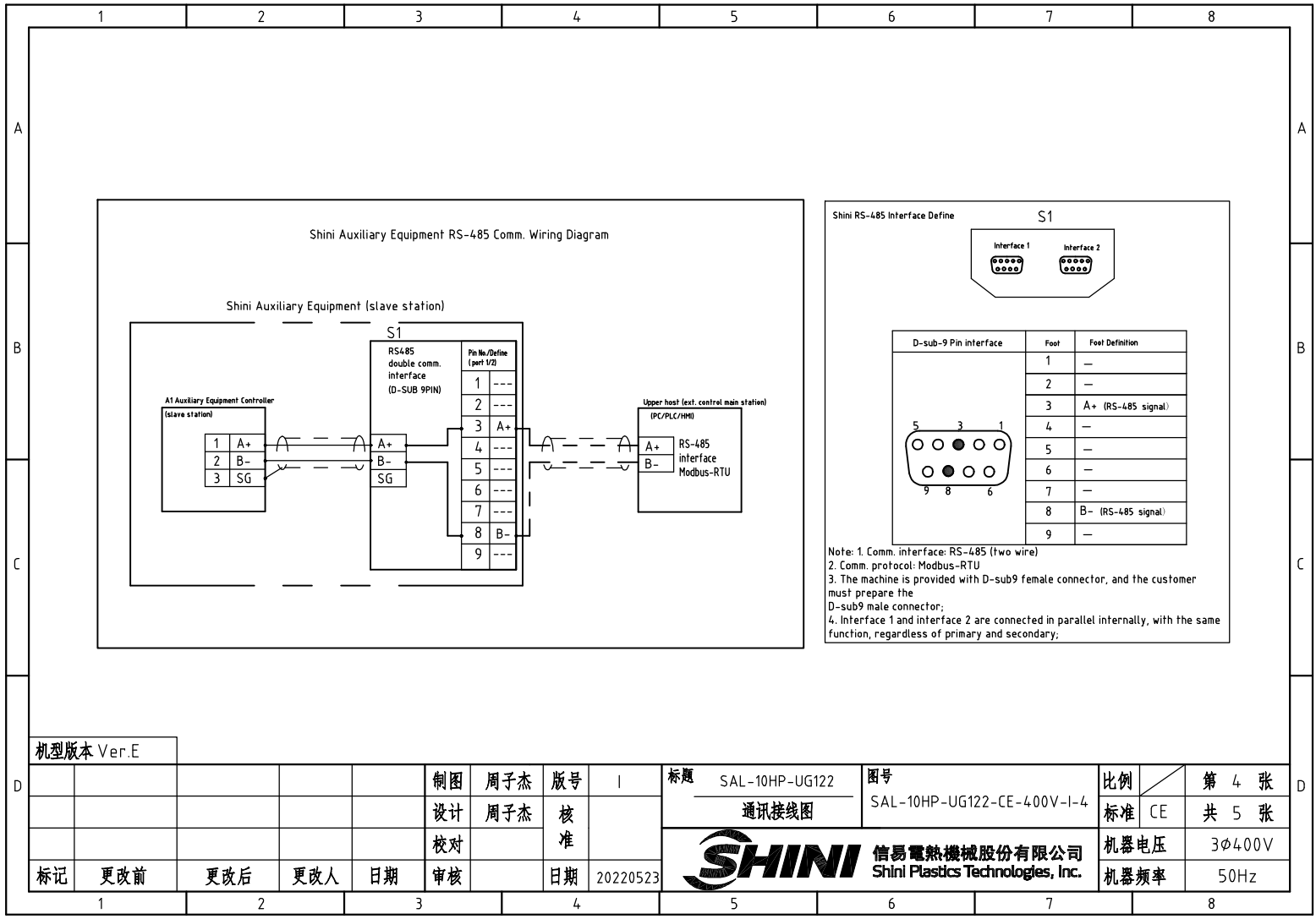
制图	周子杰	版号	I
设计	周子杰	核准	
校对		核准	
标记	更改前	更改后	更改人
			日期
			日期
			20220523

标题 SAL-10HP-UG122  
电器元件布置及接线图

图号 SAL-10HP-UG122-CE-400V-I-3

比例	第 3 张
标准	CE 共 5 张
机器电压	3φ400V
机器频率	50Hz





Shini RS-485 Interface Define

S1

D-sub-9 Pin interface	Foot	Foot Definition
1	1	—
2	2	—
3	3	A+ (RS-485 signal)
4	4	—
5	5	—
6	6	—
7	7	—
8	8	B- (RS-485 signal)
9	9	—

Note: 1. Comm. interface: RS-485 (two wire)  
 2. Comm. protocol: Modbus-RTU  
 3. The machine is provided with D-sub9 female connector, and the customer must prepare the D-sub9 male connector;  
 4. Interface 1 and interface 2 are connected in parallel internally, with the same function, regardless of primary and secondary;

机型版本 Ver.E

制图	周子杰	版号	I
设计	周子杰	核	
校对		准	
标记	更改前	更改后	更改人
	日期	日期	20220523

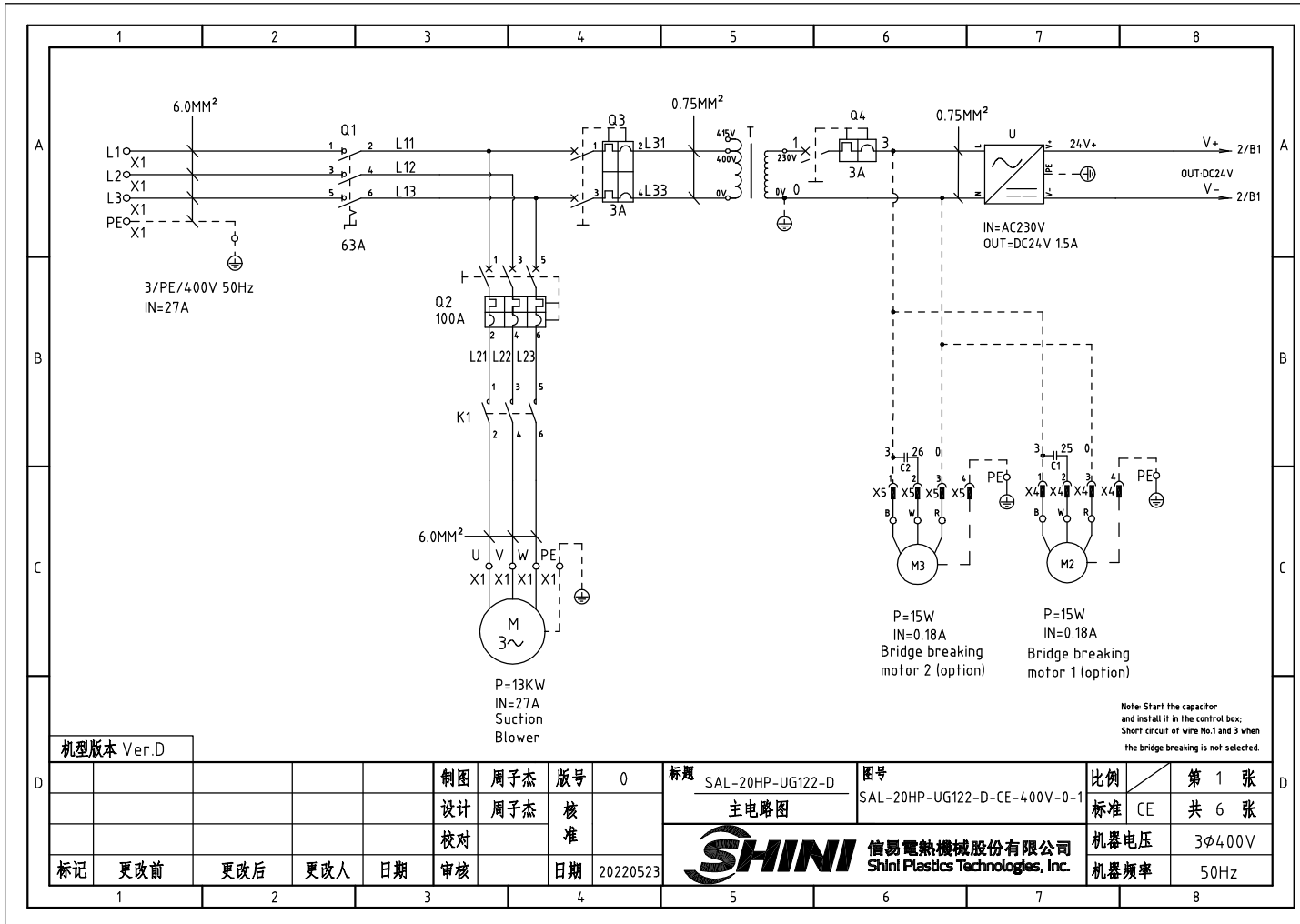
标题 SAL-10HP-UG122  
 图号 SAL-10HP-UG122-CE-400V-I-4  
 通讯接线图



信易電熱機械股份有限公司  
 Shini Plastics Technologies, Inc.

比例	第 4 张
标准	CE 共 5 张
机器电压	3φ400V
机器频率	50Hz

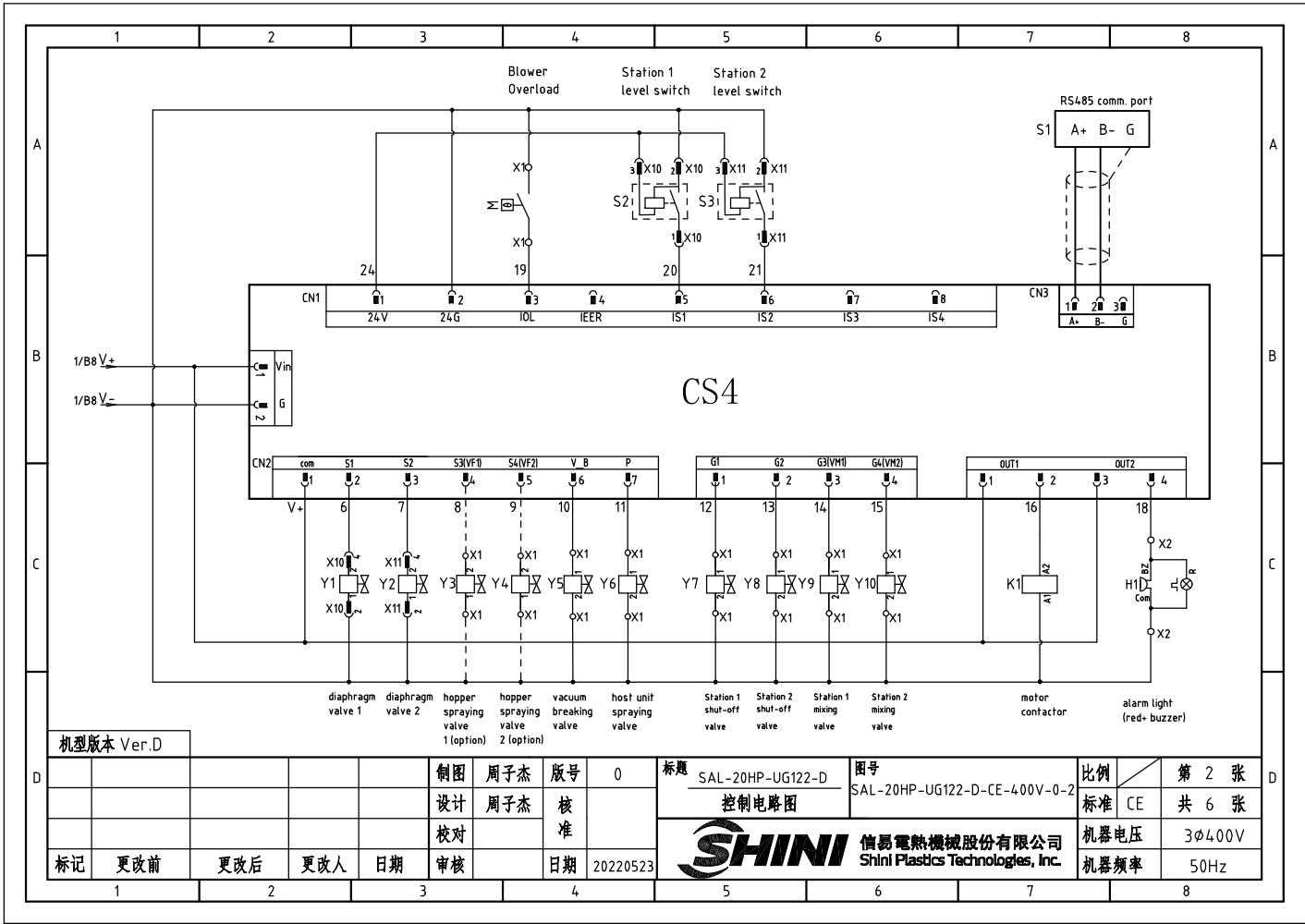
1		2		3		4		5		6		7		8	
NO	Symbol	Name		Manufacturer		Type		Specification		Number	Material number		Remark		
1	Q1	Main power switch		EATON		P1-32/EA/SVB		32A		1	YE10323200000				
2	Q2	Circuit breakers		TECO		BM-63C/3050S		50A		1	YE40305003000				
3	Q3	Circuit breakers		TECO		BM-63C/2003S		3A 2P		1	YE40200203000				
4	Q4	Contactors		TECO		BM-63C/1003S		3A 1P		1	YE40100203000				
5	K1	Contactors		SIEMENS		3RT6026-1BB40		24 VDC		1	YE00602600600				
6	A1	Controller		YUYUN		CS4		24 VAC/DC		1	YE80042401200				
7	S1	RS-485 comm. interface board		YUYUN		---		Dsub-9pin connector		1	YE90048501200				
8		Shell RS-485 (SAL-700G-A-19) ver.0		---		---		---		1	YR40048500000				
9		9-pin serial port connector (male), including housing and screws		---		---		---		1	YE62090000000				
10	H1	Alarm light board		SHINI		SWI-T		24 VAC/DC		1	BL90000011520				
11	T	Transformer		JIUXIN		IN=400V/415V OUT=230V		500MA		1	YE70040005200				
12	U	DC power		---		S-35-24		24 VDC 1.5A		1	YE71352400000				
13	X1 X2	Wiring terminal		HONEYWELL		SK2.5		2.5mm <sup>2</sup>		22	YE60002503200				
14		Wiring terminal		HONEYWELL		GK2.5PE		2.5PE		8	YE60002503400				
15		Wiring terminal		HONEYWELL		SK2.5		2.5mm <sup>2</sup>		4	YE60002503200		(2)		
16		Wiring terminal		HONEYWELL		GK2.5PE		2.5PE		2	YE60002503400		(2)		
17		Terminal fittings E/GK series (honeywell)		HONEYWELL		---		PCS		6	YE60000003900				
18	X10 X11	Heavy duty connectors		HARTING		Han E-4F(female)		4P		2	YE68000401400				
19	M	Blower		RuiJing		RB-850		10HP 400V 50HZ		1	---		(1)		
20	Y1-Y10	Solenoid valve		AIRTAC		---		24 VDC		10	---		(1)		
21	S2 S3	Photosensor switch		FOTEK		MT-4MNO-30VDC		10...30VDC		2	---		(1) SVH		
22		Reed switch		SONON		BN12-30BLA		24 VDC		2	---		SMH		
机版本 Ver.E Note: (1) Materials not mounted in the control box; (2) Optional hopper spraying valve;															
制图		周子杰		版号		I		标题		图号		比例		第 5 张	
设计		周子杰		核				SAL-10HP-UG122/SAL-10HP-UG122-D		SAL-10HP-UG122-CE-400V-I-5		标准 CE		共 5 张	
校对				准				电气元件明细表一		信易電熱機械股份有限公司		机器电压		3φ400V	
标记		更改前		更改后		更改人		日期		Shini Plastics Technologies, Inc.		机器频率		50Hz	
1		2		3		4		5		6		7		8	



机型版本 Ver.D

制图	周子杰	版号	0
设计	周子杰	核准	
校对		日期	20220523
标记	更改前	更改后	更改人
	1	2	3

标题	SAL-20HP-UG122-D	图号	SAL-20HP-UG122-D-CE-400V-0-1
主电路图		比例	第 1 张
SHINI 信易电热机械股份有限公司 Shini Plastics Technologies, Inc.		标准	CE 共 6 张
		机器电压	3φ400V
		机器频率	50Hz



机型版本 Ver.D

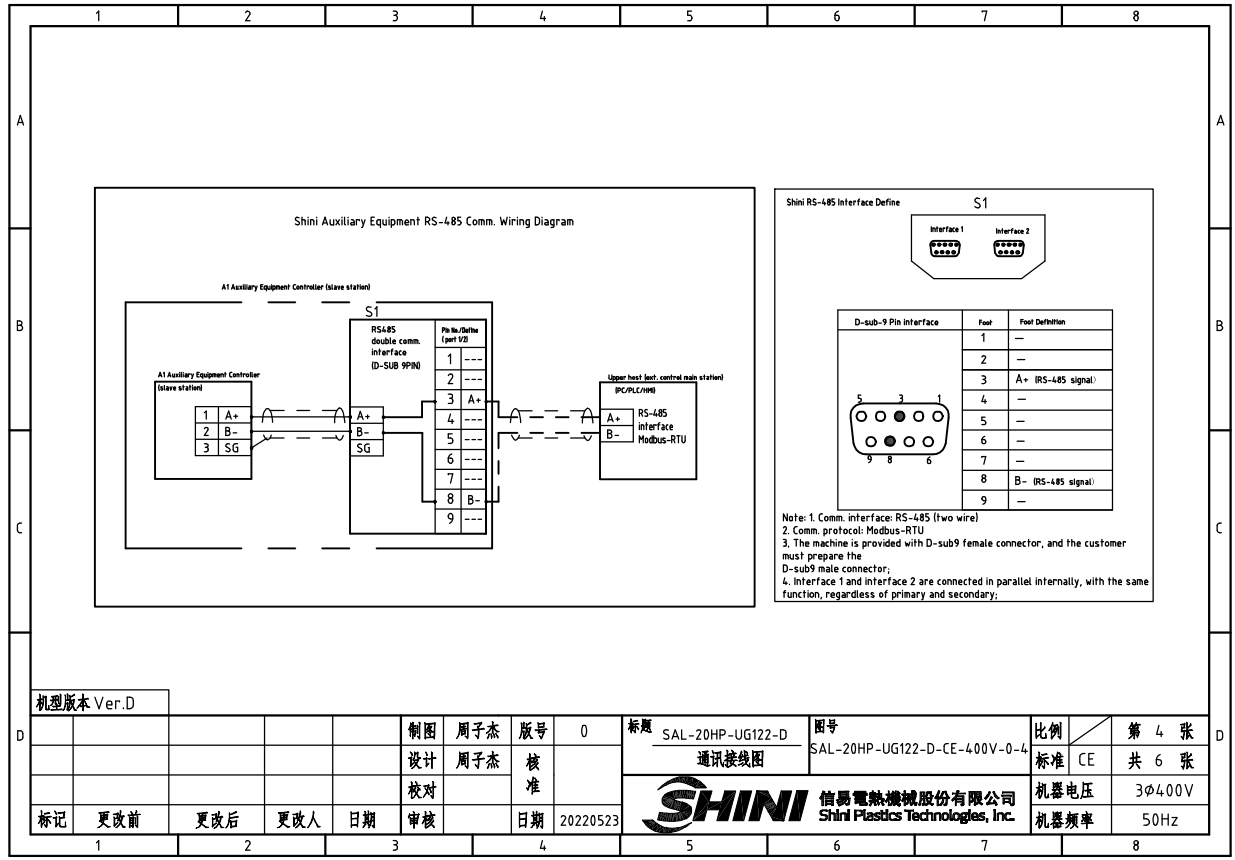
制图	周子杰	版号	0
设计	周子杰	核准	
校对		日期	20220523
标记	更改前	更改后	更改人


标题	SAL-20HP-UG122-D	图号	SAL-20HP-UG122-D-CE-400V-0-2
控制电路图		比例	第 2 张
		标准	CE 共 6 张
SHINI 信易電熱機械股份有限公司 Shini Plastics Technologies, Inc.		机器电压	3φ400V
		机器频率	50Hz


1 2 3 4 5 6 7 8







1		2		3		4		5		6		7		8					
NO	Symbol	Name	Manufacturer	Type	Specification	Number	Material number	Remark											
1	Q1	Main power switch	EATON	P3-63/EA/SVB	63A	1	YE10636300000												
2	Q2	Circuit breakers	TECO	BM-100D/30100S	100A	1	YE40310003000												
3	Q3	Circuit breakers	TECO	BM-63C/2003S	3A 2P	1	YE40200203000												
4	Q4	Circuit breakers	TECO	BM-63C/1003S	3A 1P	1	YE40100203000												
5	K1	Contactors	SIEMENS	3RT6028-1BB40	24VDC	1	YE00602800600												
6	A1	Controller	YUYUN	CS4	24VAC/DC	1	YE80042401200												
7	S1	RS-485 comm. interface board	YUYUN	---	Dsub-9pin connector	1	YE90048501200												
8		Shell RS-485 (SAL-700G-A-19) ver.0	---	---	---	1	YR40048500000												
9		9-pin serial port connector (male), including housing and screws	---	---	---	1	YE62090000000												
10	H1	Alarm light	SHINI	SWI-T	24VAC/DC	1	BL90000011520												
11	T	Transformer	JUJIXIN	IN=400V/415V OUT=230V	500MA	1	YE70040005200												
12	U	DC power	---	S-35-24	24VDC 1.5A	1	YE71352400000												
13	X1 X2	Wiring terminal	HONEYWELL	GK6	6.0mm <sup>2</sup>	6	YE60000603200												
14		Wiring terminal	HONEYWELL	GK6PE	6.0PE	2	YE60000603500												
15		Wiring terminal	HONEYWELL	SK2.5	2.5mm <sup>2</sup>	16	YE60002503200												
16		Wiring terminal	HONEYWELL	GK2.5PE	2.5PE	6	YE60002503400												
17		Wiring terminal	HONEYWELL	SK2.5	2.5mm <sup>2</sup>	4	YE60002503200	(2)											
18		Wiring terminal	HONEYWELL	GK2.5PE	2.5PE	2	YE60002503400	(2)											
19		Terminal fittings E/GK series	HONEYWELL	---	PCS	6	YE60000003900												
20	X10 X11	Heavy duty connector	HARTING	Han E-4F(female)	4P	2	YE68000401400												
21	Y1-Y10	Solenoid valve	AIRTAC	---	24VDC	10	---	(1)											
22	S2 S3	Photosensor switch	FOTEK	MT-4MNO-30VDC	10...30VDC	2	---	(1) SVH											
23		Reed switch	SONON	BN12-30BLA	24VDC	2	---	(1) SMH											
24	M	Blower	ShengHong	RB-850	20HP 400V 50HZ	1	---	(1)											
25	X4 X5	Metal connector	----	PLT-254-RF	4P(female)	2	YE68025400100	(3)											
机型版本 Ver:D		Note: (1) Materials not mounted in the control box; (2) Optional hopper spraying valve; (3) Optional vacuum breaking motor;																	
制图		周子杰		版号		0		标题		SAL-20HP-UG122-D		图号		SAL-20HP-UG122-D-CE-400V-0-5		比例		第 5 张	
设计		周子杰		核				电气元件明细表一		标准		CE		共 6 张					
校对				准						信易電熱機械股份有限公司		机器电压		3φ400V					
标记		更改前		更改后		更改人		日期		审核		日期		20220523		机器频率		50Hz	
1		2		3		4		5		6		7		8					

1		2		3		4		5		6		7		8	
N0	Symbol	Name		Manufacturer		Type		Specification		Number	Material number		Remark		
26	M2 M3	Bridge breaking motor		----		----		230V 50/60Hz 0.015KW		2	----		(3)		
27	C1 C2	Operating capacitor		----		----		PCS		2	----		(3)		
A															
B															
C															
D															
机型版本 Ver.D		Note: (1) Materials not mounted in the control box; (2) Optional hopper spraying valve; (3) Optional vacuum breaking motor;													
						制图	周子杰	版号	0	标题	SAL-20HP-UG122-D	图号	SAL-20HP-UG122-D-CE-400V-0-6	比例	第 6 张
						设计	周子杰	核		电气元件明细表一		标准	CE	共 6 张	
						校对		准		 <b>信易電熱機械股份有限公司</b> Shini Plastics Technologies, Inc.		机器电压		3φ400V	
标记		更改前	更改后	更改人	日期	审核	日期	20220523	机器频率			50Hz			
1		2		3		4		5		6		7		8	