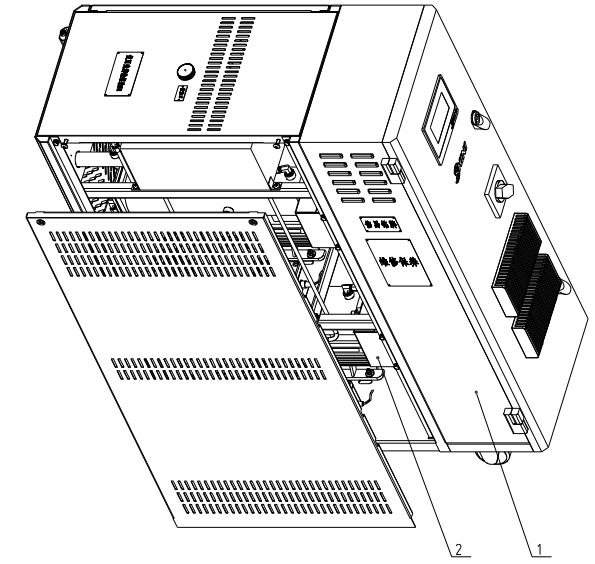
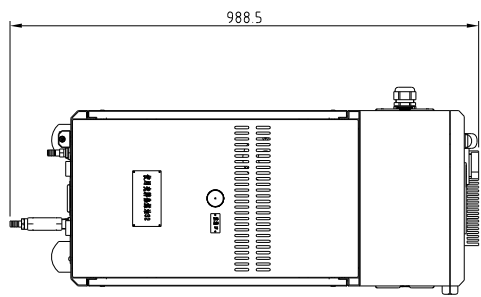
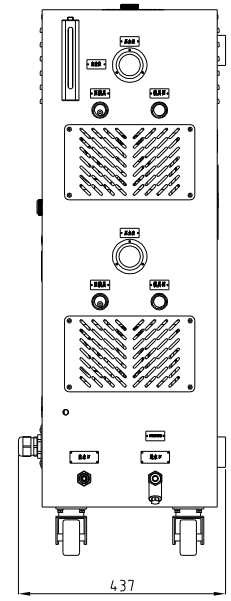
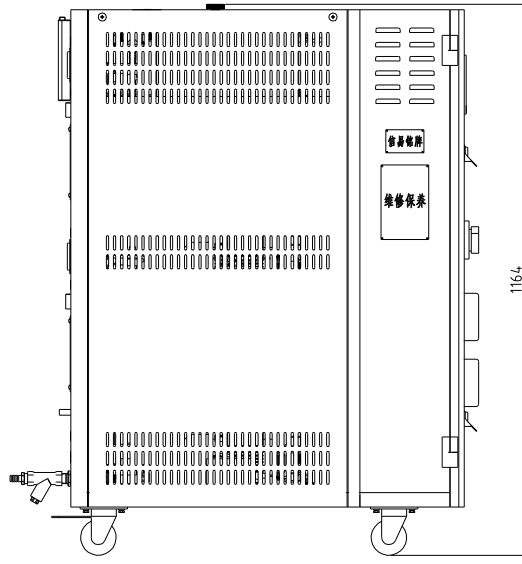


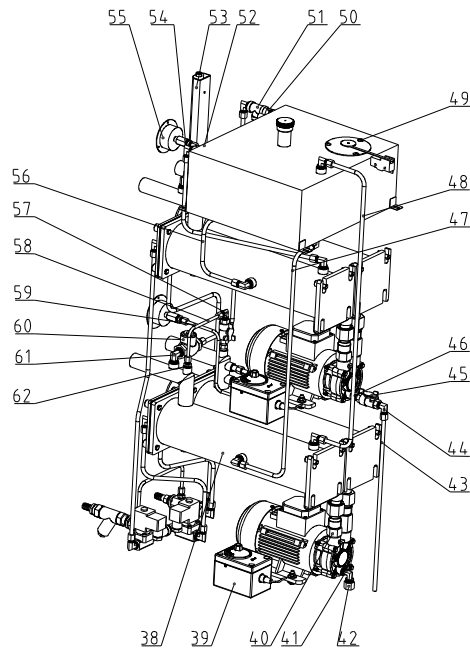
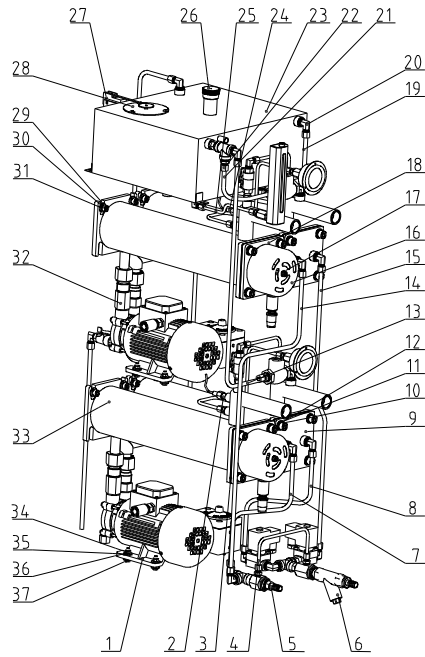
Max. pump Pressure(bar)	Max. pump Flow(L/min)	Pump Power(kW)	Heater Power(kW)	Max. Temp.	Weight(kg)	Ver.
3.8	27×2	0.55×2	6×2	200°C	150	1
Inlet /Outlet Size CE PT inner thread(inch)		Cooling Method	Main/Sub Oil Tank(L)	Heating Tank Number		
2/2		Indirect Cooling	6×2/14	2		



Technical requirements:
 1. Trimming and deburring,
 2. Dimensional tolerances not specified shall be in accordance with GB/T1804-2000
 Tolerances for linear and angular dimensions without specified tolerances
 The M-level regulations.

2	STM-607D-B-ALL	Internal structure		1	welding parts
1	STM-607D-A-ALL	External sheet metal		1	welding parts
序号	代号	名称	材料	数量	备注

制图	版号	标题	STM-607D	图号	比例	数量
设计	核准	总装图			材质	
校对		信易电热机械股份有限公司 Shini Plastics Technologies, Inc.		表面要求		
审核	日期			物料号		
标记	更改前	更改后	更改人	日期		



48	STM-607D-B-18	Air exhaust pipe 2	SUS304	1	
47	STM-607D-B-04	Lower oil pipe 2	SUS304	1	
46	S-08	Pipe coupler	H58	3	1/4"PT×1/4"PT
45	YW5022000000	Butterfly shaped ball valve	SUS304	3	1/4" heat-resistant 200°C
44	YW050814.00000	Sleeve connector		1	8MMX1/4"PT L-type(H59)
43	STM-607D-B-11	Pump oil discharge pipe	SUS304	1	
42	S-171	Teflon plug	H58	1	3/8"H plug
41	YW040308004.00	Toniflon connector	H58	1	1/4"PT×3/8"H L
40	S-02	Copper trumpet connector	H58	2	1/2"PT×3/4"H 55MM
39	BH90115000050	high-temp. tester		2	EGO
38	STM-607D-B-02	Cooling tank		2	welding parts
37	YW60062500000	Hexagon screw bolt M6×25	4.8	8	GB/T5781
36	YW650060000100	Standard spring washer 6	65Mn	8	GB/T93
35	YW66061800000	Large washer A grade	Q235A	16	GB/T96 1(6×18×1.5)
34	YW64.000600300	Hexagonal nut M6	Q235A	11	GB/T6170
33	STM-607D-B-05	Heating Tank		2	welding parts
32	S-03	Copper trumpet connector	H58	2	2/1"PT×3/4"H 75MM
31	YW650080000100	Standard spring washer 8	65Mn	8	GB/T93
30	YW61082001200	inner hexagon cylindrical screw M8×20	12.9	8	GB/T70.1
29	YW66081900000	Flat washer 8	Q235A	8	8×19×2.0
28	STM-607D-B-23	Float ball		1	welding parts
27	YE14.1524.00000	Micro switch		1	LXW5-1124 rod length 100mm
26	S-30	Aluminum oil cap	YL-112	1	3/4"G female thread
25	STM-607D-B-09	Liquid level pipe	SUS304	1	
24	BE9034.2500050	Thermocoupler	SUS304	1	2.5M
23	STM-607D-B-01	Oil tank		1	welding parts
22	YW05083800000	Sleeve connector		3	8MMX3/8"PT (H59)
21	STM-607D-B-21	Reverse suction tube 1	SUS304	1	
20	YW05083800100	Sleeve connector		13	8MMX3/8"PT L-type(H59)
19	STM-607D-B-17	Air exhaust pipe 1	SUS304	1	
18	STM-607D-B-03	Heater pipe assembly		2	welding parts Borrowed
17	YW66061300000	Flat washer A grade 6	Q235A	2	
16	S-190	Heating tube cover	SPCC10	2	
15	STM-607D-B-13	Cooling water inlet pipe 1	SUS304	1	
14	STM-607D-B-14	Cooling water outlet pipe 1	SUS304	1	
13	STM-607D-B-22	Reverse suction tube 2	SUS304	1	
12	YW66102000100	Flat washer A grade 10	Q235A	16	GB/T97.1 (11×20×2)
11	YW65010000000	Standard spring washer 10	65Mn	16	GB/T93
10	YW61102500000	Hexagon socket head screw M10×25	12.9	16	GB/T70.1
9	STM-607-B-04	Cooling pipe assembly		2	Welding parts Borrowed
8	STM-607D-B-15	Cooling water inlet pipe 2	SUS304	1	
7	STM-607D-B-16	Cooling water outlet pipe 2	SUS304	1	
6	STM-607D-B-07	Cooling water inlet joint combination		1	Welding parts
5	STM-607D-B-12	Cooling water outlet joint combination		1	Welding parts
4	STM-607D-B-18	Cold water bypass	SUS304	1	
3	YR20121200000	Flexible graphite pad	ISO-68	4	120×120×2.0
2	BE9034.0200050	Thermocouple	SUS304	1	2M
1	TP-55	TP-55 pump		2	0.55KW 27L/min 3.8bar Anbo

62	YW050614.00000	Sleeve connector		7	6MMX1/4"PT(H59)
61	YW04030800100	Pipe coupler	H62	2	3/8"PT(L)
60	YW59308000600	Swing check valve 3/8"	Cu	2	KITZ
59	STM-607D-B-10	Pressure gauge pipe	SUS304	2	
58	STM-607D-B-06	Oil bypass	SUS304	2	
57	YW050614.00100	Sleeve connector		3	6MMX1/4"PT L-type(H59)
56	STM-607D-B-03	Lower oil pipe 1	SUS304	1	
55	YW850010000100	Pressure gauge		2	0~10MPa Range
54	S-199	H to PT connector	H58	3	1/4"H to 1/4"PT female thread
53	S-60-ALL	Level detector assembly		1	Assembly
52	S-82	Liquid level indicator nut	H62	1	1/4"H
51	YW52030800000	3/8" stainless steel three-way	SUS304	1	
50	S-07	Copper pipe coupler	H58	1	3/8"PT×3/8"PT
49	YW62051000100	Large cross socket flat head screw M5×10	Q235A	7	JIS1111

Technical requirements:

1. Trimming and deburring.

2. Dimensional tolerances not specified shall be in accordance with GB/T1804-2000

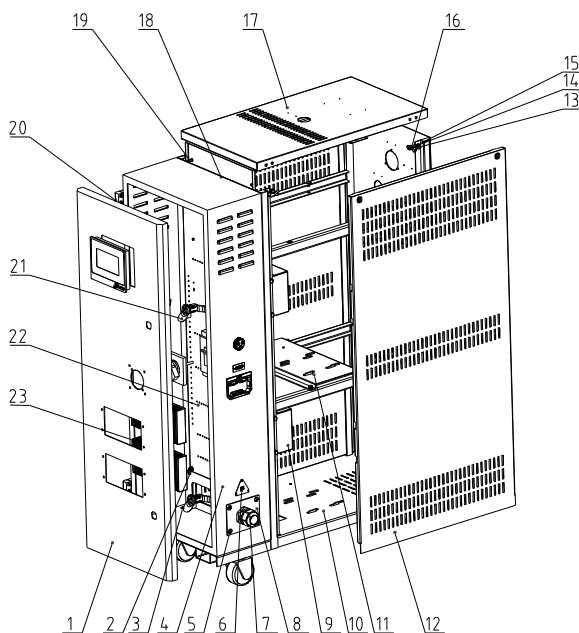
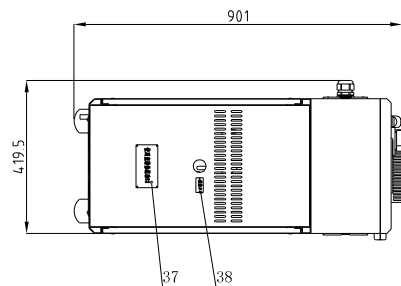
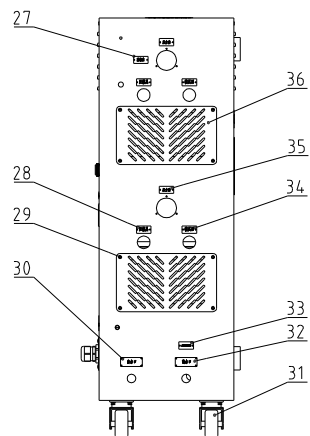
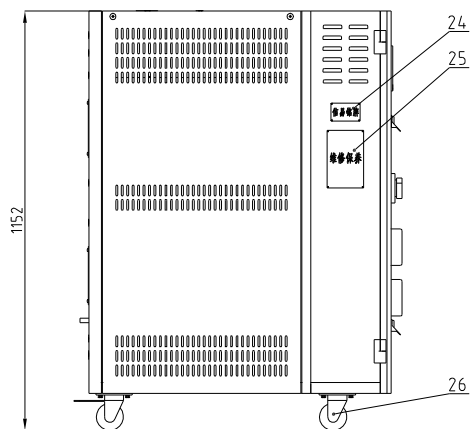
Tolerances for linear and angular dimensions without specified tolerances

The M-level regulations.

序号	代号	名称	材料	数量	备注	序号	代号	名称	材料	数量	备注
					制图 孙杰	版号	B	标题	STM-607D	图号	STM-607D-B-ALL
					设计 孙杰	核准		内部结构		比例	1:10
					校对					数量	1
					审核					表面要求	/
标记	更改前	更改后	更改人	日期	日期	20230220				物料号	/



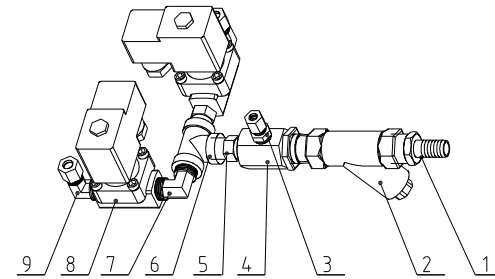
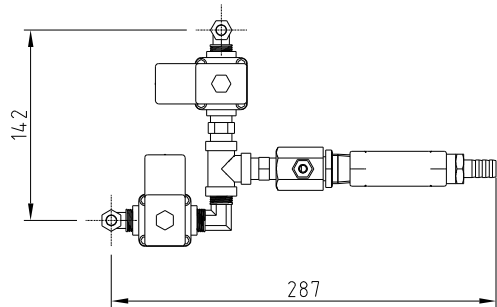
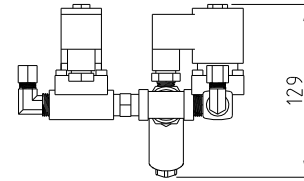
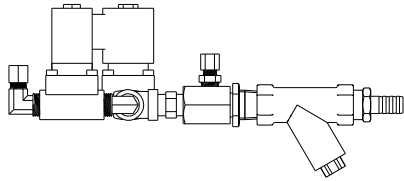
信易电热机械股份有限公司
Shini Plastics Technologies, Inc.



38	YP3052900000	Aluminum label	2024	1	Oil injection port
37	YP31118600600	Aluminum label	2024	1	Use Shell thermal oil S2 for domestic sales
36	STM-607D-A-08	Rear panel small cover plate	SPCC1.2	2	
35	YP30425000000	Aluminum label	2024	2	pressure gauge
34	YP30422000000	Aluminum label	2024	2	from mould
33	YP31091040000	Aluminum label	2024	1	Regularly clean the filter
32	YP30431000000	Aluminum label	2024	1	Water inlet port
31	YW03000300000	3" With castor with brake	Q235A	2	
30	YP30430000000	Aluminum label	2024	1	Water outlet
29	YW63051000000	Cross recessed pan head screw M5x10	Q235A	16	GB/T-818
28	YP30423000000	Aluminum label	2024	2	To mould
27	YP30428000000	Aluminum label	2024	1	High liquid level
26	YW03000300200	3" Without castor with brake	Q235A	2	
25	YP31115800600	Aluminum label	2024	1	STM Maintenance
24	YP30804900700	Aluminum label	2024	1	SHINI Nameplate
23	YW90120700000	Aluminum cooler	6061	2	
22	STM-607D-A-04	Base plate of control box		1	Welding parts
21	YW00816100000	Door lock		2	MS816-1 with key
20	YW06203100100	Hinge		2	CL203-11left)shengjju
19	YW62061500000	Large cross socket flat head screw M6x15	Q235A	4	JIS1111
18	STM-607D-A-10	Control box insulation plate	SA02-0.4	1	
17	STM-607D-A-06	Cover plate		1	Welding parts
16	YW62063000000	Large cross socket flat head screw M6x30	Q235A	4	JIS1111
15	YW66061300000	Flat washer A grade 6	Q235A	36	
14	YW65006000100	Standard spring washer 6	65Mn	32	GB/T93
13	YW60061500100	Hexagon head bolt M6x16	12.9	32	GB/T5783
12	STM-607D-A-05	Side plate	SPCC1.2	2	
11	STM-607D-A-07	Middle support plate	SPCC2.0	1	
10	STM-607D-A-01	Rack		1	Welding parts
9	STM-607D-A-09	Heating tank support plate		2	Welding parts
8	SG-S-01	Fixing board of wire clamps	SPCC2.0	1	
7	YE67002900000	Cable head	PVC	1	
6	YP31051650000	Power aluminum plate label	2024	1	Power triangle 3-phase 400V
5	YW62051000100	Large cross socket flat head screw M5x10	Q235A	4	JIS1111
4	STM-607D-A-02	Control box	SPCC1.5	1	
3	YW62061000000	Large cross socket flat head screw M6x10	Q235A	12	JIS1111
2	YW64000600300	Hexagonal nut M6	Q235A	4	GB/T6170
1	STM-607D-A-03	Door plank	SPCC1.5	1	

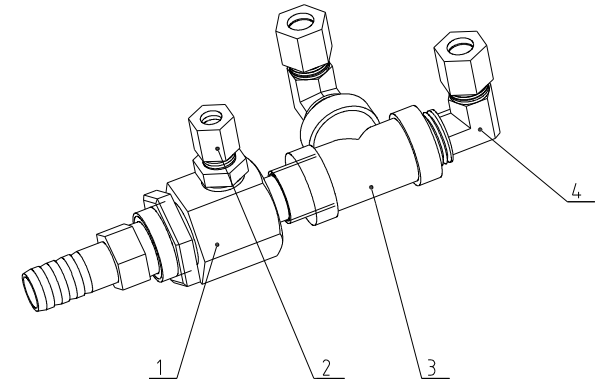
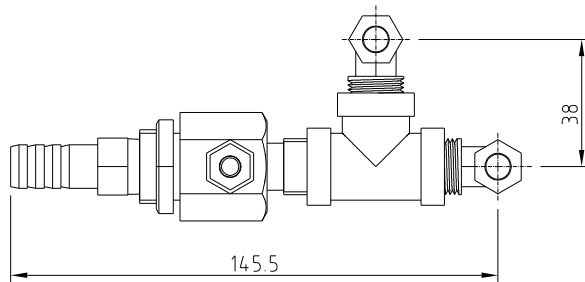
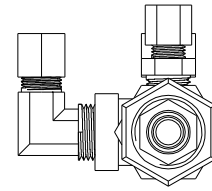
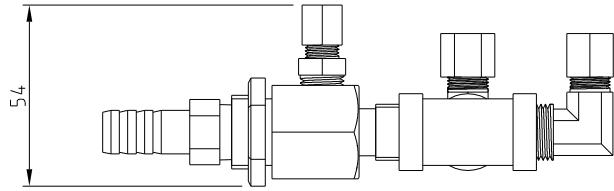
Technical requirements:
 1. Trimming and deburring;
 2. Dimensional tolerances not specified shall be in accordance with GB/T1804-2000
 Tolerances for linear and angular dimensions without specified tolerances The M-level regulations.

制图	版号	标题	图号	比例	1:13	数量	
设计	核准	STM-607D					
校对		外部钣金					
审核		SHINI 信易電熱機械股份有限公司		表面要求			
标记	更改前	更改后	更改人	日期	审核	日期	物料号



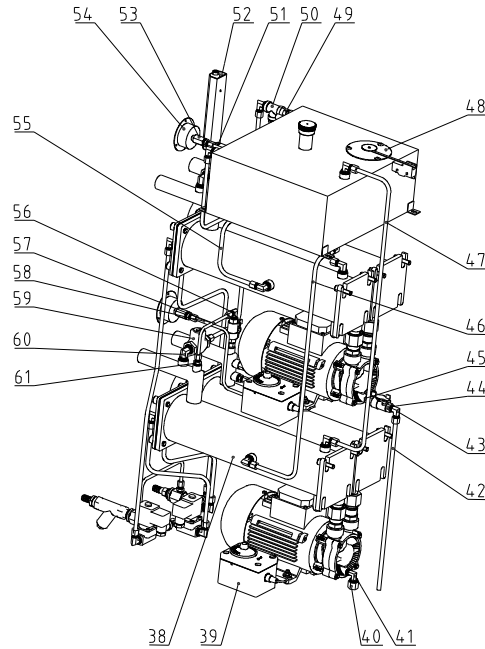
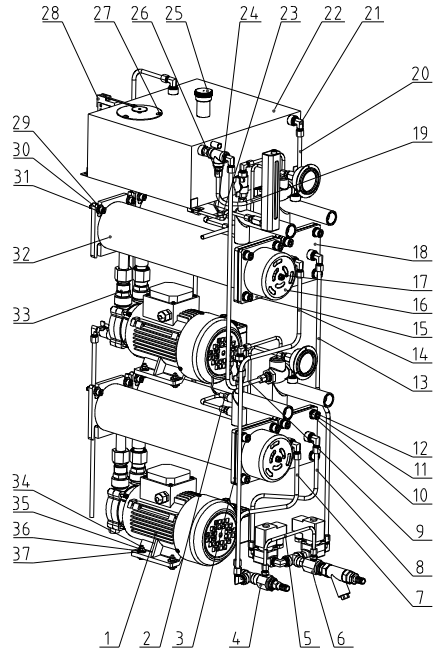
9	YW05083800100	Sleeve connector		2	8MMX3/8"PT L-type(H59)
8	YE32382400000	Solenoid valve 24V		2	3/8PT (Kailing)
7	YW59383800100	Pipe coupler	SUS304	1	3/8"PT×3/8"PT L
6	YW52030800000	3/8" stainless steel three-way	SUS304	1	
5	S-07	Copper pipe coupler	H58	2	3/8"PT×3/8"PT
4	S-142	Fourth set of copper joints		1	
3	YW05061400000	Sleeve connector		1	6MMX1/4"PT(H59)
2	YW57010200000	Y Type Strainer	H62	1	1/2 inch PT 30-35 mesh
1	S-73	Copper joint	H62	1	M13×1/2"PT
序号	代号	名称	材料	数量	备注

					制图	版号	标题	图号	比例	数量
					设计	核准	冷却水进水接头组合	STM-607D-B-07		材质
					校对		信易電熱機械股份有限公司 Shini Plastics Technologies, Inc.	表面要求		
标记	更改前	更改后	更改人	日期	审核	日期		物料号		



4	YW05083800100	Sleeve connector		2	8MMX3/8"PT L-type(H59)
3	YW52030800000	3/8" stainless steel three-way	SUS304	1	
2	YW05061400000	Sleeve connector		1	6MMX1/4"PT(H59)
1	S-141	The third-set copper connector		1	
序号	代号	名称	材料	数量	备注

					制图		版号		标题	STM-607D	图号	STM-607D-B-08	比例		数量	
					设计		核准		冷却水出水组合						材质	
					校对				信易電熱機械股份有限公司 Shini Plastics Technologies, Inc.				表面要求			
标记	更改前	更改后	更改人	日期	审核		日期								物料号	



61	YW05061400000	Sleeve connector		7	6MMX1/4"PT(H59)
60	YW04030800100	Pipe coupler	H62	2	3/8"PT(L)
59	YW59308000600	Swing check valve 3/8"	Cu	2	KITZ
58	STM-607D-B-10	Pressure gauge pipe	SUS304	2	
57	STM-910D-B-02	Oil bypass pipe	SUS304	2	
56	YW05061400100	Sleeve connector		3	6MMX1/4"PT L-type(H59)
55	STM-607D-B-03	Lower oil pipe 1	SUS304	1	
54	YW85001000100	Pressure gauge		2	0~1.0MPa Range
53	S-199	H to PT connector	H58	3	1/4"H to 1/4"PT female thread
52	S-60-ALL	Liquid level assembly		1	Assembly
51	S-82	Liquid level nut	H62	1	1/4"H
50	YW52030800000	3/8" stainless steel three-way	SUS304	1	
49	S-07	Copper connector	H58	1	3/8"PTX3/8"PT

48	STM-607D-B-23	Float ball		1	Welding parts Borrowed
47	STM-607D-B-18	Air exhaust pipe 2	SUS304	1	
46	STM-607D-B-04	Lower oil pipe 2	SUS304	1	
45	S-08	Copper pipe coupler	H58	3	1/4"PTx1/4"PT
44	YW50220000000	Butterfly shaped ball valve	SUS304	3	1/4" heat-resistant 200°C
43	YW05081400000	Sleeve connector		1	8MMX1/4"PT L-type(H59)
42	STM-607D-B-11	Pump oil discharge pipe	SUS304	1	
41	YW04030800400	Tonflon connector	H58	1	1/4"PTx3/8"H L
40	S-171	Teflon plug	H58	1	3/8"H plug
39	BH90115000050	High temp. tester		2	EGO
38	STM-910D-B-01	Cooling tank		2	Welding parts
37	YW66061800000	Large washer A grade	Q235A	16	GB/T96.1(6x18x1.5)
36	YW65006000100	Standard spring washer 6	65Mn	8	GB/T93
35	YW64000600300	Hexagonal nut M6	Q235A	10	GB/T6170
34	YW60062500000	Hexagonal head bolt M6x25	4.8	8	GB/T5781
33	S-04	Copper connector	H58	4	3/4"PTx3/4"H
32	STM-607D-B-05	Heating tank		2	Welding parts
31	YW61083000000	Hexagon socket Head cap screw M8x30	12.9	8	GB/T70.1
30	YW65008000100	Standard spring washer 8	65Mn	8	GB/T93
29	YW66081900000	Flat washer 8	Q235A	8	8x19x2.0
28	YE14152400000	Micro switch		1	LXW5-1124 rod length 100mm
27	YW62051000100	Large cross socket flat head screw M5x10	Q235A	7	JIS1111
26	YW05083800000	Sleeve connector		3	8MMX3/8"PT (H59)
25	S-30	Aluminum oil cap	YL-112	1	3/4"G female thread
24	STM-607D-B-09	Liquid level pipe	SUS304	1	
23	BE90342500050	Thermocouple	SUS304	1	2.5M
22	STM-607D-B-01	Oil tank		1	Welding parts
21	YW05083800100	Sleeve connector		13	8MMX3/8"PT L-type(H59)
20	STM-607D-B-17	Air exhaust pipe 1	SUS304	1	
19	STM-607D-B-21	Reverse suction tube 1	SUS304	1	
18	STM-607D-B-04	Cooling pipe assembly		2	Welding parts Borrowed
17	YW66061300000	Flat washer A grade 6	Q235A	2	
16	S-190	Heating tube cover	SPCC10	2	
15	STM-910-B-08	Heating tube assembly		2	Welding parts
14	STM-607D-B-14	Cooling water pipe outlet pipe 1	SUS304	1	
13	STM-607D-B-13	Cooling water pipe inlet pipe 1	SUS304	1	
12	YW65010000000	Standard spring washer 10	65Mn	16	GB/T93
11	YW66102000100	Flat washer A grade 10	Q235A	16	GB/T97.1 (11x20x2)
10	YW61102500000	Hexagon socket head cap screw M10x25	12.9	16	GB/T70.1
9	STM-607D-B-22	Reverse suction tube 2	SUS304	1	
8	STM-607D-B-15	Cooling water pipe inlet pipe 2	SUS304	1	
7	STM-607D-B-16	Cooling water pipe outlet pipe 2	SUS304	1	
6	STM-607D-B-07	Cooling water inlet joint combination		1	Welding parts
5	STM-607D-B-12	Cold water bypass pipe	SUS304	1	
4	STM-607D-B-08	Cooling water outlet combination		1	Welding parts
3	YR20121200000	Flexible graphite pad	ISO-68	4	120x120x2.0
2	BE90340200050	Thermocouple	SUS304	1	2M
1	BM20007500550	TP-75 pump	Q235A	2	

Technical requirements:

1. Trimming and deburring.

2. Dimensional tolerances not specified shall be in accordance with GB/T1804-2000

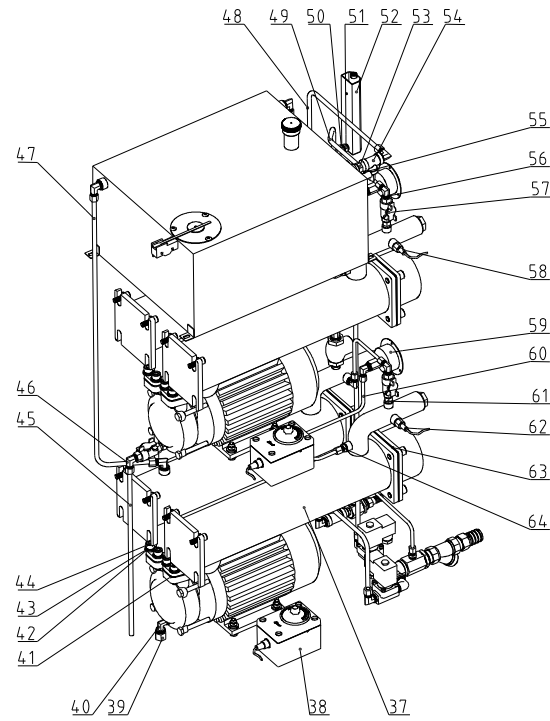
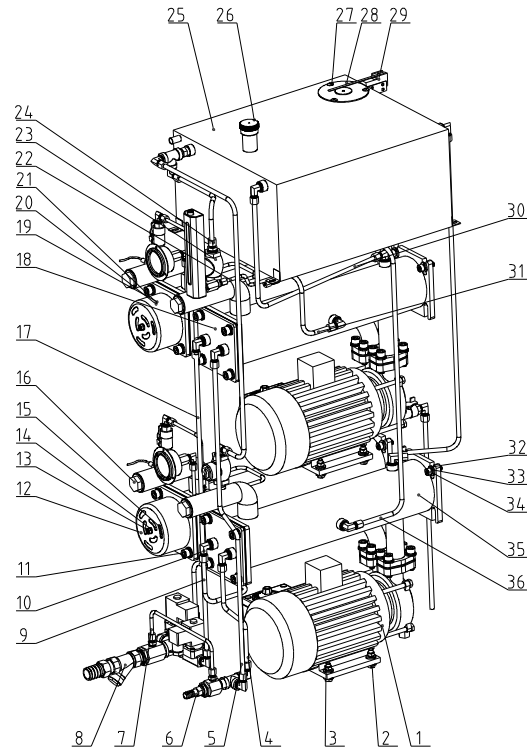
Tolerances for linear and angular dimensions without specified tolerances

The M-level regulations.

序号	代号	名称	材料	数量	备注	序号	代号	名称	材料	数量	备注
							A	标题			
								STM-910D			
								内部结构			
								图号			
								STM-910D-B-ALL			
								比例	1:10	数量	1
								核			
								准			
								日期	20220325		
								表面要求			
								物料号			

SHINI

信易电热机械股份有限公司
Shini Plastics Technologies, Inc.



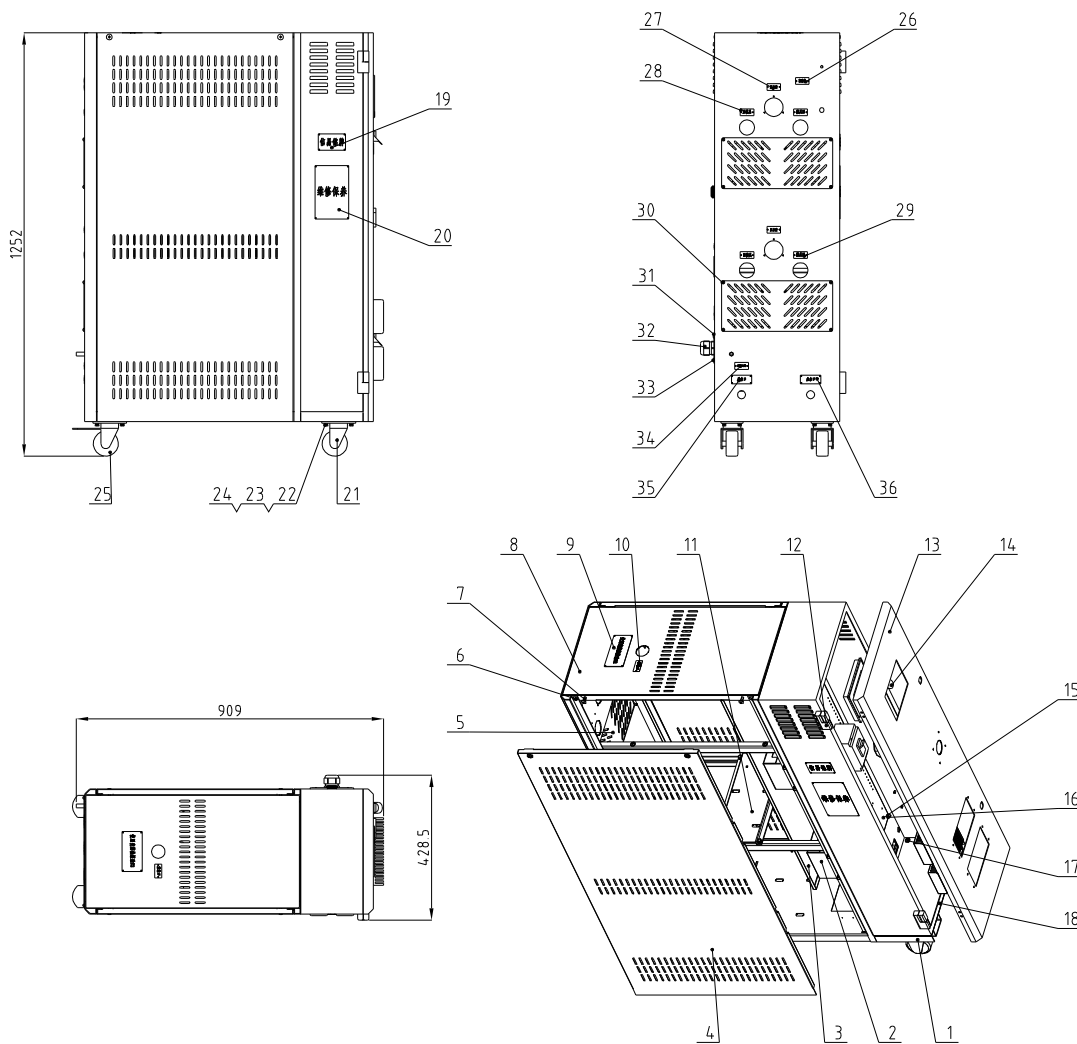
48	STM-1220D-B-23	Reverse suction tube 2	SUS304	1	
47	STM-1220D-B-19	Cooling bucket exhaust pipe 2	SUS304	1	
46	YW050814.00000	Sleeve connector		1	8MMX1/4"PT L-type (H59)
45	STM-1220D-B-07	Pump oil discharge pipe	SUS304	1	
44	YW61103500000	Inner hexagon cylindrical screw M10x25	12.9	16	GB/T70.1
43	YW66102000100	Flat washer A grade 10	Q235A	32	GB/T97.1 (11x20x2)
42	YW65010000000	Standard spring washer 10	65Mn	32	GB/T93
41	STM-1220-B-07	Graphite gasket	ISO-68	4	
40	YW04.0308004.00	Tonflon connector	H58	1	1/4"PTx3/8"H L
39	S-171	Teflon plug	H58	1	3/8"H plug
38	BH90115000050	High temp. tester		2	EGO
37	STM-1220D-B-02	Heating tank		2	Welding parts
36	STM-1220D-B-17	Oil tank to cooling barrel pipe 2	SUS304	1	
35	STM-1220D-B-01	Cooling tank		2	Welding parts
34	YW61082500000	Hexagon socket Head cap screw M8x25	Q235A	8	GB/T70.1
33	YW65008000100	Standard spring washer 8	65Mn	16	GB/T93
32	YW66081900000	Flat washer 8	Q235A	24	8x19x2.0
31	STM-1220D-B-16	Oil tank to cooling bucket pipe 1	SUS304	1	
30	STM-1220D-B-18	Cooling bucket exhaust pipe 1	SUS304	1	
29	YE14.1524.00000	Micro switch		1	LXW5-1124 rod length:100mm
28	STM-1220D-B-06	Float ball		1	Welding parts
27	YW62051000100	Large cross socket flat head screw M5x10	Q235A	7	JIS1111
26	S-30	Aluminum oil cap	YL-112	1	3/4"G female thread
25	STM-1220D-B-03	Oil tank		1	Welding parts
24	YW05083800000	Sleeve connector		1	8MMX3/8"PT L-type (H59)
23	YW59308000600	Swing check valve 3/8"	Cu	2	KITZ
22	STM-1220D-B-08	Level detector pipe	SUS304	1	
21	YW66051300000	Flat washer A grade 5	Q235A	24	GB/T97.1 (5.5x10x1)
20	YW65050000000	Standard spring washer 5	65Mn	24	GB/T93
19	YW64.031600000	Hexagonal nut 3/16	A2-70	48	
18	STM-607-B-04	Cooling pipe components		2	Welding parts Borrowed
17	STM-1220D-B-11	Cooling water inlet pipe 1	SUS304	1	
16	YW50001001000	Plastic plug 1-inch PT external teeth	PVC	4	White
15	STM-1215HT-B-03	Heating tube assembly		2	Welding parts Borrowed
14	YW66061300000	Flat washer A grade 6	Q235A	2	
13	YW64.000600300	Hexagonal nut M6	Q235A	2	GB/T6170
12	S-190	Pipe heater cover	SPCC10	2	
11	YW61102500000	Inner hexagon cylinder head screw M10x25	12.9	16	GB/T70.1
10	YW05083800100	Sleeve connector		15	8MMX3/8"PT L-type(H59)
9	STM-1220D-B-12	Cooling water inlet pipe 2	SUS304	1	
8	STM-1220D-B-04	Cooling water inlet assembly		1	Welding parts
7	STM-1220D-B-15	Cold water bypass	SUS304	1	
6	STM-1220D-B-05	Cooling water drainage interface combination		1	Welding parts
5	STM-1220D-B-14	Cooling water drainage pipe 2	SUS304	1	
4	STM-1220D-B-13	Cooling water drainage pipe 1	SUS304	1	
3	YW64.080600000	Hexagon nut M8	Q235A	8	GB/T6170
2	YW60083000200	Hexagon screw bolt M8x30	4.8	8	GB/T5783
1	TP-150	Pump	Q235A	2	TP-150 Anbo

64	YW050614.00000	Sleeve connector		3	6MMX1/4"PT(H59)
63	YR20121200000	Flexible graphite pad	ISO-68	4	120x120x2.0
62	BE9034.0200050	Thermocouple	SUS304	1	2M
61	S-08	Pipe coupler	H58	3	1/4"PTx1/4"PT
60	STM-1220D-B-10	Pressure gauge pipe	SUS304	2	
59	YW85001000100	Pressure gauge		2	0~10MPa Range
58	BE9034.2500050	Thermocouple	SUS304	1	2.5M
57	YW50220000000	Butterfly shaped ball valve	SUS304	3	1/4" heat-resistant 200°C
56	YW050614.00100	Sleeve connector		7	6MMX1/4"PT L-type(H59)
55	STM-1220D-B-09	Hot oil bypass pipe	SUS304	2	
54	YW52030800000	3/8" stainless steel three-way	SUS304	1	
53	S-07	Copper connector	H58	1	3/8"PTx3/8"PT
52	S-60-ALL	Level detector assembly		1	Assembly
51	S-82	Level detector nut	H62	1	1/4"H
50	S-199	H to PT connector	H58	3	1/4"H to 1/4"PT female thread
49	STM-1220D-B-22	Reverse suction tube 1	SUS304	1	

Technical requirements:

1. Trimming and deburring.
2. Dimensional tolerances not specified shall be in accordance with GB/T1804-2000 Tolerances for linear and angular dimensions without specified tolerances The M-level regulations.

序号	代号	名称	材料	数量	备注	序号	代号	名称	材料	数量	备注
					制图	版号	B	标题	STM-1220D	图号	STM-1220D-B-ALL
					设计	核准		内部钣金		比例	1:9
					校对	日期	20230221			数量	1
					审核	日期	20230221			材质	/
		见本图		2024.03.06						表面要求	/
标记	更改前	更改后	更改人	日期	审核	日期	20230221	SHINI 信易电热机械股份有限公司 Shini Plastics Technologies, Inc.		物料号	/



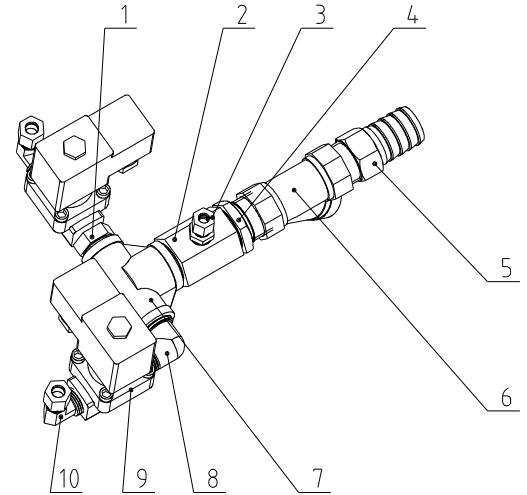
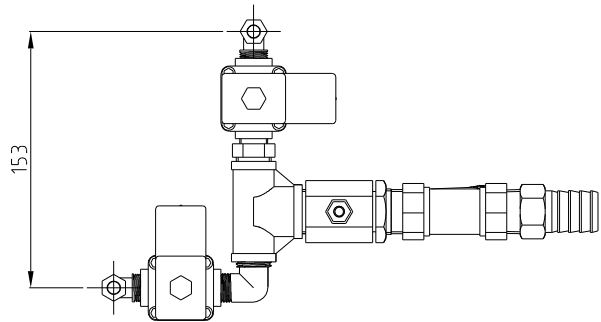
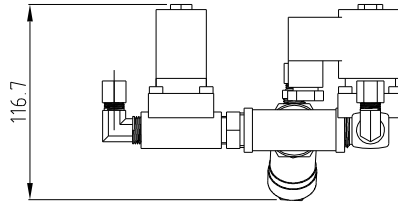
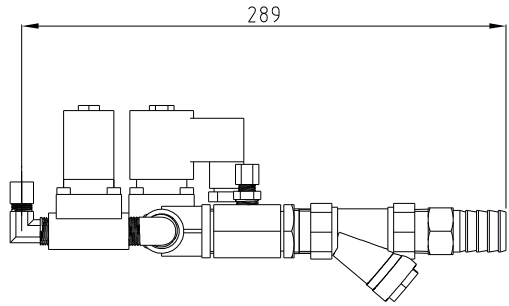
Technical requirements:

1. Trimming and deburring;
 2. Dimensional tolerances not specified shall be in accordance with GB/T1804-2000
- Tolerances for linear and angular dimensions without specified tolerances
The M-level regulations.

36	YP3043000000	Water outlet (aluminum plate)	2024	1	
35	YP3043100000	Water inlet (aluminum plate)	2024	1	
34	YP31091040000	Aluminum plate label symbol 40*80MM	2024	1	
33	YW62051000100	Cross recessed flat head screw JIS1111	Q235A	4	
32	YE67361500100	Copper nickel-plated cable connector JF		1	
31	BL50290000200	Fitting head of wire clamp MS 31-41 (pin and)	SPCC2.0	1	
30	YW61051000200	Cross recessed pan head screw-II type	Q235A	16	
29	YP30422000000	Mould back	2024	2	
28	YP30423000000	To the mould (aluminum plate label)	2024	2	
27	YP30425000000	Pump pressure gauge (aluminum plate)	2024	2	
26	YP30428000000	High liquid level (aluminum plate)	2024	1	
25	YW03000300000	3-1/2" black PPR wheel with middle brake		2	
24	YW65006000100	Standard spring washer GB/T93 6	65Mn	28	
23	YW60061500100	Hexagon head bolt GB/T5783 M16*32.9	12.9	28	
22	YW66061300000	Flat Washer grade A GB/T93.1 6-Flat disc	Q235A	28	
21	YW03000300200	3-1/2" movable black PPR wheel		2	
20	YP31115800600	Aluminum plate label 100*150mm	2024	1	
19	YP30804900700	Aluminum plate nameplate group general	2024	1	
18	STM-1220D-A-02	Control box	SPCC15	1	
17	YW62061000000	Cross recessed flat head screw JIS1111	Q235A	12	
16	YW64000600300	Hexagonal nut GB/T6170 M6	Q235A	4	
15	STM-1220D-A-04	Base plate of control box		1	
14	YW00816100000	Door lock (MS16-1 black with key)		2	
13	STM-1220D-A-03	Door plate	SPCC15	1	
12	YW06203100400	Large hinge CL203-1 (left)		2	
11	STM-1220D-A-08	Pump support plate	SPCC2.0	1	
10	YP30529000000	Oil filling part (aluminum plate label)	2024	1	
9	YP31118600600	STM-0 aluminum plate label 110*60MM	2024	1	
8	STM-1220D-A-05	Cover plate		1	
7	YW62063000000	Cross recessed flat head screw JIS1111	Q235A	4	
6	YW62061500000	Cross recessed flat head screw JIS1111	Q235A	8	
5	STM-1220D-A-07	Heater panel small cover plate	SPCC12	2	
4	STM-1220D-A-06	side plate	SPCC15	2	
3	STM-1220D-A-10	Control box insulation plate	SA02-10	1	
2	STM-1220D-A-09	Heating bucket pallet		2	
1	STM-1220D-A-01	Rack		1	

序号	代号	名称	材质	数量	备注
		标题	STM-1220D		
		图号	STM-1220D-A-ALL		
		比例	1:14	数量	1
		表面要求	外部镀金	材质	/
标记	更改前	更改后	更改人	日期	审核
				2024.02.29	
				日期	20220331

SHINI 信易电热机械股份有限公司
Shini Plastics Technologies, Inc.



Technical requirements:

1. Trimming and deburring.
2. Dimensional tolerances not specified shall be in accordance with GB/T1804-2000

Tolerances for linear and angular dimensions without specified tolerances

The M-level regulations.

3. When locking each component, it is necessary to wrap it with PTFE tape and glue, and test for no water leakage after locking.

10	YW05083800100	Sleeve connector 6MMX3/4"PT L-type(H58)		2	
9	YE32382400000	Shoulder nut 3/8" type (locking) H58 with L-shaped joint hole		2	
8	YW04030800000	Copper nickel cannot be 3/8 inch ± 1/2 inch L-shaped	H58	1	
7	YW59201500100	Ball and large variable diameter threaded ball (H20015/2550)	SUS304	1	
6	YW57030400000	Y type waster strainer 3/4"(copper)	H62	1	
5	BH12030401510	Copper joint 3/4" PT*Φ25 (S-124)	H62	1	
4	BH12305000510	Copper nut STM-3050F-B-06 (H58) Ver.0	H62	1	
3	YW05061400000	Sleeve connector 6MMX1/4"PT (H58)		1	
2	BH12305000610	Copper connector STM-3050F-B-00/01 (H58) Ver.0	H58	1	
1	BH12030800310	Copper pipe coupler 3/8" PT*1/2" PT(S-90)	H58	1	
序号	代号	名称	材质	数量	备注

					制图		版号	A	标题	STM-1220D	图号	STM-1220D-B-04	比例	1:4	数量	1
					设计		核准		冷却水进水接头组合						材质	/
		见本图		20240305	校对				信易电热机械股份有限公司 Shini Plastics Technologies, Inc.				表面要求	/		
标记	更改前	更改后	更改人	日期	审核		日期	20221104					物料号	/		

