

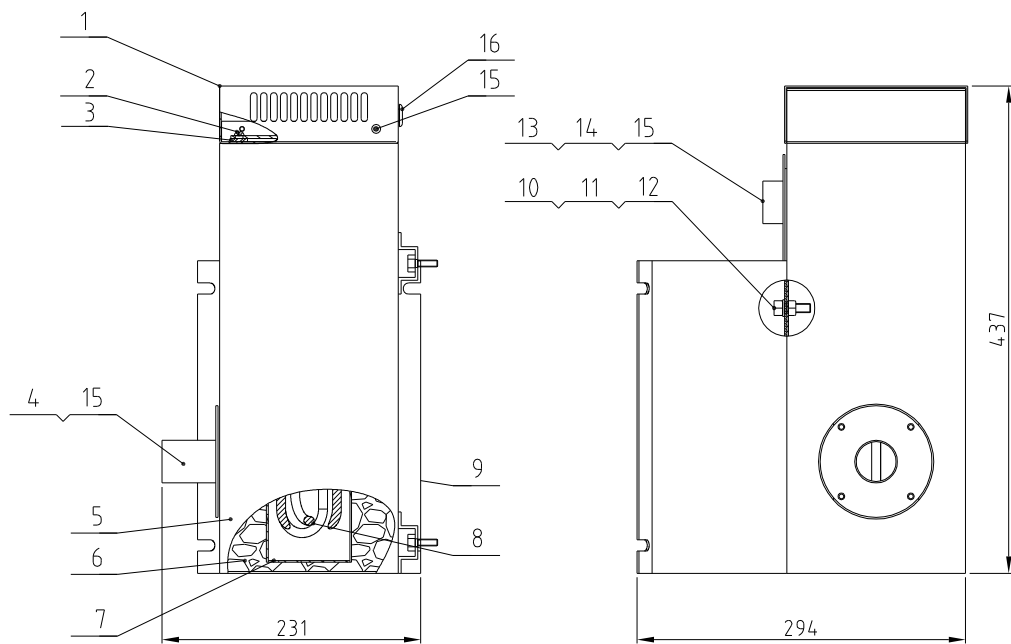
容量(L) Capacity(L)	功率(kW) Power (kW)	进风管径(inch) Inlet air pipe dia. (inch)	出风管径(inch) Outlet air pipe dia. (inch)	版本号 Version No.	重量(kg) Weight(kg)
20	2.2	1.5	1.5	A	4.0

40	YW67351000000	Cross recessed countersunk head tapping screw GB/T846 S7.3x10-C-H- Longzine			6	
39	MHD-20U-ALL-04	Cable trunking	SPCC10		1	
38	MHD-20U-ALL-03	Cable trunking cover plate	SPCC10		1	
37	MHD-20U-ALL-06	Control box cover plate	SPCC12		1	
36	YW07001200000	Large shut-off plate			1	
35	YW64080600000	Hexagon nut GB/T6170 M8- Longzine			4	
34	YW60083000200	Hex bolt GB/T5783 M8x30-8.8- Longzine			4	
33	BA20002000210	Shut-off plate flange	AC4D		1	
32	YW62051000100	Large cross socket flat head screw JIS1117 M5x10- Longzine			16	
31	MHD-20U-E-ALL	Actuator assembly	Assembly		1	
30	YW61061601200	Hexagon socket head cap screw GB/T170 M6x16-12.9- Longzine			8	
29	YW72153600000	Heat resistant pipe 15"	Assembly		1	L=0.9M
28	YW02000200000	Steel wire hose 2"	SUS201		6	
27	MHD-20U-D-ALL	Floor stand assembly	Assembly		1	
26	YW67041200600	Cross socket pan head self-tapping lock screw GB6560 M4x12- Longzine			4	
25	YE80022406200	Controller			1	
24	MHD-20U-A-ALL	Heat insulated hopper assembly	Assembly		1	
23	YW65006000100	Standard Spring washer GB/T93 6- Longzine			16	
22	YW66061800000	Large washer A grade GB/T96.16- Longzine			16	
21	YW61062000300	Hexagon socket head cap screw GB/T170 M6x20- Longzine			8	
20	SHD-80U-A-15	Hopper fixed block	SPCC20		4	Borrowed
19	YE67015800100	Quick connector of hose WDEAD15 8B	Assembly		2	
18	YE68212200100	Y-type 3-way WQY212/Z-15 8B	Assembly		1	
17	YE67116040000	Quick connector of hose P16B/AD212	Assembly		1	
16	YW64006003000	Hexagon nut GB/T6170 M6- Longzine			4	
15	MHD-20U-C-ALL	Control box assembly	Assembly		1	
14	YW66081900000	Flat washer 8x19x2.0			12	
13	YW65008000100	Standard spring washer GB/T93 8- Longzine			8	
12	YW60082500100	Hex bolt GB/T5783 M8x25- Longzine			4	
11	MHD-20U-B-ALL	Heating case assembly	Assembly		1	
10	YW02000300000	Steel wire hose 3"			4	
9	YW72253600000	Heat resistant pipe 25"			1	L=0.8M
8	YW63062000000	Cross recessed pan head screw GB/T-818 M6x20- Longzine			8	
7	MHD-20U-ALL-01	Three-way pipe	SUS201		2	
6	YR20002500300	Stainless steel punching clamp seal ring Z 5"	Silica gel		2	
5	YW07002501600	Stainless steel punching clamp 25"	SUS304		2	
4	MHD-20U-ALL-05	Adapter flange	SUS201		2	
3	YW64050300000	Hexagon nut GB/T6170 M5- Longzine			4	
2	YE67121000000	Quick connector of hose P21B/AD285			2	
1	MHD-20U-ALL-02	Control box bottom plate	SPCC12		1	

序号	代号	名称	材质	数量	备注
	MHD-20U	模组化料斗干燥机	MHD-20U-ALL	比例 1:20	数量 1
				表面要求	物料号

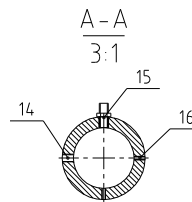
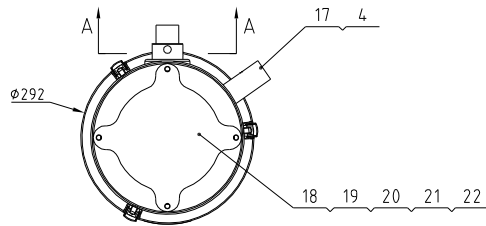
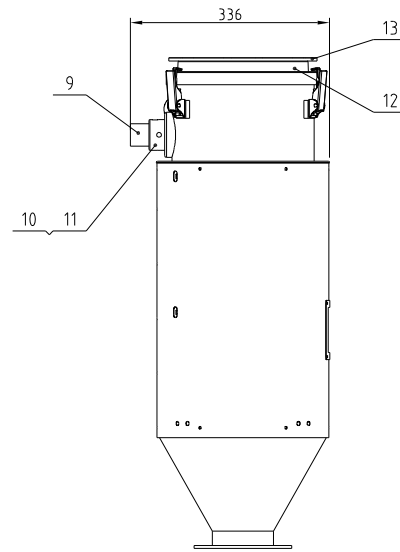
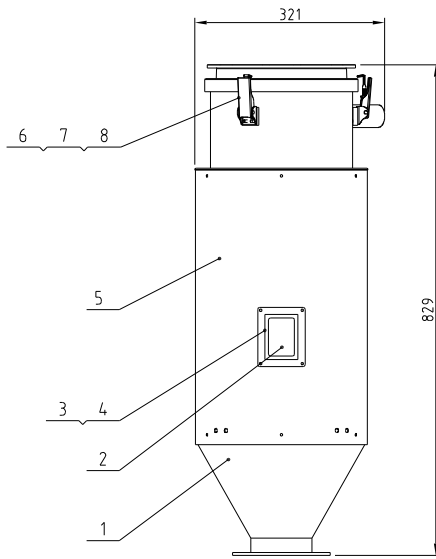
制图	版号	标题	图号	比例	数量
设计	核准	MHD-20U	MHD-20U-ALL	1:20	1
校对	核准	模组化料斗干燥机	MHD-20U-ALL		
标记	更改前	更改后	更改人	日期	审核

SHINI 信易电热机械股份有限公司
Shini Plastics Technologies, Inc.



16	YR3000000100	Rubber plug large	Rubber	1	
15	YW62051000100	Large cross socket flat head screw JIS1111 M5x10-Longzine		12	
14	YR10008001200	Heating case air outlet pipe dia.	Silica gel 3.0	2	
13	MHD-20U-B-04	Heating case air outlet pipe flange	SUS201	1	
12	YW65008000100	Standard spring washer GB/T93 8-Longzine		4	
11	YW66081600000	Flat washer A grade GB/T97 118 4×16×1.6Longzine		4	
10	YW60082500100	Hex.bolt GB/T5783 M8×25-12.9-Longzine		4	
9	MHD-20U-B-02	heating case fixed plate	SPCC2.0	1	
8	BH70202200050	Heater pipe 2.2kw	Assembly	1	
7	MHD-20U-B-03	Hot air pipe	Weldment	1	
6	YP62820140000	Fire blanket 8mm		1	
5	MHD-20U-B-01	External heating case	SPCC15	1	
4	MHD-20U-B-05	Heating case air inlet flange	SUS201	1	
3	YR10141100000	Heating case silical gel fastener	Silica gel 3.0	1	
2	YW62051500000	Large cross socket flat head screw JIS1111 M5x16-Longzine		2	
1	SHD-20U-A-05	Heating case cover	SPCC1.5	1	Borrowed
序号	代号	名称	材质	数量	备注

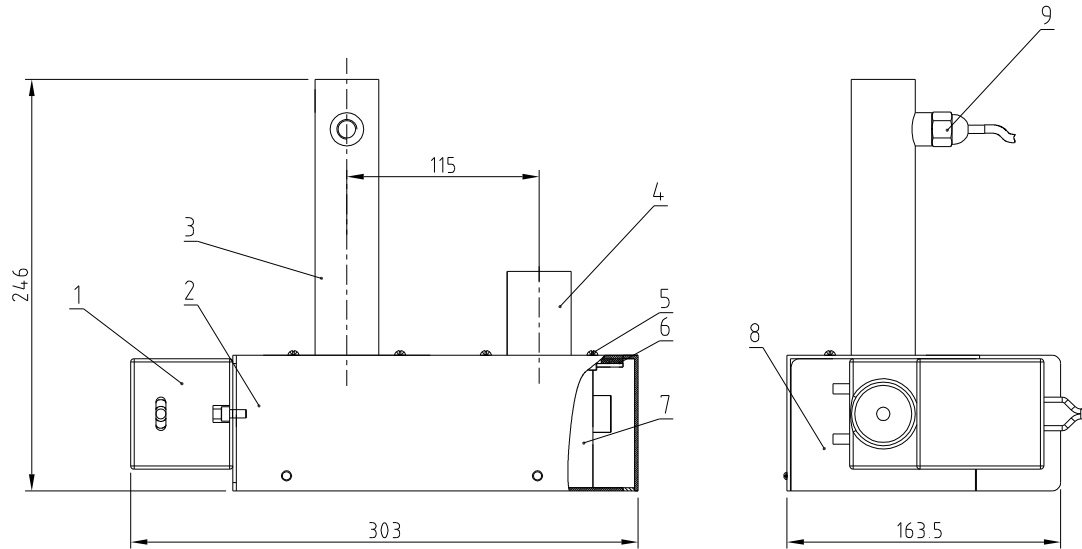
					制图		版号	0	标题	MHD-20U 加热箱组件	图号	MHD-20U-B-ALL	比例	1:6	数量	1
					设计		核准							材质		
					校对								表面要求			
标记	更改前	更改后	更改人	日期	审核		日期	20210818		信易电热机械股份有限公司 Shini Plastics Technologies, Inc.			物料号			



22	YW61825900000	Inner hexagon countersunk head screw GB/T170.3 M8x20-19.9-Longzine		4	
21	YW65008000100	Standard spring washer GB/T193 8-Longzine		4	
20	YW66081600000	Flat washer A grade GB/T191 8-Longzine		4	
19	YW60082500100	Hex bolt GB/T5783 M8-25-12.9-Longzine		4	
18	MHD-20U-A-08	Inlet sealing plate	SUS430	1	
17	MHD-20U-A-07	Air exhaust pipe	SUS201	1	
16	YW68051000000	Inner hex flat end lock screw GB/T177 M5x10-Longzine		2	
15	BH90115000150	EGG		1	
14	YE90052400300	Thermocouple 15M		1	
13	MHD-20U-A-06	Hopper adapter flange	SUS201	1	
12	MHD-20U-A-05	Material barrel cover	SUS304	1	
11	YW61061001800	Inner hexagon cylinder screw GB/T170.1 M6x10-A2-19		4	
10	MHD-20U-A-04	down-blow pipe flange	6061	1	
9	MHD-20U-A-03	Down-blow pipe assembly		1	
8	YR40000600800	Snap hook block		2	
7	YW64040700100	Non-metal inserted hexagon lock nut GB/T889.1 M6		4	
6	YW02003000400	Adjustable snap hook SAL-6U-A-35		2	
5	MHD-20U-A-02	Insulation board	SUS430	1	
4	YW62051000000	Large cross socket flat head screw JIS1111 M5x10-A2-70SUS1		8	
3	MHD-20U-A-09	Sight glass	SUS201	1	
2	MHD-20U-A-10	Sight glass	PC	1	
1	MHD-20U-A-01	Storage tank		1	
序号	代号	名称	材质	数量	备注

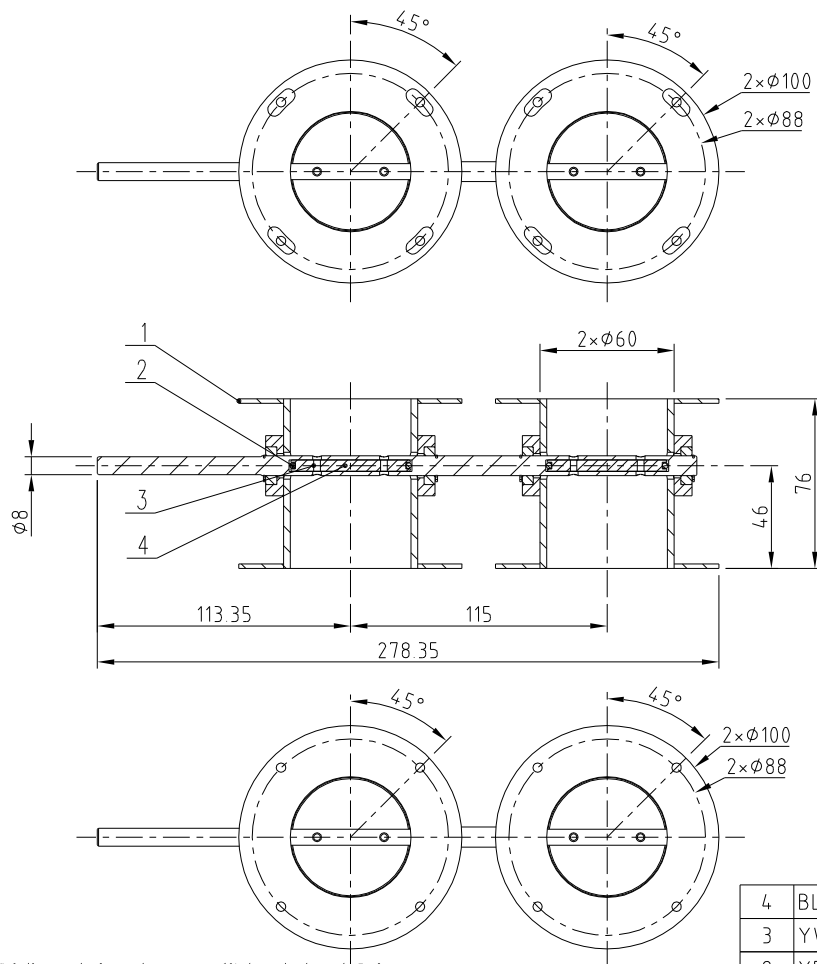
制图	版号	0	标题	MHD-20U 保温料桶组件	图号	MHD-20U-A-ALL	比例	1:10	数量	1
设计	核准						表面要求			
校对	日期	20210817					物料号			
标记	更改前	更改后	更改人	日期	审核					

SHINI 信易电热机械股份有限公司
Shini Plastics Technologies, Inc.



9	YE10002605000	Air flow sensor KYD26-FSF5E5T06L05	Assembly	1	
8	MHD-120U-D-04	Actuator bottom plate	SPCC2.0	1	Borrowed
7	MHD-20U-E-01	2" Air door	Assembly	1	
6	YR10008001200	Heating case air port fastener	white silica gel 30	4	
5	YW62051000100	Large cross socket flat head screw JIS1111 M5x10-Longzine		12	
4	MHD-20U-E-03	Actuator air inlet flange pipe	SUS201	1	
3	MHD-20U-E-02	Actuator air outlet flange pipe	SUS201	1	
2	MHD-120U-D-05	Actuator upper cover plate	Weldment	1	Borrowed
1	YE30002400000	Air door actuator LM24A-SR	Assembly	1	
序号	代号	名称	材质	数量	备注

					制图		版号	0	标题	MHD-20U 执行器组件	图号	MHD-20U-E-ALL	比例	1:4	数量	1
					设计		核准							材质		
					校对								表面要求			
标记	更改前	更改后	更改人	日期	审核		日期	20210817			信易电热机械股份有限公司 Shini Plastics Technologies, Inc.		物料号			

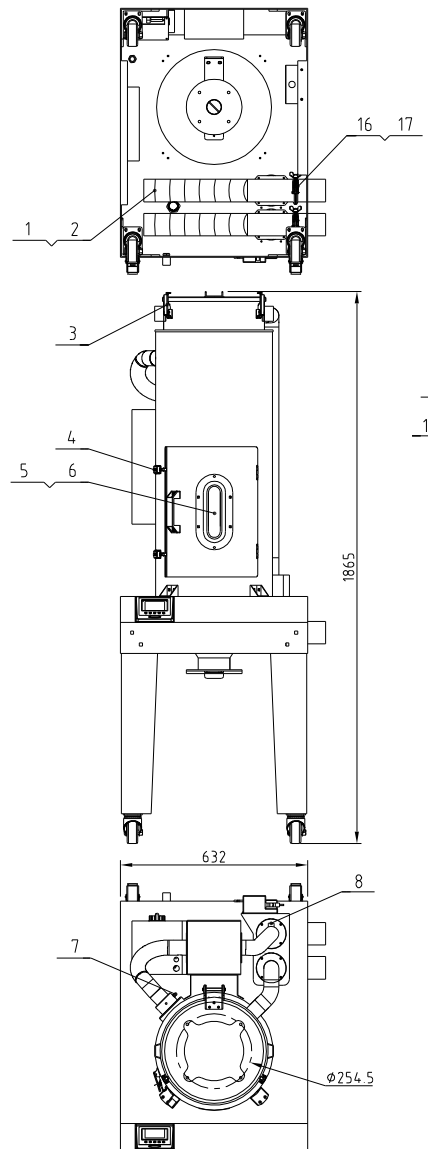


Indicates the items that may be damaged; * indicates the items that are more likely to be damaged. It is recommended to back them up.
 Please confirm the version number of the instruction manual before placing an order to purchase spare parts, so as to ensure that the material number of spare parts is consistent with the physical one.

4	BL90008000120	Wind blade	SUS304	2	
3	YW63031500000	Cross recessed pan head screw Q37018C*15		4	
2	YR20412200000	O-type seal ring 41.2*2.65	silicon rubber	2	*
1	MHD-20U-E-01-01	Air door welding part figure		1	
序号	代号	名称	材质	数量	备注

					制图	版号	A	标题	MHD-20U 2"风门	图号	MHD-20U-E-01	比例	1:3	数量	1
					设计	核准							材质	/	
					校对							表面要求	抛光		
标记	更改前	更改后	更改人	日期	审核	日期	20210817	信易電熱機械股份有限公司 Shini Plastics Technologies, Inc.				物料号	/		

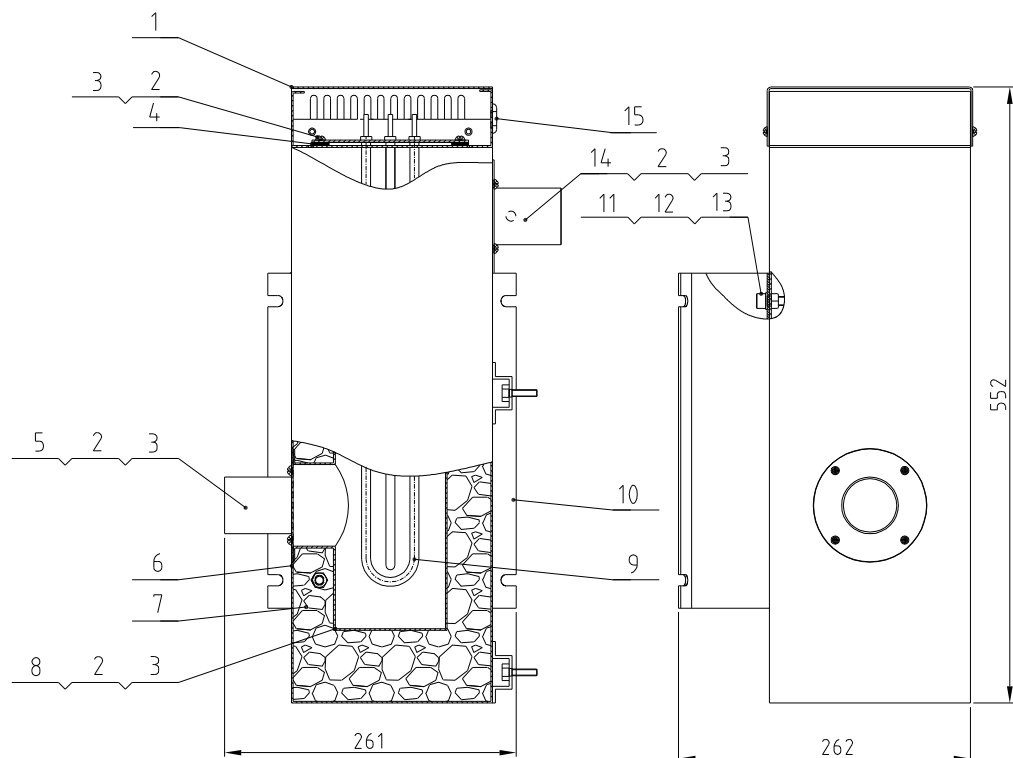
容量(L) Capacity(L)	功率(kW) Power (kW)	进风管径(inch) Inlet air pipe dia. (inch)	出风管径(inch) Outlet air pipe dia. (inch)	版本号 Version No	重量(kg) Weight(kg)
80	3.9	2	2	B	85



20	YW03000300200	3" Flexible castor		2	
19	BA20401200010	Shut-off plate flange	AC4D	1	
18	YW09255000000	Large shut-off plate		1	
17	YR20000300000	Stainless steel punching clamp seal ring 3"	Silica gel	2	
16	YW07000300300	Stainless steel punching clamp 3"	SUS304	2	
15	YR10151200000	Heating tank silica gel fastener φ150×125	Silica gel	1	
14	BH70803900250	pipe heater 3.9KW		1	
13	BW72203700010	Heat-insulated heat resistant pipe		1	
12	YW72023600000	Heat resistant pipe 2"		1	
11	YW02002500000	Steel wire hose 2.5"	SUS201	6	
10	YE30002400000	Air door actuator LM24A-SR		1	
9	YW03000300000	3" Brake castors		2	
8	YE10002605000	Airflow sensor KYD26-F5F5E5T06L05		1	
7	BE90582500050	Thermocouple 5×40L×M8×2.5M		1	
6	YR10800800900	Cleaning door fastener MHD-80U-A-08	Red silica gel	1	
5	YW70008000000	Sight glass MHD-80U-A-10	Reinforced glass	1	
4	YW09005800000	Buckle SDP-058		2	
3	YW02003000400	Spring buckle adjustable SAL-6U-A-35		2	
2	YW02003500000	Steel wire hose 3.5"		4	
1	YW72033600100	Heat resistant pipe 3"		1	

制图	版号	标题	图号
设计	核准	MHD-80U	MHD-80U-ALL
校对	日期	模组化料斗干燥机	
标记	更改前	更改后	更改人
	日期	审核	日期

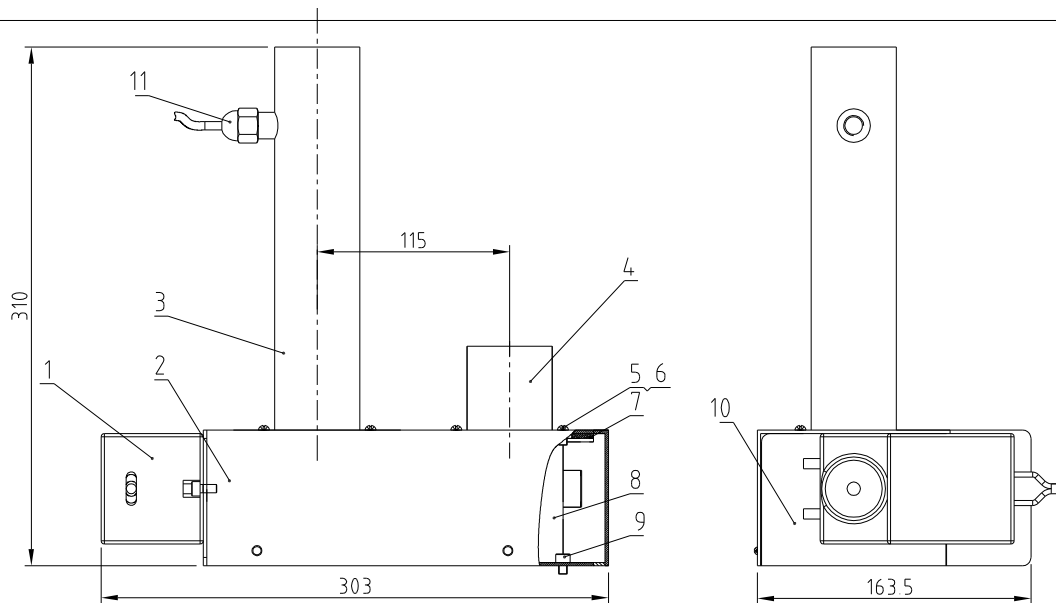
比例	1:16	数量	1
表面要求	物料号		
信易电热机械股份有限公司 Shini Plastics Technologies, Inc.			



15	YR30000000100	Rubber plug large	Rubber	1	
14	MHD-80U-B-02	Heating case air outlet pipe flange	SUS201	1	
13	YW65008000100	Standard spring washer GB/T93 8-Longzine		4	
12	YW66081600000	Flat washer A grade GB/T97 118 4*16*16-Longzine		4	
11	YW61082001200	Inner hex. column head screw GB/T70.1 M8*20-12.9-Longzine		4	
10	MHD-120U-B-02	heating case fixed plate	SPCC2.0	1	Borrowed
9	BH70803900250	Heater pipe 3.9kw	Assembly	1	
8	MHD-120U-B-04	Hot air pipe	Weldment	1	Borrowed
7	YP60613000000	Phenolic laminated fabric board	Assembly	1	
6	MHD-120U-B-01	External heating case	Weldment	1	Borrowed
5	MHD-80U-B-01	Heating case air inlet flange	SUS201	1	
4	YR10151200000	Heating case silical gel fastener	Silica gel 3.0	1	
3	YW66051000000	Flat washer A grade GB/T97.15-Longzine		12	
2	YW62051000100	Large cross socket flat head screw JIS1111 M5*10-Longzine		14	
1	SHD-230U-A-23	Heating case cover	SPCC15	1	Borrowed
序号	代号	名称	材质	数量	备注

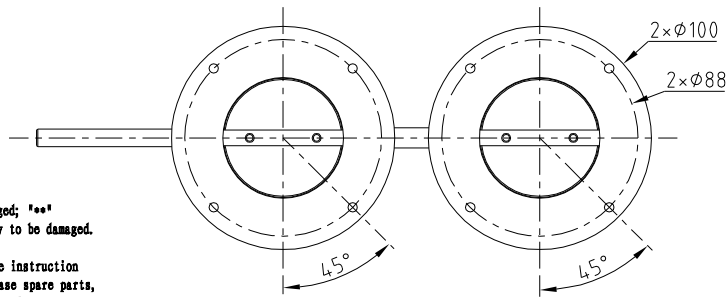
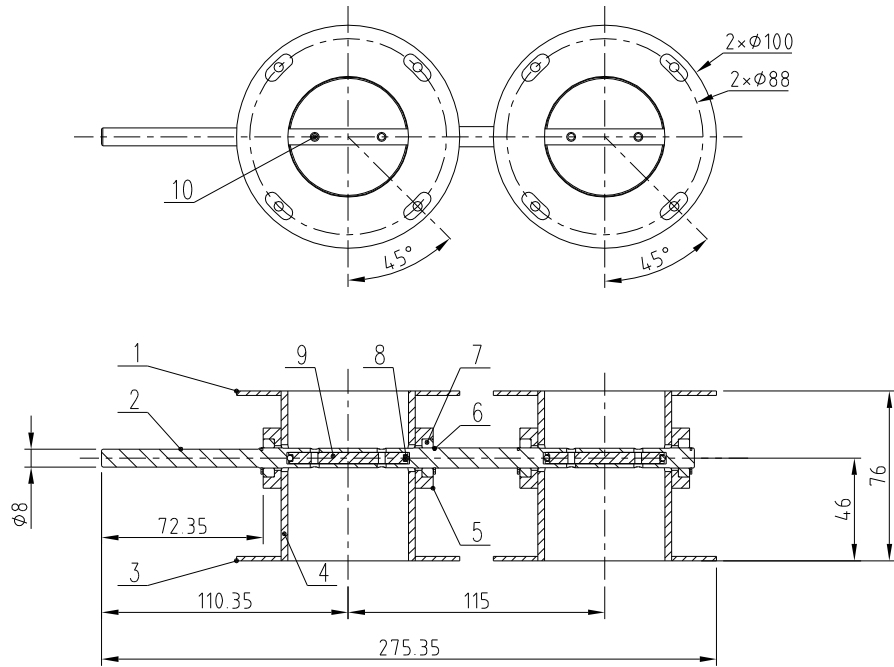
					制图		版号	0	标题	MHD-80U	图号	MHD-80U-B-ALL	比例	1:6	数量	1
					设计		核			加热箱组件						
					校对		准									
标记	更改前	更改后	更改人	日期	审核		日期	20160907					物料号			

信易电热机械股份有限公司
Shini Plastics Technologies, Inc.



11	YE10002605000	Air flow sensor KYD26-FSF5E5T06L05	Assembly	1	
10	MHD-120U-D-04	Actuator bottom plate	SPCC2.0	1	Borrowed
9	YW61050600300	Hexagon socket head cap screw GB/T70.1 M5X16-12.9-Longzine		8	
8	MHD-80U-D-02	2"/2" Air door assembly	Assembly	1	
7	YR10008001200	Actuator flange pipe fastener	white silica gel 30	4	
6	YW66051300000	Flat washer 5.5x13x1 Longzine		20	
5	YW62051000100	Large cross socket flat head screw JIS1111 M5x10-Longzine		12	
4	MHD-80U-D-01	Actuator air inlet flange pipe	SUS201	1	
3	MHD-80U-D-03	Actuator air outlet flange pipe	SUS201	1	
2	MHD-120U-D-05	Actuator upper cover plate	Weldment	1	Borrowed
1	YE30002400000	Air door actuator LM24A-SR	Assembly	1	
序号	代号	名称	材质	数量	备注

					制图	版号	A	标题	MHD-80U 执行器组件	图号	MHD-80U-D-ALL	比例	1:4	数量	1
					设计	核 准							材质		
					校对							表面要求			
标记	更改前	更改后	更改人	日期	审核	日期	20160907		信易電熱機械股份有限公司 Shini Plastics Technologies, Inc.			物料号			

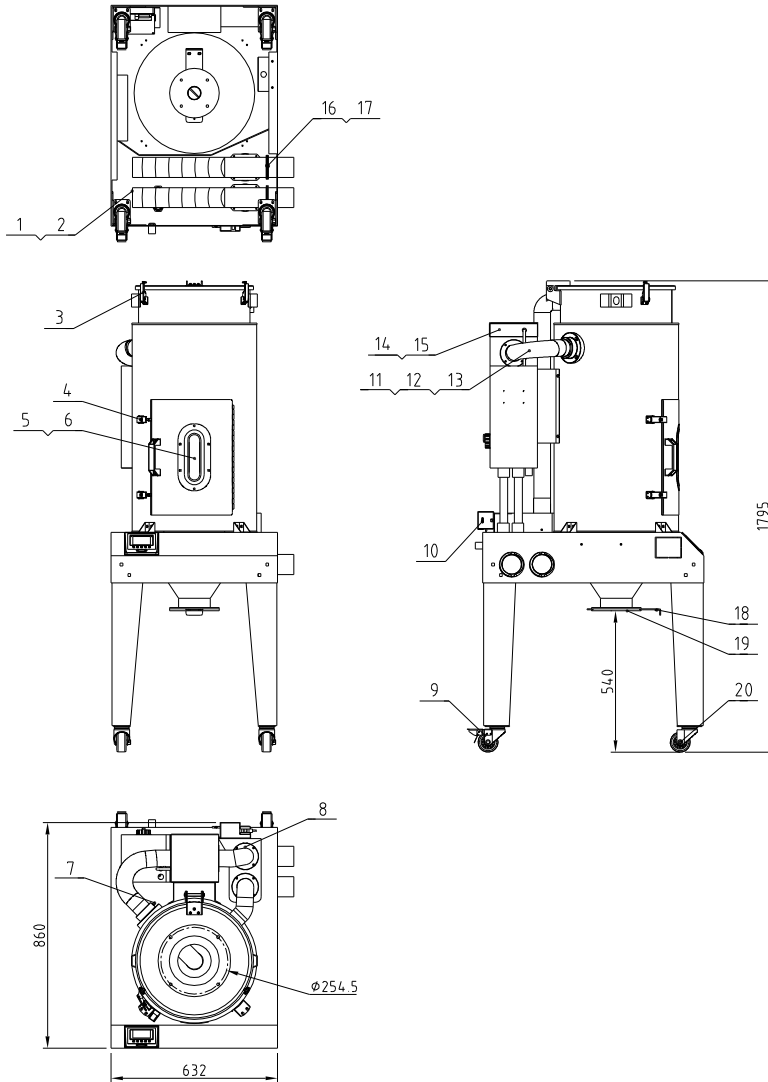


Indicates the items that may be damaged; * indicates the items that are more likely to be damaged. It is recommended to back them up.
Please confirm the version number of the instruction manual before placing an order to purchase spare parts, so as to ensure that the material number of spare parts is consistent with the physical one.

10	YW63031500000	Cross recessed pan head screw G3/78180*15		4	
9	BL90008000120	Wind blade MHD-80U-D-02/04	SUS304	2	
8	YR20412200000	O-type seal ring 41.2*2.65		2	*
7	YW11628900000	Deep groove ball bearing 628/9-ZZ	SUS201	4	
6	YW68001900500	Circlip for axis use type A G3/7894.1 9		4	
5	BH10800200110	Bearing base MHD-80U-D-02/06	SUS304	4	
4	MHD-80U-D-02/01	Air door component body	SUS201	2	
3	MHD-80U-D-02/03	flange 2	SUS201	2	
2	BH10800200210	Damper shaft MHD-80U-D-02/05	SUS304	1	
1	MHD-80U-D-02/02	flange 1	SUS201	2	
序号	代号	名称	材质	数量	备注

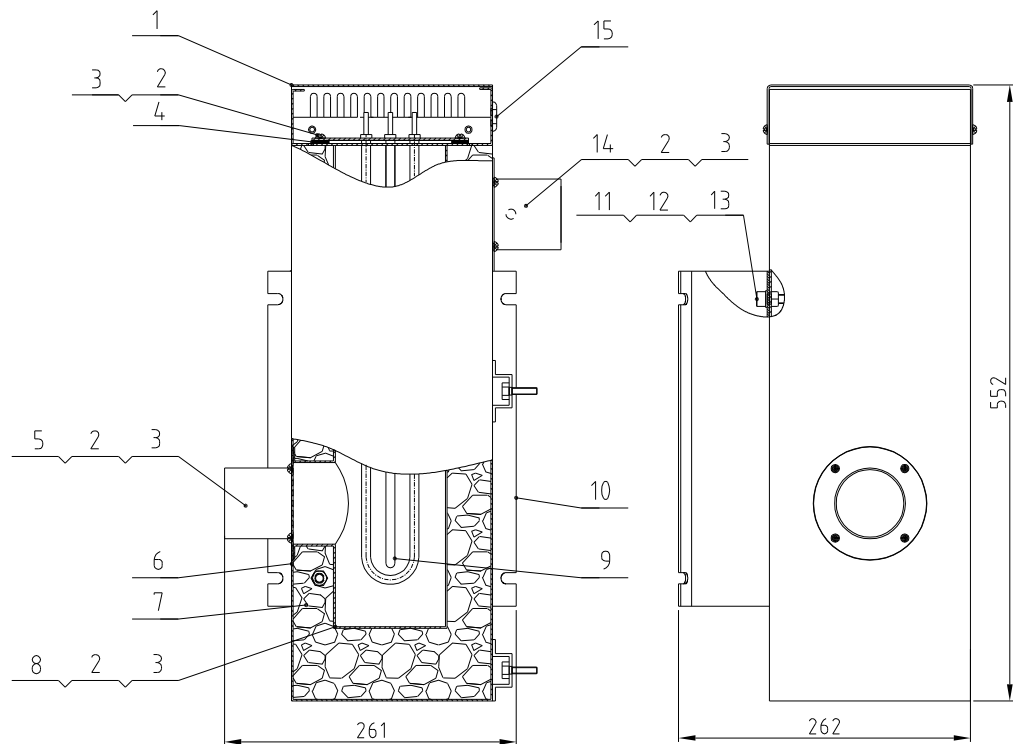
					制图	魏莹	版号	B	标题	MHD-80U	图号	MHD-80U-D-02	比例	1:3	数量	1
					设计	魏莹	核		2"/2"风门组件					材质	/	
					校对		准			信易電熱機械股份有限公司		表面要求	抛光			
标记	更改前	更改后	更改人	日期	审核		日期	20230818		Shini Plastics Technologies, Inc.		物料号	/			

容量(L) Capacity(L)	功率(kW) Power (kW)	进风管径(inch) Inlet air pipe dia. (inch)	出风管径(inch) Outlet air pipe dia. (inch)	版本号 Version No	重量(kg) Weight(kg)
120	3.9	2.5	2.5	B	90



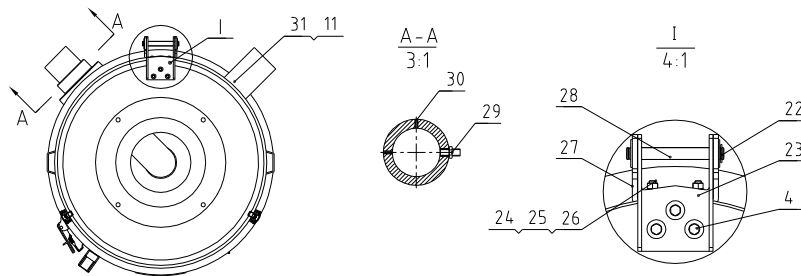
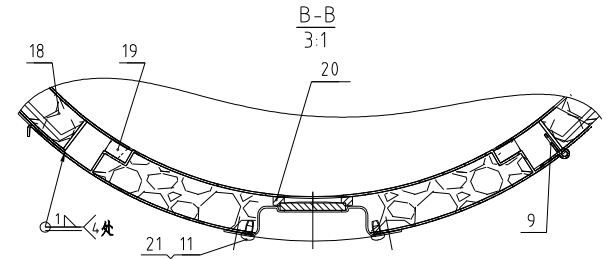
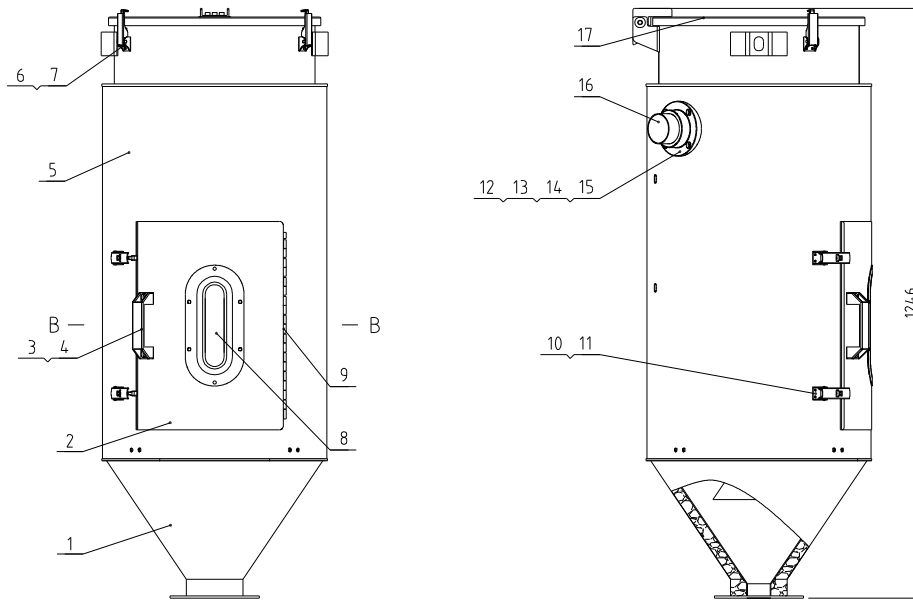
20	YW03000300200	3" Flexible castor		2	
19	BA20401200010	Shut-off plate flange	AC4D	1	
18	YW09255000000	Large shut-off plate		1	
17	YR20000300000	Stainless steel punching clamp seal ring 3"	Silica gel	2	
16	YW07000300300	Stainless steel punching clamp 3"	SUS304	2	
15	YR10151200000	Heating Tank silica gel Fastener #150x125	Silica gel	1	
14	BH70123900150	pipe heater 3 9KW		1	
13	BW72803900010	Heat-insulated Heat resistant pipe		1	
12	YW72253600000	Heat resistant pipe 25"		1	
11	YW02000300000	Steel wire hose 3"	SUS201	6	
10	YE30002400000	Air door actuator LM24A-SR		1	
9	YW03000300000	3" Brake castors		2	
8	YE10000005000	Airflow sensor KKY026-FSF65T08L05(KKEENYODA)		1	
7	BE90582500050	Thermocouple 5x4.0LxMBx2.5M		1	
6	YR10012000900	Cleaning door fastener MHD-120U-A-12	Red silica gel	1	
5	YW70008000000	Sight glass MHD-80U-A-10	Reinforced glass	1	
4	YW09005800000	Buckle SDP-058		2	
3	YW02003000400	Spring buckle adjustable SAL-6U-A-35		2	
2	YW02003500000	Steel wire hose 3.5"		4	
1	YW72033600100	Heat resistant pipe 3"		1	

制图	版号	标题	图号	比例	1:18	数量	1
设计	核准	MHD-120U 模组化料斗干燥机	MHD-120U-ALL			材质	
校对	审核		信易电热机械股份有限公司 Shini Plastics Technologies, Inc.	表面要求			
标记	更改前			更改后	更改人	日期	物料号



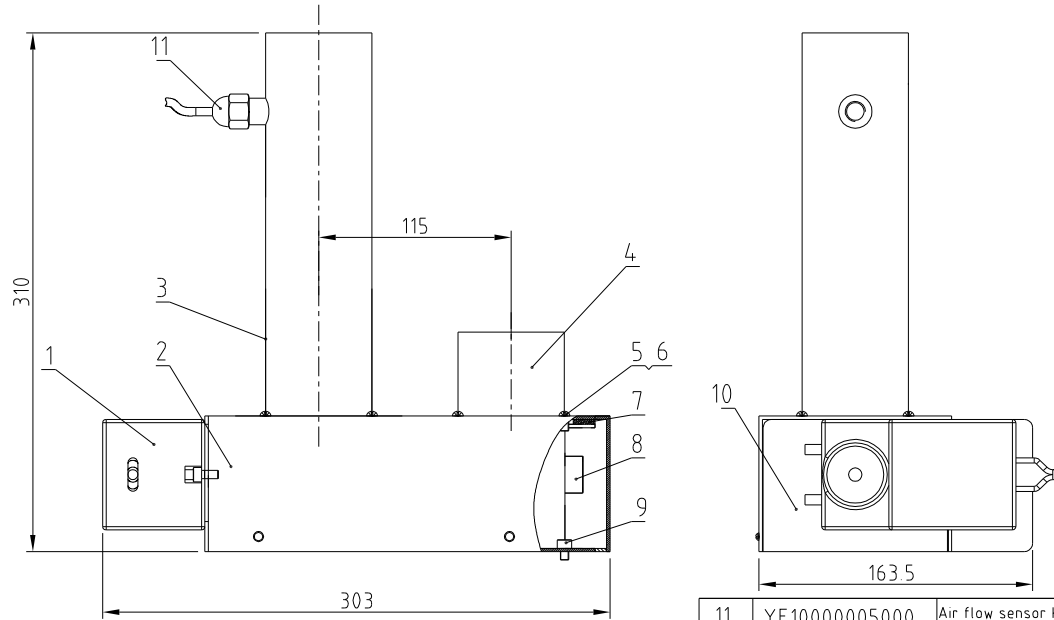
15	YR30000000100	Rubber plug large	Rubber	1	
14	MHD-120U-B-05	Heating case air outlet pipe flange	SUS201	1	
13	YW65008000100	Standard spring washer GB/T93 8-Longzine		4	
12	YW66081600000	Flat washer A grade GB/T97.1(8.4×16×1.6)Longzine		4	
11	YW61082001200	Inner hexagon cylinder screw GB/T70.1 M8×20-12.9-Longzine		4	
10	MHD-120U-B-02	heating case fixed plate	SPCC20	1	
9	BH70803900250	Heater pipe 3.9kw	Assembly	1	
8	MHD-120U-B-04	Hot air pipe	Weldment	1	
7	YP60613000000	Phenolic laminated fabric board	Assembly	1	
6	MHD-120U-B-01	External heating case	SPCC15	1	
5	MHD-120U-B-03	Heating case air inlet flange	SUS201	1	
4	YR10151200000	Heating case silical gel fastener	Silica gel 3.0	1	
3	YW66051300000	Flat washer 5.5×13×1Longzine		12	
2	YW62051000100	Large cross socket flat head screw JIS1111 M5×10-Longzine		14	
1	SHD-230U-A-23	Heating case cover	SPCC15	1	Borrowed
序号	代号	名称	材质	数量	备注

					制图		版号	0	标题	MHD-120U 加热箱组件	图号	MHD-120U-B-ALL	比例	1:6	数量	1
					设计		核准							材质		
					校对								表面要求			
标记	更改前	更改后	更改人	日期	审核		日期	20160907		信易电热机械股份有限公司 Shini Plastics Technologies, Inc.			物料号			



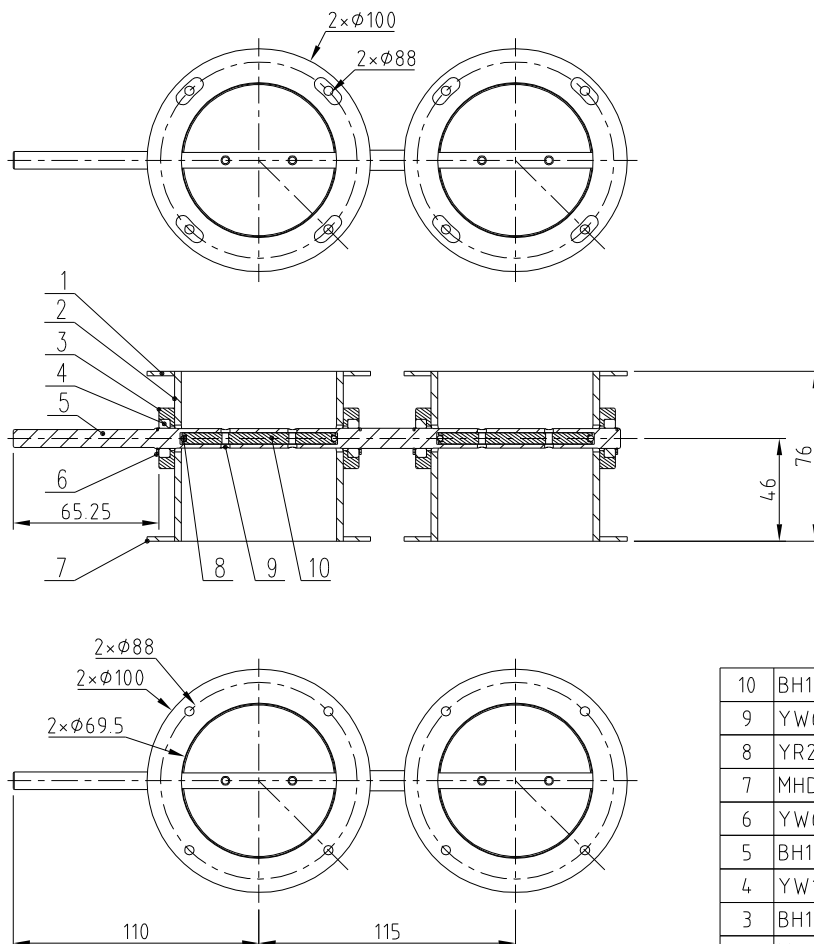
31	MHD-120U-A-08	Air exhaust pipe	SUS201	1	
30	YW68006600000	Inner hex flat end lock screw GB/T77		2	
		M6x5-Longzine			
29	BE90582500050	Thermocouple MB-2 5H	Assembly	1	
28	BH10006003110	Hinge pin SAL-6U-31	SUS201	1	
27	BL02012000720	Lower hinge	SUS201	1	
26	YW66051200000	Flat washer A grade GB/T97.15-A2-70(SUS)		4	
25	YW60512201000	Inner hex column head screw GB/T70.1		4	
		M5x12-A2-70(SUS)			
24	YW64000500000	Non-metal inserted hexagon lock nut		4	
		GB/T889.1 M5			
23	MHD-120U-A-10	Upper hinge	SUS201	1	
22	YW66000500000	E-type washer E5		2	
21	MHD-120U-A-07	Sight glass	SUS304	1	
20	YR10008001300	Sight glass fastener	white silica gel	1	
19	MHD-120U-A-12	Cleaning door fastener		1	
18	YP60252000000	Epoxy glass laminate wood	Assembly	1	
17	MHD-120U-A-04	Hopper cover	SUS304	1	
16	MHD-120U-A-05	Down-blow pipe assembly	SUS201	1	
15	YW66051000000	Flat washer A grade GB/T97.15-Longzine		7	
14	YW65005200000	Standard spring washer GB/T93.5-Longzine		7	
13	YW61052500000	Inner hex column head screw GB/T70.1		4	
		M5x25-12.9-Longzine			
12	MHD-120U-A-06	down-blow pipe flange	AC4D	1	
11	YW62051000000	Large cross socket flat head screw JIS1111		12	
		M5x10-A2-70(SUS)			
10	YW09005800000	Buckle SDP-05B	SUS304	2	
9	YW62041000000	Large cross socket flat head screw JIS1111		4	
		M4x10-Longzine			
8	YW70008000000	Sight glass	Tempering glass	1	
7	YW64040700100	Non-metal inserted hexagon lock nut		4	
		GB/T889.1 M4			
6	YW02003000400	Adjustable snap hook		2	
5	MHD-120U-A-02	Insulation board	SUS430(0.8)	1	
4	YW61061200000	Inner hex column head screw GB/T70.1		5	
		M6x12-12.9-Longzine			
3	BW20012000040	Aluminum square handle 120L(M6)		1	
2	MHD-120U-A-03	External cleaning door	Assembly	1	
1	MHD-120U-A-01	Storage tank	Assembly	1	
序号	代号	名称	材质	数量	备注

				制图	版号	B	标题	MHD-120U	图号	MHD-120U-A-ALL	比例	1:10	数量	1
				设计	核准		标题	保温材料组件					材质	
				校对									表面要求	
标记	更改前	更改后	更改人	日期	审核	日期	20160907	SHINI 信易电热机械股份有限公司 Shini Plastics Technologies, Inc.		物料号				



11	YE10000005000	Air flow sensor KYD26-FSF6EST08L05	Assembly	1	
10	MHD-120U-D-04	Actuator bottom plate	SPCC2.0	1	
9	YW61050600300	Inner hexagon cylinder screw GB/T170.1M5X16-12.9-Longzine		8	
8	MHD-120U-D-03	2.5"/2.5" Air door assembly	Assembly	1	
7	MHD-120U-D-06	Actuator flange pipe fastener	white silica gel 30	4	
6	YW66051300000	Flat washer 5.5×13×1Longzine		20	
5	YW62051000100	Large cross socket flat head screw JIS1111 M5x10-Longzine		12	
4	MHD-120U-D-02	Actuator air inlet flange pipe	SUS201	1	
3	MHD-120U-D-01	Actuator air outlet flange pipe	SUS201	1	
2	MHD-120U-D-05	Actuator upper cover plate	SPCC2.0	1	
1	YE30002400000	Air door actuator LM24A-SR	Assembly	1	
序号	代 号	名 称	材 质	数 量	备 注

					制图		版号	0	标题	MHD-120U	图号	MHD-120U-D-ALL	比例	1:3	数量	1
					设计		核		执行器组件					材质		
					校对		准		信易電熱機械股份有限公司 Shini Plastics Technologies, Inc.				表面要求			
标记	更改前	更改后	更改人	日期	审核		日期	20160907						物料号		

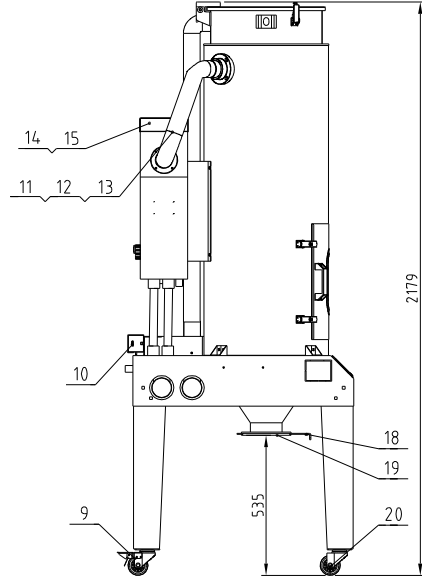
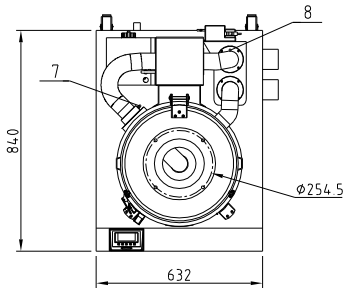
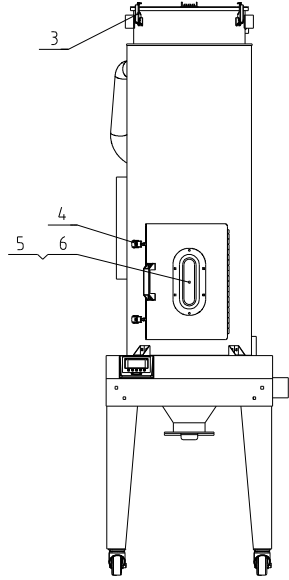
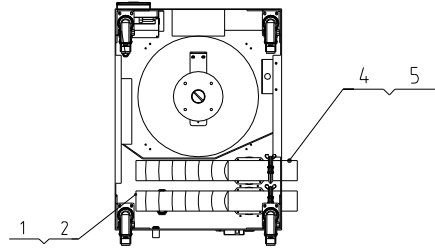


Indicates the items that may be damaged; * indicates the items that are more likely to be damaged. It is recommended to back them up. Please confirm the version number of the instruction manual before placing an order to purchase spare parts, so as to ensure that the material number of spare parts is consistent with the physical one.

10	BH11120045310	Wind blade MHD-120U-D-03/04	SUS304	2	
9	YW63031500000	Cross recessed pan head screw G/7018 M4*5		4	
8	YR20412200000	O type ring 41.2*2.65	silicon rubber	2	*
7	MHD-120U-D-03/03	flange 2	SUS201(2.0)	2	
6	YW68001900500	Elastic ring for axes use type A G/7094.1.9		4	
5	BH10120040110	Air door shaft MHD-120U-D-03/05	SUS304	1	
4	YW11628900000	Deep groove ball bearing 628/9-ZZ	SUS201	4	
3	BH10012001610	Bearing seat MHD-120U-D-03/06	SUS201	4	
2	MHD-120U-D-03/01	Air door component body	SUS201(3.0)	2	
1	MHD-120U-D-03/02	flange 1	SUS201(2.0)	2	
序号	代号	名称	材质	数量	备注

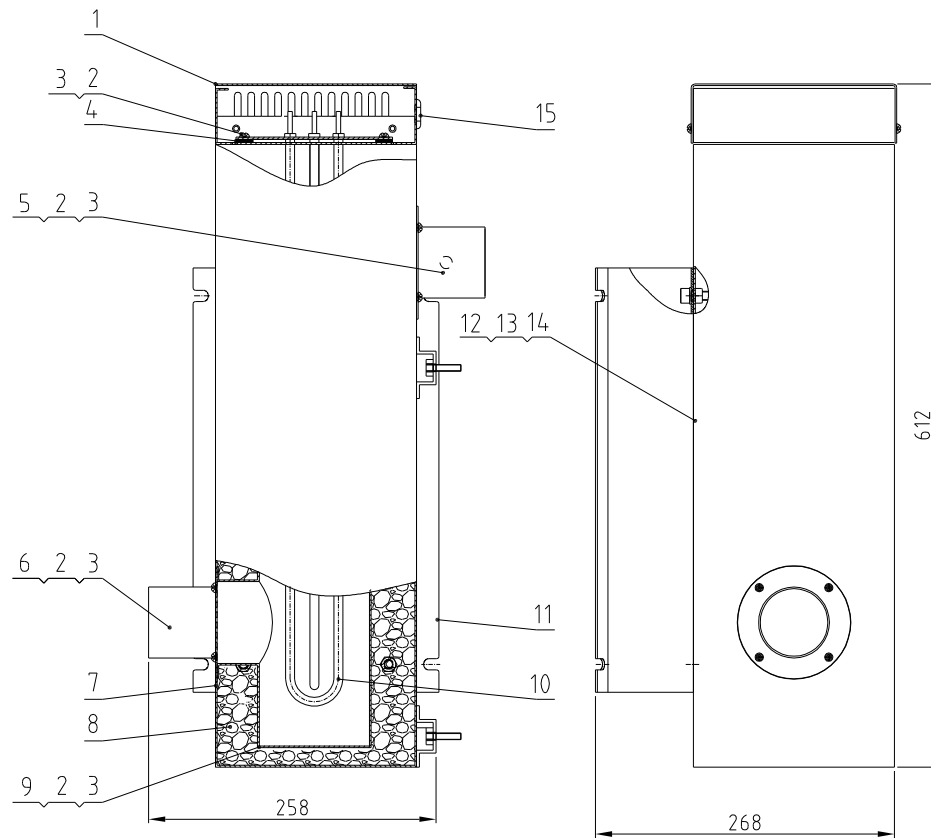
					制图	版号	A	标题	MHD-120U	图号	MHD-120U-D-03	比例	1:3	数量	1
					设计	核		2.5"/2.5" 风门组件					材质	/	
					校对	准			信易電熱機械股份有限公司	Shini Plastics Technologies, Inc.	表面要求	抛光			
标记	更改前	更改后	更改人	日期	审核	日期	20160907				物料号	/			

容量(L) Capacity(L)	功率(kW) Power (kW)	进风管径(inch) Inlet air pipe dia. (inch)	出风管径(inch) Outlet air pipe dia. (inch)	版本号 Version No	重量(kg) Weight(kg)
160	6	2.5	2.5	B	105



20	YW03000300200	3" Flexible castor		2	
19	BA20401200010	Shut-off plate flange	AC4D	1	
18	YW09255000000	Large shut-off plate		1	
17	YR20000300000	Stainless steel punching clamp seal ring 3"	Silica gel	2	
16	YW07000300300	Stainless steel punching clamp 3"	SUS304	2	
15	YR10161200000	Heating fan silica gel fastener φ160×124	Silica gel	1	
14	BH70160600250	pipe heater 6KW		1	
13	BW72016000610	Heat-insulated heat resistant pipe		1	
12	YW72253600000	Heat resistant pipe 2.5"		1	
11	YW02000300000	Steel wire hose 3"	SUS201	6	
10	YE30002400000	Air door actuator LM24A-SR		1	
9	YW03000300000	3" Brake castors		2	
8	YE10000005000	Airflow sensor KYD26-FSF5E5T06L05		1	
7	BE90582500050	Thermocouple 5×4.0L×MB×2.5M		1	
6	YR10012000900	Cleaning door fastener MHD-120U-A-12	Red silica gel	1	
5	YW70008000000	Sight glass MHD-80U-A-10	Reinforced glass	1	
4	YW09005800000	Buckle SDP-058		2	
3	YW02003000400	Spring buckle adjustable SAL-6U-A-35		2	
2	YW02003500000	Steel wire hose 3.5"		4	
1	YW72033600100	Heat resistant pipe 3"		1	

				制图	版号	标题	图号	比例	1:18	数量	1
				设计	核准	MHD-160U	MHD-160U-ALL	 表面要求			
				校对	日期	模组化料斗干燥机			材质		
标记	更改前	更改后	更改人	日期	审核	信易电热机械股份有限公司 Shini Plastics Technologies, Inc.		物料号			

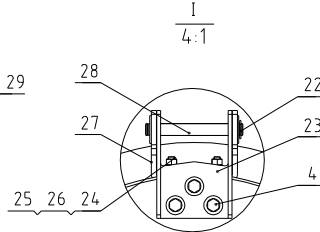
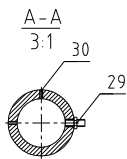
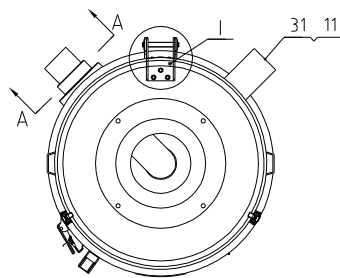
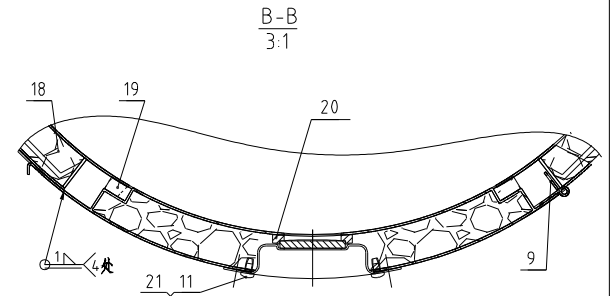
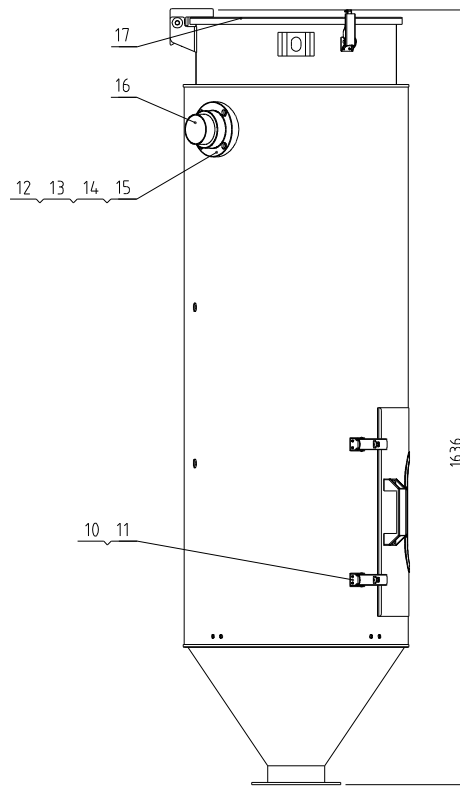
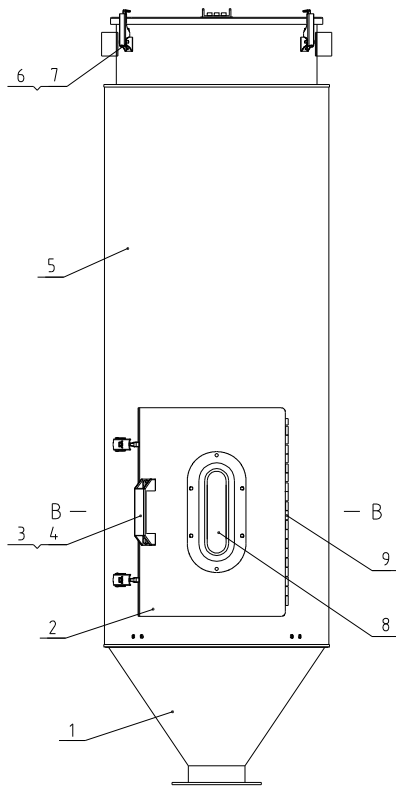


15	YR30000000100	Rubber plug large	Rubber	1	
14	YW65008000100	Standard spring washer GB/T93 8-Longzine		4	
13	YW66081600000	Flat washer A grade GB/T97.1 8.4×16×16-Longzine		4	
12	YW61082001200	Inner hexagon cylinder screw GB/T70.1 M8×20-12.9-Longzine		4	
11	MHD-160U-B-01	heating case fixed plate	SPCC2.0	1	
10	BH70160600250	Heater pipe 6kw	Assembly	1	
9	MHD-160U-B-03	Hot air pipe	Weldment	1	
8	YP60252000000	Epoxy glass laminate wood	Aluminum foil glass wool felt	1	
7	MHD-160U-B-02	External heating case	SPCC15	1	
6	MHD-120U-B-03	Heating case air inlet flange	SUS201	1	Borrowed
5	MHD-120U-B-05	Heating case air outlet pipe flange	SUS201	1	Borrowed
4	YR10161200000	Heating case silical gel fastener	Silica gel 3.0	1	
3	YW66051000000	Flat washer A grade GB/T97.1 5-Longzine		12	
2	YW62051000100	Large cross socket flat head screw JIS1111 M5×10-Longzine		14	
1	SHD-230U-A-23	Heating case cover	SPCC15	1	Borrowed
序号	代号	名称	材质	数量	备注

					制图		版号	0	标题	MHD-160U 加热箱组件	图号	MHD-160U-B-ALL	比例	1:6	数量	1
					设计		核							表面要求		
					校对		准									
标记	更改前	更改后	更改人	日期	审核		日期	20160908						物料号		



信易电热机械股份有限公司
Shini Plastics Technologies, Inc.



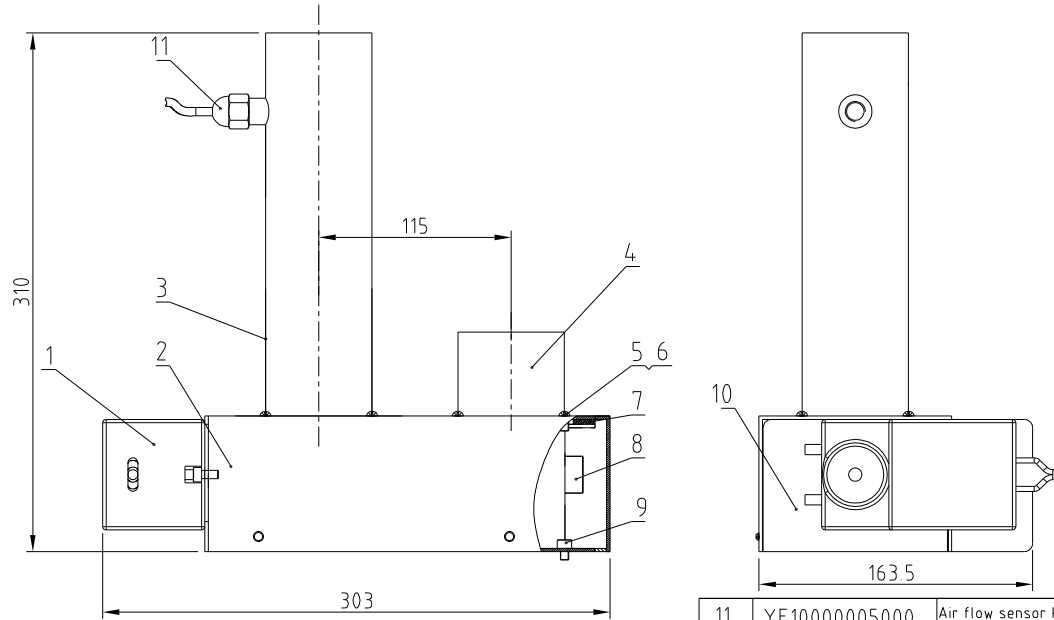
31	MHD-120U-A-08	Air exhaust pipe	SUS201	1	Borrowed
30	YW68006600000	Inner hex flat end lock screw GB/T77	M6x6-Longzine	2	
29	BE90582500050	Thermocouple M8x25M	Assembly	1	
28	BH10006003110	Hinge pine SAL-6U-31	SUS201	1	
27	BL02012000720	Lower hinge	SUS201 4.0	1	
26	YW66051200000	Flat washer A grade GB/T9915-A2-70(SUS)		4	
25	YW60512201000	Inner hex column head screw GB/T701	M5x12-A2-70(SUS)	4	
24	YW64000500000	Non-ferrous inserted hexagon lock nut	GB/T889.1 M5	4	
23	MHD-120U-A-10	Upper hinge	SUS201 3.0	1	Borrowed
22	YW66000500000	E-type washer E5		2	
21	MHD-120U-A-07	Sight glass	SUS304	1	Borrowed
20	YR10008001300	Sight glass fastener	white silica gel	1	
19	MHD-120U-A-12	Cleaning door fastener	Red silica gel 10.0mm	1	
18	YP60252000000	Epoxy glass laminate wood	Assembly	1	
17	MHD-120U-A-04	Hopper cover	SUS304	1	Borrowed
16	MHD-160U-A-03	Down-blow pipe assembly	SUS201	1	
15	YW66051000000	Flat washer A grade GB/T9915-Longzine		7	
14	YW65005200000	Standard spring washer GB/T9935-Longzine		7	
13	YW61052000000	Inner hex column head screw GB/T701	M5x25-12.9-Longzine	4	
12	MHD-120U-A-06	down-blow pipe flange	AC4D	1	Borrowed
11	YW62051000000	Large cross socket flat head screw JIS1111	M5x10-A2-70(SUS)	12	
10	YW09005800000	Buckle SDP-058	SUS304	2	
9	YW62041000000	Large cross socket flat head screw	JIS1111 M4x10-Longzine	7	
8	YW70008000000	Sight glass		1	
7	YW64040700100	Non-ferrous inserted hexagon lock nut	GB/T889.1 M4	4	
6	YW02003000400	Adjustable snap hook	Assembly	2	
5	MHD-160U-A-02	Insulation board	SUS430(0.8)	1	
4	YW61061200000	Inner hex column head screw GB/T701	M6x12-12.9-Longzine	5	
3	BW20012000040	Aluminum square handle 120L(M6)		1	
2	MHD-120U-A-03	External cleaning door	Assembly	1	Borrowed
1	MHD-160U-A-01	Storage tank	Assembly	1	

序号	代号	名称	材质	数量	备注
				110	数量 1
					材质
					表面要求
					物料号

制图	版号	标题	图号
	B	MHD-160U 保温料桶组件	MHD-160U-A-ALL
设计	核准		
校对	审核		
标记	更改前	更改后	更改人
	日期	日期	日期

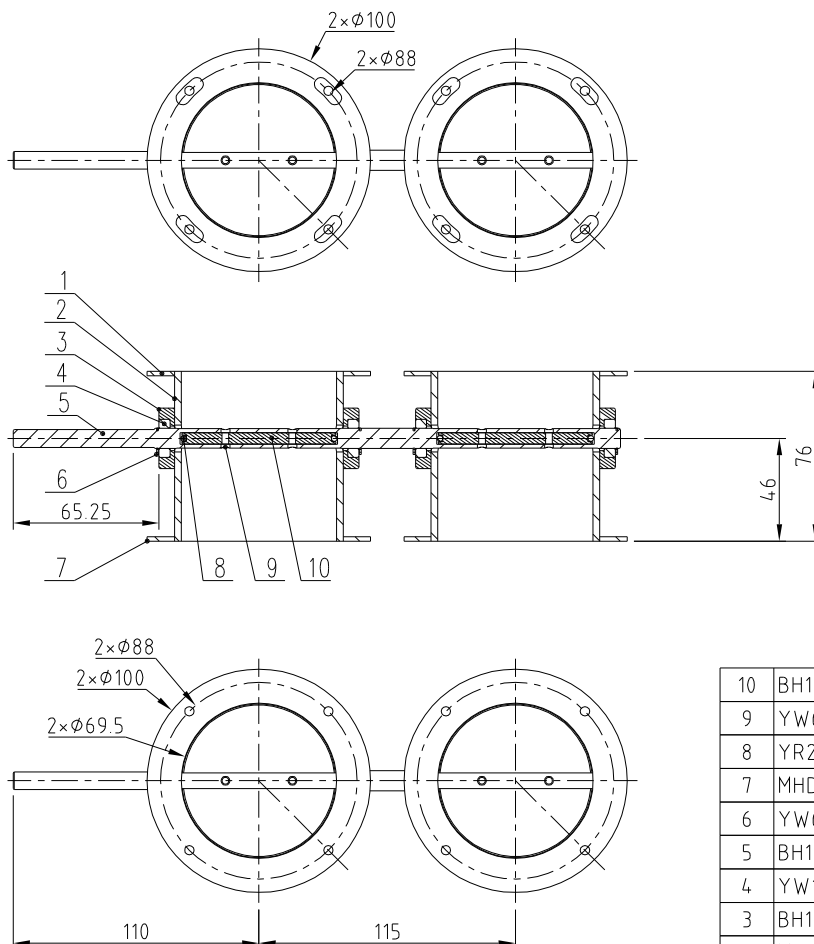
SHINI 信易电热机械股份有限公司
Shini Plastics Technologies, Inc.

20160908



11	YE10000005000	Air flow sensor KYD26-FSF6EST08L05	Assembly	1	
10	MHD-120U-D-04	Actuator bottom plate	SPCC2.0	1	
9	YW61050600300	inner hexagon cylinder screw GB/T170.1M5X16-12.9-Longzine		8	
8	MHD-120U-D-03	2.5"/2.5" Air door assembly	Assembly	1	
7	MHD-120U-D-06	Actuator flange pipe fastener	white silica gel 30	4	
6	YW66051300000	Flat washer 5.5×13×1Longzine		20	
5	YW62051000100	Large cross socket flat head screw JIS1111 M5x10-Longzine		12	
4	MHD-120U-D-02	Actuator air inlet flange pipe	SUS201	1	
3	MHD-120U-D-01	Actuator air outlet flange pipe	SUS201	1	
2	MHD-120U-D-05	Actuator upper cover plate	SPCC2.0	1	
1	YE30002400000	Air door actuator LM24A-SR	Assembly	1	
序号	代号	名称	材质	数量	备注

					制图		版号	0	标题	MHD-120U	图号	MHD-120U-D-ALL	比例	1:3	数量	1	
					设计		核		执行器组件					材质			
					校对		准		信易電熱機械股份有限公司 Shini Plastics Technologies, Inc.				表面要求				
标记	更改前	更改后	更改人	日期	审核		日期	20160907						物料号			

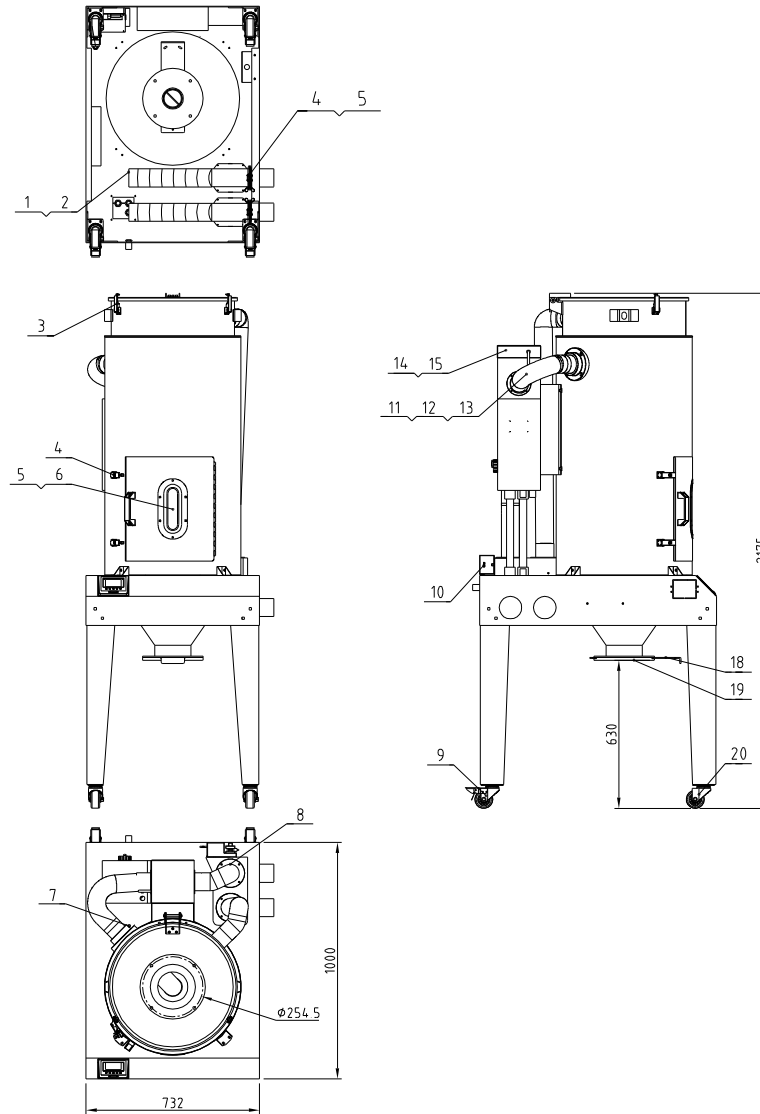


Indicates the items that may be damaged; * indicates the items that are more likely to be damaged. It is recommended to back them up. Please confirm the version number of the instruction manual before placing an order to purchase spare parts, so as to ensure that the material number of spare parts is consistent with the physical one.

10	BH11120045310	Wind blade MHD-120U-D-03/04	SUS304	2	
9	YW63031500000	Cross recessed pan head screw G/7018 M4*5		4	
8	YR20412200000	O type ring 41.2*2.65	silicon rubber	2	*
7	MHD-120U-D-03/03	flange 2	SUS201(2.0)	2	
6	YW68001900500	Elastic ring for axes use type A G/7094.1.9		4	
5	BH10120040110	Air door shaft MHD-120U-D-03/05	SUS304	1	
4	YW11628900000	Deep groove ball bearing 628/9-ZZ	SUS201	4	
3	BH10012001610	Bearing seat MHD-120U-D-03/06	SUS201	4	
2	MHD-120U-D-03/01	Air door component body	SUS201(3.0)	2	
1	MHD-120U-D-03/02	flange 1	SUS201(2.0)	2	
序号	代号	名称	材质	数量	备注

					制图	版号	A	标题	MHD-120U	图号	MHD-120U-D-03	比例	1:3	数量	1
					设计	核		2.5"/2.5" 风门组件					材质	/	
					校对	准			信易電熱機械股份有限公司		表面要求	抛光			
标记	更改前	更改后	更改人	日期	审核	日期	20160907		Shini Plastics Technologies, Inc.		物料号	/			

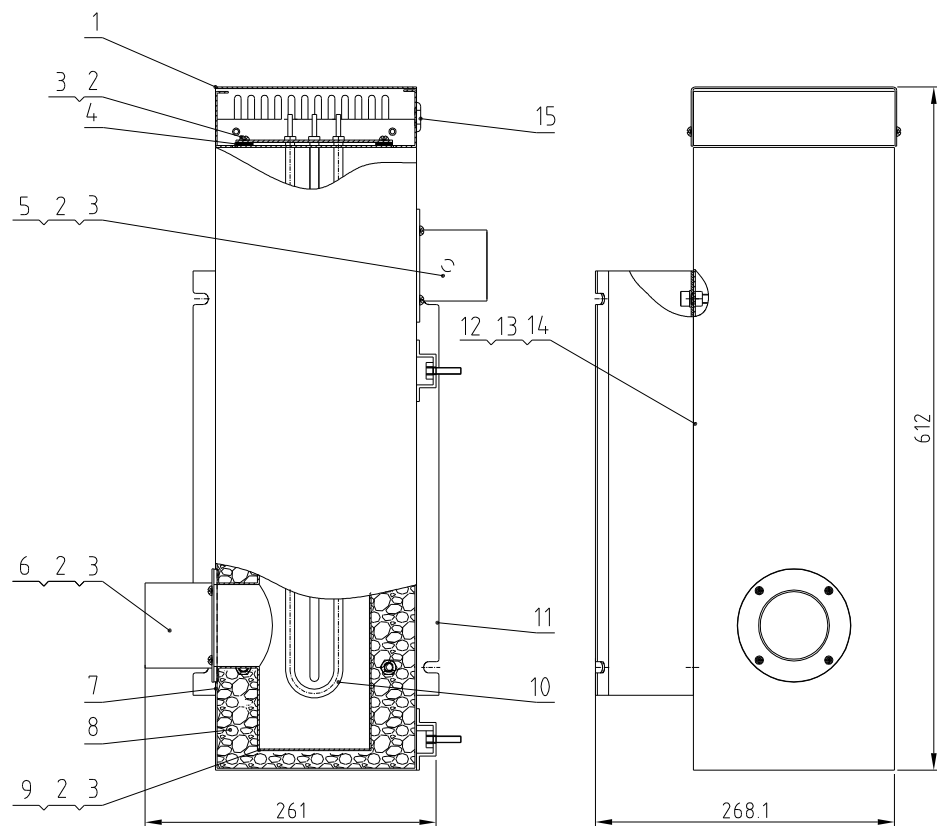
容量(L) Capacity(L)	功率(k.W) Power(k.W)	进风管径(inch) Inlet air pipe dia. (inch)	出风管径(inch) Outlet air pipe dia. (inch)	版本号 Version No.	重量(kg) Weight(kg)
230	6	3	3	B	120



20	YW03000300200	3" Flexible castor		2	
19	BA20164500010	Shut-off plate flange	AC4D	1	
18	YW09102000000	Large shut-off plate		1	
17	YR20000300000	Stainless steel punching clamp seal ring 3"	Silica gel	2	
16	YW07000300300	Stainless steel punching clamp 3"	SUS304	2	
15	YR10161200000	Heating tank silica gel fastener *160*124	Silica gel	1	
14	BH70230600250	pipe heater 6KW		1	
13	BW72303700010	Heat-insulated Heat resistant pipe		1	
12	YW02003500000	Steel wire hose 35°		1	
11	YW72033600100	Heat resistant pipe 3"	SUS201	6	
10	YE30002400700	Air door actuator NM24A-SR		1	
9	YW03000300000	3" Brake castors		2	
8	YE10558805000	Airflow sensor KYD26-FSFD5T08L08		1	
7	BE90582500050	Thermocouple 5x40LxM8x2.5M		1	
6	YR10023000900	Cleaning door fastener MHD-230U-A-09	Red silica gel	1	
5	YW70008000000	Sight glass MHD-80U-A-10	Reinforced glass	1	
4	YW09005800000	Buckle SDP-058		2	
3	YW02003000400	Spring buckle adjustable SAL-6U-A-35		2	
2	YW02003500000	Steel wire hose 35°		4	
1	YW72033600100	Heat resistant pipe 3"		1	

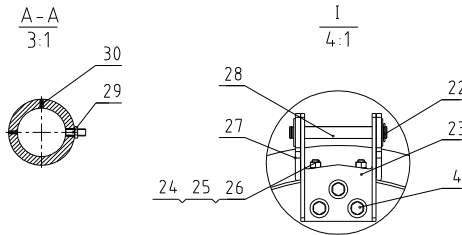
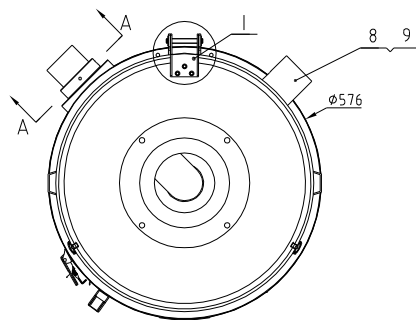
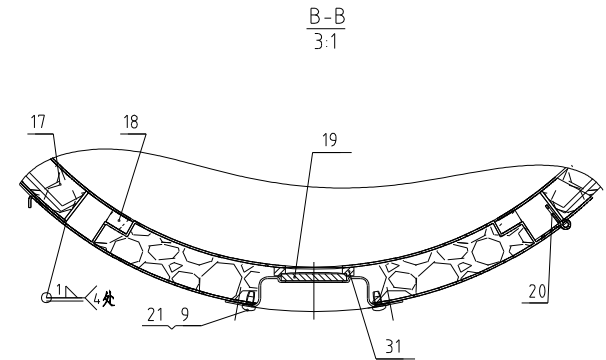
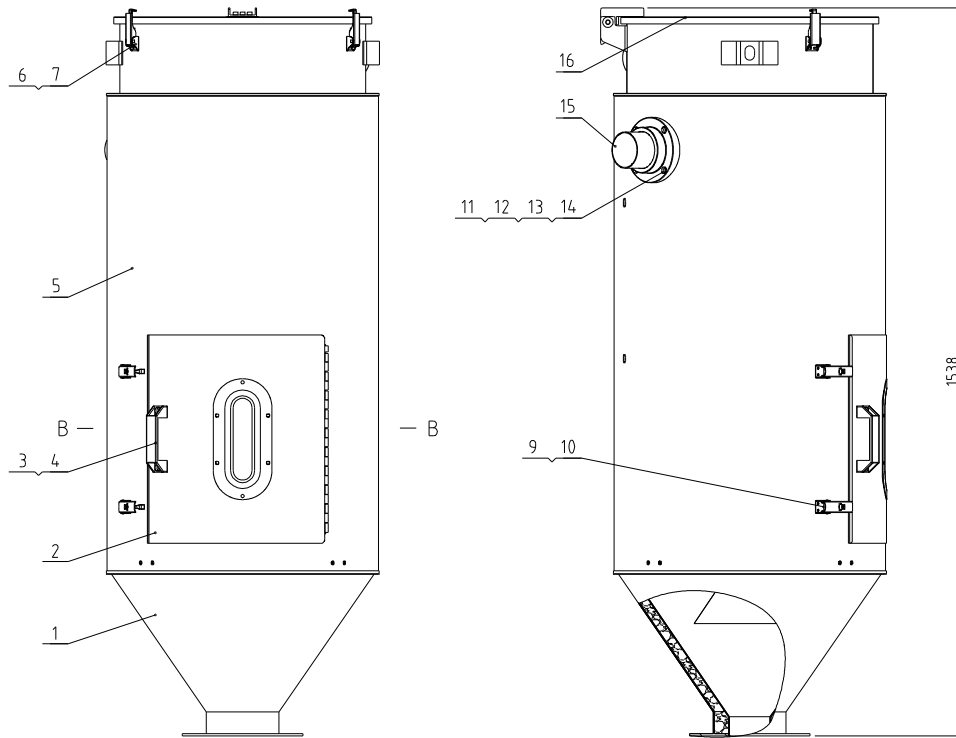
序号	代号	名称	材质	数量	备注
		标题 MHD-230U 模组化料斗干燥机	图号 MHD-230U-ALL	比例 1:20	数量 1
				表面要求	物料号
制图	设计	校对	版号	核准	日期
标记	更改前	更改后	更改人	日期	审核

SHINI 信易电热机械股份有限公司
Shini Plastics Technologies, Inc.



15	YE67109000000	Quick connector of hose WQG1-P09B		1	
14	YW65008000100	Standard spring washer GB/T93 8-Longzine		4	
13	YW66081900000	Flat washer A grade GB/T97.1 8(9x16x16)-Longzine		4	
12	YW61082001200	Inner hexagon cylinder screw GB/T70 1 M8x20-12 9-Longzine		4	
11	MHD-230U-B-01	Heating case fixed plate	SPCC2.0	1	
10	BH70230600250	Heater pipe 6kw	Assembly	1	
9	MHD-230U-B-03	Hot air pipe	Weldment	1	
8	YP60613000000	Phenolic laminated fabric board	Aluminum foil glass wool felt	1	
7	MHD-230U-B-02	External heating case	SPCC15	1	
6	MHD-230U-B-04	Heating case air inlet flange	SUS201	1	
5	MHD-230U-B-05	Heating case air outlet pipe flange	SUS201	1	
4	YR10161200000	Heating case silical gel fastener	Silica gel 3.0	1	
3	YW66051300000	Flat washer A grade GB/T97.1 5(5.5x10x1)-Longzine		12	
2	YW62051000100	Large cross socket flat head screw JIS1111 M5x10-Longzine		14	
1	SHD-230U-A-23	Heating case cover	SPCC1.5	1	Borrowed
序号	代 号	名 称	材 质	数 量	备 注

					制图		版号	0	标题	MHD-230U	图号	MHD-230U-B-ALL	比例	1:6	数量	1
					设计		核			加热箱组件			表面要求	材质		
				校对		准										
标记	更改前	更改后	更改人	日期	审核		日期	20160908	信易电热机械股份有限公司 Shini Plastics Technologies, Inc.			物料号				

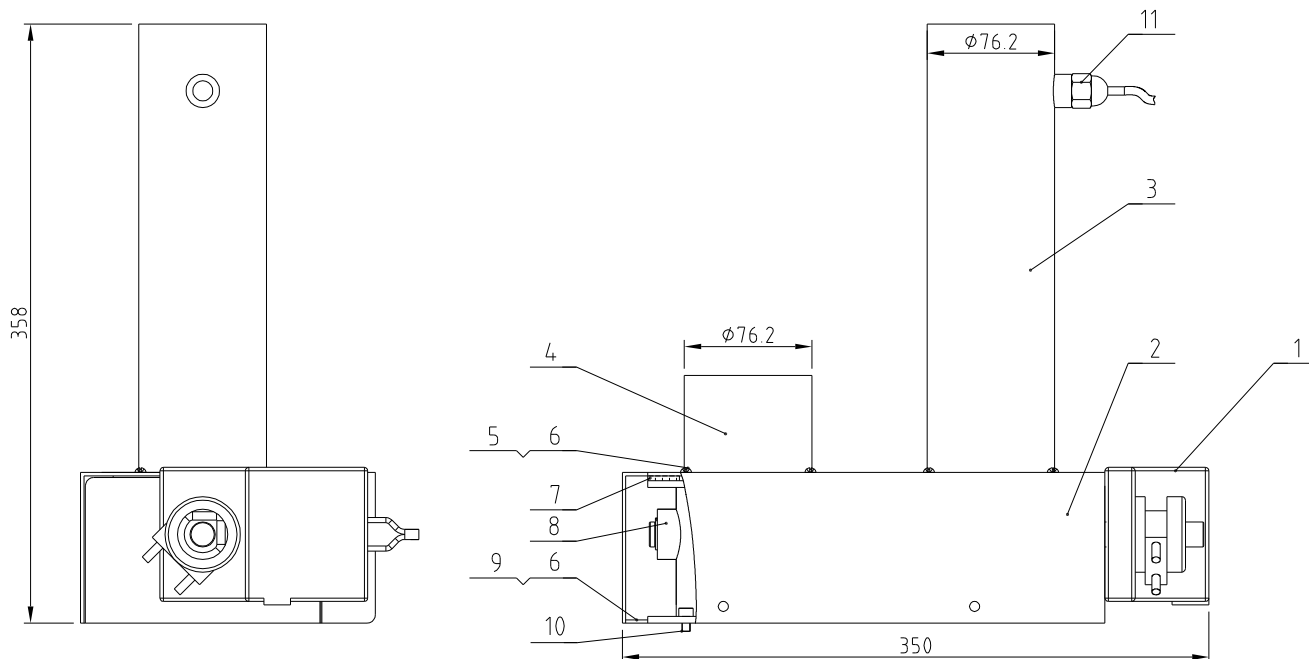


31	YR10008001300	Sight glass fastener	white silica gel	1	
30	YW68061000000	Inner hex flat end lock screw GB/T77 M6*10-Longzine		2	
29	BE90582500050	Thermocouple MB*2.5M	Assembly	1	
28	BH10006003110	Hinge pin SAL-6U-31	SUS201	1	
27	BL02012000720	Lower hinge	SUS201 4.0	1	Borrowed
26	YW66061200000	Flat washer A grade GB/T197 1.6-A2-70(SUS)		4	
25	YW61061001800	Inner hex column head screw GB/T701 M6*10-A2-70(SUS)		4	
24	YW64000600200	Non-metal inserted hexagon lock nut GB/T899 1M6		4	
23	MHD-120U-A-10	Upper hinge	SUS201 3.0	1	Borrowed
22	YW66000500000	E-type washer E5		2	
21	BL02080002020	Sight glass MHD-80U-A-07	SUS304	1	
20	YW62041000000	Large cross socket flat head screw JIS1111 M6*10-Longzine		7	
19	YW70008000000	Sight glass MHD-80U-A-10	Tempering glass	1	
18	MHD-230U-A-09	Cleaning door fastener	Red silical gel 10.0mm	1	
17	YP60252000000	Epoxy glass laminate wood	Assembly	1	
16	MHD-230U-A-04	Hopper cover	SUS304	1	
15	MHD-230U-A-05	Down-blow pipe assembly	SUS201	1	
14	YW66061300000	Flat washer A grade GB/T197 1.6-Longzine		7	
13	YW65006000100	Standard spring washer GB/T193 6-Longzine		7	
12	YW61062501200	Inner hex column head screw GB/T701 M6*25-12.9-Longzine		4	
11	MHD-230U-A-06	down-blow pipe flange	AC4D	1	
10	YW09005800000	Buckle SDP-05B	SUS304	2	
9	YW62051000000	Large cross socket flat head screw JIS1111 M6*10-A2-70(SUS)		12	
8	MHD-230U-A-08	Air exhaust pipe	SUS201	1	
7	YW64040700100	Non-metal inserted hexagon lock nut GB/T899 1M6		4	
6	YW02003000400	Adjustable snap hook	SUS304	2	
5	MHD-230U-A-02	Insulation board	SUS430(0.8)	1	
4	YW61061201000	Inner hex column head screw GB/T701 M6*12-12.9-Longzine		5	
3	BW20012000040	Aluminum square handle 120L(M6)		1	
2	MHD-230U-A-03	External cleaning door	Assembly	1	
1	MHD-230U-A-01	Storage tank	Assembly	1	

序号	代号	名称	材质	数量	备注
		标题 MHD-230U 保温料桶组件	图号 MHD-230U-A-ALL	比例 1:10	数量 1
				表面要求	材质
				物料号	

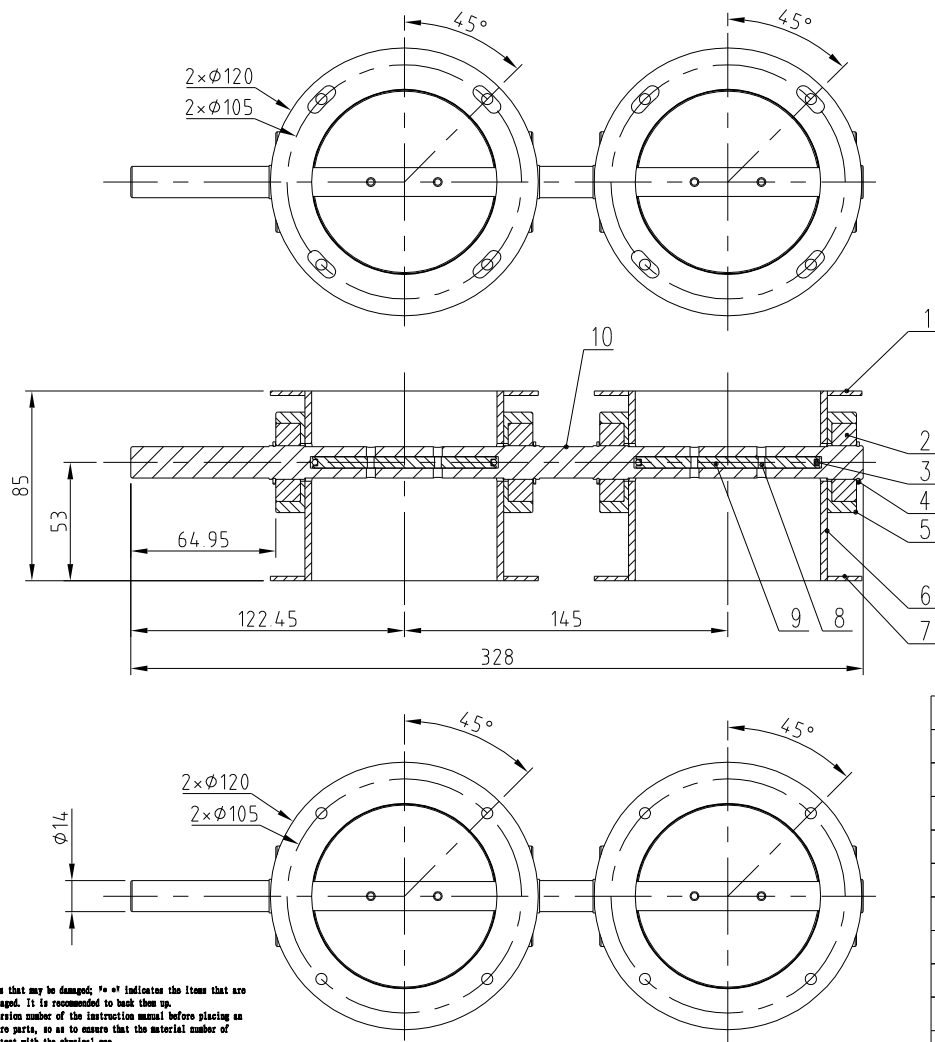
制图	版号	C	标题	图号	比例	数量	备注
设计	核准		MHD-230U	MHD-230U-A-ALL	1:10	1	
校对							
标记	更改前	更改后	更改人	日期	审核	日期	20160908

SHINI 信易电热机械股份有限公司
Shini Plastics Technologies, Inc.



11	YE10558805000	Air door actuator KYD26-FSF5D5T08L08	Assembly	1	
10	YW61050600300	Inner hexagon cylinder screw GB/T170.1M5×16-12.9-Longzine		8	
9	MHD-230U-E-01	Actuator bottom plate	SPCC2.0	1	
8	MHD-230U-E-03	3"×3" Air door assembly	Assembly	1	
7	MHD-230U-E-06	Actuator flange pipe fastener	Silica gel 3.0	4	
6	YW66051300000	Flat washer A grade GB/T97.1.5(5.5×10×1)-Longzine		20	
5	YW62051000100	Large cross socket flat head screw JIS1111 M5×10-Longzine		12	
4	MHD-230U-E-05	Actuator air inlet flange pipe	SUS201	1	
3	MHD-230U-E-04	Actuator air outlet flange pipe	SUS201	1	
2	MHD-230U-E-02	Actuator upper cover plate	SPCC2.0	1	
1	YE30002400700	Air door actuator NM24A-SR	Assembly	1	
序号	代号	名称	材质	数量	备注

					制图	版号	0	标题	MHD-230U	图号	MHD-230U-E-ALL	比例	1:4	数量	1
					设计	核准			执行器组件				材质		
					校对				信易电热机械股份有限公司 Shini Plastics Technologies, Inc.			表面要求			
标记	更改前	更改后	更改人	日期	审核	日期	20160908						物料号		

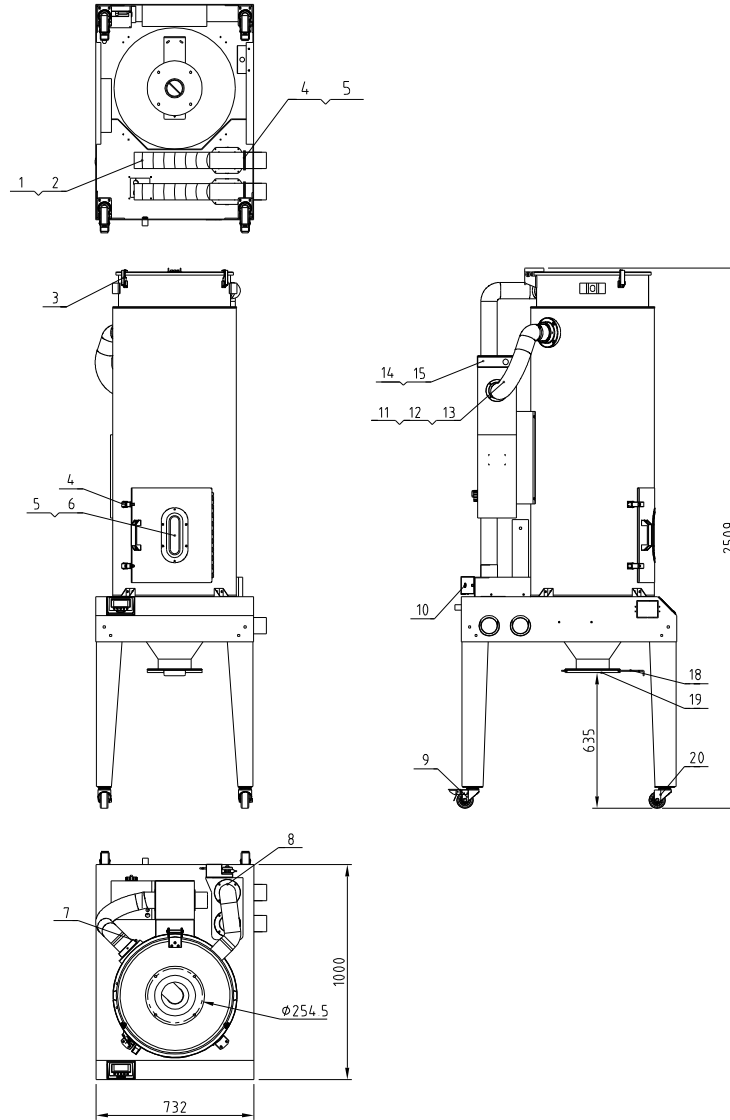


* indicates the items that may be damaged; ** indicates the items that are more likely to be damaged. It is recommended to back them up.
Please confirm the version number of the instruction manual before placing an order to purchase spare parts, so as to ensure that the material number of spare parts is consistent with the physical one.

10	BH10230036110	Air door shaft MHD-230U-E-03/05	SUS304	1	
9	BH11230000110	Wind blade MHD-230U-E-03/04	SUS304	2	
8	YW63031500000	Cross recessed pan head screw G2/7018 M2*15		4	
7	MHD-230U-E-03/03	flange 2	SUS201	2	
6	MHD-230U-E-03/01	Air door component body	SUS201	2	
5	BH10023001610	Bearing seat MHD-230U-E-03/06	SUS304	4	
4	YW68001500300	Circlip for axis use type A G2/7894.1 15		4	
3	YR20552500100	O-ring inner diameter 31.5mm * wire diameter 3.0mm (fluororubber)		2	*
2	YW11620201300	Bearing 6202ZZ(TPI)		4	
1	MHD-230U-E-03/02	flange 1	SUS201	2	
序号	代号	名称	材质	数量	备注

					制图	版号	B	标题	MHD-230U	图号	MHD-230U-E-03	比例	1:3	数量	1
					设计	核准			3"/3"风门组件				材质	/	
					校对				信易電熱機械股份有限公司 Shini Plastics Technologies, Inc.	表面要求	抛光				
标记	更改前	更改后	更改人	日期	审核	日期	20160908			物料号	/				

容量(L)	功率(kW)	进风管径(inch)	出风管径(inch)	版本号	重量(kg)
300	12	3	3	B	130



Technical requirements

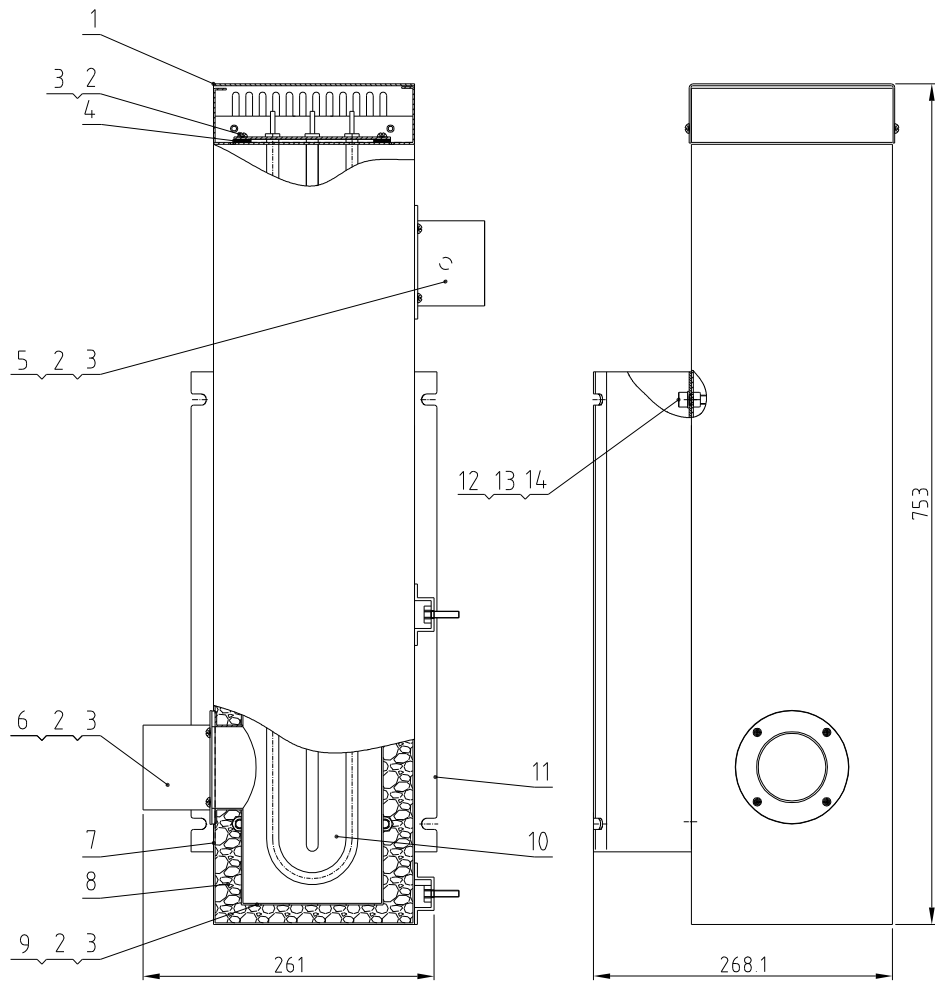
1. The power of hopper drying heater is 12KW
The capacity of the drying hopper is 300L

技术要求:

- 1、料桶干燥电热的功率为 12KW
干燥料桶的容量为 300L。

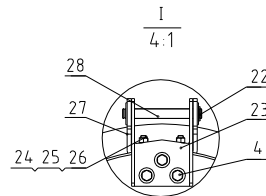
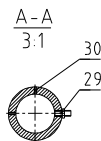
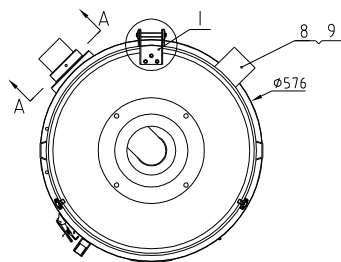
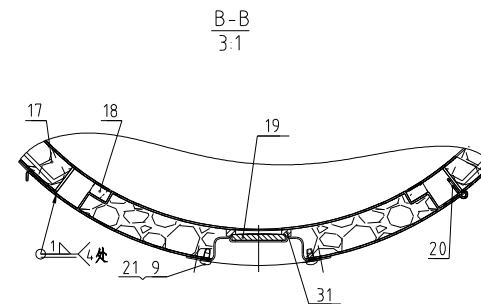
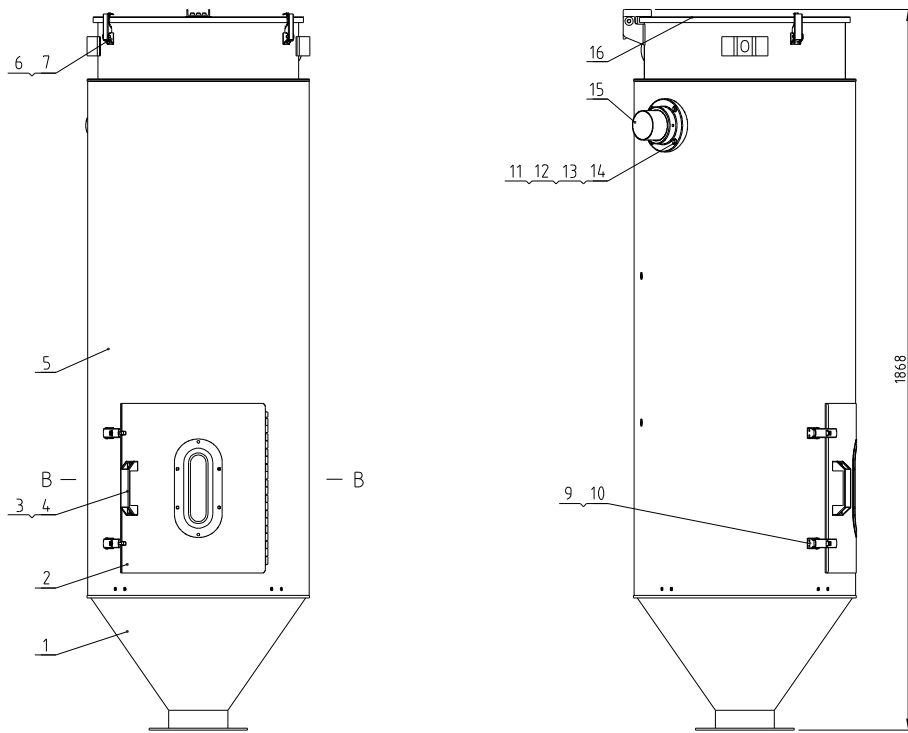
20	YW03000300200	3" Flexible castor		2	
19	BA20164500010	Shut-off plate flange	AC4D	1	
18	YW09102000000	Large shut-off plate		1	
17	YR20000300000	Stainless steel punching clamp seal ring 3"	Silica gel	2	
16	YW07000300300	Stainless steel punching clamp 3"	SUS304	2	
15	YR10161200000	Heating tank silica gel fastener #16#-12L	Silica gel	1	
14	BH70301200150	pipe heater 12KW		1	
13	BW72303700010	Heat-insulated Heat resistant pipe		1	
12	YW02003500000	Steel wire hose 3.5"		1	
11	YW72033600100	Heat resistant pipe 3"	SUS201	6	
10	YE30002400700	Air door actuator NM24-A-SR		1	
9	YW03000300000	3" Brake castors		2	
8	YE10558805000	Airflow sensor KY026-FSFS05T08L08		1	
7	BE90582500050	Thermocouple 5x4.0LxM8x2.5M		1	
6	YR10023000900	Cleaning door fastener MHD-230U-A-09	Red silica gel	1	
5	YW70008000000	Sight glass MHD-80U-A-10	Reinforced glass	1	
4	YW09005800000	Buckle SDP-05B		2	
3	YW02003000400	Spring buckle adjustable SAL-6U-A-35		2	
2	YW02003500000	Steel wire hose 3.5"		4	
1	YW72033600100	Heat resistant pipe 3"		1	

				制图	版号	标题	图号	比例	1:22	数量	1
				设计	核准	MHD-300U 模组化料斗干燥机	MHD-300U-ALL			材质	
				校对			信易电热机械股份有限公司 Shini Plastics Technologies, Inc.	表面要求			
标记	更改前	更改后	更改人	日期	审核			日期	物料号		



14	YW65008000100	Standard spring washer GB/T93 8-Longzine		4	
13	YW66081900000	Flat washer A grade GB/T97 18(9-16×16)-Longzine		4	
12	YW61082001200	Inner hexagon cylinder screw GB/T70.1 M8×20-12.9-Longzine		4	
11	SHD-300U-A-13	heating case fixed plate	SPCC2.0	1	Borrowed
10	BH70301200150	Heater pipe 12kw	Assembly	1	
9	MHD-300U-B-02	Hot air pipe	Weldment	1	
8	YP60613000000	Phenolic laminated fabric board	Aluminum foil glass wool felt	1	
7	MHD-300U-B-01	External heating case	SPCC15	1	
6	MHD-230U-B-04	Heating case air inlet flange	SUS201	1	Borrowed
5	MHD-230U-B-05	Heating case air outlet pipe flange	SUS201	1	Borrowed
4	YR10161200000	Heating case silical gel fastener	Silica gel 3.0	1	
3	YW66051300000	Flat washer 5.5×13×1 Longzine		12	
2	YW62051000100	Large cross socket flat head screw JIS1111 M5×10-Longzine		14	
1	SHD-230U-A-23	Heating case cover	SPCC1.5	1	Borrowed
序号	代号	名称	材质	数量	备注

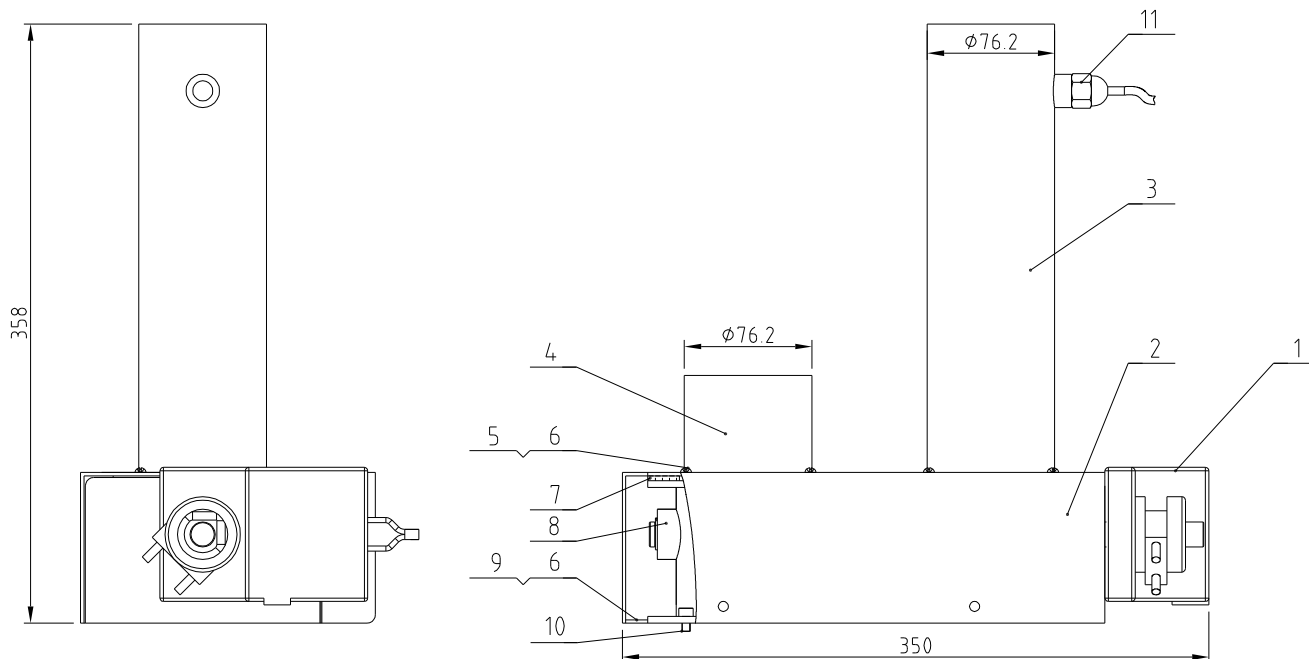
					制图		版号	0	标题	MHD-300U	图号	MHD-300U-B-ALL	比例	1:6	数量	1
					设计		核		加热箱组件				材质			
					校对		准		 信易电热机械股份有限公司 Shini Plastics Technologies, Inc.			表面要求				
标记	更改前	更改后	更改人	日期	审核		日期	20160908							本图采用第一角画法	



31	YR10008001300	Sight glass fastener	white silica gel	1	
30	YW68061000000	Inner hex flat end lock screw GB/T77 M6-10-Longene		2	
29	BE90582500050	Thermocouple MB-25M	Assembly	1	
28	BH10006003110	Hinge pin SAL-6U-31	SUS201	1	
27	MHD-120U-A-11	Lever hinge	SUS201	1	Borrowed
26	YW66061200000	Flat washer A grade GB/T93 16-A2-70SUSJ		4	
25	YW61061001800	Inner hex column head screw GB/T70 M6-10-A2-70SUSJ		4	
24	YW64000600200	Non-mental inserted hexagon lock nut GB/T889 1M6		4	
23	MHD-120U-A-10	Upper hinge	SUS201	1	Borrowed
22	YW66000500000	E-type washer E5		2	
21	BL02080002020	Sight glass MHD-80U-A-97	SUS304	1	Borrowed
20	YW62041000000	Large cross socket flat head screw J51111 M6-10-Longene		7	
19	YW70008000000	Sight glass	Tempering glass	1	
18	MHD-230U-A-09	Cleaning door fastener		1	
17	YP60252000000	Epoxy glass laminate wood	Assembly	1	
16	MHD-230U-A-04	Hopper cover	SUS304	1	Borrowed
15	MHD-300U-A-03	Down-blow pipe assembly	SUS201	1	
14	YW66061300000	Flat washer A grade GB/T93 16-Longene		7	
13	YW65006000100	Standard spring washer GB/T93 6-Longene		7	
12	YW61062501200	Inner hex column head screw GB/T70 1 M6-25-12.9-Longene		4	
11	MHD-230U-A-06	down-blow pipe flange	AC4D	1	Borrowed
10	YW09005800000	Buckle SDP-058	SUS304	2	
9	YW62051000000	Large cross socket flat head screw J51111M6x10-A2-70SUSJ		12	
8	MHD-230U-A-08	Air exhaust pipe	SUS201	1	Borrowed
7	YW64040700100	Non-mental inserted hexagon lock nut GB/T889 1M6		4	
6	YW02003000400	Adjustable snap hook		2	
5	MHD-300U-A-02	Insulation board	SUS43010 B	1	
4	YW61061201000	Inner hex column head screw GB/T70 1 M6x12-12.9-Longene		5	
3	BW20012000040	Aluminum square handle 120LM6		1	
2	MHD-230U-A-03	External cleaning door	Assembly	1	Borrowed
1	MHD-300U-A-01	Storage tank	Assembly	1	
序号	代号	名称	材质	数量	备注

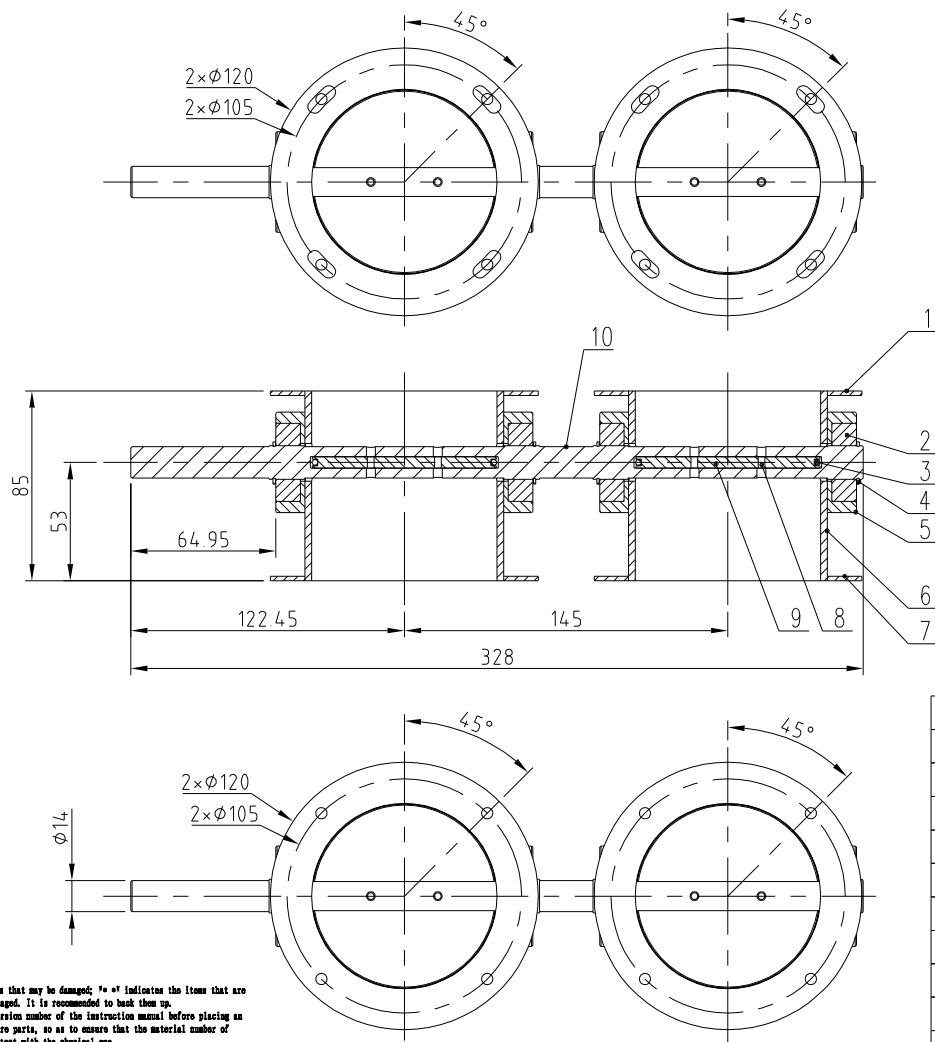
					制图	版号	C	标题	MHD-300U	图号	MHD-300U-A-ALL	比例	1:12	数量	1
					设计	核准		保送料桶组件							
					校对										
标记	更改前	更改后	更改人	日期	审核	日期	20160908					表面要求			
												物料号			

SHINI 信易电热机械股份有限公司
Shini Plastics Technologies, Inc.



11	YE10558805000	Air door actuator KYD26-FSF5D5T08L08	Assembly	1	
10	YW61050600300	Inner hexagon cylinder screw GB/T170.1M5×16-12.9-Longzine		8	
9	MHD-230U-E-01	Actuator bottom plate	SPCC2.0	1	
8	MHD-230U-E-03	3"/3" Air door assembly	Assembly	1	
7	MHD-230U-E-06	Actuator flange pipe fastener	Silica gel 3.0	4	
6	YW66051300000	Flat washer A grade GB/T97.15(5.5x10x1)-Longzine		20	
5	YW62051000100	Large cross socket flat head screw JIS1111 M5x10-Longzine		12	
4	MHD-230U-E-05	Actuator air inlet flange pipe	SUS201	1	
3	MHD-230U-E-04	Actuator air outlet flange pipe	SUS201	1	
2	MHD-230U-E-02	Actuator upper cover plate	SPCC2.0	1	
1	YE30002400700	Air door actuator NM24A-SR	Assembly	1	
序号	代号	名称	材质	数量	备注

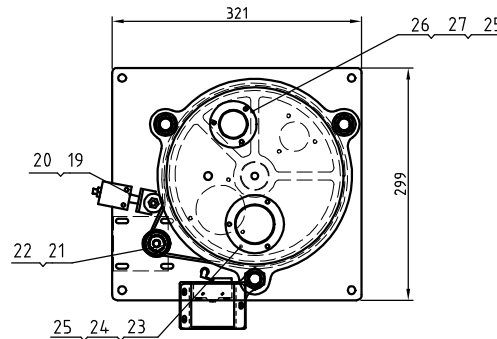
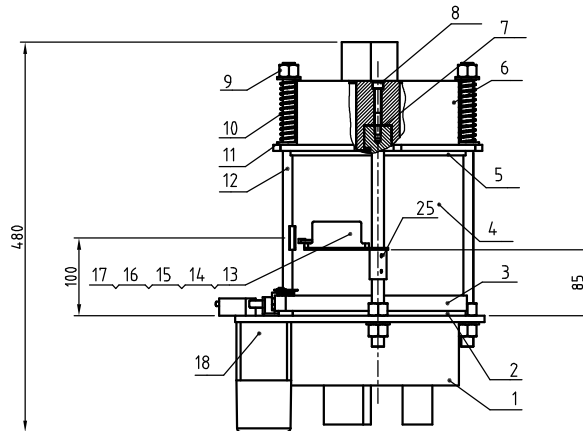
					制图	版号	0	标题	MHD-230U	图号	MHD-230U-E-ALL	比例	1:4	数量	1
					设计	核准			执行器组件				材质		
					校对				信易电热机械股份有限公司 Shini Plastics Technologies, Inc.			表面要求			
标记	更改前	更改后	更改人	日期	审核	日期	20160908						物料号		



* indicates the items that may be damaged; ** indicates the items that are more likely to be damaged. It is recommended to back them up.
Please confirm the version number of the instruction manual before placing an order to purchase spare parts, so as to ensure that the material number of spare parts is consistent with the physical one.

10	BH10230036110	Air door shaft MHD-230U-E-03/05	SUS304	1	
9	BH11230000110	Wind blade MHD-230U-E-03/04	SUS304	2	
8	YW63031500000	Cross recessed pan head screw G3/1618 M3*15		4	
7	MHD-230U-E-03/03	flange 2	SUS201	2	
6	MHD-230U-E-03/01	Air door component body	SUS201	2	
5	BH10023001610	Bearing seat MHD-230U-E-03/06	SUS304	4	
4	YW68001500300	Circlip for axis use type A G3/1618 1.15		4	
3	YR20552500100	O-ring inner diameter 31.5mm * wire diameter 3.0mm (fluororubber)		2	*
2	YW11620201300	Bearing 6202ZZ(TPI)		4	
1	MHD-230U-E-03/02	flange 1	SUS201	2	
序号	代号	名称	材质	数量	备注

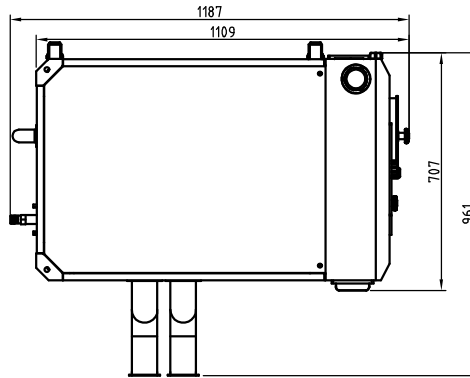
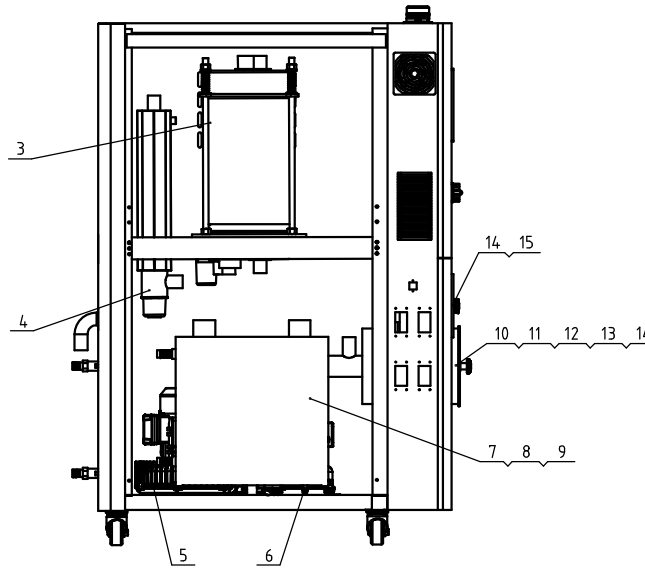
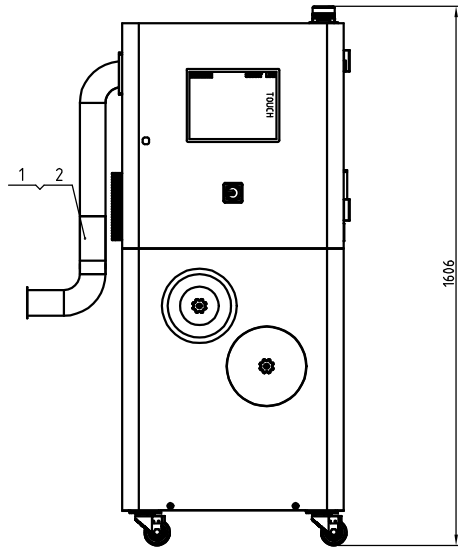
					制图	版号	B	标题	MHD-230U	图号	MHD-230U-E-03	比例	1:3	数量	1
					设计	核准			3"/3"风门组件				材质	/	
					校对				信易電熱機械股份有限公司 Shini Plastics Technologies, Inc.	表面要求	抛光				
标记	更改前	更改后	更改人	日期	审核	日期	20160908			物料号	/				



27	SD-120H-B-01	1.5" air pipe flange	SUS201	3	
26	YR90001500200	1.5" flange washer	White silical gel	3	
25	YW62051000100	Large cross socket pan head screw 2MMx8-Longzine		15	
24	YR90000200000	2.0" flange washer	White silical gel	2	
23	SD-120H-B-02	2" air pipe flange	SUS201	2	
22	YW68004500000	Inner hex. flat end lock screw GB/T77 M4.5-Longzine		3	
21	YW08001000100	Synchronous pulley SD-120H-B-05	45#	1	
20	YW63044500000	Cross socket pan head screw GB/T-#18 M4.5-Longzine		2	
19	SD-400H-A-40	Belt regulator	Assembly	1	borrow
18	YM50512600000	Gear motor 3IK15GN-C-T	Assembly	1	
17	BL04.4.02200020	Micro switch fixed piece SD-40H-A-22	SUS201	1	
16	YW6304.0600000	Cross socket pan head screw GB/T-#18 M4.5-Longzine		3	
15	YW63032500000	Cross socket pan head screw GB/T-#18 M4.5-Longzine		2	
14	YE14511200000	Limit switch YBLXW-5/11G2	Assembly	1	
13	YR4.03309000000	Micro switch box	ABS	1	
12	BH10533000010	Double head screw SD-40H-B-07	Q235A	3	zinc plated
11	YW66163000000	Flat washer A grade GB/T97.1 16- Longzine		9	
10	YW01201800000	Spring (SD-700H-B-07)	70Mn	3	
9	YW64001600000	Hex nut GB/T6170 M16-Longzine		9	
8	YW61086500000	Inner hex. cylindrical screw GB/T718 M4.5-23-Longzine		2	
7	SD-40H-B-05	Honeycomb mount shaft	45	2	borrow
6	BA4.0012000110	Honeycomb upper cover SD-120H-B-03	AC4B	1	
5	YR10010000700	Silical gel Teflon washer (upper)	Red silical gel+Teflon	1	
4	SD-120H-B-06	Honeycomb φ220×200L	Full silical gel	1	
3	YR00203000000	Synchronous belt 20×300XL(L.762)	Assembly	1	
2	YR10010000900	Silical gel Teflon washer (lower)	Red silical gel+Teflon	1	
1	BA4.0012000210	Honeycomb lower cover SD-120H-B-04	AC4B	1	

Mark	Before Mod.	After Mod.	Mod. by	Date	App.	Date

No.	Material No.	Name	Mat.	Num.	Rem.
Title SD-120H		Drawing no.		Scale 1:6	No. 1
Honeycomb Rotor		SD-120H-B-ALL		Surface req.	Mat.
		SHINI 信易電熱機械股份有限公司 Shini Plastics Technologies, Inc.		Mat No.	



Version	D
Regen. heater power (kW)	4
Regen. blower power (kW)	0.4
Drying blower power (kW)	1.5
Drying air quantity (m3/hr)	200
Outlet and inlet pipe dia. (inch)	2.5
Cooling water req. flow (L/min)	30
Weight (kg)	265

Tech. Req:

1. Main parameters

- a. Total power: 5.9KW
- b. Power: 3φ, 400VAC, 50Hz
- c. Dehumidifying air quantity: 200m³/hr
- d. Cooling water pressure 3~5kgf/cm², cooling inlet water, cooling water flow: 30L/min, cooling water temp.: 10~30C°

2. The installation of pipeline fittings should be horizontal and vertical, and in order;

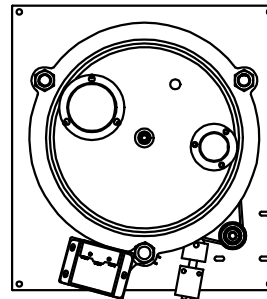
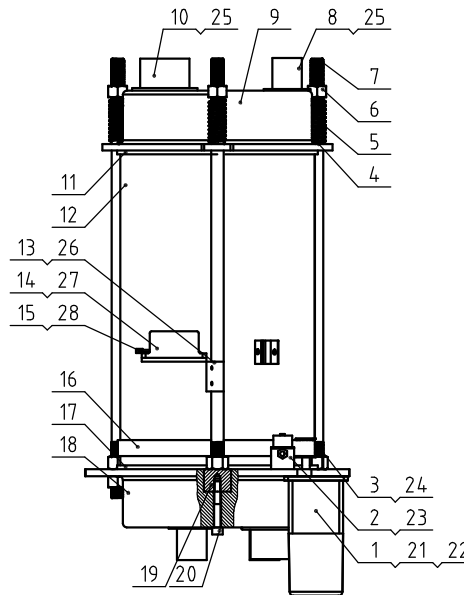
3. There should be no abnormal sound during machine running, and no mutual friction and collision between pipelines or and parts;

4. All sealing parts of dehumidifier are no air leakage;

5. All kinds of labels are complete, and there should be no bubble, drooping, curling and other defects;

No.	Material No.	Name	Mat.	Num.	Remarks
15	YW09675100000	Small star nut 5/16"	Aluminium alloy	2	
14	YR50708000100	Filter 700/800G		1	
13	YR10120400000	Filter barrel fastener SD-120H-ALL-04	Silica gel	1	
12	YR50203000000	Filter SD-200/300 L		1	
11	YW69051600000	Butterfly nut 5/16"	Q235A	1	
10	BR90120500010	Filter hopper cover SD-120H-ALL-05	PC	1	
9	BE90342500050	Thermocouple STM		1	
8	BL03154040120	Cooler (the side has hole)		1	
7	BW88152000020	Cooler (the side without hole)		1	
6	BM30042000050	Shini blower RB-420		1	
5	BM30020500050	High-pressure blower RB-205		1	
4	BH70150400050	Pipe heater 4KW		1	
3	SD-200H-B-ALL	Honeycomb rotor		1	
2	YW02003500000	Stainless steel pipe clamp 35"		4	
1	YW720033600100	Heat-resistant air pipe 3"		1	

Mark	Before Mod.	After Mod.	Mod. by	Date	Dra.	Ver.	0	Title	SD-200H-SM4	Drawing no.	SD-200H-SM4-ALL	Scale	1:13	No.	1
					Desi.	App. by		Smart Modular Dehumidifying Drying							
					Check										
					App.	Date	20090224								
										信易電熱機械股份有限公司 Shini Plastics Technologies, Inc.		Surface req.		Mat No.	

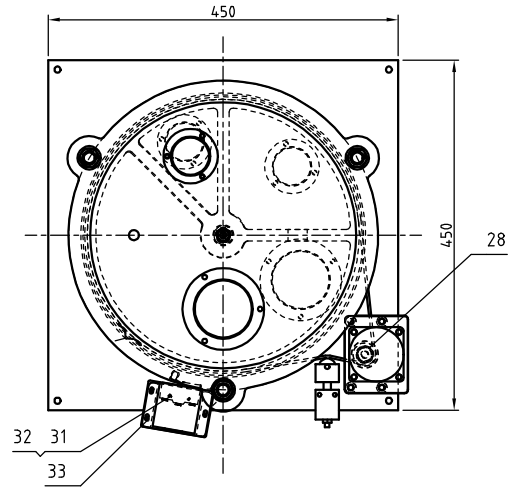
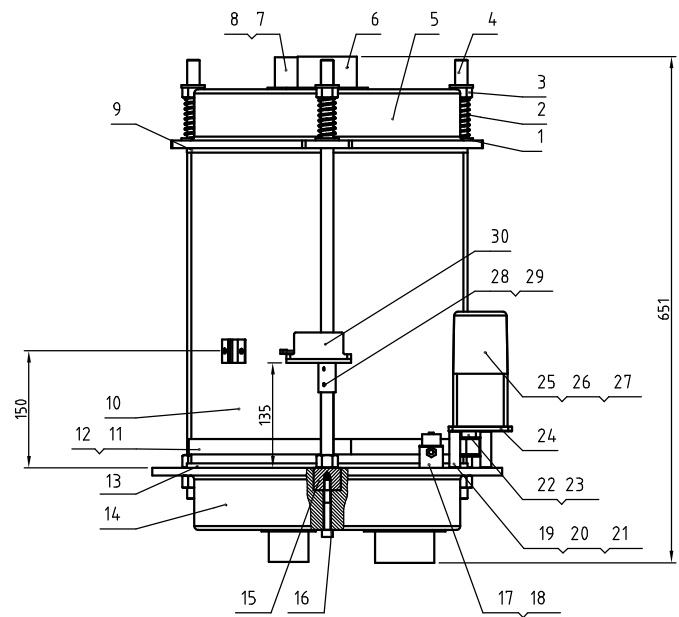


28	YW63032500000	Cross socket pan head screw GB/T48093x25-Longzine		2	
27	YW63040600000	Cross socket pan head screw GB/T4809M6-Longzine		3	
26	YW68004500000	Inner hex. flat end lock screw GB/T777 M4x5-Longzine		2	
25	YW62051000100	Large cross socket pan head screw J5111 M5x10-Longzine		15	
24	YW68041000000	Inner hex. flat end lock screw GB/T777 M4x10-Longzine		1	
23	YW63044500000	Cross socket pan head screw GB/T4809 M4x5-Longzine		2	
22	YW64000500000	Hex nut M5		4	
21	YW61059500000	Inner hex. cylindrical screw GB/T7711 M5x95-12.9-Longzine		4	
20	YW61086500000	Inner hex. cylindrical screw GB/T7711 M6x45-12.9-Longzine		2	
19	BH11101300010	Honeycomb mount shaft	45	2	borrow
18	BA40152000110	Honeycomb upper cover	ZL101	1	
17	YR10152000000	Silical gel Teflon washer (lower)	Red silical gel Teflon	1	
16	YR00203400000	Synchronous belt 30x470XL	Assembly	1	
15	YE14511200000	Limit switch YBLXW-5/11G2	Assembly	1	
14	YR40330900000	Micro switch box	ABS	1	
13	BL04402200020	Micro switch fixed piece SD-40H-A-22	SUS201	1	borrow
12	YW71025000700	Honeycomb $\phi 250 \times 4.00$	Full silical gel	1	
11	YR10152000100	Silical gel Teflon washer (upper)	Red silical gel Teflon	1	
10	SD-200H-A-35	2.5" flange	SUS201	2	borrow
9	BA40200100310	Honeycomb lower cover	ZL101	1	borrow
8	SD-200H-A-39	1.5" upper & lower cover flange	SUS201	3	
7	BH11100000210	Double head screw SD-1000H-B-11	SUS200	3	borrow
6	YW64001600000	Hex nut GB/T6170 M16-Longzine		6	
5	YW01201800000	Spring (SD-700H-B-07)	70	3	borrow
4	YW66163000000	Flat washer A grade GB/T97.1 16-Longzine		6	
3	YW08001000100	Synchronous pulley	45	1	
2	SD-400H-A-40	Belt regulator	Assembly	1	borrow
1	YM50036000300	Gear motor	Assembly	1	110V
	YM50512600000	Gear motor	Assembly	1	230V
No.	Material No.	Name	Mat.	Num.	Rem.

					Dra.		Ver.	
					Desi.		App.	
					Check			
Mark	Before Mod.	After Mod.	Mod. by	Date	App.		Date	

Title	SD-200H	Drawing no.	SD-200H-B-ALL	Scale	1:6	No.	1
	Honeycomb Rotor					Mat.	
				Surface req.			
				Mat. No.			

SHINI 信易電熱機械股份有限公司
Shini Plastics Technologies, Inc.



33	YW6304.060000	Cross socket pan head screw GB/T 48B M4x-Longzine		3	
32	YE1451120000	Limit switch YBLXW-5/1G2	Assembly	1	
31	YW6303250000	Cross socket pan head screw GB/T 48B M4x5-Longzine		2	
30	YR4033090000	Micro switch box	ABS	1	
29	YW6800450000	Inner hex. flat end lock screw GB/T77 M4x5-Longzine		3	
28	SD-40H-A-22	Micro switch fixed piece	SUS201	1	borrow
27	YW6400050000	Hex nut M5		4	
26	YW6105950000	Inner hex. cylindrical screw GB/T78.1 M4x5-Longzine		4	
25	YM5051260000	Gear motor	Assembly	1	
24	SD-400H-A-38	Gear motor mount plate	AC4D	1	
23	YW6804.100000	Inner hex. flat end lock screw GB/T77 M4x8-Longzine		1	
22	YW080014.00100	Synchronous pulley	45	1	
21	YW64.000600300	Hex. nut GB/T6170 M6-Longzine		4	
20	YW6306700000	Thick head screw M6x70(Longzine)		4	
19	BH10070001510	Positioning pipe SD-400H-A-37	AL6061	4	
18	YW6304.450000	Cross socket pan head screw GB/T 48B M4x5-Longzine		2	
17	SD-400H-A-40	Belt regulator	Assembly	1	borrow
16	YW6108650000	Inner hex. cylindrical screw GB/T78.1 M4x5-Longzine		2	
15	SD-40H-B-05	Honeycomb mount shaft	45	2	borrow
14	SD-400H-A-47	Honeycomb lower cover	LY112	1	borrow
13	YR10304.000000	Silical gel Teflon washer (lower)	Red silical gel+Teflon	1	
12	YR0000300000	Synchronous pulley	Assembly	4	
11	YR00304.700000	Synchronous belt 30x470XL	Assembly	1	
10	YW71035000700	Honeycomb PPSR-350x400L	Full silical gel	1	
9	YR10304.000100	Silical gel Teflon washer (upper)	Red silical gel+Teflon	1	
8	YW62051000100	Cross socket flat head screw GB/T 48B M4x5-Longzine		15	
7	SD-30H-A-05	2" upper & lower cover flange	SUS201	3	borrow
6	SD-400H-A-33	Honeycomb upper cover 3- way	SUS201	2	
5	SD-400H-A-46	Honeycomb upper cover	ZL101	1	borrow
4	SD-1000H-B-11	Double head screw	Q235A	3	borrow
3	YW64.001600000	Hex nut GB/T6170 M6-Longzine		6	
2	YW01201800000	Spring (SD-700H-B-07)	70	3	borrow
1	YW66163000000	Flat washer A grade GB/T197.14-Longzine		6	
No.	Material No.	Name	Mat.	Num	Remarks

					Dra.		Ver.	
					Desi.		App.	
					Check			
Mark	Before Mod.	After Mod.	Mod. by	Date	App.		Date	

Title		SD-400H		Drawing no.	
Honeycomb Rotor		SD-400H-B-ALL		Scale	1:6
				No.	1
				Mat.	
				Surface req.	
				Mat No.	

SHINI 信易電熱機械股份有限公司
Shini Plastics Technologies, Inc.