

x means possible broken parts.
 xx means easy broken part, and spare backup is suggested.
 Please confirm the version of manual before placing the purchase order to guarantee that the item number of the spare part is in accordance with the real object.

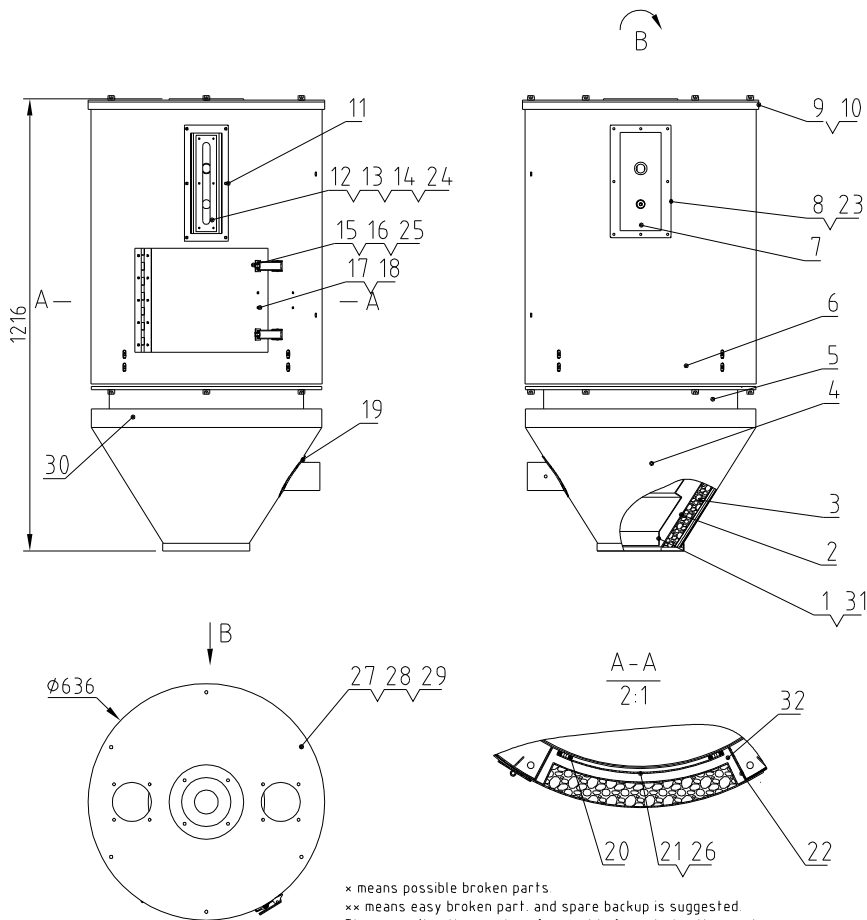
•表示可能损坏的项目; **表示较可能损坏的项目, 建议备份。
 请在下单采购零件之前, 先确认说明书版本号, 以确保零件物料号与实物一致。

Rotary valve power	blower power	heater power	mixing motor power	Ver.
0.4kW	0.55kW	12kW	0.25kW	Ver.C
Rotary valve diameter	Inlet and outlet pipe diameter	Discharge port diameter	Mixing motor speed	hopper capacity
4inch	3inch	4inch	2.4r/min	160L

18	YE15000200000	Anti-rotation level switch 200°		1	
17	BE90600000050	Thermocouple 9400-0000 (SCR-160U-ALL-17 Ver.0)		1	
16	YW02003500000	Heat insulating pipe 1.5" type clay building clay heat insulating 3000		2	
15	YW72033600100	Heat insulating pipe 2" white layer and 4" for 600mm (1.1m)		0.5M	
14	CG24000400150	Rotary valve 300-30/2500/1000/2000/2000		1	
13	SCR-160U-E-ALL	Mixing shaft assembly		1	
12	SCR-160U-F-ALL	Cyclone dust collector assembly		1	
11	YR10001200600	Motor 1000W 220V 50Hz 1.5A 1400r/min 1.5A 1400r/min		1	
10	BM30055000150	Motor 3000W 220V 50Hz 13.6A 1400r/min 13.6A 1400r/min		1	
9	YE90070000000	Thermocouple 9400-0000 (SCR-160U-ALL-09)		1	
8	YW02180200100	Heat insulating pipe 1.5" type clay building clay heat insulating 3000		2	
7	BP82184500000	Filter bag φ1800x500mm(SCR-160U-17)	涤纶TD729	2	•
6	SCR-160U-G-ALL	Control box assembly		1	
5	SCR-160U-D-01	Floor stand		1	
4	SCR-160U-C-ALL	Heating case assembly		1	
3	YE16440200200	Logic relay relay for motor 200V 20A 12V 100mA		1	
2	SCR-160U-B-ALL	Storage tank assembly		1	
1	YM50903300000	Gear motor 500W 110V 11.2A 1400r/min		1	

序号	代号	名称	材质	数量	备注
		制图		0	
		设计			
		校对			
标记	更改前	更改后	更改人	日期	审核
				2024.02.29	
标题		SCR-160U	图号		
		结晶机	SCR-160U-ALL		
			比例	1:25	数量
					1
			表面要求	/	
			物料号	/	





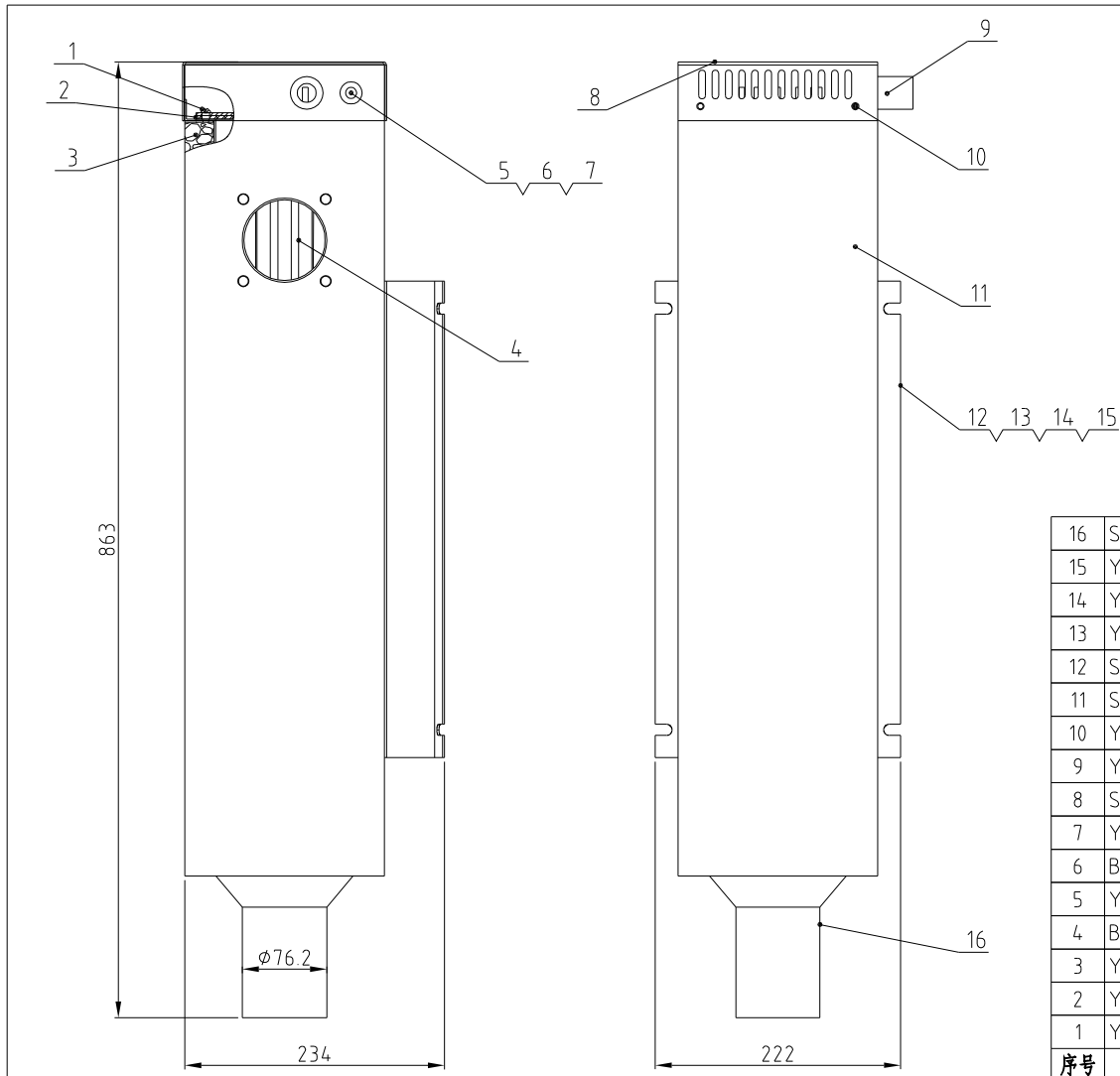
* means possible broken parts
 ** means easy broken part, and spare backup is suggested
 Please confirm the version of manual before placing the purchase order to guarantee that the item number of the spare part is in accordance with the real object.

•表示可能损坏的项目；**表示较可能损坏的项目，建议备份。
 请在下单采购零件之前，先确认说明书版本号，以确保零件物料号与实物一致。

31	YW61061500600	Inner hexagon counterbore head screw Q170.1 M5.5-M 8-Longline		6	
30	SCR-160U-B-13	Hopper aluminum cover plate 2	Aluminum plate with patterns L1.0	1	
29	YW65008000100	Standard spring washer GB/T93 8-Longline		16	
28	YW66081600000	Flat washer A grade GB/T97.1 8-Longline		16	
27	YW61083000000	Inner hexagon cylinder head screw Q170.1 M5.5-M 8-Longline		16	
26	YW62051000000	Large cross socket flat head screw JIS1111 M5-M 5S		8	
25	YW62050500000	Large cross socket flat head screw JIS1111 M5-M 4-Longline		4	
24	YW64000500000	Hexagonal nut M5 anti-loose		6	
23	YW67481900000	Cross socket head tapping screw GB/T19836.1 S14-M3		23	
22	SCR-160U-B-14	Cleaning door frame aluminum cover plate 2	Aluminum plate with patterns L1.0	2	
21	SCR-160U-B-18	Cleaning door baffle	SUS201	1	
20	SCR-160U-B-10	Cleaning door fastener	Foam Silicone 8,0	1	
19	SCR-160U-B-16	Hopper air inlet pipe flange	SUS201	1	
18	SCR-160U-B-17	Cleaning door external cover plate	Aluminum plate with patterns L1.0	1	
17	SCR-160U-B-05	Cleaning door	SUS201	1	
16	SCR-160U-B-11	Snap hook	SUS201	2	
15	YW02003000400	Spring buckle adjustable SM-A-35(Ver.C)		2	
14	YW70000100000	Reinforced glass (six holes)	Tempered glass	1	*
13	YR40000600000	Sight glass iron sheet 6 holes	Silica gel	1	*
12	BW09000630040	Sight glass iron six hole plated		1	
11	SCR-160U-B-06	Sight glas	SUS201	1	
10	YR10010040100	Oven silica gel fastener D		7.8M	
9	SCR-160U-B-04	Tank cover		1	
8	SCR-160U-B-09	Level sensor flange	SUS201	1	
7	SCR-160U-B-01	Storage tank		1	
6	SCR-160U-B-07	Hopper cover plate	Aluminum plate with patterns L1.0	1	
5	SCR-160U-B-15	Hopper aluminum cover plate 3	Aluminum plate with patterns L1.0	1	
4	SCR-160U-B-08	Hopper aluminum cover plate	Aluminum plate with patterns L1.0	1	
3	YP60501500000	Epoxy glass laminate wood		0.097	
2	SCR-160U-B-03	External hopper Welding diagram		1	
1	SCR-160U-B-02	Inner hopper		1	

32	SCR-160U-B-12	Cleaning door frame aluminum cover plate 1	Aluminum plate with patterns L1.0	2
----	---------------	--	-----------------------------------	---

						序号	代号	名称	材质	数量	备注		
						标题	SCR-160U	图号	SCR-160U-B-ALL	比例	1:18	数量	1
						储料桶组件				材质 /			
								表面要求		/			
标记	更改前	更改后	更改人	日期	审核	日期	2024.0114	信易电热机械股份有限公司 Shini Plastics Technologies, Inc.		物料号 /			

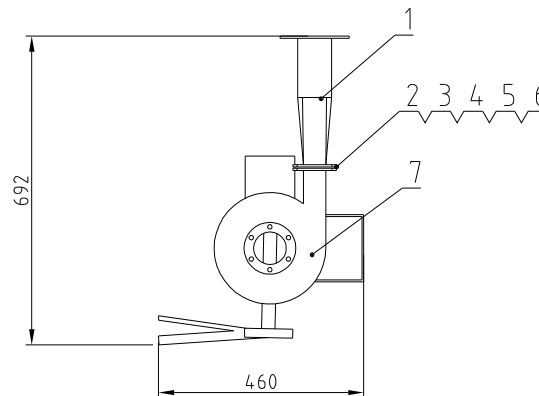
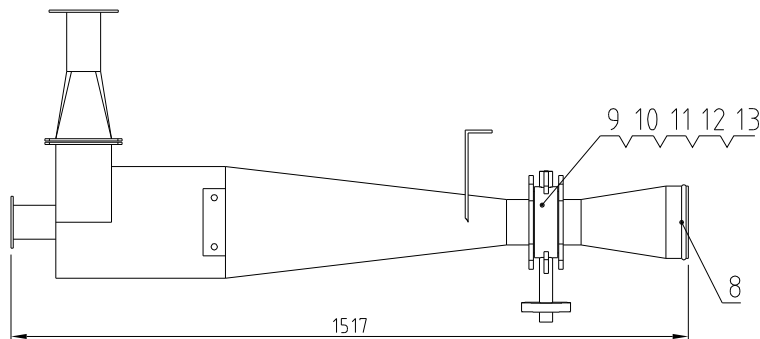


× means possible broken parts.
 ×× means easy broken part and spare backup is suggested.
 Please confirm the version of manual before placing the purchase order to guarantee that the item number of the spare part is in accordance with the real object.

*表示可能损坏的项目; **表示较可能损坏的项目, 建议备份。
 请在下单采购零配件之前, 先确认说明书版本号, 以确保零配件物料号与实物一致。

16	SCR-160U-C-02	Hot air duct pipe		1	
15	YW65008000100	Standard spring washer G3/793 Ø-Longzine		4	
14	YW66081600000	Flat washer A grade G3/797.1 (R. 4)Ø41.6 Longzine		4	
13	YW60082500100	Hexagon screw bolt G3/75783 M6x25-12.9-Longzine		4	
12	SCR-160U-C-03	Heating box fixing plate		1	
11	SCR-160U-C-01	Heating box outer box		1	
10	YW62051000100	Large cross socket flat head screw JIS1111 M10x Longzine		6	
9	YE67116040000	Quick connector of hose WQ61-P16B/AD21.2		1	
8	SHD-230U-A-23	Heating tank cover		1	
7	YW63030600000	Cross recessed pan head screw G3/7-823 M6x Longzine		2	
6	BE85013000550	Insulation material (WQ61-P16B) (see length L) (heat protection material)		1	
5	YE67109000000	Quick connector of hose WQ61-P16B/AD13.0		1	
4	BH70016007750	Pipe heat		1	
3	YP6282014.0000	Fireproof felt thickness 2mm * length 200 * width 10		0.017	
2	YR10161200000	Insulation material (WQ61-P16B) (see length L) (heat protection material)	Silica gel 3.0	1	
1	YW62051500000	Large cross socket flat head screw JIS1111 M10x Longzine		2	
序号	代号	名称	材质	数量	备注

					制图	版号	0	标题	SCR-160U	图号	SCR-160U-C-ALL	比例	1:6	数量	1
					设计	核准			加热箱组件				材质	/	
					校对				信易电热机械股份有限公司	Shini Plastics Technologies, Inc.	表面要求	/			
标记	更改前	更改后	更改人	日期	审核	日期	2024.0114				物料号	/			



13	YW65016200000	Standard spring washer GB/T93 16-Longzine		4	
12	YW66163000000	Flat washer A grade GB/T97.1 16-Longzine		8	
11	YW60161000000	Hexagon screw bolt GB/T5783 M16x100-12.9-Longzine		4	
10	YW64001600000	Hexagonal nut GB/T6170 M16-Longzine		4	
9	YW59418000000	Clay seal laterite wire # High temperature resistance of 180 degree		1	
8	SCR-160U-F-03	Dust collector discharge port flange		1	
7	SCR-160U-F-01	Cyclone hopper		1	
6	YW65006000100	Standard spring washer GB/T93 6-Longzine		6	
5	YW66061300000	Flat washer A grade GB/T97.1 6-Longzine		12	
4	YW64000600300	Hexagonal nut GB/T6170 M6-Longzine		6	
3	YW60063000000	Hexagon screw bolt GB/T5781 M6x30-4.8-Longzine		6	
2	SCR-160U-F-04	Air inlet flange fastener	silica gel	1	
1	SCR-160U-F-02	Dust collector air inlet flange		1	
序号	代号	名称	材质	数量	备注

* means possible broken parts.

** means easy broken part and spare backup is suggested

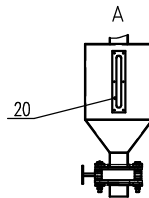
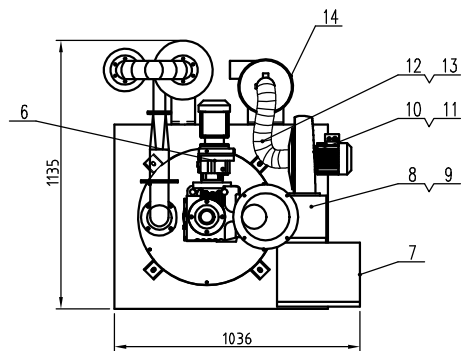
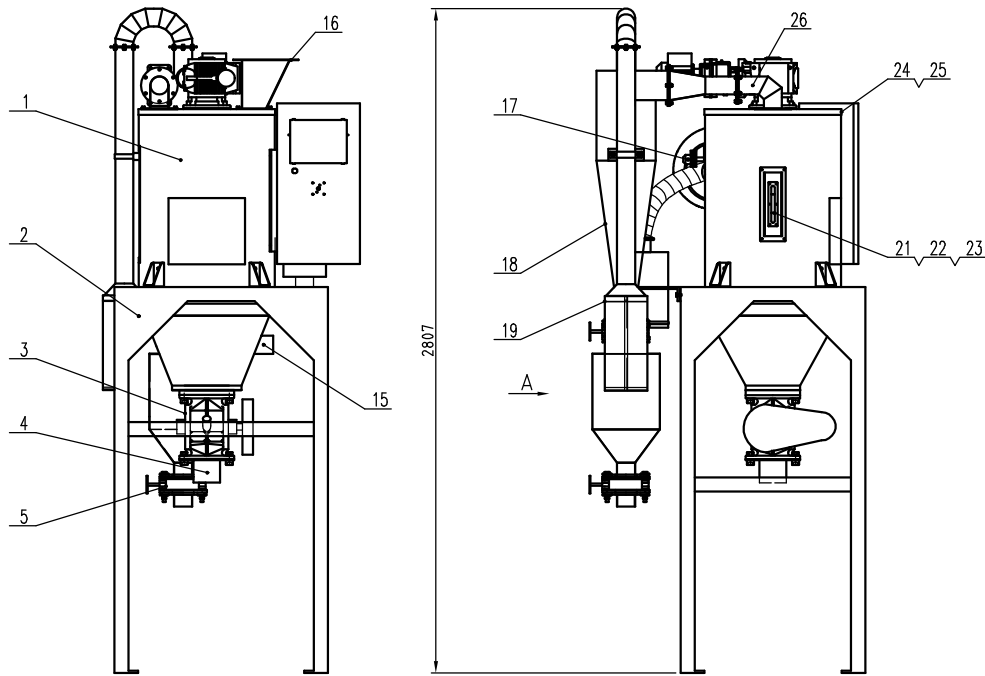
Please confirm the version of manual before placing the purchase order to guarantee that the item number of the spare part is in accordance with the real object.

*表示可能损坏的项目；**表示较可能损坏的项目，建议备份。

请在下单采购零配件之前，先确认说明书版本号，以确保零配件物料号与实物一致。

					制图		版号	0	标题	SCR-160U	图号	SCR-160U-F-ALL	比例	1:15	数量	1
					设计		核		旋风集尘器组件					材质	/	
					校对		准		信易電熱機械股份有限公司 Shini Plastics Technologies, Inc.			表面要求	/			
标记	更改前	更改后	更改人	日期	审核	日期	2024.0112			物料号	/					

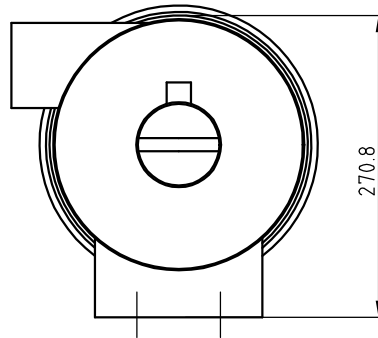
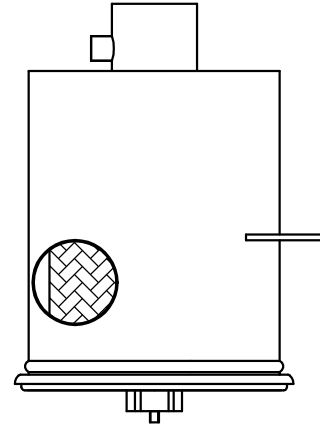
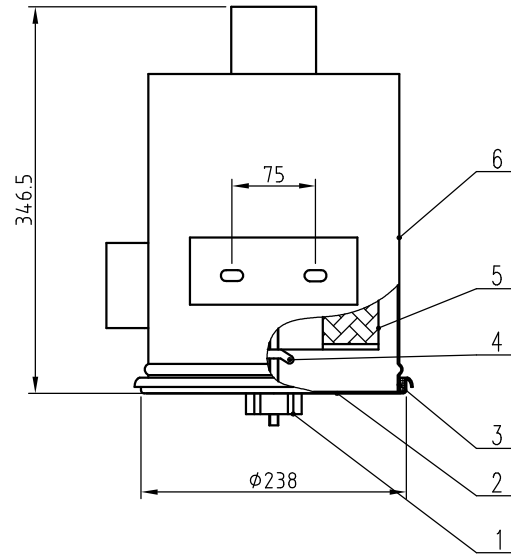
Unloading Blower	Blower Power	Heater Power	Mixing Motor Power	Model Version
0.4kW	0.55kW	12kW	0.25kW	Ver.B
Inlet Air Pipe Dia.	Discharge Port Dia.	Mixing Motor Rotating Speed	Hopper Capacity	
3inch	4inch	2.4r/min	160L	



26	BE90300000050	Thermocoupler 3M	/	1	
25	YR10010040100	Oven silica gel fastener D	/	6M	
24	SCR-160U-A-04	Hopper cover	/	1	
23	YR40000600000	Sight glass six hole	/	2	
22	YW70000100000	Reinforced glass (six holes)	/	1	
21	BW09000630040	Six hole sight glass iron sheet	/	2	
20	YR40001200000	Acrylic six hole	PC	1	
19	BP82184500000	Filter cloth bag Φ180X450mm	/	1	
18	SCR-160U-A-59	Cyclone hopper	/	1	
17	YE15000200000	Anti-rotation level switch	/	1	
16	SCR-160U-A-37	Vacuum hopper receiver adaptor flange	SUS201	1	
15	BE90802000050	Thermocoupler 2M	/	1	
14	SCR-160U-A-32	Filter hopper	/	1	
13	YW02003500000	Stainless steel pipe clamp 3.5"	/	2	
12	YW72033600100	Heat-resistant air pipe 3"	/	0.6M	
11	YR10001200600	Blower fastener	Silica gel	1	
10	BM30055000150	Blower 550W	/	1	
9	YR10161200000	Heating tank silica gel fastener Φ160×124	Silica gel	1	
8	BH70161200050	Heat pipe 12kW	/	1	
7	SCR-160U-A-34	Control box	/	1	
6	YM10773706700	Mixing motor	/	1	
5	YW59030000100	Clip-on common butterfly valve 3"	/	2	
4	SCR-160U-A-66	Discharge valve material port	SUS201	1	
3	CG24000400150	Rotary discharge valve SRV-4S	/	1	
2	SCR-160U-A-38	Floor stand	/	1	
1	SCR-160U-A-01	Material storage tank	/	1	
序号	代号	名称	材质	数量	备注

制图	版号	G	标题	SCR-160U	图号	SCR-160U-A-ALL	比例	1:20	数量	1
设计	核准		结晶机总成				材质	/		
校对	日期	20220808	表面要求				物料号	/		
标记	更改前	更改后	更改人	日期	审核					

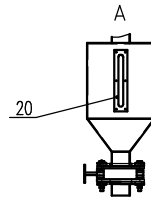
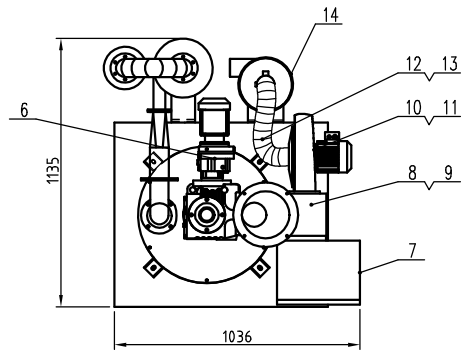
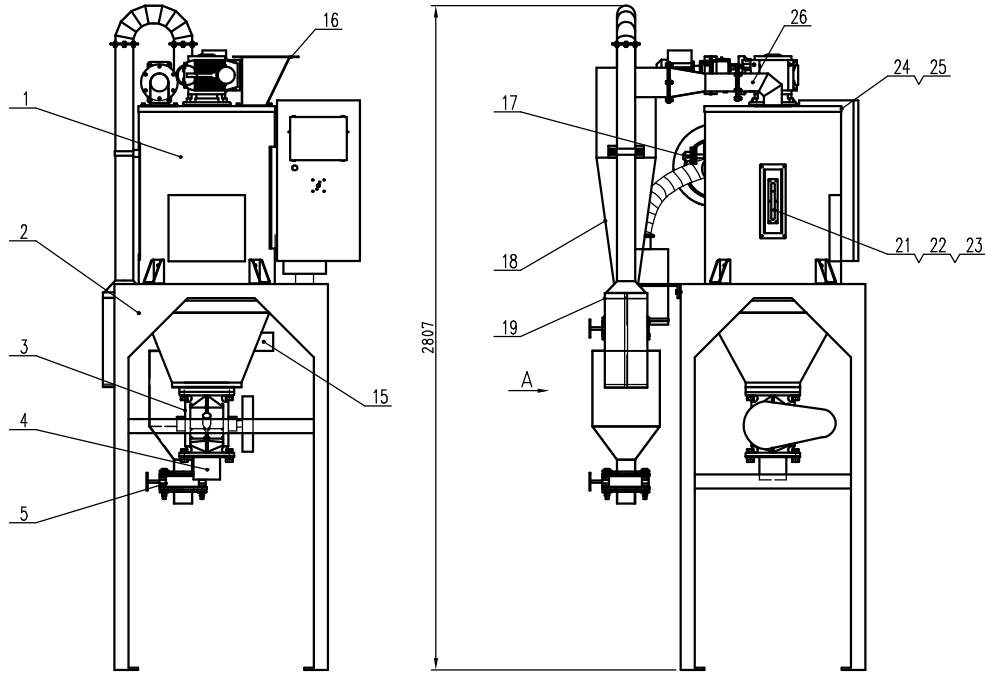
SHINI 信易电热机械股份有限公司
Shini Plastics Technologies, Inc.



6	SCR-160U-A-32-2	Filter hopper body	/	1	
5	YR50203000000	Filter SD-200/300	/	1	
4	YW69051600000	Cap nut 5/16	Q235A	1	
3	YR10026000000	Filter fastener	Silica gel	1	
2	YL21000600000	Filter hopper cover	SPCC2.0	1	
1	YW09675100000	Small start nut 5/16	Q235A	1	
序号	代号	名称	材质	数量	备注

					制图		版号	D	标题	SCR-160U	图号	SCR-160U-A-32	比例	1:6	数量	1
					设计		核		过滤桶					材质	/	
					校对		准		信易電熱機械股份有限公司 Shini Plastics Technologies, Inc.			表面要求	/			
标记	更改前	更改后	更改人	日期	审核		日期	20220808				物料号	/			

Unloading Blower	Blower Power	Heater Power	Mixing Motor Power	Model Version
0.4kW	0.55kW	12kW	0.25kW	Ver.B
Inlet Air Pipe Dia.	Discharge Port Dia.	Mixing Motor Rotating Speed	Hopper Capacity	
3inch	4inch	2.4r/min	160L	

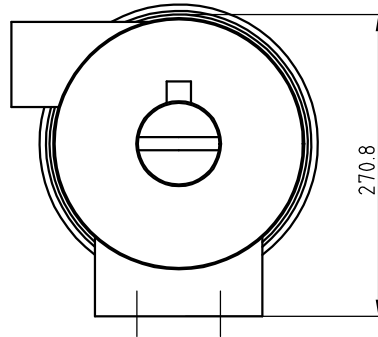
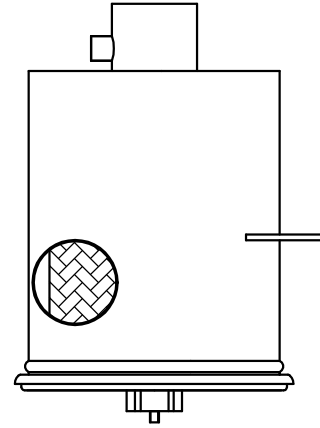
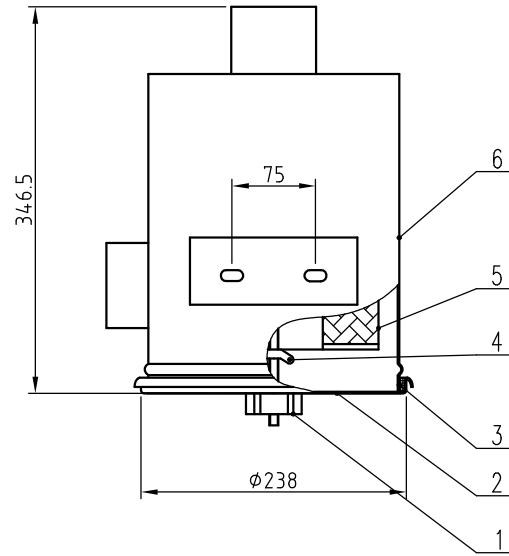


26	BE90300000050	Thermocoupler 3M	/	1	
25	YR10010040100	Oven silica gel fastener D	/	6M	
24	SCR-160U-A-04	Hopper cover	/	1	
23	YR40000600000	Sight glass six hole	/	2	
22	YW70000100000	Reinforced glass (six holes)	/	1	
21	BW09000630040	Six hole sight glass iron sheet	/	2	
20	YR40001200000	Acrylic six hole	PC	1	
19	BP82184500000	Filter cloth bag Φ180X450mm	/	1	
18	SCR-160U-A-59	Cyclone hopper	/	1	
17	YE15802000000	Anti-rotation level switch	/	1	
16	SCR-160U-A-37	Vacuum hopper receiver adaptor flange	SUS201	1	
15	BE90802000050	Thermocoupler 2M	/	1	
14	SCR-160U-A-32	Filter hopper	/	1	
13	YW02003500000	Stainless steel pipe clamp 3.5"	/	2	
12	YW72033600100	Heat-resistant air pipe 3"	/	0.6M	
11	YR10001200600	Blower fastener	Silica gel	1	
10	BM30055000150	Blower 550W	/	1	
9	YR10161200000	Heating tank silica gel fastener φ160×124	Silica gel	1	
8	BH70016000650	Heat pipe 12kW	/	1	
7	SCR-160U-A-34	Control box	/	1	
6	YM10773700700	Mixing motor	/	1	
5	YW59030000100	Clip-on common butterfly valve 3"	/	2	
4	SCR-160U-A-66	Discharge valve material port	SUS201	1	
3	CG24000400170	Rotary discharge valve SRV-4S	/	1	
2	SCR-160U-A-38	Floor stand	/	1	
1	SCR-160U-A-01	Material storage tank	/	1	

序号	代号	名称	材质	数量	备注
		SCR-160U 结晶机总成		1	
		SCR-160U-A-ALL		1	
			比例 1:20	数量	1
			材质		/
			表面要求		/
			物料号		/

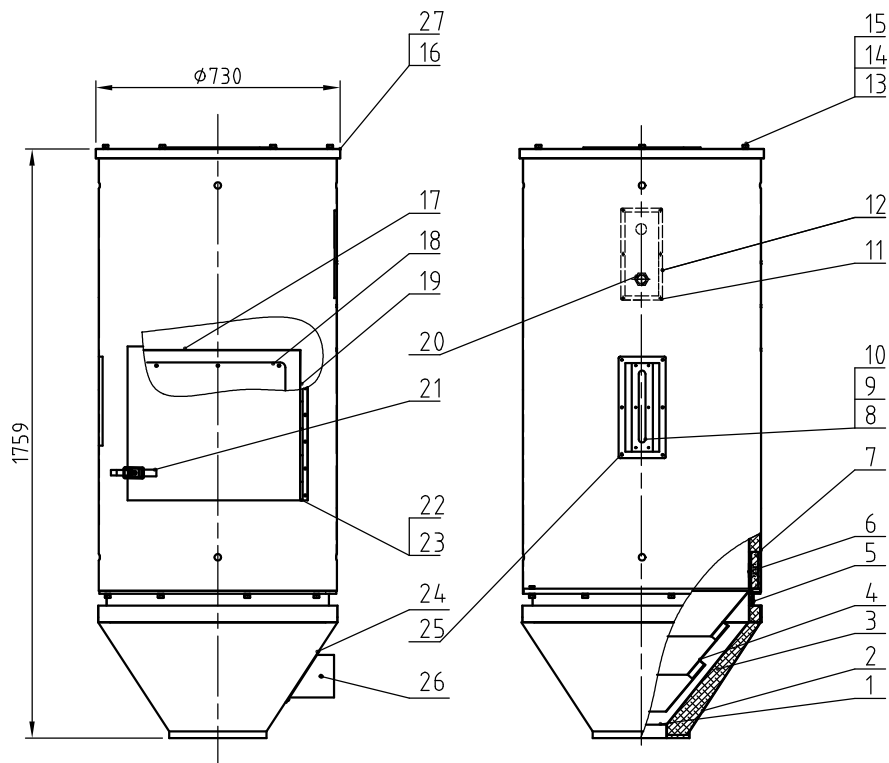
SHINI 信易电热机械股份有限公司
Shini Plastics Technologies, Inc.

制图	版号	G	标题	图号	比例	数量	1
设计	核准		SCR-160U 结晶机总成	SCR-160U-A-ALL	1:20		
校对	日期	20220808					
标记	更改前	更改后	更改人	日期	审核		



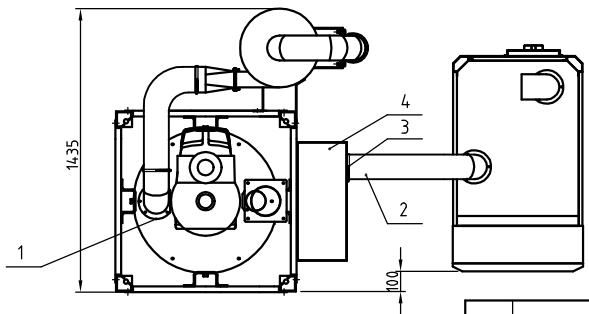
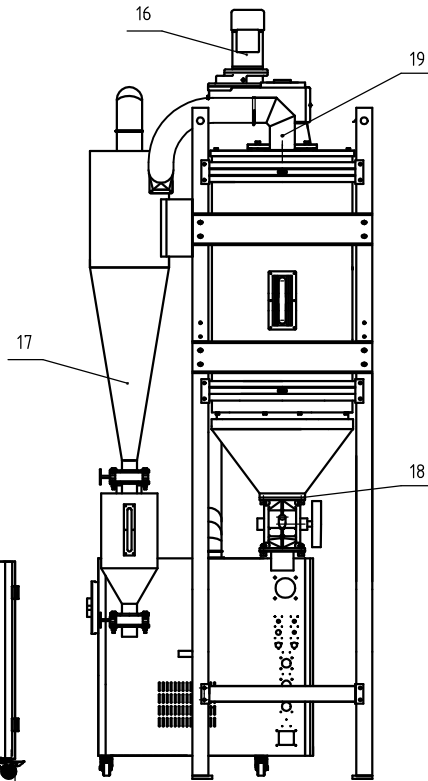
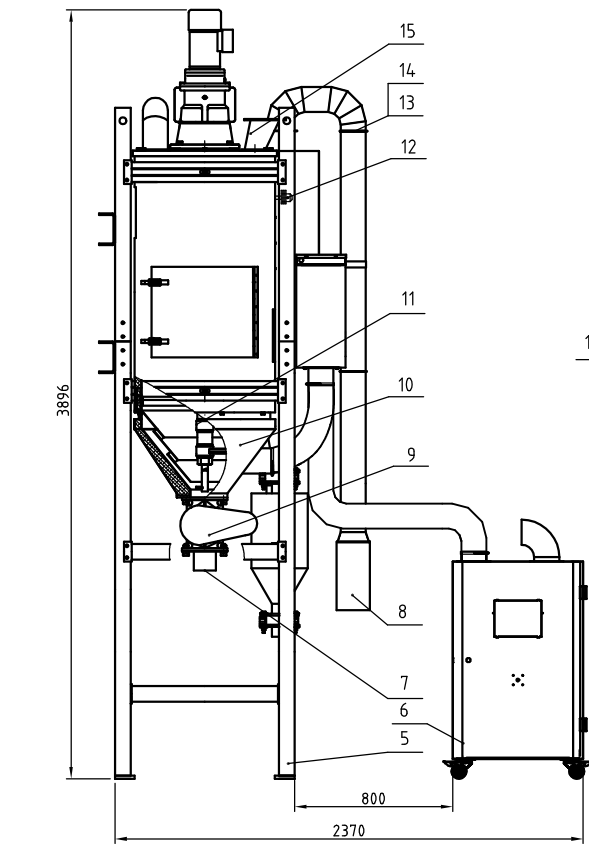
6	SCR-160U-A-32-2	Filter body	/	1	
5	YR50203000000	Filter SD-200/300	/	1	
4	YW69051600000	Butterfly cap 5/16	Q235A	1	
3	YR10026000000	Filter hopper fastener	Silica gel	1	
2	YL21000600000	Filter hopper cover	SPCC2.0	1	
1	YW09675100000	Small star nut 5/16	Q235A	1	
序号	代号	名称	材质	数量	备注

					制图		版号	D	标题	SCR-160U	图号	SCR-160U-A-32	比例	1:6	数量	1
					设计		核		过滤桶					材质	/	
					校对		准			信易電熱機械股份有限公司		表面要求	/			
标记	更改前	更改后	更改人	日期	审核		日期	20220808		Shini Plastics Technologies, Inc.		物料号	/			



27	YR10010040100	Oven silica gel fastener D		1	
26	BE90400000050	Thermocoupler 4M		1	
25	SCR-450U-A-16	Sight glass flange	SUS201(1.5)	1	
24	SCR-450U-A-14	Hopper inlet air pipe flange	SUS201(1.5)	1	
23	SCR-450U-A-12	Cleaning door ext. cover plate	Patterned alu. plate 1.0	1	
22	SCR-450U-A-08	Cleaning door	SUS201	1	
21	YW02003000400	Adjustable snap hook	assembly	2	
20	BH12901620010	Level sensor plug	H58	1	
19	SCR-450U-A-11	Cleaning door cover plate 2	Patterned alu. plate 1.0	2	
18	SCR-450U-A-09	Cleaning door fender plate	SUS201(2.0)	1	
17	SCR-450U-A-10	Cleaning door cover plate 1	Patterned alu. plate 1.0	2	
16	SCR-450U-A-02	Hopper cover	assembly	1	
15	YW65012000000	Standard spring washer GB/T93 12-Longzine		14	
14	YW661224-00000	Flat washer A grade GB/T97.1 12-Longzine		14	
13	YW61123500000	Inner hex. column head screw GB/T70.1 M12×35-12.9-Longzine		14	
12	SCR-450U-A-13	Hopper level flange	SUS201(1.5)	1	
11	YW69042310001	Cross recessed countersunk head tapping screw GB/T 846-ST4.2x13		26	
10	YW70000100000	Reinforced glass (six holes)	Tempered glass	1	
9	YR40000600000	Sight glass fastener six hole	Silica gel	1	
8	BW09000630040	Six hole sight glass iron sheet electroplate	SPCC2.5	1	
7	SCR-450U-A-05	Material storage tank ext. cover plate	Patterned alu. plate 1.0	1	
6	SCR-450U-A-01	Material storage tank	assembly	1	
5	SCR-450U-A-07	Hopper cover plate 2	Patterned alu. plate 1.0	1	
4	SCR-450U-A-04	Inner hopper	assembly	1	
3	YP60501500000	Epoxy glass fiber laminate	assembly	1	
2	SCR-450U-A-06	Hopper cover plate 1	Patterned alu. plate 1.0	1	
1	SCR-450U-A-03	Hopper	assembly	1	
序号	代号	名称	材料	数量	备注

					制图		版号	B	标题	SCR-450U	图号	比例	1:20	数量	1
					设计		核准		储料桶组件		SCR-450U-A-ALL		材质		
					校对					信易电热机械股份有限公司 Shini Plastics Technologies, Inc.		表面要求			
标记	更改前	更改后	更改人	日期	审核		日期	20220808				物料号			

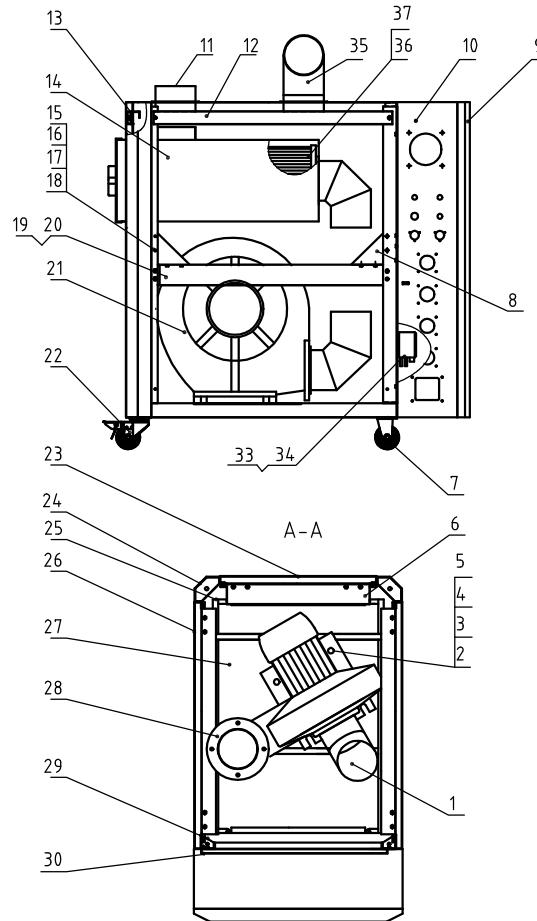
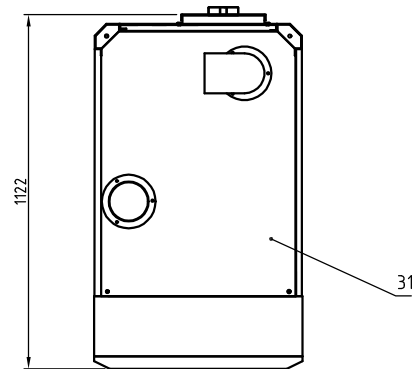
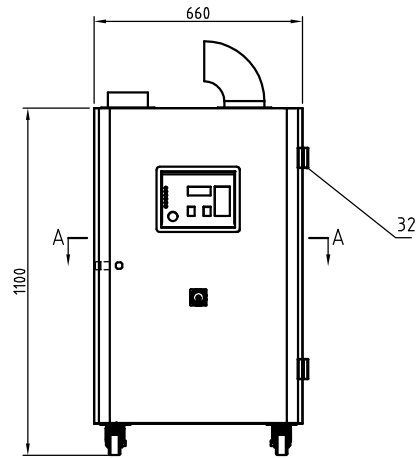


Unloading Motor	Blower Power	Heater Power	Mixing Motor Power	Model Version
0.4kW	2.2kW	24kW	0.55kW	Ver.D
Inlet Air Pipe Dia.	Discharge Port Dia.	Mixing Motor Rotating Speed	Hopper Capacity	
5inch	4inch	2.6r/min	450L	

19	BE90600000050	Thermocouple SM		1	
18	SCR-450U-ALL-16	Rotary discharge valve seal fastener	white silica gel	1	
17	SCR-450U-F-ALL	Cyclone dust collector assembly	Assembly	1	
16	YMS0538200800	Gear box	Assembly	1	Nuo De 50HZ
15	SCR-450U-ALL-01	Feed hopper	SUS201	1	
14	YR20000500000	Stainless steel pipe clamp fastener 5"	Silica gel	3	
13	YW07000500000	Stainless steel punching clamp 5"	SUS201	3	
12	YE15000200000	Anti-rotation level switch	Assembly	1	
11	SCR-450U-E-ALL	Mixing shaft assembly	Assembly	1	
10	SCR-450U-A-ALL	Material storage tank assembly	Assembly	1	
9	CG24000400150	Rotary discharge valve SRV-4S	Assembly	1	
8	SCR-450U-ALL-14	Filter cloth bag	TD729	1	
7	SCR-450U-ALL-03	Rotary discharge valve connector	SUS201	1	
6	SCR-450U-B-ALL	Blower frame	Assembly	1	
5	SCR-450U-D-ALL	Floor stand	Assembly	1	
4	SCR-450U-C-ALL	Heating tank assembly	Assembly	1	
3	YW72053600000	Heat-resistant air pipe 5"	Assembly	1	L: 7200mm
2	YW02501200000	Stainless steel pipe clamp 55"	Assembly	6	
1	SCR-450U-ALL-02	Return air port flange	SUS201	1	

制图	版号	1	标题	SCR-450U 结晶机总成	图号	SCR-450U-ALL
设计	核准		比例	1:24	数量	1
校对	日期	20220809	表面要求	材质		
标记	更改前	更改后	更改人	日期	审核	物料号

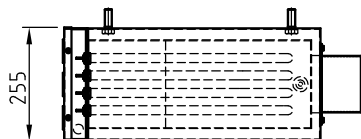
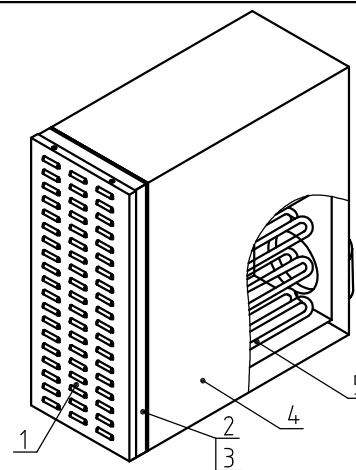
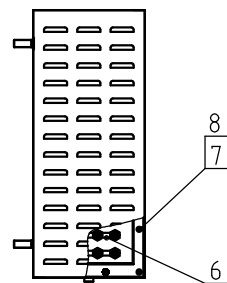
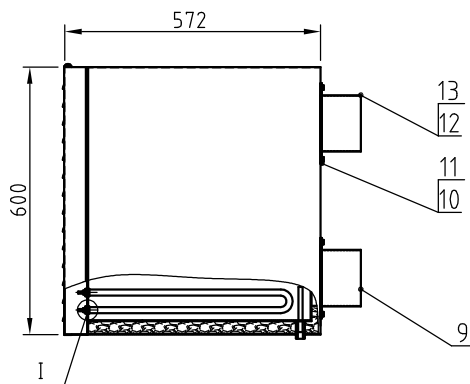
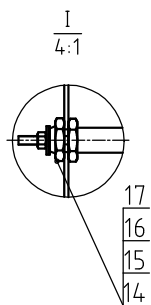




Tech. Req: Parts shall not be scratched or de-burred when assembly.
 Note: The left view is the view after removing the side plate.

37	YR10026000000	Filter hopper fastener Ø260	Silica gel	1	
36	YR50241400100	Filter ADC3		1	
35	SCR-450U-B-23	Inlet air pipe	SUS201	1	
34	YW63041200100	Cross recessed pan head screw M4-12		4	
33	YE15325000000	Negative switch LF32-50	Assembly	1	
32	YW06203100200	Chain CL230-1 right	Assembly	2	
31	SCR-450U-B-14	Top plate	SPCC2.0	1	
30	SCR-450U-B-11	Elec. mount plate	SECC15	1	
29	SCR-450U-B-02	Front column	SPCC	2	
28	SCR-450U-B-19	Blower outlet flange	SUS201	1	
27	SCR-450U-B-04	Blower base	SPCC2.0	1	
26	SCR-450U-B-12	Side plate	SPCC15	2	
25	SCR-450U-B-01	Bottom frame	Assembly	1	
24	SCR-450U-B-03	Rear column	SPCC	2	
23	SCR-450U-B-13	Rear plate	SPCC15	1	
22	YW03000300000	3" brake castor	Assembly	2	
21	BM30224000050	Blower (2.2KW)	Assembly	1	
20	SCR-450U-B-06	Middle beam (right)	SPCC2.0	1	
19	SCR-450U-B-05	Middle beam (left)	SPCC2.0	1	
18	YW64000600300	Hex. nut M6		42	
17	YW65006000100	Spring washer 6		42	
16	YW66061300000	Flat washer 6		42	
15	YW60062000100	Hex. bolt M6x20		42	
14	SCR-450U-B-15	Filter hopper	Assembly	1	
13	SCR-450U-B-09	Rear fixed beam	Assembly	1	
12	SCR-450U-B-08	Side fixed beam	Assembly	2	
11	SCR-450U-B-18	Blower pipe outlet flange	SUS201	1	
10	SCR-450U-B-10	Front plate	SPCC	1	
9	SCR-450U-B-16	Door plank	SPCC15	1	
8	SCR-450U-B-17	Reinforced plate	SPCC2.0	6	
7	YW03000300300	3" black castor	Assembly	2	
6	SCR-450U-B-07	Middle rear beam	SPCC2.0	1	
5	YW64012100000	Hex. nut M12		4	
4	YW65012000000	Spring washer 12		4	
3	YW66122400000	Flat washer 12		4	
2	YW60124000000	Hex. bolt M12x40		4	
1	SCR-450U-B-20	Blower pipe inlet flange	SUS201	1	
序号	代号	名称	材质	数量	备注

					制图	版号	B	标题	SCR-450U	图号	SCR-450U-B-ALL	比例	1:15	数量	1
					设计	核准			风机架				材质		
					校对							表面要求			
标记	更改前	更改后	更改人	日期	审核	日期	20220808		信易电热机械股份有限公司	Shini Plastics Technologies, Inc.	物料号				



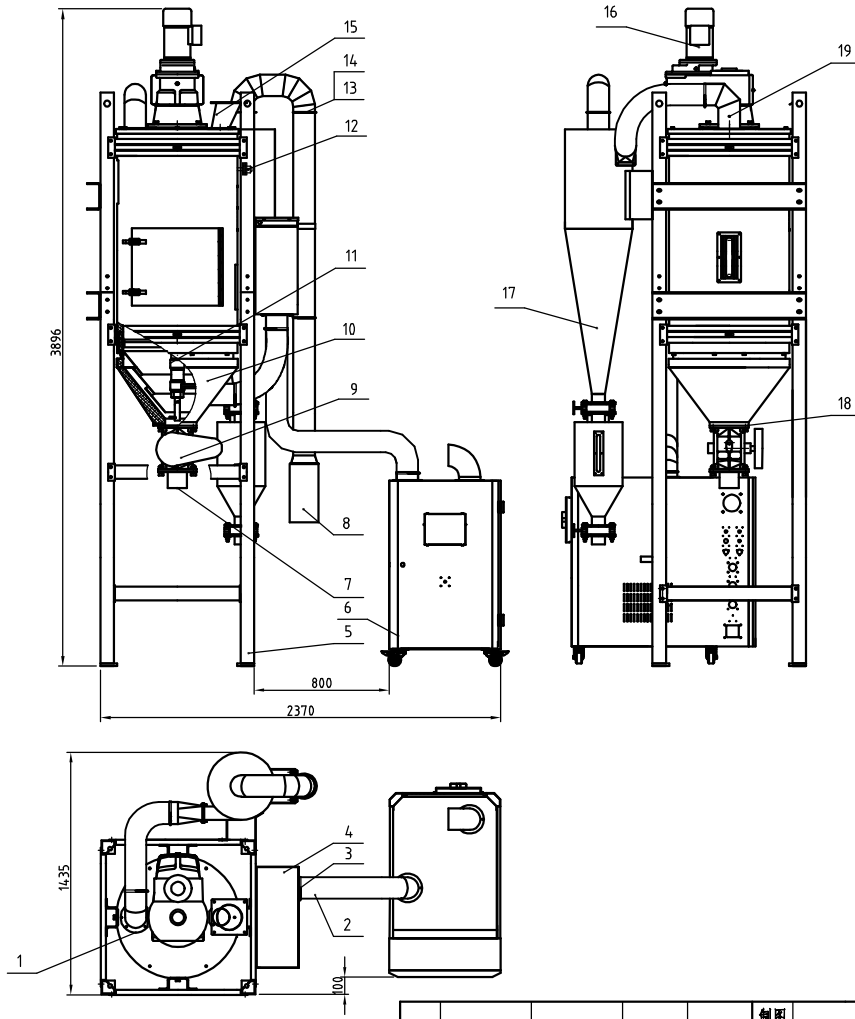
Tech. Req:
1. The parts surface shall not be scratched during assembly.

17	BH11090002310	Pipe heater fixed nut	SUS304	48	
16	YW64031600000	Hex. cap 3/16	SUS201(1.5)	72	
15	YW66051300000	Flat washer 5.5×13×1 Longzine		96	
14	YP52521100000	Natural mica washer 5.2×11	Mica	144	
13	SCR-450U-C-05	Air inlet flange	SUS201(1.5)	1	
12	SCR-450U-C-07	Heating tank air outlet fastener	White silica gel 3.0	2	
11	YW66061300000	Flat washer A grade GB/T97.1 6-Longzine		8	
10	YW60063000000	Hex. bolt GB/T5781 M6×30-Longzine		8	
9	SCR-450U-C-06	Air outlet flange	SUS201(1.5)		
8	YW66061300000	Flat washer A GB/T97.1 6-Longzine		20	
7	YW62062000000	Large cross recessed flat head screw JS1111 M6X20-Longzine		18	
6	YW66523400000	Copper washer	H58	36	
5	BH70045000850	Pipe heater	Assembly	1GR	
4	SCR-450U-C-03	Heating tank welding drawing	Assembly	1	
3	SCR-450U-C-08	Heating tank silica gel fastener	White silica gel 3.0	1	
2	SCR-450U-C-02	Pipe heater mount plate	SECC2.5	1	
1	SCR-450U-C-01	Heating tank cover plate	SPCC1.5	1	
No.	Material number	Name	Mat.	Num.	Remarks

					制图	版号	B	标题	SCR-450U 加热箱组件	图号	SCR-450U-C-ALL	比例	1:15	数量	1
					设计	核准							⊕	材质	
					校对							表面要求			
标记	更改前	更改后	更改人	日期	审核	日期	20220808					物料号			



信易电热机械股份有限公司
Shini Plastics Technologies, Inc.

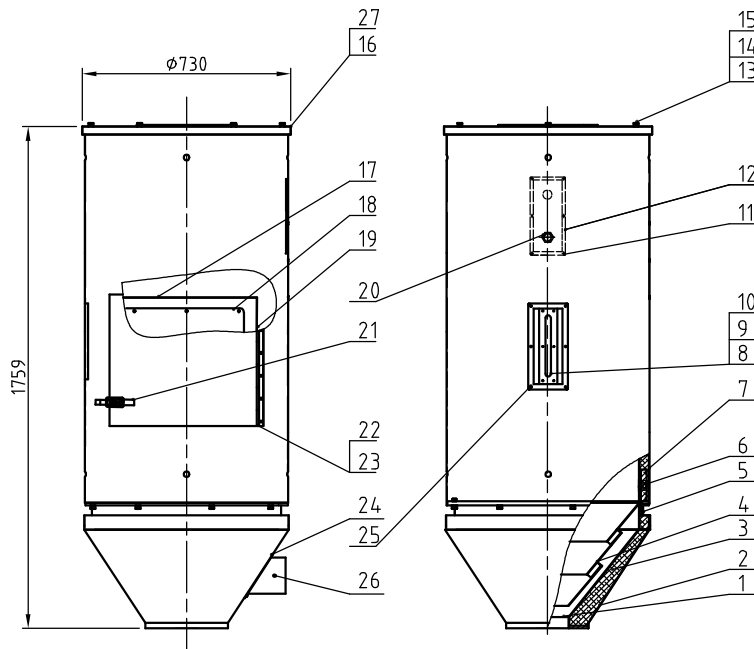


Unloading Motor	Blower Power	Heater Power	Mixing Motor Power	Model Version
0.4kW	2.2kW	24kW	0.55kW	Ver.D
Inlet Air Pipe Dia.	Discharge Port Dia.	Mixing Motor Rotating Speed	Hopper Capacity	
5inch	4inch	2.6r/min	450L	

19	BE9060000050	Thermocouple 5M		1	
18	SCR-450U-ALL-16	Rotary discharge valve seal fastener	white silica gel	1	
17	SCR-450U-F-ALL	Cyclone dust collector assembly	Assembly	1	
16	YM50538200800	Gear box	Assembly	1	Nuo De 50HZ
15	SCR-450U-ALL-01	Feed hopper	SUS201	1	
14	YR20000500000	Stainless steel pipe clamp fastener 5"	Silica gel	3	
13	YW07000500000	Stainless steel punching clamp 5"	SUS201	3	
12	YE15000200000	Anti-rotation level switch	Assembly	1	
11	SCR-450U-E-ALL	Mixing shaft assembly	Assembly	1	
10	SCR-450U-A-ALL	Material storage tank assembly	Assembly	1	
9	CG24000400150	Rotary discharge valve SRV-4S	Assembly	1	
8	SCR-450U-ALL-14	Filter cloth bag	TD729	1	
7	SCR-450U-ALL-03	Rotary discharge valve connector	SUS201	1	
6	SCR-450U-B-ALL	Blower frame	Assembly	1	
5	SCR-450U-D-ALL	Floor stand	Assembly	1	
4	SCR-450U-C-ALL	Heating tank assembly	Assembly	1	
3	YW72053600000	Heat-resistant air pipe 5"	Assembly	1	L: 7200mm
2	YW02501200000	Stainless steel pipe clamp 5.5"	Assembly	6	
1	SCR-450U-ALL-02	Return air port flange	SUS201	1	

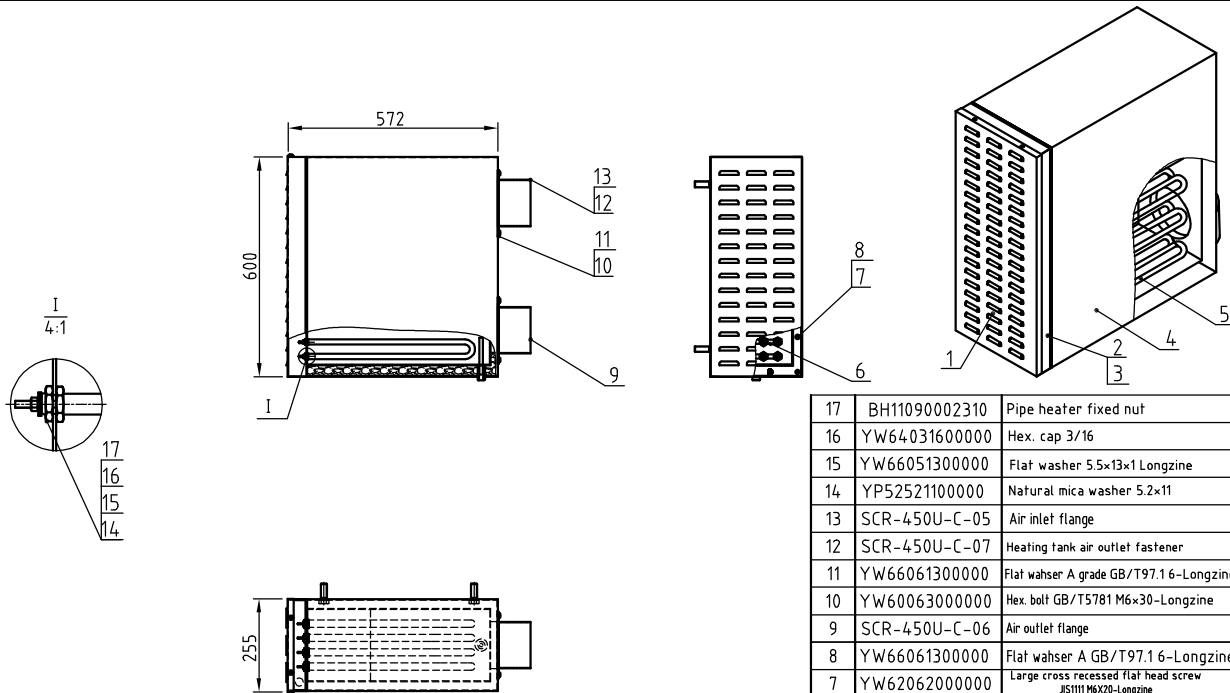
制图	版号	1	标题	SCR-450U 结晶机总成	图号	SCR-450U-ALL	比例	1:24	数量	1
设计	核准		材料				表面要求			
校对	日期	20220809	物料号							
标记	更改前	更改后	更改人	日期	审核					





27	YR10010040100	Oven silica gel fastener D		1	
26	BE90400000050	Thermocoupler 4M		1	
25	SCR-450U-A-16	Sight glass flange	SUS201(1.5)	1	
24	SCR-450U-A-14	Hopper inlet air pipe flange	SUS201(1.5)	1	
23	SCR-450U-A-12	Cleaning door ext. cover plate	Patterned alu. plate 10	1	
22	SCR-450U-A-08	Cleaning door	SUS201	1	
21	YW02003000400	Adjustable snap hook	assembly	2	
20	BH12901620010	Level sensor plug	H58	1	
19	SCR-450U-A-11	Cleaning door cover plate 2		2	
18	SCR-450U-A-09	Cleaning door fender plate	SUS201(2.0)	1	
17	SCR-450U-A-10	Cleaning door cover plate 1	Patterned alu. plate 10	2	
16	SCR-450U-A-02	Hopper cover	assembly	1	
15	YW65012000000	Standard spring washer GB/T93 I2-Longzine		14	
14	YW66122400000	Flat washer A grade GB/T97.1 12-Longzine		14	
13	YW61123500000	Inner hex. column head screw GB/T70.1 M12×35-12.9-Longzine		14	
12	SCR-450U-A-13	Hopper level flange	SUS201(1.5)	1	
11	YW69042310001	Cross recessed countersunk head tapping screw GB/T 846-ST4.2x13		26	
10	YW70000100000	Reinforced glass (six holes)	Tempered glass	1	
9	YR40000600000	Sight glass fastener six hole	Silica gel	1	
8	BW09000630040	Six hole sight glass iron sheet electroplate	SPCC2.5	1	
7	SCR-450U-A-05	Material storage tank ext. cover plate	Patterned alu. plate 10	1	
6	SCR-450U-A-01	Material storage tank	assembly	1	
5	SCR-450U-A-07	Hopper cover plate 2	Patterned alu. plate 10	1	
4	SCR-450U-A-04	Inner hopper	assembly	1	
3	YP60501500000	Epoxy glass fiber laminate	assembly	1	
2	SCR-450U-A-06	Hopper cover plate 1	Patterned alu. plate 10	1	
1	SCR-450U-A-03	Hopper	assembly	1	
序号	代号	名称	材料	数量	备注

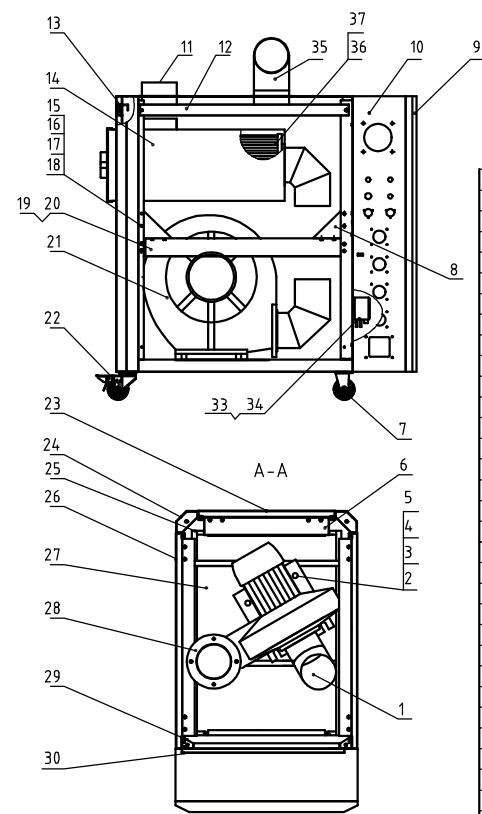
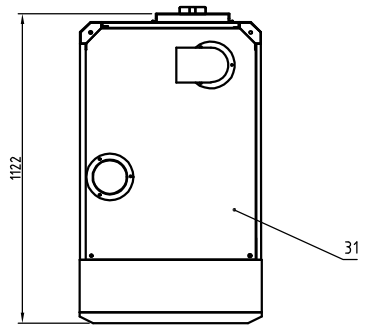
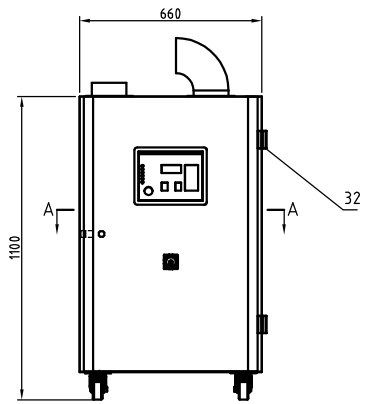
					制图	版号	B	标题	SCR-450U	图号		比例	1:20	数量	1
					设计	核		物料名称	储料桶组件		SCR-450U-A-ALL			材质	
					校对	准						表面要求			
标记	更改前	更改后	更改人	日期	审核	日期	20220808	SHINI 信易电热机械股份有限公司 Shini Plastics Technologies, Inc.				物料号			



Tech. Req:
1. The parts surface shall not be scratched during assembly.

17	BH11090002310	Pipe heater fixed nut	SUS304	48	
16	YW64031600000	Hex. cap 3/16	SUS201(1.5)	72	
15	YW66051300000	Flat washer 5.5x13x1 Longzine		96	
14	YP52521100000	Natural mica washer 5.2x11	Mica	14.4	
13	SCR-450U-C-05	Air inlet flange	SUS201(1.5)	1	
12	SCR-450U-C-07	Heating tank air outlet fastener	White silica gel 3.0	2	
11	YW66061300000	Flat washer A grade GB/T97.1 6-Longzine		8	
10	YW60063000000	Hex. bolt GB/T5781 M6x30-Longzine		8	
9	SCR-450U-C-06	Air outlet flange	SUS201(1.5)		
8	YW66061300000	Flat washer A GB/T97.1 6-Longzine		20	
7	YW62062000000	Large cross recessed flat head screw JS1111 M6x20-Longzine		18	
6	YW66523400000	Copper washer	H58	36	
5	BH70045000850	Pipe heater	Assembly	1GR	
4	SCR-450U-C-03	Heating tank welding drawing	Assembly	1	
3	SCR-450U-C-08	Heating tank silica gel fastener	White silica gel 3.0	1	
2	SCR-450U-C-02	Pipe heater mount plate	SECC2.5	1	
1	SCR-450U-C-01	Heating tank cover plate	SPCC1.5	1	
No.	Material number	Name	Mat.	Num.	Remarks

					制图	版号	B	标题	SCR-450U 加热箱组件	图号	SCR-450U-C-ALL	比例	1:15	数量	1
					设计	核准							⊕	材质	
					校对								表面要求		
标记	更改前	更改后	更改人	日期	审核		日期	20220808	信易电热机械股份有限公司 Shini Plastics Technologies, Inc.			物料号			

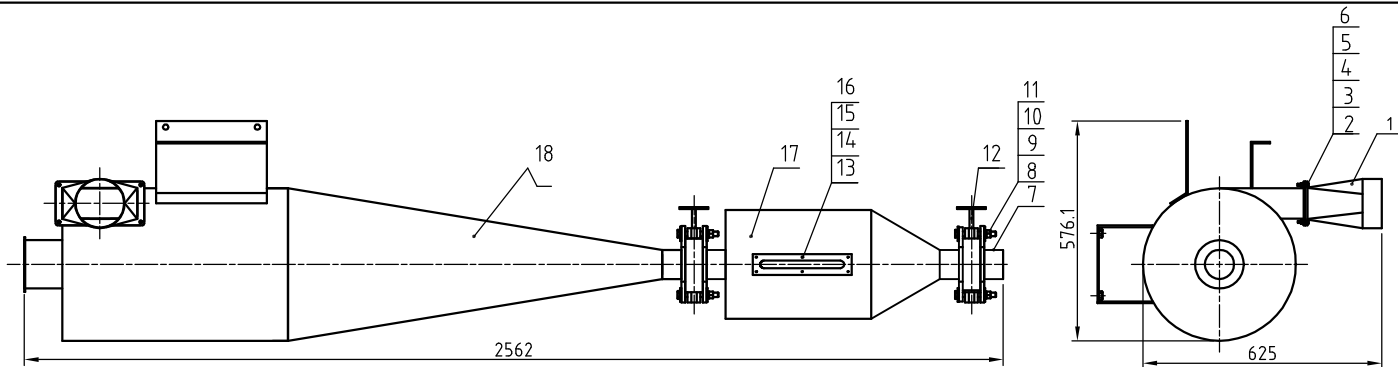


Tech. Req.: Parts shall not be scratched or de-burred when assembly.
 Note: The left view is the view after removing the side plate.

37	YR10026000000	Filter hopper fastener #260	Silica gel	1	
36	YR50241400100	Filter ADC3		1	
35	SCR-450U-B-23	Inlet air pipe	SUS201	1	
34	YW63041200100	Cross recessed pan head screw M4x12		4	
33	YE15325000000	Negative switch LF32-50	Assembly	1	
32	YW06203100200	Chain CL230-1-right	Assembly	2	
31	SCR-450U-B-14	Top plate	SPCC2.0	1	
30	SCR-450U-B-11	Elec. mount plate	SECC15	1	
29	SCR-450U-B-02	Front column	SPCC	2	
28	SCR-450U-B-19	Blower outlet flange	SUS201	1	
27	SCR-450U-B-04	Blower base	SPCC2.0	1	
26	SCR-450U-B-12	Side plate	SPCC15	2	
25	SCR-450U-B-01	Bottom frame	Assembly	1	
24	SCR-450U-B-03	Rear column	SPCC	2	
23	SCR-450U-B-13	Rear plate	SPCC15	1	
22	YW03000300000	3" brake castor	Assembly	2	
21	BM30224000050	Blower (2.2KW)	Assembly	1	
20	SCR-450U-B-06	Middle beam (right)	SPCC2.0	1	
19	SCR-450U-B-05	Middle beam (left)	SPCC2.0	1	
18	YW64000600300	Hex. nut M6		42	
17	YW65006000100	Spring washer 6		42	
16	YW66061300000	Flat washer 6		42	
15	YW60062000100	Hex. bolt M6x20		42	
14	SCR-450U-B-15	Filter hopper	Assembly	1	
13	SCR-450U-B-09	Rear fixed beam	Assembly	1	
12	SCR-450U-B-08	Side fixed beam	Assembly	2	
11	SCR-450U-B-18	Blower pipe outlet flange	SUS201	1	
10	SCR-450U-B-10	Front plate	SPCC	1	
9	SCR-450U-B-16	Door plank	SPCC15	1	
8	SCR-450U-B-17	Reinforced plate	SPCC2.0	6	
7	YW03000300300	3" black castor	Assembly	2	
6	SCR-450U-B-07	Middle rear beam	SPCC2.0	1	
5	YW64012100000	Hex. nut M12		4	
4	YW65012000000	Spring washer 12		4	
3	YW66122400000	Flat washer 12		4	
2	YW60124000000	Hex. bolt M12x40		4	
1	SCR-450U-B-20	Blower pipe inlet flange	SUS201	1	

序号	代号	名称	材质	数量	备注
制图		版号	B	标题	SCR-450U
设计		核准		图号	SCR-450U-B-ALL
校对		日期	20220808	比例	1:15
审核		日期		数量	1
标记	更改前	更改后	更改人	日期	审核
				表面要求	
				物料号	

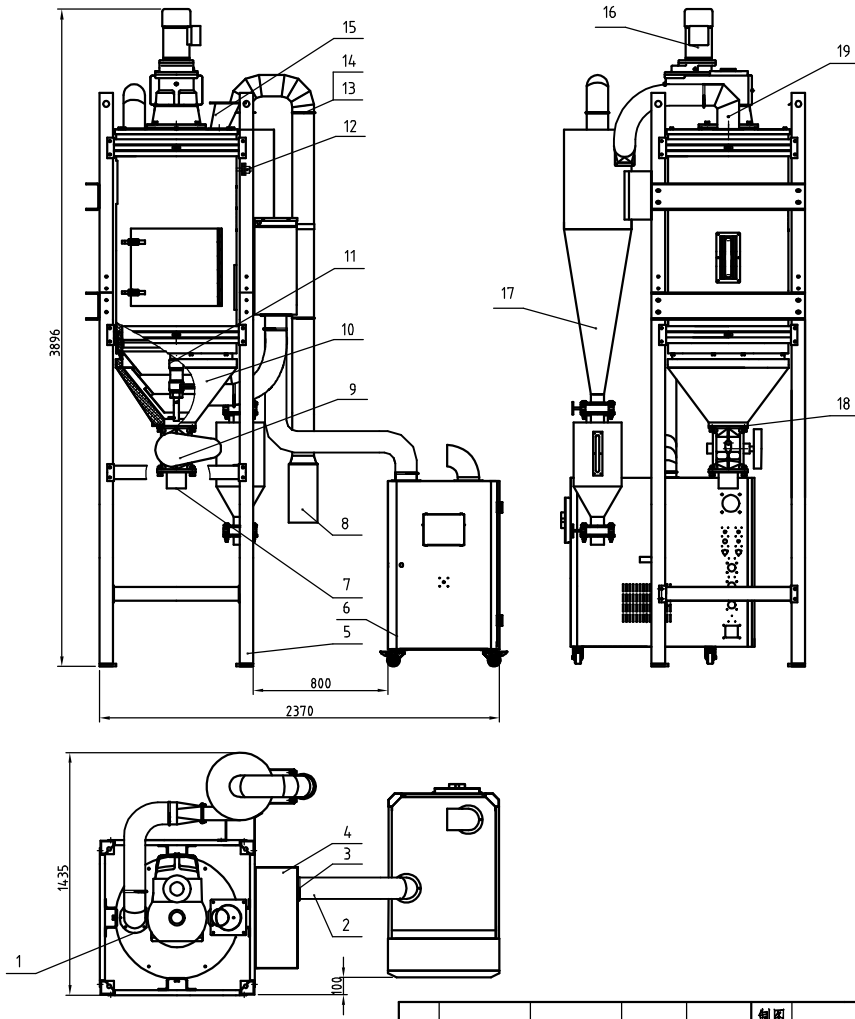




18	SCR-450U-F-01	Cyclone hopper	assembly	1	
17	ACF-6"-A-04	Dust collective hopper	assembly	1	borrow
16	YW6205150000	Cross recessed pan head screw M5x16		6	
15	YW70000100000	Reinforced glass six hole		1	
14	YR40000600000	Sight glass fastener six hole		1	
13	BW09000630040	Sight glass iron sheet six hole		1	
12	YW59030000100	Clamp manual butterfly valve 3"	assembly	2	
11	YW65012000000	Spring washer 12		8	
10	YW66122400000	Flat washer 12		16	
9	YW60128500000	Hex. bolt M12x85		8	
8	YW64012100000	Hex. nut M12		8	
7	ACF-6"-A-09	Discharge port flange	assembly	1	borrow
6	YW65008000100	Spring washer 8		6	
5	YW66081900000	Flat washer 8		12	
4	YW64080600000	Hex. nut M8		6	
3	YW60082500100	Hex. bolt M8x25		6	
2	ACF-5"-A-05	Inlet air pipe flange fastener	silica gel	1	borrow
1	ACF-5"-A-02	External pipe flange	SUS201	1	borrow
序号	代号	名称	材料	数量	备注

					制图	版号	0	标题	SCR-450U	图号	SCR-450U-F-ALL	比例	1:15	数量	1
					设计	核准			旋风集尘器组件						材质
					校对										
标记	更改前	更改后	更改人	日期	审核	日期	20220808					表面要求			
												物料号			

SHINI 信易電熱機械股份有限公司
Shini Plastics Technologies, Inc.

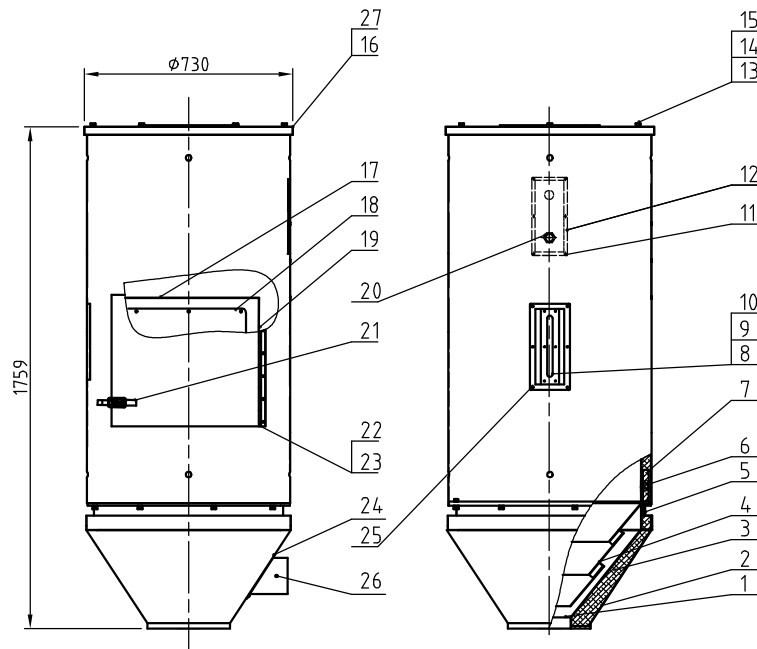


Unloading Motor	Blower Power	Heater Power	Mixing Motor Power	Model Version
0.4kW	2.2kW	24kW	0.55kW	Ver.D
	Inlet Air Pipe Dia.	Discharge Port Dia.	Mixing Motor Rotating Speed	Hopper Capacity
	5inch	4inch	2.6r/min	450L

19	BE90600000050	Thermocouple 5M		1	
18	SCR-450U-ALL-16	Rotary discharge valve seal fastener	white silica gel	1	
17	SCR-450U-F-ALL	Cyclone dust collector assembly	Assembly	1	
16	YM50538200800	Gear box	Assembly	1	Nuo De 50HZ
15	SCR-450U-ALL-01	Feed hopper	SUS201	1	
14	YR20000500000	Stainless steel pipe clamp fastener 5"	Silica gel	3	
13	YW07000500000	Stainless steel punching clamp 5"	SUS201	3	
12	YE15000200000	Anti-rotation level switch	Assembly	1	
11	SCR-450U-E-ALL	Mixing shaft assembly	Assembly	1	
10	SCR-450U-A-ALL	Material storage tank assembly	Assembly	1	
9	CG24000400150	Rotary discharge valve SRV-4S	Assembly	1	
8	SCR-450U-ALL-14	Filter cloth bag	TD729	1	
7	SCR-450U-ALL-03	Rotary discharge valve connector	SUS201	1	
6	SCR-450U-B-ALL	Blower frame	Assembly	1	
5	SCR-450U-D-ALL	Floor stand	Assembly	1	
4	SCR-450U-C-ALL	Heating tank assembly	Assembly	1	
3	YW72053600000	Heat-resistant air pipe 5"	Assembly	1	L: 720mm
2	YW02501200000	Stainless steel pipe clamp 5.5"	Assembly	6	
1	SCR-450U-ALL-02	Return air port flange	SUS201	1	
序号	代号	名称	材料	数量	备注

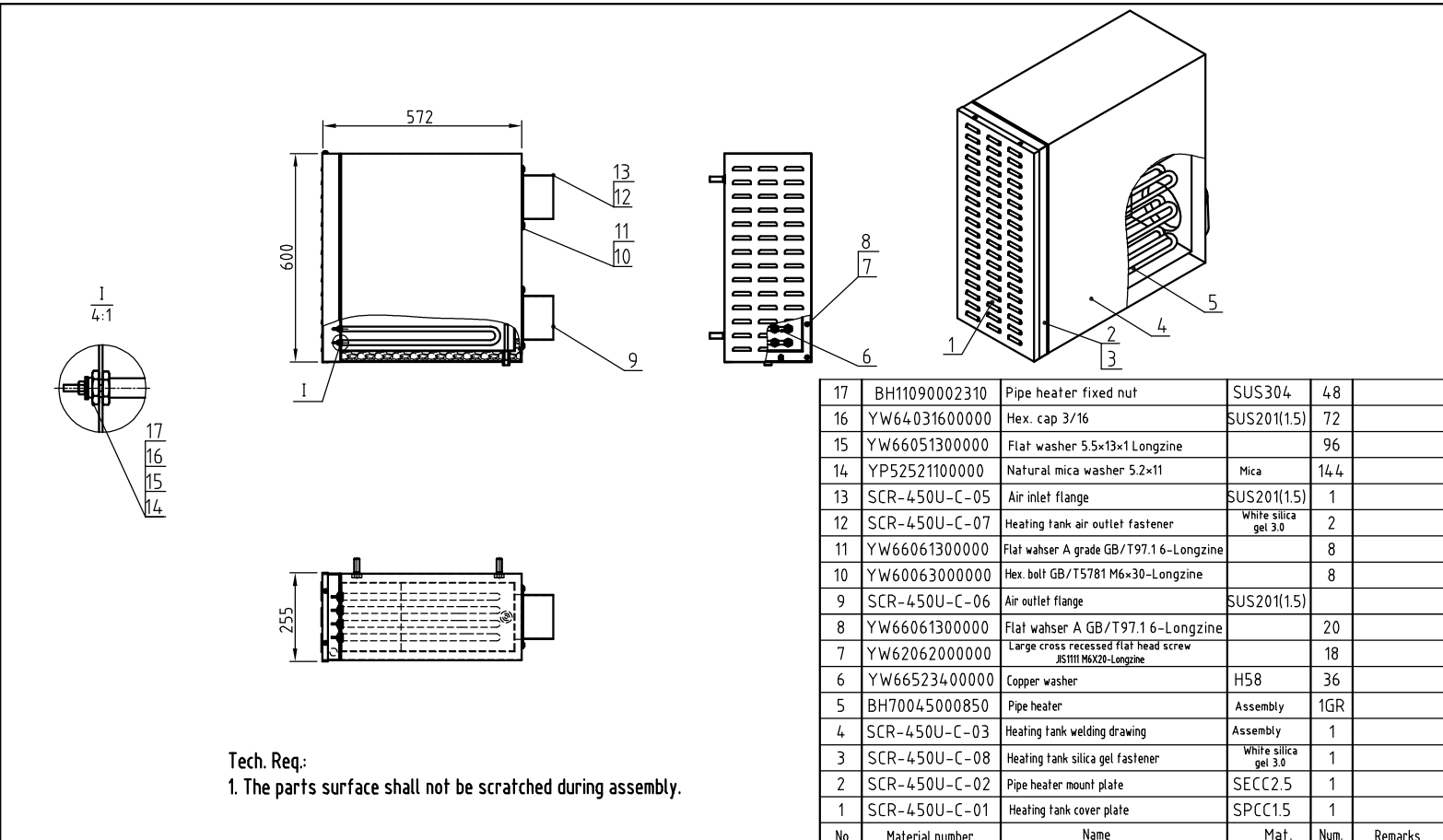
制图	版号	1	标题	SCR-450U 结晶机总成	图号	SCR-450U-ALL	比例	1:24	数量	1
设计	核准						表面要求		材质	
校对	日期	20220809	物料号							
审核	标记	更改前	更改后	更改人	日期					

SHINI 信易电热机械股份有限公司
Shini Plastics Technologies, Inc.



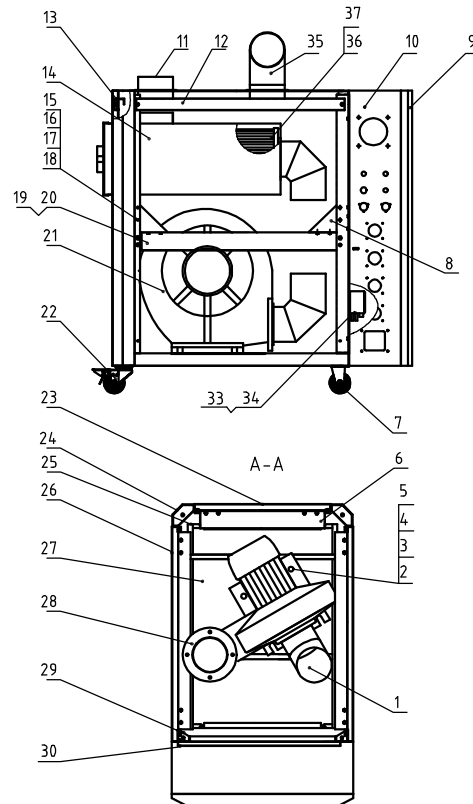
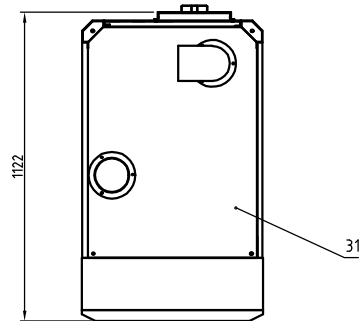
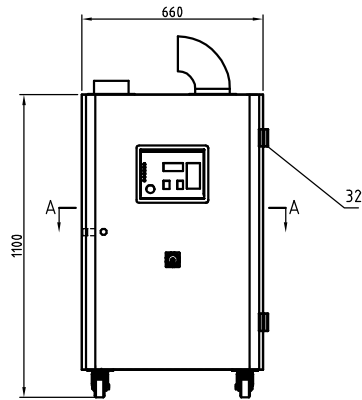
27	YR10010040100	Oven silica gel fastener D		1	
26	BE90400000050	Thermocoupler 4M		1	
25	SCR-450U-A-16	Sight glass flange	SUS201(1.5)	1	
24	SCR-450U-A-14	Hopper inlet air pipe flange	SUS201(1.5)	1	
23	SCR-450U-A-12	Cleaning door ext. cover plate	Patterned alu. plate 10	1	
22	SCR-450U-A-08	Cleaning door	SUS201	1	
21	YW02003000400	Adjustable snap hook	assembly	2	
20	BH12901620010	Level sensor plug	H58	1	
19	SCR-450U-A-11	Cleaning door cover plate 2		2	
18	SCR-450U-A-09	Cleaning door fender plate	SUS201(2.0)	1	
17	SCR-450U-A-10	Cleaning door cover plate 1	Patterned alu. plate 10	2	
16	SCR-450U-A-02	Hopper cover	assembly	1	
15	YW65012000000	Standard spring washer GB/T93 12-Longzine		14	
14	YW66122400000	Flat washer A grade GB/T97.1 12-Longzine		14	
13	YW61123500000	Inner hex. column head screw GB/T70.1 M12-35-12.9-Longzine		14	
12	SCR-450U-A-13	Hopper level flange	SUS201(1.5)	1	
11	YW69042310001	Cross recessed countersunk head tapping screw GB/T 846-ST4.2x13		26	
10	YW70000100000	Reinforced glass (six holes)	Tempered glass	1	
9	YR40000600000	Sight glass fastener six hole	Silica gel	1	
8	BW09000630040	Six hole sight glass iron sheet electroplate	SPCC2.5	1	
7	SCR-450U-A-05	Material storage tank ext. cover plate	Patterned alu. plate 10	1	
6	SCR-450U-A-01	Material storage tank	assembly	1	
5	SCR-450U-A-07	Hopper cover plate 2	Patterned alu. plate 10	1	
4	SCR-450U-A-04	Inner hopper	assembly	1	
3	YP60501500000	Epoxy glass fiber laminate	assembly	1	
2	SCR-450U-A-06	Hopper cover plate 1	Patterned alu. plate 10	1	
1	SCR-450U-A-03	Hopper	assembly	1	
序号	代号	名称	材料	数量	备注

					制图		版号	B	标题	SCR-450U	图号		比例	1:20	数量	1
					设计		核		储料桶组件		SCR-450U-A-ALL				材质	
					校对		准						表面要求			
标记	更改前	更改后	更改人	日期	审核		日期	20220808		信易电热机械股份有限公司 Shini Plastics Technologies, Inc.		物料号				



Tech. Req:
1. The parts surface shall not be scratched during assembly.

					制图		版号	B	标题	SCR-450U 加热箱组件	图号	SCR-450U-C-ALL	比例	1:15	数量	1
					设计		核								材质	
					校对		准						表面要求			
标记	更改前	更改后	更改人	日期	审核		日期	20220808	信易電熱機械股份有限公司 Shini Plastics Technologies, Inc.			物料号				



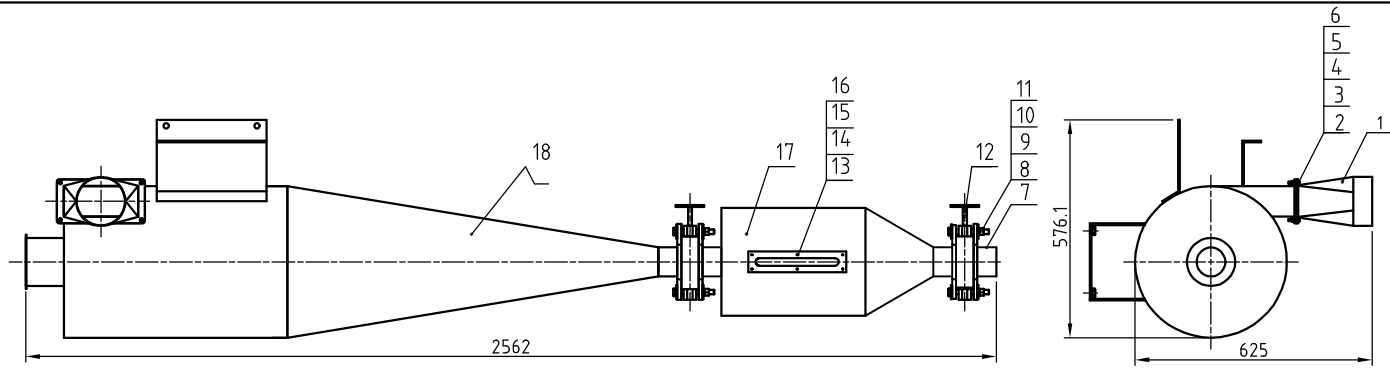
Tech. Req.: Parts shall not be scratched or de-burred when assembly.
 Note: The left view is the view after removing the side plate.

37	YR10026000000	Filter hopper fastener: Ø260	Silica gel	1	
36	YR50241400100	Filter ADC3		1	
35	SCR-450U-B-23	Inlet air pipe	SUS201	1	
34	YW63041200100	Cross recessed pan head screw M4x12		4	
33	YE15325000000	Negative switch LF32-50	Assembly	1	
32	YW06203100200	Chain CL230-1 right	Assembly	2	
31	SCR-450U-B-14	Top plate	SPCC2.0	1	
30	SCR-450U-B-11	Elec. mount plate	SECC1.5	1	
29	SCR-450U-B-02	Front column	SPCC	2	
28	SCR-450U-B-19	Blower outlet flange	SUS201	1	
27	SCR-450U-B-04	Blower base	SPCC2.0	1	
26	SCR-450U-B-12	Side plate	SPCC1.5	2	
25	SCR-450U-B-01	Bottom frame	Assembly	1	
24	SCR-450U-B-03	Rear column	SPCC	2	
23	SCR-450U-B-13	Rear plate	SPCC1.5	1	
22	YW03000300000	3" brake castor	Assembly	2	
21	BM30224000050	Blower (2.2KW)	Assembly	1	
20	SCR-450U-B-06	Middle beam (right)	SPCC2.0	1	
19	SCR-450U-B-05	Middle beam (left)	SPCC2.0	1	
18	YW64000600300	Hex. nut M6		42	
17	YW65006000100	Spring washer 6		42	
16	YW66061300000	Flat washer 6		42	
15	YW60062000100	Hex. bolt M6x20		42	
14	SCR-450U-B-15	Filter hopper	Assembly	1	
13	SCR-450U-B-09	Rear fixed beam	Assembly	1	
12	SCR-450U-B-08	Side fixed beam	Assembly	2	
11	SCR-450U-B-18	Blower pipe outlet flange	SUS201	1	
10	SCR-450U-B-10	Front plate	SPCC	1	
9	SCR-450U-B-16	Door plank	SPCC1.5	1	
8	SCR-450U-B-17	Reinforced plate	SPCC2.0	6	
7	YW03000300300	3" black castor	Assembly	2	
6	SCR-450U-B-07	Middle rear beam	SPCC2.0	1	
5	YW64012100000	Hex. nut M12		4	
4	YW65012000000	Spring washer 12		4	
3	YW66122400000	Flat washer 12		4	
2	YW60124000000	Hex. bolt M12x40		4	
1	SCR-450U-B-20	Blower pipe inlet flange	SUS201	1	
序号	代号	名称	材质	数量	备注

制图	版号	B	标题	SCR-450U	图号	SCR-450U-B-ALL
设计	核准		风机架			
校对						
标记	更改前	更改后	更改人	日期	审核	日期
						20220808



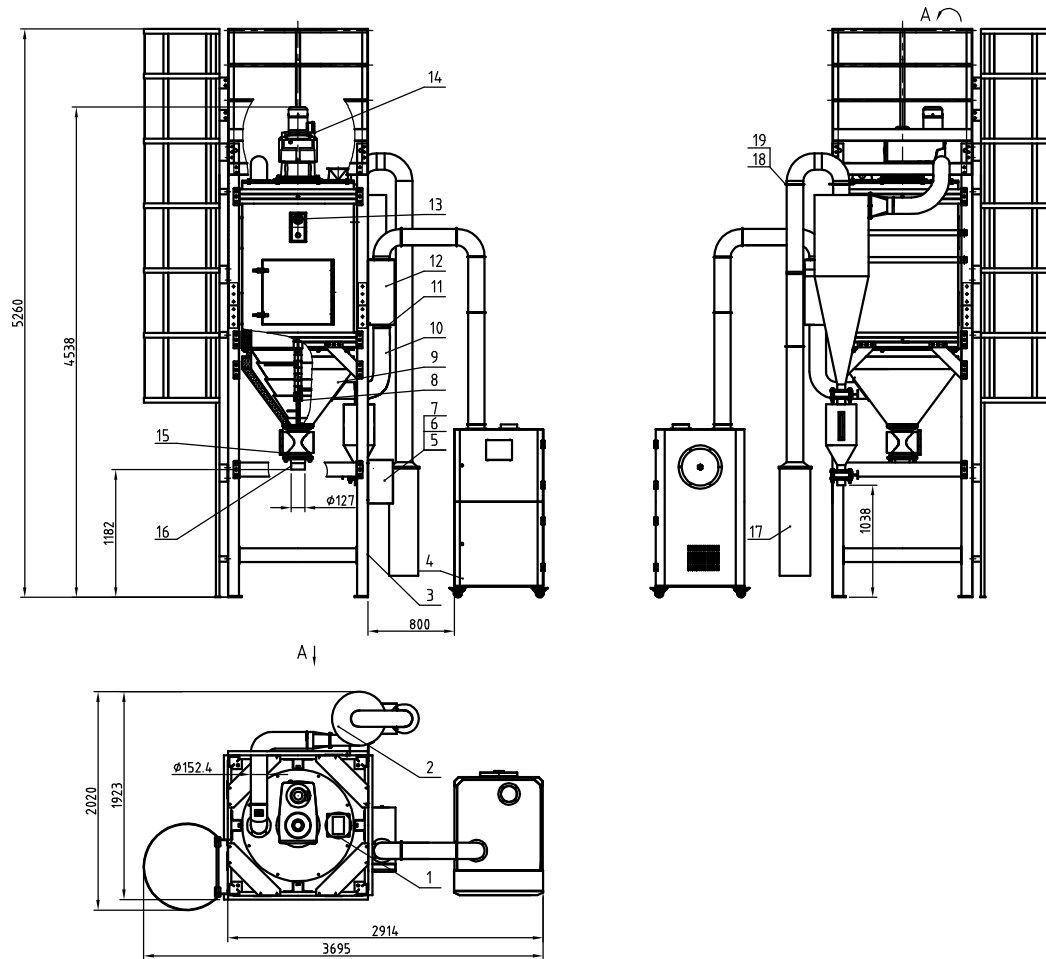
比例	1:15	数量	1
表面要求	材质		
物料号			



18	SCR-450U-F-01	Cyclone hopper	assembly	1	
17	ACF-6"-A-04	Dust collective hopper	assembly	1	borrow
16	YW62051500000	Cross recessed pan head screw M5x16		6	
15	YW70000100000	Reinforced glass six hole		1	
14	YR40000600000	Sight glass fastener six hole		1	
13	BW09000630040	Sight glass iron sheet six hole		1	
12	YW59030000100	Clamp manual butterfly valve 3"	assembly	2	
11	YW65012000000	Spring washer 12		8	
10	YW66122400000	Flat washer 12		16	
9	YW60128500000	Hex. bolt M12x85		8	
8	YW64012100000	Hex. nut M12		8	
7	ACF-6"-A-09	Discharge port flange	assembly	1	borrow
6	YW65008000100	Spring washer 8		6	
5	YW66081900000	Flat washer 8		12	
4	YW64080600000	Hex. nut M8		6	
3	YW60082500100	Hex. bolt M8x25		6	
2	ACF-5"-A-05	Inlet air pipe flange fastener	silica gel	1	borrow
1	ACF-5"-A-02	External pipe flange	SUS201	1	borrow
序号	代号	名称	材料	数量	备注

					制图	版号	0	标题	SCR-450U	图号	SCR-450U-F-ALL	比例	1:15	数量	1
					设计	核准			旋风集尘器组件						材质
					校对										表面要求
标记	更改前	更改后	更改人	日期	审核	日期	20220808								物料号

SHINI 信易電熱機械股份有限公司
Shini Plastics Technologies, Inc.

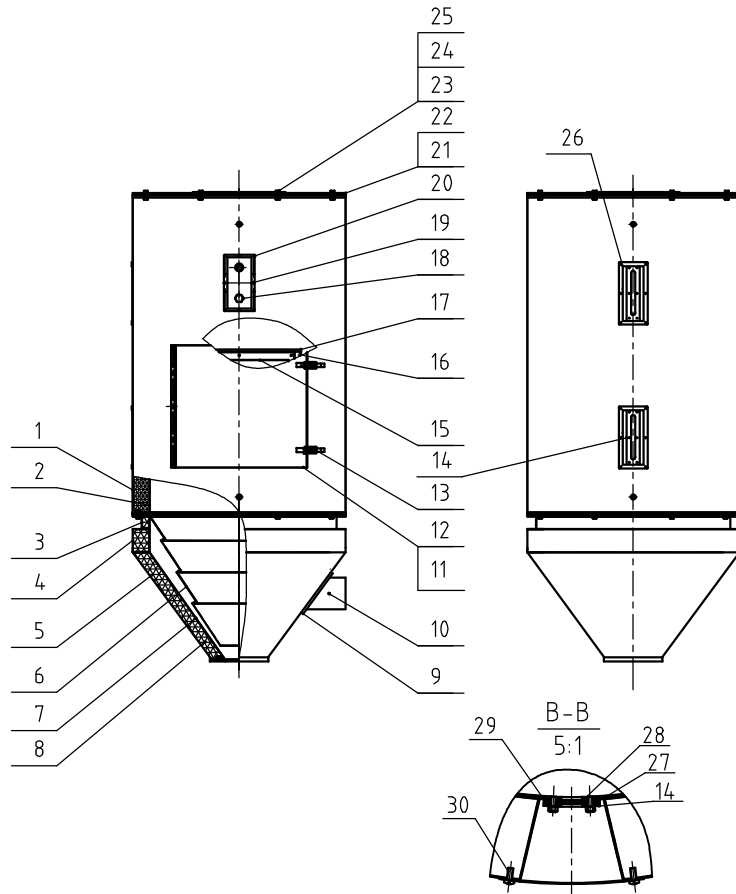


Blower Power	Heater Power	Mixing Motor Power	Model Version
3.7kW	48kW	1.5kW	Ver.F
Inlet Air Pipe Dia.	Discharge Port Dia.	Mixing Motor Rotating Speed	Hopper Capacity
6inch	5inch	3.7r/min	900L

19	YW07000600900	Stainless steel pipe clamp fastener 6"	white silca gel	3	
18	YW07000600900	Stainless steel punching clamp 6"	SUS201	3	
17	SCR-900U-ALL-08	Filter cloth bag	TD729	1	
16	SCR-900U-ALL-03	Rotary discharge valve connector	SUS201	1	
15	CG24000500150	Rotary discharge valve SRV-5S	Assembly	1	
14	YM50638200200	Gear motor SK6382AFBH	Assembly	1	
13	YE15000200000	Anti-rotation level switch	Assembly	1	
12	SCR-900U-B-ALL	Heating tank assembly	Assembly	1	
11	YW02006500000	Stainless steel pipe clamp 6.5"	SUS201	4	
10	YW72060400000	Heat-resistant air pipe 6"	Assembly	2	L:3200mm
9	SCR-900U-A-ALL	Material storage tank assembly	Assembly	1	
8	SCR-900U-E-ALL	Mixing assembly	Assembly	1	
7	SCR-900U-ALL-06	Elec. component mount plate	SECC1.5	1	
6	SCR-900U-ALL-05	Control box	SPCC1.5	1	
5	SCR-900U-ALL-04	Control box cover	SPCC1.5	1	
4	SCR-900U-C-ALL	Blower frame	Assembly	1	
3	SCR-900U-D-ALL	Floor stand ladder assembly	Assembly	1	with option ML
2	SCR-900U-F-ALL	Cyclone dust collector	Assembly	1	
1	SCR-900U-ALL-02	SSC material pipe inlet adaptor flange	Assembly	1	

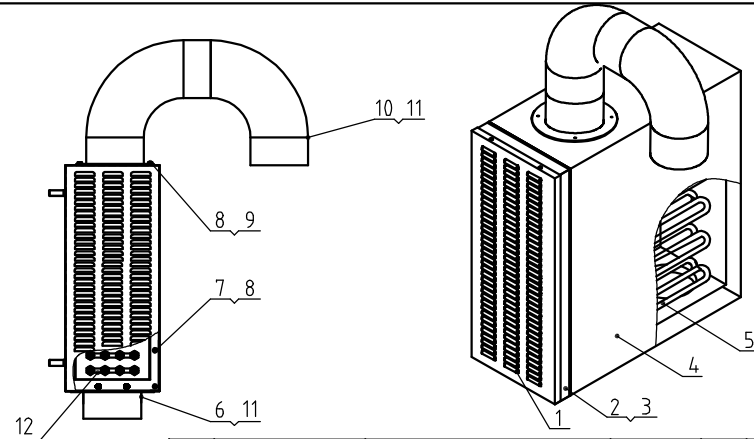
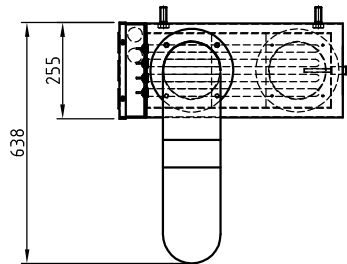
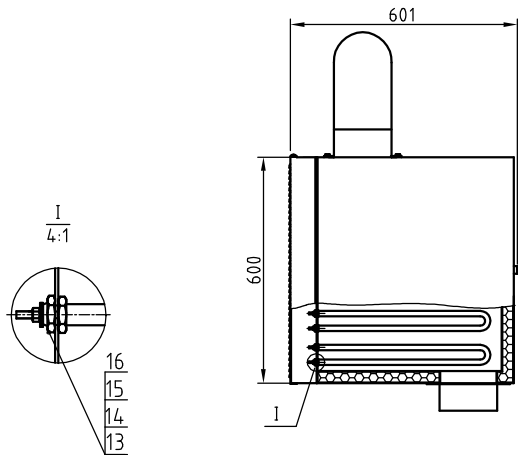
制图	版号	J	标题	SCR-900U 结晶机总成	图号	SCR-900U-ALL	比例	1:38	数量	1
设计	核准		表面要求				材质			
校对	日期	20220805	物料号							
标记	更改前	更改后	更改人	日期	审核	日期				

SHINI 信易电热机械股份有限公司
Shini Plastics Technologies, Inc.



30	YW67481900000	Cross recessed pan head self-drilling and tapping screw GB/T15856.1 ST4. 8x19-Longzine		20	
29	YW64000500000	Hex nut M5 anti-loose		12	
28	YW70000100000	Reinforced glass (six holes)	Tempered glass	2	
27	YR40000600000	Sight glass fastener six hole	rubber	2	
26	SCR-900U-A-17	Sight glass inner frame	SUS201	2	
25	YW65010000000	Standard spring washer GB/T93 10-Longzine		16	
24	YW66102500000	Flat washer A grade 10x25x1.5-Longzine		16	
23	YW61103500000	Inner hex. column head screw GB/T70.1-M10x35-12.9-Longzine		16	
22	YR10010040100	Oven fastener D type		16M	
21	SCR-900U-A-06	Hopper cover	assembly	1	
20	YW69042310001	Cross recessed countersunk head tapping screw GB/T 846-ST4.2x13		38	
19	SCR-900U-A-14	Hopper level sensor flange	SUS201	1	
18	SCR-900U-A-16	Hopper level sensor plug	H62	1	
17	SCR-900U-A-11	Cleaning door cover plate 2	Patterned alu. plate 1.0	2	
16	SCR-900U-A-10	Cleaning door cover plate 1	Patterned alu. plate 1.0	2	
15	SCR-900U-A-08	Cleaning door fender plate	SUS201(2.5)	1	
14	BW09000630040	Sight glass iron sheet six hole	SPCC2.5	2	
13	SHD-900U-B-ALL	Door buckle	assembly	2	borrow
12	SCR-900U-A-07	Cleaning door	SUS201	1	
11	SCR-900U-A-09	Cleaning door cover plate	Patterned alu. plate 1.0	1	
10	BE90600000050	Thermocoupler 5M		1	
9	SCR-900U-A-15	Hopper inlet air pipe flange	SUS201	1	
8	YP60001000100	Heat insulated cotton	assembly	1	
7	SCR-900U-A-02	Hopper	assembly	1	
6	SCR-900U-A-13	Inner hopper	assembly	1	
5	SCR-900U-A-03	Hopper cover plate 1	Patterned alu. plate 1.0	1	
4	SCR-900U-A-04	Hopper cover plate 2	Patterned alu. plate 1.0	1	
3	SCR-900U-A-05	Hopper cover plate 1	Patterned alu. plate 1.0	1	
2	SCR-900U-A-01	Material storage tank	assembly	1	
1	SCR-900U-A-12	Material storage tank cover plate	Patterned alu. plate 1.0	1	
序号	代号	名称	材质	数量	备注

					制图		版号	C	标题	SCR-900U 储料桶组件	图号	SCR-900U-A-ALL	比例	1:28	数量	1
					设计		核						表面要求		材质	
					校对		准						物料号			
标记	更改前	更改后	更改人	日期	审核		日期	20220805	 信易电热机械股份有限公司 Shini Plastics Technologies, Inc.							



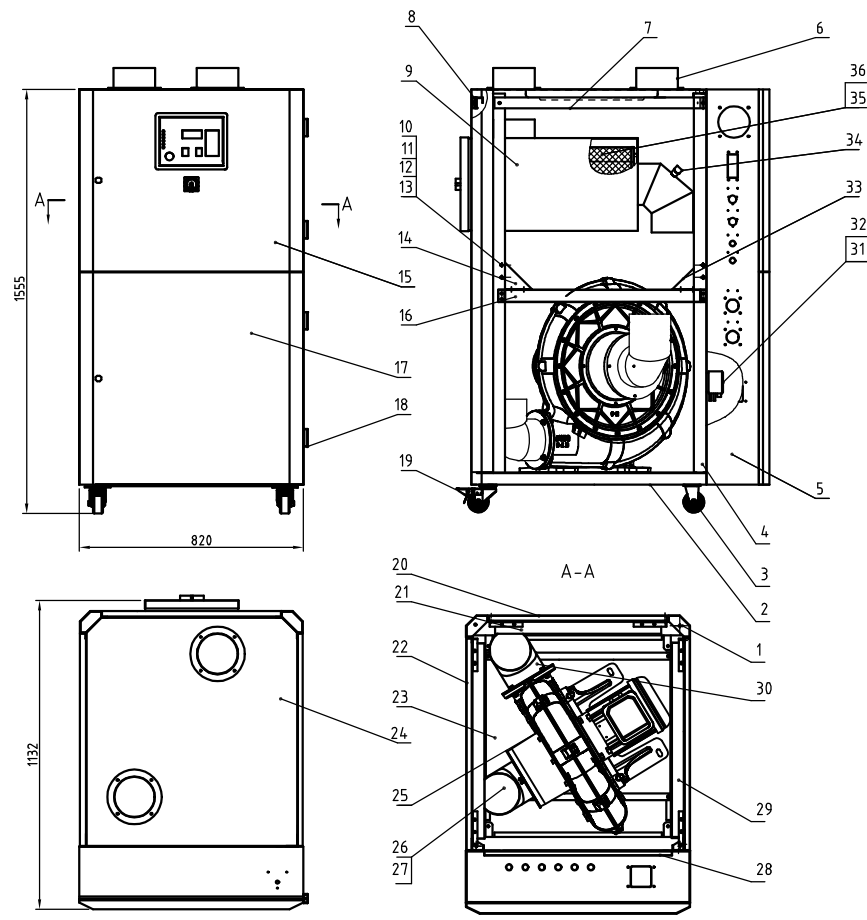
16	BH11090002310	Pipe heater fixed nut	SUS304	48	
15	YW64031600000	Hex. cap 3/16	SUS201(1.5)	96	
14	YW66051300000	Flat washer 5.5×13×1.0 Longzine		96	
13	YP52521100000	Natural mica washer 5.2×11	Mica	192	
12	YW66523400000	Copper washer	H58	36	
11	SCR-900U-B-08	Heating tank air outlet fastener	White silica gel 3.0	2	
10	SCR-900U-B-05	Air inlet flange	SUS201(1.5)	1	
9	YW60063000000	Hex bolt GB/T5781 M6×30-4.8-Longzine		8	
8	YW66061300000	Flat washer A grade GB/T97.16-Longzine		28	
7	YW62062000000	Large cross recessed flat head screw JS1111 M6X20-Longzine		18	
6	SCR-900U-B-06	Air outlet flange	SUS201(1.5)	1	
5	BH70090000950	Pipe heater	Assembly	1GR	
4	SCR-900U-B-03	Heating tank welding drawing	Assembly	1	
3	SCR-900U-B-07	Heating tank silica gel fastener	White silica gel 3.0	1	
2	SCR-900U-B-02	Pipe heater mount plate	SECC2.5	1	
1	SCR-900U-B-01	Heating tank cover plate	SPCC2.0	1	
序号	代号	名称	材质	数量	备注

Tech. Req:

1. The parts surface shall not be scratched during assembly.
2. The electrical heating pipes are divided into four groups for wiring, 6 in each group, 12kw;

					制图	版号	E	标题	SCR-900U 加热箱组件	图号	SCR-900U-B-ALL	比例	1:15	数量	1
					设计	核准						表面要求		材质	
					校对							物料号			
标记	更改前	更改后	更改人	日期	审核	日期	20220805								

SHINI 信易電熱機械股份有限公司
Shini Plastics Technologies, Inc.

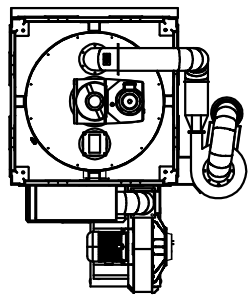
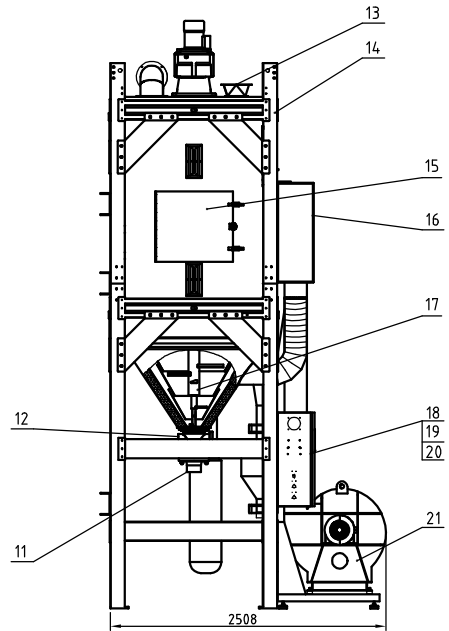
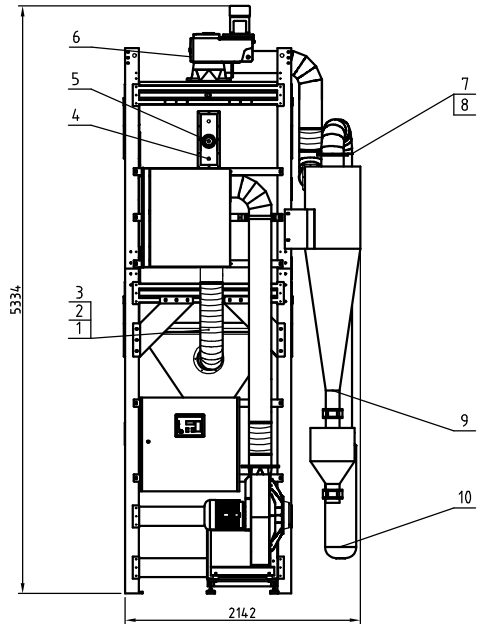


36	YR10034.000000	Filter hopper fastener $\phi 34$ 0mm	Silica gel	1	
35	YW80083800200	Filter ext. 276inner 167x570	Assembly	1	
34	BL08102100020	Right triangular plate SIC-004	SPCC2.0	3	
33	YW80083800200	Air pipe quick connector APL8-03 3/8	Assembly	2	
32	YW62041000000	Large cross recessed flat head screw $\phi 5$ 111M6x10-Longzine		4	
31	YE15325000000	Negative switch LF32-50	Assembly	1	
30	SCR-900U-C-22	Blower outlet flange	SUS201	1	
29	SCR-900U-C-21	Middle beam (right)	Assembly	1	
28	SCR-900U-C-20	Elec. mount plate	SECC1.5	1	
27	SCR-900U-C-19	Air port screen plate	Assembly	1	
26	SCR-900U-C-18	Blower pipe inlet flange	SUS201	1	
25	YM30015001600	Blower (3.7kW CX-150A)	Assembly	1	
24	SCR-900U-C-17	Side plate	SPCC2.0	1	
23	SCR-900U-C-16	Blower fixed plate	SPCC2.0	1	
22	SCR-900U-C-15	Side plate	SPCC1.5	2	
21	SCR-900U-C-14	Middle beam	SPCC2.0	1	
20	SCR-900U-C-13	Rear plate	SPCC1.5	1	
19	YW03000300200	3" black castor	Assembly	2	
18	YW06203100200	Chain CL20-1 right	Assembly	4	
17	SCR-900U-C-12	Lower door plank	SPCC1.5	1	
16	SCR-900U-C-11	Middle beam (left)	Assembly	1	
15	SCR-900U-C-10	Upper door plank	SPCC1.5	1	
14	BL08112000020	Left triangular plate SIC-003	SPCC2.0	3	
13	YW64.000800000	Hex. nut GB/T6172.1 M6-Longzine		4.2	
12	YW65060000000	Standard spring washer GB/T93 6-Longzine		4.2	
11	YW66061300000	Rat washer A grade GB/T97.1 6-Longzine		4.2	
10	YW60062000100	Hex. bolt GB/T5781 M6x20-4.8-Longzine		4.2	
9	SCR-900U-C-08	Filter hopper	Assembly	1	
8	SCR-900U-C-07	Rear fixed beam	Assembly	1	
7	SCR-900U-C-06	Side fixed beam	Assembly	2	
6	SCR-900U-C-05	Blower pipe outlet flange	SUS201	2	
5	SCR-900U-C-04	Front plate	Welding parts	1	
4	SCR-900U-C-03	Front column	Welding parts	2	
3	YW03000300300	Plated fixed black castor 3"	Assembly	2	
2	SCR-900U-C-02	Bottom frame	Assembly	1	
1	SCR-900U-C-01	Rear column	焊件	2	

序号	代号	名称	材质	数量	备注
	SCR-900U	风机架		1	
	SCR-900U-C-ALL				
			比例 1:15	数量	
			表面要求	材质	
			物料号		

制图	版号	D	标题	图号	比例	数量	备注
			SCR-900U	SCR-900U-C-ALL	1:15	1	
			设计				
			校对				
			审核				
标记	更改前	更改后	更改人	日期	日期	20220805	

SHINI 信易电热机械股份有限公司
Shini Plastics Technologies, Inc.

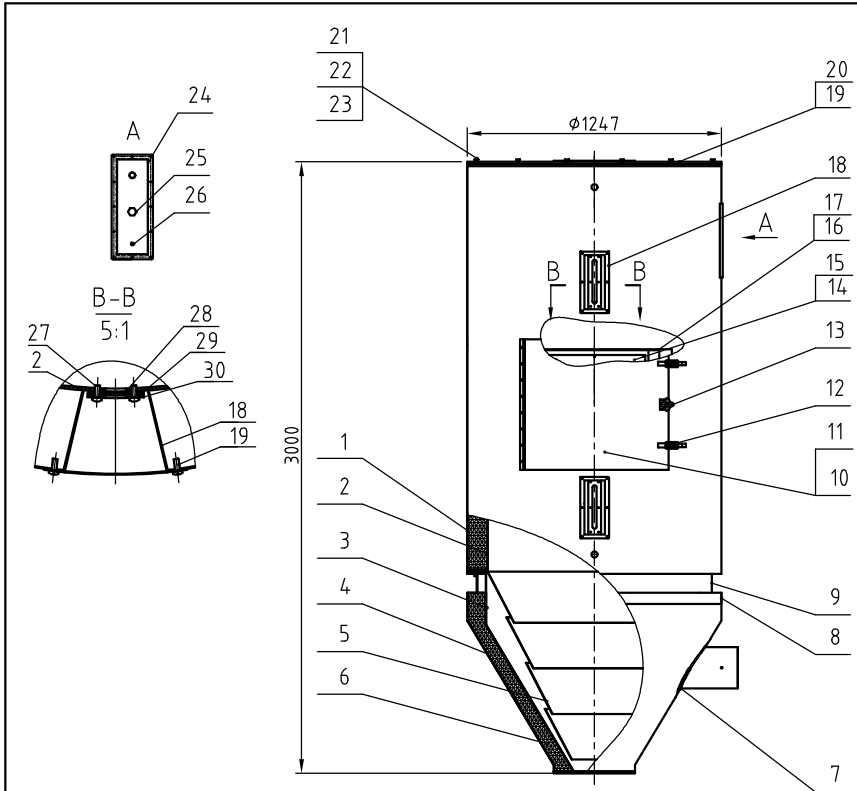


Unloading Blower	Blower Power	Heater Power	Mixing Motor Power	Model Version
0.4kW	7.5kW	96kW	2.2kW	Ver.D
Inlet Air Pipe Dia.	Discharge Port Dia.	Mixing Motor Rotating Speed	Hopper Capacity	
8inch	5inch	4.3r/min	1600L	

21	SCR-1600U-B-ALL	Blower assembly	Assembly	1	
20	SCR-1600U-ALL-03	Elec. mount plate	SECC15	1	
19	SCR-1600U-ALL-02	Control box	SPCC2.0	1	
18	SCR-1600U-ALL-01	Control box door plank	SPCC1.5	1	
17	SCR-1600U-F-ALL	Mixing assembly	Assembly	1	
16	SCR-1600U-E-ALL	Heating tank assembly	Assembly	1	96KW
15	SCR-1600U-A-ALL	Material storage tank assembly	Assembly	1	
14	SCR-1600U-D-A-ALL	Floor stand	Assembly	1	
13	SCR-1600U-ALL-05	SSC inlet port adaptor flange	Assembly	1	
12	CG24000500150	Rotary discharge valve SRV-5S	Assembly	1	
11	SCR-1600U-ALL-06	Rotary discharge valve connector	SUS201	1	
10	SCR-1600U-ALL-13	Filter cloth bag	polyester fiber	1	
9	SCR-1600U-C-ALL	Cyclone dust collector assembly	Assembly	1	
8	YR10008000000	White silica gel fastener	white silica gel	3	
7	SCR-1600U-ALL-20	8" clamp	Assembly	3	
6	YM50738200000	Mixing gear motor	Assembly	1	Nuo De
5	YE15000200000	Anti-rotation level switch	Assembly	1	
4	BE90800000050	Thermocoupler 8M	Assembly	1	
3	BE90600000050	Thermocoupler 5M	Assembly	1	
2	YW02008500000	Stainless steel pipe clamp 8.5"	Assembly	6	
1	YW72080400000	Heat-resistant air pipe 8"	Assembly	1	L=1500mm

制图	版号	A	标题	SCR-1600U 结晶机总成	图号	SCR-1600U-ALL	比例	1:38	数量	1
设计	核准						☐	☉	材质	
校对	审核						表面要求			
标记	更改前	更改后	更改人	日期	审核	日期	20220810	物料号		



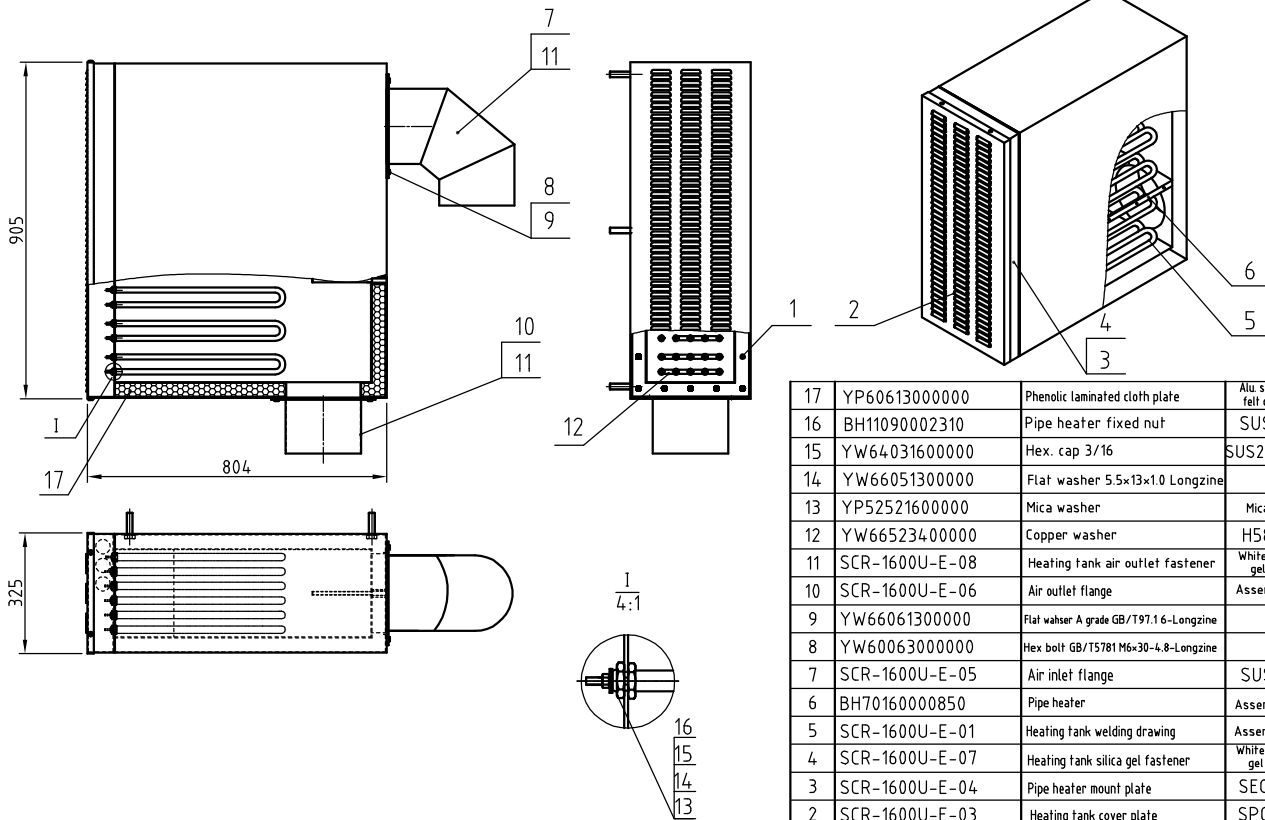


30	BW09000630040	Sight glass fastener iron sheet six hole elec. plated	SPCC2.5	2	
29	YR4.0000600000	Sight glass fastener six hole		2	
28	YW70000100000	Reinforced glass (six holes)	Tempered glass	2	
27	YW63051500000	Cross recessed pan head screw GB/T-818 M5x16-Longzine		12	
26	BE90800000050	Thermocoupler	assembly	1	
25	BH12901620010	Hopper level sensor plug	H58	1	
24	SCR-1600U-A-13	Hopper level sensor flange	SUS201(1.5)	1	
23	YW65012000000	Standard spring washer GB/T193 12-Longzine		24	
22	YW66122400000	Flat washer A gradeGB/T197.12-Longzine		24	
21	YW61123500000	Inner hex. column head screw GB/T170.1-M10x35-12.9-Longzine		24	
20	SCR-1600U-A-02	Hopper cover	assembly	1	
19	YR10010040100	Oven fastener D type		16M	
18	SCR-1600U-A-16	Sight hole glass inner frame	SUS201(1.5)	2	
17	SCR-1600U-A-17	Cleaning door cover plate 2	Patterned alu. plate 10	1	
16	SCR-1600U-A-07	Cleaning door cover plate 1	Patterned alu. plate 10	1	
15	SCR-1600U-A-18	Cleaning door fastener	Foamed red silica gel	1	
14	SCR-1600U-A-12	Cleaning door fender plate	SUS201(2.5)	1	
13	BH10150001310	Large star assembly M10	assembly	1	
12	SHD-900U-B-ALL	Door buckle	assembly	2	borrow
11	SCR-1600U-A-06	Cleaning door cover plate	Patterned alu. plate 10	1	
10	SCR-1600U-A-05	Cleaning door	welding parts	1	
9	SCR-1600U-A-11	Hopper cover plate 3	Patterned alu. plate 10	1	
8	SCR-1600U-A-10	Hopper cover plate 2	Patterned alu. plate 10	1	
7	SCR-1600U-A-14	Hopper inlet air pipe flange	SUS201(1.5)	1	
6	YP60501500000	Epoxy glass fiber laminate	assembly	1	
5	SCR-1600U-A-04	Inner hopper	assembly	1	
4	SCR-1600U-A-09	Hopper cover plate 1	Patterned alu. plate 10	1	
3	SCR-1600U-A-03	Ext. hopper	assembly	1	
2	SCR-1600U-A-01	Material storage tank	assembly	1	
1	SCR-1600U-A-08	Material storage tank cover plate	Patterned alu. plate 10	1	

序号	代号	名称	材料	数量	备注
----	----	----	----	----	----

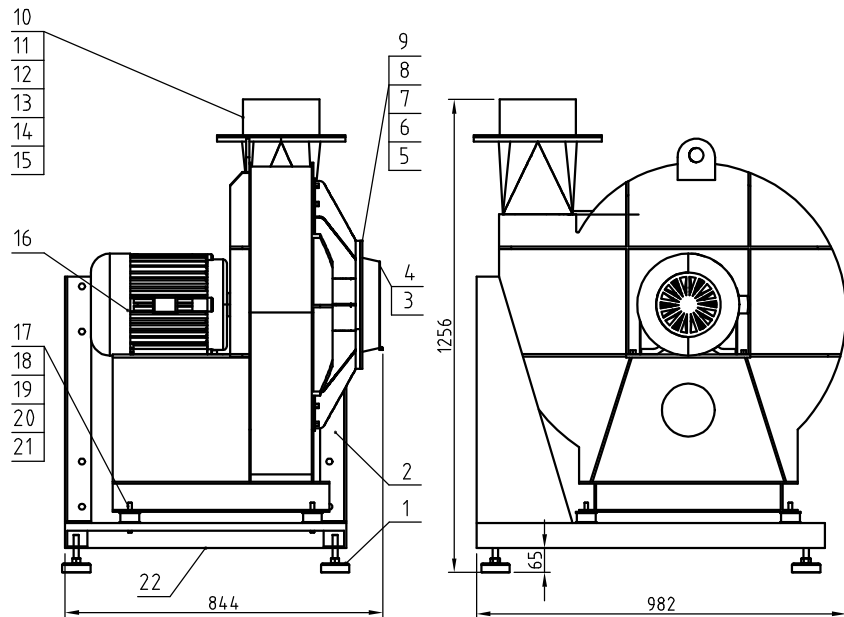
					制图		版号	B	标题	SCR-1600U	图号		比例	1:28	数量	1
					设计		核准			储料桶组件	SCR-1600U-A-ALL				材质	
					校对								表面要求			
标记	更改前	更改后	更改人	日期	审核		日期	20220810					物料号			

SHINI 信易电热机械股份有限公司
Shini Plastics Technologies, Inc.



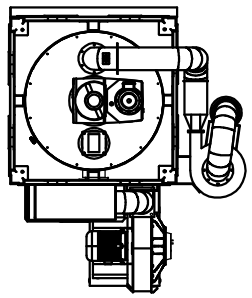
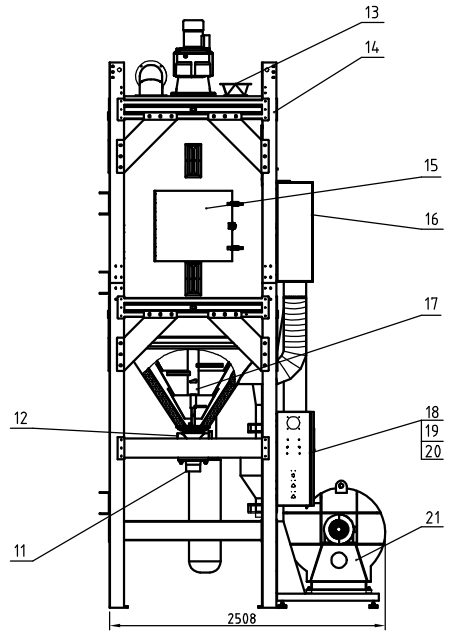
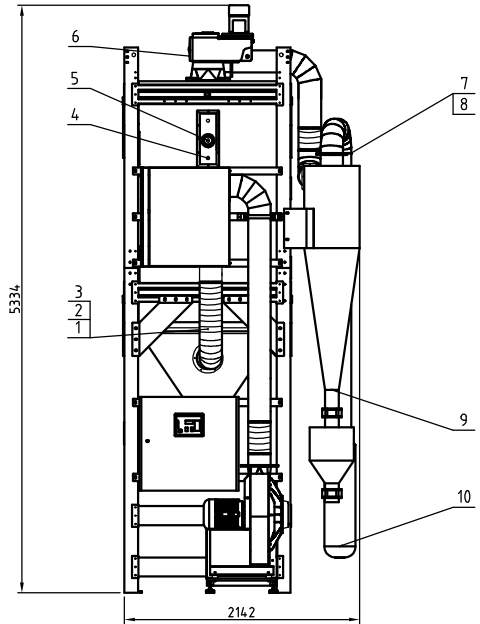
17	YP60613000000	Phenolic laminated cloth plate	Alu. silica felt cotton	1	
16	BH11090002310	Pipe heater fixed nut	SUS304	90	
15	YW64031600000	Hex. cap 3/16	SUS201(1.5)	96	
14	YW66051300000	Flat washer 5.5x13x1.0 Longzine		96	
13	YP52521600000	Mica washer	Mica	192	
12	YW66523400000	Copper washer	H58	36	
11	SCR-1600U-E-08	Heating tank air outlet fastener	White silica gel 3.0	2	
10	SCR-1600U-E-06	Air outlet flange	Assembly	1	
9	YW66061300000	Flat washer A grade GB/T97.16-Longzine		8	
8	YW60063000000	Hex bolt GB/T5781 M6x30-4.8-Longzine		8	
7	SCR-1600U-E-05	Air inlet flange	SUS201	1	
6	BH70160000850	Pipe heater	Assembly	1GR	96KW
5	SCR-1600U-E-01	Heating tank welding drawing	Assembly	1	
4	SCR-1600U-E-07	Heating tank silica gel fastener	White silica gel 3.0	1	
3	SCR-1600U-E-04	Pipe heater mount plate	SECC2.5	1	
2	SCR-1600U-E-03	Heating tank cover plate	SPCC2.0	1	
1	YW62061500000	Large cross recessed flat head screw JS1111 M6X15-Longzine		32	
序号	代号	名称	材料	数量	备注

					制图	版号	B	标题	SCR-1600U	图号	SCR-1600U-E-ALL	比例	1:15	数量	1
					设计	核			加热箱				⊕	材质	
					校对	准							表面要求	RAL9010	
标记	更改前	更改后	更改人	日期	审核		日期	20220810	信易电热机械股份有限公司 Shini Plastics Technologies, Inc.		物料号				



22	SCR-1600U-B-01	Blower mount plate	Welding parts	1	
21	YW64001000100	Hex. nut GB/T6170 M10-Longzine		4	
20	YW64101100000	Hex. nut M10 (anti-loose)		4	
19	YW66102500000	Flat washer A grade GB/T97.1 10-Longzine		8	
18	YW65010000000	Standard spring washer GB/T93 10-Longzine		4	
17	YW03536000000	Motor foot pad HB050-30-60A-M10	Assembly	4	
16	BM30754500050	Blower CF-75	Assembly	1	
15	YW64012100000	Hex. nut GB/T6170M12-Longzine		8	
14	YW661224.00000	Flat washer A grade GB/T97.1 12-Longzine		12	
13	YW65012200000	Standard spring washer GB/T93 12-Longzine		12	
12	YW60123500000	Hex. bolt GB/T5783 M12x35-8.8-Longzine		12	
11	SCR-1600U-B-04	Blower pipe outlet flange	white silica gel	1	
10	SCR-1600U-B-03	Blower outlet air pipe	SUS201	1	
9	YW65016200000	Standard spring washer GB/T93 16-Longzine		8	
8	YW64001600000	Hex. nut GB/T6170M16-Longzine		8	
7	YW66163000000	Flat washer A grade GB/T97.1 16-Longzine		16	
6	YW60165000200	Hex. nut GB/T5783 M16x50-12.9-Longzine		8	
5	SCR-1600U-B-06	Adjustable air cover	Welding parts	1	
4	YW69061000100	Butterfly bolt GB/T 3098 M6x10		2	
3	SCR-1600U-B-02	Adjustable air plate	SPCC2.0	1	
2	SCR-1600U-B-05	Reinforced plate Foot pad SH120	SPH6.0	2	
1	BW30012001410	Foot pad SH120	Assembly	4	
序号	代号	名称	材料	数量	备注

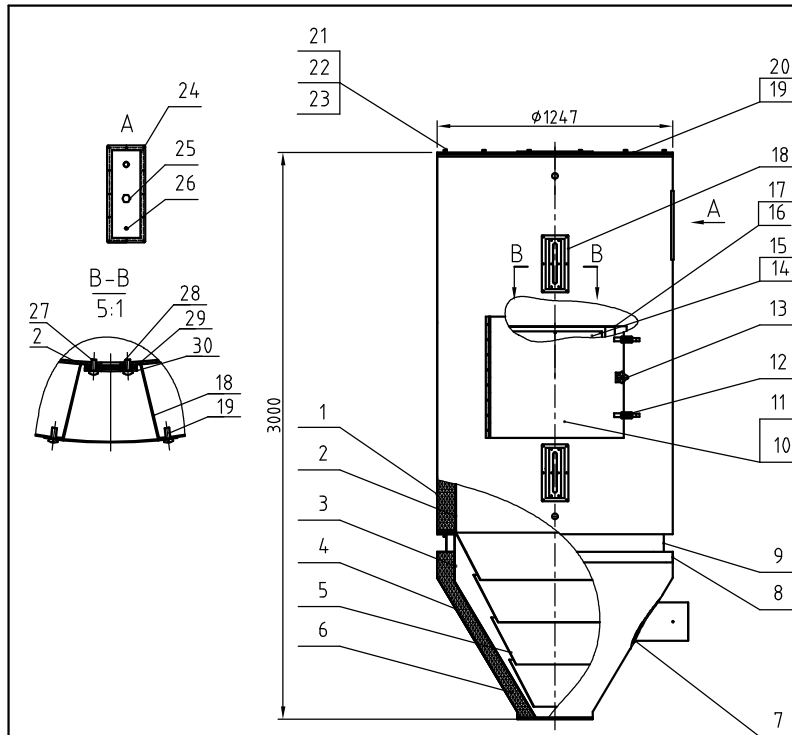
					制图		版号	B	标题	SCR-1600U	图号	比例	1:15	数量	1
					设计	魏莹	核		风机组件		SCR-1600U-B-ALL			材质	
					校对		准					表面要求			
标记	更改前	更改后	更改人	日期	审核		日期	20220810	SHINI 信易電熱機械股份有限公司 Shini Plastics Technologies, Inc.			物料号			



Unloading Blower	Blower Power	Heater Power	Mixing Motor Power	Model Version
0.4kW	7.5kW	96kW	2.2kW	Ver.D
Inlet Air Pipe Dia.	Discharge Port Dia.	Mixing Motor Rotating Speed	Hopper Capacity	
8inch	5inch	4.3r/min	1600L	

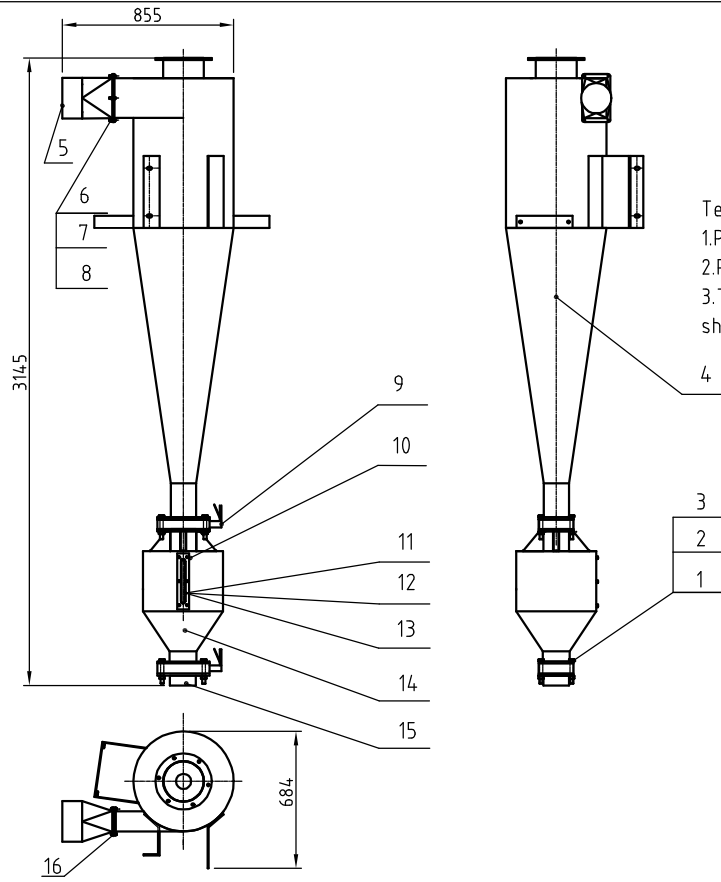
21	SCR-1600U-B-ALL	Blower assembly	Assembly	1	
20	SCR-1600U-ALL-03	Elec. mount plate	SECC15	1	
19	SCR-1600U-ALL-02	Control box	SPCC2.0	1	
18	SCR-1600U-ALL-01	Control box door plank	SPCC15	1	
17	SCR-1600U-F-ALL	Mixing assembly	Assembly	1	
16	SCR-1600U-E-ALL	Heating tank assembly	Assembly	1	96KW
15	SCR-1600U-A-ALL	Material storage tank assembly	Assembly	1	
14	SCR-1600U-D-A-ALL	Floor stand	Assembly	1	
13	SCR-1600U-ALL-05	SSC inlet port adaptor flange	Assembly	1	
12	CG24000500150	Rotary discharge valve SRV-SS	Assembly	1	
11	SCR-1600U-ALL-06	Rotary discharge valve connector	SUS201	1	
10	SCR-1600U-ALL-13	Filter cloth bag	polymer fiber	1	
9	SCR-1600U-C-ALL	Cyclone dust collector assembly	Assembly	1	
8	YR10008000000	White silica gel fastener	white silica gel	3	
7	SCR-1600U-ALL-20	8" clamp	Assembly	3	
6	YM50738200000	Mixing gear motor	Assembly	1	Nuo De
5	YE15000200000	Anti-rotation level switch	Assembly	1	
4	BE90800000050	Thermocoupler 8M	Assembly	1	
3	BE90600000050	Thermocoupler 5M	Assembly	1	
2	YW02008500000	Stainless steel pipe clamp 85"	Assembly	6	
1	YW72080400000	Heat-resistant air pipe 8"	Assembly	1	L=1500mm
序号	代号	名称	材料	数量	备注

制图	版号	A	标题	SCR-1600U	图号	SCR-1600U-ALL	比例	1:38	数量	1
设计	核准		结晶机总成				表面要求	材质		
校对	审核		SHINI	信易电热机械股份有限公司	Shini Plastics Technologies, Inc.	物料号				
标记	更改前	更改后	更改人	日期	审核	日期	20220810			



30	BW09000630040	Sight glass fastener iron sheet six hole elec. plated	SPCC2.5	2	
29	YR40000600000	Sight glass fastener six hole		2	
28	YW70000100000	Reinforced glass (six holes)	Tempered glass	2	
27	YW63051500000	Cross recessed pan head screw GB/T-818 M5x16---Longzine		12	
26	BE90800000050	Thermocoupler	assembly	1	
25	BH12901620010	Hopper level sensor plug	H58	1	
24	SCR-1600U-A-13	Hopper level sensor flange	SUS201(1.5)	1	
23	YW65012000000	Standard spring washer GB/T93 12-Longzine		24	
22	YW66122400000	Flat washer A gradeGB/T191.12-Longzine		24	
21	YW61123500000	Inner hex. column head screw GB/T770.1-M10x35-12.9-Longzine		24	
20	SCR-1600U-A-02	Hopper cover	assembly	1	
19	YR10010040100	Oven fastener D type		16M	
18	SCR-1600U-A-16	Sight hole glass inner frame	SUS201(1.5)	2	
17	SCR-1600U-A-17	Cleaning door cover plate 2	Patterned alu. plate 10	1	
16	SCR-1600U-A-07	Cleaning door cover plate 1	Patterned alu. plate 10	1	
15	SCR-1600U-A-18	Cleaning door fastener	Foamed red silica gel	1	
14	SCR-1600U-A-12	Cleaning door fender plate	SUS201(2.5)	1	
13	BH10150001310	Large star assembly M10	assembly	1	
12	SHD-900U-B-ALL	Door buckle	assembly	2	borrow
11	SCR-1600U-A-06	Cleaning door cover plate	Patterned alu. plate 10	1	
10	SCR-1600U-A-05	Cleaning door	welding parts	1	
9	SCR-1600U-A-11	Hopper cover plate 3	Patterned alu. plate 10	1	
8	SCR-1600U-A-10	Hopper cover plate 2	Patterned alu. plate 10	1	
7	SCR-1600U-A-14	Hopper inlet air pipe flange	SUS201(1.5)	1	
6	YP60501500000	Epoxy glass fiber laminate	assembly	1	
5	SCR-1600U-A-04	Inner hopper	assembly	1	
4	SCR-1600U-A-09	Hopper cover plate 1	Patterned alu. plate 10	1	
3	SCR-1600U-A-03	Ext. hopper	assembly	1	
2	SCR-1600U-A-01	Material storage tank	assembly	1	
1	SCR-1600U-A-08	Material storage tank cover plate	Patterned alu. plate 10	1	
序号	代号	名称	材料	数量	备注

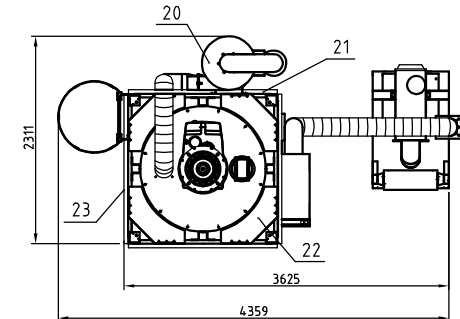
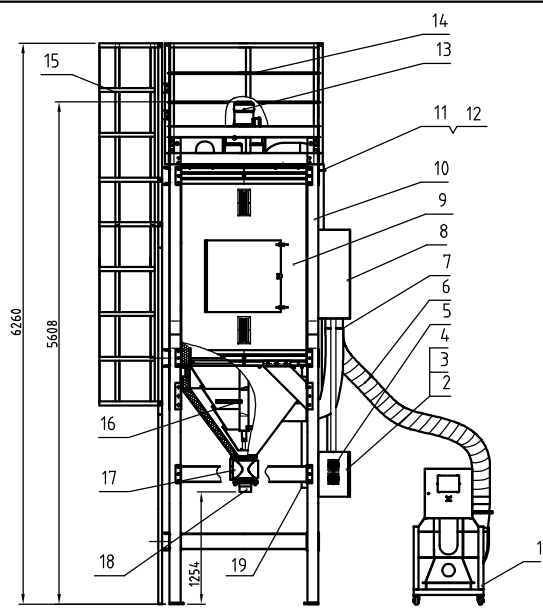
					制图	版号	B	标题	SCR-1600U	图号		比例	1:28	数量	1
					设计	核准		物料桶组件		SCR-1600U-A-ALL					
					校对	核准									
					审核							表面要求			
标记	更改前	更改后	更改人	日期	审核		日期	20220810	SHINI 信易电热机械股份有限公司 Shini Plastics Technologies, Inc.			物料号			



Tech. Req.:
 1.Parts must be cleaned before assembly, without burr, flash, rust, dust, etc.
 2.Parts shall not be bumped or scratched during assembly.
 3.The connecting flange of 5 "clamp manual butterfly valve shall comply with standard GB/T9113-2000.

16	ACF-8"-A-06	Air inlet flange fastener	Silica gel	1	borrow
15	SCR-1600U-C-04	Discharge port flange	assembly	1	
14	SCR-1600U-C-03	Dust collective hopper	assembly	1	
13	YW70000100000	Sight glass reinforced glass	Reinforced glass	1	
12	YR40000600000	Sight glass fastener six hole	Silica gel	1	
11	YW09000600000	Sight glass iron sheet six hole	Q235A	1	
10	YW63051500000	Cross recessed pan head screw M6x6		6	
9	YW59512200000	Clamp manual butterfly valve 5"	assembly	2	
8	YW66061300000	Flat washer 6	Longzine	12	
7	YW64000600300	Hex. nut M6		6	
6	YW60062500000	Hex. bolt M6x25		6	
5	SCR-1600U-C-02	Pipe connecting flange	assembly	1	
4	SCR-1600U-C-01	Cyclone hopper	assembly	1	
3	YW66163000000	Flat washer 16		16	
2	YW64001600000	Hex. nut M16		8	
1	YW60161000000	Hex. bolt M16x100		8	
序号	代号	名称	材料	数量	备注

					制图	版号	0	标题	SCR-1600U 旋风集尘器组件	图号	SCR-1600U-C-ALL	比例	1:20	数量	1
					设计	核						表面要求 物料号	材质		
					校对	准									
标记	更改前	更改后	更改人	日期	审核	日期	20220810	信易电热机械股份有限公司 Shini Plastics Technologies, Inc.							



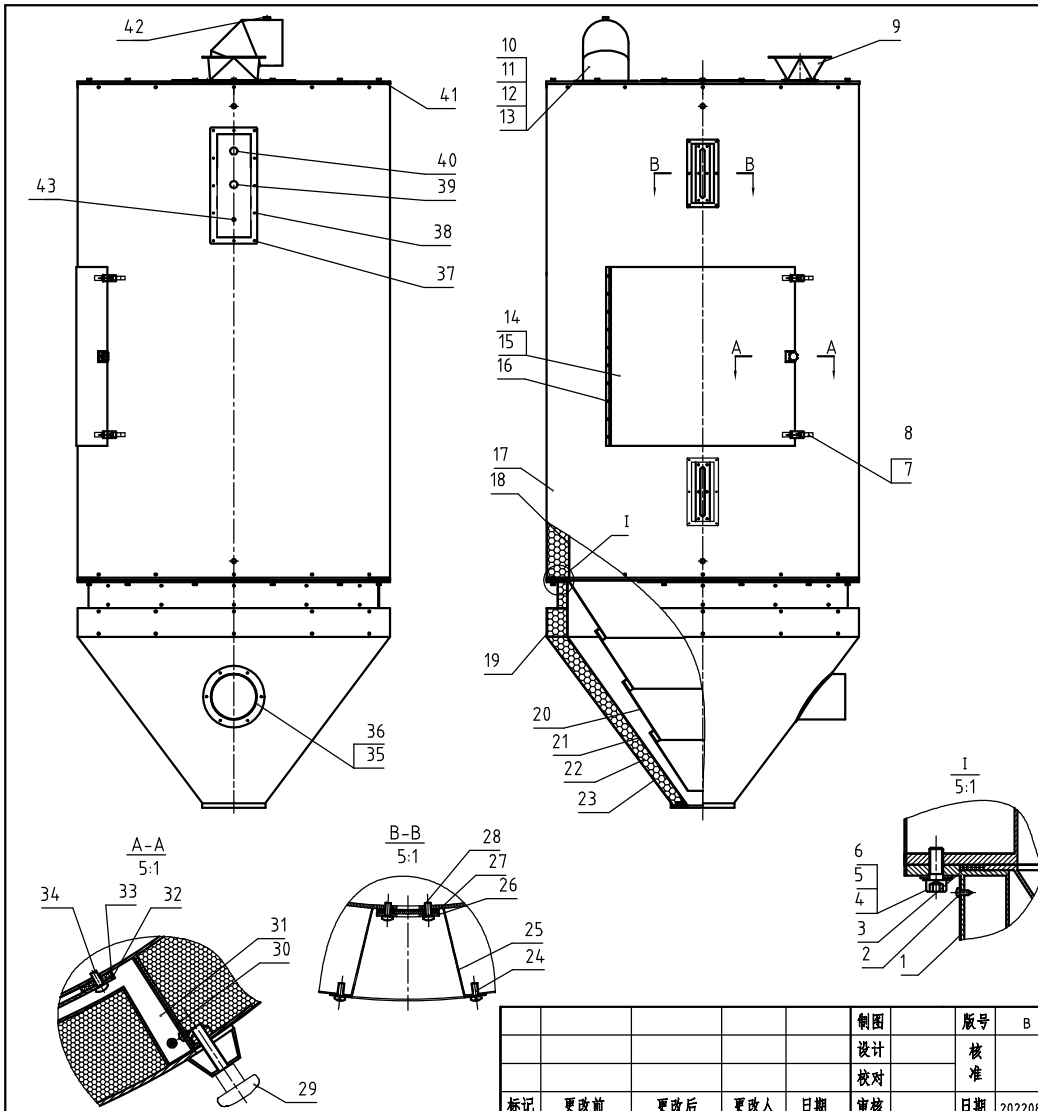
Unloading Blower	Blower Power	Heater Power	Mixing Motor Power	Model Version
0.4kW	15kW	128kW	4.0kW	Ver.A
Inlet Air Pipe Dia.	Discharge Port Dia.	Mixing Motor Rotating Speed	Hopper Capacity	
8inch	5inch	3.7r/min	2500L	

23	SCR-2500U-D-ALL-03	Ladder 2	Assembly	2	for optional ML
22	SCR-2500U-D-ALL-05	Foot plate	Assembly	4	for optional ML
21	SCR-2500U-D-ALL-04	Ladder 3	Assembly	1	for optional ML
20	SCR-2500U-F-ALL	Cyclone dust collector	Assembly	1	
19	BP82281200044	Filter cloth bag	Assembly	1	
18	SCR-2500U-ALL-04	Rotary discharge valve connector	SUS201	1	
17	CG24000500150	Rotary discharge valve SRV-55	Assembly	1	
16	SCR-2500U-E-ALL	Mixing assembly	Assembly	1	
15	SCR-2500U-D-ALL-01	Ladder assembly	Assembly	1	for optional ML
14	SCR-2500U-D-ALL-02	Ladder 1	Assembly	2	for optional ML
13	YM50838200000	Gear motor	Assembly	1	Nuo De
12	SCR-1600U-ALL-20	Stainless steel pipe clamp 8"	SUS201	3	borrow
11	YR10008000000	8" white silica gel fastener	white silica gel	2	
10	SCR-2500U-D-ALL	Floor stand	Assembly	1	
9	SCR-2500U-A-ALL	Crystallizing hopper	Assembly	1	
8	SCR-2500U-C-ALL	Heating tank	Assembly	1	
7	YW02008500000	Stainless steel pipe clamp 8.5"		6	
6	YW72080400000	Heat-resistant air pipe 8"		1	L=7.2M
5	YM60121200400	Exhaust fan		2	
4	SCR-2500U-ALL-03	Elec. mount plate 1	SECC15	1	
3	SCR-2500U-ALL-02	Control box	SPCC15	1	
2	SCR-2500U-ALL-08	Control box door plank	SPCC15	1	
1	SCR-2500U-B-ALL	Blower assembly	Assembly	1	

制图	版号	B	标题	SCR-2500U 结晶机总成	图号	SCR-2500U-ALL	比例	1:4.5	数量	1
设计	核准						表面要求			
校对	日期	20220810					物料号			
标记	更改前	更改后	更改人	日期	审核					



材料	
物料号	



Tech. Req:

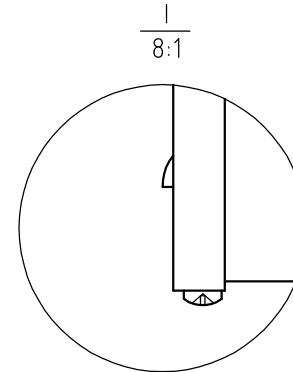
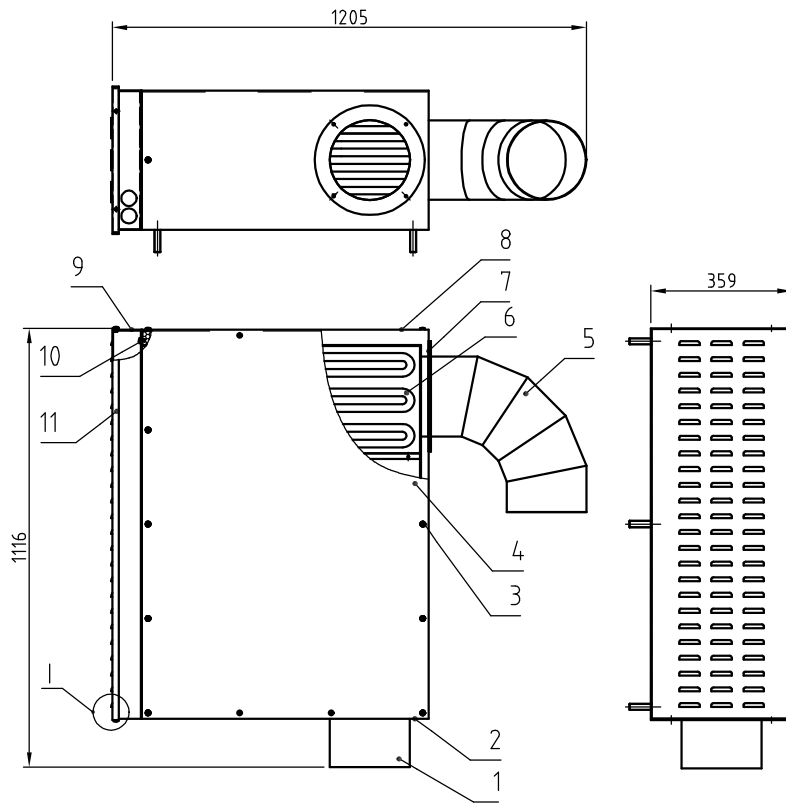
- 1.The parts surface shall not be scratched and cleaned before assembly.
- 2.The parts must be fixed firmly with rust-proof treatment after assembly.

序号	代号	名称	材料	数量	备注
43	BE90800000050	Thermocoupler 8m	assembly	1	
42	YW60081600100	Hex. bolt GB/T5781M8×6-4.8-Longzine		1	
41	SCR-2500U-A-02	Hopper cover	assembly	1	
40	YE15000200000	Anti-rotation level switch		1	
39	BH12901620010	Hopper level sensor plug	H58	1	
38	YW67041200000	Cross recessed pan head self-tapping screw GB/T85 S1.2x3-C-H-Longzine		14	
37	SCR-2500U-A-16	Hopper level sensor flange	SUS201	1	
36	YW67041200000	Cross recessed pan head self-tapping screw GB/T85 S1.2x3-C-H-Longzine		6	
35	SCR-2500U-A-07	Inlet air pipe flange	SUS201	1	
34	YW62061500000	Cross recessed pan head screw AS1111 M6x10 --Longzine		8	
33	SCR-2500U-A-17	Cleaning door sealing gasket	Foamed red silica gel	1	
32	SCR-2500U-A-14	Cleaning door fender	SUS201	1	
31	SCR-2500U-A-11	Cleaning door frame cover plate 1	Patterned alu. plate	2	
30	SCR-2500U-A-12	Cleaning door frame cover plate 2	Patterned alu. plate	2	
29	BH10150000310	Big star assembly M10	assembly	1	
28	YW70000100000	Reinforced glass (six holes)		2	
27	YR40000600000	Sight glass fastener	rubber	2	
26	BW09000630040	Sight glass iron sheet six hole	SPCC2.5	2	
25	SHD-4000U-A-57	Sight glass inner frame	SUS201	2	borrow
24	YW63051500000	Cross recessed pan head screw GB/T-8.8 M6x6 --Longzine		24	
23	SCR-2500U-A-06	Hopper cover plate 1	Patterned alu. plate	1	
22	YP60501500000	Epoxy glass fiber laminate	assembly	1	
21	SCR-2500U-A-03	External hopper	assembly	1	
20	SCR-2500U-A-04	Inner hopper	SUS201	1	
19	SCR-2500U-A-08	Hopper cover plate 2	Patterned alu. plate	1	
18	SCR-2500U-A-01	Material storage tank	assembly	1	
17	SCR-2500U-A-05	Hopper cover plate	Patterned alu. plate	1	
16	YW67041200000	Cross recessed pan head self-tapping screw GB/T85 S1.2x3-C-H-Longzine		10	
15	SCR-2500U-A-13	Cleaning door cover plate	Patterned alu. plate	1	
14	SCR-2500U-A-10	Cleaning door	SUS201	1	
13	YW65008000100	Standard spring washer GB/T93 8-Longzine		8	
12	YW66081600000	Flat washer A grade GB/T97.1 18-6x16.5-Longzine		8	
11	YW60082500300	Hex. bolt GB/T5783 M8x25-12.9-Longzine		8	
10	SCR-2500U-A-19	Exhaust pipe elbow	SUS201	1	
9	SCR-2500U-A-18	Inlet hopper adapter flange	SUS201	1	
8	YW63051500000	Cross recessed pan head screw GB/T-8.8 M6x6 --Longzine		8	
7	SHD-900U-B-ALL	Door buckle	assembly	2	borrow
6	YW66122400000	Flat washer A grade GB/T97.1 12-Longzine		24	
5	YW65012200000	Standard spring washer GB/T93 12-Longzine		24	
4	YW61123500000	Inner hex. column head screw GB/T70.1-M12x35-12.9-Longzine		24	
3	YR10010040100	Silica gel fastener 4.1m		1	
2	YW67041200000	Cross recessed pan head self-tapping and tapping screw GB/T85 S1.2x3-C-H-Longzine		72	
1	SCR-2500U-A-09	Hopper cover plate 3	Patterned alu. plate	1	

制图	版号	标题	图号
设计	B	SCR-2500U 结晶桶	SCR-2500U-A-ALL
校对			
审核			
标记	更改前	更改后	更改人
			日期
			日期

SHINI 信昂电融机械股份有限公司
Shini Plastics Technologies, Inc.

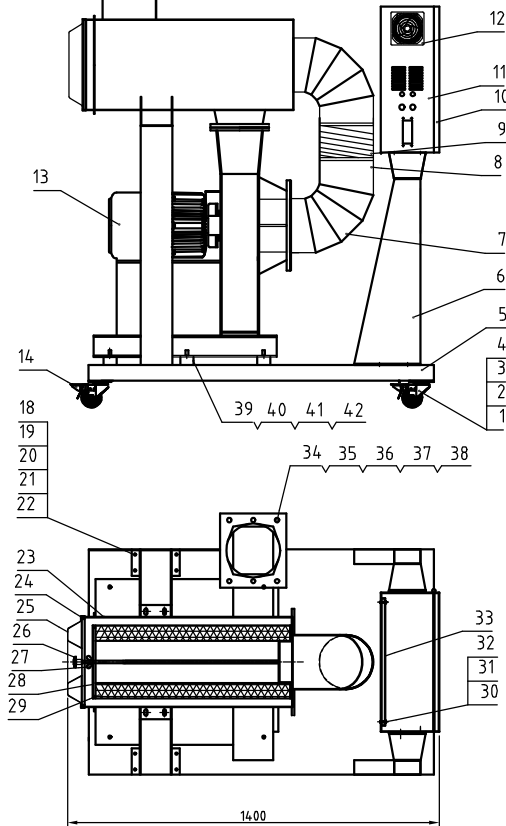
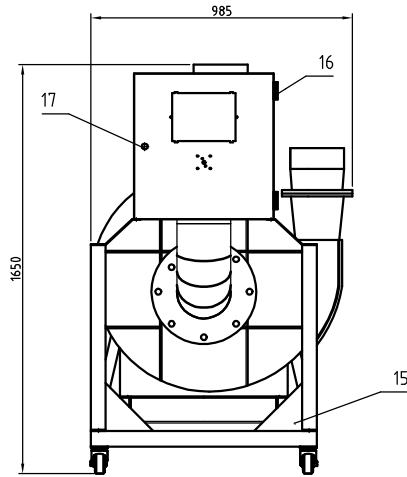
比例	数量	备注
1:18	1	
材料		
表面要求		
物料号		



Tech. Req:
 1. The parts surface shall not be scratched, and be cleaned before assembly.
 2. The parts shall be fixed firmly, with rust proof treatment after assembly.

11	SCR-2500U-C-01	Heating tank cover plate	SPCC15	1	
10	YW63061500000	Cross recessed pan head screw GB/T818M6X15-Longzine		42	
9	SCR-2500U-C-02	Pipe heater mount plate	SECC2.5	1	
8	SCR-2500U-C-05	Pipe heater mount plate 2	Patterned alu. plate	1	
7	SCR-2500U-C-03	Heating tank case		1	
6	BH70250007650	Pipe heater		1GR	128KW
5	SCR-2500U-C-07	Air inlet flange	SUS201	1	
4	SCR-2500U-C-04	Pipe heater mount plate 1	Patterned alu. plate	1	
3	YW67041200000	Cross recessed pan head self-lapping screw GB/T845 S14.2x13-C-H-Longzine		34	
2	SCR-2500U-C-06	Pipe heater mount plate 3	Patterned alu. plate	1	
1	SCR-2500U-C-08	Air outlet flange	SUS201	1	
序号	代号	名称	材料	数量	备注

					制图	版号	A	标题	SCR-2500U	图号		比例	1:15	数量	1
					设计	核准			加热箱		SCR-2500U-C-ALL		⊕	材质	
					校对	核准							表面要求		
标记	更改前	更改后	更改人	日期	审核	日期	20220810	信易电热机械股份有限公司 Shini Plastics Technologies, Inc.				物料号			



42	YW64001000100	Hex. nut GB/T6170 M10-Longzine		6	
41	YW66102500000	Flat washer 10x25x1.5-Longzine		12	
40	YW65010000000	Standard spring washer GB/T93 10-Longzine		12	
39	YW03536000000	Motor foot pad HB950-30-60A-M10		6	
38	YW64012100000	Hex. nut GB/T6170 M12-Longzine		18	
37	YW66122400000	Flat washer A GB/T93 12-Longzine		18	
36	YW65012200000	Standard spring washer GB/T93 12-Longzine		18	
35	YW61123500000	Inner hex. column head screw GB/T10192 M12x35-12.9-Longzine		18	
34	SCR-2500U-B-08	Blower air outlet flange		1	
33	SCR-2500U-B-04	Elec. mount plate	SECC1.5	1	
32	YW66051300000	Flat washer 5.5X13X1.0 Longzine		4	
31	YW65005200000	Standard spring washer GB/T93 5-Longzine		4	
30	YW62052000000	Large cross recessed flat head screw J511110X20-Longzine		4	
29	YR50277500000	Filter		1	
28	SD-1500H-ALL-10	Filter flange	SECC2.0	1	borrow
27	YW60100000000	Butterfly cap M10		1	
26	YW09115600000	Big star nut M10x15	Alu. alloy	1	
25	SD-2000H-A-025	Filter hopper cover	SPCC2.0	1	borrow
24	YR10034.0000000	Filter hopper fastener	Silica gel	1	
23	SCR-2500U-B-05	Filter hopper		1	
22	YW64080600000	Hex. nut GB/T6170 M8-Longzine		12	
21	YW65008000100	Standard spring washer GB/T93 8-Longzine		26	
20	YW66081600000	Flat washer A GB/T93 16x16x1.5-Longzine		26	
19	YW60082500100	Hex. bolt GB/T5783 M8x25-12.9-Longzine		26	
18	SCR-2500U-B-07	Filter hopper fixed foot	Assembly	2	
17	YW00816100000	Door lock MS816-1 black with key		1	
16	YW06203100200	Right chain CL203-1		2	
15	SCR-2500U-B-06	Blower frame reinforced plate	SPCC3.0	2	
14	YW03000300000	Brake castor 3"		2	
13	YM30001500000	High pressure centrifugal blower		1	
12	YM60121200400	Exhaust fan		1	
11	SCR-2500U-B-03	Control box	SPCC1.5	1	
10	SCR-2500U-B-02	Control box cover	SPCC1.5	1	
9	YW72080400000	Hot air resistant pipe 8"X0.3m		1	
8	YW02008500000	Stainless steel pipe clamp 8.5"		2	
7	SCR-2500U-B-09	Blower air inlet flange	SUS201	1	
6	SCR-2500U-B-10	Blower frame column	Assembly	2	
5	SCR-2500U-B-01	Bottom plate	SPH4.0	1	
4	YW65006000100	Standard spring washer GB/T93 6-Longzine		20	
3	YW66061300000	Flat washer A GB/T93 13x13x1.0-Longzine		20	
2	YW60061500100	Hex. bolt GB/T5783 M6x16-12.9-Longzine		20	
1	YW03000300200	Movable castor 3"		2	
序号	代号	名称	材料	数量	备注

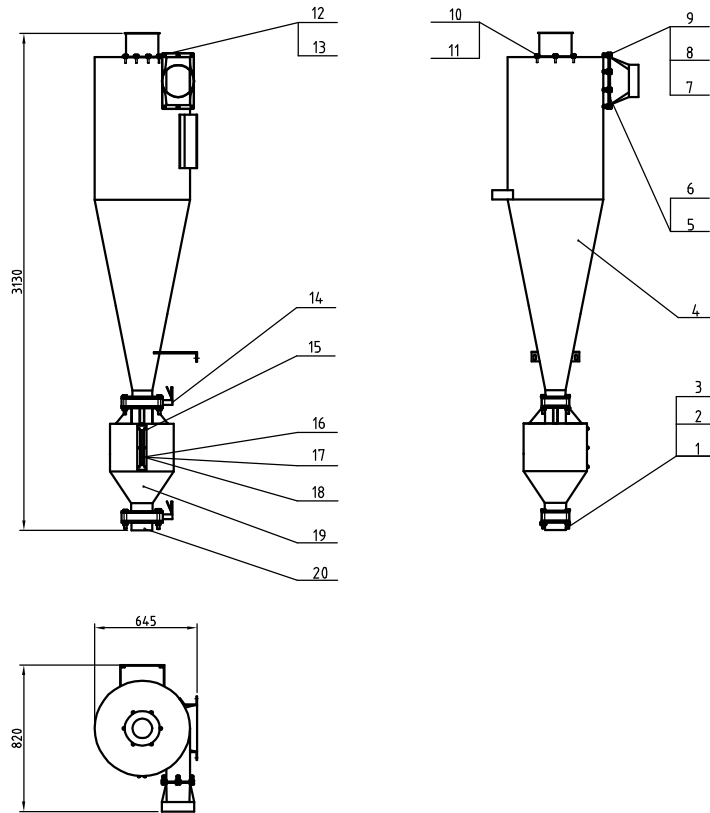
Tech. Req:

1. The parts surface shall not be scratched, and be cleaned before assembly.
2. The parts shall be fixed firmly, with rust proof treatment after assembly.

标记	更改前	更改后	更改人	日期	制图	版号	A	标题	图号
					设计	核准		SCR-2500U 风机架	SCR-2500U-B-ALL
					校对	审核			
					日期		20220810		

SHINI 信易电热机械股份有限公司
Shini Plastics Technologies, Inc.

比例	1:15	数量	1
表面要求			
物料号			



Tech. Req.:

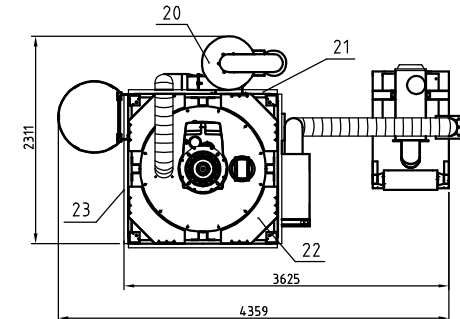
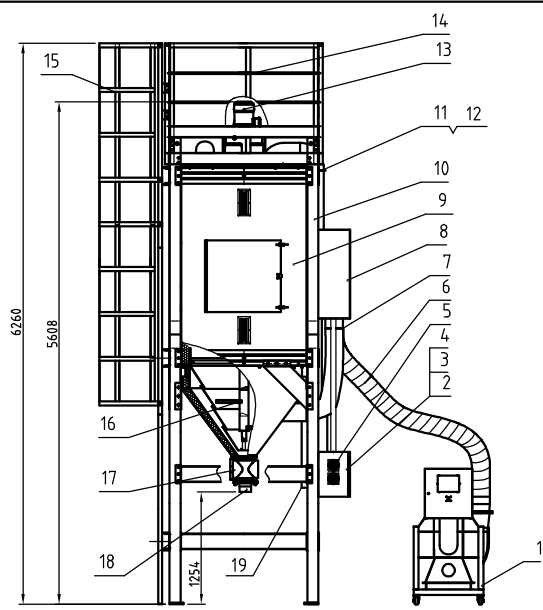
1. Parts must be cleaned before assembly, without burr, flash, rust, dust, etc.
2. Parts shall not be bumped or scratched during assembly.
3. The connecting flange of 5 "clamp manual butterfly valve shall comply with standard GB/T9113-2000.

序号	代号	名称	材料	数量	备注
20	ACF-8"-A-13	Discharge port flange	assembly	1	borrow
19	ACF-8"-A-12	Dust collective hopper	assembly	1	borrow
18	YW70000100000	Sight glass reinforced glass		1	
17	YR40000600000	Six hole sight glass fastener	rubber	1	
16	YW09000600000	Six hole sight glass iron sheet		1	
15	YW64000500000	Hex. nut M5	6	6	
14	YW59512200000	Clamp manual butterfly valve 5"	assembly	2	
13	SCR-2500U-F-02	Exhaust port flange	SUS201	1	
12	ACF-8"-A-05	Exhaust port flange fastener	silica gel	1	borrow
11	YW66081600000	Flat washer 8×16×1.5	100HV	6	
10	YW66082500000	Inner hex. screw M8×25	8.8	6	
9	YW66081600000	Flat washer 8×16×1.5	100HV	10	
8	YW61082000000	Inner hex. screw M8×20	8.8	10	
7	YW64080600000	Hex. nut M8	8	10	
6	ACF-8"-A-04	Inlet air flange	SUS430	1	borrow
5	ACF-8"-A-06	Inlet air flange fastener	silica gel	1	borrow
4	SCR-2500U-F-01	Dust collective hopper	assembly	1	
3	YW66163000000	Flat washer 16	14.0HV	8	
2	YW64001600000	Hex. nut M16	10	8	
1	YW60161000000	Hex. bolt M16×100	12.9	8	

标记	更改前	更改后	更改人	日期	制图	版号	标题	图号	比例	数量	备注
					设计	被	SCR-2500U	SCR-2500U-F-ALL	1:25	1	
					校对	准	旋风除尘器		材料		
					审核				表面要求		
									物料号		



20220810



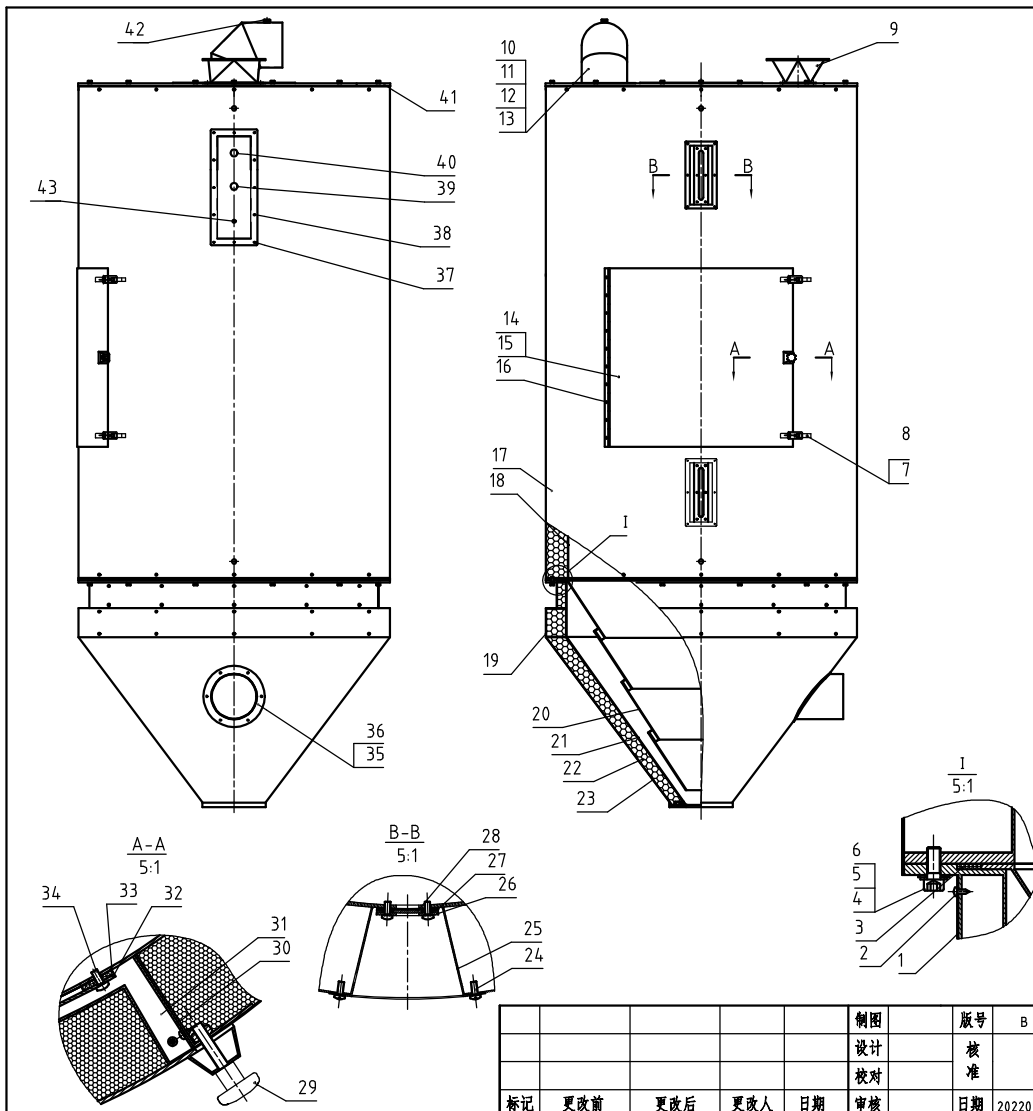
Unloading Blower	Blower Power	Heater Power	Mixing Motor Power	Model Version
0.4kW	15kW	128kW	4.0kW	Ver.A
Inlet Air Pipe Dia.	Discharge Port Dia.	Mixing Motor Rotating Speed	Hopper Capacity	
8inch	5inch	3.7r/min	2500L	

23	SCR-2500U-D-ALL-03	Ladder 2	Assembly	2	for optional ML
22	SCR-2500U-D-ALL-05	Foot plate	Assembly	4	for optional ML
21	SCR-2500U-D-ALL-04	Ladder 3	Assembly	1	for optional ML
20	SCR-2500U-F-ALL	Cyclone dust collector	Assembly	1	
19	BP82281200044	Filter cloth bag	Assembly	1	
18	SCR-2500U-ALL-04	Rotary discharge valve connector	SUS201	1	
17	CG24000500150	Rotary discharge valve SRV-55	Assembly	1	
16	SCR-2500U-E-ALL	Mixing assembly	Assembly	1	
15	SCR-2500U-D-ALL-01	Ladder assembly	Assembly	1	for optional ML
14	SCR-2500U-D-ALL-02	Ladder 1	Assembly	2	for optional ML
13	YM50838200000	Gear motor	Assembly	1	Nuo De
12	SCR-1600U-ALL-20	Stainless steel pipe clamp 8"	SUS201	3	borrow
11	YR10008000000	8" white silica gel fastener	white silica gel	2	
10	SCR-2500U-D-ALL	Floor stand	Assembly	1	
9	SCR-2500U-A-ALL	Crystallizing hopper	Assembly	1	
8	SCR-2500U-C-ALL	Heating tank	Assembly	1	
7	YW02008500000	Stainless steel pipe clamp 8.5"		6	
6	YW72080400000	Heat-resistant air pipe 8"		1	L=7.2M
5	YM60121200400	Exhaust fan		2	
4	SCR-2500U-ALL-03	Elec. mount plate 1	SECC15	1	
3	SCR-2500U-ALL-02	Control box	SPCC15	1	
2	SCR-2500U-ALL-08	Control box door plank	SPCC15	1	
1	SCR-2500U-B-ALL	Blower assembly	Assembly	1	

制图	版号	B	标题	SCR-2500U	图号	SCR-2500U-ALL	比例	1:45	数量	1
设计	核准		结晶机总成				材质			
校对	日期	20220810					表面要求			
审核	日期						物料号			



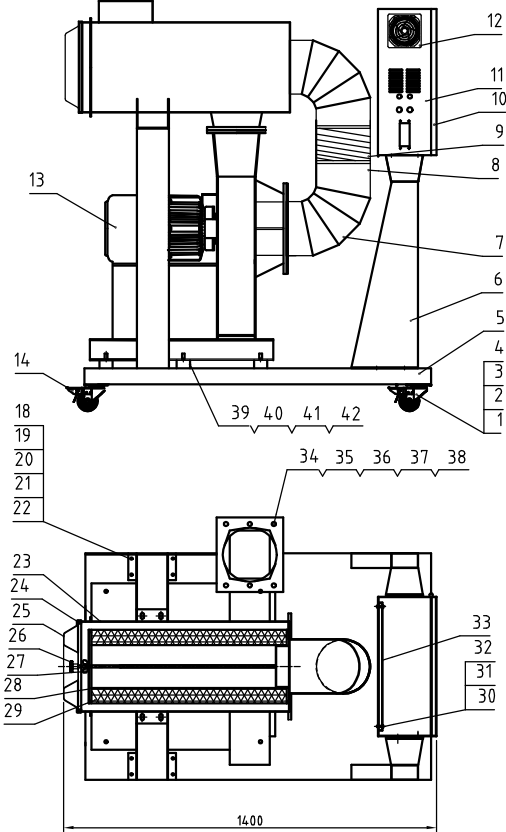
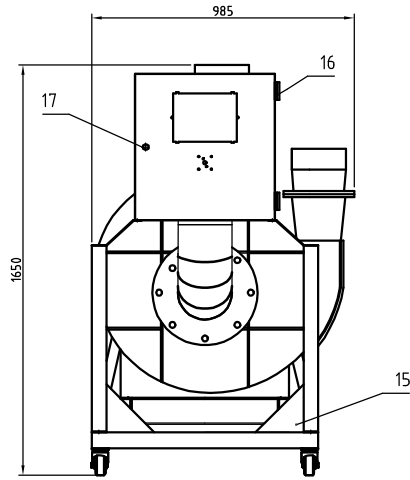
物料号	
-----	--



Tech. Req:
 1.The parts surface shall not be scratched and cleaned before assembly.
 2.The parts must be fixed firmly with rust-proof treatment after assembly.

43	BE90800000050	Thermocoupler 8m	assembly	1	
42	YW60081600100	Hex. bolt GB/T5781M8*16-4.8-Longzine		1	
41	SCR-2500U-A-02	Hopper cover	assembly	1	
40	YE15000200000	Anfi-rotation level switch		1	
39	BH12901620010	Hopper level sensor plug	H58	1	
38	YW67041200000	Cross recessed pan head self-tapping screw GB/T4513.2x13-C4-Longzine		14	
37	SCR-2500U-A-16	Hopper level sensor flange	SUS201	1	
36	YW67041200000	Cross recessed pan head self-tapping screw GB/T4513.2x13-C4-Longzine		6	
35	SCR-2500U-A-07	Inlet air pipe flange	SUS201	1	
34	YW62061500000	Cross recessed pan head screw ZS111116x15 --Longzine		8	
33	SCR-2500U-A-17	Cleaning door sealing gasket	Foamed red silica gel	1	
32	SCR-2500U-A-14	Cleaning door fender	SUS201	1	
31	SCR-2500U-A-11	Cleaning door frame cover plate 1	Patterned alu. plate	2	
30	SCR-2500U-A-12	Cleaning door frame cover plate 2	Patterned alu. plate	2	
29	BH10150000310	Big star assembly M10	assembly	1	
28	YW70000100000	Reinforced glass (six holes)		2	
27	YR40000600000	Sight glass fastener	rubber	2	
26	BW09000630040	Sight glass iron sheet six hole	SPCC2.5	2	
25	SHD-4000U-A-57	Sight glass inner frame	SUS201	2	borrow
24	YW63051500000	Cross recessed pan head screw GB/T-488 M5x6--Longzine		24	
23	SCR-2500U-A-06	Hopper cover plate 1	Patterned alu. plate	1	
22	YP60501500000	Epoxy glass fiber laminate	assembly	1	
21	SCR-2500U-A-03	External hopper	assembly	1	
20	SCR-2500U-A-04	Inner hopper	SUS201	1	
19	SCR-2500U-A-08	Hopper cover plate 2	Patterned alu. plate	1	
18	SCR-2500U-A-01	Material storage tank	assembly	1	
17	SCR-2500U-A-05	Hopper cover plate	Patterned alu. plate	1	
16	YW67041200000	Cross recessed pan head self-tapping screw GB/T4513.2x13-C4-Longzine		10	
15	SCR-2500U-A-13	Cleaning door cover plate	Patterned alu. plate	1	
14	SCR-2500U-A-10	Cleaning door	SUS201	1	
13	YW65008000100	Standard spring washer GB/T93 8-Longzine		8	
12	YW66081600000	Flat washer A grade GB/T97.1 B.6x16x1.6L.ongzine		8	
11	YW60082500300	Hex. bolt GB/T5783 M8x25-12.9-Longzine		8	
10	SCR-2500U-A-19	Exhaust pipe elbow	SUS201	1	
9	SCR-2500U-A-18	Inlet hopper adaptor flange	SUS201	1	
8	YW63051500000	Cross recessed pan head screw GB/T1-488 M5x6 --Longzine		8	
7	SHD-900U-B-ALL	Door buckle	assembly	2	borrow
6	YW66122400000	Flat washer A grade GB/T97.12-Longzine		24	
5	YW65012200000	Standard spring washer GB/T93 12-Longzine		24	
4	YW61123500000	long hex. capstan head screw GB/T70.1-M12x35-12.9-Longzine		24	
3	YR10010040100	Silica gel fastener 4.1m		1	
2	YW67041200000	Cross recessed pan head self-tapping screw GB/T4513.2x13-C4-Longzine		72	
1	SCR-2500U-A-09	Hopper cover plate 3	Patterned alu. plate	1	

序号	代号	名称	材料	数量	备注																																												
<table border="1"> <tr> <td>制图</td> <td>版号</td> <td>B</td> <td>标题</td> <td>SCR-2500U</td> <td>图号</td> <td>SCR-2500U-A-ALL</td> <td>比例</td> <td>1:18</td> <td>数量</td> <td>1</td> </tr> <tr> <td>设计</td> <td>被</td> <td></td> <td>结构</td> <td></td> <td></td> <td></td> <td></td> <td></td> <td></td> <td></td> </tr> <tr> <td>校对</td> <td>准</td> <td></td> <td></td> <td></td> <td></td> <td></td> <td></td> <td></td> <td></td> <td></td> </tr> <tr> <td>标记</td> <td>更改前</td> <td>更改后</td> <td>更改人</td> <td>日期</td> <td>审核</td> <td>日期</td> <td>20220810</td> <td></td> <td></td> <td></td> </tr> </table>						制图	版号	B	标题	SCR-2500U	图号	SCR-2500U-A-ALL	比例	1:18	数量	1	设计	被		结构								校对	准										标记	更改前	更改后	更改人	日期	审核	日期	20220810			
制图	版号	B	标题	SCR-2500U	图号	SCR-2500U-A-ALL	比例	1:18	数量	1																																							
设计	被		结构																																														
校对	准																																																
标记	更改前	更改后	更改人	日期	审核	日期	20220810																																										
信易電熱機械股份有限公司 Shini Plastics Technologies, Inc.							表面要求	材質	物料号																																								

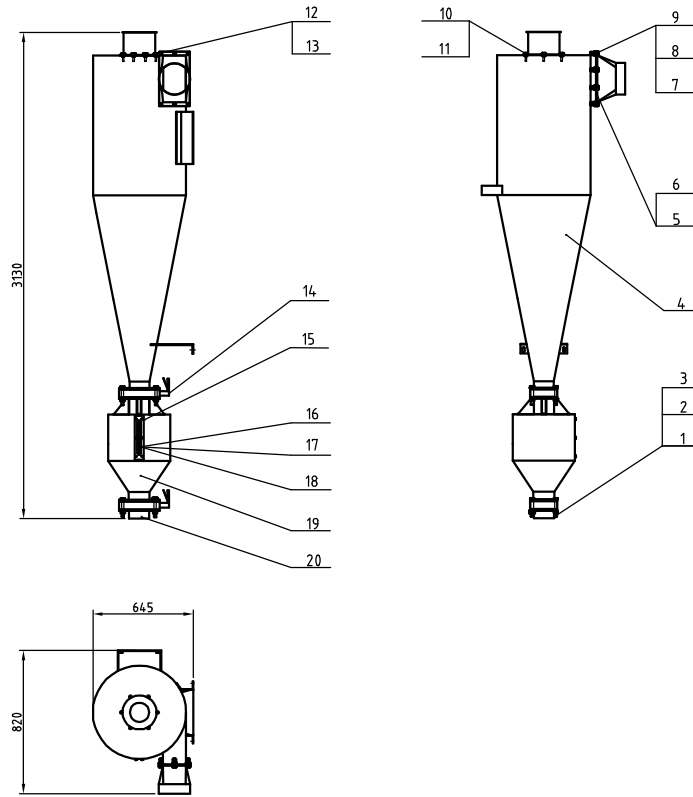


42	YW64.001000100	Hex. nut GB/T6170 M10-Longzine		6	
41	YW66102500000	Flat washer 10x25x1.5-Longzine		12	
40	YW65010000000	Standard spring washer GB/T93 10-Longzine		12	
39	YW03536000000	Motor foot pad HB058-30-60A-M10		6	
38	YW64.012100000	Hex. nut GB/T6170M12-Longzine		18	
37	YW66122400000	Flat washer A GB/T97.1 12-Longzine		18	
36	YW65012200000	Standard spring washer GB/T93 12-Longzine		18	
35	YW61123500000	Inner hex. column head screw GB/T91.91025-12.5-Longzine		18	
34	SCR-2500U-B-08	Blower air outlet flange		1	
33	SCR-2500U-B-04	Elec. mount plate	SECC1.5	1	
32	YW66051300000	Flat washer 5.5X13X1.0 Longzine		4	
31	YW65005200000	Standard spring washer GB/T93 5-Longzine		4	
30	YW62052000000	Large cross recessed flat head screw 8.5X10X2.0-Longzine		4	
29	YR50277500000	Filter		1	
28	SD-1500H-ALL-10	Filter flange	SECC2.0	1	borrow
27	YW60100000000	Butterfly cap M10		1	
26	YW09115600000	Big star nut M10x1.5	Alu. alloy	1	
25	SD-2000H-A-025	Filter hopper cover	SPCC2.0	1	borrow
24	YR10034.0000000	Filter hopper fastener	Silica gel	1	
23	SCR-2500U-B-05	Filter hopper		1	
22	YW64.080600000	Hex. nut GB/T6170M8-Longzine		12	
21	YW65008000100	Standard spring washer GB/T93 8-Longzine		26	
20	YW66081600000	Flat washer A GB/T97.1 8X16X1.5-Longzine		26	
19	YW60082500100	Hex. bolt GB/T5783 M8X25-12.9-Longzine		26	
18	SCR-2500U-B-07	Filter hopper fixed foot	Assembly	2	
17	YW00816100000	Door lock MSB16-1 black with key		1	
16	YW06203100200	Right chain CL203-1		2	
15	SCR-2500U-B-06	Blower frame reinforced plate	SPCC3.0	2	
14	YW03000300000	Brake castor 3"		2	
13	YM30001500000	High pressure centrifugal blower		1	
12	YM601212004.00	Exhaust fan		1	
11	SCR-2500U-B-03	Control box	SPCC1.5	1	
10	SCR-2500U-B-02	Control box cover	SPCC1.5	1	
9	YW720804.00000	Hot air resistant pipe 8"X0.3m		1	
8	YW02008500000	Stainless steel pipe clamp 8.5"		2	
7	SCR-2500U-B-09	Blower air inlet flange	SUS201	1	
6	SCR-2500U-B-10	Blower frame column	Assembly	2	
5	SCR-2500U-B-01	Bottom plate	SPH4.0	1	
4	YW65006000100	Standard spring washer GB/T93 6-Longzine		20	
3	YW66061300000	Flat washer A GB/T97.1 6X13X1.0-Longzine		20	
2	YW60061500100	Hex. bolt GB/T5783M6X15-12.9-Longzine		20	
1	YW03000300200	Movable castor 3"		2	

Tech. Req.:

1. The parts surface shall not be scratched, and be cleaned before assembly.
2. The parts shall be fixed firmly, with rust proof treatment after assembly.

标记	更改前	更改后	更改人	日期	制图	设计	校对	审核	版号	核准	标题	图号	比例	数量	备注
									A		SCR-2500U 风机架	SCR-2500U-B-ALL	1:15	1	
											SHINI 信昂电热机械股份有限公司 Shini Plastics Technologies, Inc.		表面要求		
													物料号		
									20220810						

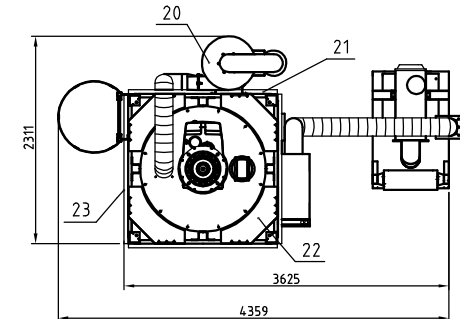
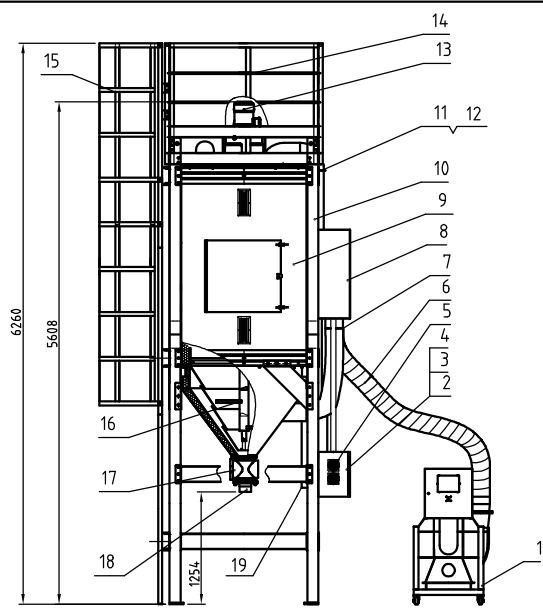


Tech. Req:

1. Parts must be cleaned before assembly, without burr, flash, rust, dust, etc.
2. Parts shall not be bumped or scratched during assembly.
3. The connecting flange of 5" clamp manual butterfly valve shall comply with standard GB/T9113-2000.

20	ACF-8"-A-13	Discharge port flange	assembly	1	borrow
19	ACF-8"-A-12	Dust collective hopper	assembly	1	borrow
18	YW70000100000	Sight glass reinforced glass		1	
17	YR40000600000	Six hole sight glass fastener	rubber	1	
16	YW09000600000	Six hole sight glass iron sheet		1	
15	YW64000500000	Hex. nut M5	6	6	
14	YW59512200000	Clamp manual butterfly valve 5"	assembly	2	
13	SCR-2500U-F-02	Exhaust port flange	SUS201	1	
12	ACF-8"-A-05	Exhaust port flange fastener	silica gel	1	borrow
11	YW66081600000	Flat washer 8x16x1.5	100HV	6	
10	YW61082500000	Inner hex. screw M8x25	8.8	6	
9	YW66081600000	Flat washer 8x16x1.5	100HV	10	
8	YW61082000000	Inner hex. screw M8x20	8.8	10	
7	YW64080600000	Hex. nut M8	8	10	
6	ACF-8"-A-04	Inlet air flange	SUS430	1	borrow
5	ACF-8"-A-06	Inlet air flange fastener	silica gel	1	borrow
4	SCR-2500U-F-01	Dust collective hopper	assembly	1	
3	YW66163000000	Flat washer 16	140HV	8	
2	YW64001600000	Hex. nut M16	10	8	
1	YW60161000000	Hex. bolt M16x100	12.9	8	
序号	代号	名称	材料	数量	备注

				制图	版号	标题	图号	比例	数量	1
				设计	核	SCR-2500U	SCR-2500U-F-ALL	1:25		
				校对	准	旋风除尘器		表面要求		
				审核	日期	SHINI 信易电热机械股份有限公司	Shini Plastics Technologies, Inc.	物料号		
标记	更改前	更改后	更改人	日期	20220810					



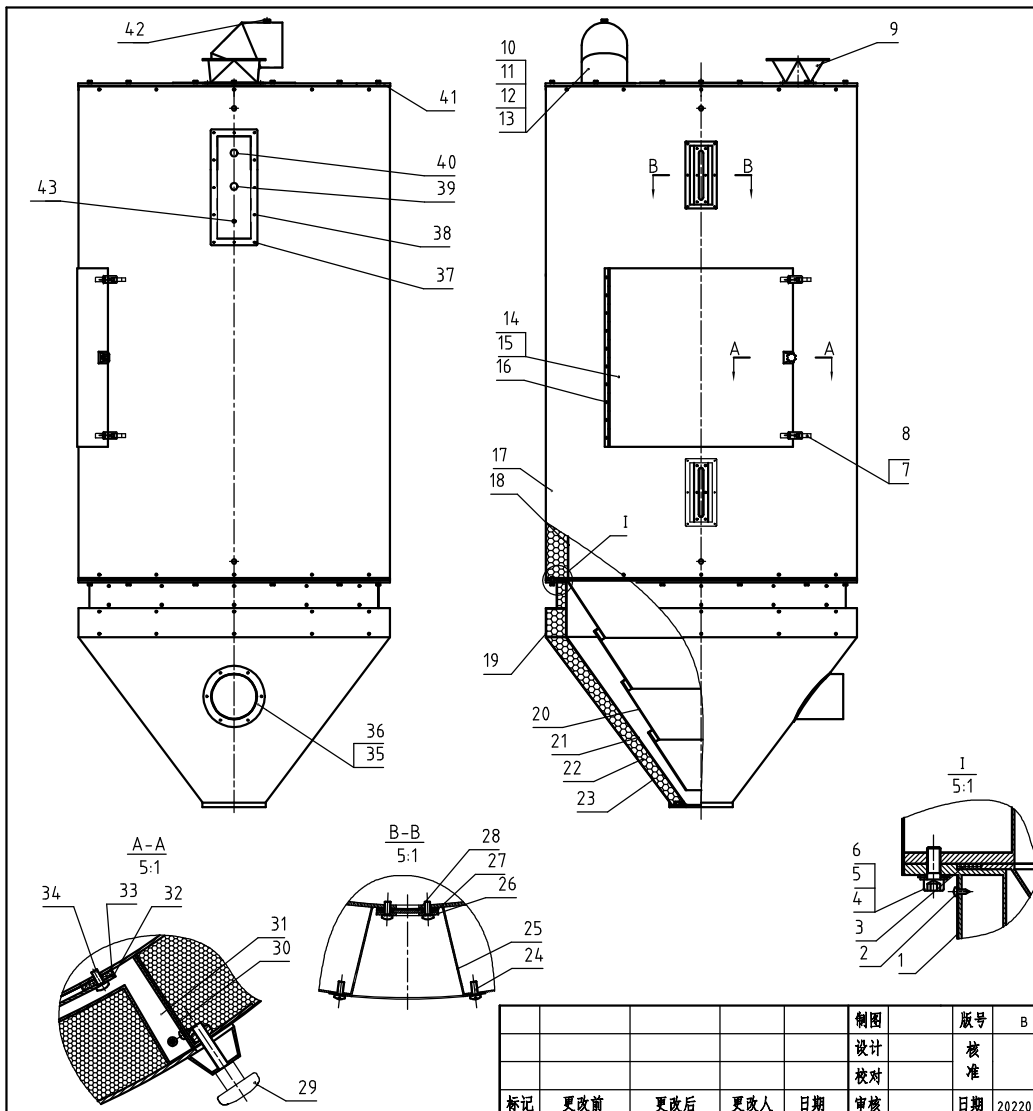
Unloading Blower	Blower Power	Heater Power	Mixing Motor Power	Model Version
0.4kW	15kW	128kW	4.0kW	Ver.A
Inlet Air Pipe Dia.	Discharge Port Dia.	Mixing Motor Rotating Speed	Hopper Capacity	
8inch	5inch	3.7r/min	2500L	

23	SCR-2500U-D-ALL-03	Ladder 2	Assembly	2	for optional ML
22	SCR-2500U-D-ALL-05	Foot plate	Assembly	4	for optional ML
21	SCR-2500U-D-ALL-04	Ladder 3	Assembly	1	for optional ML
20	SCR-2500U-F-ALL	Cyclone dust collector	Assembly	1	
19	BP82281200044	Filter cloth bag	Assembly	1	
18	SCR-2500U-ALL-04	Rotary discharge valve connector	SUS201	1	
17	CG24000500150	Rotary discharge valve SRV-55	Assembly	1	
16	SCR-2500U-E-ALL	Mixing assembly	Assembly	1	
15	SCR-2500U-D-ALL-01	Ladder assembly	Assembly	1	for optional ML
14	SCR-2500U-D-ALL-02	Ladder 1	Assembly	2	for optional ML
13	YM50838200000	Gear motor	Assembly	1	Nuo De
12	SCR-1600U-ALL-20	Stainless steel pipe clamp 8"	SUS201	3	borrow
11	YR10008000000	8" white silica gel fastener	white silica gel	2	
10	SCR-2500U-D-ALL	Floor stand	Assembly	1	
9	SCR-2500U-A-ALL	Crystallizing hopper	Assembly	1	
8	SCR-2500U-C-ALL	Heating tank	Assembly	1	
7	YW02008500000	Stainless steel pipe clamp 8.5"		6	
6	YW72080400000	Heat-resistant air pipe 8"		1	L=7.2M
5	YM60121200400	Exhaust fan		2	
4	SCR-2500U-ALL-03	Elec. mount plate 1	SECC15	1	
3	SCR-2500U-ALL-02	Control box	SPCC15	1	
2	SCR-2500U-ALL-08	Control box door plank	SPCC15	1	
1	SCR-2500U-B-ALL	Blower assembly	Assembly	1	

制图	版号	B	标题	SCR-2500U	图号	SCR-2500U-ALL	比例	1:4.5	数量	1
设计	核准		标题	结晶机总成						
校对	日期	20220810	材料							
审核	日期		表面要求							
标记	更改前	更改后	更改人	日期	物料号					



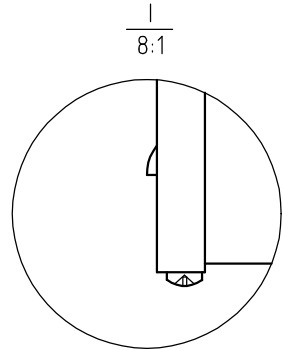
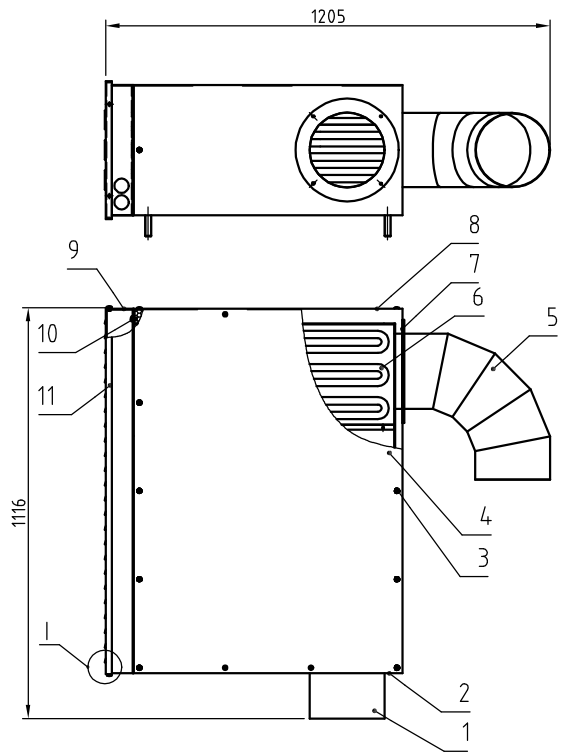
材料	
物料号	



Tech. Req:
 1.The parts surface shall not be scratched and cleaned before assembly.
 2.The parts must be fixed firmly with rust-proof treatment after assembly.

43	BE90800000050	Thermocoupler 8m	assembly	1	
42	YW60081600100	Hex. bolt GB/T5781M8*16-4.8-Longzine		1	
41	SCR-2500U-A-02	Hopper cover	assembly	1	
40	YE15000200000	Anfi-rotation level switch		1	
39	BH12901620010	Hopper level sensor plug	H58	1	
38	YW67041200000	Cross recessed pan head self-tapping screw GB/T845 S1.2x13-C4-Longzine		14	
37	SCR-2500U-A-16	Hopper level sensor flange	SUS201	1	
36	YW67041200000	Cross recessed pan head self-tapping screw GB/T845 S1.2x13-C4-Longzine		6	
35	SCR-2500U-A-07	Inlet air pipe flange	SUS201	1	
34	YW62061500000	Cross recessed pan head screw ZS111116x15 --Longzine		8	
33	SCR-2500U-A-17	Cleaning door sealing gasket	Foamed red silica gel	1	
32	SCR-2500U-A-14	Cleaning door fender	SUS201	1	
31	SCR-2500U-A-11	Cleaning door frame cover plate 1	Patterned alu. plate	2	
30	SCR-2500U-A-12	Cleaning door frame cover plate 2	Patterned alu. plate	2	
29	BH10150000310	Big star assembly M10	assembly	1	
28	YW70000100000	Reinforced glass (six holes)		2	
27	YR40000600000	Sight glass fastener	rubber	2	
26	BW09000630040	Sight glass iron sheet six hole	SPCC2.5	2	
25	SHD-4000U-A-57	Sight glass inner frame	SUS201	2	borrow
24	YW63051500000	Cross recessed pan head screw GB/T-818 M5x6--Longzine		24	
23	SCR-2500U-A-06	Hopper cover plate 1	Patterned alu. plate	1	
22	YP60501500000	Epoxy glass fiber laminate	assembly	1	
21	SCR-2500U-A-03	External hopper	assembly	1	
20	SCR-2500U-A-04	Inner hopper	SUS201	1	
19	SCR-2500U-A-08	Hopper cover plate 2	Patterned alu. plate	1	
18	SCR-2500U-A-01	Material storage tank	assembly	1	
17	SCR-2500U-A-05	Hopper cover plate	Patterned alu. plate	1	
16	YW67041200000	Cross recessed pan head self-tapping screw GB/T845 S1.2x13-C4-Longzine		10	
15	SCR-2500U-A-13	Cleaning door cover plate	Patterned alu. plate	1	
14	SCR-2500U-A-10	Cleaning door	SUS201	1	
13	YW65008000100	Standard spring washer GB/T93 8-Longzine		8	
12	YW66081600000	Flat washer A grade GB/T97.1 B.6x16x1.6L.ongzine		8	
11	YW60082500300	Hex. bolt GB/T5783 M8x25-12.9-Longzine		8	
10	SCR-2500U-A-19	Exhaust pipe elbow	SUS201	1	
9	SCR-2500U-A-18	Inlet hopper adaptor flange	SUS201	1	
8	YW63051500000	Cross recessed pan head screw GB/T1-110 M5x6 --Longzine		8	
7	SHD-900U-B-ALL	Door buckle	assembly	2	borrow
6	YW66122400000	Flat washer A grade GB/T97.12-Longzine		24	
5	YW65012200000	Standard spring washer GB/T93 12-Longzine		24	
4	YW61123500000	Hex. hex. capstan head screw GB/T70.1-M12x35-12.9-Longzine		24	
3	YR10010040100	Silica gel fastener 4.1 m		1	
2	YW67041200000	Cross recessed pan head self-tapping screw GB/T845 S1.2x13-C4-Longzine		72	
1	SCR-2500U-A-09	Hopper cover plate 3	Patterned alu. plate	1	

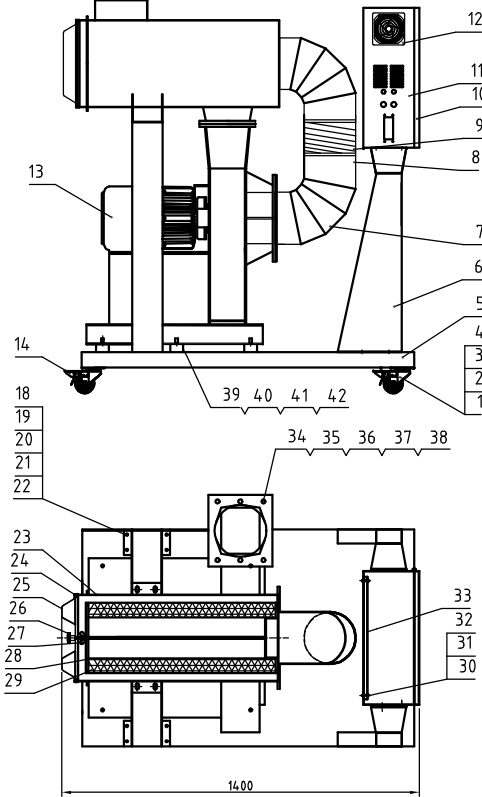
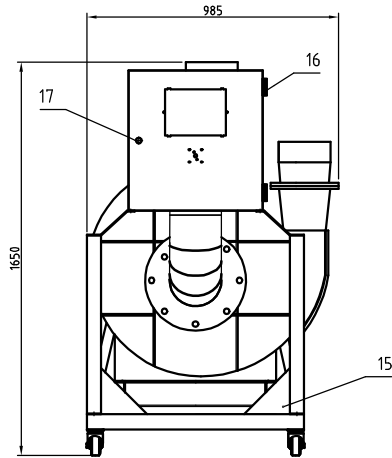
序号	代号	名称	材料	数量	备注																														
<table border="1"> <tr> <td>制图</td> <td>版号</td> <td>标题</td> <td>图号</td> <td>比例</td> <td>数量</td> </tr> <tr> <td>设计</td> <td>B</td> <td>SCR-2500U</td> <td>SCR-2500U-A-ALL</td> <td>1:18</td> <td>1</td> </tr> <tr> <td>校对</td> <td>核准</td> <td>结晶桶</td> <td></td> <td></td> <td></td> </tr> <tr> <td>标记</td> <td>更改前</td> <td>更改后</td> <td>更改人</td> <td>日期</td> <td>审核</td> </tr> <tr> <td></td> <td></td> <td></td> <td></td> <td>20220810</td> <td></td> </tr> </table>						制图	版号	标题	图号	比例	数量	设计	B	SCR-2500U	SCR-2500U-A-ALL	1:18	1	校对	核准	结晶桶				标记	更改前	更改后	更改人	日期	审核					20220810	
制图	版号	标题	图号	比例	数量																														
设计	B	SCR-2500U	SCR-2500U-A-ALL	1:18	1																														
校对	核准	结晶桶																																	
标记	更改前	更改后	更改人	日期	审核																														
				20220810																															
			信易電熱機械股份有限公司 Shini Plastics Technologies, Inc.	表面要求 物料号																															



Tech. Req:
 1. The parts surface shall not be scratched, and be cleaned before assembly.
 2. The parts shall be fixed firmly, with rust proof treatment after assembly.

11	SCR-2500U-C-01	Heating tank cover plate	SPCC15	1	
10	YW63061500000	Cross recessed pan head screw GB/T818M6X15-Longzine		42	
9	SCR-2500U-C-02	Pipe heater mount plate	SECC2.5	1	
8	SCR-2500U-C-05	Pipe heater mount plate 2	Patterned alu. plate	1	
7	SCR-2500U-C-03	Heating tank case		1	
6	BH70250007650	Pipe heater		1GR	128KW
5	SCR-2500U-C-07	Air inlet flange	SUS201	1	
4	SCR-2500U-C-04	Pipe heater mount plate 1	Patterned alu. plate	1	
3	YW67041200000	Cross recessed pan head self-lapping screw GB/T845 5T4.2x9-C-H-Longzine		34	
2	SCR-2500U-C-06	Pipe heater mount plate 3	Patterned alu. plate	1	
1	SCR-2500U-C-08	Air outlet flange	SUS201	1	
序号	代号	名称	材料	数量	备注

					制图	版号	A	标题	SCR-2500U 加热箱	图号	SCR-2500U-C-ALL	比例	1:15	数量	1
					设计	核准							材质		
					校对	核准						表面要求			
标记	更改前	更改后	更改人	日期	审核	日期	20220810		信易电热机械股份有限公司 Shini Plastics Technologies, Inc.		物料号				

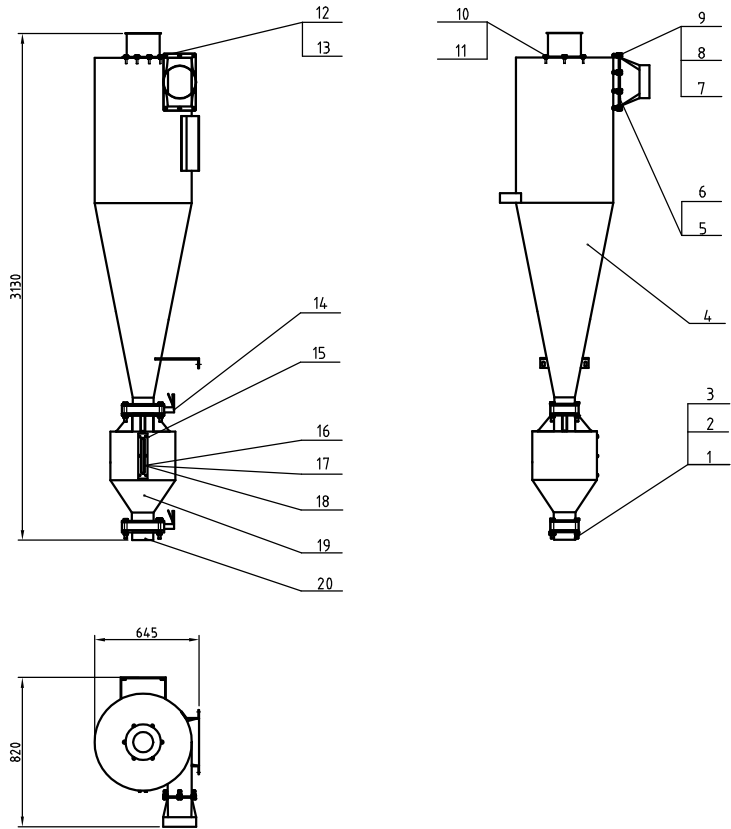


42	YW64001000100	Hex. nut GB/T6170 M8-Longzine		6	
41	YW66102500000	Flat washer 10x25x1.5-Longzine		12	
40	YW65010000000	Standard spring washer GB/T193 W-Longzine		12	
39	YW03536000000	Motor foot pad 18054-36-40A-M18		6	
38	YW64012100000	Hex. nut GB/T6170M12-Longzine		18	
37	YW66122400000	Flat washer A GB/T191 12-Longzine		18	
36	YW65012200000	Standard spring washer GB/T193 12-Longzine		18	
35	YW61123500000	Inner hex. column head screw GB/T70 10X25-12-Longzine		18	
34	SCR-2500U-B-08	Blower air inlet flange		1	
33	SCR-2500U-B-04	Elec. mount plate	SECC1.5	1	
32	YW66051300000	Flat washer 55X13X1.0 Longzine		4	
31	YW65005200000	Standard spring washer GB/T193 5-Longzine		4	
30	YW62052000000	Large cross recessed flat head screw JIS780520-Longzine		4	
29	YRS02775000000	Filter		1	
28	SD-1500H-ALL-10	Filter flange	SECC2.0	1	borrow
27	YW60100000000	Butterfly cap M10		1	
26	YW09115600000	Big star nut M10x15	Alu alloy	1	
25	SD-2000H-A-025	Filter hopper cover	SPCC2.0	1	borrow
24	YR10034.0000000	Filter hopper fastener	Silica gel	1	
23	SCR-2500U-B-05	Filter hopper		1	
22	YW64080600000	Hex. nut GB/T6170M8-Longzine		12	
21	YW65008000100	Standard spring washer GB/T193 8-Longzine		26	
20	YW66081600000	Flat washer A GB/T191 8x16X1.5-Longzine		26	
19	YW60082500100	Hex. bolt GB/T5783 M8X25-D2.9-Longzine		26	
18	SCR-2500U-B-07	Filter hopper fixed foot	Assembly	2	
17	YW00816100000	Door lock MS816-1 black with key		1	
16	YW06203100200	Right chain CL203-1		2	
15	SCR-2500U-B-06	Blower frame reinforced plate	SPCC3.0	2	
14	YW03000300000	Brake castor 3"		2	
13	YM30001500000	High pressure centrifugal blower		1	
12	YM601212004.00	Exhaust fan		1	
11	SCR-2500U-B-03	Control box	SPCC1.5	1	
10	SCR-2500U-B-02	Control box cover	SPCC1.5	1	
9	YW72080400000	Hof air resistant pipe 8"X0.3m		1	
8	YW02008500000	Stainless steel pipe clamp 8.5"		2	
7	SCR-2500U-B-09	Blower air inlet flange	SUS201	1	
6	SCR-2500U-B-10	Blower frame column	Assembly	2	
5	SCR-2500U-B-01	Bottom plate	SPH4.0	1	
4	YW65006000100	Standard spring washer GB/T193 6-Longzine		20	
3	YW66061300000	Flat washer A GB/T191 6x13X1.5-Longzine		20	
2	YW60061500100	Hex. bolt GB/T5783 M6x16-D2.9-Longzine		20	
1	YW03000300200	Movable castor 3"		2	
序号	代号	名称	材料	数量	备注

Tech. Req:

- The parts surface shall not be scratched, and be cleaned before assembly.
- The parts shall be fixed firmly, with rust proof treatment after assembly.

制图	版号	A	标题	SCR-2500U	图号	SCR-2500U-B-ALL	比例	1:15	数量	1	
设计	核准		风帆架							材质	
校对	审核									表面要求	
标记	更改前	更改后	更改人	日期	审核	日期	20220810	SHINI 德昂电热机械股份有限公司 Shini Plastics Technologies, Inc.			物料号



Tech. Req:
 1.Parts must be cleaned before assembly, without burr, flash, rust, dust, etc.
 2.Parts shall not be bumped or scratched during assembly.
 3.The connecting flange of 5 "clamp manual butterfly valve shall comply with standard GB/T9113-2000.

20	ACF-8"-A-13	Discharge port flange	assembly	1	borrow
19	ACF-8"-A-12	Dust collective hopper	assembly	1	borrow
18	YW70000100000	Sight glass reinforced glass		1	
17	YR40000600000	Six hole sight glass fastener	rubber	1	
16	YW09000600000	Six hole sight glass iron sheet		1	
15	YW64000500000	Hex. nut M5	6	6	
14	YW59512200000	Clamp manual butterfly valve 5"	assembly	2	
13	SCR-2500U-F-02	Exhaust port flange	SUS201	1	
12	ACF-8"-A-05	Exhaust port flange fastener	silica gel	1	borrow
11	YW66081600000	Flat washer 8×16×1.5	100HV	6	
10	YW61082500000	Inner hex. screw M8×25	8.8	6	
9	YW66081600000	Flat washer 8×16×1.5	100HV	10	
8	YW61082000000	Inner hex. screw M8×20	8.8	10	
7	YW64080600000	Hex. nut M8	8	10	
6	ACF-8"-A-04	Inlet air flange	SUS430	1	borrow
5	ACF-8"-A-06	Inlet air flange fastener	silica gel	1	borrow
4	SCR-2500U-F-01	Dust collective hopper	assembly	1	
3	YW66163000000	Flat washer 16	140HV	8	
2	YW64001600000	Hex. nut M16	10	8	
1	YW60161000000	Hex. bolt M16×100	12.9	8	
序号	代号	名称	材料	数量	备注

制图	版号	标题	图号	比例	数量
设计	核准	SCR-2500U	SCR-2500U-F-ALL	1:25	1
校对	审核	旋风除尘器		表面要求	材质
标记	更改前	更改后	更改人	日期	审核
				20220810	
			信易电热机械股份有限公司 Shini Plastics Technologies, Inc.		物料号