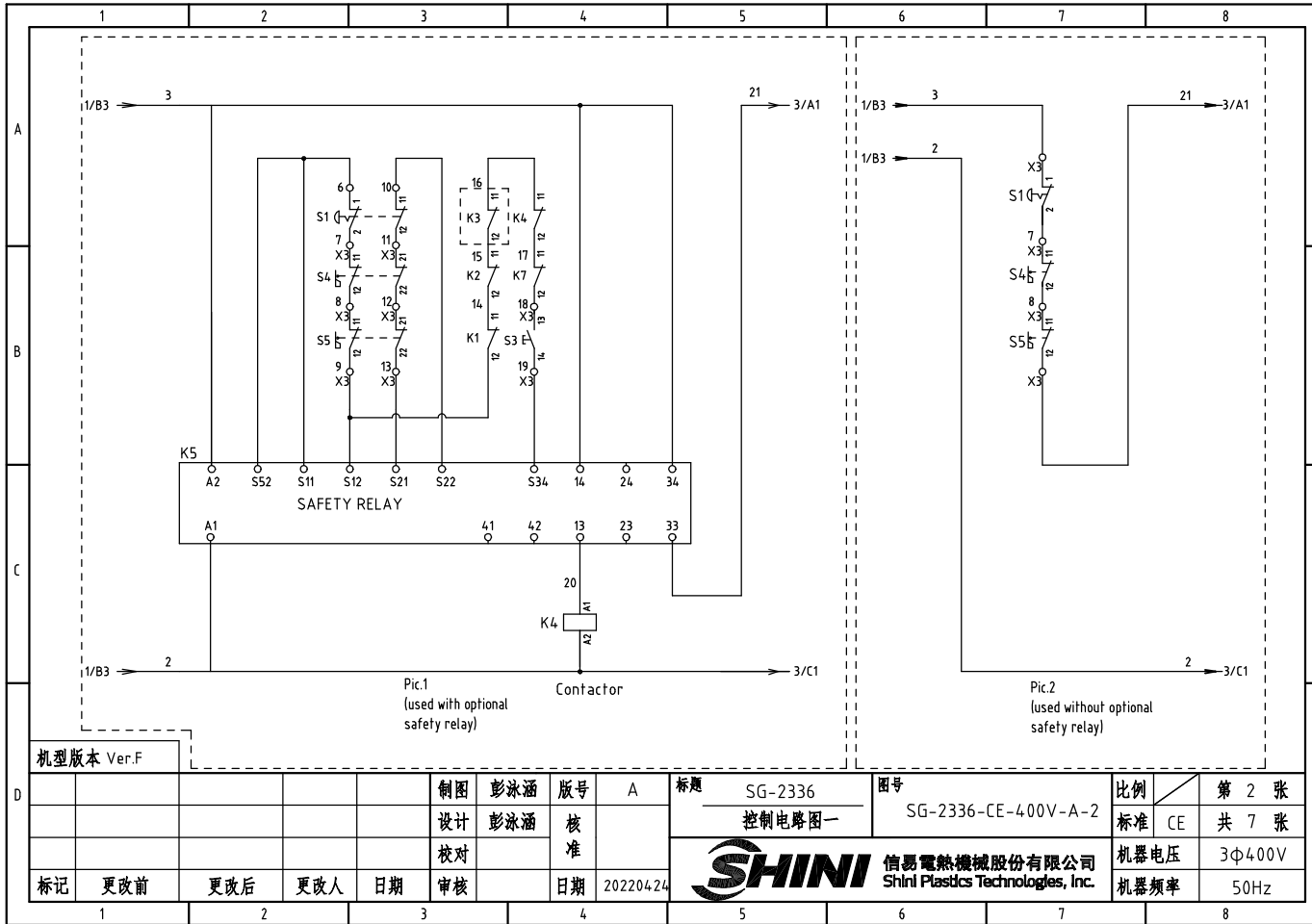
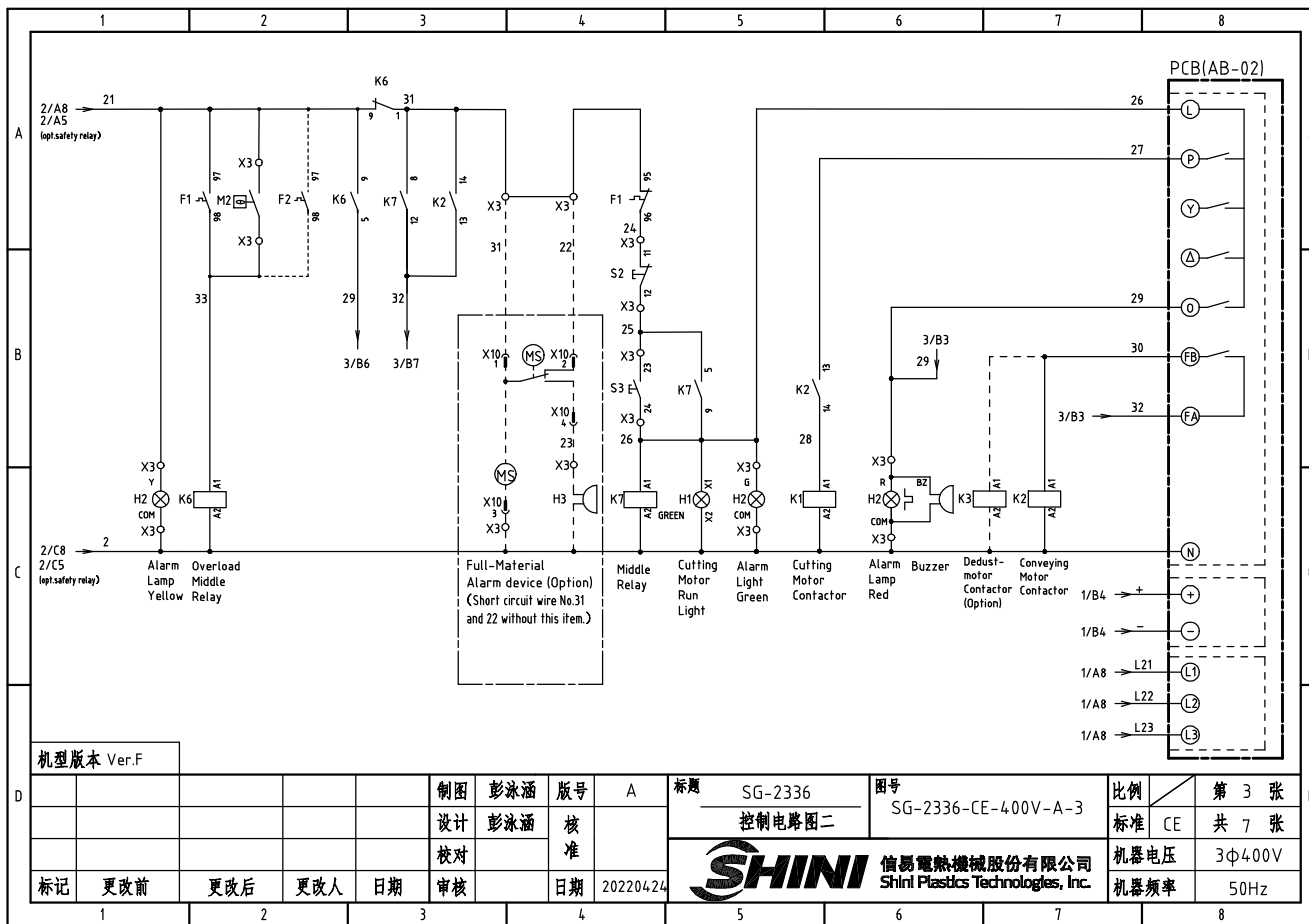


机型版本 Ver.F

制图	彭泳涵	版号	A
设计	彭泳涵	核准	
校对		核准	
标记	更改前	更改后	更改人
			日期
			日期

标题	SG-2336	图号	
	主电路图		SG-2336-CE-400V-A-1
信易電熱機械股份有限公司 Shini Plastics Technologies, Inc.		比例	第 1 张
		标准	CE 共 7 张
机器电压	3Φ400V		
机器频率	50Hz		



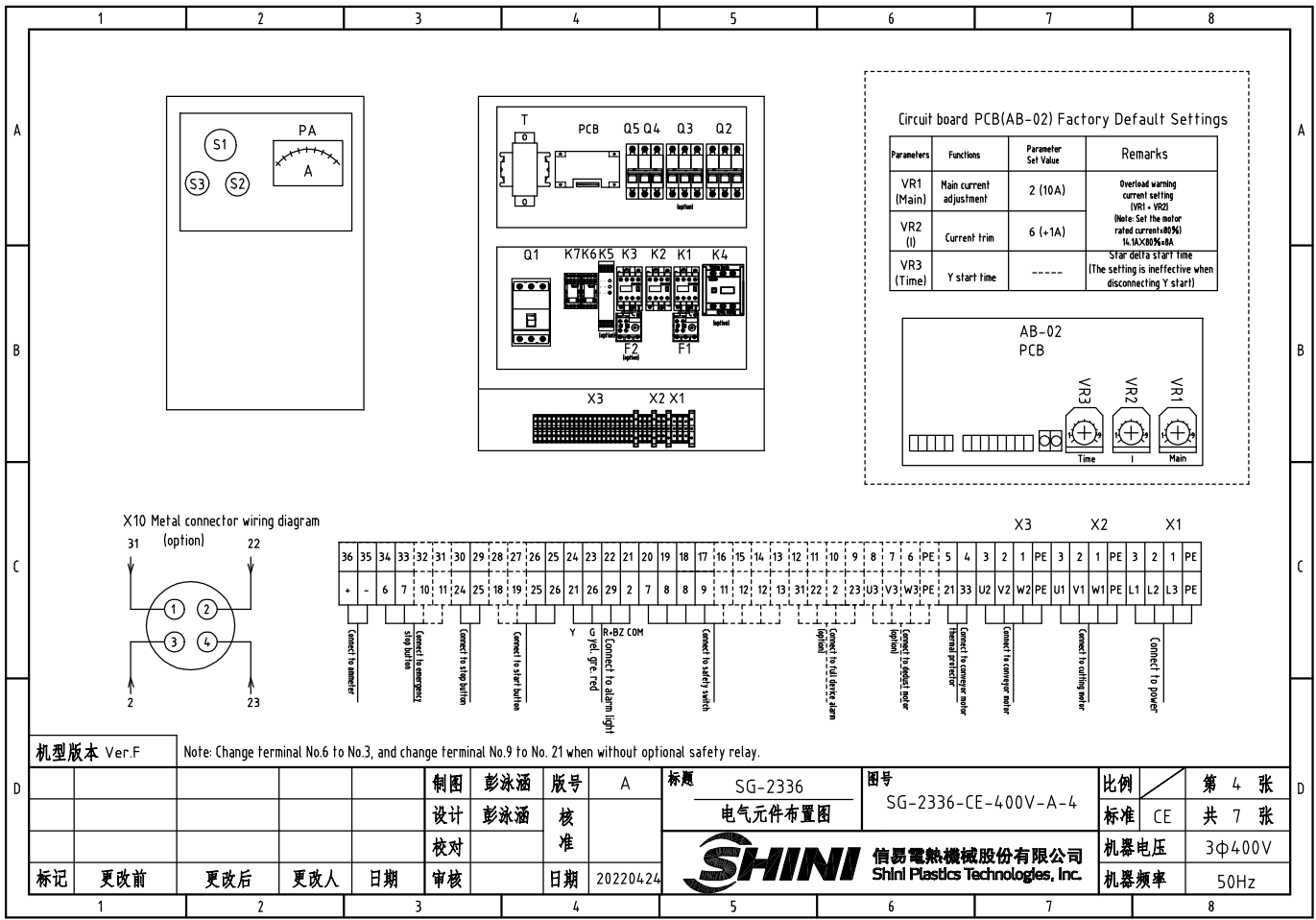


机型版本 Ver.F

制图	彭泳涵	版号	A
设计	彭泳涵	核准	
校对		核准	
标记	更改前	更改后	更改人
	日期	日期	日期
			20220424

标题	SG-2336	图号	SG-2336-CE-400V-A-3
控制电路图二			
<b>SHINI</b> 信易電熱機械股份有限公司 Shini Plastics Technologies, Inc.			

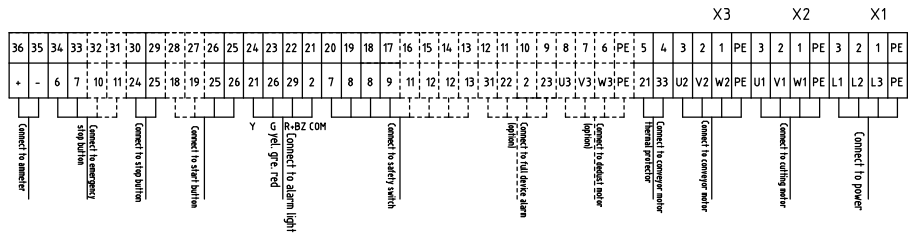
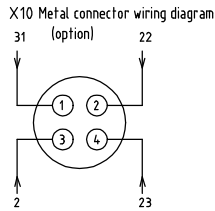
比例	第 3 张
标准	CE 共 7 张
机器电压	3Φ400V
机器频率	50Hz



Circuit board PCB(AB-02) Factory Default Settings

Parameters	Functions	Parameter Set Value	Remarks
VR1 (Main)	Main current adjustment	2 (10A)	Overload warning current setting VR1 + VR2 (Note: Set the motor rated current*0.9%) % INX0.9%*0.9%
VR2 (I)	Current trim	6 (+1A)	
VR3 (Time)	Y start time	-----	Star delay start time (The setting is ineffective when disconnecting Y start)

AB-02 PCB

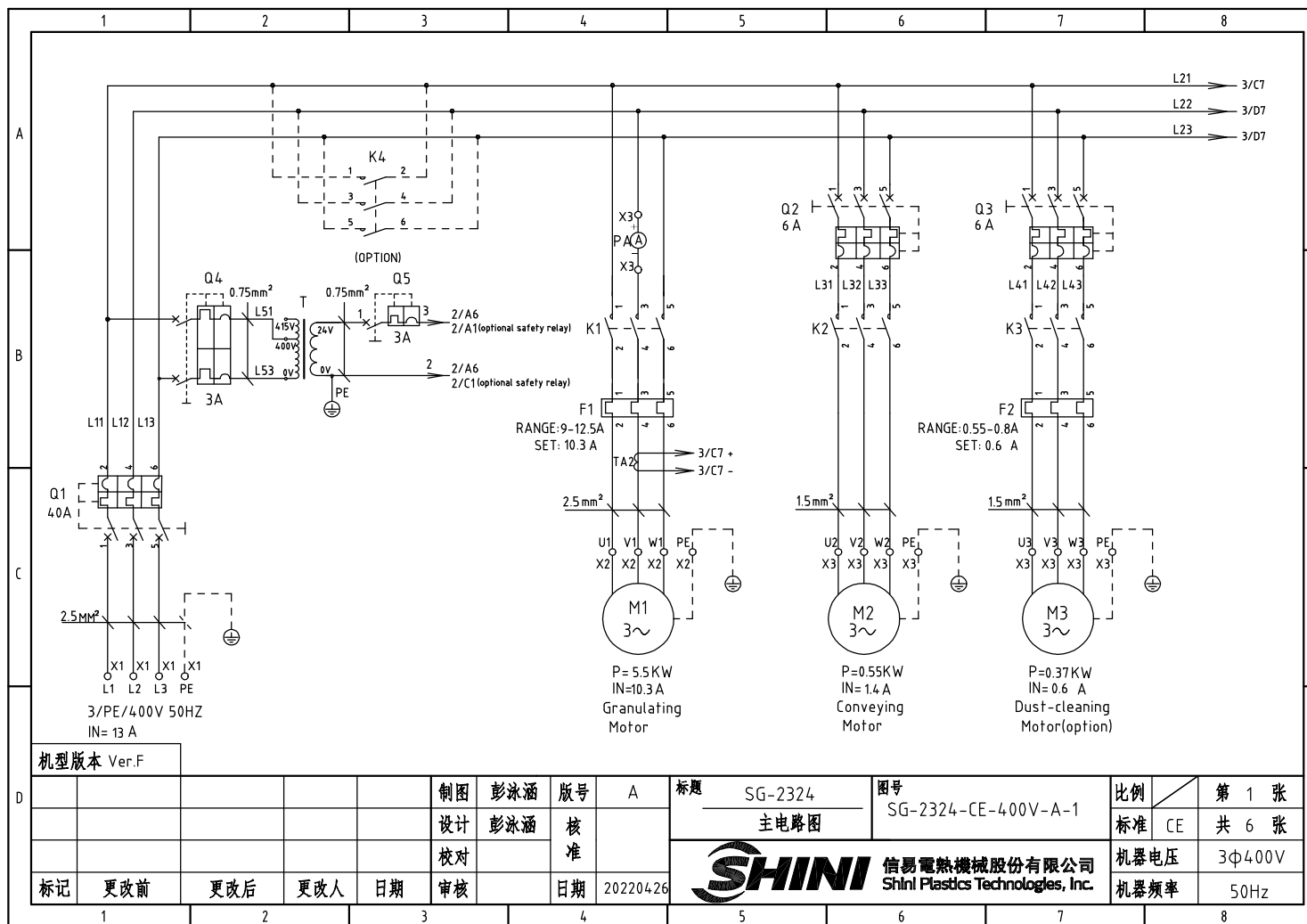


机型版本 Ver.F		Note: Change terminal No.6 to No.3, and change terminal No.9 to No. 21 when without optional safety relay.										
				制图	彭泳涵	版号	A	标题	SG-2336	图号	比例	第 4 张
				设计	彭泳涵	核准		电气元件布置图	SG-2336-CE-400V-A-4		标准	共 7 张
				校对					信易電熱機械股份有限公司 Shini Plastics Technologies, Inc.	机器电压	3φ400V	
标记	更改前	更改后	更改人	日期	审核	日期	20220424			机器频率	50Hz	

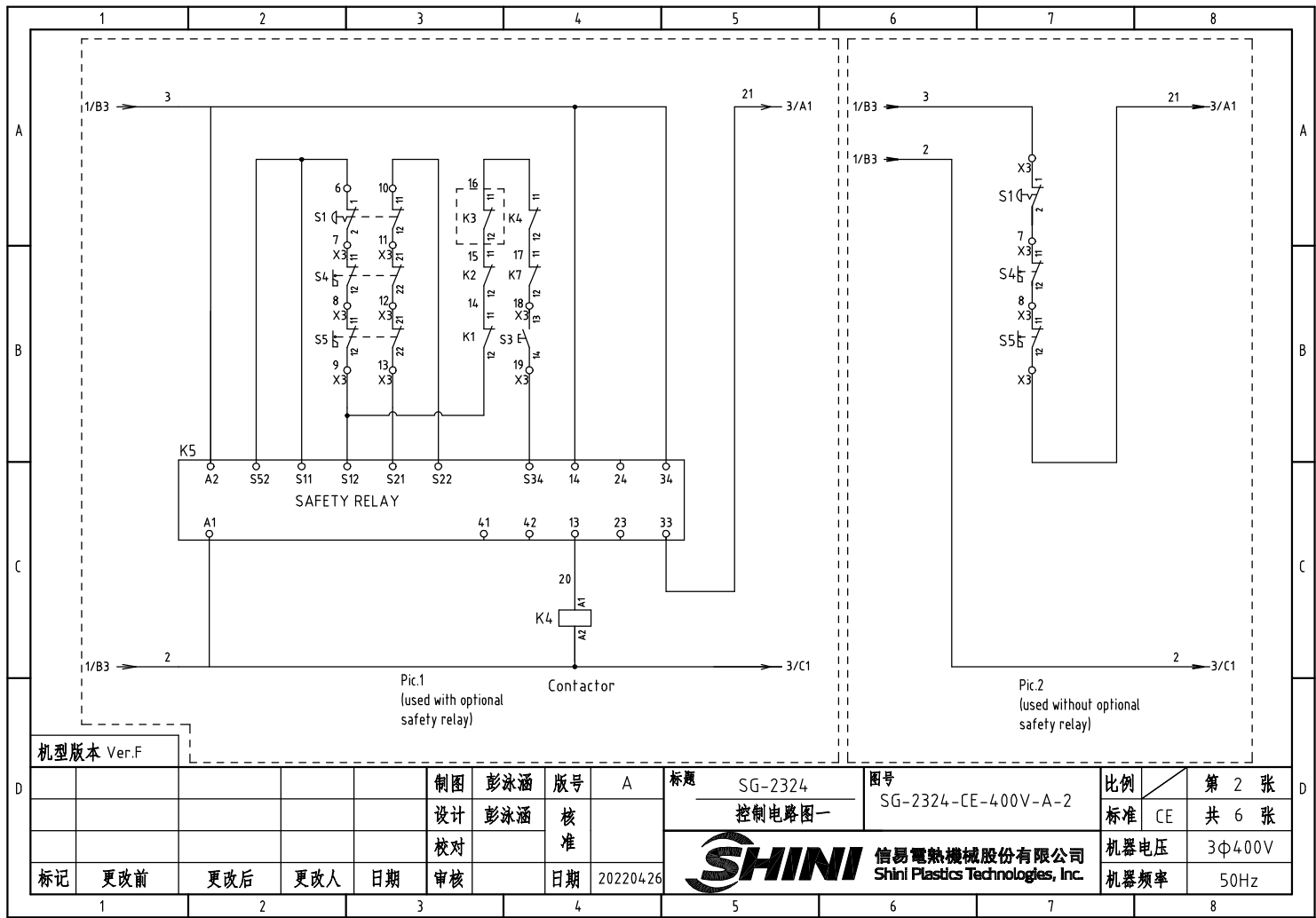
1		2		3		4		5		6		7		8	
NO.	Symbol	Name	Manufacturer	Type	Specification	Number	Material number	Remark							
1	Q1	Plastics shell circuit breaker	TECO	BO100EB3040	40A	1	YE85100300100								
2		Ext. handle	TECO	1A-CS1-C-D1	-----	1	YE90111100100								
3	Q2	Circuit breaker	TECO	BM-63C	6A	1	YE40300603000								
4	Q3	Circuit breaker	TECO	BM-63C	6A	1	YE40300603000	(2)							
5	K1	Contact	SIEMENS	3RT6026-1AC20	25A 24VAC 50/60Hz	1	YE00602602600								
6	K2	Contact	SIEMENS	3RT6016-1AB01	9A 24VAC 50/60Hz	1	YE00601602500								
7		Auxiliary contact	SIEMENS	3RH6911-1HA11	1NC+1NO	1	YE00691100100								
8	K3	Contact	SIEMENS	3RT6015-1AB02	7A 24VAC 50/60Hz	1	YE00601502600	(2)							
9	K4	Contact	SIEMENS	3RT6026-1AC20	25A 24VAC 50/60Hz	1	YE00602602600	(4)							
10	K5	Safety relay	PILZ	PNOZ×2.8P	24V AC/DC	1	YE04023000000	(4)							
11	K7	Middle relay	Honeywell	GR-2C-AC24V	24VAC	1	YE03022400300								
12	K7	Middle relay	Honeywell	GR-4C-AC24V	24VAC	1	YE03042400300	(4)							
13	F1	Overload relay	SIEMENS	3RU6126-4BB0	14-20A	1	YE0126014.0000								
14	F2	Overload relay	SIEMENS	3RU6116-0HB0	0.55-0.8A	1	YE01161550000	(2)							
15	K6	Middle relay	Honeywell	GR-2C-AC24V	24VAC	1	YE03022400300								
16	Q4	Circuit breaker	TECO	BM-63C/2003S 2P	3A	1	YE40200203000								
17	Q5	Circuit breaker	TECO	BM-63C/1003S 1P	3A	1	YE40100203000								
18	T	Transformer	BAIYUN	IN=400V/415V OUT=24V	80VA	1	YE70040006500								
19	X1	Terminal board	HONEYWELL	SK4	4mm <sup>2</sup>	3	YE60000403200								
20			HONEYWELL	GK4PE	4mm <sup>2</sup> PE	1	YE60000403500								
21	X2	Terminal board	HONEYWELL	SK4	4mm <sup>2</sup>	3	YE60000403200								
22			HONEYWELL	GK4PE	4mm <sup>2</sup> PE	1	YE60000403500								
23	X3	Terminal board	HONEYWELL	SK4	4mm <sup>2</sup>	2	YE60000403200								
24			HONEYWELL	SK2.5	2.5mm <sup>2</sup>	19	YE60002503200								
25			HONEYWELL	GK2.5PE	2.5mm <sup>2</sup> PE	1	YE60002503400								
机型版本 Ver.F		Notes:(1)Materials not in the control box;(2)Optional de-dust motor accessories;(3)Optional full mat. alarm ;(4)Optional safety relay;													
				制图 彭泳涵		版本号 A		标题 SG-2336		图号 SG-2336-CE-400V-A-5		比例		第 5 张	
				设计 彭泳涵		核准		电气元件明细表一				标准 CE		共 7 张	
				校对				 <b>信易電熱機械股份有限公司</b> Shini Plastics Technologies, Inc.		机器电压		3Φ400V			
标记 更改前		更改后		更改人		日期				20220424		机器频率		50Hz	
1		2		3		4		5		6		7		8	

1		2		3		4		5		6		7		8	
NO.	Symbol	Name		Manufacturer	Type	Specification		Number	Material number		Remark				
26				HONEYWELL	SK2.5	2.5mm <sup>2</sup>		3	YE60002503200		(2)				
27				HONEYWELL	GK2.5PE	2.5mm <sup>2</sup> PE		1	YE60002503400		(2)				
28				HONEYWELL	SK2.5	2.5mm <sup>2</sup>		4	YE60002503200		(3)				
29				HONEYWELL	SK2.5	2.5mm <sup>2</sup>		8	YE60002503200		(4)				
30		End plate		HONEYWELL	D-SK2.5	-----		1	YE60002501100						
31		End plate		HONEYWELL	SK4	-----		1	YE60000400300						
32		Terminal fittings		HONEYWELL	E/GK	-----		4	YE60000003900						
33	X10	Metal connector		SHINI	PLT-254-PM	4P		1	YE68025400000		(1)(3)				
34				-----	PLT-254-RF	4P		1	YE68025400100		(1)(3)				
35	PCB	Microcomputer board		YUYUN	AB-02	24VAC		1	YE80022400100						
36	S1	Emergency stop button		SCHNEIDER	XB2BS542C	400VAC		1	YE11254200000		(1)				
37		Contact block		SCHNEIDER	ZB2BE102C	1NC		1	YE00210203100		(1)(4)				
38	S2	Stop button		SCHNEIDER	XB2BA22C	400VAC		1	YE11222000000		(1)				
39	S3,H1	Start button (with light)		SCHNEIDER	XB2BW33B1C	24VAC		1	YE11233100000		(1)				
40		Contact block		SCHNEIDER	ZB2BE101C	1NO		1	YE00210103100		(1)(4)				
41	S4, S5	Safety switch		SCHMERSRC	AZ15-02ZVRK-1476	AZ-15		2	YE16147600100		(1)				
42	S4, S5	Safety switch		SCHMERSRC	AZ16-02ZVRK-1476	AZ-16		2	YE16147600000		(1)(4)				
43		Operating moving parts AZ17-B6		-----	-----	AZ-17		2	YE16176000000		(1)				
44	H2	3-color alarm light		SHINI	red, gre, yel.+buzzer	24VAC		1	BL90002401520		(1)				
45	H3	Buzzer		TEND	EA-2	24VAC		1	YE84240200000		(1)(3)				
46	MS	Mat. level switch		SIPAI	SR-80	24VAC		1	YE15802400100		(1)(3)				
47	TA2	Current mutual transformer		YUYUN	-----	5-100A		1	-----		with circuit board				
48	PA	Ammeter		SFIM	DH-670	50A		1	YE25675000000		(1)				
49	M1	Cutting motor		-----	7.5KW	400V 50Hz		1	-----		(1)				
50	M2	Suction blower		-----	0.55KW	400V 50Hz		1	-----		(1)				
机型版本 Ver.F		Notes:(1)Materials not in the control box;(2)Optional de-dust motor accessories;(3)Optional full mat. alarm ;(4)Optional safety relay;													
D					制图	彭泳涵	版号	A	标题	SG-2336	图号	SG-2336-CE-400V-A-6	比例	第 6 张	
					设计	彭泳涵	核		电气元件明细表二			标准	CE	共 7 张	
					校对		准					机器电压	3φ400V		
	标记	更改前	更改后	更改人	日期	审核	日期	20220424		信易電熱機械股份有限公司 Shini Plastics Technologies, Inc.		机器频率	50Hz		
1		2		3		4		5		6		7		8	

1		2		3		4		5		6		7		8	
NO.	Symbol	Name		Manufacturer		Type		Specification		Number	Material number		Remark		
26	M3	De-dust blower		-----		0.37KW		400V 50Hz		1	-----		(1)(2)		
27															
28															
29															
30															
31															
32															
33															
34															
35															
36															
37															
38															
39															
40															
41															
42															
43															
44															
45															
46															
47															
48															
49															
50															
机型版本 Ver.F		Notes:(1)Materials not in the control box;(2)Optional de-dust motor accessories;(3)Optional full mat. alarm ;(4)Optional safety relay;													
D					制图	彭泳涵	版号	A	标题	SG-2336	图号		比例	第 7 张	
					设计	彭泳涵	核		电气元件明细表二	SG-2336-CE-400V-A-7		标准	CE	共 7 张	
					校对		准								
	标记	更改前	更改后	更改人	日期	审核		日期	20220424	 <b>信易電熱機械股份有限公司</b> Shini Plastics Technologies, Inc.		机器电压	3Φ400V		
													机器频率	50Hz	



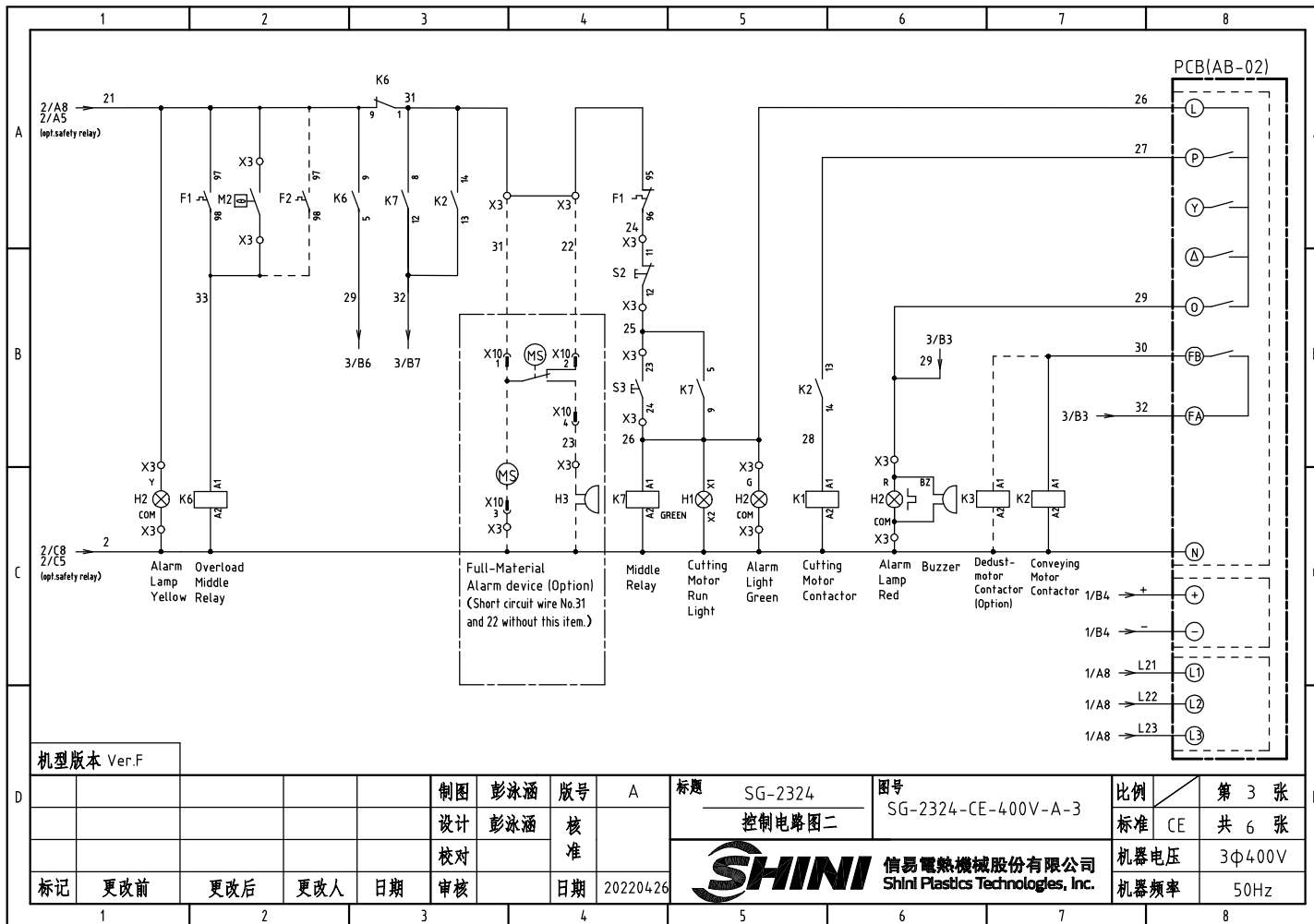




机型版本 Ver.F

制图	彭泳涵	版号	A
设计	彭泳涵	核准	
校对		核准	
标记	更改前	更改后	更改人
	日期	日期	日期
			20220426

标题	SG-2324 控制电路图一	图号	SG-2324-CE-400V-A-2
信易電熱機械股份有限公司 Shini Plastics Technologies, Inc.		比例	第 2 张
		标准	CE 共 6 张
		机器电压	3Φ400V
		机器频率	50Hz



机型版本 Ver.F

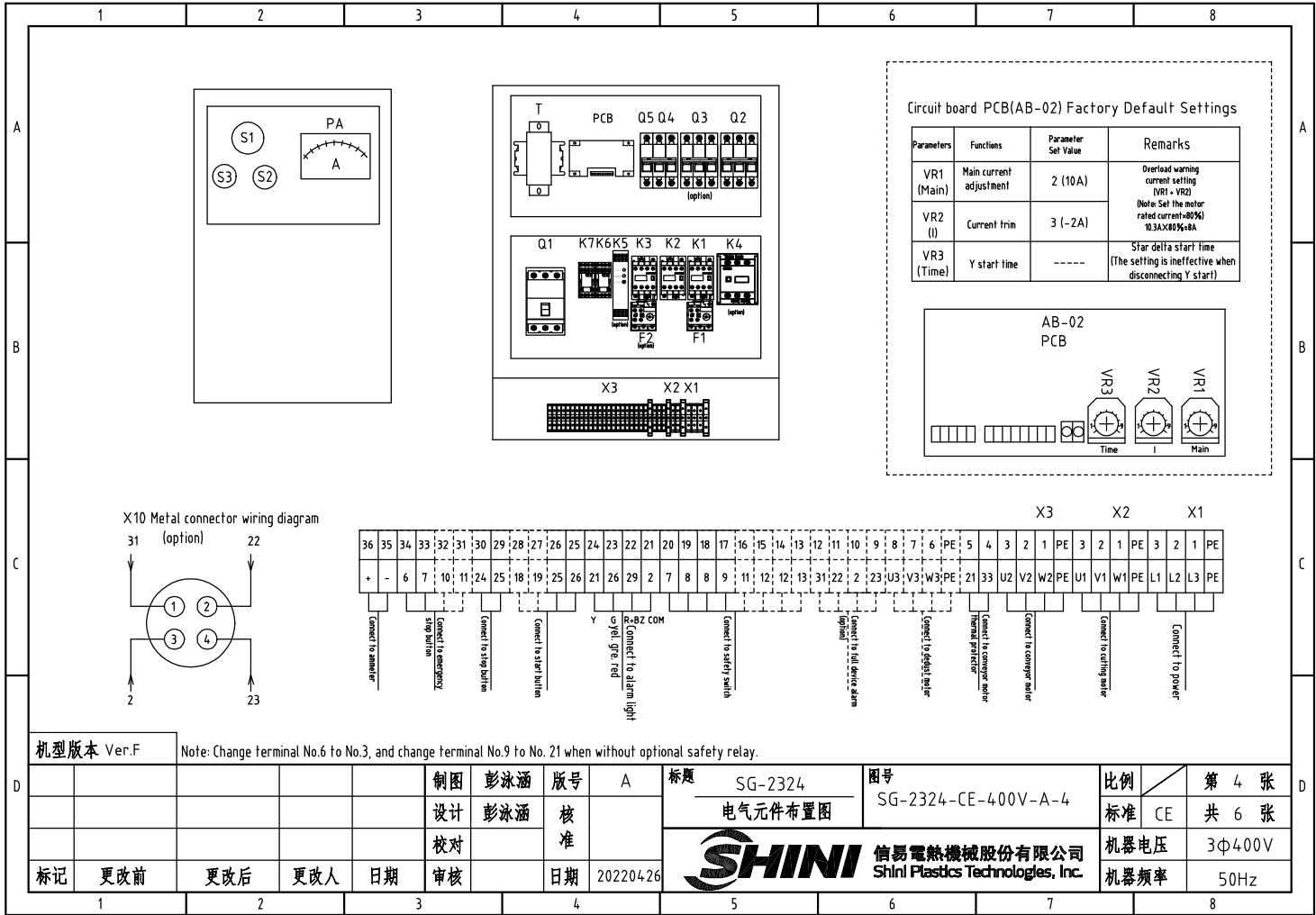
制图	彭泳涵	版号	A
设计	彭泳涵	核准	
校对		日期	20220426
标记	更改前	更改后	更改人
	1	2	3

标题 SG-2324  
控制电路图二

图号 SG-2324-CE-400V-A-3

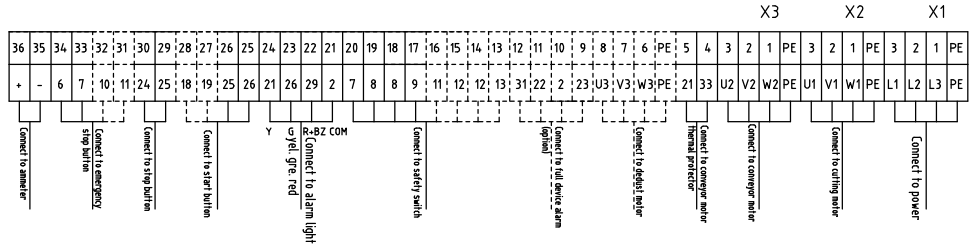
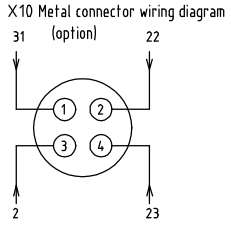
比例	第 3 张
标准	CE 共 6 张
机器电压	3φ400V
机器频率	50Hz





Circuit board PCB(AB-02) Factory Default Settings

Parameters	Functions	Parameter Set Value	Remarks
VR1 (Main)	Main current adjustment	2 (10A)	Overload warning current setting (VR1 + VR2) (Note: Set the motor rated current ±80%) %3A×80%±8A
VR2 (I)	Current trim	3 (-2A)	
VR3 (Time)	Y start time	-----	Star delta start time (The setting is ineffective when disconnecting Y start)

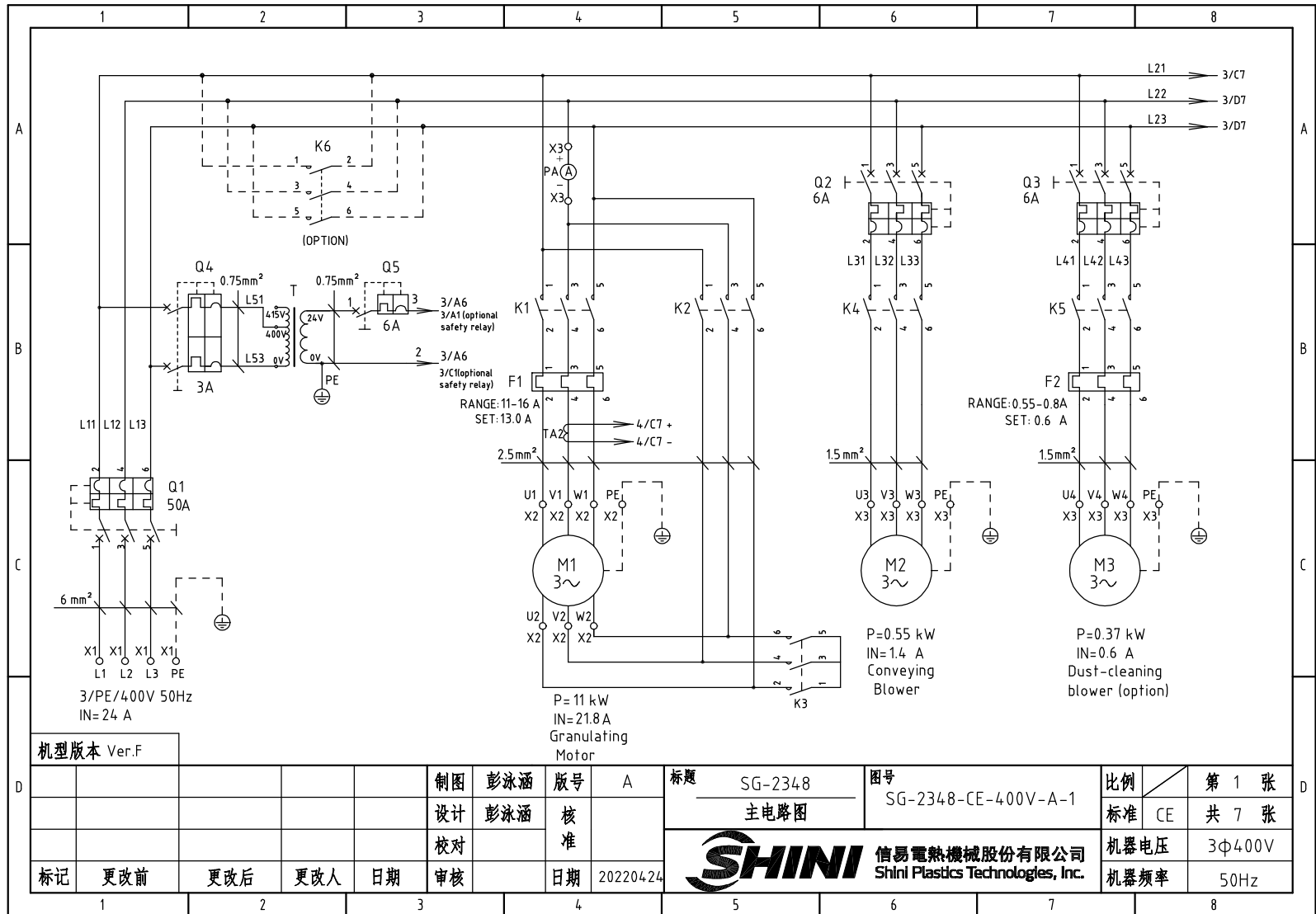


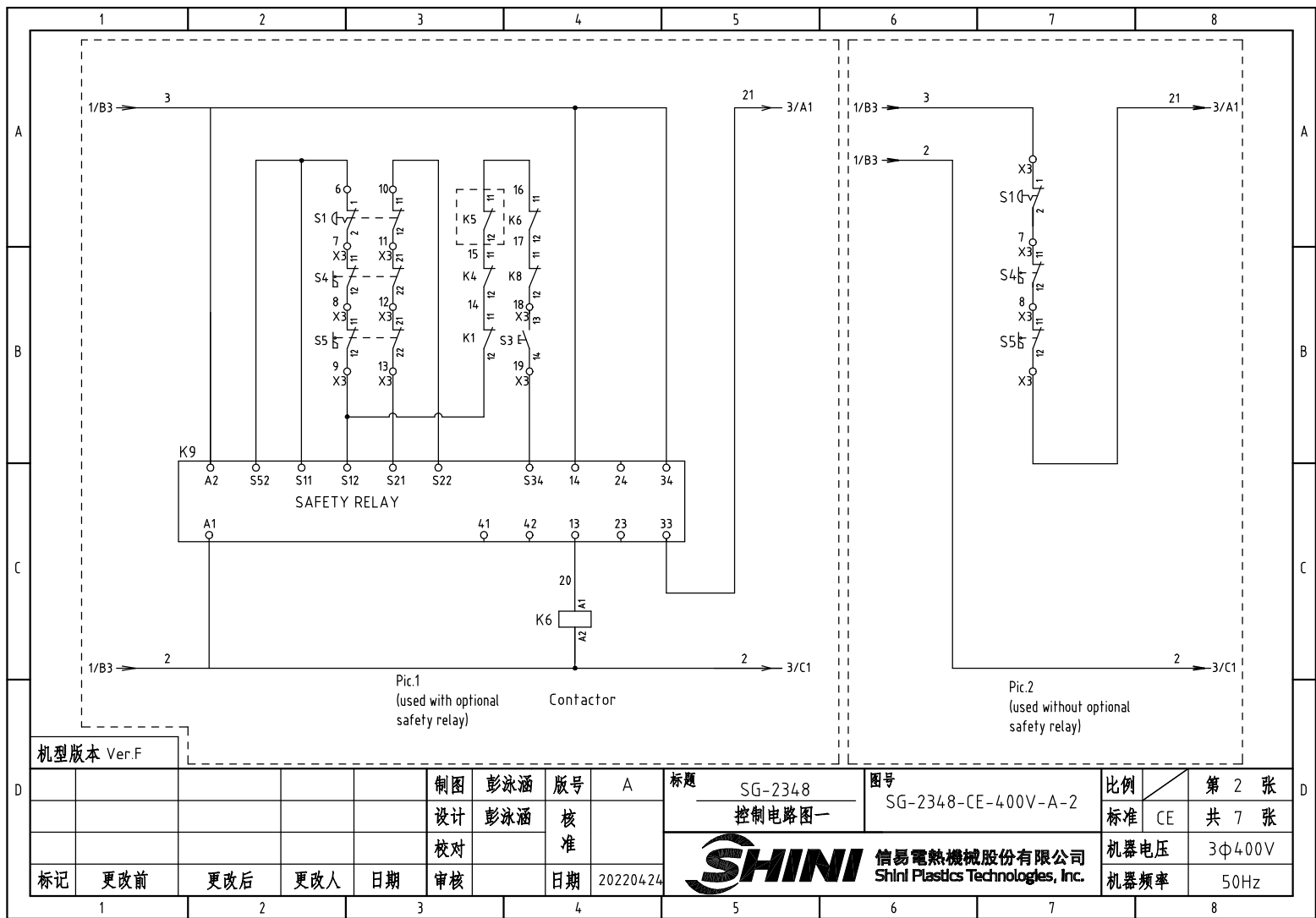
机型版本 Ver.F		Note: Change terminal No.6 to No.3, and change terminal No.9 to No.21 when without optional safety relay.							
制图	彭泳涵	版号	A	标题	SG-2324 电气元件布置图	图号	SG-2324-CE-400V-A-4	比例	第 4 张
设计	彭泳涵	核准						标准	CE 共 6 张
校对		日期	20220426					机器电压	3φ400V
标记	更改前	更改后	更改人	日期				机器频率	50Hz

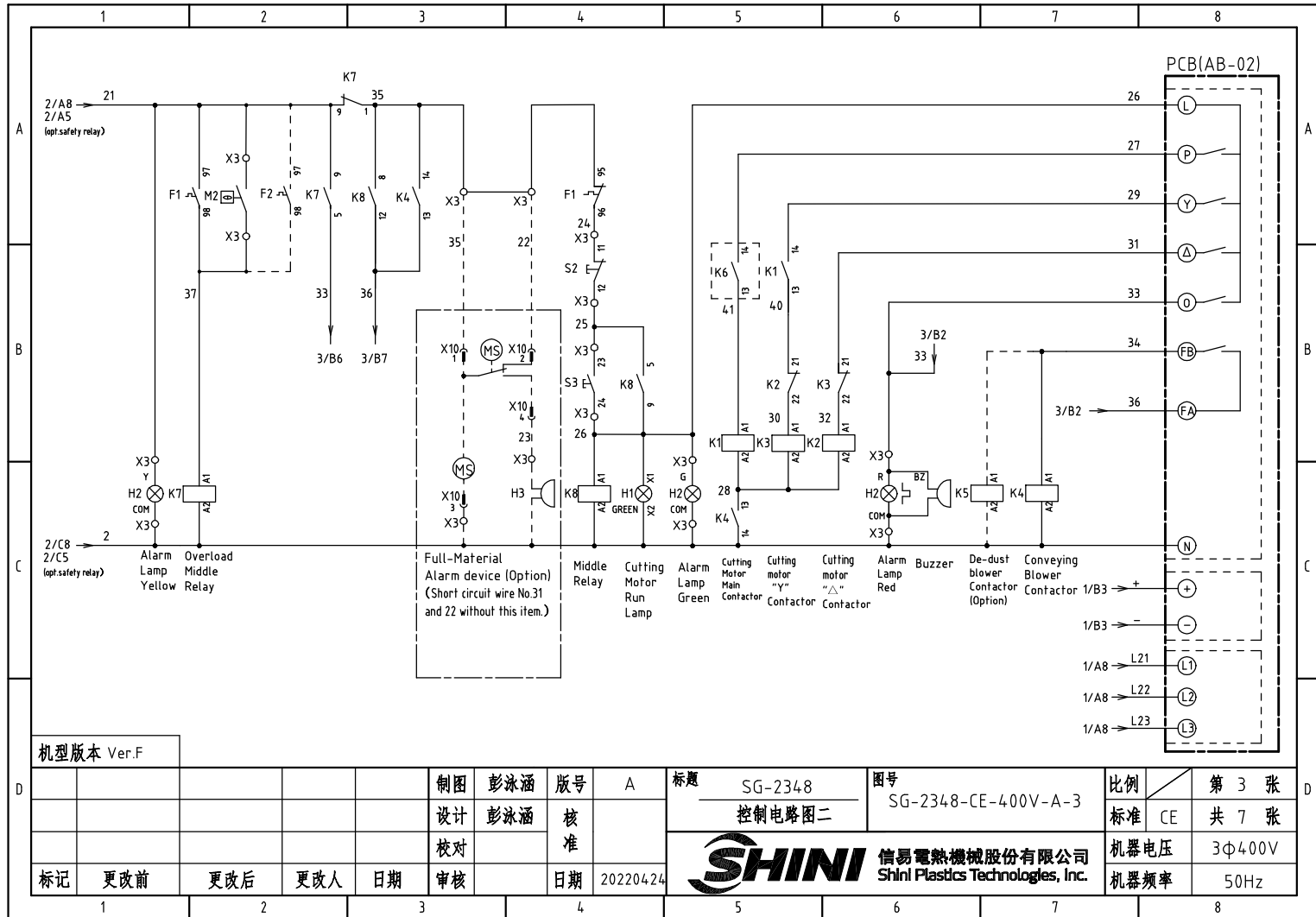


1		2		3		4		5		6		7		8	
NO.	Symbol	Name		Manufacturer		Type		Specification		Number	Material number		Remark		
1	Q1	Plastics shell circuit breaker		TECO		B0100EB3040		40A		1	YE85100300100				
2		Ext. handle		TECO		1A-CS1-C-D1		-----		1	YE90111100100				
3	Q2	Circuit breaker		TECO		BM-63C		6A		1	YE40300603000				
4	Q3	Circuit breaker		TECO		BM-63C		6A		1	YE40300603000		(2)		
5	K1	Contactor		SIEMENS		3RT6018-1AB02		16A 24VAC 50/60Hz		1	YE00601802600				
6	K2	Contactor		SIEMENS		3RT6016-1AB01		9A 24VAC 50/60Hz		1	YE00601602500				
7		Auxiliary contact		SIEMENS		3RH6911-1HA11		1NC+1NO		1	YE00691100100				
8	K3	Contactor		SIEMENS		3RT6015-1AB02		7A 24VAC 50/60Hz		1	YE00601502600		(2)		
9	K4	Contactor		SIEMENS		3RT6018-1AB02		16A 24VAC 50/60Hz		1	YE00601802600		(4)		
10	K5	Safety relay		PILZ		PNOZ×2.8P		24V AC/DC		1	YE04023000000		(4)		
11	K7	Middle relay		Honeywell		GR-2C-AC24V		24VAC		1	YE03022400300				
12	K7	Middle relay		Honeywell		GR-4C-AC24V		24VAC		1	YE03042400300		(4)		
13	F1	Overload relay		SIEMENS		3RU6116-1KB0		9-12.5A		1	YE01169125000				
14	F2	Overload relay		SIEMENS		3RU6116-0HB0		0.55-0.8A		1	YE01161550000		(2)		
15	K6	Middle relay		Honeywell		GR-2C-AC24V		24VAC		1	YE03022400300				
16	Q4	Circuit breaker		TECO		BM-63C/2003S 2P		3A		1	YE40200203000				
17	Q5	Circuit breaker		TECO		BM-63C/1003S 1P		3A		1	YE40100203000				
18	T	Transformer		BAIYUN		IN=400V/415V OUT=24V		80VA		1	YE70040006500				
19	X1	Terminal board		HONEYWELL		SK2.5		2.5mm <sup>2</sup>		3	YE60002503200				
20				HONEYWELL		GK2.5PE		2.5mm <sup>2</sup> PE		1	YE60002503400				
21	X2	Terminal board		HONEYWELL		SK2.5		2.5mm <sup>2</sup>		3	YE60002503200				
22				HONEYWELL		GK2.5PE		2.5mm <sup>2</sup> PE		1	YE60002503400				
23	X3	Terminal board		HONEYWELL		SK2.5		2.5mm <sup>2</sup>		21	YE60002503200				
24				HONEYWELL		GK2.5PE		2.5mm <sup>2</sup> PE		1	YE60002503400				
25				HONEYWELL		SK2.5		2.5mm <sup>2</sup>		3	YE60002503200		(2)		
机型版本 Ver.F		Notes:(1)Materials not in the control box;(2)Optional de-dust motor accessories;(3)Optional full mat. alarm ;(4)Optional safety relay;													
制图 彭泳涵		版号 A		标题 SG-2324		图号 SG-2324-CE-400V-A-5		比例		第 5 张		D			
设计 彭泳涵		核 准		电气元件明细表一		标准 CE		共 6 张							
校对				SHINI 信易電熱機械股份有限公司		Shini Plastics Technologies, Inc.		机器电压		3φ400V					
标记 更改前		更改后		更改人		日期 20220426		机器频率		50Hz					
1		2		3		4		5		6		7		8	


1		2		3		4		5		6		7		8	
NO.	Symbol	Name		Manufacturer		Type		Specification		Number	Material number		Remark		
26				HONEYWELL		GK2.5PE		2.5mm <sup>2</sup> PE		1	YE60002503400		(2)		
27				HONEYWELL		SK2.5		2.5mm <sup>2</sup>		4	YE60002503200		(3)		
28				HONEYWELL		SK2.5		2.5mm <sup>2</sup>		8	YE60002503200		(4)		
29		End plate		HONEYWELL		D-SK2.5		-----		1	YE60002501100				
30		Terminal fittings		HONEYWELL		E/GK		-----		4	YE60000003900				
31	X10	Metal connector		SHINI		PLT-254-PM		4P		1	YE68025400000		(1)(3)		
32				-----		PLT-254-RF		4P		1	YE68025400100		(1)(3)		
33	PCB	Microcomputer board		YUYUN		AB-02		24VAC		1	YE80022400100				
34	S1	Emergency stop button		SCHNEIDER		XB2BS542C		400VAC		1	YE11254200000		(1)		
35		Contact block		SCHNEIDER		ZB2BE102C		1NC		1	YE00210203100		(1)(4)		
36	S2	Stop button		SCHNEIDER		XB2BA22C		400VAC		1	YE11222000000		(1)		
37	S3,H1	Start button (with light)		SCHNEIDER		XB2BW33B1C		24VAC		1	YE11233100000		(1)		
38		Contact block		SCHNEIDER		ZB2BE101C		1NO		1	YE00210103100		(1)(4)		
39	S4, S5	Safety switch		SCHMERSRC		AZ15-02ZVRK-1476		AZ-15		2	YE16147600100		(1)		
40	S4, S5	Safety switch		SCHMERSRC		AZ16-02ZVRK-1476		AZ-16		2	YE16147600000		(1)(4)		
41		Operating moving parts AZ17-B6		-----		-----		AZ-17		2	YE16176000000		(1)		
42	H2	3-color alarm light		SHINI		red, gre, yel.+buzzer		24VAC		1	BL90002401520		(1)		
43	H3	Buzzer		TEND		EA-2		24VAC		1	YE84240200000		(1)(3)		
44	MS	Mat. level switch		SIPAI		SR-80		24VAC		1	YE15802400100		(1)(3)		
45	TA2	Current mutual transformer		YUYUN		-----		5-100A		1	-----		with circuit board		
46	PA	Ammeter		SFIM		DH-670		30A		1	YE25673000000		(1)		
47	M1	Cutting motor		-----		5.5KW		400V 50Hz		1	-----		(1)		
48	M2	Solution blower		-----		0.55KW		400V 50Hz		1	-----		(1)		
	M3	De-dust blower		-----		0.37KW		400V 50Hz		1	-----		(1)(2)		
机型版本 Ver.F		Notes:(1)Materials not in the control box;(2)Optional de-dust motor accessories;(3)Optional full mat. alarm ,(4)Optional safety relay;													
D						制图 彭泳涵		版本号 A		标题 SG-2324		图号 SG-2324-CE-400V-A-6		比例 第 6 张	
						设计 彭泳涵		核 准		电气元件明细表二		标准 CE		共 6 张	
						校对				 信易電熱機械股份有限公司 Shini Plastics Technologies, Inc.		机器电压		3φ400V	
标记		更改前		更改后		更改人		日期				20220426		机器频率	
1		2		3		4		5		6		7		8	



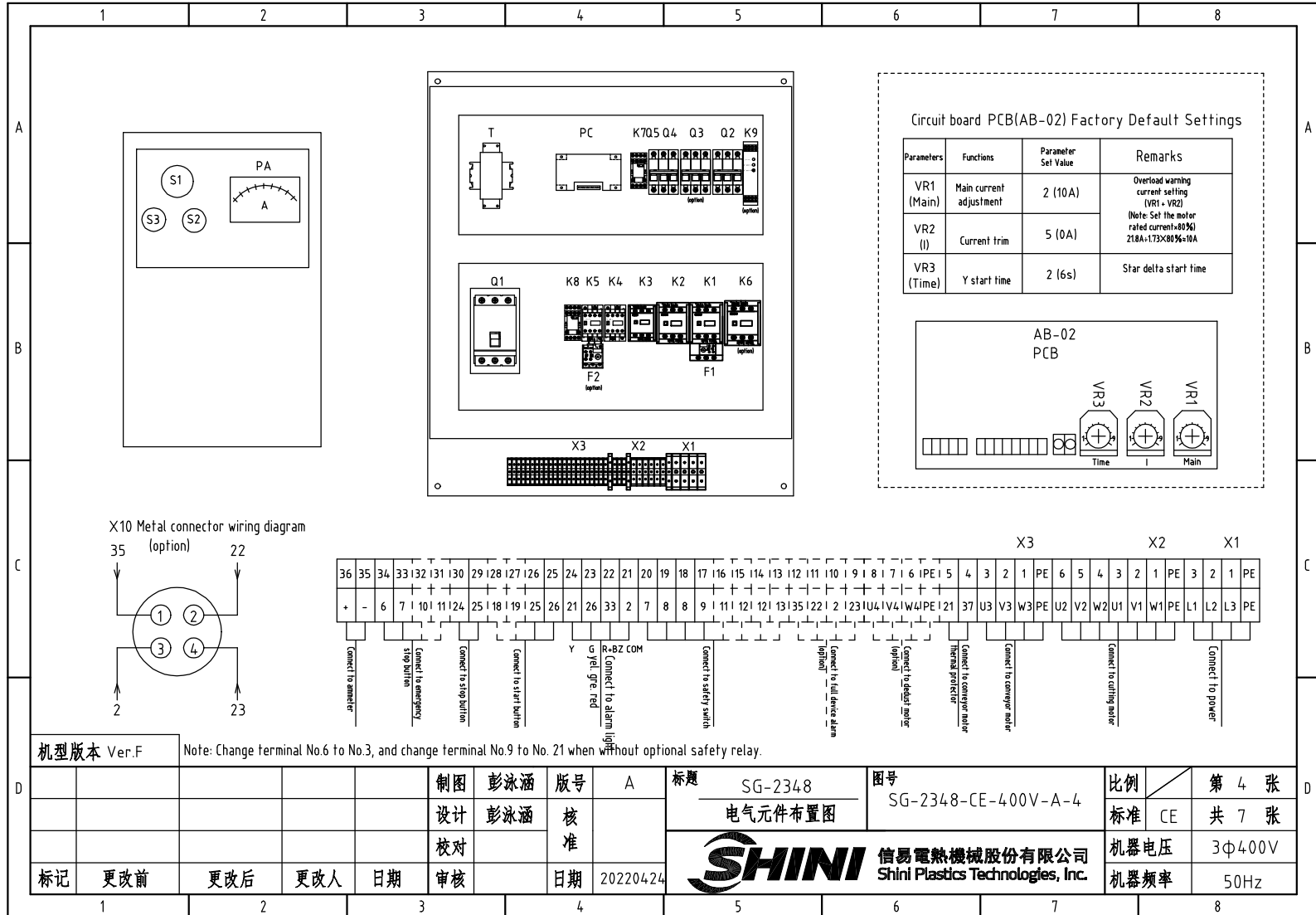




机型版本 Ver.F

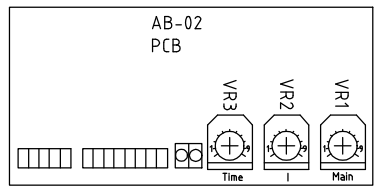
					制图	彭泳涵	版号	A	标题	SG-2348	图号	SG-2348-CE-400V-A-3	比例	第 3 张
					设计	彭泳涵	核准		控制电路图二			标准	CE	共 7 张
					校对		核准		 信易電熱機械股份有限公司 Shini Plastics Technologies, Inc.			机器电压	3Φ400V	
标记	更改前	更改后	更改人	日期	审核	日期	20220424				机器频率	50Hz		



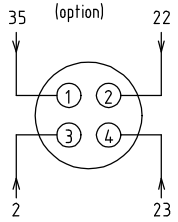


Circuit board PCB(AB-02) Factory Default Settings

Parameters	Functions	Parameter Set Value	Remarks
VR1 (Main)	Main current adjustment	2 (10A)	Overload warning current setting (VR1 + VR2) (Note: Set the motor rated current $\times 80\%$ ) 218A $\times 1.75 \times 80\% = 10A$
VR2 (I)	Current trim	5 (0A)	
VR3 (Time)	Y start time	2 (6s)	Star delta start time



X10 Metal connector wiring diagram (option)



X3		X2			X1																																														
36	35	34	33	132	131	130	29	128	127	126	25	24	23	22	21	20	19	18	17	116	115	114	113	112	111	110	1	9	8	7	1	6	1PE	1	5	4	3	2	1	PE	6	5	4	3	2	1	PE	3	2	1	PE
+	-	6	7	10	11	124	25	18	19	25	26	21	26	33	2	7	8	8	9	11	12	13	35	122	2	123	104	1	4	1	4	1	PE	1	21	37	U3	V3	W3	PE	U2	V2	W2	U1	V1	W1	PE	L1	L2	L3	PE
Connect to ammeter		Connect to emergency stop button		Connect to stop button		Connect to start button		Y		G		R-BZ COM		Connect to alarm light		Connect to safety switch		Connect to full device alarm (option)		Connect to debris roller (option)		Thermal protector		Connect to conveyor roller		Connect to conveyor roller		Connect to cutting roller		Connect to power																					

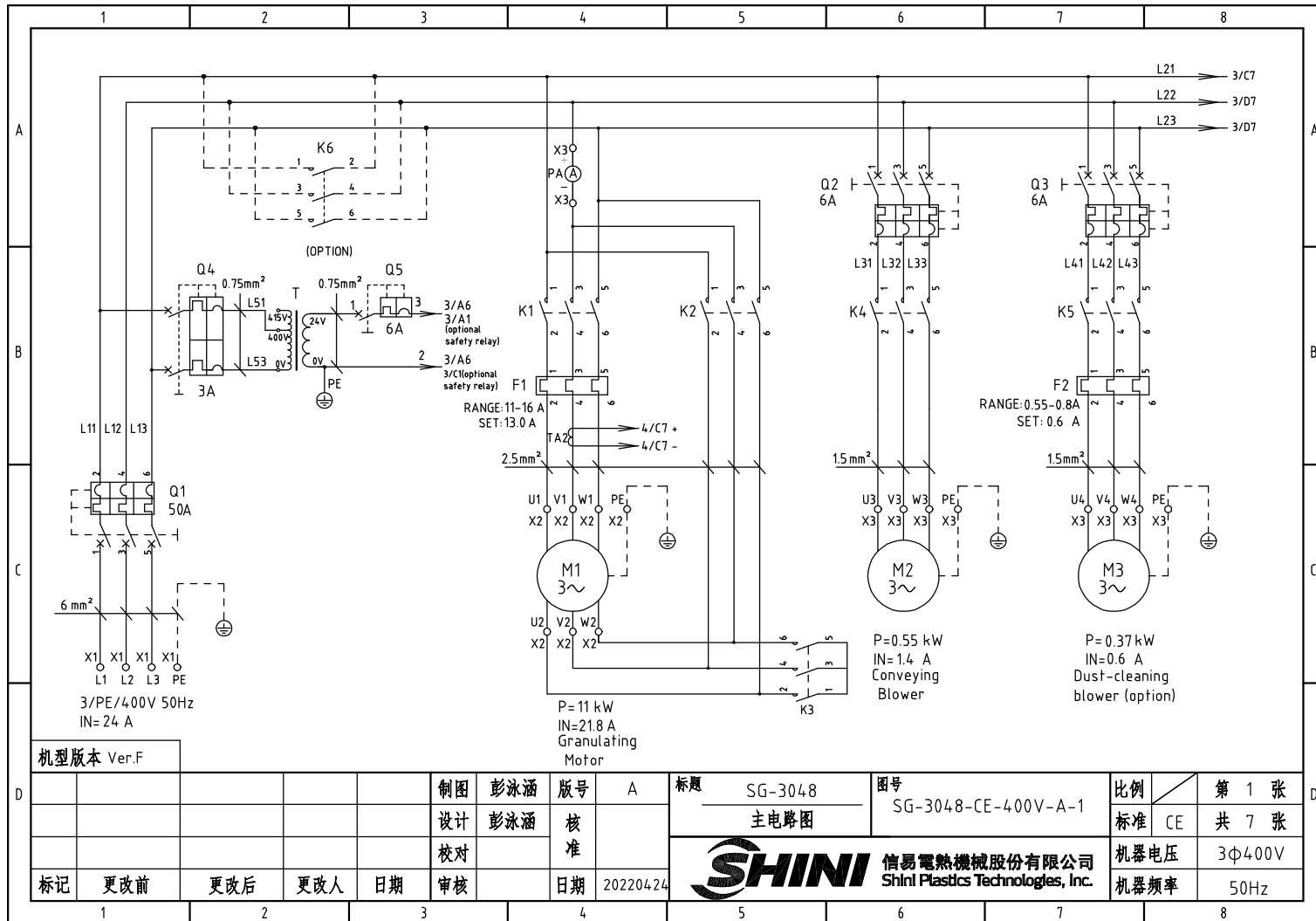
机型版本 Ver.F Note: Change terminal No.6 to No.3, and change terminal No.9 to No. 21 when without optional safety relay.

制图 彭泳涵				版本号 A		标题 SG-2348		图号 SG-2348-CE-400V-A-4		比例		第 4 张		
设计 彭泳涵				核准		电气元件布置图		标准 CE		共 7 张				
校对				核准		SHINI 信易电热机械股份有限公司 Shini Plastics Technologies, Inc.		机器电压		3Φ400V				
审核				日期 20220424				机器频率		50Hz				
标记	更改前	更改后	更改人	日期	审核	日期								

1		2		3		4		5		6		7		8			
NO.	Symbol	Name		Manufacturer		Type		Specification		Number	Material number		Remark				
1	Q1	Plastics shell circuit breaker		TECO		B0100EB3050		50A		1	YE40100300100						
2		Ext. handle		TECO		1A-CS1-C-D1		-----		1	YE90111100100						
3	Q2	Circuit breaker		TECO		BM-63C		6A		1	YE40300603000						
4	Q3	Circuit breaker		TECO		BM-63C		6A		1	YE40300603000		(2)				
5	K1	Contactor		SIEMENS		3RT6025-1AC20		17A 24VAC 50/60Hz		1	YE00602502600						
6	K2	Contactor		SIEMENS		3RT6025-1AC20		17A 24VAC 50/60Hz		1	YE00602502600						
7	K3	Contactor		SIEMENS		3RT6018-1AB02		16A 24VAC 50/60Hz		1	YE00601802600						
8	K4	Contactor		SIEMENS		3RT6016-1AB01		9A 24VAC 50/60Hz		1	YE00601602500						
9		Auxiliary contact		SIEMENS		3RH6911-1HA11		1NC+1NO		1	YE00691100100						
10	K5	Contactor		SIEMENS		3RT6015-1AB02		7A 24VAC 50/60Hz		1	YE00601502600		(2)				
11	K6	Contactor		SIEMENS		3RT6027-1AC20		32A 24VAC 50/60Hz		1	YE00602702600		(4)				
12	K8	Middle relay		Honeywell		GR-2C-AC24V		24VAC		1	YE03022400300						
13	K8	Middle relay		Honeywell		GR-4C-AC24V		24VAC		1	YE03042400300		(4)				
14	K9	Safety relay		PILZ		PN0Z×2.8P		24V AC/DC		1	YE04023000000		(4)				
15	F1	Overload relay		SIEMENS		3RU6126-4AB0		11-16A		1	YE01260110000						
16	F2	Overload relay		SIEMENS		3RU6116-0HB0		0.55-0.8A		1	YE01161500000		(2)				
17	K7	Middle relay		Honeywell		GR-2C-AC24V		24VAC		1	YE03022400300						
18	Q4	Circuit breaker		TECO		BM-63C/2003S 2P		3A		1	YE40200203000						
19	Q5	Circuit breaker		TECO		BM-63C/1006S 1P		6A		1	YE40100600100						
20	T	Transformer		-----		IN=400V/415V OUT=24V		80VA		1	YE70040006500						
21	T	Transformer		-----		IN=400V/415V OUT=24V		120VA		1	YE70040006600		(4)				
22	X1	Terminal board		HONEYWELL		GK6		6mm <sup>2</sup>		3	YE60000603200						
23				HONEYWELL		GK6PE		6mm <sup>2</sup> PE		1	YE60000603500						
24	X2	Terminal board		HONEYWELL		SK2.5		2.5mm <sup>2</sup>		6	YE60002503200						
25				HONEYWELL		GK2.5PE		2.5mm <sup>2</sup> PE		1	YE60002503400						
机型版本 Ver.F		Notes:(1)Materials not in the control box;(2)Optional de-dust motor accessories;(3)Optional full mat. alarm ;(4)Optional safety relay;															
						制图 彭泳涵		版号 A		标题 SG-2348		图号 SG-2348-CE-400V-A-5		比例		第 5 张	
						设计 彭泳涵		核 准		电气元件明细表一		标准 CE		共 7 张			
						校对		核 准		 信易電熱機械股份有限公司 Shini Plastics Technologies, Inc.		机器电压		3Φ400V			
标记 更改前		更改后		更改人		日期		日期 20220424				机器频率		50Hz			
1		2		3		4		5		6		7		8			

1		2		3		4		5		6		7		8	
NO.	Symbol	Name		Manufacturer		Type		Specification		Number	Material number		Remark		
A	26	X3	Terminal board		HONEYWELL		SK4		4mm <sup>2</sup>		2	YE60000403200			
	27				HONEYWELL		SK2.5		2.5mm <sup>2</sup>		19	YE60002503200			
	28				HONEYWELL		GK2.5PE		2.5mm <sup>2</sup> PE		1	YE60002503400			
	29				HONEYWELL		SK2.5		2.5mm <sup>2</sup>		3	YE60002503200		(2)	
	30				HONEYWELL		GK2.5PE		2.5mm <sup>2</sup> PE		1	YE60002503400		(2)	
	31				HONEYWELL		SK2.5		2.5mm <sup>2</sup>		4	YE60002503200		(3)	
B	32				HONEYWELL		SK2.5		2.5mm <sup>2</sup>		8	YE60002503200		(4)	
	33		End plate		HONEYWELL		D-SK2.5		-----		2	YE60002501100			
	34		End plate		HONEYWELL		SK4		-----		1	YE60000400300			
	35		End plate		HONEYWELL		D-GK6(for GK6, GK10)		-----		1	YE60001000500			
	36		Terminal fittings		HONEYWELL		E/GK		-----		4	YE60000003900			
	37	X10	Metal connector		SHINI		PLT-254-PM		4P		1	YE68025400000		(1)(3)	
C	38		Metal connector		-----		PLT-254-RF		4P		1	YE68025400100		(1)(3)	
	39	PCB	Microcomputer board/PCB		YUYUN		AB-02		24VAC		1	YE80022400100			
	40	S1	Emergency stop button		SCHNEIDER		XB2BS542C		400VAC		1	YE11254200000		(1)	
	41		Contact block		SCHNEIDER		ZB2BE102C		1NC		1	YE00210203100		(1)(4)	
	42	S2	Stop button		SCHNEIDER		XB2BA22C		400VAC		1	YE11222000000		(1)	
	43	S3,H1	Start button (with light)		SCHNEIDER		XB2BW33B1C		24VAC		1	YE11233100000		(1)	
D	44		Contact block		SCHNEIDER		ZB2BE101C		1NO		1	YE00210103100		(1)(4)	
	45	S4, S5	Safety switch		SCHMERSRC		AZ15-02ZVRK-14.76		AZ-15		2	YE1614.7600100		(1)	
	46	S4, S5	Safety switch		SCHMERSRC		AZ16-02ZVRK-14.76		AZ-16		2	YE1614.7600000		(1)(4)	
	47		Operating moving parts AZ17-B6		-----		-----		AZ-17		2	YE16176000000		(1)	
	48	H2	3-color alarm light		SHINI		red, gre, yel.+buzzer		24VAC		1	BL90002401520		(1)	
	49	H3	Buzzer		TEND		EA-2		24VAC		1	YE84240200000		(1)(3)	
	50	MS	Mat. level switch		SIPAI		SR-80		24VAC		1	YE15802400100		(1)(3)	
机型版本 Ver.F		Notes:(1)Materials not in the control box;(2)Optional de-dust motor accessories;(3)Optional full mat. alarm;(4)Optional safety relay;													
						制图	彭泳涵	版号	A	标题 SG-2348		图号 SG-2348-CE-400V-A-6		比例	第 6 张
						设计	彭泳涵	核		电气元件明细表二		标准 CE		共 7 张	
						校对		准		 信易電熱機械股份有限公司 Shini Plastics Technologies, Inc.		机器电压		3Φ400V	
标记		更改前	更改后	更改人	日期	审核	日期	20220424	机器频率			50Hz			
1		2		3		4		5		6		7		8	





机型版本 Ver.F

制图	彭泳涵	版号	A
设计	彭泳涵	核准	
校对		核准	
标记	更改前	更改后	更改人
		日期	20220424

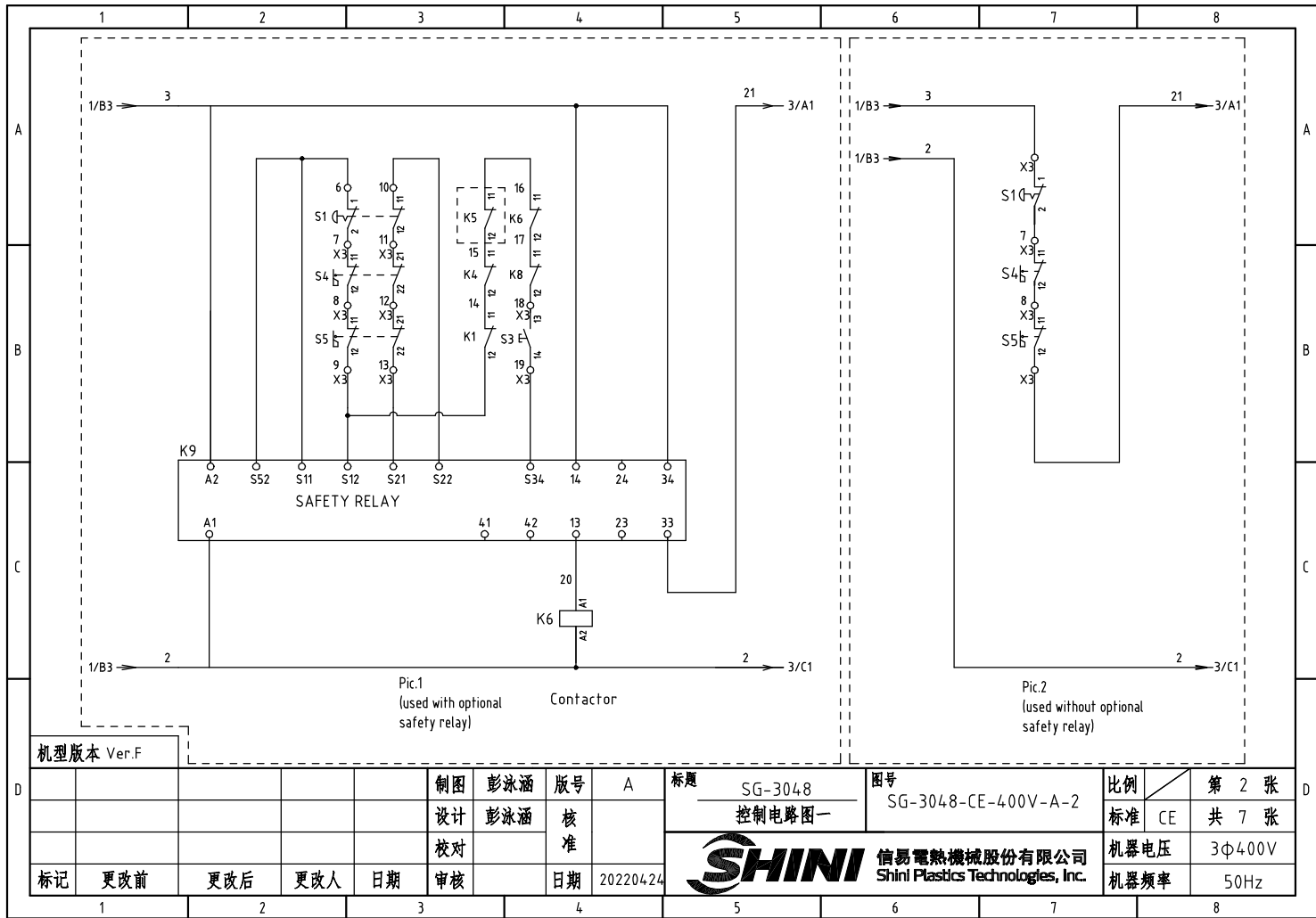
标题 SG-3048  
主电路图

图号 SG-3048-CE-400V-A-1

比例 第 1 张  
标准 CE 共 7 张

**SHINI** 信易電熱機械股份有限公司  
Shini Plastics Technologies, Inc.

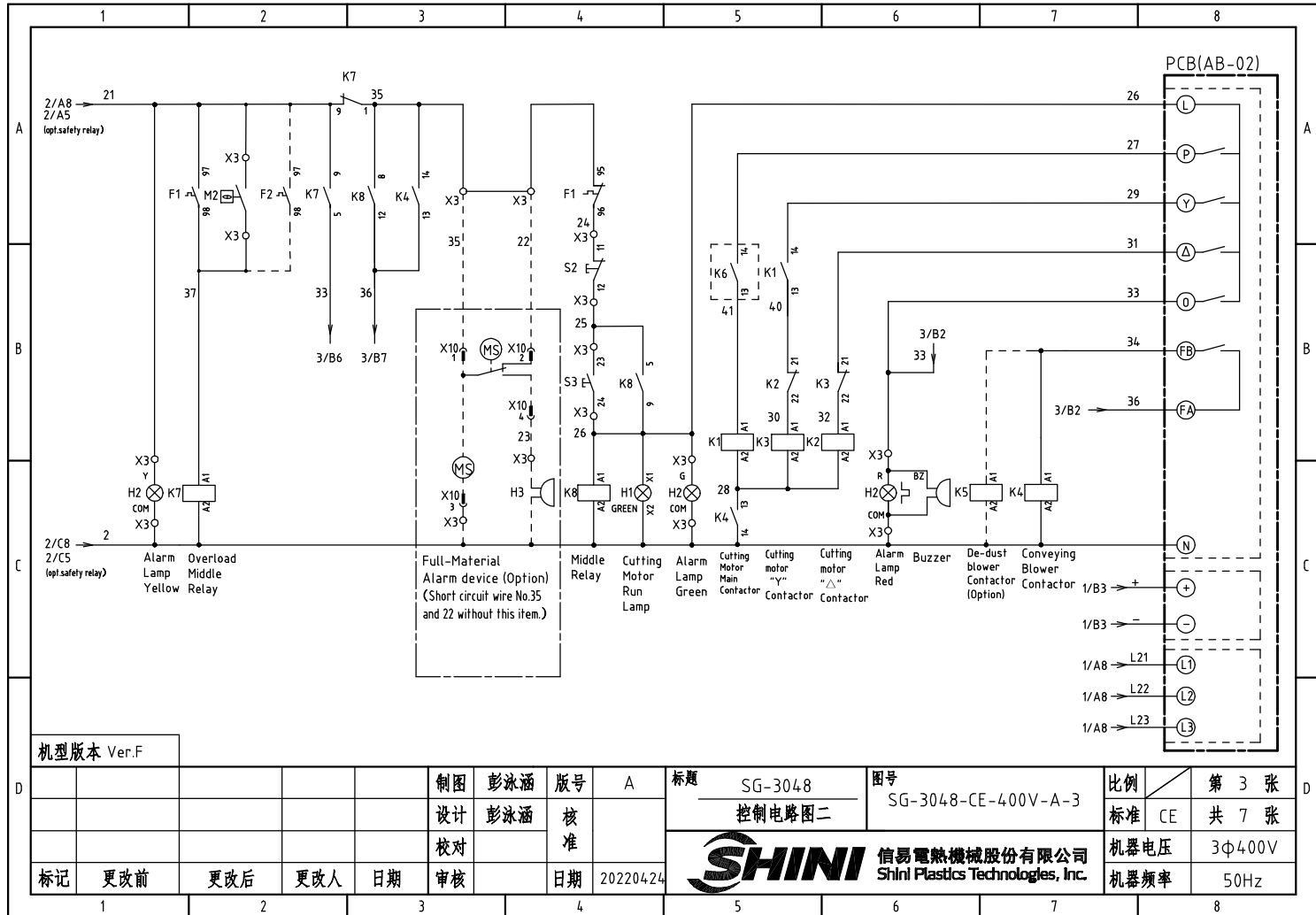
机器电压 3Φ400V  
机器频率 50Hz



机型版本 Ver.F

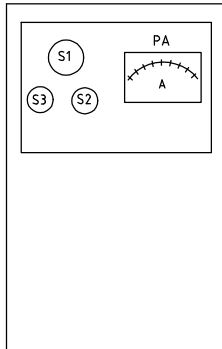
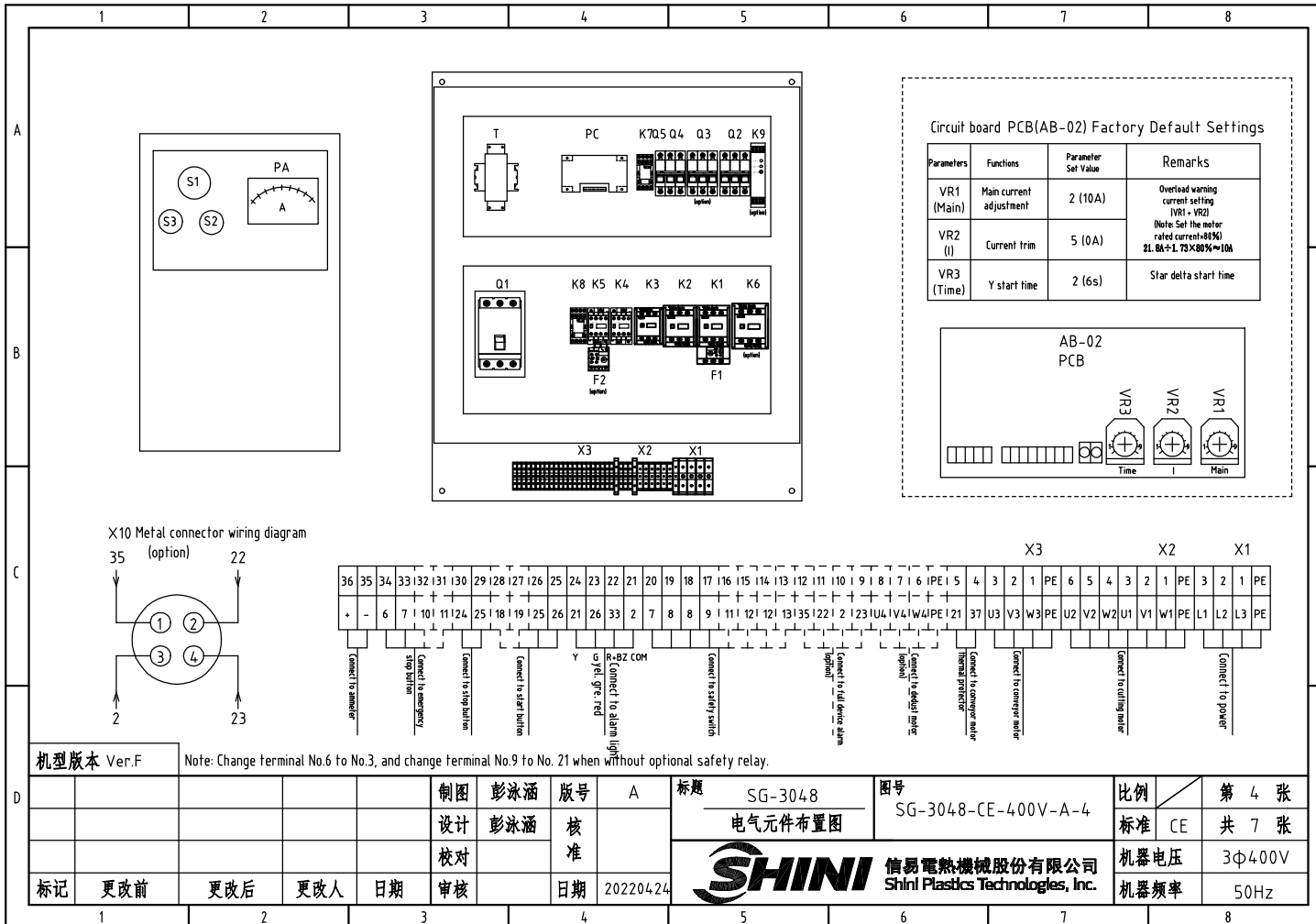
制图	彭泳涵	版号	A
设计	彭泳涵	核准	
校对		核准	
标记	更改前	更改后	更改人
	日期	日期	20220424

标题	SG-3048 控制电路图一	图号	SG-3048-CE-400V-A-2
 信易電熱機械股份有限公司 Shini Plastics Technologies, Inc.		比例	第 2 张
		标准	CE 共 7 张
		机器电压	3Φ400V
		机器频率	50Hz



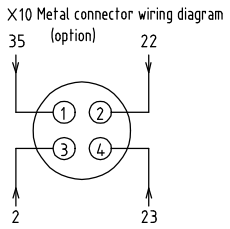
机型版本 Ver.F

			制图	彭泳涵	版号	A	标题	SG-3048	图号	SG-3048-CE-400V-A-3	比例	第 3 张
			设计	彭泳涵	核准		控制电路图二				标准	CE 共 7 张
			校对		核准		信易電熱機械股份有限公司 Shini Plastics Technologies, Inc.				机器电压	3Φ400V
标记	更改前	更改后	更改人	日期	审核	日期			20220424	机器频率	50Hz	



Circuit board PCB(AB-02) Factory Default Settings

Parameters	Functions	Parameter Set Value	Remarks
VR1 (Main)	Main current adjustment	2 (10A)	Overload warning current setting (VR1 + VR2) Note: Set the motor rated current×85% 2L 8A+L 7.73×80%≈10A
VR2 (I)	Current trim	5 (0A)	
VR3 (Time)	Y start time	2 (6s)	Star delta start time



X3										X2										X1																											
36	35	34	33	32	31	30	29	28	27	26	25	24	23	22	21	20	19	18	17	16	15	14	13	12	11	10	9	8	7	6	5	4	3	2	1	PE	6	5	4	3	2	1	PE	3	2	1	PE
Connect to ammeter										Connect to emergency stop button										Connect to start button			Y G (yellow, green, red)			R-BZ COM			Connect to safety switch			Connect to full device alarm (option)			Connect to thermal protector			Connect to emergency stop			Connect to cutting motor			Connect to power			


机型版本 Ver.F Note: Change terminal No.6 to No.3, and change terminal No.9 to No. 21 when without optional safety relay.

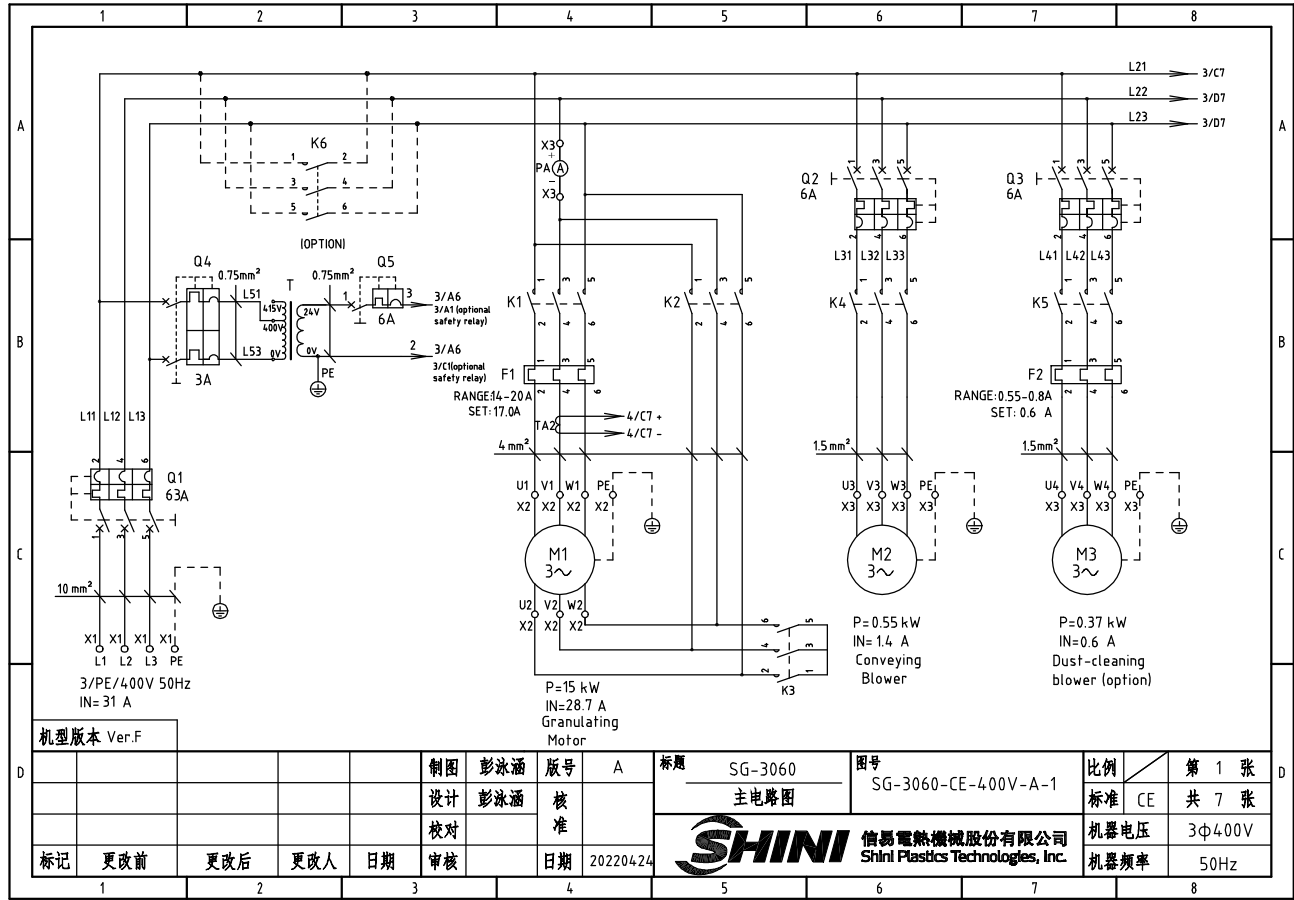
制图 彭泳涵						版号 A		标题 SG-3048		图号 SG-3048-CE-400V-A-4		比例 第 4 张	
设计 彭泳涵						核准		电气元件布置图		标准 CE		共 7 张	
校对						日期 20220424		SHINI 信易电热机械股份有限公司 Shini Plastics Technologies, Inc.		机器电压 3Φ400V		机器频率 50Hz	
标记 更改前		更改后		更改人		日期							



1		2		3		4		5		6		7		8					
NO.	Symbol	Name		Manufacturer		Type		Specification		Number	Material number		Remark						
1	Q1	Plastics shell circuit breaker		TECO		BO100EB3050		50A		1	YE40100300100								
2		Ext. handle		TECO		1A-CS1-C-D1		-----		1	YE90111100100								
3	Q2	Circuit breaker		TECO		BM-63C		6A		1	YE40300603000								
4	Q3	Circuit breaker		TECO		BM-63C		6A		1	YE40300603000		(2)						
5	K1	Contactor		SIEMENS		3RT6025-1AC20		17A 24VAC 50/60Hz		1	YE00602502600								
6	K2	Contactor		SIEMENS		3RT6025-1AC20		17A 24VAC 50/60Hz		1	YE00602502600								
7	K3	Contactor		SIEMENS		3RT6018-1AB02		16A 24VAC 50/60Hz		1	YE00601802600								
8	K4	Contactor		SIEMENS		3RT6016-1AB01		9A 24VAC 50/60Hz		1	YE00601602500								
9		Auxiliary contact		SIEMENS		3RH6911-1HA11		1NC+1NO		1	YE00691100100								
10	K5	Contactor		SIEMENS		3RT6015-1AB02		7A 24VAC 50/60Hz		1	YE00601502600		(2)						
11	K6	Contactor		SIEMENS		3RT6027-1AC20		32A 24VAC 50/60Hz		1	YE00602702600		(4)						
12	K8	Middle relay		Honeywell		GR-2C-AC24V		24VAC		1	YE03022400300								
13	K8	Middle relay		Honeywell		GR-4C-AC24V		24VAC		1	YE03042400300		(4)						
14	K9	Safety relay		PILZ		PNOZ×2.8P		24V AC/DC		1	YE04023000000		(4)						
15	F1	Overload relay		SIEMENS		3RU6126-4AB0		11-16A		1	YE01260110000								
16	F2	Overload relay		SIEMENS		3RU6116-0HB0		0.55-0.8A		1	YE01161550000		(2)						
17	K7	Middle relay		Honeywell		GR-2C-AC24V		24VAC		1	YE03022400300								
18	Q4	Circuit breaker		TECO		BM-63C/2003S 2P		3A		1	YE40200203000								
19	Q5	Circuit breaker		TECO		BM-63C/1006S 1P		6A		1	YE40100600100								
20	T	Transformer		-----		IN=400V/415V OUT=24V		80VA		1	YE70040006500								
21	T	Transformer		-----		IN=400V/415V OUT=24V		120VA		1	YE70040006600		(4)						
22	X1	Terminal board		HONEYWELL		GK6		6mm <sup>2</sup>		3	YE60000603200								
23				HONEYWELL		GK6PE		6mm <sup>2</sup> PE		1	YE60000603500								
24	X2	Terminal board		HONEYWELL		SK2.5		2.5mm <sup>2</sup>		6	YE60002503200								
25				HONEYWELL		GK2.5PE		2.5mm <sup>2</sup> PE		1	YE60002503400								
机型版本 Ver.F		Notes:(1)Materials not in the control box;(2)Optional de-dust motor accessories;(3)Optional full mat. alarm ;(4)Optional safety relay;																	
制图		彭泳涵		版号		A		标题		SG-3048		图号		SG-3048-CE-400V-A-5		比例		第 5 张	
设计		彭泳涵		核				电气元件明细表一				标准		CE		共 7 张			
校对				准								机器电压		3φ400V					
审核				日期		20220424				信易電熱機械股份有限公司 Shini Plastics Technologies, Inc.		机器频率		50Hz					
标记		更改前		更改后		更改人		日期											

1		2		3		4		5		6		7		8	
NO.	Symbol	Name		Manufacturer	Type		Specification		Number	Material number		Remark			
26	X3	Terminal board		HONEYWELL	SK4		4mm <sup>2</sup>		2	YE60004.03200					
27				HONEYWELL	SK2.5		2.5mm <sup>2</sup>		19	YE60002503200					
28				HONEYWELL	GK2.5PE		2.5mm <sup>2</sup> PE		1	YE60002503400					
29				HONEYWELL	SK2.5		2.5mm <sup>2</sup>		3	YE60002503200		(2)			
30				HONEYWELL	GK2.5PE		2.5mm <sup>2</sup> PE		1	YE60002503400		(2)			
31				HONEYWELL	SK2.5		2.5mm <sup>2</sup>		4	YE60002503200		(3)			
32				HONEYWELL	SK2.5		2.5mm <sup>2</sup>		8	YE60002503200		(4)			
33		End plate		HONEYWELL	D-SK2.5		-----		2	YE60002501100					
34		End plate		HONEYWELL	SK4		-----		1	YE600004.00300					
35		End plate		HONEYWELL	D-GK6(for GK6, GK10)		-----		1	YE60001000500					
36		Terminal fittings		HONEYWELL	E/GK		-----		4	YE60000003900					
37	X10	Metal connector		SHINI	PLT-254-PM		4P		1	YE68025400000		(1)(3)			
38		Metal connector		-----	PLT-254-RF		4P		1	YE68025400100		(1)(3)			
39	PCB	Microcomputer board/PCB		YUYUN	AB-02		24VAC		1	YE800224.00100					
40	S1	Emergency stop button		SCHNEIDER	XB2BS542C		400VAC		1	YE11254200000		(1)			
41		Contact block		SCHNEIDER	ZB2BE102C		1NC		1	YE00210203100		(1)(4)			
42	S2	Stop button		SCHNEIDER	XB2BA22C		400VAC		1	YE11222000000		(1)			
43	S3,H1	Start button (with light)		SCHNEIDER	XB2BW33B1C		24VAC		1	YE11233100000		(1)			
44		Contact block		SCHNEIDER	ZB2BE101C		1NO		1	YE00210103100		(1)(4)			
45	S4, S5	Safety switch		SCHMERSRC	AZ15-02ZVRK-1476		AZ-15		2	YE16147600100		(1)			
46	S4, S5	Safety switch		SCHMERSRC	AZ16-02ZVRK-1476		AZ-16		2	YE16147600000		(1)(4)			
47		Operating moving parts AZ17-B6		-----	-----		AZ-17		2	YE16176000000		(1)			
48	H2	3-color alarm light		SHINI	red, gre, yel.+buzzer		24VAC		1	BL900024.01520		(1)			
49	PA	Buzzer		TEND	EA-2		24VAC		1	YE8424.0200000		(1)(3)			
50	MS	Mat. level switch		SIPAI	SR-80		24VAC		1	YE158024.00100		(1)(3)			
机型版本 Ver.F		Notes:(1)Materials not in the control box;(2)Optional de-dust motor accessories;(3)Optional full mat. alarm ;(4)Optional safety relay;													
D					制图	彭泳涵	版号	A	标题	SG-3048	图号	SG-3048-CE-400V-A-6	比例		第 6 张
					设计	彭泳涵	核		电气元件明细表二			标准	CE	共 7 张	
					校对		准			信易電熱機械股份有限公司		机器电压	3φ400V		
	标记	更改前	更改后	更改人	日期	审核	日期	20220424		Shini Plastics Technologies, Inc.		机器频率	50Hz		
1		2		3		4		5		6		7		8	

1	2	3	4	5	6	7	8					
NO.	Symbol	Name	Manufacturer	Type	Specification	Number	Material number	Remark				
51	TA2	Current mutual transformer	YUYUN	-----	5-100A	1	-----	with circuit board				
52	H3	Ammeter	SFIM	DH-670	50A	1	YE25675000000	(1)				
53	M1	Cutting motor	-----	11KW	400V 50Hz	1	-----	(1)				
54	M2	Solution blower	-----	0.55KW	400V 50Hz	1	-----	(1)				
55	M3	De-dust blower	-----	0.37KW	400V 50Hz	1	-----	(1)(2)				
机型版本 Ver.F		Notes:(1)Materials not in the control box;(2)Optional de-dust motor accessories;(3)Optional full mat. alarm ;(4)Optional safety relay;										
			制图	彭泳涵	版号	A	标题	SG-3048	图号	SG-3048-CE-400V-A-7	比例	第 7 张
			设计	彭泳涵	核		电气元件明细表二		标准	CE	共 7 张	
			校对		准			信易電熱機械股份有限公司	机器电压	3φ400V	机器频率	50Hz
			标记	更改前	更改后	更改人	日期	20220424	日期			
1	2	3	4	5	6	7	8					



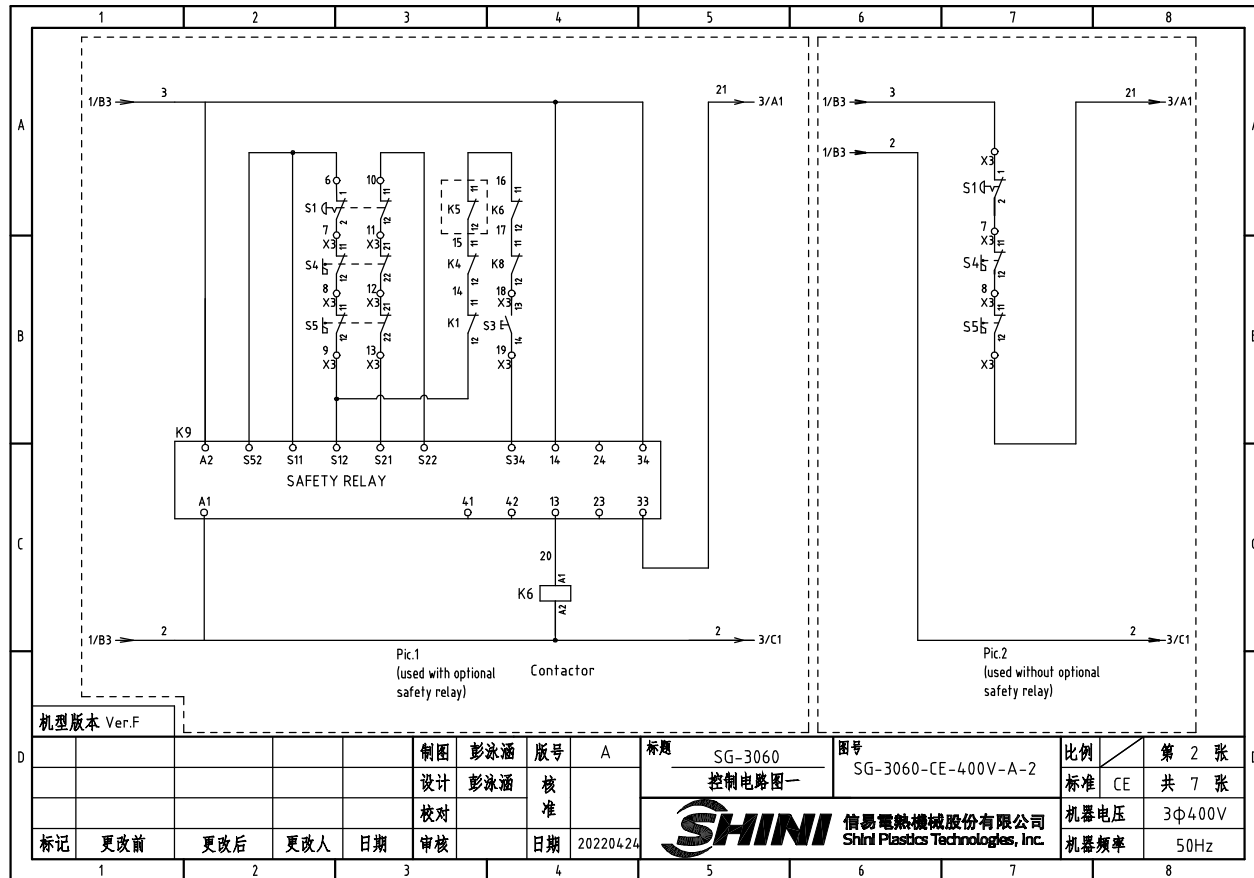
机型版本 Ver.F

制图	彭泳涵	版号	A
设计	彭泳涵	核准	
校对		日期	20220424
标记	更改前	更改后	更改人
		日期	

标题 SG-3060 主电路图  
 图号 SG-3060-CE-400V-A-1

比例	第 1 张
标准	CE 共 7 张
机器电压	3Φ400V
机器频率	50Hz





机型版本 Ver.F

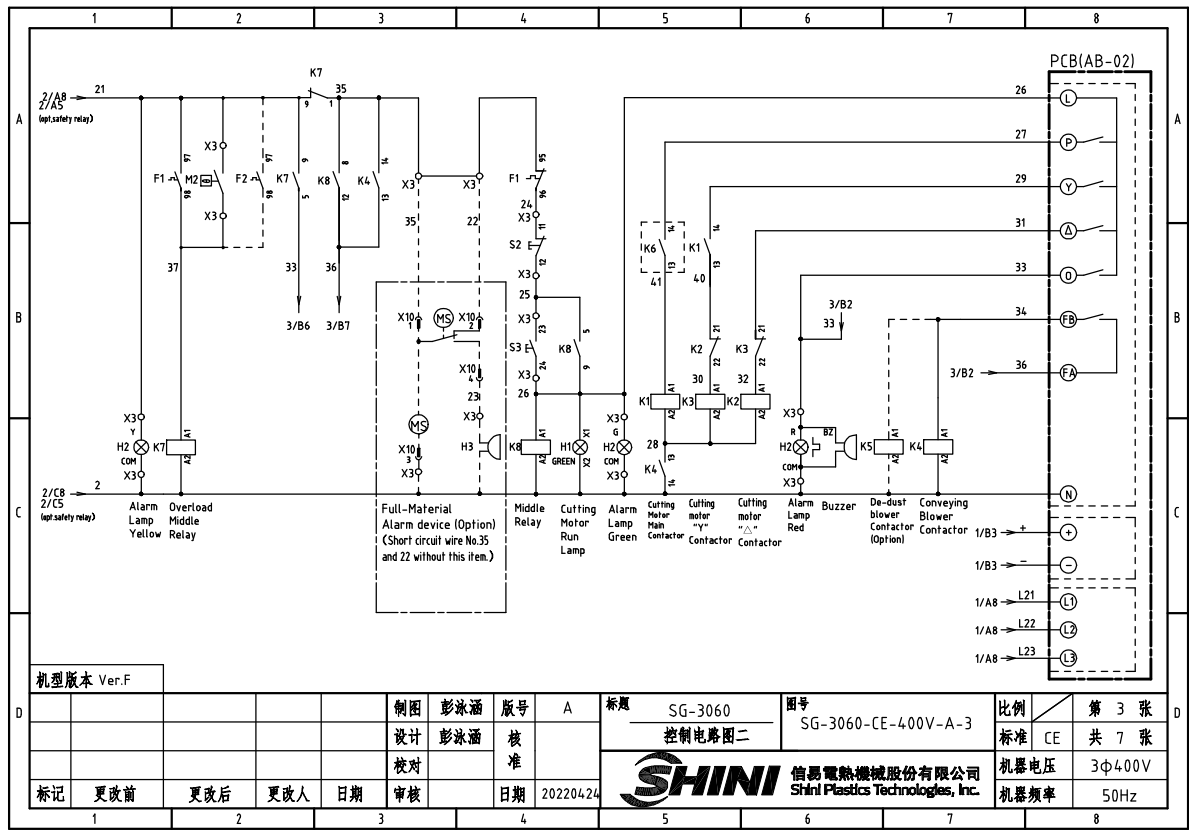
					制图	彭泳涵	版号	A
					设计	彭泳涵	核	
					校对		准	
标记	更改前	更改后	更改人	日期	审核		日期	20220424

标题 SG-3060  
控制电路图一

图号 SG-3060-CE-400V-A-2

**SHINI** 信易电热机械股份有限公司  
Shini Plastics Technologies, Inc.

比例	第 2 张
标准	CE 共 7 张
机器电压	3φ400V
机器频率	50Hz



机型版本 Ver.F

制图	彭冰涵	版号	A
设计	彭冰涵	核准	
校对		日期	20220424
审核		日期	20220424

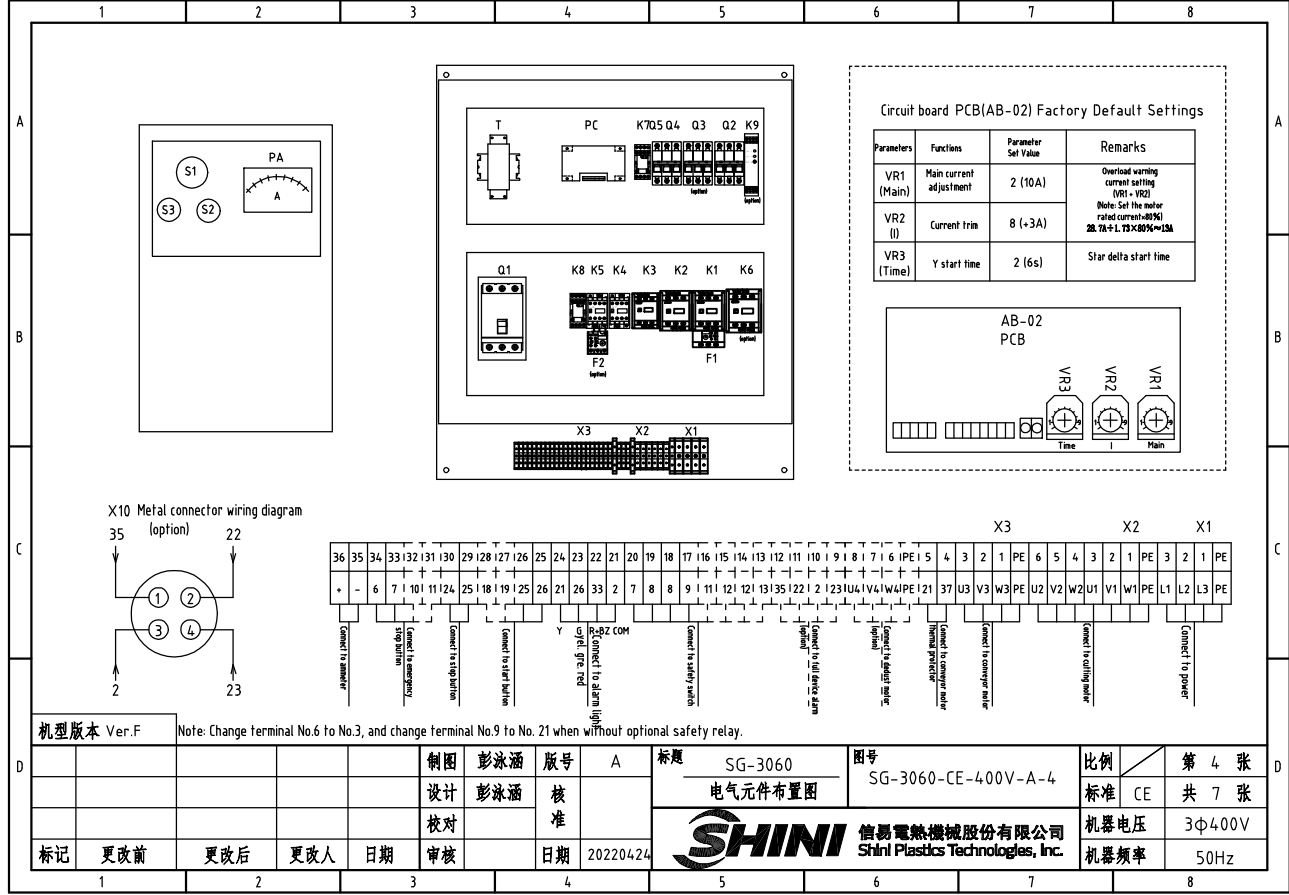
标题 SG-3060  
控制电路图二

图号 SG-3060-CE-400V-A-3

比例 第 3 张  
标准 CE 共 7 张

机器电压 3φ400V  
机器频率 50Hz





机型版本 Ver.F

Note: Change terminal No.6 to No.3, and change terminal No.9 to No. 21 when without optional safety relay.

制图	彭泳涵	版号	A	标题	SG-3060	图号	SG-3060-CE-400V-A-4	比例	第 4 张
设计	彭泳涵	核准			电气元件布置图			标准	CE 共 7 张
校对		核准						机器电压	3φ400V
审核		日期	20220424		信易电热机械股份有限公司 Shini Plastics Technologies, Inc.			机器频率	50Hz
标记	更改前	更改后	更改人	日期					

1	2	3	4	5	6	7	8		
NO.	Symbol	Name	Manufacturer	Type	Specification	Number	Material number	Remark	
1	Q1	Plastics shell circuit breaker	TECO	BO100EB3063	63A	1	YE40100300200		
2		Ext. handle	TECO	1A-CS1-C-D1	-----	1	YE90111100100		
3	Q2	Circuit breaker	TECO	BM-63C	6A	1	YE40300603000		
4	Q3	Circuit breaker	TECO	BM-63C	6A	1	YE40300603000	(2)	
5	K1	Contact	SIEMENS	3RT6026-1AC20	25A 24V 50/60Hz	1	YE00602602600		
6	K2	Contact	SIEMENS	3RT6026-1AC20	25A 24V 50/60Hz	1	YE00602602600		
7	K3	Contact	SIEMENS	3RT6025-1AC20	17A 24V 50/60Hz	1	YE00602502600		
8	K4	Contact	SIEMENS	3RT6016-1AB01	9A 24V 50/60Hz	1	YE00601602500		
9		Auxiliary contact	SIEMENS	3RH6911-1HA11	1NC+1NO	1	YE00691100100		
10	K5	Contact	SIEMENS	3RT6015-1AB02	7A 24V 50/60Hz	1	YE00601502600	(2)	
11	K6	Contact	SIEMENS	3RT6028-1AC20	38A 24V 50/60Hz	1	YE00602802600	(4)	
12	K8	Middle relay	Honeywell	GR-2C-AC24V	24VAC	1	YE030224.00300		
13	K8	Middle relay	Honeywell	GR-4C-AC24V	24VAC	1	YE0304.24.00300	(4)	
14	K9	Safety relay	PILZ	PNOZ×2.8P	24V AC/DC	1	YE04.023000000	(4)	
15	F1	Overload relay	SIEMENS	3RU6126-4BB0	14-20A	1	YE0126014.0000		
16	F2	Overload relay	SIEMENS	3RU6116-0HB0	0.55-0.8A	1	YE01161550000	(2)	
17	K7	Middle relay	Honeywell	GR-2C-AC24V	24VAC	1	YE030224.00300		
18	Q4	Circuit breaker	TECO	BM-63C/2003S 2P	3A	1	YE40200203000		
19	Q5	Circuit breaker	TECO	BM-63C/1006S 1P	6A	1	YE40100600100		
20	T	Transformer	-----	IN=400V/415V OUT=24V	120VA	1	YE7004.0006600		
21	X1	Terminal board	HONEYWELL	GK10	10mm <sup>2</sup>	3	YE60001003200		
22		Transformer	HONEYWELL	GK10PE	10mm <sup>2</sup> PE	1	YE60001003500		
23	X2	Terminal board	HONEYWELL	SK4	4mm <sup>2</sup>	6	YE600004.03200		
24		Terminal board	HONEYWELL	GK4PE	4mm <sup>2</sup> PE	1	YE600004.03500		
25	X3	Terminal board	HONEYWELL	GK6	6mm <sup>2</sup>	2	YE60000603200		
机型版本 Ver.F		Notes:(1)Materials not in the control box;(2)Optional de-dust motor accessories;(3)Optional full mat. alarm ;(4)Optional safety relay.							
		制图 彭泳涵		版号 A		标题 SG-3060		图号 SG-3060-CE-400V-A-5	
		设计 彭泳涵		核 准		比例		第 5 张	
		校对				标准 CE		共 7 张	
标记 更改前		更改后		更改人		日期		20220424	
		审核				日期		20220424	
						SHINI 信易電熱機械股份有限公司 Shini Plastics Technologies, Inc.		机器电压 3φ400V	
								机器频率 50Hz	



1		2		3		4		5		6		7		8	
NO.	Symbol	Name		Manufacturer		Type		Specification		Number	Material number		Remark		
26				HONEYWELL		SK2.5		2.5mm <sup>2</sup>		19	YE60002503200				
27				HONEYWELL		GK2.5PE		2.5mm <sup>2</sup> PE		1	YE60002503400				
28				HONEYWELL		SK2.5		2.5mm <sup>2</sup>		3	YE60002503200		(2)		
29				HONEYWELL		GK2.5PE		2.5mm <sup>2</sup> PE		1	YE60002503400		(2)		
30				HONEYWELL		SK2.5		2.5mm <sup>2</sup>		4	YE60002503200		(3)		
31				HONEYWELL		SK2.5		2.5mm <sup>2</sup>		8	YE60002503200		(4)		
32		End plate		HONEYWELL		D-SK2.5		-----		1	YE60002501100				
33		End plate		HONEYWELL		SK4		-----		1	YE60000400300				
34		End plate		HONEYWELL		D-GK6(for GK6, GK10)		-----		2	YE60001000500				
35		Terminal fittings		HONEYWELL		E/GK		-----		4	YE60000003900				
36	X10	Metal connector		SHINI		PLT-254PM		4P		1	YE68025400000		(1)(3)		
37		Metal connector		SHINI		PLT-254RF		4P		1	YE68025400100		(1)(3)		
38	PCB	Microcomputer board/PCB		YUYUN		AB-02		24 VAC		1	YE80022400100				
39	S1	Emergency stop button		SCHNEIDER		XB2BS542C		400VAC		1	YE11254200000		(1)		
40		Contact block		SCHNEIDER		ZB2BE102C		1NC		1	YE00210203100		(1)(4)		
41	S2	Stop button		SCHNEIDER		XB2BA22C		400VAC		1	YE11222000000		(1)		
42	S3,H1	Start button (with light)		SCHNEIDER		XB2BW33B1C		24 VAC		1	YE11233100000		(1)		
43		Contact block		SCHNEIDER		ZB2BE101C		1NO		1	YE00210103100		(1)(4)		
44	S4, S5	Safety switch		SCHMERSRC		AZ15-02ZVRK-1476		AZ-15		2	YE16147600100		(1)		
45	S4, S5	Safety switch		SCHMERSRC		AZ16-02ZVRK-1476		AZ-16		2	YE16147600000		(1)(4)		
46		Operating moving parts AZ17-B6		-----		-----		AZ-17		2	YE16176000000		(1)		
47	H2	3-color alarm light		SHINI		red, gre, yel.+buzzer		24 VAC		1	BL90002401520		(1)		
48	H3	Buzzer		TEND		EA-2		24 VAC		1	YE84240200000		(1)(3)		
49	MS	Mat. level switch		SIPAI		SR-80		24 VAC		1	YE15802400100		(1)(3)		
50	TA2	Current mutual transformer		YUYUN		-----		5-100A		1	-----		线路板自带		
机型版本 Ver.F		Notes:(1)Materials not in the control box,(2)Optional de-dust motor accessories,(3)Optional full mat. alarm ,(4)Optional safety relay.													
制图 彭泳涵		版号 A		标题 SG-3060		图号 SG-3060-CE-400V-A-6		比例		第 6 张					
设计 彭泳涵		核准		电气元件明细表二				标准 CE		共 7 张					
校对				SHINI		信易电热机械股份有限公司		机器电压		3Φ400V					
审核		日期 20220424		Shini Plastics Technologies, Inc.		机器频率		50Hz							
1	2	3	4	5	6	7	8								

