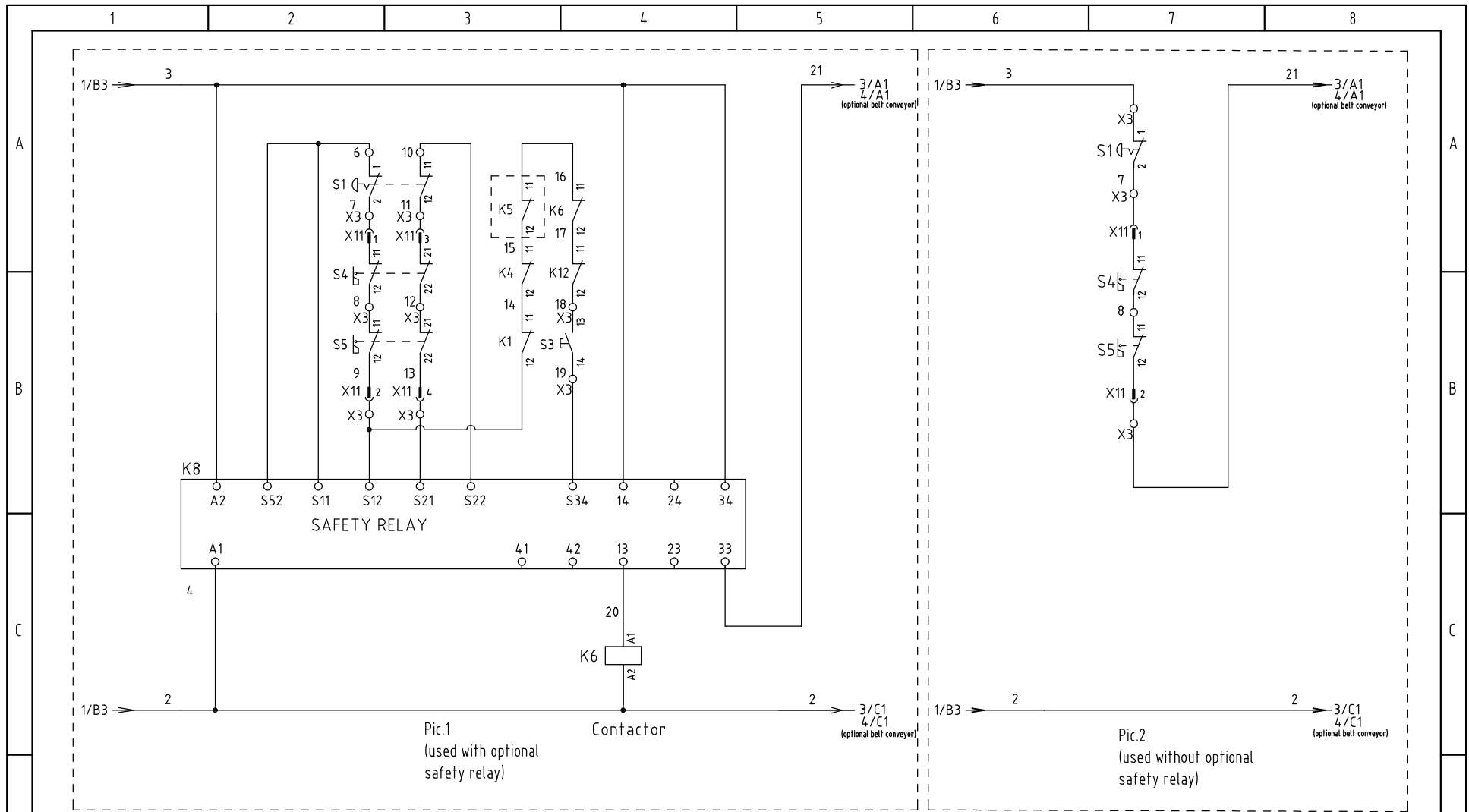


SYMBOL	a	b	c	d	e	f
MODE						
SG-4360	63	25	100	28-40	32	6
SG-4360H	75	35	125	36-45	41	10

SYMBOL	g	h	i	j
MODE				
Conveying blower	10	3.5-5	4.4	1.5
Large power conveying blower	32	14-20	14.5	2.5

机型版本 Ver.E

					制图	版号	M	标题	SG-4360(H)	图号	SG-4360(H)-CE-400V-M-1	比例	第 1 张
					设计	核准		主电路图				标准	CE 共 12 张
					校对	日期	20220805	信易電熱機械股份有限公司 Shini Plastics Technologies, Inc.	机器电压	3φ400V			
标记	更改前	更改后	更改人	日期	审核		日期		机器频率	50Hz			



机型版本 Ver.E

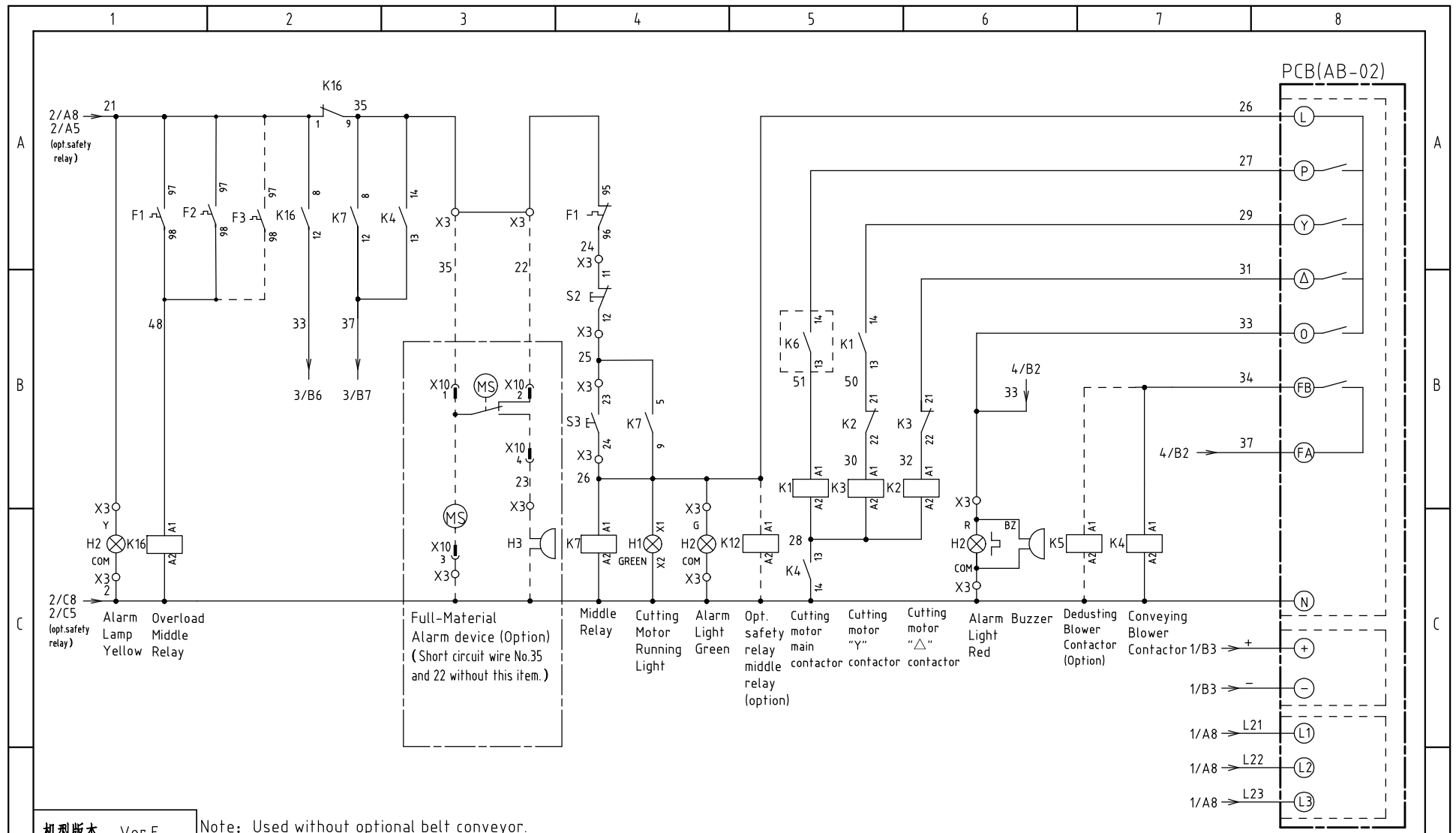
					制图		版号	M	标题	SG-4360(H)	图号	比例	第 2 张
					设计		核		控制电路图一	SG-4360(H)-CE-400V-M-2	标准	CE	共 12 张
					校对		准					机器电压	3φ4.00V
标记	更改前	更改后	更改人	日期	审核		日期	20220805				机器频率	50Hz



信易电热机械股份有限公司
Shini Plastics Technologies, Inc.

机器电压	3φ4.00V
机器频率	50Hz

1 2 3 4 5 6 7 8

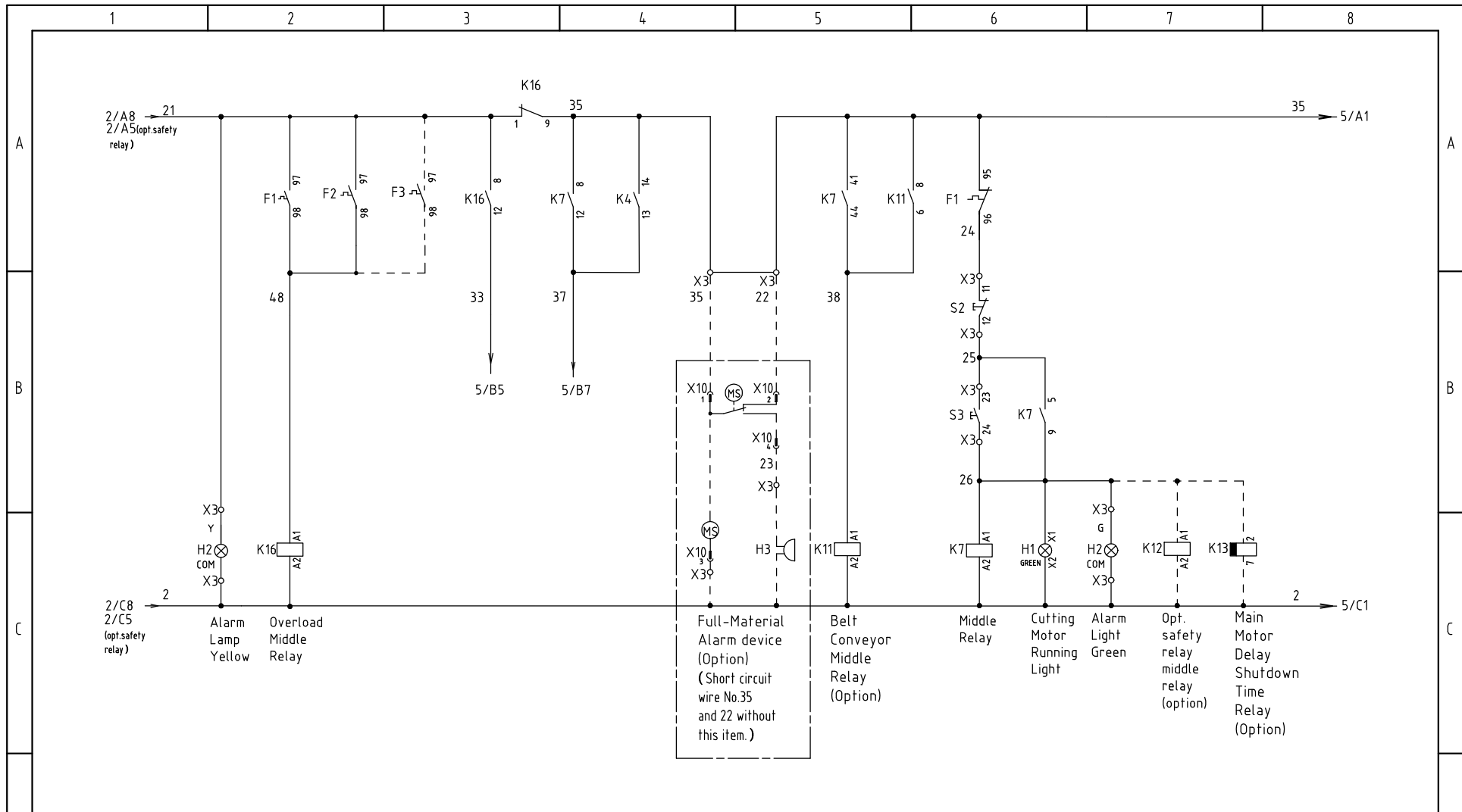


机型版本 Ver.E

Note: Used without optional belt conveyor.

					制图	版号	M	标题	SG-4360(H)	图号	SG-4360(H)-CE-400V-M-3	比例	第 3 张
					设计	核准		控制电路图二		标准	CE	共 12 张	
					校对	核准			信易电热机械股份有限公司		机器电压	3φ400V	
					审核	日期	20220805		Shini Plastics Technologies, Inc.		机器频率	50Hz	

标记	更改前	更改后	更改人	日期	审核	日期	20220805					
----	-----	-----	-----	----	----	----	----------	--	--	--	--	--



机型版本 Ver.E		Note: Used without optional belt conveyor.								
				制图		版号 M	标题 SG-4360(H) 控制电路图三	图号 SG-4360(H)-CE-400V-M-4	比例	第 4 张
				设计		核 准			标准 CE	共 12 张
				校对					机器电压	3φ400V
标记	更改前	更改后	更改人	日期	审核	日期	20220805	SHINI 信易電熱機械股份有限公司 Shini Plastics Technologies, Inc.	机器频率	50Hz

1 2 3 4 5 6 7 8

A

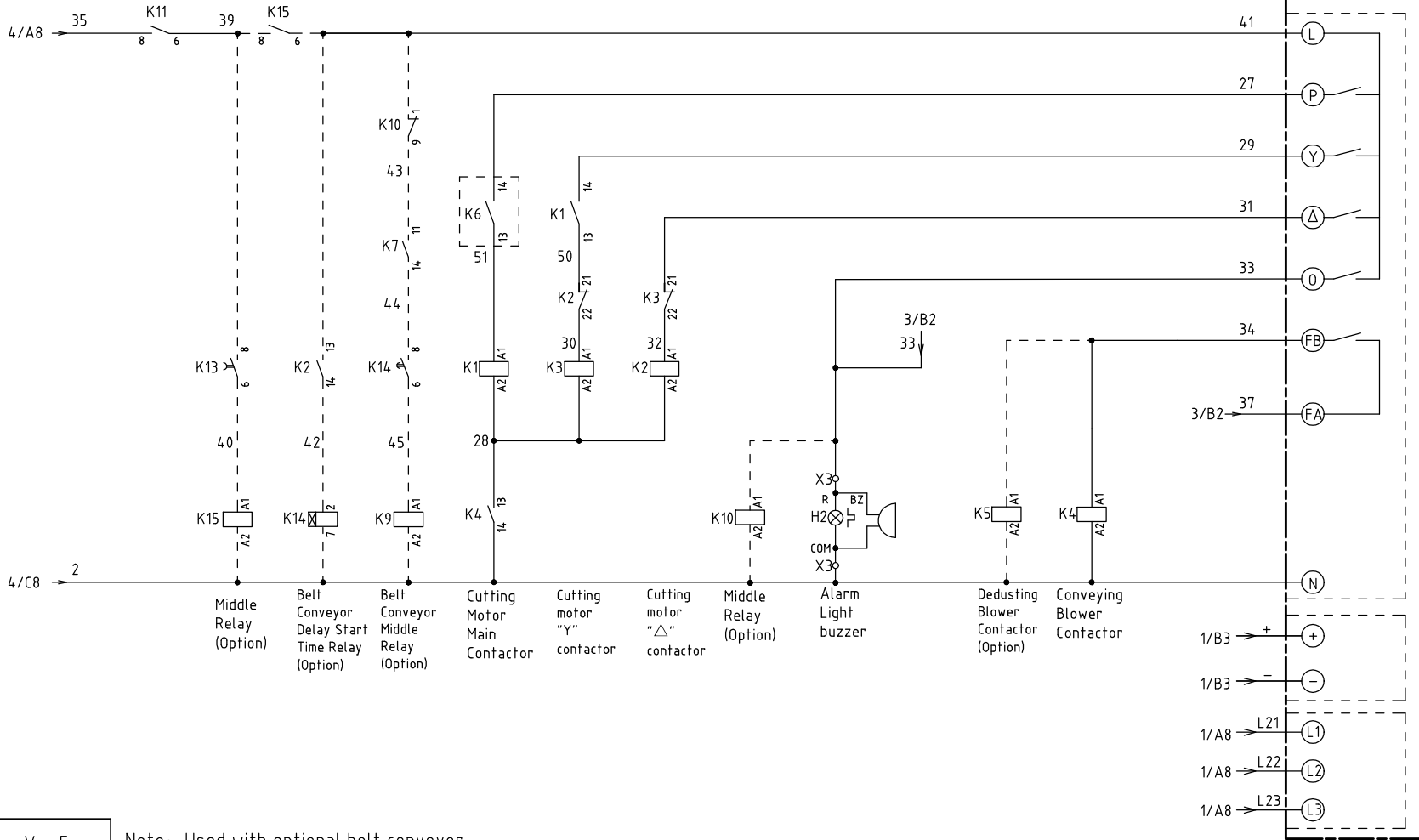
B

C

A

B

C



机型版本 Ver.E

Note: Used with optional belt conveyor.

					制图		版号	M	标题	SG-4360(H)	图号	SG-4360(H)-CE-400V-M-5	比例	第 5 张
					设计		核		控制电路图三				标准	CE
					校对		准						机器电压	3φ400V
标记	更改前	更改后	更改人	日期	审核		日期	20220805					机器频率	50Hz



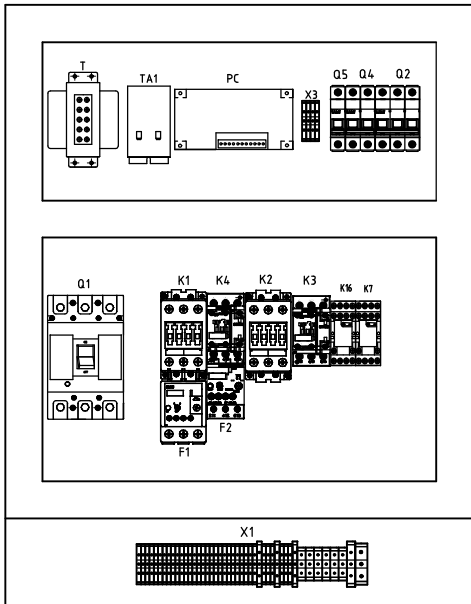
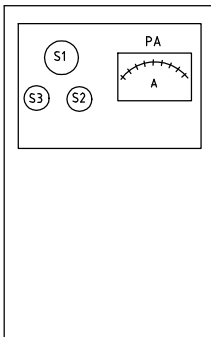
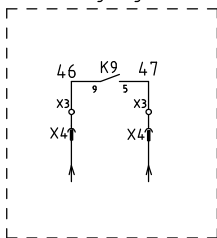
信易電熱機械股份有限公司
Shini Plastics Technologies, Inc.

1 2 3 4 5 6 7 8

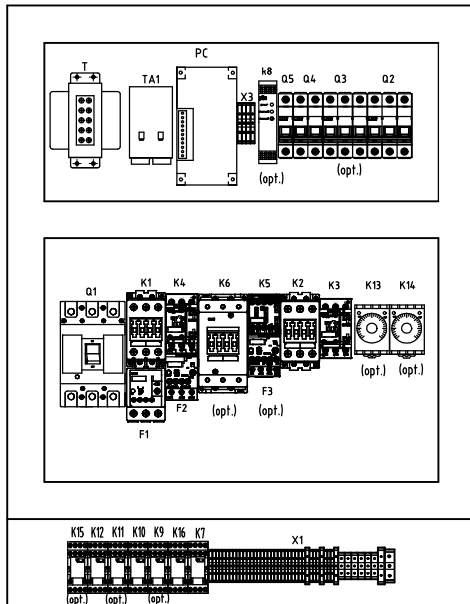
D

D

Optional belt conveyor control contact wiring diagram



Standard model layout



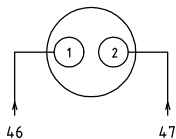
Optional model layout

X11: 16P heavy-duty connector

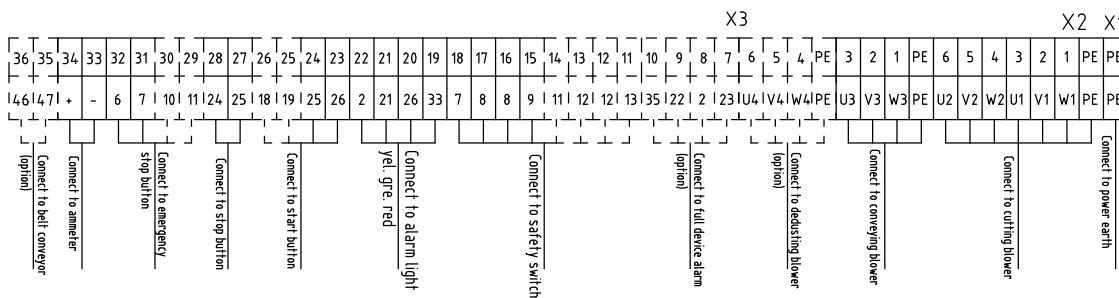
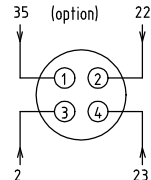
①	7	⑨	
②	9	⑩	
③	11	⑪	
④	13	⑫	
⑤		⑬	
⑥		⑭	
⑦		⑮	
⑧		⑯	

Note: Change terminal No.9 to No.21 when optional with the safety relay, and terminal No. 11 and No.13 are not connected.

X4 Metal connector wiring diagram connect to belt conveyor (option)



X10 Metal connector wiring diagram connect to full-maf. alarm device (option)



机型版本 Ver.E

Note: Change terminal No.6 to No.3, and change terminal No.9 to No. 21 when without optional safety relay.

					制图	版号	M	标题	SG-4360(H)	图号	SG-4360(H)-CE-400V-M-6	比例	第 6 张
					设计	核准		电气元件布置图				标准	CE 共 12 张
					校对			信易电热机械股份有限公司 Shini Plastics Technologies, Inc.				机器电压	3φ400V
标记	更改前	更改后	更改人	日期	审核	日期	20220805		机器频率	50Hz			

1

2

3

4

5

6

7

8

1		2		3		4		5		6		7		8					
NO.	Symbol	Name			Manufacturer		Type		Specification		Number	Material number		Remark					
A	1	Q1	Circuit breaker			TECO		BO100EB3100 3P		100A		1	YE40100300400						
	2		Circuit breaker ext. handler			TECO		1A-CS1-C-D1 (BO100EB)		----		1	YE90111100100						
	3	Q2	Circuit breaker			TECO		BM-63C/3P		10A		1	YE40301003000						
	4	Q2	Circuit breaker			TECO		BM-63C/3P		32A		1	YE40303203000		(6)				
	5	Q3	Circuit breaker			TECO		BM-63C/3P		6A		1	YE40300603000		(2)				
	6	Q4	Circuit breaker			TECO		BM-63C/2003S 2P		3A		1	YE40200203000						
	7	Q5	Circuit breaker			TECO		BM-63C/1010S 1P		10A		1	YE40101000100						
B	8	K1,K2	Contactor			SIEMENS		3RT5035-1AC20		40A 24VAC 50/60Hz		2	YE00503502600						
	9		Auxiliary contact			SIEMENS		3RH5921-1CA01		1NC		1	YE00592110100		(4)				
	10		Auxiliary contact			SIEMENS		3RH5921-1CA01		1NC		1	YE00592110100						
	11		Auxiliary contact			SIEMENS		3RH5921-1CA10		1NO		1	YE00592110000		(5)				
	12		Auxiliary contact			SIEMENS		3RH5921-1CA10		1NO		1	YE00592110000						
	13	K3	Contactor			SIEMENS		3RT6028-1AC20		38A 24VAC 50/60Hz		1	YE00602802600						
	14	K4	Contactor			SIEMENS		3RT6016-1AB01		9A 24VAC 50/60Hz		1	YE00601602500						
C	15	K4	Contactor			SIEMENS		3RT6026-1AC20		25A 24VAC 50/60Hz		1	YE00602602600		(6)				
	16		Auxiliary contact			SIEMENS		3RH6911-1HA11		1NC+1NO		1	YE00691100100						
	17	K5	Contactor			SIEMENS		3RT6016-1AB02		9A 24VAC 50/60Hz		1	YE00601602600		(2)				
	18	K6	Contactor			SIEMENS		3RT5045-1AC20		80A 24VAC 50/60Hz		1	YE00504502600		(4)				
	19		Auxiliary contact			SIEMENS		3RH5921-1CA01		1NC		1	YE00592110100		(4)				
	20		Auxiliary contact			SIEMENS		3RH5921-1CA10		1NO		1	YE00592110000		(4)				
	21	K7	Middle relay			Honeywell		GR-2C-AC24V		24VAC		1	YE03022400300						
	22	K7	Middle relay			Honeywell		GR-4C-AC24V		24VAC		1	YE03042400300		(5)				
	23	K8	Safety relay			PILZ		PNOZ×2.8P		24V AC/DC		1	YE04023000000		(4)				
	24	T	Mutual transformer			JIUXIN		IN=400V/415V OUT=24V		180VA		1	YE70040006700						
25	T	Mutual transformer			----		IN=400V/415V OUT=24V		350VA		1	YE70040009900		(4)					
机型版本		Ver.E		Notes:(1)Materials not in the control box;(2)Optional de-dust motor accessories;(3)Optional full mat. alarm ;(4)Optional safety relay; (5) Optional belt conveyor;(6) Optional large power:															
D					制图		版号		M		标题		图号		比例		第 7 张		
					设计		核				SG-4360		SG-4360(H)-CE-400V-M-7		标准		CE 共 12 张		
					校对		准				电气元件明细一								
	标记		更改前		更改后		更改人		日期		20220805		 信易電熱機械股份有限公司 Shini Plastics Technologies, Inc.		机器电压		3φ400V		
1		2		3		4		5		6		7		8					

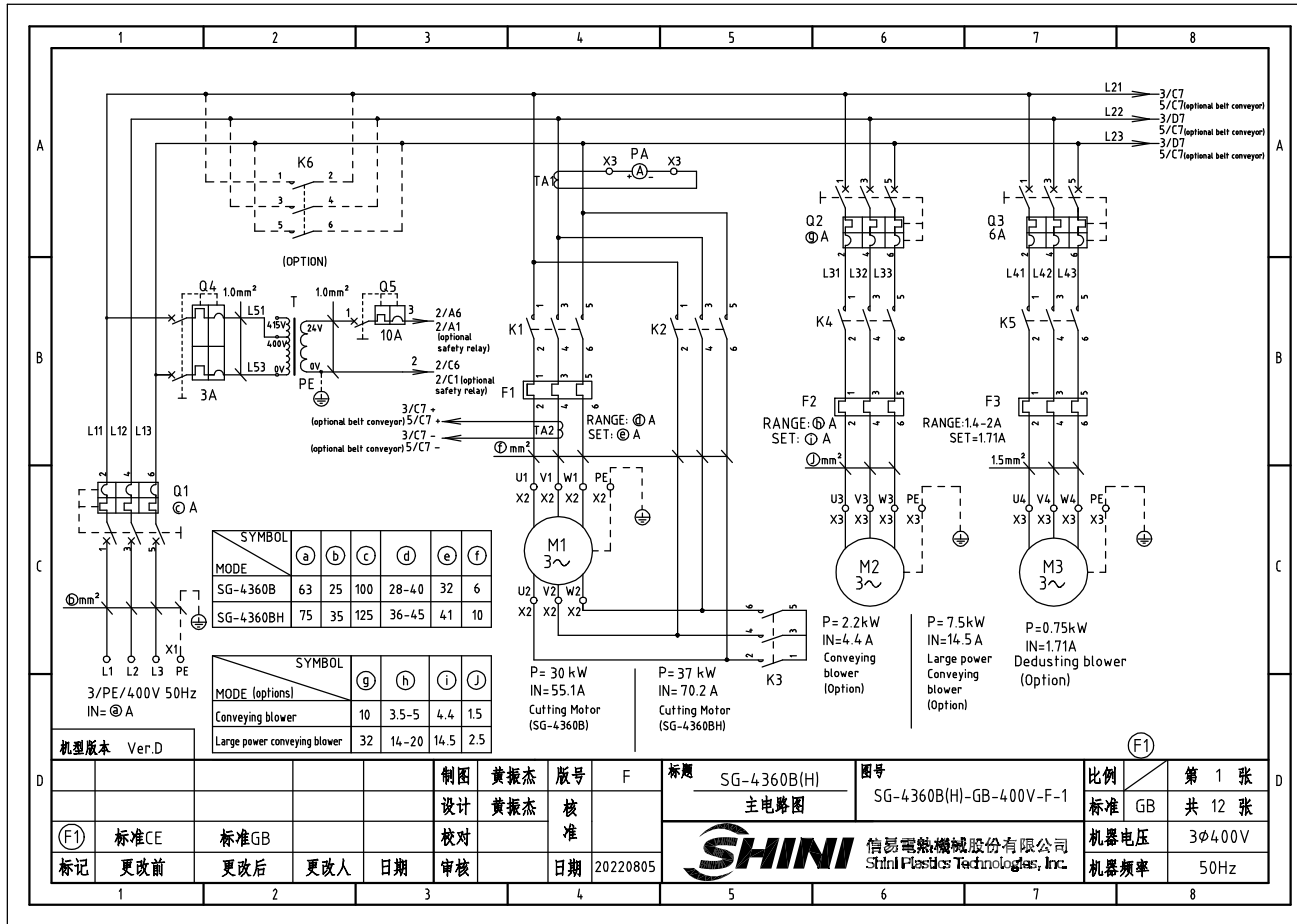
1		2		3		4		5		6		7		8					
NO.	Symbol	Name			Manufacturer		Type		Specification		Number	Material number		Remark					
A	26	K9 K10 K11 K15	Middle relay			Honeywell		GR-2C-AC24V		24VAC		4	YE03022400300		(5)				
	27	K12	Middle relay			Honeywell		GR-2C-AC24V		24VAC		1	YE03022400300		(4)				
	28	K13	Timer			YUYUN		TRF-N/3M		24VAC		1	YE86032400000		(5)				
	29	K14	Timer			YUYUN		TH3A-NAB 60S		24VAC		1	YE86602400300		(5)				
	30	F1	Thermal overload relay			SIEMENS		3RU5136-4FB0		28-40A		1	YE01513600100						
	31	F2	Thermal overload relay			SIEMENS		3RU6116-1FB0		3.5-5A		1	YE01160350000						
	32	F2	Thermal overload relay			SIEMENS		3RU6126-4BB0		14-20A		1	YE01260140000		(6)				
B	33	F3	Thermal overload relay			SIEMENS		3RU6116-1BB0		1.4-2A		1	YE01160140000		(2)				
	34	K16	Middle relay			Honeywell		GR-2C-AC24V		24VAC		1	YE03022400300						
	35	S1	Emergency stop button			SCHNEIDER		XB2BS542C		400VAC		1	YE11254200000		(1)				
	36		Contact block			SCHNEIDER		ZB2BE102C		1NC		1	YE00210203100		(1)(4)				
	37	S2	Stop button			SCHNEIDER		XB2BA22C		400VAC		1	YE11222000000		(1)				
	38	S3,H1	Start button (with light)			SCHNEIDER		XB2BW33B1C		24VAC		1	YE11233100000		(1)				
	39		Contact block			SCHNEIDER		ZB2BE101C		1NO		1	YE00210103100		(1)(4)				
C	40	S4,S5	Safety switch			SCHMERSRC		AZ15-02ZVRK-1476		24VAC		2	YE16147600100		(1)				
	41	S4,S5	Safety switch			SCHMERSRC		AZ16-02ZVRK-1476		24VAC		2	YE16147600000		(1)(4)				
	42	H2	3-color alarm lamp			SHINI		red, gre.,yel,+buzzer		24VAC/DC 50/60Hz		1	BL90002401520		(1)				
	43	H3	Buzzer			TEND		EA-2		24VAC		1	YE84240200000		(1)(3)				
	44	MS	Mat. level motor			SHINI		SR-80		24VAC		1	YE15802400100		(1)(3)				
	45	X1	Terminal board			Honeywell		GK16PE		16mm ² PE		1	YE60001603500						
	46	X2	Terminal board			Honeywell		GK6		6mm ²		6	YE60000603200						
	47					Honeywell		GK6PE		6mm ² PE		1	YE60000603500						
	48	X3	Terminal board			Honeywell		SK2.5		2.5mm ²		21	YE60002503200						
	49					Honeywell		GK2.5PE		2.5mm ² PE		1	YE60002503400						
50					Honeywell		SK2.5		2.5mm ²		5	YE60002503200		(2)					
机型版本		Ver.E		Notes:(1)Materials not inthe control box;(2)Optional de-dust motor accessories;(3)Optional full mat. alarm ,(4)Optional safety relay; (5) Optional belt conveyor;(6) Optional large power:															
D					制图		版号		M		标题		图号		比例		第 8 张		
					设计		核				SG-4360		SG-4360(H)-CE-400V-M-8		标准		CE 共 12 张		
					校对		准				电气元件明细二								
	标记		更改前		更改后		更改人		日期		审核		日期		20220805		 信易電熱機械股份有限公司 Shini Plastics Technologies, Inc.		机器电压 3φ4.00V 机器频率 50Hz
1		2		3		4		5		6		7		8					

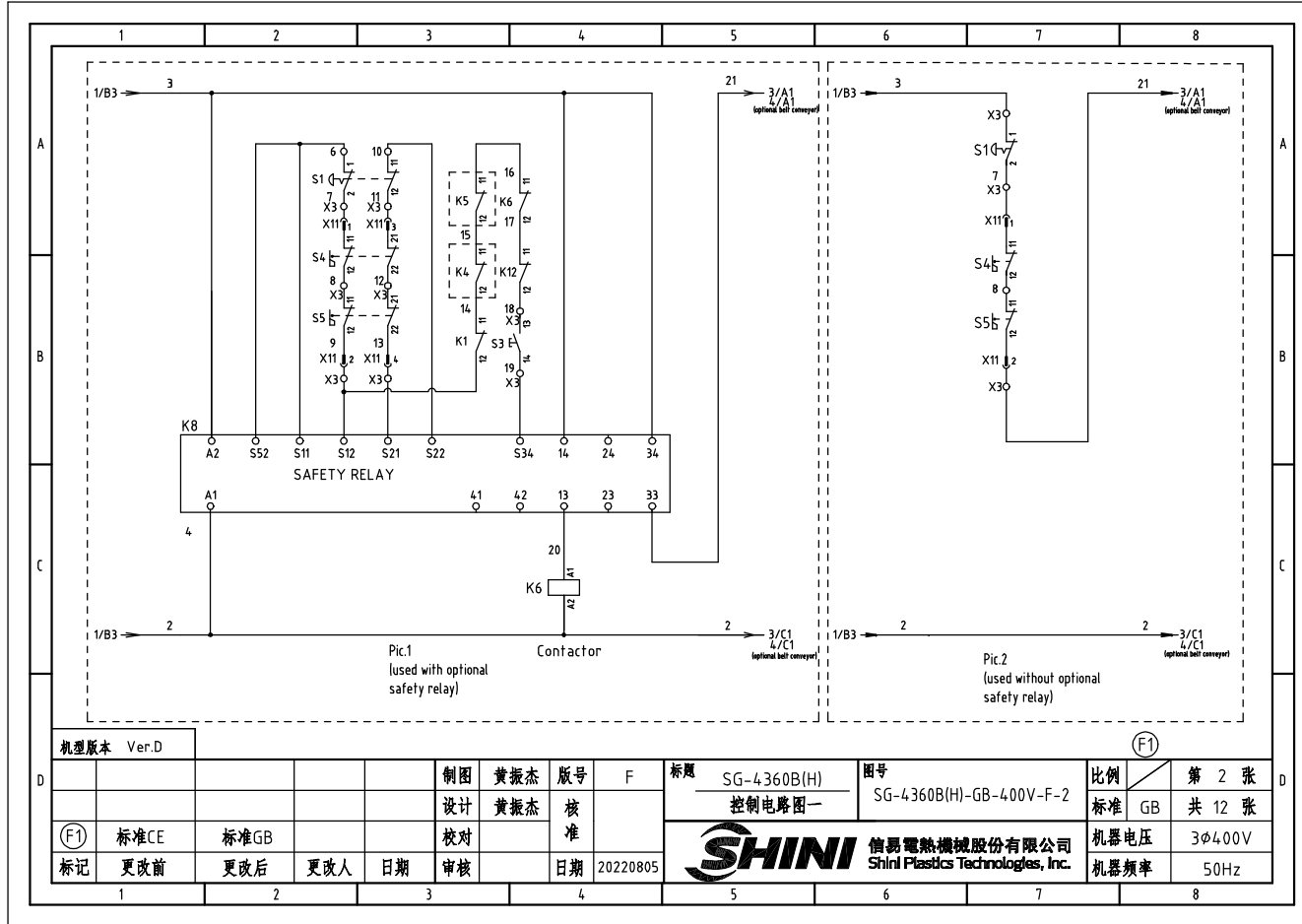
1		2		3		4		5		6		7		8	
NO.	Symbol	Name			Manufacturer	Type		Specification		Number	Material number		Remark		
51					Honeywell	GK2.5PE		2.5mm ² PE		1	YE60002503400		(2)		
52					Honeywell	SK2.5		2.5mm ²		4	YE60002503200		(3)		
53					Honeywell	SK2.5		2.5mm ²		2	YE60002503200		(5)		
54					Honeywell	SK2.5		2.5mm ²		8	YE60002503200		(4)		
55					Honeywell	SK6		6mm ²		3	YE60000603200		(6)		
56					Honeywell	SK6PE		6mm ² PE		1	YE60000603500		(6)		
57		Terminal fittings E/GK series			Honeywell	----		PCS		4	YE60000003900				
58	X4	Metal connector			SHINI	PLT-162-RR(plug)		2P		1	YE68016200100		(1)(5)		
59	X10	Metal connector			SHINI	PLT-254-PM		4P		1	YE68025400000		(1)(3)		
60		Metal connector			SHINI	PLT-254-RF		4P		1	YE68025400100		(1)(3)		
61	X11	Heavy duty connector			HARTING	16P+PE(plug+socket)		16P		1	YE68001601300		(1)		
62	PCB	Microcomputer board/PCB			YUYUN	AB-02		24VAC		1	YE80022400100				
63		Plastic shell SI-4T for circuit board			----	----		----		1	YR40000400100				
64	PA	Ammeter			SFIM	DH-670		100/5A		1	YE25671000000		(1)		
65	TA1	Current mutual transformer			RATIO	RQT-10		100/5A		1	YE04100500000				
66	TA2	Current mutual transformer			YUYUN	----		5-100A		1	----		with circuit board		
67	M1	Cutting motor			----	----		400V 50Hz 30kW		1	----		(1)		
68	M2	Conveying blower			----	----		400V 50Hz 2.2kW		1	----		(1)		
69	M2	Conveying blower			----	----		400V 50Hz 7.5kW		1	----		(1)(6)		
70	M3	De-dust blower			----	----		400V 50Hz 0.75kW		1	----		(1)(2)		
机型版本 Ver.E		Notes:(1)Materials not inthe control box;(2)Optional de-dust motor accessories;(3)Optional full mat. alarm ;(4)Optional safety relay; (5) Optional belt conveyor;(6) Optional large power:													
					制图		版号	M	标题	SG-4360	图号	SG-4360(H)-CE-400V-M-9	比例		第 9 张
					设计		核		电气元件明细三				标准	CE	共 12 张
					校对		准						机器电压		3φ4.00V
标记	更改前	更改后	更改人	日期	审核		日期	20220805		信易電熱機械股份有限公司 Shini Plastics Technologies, Inc.			机器频率		50Hz
1		2		3		4		5		6		7		8	

1		2		3		4		5		6		7		8				
NO.	Symbol	Name			Manufacturer		Type		Specification		Number	Material number		Remark				
A	1	Q1	Breaker interlock			TECO		TAX-125L3125 3P		125A		1	YE40125301100					
	2		Circuit breaker ext. handler			TECO		FB1R-CS1-C-D1 (TAX-125)		----		1	YE90111100300					
	3	Q2	Circuit breaker			TECO		BM-63C/3P		10A		1	YE40301003000					
	4	Q2	Circuit breaker			TECO		BM-63C/3P		32A		1	YE40303203000		(6)			
	5	Q3	Circuit breaker			TECO		BM-63C/3P		6A		1	YE40300603000		(2)			
	6	Q4	Circuit breaker			TECO		BM-63C/2003S 2P		3A		1	YE40200203000					
	7	Q5	Circuit breaker			TECO		BM-63C/1010S 1P		10A		1	YE40101000100					
B	8	K1,K2	Contactor			SIEMENS		3RT5036-1AC20		50A 24VAC 50/60Hz		2	YE00503602600					
	9		Auxiliary contact			SIEMENS		3RH5921-1CA10		1NO		1	YE00592110000					
	10	K3	Contactor			SIEMENS		3RT5035-1AC20		40A 24VAC 50/60Hz		1	YE00503502600					
	11		Auxiliary contact			SIEMENS		3RH5921-1CA01		1NC		2	YE00592110100					
	12		Auxiliary contact			SIEMENS		3RH5921-1CA10		1NO		1	YE00592110000		(5)			
	13		Auxiliary contact			SIEMENS		3RH5921-1CA01		1NC		1	YE00592110100		(4)			
	14	K4	Contactor			SIEMENS		3RT6016-1AB01		9A 24VAC 50/60Hz		1	YE00601602500					
C	15	K4	Contactor			SIEMENS		3RT6026-1AC20		25A 24VAC 50/60Hz		1	YE00602602600		(6)			
	16		Auxiliary contactor			SIEMENS		3RH6911-1HA11		1NC+1NO		1	YE00691100100					
	17	K5	Contactor			SIEMENS		3RT6016-1AB02		9A 24VAC 50/60Hz		1	YE00601602600		(2)			
	18	K6	Contactor			SIEMENS		3RT5046-1AC20		95A 24VAC 50/60Hz		1	YE00504602600		(4)			
	19		Auxiliary contactor			SIEMENS		3RH5921-1CA01		1NC		1	YE00592110100		(4)			
	20		Auxiliary contactor			SIEMENS		3RH5921-1CA10		1NO		1	YE00592110000		(4)			
	21	K7	Middle relay			Honeywell		GR-2C-AC24V		24VAC		1	YE03022400300					
	22	K7	Middle relay			Honeywell		GR-4C-AC24V		24VAC		1	YE03042400300		(5)			
	23	K8	Safety relay			PILZ		PNOZ×2.8P		24V AC/DC		1	YE04023000000		(4)			
	24	K9 K10 K11 K15	Middle relay			Honeywell		GR-2C-AC24V		24VAC		4	YE03022400300		(5)			
25	K12	Middle relay			Honeywell		GR-2C-AC24V		24VAC		1	YE03022400300		(4)				
机型版本		Ver.E		Notes:(1)Materials not inthe control box;(2)Optional de-dust motor accessories;(3)Optional full mat. alarm ;(4)Optional safety relay; (5) Optional belt conveyor;(6) Optional large power:														
D					制图		版号		M		标题		图号		比例		第 10 张	
					设计		核				SG-4360H		SG-4360(H)-CE-4.00V-M-10		标准		CE 共 12 张	
					校对		准				电气元件明细一							
	标记		更改前		更改后		更改人		日期		20220805		 信易電熱機械股份有限公司 Shini Plastics Technologies, Inc.		机器电压		3φ4.00V	
														机器频率		50Hz		
1		2		3		4		5		6		7		8				

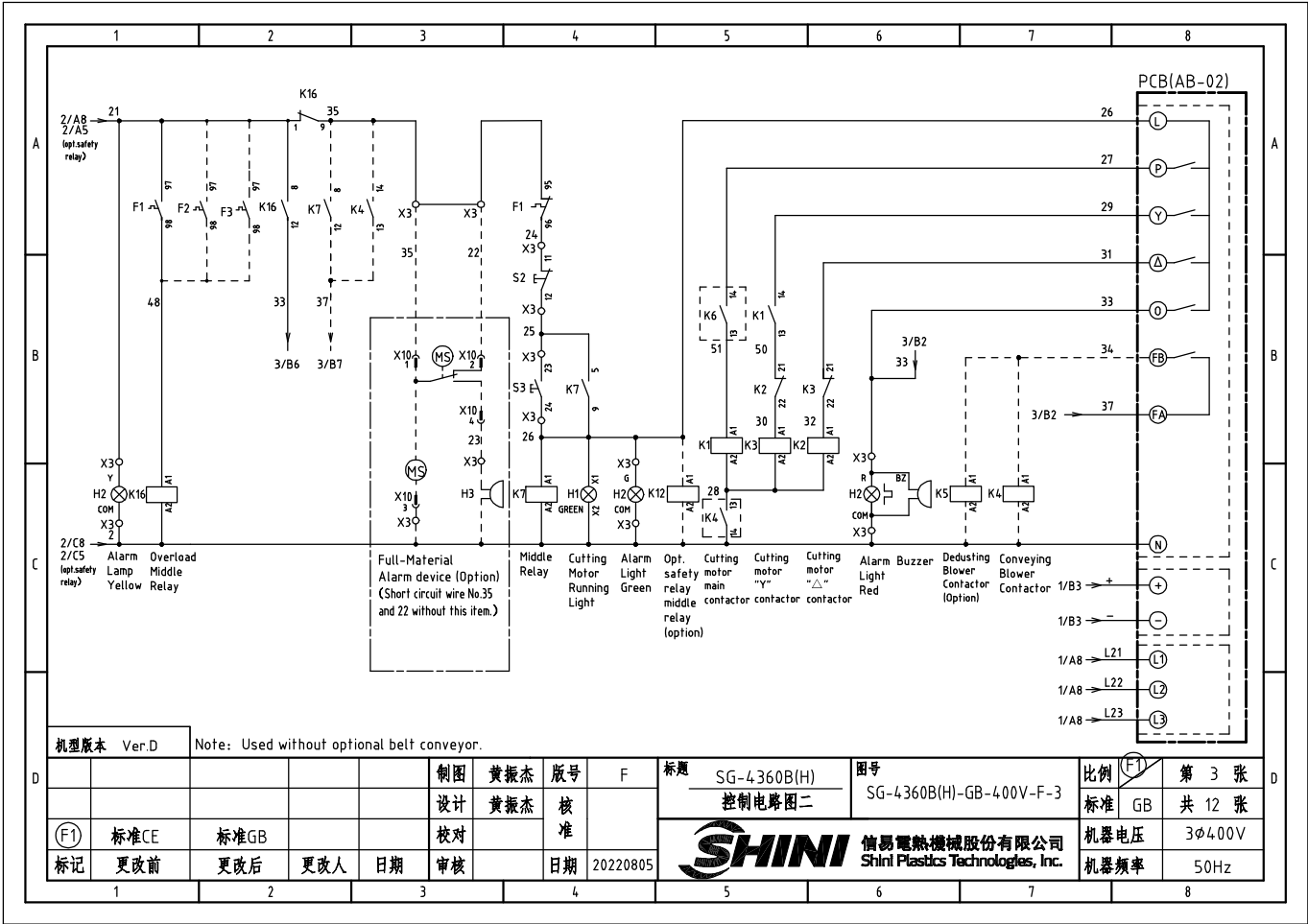
1		2		3		4		5		6		7		8				
NO.	Symbol	Name		Manufacturer		Type		Specification		Number	Material number		Remark					
A	26	K13	Timer		YUYUN		TRF-N/3M		24VAC		1	YE86032400000		(5)				
	27	K14	Timer		YUYUN		TH3A-NAB 60S		24VAC		1	YE86602400300		(5)				
	28	F1	Thermal overload relay		SIEMENS		3RU5136-4GB0		36-45A		1	YE01612660000						
	29	F2	Thermal overload relay		SIEMENS		3RU6116-1FB0		3.5-5A		1	YE01160350000						
	30	F2	Thermal overload relay		SIEMENS		3RU6126-4BB0		14-20A		1	YE01260140000		(6)				
	31	F3	Thermal overload relay		SIEMENS		3RU6116-1BB0		1.4-2A		1	YE01160140000		(2)				
	32	K16	Middle relay		Honeywell		GR-2C-AC24V		24VAC		1	YE03022400300						
B	33	S1	Emergency stop button		SCHNEIDER		XB2BS542C		400VAC		1	YE11254200000		(1)				
	34		Contact block		SCHNEIDER		ZB2BE102C		1NC		1	YE00210203100		(1)(4)				
	35	S2	Stop button		SCHNEIDER		XB2BA22C		400VAC		1	YE11222000000		(1)				
	36	S3,H1	Start button (with light)		SCHNEIDER		XB2BW33B1C		24VAC		1	YE11233100000		(1)				
	37		Contact block		SCHNEIDER		ZB2BE101C		1NO		1	YE00210103100		(1)(4)				
	38	S4,S5	Safety switch		SCHMERSRC		AZ16-02ZVRK-1476		230VAC		2	YE16147600000		(1)(4)				
	39	S4,S5	Safety switch		SCHMERSRC		AZ15-02ZVRK-1476		230VAC		2	YE16147600100		(1)				
C	40	H2	3-color alarm lamp		SHINI		red, gre.,yel,+buzzer		24VAC/DC 50/60Hz		1	BL90002401520		(1)				
	41	H3	Buzzer		TEND		EA-2		24VAC		1	YE84240200000		(1)(3)				
	42	MS	Mat. level motor		SHINI		SR-80		24VAC		1	YE15802400100		(1)(3)				
	43	T	Mutual transformer		----		IN=400V/415V OUT=24V		180VA		1	YE70040006700						
	44	T	Mutual transformer		----		IN=400V/415V OUT=24V		350VA		1	YE70040009900		(4)				
	45	TA1	Current mutual transformer		RATIO		RQT-35		100/5A		1	YE04100500000						
	46	PA	Ammeter		SFIM		DH-670		100/5A		1	YE25671000000		(1)				
	47	PCB	Microcomputer board/PCB		YUYUN		AB-02		24VAC		1	YE80022400100						
	48		Plastic shell SI-4T for circuit board		----		----		----		1	YR40000400100						
	49	TA2	Current mutual transformer		YUYUN		----		5-100A		1	----		with circuit board				
50	X1	Terminal board		Honeywell		GK16PE		16mm ² PE		1	YE60001603500							
机型版本		Ver.E		Notes:(1)Materials not inthe control box;(2)Optional de-dust motor accessories;(3)Optional full mat. alarm ;(4)Optional safety relay; (5) Optional belt conveyor;(6) Optional large power:														
D					制图		版号		M		标题		图号		比例		第 11 张	
					设计		核				SG-4360H		SG-4360(H)-CE-400V-M-11		标准		CE 共 12 张	
					校对		准				 信易電熱機械股份有限公司 Shini Plastics Technologies, Inc.		机器电压		3φ400V			
	标记		更改前		更改后		更改人		日期				20220805		机器频率		50Hz	
1		2		3		4		5		6		7		8				

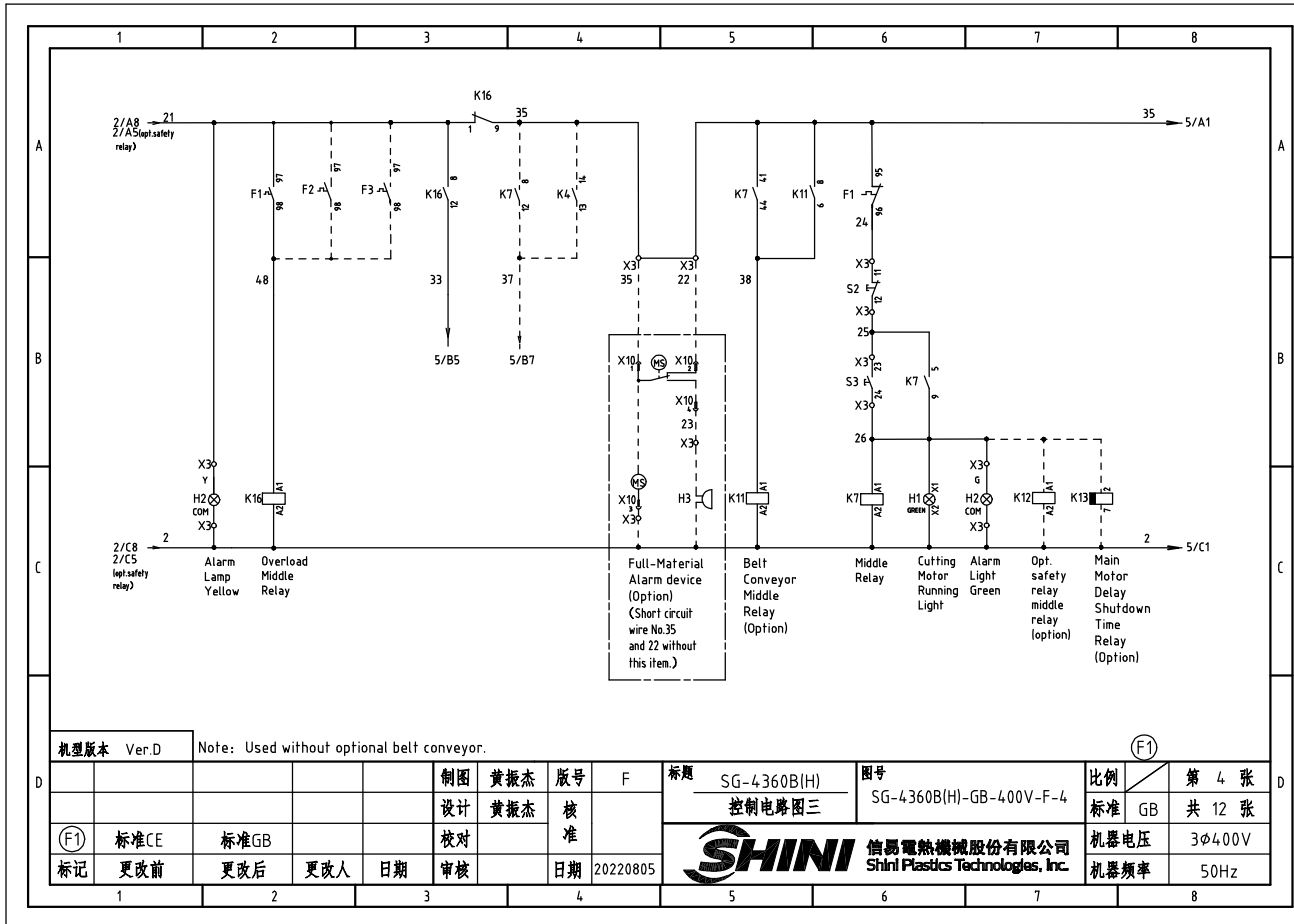
1		2		3		4		5		6		7		8	
NO.	Symbol	Name		Manufacturer		Type		Specification		Number	Material number		Remark		
A	51	X2	Terminal board		Honeywell		GK10		10mm ²		6	YE60001003200			
	52		Terminal board		Honeywell		GK10PE		10mm ² PE		1	YE60001003500			
	53	X3	Terminal board		Honeywell		SK2.5		2.5mm ²		21	YE60002503200			
	54					Honeywell		GK2.5PE		2.5mm ² PE		1	YE60002503400		
	55					Honeywell		SK2.5		2.5mm ²		5	YE60002503200		(2)
	56					Honeywell		GK2.5PE		2.5mm ² PE		1	YE60002503400		(2)
	57					Honeywell		SK2.5		2.5mm ²		4	YE60002503200		(3)
B	58					Honeywell		SK2.5		2.5mm ²		2	YE60002503200		(5)
	59					Honeywell		SK2.5		2.5mm ²		8	YE60002503200		(4)
	60					Honeywell		SK6		6mm ²		3	YE60000603200		(6)
	61					Honeywell		SK6PE		6mm ² PE		1	YE60000603500		(6)
	62		Terminal fittings E/GK series		Honeywell		----		PCS		4	YE60000003900			
	63	X4	Metal connector		SHINI		PLT-162-RR(plug)		2P		1	YE68016200100		(1)(5)	
	64	X10	Metal connector		SHINI		PLT-254-PM		4P		1	YE68025400000		(1)(3)	
C	65		Metal connector		----		PLT-254-RF		4P		1	YE68025400100		(1)(3)	
	66	X11	Heavy duty connector		HARTING		16P+PE(plug+socket)		16P		1	YE68001601300		(1)	
	67	M1	Granulating motor		----		----		400V 50Hz 37kW		1	----		(1)	
	68	M2	Conveying blower		----		----		400V 50Hz 2.2kW		1	----		(1)	
	69	M2	Conveying blower		----		----		400V 50Hz 7.5kW		1	----		(1)(6)	
	70	M3	Dedusting blower		----		----		400V 50Hz 0.75kW		1	----		(1)(2)	
机型版本 Ver.E		Notes:(1)Materials not inthe control box;(2)Optional de-dust motor accessories;(3)Optional full mat. alarm ;(4)Optional safety relay; (5) Optional belt conveyor;(6) Optional large power:													
D					制图		版号	M	标题	SG-4360H	图号		比例		第 12 张
					设计		核		电气元件明细三		SG-4360(H)-CE-400V-M-12	标准	CE	共 12 张	
					校对		准			信易電熱機械股份有限公司		机器电压	3φ400V		
	标记	更改前	更改后	更改人	日期	审核	日期	20220805		Shini Plastics Technologies, Inc.		机器频率	50Hz		
1		2		3		4		5		6		7		8	



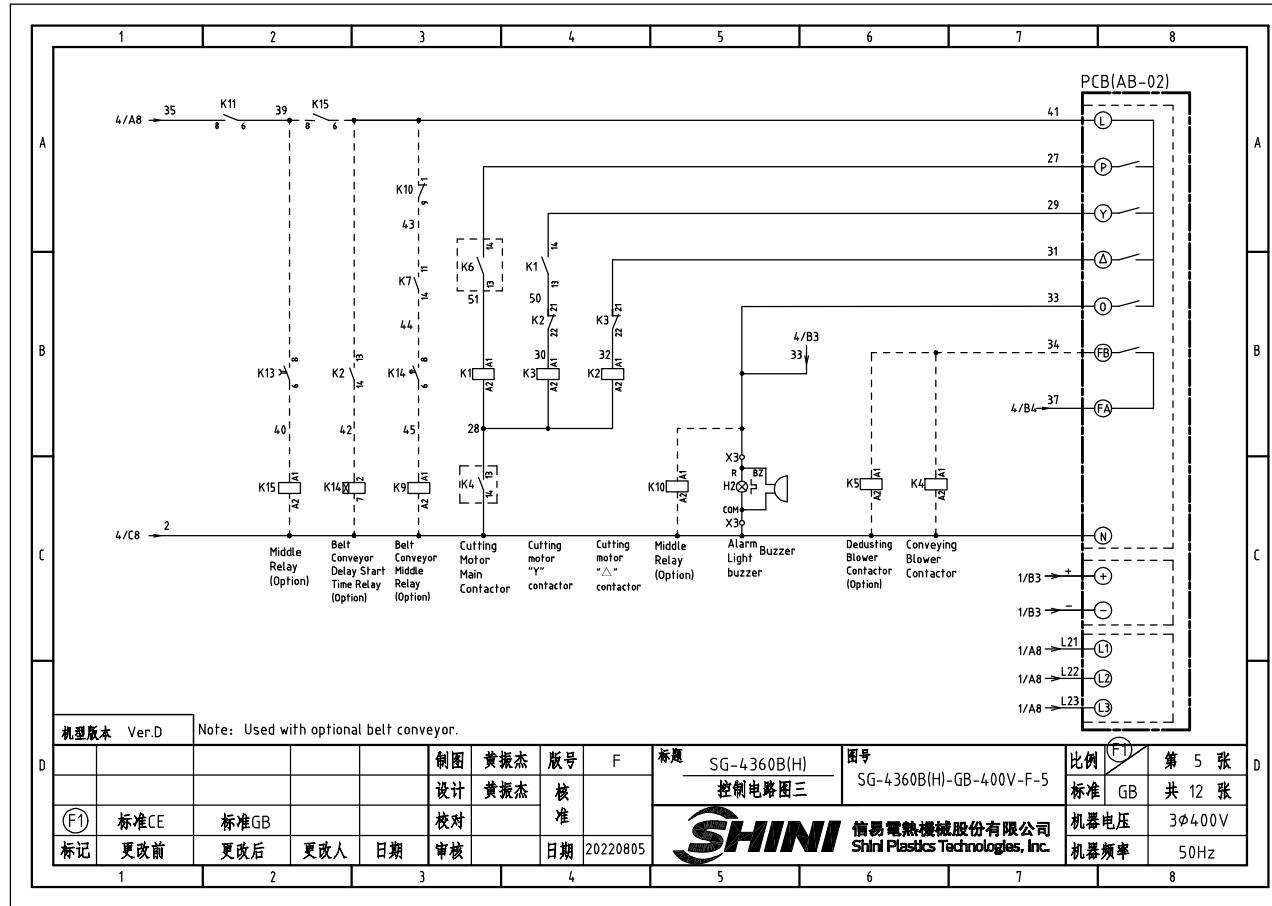


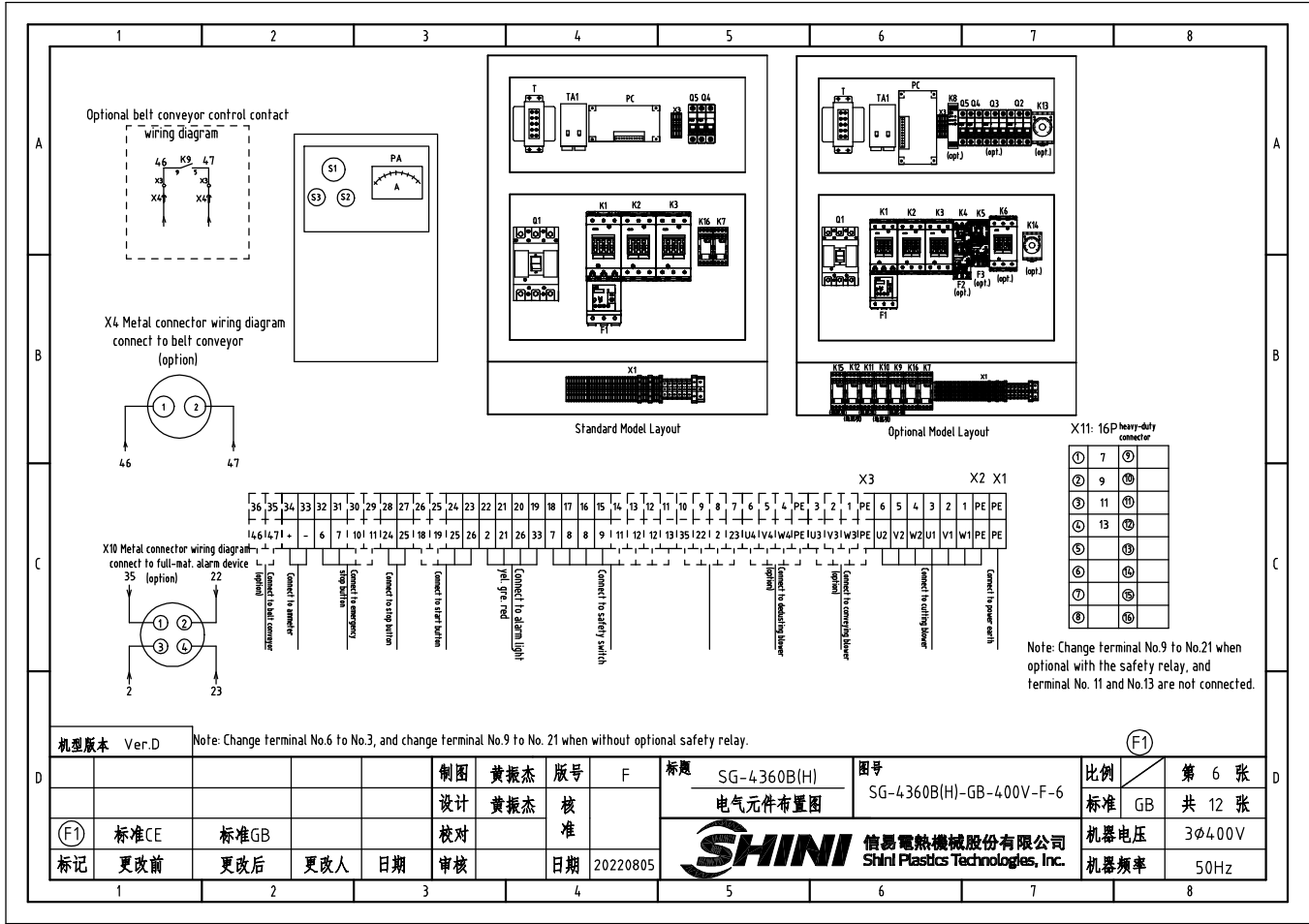
机型版本 Ver.D				(F1)				
				制图 黄振杰	版号 F	标题 SG-4360B(H)	图号 SG-4360B(H)-GB-400V-F-2	比例 第 2 张
				设计 黄振杰	核 准	控制电路图一		标准 GB 共 12 张
(F1)	标准CE	标准GB		校对		信易电热机械股份有限公司 Shini Plastics Technologies, Inc.		机器电压 3φ4.00V
标记	更改前	更改后	更改人	日期	审核			日期






机型版本 Ver.D		Note: Used without optional belt conveyor.			标题 SG-4360B(H)		图号 SG-4360B(H)-GB-400V-F-4		比例 第 4 张	
		制图 黄振杰			版号 F		控制电路图三		标准 GB 共 12 张	
(F1) 标准CE		标准GB			设计 黄振杰		SHINI 信易電熱機械股份有限公司 Shini Plastics Technologies, Inc.		机器电压 3φ400V	
标记 更改前		更改后			更改人		日期 20220805		机器频率 50Hz	
1	2	3	4	5	6	7	8			






机型版本 Ver.D Note: Change terminal No.6 to No.3, and change terminal No.9 to No. 21 when without optional safety relay.

D				制图 黄振杰		版号 F		标题 SG-4360B(H)		图号 SG-4360B(H)-GB-400V-F-6		比例 第 6 张	
				设计 黄振杰		核 准		电气元件布置图		标准 GB		共 12 张	
(F1)		标准CE		标准GB				SHINI 信易电热机械股份有限公司		机器电压 3φ400V			
标记		更改前		更改后		更改人		日期 20220805		SHINI 信易电热机械股份有限公司		机器频率 50Hz	


1		2		3		4		5		6		7		8			
NO.	Symbol	Name		Manufacturer	Type		Specification		Number	Material number		Remark					
1	Q1	Circuit breaker		TECO	BO100EB3100 3P		100A		1	YE40100300400							
2		Circuit breaker ext. handler		TECO	1A-CS1-C-D1 (BO100EB)		----		1	YE90111100100							
3	Q2	Circuit breaker		TECO	BM-63C/3P		10A		1	YE40301003000		(6)					
4	Q2	Circuit breaker		TECO	BM-63C/3P		32A		1	YE40303203000		(7)					
5	Q3	Circuit breaker		TECO	BM-63C/3P		6A		1	YE40300603000		(2)					
6	Q4	Circuit breaker		TECO	BM-63C/2003S 2P		3A		1	YE40200203000							
7	Q5	Circuit breaker		TECO	BM-63C/1010S 1P		10A		1	YE40101000100							
8	K1,K2	Contactor		SIEMENS	3RT5035-1AC20		40A 24VAC 50/60Hz		2	YE00503502600							
9		Auxiliary contact		SIEMENS	3RH5921-1CA01		1NC		1	YE00592110100		(4)					
10		Auxiliary contact		SIEMENS	3RH5921-1CA01		1NC		1	YE00592110100							
11		Auxiliary contact		SIEMENS	3RH5921-1CA10		1NO		1	YE00592110000		(5)					
12		Auxiliary contact		SIEMENS	3RH5921-1CA10		1NO		1	YE00592110000							
13	K3	Contactor		SIEMENS	3RT6028-1AC20		38A 24VAC 50/60Hz		1	YE00602802600							
14	K4	Contactor		SIEMENS	3RT6016-1AB01		9A 24VAC 50/60Hz		1	YE00601602500		(6)					
15	K4	Contactor		SIEMENS	3RT6026-1AC20		25A 24VAC 50/60Hz		1	YE00602602600		(7)					
16		Auxiliary contact		SIEMENS	3RH6911-1HA11		1NC+1NO		1	YE00691100100		(6)					
17	K5	Contactor		SIEMENS	3RT6016-1AB02		9A 24VAC 50/60Hz		1	YE00601602600		(2)					
18	K6	Contactor		SIEMENS	3RT5045-1AC20		80A 24VAC 50/60Hz		1	YE00504502600		(4)					
19		Auxiliary contact		SIEMENS	3RH5921-1CA01		1NC		1	YE00592110100		(4)					
20		Auxiliary contact		SIEMENS	3RH5921-1CA10		1NO		1	YE00592110000		(4)					
21	K7	Middle relay		Honeywell	GR-2C-AC24V		24VAC		1	YE03022400300							
22	K7	Middle relay		Honeywell	GR-4C-AC24V		24VAC		1	YE03042400300		(5)					
23	K8	Safety relay		PILZ	PNOZ×2.8P		24V AC/DC		1	YE04023000000		(4)					
24	T	Mutual transformer		----	IN=400V/415V OUT=24V		180VA		1	YE70040006700		remove with optional (2)					
25	T	Mutual transformer		----	IN=400V/415V OUT=24V		350VA		1	YE70040009900		(4)					
机型版本		Ver.D		Notes:(1)Materials not in the control box;(2)Optional de-dust motor accessories;(3)Optional full mat. alarm;(4)Optional safety relay;(5) Optional belt conveyor;(6) Optional conveying option;(7)Optional large power conveying (6~9)													
制图		黄振杰		版号		F		标题		SG-4360B		图号		比例		第 7 张	
设计		黄振杰		核 准				电气元件明细一		SG-4360B(H)-GB-400V-F-7		标准		GB		共 12 张	
(F1) 标准CE		标准GB		校 对						信易電熱機械股份有限公司 Shini Plastics Technologies, Inc.		机器电压		3φ400V			
标记 更改前		更改后		更改人		日期						20220805		机器频率		50Hz	
1		2		3		4		5		6		7		8			

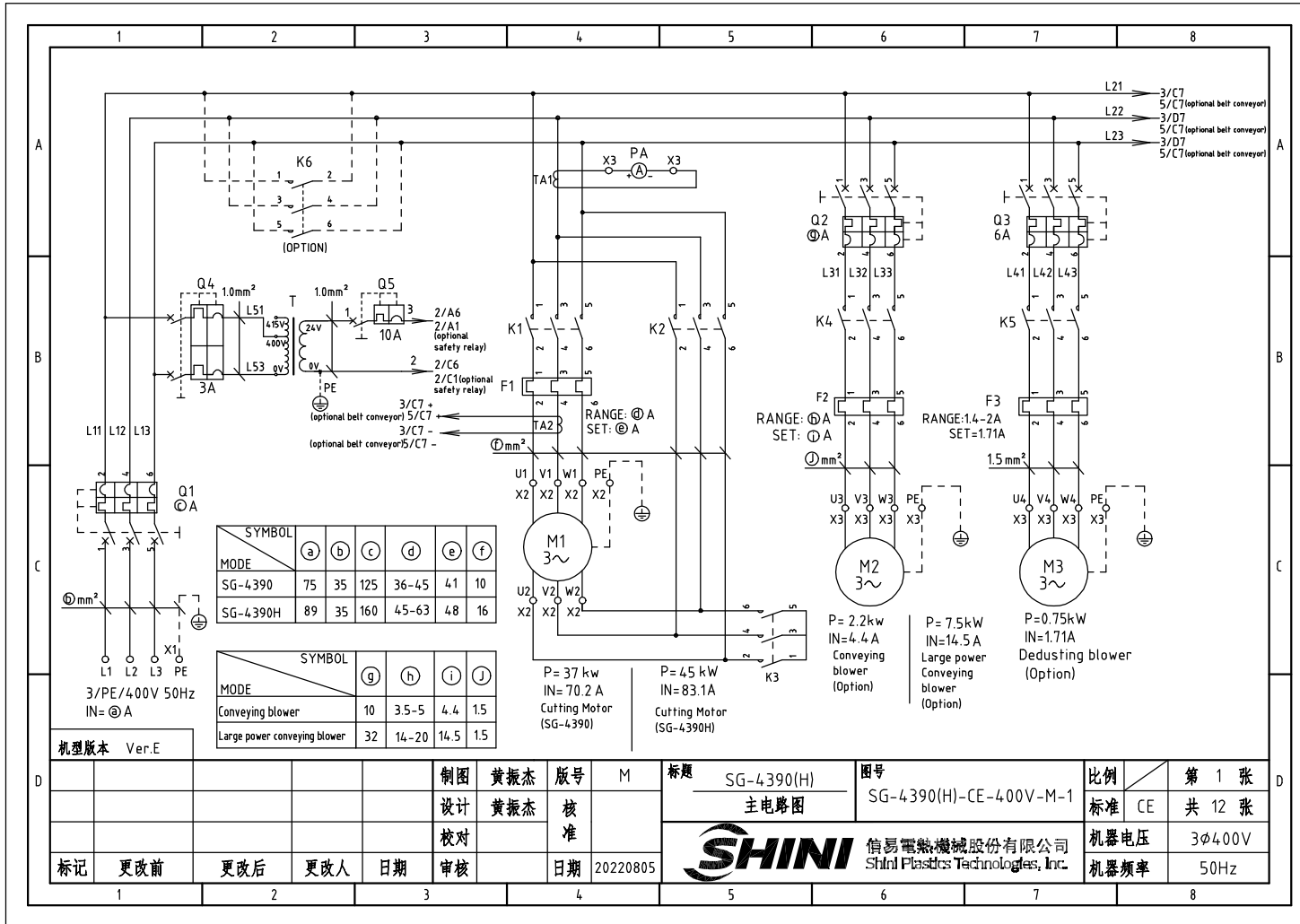
1		2		3		4		5		6		7		8	
NO.	Symbol	Name	Manufacturer	Type	Specification	Number	Material number	Remark							
26	K12	Middle relay	Honeywell	GR-2C-AC24V	24VAC	1	YE03022400300	(4)							
27	K13	Timer	YUYUN	TRF-N/3M	24VAC	1	YE86032400000	(5)							
28	K14	Timer	YUYUN	TH3A-NAB 60S	24VAC	1	YE86602400300	(5)							
29	F1	Thermal overload relay	SIEMENS	3RU5136-4FB0	28-40A	1	YE01513600100								
30	F2	Thermal overload relay	SIEMENS	3RU6116-1FB0	3.5-5A	1	YE01160350000	(6)							
31	F2	Thermal overload relay	SIEMENS	3RU6126-4BB0	14-20A	1	YE01260140000	(7)							
32	F3	Thermal overload relay	SIEMENS	3RU6116-1BB0	14-2A	1	YE01160140000	(2)							
33	K16	Middle relay	Honeywell	GR-2C-AC24V	24VAC	1	YE03022400300								
34		Emergency stop button	SCHNEIDER	XB2BS542C	400VAC	1	YE11254200000	(1)							
35	S1	Contact block	SCHNEIDER	ZB2BE102C	1NC	1	YE00210203100	(1)(4)							
36	S2	Stop button	SCHNEIDER	XB2BA22C	400VAC	1	YE11222000000	(1)							
37	S3,H1	Start button (with light)	SCHNEIDER	XB2BW33B1C	24VAC	1	YE11233100000	(1)							
38		Contact block	SCHNEIDER	ZB2BE101C	1NO	1	YE00210103100	(1)(4)							
39	S4,S5	Safety switch	SCHMERSRC	AZ15-02ZVRK-1476	24VAC	2	YE16147600100	(1)							
40	S4,S5	Safety switch	SCHMERSRC	AZ16-02ZVRK-1476	24VAC	2	YE16147600000	(1)(4)							
41	H2	3-color alarm lamp	SHINI	red, gre.,yel.+buzzer	24VAC/DC 50/60Hz	1	BL90002401520	(1)							
42	H3	Buzzer	TEND	EA-2	24VAC	1	YE84240200000	(1)(3)							
43	MS	Mat. level motor	SHINI	SR-80	24VAC	1	YE15802400100	(1)(3)							
44	X1	Terminal board	Honeywell	GK16PE	16mm ² PE	1	YE60001603500								
45	X2	Terminal board	Honeywell	GK6	6mm ²	6	YE60000603200								
46		Terminal board	Honeywell	GK6PE	6mm ² PE	1	YE60000603500								
47	X3	Terminal board	Honeywell	SK2.5	2.5mm ²	16	YE60002503200								
48			Honeywell	SK2.5	2.5mm ²	5	YE60002503200	(6)							
49			Honeywell	GK2.5PE	2.5mm ² PE	1	YE60002503400	(6)/(7)							
50	K9 K10 K11 K15	Middle relay	Honeywell	GR-2C-AC24V	24VAC	4	YE03022400300	(5)							
机版本 Ver.D Notes:(1)Materials not in the control box;(2)Optional de-dust motor accessories;(3)Optional full mat. alarm;(4)Optional safety relay; (5) Optional belt conveyor;(6)Optional large blower power; (7) Optional conveying blower; (F1)															
				制图 黄振杰		版号 F		标题 SG-4360B		图号 SG-4360B(H)-GB-400V-F-8		比例 第 8 张		D	
				设计 黄振杰		核		电气元件明细二		标准 GB		共 12 张			
(F1) 标准CE		标准GB		校对		准		 信易電熱機械股份有限公司 Shini Plastics Technologies, Inc.		机器电压 3φ4.00V					
标记 更改前		更改后		更改人		日期				20220805		机器频率 50Hz			
1		2		3		4		5		6		7		8	

1		2		3		4		5		6		7		8	
NO.	Symbol	Name		Manufacturer	Type	Specification		Number	Material number		Remark				
51				Honeywell	SK2.5	2.5mm ²		5	YE60002503200		(2)		A		
52				Honeywell	GK2.5PE	2.5mm ² PE		1	YE60002503400		(2)				
53				Honeywell	SK2.5	2.5mm ²		4	YE60002503200		(3)				
54				Honeywell	SK2.5	2.5mm ²		2	YE60002503200		(5)				
55				Honeywell	SK2.5	2.5mm ²		8	YE60002503200		(4)				
56				Honeywell	SK6	6mm ²		3	YE60000603200		(7)				
57				Honeywell	SK6PE	6mm ² PE		1	YE60000603500		(7)				
58		Terminal fittings E/GK series		Honeywell	----	PCS		8	YE60000003900				B		
59	X4	Metal connector		SHINI	PLT-162-RR(plug)	2P		1	YE68016200100		(1)(5)				
60	X10	Metal connector		SHINI	PLT-254-PM	4P		1	YE68025400000		(1)(3)				
61		Metal connector		SHINI	PLT-254-RF	4P		1	YE68025400100		(1)(3)				
62	X11	Heavy duty connector		HARTING	16P+PE(plug+socket)	16P		1	YE68001601300		(1)				
63	PCB	Microcomputer board/PCB		YUYUN	AB-02	24VAC		1	YE80022400100						
64		Plastic shell SI-4T for circuit board		----	----	----		1	YR40000400100						
65	PA	Ammeter		SFIM	DH-670	100/5A		1	YE25671000000		(1)		C		
66	TA1	Current mutual transformer		RATIO	RQT-10	100/5A		1	YE04100500000						
67	TA2	Current mutual transformer		YUYUN	----	5-100A		1	----		with circuit board				
68	M1	Cutting motor		----	----	400V 50Hz 30kW		1	----		(1)				
69	M2	Conveying blower		----	----	400V 50Hz 3kW		1	----		(1)(6)				
70	M2	Conveying blower		----	----	400V 50Hz 7.5kW		1	----		(1)(7)				
71	M3	De-dust blower		----	----	400V 50Hz 0.75kW		1	----		(1)(2)				
机型版本 Ver.D		Notes:(1)Materials not in the control box;(2)Optional de-dust motor accessories;(3)Optional full mat. alarm ;(4)Optional safety relay; (5) Optional belt conveyor;(6)Optional large blower power; (7) Optional conveying blower; (F1)													
D				制图 黄振杰		版号 F		标题 SG-4360B		图号 SG-4360B(H)-GB-400V-F-9		比例 第 9 张		D	
				设计 黄振杰		核 准		电气元件明细三				标准 GB 共 12 张			
(F1)		标准CE		标准GB		校对		 信易電熱機械股份有限公司 Shini Plastics Technologies, Inc.		机器电压		3φ400V			
标记		更改前		更改后		更改人				日期 20220805		机器频率		50Hz	
1		2		3		4		5		6		7		8	

1		2		3		4		5		6		7		8	
NO.	Symbol	Name		Manufacturer		Type		Specification		Number	Material number		Remark		
1	Q1	Breaker interlock		TECO		TAX-125L3125 3P		125A		1	YE4.0125301100				
2		Circuit breaker ext. handler		TECO		FB1R-CS1-C-D1x(TAX-125)		----		1	YE90111100300				
3	Q2	Circuit breaker		TECO		BM-63C/3P		10A		1	YE4.0301003000		(6)		
4	Q2	Circuit breaker		TECO		BM-63C/3P		32A		1	YE4.0303203000		(7)		
5	Q3	Circuit breaker		TECO		BM-63C/3P		6A		1	YE4.0300603000		(2)		
6	Q4	Circuit breaker		TECO		BM-63C/2003S 2P		3A		1	YE4.0200203000				
7	Q5	Circuit breaker		TECO		BM-63C/1010S 1P		10A		1	YE4.0101000100				
8	K1,K2	Contactor		SIEMENS		3RT5036-1AC20		50A 24VAC 50/60Hz		2	YE00503602600				
9		Auxiliary contact		SIEMENS		3RH5921-1CA10		1NO		1	YE00592110000				
10	K3	Contactor		SIEMENS		3RT5035-1AC20		40A 24VAC 50/60Hz		1	YE00503502600				
11		Auxiliary contact		SIEMENS		3RH5921-1CA01		1NC		2	YE00592110100				
12		Auxiliary contact		SIEMENS		3RH5921-1CA10		1NO		1	YE00592110000		(5)		
13		Auxiliary contact		SIEMENS		3RH5921-1CA01		1NC		1	YE00592110100		(4)		
14	K4	Contactor		SIEMENS		3RT6016-1AB01		9A 24VAC 50/60Hz		1	YE00601602500		(6)		
15	K4	Contactor		SIEMENS		3RT6026-1AC20		25A 24VAC 50/60Hz		1	YE00602602600		(7)		
16		Auxiliary contactor		SIEMENS		3RH6911-1HA11		1NC+1NO		1	YE00691100100		(6)		
17	K5	Contactor		SIEMENS		3RT6016-1AB02		9A 24VAC 50/60Hz		1	YE00601602600		(2)		
18	K6	Contactor		SIEMENS		3RT5046-1AC20		95A 24VAC 50/60Hz		1	YE00504602600		(4)		
19		Auxiliary contactor		SIEMENS		3RH5921-1CA01		1NC		1	YE00592110100		(4)		
20		Auxiliary contactor		SIEMENS		3RH5921-1CA10		1NO		1	YE00592110000		(4)		
21	K7	Middle relay		Honeywell		GR-2C-AC24V		24VAC		1	YE030224.00300				
22	K7	Middle relay		Honeywell		GR-4C-AC24V		24VAC		1	YE030424.00300		(5)		
23	K8	Safety relay		PILZ		PNOZ×2.8P		24V AC/DC		1	YE04.023000000		(4)		
24	K9 K10 K11 K15	Middle relay		Honeywell		GR-2C-AC24V		24VAC		4	YE030224.00300		(5)		
25	K12	Middle relay		Honeywell		GR-2C-AC24V		24VAC		1	YE030224.00300		(4)		
机型版本 Ver.D Notes:1)Materials not in the control box;2)Optional de-dust motor accessories;3)Optional full mat. alarm ;4)Optional safety relay; (5) Optional belt conveyor; (6) Optional conveying blower; (7)Optional large blower power(F1)															
				制图 黄振杰		版号 F		标题 SG-4360BH		图号 SG-4360B(H)-GB-400V-F-10		比例		第 10 张	
				设计 黄振杰		核 准		电气元件明细一		标准 GB		标准 GB		共 12 张	
(F1) 标准CE		标准GB		校 对				 信易电热机械股份有限公司 Shini Plastics Technologies, Inc.		机器电压		3φ400V			
标记 更改前		更改后		更改人		日期				20220805		机器频率		50Hz	
1		2		3		4		5		6		7		8	

1		2		3		4		5		6		7		8	
NO.	Symbol	Name		Manufacturer	Type		Specification		Number	Material number		Remark			
26	K13	Timer		YUYUN	TRF-N/3M		24VAC		1	YE86032400000		(5)			
27	K14	Timer		YUYUN	TH3A-NAB 60S		24VAC		1	YE86602400300		(5)			
28	F2	Thermal overload relay		SIEMENS	3RU6116-1FB0		3.5-5A		1	YE01160350000		(6)			
29	F2	Thermal overload relay		SIEMENS	3RU6126-4BB0		14-20A		1	YE01260140000		(7)			
30	F1	Thermal overload relay		SIEMENS	3RU5136-4GB0		36-45A		1	YE01612660000					
31	F3	Thermal overload relay		SIEMENS	3RU6116-1BB0		1.4-2A		1	YE01160140000		(2)			
32	K16	Middle relay		Honeywell	GR-2C-AC24V		24VAC		1	YE03022400300					
33	S1	Emergency stop button		SCHNEIDER	XB2BS542C		400VAC		1	YE11254200000		(1)			
34		Contact block		SCHNEIDER	ZB2BE102C		1NC		1	YE00210203100		(1)(4)			
35	S2	Stop button		SCHNEIDER	XB2BA22C		400VAC		1	YE11222000000		(1)			
36	S3,H1	Start button (with light)		SCHNEIDER	XB2BW33B1C		24VAC		1	YE11233100000		(1)			
37		Contact block		SCHNEIDER	ZB2BE101C		1NO		1	YE00210103100		(1)(4)			
38	S4,S5	Safety switch		SCHMERSRC	AZ16-02ZVRK-1476		230VAC		2	YE16147600000		(1)(4)			
39	S4,S5	Safety switch		SCHMERSRC	AZ15-02ZVRK-1476		230VAC		2	YE16147600100		(1)			
40	H2	3-color alarm lamp		SHINI	red, gre.,yel,+buzzer		24VAC/DC 50/60Hz		1	BL90002401520		(1)			
41	H3	Buzzer		TEND	EA-2		24VAC		1	YE84240200000		(1)(3)			
42	MS	Mat. level motor		SHINI	SR-80		24VAC		1	YE15802400100		(1)(3)			
43	T	Mutual transformer		----	IN=400V/415V OUT=24V		180VA		1	YE70040006700					
44	T	Mutual transformer		----	IN=400V/415V OUT=24V		350VA		1	YE70040009900		(4)			
45	TA1	Current mutual transformer		RATIO	RQT-35		100/5A		1	YE04100500000					
46	PA	Ammeter		SFIM	DH-670		100/5A		1	YE25671000000		(1)			
47	PCB	Microcomputer board/PCB		YUYUN	AB-02		24VAC		1	YE80022400100					
48		Plastic shell SI-4T for circuit board		----	----		----		1	YR40000400100					
49	TA2	Mutual transformer		YUYUN	----		5-100A		1	----		with circuit board			
50	X1	Terminal board		Honeywell	GK16PE		16mm ² PE		1	YE60001603500					
机型版本 Ver.D Notes:(1)Materials not in the control box;(2)Optional de-dust motor accessories;(3)Optional full mat. alarm;(4)Optional safety relay; (5) Optional belt conveyor; (6) Optional conveying blower; (7)Optional large blower power (F1)															
				制图	黄振杰	版号	F	标题	SG-4360BH	图号	SG-4360B(H)-GB-400V-F-11	比例	第 11 张		
				设计	黄振杰	核		电气元件明细二		标准	GB	共 12 张			
				校对		准			信易電熱機械股份有限公司 Shini Plastics Technologies, Inc.		机器电压	3φ400V			
				审核		日期	20220805		机器频率	50Hz					
1		2		3		4		5		6		7		8	

1		2		3		4		5		6		7		8	
NO.	Symbol	Name		Manufacturer	Type		Specification		Number	Material number		Remark			
51	X2	Terminal board		Honeywell	GK10		10mm ²		6	YE60001003200					
52		Terminal board		Honeywell	GK10PE		10mm ² PE		1	YE60001003500					
53	X3	Terminal board		Honeywell	SK2.5		2.5mm ²		16	YE60002503200					
54				Honeywell	SK2.5		2.5mm ²		5	YE60002503200		(6)			
55				Honeywell	GK2.5PE		2.5mm ² PE		1	YE60002503400		(6)/(7)			
56				Honeywell	SK2.5		2.5mm ²		5	YE60002503200		(2)			
57				Honeywell	GK2.5PE		2.5mm ² PE		1	YE60002503400		(2)			
58				Honeywell	SK2.5		2.5mm ²		4	YE60002503200		(3)			
59				Honeywell	SK2.5		2.5mm ²		2	YE60002503200		(5)			
60				Honeywell	SK2.5		2.5mm ²		8	YE60002503200		(4)			
61				Honeywell	SK6		6mm ²		3	YE60000603200		(7)			
62				Honeywell	SK6PE		6mm ² PE		1	YE60000603500		(7)			
63		Terminal fittings E/GK series		Honeywell	----		PCS		4	YE60000003900					
64	X4	Metal connector		SHINI	PLT-162-RR(plug)		2P		1	YE68016200100		(1)(5)			
65	X10	Metal connector		SHINI	PLT-254-PM		4P		1	YE68025400000		(1)(3)			
66		Metal connector		----	PLT-254-RF		4P		1	YE68025400100		(1)(3)			
67	X11	Heavy duty connector		HARTING	16P+PE(plug+socket)		16P		1	YE68001601300		(1)			
68	M1	Granulating motor		SIEMENS	----		400V 50Hz 37kW		1	----		(1)			
69	M2	Conveying blower		----	----		400V 50Hz 3kW		1	----		(1)(6)			
70	M2	Conveying blower		----	----		400V 50Hz 7.5kW		1	----		(1)(7)			
71	M3	Dedusting blower		----	----		400V 50Hz 0.75kW		1	----		(1)(2)			
机版本 Ver.D		Notes:(1)Materials not in the control box;(2)Optional de-dust motor accessories;(3)Optional full mat. alarm ;(4)Optional safety relay; (5) Optional belt conveyor; (6) Optional conveying blower; (7)Optional large blower power (F1)													
D					制图	黄振杰	版号	F	标题	SG-4360BH	图号	SG-4360B(H)-GB-400V-F-12	比例	第 12 张	
					设计	黄振杰	核		电气元件明细三			标准	GB	共 12 张	
	(F1)	标准CE	标准GB		校对		准		 信易電熱機械股份有限公司 Shini Plastics Technologies, Inc.	机器电压	3φ400V				
	标记	更改前	更改后	更改人	日期	审核	日期	20220805		机器频率	50Hz				
1		2		3		4		5		6		7		8	



SYMBOL	(a)	(b)	(c)	(d)	(e)	(f)
MODE						
SG-4390	75	35	125	36-45	41	10
SG-4390H	89	35	160	45-63	48	16

SYMBOL	(g)	(h)	(i)	(j)
MODE				
Conveying blower	10	3.5-5	4.4	1.5
Large power conveying blower	32	14-20	14.5	1.5

机型版本 Ver.E

制图	黄振杰	版号	M
设计	黄振杰	核准	
校对		核准	
标记	更改前	更改后	更改人
			日期
			日期
			20220805

标题 SG-4390(H)
主电路图

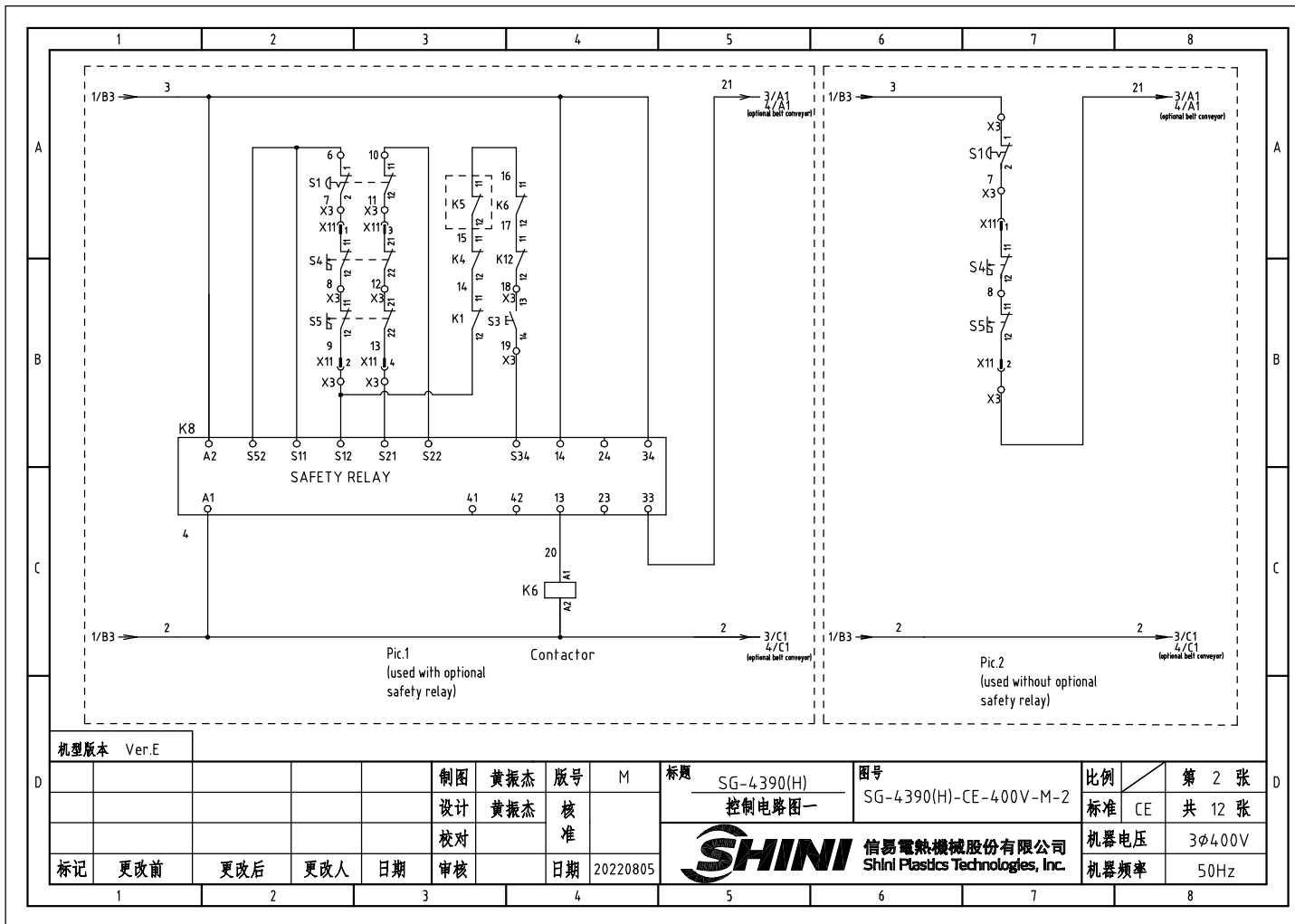
图号 SG-4390(H)-CE-400V-M-1

比例 第 1 张
标准 CE 共 12 张



信易电热机械股份有限公司
Shini Plastics Technologies, Inc.

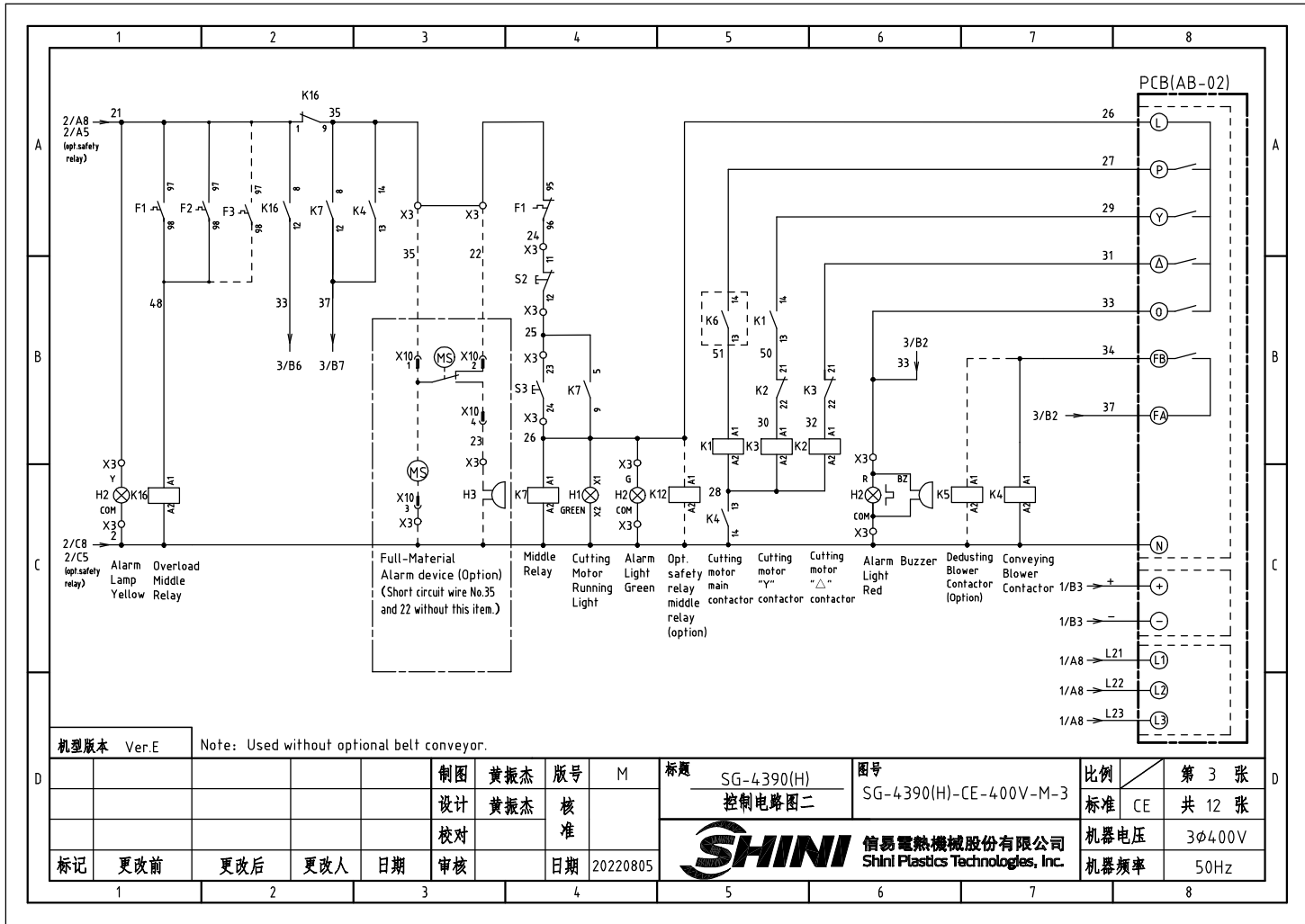
机器电压 3φ400V
机器频率 50Hz



机型版本 Ver.E

				制图	黄振杰	版号	M
				设计	黄振杰	核	
				校对		准	
标记	更改前	更改后	更改人	日期	审核	日期	20220805

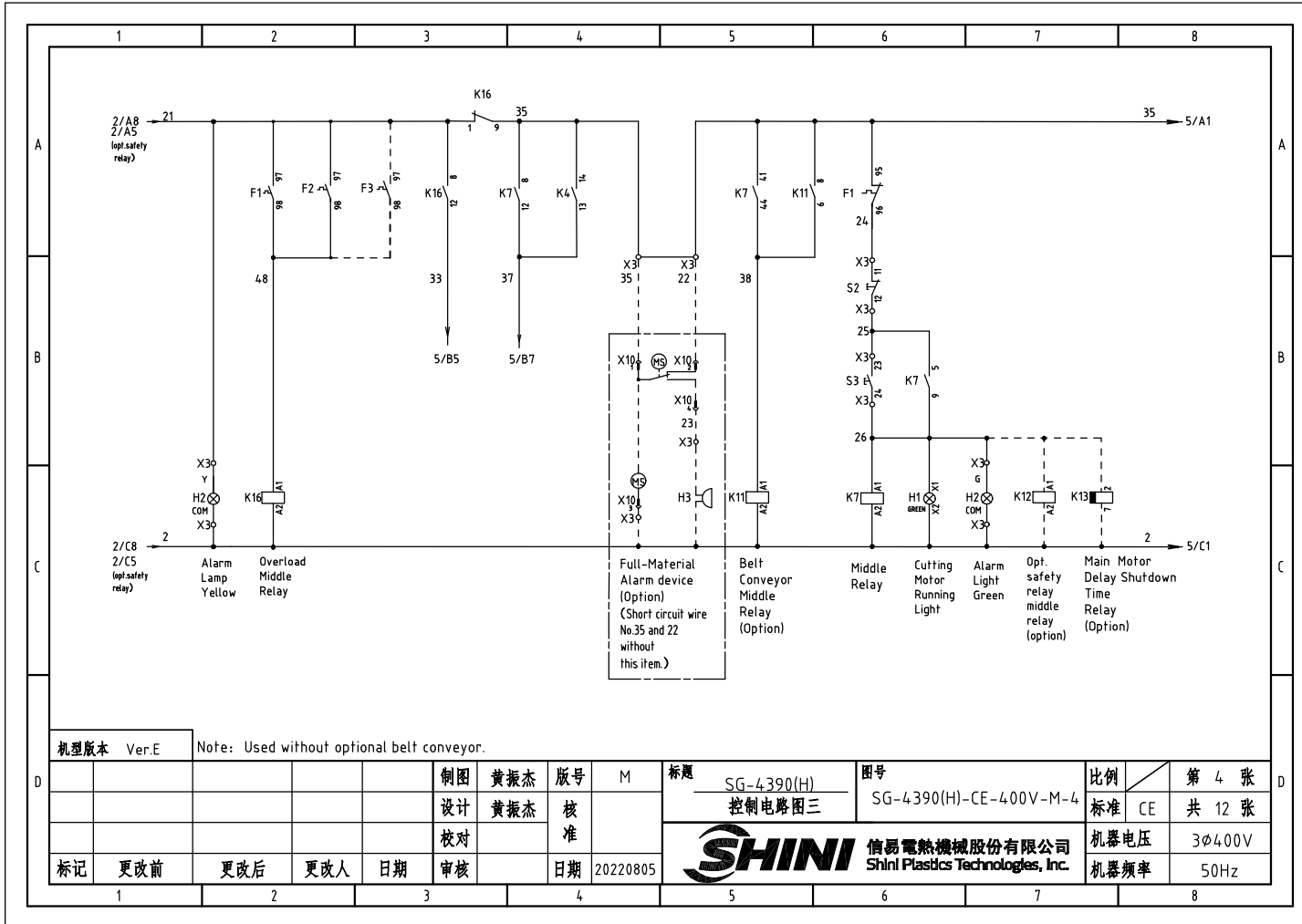
标题	SG-4390(H) 控制电路图一	图号	SG-4390(H)-CE-400V-M-2
 信易電熱機械股份有限公司 Shini Plastics Technologies, Inc.		比例	第 2 张
		标准	CE 共 12 张
		机器电压	3φ400V
		机器频率	50Hz



机型版本 Ver.E Note: Used without optional belt conveyor.

制图	黄振杰	版号	M
设计	黄振杰	核准	
校对		核准	
标记	更改前	更改后	更改人
	日期	日期	日期
		20220805	

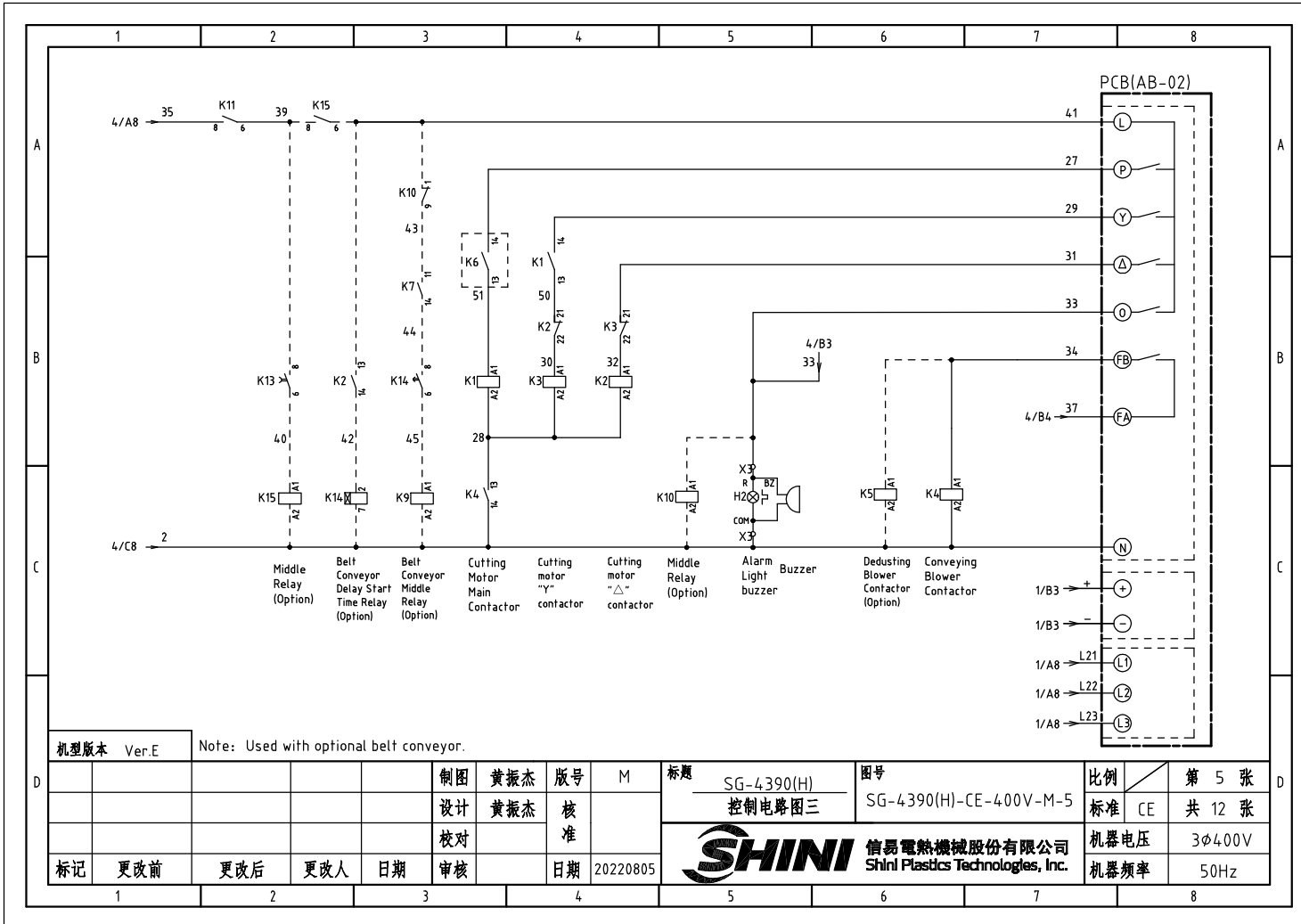
标题	SG-4390(H) 控制电路图二	图号	SG-4390(H)-CE-400V-M-3
信易电热机械股份有限公司 Shini Plastics Technologies, Inc.		比例	第 3 张
		标准	CE 共 12 张
		机器电压	3φ400V
		机器频率	50Hz



机型版本 Ver.E Note: Used without optional belt conveyor.

制图	黄振杰	版号	M	标题	SG-4390(H) 控制电路图三	图号	SG-4390(H)-CE-400V-M-4	比例	第 4 张
设计	黄振杰	核 准						标准	CE 共 12 张
校对								机器电压	3φ400V
标记	更改前	更改后	更改人	日期	审核	日期	20220805	机器频率	50Hz



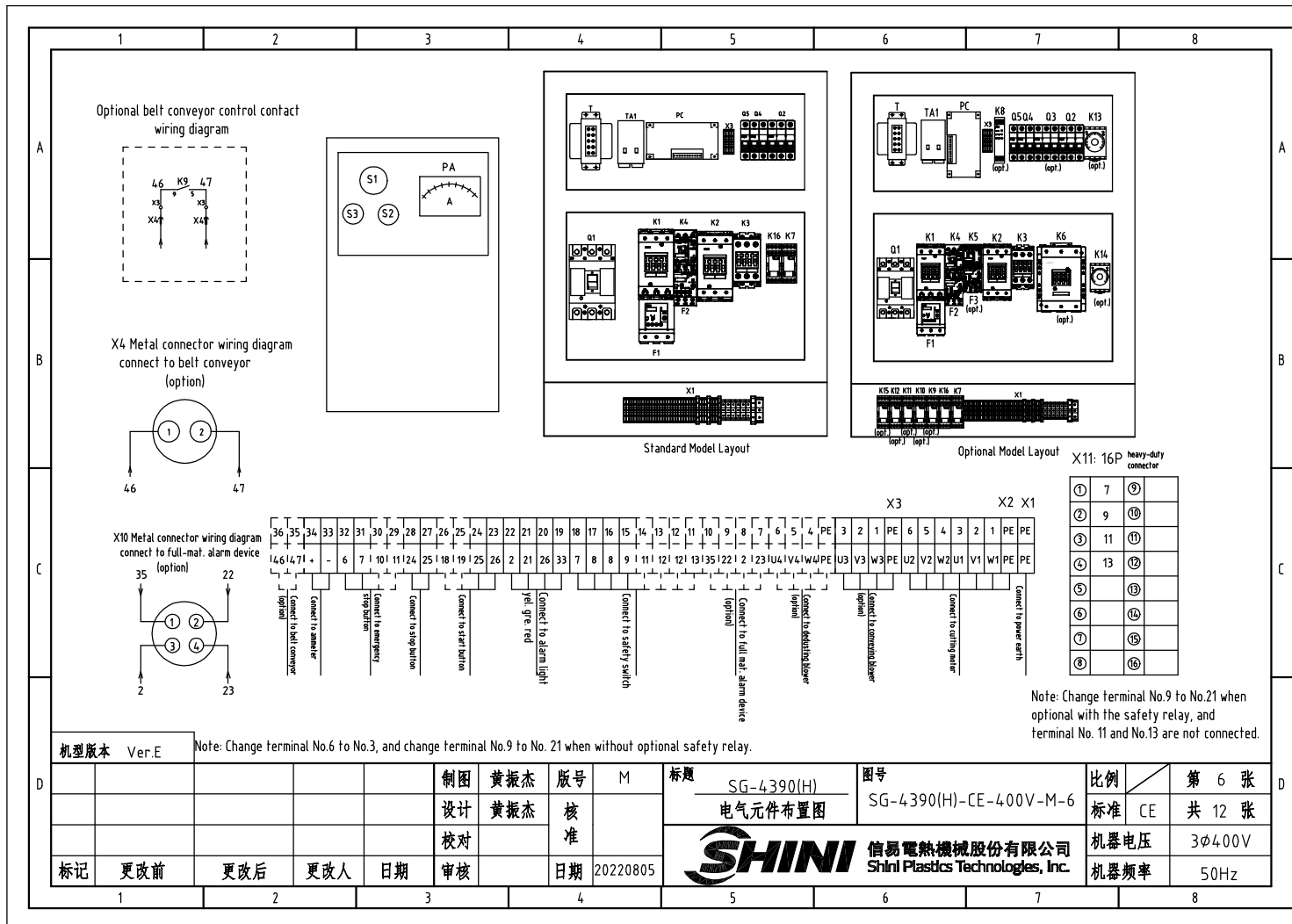


机型版本 Ver.E

Note: Used with optional belt conveyor.

制图	黄振杰	版号	M	标题	SG-4390(H) 控制电路图三	图号	SG-4390(H)-CE-400V-M-5	比例	第 5 张
设计	黄振杰	核 准						标准	CE 共 12 张
校对								机器电压	3φ400V
标记	更改前	更改后	更改人	日期	审核	日期	20220805	机器频率	50Hz





Note: Change terminal No.9 to No.21 when optional with the safety relay, and terminal No. 11 and No.13 are not connected.

机型版本 Ver.E

Note: Change terminal No.6 to No.3, and change terminal No.9 to No. 21 when without optional safety relay.

制图	黄振杰	版号	M
设计	黄振杰	核准	
校对		核准	
标记	更改前	更改后	更改人
	更改后	更改人	日期
		审核	日期
			20220805

标题 SG-4390(H)
电气元件布置图





图号 SG-4390(H)-CE-400V-M-6
信易电热机械股份有限公司
Shini Plastics Technologies, Inc.

比例	第 6 张
标准	CE 共 12 张
机器电压	3φ400V
机器频率	50Hz


1		2		3		4		5		6		7		8	
NO.	Symbol	Name		Manufacturer	Type		Specification		Number	Material number		Remark			
1	Q1	Breaker interlock		TECO	TAX-125L3125 3P		125A		1	YE40125301100					
2		Circuit breaker ext.handler		TECO	FB1R-CS1-C-D1 (TAX-125)		----		1	YE90111100300					
3	Q2	Circuit breaker		TECO	BM-63C/3P		10A		1	YE40301003000					
4	Q2	Circuit breaker		TECO	BM-63C/3P		32A		1	YE40303203000		(6)			
5	Q3	Circuit breaker		TECO	BM-63C/3P		6A		1	YE40300603000		(2)			
6	Q4	Circuit breaker		TECO	BM-63C/2003S 2P		3A		1	YE40200203000					
7	Q5	Circuit breaker		TECO	BM-63C/1010S 1P		10A		1	YE40101000100					
8	K1,K2	Contactor		SIEMENS	3RT5036-1AC20		50A 24VAC 50/60Hz		2	YE00503602600					
9		Auxiliary contact		SIEMENS	3RH5921-1CA10		1NO		1	YE00592110000					
10	K3	Contactor		SIEMENS	3RT5035-1AC20		40A 24VAC 50/60Hz		1	YE00503502600					
11		Auxiliary contact		SIEMENS	3RH5921-1CA01		1NC		2	YE00592110100					
12		Auxiliary contact		SIEMENS	3RH5921-1CA10		1NO		1	YE00592110000		(5)			
13		Auxiliary contactor		SIEMENS	3RH5921-1CA01		1NC		1	YE00592110100		(4)			
14	K4	Contactor		SIEMENS	3RT6016-1AB01		9A 24VAC 50/60Hz		1	YE00601602500					
15	K4	Contactor		SIEMENS	3RT6026-1AB01		25A 24VAC 50/60Hz		1	YE00602602600		(6)			
16		Auxiliary contact		SIEMENS	3RH6911-1HA11		1NC+1NO		1	YE00691100100					
17	K5	Contactor		SIEMENS	3RT6016-1AB02		9A 24VAC 50/60Hz		1	YE00601602600		(2)			
18	K6	Contactor		SIEMENS	3RT5046-1AC20		95A 24VAC 50/60Hz		1	YE00504602600		(4)			
19		Auxiliary contact		SIEMENS	3RH5921-1CA01		1NC		1	YE00592110100		(4)			
20		Auxiliary contact		SIEMENS	3RH5921-1CA10		1NO		1	YE00592110000		(4)			
21	K7	Middle relay		Honeywell	GR-2C-AC24V		24VAC		1	YE03022400300					
22	K7	Middle relay		Honeywell	GR-4C-AC24V		24VAC		1	YE03042400300		(5)			
23	K8	Safety relay		PILZ	PNOZ×2 8P		24V AC/DC		1	YE04023000000		(4)			
24	K9 K10 K11 K15	Middle relay		Honeywell	GR-2C-AC24V		24VAC		4	YE03022400300		(5)			
25	K12	Middle relay		Honeywell	GR-2C-AC24V		24VAC		1	YE03022400300		(4)			
机塑版本 Ver.E Notes:(1)Materials not in the control box;(2)Optional de-dust motor accessories;(3)Optional full mat. alarm ;(4)Optional safety relay; (5) Optional belt conveyor;(6) Optional large blower power:															
制图 黄振杰		版号 M		标题 SG-4390		图号 SG-4390(H)-CE-400V-M-7		比例		第 7 张		D			
设计 黄振杰		核 准		电气元件明细一		标准 CE		共 12 张							
校对		日期 20220805		SHINI		信易塑料机械股份有限公司 Shini Plastics Technologies, Inc.		机器电压		3φ400V					
审核		日期		机器频率		50Hz									
1	2	3	4	5	6	7	8								

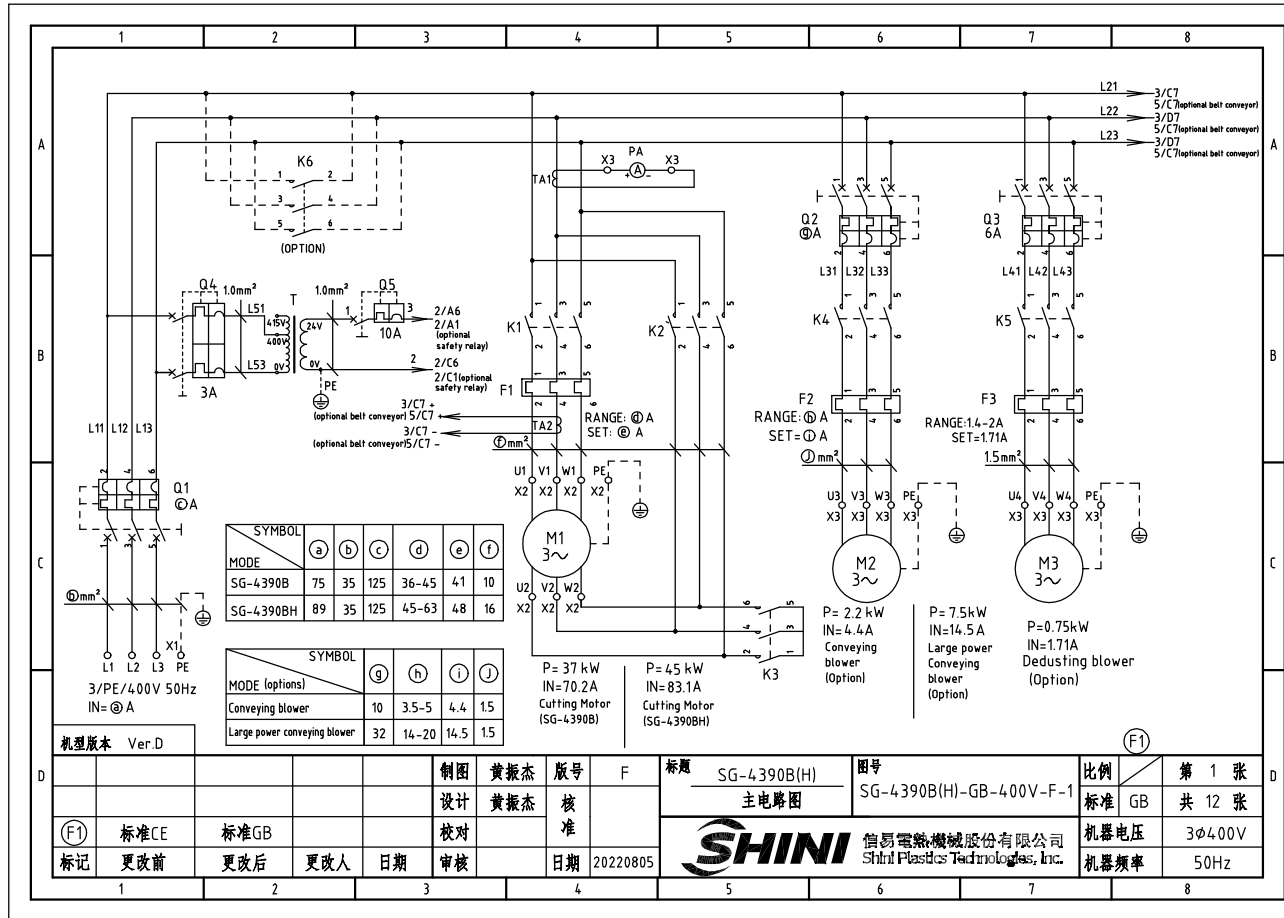
1		2		3		4		5		6		7		8	
NO.	Symbol	Name		Manufacturer	Type		Specification		Number	Material number		Remark			
26	K13	Timer		YUYUN	TRF-N/3M		24 VAC		1	YE86032400000		(5)		A	
27	K14	Timer		YUYUN	TH3A-NAB 60S		24 VAC		1	YE86602400300		(5)		A	
28	F1	Thermal overload relay		SIEMENS	3RU5136-4GB0		36-45A		1	YE01612660000				A	
29	F2	Thermal overload relay		SIEMENS	3RU6116-1FB0		3.5-5A		1	YE01160350000				A	
30	F2	Thermal overload relay		SIEMENS	3RU6126-4BB0		14-20A		1	YE0126014.00000		(6)		A	
31	F3	Thermal overload relay		SIEMENS	3RU6116-1BB0		1.4-2A		1	YE0116014.00000		(2)		A	
32	K16	Middle relay		Honeywell	GR-2C-AC24V		24 VAC		1	YE03022400300				A	
33	S1	Emergency stop button		SCHNEIDER	XB2BS542C		400VAC		1	YE11254200000		(1)		B	
34		Contact block		SCHNEIDER	ZB2BE102C		1NC		1	YE00210203100		(1)(4)		B	
35	S2	Stop button		SCHNEIDER	XB2BA22C		400VAC		1	YE11222000000		(1)		B	
36	S3,H1	Start button (with light)		SCHNEIDER	XB2BW33B1C		24 VAC		1	YE11233100000		(1)		B	
37		Contact block		SCHNEIDER	ZB2BE101C		1NO		1	YE00210103100		(1)(4)		B	
38	S4,S5	Safety switch		SCHMERSRC	AZ16-02ZVRK-1476		230VAC		2	YE16147600000		(1)(4)		B	
39	S4,S5	Safety switch		SCHMERSRC	AZ15-02ZVRK-1476		230VAC		2	YE16147600100		(1)		B	
40	H2	3-color alarm lamp		SHINI	red, gre.,yel,+buzzer		24 VAC/DC 50/60Hz		1	BL90002401520		(1)		C	
41	H3	Buzzer		TEND	EA-2		24 VAC		1	YE84240200000		(1)(3)		C	
42	MS	Mat. level motor		SHINI	SR-80		24 VAC		1	YE15802400100		(1)(3)		C	
43	T	Mutual transformer		----	IN=400V/415V OUT=24V		180VA		1	YE70040006700		(4)		C	
44	T	Current mutual transformer		----	IN=400V/415V OUT=24V		350VA		1	YE70040009900		(4)		C	
45	TA1	Current mutual transformer		RATIO	RQT-35		100/5A		1	YE04100500000				C	
46	PA	Ammeter		SFIM	DH-670		100/5A		1	YE25671000000		(1)		C	
47	PCB	Micro computer board/PCB		YUYUN	AB-02		24 VAC		1	YE80022400100				C	
48		Plastic shell SI-4T for circuit board		----	----		----		1	YR40000400100				C	
49	TA2	Current mutual inductance		YUYUN	----		5-100A		1	----		with circuit board		C	
50	X1	Terminal board		Honeywell	GK16PE		16mm ² PE		1	YE60001603500				C	
机型版本 Ver.E Notes:(1)Materials not in the control box;(2)Optional de-dust motor accessories;(3)Optional full mat. alarm ;(4)Optional safety relay; (5) Optional belt conveyor;(6) Optional large blower power:															
制图		黄振杰		版号		M		标题		图号		比例		第 8 张	
设计		黄振杰		核 准				SG-4390		SG-4390(H)-CE-400V-M-8		标准		CE 共 12 张	
校对								电气元件明细二				机器电压		3φ400V	
标记		更改前		更改后		更改人		日期		20220805		SHINI 信易電器機械股份有限公司		机器频率	
												Shini Plastics Technologies, Inc.		50Hz	
1		2		3		4		5		6		7		8	

1		2		3		4		5		6		7		8	
NO.	Symbol	Name	Manufacturer	Type	Specification	Number	Material number	Remark							
51	X2	Terminal board	Honeywell	GK10	10mm ²	6	YE60001003200								
52		Terminal board	Honeywell	GK10PE	10mm ² PE	1	YE60001003500								
53	X3	Terminal board	Honeywell	SK2.5	2.5mm ²	21	YE60002503200								
54			Honeywell	GK2.5PE	2.5mm ² PE	1	YE60002503400								
55			Honeywell	SK2.5	2.5mm ²	4	YE60002503200	(2)							
56			Honeywell	GK2.5PE	2.5mm ² PE	1	YE60002503400	(2)							
57			Honeywell	SK2.5	2.5mm ²	4	YE60002503200	(3)							
58			Honeywell	SK2.5	2.5mm ²	2	YE60002503200	(5)							
59			Honeywell	SK2.5	2.5mm ²	8	YE60002503200	(4)							
60			Honeywell	SK6	6mm ²	3	YE60000603200	(6)							
61			Honeywell	SK6PE	6mm ² PE	1	YE60000603500	(6)							
62		Terminal fittings E/GK series	Honeywell	----	PCS	4	YE60000003900								
63	X4	Metal connector	SHINI	PLT-162-RR(plug)	2P	1	YE68016200100	(1)(5)							
64	X10	Metal connector	SHINI	PLT-254-PM	4P	1	YE68025400000	(1)(3)							
65		Metal connector	----	PLT-254-RF	4P	1	YE68025400100	(1)(3)							
66	X11	Heavy duty connector	HARTING	16P+PE(plug+socket)	16P	1	YE68001601300	(1)							
67	M1	Cutting motor	----	----	400V 50Hz 37kW	1	----	(1)							
68	M2	Conveying blower	----	----	400V 50Hz 2.2kW	1	----	(1)							
69	M2	Conveying blower	----	----	400V 50Hz 7.5kW	1	----	(1)(6)							
70	M3	De-dust blower	----	----	400V 50Hz 0.75kW	1	----	(1)(2)							
机型版本 Ver.E Notes:(1)Materials not in the control box;(2)Optional de-dust motor accessories;(3)Optional full mat. alarm ;(4)Optional safety relay; (5) Optional belt conveyor;(6) Optional large blower power:															
标记		更改前	更改后	更改人	日期	审核	日期	20220805	 信易電熱機械股份有限公司 Shini Plastics Technologies, Inc.		比例 第 9 张 标准 CE 共 12 张 机器电压 3φ400V 机器频率 50Hz				

1		2		3		4		5		6		7		8	
NO.	Symbol	Name		Manufacturer		Type		Specification		Number	Material number		Remark		
1	Q1	Breaker interlock		TECO		TAX-250L3160 3P		160A		1	YE40250300400				
2		Circuit breaker ext. handler		TECO		FB1R-CS1-C-D1(TAX-250)		----		1	YE90211200300				
3	Q2	Circuit breaker		TECO		BM-63C/3P		10A		1	YE40301003000				
4	Q2	Circuit breaker		TECO		BM-63C/3P		32A		1	YE40303203000		(6)		
5	Q3	Circuit breaker		TECO		BM-63C/3P		6A		1	YE40300603000		(2)		
6	Q4	Circuit breaker		TECO		BM-63C/2003S 2P		3A		1	YE40200203000				
7	Q5	Circuit breaker		TECO		BM-63C/1010S 1P		10A		1	YE40101000100				
8	K1,K2	Contactor		SIEMENS		3RT5044-1AC20		65A 24VAC 50/60Hz		2	YE00504402600				
9		Auxiliary contact		SIEMENS		3RH5921-1CA10		1NO		1	YE00592110000				
10	K3	Contactor		SIEMENS		3RT5036-1AC20		50A 24VAC 50/60Hz		1	YE00503602600				
11		Auxiliary contact		SIEMENS		3RH5921-1CA01		1NC		2	YE00592110100				
12		Auxiliary contact		SIEMENS		3RH5921-1CA10		1NO		1	YE00592110000		(5)		
13	K4	Contactor		SIEMENS		3RT6016-1AB01		9A 24VAC 50/60Hz		1	YE00601602500				
14	K4	Contactor		SIEMENS		3RT6026-1AC20		25A 24VAC 50/60Hz		1	YE00602602600		(6)		
15		Auxiliary contactor		SIEMENS		3RH6911-1HA11		1NC+1NO		1	YE00691100100				
16	K5	Contactor		SIEMENS		3RT6016-1AB02		9A 24VAC 50/60Hz		1	YE00601602600		(2)		
17	K6	Contactor		SIEMENS		3RT5054-1AB36		115A 24V 50/60Hz		1	YE00505400900		(4)		
18		Auxiliary contactor		SIEMENS		3RH5921-1CA01		1NC		1	YE00592110100		(4)		
19		Auxiliary contactor		SIEMENS		3RH5921-1CA10		1NO		1	YE00592110000		(4)		
20	K7	Middle relay		Honeywell		GR-2C-AC24V		24VAC		1	YE03022400300				
21	K7	Middle relay		Honeywell		GR-4C-AC24V		24VAC		1	YE03042400300		(5)		
22	K8	Safety relay		PILZ		PNOZ×2.8P		24V AC/DC		1	YE04023000000		(4)		
23	K9 K10 K11 K15	Middle relay		Honeywell		GR-2C-AC24V		24VAC		4	YE03022400300		(5)		
24	K12	Middle relay		Honeywell		GR-2C-AC24V		24VAC		1	YE03022400300		(4)		
25	K13	Timer		YUYUN		TRF-N/3M		24VAC		1	YE86032400000		(5)		
机型版本		Ver.E		Notes:(1)Materials not in the control box;(2)Optional de-dust motor accessories;(3)Optional full mat. alarm ;(4)Optional safety relay; (5) Optional belt conveyor;(6) Optional large blower power:											
D					制图	黄振杰	版号	M	标题	SG-4390H	图号	SG-4390(H)-CE-400V-M-10	比例	第 10 张	
					设计	黄振杰	核		电气元件明细一			标准	CE	共 12 张	
					校对		准					机器电压	3φ400V		
	标记	更改前	更改后	更改人	日期	审核	日期	20220805		信易電熱機械股份有限公司 Shini Plastics Technologies, Inc.		机器频率	50Hz		
1		2		3		4		5		6		7		8	

1		2		3		4		5		6		7		8	
NO.	Symbol	Name		Manufacturer		Type		Specification		Number	Material number		Remark		
26	K14	Timer		YUYUN		TH3A-NAB 60S		24VAC		1	YE86602400300		(5)		
27	F1	Thermal overload relay		SIEMENS		3RU5146-4JB0		45-63A		1	YE01514640000				
28	F2	Thermal overload relay		SIEMENS		3RU6126-4BB0		14-20A		1	YE01260140000		(6)		
29	F2	Thermal overload relay		SIEMENS		3RU6116-1FB0		3.5-5A		1	YE01160350000				
30	F3	Thermal overload relay		SIEMENS		3RU6116-1BB0		1.4-2A		1	YE01160140000		(2)		
31	K16	Middle relay		Honeywell		GR-2C-AC24V		24VAC		1	YE03022400300				
32	S1	Emergency stop button		SCHNEIDER		XB2BS542C		400VAC		1	YE11254200000		(1)		
33		Contact block		SCHNEIDER		ZB2BE102C		1NC		1	YE00210203100		(1)(4)		
34	S2	Stop button		SCHNEIDER		XB2BA22C		400VAC		1	YE11222000000		(1)		
35	S3,H1	Start button (with light)		SCHNEIDER		XB2BW33B1C		24VAC		1	YE11233100000		(1)		
36		Contact block		SCHNEIDER		ZB2BE101C		1NO		1	YE00210103100		(1)(4)		
37	S4,S5	Safety switch		SCHMERSRC		AZ15-02ZVRK-1476		230VAC		2	YE16147600100		(1)		
38	S4,S5	Safety switch		SCHMERSRC		AZ16-02ZVRK-1476		230VAC		2	YE16147600000		(1)(4)		
39	H2	3-color alarm lamp		SHINI		red, gre.,yel,+buzzer		24VAC/DC 50/60Hz		1	BL90002401520		(1)		
40	H3	Buzzer		TEND		EA-2		24VAC		1	YE84240200000		(1)(3)		
41	MS	Mat.level motor		SHINI		SR-80		24VAC		1	YE15802400100		(1)(3)		
42	T	Mutual transformer		----		IN=400V/415V OUT=24V		350VA		1	YE70040009900				
43	TA1	Current mutual transformer		RATIO		RCT-35		150/5A		1	YE04150500000				
44	PA	Ammeter		SFIM		DH-670		150/5A		1	YE25671500000		(1)		
45	PCB	Microcomputer board/PCB		JIUXIN		AB-02		24VAC		1	YE80022400100				
46		Plastic shell SI-4T for circuit board		----		----		----		1	YR40000400100				
47	TA2	Current mutual transformer		YUYUN		----		5-100A		1	----		with circuit board		
48	X1	Terminal board		Honeywell		GK16PE		16mm ² PE		1	YE60001603500				
49	X2	Terminal board		Honeywell		GK16		16mm ²		6	YE60001603200				
50		Terminal board		Honeywell		GK16PE		16mm ² PE		1	YE60001603500				
机型版本		Ver.E		Notes:(1)Materials not in the control box;(2)Optional de-dust motor accessories;(3)Optional full mat. alarm ;(4)Optional safety relay; (5) Optional belt conveyor;(6) Optional large blower power:											
D					制图	黄振杰	版本号	M	标题	SG-4390H	图号		比例	第 11 张	
					设计	黄振杰	核		电气元件明细二	SG-4390(H)-CE-400V-M-11		标准	CE	共 12 张	
					校对		准						机器电压	3φ400V	
	标记	更改前	更改后	更改人	日期	审核	日期	20220805		信易電熱機械股份有限公司 Shini Plastics Technologies, Inc.			机器频率	50Hz	
1		2		3		4		5		6		7		8	

1		2		3		4		5		6		7		8	
NO.	Symbol	Name		Manufacturer	Type		Specification		Number	Material number		Remark			
51	X3	Terminal board		Honeywell	SK2.5		2.5mm ²		21	YE60002503200					
52				Honeywell	GK2.5PE		2.5mm ² PE		1	YE60002503400					
53				Honeywell	SK2.5		2.5mm ²		5	YE60002503200		(2)		A	
54				Honeywell	GK2.5PE		2.5mm ² PE		1	YE60002503400		(2)			
55				Honeywell	SK2.5		2.5mm ²		4	YE60002503200		(3)			
56				Honeywell	SK2.5		2.5mm ²		2	YE60002503200		(5)			
57				Honeywell	SK2.5		2.5mm ²		8	YE60002503200		(4)			
58				Honeywell	SK6		6mm ²		3	YE60000603200		(6)			
59				Honeywell	SK6PE		6mm ² PE		1	YE60000603500		(6)			
60		Terminal fittings E/GK series		Honeywell	----		PCS		4	YE60000003900					
61	X4	Metal connector		SHINI	PLT-162-RR(plug)		2P		1	YE68016200100		(1)(5)			
62	X10	Metal connector		SHINI	PLT-254-PM		4P		1	YE68025400000		(1)(3)			
63		Metal connector		----	PLT-254-RF		4P		1	YE68025400100		(1)(3)			
64	X11	Heavy duty connector		HARTING	16P+PE(plug+socket)		16P		1	YE68001601300		(1)			
65	M1	Granulating motor		----	----		400V 50Hz 4.5kW		1	----		(1)			
66	M2	Conveying blower		----	----		400V 50Hz 2.2kW		1	----		(1)			
67	M2	Conveying blower		----	----		400V 50Hz 7.5kW		1	----		(1)(6)			
68	M3	Dedusting blower		----	----		400V 50Hz 0.75kW		1	----		(1)(2)			
机型版本 Ver.E		Notes:(1)Materials not in the control box;(2)Optional de-dust motor accessories;(3)Optional full mat. alarm ;(4)Optional safety relay; (5) Optional belt conveyor;(6) Optional large blower power:													
D					制图	黄振杰	版号	M	标题	SG-4390H	图号	SG-4390(H)-CE-400V-M-12		比例	第 12 张
					设计	黄振杰	核		电气元件明细三		标准	CE	共 12 张		
					校对		准		 信易電熱機械股份有限公司 Shini Plastics Technologies, Inc.		机器电压		3ø400V		
	标记 更改前		更改后		更改人	日期	审核	日期			20220805	机器频率		50Hz	
1		2		3		4		5		6		7		8	



SYMBOL	a	b	c	d	e	f
MODE						
SG-4390B	75	35	125	36-45	41	10
SG-4390BH	89	35	125	45-63	48	16

SYMBOL	g	h	i	j
MODE (options)				
Conveying blower	10	3.5-5	4.4	1.5
Large power conveying blower	32	14-20	14.5	1.5

机型号版本 Ver.D
3/PE/400V 50Hz
IN=⊙A

P= 37 kW
IN=70.2A
Cutting Motor
(SG-4390B)

P= 45 kW
IN=83.1A
Cutting Motor
(SG-4390BH)

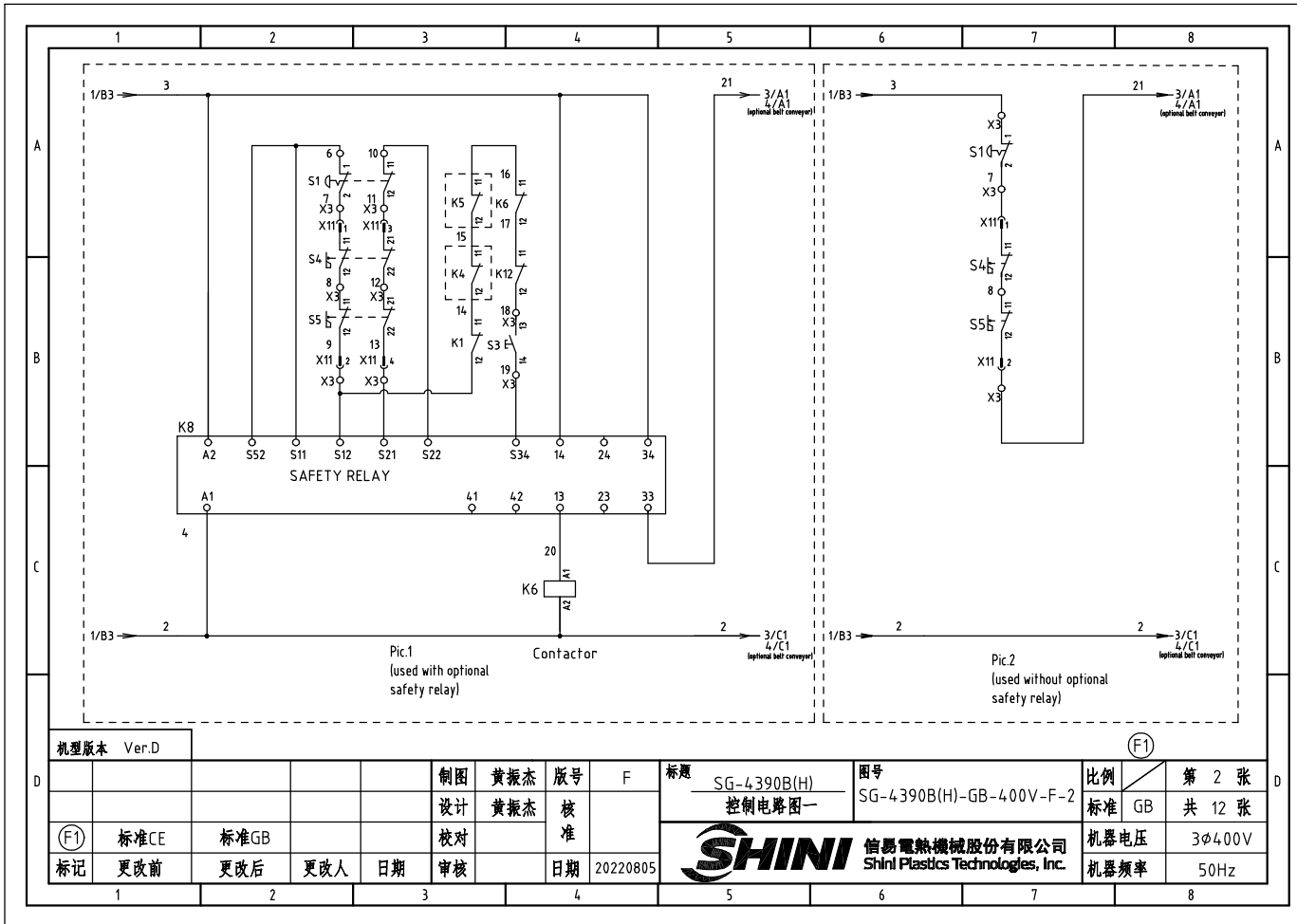
P= 2.2 kW
IN=4.4 A
Conveying
blower
(Option)

P= 7.5 kW
IN=14.5 A
Large power
Conveying
blower
(Option)

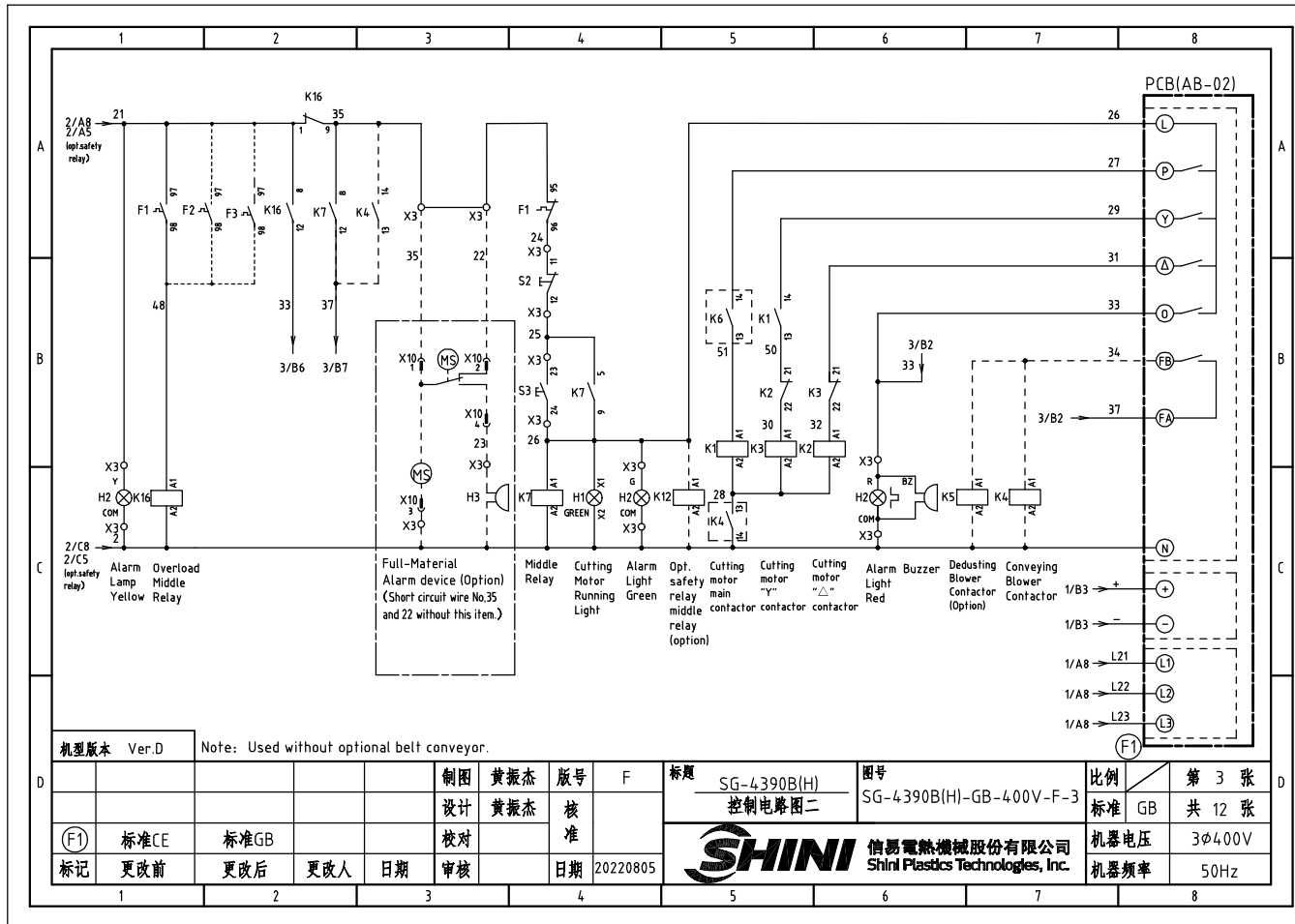
P=0.75kW
IN=1.71A
Dedusting blower
(Option)

机型号版本 Ver.D		制图 黄振杰 版号 F		标题 SG-4390B(H) 主电路图		图号 SG-4390B(H)-GB-400V-F-1		比例 第 1 张	
设计 黄振杰 核 准		校对		标准 GB		机器电压 3φ400V		共 12 张	
标准CE		标准GB		日期 20220805		机器频率 50Hz			
标记 更改前		更改后		更改人		日期			





机型版本 Ver.D				制图 黄振杰		版号 F		标题 SG-4390B(H) 控制电路图一		图号 SG-4390B(H)-GB-400V-F-2		比例 第 2 张	
				设计 黄振杰		核 准		标准 GB		标准 GB		共 12 张	
标准CE		标准GB		校对				机器电压		3φ400V			
标记 更改前		更改后		更改人		日期		审核		日期		20220805	
								SHINI 信易电热机械股份有限公司 Shini Plastics Technologies, Inc.		机器频率		50Hz	



机型版本 Ver.D Note: Used without optional belt conveyor.

制图	黄振杰	版号	F
设计	黄振杰	核准	
校对		日期	20220805
标记	更改前	更改后	更改人

标题 SG-4390B(H) 控制电路图二

图号 SG-4390B(H)-GB-400V-F-3

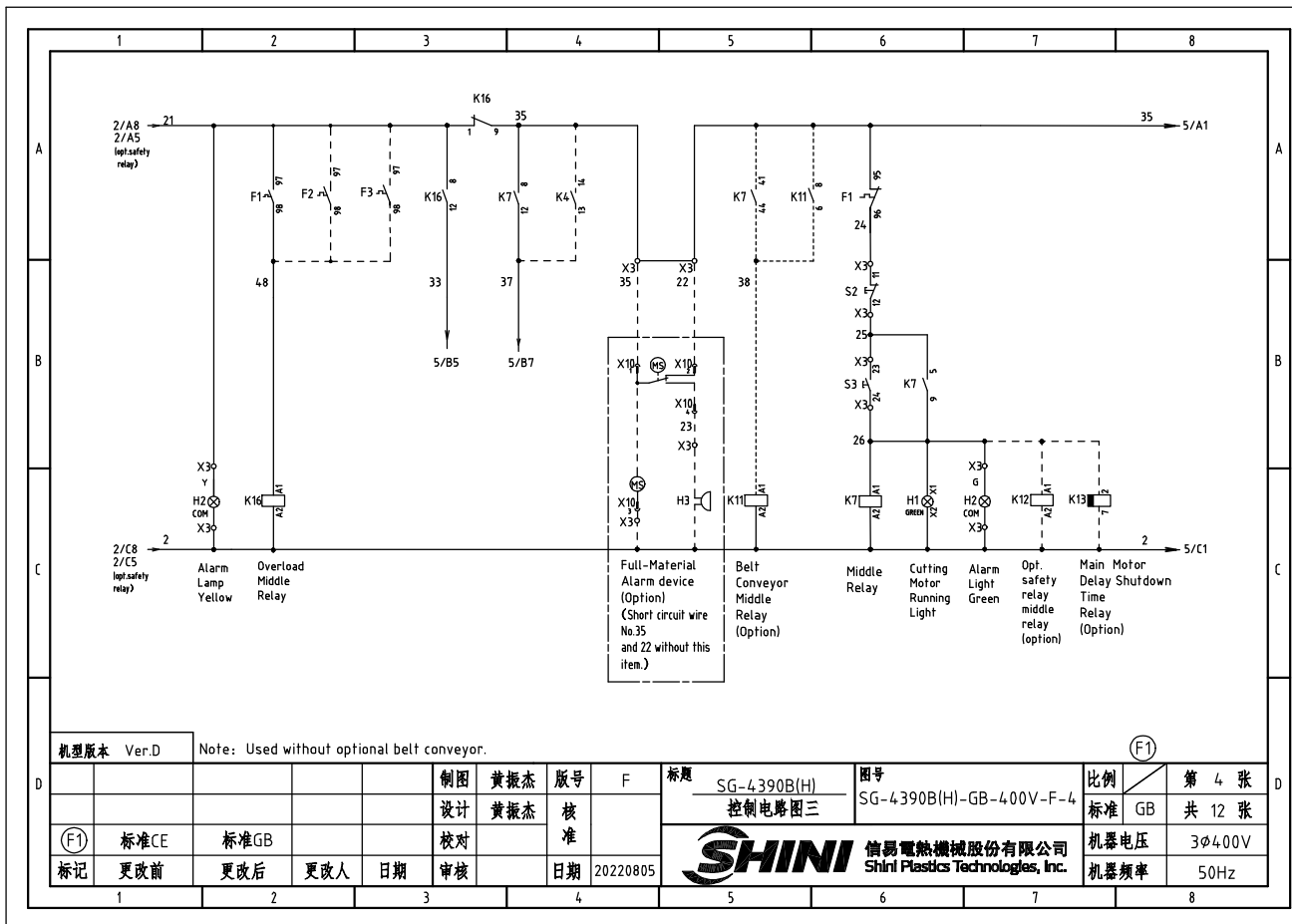
比例 第 3 张

标准 GB 共 12 张

机器电压 3φ400V

机器频率 50Hz



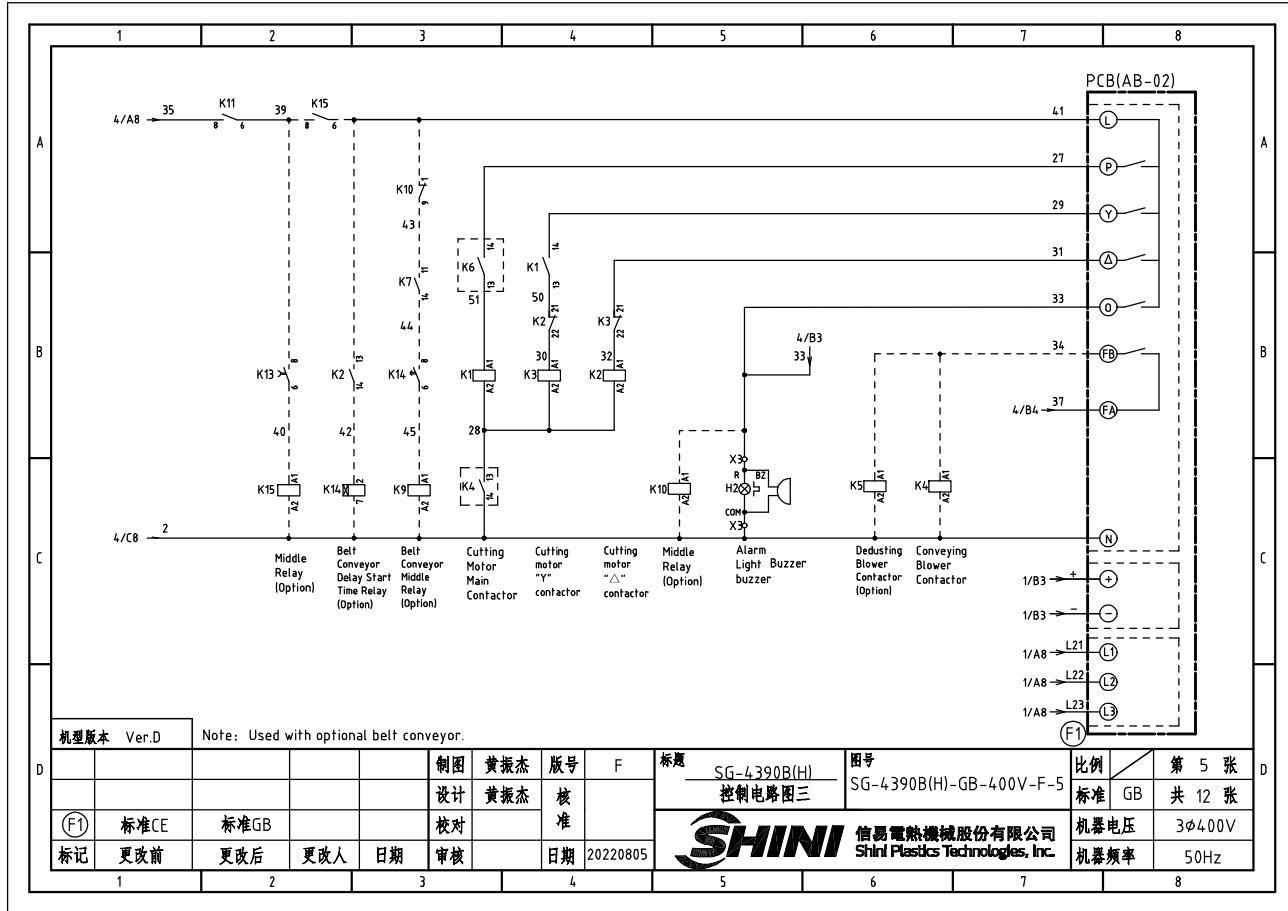


机型版本 Ver.D

Note: Used without optional belt conveyor.

(F1)

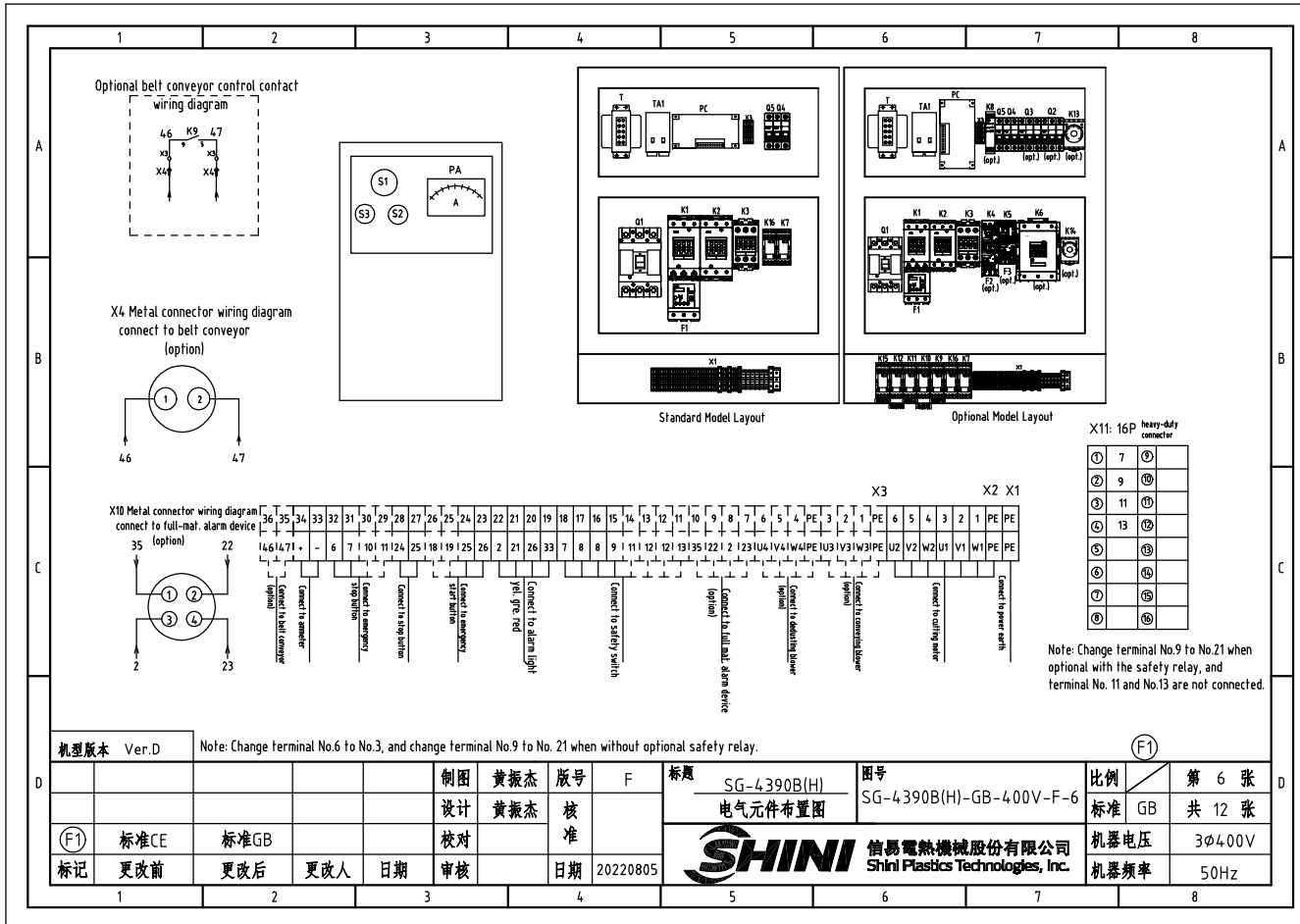
制图	黄振杰	版号	F	标题	SG-4390B(H)	图号	SG-4390B(H)-GB-4.00V-F-4	比例	第 4 张
设计	黄振杰	核 准		控制电路图三				标准	共 12 张
(F1) 标准	CE	标准	GB					机器电压	3φ400V
标记	更改前	更改后	更改人	日期	审核	日期	20220805	机器频率	50Hz



机型版本 Ver.D Note: Used with optional belt conveyor.

制图	黄振杰	版号	F	标题	SG-4390B(H) 控制电路图三	图号	SG-4390B(H)-GB-400V-F-5	比例	第 5 张
设计	黄振杰	核准						标准 GB	共 12 张
校对		核准						机器电压	3φ400V
标记	更改前	更改后	更改人	日期	审核	日期	20220805	机器频率	50Hz






X11: 16P heavy-duty connector

①	7	⑦
②	9	⑧
③	11	⑨
④	13	⑩
⑤		⑪
⑥		⑫
⑬		⑬
⑭		⑭
⑮		⑮
⑯		⑯

Note: Change terminal No.9 to No.21 when optional with the safety relay, and terminal No. 11 and No.13 are not connected.

机型版本 Ver.D		Note: Change terminal No.6 to No.3, and change terminal No.9 to No. 21 when without optional safety relay.				图号 SG-4390B(H)		图号 SG-4390B(H)-GB-400V-F-6		比例 第 6 张	
						标题 电气元件布置图		标准 GB		共 12 张	
① 标准CE		标准GB		制图 黄振杰		版号 F		SHINI 信易电热机械股份有限公司		机器电压 3φ400V	
标记 更改前		更改后		设计 黄振杰		核 准		Shini Plastics Technologies, Inc.		机器频率 50Hz	
		更改人		校对		日期 20220805					
		日期		审核							


1		2		3		4		5		6		7		8	
NO.	Symbol	Name	Manufacturer	Type	Specification	Number	Material number	Remark							
1	Q1	Breaker interlock	TECO	TAX-125L3125 3P	125A	1	YE40125301100		A						
2		Circuit breaker ext. handler	TECO	FB1R-CS1-C-D1*(TAX-125)	----	1	YE90111100300								
3	Q2	Circuit breaker	TECO	BM-63C/3P	10A	1	YE40301003000	(6)							
4	Q2	Circuit breaker	TECO	BM-63C/3P	32A	1	YE40303203000	(7)							
5	Q3	Circuit breaker	TECO	BM-63C/3P	6A	1	YE40300603000	(2)							
6	Q4	Circuit breaker	TECO	BM-63C/2003S 2P	3A	1	YE40200203000								
7	Q5	Circuit breaker	TECO	BM-63C/1010S 1P	10A	1	YE40101000100								
8	K1,K2	Contactor	SIEMENS	3RT5036-1AC20	50A 24VAC 50/60Hz	2	YE00503602600		B						
9		Auxiliary contact	SIEMENS	3RH5921-1CA10	1NO	1	YE00592110000								
10	K3	Contactor	SIEMENS	3RT5035-1AC20	40A 24VAC 50/60Hz	1	YE00503502600								
11	K3	Contactor	SIEMENS	3RT5036-1AC20	50A 24VAC 50/60Hz	1	YE00503602600	(8)							
12		Auxiliary contact	SIEMENS	3RH5921-1CA01	1NC	2	YE00592110100								
13		Auxiliary contactor	SIEMENS	3RH5921-1CA10	1NO	1	YE00592110000	(5)							
14		Auxiliary contactor	SIEMENS	3RH5921-1CA01	1NC	1	YE00592110100	(4)							
15	K4	Contactor	SIEMENS	3RT6016-1AB01	9A 24VAC 50/60Hz	1	YE00601602500	(6)	C						
16	K4	Contactor	SIEMENS	3RT6026-1AC20	25A 24VAC 50/60Hz	1	YE00602602600	(7)							
17		Auxiliary Contactor	SIEMENS	3RH6911-1HA11	1NC+1NO	1	YE00691100100	(6)							
18	K5	Contactor	SIEMENS	3RT6016-1AB02	9A 24VAC 50/60Hz	1	YE00601602600	(2)							
19	K6	Contactor	SIEMENS	3RT5046-1AC20	95A 24VAC 50/60Hz	1	YE00504602600	(4)							
20		Auxiliary contact	SIEMENS	3RH5921-1CA01	1NC	1	YE00592110100	(4)							
21		Auxiliary contact	SIEMENS	3RH5921-1CA10	1NO	1	YE00592110000	(4)							
22	K7	Middle relay	Honeywell	GR-2C-AC24V	24VAC	1	YE03022400300		D						
23	K7	Middle relay	Honeywell	GR-4C-AC24V	24VAC	1	YE03042400300	(5)							
24	K8	Safety realy	PILZ	PNOZ×2.8P	24V AC/DC	1	YE04023000000	(4)							
25	K9 K10 K11 K15	Middle relay	Honeywell	GR-2C-AC24V	24VAC	4	YE03022400300	(5)							
机型版本		Ver.D	Notes:(1)Materials not inthe control box;(2)Optional de-dust motor accessories;(3)Optional full mat. alarm ;(4)Optional safety relay; (5) Optional belt conveyor; (6) Optional conveying blower; (7)Optional large blower power; (F1)												
					制图	黄振杰	版号	F	标题	SG-4390B	图号	SG-4390B(H)-GB-400V-F-7	比例	第 7 张	
					设计	黄振杰	核		电气元件明细一			标准	GB	共 12 张	
(F1)		标准CE	标准GB		校对		准		 信易电热机械股份有限公司 Shini Electric Technologies, Inc.			机器的电压	3φ400V		
标记		更改前	更改后	更改人	日期	审核	日期	20220805				机器的频率	50Hz		
1		2		3		4		5		6		7		8	

1		2		3		4		5		6		7		8	
NO.	Symbol	Name		Manufacturer	Type		Specification		Number	Material number		Remark			
26	K12	Middle relay		Honeywell	GR-2C-AC24V		24VAC		1	YE030224.00300		(4)		A	
27	K13	Timer		YUYUN	TRF-N/3M		24VAC		1	YE860324.00000		(5)			
28	K14	Timer		YUYUN	TH3A-NAB 60S		24VAC		1	YE866024.00300		(5)			
29	F2	Thermal overload relay		SIEMENS	3RU6116-1FB0		3.5-5A		1	YE01160350000		(6)			
30	F2	Thermal overload relay		SIEMENS	3RU6126-4BB0		14-20A		1	YE0126014.00000		(7)			
31	F1	Thermal overload relay		SIEMENS	3RU5136-4GB0		36-45A		1	YE01612660000					
32	F3	Thermal overload relay		SIEMENS	3RU6116-1BB0		1.4-2A		1	YE0116014.00000		(2)			
33	K16	Middle relay		Honeywell	GR-2C-AC24V		24VAC		1	YE030224.00300				B	
34	S1	Emergency stop button		SCHNEIDER	XB2BS542C		400VAC		1	YE11254.2000000		(1)			
35		Contact block		SCHNEIDER	ZB2BE102C		1NC		1	YE00210203100		(1)(4)			
36	S2	Stop button		SCHNEIDER	XB2BA22C		400VAC		1	YE11222000000		(1)			
37	S3,H1	Start button (with light)		SCHNEIDER	XB2BW33B1C		24VAC		1	YE11233100000		(1)			
38		Contact block		SCHNEIDER	ZB2BE101C		1NO		1	YE00210103100		(1)(4)			
39	S4,S5	Safety switch		SCHMERSRC	AZ16-02ZVRK-14.76		230VAC		2	YE1614.7600000		(1)(4)			
40	S4,S5	Safety switch		SCHMERSRC	AZ15-02ZVRK-14.76		230VAC		2	YE1614.7600100		(1)			
41	H2	3-color alarm lamp		SHINI	red, gre.,yel.+buzzer		24VAC/DC 50/60Hz		1	BL900024.01520		(1)		C	
42	H3	Buzzer		TEND	EA-2		24VAC		1	YE84.24.0200000		(1)(3)			
43	MS	Mat. level motor		SHINI	SR-80		24VAC		1	YE158024.00100		(1)(3)			
44	T	Mutual transformer		----	IN=4.00V/4.15V OUT=24V		180VA		1	YE7004.0006700					
45	T	Mutual transformer		----	IN=4.00V/4.15V OUT=24V		350VA		1	YE7004.0009900		(4)			
46	TA1	Current mutual transformer		RATIO	RQT-35		100/5A		1	YE04.100500000					
47	PA	Ammeter		SFIM	DH-670		100/5A		1	YE25671000000		(1)			
48	PCB	Micro computer board/PCB		YUYUN	AB-02		24VAC		1	YE800224.00100					
49		Plastic shell SI-4T for circuit board		----	----		----		1	YR4.00004.00100					
50	TA2	Current mutual transformer		YUYUN	----		5-100A		1	----		with circuit board			
机型版本 Ver.D		Notes:(0)Materials not in the control box;(2)Optional de-dust motor accessories;(3)Optional full mat. alarm ;(4)Optional safety relay; (5) Optional belt conveyor; (6) Optional conveying blower; (7)Optional large blower power; (F1)													
				制图 黄振杰		版号 F		标题 SG-4390B		图号 SG-4390B(H)-GB-400V-F-8		比例 第 8 张		D	
				设计 黄振杰		核 准		电气元件明细二				标准 GB 共 12 张			
(F1) 标准CE		标准GB		校 对		核 准		 信易电热机械股份有限公司 Shini Plastic Technologies, Inc.		机器电压		3φ400V			
标记 更改前		更改后		日期		日期				20220805		机器频率		50Hz	
1		2		3		4		5		6		7		8	

1		2		3		4		5		6		7		8	
NO.	Symbol	Name		Manufacturer		Type		Specification		Number	Material number		Remark		
51	X1	Terminal board		Honeywell		GK16PE		16mm ² PE		1	YE60001603500				
52	X2	Terminal board		Honeywell		GK10		10mm ²		6	YE60001003200				
53		Terminal board		Honeywell		GK10PE		10mm ² PE		1	YE60001003500				
54	X3	Terminal board		Honeywell		SK2.5		2.5mm ²		16	YE60002503200				
55				Honeywell		SK2.5		2.5mm ²		5	YE60002503200		(6)		
56				Honeywell		GK2.5PE		2.5mm ² PE		1	YE60002503400		(6)/(7)		
57				Honeywell		SK2.5		2.5mm ²		5	YE60002503200		(2)		
58				Honeywell		GK2.5PE		2.5mm ² PE		1	YE60002503400		(2)		
59				Honeywell		SK2.5		2.5mm ²		4	YE60002503200		(3)		
60				Honeywell		SK2.5		2.5mm ²		2	YE60002503200		(5)		
61				Honeywell		SK2.5		2.5mm ²		8	YE60002503200		(4)		
62				Honeywell		SK6		6mm ²		3	YE60000603200		(7)		
63				Honeywell		SK6PE		6mm ² PE		1	YE60000603500		(7)		
64		Terminal fittings E/GK series		Honeywell		----		PCS		4	YE60000003900				
65	X4	Metal connector		SHINI		PLT-162-RR(plug)		2P		1	YE68016200100		(1)(5)		
66	X10	Metal connector		SHINI		PLT-254-PM		4P		1	YE68025400000		(1)(3)		
67		Metal connector		----		PLT-254-RF		4P		1	YE68025400100		(1)(3)		
68	X11	Heavy duty connector		HARTING		16P+PE(plug+socket)		16P		1	YE68001601300		(1)		
69	M1	Cutting motor		----		----		400V 50Hz 37kW		1	----		(1)		
70	M2	Conveying blower		----		----		400V 50Hz 3kW		1	----		(1)(6)		
71	M2	Conveying blower		----		----		400V 50Hz 7.5kW		1	----		(1)(7)		
72	M3	De-dust blower		----		----		400V 50Hz 0.75kW		1	----		(1)(2)		
机型版本 Ver.D Notes:1)Materials not in the control box;2)Optional de-dust motor accessories;3)Optional full mat. alarm ;4)Optional safety relay; 5) Optional bell conveyor; 6) Optional conveying blower; 7)Optional large blower power; (F1)															
D						制图 黄振杰 版号 F		标题 SG-4390B 电气元件明细三		图号 SG-4390B(H)-GB-400V-F-9		比例 第 9 张		D	
						设计 黄振杰 核 准						标准 GB 共 12 张			
(F1)		标准CE		标准GB		校对				SHINI 信易电热机械股份有限公司 Shini Plastics Technologies, Inc.		机器电压 3φ4.00V			
标记		更改前		更改后		更改人		日期		20220805		机器频率 50Hz			

1		2		3		4		5		6		7		8					
NO.	Symbol	Name		Manufacturer		Type		Specification		Number	Material number		Remark						
1	Q1	Breaker interlock		TECO		TAX-125L3125 3P		125A		1	YE40125301100								
2		Circuit breaker ext. handler		TECO		FB1R-CS1-C-D1x(TAX-125)		----		1	YE90111100300								
3	Q2	Circuit breaker		TECO		BM-63C/3P		10A		1	YE40301003000		(6)						
4	Q2	Circuit breaker		TECO		BM-63C/3P		32A		1	YE40303203000		(7)						
5	Q3	Circuit breaker		TECO		BM-63C/3P		6A		1	YE40300603000		(2)						
6	Q4	Circuit breaker		TECO		BM-63C/2003S 2P		3A		1	YE40200203000								
7	Q5	Circuit breaker		TECO		BM-63C/1010S 1P		10A		1	YE40101000100								
8	K1,K2	Contactor		SIEMENS		3RT5044-1AC20		65A 24VAC 50/60Hz		2	YE00504402600								
9		Auxiliary contact		SIEMENS		3RH5921-1CA10		1NO		1	YE00592110000								
10	K3	Contactor		SIEMENS		3RT5036-1AC20		50A 24VAC 50/60Hz		1	YE00503602600								
11		Auxiliary contact		SIEMENS		3RH5921-1CA01		1NC		2	YE00592110100								
12		Auxiliary contact		SIEMENS		3RH5921-1CA10		1NO		1	YE00592110000		(5)						
13		Auxiliary contact		SIEMENS		3RH5921-1CA01		1NC		1	YE00592110100		(4)						
14	K4	Contactor		SIEMENS		3RT6016-1AB01		9A 24VAC 50/60Hz		1	YE00601602500		(6)						
15	K4	Contactor		SIEMENS		3RT6026-1AC20		25A 24VAC 50/60Hz		1	YE00602602600		(7)						
16		Auxiliary contact		SIEMENS		3RH6911-1HA11		1NC+1NO		1	YE00691100100		(6)						
17	K5	Contactor		SIEMENS		3RT6016-1AB02		9A 24VAC 50/60Hz		1	YE00601602600		(2)						
18	K6	Contactor		SIEMENS		3RT5054-1AB36		115A 24V 50/60Hz		1	YE00505400900		(4)						
19		Auxiliary contact		SIEMENS		3RH5921-1CA10		1NO		1	YE00592110000		(4)						
20	K7	Middle relay		Honeywell		GR-2C-AC24V		24VAC		1	YE03022400300								
21	K7	Middle relay		Honeywell		GR-4C-AC24V		24VAC		1	YE03042400300		(5)						
22	K8	Safety relay		PILZ		PNOZ×2.8P		24V AC/DC		1	YE04023000000		(4)						
23	K9 K10 K11 K15	Middle relay		Honeywell		GR-2C-AC24V		24VAC		4	YE03022400300		(5)						
24	K12	Middle relay		Honeywell		GR-2C-AC24V		24VAC		1	YE03022400300		(4)						
25	K13	Timer		YUYUN		TRF-N/3M		24VAC		1	YE86032400000		(5)						
机型版本		Ver.D		Notes:1)Materials not in the control box;2)Optional de-dust motor accessories;3)Optional full mat. alarm ;4)Optional safety relay; (5) Optional belt conveyor; (6) Optional conveying blower; (7)Optional large blower power;(F1)															
制图		黄振杰		版号		F		标题		SG-4.390BH		图号		SG-4.390B(H)-GB-4.00V-F-10		比例		第 10 张	
设计		黄振杰		核准				电气元件明细一				标准		GB		共 12 张			
(F1) 标准CE		标准GB		校对						信易塑料机械股份有限公司 Shini Plastics Technologies, Inc.		机器电压		3φ4.00V					
标记 更改前		更改后		更改人		日期						20220805		机器频率		50Hz			
1		2		3		4		5		6		7		8					

1		2		3		4		5		6		7		8					
NO.	Symbol	Name		Manufacturer		Type		Specification		Number	Material number		Remark						
26	K14	Timer		YUYUN		TH3A-NAB 60S		24VAC		1	YE866024.00300		(5)						
27	F1	Thermal overload relay		SIEMENS		3RU5146-4JB0		45-63A		1	YE0151464.0000								
28	F2	Thermal overload relay		SIEMENS		3RU6126-4BB0		14-20A		1	YE0126014.0000		(7)						
29	F2	Thermal overload relay		SIEMENS		3RU6116-1FB0		3.5-5A		1	YE01160350000		(6)						
30	F3	Thermal overload relay		SIEMENS		3RU6116-1BB0		1.4-2A		1	YE0116014.0000		(2)						
31	K16	Middle relay		Honeywell		GR-2C-AC24V		24VAC		1	YE030224.00300								
32	S1	Emergency stop button		SCHNEIDER		XB2BS542C		400VAC		1	YE11254200000		(1)						
33		Contact block		SCHNEIDER		ZB2BE102C		1NC		1	YE00210203100		(1)(4)						
34	S2	Stop button		SCHNEIDER		XB2BA22C		400VAC		1	YE11222000000		(1)						
35	S3,H1	Start button (with light)		SCHNEIDER		XB2BW33B1C		24VAC		1	YE11233100000		(1)						
36		Contact block		SCHNEIDER		ZB2BE101C		1NO		1	YE00210103100		(1)(4)						
37	S4,S5	Safety switch		SCHMERSRC		AZ15-02ZVRK-1476		230VAC		2	YE16147600100		(1)						
38	S4,S5	Safety switch		SCHMERSRC		AZ16-02ZVRK-1476		230VAC		2	YE16147600000		(1)(4)						
39	H2	3-color alarm lamp		SHINI		red, gre.,yel,+buzzer		24VAC/DC 50/60Hz		1	BL90002401520		(1)						
40	H3	Buzzer		TEND		EA-2		24VAC		1	YE84240200000		(1)(3)						
41	MS	Maf.level motor		SHINI		SR-80		24VAC		1	YE158024.00100		(1)(3)						
42	T	Mutual transformer		----		IN=400V/4.15V OUT=24V		230VA		1	YE7004.0009800								
43	T	Mutual transformer		----		IN=400V/4.15V OUT=24V		350VA		1	YE7004.0009900		(4)						
44	TA1	Current mutual transformer		RATIO		RCT-35		150/5A		1	YE04.150500000								
45	PA	Ammeter		SFIM		DH-670		150/5A		1	YE25671500000		(1)						
46	PCB	Microcomputer board/PCB		YUYUN		AB-02		24VAC		1	YE800224.00100								
47		Plastic shell SI-4T for circuit board		----		----		----		1	YR4.00004.00100								
48	TA2	Current mutual transformer		YUYUN		----		5-100A		1	----		with circuit board						
49	X1	Terminal board		Honeywell		GK16PE		16mm ² PE		1	YE60001603500								
50	X2	Terminal board		Honeywell		GK16		16mm ²		6	YE60001603200								
机型版本		Ver.D		Notes:(1)Materials not inthe control box;(2)Optional de-dust motor accessories;(3)Optional full maf. alarm ;(4)Optional safety relay; (5) Optional belt conveyor; (6) Optional conveying blower; (7)Optional large blower power;(F1)															
制图		黄振杰		版号		F		标题		SG-4390BH		图号		SG-4390B(H)-GB-400V-F-11		比例		第 11 张	
设计		黄振杰		核				电气元件明细二				标准		GB		共 12 张			
(F1) 标准CE		标准GB		校对		核		SHINI		信易塑料机械股份有限公司		机器电压		3φ400V					
标记		更改前		更改后		更改人		日期		20220805		Shini Plastics Technologies, Inc.		机器频率		50Hz			
1		2		3		4		5		6		7		8					

1	2	3	4	5	6	7	8	
NO.	Symbol	Name	Manufacturer	Type	Specification	Number	Material number	Remark
51		Terminal board	Honeywell	GK16PE	16mm ² PE	1	YE60001603500	
52	X3	Terminal board	Honeywell	SK2.5	2.5mm ²	16	YE60002503200	
53			Honeywell	SK2.5	2.5mm ²	5	YE60002503200	(6)
54			Honeywell	GK2.5PE	2.5mm ² PE	1	YE60002503400	(6)/(7)
55			Honeywell	SK2.5	2.5mm ²	5	YE60002503200	(2)
56			Honeywell	GK2.5PE	2.5mm ² PE	1	YE60002503400	(2)
57			Honeywell	SK2.5	2.5mm ²	4	YE60002503200	(3)
58			Honeywell	SK2.5	2.5mm ²	2	YE60002503200	(5)
59			Honeywell	SK2.5	2.5mm ²	8	YE60002503200	(4)
60			Honeywell	SK6	6mm ²	3	YE60000603200	(7)
61			Honeywell	SK6PE	6mm ² PE	1	YE60000603500	(7)
62		Terminal fittings E/GK series	Honeywell	----	PCS	4	YE60000003900	
63	X4	Metal connector	SHINI	PLT-162-RR(plug)	2P	1	YE68016200100	(1)(5)
64	X10	Metal connector	SHINI	PLT-254-PM	4P	1	YE68025400000	(1)(3)
65		Metal connector	----	PLT-254-RF	4P	1	YE68025400100	(1)(3)
66	X11	Heavy duty connector	HARTING	16P+PE(plug+socket)	16P	1	YE68001601300	(1)
67	M1	Granulating motor	----	----	400V 50Hz 4.5kW	1	----	(1)
68	M2	Conveying blower	----	----	400V 50Hz 3kW	1	----	(1)(6)
69	M2	Conveying blower	----	----	400V 50Hz 7.5kW	1	----	(1)(7)
70	M3	Dedusting blower	----	----	400V 50Hz 0.75kW	1	----	(1)(2)
机型版本 Ver.D Notes:(1)Materials not in the control box;(2)Optional de-dust motor accessories;(3)Optional full mat. alarm ;(4)Optional safety relay; (5) Optional belt conveyor; (6) Optional conveying blower; (7)Optional large blower power; (F1)								
制图 黄振杰 版号 F 设计 黄振杰 核 校对 校 审核 日期 20220805		标题 SG-4390BH 电气元件明细三		图号 SG-4390B(H)-GB-400V-F-12		比例 第 12 张 标准 GB 共 12 张		
(F1) 标准CE 标准GB 标记 更改前 更改后 更改人 日期		机器电压 3φ400V 机器频率 50Hz		 信易電機機械股份有限公司 Shini Plastics Technologies, Inc.				
1	2	3	4	5	6	7	8	