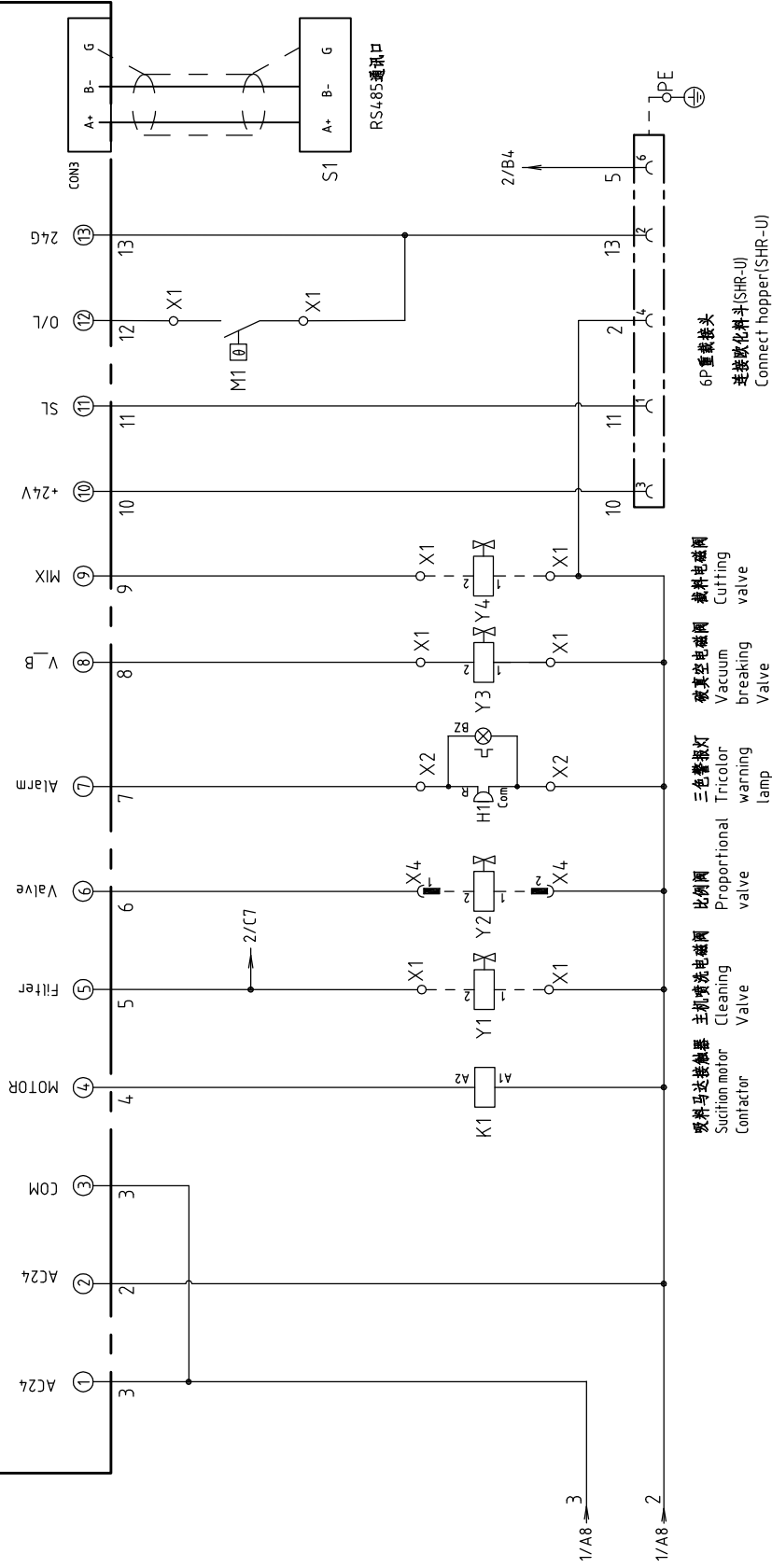


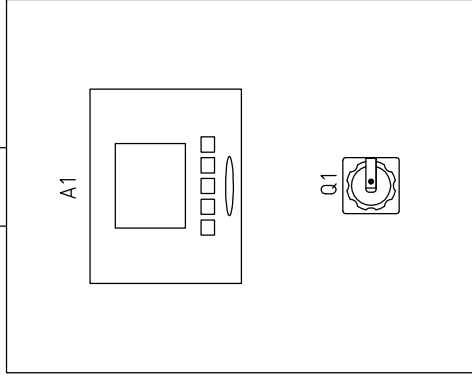
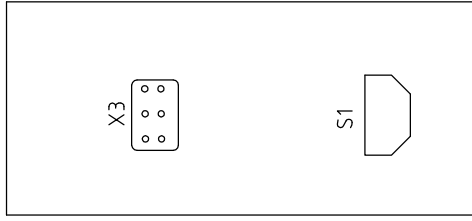
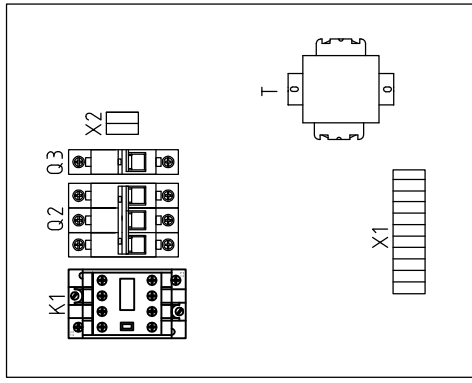
Ver.C		Title		Drawing NO.		Scale		Page	
		SAL-1HP-UGP		SAL-1HP-UGP-CE-230V-A-1		Standard		Page 1	
		Version		SHINI		Voltage		Totally 4 Pages	
		Approved by		信易电热机械股份有限公司 Shini Plastics Technologies, Inc.		Frequency		400V	
		Date						50Hz	
		Proofread by							
		Checked by							
		Modify date							
		After modification							
		Before modification							
1		2		3		4		5	
6		7		8		9		10	

# CS-23



Ver.C	Title				Drawing NO.				Scale		Page		
	SAL-1HP-UGP				SAL-1HP-UGP-CE-400V-D-2				Standard		CE		2
Control Circuit Diagram										Voltage		230V	
SHINI										Frequency		50HZ	
信易电热机械股份有限公司 Shini Plastics Technologies, Inc.										Totally		4	
SHINI										Pages		8	
Mark	Before modification	Modified by	Modify date	Checked by	Date	Approved by	Version	D	Version	4	4	8	

Note: M1 is the internal thermal protector of the suction blower



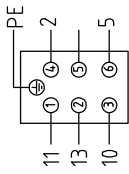
A

B

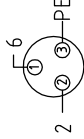
C

D

X3(料斗与主机互锁重载接头)



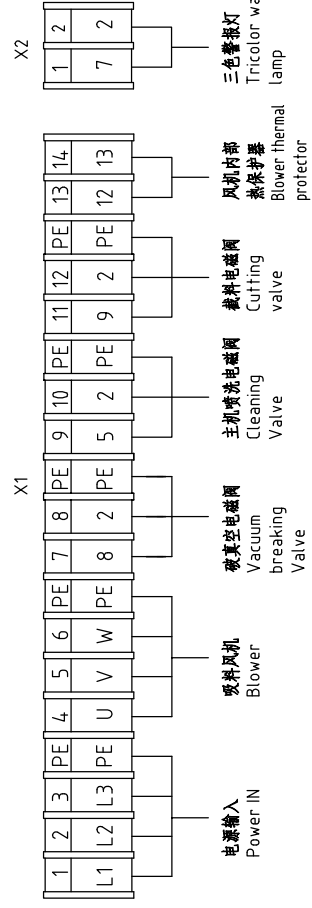
X4(3P防水连接器)



牌号	功能	描述
1	料位信号	料位信号
2	GND	接料位开关
3	24V+	
4	24VAC(COM)	电磁阀公共端
5	---	---
6	喷洗电磁阀	24VAC电磁阀

接料比例阀

Connect Proportional Valve



X1

X2

Ver.C

Ver.C	Version	Scale	Page
Electrical Components Layout	Approved by	Standard	Totally
SAL-1HP-UGP	Date	Voltage	4
Electrical Components Layout	Checked by	Frequency	4
SAL-1HP-UGP-CE-400V-D-3	Modify date	400V	50Hz
SHINI 信易电热机械股份有限公司	Modified by		
SHINI 信易电热机械股份有限公司	After modification		
1	3	6	8

1

2

3

4

5

6

7

8

1	2	3	4	5	6	7	8	
NO.	Symbol	Name	Manufacturer	Type	Specification	Number	Material number	Remark
1	Q1	Main Switch	EATON	T0-2-1/EA/SVB	20A	1	YE10021160000	
2	Q2	Circuit-Breakers	TECO	BM-63C/3010S	10A	1	YE40301003000	
3	Q3	Circuit-Breakers	TECO	BM-63C/1003S	3A 1P	1	YE40100203000	
4	K1	Contactors	schneider	LC1-D09B7C	24VAC/DC	1	YE00972400000	
5	A1	Controllor	YUYUN	CS-23(communication)	24VAC/DC	1	YE80232402200	
6	S1	RS-485	YUYUN	---	Dsub-9pin	1	YE90048501200	
7		RS485(SAL-700G-A-19)0	BINCHENG	----	----	1	YR40048500000	
8	H1	Tricolor warning lamp	SHINI	Red yellow green+buzzer	24VAC/DC	1	BL90000011520	
9	T	Transformer	JIUXIN	IN=400V/415V OUT=24V	50VA	1	YE70040006400	
10	M	Blower	SHINI	RB-310	1HP 400V 50HZ	1	---	(1)
11	Y1 Y2 Y3 Y4	Solenoid Vavle	AIRTAC	---	24VAC	4	---	(1)
12		Terminal fixed fittings E/GK	HONEYWELL	---	PCS	4	YE60000003900	
13	X1 X2	Terminal Board	HONEYWELL	SK2.5	2.5mm <sup>2</sup>	16	YE60002503200	
14		Terminal Board	HONEYWELL	GK2.5PE	2.5PE	5	YE60002503400	
15	X3	Heavy duty connectors	HARTING	Han E-6F(Female)	6P+PE	1	YE68000601300	
16	X4	Waterproof linker	AOPULO	AQF16K3Z(Female)	250V 3P	1	YE62163000100	
C								
D								
				Title		Drawing NO.		Page
				SAL-1HP-UGP		SAL-1HP-UGP-CE-400V-D-4		4
				Electrical Components List 1		CE		4
				Version		Approved by		4
				Designer		Date		4
				Proofread by		20190701		4
				Checked by		Date		4
				Modified by		Modify date		4
				After modification		Voltage		400V
				Before modification		Frequency		50HZ
				Mark		Totally		4
				1		7		8

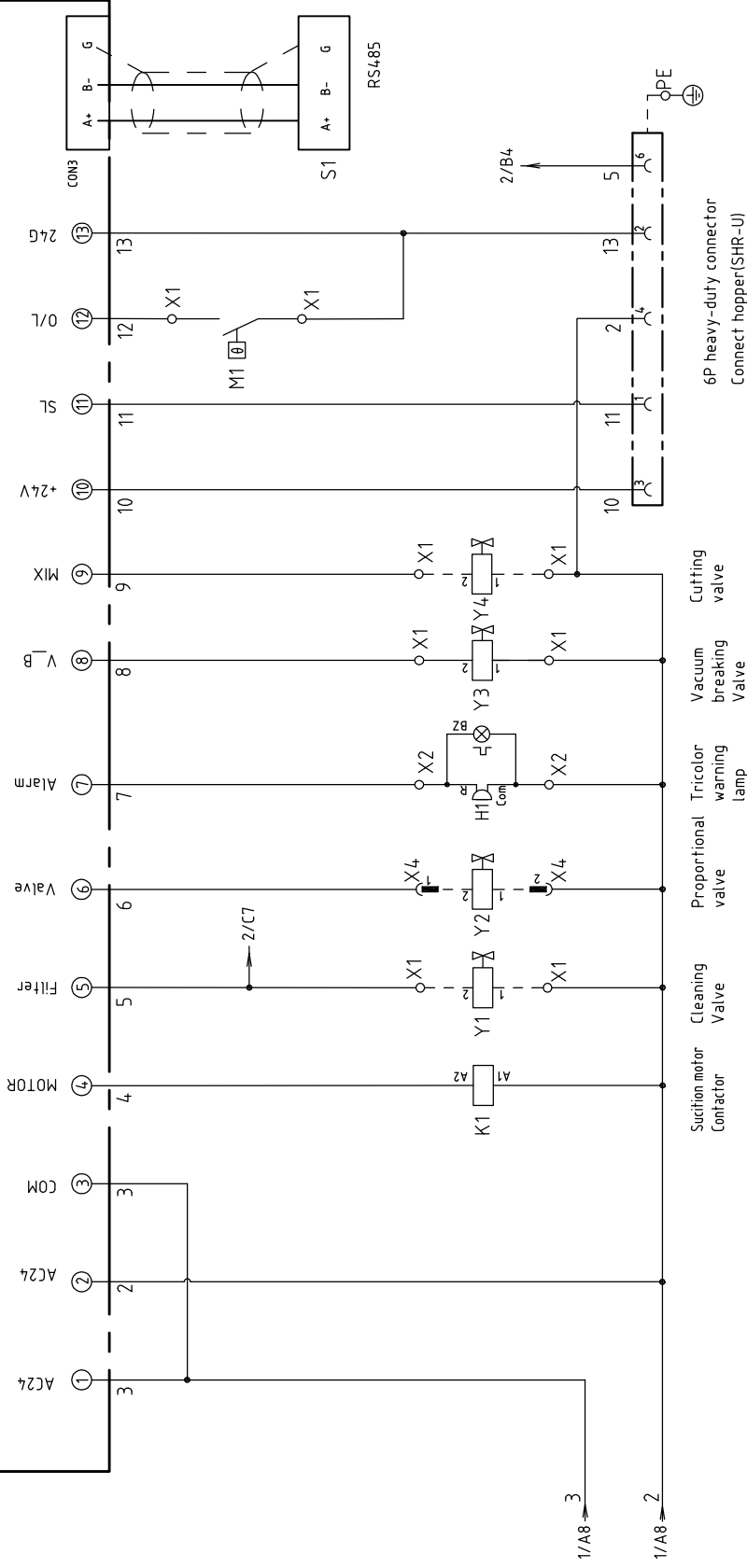


信易電熱機械股份有限公司  
Shini Plastics Technologies, Inc.





# CS-23



Ver.C

Mark	Before modification	Modified by	Modify date	Checked by	Date	Approved by	Version	D	Title	SAL-2HP-UGP Control Circuit Diagram	Scale	Standard	CE	Page	2	Totally	4	Pages	
					20190701														

Note: M1 is the internal thermal protector of the suction blower

Drawing NO.

SAL-2HP-UGP-CE-400V-D-2



信易電熱機械股份有限公司  
Shini Plastics Technologies, Inc.

Voltage 400V  
Frequency 50HZ



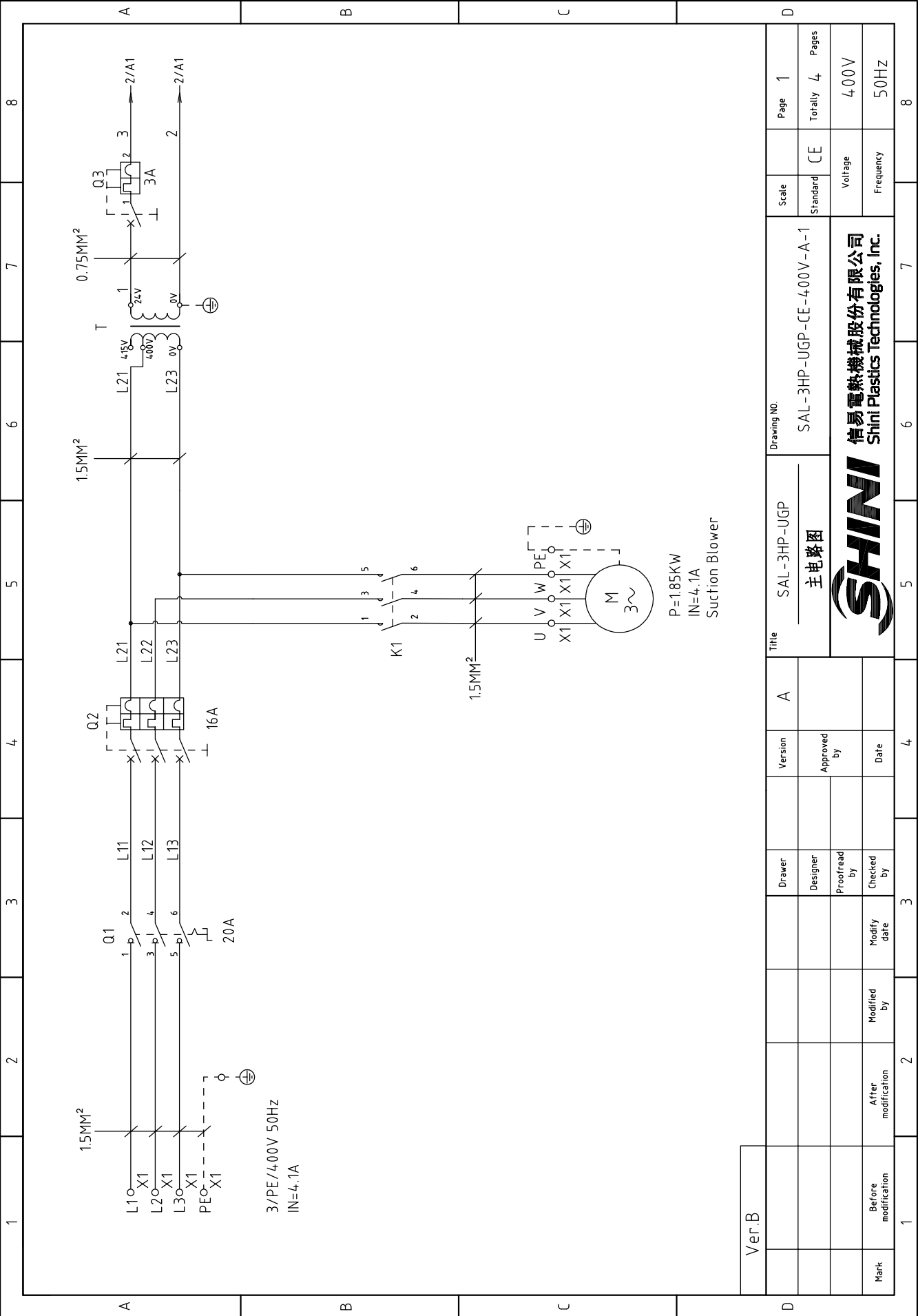




1	2		3	4	5	6	7	8
No.	Symbol	Name			Specification	Number	Material number	Remark
1		Solenoid valve cable SHR-S(1.3M)			BA	1	BE51010300150	(1)
2		Motor cable 1.5mm <sup>2</sup> × 4C × 0.75mm <sup>2</sup> × 2C × 0.72M			BA	1	BE50152400950	(1)
3	A	Guide rail H66-TRx1M(Color-zinc)			BA	0.32	YE90660100000	
4		Cross socket head tapping screw GB6560 M4×6			PCS	9	YW670406000600	
5		Flat washer A grade GB/T97014(4.5×9×0.8)-Longzine			PCS	11	YW66041000000	
6		Cross socket head tapping screw GB/T9074.8 M3×6			PCS	2	YW63030601500	
7		Communication cable RVVYP 2×0.5mm <sup>2</sup> × 0.6m(SHD&SHD-U&SAL)			BA	1	BE50020500110	
8		Cable 1.5×1C black/black/soft			M	20	YE50015100000	
9		Labeling sleeve 1.5MM(100m/reel)			RL	0.002	YR70151000000	
10		Tubular terminal E2508			PCS	14	YE60250840000	
11	B	Labeling sleeve 2.5MM(100m/reel)			RL	0.5	YR70002540200	
12		Cable 0.75×1C×200M red			M	11	YE50750100000	
13		Cable 1.5×1C×200M Yellow green			M	0.5	YE50125140300	
14		Tubular terminal E1008			PCS	25	YE60100800200	
15		Terminal 1.25-3Y(1000pcs/bag)			PAC	0.004	YE60125340000	
16		Terminal 1-4Y(1000pcs/bag)			PAC	0.005	YE60100440200	
17		Terminal 2-4Y (1000pcs/bag)			PAC	0.13	YE60200440100	
18		Terminal 1.25-4Y insert (1000pcs/bag)			PAC	0.004	YE60125440000	
19		Terminal sleeve/insert 6.3(2000pcs/bag)			PAC	0.02	YE60006340000	
20		Wire bundle 2.5×100MM(1000 pes/bag)			PAC	0.03	YR90310000000	
21		Cable 1.5×4C×4M			BA	1	BE51150403150	(1)
Ver.C								
Note: (1) Means not part of control box.								
D		Title		Drawing NO.		Scale		Page
		SAL-2HP-UGP		SAL-2HP-UGP-CE-400V-D-4/1		Standard		4 / 1
		Electrical Components List 2				CE		Totally 4 Pages
Mark		Before modification		Modified by		Modified date		Voltage
1				20190701				400V
		After modification		Modify date		Frequency		50HZ
								8



信易電熱機械股份有限公司  
Shini Plastics Technologies, Inc.

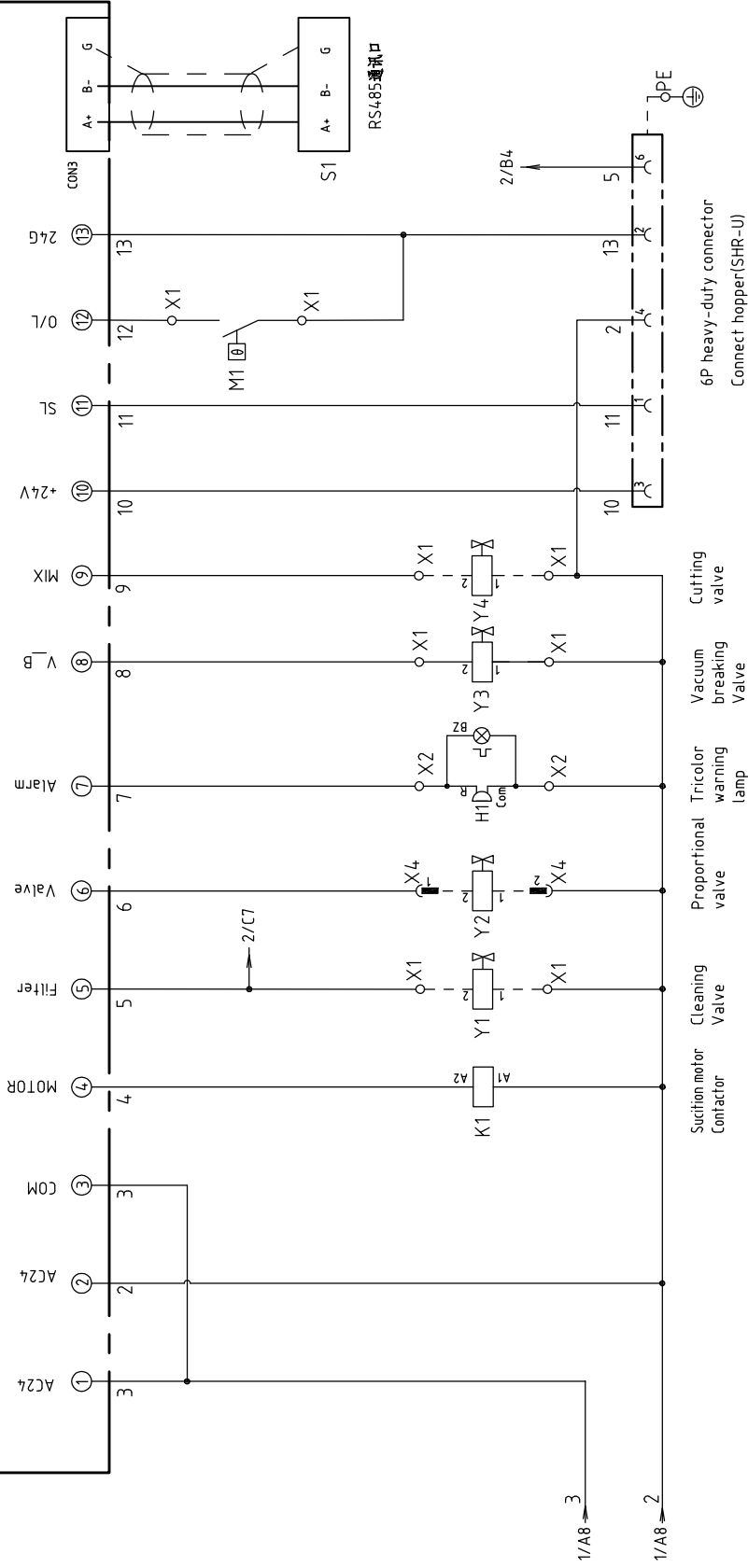


Ver.B

Ver.B			Title		Drawing No.		Scale	Page
	SAL-3HP-UGP		SAL-3HP-UGP-CE-400V-A-1		Standard		CE	1
	Version		A		Approved by		Voltage	
	Designer		Date		Checked by		Frequency	
	Proofread by		Modify date		Modified by		400V	
	Checked by		Date		After modification		50Hz	
Mark	Before modification	Modified by	Modify date	Checked by	Date	Approved by		Pages
1	2	3	4	5	6	7	8	Totally 4



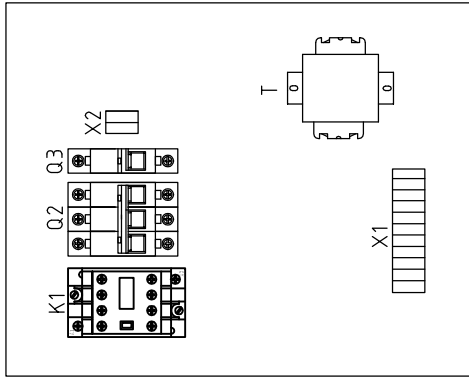
# CS-23



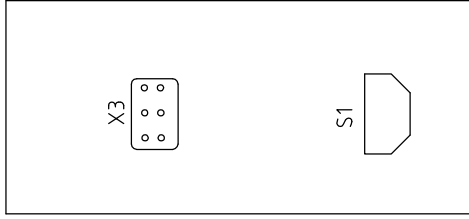
Ver.B		Title		Scale		Page	
		Control Circuit Diagram		Standard		2	
		SAL-3HP-UGP-CE-400V-A-2		CE		Totally 4	
		Voltage		Frequency		Pages	
		400V		50HZ		400V	
		50HZ				50HZ	
Mark		Before modification		Modified by		Modify date	
1		2		3		4	
5		6		7		8	

Note: M1 is the internal thermal protector of the suction fan

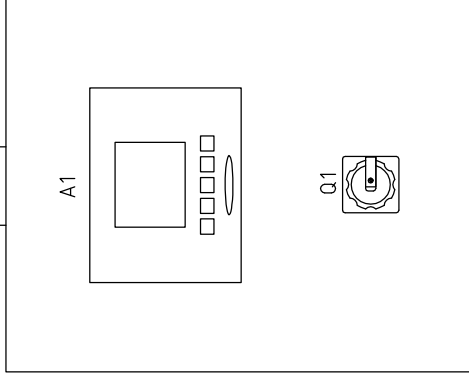




X3(Heavy duty connector for hopper and main machine)



X4(3P Waterproof connector)



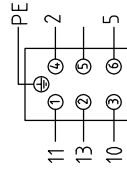
A

B

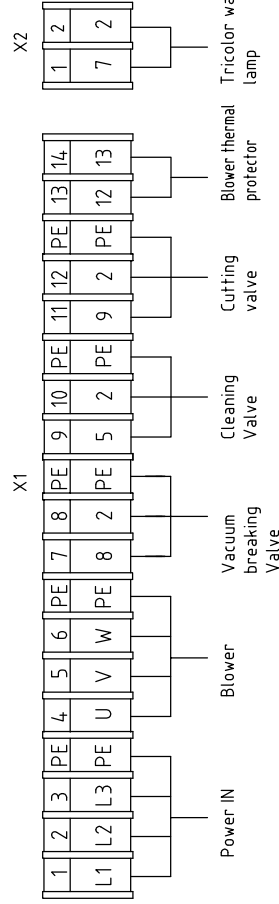
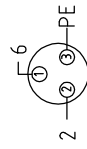
C

D

Subcircuit	Material/level	Function	Description
1	signal	Connect to material	Connect to material
2	GND	level switch	level switch
3	24V+	Common terminal of solenoid valve	Common terminal of solenoid valve
4	24VAC(COM)	24VAC solenoid valve	24VAC solenoid valve
5	---	Solenoid valve	Solenoid valve
6	Spray solenoid valve		



Connect Proportional Valve

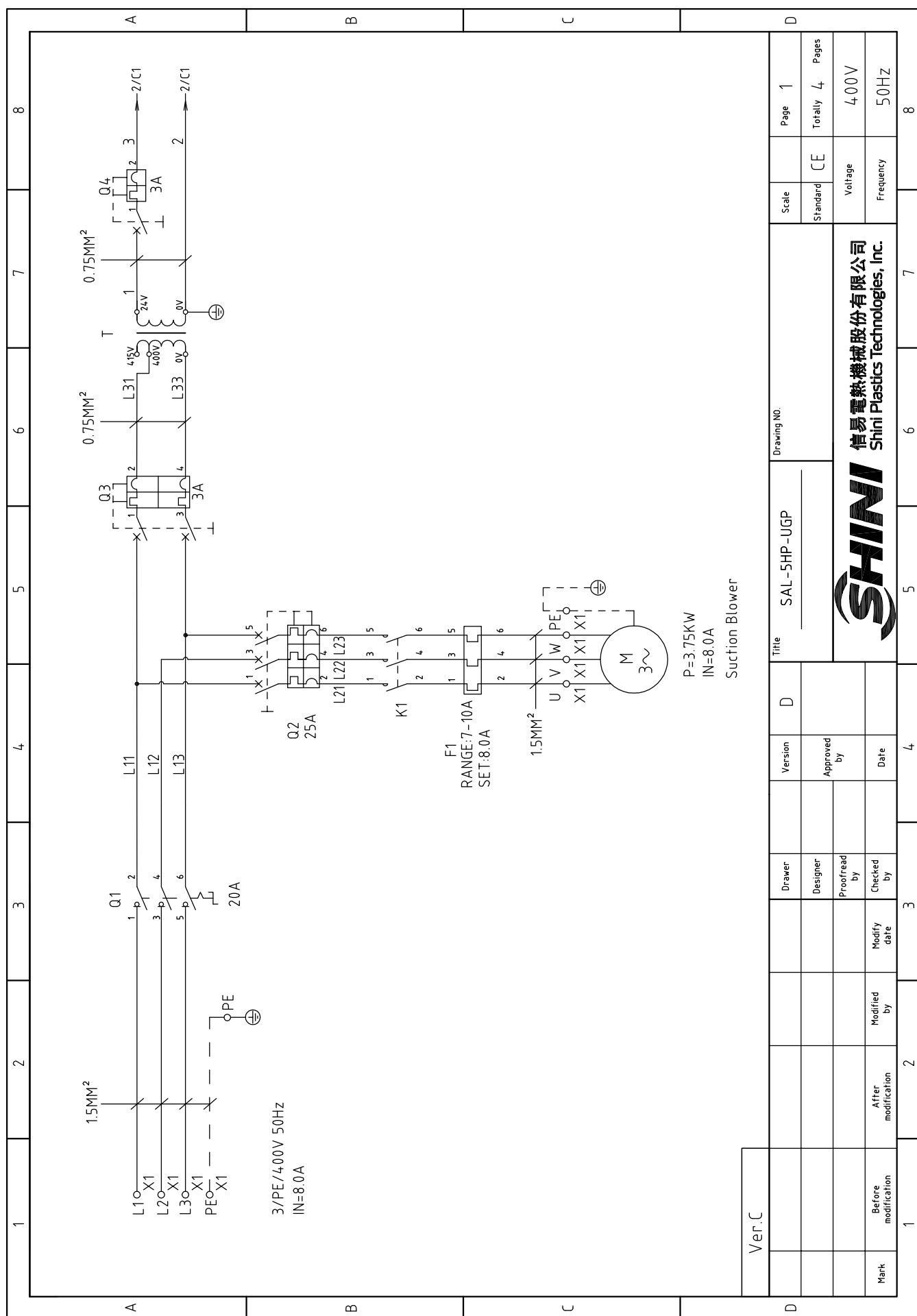


Ver.B

Title		Drawing NO.		Scale	Page
Electrical Components Layout		SAL-3HP-UGP-CE-400V-A-3		Standard	3
Version		Standard		Page 3	
Approved by		CE		Totally 4	
Date		Voltage		Pages	
Modified by		400V		4	
Modify date		Frequency		50HZ	
Mark		SHINI		8	
Before modification		信易電熱機械股份有限公司			
After modification		Shini Plastics Technologies, Inc.			

1	2		3	4	5	6	7	8
NO	Symbol	Name	Manufacturer	Type	Specification	Number	Material number	Remark
1	Q1	Main Switch	EATON	T0-2-1/EA/SVB	20A	1	YE10021160000	
2	Q2	Circuit-Breakers	TECO	BM-63C/3010S	10A	1	YE40301003000	
3	Q3	Circuit-Breakers	CS-23(communication)	BM-63C/1003S	3A 1P	1	YE40100203000	
4	K1	Contactors	schneider	LC1-D09B7C	24VAC/DC	1	YE00972400000	
5	A1	Controllor	YUYUN	CS-23(communication)	24VAC/DC	1	YE80232402200	
6	S1	RS-485	Red yellow green+buzzer	---	Dsub-9pin	1	YE90048501200	
7		RS485(SAL-700G-A-19)0	BINCHENG	----	----	1	YR40048500000	
8	H1	Tricolor warning lamp	SHINI	Red yellow green+buzzer	24VAC/DC	1	BL90000011520	
9	T	Transformer	JIUXIN	IN=400V/4.15V OUT=24V	50VA	1	YE70040006400	
10	M	Blower	SHINI	RB-430	3HP 400V 50HZ	1	---	(1)
11	Y1 Y2 Y3 Y4	Solenoid Vavle	AIRTAC	---	24VAC	4	---	(1)
12		Terminal fixed fittings E/GK	HONEYWELL	---	PCS	4	YE60000003900	
13	X1 X2	Terminal Board	HONEYWELL	SK2.5	2.5mm <sup>2</sup>	12	YE60002503200	
14		Terminal Board	HONEYWELL	GK2.5PE	2.5PE	3	YE60002503400	
15	X3	Heavy duty connectors	HARTING	Han E-6F(母)	6P+PE	1	YE68000601300	
16	X4	Waterproof linker	AOPULO	AQF16K3Z(母)	250V 3P	1	YE62163000100	
C								
D								
Ver.B								
Note: (1) Means not part of control box.								
				Version	A	Title		Scale
				Designer		SAL-3HP-UGP		Standard
				Approved by		Electrical Components List 1		CE
				Proofread by		SAL-3HP-UGP-CE-280V-A-4		Voltage
				Checked by		SHINI		Frequency
				Modify date	20190701	信易電熱機械股份有限公司 Shini Plastics Technologies, Inc.		400V
Mark	Before modification	After modification	Modified by	Date	20190701	SHINI		50HZ
1	2	3	4	5	6	7	8	8
				Drawing NO.		Page	4	
				SAL-3HP-UGP-CE-280V-A-4		Totally	4	
				SHINI		400V		
				Shini Plastics Technologies, Inc.		50HZ		

1	2	3	4	5	6	7	8
NO.	Symbol	Name	Specification	Number	Material number	Remark	
1		Solenoid valve cable SHR-S(13M)	BA	1	BE51010300150	(1)	
2		Motor cable 1.5mm <sup>2</sup> x4C x0.75mm <sup>2</sup> x2C x0.72M	BA	1	BE501524400950	(1)	
3		Guide rail H66- TRx1M(Color-zinc)	BA	0.32	YE90660100000		A
4		Cross socket head tapping screw GB6560 M4x6	PCS	9	YW67040600600		
5		Flat washer A grade GB/T97014(4.5x9x0.8)- Longzine	PCS	11	YW66041000000		
6		Cross socket head tapping screw GB/T9074.8 M3x6	PCS	2	YW63030601500		
7		Communication cable RVVYP 2x0.5mm <sup>2</sup> x0.6m(SHD&SHD-U&SAL)	BA	1	BE50020500110		
8		Cable 1.5x1C black/black/soft	M	20	YE50015100000		
9		Labeling sleeve 1.5MM(100m/reel)	RL	0.002	YR70151000000		
10		Tubular terminal E2508	PCS	14	YE60250840000		
11		Labeling sleeve 2.5MM(100m/reel)	RL	0.5	YR70002540200		B
12		Cable 0.75x1C x200M red	M	11	YE50750100000		
13		Cable 1.5x1C x200M Yellow green	M	0.5	YE50125140300		
14		Tubular terminal E1008	PCS	25	YE60100800200		
15		Terminal 1.25-3Y(1000pcs/bag)	PAC	0.004	YE60125340000		
16		Terminal 1-4Y(1000pcs/bag)	PAC	0.005	YE60100440200		
17		Terminal 2-4Y (1000pcs/bag)	PAC	0.13	YE60200440100		
18		Terminal 1.25-4Y insert (1000pcs/bag)	PAC	0.004	YE60125440000		
19		Terminal sleeve/insert 6.3(2000pcs/bag)	PAC	0.02	YE60006340000		C
20		Wire bundle 2.5x100MM(1000 pes/bag)	PAC	0.03	YR90310000000		
21		Cable 1.5x4Cx4M	BA	1	BE51150403150	(1)	
Ver.B Note: (1) Means not part of control box.							
Title			Drawing NO.			Page	
SAL-3HP-UGP			SAL-3HP-UGP-CE-4.00V-A-4/1			4/1	
Electrical Components List 2			Standard			CE	
SHINI			Voltage			400V	
信易電熱機械股份有限公司 Shini Plastics Technologies, Inc.			Frequency			50HZ	
Mark	Before modification	Modified by	Modify date	Checked by	Date	20190701	
1	2	3	4	5	6	7	8



Ver.C			
Mark	Before modification	Modified by	Modify date

Version	D	Title		SAL-5HP-UGP	Drawing NO.	
Designer		Approved by				
Proofread by		Checked by				
Modified by						

Scale	CE	Page	1
Standard	CE	Totally	4
Voltage	400V	Pages	
Frequency	50HZ		



1 2 3 4 5 6 7 8

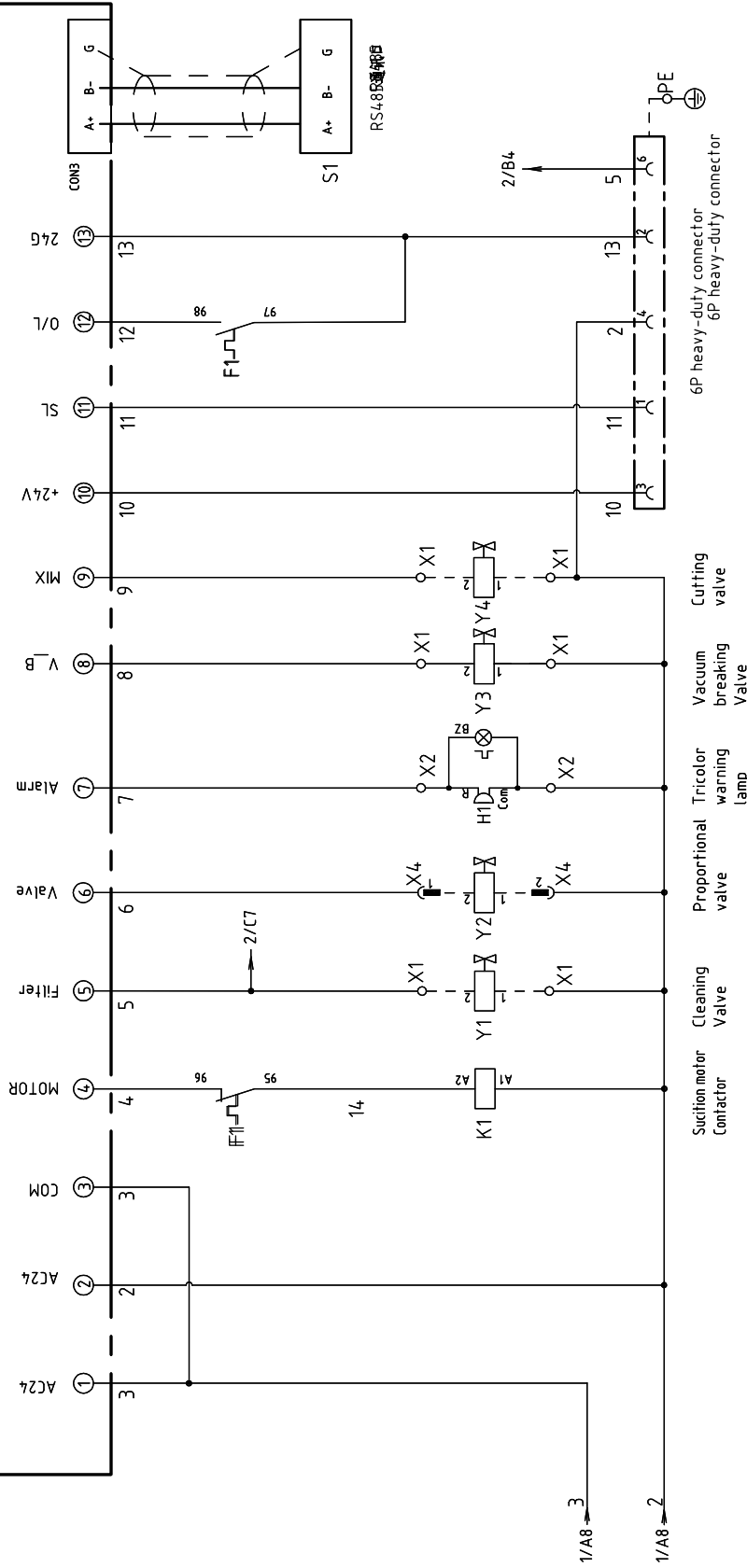
A B C D

8

8



# CS-23



Ver.C							
1	2	3	4	5	6	7	8
A		B		C		D	
Title				Drawing No.			
SAL-5HP-UGP				SAL-5HP-UGP-CE-400V-D-2			
Control Circuit Diagram				CE			
Version				Voltage			
D				400V			
Approved by				Frequency			
				50HZ			
Drawer				Page			
				2			
Designer				Totally			
				4			
Proofread by				Pages			
Checked by				Mark			
				Before modification			
Modify date				After modification			
1				2			
3				4			
5				6			
7				8			



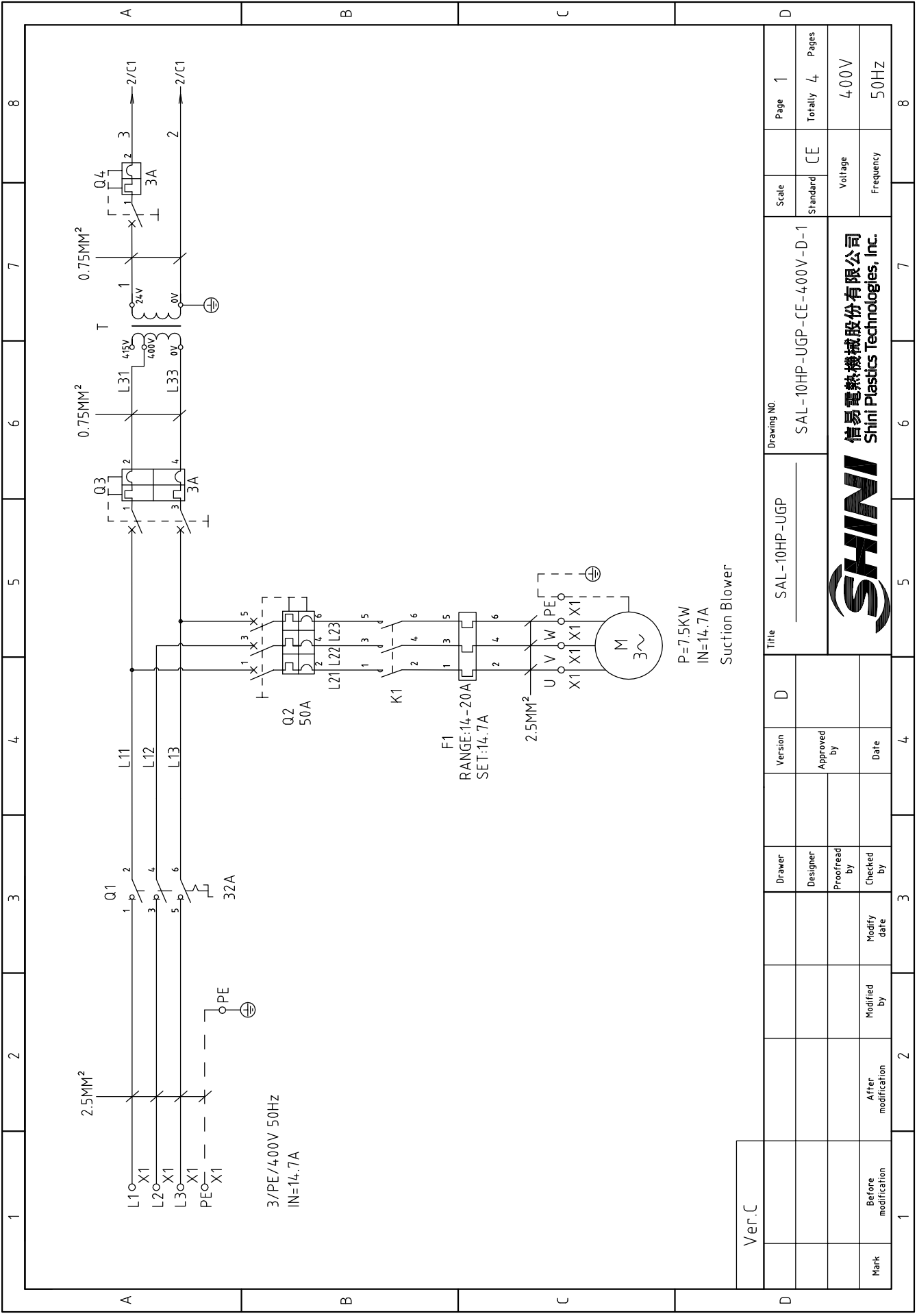




1		2		3		4		5		6		7		8	
NO.	Symbol	Name	Specification	Number	Material number	Remark									
1		Cable 2.5x4Cx4M	BA	1	BE51150403150	(1)									
2		Solenoid valve cable SHR-S(13M)	BA	1	BE51010300150	(1)									
3	A	Suction Blower Cable 1.5MM2x4C(3 black 1 yellow blue)+0.75MM2x2Cx0.72M	BA	1	BE50152400950	(1)									
4		Guide rail H66-TRx1M(Color-zinc)	BA	0.32	YE90660100000										
5		Cross socket head tapping screw GB6560 M4x6	PCS	9	YW67040600600										
6		Flat washer A grade GB/T90714(4.5x9x0.8)- Longzine	PCS	11	YW66041000000										
7		Cross socket head tapping screw GB/T9074.8 M3x6	PCS	2	YW63030601500										
8		Communication cable RYVYP 2x0.5mm <sup>2</sup> x0.6m(SHD&SHD-U&SAL)	BA	1	BE50020500110										
9		Cable2.5x1C black/black/soft	M	20	YE50015100000										
10		Labeling sleeve 1.5MM(100m/reel)	RL	0.002	YR70151000000										
11	B	Tubular terminal E2508	PCS	14	YE60250840000										
12		Labeling sleeve 2.5MM(100m/reel)	RL	0.5	YR70002540200										
13		Cable 0.75x1Cx200M red	M	11	YE50750100000										
14		Cable1.5x1C x200M Yellow green	M	5.0	YE50125140300										
15		Tubular terminal E1008	PCS	25	YE60100800200										
16		Terminal 1.25-3Y(1000pcs/bag)	PAC	0.004	YE60125340000										
17		Terminal 1-4Y(1000pcs/bag)	PAC	0.005	YE60100440200										
18		Terminal 2-4Y (1000pcs/bag)	PAC	0.13	YE60200440100										
19		Terminal 1.25-4Y insert (1000pcs/bag)	PAC	0.004	YE60125440000										
20		Terminal sleeve/insert 6.3(2000pcs/bag)	PAC	0.02	YE60006340000										
21		Wire bundle 2.5x100MM(1000 pes/bag)	PAC	0.03	YR90310000000										
22		RS485(SAL-700G-A-19)0	PCS	1	YR40048500000										
Ver.C															
Note: (1) Means not part of control box.															
D		Title		Drawing NO.		Scale		Page		CE		Voltage		Frequency	
		SAL-5HP-UGP		SAL-5HP-UGP-CE-400V-D-4/1		Standard		4/1		CE		400V		50HZ	
		Electrical Components List 2						Totally		4		Pages		4	
Mark		Before modification		Modified by		Modify date		After modification		Modified by		Modify date		Checked by	
1		2		3		4		5		6		7		8	



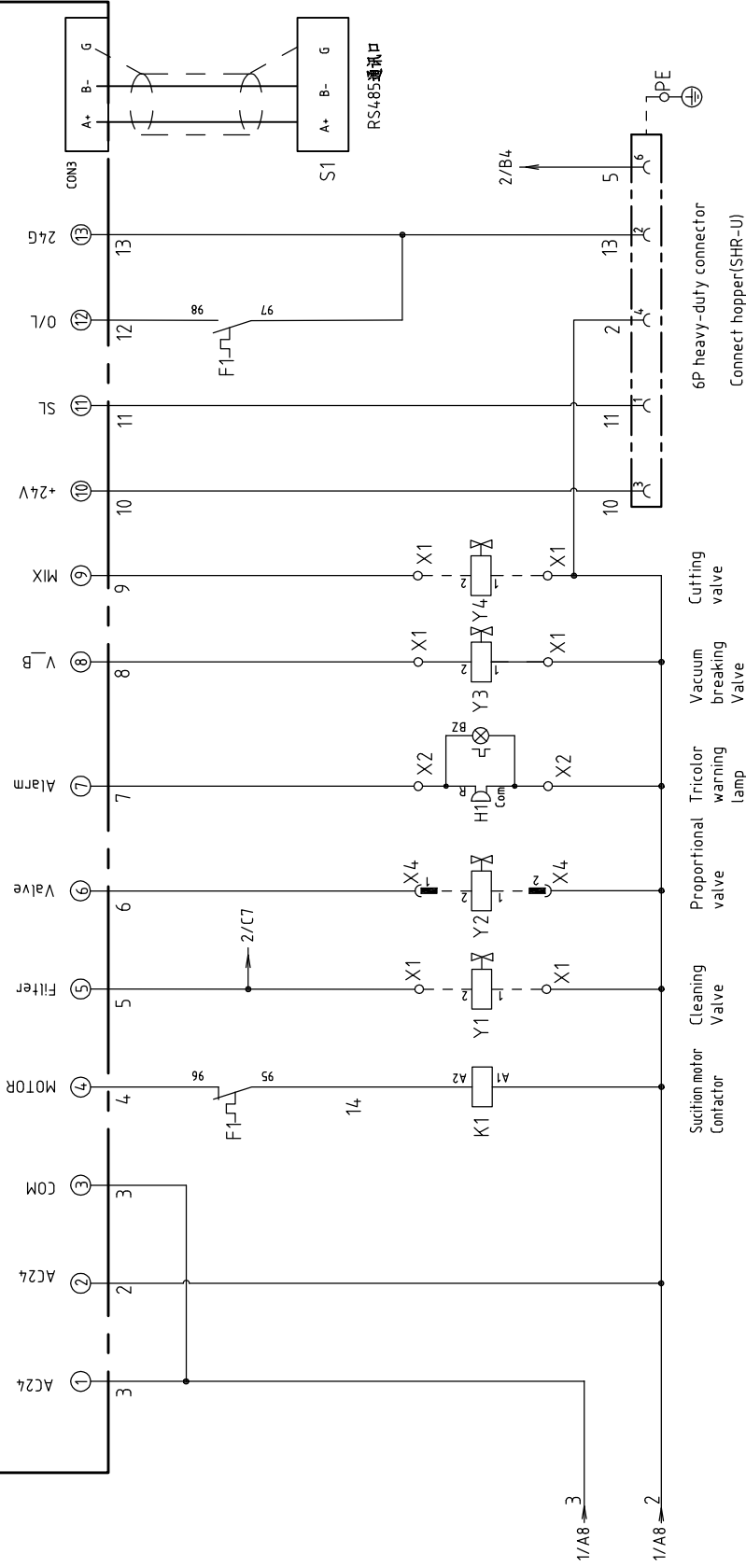
信易電熱機械股份有限公司  
Shini Plastics Technologies, Inc.



P=7.5KW  
IN=14.7A  
Suction Blower

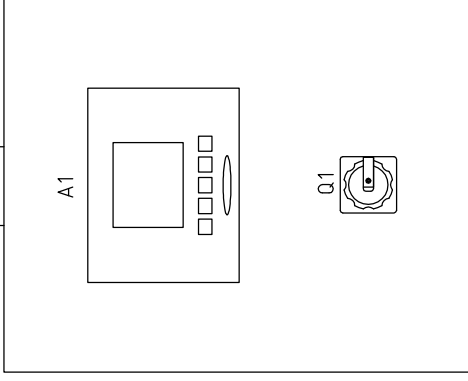
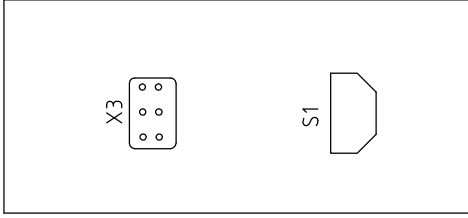
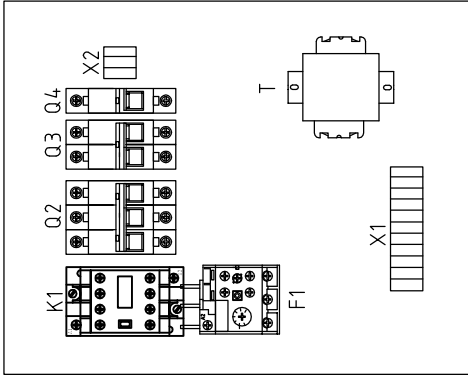
Ver.C												
Mark	Before modification	After modification	Modified by	Modify date	Checked by	Proofread by	Designer	Drawer	Version	D	Title	SAL-10HP-UGP
<p style="text-align: center;">SHINI 信易電熱機械股份有限公司 Shini Plastics Technologies, Inc.</p>												
<p style="text-align: center;">Drawing NO. SAL-10HP-UGP-CE-400V-D-1</p>												
<p style="text-align: center;">Standard CE</p>												
<p style="text-align: center;">Scale</p>												
<p style="text-align: center;">Page 1</p>												
<p style="text-align: center;">Voltage 400V</p>												
<p style="text-align: center;">Frequency 50HZ</p>												
<p style="text-align: center;">Totally 4 Pages</p>												
<p style="text-align: center;">8</p>												

# CS-23



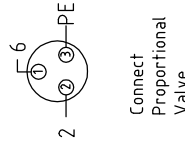
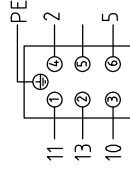
Ver.C	Drawing No. SAL-10HP-UGP-CE-4.00V-D-2		Page 2
	Title SAL-10HP-UGP Control Circuit Diagram	Standard CE	Totally 4 Pages
Mark	Before modification	Voltage 400V	Frequency 50HZ
1	2	3	4
5	6	7	8



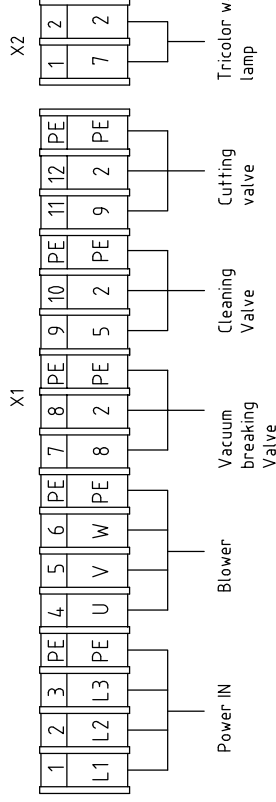


X3(heavy duty connector for hopper and main machine)

X4(3P Waterproof connector)



Subscript	Function	Description
1	Motor start signal	Connect to material level switch
2	GND	
3	24V+	
4	24VAC(COM)	Common terminal of solenoid valve
5	--	24VAC Solenoid valve
6	Spray solenoid valve	




Ver.C

Mark	Before modification	After modification	Modified by	Modify date	Checked by	Proofread by	Designer	Drawer	Version	Title	Drawing NO.		Page
											Standard	Scale	
										SAL-10HP-UGP Electrical Components Layout	SAL-10HP-UGP-CE-280V-D-3	CE	3
												Voltage	400V
												Frequency	50HZ



1		2		3		4		5		6		7		8	
NO	Symbol	Name	Manufacturer	Type	Specification	Number	Material number	Remark							
1	Q1	Main Switch	EATON	P1-32/EA/SVB	32A	1	YE10323200000								
2	Q2	Circuit-Breakers	TECO	BM-63C/3050S	50A	1	YE40305003000								
3	Q3	Circuit-Breakers	TECO	BM-63C/2003S	3A 2P	1	YE40200203000								
4	Q4	Circuit-Breakers	TECO	BM-63C/1003S	3A 1P	1	YE40100203000								
5	K1	Contactors	SIEMENS	3RT6026-1AC20	24VAC/DC	1	YE00602602600								
6	F1	Overload Relays	SIEMENS	3RU6126-4BB0	14-20A	1	YE01260140000								
7	A1	Controllor	YUYUN	CS-23(communicatior)	24VAC/DC	1	YE80232402200								
8	S1	RS-485	YUYUN	---	Dsub-9pin	1	YE90048501200								
9	H1	Tricolor warning lamp	SHINI	Red yellow green-buzzer	24VAC/DC	1	BL90000011520								
10	T	Transformer	JIUXIN	IN=400V/415V OUT=24V	80VA	1	YE70040006500								
11	M	Blower	SHINI	RB-850	10HP 400V 50HZ	1	---	(1)							
12	Y1 Y2 Y3 Y4	Solenoid Valve	AIRTAC	---	24VAC	4	---	(1)							
13		Terminal fixed fittings E/GK	HONEYWELL	---	PCS	4	YE60000003900								
14	X1 X2	Terminal Board	HONEYWELL	SK2.5	2.5mm <sup>2</sup>	14	YE60002503200								
15		Terminal Board	HONEYWELL	GK2.5PE	2.5PE	5	YE60002503400								
16	X3	Heavy duty connectors	HARTING	Han 6A-F	6P+PE	1	YE68000601300								
17	X4	Waterproof linker	AOPULO	A0F16K3Z	250V 3P	1	YE62163000100								
C															
Ver. C Note: (1) Means not part of control box.															
D															
Title SAL-10HP-UGP Electrical Components List 1										Drawing NO. SAL-10HP-UGP-CE-400V-D-4			Scale		
SHINI										CE			Page 4		
信易電熱機械股份有限公司 Shini Plastics Technologies, Inc.										Voltage			Totally 4 Pages		
Mark Before modification										Frequency			400V		
Modified by										50HZ			8		
Modify date										3			4		
Designer										Version			D		
Proofread by										Approved by			Date		
Checked by										Date			Date		



1	2		3	4	5	6		7	8																	
NO.	Symbol	Name	Specification		Number	Material number	Remark																			
1		Cable 2.5x4Cx4M	BA		1	BE51250400450	(1)																			
2		Solenoid valve cable SHR-S(2.5M)	BA		1	BE51002500150	(1)																			
3		Motor cable 6.5x4Cx1.6M	BA		1	BE51250400950	(1)	A																		
4		Guide rail H66-TRx1M(color-zinc)	BA		0.32	YE90660100000																				
5		Cross socket head tapping screw GB6560 M4x6	PCS		9	YW67040600600																				
6		Flat washer A grade GB/T97014(4.5x9x0.8)- Longzine	PCS		11	YW66041000000																				
7		Cross socket head tapping screw GB/T9074.8 M3x6	PCS		2	YW63030601500																				
8		Communication cable RVVYP 2x0.5mm <sup>2</sup> x0.6m(SHD&SHD-U&SAL)	BA		1	BE50020500110																				
9		Cable 2.5 1C black/black/soft	M		20	YE50250100200																				
10		Labeling sleeve 1.5MM(100m/reel)	RL		0.002	YR70151000000																				
11		Tubular terminal E2508	PCS		14	YE60250840000		B																		
12		Labeling sleeve 2.5MM(100m/reel)	RL		0.5	YR70002540200																				
13		Cable 0.75x1Cx200M red	M		11	YE50750100000																				
14		Cable 1.5x1Cx200M Yellow green	M		4.5	YE50125140300																				
15		Tubular terminal E1008	PCS		25	YE60100800200																				
16		Terminal 1.25-3Y(1000pcs/bag)	PAC		0.004	YE60125340000																				
17		Terminal 1-4Y(1000pcs/bag)	PAC		0.005	YE60100440200																				
18		Terminal 2-4Y (1000pcs/bag)	PAC		0.13	YE60200440100																				
19		Terminal 1.25-4Y insert (1000pcs/bag)	PAC		0.004	YE60125440000		C																		
20		Terminal sleeve/insert 6.3(2000pcs/bag)	PAC		0.02	YE60006340000																				
21		Wire bundle 2.5x100MM(1000 pcs/bag)	PAC		0.03	YR90310000000																				
22		Shell RS485(SAL-700G-A-19)0	PCS		1	YR40048500000																				
Ver.C																										
Note: (1) Means not part of control box.																										
D																										
Drawing NO. SAL-10HP-UGP-CE-400V-D-4/1																										
Electrical Components List 2																										
																										
<table border="1"> <tr> <td>Scale</td> <td>CE</td> <td>Page</td> <td>4 / 1</td> </tr> <tr> <td>Standard</td> <td></td> <td>Totally</td> <td>4</td> </tr> <tr> <td colspan="2">Voltage</td> <td colspan="2">400V</td> </tr> <tr> <td colspan="2">Frequency</td> <td colspan="2"></td> </tr> </table>											Scale	CE	Page	4 / 1	Standard		Totally	4	Voltage		400V		Frequency			
Scale	CE	Page	4 / 1																							
Standard		Totally	4																							
Voltage		400V																								
Frequency																										
Mark	Before modification	After modification	Modified by	Modify date	Checked by	Proofread by	Designer	Drawer	Version	D																
1																										