
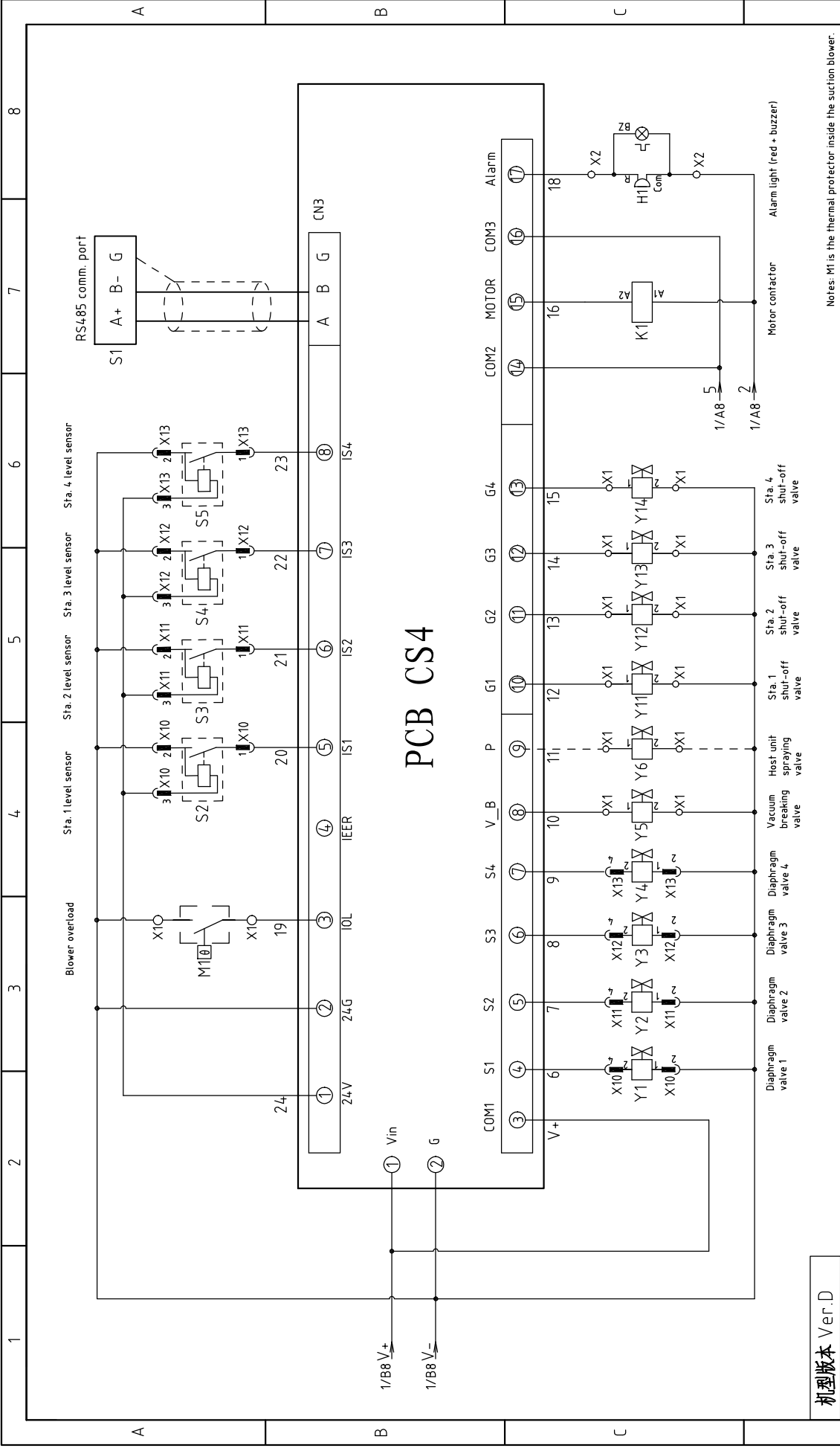


机型版本 Ver.D

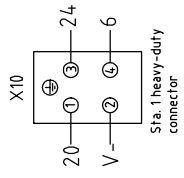
Mark	Before modification	Modified by	Modify date	Date	20191220	Checked by	Approved by	Version	G	Title	Drawing NO.		Page
	After modification	Modified by	Modify date								SAL-2HP-UG124	SAL-2HP-UG124-CE-400V-G-1	
 <b>信易电热机械股份有限公司</b> <b>Shini Plastics Technologies, Inc.</b>											Voltage		3 $\phi$ 400V
											Frequency		50Hz
											Scale		
											Page		1
											Totally		4
											Pages		



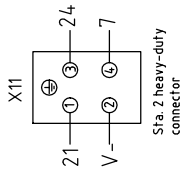
# PCB CS4

机型版本	Ver.D
------	-------

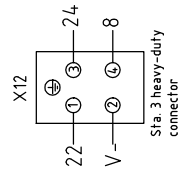
Title		SAL-2HP-UG124		Drawing NO.		SAL-2HP-UG124-CE-4.00V-G-2	
Version		Approved by		Designer		Scale	
Diaphragm valve 1		Diaphragm valve 2		Diaphragm valve 3		Diaphragm valve 4	
Vacuum breaking valve		Host unit spraying valve		Sta. 1 shut-off valve		Sta. 2 shut-off valve	
Sta. 1 shut-off valve		Sta. 3 shut-off valve		Sta. 4 shut-off valve		Motor contactor	
Alarm light (red + buzzer)		H1		Com		ZB	
COM1		COM2		COM3		Alarm	
V+		V-		GND		24V	
1		2		3		4	
5		6		7		8	
9		10		11		12	
13		14		15		16	
17		18		19		20	
21		22		23		24	
IEER		IS1		IS2		IS3	
IS4		IS5		IS6		IS7	
IS8		IS9		IS10		IS11	
IS12		IS13		IS14		IS15	
IS16		IS17		IS18		IS19	
IS20		IS21		IS22		IS23	
IS24		IS25		IS26		IS27	
IS28		IS29		IS30		IS31	
IS32		IS33		IS34		IS35	
IS36		IS37		IS38		IS39	
IS40		IS41		IS42		IS43	
IS44		IS45		IS46		IS47	
IS48		IS49		IS50		IS51	
IS52		IS53		IS54		IS55	
IS56		IS57		IS58		IS59	
IS60		IS61		IS62		IS63	
IS64		IS65		IS66		IS67	
IS68		IS69		IS70		IS71	
IS72		IS73		IS74		IS75	
IS76		IS77		IS78		IS79	
IS80		IS81		IS82		IS83	
IS84		IS85		IS86		IS87	
IS88		IS89		IS90		IS91	
IS92		IS93		IS94		IS95	
IS96		IS97		IS98		IS99	
IS100		IS101		IS102		IS103	
IS104		IS105		IS106		IS107	
IS108		IS109		IS110		IS111	
IS112		IS113		IS114		IS115	
IS116		IS117		IS118		IS119	
IS120		IS121		IS122		IS123	
IS124		IS125		IS126		IS127	
IS128		IS129		IS130		IS131	
IS132		IS133		IS134		IS135	
IS136		IS137		IS138		IS139	
IS140		IS141		IS142		IS143	
IS144		IS145		IS146		IS147	
IS148		IS149		IS150		IS151	
IS152		IS153		IS154		IS155	
IS156		IS157		IS158		IS159	
IS160		IS161		IS162		IS163	
IS164		IS165		IS166		IS167	
IS168		IS169		IS170		IS171	
IS172		IS173		IS174		IS175	
IS176		IS177		IS178		IS179	
IS180		IS181		IS182		IS183	
IS184		IS185		IS186		IS187	
IS188		IS189		IS190		IS191	
IS192		IS193		IS194		IS195	
IS196		IS197		IS198		IS199	
IS200		IS201		IS202		IS203	
IS204		IS205		IS206		IS207	
IS208		IS209		IS210		IS211	
IS212		IS213		IS214		IS215	
IS216		IS217		IS218		IS219	
IS220		IS221		IS222		IS223	
IS224		IS225		IS226		IS227	
IS228		IS229		IS230		IS231	
IS232		IS233		IS234		IS235	
IS236		IS237		IS238		IS239	
IS240		IS241		IS242		IS243	
IS244		IS245		IS246		IS247	
IS248		IS249		IS250		IS251	
IS252		IS253		IS254		IS255	
IS256		IS257		IS258		IS259	
IS260		IS261		IS262		IS263	
IS264		IS265		IS266		IS267	
IS268		IS269		IS270		IS271	
IS272		IS273		IS274		IS275	
IS276		IS277		IS278		IS279	
IS280		IS281		IS282		IS283	
IS284		IS285		IS286		IS287	
IS288		IS289		IS290		IS291	
IS292		IS293		IS294		IS295	
IS296		IS297		IS298		IS299	
IS300		IS301		IS302		IS303	
IS304		IS305		IS306		IS307	
IS308		IS309		IS310		IS311	
IS312		IS313		IS314		IS315	
IS316		IS317		IS318		IS319	
IS320		IS321		IS322		IS323	
IS324		IS325		IS326		IS327	
IS328		IS329		IS330		IS331	
IS332		IS333		IS334		IS335	
IS336		IS337		IS338		IS339	
IS340		IS341		IS342		IS343	
IS344		IS345		IS346		IS347	
IS348		IS349		IS350		IS351	
IS352		IS353		IS354		IS355	
IS356		IS357		IS358		IS359	
IS360		IS361		IS362		IS363	
IS364		IS365		IS366		IS367	
IS368		IS369		IS370		IS371	
IS372		IS373		IS374		IS375	
IS376		IS377		IS378		IS379	
IS380		IS381		IS382		IS383	
IS384		IS385		IS386		IS387	
IS388		IS389		IS390		IS391	
IS392		IS393		IS394		IS395	
IS396		IS397		IS398		IS399	
IS400		IS401		IS402		IS403	
IS404		IS405		IS406		IS407	
IS408		IS409		IS410		IS411	
IS412		IS413		IS414		IS415	
IS416		IS417		IS418		IS419	
IS420		IS421		IS422		IS423	
IS424		IS425		IS426		IS427	
IS428		IS429		IS430		IS431	
IS432		IS433		IS434		IS435	
IS436		IS437		IS438		IS439	
IS440		IS441		IS442		IS443	
IS444		IS445		IS446		IS447	
IS448		IS449		IS450		IS451	
IS452		IS453		IS454		IS455	
IS456		IS457		IS458		IS459	
IS460		IS461		IS462		IS463	
IS464		IS465		IS466		IS467	
IS468		IS469		IS470		IS471	
IS472		IS473		IS474		IS475	
IS476		IS477		IS478		IS479	
IS480		IS481		IS482		IS483	
IS484		IS485		IS486		IS487	
IS488		IS489		IS490		IS491	
IS492		IS493		IS494		IS495	
IS496		IS497		IS498		IS499	
IS500		IS501		IS502		IS503	
IS504		IS505		IS506		IS507	
IS508		IS509		IS510		IS511	
IS512		IS513		IS514		IS515	
IS516		IS517		IS518		IS519	
IS520		IS521		IS522		IS523	
IS524		IS525		IS526		IS527	
IS528		IS529		IS530		IS531	
IS532		IS533		IS534		IS535	
IS536		IS537		IS538		IS539	
IS540		IS541		IS542		IS543	
IS544		IS545		IS546		IS547	
IS548		IS549		IS550		IS551	
IS552		IS553		IS554		IS555	
IS556		IS557		IS558		IS559	
IS560		IS561		IS562		IS563	
IS564		IS565		IS566		IS567	
IS568		IS569		IS570		IS571	
IS572		IS573		IS574		IS575	
IS576		IS577		IS578		IS579	
IS580		IS581		IS582		IS583	
IS584		IS585		IS586		IS587	
IS588		IS589		IS590		IS591	
IS592		IS593		IS594		IS595	
IS596		IS597		IS598		IS599	
IS600		IS601		IS602		IS603	
IS604		IS605		IS606		IS607	
IS608		IS609		IS610		IS611	
IS612		IS613		IS614		IS615	
IS616		IS617		IS618		IS619	
IS620		IS621		IS622		IS623	
IS624		IS625		IS626		IS627	
IS628		IS629		IS630		IS631	
IS632		IS633		IS634		IS635	
IS636		IS637		IS638		IS639	
IS640		IS641		IS642		IS643	
IS644		IS645		IS646		IS647	
IS648		IS649		IS650		IS651	
IS652		IS653		IS654		IS655	
IS656		IS657		IS658		IS659	
IS660		IS661		IS662		IS663	
IS664		IS665		IS666		IS667	
IS668		IS669		IS670		IS671	
IS672		IS673		IS674		IS675	
IS676		IS677		IS678		IS679	
IS680		IS681		IS682		IS683	
IS684		IS685		IS686		IS687	
IS688		IS689		IS690		IS691	
IS692		IS693		IS694		IS695	
IS696		IS697		IS698		IS699	
IS700		IS701		IS702		IS703	
IS704		IS705		IS706		IS707	
IS708		IS709		IS710		IS711	
IS712		IS713		IS714		IS715	
IS716		IS717		IS718		IS719	
IS720		IS721		IS722		IS723	
IS724		IS725		IS726		IS727	
IS728		IS729		IS730		IS731	
IS732		IS733		IS734		IS735	
IS736		IS737		IS738		IS739	
IS740		IS741		IS742		IS743	
IS744		IS745		IS746		IS747	
IS748		IS749		IS750		IS751	
IS752		IS753		IS754		IS755	
IS756		IS757		IS758		IS759	
IS760		IS761		IS762		IS763	
IS764		IS765		IS766		IS767	
IS768		IS769		IS77			



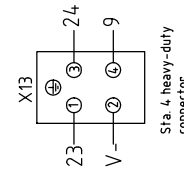
Pin No.	Function	Description
1	Level signal (SENS)	Connect to level sensor 1
2	GND(COM)	
3	24V+	
4	Connect to diaphragm valve 1	24VDC solenoid valve



Pin No.	Function	Description
1	Level signal (SENS)	Connect to level sensor 2
2	GND(COM)	
3	24V+	
4	Connect to diaphragm valve 2	24VDC solenoid valve

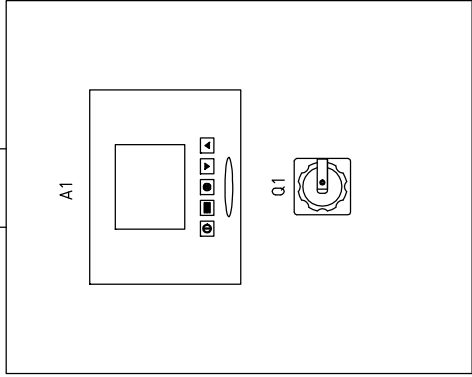


Pin No.	Function	Description
1	Level signal (SENS)	Connect to level sensor 3
2	GND(COM)	
3	24V+	
4	Connect to diaphragm valve 3	24VDC solenoid valve

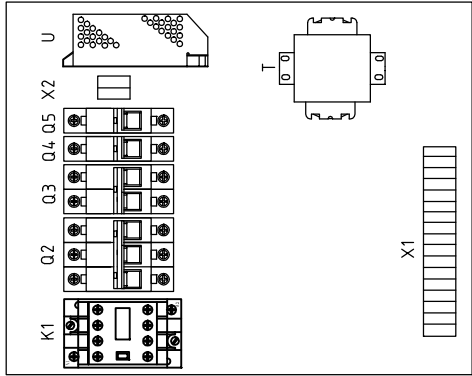


Pin No.	Function	Description
1	Level signal (SENS)	Connect to level sensor 4
2	GND(COM)	
3	24V+	
4	Connect to diaphragm valve 4	24VDC solenoid valve

H1

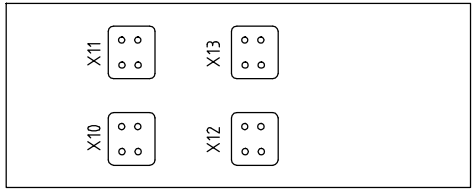


S1

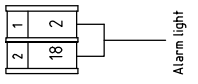


T

X1

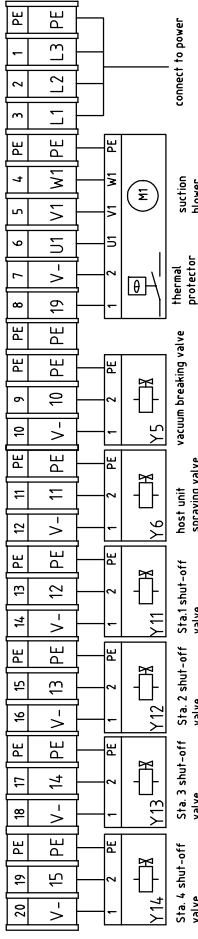


X2



Alarm light

X1




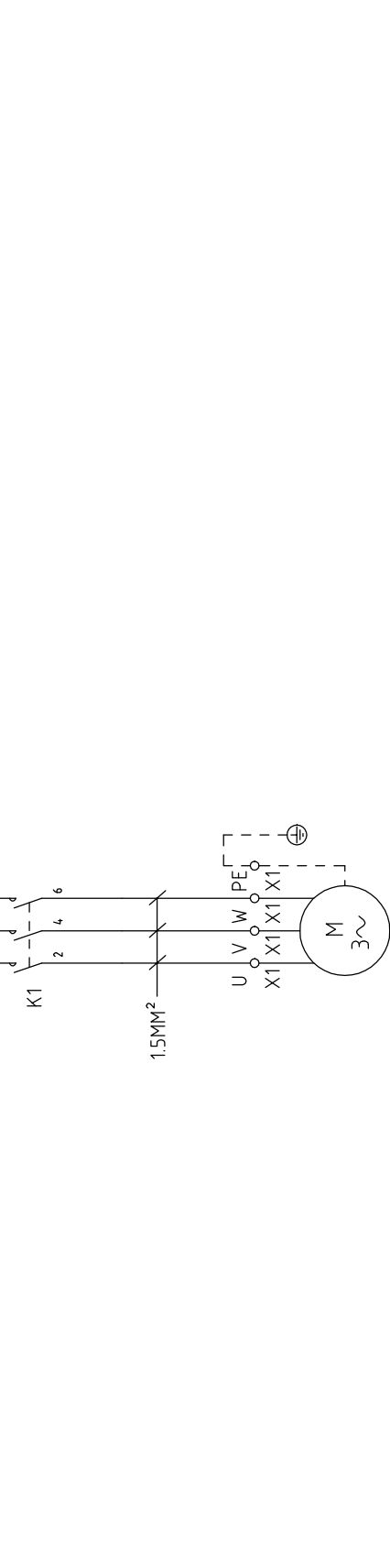
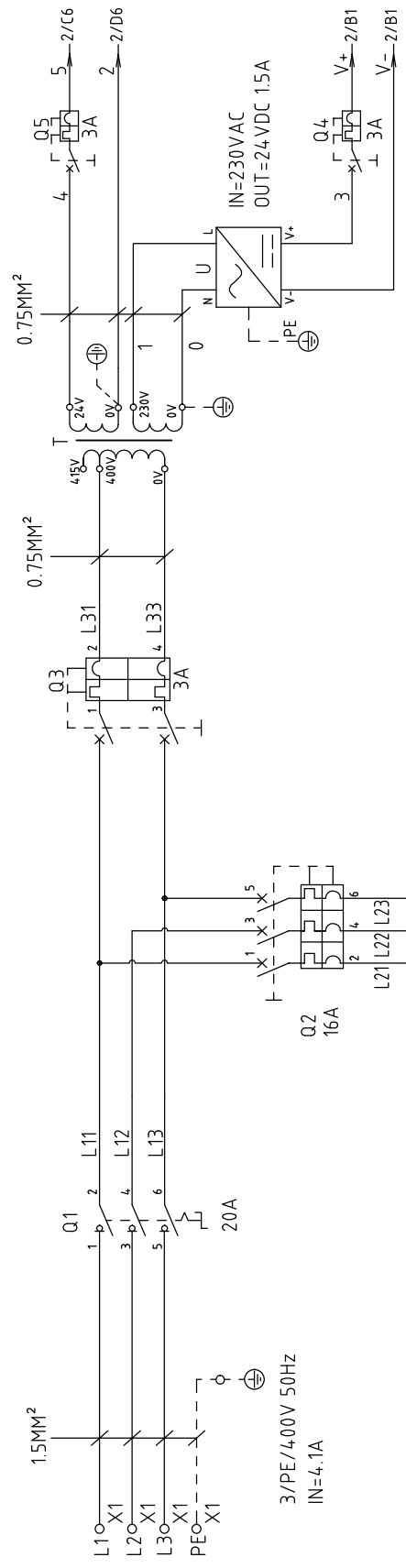
机型版本 Ver.D

Title		Version		Drawer		Designer		Proofread by		Checked by		Date		Approved by		G		Drawing NO.		Scale		Page	
SAL-2HP-UG124		G										20191220						SAL-2HP-UG124-CE-400V-G-3		CE		3	
Elec. Parts Layout & Wiring Diagram		Approved by		Proofread by		Checked by		Modified by		Modify date								Voltage		Frequency		Totally	
																		3φ400V		50HZ		4	
																						Pages	
																						8	



信易电热机械股份有限公司  
Shini Plastics Technologies, Inc.

1	2		3	4	5	6	7	8	
NO	Symbol	Name	Manufacturer	Type	Specification	Number	Material number	Remark	
									Version
A	1	Main Switch	EATON	T0-2-1/EA/SVB	20A	1	YE10021160000		
	2	Circuit-Breakers	TECO	BM-63C/3016S	16A	1	YE40301603000		
	3	Circuit-Breakers	TECO	BM-63C/2003S	3A 2P	1	YE40200203000		
	4	Circuit-Breakers	TECO	BM-63C/1003S	3A 1P	2	YE40100203000		
	5	Contactors	SCHNEIDER	LC1-D09B7C	24V 50/60Hz	1	YE00972400000		
	6	Controller	YUYUN	CS4	24VAC/DC	1	YE80042401200		
	7	RS-485 comm. interface board	YUYUN	---	Dsub-9pin connector	1	YE90048501200		
B	8	Shell RS-485(SAL-700G-A-19)ver. 0	---	---	---	1	YR40048500000		
	9	9-pin serial port connector (male) with shell and screw	---	---	---	1	YE62090000000		
	10	Alarm light board	HONGYUN	Red,yel,gre.+ buzzer	24VAC/DC	1	BL90000011520		
	11	Transformer	JIUXIN	400V/4.15V OUT=24V /230V	50VA 500MA	1	YE70040007100		
	12	DC power	---	S-35-24	24VDC 1.5A	1	YE71352400000		
	13	Terminal Board	HONEYWELL	SK2.5	2.5mm <sup>2</sup>	22	YE60002503200		
	14	Terminal Board	HONEYWELL	GK2.5PE	2.5PE	9	YE60002503400		
C	15	Terminal fittings E/GK series	HONEYWELL	---	PCS	6	YE60000003900		
	16	Heavy duty connectors	HARTING	Han E-4(F)(female)	4P	4	YE68000401400		
	17	Blower	SHINI	RB-420 with thermal prof.	2HP 400V 50HZ	1	---	(1)	
	18	Solenoid vavle	AIRTAC	---	24VDC	6	---	(1)	
	19	Solenoid vavle	AIRTAC	---	24VDC	4	---	(1)	
	20	Photoelectricity switch	FOTEK	MT-4,MNO-30VDC	10...30VDC	4	---	(1) Photosensor hopper receiver	
	21	Magnetic proximity switch	SONON	BN12-30BLA	24VDC	4	---	(1) Vacuum hopper receiver	
D	Mark	Before modification							
		After modification							
机型版本 Ver.D									
				Title		Drawing NO.		Page	
				SAL-2HP-UG124		SAL-2HP-UG124-CE-400V-G-4		4	
				Elec. Parts List 1		Standard		CE	
						Voltage		3φ400V	
						Frequency		50Hz	
 <b>信易電熱機械股份有限公司</b> <b>Shini Plastics Technologies, Inc.</b>									
1	2	3	4	5	6	7	8		

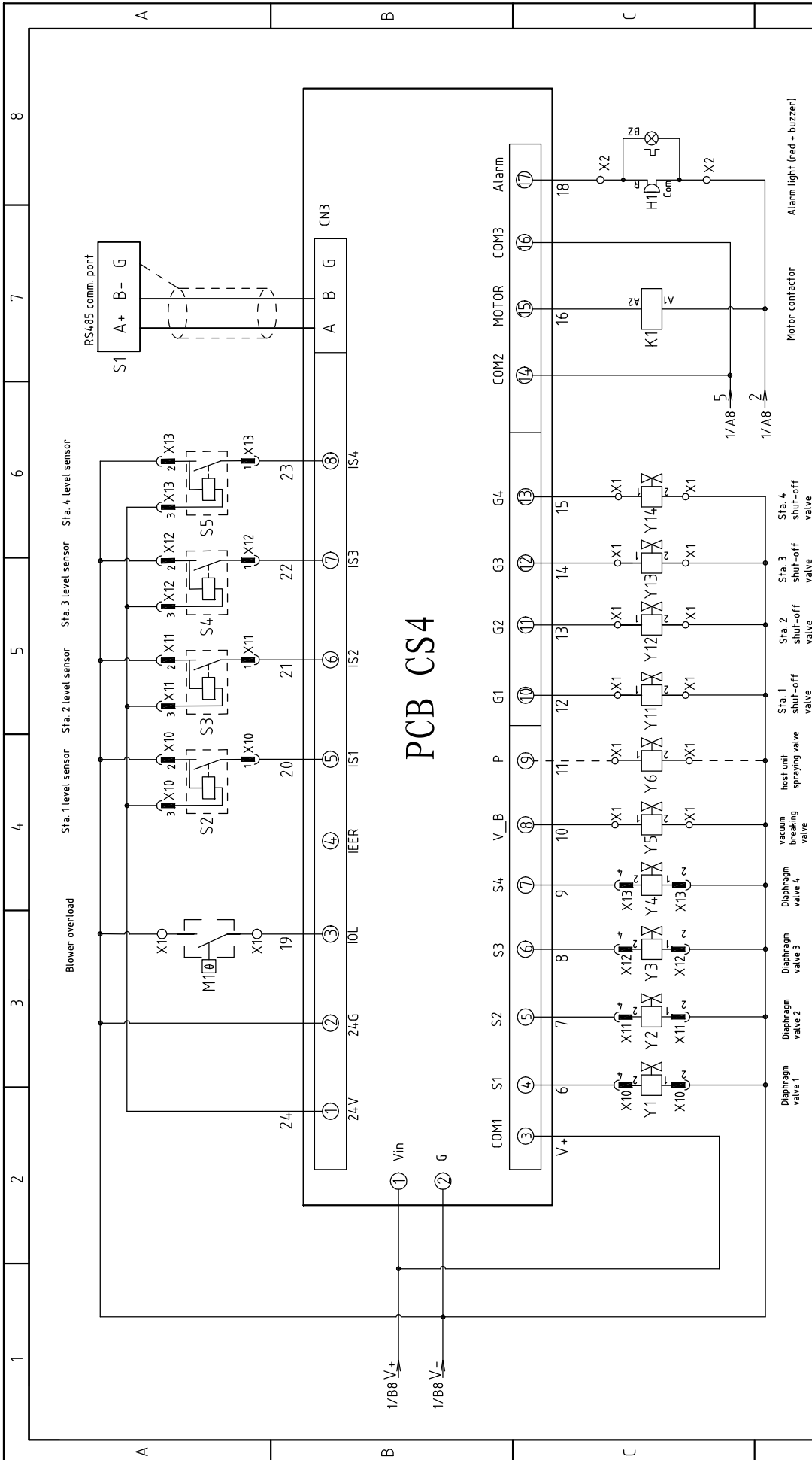


P=1.85KW  
IN=4.1A  
Suction Blower

机型版本 Ver.C

Mark	Before modification	Modified by	Modify date	Checked by	Date	Proofread by	Designer	Drawer	Version	G	Title	Drawing NO.		Scale	Page
					20191220						SAL-3HP-UG124	SAL-3HP-UG124-CE-400V-G-1		Standard	1
											Main Circuit Diagram		CE	Totally	4
											Voltage		Frequency		
											3φ400V		50Hz		





# PCB CS4

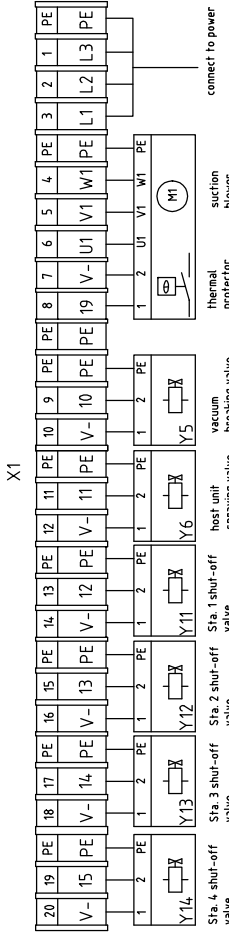
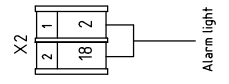
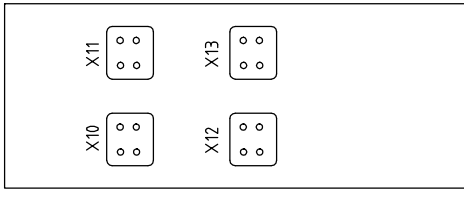
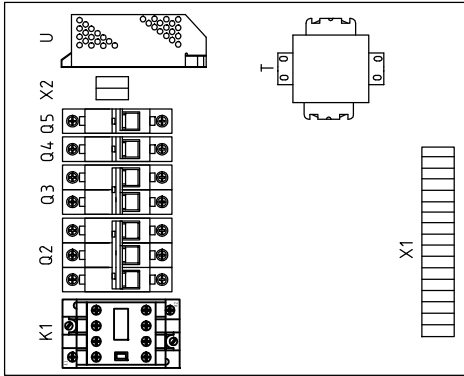
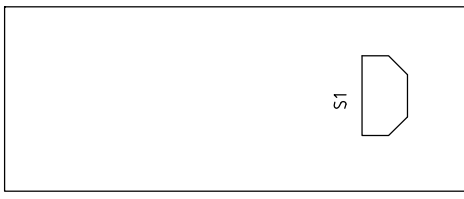
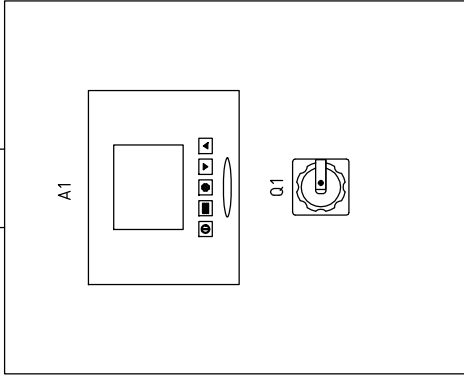
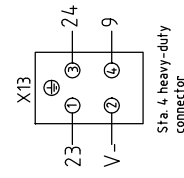
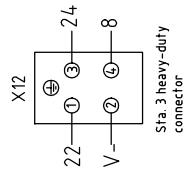
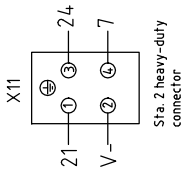
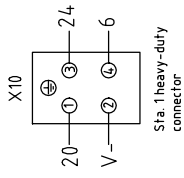
初型版本 Ver.C

Notes: M1 is the thermal protector inside the suction blower.

Title		SAL-3HP-UG124		Drawing NO.		SAL-3HP-UG124-CE-4.00V-G-2	
Version		G		Scale		Page 2	
Designer		Approved by		Standard		CE	
Proofread by		Date		Voltage		3φ4.00V	
Checked by		20191220		Frequency		50HZ	
Modified by		Modify date		Totally		4	
After modification		Date		Pages		3	
Before modification		Date		Voltage		3φ4.00V	
Mark		Date		Frequency		50HZ	




信易電熱機械股份有限公司  
Shini Plastics Technologies, Inc.



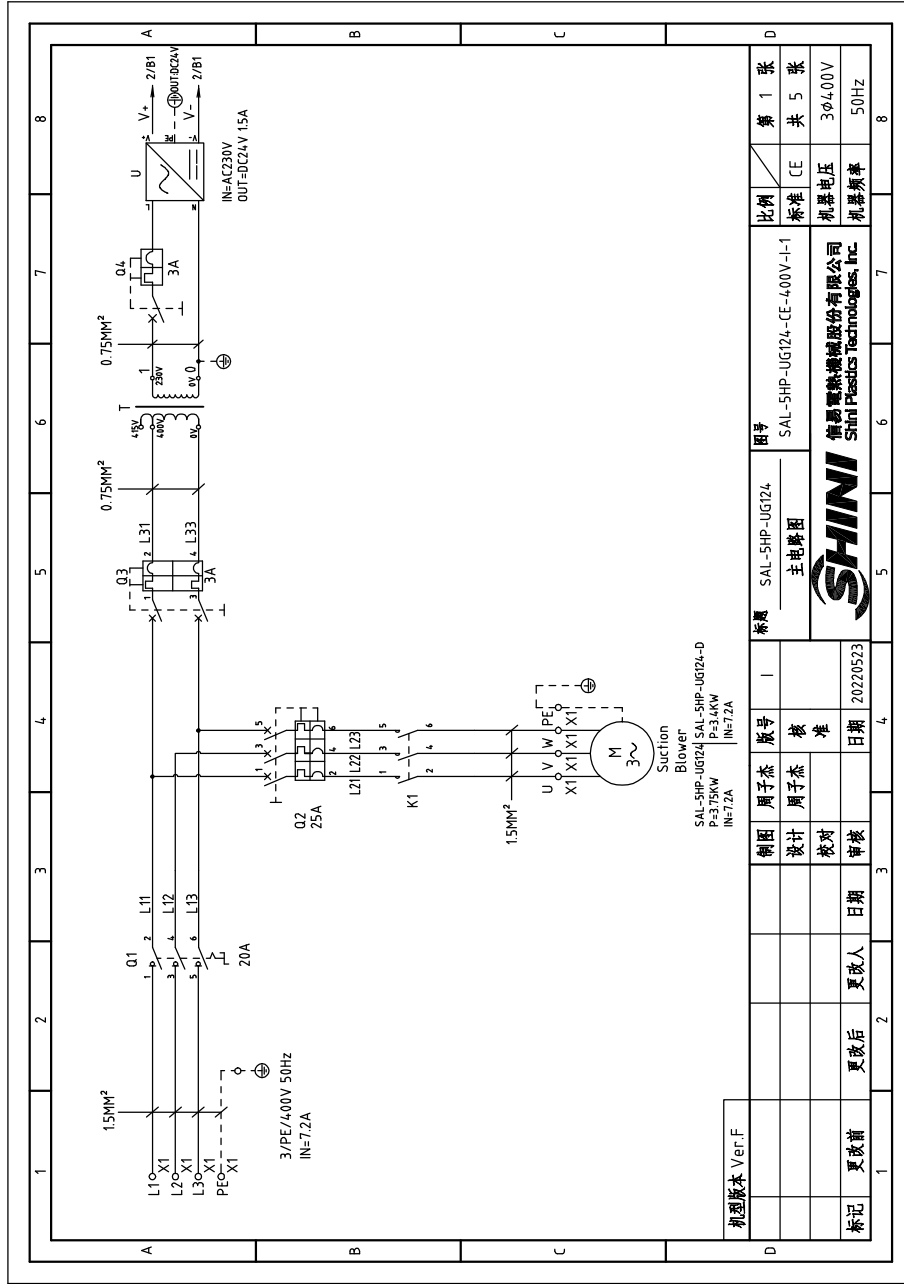
机型版本 Ver.C

Mark	Before modification	After modification	Modified by	Modify date	Checked by	Proofread by	Designer	Drawer	Version	G	Title	Drawing NO.	Scale	Page
				20191220					Approved by		Elec. Parts Layout & Wiring Diagram	SAL-3HP-UG124	Standard	3
											SAL-3HP-UG124-CE-400V-G-3	CE	Totally	4
													Voltage	3Φ400V
													Frequency	50HZ



1	2		3	4	5	6		7	8	
N0	Symbol	Name	Manufacturer	Type	Specification	Number	Material number	Remark		
1	Q1	Main switch	EATON	T0-2-1/EA/SVB	20A	1	YE10021160000			
2	Q2	Circuit-breakers	TECO	BM-63C/3016S	16A	1	YE40301603000			
3	Q3	Circuit-breakers	TECO	BM-63C/2003S	3A 2P	1	YE40200203000			
4	Q4 Q5	Circuit-breakers	TECO	BM-63C/1003S	3A 1P	2	YE40100203000			
5	K1	Contactors	SCHNEIDER	LCT-D09B7C	24V 50/60Hz	1	YE00972400000			
6	A1	Controller	YUYUN	CS4	24VAC/DC	1	YE80042401200			
7	S1	RS-485 comm. interface board	YUYUN	---	Dsub-9pin connector	1	YE90048501200			
8		Shell RS-485(SAL-700G-A-19)ver. 0	---	---	---	1	YR40048500000			
9		9-pin serial port connector (male) with shell and screw	---	---	---	1	YE62090000000			
10	H1	Alarm light	HONGYUN	Red,yel,gre.+ buzzer	24VAC/DC	1	BL90000011520			
11	T	Transformer	JUUXIN	400V/4.15V OUT=24V /230V	50VA 500MA	1	YE70040007100			
12	U	DC power	---	S-35-24	24VDC 1.5A	1	YE71352400000			
13	X1 X2	Wiring terminal	HONEYWELL	SK2.5	2.5mm <sup>2</sup>	22	YE60002503200			
14		Wiring terminal	HONEYWELL	GK2.5PE	2.5PE	9	YE60002503400			
15		Terminal fittings E/GK series	HONEYWELL	---	PCS	6	YE60000003900			
16	X10~X13	Heavy duty connectors	HARTING	Han E-4F (female)	4P	4	YE68000401400			
17	M	Blower	SHINI	RB-4.30 with thermal prot.	5HP 400V 50HZ	1	---	(1)		
18	Y1~Y6	Solenoid vavle	AIRTAC	---	24VDC	6	---	(1)		
19	Y11~Y14	Solenoid vavle	AIRTAC	---	24 VDC	4	---	(1)		
20	S2~S5	Photosensor switch	FOTEK	MT-4MNO-30VDC	10...30VDC	4	---	(1)	Photosensor hopper receiver	
21		Reed switch	SONON	BN12-30BLA	24VDC	4	---	(1)	Vacuum hopper receiver	
机型版本 Ver.C										
Notes: (1)Non-control box installation.										
D										
Drawing NO. SAL-3HP-UG124										
Elec. Parts List 1										
SAL-3HP-UG124-CE-400V-G-4										
										
信易塑料机械股份有限公司 Shini Plastics Technologies, Inc.										
Scale										
Standard CE										
Voltage										
Frequency										
Page 4										
Totally 4 Pages										
3φ400V										
50HZ										
1										
2										
3										
4										
5										
6										
7										
8										





SAL-5HP-UG124 SAL-5HP-UG124-D  
 P=375KW IN=7.2A

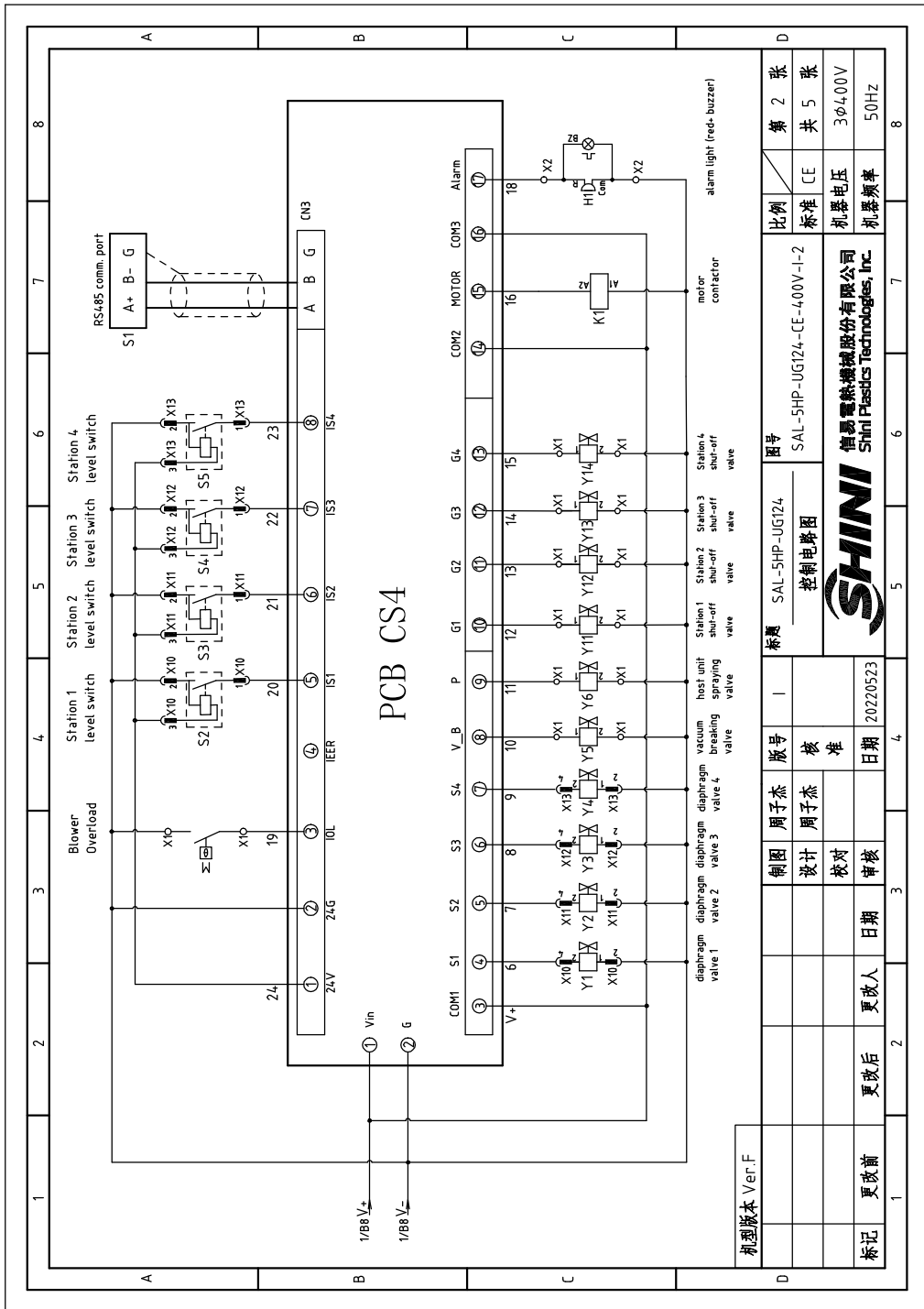
Suction Blower

机选版本 Ver.F

制图	周子杰	版号	I	标题	SAL-5HP-UG124	图号	SAL-5HP-UG124-CE-400V-I-1	比例	第 1 张
设计	周子杰	核准		主电原理图				标准	共 5 张
校对		日期	20220523					标准	CE
审核		日期						标准	3φ4.00V
更改前	更改后	更改人						标准	50Hz
								标准	机器电压
								标准	机器频率

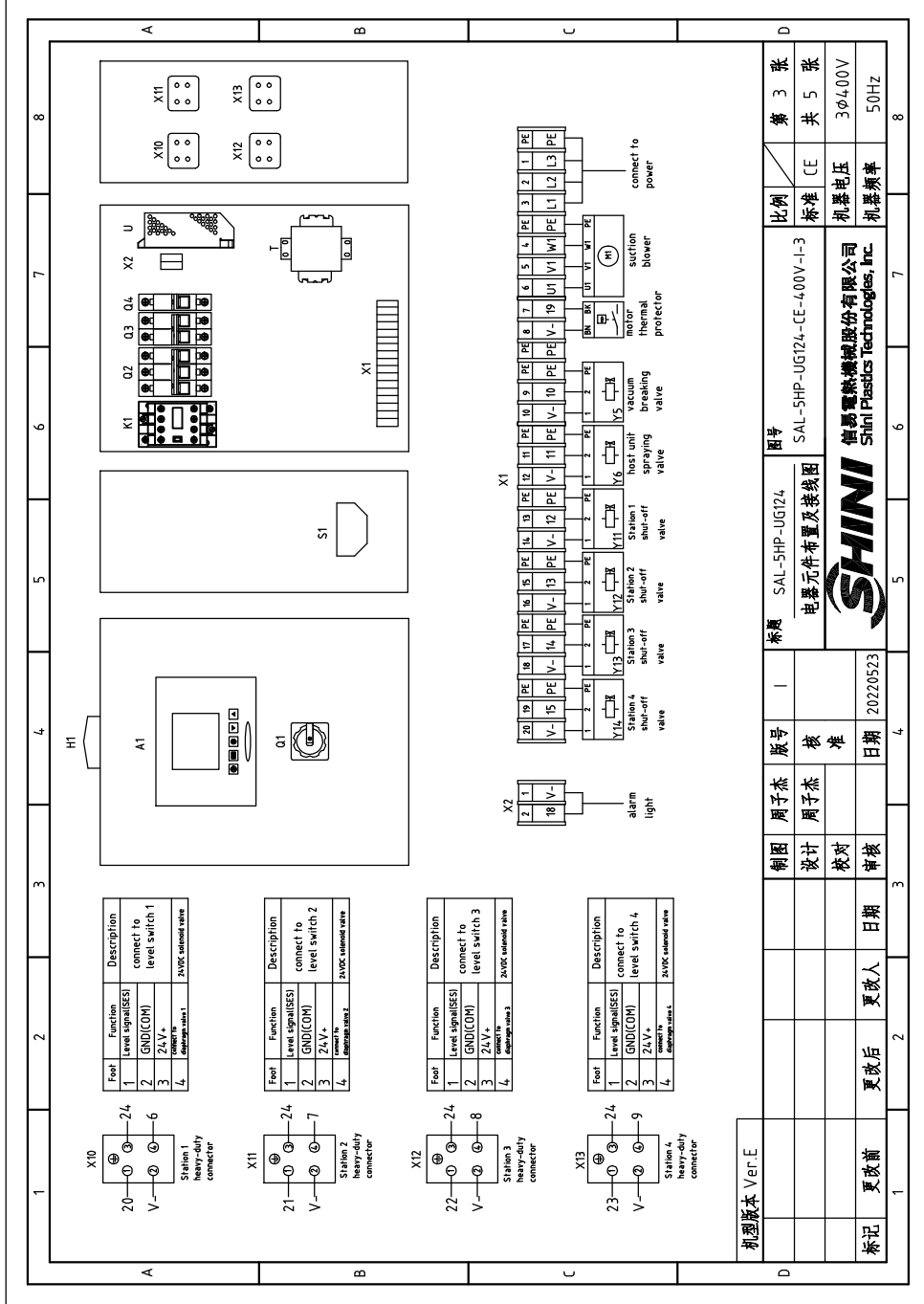


信易塑料机械股份有限公司  
 Shini Plastics Technologies, Inc.



机型版本 Ver.F		比例		第 2 张	
制图	周子杰	图号	SAL-5HP-UG124	标准	CE
设计	周子杰	标题	SAL-5HP-UG124-CE-4.00V-I-2	共	5 张
校对		控制电路图		机器电压	3φ4,00V
审核		日期	20220523	机器频率	50Hz
更改前	更改后	更改人	日期		

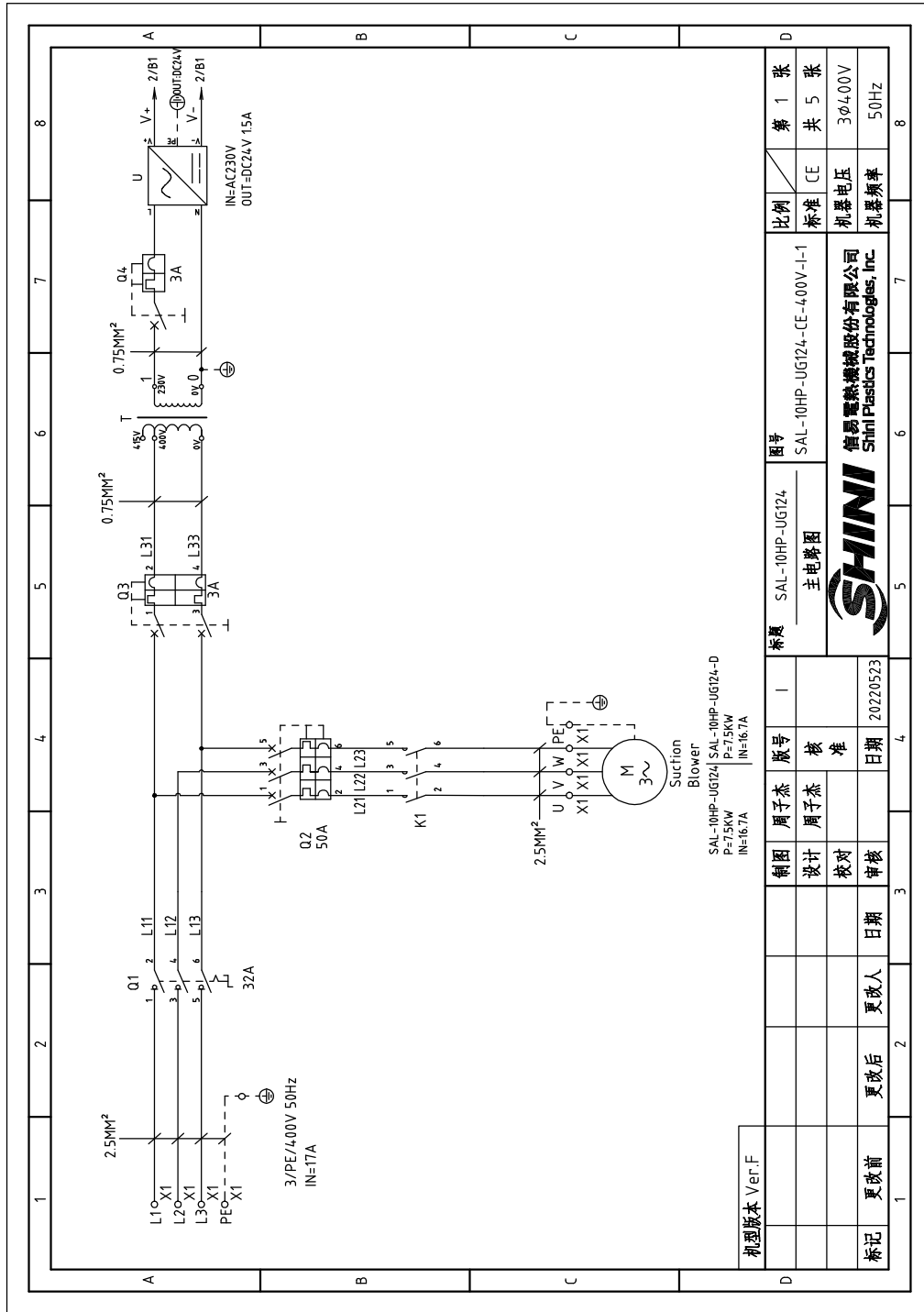




机型版本 Ver.E	标题 SAL-5HP-UG124	图号 SAL-5HP-UG124-CE-400V-I-3	比例 第 3 张
	电器元件布置及接线图		标准 CE
	<b>SHINI</b>	倍奇塑料机械股份有限公司 Shini Plastics Technologies, Inc.	机壳电压 3φ4.00V
标记 更改前	更改后	更改人	机壳频率 50Hz
	日期	日期	
	周子杰	周子杰	
	设计	审核	
	制图	版号	
	周子杰	1	

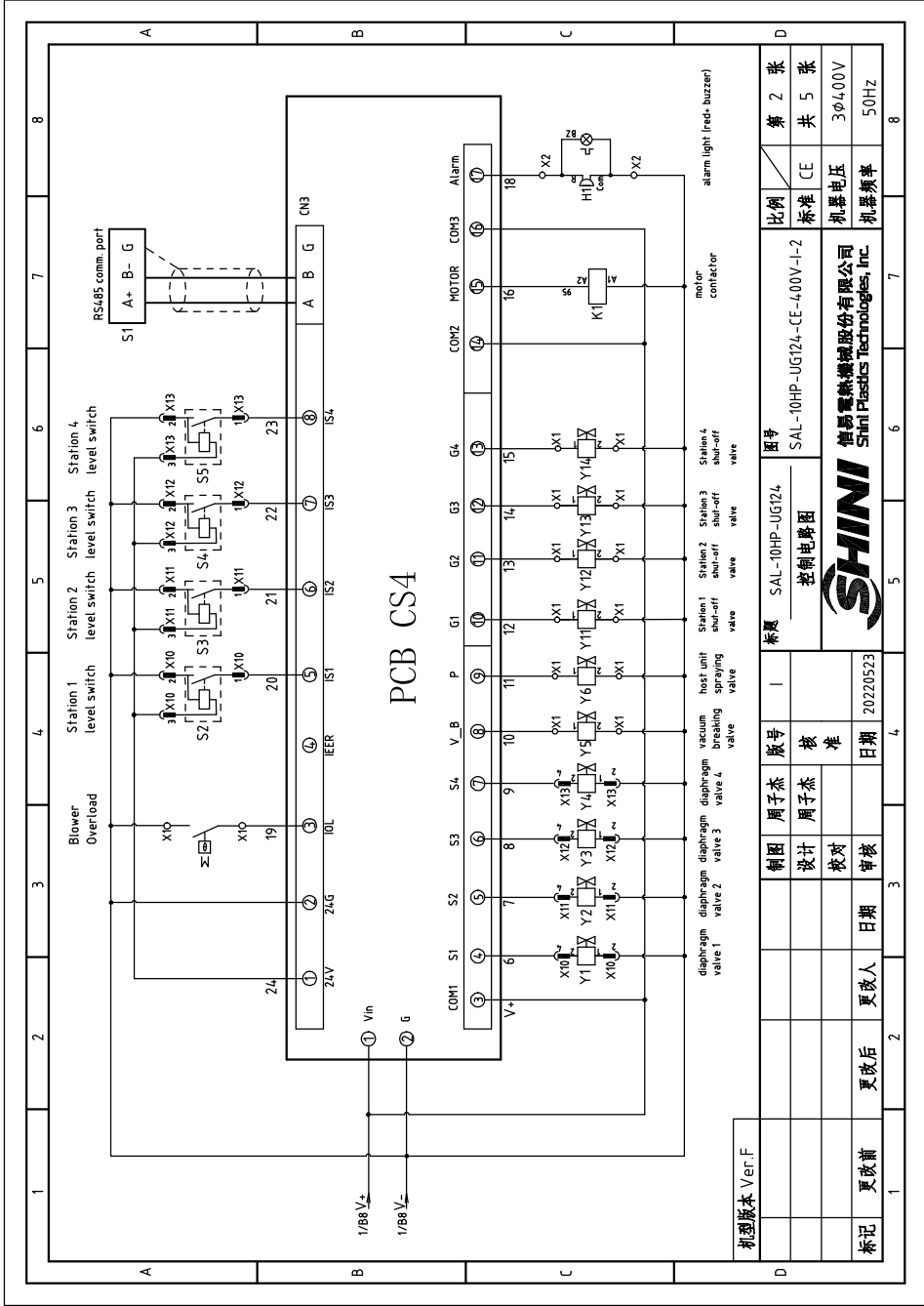






SAL-10HP-UG124 | SAL-10HP-UG124-D  
 P=7.5KW | IN=16.7A

机型版本 Ver.F		标题		版号		图号		比例	
		周子杰	周子杰	1	1	SAL-10HP-UG124	SAL-10HP-UG124-CE-400V-1-1	第 1 张	
		设计	核准			主电路图		共 5 张	
		校对				SHINI 旭勢電熱機械股份有限公司 Shini Plastics Technologies, Inc.		标准 CE	
标记	更改前	更改后	更改人	日期	20220523			机器电压	3φ4.00V
								机器频率	50Hz



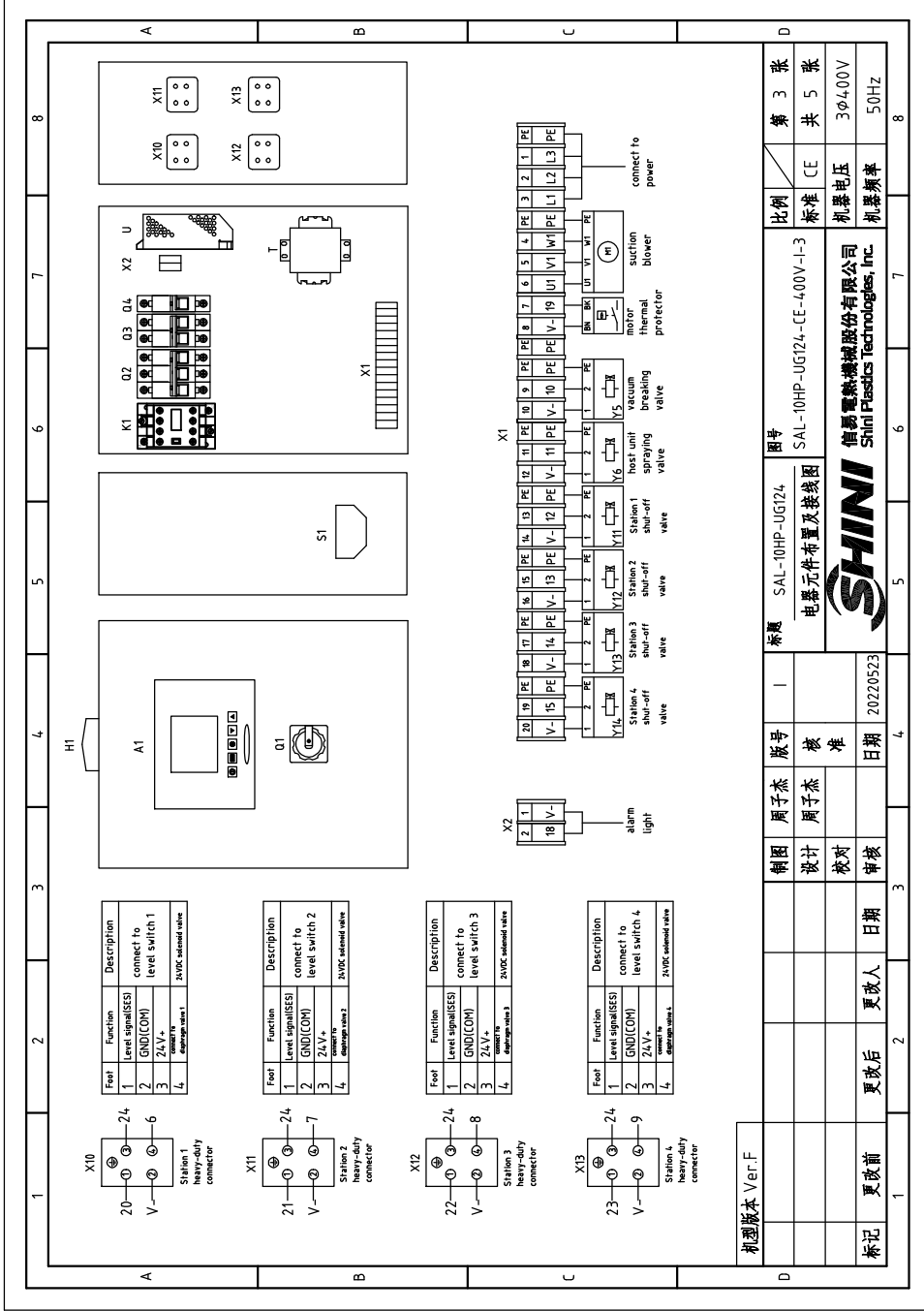
PCB CS4

机型版本 Ver.F

标记	更改前	更改后	更改人	日期	审核
制图	周子杰	周子杰	周子杰	20220523	
版号	I				
标题	SAL-10HP-UG124 控制电路图				
图号	SAL-10HP-UG124-CE-400V-I-2				
比例	第 2 张	共 5 张	标准	CE	机器电压
					3φ4.00V
					机器频率
					50Hz



SHINI  
Shini Plastics Technologies, Inc.



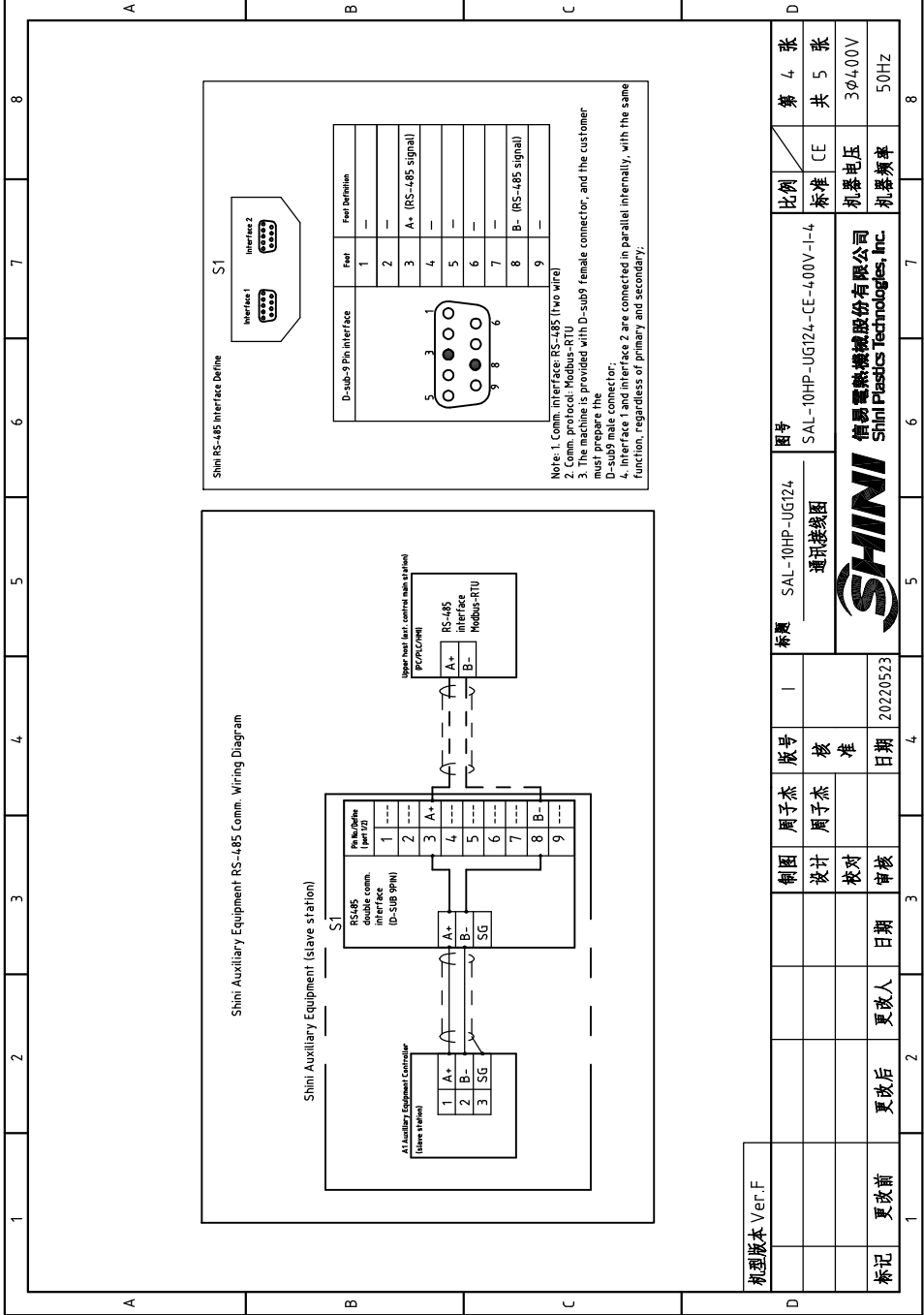
机型版本 Ver.F

比例	第 3 张
标准	CE
机壳电压	3φ4.00V
机壳频率	50Hz

制图	周子杰	版号	1	标题	SAL-10HP-UG124
设计	周子杰	核准		电器元件布置及接线图	图号 SAL-10HP-UG124-CE-4.00V-1-3
校对		日期	20220523		信易电热机械股份有限公司 Shini Plastics Technologies, Inc.
审核		日期			





Note: 1. Comm. interface RS-485 (two wire)  
 2. Comm. protocol: Modbus-RTU  
 3. The interface is provided with D-sub9 female connector, and the customer must prepare the D-sub9 male connector.  
 4. Interface 1 and interface 2 are connected in parallel internally, with the same function, regardless of primary and secondary.

机型版本 Ver.F									
标记	更改前	更改后	更改人	日期	审核	日期	核准	版本	制图

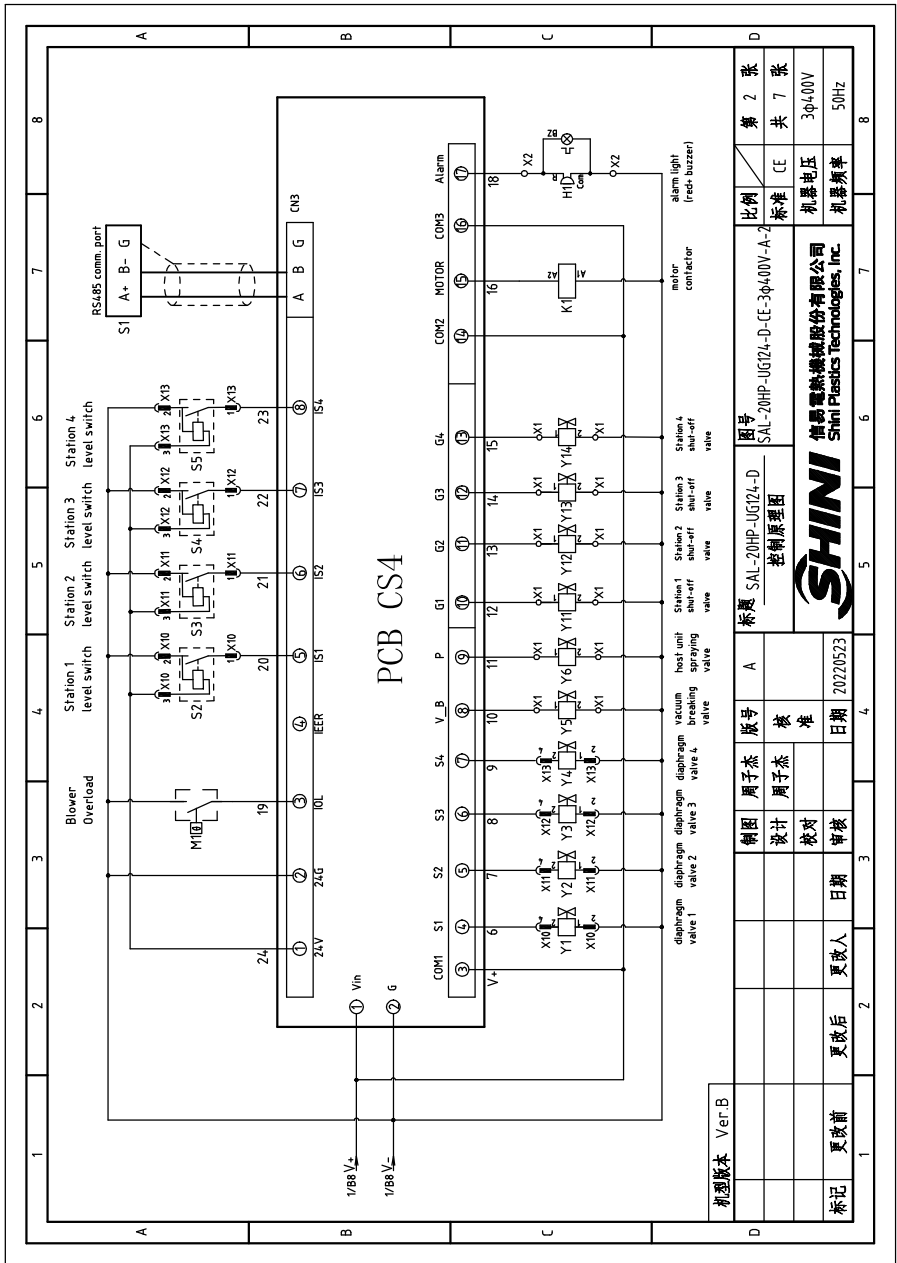
标题	SAL-10HP-UG124 通讯接线图	图号	SAL-10HP-UG124-CE-4.00V-1-4
比例	标准 CE	张数	第 4 张 共 5 张
机器电压	3φ4.00V	机器频率	50Hz



信昌塑料科技股份有限公司  
 Shini Plastics Technologies, Inc.

1		2		3		4		5		6		7		8	
N0	Symbol	Name	Manufacturer	Type	Specification	Number	Material number	Remark							
1	Q1	Main power switch	EATON	P1-32/EA/SVB	32A	1	YE10323200000								
2	Q2	Circuit breakers	TECO	BM-63C/3050S	50A	1	YE40305003000								
3	Q3	Circuit breakers	TECO	BM-63C/2003S	3A 2P	1	YE40200203000	A							
4	Q4	Contacts	TECO	BM-63C/1003S	3A 1P	1	YE40100203000								
5	K1	Controller	SIEMENS	3RT6026-1BB40	24VDC	1	YE00602600600								
6	A1	Controller	YUYUN	CS4	24VAC/DC	1	YE80042401200								
7	S1	RS-485 comm. interface	YUYUN	---	Dsub-9pin connector	1	YE90048501200								
8		Shell RS-485 (SAL-700G-A-19) ver.0	---	---	---	1	YR40048500000								
9		9-pin serial port connector (male), including housing and screws	---	---	---	1	YE62090000000								
10	H1	Alarm light	HONGYUN	red, yel, gre, + buzzer	24VAC/DC	1	BL90000011520								
11	T	Transformer	JUJUN	IN=400V/4.15V,OUT=230V	500MA	1	YE70040005200	B							
12	U	DC power	---	S-35-24	24VDC 15A	1	YE71352400000								
13	X1 X2	Wiring terminal	HONEYWELL	SK2.5	2.5mm <sup>2</sup>	22	YE60002503200								
14		Wiring terminal	HONEYWELL	GK2.5PE	2.5PE	9	YE60002503400								
15		Terminal fittings E/GK series (honeywell)	HONEYWELL	---	PCS	6	YE60000003900								
16	X10-X13	Heavy duty connectors	HARTING	Han E-4F(socket)	4P	4	YE68000401400								
17	M	Blower	RuiJing	RB-850	10HP 400V 50HZ	1	---	(1)							
18	Y1-Y6	Solenoid valve	AIRTAC	---	24VDC	6	---	(1)							
19	Y11-Y14	Solenoid valve	AIRTAC	---	24VDC	4	---	(1)							
20	S2-S5	Photosensor switch	FOTEK	MT-4MN0-30VDC	10...30VDC	4	---	(1) SVH							
21		Reed switch	SONON	BN12-30BLA	24VDC	4	---	(1) SMH							
机型版本 Ver.F															
Note: (1) Materials not mounted in the control box;															
D		制图	周子杰	版号	1	标题		SAL-10HP-UG124/SAL-10HP-UG124-D		图号		SAL-10HP-UG124-CE-4.00V-I-5		比例	第 5 张
		设计	周子杰	核 准		电气元件明细表一		标准		CE		共 5 张			
		校对		日期	20220523	SHINI		SHINI 信易塑料机械股份有限公司		机器电压		3φ4.00V			
标记		更改前	更改后	更改人	日期	SHINI		机器频率		50Hz					





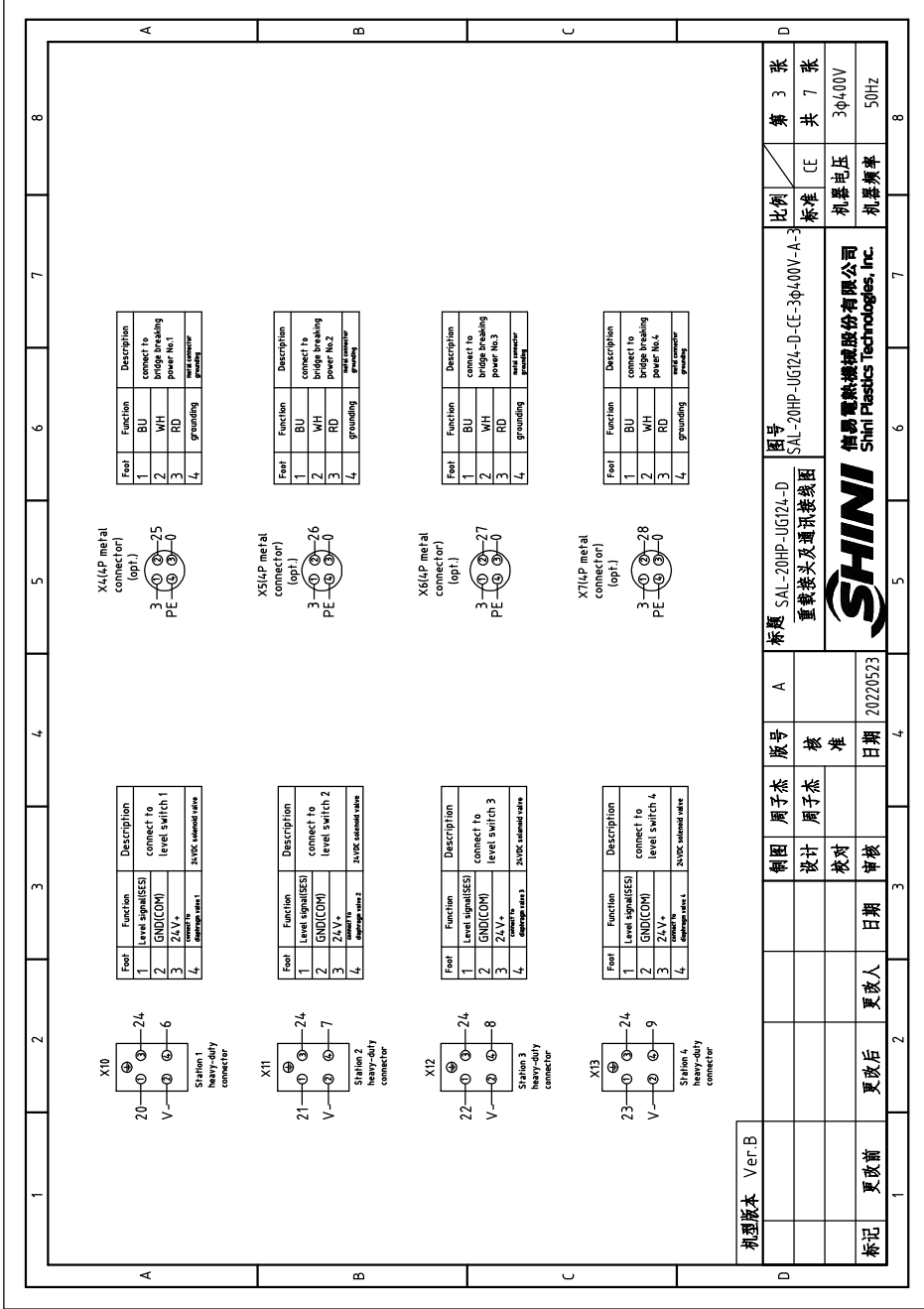
PCB CS4

机壳版本 Ver.B

标记	更改前	更改后	更改人	日期	审核	制图	周子杰	版号	A	图号	SAL-20HP-UG124-D	比例	第 2 张
						设计	周子杰	校		标题图	SAL-20HP-UG124-D-CE-3φ400V-A-2	标准	共 7 张
						校对		准				机器电压	3φ400V
						审核		日期	2020523			机器频率	50Hz



信易电热机械股份有限公司  
Shini Plastics Technologies, Inc.



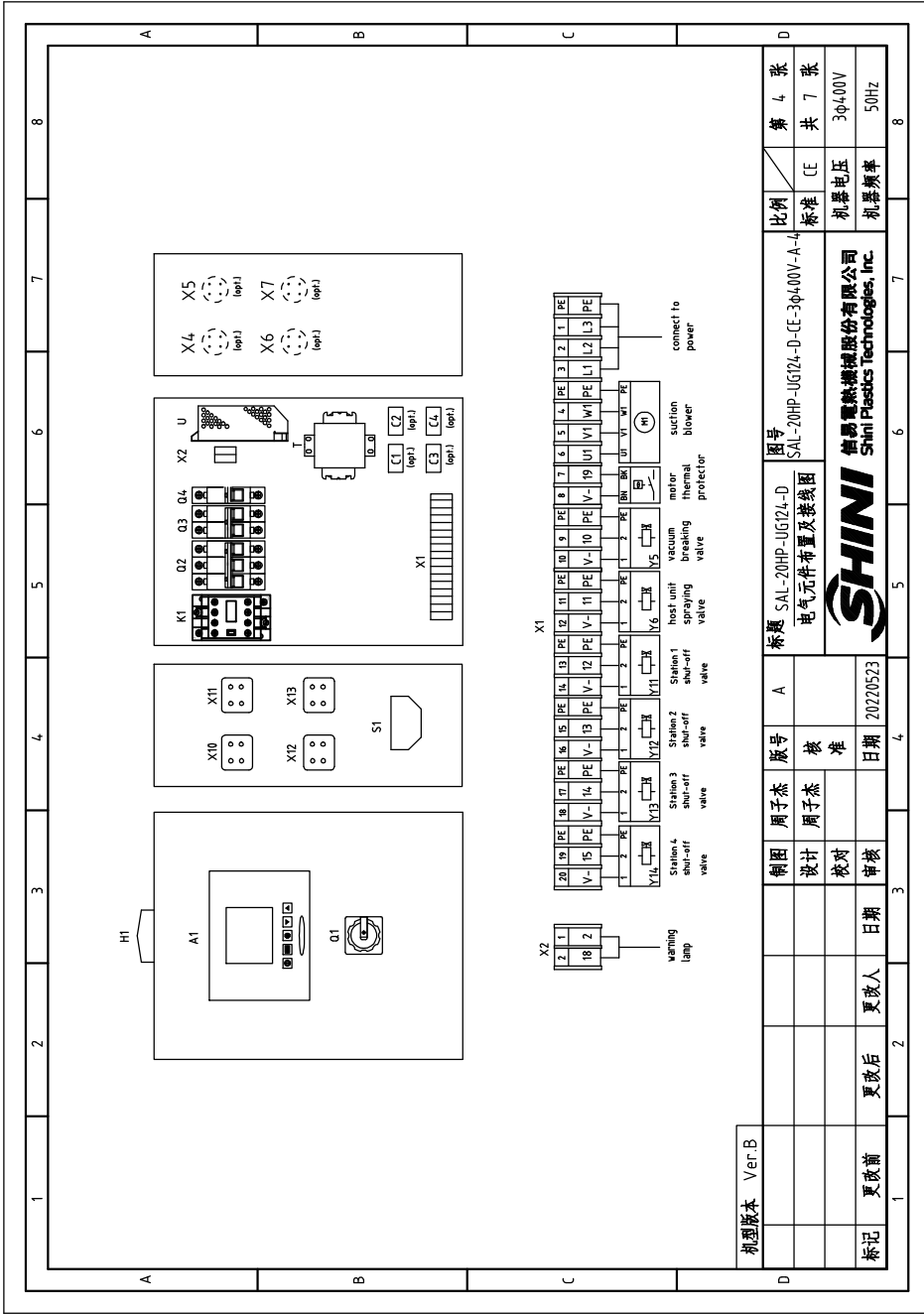
机型版本 Ver.B

制图	周子杰	版号	A
设计	周子杰	核准	
校对		日期	20220523
审核			
更改后	更改人	日期	
更改前			


标题	SAL-20HP-UG124-D 重载接头及通讯线图	图号	SAL-20HP-UG124-D-CE-30400V-A-3
比例	CE	标准	CE
电压	304.00V	频率	50Hz
张数	第 3 张	共	7 张

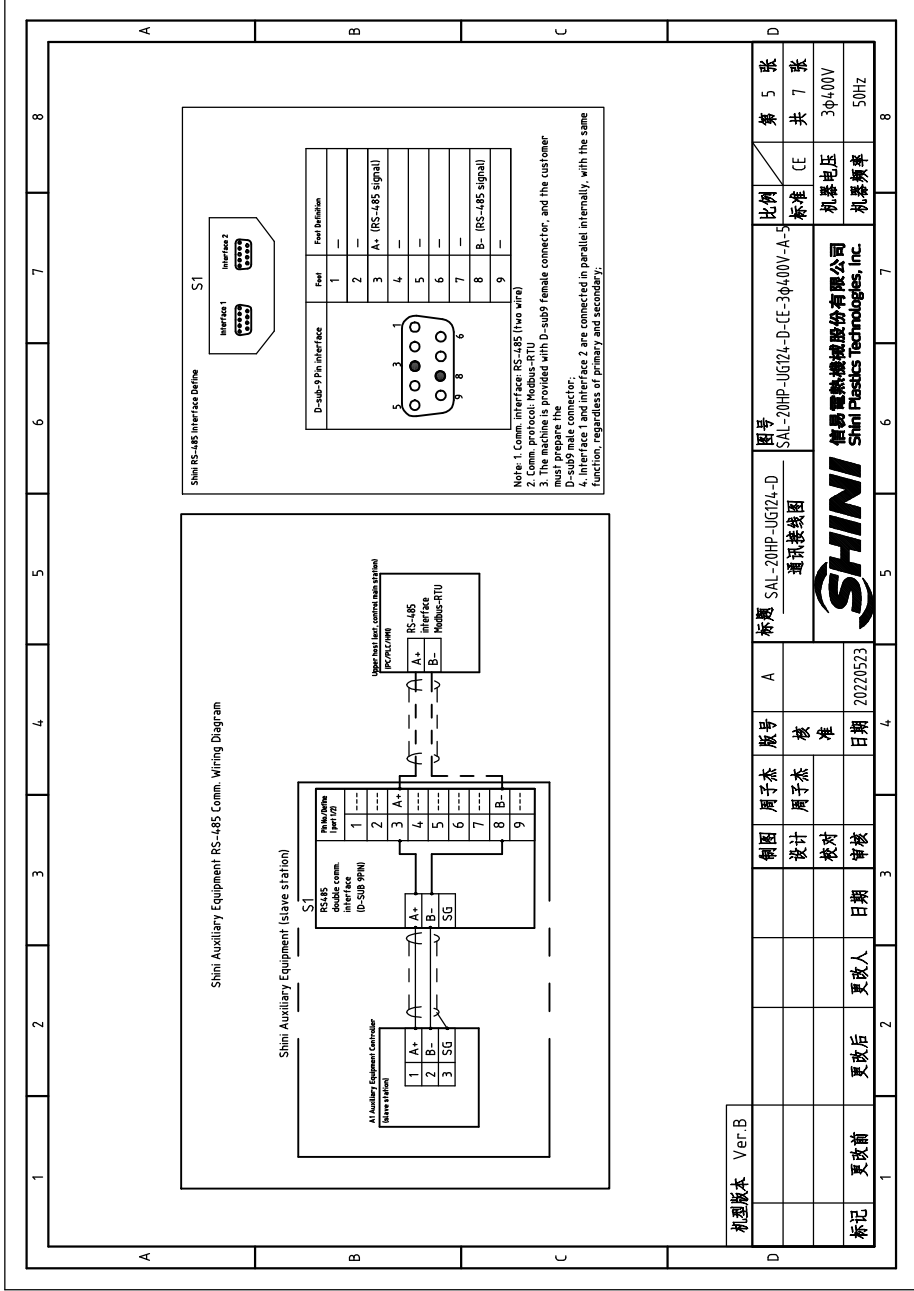


SHINI  
Shini Plasstics Technologies, Inc.



机型版本 Ver.B

制图	周子杰	版号	A	图号	SAL-20HP-UG124-D	比例	第 4 张
设计	周子杰	核 准		标题	SAL-20HP-UG124-D-CE-3Φ4.00V-A-4 电气元件布置及接线图	标准	共 7 张
校对		日期	20220523	 神鹰电声科技股份有限公司 Shini Plastics Technologies, Inc.		机器电压	3Φ4.00V
标记	更改前	更改后	更改人			审核	日期



机型版本 Ver.B

标记	更改前	更改后	更改人	日期	审核	制图	周子杰	版号	A	标题	SAL-20HP-UG174-D 通讯接线图	图号	SAL-20HP-UG174-D-CE-3φ400V-A-5	比例	第 5 张
				20220523		设计	周子杰	核准						标准	共 7 张
						校对									机罩电压
						审核									3φ400V
															机罩频率
															50Hz



SHINI  
Shini Plastics Technologies, Inc.





1		2		3		4		5		6		7		8	
No	Symbol	Name	Manufacturer	Type	Specification	unit	Number	Material number	Remark						
1	C1 C2 C3 C4	Operating capacitance	----	----	----	PCS	4	----	(2)						
A															
B															
C															
D															
机型版本 Ver.B Note: (1) Materials not mounted in the control box; (2) Optional bridge breaking motor;															
		制图		周子杰		版号		A		标题		SAL-20HP-UG124-D 电气元件明细表一		图号	
		设计		周子杰		核准				标准		CE		比例	
		校对				日期		20220523		标准		机壳电压		第 7 张	
标记		更改前		更改后		更改人		日期		审核		机壳频率		共 7 张	
												3φ400V		50Hz	
												SHINI		SHINI Plasstics Technologies, Inc.	