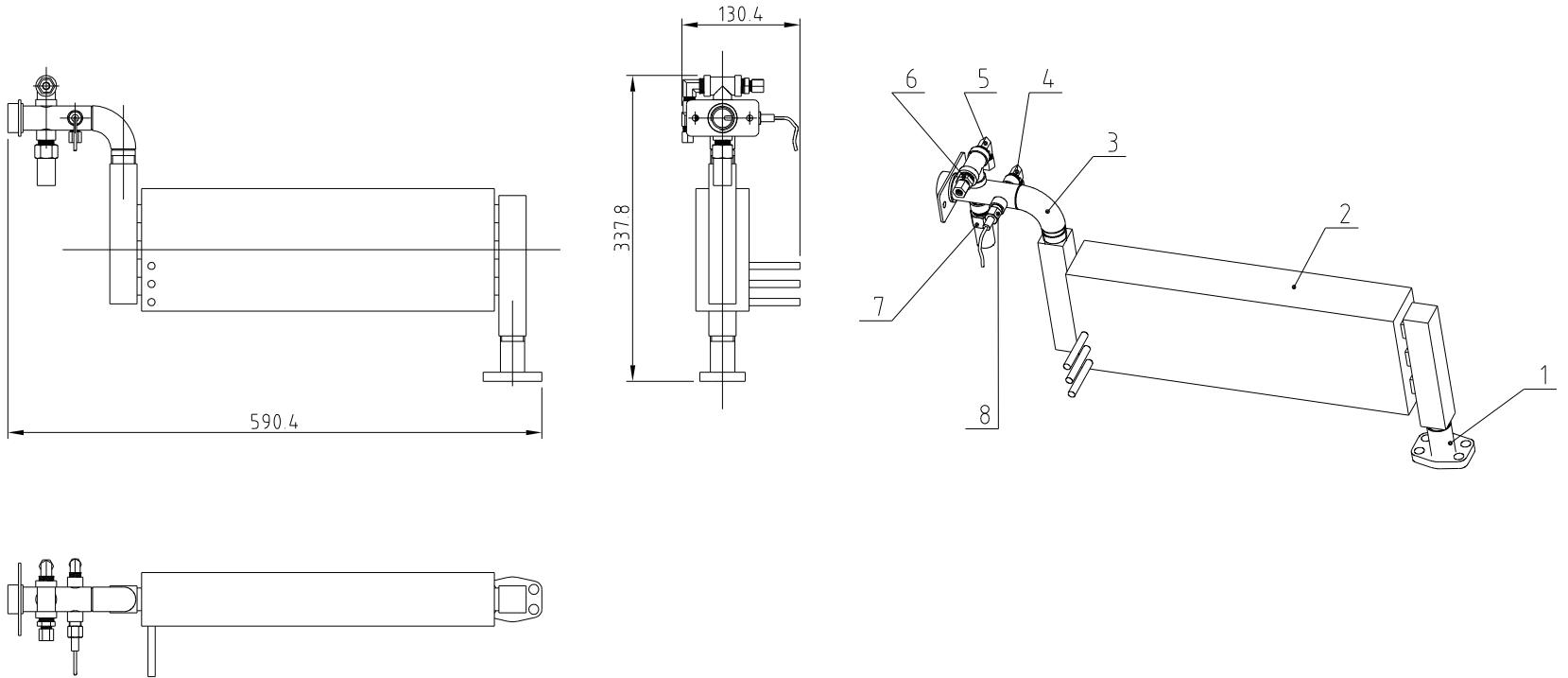


44	YW62061000000	Cross recessed flat head screw M10x10	Q235A	18	JIS1111
43	STM-1220PW-F-ALL	Water replacement connector assembly		1	Assembly
42	STM-607PW-F-ALL	Plunger pump water refilling assembly		1	Assembly
41	YW674.819000000	Cross recessed pan head screws	Q235A	4	GB/T15856
40	STM-1220PW-C-ALL	Return water pipe components		1	Assembly
39	YW61102500000	Hexagon socket head screw M10x12.9	12.9	8	GB/T70.1
38	YR10110000000	Flange gasket MP-100	ISO-68	2	has mould
37	YW90120700000	Aluminum cooler	6061	1	
36	YE10125250000	Main power switch	Q235A	1	P1-25
35	YW20660900100	Door panel handle block (aluminum handle)	2024	1	6609(Yaxuan)
34	YW00000000100	Long gear door lock	PVC	1	
33	YW050614.00000	Sleeve connector 6MM1/4"PT	H58	1	
32	YE15200000500	Lifu T2000	1	SUS304	
31	BH12060701710	H to PT connector	SUS304	1	1/2" H to PT internal nut
30		Bump touch screen		1	
29	YE84003500200	Buzzer PK-3A 220V	PVC	1	
28	STM-607PW-ALL-01	Control box		1	Welding parts
27	STM-607PW-ALL-02	Door plank		1	Welding parts
26		RS485 communication connector		1	Assembly
25	STM-1220PW-ALL-03	Base plate of control box	SECC15	1	
24	SG-S-01	Wire clamp fixed plate	SPCC2.0	1	
23	YW06219100000	Large hinge	2024	2	Shengjiu QJ19-1
22	YW62051000100	Cross recessed flat head screw M10x10	Q235A	8	JIS1111
21	YE67201500100	Copper nickel-plated cable connector	H62	1	2.5*4C For cables
20	YW03002500000	Universal rubber wheel 2.5" as		4	2.5" without brake
19	STM-607PW-ALL-03	Rear panel of control box		1	Welding parts
18	YW65008000100	Standard spring washer GB/T93 8	65Mn	4	GB/T93
17	BH90115000050	High temperature taster		1	EGO
16	BM20150300750	Magnetic pump MP-150 3-phase	QT400	1	1.5KW Anbo
15	YW66082200100	Large washer C grade	Q235A	8	GB/T196818 4x24x20
14	YW60062500000	Hexagon head bolt M6x25	4.8	4	GB/T5781
13	YW66061800000	Large washer Grade 1 GB/T93 1.6kg nut	Q235A	4	GB/T6170
12	YW64000600300	Hexagonal nut GB/T6170 M6	Q235A	6	GB/T6170
11	YW57010200000	F-type water filter valve 1/2" PT	H62	1	1/2" inch PT 3/4-15 mesh
10	STM-607PW-B-21	Cooling water inlet joint assembly		1	Assembly
9	BH12161200010	Copper ferrule 1/2" PT; A105 B-13	H58	1	
8	STM-607PW-E-ALL	Drainage joint parts		1	
7	STM-607PW-B-20	Plate replacement fixed plate	SPCC2.0	1	
6	STM-1220PW-B-19	Board replacement		1	
5	STM-1220PW-A-ALL	rack		1	Welding parts
4	STM-1220PW-B-ALL	Heated barrel assembly		1	Assembly
3	YW66061300000	Flat Washer Grade 1 GB/T93 1.6kg nut	Q235A	6	
2	YW65006000100	Standard spring washer GB/T93 6	65Mn	7	GB/T93
1	YW60061500100	Hexagon head bolt GB/T5783 M10x12.9	12.9	2	GB/T5783

Technical requirements:
 1. The stainless steel pipe should be wired horizontally and vertically, and the PT teeth need to be wrapped with PTFE tape.
 2. All fasteners need to be treated with rust prevention.

制图	版号	标题	图号	比例	1:10	数量	1
设计	核准	STM-1220PW	STM-1220PW-ALL	材质			/
2024.06.24	日期	高温水式模温机		表面要求			/
校对	日期	20230214		物料号			/
标记	更改前	更改后	更改人	日期	审核		





Technical requirements:

1. Trimming and deburring,

2. Dimensional tolerances not specified shall be in accordance with GB/T1804-2000

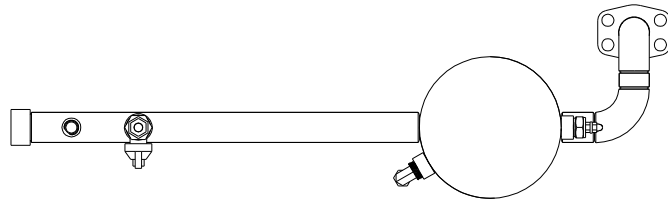
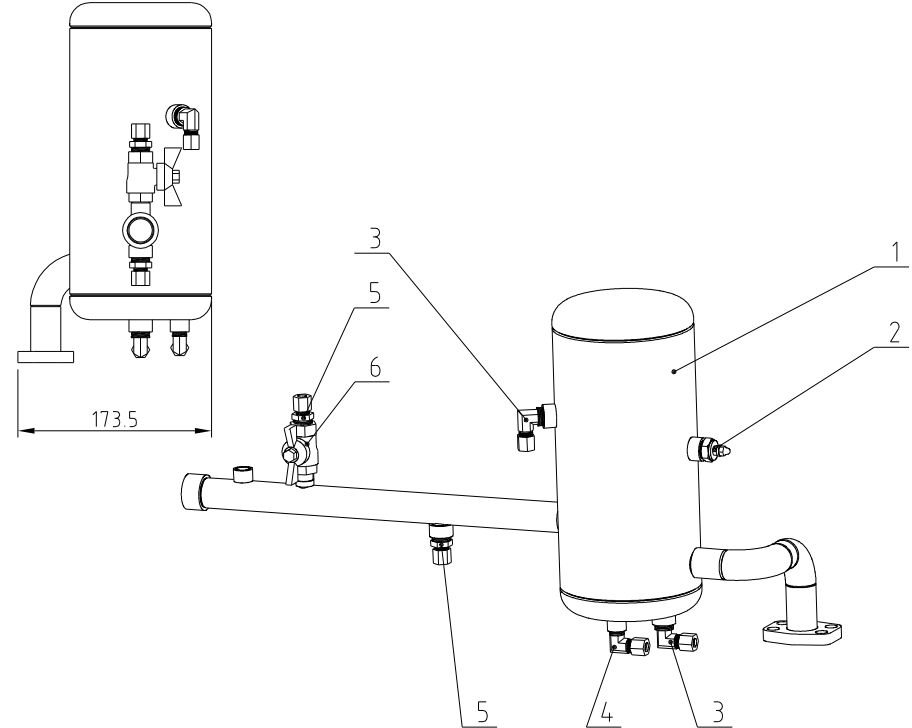
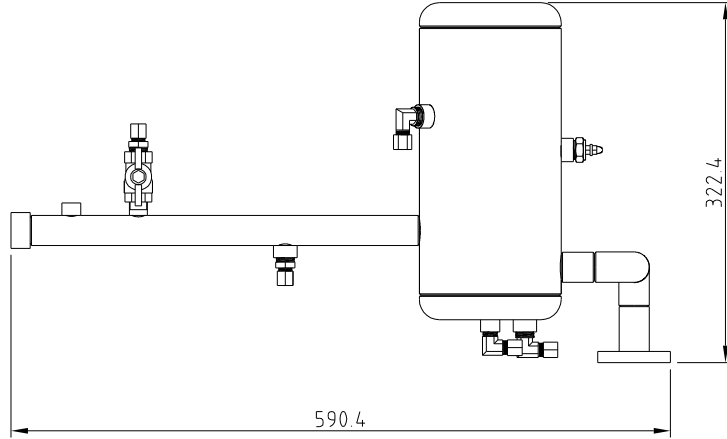
Tolerances for linear and angular dimensions without specified tolerances

The M-level regulations.

3. Each screw thread connection must be wrapped with a sealing tape and must not leak under a pressure of 15 MPa.

8	BE90342500050	Temple SW (probe length 14, wire length 2.5 meters) M8	SUS304	1	2.5M
7	BY90202200110	Pressure release valve	Cu	1	
6	YW05083800000	Sleeve connector	H58	1	8MMX3/8"PT
5	YW05083800100	Sleeve connector	H58	1	8MMX3/8"PT L-type
4	YW05061400100	Sleeve connector	H58	1	6MMX1/4"PT L-type
3	STM-1220PW-B-02	Heater outlet pipe		1	
2	YW59123300100	Non contact electric heating tube	SUS304	1	
1	STM-1220PW-B-01	Heater and water pump connection pipe		1	
序号	代号	名称	材质	数量	备注

					制图		版号	E	标题	STM-1220PW	图号	比例	1:7	数量	1
					设计		核		加热器组件		STM-1220PW-B-ALL		材质	/	
				20240626	校对		准		信易電熱機械股份有限公司 Shini Plastics Technologies, Inc.		表面要求	/			
标记	更改前	更改后	更改人	日期	审核		日期	20240620				物料号	/		

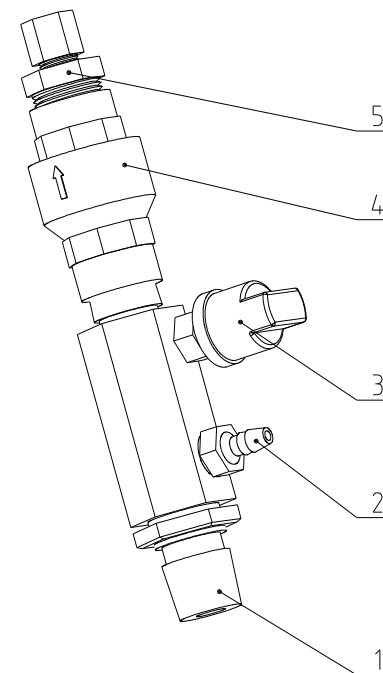
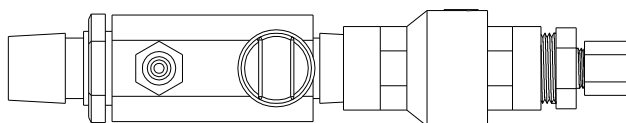
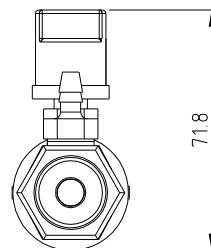
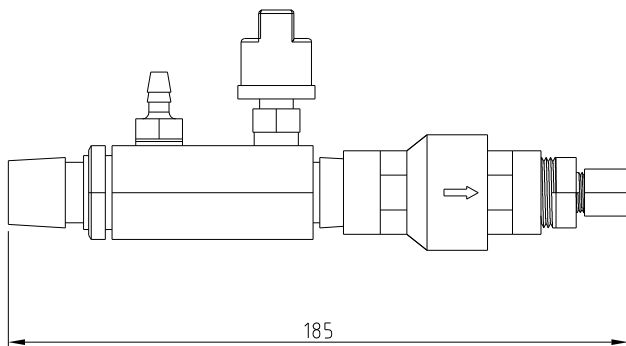


Technical requirements

1. Trimming and deburring.
2. Dimensional tolerances not specified shall be in accordance with GB/T1804-2000 Tolerances for linear and angular dimensions without specified tolerances The M-level regulations.
3. Each screw thread connection must be wrapped with a sealing tape and must not leak under a pressure of 1.5 MPa.

6	YW50381800100	Ball valve (temperature resistant to 100 degrees) Shintai	H58	1	3/8"
5	YW05083800000	Sleeve connector	H58	2	8MMX3/8"PT
4	YW05081400000	Sleeve connector	H58	1	8MMX1/4" PT L-type
3	YW05083800100	Sleeve connector	H58	2	8MMX3/8" PT L-type
2	YW09003800500	Single water level probe	Q235A	1	3mm in lead and 10mm in total L. No
1	STM-1220PW-C-01	Return water pipe		1	Welding parts
序号	代号	名称	材质	数量	备注

					制图		版号	E	标题	STM-1220PW	图号	STM-1220PW-C-ALL	比例	1:6	数量	1
					设计		核准			回水管部件					材质	/
				2024.06.21	校对					信易電熱機械股份有限公司 Shini Plastics Technologies, Inc.			表面要求	/		
标记	更改前	更改后	更改人	日期	审核		日期	20181221					物料号	/		



Technical requirements:

1. Trimming and deburring;

2. Dimensional tolerances not specified shall be in accordance with GB/T1804-2000

Tolerances for linear and angular dimensions without specified tolerances

The M-level regulations.

3. Each screw thread connection must be wrapped with a sealing tape and must not leak under a pressure of 1.5 MPa.

5	YW05081200600	Sleeve connector	H58	1	8MMX1/2"PT
4	YW59001201300	Check valve 1/2"	Cu	1	
3	YE90110800100	Pressure switch	H58	1	1/4"PTx1.5kg
2	BH11060703110	Pagoda 7mm*1/4	H58	1	
1	BH12091000010	Seven sets of copper connectors		1	
序号	代号	名称	材质	数量	备注

					制图	版号	0	标题	STM-1220PW	图号	STM-1220PW-F-ALL	比例	1:2	数量	1
					设计	核			补水接头组件				材质	/	
					校对	准						表面要求	/		
标记	更改前	更改后	更改人	日期	审核	日期	2024.07.01		信易電熱機械股份有限公司 Shini Plastics Technologies, Inc.			物料号	/		