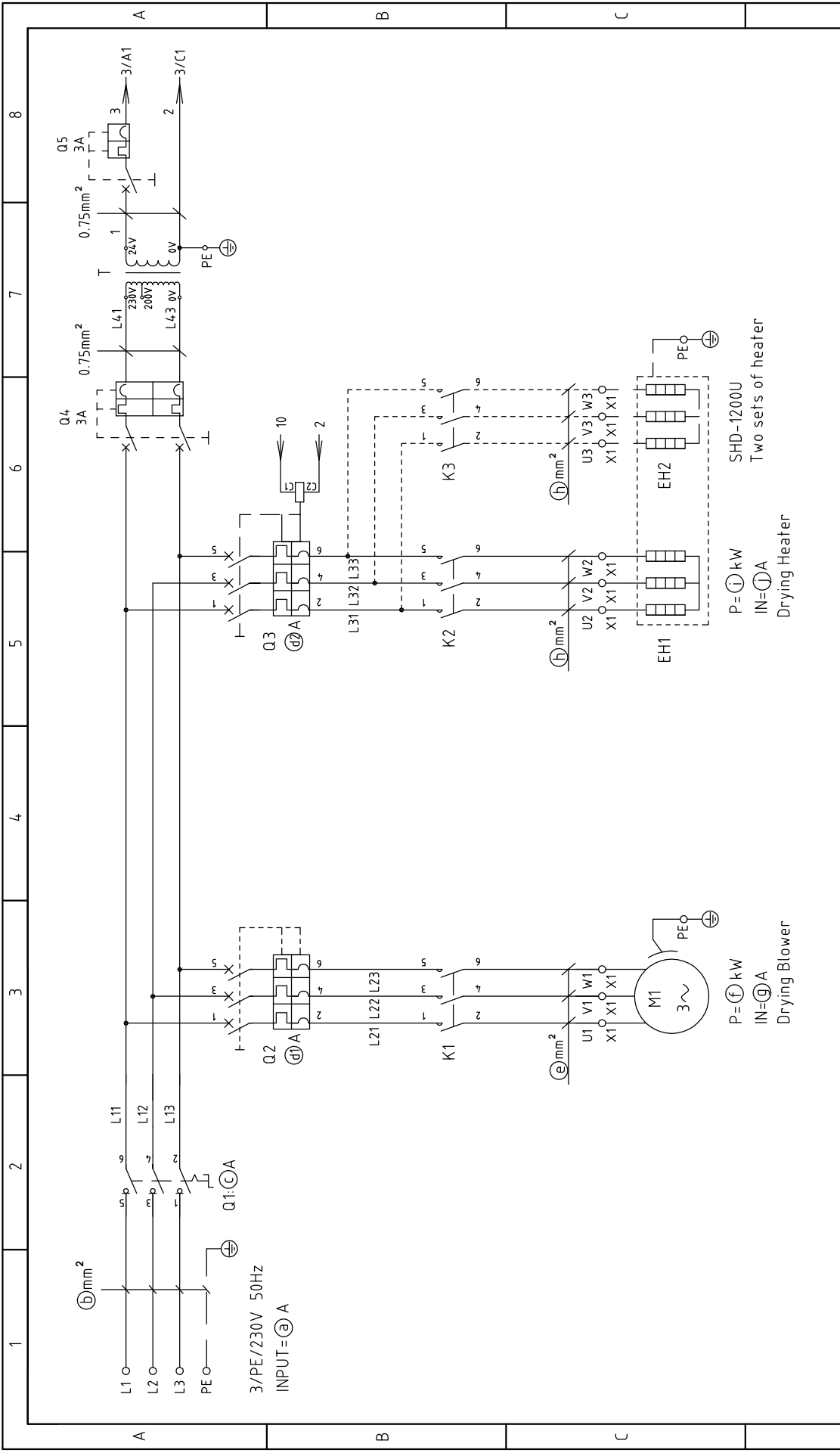


- (a) Total input current      (d1) Drying blower circuit breaker      (f) Drying blower power      (i) Heater power
- (b) Main power wire dia.      (d2) Drying heater breaker      (g) Drying blower current      (j) Heater current
- (c) Main power switch      (e) Drying blower wire dia.      (h) Heater wire dia.

MODE	Ver.	(a)	(b)	(c)	(d1)	(d2)	(e)	(f)	(g)	(h)	(i)	(j)
SHD-20U	Ver.D	6.0	1.5	20	6	10	1.5	0.05	0.3	1.5	2.2	5.7
SHD-40U	Ver.E	8.3	2.5	20	6	10	1.5	0.12	0.5	1.5	3.0	7.8
SHD-80U	Ver.E	10.8	2.5	20	6	16	1.5	0.12	0.5	2.5	3.9	10.3
SHD-120U	Ver.E	10.8	2.5	20	6	16	1.5	0.12	0.5	2.5	3.9	10.3
SHD-160U	Ver.D	16.0	4.0	25	6	20	1.5	0.12	0.5	4.0	6.0	15.5
SHD-230U	Ver.D	16.0	4.0	25	6	20	1.5	0.12	0.5	4.0	6.0	15.5
SHD-300U	Ver.D	31.6	10.0	63	6	40	1.5	0.18	0.6	6.0	12.0	31
SHD-450U	Ver.D	31.6	10.0	63	6	40	1.5	0.18	0.6	6.0	12.0	31
SHD-600U	Ver.D	48	16.0	63	6	63	1.5	0.55	2.0	16.0	18.0	46
SHD-750U	Ver.D	48	16.0	63	6	63	1.5	0.55	2.0	16.0	18.0	46
SHD-900U	Ver.E	48	16.0	63	6	63	1.5	0.55	2.0	16.0	18.0	46
SHD-1200U	Ver.E	66.0	16.0	100	10	80	1.5	1.1	4.0	6.0x2	12.0x2	62

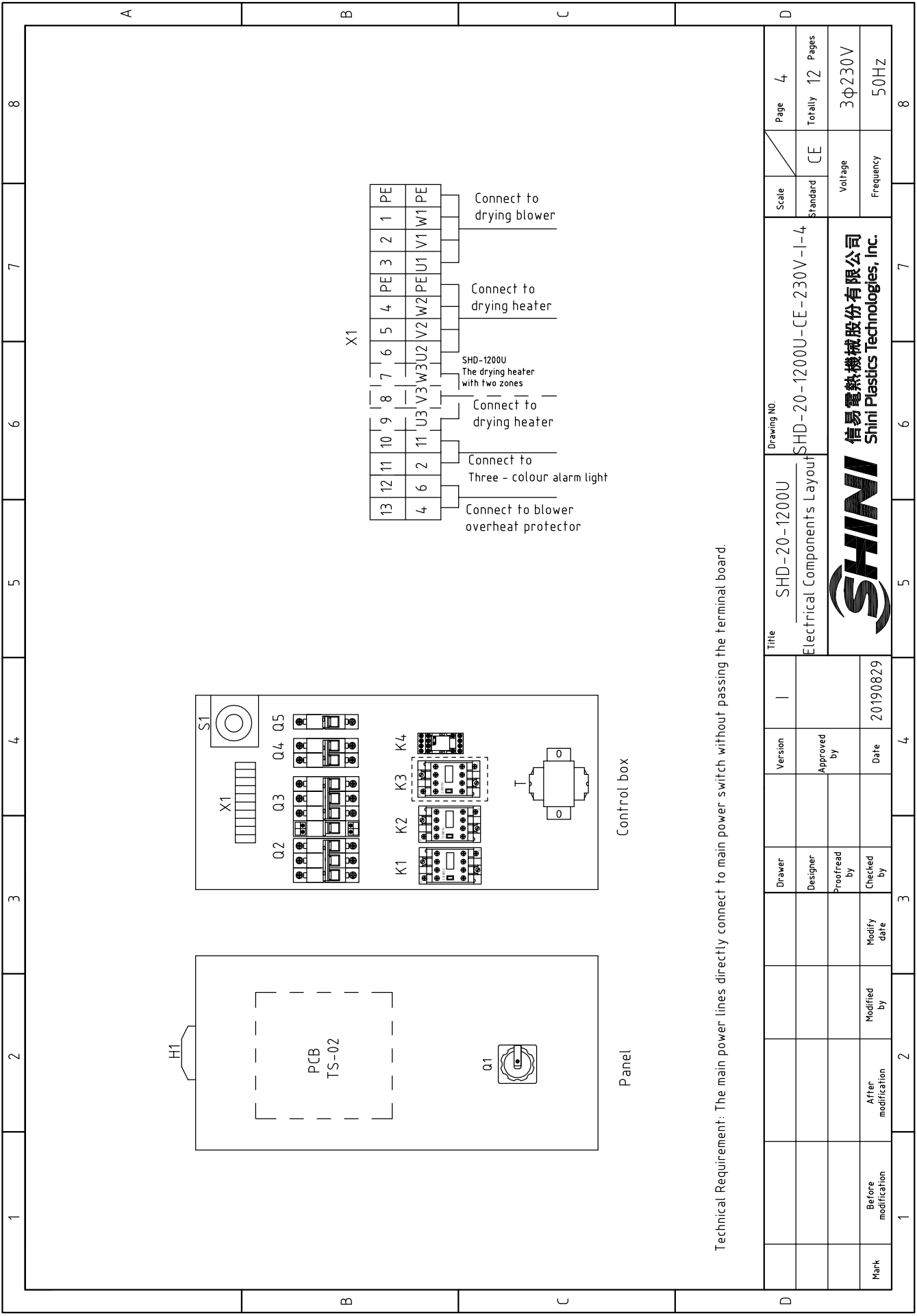
Title		SHD-20-1200U		Drawing NO.		SHD-20-1200U-CE-230V-I-1		Scale		Page 1	
Parameter List of Circuit Diagram		Version		I		Standard		CE		Totally 12 Pages	
Designer		Approved by		Date		Voltage		Frequency		3Φ230V	
Proofread by		Checked by		20190829		50HZ					
Mark		After modification		Modified by		Modify date					
Before modification											





1	2	3	4	5	6	7	8
Title		Version		Drawing NO.		Scale	
SHD-20-1200U		I		SHD-20-1200U-CE-230V-I-2		Standard	
Main Circuit Diagram		Approved by		SHD-20-1200U-CE-230V-I-2		Voltage	
SHINI		Date		SHINI 信易電熱機械股份有限公司		Frequency	
20190829		20190829		Shini Plastics Technologies, Inc.		3φ230V	
Mark		Modified by		Page		Totally	
Before modification		After modification		2		12	
Modified date		Checked by		8		Pages	
2		3		4		3	
3		4		5		8	
4		5		6		50Hz	
5		6		7		50Hz	
6		7		8		50Hz	
7		8		9		50Hz	
8		9		10		50Hz	





Technical Requirement: The main power lines directly connect to main power switch without passing the terminal board.

Mark	Before modification	Modified by	Modify date	Checked by	Date	20190829	Approved by	Version	I	Title	SHD-20-1200U Electrical Components Layout		Scale	Standard	CE	Page	4	Totally	12	Pages	3φ230V	50HZ
Drawer	Designer	Proofread by	Checked by	Modify date	Date	20190829	Approved by	Version	I	Title	SHD-20-1200U Electrical Components Layout		Scale	Standard	CE	Page	4	Totally	12	Pages	3φ230V	50HZ
										SHD-20-1200U	SHD-20-1200U-CE-230V-I-4		Standard	CE	Page	4	Totally	12	Pages	3φ230V	50HZ	
										SHINI		信易電熱機械股份有限公司 Shini Plastics Technologies, Inc.										






1	2		3	4	5	6	7	8			
NO.	Symbol	Name	Manufacturer	Type	Specification	Number	Material number	Remark			
1	Q1	Main power switch	EATON	T0-2-1/EA/SVB	20A 3P 690V 50/60Hz	1	YE10021160000				
2	Q3	Circuit-breaker	TECO	BM-63C/3016S	16A	1	YE40301603000				
3		Excitation release	YIJIN	MX	24V AC	1	YE40024000000				
4	Q2	Circuit-breaker	TECO	BM-63C/3006S	6A	1	YE40300603000				
5	K1	AC Contactor	SIEMENS	3RT6015-1AB01	7A 3P 1N0 24V AC	1	YE00601502500				
6	K2	AC Contactor	SIEMENS	3RT6018-1AB01	16A 3P 24V AC	1	YE00601802500				
7	K4	Middle relay	HONEYWELL	GR-2C-AC24V PRG-2C-E	24V 50/60Hz	1	YE03022400300				
8	T	Transformer	JIUXIN	IN=230V/200 OUT=24V	80VA	1	YE70023005200				
9	Q4	Circuit-breaker	TECO	BM-63C/2003S	3A 2P	1	YE40200203000				
10	Q5	Circuit-breaker	TECO	BM-63C/1003S	3A 1P	1	YE40100203000				
11	PCB	PCB	YUYUN	TS-02124VAC(include communication)	24V 50/60Hz	1	YE80022401200				
12	S1	Temperature protector	EGO	----	115-320 °C	1	BH901150000150				
13	S2	Thermocouple	SHINI	K TYPE	----	1	----	(1)			
14	H1	Three - colour alarm light	SHINI	Red. Yel. Gre + buzzer	24V AC/DC	1	BL90000011520				
15	X1	Terminal	HOEYWELL	SK4	4mm <sup>2</sup>	6	YE60000403200				
16		Terminal	HOEYWELL	GKSPE	4mm <sup>2</sup> PE	2	YE60000403500				
17		Terminal	HOEYWELL	SK2.5	2.5mm <sup>2</sup>	4	YE60002503200				
18		Terminal fixed fittings	HOEYWELL	----	----	5	YE60000003900				
19	M1	Blower	SHINI	0.12kW	230V50/60HZ	1	----	(1)			
20	EH1	Heater	SHINI	3.9kW	230V50/60HZ	1	----	(1)			
21	S3	Communication interface board RS-485 (double Dsub-9pin connector)	YUYUN	----	----	1	YE90048501200				
22		Shell RS485(SAL-700G-A-1910)	BINCHEG	----	----	1	YR40048500000				
Ver.E											
Notes: (1)Means it's not the material inside the control box.											
				Version	I	Drawing NO.					
				Designer		SHD-20-1200U-CE-230V-I-7					
				Proofread by		Standard					
				Checked by		CE					
				Modify date		Voltage					
				After modification		Frequency					
				Before modification		3Φ230V					
				Mark		50HZ					
				1	2	3	4	5	6	7	8
				Electrical Components List 1				Scale		Page	
				SHINI				SHD-20-1200U-CE-230V-I-7		Totally 12 Pages	
				信易電熱機械股份有限公司 Shini Plastics Technologies, Inc.						3Φ230V	
										50HZ	

1	2		3	4	5	6	7	8
NO.	Symbol	Name	Manufacturer	Type	Specification	Number	Material number	Remark
1	Q1	Main power switch	EATON	P1-25/EA/SVB	25A 3P 690V 50/60Hz	1	YE10125250000	
2	Q3	Circuit-breaker	TECO	BM-63C/3020S	20A 3P	1	YE403020030000	
3		Excitation release	YIJIN	MX	24V AC	1	YE400240000000	
4	Q2	Circuit-breaker	TECO	BM-63C/3006S	6A 3P	1	YE403006030000	
5	K1	AC Contactor	SIEMENS	3RT6015-1AB01	7A 3P 1N0 24V AC	1	YE006015025000	
6	K2	AC Contactor	SIEMENS	3RT6025-1AC20	17A 3P 24V AC	1	YE006025026000	
7	K4	Middle relay	HONEYWELL	GR-2C-AC24V PGR-2C-E	24V 50/60Hz	1	YE030224003000	
8	T	Transformer	JIUXIN	IN=230V/200V OUT=24V	80VA	1	YE700230052000	
9	Q4	Circuit-breaker	TECO	BM-63C/2003S	3A 2P	1	YE402002030000	
10	Q5	Circuit-breaker	TECO	BM-63C/1003S	3A 1P	1	YE401002030000	
11	PCB	PCB	YUYUN	TS-0212xVAC(include communication)	24V 50/60Hz	1	YE800224012000	
12	S1	Temperature protector	EGO	----	115-320 °C	1	BH901150001500	
13	S2	Thermocouple	SHINI	K TYPE	----	1	----	(1)
14	H1	Three - colour alarm light	SHINI	Red, Yel, Gre + buzzer	24V AC/DC	1	BL900000115200	
15	X1	Terminal	HOEYWELL	SK4	4mm <sup>2</sup>	6	YE600004032000	
16		Terminal	HOEYWELL	GK5PE	4mm <sup>2</sup> PE	2	YE600004035000	
17		Terminal	HOEYWELL	SK2.5	2.5mm <sup>2</sup>	4	YE600002503200	
18		Terminal fixed fittings	HOEYWELL	----	----	5	YE600000003900	
19	M1	Blower	SHINI	0.12kW	230V50/60HZ	1	----	(1)
20	EH1	Heater	SHINI	6kW	230V50/60HZ	1	----	(1)
21	S3	Communication interface board RS-485 (double Dsub-9pin connector)	YUYUN	----	----	1	YE900485012000	
21		Shell RS485(SAL-700G-A-1910)	BINCHEG	----	----	1	YR400485000000	
Ver.D Notes: (1)Means it's not the material inside the control box.								
Title				SHD-160U/230U		SHD-20-1200U-CE-230V-I-8		Page 8
Electrical Components List 1				SHD-20-1200U-CE-230V-I-8		Standard		CE
Voltage				3Φ230V		Frequency		50HZ
SHINI				信易電熱機械股份有限公司		Shini Plastics Technologies, Inc.		Totally 12 Pages
Ver.D				Notes: (1)Means it's not the material inside the control box.		3		8
Mark				Before modification		Modified by		Date
Mark				After modification		Modified by		Date
Mark				Proofread by		Checked by		Date
Mark				Designer		Approved by		Date
Mark				Drawer		Version		I
Mark				Title		SHD-160U/230U		Electrical Components List 1
Mark				SHD-20-1200U-CE-230V-I-8		Standard		CE
Mark				Voltage		3Φ230V		Frequency
Mark				SHINI		信易電熱機械股份有限公司		Shini Plastics Technologies, Inc.
Mark				Ver.D		Notes: (1)Means it's not the material inside the control box.		3
Mark				Before modification		Modified by		Date
Mark				After modification		Modified by		Date
Mark				Proofread by		Checked by		Date
Mark				Designer		Approved by		Date
Mark				Drawer		Version		I
Mark				Title		SHD-160U/230U		Electrical Components List 1
Mark				SHD-20-1200U-CE-230V-I-8		Standard		CE
Mark				Voltage		3Φ230V		Frequency
Mark				SHINI		信易電熱機械股份有限公司		Shini Plastics Technologies, Inc.
Mark				Ver.D		Notes: (1)Means it's not the material inside the control box.		3
Mark				Before modification		Modified by		Date
Mark				After modification		Modified by		Date
Mark				Proofread by		Checked by		Date
Mark				Designer		Approved by		Date
Mark				Drawer		Version		I
Mark				Title		SHD-160U/230U		Electrical Components List 1
Mark				SHD-20-1200U-CE-230V-I-8		Standard		CE
Mark				Voltage		3Φ230V		Frequency
Mark				SHINI		信易電熱機械股份有限公司		Shini Plastics Technologies, Inc.
Mark				Ver.D		Notes: (1)Means it's not the material inside the control box.		3
Mark				Before modification		Modified by		Date
Mark				After modification		Modified by		Date
Mark				Proofread by		Checked by		Date
Mark				Designer		Approved by		Date
Mark				Drawer		Version		I
Mark				Title		SHD-160U/230U		Electrical Components List 1
Mark				SHD-20-1200U-CE-230V-I-8		Standard		CE
Mark				Voltage		3Φ230V		Frequency
Mark				SHINI		信易電熱機械股份有限公司		Shini Plastics Technologies, Inc.
Mark				Ver.D		Notes: (1)Means it's not the material inside the control box.		3
Mark				Before modification		Modified by		Date
Mark				After modification		Modified by		Date
Mark				Proofread by		Checked by		Date
Mark				Designer		Approved by		Date
Mark				Drawer		Version		I
Mark				Title		SHD-160U/230U		Electrical Components List 1
Mark				SHD-20-1200U-CE-230V-I-8		Standard		CE
Mark				Voltage		3Φ230V		Frequency
Mark				SHINI		信易電熱機械股份有限公司		Shini Plastics Technologies, Inc.
Mark				Ver.D		Notes: (1)Means it's not the material inside the control box.		3
Mark				Before modification		Modified by		Date
Mark				After modification		Modified by		Date
Mark				Proofread by		Checked by		Date
Mark				Designer		Approved by		Date
Mark				Drawer		Version		I
Mark				Title		SHD-160U/230U		Electrical Components List 1
Mark				SHD-20-1200U-CE-230V-I-8		Standard		CE
Mark				Voltage		3Φ230V		Frequency
Mark				SHINI		信易電熱機械股份有限公司		Shini Plastics Technologies, Inc.
Mark				Ver.D		Notes: (1)Means it's not the material inside the control box.		3
Mark				Before modification		Modified by		Date
Mark				After modification		Modified by		Date
Mark				Proofread by		Checked by		Date
Mark				Designer		Approved by		Date
Mark				Drawer		Version		I
Mark				Title		SHD-160U/230U		Electrical Components List 1
Mark				SHD-20-1200U-CE-230V-I-8		Standard		CE
Mark				Voltage		3Φ230V		Frequency
Mark				SHINI		信易電熱機械股份有限公司		Shini Plastics Technologies, Inc.
Mark				Ver.D		Notes: (1)Means it's not the material inside the control box.		3
Mark				Before modification		Modified by		Date
Mark				After modification		Modified by		Date
Mark				Proofread by		Checked by		Date
Mark				Designer		Approved by		Date
Mark				Drawer		Version		I
Mark				Title		SHD-160U/230U		Electrical Components List 1
Mark				SHD-20-1200U-CE-230V-I-8		Standard		CE
Mark				Voltage		3Φ230V		Frequency
Mark				SHINI		信易電熱機械股份有限公司		Shini Plastics Technologies, Inc.
Mark				Ver.D		Notes: (1)Means it's not the material inside the control box.		3
Mark				Before modification		Modified by		Date
Mark				After modification		Modified by		Date
Mark				Proofread by		Checked by		Date
Mark				Designer		Approved by		Date
Mark				Drawer		Version		I
Mark				Title		SHD-160U/230U		Electrical Components List 1
Mark				SHD-20-1200U-CE-230V-I-8		Standard		CE
Mark				Voltage		3Φ230V		Frequency
Mark				SHINI		信易電熱機械股份有限公司		Shini Plastics Technologies, Inc.
Mark				Ver.D		Notes: (1)Means it's not the material inside the control box.		3
Mark				Before modification		Modified by		Date
Mark				After modification		Modified by		Date
Mark				Proofread by		Checked by		Date
Mark				Designer		Approved by		Date
Mark				Drawer		Version		I
Mark				Title		SHD-160U/230U		Electrical Components List 1
Mark				SHD-20-1200U-CE-230V-I-8		Standard		CE
Mark				Voltage		3Φ230V		Frequency
Mark				SHINI		信易電熱機械股份有限公司		Shini Plastics Technologies, Inc.
Mark				Ver.D		Notes: (1)Means it's not the material inside the control box.		3
Mark				Before modification		Modified by		Date
Mark				After modification		Modified by		Date
Mark				Proofread by		Checked by		Date
Mark				Designer		Approved by		Date
Mark				Drawer		Version		I
Mark				Title		SHD-160U/230U		Electrical Components List 1
Mark				SHD-20-1200U-CE-230V-I-8		Standard		CE
Mark				Voltage		3Φ230V		Frequency
Mark				SHINI		信易電熱機械股份有限公司		Shini Plastics Technologies, Inc.
Mark				Ver.D		Notes: (1)Means it's not the material inside the control box.		3
Mark				Before modification		Modified by		Date
Mark				After modification		Modified by		Date
Mark				Proofread by		Checked by		Date
Mark				Designer		Approved by		Date
Mark				Drawer		Version		I
Mark				Title		SHD-160U/230U		Electrical Components List 1
Mark				SHD-20-1200U-CE-230V-I-8		Standard		CE
Mark				Voltage		3Φ230V		Frequency
Mark				SHINI		信易電熱機械股份有限公司		Shini Plastics Technologies, Inc.
Mark				Ver.D		Notes: (1)Means it's not the material inside the control box.		3
Mark				Before modification		Modified by		Date
Mark				After modification		Modified by		Date
Mark				Proofread by		Checked by		Date
Mark				Designer		Approved by		Date
Mark				Drawer		Version		I
Mark				Title		SHD-160U/230U		Electrical Components List 1
Mark				SHD-20-1200U-CE-230V-I-8		Standard		CE
Mark				Voltage		3Φ230V		Frequency
Mark				SHINI		信易電熱機械股份有限公司		Shini Plastics Technologies, Inc.
Mark				Ver.D		Notes: (1)Means it's not the material inside the control box.		3
Mark				Before modification		Modified by		Date
Mark				After modification		Modified by		Date
Mark				Proofread by		Checked by		Date
Mark				Designer		Approved by		Date
Mark				Drawer		Version		I
Mark				Title		SHD-160U/230U		Electrical Components List 1
Mark				SHD-20-1200U-CE-230V-I-8		Standard		CE
Mark				Voltage		3Φ230V		Frequency
Mark				SHINI		信易電熱機械股份有限公司		Shini Plastics Technologies, Inc.
Mark				Ver.D		Notes: (1)Means it's not the material inside the control box.		3
Mark				Before modification		Modified by		Date
Mark				After modification		Modified by		Date
Mark				Proofread by		Checked by		Date
Mark				Designer		Approved by		Date
Mark				Drawer		Version		I
Mark				Title		SHD-160U/230U		Electrical Components List 1
Mark				SHD-20-1200U-CE-230V-I-8		Standard		CE
Mark				Voltage		3Φ230V		Frequency
Mark				SHINI		信易電熱機械股份有限公司		Shini Plastics Technologies, Inc.
Mark				Ver.D		Notes: (1)Means it's not the material inside the control box.		3
Mark				Before modification		Modified by		Date
Mark				After modification		Modified by		Date
Mark				Proofread by		Checked by		Date
Mark				Designer		Approved by		Date
Mark				Drawer		Version		I
Mark				Title		SHD-160U/230U		Electrical Components List 1
Mark				SHD-20-1200U-CE-230V-I-8		Standard		CE
Mark				Voltage		3Φ230V		Frequency
Mark				SHINI		信易電熱機械股份有限公司		Shini Plastics Technologies, Inc.
Mark				Ver.D		Notes: (1)Means it's not the material inside the control box.		3
Mark				Before modification		Modified by		Date
Mark				After modification		Modified by		Date
Mark				Proofread by		Checked by		Date
Mark				Designer		Approved by		Date
Mark				Drawer		Version		I
Mark				Title		SHD-160U/230U		Electrical Components List 1
Mark				SHD-20-1200U-CE-230V-I-8		Standard		CE
Mark				Voltage		3Φ230V		Frequency
Mark				SHINI		信易電熱機械股份有限公司		Shini Plastics Technologies, Inc.
Mark				Ver.D		Notes: (1)Means it's not the material inside the control box.		3
Mark				Before modification		Modified by		Date
Mark				After modification		Modified by		Date
Mark				Proofread by		Checked by		Date
Mark				Designer		Approved by		Date
Mark				Drawer		Version		I
Mark				Title		SHD-160U/230U		Electrical Components List 1
Mark				SHD-20-1200U-CE-230V-I-8		Standard		CE
Mark				Voltage		3Φ230V		Frequency
Mark				SHINI				





1	2		3	4	5	6	7	8
NO.	Symbol	Name	Manufacturer	Type	Specification	Number	Material number	Remark
1	Q1	Main power switch	EATON	P3-63/EA/SVB	63A 3P 690V 50/60Hz	1	YE10636300000	
2	Q3	Circuit-breaker	TECO	BM-63C/3063S	63A 3P	1	YE40306303000	
3		Excitation release	YIJIN	MX	24V AC	1	YE40024000000	
4	Q2	Circuit-breaker	TECO	BM-63C/3006S	6A 3P	1	YE40300603000	
5	K1	AC Contactor	SIEMENS	3RT6015-1AB01	7A 3P 1N0 24V AC	1	YE00601502500	
6	K2	AC Contactor	SIEMENS	3RT5044-1AC20	65A 3P 24V AC	1	YE00504402600	
7	K4	Middle relay	HONEYWELL	GR-2C-AC24V PGR-2C-E	24V 50/60Hz	1	YE03022400300	
8	T	Transformer	JIUXIN	IN=230V/200V OUT=24V	180VA	1	YE70023005400	
9	Q4	Circuit-breaker	TECO	BM-63C/2003S	3A 2P	1	YE40200203000	
10	Q5	Circuit-breaker	TECO	BM-63C/1003S	3A 1P	1	YE40100203000	
11	PCB	PCB	YUYUN	TS-02024VAC(include communication)	24V 50/60Hz	1	YE80022401200	
12	S1	Temperature protector	EGO	----	115-320 °C	1	BH90115000150	
13	S2	Thermocouple	SHINI	K TYPE	----	1	----	(1)
14	H1	Three - colour alarm light	SHINI	Red, Yel, Gre + buzzer	24V AC/DC	1	BL90000011520	
15	X1	Terminal	HOEYWELL	SK4	4.0mm <sup>2</sup>	3	YE60000403200	
16		Terminal	HOEYWELL	GK5PE	4.0mm <sup>2</sup> PE	1	YE60000403500	
17		Terminal	HOEYWELL	SK10	16mm <sup>2</sup>	3	YE60001603200	
18		Terminal	HOEYWELL	GK10PE	16mm <sup>2</sup> PE	1	YE60001603500	
19		Terminal	HOEYWELL	SK2.5	2.5mm <sup>2</sup>	4	YE60002503200	
20		Terminal fixed fittings	HOEYWELL	----	----	5	YE60000003900	
21	M1	Blower	SHINI	0.55kW	230V50/60HZ	1	----	(1)
22	EH1	Heater	SHINI	18kW	230V50/60HZ	1	----	(1)
23	S3	Communication interface board RS-485 (double Dsub-9pin connector)	YUYUN	----	----	1	YE90048501200	
24		Shell RS485(SAL-700G-A-19)0	BINCHENG	----	----	1	YR40048500000	
25	RC	Resistance capacity absorber	YUYUN	SA-RCS2	PLS	1	YE90000200000	
Ver.D								
Notes: (1)Means it's not the material inside the control box.								
			Drawer	Version	Title	Drawing NO.		Page
			Designer	I	SHD-600U/750U	Scale	Standard	10
			Proofread by	Approved by	Electrical Components List 1	SHD-20-1200U-CE-230V-I-10		Totally 12 Pages
			Checked by	Date	 <b>信易电热机械股份有限公司</b> <b>Shini Plastics Technologies, Inc.</b>			Voltage
Mark	Before modification	After modification	Modified by	Modify date	20190829			Frequency
1								3φ230V
								50HZ
						5	6	7
						8		

NO.	Symbol	Name	Manufacturer	Type	Specification	Number	Material number	Remark
1	Q1	Main power switch	EATON	P3-63/EA/SVB	63A 3P 690V 50/60Hz	1	YE10636300000	
2	Q3	Circuit-breaker	TECO	BM-63C/3063S	63A 3P	1	YE40306303000	
3		Excitation release	YIJIN	MX	24V AC	1	YE40024000000	
4	Q2	Circuit-breaker	TECO	BM-63C/3006S	6A 3P	1	YE40300603000	
5	K1	AC Contactor	SIEMENS	3RT6015-1AB01	7A 3P 1N0 24V AC	1	YE00601502500	
6	K2	AC Contactor	SIEMENS	3RT5044-1AC20	65A 3P 24V AC	1	YE00504402600	
7	K4	Middle relay	HONEYWELL	GR-2C-AC24V PGR-2C-E	24V 50/60Hz	1	YE03022400300	
8	T	Transformer	JIUXIN	IN=230V/200V OUT=24V	180VA	1	YE70023005400	
9	Q4	Circuit-breaker	TECO	BM-63C/2003S	3A 2P	1	YE40200203000	
10	Q5	Circuit-breaker	TECO	BM-63C/1003S	3A 1P	1	YE40100203000	
11	PCB	PCB	YUYUN	TS-0224VAC(include communication)	24V 50/60Hz	1	YE80022401200	
12	S1	Temperature protector	EGO	--	115-320 °C	1	BH90115000150	
13	S2	Thermocouple	SHINI	K TYPE	--	1	----	(1)
14	H1	Three - colour alarm light	SHINI	Red. Yel. Gre + buzzer	24V AC/DC	1	BL90000011520	
15	X1	Terminal	HOEYWELL	SK4	4.0mm <sup>2</sup>	3	YE60000403200	
16		Terminal	HOEYWELL	GK5PE	4.0mm <sup>2</sup> PE	1	YE60000403500	
17		Terminal	HOEYWELL	SK2.5	2.5mm <sup>2</sup>	4	YE60002503200	
18		Terminal	HOEYWELL	SK10	16mm <sup>2</sup>	3	YE60001603200	
19		Terminal	HOEYWELL	GK10PE	16mm <sup>2</sup> PE	1	YE60001603500	
20		Terminal fixed fittings	HOEYWELL	----	----	5	YE60000003900	
21	M1	Blower	SHINI	0.55kW	230V50/60HZ	1	----	(1)
22	EH1	Heater	SHINI	18kW	230V50/60HZ	1	----	(1)
23	S3	Communication interface board RS-485 (double Dsub-9pin connector)	YUYUN	----	----	1	YE90048501200	
24		Shell RS485(SAL-700G-A-19)0	BINCHENG	----	----	1	YR40048500000	
25	RC	Resistance capacity absorber	YUYUN	SA-RCS2	PCS	1	YE90000200000	

Ver.E Notes: (1)Means it's not the material inside the control box.

SHD-900U  
SHD-20-1200U-CE-230V-I-11  
CE  
11  
12  
es



信易電熱機械股份有限公司  
Shini Plastics Technologies, Inc.

20190829

3φ230V  
50Hz

1	2	3	4	5	6	7	8		
NO.	Symbol	Name	Manufacturer	Type	Specification	Number	Material number	Remark	
1	Q1	Main power switch	EATON	P3-100/EA/SVB	100A 3P 690V 50/60Hz	1	YE10010000000		
2	Q3	Circuit-breaker	TECO	BM-100D/3080S	80A 3P	1	YE40308003000		
3		Excitation release	YUJIN	MX	24V AC	1	YE40024000000		
4	Q2	Circuit-breaker	TECO	BM-63C/3010S	10A 3P	1	YE40600300000		
5	K1	Contacto	SIEMENS	3RT6015-1AB01	7A 3P 1NO 24V AC	1	YE00601502500		
6	K2 K3	AC Contacto	SIEMENS	3RT6028-1AC20	38A 3P 24V AC	2	YE00602802600		
7	K4	Middle relay	HONEYWELL	GR-2C-AC24V PGR-2C-E	24V 50/60Hz	1	YE03022400300		
8	T	Transformer	JIUXIN	IN=230V/200V OUT=24V	180VA	1	YE70023005400		
9	Q4	Circuit-breaker	TECO	BM-63C/2003S	3A 2P	1	YE40200203000		
10	Q5	Circuit-breaker	TECO	BM-63C/1003S	3A 1P	1	YE40100203000		
11	PCB	PCB	YUYUN	TS-0224VAC(include communication)	24V 50/60Hz	1	YE80022401200		
12	S1	Temperature protector	EGO	----	115-320 °C	1	BH90115000150		
13	S2	Thermocouple	SHINI	K TYPE	----	1	----	(1)	
14	H1	Three - colour alarm light	SHINI	Red, Yel, Gre + buzzer	24V AC/DC	1	BL90000011520		
15	X1	Terminal	HOEYWELL	SK4	4.0mm <sup>2</sup>	3	YE60000403200		
16		Terminal	HOEYWELL	GK5PE	4.0mm <sup>2</sup> PE	1	YE60000403500		
17		Terminal	HOEYWELL	SK6	6.0mm <sup>2</sup>	6	YE60000603200		
18		Terminal	HOEYWELL	GK6	6.0mm <sup>2</sup> PE	2	YE60000603500		
19		Terminal	HOEYWELL	SK2.5	2.5mm <sup>2</sup>	4	YE600002503200		
20		Terminal fixed fittings	HOEYWELL	----	----	5	YE60000003900		
21	M1	Blower	SHINI	1.1kW	230V 50/60Hz	1	----	(1)	
22	EH1	Heater	SHINI	24kW	230V 50/60Hz	1	----	(1)	
23	S3	Communication interface board RS-485 (double Dsub-9pin connector)	YUYUN	----	----	1	YE90048501200		
24		Shell RS485(SAL-700G-A-1910)	BINCHENG	----	----	1	YR40048500000		
Ver.E									
Notes: (1)Means it's not the material inside the control box.									
				Title		Drawing NO.		D	
				SHD-1200U		SHD-20-1200U-CE-230V-I-12		Page 12	
				Electrical Components List 1		Standard		Page 12	
				SHINI		Voltage		3Φ230V	
				信易電熱機械股份有限公司 Shini Plastics Technologies, Inc.		Frequency		50HZ	
Mark	Before modification	Modified by	Modify date	Checked by	Date	20190829			
1	2	3	4	5	6	7	8		