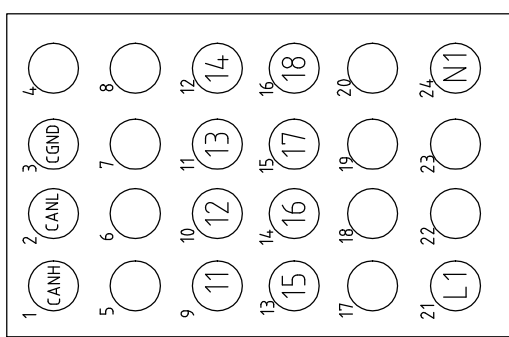
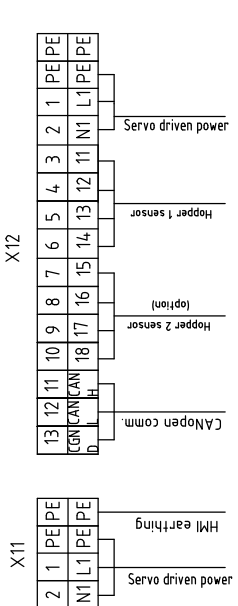
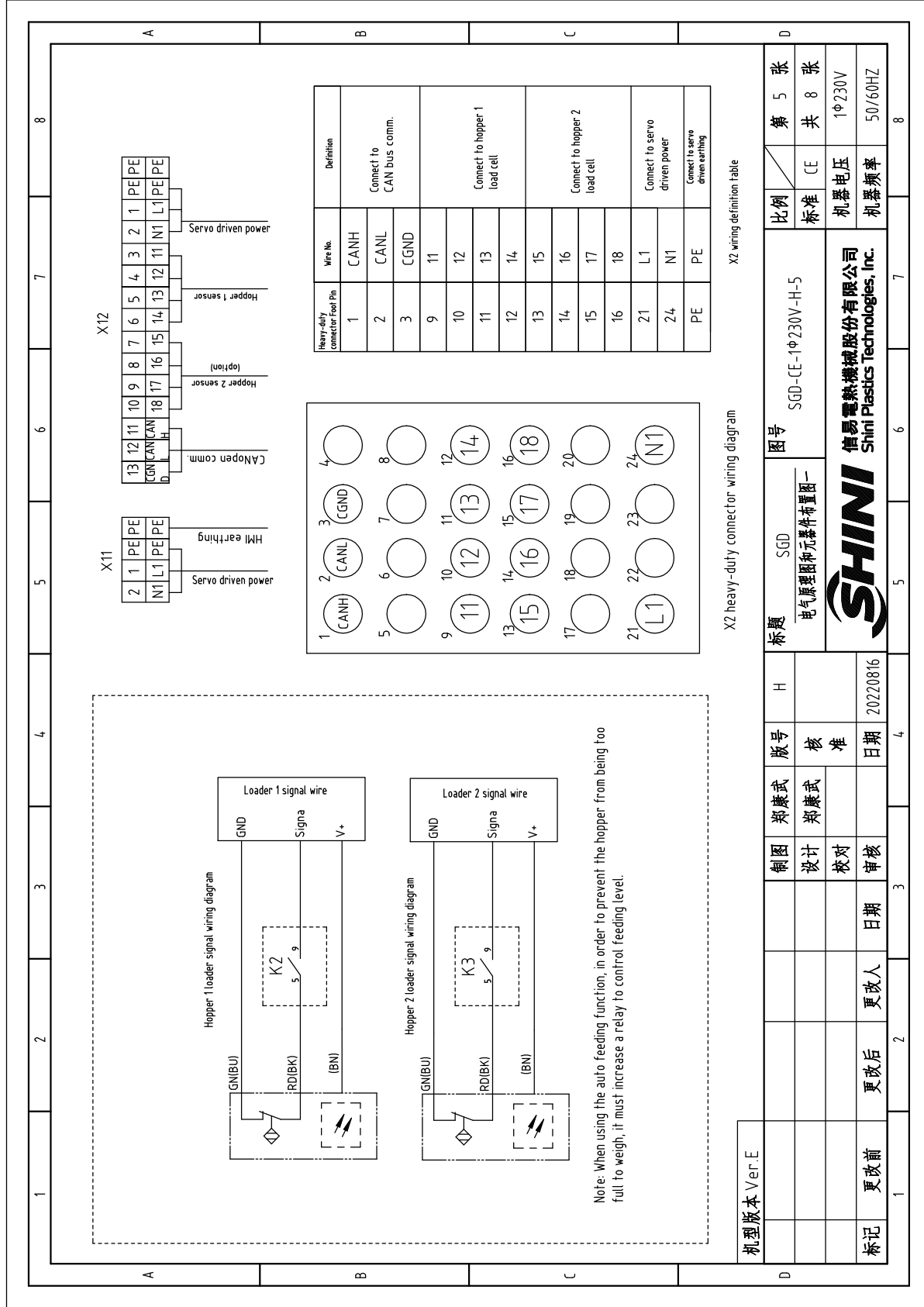


信易电热机械股份有限公司  
Shini Plastics Technologies, Inc.





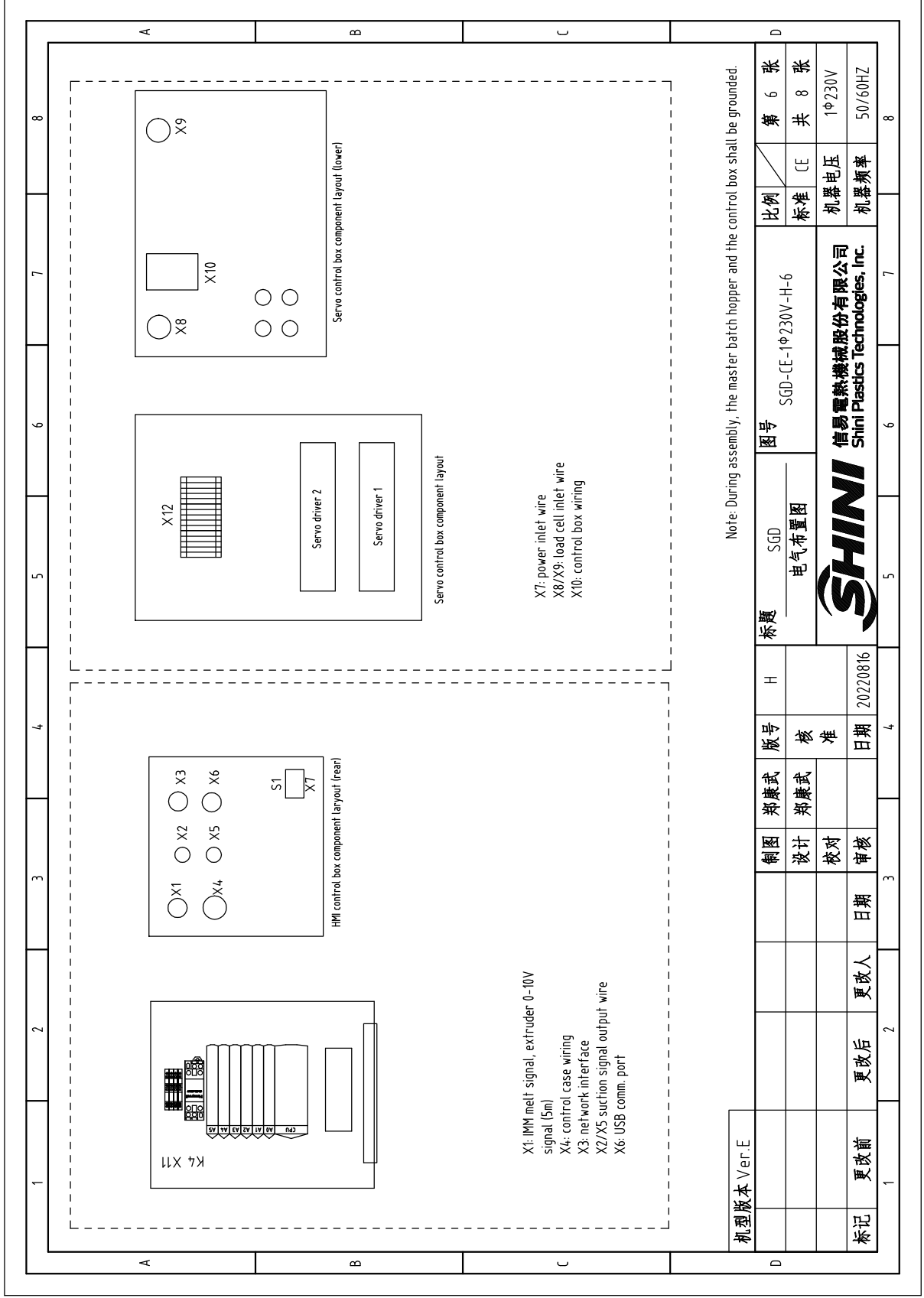
Heavy-duty connector Foot Pin	Wire No.	Definition
1	CANH	
2	CANL	Connect to CAN bus comm.
3	CGND	
9	11	
10	12	
11	13	Connect to hopper 1 load cell
12	14	
13	15	
14	16	
15	17	Connect to hopper 2 load cell
16	18	
21	L1	Connect to servo driven power
24	N1	
PE	PE	Connect to servo driven earthing

X2 heavy-duty connector wiring diagram

X2 wiring definition table

机型号	Ver.E	制图	郑康武	版号	H	标题	SGD	图号	SGD-CE-1Φ230V-H-5	比例	第 5 张
		设计	郑康武	核准		电气原理图和元器件布置图一				标准	共 8 张
标记	更改前	更改后	更改人	日期	20220816	<b>SHINI</b>		Shini Plastics Technologies, Inc.		机器电压	1Φ230V
										机器频率	50/60HZ
											8

Note: When using the auto feeding function, in order to prevent the hopper from being too full to weigh, it must increase a relay to control feeding level.



Note: During assembly, the master batch hopper and the control box shall be grounded.

机型版本 Ver.E		标题		图号		比例		第 6 张	
		SGD		SGD-CE-1φ230V-H-6		标准		共 8 张	
		电气布置图				机器电压		1φ230V	
		制图		版号		H			
		设计		核准					
		校对		日期		20220816			
		审核		日期					
标记		更改前		更改后		更改人			



1	2	3	4	5	6	7	8		
序号/NO	符号/Symbol	名称/Name	制造商/Manufacturer	型号/Type	规格/Specification	单位/Unit	数量/Number	物料编号/Material number	备注/Remark
1	PLC	Greivmetric Doser Controller (0410)/PLC	B&R	----	include A0,A1,A2,A3,A4	PCS	1	YE80041000300	
2		Weighing module X20 A11744 (B&R)	B&R	X20 A11744	----		1	E80200000500	
3		I/O base module X20BM11 (B&R)	B&R	X20BM11	----		1	YE80200100000	A
4	S1	Alternative switch	MISUMI	APCJ-101-IFR-03+AC90	Alternative switch	PCS	1	YE15111300000	
5	X7	Power wire	----	0.75x3C	power insert	PCS	1	YE50075300500	
6	FU1	Fusible core	SHINI	5x20	5A	PCS	1	YE46520500000	
7	H1	/Buzzer	HITPOINT	PK-27	24VDC	PCS	1	YE84002700000	
8	U	DC Power	MEAN WELL	LRS-35-24	IN=15/240V OUT=24VDC 15A	PCS	1	YE71352400100	
9	K1 K4	Middle relay	weidmuller	DRM270024LT	24VDC	PCS	2	YE03272400000	
10	K2 K3	Middle relay	weidmuller	DRM270024LT	24VDC	PCS	2	YE03272400000	-3
11	HMI	Touch screen	FLEXEM	F007R	24VDC	PCS	1	YE80072400000	B
12	X11	Terminal	Honeywell	SK2.5	2.5mm <sup>2</sup>	PCS	2	YE60002503200	
13		Spring terminal block D-SK2.5	Honeywell	SK2.5	2.5mm <sup>2</sup>	PCS	1	YE60002501100	
14		Spring terminal block D-SK2.5	Honeywell	GK2.5PE	2.5mm <sup>2</sup> PE	PCS	3	YE60002503400	
15	X11/X12	1-in and 2-out terminals	Honeywell	SK2.5	2.5mm <sup>2</sup>	PCS	8	YE60002501300	
16		1-in 2-two earth spring terminal	Honeywell	GK2.5PE	2.5mm <sup>2</sup> PE	PCS	1	YE60002501400	
17		Terminal	Honeywell	SK2.5	2.5mm <sup>2</sup>	PCS	5	YE60002503200	
18		Terminal fastener E/CX series (Honeywell)	----	----	----	PCS	4	YE60000003900	C
19	X2	Heavy duty connector (100) with cover/1 core female plug without pin	HARTING	Han 24DD	24 core	PCS	1	YE62240002700	
20		Heavy duty connector (100) with cover/1 core male plug without pin	HARTING	Han 24DD	24 core	PCS	1	YE62240002200	
21		0.75mm <sup>2</sup> crimping female pin (Hao Ting)	HARTING	----	----	PCS	13	YE62750001000	
22		0.75mm <sup>2</sup> crimping male pin (Hao Ting)	HARTING	----	----	PCS	13	YE62750000900	
23		0.75mm <sup>2</sup> crimping female pin (Hao Ting)	HARTING	----	----	PCS	4	YE62750001000	-2
24		0.75mm <sup>2</sup> crimping male pin (Hao Ting)	HARTING	----	----	PCS	4	YE62750000900	-2
25	X1	metal connector	PLS	PLT-162-RR(公)	2P	PCS	1	YE68016200100	
机型号版本 Ver.E Notes: (1) Materials not in the control box; (2) Optional SGD-D; (3) Optional loader;									
			制图 郑康武		标题 SGD		图号 SGD-CE-1Φ230V-H-7		
			设计 郑康武		电气元件明细表一		比例 标准 CE		
			校对 郑康武		SHINI		第 7 张		
			审核 郑康武		信易电热机械股份有限公司		共 8 张		
标记 更改前			更改后		日期 20220816		电压 1Φ230V		
更改人			更改日期		日期 20220816		频率 50/60HZ		
1	2	3	4	5	6	7	8		

1		2		3		4		5		6		7		8	
序号/NO	符号/Symbol	名称/Name	制造商/Manufacturer	型号/Type	规格/Specification	单位/Unit	数量/Number	物料编号/Material number	备注/Remark						
26		metal connector	PLS	PLT-162-PR(※)	2P	PCS	1	YE68016200000							
27	X3	Ethernet socket	LINGKE	LP-16-JR/45/1M/SX-03-201	----	PCS	1	YE68164501100							
28		USB2.0 base extension line 0.5 M (plug-socket)	LSHITECH	USB2.0	0.5M	PCS	1	YE50200500100	A						
29	WS1	Cat5E shield network jumper DO. 3M L blk. /Ethernet line	----	----	BA	PCS	1	YE90000504700							
30	WS2	Cat5E shield network jumper DO. 3M L blk. /Ethernet line	----	----	BA	PCS	1	YE90000504700	-2						
31		9-pin serial interface (male) (including shell and screw)	----	----	PCS	PCS	1	YE620900000100							
32	A6(CN1)	Servo driver	INOVANCE	SV630CS2R8I-JXS	400W(with CN1 terminal)	PCS	1	YM10463000800							
33	M1 (W2, W3)	Servo motor	INOVANCE	MS1H1-40B30CB-T331Z	400W(with encoder cable and power cable)	PCS	1	YE50040000300							
34	A7(CN1)	Servo driver	INOVANCE	SV630CS2R8I-JXS	400W(with CN1 terminal)	PCS	1	YM10463000800	-2						
35	M2(W2, W3)	Servo motor	INOVANCE	MS1H1-40B30CB-T331Z	400W(with encoder cable and power cable)	PCS	1	YE50040000300	-2						
36	BW1 BW2	Load cell	TEDEA	1022-15KG-C3-3M	10VDC 2mV/V	PCS	2	----	(1)						
37	BW3 BW4	Load cell	TEDEA	1022-15KG-C3-3M	10VDC 2mV/V	PCS	2	----	(1)(2)						
B															
C															
D															
机型版本 Ver.E															
Notes: (1) Materials not in the control box; (2)Optional SGD-D;(3) Optional loader;															
		制图 郑康武		版号 H		标题 SGD		图号 SGD-CE-1Φ230V-H-8		比例		第 8 张			
		设计 郑康武		核准		电气元件明细表二				标准 CE		共 8 张			
		校对		日期 20220816		SHINI		信易电热机械股份有限公司 Shini Plastics Technologies, Inc.		机器电压 1Φ230V		机器频率 50/60HZ			
标记 更改前		更改后		更改人		日期		审核		1		2		3	
1		2		3		4		5		6		7		8	