
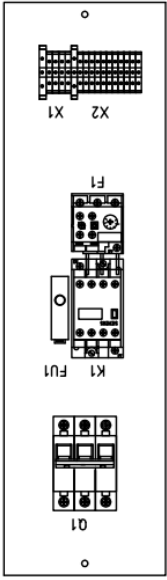
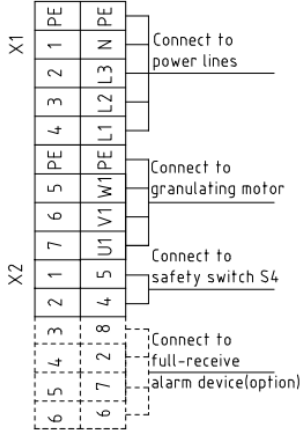
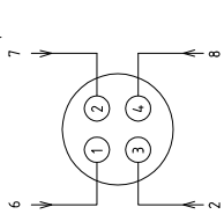


1	2	3	4	5	6	7	8
A	B	C	D				
							
<p>Connection diagram of X10 metal connectors (option)</p> 							
<p>版本 Ver. A</p>		<p>Drawer 杨红</p>		<p>Version 0</p>		<p>Title SG-2130EB</p>	
		<p>Designer 杨红</p>		<p>Approved by</p>		<p>Electrical Components Layout</p>	
		<p>Proofread by</p>		<p>Date 20170310</p>		<p>Scale Standard GB</p>	
		<p>Checked by</p>		<p>Modify date</p>		<p>Page 2</p>	
<p>Mark Before modification</p>		<p>Modified by</p>		<p>After modification</p>		<p>Totally 3 Pages</p>	
						<p>Voltage 4.00V</p>	
						<p>Frequency 50Hz</p>	
1		2		3		4	
						5	
						6	
						7	
						8	

SHINI
 信易电热机械股份有限公司
 Shini Plastics Technologies, Inc.

Drawing NO. SG-2130EB-GB-4.00V-0-2

版本 Ver. A

Drawer 杨红

Designer 杨红

Proofread by

Checked by

Date 20170310

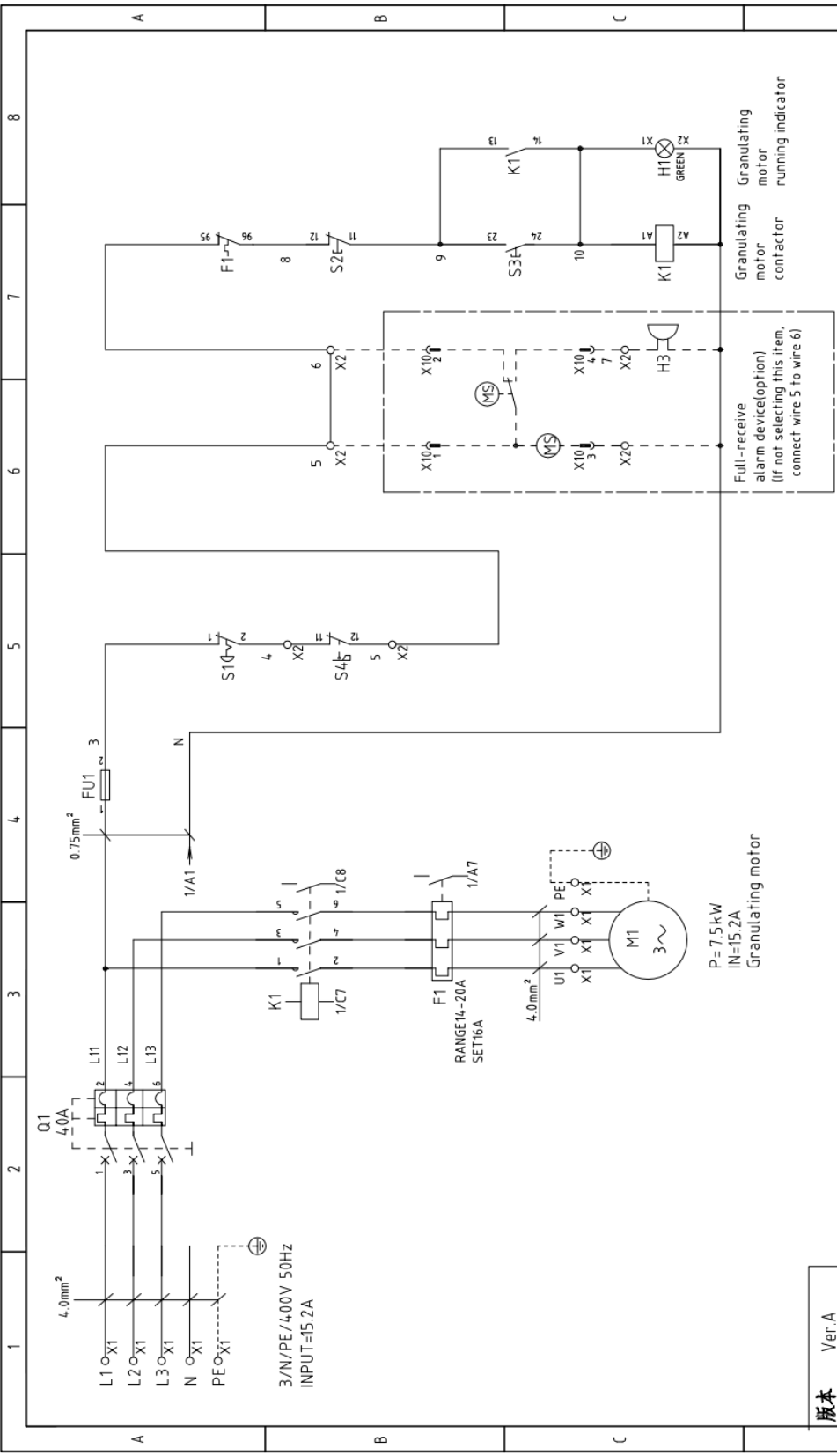
Scale Standard GB

Page 2

Totally 3 Pages

Voltage 4.00V

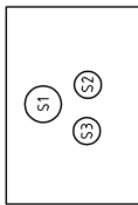
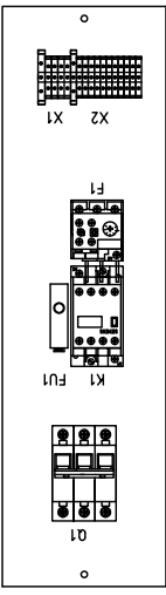
Frequency 50Hz



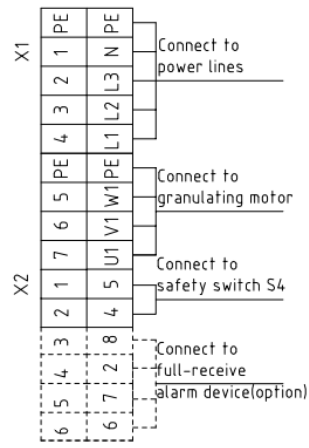
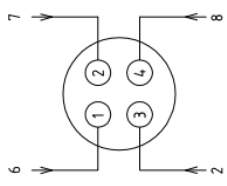
版本 Ver.A

Mark	Before modification	After modification	Modified by	Modify date	Checked by	Date	20170310
Designer	杨红	杨红	Approved by				
Version	0						
Title	SG-254.0EB Main Circuit Diagram and Control Circuit Diagram						
Drawing NO.	SG-254.0EB-GB-4.00V-0-1						
Scale	Standard	GB					
Page	1						
Totally	3						
Pages							
Voltage	4.00V						
Frequency	50Hz						

SHINI
信易电热机械股份有限公司
Shini Plastics Technologies, Inc.



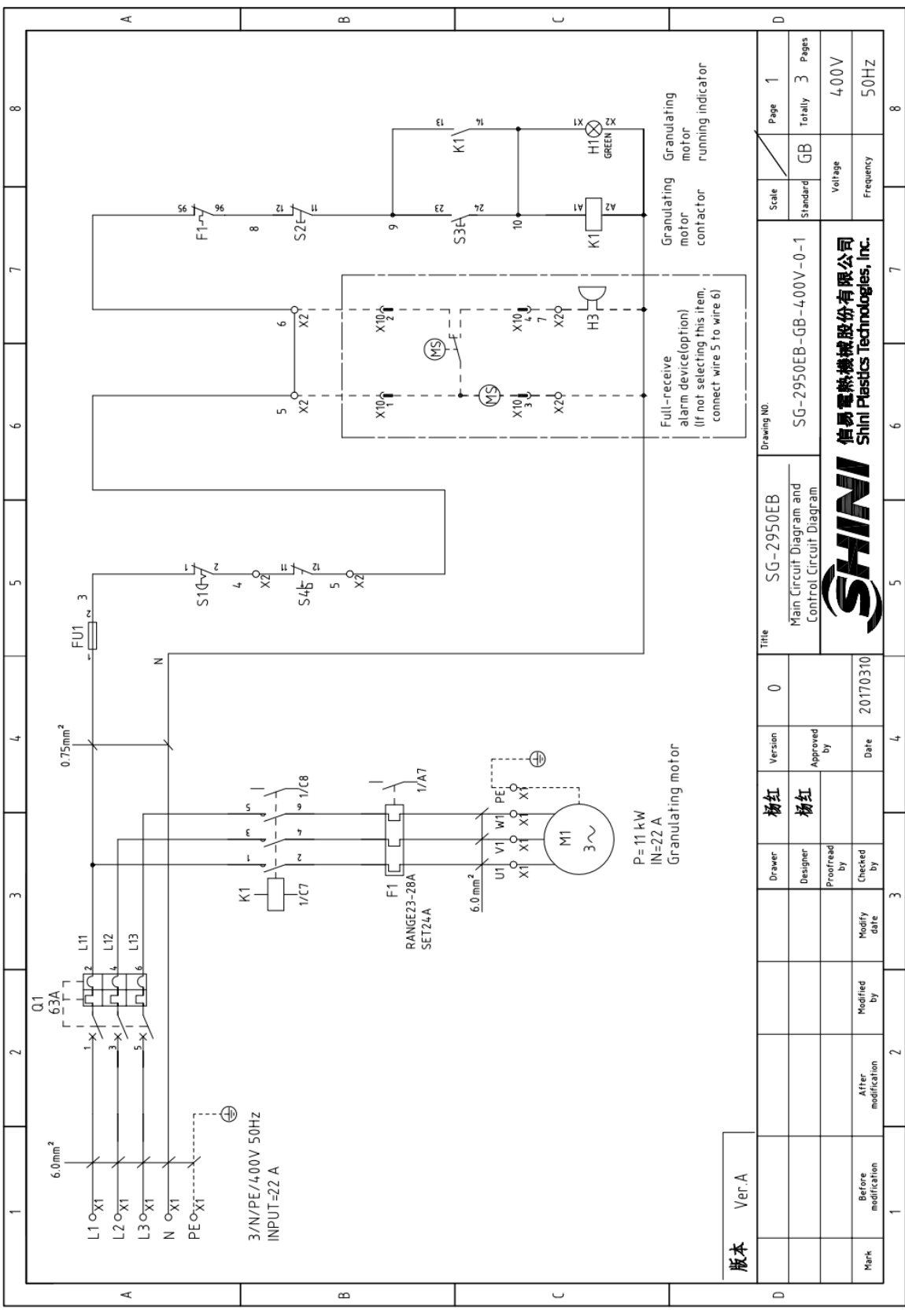
Connection diagram of X10 metal connectors (option)



版本 Ver.A

Drawer	杨红	Version	0	Title	SG-2540EB	Drawing NO.	Scale	Page
Designer	杨红	Approved by		Electrical Components Layout	SG-2540EB-GB-400V-0-2		Standard	Totally
Proofread by		Date	20170310				Voltage	400V
Checked by		Modify date					Frequency	50HZ
Before modification								
After modification								
Mark								

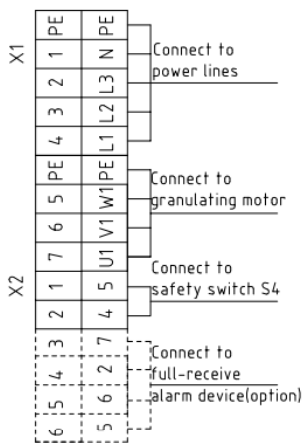
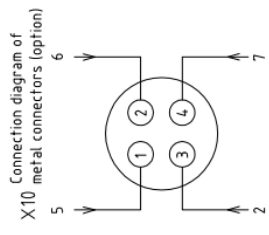
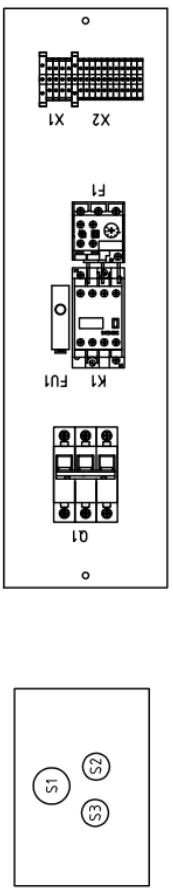




版本 Ver.A	Drawing NO.	Scale	Page 1
	Title SG-2950EB Main Circuit Diagram and Control Circuit Diagram	Standard	Totaly 3 Pages
Designer 杨红	Version 0	Standard GB	Voltage 400V
Proofread by	Approved by 杨红	Drawing NO. SG-2950EB-GB-400V-0-1	Frequency 50HZ
Checked by	Date 20170310	SHINI 信易电热机械股份有限公司 Shini Plastics Technologies, Inc.	8
Modified by	4	5	6
After modification	2	3	7
Before modification	1	4	8

1 2 3 4 5 6 7 8

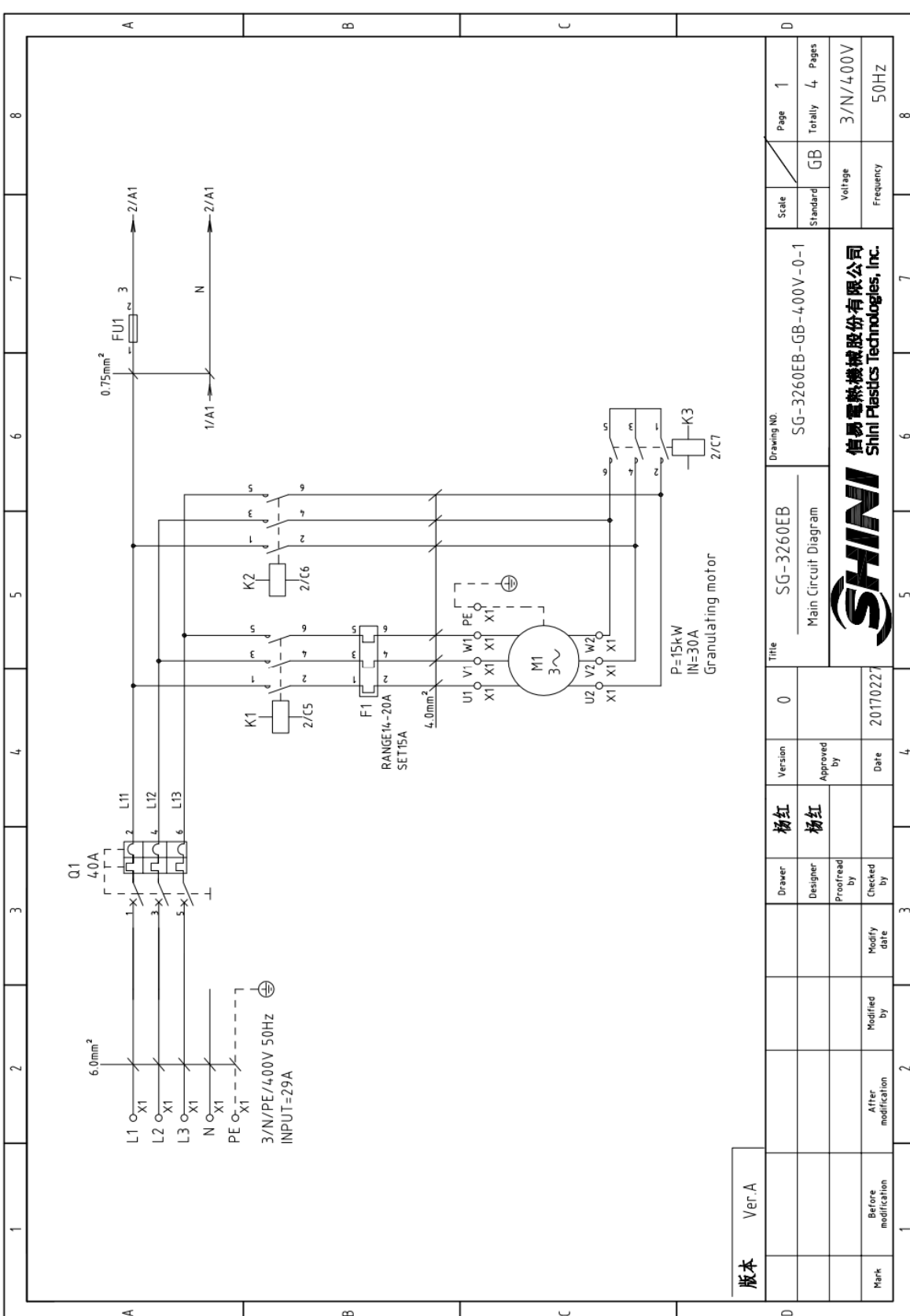
A B C D



版本 Ver.A

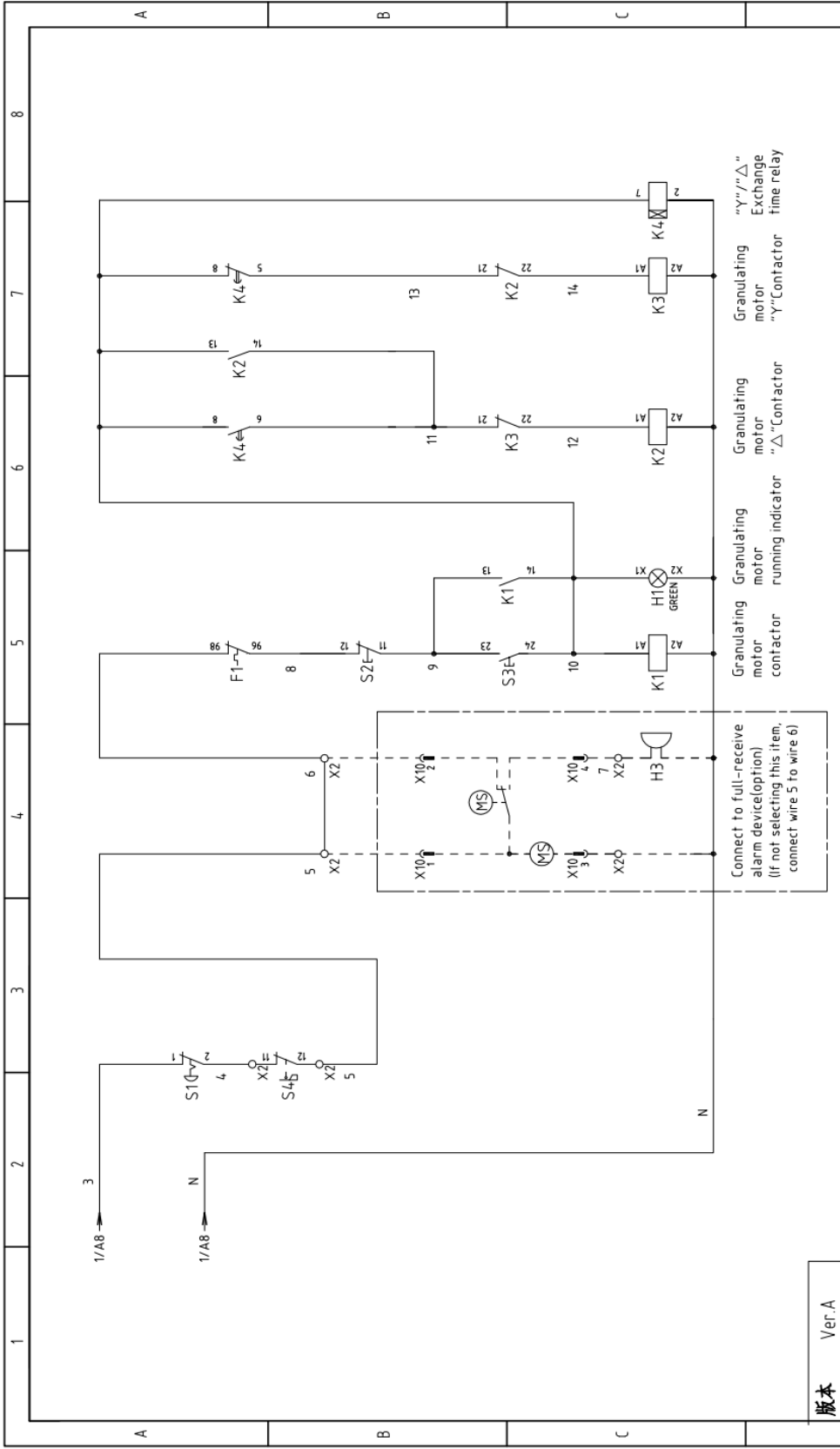
Drawer	杨红	Version	0	Title	SG-2950EB	Drawing NO.	Scale	Page
Designer	杨红	Approved by		Electrical Components Layout	SG-2950EB-GB-4.00V-0-2		Standard	Totally
Proofread by		Date	20170310				Voltage	Pages
Checked by		Modify date					Frequency	
Mark	Before modification	After modification					4.00V	3
							50HZ	8





版本	Ver-A
Mark	Before modification
After modification	
Modified by	
Modify date	
Checked by	20110227
Proofread by	
Designer	杨红
Approved by	杨红
Version	0
Title	SG-3260EB
Main Circuit Diagram	
Drawing No.	SG-3260EB-GB-400V-0-1
Scale	Standard
Page	1
Totally	4
Pages	3/N/400V
Voltage	50Hz
Frequency	

SHINI
 信义塑料机械股份有限公司
 Shini Plastics Technologies, Inc.



版本 Ver.A

D	Scale	Standard	GB	Page	2
	Title		SG-3260EB	Totally	4
Drawing No.		SG-3260EB-GB-400V-0-2		Voltage	
Control Circuit Diagram				Frequency	
SHINI		SHINI 塑料机械股份有限公司		3/N/400V	
SHINI		SHINI Plastics Technologies, Inc.		50Hz	
Version		0		8	
Designer		杨红		7	
Proofread by		杨红		6	
Checked by				5	
Modified by				4	
After modification				3	
Before modification				2	
Mark		20170227		1	
Date					
Approved by					

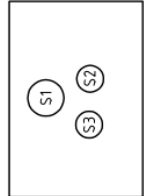
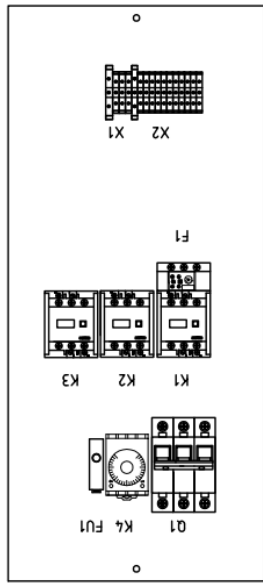
1 2 3 4 5 6 7 8

A

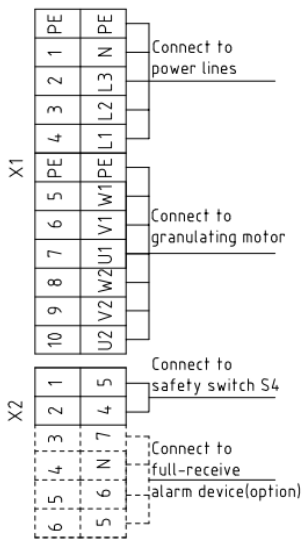
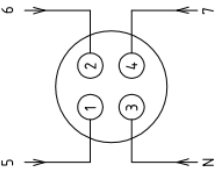
B

C

D



Connection diagram of X-10 metal connectors (option)

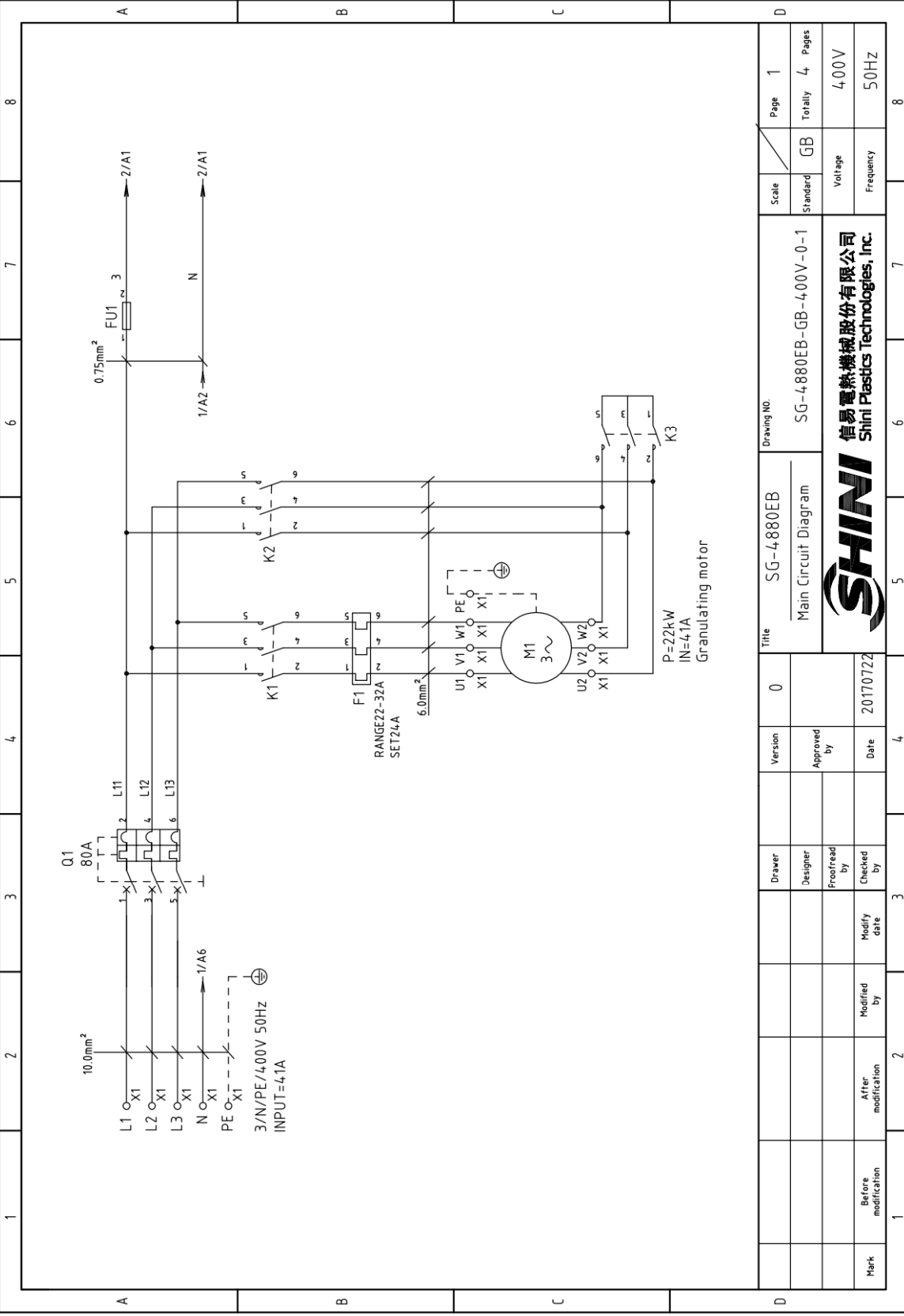


版本 Ver.A

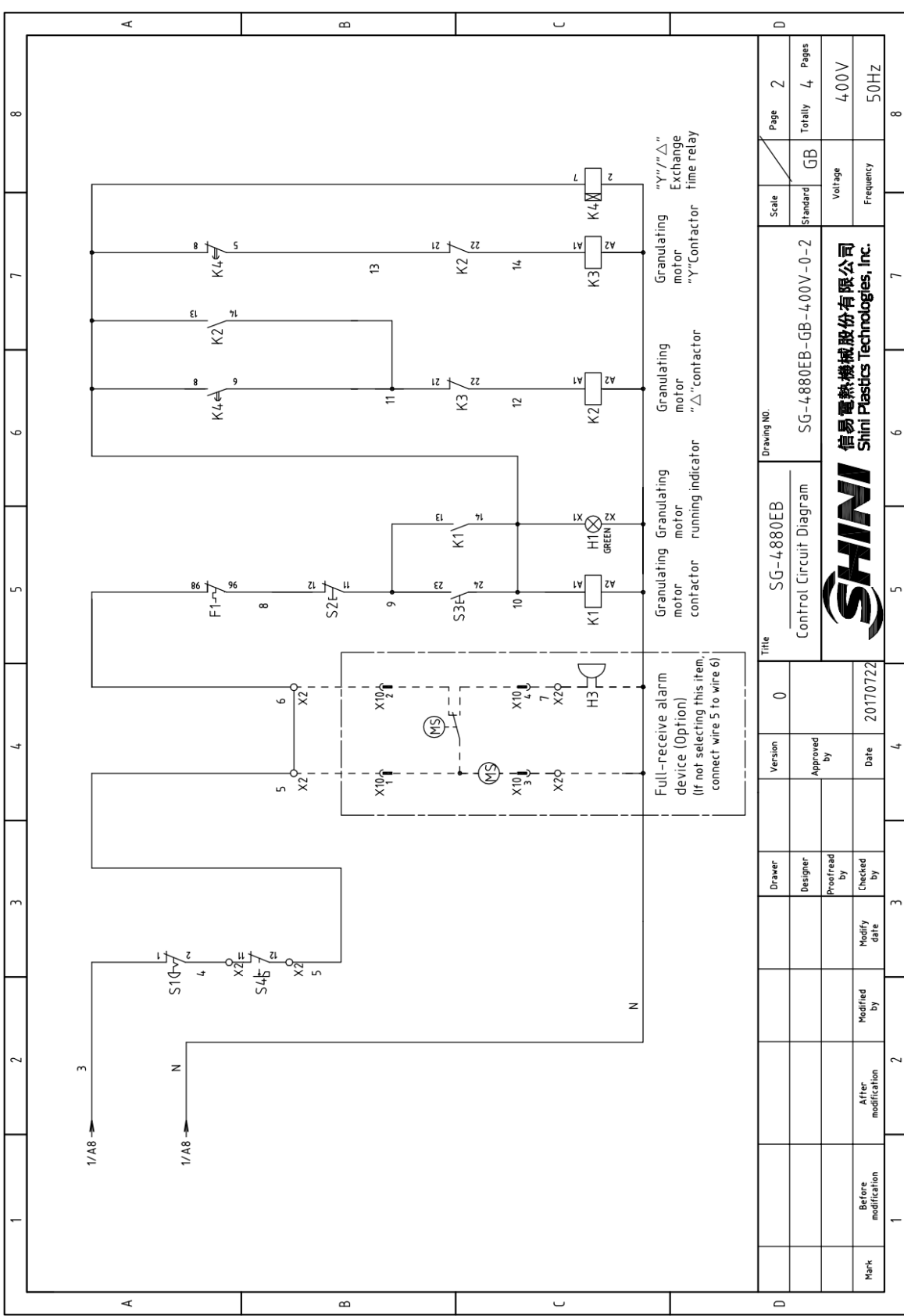
Mark	Before modification	After modification	Modify date	Checked by	Approved by	Version	0	Title	SG-3260EB Electrical Components Layout	Drawing NO.	SG-3260EB-GB-400V-0-3	Scale	Standard	Page	3
														Totally	4
														GB	Pages
														Voltage	3/N/400V
														Frequency	50HZ



1 2 3 4 5 6 7 8



Mark	Before modification	Modified by	Modify date	Designer	Version	Title	Drawing No.	Scale	Page
	After modification	Checked by	Date	Approved by	0	SG-4880EB Main Circuit Diagram	SG-4880EB-GB-400V-0-1	Standard	Totally 4
			20170722					GB	Pages
								Voltage	400V
								Frequency	50HZ
信易電熱機械股份有限公司 Shini Plastics Technologies, Inc.									
P=22kW IN=4.1A Granulating motor									



Title		Drawing No.		Scale	Page
SG-4880EB		SG-4880EB-GB-400V-0-2		Standard	2
Control Circuit Diagram		GB		Totally 4 Pages	
Version		Date		Voltage	
0		20170722		400V	
Approved by		Checked by		Frequency	
				50HZ	
Designer		Modified by		After modification	
Proofread by		Modify date		Before modification	
Checked by					
Mark					

SHINI
信易電熱機械股份有限公司
Shini Plastics Technologies, Inc.

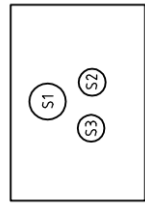
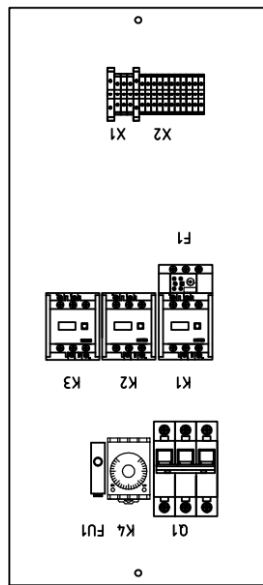
1 2 3 4 5 6 7 8

A

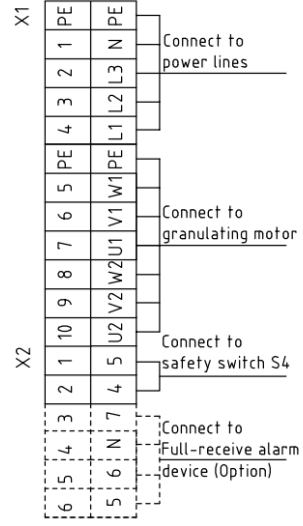
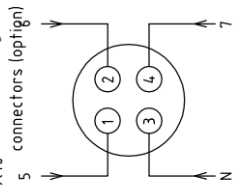
B

C

D



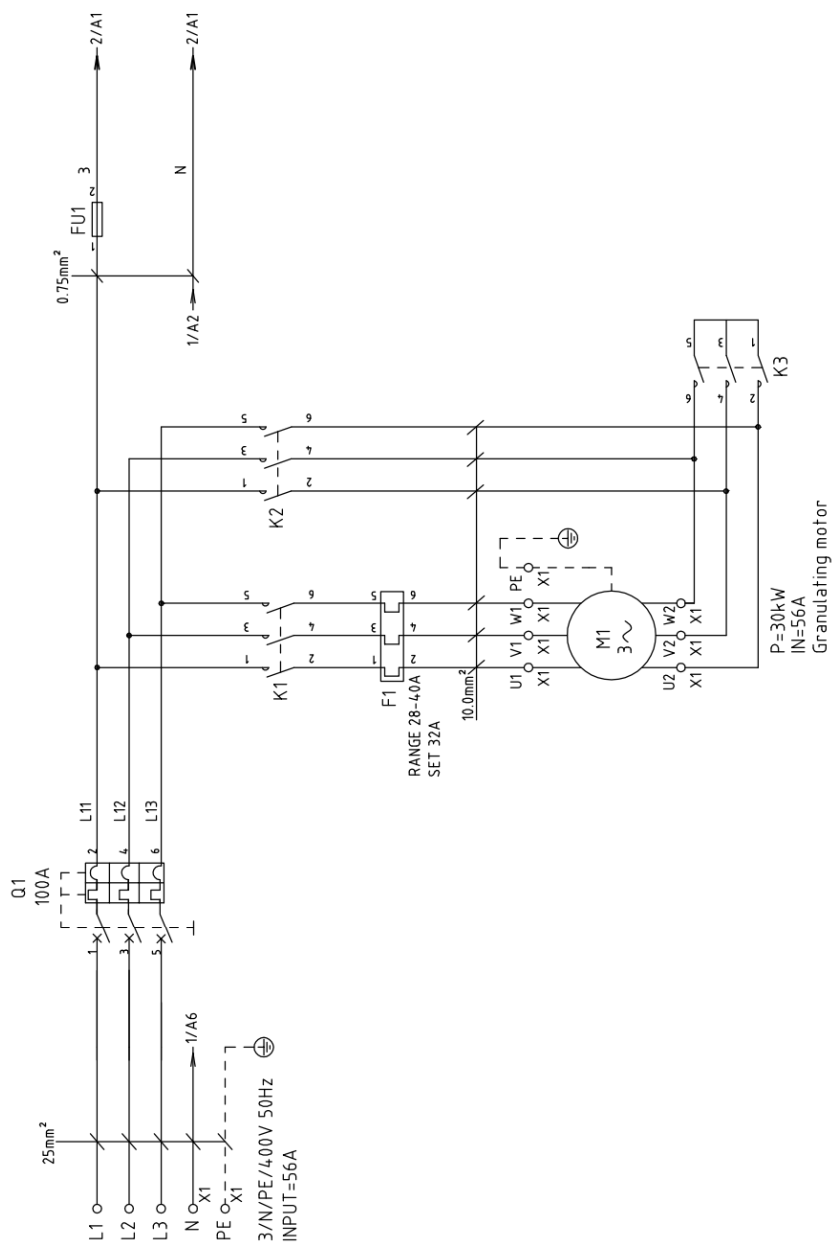
X10 Connection diagram of metal



Version	0	Title	SG-4880EB	Scale	Standard	Page	3
Drawer		Electrical Components Layout		Standard	GB	Totally	4
Designer		Drawing NO. SG-4880EB-GB-400V-0-3		Voltage	400V	Pages	4
Proofread by				Frequency	50Hz		
Checked by		Date 20170722					
Modified by							
Modify date							
Before modification							
After modification							
Mark							

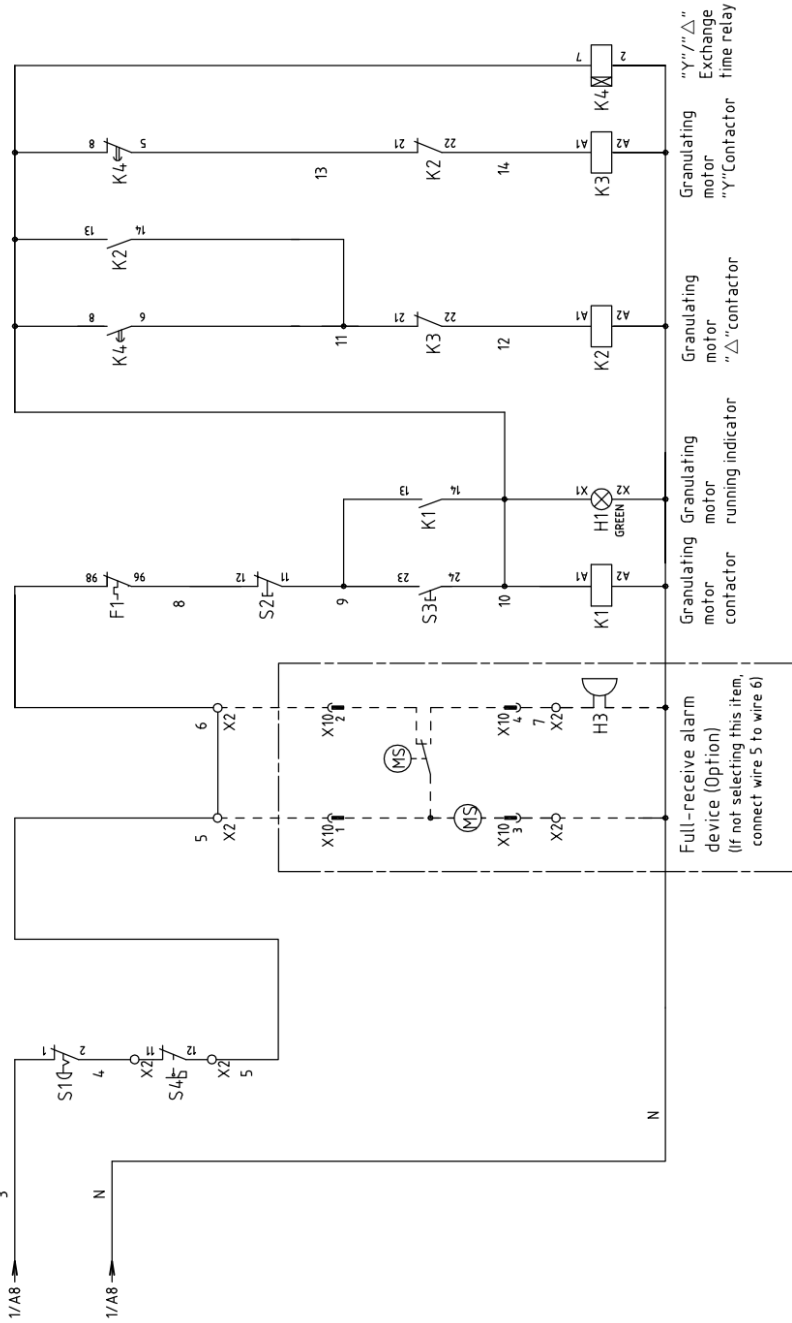
SHINI
信易電熱機械股份有限公司
Shini Plastics Technologies, Inc.

1 2 3 4 5 6 7 8



Mark	Before modification	Modified by	20170802	Version	0	Title	SG-60110EB	Drawing NO.	SG-60110EB-GB-400V-0-1	Scale	Page 1
	After modification	Modified by	20170802		Approved by		Standard		Totally 4		
										Standard	GB
										Voltage	400V
										Frequency	50Hz
										Page 1	8

SHINI
 信易電熱機械股份有限公司
 Shini Plastics Technologies, Inc.



Title		Drawing No.		Scale		Page	
SG-60110EB		SG-60110EB-GB-400V-0-2		Standard GB		2	
Control Circuit Diagram				Voltage		400V	
				Frequency		50Hz	
Version		Approved by		Totally		Pages	
0				4		4	
Date		Date		Voltage		Frequency	
20170802				400V		50Hz	
Modified by		Checked by		Voltage		Frequency	
				400V		50Hz	
After modification		Modify date		Voltage		Frequency	
				400V		50Hz	



Full-receive alarm device (Option)
 (If not selecting this item, connect wire 5 to wire 6)

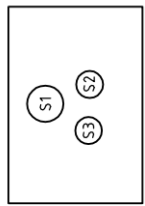
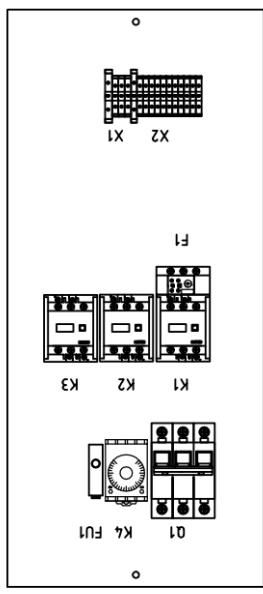
1 2 3 4 5 6 7 8

A

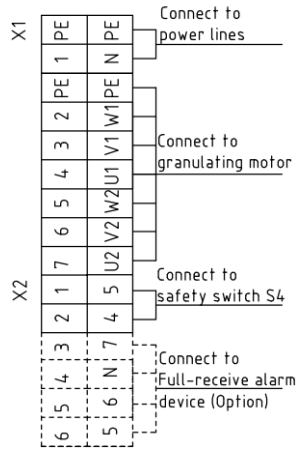
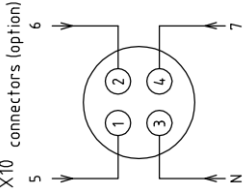
B

C

D



Connection diagram of metal X10 connectors (option)



Scale	Standard	GB	Page	3
Standard	GB	Voltage	400V	Totally
Frequency	50HZ	Pages	4	8
Drawing No.		SG-60110EB-GB-400V-0-3		
Title		SG-60110EB Electrical Components Layout		
Version		0		
Approved by				
Date		20170802		
Drawer	Designer	Proffread by	Checked by	Modify date
Mark	Before modification	After modification	Modified by	Modify date



Electrical Components List(400V)

SG-2130 EB					
NO.	Symbol	Name	Specification	Part NO.	Note
1	Q1	Circuit braker *	25A	YE40302503000	-
2	K1	Contactor**	220VAC 50/60Hz	YE00601800000	-
3	F1	Thermo overload relay	11~16A	YE01611640000	-
4	FU1	Fuse **	2A	YE41001000000	-
5	X1	Terminal board	4.0mm ²	YE60002503200	-
6			4.0mm ² PE	YE60002503500	-
7	X2	Terminal board	2.5mm ²	YE61250040000	-
8			2.5mm ²	YE61250040000	Option
9	H3	Buzzer	220VAC	YE84222000000	Option
10	S1	Emergency stop button	1NC	YE11411000000	-
11	S2	Stop button	1NC	YE11113100000	-
12	S3,H1	Start button	1NO	YE11100100000	-
13	S4	Safety switch	AZ-15	YE16147600100	-
14	MS	Materia level switch	220VAC	YE15000200100	Option
15	X10	Metal joint	4P	YE68025400000	Option
16			4P	YE68025400100	Option
17	M1	Granulating motor	400V 50Hz	-	-
18		Cable 4.0x5Cx4M	BA	BE51040500250	-

* means possible broken parts. ** means easy broken part. and spare backup is suggested.

Please confirm the version of manual before placing the purchase order to guarantee that the item number of the spare part is in accordance with the real object.

SG-2540 EB					
NO.	Symbol	Name	Specification	Part NO.	Note
1	Q1	Circuit braker *	40A	YE40304003000	-
2	K1	Contactor **	220VAC 50/60Hz	YE00602622000	-
3	F1	Thermo overload relay	14~20A	YE01260140000	-
4	FU1	Fuse **	2A	YE41001000000	-
5	X1	Terminal board	4.0mm ²	YE61040000000	-
6			4.0mm ² PE	YE61043500000	-
7	X2	Terminal board	2.5mm ²	YE61250040000	-
8			2.5mm ²	YE61250040000	Option
9	H3	Buzzer	220VAC	YE84222000000	Option
10	S1	Emergency stop button	1NC	YE11411000000	-
11	S2	Stop button	1NC	YE11113100000	-
12	S3,H1	Start button	1NO	YE11100100000	-
13	S4	Safety switch	AZ-15	YE16147600100	-
14	MS	Materia level switch	220VAC	YE15000200100	Option
15	X10	Metal joint	4P	YE68025400000	Option

16	-	-	4P	YE68025400100	Option
17	M1	Granulating motor	400V 50Hz	-	-
18		Cable 4.0x5Cx4M	BA	BE51040500250	-

* means possible broken parts. ** means easy broken part. and spare backup is suggested.

Please confirm the version of manual before placing the purchase order to guarantee that the item number of the spare part is in accordance with the real object.

SG-2950 EB					
NO.	Symbol	Name	Specification	Part NO.	Note
1	Q1	Circuit braker *	63A	YE40306303000	-
2	K1	Contactor **	220VAC 50/60Hz	YE00602722000	-
3	F1	Thermo overload relay	23~28A	YE01612620000	-
4	FU1	Fuse **	2A	YE41001000000	-
5	X1	Terminal board	6.0mm ²	YE60000603200	-
6			6.0mm ² PE	YE60000603500	-
7	X2	Terminal board	2.5mm ²	YE60002503200	-
8			2.5mm ² PE	YE60002503200	Option
9	H3	Buzzer	220VAC	YE84222000000	Option
10	S1	Emergency stop button	1NC	YE11411000000	-
11	S2	Stop button	1NC	YE11113100000	-
12	S3,H1	Start button	1NO	YE11100100000	-
13	S4	Safety switch	AZ-15	YE16147600100	-
14	MS	Materia level switch	220VAC	YE15000200100	Option
15	X10	Metal joint	4P	YE68025400000	Option
16			4P	YE68025400100	Option
17	M1	Granulating motor	400V 50Hz	-	-
18		Cable 6.0x5Cx5M	BA	BE51060500250	-

*means possible broken parts. ** means easy broken part. and spare backup is suggested.

Please confirm the version of manual before placing the purchase order to guarantee that the item number of the spare part is in accordance with the real object.

SG-3260EB					
NO.	Symbol	Name	Specification	Part NO.	Note
1	Q1	Circuit braker *	40A	YE40304003000	-
2	K1 K2	Contactor **	220VAC 50/60Hz	YE00602822000	-
3	K3	Contactor **	220VAC 50/60Hz	YE00602722000	-
4	F1	Thermo overload relay	14-20A	YE01260140000	-
5	FU1	Fuse **	2A	YE41001000000	-
6	K4	Time relay	3S-60M 230VAC	YE86300300000	-
7	X1	Terminal board	6.0mm ²	YE60002503200	-
8			6.0mm ² PE	YE60002503400	-
9			4.0mm ²	YE60000403200	-
10			4.0mm ²	YE60000403500	-

11	X2	Terminal board	6.0mm ²	YE60000603200	-
12			6.0mm ² PE	YE60000603500	Option
13	H3	Buzzer	220VAC	YE84222000000	Option
14	S1	Emergency stop button	1NC	YE11411000000	-
15	S2	Stop button	1NC	YE11113100000	-
16	S3,H1	Start button	1NO	YE11100100000	-
17	S4	Safety switch	AZ-15	YE16147600100	-
18	MS	Materia level switch	220VAC	YE15000200100	Option
19	X10	Metal joint	4P	YE68025400000	Option
20			4P	YE68025400100	Option
21	M1	Granulating motor	400V 50Hz	-	-

*means possible broken parts. ** means easy broken part. and spare backup is suggested.

Please confirm the version of manual before placing the purchase order to guarantee that the item number of the spare part is in accordance with the real object.

SG-4880EB					
NO.	Symbol	Name	Specification	Part NO.	Note
1	Q1	Circuit braker *	80A	YE40308003000	-
2	K1 K2	Contactora **	220VAC 50/60Hz	YE00503600000	-
3	K3	Contactora **	220VAC 50/60Hz	YE00503500000	-
4		Auxiliary contactora	1NC	YE00592110100	
5		Auxiliary contactora	1NO	YE00592110000	
6	F1	Thermo overload relay	22-32A	YE01223200000	-
7	FU1	Fuse **	2A	YE41001000000	-
8	K4	Time relay	3S-60M 230VAC	YE86300300000	-
9	X1	Terminal board	10mm ²	YE60001003200	-
10			10mm ² PE	YE60001003500	-
11			6.0mm ²	YE60000603200	-
12			6.0mm ² PE	YE60000603500	-
13	X2	Terminal board	2.5mm ²	YE60002503200	-
14			2.5mm ²	YE60002503200	Option
15	H3	Buzzer	220VAC	YE84222000000	Option
16	S1	Emergency stop button	1NC	YE11411000000	-
17	S2	Stop button	1NC	YE11113100000	-
18	S3,H1	Start button	1NO	YE11100100000	-
19	S4	Safety switch	AZ-15	YE16147600100	-
20	MS	Materia level switch	220VAC	YE15000200100	Option
21	X10	Metal joint	4P	YE68025400000	Option
22			4P	YE68025400100	Option
23	M1	Granulating motor	400V 50Hz	-	-
24		Cable 10.0x5Cx5M	BA	BE51105000150	

*means possible broken parts. ** means easy broken part. and spare backup is suggested.

Please confirm the version of manual before placing the purchase order to guarantee that the item number of the spare part is in accordance with the real object.

SG-60110EB					
NO.	Symbol	Name	Specification	Part NO.	Note
1	Q1	Circuit braker *	100A	YE40310003000	-
2	K1 K2	Contactora **	220VAC 50/60Hz	YE00503600000	-
3	K3	Contactora **	220VAC 50/60Hz	YE00503500000	-
4		Auxiliary contactora	1NC	YE00592110100	
5		Auxiliary contactora	1NO	YE00592110000	
6	F1	Thermo overload relay	28-40A	YE01513600100	-
7	FU1	Fuse **	2A	YE41001000000	-
8	K4	Time relay	3S-60M 230VAC	YE86300300000	-
9	X1	Terminal board	35mm ²	YE60003503200	-
10			35mm ² PE	YE60003503500	-
11			10.0mm ²	YE60001003200	-
12			10.0mm ² PE	YE60001003500	-
13	X2	Terminal board	2.5mm ²	YE61250040000	-
14			2.5mm ²	YE61250040000	Option
15	H3	Buzzer	220VAC	YE84222000000	Option
16	S1	Emergency stop button	1NC	YE11411000000	-
17	S2	Stop button	1NC	YE11113100000	-
18	S3,H1	Start button	1NO	YE11100100000	-
19	S4	Safety switch	AZ-15	YE16147600100	-
20	MS	Materia level switch	220VAC	YE15000200100	Option
21	X10	Metal joint	4P	YE68025400000	Option
22			4P	YE68025400100	Option
23	M1	Granulating motor	400V 50Hz	-	-

*means possible broken parts. ** means easy broken part. and spare backup is suggested.

Please confirm the version of manual before placing the purchase order to guarantee that the item number of the spare part is in accordance with the real object.