

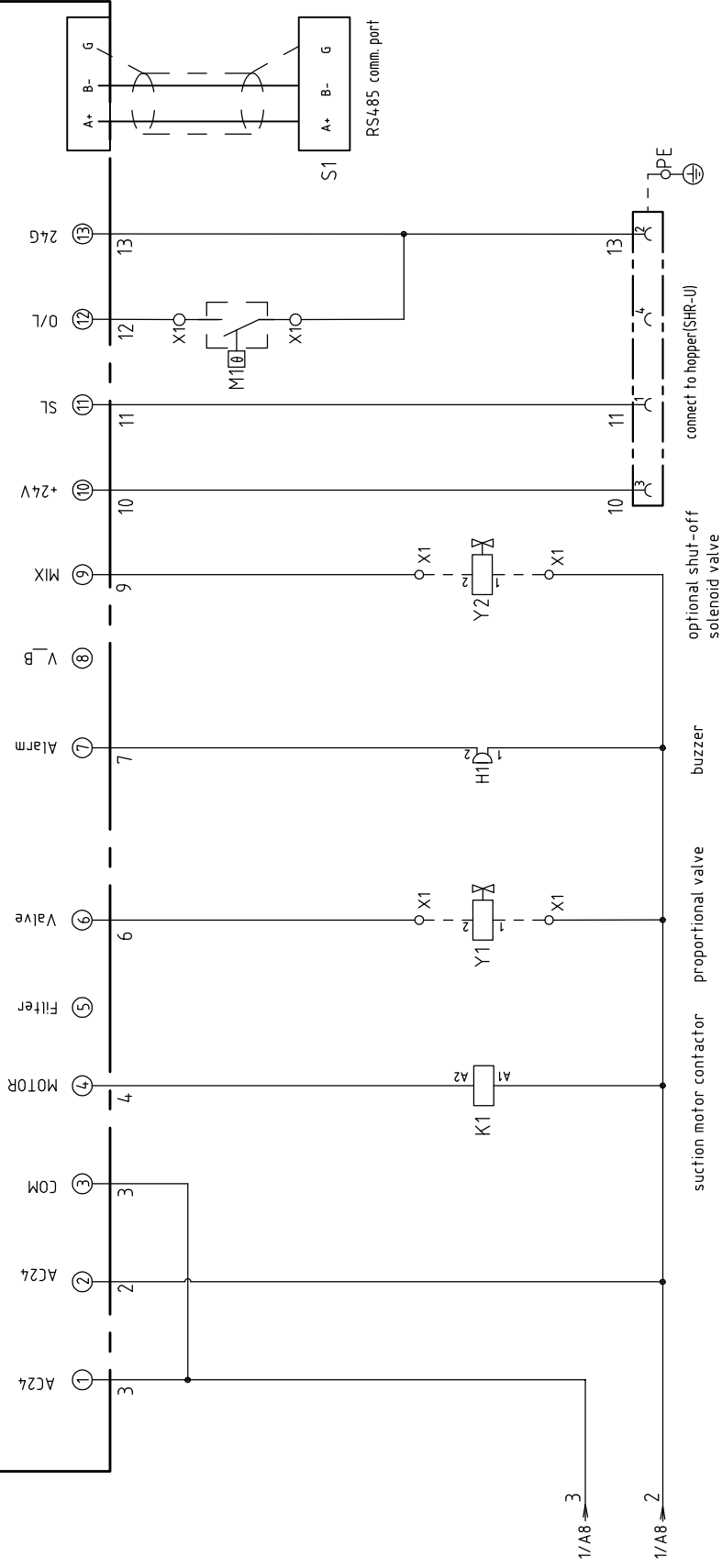
Suction Motor
 SAL-810G | SAL-820G | SAL-830G
 P=0.75KW | P=1.85KW
 IN=2.3A | IN=3.5A | IN=4.0A

机型版本 Ver. B

Title	SAL-810G/820G/830G		Drawing NO.	SAL-810G/820G/830G		Scale	Page 1	
	Main Circuit Diagram			-CE-400V-B-1			Standard	CE
Version	B		Designer			Proofread by		
Approved by			Checked by			Modified by		
Date	20190730		Modify date			Voltage	3φ400V	
						Frequency	50HZ	
Mark	Before modification	After modification	Modified by					



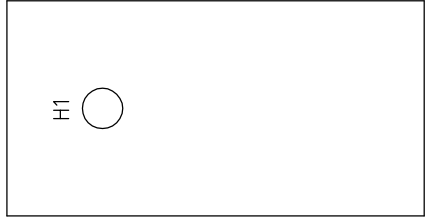
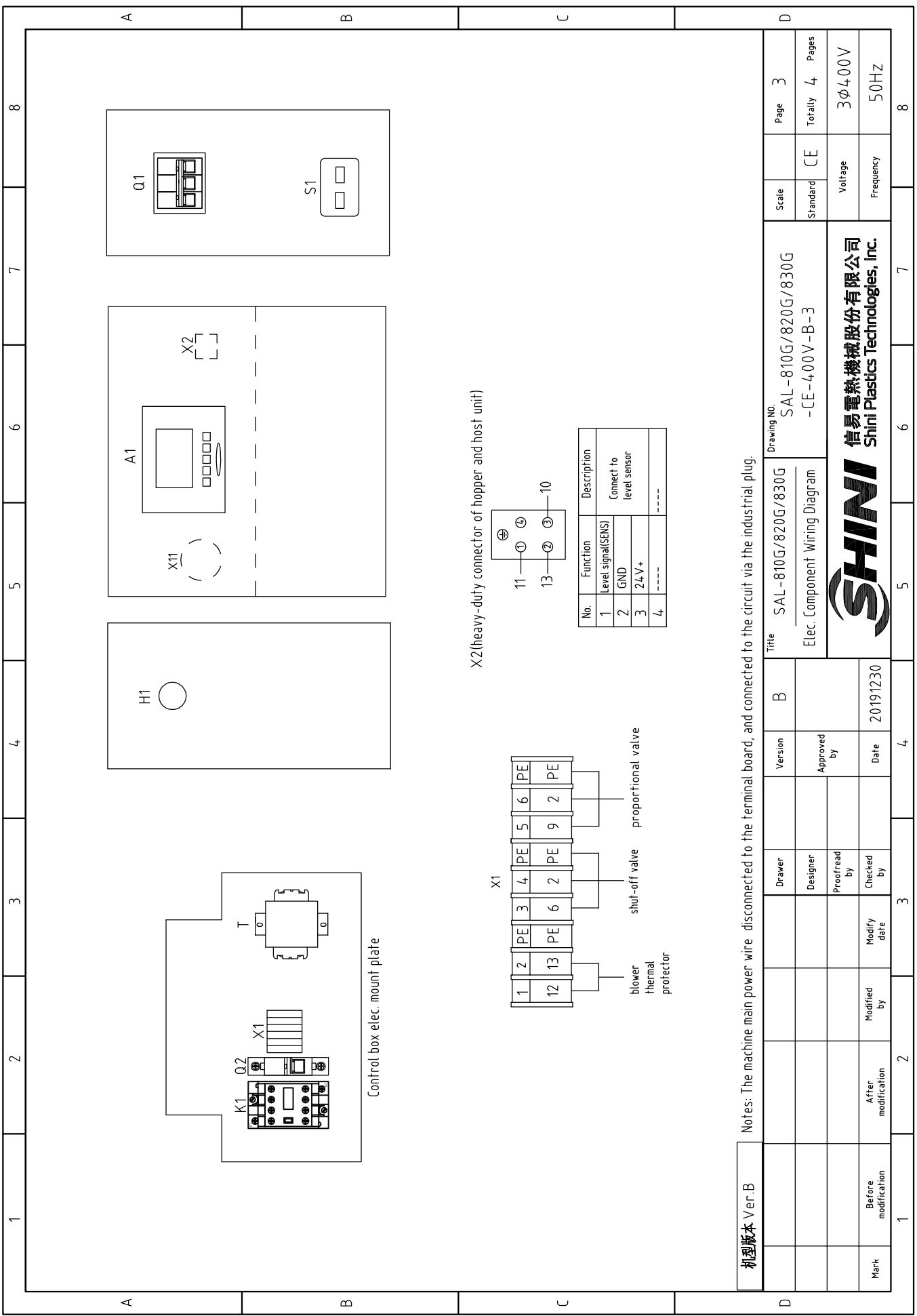
CS-23



机型版本 Ver.B

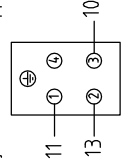
Notes: M1 is the thermal protector inside the suction blower.

Title		SAL-810G/820G/830G		Scale		Page 2	
Drawing NO.		SAL-810G/820G/830G		Standard		CE	
Control Circuit Diagram		-CE-4.00V-B-2		Voltage		3φ4.00V	
SHINI		信易电热机械股份有限公司		Frequency		50HZ	
Version		B		Totally		4	
Approved by		Date		Pages		3	
Proofread by		20191230		Mark		Before modification	
Checked by		Date		After modification		Modified by	
Drawer		Version		Mark		Before modification	
Designer		Approved by		Mark		After modification	
Proofread by		Date		Mark		Before modification	
Checked by		Date		Mark		After modification	

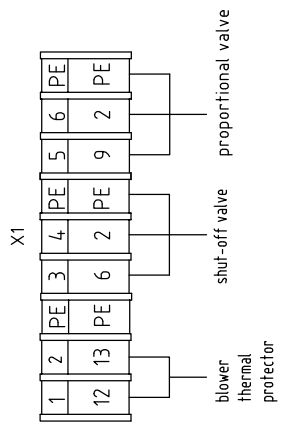


Control box elec. mount plate

X2 (heavy-duty connector of hopper and host unit)



No.	Function	Description
1	Level signal (SENS)	
2	GND	Connect to level sensor
3	24V+	
4	----	----



Mark	Before modification	Modified by	Modify date	Checked by	Date	Proofread by	Approved by	Version	B	Title	SAL-810G/820G/830G	Scale	Page	3
	After modification				20191230					Elec. Component Wiring Diagram	SAL-810G/820G/830G -CE-400V-B-3	Standard	Totally	4
													Voltage	3Φ400V
													Frequency	50HZ

Notes: The machine main power wire disconnected to the terminal board, and connected to the circuit via the industrial plug.

Drawing NO.

SAL-810G/820G/830G
-CE-400V-B-3



1		2		3		4		5		6		7		8	
NO	Symbol	Name	Manufacturer	Type	Specification	Number	Material number	Remark							
1	X11	Power plug	QX	QX-813 4P/16A(male)	4P/16A	1	YE62081300000								
2	Q1	Circuit breakers	TECO	BM-63C/3016S	16A	1	YE40301603000								
3	Q2	Circuit breakers	TECO	BM-63C/1003S	3A 1P	1	YE40100203000								
4	K1	Contacto	SCHNEIDER	LC1-D09B7C	24VAC	1	YE00972400000								
5	A1	Controllor	YUYUN	CS-23(with comm.)	24VAC/DC	1	YE80232402200								
6	S1	RS-485 comm. plate	YUYUN	---	Dsub-9pi connector	1	YE90048501200								
7		Shell RS485(SAL-700G-A-19)ver.0	BINCHENG	---	---	1	YR40048500000								
8	H1	Buzzer	---	PK-35A	24VAC/DC	1	YE84003500600								
9	T	Transformer	JIUXIN	IN=400V/415V OUT=24V	50VA	1	YE70040006400								
10		Terminal fittings E/GK series	HONEYWELL	---	PCS	4	YE60000003900								
11	X1	Wiring terminal	HONEYWELL	SK2.5	2.5mm ²	6	YE60002503200								
12	X2	Wiring terminal	HONEYWELL	GK2.5PE	2.5PE	3	YE60002503400								
13	X2	Heavy duty connectors	HARTING	Han E-4F(female)	4P	1	YE68000401400								
14	Y1 Y2 Y3 Y4	Solenoid Vavle	AIRTAC	---	24VAC	4	---	(1)							
15	M	Motor	SHINI	0.75KW (with thermal protector)	400V 50Hz	1	---	(1)SAL-810G							
16	M	Motor	SHINI	1.5KW (with thermal protector)	400V 50Hz	1	---	(1)SAL-820G							
17	M	Motor	SHINI	1.85KW (with thermal protector)	400V 50Hz	1	---	(1)SAL-830G							
18	M1	Thermal protector	---	---	----	1	---	(1) in blower							
C															
Notes: (1)Not install in the control box.															
礼型版本 Ver.B															
				Title		Version		Drawing NO.		Scale		Page		D	
				SAL-810G/820G/830G		B		SAL-810G/820G/830G -CE-400V-B-4		Standard		4		4	
				电元件明细表一		Approved by				CE		Totally		4	
				Date		20191230				Voltage		3φ400V			
				Modified by		Modify date				Frequency		50Hz			
				Mark		Before modification				Frequency		50Hz			
SHINI 信易電熱機械股份有限公司 Shini Plastics Technologies, Inc.															
				5		6		7		8					